

DOCUMENT RESUME

ED 357 030

TM 019 723

TITLE Digest of Education Statistics, 1992. Pocket Digest.

INSTITUTION National Center for Education Statistics (ED), Washington, DC.

REPORT NO NCES-93-219

PUB DATE Feb 93

NOTE 13p.; For the complete digest, see ED 349 706.

PUB TYPE Statistical Data (110)

EDRS PRICE MF01/PC01 Plus Postage.

DESCRIPTORS Age Differences; Annual Reports; Educational Attainment; Educational Finance; Elementary Secondary Education; *Enrollment; *Expenditures; Federal Aid; Higher Education; High School Graduates; *National Surveys; Population Trends; *School Statistics; Tables (Data)

IDENTIFIERS *Educational Information

ABSTRACT

The National Center for Education Statistics annually compiles data covering all aspects of education for its "Digest of Education Statistics." This pocket version presents an overview of education in the United States, with greater detail on elementary and secondary education, higher education, and population characteristics. The overview tables contain data for the 1970-71, 1980-81, 1985-86, and 1991-92 school years on enrollment, instructional staff, expenditures, and federal funds for education. Numbers of schools, enrollment, numbers of teachers, high school graduates, finances, and pupil-teacher ratios are summarized for elementary and secondary education. The higher education section lists numbers of colleges, enrollment, degrees conferred, and finances. The population characteristics reviewed are for the years 1960, 1970, 1980, and 1991; and they concern enrollment by eight selected age groups and educational attainment of persons over age 25 years. (SLD)

 * Reproductions supplied by EDRS are the best that can be made *
 * from the original document. *

Pocket Digest

NATIONAL CENTER FOR EDUCATION STATISTICS

ED357030

Digest of Education Statistics 1992

U.S. DEPARTMENT OF EDUCATION
Office of Educational Research and Improvement
EDUCATIONAL RESOURCES INFORMATION
CENTER (ERIC)

- This document has been reproduced as received from the person or organization originating it.
- Minor changes have been made to improve reproduction quality.
- Points of view or opinions stated in this document do not necessarily represent official OERI position or policy.

BEST COPY AVAILABLE

U.S. Department of Education
Office of Educational Research and Improvement

NCES 93-219

TM019723

The following tables are a small sample of what is contained in the ***Digest of Education Statistics, 1992***.

Since 1870, the federal government has been gathering and reporting data about students, teachers, schools, and educational funding. The National Center for Education Statistics (NCES), as the statistical arm of the U.S. Department of Education, annually compiles data covering all aspects of education in the ***Digest of Education Statistics***.

The ***Digest*** includes data from many sources, both government and private, and draws especially on the results of the surveys conducted by NCES. The book has information on the number of schools and colleges, enrollments and graduates, and characteristics of teachers and students. In addition, it contains figures on educational attainment, dropouts, finances, federal and state funds for education, employment and income of graduates, international educational comparisons, and libraries. Supplemental tables on population trends, attitudes about education, education characteristics of the labor force, government finances, and economic trends provide background for evaluating education data.

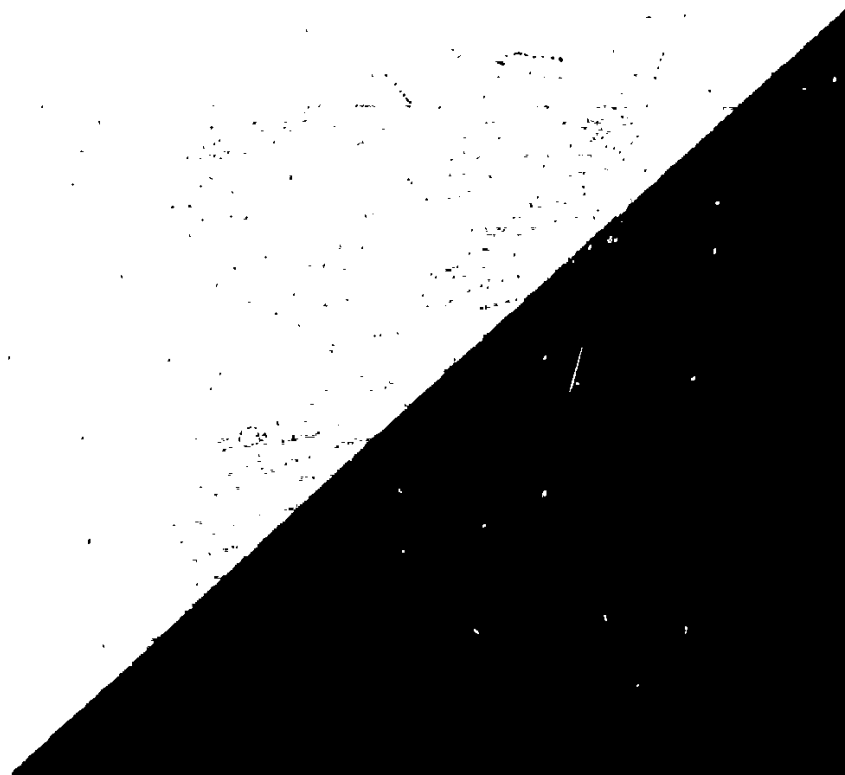
To obtain the complete 491-page ***Digest of Education Statistics, 1992***, see the ordering information at the end of this booklet.

U.S. Department of Education material in this booklet is in the public domain. Authorization to reproduce Department of Education material in whole or in part is granted.

3
BEST COPY AVAILABLE

Pocket Digest

Digest of Education Statistics 1992



**Charlene M. Hoffman
National Center for Education Statistics**

U.S. Department of Education

Richard W. Riley

Secretary

Office of Educational Research and Improvement

Emerson J. Elliott

Acting Assistant Secretary

National Center for Education Statistics

Emerson J. Elliott

Commissioner

National Center for Education Statistics

"The purpose of the Center shall be to collect, analyze, and disseminate statistics and other data related to education in the United States and in other nations."—Section 406(b) of the General Education Provisions Act, as amended (20 U.S.C. 1221e-1).

February 1993

5

Overview

Characteristic	School year			
	1970-71	1980-81	1985-86	1991-92 ¹
Enrollment				
	(In thousands)			
Total, all levels	59,838	58,305	57,226	61,189
Elementary/secondary, total	51,257	46,208	44,979	47,032
Public schools	45,894	40,877	39,422	41,839
Private schools	5,363	5,331	5,557	5,193
Higher education, total	8,581	12,097	12,247	14,157
Public colleges	6,428	9,457	9,479	11,174
Private colleges	2,153	2,640	2,768	2,983
Instructional staff				
Total, all levels	2,766	3,172	3,264	3,645
Elementary/secondary teachers ..	2,292	2,486	2,549	2,786
Public schools	2,059	2,185	2,206	2,431
Private schools	233	301	343	355
College faculty (senior Instructional staff only)	474	1,686	1,715	859
Public colleges	314	1,495	1,503	610
Private colleges	160	1,191	1,212	249
Expenditures				
	(In billions)			
Total, all levels	\$75.7	\$182.8	\$269.5	\$425.2
Elementary/secondary expenditures	48.2	112.3	161.8	261.1
Public schools	45.5	104.1	148.6	240.9
Private schools ¹	2.7	8.2	13.2	20.1
College expenditures ²	27.5	70.5	107.7	164.0
Public colleges	18.0	46.6	70.1	105.7
Private colleges	9.5	24.0	37.6	58.3
Fiscal year				
	1980	1985	1990	1992 ¹
Federal funds for education				
	(In billions)			
Total, all agencies	\$34.3	\$38.8	\$51.4	\$61.4
Elementary/secondary education	16.0	16.9	22.0	28.3
Higher education programs	10.9	11.0	13.4	14.4
Research at colleges	5.8	8.8	12.6	14.7
Other education programs	1.5	2.1	3.4	4.0
Non-federal funds generated by federal programs	4.9	8.7	11.2	13.9

See footnotes at end of booklet

1

C

Elementary/Secondary Education

Characteristic	School year			
	1970-71	1980-81	1985-86	1990-91
Public school districts				
	(In units)			
Total	17,995	15,912	³ 15,713	15,258
Regular schools				
Public schools, total	89,372	83,688	³ 82,190	81,746
Elementary	64,020	59,326	³ 58,801	59,015
Secondary	23,572	22,619	³ 21,406	20,406
Combined elementary/secondary	1,780	1,743	³ 1,983	2,325
Private schools, total	—	19,029	22,690	—
Elementary	—	13,333	15,303	—
Secondary	—	2,237	2,438	—
Combined elementary/secondary	—	3,459	4,949	—
Enrollment (fall)				
	(in thousands)			
Total, public and private	51,257	46,208	44,979	⁴ 46,450
Public schools	45,894	40,877	39,422	⁴ 41,224
Elementary (K-8)	32,558	27,647	27,034	⁴ 29,888
Secondary (9-12)	13,336	13,231	12,388	⁴ 11,336
Private schools	5,363	5,331	5,557	⁴ 5,226
Elementary (K-8)	4,052	3,992	4,195	⁴ 4,090
Secondary (9-12)	1,311	1,339	1,362	⁴ 1,136
Percent of students in private schools	10.5	11.5	12.4	⁴ 11.3
Teachers (fall)				
	(in thousands)			
Total, public and private	2,292	2,486	2,549	⁴ 2,751
Public schools	2,059	2,185	2,206	⁴ 2,397
Elementary	1,130	1,190	1,237	⁴ 1,426
Secondary	929	995	969	⁴ 972
Private schools	233	301	343	⁴ 354
Elementary	153	212	246	⁴ 254
Secondary	80	89	97	⁴ 100
High school graduates				
Total, public and private	2,938	3,020	2,643	⁴ 2,511
Public schools	2,638	2,725	2,383	⁴ 2,263
Private schools	300	295	260	⁴ 247
Public school finances				
	(In billions)			
Revenues, total	\$44.5	\$105.9	\$149.1	⁵ \$207.6
Revenues, by source of funds				
	(Percent)			
Total	100.0	100.0	100.0	100.0
Federal	8.4	9.2	6.7 ⁵	6.1
State	39.1	47.4	49.4	⁵ 47.2
Local	52.5	43.4	43.9	⁵ 46.6

Elementary/Secondary Education

Characteristic	School year			
	1970-71	1980-81	1985-86	1990-91
Public school finances (continued)				
	(In billions)			
Public school expenditures, total	\$45.5	\$104.1	\$148.6	¹ \$227.6
Current expenditures	39.6	95.5	—	—
—for regular school program ...	38.7	94.3	137.2	¹ \$201.4
—for other programs	1.0	1.2	—	—
Interest on school debt	1.3	1.9	—	—
Capital outlay	4.6	6.7	—	—
Average annual salary for public school teachers ⁶	\$9,268	(In units)		\$32,977
		\$17,644	\$25,199	
Current expenditure per pupil in average daily attendance in public schools	\$911	\$2,502	\$3,756	¹ \$5,243
Pupil-teacher ratios (based on enrollment)				
Public schools	22.3	18.7	17.9	¹ 17.2
Private schools	23.0	17.7	16.2	¹ 14.7

Higher Education

Characteristic	School year			
	1970-71	1980-81	1985-86	1990-91
Number of colleges				
	(In units)			
Total	—	3,231	3,340	3,559
Public	—	1,497	1,498	1,567
4-year	—	552	566	595
2-year	—	945	932	972
Private	—	1,734	1,842	1,992
4-year	—	1,405	1,463	1,546
2-year	—	329	379	446
Noncollegiate schools	—	7,730	⁸ 8,956	6,455
Public	—	896	⁸ 830	529
Private	—	790	¹ 1,797	1,159
Proprietary	—	6,044	⁶ 6,329	4,767

Higher Education

Characteristic	School year			
	1970-71	1980-81	1985-86	1990-91
Enrollment (fall)	(In thousands)			
Total, higher education	8,581	12,097	12,247	13,710
Control				
Public	6,428	9,457	9,479	10,741
4-year	4,233	5,129	5,210	5,803
2-year	2,195	4,329	4,270	4,938
Private	2,153	2,640	2,768	2,970
4-year	2,029	2,442	2,506	2,726
2-year	124	198	261	243
Student attendance status				
Full-time	5,816	7,098	7,075	7,780
Part-time	2,765	4,999	5,172	5,930
Sex of student				
Men	5,044	5,874	5,818	6,239
Women	3,537	6,223	6,429	7,472
		(Percent)		
Distribution, by race/ethnicity⁷	—	100.0	³ 100.0	¹ 100.0
White, non-Hispanic	—	83.5	³ 81.6	⁴ 80.2
Black, non-Hispanic	—	9.4	³ 8.9	⁴ 9.2
Hispanic	—	4.0	³ 5.1	⁴ 5.7
Asian/Pacific Islander	—	2.4	³ 3.7	⁴ 4.2
American Indian/Alaskan Native	—	0.7	³ 0.7	⁴ 0.8
Faculty		(In thousands)		
Total (senior instructional staff only)	474	1,686	1,715	1,824
4-year	382	1,494	1,504	1,584
2-year	92	192	211	241
Degrees conferred		(In thousands)		
Associate	253	416	446	470
Bachelor's	840	935	988	1,084
Master's	231	296	289	333
First-professional	38	72	74	73
Doctor's	32	33	34	40
Awarded to women		(Percent)		
Associate	42.8	54.7	56.0	58.9
Bachelor's	43.4	49.8	50.8	54.1
Master's	40.1	50.3	50.3	53.4
First-professional	6.3	26.6	33.4	38.4
Doctor's	14.3	31.1	35.2	37.5

Higher Education

Characteristic	School year			
	1970-71	1980-81	1985-86	1990-91
Finances				
	(In billions)			
Revenues, total public and private	\$23.9	\$65.6	\$100.4	⁹ \$139.6
Revenues, by source of funds	(Percent)			
Total	100.0	100.0	100.0	⁹ 100.0
Tuition and fees	21.0	21.0	23.0	⁹ 24.3
Federal government ¹⁰	19.3	14.9	12.6	⁹ 12.4
State governments	27.6	30.7	29.8	⁹ 27.5
Local governments	3.8	2.7	2.5	⁹ 2.6
Private sources	5.1	4.8	5.4	⁹ 5.6
Endowment income	2.3	2.1	2.3	⁹ 2.3
Sales and services/other	20.9	23.8	24.4	⁹ 25.4
Expenditures, total public and private ²	\$27.5	\$70.5	\$107.7	¹ \$155.6
Public colleges	18.0	46.6	70.1	¹ 99.8
Current-fund expenditures	15.0	42.3	63.2	—
Additions to plant value	3.0	4.3	6.9	—
Private colleges	9.5	24.0	37.6	¹ 55.8
Current-fund expenditures	8.4	21.8	34.3	—
Additions to plant value	1.1	2.2	3.3	—
Average annual rates for tuition, and room and board ¹				
Public	\$1,287	\$2,373	¹ \$3,571	\$4,757
Tuition and fees (in-state)	351	635	1,045	1,454
Room and board	936	1,739	¹ 2,527	3,303
Private	2,738	5,470	¹ 8,885	12,910
Tuition and fees (in-state)	1,684	3,498	5,789	8,772
Room and board	1,054	1,972	¹ 3,095	4,137

Population Characteristics¹¹

Characteristic	Year			
	1960	1970	1980	1991
(Percent)				
Enrollment rates of selected population age groups, October				
3- and 4-year-olds	—	20.5	36.7	40.5
5- and 6-year-olds	80.7	89.5	95.7	95.4
7- to 13-year-olds	99.5	99.2	99.3	99.6
14- to 17-year-olds	90.3	94.1	93.4	96.0
18- and 19-year-olds	38.4	47.7	46.4	59.6
20- to 24-year-olds	13.1	21.5	22.3	30.2
25- to 29-year-olds	4.9	7.5	9.3	10.2
30- to 34-year-olds	2 ¹	4.2	6.4	6.2
Educational attainment of persons 25 and over, March:				
Completing less than 5 years of school	8.3	5.3	3.4	¹² 2.4
Completing high school	41.1	55.2	68.6	¹² 77.6
Completing at least 4 years of college	7.7	11.0	17.0	¹² 21.3

—Data not available or not applicable.

¹Estimated.

²Includes current-fund expenditures and additions to plant value.

³1986–87 data.

⁴Preliminary data.

⁵1989–90 data.

⁶Data collected by the National Education Association

⁷Distribution for United States citizens only.

⁸Because of revised survey methods, data are not comparable with figures for earlier years.

⁹Preliminary data for 1989–90.

¹⁰Federally supported student aid received through students is shown under tuition and under sales and services/other.

¹¹Bureau of the Census data.

¹²1990 data.

NOTE.—Be aware of the limitations of statistics. These limitations vary with the particular survey. More information on survey methodologies is in the "Guide to Sources" in the appendix of the *Digest of Education Statistics, 1992*. All data are for the 50 states and District of Columbia. Finance data not adjusted for inflation. Some data are revised from previously published figures. Because of rounding, details may not add to totals.

SOURCE: U.S. Department of Education, National Center for Education Statistics, *Digest of Education Statistics, 1992*. (This publication was prepared September 1992.)

United States
Department of Education
Washington, D.C. 20208-5650

Official Business
Penalty for Private Use, \$300

Postage and Fees Paid
U.S. Department of Education
Permit No. G-17

FIRST CLASS

13