

DOCUMENT RESUME

ED 355 749

EC 302 007

TITLE Services for People with Mental Retardation or Related Disabilities.

INSTITUTION South Carolina State Dept. of Mental Retardation, Columbia.

PUB DATE 92

NOTE 77p.

AVAILABLE FROM South Carolina State Department of Mental Retardation, Community Education Office, P.O. Box 4706, Columbia, SC 29240 (limited supply).

PUB TYPE Reference Materials - Directories/Catalogs (132) -- Guides - Non-Classroom Use (055)

EDRS PRICE MF01/PC04 Plus Postage.

DESCRIPTORS Agencies; Eligibility; Health Services; Human Services; *Mental Retardation; *Organizations (Groups); Placement; Psychological Services; *Referral; Social Services; *State Agencies; *State Programs

IDENTIFIERS *South Carolina

ABSTRACT

Intended as a reference for chambers of commerce, physicians, public schools, and other agencies, this directory lists services for families of people with mental retardation or related disabilities in South Carolina. First, the South Carolina Department of Mental Retardation is described, including its service system, organization, case management program, relationship to provider organizations and other local agencies, funding, and emphasis on family participation. Information on eligibility and the application process for mental retardation services and specific services (day and residential services for both adults and children) is provided. A chart lists the county mental retardation boards and service organizations, their addresses, and services provided. A state map showing service regions accompanies a listing of addresses of regional offices and facilities. Additional listings cover: prevention and genetic services, sources for developmental evaluations, information and referral resources, government advisory committees, government service agencies, private service organizations, health insurance and financial assistance, advocacy, consumer and family organizations, assistive services, national toll-free numbers, professional organizations, foundations and fund-raising organizations, and publications. (DB)

 * Reproductions supplied by EDRS are the best that can be made *
 * from the original document. *

82

U.S. DEPARTMENT OF EDUCATION
Office of Educational Research and Improvement
EDUCATIONAL RESOURCES INFORMATION
CENTER (ERIC)

- This document has been reproduced as received from the person or organization originating it
- Minor changes have been made to improve reproduction quality
- Points of view or opinions stated in this document do not necessarily represent official OERI position or policy

ED355749



Services

"PERMISSION TO REPRODUCE THIS MATERIAL HAS BEEN GRANTED BY

Leslie Christy Jennings

TO THE EDUCATIONAL RESOURCES INFORMATION CENTER (ERIC) "

For People with Mental Retardation
Or Related Disabilities

1992

Published by the S.C. Department of Mental Retardation

EC 302007

Services for People with Mental Retardation or Related Disabilities

This directory contains information about the mental retardation service delivery system, services provided in your community and support groups for families of people with mental retardation or related disabilities.

It is a reference for chambers of commerce, physicians, public schools and other agencies and organizations which may direct families of people with mental retardation or related disabilities to services available in their community.

Since 1967, DMR has coordinated services for people with mental retardation. A network of county mental retardation boards and provider organizations offer opportunities and a better quality of life for these citizens.

Please take a closer look at this services directory to see how you can make a difference for people with mental retardation or related disabilities and their families.

Cover photo: Frances Smith of Greenwood with her foster son, Amado Espitia.

Table of Contents

I. The S.C. Department of Mental Retardation	3
II. Organization Chart	7
III. Eligibility	8
IV. Services Provided Through Mental Retardation Boards	9
V. County Mental Retardation Boards and Service Organizations	13
VI. Regional Map	26
VII. Regional Offices and Facilities	27
VIII. Prevention and Genetic Services	29
IX. Developmental Evaluations	32
X. Information and Referral Resources	33
XI. Government Advisory Committees	35
XII. Government Service Agencies	36
XIII. Private Service Organizations	40
XIV. Health Insurance and Financial Assistance	43
XV. Advocacy	48
XVI. Consumer and Family Organizations	50
XVII. Assistive Services	59
XVIII. National Toll-free Numbers	60
XIX. Professional Organizations	62
XX. Foundations and Fund-raising Organizations	64
XXI. Publications	66
XXII. For More Information	72

The S.C. Department of Mental Retardation

The Service System

Services for people with mental retardation or related disabilities are the responsibility of many agencies in South Carolina. To coordinate that interagency effort, the S.C. Department of Mental Retardation was created in 1967. The department's statutory authority mandates the development, coordination and improvement of mental retardation services throughout the state with the goal of affording people with mental retardation or related disabilities the opportunity to reach maximum mental, physical and social potential in settings as near normal as possible.

DMR advocates on behalf of citizens with mental retardation or related disabilities with other state, federal and local agencies to ensure their needs are addressed by these various groups. When the services needed cannot be provided by the agencies that traditionally provide services to all South Carolina citizens, DMR develops services through its regional offices and local mental retardation boards.

The agency is committed to providing services in a safe environment and ensuring maximum health and welfare of people with mental retardation or related disabilities.

Organization

DMR is governed by a seven-member commission appointed by the governor. There are members from each Congressional district, with one member from the state-at-large. The commission provides general policy direction and guidance.

The state commissioner for mental retardation is the department's chief administrator. Appointed by the commission, he has jurisdiction over the agency's regional centers, central administrative office, and the provision of services through community service contracts with local mental retardation boards (please see page 7).

DMR's central office is located in Columbia. The central office is organized into three divisions, each headed by a deputy commissioner. These divisions include client services, fiscal affairs and support services.

The central office also has an office of prevention, which coordinates efforts and broadens public awareness to prevent occurrence of mental retardation (please see page 29).

For administrative purposes, the department divides the state into four regions (please see page 26). Programs within each region are coordinated by a regional commissioner.

The regional office acts as the department's representative to coordinate program planning, service delivery and program monitoring for services developed through county MR boards. The office also provides technical assistance and training to MR boards. It coordinates services delivered by the regional residential center with services offered by local MR boards and other local agencies (please see page 27).

Each region has a regional residential center that provides residential care on a 24-hour basis in an ICF/MR congregate care setting. Each regional center is managed by a facility director who supervises a broad array of professional and support staff (please see page 27).

The MR board in each county (or multiple county cluster) serves as the single planning and service coordination point for all services funded by DMR. This system permits people with mental retardation or related disabilities to remain in their natural homes or, if this is not possible, to live in a community setting.

The MR board is responsible for developing a local service plan. The board supervises the case management system and coordination of services with other local agencies. While most county MR boards deliver services directly, some contract with or arrange for specific services or programs to be delivered by other providers (please see page 13).

Case Management

Under contract with DMR, each MR board operates a case management program. Case managers are the point of entry into DMR's service delivery system for families of people with mental retardation or related disabilities. They identify client needs and develop a service plan to meet those needs. Case managers coordinate services provided by the board with those of other providers and with services provided by other agencies, such as the Departments of Education and Mental Health.

Everything possible is done to provide and coordinate services for citizens who need them, throughout their lives. While citizens may receive services from more than one agency and may move from one type of service to another as needs change, case managers ensure services are adequately provided to each person.

Provider Organizations

Provider organizations offer specific services under the direction of, or under contract with, MR boards (please see page 13). Contract services are monitored by the local MR board and/or regional office quality assurance teams.

Other Local Agencies

Just as DMR is responsible for promoting and coordinating other state agency efforts on behalf of people with mental retardation or related disabilities, MR boards are responsible for developing and coordinating services and funds from other local agencies.

Local education agencies are vital for services to people with mental retardation or related disabilities 3 to 21-years-old. The Department of Health and Environmental Control is the lead agency for services to children from birth to 2-years-old and in health-related areas for people of all ages. Mental health services are essential for individuals with both mental health problems and mental retardation. Local services of the Department of Social Services, Vocational Rehabilitation and other agencies are also available to people served by DMR (please see page 36).

Funding

Mental retardation programs are funded through state, federal and local governments.

State funding is a key to both federal and local resources. DMR makes every effort to ensure the legislature is well informed about needs of people with mental retardation or related disabilities and the administrative and financial implications of these needs.

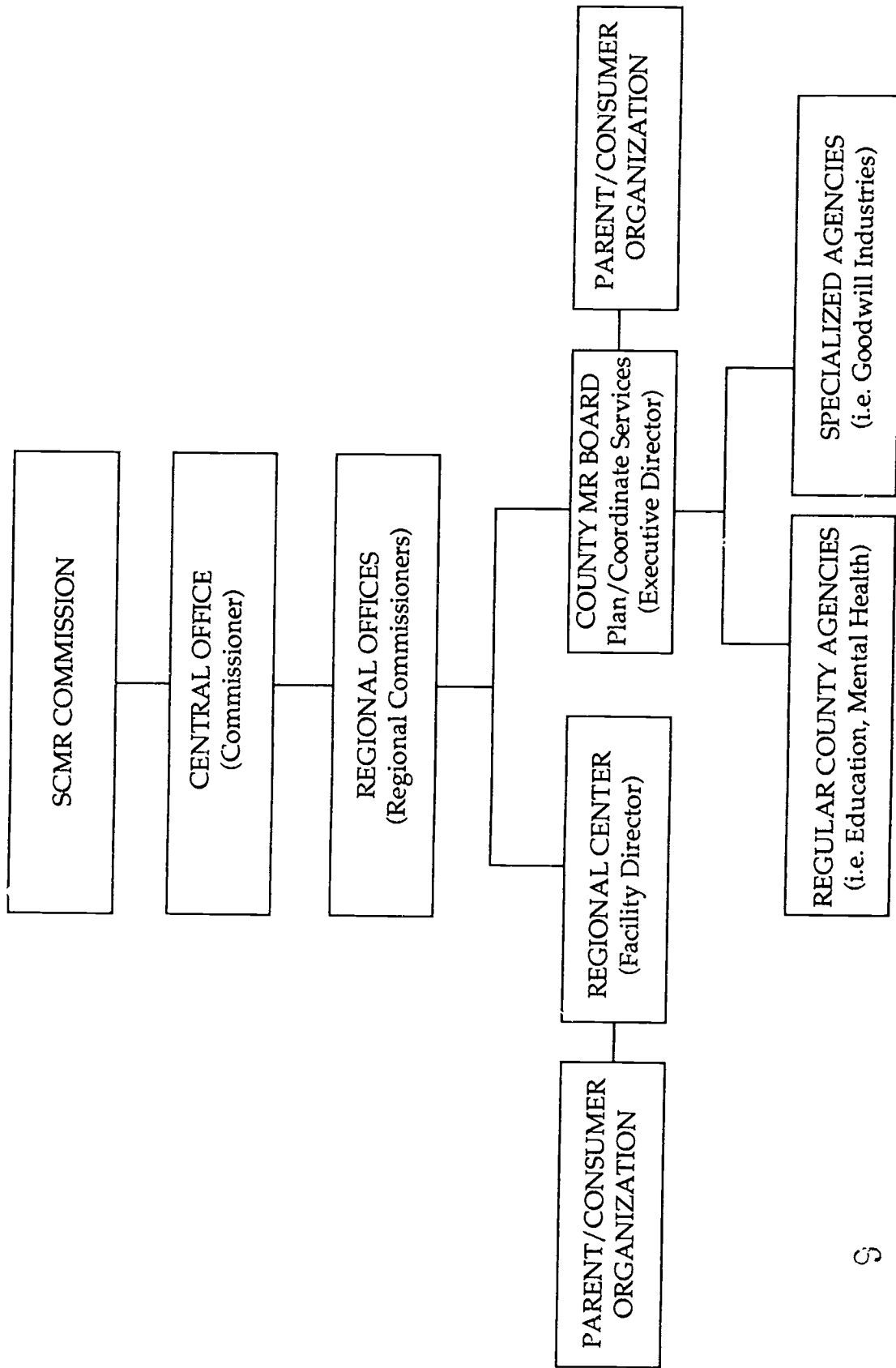
Local county governments benefit from jobs and dollars spent in local communities for mental retardation programs through economic activity and local revenue. DMR encourages local governments to share financial responsibility for providing services to local citizens, and—at the same time—assures services are equally available statewide.

MR boards are encouraged to develop foundations and other organizations, solicit donations and provide volunteer services (please see page 64).

Families

Parents and other family members play a critical role in the service delivery system and in evaluating the effectiveness of that system. Each regional residential center and local mental retardation board is required to have a family organization and to have in place a process for parents and other family members to participate in providing advocacy services to individuals and their families, and to review the operation of specific programs (please see page 50).

**S.C. Department of Mental Retardation
Organizational Chart**



Eligibility

Mental retardation is defined as having an IQ of 70 or below and social/adaptive behavior test scores in the range for mental retardation.

DMR serves state residents with mental retardation or related disabilities.

Citizens with related disabilities have needs that parallel those of people with mental retardation, though their needs result from other conditions. DMR advocates for, provides and coordinates services for people with related disabilities as funds are made available.

There are no income requirements for services.

Applying for Mental Retardation Services

To apply for services, the family of a person with mental retardation or related disabilities should contact their MR board. The family will be assigned a case manager who will arrange evaluation and planning procedures for the applicant.

Evaluation and planning services determine if an applicant is eligible for services, which services the applicant needs and how they will be provided. A group of specialists evaluates the applicant, or reviews a previous evaluation, and talks with the family. Some evaluations may be done in the family's community. Others must be done at regional diagnosis and planning offices or evaluation clinics (please see page 32).

The specialists and case manager meet with the family after testing to discuss test results, applicant needs and appropriate services. If the applicant is not eligible for mental retardation services, the case manager will refer the family to other resources. If the applicant is eligible for mental retardation services, the case manager will help the family receive recommended services.

Services Provided Through Mental Retardation Boards

DMR strives to serve all who need services and to ensure services meet acceptable standards.

The agency recognizes existing programs or services may not meet needs of individuals with unique or multiple disabilities. MR boards are encouraged to be creative in solving service concerns. DMR expends a greater proportion of resources on behalf of these individuals and their families whenever possible.

MR boards provide three categories of services to people with mental retardation or related disabilities: support, day and residential services (please see page 13):

Support Services

Support Services provide leisure activities, respite, therapy and other services for people with mental retardation or related disabilities.

Community-based professional services provide training to people with mental retardation or related disabilities and their families to help maintain a life-style as normal as possible. Services include behavior management, counseling and nursing services.

Extended day services provide care in special time frames (such as before or after school or work) for people with mental retardation or related disabilities who have working parents.

Genetic evaluation, treatment and counseling services are available to families in which mental retardation or a related disability has occurred and families at risk of having a child with mental retardation or a related disability. Emphasis is on preventing mental retardation and related disabilities when possible.

Recreation services provide funds to help families use existing recreational opportunities in the community.

Respite services relieve families of stress associated with caring for people with mental retardation or related disabilities. Respite provides temporary care to people with mental retardation or related disabilities while families handle emergencies or take a vacation. Care may be given in the family home, a caregiver's home, a regional center or other locations.

Stipends are available to help families afford the cost of caring for a person with mental retardation or related disabilities in their home. Funds are available for transportation, specialized equipment and other costly items.

Summer camps provide supervised recreational activities for people with mental retardation or related disabilities. Residential and day camps are available.

Summer day services provide summer care on week days for school-aged children with severe mental retardation or related disabilities who have working parents.

Day Services for Adults

MR boards provide supported employment and center-based programs in local communities for adults over age 21.

Supported employment places adults with mental retardation on a job site in the community. This service improves the quality of life for people with mental retardation through competitive wages and opportunities to interact with other workers. Supported employment includes job coach, enclave and mobile work crew options.

Job coach services are funded through DMR and the Job Training Partnership Act. Job coaches work with participants on a one-to-one basis to teach them the skills necessary to perform a particular job and help them develop job-related skills such as money management and employee relations.

Enclaves provide work for groups of adults at a local industry or business. Participants work at typical jobs and are often hired by the employer.

Mobile work crews train groups of five to seven adults as they work in their community and perform services such as lawn care, janitorial, landscaping or other services.

Center-based services help adults develop social and personal care skills to live independent, productive lives. The services also motivate adults to perform work that produces a product or provides a service.

Day Services for Children

Early intervention is a family-focused, in-home service for children up to 6-years-old. An early intervention specialist helps families learn development and stimulation techniques and provides case management services in accordance with an individualized family service plan.

Integrated day care programs provide assistance to enable children with mental retardation to be served in typical community day care centers.

Kiddie coach programs help families of preschool-aged children with mental retardation find suitable community day care programs.

Child development programs provide day care and developmental activities for children with mental retardation. MR boards may offer the service before or after school, during summer months or for the entire day.

Public schools provide education and related services for children with mental retardation or related disabilities beginning at age 3. Families should contact their local MR board for information on local developmental and educational programs.

Residential Services

Supervised living programs serve adults with mental retardation or related disabilities capable of independence. Adults may live in apartments, duplexes or other housing. Supervision and support services are provided with regard to individual needs.

Community training homes offer people with mental retardation the opportunity to live in a home-like environment under the supervision of a qualified and trained caregiver. Personalized care, supervision and individualized training are provided for up to three individuals. Caregivers are either trained private citizens who provide care in their own homes (CTH I), or employees who provide care in a home which is owned or rented by the provider organization (CTH II).

Community residences resemble single-family homes. They provide 24-hour care and supervision, counseling, recreation and other activities.

Regional residential centers provide 24-hour care and treatment to people with mental retardation or related disabilities. Generally, regional center care is recommended only when appropriate community services are not available. Regional centers are located in Ladson, near Charleston; Clinton; Columbia and Florence.

To meet the needs of people with mental retardation or related disabilities in each county, some MR boards offer services which are funded through other government agencies. These services and programs include:

- After Hours Recreation
- BabyNet
- Baby Parenting Access and Training Services
- Extended School Day Program
- Home Intervention and Prevention
- Temporary Care

For more information about these services, please contact your local MR board.

County Mental Retardation Boards and Service Organizations

(May 1992)

County	Administration Agency Address and Telephone Number	Services Provided
Abbeville	<p>Piedmont Multi-County MR Board P. O. Box 3004 Greenwood, S. C. 29648 942-8901</p> <p>Other services available in Edgefield, Greenwood, McCormick and Saluda counties</p>	<p>Adult Day Services Supervised Living Community Residence</p>
Aiken	<p>Aiken County MR Board P. O. Box 698 Aiken, S. C. 29802 642-8800 FAX 642-8806</p> <p>Tri-Development Center of Aiken County, Inc. P. O. Box 698 Aiken, S. C. 29802 642-8800 FAX 642-8806</p> <p>Aiken County Association for Special Citizens P. O. Box 295 Aiken, S. C. 29802 663-6142</p>	<p>Case Management Early Intervention</p> <p>Respite Summer Day Services Supported Employment Adult Day Services Comm.-based Prof. Services Child Development Supervised Living Community Training Home Community Residence</p> <p>Recreation</p>
Allendale	<p>Allendale County MR Board P. O. Drawer 941 Allendale, S. C. 29810 584-5050</p> <p>Respite provided by Aiken County MR Board</p>	<p>Case Management Respite Adult Day Services Child Development Early Intervention Summer Camp</p>

Anderson	Anderson County MR Board P. O. Box 5847 Anderson, S. C. 29623-5847 260-4515 FAX 260-5011	Case Management Respite Supported Employment Adult Day Services Child Development Early Intervention Supervised Living Community Residence
Bamberg	Bamberg County MR Board P. O. Box 333 Denmark, S. C. 29042 793-5003 FAX 793-5005 (call 793-5003, first) Respite and Early Intervention provided by Orangeburg County MR Board	Case Management Respite Summer Day Services Supported Employment Adult Day Services Early Intervention Supervised Living Community Training Home Community Residence Baby Parenting Access and Training Services
Barnwell	Barnwell County MR Board P. O. Box 556 Barnwell, S. C. 29812-0556 259-7472 FAX 259-1351 Respite provided by Aiken County MR Board	Case Management Comm.-based Prof. Services Respite Summer Camp Supported Employment Adult Day Services Early Intervention Supervised Living Community Training Home Community Residence
Beaufort	Beaufort County MR Board P. O. Box 128 Port Royal, S. C. 29935 525-7680 FAX 525-7181	Case Management Temporary Care Summer Camp Supported Employment Adult Day Services Early Intervention Supervised Living Community Residence Extended Day Service

Berkeley

Berkeley Citizens, Inc.
P. O. Drawer 429
Moncks Corner, S. C. 29461
761-8513
FAX 899-4167

Case Management
Respite
Summer Camp
Summer Day Services
Supported Employment
Adult Day Services
Child Development
Early Intervention
Community Training Home
Community Residence

Calhoun

Calhoun County MR Board
Route 4, Box 79-B
St. Matthews, S. C. 29135
874-2664
FAX 874-2660

Respite and Early Intervention provided
by Orangeburg County MR Board

Case Management
Respite
Supported Employment
Comm.-based Prof. Services
Adult Day Services
Early Intervention
Community Residence
Community Training Home
Socialization Training, Education
and Parenting Services

Charleston

Charleston County MR Board
1821 Sam Rittenberg Avenue
Charleston, S. C. 29407
766-2918
FAX 763-1975

Case Management
Respite
Summer Camp
Supported Employment
Adult Day Services
Supervised Living
Community Training Home
Community Residence
Socialization Training, Education
and Parenting Services

Charles Webb Center
325 Calhoun Street
Charleston, S. C. 29401
723-7224

Child Development
Early Intervention

Goodwill Industries of Lower S. C.
P. O. Box 12448
Charleston, S. C. 29422
795-8280
FAX 762-6964

Adult Day Services

Cherokee

Cherokee County MR Board
959 East O'Neal Street
Gaffney, S. C. 29340
487-4190
FAX 489-1384

Case Management
Supported Employment
Adult Day Services
Child Development
Early Intervention
Community Training Home
Community Residence

Cherokee County ARC
P. O. Box 397
Gaffney, S. C. 29340
489-7216

Summer Camp

Chester

Chester County MR Board
P. O. Box 246
Chester, S. C. 29706
581-1091
FAX 377-1168

Case Management
Adult Day Services
Supported Employment
Respite
Summer Day Services
Summer Camp
Early Intervention
Supervised Living
Community Training Home
Extended School Day Program

Chesterfield

Chesterfield County MR Board
P. O. Box 151
Chesterfield, S. C. 29709
623-9016
FAX 623-9053 (call 623-9016, first)

Case Management
Respite
Supported Employment
Adult Day Services
Early Intervention
Community Training Home
Community Residence

Respite and Community Training
Home provided by Marlboro County
MR Board

Clarendon

Clarendon County MR Board
P. O. Drawer 40
Manning, S. C. 29102
435-2330
FAX 435-8280

Case Management
Adult Day Services
Respite
Summer Camp
Integrated Day Care
Early Intervention
Supervised Living
Community Training Home
Community Residence

Respite provided by
Sumter County MR Board

Colleton	<p>Colleton County MR Board P. O. Box 1547 Walterboro, S. C. 29488 549-6053 FAX 549-6167 (off-site)</p>	<p>Case Management Summer Camp Adult Day Services Early Intervention Kiddie Coach Supervised Living Community Residence Temporary Care</p>
Darlington	<p>Darlington County MR Board 201 N. Damascus Church Road Hartsville, S. C. 29550 332-4642 FAX 332-2958</p>	<p>Case Management Respite Supported Employment Adult Day Services Child Development Early Intervention Supervised Living Community Residence</p>
	<p>St. Luke's United Methodist Church 302 Dunlap Road Hartsville, S. C. 29550 383-5169</p>	<p>Summer Camp</p>
	<p>St. Matthews Episcopal Church P. O. Box 804 Darlington, S. C. 29532 393-4112</p>	<p>Summer Camp</p>
Dillon	<p>Marion-Dillon County MR Board P. O. Box 1082 Marion, S. C. 29571 423-1499 FAX 423-1589</p>	<p>Case Management Respite Supported Employment Adult Day Services Early Intervention Community Training Home Community Residence</p>
	<p>Respite provided by Horry County MR Board, other services available in Marion County</p>	
Dorchester	<p>Dorchester County MR Board 10 Flying Cloud Drive Summerville, S. C. 29483 871-1285 FAX 873-2929</p>	<p>Case Management Respite Supported Employment Adult Day Services Child Development Summer Camp Integrated Day Care Kiddie Coach Early Intervention Supervised Living Community Training Home Community Residence</p>
	<p>Respite provided by Berkeley Citizens, Inc.</p>	

Edgefield

Piedmont Multi-County MR Board
P. O. Box 3004
Greenwood, S. C. 29648
942-8901

Supervised Living

Other services available in
Abbeville, Greenwood, McCormick
and Saluda counties

Fairfield

Fairfield County MR Board
P. O. Box 367
Winnsboro, S. C. 29180
635-2154

Case Management
Respite
Supported Employment
Adult Day Services
Early Intervention

Respite provided by Kershaw
County MR Board

Babcock Center, Inc.
P. O. Box 3817
Columbia, S. C. 29230
359-9717

Community Residence

Florence

Florence County MR Board
P. O. Box 12810
Florence, S. C. 29504
667-5007
FAX 678-8573 (Florence office)
FAX 394-3963 (Lake City office)

Case Management
Respite
Integrated Day Care
Summer Camp
Summer Day Services
Supported Employment
Adult Day Services
Child Development
Kiddie Coach
Early Intervention
Supervised Living
Community Training Home
Community Residence

Georgetown

Georgetown County MR Board
P. O. Box 1471
Georgetown, S. C. 29442
546-8228
FAX 546-1617

Case Management
Respite
Supported Employment
Adult Day Services
Child Development
Early Intervention
Community Residence
Socialization Training, Education
and Parenting Services

Respite provided by Horry
County MR Board

Pawley's Island Presbyterian Church
P. O. Box 190
Pawley's Island, S. C. 29585
237-4581

Summer Day Services

Greenville

Greenville County MR Commission
P. O. Box 17007
Greenville, S. C. 29606
288-1907

Case Management
Summer Camp
Respite
Supported Employment
Supervised Living
Community Training Home
Community Residence

Greenville Association
for the Retarded
P. O. Box 17007
Greenville, S. C. 29606
288-11907

Adult Day Services
Child Development
Early Intervention
Community Residence

Greenwood

Piedmont Multi-County MR Board
P. O. Box 3004
Greenwood, S. C. 29648
942-8901
FAX 942-8945

Other services available
in Abbeville, Edgefield,
McCormick and Saluda counties

Case Management
Respite
Summer Camp
Summer Day Services
Supported Employment
Adult Day Services
Child Development
Early Intervention
Supervised Living
Community Training Home
Community Residence

Hampton

Hampton County MR Board
P. O. Box 332
Hampton, S. C. 29924
943-4818
FAX 943-3322

Case Management
Adult Day Services
Early Intervention
Community Residence
Temporary Care

Horry

Horry County MR Board
P. O. Box 1345
Conway, S. C. 29526
347-3010
FAX 347-7308

Case Management
Respite
Summer Day Services
Supported Employment
Adult Day Services
Community Training Home
Community Residence
Home Intervention and
Prevention
Socialization Training, Education
and Parenting Services

Horry County School District
District Office Annex
1605 Horry Street
Conway, S. C. 29526
248-2206, Ext. 279
FAX 248-4068

Summer Camp
Child Development
Early Intervention

Jasper

Jasper County MR Board
P. O. Box 747
Ridgeland, S. C. 29936
726-4499
FAX 726-7800
(emergency only,
call 726-4499, first)

Case Management
Temporary Care
Adult Day Services
Supported Employment
Summer Camp
Early Intervention
Home Intervention and
Prevention

Kershaw

Kershaw County MR Board
1619 Jefferson Davis Hwy.
Camden, S. C. 29020
432-4841

Early Intervention provided by
Fairfield County MR Board

Camden-Kershaw Recreation Department
City Hall
Camden, S. C. 29020
425-6018

Babcock Center, Inc.
P. O. Box 3817
Columbia, S. C. 29230
359-9717

Case Management
Respite
Summer Day Services
Supported Employment
Adult Day Services
Child Development
Early Intervention
Supervised Living
Community Training Home

Summer Camp

Community Residence

Lancaster

Lancaster County MR Board
P. O. Box 577
Lancaster, S. C. 29721
285-4368
FAX 286-5571

Lancaster Area Schools
P. O. Drawer 130
Lancaster, S. C. 29721
286-6975

Case Management
Summer Camp
Supported Employment
Adult Day Services
Early Intervention
Supervised Living
Community Residence

Child Development

Laurens

Laurens County MR Board
P. O. Box 410
Clinton, S. C. 29325
682-2314
FAX 682-2397

Community Training Home
provided by Union County
MR Board

Case Management
Respite
Summer Camp
Supported Employment
Adult Day Services
Early Intervention
Supervised Living
Community Training Home
Community Residence

Lee

Lee County MR Board
P. O. Box 468
Bishopville, S. C. 29010
484-9474
FAX 484-5710

Respite and Early Intervention provided
by Darlington County MR Board

Case Management
Respite
Summer Camp
Supported Employment
Adult Day Services
Early Intervention
Supervised Living
Community Training Home
Community Residence

Lexington

Richland/Lexington County MR Board
P. O. Box 3547
Columbia, S. C. 29230
754-6669

Other services available in
Richland County

Babcock Center, Inc.
P. O. Box 3317
Columbia, S. C. 29230
359-9717
FAX 359-1312

Lexington County Recreation and
Aging Commission
563 South Lake Drive
Lexington, S. C. 29072
359-4048
FAX 359-9092

Case Management
Respite
Community Training Home

Supported Employment
Adult Day Services
Early Intervention
Kiddie Coach
Supervised Living
Community Residence

Summer Camp

Marion	<p>Marion-Dillon County MR Board P. O. Box 1082 Marion, S. C. 29571 423-1499 FAX 423-1589</p> <p>Respite provided by Horry County MR Board, other services available in Dillon County</p>	<p>Case Management Respite Supported Employment Adult Day Services Early Intervention Community Training Home</p>
Marlboro	<p>Marlboro County MR Board P. O. Box 1212 Bennettsville, S. C. 29512 479-6627 FAX 479-1882</p> <p>Respite and Community Training Home provided by Chesterfield County MR Board</p>	<p>Case Management Respite Summer Camp Summer Day Services Supported Employment Adult Day Services Early Intervention Community Training Home</p>
McCormick	<p>Piedmont Multi-County MR Board P. O. Box 3004 Greenwood, S. C. 29648 942-8901</p> <p>Other services available in Abbeville, Edgefield, Greenwood and Saluda counties</p>	<p>Community Residence</p>
Newberry	<p>Newberry County MR Board 67 Park Place Newberry, S. C. 29108 276-9691 FAX 276-8684 (emergency use only)</p> <p>Respite provided by Laurens County MR Board, Community Training Home provided by Union County MR Board</p>	<p>Case Management Respite Summer Camp Supported Employment Adult Day Services Early Intervention Community Training Home Community Residence</p>
Oconee	<p>Oconee County MR Board 116 South Cove Road Seneca, S. C. 29678-8841 882-6347 FAX 882-7829</p>	<p>Case Management Respite Summer Day Services Supported Employment Adult Day Services Early Intervention Supervised Living Community Residence After Hours Recreation BabyNet Services</p>

Oconee	Oconee County School District P. O. Box 220 Walhalla, S. C. 29691 638-4039 FAX 882-7829	Summer Camp
Orangeburg	Orangeburg County MR Board P. O. Box 1812 Orangeburg, S. C. 29115 536-1170 FAX 531-8317	Case Management Comm.-based Prof. Services Respite Summer Day Services Supported Employment Adult Day Services Child Development Early Intervention Supervised Living Community Training Home Community Residence Socialization Training, Education and Parenting Services
Pickens	Pickens County MR Board 101 North East Main Street Easley, S. C. 29640 859-5416 FAX 859-4809 Respite provided by Anderson County MR Board	Case Management Respite Supported Employment Adult Day Services Early Intervention Supervised Living Community Residence
Richland	Richland/Lexington County MR Board P. O. Box 3547 Columbia, S. C. 29230 754-6669 Other services available in Lexington County Babcock Center, Inc. P. O. Box 3817 Columbia, S. C. 29230 359-9717 FAX 359-1312 Epworth Children's Home P. O. Box 50466 2900 Millwood Avenue Columbia, S. C. 29250 256-7394	Case Management Integrated Day Care Respite Community Training Home Supported Employment Adult Day Services Kiddie Coach Early Intervention Supervised Living Community Residence Summer Camp BabyNet Services Early Intervention

Richland	<p>Richland County Recreation Commission 5819 Shakespeare Road Columbia, S. C. 29223 754-7275</p>	<p>Summer Camp</p>
Saluda	<p>Piedmont Multi-County MR Board P. O. Box 3004 Greenwood, S. C. 29648 942-8901</p> <p>Other services available in Abbeville, Edgefield, Greenwood and McCormick counties</p>	<p>Adult Day Services</p>
Spartanburg	<p>Spartanburg County MR Board 366 North Church Street Spartanburg, S. C. 29303 596-3574 FAX 596-2477</p> <p>Charles Lea Center 195 Burdette Street Spartanburg, S. C. 29302 585-0322 FAX 591-0780</p> <p>Cannon Manor Boarding Home 366 Alexander Avenue Spartanburg, S.C. 29301 585-3962</p>	<p>Administration</p> <p>Case Management Respite Summer Camp Summer Day Services Supported Employment Adult Day Services Child Development Kiddie Coach Early Intervention Supervised Living Community Training Home Community Residence Socialization Training, Education and Parenting Services</p> <p>Community Residence</p>

Sumter

Sumter County MR Board
P. O. Box 2847
Sumter, S. C. 29151-2847
778-1669
FAX 775-9194

Case Management
Respite
Summer Camp
Summer Day Services
Supported Employment
Adult Day Services
Child Development
Early Intervention
Supervised Living
Community Training Home
Community Residence

Sumter School District #2
1345 Wilson Hall Road
Sumter, S. C. 29150
469-6900

Summer Camp

Union

Union County MR Board
P. O. Box 903
Union, S. C. 29379
427-7651

Respite provided by
Laurens County MR Board

Case Management
Respite
Summer Camp
Supported Employment
Adult Day Services
Early Intervention
Community Training Home
Community Residence

Williamsburg

Williamsburg County MR Board
127 Mill Street
Kingstree, S. C. 29556
354-5481

Case Management
Adult Day Services
Early Intervention

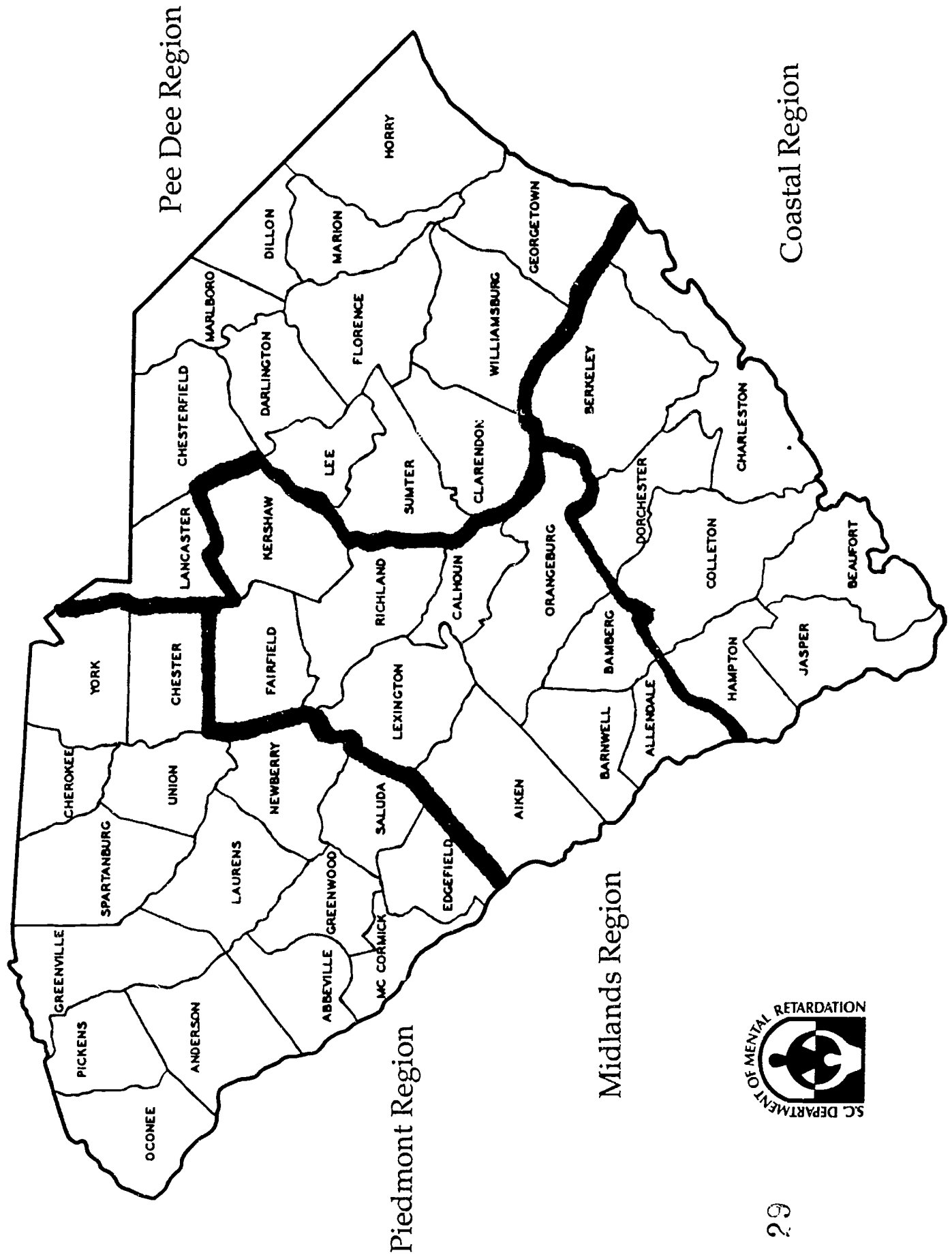
York

York County MR Board
P. O. Box 10820
Rock Hill, S. C. 29731
324-5161
FAX 324-7984

Case Management
Comm.-based Prof. Services
Integrated Day Care
Respite
Summer Camp
Supported Employment
Adult Day Services
Early Intervention
Supervised Living
Community Residence

Babcock Center, Inc.
P. O. Box 3817
Columbia, S. C. 29230
359-9717

Community Residence



Regional Offices and Facilities

Coastal Regional Office
P. O. Box 2590
Summerville, S. C. 29484-2590
851-1096
FAX 851-1098

Coastal Regional Center
Jamison Road
Ladson, S. C. 29456
873-5750
FAX 821-5800

Coastal Regional Office and Coastal Regional Center serve residents of Dorchester, Berkeley, Charleston, Beaufort, Jasper, Hampton and Colleton counties.

Midlands Regional Office
8301 Farrow Road
Columbia, S. C. 29203
935-7654
FAX 935-6170

Midlands Regional Center
8301 Farrow Road
Columbia, S. C. 29203
935-7500
FAX 935-6177

Midlands Regional Office and Midlands Regional Center serve residents of Aiken, Allendale, Bamberg, Barnwell, Calhoun, Fairfield, Kershaw, Lexington, Orangeburg and Richland counties.

Pee Dee Regional Office
P. O. Box 3209
Florence, S. C. 29502
669-3661
FAX 664-2692

Pee Dee Regional Center
P. O. Box 3209
Florence, S. C. 29502
669-3661
FAX 664-2687

Pee Dee Regional Office and Pee Dee Regional Center serve residents of Chesterfield, Clarendon, Darlington, Dillon, Florence, Georgetown, Horry, Lancaster, Lee, Marion, Marlboro, Sumter and Williamsburg counties.

Piedmont Regional Office
P. O. Drawer 239
Clinton, S. C. 29325
833-5131
FAX 833-7217

Whitter Center
P. O. Drawer 239
Clinton, S. C. 29325
833-2733
FAX 833-5668

Piedmont Regional Office and Whitten Center serve residents of Abbeville, Anderson, Cherokee, Chester, Edgefield, Greenville, Greenwood, Laurens, McCormick, Newberry, Oconee, Pickens, Saluda, Spartanburg, Union and York counties.

Prevention and Genetic Services

Prevention

The S.C. Department of Mental Retardation's office of prevention was established to reduce the incidence of mental retardation and related conditions. The office conducts public awareness and professional education activities, collects data, coordinates prevention activities and genetic services.

The office also provides printed material and videotapes concerning prevention. **For more information, call the office of prevention at 737-6559.**

Other prevention resources include:

National Fragile X Foundation
1441 York Street
Suite 215
Denver, Colo. 80206
(303) 333-6155
1-800-688-8765

This foundation provides prevention information on Fragile X syndrome.

March of Dimes—S. C. Chapter
2330 Devine Street
Columbia, S. C. 29205
252-5200
1-800-277-2773
FAX 799-4549

March of Dimes Birth Defects Foundation
1275 Mamaroneck Avenue
White Plains, N. Y. 10605
(914) 428-7700

March of Dimes provides information on pregnancy and prevention of birth defects. The organization also sponsors research to prevent birth defects.

Alliance of Genetic Support Groups
1001 22nd Street NW, Suite 800
Washington, D. C. 20037
1-800-336-GENE

The AGSG provides support and referrals to families with genetic disorders.

TERIS (Teratogen Information System)
Center for Developmental Disabilities/SCSIS
Department of Pediatrics, Benson Building
University of South Carolina
Columbia, S. C. 29208
777-5732, Ext. 847
1-800-922-1107
FAX 777-6058

TERIS is an information hotline for health care professionals who are concerned about the danger of certain drugs, medications or chemicals to an unborn child. Information on over 2,000 agents is available through the TERIS computer system, and summaries can be mailed or faxed within one working day. TERIS is available Monday through Friday from 8:30 a.m. to 4:30 p.m. (except U.S.C. holidays).

Genetic Services

DMR has a special working relationship with Greenwood Genetic Center. The center provides genetic services to families of people with mental retardation or related disabilities.

Greenwood Genetic Center is a unique model of cooperation between public and private sectors in S.C. The center began in 1974 with support from DMR and the Self Foundation. It provides a complete range of genetic services.

Families of people with mental retardation or related disabilities may receive services from Greenwood Genetic Center without charge. Services emphasize prevention programs, which reduce the risk of having children with mental or physical disabilities.

Genetic case workers coordinate services at the regional level. Services are provided through a central clinic and laboratory in Greenwood and a network of satellite clinics. Services are also available through local MR boards.

Greenwood Genetic Center collaborates with Divisions of Medical Genetics at the University of South Carolina School of Medicine and the Medical University of South Carolina. Genetic Center faculty members have joint appointments at the medical schools to facilitate this collaboration.

Upper Piedmont Region

(Cherokee, Chester, Greenville, Oconee, Pickens,
Spartanburg, Union and York counties)

233-0538 (Case Worker)

223-9411 (Geneticist)

Lower Piedmont Region

(Abbeville, Anderson, Edgefield, Greenwood,
Laurens, McCormick, Newberry and Saluda counties)

223-9411 (Case Worker and Geneticist)

Midlands Region

(Aiken, Allendale, Bamberg, Barnwell, Calhoun,
Fairfield, Kershaw, Lexington, Orangeburg and
Richland counties)

737-6346 (Case Worker)

737-6347 (Geneticist)

Pee Dee Region

(Chesterfield, Clarendon, Darlington, Dillon, Florence,
Georgetown, Horry, Lancaster, Lee, Marion, Marlboro,
Sumter and Williamsburg counties)

664-2648 (Case Worker)

223-9411 (Geneticist)

Coastal Region

(Beaufort, Berkeley, Charleston, Colleton, Dorchester,
Hampton and Jasper counties)

727-2129 (Case Worker)

1-800-922-5250 (Geneticist)

DMR Office of Prevention

737-6559

FAX 737-6323

Central Clinic and Laboratories

223-9411

FAX 227-1614

Greenwood Genetic Center

227-1074

FAX 227-1614

Developmental Evaluations

DMR offers developmental evaluations through special arrangements with three clinics. The clinics evaluate people with complex or multiple disabilities. Referrals are made by DMR regional evaluation and planning teams and are coordinated by case managers.

Services include social, psychological/behavioral, medical and educational evaluations as well as assessments in speech, orthopedics, ophthalmology, physical and occupational therapy, genetic screening and other areas.

A team of professionals conducts evaluations and meets with each individual's family and case manager to discuss their assessment.

For more information, contact your local MR board (please see page 13) or DMR regional center (please see page 27):

Coastal Region:

Medical University of South Carolina
Division of Developmental Disabilities
41 Bee Street
Charleston, S. C. 29403

Midlands and Pee Dee Regions:

University of South Carolina
Center for Developmental Disabilities
Benson Building
Columbia, S. C. 29208

Piedmont Region:

The Greenville Hospital System
Center for Developmental Pediatrics
48 Cross Park Court
Greenville, S. C. 29605

Information and Referral Resources

State agencies and independent organizations provide information about services and refer families of people with mental retardation or related disabilities to service providers which suit their needs. Information and referral resources include:

**National Information Center for Handicapped
Children and Youth (NICHY)**
P. O. Box 1492
Washington, D. C. 20013
1-800-999-5599

NICHY maintains a database, has information sheets and can make referrals on "orphan" diseases, rare disorders and syndromes. The organization will also link parents of children with disabilities resulting from rare conditions.

**National Information System for Health
Related Services and
National Information Clearinghouse for Infants with
Disabilities and Life-threatening Conditions**
Center for Developmental Disabilities
Benson Building, 1st Floor
University of South Carolina
Columbia, S. C. 29208
777-4435
1-800-922-9234
FAX 777-6058

These information systems help parents and professionals identify resources. The National Information System for Health Related Services maintains information on federal, state and non-profit agencies for any state in the U. S. The Clearinghouse for Infants provides information on parent support, financial assistance, specific conditions, legal and child protective services.

S. C. Program Assistance Line (PAL)
Office of the Lieutenant Governor
P. O. Box 142
Columbia, S. C. 29202
734-2072

PAL is a statewide information and referral service. It helps clients find appropriate public and private human service agencies/programs to suit their needs and advocates for people having difficulty receiving services.

S. C. Services Information System
University Affiliated Program
Center for Developmental Disabilities
Benson Building, University of South Carolina
Columbia, S. C. 29208
777-5732
1-800-922-1107
FAX 777-6058

SCIS provides information and referral services in five major areas. A computerized database allows counselors to refer callers to service providers and give service details, telephone numbers, etc.

S.C. Handicapped Services Information System (SCHSIS) provides information on services which affect the quality of life for people with disabilities, such as physical therapy, vocational training, advocacy and rehabilitation counseling.

Supported Employment Network (SENET) provides information to potential employers willing to learn more about hiring people with disabilities.

Access Technology provides information on mobility aids, worksite accommodations, adaptive computer equipment, augmentative communication devices and many other related services.

BabyNet Central Directory provides information on support groups, parent training, medical and early intervention services for children with special needs up to 3-years-old.

Elderly Assistance Line provides information on services for people over 55-years-old, such as home health, adult education, estate planning and daily living aids.

Government Advisory Committees

Several committees and councils advise the governor and legislators about the service delivery system for people with mental retardation or related disabilities. These groups include:

**Governor's Division of Human Services/
Developmental Disabilities Council**
Edgar A. Brown Building, Suite 372
1205 Pendleton Street
Columbia, S. C. 29201
734-0465

DD Council members are appointed by the governor. They include people with developmental disabilities, parents, guardians and agency representatives who advocate for people with developmental disabilities. The council develops and advocates for policies, monitors programs and reports on the service delivery system for people with developmental disabilities in South Carolina.

Joint Legislative Committee on Children
Gressette Building, Suite 311
P. O. Box 142
Columbia, S. C. 29202
734-2928

The Joint Legislative Committee on Children provides research on issues affecting children. The committee is committed to children who are emotionally disturbed, abused or neglected, in foster care, unhealthy, substance abusers and at risk, as well as those with mental retardation.

Joint Legislative Committee for Disabled Citizens
P. O. Box 11867
Blatt Building, Room 222
Columbia, S. C. 29211
734-2954

The Joint Legislative Committee for the Disabled conducts hearings, coordinates research and develops appropriate legislation regarding people with disabilities. The committee is also a sounding board for needs and concerns of people with disabilities.

**Joint Legislative Committee on Mental Health
and Mental Retardation**
P. O. Box 11867
Columbia, S. C. 29211
734-3116

This committee has appointees from the House, Senate and Governor's Office. This committee conducts hearings around the state once a year, and is an excellent source concerning pending legislation.

Government Service Agencies

People with mental retardation or related disabilities have a right to services from agencies that ordinarily serve state citizens whenever possible.

DMR advocates for people with mental retardation and their families to ensure they receive services to meet their needs. Interagency efforts focus on obtaining services for people with mental retardation or related disabilities from other agencies, receiving funding from other agencies to provide services, establishing cooperative agreements and sharing funding or treatment services.

At the local level, case management should be available to all citizens with mental retardation or related disabilities. Case managers develop joint services and/or funding with other agencies to meet individual needs.

Government Agencies

S. C. Commission on Aging
400 Arbor Lake Drive, Suite B-500
Columbia, S. C. 29223
735-0210
FAX 786-7752

S. C. Commission on Aging administers and coordinates services for the elderly.

S. C. Commission for the Blind
1430 Confederate Avenue
Columbia, S. C. 29201
734-7520
1-800-922-2222
FAX 734-7885

S. C. Commission for the Blind offers diagnostic, prevention, training and support services to people with legal blindness or severe visual disabilities.

S. C. School for the Deaf and Blind
Cedar Springs Station
Spartanburg, S. C. 29302
585-7711
FAX 585-3555

S. C. School for the Deaf and Blind offers educational and vocational services for children with hearing, visual or multiple disabilities.

**S. C. Department of Education
Office of Exceptional Children
1429 Senate Street
Columbia, S. C. 29201
737-8710
FAX 734-8624**

This office ensures that all children with disabilities have free, appropriate public education available to them, that the rights of these children and their parents are protected and that school districts and other state programs have assistance in providing for the children's education.

**S. C. Department of Health and Environmental Control
2600 Bull Street
Columbia, S. C. 29201
734-5000
FAX 734-4620**

DHEC administers health and environmental control programs for the state of South Carolina.

DHEC's BabyNet program administers and implements the Infants and Toddlers Early Education Program (P.L. 99-457, Part H). The program coordinates services to children from birth to age 3 to address special needs of infants with disabilities and their families. For a list of services in your local area, call 737-4045 (Columbia) or 1-800-922-1107.

The Bureau of Maternal and Child Health provides prenatal care, care for newborns and prevention services through local health departments. The bureau also administers the Women, Infants and Children (WIC) supplemental food program. For more information, call 737-3840.

The Bureau of Home Health Services provides home health care services through local health departments. For more information, call 737-3960.

The Division of Children's Health provides Well Baby clinics through local health departments. For more information, call 748-4980.

The Division of Children's Rehabilitative Services provides comprehensive evaluations and referrals for children with physical disabilities through local health departments. For more information, call 737-4050.

**S. C. State Housing Finance
and Development Authority
1710 Gervais Street
Columbia, S. C. 29210
734-8702**

S. C. State Housing Finance and Development Authority provides rental subsidies to people with disabilities. By law, some public housing is reserved for people with disabilities.

**S. C. Department of Mental Health
Services for People with Developmental Disabilities
P. O. Box 485
Columbia, S. C. 29201
734-7766
FAX 734-7879**

DMH provides mental health services to people with mental retardation and mental illness (dually diagnosed). The agency provides assessment, case management, training and therapies, employment services, structured intensive care, 24-hour emergency services, psychiatric hospitalization and other services.

**S. C. Department of Social Services
1535 Confederate Avenue Extension
North Towers Building
P. O. Box 1520
Columbia, S. C. 29202-1520
734-6179
1-800-772-1213
FAX 734-5597**

The Department of Social Services administers Aid to Families with Dependent Children (AFDC), Food Stamp and Medicaid programs (please see page 43).

**S. C. Vocational Rehabilitation Department
1410 Boston Avenue
P. O. Box 15
West Columbia, S. C. 29171-0015
822-5300
FAX 822-5384**

Vocational Rehabilitation provides, plans and coordinates rehabilitation services for people with mental retardation who meet eligibility requirements outlined in the law and regulations. The agency also serves some school-age people with disabilities in an effort to support their transition into the work environment.

**Early Childhood Special Education
In-service/Consultation Network—
Program for Exceptional Children
Department of Educational Psychology
College of Education
University of South Carolina
Columbia, S. C. 29208
777-6550
777-8195
777-7138**

U.S.C.'s Program for Exceptional Children provides names, addresses and telephone numbers of persons throughout South Carolina who provide either in-service or consultation services. This is a computer database. Information for pre-school handicapped children is available.

Private Service Organizations

Independent organizations provide therapy, support services and recreation activities for people with mental retardation or related disabilities. For more information, contact your MR board (please see page 13) or the following organizations:

Boy Scouts of America
1325 W. Walnut Hill Lane
P. O. Box 152079
Irving, Tex. 75015-2079
(214) 580-2000

Boy Scout programs provide fellowship and scouting opportunities for children with disabilities.

U. S. Cerebral Palsy Athletic Association
34518 Warren Road
Suite 264
Westland, Mich. 48185
(313) 425-8961

U. S. Cerebral Palsy Athletic Association provides support and sponsors athletic programs for people with cerebral palsy.

Children Unlimited, Inc.
P. O. Box 11463
Columbia, S. C. 29211
799-8311

Children Unlimited provides adoption services for children with disabilities.

National Easter Seal Society
**Computer Assistive Technology Services/
Technology Related Loan Fund**
70 E. Lake Street, Ninth Floor
Chicago, Ill. 60601
(312) 726-6200
(312) 726-4258 TDD

National Easter Seal Society provides technological services to people with disabilities.

S. C. Easter Seal Society
3020 Farrow Road
Columbia, S. C. 29250
256-0735
FAX 765-9765

S. C. Easter Seal Society provides or purchases habilitation services for people with varying disabilities.

Episcopal Church Home for Children
234 King's Mountain Highway
York, S. C. 29745
684-4011

Episcopal Church Home for Children provides residential care for children with disabilities, ages 6-12.

Epworth Children's Home
P. O. Box 50466
2900 Millwood Avenue
Columbia, S. C. 29250
256-7394
FAX 256-7394

Epworth Children's Home provides foster care for preschool and other special children. Epworth also provides day care and summer camp for children with mental retardation.

Girl Scouts of the USA
830 Third Avenue
New York, N. Y. 10022
(212) 940-7500
1-800-223-0624

Girl Scouts of the USA prepares children for the future through scouting and fellowship opportunities.

S. C. Special Olympics
2615 Devine Street
Columbia, S. C. 29205
254-7774
1-800-765-SCSO
FAX 254-7668

Special Olympics
1350 New York Avenue NW
Suite 500
Washington, D. C. 20005
(202) 393-1250

Special Olympics provides athletic opportunities for people with mental retardation.

**Very Special Arts/S. C.
Jamison Road
Ladson, S. C. 29456
873-5750**

**Very Special Arts
1331 F. Street NW
Suite 800
Washington, D. C. 20004
202-628-2800
1-800-933-8721**

VSA provides opportunities in the arts for people with disabilities. A statewide festival is held each year.

Health Insurance and Financial Assistance

Health Insurance

Coverage Under Group Policies

Many people with mental retardation or related disabilities are included in group health insurance policies. Each of these policies is a contract between a group (usually a family member's employer) and an insurance company.

People with mental retardation or related disabilities can't be excluded from group policies as a class or category, but they may have pre-existing conditions which can be excluded from coverage offered under the policy. Pre-existing conditions are health conditions known to applicants 12 months before enrolling in an insurance plan. These conditions may be excluded from coverage for one year, but should be covered after that time period.

Group policies may also limit coverage for certain health care services, but limits must be the same for all individuals in the group. For example, policies may or may not cover payment for speech therapy, but they must pay speech therapy claims for all eligible individuals, if the service is covered.

Group policies can't drop people with mental retardation or related disabilities from coverage, due to claims experience, but their claims can affect claims paid to other family members, if policies have family limits.

Families should contact their insurance providers (employer) or insurance companies, if they have questions about group policies, since they are not regulated or reviewed by the State Insurance Department.

Coverage Under Individual Policies

People with mental retardation or related disabilities may also be covered under individual health insurance policies. Rates for these policies can't be raised, due to claims history. They are based on a broad range of activity for a particular type of coverage, and increases must be approved by the Department of Insurance.

The Department of Insurance answers questions and files complaints about individual policies. Questions are handled through the forms and rates office (737-6240), and complaints are handled through the consumer assistance office (737-6180).

S. C. Health Insurance Pool

People unable to get private health insurance coverage now have the opportunity through the S. C. Health Insurance Pool.

The pool was created by the General Assembly to help people who couldn't get health insurance coverage from any other source, including people with certain disabilities. Blue Cross and Blue Shield of South Carolina administers the pool.

Coverage is available to people who have been state residents for at least six months and meet the following criteria:

- ▶ They were turned down for private health insurance coverage for health reasons;
- ▶ They were accepted for private health insurance, but have existing illnesses or conditions excluded from coverage, and have had these conditions for over 12 months;
- ▶ They are paying health insurance premiums for comparable coverage which are more than the premium levels established by law which created the pool.

Other eligibility requirements also apply.

Pool benefits are comparable to many private insurance company plans. The pool pays 80 percent of allowed charges for covered hospital inpatient and outpatient treatment, physician services and some other medical care.

Persons covered by the pool pay the remaining 20 percent and must meet a \$500 deductible each year, before pool coverage begins to pay. Prescription drugs are covered at 50 percent after this deductible is met.

Monthly premiums are determined by the person's age and sex. There is no family coverage under the pool. Each policy is for individual coverage.

As administrator, Blue Cross processes claims, determines eligibility and handles all services required to operate the pool.

For more information about coverage or eligibility, call 1-800-868-2503 toll-free, or 736-0043 in Columbia.

Claims Filed by DMR

The S. C. Department of Mental Retardation is required to bill private health insurance companies for a number of services, prior to submitting claims for payment by Medicaid.

If individuals have private health insurance, DMR will bill their insurance company for the following services:

- ▶ Residential care in regional centers or community residential homes;
- ▶ Services provided by DMR physicians and those under contract with the agency;
- ▶ Hospital stays, supplies and procedures;
- ▶ Psychological testing and evaluations included in the diagnosis and evaluation process.

If the client's insurance company does not pay a bill, or a portion of a bill, DMR will bill Medicaid for the unpaid amount. The agency will **not** bill clients or their families for unpaid portions of insurance bills.

Medicaid provides half of DMR's funding for services and programs. The agency will jeopardize this source of funding, if health care services are not billed to private health insurance companies, first.

Insurance payments are kept by DMR and budgeted to expand its services and programs. Physicians and other individuals who provide health care services are paid by salary or contractual agreement and do not receive additional compensation as a result of billing.

If families have questions about unpaid insurance bills, they should contact claims and collections officers at DMR regional centers.

Financial Assistance

Aid to Families with Dependent Children (AFDC)

AFDC provides cash payments to dependent children in single parent households. The program includes children deprived of parental support due to a parent's unemployment (AFDC-UP). Persons eligible for AFDC are automatically entitled to Medicaid benefits. **For more information, contact your local Department of Social Services (DSS) office.**

Early Periodic Screening, Diagnosis and Treatment (EPSDT)

EPSDT provides free health checkups to children under 21-years-old who are eligible for Medicaid. The checkups include a physical examination, hearing and vision tests, immunizations and a direct dental referral, if the child is over age 3. **For more information, contact your case manager or your local DSS office.**

Food Stamps

Food stamps are managed by the U. S. Department of Agriculture, which pays for the cost of coupons used to purchase food. **Your local DSS office has detailed information on eligibility requirements and application procedures.**

Medicaid

Medicaid is a health insurance program that pays for medical services on behalf of certain groups of persons with low incomes. Medicaid benefits include hospital and physician services, medical supplies, prescriptions and other medically necessary services. **For more information, contact your case manager or your local DSS office.**

Medicare

Medicare provides health insurance for people age 65 and over, and people with certain disabilities.

There are two parts to the Medicare program. Hospital insurance (Part A) helps pay for inpatient hospital care, some inpatient care in a skilled-nursing facility, home health care and hospice. Medical insurance (Part B) helps pay for doctors' services, outpatient hospital services and a number of other medical services and supplies.

Both types of coverage have amounts that must be paid out-of-pocket by the beneficiary (premiums, deductibles, etc.).

Medicare is administered directly by the Social Security Administration and contracted with private insurance agencies, such as Blue Cross and Blue Shield.

Contact your local Social Security office or call 1-800-772-1213 for more information.

Social Security

Social Security is a package of protection—retirement, survivors and disability insurance. It protects workers and their families. Workers can start receiving retirement benefits as early as age 62. If you receive a retirement benefit, monthly benefits can also be paid to unmarried children—age 18 or over—who were severely disabled before age 22 and continue to be disabled and to spouses under age 62—if they are caring for a child with a disability benefit based on the worker's earnings. **For more information, contact your local Social Security office or call 1-800-772-1213.**

Supplemental Security Income (SSI)

SSI provides a monthly check to people who are unable to support themselves due to age, disability or blindness. These people must have limited income and resources. Eligibility is based on the extent of disability; ability for substantial, gainful work; and financial resources. Persons eligible for SSI are automatically entitled to Medicaid benefits. **For more information about eligibility and dependency requirements, contact your local Social Security office or call 1-800-772-1213.**

Advocacy

The interest and welfare of people with mental retardation or related disabilities is the mutual responsibility of their family, MR boards, local service providers and DMR.

DMR encourages family involvement in all aspects of each individual's service plan, and they will be invited to participate in developing and implementing that plan.

If the individual has no family representative or guardian, DMR's office of client advocacy, the S.C. Protection and Advocacy System for the Handicapped, Inc., a personal advocate or others may advocate for services to meet the individual's needs.

If individuals, their families or advocates are not pleased with particular services or incidents, they should notify the MR board executive director or facility director, first (please see pages 13 and 27).

If they are not pleased with the executive director's or facility director's actions, they should contact the regional commissioner (please see page 27).

If not pleased, after discussing their concerns with the regional commissioner, the individual, family or advocate should contact DMR's client advocate.

DMR's client advocate ensures that individuals served by the agency receive quality of care and treatment. The client advocate also helps solve immediate concerns within the service delivery system, prevents problems from occurring in similar situations and acts as a liaison to other advocacy agencies and organizations.

If the individual, family or advocate is still not pleased after talking with DMR's client advocate, they should refer their concerns to other agencies or organizations which advocate for people with mental retardation or related disabilities and their families.

For more information, contact your local MR board, regional facility, regional office or the following advocacy resources:

**Client Advocate
S. C. Department of Mental Retardation
P. O. Box 4706
Columbia, S. C. 29240
737-6345**

**Child Case Resolution System
Office of Children's Affairs
Edgar Brown Building, Fourth Floor
1205 Pendleton Street
Columbia, S. C. 29201
734-0467**

**Governor's Division of Ombudsman and Citizen Services
Room 308
1205 Pendleton Street
Columbia, S. C. 29201
734-0546**

Child Case Resolution System, and the Governor's Division of Ombudsman and Citizen Services investigate consumer complaints regarding state government agencies.

**S. C. Protection and Advocacy for the Handicapped, Inc.
3710 Landmark Drive, Suite 208
Columbia, S. C. 29204
782-0639
1-800-922-5225
FAX 790-1946**

SCP&A is a private, non-profit organization which provides a variety of protection and advocacy services for people with disabilities.

Consumer and Family Organizations

Consumers and family members play a critical role in the service delivery system and in evaluating the effectiveness of that system. Each regional residential center and local MR board is required to have a family organization and to have in place a process for consumers and families to participate as advocates and to review specific programs. Membership in these organizations is also open to interested citizens in the community.

Family organizations monitor community residences and regional center residential programs; assist foundations to provide private funds; assist volunteer organizations; provide self-help groups, advocacy, information and public education; and cooperate with statewide coalitions. **For more information about these organizations, please contact your county MR board or regional center (please see pages 13 and 27).**

DMR has a statewide Family Advisory Council which meets quarterly to advise the agency on programs, services and needs of people with mental retardation or related disabilities.

Membership includes a representative from every county MR board family organization, presidents of the regional center family organizations and representatives from other statewide family organizations. **For more information about the Family Advisory Council, contact your county MR board or regional center (please see pages 13 and 27).**

State and national organizations also provide leadership for consumers and families. The following organizations serve people with mental retardation or related disabilities and their families:

ARC/SC Association on Mental Retardation
Judith Cooper, Contact Person
P. O. Box 61062
Columbia, S. C. 29260-1062
894-5591

ARC/Association on Mental Retardation
P. O. Box 6109
Arlington, Tex. 76005
1-800-433-5255
For TDD number, dial 1-800-855-1155 and ask the operator to place a collect call to (817) 277-0553.

ARC is an advocacy organization which provides information, training and support to people with mental retardation and their families.

S. C. Augmentative Communication Association
Anne Poole, Contact Person
Washington Center
349 Loop Street
Greenville, S. C. 29609
241-3305

SCACA provides support to parents, educators and professionals for augmentative communication programs.

S. C. Autism Society
P. O. Box 684
Effingham, S. C. 29541-0684
667-6448

Autism Society of America
8601 Georgia Avenue, Suite 503
Silver Spring, Md. 20910
(301) 565-0433

SCAS and ASA provide advocacy, information, training and referrals to families or people with autism.

Federation Center of the Blind
119 S. Kilbourne Road
Columbia, S. C. 29205
254-3777

American Council for the Blind
155 15th Street NW, Suite 720
Washington, D. C. 20005
1-800-424-8666

American Foundation for the Blind
15 West 16th Street
New York, N. Y. 10011
1-800-AF-BLIND

National Association for Parents
of the Visually Impaired
2180 Linway Drive
Beloit, Wis. 53511
1-800-562-6265

Federation Center for the Blind, American Council for the Blind, American Foundation for the Blind and National Association for Parents of the Visually Impaired provide support and referral services for people who are legally blind and their families.

**The Caring Connection
Charles Webb Easter Seal Center
325 Calhoun Street
Charleston, S. C. 29401
723-7224**

The Caring Connection is a network of families, teachers and health care professionals who give support to children with special needs and their families.

**Parents of Children with Cerebral Palsy
Mary Kiddoo, Contact Person
Benson Building
University of South Carolina
Columbia, S. C. 29208
777-2703**

**United Cerebral Palsy Associations, Inc.
7 Penn Plaza, Suite 804
New York, N. Y. 10001
1-800-872-1827
1-800-USA-5UCP**

PCCP and UCPA provide support and assistance to people with cerebral palsy and their families.

**National Information Center
for Children and Youth with Disabilities (NICHY)
P. O. Box 1492
Washington, D. C. 20013
1-800-999-5599**

NICHY maintains a database, has information sheets and can make referrals on "orphan" diseases, rare disorders and syndromes. The organization also links parents of children with disabilities resulting from rare conditions.

**American Cleft Palate/Craniofacial Association
and Cleft Palate Foundation
1218 Grandview Avenue
Pittsburgh, Penn. 15211
(412) 481-1376
1-800-24-CLEFT**

**Children's Craniofacial Foundation
10210 N. Central Expressway LB37
Dallas, Tex. 75231
1-800-535-3643**

ACP/CA and CCF provide financial, medical and emotional support to craniofacial patients and their families.

S. C. Association of the Deaf
1735 Augusta Road
West Columbia, S. C. 29169

SCAD is an advocacy organization which protects the rights of people with hearing disabilities. SCAD is also an information clearinghouse and referral service.

S. C. Down Syndrome Conference
Kay Richardson, Contact Person
P. O. Box 50466
Columbia, S. C. 29250
256-7394

Association for Children with Down Syndrome
2616 Martin Avenue
Bellmore, N. Y. 11710
(516) 221-4700

National Down Syndrome Congress
1800 Dempster Street
Park Ridge, Ill. 60068-1146
1-800-232-6372

National Down Syndrome Society
666 Broadway
New York, N.Y. 10012
(212) 460-9330
1-800-221-4602

The SCDSC, ACDS, NDSC and NDSS provide advocacy and information to families of people with Down syndrome.

Midlands Epilepsy Association
Margaret Masse, Contact Person
Logan Community School
815 Elmwood Avenue
Columbia, S. C. 29201
733-6210

Epilepsy Foundation of America
4351 Garden City Drive
Landover, Md. 20785-2267
1-800-332-1000

Midlands Epilepsy Association and Epilepsy Foundation of America provide advocacy, training, information and referrals to people with epilepsy and their families.

Family Connection
2712 Middleburg Drive, Suite 103 B
Columbia, S. C. 29204
252-0914

Family Connection provides support to families of children with special needs, especially those in Richland, Lexington, Fairfield and Newberry counties. The non-profit organization fosters family-to-family connections and connections between families and professionals.

Guiding Parents Program
The Charles Lea Center
195 Burdette Street
Spartanburg, S. C. 29302
542-1363

Guiding Parents Program provides support, information and assistance to parents and families of infants and children who have mental retardation or developmental disabilities.

S. C. Head Injury Association, Inc.
Charles and Dee McLafferty, Contact Persons
1587 Tolly Ganly Circle
Orangeburg, S. C. 29115
533-1613

National Head Injury Foundation
1140 Connecticut Avenue, Northwest
Suite 812
Washington, D. C. 20036
1-800-444-6443

SCHIA and NHIF offer education, support, advocacy and a listing of rehabilitation centers to survivors and their families. They also offer prevention materials.

Human Development Center
Winthrop College
Rock Hill, S. C. 29733
323-2244

Human Development Center provides evaluation and treatment for people with developmental disabilities or special needs.

Learning Disability Association of S. C.
Sheila Marino, President
103 Essex Court
Greenwood, S. C. 29646
229-8382

Learning Disability Association of S. C. addresses needs of people with learning disabilities and attention deficit disorders.

S. C. Mental Health Association
1823 Gadsden Street
Columbia, S. C. 29201
779-5363

S. C. Mental Health Association promotes mental health, prevention and treatment of mental illness through advocacy, public education and volunteer services.

Missing Person Information Center
P. O. Box 21398
Columbia, S. C. 29221
1-800-322-4453

The center is an information clearinghouse for missing persons, and missing and exploited children.

Our Voices Count
(South Carolina's self-advocacy movement
for people with mental retardation)
Mary Barr Behlke, Contact Person
S. C. Protection and Advocacy for the Handicapped, Inc.
1 Chick Springs Road, Suite 101-A
Greenville, S. C. 29609
235-0273
1-800-922-5225

Our Voices Count
(Speakers bureau of self-advocates
and their families)
S. C. Department of Mental Retardation
P. O. Box 4706
Columbia, S. C. 29240
737-6477
FAX 737-6323

Our Voices Count promotes self-advocacy and respect. Its members are people with mental retardation or related disabilities. Local chapters are being formed. Our Voices Count speakers bureau trains people with mental retardation and their families to speak out as advocates. Speakers make presentations to local civic clubs, legislative groups, etc.

Parents Reaching Out to Parents of S. C.
2712 Middleburg Drive, Suite 102
Columbia, S. C. 29204
734-3547
799-3859 (Voice, TDD)
1-800-759-4776 (Voice, TDD)
FAX 252-4513

PRO-Parents is sponsored by a grant from the U.S. Department of Education—Office of Special Education and Rehabilitation Services (OSERS). The center provides training and information to families of people with disabilities.

National Parent Network on Disabilities
1600 Prince Street
Suite 115
Alexandria, Va. 22314
(703) 684-6763
FAX (703) 548-6191 (Voice, TDD)

National Parent Network on Disabilities is a coalition of parent organizations and parents that provides a national voice for parents of people with disabilities.

Prader-Willi Syndrome Association
W. Rhett Eleazer, Contact Person
1817 Pickens Street
Columbia, S. C. 29201
779-2204
788-0544
FAX 799-9109

Prader-Willi Syndrome Association
6490 Excelsior Boulevard, E-102
St. Louis Park, Minn. 55426
(612) 926-1947

PSA provides information and advocacy for families of people with Prader-Willi syndrome.

National Organization for Rare Disorders (NORD)
P. O. Box 8923
New Fairfield, Conn. 06812
(203) 746-6518

NORD provides information on more than 900 rare disorders. The organization also links families having similar needs.

Center for Rehabilitative Technology Services
1410-C Boston Avenue
West Columbia, S. C. 29171-0015
822-5362

Center for Rehabilitative Technology Services is a rehabilitation engineering center for assistive aids for people with disabilities.

International Rhett Syndrome Association
Nancy Maseng, S. C. Contact Person
765-1855
8511 Rose Marie Drive
Ft. Washington, Md. 20744
(301) 248-7031

International Rhett Syndrome Association provides information and support to families of people with Rhett syndrome.

National Retinitis Pigmentosa Foundation
1410 Mt. Royal Avenue
Baltimore, Md. 21217
1-800-683-5555

National Retinitis Pigmentosa Foundation provides information and funds research for retinal degenerations.

**The Association for Persons
with Severe Handicaps (TASH)**
11201 Greenwood Avenue, North
Seattle, Wash. 98133
(206) 361-8870

TASH is dedicated to people perceived as having severe intellectual disabilities and promotes a society that includes and values all people. TASH accomplishes this through research, education, legislation, litigation, organizing communities and promoting excellence in services.

Spina Bifida Association of Tri-County
P. O. Box 1299
Summerville, S. C. 29484
797-7775

Spina Bifida Association
1700 Rockville Pike
Rockville, Md. 20852
1-800-621-3141

SBATC and SBA provide information and support to families of people with spina bifida.

National Spinal Cord Injury Association
600 W. Cummings Park, Suite 2000
Woburn, Mass. 01801
(617) 935-2722

National Spinal Cord Injury Association provides information and referral services to people with spinal cord injuries and diseases.

Williams Syndrome Association of S. C.
John and Nancy Catizone, Contact People
24 Squiresgate
Hilton Head, S. C. 29926

Williams Syndrome Association
P. O. Box 3297
Baldwin, Missouri 63022
(314) 227-4411

Williams Syndrome Association of S. C. and Williams Syndrome Association provide information and advocacy for people with Williams syndrome and their families.

Wolf-Hirshhorn Syndrome Support Group
Brenda Grimmett, Contact Person
5536 Virginia Court
Amherst, Oh. 44001
(216) 282-1460

Wolf-Hirshhorn Syndrome Support Group links families to families and provides information and support to families of children with Wolf-Hirshhorn syndrome.

Assistive Services

Many private organizations serving large populations offer adaptive equipment and/or services.

South Central Bell Telephone Company
TCDC
600 N. 19th Street
18th Floor
Birmingham, Ala. 35203
780-2273 (Voice)
780-2274 (TDD)

South Central Bell provides adaptive communications equipment, including volume controls, TDD services and enlarged dials.

AT&T National Special Needs Center
2001 Route 46
Suite 310
Parsippany, N. J. 07054
1-800-233-1222

AT&T offers a variety of communications equipment for people with special needs.

National Toll-free Numbers

Support and information on disabilities is available from national organizations to individuals and their families. The following organizations provide toll-free numbers:

Alliance of Genetic Support Groups	1-800-336-GENE
American Association on Mental Retardation	1-800-424-3688
American Council of the Blind	1-800-424-8666
American Cleft Palate Educational Foundation	1-800-24-CLEFT
Better Hearing Institute Hearing Helpline	1-800-424-8576
Epilepsy Information Line	1-800-426-0660
Epilepsy Foundation of America	1-800-EFA-1000
Federal Information Center	1-800-347-1997
	(TDD/TTY) 1-800-326-2996
International Craniofacial Foundation	1-800-535-3643
National Crisis Center for the Deaf	1-800-446-9876
National Down Syndrome Congress	1-800-232-NDSC
National Down Syndrome Society	1-800-221-4602
National Fragile X Foundation	1-800-688-8765
National Head Injury Foundation	1-800-444-NHIF
National Health Information Clearinghouse	1-800-336-4797
National Hearing Aid Society	1-800-521-5247
National Information Center for Children and Youth with Handicaps	1-800-999-5599
National Information Center for Orphan Drugs and Rare Disorders (NICODARD)	1-800-456-3505

National Information System for Health Related Services and National Information Clearinghouse for Infants with Disabilities and Life Threatening Conditions	1-800-922-9234
National Library Service for the Blind and and Physically Handicapped	1-800-424-8567
National Rehabilitation Information Center	1-800-346-2742
National Reye's Syndrome Foundation	1-800-233-7393
National Spinal Cord Injury Association	1-800-962-9629
Spina Bifida Hotline	1-800-621-3141
Tripod Service for Hearing Impaired	1-800-352-8888
United Cerebral Palsy Association	1-800-USA-5UCP

Professional Organizations

Organizations are available to assist professionals who serve people with mental retardation or related disabilities and their families. These organizations include:

American Association on Mental Retardation/ S. C. Chapter
Tom Duncan, Contact Person
Pee Dee Regional Center
P. O. Box 3209
Florence, S. C. 29456
669-3661

American Association on Mental Retardation
1719 Kalorama Road NW
Washington, D. C. 20009
(202) 387-1968

AAMR sponsors an annual training institute. The organization offers affiliate memberships for non-professionals. Regular members are professionals involved in service, training and research for people with mental retardation.

S. C. Council for Exceptional Children
R. Lynn Demori, Contact Person
446 Pindulac Drive
Nord-lac Estates
Central, S. C. 29630
638-4039

Council for Exceptional Children
1920 Association Drive
Reston, Va. 22091
(703) 620-3660

CEC members are educators of children with disabilities who promote quality education and act as advocates.

S. C. Association of Education and Rehabilitation
of the Blind and Visually Impaired
Sarah Crouch, Contact Person
S. C. Commission for the Blind
1430 Confederate Avenue
Columbia, S. C. 29201
734-7885
FAX 734-7520

This organization's members are a multi-disciplinary group of professionals. They promote full participation in education and improved access to employment opportunities for people with visual impairments.

National Epilepsy Library
for Professors, Doctors and Researchers
4351 Garden City Drive
Landover, Md. 20785-2267
1-800-332-4050

NEL provides detailed information on epilepsy to professionals only.

National Association of State Mental Retardation
Program Directors
113 Oronoco Street
Alexandria, Va. 22314
(703) 683-4202

NASMRPD is a national organization for professionals in the field of mental retardation.

National Industries for the Severely Handicapped
2235 Cedar Lane
Vienna, Va. 22182-5200
(703) 560-6800
(703) 560-6512 (TDD)
FAX 703-849-8916

NISH serves work centers for people with severe disabilities.

S. C. Speech and Hearing Association
3008 Millwood Avenue
Columbia, S. C. 29205
252-5646

SCSHA is a professional organization for speech/language pathologists, audiologists and professionals in speech/language and hearing sciences.

Foundations and Fund-raising Organizations

The S. C. Mental Retardation Foundation is a private, non-profit organization which administers special projects in community education, parent education, staff development and prevention.

MR boards also develop local foundations and other fund-raising organizations, solicit donations and provide volunteer services which benefit people with mental retardation or related disabilities.

For more information, contact the S. C. Mental Retardation Foundation, your MR board or other fund-raising organizations:

Statewide Foundation

S. C. Mental Retardation Foundation
P. O. Box 4346
Columbia, S. C. 29240
737-6477
FAX 737-6323

SCMRF sponsors training programs, promotes acceptance of people with mental retardation and increases public awareness for the needs of people with mental retardation.

MR Board Foundations

Babcock Center Foundation
P. O. Box 3845
Columbia, S. C. 29230
799-1343
FAX 252-9588

The Babcock Center Foundation serves a vital role in both present and future financial capabilities of Babcock Center to address growing community service needs. Funds from the foundation meet individual client needs when no other source of funding is available.

The Charles Lea Center Foundation, Inc.
195 Burdette Street
Spartanburg, S. C. 29302
591-0780

The Charles Lea Center Foundation raises funds to support the mission, goals and purpose of The Charles Lea Center.

Emerald Center Foundation
P. O. Box 3004
Greenwood, S. C. 29648
942-8901

Emerald Center Foundation raises funds to meet special needs of people with mental retardation served by Emerald Center, a division of Piedmont Multi-County MR Board.

Developmental Disabilities Foundation of Florence County
P. O. Box 12810
Florence, S. C. 29504
667-5007

Developmental Disabilities Foundation raises funds and manages property to benefit children and adults with developmental disabilities in Florence County.

Orangeburg Area Resource Center Foundation, Inc.
1685 Magnolia Street
Orangeburg, S. C. 29115
536-1170
FAX 531-8317

Orangeburg Area Resource Center Foundation fosters and supports the activities and purposes of the Orangeburg County MR Board. The foundation sponsors projects and programs; and promotes client care, research, educational programs and training.

The York County Foundation for Mental Retardation
P. O. Box 10820
Rock Hill, S. C. 29731
324-5161

The York County Foundation raises funds and manages property to meet special needs of people with mental retardation or related disabilities in York County.

Other Fund-raising Organizations

United Way of S. C.
2711 Middleburg Drive, Suite 307
Columbia, S. C. 29204
252-9101
FAX 256-8347

United Way assists local United Way organizations in planning, fund raising and allocations. Local United Way agencies provide human services and community needs, including assistance to local programs for people with mental retardation.

Publications

Many agencies and organizations offer publications to educate families of people with mental retardation or related disabilities about services, special events and other important information. For more information, contact your MR board (please see page 13), the following agencies or organizations:

The Advocate
S. C. Protection and Advocacy for the Handicapped, Inc.
3710 Landmark Drive, Suite 208
Columbia, S. C. 29204
782-0639
1-800-922-5225

The Advocate is published annually by SCP&A. Copies are free. SCP&A also offers fact sheets, brochures, and other materials about advocacy for people with disabilities.

ARC Express
ARC/SC Association on Mental Retardation
P. O. Box 61062
Columbia, S. C. 29260-1062
894-5591

ARC Express is published quarterly by ARC with a grant from Merck, Sharp and Dohme. Subscriptions are free to ARC members.

*A Parent's Guide to Accessing Programs for Infants,
Toddlers and Preschoolers with Handicaps*
National Information Center for Handicapped
Children and Youth (NICHY)
P. O. Box 1492
Washington, D. C. 20013
1-800-999-5599

A Parent's Guide is published by NICHY. Free copies are available.

S. C. Autism Society Newsletter
S. C. Autism Society
P. O. Box 684
Effingham, S. C. 29541-0684
667-6448

SCAS Newsletter is published quarterly. Subscriptions are free to SCAS members.

S. C. Dental Directory for the Treatment of the Special Needs Patient

DMR and the Department of Health and Environmental Control publish a statewide dental directory for treatment of patients with special needs. The directory lists dentists who are willing to treat patients with special needs. It also describes payment methods. For more information, contact your local MR board or DMR regional office (please see pages 13 and 27).

Exceptional Parent

P. O. Box 3000, Dept. EP
Denville, N. J. 07834-9919
1-800-247-8080

Exceptional Parent is a magazine for parents of children with disabilities. The magazine is published eight times per year. There is a charge for subscriptions.

Families and Disability Newsletter

Beach Center on Families and Disability
c/o Bureau of Child Research
University of Kansas
c/o The Life Span Institute
3111 Haworth Hall
Lawrence, Kan. 66045
(913) 864-7600

Families and Disability is published three times a year by the Beach Center on Families and Disability. Subscriptions are free.

Family Support Bulletin

United Cerebral Palsy Association, Inc.
Community Services Division
1522 K Street, Northwest
Washington, D. C. 20005
1-800-USA-5UCP

Family Support Bulletin is a quarterly newsletter for families of people with Cerebral Palsy or related disabilities. Subscriptions are free.

Frontline and Now and the Future
**Governor's Division of Health and Human Services/
Developmental Disabilities Council**
Brown Building
1205 Pendleton Street
Columbia, S. C. 29201
734-0465

Frontline and Now and the Future are published by the Developmental Disabilities Council. Subscriptions to *Frontline*, a quarterly newsletter, are free. *Now and the Future* is a guide to guardianship, wills, trusts, life and health insurance, government benefits and other practical matters.

New Ways Magazine
P. O. Box 5072
Evanston, Ill. 60204
(708) 869-7210

New Ways is published quarterly to bring better lives to people with mental retardation and their families. There is a charge for subscriptions.

Parenting the Handicapped
Cooperative Extension Service
Clemson University
Clemson, S. C. 29631

Parenting the Handicapped is available free of charge from the Clemson University Extension Service.

Special Edition
S. C. Special Olympics
2615 Devine Street
Columbia, S. C. 29205
254-7774
1-800-765-SCSO

Special Edition is published for families of Special Olympic athletes. Subscriptions are free.

Dances With Wolves
Wolf-Hirshhorn Syndrome
Brenda Grimmett, Contact Person
5536 Virginia Court
Amherst, Oh. 44001
(216) 282-1460

Dances With Wolves newsletter is published monthly for families of children with Wolf-Hirshhorn syndrome. Subscriptions are free.

The S. C. Department of Mental Retardation offers the following publications for families of individuals with mental retardation or related disabilities:

Child Care and Development Block Grant Facts

This bulletin includes general information and eligibility criteria for the Child Care and Development Block Grant program.

Claims and Coverage

Claims and Coverage is a brochure about health insurance for families of people with mental retardation.

FORUM

FORUM is a newsletter for families served by DMR, legislators, family support and government organizations and others with interests in mental retardation or related disabilities. *FORUM* is published four times per year, and subscriptions are free.

Medicaid Program Overview

This overview provides general information about the Medicaid program, which provides medical care for needy people.

Parent/Family Organization Manual

The *Parent/Family Organization Manual* is a guide to the role and functions of these local groups. The manual assists in the development and organization of local parent/family organizations.

Publications Catalogue

Publications Catalogue is a catalogue of brochures, manuals, standards and other training materials published by DMR.

Stork Service

Stork Service is a special support packet for families of newborns with Down syndrome.

Tax Bulletin for Families of People with Mental Retardation or Related Disabilities

DMR's tax bulletin provides general information about deductions and credits available to families of people with mental retardation when filing state and local taxes.

Working With Professionals: A Guide for Families With Special Needs

Working With Professionals is a guide for families, so they can work more effectively with professionals who provide services for their child.

Working With Families Who Have Special Needs: A Guide for Professionals

This guide provides information for professionals, so they can work more effectively with families of children with special needs. The guide outlines DMR professional principles and philosophy and includes responsibilities for providing family-centered services.

To order DMR publications, contact:

**S. C. Department of Mental Retardation
Community Education Office
P. O. Box 4706
Columbia, S. C. 29240
737-6477
FAX 737-6323**

Publications and videotapes concerning mental retardation or related disabilities can be borrowed by groups or individuals through the S. C. Department of Mental Retardation's central library.

A complete list of videotapes is available without charge. Topics such as education, family support, sibling issues, advocacy and estate planning are included.

For more information, please call 737-6345 or write:

**Librarian
S. C. Department of Mental Retardation
P. O. Box 4706
Columbia, S. C. 29240**

For More Information

For additional copies of this services directory or more information,
please contact:

**S.C. Department of Mental Retardation
Community Education Office
P. O. Box 4706
Columbia, S. C. 29240
737-6477
FAX 737-6323**

***DMR and its service delivery system do not discriminate in any
way in delivery of services or employment of qualified people.***

5,000 Copies Printed
Total Cost: \$3,129.00
Cost Per Book: 63 cents