

DOCUMENT RESUME

ED 354 944

JC 930 114

TITLE Enrollment Trends and Student Characteristics, Fall 1989.
 INSTITUTION College of the Canyons, Valencia, CA.
 PUB DATE Aug 90
 NOTE 28p.
 PUB TYPE Reports - Research/Technical (143) -- Statistical Data (110)

EDRS PRICE MF01/PC02 Plus Postage.
 DESCRIPTORS College Attendance; Community Colleges; Degrees (Academic); Educational Attainment; Educational Change; Enrollment; *Enrollment Trends; Ethnic Distribution; Females; Full Time Students; Males; Part Time Students; *Student Characteristics; Two Year Colleges; *Two Year College Students
 IDENTIFIERS *College of the Canyons CA

ABSTRACT

Comprised principally of tables and bar graphs, this report provides data on enrollment trends and student characteristics at College of the Canyons (CC) in Valencia, California, for each fall term year from 1985 through 1989. Information is included on student enrollment totals in credit courses; high schools last attended by new freshmen; student ethnicity, age, enrollment status, and gender; and educational attainment. Highlighted data for the 5-year period includes the following: (1) enrollment in credit courses grew 56%, from 3,630 in 1985 to 5,667 in 1989; (2) of the 1,555 students who graduated from district area high schools in 1989, 480 enrolled in CC; (3) for the period, enrollment of American Indians increased from 16 to 40 (150%), Filipinos increased from 24 to 59 (146%), and Hispanics increased from 247 to 548 (122%); (4) in 1989, 42.9% of CC students were 18-21 years old, while the average age was 26.9 years old; (5) for each year, roughly 30% of students were enrolled in 12 or more units and 70% were enrolled in less than 12 units; (6) students enrolled only in the evening decreased from 40.7% to 32.5% for the period, students enrolled in only day classes remained steady at 37%, and students enrolled in both increased from 22% to 30.3%; (7) the proportion of male to female students remained steady at about 42% male to 58% female; and (8) 4.3% of enrolled students in 1989 had an associate degree, and 5.5% had a bachelor's degree. (PAA)

 * Reproductions supplied by EDRS are the best that can be made *
 * from the original document. *

ED354944

INSTITUTIONAL RESEARCH

College of the Canyons
**ENROLLMENT TRENDS
AND
STUDENT CHARACTERISTICS**

Fall 1989

August 1990

Office of Institutional Development
College of the Canyons
Santa Clarita Community College District

PERMISSION TO REPRODUCE THIS
MATERIAL HAS BEEN GRANTED BY

N. J. Mattice

TO THE EDUCATIONAL RESOURCES
INFORMATION CENTER (ERIC)

U.S. DEPARTMENT OF EDUCATION
Office of Educational Research and Improvement
EDUCATIONAL RESOURCES INFORMATION
CENTER (ERIC)

This document has been reproduced as
received from the person or organization
originating it.

Minor changes have been made to improve
reproduction quality.

• Points of view or opinions stated in this docu-
ment do not necessarily represent official
OERI position or policy.

BEST COPY AVAILABLE

C 930 114
ERIC
Full Text Provided by ERIC

COLLEGE OF THE CANYONS
ENROLLMENT TRENDS & STUDENT CHARACTERISTICS
FALL 1989

Table of Contents

Part I: Enrollment Trends, 1985 - 1989

ENROLLMENT

Table 1. Enrollment in Credit Courses, Fall 1985 - 1989

Figure 1. Enrollment in Credit Courses, Fall 1985 - 1989

FEEDER HIGH SCHOOLS

Table 2. High Schools Last Attended by New Freshmen
17-19 Years Old, Fall 1985 - 1989

Figure 2. Percentage of Students Graduating from the
William S. Hart Union High School District
Enrolling at College of the Canyons the
following Fall, Fall 1985 - 1989

Part II: Student Characteristics, 1985 - 1989

ETHNICITY

Table 3. Ethnicity of Enrolled Students, Fall 1985 - 1989

Table 4. Percentage Change by Ethnicity, Fall 1985 to
Fall 1989

Figure 3. Ethnicity, Fall 1985 - 1989

AGE

Table 5. Age of Enrolled Students, Fall 1985 - 1989

Table 6. Percentage Change by Age, Fall 1985 to Fall 1989

Figure 4. Age, 1985 - 1989

FULL-TIME/PART-TIME

Table 7. Full-Time/Part-Time Status of Enrolled Students,
Fall 1985 - 1989

Table 8. Percentage Change by Full-Time/Part-Time Status,
Fall 1985 to Fall 1989

Figure 5. Full-Time/Part-Time Status, Fall 1985 - 1989

TIME OF ENROLLMENT

Table 9. Time of Class Enrollment, Fall 1985 - 1989

Table 10. Percentage Change by Time of Class Enrollment,
Fall 1985 to Fall 1989

Figure 6. Time of Enrollment, 1985 - 1989

GENDER

Table 11. Gender of Enrolled Students, Fall 1985 - 1989

Table 12. Percent Change by Gender, Fall 1985 to Fall 1989

Figure 7. Gender, Fall 1985 - 1989

EDUCATIONAL ATTAINMENT

Table 13. Educational Attainment of Enrolled Students,
Fall 1985 - 1989

Table 14. Percentage Change by Level of Educational
Attainment, Fall 1985 to Fall 1989

Figure 8. Educational Attainment of Enrolled Students,
Fall 1985 - 1989

Part I

Enrollment Trends

1985 - 1989

COLLEGE OF THE CANYONS

Table 1.
Enrollment in Credit Courses,
Fall 1985-1989

Fall 1985	3,630
Fall 1986	3,579
Fall 1987	4,650
Fall 1988	4,880
Fall 1989	5,667
Percent Change From 1985	+ 56%

COLLEGE OF THE CANYONS

Figure 1.

ENROLLMENT IN CREDIT COURSES,
FALL 1985 - 1989

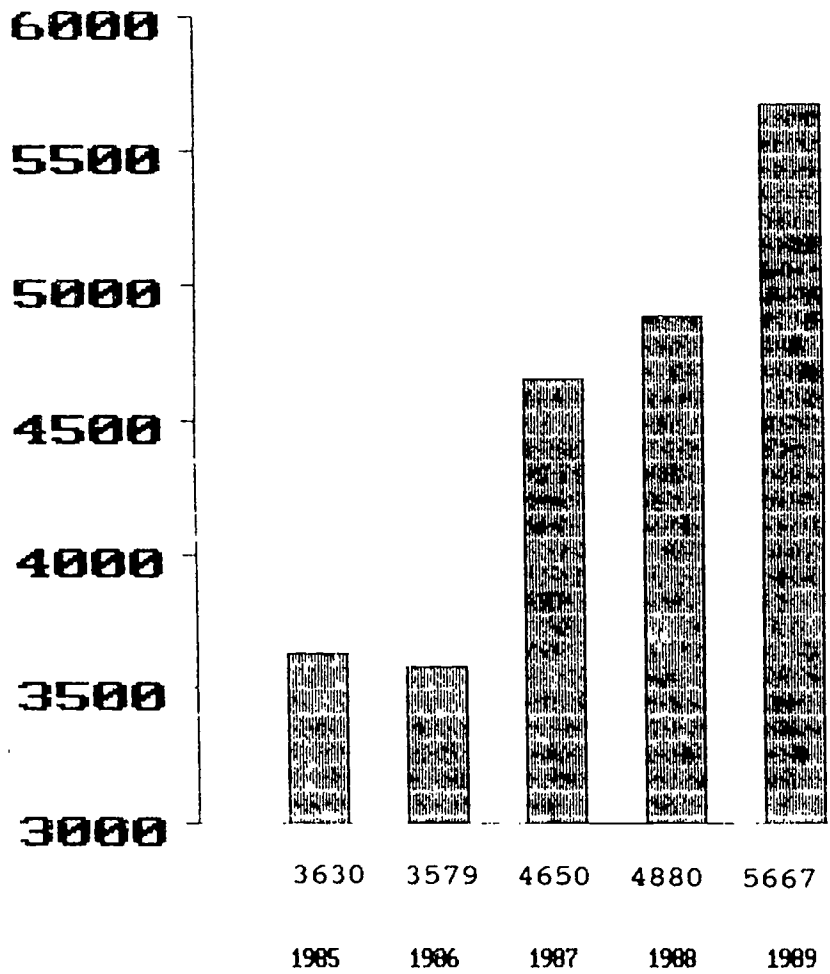


Table 2.

High Schools Last Attended by New Freshmen 17-19 Years Old,
Fall 1985-1989

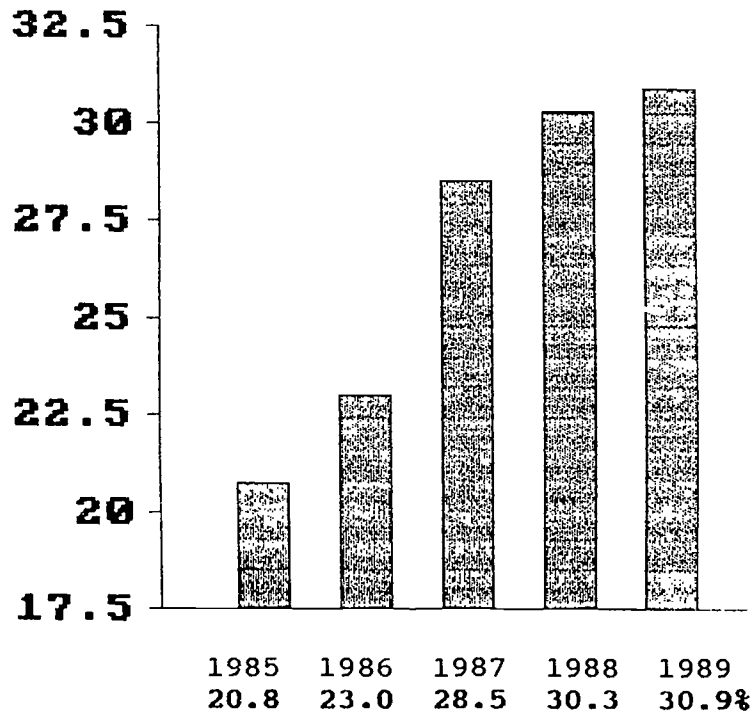
William S. Hart Union High School District

<u>High School</u>	<u>1985</u>	<u>1986</u>	<u>1987</u>	<u>1988</u>	<u>1989</u>	<u>Percent Change From 1985</u>
Bowman	1	5	9	9	9	+800%
Canyon	83	112	142	161	150	+ 81%
Golden Oaks	3	4	2	4	3	0%
Hart	93	109	154	150	181	+ 95%
Saugus	102	107	138	151	137	+ 34%
Total Enrolling at COC	282	337	445	475	480	+ 70%
Total Annual Hart District Graduates	1359	1466	1561	1569	1555	+ 14%

COLLEGE OF THE CANYONS

Figure 2.

Percentage of Students Graduating from the William S. Hart Union High School District Enrolling at College of the Canyons the following Fall, Fall 1985 - 1989



Sources: Follow-up Study of Graduating Class of 1989, W.S. Hart Union High School District. Data from Application Form from Fall 1985 - Fall 1989, College of the Canyons.

Part II
Student Characteristics
1985 - 1989

This section is presented in a defined format. The first table in each series indicates the actual number of students by category for each of the last five years. It also represents the percentage of the total for each category by year. For example, Table 3 shows that there were 3,141 White students enrolled in fall 1985 and that they represented 86.5 percent of the total student body.

The next table in the series indicates the percentage of change by category from fall 1985 to fall 1989. For example, Table 4 shows that the change in enrollment from 3,141 to 4,652 in fall 1989 represents a 48 percent growth in White student enrollment. This must be viewed in terms of the 56 percent overall growth of the total student body during that same time period, indicating a slower growth rate for the White portion of the student body.

The final figure graphically represents some aspect of the student characteristic.

COLLEGE OF THE CANYONS

Table 3.

ETHNICITY OF ENROLLED STUDENTS
FALL 1985 - 1989

Ethnicity	1985		1986		1987		1988		1989	
	N	%	N	%	N	%	N	%	N	%
White	3141	86.5	3103	86.7	4045	87.0	4112	84.2	4652	82.1
Hispanic	247	6.8	246	6.8	332	7.1	414	8.5	548	9.7
Asian	105	2.9	100	2.8	118	2.5	126	2.6	193	3.4
Black	58	1.6	52	1.5	61	1.3	77	1.6	104	1.8
Filipino	24	0.7	35	1.0	38	0.8	54	1.1	59	1.0
Am. Indian	16	0.4	12	0.3	12	0.3	32	0.7	40	0.7
Unknown	39	1.1	31	0.9	44	1.0	65	1.3	71	1.3
Total	3630	100.0	3579	100.0	4650	100.0	4880	100.0	5667	100.0

COLLEGE OF THE CANYONS

Table 4.

PERCENTAGE CHANGE BY ETHNICITY,
FALL 1985 TO FALL 1989

<u>Ethnicity</u>	<u>1985</u>	<u>1989</u>	<u>Percentage Change</u>
White	3141	4652	+ 48%
Hispanic	247	548	+ 122%
Asian	105	193	+ 84%
Black	58	104	+ 79%
Filipino	24	59	+ 146%
American Indian	16	40	+ 150%
Unknown	39	71	+ 82%
Total	3630	5667	+ 56%

COLLEGE OF THE CANYONS

Figure 3.

ETHNICITY OF ENROLLED STUDENTS,
FALL 1985 AND FALL 1989

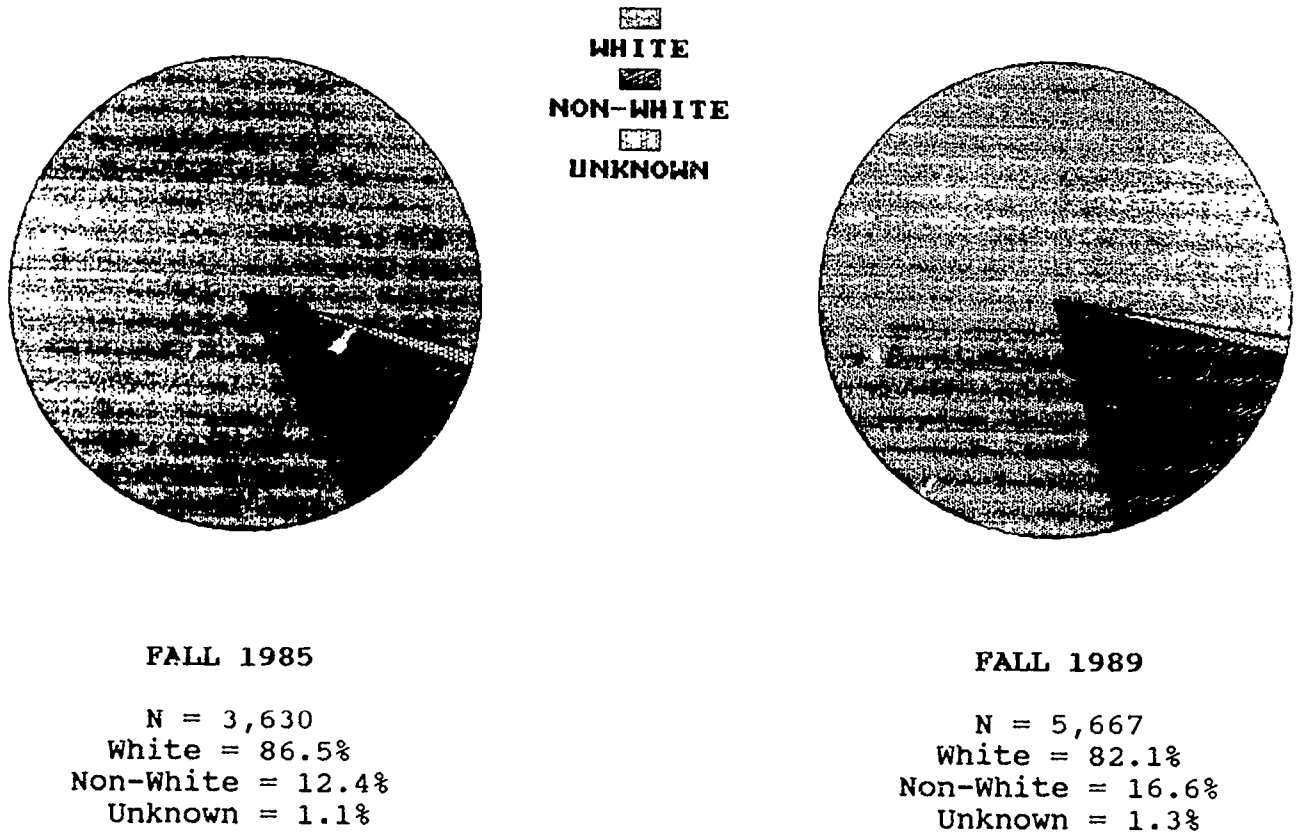


Table 5.

**AGE OF ENROLLED STUDENTS
FALL 1985-1989**

Age	1985		1986		1987		1988		1989	
	N	%	N	%	N	%	N	%	N	%
17 and under	71	2.0	85	2.4	92	2.0	123	2.5	105	1.9
18-21	1574	43.4	1553	43.4	1804	38.8	2006	41.1	2432	42.9
22-29	864	23.8	898	25.1	1210	26.0	1142	23.4	1356	23.9
30-39	705	19.4	657	18.4	936	20.1	947	19.4	1028	18.1
40-49	308	8.5	291	8.1	450	9.7	479	9.8	541	9.6
50-64	101	2.8	81	2.3	131	2.8	160	3.3	182	3.2
65 and over	6	0.2	7	0.2	20	0.4	23	0.5	23	0.4
Unknown	1	0.0	7	0.2	7	0.2	0	0.0	0	0.0
Total	3,630	100.1	3,579	100.1	4,650	100.0	4,880	100.0	5,667	100.0
Mean/Average Age:		26.5		26.1		27.2		27.1		26.9

COLLEGE OF THE CANYONS

Table 6.

PERCENTAGE CHANGE BY AGE
FALL 1985 TO FALL 1989

<u>Age</u>	<u>1985</u>	<u>1989</u>	<u>Percentage Change</u>
17 and under	71	105	48%
18-21	1574	2432	55%
22-29	864	1356	57%
30-39	705	1028	46%
40-49	308	541	76%
50-64	101	182	80%
65 and over	6	23	283%
Unknown	1	0	-100%
Total	3,630	5,667	56%

COLLEGE OF THE CANYONS

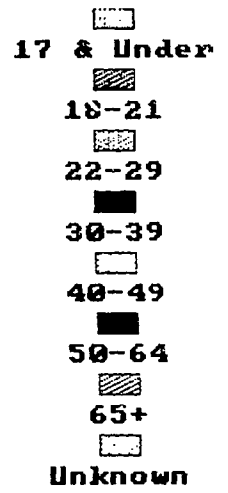
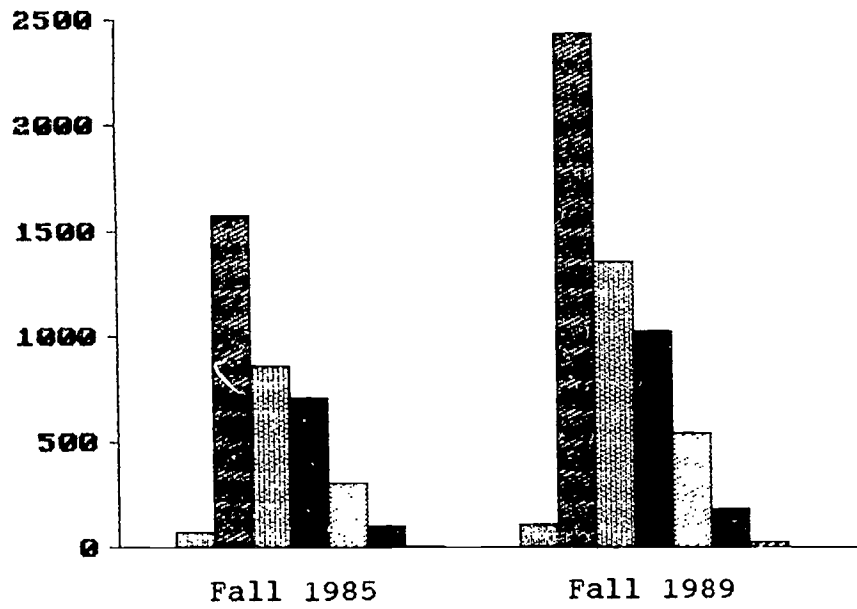


Figure 4.

AGE OF ENROLLED STUDENTS,
FALL 1985 AND FALL 1989



COLLEGE OF THE CANYONS

Table 7.

FULL-TIME/PART-TIME STATUS OF ENROLLED STUDENTS,
FALL 1985 - 1989

Status	1985		1986		1987		1988		1989	
	N	%	N	%	N	%	N	%	N	%
FULL-TIME (12 or more units)	1066	29.4	1027	28.7	1302	28.0	1449	29.7	1669	29.5
PART-TIME (Less than 12 units)	2564	70.6	2517	70.3	3348	72.0	3424	70.2	3979	70.2
Unknown	0	0.0	35	1.0	0	0.0	7	0.1	19	0.3
Total	3630	100.0	3579	100.0	4650	100.0	4880	100.0	5667	100.0

COLLEGE OF THE CANYONS

Table 8.

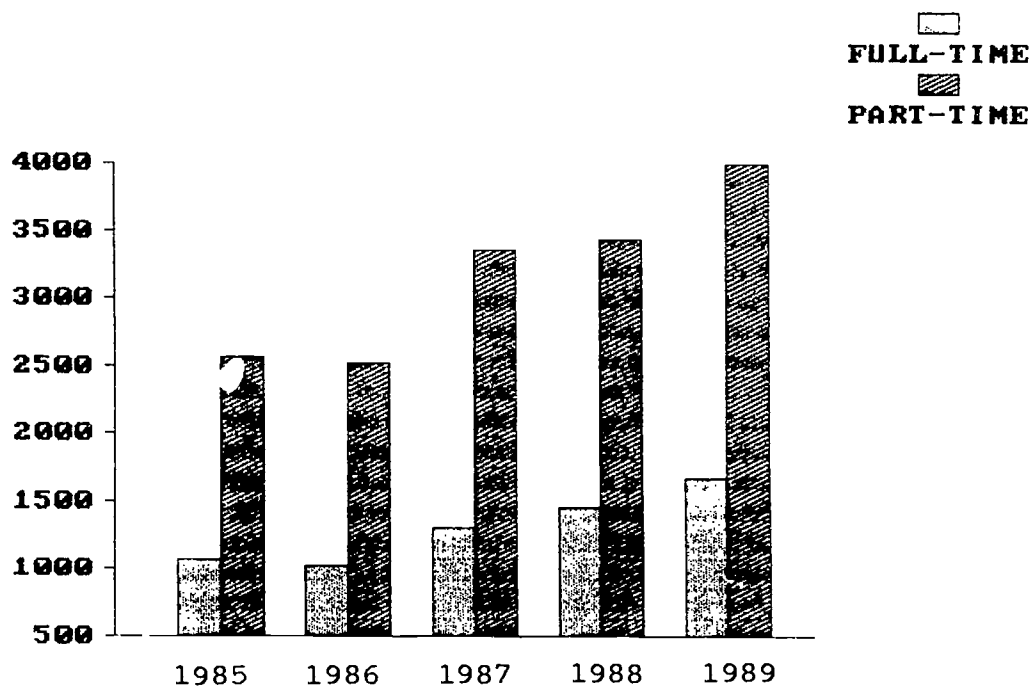
PERCENTAGE CHANGE BY FULL-TIME/PART-TIME STATUS,
FALL 1985 TO FALL 1989

<u>Status</u>	<u>1985</u>	<u>1989</u>	<u>Percentage Change</u>
FULL-TIME	1066	1669	57%
PART-TIME	2564	3979	55%
Total	3630	5667	56%

COLLEGE OF THE CANYONS

Figure 5.

FULL-TIME/PART-TIME STATUS,
FALL 1985 - 1989



COLLEGE OF THE CANYONS

Table 9.

TIME OF CLASS ENROLLMENT,
FALL 1985 - 1989

Time of Classes	1985		1986		1987		1988		1989	
	N	%	N	%	N	%	N	%	N	%
Day Only	1355	37.3	1354	37.8	1800	38.7	1654	33.9	2110	37.2
Evening Only	1479	40.7	1487	41.6	1755	37.7	1779	36.5	1840	32.5
Both	796	22.0	738	20.6	1095	23.6	1447	29.6	1717	30.3
Total	3630	100.0	3579	100.0	4650	100.0	4880	100.0	5667	100.0

COLLEGE OF THE CANYONS

Table 10.

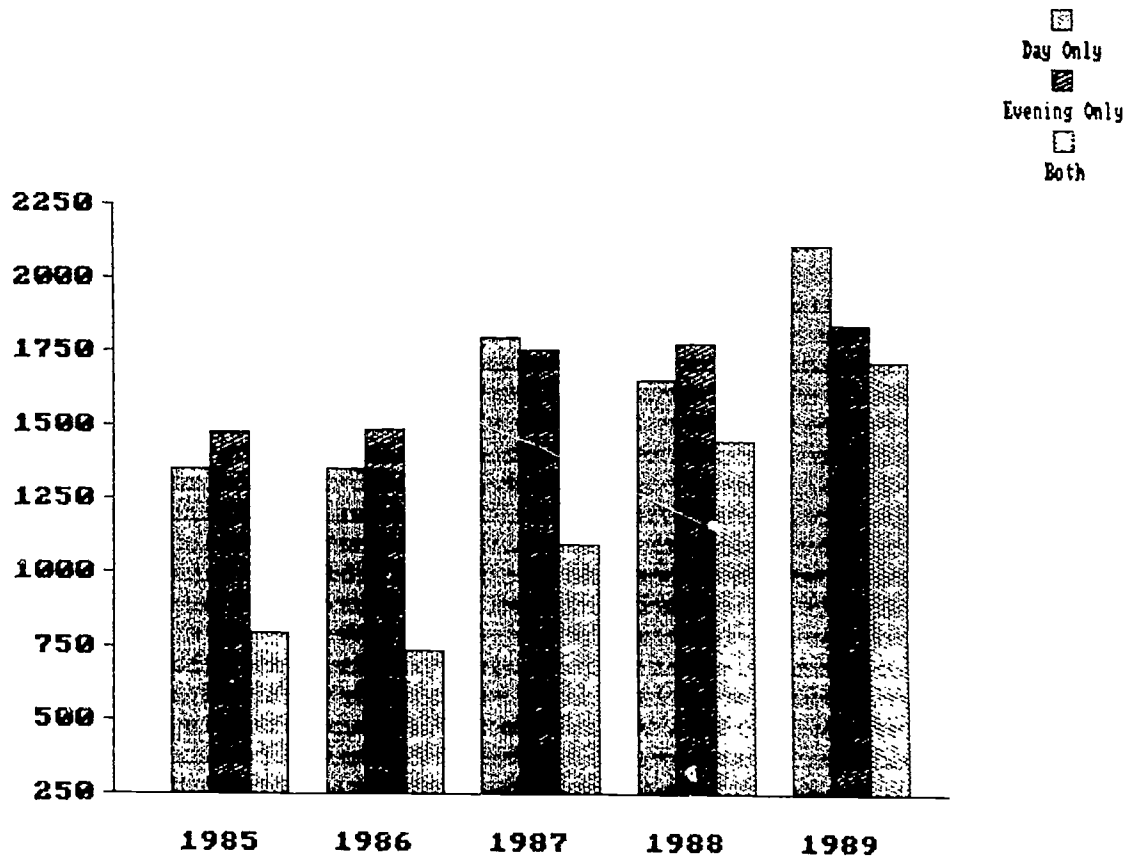
PERCENTAGE CHANGE BY TIME OF CLASS ENROLLMENT
FALL 1985 TO FALL 1989

<u>Time of Classes</u>	<u>1985</u>	<u>1989</u>	<u>Percentage Change</u>
Day Only	1,355	2,110	56%
Evening Only	1,479	1,840	24%
Both	796	1,717	116%
Total	3,630	5,667	56%

COLLEGE OF THE CANYONS

Figure 6.

TIME OF ENROLLMENT, 1985 - 1989



COLLEGE OF THE CANYONS

Table 11.

GENDER OF ENROLLED STUDENTS,
FALL 1985 - 1989

Gender	1985		1986		1987		1988		1989	
	N	%	N	%	N	%	N	%	N	%
FEMALE	2114	58.2	2102	58.7	2639	56.8	2824	57.9	3253	57.4
MALE	1516	41.8	1477	41.3	2011	43.2	2056	42.1	2414	42.6
Total	3630	100.0	3579	100.0	4650	100.0	4880	100.0	5667	100.0

COLLEGE OF THE CANYONS

Table 12.

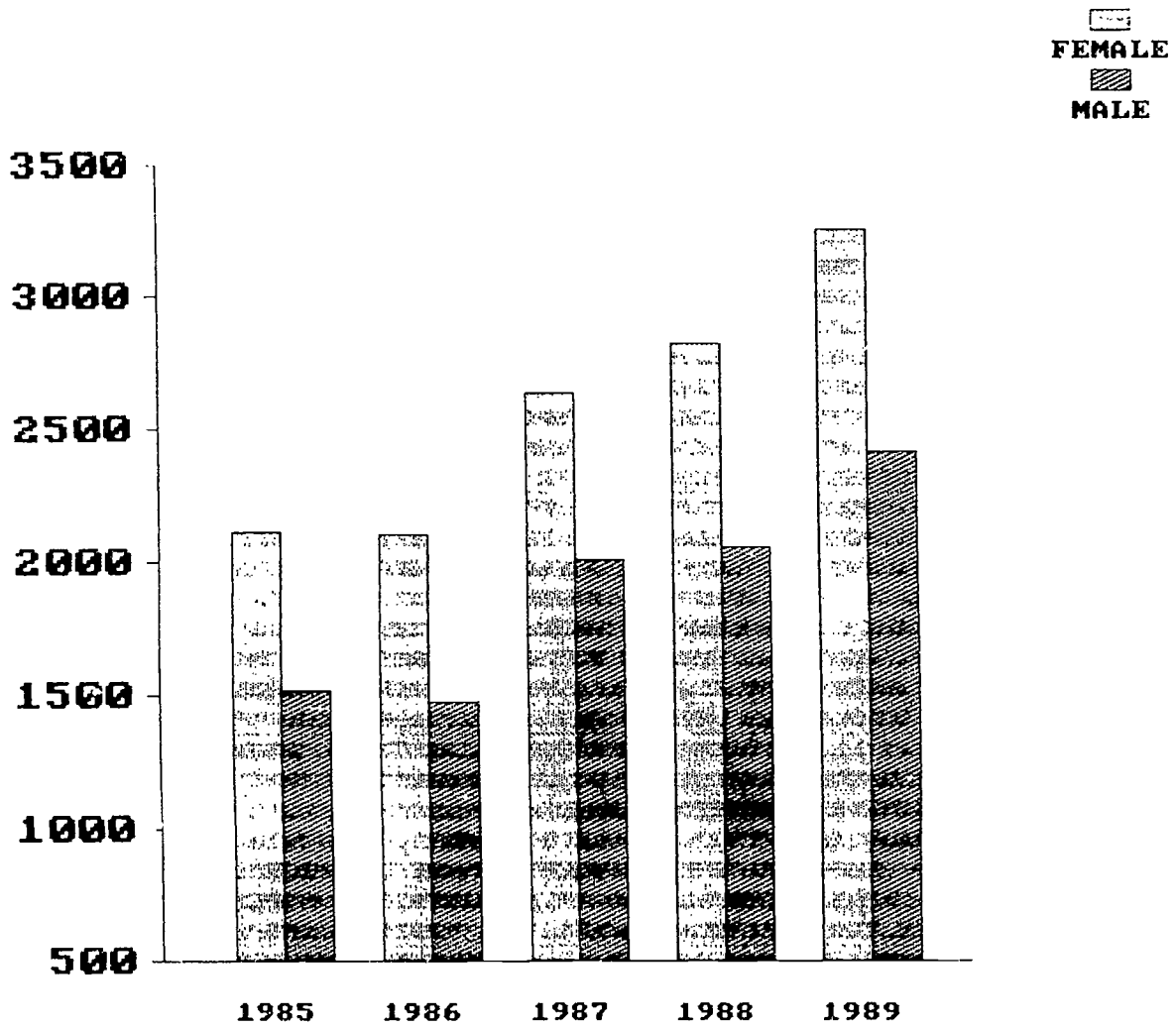
PERCENTAGE CHANGE BY GENDER,
FALL 1985 TO FALL 1989

<u>Gender</u>	<u>1985</u>	<u>1989</u>	<u>Percentage Change</u>
FEMALE	2114	3253	54%
MALE	1515	2414	59%
Total	3630	5667	56%

COLLEGE OF THE CANYONS

Figure 7.

GENDER, FALL 1985 - 1989



COLLEGE OF THE CANYONS

Table 13.

EDUCATIONAL ATTAINMENT OF ENROLLED STUDENTS,
FALL 1985-1989

Student Level	1985		1986		1987		1988		1989	
	N	%	N	%	N	%	N	%	N	%
HIGH SCHOOL	29	0.8	44	1.2	22	0.5	61	1.3	79	1.4
FRESHMEN	2576	71.0	2451	68.5	3236	69.6	3438	70.5	4021	71.0
SOPHOMORES	535	14.7	543	15.2	610	13.1	618	12.7	665	11.7
60 + UNITS	193	5.3	227	6.3	276	5.9	279	5.7	348	6.1
A.A. DEGREES	135	3.7	151	4.2	210	4.5	211	4.3	242	4.3
B.A. DEGREES	162	4.5	163	4.6	296	6.4	273	5.6	312	5.5
Total	3630	100.0	3579	100.0	4650	100.0	4880	100.0	5667	100.0

COLLEGE OF THE CANYONS

Table 14.

PERCENTAGE CHANGE BY LEVEL OF EDUCATIONAL ATTAINMENT,
FALL 1985 TO FALL 1989

<u>Student Level</u>	<u>1985</u>	<u>1989</u>	<u>Percentage Change</u>
HIGH SCHOOL	29	79	172%
FRESHMEN	2576	4021	56%
SOPHOMORES	535	665	24%
60 + UNITS	193	348	80%
A.A. DEGREES	135	242	79%
B.A. DEGREES	162	312	93%
Total	3630	5667	56%

COLLEGE OF THE CANYONS

Figure 8.

EDUCATIONAL ATTAINMENT OF ENROLLED STUDENTS,
FALL 1985 - 1989

