

DOCUMENT RESUME

ED 354 183

SO 022 663

TITLE A Handbook for Teachers of Arkansas Studies. Revised Edition.

INSTITUTION Arkansas State Dept. of Education, Little Rock. General Education Div.

SPONS AGENCY Department of Education, Washington, DC.

PUB DATE 91

NOTE 57p.

PUB TYPE Guides - Non-Classroom Use (055)

EDRS PRICE MF01/PC03 Plus Postage.

DESCRIPTORS Archives; *Educational Resources; Elementary Secondary Education; Federal Government; Information Sources; Libraries; Museums; Parks; Social Studies; State Curriculum Guides; State Government; *State History

IDENTIFIERS *Arkansas

ABSTRACT

The purpose of this guide is to provide basic information about historical resources to Arkansas teachers who are seeking to develop units of study and/or activities on Arkansas history. The guide is divided into four chapters: (1) Museums, Parks and Historical Sites, (2) Libraries and Archives, (3) Other Sources of Information, and (4) Bibliography. The first chapter is intended for those seeking specific information, those wishing technical assistance, and those who wish to plan on-site visits. Chapter 2 is for those interested in finding general and specific information for research and lesson planning. The third chapter includes lists of addresses for federal, state, and local organizations that might be useful sources of information and ideas for guest speakers. The bibliography, chapter 4, is intended to provide a reference for librarians and teachers seeking sources of printed and audiovisual materials for personal or student enrichment. The list includes books, bibliographies and indexes, and periodicals and newspapers and is intended for novice and veteran Arkansas history teachers. (DB)

 * Reproductions supplied by EDRS are the best that can be made *
 * from the original document. *

ED354183

A HANDBOOK FOR TEACHERS OF ARKANSAS STUDIES

Revised Edition

U.S. DEPARTMENT OF EDUCATION
Office of Educational Research and Improvement
EDUCATIONAL RESOURCES INFORMATION
CENTER (ERIC)

This document has been reproduced as received from the person or organization originating it.

Minor changes have been made to improve reproduction quality.

Points of view or opinions stated in this document do not necessarily represent official ERIC position or policy.



BEST COPY AVAILABLE

ABOUT THE COVER—

The pen and ink drawings on the cover and division pages are the creation of Richard DeSpain. His loving contribution to this book should not go unacknowledged.

For more information about his work, one may contact him at 101 Broken Arrow, North Little Rock, AR 72116.

A HANDBOOK FOR TEACHERS OF ARKANSAS STUDIES

Revised Edition

General Education Division
Arkansas Department of Education
Little Rock, Arkansas
1991

Dr. Burton Elliott, Director

ACKNOWLEDGMENTS

This document was originally conceived and developed by a group of teachers under the auspices of the Arkansas Department of Education and the Department of Arkansas Heritage in 1986-87. Their thoroughness in compiling the original handbook made this revision a much simpler task. Grateful appreciation is extended to that pioneer group.

Numerous state agencies have cooperated in the revision of this document. The following people are acknowledged for their contribution to this project:

Project Coordinators

Judy ButlerArkansas Department of Education
Margaret CrankArkansas Department of Education

Committee Members

Bob RazerCentral Arkansas Library System
Ann PryorOffice of the Secretary of State
Berna LoveMuseum of Science and History
Martha RimmerArkansas Historical Association
Cynthia PittsArkansas State Library
Ola FlucasArkansas State Library
Jay S. MillerDepartment of Parks and Tourism
Barbara Heffington ..Department of Arkansas Heritage

The development and original publication of this handbook, as well as this revision, have been supported in whole with ESEA, Chapter 2 funds administered by the U.S. Department of Education. However, the opinions expressed herein do not necessarily reflect the position or policy of the Arkansas Department of Education or the U.S. Department of Education, and no official endorsements by the U.S. Department of Education should be inferred. In-kind support has been provided by the Department of Arkansas Heritage, Arkansas Sesquicentennial Education Task Force and the Arkansas Department of Education.

The Arkansas Department of Education only gives its consent for this material to be copied and/or reproduced in any manner for educational purposes. This material may not be reproduced in any form or fashion for profit.

CONTENTS

ACKNOWLEDGMENTS	page 2	State	33
FOREWORD	4	State Agencies	33
CHAPTER 1		Historical & Genealogical	
MUSEUMS, PARKS & HISTORIC SITES	5	Societies	37
Arkansas Museums	7	Colleges & Universities	38
National Parks, Wildlife Refuges,		Educational Cooperatives	39
Forests	12	Associations, Organizations	
State Parks	13	& Competitions	41
CHAPTER 2		Local	42
LIBRARIES & ARCHIVES	17	Historical & Genealogical	
State	19	Societies	42
Local	21	Government Offices	47
Chapter 3		Civic Organizations	48
OTHER SOURCES OF INFORMATION	25	Chapter 4	
Federal	27	BIBLIOGRAPHY	49
Corps of Engineers	27	Books	51
Cooperative Extension Offices	28	Sources of Instructional Materials	56
Federal Officials	32	Sources of Audiovisual Materials	57
		Periodicals & Newspapers	58

FOREWORD

BACKGROUND

In the spring of 1988, the State Board of Education passed new regulations calling for the systematic study of Arkansas in grades K-12. Course content guides for grades 4-8 were sent to schools in the fall of 1990 delineating how Arkansas history/studies is to be addressed in those grades. In addition, the introductory pages of the guides contain suggestions for what might happen in grades K-3 to meet the requirement that units of study be taught there. The most radical change is evident at grade eight where a full semester of Arkansas history is now mandatory. The 1992 Minimum Performance Test (MPT) at grade eight will contain the first questions on Arkansas history.

RATIONALE

Because of these new requirements, teachers and media specialists, especially at the junior high or middle school level, are scrambling to find materials to use to develop units of study and/or activities on Arkansas history. Although there is a plethora of material, it is very time consuming to search for it. Therefore, a resource that will serve as a reference guide seemed appropriate. Such was developed in 1986-87 under a grant from ECIA Chapter 2, entitled *A Handbook for Teachers of Arkansas Studies*. The supply, however, is depleted. In the spring of 1991, funds were sought to up-date, reprint and distribute that guide to junior highs and middle schools with the target audience being media specialists, librarians and teachers preparing for the new requirement at eighth grade. We hope this guide will encourage and further the understanding and appreciation of Arkansas history among teachers,

students and the community at large.

PURPOSE

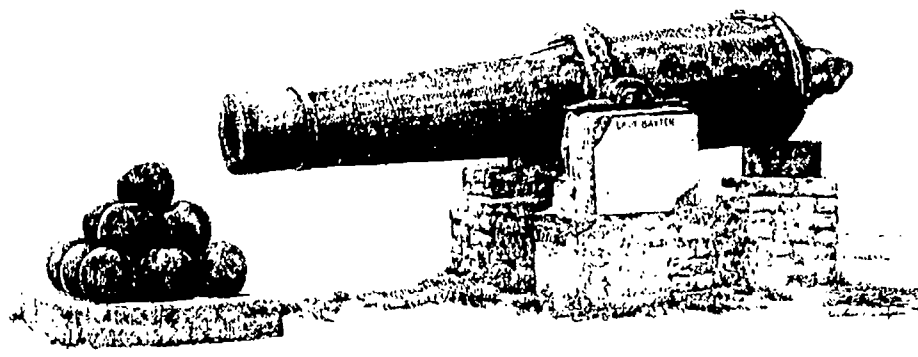
The purpose of the *Handbook* is to provide basic information about a variety of historical resources in such a way that it will remain useful for as long as possible, and in a format that is well-organized and easy to use.

OVERVIEW

For your convenience, this guide is divided into four chapters—Museums, Parks and Historic Sites, Libraries and Archives, Other Sources of Information and Bibliography. The first chapter is useful to those seeking specific information, those wishing technical assistance and those who wish to plan on-site visits. Chapter 2 will be helpful in finding general and specific information for research and lesson planning. The third chapter includes lists of addresses for numerous federal, state and local organizations that might be reservoirs of information and sources of guest speakers. The bibliography provides a reference for librarians and teachers seeking materials for personal or student enrichment. Both primary and secondary sources are listed. The list should be of use to both the novice and the veteran Arkansas history teacher.

We hope the *Handbook for Teachers of Arkansas Studies* will become a permanent and valuable part of your reference collection. As a guide, it is not inclusive, but we hope that we have provided comprehensive information about the state's historical resources and have pointed the way toward finding more.

Chapter 1
**MUSEUMS, PARKS
& HISTORIC SITES**



FOOT STATE CAPITOL

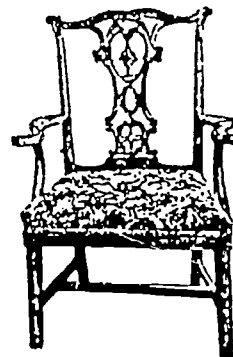
ARKANSAS MUSEUMS

This list includes current museums in Arkansas. They may vary in educational value and policies. The list is divided into three parts: those museums which offer educational packets and instructional materials, other museums and art centers. *Note: Since the content of the educational packets and instructional materials changes from time to time, please contact the museum in which you are interested for a current listing of policies and materials.*

A. MUSEUMS WHICH OFFER EDUCATIONAL PACKETS AND INSTRUCTIONAL MATERIALS, AS WELL AS TOURS

Note: Museums are listed alphabetically by city.

1. UNIVERSITY OF ARKANSAS MUSEUM
Museum Bldg. #202
Fayetteville, AR 72701
2. OLD FORT SMITH MUSEUM
320 Rogers Ave.
Fort Smith, AR 72901
3. ARKANSAS POST COUNTY MUSEUM
512 Main St.
Gillett, AR 72055
4. ARKANSAS MUSEUM OF SCIENCE
AND HISTORY
MacArthur Park
Little Rock, AR 72202
5. ARKANSAS TERRITORIAL
RESTORATION
Third and Scott Streets
Little Rock, AR 72201
6. OLD STATE HOUSE
300 W. Markham
Little Rock, AR 72201
7. MID-AMERICA CENTER MUSEUM
400 Mid-America Blvd.
Hot Springs, AR 71913
8. OZARK FOLK CENTER
P.O. Box 550
Mountain View, AR 72560
9. JEFFERSON COUNTY HISTORICAL
MUSEUM
Barraque & Main Streets
Pine Bluff, AR 71601
10. ROGERS HISTORICAL MUSEUM
322 S. Second St.
Rogers, AR 72756
11. GRANT COUNTY MUSEUM
409 W. Center
Sheridan, AR 72150
12. ARKANSAS OIL AND BRINE MUSEUM
3853 Smackover Hwy.
Smackover, AR 71762
13. SHILOH MUSEUM
118 W. Johnson Ave.
Springdale, AR 72764
14. ARKANSAS STATE UNIVERSITY
MUSEUM
P.O. Box 490
State University, AR 72467
15. STUTTGART AGRICULTURAL MUSEUM
921 E. Fourth St.
Stuttgart, AR 72160



B. OTHER MUSEUMS

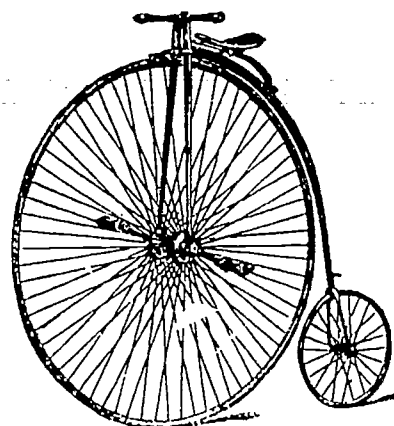
1. **WILL REED FARMHOUSE**
Alleene, AR 71820
2. **HENDERSON UNIVERSITY MUSEUM**
P.O. Box 7657
Henderson State University
Arkadelphia, AR 72923
3. **BALD KNOB CENTENNIAL MUSEUM**
Market and Elm Streets
Bald Knob, AR 72010
4. **ARKANSAS COLLEGE MUSEUM**
Batesville, AR 72501
5. **BAUXITE MUSEUM**
P.O. Box 242
Bauxite, AR 72011
6. **MISSOURI AND ARKANSAS RAILROAD**
P.O. Box 65
Beaver, AR 72613
7. **BELLA VISTA HISTORICAL MUSEUM**
491 Bella Vista Way
Bella Vista, AR 72712
8. **GANN MUSEUM**
218 S. Market
Benton, AR 72015
9. **WAL-MART VISITORS CENTER**
105 N. Main
Bentonville, AR 72712
10. **CARROLL COUNTY HERITAGE CENTER**
P.O. Box 249
Berryville, AR 72616
11. **SAUNDERS MEMORIAL MUSEUM**
113-115 Madison St.
Berryville, AR 72616
12. **MCCOLLUM-CHIDESTER HOUSE**
926 Washington St., N.W.
Camden, AR 71701
13. **CANE HILL MUSEUM COMMITTEE**
P.O. Box 41
Cane Hill, AR 72717
14. **ARKANSAS INDIAN CULTURAL CENTER**
P.O. Box 8
Cherokee Village, AR 72525
15. **HALLS OF HISTORY**
P.O. Box 64
Choctaw, AR 72028
16. **GREATHOUSE HOME**
P.O. Box 731
Conway, AR 72032
17. **SEVIER CITY HISTORICAL SOCIETY MUSEUM**
P.O. Box 2 J8
DeQueen, AR 71832
18. **LOG CABIN MUSEUM**
Rt. 1, Box 4
Des Arc, AR 72042
19. **PRAIRIE COUNTY MUSEUM**
P.O. Box 543
Des Arc, AR 72042
20. **DESHA COUNTY MUSEUM**
P.O. Box 141
Dumas, AR 71639
21. **CRITTENDEN COUNTY MUSEUM**
P.O. BOX 644
Earle, AR 72331
22. **RUBY AND HENRY CONNERLY MUSEUM**
143 Duncan St.
Eudora, AR 71640
23. **BIBLE MUSEUM**
P.O. Box 471
Eureka Springs, AR 72632
24. **CARRY A. NATION HOME**
35 Steel St.
Eureka Springs, AR 72632
25. **CASTLE AND MUSEUM AT INSPIRATION POINT**
Rt. 2, Box 375
Eureka Springs, AR 72632
26. **EUREKA SPRINGS HISTORICAL MUSEUM**
95 S. Main St.
Eureka Springs, AR 72632
27. **GAY NINETIES BUTTON AND DOLL MUSEUM**
Rt. 4, Box 420
Eureka Springs, AR 72632
28. **GEUTHER DOLL MUSEUM**
118 N. Main St.
Eureka Springs, AR 72632
29. **HAMMOND MUSEUM OF BELLS**
P.O. Box 269
Eureka Springs, AR 72632
30. **MILES MUSICAL MUSEUM**
P.O. Box 488
Eureka Springs, AR 72632

31. **ROSALIE HOUSE**
282 Spring St.
Eureka Springs, AR 72632
32. **ROBINSON FARM MUSEUM
AND HERITAGE CENTER**
Rt. 1, Box 324
Everton, AR 72633
33. **FAIRFIELD BAY LOG CABIN MUSEUM**
County Club Road
Fairfield Bay, AR 72088
34. **ARKANSAS AIR MUSEUM**
P.O. Box 1911
Fayetteville, AR 72702
35. **HEADQUARTER'S HOUSE**
30 S. College
Fayetteville, AR 72701
36. **WASHINGTON COUNTY
HISTORICAL SOCIETY**
118 Dickson St.
Fayetteville, AR 72701
37. **CARLTON'S HISTORICAL MUSEUM**
405 Garrison
Fort Smith, AR 72901
38. **FORT SMITH NATIONAL HISTORIC SITE**
P.O. Box 1406
Fort Smith, AR 72902
39. **FORT SMITH TROLLEY MUSEUM**
2121 Wolfe Lane
Fort Smith, AR 72901
40. **PATENT MODEL MUSEUM**
400 N. Eighth St.
Fort Smith, AR 72901
41. **WILLIAM O'DARBY MEMORIAL**
P.O. Box 1625
Fort Smith, AR 72902
42. **ARKANSAS POST NATIONAL MEMORIAL**
Rt. 1, Box 16
Gillett, AR 72055
43. **ANTIQUÉ DOLL HOUSE**
Rt. 1
Green Forest, AR 72638
44. **OLD JAIL MUSEUM**
Rt. 3, Box 42
Greenwood, AR 72936
45. **GURDON HISTORICAL PRESERVATION
ASSOCIATION**
P.O. Box 193
Gurdon, AR 71743
46. **HOO-HOO INTERNATIONAL MUSEUM**
P.O. Box 118
Gurdon, AR 71743
47. **ASHLEY COUNTY MUSEUM**
300 N. Cherry St.
Hamburg, AR 72646
48. **BOONE COUNTY HERITAGE MUSEUM**
P.O. Box 1094
Harrison, AR 72601
49. **BUFFALO NATIONAL RIVER MUSEUM**
P.O. Box 1173
Harrison, AR 72602-1173
50. **MISSOURI AND ARKANSAS RAILROAD
MUSEUM**
P.O. Box 1094
Harrison, AR 72601
51. **W.J. HAMILTON MEMORIAL MINING
MUSEUM**
P.O. Box 69
Hartford, AR 72342
52. **DELTA CULTURAL CENTER**
95 Missouri St.
Helena, AR 72342
53. **PHILLIPS COUNTY MUSEUM**
623 Pecan St.
Helena, AR 72342
54. **GARLAND COUNTY MUSEUM**
914 Summer St.
Hot Springs, AR 71901
55. **HOT SPRINGS NATIONAL PARK**
P.O. Box 1860
Hot Springs, AR 71601
56. **JOSEPHINE TUSSAUD WAX MUSEUM**
250 Central Ave.
Hot Springs, AR 71901
57. **JACKSONPORT COURTHOUSE MUSEUM**
P.O. Box 8
Jacksonport, AR 72075
58. **LOCH BEE LOG CABIN**
Craighead County Historical Society
1228 S. Main
Jonesboro, AR 72401
59. **MUSEUM LEPANTO, U.S.A.**
P.O. Box 223
Lepanto, AR 72354
60. **QUAPAW QUARTER ASSOCIATION
OF VILLA MARRE**
P.O. Box 165023
Little Rock, AR 72116

61. **UALR**
2801 S. University
Little Rock, AR 72204
62. **HOT SPRING COUNTY MUSEUM**
1220 Brownwood
Malvern, AR 72104
63. **READER RAILROAD**
P.O. Box 477
Malvern, AR 72104
64. **MARIANNA-LEE COUNTY MUSEUM**
67 W. Main St.
Marianna, AR 72360
65. **SEARCY COUNTY MUSEUM**
Hwy. 27 S.
Marshall, AR 72650
66. **MAYNARD PIONEER MUSEUM**
P.O. Box 186
Maynard, AR 72444
67. **MENA DEPOT MUSEUM**
Rt. 4, Box 564-C
Mena, AR 71953
68. **STAINED GLASS BELL TOWER MUSEUM**
Howard Creek Rd.
Midway, AR 72651
69. **DREW COUNTY HISTORICAL MUSEUM**
402 S. Main St.
Monticello, AR 71655
70. **TURNER NEAL MUSEUM OF NATURAL HISTORY**
University of Arkansas at Monticello
Monticello, AR 71655
71. **CONWAY COUNTY HISTORICAL MUSEUM**
P.O. Box 417
Morrilton, AR 72110
72. **MUSEUM OF AUTOMOBILES**
Rt. 3
Morrilton, AR 72110
73. **KA-DO-HA DISCOVERY MUSEUM**
P.O. Box 669
Murfreesboro, AR 71852
74. **HOWARD COUNTY MUSEUM**
218 W. Howard St.
Nashville, AR 71852
75. **WOLF HOUSE MEMORIAL MUSEUM**
P.O. Box 147
Norfolk, AR 72658
76. **ROSARY MUSEUM**
1603 Marion St.
North Little Rock, AR 72114
77. **OSCEOLA CHAMBER OF COMMERCE**
P.O. Box 174
Osceola, AR 72370
78. **CHURCHLIFT MUSEUM**
Hwy. 64 E.
Ozark, AR 72949
79. **LOGAN COUNTY MUSEUM**
204 N. Vine St.
Paris, AR 72855
80. **ROBERT'S MUSEUM**
P.O. Box 404
Parkin, AR 72373
81. **PEA RIDGE NATIONAL MILITARY PARK**
Pea Ridge, AR 72751
82. **ARKANSAS RAILROAD MUSEUM**
1803 Belmoor
Pine Bluff, AR 71601
83. **HARDIN HISTORICAL SOCIETY AND MUSEUM**
Rt. 8
Pine Bluff, AR 71602
84. **LUM AND ABNER MUSEUM**
F.O. Box 38
Pine Ridge, AR 71601
85. **LIVING FARM MUSEUM OF THE OZARKS**
202 E. Church
Pocahontas, AR 72455
86. **DEPOT MUSEUM**
300 W. First St., South
Prescott, AR 71857
87. **PIONEER VILLAGE**
P.O. Box 426
Rison, AR 71665



88. **DAISY INTERNATIONAL AIR GUN MUSEUM**
P.O. Box 220
Rogers, AR 72756
89. **ARKANSAS TECH UNIVERSITY GEOLOGY MUSEUM**
Physical Sciences Department
Russellville, AR 72801
90. **POTTS TAVERN**
2206 Red Hill Lane
Russellville, AR 72801
91. **PLANTATION AGRICULTURE MUSEUM**
P.O. Box 87
Scott, AR 72142
92. **WHITE COUNTY PIONEER MUSEUM**
P.O. Box 537
Searcy, AR 72143
93. **SILOAM SPRINGS MUSEUM**
112 N. Maxwell
Siloam Springs, AR 72761
94. **TEXARKANA MUSEUM AND HISTORICAL SOCIETY**
P.O. Box 2343
Texarkana, AR 75504
95. **TONTITOWN HISTORICAL MUSEUM**
605 Hwy. 63 N.
Trumann, AR 72472
96. **FRISCO DEPOT RAILROAD MUSEUM**
P.O. Box 652
Van Buren, AR 72956
97. **ETHNIC MINORITY MEMORABILIA ASSOCIATION**
P.O. Box 55
Washington, AR 71862
98. **SOUTHWEST ARKANSAS REGIONAL ARCHIVES**
P.O. Box 134
Washington, AR 71862
99. **CROSS COUNTY HISTORICAL SOCIETY, INC.**
P.O. Box 943
Wynne, AR 72396



ART CENTERS

1. **SOUTH ARKANSAS ART CENTER**
110 E. Fifth Center
El Dorado, AR 71730
2. **FORT SMITH ART CENTER**
423 N. Sixth Center
Fort Smith, AR 72901
3. **FINE ARTS CENTER OF HOT SPRINGS**
514 Central Ave.
Hot Springs, AR 71901
4. **ARKANSAS ART CENTER**
P.O. Box 2157
Little Rock, AR 72203
5. **THE ARTS AND SCIENCE CENTER FOR SOUTHEAST ARKANSAS**
220 Martin St.
Pine Bluff, AR 71601
6. **ARKANSAS RIVER VALLEY ART CENTER**
P.O. Box 2112
Russellville, AR 72801
7. **ARTS CENTER OF THE OZARKS**
216 W. Grove
Springdale, AR 72764
8. **ARKANSAS STATE UNIVERSITY ART GALLERY**
P.O. Box 490
State University, AR 72467
9. **ARTS CENTER OF THE GRAND PRAIRIE**
108 W. 12th St.
Stuttgart, AR 72160

NATIONAL PARKS, WILDLIFE REFUGES, FORESTS

NATIONAL PARK SERVICE

1. **ARKANSAS POST NATIONAL MEMORIAL**
Rt. 1, Box 16
Gillett, AR 72055
Phone: 548-2432
2. **BUFFALO NATIONAL RIVER**
P.O. Box 1173
Harrison, AR 72601
Phone: 741-5443
3. **FORT SMITH
NATIONAL HISTORICAL SITE**
P.O. Box 1406
Fort Smith, AR 72902
Phone: 783-3961
4. **HOT SPRINGS NATIONAL PARK**
P.O. Box 1860
Hot Springs National Park, AR 71902
Phone: 624-3383
5. **PEA RIDGE NATIONAL MILITARY PARK**
Pea Ridge, AR 72751
Phone: 451-8122

U.S. FISHERIES AND WILDLIFE SERVICE

1. **BIG LAKE NATIONAL WILDLIFE
REFUGE**
P.O. Box 67
Big Lake, AR 72442
2. **FELSENTHAL NATIONAL
WILDLIFE REFUGE**
P.O. Box 1157
Crossett, AR 71635
3. **HOLLA BEND NATIONAL
WILDLIFE REFUGE**
P.O. Box 1043
Russellville, AR 72801
4. **WAPANOCCA NATIONAL
WILDLIFE REFUGE**
P.O. Box 279
Turrell, AR 72384
5. **WHITE RIVER NATIONAL
WILDLIFE REFUGE**
P.O. Box 308
DeWitt, AR 72042

U.S. DEPARTMENT OF AGRICULTURE

1. **OUACHITA NATIONAL FOREST**
P.O. Box 1860
Hot Springs National Park, AR 71902
2. **OZARK NATIONAL FOREST**
P.O. Box 1008
Russellville, AR 72801
3. **SAINT FRANCIS NATIONAL FOREST**
P.O. Box 1008
Russellville, AR 72801



ARKANSAS STATE PARKS & MUSEUMS

The Arkansas State Park System includes 45 State Parks and three State Museums, each of which protects and interprets a unique aspect of Arkansas heritage. Learning opportunities include prehistoric Indian villages, Arkansas' first post office, courthouses, a sternwheel paddleboat, life on the Arkansas frontier, making the Bowie Knife, life crafts and music of the Ozarks, the amazing work of the Civilian Conservation Corps in Arkansas, the fascinating Arkansas' Oil Boom, plantation life and cotton agriculture, and many more areas of particular importance to the development of the state of Arkansas.

Many sites have full-time education staff able to prepare curriculum-related programs and activities for school groups, as identified in the list below. Other sites also have excellent resources, both natural and historic, which are available for visits and tours. It is strongly recommended that teachers make advance reservations, complete the pre-trip and post-trip classroom activities, and bring adult supervisors sufficient to allow division of the class into working groups. Where fees are charged, they will be reduced for groups with advance reservations and an educational purpose.

For information on park resources and available programs, and to make reservations, contact the park directly at the address or phone number listed. Be prepared to inform the park of the topics you are studying and activities which will relate the park resources to those studies.

STATE PARKS

1. **BEAVER LAKE STATE PARK**

Rt. 5, Box 900
Rogers, AR 72756
Phone: 789-2380

The Superintendent and/or volunteers can prepare programs focusing on the natural resources of Northwest Arkansas.

2. **BULL SHOALS STATE PARK**

P.O. Box 205
Bull Shoals, AR 72619
Phone: 431-5521

The Park Interpreter has, and can prepare, an array of demonstrations, presentations, trail walks and water tours.

3. **CANE CREEK STATE PARK**

P.O. Box 96
Star City, AR 71667
Phone: 628-4714

This park lies in two natural divisions. Programs and guided walks are available on those natural associations and the history of the park area.

4. **COSSATOT RIVER STATE PARK**

Rt. 1, Box 170-A
Wickes, AR 71973
Phone: 385-2201

The Park Superintendent can prepare demonstrations, presentations, activities and trail walks emphasizing the beautiful resources of this dramatic riverine environment.

5. **CRATER OF DIAMONDS STATE PARK**

Rt. 1, Box 364
Murfreesboro, AR 71958
Phone: 285-3113

Emphasis is on the geology and history of the diamond field. Groups can search for diamonds, the Visitor Center has exhibits, and Park Interpreters can prepare demonstrations, presentations, activities and trail walks.

6. **CROWLEY'S RIDGE STATE PARK**

P.O. Box 97
Walcott, AR 72474-0097
Phone: 573-6751

Emphasis is the unique Crowley's Ridge and the CCC park construction. Park Interpreters can prepare demonstrations, presentations, activities, trail walks and CCC area tours.

7. **DAISY STATE PARK**

HC-71, Box 66
Kirby, AR 71950-8105
Phone: 398-4487

Park Superintendent will present programs to school groups.

8. **DEGRAY STATE PARK**

Rt. 3, Box 490
Bismarck, AR 71929-8194
Phone: 865-4591

Emphasis is the Ouachita Mountain Natural Division, its plant and animal life, the history of the lake, and lumbering as demonstrated on the Saginaw Historic Trail. Park Interpreters can prepare demonstrations, presentations, activities, trail walks and water tours.

9. **DEVIL'S DEN STATE PARK**

11333 W. Arkansas Hwy. 74
West Fork, AR 72774
Phone: 761-3325

Emphasis is the Ozark Mountain Natural Division featuring plants, animals, geology, endangered bats, and formation of the unique crevice area; also historic settlement and beautiful CCC work are interpreted. Park Interpreters can prepare demonstrations, presentations, activities, trail walks and historic tours. Exhibits and a classroom are available.

10. **HAMPSON MUSEUM STATE PARK**

P.O. Box 156
Wilson, AR 72395
Phone: 655-8622

Emphasizes a remarkable collection of Mississippian artifacts, the noted Nodena collection. Exhibits, museum tours and programs are available.

11. **JACKSONPORT STATE PARK**

P.O. Box 8
Jacksonport, AR 72075
Phone: 523-2143

Emphasizes life along the upper White River from the 1830s. Tours of the sternwheel riverboat and courthouse are available.

12. **LAKE CATHERINE STATE PARK**

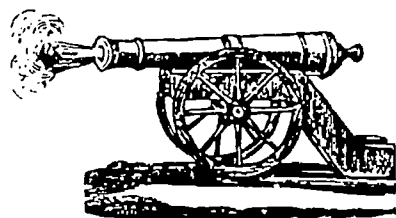
1200 Lake Catherine Park Rd.
Hot Springs, AR 71913-8605
Phone: 844-4176

Emphasizes the Ouachita Mountain Natural Division, the building of Lake Catherine in the 1920s and the CCC era. Park Interpreters can prepare demonstrations, presentations, activities, trail walks and water tours; plus a nature cabin interprets history and man's relationship to his environment.

13. **LAKE CHARLES STATE PARK**

HCR-67, Box 36
Powhatan, AR 72458
Phone: 878-6595

Summer programs may include demonstrations, presentations, activities and trail walks.



14. **LAKE CHICOT STATE PARK**

Rt. 1, Box 1555
Lake Village, AR 71653
Phone: 265-5480

On Arkansas' largest natural lake, the park interprets life along the Mississippi River, ox-bow lake formation, Lindberg's first night flight, the Civil War on the river, wetland values and more. The park has an attractive exhibit area and a classroom. Interpreters can prepare demonstrations, presentations, activities and trail walks.

15. **LAKE DARDANELLE STATE PARK**

Rt. 5, Box 358
Russellville, AR 72801
Phone: 967-5516

Park staff can prepare demonstrations, presentations, activities and trail walks.

16. **LAKE FORT SMITH STATE PARK**

P.O. Box 4
Mountainburg, AR 72946
Phone: 369-2469

In a valley surrounded by the Ozark Mountains, park staff can prepare demonstrations, presentations, activities and trail walks.

17. **LAKE FRIERSON STATE PARK**

Rt. 2, Box 319-D
Jonesboro, AR 72401
Phone: 932-2615

18. **LAKE OUACHITA STATE PARK**

HC-33, Box 1160
Mountain Pine, AR 71956
Phone: 767-9366

Park Interpreters can prepare demonstrations, presentations, activities, trail walks and water tours. Exhibits and a classroom are available.

19. **LAKE POINSETT STATE PARK**

Rt. 3, Box 317
Harrisburg, AR 72432
Phone: 578-2064

Park staff can prepare demonstrations and presentations.

20. **LOGOLY STATE PARK**

P.O. Box 245
McNeil, AR 71752
Phone: 695-3561

An environmental education park, Logoly also interprets the history of the spa at famous Magnesia Springs. Park Interpreters can prepare demonstrations, presentations, activities and trail walks. Exhibits and a classroom are available.

21. LOUISIANA PURCHASE STATE PARK

Phone: 682-2187

South of Brinkley on Hwy. 46, this is the "point of beginning" for the first survey of the Louisiana Purchase Territory. A boardwalk with wayside exhibits and a guidebook tell the story. The site is unmanned.

22. MAMMOTH SPRING STATE PARK

P.O. Box 36

Mammoth Spring, AR 72554

Phone: 625-7364

Arkansas' largest spring, a dam and hydroelectric plant, an 1880s depot and the Spring River are interpreted through demonstrations, presentations, activities and trail walks.

23. MILLWOOD STATE PARK

Rt. 1, Box 37-AB

Ashdown, AR 71822

Phone: 898-2900

Park staff can prepare demonstrations, presentations, activities and trail walks on the natural world in this rich South Arkansas habitat.

24. MORO BAY STATE PARK

6071 Hwy. 15 S.

Jersey, AR 71651

Phone: 463-8555

Located at the confluence of the Ouachita River and Moro Creek, this area is a rich riverine environment. Park staff can prepare demonstrations, presentations, activities and trail walks.

25. MOUNT NEBO STATE PARK

Rt. 3, Box 374

Dardanelle, AR 72834

Phone: 229-3655

The history of Mt. Nebo includes the early 1800s when it was called Mt. Magazine. Programs include early mountain life, operation as a huge resort, the only city in America with an all-woman board, the CCC era, and the park today. Geology, springs and wildlife are also interpreted. Park staff can prepare demonstrations, presentations, activities and trail walks.



26. OLD DAVIDSONVILLE STATE PARK

Rt. 2

Pocahontas, AR 72455

Phone: 892-4708

The site of Arkansas' first post office purchased from French trappers in 1815, it was a planned community with international trade by 1818. It had significant influence in frontier settlement but was gone by 1830. Park staff can prepare demonstrations, presentations, activities and trail and historic site walks.

27. OLD WASHINGTON STATE PARK

P.O. Box 98

Washington, AR 71862

Phone: 983-2684

The Bowie Knife, a frontier town, the independence of Texas, the Confederate capitol of Arkansas, printing museum, weapons museum, historic home tours and more in the years 1824-1875. Park Interpreters can prepare demonstrations, presentations, activities and a variety of historic tours.

28. PETIT JEAN STATE PARK

Rt. 3, Box 340

Morrilton, AR 72110

Phone: 727-5441

The scenery and the history of Petit Jean are outstanding. Programs include settlement, the striking work of the CCC and nature themes. Park Interpreters can prepare demonstrations, presentations, activities and trail walks.

29. PINNACLE MOUNTAIN STATE PARK

11901 Pinnacle Valley Rd.

Roland, AR 72135

Phone: 868-5806

An environmental state park, Pinnacle also interprets the history of the Pinnacle area. Park Interpreters can prepare demonstrations, presentations, activities and trail walks, and the park has an exhibit area and classroom.

30. POWHATAN COURTHOUSE STATE PARK

P.O. Box 93

Powhatan, AR 72458

Phone: 878-7694

The museum emphasizes the history of Lawrence County from its first establishment at Davidsonville in 1818 to its removal from Powhatan in the 1960s. Exhibits, tours and the restored jail can be enjoyed.

31. PRAIRIE GROVE STATE PARK

P.O. Box 306
Prairie Grove, AR 72753
Phone: 846-2990

This Civil War battle took place December 7, 1862. The park interprets the battle and its impact on life in North Arkansas. Exhibits, a classroom, Ozark village tours, battlefield trail tours, programs and demonstrations are available.

32. QUEEN WILHELMINA STATE PARK

HC-07, Box 53-A
Mena, AR 71953
Phone: 394-2863

Railroad and settler history and the nature of Arkansas' second highest mountain are interpreted through demonstrations, presentations, activities and trail walks.

33. TOLTEC MOUNDS ARCHEOLOGICAL STATE PARK

#1 Toltec Mounds Rd.
Scott, AR 72142-9502
Phone: 961-9442

An impressive 18-mound prehistoric city including Arkansas' tallest Indian mound is interpreted through demonstrations, presentations, activities and trail walks. An extensive interdisciplinary educational program involving math, science, social studies and archeology is also available.

34. VILLAGE CREEK STATE PARK

Rt. 3, Box 49-B
Wynne, AR 72396
Phone: 238-9406

Park Interpreters use demonstrations, presentations, activities, exhibits and trail walks to interpret the plants, animals and the formation of unique Crowley's Ridge. Two classrooms and the new "Discovery Center" exhibit area are available.

35. WHITE OAK LAKE STATE PARK

Rt. 2, Box 28
Bluff City, AR 71722
Phone: 685-2748

White Oak Lake State Park has designed a series of grade/subject programs available for schools. Programs, demonstrations and trail walks are also available.

36. WITHROW SPRINGS STATE PARK

Rt. 3
Huntsville, AR 72740
Phone: 559-2593

37. WOOLLY HOLLOW STATE PARK

82 Woolly Hollow Rd.
Greenbrier, AR 72058
Phone: 679-2098

Programs may emphasize edible and medicinal plants, the CCC dam construction, the one-room log cabin of the Woolly family or the park's natural resources. Park staff can prepare demonstrations, presentations, activities and trail walks.

STATE MUSEUMS

1. ARKANSAS OIL AND BRINE MUSEUM

3853 Smackover Hwy.
Smackover, AR 71762

2. PRAIRIE COUNTY MUSEUM

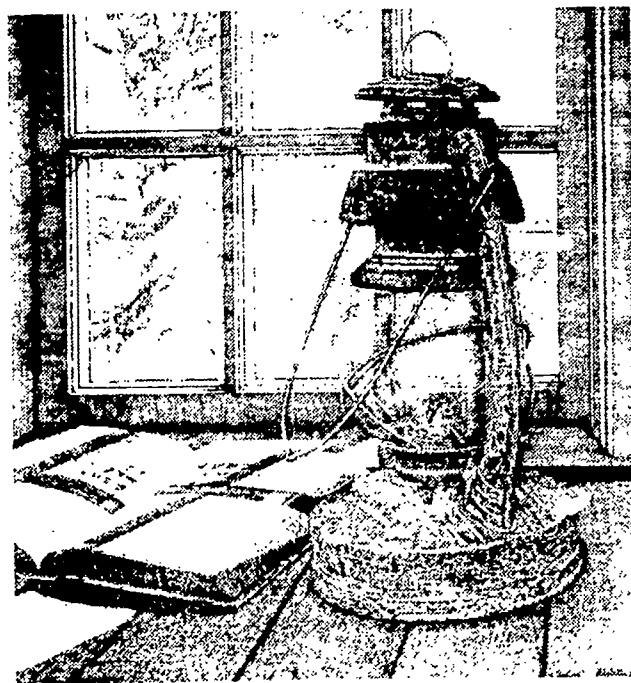
P.O. Box 543
Des Arc, AR 72042

3. PLANTATION AGRICULTURE MUSEUM

P.O. Box 87
Scott, AR 72142



Chapter 2
LIBRARIES & ARCHIVES



LIBRARIES & ARCHIVES

Historical resources can be divided into primary and secondary sources. Primary sources are first-hand records, such as letters, diaries, photographs, etc. They are usually more accurate than secondary sources, but they may be more difficult to evaluate. Secondary sources are usually in a more finished form, but they may reflect the authors' biases.

Libraries can be excellent sources of both primary and secondary sources. Your local school, public and college libraries are the best places to begin research on a subject.

Included here are lists of some of the state's libraries. Public libraries having larger Arkansas collections are noted with asterisks. College and university libraries listed have large Arkansas collections and/or archives. State documents depository libraries provide access to a wide range of topics published in Arkansas state publications. Special libraries listed have information on Arkansas. **Note: Libraries are listed alphabetically by city.**

STATE LIBRARIES

UNIVERSITY AND COLLEGE LIBRARIES WITH LARGE ARKANSAS COLLECTIONS AND/OR ARCHIVES

1. **RILEY-HICKINGBOTHAM LIBRARY**
Ouachita Baptist University
410 Ouachita
Arkadelphia, AR 71923
Phone: 246-4531
2. **MABEE LIBRARY**
Arkansas College
2300 Highland
Batesville, AR 72501
Phone: 793-9813
3. **OLIN C. BAILEY LIBRARY**
Hendrix College
Washington and Front Streets
Conway, AR 72032
Phone: 450-1302
4. **TORREYSON LIBRARY**
University of Central Arkansas
Conway, AR 72032
Phone: 450-3129
5. **UNIVERSITY LIBRARIES**
University of Arkansas
Fayetteville, AR 72701
Phone: 575-4101
6. **OTTENHEIMER LIBRARY**
University of Arkansas at Little Rock
2801 S. University Ave.
Little Rock, AR 72204
Phone: 569-3120

7. **BEAUMONT MEMORIAL LIBRARY**
Harding University
P.O. Box 928
Searcy, AR 72143
Phone: 268-6161
8. **DEAN B. ELLIS LIBRARY**
Arkansas State University (at Jonesboro)
P.O. Box 2040
State University, AR 72467-2040
Phone: 972-3077

ARKANSAS DOCUMENTS DEPOSITORY LIBRARIES

* Denotes full depositories

1. **HUIE LIBRARY***
Henderson State University
Arkadelphia, AR 71923
Phone: 246-5511
2. **RILEY-HICKINGBOTHAM LIBRARY**
Ouachita Baptist University
Arkadelphia, AR 71923
Phone: 246-4531
3. **ABINGTON LIBRARY**
Arkansas State University-Beebe Branch
Beebe, AR 72012
Phone: 882-6452
4. **MISSISSIPPI COUNTY LIBRARY**
200 N. Fifth St.
Blytheville, AR 72315
Phone: 762-2431
5. **DOBSON MEMORIAL LIBRARY**
University of the Ozarks
Clarksville, AR 72830
Phone: 754-3964

6. **TORREYSON LIBRARY***
University of Central Arkansas
Conway, AR 72032
Phone: 450-3129
7. **OZARKS REGIONAL LIBRARY**
217 E. Dickson St.
Fayetteville, AR 72701
Phone: 442-6253
8. **LEARNING RESOURCES CENTER**
East Arkansas Community College
Forrest City, AR 72335
Phone: 633-4480
9. **FORT SMITH PUBLIC LIBRARY**
61 S. Eighth St.
Fort Smith, AR 72901
Phone: 783-0229
10. **NORTH ARKANSAS REGIONAL LIBRARY**
221 W. Stephenson Ave.
Harrison, AR 72601
Phone: 741-3665
11. **ARKANSAS STATE LIBRARY***
One Capitol Mall
Little Rock, AR 72201
Phone: 682-1527
12. **ARKANSAS SUPREME COURT LIBRARY**
Justice Bldg.
Little Rock, AR 72201-1080
Phone: 682-2147
13. **CENTRAL ARKANSAS LIBRARY SYSTEM***
Seventh & Louisiana Streets
Little Rock, AR 72201
Phone: 370-5950
14. **OTTENHEIMER LIBRARY***
University of Arkansas at Little Rock
2801 S. University Ave.
Little Rock, AR 72204
Phone: 569-3120
15. **MAGALE LIBRARY***
Southern Arkansas University
Magnolia, AR 71753
Phone: 235-5120
16. **UNIVERSITY OF ARKANSAS AT
MONTICELLO LIBRARY**
University of Arkansas at Monticello
Monticello, AR 71655
Phone: 367-6811
17. **PUBLIC LIBRARY OF PINE BLUFF
AND JEFFERSON COUNTY**
200 E. Eighth Ave.
Pine Bluff, AR 71601
Phone: 534-4802
18. **WATSON MEMORIAL LIBRARY**
University of Arkansas at Pine Bluff
Pine Bluff, AR 71601
Phone: 541-6500
19. **TOMLINSON LIBRARY**
Arkansas Tech University
Russellville, AR 72801
Phone: 968-0416
20. **BEAUMONT MEMORIAL LIBRARY***
Harding University
Searcy, AR 72143
Phone: 279-4354
21. **OZARKS REGIONAL LIBRARY-
SPRINGDALE BRANCH**
1205 W. Maple St.
Springdale, AR 72764
Phone: 751-7468
22. **DEAN B. ELLIS LIBRARY***
Arkansas State University (at Jonesboro)
State University, AR 72467
Phone: 972-3077
23. **FELIX GOODSON LIBRARY**
Williams Baptist College
Walnut Ridge, AR 72476
Phone: 886-6741

SPECIAL LIBRARIES & ARCHIVES

1. **DELTA CULTURAL CENTER**
95 Missouri St.
Helena, AR 72342
2. **HOT SPRINGS NATIONAL PARK
LIBRARY**
Fordyce Bathhouse Visitor's Center
Central Ave.
P.O. Box 1860
Hot Springs, AR 71902
3. **SOUTHERN FORESTRY RESEARCH
CENTER**
Weyerhaeuser Company
900 Whittington Ave.
P.O. Box 1060
Hot Springs, AR 71902
4. **AUDIO-VISUAL SERVICES FILM LIBRARY**
Arkansas Department of Education
Four Capitol Mall, Room 104B
Little Rock, AR 72201



5. **INFORMATION RESOURCES CENTER**
Arkansas Department of Education
Four Capitol Mall, Room 103A
Little Rock, AR 72201
6. **AGENCY LIBRARY**
Arkansas Department of Pollution Control
& Ecology
8001 National Dr.
P.O. Box 9583
Little Rock, AR 72219
7. **FISHERIES DIVISION LIBRARY**
Arkansas Game & Fish Commission
Two Natural Resources Drive
Little Rock, AR 72205
8. **ARKANSAS GEOLOGICAL COMMISSION
LIBRARY**
3815 W. Roosevelt Rd.
Little Rock, AR 72204
9. **RESEARCH LIBRARY
ARKANSAS INSTITUTE
FOR ECONOMIC ADVANCEMENT**
University of Arkansas at Little Rock
2801 S. University
Little Rock, AR 72204
10. **ARKANSAS HISTORY COMMISSION
LIBRARY**
One Capitol Mall, Second Floor
Little Rock, AR 72201
11. **ARKANSAS STATE LIBRARY**
One Capitol Mall, Fifth Floor
Little Rock, AR 72201
12. **QUAPAW QUARTER ASSOCIATION
RESOURCE CENTER**
1315 Scott
Little Rock, AR 72202
13. **U.S. ARMY CORPS OF ENGINEERS
LIBRARY**
700 W. Capitol
Little Rock, AR 72201
14. **OZARK FOLK CENTER LIBRARY**
P.O. Box 500
Mountain View, AR 72560
15. **SHILOH MUSEUM LIBRARY**
118 W. Johnson Ave.
Springdale, AR 72764
16. **FISH FARMING
EXPERIMENTAL LABORATORY LIBRARY**
U.S. Fish and Wildlife Service
P.O. Box 860
Stuttgart, AR 72160

17. **STUTTGART AGRICULTURAL MUSEUM**
921 W. Fourth St.
Stuttgart, AR 72160
18. **SOUTHWEST ARKANSAS
REGIONAL ARCHIVES**
Old Washington State Park
P. O. Box 134
Washington, AR 71862

LOCAL LIBRARIES

**Denotes large Arkansas collections and/or archives*

1. **WHITE RIVER REGIONAL LIBRARY**
368 E. Main
Batesville, AR 72501
Phone: 793-8814
Serves Cleburne, Fulton, Independence, Izard,
Sharp and Stone Counties
2. **BENTONVILLE PUBLIC LIBRARY**
125 W. Central
Bentonville, AR 72712
Phone: 271-3192
Serves Bentonville
3. **MISSISSIPPI-CRITTENDEN REGIONAL
LIBRARY**
200 N. Fifth St.
Blytheville, AR 72315
Phone: 762-2431
Serves Mississippi and Crittenden Counties
4. **FAULKNER-VAN BUREN
REGIONAL LIBRARY**
Courthouse Square
Conway, AR 72032
Phone: 327-7482
Serves Faulkner and Van Buren Counties
5. **PAUL SULLINS PUBLIC LIBRARY**
125 Main
Crossett, AR 71635
Phone: 364-2230
Serves Crossett
6. **ARKANSAS RIVER VALLEY
REGIONAL LIBRARY**
501 N. Front St.
Dardanelle, AR 72834
Phone: 229-4418
Serves Franklin, Johnson, Logan and Yell Counties
7. **ARKANSAS COUNTY LIBRARY,
SOUTH DISTRICT**
205 W. Maxwell
DeWitt, AR 72042
Phone: 946-1151
Serves Arkansas County, South District

8. **UNION COUNTY LIBRARY**
200 E. Fifth
El Dorado, AR 71730
Phone: 863-5447
Serves Union County
9. **OZARKS REGIONAL LIBRARY**
217 E. Dickson St.
Fayetteville, AR 72701
Phone: 442-6253
Serves Crawford and Washington Counties and
the city of Rogers in Benton County.
10. **FORREST CITY PUBLIC LIBRARY**
421 S. Washington
Forrest City, AR 72335
Phone: 633-5646
Serves Forrest City
11. **FORT SMITH PUBLIC LIBRARY***
61 S. Eighth St.
Fort Smith, AR 72901
Phone: 783-0229
Serves Fort Smith
12. **SCOTT-SEBASTIAN REGIONAL LIBRARY**
North Adair at Atlanta Streets
Greenwood, AR 72936
Phone: 996-2856
Serves Scott County and Sebastian County, South
District
13. **ASHLEY COUNTY LIBRARY**
211 E. Lincoln
Hamburg, AR 71646
Phone: 853-8781
Serves Ashley County
14. **NORTH ARKANSAS REGIONAL LIBRARY**
123 Jaycee Ave.
Harrison, AR 72601
Phone: 741-3665
Serves Baxter, Boone, Carroll, Madison, Marion,
Newton and Searcy Counties
15. **PHILLIPS-LEE-MONROE
REGIONAL LIBRARY**
623 Pecan St.
Helena, AR 72342
Phone: 338-3537
Serves Phillips, Lee and Monroe Counties
16. **SOUTHWEST ARKANSAS
REGIONAL LIBRARY**
Fifth and Elm Streets
Hope, AR 71801
Phone: 777-2957
Serves Hempstead, Howard, Little River, Nevada,
Pike, Polk and Sevier Counties
17. **TRI-LAKES REGIONAL LIBRARY***
125-B Albert Pike
Hot Springs, AR 71913
Phone: 623-3943
Serves Clark, Garland and Montgomery Counties
18. **CROWLEY RIDGE REGIONAL LIBRARY**
315 W. Oak Ave.
Jonesboro, AR 72401
Phone: 935-5133
Serves Craighead and Poinsett Counties
19. **CHICOT COUNTY LIBRARY**
17 S. Court
Lake Village, AR 71653
Phone: 265-6116
Serves Chicot County
20. **CENTRAL ARKANSAS LIBRARY SYSTEM***
700 Louisiana St.
Little Rock, AR 72201
Phone: 370-5950
Serves Perry and Pulaski Counties
21. **LONOKE-PRAIRIE REGIONAL LIBRARY**
P.O. Box 212
Lonoke, AR 72086
Phone: 676-6635
Serves Lonoke and Prairie Counties
22. **CLOC REGIONAL LIBRARY**
220 E. Main St.
Magnolia, AR 71753
Phone: 234-1991
Serves Calhoun, Lafayette, Columbia and
Ouachita Counties
23. **MID-ARKANSAS REGIONAL LIBRARY**
Ash and E. Third Streets
Malvern, AR 72104
Phone: 332-5441
Serves Hot Spring, Grant, Saline, Dallas and
Cleveland Counties

24. **SOUTHEAST ARKANSAS REGIONAL LIBRARY**
233 S. Main
Monticello, AR 71655
Phone: 367-8584
Serves Bradley, Desha, Drew and Lincoln Counties
25. **CONWAY COUNTY LIBRARY**
101 W. Church
Morrilton, AR 72110
Phone: 354-5204
Serves Conway County
26. **JACKSON COUNTY LIBRARY**
213 Walnut
Newport, AR 72112
Phone: 523-2952
Serves Jackson County
27. **WILLIAM F. LAMAN PUBLIC LIBRARY**
2801 Orange
North Little Rock, AR 72114
Phone: 758-1720
Serves North Little Rock
28. **NORTHEAST ARKANSAS REGIONAL LIBRARY**
120 N. Twelfth St.
Paragould, AR 72450
Phone: 236-8711
Serves Clay, Greene and Randolph Counties
29. **PINE BLUFF AND JEFFERSON COUNTY PUBLIC LIBRARY***
200 E. Eighth Ave.
Pine Bluff, AR 71601
Phone: 534-4802
Serves Jefferson County
30. **POPE COUNTY LIBRARY**
116 E. Third St.
Russellville, AR 72801
Phone: 968-4368
Serves Pope County
31. **WHITE COUNTY LIBRARY**
113 E. Pleasure Ave.
Searcy, AR 72143
Phone: 268-2449
Serves White County
32. **SILOAM SPRINGS PUBLIC LIBRARY**
401 W. University
Siloam Springs, AR 72761
Phone: 524-4236
Serves Siloam Springs
33. **ARKANSAS COUNTY LIBRARY NORTH DISTRICT**
404 S. Grand
Stuttgart, AR 72160
Phone: 673-1966
Serves Arkansas County, North District
34. **TEXARKANA PUBLIC LIBRARY**
600 W. Third St.
Texarkana, AR 75501
Phone: (214) 794-2149
Serves Texarkana
35. **LAWRENCE COUNTY LIBRARY**
1315 W. Main
Walnut Ridge, AR 72476
Phone: 886-3222
Serves Lawrence County
36. **WEST MEMPHIS PUBLIC LIBRARY**
Avalon at Oliver Streets
West Memphis, AR 72301
Phone: 732-7590
Serves West Memphis
37. **EAST CENTRAL ARKANSAS REGIONAL LIBRARY**
410 E. Merriman
Wynne, AR 72396
Phone: 238-3850
Serves Cross and Woodruff Counties



Chapter 3
**OTHER SOURCES
OF INFORMATION**



OTHER SOURCES OF INFORMATION

The following is a comprehensive list of government agencies, private organizations, societies, clubs and other groups that may have information that is useful for educators who wish to develop units of study or programs about Arkansas.

Many of these groups will be able to provide information, technical assistance or speakers. Please contact them individually to see how they might assist you and your school.

FEDERAL

U.S. ARMY CORPS OF ENGINEERS, LITTLE ROCK DISTRICT, RESIDENT OFFICES IN ARKANSAS

1. **ARKANSAS RIVER, PINE BLUFF**
P.O. Box 7835
Pine Bluff, AR 71611
Phone: 534-0451
2. **ARKANSAS RIVER, TOAD SUCK FERRY**
6298 Hwy. 60 W.
Conway, AR 72032
Phone: 329-2986
3. **BEAVER LAKE**
P.O. Drawer H
Rogers, AR 72757
Phone: 636-1210
4. **BLUE MOUNTAIN LAKE PROJECT**
U.S. Army Corps of Engineers
Waveland, AR 72867
Phone: 947-2372
5. **BULL SHOALS LAKE PROJECT**
U.S. Army Corps of Engineers
P.O. Box 369
Mountain Home, AR 72653
Phone: 425-2700
6. **CLEARWATER LAKE**
RR 3, Box 3559D
Piedmont, MO 63957
Phone: (314) 233-7777
7. **LAKE DARDANELLE**
P.O. Box 1087
Russellville, AR 72801
Phone: 968-5008
8. **DEQUEEN LAKE**
Rt. 1, Box 358-C
DeQueen, AR 71832
Phone: 584-4161
9. **DIERKS LAKE**
P.O. Box 8
Dierks, AR 71833
Phone: 286-2346
10. **GILLHAM LAKE**
Rt. 1, Box 184
Gillham, AR 71841
Phone: 386-2141
11. **GREERS FERRY LAKE**
P.O. Box 1088
Heber Springs, AR 72543
Phone: 362-2416
12. **MILLWOOD LAKE**
Rt. 1, Box 37A
Ashdown, AR 71822
Phone: 898-3343
13. **NIMROD LAKE**
HC-68, Box 604
Plainview, AR 72857
Phone: 272-4324
14. **NORFORK LAKE PROJECT**
U.S. Army Corps of Engineers
324 W. Seventh St.
P.O. Box 369
Mountain Home, AR 72653
Phone: 425-2700
15. **OZARK LAKE**
Rt. 1, Box 267X
Ozark, AR 72949
Phone: 667-2129
16. **TABLE ROCK LAKE**
P.O. Box 1109
Branson, MO 65616
Phone: (417) 334-4101



**COOPERATIVE EXTENSION SERVICE
COUNTY OFFICES**

1. **ARKANSAS**
County Extension Bldg.
1009 Liberty Dr.
DeWitt, AR 72042
Phone: 946-3231
2. **ARKANSAS**
301 S. Grand
Stuttgart, AR 72160
Phone: 673-6111
3. **ASHLEY**
Courthouse
Hamburg, AR 71646
Phone: 853-8391
4. **BAXTER**
County Services Bldg.
Mountain Home, AR 72653
Phone: 425-2335
5. **BENTON**
Benton County Public Services Bldg.
120 S.W. 14th St.
Bentonville, AR 72712
Phone: 273-3346
6. **BOONE**
Old Federal Bldg.
P.O. Box 848
Harrison, AR 72601
Phone: 741-6168
7. **BRADLEY**
Agricultural Bldg.
Warren, AR 71671
Phone: 226-5813
8. **CALHOUN**
Administrative Bldg.
P.O. Box 38
Hampton, AR 71744
Phone: 798-2231
9. **CARROLL**
909B Freeman Switch Rd.
Berryville, AR 72616
Phone: 423-2958
10. **CHICOT**
434 S. Cokley
Lake Village, AR 71653
Phone: 265-5883
11. **CLARK**
423 Crittenden St.
Arkadelphia, AR 71923
Phone: 246-2281
12. **CLAY**
173 S. Third
Piggott, AR 72454
Phone: 598-2246
13. **CLAY**
508 Vine St.
Corning, AR 72422
Phone: 857-6875
14. **CLEBURNE**
104 Tulaka Blvd.
Heber Springs, AR 72543
Phone: 362-2524
15. **CLEVELAND**
Federal Bldg.
P.O. Box 386
Rison, AR 71655
Phone: 325-6321
16. **COLUMBIA**
County Bldg.
133 S. Jefferson
Magnolia, AR 71753
Phone: 234-1390
17. **CONWAY**
Courthouse
P.O. Box 460
Morrilton, AR 72110
Phone: 354-9618
18. **CRAIGHEAD**
County Extension Bldg.
P.O. Box 338
Jonesboro, AR 72403-0338
Phone: 933-4565
19. **CRAWFORD**
Courthouse
Van Buren, AR 72956
Phone: 474-5286
20. **CRITTENDEN**
County Office Bldg.
116 Center St.
Marion, AR 72364
Phone: 739-3239
21. **CROSS**
Courthouse
705 E. Union Ave.
Wynne, AR 72396
Phone: 238-2335



22. **DALLAS**
 Courthouse
 Fordyce, AR 71742
 Phone: 352-3505
23. **DESHA**
 Post Office Bldg.
 P.O. Box 230
 McGehee, AR 71654
 Phone: 222-3972
24. **DESHA**
 165 S. Main St.
 P.O. Box 25
 Dumas, AR 71639
 Phone: 382-4785
25. **DREW**
 Courthouse
 P.O. Box 508
 Monticello, AR 71655
 Phone: 367-3128
26. **FAULKNER**
 Courthouse
 801 Locust St.
 Conway, AR 72032
 Phone: 329-8344
27. **FRANKLIN**
 Courthouse
 Ozark, AR 72949
 Phone: 667-3720
28. **FRANKLIN**
 Courthouse
 P.O. Box 367
 Charleston, AR 72933
 Phone: 965-2272
29. **FULTON**
 107 Locust St.
 P.O. Box 308
 Salem, AR 72576
 Phone: 895-3301
30. **GARLAND**
 Courthouse, 4th Floor
 Hot Springs, AR 71901
 Phone: 623-6841
31. **GRANT**
 Courthouse
 Sheridan, AR 72150
 Phone: 942-2231
32. **GREENE**
 Federal Bldg.
 P.O. Box 968
 Paragould, AR 72451-0968
 Phone: 236-6921
33. **HEMPSTEAD**
 Courthouse, First Floor
 Hope, AR 71801
 Phone: 777-5771
34. **HOT SPRING**
 1415 Smith St.
 Malvern, AR 72104
 Phone: 332-5267
35. **HOWARD**
 Courthouse
 421 N. Main
 Nashville, AR 71852
 Phone: 845-5916, Ext. 24
36. **INDEPENDENCE**
 1770 Meyers St.
 Batesville, AR 72503
 Phone: 793-8840
37. **IZARD**
 Courthouse
 P.O. Box 428
 Melbourne, AR 72556
 Phone: 368-4293
38. **JACKSON**
 Courthouse Annex
 P.O. Box 739
 Newport, AR 72112
 Phone: 523-6594
39. **JEFFERSON**
 500 Idaho
 P.O. Box 6896
 Pine Bluff, AR 71611
 Phone: 534-1033
40. **JOHNSON**
 Courthouse
 P.O. Box 590
 Clarksville, AR 72830
 Phone: 754-2240
41. **LAFAYETTE**
 Courthouse
 P.O. Box 7
 Lewisville, AR 71845
 Phone: 921-4744



42. **LAWRENCE**
1100 W. Main St.
Walnut Ridge, AR 72476
Phone: 886-3741
43. **LEE**
Courthouse
P.O. Box 476
Marianna, AR 72360
Phone: 295-5202
44. **LINCOLN**
Extension Office
113 W. Wylie Ave.
Star City, AR 71667
Phone: 628-4247
45. **LITTLE RIVER**
Courthouse
351 N. Second
Ashdown, AR 71822
Phone: 898-5021
46. **LOGAN**
15 Courthouse Bldg.
Paris, AR 72855
Phone: 963-2360
47. **LOGAN**
Courthouse
P.O. 366
Booneville, AR 72927
Phone: 675-2787
48. **LONOKE**
P.O. Drawer D
Lonoke, AR 72086
Phone: 676-3124
49. **MADISON**
Courthouse
P.O. Box 370
Huntsville, AR 72740
Phone: 738-6826
50. **MARION**
Courthouse
P.O. Box 386
Yellville, AR 72687
Phone: 449-6349
51. **MILLER**
Courthouse, Room 319
Texarkana, AR 75502
Phone: 774-1500
52. **MISSISSIPPI**
Courthouse
P.O. Box 717
Blytheville, AR 72316
Phone: 762-2075
53. **MISSISSIPPI**
Courthouse
P.O. Box 623
Osceola, AR 72370
Phone: 563-2644
54. **MONROE**
Old Post Office Bldg.
292 Madison St.
Clarendon, AR 72029
Phone: 747-3397
55. **MONTGOMERY**
Courthouse
P.O. Box 436
Mount Ida, AR 71957
Phone: 867-2311
56. **NEVADA**
532 W. First S.
P.O. Box 549
Prescott, AR 71857
Phone: 887-2818
57. **NEWTON**
Courthouse
P.O. Box 433
Jasper, AR 72641
Phone: 446-2240
58. **OUACHITA**
Courthouse
P.O. Box 576
Camden, AR 71701
Phone: 836-6858
59. **PERRY**
Courthouse
P.O. Box 300
Perryville, AR 72126
Phone: 889-2661
60. **PHILLIPS**
Courthouse
P.O. Box 220
Helena, AR 72342
Phone: 338-5540
61. **PIKE**
County Office Bldg.
P.O. 297
Mufreesboro, AR 71958
Phone: 285-2161
62. **POINSETT**
302 N. Main
Harrisburg, AR 72432
Phone: 578-5496



63. **POLK**
 Courthouse
 507 Church St.
 Mena, AR 71953
 Phone: 394-6010
64. **POPE**
 County Courthouse Complex
 105 W. "B" St.
 P.O. Box 579
 Russellville, AR 72801
 Phone: 968-7098
65. **PRAIRIE**
 Courthouse
 P.O. Box 388
 DeValls Bluff, AR 72041
 Phone: 998-2614
66. **PRAIRIE**
 P.O. Box 407
 Des Arc, AR 72040
 Phone: 256-4204
67. **PULASKI**
 2901 W. Roosevelt Rd.
 Little Rock, AR 72204
 Phone: 660-6650
68. **RANDOLPH**
 County Extension Bldg.
 Rt. 1, Box 67
 Pocahontas, AR 72455
 Phone: 892-4504
69. **ST. FRANCIS**
 Courthouse
 Box 747
 Forrest City, AR 72335
 Phone: 633-3034
70. **SALINE**
 1605 Edison Ave.
 Benton, AR 72015
 Phone: 778-2483
71. **SCOTT**
 Courthouse
 P.O. Box R
 Waldron, AR 72958
 Phone: 637-2173
72. **SEARCY**
 211 Federal Bldg.
 P.O. Box 328
 Marshall, AR 72650
 Phone: 448-3981
73. **SEBASTIAN**
 809 N. Sixth St.
 P.O. Box 973
 Fort Smith, AR 72901
 Phone: 782-4947

74. **SEBASTIAN**
 Courthouse
 P.O. Box 458
 Greenwood, AR 72936
 Phone: 996-4131
75. **SEVIER**
 Courthouse, 2nd Floor
 DeQueen, AR 71832
 Phone: 584-3013
76. **SHARP**
 Courthouse
 P.O. Box 70
 Ash Flat, AR 72513
 Phone: 994-7363
77. **STONE**
 County Extension Bldg.
 P.O. Box G
 Mountain View, AR 72560
 Phone: 269-3336
78. **UNION**
 Courthouse
 P.O. Box 1626
 El Dorado, AR 71730
 Phone: 862-4226
79. **VAN BUREN**
 Fureigh Bldg.
 P.O. Box 157
 Clinton, AR 72031
 Phone: 745-7117
80. **WASHINGTON**
 Courthouse Annex, Room 207
 Fayetteville, AR 72701
 Phone: 521-8400
81. **WHITE**
 County Office Bldg.
 Searcy, AR 72143
 Phone: 279-6247
82. **WOODRUFF**
 County Service Bldg., Room 112
 P.O. Box X
 Augusta, AR 72006
 Phone: 347-2556
83. **YELL**
 Agricultural Bldg.
 P.O. Box 249
 Danville, AR 72833
 Phone: 495-2216
84. **YELL**
 Community Center
 P.O. Box 118
 Dardanelle, AR 72834
 Phone: 229-4441

FEDERAL OFFICIALS

1. **SENATOR DALE BUMPERS**
2527 Federal Bldg.
Little Rock, AR 72201
Little Rock Phone: 324-6286
Little Rock FAX: 378-6023
Washington, D.C., Phone: (202) 224-4843

2. **SENATOR DAVID PRYOR**
3030 Federal Bldg.
Little Rock, AR 72201
Little Rock Phone: 324-6336
Washington, D.C., Phone: (202) 224-2353

4. **REPRESENTATIVE BILI. ALEXANDER**
615 S. Main St., Suite 211
Jonesboro, AR 72401
Jonesboro Phone: 972-4600
Washington, D.C., Phone: (202) 225-4076

5. **REPRESENTATIVE RAY THORNTON**
P.O. Box 826
Little Rock, AR 72203
Little Rock Phone: 324-5941
Washington, D.C., Phone: (202) 225-2506

6. **REPRESENTATIVE JOHN PAUL
HAMMERSCHMIDT**
P.O. Box 1624
Fort Smith, AR 72902
Fort Smith Phone: 782-7787
Washington, D.C., Phone: (202) 225-4301

7. **REPRESENTATIVE BERYL ANTHONY**
206 Federal Bldg.
El Dorado, AR 71730
El Dorado Phone: 863-0121
El Dorado FAX: 863-0451
Washington, D.C., Phone: (202) 225-3772



STATE

ARKANSAS STATE AGENCIES

Many of the agencies of Arkansas state government have services which can be helpful in teaching Arkansas history. This list indicates what each agency offered at the time of publication of this handbook.

- 1. ARKANSAS ARCHEOLOGICAL SURVEY**
P.O. Box 1249
Fayetteville, AR 72702-1249
Phone: 575-3556

Publications and other instructional materials:
The various research stations of the Survey offer opportunities for educational programming. The Fayetteville office offers publications for sale at nominal fees.

RESEARCH STATIONS:

**UNIVERSITY OF ARKANSAS
AT PINE BLUFF**
ARKANSAS ARCHEOLOGICAL SURVEY
Box 136, UAPB
Pine Bluff, AR 71601

ARKANSAS STATE UNIVERSITY
ARKANSAS ARCHEOLOGICAL SURVEY
Drawer 820, ASU
State University, AR 72467

**UNIVERSITY OF ARKANSAS
AT MONTICELLO**
ARKANSAS ARCHEOLOGICAL SURVEY
Box 3087, UAM
Monticello, AR 71655

HENDERSON STATE UNIVERSITY
ARKANSAS ARCHEOLOGICAL SURVEY
Box H-7657, HSU
Arkadelphia, AR 71923

SOUTHERN ARKANSAS UNIVERSITY
ARKANSAS ARCHEOLOGICAL SURVEY
Box 1381, SAU
Magnolia, AR 71753

ARKANSAS TECH UNIVERSITY
ARKANSAS ARCHEOLOGICAL SURVEY
Box 1356, ATU
Russellville, AR 72801

TOLTEC MOUNDS STATE PARK
ARKANSAS ARCHEOLOGICAL SURVEY
1 Toltec Mounds Rd.
Scott, AR 72142

- 2. ARKANSAS DEPARTMENT
OF EDUCATION**

Four Capitol Mall
Little Rock, AR 72201-1071
Phone: 682-4395
Social Studies Specialist

Publications and other instructional materials:
Course content guides for Arkansas history/studies,
occasional publications, films catalog and textbook
adoption list

- 3. ARKANSAS DEPARTMENT
OF PARKS AND TOURISM**

One Capitol Mall, Room 4A-900
Little Rock, AR 72201
Phone: 682-7777

Publications and other instructional materials:
Traveling information center that will go to
schools (mini-van); student packet and film,
Arkansas, Land Where Dreams Come True; NOTE:
Many of the state parks offer good educational
resources.

- 4. ARKANSAS DEPARTMENT
OF POLLUTION CONTROL & ECOLOGY**

8001 National Dr.
Little Rock, AR 72209
Phone: 562-7444

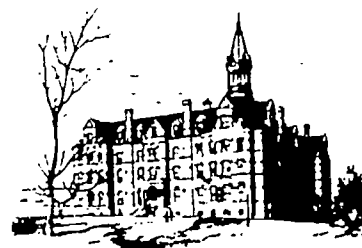
Public Information Officer

Tours: Junior high-adult level
Publications and other instructional materials:
Laws and regulations, environmental brochures for
elementary level, speakers for junior and senior
high school.

- 5. ARKANSAS EDUCATIONAL TELEVISION
NETWORK**

350 S. Donaghey
Conway, AR 72032
Phone: 682-2386
Associate Director, Education Services
Department

Tours: All grade levels (by appointment only)
Publications and other instructional material:
Monthly program guide (\$15 minimum donation);
ITV resource book (\$5); catalog and instructional
and educational programming; instructional
television available by broadcast, education co-
operatives and video dubbing by AETN.



6. **ARKANSAS FORESTRY COMMISSION**

3821 W. Roosevelt Rd.
Little Rock, AR 72204
Phone: 664-2531
Information and Education Manager

Publications and other instructional materials: *Trees of Arkansas* (\$2-\$3); fire prevention posters (large variety, free); presentation by ranger (film and slides, free); information on entomology (high school and college level); "Learn Not to Burn" curriculum, three-hour workshop, resource speaker, (free—after workshop, teacher receives curriculum guide free—if guide purchased without participating in workshop, cost is \$30); "Project Learning Tree," a three- to six-hour workshop with free guide to all teachers who attend; speakers available on topics of urban forestry and forestry stewardship.

7. **ARKANSAS GAME & FISH COMMISSION**

Two Natural Resources Dr.
Little Rock, AR 72205
Phone: 223-6300

Tours: An exhibit area and self-guided interpretive trail at the central office in Little Rock
Publications and other instructional materials: An extensive number of publications and maps (Most are free.); films and slide programs for loan; Project Wild, an interdisciplinary conservation program (K-12); hunter education program; boating education course; classroom presentations by staff.

8. **ARKANSAS GEOLOGICAL COMMISSION**

3815 W. Roosevelt Rd.
Little Rock, AR 72204
Phone: 371-1488

Publications and other instructional materials: *Fossils of Arkansas* plus a long list of technical publications (price list sent upon request); brochures on diamonds, quartz crystals, history of bauxite and fossils; samples of rocks; information on water and earthquakes; teacher packet available upon request; state topographic map (\$4).

9. **ARKANSAS HISTORY COMMISSION**

One Capitol Mall, Room 2B-215
Little Rock, AR 72201
Phone: 682-6900

Publications and other instructional materials: Pamphlet listing source materials; newspaper accounts of historical events; old photographs; historical documents; and family histories; (Copies of materials on deposit can be obtained for a small fee.).

10. **ARKANSAS HOUSE OF REPRESENTATIVES**

State Capitol
Little Rock, AR 72201
Phone: 375-7771
Information Director

State flags, publications and other instructional materials: Arkansas General Assembly Legislative Booklet (Contact local representative.); For a child to be a page during the General Assembly, a supervising adult should contact the local representative.

11. **ARKANSAS INDUSTRIAL DEVELOPMENT COMMISSION**

One Capitol Mall, Room 4C-300
Little Rock, AR 72201
Phone: 682-1121

Publications and other instructional materials: *Arkansas Journal* (very limited quantity).

12. **ARKANSAS LIVESTOCK AND POULTRY COMMISSION**

One Natural Resources Dr.
Little Rock, AR 72205
Phone: 225-5138

Publications and other instructional materials: Videotapes on preparation of dishes featuring eggs; filmstrips of mini-lessons on omelets and custards for classroom use; slide sets on preparation of omelets and crepes; numerous brochures; *Basics 101* (25-minute video).

13. **ARKANSAS MUSEUM SERVICES**

Department of Parks & Tourism
One Capitol Mall, Room 4A-900
Little Rock, AR 72201
Phone: 682-7777

Publications and other instructional materials: Technical assistance and consultations for museums and museum-related organizations.

14. **ARKANSAS SOIL AND WATER CONSERVATION COMMISSION**

101 E. Capitol, Suite 350
Little Rock, AR 72201
Phone: 682-3987
Deputy Director

The Arkansas Soil and Water Conservation Commission is responsible for management of our state's water and land resources. Commission programs address water and soil conservation, statewide water supply development, water rights, water quality, wetlands protection, floodplain management and dam safety. Publications and information on these topics may be obtained by writing or phoning the commission office or your local conservation district.



15. ARKANSAS STATE LIBRARY

One Capitol Mall, 5th Floor
Little Rock, AR 72201
Phone: 682-1527
Information Officer

The State Library maintains a small collection of Arkansas materials as well as extensive collections of books, periodicals, newspapers, microfilm materials, government maps and posters and access to over 350 electronic databases; provides specialized services such as a U.S. patent depository collection and provides library services to the blind and physically handicapped; maintains the official Arkansas state documents depository collection; serves as the official state documents clearinghouse for a statewide network of select depository libraries. Resources are available for reference use in the library or by interlibrary loan through local public libraries. Resource speakers may be available upon request.

16. ARKANSAS STATE SENATE

State Capitol
Little Rock, AR 72201
Phone: 682-5954
Senate Information Officer

State flags, publications and other instructional materials: Arkansas General Assembly Legislative Booklet (Contact local senator.); For a child to be a page during the General Assembly, a supervising adult should contact the local senator.

17. AUDITOR OF THE STATE

State Capitol
Little Rock, AR 72201
Phone: 682-6030
Administrative Assistant

Publications and other instructional materials: Office brochure; guest speaker available upon request.

18. STATE BANK DEPARTMENT

Tower Bldg.
323 Center St., Suite 500
Little Rock, AR 72201
Phone: 324-9019
Financial Analyst

Publications and other instructional materials: Annual report of the Bank Commission (free).

19. COMMISSIONER OF STATE LANDS

109 State Capitol
Little Rock, AR 72201
Commissioner

Publications and other instructional materials: Brochure, "Your State Lands"; annual report; and leaflet on legal land descriptions.

20. DEPARTMENT OF AERONAUTICS

Regional Airport Terminal, 3rd Floor
One Airport Dr.
Little Rock, AR 72202
Phone: 376-6781
Director

Publications and other instructional materials: Map, chart of airports.

**21. DEPARTMENT OF ARKANSAS HERITAGE
ARKANSAS ARTS COUNCIL**

Heritage Center, Suite 200
225 E. Markham
Little Rock, AR 72201
Phone: 324-9337
Art-in-Education Coordinator
Folk Arts Coordinator

Publications and other instructional materials: Quarterly newsletter and monthly calendar of events (free).

**22. DEPARTMENT OF ARKANSAS HERITAGE
ARKANSAS COMMEMORATIVE
COMMISSION**

Old State House
300 W. Markham
Little Rock, AR 72201
Phone: 324-9685
Tours: All grade levels (self-guided)
Museum Education Staff

Publications and other instructional material: *Victorian Arkansas* (\$5); curriculum guide; *Arkansas New*, a newspaper of Arkansas history (free to teacher and schools); loan boxes on Victorian life and World War II; slide shows for self-guided tour and *Granny's Attic*, a hands-on activity room for children to explore and examine objects from the past; visitor's guide; teacher's guide; In-museum programs include Legislative Process (5th-12th grades), which combines history, language arts and critical thinking.

**23. DEPARTMENT OF ARKANSAS HERITAGE
ARKANSAS HISTORIC PRESERVATION
PROGRAM**

Heritage Center, Suite 200
225 E. Markham
Little Rock, AR 72201
Phone: 324-9346
Public Information Officer

Tours: Office tours with program overviews
Publications and other instructional materials: Occasional publications, guest speakers, exhibits and classroom materials.

24. DEPARTMENT OF ARKANSAS HERITAGE
ARKANSAS NATURAL HERITAGE
COMMISSION

Heritage Center, Suite 200
225 E. Markham
Little Rock, AR 72201
Phone: 324-9332

Publications and other instructional materials:
Arkansas' Natural Heritage.

25. DEPARTMENT OF ARKANSAS HERITAGE
ARKANSAS NATURAL AND SCENIC
RIVERS COMMISSION

Heritage Center, Suite 200
225 E. Markham
Little Rock, AR 72201
Phone: 324-9330

Publications and other instructional materials:
Brochure, slide show about state and rivers, slide
show about nationwide conservation effort, guest
speakers available.

26. DEPARTMENT OF ARKANSAS HERITAGE
ARKANSAS TERRITORIAL
RESTORATION

Third & Scott Streets
Little Rock, AR 72201
Phone: 324-9351
Educational Coordinator

Tours: All grade levels (children under 16, 50¢;
adults, \$2; special group rate for schools with
advance notice or 10¢ per person)

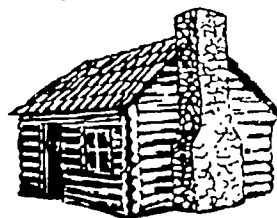
Publications and other instructional materials:
Brochures and poster (free to visitors); educational
packet; *Print Shop Press*, an activity-oriented
newspaper; *Printer to the Territory*, a 55-minute
film available for loan to schools; *Laura's Letter*, a
six-minute student-produced video and teacher's
guide; two study guides and evaluation forms on
Arkansas history.

27. DEPARTMENT OF ARKANSAS HERITAGE
DELTA CULTURAL CENTER

95 Missouri St.
Helena, AR 72342
Phone: 338-8919
Public Information Director

Guided tours for school groups by appointment. A
self-guided walking tour is available.

Topic-specific and age-specific educational
programs and packets are available upon request.



28. EMPLOYMENT SECURITY DIVISION

Two Capitol Mall
Little Rock, AR 72201
Phone: 371-1160

Publications and other instructional materials: Job
hunter's guide and statistical information on
employment and unemployment.

29. GOVERNOR
OF THE STATE OF ARKANSAS

State Capitol
Little Rock, AR 72201
Phone: 682-2345
FAX: 682-1382

The Governor's Office has educational staff
members who respond to needs and requests of
educators. An individual may acquire an Arkansas
Traveler certificate from this office for presenta-
tion to distinguished out-of-state guests.

30. ARKANSAS STATE HIGHWAY AND
TRANSPORTATION DEPARTMENT

10324 Interstate 30
Little Rock, AR 72203
Phone: 569-2000 or 569-2239
Public Affairs Office

Tours: Grades 7-12
Publications and other instructional materials:
Maps (city, county and state).

31. LIEUTENANT GOVERNOR

State Capitol
Little Rock, AR 72201
Phone: 682-2144

32. MILITARY DEPARTMENT

Camp Robinson
North Little Rock, AR 72118
Phone: 771-5204
Military Intelligence Officer
Management Assistant

Publications and other instructional materials:
Occasional publications.

33. SECRETARY OF STATE

State Capitol
Little Rock, AR 72201
Phone: 682-1010
Tours: State Capitol 682-5080
Information Officer 682-3684

Publications and other instructional materials:
Educational packet, including flag and booklets
(elementary and secondary); will provide one copy
of the following to each teacher: 1) State Consti-
tution, 2) directory of elected officials, 3) election
calendar, 4) map of state senate representative
districts, 5) map of congressional districts, 6) map
of counties; guest speakers and slide shows.

34. **TREASURER OF STATE**

220 State Capitol
Little Rock, AR 72201
Phone: 682-5888

Publications and other instructional materials:
Biographical sheet and glossy print of treasurer;
will make a presentation to classroom and/or
assemblies (free); specific information required
with request.

**ARKANSAS STATE HISTORICAL
AND GENEALOGICAL SOCIETIES**

Many of the following societies can provide information, guest speakers or programs. Those that publish periodicals are noted, and the title of the periodical is listed at the end of the entry.

1. **ARKANSAS ARCHEOLOGICAL SOCIETY**
P.O. Box 1222
Fayetteville, AR 72702
Arkansas Archeologist
Field Notes
2. **ARKANSAS ARCHIVISTS AND RECORD MANAGERS**
Arkansas History Commission
One Capitol Mall, Room 2B-215
Little Rock, AR 72201
AARM Newsletter
3. **ARKANSAS AVIATION HISTORICAL SOCIETY**
P.O. Box 3511
Little Rock, AR 72201
4. **ARKANSAS ARTS COUNCIL**
225 E. Markham
Little Rock, AR 72201
Folklife
5. **ARKANSAS COMMEMORATIVE COMMISSION**
Old State House
300 W. Markham
Little Rock, AR 72201
Statements
6. **ARKANSAS HUMANITIES COUNCIL**
10816 Executive Center Dr., Suite 310
Little Rock, AR 72211
Reflections
7. **ARKANSAS GENEALOGICAL SOCIETY, INC.**
P.O. Box 908
Hot Springs, AR 71902-0908
Arkansas Family Historian
8. **ARKANSAS GEOGRAPHICAL SOCIETY**
Dept. of Geography
University of Arkansas
Fayetteville, AR 72701
Arkansas Journal of Geography
9. **ARKANSAS HISTORIC PRESERVATION PROGRAM**
225 E. Markham
Little Rock, AR 72201
10. **ARKANSAS HISTORICAL ASSOCIATION**
History Department
Old Main 416
University of Arkansas
Fayetteville, AR 72701
Arkansas Historical Quarterly
AHA News
11. **ARKANSAS STATE CAPITOL ASSOCIATION**
State Capitol
Little Rock, AR 72201
12. **ARKANSAS MUSEUM SERVICES**
One Capitol Mall
Little Rock, AR 72201
13. **ARKANSAS WOMEN'S HISTORY INSTITUTE**
P.O. Box 7704
Little Rock, AR 72217
The Legacy
14. **ARKANSAS TERRITORIAL RESTORATION**
3rd & Scott Streets
Little Rock, AR 72201
Territorial Times
15. **CENTER FOR ARKANSAS AND REGIONAL STUDIES**
Old Main 506
University of Arkansas
Fayetteville, AR 72701
16. **CENTER FOR ARKANSAS STUDIES**
University of Arkansas at Little Rock
2801 S. University
Little Rock, AR 72204
17. **CIVIL WAR ROUND TABLE ASSOCIATES**
P.O. Box 7388
Little Rock, AR 72217
CWRT Digest
18. **CONFEDERATE HISTORICAL INSTITUTE**
P.O. Box 7388
Little Rock, AR 72217
CHI Dispatch
CHI Journal

19. **HISTORIC PRESERVATION ALLIANCE OF ARKANSAS**
P.O. Box 305
Little Rock, AR 72203
Arkansas Preservation
20. **SOCIETY OF MAYFLOWER DESCENDENTS IN THE STATE OF ARKANSAS**
P.O. Box 1244
Little Rock, AR 72203
Arkansas Pilgrim
21. **SONS OF AMERICAN REVOLUTION, ARKANSAS SOCIETY**
c/o Robert W. Dhonau
4410 Lee Ave.
Little Rock, AR 72205
The Patriot
22. **VICTORIAN MILITARY HISTORY INSTITUTE**
P.O. Box 7401
Little Rock, AR 72202
VMHI Dispatch
VMHI Blue Book

**ARKANSAS COLLEGE & UNIVERSITY
OFFERINGS FOR TEACHERS OF ARKANSAS
HISTORY/STUDIES**

STATE INSTITUTIONS

1. **ARKANSAS STATE UNIVERSITY**
(at Jonesboro)
State University, AR 72467
Dr. Michael Dougan
Phone: 972-3046

An Arkansas history course, as well as an Arkansas geography course, is offered every other school term on the undergraduate level for three credit hours. Currently a three-hour extension course is available upon request through Continuing Education.
2. **ARKANSAS STATE UNIVERSITY**
Beebe, AR 72012
Ms. Jeannie Lindsey Branch
Phone: 882-6452, Ext. 37

An Arkansas history course is offered to freshman and sophomore students each spring for three credit hours. The course involves lecture, research, slide projects and field trips to historical areas.

3. **ARKANSAS TECH UNIVERSITY**
North Arkansas Ave.
Russellville, AR 72801
Dr. William Seidenstucker
Phone: 968-0266

An Arkansas history course is offered on the undergraduate and graduate levels every year for three credit hours. A graduate level seminar entitled "Contemporary Arkansas History" is offered every two years.

4. **HENDERSON STATE UNIVERSITY**
P.O. Box 7609
Arkadelphia, AR 71923
Dr. John W. Graves
Phone: 246-5511

A course entitled "Arkansas and the Southwest" is offered every other school year on the senior and graduate levels for three credit hours. An undergraduate course entitled "Arkansas State and Local Government" is offered every semester for three credit hours. In addition, a three-hour course entitled "Sub-National Government in Arkansas and the U.S." is planned.

5. **SOUTHERN ARKANSAS UNIVERSITY**
P.O. Box 1359
Magnolia, AR 71753
Dr. James F. Willis
Phone: 235-4234

An Arkansas history survey course is offered each fall semester for three credit hours. Also, a state and local government course, dealing with Arkansas and the U.S., will be offered each semester.

THE CURRICULUM CENTER
SAU Box 1389
Southern Arkansas University
Magnolia, AR 71753
Phone: 235-4186

The Curriculum Center offers resource materials, textbooks and inservice workshops for elementary and secondary teachers.

6. **UNIVERSITY OF ARKANSAS**
Fayetteville, AR 72701
Phone: 575-3001

A course entitled "Arkansas and the Southwest" is offered each spring for three credit hours. "Arkansas Politics" is taught each fall.

7. **UNIVERSITY OF ARKANSAS
AT LITTLE ROCK**

2801 S. University Ave.
Little Rock, AR 72204
Dr. C. Fred Williams
Phone: 569-8155

The university offers several Arkansas related courses entitled "Arkansas Government and Politics," "Arkansas Writers," "Geography of Arkansas," "Geology of Arkansas," "History of Arkansas," "History of Arkansas Architecture" and "Workshop in Arkansas History." All of these courses are on the undergraduate level and are offered at various times (including the summer) for three credit hours. "Seminar in Arkansas History" is offered biannually on the graduate and undergraduate levels for three credit hours.

8. **UNIVERSITY OF ARKANSAS
AT MONTICELLO**

264 Mason Hill
Monticello, AR 71655
Dr. Donald Holley
Phone: 460-1047

An undergraduate Arkansas history course is offered every two to three school terms. A graduate course in Arkansas history is offered every other year. "Government & Politics of Arkansas" is offered once a year.

9. **UNIVERSITY OF ARKANSAS
AT PINE BLUFF**

Pine Bluff, AR 71601
Dr. Buford Thatcher
Phone: 541-6500

The university is currently planning to offer an Arkansas history course on the undergraduate level for three credit hours.

10. **UNIVERSITY OF CENTRAL ARKANSAS**

P.O. Box 5053
Conway, AR 72032
Dr. Waddy Moore
Phone: 450-5723

A senior and graduate level course entitled "Role of Arkansas in the Nation" is offered every other fall semester and each summer for three credit hours. "Geography of Arkansas" is offered to juniors, and a state and local government course is offered regularly.



PRIVATE INSTITUTIONS

1. **ARKANSAS COLLEGE**

Fatesville, AR 72501
Dr. Don Weatherman
Phone: 793-9813

A survey course entitled "Arkansas in the United States" is offered every third year for three credit hours. A large element of Arkansas history is incorporated in historic preservation and folklore courses.

2. **HARDING UNIVERSITY**

P.O. Box 924
Searcy, AR 72143
Dr. Ray Muncy
Phone: 279-4619

An Arkansas history course will be offered in the spring of 1992; and an Arkansas government course, in spring 1992.

3. **OUACHITA BAPTIST UNIVERSITY**

Arkadelphia, AR 71923
Dr. Lavell Cole
Phone: 246-4531, Ext. 168

A summer course in Arkansas history for teachers is taught at Old Washington. An upper-level Arkansas history survey course is offered every spring semester for three credit hours. They teach an Arkansas state and local government course on demand.

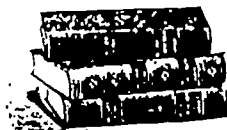
EDUCATION SERVICE COOPERATIVES

Each cooperative plans workshops and staff development throughout the year. Check with them for topics, times and locations. In addition, there are media centers in all of the cooperatives, where many films on Arkansas are located. These centers house copies of all of AETN's instructional videos. The Teacher Center Coordinators are good sources of information, as are the regular newsletters. Staff members are also helpful in locating facilities and scheduling meetings for teachers.

1. **ARCH FORD EDUCATION
SERVICE COOPERATIVE**

Rt. 1, Box 2
Plumerville, AR 72127
Mike Hargis, Director
Mike Moss, Teacher Center Coordinator
Phone: 354-2269

2. **ARKANSAS RIVER EDUCATION SERVICE COOPERATIVE**
221 S. Beech
Pine Bluff, AR 71601
Curtis Merrell, Director
Arland Lyons, Teacher Center Coordinator
Phone: 534-6129
3. **CROWLEY'S RIDGE EDUCATIONAL COOPERATIVE**
P.O. Box 377
Harrisburg, AR 72432
Jim Parrish, Director
Louis Midkiff, Teacher Center Coordinator
Phone: 578-2416
4. **DAWSON EDUCATION SERVICE COOPERATIVE**
1021 Henderson St.
Arkadelphia, AR 71923
James Ford, Director
Lynelle Chitwood, Teacher Center Coordinator
Phone: 246-3077
5. **DEQUEEN/MENA EDUCATIONAL COOPERATIVE**
P.O. Box 110
Gillham, AR 71841
Frank Scott, Director
Diann Gathright, Teacher Center Coordinator
Phone: 642-2012
6. **GREAT RIVERS COOPERATIVE**
P.O. Box 2837-G
West Helena, AR 72390
Suzann McCommon, Director
Patty Smith, Teacher Center Coordinator
Phone: 338-6461
7. **NORTHCENTRAL ARKANSAS EDUCATION SERVICE CENTER**
P.O. Box 739
Melbourne, AR 72556
J. Newt Blankenship, Director
Danny Brightwell, Teacher Center Coordinator
Phone: 368-7964
8. **NORTHEAST ARKANSAS EDUCATIONAL COOPERATIVE**
P.O. Box 100
Strawberry, AR 72469
Perry Hope, Director
Doug Adams, Teacher Center Coordinator
Phone: 528-3395
9. **NORTHWEST ARKANSAS EDUCATION SERVICE COOPERATIVE**
409 N. Thompson
Springdale, AR 72764
Buddy Auman, Director
Janice Peters, Teacher Center Coordinator
Phone: 756-2803
10. **OZARKS UNLIMITED RESOURCES COOPERATIVE**
320 Industrial Park Rd.
Harrison, AR 72601-6803
Leon McLean, Director
Steve Brewer, Teacher Center Coordinator
Phone: 741-3999
11. **SOUTH CENTRAL SERVICE COOPERATIVE**
400B Maul Rd.
Camden, AR 71701
Pat Ward, Director
Marsha Daniles, Teacher Center Coordinator and Assistant Director
Phone: 836-2213
12. **SOUTHEAST ARKANSAS EDUCATION SERVICE COOPERATIVE**
P.O. Box 3507
UAM
Monticello, AR 71655
Lloyd Crossley, Director
Karen Eoff, Teacher Center Coordinator
Phone: 367-6848
13. **SOUTHWEST ARKANSAS EDUCATIONAL COOPERATIVE**
303 S. Shover
Hope, AR 71801
Anthony Gadberry, Director
Lindy Franks, Teacher Center Coordinator
Phone: 777-3076
14. **WESTERN ARKANSAS COOPERATIVE**
Rt. 1, Box 104
Branch, AR 72928
Guy Fenter, Director
Pat Yick, Teacher Center Coordinator
Phone: 965-2191
15. **WILBUR D. MILLS EDUCATION SERVICE COOPERATIVE**
P.O. Drawer 1016
Beebe, AR 72012
Rodger Harlan, Director
Shirley Hooks, Teacher Center Coordinator
Phone: 882-5467



STATE ASSOCIATIONS, ORGANIZATIONS AND COMPETITIONS

Local, state, regional and national associations can offer a wealth of information on their particular subjects. For information on statewide and regional associations, consult the *Directory of Arkansas Associations*, published by the Reference Department of Mullins Library, University of Arkansas, Fayetteville, Arkansas 72701. The *Directory* features the name, address, president or executive director, telephone number, number of members, founding date, publications, conventions, affiliations with other organizations and description of purpose of 390 associations in Arkansas.

You should also contact local organizations in your area for resources they may offer.

For information on businesses, you may consult the annual *Directory of Arkansas Manufacturers* for names of companies, which may offer materials for schools. It is available from the Arkansas Industrial Development Commission, P.O. Box 1784, Little Rock, Arkansas 72203 for a nominal fee. Some businesses periodically offer information free of charge to teachers.

There are numerous groups that are supportive of all Arkansas social studies teachers, who are involved in production of materials and staff development relating to Arkansas. Some groups have membership dues, but the benefits far outweigh the minimal charges.

1. TEACHERS OF ARKANSAS STUDIES COUNCIL

Arkansas Historical Association
Old Main 416
University of Arkansas
Fayetteville, AR 72701

The Council is a group of educators banded together to share information about Arkansas and increase their knowledge of Arkansas so that they might better teach the subject on all occasions. They have programs twice a year, once during the annual Arkansas Education Association (AEA) convention and once during the annual meeting of the Arkansas Historical Association.

2. ARKANSAS COUNCIL ON GLOBAL EDUCATION

Arkansas International Center
University of Arkansas at Little Rock
2801 S. University
Little Rock, AR 72204
Dr. Barbara Stanford
Phone: 569-4000

ACOGGE is composed of educators with interest in Arkansas global connections. Training our young people to live productively and caringly in a global society is at the forefront of their mission. Regular conferences are held around the state, and a newsletter is published regularly. Contact ACOGGE to get information about foreign exchange programs, international visitors, guest speakers and workshops on global education.

3. ARKANSAS GEOGRAPHIC ALLIANCE

University of Arkansas at Little Rock
2801 S. University
Little Rock, AR 72204
Dr. Gerald Hanson
Phone: 569-8730

AGA is a group of teachers and professors whose interest is principally geography. This group, which is funded in part by the National Geographic Society, has a newsletter, sponsors contests, conducts in-service and hosts summer institutes, some of which are Arkansas specific.

4. ARKANSAS COUNCIL ON ECONOMIC EDUCATION

Arch Ford Education Bldg.
Four Capitol Mall
Little Rock, AR 72201
Polly Jackson
Phone: 682-4349

The Council produces materials, conducts workshops and can suggest speakers on many topics related to economics. Many workshops are Arkansas specific, as are many of the activities they generate. A recent publication was done in cooperation with the Farm Bureau.

5. ARKANSAS COUNCIL ON THE SOCIAL STUDIES

Arkansas Department of Education
Four Capitol Mall
Little Rock, AR 72201
Social Studies Specialist
Phone: 682-4395

The Council is the umbrella organization for all social studies activities and teachers. In addition to sponsoring the National Geography Bee, the group meets annually in cooperation with AEA and sponsors regional meetings throughout the state. Arkansas history is frequently a topic in those meetings. The annual journal is the *Arkansas Social Studies Teacher*.



6. **LEARNING LAW IN ARKANSAS**

209 W. Capitol
Little Rock, AR 72201
372-0571

LLIA is a nonprofit organization funded in part by the U.S. Department of Education. LLIA produces a newsletter, holds regular teacher training activities and conducts the Mock Trial competition. Its goal is to further citizenship education and foster a better understanding of the law.

7. **LEAGUE OF WOMEN VOTERS**

1599 Halsell Rd.
Fayetteville, AR 72701
Peg Anderson

The League produces a unique resource entitled *Government in Arkansas*, which is a plethora of information most useful to civics and government teachers but beneficial to all Arkansas social studies people.

STATE COMPETITIONS AND AWARDS

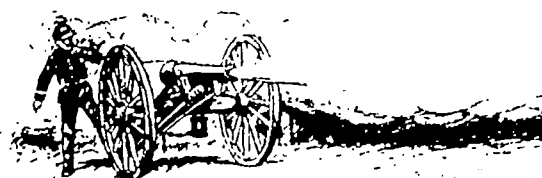
Various organizations in Arkansas offer competitions and awards for history projects and especially for historical essays. Some competitions are for adults but could be useful for some secondary programs, as well as gifted and talented programs.

1. **HISTORY DAY**

Arkansas Department of Education
Four Capitol Mall
Little Rock, AR 72201
History Day Coordinator

History Day is an annual event for the junior and senior high school levels. Students participate in district competitions in six categories: Papers, individual projects, group projects, individual performances, group performances and media presentations. Certificates and ribbons are presented to all entrants.

Arkansas is divided into 12 districts for the competition. A district coordinator is responsible for contacting all social studies teachers in his/her district on both the junior and senior high levels. Lists of teachers are provided by the Arkansas Department of Education. Entry forms, rules books, judging forms, certificates, seals, etc., are distributed to teachers by district coordinators.



First-, second- and third-place winners in each category on both the junior and senior high levels are qualified to participate in the state competition, usually held on the last Saturday in April. First- and second-place winners at the state level represent Arkansas in their category at the National History Day at College Park, Maryland, in June.

2. **ARKANSAS HISTORICAL ASSOCIATION**

Old Main 416
University of Arkansas
Fayetteville, AR 72701
Suzanne Maberry

The AHA offers annual awards for historical essays. There are cash prizes for essays on state-wide history subjects, local history subjects, as well as other awards based upon county and local historical society journal entries.

The J.H. Atkinson Award is presented each year during the annual meeting of AHA to an outstanding Arkansas history teacher of grades K-12.

3. **ARKANSAS WOMEN'S HISTORY INSTITUTE**

Mary Frances Hodges, Chairperson
Susie Pryor Award
P.O. Box 4590
Little Rock, AR 72214

A cash award of \$1,000 is awarded annually for the winning original essay on Arkansas women's history.

4. **ASSOCIATION OF ARKANSAS COUNTIES**

314 S. Victory St.
Little Rock, AR 72201
Phone: 372-7550

The Association of Arkansas Counties has initiated a scholarship program worth up to \$1,000 for students majoring in government or a related field. The scholarship is awarded based on financial need and academic performance and is open to current students, those entering college, as well as postgraduate students. Priority consideration will be given to descendants of current or retired county employees.

5. **LOCAL HISTORICAL SOCIETIES**

Some local and county historical societies have annual competitions. For example, the Pulaski County Historical Society gives a cash award for the best article on Pulaski County. Contact your local society for further information.

LOCAL

LOCAL HISTORICAL AND GENEALOGICAL SOCIETIES

Many of the following societies can provide information, guest speakers or programs. Those that publish periodicals are noted, and the title of the periodical is listed at the end of the entry.

1. **ASHLEY COUNTY
GENEALOGICAL SOCIETY**
P.O. Drawer R
Crossett, AR 71653
Kin Collecting
2. **BAXTER COUNTY HISTORICAL SOCIETY**
1634 U.S. Hwy. 62 S.W.
Mountain Home, AR 72653
Baxter County History
3. **BATESVILLE AREA
CIVIL WAR ROUND TABLE**
P.O. Box 2455
Batesville, AR 72501
Bugle Blast
4. **BATESVILLE GENEALOGICAL SOCIETY**
P.O. Box 3883
Batesville, AR 72501
Bits of Bark from the Family Tree
5. **BAXTER COUNTY HISTORICAL SOCIETY**
1500 Manor Dr.
Mountain Home, AR 72653
6. **BELLA VISTA HISTORICAL SOCIETY**
1885 Bella Vista Way
Bella Vista, Arkansas 72714
Newsletter
7. **BENTON COUNTY
HISTORICAL SOCIETY/MUSEUM**
P.O. Box 355
Siloam Springs, AR 72761
Benton County Pioneer
8. **BOONE COUNTY HISTORICAL
AND GENEALOGICAL SOCIETY**
P.O. Box 58
Harrison, AR 72601
Boone County Historian
9. **BRADLEY COUNTY
HISTORICAL SOCIETY**
P.O. Box 1
Warren, AR 71671
10. **CABOT HISTORICAL SOCIETY**
P.O. Box 39
Cabot, AR 72033
11. **CALHOUN COUNTY
HISTORICAL SOCIETY**
P.O. Box 97
Hampton, AR 71744
12. **CARROLL COUNTY HISTORICAL
AND GENEALOGICAL SOCIETY**
P.O. Box 249
Berryville, AR 72616
Carroll County Historical Society Quarterly
13. **CHICOT COUNTY HISTORICAL SOCIETY**
P.O. Box 308
Lake Village, AR 71653
14. **CIVIL WAR ROUND TABLE
OF ARKANSAS**
P.O. Box 7281
Little Rock, AR 72217
Monthly newsletter
15. **CLARK COUNTY
HISTORICAL ASSOCIATION**
P.O. Box 516
Arkadelphia, AR 71923
Clark County Historical Association Journal
Newsletter
16. **CLEBURNE COUNTY
HISTORICAL SOCIETY**
P.O. Box 794
Heber Springs, AR 72543
Cleburne County Historical Journal
17. **CLEVELAND COUNTY
HISTORICAL SOCIETY**
P.O. BOX 327
Rison, AR 71655
Cleveland County Historical Society Newsletter
18. **CRAIGHEAD COUNTY
HISTORICAL SOCIETY**
P.O. Box 1011
Jonesboro, AR 72401
Craighead County Historical Quarterly
19. **CRAWFORD COUNTY GENEALOGICAL
SOCIETY**
Rt. 3, Box 5
Alma, AR 72721
Panning for Nuggets of Gold
20. **CRAWFORD COUNTY
HISTORICAL SOCIETY**
P.O. Box 1317
Van Buren, AR 72956
The Heritage

21. CRITTENDEN COUNTY
HISTORICAL SOCIETY
P.O. Box 685
Marion, AR 72364
22. CROSS COUNTY
GENEALOGICAL SOCIETY
P.O. Box 1274
Wynne, AR 72396
Quarterly Journal
23. CROSS COUNTY HISTORICAL SOCIETY
P.O. Box 943
Wynne, AR 72396
24. DALLAS COUNTY GENEALOGICAL
AND HISTORICAL SOCIETY
P.O. Box 28
Fordyce, AR 71742
25. DESHA COUNTY HISTORICAL SOCIETY
P.O. Box 432
McGhee, AR 71654
Programs
26. DREW COUNTY HISTORICAL SOCIETY
404 S. Main St.
Monticello, AR 71655
27. EUREKA SPRINGS
PRESERVATION SOCIETY
P.O. Box 404
Eureka Springs, AR 72632
28. FAULKNER COUNTY
HISTORICAL SOCIETY
P.O. Box 731
Conway, AR 72032
Faulkner Facts and Fiddlings
Faulkner County Historical Society Newsletter
29. FORESTER HISTORICAL SOCIETY
P.O. Box 810
Waldron, AR 72952
30. FORT SMITH CIVIL WAR ROUND TABLE
c/o Sam Baker
1005 Adelaide
Fort Smith, AR 72901
31. FORT SMITH HISTORICAL SOCIETY
61 S. Eighth St.
Fort Smith, AR 72901
The Journal
32. FORT SMITH TROLLEY MUSEUM
2121 Wolfe Lane
Fort Smith, AR 72901
Trolley Report
33. FRANKLIN COUNTY
HISTORICAL ASSOCIATION
509 N. Third St.
Ozark, AR 72749
Observer
34. FRONTIER RESEARCHERS:
A GENEALOGICAL SOCIETY
P.O. Box 2123
Fort Smith, AR 72902
Frontier Research
35. GARLAND COUNTY
HISTORICAL SOCIETY
914 Summer St.
Hot Springs, AR 71913
The Record
36. GRAND PRAIRIE HISTORICAL SOCIETY
P.O. Box 122
Gillett, AR 72055
Grand Prairie Historical Society Bulletin
37. GRANT COUNTY MUSEUM GUILD
409 W. Center St.
Sheridan, AR 72150
Grassroots
38. GREENE COUNTY HISTORICAL
AND GENEALOGICAL SOCIETY
901 W. Kingshighway
Paragould, AR 72450
39. GURDON HISTORICAL PRESERVATION
ASSOCIATION
P.O. Drawer 120
Gurdon, AR 71743
40. HEMPSTEAD COUNTY
HISTORICAL SOCIETY
P.O. Box 1257
Hope, AR 71801
Journal
41. HOT SPRING COUNTY
HISTORICAL SOCIETY
P.O. Box 674
Malvern, AR 72104
The Heritage
42. HOWARD COUNTY HERITAGE CLUB
Hempstead and Second Streets
Nashville, AR 71752
43. INDEPENDENCE COUNTY
HISTORICAL SOCIETY
P.O. Box 2036
Batesville, AR 72501
Independence County Chronicle
The Harbinger

44. JACKSON COUNTY
HISTORICAL SOCIETY
209 Walnut St.
Newport, AR 72112
The Stream of History
45. JEFFERSON COUNTY
HISTORICAL SOCIETY
P.O. Box 2215
Pine Bluff, AR 71603
Jefferson County Historical Quarterly
46. JOHNSON COUNTY
HISTORICAL SOCIETY
P.O. Box 505
Clarksville, AR 72830
*Journal
Newsletter*
47. LAFAYETTE COUNTY
HISTORICAL SOCIETY
P.O. Box 118
Lewisville, AR 71845
Newsletter
48. LAWRENCE COUNTY
HISTORICAL SOCIETY
P.O. Box 724
Imboden, AR 72434
Quarterly
49. LEATHERWOOD CIVIL WAR
ROUND TABLE
801 Arkansas Ave.
Mountain Home, AR 72653
50. LINCOLN COUNTY
HISTORICAL SOCIETY
1 Harper Bldg.
Star City, AR 71667
51. LITTLE RIVER COUNTY
HISTORICAL SOCIETY
960 Rankin
Ashdown, AR 71822
52. LOGAN COUNTY HISTORICAL SOCIETY
P.O. Box B
Paris, AR 72855
Wagon Wheels
53. LONOKE COUNTY HISTORICAL SOCIETY
P.O. Box 14
Lonoke, AR 72086
Newsletter
54. MADISON COUNTY GENEALOGICAL
AND HISTORICAL SOCIETY
P.O. Box 427
Huntsville, AR 72740
Madison County Musings
55. QUAPAW QUARTER ASSOCIATION
P.O. Box 165023
Little Rock, AR 72216
The Chronicle, bimonthly
56. MARION COUNTY
HISTORY COMMITTEE
c/o Lyle Wood
P.O. Box 263
Flippin, AR 72634
57. MELTING POT GENEALOGICAL SOCIETY
400 Winans Ave.
Hot Springs, AR 71901
Melting Pot
58. MISSISSIPPI COUNTY HISTORICAL
AND GENEALOGICAL SOCIETY
P.O. Box 483
Osceola, AR 72320
59. MONROE COUNTY
HISTORICAL SOCIETY
400 N. Second St.
Clarendon, AR 72029
60. MONTGOMERY COUNTY
HISTORICAL SOCIETY
P.O. Box 520
Mount Ida, AR 71957
The Crystal
61. NEWTON COUNTY
HISTORICAL SOCIETY
P.O. Box 360
Jasper, AR 72641
The Homestead
62. NORTH LITTLE ROCK
HERITAGE SEEKERS
Laman Library
28th and Orange Streets
North Little Rock, AR 72114
63. NORTHWEST ARKANSAS CIVIL WAR
ROUND TABLE
Rt. 2, Box 389B
Lowell, AR 72745
64. NORTHWEST ARKANSAS
GENEALOGICAL SOCIETY
P.O. Box K
Rogers, AR 72756
The Backtracker
65. ORDER OF THE INDIAN WARS
P.O. Box 7401
Little Rock, AR 72217
Dispatch (monthly newsletter)

66. **OUACHITA COUNTY HISTORICAL SOCIETY**
926 Washington St., N.W.
Camden, AR 71701
Ouachita County Quarterly
67. **OUACHITA-CALHOUN GENEALOGICAL SOCIETY**
P.O. Box 2092
Camden, AR 71701
Researchin'
68. **OZARK HERITAGE INSTITUTE**
P.O. Box 5053
University of Central Arkansas
Conway, AR 72032
69. **PHILLIPS COUNTY FOUNDATION FOR HISTORIC PRESERVATION**
P.O. Box 205
Helena, AR 72342
70. **PHILLIPS COUNTY HISTORICAL SOCIETY**
623 Pecan St.
Helena, AR 72342
Phillips County Historical Quarterly
71. **PIKE COUNTY HISTORICAL SOCIETY**
P.O. Box 238
Murfreesboro, AR 71958
72. **POLK COUNTY HISTORICAL SOCIETY**
c/o Mr. Cleo Tucker
Rt. 2, Box 149
Mena, AR 71923
73. **POPE COUNTY GENEALOGICAL SOCIETY**
P.O. Box 222
Dover, AR 72837
74. **POPE COUNTY HISTORICAL ASSOCIATION**
c/o Elaine Cia
4200 "A" St.
Little Rock, AR 72205
Pope County Historical Association Quarterly
75. **POPE COUNTY HISTORICAL FOUNDATION**
2206 Red Hill Lane
Russellville, AR 72801
76. **PRAIRIE COUNTY HISTORICAL SOCIETY**
P.O. Box 451
Hazen, AR 72067
77. **PULASKI COUNTY HISTORICAL SOCIETY**
P.O. Box 251903
Little Rock, AR 72225
Pulaski County Historical Review, 1953-present
78. **RANDOLPH COUNTY HISTORICAL SOCIETY**
202 E. Church
Pocahontas, AR 72455
79. **REDFIELD HISTORICAL SOCIETY**
c/o Ken Parsons
P.O. Box 333
Redfield, AR 72132
80. **SALINE COUNTY HISTORY AND HERITAGE SOCIETY**
P.O. Box 221
Bryant, AR 72022
The Saline
81. **SCOTT COUNTY HISTORICAL SOCIETY**
P.O. Box 446
Waldron, AR 72958
82. **SEARCY COUNTY HISTORY CLUB**
c/o James Johnston
2333 E. Oaks Dr.
Fayetteville, AR 72701
83. **SEBASTIAN COUNTY HISTORICAL SOCIETY**
Rt. 3, Box 42
Greenwood, AR 72936
The Key
84. **SEVIER COUNTY HISTORICAL SOCIETY**
P.O. Box 892
DeQueen, AR 71832
85. **SHARP COUNTY HISTORICAL SOCIETY**
P.O. Box 185
Ash Flat, AR 72513
Sharp County Journal
86. **SMACKOVER GENEALOGICAL AND HISTORICAL SOCIETY**
700 N. Broadway
Smackover, AR 71762
87. **SHILOH MUSEUM**
118 W. Johnson
Springdale, AR 72764
Newsletter
88. **SOUTH ARKANSAS HISTORICAL FOUNDATION**
P.O. Box 144
El Dorado, AR 71731
89. **SOUTHWEST ARKANSAS GENEALOGICAL SOCIETY**
523 E. Union St.
Magnolia, AR 71753
SO-WE-AR

90. **STONE COUNTY HISTORICAL SOCIETY**
P.O. Box 77
Mountain View, AR 72051
Heritage of Stone
91. **STUTTGART AGRICULTURAL MUSEUM**
921 E. Fourth St.
Stuttgart, AR 72160
Sodbuster (newsletter)
92. **TEXARKANA HISTORICAL SOCIETY AND MUSEUM**
P.O. Box 2343
Texarkana, AR 75504
Newsletter
93. **TEXARKANA, TEXAS, HISTORICAL SOCIETY**
P.O. Box 2323
Texarkana, TX 75504
Quarterly
94. **UNION COUNTY GENEALOGICAL SOCIETY**
c/o Barton Library
200 E. Fifth
El Dorado, AR 71730-3897
Tracks and Traces
95. **VAN BUREN COUNTY HISTORICAL SOCIETY**
Rt. 1, Box 279
Clinton, AR 72031
Van Buren County Historical Journal
96. **WASHINGTON COUNTY HISTORICAL SOCIETY**
118 E. Dickson
Fayetteville, AR 72701
Flashback
97. **WHITE COUNTY HISTORICAL SOCIETY**
P.O. Box 537
Searcy, AR 72143
White County Heritage
98. **WOODRUFF COUNTY HISTORICAL SOCIETY**
P.O. Box 557
McCrary, AR 72101
Rivers and Roads and Points in Between
99. **YELL COUNTY HISTORICAL AND GENEALOGICAL SOCIETY**
P.O. Box 622
Dardanelle, AR 72834
Yell County Historical and Genealogical Journal

Note: Check your local area for chapters of the Daughters of the American Revolution, United Daughters of the Confederacy, Colonial Dames, Sons of the American Revolution and Sons of the Confederacy.

GOVERNMENT OFFICES

In this section, no attempt is made to list individually the wealth of local resources available to the teachers of Arkansas history, government or economics. Rather, it lists some types of resources which might be available and the ways in which these resources can be utilized.

1. CITY OFFICES

Types of government offices will vary with the type of city or town government. Generally these offices might have current information on population, income, growth patterns and duties of various government officials. Old city records might reveal unusual laws, birth and death records of famous citizens, minutes of city meetings, etc.

2. COUNTY OFFICES

A. COUNTY CLERK

The county clerk's office is the repository of records such as marriage records, wills, land records, etc. Marriage records might provide a look at famous or early settlers of your area. Wills provide a look at types of property people of a particular era owned. Land records can provide the history of a particular spot in your area or a picture of immigration and migration in the area.

B. CIRCUIT CLERK

Sometimes land records are located in the circuit clerk's office. Also, here you will find records of probates and court cases. If you have had a famous trial in your area, students might enjoy studying legal documents of the trial.

C. COUNTY JUDGE/QUORUM COURT

These two government agencies can provide current information about your county government and, if they still exist, records of past history of county government decisions. Also, ask your county judge about *This Is Arkansas*, which highlights the history and government in each of Arkansas' 75 counties. It is published yearly by the County Judges Association.



CIVIC ORGANIZATIONS

Many civic organizations publish material about their locality or special interest. Check with such organizations as the Rotary Club, Kiwanis, Daughters of American Revolution, United Daughters of the Confederacy, Colonial Dames, Sons of the American Revolution, historical and genealogical societies, restoration/preservation groups, Junior League and League of Women Voters. These organizations are a possible source of guest speakers as well.

PROFESSIONAL ORGANIZATIONS

Professional organizations, such as the local Medical Association, Bar Association, etc., can offer guest speakers or printed materials. For example, students may find it interesting to hear of the history of medicine in their community or the laws of Arkansas.

CHURCHES AND RELIGIOUS ORGANIZATIONS

Local churches often have published histories, which will list facts or stories of early area settlers. Church buildings themselves may be of historic interest to the community.

ETHNIC GROUPS

Local ethnic groups often hold regular celebrations. They may also be good sources of guest speakers who will instruct your students in customs of their ethnic groups, reasons which brought the ethnic group to your community and the history of the group in your area.

BUSINESSES AND INDUSTRIES

These groups often have information for studying the current history of your community. If the business has been there a long time, it may have old photographs which may help your students to picture the "way it was." Sometimes they have advertising materials, such as maps, etc., which could be used as instructional materials.

CEMETERIES AND FUNERAL HOMES

Cemeteries offer several types of teaching aids. Having students make rubbings of the oldest tombstones they can find can help them to identify with the early history of the community and can teach valuable lessons in early art forms. Cemeteries can also provide discoveries of epidemics of diseases, early settlers, famous citizens and birth and death records. Funeral home records can reveal much of the same information and often can allow a comparison of the value of money yesterday and today in terms of funeral costs.

LOCAL RESOURCE PEOPLE

Local resource people may come from a variety of sources. Government officials can speak about local government. Professional groups may provide speakers on the local history of their profession. Local genealogical or historical societies often have members who know a great deal about the history of your area. Do not overlook the older members of your community. An oral history project can be beneficial to both students and older citizens. Visiting a local historic district in your area can enhance the knowledge of the buildings and their history.

Check your local community for chapters of the Herb Society, Garden Clubs or other groups who study various aspects of Arkansas flora and fauna. Some have excellent speakers and resources.

LOCAL MILITARY GUARD UNITS

These groups sometimes publish materials about the history of their units or even the area. Some of the older members have had prior military service and can speak about their experiences in such events as the Vietnam or Korean Conflicts. They may also know former members who could speak about earlier wars.

LOCAL ART CENTERS

At times, art centers may have exhibits of early photographs of an area or historic paintings. Artwork is sometimes displayed in banks or local businesses.

LOCAL HISTORIC DISTRICTS

These organizations may have historic buildings for which they can arrange tours or furnish programs or speakers.

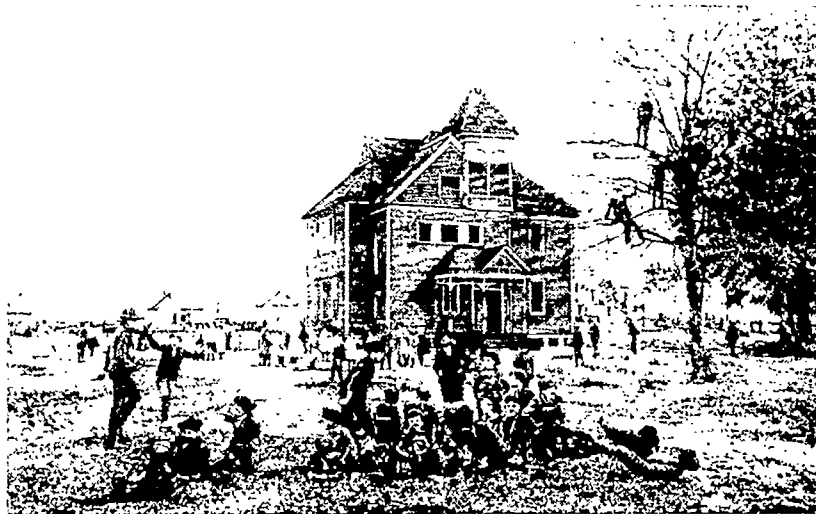
CHAMBERS OF COMMERCE

Never overlook this valuable resource. Chambers of commerce have current statistics about your community, often have materials which can be used for instructional purposes and can recommend resource people.

LOCAL MEDIA

Your local radio or television stations may have audiotapes or videotapes of programs which might be of use to you in your classroom. Radio stations sometimes have tapes of special, historic spots they run in connection with special events in the community. Local newspapers often maintain "morgues" or files of their back issues, which can be valuable sources of up-to-the-minute news of a particular time period.

Chapter 4
BIBLIOGRAPHY



Jacksonville Public School, built 1897

BIBLIOGRAPHY

BOOKS ABOUT ARKANSAS

This section has been divided into three subsections: 1) Books about the state as a whole and books that discuss Arkansas folklore and folkways; 2) Books that deal with a specific period, event, place or person in Arkansas history; and 3) Bibliographies and indices that list Arkansas related material.

This bibliography is not meant to be a comprehensive one. Its purpose is to be a guide or an introduction to materials which would be helpful to those teaching Arkansas history or other Arkansas studies courses in grades K-12. A few titles listed do not discuss Arkansas specifically but are included to help place Arkansas' history in a regional context. Some works of fiction are listed because they provide insight on a topic, way of life or event. A few unpublished dissertations are included when their subject is an important one not covered by monograph publications.

Dissertations, hard-to-find publications and books that are out of print frequently can be found in public or academic libraries in the state. Publications dealing with state or local history can go out of print quickly, and material once unavailable can be reprinted at a later date. For those reasons, out-of-print items are not identified as such. Addresses for many publishers can be found in the section following the bibliography. Addresses for other publishers, as well as information about a book's availability and price, can be found in *Books in Print*, a reference publication available at most bookstores, academic libraries and larger public libraries.

—Bob Razer

Central Arkansas Library System

ARKANSAS BOOKS WITH A STATEWIDE SCOPE; FOLKLORE

Aikman, Nadyne. *Learning About Arkansas*.
Morristown, NJ: Silver Burdett Co., 1985.

Allsopp, Fred W. *Folklore of Romantic Arkansas*. New
York: Grolier Society, 1931.

Ashmore, Harry. *Arkansas: A Bicentennial History*.
New York: W.W. Norton, 1978.

Berry, Fred and John Novak. *The History of Arkansas*.
Little Rock: Rose Publishing Co., 1987.

Blair, Diane. *Arkansas Politics and Government: Do the
People Rule?* Lincoln: University of Nebraska Press,
1988.

Collins, Charles, et. al. *The Heritage of the Ozarks*.
Little Rock: August House, 1984.

Davis, Hester, ed. *Arkansas Before the Americans*.
Fayetteville: Arkansas Archeological Society, 1990.

Dillard, Tom and Valerie Thwing. *Researching Arkan-
sas History: A Beginners Guide*. Little Rock: Rose
Publishing Co., 1979.

Donovan, Timothy and Willard Gatewood, eds. *The
Governors of Arkansas: Essays in Political Biography*.
Fayetteville: University of Arkansas Press, 1981.

DuVall, Leland, ed. *Arkansas: Colony and State*. Little
Rock: Rose Publishing Co., 1973.

Federal Writers' Project of the Works Progress Admin-
istration. *The WPA Guide to the 1930s Arkansas*. 1941;
reprint. Lawrence: University Press of Kansas, 1987.

Fletcher, John Gould. *Arkansas*. 1947; reprint.
Fayetteville: University of Arkansas Press, 1989.

Foti, Tom. *Arkansas: Its Land and People*. Little Rock:
Arkansas Department of Education, 1976.

Fountain, Sarah, ed. *Authentic Voices: Arkansas
Culture, 1541-1860*. Conway: University of Central
Arkansas Press, 1986.

Hanson, Gerald and Carl Moneyhon. *Historical Atlas
of Arkansas*. Norman: University of Oklahoma Press,
1989.

Jacoway, Elizabeth, ed. *Behold Our Works Were Good:
A Handbook of Arkansas History*. Little Rock: August
House, 1987.

Lancaster, Bob. *Jungles of Arkansas: A Personal History
of the Wonder State*. Fayetteville: University of
Arkansas Press, 1989.

League of Women Voters. *Government in Arkansas*.
Little Rock: League of Women Voters, 1989.

McDonough, Nancy. *Garden Sass: A Catalog of
Arkansas Folkways*. New York: Coward, McCann &
Geoghegan, 1975.

McNeil, William, ed. *The Charm is Broken: Readings in Arkansas and Missouri Folklore*. Little Rock: August House, 1984.

Masterson, James. *Arkansas Folklore*. 1942; reprint. Little Rock: Rose Publishing Co., 1974.

Mitchell, Ruth. *Arkansas Heritage*. Little Rock: Rose Publishing Co., 1986.

Moore, Waddy. *Arkansas: The Land of Opportunity*. Fenton, MI: McRoberts Publishing Co., 1975.

Rafferty, Milton. *The Ozarks: Land and Life*. Norman: University of Oklahoma Press, 1980.

Randolph, Vance and George Wilson. *Down in the Holler: A Gallery of Ozark Folk Speech*. Norman: University of Oklahoma Press, 1953.

_____. *Ozark Folksongs*. 1950; reprint. 4 vols. Columbia: University of Missouri Press, 1980.

_____. *Ozark Magic and Folklore*. 1947; reprint. New York: Dover, 1964.

Smith, Diann Sutherlin. *The Arkansas Handbook*. Little Rock: Emerald City Press, 1984.

Smith, Richard. *Atlas of Arkansas*. Fayetteville: University of Arkansas Press, 1989.

Stroud, Hubert and Gerald Hanson. *Arkansas Geography: The Physical Landscape and the Historical-Cultural Setting*. Little Rock: Rose Publishing Co., 1981.

Thomas, David Y. *Arkansas and Its People, a History, 1541-1930*. 4 vols. New York: American Historical Society, 1930.

Tucker, David. *Arkansas: A People and Their Reputation*. Memphis: Memphis State University Press, 1985.

Williams, C. Fred, et. al., eds. *A Documentary History of Arkansas*. Fayetteville: University of Arkansas Press, 1984.

ARKANSAS BOOKS ABOUT A TIME PERIOD, EVENT OR PERSON

Abbott, Shirley. *Womenfolks: Growing Up Down South*. New York: Ticknor & Fields, 1983.

Arnold, Morris. *Unequal Laws unto a Savage Race: European Legal Traditions in Arkansas, 1686-1836*. Fayetteville: University of Arkansas Press, 1985.

Arsenault, Raymond. *The Wild Ass of the Ozarks: Jeff Davis and the Social Bases of Southern Politics*. Philadelphia: Temple University Press, 1984.

Arvey, Verna. *In One Lifetime*. Fayetteville: University of Arkansas Press, 1984.

Baird, W. David. *Medical Education in Arkansas, 1879-1979*. Memphis: Memphis State University Press, 1979.

_____. *The Osage*. Phoenix: Indian Tribal Series, 1972.

_____. *The Quapaw*. Phoenix: Indian Tribal Series, 1975.

_____. *The Quapaw Indians: A History of the Downstream People*. Norman: University of Oklahoma Press, 1980.

Bass, Sharon. *For the Trees: An Illustrated History of the Ozark-St. Francis National Forests, 1908-1978*. Washington, D.C.: U.S. Department of Agriculture, 1981.

Bates, Daisy. *The Long Shadow of Little Rock: A Memoir*. 1962; reprint. Fayetteville: University of Arkansas Press, 1986.

Bearss, Edwin. *Fort Smith: Little Gibraltar on the Arkansas*. 2nd ed. Norman: University of Oklahoma Press, 1979.

_____. *Steele's Retreat from Camden and the Battle of Jenkins Ferry*. Little Rock: Pioneer Press, 1969.

Bennett, Swanee and William Worthen. *Arkansas Made: A Survey of the Decorative, Mechanical, and Fine Arts Produced in Arkansas, 1819-1870*. 2 vols. Fayetteville: University of Arkansas Press, 1990.

Bloom, Louise, et. al. *Victorian Arkansas: How They Lived, Played, and Worked*. Little Rock: Old State House Museum, 1981.

Bolton, Charles, et. al. *Arkansas Becomes a State*. Little Rock: Center for Arkansas Studies, University of Arkansas at Little Rock, 1985.

Boyett, Gene. "The Whigs of Arkansas, 1836-1856." Ph.D. diss. Louisiana State University, 1972.

Branscum, Robbie. *The Three Wars of Billy Joe Treat*. New York: McGraw Hill, 1975.

Brooks, Juanita. *The Mountain Meadows Massacre*. 1963; reprint. Norman: University of Oklahoma Press, 1985.

Brown, Dee. *The American Spa: Hot Springs, Arkansas*. Little Rock: Rose Publishing Co., 1982.

Buckner, John. *Cap Gates' Tent City: A History of Crosssett, Arkansas*. Little Rock: Rose Publishing Co., 1983.

Burnside, William H. *The Honorable William Powell Clayton*. Conway: University of Central Arkansas Press, 1991.

- Clayton, Powell. *The Aftermath of the Civil War in Arkansas*. 1915; reprint. Westport, CT: Greenwood Press, 1985.
- Cleaver, Vera and Bill Cleaver. *The Whys and Wherefores of Littelville Lee*. New York: Atheneum, 1973.
- Collier, Calvin. *First In—Last Out: The Capital Guards, Arkansas Brigade in the Civil War*. Little Rock: Pioneer Press, 1961.
- _____. *They'll Do To Tie To! The Story of the Third Regiment Arkansas Infantry, CSA*. Little Rock: Warren, 1959.
- Cook, Charles. "Arkansas's Charles Hillman Brough, 1876-1935: An Introduction." Ph.D. diss. University of Houston, 1980.
- Cortner, Richard. *A Mob Intent on Death: The NAACP and the Arkansas Riot Cases*. Middletown, CT: Wesleyan University Press, 1988.
- Daniel, Pete. *Deep'n As It Come. The 1927 Mississippi River Flood*. New York: Oxford University Press, 1977.
- _____. *The shadow of Slavery: Peonage in the South, 1901-1969*. Urbana: University of Illinois Press, 1972.
- _____. *Standing at the Crossroads: Southern Life in the Twentieth Century*. New York: Hill & Wang, 1986.
- Dougan, Michael. *Confederate Arkansas: The People and Policies of a Frontier State in Wartime*. University, AL: University of Alabama Press, 1976.
- Fair, James. *The North Arkansas Line: The Story of the Missouri and North Arkansas Railroad*. Berkeley: Howell-North Books, 1969.
- Faris, Paul. *Ozark Log Cabin Folks: The Way They Were*. Little Rock: Rose Publishing Co., 1983.
- Featherstonhaugh, George. *Excursion Through the Slave States from Washington on the Potomac to the Frontier of Mexico*. 1844; reprint. Westport, CT: Greenwood Press, 1985.
- Ferguson, John. *Arkansas and the Civil War*. Little Rock: Pioneer Press, 1964.
- _____. "William E. Woodruff and the Territory of Arkansas, 1819-1836." Ph.D. diss. Tulane University, 1960.
- Fisher, George. *The Old Guard Rest Home*. Little Rock: Rose Publishing Co., 1984.
- Freyer, Tony. *The Little Rock Crisis: A Constitutional Interpretation*. Westport, CT: Greenwood Press, 1984.
- Gerstacker, Friedrich. *In the Arkansas Backwoods: Tales and Sketches*. James Miller, ed. Columbia: University of Missouri Press, 1991.
- _____. *Wild Sports in the Far West*. Durham: Duke University Press, 1968.
- Gilkey, Langdon. *Creationism on Trial*. New York: Harper, 1985.
- Gordon, Fon. "The Black Experience in Arkansas, 1880-1920." Ph.D. diss. University of Arkansas, 1989.
- Graves, John. *Town and Country: Race Relations in an Urban-Rural Context, Arkansas, 1865-1905*. Fayetteville: University of Arkansas Press, 1990.
- Greene, Bette. *Summer of My German Soldier*. New York: Dial, 1973.
- Grubbs, Donald. *Cry from the Cotton: The Southern Tenant Farmer's Union and the New Deal*. Chapel Hill: University of North Carolina Press, 1971.
- Harrington, M.R. *The Ozark Bluff Dwellers*. 1960; reprint. New York: Museum of the American Indian, 1971.
- Hays, Brooks. *Politics Is My Parish: An Autobiography*. Baton Rouge: Louisiana State University Press, 1981.
- Hinshaw, Jerry. *Call the Roll: The First 150 Years of the Arkansas Legislature*. Little Rock: Rose Publishing Co., 1986.
- Holley, Donald. *Uncle Sam's Farmers: The New Deal Communities in the Lower Mississippi Valley*. Urbana: University of Illinois Press, 1975.
- Huckaby, Elizabeth. *Crisis at Central High: Little Rock 1957-1958*. Baton Rouge: Louisiana State University Press, 1980.
- Hughes, William. *Archibald Yell*. Fayetteville: University of Arkansas Press, 1988.
- Hull, Clifton. *Shortline Railroads of Arkansas*. Norman: University of Oklahoma Press, 1969.
- Ingenthron, Elmo. *Indians of the Ozark Plateau*. Point Lookout, MO: School of the Ozarks Press, 1970.
- Jacoway, Elizabeth, ed. *Southern Businessmen and Desegregation*. Baton Rouge: Louisiana State University Press, 1982.
- Jones, Douglas. *Barefoot Brigade*. New York: Holt, Rinehart, & Winston, 1982.
- _____. *Elkhorn Tavern*. New York: Holt, Rinehart, & Winston, 1980.
- LaFollette, Marcel. *Creationism, Science, and the Law: The Arkansas Case*. Cambridge: Massachusetts Institute of Technology Press, 1983.
- LaPin, Deirdre. *Hogs in the Bottom*. Little Rock: August House, 1982.

Ledbetter, Cal, et al. *Politics in Arkansas: The Constitutional Experience*. Little Rock: Academic Press of Arkansas, 1972.

Lenske, Lois. *Cotton in My Sack*. Philadelphia: Lippincott, 1949.

Leslie, James. *Land of Cypress and Pine*. Little Rock: Rose Publishing Co., 1976.

_____. *Pine Bluff and Jefferson County Pictorial History*. Norfolk: Donning Co., 1981.

_____. *Saracen's Country: Some Southeast Arkansas History*. Little Rock: Rose Publishing Co., 1974.

Lester, Jim. *Greater Little Rock*. Norfolk: Donning Co., 1986.

_____. *A Man for Arkansas: Sid McMath and the Southern Reform Tradition*. Little Rock: Rose Publishing Co., 1976.

McArthur, Prilla. *Arkansas in the Gold Rush*. Little Rock: August House, 1986.

McGimsey, Charles. *Indians of Arkansas*. Fayetteville: Arkansas Archeological Survey, 1969.

McMath, Anne. *First Ladies of Arkansas*. Little Rock: August House, 1989.

Machen, Strelsa Morris. *The Farmers on the Hill*. Little Rock: General Publishing Co., 1979.

_____. *Little Schoolhouse on the Hill*. Little Rock: General Publishing, 1980.

Malone, David. *Hattie and Huey: An Arkansas Tour*. Fayetteville: University of Arkansas Press, 1989.

Markham, Robert. "The Arkansas Cherokees, 1817-1828." Ph.D. diss. University of Oklahoma, 1972.

Medearis, Mary. *Big Doc's Girl*. Little Rock: August House, 1985.

_____. *Washington, Arkansas: History on the Southwest Trail*. Hope: Etter Printing Co., 1976.

Mitchell, H.L. *Mean Things Happening in this Land*. Totowa, NJ: Allanheld Osmun & Co., 1979.

_____. *Roll the Union On: A Pictorial History of the Southern Tenant Farmer's Union*. Chicago: Kerr Publishing Co., 1987.

Moore, Waddy, ed. *Arkansas in the Gilded Age, 1874-1900*. Little Rock: Rose Publishing Co., 1976.

_____. "Territorial Arkansas, 1819-1836." Ph.D. diss. University of North Carolina, 1963.

Mueller, Myrl. *Lost in the Annals: History and Legends of the New Madrid Earthquake, 1811-12*. Self-published, 1990.

Neal, Nevin. "A Biography of Joseph T. Robinson." Ph.D. diss. University of Oklahoma, 1958.

Niswonger, Richard. *Arkansas Democratic Politics, 1886-1920*. Fayetteville: University of Arkansas Press, 1990.

Nuttall, Thomas. *Journal of Travels into the Arkansas Territory During the Year 1819*. Norman: University of Oklahoma Press, 1980.

O'Donnell, William. *Civil War Quadrennium: A Narrative History of Day to Day Life in Little Rock During the War Between the States*. Little Rock: Civil War Roundtable of Arkansas, 1985.

Palmer, Robert. *Deep Blues*. New York: Viking, 1981.

Patterson, Ruth Polk. *Seed of Sally Good'n: A Black Family of Arkansas, 1833-1953*. Lexington: University of Kentucky Press, 1985.

Penick, James. *The New Madrid Earthquake of 1811-1812*. Columbia: University of Missouri Press, 1976.

Pope, William F. *Early Days in Arkansas*. Little Rock: Allsopp, 1895.

Rawick, George, ed. *The American Slave: A Composite Biography*. Westport, CT: Greenwood Press, 1972.

Richards, Ira Don. *Story of a Rivertown: Little Rock in the Nineteenth Century*. Self-published, 1969.

Rison, David. "Arkansas During the Great Depression." Ph.D. diss. University of California at Los Angeles, 1974.

Roberts, Bobby and Carl Moneyhon. *Portraits of Conflict: A Photographic History of Arkansas in the Civil War*. Fayetteville: University of Arkansas Press, 1987.

Ross, Margaret. *Arkansas Gazette, The Early Years, 1819-1866*. Little Rock: The Arkansas Gazette Foundation, 1969.

Roy, Hampton, et. al. *How We Lived: Little Rock as an American City*. Little Rock: August House, 1984.

Sandford, Juanita. *Poverty in the Land of Opportunity*. Little Rock: Rose Publishing Co., 1978.

Savitt, Todd and James Young, eds. *Disease and Distinctiveness in the American South*. Knoxville: University of Tennessee Press, 1988.

Schambach, Frank and Leslie Newell. *Crossroads of the Past: 12,000 Years of Indian Life in Arkansas*. Fayetteville: Arkansas Archeological Survey, 1990.

Schoolcraft, Henry. *Schoolcraft in the Ozarks*. 1821; reprint. Van Buren: Press-Argus, 1955.

Schwartz, Marvin. *In Service to America: A History of VISTA in Arkansas, 1965-1985*. Fayetteville: University of Arkansas Press, 1988.

Seagraves, J. W. "Arkansas Politics, 1874-1918." Ph.D. diss. University of Kentucky, 1973.

Sherrill, Robert. *Gothic Politics in the Deep South*. New York: Crossman, 1968.

Shoudel, Pearl, ed. *Some Remarkable Women of Arkansas*. Little Rock: Arkansas Coordinating Committee for International Woman's Year, 1977.

Smith, C. Calvin. *War and Wartime Changes: The Transformation of Arkansas, 1940-1945*. Fayetteville: University of Arkansas Press, 1986.

Smith, John I. *The Courage of a Southern Unionist: A Biography of Isaac Murphy*. Little Rock: Rose Publishing Co., 1983.

_____. *Forward from Rebellion: Reconstruction and Revolution in Arkansas, 1868-1874*. Little Rock: Rose Publishing Co., 1973.

Smith, Ken. *Buffalo River Country*. Fayetteville: Ozark Society, 1973.

_____. *Sawmill: The Story of Cutting the Last Great Virgin Forest East of the Rockies*. Fayetteville: University of Arkansas Press, 1986.

Spitzberg, Irving. *Racial Politics in Little Rock, 1954-1964*. New York: Garland, 1987.

Taylor, Orville W. *Negro Slavery in Arkansas*. Durham: Duke University Press, 1958.

Terry, Adolphine Fletcher. *Charlotte Stephens: Little Rock's First Black Teacher*. Little Rock: Academic Press of Arkansas, 1973.

Thompson, George. *Arkansas and Reconstruction: The Influence of Geography, Economics, and Personality*. Port Washington, NY: Kennikat Press, 1976.

Trelease, Allen. *White Terror: The Ku Klux Klan Conspiracy and Southern Reconstruction*. Westport, CT: Greenwood Press, 1979.

Urwin, Cathy Kunzinger. *Agenda for Reform: Winthrop Rockefeller as Governor of Arkansas 1967-71*. Fayetteville: University of Arkansas Press, 1991.

Urwin, Cathy K. *Agenda for Reform*. Fayetteville: University of Arkansas Press, 1991.

Walls, Edwina, ed. *Contributions to Arkansas Medical History*. Little Rock: University of Arkansas for Medical Sciences, 1990.

Walz, Robert. "Migration into Arkansas, 1834-1880." Ph.D. diss. University of Texas, 1958.

Ward, John. *The Arkansas Rockefeller*. Baton Rouge: Louisiana State University Press, 1978.

Westbrook, Kent. *Legacy in Clay: Prehistoric Ceramic Arts of Arkansas*. Little Rock: Rose Publishing Co., 1982.

Wheeler, John. "The People's Party in Arkansas, 1891-1896." Ph.D. diss. Tulane University, 1975.

White, Lonnie. *Politics on the Southwestern Frontier: Arkansas Territory, 1819-1836*. Memphis: Memphis State University Press, 1964.

Williams, Leonard, ed. *Cavorting on the Devil's Fork: The Pete Whetstone Letters of C.F.M. Noland*. Memphis: Memphis State University Press, 1979.

Wolf, John Q. *Life in the Leatherwoods*. Memphis: Memphis State University Press, 1974.

Woodrell, Daniel. *Woe to Live On*. New York: Holt, 1987.

Woodruff, Nan Elizabeth. *As Rare as Rain: Federal Relief in the Great Southern Drought of 1930-31*. Urbana: University of Illinois Press, 1985.

Woods, James. *Rebellion and Realignment: Arkansas's Road to Secession*. Fayetteville: University of Arkansas Press, 1987.

Woodward, C. Vann. *The Strange Career of Jim Crow*. 3rd ed. New York: Oxford University Press, 1974.

Worthen, Mary Fletcher, ed. *Matters and Things in General*. Little Rock: Arkansas Territorial Restoration, 1974.

ARKANSAS BIBLIOGRAPHIES/INDICES

A Bibliography of Arkansas History Materials. Little Rock: Old State House Museum, 1986.

Dillard, Tom and Michael Dougan. *Arkansas History: A Selected Research Bibliography*. Little Rock: Department of Arkansas Heritage, 1984.

Dorsett, Cora Matheny, ed. *The Mississippi Delta*. Chicago: American Library Association, 1983. (Annotated bibliography of state literature of Arkansas, Mississippi and Louisiana for grades K-12 prepared by specialists in each state. Part of the *Reading for Young People* series.)

Henderson, Shannon. *Index to the Arkansas Gazette*. Russellville: Arkansas Tech University Library, various years. (Yearly index being prepared in two series with a volume each year in each series. Retrospective series currently covers 1819-1893, and the modern series covers the years 1964-1990.)

Index to the Arkansas Historical Quarterly. Fayetteville: Arkansas Historical Association, 1984.

McNeil, W.K. *Arkansas Folklore: A Bibliography*.
North Little Rock: Arkansas Endowment for the
Humanities, 1980.

Note: Some universities have bibliographies highlighting materials contained in their special collections. Check the card catalog of libraries you visit for specialized publications which may help you use Arkansas materials or which may identify additional materials of use to you.

SOURCES OF INSTRUCTIONAL MATERIALS

The following companies publish instructional materials/books which can be used in Arkansas studies. Please write for current information.

1. **ARKANSAS DEMOCRAT-GAZETTE**
Capitol and Scott Streets
Little Rock, AR 72203
2. **ARKANSAS 4-H PROJECT BOOK**
University of Arkansas Agriculture Department
Fayetteville, AR 72701
3. **ARKANSAS SOFTWARE**
1923 Caldwell St.
Conway, AR 72032
Geneva Bowlin, Co-Owner
4. **AUGUST HOUSE**
P.O. Box 3223
Little Rock, AR 72203
5. **CENTER FOR ARKANSAS STUDIES**
University of Arkansas at Little Rock
Little Rock, AR 72204
6. **CHILDREN'S PRESS**
5400 N. Cumberland Ave.
Chicago, IL 60656
Joseph R. Honn, V.P. of Sales
7. **DOVER PUBLICATIONS, INC.**
31 E. Second St.
Mineola, NY 11501
8. **D.C. HEATH**
8301 Ambassador Row
Dallas, TX 75202
9. **EMERALD CITY PRESS**
P.O. Box 21066
Little Rock, AR 72212
10. **FACTS ON FILE PUBLICATIONS**
460 Park Ave.
New York, NY 10016
11. **GENERAL BOOK COMPANY**
P.O. Box 55094
Hillcrest Station
Little Rock, AR 72205
12. **GEORGE F. CRAM, INC.**
P.O. Box 426
Indianapolis, IN 56206
13. **HARCOURT-BRACE-JOVANOVICH**
4640 Harry Hines Blvd.
Dallas, TX 75235
14. **HI-WILLOW ENTERPRISES, INC.**
P.O. Box 1801
Fayetteville, AR 72702-1801
15. **HOUGHTON MIFFLIN COMPANY**
One Beacon St.
Boston, MA 02108
16. **LEAGUE OF WOMEN VOTERS
OF ARKANSAS**
1599 Halsell Rd.
Fayetteville, AR 72701
Peg Anderson
17. **MACMILLAN/MCGRAW HILL
PUBLISHING COMPANY**
220 E. Danieldale
P.O. Box 815639
Desoto, TX 75115
18. **NYSTROM**
3333 Elston Ave.
Chicago, IL 60618
Frank A. Spadola, Director of Sales
19. **RAND MCNALLY AND COMPANY**
8255 N. Central Park Ave.
P.O. Box 1906
Skokie, IL 60076-8906
20. **ROSE PUBLISHING COMPANY**
301 S. Louisiana St.
Little Rock, AR 72201
21. **SCOTT, FORESMAN AND COMPANY**
1310 Gemini Lane
Dallas, TX 75229
22. **SIGNAL MEDIA CORPORATION**
P.O. Box 1576
Little Rock, AR 72203
23. **SILVER-BURDETT & GINN**
8301 Ambassador Row
Dallas, TX 75247

24. **SOUTHERN HISTORICAL PRESS**
P.O. Box 738
Easley, South Carolina 29641-0738
25. **SUNSHINE ENTERPRISES**
P.O. Box 7553
Little Rock, AR 72217
26. **THE UNIVERSITY OF ARKANSAS PRESS**
201 Ozark St.
Fayetteville, AR 72701
27. **THE UNIVERSITY OF CENTRAL ARKANSAS PRESS**
143 Oliver
Conway, AR 72032
Robert Lowrey, Director
28. **THE UNIVERSITY OF MISSOURI PRESS**
P.O. Box 7088
Columbia, MO 65205-7088
29. **WILLIAM W. O'DONNELL, OWNER/AUTHOR**
5615 Evergreen Rd.
Little Rock, AR 72205



SOURCES OF AUDIOVISUAL MATERIALS

The following are sources of audiovisual materials for use in Arkansas studies. Additional materials are also available from some federal or state agencies and from some museums. (See those listings in this handbook.) Please contact the sources for current listings of available materials.

1. **ARKANSAS DEPARTMENT OF EDUCATION**
Instructional Materials
Four Capitol Mall
Little Rock, AR 72201

2. **ARKANSAS EDUCATIONAL TELEVISION NETWORK**
350 S. Donaghey
Conway, AR 72032
3. **ARKANSAS HUMANITIES COUNCIL**
10816 Executive Center Dr., Suite 310
Little Rock, AR 72211
4. **ARKANSAS MUSEUM OF SCIENCE AND HISTORY**
MacArthur Park
Little Rock, AR 72202
5. **ARKANSAS SYMPHONY ORCHESTRA**
2500 N. Tyler
Little Rock, AR 72207
6. **BATTLE MUSIC, INC.**
Timbo, AR 72680
Jimmy Driftwood
7. **CREATIVE VISUALS**
Division of Gamco, Inc.
P.O. Box 1911
Big Spring, TX 79721
8. **FISHER-ESSEX ART SERVICE**
309 Center
Little Rock, AR 72202
9. **KILLION AUDIO-VISUAL**
P.O. Box 5374
Jacksonville, AR 72076
10. **MCRBERTS PUBLISHING, INC.**
3103 Thompson Rd.
Fenton, MI 48430
11. **NORTHWEST EDUCATIONAL SYSTEMS**
P.O. box 533
Springdale, AR 72764
12. **RACKENSACK SOCIETY**
309 Center
Little Rock, AR 72202
13. **ROSE PUBLISHING COMPANY**
301 S. Louisiana St.
Little Rock, AR 72201
14. **SIS, INC.**
Arkansas Software
1923 Caldwell St.
Conway, AR 72032
15. **TALKING TRADITIONS**
1018 Rock
Little Rock, AR 72202
George West
16. **ARKANSAS BOOK DEPOSITORY**
900 E. Markham
Little Rock, AR 72201

ARKANSAS PERIODICALS AND NEWSPAPERS

Subscriptions for the following newspapers and magazines may vary in price from free to several dollars a year. Please contact the publisher for information. Value to your class may also vary.

1. **ARKANSAS ARCHEOLOGIST**
Arkansas Archeological Society
P.O. Box 1222
Fayetteville, AR 72702
Annually
2. **ARKANSAS BANKER**
Arkansas Bankers Association
221 W. Second St., Suite 1027
Little Rock, AR 72201-2593
Monthly
3. **ARKANSAS BUSINESS**
Journal Publishing, Inc.
201 E. Markham
P.O. Box 3686
Little Rock, AR 72203
Bi-weekly
4. **ARKANSAS DEMOCRAT-GAZETTE**
E. Capitol and Scott Streets
Little Rock, AR 72201
5. **ARKANSAS DOCUMENTS**
Documents Services
Arkansas State Library
One Capitol Mall
Little Rock, AR 72201
Quarterly
6. **ARKANSAS EDUCATOR**
Arkansas Education Association
1500 W. Fourth St.
Little Rock, AR 72201
Monthly except July
7. **ARKANSAS GAME AND FISH MAGAZINE**
Arkansas Game and Fish Commission
Two Natural Resources Dr.
Little Rock, AR 72205
Quarterly
8. **ARKANSAS HISTORICAL QUARTERLY**
Arkansas Historical Association
University of Arkansas
History Department
Old Main 416
Fayetteville, AR 72701
Quarterly
9. **ARKANSAS HOMES**
Arkansas Writers' Project, Inc.
P.O. Box 34010
Little Rock, AR 72203
Semi-annually
10. **ARKANSAS JOURNAL: A REVIEW OF
BUSINESS AND INDUSTRY IN ARKANSAS**
Arkansas Industrial Development Commission
One State Capitol Mall
Little Rock, AR 72201
Semi-annual
(Previously called *Inside Arkansas*)
11. **ARKANSAS LIBRARIES**
Arkansas Library Association
1100 N. University, Suite 109
Little Rock, AR 72207
Bi-monthly
12. **ARKANSAS NEWS**
Old State House Museum
300 W. Markham
Little Rock, AR 72201
Semi-Annually
13. **ARKANSAS RAILROADER**
Little Rock Chapter
National Railway Historical Society
905 Valerie Dr.
North Little Rock, AR 72118-3160
Monthly
14. **ARKANSAS SOCIAL STUDIES TEACHER**
Arkansas Council for the Social Studies
Published by the Department of History
College of Arts and Sciences
Arkansas State University
P.O. Box 1690
State University, AR 72467
Annually
15. **ARKANSAS STATE GOVERNMENT GUIDE**
Arkansas State Employees Association
1311 W. Seventh St.
Little Rock, AR 72201
Semi-annually
16. **ARKANSAS STATE PRESS**
1517 S. Broadway
P.O. Box 164037
Little Rock, AR 72202
Wednesday only
17. **ARKANSAS TIMES**
Arkansas Writers' Project, Inc.
201 E. Markham St.
200 Heritage Center W.
P.O. Box 34010
Little Rock, AR 72203
Monthly

18. **CITY AND TOWN**
Arkansas Municipal League
Second & Willow Streets
North Little Rock, AR 72114
Monthly except February and July
19. **FIELD NOTES**
Arkansas Archeological Society
P.O. Box 1222
Fayetteville, AR 72702
Bi-monthly
20. **JOURNAL OF THE ARKANSAS MEDICAL SOCIETY**
Arkansas Medical Society
10 Corporate Hill Dr., Suite 200
Little Rock, AR 72215
Monthly
21. **MIDSOUTH POLITICAL SCIENCE JOURNAL**
Arkansas Political Science Association
P.O. Box 4995
University of Central Arkansas
Conway, AR 72032
Annually
22. **RURAL ARKANSAS**
Arkansas Electric Cooperatives
P.O. Box 510
Little Rock, AR 72203
Monthly
23. **THIS IS ARKANSAS**
Arkansas County Judges Association
P.O. Box 2963
Fayetteville, AR 72702
Annually