

DOCUMENT RESUME

ED 328 322

JC 910 113

AUTHOR Belcher, Marcia J.  
 TITLE Results of the Child Care Needs Survey at Miami-Dade Community College. Research Report No. 90-17R.  
 INSTITUTION Miami-Dade Community Coll., Fla. Office of Institutional Research.  
 PUB DATE Jul 90  
 NOTE 24p.  
 PUB TYPE Reports - Evaluative/Feasibility (142) -- Statistical Data (110) -- Tests/Evaluation Instruments (160)

EDRS PRICE MF01/PC01 Plus Postage.  
 DESCRIPTORS Child Caregivers; College Planning; Community Colleges; \*Day Care; \*Day Care Centers; \*Employee Attitudes; \*Employer Supported Day Care; Needs Assessment; \*Parent Attitudes; Questionnaires; School Surveys; Student Attitudes; \*Student Needs; Tables (Data); Two Year Colleges  
 IDENTIFIERS Miami Dade Community College FL

ABSTRACT

In 1990, Miami-Dade Community College's (M-DCC's) Task Force on Child Care conducted a college-wide survey of all faculty, staff, and administrators and a sample of students to assess the need for and interest in on-site child care at M-DCC. Among full-time employees, 722 surveys were collected for a 30% response rate. Students comprised 72% of the total study population with 1,860 responses. Study findings included the following: (1) over half of the staff and 20% of the students had children under 12 years of age; (2) the demand for child care was expected to increase from the current 27% rate to 39%; (3) 81.6% of those with children under 12 indicated that they would use a child care facility at M-DCC; (4) the most common child care arrangement, cited by 30% of the respondents, was the use of child care centers; (5) 81.5% of the respondents were at least somewhat satisfied with their current child care arrangements, although 56.4% had changed their arrangements at least once within the past year; (6) 56% of the respondents with children under 12 indicated they had missed work or class because of the lack of child care; (7) 48% of those interested in campus child care favored a full-day program, and 81.9% would need a program that operates Monday through Friday; and (8) 58.4% of the respondents paid less than \$50 per week for child care. Data tables and the survey instrument are included. (JMC)

\*\*\*\*\*  
 \* Reproductions supplied by EDRS are the best that can be made \*  
 \* from the original document. \*  
 \*\*\*\*\*



# Institutional Research

RESULTS OF THE CHILD CARE NEEDS SURVEY AT  
MIAMI-DADE COMMUNITY COLLEGE

Research Report No. 90-17R

July 1990

Marcia J. Belcher

Research Associate, Sr.

"PERMISSION TO REPRODUCE THIS  
MATERIAL HAS BEEN GRANTED BY

M. J. Belcher

TO THE EDUCATIONAL RESOURCES  
INFORMATION CENTER (ERIC)."

U S DEPARTMENT OF EDUCATION  
Office of Educational Research and Improvement  
EDUCATIONAL RESOURCES INFORMATION  
CENTER (ERIC)

This document has been reproduced as  
received from the person or organization  
originating it.

Minor changes have been made to improve  
reproduction quality.

Points of view or opinions stated in this docu-  
ment do not necessarily represent official  
OERI position or policy.

Miami-Dade Community College

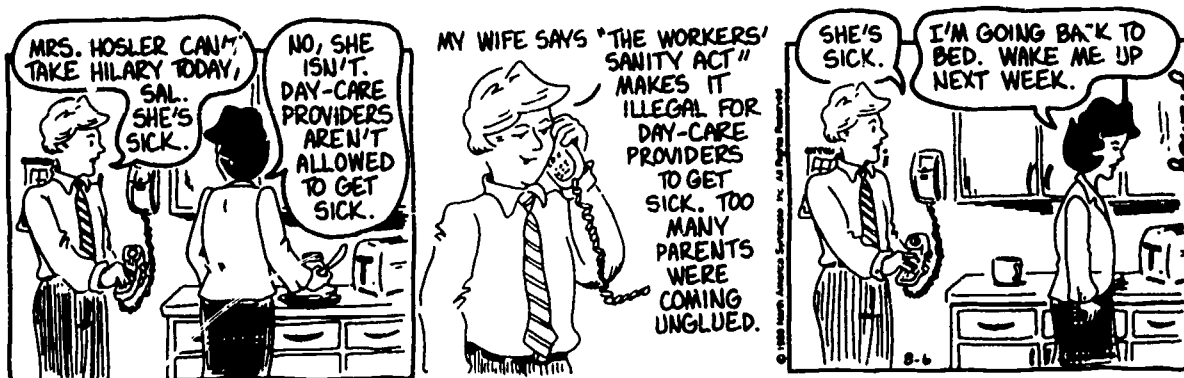
OFFICE OF INSTITUTIONAL RESEARCH

John Losak, Dean

# Miami-Dade Community College

ED328322

Jc 9/10/13



Note: "Reprinted with special permission of North America Syndicate, Inc."

## Results of the Child Care Needs Survey at Miami-Dade Community College

### Introduction

Child care is an issue that has gained increasing prominence in the past few years. Legislation has recently addressed funding of child care at both the state and national level. Locally (as well as nationally) a number of businesses are finding child care a good option for attracting and keeping employees. Metro-Dade, for example, has established child care at their downtown site.

Perhaps one reason for the interest is that more women are in the workforce. Men, too, have been increasingly concerned about child care as men's roles as active caretakers have expanded. The baby boomers' generation has been producing a "baby boomlet". In addition, more single parent families have resulted in a greater need for child care.

A 1989 telephone survey of Dade County residents confirmed the interest in child care issues.<sup>1</sup> Many respondents (40%) had children at

<sup>1</sup> This study was conducted by an outside consulting firm as part of the Enrollment Management Project. Child care was only one of a number of issues studied. The results were unpublished, but details are available through Institutional Research.

home, and 18% had children under the age of six. The figures were even higher for respondents enrolled or planning to enroll at Miami-Dade. When asked how important the availability of on-site child care was, about 40% thought it was at least slightly important and 25% thought it was very important. These figures indicate that our current and potential students are concerned about child care even more than the population as a whole.

Recognizing that child care is an important issue, Miami-Dade has appointed a college-wide Taskforce on Child Care. The Taskforce is charged with assessing the extent of the need and desire for on-site child care and making recommendations about possible implementation. As one of their first tasks, therefore, a needs assessment survey was developed. In February 1990, the survey was distributed to all faculty, staff, and administrators. In addition, a sample of classes was selected to receive the survey on each campus. A copy of the survey and accompanying letter can be found in Appendix A.

#### Purpose of Study

The purpose of this study is to report the results of the Child Care Needs Survey. While this report will not cover all items included in the survey, it will address the following major questions:

1. Who responded to the survey?
2. How much demand for on-campus child care is there?
3. How are families currently coping with child care?
4. Has there been an effect on school and work performance due to lack of child care?
5. What kind of on-campus child care program is needed?
6. How much might an on-campus program charge for care?

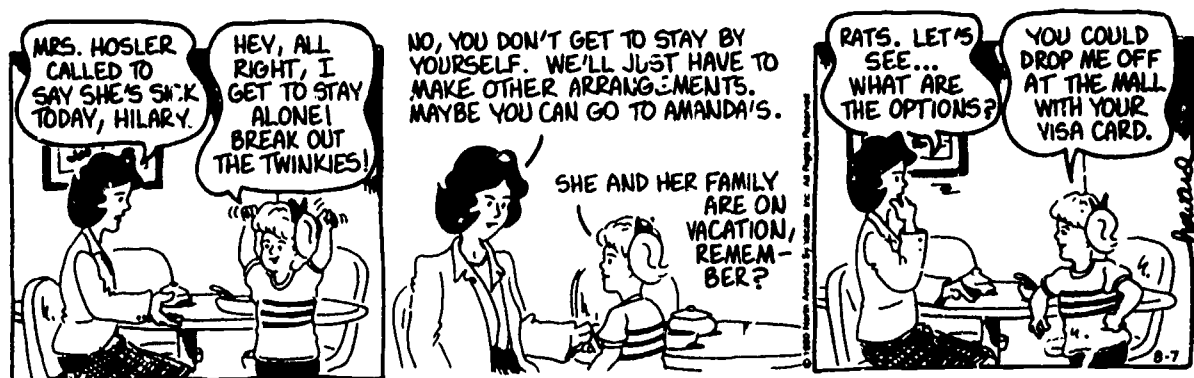
## Results

### Who Responded?

As with most surveys distributed at the College, the response rate was not sufficient to ensure the results were representative of the population as a whole. In this case, the 722 employees who responded represent about 30% of all full-time employees. This amounts to 31% of the faculty, 26% of the staff, and 38% of the administrators.

Student results are somewhat more representative (N = 1,860), though still not entirely satisfactory. For the classes randomly sampled, the percentage of student responses compared to the official class rosters range from a high of 64% on Medical Center and 63% on South, to 48% on Wolfson and 34% on North. It is impossible to tell how much of this discrepancy is due to entire classes not responding and how much is due to lack of attendance or withdrawal by the date that the survey was administered.

As shown by Table 1, the responses are heavily weighted by the student results since 72% of the respondents were students. This fact should be kept in mind when interpreting the results.



Note: "Reprinted with special permission of North America Syndicate, Inc."

### How Much Demand is There?

The issue of children and child care is one that pervades the College environment. As shown by Table 2, more than 1 in 4 of the respondents have children under 12. Over half the staff have children under 12 compared to 20% of students. Some campuses appear to have a greater need than others--Medical Center and InterAmerican have a greater percentage of employees and students with children than some other campuses.

Table 3 lists the ages of all children under 12 for those respondents who gave their children's age. Note that a majority are pre-schoolers.

Table 4 provides an estimate of how much the demand for child care will change in the next three to five years. Compared to the percentage currently with children, the demand is estimated to rise on almost every campus. College-wide, the percentage requiring child care will increase to 39% from the current 27% rate.

For those who have children under 12, the interest in a child care facility at Miami-Dade is strong. Table 5 shows that over 80% of this group say they would use such a facility.



Note: "Reprinted with special permission of North America Syndicate, Inc."

### How Are Families Currently Handling Child Care?

The most common approach to child care arrangements is to take the child to a child care center (30% of the group). See Table 6 for more detailed results.

Over 80% are at least somewhat satisfied with their arrangements, though only about 40% are very satisfied (see Table 7). Dissatisfaction may also be reflected in the number of times parents change their child care arrangements. A majority (56%) have changed their arrangements at least once in the past year (see Table 8). The major reasons parents changed was because of problems with times or location (31% of the group); the second reason was cost (22% of the group). See Table 9 for more detail.

### Has School and Work Performance Been Affected by Lack of Child Care?

Having children means shouldering the responsibility to make sure they receive care and are supervised. Occasionally, this may mean missing work or school because care is not available. More than half of the respondents (56%) with children under 12 indicate that they have missed work or class because of lack of child care (see Table 10). Sometimes instead of staying home, the parent takes the child along. About 40% have used this option (see Table 11).

At other times, worry leads to less than optimum performance in class or on the job because the parent is concerned about the child care arrangements that have been made. Businesses have documented drops in production and attention during the hour or so after school is out as parents wait for their children to make the transition from school to after-school care. At Miami-Dade, 61% of those with children under 12 indicate their work or school has suffered as a result of child care concerns (see Table 12).

Some of this worry is evident in the reasons respondents give for their interest in a campus child care facility. Of those who said they were interested in a campus child care facility, over 75% state they would like such a facility because they would be in close proximity to their child in case of illness or emergency. Other major reasons include more convenient

transportation arrangements (65%) and less worry (54%). See Table 13 for full results.



Note: "Reprinted with special permission of North America Syndicate, Inc."

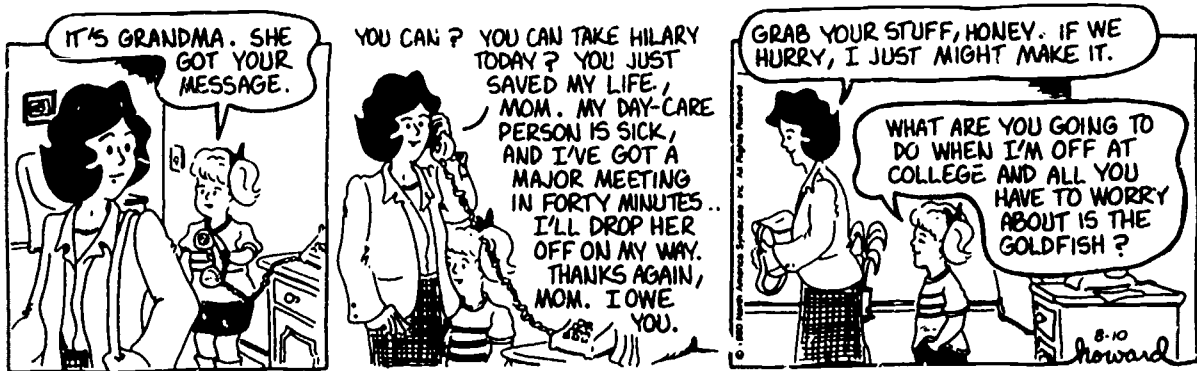
#### What Kind of On-Campus Child Care Program is Needed?

As might be expected based on the number of pre-schoolers, the bulk (48%) of respondents interested in campus child care want a full day program (see Table 14). Over 80% indicate that the program would need to operate Monday through Friday (see Table 15). Mornings and afternoons are selected by most of those interested, but a sizeable group (36%) are interested in evening care. Of the possible meals that could be provided, most (67%) need lunch to be served, although breakfast was requested by 42% (see Table 17).

Besides regular full-time care, parents must also cope with those intermittent times when their children need special care. The most common occurrences are when the child is sick or school is not in session. For this group of respondents, two-thirds say they would be interested in having a place to send their children when they are sick. Just as many would like



help during teacher workdays or school holidays. During the summer when school is not in session, about 60% are interested in a child care program. See Table 18 for results by campus.

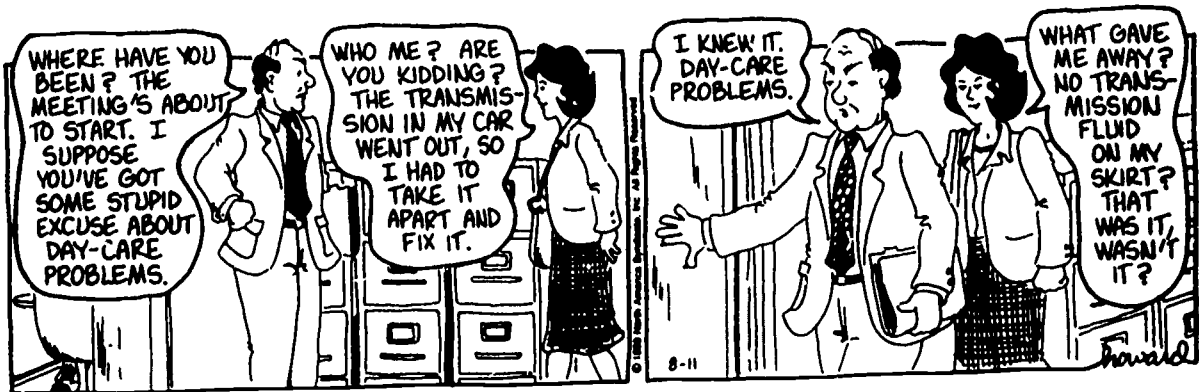


Note: "Reprinted with special permission of North America Syndicate, Inc."

#### How Much Might an On-Campus Program Charge for Care?

There are many factors that must be weighed when deciding upon charges for child care and many ways that participants could be charged based on need and/or services used. The survey only asks respondents interested in on-campus care to self-report their current child care costs and income.

As shown by Table 19, more than half of the group pay \$50 or less per week per child for child care. Over 80% pay \$75 or less. This figure can be compared to family income before taxes. Slightly over 40% of the respondents have a household income of \$20,000 per year or less, while one-third report incomes of over \$35,000.



Note: "Reprinted with special permission of North America Syndicate, Inc."

#### Conclusion

Child care is an important issue to M-DCC employees, students, and potential enrollees. Over half of the staff have children under 12. A sizeable number of students--one in five--also have children. This group is almost unanimous in their interest in an on-campus full-service child care facility.

Such a facility would ease transportation difficulties and worry, especially when children become ill. Availability of child care could also improve the productivity of employees and students. Over half reported that they had missed work or class because of lack of child care arrangements. More (60%) indicate that their work or school had suffered because of child care concerns.

This survey is one important piece of information to be used by the Taskforce on Child Care in making recommendations for child care support at the College. With their recommendations, the task of deciding on implementation issues can begin.

Table 1  
Role at College of Survey Respondents

Campus	Faculty		Staff		Administrator		Student		Total	
	Number	Percent	Number	Percent	Number	Percent	Number	Percent	Number	Percent
North	48	12.2	45	11.5	21	5.3	279	71.0	393	15.2
Hialeah Center	0	0.0	1	5.9	1	5.9	15	88.2	17	0.7
South	137	11.6	193	16.3	58	4.9	795	67.2	1,183	45.8
Wolfson	26	6.2	56	13.4	34	8.1	302	72.3	418	16.2
InterAmerican	14	14.6	9	9.4	2	2.1	71	74.0	96	3.7
Medical Center	38	8.1	27	5.8	5	1.1	397	85.0	467	18.1
College-Wide	269	10.4	332	12.9	121	4.7	1,860	72.0	2,582	100.0

Note: Totals may not add since "Homestead" and "Other" campus locations are not included because of their small size. Based on 2,582 responses with 13 missing.

Table 2  
Number and Percent With Children Under 12 Years Old  
By Role and Campus

Campus	Faculty		Staff		Administrator		Student		Total	
	Number	Percent	Number	Percent	Number	Percent	Number	Percent	Number	Percent
North	13	27.1	27	60.0	9	42.9	50	18.1	99	25.4
Hialeah Center	-	-	-	-	-	-	9	64.3	9	56.3
South	52	38.2	92	48.2	18	31.0	72	9.2	234	20.1
Wolfson	12	48.0	32	59.3	9	27.3	63	22.0	116	29.1
InterAmerican	7	50.0	3	37.5	1	50.0	29	47.5	40	47.1
Medical Center	17	44.7	17	63.0	1	20.0	133	34.1	168	36.5
College-Wide	102	38.2	172	52.9	38	32.3	357	19.8	669	26.5

Note: Totals may not add since "Homestead" and "Other" campus locations are not included because of their small size. Based on 2,523 responses with 63 missing.

Table 3

## Ages of All Children Under Twelve

Years Old	Campus						College-Wide
	North	Hialeah Center	South	Wolfson	InterAmerican	Medical Center	
0 - 2	24	5	77	41	4	49	200
3 - 5	32	4	78	38	8	43	203
6 - 8	20	4	50	21	8	26	129
9 - 11	9	0	37	10	6	18	80
Total	85	13	242	110	26	136	612

Note: Totals may not add since "Homestead" and "Other" campus locations are not included because of their small size. About 9% of the 674 respondents who said they had children under 12 did not give their ages.

Table 4

## Demand for Child Care by Campus Over Next 3 - 5 Years

Campus	Number in Group	Number Needing Care	Percent of Total
North	390	147	37.7
Hialeah Center	17	10	58.8
South	1,175	386	32.9
Wolfson	394	184	46.7
InterAmerican	88	40	45.6
Medical Center	453	215	47.5
College-Wide	2,525	985	39.0

Note: Totals may not add since "Homestead" and "Other" campus locations are not included because of their small size.

Table 5

Number and Percent of Those With Children Under 12  
Who Would Use Facilities at M-DCC

Campus	Number in Group	Number Who Would Use	Percent
North	97	78	80.4
Hialeah Center	8	8	100.0
South	220	187	85.0
Wolfson	110	88	80.0
InterAmerican	34	29	85.3
Medical Center	153	118	77.1
College-Wide	625	510	81.6

Note: Totals may not add since "Homestead" and "Other" campus locations are not included because of their small size. Responses were missing from 51 people.

Table 6

Current Child Care Arrangements  
For Those With Children Under 12

Arrangements	Number	Percent
Live-in Care	110	17.1
Relative	143	22.3
Private Home	96	15.0
Child Care Center	195	30.4
Other	98	15.2

Note: Based on 642 responses with 34 missing.

Table 7

Degree of Satisfaction With Present Child Care Arrangements  
For Those With Children Under 12

Campus	Very Satisfied		Somewhat Satisfied		Somewhat Dissatisfied		Very Dissatisfied		Total	
	Number	Percent	Number	Percent	Number	Percent	Number	Percent	Number	Percent
North	41	41.9	45	45.9	7	7.1	5	5.1	98	100.0
Hialeah Center	3	37.5	5	62.5	0	0.0	0	0.0	8	100.0
South	83	38.4	88	40.7	33	15.3	12	5.6	216	100.0
Wolfson	46	43.8	40	38.1	16	15.2	3	2.9	105	100.0
InterAmerican	8	25.0	12	37.5	5	15.6	7	21.9	32	100.0
Medical Center	60	38.5	70	44.9	18	11.5	8	5.1	156	100.0
College-Wide	242	39.1	262	42.4	79	12.8	35	5.7	618	100.0

Note: Totals may not add since "Homestead" and "Other" campus locations are not included because of their small size. Responses were missing from 58 people.

Table 8

Number and Percent of Those With Children Under 12  
Who Changed Child Care Arrangements in Past Year

Campus	None		Once		Two or More Times		Total	
	Number	Percent	Number	Percent	Number	Percent	Number	Percent
North	52	53.6	21	21.7	24	24.7	97	100.0
Hialeah Center	3	50.0	0	0.0	3	50.0	6	100.0
South	90	39.7	62	27.3	75	33.0	227	100.0
Wolfson	53	46.9	26	23.0	34	30.1	113	100.0
InterAmerican	17	44.7	7	18.4	14	36.9	38	100.0
Medical Center	67	40.6	46	27.9	57	31.5	165	100.0
College-Wide	283	43.6	164	25.3	202	31.1	649	100.0

Note: Totals may not add since "Homestead" and "Other" campus locations are not included because of their small size. Responses were missing from 27 people.

Table 9

Reasons for Changing Child Care Arrangements  
For Those With Children Under 12

Reasons	Number	Percent
Programs/Activities	110	16.7
Times/Location	204	30.9
Staff	55	8.3
Facilities	74	11.2
Cost	147	22.3
Other	70	10.6

Note: Based on 663 responses with 13 missing.

Table 10

Number and Percent of Those With Children Under 12  
Who Missed Work/Class  
Due to Lack of Child Care

Campus	Total	Number	Percent
North	99	50	50.5
Hialeah Center	8	5	62.5
South	227	134	59.0
Wolton	112	63	56.3
InterAmerican	40	30	75.0
Medical Center	167	88	52.7
College-Wide	656	370	56.4

Note: Totals may not add since "Homestead" and "Other" campus locations are not included because of their small size. Responses were missing from 20 people.

Table 11

Number and Percent of Those With Children Under 12  
Who Brought Child to Work or School

Campus	Total	Number	Percent
North	99	39	39.4
Hialeah Center	7	6	85.7
South	229	98	42.8
Wolfson	112	37	33.0
InterAmerican	39	20	51.3
Medical Center	166	63	38.0
College-Wide	655	264	40.3

Note: Totals may not add since "Homestead" and "Other" campus locations are not included because of their small size. Responses were missing from 21 people.

Table 12

Number and Percent of Those With Children Under 12  
Whose Work or School Has Suffered  
As Result of Child Care Concerns

Campus	Total	Number	Percent
North	99	50	50.5
Hialeah Center	8	7	87.5
South	226	140	62.0
Wolfson	114	67	58.8
InterAmerican	37	28	75.7
Medical Center	165	107	64.9
College-Wide	652	399	61.2

Note: Totals may not add since "Homestead" and "Other" campus locations are not included because of their small size. Responses were missing from 24 people.



Table 13

## Reasons for Interest in Campus Child Care Facility

Reasons	Number	Percent
Close proximity to Child in Case of Illness/Emergency	387	76.0
Worry Less When Child is Nearby	274	53.8
Reduced Absenteeism/Tardiness	267	52.5
More Frequent Visits With Child	241	47.4
More Convenient for Transportation	329	64.6
Child will Interact With Co-Workers and Students' Children	176	34.6
Other	35	6.9

Note: Based on 509 responses with 4 missing.

Table 14

Types of Regular Care Needed  
For Those Interested in M-DOC Child Care

Campus	Drop-Off		Full-Day		Half-Day		After School		K-2	
	Number	Percent	Number	Percent	Number	Percent	Number	Percent	Number	Percent
North	23	29.5	40	51.3	6	7.7	25	32.0	16	20.5
Hialeah Center	6	75.0	2	25.0	1	12.5	3	37.5	1	12.5
South	75	40.1	96	51.3	22	11.8	53	28.3	43	23.0
Wolfson	22	25.3	56	64.4	14	16.1	17	19.5	13	14.9
InterAmerican	12	42.9	10	35.7	7	25.0	13	46.4	1	3.6
Medical Center	60	51.7	41	35.3	15	12.9	22	19.0	5	4.3
College-Wide	200	39.5	245	48.4	65	12.9	133	26.3	79	15.6

Note: Totals may not add since "Homestead" and "Other" campus locations are not included because of their small size. Based on 506 responses with 7 missing.

Table 15

Number and Percent Needing Child Care  
Monday Through Friday  
For Those Interested in M-DCC Child Care

Campus	Number	Percent
North	62	79.5
Hialeah Center	7	87.5
South	164	87.7
Wolfson	78	89.7
InterAmerican	23	85.2
Medical Center	78	67.2
College-Wide	413	81.9

Note: Totals may not add since "Homestead" and "Other" campus locations are not included because of their small size. Based on 505 responses with 8 missing.

Table 16

Time of Day That Child Care is Needed  
For Those Interested in M-DCC Child Care

Campus	Morning		Afternoon		Evening	
	Number	Percent	Number	Percent	Number	Percent
North	55	70.5	55	70.5	30	38.5
Hialeah Center	3	37.5	0	0.0	5	62.5
South	148	79.1	150	80.2	65	34.8
Wolfson	75	85.2	61	69.3	33	37.5
InterAmerican	18	64.3	16	57.1	13	46.4
Medical Center	86	73.5	71	60.7	38	32.5
College-Wide	387	76.2	354	69.7	185	36.4

Note: Totals may not add since "Homestead" and "Other" campus locations are not included because of their small size.

Table 17

Meals That Would Need to be Provided  
For Those Interested in M-DCC Child Care

Campus	None		Breakfast		Lunch		Dinner	
	Number	Percent	Number	Percent	Number	Percent	Number	Percent
North	10	12.8	43	55.1	55	70.5	23	29.5
Hialeah Center	2	25.0	4	50.0	5	62.5	4	50.0
South	37	19.8	59	31.6	123	65.8	28	15.0
Wolfson	10	11.4	49	55.7	64	72.7	23	26.1
InterAmerican	9	32.1	6	21.4	16	57.1	8	28.6
Medical Center	23	19.8	48	41.4	74	63.8	27	23.3
College-Wide	91	18.0	211	41.6	338	66.7	114	22.5

Note: Totals may not add since "Homestead" and "Other" campus locations are not included because of their small size. Based on 507 responses with 6 missing.

Table 18

Types of Intermittent Child Care Needed  
For Those Interested in M-DCC Child Care

Campus	Sick Care		Teacher Workdays School Holidays		School Vacations	
	Number	Percent	Number	Percent	Number	Percent
North	49	66.2	46	62.2	44	58.7
Hialeah Center	3	42.9	0	0.0	0	0.0
South	119	68.0	135	75.4	119	65.8
Wolfson	57	73.1	54	65.9	54	65.9
InterAmerican	16	66.7	18	69.2	14	58.3
Medical Center	71	62.3	69	60.5	55	48.7
College-Wide	316	66.7	324	66.8	287	59.2

Note: Totals may not add since "Homestead" and "Other" campus locations are not included because of their small size. Based on 485 responses 28 missing.

Table 19

Current Cost of Child Care Per Child Per Week  
For Those Interested in M-DCC Child Care

Cost Per Week	Number	Percent
\$ 0 - \$ 25	128	27.3
\$ 26 - \$ 50	146	31.1
\$ 51 - \$ 75	105	22.4
\$ 76 - \$100	42	9.0
\$101 - \$125	14	3.0
\$126 - \$150	11	2.4
\$151 - \$175	5	1.1
\$176 - \$200	4	0.9
Over \$200	14	3.0

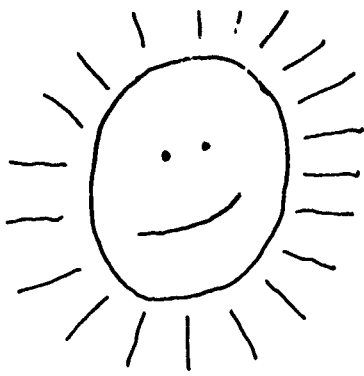
Note: Based on 469 responses with 44 missing.

Table 20

Family Income Per Year  
For Those Interested in M-DCC Child Care

Income Per Year	Number	Percent
Less Than \$10,000	81	16.7
\$10,000 - \$15,000	57	11.8
\$16,000 - \$20,000	65	13.4
\$21,000 - \$25,000	38	7.9
\$26,000 - \$30,000	59	8.1
\$31,000 - \$35,000	37	7.6
Over \$35,000	167	34.5

Note: Based on 484 responses with 29 missing.



Miami-Dade Community College

Appendix  
(1 of 3)

# Task Force on Child Care

February 15, 1990

Dear Employee and Students of Miami-Dade Community College:

Miami-Dade Community College is involved in a comprehensive effort to improve the quality of teaching and learning at our institution. As part of that effort, we are studying many aspects of our policies, procedures, and programs with the goal of enhancing the instructional and support services we provide for students and employees of the College.

Being sensitive to the needs of today's families, we understand that child care is a critical issue for parents who wish to return to school, as well as for employees and future employees who wish to work in an environment which is supportive of family life. We are, therefore, exploring a variety of ways in which Miami-Dade can better meet the needs of our students' and employees' families.

In order to accomplish this task effectively, however, we need your cooperation in completing the attached survey. Please take just a few minutes to give us the data which will assist us to serve you better. Please return your completed survey by Thursday, March 1, 1990 to:

Marcia Belcher  
Institutional Research  
District, South Campus

Sincerely,

Robert H. McCabe  
President  
Miami-Dade Community College

eh



**Miami-Dade Community College**

# CHILD CARE NEEDS SURVEY

The purpose of this survey is to discover the extent of the need for Child Care services for Miami-Dade employees and students. Your responses will be used anonymously by the College Task Force on Child Care Committee to devise a plan to serve M-DCC employees' and students' needs.

1. Are you (please check one)
  - <sup>(1)</sup>Faculty
  - <sup>(2)</sup>Staff
  - <sup>(3)</sup>Administrator
  - <sup>(4)</sup>Student
2. Are you (please check one)
  - <sup>(1)</sup>Full Time
  - <sup>(2)</sup>Part-Time
3. Campus Location: (please check one)
  - <sup>(1)</sup>North
  - <sup>(2)</sup>North/Hialeah
  - <sup>(3)</sup>South
  - <sup>(4)</sup>Wolfson/Downtown
  - <sup>(5)</sup>Wolfson/InterAmerican
  - <sup>(6)</sup>Medical
  - <sup>(7)</sup>Homestead
  - <sup>(8)</sup>Other \_\_\_\_\_
4. Your Age:
  - <sup>(1)</sup>less than 20
  - <sup>(2)</sup>20 - 29
  - <sup>(3)</sup>30 - 39
  - <sup>(4)</sup>40 - 49
  - <sup>(5)</sup>50 - 59
  - <sup>(6)</sup>60 or over
5. Ethnic Background
  - <sup>(1)</sup>Black Non-Hispanic
  - <sup>(2)</sup>White Non-Hispanic
  - <sup>(3)</sup>Hispanic
  - <sup>(4)</sup>Other \_\_\_\_\_
6. Gender:
  - <sup>(1)</sup>Male  <sup>(2)</sup>Female
7. Do you anticipate needing Child Care within the next three to five years?
  - <sup>(1)</sup>Yes  <sup>(2)</sup>No
8. Do you NOW have children between the ages of newborn to 12 years old?
  - <sup>(1)</sup>Yes — Please continue the survey
  - <sup>(2)</sup>No — Thank you.
9. What are the ages of each child under 12?
  - First Child's age: \_\_\_\_\_ (9-10)
  - Second Child's age: \_\_\_\_\_ (11-12)
  - Third Child's age: \_\_\_\_\_ (13-14)
  - Fourth Child's age: \_\_\_\_\_ (15-16)
  - Fifth Child's age: \_\_\_\_\_ (17-18)
10. How many times in the past year have you changed your Child Care arrangements?
  - <sup>(1)</sup>None  <sup>(2)</sup>Once (19)
  - <sup>(3)</sup>Two or more times
11. If you changed your arrangements, why did you do it? (Check all that apply) (20-25)
  - Program/Activities
  - Times/Location
  - Staff
  - Facilities
  - Cost
  - Other \_\_\_\_\_
12. What type of Child Care arrangements do you now have? (Check one) (26)
  - <sup>(1)</sup>Live-in care (e.g., sibling, grandparent, nanny)
  - <sup>(2)</sup>Relative
  - <sup>(3)</sup>Private home
  - <sup>(4)</sup>Child Care Center
  - <sup>(5)</sup>Other \_\_\_\_\_
13. Have you missed time at work or class during the past 12 months due to lack of Child Care? (27)
  - <sup>(1)</sup>Yes  <sup>(2)</sup>No
14. Have you brought your child with you to work or to school during the past 12 months due to lack of Child Care? (28)
  - <sup>(1)</sup>Yes  <sup>(2)</sup>No
15. Do you feel that your work or school has suffered as a result of being concerned about the care of your child/children? (29)
  - <sup>(1)</sup>Yes  <sup>(2)</sup>No

Please return the survey now.  
See last page for instructions.

16. How satisfied are you with your present Child Care arrangements? (30)

<sup>(1)</sup>Very Satisfied

<sup>(2)</sup>Somewhat Satisfied

<sup>(3)</sup>Somewhat Dissatisfied

<sup>(4)</sup>Very Dissatisfied

17. If you are dissatisfied, please check the reasons for this: *(Check all that apply)* (31-36)

Educational Program

Times/Location

Staff

Facilities

Cost

Other \_\_\_\_\_

18. Would you use Child Care facilities at or near M-DCU if they were available? (37)

<sup>(1)</sup>Yes — *Please continue survey.*

<sup>(2)</sup>No — *Thank You. Please return the survey now.*

*See last page for instructions.*

19. What are the reasons you would be interested in a Child Care facility on or near campus? *(Check all that apply)* (38-44)

Close proximity to child in case of illness or emergency

Worry less when child is nearby

Absenteeism and tardiness would be reduced

More frequent visits with child (e.g. lunch)

More convenient as far as transportation is concerned.

Child will interact with co-workers' and students' children in an on-campus center.

Other \_\_\_\_\_

20. What time of day would you use Child Care *(check all that apply)* (45-47)

Morning

Afternoon

Evening

21. What meals would you need to have provided for your child *(check all that apply)*. (48-51)

None

Breakfast

Lunch

Dinner

22. On what days would you use Child Care? *(check all that apply)* (52-58)

<sup>(52)</sup>Monday thru Friday

<sup>(53)</sup>Monday  <sup>(56)</sup>Tuesday

<sup>(54)</sup>Wednesday  <sup>(57)</sup>Thursday

<sup>(55)</sup>Friday  <sup>(58)</sup>Saturday

23. What type of Child Care arrangements do you need? *(check all that apply)* (59-64)

Drop-off for several hours while working or taking classes

full-day care

half-day care

after school care

K-2 public school satellite

Other need *(please describe)*

\_\_\_\_\_

\_\_\_\_\_

24. Would you use sick care (i.e., place to bring sick child so you can continue work/school)? (65)

<sup>(1)</sup>Yes  <sup>(2)</sup>No

25. Do you have a disabled child for whom you need Child Care services? (66)

<sup>(1)</sup>Yes  <sup>(2)</sup>No

If yes, what is the disability? \_\_\_\_\_

\_\_\_\_\_

26. Would you be willing to use a Child Care facility on or near the campus for your disabled child? (67)

<sup>(1)</sup>Yes  <sup>(2)</sup>No

27. Would you use Child Care during teacher workdays/school holidays? (68)

<sup>(1)</sup>Yes  <sup>(2)</sup>No

28. Would you use Child Care during School Vacations? (69)

<sup>(1)</sup>Yes  <sup>(2)</sup>No

29. How much do you currently pay for Child Care per child per week? (70)

<sup>(1)</sup>\$ 0-25  <sup>(6)</sup>\$126-150

<sup>(2)</sup>\$26-50  <sup>(7)</sup>\$151-175

<sup>(3)</sup>\$51-75  <sup>(8)</sup>\$176-200

<sup>(4)</sup>\$76-100  <sup>(9)</sup>Over \$200

<sup>(5)</sup>\$101-125

30. What is your total family income before taxes? (71)

<sup>(1)</sup>Less than \$10,000

<sup>(2)</sup>\$10,000 to \$15,000

<sup>(3)</sup>\$16,000 to \$20,000

<sup>(4)</sup>\$21,000 to \$25,000

<sup>(5)</sup>\$26,000 to \$30,000

<sup>(6)</sup>\$31,000 to \$35,000

<sup>(7)</sup>Over \$35,000

Please return this survey to:  
 Marcia Belcher  
 Institutional Research  
 South Campus

Thank you.





# Miami-Dade Community College

MIAMI-DADE IS AN EQUAL ACCESS/EQUAL OPPORTUNITY COMMUNITY COLLEGE  
AND DOES NOT DISCRIMINATE ON THE BASIS OF HANDICAP 4/88