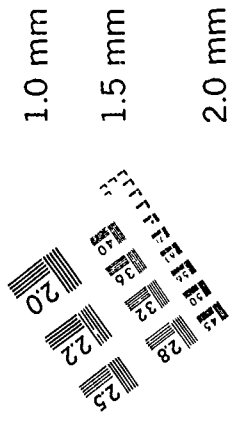
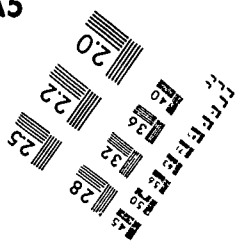


1.0 mm

1.5 mm
 ABCDEFGHIJKLMNOPQRSTUVWXYZ
 abcdefghijklmnopqrstuwxvz1234567890

2.0 mm
 ABCDEFGHIJKLMNOPQRSTUVWXYZ
 abcdefghijklmnopqrstuwxvz
 1234567890

A5



DOCUMENT RESUME

ED 320 341

EC 231 150

AUTHOR Hall, Suzanne E., Ed.; Garvey, Geri M., Ed.
 TITLE Directory of Catholic Special Educational Programs and Facilities, 1989.
 INSTITUTION National Catholic Educational Association, Washington, D.C.
 REPORT NO ISBN-1-55833-012-7
 PUB DATE 89
 NOTE 101p.
 AVAILABLE FROM National Catholic Educational Association, 1077 30th St., N.W., Suite 100, Washington, DC 20008-3852 (\$8.00).
 PUB TYPE Reference Materials - Directories/Catalogs (132)
 EDRS PRICE MF01/PC05 Plus Postage.
 DESCRIPTORS *Catholic Schools; Day Schools; *Disabilities; Elementary Secondary Education; Group Homes; Private Education; Residential Schools; *Special Education; *Special Programs; *Special Schools; Vocational Education

ABSTRACT

The directory provides listings of Catholic school programs and facilities for special students, using information gathered from surveys sent to diocesan offices, Catholic Charities offices, and school offices. The listings are arranged alphabetically by state and then diocese. For each listing, the following information is supplied: name, address, and telephone number; type of facility (residential, day school, group home, or vocational work training); gender served; exceptionalities served; administration; purpose; admission policies; enrollment; and special services. Indices provide access to directory information regarding residential facilities; day schools; group homes; vocational training programs; and programs/facilities serving the mentally retarded/developmentally disabled, the learning disabled, the emotionally and/or socially maladjusted, the hearing impaired, the speech impaired, and the vision impaired. (JDD)

 * Reproductions supplied by EDRS are the best that can be made *
 * from the original document. *

ED320341

U.S. DEPARTMENT OF EDUCATION
 Office of Educational Research and Improvement
 EDUCATIONAL RESOURCES INFORMATION
 CENTER (ERIC)

This document has been reproduced as received from the person or organization originating it.

Minor changes have been made to improve reproduction quality.

• Points of view or opinions stated in this document do not necessarily represent official OERI position or policy.

ERIC
 Full Text Provided by ERIC

EQ 231150

"PERMISSION TO REPRODUCE THIS MATERIAL HAS BEEN GRANTED BY

Phyllis D. Kabua

TO THE EDUCATIONAL RESOURCES INFORMATION CENTER (ERIC)."

DIRECTORY OF CATHOLIC SPECIAL EDUCATIONAL PROGRAMS AND FACILITIES 1989

Suzanne E. Hall, SNDdeN
Geri M. Garvey
Editors

National Catholic Educational Association
Washington, DC

Copyright (c) 1989 by the National Catholic Educational Association, Washington, D.C.
All rights reserved, including the right of reproducing in whole or part in any form.
Published in the United States of America by the National Catholic Educational Association.

ISBN #1-55833-012-7

INTRODUCTION

This directory is an updated version of the *Directory of Catholic Special Facilities*, 1979 edition. The information and references included herein have proven to be a valuable resource not only to teachers and administrators, but also to parents of special students. In seeking appropriate placements in Catholic settings many parents have requested assistance from our office. It is our sincere hope that you, at the local level, will find the enclosed data helpful as you work with parents in finding the best possible placement for their children.

Over the past several years, surveys have been sent to diocesan offices, Catholic Charities offices, and school offices for their input. The data gathered from these surveys is enclosed. However, given the tenuous position of some special educational programs and the on-going changes that are occurring in delivery systems we understand that the data enclosed herein may be out of date very soon. Therefore, we would appreciate and invite your response and/or update of this information.

Suzanne E. Hall, SNDdeN
Executive Director
Special Educational Services

Geri M. Garvey
Administrative Assistant

TABLE OF CONTENTS

I. Schema (Explanation of individual listing)	6
II. Alphabetical listing of Catholic Special Educational Programs and Facilities by State and Diocese	7
III. Indices by Descriptors	
A. Residential Facilities	68
B. Day Schools.....	73
C. Group Homes	79
D. Vocational Training Programs	81
E. Programs/Facilities serving the Mentally Retarded/ Developmentally Disabled	83
F. Programs/Facilities serving the Learning Disabled	88
G. Programs/Facilities serving the Emotionally and/or Socially Maladjusted	92
H. Programs/Facilities serving the Hearing Impaired.....	96
I. Programs/Facilities serving the Speech Impaired	98
J. Programs/Facilities serving the Vision Impaired	100

I. SCHEMA

Please read the following format which is used for all listings in this directory. The listings are classified by *State* and *Diocese* and then arranged alphabetically within the diocese.

S A M P L E (fictional listing)

COLORADO

Arch/Diocese of Denver

St. Coletta's School (name)

4250 South Wayne Avenue (address)

Denver, CO 48730

(303) 498-2068 (phone)

TYPE OF FACILITY: Residential, Day School, Group Home, Vocational Work Training (one or more listings may be noted)

GENDER SERVED: Male or Female or Coed

EXCEPTIONALITY: Programs/Facilities were asked to indicate the primary populations they served as the first listing choice.

Mentally Retarded/Developmentally Delayed;

(category descriptors indicate mild, moderate or severe conditions served)

Learning Disabled;

Emotionally and/or Socially Maladjusted;

Speech, Hearing and/or Vision Impaired;

Autistic;

Orthopedically Handicapped

Multiply-handicapped

(Other categories may be noted in some instances)

ADMINISTRATION: Name of religious order or other organization sponsoring program/facility.

PURPOSE: Brief statement of philosophy of program/facility.

ADMISSION POLICIES: Brief listing of pertinent admission policies. For detailed information, contact program/facility.

ENROLLMENT: Number of students in program/facility.

SERVICES: Listing of special services provided by program/facility.

Alabama

Archdiocese of Mobile

Father Walter Memorial Child Care Center

2815 Forbes Drive
Montgomery, AL 36110
205-262-6421

Type of Facility: Residential

Gender Served: Coed

Exceptionality: Mentally Retarded (severe)

Administration: (Private) Resurrection Fathers (CR)

Purpose: Skilled nursing facility for mentally and physically handicapped children.

Admission Policies: CA: birth to 12 years. No denominational restrictions or social habit requirements.

Enrollment: capacity - 44

St. Mary's Home for Children

4350 Moffat Road
Mobile, AL 36618
205-344-7733

Type of Facility: Residential; Group Home

Gender Served: Coed

Exceptionality: Emotionally and/or Socially Maladjusted; Mentally Retarded (mild)

Administration: Diocesan Office, Archdiocese of Mobile

Purpose: To care for children who because of sexual or physical abuse or family crisis need to be away from their families.

Admission Policies: Referral from agencies. Social summary, psychiatric or psychological evaluations, medical records required.

Enrollment: Residential - 44; Emergency Shelter - 10

Services: Special tutoring program; social work, group living therapy, recreation and enrichment activity, psychiatric consultation.

California

Archdiocese of Los Angeles

Child Study Center of St. John's Hospital

1339 20th Street
Santa Monica, CA 90404
213-829-8921

Type of Facility: Day School

Gender Served: Coed

Exceptionality: Mentally Retarded/Developmentally Disabled

Administration: St. John's Hospital and Health Center

Purpose: To provide diagnosis, evaluation and treatment of children between infancy and 18 years who are emotionally disturbed, mentally retarded and neurologically handicapped.

Admission Policies: Consult facility; all programs are non-sectarian.

Enrollment: 40-45

Services: Parent counseling; special education evaluation; recreation; summer camp.

Diocese of San Diego

St. Madeleine Sophie's Training Center

2111 East Madison Avenue

El Cajon, CA 92019

619-442-5129

Type of Facility: Vocational Training; Adult Education

Gender Served: Coed

Exceptionality: Mentally Retarded/Developmentally Disabled (mild to moderately severe), Autistic; Orthopedically Handicapped

Administration: (Private) Religious of the Sacred Heart

Purpose: To give maximum opportunity to enable the handicapped to be mainstreamed into the life of the community while developing each person's ability to achieve his/her potential.

Admission Policies: Must have all basic self-help skills and an interview with the Program Director.

Enrollment: 115

Services: Speech; catering, choral, swimming, community-based instruction, supported work; social awareness, arts and crafts; physical education.

Diocese of San Jose

Children's Counseling Center/Catholic Charities

1250 Pomeroy Avenue

Santa Clara, CA 95051

408-983-1004

Type of Facility: Day Treatment Program

Gender Served: Coed

Exceptionality: Emotionally and/or Socially Maladjusted (certified special education)

Administration: Catholic Charities as a contract provider for County Mental Health.

Purpose: The primary purpose is to modify the behavior of children with severe emotional/behavioral problems who are unable to function in regular school so that they can return to class.

Admission Policies: CA: 5-12 years. Parents must agree to weekly family counseling.

Enrollment: capacity - 12

Services: Day treatment (including educational component) weekdays from 8:30 am to 1:30 pm. Family counseling appointments throughout week.

Diocese of Santa Rosa

Hanna Boys Center

P.O. Box 100

Sonoma, CA 95476

707-996-6767

Type of Facility: Residential

Gender Served: Male

Exceptionality: Emotionally and/or Socially Maladjusted

Administration: Board of Directors

Purpose: To assist boys who are in distress due to family problems.

Admission Policies: CA: 10-15 years. No denominational restrictions. Social habit requirements - normal.

Enrollment: 72

Services: Counseling and guidance.

Colorado

Archdiocese of Denver

Excelsior Youth Centers

15001 East Oxford
Aurora, CO 80014
303-693-1550

Type of Facility: Residential; Extended Care

Gender Served: Female

Exceptionality: Emotionally and/or Socially Maladjusted; Mentally Retarded; Speech, Hearing, and Visually Impaired; Learning Disabled; Orthopedically Handicapped

Administration: Non-profit

Purpose: Long-term treatment for psychiatrically and behaviorally disturbed girls.

Admission Policies: CA: 12-18 years; IQ: 80 or higher. No pregnant or psychotic admissions.

Enrollment: capacity - 141

Services: Special education and full curriculum for Jr/Sr High School on grounds; intensive treatment for severely disturbed residents; individual and family therapy.

Havern School

4000 South Wadsworth Blvd.
Littleton, CO 80123
303-986-4587

Type of Facility: Day School

Gender Served: Coed

Exceptionality: Learning Disabled

Administration: (Private) Sisters of Loretto

Purpose: To teach children whose basic learning capabilities are intact, but who have a definite learning disability due to a psycho-neurological dysfunction.

Admission Policies: CA: 5-12 years; IQ range: 90 and up (flexible)

Enrollment: 65

Services: Speech/language therapy; occupational therapy. Instruction is actually tutorial with the educational program individually tailored to the student.

Mt. St. Vincent Home

4159 Lowell Blvd.
Denver, CO 80211
303-458-7220

Type of Facility: Residential

Gender Served: Coed

Exceptionality: Emotionally and/or Socially Maladjusted

Administration: (Private) Sisters of Charity of Leavenworth (SCL), affiliated with Denver Catholic Charities

Purpose: Residential program for school age children with emotional and social difficulties. Special class on the grounds with goal of preparing child for community schools.

Admission Policies: CA: 5-13 years; IQ: normal range

Enrollment: Boys - 35, Girls - 10

Services: On-grounds school; individual, group and family therapy, medical and dental care, supervised recreation; special summer program.

Connecticut

Archdiocese of Hartford

Gengras Center - St. Joseph's College

1678 Asylum Avenue
West Hartford, CT 06117
203-232-5616

Type of Facility: Day School; Pre-school; Vocational Work Training

Gender Served: Coed

Exceptionality: Mentally Retarded/Developmentally Disabled (mild, moderate), Learning Disabled, Emotionally and/or Socially Maladjusted; Language Impaired; Orthopedically Handicapped

Administration: Auspices of St. Joseph's College

Purpose: Education and training of mentally retarded children and adolescents, the learning disabled, and multiply-handicapped.

Admission Policies: CA: 3-21 years. Consult facility for further information.

Enrollment: capacity - 112

Services: Speech/language therapy, psychological services, social services; physical education, vocational program.

Highland Heights-St. Francis Home for Children

651 Prospect Street, Box 1224
New Haven, CT 06505
203-777-5513

Type of Facility: Residential; Extended Day Treatment

Gender Served: Coed

Exceptionality: Emotionally and/or Socially Maladjusted; Learning Disabled

Administration: (Private) Sisters of Mercy

Purpose: To provide residential treatment care for emotionally disturbed children. Extended day treatment services are provided for children living at home.

Admission Policies: CA: 4-1/2-17 years, IQ range. 80 to superior (flexible). No racial or religious restrictions. Self-care required.

Enrollment: capacity - 72

Services: Milieu therapy, individual and group psychotherapy, family therapy, special education service in 4 residential extended day treatment centers; foster care and adoption.

Diocese of Norwich

Mount Saint John, Inc.

135 Kirtland Street
Deep River, CT 06417
203-526-5391

Type of Facility: Residential; Day Treatment; Group Home; Emergency Shelter

Gender Served: Male

Exceptionality: Emotionally and/or Socially Maladjusted; Learning Disabled

Administration: Diocese of Norwich

Purpose: Treatment center for emotionally/socially maladjusted and/or learning disabled boys.

Admission Policies: CA: 11-15-1/2 years (grades 6-10). No denominational restrictions.

Enrollment: 75

Services: Clinical service, structured group living, individual and special education, aftercare, vocational training, activities; individual treatment plans; psychological/psychiatric consultations.

Delaware

Diocese of Wilmington

Benedictine School for Exceptional Children, Inc.

R.R. 1, Box 182
Ridgely, MD 21660-9742
301-634-2112

(see description of listing under State of Maryland)

Our Lady of Grace Home for Children

487 Chestnut Hill Road
Newark, DE 19713
302-738-4658

Type of Facility: Residential; Day School

Gender Served: Coed

Exceptionality: Emotionally and/or Socially Maladjusted

Administration: (Private) Felician Sisters

Purpose: To provide a home and care for children that are neglected, abused and deprived

Admission Policies: CA: 6-12 years Home open to anyone in need. No restrictions in regard to race, color or creed.

Enrollment: capacity -16

Services: Development of the whole child emotionally, mentally, morally, socially and spiritually.

Seton Villa and Siena Hall, Inc.

c/o 2307 Kentmere Parkway
Wilmington, DE 19806
302-656-2183

Type of Facility: Group Home

Gender Served: Coed

Exceptionality: Emotionally and/or Socially Maladjusted

Administration: Catholic Charities, Diocese of Wilmington

Purpose: To provide youth with an opportunity to relate to adults, to develop self-worth, trust and respect for others; educational advancement; occupational and employment experience

Admission Policies: Seton Villa - CA: 5-18 years; Siena Hall - CA: 5-14 years

Enrollment: Seton Villa - 9; Siena Hall - 10

Services: Clinical social work services, psychological and psychiatric diagnosis, educational consultation.

District of Columbia

Archdiocese of Washington

Lt. Joseph P. Kennedy Institute

801 Buchanan Street, NE
Washington, DC 20017
202-529-7600

Type of Facility: Day School/Pre-school, Evening Continuing Education, Vocational Training, Group Home, Day Treatment

Gender Served: Coed

Exceptionality: Mentally Retarded; Emotionally Disturbed; Developmentally Disabled

Administration: Private

Purpose: To provide individualized programming to enhance the image, status and quality of life of children and adults with developmental disabilities. Emphasis on skills for self-sufficiency.

Admission Policies: Referrals from government agencies and private parties, testing, interview. CA. 6 months-21 years for school programs; 21 years and older for others.

Enrollment: No limit

Services: Therapeutic programs; employment training, placement and follow-up, community living alternatives, advocacy and self-advocacy; training for community integration.

St. Gertrude's School

4801 Sargent Road, NE
Washington, DC 20017
202-526-7676

Type of Facility: Residential; Day School; Pre-vocational Training

Gender Served: Female

Exceptionality: Mentally Retarded/Developmentally Disabled (mild, moderate), Learning Disabled, Emotionally and/or Socially Maladjusted; Speech Impaired

Administration: (Private) Order of St. Benedict

Purpose: To educate girls to their fullest potential.

Admission Policies: CA: 6-19 years

Enrollment: capacity - 40

Services: Academics and pre-vocational training, speech therapy, adaptive physical education, perceptual motor skills; counseling; arts and crafts; life skills.

Florida

Archdiocese of Miami

Boystown of Florida

11400 S.W. 137 Avenue
Miami, FL 33186
305-385-1722

Type of Facility: Residential; Group Home

Gender Served: Male

Exceptionality: Emotionally and/or Socially Maladjusted

Administration: Catholic Community Services, Inc.

Purpose: To mold mature, responsible and contributing citizens.

Admission Policies: Screened through our Social Work Department.

Enrollment: 43

Services: Social work; psychological consultation, education, religious instruction, vocational training, recreational therapy.

Marian Center Services-Developmentally Handicapped

15701 Northwest 37th Avenue
Opa Locka, FL 33054
305-625-8354

Type of Facility: Residential; Day School; Vocational Work Training

Gender Served: Coed (Residential - Female only)

Exceptionality: Mentally Retarded/Developmentally Disabled (all)

Administration: (Private) Sisters of St. Joseph Cottolengo

Purpose: Training and education of mentally retarded.

Admission Policies: Services for residents of Archdiocese of Miami, CA. 2-21 years, severe to borderline retardation.

Enrollment: 120

Services: Care, education and training of mentally retarded, vocational work training, housing when necessary, counseling for families and referral services.

Diocese of Orlando

Morning Star School

954 Leigh Avenue
Orlando, FL 32804
407-295-3077

Type of Facility: Day School

Gender Served: Coed

Exceptionality: Mentally Retarded/Developmentally Disabled

Administration: Diocesan Department of Special Education staffed by Sisters of St. Joseph of St. Augustine (SSJ)

Purpose: Catholic education with emphasis on the reception of the sacraments. To educate those students with specific learning disabilities and the educable mentally retarded.

Admission Policies: School age; IQ range: 50 upward. No denominational restrictions. Social habit requirements: self-care.

Enrollment: capacity - 50

Services: Occupational therapy; regular educational program developed for each individual child.

Diocese of St. Augustine

Harbor House Group Homes of Northeast Florida

700 Arlington Road
Jacksonville, FL 32211
904-634-0395

Type of Facility: Group Home

Gender Served: Coed

Exceptionality: Mentally Retarded/Developmentally Disabled

Administration: Catholic Charities

Purpose: Family Christ-centered residential services.

Admission Policies: CA: 18 years and above; mild mental retardation.

Enrollment: 22

Services: Residential care, emphasizing relationships with disabled persons, provide social, spiritual and recreational opportunities.

Morning Star School

725 Mickler Road
Jacksonville, FL 32211
904-721-2144

Type of Facility: Day School

Gender Served: Coed

Exceptionality: Learning Disabled (mild); Emotionally Handicapped, Emotionally and/or Socially Maladjusted, Slow Learner

Administration: Catholic Charities, Inc.

Purpose: To educate children diagnosed as being learning disabled, emotionally handicapped, or slow learner and return them to a regular classroom.

Admission Policies: CA: 4-14 years; updated psychological; IQ: 80 +; social habit requirements: self-care. No denominational restrictions.

Enrollment: capacity - 120

Services: Education; speech; counseling.

Diocese of St. Petersburg

Morning Star School

210 E. Linebaugh Avenue

Tampa, FL 33612

813-935-0232

Type of Facility: Day School

Gender Served: Coed

Exceptionality: Learning Disabled

Administration: Diocesan Office

Purpose: To meet educational needs of individual children with learning disabilities.

Admission Policies: CA: 6-16 years, interview, psychological and psychiatric reports, and application forms.

Enrollment: capacity - 90

Services: Spiritual, moral, social, and personal growth of each child is actively promoted. Students are prepared to become useful functioning members of community.

Morning Star School

4661 80th Avenue, North

Pinellas Park, FL 34665

813-544-6036

Type of Facility: Day School

Gender Served: Coed

Exceptionality: Learning Disabled; Mentally Retarded (mild)

Administration: (Private) Apostles of the Sacred Heart (ASCJ)

Purpose: To educate children with specific learning disabilities and the educable mentally handicapped, must be ambulatory.

Admission Policies: CA: 6-10 years, IQ range. 65 upward (flexible). No denominational restrictions. Child must function independently and safely in play, self care, eating.

Enrollment: capacity - 60

Services: Sensori-motor; speech; language.

Georgia

Archdiocese of Atlanta

Village of St. Joseph

2969 Butner Road, S.W.

Atlanta, GA 30331-0120

404-349-2400

Type of Facility: Residential

Gender Served: Coed

Exceptionality: Emotionally and/or Socially Maladjusted, Learning Disabled

Administration: Catholic Social Services

Purpose: Five-day residential treatment center.

Admission Policies: CA: 6-16 years, IQ. 80 and above. No denominational restrictions, parent must be able to come for family therapy twice a month.

Enrollment: capacity - 39.

Services: Special education classes (4 elementary, 2 high school), individual, group and family therapy, behavioral levels system.

Diocese of Savannah

Saint Mary's Home

2170 East Victory Drive
Savannah, GA 31404
912-236-7164

Type of Facility: Residential

Gender Served: Coed

Exceptionality: Mentally Retarded/Developmentally Disabled; Emotionally and/or Socially Maladjusted

Administration: Diocese of Savannah

Purpose: To meet the needs of those children who cannot be cared for in their own homes or in foster family homes.

Admission Policies: By referral. Psychological evaluation is required. No denominational restrictions.

Enrollment: 35-40

Services: Creative group living; spiritual guidance; medical, dental, psychiatric and psychological services, casework; educational and recreational programs.

Illinois

Diocese of Belleville

St. Jude School

2nd and Spring
Avison, IL 62216
618-228-7841

Type of Facility: Day School

Gender Served: Coed

Exceptionality: Mentally Retarded/Developmentally Disabled (mild, moderate)

Administration: Diocesan School Office

Purpose: Education of children in need of special services.

Admission Policies: CA: 5-21 years; developmentally disabled.

Enrollment: capacity - 15

Services: Academics; home economics; social skills; religion.

Archdiocese of Chicago

Bartlett Learning Center, Inc.

801 West Bartlett Road
Bartlett, IL 60103
312-289-4221

Type of Facility: Residential; Day School; Vocational Work Training;

Gender Served: Coed

Exceptionality: Mentally Retarded/Developmentally Disabled (mild, moderate), Learning Disabled, Socially Maladjusted

Administration: (Private) Sisters of St. Joseph and Third Order of St. Francis

Purpose: To serve the educable mentally handicapped and children with learning disabilities.

Admission Policies: Day school - CA: 3-16 years; Residential- CA: 6-12 years on admission. Services provided through age 21. Non-denominational. Student must be toilet trained, ambulatory and self-feeding.

Enrollment: capacity - 130

Services: Remedial academics; adaptive physical education; art therapy, speech pathology, occupational therapy.

House of the Good Shepherd

1126 West Grace Street

Chicago, IL 60613

312-935-3434

Type of Facility: Residential; Emergency Shelter

Gender Served: Female

Exceptionality: Emotionally and/or Socially Maladjusted

Administration: (Private) Sisters of the Good Shepherd (RGS)

Purpose: To assist women in need of shelter and provide counseling.

Admission Policies: No denominational restrictions.

Services: Social services; pre-school for younger children on grounds.

Loyola Day School

1043 West Loyola Avenue

Chicago, IL 60626

312-274-5305

Type of Facility: Day School

Gender Served: Coed

Exceptionality: Emotionally/Socially Maladjusted; Developmentally Delayed

Administration: Private

Purpose: To provide education and treatment to severely disturbed children.

Admission Policies: CA: 3-12 years; referrals through the Chicago Board of Education.

Enrollment: 19

Services: Psychotherapy, testing; individualized educational plan, physical education, speech/language therapy, adaptive physical education; parent counseling.

Lt. Joseph P. Kennedy Jr. School

123rd and Wolf Road

Palos Park, IL 60464

312-448-6520

Type of Facility: Residential (5 day); Day School

Gender Served: Coed

Exceptionality: Mentally Retarded/Developmentally Disabled, Emotionally and/or Socially Maladjusted

Administration: (Private) Sisters of St. Francis of Assisi (OSF)

Purpose: To educate and train persons with mild to severe retardation or emotional problems.

Admission Policies: CA: 6-21 years; IQ range 30 and upward. No denominational restrictions.

Enrollment: Residential - 101; Day School - 60

Maryville Academy

1150 North River Road

Des Plaines, IL 60016

312-824-6126

Type of Facility: Residential

Gender Served: Coed

Exceptionality: Emotionally and/or Socially Maladjusted

Administration: Catholic Charities

Purpose: Residential and group care available with a diagnostic unit. Emergency shelter and youth center.

Admission Policies: CA: 6-18 years.

Enrollment: 500

Services: Diagnostic evaluation; family and individual therapy.

Mercy Boys and Girls Home

1140 West Jackson Blvd.

Chicago, IL 60607

312-738-7560

Type of Facility: Residential

Gender Served: Coed

Exceptionality: Emotionally and/or Socially Maladjusted

Administration: Catholic Charities

Purpose: Residential program to assist those with family and communal problems

Admission Policies: CA: 15-18 years

Enrollment: 50

Services: Residential program; counseling; transitional living program, job placement; life skills.

Misericordia Home South

2916 West 47th Street

Chicago, IL 60632

312-254-9595

Type of Facility: Residential; Pre-school

Gender Served: Coed

Exceptionality: Mentally Retarded/Developmentally Disabled (severe), Orthopedically Handicapped, Speech Impaired

Administration: (Private) Sisters of Mercy (RSM)

Purpose: To serve needs of severely mentally and physically handicapped children in need of 24-hour nursing care. Each child receives programs according to individual needs.

Admission Policies: Under three years of age, non-ambulatory, non-mobile, in need of skilled nursing care and may remain as long as needs can be adequately met or until child turns 21 years of age.

Enrollment: 114

Services: Social work; music; occupational therapy; medical and nursing care; physical therapy, psychological services; hydrotherapy; music therapy.

Misericordia Home/Heart of Mercy Village

6300 North Ridge

Chicago, IL 60660

312-973-6300

Type of Facility: Residential

Gender Served: Coed

Exceptionality: Mentally Retarded/Developmentally Disabled (moderate to profound)

Administration: (Private) Sisters of Mercy

Purpose: To provide a homelike, challenging goal-oriented environment for children and young adults with developmental disabilities.

Admission Policies: Admissions criteria vary depending on living area within the facility.

Enrollment: capacity - 236

Services: Residential learning programs; on-site school; medical and nursing services, social, recreational, and religious education programs; social work; vocational program; occupational therapy.

Mt. St. Joseph

24955 N. Highway 12
Lake Zurich, IL 60047
312-438-5050

Type of Facility: Residential (ICF/DD); Geriatric and Senior Program

Gender Served: Female

Exceptionality: Mentally Retarded/Developmentally Disabled (all) Hearing, Speech, and Visually Impaired

Administration: (Private) Daughters of St. Mary of Providence

Purpose: To provide a home-like therapeutic residential environment that fosters growth in all areas.

Admission Policies: CA: over 21 years; developmentally disabled.

Enrollment: 162

Services: Occupational therapy; physical therapy; music; arts and crafts, speech therapy, education habilitation, health and social services; music; residential program; aquatic program; psychological consultation.

St. Joseph Carondelet Center

739 East 35th Street
Chicago, IL 60616
312-624-7443

Type of Facility: Residential; Day School

Gender Served: Coed (Residential - Male)

Exceptionality: Emotionally and/or Socially Maladjusted

Administration: Catholic Charities, Archdiocese of Chicago

Purpose: Residential care and treatment for emotionally disturbed children. Separate program for adolescent boys.

Admission Policies: CA: 4-12 years. Adolescent program - CA: 16-21 years.

Enrollment: Residential - 28; Day School - 75; Adolescent Program - 10

Services: Individual and family therapy; counseling; life skills.

St. Mary of Providence

4200 North Austin Avenue
Chicago, IL 60634
312-545-8300

Type of Facility: Residential; Day School

Gender Served: Female

Exceptionality: Mentally Retarded/Developmentally Disabled (all)

Administration: (Private) Daughters of St. Mary of Providence

Purpose: To provide a home and training center for developmentally disabled children.

Admission Policies: CA: 6-21 years. No denominational restrictions.

Enrollment: 80

St. Rose Center

4911 South Hoyne
Chicago, IL 60609
312-436-1433

Type of Facility: Day School; Vocational Work Training

Gender Served: Coed

Exceptionality: Mentally Retarded/Developmentally Disabled (all) Hearing, Speech, and Visually Impaired; Emotionally and/or Socially Maladjusted

Administration: (Private) Daughters of St. Mary of Providence

Purpose: Training and education of mentally retarded children and vocational work training for teenagers and young adults.

Admission Policies: CA: 3-30 years, IQ range 35-70 (flexible). Non-discriminatory as to race, sex, beliefs, origins.

Enrollment: 56

Services: Speech; social work; work training; occupational therapy; physical therapy.

Diocese of Joliet

Good Shepherd Manor

P.O. Box 260
Mokenca, IL 60954
815-472-6492

Type of Facility: Residential

Gender Served: Male

Exceptionality: Mentally Retarded/Developmentally Disabled

Administration: (Private) Brothers of the Good Shepherd (BGS)

Purpose: Residential custodial care with training program for mentally retarded males.

Admission Policies: CA: 18 years to death. IQ range: 50-80 (flexible) trainable. No denominational restrictions. Social habit requirements: ambulatory, must be toilet trained.

Enrollment: capacity - 120

Guardian Angel Home

1550 Plainfield Road
Joliet, IL 60435
815-729-0930

Type of Facility: Day School (therapeutic)

Gender Served: Coed

Exceptionality: Emotionally and/or Socially Maladjusted

Administration: (Private) Sisters of St. Francis of Mary Immaculate (Joliet Franciscans)

Purpose: To provide therapeutic and educational services to students with behavioral disabilities.

Admission Policies: Appropriate referral from public school district and availability of space.

Enrollment: 50

Diocese of Rockford

St. Francis School for Exceptional Children

1209 South Walnut Avenue
Freeport, IL 61032
815-235-3174

Type of Facility: Residential

Gender Served: Coed

Exceptionality: Mentally Retarded (severe), Orthopedically Handicapped, Speech Impaired, Emotionally and/or Socially Maladjusted

Administration: A diocesan school staffed by the School Sisters of St. Francis (SSSF) and lay staff

Purpose: To provide a basic training program to severely and profoundly developmentally disabled children. Training of older students in domestic and vocational skills

Admission Policies: CA: 4-12 years - preferably ambulatory; seizures controlled or partially controlled by medication

Enrollment: capacity - 40

Services: Consultants: speech, behavior modification, music, curriculum development, physical therapy, and occupational therapy.

St. Vincent Community Living Facility

659 East Jefferson Street

Freeport, IL 61032

815-232-6181

Type of Facility: Residential; Extended Care, Vocational Work Training

Gender Served: Coed

Exceptionality: Mentally Retarded/Developmentally Disabled (all); Speech Impaired

Administration: St. Vincent Home for Children, Inc.

Purpose: To provide residential living and training program for adults who are developmentally disabled to develop to their utmost potential of self-independence.

Admission Policies: CA: 18+; IQ range: flexible. No denominational restrictions. Self care skills. Clients must work either competitively or in sheltered workshop or as full-time student. Illinois residents only.

Enrollment: CLF - capacity 20; SLA - capacity unlimited

Services: Contractual: speech, nursing, vocational, social work, and counseling.

Diocese of Springfield**Brother James Court**

2500 St. James Road

Springfield, IL 62707

217-544-4876

Type of Facility: Residential; Intermediate Care Facility

Gender Served: Male

Exceptionality: Mentally Retarded/Developmentally Disabled

Administration: (Private) Franciscan Brothers of the Holy Cross (FFSC)

Purpose: Residential care for mentally retarded men together with a program geared to their level of capability and interests.

Admission Policies: CA: 18 yrs and above; IQ: below 70 (flexible) trainable. No race or denominational restrictions. Social habit requirements: toilet trained and ambulatory.

Enrollment: capacity - 96

Services: Speech therapy; occupational therapy.

Catholic Children's Home

1400 State Street

Alton, IL 62002

618-465-3694

Type of Facility: Day School

Gender Served: Coed

Exceptionality: ESM (Behavior Disordered), Mentally Retarded (moderate), Learning Disabled, Speech Impaired

Administration: Catholic Charities, Diocese of Springfield

Purpose: To help children with special needs to reach their highest potential both educationally and socially.

Admission Policies: CA: 5-21 years.

Services: Counseling; social work; occupational therapy; recreation, art, speech/language/hearing therapy, psychological evaluation.

Springfield Developmental Center
R. R. #10, Sangamon Avenue Road East
Springfield, IL 62707
217-525-8271

Type of Facility: Vocational Training

Gender Served: Male

Exceptionality: Mentally Retarded

Administration: (Private) Religious of the Franciscan Brothers of the Holy Cross (FFSC)

Purpose: To provide adult day training programs for mentally retarded adults.

Admission Policies: CA: 18-35 years; IQ below 70 and trainable; our agency offers equal opportunity to all male applicants without regard to race, color, religion, or national origin.

Enrollment: capacity - 75

Services: Vocational training.

Indiana

Diocese of Evansville

Marian Day School Program

700 Herndon Drive
Evansville, IN 47711
812-422-5346

Type of Facility: Day School - located in a regular school

Gender Served: Coed

Exceptionality: Learning Disabled; Mentally Retarded (mild)

Administration: Diocesan Department of Special Education, staffed by Benedictine Sisters (OSB)

Purpose: To teach mildly handicapped, low achievers because of intelligence, and learning disabled students within a regular setting in and around Evansville area.

Admission Policies: CA: 6-18 years; IQ range: 70 to 95 with consideration given to those within 60-70 range depending on academic level and social ability. Consult facility for further information.

Enrollment: capacity - 30

Services: Educational program located in a regular school.

Diocese of Ft Wayne-South Bend

St. Bavo School

513 West 7th Street
Mishawaka, IN 46544
219-259-4214

Type of Facility: Day School - special education class in a regular school

Gender Served: Coed

Exceptionality: Mentally Retarded/Developmentally Disabled (mild)

Administration: (Private) Poor Handmaids of Jesus Christ

Purpose: To help retarded children attain their potential.

Admission Policies: CA: 6-15 years; educable.

Enrollment: capacity - 10

Services: Academic program; mainstreaming; motor training program, physical education; religious education.

Diocese of Gary

Hoosier Boys' Town

7403 Cline Avenue
Schererville, IN 46375
219-838-7723

Type of Facility: Therapeutic Residential Treatment Facility- Residential and Challenge Program

Gender Served: Male

Exceptionality: Emotionally, Behaviorally and/or Socially Maladjusted, Learning Disabled, Mentally Retarded (mild)

Administration: Non-sectarian, non-profit

Purpose: To provide a therapeutic home-like environment with direction to self respect, responsibility and positive thinking. Challenge Unit provides psychological, psychiatric, medical, social, and educational programs.

Admission Policies: CA: 10-18 years. Boys of all races, creeds, and national origins are accepted. Placement agencies within State of Indiana given priority. Residents must be involved in a formal education program.

Enrollment: Main campus - 60 capacity; Challenge Program - 15 capacity program

Services: Academic (including public school or on-grounds class); individual group, family and/or substance abuse therapy; recreation; independent living; employment programs.

Archdiocese of Indianapolis

Gibault School for Boys

5901 Dixie Bee Road, Box 2316
Terre Haute, IN 47802
812-299-1156

Type of Facility: Residential

Gender Served: Male

Exceptionality: Emotionally and/or Socially Maladjusted; Learning Disabled

Administration: Board of Trustees

Purpose: Rehabilitation of adjudicated delinquents.

Admission Policies: CA: 10-17-1/2 years. Wards of the Court. IQ: 70 and above.

Enrollment: 120

Services: Year round school; weekly individual and group counseling, psychological and psychiatric consultation.

St. Mary's Child Center, Inc.

901 Dr. Martin Luther King Jr. Street
Indianapolis, IN 46202
317-635-1491

Type of Facility: Day School; Pre-school

Gender Served: Coed

Exceptionality: Learning Disabled; Developmentally Delayed; Behavioral Problems; Autistic

Administration: Board of Directors affiliated with Catholic Charities and United Way

Purpose: To serve the needs of children with learning and/or behavioral problems.

Admission Policies: Open

Enrollment: 50-75

Services: Developmental pre-school; remedial sessions; case work, speech therapy, psychotherapy, testing and evaluation of school-age children.

Iowa

Archdiocese of Davenport

Happy World Pre-school

509 Ave F. (Aquinas East School Bldg.)

Ft. Madison, IA 52627

319-372-5013

Type of Facility: Pre-school - 1/2 day

Gender Served: Coed

Exceptionality: Hearing, Speech, and Visually impaired

Administration: Branch of Ft. Madison Catholic School System

Purpose: To provide a developmental preschool for 3-5 year olds to serve all families in the area

Admission Policies: Any child who is toilet trained and 3 years of age by September 15.

Enrollment: 63

Services: Testing and treatment for visual, hearing, and speech problems done by school nurses, volunteers from King's D and Great Area 16 Education Agency.

Diocese of Sioux City

St. Anthony's Boys Home

c/o Catholic Charities, Box 2025

Sioux City, IA 51104

712-252-2701

Type of Facility: Residential Treatment Home

Gender Served: Male

Exceptionality: Emotionally and/or Socially Maladjusted

Administration: Catholic Charities

Purpose: Treatment of emotionally disturbed adolescents.

Admission Policies: CA: 13-18 years.

Enrollment: capacity - 8

Services: Family, individual and group therapy. Residents attend classes at public or parochial schools.

Villa Maria Girls Home

c/o Catholic Charities, Box 2025

Sioux City, IA 51104

712-252-2701

Type of Facility: Residential Treatment Home

Gender Served: Female

Exceptionality: Emotionally and/or Socially Maladjusted

Administration: Catholic Charities

Purpose: Residential treatment for emotionally disturbed adolescents.

Admission Policies: CA: 13-18 years.

Enrollment: capacity - 16

Services: Residents attend classes at the public or parochial schools, family, individual and group therapy

Kentucky

Archdiocese of Louisville

Boys' Haven

3291 Bardstown Road
Louisville, KY 40205
502-458-1171

Type of Facility: Residential; Group Home

Gender Served: Male

Exceptionality: Emotionally and/or Socially Maladjusted

Administration: Agency of the Archdiocese of Louisville

Purpose: Care of dependent/neglected adolescent boys

Admission Policies: CA: 14-19 years; IQ range: 85-130 (flexible). No denominational restrictions, ability to get along in a group.

Enrollment: capacity - 40

Services: Boys attend public and private schools. Services of 4 social workers available.

Our Lady's Home

523 Park Avenue
Louisville, KY 40208
502-637-2969

Type of Facility: Residential; Maternity Home

Gender Served: Female

Exceptionality: Emotionally and/or Socially Maladjusted

Administration: Catholic Charities of Louisville

Purpose: Care of dependent, pregnant women.

Enrollment: capacity - 15

Services: Transitional living program available for those who qualify.

Louisiana

Diocese of Alexandria-Shreveport

Holy Angels Residential Facility

10450 Ellerbe Road
Shreveport, LA 71106
318-797-8500

Type of Facility: Residential

Gender Served: Coed

Exceptionality: Mentally Retarded (severe/profound), Speech, Hearing, and Visually Impaired, Orthopedically Handicapped

Administration: (Private) Our Lady of Sorrows

Purpose: Provide 24-hour medical care to physically and mentally handicapped non-ambulatory children under the age of 8. Maximize growth potential through love and sensory stimulation.

Admission Policies: Children with severe to profound delays in development, CA: 0-8 years with approval of Admissions Review Committee;

Enrollment: capacity - 30

Services: 24 hr-nursing care; occupational therapy, physical therapy, education/habilitation; direct care, communication; adaptive physical education.

St. Mary's Residential Training School

P.O. Drawer 7768

Alexandria, LA 71306

318-445-6443

Type of Facility: Residential; Day School; Vocational Work Training

Gender Served: Coed

Exceptionality: Mentally Retarded/Developmentally Disabled (all), Hearing, Speech, and Visually Impaired, Orthopedically Handicapped

Administration: Congregation of Our Lady of Sorrows Religious (OLS) and Rapides Parish School Board

Purpose: Training and education of the mentally retarded.

Admission Policies: CA: 3-22 years; educable and trainable, ambulatory. No denominational restrictions.

Enrollment: 152

Services: Facilities for educational purposes in self-help skills and social enrichment. Educational services from Rapides School Board.

Diocese of Baton Rouge

Guardian Angels Center/Redemptorist Center

c/o Dept of Special Ed - P.O. Box 2028

Baton Rouge, LA 70821

504-383-3066

Type of Facility: Day School - two campuses (elementary and high)

Gender Served: Coed

Exceptionality: Learning Disabled; Mentally Retarded (mild); Speech Impaired, Educationally Handicapped

Administration: Department of Special Education, Diocese of Baton Rouge

Purpose: To educate special students in order for them to reach their potential academically, socially and emotionally in a Catholic school setting.

Admission Policies: Current Louisiana 1508 evaluation; CA: 6-21 years; private tuition.

Enrollment: capacity - 15 per class

Services: Adaptive physical education; speech therapy; bus transportation.

Diocese of Lake Charles

Regina Caell Center

3903 Kingston Street

Lake Charles, LA 70605

318-478-1970

Type of Facility: Day School

Gender Served: Coed

Exceptionality: Mentally Retarded (mild); Learning Disabled; Speech Impaired

Administration: (Private) School Sisters of Notre Dame (SSND)

Purpose: The education of children with mild mental retardation and learning disabilities.

Admission Policies: CA: 6-12 years. No denominational, sex or race restrictions.

Enrollment: 40

Services: Academic program.

Archdiocese of New Orleans

Chinchuba

1131 Barataria Blvd.

Marrero, LA 70072

504-340-9261

Type of Facility: Day School

Gender Served: Coed

Exceptionality: Hearing Impaired

Administration: Independent Board of Education

Purpose: Auditory/oral education of hearing impaired children from birth through 8th grade.

Admission Policies: CA: birth to 16 years. No denominational restrictions.

Enrollment: Boys - 16; girls - 15

Services: Educational services; speech therapy; auditory management; parent-infant education.

Hope Haven-Madonna Manor Residential Treatment Center

1101 Barataria Blvd.

Marrero, LA 70072

504-347-5581

Type of Facility: Residential

Gender Served: Coed

Exceptionality: Emotionally and/or Socially Maladjusted; Mentally Retarded (moderate)

Administration: Associated Catholic Charities of New Orleans

Purpose: A residential facility/school for emotionally disturbed/learning disabled males and females.

Admission Policies: CA: 5-18 years; IQ: 60 and above; ambulatory, no severe handicaps or psychotic referrals accepted.

Enrollment: 135

Services: Psychological/psychiatric evaluation and diagnosis; education, religious instruction; recreation, medical care; therapy; dietary.

Maison Marie Group Home

3020 Independence Street

Metairie, LA 70001

504-888-9555

Type of Facility: Residential; Group Home

Gender Served: Female

Exceptionality: Emotionally and/or Socially Maladjusted

Administration: Associated Catholic Charities

Purpose: A residential treatment home for emotionally and/or socially maladjusted girls. Psychiatric care is available.

Admission Policies: CA: 14-18 years; IQ: 80 to 130 (flexible). No denominational restrictions. Girls are expected to function in an age-appropriate manner. Louisiana residents only.

Services: Counseling; individual and group therapy; physical and mental health care.

Padua Community Services

200 Beta Street

Belle Chasse, LA 70037

504-392-0502

Type of Facility: Residential

Gender Served: Coed

Exceptionality: Mentally Retarded/Developmentally Disabled (severe); Orthopedically Handicapped

Administration: Associated Catholic Charities

Purpose: Twenty-four hour care for severely/profoundly, multiply-handicapped infants and children.

Admission Policies: CA: 0-21 years; Title 19 eligible; must be non-ambulatory, multiply handicapped, severely or profoundly mentally retarded.

Enrollment: capacity - 44

Services: Active treatment; parish education services; physical therapy, occupational therapy, speech therapy, health care.

St. Michael Special School

1522 Chippewa Street
New Orleans, LA 70130
504-524-7285

Type of Facility: Day School; Vocational Training; Sheltered Activity Program

Gender Served: Coed

Exceptionality: Mentally Retarded/Developmentally Disabled (mild, moderate), Learning Disabled, Speech Impaired

Administration: Archdiocesan Department of Special Education

Purpose: Education of children with major learning disabilities.

Admission Policies: Day School - CA: 6-16 years; IQ: 50-80 (flexible). No denominational restrictions. Social habit requirements: self-care.

Enrollment: 250

Services: Elementary program (6-16 years); speech therapy; Vocational Training Program (16-21 years); Sheltered Activity Program -(21 and above).

St. Michael Vocational Training Center

1522 Chippewa Street
New Orleans, LA 70130
504-524-7285

Type of Facility: Day School; Vocational Work Training

Gender Served: Coed

Exceptionality: Mentally Retarded/Developmentally Disabled (mild, moderate); Learning Disabled, Speech Impaired

Administration: Archdiocesan Department of Special Education and various religious orders.

Purpose: To train young adults to help meet the spiritual, civic, educational, and social demands of the world of work.

Admission Policies: CA: 16-21 years; IQ: 50-80 (flexible); including learning disabled, mild, moderately handicapped, and slow learner. No denominational restrictions.

Enrollment: 129

Services: Comprehensive educational program, balanced and enriched with credible social and civil activities, GED for those capable.

Maine

Diocese of Portland

Diocesan Human Relations Services, Inc.

15 Vaughn Street P.O. Box 748
Caribou, ME 04736
207-498-2575

Type of Facility: Itinerant program

Gender Served: Coed

Exceptionality: Visually Impaired

Administration: Diocesan Human Relations

Services, Inc. through a contract with the Maine Department of Human Services

Purpose: To teach blind and visually impaired clients -birth to 19 yrs. To provide services to families of blind/visually impaired children and their schools.

Admission Policies. Federal guidelines to qualify as blind or visually impaired. CA: 0-19 No IQ test. No denominational or financial restrictions.

Enrollment: 28

Services: Direct and Consultative

Maryland

Archdiocese of Baltimore

Good Shepherd Center

4100 Maple Avenue
Baltimore, MD 21227
301-247-2770

Type of Facility: Residential Treatment Center

Gender Served: Female

Exceptionality: Emotionally and/or Socially Maladjusted; Learning Disabled

Administration: (Private) Sisters of the Good Shepherd

Purpose: Residential treatment center for emotionally disturbed adolescent girls, accredited by the Joint Commission on Accreditation of Hospitals as a psychiatric facility.

Admission Policies: CA: 13-17 years (grades 8-12); IQ: 80 upward; no geographical restrictions.

Enrollment: capacity - 105

Services: Group living experience; social services; individual and family therapy; therapeutic education program; recreational activities; religious education; cultural experiences; health.

St. Elizabeth School and Habilitation Center

801 Argonne Drive
Baltimore, MD 21218-1998
301-889-5054

Type of Facility: Day School

Gender Served: Coed

Exceptionality: Mentally Retarded/Developmentally Disabled (all); Multi-handicapped

Administration: (Private) Franciscan Sisters of Baltimore (OSF)

Purpose: To train and educate intellectually limited students for adult life in the community and various levels of employment.

Admission Policies: CA: 12 years upward; SPH, moderate and mild intellectually handicapped or multi-handicapped. Non-discriminatory.

Enrollment: 110-125

Services: Related services; speech/language therapy; social work; counseling services, transition services; behavior management.

St. Francis School for Special Education, Inc.

2226 Maryland Avenue
Baltimore, MD 21218
301-235-3378

Type of Facility: Day School

Gender Served: Coed

Exceptionality: Mentally Retarded/Developmentally Disabled (all); Speech Impaired

Administration: (Private) Franciscan Sisters of Baltimore City

Purpose: To help the handicapped child become a happy and productive individual in the family and community by guiding growth in social, intellectual and adaptive behaviors.

Admission Policies: CA: 3-13 years. No denominational restrictions. Level V Special Education; referred through Baltimore City Public School Department of Special Education.

Enrollment: capacity - 60

Services: Speech/language therapy; psychological service; health service, music, physical education, self-help skills; pre- vocational training; functional academics; computer usage.

Diocese of Wilmington

Benedictine School for Exceptional Children, Inc.

R.R. 1, Box 182
Ridgeley, MD 21660-9742
301-634-2112

Type of Facility: Residential; Vocational Work Training, Alternate Living Units, Day School, Habilitation Center

Gender Served: Coed

Exceptionality: Mentally Retarded (all); Multi-handicapped

Administration: (Private) Benedictine Sisters

Purpose: Education and training of the mentally retarded and multi-handicapped.

Admission Policies: CA: 5-21 years; IQ range: mild-severe. No denominational restrictions; self-care.

Enrollment: capacity: school - 125; habilitation center - 42

Services: Speech; psychology; social work; nursing care; physical education and aquatics, vocational services.

Massachusetts

Archdiocese of Boston

Boston School Serving Deaf and Aphasic Students

800 North Main Street
Randolph, MA 02368
617-963-8150

Type of Facility: Residential; Day School

Gender Served: Coed

Exceptionality: Hearing Impaired; Learning Disabled

Administration: (Private) Sisters of St. Joseph of Boston

Purpose: To provide the hearing impaired and children with aphasia with education and offer parents support and knowledge to deal effectively with each child at home.

Admission Policies: Students may be referred by the Director of Special Education in their city of residence, by parents, or other agencies. Elementary: 0-12 years; Secondary: 13-20+ years

Enrollment: 100

Services: Educational, diagnostic and counseling services; academic and vocational services.

Diocese of Fall River

St. Vincent's Home/School

2425 Highland Avenue
Fall River, MA 02720
508-679-8511

Type of Facility: Residential; Group Home; Vocational Work Training

Gender Served: Coed

Exceptionality: Developmentally Disabled (mild); Learning Disabled; Emotionally and/or Socially Maladjusted

Administration: Diocese of Fall River

Purpose: Residential treatment center for emotionally disturbed children and children with learning disabilities.

Admission Policies: Consult facility.

Enrollment: 75

Services: Residential placement; special education; social service; psychiatric service; summer program; psychological testing; pre-vocational and independent life skills training.

Diocese of Springfield

Our Lady of Providence Children's Center

2112 Riverdale Street
West Springfield, MA 01089
413-788-7366

Type of Facility: Residential; Day School; Group Home

Gender Served: Coed

Exceptionality: Emotionally and/or Socially Maladjusted; Learning Disabled

Administration: (Private) Our Lady of Providence Children's Ctr.

Purpose: To provide residential treatment for emotionally disturbed boys and girls. The treatment program utilizes milieu, group, family and individual therapy.

Admission Policies: CA: 6-16 years. No denominational restrictions. Residence in New England States.

Enrollment: Resident-48; Group Home-6; Diagnostic-8; School-5

Services: Educational; social; adaptive; foster care; out-patient clinic.

Diocese of Worcester

McAuley Nazareth Home for Boys

77 Mulberry Street
Leicester, MA 01524
617-892-4886

Type of Facility: Residential

Gender Served: Male

Exceptionality: Emotionally and/or Socially Maladjusted

Administration: Nonprofit corporation: McAuley Nazareth Home for Boys

Purpose: Treatment of youth with behavioral problems.

Admission Policies: Residential Treatment: CA: 6-12 years, IQ range: flexible. No denominational restrictions. No specific social habit requirements.

Enrollment: capacity - 16

Services: Residential treatment; on-grounds special education program; family work: individual and group; individual and group therapy.

Mercy Centre for Developmental Disabilities

25 West Chester Street
Worcester, MA 01605
617-852-7165

Type of Facility: Day School; Pre-school; Sheltered Workshop

Gender Served: Coed

Exceptionality: Mentally Retarded/Developmentally Disabled

Administration: Catholic Charities Office, staffed by the Sisters of Mercy and laity.

Purpose: Education and habilitation of special needs.

Admission Policies: No denominational restrictions. Consult facility for further information.

Enrollment: 175 students

Services: Education; adaptive physical education; speech/language therapy, physical therapy, counseling, pre-vocational training; vocational training; job placement; follow-up.

Michigan

Archdiocese of Detroit

Barat House

5250 John R. Street
Detroit, MI 48202
313-833-1525

Type of Facility: Residential

Gender Served: Female

Exceptionality: Emotionally and/or Socially Maladjusted

Administration: (Private) Barat Human Services - League of Catholic Women

Purpose: To treat emotionally disturbed adolescent girls.

Admission Policies: CA: 13-17 years; IQ range: average. No denominational restrictions. Funded by fees and the United Fund.

Enrollment: 22

Services: Individual counseling; group and family therapy; activities therapy, educational/tutorial services, psychological/psychiatric services; medical/dental services.

Don Bosco Hall

10001 Petoskey Street
Detroit, MI 48204
313-834-8677

Type of Facility: Residential

Gender Served: Male

Exceptionality: Emotionally and/or Socially Maladjusted; Mentally Retarded (mild)

Administration: Private, non-profit constituent agency of the Archdiocese of Detroit

Purpose: Social treatment for neglected dependent delinquent and pre-delinquent males. Most residents attend the Detroit public school system.

Admission Policies: CA: 12-1/2-17 years

Enrollment: 30

Services: Individual case work; group therapy education for short term residents, recreation; family therapy sessions.

Vista Maria

20651 W. Warren
Dearborn Heights, MI 48127
313-271-3050

Type of Facility: Residential; Day School; Vocational Work Training; Treatment Center

Gender Served: Female

Exceptionality: Emotionally and/or Socially Maladjusted; Learning Disabled

Administration: (Private) Sisters of the Good Shepherd (RGS)

Purpose: Private, not-for-profit residential treatment center dedicated to serving young women with behavioral and emotional difficulties.

Admission Policies: Referrals only from the Department of Social Services and Juvenile Justice System.

Enrollment: 150 (11-18 years)

Services: Residential secured and community-based treatment, substance abuse program, interim placement/emergency shelter; foster care; independent living program, vocational education, individual, group, and family therapy.

Diocese of Grand Rapids

St. John's Home

385 E. Leonard, N.E.
Grand Rapids, MI 49503
616-459-9504

Type of Facility: Residential

Gender Served: Coed

Exceptionality: Emotionally and/or Socially Maladjusted

Administration: Grand Rapids Board of Education

Purpose: To provide a residential treatment center for emotionally/socially maladjusted youth.

Admission Policies: CA: 9-16 years; IQ range: 70 upward (flexible). No denominational restrictions.

Enrollment: capacity - 40

Services: In-patient psychiatric care. A maximum of 10 attend school on grounds, others attend public schools in community; 90% attend emotionally impaired programs.

Diocese of Lansing

Boysville of Michigan

8744 Clinton-Macon Rd.
Clinton, MI 49236
517-423-7451

Type of Facility: Residential; Vocational Work Training

Gender Served: Male

Exceptionality: Emotionally and/or Socially Maladjusted; Learning Disabled

Administration: (Private) Brothers of the Holy Cross

Purpose: To serve state court referred male adjudicated youth between the ages of 13-17 and provide for the educational, vocational, social, recreational and family needs of students.

Admission Policies: State court referred youth, ages 13-17. Do not accept students that have breaks with reality or EMI youth. No denominational or racial restrictions.

Enrollment: Residential court placed youth.

Services: Special education; social work; psychological treatment and evaluation.

St. Louis Center

16195 Old U.S. 12
Chelsea, MI 48118
313-475-8430

Type of Facility: Residential; Group Home

Gender Served: Male

Exceptionality: Mentally Retarded/Developmentally Disabled (all)

Administration: (Private) Servants of Charity (SC)

Purpose: Education and training of developmentally disabled boys and young adults unable to function at home.

Admission Policies: CA: 6-16 years; ambulatory; excludes violent and self-abusive behavior

Enrollment: capacity: children - 50; adults - 36

Services: Regular academics; adaptive physical education; counseling; psychological services; speech therapy; recreation; pre-vocational/vocational training; music.

St. Vincent Home for Children

2800 W. Willow
Lansing, MI 48817
517-323-4734

Type of Facility: Residential

Gender Served: Coed

Exceptionality: Emotionally and/or Socially Maladjusted; Speech Impaired; Learning Disabled

Purpose: Treatment of emotionally impaired children. Provides intensive services in residential care to enable child to move to less restrictive setting.

Admission Policies: CA: 10-16 years. Child must have some capacity to form attachment with adults and peers and experience some discomfort with identified problems and the stress caused by their behavior.

Enrollment: 30

Services: Individual therapy; group therapy; milieu therapy; special education; attend public schools if possible; 2 on-grounds classrooms; recreation; daily living skills.

Minnesota

Diocese of St. Cloud

St. Cloud Children's Home

1726 South 7th Avenue
St. Cloud, MN 56301
612-251-8811

Type of Facility: Residential

Gender Served: Coed

Exceptionality: Emotionally and/or Socially Maladjusted; Speech Impaired; Learning Disabled; Mentally Retarded

Administration: Program administered and staffed by St. Cloud District

Purpose: To provide the special education component of the residential treatment center for emotionally disturbed children and adolescents.

Admission Policies: CA: 8-18 years. Diagnosed emotional problems. Average and borderline intelligence. Able to function in an open setting.

Enrollment: capacity - 83

Services: Individual and family therapy; special education; religion and spirituality programs; chemical abuse counseling; recreation; structured group living; physical health care.

Missouri

Diocese of Jefferson City

Vogelweid Learning Center

314 West High Street
Jefferson City, MO 65101
314-636-8980

Type of Facility: Day School

Gender Served: Coed

Exceptionality: Learning Disabled; Mentally Retarded (moderate/severe) Behavior Disordered; Autistic; Orthopedically Handicapped; Speech Impaired

Administration: Diocesan School Office, staffed by School Sisters of Notre Dame

Purpose: Education of children with learning difficulties; mainstreaming procedures.

Admission Policies: CA: 5-18 years. Children who cannot function in a regular school program. No denominational restrictions. Self-care.

Enrollment: 22

Services: Academic program with mainstreaming in regular school.

Diocese of Kansas City-St Joseph

Good Shepherd Manor

3220 E. 23rd St.- P.O. Box 22019
Kansas City, MO 64127
816-231-5858

Type of Facility: Residential

Gender Served: Male

Exceptionality: Mentally Retarded/Developmentally Disabled (all)

Administration: (Private) Little Brothers of the Good Shepherd, Kansas City

Purpose: Residential care facility for the developmentally disabled.

Admission Policies: CA: 16 and above. Consult facility for further information.

Enrollment: capacity - 40

Services: Access to sheltered workshops; pre-vocational and life skills programs.

Archdiocese of St. Louis

Child Center of our Lady

7900 Natural Bridge
St. Louis, MO 63121
314-383-0200

Type of Facility: Residential; Day School; Psychiatric Treatment Center with Outpatient and Triage Services

Gender Served: Coed

Exceptionality: Emotionally and/or Socially Maladjusted; Learning Disabled

Administration: Catholic Charities of St. Louis; Board of Directors

Purpose: Provide complete evaluation, diagnostic and treatment services to mild to severely emotionally disturbed children

Admission Policies: CA: 5-14 years; IQ range: potential for average or above. No denominational restrictions. Psychiatric and psychological evaluation, social history, and educational assessments required.

Enrollment: capacity - 43; (23 day; 20 residential)

Services: Psychotherapy on outpatient, day or residential basis; chemotherapy and routine medical care; special education; language; occupational therapy; referral triage service; creative arts therapy.

St. Joseph Institute for the Deaf

1483 82nd Blvd.
St. Louis, MO 63132
314-993-1507

Type of Facility: Residential; Day School

Gender Served: Coed

Exceptionality: Hearing Impaired

Administration: (Private) Sisters of St. Joseph of Carondelet (CSJ)

Purpose: To educate deaf children.

Admission Policies: Consult facility.

Enrollment: capacity - 170

Services: Speech/language education.

St. Joseph's Home for Boys

4753 South Grand Boulevard

St. Louis, MO 63111

314-481-9121

Type of Facility: Residential; Day School**Gender Served:** Male**Exceptionality:** Emotionally and/or Socially Maladjusted**Purpose:** To facilitate treatment and rehabilitation of children due to behavioral, emotional, familial and educational problems.**Admission Policies:** Diagnostic evaluation that assumes or presumes the child can be treated within the scope of the program services.**Enrollment:** capacity: (residence-44); (day treatment-12)**Services:** Special elementary educational program with individual tutorial assistance; individual and family therapy; parental workshops; play therapy; religious education; consultations.**St. Joseph's Vocational Center**

5341 Emerson

St. Louis, MO 63120

314-261-8600

Type of Facility: Day School; Vocational Work Training**Gender Served:** Coed**Exceptionality:** Mentally Retarded (mild, moderate)**Administration:** Archdiocesan Department of Special Education**Purpose:** To train developmentally disabled adolescents to function independently in society, through academic and pre-vocational experiences; inculcate Christian values into daily life**Admission Policies:** CA: 15-20 years; developmentally disabled; referred by Archdiocesan Department of Special Education.**Enrollment:** 150**Services:** Affiliated with Vocational Rehabilitation and Project JESS; swimming classes and extra-curricular activities; Special Olympics; counseling.**St. Mary's Special School**

5341 Emerson Avenue

St. Louis, MO 63120

314-261-8533

Type of Facility: Residential; Day School**Gender Served:** Coed**Exceptionality:** Mentally Retarded/Developmentally Disabled (mild, moderate)**Administration:** Department of Special Education, staffed by School Sisters of Notre Dame, other religious and laity.**Purpose:** Education and training of mentally retarded children and others with serious learning problems that they cannot cope satisfactorily within the regular school curriculum.**Admission Policies:** CA: 5-16 years; IQ range: flexible. No denominational restrictions. Social habit: ambulatory, reasonably self-sufficient eating and toileting habits.**Enrollment:** capacity - 132**Services:** Speech therapy; residential/day programming; ungraded special education (9 month program).

Universal Sheltered Workshop

6912 West Florissant Ave.

St. Louis, MO 63136

314-389-7072

Type of Facility: Sheltered Workshop

Gender Served: Coed

Exceptionality: Mentally Retarded/Developmentally Disabled (moderate), Speech Impaired, Emotionally and/or Socially Maladjusted; Learning Disabled

Administration: Archdiocese of St. Louis, Department of Special Education

Purpose: To provide meaningful and gainful employment.

Admission Policies: Completion of schooling.

Enrollment: 65

Services: Sub-contract work.

Montana

Diocese of Billings-Great Falls

St. Labre Indian School

St. Labre Mission

Ashland, MT 59003

406-784-2278

Type of Facility: Residential; Group Home; Day School

Gender Served: Coed

Exceptionality: Learning Disabled

Admission Policies: Open to children that live on the Crow and Northern Cheyenne Reservations. High School students on the Crow reservation live in the dorm Monday-Friday.

Enrollment: 172 elementary; 120 high school (20 special students)

Services: Band; art; music; physical education; special education for learning disabled.

Nebraska

Diocese of Lincoln

Villa Marie School

R.R. 1, Box 109

Waverly, NE 68462

402-786-3625

Type of Facility: Residential; Day School; Vocational Work Training

Gender Served: Coed

Exceptionality: Mentally Retarded (mild, moderate); Learning Disabled; Speech Impaired

Administration: Diocesan School Office, staffed by the Marian Sisters (MS)

Purpose: To educate each child according to his/her ability in all of the academic subjects. Ungraded academic program combines individual and small group instruction. Survival and living skills.

Admission Policies: CA: 6-13 years; self-care required. No denominational restrictions. IQ: 50-85. Students are required to go home every two weekends.

Enrollment: 15-20

Services: Special education services for mentally handicapped persons. Operates 9 months per year in a residential and day school capacity.

Archdiocese of Omaha

Father Flanagan's Boys' Home

Boys Town, NE 68010

402-498-1111

Type of Facility: Residential; Day School

Gender Served: Coed

Exceptionality: Emotionally and/or Socially Maladjusted

Administration: Lay Board of Directors

Purpose: Care and education of homeless, neglected and delinquent youth.

Admission Policies: CA: 10-16; IQ range: flexible and dependent upon school achievement level. Youth must be able to perform school work near age level. No denominational restrictions.

Enrollment: capacity - 525

Madonna School for Exceptional Children

2537 North 62nd Street

Omaha, NE 68104

402-556-1883

Type of Facility: Day School

Gender Served: Coed

Exceptionality: Learning Disabled

Administration: (Private) Sisters of Mercy

Purpose: Education of children with learning problems not served in local public school.

Admission Policies: CA: 5-21 years; IQ range individually determined (flexible). Social habit requirements. initial self-help skills and toilet trained.

Enrollment: capacity - 65

Services: Academic programming; pre-vocational training; speech therapy; adaptive physical education.

Madonna Shop

6930 Maple Street

Omaha, NE 68104

402-571-0282

Type of Facility: Vocational Work Training

Gender Served: Coed

Exceptionality: Learning Disabled; Mentally Retarded

Administration: (Private) administered by Madonna School

Purpose: To train mentally handicapped young adults in job skills, social habits, and behavior which will enable them to maintain financial independence through full-time employment.

Admission Policies: CA: 21-35 years; IQ range individually determined (flexible)

Enrollment: capacity - 24

Services: Personal and social skills and vocational training.

Nevada

Diocese of Reno

St. Yves High School

7000 North Jones Blvd.
Las Vegas, NV 89131
702-645-1300

Type of Facility: Residential; Day School; Extended Care

Gender Served: Female

Exceptionality: Emotionally and/or Socially Maladjusted

Administration: (Private) Sisters of the Good Shepherd (RGS)

Purpose: Re-education/rehabilitation of pre-delinquent and non-hardened delinquents.

Admission Policies: CA: 13-18 years; IQ range: 85-140 (flexible). No denominational restrictions. No unwed mothers accepted.

Enrollment: Residential capacity: 56

Services: Chapter I, Chapter II, counseling; therapy.

New Jersey

Diocese of Camden

Archbishop Damiano School/St. John of God

532 Delsea Drive
Westville Grove, NJ 08093
609-848-4700

Type of Facility: Day School; Pre-school; Vocational Work Training

Gender Served: Coed

Exceptionality: Mentally Retarded/Developmentally Disabled

Administration: (Private) Hospitallers of St. John of God

Purpose: Day school and vocational training school for the mentally retarded. Non-denominational.

Admission Policies: Consult facility for policies; early intervention program; (Day School- CA: 6-18 years; Vocational Training- CA: 21 + years).

Enrollment: total clients - 370

Services: Speech/language therapy, occupational therapy, physical therapy, psychological service, family counseling.

Office of Special Education Programs

P. O. Box 709
Camden, NJ 08101
609-756-7987

Type of Facility: Day Schools - located in 4 regular elementary schools and 2 regular high schools, Perceptually Impaired - located in 4 regular elementary schools

Gender Served: Coed

Exceptionality: Learning Disabled; Mentally Retarded/Developmentally Disabled, Perceptually Impaired Program

Administration: Diocesan Office of Special Education

Purpose: To mainstream children who have been classified as educable mentally retarded, perceptually impaired, or neurologically impaired.

Admission Policies: Placement by Child Study team. Below average IQ for self-contained programs. Average IQ with classification PI for Perceptually Impaired training programs.

Enrollment: 150 - total

Services: Child Study Team services; speech; transportation.

Archdiocese of Newark

Catholic Community Service/Mt. Carmel Guild

17 Mulberry Street
Newark, NJ 07102
201-596-4100

Type of Facility: Day School - 4 locations

Gender Served: Coed

Exceptionality: Learning Disabled; Neurologically Impaired; Emotionally and/or Socially Maladjusted

Administration: Catholic Community Services; Archdiocese of Newark

Purpose: To provide specialized educational curriculum to neurologically impaired, emotionally disturbed, and/or handicapped youngsters.

Admission Policies: CA: 3-20 years. No denominational restrictions. Consult facility for further information.

Enrollment: capacity - 214

Services: Basic academic skills instruction, speech/hearing; perceptual-motor training, psychiatric consultation, socialization skills.

Mt. Carmel Guild Child Study Center, Alhambra Pavilion

31 Centre Street
Newark, NJ 07102
201-642-4237

Type of Facility: Day School

Gender Served: Coed

Exceptionality: Mentally Retarded/Developmentally Disabled (emphasis on neurological impairment)

Administration: Catholic Community Services; Archdiocese of Newark

Purpose: To provide an ungraded educational program for children who are multiply-handicapped with emphasis on neurological impairment.

Admission Policies: CA: 5-12 years; referrals are initiated by local boards of education.

Enrollment: 30-40

Services: Implementation of individual educational plan, educational objectives-therapies, perceptual motor-speech therapy.

Mt. Carmel Guild Communication Disorders Program

17 Mulberry Street
Newark, NJ 07102
201-596-3965

Type of Facility: Clinical program

Gender Served: Coed

Exceptionality: Hearing Impaired; Speech Impaired

Administration: The Mt. Carmel Guild

Purpose: Evaluation and intervention with children and adults with speech, language, and/or hearing problems.

Admission Policies: Open. No denominational restrictions.

Enrollment: 350

Services: Audiology; ENT; speech/language; pathology.

The Felician School for Exceptional Children

260 South Main Street, P.O. Box 530

Lodi, NJ 07644

201-777-5355

Type of Facility: Day School

Gender Served: Coed

Exceptionality: Mentally Retarded/Developmentally Disabled (moderate), Emotionally Disturbed, Autistic

Administration: (Private) Felician Sisters of St. Francis (CSSF)

Purpose: To provide a stimulating individualized program to help the child develop his/her potential to the fullest.

Admission Policies: CA: 3-20 years; IQ: flexible. No restrictions as to race, creed or color

Enrollment: 140

Services: Educational program; speech/language therapy.

Diocese of Paterson

Dept. for Persons with Disabilities

R.R. 2, Box 137

Oak Ridge, NJ 07438

201-697-4394

Type of Facility: Day Programs; Group Homes -7; Vocational Training

Gender Served: Coed

Exceptionality: Mentally Retarded/Developmentally Disabled (all)

Administration: Social Ministries, Catholic Charities

Purpose: To provide residential setting which provides greatest independence possible for people with developmental disabilities.

Admission Policies: CA: 21 and above

Enrollment: 80 - group homes; 36 - vocational training

Services: Job training; residential; daily living skills and training; counseling.

Diocese of Trenton

Collier School

Conover Road

Wickatunk, NJ 07765

201-946-4771

Type of Facility: Day School

Gender Served: Coed

Exceptionality: Emotionally Disturbed

Administration: (Private) Sisters of the Good Shepherd

Purpose: To provide special education and counseling services to troubled adolescents and their families.

Admission Policies: CA: 12-18 years (grades 8-12); IQ range: average. No denominational restrictions.

Enrollment: 165 per year

Guidance Clinic

39 North Clinton Avenue

Trenton, NJ 08609

609-394-9398

Type of Facility: Aftercare out-patient services

Gender Served: Coed

Exceptionality: Emotionally and/or Socially Maladjusted

Administration: Catholic Charities, Diocese of Trenton.

Purpose: To provide aftercare out-patient services to chronically disabled adults and to children at risk.

Admission Policies: Service Area 24; not retarded or primary substance abuse.

Services: Outpatient psychotherapy - individual, group, marital and family; and medication supervision.

Sister Georgine Learning Center

544 Chestnut Avenue

Trenton, NJ 08611

609-396-5444

Type of Facility: Day School

Gender Served: Coed

Exceptionality: Mentally Retarded/Developmentally Disabled (all), Orthopedically Handicapped, Speech Impaired

Administration: Diocesan School Office, staffed by Sisters of St. Francis of Philadelphia

Purpose: Education and training of mentally retarded children.

Admission Policies: CA: 5 years upward, IQ range. 32-78 (flexible). No denominational restrictions, toilet trained. State approved.

Enrollment: 25

Services: Speech; occupational therapy, adaptive physical education, health, learning consultation, counseling.

St. Joseph's School for the Blind

253 Baldwin Avenue

Jersey City, NJ 07306

201-653-0578

Type of Facility: Residential; Day School

Gender Served: Coed

Exceptionality: Visually Impaired; Multi-handicapped

Administration: (Private) Sisters of St. Joseph of Peace (CSJP)

Purpose: To educate and provide residential living for blind, visually impaired and multi-handicapped children and youth.

Admission Policies: CA: 3-21 years. No denominational restrictions. No financial requirements.

Enrollment: Open

Services: Speech therapy; occupational therapy, physical therapy, social and psychological service, nursing, music and dance therapy; orientation and mobility techniques, pre-vocational and transition services.

New Mexico

Diocese of Santa Fe

St. Joseph's Manor

P.O. Box 610

Bernalillo, NM 87004

505-867-2954

Type of Facility: Residential; Shelter Care For Adults

Gender Served: Male

Exceptionality: Mentally Retarded/Developmentally Disabled (moderate, severe)

Administration: (Private) Little Brothers of the Good Shepherd

Purpose: To provide long term residential custodial care and training.

Admission Policies: CA: 10-25 years; IQ: below 70 No denominational restrictions. Shelter Care- CA. 18-36 years.

Enrollment: capacity - 30

Services: Services available 24 hours a day; workshop; sports.

New York

Diocese of Albany

LaSalle School

391 Western Avenue
Albany, NY 12203
518-489-4731

Type of Facility: Residential; Day Services; Independent Living; Special Education (grades 7-12)

Gender Served: Male

Exceptionality: Emotionally and/or Socially Maladjusted, Learning Disabled, Mentally Retarded/Developmentally Disabled

Administration: (Private) Brothers of the Christian Schools

Purpose: A treatment facility for teen-age males who are experiencing difficulties in school, home or the community.

Admission Policies: Referral by agency only. Referral materials including social history, educational record, psychological or psychiatric report. Pre-placement visit. CA: 12-18 yrs. IQ: 85 and above.

Enrollment: Residential-100; Independent Living-under 10; Day Treatment-50.

Services: Counseling; special education; recreation, substance abuse education, prevention program, juvenile sexual offender school.

St. Colman's Home

Boght and Haswell Road
Waterliet, NY 12180
518-273-4911

Type of Facility: Residential; Day School; Group Home; Vocational Work Training

Gender Served: Coed

Exceptionality: Emotionally and/or Socially Maladjusted; Mentally Retarded (mild); Speech and Visually Impaired; Autistic

Administration: Private, non profit.

Admission Policies: Referral packet comprised of psychological, social, educational, and medical evaluations.

Services: Speech/language therapy; occupational therapy; physical therapy; vision therapy, vocational education; remedial reading; computer education; counseling; adaptive physical education.

Diocese of Brooklyn

Dept. of Education - Diocese of Brooklyn

6025 Sixth Avenue
Brooklyn, NY 11220
718-492-1800

Type of Facility: Day School; Vocational Work Training

Gender Served: Coed

Exceptionality: Mentally Retarded/Developmentally Disabled (mild, moderate), Learning Disabled, Speech and Visually Impaired

Administration: Central diocesan office coordinates and supervises 14 classes in 9 school sites.

Admission Policies: Program serves mentally retarded students CA. 4.9 -21 years Students are admitted up to age 17.

Enrollment: 140

Services: Speech/language therapy; counseling, independence/ travel training, vocational training.

Diocese of Buffalo

Baker Hall

150 Martin Road
Lackawanna, NY 14218
716-827-9777

Type of Facility: Residential; Day School; Group Home; Day Treatment Center

Gender Served: Coed

Exceptionality: Emotionally and/or Socially Maladjusted; Learning Disabled

Administration: (Private) Our Lady of Victory Homes of Charity

Purpose: To foster/teach socially acceptable and appropriate behaviors. To improve level of academic achievement and behavior in school. Residential treatment for delinquent, disturbed and mentally ill.

Admission Policies: CA: 10-17 years. Youth referred by the Department of Social Services, Family Courts, Division for Youth, Office of Mental Health, or School Districts.

Enrollment: capacity - 100

Services: Option I, II, III, IV Classrooms; work study; GED classes.

Cantallian Center for Learning

3233 Main Street
Buffalo, NY 14214
716-833-5353

Type of Facility: Day School; Pre-school; (Residential -1990); Sheltered Workshop

Gender Served: Coed

Exceptionality: Mentally Retarded/Developmentally Disabled; Autistic; Emotionally and/or Socially Maladjusted, Learning Disabled; Speech and Visually Impaired; Orthopedically Handicapped

Administration: Funded through the NY State Education Dept, Division of Handicapped Children, Albany, NY

Purpose: Program serves the autistic child. Alternative means of communicating are used to stimulate communications between student and others.

Admission Policies: CA: 0-21 years. Consult facility for further information. Pre-school - county approval, Day School - state approval; Workshop - must meet workshop criteria for admission

Enrollment: 200 (0-5 years); 142 (5-21 years); 200 (workshop)

Services: Occupational therapy; infant stimulation; physical therapy; bilingual; speech therapy; behavior management; supported employment; sheltered workshop; education.

St. Mary's School for the Deaf

2253 Main Street
Buffalo, NY 14214
716-834-7200

Type of Facility: Residential; Day School

Gender Served: Coed

Exceptionality: Hearing Impaired; Mentally Retarded; Multi-handicapped

Administration: (Private) Board of Trustees

Purpose: Education of hearing-impaired and multi-handicapped, hearing-impaired children

Admission Policies: CA: 0-21 years. No denominational restrictions.

Enrollment: 165

Services: Parent/infant program; pre-school, elementary/high school, vocational training, speech; physical education and athletics; counseling; psychological; audiological; social services.

Archdiocese of New York

BASE- Bronx Archdiocesan Special Education

1011 First Avenue
New York, NY 10022
212-371-1000

Type of Facility: Day School

Gender Served: Coed

Exceptionality: Mentally Retarded/Developmentally Disabled (mild); Learning Disabled

Administration: Diocesan Department of Special Education

Purpose: To provide a day school program for mild mentally retarded children and developmentally delayed children.

Admission Policies: CA: 8-15 years; IQ range: 65-95. No denominational restrictions. Behavior should be such to allow for individual and group instruction.

Enrollment: 31

Services: Four self-contained classes, non-academic on-site mainstreaming, some academic mainstreaming; speech and counseling services.

Barbara Blum Residence

262 9th Street
Brooklyn, NY 11215
718-788-0666

Type of Facility: Residential

Gender Served: Coed

Exceptionality: Emotionally and/or Socially Maladjusted

Administration: (Private) Good Shepherd Services

Purpose: Crisis intervention program to identify and treat the causes of emotional, behavioral and family problems and to develop a plan for continued help.

Admission Policies: Referrals from Brooklyn Family Court and Special Services for Children.

Enrollment: capacity - 12

Services: Emergency shelter; diagnostic and referral services.

Euphrasian Residence

337 East 17th Street
New York, NY 10033
212-475-4245

Type of Facility: Residential; Diagnostic Reception Center

Gender Served: Female

Exceptionality: Emotionally and/or Socially Maladjusted

Administration: (Private) Good Shepherd Services

Purpose: To help identify the causes of emotional, behavioral and family problems and to develop a plan for continued help. Each person is helped to identify unique strengths and abilities.

Admission Policies: CA: 12-17 years; Crisis intervention center. Referrals by Special Services for Children and the Family Courts.

Enrollment: capacity - 30

Services: Group living program which includes counseling, recreation and special education.

Good Shepherd Services - Group Homes

337 East 17th Street
New York, NY 10003
212-475-4245

Type of Facility: Residential Treatment Centers; (Marian Hall, St. Helena's, St. Germaine's)

Gender Served: Female

Exceptionality: Emotionally and/or Socially Maladjusted

Administration: (Private) Sisters of the Good Shepherd

Purpose: Counseling is provided to help resolve personal and family difficulties and to prepare youngsters for return home or for independent living.

Admission Policies: Referrals by Special Services for Children and the Family Courts. CA. 12-17 years. No denominational restrictions.

Enrollment: capacity - 56

Services: Girls attend community schools, participate in community activities, have unlimited family contact, while receiving counseling.

Lavelle School for the Blind

E. 221 St. and Paulding Avenue
Bronx, NY 10469
212-882-1212

Type of Facility: Day School

Gender Served: Coed

Exceptionality: Visually Impaired

Administration: (Private) Sisters of St. Dominic of Blauvelt under a Board of Trustees

Purpose: To educate our visually impaired children to insure their intellectual, emotional, physical, moral and social development so that they may become contributing members of society.

Admission Policies: CA: 3-21 years; IQ range: flexible; toilet trained. No denominational restrictions.

Enrollment: capacity - 125

Services: Psychological; occupational therapy; physical therapy; educational evaluation, speech; counseling, medical and nursing care.

Seton Foundation for Learning

104 Gordon Street
Staten Island, NY 10304
718-447-1750

Type of Facility: Day School

Gender Served: Coed

Exceptionality: Mentally Retarded/Developmentally Disabled (mild)

Administration: Diocesan Department of Special Education and Board of Directors

Purpose: To provide an alternate Catholic educational experience for mildly retarded children.

Admission Policies: CA: 5-15 years; IQ range: 65-95; toilet trained. No denominational restrictions.

Enrollment: 34

Services: Self-contained class; mainstreaming opportunities, speech therapy, occupational therapy, physical therapy.

St. Joseph's School for the Deaf

1000 Hutchinson River Pkwy
Bronx, NY 10465
212-828-9000

Type of Facility: Day School

Gender Served: Coed

Exceptionality: Hearing Impaired

Administration: (Private) Daughters of the Heart of Mary and State Education Department

Purpose: To provide education programs and support services to hearing impaired children.

Admission Policies: CA: 0-14 years; 80dB hearing loss; placement through local CSE and State Education Dept. No denominational restrictions. Social habit requirements: self help skills, ready for group placement.

Enrollment: 160

Services: Speech; social service; psychological consultations; counseling.

The Astor Home for Children

1967 Turnbull Avenue

Bronx, NY 10473

212-829-8900

Type of Facility: Group Home

Gender Served: Coed

Exceptionality: Emotionally and/or Socially Maladjusted; Learning Disabled

Purpose: To serve emotionally disturbed or mentally ill children in a community based setting.

Admission Policies: CA: 5-18 years; emotionally disturbed or mentally ill; NY state residents.

Enrollment: 43

Services: Individual and group psychotherapy; health and medical service, family therapy; education coordination and placement; job placement; vocational training; summer employment program.

The Astor Home for Children Residence

36 Mill Street

Rhinebeck, NY 12572

914-876-4081

Type of Facility: Residential

Gender Served: Coed

Exceptionality: Emotionally and/or Socially Maladjusted; Mentally Retarded; Learning Disabled, Hearing and Speech Impaired

Administration: Catholic Charities, Diocese of New York and Daughters of Charity of St. Vincent de Paul

Purpose: To provide a gamut of services in a 24-hour structured therapeutic milieu with the goal of return to families or to discharge to less restrictive settings.

Admission Policies: NY State residents; CA: 5-12 years; IQ: 70 or above; emotionally disturbed or mentally ill.

Enrollment: 75

Services: Individual and group psychotherapy; milieu therapy, family therapy, music, speech/language therapy, recreation therapy; health and medical services.

Diocese of Rochester

School of the Holy Childhood

100 Groton Parkway

Rochester, NY 14623

716-359-3710

Type of Facility: Day School; Clinic Treatment Program; Adult Day Training/Work Activities Center

Gender Served: Coed

Exceptionality: Mentally Retarded/Developmentally Disabled (all)

Administration: (Private) Sisters of St. Joseph of the Rochester area

Purpose: To provide special education and training to developmentally disabled children and vocational training for adults from the greater Rochester area.

Admission Policies: CA: 5-21 years. Adult Day Training - CA: 18-50 years

Enrollment: Day-100; Adult Day Training Program-70

Services: Academic; prevocational and vocational training; adaptive physical education, medical care, speech; occupational therapy; social and psychological services; sheltered employment training.

Diocese of Rockville Centre

Catholic Charities Services for Visually Impaired

272 Merrick Road
Lynbrook, NY 11563
516-593-4600

Type of Facility: Community Rehabilitation Teaching Program

Gender Served: Coed

Exceptionality: Visually Impaired

Administration: Catholic Charities, Diocese of Rockville Centre

Purpose: To provide rehabilitation services, book transcription services and recreation to legally blind children and adults in Nassua and Suffolk Counties, NY; not a school.

Admission Policies: For rehabilitation, persons must be clients of the State Commission for the Blind and Visually Handicapped. Referrals may come from any source.

Enrollment: 250

Services: Advocacy; counseling; mobility instruction, information and referral services; rehabilitation teaching; transcription center.

Cleary School for the Deaf

301 Smithtown Blvd.
Ronkonkoma, NY 11779
516-588-0530

Type of Facility: Day School

Gender Served: Coed

Exceptionality: Hearing Impaired

Administration: (Private) Sisters of St. Joseph of Brentwood

Purpose: To educate deaf children 0-21 years in Suffolk County; Infant, preschool, elementary, high school.

Admission Policies: Profoundly deaf and/or multi-handicapped deaf students living in Suffolk. No denominational requirements. Referred by State Education Department and School District Committee of Special Education.

Enrollment: 84

Services: Resource Center; diagnostic work-up in audio, speech/ language education; parent education; in-service works; speech; sign language classes; lip reading.

Madonna Heights School for Girls

Burr's Lane
Huntington, NY 11743
516-643-8800

Type of Facility: Residential; Day School

Gender Served: Female

Exceptionality: Emotionally and/or Socially Maladjusted; Learning Disabled

Administration: (Private) Sisters of the Good Shepherd (RGS)

Purpose: Residential or day treatment for emotionally disturbed adolescent girls.

Admission Policies: CA: 11-17 years (grades 6-12); IQ: 75 and up. No denominational restrictions.

Enrollment: 95

Services: All psychological and academic testing and treatment facilities.

Maryhaven Center of Hope

450 Myrtle Avenue

Port Jefferson, NY 11777

516-474-3400

Type of Facility: Residential; Pre-vocational Work Training

Gender Served: Coed

Exceptionality: Mentally Retarded/Developmentally Disabled (all), Emotionally and/or Socially Maladjusted

Administration: Diocese of Rockville Centre and New York State

Purpose: To enable handicapped persons of all ages to realize their potential, and to provide services and training in an environment of compassion, understanding and love.

Admission Policies: CA: 5-21 years (residential).

Enrollment: 110

Services: Music; adaptive daily living skills, industrial arts, adaptive physical education, pre/vocational training, art; occupational therapy; physical therapy.

North Carolina

Diocese of Charlotte

Holy Angels, Inc.

427 East Wilkinson Blvd.

Belmont, NC 28012

704-825-4161

Type of Facility: Residential; Developmental Program

Gender Served: Coed

Exceptionality: Mentally Retarded (profound, severe); Multiply- Handicapped

Administration: (Private) Sisters of Mercy of North Carolina

Purpose: Residential and developmental services to severely and profoundly multi-handicapped children.

Admission Policies: CA: birth to 12 years; primary diagnosis of mental retardation and need for 24-hour care and treatment.

Enrollment: 45

Services: Interdisciplinary/transdisciplinary services. nursing, physical therapy, special education, speech/language services, social work, and recreation.

North Dakota

Diocese of Bismarck

Home on the Range for Boys

Route 1, Box 41

Sentinel Butte, ND 58654

701-872-3745

Type of Facility: Residential

Gender Served: Male

Exceptionality: Emotionally and/or Socially Maladjusted

Administration: Private

Purpose: To provide a success-oriented environment where adolescent boys can experience worth, develop responsibility, and meet their basic needs.

Admission Policies: CA: 11-18 years; IQ range: 80-140. Applications, social history, psychiatric reports, school and medical records must be submitted to Social Worker. No denominational restrictions.

Enrollment: capacity - 59

Services: Group therapy; family counseling; alcohol and drug awareness programs, individualized therapy.

Diocese of Fargo

Friendship (Villa Nazareth dba Friendship Village)

3004 11 Street South

Fargo, ND

701-235-8217

Type of Facility: Residential; Habilitation/Vocational Training; Developmental Skills Center

Gender Served: Coed

Exceptionality: Mentally Retarded/Developmentally Disabled, Neurologically and Visually Impaired, Learning Disabled

Administration: (Private) Sisters of the Presentation

Purpose: To provide a program of education, social and clinical services in residential and developmental/vocational programs for exceptional children and adults.

Admission Policies: CA: 5 and above. Non-discriminatory. Children and adults are served on the basis of handicapping condition or as determined by the North Dakota Department of Human Services.

Enrollment: Adult Residential-42; Children Residential-16

Services: Nursing; occupational therapy; physical therapy; psychology/behavior management, speech/language, respite care; pastoral care.

Ohio

Archdiocese of Cincinnati

St. Rita School for the Deaf

1720 Glendale-Milford Road

Cincinnati, OH 45215

513-771-7600

Type of Facility: Residential; Day School

Gender Served: Coed

Exceptionality: Hearing Impaired

Purpose: The education of hearing impaired children.

Admission Policies: CA: 4-21 years. No denominational restrictions.

Enrollment: 110 (elementary-60, high school-50)

Services: Speech therapy; residential care; educational program.

Diocese of Cleveland

Julie Billiard School

4982 Clubside Road

Lyndhurst, OH 44124

216-381-1191

Type of Facility: Day School

Gender Served: Coed

Exceptionality: Learning Disabled

Administration: (Private) Sisters of Notre Dame

Purpose: To educate children with learning problems.

Admission Policies: Grades 1-8; IQ: 80 and above. Non-denominational. Consult facility for additional information.

Enrollment: capacity - 125

Services: Non-graded academic program.

Kolnonia Homes, Inc.

5755 Granger Road
Independence, OH 44131
216-741-8777

Type of Facility: Group Home - 7 locations

Gender Served: Coed

Exceptionality: Mentally Retarded/Developmentally Disabled

Administration: Cuyahoga County Board

Admission Policies: No direct referrals.

Enrollment: capacity - 50

Services: Social services; attend workshops.

Marycrest School for Girls

7800 Brookside Road
Independence, OH 44131
216-524-5280

Type of Facility: Residential; Day School

Gender Served: Female

Exceptionality: Emotionally and/or Socially Maladjusted; Behaviorally Handicapped

Administration: (Private) Sisters of the Good Shepherd (RGS)

Purpose: Rehabilitation of girls.

Admission Policies: CA: 13-18 years; IQ range: 80-130 (flexible). No restrictions regarding race, color, or creed. There must be a need for residential treatment.

Enrollment: capacity - 70

Services: State accredited, vocational and academic programs

OLA/St. Joseph Center

2346 West 14th Street
Cleveland, OH 44113
216-621-3451

Type of Facility: Day School

Gender Served: Coed

Exceptionality: Mentally Retarded/Developmentally Handicapped

Administration: Under the Apostolate for the Mentally Retarded and Catholic Charities

Purpose: To provide Catholic special education in a day school setting for children who are mild/moderate mentally retarded. Individual Education Plan is developed with parent input.

Admission Policies: CA: 6-16 years. Students referred from Catholic and public school programs. Current psychological test, meeting with principal and social worker, and an assessment by teacher is needed.

Enrollment: capacity 76-80

Services: Academic instruction; daily living skills; speech/language therapy; pre-vocational training; health service; psychological services including testing and counseling.

Our Lady of the Elms Special Education School

1230 West Market Street
Akron, OH 44313
216-836-3734

Type of Facility: Day School

Gender Served: Coed

Exceptionality: Learning Disabled

Administration: (Private) Srs. of St. Dominic and Diocesan Board of Education

Purpose: To provide an educational program for students with special learning needs. Education of the total child based on Christian values. Individual and group instruction.

Admission Policies: CA: 5-15 years. No denominational restrictions. Personal interviews, testing and previous records.

Enrollment: capacity - 65

Services: Motor development therapy, speech/language therapy, counseling, psychological consultation, religious education; cooking; swimming.

Our Lady of the Wayside

37665 Detroit Road

Avon, OH 44011

216-934-6152

Type of Facility: Residential

Gender Served: Coed

Exceptionality: Mentally Retarded/Developmentally Disabled; Multi-handicapped

Administration: Private

Purpose: Education and training of mentally retarded persons.

Admission Policies: CA: birth-21 years

Enrollment: capacity - 90

Services: Physical therapy; music; activity center; basic living skills.

Parmadale

6753 State Road

Parma, OH 44134

216-845-7700

Type of Facility: Residential

Gender Served: Coed

Exceptionality: Emotionally Disturbed (severe); Learning Disabled; Developmentally Disabled

Administration: Diocese of Cleveland

Purpose: Residential treatment. Family therapy treatment for children with the goal of keeping children in their homes or returning them to their homes/communities. Chemical Dependency Treatment. Foster Homes.

Admission Policies: CA: 7-21 years; No ethnic, racial or religious restrictions.

Enrollment: capacity - 180

Services: Residential treatment and care; family and individual therapy, education, foster care, chemical dependency treatment; medical and dental care.

Rose-Mary Center

19350 Euclid Avenue

Euclid, OH 44117

216-481-4823

Type of Facility: Residential

Gender Served: Coed

Exceptionality: Mentally Retarded/Developmentally Disabled (moderate, severe), Multiply-handicapped

Administration: Diocese of Cleveland, staffed by the Sisters of the Humility of Mary

Purpose: To provide short-term residential treatment, aimed to help the handicapped child develop his/her potential skills to a level which he/she will be able to function in home/school environment.

Admission Policies: Referral by physician, parent, social agency or interested party. Contact should be initiated through the Center's social worker.

Enrollment: 40

Services: Basic skills; occupational therapy; physical therapy; speech therapy, social services, psychological service; individual educational plans.

St. Vincent-St. Mary High School

15 North Maple Street

Akron, OH 44303

216-253-9113

Type of Facility: Day School; Developmentally Handicapped Program

Gender Served: Coed

Exceptionality: Mentally Retarded/Developmentally Disabled (all); Learning Disabled

Purpose: To provide a secondary special education unit which will serve any students of the greater Akron area who have unique developmental learning needs.

Admission Policies: Parent-teacher conference, student visitation, psychological data review, written IEP plan

Enrollment: capacity: Developmentally Handicapped-12; Learning Disabled-15

Services: Regular courses; extra-curricular activities; speech therapy; vocational training.

Diocese of Columbus

Mount Aloysius

5375 Tile Plant Road
New Lexington, OH 43764
614-342-3343

Type of Facility: Residential; Group Home

Gender Served: Male

Exceptionality: Mentally Retarded (moderate, severe), Speech and Hearing Impaired, Autistic, Orthopedically Handicapped

Administration: (Private) Brothers of the Good Shepherd; Board of Trustees

Purpose: Permanent residential placement serving mentally retarded/developmentally disabled residents.

Admission Policies: CA: 16 and above; Medicaid eligible.

Enrollment: capacity - 80

Services: Habilitation training in daily living activities; social skills; hygiene; recreation, physical therapy; occupational therapy; pathology; nursing care.

Rosemont Center

2440 Dawnlight
Columbus, OH 43211
614-471-2626

Type of Facility: Residential; Day School; Group Home; Receiving Center

Gender Served: Coed

Exceptionality: Emotionally and/or Socially Maladjusted

Administration: (Private) Sisters of the Good Shepherd (residential) and Columbus Public School (school program)

Purpose: To provide therapeutic intervention educationally, socially, and emotionally to youth with emotional and behavior problems.

Admission Policies: CA: 12-18 years; IQ range: flexible. No denominational restrictions.

Enrollment: 70-80

Services: Severe behavioral handicapped classes (grades 7-12).

Diocese of Steubenville

St. John's Villa

620 Roswell Road, NW
Carrolton, OH 44615-9399
216-627-7647

Type of Facility: Residential; Vocational Work Training; Extended Care

Gender Served: Coed

Exceptionality: Mentally Retarded/Developmentally Disabled, Autistic, Speech Impaired, Learning Disabled, Orthopedically Handicapped

Administration: (Private) Sisters of Our Lady of Charity

Purpose: To provide special education, training and residential care to developmentally disabled persons with special needs.

Admission Policies: CA: 4-18 years, IQ range. 30-85 (flexible) No denominational restrictions. Consult facility for information.

Enrollment: capacity - 182

Services: Educational and vocational programs, practical living experiences, recreation; medical care.

Diocese of Toledo

Mary Immaculate School

3837 Secor Road
Toledo, OH 43623
419-474-1688

Type of Facility: Day School

Gender Served: Coed

Exceptionality: Learning Disabled

Administration: (Private) Sisters of Notre Dame of Toledo

Purpose: To educate the students handicapped by learning disability.

Admission Policies: A recent psychological report confirming learning disability. CA. 7-14 years; self-care. No denominational restrictions.

Enrollment: 66

Services: Educational program.

Oklahoma

Archdiocese of Oklahoma City

St. Joseph's Children's Home

P.O. Box 11417
Oklahoma City, OK 73136
405-424-1411

Type of Facility: Residential; Group Home; Vocational Work Training; Extended Care

Gender Served: Coed

Exceptionality: Emotionally and/or Behaviorally Maladjusted

Purpose: To provide treatment to youth suffering from abuse, neglect and abandonment, and behavioral problems.

Admission Policies: CA: 11-17 years; delinquent, in need of supervision and treatment. Private custody (parents).

Enrollment: 36

Services: Therapy; education; spiritual; recreational; independent living.

Oregon

Archdiocese of Portland

19th St. and McMinnville Group Homes

c/o 231 S.E. 12th Avenue
Portland, OR 97214
503-231-4866

Type of Facility: Residential

Gender Served: Male

Exceptionality: Mentally Retarded (moderate); Learning Disabled; Emotionally and/or Socially Maladjusted, Speech Impaired

Administration: Catholic Community Services of Portland

Purpose: To provide support, guidance and education to boys with special needs. Boys attend special classes in public schools with individual education plans.

Admission Policies: CA: 12-18 years; screening process.

Enrollment: capacity - 10

Services: Individual and group counseling; psychological services, basic living skills, sexual abuse programs, resources for work training programs.

Christle School/Evergreen Education Program

Marylhurst, OR 97036

503-636-3621

Type of Facility: Residential

Gender Served: Coed

Exceptionality: Emotionally and/or Socially Maladjusted; Learning Disabled

Administration: (Private) Board of Directors; Clackamas Education Service District

Purpose: To help expand competence to reach each person's developmental potential. To bring each child where he/she can function in a less structured setting and live with his family unit.

Admission Policies: Placements from Children's Services Division, out-of-state agencies, and private placements.

Enrollment: 40 (12 in secure unit; 28 less restrictive)

Services: Psychological counseling; group and individual therapy, behavior management, individual academic curriculum; life skills program; social skills/affective education.

Emily School

830 N.E. 47th Avenue

Portland, OR 97213

503-234-9991

Type of Facility: Day School; Pre-school

Gender Served: Coed

Exceptionality: Developmentally Delayed (moderate); Communication Delayed

Administration: (Private) Sisters of Providence and Portland Public School personnel

Purpose: To provide an education for developmentally delayed pre-school age children.

Admission Policies: CA: 2-1/2-5 years; admission determined by Portland Public School policies.

Enrollment: 10-12

Services: Speech therapy; occupational therapy; food services; nurse on duty.

St. Mary's Home for Boys

16535 S.W. Tualatin Valley Highway

Beaverton, OR 97006

503-649-5651

Type of Facility: Residential

Gender Served: Male

Exceptionality: Emotionally and/or Socially Maladjusted; Learning Disabled

Purpose: Treatment center for emotionally disturbed and delinquent boys.

Admission Policies: CA: 9-18 years; IQ range: 70 and over. We accept private referrals.

Enrollment: capacity - 56

Services: Treatment/education for severely emotionally disturbed/ delinquent boys. Adolescent sexual offender program.

Pennsylvania

Diocese of Allentown

John Paul II, Center for Special Learning

450 S. 6th Street

Reading, PA 19611

215-373-5687

Type of Facility: Day School

Gender Served: Coed

Exceptionality: Mentally Retarded/Developmentally Disabled, Emotionally and/or Socially Maladjusted, Multi-handicapped

Administration: Auspices of Catholic Social Agency

Purpose: To provide an education and training to Downs Syndrome, handicapped children

Admission Policies: CA: 5-21 years; interview and testing required.

Enrollment: capacity - 40

Services: Speech therapy; physical therapy; pre-vocational training; access to vocational training.

Mercy Special Learning Center

830 South Woodward Street
Allentown, PA 18103
215-797-8242

Type of Facility: Day School; Pre-vocational Work Training; Infant/Pre-School Program

Gender Served: Coed

Exceptionality: Mentally Retarded/Developmentally Disabled (all)

Administration: (Private) Sisters of Mercy and Catholic Social Agency

Purpose: To provide a quality education to children who are mentally handicapped in a loving, caring environment.

Admission Policies: Child must be diagnosed as having mental retardation and able to benefit from the program. CA: birth-21 years. No denominational restrictions. Consult facility for other policies.

Enrollment: 90

Services: Religious instruction; math; reading; self-help; daily living skills; pre-vocational training; speech; occupational therapy; physical therapy.

St. Joseph Center

2075 W. Norwegian Street
Pottsville, PA 17901
717-622-4638

Type of Facility: Day School

Gender Served: Coed

Exceptionality: Mentally Retarded/Developmentally Disabled (all); Learning Disabled; Speech Impaired

Administration: (Private) Catholic Social Agency and the Sisters of St. Joseph of Chestnut Hill (SSJ)

Purpose: To provide an educational program within a Christian atmosphere which meets the individual needs of children who are mentally retarded or learning disabled.

Admission Policies: CA: 4.7 to 21 years. No denominational restrictions.

Enrollment: capacity - 60

Services: Infant stimulation; after care; speech/language therapy; academic and vocational programs.

Diocese of Erie

Harborcreek Youth Services

5712 Iroquois Avenue
Harborcreek, PA 16421
814-899-7664

Type of Facility: Residential; Day School; Vocational Work Training; Group Home

Gender Served: Coed

Exceptionality: Emotionally and/or Socially Maladjusted; Learning Disabled

Administration: Diocese of Erie

Purpose: Care and treatment of socially and emotionally disturbed youth.

Admission Policies: CA: 10-17 years

Enrollment: 135

Services: Individual and group counseling; special education; religious education.

Diocese of Greensburg

Clellan Heights School for Exceptional Children

R.D.9, Box 607
Greensburg, PA 15601
412-837-8120

Type of Facility: Residential; Day School; Resocialization Program

Gender Served: Coed

Exceptionality: Mentally Retarded/Developmentally Disabled (mild, moderate)

Administration: (Private) Apostles of the Sacred Heart of Jesus

Purpose: Education and training of developmentally disabled children and young adults to bring them to maximum adequacy in employment and independent living.

Admission Policies: CA: 5-21 years; mildly to moderately mentally handicapped; must be ambulatory and toilet trained. No denominational restrictions. Must be able to spend weekends at home.

Enrollment: capacity - 120

Services: Individualized educational programs; development of personal and social skills; independent living training; sheltered workshop and work trial experiences.

Diocese of Harrisburg

Paradise School

R.D. 1
Abbottstown, PA 17331
717-259-9537

Type of Facility: Residential; Day School; Vocational Work Training

Gender Served: Male

Exceptionality: Emotionally and/or Socially Maladjusted; Learning Disabled

Administration: Catholic Social Services, Diocese of Harrisburg.

Purpose: Child care facility for dependent, neglected, delinquent boys.

Admission Policies: CA: 15-18 years. Referral from the local county officer of Children and Youth and Juvenile Probation Offices.

Enrollment: 55

Services: Special education; vocational training; family, group, and individual therapy, therapeutic recreation.

Archdiocese of Philadelphia

Archbishop Ryan Memorial Institute for the Deaf

3509 Spring Garden Street
Philadelphia, PA 19104
215-387-1711

Type of Facility: Day School

Gender Served: Coed

Exceptionality: Hearing Impaired

Administration: (Private) Sisters of St. Joseph and School Sisters of Notre Dame

Purpose: To educate deaf children with a solid foundation in speech, lip reading, and auditory training. Possible mainstreaming.

Admission Policies: Severe hearing impairment that precludes regular school. No denominational restrictions. Qualified testing.

Enrollment: 66

Services: Parent-infant program; rehabilitation program for children in regular schools.

C. K. Center

1799 S. Sproul Road
Springfield, PA 19064
215-543-3380

Type of Facility: Residential; Vocational Work Training; Day School

Gender Served: Male; (Day School-coed)

Exceptionality: Mentally Retarded/Developmentally Disabled (all)

Administration: (Private) Congregation of the Servants of Charity

Purpose: To provide maintenance, care, occupational, therapeutic, vocational and workshop programs

Admission Policies: CA: 21+ years; educable and trainable. No denominational restrictions. Social habit requirements: self care.

Enrollment: capacity: Residential-100; Day program - 122

Services: Special education; psychology; occupational therapy; physical therapy; speech; arts and crafts, vocational therapy; social services; work activity center; daily living skills; recreation.

De La Salle Vocational Day Treatment Center

Street Road and Bristol Pike (P.O. Box 344)
Bensalem, PA 19020
215-464-0344

Type of Facility: Day School; Vocational Training

Gender Served: Male

Exceptionality: Learning Disabled

Administration: Catholic Social Services; Christian Brothers (FSC)

Purpose: Rehabilitation of court committed juvenile boys.

Admission Policies: CA: 15-18 years; IQ range: 80 and upward (flexible). No denominational restrictions.

Enrollment: capacity - 125

Services: Family, individual and group therapy, alcohol and drug abuse therapy; individualized instruction, diploma program; vocational program; GED preparation; employment search.

De La Salle in Towne

25 S. Van Pelt Street
Philadelphia, PA 19103
215-567-5500

Type of Facility: Day School

Gender Served: Male

Exceptionality: Emotionally and/or Socially Maladjusted; Learning Disabled

Administration: St. Gabriel's System under auspices of Archdiocese of Philadelphia

Purpose: To provide a 12-month program for delinquent boys.

Admission Policies: CA: 14-17 years; borderline IQ or above, living in community, one parent or guardian responsible

Enrollment: 95

Services: Social work; counseling; junior-senior education, group counseling, job readiness and placement.

Don Guanella School

1797 S. Sproul Road
Springfield, PA 19064
215-543-1418

Type of Facility: Residential; Sheltered Workshop

Gender Served: Male

Exceptionality: Mentally Retarded/Developmentally Disabled

Administration: (Private) Congregation of the Servants of Charity

Purpose: Education and training of mentally retarded boys.

Admission Policies: Residential: CA: 6-16 years; IQ range 15-70, educable, trainable, social habit requirements; non-violent behavior. No denominational restrictions.

Enrollment: capacity: Residential-70; Coeducational-130

Services: Speech/language/hearing therapy; occupational therapy, physical therapy, remedial reading, tutoring, vocational training; educational and psychological evaluation; respite care; dental/medical, independent living skills.

Our Lady of Confidence Day School

10th and Lycoming Streets
Philadelphia, PA 19140
215-329-2697

Type of Facility: Day School; Practical Life Skills Center (18-21 years)

Gender Served: Coed

Exceptionality: Mentally Retarded (mild, moderate)

Administration: (Private) Sisters of St. Joseph of Chestnut Hill

Purpose: Provide educational facility for retarded children - emphasis on religious, academic, social, physical, emotional, and pre-vocational development.

Admission Policies: CA: 4-21 years; IQ: 30-75, educable and trainable. No denominational restrictions.

Enrollment: capacity - 145

Services: Speech therapy; psychology; adaptive physical education; career exploration; vision and hearing therapy.

Queen of the Universe Day Center

Trenton Road
Levittown, PA 19056
215-945-6090

Type of Facility: Day School

Gender Served: Coed

Exceptionality: Mentally Retarded/Developmentally Disabled (mild, moderate)

Administration: Diocesan Office

Purpose: To provide special education to students.

Admission Policies: CA: 5-16 years

Enrollment: 45

Services: Special academic program for mentally handicapped students.

Saint Katherine Day School

Bowman Ave. and Williams Road
Philadelphia, PA 19151
215-839-4332

Type of Facility: Day School

Gender Served: Coed

Exceptionality: Mentally Retarded/Developmentally Disabled (all)

Administration: Sisters of Mercy and Archdiocesan Office of Catholic Education

Purpose: To provide for the religious education, academic, pre-vocational and living skills education for the students attending.

Admission Policies: The child must be 4-1/2 yrs of age and live in the geographic area of Philadelphia and suburbs served by the school.

Enrollment: 142

Services: Educational services; speech therapy; psychological services.

St. Edmond's Home for Crippled/Retarded Children

320 South Roberts Road
Rosemont, PA 19010
215-525-8800

Type of Facility: Residential

Gender Served: Coed

Exceptionality: Mentally Retarded/Developmentally Disabled (all); Orthopedically Handicapped

Administration: (Private) Sisters of Mercy (RSM)

Purpose: Residential setting for children with orthopedic/ mentally retarded limitations.

Admission Policies: Boys and girls (regardless of race, creed, color, national origin) with physical and/or mental handicaps/disabilities. CA: birth-18 years.

Enrollment: capacity - 40

Services: Medical and nursing care; speech/language therapy; psychological counseling, recreation, music, physical therapy; occupational therapy.

St. Gabriel's Hall System

P. O. Box 390, Pawlings Road
Phoenixville, PA 19460
215-666-7970

Type of Facility: Residential; Day School; Group Home

Gender Served: Male

Exceptionality: Emotionally and/or Socially Maladjusted

Administration: Catholic Social Services; staffed by Christian Brothers (FSC)

Purpose: Rehabilitation of court-committee juvenile delinquent boys. Emotionally disturbed (not severely) and educable mentally retarded accepted.

Admission Policies: CA: 12-17-1/2 years; IQ range: 20-120 (flexible). No denominational restrictions.

Enrollment: Residential-180; Group Home-30

Services: Family, individual and group therapy; alcohol and drug abuse therapy, individualized instruction, diploma program; vocational program; GED preparation; employment search.

St. Lucy Day School

929 S. Farragut Street
Philadelphia, PA 19143
215-382-6325

Type of Facility: Day School

Gender Served: Coed

Exceptionality: Visually Impaired

Administration: (Private) Servants of the Immaculate Heart of Mary (IHM) and Department of Special Education

Purpose: To provide a day school program and vision consultant service to parish schools and diocesan secondary schools. To enable visually impaired students to remain within mainstream.

Admission Policies: Visual acuity of 20/70 or less in better eye after correction as indicated in recent medical reports. Parent interview required.

Enrollment: Resource Rooms-25; Vision Consultant Service-45

Services: Infant program; pre-school; K-8 elementary program; parent-support group meetings; parent Braille class; Vision Co service; summer day camp.

Diocese of Pittsburgh

DePaul Institute

Castlegate Avenue
Pittsburgh, PA 15226
412-561-4848

Type of Facility: Day School

Gender Served: Coed

Exceptionality: Hearing, Speech and Language Impaired

Administration: (Private) Sisters of Charity

Purpose: Education of hearing, speech and language impaired children.

Admission Policies: Infant program (0-2 yrs) nursery, kindergarten and grade school through junior high.

Enrollment: 115

Services: Audiological; psychological; speech; evaluations and counseling for parents and students.

St. Anthony School for Exceptional Children

Hulton Road and 13th Street
Oakmont, PA 15139
412-828-8871

Type of Facility: Residential (5 day); Day School

Gender Served: Coed

Exceptionality: Mentally Retarded/Developmentally Disabled (mild, moderate)

Administration: Diocesan Dept. of Special Education

Purpose: Education of retarded children of the diocese.

Admission Policies: CA: 5-21 years; IQ: (flexible), educable and trainable. No denominational restrictions.

Enrollment: 75

Services: Speech therapy; music therapy; counseling; physical therapy; nutrition counseling.

Diocese of Scranton

Catholic Social Services Group Home

400 Wyoming Avenue
Scranton, PA 18503
717-346-8936

Type of Facility: Group Home; Vocational Work Training

Gender Served: Female

Exceptionality: Emotionally and/or Socially Maladjusted

Administration: Catholic Social Services

Purpose: To provide a home, education and treatment for teen-age girls who cannot live in their own homes.

Admission Policies: Teen age girls, capable of profiting from education and treatment programs.

Enrollment: 12

Services: Complete remedial education; psychiatric and psychological counseling.

Lourdesmont Good Shepherd Youth and Family Services

537 Venard Road
Clarks Summit, PA 18411
717-587-4741

Type of Facility: Residential (Female); Day School (Coed)

Gender Served: Coed

Exceptionality: Emotionally and/or Socially Maladjusted

Administration: (Private) Sisters of the Good Shepherd (RGS), Washington, DC Province

Purpose: Psycho-social-educational intervention for adolescents who manifest emotional/social/behavioral maladjustment. Work with parents is integral to programs.

Admission Policies: CA: 13-17 years; average ability, (grades 7-12); who are not severely disturbed. Non-discriminatory. Social history required in advance.

Enrollment: capacity: Residential - 25; Day - 80

Services: Psychiatric and psychological consultation, medical; individual, group, and family therapy; education, pre-vocational training; recreation; drug and alcohol education/counseling.

St. Joseph's Center

2010 Adams Avenue
Scranton, PA 18509
717-342-8379

Type of Facility: Residential; Day School; Intermediate Care Facility

Gender Served: Coed

Exceptionality: Mentally Retarded/Developmentally Disabled (all), Hearing, Speech and Visually Impaired; Orthopedically Handicapped

Purpose: To provide comprehensive medical care and individualized therapeutic programming.

Admission Policies: CA: 0-17 yrs with a diagnosis of severe/profound mental retardation. The child must also be able to benefit from programming at the Center.

Enrollment: 93

Services: Psychological, educational, and social services, physical therapy, occupational therapy, speech, music therapy; recreation.

South Dakota

Diocese of Sioux Falls

St. Joseph's Indian School

Box 89

Chamberlain, SD 57325

605-734-6021

Type of Facility: Residential School for Native Americans

Gender Served: Coed

Exceptionality: Learning Disabled

Purpose: To meet the educational needs of each student.

Admission Policies: Native American, child in need of a home. Natural family is functioning poorly and child needs residential setting.

Enrollment: 180 (19 special students)

Tennessee

Diocese of Memphis

DeNeuille Heights School

3060 Baskin Street

Memphis, TN 38127

901-357-7316

Type of Facility: Residential

Gender Served: Female

Exceptionality: Emotionally and/or Socially Maladjusted; Learning Disabled

Administration: (Private) Sisters of the Good Shepherd

Purpose: To rehabilitate girls with emotional problems.

Admission Policies: CA: 13-17 years; normal IQ; all races and creeds accepted.

Enrollment: 52

Services: Regular classes; counseling; therapy; casework.

Madonna Day School for Retarded Children

4189 Leroy Avenue

Memphis, TN 38108

901-767-3460

Type of Facility: Day School

Gender Served: Coed

Exceptionality: Mentally Retarded/Developmentally Disabled

Administration: (Private) Benedictine Sisters (OSB)

Purpose: To train and educate the mentally retarded.

Admission Policies: CA: 6-16 years; IQ range: 40-70, toilet trained No denominational restrictions.

Enrollment: capacity - 52

St. Peter Home

1805 Poplar
Memphis, TN 38104
901-725-8240

Type of Facility: Residential; Group Home

Gender Served: Female

Exceptionality: Emotionally and/or Socially Maladjusted; Mentally Retarded (mild)

Administration: Associated Catholic Charities, Diocese of Memphis

Purpose: To provide professional services to emotionally disturbed adolescent girls in a residential treatment setting, with a view to their planning for life-long attainable goals.

Admission Policies: Girls attend public schools or if in Youth Service Bureau custody have homebound teacher from City School System. Referrals from Department of Human Services and Youth Service Bureau of Juvenile Court.

Enrollment: 40

Services: Individual, family and group counseling; case management; opportunities for spiritual, social and educational growth, and guidance in independent living skills.

Diocese of Nashville

St. Bernard School for Exceptional Children

2021 21st Avenue South
Nashville, TN 37212
615-292-2231

Type of Facility: Day School

Gender Served: Coed

Exceptionality: Mentally Retarded/Developmentally Disabled (mild) Autistic, Emotionally and/or Socially Maladjusted; Orthopedically Handicapped

Administration: Private

Purpose: To teach academics to young handicapped children in order that they may be mainstreamed into a regular class.

Admission Policies: Some academic potential; toilet trained.

Enrollment: 24

Services: 10 month program - August through May, Monday through Friday, 8:30 am - 2:30 pm.

Texas

Diocese of Dallas

Notre Dame of Dallas Schools, Inc.

2018 Allen Drive
Dallas, TX 75204
214-720-3911

Type of Facility: Day School; Vocational Work Training

Gender Served: Coed

Exceptionality: Mentally Retarded/Developmentally Disabled (all), Speech, Hearing and Vision Impaired; Learning Disabled; Autistic

Administration: (Private) School Sisters of Notre Dame

Purpose: To teach work adjustment and social skills and specific vocational skills as well as provide educational, spiritual and social opportunities for exceptional students.

Admission Policies: CA: 3-21 years; ambulatory No denominational restrictions. Consult facility for further information.

Enrollment: 78

Services: Academic program; speech therapy.

St. Joseph Youth Center

901 South Madison
Dallas, TX 75208
214-941-3900

Type of Facility: Residential

Gender Served:

Exceptionality: Emotionally and/or Socially Maladjusted

Administration: Catholic Charities

Purpose: Residential treatment of emotionally disturbed children and adolescents.

Admission Policies: CA: 13-17 years; IQ range: 60 upward. Primary importance is the ability to respond to program. No denominational restrictions; must be physically mobile and verbal.

Enrollment: 48

Services: Intensive individual, family, and group therapy. Classroom education provided by Dallas Independent School District.

Archdiocese of San Antonio

Brighton School, Inc.

271 E. Lullwood
San Antonio, TX 78212
512-826-4492

Type of Facility: Day School

Gender Served: Coed

Exceptionality: Mentally Retarded/Developmentally Disabled (mild, moderate)

Administration: Private, non-profit

Purpose: To serve children who have Downs Syndrome or other developmental delays.

Admission Policies: CA: birth-6 years. No denominational restrictions.

Enrollment: 70

Services: Infant stimulation; speech/language therapy; early childhood education, psychology, physical therapy, occupational therapy; parent training programs.

Vermont

Diocese of Burlington

St. Joseph's Group Home/Vt. Catholic Charities

351 North Avenue
Burlington, VT 05401
802-658-6110

Type of Facility: Group Home

Gender Served: Coed

Exceptionality: Emotionally and/or Socially Maladjusted

Administration: Vt. Catholic Charities supervises and administers program.

Purpose: Provide home for youths due to behavior and/or emotional problems.

Admission Policies: CA: 13-17 years. Referral and work up by a committee

Enrollment: 8

Services: Counseling; recreation on/off grounds; health care; residential care, personal development, social program; spiritual and after-care program.

Virginia

Diocese of Arlington

Gabriel Homes

3838 North Cathedral Lane
Arlington, VA 22203
703-841-2531

Type of Facility: Group Home

Gender Served: Coed

Exceptionality: Mentally Retarded/Developmentally Disabled (mild)

Administration: Affiliated with Catholic Charities of Arlington

Purpose: Residential program for adults with mild/moderate mental retardation.

Admission Policies: Adults living in Fairfax Co, VA, with mild/moderate mental retardation.

Enrollment: 5

Services: Residential care.

St. Coletta School

1305 North Jackson Street
Arlington, VA 22201
703-455-5326

Type of Facility: Day School

Gender Served: Coed

Exceptionality: Mentally Retarded/Developmentally Disabled (mild, moderate), Hearing and Speech Impaired

Administration: Diocese of Arlington

Purpose: To provide opportunities for the development to full potential for mentally retarded persons.

Admission Policies: No restrictions on the basis of religion, race, creed, color, sex, national origin.

Enrollment: 24

Services: Speech; music therapy, psychological testing, vocational placement and training, adaptive physical education; occupational therapy.

Diocese of Richmond

The Achievement Center/St. Vincent's Home

615 North Jefferson St, P.O. Box 12368
Roanoke, VA 24025
703-982-0128

Type of Facility: Day School

Gender Served: Coed

Exceptionality: Learning Disabled

Administration: Private, non-profit, nonsectarian

Purpose: To remediate learning disabled children using a multi-sensory approach. Overall program is aimed at rebuilding the student's self-esteem and self-concept.

Admission Policies: CA: 6-15 years; psychological evaluation required.

Enrollment: capacity - 80

Services: Group instruction limited to 8 to 10 children per class, with primary emphasis on language arts, reading, and math.

Washington

Archdiocese of Seattle

St. Joseph School

6150 Highland Drive
Vancouver, WA 98661
206-696-2586

Type of Facility: Day School

Gender Served: Coed

Exceptionality: Learning Disabled

Administration: St. Joseph School Board

Purpose: To serve students, who because of a learning disability, temporarily cannot benefit from the main-stream of the educational system.

Admission Policies: Students are given a battery of tests to determine academic level and learning difficulties. Meeting with parents and child required.

Enrollment: 10 full-time; 10 part-time

Services: Full-time grades 4-8 act as a regular classroom. Subjects are taught at individual's functional level. Part-time: reading; spelling; study skills.

Diocese of Spokane

Morning Star Boys Ranch

P. O. Box 8087
Spokane, WA 99203
509-448-1411

Type of Facility: Group Home

Gender Served: Male

Exceptionality: Emotionally and/or Socially Maladjusted; Learning Disabled

Administration: Non-profit organization - Spokane Boys Ranch, Inc.

Purpose: To provide treatment milieu for boys who cannot live at home. Serves boys who are moderately emotionally, behaviorally or socially dysfunctional.

Admission Policies: CA: 9-18 years; IQ: 85 and above. Non-psychotic diagnosis. Not a danger to self or others.

Enrollment: capacity - 35

Services: Individual and group counseling; family therapy; organized recreational program, skills building program.

St. Anne's Children's Home

North 707 Cedar Street
Spokane, WA 99201
509-456-7137

Type of Facility: Residential; Group Home

Gender Served: Coed

Exceptionality: Mentally Retarded/Developmentally Disabled; Hearing and Visually Impaired

Administration: Social Ministries Division, Diocesan Office

Purpose: Provide care in the least restrictive environment to children. Respite care for families up to 27 days/year. On-site program of special education.

Admission Policies: Must be non-ambulatory; be accommodated in a 6-year crib and not require oxygen or tube-feeding; maximum weight 40 lbs.

Enrollment: 18

Services: 24-hr care; classroom sessions; physical therapy; occupational therapy, speech, cognitive and motor skills; physical education.

St. Margaret's Hall

S. 707 McClellan
Spokane, WA 99204
509-624-7624

Type of Facility: Residential

Gender Served: Female

Exceptionality: Mentally Retarded/Developmentally Disabled (mild, moderate)

Administration: Social Ministries Division, Diocesan Office

Purpose: To provide training and teach skills necessary for transition to a less restrictive living environment for female, adult, developmentally disabled persons.

Admission Policies: Able to dress unaided, ability to take their own medication, do simple household chores, use stairs and emergency fire exits. CA: 18+ years.

Enrollment: capacity - 15

Services: Training in social skills and self-concept, self-help skills, money management, household chores; adult education; pre-vocational training; volunteer work and job placement.

Wisconsin

Diocese of Madison

St. Coletta School

W4955 Highway 18
Jefferson, WI 53549
414-674-4330

Type of Facility: Residential; Day School; Extended Care; Group Home; Vocational Work Training

Gender Served: Coed

Exceptionality: Mentally Retarded (all)

Administration: (Private) Sisters of St. Francis of Assisi

Purpose: Care and education of children and adults with mental retardation and learning disabilities. Consists of special education, habilitation program, adult worker program, Alverno program.

Admission Policies: CA: 6-18 years; self-care required. Mental retardation must be the primary disability. Serves persons irrespective of ethnic, racial, economic background.

Enrollment: 425

Services: Counseling-personal and vocational; socialization skills; personal living skills, speech and language development; adaptive physical education; swimming; physical therapy; occupational therapy; music.

Archdiocese of Milwaukee

St. Charles Boys Home

151 South 84th Street
Milwaukee, WI 53214
414-476-3710

Type of Facility: Residential; Day School; Vocational Work Training; Day Services

Gender Served: Male

Exceptionality: Emotionally and/or Socially Maladjusted; Learning Disabled

Administration: (Private) Brothers of Holy Cross

Purpose: Residential, day services and in-home after care treatment for adolescent boys.

Admission Policies: CA: 12-18 years. Must reside in the State of Wisconsin.

Enrollment: 63 boys plus day services and aftercare.

Services: Individual, group, and family therapy with psychiatric and psychological consultation, special education services.

St. Coletta Day School

1725 North 54th Street

Milwaukee, WI 53208

414-453-5465

Type of Facility: Day School

Gender Served: Coed

Exceptionality: Mentally Retarded/Developmentally Disabled (mild)

Administration: (Private) Sisters of St. Francis

Purpose: To educate children and assist parents in training and education.

Admission Policies: CA: 8-16 years, who are capable of academic achievement. No denominational restrictions. Self-care.

Enrollment: 12

Services: Academic program; religious education; physical education.

Diocese of Superior

Elmwood/Evergreen/Phoenix Villa/Maywood Homes

c/o 1416 Cumming Avenue

Superior, WI 54880

715-394-6617

Type of Facility: Residential; Group Homes

Gender Served: Coed

Exceptionality: Mentally Retarded/Developmentally Disabled

Administration: Catholic Charities, Diocese of Superior

Purpose: To provide affordable living arrangements for handicapped adults.

Admission Policies: Handicapped, low income, residence in areas.

Enrollment: 69 resident units at scattered sites

Services: Subsidized rent so that rent charged including utilities does not exceed 30% of tenants' income.

Wyoming

Diocese of Cheyenne

St. Joseph's Children's Home

P. O. Box 1117

Torrington, WY 82240

307-532-4197

Type of Facility: Residential; Day School; Group Home, Vocational Work Training

Gender Served: Coed

Exceptionality: Emotionally and/or Socially Maladjusted, Learning Disabled, Mentally Retarded (mild), Speech Impaired

Purpose: To provide a supportive atmosphere where children can grow emotionally, provide instruction on an individual need basis, aid in the development of positive interpersonal relationships.

Admission Policies: CA: 6-17 years

Enrollment: capacity - 10

Services: Special education; regular education; work-study; individual, group and family therapy, psychiatric consultation; speech; occupational therapy; educational/psychological assessment.

INDEX A – RESIDENTIAL FACILITIES

Alabama

Father Walter Memorial Child Care Center
2815 Forbes Drive
Montgomery, AL 36110
205-262-6421

St. Mary's Home for Children
4350 Moffat Road
Mobile, AL 36618
205-344-7733

California

Hanna Boys Center
P.O. Box 100
Sonoma, CA 95476
707-996-6767

Colorado

Excelsior Youth Centers
15001 East Oxford
Aurora, CO 80014
303-693-1550

Mt. St. Vincent Home
4159 Lowell Blvd.
Denver, CO 80211
303-458-7000

Connecticut

Highland Heights-St. Francis Home for Children
651 Prospect Street, Box 1224
New Haven, CT 06505
203-777-5513

Mount Saint John, Inc.
135 Kirtland Street
Deep River, CT 06417
203-526-5391

Delaware

Our Lady of Grace Home for Children
487 Chestnut Hill Road
Newark, DE 19713
302-738-4658

District of Columbia

St. Gertrude's School
4801 Sargent Road, NE
Washington, DC 20017
202-526-7676

Florida

Coystown of Florida
11400 S.W. 137 Avenue
Miami, FL 33186
305-385-1722

Marian Center Services-Developmentally Handi-
capped
15701 Northwest 37th Avenue
Opa Locka, FL 33054
305-625-8354

Georgia

Village of St. Joseph
2969 Butner Road, S.W.
Atlanta, GA 30331-0120
404-349-2400

Saint Mary's Home
2170 East Victory Drive
Savannah, GA 31404
912-236-7164

Illinois

Bartlett Learning Center, Inc.
801 West Bartlett Road
Bartlett, IL 60103
312-289-4221

House of the Good Shepherd
1126 West Grace Street
Chicago, IL 60613
312-935-3434

Lt. Joseph P. Kennedy Jr. School
123rd and Wolf Road
Palos Park, IL 60464
312-448-6520

Maryville Academy
1150 North River Road
Des Plaines, IL 60016
312-824-6126

Mercy Boys & Girls Home
1140 West Jackson Blvd.
Chicago, IL 60607
312-738-7560

Misericordia Home South
2916 West 47th Street
Chicago, IL 60632
312-254-9595

Misericordia Home/Heart of Mercy Village
6300 North Ridge
Chicago, IL 60660
312-973-6300

Mt. St. Joseph
24955 N. Highway 12
Lake Zurich, IL 60047
312-438-5050

St Joseph Carondelet Center
739 East 35th Street
Chicago, IL 60616
312-624-7443

St. Mary of Providence
4200 North Austin Avenue
Chicago, IL 60634
312-545-8300

Good Shepherd Manor
P.O. Box 260
Momence, IL 60954
815-472-6492

St. Francis School for Exceptional Children
1209 South Walnut Avenue
Freeport, IL 61032
815-235-3174

St. Vincent Community Living Facility
659 East Jefferson Street
Freeport, IL 61032
815-232-6181

Brother James Court
2500 St. James Road
Springfield, IL 62707
217-544-4876

Indiana

Hoosier Boys'Town
7403 Cline Avenue
Schererville, IN 46375
219-838 7723

Gibault School for Boys
5901 Dixie Bee Road, Box 2316
Terre Haute, IN 47802
812-299-1156

Iowa

St. Anthony's Boys Home
c/o Catholic Charities, Box 2025
Sioux City, IA 51104
712-252-2701

Villa Maria Girls Home
c/o Catholic Charities, Box 2025
Sioux City, IA 51104
712-252-2701

Kentucky

Boys' Haven
3201 Bardstown Road
Louisville, KY 40205
502-458-1171

Our Lady's Home
523 Park Avenue
Louisville, KY 40208
502-637-2969

Louisiana

Holy Angels Residential Facility
10450 Ellerbe Road
Shreveport, LA 71106
318-797-8500

St. Mary's Residential Training School
P.O. Drawer 7768
Alexandria, LA 71306
318-445-6443

Hope Haven-Madonna Manor Residential Treatmt
Ctr.
1101 Baratavia Blvd
Marrero, LA 70072
504-347-5581

Maison Marie Group Home
3020 Independence Street
Metairie, LA 70001
504-888-9555

Padua Community Services
200 Beta Street
Belle Chasse, LA 70037
504-392-0502

RESIDENTIAL FACILITIES

Maryland

Good Shepherd Center
4100 Maple Avenue
Baltimore, MD 21227
301-247-2770

Benedictine School for Exceptional Children, Inc.
R.R. 1, Box 182
Ridgely, MD 21660-9742
301-634-2112

Massachusetts

Boston School Serving Deaf & Aphasic Students
800 North Main Street
Randolph, MA 02368
617-963-8150

St. Vincent's Home/School
2425 Highland Avenue
Fair River, MA 02720
508-679-8511

Our Lady of Providence Children's Center
2112 Riverdale Street
West Springfield, MA 01089
413-788-7366

McAuley Nazareth Home for Boys
77 Mulberry Street
Leicester, MA 01524
617-892-4886

Michigan

Barat House
5250 John R Street
Detroit, MI 48202
313-833-1525

Don Bosco Hall
10001 Petoskey Street
Detroit, MI 48204
313-834-8677

Vista Maria
20651 W. Warren
Dearborn Heights, MI 48127
313-271-3050

St. John's Home
385 E. Leonard, N.E.
Grand Rapids, MI 49503
616-459-9504

Boysville of Michigan
8744 Clinton-Macon Rd.
Clinton, MI 49236
517-423-7451

St. Louis Center
16195 Old U.S. 12
Chelsea, MI 48118
313-475-8430

St Vincent Home for Children
2800 W. Willow
Lansing, MI 48917
517-323-4734

Minnesota

St. Cloud Children's Home
1726 South 7th Avenue
St. Cloud, MN 56301
612-251-8811

Missouri

Good Shepherd Manor
3220 E. 23rd St.- P O. Box 22019
Kansas City, MO 64127
816-231-5838

Child Center of our Lady
7900 Natural Bridge
St. Louis, MO 63121
314-383-0200

St. Joseph Institute for the Deaf
1483 82nd Blvd.
St. Louis, MO 63132
314-993-1507

St Joseph's Home for Boys
4753 South Grand Boulevard
St. Louis, MO 63111
314-481-9121

St. Mary's Special School
5341 Emerson Avenue
St. Louis, MO 63120
314-261-8533

Montana

St. Labre Indian School
St Labre Mission
Ashland, MT 59003
406-784-2278

Nebraska

Villa Marie School
R.R. 1, Box 109
Waverly, NE 68462
402-786-3625

Father Flanagan's Boys' Home
Boys Town, NE 68010
402-498-1111

Nevada

St. Yves High School
7000 North Jones Blvd.
Las Vegas, NV 89131
702-645-1300

New Jersey

St. Joseph's School for the Blind
253 Baldwin Avenue
Jersey City, NJ 07306
201-653-0578

New Mexico

St. Joseph's Manor
P.O. Box 610
Bernalillo, NM 87004
505-867-2954

New York

LaSalle School
391 Western Avenue
Albany, NY 12203
518-489-4731

St. Colman's Home
Boght & Haswell Road
Wateruliet, NY 12180
518-273-4911

Baker Hall
150 Martin Road
Lackawanna, NY 14218
716-827-9777

Cantalician Center for Learning
3233 Main Street
Buffalo, NY 14214
716-833-5353

St. Mary's School for the Deaf
2253 Main Street
Buffalo, NY 14214
716-834-7200

Barbara Blum Residence
262 9th Street
Brooklyn, NY 11215
718-788-0666

Euphrasian Residence
337 East 17th Street
New York, NY 10033
212-475-4245

Good Shepherd Services Group Homes
337 East 17th Street
New York, NY 10003
212-475-4245

The Astor Home for Children Residence
36 Mill Street
Rhinebeck, NY 12572
914-876-4081

Madonna Heights School for Girls
Burr's Lane
Huntington, NY 11743
516-643-8800

Maryhaven Center of Hope
450 Myrtle Avenue
Port Jefferson, NY 11777
516-474-3400

North Carolina

Holy Angels, Inc.
427 East Wilkinson Blvd.
Belmont, NC 28012
704-825-4161

North Dakota

Home on the Range for Boys
Route 1, Box 41
Sentinel Butte, ND 58654
701-872-3745

Friendship (Villa Nazareth dba Friendship Village)
3004 11 Street South
Fargo, ND
701-235-8217

Ohio

St. Rita School for the Deaf
1720 Glendale-Milford Road
Cincinnati, OH 45215
513-771-7600

RESIDENTIAL FACILITIES

Marycrest School for Girls
7800 Brookside Road
Independence, OH 44131
216-524-5280

Our Lady of the Wayside
37665 Detroit Road
Avon, OH 44011
216-934-6152

Parmadale
6753 State Road
Parma, OH 44134
216-845-7700

Rose-Mary Center
19350 Euclid Avenue
Euclid, OH 44117
216-481-4823

Mount Aloysius
5375 Tile Plant Road
New Lexington, OH 43764
614-342-3343

Rosemont Center
2440 Dawnlight
Columbus, OH 43211
614-471-2626

St. John's Villa
620 Roswell Road, NW
Carrollton, OH 44615-9399
216-627-7647

Oklahoma

St. Joseph's Children's Home
P.O. Box 11417
Oklahoma City, OK 73136
405-424-1411

Oregon

19th St. and McMinnville Group Homes
c/o 231 S.E. 12th Avenue
Portland, OR 97214
503-231-4866

Christie School/Evergreen Education Program
Marylhurst, OR 97036
503-636-3621

St. Mary's Home for Boys
16535 S.W. Tualatin Valley Highway
Beaverton, OR 97006
503-649-5651

Pennsylvania

Harborcreek Youth Services
5712 Iroquois Avenue
Harborcreek, PA 16421
814-899-7664

Clellian Heights School for Exceptional Children
R.D.9, Box 607
Greensburg, PA 15601
412-837-8120

Paradise School
R.D. 1
Abbottstown, PA 17331
717-259-9537

C. K. Center
1799 S. Sproul Road
Springfield, PA 19064
215-543-3380

Don Guanella School
1797 S. Sproul Road
Springfield, PA 19064
215-543-1418

St. Edmond's Home for Crippled/Retarded Children
320 South Roberts Road
Rosemont, PA 19010
215-525-8800

St. Gabriel's Hall System
P. O. Box 390, Pawlings Road
Phoenixville, PA 19460
215-666-7970

St. Anthony School for Exceptional Children
Hulton Road & 13th Street
Oakmont, PA 15139
412-828-8871

Lourdesmont Good Shepherd Youth and Family
Service
537 Venard Road
Clarks Summit, PA 18411
717-587-4741

St. Joseph's Center
2010 Adams Avenue
Scranton, PA 18509
717-342-8379

South Dakota

St. Joseph's Indian School
Box 89
Chamberlain, SD 57325
605-734-6021

Tennessee

DeNeuille Heights School
3060 Baskin Street
Memphis, TN 38127
901-357-7316

St. Peter Home
1805 Poplar
Memphis, TN 38104
901-725-8240

Texas

St. Joseph Youth Center
901 South Madison
Dallas, TX 75208
214-941-3900

Washington

St. Anne's Children's Home
North 707 Cedar Street
Spokane, WA 99201
509-456-7137

St. Margaret's Hall
S. 707 McClellan
Spokane, WA 99204
509-624-7624

Wisconsin

St. Coletta School
W4955 Highway 18
Jefferson, WI 53549
414-674-4330

St. Charles Boys Home
151 South 84th Street
Milwaukee, WI 53214
414-476-3710

Elmwood/Evergreen/Phoenix Villa/Maywood Homes
c/o 1416 Cumming Avenue
Superior, WI 54880
715-394-6617

Wyoming

St. Joseph's Children's Home
P. O. Box 1117
Torrington, WY 82240
307-532-4197

INDEX B - DAY SCHOOLS

California

Child Study Center of St. John's Hospital
1339 20th Street
Santa Monica, CA 90404
213-829-8921

Children's Counseling Center/Catholic Charities
1250 Pomeroy Avenue
Santa Clara, CA 95051
408-983-1004

Colorado

Havern School
4000 South Wadsworth Blvd
Littleton, CO 80123
303-986-4587

Gengras Center - St. Joseph's College
1678 Asylum Avenue
West Hartford, CT 06117
203-232-5616

Connecticut

Highland Heights-St. Francis Home for Children
651 Prospect Street, Box 1224
New Haven, CT 06505
203-777-5513

Mount Saint John, Inc.
135 Kirtland Street
Deep River, CT 06417
203-526-5391

Delaware

Our Lady of Grace Home for Children
487 Chestnut Hill Road
Newark, DE 19713
302-738-4658

District of Columbia

Lt. Joseph P. Kennedy Institute
801 Buchanan Street, NE
Washington, DC 20017
202-529-7600

St. Gertrude's School
4801 Sargent Road, NE
Washington, DC 20017
202-526-7676

DAY SCHOOLS

Florida

Marian Center Services-Developmentally Handicapped
15701 Northwest 37th Avenue
Opa Locka, FL 33054
305-625-8354

Morning Star School
954 Leigh Avenue
Orlando, FL 32804
407-295-3077

Morning Star School
725 Mickler Road
Jacksonville, FL 32211
904-721-2144

Morning Star School
210 E. Linebaugh Avenue
Tampa, FL 33612
813-935-0232

Morning Star School
4661 80th Avenue, North
Pinellas Park, FL 34665
813-544-6036

Illinois

St. Jude School
2nd and Spring
Aviston, IL 62216
618-228-7841

Bartlett Learning Center, Inc.
801 West Bartlett Road
Bartlett, IL 60103
312-289-4221

Loyola Day School
1043 West Loyola Avenue
Chicago, IL 60626
312-274-5305

Lt. Joseph P. Kennedy Jr. School
123rd and Wolf Road
Palos Park, IL 60464
312-448-6520

St. Joseph Carondelet Center
739 East 35th Street
Chicago, IL 60616
312-624-7443

St. Mary of Providence
4200 North Austin Avenue
Chicago, IL 60634
312-545-8300

St. Rose Center
4911 South Hoyne
Chicago, IL 60609
312-436-1433

Guardian Angel Home
1550 Plainfield Road
Joliet, IL 60435
815-729-0930

Catholic Children's Home
1400 State Street
Alton, IL 62002
618-465-3694

Indiana

Marian Day School Program
700 Herndon Drive
Evansville, IN 47711
812-422-5346

St. Bavo School
513 West 7th Street
Mishawaka, IN 46544
219-259-4214

St. Mary's Child Center, Inc.
901 Dr. Martin Luther King Jr. Street
Indianapolis, IN 46202
317-635-1491

Louisiana

St. Mary's Residential Training School
P.O. Drawer 7768
Alexandria, LA 71306
318-445-6443

Guardian Angels Center/Redemptorist Center
c/o Dept of Spec Ed - P.O. Box 2028
Baton Rouge, LA 70821
504-383-3066

Regina Caeli Center
3903 Kingston Street
Lake Charles, LA 70605
318-478-1970

Chinchuba
1131 Barataria Blvd
Marrero, LA 70072
504-340-9261

St. Michael Special School
1522 Chippewa Street
New Orleans, LA 70130
504-524-7285

St. Michael Vocational Training Center
1522 Chippewa Street
New Orleans, LA 70130
504-524-7285

St. Joseph Institute for the Deaf
1483 82nd Blvd.
St. Louis, MO 63132
314-993-1507

Maryland

St. Elizabeth School & Habilitation Center
801 Argonne Drive
Baltimore, MD 21218-1998
301-889-5054

St. Joseph's Home for Boys
4753 South Grand Boulevard
St. Louis, MO 63111
314-481-9121

St. Francis School for Special Education, Inc.
2226 Maryland Avenue
Baltimore, MD 21218
301-235-3378

St. Joseph's Vocational Center
5341 Emerson
St. Louis, MO 63120
314-261-8600

Benedictine School for Exceptional Children, Inc.
R.R. 1, Box 182
Ridgely, MD 21660-9742
301-634-2112

St. Mary's Special School
5341 Emerson Avenue
St. Louis, MO 63120
314-261-8533

Massachusetts

Boston School Serving Deaf & Aphasic Students
800 North Main Street
Randolph, MA 02368
617-963-8150

Montana

St. Labre Indian School
St. Labre Mission
Ashland, MT 59003
406-784-2278

Our Lady of Providence Children's Center
2112 Riverdale Street
West Springfield, MA 01089
413-788-7366

Nebraska

Father Flanigan's Boys' Home
Boystown, NE 68010
402-498-1111

Mercy Centre for Developmental Disabilities
25 West Chester Street
Worcester, MA 01605
617-852-7165

Villa Marie School
R.R. 1, Box 109
Waverly, NE 68462
402-786-3625

Michigan

Vista Maria
20651 W. Warren
Dearborn Heights, MI 48127
313-271-3050

Madonna School for Exceptional Children
2537 North 62nd Street
Omaha, NE 68104
402-556-1883

Nevada

St. Yves High School
7000 North Jones Blvd.
Las Vegas, NV 89131
702-645-1300

Missouri

Vogelweid Learning Center
314 West High Street
Jefferson City, MO 65101
314-636-8980

New Jersey

Archbishop Damiano School/St. John of God
532 Delsea Drive
Westville Grove, NJ 08093
609-848-4700

Child Center of our Lady
7900 Natural Bridge
St. Louis, MO 63121
314-383-0200

DAY SCHOOLS

Office of Special Education Programs
P. O. Box 709
Camden, NJ 08101
609-756-7987

Catholic Community Services/Mt. Carmel Guild
17 Mulberry Street
Newark, NJ 07102
201-596-4100

Mt. Carmel Guild Child Study Ctr, Alhambra Pavilion
31 Centre Street
Newark, NJ 07102
201-642-4237

The Felician School for Exceptional Children
260 South Main Street, P.O. Box 530
Lodi, NJ 07644
201-777-5355

Dept. for Persons with Disabilities
R.R. 2, Box 137
Oak Ridge, NJ 07438
201-697-4394

Collier School
Conover Road
Wickatunk, NJ 07765
201-946-4771

Sister Georgine Learning Center
544 Chestnut Avenue
Trenton, NJ 08611
609-396-5444

St. Joseph's School for the Blind
253 Baldwin Avenue
Jersey City, NJ 07306
201-653-0578

New York

LaSalle School
391 Western Avenue
Albany, NY 12203
518-489-4731

St. Colman's Home
Boght & Haswell Road
Wateruliet, NY 12180
518-273-4911

Dept. of Education - Diocese of Brooklyn
6025 Sixth Avenue
Brooklyn, NY 11220
718-492-1800

Baker Hall
150 Martin Road
Lackawanna, NY 14218
716-827-9777

Cantalician Center for Learning
3233 Main Street
Buffalo, NY 14214
716-833-5353

St. Mary's School for the Deaf
2253 Main Street
Buffalo, NY 14214
716-834-7200

BASE- Bronx Archdiocesan Special Education
1011 First Avenue
New York, NY 10022
212-371-1000

Lavelle School for the Blind
E. 221 St. & Paulding Avenue
Bronx, NY 10469
212-882-1212

Seton Foundation for Learning
104 Gordon Street
Staten Island, NY 10304
718-447-1750

St. Joseph's School for the Deaf
1000 Hutchinson River Pkwy
Bronx, NY 10465
212-828-9000

School of the Holy Childhood
100 Groton Parkway
Rochester, NY 14623
716-359-3710

Cleary School for the Deaf
301 Smithtown Blvd.
Ronkonkoma, NY 11779
516-588-0530

Madonna Heights School for Girls
Burr's Lane
Huntington, NY 11743
516-643-8800

Ohio

St. Rita School for the Deaf
1720 Glendale-Milford Road
Cincinnati, OH 45215
513-771-7600

Julie Billiard School
4982 Clubside Road
Lyndhurst, OH 44124
216-381-1191

Marycrest School for Girls
7800 Brookside Road
Independence, OH 44131
216-524-5280

OLA/St. Joseph Center
2346 West 14th Street
Cleveland, OH 44113
216-621-3451

Our Lady of the Elms Special Education School
1230 West Market Street
Akron, OH 44313
216-836-3734

St. Vincent-St. Mary High School
15 North Maple Street
Akron, OH 44303
216-253-9113

Rosemont Center
2440 Dawnlight
Columbus, OH 43211
614-471-2626

Mary Immaculate School
3837 Secor Road
Toledo, OH 43623
419-474-1688

Oregon

Emily School
830 N.E. 47th Avenue
Portland, OR 97213
503-234-9991

Pennsylvania

John Paul II, Center for Special Learning
450 S. 6th Street
Reading, PA 19611
215-373-5687

Mercy Special Learning Center
830 South Woodward Street
Allentown, PA 18103
215-797-8242

St. Joseph Center
2075 W. Norwegian Street
Pottsville, PA 17901
717-622-4638

Harborcreek Youth Services
5712 Iroquois Avenue
Harborcreek, PA 16421
814-899-7664

Clelian Heights School for Exceptional Children
R.D.9, Box 607
Greensburg, PA 15601
412-837-8120

Paradise School
RD 1
Abbottstown, PA 17331
717-259-9537

Archbishop Ryan Memorial Institute for the Deaf
3509 Spring Garden Street
Philadelphia, PA 19104
215-387-1711

C. K. Center
1799 S. Sproul Road
Springfield, PA 19064
215-543-3380

De La Salle Vocational Day Treatment Center
Street Road & Bristol Pike (POB 344)
Bensalem, PA 19020
215-464-0344

De La Salle in Towne
25 S. Van Pelt Street
Philadelphia, PA 19103
215-567-5500

Our Lady of Confidence Day School
10th and Lycoming Streets
Philadelphia, PA 19140
215-329-2697

Queen of the Universe Day Center
Trenton Road
Levittown, PA 19056
215-945-6090

Saint Katherine Day School
Bowman Ave. and Williams Road
Philadelphia, PA 19151
215-839-4322

DAY SCHOOLS

St. Gabriel's Hall System
P. O. Box 390, Pawlings Road
Phoenixville, PA 19460
215-666-7970

St. Lucy Day School
929 S. Farragut Street
Philadelphia, PA 19143
215-382-6325

DePaul Institute
Castlegate Avenue
Pittsburgh, PA 15226
412-561-4848

St. Anthony School for Exceptional Children
Hulton Road & 13th Street
Oakmont, PA 15139
412-828-8871

Lourdesmont Good Shepherd Youth and Family
Service
537 Venard Road
Clarks Summit, PA 18411
717-587-4741

St. Joseph's Center
2010 Adams Avenue
Scranton, PA 18509
717-342-8379

Tennessee

Madonna Day School for Retarded Children
4189 Leroy Avenue
Memphis, TN 38108
901-767-3460

St. Bernard School for Exceptional Children
2021 21st Avenue South
Nashville, TN 37212
615-292-2231

Texas

Notre Dame of Dallas Schools, Inc
2018 Allen Drive
Dallas, TX 75204
214-720-3911

Brighton School Inc.
271 E. Lullwood
San Antonio, TX 78212
512-826-4492

Virginia

St. Coletta School
1305 North Jackson Street
Arlington, VA 22201
703-455-5326

The Achievement Center/St. Vincent's Home
615 North Jefferson St (P.O. Box 12368)
Roanoke, VA 24025
703-982-0128

Washington

St. Joseph School
6500 Highland Drive
Vancouver, WA 98661
206-696-2586

Wisconsin

St. Coletta School
W4955 Highway 18
Jefferson, WI 53549
414-674-4330

St. Charles Boys Home
151 South 84th Street
Milwaukee, WI 53214
414-476-3710

St. Coletta Day School
1725 North 54th Street
Milwaukee, WI 53208
414-453-5465

Wyoming

St. Joseph's Children's Home
P. O. Box 1117
Torrington, WY 82240
307-532-4197

INDEX C — GROUP HOMES**Alabama**

St. Mary's Home for Children
4350 Moffat Road
Mobile, AL 36618
205-344-7733

Connecticut

Mount Saint John, Inc.
135 Kirtland Street
Deep River, CT 06417
203-526-5391

Delaware

Seton Villa and Siena Hall, Inc.
c/o 2307 Kentmere Parkway
Wilmington, DE 19806
302-656-2183

District of Columbia

Lt. Joseph P. Kennedy Institute
801 Buchanan Street, NE
Washington, DC 20017
202-529-7600

Florida

Boystown of Florida
11400 S.W. 137 Avenue
Miami, FL 33186
305-385-1722

Harbor House Group Homes of Northeast Florida
700 Arlington Road
Jacksonville, FL 32211
904-634-0395

Kentucky

Boys' Haven
3201 Bardstown Road
Louisville, KY 40205
502-458-1171

Louisiana

Maison Marie Group Home
3020 Independence Street
Metairie, LA 70001
504-888-9555

Massachusetts

St. Vincent's Home/School
2425 Highland Avenue
Fall River, MA 02720
508-679-8511

Our Lady of Providence Children's Center
2112 Riverdale Street
West Springfield, MA 01089
413-788-7366

Michigan

St. Louis Center
16195 Old U.S. 12
Chelsea, MI 48118
313-475-8430

Montana

St. Labre Indian School
St. Labre Mission
Ashland, MT 59003
406-784-2278

New Jersey

Dept. for Persons with Disabilities
R.R. 2, Box 137
Oak Ridge, NJ 07438
201-697-4394

New York

St. Colman's Home
Boght & Haswell Road
Wateruliet, NY 12180
518-273-4911

Baker Hall
150 Martin Road
Lackawanna, NY 14218
716-827-9777

The Astor Home for Children
1967 Turnbull Avenue
Bronx, NY 10473
212-829-8900

Good Shepherd Services-Group Homes
337 East 17th Street,
New York, NY 10003
212-475-4245

GROUP HOMES

Ohio

Koinonia Homes, Inc.
5755 Granger Road
Independence, OH 44131
216-741-8777

Mount Aloysius
5375 Tile Plant Road
New Lexington, OH 43764
614-342-3343

Rosemont Center
2440 Dawnlight
Columbus, OH 43211
614-471-2626

Oklahoma

St. Joseph's Children's Home
P.O. Box 11417
Oklahoma City, OK 73136
405-424-1411

Pennsylvania

Harborcreek Youth Services
5712 Iroquois Avenue
Harborcreek, PA 16421
814-899-7664

St. Gabriel's Hall System
P. O. Box 390, Pawlings Road
Phoenixville, PA 19460
215-666-7970

Catholic Social Services Group Home
400 Wyoming Avenue
Scranton, PA 18503
717-346-8936

Tennessee

St. Peter Home
1805 Poplar
Memphis, TN 38104
901-725-8240

Vermont

St. Joseph's Group Home/Vt. Catholic Charities
351 North Avenue
Burlington, VT 05401
802-658-6110

Virginia

Gabriel Homes
3838 North Cathedral Lane
Arlington, VA 22203
703-841-2531

Washington

Morning Star Boys Ranch
P. O. Box 8087
Spokane, WA 99203
509-448-1411

St. Anne's Children's Home
North 707 Cedar Street
Spokane, WA 99201
509-456-7137

Wisconsin

St. Coletta School
W4955 Highway 18
Jefferson, WI 53549
414-674-4330

Elmwood/Evergreen/Phoenix Villa/Maywood Homes
c/o 1416 Cumming Avenue
Superior, WI 54880
715-394-6617

Wyoming

St. Joseph's Children's Home
P. O. Box 1117
Torrington, WY 82240
307-532-4197

INDEX D — VOCATIONAL TRAINING SCHOOLS

California

St. Madeleine Sophie's Training Center
2111 East Madison Avenue
El Cajon, CA 92019
619-442-5129

Connecticut

Gengras Center - St. Joseph's College
1678 Asylum Avenue
West Hartford, CT 06117
203-232-5616

District of Columbia

Lt. Joseph P. Kennedy Institute
801 Buchanan Street, NE
Washington, DC 20017
202-529-7600

Florida

Marian Center Services-Developmentally Handi-
capped
15701 Northwest 37th Avenue
Opa Locka, FL 33054
305-625-8354

Illinois

Bartlett Learning Center, Inc.
801 West Bartlett Road
Bartlett, IL 60103
312-289-4221

St. Rose Center
4911 South Hoyne
Chicago, IL 60609
312-436-1433

St. Vincent Community Living Facility
659 East Jefferson Street
Freeport, IL 61032
815-232-6181

Springfield Developmental Center
R. R. #10, Sangamon Avenue Road East
Springfield, IL 62707
217-525-8271

Louisiana

St. Mary's Residential Training School
P.O. Drawer 7768
Alexandria, LA 71306
318-445-6443

St. Michael Special School
1522 Chippewa Street
New Orleans, LA 70130
504-524-7285

St. Michael Vocational Training Center
1522 Chippewa Street
New Orleans, LA 70130
504-524-7285

Maryland

Benedictine School for Exceptional Children, Inc.
R.R. 1, Box 182
Ridgely, MD 21660-9742
301-634-2112

Massachusetts

St. Vincent's Home/School
2425 Highland Avenue
Fall River, MA 02720
508-679-8511

Michigan

Vista Maria
20651 W. Warren
Dearborn Heights, MI 48127
313-271-3050

Boysville of Michigan
8744 Clinton-Macon Rd.
Clinton, MI 49236
517-423-7451

Missouri

St. Joseph's Vocational Center
5341 Emerson
St. Louis, MO 63120
314-261-8600

Nebraska

Villa Marie School
R.R. 1, Box 109
Waverly, NE 68462
402-786-3625

VOCATIONAL TRAINING SCHOOLS

Madonna Shop
6930 Maple Street
Omaha, NE 68104
402-571-0282

Paradise School
RD 1
Abbottstown, PA 17331
717-259-9537

New Jersey

Archbishop Damiano School/St. John of God
532 Delsea Drive
Westville Grove, NJ 08093
609-848-4700

Dept. for Persons with Disabilities
R.R. 2, Box 137
Oak Ridge, NJ 07438
201-697-4394

C. K. Center
1799 S. Sproul Road
Springfield, PA 19064
215-543-3380

De La Salle Vocational Day Treatment Center
Street Road & Bristol Pike (POB 344)
Bensalem, PA 19020
215-464-0344

Catholic Social Services Group Home
400 Wyoming Avenue
Scranton, PA 18503
717-346-8936

New York

St. Colman's Home
Boght & Haswell Road
Wateruliet, NY 12180
518-273-4911

Dept. of Education - Diocese of Brooklyn
6025 Sixth Avenue
Brooklyn, NY 11220
718-492-1800

Texas

Notre Dame of Dallas Schools, Inc.
2018 Allen Drive
Dallas, TX 75204
214-720-3911

North Dakota

Friendship (Villa Nazareth dba Friendship Village)
3004 11 Street South
Fargo, ND
701-235-8217

Wisconsin

St. Coletta School
W4955 Highway 18
Jefferson, WI 53549
414-674-4330

St. Charles Boys Home
151 South 84th Street
Milwaukee, WI 53214
414-476-3710

Ohio

St. John's Villa
620 Roswell Road, NW
Carrollton, OH 44615-9399
216-627-7647

Wyoming

St. Joseph's Children's Home
P. O. Box 1117
Torrington, WY 82240
307-532-4197

Oklahoma

St. Joseph's Children's Home
P.O. Box 11417
Oklahoma City, OK 73136
405-424-1411

Pennsylvania

Harborcreek Youth Services
5712 Iroquois Avenue
Harborcreek, PA 16421
814-899-7664

INDEX E — PROGRAMS/ FACILITIES SERVING THE MENTALLY RETARDED/ DEVELOPMENTALLY DISABLED

Alabama

Father Walter Memorial Child Care Center
2815 Forbes Drive
Montgomery, AL 36110
205-262-6421

St. Mary's Home for Children
4350 Moffat Road
Mobile, AL 36618
205-344-7733

California

Child Study Center of St. John's Hospital
1339 20th Street
Santa Monica, CA 90404
213-829-8921

St. Madeleine Sophie's Training Center
2111 East Madison Avenue
El Cajon, CA 92019
619-442-5129

Colorado

Excelsior Youth Centers
15001 East Oxford
Aurora, CO 80014
303-693-1550

Connecticut

Gengras Center - St. Joseph's College
1678 Asylum Avenue
West Hartford, CT 06117
203-232-5616

District of Columbia

Lt. Joseph P. Kennedy Institute
801 Buchanan Street, NE
Washington, DC 20017
202-529-7600

St. Gertrude's School
4801 Sargent Road, NE
Washington, DC 20017
202-526-7676

Florida

Marian Center Services-Developmentally Handi-
capped
15701 Northwest 37th Avenue
Opa Locka, FL 33054
305-625-8354

Morning Star School
954 Leigh Avenue
Orlando, FL 32804
407-295-3077

Harbor House Group Homes of Northeast Florida
700 Arlington Road
Jacksonville, FL 32211
904-634-0395

Morning Star School
4661 80th Avenue, North
Pinellas Park, FL 34665
813-544-6036

Georgia

Saint Mary's Home
2170 East Victory Drive
Savannah, GA 31404
912-236-7164

Illinois

St. Jude School
2nd and Spring
Avison, IL 62216
618-228-7841

Bartlett Learning Center, Inc
801 West Bartlett Road
Bartlett, IL 60103
312-289-4221

Lt. Joseph P. Kennedy Jr. School
123rd and Wolf Road
Palos Park, IL 60464
312-448-6520

Misericordia Home South
2916 West 47th Street
Chicago, IL 60632
312-254-9595

Misericordia Home/Heart of Mercy Village
6300 North Ridge
Chicago, IL 60660
312-973-6300

MENTALLY RETARDED/ DEVELOPMENTALLY DISABLED PROGRAMS

Mt. St. Joseph
24955 N. Highway 12
Lake Zurich, IL 60047
312-438-5050

St. Mary of Providence
4200 North Austin Avenue
Chicago, IL 60634
312-545-8300

St. Rose Center
4911 South Hoyne
Chicago, IL 60609
312-436-1433

Good Shepherd Manor
P.O. Box 260
Momence, IL 60954
815-472-6492

St. Francis School for Exceptional Children
1209 South Walnut Avenue
Freeport, IL 61032
815-235-3174

St. Vincent Community Living Facility
659 East Jefferson Street
Freeport, IL 61032
815-232-6181

Brother James Court
2500 St. James Road
Springfield, IL 62707
217-544-4876

Catholic Children's Home
1400 State Street
Alton, IL 62002
618-465-3694

Springfield Developmental Center
R. R. #10, Sangamon Avenue Road East
Springfield, IL 62707
217-525-8271

Indiana

Marian Day School Program
700 Herndon Drive
Evansville, IN 47711
812-422-5346

St. Bavo School
513 West 7th Street
Mishawaka, IN 46544
219-259-4214

Hoosier Boys'Town
7403 Cline Avenue
Scherville, IN 46375
219-838-7723

Louisiana

St. Mary's Residential Training School
P.O. Drawer 7768
Alexandria, LA 71306
318-445-6443

Guardian Angels Center/Redemptorist Center
c/o Dept of Special Ed, P.O. Bo. 2028
Baton Rouge, LA 70821
504-383-3066

Regina Caeli Center
3903 Kingston Street
Lake Charles, LA 70605
318-478-1970

Hope Haven-Madonna Manor Residential Treat-
ment Center
1101 Barataria Blvd.
Marrero, LA 70072
504-347-5581

Padua Community Services
200 Beta Street
Belle Chasse, LA 70037
504-392-0502

St. Michael Special School
1522 Chippewa Street
New Orleans, LA 70130
504-524-7285

St. Michael Vocational Training Center
1522 Chippewa Street
New Orleans, LA 70130
504-524-7285

Holy Angels Residential Facility
10450 Ellerbe Road
Shreveport, LA 71106
318-797-8500

Maryland

St. Elizabeth School & Habilitation Center
801 Argonne Drive
Baltimore, MD 21218-1998
301-889-5054

St. Francis School for Special Education, Inc
2226 Maryland Avenue
Baltimore, MD 21213
301-235-3378

Benedictine School for Exceptional Children, Inc.
R.R. 1, Box 182
Ridgely, MD 21660-9742
301-634-2112

St. Mary's Special School
5341 Emerson Avenue
St. Louis, MO 63120
314-261-8533

Universal Sheltered Workshop
6912 West Florissant Ave.
St. Louis, MO 63136
314-389-7072

Massachusetts

Mercy Centre for Developmental Disabilities
25 West Chester Street
Worcester, MA 01605
617-852-7165

Michigan

Don Bosco Hall
10001 Petoskey Street
Detroit, MI 48204
313-834-8677

Saint Vincent Home for Children
2800 W. Willow
Lansing, MI 48817
517-323-4734

St. Louis Center
16195 Old U.S. 12
Chelsea, MI 48118
313-475-8430

Minnesota

St. Cloud Children's Home
1726 South 7th Avenue
St. Cloud, MN 56301
612-251-8811

Missouri

Vogelweid Learning Center
314 West High Street
Jefferson City, MO 65101
314-636-8980

Good Shepherd Manor
3220 E. 23rd St.- P.O. Box 22019
Kansas City, MO 64127
816-231-5858

St. Joseph's Vocational Center
5341 Emerson
St. Louis, MO 63120
314-261-8600

Nebraska

Villa Marie School
R.R. 1, Box 109
Waverly, NE 68462
402-786-3625

Madonna Shop
6930 Maple Street
Omaha, NE 68104
402-571-0282

New Jersey

Archbishop Damiano School/St. John of God
532 Delsea Drive
Westville Grove, NJ 08093
609-848-4700

Office of Special Education Programs
P. O. Box 709
Camden, NJ 08101
609-756-7987

Mt Carmel Guild Child Study Ctr, Alhambra Pavilion
31 Centre Street
Newark, NJ 07102
201-642-4237

The Felician School for Exceptional Children
260 South Main Street P.O. Box 530
Lodi, NJ 07644
201-777-5355

Dept. for Persons with Disabilities
R.R. 2, Box 137
Oak Ridge, NJ 07438
201-697-4394

Sister Georgine Learning Center
544 Chestnut Avenue
Trenton, NJ 08611
609-396-5444

**MENTALLY RETARDED/ DEVELOPMENTALLY
DISABLED PROGRAMS**

New Mexico

St. Joseph's Manor
P.O. Box 610
Bernalillo, NM 87004
505-867-2954

New York

LaSalle School
391 Western Avenue
Albany, NY 12203
518-489-4731

St. Colman's Home
Boght & Haswell Road
Wateruliet, NY 12180
518-273-4911

Dept. of Education - Diocese of Brooklyn
6025 Sixth Avenue
Brooklyn, NY 11220
718-492-1800

Cantalician Center for Learning
3233 Main Street
Buffalo, NY 14214
716-833-5353

St. Mary's School for the Deaf
2253 Main Street
Buffalo, NY 14214
716-834-7200

BASE- Bronx Archdiocesan Special Education
1011 First Avenue
New York, NY 10022
212-371-1000

Seton Foundation for Learning
104 Gordon Street
Staten Island, NY 10304
718-447-1750

The Astor Home for Children Residence
36 Mill Street
Rhinebeck, NY 12572
914-876-4081

School of the Holy Childhood
100 Groton Parkway
Rochester, NY 14623
716-359-3710

Maryhaven Center of Hope
450 Myrtle Avenue
Port Jefferson, NY 11777
516-474-3400

North Carolina

Holy Angels, Inc.
427 East Wilkinson Blvd
Belmont, NC 28012
704-825-4161

North Dakota

Friendship (Villa Nazareth dba Friendship Village)
3004 11 Street South
Fargo, ND
701-235-8217

Ohio

Koinonia Homes, Inc.
5755 Granger Road
Independence, OH 44131
216-741-8777

OLA/St. Joseph Center
2346 West 14th Street
Cleveland, OH 44113
216-621-3451

Our Lady of the Wayside
37665 Detroit Road
Avon, OH 44011
216-934-6152

Rose-Mary Center
19350 Euclid Avenue
Euclid, OH 44117
216-481-4823

St. Vincent-St. Mary High School
15 North Maple Street
Akron, OH 44303
216-253-9113

Mount Aloysius
5375 Tile Plant Road
New Lexington, OH 43764
614-342-3343

St. John's Villa
620 Roswell Road, NW
Carrollton, OH 44615-9399
216-627-7647

Oregon

19th St. and McMinnville Group Homes
c/o 231 S.E. 12th Avenue
Portland, OR 97214
503-231-4866

Pennsylvania

John Paul II, Center for Special Learning
450 S. 6th Street
Reading, PA 19611
215-373-5687

Mercy Special Learning Center
830 South Woodward Street
Allentown, PA 18103
215-797-8242

St. Joseph Center
2075 W. Norwegian Street
Pottsville, PA 17901
717-622-4638

Clelian Heights School for Exceptional Children
R.D.9, Box 607
Greensburg, PA 15601
412-837-8120

C. K. Center
1799 S. Sproul Road
Springfield, PA 19064
215-543-3380

Don Guanella School
1797 S. Sproul Road
Springfield, PA 19064
215-543-1418

Our Lady of Confidence Day School
10th and Lycoming Streets
Philadelphia, PA 19140
215-329-2697

Queen of the Universe Day Center
Trenton Road
Levittown, PA 19056
215-945-6090

Saint Katherine Day School
Bowman Ave. and Williams Road
Philadelphia, PA 19151
215-839-4332

St. Edmond's Home for Crippled/Retarded Children
320 South Roberts Road
Rosemont, PA 19010
215-525-8800

St. Anthony School for Exceptional Children
Hulton Road & 13th Street
Oakmont, PA 15139
412-828-8871

St. Joseph's Center
2010 Adams Avenue
Scranton, PA 18509
717-342-8379

Tennessee

Madonna Day School for Retarded Children
4189 Leroy Avenue
Memphis, TN 38108
901-767-3460

St. Peter Home
1805 Poplar
Memphis, TN 38104
901-725-8240

St. Bernard School for Exceptional Children
2021 21st Avenue South
Nashville, TN 37212
615-292-2231

Texas

Notre Dame of Dallas Schools, Inc.
2018 Allen Drive
Dallas, TX 75204
214-720-3911

Brighton School Inc.
271 E. Lullwood
San Antonio, TX 78212
512-826-4492

Virginia

St. Coletta School
1305 North Jackson Street
Arlington, VA 22201
703-455-5326

Gabriel Homes
3838 North Cathedral Lane
Arlington, VA 22203
703-841-2531

Washington

St. Anne's Children's Home
North 707 Cedar Street
Spokane, WA 99201
509-456-7137

LEARNING DISABLED PROGRAMS

St. Margaret's Hall
S. 707 McClellan
Spokane, WA 99204
509-624-7624

Wisconsin

St. Coletta School
W4955 Highway 18
Jefferson, WI 53549
414-674-4330

St. Coletta Day School
1725 North 54th Street
Milwaukee, WI 53208
414-453-5465

Elmwood/Evergreen/Phoenix Villa/Maywood Homes
c/o 1416 Cumming Avenue
Superior, WI 54880
715-394-6617

Wyoming

St. Joseph's Children's Home
P. O. Box 1117
Torrington, WY 82240
307-532-4197

INDEX F – PROGRAMS/FACILITIES SERVING THE LEARNING DISABLED

Colorado

Havern School
4000 South Wadsworth Blvd.
Littleton, CO 80123
303-986-4587

Connecticut

Gengras Center - St. Joseph's College
1678 Asylum Avenue
West Hartford, CT 06117
203-232-5616

Highland Heights-St. Francis Home for Children
651 Prospect Street, Box 1224
New Haven, CT 06505
203-777-5513

Mount Saint John, Inc.
135 Kirtland Street
Deep River, CT 06417
203-526-5391

District of Columbia

St. Gertrude's School
4801 Sargent Road, NE
Washington, DC 20017
202-526-7676

Florida

Morning Star School
725 Mickler Road
Jacksonville, FL 32211
904-721-2144

Morning Star School
210 E. Linebaugh Avenue
Tampa, FL 33612
813-935-0232

Morning Star School
4661 80th Avenue, North
Pinellas Park, FL 34665
813-544-6036

Georgia

Village of St. Joseph
2969 Butner Road, S.W.
Atlanta, GA 30331-0120
404-349-2400

St. Michael Vocational Training Center
1522 Chippewa Street
New Orleans, LA 70130
504-524-7285

Illinois

Bartlett Learning Center, Inc.
801 West Bartlett Road
Bartlett, IL 60103
312-289-4221

Maryland

Good Shepherd Center
4100 Maple Avenue
Baltimore, MD 21227
301-247-2770

Catholic Children's Home
1400 State Street
Alton, IL 62002
618-465-3694

Massachusetts

Boston School Serving Deaf & Aphasic Students
800 North Main Street
Randolph, MA 02368
617-963-8150

Indiana

Marian Day School Program
700 Herndon Drive
Evansville, IN 47711
812-422-5346

St. Vincent's Home/School
2425 Highland Avenue
Fall River, MA 02720
508-679-8511

Hoosier Boys' Town
7403 Cline Avenue
Schererville, IN 46375
219-838-7723

Our Lady of Providence Children's Center
2112 Riverdale Street
West Springfield, MA 01089
413-788-7366

Gibault School for Boys
5901 Dixie Bee Road, Box 2316
Terre Haute, IN 47802
812-299-1156

Michigan

St. Mary's Child Center, Inc.
901 Dr. Martin Luther King Jr. Street
Indianapolis, IN 46202
317-635-1491

Vista Maria
20651 W. Warren
Dearborn Heights, MI 48127
313-271-3050

Louisiana

Guardian Angels Center/Redemptorist Center
c/o Dept of Spec Ed - P.O. Box 2028
Baton Rouge, LA 70821
504-383-3066

Boysville of Michigan
8744 Clinton-Macon Rd.
Clinton, MI 49236
517-423-7451

Regina Caeli Center
3903 Kingston Street
Lake Charles, LA 70605
318-478-1970

Saint Vincent Home for Children
2800 W. Willow
Lansing, MI 48817
517-323-4734

St. Michael Special School
1522 Chippewa Street
New Orleans, LA 70130
504-524-7285

Minnesota

St. Cloud Children's Home
1726 South 7th Avenue
St. Cloud, MN 56301
612-251-8811

LEARNING DISABLED PROGRAMS

Missouri

Vogelweid Learning Center
314 West High Street
Jefferson City, MO 65101
314-636-8980

Child Center of our Lady
7900 Natural Bridge
St. Louis, MO 63121
314-383-0200

Universal Sheltered Workshop
6912 West Florissant Ave.
St. Louis, MO 63136
314-389-7072

Montana

St. Labre Indian School
St. Labre Mission
Ashland, MT 59003
406-784-2278

Nebraska

Villa Marie School
R.R. 1, Box 109
Waverly, NE 68462
402-786-3625

Madonna School for Exceptional Children
2537 North 62nd Street
Omaha, NE 68104
402-556-1883

Madonna Shop
6930 Maple Street
Omaha, NE 68104
402-571-0282

New Jersey

Office of Special Education Programs
P. O. Box 709
Camden, NJ 08101
609-756-7987

Catholic Community Services/Mt. Carmel Guild
17 Mulberry Street
Newark, NJ 07102
201-596-4100

New York

LaSalle School
391 Western Avenue
Albany, NY 12203
518-489-4731

Dept. of Education - Diocese of Brooklyn
6025 Sixth Avenue
Brooklyn, NY 11220
718-492-1800

Baker Hall
150 Martin Road
Lackawanna, NY 14218
716-827-9777

Cantalcian Center for Learning
3233 Main Street
Buffalo, NY 14214
716-833-5353

BASE- Bronx Archdiocesan Special Education
1011 First Avenue
New York, NY 10022
212-371-1000

The Astor Home for Children
1967 Turnbull Avenue
Bronx, NY 10473
212-829-8900

The Astor Home for Children Residence
36 Mill Street
Rhinebeck, NY 12572
914-876-4081

Madonna Heights School for Girls
Burr's Lane
Huntington, NY 11743
516-643-8800

North Dakota

Friendship (Villa Nazareth dba Friendship Village)
3004 11 Street South
Fargo, ND
701-235-8217

Ohio

Julie Billiard School
4982 Clubside Road
Lyndhurst, OH 44124
216-381-1191

Our Lady of the Elms Special Education School
1230 West Market Street
Akron, OH 44310
216-836-3734

Parmadale
6753 State Road
Parma, OH 44134
216-845-7700

St. Vincent-St. Mary High School
15 North Maple Street
Akron, OH 44303
216-253-9113

St. John's Villa
620 Roswell Road, NW
Carrollton, OH 44615-9399
216-627-7647

Mary Immaculate School
3837 Secor Road
Toledo, OH 43623
419-474-1688

Oregon

19th St. and McMinnville Group Homes
c/o 231 S.E. 12th Avenue
Portland, OR 97214
503-231-4866

Christie School/Evergreen Education Program
Marylhurst, OR 97036
503-636-3621

St. Mary's Home for Boys
16535 S.W. Tualatin Valley Highway
Beaverton, OR 97006
503-649-5651

Pennsylvania

St. Joseph Center
2075 W. Norwegian Street
Pottsville, PA 17901
717-622-4638

Harborcreek Youth Services
5712 Iroquois Avenue
Harborcreek, PA 16421
814-899-7664

Paradise School
RD 1
Abbottstown, PA 17331
717-259-9537

De La Salle Vocational Day Treatment Center
Street Road & Bristol Pike (POB 344)
Bensalem, PA 19020
215-464-0344

De La Salle in Towne
25 S. Van Pelt Street
Philadelphia, PA 19103
215-567-5500

South Dakota

St. Joseph's Indian School
Box 89
Chamberlain, SD 57325
605-734-6021

Tennessee

DeNeuille Heights School
3060 Baskin Street
Memphis, TN 38127
901-357-7316

Texas

Notre Dame of Dallas Schools, Inc.
2018 Allen Drive
Dallas, TX 75204
214-720-3911

Virginia

The Achievement Center/St. Vincent's Home
615 North Jefferson St (P. O. Box 12368)
Roanoke, VA 24025
703-982-0128

Washington

St. Joseph School
6500 Highland Drive
Vancouver, WA 98661
206-696-2586

Morning Star Boys Ranch
P. O. Box 8087
Spokane, WA 99203
509-448-1411

Wisconsin

St. Charles Boys Home
151 South 84th Street
Milwaukee, WI 53214
414-476-3710

Wyoming

St. Joseph's Children's Home
P. O. Box 1117
Torrington, WY 82240
307-532-4197

INDEX G — PROGRAMS/ FACILITIES SERVING THE EMOTIONALLY AND/OR SOCIALY MALADJUSTED

Alabama

St. Mary's Home for Children
4350 Moffat Road
Mobile, AL 36618
205-344-7733

California

Children's Counseling Center/Catholic Charities
1250 Pomeroy Avenue
Santa Clara, CA 95051
408-983-1004

Hanna Boys Center
P.O. Box 100
Sonoma, CA 95476
707-996-6767

Colorado

Excelsior Youth Centers
15001 East Oxford
Aurora, CO 80014
303-693-1550

Mt. St. Vincent Home
4159 Lowell Blvd.
Denver, CO 80211
303-458-7220

Connecticut

Highland Heights-St. Francis Home for Children
651 Prospect Street, Box 1224
New Haven, CT 06505
203-777-5513

Mount Saint John, Inc.
135 Kirtland Street
Deep River, CT 06417
203-526-5391

Delaware

Our Lady of Grace Home for Children
487 Chestnut Hill Road
Newark, DE 19713
302-738-4658

Seton Villa and Siena Hall, Inc
c/o 2307 Kentmere Parkway
Wilmington, DE 19806
302-656-2183

District of Columbia

Lt. Joseph P. Kennedy Institute
801 Buchanan Street, NE
Washington, DC 20017
202-529-7600

St. Gertrude's School
4801 Sargent Road, NE
Washington, DC 20017
202-526-7676

Florida

Boystown of Florida
11400 S.W. 137 Avenue
Miami, FL 33186
305-385-1722

Morning Star School
725 Mickler Road
Jacksonville, FL 32211
904-721-2144

Georgia

Village of St. Joseph
2969 Butner Road, S.W.
Atlanta, GA 30331-0120
404-349-2400

Saint Mary's Home
2170 East Victory Drive
Savannah, GA 31404
912-236-7164

Illinois

House of the Good Shepherd
1126 West Grace Street
Chicago, IL 60613
312-935-3434

Loyola Day School
1043 West Loyola Avenue
Chicago, IL 60626
312-274-5305

Lt. Joseph P. Kennedy Jr. School
123rd and Wolf Road
Palos Park, IL 60464
312-448-6520

Maryville Academy
1150 North River Road
Des Plaines, IL 60016
312-824-6126

Mercy Boys & Girls Home
1140 West Jackson Blvd.
Chicago, IL 60607
312-738-7560

St. Joseph Carondelet Center
739 East 35th Street
Chicago, IL 60616
312-624-7443

Guardian Angel Home
1550 Plainfield Road
Joliet, IL 60435
815-729-0930

St. Francis School for Exceptional Children
1209 South Walnut Avenue
Freeport, IL 61032
815-235-3174

Indiana

Hoosier Boys'Town
7403 Cline Avenue
Schererville, IN 46375
219-838-7723

Gibault School for Boys
5901 Dixie Bee Road, Box 2316
Terre Haute, IN 47802
812-299-1156

Iowa

St Anthony's Boys Home
c/o Catholic Charities, Box 2025
Sioux City, IA 51104
712-252-2701

Villa Maria Girls Home
c/o Catholic Charities, Box 2025
Sioux City, IA 51104
712-252-2701

Kentucky

Boys' Haven
3201 Bardstown Road
Louisville, KY 40205
502-458-1171

Our Lady's Home
523 Park Avenue
Louisville, KY 40208
502-637-2969

Louisiana

Hope Haven-Madonna Manor Residential Treat-
ment Center
1101 Barataria Blvd.
Marrero, LA 70072
504-347-5581

Maison Marie Group Home
3020 Independence Street
Metairie, LA 70001
504-888-9555

Massachusetts

St. Vincent's Home/School
2425 Highland Avenue
Fall River, MA 02720
508-679-8511

Our Lady of Providence Children's Center
2112 Riverdale Street
West Springfield, MA 01089
413-788-7366

McAuley Nazareth Home for Boys
77 Mulberry Street
Leicester, MA 01524
617-892-4886

Maryland

Good Shepherd Center
4100 Maple Avenue
Baltimore, MD 21227
301-247-2770

Michigan

Barat House
5250 John R. Street
Detroit, MI 48202
313-833-1525

Don Bosco Hall
10001 Pe'oskey Street
Detroit, MI 48204
313-834-8677

EMOTIONALLY AND/OR SOCIALLY MALADJUSTED PROGRAMS

Vista Maria
20651 W. Warren
Dearborn Heights, MI 48127
313-271-3050

St. John's Home
385 E. Leonard, N.E.
Grand Rapids, MI 49503
616-459-9504

Boysville of Michigan
8744 Clinton-Macon Rd.
Clinton, MI 49236
517-423-7451

Saint Vincent Home for Children
2800 W. Willow
Lansing, MI 48817
517-323-4734

Minnesota

St. Cloud Children's Home
1726 South 7th Avenue
St. Cloud, MN 56301
612-251-8811

Missouri

Child Center of our Lady
7900 Natural Bridge
St. Louis, MO 63121
314-383-0200

St. Joseph's Home for Boys
4753 South Grand Boulevard
St. Louis, MO 63111
314-481-9121

Universal Sheltered Workshop
6912 West Florissant Ave
St. Louis, MO 63136
314-389-7072

Nebraska

Father Flanagan's Boys' Home
Boys Town, NE 68010
402-498-1111

New Jersey

Catholic Community Services/Mt Carmel Guild
17 Mulberry Street
Newark, NJ 07102
201-596-4100

The Felician School for Exceptional Children
260 South Main Street P O. Box 530
Lodi, NJ 07644
201-777-5355

Collier School
Conover Road
Wickatunk, NJ 07765
201-946-4771

Guidance Clinic
39 North Clinton Avenue
Trenton, NJ 08609
609-394-9398

Nevada

St. Yves High School
7000 North Jones Blvd.
Las Vegas, NV 89131
702-645-1300

New York

LaSalle School
391 Western Avenue
Albany, NY 12203
518-489-4731

St. Colman's Home
Boght & Haswell Road
Waterliet, NY 12180
518-273-4911

Baker Hall
150 Martin Road
Lackawanna, NY 14218
716-827-9777

Barbara Blum Residence
262 9th Street
Brooklyn, NY 11215
718-788-0666

Euphrasian Residence
337 East 17th Street
New York, NY 10033
212-475-4245

Good Shepherd Services Group Homes
337 East 17th Street
New York, NY 10003
212-475-4245

The Astor Home for Children
1967 Turnbull Avenue
Bronx, NY 10473
212-829-8900

The Astor Home for Children Residence
36 Mill Street
Rhinebeck, NY 12572
914-876-4081

Madonna Heights School for Girls
Burr's Lane
Huntington, NY 11743
516-643-8800

Maryhaven Center of Hope
450 Myrtle Avenue
Port Jefferson, NY 11777
516-474-3400

North Dakota

Home on the Range for Boys
Route 1, Box 41
Sentinel Butte, ND 58654
701-872-3745

Ohio

Manycrest School for Girls
7800 Brookside Road
Independence, OH 44131
216-524-5280

Parmadale
6753 State Road
Parma, OH 44134
216-845-7700

Rosemont Center
2440 Dawnlight
Columbus, OH 43211
614-471-2626

Oklahoma

St. Joseph's Children's Home
P.O. Box 11417
Oklahoma City, OK 73136
405-424-1411

Oregon

19th St. and McMinnville Group Homes
c/o 231 S.E. 12th Avenue
Portland, OR 97214
503-231-4866

Christie School/Evergreen Education Program
Marylhurst, OR 97036
503-636-3621

St. Mary's Home for Boys
16535 S.W. Tualatin Valley Highway
Beaverton, OR 97006
503-649-5651

Pennsylvania

John Paul II, Center for Special Learning
450 S. 6th Street
Reading, PA 19611
215-373-5687

Harborcreek Youth Services
5712 Iroquois Avenue
Harborcreek, PA 16421
814-899-7664

Paradise School
Rt. 1
Abbottstown, PA 17331
717-259-9537

De La Salle in Towne
25 S. Van Pelt Street
Philadelphia, PA 19103
215-567-5500

St. Gabriel's Hall System
P. O. Box 390, Pawlings Road
Phoenixville, PA 19460
215-666-7970

Catholic Social Services Group Home
400 Wyoming Avenue
Scranton, PA 18503
717-346-8936

Lourdesmont Good Shepherd Youth and Family
Service
537 Venard Road
Clarks Summit, PA 18411
717-587-4741

Tennessee

DeNeuille Heights School
3060 Baskin Street
Memphis, TN 38127
901-357-7316

St. Peter Home
1805 Poplar
Memphis, TN 38104
901-725-8240

St. Bernard School for Exceptional Children
2021 21st Avenue South
Nashville, TN 37212
615-292-2231

HEARING IMPAIRED PROGRAMS

Texas

St. Joseph Youth Center
901 South Madison
Dallas, TX 75208
214-941-3900

Vermont

St. Joseph's Group Home/Vt. Catholic Charities
351 North Avenue
Burlington, VT 05401
802-658-6110

Washington

Morning Star Boys Ranch
P. O. Box 8087
Spokane, WA 99203
509-448-1411

Wisconsin

St. Charles Boys Home
151 South 84th Street
Milwaukee, WI 53214
414-476-3710

Wyoming

St. Joseph's Children's Home
P. O. Box 1117
Torrington, WY 82240
307-532-4197

INDEX H — PROGRAMS/ FACILITIES SERVING THE HEARING IMPAIRED

Colorado

Excelsior Youth Centers
15001 East Oxford
Aurora, CO 80014
303-693-1550

Illinois

Mt. St. Joseph
24955 N. Highway 12
Lake Zurich, IL 60047
312-438-5050

St. Rose Center
4911 South Hoyne
Chicago, IL 60609
312-436-1433

Iowa

Happy World Preschool
509 Ave F. (Aquinas East School Bldg.)
Ft. Madison, IA 52627
319-372-5013

Louisiana

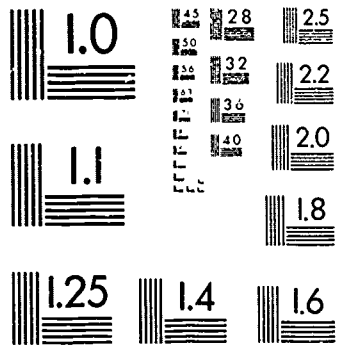
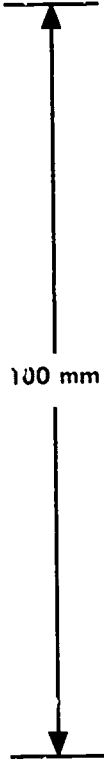
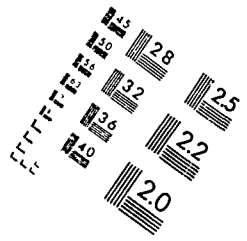
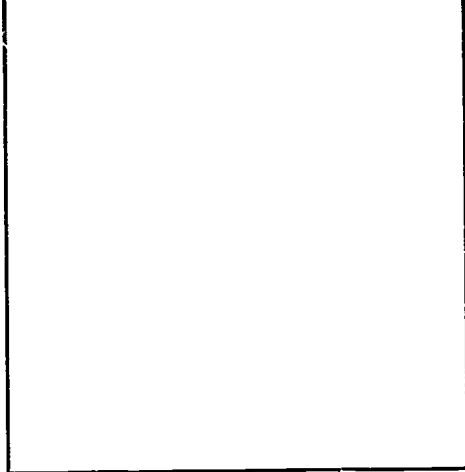
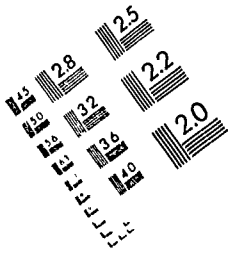
St. Mary's Residential Training School
P.O. Drawer 7768
Alexandria, LA 71306
318-445-6443

Chinchuba
1131 Baratana Blvd
Marrero, LA 70072
504-340-9261

Holy Angels Residential Facility
10450 Ellerbe Road
Shreveport, LA 71106
318-797-8500

Massachusetts

Boston School Serving Deaf & Aphasic Students
800 North Main Street
Randolph, MA 02368
617-963-8150

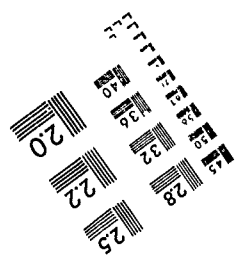
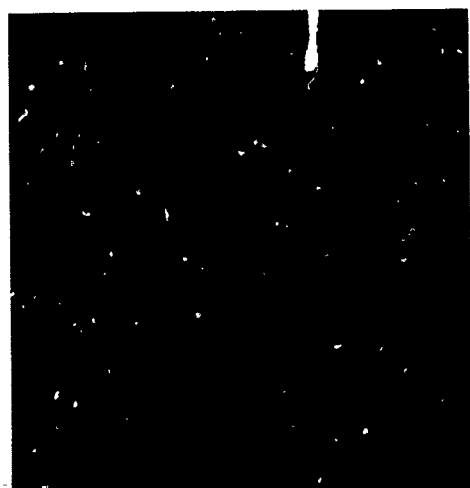
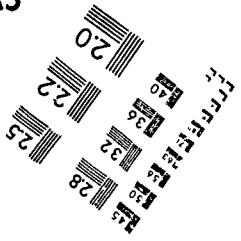


RESOLUTION TEST CHART

ABCDEFGHIJKLMNOPQRSTUVWXYZ
 abcdefghijklmnopqrstuvwxyz1234567890
 ABCDEFGI 10PQRSTUUVWXYZ
 abcdefghijkl, _grstuvwxyz
 123456/890

1.0 mm
 1.5 mm
 2.0 mm

A5



Missouri

St. Joseph Institute for the Deaf
1483 82nd Blvd.
St. Louis, MO 63132
314-993-1507

DePaul Institute
Castlegate Avenue
Pittsburgh, PA 15226
412-561-4848

St. Joseph's Center
2010 Adams Avenue
Scranton, PA 18509
717-342-8379

New Jersey

Mt. Carmel Guild Communication Disorders Program
17 Mulberry Street
Newark, NJ 07102
201-596-3965

Texas

Notre Dame of Dallas Schools, Inc.
2018 Allen Drive
Dallas, TX 75204
214-720-3911

New York

St. Mary's School for the Deaf
2253 Main Street
Buffalo, NY 14214
716-834-7200

St. Joseph's School for the Deaf
1000 Hutchinson River Pkwy
Bronx, NY 10465
212-828-9000

The Astor Home for Children Residence
36 Mill Street
Rhinebeck, NY 12572
914-876-4081

Cleary School for the Deaf
301 Smithtown Blvd.
Ronkonkoma, NY 11779
516-588-0530

Virginia

St. Coletta School
1395 North Jackson Street
Arlington, VA 22201
703-455-5326

Washington

St. Anne's Children's Home
North 707 Cedar Street
Spokane, WA 99201
509-456-7137

Ohio

St. Rita School for the Deaf
1720 Glendale-Milford Road
Cincinnati, OH 45215
513-771-7600

Mount Aloysius
5375 Tile Plant Road
New Lexington, OH 43764
614-342-3343

Pennsylvania

Archbishop Ryan Memorial Institute for the Deaf
3509 Spring Garden Street
Philadelphia, PA 19104
215-387-1711

INDEX I — PROGRAMS/FACILITIES SERVING THE SPEECH IMPAIRED

Colorado

Excelsior Youth Centers
15001 East Oxford
Aurora, CO 80014
303-693-1550

District of Columbia

St. Gertrude's School
4801 Sargent Road, NE
Washington, DC 20017
202-526-7676

Illinois

Misericordia Home South
2916 West 47th Street
Chicago, IL 60632
312-254-9595

Mt. St. Joseph
24955 N. Highway 12
Lake Zurich, IL 60047
312-438-5050

St. Rose Center
4911 South Hoyne
Chicago, IL 60609
312-436-1433

St. Francis School for Exceptional Children
1209 South Walnut Avenue
Freeport, IL 61032
815-235-3174

St. Vincent Community Living Facility
659 East Jefferson Street
Freeport, IL 61032
815-232-6181

Catholic Children's Home
1400 State Street
Alton, IL 62002
618-465-3694

Iowa

Happy World Preschool
509 Ave F. (Aquinas East School Bldg.)
Ft. Madison, IA 52627
319-372-5013

Louisiana

St. Mary's Residential Training School
P.O. Drawer 7768
Alexandria, LA 71306
318-445-6443

Guardian Angels Center/Redemptorist Center
c/o Dept of Special Ed - P.O. Box 2028
Baton Rouge, LA 70821
504-383-3066

Regina Caeli Center
3903 Kingston Street
Lake Charles, LA 70605
318-478-1970

St. Michael Special School
1522 Chippewa Street
New Orleans, LA 70130
504-524-7285

St. Michael Vocational Training Center
1522 Chippewa Street
New Orleans, LA 70130
504-524-7285

Holy Angels Residential Facility
10450 Ellerbe Road
Shreveport, LA 71106
318-797-8500

Maryland

St. Francis School for Special Education, Inc.
2226 Maryland Avenue
Baltimore, MD 21218
301-235-3378

Michigan

St. Vincent Home for Children
2800 W. Willow
Lansing, MI 48917
517-323-4734

Minnesota

St. Cloud Children's Home
1726 South 7th Avenue
St. Cloud, MN 56301
612-251-8811

Missouri

Vogelweid Learning Center
314 West High Street
Jefferson City, MO 65101
314-636-8980

Universal Sheltered Workshop
6912 West Florissant Ave.
St. Louis, MO 63136
314-389-7072

Nebraska

Villa Marie School
R.R. 1, Box 109
Waverly, NE 68462
402-786-3625

New Jersey

Mt. Carmel Guild Communication Disorders Program
17 Mulberry Street
Newark, NJ 07102
201-596-3965

Sister Georgine Learning Center
544 Chestnut Avenue
Trenton, NJ 08611
609-396-5444

New York

St. Colman's Home
Boght & Haswell Road
Wateruliet, NY 12180
518-273-4911

Dept. of Education - Diocese of Brooklyn
6025 Sixth Avenue
Brooklyn, NY 11220
718-492-1800

Cantalician Center for Learning
3233 Main Street
Buffalo, NY 14214
716-833-5353

The Astor Home for Children Residence
36 Mill Street
Rhinebeck, NY 12572
914-876-4081

Ohio

Mount Aloysius
5375 Tile Plant Road
New Lexington, OH 43764
614-342-3343

St. John's Villa
620 Roswell Road, NW
Carrollton, OH 44615-9399
216-627-7647

Oregon

19th St. and McMinnville Group Homes
c/o 231 S.E. 12th Avenue
Portland, OR 97214
503-231-4866

Pennsylvania

St. Joseph Center
2075 W. Norwegian Street
Pottsville, PA 17901
717-622-4638

DePaul Institute
Castlegate Avenue
Pittsburgh, PA 15226
412-561-4848

St. Joseph's Center
2010 Adams Avenue
Scranton, PA 18509
717-342-8379

Texas

Notre Dame of Dallas Schools, Inc.
2018 Allen Drive
Dallas, TX 75204
214-720-3911

Virginia

St. Coletta School
1305 North Jackson Street
Arlington, VA 22201
703-455-5326

Wyoming

St. Joseph's Children's Home
P. O. Box 1117
Torrington, WY 82240
307-532-4197

INDEX J — PROGRAMS/FACILITIES SERVING THE VISUALLY IMPAIRED

Colorado

Excelsior Youth Centers
15001 East Oxford
Aurora, CO 80014
303-693-1550

Illinois

Mt. St. Joseph
24955 N. Highway 12
Lake Zurich, IL 60047
312-438-5050

St. Rose Center
4911 South Hoyne
Chicago, IL 60609
312-436-1433

Iowa

Happy World Preschool
509 Ave F. (Aquinas East School Bldg.)
Ft. Madison, IA 52627
319-372-5013

Louisiana

St. Mary's Residential Training School
P.O. Drawer 7768
Alexandria LA 71306
318-445-6443

Holy Angels Residential Facility
10450 Ellerbe Road
Shreveport, LA 71106
318-797-8500

Maine

Diocesan Human Relations Services, Inc.
15 Vaughn Street P.O. Box 748
Caribou, ME 04736
207-498-2575

New Jersey

St. Joseph's School for the Blind
253 Baldwin Avenue
Jersey City, NJ 07306
201-653-0578

New York

St. Colman's Home
Boght & Haswell Road
Wateruliet, NY 12180
518-273-4911

Dept. of Education - Diocese of Brooklyn
6025 Sixth Avenue
Brooklyn, NY 11220
718-492-1800

Cantalician Center for Learning
3233 Main Street
Buffalo, NY 14214
716-833-5353

Lavelle School for the Blind
E. 221 St. & Paulding Avenue
Bronx, NY 10469
212-882-1212

Catholic Charities Services for Visually Impaired
272 Merrick Road
Lynbrook, NY 11563
516-593-4600

North Dakota

Friendship (Villa Nazareth dba Friendship Village)
3004 11 Street South
Fargo, ND
701-235-8217

Pennsylvania

St. Lucy Day School
929 S. Farragut Street
Philadelphia, PA 19143
215-382-6325

St. Joseph's Center
2010 Adams Avenue
Scranton, PA 18509
717-342-8379

Washington

St. Anne's Children's Home
North 707 Cedar Street
Spokane, WA 99201
509-456-7137