

DOCUMENT RESUME

ED 311 952

JC 890 454

AUTHOR Eaton, Judith S.
 TITLE President's Report, 1988-89. Community College of Philadelphia.
 INSTITUTION Philadelphia Community Coll., Pa.
 PUB DATE Aug 89
 NOTE 12p.
 PUB TYPE Statistical Data (110) -- Reports - Descriptive (141)

EDRS PRICE MF01/PC01 Plus Postage.
 DESCRIPTORS Budgets; College Faculty; Community Colleges; *Computers; Educational Finance; Educational Trends; *Enrollment Trends; *Financial Support; *Institutional Characteristics; Private Financial Support; *Student Characteristics; Student Financial Aid; Trend Analysis; Two Year Colleges; *Two Year College Students
 IDENTIFIERS *Community College of Philadelphia PA

ABSTRACT

A brief narrative and statistical profile of the Community College of Philadelphia (CCP) are provided, with emphasis on the 1988-89 academic year. Graphs and tables illustrate trends in enrollments, student characteristics, finances, financial aid funding, gifts and grants, staffing, and the acquisition of computer equipment. Statistical highlights include the following: (1) enrollment for 1988-89 reflected a modest gain in headcount and full-time equivalent students at the main campus, along with a significant decline in off-campus activity associated with the discontinuation of an apprenticeship program; (2) 32% of CCP's students enrolled for job preparation, while 52% entered for transfer preparation; (3) CCP's operating budget rose 4.8% from \$36,724,799 in 1987-88 to \$38,474,708 in 1988-89; (4) student financial aid funds totaled \$8,872,029 in 1988-89, representing a seven-year low in state and federal student financial aid grants and loans at the college; (5) the number of full-time staff dropped from 701 in 1988-89 to 694 in 1989-90; and (6) CCP's computer and computer-related inventory continued to expand, with the number of computer terminals increasing from 261 in March 1988 to 319 in June 1989. A list of the members of CCP's board of trustees is included. (JMC)

 * Reproductions supplied by EDRS are the best that can be made *
 * from the original document. *



COMMUNITY COLLEGE OF PHILADELPHIA

President's Report 1988-89

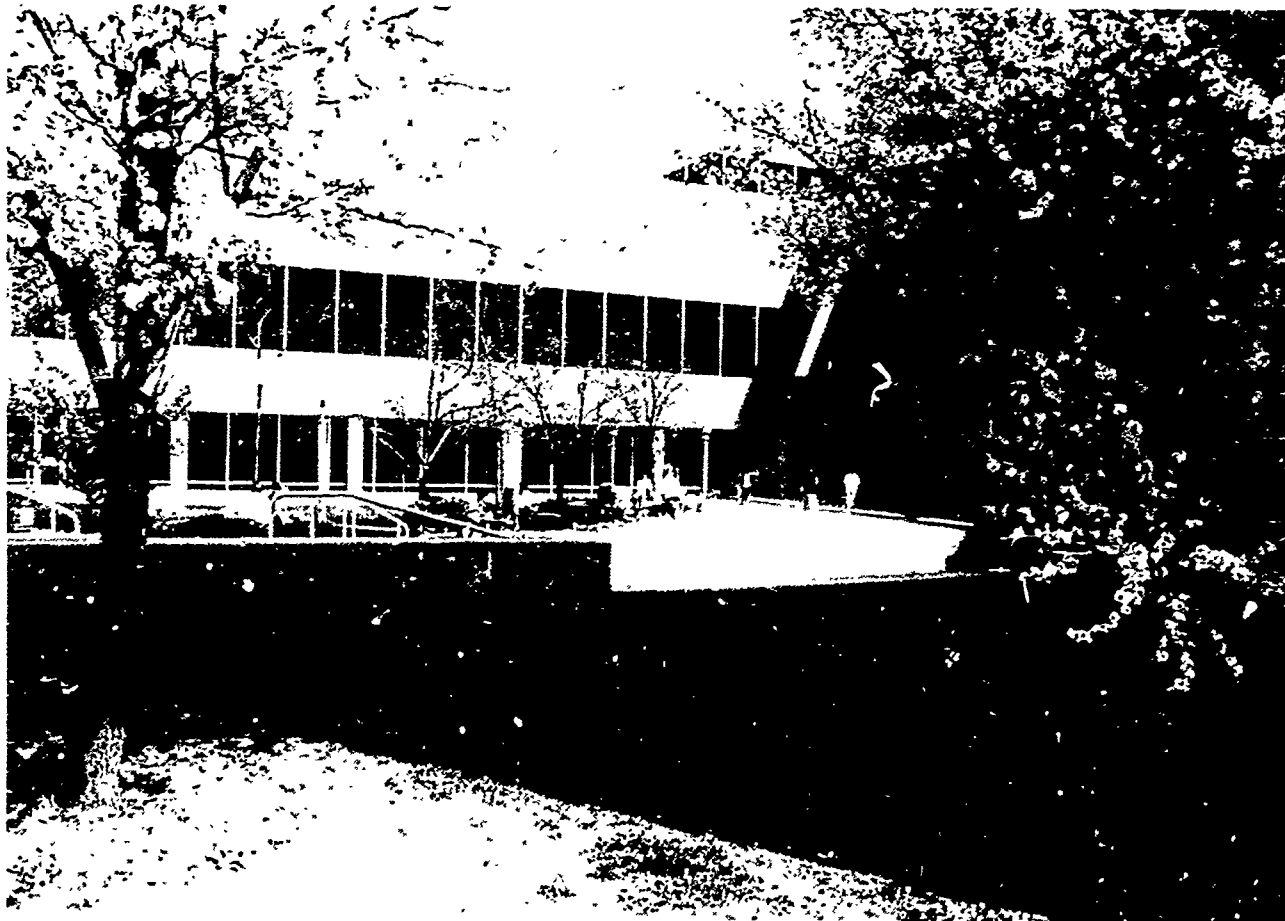
PERMISSION TO REPRODUCE THIS
MATERIAL HAS BEEN GRANTED BY

J. Eaton

TO THE EDUCATIONAL RESOURCES
INFORMATION CENTER (ERIC)."

U.S. DEPARTMENT OF EDUCATION
Office of Educational Research and Improvement
EDUCATIONAL RESOURCES INFORMATION
CENTER (ERIC)

- This document has been reproduced as received from the person or organization originating it.
- Minor changes have been made to improve reproduction quality.
- Points of view or opinions stated in this document do not necessarily represent official OERI position or policy.



BEST COPY AVAILABLE

ED311952

890 454





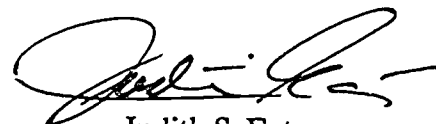
Introduction

The 1988-89 academic year was a time of meaningful and productive use of energy at Community College of Philadelphia. Quality professional and classified staff, a dedicated and thoughtful Board of Trustees, and interested and involved students helped to ensure a year in which CCP was able to continue to provide leadership in higher education in Philadelphia as the "City's College"--that institution which is uniquely charged to provide access to a collegiate experience to any and all interested and capable Philadelphians. Community College of Philadelphia--in contrast to its brother and sister area schools--is an open admission college serving a student population made up almost exclusively of Philadelphia residents. We are pivotal in the providing of educational opportunity to low-income and minority students. We are central to the City's efforts to provide educational opportunity to the adult community, especially part-time, working adults. This opportunity is not confined to only the first two years (as important as they are) of college attendance--CCP is a powerful institution of educational mobility as well. More than 75% of those students who take twelve credits or more at CCP and who indicate an interest in continuing their education at a four-year school transfer to another higher education institution.

Community College of Philadelphia's commitment as the college of the City is carried out through careful identification of institutional purpose and direction and reflected in its Statement of Institutional Priorities. The College's 1988-91 Strategic Plan thoughtfully organizes the work to be done to realize these institutional priorities or goals. CCP, since 1985-86, has sought to (1) enhance and diversify curricular design, (2) strengthen the quality of its programming through careful measurement of educational effectiveness, (3) enrich and expand the college commitment to basic skill development, (4) nurture meaningful educational and training partnerships with the City, and (5) sustain a collegiate environment which is open, exciting, and humane.

Our efforts have been rewarded through the success our students have realized. CCP's graduation rate is twice the national graduate rate for community colleges. Our transfer rate is among the highest in the nation. Virtually all graduates are employed immediately upon graduation or continue on to four-year schools. Ongoing reports from employers reflect significant satisfaction with CCP graduates. Four-year colleges and universities report that CCP transfers are likely to do as well as native students in moving toward the baccalaureate. Our extensive developmental and remedial work makes it possible for thousands of students who come to the College academically underprepared to achieve success at college-level studies, to realize their educational goals, and to move on to work or more education. Students requiring modest remediation do as well as college-ready students as measured by realization of educational goals, degree acquisition, transfer, and employment.

What follows is a brief summary of pertinent information concerning the 1988-89 academic year. While this brief statistical profile cannot convey the comprehensive breadth of CCP programs and services, it can be helpful in identifying some significant features of the year just concluded.



Judith S. Eaton
President
August, 1989

Enrollment

Enrollment for 1988-89 reflects a modest gain in headcount and full-time equivalent students at the main campus and a significant decline in off-campus activity, especially headcount enrollment at community-based sites other than the College's Northeast and West Philadelphia Regional Centers. The enrollment loss resulted in part from the College's termination of its Philadelphia Navy Yard Naval Apprenticeship Program. In general, the College was not able to offer as broad an array of non-credit offerings as it has during the previous several years. This accounted for much of the enrollment decline.

Enrollment Patterns 1985-86 through 1988-89

	1985-86	1986-87	1987-88	1988-89	Change (1987-88 to 1988-89)	% Change
Total College						
Headcount *	35,419	38,304	37,107	33,520	-3,587.0	-9.7%
FTE **	11,570	11,536	11,234	11,280	45.5	0.4%
Main Campus - Credit Only						
Headcount	17,200	16,207	16,264	16,575	311.0	1.9%
FTE	8,982	8,214	8,079	8,233	153.5	1.9%
Northeast Center - Credit Only						
Headcount	3,443	4,130	3,851	3,440	-411.0	-10.7%
FTE	751	953	892	842	-50.0	-5.6%
West Phila. Center - Credit Only						
Headcount	494	735	694	617	-77.0	-11.1%
FTE	70	136	129	129	0.0	0.0%
All Other Community Services - Credit and Non-credit						
Headcount	14,282	17,232	16,298	12,888	-3,410.0	-20.9%
FTE	1,767	2,233	2,135	2,076	-59.0	-2.8%

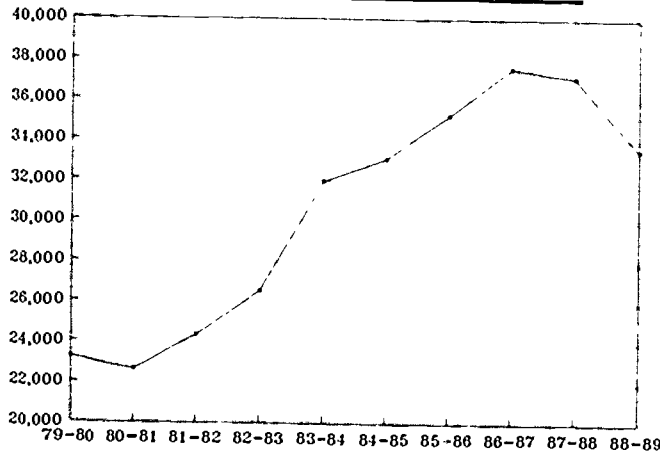
* Unduplicated headcount

** Full-time equivalent students

Student Profile:

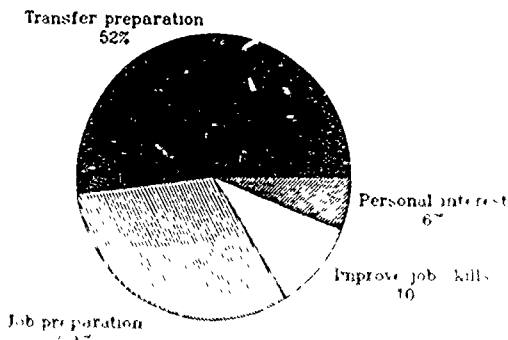
STUDENTS

CCP Headcount Enrollment 1979-1989*

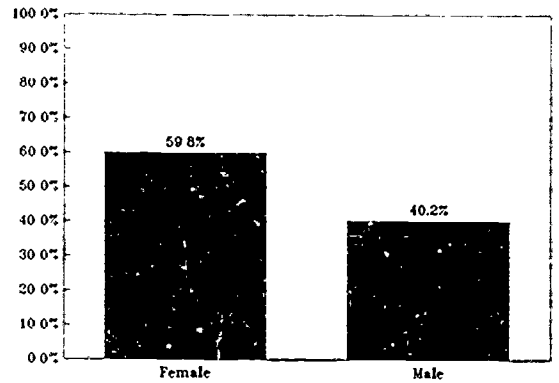


* Unduplicated count of students enrolling during each of the last ten fiscal years.

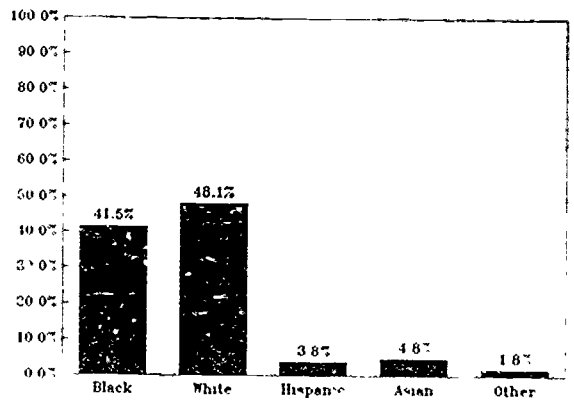
Why Students Enter CCP



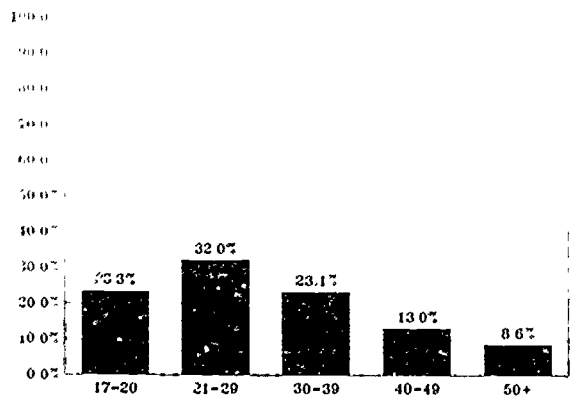
Sex



Race



Age



Finance

Total College expenditures for 1988-89 were \$58,090,969. This includes all operating costs, capital expenditures (purchases and debt service) and student aid.

Operating expenditures for 1988-89 were \$38,474,708. State support improved with the raising of the cap for full-time equivalent enrollment from \$800 per FTE to \$1000 per FTE. City support for operating costs remained unchanged for the fourth consecutive year.

Operating Budgets 1984-85 through 1988-89

Year	Operating Budget (State Definition)	Increase (in current dollars)
1984-85	\$33,089,210	
1985-86	34,382,466	3.9%
1986-87	35,074,658	2.0%
1987-88	36,724,799	4.7%
1988-89	38,474,708	4.8%

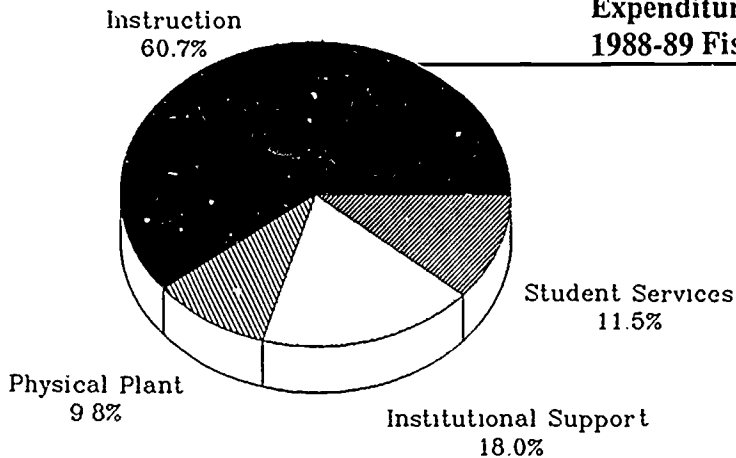
Financial Aid Funding

Student financial aid funds totalled \$8,872,029 in 1988-89. This is a seven-year low in state and federal student financial aid grants and loans at CCP. The College remains concerned about the impact on access and has undertaken, through its strategic planning efforts, several initiatives to improve the financing of college education for students.

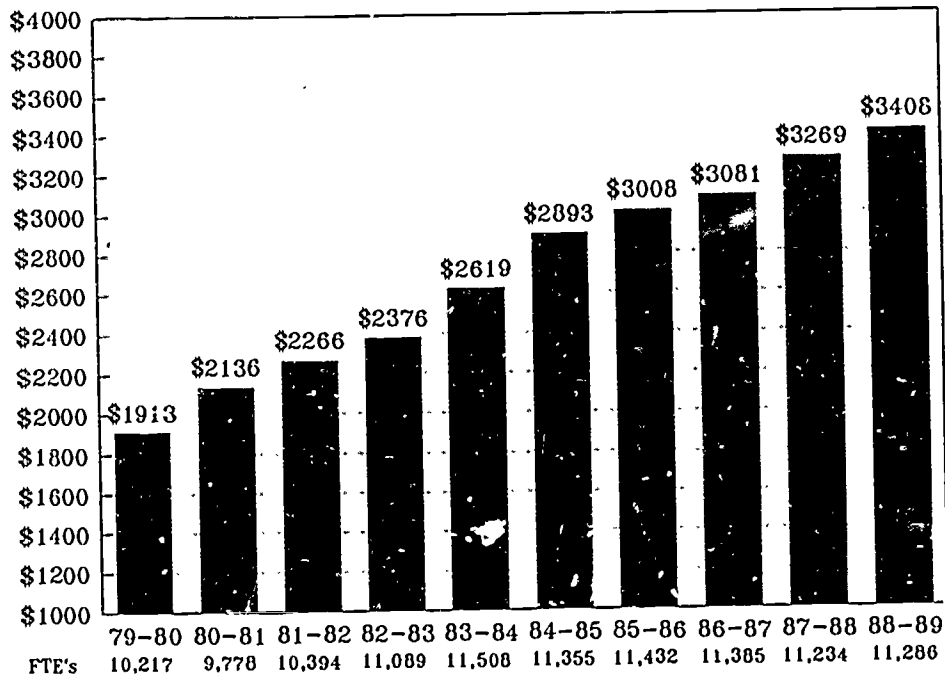
Grants and Loans 1982-83 through 1988-89

Year	Total \$ Grants/Loans	Grant Recipients	Loan Recipients
1988-89	\$8,872,029	7,208	1,708
1987-88	9,050,563	7,676	2,022
1986-87	9,640,441	8,124	2,443
1985-86	10,760,214	9,667	2,354
1984-85	10,338,406	10,160	2,521
1983-84	10,340,897	10,537	2,316
1982-83	9,467,697	10,472	2,037

**Expenditures by Category
1988-89 Fiscal Year**



**Operating Costs Per
Full-Time-Equivalent
Student**



Gifts and Grants

Gift and grant funds exclusive of financial aid totalled \$2,810,929 for 1988-89.

State:	\$539,453
Federal:	1,779,590
Corporate/Foundation:	372,494
Other:	25,700
Cash Donations:	35,092
Equipment Donations (estimated value):	58,600

Gifts and Grants 1983-84 through 1988-89

Year	Amount	Number
1983-84	\$1,133,066	15
1984-85	2,393,560	18
1985-86	2,054,680	20
1986-87	4,596,105	36
1987-88	3,054,012	37
1988-89	2,810,919	55



Grants

State

New Horizons	\$75,000
Act Now	134,277
Adult Literacy Funds	81,000
Centers for Adult Literacy	81,586
Step-Up (Year 1)	<u>167,590</u>
Total	\$539,453

Federal

Minority Recruitment/Retention	\$29,784
Naval Hull Maintenance Program	216,253
Architecture/Construction	57,534
Word Processing	48,912
Integrated Calculus Revision	40,123
Centers for Learning in the City	116,707
Entitlement: Handicapped	77,865
Entitlement: Disadvantaged Vocational Programs	822,682
Improving Curriculum (Year 3)	188,734
Cultural Literacy (Year 2)	162,314
High School Enrichment	<u>16,000</u>
Total	\$1,779,590

Corporate/Foundations

Retention Support for Nursing	\$25,000
Improving Nursing (Year 2)	156,250
High School Enrichment	8,328
Transfer Network	47,820
Nursing Equipment	20,755
Summer Science Institute IV	<u>114,341</u>
Total	\$372,494

Other

Summer Orientation Academic Programs	\$23,500
Interpreter Training	<u>2,200</u>
Total	\$25,700

Cash Donations

Minority Education Initiative	\$33,092
Featherman Fund	<u>2,000</u>
Total	\$35,092

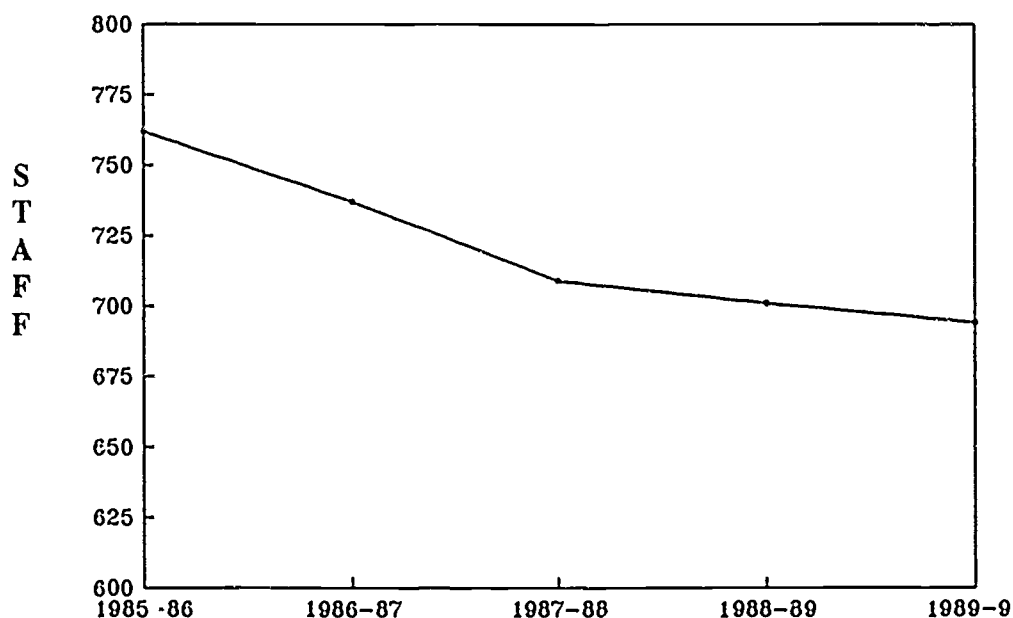
Equipment Donations

Rohm & Haas Company Chemistry Equipment	\$50,000
Pioneer Scientific Corporation Chemistry Equipment	<u>8,600</u>
Total	\$58,600

Staffing

Full-Time Staff

Year	Full-Time Staff
1985-86	762
1986-87	737
1987-88	709
1988-89	701
1989-90	694



Computer Equipment Acquisition

Our commitment to improving efficiency and effectiveness through automated systems has been sustained during the past year. Our computer and computer-related inventory continue to expand.

	9/84	12/85	5/87	3/88	6/89
Terminals:	93	185	210	261	319
On-line Printers:	12	15	13	19	15*
Microcomputers:	184	239	498	539	579
Word Processors:	58	63	94	99	84**

* Retired 9 old printers, replaced with 5 laser printers

** 15 Wang word processors replaced by IBM microcomputers in Office Administration.

Board of Trustees

Jane S. Abrahams
Brother Daniel Bernian
Dr. Sandra Featherman
Ruth S. Ferber, Esquire
Richard H. Glanton, Esquire
Thomas B. Harper, III., Esquire
Robert S. King
Dr. Henry Klein
Dr. Marciene S. Mattleman
Joseph B. Meranze, Esquire
Emanuel Ortiz
Jerrildine Reed, Esquire
The Honorable M. Joseph Rocks
The Honorable Edward B. Rosenberg
Isadore A. Shrager, Esquire
The Honorable Nochem S. Winnet

Accreditation

Community College of Philadelphia is accredited by the Middle States Association of Colleges and Secondary Schools. It is also approved by the Council of Higher Education and the Department of Education of the Commonwealth of Pennsylvania.