

DOCUMENT RESUME

ED 311 227

CE 053 214

AUTHOR LaBrecque, Suzanne V.; And Others
 TITLE Resource Manual of Jointly Planned/Funded Programs/Services/Activities To Serve Special Populations.
 INSTITUTION Indiana Univ., Bloomington. Inst. for Urban Transportation.
 SPONS AGENCY Texas Higher Education Coordinating Board, Austin.
 PUB DATE Jun 89
 NOTE 142p.
 PUB TYPE Reference Materials - Directories/Catalogs (132)

EDRS PRICE MF01/PC06 Plus Postage.

DESCRIPTORS Adult Education; Adults; Apprenticeships; *Cooperative Programs; *Coordination; Disabilities; *Employment Programs; *High Risk Persons; Job Training; Labor Force Development; Nontraditional Students; Postsecondary Education; *Program Administration; Program Descriptions; Rehabilitation Programs; Transitional Programs; Vocational Education; Work Experience Programs; Young Adults

IDENTIFIERS Adult Education Act; Education Consolidation and Improvement Act Chapter 1; Education of the Handicapped Act 1970; Job Training Partnership Act 1982; Rehabilitation Act 1973; *Texas

ABSTRACT

This document is intended to aid those in Texas doing joint planning of vocational and technical education programs with programs conducted under the Job Training Partnership Act (JTPA), the Adult Education Act, Chapter I of the Education Consolidation and Improvement Act, the Education of the Handicapped Act, the Rehabilitation Act of 1973, and apprenticeship training programs. The document is the result of an assessment of the impact of two regional workshops that were held in 1987-88 and 1988-89 to inform postsecondary personnel of the need for and process of joint planning. Section 1 provides a list of programs, services, and activities that were in place in 1988-89 as a result of the workshop conducted early in 1988. Twelve jointly planned programs for at-risk youth and hard-to-serve adults and those exclusively for hard-to-serve adults are described. Provided are contact person, program goals, program description, and evaluation information. Section 2 provides a listing and brief description of programs, services, and activities that have been planned and are using or expect to be using multiple resources for implementation as a result of the 1988-89 workshops. The 64 programs serve the handicapped, at-risk youth and hard-to-serve adults. Program descriptions include information on contact persons, program goals, target populations, planned activities, and resources. (CML)

 * Reproductions supplied by EDRS are the best that can be made *
 * from the original document. *

ED311227

RESOURCE MANUAL
OF
JOINTLY PLANNED/FUNDED
PROGRAMS/SERVICES/ACTIVITIES
TO SERVE SPECIAL POPULATIONS

Prepared by the
University of North Texas
School of Human Resource Management

Suzanne V. LaBrecque
Bill E. Lovelace
Sharon R. Smith

June 1989

The project which produced this document was funded by the Texas Higher Education Coordinating Board through a grant utilizing funds from the Carl D. Perkins Vocational Education Act.

Project Number: 99104009

Project Year: 1989

BEST COPY AVAILABLE

U S DEPARTMENT OF EDUCATION
Office of Educational Research and Improvement
EDUCATIONAL RESOURCES INFORMATION
CENTER (ERIC)

This document has been reproduced as
received from the person or organization
originating it.
Minor changes have been made to improve
reproduction quality.

- Points of view or opinions stated in this document do not necessarily represent either the ERIC position or policy.

PERMISSION TO REPRODUCE THIS
MATERIAL HAS BEEN GRANTED BY

Patricia Day

TO THE EDUCATIONAL RESOURCES
INFORMATION CENTER (ERIC)

CE053214

FUNDING INFORMATION

Project Title: Joint Planning Assessment:
Follow-up of Carl Perkins/JTPA Workshops

Project Number: 99104009

Funding Source: Carl D. Perkins Vocational Education Act, Title IIB
Texas Higher Education Coordinating Board
Community Colleges and Technical Institutes Division

**Coordinating Board
Grants Manager:** Mr. Larry Johnson
Assistant Director of Federal Projects
Texas Higher Education Coordinating Board
Community Colleges and Technical Institutes Division
Austin, Texas

Contractor: University of North Texas
School of Human Resource Management
Vocational Research and Development
Denton, Texas

Project Staff: Project Administrator, Dr. Suzanne V. LaBrecque
Principal Investigator, Dr. Bill E. Lovelace
Project Facilitator, Dr. Sharon R. Smith

Disclaimer: This publication was prepared pursuant to a contract with the Texas Higher Education Coordinating Board, Community Colleges and Technical Institutes Division. Contractors undertaking such projects under government sponsorship are encouraged to express freely their judgement in professional and technical matters. Points of view or opinions do not, therefore, necessarily represent official Texas Higher Education Coordinating Board position or policy.

ACKNOWLEDGEMENTS

The project staff expresses its sincere appreciation to the following individuals who assisted in this project by serving as members of the advisory task force:

Mr. Horacio Acevedo
Executive Director
South Texas Private Industry Council
Laredo, Texas

Mr. Jim Boyd
Planner, Regional Planning
Work Force Development Division
Texas Department of Commerce
Austin, Texas

Dr. R. D. Bristow
Director of Vocational Funding and Compliance
Texas Education Agency
Austin, Texas

Dr. Loanne Boudreaux
Director, Occupational - Technical Education
San Jacinto College - South Campus
Houston, Texas

Ms. Rebecca Everhard
Employment Services Specialist
Family Support Resources Division
Texas Department of Human Services
Austin, Texas

Mr. Larry Johnson
Assistant Director of Federal Projects
Texas Higher Education Coordinating Board
Community Colleges & Technical Institutes Division
Austin, Texas

Dr. Faye Murphy
Assistant Director, Program Planning
Tarrant County Junior College District
Fort Worth, Texas

Mr. Willie Taylor
Service Delivery Area Director
Permian Basin Regional Planning Commission
Midland, Texas

Appreciation is extended to the following two individuals who attended the advisory task force meeting as designees for two members unable to attend the scheduled meeting:

Ms. Ima Nell Hill
Supervising Accounts Examiner
Texas Education Agency
Austin, Texas

Ms. Phyllis Snyder
Planner, Regional Planning
Work Force Development Division
Texas Department of Commerce
Austin, Texas

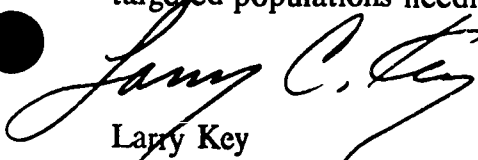
We also would like to acknowledge the cooperation shown by the workshop participants who responded to the survey instruments used in this project. Their responses were vital to the success of the project.

PREFACE

The State Plan for Federal Vocational Education has assured that joint planning of technical and vocational education programs with programs conducted under the Job Training and Partnership Act (JTPA), the Adult Education Act, Chapter I of the Education Consolidation and Improvement Act, the Education of the Handicapped Act, the Rehabilitation Act of 1975, and with apprenticeship training programs will be an ongoing process in the state.

The Community Colleges and Technical Institutes (CCTI) Division of the Texas Higher Education Coordinating Board has provided leadership and support to a variety of activities and projects designed to enhance the achievement of the desired level of joint planning and coordination by public two year postsecondary institutions. Three projects were sponsored by the CCTI Division to encourage and assist joint planning and coordination of occupational training to serve populations common to two or more funding sources. Two sponsored projects provided regional workshops, in 1987-88 and 1988-89, for informing postsecondary personnel of the needs and process of joint planning. A third project assessed the impact of the joint planning workshops. This resource manual is a product of the assessment project.

It is hoped and anticipated that this resource manual will assist you in your efforts of joint planning and coordination with other entities such as JTPA to better serve common targeted populations needing occupational instruction and employment.



Larry Key
Director of Federal Projects
Community Colleges and Technical Institutes Division
Texas Higher Education Coordinating Board

This resource manual is a product of the project "Joint Planning Assessment: Follow-up of Workshops" sponsored by the Texas Higher Education Coordinating Board, Community Colleges and Technical Institutes Division. The Joint Planning Assessment Project conducted a series of surveys to determine the impact of workshops, conducted during the 1987-88 and 1988-89 program years, on joint planning between two-year public postsecondary institutions and JTPA entities.

This manual is presented in two sections. Section I provides a listing of programs, services, and activities that were in place (1989-89) as a result of the workshops conducted in the early months of 1988. Section II provides a listing and brief description of programs, services, and activities that have been planned and are using or expect to be using multiple resources for implementation.

TABLE OF CONTENTS

	Page
I. Jointly Planned Programs To Serve Special Populations (1938)	1
A. Jointly Planned Programs for "At-Risk" Youth and "Hard-to-Serve" Adults	2
B. Jointly Planned Programs for "Hard-to-Serve" Adults	9
II. Jointly Planned Programs To Serve Special Populations (1989)	54
A. Jointly Planned Programs for the Handicapped	55
B. Jointly Planned Programs for "At-Risk" Youth	61
C. Jointly Planned Programs for "At-Risk" Youth and "Hard-to-Serve" Adults	97
D. Jointly Planned Programs for "Hard-to-Serve" Adults	103

Section I

Jointly Planned Programs To Serve Special Populations (1988)

Twelve jointly planned programs, resulting from the 1987-88 Joint Planning Workshops Project, are presented in the following format:

- A. Jointly Planned Programs for "At-Risk" Youth and "Hard-to-Serve" Adults
- B. Jointly Planned Programs for "Hard-to-Serve" Adults

**Jointly Planned Programs
for
"At-Risk" Youth
and
"Hard-to-Serve" Adults**

Report of Jointly
Planned, Funded, Conducted Projects/Activities/Services

For
"At-Risk" Youth or "Hard-to-Serve" Adults

Program/Project Title:

Basic Skills Instruction for JTPA Eligible Recipients

Contact Person:

Kouider Mokhtari
Director, Center for Independent Study
North Lake College
5001 N. MacArthur Blvd.
Irving, Texas 75038
(214) 659 - 5265

Types of Participating Entities:

Postsecondary Institution
Local Education Agency
Service Delivery Area

Goals/Objectives of Program/Project:

To provide basic skills instruction to JTPA eligible youth and adults to increase their employment potential.

Duration of Program/Project:

July 1, 1988 - June 30, 1989

Program or Service Description:

In a joint effort between North Lake College and Irving ISD, basic skills instruction was provided to JTPA eligible "at-risk" and "dropout" youth and adults. The Local PLATO Delivery System I, a computer-assisted instruction program, was used to provide instruction in reading, writing, math, and job/life coping skills to two groups of participants.

Characteristics of students served:
Academically Disadvantaged

Number of students:

Females: 28 Males: 16 Age range of all students served: 16 yrs. to 55 yrs.

Financial Arrangements:

JTPA
State and/or local funds
Irving Independent School District

Staffing
(describe staff by position
of program or service)

Grant Manager
Grant Secretary
Irving ISD Liaison
Project Coordinator
Instructor/Counselor - High
School Group
Instructor/Counselor - Adult
Group

Resource Materials/Activities/Services used:

PLATO System Local PLATO Delivery System II
Test of Adult Basic Education (TABE), McGraw-Hill
Pre-employment Training Skills

Evaluation Results:

Highly successful

Report of Jointly
Planned, Funded, Conducted Projects/Activities/Services
For
"At-Risk" Youth or "Hard-to-Serve" Adults

Program/Project Title:

123 At-Risk Youth Project

Contact Person:

Stephan M. Branch
Program Coordinator/Instructor
Northeast Texas Community College
P.O. Box 1307
Mt. Pleasant, Texas 75455
(214) 572 - 1911

Types of Participating Entities:

Postsecondary Institution
Local Education Agency
Service Delivery Area
Texas Department of Human Services

Goals/Objectives of Program/Project:

The goals/objectives of this project were:

- * To increase the grade level functioning of program participants by at least one grade point in basic education skill areas (reading, math, and writing) within a 10 week period for two semesters using the PALS and/or CCP.
 - * To provide entry-level skills in computer literacy, keyboarding and time-management for all participants in the PALS/CCP Model Program.
 - * To increase employability of the participants through vocational training in specific occupations, and general employability development.
-

Duration of Program/Project:

August 29, 1988 through December 15, 1988

Program or Service Description:

This project addressed the need for the development of a Remedial Education Program for Adult/Out-Of-School Youth, ages 16-21, residing in Camp and Wood Counties. The model developed an intensive basic skills instructional delivery system using state-of-the-art technology. The Comprehensive Competency Program (CCP) Model was used to provide basic skills training in reading, writing, mathematics, and social science to those at-risk-youth functioning below grade level. The Principle of the Alphabet Literacy System (PALS), a new interactive videodisc program developed by Dr. John Henry Martin for IBM, was integrated into the model to serve adult/out-of-school youth who were reading at the

0-5 grade level. In addition, this model provided support services, such as child care referrals and stipends for transportation, using local, state and federal resources that were available through the Carl Perkins Act, Department of Human Services, and the Department of Education. Careful coordination with the local school district was given priority, along with a system of identification/recruitment, placement/qualifying, instruction, counseling/referring, evaluation, and follow-up.

Characteristics of students served:

Academically Disadvantaged
Handicapped
Single Parent

Number of students:

Females: 8 Males: 8 Age range of all students served: 16 yrs. to 21 yrs.

Financial Arrangements:

JTPA
Carl D. Perkins
Texas Department of Human Services
Adult Basic Education

Staffing
(describe staff by position
of program or service)

1 Project Coordinator/Instructor

Resource Materials/Activities/Services used:

The Comprehensive Competency Program (CCP) and the Principle of the Alphabet Literacy System (PALS).

Evaluation Results:

Successful completion rate = 44%

Report of Jointly
Planned, Funded, Conducted Projects/Activities/Services

For
"At-Risk" Youth or "Hard-to-Serve" Adults

Program/Project Title:

(PASS) Positive Alternatives for At-Risk Youth

Contact Person:

Debbie Porter
Director, At-Risk Youth Programs
Northeast Texas Community College
P.O. Box 1307
Mt. Pleasant, Texas 75455
(214) 572 - 1911

Types of Participating Entities:

Postsecondary Institution
Local Education Agency
Service Delivery Area
Department of Commerce

Goals/Objectives of Program/Project:

To develop and implement a program for at-risk youth in the three county community college district in cooperation with local school districts, JTPA service providers, two private industry councils and an adult basic education cooperative

Duration of Program/Project:

12 months with continuation possibilities

Program or Service Description:

To develop and implement a comprehensive model program designed for drop-out prevention and recovery of "at-risk" youth. These students will be assisted in achieving a high school education and prepared for entry into the labor force. PASS is a hybrid program using a multiplicity of resources to meet the educational and support services needs of the JTPA eligible students, ages 14-21.

Characteristics of students served:
Academically Disadvantaged
Single Parent

Number of students:

Females: 18 Males: 12 Age range of all students served: 14 yrs. to 21 yrs.

Financial Arrangements:

JTPA
Carl D. Perkins
State and/or local funds

Staffing
(describe staff by position
of program or service)

Project Director
Intake Advisor
Assessment Counselor
Remedial Instructor
Technical Advisor

Resource Materials/Activities/Services used:

1. Recruitment
 2. Academic and vocational assessment
 3. Instruction and remediation in basic skills
 4. Instruction for occupational preparation
 5. Motivational training
 6. Support services
 7. Employability skill development and transitional skills
-

Evaluation Results:

The project will be evaluated in terms of installation, process, products, and possibilities for replication.

Jointly Planned Programs
for
"Hard-to-Serve" Adults

Report of Jointly
Planned, Funded, Conducted Projects/Activities/Services

For
"At-Risk" Youth or "Hard-to-Serve" Adults

Program/Project Title:

Hard-to-Serve Adults-Substance Abusers

Contact Person:

Dawn Boyer
Director, Guidance and Counseling
Texas State Technical Institute-Amarillo
P.O. Box 11197
Amarillo, Texas 79111
(806) 335 - 2316

Types of Participating Entities:

Postsecondary Institution
Service Delivery Area

Goals/Objectives of Program/Project:

Provision of a comprehensive program of enrollment, assistance to complement needs and educational and preventive activities for reformed substance abusers.

Duration of Program/Project:

July 1, 1987 - December 31, 1988

Program or Service Description:

Coordination of recruitment and services with parole and probation officers was accomplished in area counties through the project officer. Individuals were identified, tested to determine interests and aptitudes, counseled by TSTI staff, assisted with support services. A comprehensive on campus substance abuse program of education, prevention, treatment, and referral and intervention was provided.

Characteristics of students served:
Academically Disadvantaged
Handicapped

Number of students:

Females: 2 Males: 18 Age range of all students served: 22 yrs.

Financial Arrangements:

Percent of cost paid by JTPA 68%
Percent of cost paid by Carl D. Perkins 8%
Percent of State and/or local funds 24%

Staffing

(describe staff by position
of program or service)

Coordinator of Special Project

Resource Materials/Activities/Services used:

A comprehensive on campus substance abuse program to serve the population was developed. The program included education, prevention, treatment, referral, and intervention. Participation opportunities in group counseling activities with peer alcohol/drug counselors and staff was provided.

Evaluation Results:

While success with all students enrolled was not accomplished due to a lack of student commitment, many took advantage (17) of the opportunity offered and progressed satisfactorily in training. Their attendance, attitude, and grades reflect their motivation to complete their programs of study and become job-ready participants.

Report of Jointly
Planned, Funded, Conducted Projects/Activities/Services

For
"At-Risk" Youth or "Hard-to-Serve" Adults

Program/Project Title:

Section 123 - GED Training, Basic Remediation and Basic Literacy

Contact Person:

Nancy Davis, Coordinator of Special Services
Brenda Kasseroler, Director
Lamar University
P.O. Box 10043
Beaumont, Texas 77710
Davis: (409) 880 - 8190 Kasseroler: (409) 880 - 8984

Types of Participating Entities:

Postsecondary Institution
Service Delivery Area
Texas Department of Human Services

Goals/Objectives of Program/Project:

To prepare adults for passing the GED by improving basic skills in reading, writing, and mathematics.

Duration of Program/Project:

4 months and has been promised extended funding for after June through July 1990 by JTPA and PIC

Program or Service Description:

Activities of the grant include preparation for the GED classes and activities for improving self esteem - weekly assemblies, class song, and lots of tutorial individualized instruction.

Characteristics of students served:
Academically Disadvantaged
Single Parent

Number of students:

Females: 82 Males: 4 Age range of all students served: 28 yrs. to 45 yrs.

Financial Arrangements:

JTPA \$153,000
Carl D. Perkins In-bind counselor provided for
consultation
Department of Human Services provided child care
and transportation - \$60,000
Texaco \$10,000 private donation
Three M

Staffing
(describe staff by position
of program or service)

1 administrative assistant
1 male teacher
2 female teachers
1 full-time volunteer counselor

Resource Materials/Activities/Services used:

Community newspaper giving 9 articles -- Donation from Beaumont Enterprise
Texaco Star Industries giving one full-time degreed teacher for tutorial assistance
Computerized Networking System (IBM) for preparing for GED
Classroom instruction in basic skills: reading, writing, and mathematics

Evaluation Results:

Unknown other than Regional Planning Commission is currently "very pleased" with project. Classes started in March and meet 5 days a week for 8 hours. Newspaper publicity and community support has been fabulous. \$10,000 donated tagged for learning materials.

Report of Jointly
Planned, Funded, Conducted Projects/Activities/Services

For
"At-Risk" Youth or "Hard-to-Serve" Adults

Program/Project Title:

Title IIA Classroom Training Programs

Contact Person:

Steve Nunley
JTPA Daily Operations Coordinator
Texoma Council of Governments
10000 Grayson Drive
Denison, Texas 75020
(214) 786 - 2955

Types of Participating Entities:

Postsecondary Institution
Service Delivery Area

Goals/Objectives of Program/Project:

To assist JTPA clients in classroom training programs.

Duration of Program/Project:

2 years

Program or Service Description:

Carl Perkins funding pays for child care and some transportation.

JTPA funding pays for tuition, fees, books, supplies, and some transportation.

Characteristics of students served:
Single Parent

Number of students:

Females: 4 Age range of all students served: 25 yrs. to 32 yrs.

Financial Arrangements:

Percent of cost paid by JTPA 90%
Percent of cost paid by Carl D. Perkins 10%

Staffing

(describe staff by position
of program or service)

Ms. Charlotte Bullard
Guidance Counselor
Grayson County College

Resource Materials/Activities/Services used:

Evaluation Results:

Good -- 100% completion rate of CRT students.

Report of Jointly
Planned, Funded, Conducted Projects/Activities/Services

For
"At-Risk" Youth or "Hard-to-Serve" Adults

Program/Project Title:

Clerical Skills Training Program

Contact Person:

Patsy Blankenship
Coordinator, Office Careers
North Lake College
5001 N. MacArthur Blvd.
Irving, Texas 75038
(214) 659 - 5297

Types of Participating Entities:

Postsecondary Institution
Service Delivery Area
Texas Department of Human Services

Goals/Objectives of Program/Project:

The goal of the clerical skills training is to enhance the JTPA participants' employability. The program objective is for the participants to be placed in unsubsidized, full-time, training related employment at not less than \$4.00 per hour.

Duration of Program/Project:

July 1, 1988 - June 30, 1989

Program or Service Description:

This 600-hour intensive training program teaches students entry-level skills for office employment and includes courses in typing, office machines, word processing, basic math, basic English, business communications, human development, office procedures, physical education, and special seminars in interviewing techniques, grooming, resume writing, assertiveness, and other topics. Classes meet Monday through Thursday for 7 1/2 hours per day (8:30 AM - 4:30 PM). Fridays are scheduled as open lab and may be used for make-up days for absences. After six months, students participate in an unpaid internship with local corporations. After the internship, job placement activities are undertaken.

Characteristics of students served:

Single Parent

Number of students:

Females: 16 Males: 0 Age range of all students served: 19 yrs. to 37 yrs.

Financial Arrangements:

JTPA
State and/or local funds
Texas Department of Human Services

Staffing
(describe staff by position
of program or service)

Grant Administrator
Program Counselor and Job
Placement Counselor
Special Program Instructor

Resource Materials/Activities/Services used:

Resource Materials: Textbooks, handouts, current publications, audiovisuals
Activities: Seminars, community interaction, internships, job training, clothing drive, guest speakers, video taping, mock interviews and research interviews, and mentorship program
Services Used: North Lake College Center for Independent Study for special tutoring, transportation remedy, needed dental work, emergency aid, Irving Aid, Alcoholics Anonymous, Narcotics Anonymous, Overeaters Anonymous, Catholic Charities, Family Guidance Center, Incest Recovery and TRC

Evaluation Results:

Current program is in placement stage. Previous programs placed graduates as follows in permanent positions:

1985 -- 70%
1986 -- 71%
1987 -- 69%
1989 -- Of the 15 graduates, 7 are currently placed. Others are expected before June 30.

Report of Jointly
Planned, Funded, Conducted Projects/Activities/Services

For
"At-Risk" Youth or "Hard-to-Serve" Adults

Program/Project Title:

Clerical Skills Training Program (for AFDC Clients)

Contact Person:

Colleen Hager
Program Director, Continuing Education
Eastfield College
3737 Motley Drive
Mesquite, Texas 75150-2099
(214) 324 - 7020

Types of Participating Entities:

Postsecondary Institution
Service Delivery Area
Texas Department of Human Services

Goals/Objectives of Program/Project:

The goal of the clerical skills training is to enhance the JTPA participants' employability. The program objective is for the participants to be placed in unsubsidized, full-time, training related employment at not less than \$4.00 per hour.

Duration of Program/Project:

July 1, 1988 - June 30, 1989

Program or Service Description:

This 600-hour intensive training program teaches students entry-level skills for office employment and includes courses in typing, child development, office machines, word processing, basic math, basic English, business communications, human development, office procedures, physical education, and special seminars in interviewing techniques, grooming, resume writing, assertiveness, and other topics. Classes meet Monday through Thursday from 8:30 AM - 5:00 PM. Fridays are scheduled as open lab and may be used for make-up days for absences. After five or six months, depending on schedule, students participate in an unpaid internship with local corporations. After the internship, job placement activities are undertaken.

Characteristics of students served:
Academically Disadvantaged
Single Parent

Number of students:
Females: 26 Age range of all students served: 18 yrs. to 35 yrs.

<p>Financial Arrangements:</p> <p>JTPA Carl D. Perkins State and/or local funds Texas Department of Human Services</p>	<p>Staffing (describe staff by position of program or service)</p> <p>Program Director Licensed Professional Counselor Job Placement Coordinator Part-time Faculty Clerical Skills Aide (part-time) Office Clerk (part-time)</p>
---	---

Resource Materials/Activities/Services used:

See attachments

Evaluation Results:

26 students were enrolled -- all AFDC clients
18 completed coursework and were placed in internships
13 were graduated
10 were placed in jobs -- full-time, skill-related with an average of \$5 - 7 per hour pay

PROGRAM OVERVIEW

FUNDED BY?

DALLAS COUNTY
DEPARTMENT OF HUMAN SERVICES

WHAT?

CLERICAL SKILLS TRAINING PROGRAM

WHERE?

EASTFIELD COLLEGE
MESQUITE, TEXAS

WHEN?

MONDAYS THROUGH THURSDAYS ONLY
SEPTEMBER 26, 1988 - MARCH 6, 1989
8:30 AM - 5:00 PM

FOR WHOM?

A.F.D.C. RECIPIENTS

SCHEDULE

STEP 1

- * SUCCESSFULLY COMPLETE ALL COURSES
SEPTEMBER 26 - MARCH 6

STEP 2

- * SUCCESSFULLY COMPLETE
30-DAY INTERNSHIP
WITH COMPANY
MARCH/APRIL

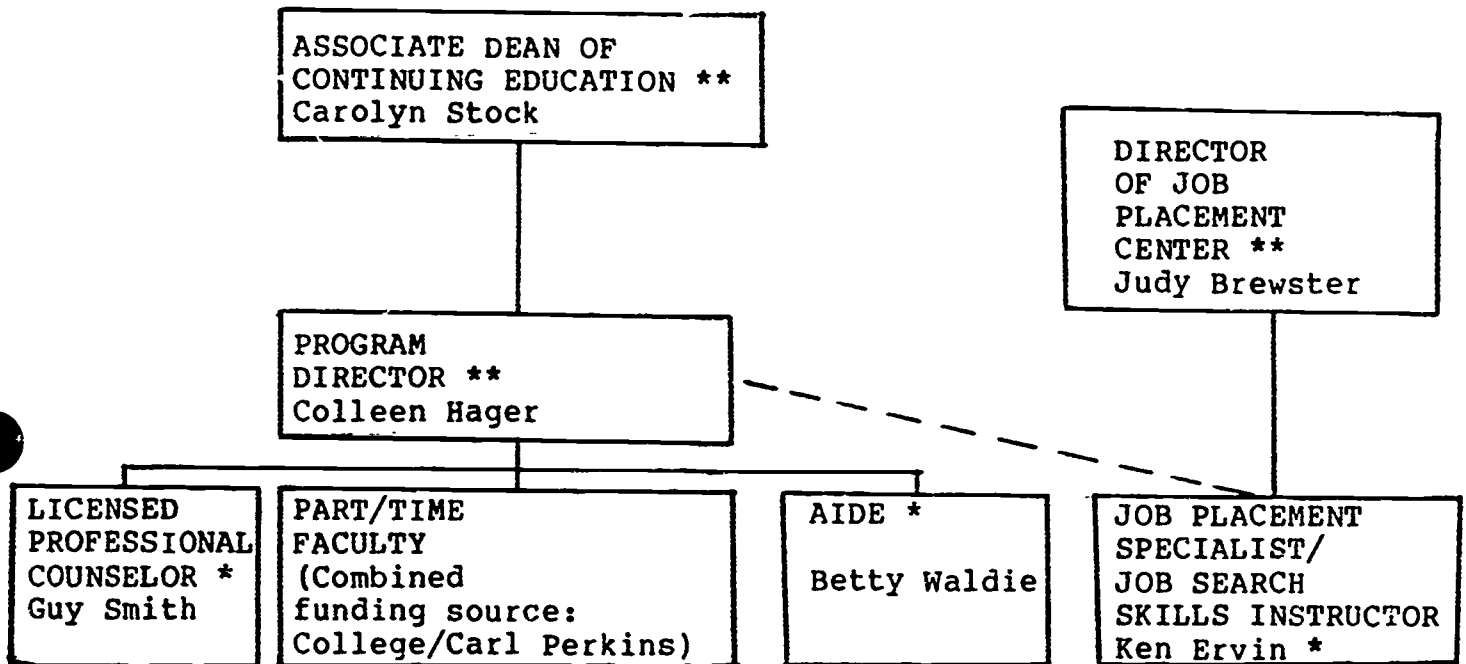
STEP 3

- * GRADUATION - WEEK OF APRIL 17

STEP 4

- * PLACEMENT ASSISTANCE
PROVIDED THROUGH JUNE 30, 1989

STAFFING



* Funded by Carl Perkins/Single Parent-Homemaker Grant

**Funded by College budget

INTAKE PROCESS

HOW DO I GET ADMISSION?

CERTIFICATION WITH DALLAS COUNTY DEPARTMENT OF HUMAN SERVICES



SUCCESSFUL COMPLETION OF EASTFIELD'S ASSESSMENT TESTS



INTERVIEW WITH EASTFIELD'S COUNSELOR



ENTER INTO PROGRAM

MARKETING

'88 - '89

1. LINKAGE/NETWORK: WORKING WITH FIELD WORKERS/CASE WORKERS IN STATE AND COUNTY DEPARTMENT OF HUMAN SERVICES FOR CLIENT REFERRALS.
2. PRESS RELEASE: 70 DALLAS AREA NEWSPAPERS/MAGAZINES/RADIO/TELEVISION CONTACTS
3. ADVERTISING: CONTINUING EDUCATION CATALOG MAILED TO 130,000 HOUSEHOLDS

CURRICULUM

1.	BASIC MATH.....	40 HOURS
2.	BASIC ENGLISH.....	40 HOURS
3.	HUMAN DEVELOPMENT.....	48 HOURS
4.	PHYSICAL FITNESS/NUTRITION.....	20 HOURS
5.	CHILD DEVELOPMENT.....	40 HOURS
6.	SPECIAL TOPICS: JOB SEARCH SKILLS.....	36 HOURS
7.	TYPING I.....	80 HOURS
8.	TYPING II.....	80 HOURS
9.	BEGINNING OFFICE MACHINES.....	25 HOURS
10.	INTERMEDIATE OFFICE MACHINES.....	25 HOURS
11.	WORD PROCESSING: WORDPERFECT.....	45 HOURS
12.	BOOKKEEPING I.....	25 HOURS
13.	BUSINESS COMMUNICATIONS I.....	16 HOURS
14.	BUSINESS COMMUNICATIONS II.....	16 HOURS
15.	BUSINESS COMMUNICATIONS III.....	16 HOURS
16.	OFFICE PROCEDURES.....	48 HOURS
	TOTAL	600 HOURS

EXIT COMPETENCIES

STUDENTS WHO SUCCESSFULLY COMPLETE THE PROGRAM WILL HAVE OBTAINED THE FOLLOWING SKILLS:

1. ABILITY TO TYPE 40 WORDS PER MINUTE.
2. ABILITY TO USE WORD PROCESSING SOFTWARE & IBM-PCs.
3. ABILITY TO USE OFFICE MACHINES, PRIMARILY ELECTRONIC CALCULATIONS, WITH SPEED AND ACCURACY.
4. ABILITY TO KNOW AND TO USE FUNDAMENTAL BOOKKEEPING SYSTEMS.
5. KNOW AND USE BASIC MATH, INCLUDING PERCENTAGES.
6. DEMONSTRATE CORRECT USAGE OF GRAMMAR.
7. BE ABLE TO COMMUNICATE PROPERLY WITH BUSINESS CLIENTS, CUSTOMERS, COLLEAGUES, AND SUPERVISORS.
8. BE ABLE TO WRITE AND EDIT BUSINESS LETTERS, MEMOS AND REPORTS.
9. BE ABLE TO WRITE A RESUME.
10. BE ABLE TO SCHEDULE AND PARTICIPATE IN A SUCCESSFUL INTERVIEW.
11. KNOW HOW TO FIND A JOB.
12. KNOW AND USE APPROPRIATE PROCEDURES IN OFFICE SETTINGS.
13. BE ABLE TO USE THE TELEPHONE PROPERLY.
14. KNOW GOOD BUSINESS ETIQUETTE.
15. KNOW HOW TO DRESS PROPERLY FOR THE WORK ATMOSPHERE.
16. BE ABLE TO DEMONSTRATE CONFIDENCE AND COMMITMENT TO LONG-TERM EMPLOYMENT.
17. KNOW THE FUNDAMENTALS OF NUTRITION, FITNESS AND CHILD DEVELOPMENT AND HOW TO INCORPORATE THEM INTO THEIR LIVES.

ADDITIONAL SERVICES

1. DAY CARE
2. DAILY ALLOWANCE - COVERS TRANSPORTATION, LUNCH
3. COUNSELING - PERSONAL, CAREER, ACADEMIC
4. TUTORING - ENGLISH AND MATH (PRIVATE AND SELF-PACED)
5. MENTOR PROGRAM - SENIOR CITIZENS OF DALLAS
6. CLOTHING/FINANCIAL ASSISTANCE - MESQUITE SOCIAL SERVICE LEAGUE
7. MAKE-OVER/STYLING - THOM JONES SALON, DALLAS
8. GUEST SPEAKERS - NORA EPHRON, ANITA REED,
(PARENTING SKILLS, MOTIVATION, SELF ESTEEM, ETC.)
9. USE OF CAMPUS FACILITIES/SERVICES -
 - *LEARNING RESOURCE CENTER
 - *CENTER FOR SUCCESS - PLATO
 - *STUDENT PROGRAMS AND RESOURCES
YEAR-LONG CONCERTS, GUEST APPEARANCES,
CLUBS, WORKSHOPS, ETC.

INTERNSHIP/PLACEMENT

JOB TITLES: ENTRY-LEVEL CLERK, SECRETARY, RECEPTIONIST

COMPANY PROFILE
BASED ON PAST

PLACEMENTS: LARGE NATIONAL CORPORATIONS, LAW FIRMS, CABLE TELEVISION,
AND EDUCATIONAL INSTITUTIONS.

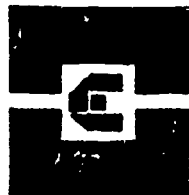
ENTRY-LEVEL

SALARY RANGE: \$5.40 - 8.00/HR (11,000 - 16,000)
INCLUDING FULL BENEFITS.

EASTFIELD COLLEGE

OF THE DALLAS COUNTY COMMUNITY COLLEGE DISTRICT

THIS IS TO CERTIFY THAT



has served as an
INTERN SUPERVISOR
for the

CLERICAL SKILLS TRAINING PROGRAM

Justin D. Sundermann
PRESIDENT

Eastfield College - Service or Program Description -- Continued

GRADUATION

INTRODUCTIONS

COLLEGE PRESIDENT
DEANS
TEXAS DEPT. OF HUMAN SERVICES
DALLAS COUNTY DEPT. OF HUMAN SERVICES
FACULTY
STAFF

ADDRESS

ANITA REED

AWARDS FOR HIGH ACHIEVEMENT

ACADEMICS
PERSONAL DEVELOPMENT

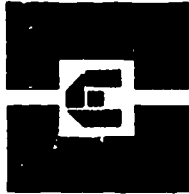
GIFTS FROM MESQUITE SOCIAL SERVICE LEAGUE

RECEPTION

*The President,
Faculty and Graduating Class
of
Eastfield College's
Clerical Skills Training Program
request the pleasure of your company
at their
Commencement Exercises
April 19, 1989
7:00 p.m.
Room G-100, Eastfield College
Reception following ceremony*

EASTFIELD COLLEGE
OF THE DALLAS COUNTY COMMUNITY COLLEGE DISTRICT

THIS IS TO CERTIFY THAT



has successfully completed the listed requirements
for certification in the

CLERICAL SKILLS TRAINING PROGRAM

This _____ day of _____, 19 _____.

Carolyn Stock
ASSOCIATE DEAN, CONTINUING EDUCATION

John D. Sundermann
PRESIDENT

Report of Jointly
Planned, Funded, Conducted Projects/Activities/Services

For
"At-Risk" Youth or "Hard-to-Serve" Adults

Program/Project Title:

Center for Reassessment Coordination With Project Self-Sufficiency

Contact Person:

Wanda Phillips
Special Programs Coordinator
Midland College
3600 N. Garfield
Midland, Texas 79705
(915) 685 - 4568

Types of Participating Entities:

Postsecondary Institution
Service Delivery Area
Midland College Housing (HUD)
Texas Department of Human Services
Texas Rehabilitation Commission

Goals/Objectives of Program/Project:

To provide housing payments and other services for low-income students who show motivation and desire to get training leading to jobs which will allow for self-sufficiency in one to three years

Duration of Program/Project:

Ongoing coordination since 1987

Program or Service Description:

See attachments

Characteristics of students served:

Academically Disadvantaged
Handicapped
Limited English Proficient
Single Parent

Number of students:

Females: 35 Males: 2 Age range of all students served: 19 yrs. to 45 yrs.

Financial Arrangements:

JTPA: Tuition and fees - 20%
Percent of cost paid by Carl D. Perkins 40%
Percent of State and/or local funds 40%
Department of Human Services - child care
AFDC
food stamps

Staffing

(describe staff by position
of program or service)

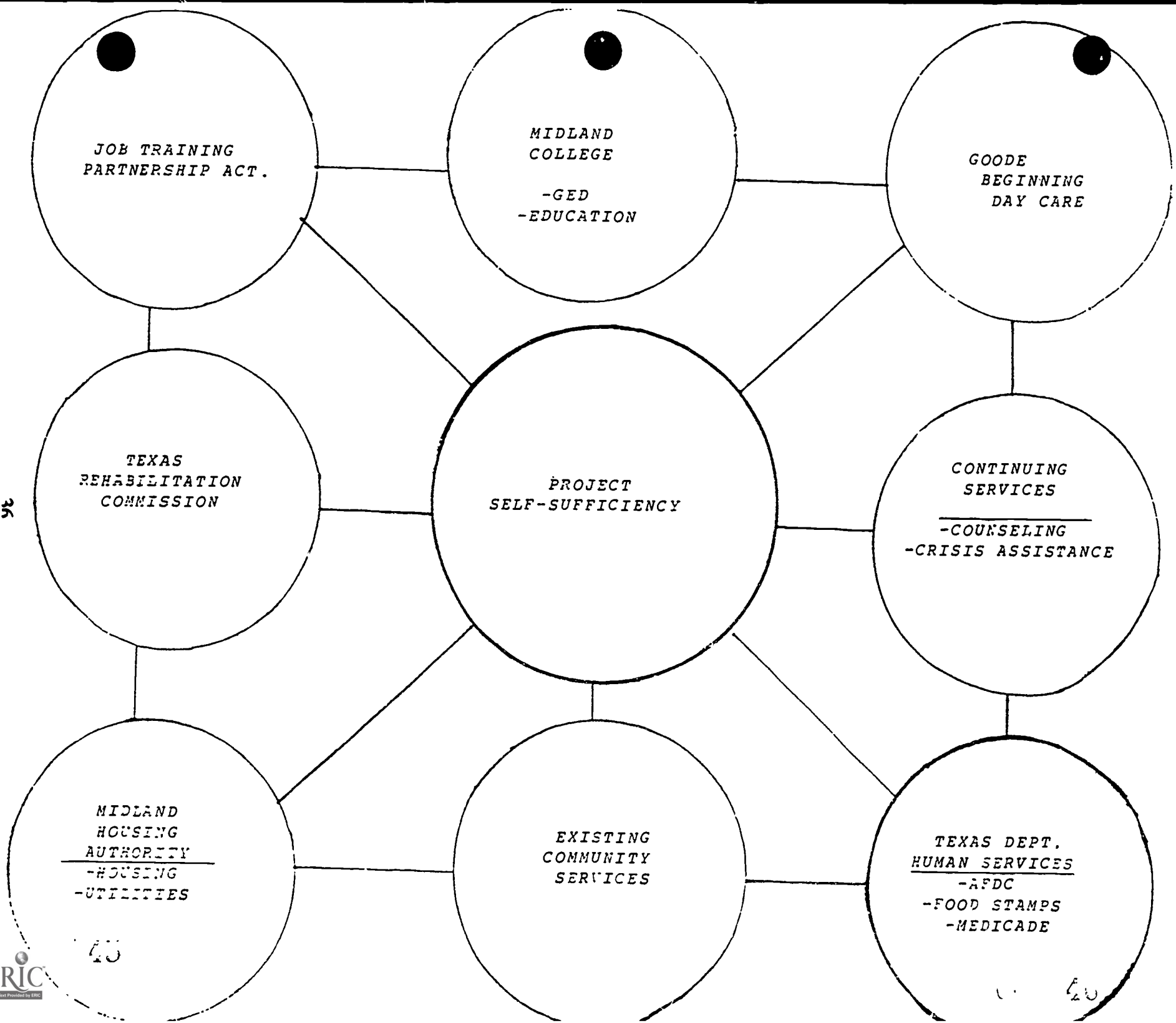
36 hour per week single parent
career counselor
1 full-time Carl Perkins director

Resource Materials/Activities/Services used:

COPs Vocational Interest Inventory
Myers/Briggs Personality Inventory
Math, reading, English assessment
9 hour orientation to college and work held once a month for new students

Evaluation Results:

27 enrolled in Fall 1988 -- average GPA of 2.84



36

45

40

Midland College - Program or Service Description - Continued

PROJECT SELF-SUFFICIENCY Policies and Procedures

Purpose: To provide assistance to low-income persons who have a desire and a plan leading to self-sufficiency.

A Plan Toward Self-Sufficiency may be:

- A. Vocational training at Midland College
- B. Earning GED in order to enter work or training.
- C. On-job-training which could lead to permanent work
- D. Other training such as beauty college, leading to a skill

Eligibility:

- A. Single parent or low-income couple
- B. Having legal custody of at least one minor child living in the home
- C. Low-income as defined by PSS formula
- D. Must be renting not buying

Process to apply:

- A. Complete application
- B. Three letters of reference
- C. Make appointment at Midland College (685-4695)
- D. Complete social history

Center for Reassessment for Testing/Career Planning:

- A. COPS Interest Inventory
- B. Personality Test
- C. Math, Reading, English
Assessment or copy of college transcript (if have attended college)

Progress - Rules & Regulations:

- A. School - attendance with progress cards signed by instructors
- B. Continuation satisfactorily on job
- C. Working toward GED
- D. Attend:
 - 1. Monthly orientations
 - 2. Monthly appointment at Center for Reassessment to report progress
 - 3. Monthly night meeting - last Wednesday of the month, 7:00-9:00 p.m., 1321 S. Goode. This meeting is mandatory - child care provided.
- E. Complete monthly self-evaluation forms.

Single Mothers: **WORK** MAKING IT

Program helps women reassess, rebuild lives

By CHRIS VAN WAGENEN
Staff Writer

\$ 3.35 an hour.

Minimum wage doesn't pay the bills — and it doesn't get single mothers off welfare.

According to a U.S. commission study conducted for the Office of Educational Research and Improvement, 54 percent of all single-parent households were living below the poverty line in 1985.

The report strongly identified a need for dropout-prevention programs, established educational sites for career and vocational development, with special assistance in child care coming from government, industry and labor unions.

While Midland is no closer to solving the day-care issue than the rest of the nation, it is making progress in getting mothers off the welfare rolls and into the mainstream.

One such program is Midland College's Center for Reassessment.

"Everyone can succeed if they can just find the right spot," says Wanda Phillips, the center's special projects coordinator. "The purpose is to locate this unskilled population and get them off welfare."

Established in 1983, with matching federal funds provided under the Carl Perkins Vocational Education Act, the center serves the disadvantaged, handicapped, those with limited English skills, single parents and displaced homemakers.

But Phillips says many of her clients are single mothers — women who a 1986 U.S. commission study identified as victims of extreme economic problems with considerable career development needs.

Many are minorities, particularly teen-age mothers forced to drop out of high school with limited job skills.

As of fiscal 1987, the Department of Human Resources in Midland County reported 626 families on public assistance. Of that number, 95 percent were identified as being single mothers.

The center works closely with DHS, as well as the Job Training Partnership Act, Project Self-Sufficiency and the Midland County Housing Authority, serving about 1,200 students annually.

Not all make it, but those who do stand a reasonable chance of creating a better life for themselves and their children.

Once a month, the center offers an orientation program for women interested in returning to school or seeking training to provide them a path out of the doldrums of welfare.

"The majority of women I deal with are single parents on C (Aid to Families with Dependent Children)," says Phillips. "Many of them have no idea how to change their lives by setting goals. Their usual pattern is crisis management — living for the moment."

Phillips says the day-long seminar teaches women to assess problems, make decisions and ultimately develop a career which is then carefully monitored.

"Many of these women take the attitude that they'll wait until another man shows up in their lives. A lot of that has to do with low self-esteem," but she adds that these women need to realize that the female's role today is dramatically shifting toward greater self-sufficiency.

For those willing to make the sacrifices, the center offers "Project Self-Sufficiency," a pilot program established under the Department of Housing and Urban Development in 1983, and then extended locally through the Permian Basin Planning Commission and the JTPA.

Successful applicants for Project Self-Sufficiency are eligible for subsidized rent payments for up to two years, as well as financial aid for tuition, books and fees up to \$2,400 through JTPA plus monthly payments up to \$200 for attending class.

Of the 35 single parents now in the program, 32 attend Midland College.

Last semester the group achieved a median grade-point average of 3.3 — a B+ — "which surprised us," says former project director Tom Burns. "When we give them the opportunity to get off welfare, they go crazy with it."

Unfortunately, funding for the program is limited. Ninety-eight families currently are on the waiting list.

Phillips says one of largest concerns among these single parents who want to enter the workforce is child care. "That's probably the main reason why they tend to get emotionally dragged down."

Many receive subsidized child-care payments through the center. Those that don't usually qualify for such funds through JTPA and the Department of Human Services, Phillips claims.

Geri Wallis, 25, the parent of a 5-year-old, is one of the fortunate few enrolled in the program.

Expected to graduate later this spring, Wallis is able to pay \$260 a month under the program so that her son Matthew can go to day care at First Baptist Church.

"I knew I had to go back to school because a high school degree wasn't going to get me where I was going," she says. "He (Matthew) sometimes gets tired of me studying all the time, but I tell him that I need a job that can support me so that I can spend more time with him."

Phillips says many still must contend with the bureaucracies, such as DHS, for food stamp and child care assistance.

"But I tell them to play the game and keep their eyes always on their goals."

She also discourages them from seeking out minimum-wage jobs — jobs she says cut into Medicaid and other benefits provided by DHS.

Based on DHS' own 1987 statistics, an unemployed family of three which receives \$578 in DHS benefits would lose all welfare payments upon taking a minimum-wage job, and face a reduction in food stamp payments from \$203 to \$119 per month.

Earnings from the job, which would total only \$3 more per month than the welfare benefits, were compounded after four months, when all Medicaid benefits would have been taken away.

According to Phillips, most minimum-wage jobs don't offer medical benefits, so a single mother can suddenly find herself in a hole during an emergency.

"And you wonder why we tell women not to work for minimum wage — there's just no incentive," she notes.

Agreeing with that was Burns. "Why work for \$3 more a month? It's just silly."

Burns thinks the federal government should take a more assertive role in the area of social services by providing funds for successful programs, such as "Project Self-Sufficiency."

"They don't need to throw money at the problem ... they need to get people back in the system," he says.

Adds Phillips: "It's to the point now that even to hold a secretarial job in Midland, oil companies are requiring B.A. degrees."

While Midland is no closer to solving the day-care issue than the rest of the nation, it is making progress in getting mothers off the welfare rolls and into the mainstream.

Report of Jointly
Planned, Funded, Conducted Projects/Activities/Services

For
"At-Risk" Youth or "Hard-to-Serve" Adults

Program/Project Title:

JTPA Summer Program: Preparing for School and Work

Contact Person:

Types of Participating Entities:

Wanda Phillips, Special Projects Coordinator
Cynthia Turland, Dir. of Adult Basic Education
Midland College
3600 N. Garfield
Midland, Texas 79705
Phillips: (915) 685 - 4568 Turland: (915) 687 - 3007

Postsecondary Institution
Service Delivery Area

Goals/Objectives of Program/Project:

Prepare disadvantaged adults for college vocational program

Duration of Program/Project:

14 weeks

Program or Service Description:

Pre-enrollment vocational and academic assessment

Classroom instruction in college-bound skills leading to enrollment

Characteristics of students served:
Academically Disadvantaged

Number of students:

24 enrolled; 18 participants completed

Financial Arrangements:

Percent of cost paid by JTPA 90%
Percent of cost paid by Carl D. Perkins 5%
Percent of State and/or local funds 5%

Staffing
(describe staff by position
of program or service)

1 Coordinator
3 Career Guidance Personnel
1 Classroom Instructor
1 Aide

Resource Materials/Activities/Services used:

Resource Materials: Midland College Learning Center and Reassessment Center

Activities: Assessments (personality, career, academic), seminars, tutoring, lectures, guest speakers, basic instruction

Evaluation Results:

75% completed program and enrolled in vocational programs at Midland College

Report of Jointly
Planned, Funded, Conducted Projects/Activities/Services

For
"At-Risk" Youth or "Hard-to-Serve" Adults

Program/Project Title:

Single Parent/Displaced Homemakers Grant

Contact Person:

Jennifer Cochran
Director
Odessa College
201 W. University
Odessa, Texas 79764
(915) 335 - 6583

Types of Participating Entities:

Postsecondary Institution
Service Delivery Area
Texas Department of Human Services

Goals/Objectives of Program/Project:

To reach the "hard-to serve" adults and assist them with their training needs as well as help with child care and transportation in order to develop their marketable skills and ultimately get them off welfare

Duration of Program/Project:

9 months

Program or Service Description:

Students are enrolled in the following pre-employment classes:

1. Job Search I (Job Seeking Skills) - 12 hours
2. Job Search II (Job Keeping Skills) - 12 hours
3. Positive Image and Self Esteem - 30 hours
4. Communication Skills - 30 hours
5. Life Skills - 36 hours
6. Study Skills - 9 hours

After the completion of these classes, students are then counseled and enrolled into vocational training programs.

Characteristics of students served:

Academically Disadvantaged
Limited English Proficient
Single Parent

Number of students:

Females: 200 Males: 3 Age range of all students served: 20 yrs. to 45 yrs.

Financial Arrangements:

JTPA
Carl D. Perkins
State and/or local funds
Department of Human Services

Staffing

(describe staff by position
of program or service)

Jennifer Cochran - Director
3 secretaries
1 student aide
10 instructors

Resource Materials/Activities/Services used:

Instructor prepared workbooks from various sources

Evaluation Results:

Not all students continue into the vocational training, but there is a large percentage who do. We have found that if we can work with the students during the early part of the program to improve their academic skills, they are more determined to improve their situation.



201 W. University
Odessa, Texas 79764

Single Parents Prayer

Lord, grant me...

Time enough to do all the chores, join in the games, help with the lessons and say the night prayers - and still have a few moments left over for me...

Energy enough to be bread-baker and bread-winner, knee patcher and peacemaker, ball player and bill-juggler...

Hands enough to wipe away the tears, to reach out when I'm needed, to hug and hold, to tickle and touch...

Heart enough to share and to care, to listen and to understand, and to make a loving home for my family.



47

Non-Profit
Organization
U.S. POSTAGE
PAID
Odessa, Texas
Permit No. 36

Single Parents: A Fresh Start



ODESSA COLLEGE - CONTINUED

Single Parents: A Fresh Start

Services at no cost

43 Odessa College currently provides special services for single parents at no cost due to the Carl D. Perkins Vocational Education Act: Single Parent Grant. Given to promote instruction for adult vocational courses as well as basic skills training and pre-employment work skills, the grant also allows OC to provide career/educational counseling, support services and equipment and materials for the vocational courses.

Becoming a part of the program

Anyone who is a single parent with custody of a minor child or a homemaker who has been out of the job market for at least three years is eligible to join the program. Since this is not a typical semester course, enrollment is continuous and individuals may sign up at any time by simply calling Odessa College's continuing education department at 335-6583. Child care is available for qualified participants.

Participants in the program

The vast majority of people involved in the program are women, with 67 percent between the ages of 25 and 44. Seventy-seven percent are either divorced or single. Eighty percent of the participants have an annual income less than \$10,000, and more than half have annual incomes less than \$5,000.

Two-thirds of the students are unemployed, and most have expressed an interest in learning office and computer skills in order to join the workforce. Many of the women have worked in sales or clerical positions, yet very few have more than five years of work experience. The program goes beyond clerical skills, however, and includes training for other occupations.

Services of the program

The program provides services from personal counseling, assessment and testing to skills training, pre-employment preparation and job placement.

In personal counseling, an advisor meets individually with the students to discuss the program and the students' educational goals. Then, the students' current skill levels are assessed in order to place them in the appropriate classes. The advisor ensures that students receive adequate training in a G.E.D. program, continuing education or college credit courses.

In career/educational counseling, the advisor helps the students determine if they need to complete their secondary education or if they qualify for Odessa College's credit program. Through skills training, the program provides vocational classes including courses in computers, typing, legal and medical terminology, business machines and others as needed.

Once the students' skills are enhanced, the program's advisors prepare the students for a job by placing them in non-paying positions on campus to gain work experience. The advisors also assist with job placement and provide employment referrals. Throughout the entire program, staff members support the students, helping them make new friends and develop their own support group.

Developing life skills

Also included in the program are one-hour "brown bag" seminars to help students in their personal lives. Topics covered include time management, household management, parenting skills, relationships, financial concerns, coping with loss and assertiveness training. For each seminar, students bring their own "brown bag" meal and eat during the meeting.



Report of Jointly
Planned, Funded, Conducted Projects/Activities/Services

For
"At-Risk" Youth or "Hard-to-Serve" Adults

Program/Project Title:

Contact Person:

Dr. John E. Brooks
Dean, Continuing Education
Wharton County Junior College
911 Boling Highway
Wharton, Texas 77488
(409) 532 - 4560

Types of Participating Entities:

Postsecondary Institution
Service Delivery Area

Goals/Objectives of Program/Project:

1. To provide job entry skills to JTPA eligible clients.
 2. To provide support services to mainstream disadvantaged in regular vocational programs.
 3. To provide reentry for high school drop-outs.
-

Duration of Program/Project:

July 1, 1988 - June 30, 1989

Program or Service Description:

Job entry skills to JTPA eligible clients

Support services to mainstream disadvantaged in regular vocational programs

Reentry for high school drop-outs

Characteristics of students served:

Academically Disadvantaged
Handicapped
Limited English Proficient
Single Parent

Number of students:

Females: 60 Males: 40 Age range of all students served: 16 yrs. to 55 yrs.

<p>Financial Arrangements:</p> <p>JTPA: Tuition and fees Carl D. Perkins: Supportive services 100% Percent of State and/or local funds 60%</p>	<p>Staffing (describe staff by position of program or service)</p>
---	---

Resource Materials/Activities/Services used:

See attached brochures

Evaluation Results:

100% placement -- Title III
85% placement -- Title II

The Connection Between
**THE CARL D. PERKINS
 VOCATIONAL EDUCATION ACT**
 and
**THE JOB TRAINING
 PARTNERSHIP ACT**

WHAT'S IN IT FOR ME?

- Support through Tutoring
- Support for the Handicapped
- Support through Counseling
- Support in Non-Traditional Career Exploration
- Support through Jobs

**Wharton County Junior College
 Vocational Training Programs**

- Air Conditioning & Refrigeration
- Automotive • Cosmetology • Data Processing
- Dental Hygiene • Drafting • Electronics
- G.E.D. • Industrial Maintenance Technology
- Law Enforcement • L.V.N. • ESL
- Medical Lab Technology • Microcomputer
- Office Education • Radiology
- Remedial Education

- Answering Service
- Career Planning
- Career Transition Skills
- Clerical/Secretarial Support
- Job Clubs
- Job Information Services
- Job Search Resource Library
- Job Search Workshops
- Needs Based Allowances
- Networking
- Resource Room and Work Area
- Self-Assessment
- State-of-the-Art Job Search Techniques and Training
- Typewriters-Computers-Word Processors

ALL SERVICES FREE:

Including training, tuition, books, lab tools, uniforms, and transportation for eligible participants.

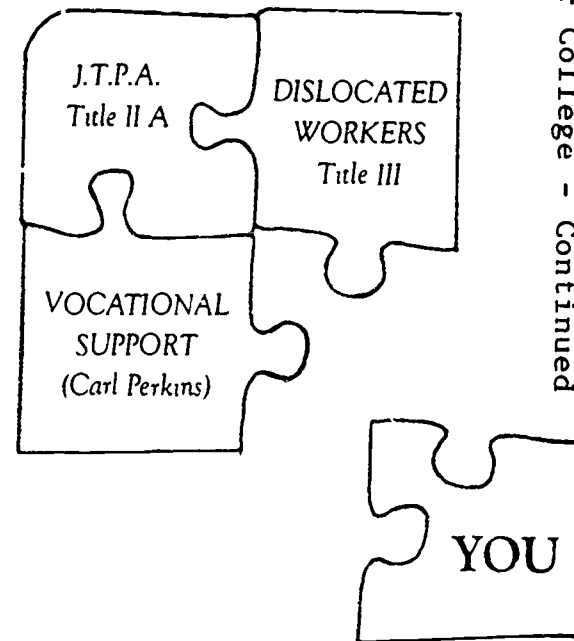
WHARTON COUNTY JUNIOR COLLEGE
 911 BOLING HIGHWAY
 WHARTON, TEXAS 77488



AFFIRMATIVE ACTION
 Wharton County Junior College
 is an equal opportunity institution.

Are you . . .

- An adult who's thinking of college?
- Unemployed or under skilled?
- Needing support or training?
- Looking for new options?



Wondering where
YOU fit?

Wharton County Junior College - Continued

VOCATIONAL SUPPORT SERVICES

The Vocational Support Services Program is designed to give vocational students with special needs the support required for them to succeed in the regular program at Wharton County Junior College, and to provide opportunities for personal development. All services, and seminars are offered free of charge.

SUPPORT THROUGH TUTORING

Students with:

- Academic or financial disadvantage
- Limited English Proficiency
- Referral from Instructor

May apply for free individual or small group peer tutoring.

SUPPORT FOR THE HANDICAPPED

The special needs of the handicapped are met through:

- Assistance with registration
- Modification of books, materials or equipment as necessary
- Notetakers
- Sign interpretation
- Tutoring
- Counseling

SUPPORT THROUGH COUNSELING

Often personal, financial, or physical problems can discourage our ambitions and dreams, but for many of these obstacles there are solutions. We're here to help you look for them!!

SUPPORT IN NON-TRADITIONAL CAREER EXPLORATION

Besides the traditional female careers in cosmetology, secretarial, nursing, clerical and mental hygiene, W.C.J.C. offers training for good paying jobs in other careers.

SUPPORT THROUGH JOBS

A "Limited Work Experience" program is available to provide additional income to interested students.

WHO IS A DISLOCATED WORKER?

Individuals who are or will be unemployed as a result of structural changes in the economy which result in PERMANENT ELIMINATION OF THEIR JOBS OR OBSOLES-CENCE OF THEIR SKILLS.

Section 302 of the Job Training Partnership Act of 1982 defines a dislocated worker eligible for services as an individual who:

- (1.) has been terminated or laid off or has received a notice of lay-off or termination from employment; or
- (2.) has been terminated or received a notice of termination as a result of any permanent closure of a plant or facility; or
- (3.) is long-term unemployed and has limited opportunities for employment or re-employment in the same or similar occupation in the area in which such individual resides (including any older individual who may have substantial barriers to employment by reason of age); or
- (4.) was self-employed (This INCLUDES FARMERS) and is unemployed as a result of general economic conditions in the community in which he resides.

For More Information Contact:

DISLOCATED WORKERS PROGRAM

DONALD KOPNICKY

Wharton County Junior College (409) 532-4560, Ext 299
911 Boling Highway Room 101-C
Wharton, Texas 77488 Administration Building

J. T. P. A.

WHAT IS THE JOB TRAINING PARTNERSHIP ACT OF 1982?

In 1982, Congress enacted legislation establishing the Job Training Partnership Act. This act establishes programs to prepare youth and unskilled adults for entry into the labor force and affords job training to economically disadvantaged individuals.

SERVICES RENDERED BY J. T. P. A.

According to the availability of slots, eligible J. T. P. A. applicants are selected to participate in vocational classroom training at Wharton County Junior College. The J. T. P. A. program pays tuition, fees, books and handtools. Other assistance includes support payments for transportation, child care and part-time employment while attending school.

ELIGIBILITY REQUIREMENTS

Participants must meet certain economic guidelines in order to qualify for the J. T. P. A. program.

The following information must be supplied.

1. Proof of gross family income for the past 6 months. (Check stubs or statement of earnings from employer)
2. Proof of residency (Utility bill or Driver's License or etc.)
3. Provide proof of age (Birth Certificate)
4. Provide proof of citizenship (Birth Certificate or Voter Registration Card)
5. Verify members of Household.
6. Male citizens born on or after January 1, 1960 who have reached their 18th birthday must have registered with Selective Service.

THE SERVICE CENTER CONCEPT

The Texas Employment Commission operates several Employment and Training Service Centers within the Wharton County Junior College service area. The functions of the centers include outreach, intake, assessment, referral, job development, job placement, and follow-up. Individuals seeking training must apply for J. T. P. A. services through The Texas Employment Commission.



48

WHARTON COUNTY JUNIOR COLLEGE
911 BOLING HIGHWAY
WHARTON, TEXAS 77488



AFFIRMATIVE ACTION
Wharton County Junior College
is an equal opportunity institution.

SKILLS TRAINING AVAILABLE THROUGH

J.T.P.A.

JOB TRAINING PARTNERSHIP ACT

AT



TRAINING PROGRAMS

Air Conditioning • Automotive • Data Processing
Electronics • Vocational Nursing
Microcomputer • Office Education • Cosmetology
Industrial Maintenance Technology
High School Equivalency Diploma (G.E.D.)

Learn AND Earn

***** CONTACT *****

**Wharton County
Junior College**

911 Boling Highway ★ Wharton, Texas 77488

(409) 532-4560, Ext. 239

FUNDED BY
HOUSTON-GALVESTON COUNCIL OF GOVERNMENT



Wharton County Junior College is an equal opportunity institution. It does not discriminate any person in its services, employment or personnel relations because of the race, color, religion, sex or place of national origin. The College complies with the

WHY IS THE JOB TRAINING PARTNERSHIP ACT OF 1982?

In 1982, Congress enacted legislation establishing the Job Training Partnership Act. This act establishes programs to prepare youth and unskilled adults for entry into the labor force and affords job training to economically disadvantaged individuals.

SERVICES RENDERED BY J.T.P.A.

According to the availability of slots, eligible J.T.P.A. applicants are selected to participate in vocational classroom training at Wharton County Junior College. The J.T.P.A. program pays tuition, fees, books and handtools. Other assistance includes support payments for transportation, child care and part-time employment while attending school.

ELIGIBILITY REQUIREMENTS

Participants must meet certain economic guidelines in order to qualify for the J.T.P.A. program

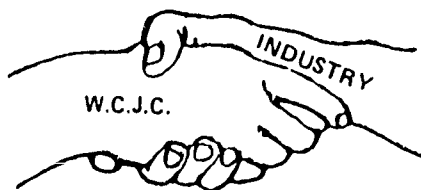
The following information must be supplied:

1. Proof of gross family income for the past 6 months. (Check stubs or statement of earnings from employer)
2. Proof of residency (Utility bill or Driver's License or etc.)
3. Provide proof of age (Birth Certificate)
4. Provide proof of citizenship (Birth Certificate or Voter Registration Card)
5. Verify members of Household
6. Male citizens born on or after January 1, 1960 who have reached their 18th birthday and have registered with Selective Service

Training Programs

- ✓ AIR CONDITIONING & REFRIGERATION
- ✓ AUTOMOTIVE
- ✓ COSMETOLOGY
- ✓ DATA PROCESSING
- ✓ ELECTRONICS
- ✓ INDUSTRIAL MAINTENANCE TECHNOLOGY
- ✓ L.V.N.
- ✓ MICROCOMPUTER
- ✓ OFFICE EDUCATION
- ✓ G.E.D.

JOB TRAINING PARTNERSHIP ACT



"A WORKING PARTNERSHIP"

THE SERVICE CENTER CONCEPT

The Texas Employment Commission operates several Employment and Training Service Centers within the Wharton County Junior College service area. The functions of the centers include outreach, intake, assessment, referral, job development, job placement, and follow-up. Individuals seeking training must apply for J.T.P.A. services through:

Texas Employment Commission
117 South Fulton Street
Wharton, Texas 77488
(409) 532-1399

Texas Employment Commission
3926 Avenue H, Suite 6
Rosenberg, Texas 77471
(713) 342-0696

Texas Employment Commission
3614 Avenue F
Bay City, Texas 77414
(409) 245-4808

Texas Employment Commission
S.E.R. J.T.P.A. Service Center
300 East Highway 290, Suite B
Prairie View, Texas 77446

Itinerant Offices:

S.E.R. Jobs for Progress Office
1126 Milam
Columbus, Texas 78934
(409) 732-6892

(Interviewer available every Tuesday and Wednesday from 10:00 a.m. - 3:00 p.m.)

Austin County Courthouse, Room B-19
Bellville, Texas 77416
(Interviewer available 1st & 3rd Thursday of each month) 9:00 a.m. - 2:30 p.m.

Texas Department of Human Resources
505 Bains St
Brookshire, Texas 77423
(713) 934-3971

(Interviewer available every Wednesday from 9:00 a.m. - 3:00 p.m.)

*Dislocated Workers
Program
for
Wharton
Matagorda
H. Bend
Colorado
Austin
Counties*

50

This program's objective is to evaluate current skills and abilities, help in job search, provide vocational training, classroom training, job referrals, and placement in a permanent, full-time job.



WHARTON COUNTY JUNIOR COLLEGE
911 BOLING HIGHWAY
WHARTON, TEXAS 77488

AFFIRMATIVE ACTION
Wharton County Junior College
is an equal opportunity institution

**Title III
Dislocated
Workers
Program**

A Division of Continuing
Education and Community Services



This program will provide outreach and intake personal and vocational counseling, and skill training to dislocated workers from the oil and gas industry, farming and agriculture business, general building contractors and related fields.

WHARTON COUNTY JUNIOR COLLEGE
911 Boling Highway • Wharton, Texas 77488
(409) 532-4560, Ext. 299

DISLOCATED WORKERS PROGRAM

FUNDED BY

HOUSTON-GALVESTON COUNCIL OF GOVERNMENT

WHO IS A DISLOCATED WORKER?

Individuals who are or will be unemployed as a result of structural changes in the economy which result in PERMANENT ELIMINATION OF THEIR JOBS OR OBSOLESCENCE OF THEIR SKILLS.

Section 302 of the Job Training Partnership Act of 1982 defines a dislocated worker eligible for services as an individual who:

- (1.) has been terminated or laid off or has received a notice of lay-off or termination from employment; or
- (2.) has been terminated or received a notice of termination as a result of any permanent closure of a plant or facility; or
- (3.) is long-term unemployed and has limited opportunities for employment or re-employment in the same or similar occupation in the area in which such individual resides (including any older individual who may have substantial barriers to employment by reason of age); or
- (4.) was self-employed (This INCLUDES FARMERS) and is unemployed as a result of general economic conditions in the community in which he resides

SERVICES PROVIDED

All participants will be placed in programs designed towards reasonable expectation of employment.

SHORT TERM TRAINING

- * Job Development
- * Job Search Training
- * Job Readiness Clinics
 - Resume Writing
 - Job Applications
 - Interviewing Skills

TRAINING PROGRAMS OFFERED

- * Industrial Maintenance Technology
- * Microcomputer Classes or
 - * Data Processing
- * Air Conditioning & Refrigeration
- * Office Education
- * Automotive Mechanics
- * L.V.N. or * R.N.
- * Radiologic Technology
- * Cosmetology
- * Electronics or * Drafting
- * Dental Hygiene
- * Medical Lab Technician

Free vocational training and Free tuition, books, lab fees and some needs based allowances such as transportation will be provided to eligible participants.

ELIGIBILITY REQUIREMENTS

- I. Official Birth Certificate (not a copy).
- II. Current electric bill, gas bill, utility bill, including address and name.
- III. Three (3) alternate names, and addresses (including zip code) and phone numbers (including area code).
- IV. Written certification from employer of lay-off or termination,
and
- V. Written reason applicant is unlikely to return to previous industry or occupation.
or
- VI. Written verification from employer of lay-off or termination as a result of the closure of a plant or facility.
or
- VII. Written reason why there are limited opportunities for employment in same or similar occupation.

For More Information Contact:

DISLOCATED WORKERS PROGRAM

DONALD KOPNICKY

Wharton Community Junior College (409) 532 4560, Ext 299
911 Boling Highway Room 101-C
Wharton, Texas 77488 Administration Building

FOR MORE
INFORMATION
CALL OR WRITE:

VOCATIONAL SUPPORT SERVICES

WHARTON COUNTY JUNIOR COLLEGE

911 Boling Highway

WHARTON, TEXAS 77488

Phone: (409) 532-4560

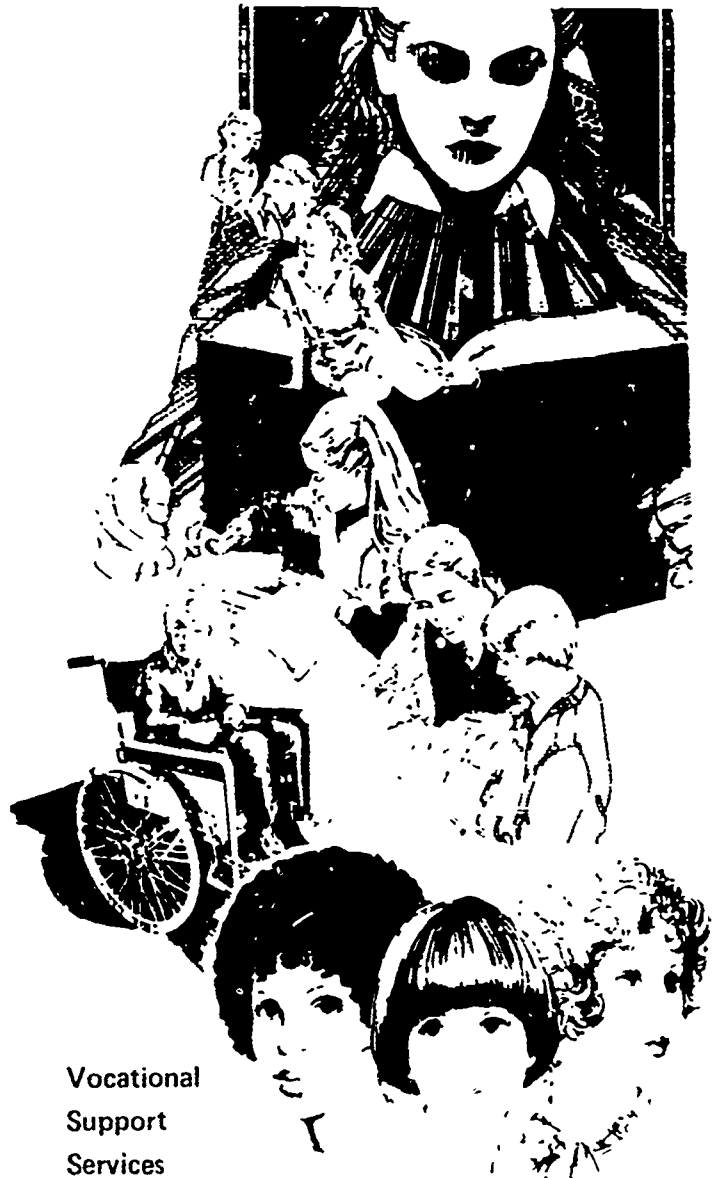


Continuing Education &
Community Services

EQUAL OPPORTUNITY STATEMENT

No person shall be excluded from participation in, denied the benefits of, or be subject to discrimination under any program or activity sponsored or conducted by Wharton County Junior College on any basis prohibited by applicable law, including, but not limited to race, color, age, marital status, national origin, religion, sex or handicap.

There is
SUPPORT
for You.



Vocational
Support
Services

Wharton County Junior College

VOCATIONAL SUPPORT SERVICES

The Vocational Support Services Program is designed to give vocational students with special needs the support required for them to succeed in the regular program at Wharton County Junior College, and to provide opportunities for personal development. All services, and seminars are offered free of charge.

SUPPORT THROUGH TUTORING

- Students with:
- Academic or financial disadvantage
 - Limited English Proficiency
 - Referral from Instructor

May apply for free individual or small group peer tutoring.

SUPPORT FOR THE HANDICAPPED

The special needs of the handicapped are met through:

- Assistance with registration
- Modification of books, materials or equipment as necessary
- Notetakers
- Sign interpretation
- Tutoring
- Counseling

SUPPORT THROUGH COUNSELING

Often personal, financial, or physical problems can discourage our ambitions and dreams, but for many of these obstacles there are solutions. We're here to help you look for them!

SUPPORT FOR WOMEN

The New Directions Program offers workshops and seminars designed to enable women to make desired changes in their lives or adapt to changes not of their choice.

SUPPORT IN VOCATIONAL CAREER EXPLORATION FOR WOMEN

Besides the traditional female careers in cosmetology, secretarial, nursing, clerical and dental hygiene, W.C.J.C. offers training for good paying jobs in:

- Accounting
- Agriculture
- Auto Mechanics
- Air Conditioning & Refrigeration
- Business Management
- Criminal Justice
- Data Processing
- Industrial Maintenance
- Medical Lab Technology
- Electronics
- Floral Design
- Machine Shop
- Drafting
- Radiology
- Law Enforcement

SUPPORT THROUGH JOBS

A "work study" program is available to provide additional income to qualified students.

Section II

Jointly Planned Programs To Serve Special Populations (1989)

Sixty-four jointly planned programs, resulting from the 1988-89 Joint Planning Workshops Project, are presented in the following format:

- A. Jointly Planned Programs for the Handicapped
- B. Jointly Planned Programs for "At-Risk" Youth
- C. Jointly Planned Programs for "At-Risk" Youth and "Hard-to-Serve" Adults
- D. Jointly Planned Programs for "Hard-to-Serve" Adults

Jointly Planned Programs

for

The Handicapped

CONTACT PERSON	Mr. Bill Demestihias Executive Director City of Austin/Travis County PIC 4315 Guadalupe Street, Suite 303 Austin, Texas 78751-3644 512/458-3313
PROGRAM GOAL	Dropout prevention "Jobstart for Life"
TARGET POPULATIONS	Handicapped Academically disadvantaged
PLANNED ACTIVITIES	Vocational education/training Day care Transportation Supplemental or additional staff Supplemental or additional equipment Supplemental or additional materials Vocational assessment Job coaching Job development Academic program
RESOURCES	JTPA Goodwill Industries
INITIATE PROGRAM	Unknown (Submitted to DOE)

CONTACT PERSON	Mr. Rogerio V. Arredondo Vocational Director Brownsville ISD 1900 Price Road Brownsville, Texas 78520 512/548-8272
PROGRAM GOAL	OJT in technical occupations
TARGET POPULATIONS	Handicapped Academically disadvantaged
PLANNED ACTIVITIES	Vocational education/training
RESOURCES	Carl D. Perkins JTPA
INITIATE PROGRAM	Already begun

CONTACT PERSON	Ms. Betsy Sheidler Vocational/Academic Counselor (Special Education) Castleberry ISD 315 Churchill Road Fort Worth, Texas 76114 817/732-4455
PROGRAM GOAL	Pre-employment skills for handicapped/disadvantaged
TARGET POPULATIONS	Handicapped Academically disadvantaged
PLANNED ACTIVITIES	Vocational education/training Supplemental or additional staff Supplemental or additional equipment Supplemental or additional materials Follow-up, transition, and placement
RESOURCES	JTPA Local school district funds
INITIATE PROGRAM	This summer (1989)

**CONTACT
PERSON**

Mr. Mike Carran
Coordinator, Pasadena Evening School
Pasadena ISD
204 South Shaver
Pasadena, Texas 77505
713/477-1443

**PROGRAM
GOAL**

Provide literacy services to mentally retarded adults

**TARGET
POPULATION**

Handicapped

**PLANNED
ACTIVITIES**

Supplemental or additional staff
Supplemental or additional materials

RESOURCES

ABE
Local school district funds

**INITIATE
PROGRAM**

Already begun

CONTACT PERSON	Mr. Thomas Hoy Counselor/Coordinator, Disabled Student Services San Antonio College 1300 San Pedro Avenue San Antonio, Texas 78284 512/733-2352
PROGRAM GOAL	Provide comprehensive support services for disabled students at the postsecondary educational level
TARGET POPULATION	Handicapped
PLANNED ACTIVITIES	Support Services: notetakers, interpreters, mobility assistance, test monitors, readers/writers, specialized equipment, adaptive furniture, computer software, etc. Supplemental or additional staff Supplemental or additional equipment Supplemental or additional materials
RESOURCES	Carl D. Perkins Texas Rehabilitation Commission Texas Commission for the Blind Postsecondary education funds
INITIATE PROGRAM	Already begun

Jointly Planned Programs

for

"At-Risk" Youth

CONTACT PERSON	Ms. Carolyn Welcome Vocational Counselor Cisco Junior College 209 South Danville #B Abilene, Texas 79605 915/698-2212
PROGRAM GOAL	Summer youth program for at-risk youth (dropout prevention)
TARGET POPULATIONS	Economically disadvantaged Academically disadvantaged AFDC recipients Dropouts or potential dropouts
PLANNED ACTIVITIES	Vocational education/training Transportation Supplemental or additional staff Supplemental or additional equipment Supplemental or additional materials Vocational assessment Guidance and counseling
RESOURCES	JTPA TDHS
INITIATE PROGRAM	This year

**CONTACT
PEOPLE**

Mr. Mike Pempsell
Coordinator
Venture High School
2315 Stonegate
Arlington, Texas 76010
817/460-7841

Mr. Lonny Porter
Principal, Ferguson Educational Center
Venture High School
2315 Stonegate
Arlington, Texas 76010
817/460-7841

**PROGRAM
GOAL**

Alternative school program for at-risk youth
Assessment lab
Computerized remediation lab
Computerized classroom instruction

**TARGET
POPULATIONS**

Economically disadvantaged
Academically disadvantaged
Limited English proficient
Single parent/homemaker
Dropouts or potential dropouts

**PLANNED
ACTIVITIES**

Vocational education/training
Vocational assessment
Supplemental or additional equipment

RESOURCES

Carl D. Perkins
JTPA
TDHS
TEC
University of Texas-Arlington, School of Social Work
Arlington Literacy Council
Armed Forces Recruiters

**INITIATE
PROGRAM**

Next year

**CONTACT
PEOPLE**

Ms. Jackie Henry
Director, Alternative School
Big Spring, ISD
708 11th Place
Big Spring, Texas 79720
915/267-2102

Mr. Murray Murphy
Assistant Superintendent, Personnel/Instruction
Big Spring ISD
Box 590
Big Spring, Texas 79721
915/267-8245

**PROGRAM
GOAL**

Alternative school implementation

**TARGET
POPULATIONS**

Economically disadvantaged
Academically disadvantaged
Single parent/homemaker
Dropouts or potential dropouts

**PLANNED
ACTIVITIES**

Vocational education/training
Supplemental or additional staff
Supplemental or additional equipment
Supplemental or additional materials

RESOURCES

Carl D. Perkins
JTPA

**INITIATE
PROGRAM**

Already begun and will continue next year

CONTACT PERSON	Mr. Raul Garcia R&D Manager/Administrative Assistant Cameron County Private Industry Council 285 Kings Highway Brownsville, Texas 78521 512/548-6712
PROGRAM GC L	Prevention program for at-risk youth who have been retained in ninth grade [This alternative program provides youth the opportunity to catch up with school peers via a basic skills curriculum approved by TEA (APL).]
TARGET POPULATIONS	Handicapped Economically disadvantaged Academically disadvantaged Limited English proficient Single parent/homemaker AFDC recipients Sex equity Migrants Immigrants/aliens Dropouts or potential dropouts
PLANNED ACTIVITIES	Vocational education/training Transportation Supplemental or additional staff Supplemental or additional equipment Supplemental or additional materials Follow-up, transition, and placement
RESOURCES	Carl D. Perkins JTPA ABE TDHS TEC
INITIATE PROGRAM	Already begun

CONTACT PERSON	Mr. Tommy Horner Director of State & Federal Programs Brownwood ISD P.O. Box 730 Brownwood, Texas 76804 915/643-5644
PROGRAM GOAL	To help at-risk youth remain in school
TARGET POPULATIONS	Economically disadvantaged Academically disadvantaged Dropouts or potential dropouts
PLANNED ACTIVITIES	Vocational education/training Day care Transportation
RESOURCES	Carl D. Perkins JTPA
INITIATE PROGRAM	Already begun

CONTACT PERSON	Ms. Dorothy Ottinger Director of Vocational Education Corpus Christi ISD 801 Leopard Street Corpus Christi, Texas 78403 512/886-9053
PROGRAM GOAL	To provide instruction for the attainment of a high school diploma coupled with CVAE (Coordinated Vocational Academic Education)
TARGET POPULATIONS	Handicapped Economically disadvantaged Academically disadvantaged Single parent/homemakers Dropouts or potential dropouts
PLANNED ACTIVITIES	Vocational education/training Supplemental or additional staff Supplemental or additional equipment Supplemental or additional materials Vocational assessment Guidance and counseling Follow-up, transition, and placement
RESOURCES	Carl D. Perkins JTPA Local school district funds
INITIATE PROGRAM	This year

**CONTACT
PERSON**

Ms. Irma Caballero
Director of Jobs Training
Corpus Christi/Nueces County SDA
5110 Wiikinson Drive
Corpus Christi, Texas 78415-3004
512/855-7640

**PROGRAM
GOAL**

To provide a portion of the funding for an alternative high school

**TARGET
POPULATIONS**

Economically disadvantaged
Academically disadvantaged
Limited English proficient
Dropouts or potential dropouts

**PLANNED
ACTIVITY**

Vocational education/training

RESOURCES

Carl D. Perkins
JTPA

**INITIATE
PROGRAM**

Already begun

CONTACT PERSON	Dr. Margie Gregory Assistant Superintendent of Instruction Daingerfield ISD P.O. Drawer V Daingerfield, Texas 75638 214/645-2239
PROGRAM GOAL	Prevent dropouts and serve at-risk youth
TARGET POPULATIONS	Economically disadvantaged Academically disadvantaged Limited English proficient Single parent/homemaker Dropouts or potential dropouts
PLANNED ACTIVITIES	Vocational education/training Transportation Supplemental or additional staff Vocational assessment Guidance and counseling Follow-up, transition, and placement
RESOURCES	Carl D. Perkins JTPA ABE
INITIATE PROGRAM	Already begun

CONTACT PERSON	Mr. Roy Jackson Migrant Director Region I Education Service Center 1900 West Schunior Edinburg, Texas 78539 512/383-5611
PROGRAM GOAL	To remediate and have high school seniors master the TEAMS exit level test
TARGET POPULATIONS	Economically disadvantaged Academically disadvantaged
PLANNED ACTIVITIES	Vocational education/training Transportation Supplemental or additional staff Guidance and counseling
RESOURCES	JTPA Local and State Compensatory Funds
INITIATE PROGRAM	Already begun

CONTACT PERSON	Mr. John Estrada Coordinator Gang Intervention Program City of El Paso 2 Civic Center Plaza El Paso, Texas 79901 915/541-4243
PROGRAM GOAL	To establish an El Paso Network to provide support and coordination to the institutions and groups dedicated to youth issues and concerns
TARGET POPULATIONS	Handicapped Economically disadvantaged Academically disadvantaged Limited English proficient Single parent/homemaker AFDC recipients Sex equity Migrants Immigrants/aliens Dropouts or potential dropouts
PLANNED ACTIVITIES	Those necessary to establish the network
RESOURCES	City of El Paso Department of Criminal Justice Department of Health and Human Services, Youth-at-Risk Program Department of Human Services Department of Mental Health El Paso Community College El Paso Private Industry Council Four H LULAC Youth Leadership Program
INITIATE PROGRAM	Already begun

CONTACT PERSON	Ms. Sue Pratt-Bissell Coordinator, Teen Parent Program El Paso Community College P.O. Box 20500 El Paso, Texas 79998 915/534-4087
PROGRAM GOAL	To serve pregnant or parenting youth, ages 17-21, who have dropped out of school and for whom returning to school would result in academic failure
TARGET	Economically disadvantaged Academically disadvantaged Single parent/homemaker Pregnant and parenting youth AFDC recipients Dropouts or potential dropouts
PLANNED ACTIVITIES	Vocational education/training Day care Transportation Supplemental or additional staff Supplemental or additional materials Guidance and counseling Follow-up, transition, and placement
RESOURCES	JTPA - 100% Funded Inkind Services: El Paso Community College El Paso YMCA "Project Redirection Program"
INITIATE PROGRAM	Already begun

CONTACT PERSON	Ms. Lorri Patrick Coordinator, Special Education and Developmental Services Region XIX Education Service Center 6611 Boeing Drive El Paso, Texas 79925 915/779-1551
PROGRAM GOALS	To plan for transition To address the needs of homeless children
TARGET POPULATIONS	Handicapped Economically disadvantaged Academically disadvantaged Limited English proficient Dropouts or potential dropouts
PLANNED ACTIVITIES	Vocational education/training Job Coaches Supplemental or additional staff Guidance and counseling Follow-up, transition, and placement
RESOURCES	Carl D. Perkins JTPA TEC
INITIATE PROGRAM	Already begun

**CONTACT
PERSON**

Mr. Carl Cooper
Vocational Director
Socorro ISD
12300 East Lake Drive
El Paso, Texas 79927
915/858-0912

**PROGRAM
GOAL**

To provide funds for an at-risk youth program

**TARGET
POPULATIONS**

Handicapped
Economically disadvantaged
Academically disadvantaged
Limited English proficient
Dropouts or potential dropouts

**PLANNED
ACTIVITIES**

Vocational education/training
Transportation

RESOURCES

Carl D. Perkins
JTPA

**INITIATE
PROGRAM**

Already begun

CONTACT PERSON	Ms. Carol Wilder Program Administrator, Project Redirection YWCA 1918 Texas El Paso, Texas 79901 915/533-1114
PROGRAM GOALS	To assist teen parents in obtaining parenting skills, completing their education, and preparing for employment To prevent teen parents from dropping out of school
TARGET POPULATIONS	Economically disadvantaged Pregnant and parenting teens Dropouts or potential dropouts
PLANNED ACTIVITIES	Transportation Supplemental or additional staff Follow-up, transition, and placement Development of business mentor program
RESOURCES	JTPA ISDs YMCA (in kind)
INITIATE PROGRAM	Unknown

CONTACT PERSON	Ms. Betty H. Murphy Instructor, Butz Learning Progressive Center (LPC) Fort Stockton ISD 400 South Young Fort Stockton, Texas 79735 915/336-7504
PROGRAM GOAL	To continue the Butz LPC program already in progress for dropout recovery and at-risk youth
TARGET POPULATIONS	Economically disadvantaged Academically disadvantaged Limited English proficient Single parent/homemaker AFDC recipients Dropouts and potential dropouts
PLANNED ACTIVITIES	Regular classroom training
RESOURCES	JTPA Local school district funds
INITIATE PROGRAM	Already begun

CONTACT PERSON	Dr. Henry Burgoon Vocational Director Birdville ISD 6125 East Belknap Street Fort Worth, Texas 76117 817/831-0951
PROGRAM GOAL	Alternative school
TARGET POPULATION	Dropouts or potential dropouts
PLANNED ACTIVITIES	Vocational education/training Day care Transportation Supplemental or additional staff Supplemental or additional equipment Supplemental or additional materials Vocational assessment Guidance and counseling Follow-up, transition, and placement
RESOURCES	Department of Criminal Justice Texas Alcohol and Drug Abuse Carl D. Perkins JTPA
INITIATE PROGRAM	Next year

CONTACT PERSON	Ms. DeDe Barth Single Parent Grant Coordinator Birdville ISD Haltom High School 3120 Carson Street Fort Worth, Texas 76117 817/831-0741, ext. 34
PROGRAM GOAL	To provide support services, vocational training and guidance to help teenage parents stay in school
TARGET POPULATIONS	Single parent/homemakers Dropouts or potential dropouts
PLANNED ACTIVITIES	Vocational education/training Day care Transportation Vocational assessment Guidance and counseling Follow-up, transition, and placement
RESOURCES	Carl D. Perkins JTPA
INITIATE PROGRAM	Unknown

**CONTACT
PERSON**

Mr. Cliff Stephens
Principal
Friona High School
P.O. Box 607
Friona, Texas 79035
806/247-3951

**PROGRAM
GOAL**

Plan summer school with funds as well as summer work
through JTPA

**TARGET
POPULATIONS**

Academically disadvantaged
Single parent/homemaker
Migrants
Dropouts or potential dropouts

**PLANNED
ACTIVITIES**

Vocational education/training
Supplemental or additional staff

RESOURCES

Carl D. Perkins
JTPA

**INITIATE
PROGRAM**

Unknown

CONTACT PERSON	Mr. Tom Loftin Assistant Superintendent Gainesville ISD 1201 Lindsay Gainesville, Texas 76240 817/665-4362
PROGRAM GOAL	To establish a learning center for at-risk students
TARGET POPULATIONS	Dropouts or potential dropouts
PLANNED ACTIVITIES	Computer curriculum system Supplemental or additional equipment
RESOURCES	JTPA Local education funds
INITIATE PROGRAM	Next year

CONTACT PERSON	Mr. Stephen M. Vassberg Associate Dean TSTI - Harlingen P.O. Box 2628 Harlingen, Texas 78551 512/425-0607
PROGRAM GOAL	Provide summer activity for at-risk youth
TARGET POPULATIONS	Handicapped Economically disadvantaged Academically disadvantaged Limited English proficient Single parent/homemaker AFDC recipients Sex equity Migrants Dropouts or potential dropouts
PLANNED ACTIVITIES	Vocational education/training Supplemental or additional equipment Vocational assessment Guidance and counseling
RESOURCES	Carl D. Perkins JTPA
INITIATE PROGRAM	This year

CONTACT PERSON	Mr. John White Vocational Education Director Keller ISD 101 Indian Trail Keller, Texas 76248 817/431-2585, ext. 346
PROGRAM GOAL	To jointly fund single parent part-time skills training with JTPA and single parent grant funds
TARGET POPULATIONS	Economically disadvantaged Academically disadvantaged Single parent/homemaker Sex equity
PLANNED ACTIVITIES	Vocational education/training Day care Transportation Supplemental or additional staff Supplemental of additional materials Vocational assessment Guidance and counseling Follow-up, transition, and placement
RESOURCES	Carl D. Perkins JTPA TDHS TEC
INITIATE PROGRAM	Already begun

**CONTACT
PERSON**

Ms. Robin Battershell
Coordinator of Guidance and At-Risk Programs
Killeen ISD
200 N. W. S. Young
Killeen, Texas 76540
817/526-3361

**PROGRAM
GOAL**

To provide high school at-risk students basic educational skills through computer assisted lab

**TARGET
POPULATIONS**

Economically disadvantaged
Academically disadvantaged
Limited English Proficient
Dropouts or potential dropouts

**PLANNED
ACTIVITIES**

Transportation
Tutoring
Supplemental or additional staff
Guidance and counseling

RESOURCES

JTPA
ABE
Compensatory Education

**INITIATE
PROGRAM**

Unknown

CONTACT PERSON	Ms. Mary Ann Colin Vocational Education Chairman Kingsville ISD P.O. Box 871 Kingsville, Texas 78363 512/592-6401, ext. 54
PROGRAM GOAL	To promote student success and prevent dropouts
TARGET POPULATIONS	Handicapped Economically disadvantaged Academically disadvantaged
PLANNED ACTIVITIES	Vocational education/training Supplemental or additional staff Supplemental or additional equipment Supplemental or additional materials Guidance and counseling Other support services: Summer school center and personnel 15 hours a week job and support service
RESOURCES	Carl D. Perkins JTPA
INITIATE PROGRAM	This year (June 5, 1989)

CONTACT PERSON	Mr. W. D. Powell, Jr. JTPA Director South Plains Community Action Association P.O. Box 610 Levelland, Texas 79336-0610 806/894-6104
PROGRAM GOAL	To serve at-risk youth and students who have already dropped out of school
TARGET POPULATIONS	Economically disadvantaged Academically disadvantaged Limited English proficient Single parent/homemaker Dropouts or potential dropouts
PLANNED ACTIVITIES	Supplemental or additional staff Supplemental or additional equipment Supplemental or additional materials Guidance and counseling
RESOURCES	JTPA Local funds
INITIATE PROGRAM	Already begun

CONTACT PERSON	Mr. Don McCullough Director Lubbock/Garza Private Industry Council 1220 Broadway Street, Suite 805 Lubbock, Texas 79401-3201 806/765-5038
PROGRAM GOALS	Assist students in getting a GED (16-21 years) Assist students in preparing to return to school
TARGET POPULATIONS	Economically disadvantaged Academically disadvantaged Dropouts or potential dropouts
PLANNED ACTIVITIES	Transportation Vocational assessment Guidance and counseling
RESOURCES	Carl D. Perkins JTPA
INITIATE PROGRAM	Already begun

CONTACT PERSON	Mr. Charles Tankersley Coordinator Permian Basin Regional Planning Commission P.O. Box 6391 Midland, Texas 79711 915/563-1061
PROGRAM GOAL	To provide curriculum enrichment to rural schools in West Texas
TARGET POPULATIONS	Economically disadvantaged Academically disadvantaged Limited English proficient Dropouts or potential dropouts
PLANNED ACTIVITIES	Research and creation of teaching materials Television programming
RESOURCES	JTPA TEA
INITIATE PROGRAM	Next year

CONTACT PERSON	Mr. Ken Emery Director, Vocational Education Paris ISD 2400 Jefferson Road Paris, Texas 75460 214/6374
PROGRAM GOALS	Summer youth employment/training Dropout prevention/dropout recovery program for single parents
TARGET POPULATIONS	Handicapped Economically disadvantaged Academically disadvantaged Single parent/homemaker AFDC recipients Dropouts or potential dropouts
PLANNED ACTIVITIES	Vocational education/training Day care Transportation Supplemental or additional staff Vocational assessment Guidance and counseling Follow-up, transition, and placement
RESOURCES	Carl D. Perkins JTPA TDHS TEC
INITIATE PROGRAM	This year

CONTACT PERSON	Ms. Linda Gossett Director, Carver Service Center Pecos-Barstow-Toyah ISD P.O. Box 869 Pecos, Texas 79772 915/447-7255
PROGRAM GOAL	Dropout recovery expanding to dropout prevention and basic skills remediation for at-risk youth
TARGET POPULATIONS	Economically disadvantaged Academically disadvantaged Limited English proficient AFDC recipients Dropouts or potential dropouts
PLANNED ACTIVITIES	Basic skills GED preparation College preparation
RESOURCES	JTPA Local school district funds
INITIATE PROGRAM	Next school year (September 1989)

CONTACT PERSON	Ms. Ann Lessem Education Manager Rural Capital Area PIC P.O. Box 1565 Round Rock, Texas 78680-1565 512/244-7966
PROGRAM GOALS	Serve at-risk youth to help keep them in school Screen for IIB participants for JTPA summer program Dropout recovery
TARGET POPULATIONS	Economically disadvantaged Academically disadvantaged Dropouts or potential dropouts
PLANNED ACTIVITIES	Vocational education/training Transportation Supplemental or additional staff Supplemental or additional equipment Supplemental or additional materials Vocational assessment Guidance and counseling Follow-up, transition, and placement
RESOURCES	JTPA ISD (inkind)
INITIATE PROGRAM	Already begun

CONTACT PERSON	Ms. Claudette Yarbrough Administrative Assistant/Program Evaluator Communities in Schools P.O. Box 791049 San Antonio, Texas 78216 512/349-9094
PROGRAM GOAL	To provide nontraditional educational curriculum in a nontraditional educational setting to at-risk youth and dropouts. (Human and social services along with pre-employment skills training and job related activities will be provided.)
TARGET POPULATIONS	Economically disadvantaged Academically disadvantaged Limited English proficient Single parent/homemaker AFDC recipients Dropouts or potential dropouts
PLANNED ACTIVITIES	Vocational education/training Day care Transportation Basic education curriculum Supplemental or additional staff Supplemental or additional equipment Supplemental or additional materials Vocational assessment Guidance and counseling (entire range of human and social services counseling) Follow-up, transition, and placement
RESOURCES	JTPA ISDs National Communities in Schools Burger King Corporation USAA Insurance Company Valero Energy Corporation San Antonio Savings Association
INITIATE PROGRAM	This year

CONTACT PERSON	Ms. Kaye Fenn Coordinator North East ISD 2523 Bitters Road San Antonio, Texas 78217 512/653-5071
PROGRAM GOAL	To assist pregnant and parenting teens to access appropriate services in their community
TARGET POPULATIONS	Economically disadvantaged Academically disadvantaged Single parent/homemaker AFDC recipients Sex equity Dropouts or potential dropouts
PLANNED ACTIVITIES	Vocational education/training Day care Transportation Vocational assessment Guidance and counseling Follow-up, transition, and placement
RESOURCES	Carl D. Perkins JTPA TDHS TEC
INITIATE PROGRAM	Next year

CONTACT PERSON	Dr. Dolores Munoz Assistant Superintendent San Benito CISD 155 West Adele Street San Benito, Texas 78586 512/399-3372
PROGRAM GOAL	Recovery program for dropouts
TARGET POPULATIONS	Economically disadvantaged Academically disadvantaged Migrants Dropouts or potential dropouts
PLANNED ACTIVITIES	GED preparation for dropouts Guidance and counseling
RESOURCES	JTPA Local school district funds
INITIATE PROGRAM	Already begun

CONTACT PERSON	Ms. Jane Westbrook Director, Adult and Community Education Weatherford ISD P.O. Drawer N Weatherford, Texas 76086 817/594-7458
PROGRAM GOAL	To implement a plan for a county-wide alternative school utilizing ABE, JTPA, Criminal Justice, Drug Free Schools and Communities, and Carl Perkins funds to provide comprehensive services to high-risk youth
TARGET POPULATIONS	Economically disadvantaged Academically disadvantaged Single parent/homemaker Dropouts or potential dropouts
PLANNED ACTIVITIES	Vocational education/training Day care Transportation Supplemental or additional staff Supplemental or additional equipment Supplemental or additional materials Vocational assessment Guidance and counseling
RESOURCES	Carl D. Perkins JTPA ABE Criminal Justice Drug Free Schools and Communities
INITIATE PROGRAM	Next year (subject to approval of funding)

CONTACT PERSON	Ms. Sandra Marvel Vocational Administrator Wichita Falls ISD 1609 Blonde Wichita Falls, Texas 76301 817/720-3224
PROGRAM GOALS	Serve at-risk youth with academic remediation Accelerate to high school graduation Receive high school credits during JTPA summer program at Carrigan Career Center and Harrell Career Center
TARGET POPULATIONS	Handicapped Economically disadvantaged Academically disadvantaged Limited English proficient Single parent/homemaker AFDC recipient Dropouts or potential dropouts
PLANNED ACTIVITIES	Supplemental or additional staff (Existing equipment and supplies of centers will be used in summer program)
RESOURCES	Carl D. Perkins JTPA
INITIATE PROGRAM	This year (Summer 1989)

Wichita Falls - Continued

Additional Information: Existing Programs (for at-risk youth during school year) *

- I. Corrigan Center (1988-89, 38 students)
Computers purchased with local dollars and JTPA dollars
Comprehensive Competencies Program (CCP) purchased with Carl Perkins and matching local dollars
Staff paid by JTPA and local dollars
- II. Harrell Center (1988-89, 100 students)
Computers purchased with JTPA dollars
Software and instructional supplies provided by local dollars
Staff: Teacher - state dollars
Aide - Carl Perkins and matching local dollars
Counselor - Carl Perkins and matching local dollars
- III. Single Parent Program (Wichita Falls High School if transportation required; otherwise, student could attend another school)
Program funds:
Texas Education Agency (TEA) Single Parent Grant (Carl Perkins funds)
Local dollars
Federal dollars - equipment and software
JTPA and AFDC - child care
Note: Twenty (20) local agencies cooperate in program for single parents

* All programs have inkind matches (facilities, etc.) and all students receive vocational education and training.

Jointly Planned Programs
for
"At-Risk" Youth
and
"Hard-to-Serve" Adults

CONTACT PERSON	Mr. Johnny Raymond Executive Director Panhandle Community Action Committee P.O. Box 32150 Amarillo, Texas 79120 806/372-2531
PROGRAM GOALS	Assist single parents with dependent children in obtaining ABE or GED Locate at-risk youth for enhancement training in reading
TARGET POPULATIONS	Economically disadvantaged Academically disadvantaged Limited English proficient Single parent/homemaker Displaced homemakers Older workers AFDC recipients Migrants Dropouts or potential dropouts
PLANNED ACTIVITIES	Vocational education/training Day care Transportation Supplemental or additional staff Vocational assessment Guidance and counseling Follow-up, transition, and placement
RESOURCES	Carl D. Perkins JTPA TDHS DHHS (special demonstration grant, federal award)
INITIATE PROGRAM	Unknown

CONTACT PERSON	Mr. Norm Haley Regional Planning Facilitator Upper Rio Grande Private Industry Council 1155 Westmoreland Drive, Suite 130 El Paso, Texas 79925-5649 915/772-5627
PROGRAM GOAL	To provide the training needed for a skilled workforce for the 1990's and beyond
TARGET POPULATIONS	Handicapped Economically disadvantaged Academically disadvantaged Limited English proficient Single parent/homemaker Displaced homemakers Dislocated workers Older workers AFDC recipients Sex equity Migrants Dropouts and potential dropouts
PLANNED ACTIVITIES	Vocational education/training Day care Transportation Vocational assessment Guidance and counseling Follow-up, transition, and placement
RESOURCES	Carl D. Perkins JTPA TDHS TEC
INITIATE PROGRAM	Already begun

CONTACT PERSON	Mr. William Whitlow Manager, Contract Administrator Houston Job Training Partnership Council 1919 Smith, Suite 500 Houston, Texas 77002 713/654-1919
PROGRAM GOAL	Dropout prevention - 4 contracts - Houston ISD Vocational skills - 2 contracts - community colleges
TARGET POPULATIONS	Economically disadvantaged Academically disadvantaged Limited English proficient Single parent/homemaker Displaced homemakers AFDC recipients Dropouts or potential dropouts
PLANNED ACTIVITIES	Vocational education/training Day care Supplemental or additional staff Vocational assessment Guidance and counseling
RESOURCES	Carl D. Perkins JTPA ABE TDHS TEC
INITIATE PROGRAM	Next year

CONTACT PERSON	Mr. Mike Jenkins Regional Planner East Texas Council of Governments 3800 Stone Road Kilgore, Texas 75662 214/984-8641
PROGRAM GOAL	To provide training programs for at-risk youth, single parents, and disadvantaged adults
TARGET POPULATIONS	Handicapped Economically disadvantaged Academically disadvantaged Single parent/homemaker Dropouts or potential dropouts
PLANNED ACTIVITIES	Vocational education/training Day care Transportation Guidance and counseling
RESOURCES	Carl D. Perkins JTPA
INITIATE PROGRAM	This year

CONTACT PERSON	Ms. Cherry Mills-Bogges Coordinator, Adult/Community Education Waco ISD P.O. Box 27 Waco, Texas 76703 817/756-3374 or 817/756-3373
PROGRAM GOAL	To provide a remediation program for at-risk youth and hard-to-serve adults using the Educational Development Laboratory, a computer program. Students enrolled will have an opportunity for a head start on GED preparation and remediation in the areas of English, Math, Writing and Language Arts. Funding sources are: SDA, local school district and postsecondary institution.
TARGET POPULATIONS	Economically disadvantaged Academically disadvantaged Single parent/homemaker Dispaced homemaker Dislocated workers Older workers AFDC recipients Dropouts or potential dropouts
PLANNED ACTIVITIES	Day care Supplemental or additional equipment Supplemental or additional materials Guidance and counseling
RESOURCES	JTPA ABE
INITIATE PROGRAM	Already begun

Jointly Planned Programs
for
"Hard-to-Serve" Adults

CONTACT PERSON	Mr. Joseph DeLeon Regional Planner Work Force Development Division Texas Department of Commerce P.O. Box 12728 Austin, Texas 78711 512/834-6320
PROGRAM GOAL	To investigate and determine different delivery systems for utilizing apprenticeship programs in small business environments
TARGET POPULATIONS	Economically disadvantaged Academically disadvantaged Limited English proficient Single parent/homemaker Dislocated workers AFDC recipients Sex equity Migrants Immigrants/aliens Dropouts or potential dropouts
PLANNED ACTIVITIES	Vocational education/training Day care Transportation Vocational assessment Guidance and counseling Follow-up, transition, and placement
RESOURCES	Carl D. Perkins JTPA ABE
INITIATE PROGRAM	Unknown

CONTACT PERSON	Ms. Patti Myers Counselor Bee County College 3800 Charco Road Beeville, Texas 78102 512/358-3130, ext. 720
PROGRAM GOAL	Single parent program ("Adult Outreach Program")
TARGET POPULATIONS	Handicapped Economically disadvantaged Academically disadvantaged Limited English proficient Single parent/homemaker Displaced homemakers Dislocated workers AFDC recipients Dropouts or potential dropouts
PLANNED ACTIVITIES	Vocational education/training Day care Guidance and counseling
RESOURCES	Carl D. Perkins JTPA
INITIATE PROGRAM	Unknown

CONTACT PERSON	Mr. Robert Ramirez Planner Corpus Christi/Nueces County SDA 5110 Wilkinson Drive Corpus Christi, Texas 78415-3004 512/855-7640
PROGRAM GOAL	To stop the AFDC family from continuing the AFDC trend and to use as many funding programs as possible
TARGET POPULATIONS	Economically disadvantaged Academically disadvantaged Single parent/homemaker
PLANNED ACTIVITIES	Day care Transportation Supplemental of additional equipment Supplemental or additional materials Guidance and counseling
RESOURCES	Carl D. Perkins JTPA TDHS
INITIATE	Unknown

CONTACT PERSON	Mr. Luis Macias Program Director Texas Department of Human Services Family Self-Support Services Division P.O. Box 10276 El Paso, Texas 79994 915/595-1700
PROGRAM GOAL	Joint planning effort to give hard-to-serve adults exposure to different occupational arenas (This will help clients make career decisions which then will assist caseworkers in knowing where to refer them.)
TARGET POPULATION	AFDC recipients
PLANNED ACTIVITIES	In planning stage (JTPA and community colleges)
RESOURCES	Carl D. Perkins JTPA TDHS
INITIATE PROGRAM	This year

**CONTACT
PEOPLE**

Dr. Mary Brumbach
Research Consultant
Brookhaven College
3939 Valley View Lane
Farmers Branch, Texas 75244-4997
214/620-4857

Ms. Cynthia Morton
Program Coordinator
Brookhaven College
3939 Valley View Lane
Farmers Branch, Texas 75244-4997
214/620-4114

**PROGRAM
GOAL**

Training for AFDC Clients

**TARGET
POPULATIONS**

Economically disadvantaged
Academically disadvantaged
Single parent/homemaker
Displaced homemaker
Dislocated workers
AFDC recipients

**PLANNED
ACTIVITIES**

Vocational education/training
Day care
Transportation

RESOURCES

Carl D. Perkins
TDHS
JTPA
TEC

**INITIATE
PROGRAM**

Unknown

CONTACT PERSON	Mr. Norman Stewart Coordinator of Special Projects Tarrant County Junior College District 1500 Houston Street Fort Worth, Texas 76102-6599 817/877-9255
PROGRAM GOAL	Literacy training for disadvantaged
TARGET POPULATIONS	Handicapped Economically disadvantaged Academically disadvantaged Limited English proficient Single parent/homemaker Displaced homemakers Dislocated workers AFDC recipients Dropouts or potential dropouts
PLANNED ACTIVITIES	Vocational education/training Transportation Supplemental or additional staff Supplemental or additional equipment Supplemental or additional materials Follow-up, transition, and placement
RESOURCES	Carl D. Perkins JTPA
INITIATE PROGRAM	Already begun

CONTACT PERSON	Dr. Monroe Neff Dean, Adult and Continuing Education Houston Community College System 1401 Alabama Houston, Texas 77004 713/630-7277
PROGRAM GOAL	Adult Literacy Project, Grades 0-5
TARGET POPULATIONS	Handicapped Economically disadvantaged Academically disadvantaged Limited English proficient Dislocated workers Older workers AFDC recipients Dropouts or potential dropouts
PLANNED ACTIVITIES	Adult literacy for grades 0-5 and on to GED ABE and ESL
RESOURCES	JTPA ABE
INITIATE PROGRAM	Already begun

CONTACT PERSON	Ms. Sandra Whitlow Program Specialist North Harris County College District 250 North Belt East Houston, Texas 77060 713/591-3524
PROGRAM GOAL	Maximize program funding for hard-to-serve adults
TARGET POPULATIONS	Economically disadvantaged Academically disadvantaged Single parent/homemaker AFDC recipients Sex equity Dropouts or potential dropouts
PLANNED ACTIVITIES	Day care Transportation Supplemental or additional staff Guidance and counseling Follow-up, transition, and placement
RESOURCES	Carl D. Perkins JTPA North Harris County College District is currently working with the Houston-Galveston COG. This SDA pays tuition (JTPA Title IIA funds) for long-term vocational training. Carl Perkins funds [single parent and sex equity (nontraditional training)] pay for transportation, books and supplies. This type of coordination will be extended next year to include the other two SDAs that the college district encompasses (City of Houston and Balance of Harris County).
INITIATE PROGRAM	Already begun

CONTACT PERSON	Dr. Diane Jackson Director, Internal Projects and Governmental Liaison Spring Branch Independent School District 955 Campbell Road Houston, Texas 77024 713/464-1511
PROGRAM GOAL	Amnesty, English, and basic literacy classes for <u>parents</u> of students
TARGET POPULATIONS	Economically disadvantaged Academically disadvantaged Limited English proficient
PLANNED ACTIVITIES	Vocational education/training (in the future) Tuition-free classes Supplemental or additional staff
RESOURCES	Carl D. Perkins (in process) JTPA
INITIATE PROGRAM	Next year

CONTACT PERSON	Dr. Joe Hendrix Dean, Longview Center Kilgore College 300 South High Longview, Texas 75601 214/753-2642
PROGRAM GOAL	To provide basic education for hard-to-serve adults
TARGET POPULATIONS	Economically disadvantaged Academically disadvantaged Dislocated workers Older workers
PLANNED ACTIVITIES	Supplemental or additional staff
RESOURCES	JTPA ABE
INITIATE PROGRAM	Already begun

CONTACT PERSON	Dr. Deana Lusk Dean, Community Services Midland College 3600 North Garfield Midland, Texas 79705 915/685-4515
PROGRAM GOAL	Successful placement and retention of disadvantaged adults and out-of-school youth in vocational training
TARGET POPULATIONS	Economically disadvantaged Academically disadvantaged Limited English proficient Single parent/homemaker Displaced homemakers Dislocated workers Older workers AFDC recipients Dropouts or potential dropouts
PLANNED ACTIVITIES	Vocational education/training Day care Supplemental or additional staff Supplemental or additional equipment Vocational assessment Guidance and counseling Follow-up, transition, and placement
RESOURCES	Carl D. Perkins JTPA ABE
INITIATE PROGRAM	Unknown

CONTACT PERSON	Ms. Wanda Phillips Special Projects Coordinator Midland College 3600 North Garfield Midland, Texas 79705 915/697-3449
PROGRAM GOALS	Serve single parents in cooperative effort Serve JTPA students
TARGET POPULATIONS	Handicapped Economically disadvantaged Academically disadvantaged Limited English proficient Single parent/homemaker Displaced homemakers Dislocated workers Older workers AFDC recipients Sex equity
PLANNED ACTIVITIES	Vocational education/training Day care Vocational assessment Guidance and counseling Follow-up, transition, and placement
RESOURCES	Carl D. Perkins JTPA TDHS HUD
INITIATE PROGRAM	This year

CONTACT PERSON	Dr. Jack Foreman Executive Dean, Instructional and Resource Development Northeast Texas Community College P.O. Box 1307 Mt. Pleasant, Texas 75455 214/572-1911
PROGRAM GOAL	To coordinate services of JTPA, TEC, TDHS, and 3 community colleges to serve the employment (refocus) needs of single parents (AFDC)
TARGET POPULATIONS	Handicapped Economically disadvantaged Academically disadvantaged Limited English proficient Single parent/homemaker AFDC recipients Sex equity Dropouts or potential dropouts
PLANNED ACTIVITIES	Vocational education/training Day care Transportation Supplemental or additional staff Supplemental or additional equipment Supplemental or additional materials Tutoring Vocational assessment Guidance and Counseling Follow-up, transition, and placement
RESOURCES	Carl D. Perkins JTPA TDHS TEC ABE
INITIATE PROGRAM	Unknown

CONTACT PERSON	Dr. Judy Traylor Director of Adult and Developmental Education Northeast Texas Community College P.O. Box 1307 Mt. Pleasant, Texas 75455 214/572-1911
PROGRAM GOAL	To provide adult education instruction to AFDC clients
TARGET POPULATIONS	Academically disadvantaged AFDC recipients
PLANNED ACTIVITIES	Vocational education/training Supplemental or additional staff Supplemental or additional materials Vocational assessment Guidance and counseling Follow-up, transition, and placement
RESOURCES	Carl D. Perkins Adult Basic Education Texas Department of Human Services
INITIATE PROGRAM	Already begun

**CONTACT
PEOPLE**

Mr. Rick Bilheimer
JTPA Counselor
San Jacinto College
8060 Spencer Highway
Pasadena, Texas 77505
713/476-1888

Mr. James T. Matlock III
Evening Director, Technical/Vocational Education
San Jacinto College
8060 Spencer Highway
Pasadena, Texas 77505
713/476-1806

**PROGRAM
GOAL**

To provide occupational training to hard-to-serve adults and assist them in finding unsubsidized employment

**TARGET
POPULATIONS**

Economically disadvantaged
Academically disadvantaged
Single parent/homemaker
AFDC recipient
Dropouts or potential dropouts

**PLANNED
ACTIVITIES**

Vocational education/training
Day care
Supplemental or additional staff

RESOURCES

Carl D. Perkins
JTPA

**INITIATE
PROGRAM**

This year (July 1, 1989)

CONTACT PERSON	Mr. Homer Hayes Dean, Occupational Education San Antonio College 1300 San Pedro San Antonio, Texas 78284 512/733-2440
PROGRAM GOAL	Vocational education dropout prevention
TARGET POPULATIONS	Handicapped Economically disadvantaged Academically disadvantaged Limited English proficient Single parent/homemaker Displaced homemakers Sex equity Immigrants/aliens
PLANNED ACTIVITIES	Vocational education/training Day care Transportation Vocational assessment Guidance and counseling Job placement Follow-up, transition, and placement
RESOURCES	Carl D. Perkins ABE
INITIATE PROGRAM	Unknown (submitted application to DOE)

CONTACT PERSON	Ms. Jackie Gorman Project Coordinator Texas Engineering Extension Service P.O. Box 40 San Antonio, Texas 78291-0040 512/227-8217
PROGRAM GOAL	To provide integrated comprehensive services to welfare clients interested in pursuing postsecondary vocational education
TARGET POPULATIONS	AFDC recipients
PLANNED ACTIVITIES	Vocational education/training Transportation Supplemental or additional staff Guidance and counseling Follow-up, transition, and placement
RESOURCES	Carl D. Perkins JTPA
INITIATE PROGRAM	This year (if funded)

CONTACT PERSON	Ms. Ermer Pondexter Director, Administration and Job Training Ark-Tex Council of Governments P.O. Box 5307 Texarkana, Texas 75505-5307 214/832-8636
PROGRAM GOAL	To serve more JTPA eligible LVN students at Texarkana College
TARGET POPULATIONS	Handicapped Economically disadvantaged AFDC recipients
PLANNED ACTIVITIES	Vocational education/training Supplemental or additional staff Vocational assessment Guidance and counseling Follow-up, transition, and placement
RESOURCES	Carl D. Perkins JTPA
INITIATE PROGRAM	This year

CONTACT PERSON	Ms. Nancy Smith Director, Adult Basic Education College of the Mainland 8001 Palmer Highway Texas City, Texas 77591 409/938-1211
PROGRAM GOAL	Dropout recovery
TARGET POPULATIONS	Handicapped Economically disadvantaged Academically disadvantaged Single parent/homemaker AFDC recipients Dropouts or potential dropouts (main purpose)
PLANNED ACTIVITIES	Vocational education/training Day care Transportation Guidance and counseling
RESOURCES	Carl D. Perkins JTPA
INITIATE PROGRAM	Already begun

CONTACT PERSON	Dr. Roberto Agüero Dean of Instructional Services Southwest Texas Junior College Garner Field Road Uvalde, Texas 78801 512/278-4401
PROGRAM GOAL	To produce Associate Degree Nurse (ADN) graduates for the Maverick County Hospital District
TARGET POPULATIONS	Economically disadvantaged Academically disadvantaged Limited English proficient Single parent/homemaker Displaced homemakers
PLANNED ACTIVITIES	Vocational education/training Day care Transportation Supplemental or additional staff Supplemental or additional equipment Supplemental or additional materials Guidance and counseling Follow-up, transition, and placement
RESOURCES	Carl D. Perkins JTPA Maverick County Hospital District Howard County Junior College District (Big Spring)
INITIATE PROGRAM	Next school year (August 1989)