

DOCUMENT RESUME

ED 301 256

JC 880 552

TITLE Student Demographics of Central Community College,
Academic Year 1986-87.

INSTITUTION Central Community Coll., Grand Island, NE.

PUB DATE Oct 88

NOTE 26p.

PUB TYPE Reports - Descriptive (141) -- Statistical Data (110)

EDRS PRICE MF01/PC02 Plus Postage.

DESCRIPTORS Class Size; Community Colleges; Degrees (Academic);
*Enrollment Trends; Full Time Students; High School
Graduates; High Schools; Majors (Students);
Multicampus Colleges; Part Time Students; Population
Trends; *School Demography; *Student Characteristics;
Two Year Colleges; *Two Year College Students

ABSTRACT

Designed to present descriptive data on previous and current Central Community College (CCC) students, this report contains tables and graphs showing the characteristics of 1986-87 students at the three CCC campuses, the sources of CCC's students, significant enrollment trends, and graduation rates. Specifically, the report focuses on: (1) 1986-87 on- and off-campus enrollments, by campus, full-/part-time status, and gender; (2) full-time enrollments by age for each campus; (3) racial composition of student populations; (4) top program majors for full- and part-time students, by campus; (5) the ratio between the number of credits registered for and the number of credits earned; (6) degrees, diplomas, and certificates awarded at CCC in relation to all awards conferred by Nebraska institutions of postsecondary education; (7) residence and migration patterns among Nebraska's college students; (8) state enrollment patterns among first-time, degree-seeking students; (9) percentages of high school graduating classes attending CCC, from 1985 to 1988, by county; (10) high school graduating class size, by county; (11) percent of change in county populations; (12) Nebraska public school enrollment trends, 1973 to 1990; and (13) estimated 11th and 12th grade enrollments in public and non-public schools, 1986 to 1995. (AYC)

* Reproductions supplied by EDRS are the best that can be made *
* from the original document. *

ED301256

"PERMISSION TO REPRODUCE THIS
MATERIAL HAS BEEN GRANTED BY

V. L. Obermiller

TO THE EDUCATIONAL RESOURCES
INFORMATION CENTER (ERIC)."

central community college Institutional Research

U.S. DEPARTMENT OF EDUCATION
Office of Educational Research and Improvement
EDUCATIONAL RESOURCES INFORMATION
CENTER (ERIC)

This document has been reproduced as
received from the person or organization
originating it.

Minor changes have been made to improve
reproduction quality.

- Points of view or opinions stated in this docu-
ment do not necessarily represent official
OERI position or policy

STUDENT DEMOGRAPHICS

ACADEMIC YEAR 1986-87

Compiled and published by the Institutional Research Department

October, 1988

880 552

TABLE OF CONTENTS

	Page No.
Introduction	1
 <u>PRESENT STUDENT BODY</u>	
1986/1987 Academic Year Enrollment	2
Composition of Student Body	
Student Population by Age Range	3
Male-Female Ratio	4
Enrollment by Race	4
Registration by Full-time, Part-time Status	5
Program Majors	
Top Program Majors, Full-time, Part-time Status	6
Grand Island Campus	7
Hastings Campus	8
Columbus Campus	9
Credits Completed in Comparison of Credits Registered	10
Degrees, Diplomas and Certificates Awarded	11-13
Nebraska Institutions	
Summary	14
 <u>SOURCE OF STUDENTS</u>	
Residence and Migration of Students	15
First-Time, Degree Seeking	16
By State	17
By County	18
 <u>CENTRAL COMMUNITY COLLEGE AREA POPULATION TRENDS</u>	
Enrollment by County by Graduation Class	19
Graduating Class Size of Area High Schools	20
 <u>PUBLIC SCHOOLS ENROLLMENT TRENDS</u>	
Percent of Change in Population	21
Public School Enrollment Trends 1973-1990	22
Estimated Public School Enrollment 1986-1995	23

Data based on Academic Year 1986-87 unless specified otherwise.

INTRODUCTION

If an institution is to satisfactorily plan for and direct its future, it must objectively analyze and learn from its past. It is with this principle in mind that the Computer Services Institutional Research Department presents this profile of the Central Community College student body.

This document is designed to present descriptive information on previous and present CCC students and to depict trend data in a manner which is useful in planning for the challenges which lie ahead.

The Student Demographic Summary will provide comparisons between campuses and the college as a whole. This information will provide insight into such questions as:

What are the characteristics of the present student body?

From where do CCC students come?

Are there significant enrollment trends?

How many students earn degrees, diplomas and certificates?

Most of the information contained in this report is a part of the regular reporting system available to each campus from the Computer Services Department. However, these materials have not previously been compiled into one comprehensive profile of Central Community College students. A profile of this type cannot anticipate all questions which will arise, and there are others which cannot be answered due to unavailability of data. This document, however, does provide an initial base of information which can become a useful planning tool.

The intent of the student profile is to become an annual report to which additional information will be added and updated each year.

In order to become a more effective document, its users are encouraged to direct their comments, questions, and suggestions about its contents to the Computer Services Institutional Research Department.

CENTRAL COMMUNITY COLLEGE
1986/1887 ACADEMIC YEAR ENROLLMENT

On Campus Students

Grand Island	1790
Hastings	2376
Columbus	2535
College Total	6701

Off Campus Students

Grand Island	5505
Hastings	3379
Columbus	4019
College Total	12903

Student Status*

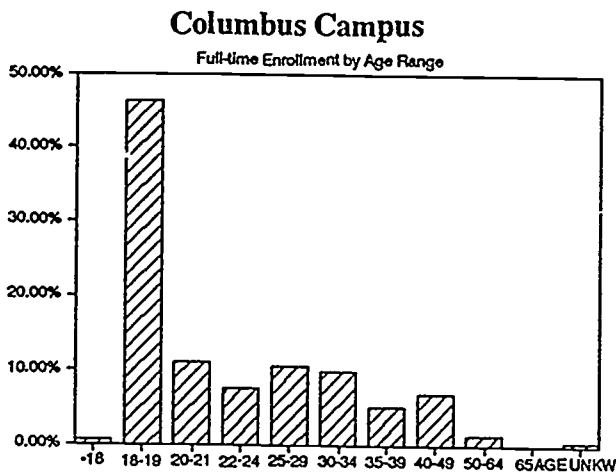
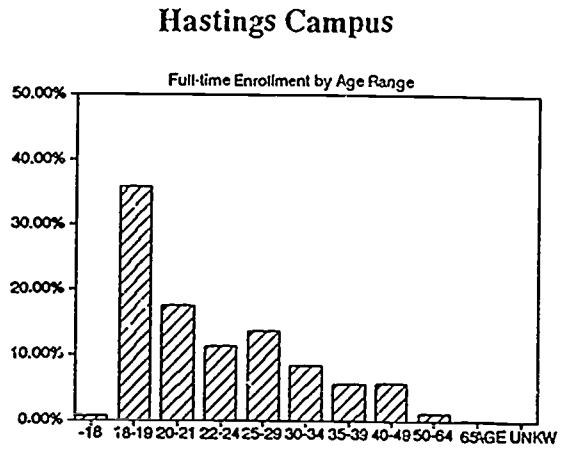
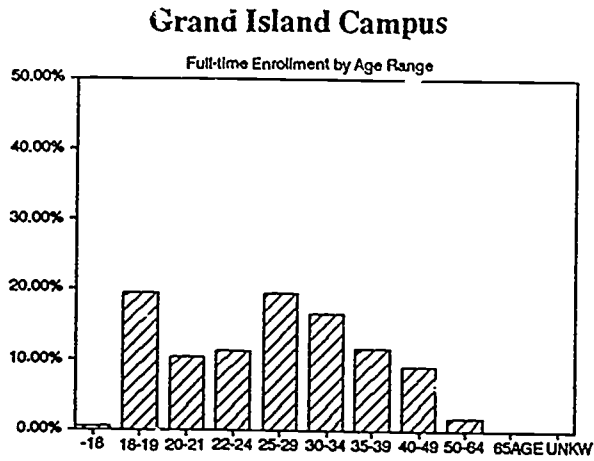
	Full-time	Part-time
Grand Island	302	6869
Hastings	932	4412
Columbus	557	5645
College Total	1791	16953

Male/Female Ratio

	Male	Female
Grand Island	3086	4112
Hastings	2482	2862
Columbus	2497	3705
College Total	8065	10679

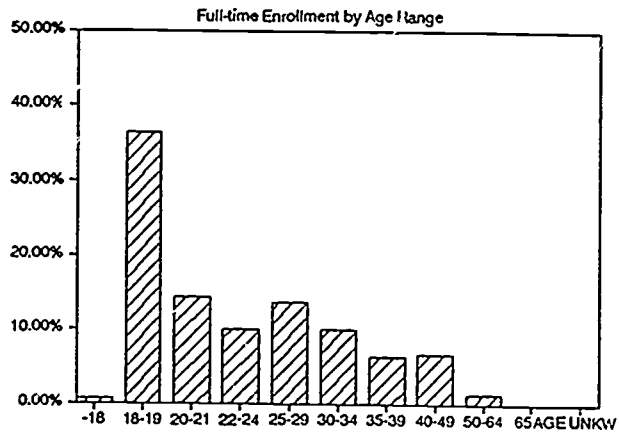
*Students registering for 12 or more credit hours are considered full-time
 Students registering for less than 12 credit hours are considered part-time.

Full-time Enrollment by Age Range

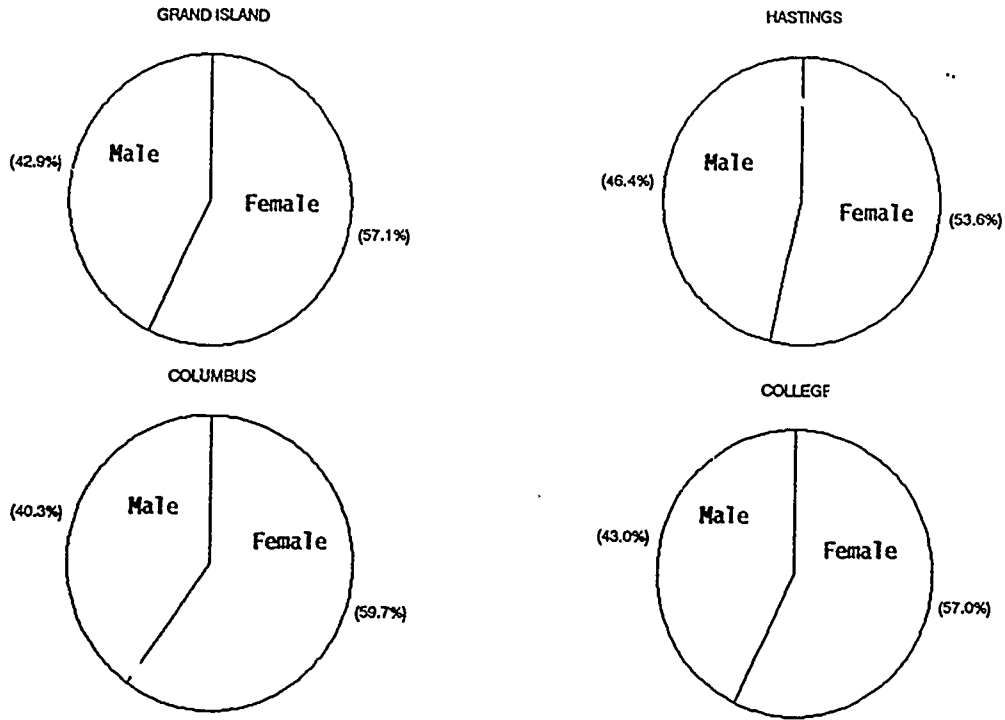


The Hastings and Columbus Campuses' student age range is dominated by the 18 to 19 age range. The Grand Island Campus does not have a dominate age range but is relatively similar in age group numbers.

College-wide

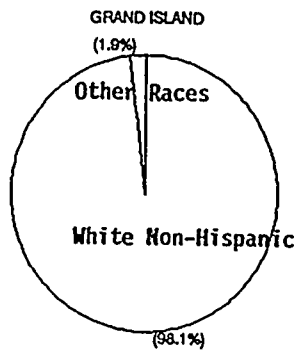


MALE FEMALE RATIO ALL STUDENTS

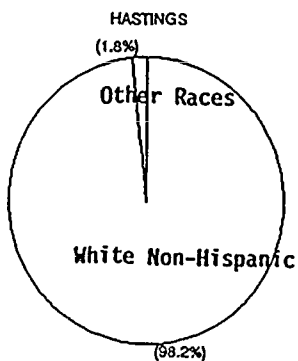


For each of the groups, the female population is larger on each campus.

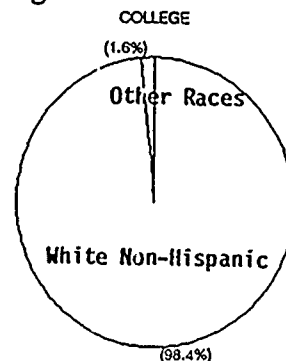
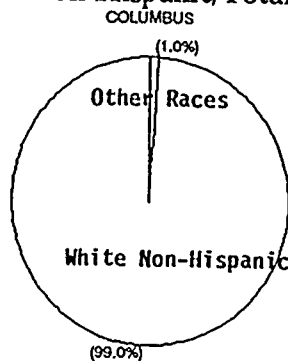
POPULATION BY RACIAL MAKEUP



Each campus reflects the small minority population that is consistent with the population in the surrounding communities.

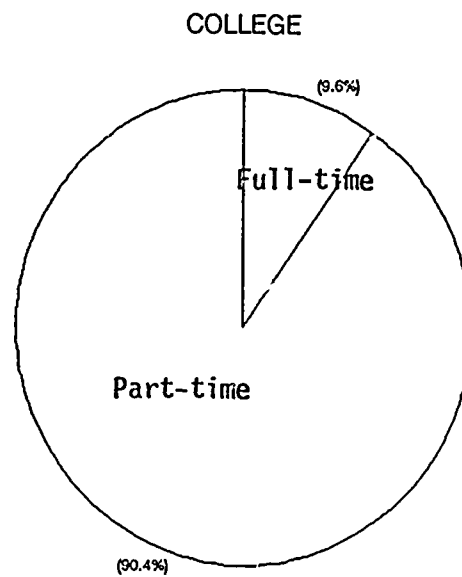
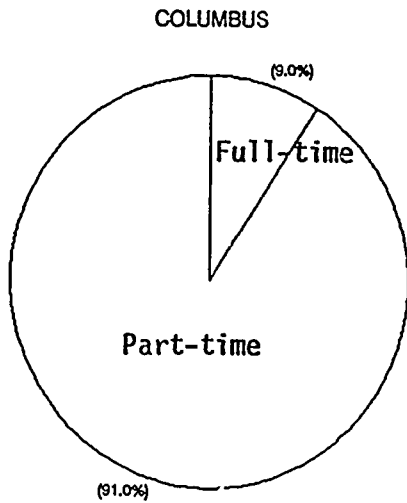
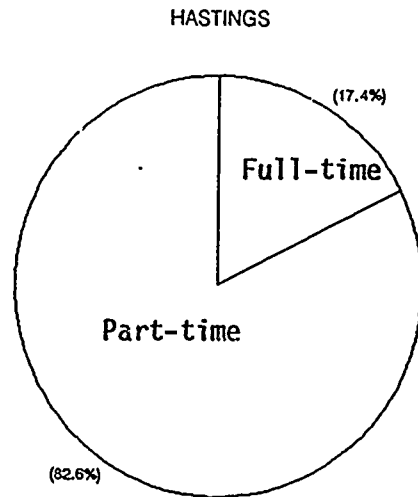
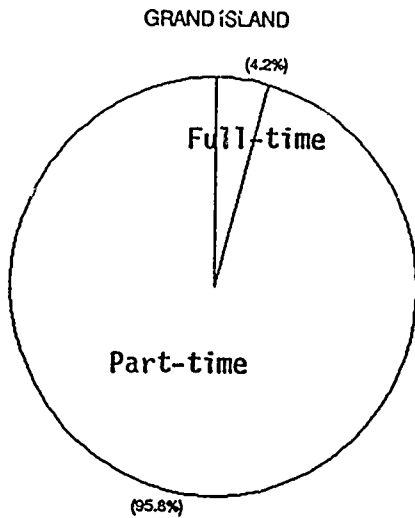


White Non-Hispanic/Total Race Designation



REGISTRATION STATUS BY CAMPUS

On each campus the part-time student population is by far the largest percent of the student body.



TOP PROGRAM MAJORS

COLLEGE WIDE

(1986-87)

Full-time Students		Part-time Students	
Business & Management	11.04%	Data Processing	13.83%
Practical Nursing	10.02%	Business & Management	12.58%
Accounting	7.57%	Agriculture	8.40%
Secretarial Science	7.23%	Accounting	7.87%
Data Processing	6.07%	Secretarial Science	6.59%
Electronics	4.84%	Heating and Air Conditioning	5.28%
Automotive	4.84%	Electronics	5.05%
Deciding	3.95%	Practical Nursing	4.14%
Human Services	3.75%	Welding	3.47%
Hotel, Motel, Restaurant	3.41%	Electrical	2.90%
Agriculture	2.25%	Fine Performing Arts	2.75%
Autobody Technology	2.25%	Home Economics	2.71%
Home Economics	2.11%	Drafting	2.68%
Dental Hygiene	1.98%	Machine Shop Technology	2.60%
Drafting	1.98%	Human Services	2.19%
Medical Assisting	1.91%	Automotive	2.00%
Electrical	1.84%	Health Occupations	1.81%
Dental Assisting	1.64%	Dietetics	1.77%
Commercial Horticulture	1.64%	Communications	1.77%
Broadcasting	1.64%	Commercial Horticulture	.98%
Education	1.64%		

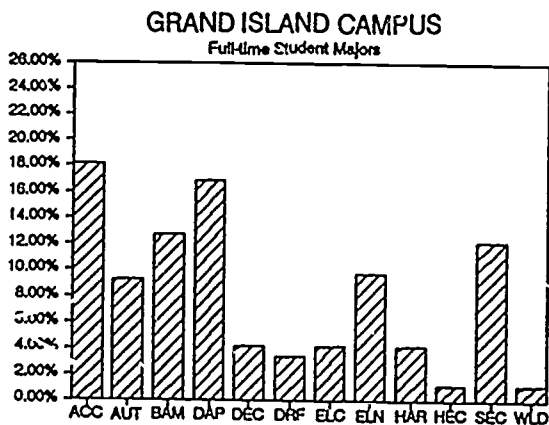
Part-time excludes students who have an undecided major.

TOP PROGRAM MAJORS

GRAND ISLAND

(1986-87)

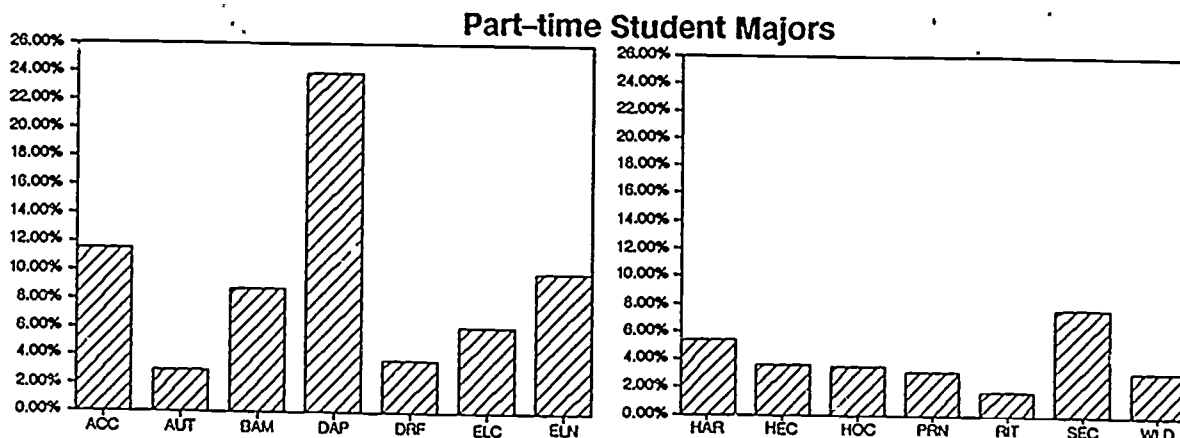
Full-time Students		Part-time Students	
Accounting	18.14%	Data Processing	23.89%
Data Processing	16.88%	Accounting	11.50%
Business & Management	12.66%	Electronics	9.86%
Secretarial Science	12.24%	Business & Management	8.72%
Electronics	4.22%	Secretarial Science	7.71%
Heating and Air Cond.	4.22%	Electrical	6.07%
Drafting	3.38%	Heating and Air Cond.	5.44%
Health Occupations	1.27%	Drafting	3.75%
Welding	1.27%	Home Economics	3.67%
Health Occupations	.84%	Health Occupations	3.54%



Program enrollment by major for full-time students.

Program enrollment by major for part-time students. Undecided status has been eliminated from the calculation.

GRAND ISLAND CAMPUS



TOP PROGRAM MAJORS

Hastings Campus (1986-87)

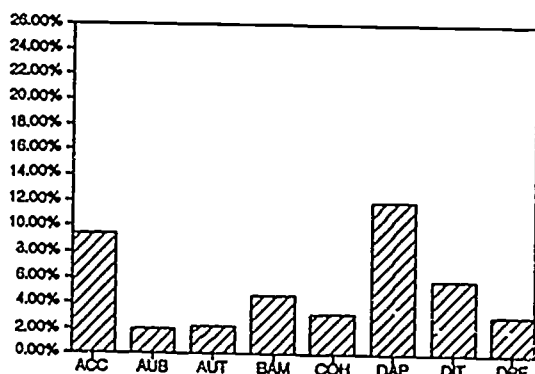
Full-time Students

Business & Mangement	8.08%
Human Services	7.05%
Secretarial Science	6.54%
Hotel, Motel, and Rest.	6.41%
Accounting	5.77%
Automotive	5.13%
Electronics	2.00%
Data Processing	4.87%
Practical Nursing	4.74%
Autobody Technology	4.23%
Dental Hygiene	3.72%
Medical Assisting	3.46%
Broadcasting	3.08%
Dental Assisting	2.95%
Commercial Horticulture	2.95%

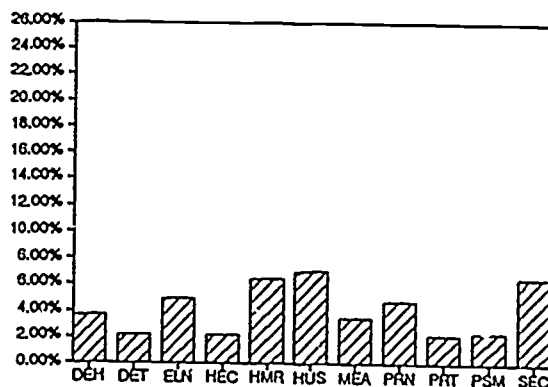
Part-time Students

Heating and Air Cond.	13.19%
Data Processing	11.94%
Accounting	9.44%
Human Services	6.94%
Dietetics	5.83%
Secretarial Science	5.56%
Practical Nursing	5.14%
Business & Management	4.58%
Electronics	3.47%
Commercial Horticulture	3.19%
Machine Shop Technology	3.06%
Drafting	3.06%
Welding	2.78%
Electrical	2.64%
Automotive Technology	2.22%

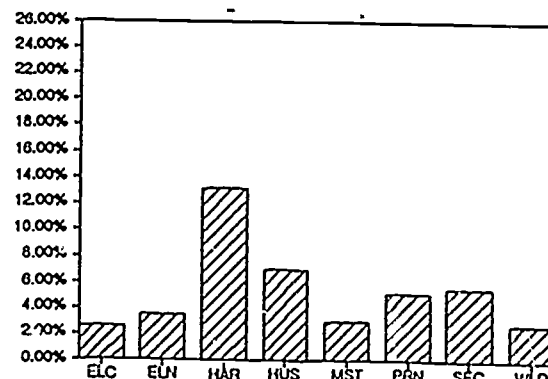
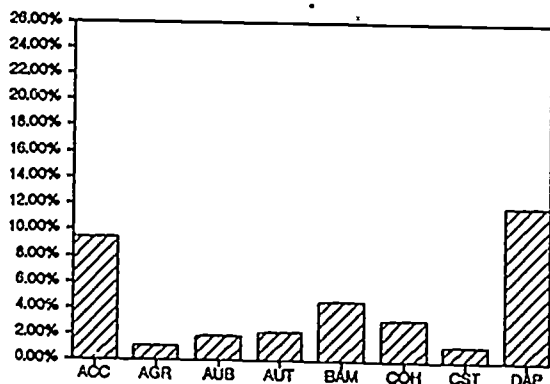
HASTINGS CAMPUS



Full-time Student Majors



Part-time Student Majors



TOP PROGRAM MAJORS

Columbus Campus

(1986-87)

Full-time Students

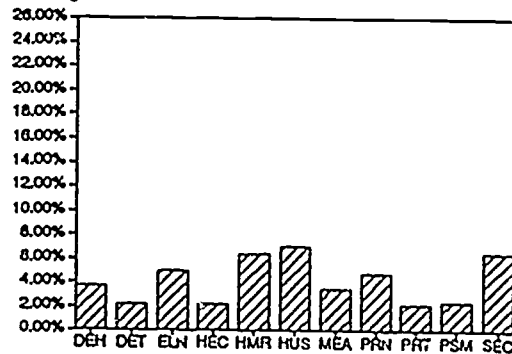
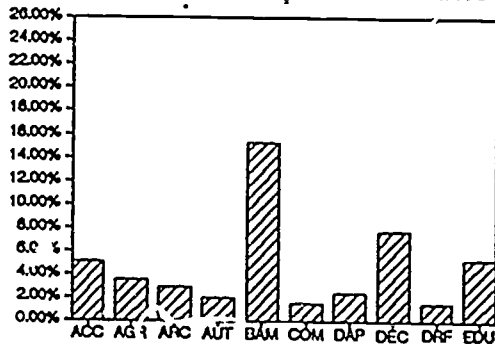
Practical Nursing	24.44%
Business & Management	15.33%
Deciding	7.78%
Secretarial Science	5.78%
Education	5.33%
Accounting	5.11%
Pre-Professional	4.67%
Fine Performing Arts	4.00%
Agriculture	3.56%
Commercial Art	2.89%
Home Economics	2.44%

Part-time Students

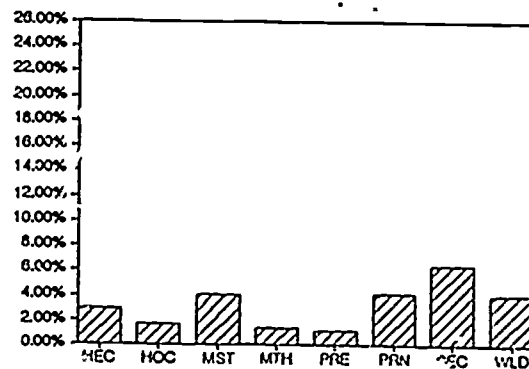
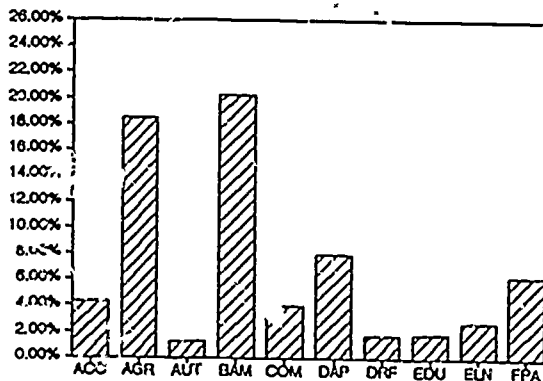
Business & Management	20.30%
Agriculture	18.46%
Data Processing	8.05%
Secretarial Science	6.47%
Fine Performing Arts	6.30%
Accounting	4.37%
Practical Nursing	4.20%
Welding	4.11%
Communications	4.02%
Machine Shop	4.02%
Home Economics	2.97%

COLUMBUS CAMPUS

Full-time Student Majors



Part-time Student Majors

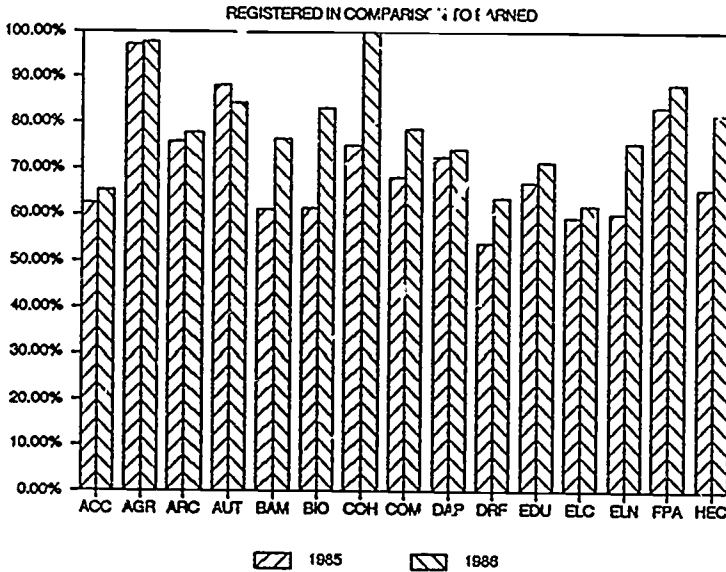


The Number of Credits

Registered in Comparison to Earned

Part I

PERCENT OF CREDITS COMPLETED

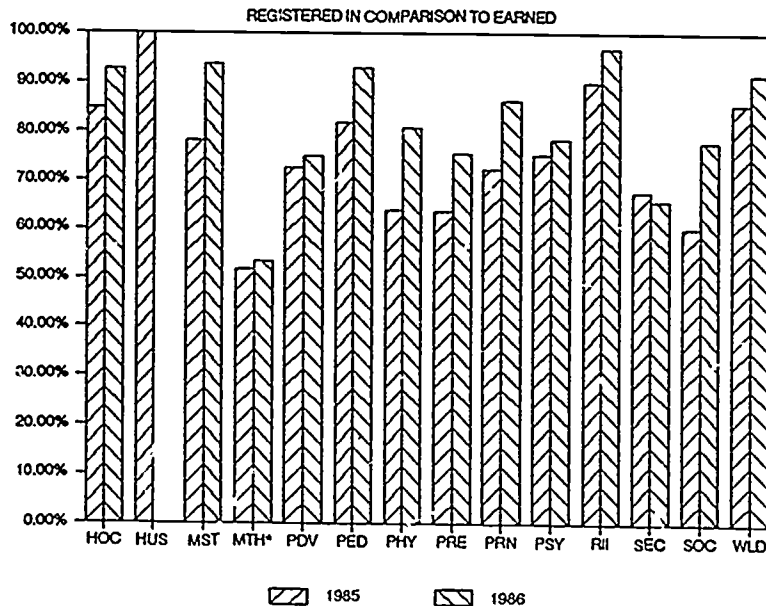


These graphs compare the number of credits the individual student registers for in comparison to those credits that are actually earned.

Two year's of data have been gathered to analyze the trends of credit completion in each program.

Part II

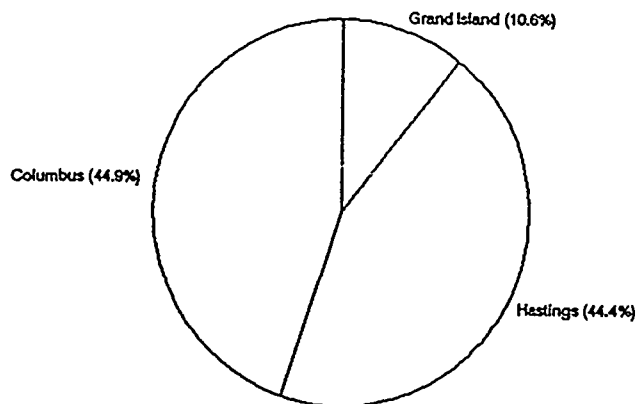
PERCENT OF CREDITS COMPLETED



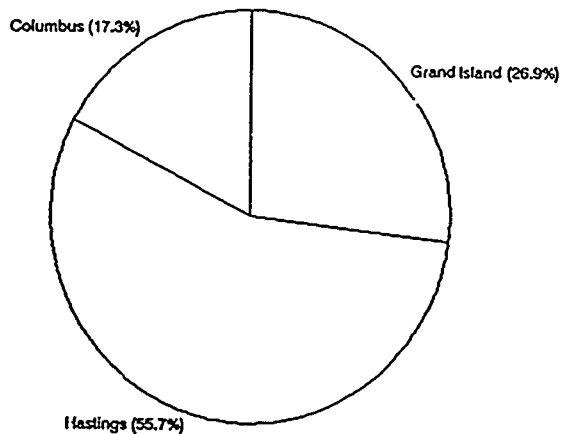
DEGREES, DIPLOMAS, AND CERTIFICATES

(1986-87)

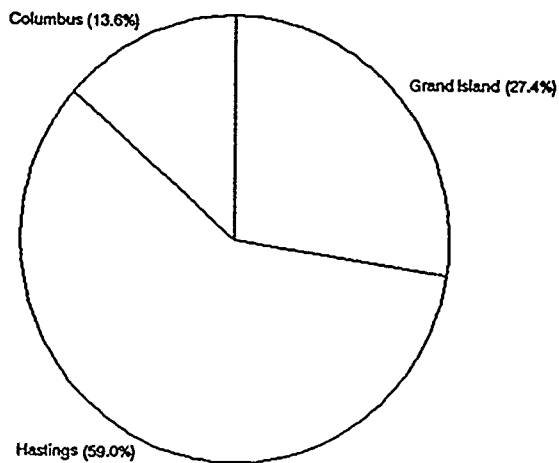
Percent of Total Degrees Awarded



Percent of Total Diplomas Awarded



Percent of Total Certificates Awarded

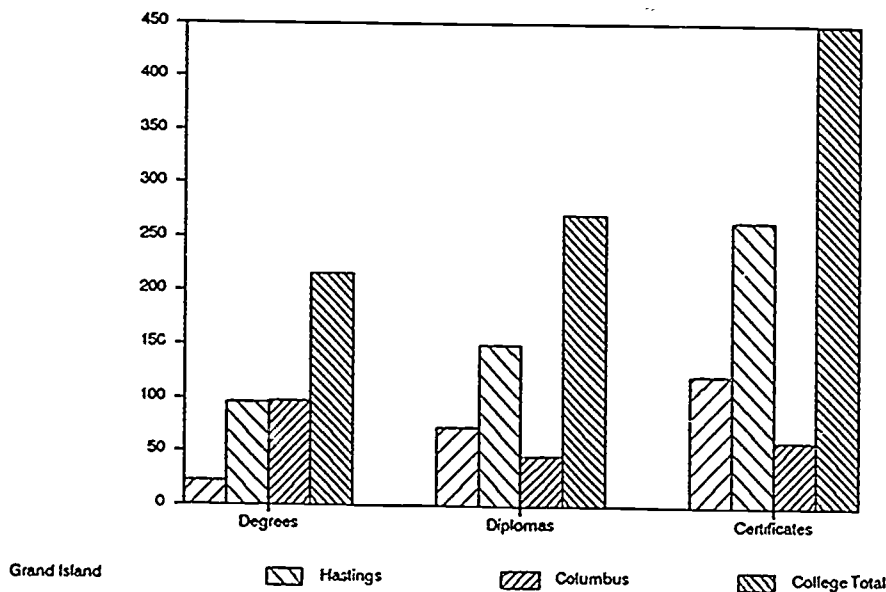


DEGREES, DIPLOMAS, AND CERTIFICATES AWARDED

(1986-87)

	GRAND ISLAND			HASTINGS			COLUMBUS			COLLEGE		
	Dgr.	Dpl.	Cert.	Dgr.	Dpl.	Cert.	Dgr.	Dpl.	Cert.	Dgr.	Dpl.	Cert.
Acc	1	13	25	8	14	26	4	3	9	13	30	60
Agr	0	0	0	2	2	6	0	0	18	2	2	24
AuB	0	0	0	4	0	15	0	0	0	4	0	15
AuT	0	1	6	4	7	14	2	1	0	6	9	20
BaM	2	0	1	7	2	10	24	9	9	33	11	20
Bio	0	0	0	0	0	0	1	0	0	0	0	0
Brc	0	0	0	3	3	14	0	0	0	3	3	14
CoH	0	0	0	0	0	0	2	4	2	2	4	2
Com	0	0	0	0	0	0	4	1	0	4	1	0
Cst	0	0	0	1	4	5	0	0	0	1	4	5
DaP	4	20	24	4	9	21	4	3	5	12	32	50
DeA	0	0	0	0	17	0	0	0	0	0	17	0
DeH	0	0	0	8	0	0	0	0	0	8	0	0
DeL	0	0	0	5	0	8	0	0	0	5	0	8
DeT	0	0	0	4	3	7	0	0	0	4	3	7

DEGREES, DIPLOMAS, AND CERTIFICATES AWARDED FOR 1986-87



DEGREES, DIPLOMAS, AND CERTIFICATES CON'T

	GRAND ISLAND			HASTINGS			COLUMBUS			COLLEGE		
	Dgr.	Dpl.	Cert.	Dgr.	Dpl.	Cert.	Dgr.	Dpl.	Cert.	Dgr.	Dpl.	Cert.
DiT	0	0	0	4	0	20	0	0	0	4	0	20
Drf	2	4	8	4	2	7	4	1	1	10	7	16
Edu	0	0	0	0	0	0	9	0	0	9	0	0
Elc	0	2	12	4	6	9	0	1	2	4	9	23
Eln	5	6	0	9	6	3	2	1	0	16	13	3
FPA	0	0	0	0	0	0	8	0	0	8	0	0
HAR	3	1	5	6	8	15	0	0	0	9	9	20
HEc	0	3	8	0	5	7	0	1	2	0	9	17
HMR	0	0	0	4	5	4	0	0	0	4	5	4
HOc	1	0	0	1	0	0	5	0	0	7	0	0
HuS	0	0	0	5	6	3	0	0	0	5	6	3
MeA	0	0	0	0	9	0	0	0	0	0	9	0
MsT	0	0	0	0	2	12	1	0	1	1	2	13
PCM	0	0	0	1	2	20	0	0	0	1	2	20
PEd	0	0	0	0	0	0	3	0	0	3	0	0
Pre	0	0	0	0	0	0	9	0	0	9	0	0
PrN	0	0	0	0	22	0	0	6	0	0	28	0
PrT	0	0	0	2	11	13	0	0	0	2	11	13
Psy	0	0	0	0	0	0	2	0	0	2	0	0
Sec	5	22	32	4	5	14	9	15	12	18	42	58
Soc	0	0	0	0	0	0	4	0	0	4	0	0
Wld	0	1	2	2	1	12	0	1	0	2	3	14
Totals	23	73	123	96	151	265	97	46	61	216	271	449

SUMMARY*

The number of degrees and other formal awards conferred by Nebraska institutions of postsecondary education show a slight increase in fiscal year 1986-87 as compared to data reported a year ago: 15,486 as compared to 15,274, a decrease of 1%.

Bachelor degrees and post-baccalaureate certificates account for 55% of the total, followed by degrees and awards based on less than four years of work beyond high school, 28%; masters degrees and post-masters certificates, 11%; and first-professional and doctoral degrees accounting for the remaining 6%. Overall, a comparison of this year's data with that of last year is again one of stability and similarity.

Statistics for the four postsecondary sectors are as follows:

- University of Nebraska awarded 6,334 degrees, 155 fewer than last year, representing 41% of the total. The greatest decrease occurred in the area of Health programs.
- State Colleges awarded 2,192 degrees, 124 more than last year, representing 14% of the total. The greatest increases were in the areas of Business, Education and Humanities.
- Technical Community Colleges conferred 3,885 awards, 186 more than last year, representing 25% of the total. The greatest increase was in the area of Business.

The largest number of degrees and awards were conferred in the area of Business, 3,561; followed by Physical Sciences, 2,721; and Education, 2,247.

Ratio of males to females remained stable over the past year: male, 49%, female, 51%.

*Excerpt from "State of Nebraska Degrees and Other Formal Awards Conferred by Nebraska Institutions of Postsecondary Education, 1982-83 through 1986-87", Nebraska Coordinating Commission for Postsecondary Education, March, 1988.

RESIDENCE AND MIGRATION OF STUDENTS

According to the Nebraska Coordinating Commission for Postsecondary Education, residence and migration of college students is tracked to determine the effectiveness of an institution in attracting students from other communities and states, to determine which communities and states are being served, and to evaluate whether or not the state higher education systems as a whole attracts more students from other states or provides students to other states. This is referred to as "in-migration/out-migration ratio."

The report concludes from the most recent national data (1984) as reported by the U. S. Department of Education Center for Education Statistics show Nebraska to be near the national average in the ratio of Nebraska students enrolled in Nebraska institutions to the total number of Nebraska students enrolled here and elsewhere. The data reported that Nebraska received 500 more students from other states, territories and foreign countries than it exported to other states. Therefore, Nebraska maintained a balance between the in-migration and out-migration of students, attracting more than the number of students who chose to attend an out-of-state institution.

FIRST-TIME, DEGREE SEEKING STUDENTS

Technical Community Colleges' student populations contain the highest percentage of Nebraskans (97.6%), the Nebraska State Colleges are second (89.2%), the University of Nebraska is third (86.7%), and the Independent colleges and Universities are fourth with (55.4%). The data reflects only first-time, degree-seeking students for the Fall of 1987 and does not include students enrolled in courses not creditable toward a formal award.

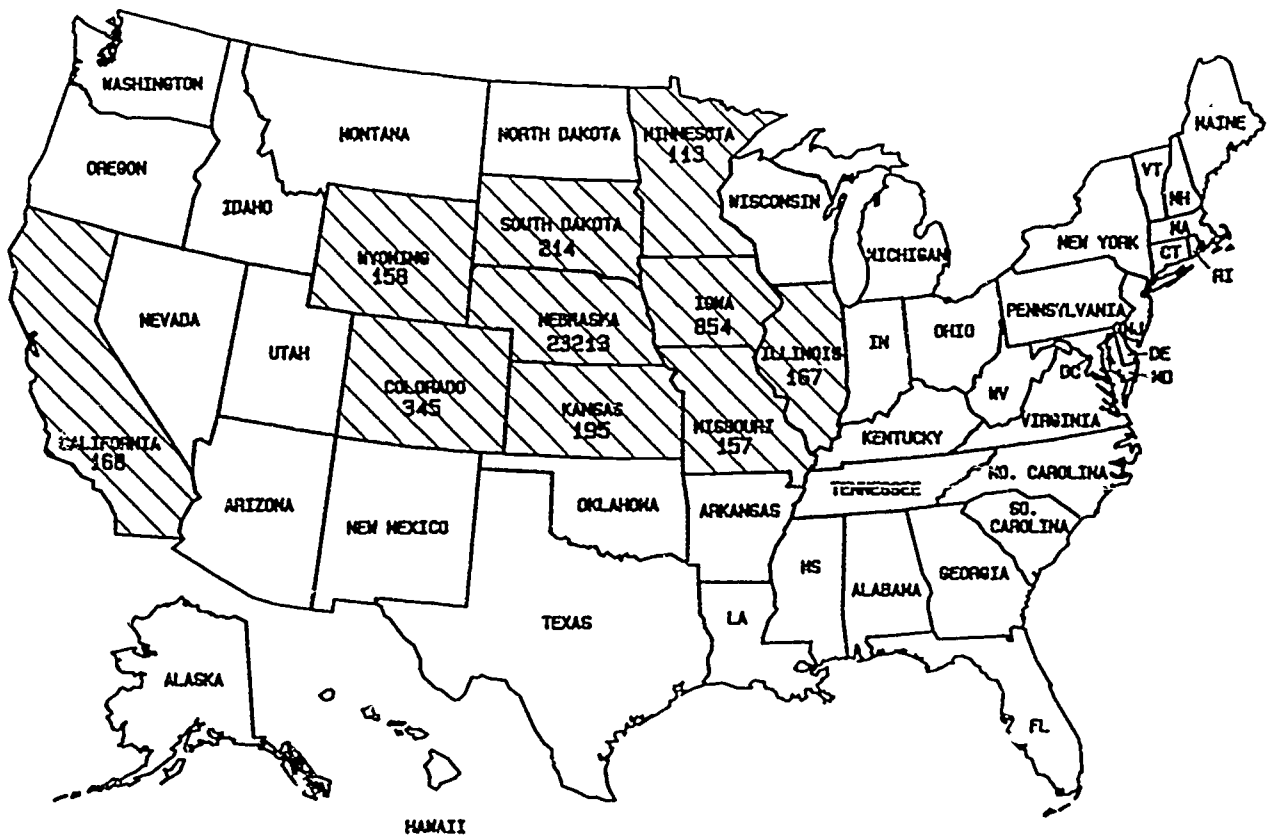
According to the Nebraska Association of Collegiate Registrars and Admissions Officers 84.8% of the entering freshmen enrolled in a public institution with 15.2% enrolling in an independent institution. Within the public institutions, 31.0% enrolled in universities, 13.5% enrolled in colleges, and 40.3% enrolled in technical schools. However, total headcount enrollments continued the decline noted last year; 96,971 in 1986 as compared to 97,754 in 1985, a decrease of .8%.

The residence and migration of students in Nebraska is influenced primarily by geographic factors and secondly by the type of program offered.*

Technical Community Colleges are regional by design with few students enrolling from outside the regional or from outside the state. The next pages contain maps of the Nebraska and the county of origin for each campus and the college as a whole.

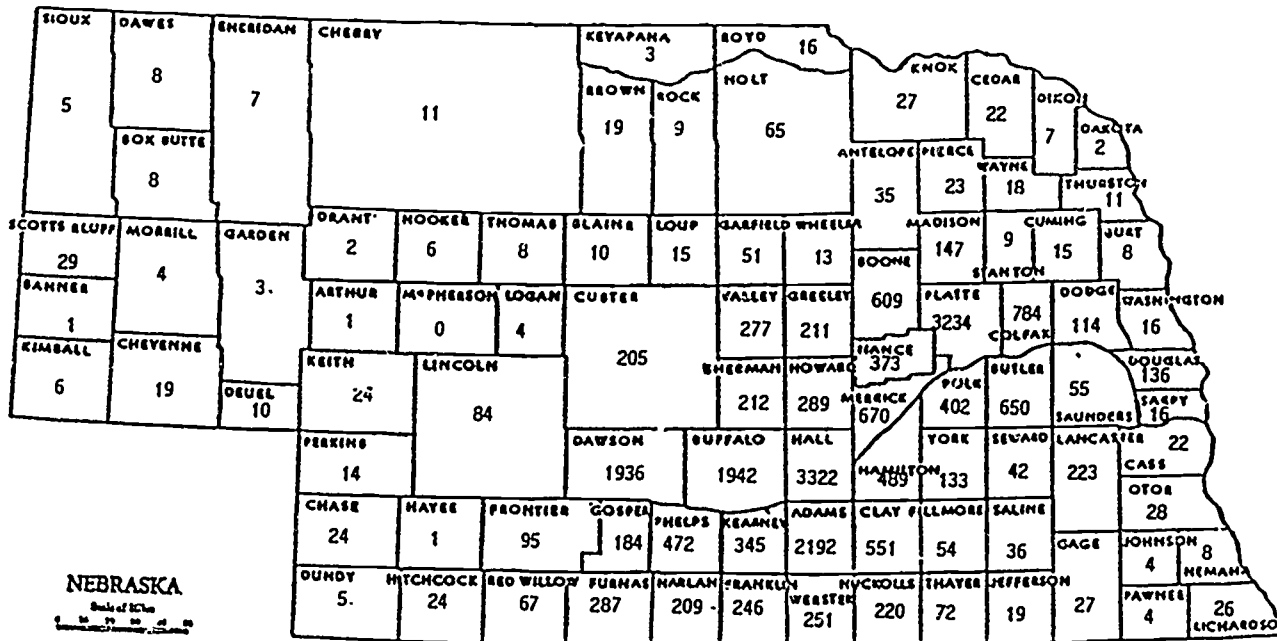
There were 3,579 fewer entering freshmen, a 17.35% decrease over 1985. Forty percent of the entering freshmen were enrolled in Technical Community Colleges in 1986 as compared to 48% in 1985. Central Community's entering freshman enrollment is charted in detail for the classes of 1985 through 1988. The actual percent of the total class enrollment for each year for each county in the area served is illustrated on Page 20. The graduating class is illustrated on Page 21 by county.

THE TEN STATES WHICH PROVIDE THE MOST STUDENTS TO NEBRASKA INSTITUTIONS OF HIGHER EDUCATION



CENTRAL COMMUNITY COLLEGE

Enrollment By County

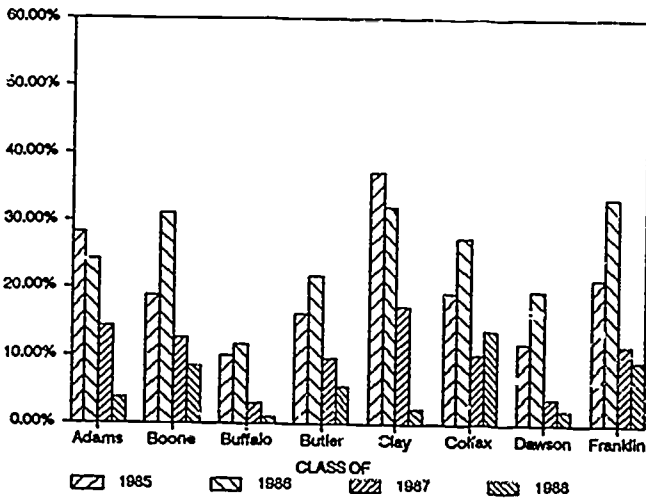


Total Out-Area 2,240

Total Out-State 125

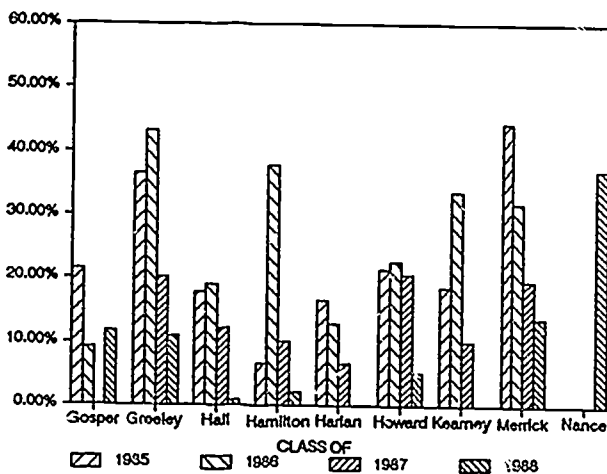
*From the Annual Enrollment Report 1986-87

PERCENT OF GRADUATING CLASS ATTENDING CCC

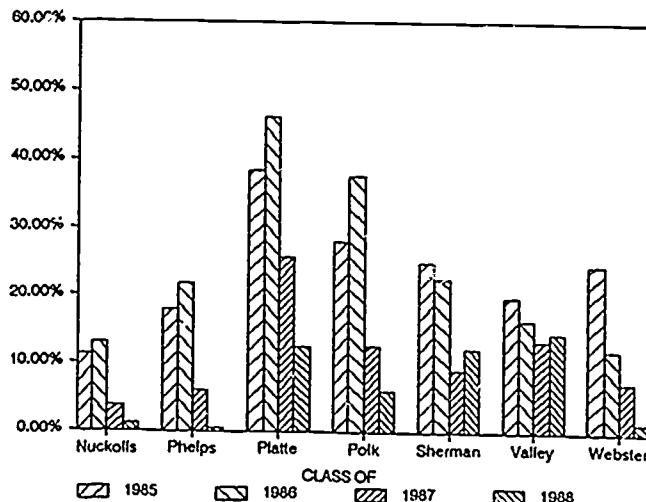


Enrollment for each graduating class ranges from zero percent to almost 50 percent of the entire class in some counties. Particularly large enrollments occur in Hall, Harlan, Nance, Platte and Polk counties.

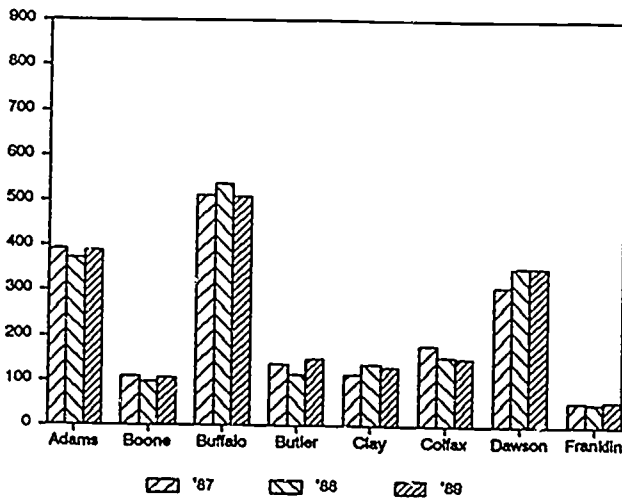
Enrollment is tracked for the following two academic years for each class to compile these statistics.



Part III

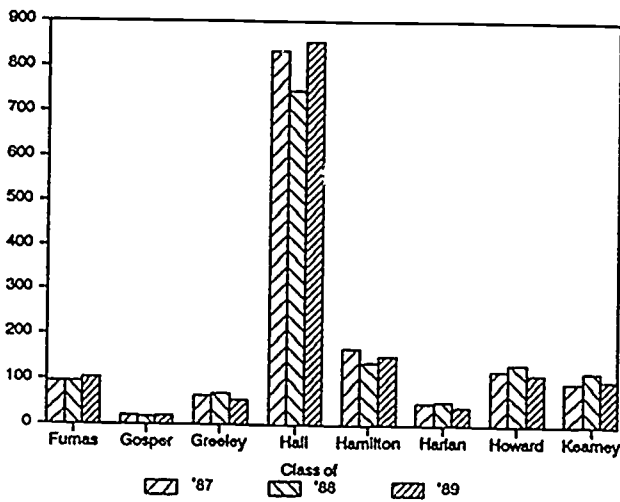


GRADUATING CLASS SIZE OF THE 25 COUNTRY AREA



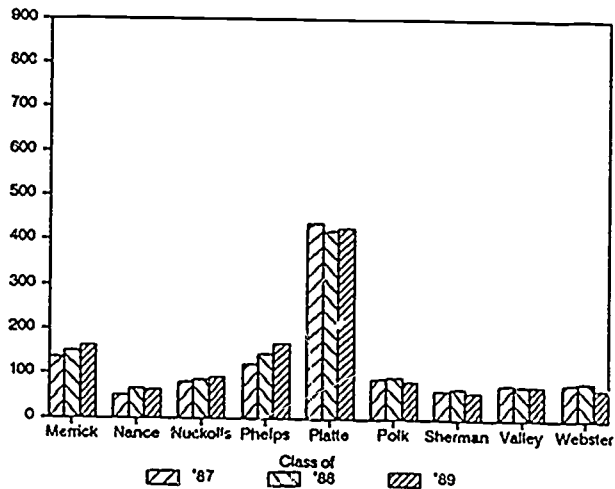
Part I

These graphs indicate the graduating class size for each county.



Part II

Part III

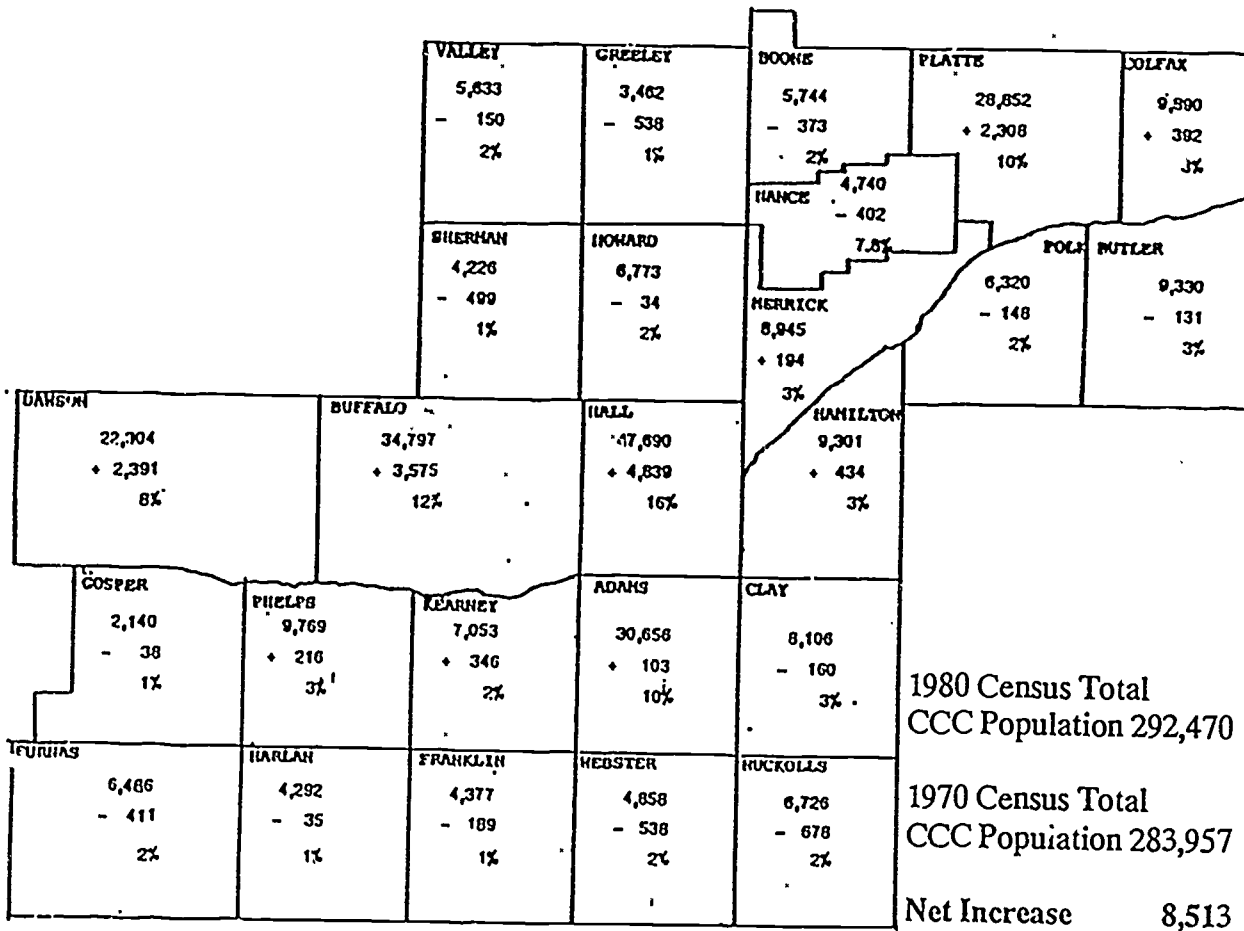


PERCENT OF CHANGE IN POPULATION

25 County Area

LINE KEY:

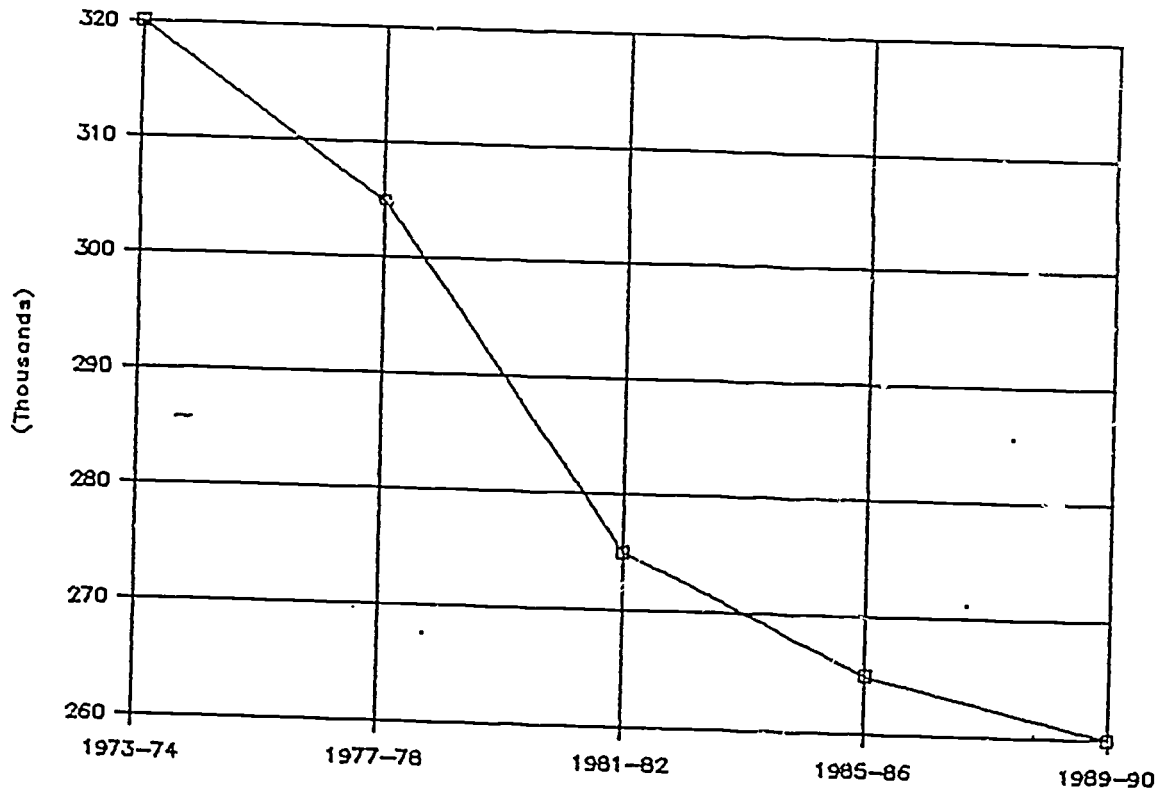
- 1st: 1980 Population
- 2nd: Change in Population, 1970-80
- 3rd: Percent of 25 County Population



Reprinted from Annual Enrollment Report 1986-87

NEBRASKA PUBLIC SCHOOL ENROLLMENT TRENDS

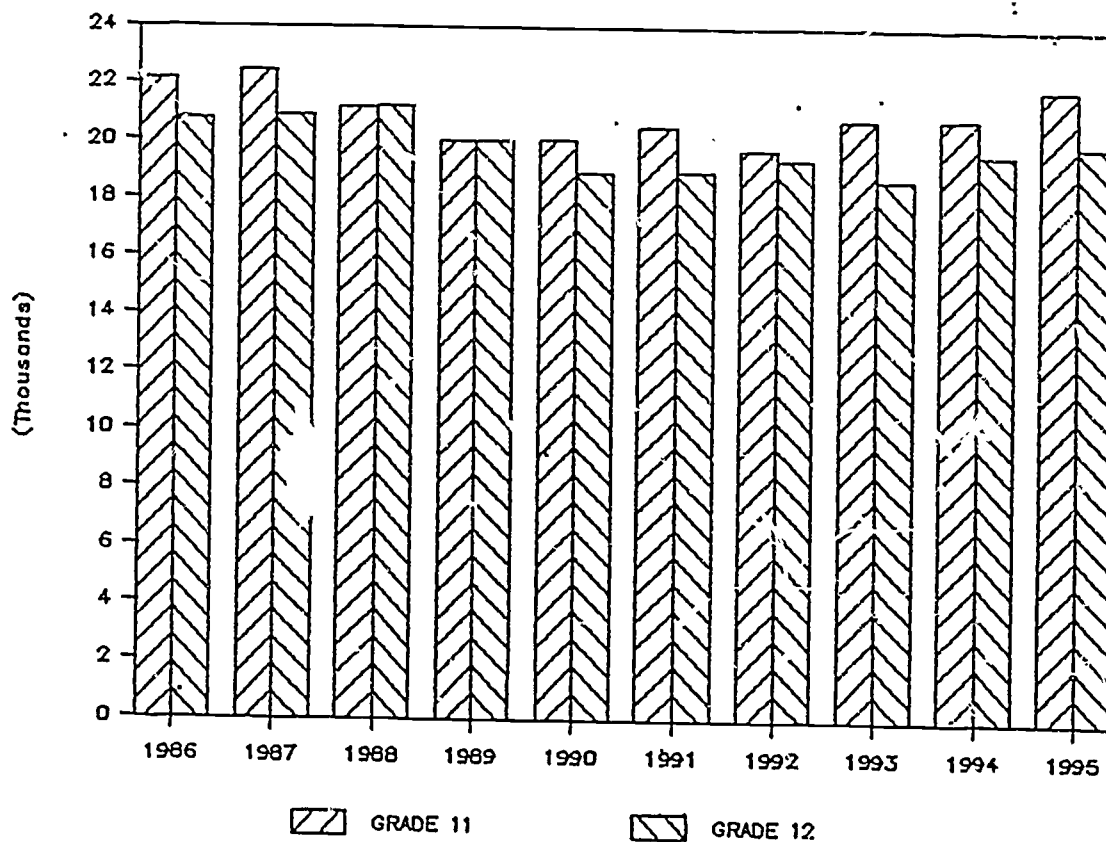
1973-Present



Since the 1973-74 academic year, the Nebraska public school enrollment has decreased dramatically. The rate of decline, however, has leveled off since the academic year 1981-82.

ESTIMATED ENROLLMENT 1986-1995

Public and Non-Public Schools



The above chart compares the junior and senior classes for the academic years 1986 to 1995.

ERIC Clearinghouse for
Junior Colleges DEC 22 1988
