

DOCUMENT RESUME

ED 297 735

IR 052 293

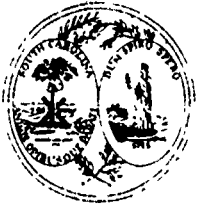
TITLE South Carolina State Library Annual Report, 1986-1987.
INSTITUTION South Carolina State Library, Columbia.
PUB DATE 87
NOTE 67p.; For the 1985-1986 report, see ED 281 562.
PUB TYPE Reports - Descriptive (141)

EDRS PRICE MF01/PC03 Plus Postage.
DESCRIPTORS Academic Libraries; Administrative Organization; Annual Reports; Blindness; Charts; Computer Networks; Disabilities; Institutional Libraries; Library Administration; Library Networks; *Library Services; Library Statistics; *Library Technical Processes; Public Libraries; State Libraries
IDENTIFIERS *Library Development; *South Carolina State Library

ABSTRACT

This report to the Governor and state assembly members reports two major achievements during the year: the opening of a new library facility for the blind and physically handicapped, and the continued growth of the computerized networking system linking the public libraries of the state. Introductory materials include lists of the members of the South Carolina State Library Board and of the library staff; an organizational chart; a history of the South Carolina State Library; and highlights of fiscal year 1986-1987. A summary of the activities of the Division of Library Development then describes Administrative Services; Field Services (state aid for public libraries, federal aid to South Carolina libraries, continuing education for librarians, library services for the disadvantaged, literacy programs, audiovisual services, library service to children, institutional library services, and public library construction); and Library Services to the Blind and Physically Handicapped. A discussion of Division of Library Services activities includes Reader Services (reference and information services to state government, legislative reference service, interlibrary loan service, the South Carolina Library Network, and government documents); and Technical Services. Reports on state library awards and volunteer services are also provided, as well as a listing of South Carolina State Library publications and statistical data on state library collections, interlibrary loans, expenditures of state and federal funds, and public, college, and institutional libraries. Directories of public, college, and institutional libraries are also provided. (CGD)

XX
* Reproductions supplied by EDRS are the best that can be made *
* from the original document. *
XX



The South Carolina State Library

1500 Senate Street

P.O. Box 11469

Columbia, South Carolina 29211

PHONE 734-8666

BETTY E. CALLAHAM
DIRECTOR

TO: The Honorable Carroll A. Campbell, Jr., Governor of South Carolina, and to the Honorable Members of The General Assembly of South Carolina.

On behalf of Director Betty Callaham, her staff, and the members of the State Library Board, I present for your review the annual report of the South Carolina State Library.

Despite continued budget reductions and the unpredictability of funding, the past year has been most productive. As you are aware, the Library for the Blind and Physically Handicapped opened its doors at the Old Columbia Mill site. This new facility will better enable the State Library to provide library services to the visually impaired of South Carolina. We are also proud of the continued growth of the computerized networking system linking the public libraries of the state. The implementation of this network dramatically increases the efficiency of our libraries and makes South Carolina a model for other states to follow in the delivery of reader services.

The strength of our state's libraries continues to be the dedication of its librarians. South Carolina is fortunate to have highly-qualified, professional librarians serving the reading public, from Director Callaham, Deputy Directors Jim Johnson and John Landrum through to the staffs of each county library.

The State Library is proud of its past achievements and looks forward to embarking upon another year of service and accomplishment.

Respectfully submitted,

Timothy G. Driggers
Chairman

TABLE OF CONTENTS

Letter of Transmittal.....	1
State Library Board.....	3
Library Staff.....	4
Organizational Chart.....	6
 South Carolina State Library	
I. Introduction.....	10
II. History.....	10
III. Highlights of 1986-87.....	12
IV. Division of Library Development.....	14
A. Administrative Services.....	14
B. Field Services.....	15
- State Aid for Public Libraries.....	16
- Federal Aid to South Carolina Libraries.....	17
- Continuing Education for Libraries.....	18
- Library Service for the Disadvantaged.....	23
- Literacy Program.....	19
- Audio-Visual Services.....	19
- Library Service to Children.....	20
- Institutional Library Services.....	21
- Public Library Construction.....	21
C. Library Services to the Blind and Physically Handicapped.....	22
V. Division of Library Services.....	23
A. Reader Services.....	23
- Reference and Information Services to State Government.....	23
- Legislative Reference Service.....	26
- Interlibrary Loan Service.....	26
- South Carolina Library Network.....	28
- Government Documents.....	29
B. Technical Services.....	30
VI. State Library Awards.....	31
VII. Volunteer Services.....	32
VIII. Publications of the South Carolina State Library.....	33
IX. State Library Collections.....	34
X. State Library Loan Statistics.....	37
XI. Expenditures: State Funds.....	39
Federal Funds.....	41
 Public, College, and Institutional Libraries	
I. Public Library Board Chairmen.....	43
II. Directory of South Carolina Public Libraries.....	45
III. Directory of South Carolina Colleges and Universities.....	48
IV. Directory of Libraries in State Institutions.....	53
 Library Statistics, 1936-87	
I. Public Libraries: Comparative Summary.....	55
II. South Carolina Public Libraries.....	57
III. South Carolina State-Supported Institutions.....	58
IV. South Carolina Colleges and Universities.....	59

SOUTH CAROLINA STATE LIBRARY BOARD

Second Congressional District -- Mr. Timothy G. Driggers (Chairman)
P. O. Box 1001
Lexington, SC 29072

First Congressional District -- Mr. George H. Seago, Jr.
F. O. Box 1894
Summerville, SC 29484

Third Congressional District -- Dr. Hugh E. Vincent, Jr. (Secretary)
2623 1/2 S. Main Street
Anderson, SC 29624

Fourth Congressional District -- Mr. Buford Mobley
3071 Huntington Drive
Spartanburg, SC 29302

Fifth Congressional District -- Mrs. Lou Wilburn
Glendale Road
Union, SC 29379

Sixth Congressional District -- Mrs. Willie M. Saleeby (Vice-Chairman)
936 West Home Avenue
Hartsville, SC 29550

At-Large Mr. Claude Vaughn
3937 DuBose Drive
Columbia, SC 29204

LIBRARY STAFF

Director.....Betty E. Callaham

DIVISION OF LIBRARY DEVELOPMENT

Deputy Director for Library Development.....James B. Johnson, Jr.

Administrative Services

Business Manager.....Betty Q. Onley
Senior Accountant.....Annette S. Stuck
Accounting Technician II.....Karen L. Wicker
Administrative Assistant I.....Deborah P. Anderson
Administrative Assistant I.....Vicki L. Maxheimer
Administrative Specialist B.....Georgia A. Gillens
Administrative Specialist B.....Deanna S. Wolff
Administrative Specialist A.....Beverly C. Moore
Library Technical Assistant II.....Albert Johnson

Field Services

Director of Field Services.....Margie E. Herron
Field Service Librarian.....Larry S. Freeman
Field Service Librarian.....Aileen P. Law
Field Service Librarian.....Alice I. Nolte
Field Service Librarian for Audio-Visual Programs.....Ronald E. Anderson
Field Service Librarian for Children's Services.....Jane A. McGregor
Institutional Library Consultant.....Mark E. Pumphrey

Blind and Handicapped Services

Director of Library Services for the Blind
and Physically Handicapped.....Frances K. Case
Handicapped Services Librarian.....Billie J. Ouellette
Reader Advisor.....Marie S. Berry
Reader Advisor.....Beverly A. Coleman
Reader Advisor.....Margaret E. Jones
Data Coordinator II.....Boyce E. Steadman
Administrative Specialist B.....Mary Walker
Administrative Specialist A.....Ruth E. McCants
Library Technical Assistant III.....George L. Mitchell
Library Technical Assistant I.....Mark T. Frick
Library Technical Assistant I.....William R. Wilson

LIBRARY STAFF (con't)

DIVISION OF LIBRARY SERVICES

Deputy Director for Library Services.....John H. Landrum

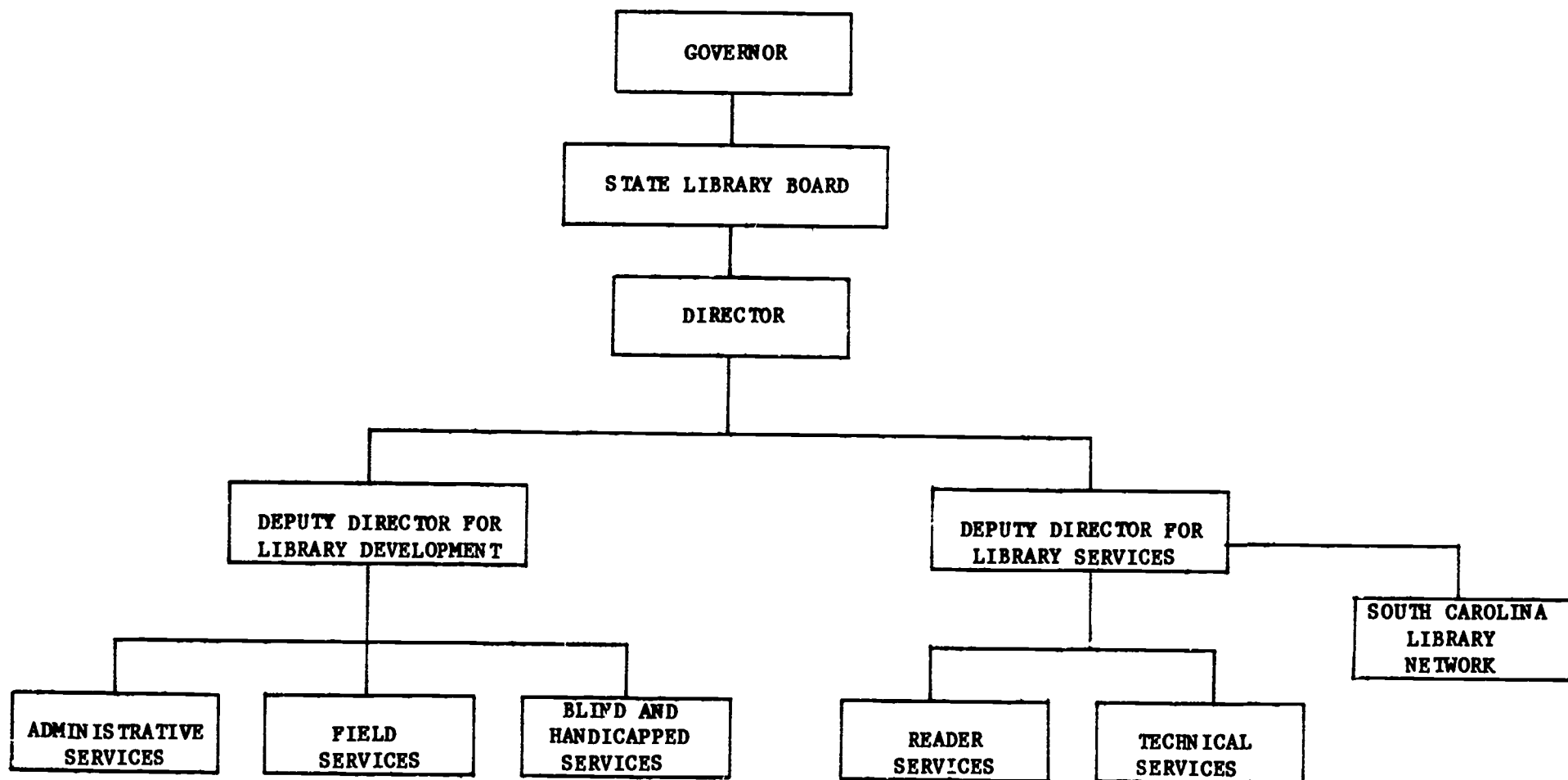
Reader Services

Director of Reader Services.....Anne M. Schneider
Interlibrary Loan Librarian.....Lea Walsh
Coordinator of Automation Services.....William A. Ellett
Documents Librarian.....Mary B. Toll
Reference Librarian.....Deborah hotchkiss
Reference Librarian.....Guynell Williams
Assistant Reference Librarian.....Mary L. Morgan
Assistant Reference Librarian.....Edna C. White
Library Research Assistant.....Bobbie P. Adkins
Library Research Assistant.....Brenda J. Boyd
Library Research Assistant.....Rosalie B. Branham
Library Technical Assistant III.....William T. Putnam
Library Technical Assistant II.....Linda K. Sharpe
Library Technical Assistant I.....Whitman Page

Technical Services

Director of Technical Services.....Marjorie A. Mazur
Cataloger.....Jo Ann Rhodes
Library Research Assistant.....Carolyn H. Hite
Library Technical Assistant III.....Deborah F. Bowers
Library Technical Assistant II.....Marcella A. Frick
Library Technical Assistant II.....Reba D. Holden

SOUTH CAROLINA STATE LIBRARY



SOUTH CAROLINA STATE LIBRARY

I. Director

The Director, who is responsible for the operation of the South Carolina State Library, is appointed by and is responsible to the Board of the State Library.

II. Library Development Division

The Deputy Director for Library Development is responsible for Administrative Services, Field Services, and Services for the Blind and Physically Handicapped.

A. Administrative Services

1. General Administration

Plans development and extension of library service; establishes and reviews policies; prepares and administers the annual budget; administers state and federal aid for libraries; promotes the extension and improvement of library service; recommends library legislation; provides support services for all departments and programs.

2. Library Interpretation

Interprets the objectives and functions of the statewide library program; plans and carries out a statewide program of publicity and public relations designed to publicize South Carolina libraries and to make the general public aware of library services; publishes newsletters and reports.

B. Field Services

1. General Field Service

Fosters the development and improvement of public library services; assists local officials, librarians, trustees and citizens through field visits, surveys and correspondence; supervises State Aid for public libraries and LSCA Title I grant programs; oversees all public library projects funded from state and federal funds administered by the South Carolina State Library.

2. Career Education

Provides workshops and training programs for public and institutional library employees and public library trustees; supervises the certification program for public librarians.

3. Library Services for the Disadvantaged

Provides consultant service to local libraries engaged in, or planning, projects in this area; administers grants and supervises local projects; reports on and evaluates the program.

4. Literacy

Plans, develops, implements, and evaluates programs to combat the problem of illiteracy; promotes mutual cooperation between libraries and other state and local agencies serving the illiterate and functionally illiterate.

5. **Audio-Visual Service**
Plans and administers a statewide film program for public and institutional libraries and community organizations; trains staff in use of films as a means of extending the informational resources of the local library; selects and maintains film collection and A-V equipment; prepares annual film catalog.
 6. **Library Services for Children**
Provides assistance and training for public library staff to enable them to better serve children and parents; coordinates the Early Childhood Media Clearinghouse; serves as liaison to other agencies concerned with child welfare and education.
 7. **Institutional Library Services**
Plans and administers a program to establish develop and improve library service in state institutions; supervises the library program in individual institutions and provides consultant service for library development in all institutions; administers federally funded grant-in-aid projects.
 8. **Public Library Construction**
Provides consultant service in planning of public and institutional library buildings; advises library boards, library administrators, and architects on state and federal regulations and procedures; administers federal LSCA Title II grant program and supervises construction projects receiving grant funds.
- C. **Service to the Blind and Physically Handicapped**
Provides library service to the blind and physically handicapped; maintains liaison with the Library of Congress's National Library Service for the Blind and Physically Handicapped; maintains records of eligible borrowers and of materials and equipment on loan; provides guidance to readers in selection of books; supervises five browsing collections of talking books in local public libraries; conducts public information program to make potential users aware of service.

III. Library Services Division

The Deputy Director for Library Services is responsible for Reader Services, Technical Services, and the South Carolina Library Network.

A. Reader Services

1. **Reference Service**
Provides reference and research services to State Government, State Government agencies, and State employees; performs on-line computer data base reference and bibliographic searches; maintains and services federal document collection and grants research collection; selects books and other materials to be added to the general reference collection; prepares and publishes a monthly bibliography of new acquisitions and prepares special bibliographies.
2. **Interlibrary Loan Service**
Provides statewide reference and interlibrary loan service to supplement local library resources; supplies materials and

answers reference requests for libraries throughout the state; uses OCLC/SOLINET bibliographic computer network for interlibrary loan and reference; provides consultant service to local libraries in the development of reference services and collections; plans and provides workshops to increase the effectiveness of library employees engaged in reference services.

3. Interlibrary Cooperation

Promotes cooperative activities and sharing of resources by all South Carolina libraries; plans and administers LSCA Title III grant program and monitors local projects.

4. State Documents Depository System

Coordinates the South Carolina State Documents Depository System; collects, catalogs, and distributes to designated affiliate libraries the publications of State Government agencies and institutions; provides consultant and supervisory service to depository libraries; promotes and publicizes document services; prepares the quarterly checklist and annual index of state documents.

B. Technical Services

Acquires and makes available all materials used in the library program; catalogs and classifies books, serials, pamphlets, and non-book materials; purchases and receives all materials; receives, stores and distributes periodicals and newspapers; classifies and/or catalogs all state and federal documents received; prepares all materials for use and maintains the book collection; uses OCLC/SOLINET bibliographic computer network for cataloging and retrospective conversion; maintains DRA data base.

C. South Carolina Library Network

Maintains and operates a computer-based statewide library network and communication system to facilitate sharing of library resources and services; provides consultant service to local libraries in the automation of library functions, conversion of bibliographic records to machine-readable form, and resource sharing activities.

I. INTRODUCTION

Statutory authority for the South Carolina State Library is provided by Title 60, Chapter 1 of the Code of Laws of South Carolina. Originally authorized in 1929 and known as the State Library Board, the public library extension agency was first funded in 1943. It was redesignated the South Carolina State Library with a broad range of responsibilities by Act 464 of 1969. The legislation was recodified and new functions were authorized by Act 178 of 1985. Certain functions are also authorized and funded by the federal Library Services and Construction Act (P.L. 84-597 as amended).

The South Carolina State Library is an independent state agency governed by a library board of seven members named by the Governor, with one member from each Congressional District and one from the state-at-large. Members serve five-year terms and may be reappointed. The Director, who is responsible for the operation of the agency, is appointed by and is responsible to the State Library Board. The agency is organized under two divisions. The Deputy Director for Library Development is responsible for Administrative Services, Field Services, and Services for the Blind and Physically Handicapped. The Deputy Director for Library Services is responsible for Reader Services, including the South Carolina Library Network, and Technical Services.

The mission of the South Carolina State Library is to serve the educational, informational, cultural and recreational needs of the people of South Carolina. It strives to improve library services throughout the state and to ensure that all citizens have access to library and information resources adequate to meet their individual needs.

The State Library's major functions are to provide technical assistance and support services to the public libraries and state institutional libraries of the state in order that they may better serve all the residents of South Carolina; to supplement the resources of other libraries by maintaining appropriate collections of library materials and information services and by providing research, interlibrary loan, and bibliographic services; to provide research, loan, and reference services to meet the information needs of the General Assembly, state officers and agencies, and state government employees; to stimulate cooperation and resource sharing among all types of libraries in order to provide the widest possible access to the library and information resources of the state; and to provide library services to visually and physically handicapped readers in the state and to assist libraries in developing outreach programs to serve other groups with special needs: the handicapped, the educationally deprived, those with limited English-speaking ability, the culturally disadvantaged, and the elderly

II. HISTORY

In 1929, the General Assembly, at the urging of citizens interested in quality county-wide library service, passed legislation establishing the State Public Library Association and a State Library Board composed of five citizens. In the depths of the Great Depression, no funds were appropriated for the library extension agency, but grants from the South Carolina Library Association

and the Rosenwald Foundation enabled the State Library Board to employ a field agent from 1929 to 1932 to assist communities interested in the development of public library service.

The first statewide library program was carried out under the Works Project Administration from 1935 to 1943. The WPA's major objective was to provide each county of the state some measure of area-wide public library service. The WPA library program helped establish library service in some areas and in others it enhanced existing libraries' operations. The WPA program made possible the establishment of bookmobile service in twenty-three counties formerly without rural library service. At its demise in 1943, the WPA had been successful in creating public library service in some form in all counties.

The State Library Board received its first appropriation of \$3,000 in 1943 and inherited the assets of the WPA. Under the leadership of Nancy C. Blair (1943-1946) and Estellene P. Walker (1946-1979), the State Library Board initiated its program with emphasis on State Aid to public libraries and a goal of statewide public library service. County or regional libraries were established in all forty-six counties. The pattern of unified library systems, each legally established and governed by a single library board, made possible a good level of service by eliminating expensive duplication and overhead and by sharing resources and personnel.

When the federal Library Services Act was passed in 1956, the State Library Board, by executive order of the Governor, was charged with administering and implementing within the state the library programs provided for in the Act. Through this Act, the agency's functions were expanded to include service to the blind and physically handicapped, development of library service in state institutions, and interlibrary cooperation.

In 1969, as the result of action by the General Assembly, the State Library Board was redesignated as the South Carolina State Library and assumed responsibility for public library development, library service for state institutions, service for the blind and physically handicapped, and library service to state government and state government agencies. The library occupied its new building at 1500 Senate Street in November 1969. In 1985, an act was passed providing for the recodification of the State Library's legislation. The new legislation reauthorized all functions of the State Library and consolidated a variety of authorizations found in state and federal laws and regulations, executive orders and budget provisos.

The 1985 legislation also provided the legal basis for the South Carolina Library Network, a statewide computer-based network developed by the State Library to serve all South Carolinians. Between 1985 and 1987, the State Library's bibliographic functions (cataloging, circulation, and interlibrary loan) were automated. A telecommunications network was then developed to give public, academic, and TEC libraries as well as agencies of state government on-line access to the State Library's catalog. The Department for the Blind and Physically Handicapped was automated in 1986. Automation has increased the productivity and efficiency of the State Library, while the network has enabled citizens throughout the state to have better access to library resources.

The State Library now has a threefold responsibility. As a library extension agency, it provides a staff of consultants to assist public and state

institutional libraries in strengthening services, administers state and federal aid to libraries, and encourages cooperation and resource sharing among all types of libraries. As a reference and research library, it maintains a comprehensive collection of books, documents, periodicals, films and other materials to supplement local library resources and provide information not available at the local level and to supply legislators, officials and state agency personnel with the information requested for planning and decision-making. It answers questions, lends books and materials, researches issues, prepares bibliographies, collects state and federal documents, and provides information about legislation and programs of other states and the U.S. government. As the regional library for the blind and physically handicapped, the State Library serves all handicapped readers in the state. Established in 1973, the Department for the Blind and Physically Handicapped now serves more than 8,000 registered borrowers, providing them with recorded books on disk or cassette tape, equipment to read these materials, and also large print materials for the partially sighted.

Public library development, the original mandate of the State Library, continues to be an essential function. Because county libraries were originally established by individual enabling acts passed by the General Assembly, the effects of the 1975 Home Rule Act upon local legislation necessitated passage of a statewide library act. In 1978 the Legislature amended the Home Rule Act to require counties to provide library systems. Act 564 (S.C. Code, 1979 Supp., Sec. 4-9-35 et seq.) stated:

"The General Assembly finds that county public libraries make a substantial contribution to the education and recreation of the residents of the state and merit the continued interest and support of state and local government."

Through the years the State's financial support for public libraries has grown significantly. Beginning in 1943 with only \$200 per county system, State Aid increased to \$1,500 per county by 1952. Years of effort, climaxed by the 1965 Governor's Conference on Public Libraries, resulted in the change to a per capita basis for State Aid. From twenty cents per capita (\$69,650) in 1966-67, State Aid increased in gradual steps to \$1.00 per capita in 1984-85 although mid-year budget cuts reduced that amount in succeeding years. With local, state, and federal support, South Carolina now has county-wide library service for all forty-six counties.

III. HIGHLIGHTS OF 1986-1987

Budget cuts and continuing fiscal restraints overshadowed all of the events of 1986-1987. The year began and ended with gubernatorial vetoes. In June 1986 Governor Riley vetoed items equalling .5% of the FY 87 appropriation, and Governor Campbell vetoed 1% of the FY 88 appropriation in June 1987. In between the Budget and Control Board mandated cuts of 2.6% in November and .8% in February. For five consecutive years, annual increases in appropriations have been offset by mid-year budget reductions, making both planning and management exceedingly difficult. Nevertheless, 1986-1987 was a year of accomplishment. Through extraordinary staff effort, automation, and shifting of resources, the State Library was able to maintain service levels and even surpass last year's

performance measures in most areas. The most serious effects of the budget cuts were on the library's book budget and on State Aid for public libraries which was reduced to \$.961 per capita. The corollary to state funding cuts is an increasing dependence on federal funds.

The foremost event of the year was the relocation of the Library for the Blind and Physically Handicapped to new quarters in the Columbia Mill Complex. After thirteen years in crowded, inadequate rented space, the library now has a permanent home. Initially the basement of the old mill seemed an unlikely location for a library; but the staff, working with the State Engineer's Office, proved that it is indeed possible to transform a "sow's ear into a silk purse". The new library is not only spacious but also functional, attractive, and handicapped accessible. With adequate space and automated circulation, it will now be possible to extend service to many more readers when the State is able to provide the necessary staff.

Network development continued throughout the year as the library completed Phase I and, with little fanfare, proceeded to implement Phase II. Public, academic, and TEC libraries, as well as some state agencies, received training and were given access to LION (Library Information On-line), the computer-based catalog. A second computer, a Microvax II, was added to mount the BPH data base, thus improving network response time on the original VAX 11-750. Planning for future enhancements is ongoing, with preparations or study underway for authority control, an electronic bulletin board, a union list of serials, and demonstration projects for service to school library media centers.

Two major pieces of legislation enacted by the 1987 General Assembly affect South Carolina libraries. The new Freedom of Information Act is intended to give citizens better access to information about the performance of public officials and agencies. Library boards must give advance notice of meetings, make their meetings open to the public, take most actions in public meetings, and make many records accessible to the public. The Freedom of Information Act does preserve the confidentiality of library registration and circulation records which was established by Act 108 of 1985. New obscenity legislation was enacted during the year in response to recommendations of the Meese Commission. Although intended to protect minors from pornography and directed primarily against adult bookstores, the legislation is so broadly drawn that many literary, artistic, or factual materials in libraries could be judged obscene by some individuals. Most library boards have reaffirmed their commitment to the Library Bill of Rights and Freedom to Read statements, while updating their selection policies and challenged materials policies to be prepared for possible objections.

The year was crowded with other events. More than four hundred library supporters attended the sixth annual Library Legislative Day on March 4. Twelve South Carolinians, including the State Library Board Chairman, Director, and Deputy Director, participated in ALA's Legislative Day in Washington on April 7. The State Library continued working with other agencies involved in the literacy initiative, hosted a statewide workshop for literacy workers and librarians, and made numerous LSCA grants to libraries for local literacy projects. The State Library Director was appointed to serve on Governor Campbell's GOLD (Governor's Outreach for Literacy Development) Committee.

Internally, the automation of accounting continued with full implementation of the BARS system. Staff members participated in planning and training for GAAP - the State's plan for implementing Generally Accepted Accounting Principles. The Field Services staff assisted county libraries in complying with the Single Audit Act. A classification and compensation study conducted by the Division of Human Resource Management resulted in the reclassification or reallocation of most staff positions. The staff continued to refine the library's planning process during the annual goal setting exercise and also worked on plans for disaster preparedness materials conservation, and information technology. Present services and programs were maintained and strengthened, and plans for future enhancements and innovations are on the drawing board.

IV. DIVISION OF LIBRARY DEVELOPMENT

A. ADMINISTRATIVE SERVICES

The General Administration of the State Library is carried out by a cabinet-style management team headed by the Library Director and consisting of the Deputy Directors and Department Heads. Within the policies and guidelines established by the State Library Board, this team plans development and extension of library service, prepares and administers the annual budget, administers state and federal aid for libraries, promotes the extension and improvement of library service, and recommends library legislation.

Support services for General Administration and for the entire agency are provided by the Administrative Services staff composed of nine individuals under the direction of the Business Manager. Support services are: (1) Information/Clerical Support, (2) Finance/Accounting/Payroll, (3) Personnel, (4) Procurement, and (5) Facilities Management.

The Information/Clerical Support staff provides services to all departments through word processing, mail service, telephone service, reprographics, records management, and motor vehicle management. Enhancements were made in word processing by the purchase of updated software programs and refinements to existing programs.

Finance/Accounting/Payroll handles all financial transactions and maintains records of state appropriations and federal funds under the Library Services and Construction Act. One full-time accountant and one full-time accounting technician processed 3,097 vouchers totalling approximately \$6,318,888.

During 1986-87, the State Library cooperated with the State's plans to improve accounting and procurement procedures. The Accounting staff attended training sessions conducted by the Comptroller General's Office on the new Generally Accepted Accounting Principles (GAAP). Upon implementation of the project, the State will be able to prepare a statewide Comprehensive Annual Financial Report (CAFR) on a GAAP basis. The BARS Accounting System was fully implemented by the State Library. The statewide vendor coding system using the nine digit Federal Employer Identification Number (FEIN) and Social Security Number instead of the five digit internal number was implemented.

The State Library is an Affirmative Action Equal Opportunity Employer, and operates under an Affirmative Action Plan approved by the South Carolina Commission on Human Affairs. The agency administers its personnel program in compliance with State personnel regulations and requirements. During the year, an agency-wide personnel study was conducted by the Human Resource Management Division and most positions were reclassified as a result.

The new State Telephone System 85 was implemented on July 4, 1986. As use of the system evolved, modifications and enhancements were made to help meet the agency's needs. Furniture and equipment purchases were made for the new offices housing the Department for the Blind and Physically Handicapped.

The Library Interpretation Program, supervised by the Deputy Director for Library Development, is a special project under Administrative Services. The goal of this project is to interpret the objectives and functions of the statewide library program. It plans and carries out a statewide program of publicity and public relations designed to publicize South Carolina libraries and to make the general public aware of library services available within the state. Through this project, the State Library publishes a number of newsletters and reports. During the year a consulting team reviewed the Library Interpretation Program and recommended plans for promoting library services available through the South Carolina Library Network and increasing awareness of the State Library services to state government agencies.

B. FIELD SERVICES

The Field Services staff is charged with the development and improvement of public library service throughout the state and of library service in the state institutions. Consultants provide assistance to library directors, boards of trustees, library staffs, library organizations, and state agencies and institutions.

Two special consultants work with all the public and state institutional libraries in the areas of children's and audio-visual services. Four general consultants (including the Field Services Director) serve as liaison between the State Library and the thirty-nine county and regional library systems which provide service to all of the state's forty-six counties. Each consultant works with specific county and regional libraries. The nature of the consultant's work depends upon the level of library service in the system and on the training, expertise, and experience of individual librarians. The state institutional consultant performs a similar function in the thirty-nine institutional libraries maintained by seven state departments and agencies.

In 1987 the Field Staff - via regular on-site visits, telephone, and correspondence - assisted librarians, trustees, citizens, and administrators of state institutions in determining the library needs of their communities and ways to meet those needs. They provided workshops and training programs for library employees and public library trustees; explored solutions for local problems with library directors and boards; and supplied information on topics ranging from policies and standards of service to budget preparation to building construction. The Field Staff is also responsible for administering State Aid to public libraries and for supervising grants-in-aid to public and state institutional libraries under the Library Services and Construction Act.

During fiscal 1986-87, the Field Services Librarians:

- worked with the 39 public library systems serving 46 counties of the state and with the 39 institutional libraries maintained by seven departments and agencies;
- made 419 field trips to public and institutional libraries;
- attended 70 local library board meetings;
- monitored library budgets including approximately \$18.8 million in local funds;
- administered \$3,001,246 in State Aid grants to public libraries;
- supervised LSCA projects providing approximately \$476,530 in grants-in-aid to public libraries and \$41,537 in grants to state institutional libraries;
- collected statistics and prepared and distributed statewide the Annual Statistical Summary;
- represented the State Library at local, state, and national conferences, conventions, workshops, professional associations, building dedications, civic organizations, and other state and local meetings;
- certified 41 professional and pre-professional public librarians;
- provided recruiting, placement, and training services for public librarians and for librarians in the state institutions;
- carried out additional duties either directly or through liaison activities.

State Aid for Public Libraries. The program of State Aid to public libraries has been funded continuously since 1943. For FY 87, the General Assembly appropriated \$3,121,820 to the State Library for distribution to the public libraries at the rate of \$1.00 per capita. However, the Governor vetoed .5%, and the State Budget and Control Board mandated additional across-the-board reductions in a First Interim Reduction in November of 2.6% and a Second Interim Reduction in February of 0.8%. The final allocation for the year was \$3,001,246, a reduction of 3.9 cents per capita for each county and regional library system.

The regulations under which the funds are administered require that participating libraries be legally established, provide county-wide service, maintain levels of county funding, and meet certain standards of service. Qualifying libraries may use State Aid funds to supplement staff salaries, to purchase books and audio-visual materials, to purchase or lease equipment and computer hardware and software, and to operate and maintain bookmobiles. These regulations ensure that State funds will not replace local funds and that the funds will be used to achieve a higher level of service. In 1987, all forty-six counties qualified for State Aid funds. Historically, State Aid requirements provided the incentive for establishment of library systems providing county-

wide service. In recent years, matching and maintenance of effort requirements have encouraged county governments to increase local support for libraries.

Federal Aid to South Carolina Libraries. The Library Services and Construction Act, the source of federal aid for library service, includes six titles: Title I, Public Library Services; Title II, Public Library Construction; Title III, Interlibrary Cooperation and Resource Sharing; Title IV, Library Service to Indian Tribes; Title V, Foreign Language Materials Acquisition; and Title VI, Library Literacy Programs.

General purposes of the Library Services and Construction Act are to provide for improved public library service, the construction of public library buildings, the strengthening of state library agencies, and the promotion of interlibrary cooperation among all types of libraries. Emphasis is also placed on reaching the unserved and the inadequately served.

Title I - Public Library Services: This title supports improved service to public libraries, institutional libraries and to special segments of the population. Grants-in-aid have been used to develop new programs of service, to improve the level of service in existing programs, and to strengthen book and periodical collections. Continuing education grants have contributed to the upgrading of library personnel. Outreach programs enable libraries to help the culturally disadvantaged, the functionally illiterate, the handicapped, and people who need special services. Grants are made for the automation of library services and the conversion of bibliographic records. Title I also provides grants to improve library service in state-supported institutions. In FY 87 the State Library was awarded \$1,132,157 for Title I.

Title II - Public Library Construction: During FY 87 this title provided funds for construction projects which contributed to improved service in the participating county library systems. (See Public Library Construction.) In FY 87 the State Library was awarded \$330,289 for Title II.

Title III - Interlibrary Cooperation and Resource Sharing: Programs funded under this title have resulted in improved communications, bibliographic access, interlibrary loan, consultant services, and study and planning. During FY 87, Title III projects were designed to contribute to the long-range goals of enhancing the state bibliographic network. The expanding statewide data base helps eliminate expensive duplication of materials and makes the state's library resources available to all South Carolinians. (See Network Development). In FY 87 the State Library was awarded \$253,241 for Title III.

Title IV - Library Service to Indian Tribes: South Carolina is not eligible to participate in this title since it has no recognized Indian tribes.

Title V - Foreign Language Materials Acquisition: This title was not funded in FY 87.

Title VI - Library Literacy Programs: This title is administered as a direct grant through the U.S. Department of Education. In FY 87 the State Library received a grant of \$25,000 to conduct a workshop on cooperative literacy programs.

Continuing Education For Librarians. Recognizing the need for well-trained personnel, the State Library has consistently supported a program of continuing education for public and institutional library personnel at all levels and for public library trustees. Grants are awarded to attend conferences, seminars, and academic courses in librarianship. The State Library also plans and provides workshops in specific subject areas when it deems necessary.

In 1986-87, nine pre-professional librarians were awarded grants to attend academic courses in the foundations of library and information science, computers and libraries, interpersonal communications, and the organization of library materials. A staff member also attended a workshop on bookmobile service in preparation for developing this service in a county which was purchasing its own bookmobile for the first time. Twenty-three non-professional librarians representing fifteen county library systems and the State Library attended the two-week course, Public Service for Library Technicians, offered by the University of South Carolina College of Library and Information Science and funded by the State Library. This intensive course concentrated on basic reference service and related information. The housing arrangements and academic setting also provided an excellent opportunity for the interchange of ideas and experiences among the participants.

Six professional librarians and a library trustee attended seminars and conferences on computers, bookmobile service, and the purchase of integrated automated systems.

Members of the State Library Staff attended workshops or seminars on financial management, personnel, public relations, and accounting.

In November, the State Library sponsored a Collection Management Workshop directed at the needs of public libraries with seventy-three participants in attendance. Literacy Initiatives: Working Together for a Literate South Carolina was held in May. This literacy workshop was funded under an LSCA Title VI grant with 160 participants representing local literacy councils, literacy volunteers, public libraries, and government agencies which work with literacy programs. Children's Services workshops included Programming for Pre-Schoolers held in February and regional workshops in the spring on the summer reading program. The State Library's Department for the Blind and Physically Handicapped sponsored a workshop for public library personnel for the purpose of familiarizing them with its services.

Library Service for the Disadvantaged. Grants totalling \$56,700 were awarded to seven county library systems to establish and extend library service to the disadvantaged during FY 87 and \$80,000 was reserved for five county and regional library systems pending qualification for county up-grade grants.

Providing access to library services to the disadvantaged in rural and other isolated areas continues to be a serious problem in South Carolina. Grants were made to two county library systems to establish and improve bookmobile programs, to one library system to improve deposit collections in rural areas, to two library systems for outreach programs and to one library system to improve service to homebound and other isolated residents.

Special Services for the Disadvantaged county up-grade grants are available to assist qualifying library systems to develop minimum levels of service and

financial support prerequisites for outreach services. Library systems qualify for matching funds by identifying basic service and funding needs and providing a commitment to increased local funding from local governmental sources. In FY 87 four regional library systems and one county library system were identified as eligible.

Literacy Program. The library literacy program was designated as a separate program in FY 87 and awarded grants totalling \$70,582 to fifteen county and regional library systems. These grants were used to extend and improve library service to the illiterate and the functionally illiterate segments of the population. Prior to FY 86, awards for literacy projects were made as part of the Library Services to the Disadvantaged program.

With one out of every four adults twenty-five years of age and over identified as functionally illiterate, continued emphasis was placed on planning, development, and implementation of cooperative programs to combat the problems of illiteracy in South Carolina. In all projects, cooperation and coordination with local agencies and organizations such as the local office of adult education, literacy councils, recreation departments, health agencies, social service agencies, etc., was stressed.

Grants were awarded for programs designed to prevent adult illiteracy as well as for traditional adult literacy programs.

The majority of grants were made to plan, develop, and provide collections of materials to assist tutors with the teaching of reading and which met the reading level and interest of adult students. Several grants were made to explore the use of new technology with literacy programs.

Audio-Visual Services. The Field Service Librarian for Audio-Visual Programs is responsible for planning and administering a statewide film program for public libraries, institutional libraries, and community organizations. He trains staff in the use of films as a means of extending the informational resources of the local library and selects and maintains the film collection and A-V equipment. During FY 87, he made thirty field trips to provide in-service training, technical assistance, and help in programming and promoting the use of A-V materials in public and institutional libraries. Four regional preview sessions were held this year featuring children's films.

The State Library's audio-visual collection is comprised of the following materials:

16mm motion picture films	35mm filmstrips
3/4" U-Matic video tapes	35mm slides
1/2" VHS video tapes	Audio cassettes
1/2" Betamax video tapes	Puppets

The 2,027 16mm films make up the bulk of the audio-visual collection. Such a collection at the state level prevents costly duplication of expensive resources and makes available to the public a much larger selection of materials than any library could provide alone. A total of 3,650 audio-visual materials were booked by the department in FY 87 for 4,939 programs. In addition to serving public and institutional libraries directly, the State Library lends audio-visual materials through local public libraries to civic groups, churches,

nursing homes, day care centers for children, hospitals, museums and zoos. In FY 87, thirty-five public libraries participated in lending audio-visual materials to community groups and organizations.

In addition to the materials mentioned above, the State Library also circulates and maintains audio-visual materials which have been put on permanent loan by the South Carolina Literacy Association. The Field Service Librarian for Audio-Visual Programs also supervises the circulation and maintenance of the audio-visual materials in the Early Childhood Media Clearinghouse Collection.

During FY 87, the publication of the quarterly newsletter "News About the A-V Scene" was continued. This newsletter, which deals solely with information in non-print format, is mailed to every public library (including branches) and to every state institutional library in South Carolina.

In FY 87, the State Library automated the booking and circulation of its audio-visual materials. Switching from a manual system will streamline booking procedures, provide better control of the collection, and make efficient use of staff time.

A First Supplement (January 1987) to the 1985 Catalog of Audio-Visual Materials was compiled, printed and distributed during this fiscal year.

Library Service to Children. Early and continued exposure to books and libraries is important in helping children learn to read and study. The South Carolina State Library is committed to helping public libraries provide the best possible service to children. The children's consultant helps public and institutional libraries with planning and evaluation, collection development, program planning, staff training and public relations.

Service to children extends also to encouraging parents and adults who work with children to use library resources for their own enrichment and to make libraries and reading a regular part of family and group life. The State Library is participating with the USC College of Library and Information Science in planning a promotional effort directed to parents and caregivers. The "Read to Someone You Love" campaign will be implemented during 1987-88.

A new edition of the Early Childhood Media Clearinghouse Catalog was prepared and distributed. This catalog lists the non-print resources about early childhood development and education that are available on loan from state agencies, institutions and organizations for use in staff and parent education. Users include child development centers, social service agencies, churches, schools and other state agencies.

During 1986-87, the children's consultant made fifty-nine field visits to public and institutional libraries. A workshop on "Programming for Preschoolers" was held for staff of public libraries. The Palmetto Pete Summer Reading Program, sponsored cooperatively by the State Library and public libraries throughout the state, enrolled, 28,290 children and attracted an attendance of 42,352 at group programs during the summer of 1986. The State Library again sponsored regional workshops to help libraries plan for the 1987 Summer Reading Program. A successful summer tour by Chopstick Theater of Charleston was coordinated by the State Library with local funding supplemented by a grant from the South Carolina Arts Commission.

The State Library was a co-sponsor of the first "Augusta Baker's Dozen: A Celebration of Stories" which attracted large audiences to hear storytelling by nationally known figures and to participate in lectures and workshops on storytelling.

Institutional Library Services. The Institutional Library Services Program of the South Carolina State Library assists in the development and improvement of libraries in state-supported institutions. The State Library provides monetary and professional assistance to these libraries. This program includes the services of consultants, workshops for administrators and librarians, scholarships and workshops for library personnel, reference and interlibrary loan, and grants-in-aid for the purchase of materials. The emphasis of this year's workshops has been on self-study for institutional librarians in terms of library administration, personnel, finance, technical services, collections and circulation.

In FY 87 thirty-nine institutions, maintained by seven state departments and agencies, provided library service to residents and participated in the LSCA grant project. Twenty-four of these offer full service under the direction of qualified library personnel. Included in this number are nine adult correctional institutions. In addition, eight other adult correctional institutions are served from a central library division maintained by the Department of Corrections via bookmobile and book van.

Four institutions too small to provide full-service library programs are served by a special project of the State Library. Two addiction centers, a vocational rehabilitation center for physically disabled persons, and a long-term care mental health facility annually receive collections of paper bound books especially selected for the use of their residents in recreation or therapy.

In FY 87 the State Library's Institutional Library Consultant maintained liaison with the South Carolina Bibliotherapy Association and made eighty-nine field trips to work with state institutional librarians and administrators.

Public Library Construction. The State Library provides consultant service in the planning of public and institutional library buildings; advises library boards, library administrators, and architects on state and federal regulations and procedures; administers the federal LSCA Title II grant program and supervises public library construction projects receiving grant funds. State Library staff work with public library staffs, boards, and local officials in the writing of building programs, drawing of initial floor plans, critiques of architectural drawings, furniture layout, fund raising, and justifying need to funding authorities.

The key word concerning public library construction in FY 87 was planning. Only one project, a new Darlington County Library headquarters, was under construction. A \$150,000 FY 85 LSCA Title II grant was awarded to assist with this project. Plans to expand the headquarters of the Beaufort County Library and to add an elevator for handicapped accessibility at the Sumter County Library were being finalized. These two projects will complete FY 85 funding.

The State Library has \$316,482 in FY 86 funding and \$330,289 in FY 87 funding available from LSCA Title II. Libraries in a number of counties are in

the process of developing written building programs, raising funds, and working with architects prior to submitting applications for LSCA Title II funds. Among these are Aiken County (new headquarters), Chester County (expansion of Great Falls Branch), Georgetown County (new headquarters), Laurens County (new headquarters), Kershaw County (expansion of headquarters), Orangeburg County (expansion of headquarters), and York County (new Lake Wylie Branch). Most of these projects should be funded in FY 88.

C. LIBRARY SERVICES TO THE BLIND AND PHYSICALLY HANDICAPPED

The major event of the year occurred in November 1986 when the Department for the Blind and Physically Handicapped (DBPH) moved into the Columbia Mill Complex. The library welcomed this move into a fully handicapped accessible facility after thirteen years in inadequate rental quarters. The 28,000 sq. ft. will allow the library to expand its programs, increase the size of its materials collections, develop a sophisticated volunteer program, and generally improve the overall level of service. The library was formally dedicated on March 25, 1987.

The State Library provides this service in cooperation with the Library of Congress, National Library Service for the Blind and Physically Handicapped (NLS). Any South Carolinian who is unable to read conventional print due to a visual or physical handicap is eligible for this service. This includes, but is not limited to, blindness, double vision, cataracts, glaucoma, stroke, paralysis, palsy, multiple sclerosis, and learning disabilities. The Library of Congress provides books and magazines in recorded disc and cassette formats, as well as the required playback equipment, and books in braille. The State Library provides staff, facilities, operating costs, and a supplemental collection of books in large print. It also contracts with the North Carolina State Library for braille service. Reading materials are available in all subject areas and for all age groups. No postage is required to either mail materials to readers or to return them to the library.

Service was provided to 9,414 readers in FY 87. There has been a steady increase in the number of people served since the State Library assumed responsibility for this service in FY 73. At that time only 1,800 were being served. By contrast 1,343 new readers were registered in FY 87 alone. An estimated 43,705 South Carolinians are potentially eligible. In response to requests, a total of 241,971 books and magazines were circulated this year, an increase of more than 100,000. The new automated system has enabled a small staff to greatly increase book circulation. This total does not reflect the 70,000 magazines sent to readers directly by the producers upon notification by the State Library.

The collection of materials numbered 152,792. Due to the lack of space at its former location the collection did not grow as it should have. It is expected that this will be corrected in the future.

Automated system performance was improved when a DEC Microvax II computer for DBPH was installed in February 1987. Until that time DBPH shared time on the South Carolina Library Network's DEC VAX 11/750.

Because services are primarily via mail from Columbia, South Carolina, a newsletter in large print and on cassette tape and an In-WATS telephone line with an after hours recording device serve as principal means of communication. The In-WATS line recorded over 7,000 calls using 437.5 hours.

Even though no formal public relations efforts were carried out due to the pressures of moving and of automating departmental services, 1,343 new readers were reached in FY 87. Plans are being developed to participate in the NLS Public Relations Program which will involve public service announcements for television and radio. In concert with this, staff will exhibit at conferences, speak before appropriate consumer groups, and schedule media talk shows to promote this service. Public libraries are also encouraged to promote this service by identifying potential patrons and generally assisting with publicity efforts. Handicapped people are also encouraged to utilize appropriate services of their public libraries. Five county libraries - Anderson, Charleston, Florence, Greenville, and Spartanburg - have small browsing collections of materials for use by local residents.

Despite the advantages of a new location and the benefits of automation, there is still the problem that the present staff is inadequate to meet the needs of our patrons. A consultant visit from NLS pointed out the immediate need for a volunteer coordinator and two more clerks. The State Library will request the creation of a volunteer coordinator position in the FY 89 budget.

V. DIVISION OF LIBRARY SERVICES

A. READER SERVICES

Reference and Information Services to State Government. The State Library serves as a major source of information for state government agencies. Reference librarians research the library's collection of materials and specialized information sources to answer state employees' information requests. These requests vary in complexity depending on the type of information needed by state government personnel to carry out their job assignments. Questions answered by librarians range from brief, direct inquiries such as the address of a manufacturing corporation or the latest consumer price index figure to multiple-concept information requests such as the link between education and economic development.

Reference librarians also provide assistance and guidance to state government personnel in using the library's facilities and collection. Much of this assistance is provided on a one-to-one basis, but also during the year ten group orientation sessions were provided to different state agency units to familiarize personnel with the library's collection and services.

To improve its ability to meet the information demands of state government, the reference staff continually attempts to identify and purchase new publications of interest to state government. Materials specifically recommended by individuals in state government are frequently ordered for the collection as well. By acquiring, housing, and offering these informational materials at one central location, the library attempts to eliminate the need for individual state agencies to purchase and maintain extensive, and often very expensive

collections of research materials. During the year, the library began purchasing some materials in audio-visual format as part of its circulating collection. A number of instructional foreign language audiotapes were added to the collection as well as videotapes relating to library and general management concerns.

In order to focus attention on new materials which are continually being added to the State Library's collection, New Resources, a selective listing of new books, journal articles, and government publications of interest to state government, is mailed on a monthly basis to 460 state employees and to all state legislators during the legislative session. State agency personnel and legislators may then borrow or obtain photocopy of any items listed in New Resources.

In its endeavor to meet the daily information needs of state government agencies, the State Library has developed particularly strong collections in the areas of political science, the social sciences, human resources management, and education. In the field of education, the State Library maintains a complete collection of the Education Resources Information Clearinghouse (ERIC). This collection represents the most extensive set of research materials relating to various aspects of education in the nation. The ERIC document collection, published in microfiche format, currently numbers over 180,000 separate publications. The collection is used extensively by the South Carolina Department of Education, teachers, school administrators, students, and other researchers.

The library is frequently called upon for information relating to or produced by federal and South Carolina governmental agencies. Laws, regulations, statistical figures, etc., are often sought by state agency personnel in documenting their research and planning projects. The library attempts to support these information needs by subscribing to such publications as the Code of Federal Regulations, Federal Register Index, and American Statistics Index. Government documents issued by such agencies as the U.S. Department of Commerce, U.S. Bureau of Labor Statistics, and the South Carolina Division of Research and Statistical Services receive frequent use. In addition, the library serves as an affiliate of the State Data Center to provide South Carolina citizens with access to census data.

The Grants Research Collection represents another specialized group of materials which is designed to inform fund-raisers and grant seekers about the funding patterns, policies and key personnel of major philanthropic foundations and corporate philanthropic programs across the country. In its role as a regional collection of the Foundation Center for South Carolina, the State Library receives tax returns filed with the Internal Revenue Service by South Carolina philanthropic foundations. These returns contain often difficult-to-locate information on trustees, grants, and geographic focus of the foundations. The collection is frequently used by individuals in raising funds to support non-profit organizations in the state. During the latter part of the year, the third edition of the South Carolina Foundation Directory was completed. Information compiled on South Carolina philanthropic foundations was also down loaded into the library's computerized information system in order to provide on-line access to the information and a means to easily update foundation reports.

To enhance its research capabilities, the State Library provides Data Search, a service to locate information contained in computerized data bases. The library currently has access to over 380 informational data bases offered by various data base vendors. During the year, the library expanded its access to

new data bases. In addition to its previous use of DIALOG Information Services, the State Library became a subscriber to several new data base services. These include: BRS Information Technologies, ISIS (Integrated States Information System) produced by the Council of State Governments, SCOIS (South Carolina Occupational Information System) produced by the South Carolina Employment Security Commission, CUFAN (Clemson University Forestry and Agricultural Network), and LUIS (Library User Information Service), the automated catalog of the Clemson University Library. These data bases vary in content and format, including bibliographic citation listings, full-text articles and reports, directory data, and numeric tabulations. Increasingly more of this information is being produced solely as a computerized product with no equivalent in paper form. As this trend continues, a thorough knowledge of existing data bases and the ability to efficiently search them takes on a growing importance in the provision of current accurate information to state government. To ensure that the research staff possesses the necessary skills to perform efficient computerized searches, seven reference librarians attended a total of four different specialized instructional sessions on data base searching during the year. A total of 184 Data Search requests were processed by the end of the year. Since the State Library does not receive a specific appropriation to support this service, all actual search costs, including data base and telecommunication charges, must be paid by the requestor.

State agency use of library facilities grew during the year. In 1986-87, 17,140 individuals visited the library. State employees officially registered as library borrowers totalled 1,939. Adding to its potential library clientele, the State Library extended direct borrowing privileges to permanent employees of state-supported academic institutions in the Columbia metropolitan area in January 1987. All directors of state agencies, as well as all constitutional officers, were issued new library cards during the year. The library's hours of operation were expanded from 8:15 a.m. to 5:30 p.m. to allow state employees the opportunity to use the library either before or after their regular office hours. Circulation figures and research requests both increased over the previous year. Members of state government borrowed 29,705 library items and received assistance with 9,676 reference questions.

During 1986-87, the library embarked on a program to provide state agencies with remote dial-up access to the library's automated catalog - LION (Library Information On-line). Nine state agencies received training and began using their in-house computer equipment to search the library's catalog from their own offices. To supplement the initial on-site training sessions, the library also produced user manuals and instructional brochures which were distributed to interested agencies.

To educate state agency personnel and members of the general public in the use of the library's new automated public access catalog, staff members devoted many hours to instructing library patrons on an individual basis about correct search procedures. In addition, fifteen scheduled demonstrations were made for various groups of state employees and library representatives.

Due to changes brought about by the automation of circulation and patron registration functions, new internal procedures were developed and adopted. Such processes as check-out and renewal of library materials, production of overdue notices, maintenance of patron information files, circulation statistics, and current location status of materials in the collection were greatly

streamlined, thus eliminating some extremely labor-intensive, time-consuming tasks.

Legislative Reference Service. The State Library provides a special information service for members of the South Carolina General Assembly, legislative committee researchers, and legislative interns. Research requests vary from information needed for speech preparation to extensive background information on legislative issues. To assist in researching these needs, the State Library subscribes to two major services which report on significant governmental actions occurring in other states - From the State Capitols and State Policy Reports. The research staff also draws upon the entire library collection as well as resources available through interlibrary loan in order to answer legislative requests. In order to advertise its services to the General Assembly, the State Library issued new individual library cards to all state legislators. During January, 1987 an orientation program was held for graduate student interns assigned to various legislative committees to acquaint them with the resources and services of the State Library. During the year, the library answered 281 research requests from the legislature and provided 2,983 pages of photocopy free of charge in response to legislative requests.

Interlibrary Loan Service. The State Library provides statewide reference and interlibrary loan service to supplement local library resources and acts as the central component of a statewide network designed to supplement and coordinate library resources within the state. Since no single library is able to meet the diverse informational needs of its patrons, the collection of the State Library has been consistently developed as a source upon which local libraries may draw to make information and materials available to South Carolinians in their own communities. Requests submitted to the State Library by public, state institutional, academic, and special libraries reflect the efforts of libraries to supplement their own holdings for those citizens interested in improving the quality of daily life; educating themselves and their children; understanding state, national, and international affairs; and coping with the challenges of the workplace. To provide their patrons with needed information, libraries submit requests for materials on a variety of topics, from raising plants and animals to identifying and locating federal regulations or specifications. The State Library draws on its own collection for both research purposes and to supply materials. In addition, the computerized search capabilities of its Data Search service are utilized to supplement standard research methods in providing information to public and state institutional librarians.

During 1986-87, the Interlibrary Loan Service processed a total of 22,295 requests, which included 5,080 information requests and 17,215 title requests. In response to these requests, 26,294 books and 19,196 pages of photocopy were mailed to all types of libraries.

Many of the activities of 1986-87 were related to the implementation of the South Carolina Library Network, a computer-based state library network and communication system designed to give libraries better access to the collections and services of the State Library. Network training sessions were conducted throughout the year for public, academic, and special libraries in South Carolina. Upon completion of their training, these libraries began using the computerized Network to identify the holdings of the State Library and to place requests for information and materials on-line. In previous years, the majority of requests had been transmitted via an In-WATS telephone service provided for

public and state institutional libraries. This In-WATS service was discontinued as of December, 1986. As of the end of the year, the majority of interlibrary loan requests were being submitted via the Network with occasional requests received through the mail, SOLINET, or telephone.

Interlibrary Loan internal procedures were greatly affected by the automation of the library's catalog and circulation system as well as the operation of the Network. As a result, Interlibrary Loan staff members underwent extensive training and were also involved in the development and implementation of new procedures in all aspects of their work. As a result of the implementation of the Network, many operations which formerly had been performed manually were now being done by computer. Staff members, consequently, were freed for activities which insured better service to users and an even faster turnaround on requests than had been possible in the past.

The advent of the Network saw an immediate impact on the number and types of requests placed with the Interlibrary Loan Service. For the first time, libraries could not only immediately identify title holdings of the State Library, but they could also perform their own subject searches when appropriate. Titles requested on-line were processed and mailed by staff within 24 hours in most instances. Through electronic mail, libraries continued to make requests for information, photocopy, books, government documents, and location information which could not be placed on-line through the catalog itself. The improved access capabilities of the South Carolina Library Network were extended to South Carolina academic and technical college libraries during a series of training sessions held in the spring of 1987. During the year, academic and special libraries submitted 3,728 requests to the State Library, borrowed 3,624 books, and obtained 5,824 pages of photocopy.

To assist libraries in placing requests for photocopies from journals, the State Library issued the fourth edition of its periodicals holdings list. This computer-produced microfiche list was distributed to all public and academic libraries in the state to help them identify the more than 2,200 journal titles available at the State Library.

Both libraries and state employees may request information on research materials that are not part of the State Library's collection. To provide information concerning the locations of these materials in other library collections, the State Library owns several union lists of both books and periodicals. The State Library, as a member of the Southeastern Library Network (SOLINET), also has access to the OCLC computerized data base of more than 12 million items held by more than 6,000 libraries across the country. More than 40 South Carolina libraries are presently SOLINET members. The SOLINET data base is used extensively to locate materials held in other libraries. In 1986-87, the Interlibrary Loan Service provided locations for 1,123 books and supplied this information to all types of libraries in South Carolina. Through its membership in SOLINET the State Library participates in an OCLC Interlibrary Loan Subsystem which permits member libraries to place and receive interlibrary requests. This system was used to support the library's service to state government by locating and requesting research materials which were not owned by the State Library, and which many times were not available in the state.

The library also received requests from libraries outside of the state wishing to borrow materials in the State Library. During the past year, inter-

library loan requests were received from 46 other states and Canada. Many of these requests were for materials in the State Documents and South Carolina collections.

South Carolina Library Network. The South Carolina Library Network is a statewide library and information network operated by the State Library. The network's long-range goal is to enable local library users to have access to the state's total library resources. Through the use of automation and telecommunications technology, the network promotes interlibrary cooperation and resource sharing.

As the central component of the network, the State Library uses an integrated library automation system, ATLAS - A Total Library Automation System software produced by Data Research Associates to manage its data base of more than 700,000 items. The State Library's internal functions which are presently automated include circulation, cataloging and inventory maintenance, public access catalog, interlibrary loan, and audio-visual booking. Thirty-two terminals within the State Library are connected to the library's central computer which is housed and maintained by the Computer Services Division of the University of South Carolina under a contractual arrangement.

The communications component of the network has dial-up access capabilities permitting remote libraries and state agencies to search the State Library's data base and place interlibrary loan requests using a variety of microcomputers and terminals. The network plan established a multi-phase schedule for extending access to libraries and state agencies to assure sufficient time for training and evaluation. During the year emphasis was placed on increasing user participation. Between July and September, the State Library staff conducted fourteen training sessions for staff from twenty-eight county libraries, thus completing the training for all forty-six county libraries begun the previous year. The libraries immediately began using the network, thereby making South Carolina the first state in the nation in which all county libraries have on-line access to a back-up research library.

Between February and April 1987, access was extended to academic libraries; and the State Library staff conducted seven training sessions for thirty-eight academic and technical college libraries. Currently the following academic libraries are participating in the South Carolina Library Network:

Technical Colleges: Aiken, Beaufort, Chesterfield-Marlboro, Denmark, Florence-Darlington, Greenville, Midlands, Orangeburg-Calhoun, Piedmont, Spartanburg, Sumter, Tri-County, Trident, Williamsburg, and York.

Universities and Colleges: Bob Jones, Central Wesleyan, Clemson, College of Charleston, Columbia Bible and Seminary, Columbia, Francis Marion, Furman, Medical University of South Carolina, North Greenville, Presbyterian, USC-Aiken, USC-Beaufort, USC-Coastal, USC-Lancaster, USC-Spartanburg, USC-Sumter, USC-Union, USC Processing Center, USC School of Medicine, Winthrop, and Wofford.

The remaining academic libraries are not yet participating due to a lack of appropriate equipment.

Ten State agencies in the Columbia area were trained in the use of the network, and their staff began to search the State Library's data base from their offices. The major difficulty encountered in state agency participation was due to the many different modems available for agency use.

Plans were made for a Public School Library Media Center Demonstration Project to determine the feasibility of school library media center participation in the network. In addition to automating individual school library functions, the project will study resource sharing at the school district level. The School District of Oconee County and the Lexington County School District V were selected for the two-year pilot project to be conducted in 1987-89.

In developing network plans, the State Library has been assisted by the South Carolina Task Force on Library Automation and Networking, an advisory group consisting of representatives of all types of libraries. In September, 1986, the Task Force appointed a special committee to study the feasibility of a statewide union list of serials containing the periodicals held by South Carolina libraries. As a future component of the South Carolina Library Network, the statewide serials list would enable libraries to more effectively obtain needed journal articles and eliminate duplicate purchases of expensive serials. During future phases, the South Carolina Library Network will have an expanded data base including statewide locations of special collections deemed most significant for interlibrary loan and resource sharing. In addition to the union list of serials, the possible components include state and federal documents, newspapers, local history and South Caroliniana.

Eventually the network will permit the linking of local automated library systems in order for the libraries to communicate easily and share resources fully. To that end, the State Library continues to encourage the planning for local automated systems and the creation of local data bases. During the year, the State Library awarded Library Services and Construction Act Title III grants for automation studies for the Abbeville-Greenwood Regional Library, the Aiken-Bamberg-Barnwell-Edgefield Regional Library, and the Sumter County Library. Grants for the conversion of older catalog records to machine-readable format were awarded to Clemson University, the University of South Carolina, the University of South Carolina Processing Center, the Horry County Library, and the Orangeburg County Library.

Government Documents. In 1970 the South Carolina State Library became a selective depository for federal publications in the U.S. Superintendent of Document's Depository Program. The State Library receives 50.6% of all publications available through the program.

Since June 1986, the libraries of Clemson University and the University of South Carolina have served as a joint regional federal depository library, receiving between them all publications available through the U.S. Superintendent of Documents Depository Program. This arrangement ensures South Carolinians access to the full range of federal publishing and enables the fifteen selective depository libraries in the state to discard old, out-of-date or unused publications to one of the regionals.

The State Documents Depository Program began in July 1982 after passage of the State Documents Depository Act. The Act requires all agencies, branches

and institutions of state government to send fifteen copies of their publications to the State Library which is responsible for the program. The State Library catalogs and retains three copies of all publications and sends the other twelve copies plus associated cataloging information to ten in-state and two out-of-state affiliate depository libraries. In the five years since the inception of the State Documents Depository Program, the affiliate libraries have been able to establish increasingly useful collections of information sources relating to South Carolina and the operation of South Carolina state government. A citizen of South Carolina can now obtain manufacturing employment figures by county or information on the performance of a particular school district by visiting a nearby depository library. The State Library's depository program is coordinated with the Department of Archives and History's record retention program to insure availability of state information without duplication.

During 1986-87, 1,215 state publications were distributed to affiliate depository libraries. Of these, 345 were new titles and 794 were additions to existing titles. Seventy-six titles distributed were considered too general or ephemeral to be cataloged.

Affiliate state publications depository libraries in South Carolina are Clemson University, College of Charleston, Francis Marion College, Greenville County Library, Lander College, South Carolina State College, Spartanburg County Library, USC-Beaufort, USC-Coastal, and Winthrop College. The Library of Congress and the Center for Research Libraries in Chicago also receive one copy of South Carolina state publications.

B. TECHNICAL SERVICES

The Technical Services Department coordinates the selection, ordering and processing of all materials for the State Library collections, including audio-visual materials and state and federal documents. The book stock is a one-copy, non-fiction collection, except for South Carolina titles. It includes periodicals and newspapers in both paper and microfilm, and services such as ERIC in microfiche. There are separate collections of both federal and state documents. Principal additions during the year are as follows:

<u>Item</u>	<u>Additions</u>	<u>Total</u>
Books	8,288	188,869
State Documents	3,013	29,434
Federal Documents in print	6,010	86,303
Federal Documents in microfiche	12,781	90,049
Microfilm reels	728	14,945
Microfiche	17,463	340,216

Being a member of Southeastern Library Network, a computerized network of libraries affiliated with the national network, OCLC, Inc., has made it possible to catalog new acquisitions quickly and efficiently and to continue input of retrospective holdings into the data base. The total number of retrospective titles added this year was 2,252, bringing the total to 101,915 titles. The

greater part of this project has required no extra personnel and no extra time. Adding the library's holdings to the national network data base has resulted in greater use through interlibrary loan. Having a machine-readable data base has made it possible for us to automate this library to better serve both state agencies and the county libraries.

Barcoding continued this year, and, although Technical Services did not do the barcoding of the state documents and reference collections, the staff did handle all problems which arose concerning the records. As each new problem arose, new procedures were devised to handle each process. Some procedures were transferred to other departments, and some procedures transferred from other departments.

Records for the Audio-Visual collection were added to the data base in FY 87. This enabled that department to automate its bookings to the county libraries.

The number of new publications by state agencies continues to grow. An additional 668 state document titles, for a total of 1,871 new titles, were cataloged during the fifth year since depository legislation was enacted. Each year has seen an increase over the year before. The increase for FY 87 was 248 over the previous fiscal year. Cataloging information is still supplied with each new title sent to the depository libraries, and the Checklist of South Carolina State Documents is issued quarterly with an annual cumulative index. The Checklist is also fully automated.

The State Library cooperates with the Library of Congress in the National Coordinated Cataloging Operations, an on-line authority file of personal, corporate or geographic names; uniform titles; and meetings. This makes for uniformity in cataloging so that on-line access will be possible across the country. Names established by the State Library are entered by the Library of Congress into its on-line name authority used by the libraries of North America through the bibliographic utilities of OCLC, RLIN, WLN, and UTLAS. The South Carolina State Library was the eighth state to join in this cooperative effort.

VI. STATE LIBRARY AWARDS

Each year the South Carolina State Library honors individuals, organizations, or libraries which have made outstanding contributions to library service in South Carolina. One Award was presented during the 1986 annual conference of the South Carolina Library Association. The Public Service Award was presented to Mary and Laurens Moore of Gaffney, South Carolina, in recognition of their service as Library Ambassadors for the Cherokee County Library. Since January, 1976, Mr. and Mrs. Moore have broadcast a popular radio show about books and programs at the library. In addition, Mr. Moore has served on the Library Board for more than ten years.

VII. VOLUNTEER SERVICES

Volunteers contributing time and services benefit the State Library and particularly the Department for the Blind and Physically Handicapped. Members of boards and advisory councils represent user groups and aid in the development of policies and services. Individuals and groups perform tasks such as narration of recorded material, repairing Talking Book machines and headphones, preparation of newsletters and other mass mailings, and other tasks for which there is not sufficient staff time.

Since the Department for the Blind and Physically Handicapped has moved into larger quarters with space for volunteers to work with new equipment such as a sound booth and recording equipment, it is anticipated that the volunteer program will soon begin to expand.

During 1986-87 some ninety-four individuals contributed 1,529.75 hours of service as shown below:

State Library

Library Board	7 members	76.25 hours
LSCA Advisory Council	10 members	20 hours
Task Force on Library Automation & Networking	15 members	30 hours

Department for the Blind and Physically Handicapped

Advisory Council	11 members	8 hours
Telephone Pioneers	39 members	1,071 hours
Other Volunteers	19 members	324.5 hours

Based on formulas from the Governor's Office the service value of these volunteers to the State Library is more than \$12,174.25. Cash donations bring the total volunteer investment in the agency to more than \$14,313.25 in the past year. Staff time devoted to this program was approximately 135 hours.

VIII. PUBLICATIONS OF THE SOUTH CAROLINA STATE LIBRARY
1986-87

- Annual program, Library Services and Construction Act, 1986-1987 [1987] [17], 101 p.
- Bibliography of literacy resources in the South Carolina State Library collection. 1987. 10 leaves.
- Checklist of South Carolina state publications. Apr.-June 1986 -- January-March 1987. quarterly.
- Early Childhood Media Clearinghouse catalog: a listing of audio-visual resources available in South Carolina on topics relating to early childhood development and education. 2nd ed., 1986. xvi, 163, 34p.
- Enjoy reading with McRead A. Book at your public library: summer reading manual. 1987. 31p., [13] leaves.
- Enjoy reading with McRead A. Book at your public library: summer reading manual supplement. 1987. 23 leaves.
- Library Services and Construction Act: federal funds that work for South Carolina libraries. 1987. (brochure, 6 p.)
- Library Services and Construction Act: FY 86 summary. 1986. 16 p.
- New resources for state government and agencies. v. 17, no. 7--v. 18, no. 6 (July 1986--June 1987). monthly.
- News about library services for the blind and physically handicapped. v. 12, nos. 1--4 (Sept. 1986--May 1987). quarterly.
- News about the A-V scene. v. 7, nos. 1--4 (Aug. 1986--May 1987). quarterly.
- News for South Carolina libraries. v. 18, no. 7--v. 19, no. 6 (July 1986--June 1987). monthly.
- Periodical holdings. May 8, 1987. 2 microfiche.
- Report, 1985-86. 57, [4] p.
- South Carolina program for library development, 1986-1989, under the Library Services and Construction Act, (PL 98-480, FY 1987). [1987]. 72 p.
- South Carolina public library annual statistical summary, FY 86. [1986]. 34 p.
- South Carolina public library buildings funded with LSCA Title II ("Jobs Bill") grants, 1983-1985. 1986. 23 p.
- South Carolina state documents classification system. 1986. ii, 22 leaves.
- South Carolina State Library audio-visual services catalog. 1st supplement, Jan. 1987. [2], viii, 114, 32 p.

**IX. STATE LIBRARY COLLECTIONS
SUMMARY REPORT***

COLLECTIONS IN DATA BASE

Books	188,869
SC State Documents	29,434
Audio-Visual	2,654
Other Materials	342,228

ADDITIONAL MATERIALS NOT IN DATA BASE

Federal Documents	176,352
Periodicals (Reels and Bound Volumes)	14,655
Newspapers (Reels)	2,113

DEPARTMENT FOR THE BLIND AND PHYSICALLY HANDICAPPED

Materials in Data Base (all formats)	152,792
--------------------------------------	---------

GRAND TOTAL	909,097
-------------	---------

*Figures reflect number of items held. See following pages for detailed holdings.

**STATE LIBRARY COLLECTIONS
DETAILED REPORTS
June 30, 1987**

COLLECTIONS IN DATA BASE

Book Collections

	Volumes Added	Volumes Withdrawn	Total Volumes
General	8,288	1,553	160,958
Reference	7,269	139	13,245
S. C. Total			13,303
Adult	1,258	482	13,061
Non-Book	3		12
Juvenile	3		242
Salley	0		1,363

South Carolina Documents Collection

Added 1986-87	Superseded Withdrawn	Total June 30, 1987
3,013	697	29,434

Audio-Visual Booking Collections

	Added 1986-87	Total June 30, 1987
Items	124	2,654
16mm Film		2,026
Cassettes		9
Filmstrips		276
Slides (Titles)		23
Videotapes		282
Puppets		38

Other Materials

	Added 1986-87	Total
Microfiche (Except Per.)	17,463	340,216
Cassettes	42	58
Filmstrips	14	72
Maps	3	15
Records	3	4
Slides	144	1,813
Microfilm (Except Per.)	1	6
Video Cassettes	26	41
Games	0	3

ADDITIONAL MATERIALS NOT IN DATA BASE

Federal Documents Collection (In Supt. of Docs. Class)

	Added 1986-87	Superseded Withdrawn	Total June 30, 1987
Print	6,010	123	86,303
Microfiche	12,781	1,403	90,049

Periodicals

Number Subscriptions, June 30, 1987

<u>Periodicals</u> <u>(Per.)</u>	<u>Also</u> <u>M</u>	<u>Also</u> <u>MF</u>	<u>M</u> <u>Only</u>	<u>MF</u> <u>Only</u>	<u>L</u> <u>Per.</u>	<u>S C.</u> <u>Per.</u>	<u>Class.</u>	<u>Class.</u> <u>M</u>	<u>Class.</u> <u>MF</u>	<u>Total</u> <u>Subscr</u>
457	545	6	317	17	219	96	615	7	34	2,213

Added 1986-87

Total

No. Bound Volumes	43	1,823
Microfilm No. Reels	672	12,832
Per. Videotapes	3	3

Newspapers

Added 1986-87

Total

Number Subscriptions	0	27
Also Microfilm	0	2
Number Reels	56	2,113

Other Materials

Added 1986-87

Total

Genealogy at South Caroliniana	286	2,515
-----------------------------------	-----	-------

DEPARTMENT FOR THE BLIND AND PHYSICALLY HANDICAPPED

Book Collections in Data Base

June 30, 1987

	Total June 30, 1987
Recorded Disc	53,235
Recorded Cassettes	91,516
Large-Type	8,041

36

X. STATE LIBRARY LOAN STATISTICS
1986 - 1987

	TOTAL REQUESTS RECEIVED -----	REFERENCE REQUESTS RECEIVED -----	BOOKS/ AV LOANED -----	PHOTO- COPIES SENT -----
REGIONAL LIBRARIES:				
Abbeville-Greenwood	247	65	331	350
Aiken-Bamberg-Barnwell-Edgefield	975	338	1,813	631
Allendale-Hampton-Jasper	485	167	767	253
Newberry-Saluda	138	46	361	126
COUNTY LIBRARIES 100,000 AND OVER:				
Anderson County Library	228	72	450	184
Charleston County Library	385	40	390	269
Florence County Library	190	114	354	322
Greenville County Library	265	21	434	726
Horry County Library	871	200	738	377
Lexington County Library	531	124	695	324
Richland County Library	160	112	386	C
Spartanburg County Library	1,103	161	788	365
York County Library	511	156	647	193
COUNTY LIBRARIES 50,000 TO 100,000:				
Beaufort County Library	995	273	1,159	884
Berkeley County Library	495	213	597	261
Darlington County Library	641	92	559	175
Dorchester County Library	622	167	677	493
Lancaster County Library	121	31	181	99
Laurens County Library	606	181	659	278
Orangeburg County Library	979	356	1,081	1,356
Pickens County Library	225	93	324	125
Sumter County Library	412	161	674	563
COUNTY LIBRARIES 25,000 TO 50,000:				
Cherokee County Library	140	41	225	51
Chester County Library	257	66	427	240
Chesterfield County Library	1,088	297	1,146	782
Clarendon County Library	400	124	428	352
Colleton County Library	246	72	245	233
Dillon County Library	104	30	136	31
Georgetown County Library	327	101	439	461

COUNTY LIBRARIES 25,000 TO 50,000:				
Kershaw County Library	575	181	631	242
Marion County Library	163	54	168	108
Marlboro County Library	504	177	581	498
Oconee County Library	906	311	890	305
Union County Library	109	27	337	76
Williamsburg County Library	481	137	680	277
COUNTY LIBRARIES 25,000 AND UNDER:				
Calhoun County Library	239	31	422	259
Fairfield County Library	108	21	183	116
Lee County Library	70	36	166	110
McCormick County Library	5	5	8	19
MUNICIPAL AND TOWNSHIP LIBRARIES:				
Chapin Memorial Library	145	21	131	51
LOANS TO S.C. PUBLIC LIBRARIES	17,052	4,915	21,308	12,565
LOANS TO STATE INSTITUTIONS	496	140	646	333
LOANS TO S.C. ACADEMIC LIBRARIES	2,763	15	2,656	2,061
LOANS TO S.C. SPECIAL LIBRARIES	965	9	968	3,763
LOANS TO OTHER LIBRARIES	1,019	1	716	474
FILM PROGRAM LOANS	4,939	N/A	4,939	N/A
SERVICES FOR STATE GOVERNMENT	N/A	9,676	29,705	N/A
GRAND TOTAL	27,234	14,756	60,938	19,196

XI. EXPENDITURES

SOUTH CAROLINA STATE LIBRARY EXPENDITURES: STATE FUNDS July 1, 1986 - June 30, 1987

GENERAL FUNDS:

Salaries and Wages-----	\$ 948,240.00
Per Diem-----	980.00
Office Equipment Repairs-----	1,341.37
Data Processing Services - Other-----	21,686.00
Printing, Binding, Advertising-Commercial-----	1,103.00
Film Processing-----	247.07
Freight, Express, Delivery-----	13,032.89
Telephone and Telegraph-----	17,621.76
Building Renovation-----	237.46
Other Professional Services-----	81.50
Intergovernmental-----	3,000.00
Data Processing - State-----	51,240.14
Printing - State-----	4,538.00
General Repair-----	8,947.70
Non-State Employee Travel-----	1,123.61
Other Contractual Services-----	2,152.54
Office Supplies-----	9,262.42
Photocopy Supplies-----	194.32
Data Processing Supplies-----	1,464.07
Household, Laundry, Janitorial-----	410.45
Photographic and Audio-Visual Supplies-----	12.50
Promotional Supplies-----	74.20
Postage-----	11,306.00
Maintenance Supplies-----	206.64
Television/Radio Engineering Maintenance Supplies-----	156.45
Other Supplies-----	604.18
Rental - Office Equipment-----	400.00
Rental - Non-State Owned Real Property-----	28,176.00
Rental - State Owned Real Property-----	489,247.00
Rent - Other-----	541.10
Dues and Membership Fees-----	1,250.00
Insurance - State-----	3,922.20
Insurance - Non-State-----	350.00
Travel-----	5,440.00
Office Equipment-----	57,524.15
Data Processing Equipment-----	2,113.00
Photographic and Audio-Visual-----	7,719.23
Library Books, Maps, and Films-----	150,586.00
Television, Radio Engineering Equipment-----	695.56
State Retirement-----	66,184.22
Social Security-----	67,748.72
Workmen's Compensation-----	1,290.50
Unemployment Compensation-----	1,057.32

EXPENDITURES: STATE FUNDS (con't)

Health Insurance-----	35,505.79
Dental Insurance-----	4,900.48
Pre-Retirement Death Benefic-----	2,836.43
Aid to County Libraries-----	3,001,246.00
Transportation-----	<u>2,188.00</u>
TOTAL GENERAL FUNDS-----	<u>\$5,030,185.97</u>
EARMARKED FUNDS:	
Operating Revenue-----	<u>\$ 3,000.00</u>
TOTAL EARMARKED-----	<u>\$ 3,000.00</u>
*GRAND TOTAL EXPENDITURES-----	<u>\$5,033,185.97</u>

*NOTE: \$133,424.51 Supplemental Appropriation for Blind and Handicapped move and equipment included.

**SOUTH CAROLINA STATE LIBRARY
EXPENDITURES: FEDERAL FUNDS
July 1, 1986 - June 30, 1987**

1987 Funds

TITLE I: LIBRARY SERVICES:

Project IB. Library Interpretation-----	\$ 2.38
Project IIA. General Operation-----	21,323.81
Project IIB. Strengthening the State Library Agency-----	36,389.37
Project IIIA. Field Services-----	3,088.50
Project IIIB. Workshops-----	14,279.27
Project IIIE. Library Development-----	159,206.48
Project IIIF. Service to Children-----	3,305.60
Project IIIG. Audio-Visual Program-----	48,485.08
Project IIIH. Public Library Automation and Technology-----	18,955.00
Project IV. Blind and Physically Handicapped---	<u>16,239.23</u>

TOTAL EXPENDITURES - Title I (1987 Funds)-----\$ 321,274.72

1986 Funds

TITLE I: LIBRARY SERVICES:

Project IA. General Administration-----	\$ 38,052.91
Project IB. Library Interpretation-----	4,720.58
Project IIA. General Operation-----	62,856.91
Project IIB. Strengthening the State Library Agency-----	131,003.16
Project IIIA. Field Services-----	15,813.89
Project IIIB. Workshops-----	12,312.55
Project IIID. Service to the Disadvantaged----	55,379.69
Project IIIE. Library Development-----	110,707.89
Project IIIF. Service to Children-----	3,524.69
Project IIIG. Audio-Visual Program-----	43,170.04
Project IIIH. Public Library Automation and Technology-----	15,232.00
Project III-I. Literacy-----	49,645.60
Project IV. Blind and Physically Handicapped---	64,778.75
Project V. Institutional Library Services-----	<u>41,725.38</u>

TOTAL EXPENDITURES - Title I (1986 Funds)-----\$ 648,924.04

TITLE III: INTERLIBRARY COOPERATION:

Project I. Interlibrary Network-----	\$ <u>167,937.87</u>
--------------------------------------	----------------------

TOTAL EXPENDITURES - Title III (1986 Funds)-----\$ 167,937.87

EXPENDITURES: FEDERAL FUNDS (con't)

TITLE VI: LITERACY:-----\$ 15,573.52
TOTAL EXPENDITURES - All Titles (1986 Funds)-----\$ 832,435.43

1985 Funds

TITLE I: LIBRARY SERVICES:

Project IA. General Administration-----\$ 8,863.67
Project IB. Library Interpretation----- 1,201.82
Project IIA. General Operation----- 14,015.07
Project IIB. Strengthening the State
Library Agency----- 53,289.90
Project IIIA. Field Services----- 3,029.32
Project IIH. Public Library Automation
and Technology----- 70,055.60

TOTAL EXPENDITURES - Title I (1985 Funds)-----\$ 150,455.38

TITLE III: INTERLIBRARY COOPERATION:

Project I. Interlibrary Network-----\$ 8,639.56

TOTAL EXPENDITURES - Title III (1985 Funds)-----\$ 8,639.56

TOTAL EXPENDITURES - All Titles (1985 Funds)-----\$ 159,094.94

1983 Funds

TITLE II: CONSTRUCTION-----\$ 5,000.00

TOTAL EXPENDITURES - Title II (1983 Funds)-----\$ 5,000.00

TOTAL EXPENDITURES - ALL TITLES - ALL FUNDS-----\$ 1,317,805.09

I. PUBLIC LIBRARY BOARD CHAIRMEN

- ABBEVILLE COUNTY LIBRARY** -- Mr. Fletcher W. Ferguson, P.O. Box 548, Abbeville, SC 29620
- ABBEVILLE-GREENWOOD REGIONAL LIBRARY** -- Mr. Wayne Justesen, P.O. Box 1017, Greenwood, SC 29646
- AIKEN-BAMBERG-BARNWELL-EDGEFIELD REGIONAL LIBRARY** -- Mrs. Frankie H. Cubbedge, Box 335, Graniteville, SC 29829
- AIKEN COUNTY LIBRARY** -- Mr. Gene Lockhart, 2606 Spring Valley, Aiken, SC 29801
- ALLENDALE-HAMPTON-JASPER REGIONAL LIBRARY** -- Mrs. Sue Colter, P.O. Box 644, Hardeeville, SC 29927
- ALLENDALE COUNTY LIBRARY** -- Mrs. Mamie Peeples, Fairfax, SC 29827
- ANDERSON COUNTY LIBRARY** -- Ms. Eleanor Farmer, 1117 Greenacres, Anderson, SC 29621
- BAMBERG COUNTY LIBRARY** -- Mrs. Ryerson McMillan, Rt. 2, Box 449, Denmark, SC 29042
- BARNWELL COUNTY LIBRARY** -- Mrs. Claudia Peeples, Box 426, Barnwell, SC 29812
- BEAUFORT COUNTY LIBRARY** -- Mrs. Nancy Pearson, 115 S. Hermitage Road, Beaufort, SC 29902
- BERKELEY COUNTY LIBRARY** -- Mrs. Frances J. Shipley, Pinewood Drive, Moncks Corner, SC 29461
- CALHOUN COUNTY LIBRARY** -- Mrs. Ann K. Thornton, 115 Harry C. Raysor Drive, St. Matthews, SC 29135
- CHAPIN MEMORIAL LIBRARY** -- Mrs. Jo Pearce, 404 39th Avenue, N., Myrtle Beach, SC 29577
- CHARLESTON COUNTY LIBRARY** -- Mr. James D. Decker, 757 Creekside Drive, Mt. Pleasant, SC 29464
- CHEROKEE COUNTY PUBLIC LIBRARY** -- Mrs. Bright G. Parker, 1010 S. Petty Street, Gaffney, SC 29340
- CHESTER COUNTY PUBLIC LIBRARY** -- Dr. Ray Schumacher, Rt. 4, Box 239, Chester, SC 29706
- CHESTERFIELD COUNTY LIBRARY** -- Mrs. Pauline A. Raley, P.O. Box 158, Jefferson, SC 29718
- CLARENDON COUNTY LIBRARY** -- Mrs. Catherine Kirkpatrick, Rt. 4, Box 1612, Manning, SC 29102
- COLLETON COUNTY MEMORIAL LIBRARY** -- Mrs. Jane McT. Brown, 104 Silverhill Road, Walterboro, SC 29488
- DARLINGTON COUNTY LIBRARY** -- Col. Marion Carrigan, 126 Oak Street, Darlington, SC 29532
- DILLON COUNTY LIBRARY** -- Mr. Joseph T. Griffin, Jr., P.O. Box 206, Latta, SC 29565
- DORCHESTER COUNTY LIBRARY** -- Mr. Joseph T. Holleman, 1500 Wannamaker Drive, Summerville, SC 29483
- EDGEFIELD COUNTY LIBRARY** -- Mrs. Katherine W. Nicholson, 409 Simkins, Edgefield, SC 29824
- FAIRFIELD COUNTY LIBRARY** -- Mr. A. B. Rabb, Hudson Street, Winnsboro, SC 29180
- FLORENCE COUNTY LIBRARY** -- Mrs. John L. Steele, P.O. Box 125, Pamplico, SC 29583
- GEORGETOWN COUNTY MEMORIAL LIBRARY** -- Mrs. Patricia Doyle, 528 Front Street, Georgetown, SC 29440

PUBLIC LIBRARY BOARD CHAIRMEN (con't)

- GREENVILLE COUNTY LIBRARY** -- Mr. Frank W. Bonner, 9 S. Warwick Road,
Greenville, SC 29615
- GREENWOOD COUNTY LIBRARY** -- Mr. Bruce Ezell, P.O. Box 146, Ninety Six, SC
29666
- HAMPTON COUNTY LIBRARY** -- Mrs. Mary Laffitte, P.O. Box 81, Hampton, SC 29924
- HORRY COUNTY MEMORIAL LIBRARY** -- Mr. H. Buck Cutts, 825 5th Avenue, N.,
Surfside Beach, SC 29587
- JASPER COUNTY LIBRARY** -- Mrs. Jessie Tyler, Rt. 3, Box 472, Ridgeland, SC
29936
- KERSHAW COUNTY LIBRARY** -- Vacant
- LANCASTER COUNTY LIBRARY** -- Mr. A. V. Caporossi, 425 Morningside Drive,
Lancaster, SC 29720
- LAURENS COUNTY LIBRARY** -- Mrs. Georgia B. Thomason, 405 S. Broad Street,
Clinton, SC 29325
- LEE COUNTY PUBLIC LIBRARY** -- Ms. June Latimer, 311 Cousar Street, Bishopville,
SC 29010
- LEXINGTON COUNTY CIRCULATING LIBRARY** -- Mr. Hugh Rogers, P.O. Box 396,
Lexington, SC 29072
- MCCORMICK COUNTY LIBRARY** -- Ms. Verda Musier, Rt. 2, Box 60, Plum Branch, SC
29845
- MARION COUNTY LIBRARY** -- Mrs. Thelma C. Clark, 710 Northside Avenue, Marion,
SC 29571
- MARLBORO COUNTY PUBLIC LIBRARY** -- Ms. Carolyn Rogers, Rt. 4, Box 46,
Bennettsville, SC 29512
- NEWBERRY-SALUDA REGIONAL LIBRARY** -- Mr. Earl H. Bergen, Box 257, Newberry, SC
29108
- OCONEE COUNTY LIBRARY** -- Mrs. Roddey A. Stoudemire, 13 Abbott Circle,
Walhalla, SC 29691
- ORANGEBURG COUNTY FREE LIBRARY** -- Mrs. Valeria H. Staley, 1756 Belleville
Road, Orangeburg, SC 29115
- PICKENS COUNTY LIBRARY** -- Mr. Edgar Neas, Rt. 1, Box 417 C, Pickens, SC 29671
- RICHLAND COUNTY PUBLIC LIBRARY** -- Mr. Julius W. McKay, Sr., P.O. Drawer 7157,
Columbia, SC 29202
- SPARTANBURG COUNTY PUBLIC LIBRARY** -- Mrs. Chester Ruff, Rt. 1, Chesnee, SC,
29323
- SUMTER COUNTY LIBRARY** -- Mrs. Betsy Humphries, 115 Snowden Street, SC 29150
- UNION COUNTY CARNEGIE LIBRARY** -- Mr. William M. White, Rt. 3, Box 364, Union,
SC 29379
- WILLIAMSBURG COUNTY LIBRARY** -- Dr. David F. Grossman, 208 Jackson Street,
Kingstree, SC 29556
- YORK COUNTY LIBRARY** -- Ms. Toni Steedman, 3 Tanglewood Drive, Lake Wylie, SC
29710

II. DIRECTORY OF SOUTH CAROLINA PUBLIC LIBRARIES

<u>LIBRARY</u>	<u>CHIEF LIBRARIAN</u>	<u>PHONE</u>
ABBEVILLE-GREENWOOD REGIONAL LIBRARY 106 North Main Street Greenwood, SC 29646	Mr. Bruce Heimburger	223-4515
ABBEVILLE COUNTY LIBRARY Main & Cherry Streets Abbeville, SC 29620	Mrs. Deborah Nicholson	459-4009
AIKEN-BAMBERG-BARNWELL-EDGEFIELD REGIONAL LIBRARY 224 Laurens Street, S.W. P.O. Box 909 Aiken, SC 29802	Mrs. Carol Bowling	648-8961
AIKEN COUNTY PUBLIC LIBRARY 435 Newberry Street, S.W. Aiken, SC 29801	Mrs. Betsy Ristroph	649-2352
ALLENDALE-HAMPTON-JASPER REGIONAL LIBRARY War Memorial Building P.O. Drawer 768 Allendale, SC 29810	Mr. Donald W. Dryden	584-3513
ANDERSON COUNTY LIBRARY P.O. Box 4047 Anderson, SC 29622	Mr. Carl Stone	260-4500
BAMBERG COUNTY LIBRARY Railroad Avenue Bamberg, SC 29003	Mrs. Carol Ann Bunch	245-4280
BARNWELL COUNTY LIBRARY Hagood Avenue Barnwell, SC 29812	Mrs. Sandra Hummel	259-3612
BEAUFORT COUNTY LIBRARY 710 Craven Street Beaufort, SC 29902	Miss Julie Zachowski	525-7279
BERKELEY COUNTY LIBRARY 100 Library Street Moncks Corner, SC 29461	Mrs. Patricia Jackson	761-8082
CALHOUN COUNTY PUBLIC LIBRARY 208 N. Harry C. Raysor Drive St. Matthews, SC 29135	Mr. Douglas E. Clore	874-3389
CHAPIN MEMORIAL LIBRARY 400 14th Avenue, N. Myrtle Beach, SC 29577	Mrs. Shirley W. Boone	448-3338
CHARLESTON COUNTY LIBRARY 404 King Street Charleston, SC 29403	Ms. Jan Buvinger	723-1645
CHEROKEE COUNTY PUBLIC LIBRARY 300 E. Rutledge Avenue Gaffney, SC 29340	Mr. Dave Eden	489-4381
CHESTER COUNTY LIBRARY 100 Center Street Chester, SC 29706	Mrs. Ann Ramsey	377-8145

DIRECTORY OF SOUTH CAROLINA PUBLIC LIBRARIES (con't)

<u>LIBRARY</u>	<u>CHIEF LIBRARIAN</u>	<u>PHONE</u>
CHESTERFIELD COUNTY LIBRARY 119 W. Main Street Chesterfield, SC 29709	Mr. Ware G. Martin	623-7489
HARVIN CLARENDON COUNTY LIBRARY 215 N. Brooks Street Manning, SC 29102	Mrs. Sybil Gilbert	435-8633
COLLETON COUNTY MEMORIAL LIBRARY 600 Hampton Street Walterboro, SC 29488	Mrs. Sylvia N. Rowe	549-5621
DARLINGTON COUNTY LIBRARY 127 N. Main Street Darlington, SC 29532	Mr. Bill Langston, Jr.	393-5864
DILLON COUNTY LIBRARY 101 N. Marion Street Latta, SC 29565	Mrs. Paula Davino	752-5389
DORCHESTER COUNTY LIBRARY 506 N. Parler Avenue St. George, SC 29477	Mrs. Connie Jones	563-9189
EDGEFIELD COUNTY LIBRARY 104 Court House Square Edgefield, SC 29824	Ms. Anuradha S. Acharekar	637-6347
FAIRFIELD COUNTY LIBRARY Garden & Washington Streets Winnsboro, SC 29180	Mrs. Sarah D. McMaster	635-4971
FLORENCE COUNTY LIBRARY 319 S. Irby Street Florence, SC 29501	Mr. Robert Davidson	662-8424
GEORGETOWN COUNTY MEMORIAL LIBRARY Drawer D 702 Highmarket Street Georgetown, SC 29440	Mrs. Virginia Foley	546-2521
GREENVILLE COUNTY LIBRARY 300 College Street Greenville, SC 29601	Mr. Anthony Messineo	242-5000
HORRY COUNTY MEMORIAL LIBRARY 1008 Fifth Avenue Conway, SC 29526	Mrs. Catherine Lewis	248-4898
KERSHAW COUNTY LIBRARY 1304 Broad Street Camden, SC 29020	Mrs. Penny Albright	425-1508
LANCASTER COUNTY LIBRARY 313 S. White Street Lancaster, SC 29720	Mr. Richard A. Band	285-1502
LAURENS COUNTY LIBRARY 321 S. Harper Street Laurens, SC 29360	Mr. William C. Cooper	984-0596
LEE COUNTY PUBLIC LIBRARY 102 N. Main Street Bishopville, SC 29010	Mrs. Dawn F. Ellen	484-5921

DIRECTORY OF SOUTH CAROLINA PUBLIC LIBRARIES (con't)

<u>LIBRARY</u>	<u>CHIEF LIBRARIAN</u>	<u>PHONE</u>
LEXINGTON COUNTY CIRCULATING LIBRARY 111 Armory Street Batesburg, SC 29006	Mrs. Jane Griffin	359-6984
MCCORMICK COUNTY LIBRARY Drawer M McCormick, SC 29835	Mrs. Dianne Purdy	465-2821
MARION COUNTY LIBRARY 101 E. Court Street Marion, SC 29571	Mrs. Louise S. McAulay	423-2244
MARLBORO COUNTY PUBLIC LIBRARY Market Street Bennettsville, SC 29512	Mrs. Ann Goodwin	479-6201
NEWBERRY-SALUDA REGIONAL LIBRARY 1300 Friend Street Newberry, SC 29108	Mrs. Tucker Neel Taylor	276-0854
OCONEE COUNTY LIBRARY 501 W. South Broad Street Walhalla, SC 29691	Mrs. Dorothy S. Chandler	638-5837
ORANGEBURG COUNTY FREE LIBRARY P.O. Box 1367 Orangeburg, SC 29116	Ms. Paula Paul	531-4636
PICKENS COUNTY LIBRARY 110 W. First Avenue Easley, SC 29640	Ms. Penelope Forrester	859-9679
RICHLAND COUNTY PUBLIC LIBRARY 1400 Sumter Street Columbia, SC 29201	Mr. David Warren	799-9084
SPARTANBURG COUNTY LIBRARY P.O. Box 2409 333 S. Pine Street Spartanburg, SC 29304	Mr. Dennis L. Bruce	596-3507
SUMTER COUNTY LIBRARY 111 Harvin Street Sumter, SC 29150	Ms. Faith A. Line	773-7273
UNION COUNTY CARNEGIE LIBRARY 300 E. South Street Union, SC 29379	Mr. Edward Burwell	427-7140
WILLIAMSBURG COUNTY LIBRARY 135 Hampton Avenue Kingstree, SC 29556	Mr. Thomas Cox, Jr.	354-9486
YORK COUNTY LIBRARY P.O. Box 10032 138 E. Black Street Rock Hill, SC 29731	Mr. David A. Lyon, IV	324-3055

III. DIRECTORY OF SOUTH CAROLINA COLLEGES AND UNIVERSITIES

SENIOR COLLEGES

<u>NAME OF INSTITUTION</u>	<u>LIBRARIAN</u>	<u>PHONE</u>	<u>EXT.</u>
ALLEN UNIVERSITY J.S. Flipper Library 1530 Harden Street Columbia, SC 29204		254-4165	
BAPTIST COLLEGE AT CHARLESTON P.O. Box 10087 Charleston, SC 29411	Mrs. Enid R. Causey	797-4718	
BENEDICT COLLEGE Harden and Blanding Streets Columbia, SC 29204	Ms. Cassandra M. Norman	253-5173	
BOB JONES UNIVERSITY J.S. Mack Library Greenville, SC 29614	Mr. Joseph L. Allen	242-5100	6010
CENTRAL WESLEYAN COLLEGE Rickman Library Central, SC 29630	Mrs. Martha S. Evatt	639-2453	361
THE CITADEL Daniel Library Charleston, SC 29409	Dr. Richard J. Wood	792-5116	
CLAFLIN COLLEGE College Avenue Orangeburg, SC 29115	Ms. Marilyn Gibbs	534-2710	
CLEMSON UNIVERSITY Robert Muldrow Cooper Library Clemson, SC 29634-3001	Mr. Joseph F. Boykin, Jr.	656-3026	
COKER COLLEGE James Lide Coker III Memorial Library College Avenue Hartsville, SC 29550	Mr. Gordon J. Gourlay	332-1381	
COLLEGE OF CHARLESTON Robert Scott Small Library 66 George Street Charleston, SC 29424	Mr. David Cohen	792-5530	
COLUMBIA BIBLE COLLEGE AND SEMINARY P.O. Box 3122 Columbia, SC 29230	Mrs. Laura Braswell	754-4100	372
COLUMBIA COLLEGE J. Drake Edens Library Columbia College Drive Columbia, SC 29203	Mr. John C. Pritchett	786-3716	
CONVERSE COLLEGE Mickel Library Spartanburg, SC 29301	Dr. James G. Harrison, Jr.	596-9072	
ERSKINE COLLEGE McCain Library 1 Depot Street Due West, SC 29639	Mr. John H. Wilde	379-8898	

DIRECTORY OF SOUTH CAROLINA COLLEGES AND UNIVERSITIES (con't)

SENIOR COLLEGES (con't)

<u>NAME OF INSTITUTION</u>	<u>LIBRARIAN</u>	<u>PHONE</u>	<u>EXT.</u>
FRANCIS MARION COLLEGE James A. Rogers Library Florence, SC 29501	Mr. H. Paul Dove, Jr.	661-1300	
FURMAN UNIVERSITY James B. Duke Library Poinsett Highway Greenville, SC 29613-0001	Dr. Edward A. Scott	294-2191	
LANDER COLLEGE Larry A. Jackson Library Stanley Avenue Greenwood, SC 29646	Ms. Ann T. Hare	229-8365	
LIMESTONE COLLEGE A. J. Eastwood Library 1115 College Drive Gaffney, SC 29340	Ms. Ruth Anne Smith	489-7151	347
LUTHERAN THEOLOGICAL SOUTHERN SEMINARY Lineberger Memorial Library 4201 North Main Street Columbia, SC 29203	Ms. Mitzi Jarrett Derrick	786-5150	
MEDICAL UNIVERSITY OF SOUTH CAROLINA 171 Ashley Avenue Charleston, SC 29425-3001	Mr. Warren A. Sawyer	792-2374	
MORRIS COLLEGE Pinson Memorial Library N. Main Street Sumter, SC 29150	Ms. Clara B. Gordon	775-9371	246
NEWBERRY COLLEGE Wessels Library 2100 College Street Newberry, SC 29108	Ms. Jerolyn W. Charleston	276-5010	
PRESBYTERIAN COLLEGE James H. Thomason Library Clinton, SC 29325	Dr. Lennart Pearson	833-2820	295
SOUTH CAROLINA STATE COLLEGE Miller F. Whittaker Library P.O. Box 1991 Orangeburg, SC 29117	Dr. Barbara Williams Jenkins	536-7045	
SOUTHERN METHODIST COLLEGE Lynn Corbett Library P.O. Box 1027 Orangeburg, SC 29116-1027	Miss Marjorie V. Haile	534-7826	
UNIVERSITY OF SOUTH CAROLINA Thomas Cooper Library Columbia, SC 29208	Mr. Kenneth E. Toombs	777-3142	
UNIVERSITY OF SOUTH CAROLINA AT AIKEN 171 University Parkway Aiken, SC 29801	Mrs. Frankie H. Cubbedge	648-6851	

DIRECTORY OF SOUTH CAROLINA COLLEGES AND UNIVERSITIES (con't)

SENIOR COLLEGES (con't)

<u>NAME OF INSTITUTION</u>	<u>LIBRARIAN</u>	<u>PHONE</u>	<u>EXT.</u>
UNIVERSITY OF SOUTH CAROLINA COASTAL CAROLINA COLLEGE Box 1954 Conway, SC 29526	Dr. Lynne Smith	347-3161	
UNIVERSITY OF SOUTH CAROLINA AT SPARTANBURG Spartanburg, SC 29303	Mr. Robert A. Perrin	578-1800	
VOORHEES COLLEGE Elizabeth E. Wright/John F. Pott Library Voorhees Road Denmark, SC 29042	Ms. Marchita J. Phifer	793-3351	7262
WINTHROP COLLEGE Dacus Library Rock Hill, SC 29733	Ms. Shirley M. Tarlton	323-2131	
WOFFORD COLLEGE Sandor Teszler Library Spartanburg, SC 29301	Mr. Oakley H. Coburn	585-4821	

JUNIOR COLLEGES

ANDERSON COLLEGE 316 Boulevard Anderson, SC 29621	Miss Annie F. Blackman	231-2050	
CLINTON JUNIOR COLLEGE Rock Hill, SC 29730	Mrs. H. B. Wilkes	327-7402	
NORTH GREENVILLE COLLEGE Hester Memorial Library Tigerville, SC 29688	Mr. Steve Baker	895-1410	
SPARTANBURG METHODIST COLLEGE Powell Mill Road Spartanburg, SC 29301	Mr. James E. Haller	594-4208	
UNIVERSITY OF SOUTH CAROLINA AT BEAUFORT 800 Carteret Street Beaufort, SC 29902	Ms. Ellen Chamberlain	524-6153	
UNIVERSITY OF SOUTH CAROLINA AT LANCASTER Medford Library P.O. Box 889 Lancaster, SC 29720	Ms. Shari Lohela	285-7471	
UNIVERSITY OF SOUTH CAROLINA AT SALKEHATCHIE P.O. Box 617 Allendale, SC 29810		584-3446	

DIRECTORY OF SOUTH CAROLINA COLLEGES AND UNIVERSITIES (con't)

JUNIOR COLLEGES (con't)

<u>NAME OF INSTITUTION</u>	<u>LIBRARIAN</u>	<u>PHONE</u>	<u>EXT.</u>
UNIVERSITY OF SOUTH CAROLINA AT SUMTER 200 Miller Road Sumter, SC 29150	Mrs. Jane Ferguson	775-6341	
UNIVERSITY OF SOUTH CAROLINA AT UNION P.O. Drawer 729 Union, SC 29379	Ms. Lorene B. Harris	427-4735	

TECHNICAL COLLEGES

AIKEN TECHNICAL COLLEGE P.O. Drawer 696 Aiken, SC 29801-0696	Ms. Susan Hollifield	593-9231	312
BEAUFORT TECHNICAL COLLEGE P.O. Box 1288 Beaufort, SC 29901	Ms. Helen Fellers	525-8236	
CHESTERFIELD-MARLBORO TECHNICAL COLLEGE P.O. Drawer 1007 Cheraw, SC 29520	Ms. Carolyn T. Bittle	537-5286	46
DENMARK TECHNICAL COLLEGE Learning Resource Center P.O. Box 327 Denmark, SC 29042	Mrs. Imogene I. Book	793-3301	
FLORENCE-DARLINGTON TECHNICAL COLLEGE P.O. Drawer r-8000 Florence, SC 29501-0057	Ms. Jeronell White	662-8151	
GREENVILLE TECHNICAL COLLEGE P.O. Box 5539 Greenville, SC 29606	Ms. Elizabeth B. Olinger	242-3170	2321
HORRY-GEORGETOWN TECHNICAL COLLEGE Highway 501 East, P.O. Box 1966 Conway, SC 29526	Ms. Barbara Brittain	347-3186	269
MIDLANDS TECHNICAL COLLEGE AIRPORT CAMPUS P.O. Box 2408 Columbia, SC 29202	Ms. Marilyn S. Hook	791-8281	3389
MIDLANDS TECHNICAL COLLEGE BELTLINE CAMPUS P.O. Box 2408 Columbia, SC 29202	Ms. Virginia Brooker	738-1400	4271
ORANGEBURG-CALHOUN TECHNICAL COLLEGE 3250 St. Matthews Road, NE Orangeburg, SC 29115-8299	Mrs. Margaret F. Huff	536-0311	296
PIEDMONT TECHNICAL COLLEGE P.O. Drawer 1467 Greenwood, SC 29648	Mr. Dan Koenig	223-8357	

DIRECTORY OF SOUTH CAROLINA COLLEGES AND UNIVERSITIES (con't)

TECHNICAL COLLEGES (con't)

<u>NAME OF INSTITUTION</u>	<u>LIBRARIAN</u>	<u>PHONE</u>	<u>EXT.</u>
SPARTANBURG TECHNICAL COLLEGE P.O. Drawer 4386 I-85 at New Cut Road Spartanburg, SC 29305	Ms. Debra A. Kay	591-3760	
SUMTER AREA TECHNICAL COLLEGE 506 Guignard Drive Sumter, SC 29150	Mr. Chris Bruggman	778-1961	
TRI-COUNTY TECHNICAL COLLEGE P.O. Box 587 Pendleton, SC 29670	Ms. Nancy Griese	646-8361	
TRIDENT TECHNICAL COLLEGE BERKELEY CAMPUS MAIN CAMPUS PALMER CAMPUS P.O. Box 10367 Charleston, SC 29411	Ms. Marion L. Vogel	572-6089	
WILLIAMSBURG TECHNICAL COLLEGE 601 Lane Road Kingstree, SC 29556	Ms. Carolyn Long	354-7423	
YORK TECHNICAL COLLEGE U.S. 21 Bypass Rock Hill, SC 29730	Ms. Amandu Yu	324-3130	317

IV. DIRECTORY OF LIBRARIES IN STATE INSTITUTIONS

<u>INSTITUTION</u>	<u>LIBRARIAN</u>	<u>PHONE</u>	<u>EXT.</u>
BECKMAN VOCATIONAL REHABILITATION CENTER 1400 Boston Avenue West Columbia, SC 29169	Mrs. Carol Teal	734-3511	
BIRCHWOOD SCHOOL 5000 Broad River Road Columbia, SC 29210	Mrs. Jane Valenta	737-9114	
BRYAN PSYCHIATRIC HOSPITAL P.O. Box 485 Columbia, SC 29202	Mr. Steven Leap	737-7851	
CRAFTS-FARROW STATE HOSPITAL 7901 Farrow Road Columbia, SC 29203	Mrs. Bernetha Flemming	737-7722	
COASTAL CENTER Jamison Road Ladson, SC 29456	Mrs. Veronica Fields	873-5750	240
DEPARTMENT OF CORRECTIONS LIBRARY SERVICES DIVISION P.O. Box 21787 Columbia, SC 29221	Mr. Richard P. Coolidge	737-9525	
HOLMESVIEW CENTER P.O. Box 7545 Branwood Station Greenville, SC 29610	Ms. Carol Frazier Library Coordinator	269-1414	
HORGER LIBRARY, STATE HOSPITAL P.O. Box 119 Columbia, SC 29202	Ms. Theodora Richardson Library Technical Assistant	734-6766	
JOHN DE LA HOWE SCHOOL McCormick, SC 29835	Mrs. Amy Jenkins	391-2131	25
MIDLANDS CENTER 8301 Farrow Road Columbia, SC 29203	Mrs. Clannie Washington	737-7548	
MORRIS VILLAGE 610 Falson Drive Columbia, SC 29203	Mrs. Jane Olsgaard	737-7748	
PALMETTO CENTER P.O. Box 5357 Florence, SC 29501	Mr. Robert Stevens Director	662-9378	

DIRECTORY OF LIBRARIES IN STATE INSTITUTIONS (con't)

<u>INSTITUTION</u>	<u>LIBRARIAN</u>	<u>PHONE</u>	<u>EXT.</u>
PATRICK B. HARRIS PSYCHIATRIC HOSPITAL P.O. Box 2907 Anderson, SC 29622	Mrs. Mary Reimer	231-2600	
PEE DEE REGIONAL CENTER 714 National Cemetery Road Florence, SC 29502	Mrs. Dolly Cummings	669-3661	
S.C. SCHOOL FOR THE DEAF AND BLIND Cedar Spring Station Spartanburg, SC 29302	Mrs. Wanda Yearwood	585-7711	
TUCKER HUMAN RESOURCES CENTER 2200 Harden Street Columbia, SC 29201	Mr. John Scott	737-5387	
WHITTEN CENTER P.O. Box 239 Clinton, SC 29325	Mr. H. Y. Keng	833-2733	332
WILLIAM J. GOLDSMITH RECEPTION & EVALUATION CENTER 3200 Broad River Road Columbia, SC 29210	Mrs. Nancy Montgomery	737-9111	
WILLOW LANE SCHOOL 4650 Broad River Road Columbia, SC 29210	Mrs. Nancy Montgomery	737-8938	

I. PUBLIC LIBRARIES: COMPARATIVE SUMMARY

Public Library Bookstock
Circulation and Support
July 1, 1986 - June 30, 1987

County or Regional Library	Per Capita Circulation	Per Capita Bookstock	Total Per Capita Support	Per Capita Support Local Only
Abbeville-Greenwood	3.44	1.64	4.64	3.59
A-B-B-E	2.78	1.10	4.64	3.43
Allendale-Hampton-Jasper	1.95	1.06	3.68	2.60
Anderson	2.96	1.53	6.65	5.46
Beaufort	2.96	1.49	6.94	5.82
Berkeley	2.40	0.89	4.43	3.31
Calhoun	3.18	2.69	6.53	5.32
Charleston	3.10	1.51	9.02	7.95
Cherokee	4.89	1.77	7.04	5.95
Chester	4.32	1.83	7.70	6.59
Chesterfield	2.76	1.38	4.11	3.14
Clarendon	1.90	1.00	4.78	3.58
Colleton	3.25	1.95	6.25	5.29
Darlington	2.16	1.24	4.22	3.26
Dillon	2.47	2.25	4.40	3.43
Dorchester	4.23	1.21	6.44	5.35
Fairfield	3.61	2.37	7.51	6.32
Florence	2.96	1.36	5.71	4.63
Georgetown	2.14	1.47	6.52	5.46
Greenville	4.23	1.89	11.43	10.24
* Horry	4.40	1.42	8.31	7.14
Kershaw	4.38	1.83	8.13	6.59
Lancaster	3.60	1.42	5.25	4.07
Laurens	2.72	2.02	5.46	4.29
Lee	1.91	1.40	3.50	2.54
Lexington	3.65	1.26	5.76	4.65
Marion	3.40	1.96	6.57	5.44
Marlboro	2.36	1.36	4.40	3.38
McCormick	1.58	1.57	4.37	2.96
Newberry-Saluda	2.58	1.52	4.02	2.61
Oconee	6.05	2.21	9.01	7.93
Orangeburg	2.73	0.77	5.02	3.88
Pickens	2.90	1.19	5.46	4.39
Richland	4.94	1.76	13.92	12.78
Spartanburg	4.13	1.53	9.95	8.84
Sumter	2.21	1.10	5.22	4.07
Union	1.61	1.16	3.59	2.63
Williamsburg	1.14	0.82	3.70	2.12
York	3.86	1.38	7.38	6.40
* Includes Chapin Memorial Library	9.11	0.00	10.68	10.68

PUBLIC LIBRARY STATISTICS

LIBRARIES AND LIBRARIANS

	1985-86	1986-87
No. Regional Libraries	4	4
No. Counties in Regions	11	11
No. County Libraries	35	35
No. Municipal Libraries	1	1
No. of Counties with County-wide Service	46	46
No. Professional Librarians	182	186

BOOKSTOCK, CIRCULATION, POPULATION

	1985-86	1986-87
Total Bookstock	4,515,443	4,641,695
Per Capita Bookstock	1.45	1.49
Total Circulation	9,879,416	10,718,623
Per Capita Circulation	3.16	3.43
Population	3,121,820	3,121,820
With Public Library Service	3,121,820	3,121,820

PUBLIC LIBRARY INCOME

	1985-86	1986-87
Library Income:		
SCSL Appropriation	\$ 5,072,403	\$ 5,228,656
State Aid	3,207,164	3,001,246
Per Capita	1.03	.96
Counties Participating	46	46
Local Income:		
Total	\$18,610,898	\$19,961,067
Per Capita	5.96	6.39
Federal Funds: LSCA	\$ 1,609,710	\$ 520,850
Total Public Library Income:		
All Sources	\$22,469,266	\$23,483,163
Per Capita	7.20	7.52

	Population of Area Taxed for Support 1980 Census *	OPERATING INCOME, 1986-87			
		Income '86-'87 Total Budget **	Total Local Income	LSCA *** Grants	State *** Aid
Regional Libraries					
Abbeville-Greenwood	80,474	373,052.25	289,219.71	6,466.68	77,365.86
Aiken-Bamberg-Barnwell-Edgefield	161,139	748,228.00	552,687.00	40,626.00	154,915.00
Allendale-Hampton-Jasper	43,363	159,379.66	112,651.53	5,039.95	41,688.18
Newberry-Seluda	47,392	190,438.29	123,776.24	21,100.48	45,561.57
County Libraries 100,000 and Over					
Anderson County Library	133,235	885,914.70	727,979.07	29,846.56	128,089.07
Charleston County Library	276,974	2,497,784.54	2,202,124.23	29,383.91	266,276.40
Florence County Library	110,163	629,075.61	509,947.87	13,219.56	105,908.18
Greenville County Library	287,913	3,290,399.94	2,948,935.90	64,671.13	276,792.91
Horry County Library	101,419	642,457.78	523,330.60	21,625.28	97,501.90
Lexington County Library	140,353	808,774.76	652,000.26	21,842.36	134,832.14
Richland County Library	269,735	3,755,947.48	3,446,449.16	50,181.33	259,316.99
Spartanburg County Library	201,861	2,009,479.00	1,784,980.00	30,434.00	194,065.00
York County Library	106,720	787,554.25	683,157.96	1,798.15	102,598.14
County Libraries 50,000-100,000					
Beaufort County Library	65,364	453,693.33	380,498.82	10,355.06	62,839.45
Berkeley County Library	94,727	419,611.01	313,782.99	14,759.65	91,068.37
Darlington County Library	62,717	264,503.00	204,208.00	0.00	60,295.00
Dorchester County Library	58,761	378,196.08	314,653.27	7,051.32	56,491.49
Lancaster County Library	53,361	269,446.13	208,796.48	9,349.60	51,300.05
Laurens County Library	52,214	284,953.82	223,881.90	10,874.57	50,197.35
Orangeburg County Library	82,276	413,342.63	318,887.92	15,356.47	79,098.24
Pickens County Library	79,292	432,826.83	348,124.83	8,472.50	76,229.50
Sumter County Library	88,243	460,450.00	358,971.05	16,644.16	84,834.79
County Libraries 25,000-50,000					
Cherokee County Library	40,983	288,349.60	244,031.53	4,917.96	39,400.11
Chester County Library	30,148	232,106.62	198,728.63	4,394.38	28,983.61
Chesterfield County Library	38,161	156,687.12	120,000.00	0.00	36,687.12
Clerendon County Library	27,464	131,176.74	98,233.49	6,539.98	26,403.27
Colleton County Library	31,776	198,727.52	168,074.05	104.75	30,548.72
Dillon County Library	31,083	136,636.21	106,753.71	0.00	29,882.50
Georgetown County Library	42,461	276,846.66	231,639.96	4,385.66	40,821.04
Kershaw County Library	39,315	317,283.69	257,150.16	22,625.39	37,508.14
Marion County Library	34,179	224,496.34	186,062.55	5,574.88	32,858.91
Marlboro County Library	31,634	139,278.02	106,809.60	2,056.21	30,412.21
Oconee County Library	48,611	437,887.16	385,320.34	5,833.32	46,733.50
Union County Library	30,751	110,360.46	80,797.15	0.00	29,563.31
Williamsburg County Library	38,226	141,910.31	81,121.95	24,038.76	36,749.60
County Libraries 25,000 & Under					
Calhoun County Public Library	12,206	79,703.23	64,968.65	3,000.00	11,734.58
Fairfield County Library	20,700	155,432.38	130,752.16	4,779.73	19,900.52
Lee County Library	18,929	66,340.52	48,142.60	0.00	18,197.92
McCormick County Library	7,797	34,047.48	23,051.62	3,500.00	7,495.86
TOTAL	3,121,820	23,282,779.15	19,760,682.94	520,849.71	3,001,246.50
Municipal and Township Libraries					
Chapin Memorial Library	+	200,334.00	200,384.00	0.00	0.00
GRAND TOTAL	3,121,820	23,483,163.15	19,961,066.94	520,849.71	3,001,246.50

* All 1986-87 statistics based on 1980 census.

** Total income, all sources. Excludes capital income.

*** State and LSCA Grants-in-Aid may vary from that shown on local reports because of date of receipt of funds. No construction grants included.

+ Included in Horry County population figure.

Note: State aid includes \$146,870 non-recurring supplemental appropriation.

II. SOUTH CAROLINA PUBLIC LIBRARIES
ANNUAL LIBRARY STATISTICS, 1986-87 FISCAL YEAR

LSCA Construction	Receives Millage	OPERATING EXPENDITURES, 1986-87							Capital Outlay	BOOKSTOCK				CIRCULATION		
		Total	Salaries	Print Materials	Equipment	Non-Print Materials	Other Operating Expenses	Total Vols. (Books)		Vols. Added (Books)	Newspaper Titles	Periodical Titles	Total All Materials	Total Print	Juvenile Print	
0.00		372,800.01	258,141.80	55,121.33	1,182.71	708.35	58,745.72	0.00	131,968	4,551	16	184	276,515	265,826	105,988	
0.00		723,834.00	488,887.00	140,815.00	17,289.00	14,773.00	82,010.00	0.00	177,864	8,483	15	205	448,182	446,558	143,621	
0.00		159,138.03	102,857.03	40,903.80	0.00	174.60	14,402.50	0.00	46,131	2,592	10	140	84,574	84,546	29,551	
0.00		192,163.48	107,830.32	35,219.53	1,495.48	800.21	46,817.92	0.00	71,987	2,278	9	77	122,472	121,439	54,820	
0.00	3.50	818,233.78	479,567.85	150,223.50	23,717.51	12,432.11	250,292.99	127,138.53	204,277	8,145	22	350	393,980	384,805	155,085	
0.00		2,512,813.54	1,426,775.34	801,220.67	43,983.28	34,838.15	406,118.10	0.00	418,211	35,184	45	626	858,117	832,429	182,844	
0.00		629,075.81	400,498.74	121,468.61	0.00	4,795.54	102,314.72	0.00	146,772	10,869	19	440	326,426	315,187	123,558	
0.00	5.50	3,189,488.53	1,941,890.88	393,810.30	40,801.04	43,343.86	779,752.54	26,809.08	545,328	29,212	33	844	1,219,013	1,159,112	124,259	
0.00	0.50	457.78	404,309.98	105,881.83	17,420.87	14,778.73	100,266.57	0.00	144,388	9,575	14	249	275,088	250,588	75,812	
0.00	2.50	3,098.91	512,521.87	186,303.87	4,701.85	0.00	109,571.82	6,010.54	178,822	13,785	20	324	512,522	508,783	235,717	
0.00		3,670,882.34	1,821,778.88	885,556.08	70,575.11	83,740.42	899,033.05	0.00	474,920	85,178	38	1,256	1,333,508	1,333,508	404,547	
0.00		1,839,322.00	1,085,411.00	309,887.00	44,895.00	28,583.00	470,568.00	0.00	309,593	23,753	45	571	834,634	787,839	343,541	
0.00		798,787.81	482,438.38	121,814.11	4,328.30	7,510.79	173,898.06	26,235.83	147,151	8,328	15	294	411,646	407,473	181,238	
0.00		417,870.23	278,925.84	78,082.88	15,598.07	4,282.31	43,060.05	13,888.89	87,874	11,792	14	162	193,247	191,101	44,965	
0.00		419,341.21	282,805.83	80,818.20	7,040.27	0.00	68,679.11	0.00	84,163	9,209	7	133	226,937	226,937	83,246	
0.00		284,503.00	188,741.00	60,411.00	0.00	2,217.00	33,137.00	239,808.00	77,901	4,528	12	158	135,503	133,980	55,028	
0.00	3.00	357,586.36	189,433.08	81,387.18	4,239.84	3,484.19	89,032.34	0.00	171,388	5,383	11	179	248,543	248,521	112,703	
0.00		289,715.42	158,883.78	51,386.50	2,518.80	11,070.50	45,087.83	38,438.00	72,757	2,821	6	225	185,013	181,623	46,448	
0.00		284,708.14	188,428.15	58,823.52	2,770.59	718.75	53,189.13	0.00	105,529	3,272	14	139	142,115	139,401	47,275	
0.00		409,059.88	242,708.00	83,251.20	982.40	7,187.85	84,842.24	0.00	83,039	5,159	11	282	224,555	223,672	70,738	
0.00		389,651.18	243,852.07	83,518.09	0.00	12,894.01	48,388.89	14,584.61	94,220	4,860	11	130	230,342	212,225	80,271	
0.00	3.40	460,639.82	247,421.44	72,883.23	49,542.85	9,255.59	81,758.71	0.00	87,307	2,530	18	350	184,848	187,745	58,386	
0.00		264,589.80	138,848.52	53,850.89	3,400.45	1,435.81	87,254.33	0.00	72,801	4,808	13	155	200,365	196,928	70,207	
0.00		247,959.88	184,875.85	49,485.54	2,101.53	2,261.25	29,246.01	5,840.84	55,230	3,284	11	164	130,180	126,622	55,582	
0.00		159,887.12	109,784.22	30,919.12	0.00	80.28	15,913.50	0.00	52,798	2,812	8	88	105,233	104,888	40,905	
0.00		129,771.51	84,737.42	29,853.04	254.49	515.82	33,810.84	1,431.38	27,559	2,384	8	83	52,102	49,457	19,393	
0.00		180,384.27	111,054.86	35,150.49	2,753.13	733.27	30,702.42	1,322.03	82,038	3,081	9	120	103,425	102,442	42,541	
0.00		138,638.21	87,304.71	35,870.80	561.80	113.82	12,795.18	0.00	89,908	1,749	4	59	78,770	76,482	27,318	
0.00		284,538.82	180,993.33	48,190.07	0.00	15,538.81	12,812.81	0.00	82,214	4,144	11	140	90,815	90,014	29,321	
0.00	3.10	323,933.98	184,155.85	53,135.20	24,844.58	3,814.00	77,884.33	0.00	71,433	4,878	8	117	170,715	168,065	50,370	
0.00	5.00	208,630.78	122,080.63	34,923.67	860.25	2,885.78	47,800.53	0.00	87,069	3,409	11	90	116,289	110,281	51,808	
0.00		134,886.74	72,385.00	28,515.42	1,006.75	84.95	35,024.82	0.00	42,877	2,383	7	78	74,809	74,809	36,135	
5,000.00		408,171.85	223,084.39	81,842.50	5,394.72	15,336.38	72,733.86	0.00	107,601	5,504	11	187	293,888	287,867	78,188	
0.00		110,383.21	63,810.27	20,370.23	442.02	1,062.83	24,877.88	0.00	35,833	2,189	6	188	49,580	48,836	17,810	
0.00		135,242.46	87,848.30	33,423.78	7,271.44	1,383.50	30,305.44	0.00	31,805	2,414	7	52	43,878	43,878	14,715	
0.00		78,585.87	44,555.85	19,837.89	199.95	1,478.00	13,398.39	7,198.84	32,816	1,585	3	101	38,827	38,811	16,593	
0.00		180,084.90	88,209.80	38,236.45	352.75	5,898.27	27,387.83	0.00	49,083	2,788	8	147	74,811	68,811	20,878	
0.00		65,634.46	34,638.00	15,752.86	4,189.59	1,278.70	9,799.31	0.00	26,518	1,030	5	96	36,091	35,819	11,328	
0.00		33,527.48	13,709.88	11,228.34	2,201.54	152.78	6,234.16	0.00	12,256	755	1	57	12,351	12,340	4,884	
5,000.00	26.50	22,850,787.14	13,232,477.50	4,523,099.78	403,926.58	381,838.71	4,328,446.49	519,482.35	4,641,895	340,120	538	9,230	10,547,645	10,274,425	3,336,722	
0.00		195,392.00	122,884.00	43,782.00	245.00	5,884.00	22,807.00	0.00	0	0	N/A	128	170,978	168,389	33,523	
5,000.00	26.50	23,046,179.14	13,355,381.50	4,568,881.78	404,171.58	387,500.71	4,352,253.49	519,482.35	4,641,895	340,120	538	9,358	10,718,623	10,442,784	3,370,246	

Includes '85, '86, and '87 funds.

REGISTERED USERS		INTERLIBRARY LOANS		Reference Transactions Per Typical Week	Number of Branches & Stations	Bookmobiles Operated
Total	Juvenile	Volumes Lent	Volumes Borrowed			
27,459	6,865	42	307	300	4	1
60,813	N/A	8	1,746	1,024	8	1
18,557	8,032	0	601	128	2	1
22,839	10,111	N/A	N/A	347	1	1
35,395	12,438	229	683	1,170	8	1
73,480	N/A	710	969	2,932	10	1
35,071	10,872	199	777	841	6	1
87,106	14,315	283	1,269	8,183	11	2
43,156	N/A	152	1,237	361	4	1
74,158	34,855	27	1,138	5,194	8	1
75,081	N/A	802	557	4,564	7	1
76,375	N/A	682	1,208	1,661	7	1
87,821	25,063	301	998	921	3	1
27,927	6,997	0	961	415	2	1
19,155	5,816	0	332	317	3	1
24,267	8,705	53	567	200	3	1
38,074	14,639	0	492	383	1	1
20,276	7,255	5	129	215	1	1
120,000	N/A	32	591	175	2	1
24,430	N/A	0	644	1,014	5	1
37,522	1,725	7	349	627	4	1
24,907	8,461	10	265	850	0	1
25,610		82	424	128	1	1
20,009	8,211	2	289	250	1	1
13,545	4,110	2	769	75	4	1
8,899	3,035	838	847	75	0	0
21,080	10,926	0	164	41	0	0
11,320	5,167	0	84	36	2	1
12,055	N/A	0	375	105	1	1
12,720	4,954	24	514	125	1	1
15,782	N/A	6	214	127	2	1
8,140	2,977	0	254	67	0	1
32,117	N/A	29	722	692	3	1
6,586	2,191	2	226	640	0	1
11,573	5,281	0	601	15	1	1
2,845	1,194	2	288	30	1	1
9,856	N/A	3	92	60	1	1
5,360	1,348	7	50	25	0	1
2,600	840	0	3	24	0	0
1,273,966	226,383	4,539	21,736	34,337	118	37
13,331		N/A	N/A	165	0	0
1,287,297	226,383	4,539	21,736	34,502	118	37

III. SOUTH CAROLINA STATE-SUPP

LIBRARY STATISTICS

1986-87

	Residents	Total	OPERATING EXPENSES					
			Salaries	Books and Other Materials	Audio Visuals	Other Operating Expenses	Equipment or Capital Outlay	
Adult Correctional Institutions -								
S.C. Department of Corrections	12,988 (b)	\$306,353.00	\$244,029.00	\$43,205.00		\$15,990.00	\$3,129.00	\$3
Aiken Youth Center *								
Central Correctional Institution *								
Cross Anchor Correctional Institution *								
Dutchman Correctional Institution *								
Givens Youth Center *								
Goodman Correctional Institution *								
Greenwood Correctional Institution *								
Kirkland Correctional Institution *								
Leiber Correctional Institution *								
McCormick Correctional Institution *								
MacDougall Youth Correctional Center *								
Manning Correctional Institution *								
Northside Correctional Institution *								
Perry Correctional Institution *								
State Park Correctional Institution *								
Stevenson Pre-Release Center *								
Walden Correctional Institution *								
Wateres River Correctional Institution *								
Watkins Pre-Release Center *								
Women's Correctional Institution *								
Youth Services Institutions								
Birchwood High School	834	24,556.93	17,098.51	5,010.29	267.38	2,180.75		
Willow Lane High School	401	39,002.62	32,158.45	3,657.00	441.68	2,745.49		
Reception and Evaluation Center	110							
Institutions for the Mentally Retarded								
Coastal Center***	419	2,197.00		1,933.00	264.00			
Midlands Center	659	47,128.00	36,398.00	4,080.00	6,350.00	300.00		
Pee Dee Regional Center	414	25,721.00	21,963.00	800.00	2,958.00			
Whitten Center	1,224	56,440.00	41,971.00	1,000.00	12,594.00	875.00		
Mental Health Institutions								
Crafts-Farrow State Hospital ***	548	45,071.79	44,328.00	464.79	219.00	60.00		
Earle E. Morris Village	1,709 ****	26,550.00	21,800.00	4,600.00		150.00		
G. Weber Bryan Psychiatric Hospital ***	288	11,730.95	11,015.00	715.95				
Patrick B. Harris Psychiatric Hospital	160	28,100.00	21,729.00	2,918.00	347.00	1,722.00	1,384.00	
S.C. State Hospital-Horger Library ***	650	26,440.00	19,340.00	1,639.00	170.00	5,291.00		
Institutions for the Physically Handicapped								
S.C. School for the Blind	66	29,402.00	27,652.00	1,750.00				
S.C. School for the Deaf	141	32,562.00	30,562.00	2,000.00				
Special Institutions								
John de la Howe School	148	47,367.00	35,101.00	2,400.00	60.00	9,806.00		
Holmesview Center (c)	298 ****							
Palmetto Center (c)	550 ****							
Beckman Vocational Rehabilitation Center (c)	360 ****	750.00		750.00				
Tucker Center (c)	650	750.00		750.00				
Totals	22,617	\$750,122.29	\$605,144.96	\$77,673.03	\$23,671.06	\$39,120.24	\$4,513.00	\$7

* - Served from the Library Services Division of the S.C. Department of Corrections

** - Not included in the grant program, FY 87. Receive reference, interlibrary loan, film, and consultant services from the State Library.

*** - Represents total residents served annually, not capacity or population of institutions.

(a) - Grant funds through LSCA expended in Federal fiscal year.

(b) - Total number of residents for all 20 adult correctional centers served.

No library at the center. The S.C. State Library selects and purchases paperback books for these institutions.

SOUTH CAROLINA STATE-SUPPORTED INSTITUTIONS

LIBRARY STATISTICS

1986-87

OPERATING EXPENSES				TOTAL INCOME			BOOKSTOCK				PERSONNEL		
Books and Other Materials	Audio Visuals	Other Operating Expenses	Equipment or Capital Outlay	Total	Inst. or Other Funds	State Library Grants (a)	Total Volumes	Volumes Added	Periodicals	Newspapers	Professional	Non-Professional	
00	\$43,205.00		\$15,990.00	\$3,129.00	\$306,353.00	\$289,353.00	\$17,000.00	80,951	15,354	25	7	5.0	94.0 **
51	5,010.29	267.38	2,180.75		24,556.93	22,730.43	1,826.50	3,201	466	53	3	1.0	
45	3,657.00	441.68	2,745.49		39,002.62	36,903.12	2,099.50	6,520	260	45	4	1.0	
	1,933.00	264.00			2,197.00	2,197.00		2,114	23	8	2		1.0
00	4,080.00	6,350.00	300.00		47,128.00	40,798.00	6,330.00	4,979	55	32	2	1.0	2.0
00	800.00	2,958.00			25,721.00	23,463.00	2,258.00	1,200					2.0
00	1,000.00	12,594.00	875.00		56,440.00	52,426.00	4,014.00	5,310	190	24	4	1.0	1.0
00	464.79	219.00	60.00		45,071.79	45,071.79		7,049		33	18		2.0
00	4,600.00		150.00		26,550.00	25,550.00	1,000.00	3,915	609	32	2	1.0	0.1
00	715.95				11,730.95	11,730.95		3,003			1		0.5
00	2,918.00	347.00	1,722.00	1,384.00	28,100.00	27,100.00	1,000.00	1,832	369	23	11	1.0	0.1
00	1,639.00	170.00	5,291.00		26,440.00	26,440.00		4,730	150	75	20		3.0
00	1,750.00				29,402.00	28,402.00	1,000.00	5,204	231	25		1.0	
00	2,000.00				32,562.00	31,562.00	1,000.00	3,168	379	200	1	1.0	2.0
00	2,400.00	60.00	9,806.00		47,367.00	46,227.00	1,140.00	6,706	332	31	5		2.0 0.1
	750.00				750.00		750.00						0.1
	750.00				750.00		750.00						0.1
36	\$77,673.03	\$23,671.06	\$39,120.24	\$4,513.00	\$750,122.29	\$709,954.29	\$40,168.00	139,882	18,418	606	80	13.0	110.0

film, and consultant services from the State Library.
stitutions.

ck books for these institutions.

IV. SOUTH CAROLINA COLLEGES AND UNIVERSITIES

ANNUAL LIBRARY STATISTICS, 1986-87 FISCAL YEAR

	OPERATING EXPENSES, 1986-87				LIBRARY COLLECTIONS						CIRCULATION
	GRAND TOTAL	SALARIES & WAGES	BOOKS & OTHER LIBRARY MATERIALS	BINDING	TOTAL VOLUMES	VOLUMES ADDED	VOLUMES WITHDRAWN	GOVERNMENT DOCUMENTS	MICROFORMS	AUDIO-VISUAL TITLES	
FOUR YEAR COLLEGES AND UNIVERSITIES											
Allen University											
Baptist College at Charleston	\$247,124.00	\$156,735.00	\$44,633.00	\$0.00	116,046	751	30	86,786	55,013	25,414	21
Benedict College	271,588.00	218,039.00	45,168.00	0.00	144,888	739	5	8,704	5,244	13,230	10
Bob Jones University	268,581.82	181,251.01	80,383.64	4,082.15	192,614				161,283	9,760	61
Central Wesleyan College	125,643.67	62,642.20	33,637.86	1,679.14	67,194	1,476	463		43	2,640	13
Citadel	743,468.00	361,252.00	238,827.00	6,000.00	196,959	4,601	4,048	68,307	449,390	0	29
Claflin College	No Report Received										
Clemson University	3,346,833.00	1,588,000.00	1,428,798.00	74,675.00	672,060	21,347	20,789	629,461	1,207,725	68,840	220
Coker College	120,594.00	61,594.00	35,000.00	2,500.00	56,514	1,703	8	0	7,906	1,956	7
College of Charleston	1,223,486.30	601,080.98	406,988.26	21,929.98	354,252	13,621	243		407,306		61
Columbia Bible College	228,667.00	119,349.00	66,437.00	3,714.00	63,758	2,047	440		5,405	12,885	67
Columbia College	311,937.05	188,600.00	93,912.75	7,586.10	125,709	2,713	408		21,018	7,134	21
Converse College	433,644.99	220,899.00	155,071.99	6,000.00	141,260	3,009	1,109	0	2,976	176	20
Erskine College	160,972.30	75,105.00	78,824.23		135,358	4,872	519	79,441		975	
Francis Marion College	867,390.00	356,002.00	297,660.00	16,774.00	227,705	8,160	21	22,890	54,175	0	39
Furman University	880,111.00	335,876.00	416,470.00	23,585.00	299,644	7,339	1,185	30,905	394,466	1,462	58
Lander College	443,606.00	248,590.00	109,900.00	4,500.00	123,825	4,090	91	1,552	68,714	1,682	38
Limestone College	88,694.00	52,844.00	33,000.00		89,284	1,832	300		549	4,971	
Lutheran Theol. Southern Seminary	136,364.00	85,638.00	42,215.00	4,301.00	95,190	2,074	0	0	7,600	1,637	
Medical University of S.C.	1,524,275.00	725,952.00	527,640.00	23,426.00	172,523	7,642	1,449		10,364	2,252	12
Morris College	161,267.00	94,332.00	47,676.00	252.00	84,223	1,948	466		61,995	1,866	19
Newberry College	193,697.00	82,700.00	48,000.00	4,000.00	87,700	2,539	2,057		423	203	7
Presbyterian College	279,140.00	142,462.00	113,927.00	4,785.00	130,279	3,429	8,097		3,368	2,762	14
South Carolina State College	677,652.00	350,165.00	190,757.00	10,293.00	246,407	3,647	0	57,395	395,569	376	56
Southern Methodist College	19,430.92	13,900.00	3,538.70	0.00	14,000	946		0			
University of South Carolina	6,137,554.00	3,389,414.00	2,223,541.00	117,058.00	2,225,572	58,435	8,629	582,918	2,327,945	9,837	707
USC-Aiken	841,044.00	226,361.00	274,992.00	16,592.00	110,086	6,998	2,542	5,000	24,288	626	39
USC-Coastal Carolina	615,025.00	239,994.00	288,001.00	9,637.00	134,779	12,270	1,153		21,384	5,496	58
USC-Spartanburg	605,773.00	252,028.00	247,688.00	247,688.00	79,128	3,711	387	0	67,693	1,248	20
Voorhees College	171,525.00	80,660.00	63,520.00	0.00	120,000	2,000	653			765	
Winthrop College	1,358,632.00	647,468.00	370,026.00	9,167.00	324,472	6,052	1,842	201,022	791,247	1,852	77
Wofford College	397,874.00	181,000.00	106,000.00	10,000.00	172,318	3,894	1,000		22,647		18
JUNIOR COLLEGES											
Anderson College	107,675.00	74,718.00	26,674.00	668.00	39,678	1,290	846	0	214	214	22
Clinton Junior College	No Report Received										
North Greenville College	99,149.23	63,522.40	23,269.53	1,663.03	41,506	1,516	19	0	1,109	4,517	7
Spartanburg Methodist College	110,775.00	67,500.00	31,500.00	500.00	32,025	750	227			1,761	9
USC-Beaufort	107,335.00	64,772.00	30,056.00	484.00	35,817	822	0	4,287	2,466	971	6
USC-Lancaster	186,843.00	98,763.00	50,948.00	2,567.00	46,119	1,792	0		4,086	1,978	14
USC-Salkehatchie	No Report Received										
USC-Sumter	214,136.39	87,496.11	74,267.15	2,286.88	36,706	1,903	15	0	772	1,685	30
USC-Union	72,669.42	41,292.79	13,486.38	546.83	30,727	699	142		1,568	5,975	6
TECHNICAL COLLEGES											
Aiken	136,997.00	94,395.00	25,616.00		17,673	842	393	280	578	3,246	3
Beaufort	82,599.00	65,699.00	15,945.00		22,249	432	0			741	3
Chesterfield-Marlboro	66,679.56	41,082.60	32,168.34		17,578	715	26	0	0	42	6
Denmark	108,079.00	76,217.00	26,000.00	453.00	19,224	648	259	0	15,674	2,433	5
Florence-Darlington	106,410.00	69,806.00	25,778.00	0.00	27,829	614	80	0	11,517	209	6
Greenville	225,932.00	124,695.00	78,325.00	0.00	42,373	2,554	1,771		7,330	3,463	13
Horry-Georgetown	122,564.58	103,989.75	14,603.85	402.10	24,138	1,363	35	0	3,744	1,380	16
Midlands-Airport	327,246.00	256,287.00	50,000.00	0.00	61,973	935	727	0	4,686	295	20
Midlands-Beltline	Included in Airport campus										
Orangeburg-Calhoun	200,023.00	161,171.00	21,000.00	0.00	29,548	747	417	0	3,021	8,297	14
Piedmont	157,181.16	96,346.16	34,079.85	300.00	24,359	964	38	0	187	2,175	6
Spartanburg	91,335.00	59,599.00	28,000.00	0.00	24,638	1,052	128	0	2,029	481	6
Sumter Area	99,616.22	63,531.85	31,738.93	694.50	17,709	436		0	180	1,216	14
Tri-County	166,962.00	136,482.00	7,000.00	130.00	39,988	268	176	0	24,250	3,839	12
Trident-Berkeley	16,989.00	15,089.00	0.00	0.00	3,393	223	200		11,816		1
Trident-Main	280,505.00	238,825.00	40,750.00	270.00	32,965	1,300	545		29,545	18	12
Trident-Palmer	22,682.00	21,282.00	0.00	0.00	21,582	154	182		27,892		
Williamsburg	84,104.00	47,782.00	25,786.00	0.00	18,321	677	61	0	15,213	1,183	7
York	81,840.00	41,214.00	35,036.00	0.00	20,986	725	0	0	33,398	1,785	6

total enrollment for Airport and Beltline campuses of Midlands.
total enrollment for Main, Berkeley, and Palmer campuses of Trident.

CAROLINA COLLEGES AND UNIVERSITIES

LIBRARY STATISTICS, 1986-87 FISCAL YEAR

S	LIBRARY COLLECTIONS					TRANSACTIONS			PERSONNEL (Full-Time Equivalent)					
	VOLUMES ADDED	VOLUMES WITHDRAWN	GOVERNMENT DOCUMENTS	MICROFORMS	AUDIO-VISUAL TITLES	CIRCULATION	INTERLIBRARY LOANS		PROFESSIONAL	NON-PROFESSIONAL	NO. OF HOURS OF STUDENT ASSISTANCE	ENROLLMENT		
							VOLUMES LENT	VOLUMES BORROWED				FULL-TIME	HEAD-COUNT	
46	751	30	86,786	55,013	25,414	21,864	371	578	5.0	6.5	9,295.5	1,053	219	233
88	739	5	8,704	5,244	13,230	10,701	14	6	5.0	5.0	16,094.0	1,439	1,469	1,469
14				161,283	9,760	61,217	175	133	5.3	11.5	20,937.3	3,520	4,039	4,039
94	1,476	463		43	2,640	13,012	2	12	2.5	3.5	2,183.0	390	450	450
59	4,601	4,048	68,307	449,390	0	29,321	383	1,003	6.0	12.0	1,700.0	2,110	3,338	3,338
60	21,347	20,789	629,461	1,207,725	68,840	226,566	6,076	5,588	25.0	58.5	24,230.0	10,985	744	757
14	1,703	8	0	7,906	1,956	7,728	22	296	1.0	3.3	2,096.0	234	485	485
52	13,621	243		407,306		67,290	1,491	2,130	11.5	17.0	16,947.0	3,879	5,531	5,531
58	2,047	440		5,405	12,885	67,397	184	180	2.3	9.1	2,007.0	747	866	866
09	2,713	408		21,018	7,134	21,526	52	65	6.0	4.0	5,930.0	979	1,191	1,191
60	3,009	1,109	0	2,976	176	20,187	88	367	6.0	5.0	5,940.0	794	1,145	1,145
58	4,872	519	79,441		975		13	9	2.0	3.0		537	605	605
05	8,160	21	22,890	54,175	0	39,584	981	620	7.0	10.0	9,135.0	2,639	3,673	3,673
44	7,339	1,185	30,905	394,466	1,462	52,900	399	541	7.0	10.8	12,996.0	2,222	2,964	2,964
25	4,090	91	1,552	68,714	1,682	35,807	212	742	4.2	5.8	6,719.0	1,842	2,276	2,276
84	1,832	300		549	4,971	2,581		18	1.0	3.0	2,655.0	1,147	1,156	1,156
90	2,074	0	0	7,600	1,637		5	17	2.0	1.0	2,293.0	109	169	169
23	7,642	1,449		10,364	2,252	125,259	10,836	2,118	14.0	21.0	7,714.3	2,131	2,468	2,468
23	1,948	466		61,995	1,866	19,561	93	17	3.0	4.0	18,485.0	672	675	675
00	2,539	2,057		423	203	7,535	595	171	3.0	4.0	3,582.0	576	608	608
79	3,429	8,097		3,368	2,762	14,711	4	54	1.8	6.0	3,851.0	997	1,026	1,026
07	3,647	0	57,395	395,569	376	56,733	293	602	9.0	8.0	9,862.0	3,088	3,869	3,869
00	946		0				0	0	1.0	0.0	260.0	19	43	43
72	58,435	8,629	582,918	2,327,945	9,837	707,489	12,125	4,468	59.0	111.0	50,876.0	15,775	22,965	22,965
86	6,998	2,542	5,000	24,288	626	32,645	576	854	5.0	6.5	9,914.5	1,284	2,068	2,068
79	12,270	1,153		21,384	6,496	52,559	487	1,440	5.0	7.5	6,884.0	2,266	3,176	3,176
28	3,711	387	0	67,693	1,248	20,563	510	496	5.0	6.0	4,931.3	1,837	2,956	2,956
00	2,000	653		765			100	20	3.0	4.0	1,112.0	563	581	581
72	6,052	1,842	201,022	791,247	1,852	77,148	1,236	1,184	13.0	17.0	30,118.0	4,009	5,323	5,323
18	3,894	1,000		22,647		18,005	126	359	6.7	3.0	6,417.0	1,064	1,095	1,095
78	1,290	846	0	214	214	22,155	0	22	2.0	2.5	2,304.0	966	1,067	1,067
06	1,516	19	0	1,109	4,517	7,996	0	13	2.0	2.5	1,352.0	426	470	470
25	750	227		1,761	9,004	10	6		1.8	1.5	2,500.0	732	967	967
17	822	0	4,287	2,466	971	6,284	113	423	1.0	1.6	2,034.0	223	711	711
19	1,792	0		4,086	1,978	11,358	201	705	2.0	3.0	540.0	393	970	970
06	1,903	15	0	772	1,685	36,317	177	862	2.0	2.5	2,540.0	567	1,265	1,265
27	699	142		1,568	5,975	6,328	97	153	1.0	1.5	3,765.0	148	319	319
73	842	393	280	578	3,246	2,768	0	10	1.0	2.0	2,550.0	583	1,328	1,328
49	432	0		741	3,008	1	10		1.0	2.0	2,945.0	270	979	979
78	715	26	0	42	6,037	1	1		1.0	3.0	1,000.0	248	619	619
24	648	259	0	15,674	2,433	5,348	0	3	2.0	3.0	1,742.5	578	889	889
29	614	80	0	11,517	209	6,256	58	170	1.5	2.0	1,464.0	1,145	1,900	1,900
79	2,554	1,771		7,330	3,463	13,000	300	33	1.5	6.0	2,834.0	3,120	5,855	5,855
38	1,363	35	0	3,744	1,380	16,351	10	105	1.8	3.0	5,353.0	917	1,488	1,488
73	935	727	0	4,686	295	20,452	0	21	6.5	6.0	3,569.3	2,547	5,050	5,050
48	747	417	0	3,021	8,297	11,133	138	49	4.0	3.1	4,617.0	856	1,265	1,265
59	964	38	0	187	2,175	6,264	44	216	2.5	2.0	2,626.9	1,103	1,615	1,615
38	1,052	128	0	2,029	481	6,772	13	41	2.0	2.0	345.0	1,023	1,702	1,702
09	436		0	180	1,216	14,614	4	37	1.0	2.0	960.0	870	1,714	1,714
38	268	176	0	24,250	3,839	12,231	10	304	2.0	5.5	250.0	1,441	2,379	2,379
93	223	200		11,816		1,285			0.0	1.0	1,246.0	1,843	5,241	5,241
55	1,300	545		29,545	18	12,646	92	204	5.5	7.0	2,914.5			
32	154	182		27,892		801			0.0	1.0	740.0			
21	677	61	0	15,213	1,183	7,910	1	41	1.0	2.0	0.0	138	357	357
86	725	0	0	33,398	1,785	8,919	3	18	1.0	1.5	1,375.0	1,147	2,125	2,125