

DOCUMENT RESUME

ED 291 442

JC 880 100

TITLE Washington Community Colleges Fall Quarter Report 1987--Recap.

INSTITUTION Washington State Board for Community Coll. Education, Olympia. Div. for Information Services, Research & Evaluation.

PUB DATE [88]

NOTE 48p.

PUB TYPE Statistical Data (110) -- Reports - Descriptive (141)

EDRS PRICE MF01/PC02 Plus Postage.

DESCRIPTORS Academic Education; Administrators; Age; College Faculty; *Community Colleges; *Courses; *Enrollment; Females; Full Time Equivalency; Males; Personnel Data; *School Personnel; State Surveys; *Student Characteristics; Two Year Colleges; *Two Year College Students; Vocational Education

IDENTIFIERS *Washington

ABSTRACT

Fall 1987 data on student characteristics, course characteristics, and personnel in the Washington community colleges are presented in this report. The first section provides summary data on headcount and full-time equivalent (FTE) enrollments for 1983 through 1987; information on FTE's by funding source; and a comparison of state-supported FTE's by college. The next section focuses on student characteristics, providing data on full-/part-time status, age group, median age, gender, race, subject area, and new/continuing status. The third section presents enrollment data by course characteristics, with tables showing enrollment by funding source, course intent, subject, time, and location. Finally, personnel data are presented, including statistics on teaching faculty by employment status; numbers and percentages of employees and students by race, sex, and full-/part-time status; and the age structure of faculty and administrators. Selected findings include the following: (1) in fall 1987, the Washington community colleges served 163,278 students, representing an increase of 2.8% over 1986; (2) the average campus served 5,900 headcount and 3,300 FTE students; (3) the fastest-growing student groups were young students under 20 years of age and those 40 to 45 years of age; and (4) 42% of all students enrolled in fall 1987 were new to the college. (EJV)

* Reproductions supplied by EDRS are the best that can be made *
 * from the original document. *

ED291442

JC 880100

Washington Community Colleges

FALL QUARTER REPORT 1987 -- RECAP

State of Washington

STATE BOARD FOR COMMUNITY COLLEGE EDUCATION

Philip Hayes, Chair

Earl Hale, Executive Director

Prepared by the Division of Information Services

and Enrollment Planning

"PERMISSION TO REPRODUCE THIS MATERIAL HAS BEEN GRANTED BY

R. Bell

BEST COPY AVAILABLE

U.S. DEPARTMENT OF EDUCATION
Office of Educational Research and Improvement
EDUCATIONAL RESOURCES INFORMATION
CENTER (ERIC)

This document has been reproduced as received from the person or organization originating it.
 Minor changes have been made to improve reproduction quality.

• Points of view or opinions stated in this document do not necessarily represent official OERI position or policy.



TO THE EDUCATIONAL RESOURCES INFORMATION CENTER (ERIC)."

TABLE OF CONTENTS

	Page
TABLE OF CONTENTS	i
 OVERVIEW	
All Students	1
FTES by Funding Source	3
Comparison of State-Supported FTES	6
 ENROLLMENT: STUDENT CHARACTERISTICS	
Students by Full-Time & Part-Time Status	7
Students by Age Group	9
Students by Median Age	11
Students by Sex	13
Students by Race	14
Students by Subject Area	15
Students by Source	17
 ENROLLMENT: COURSE CHARACTERISTICS	
State-Supported FTES by Course Intent	19
Basic Skills & Developmental Studies Courses	21
Academic and Vocational Courses	24
Day-On-Campus FTES	34
 PERSONNEL	
Teaching Faculty (FTE-F) by Employment Status	35
Community College Employed Compared to Washington Employed by Sex and Race	37
Employees & Students by Race, Sex and Full-Time/Part-Time Status	38
Full-Time Employees by Age Group	39

COMMUNITY COLLEGE ENROLLMENTS

	<u>1986</u>	<u>1987</u>	<u>% Change</u>
Headcount			
All Students	158,837	163,278	2.8%
State	134,522	132,838	- 1.3%
Contract	9,524	12,595	+32.2%
Student Funded	14,791	17,845	+20.6%
FTE			
All Students	90,113	90,568	0.5%
State	83,658	82,243	- 1.7%
Contract	4,987	6,063	+21.6%
Student Funded	1,467	2,261	+54.1%

AJB/ISDBB

00005

ENROLLMENTS FOR ALL STUDENTS

Fall Quarters 1983 thru 1987

	<u>1983</u>	<u>1984</u>	<u>1985</u>	<u>1986</u>	<u>1987</u>
HEADCOUNT	152,814	153,451	153,460	158,837	163,278
% Change	-0.1%	0.4%	*	3.5%	2.8%
FTES	86,989	87,089	87,901	90,113	90,568
% Change	-1.2%	0.1%	0.9%	2.5%	0.5%
AVERAGE CREDIT LOAD	8.5	8.5	8.6	8.5	8.3

The average Washington community college served 5,900 students, 3,300 FTEs. The largest colleges served from 8,000 to 13,000 students each. The smallest colleges serve from 2,000 to 3,000 students each.

Fall Quarter 1987

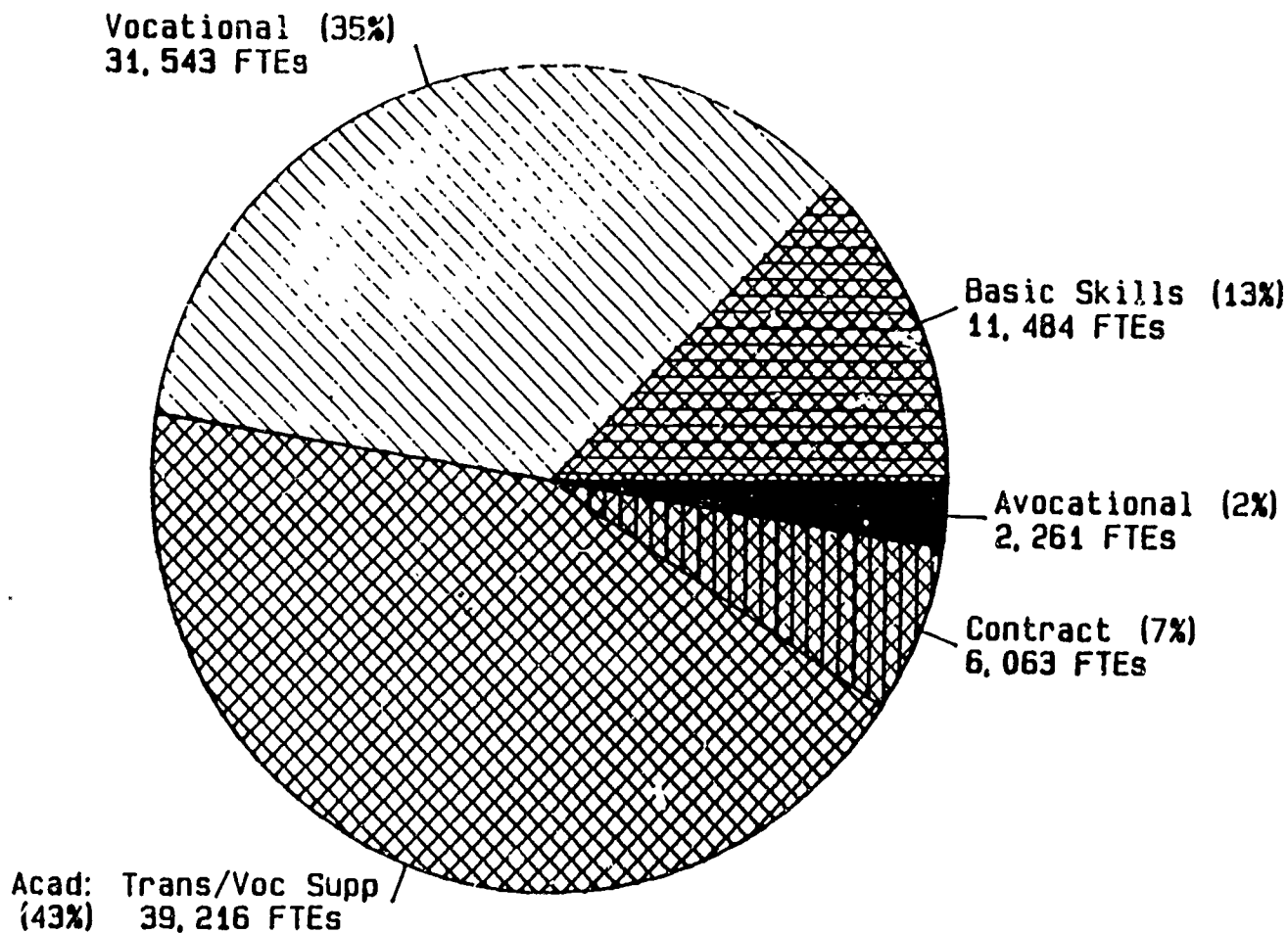
<u>COLLEGE/DISTRICT</u>	<u>HEADCOUNT</u>	<u>HEADCOUNT AS % OF TOTAL</u>	<u>FTE</u>	<u>FTE AS % OF TOTAL</u>
1 PENINSULA	2,685	1.6%	1,055	1.2%
2 GRAYS HARBOR	2,449	1.5%	1,206	1.3%
3 OLYMPIC	5,956	3.6%	3,267	3.6%
4 SKAGIT VALLEY	5,096	3.1%	2,648	2.9%
5 EVERETT	6,666	4.1%	3,435	3.8%
6 DISTRICT				
SEATTLE CENTRAL	8,202	5.0%	5,210	5.8%
SEATTLE NORTH	7,186	4.4%	3,514	3.9%
SEATTLE SOUTH	5,711	3.5%	3,392	3.7%
7 SHORELINE	7,197	4.4%	4,455	4.9%
8 BELLEVUE	12,286	7.5%	5,663	6.3%
9 HIGHLINE	8,703	5.3%	4,900	5.4%
10 GREEN RIVER	6,328	3.9%	4,174	4.6%
11 PIERCE	9,273	5.7%	4,895	5.4%
12 DISTRICT				
CENTRALIA	3,256	2.0%	2,151	2.4%
SO. PUGET SOUND	3,895	2.4%	1,935	2.1%
13 LOWER COLUMBIA	3,777	2.3%	2,090	2.3%
14 CLARK	8,213	5.0%	4,618	5.1%
15 WENATCHEE VALLEY	3,153	1.9%	1,775	2.0%
16 YAKIMA VALLEY	4,552	2.8%	2,645	2.9%
17 DISTRICT				
SPOKANE	6,436	3.9%	5,399	6.0%
SPOKANE FALLS	13,928	8.5%	6,550	7.2%
18 BIG BEND	2,277	1.4%	1,190	1.3%
19 COLUMBIA BASIN	5,731	3.5%	3,368	3.7%
20 WALLA WALLA	4,331	2.7%	2,360	2.6%
21 WHATCOM	2,887	1.8%	1,260	1.4%
22 TACOMA	5,948	3.6%	3,389	3.7%
23 EDMONDS	7,156	4.4%	4,023	4.4%
SYSTEM TOTALS	163,278	100.0%	90,568	100.0%

SOURCE: 1983-85: SBCCE Course Effort Report MIS-2:IM2052, SBCCE Student Enrollment Report MIS-1:IM101, and SMS Report SM4310.
 1986-87: SBCCE Course MIS:SR2101, Version #1, Student MIS:SR1101, Version #1.

NOTE: Totals may not add due to rounding.
 * Less than 0.05 Percent

TOTAL COURSE EFFORT

Fall Quarter 1987



FTES BY FUNDING SOURCE

Fall Quarters 1983 thru 1987

	1983	1984	1985	1986	1987
STATE SUPPORTED	79,666	80,904	81,901	83,658	82,243
% Change	-0.4%	1.6%	1.2%	2.1%	-1.7%
CONTRACT SUPPORTED	5,328	4,544	4,530	4,987	6,063
% Change	-3.3%	-14.7%	-0.3%	10.1%	21.6%
STUDENT FUNDED	1,995	1,641	1,470	1,467	2,261
% Change	-23.0%	-17.7%	-10.4%	-0.2%	54.1%
TOTAL	86,989	87,089	87,901	90,113	90,568
% Change	-1.2%	0.1%	0.9%	2.5%	0.5%

State-supported FTEs have been increasing slightly each year since 1983, consistent with small increases in state funding levels. FTE limits for 1987-89 are the same as 1986-87, so colleges reduced the size of fall classes to allow for more equal quarterly enrollments. Contract-supported FTEs come from courses tailored to the specific educational needs of a business or organization which pays the costs of instruction. Student-funded FTEs include recreational courses and other courses of an avocational or personal enrichment nature.

Fall Quarter 1987

DISTRICT/COLLEGE	STATE SUPPORTED	CONTRACT SUPPORTED	SUB-TOTAL	STUDENT FUNDED	TOTAL
1 PENINSULA	997	57	1,054	2	1,056
2 GRAYS HARBOR	1,191	5	1,196	10	1,206
3 OLYMPIC	3,249		3,249	18	3,267
4 SKAGIT VALLEY	2,362	263	2,625	23	2,648
5 EVERETT	3,425	6	3,431	4	3,435
6 DISTRICT					
SEATTLE CENTRAL	4,635	462	5,097	114	5,211
SEATTLE NORTH	3,306	89	3,395	119	3,514
SEATTLE SOUTH	3,203	91	3,294	97	3,391
7 SHORELINE	4,375	23	4,398	57	4,455
8 BELLEVUE	4,236	942	5,178	485	5,663
9 HIGHLINE	4,791	63	4,854	46	4,900
10 GREEN RIVER	3,719	104	3,823	351	4,174
11 PIERCE	3,491	1,341	4,832	63	4,895
12 DISTRICT					
CENTRALIA	1,733	408	2,141	10	2,151
SO. PUGET SOUND	1,897	24	1,921	14	1,935
13 LOWER COLUMBIA	2,059		2,059	31	2,090
14 CLARK	4,340	136	4,476	142	4,618
15 WENATCHEE VALLEY	1,720	7	1,727	46	1,773
16 YAKIMA VALLEY	2,542	100	2,642	4	2,646
17 DISTRICT					
SPOKANE	5,350	12	5,362	37	5,399
SPOKANE FALLS	6,031	231	6,262	288	6,550
18 BIG BEND	1,169		1,169	20	1,189
19 COLUMBIA BASIN	3,368		3,368		3,368
20 WALLA WALLA	2,010	332	2,342	18	2,360
21 WHATCOM	825	405	1,230	29	1,259
22 TACOMA	3,029	255	3,284	105	3,389
23 EDMONDS	3,190	707	3,897	127	4,024
SYSTEM TOTALS	82,243	6,063	88,306	2,261	90,568
% of Total	90.8%	6.7%	97.5%	2.5%	

SOURCE: 1980-85: Course Effort Report MIS-2:IM2052
 1986-87: SBCCE Course MIS:SR2101, Version #1.

NOTE: Totals may not add due to rounding.

4

COMPARISON OF STATE-SUPPORTED FTES BY COLLEGE

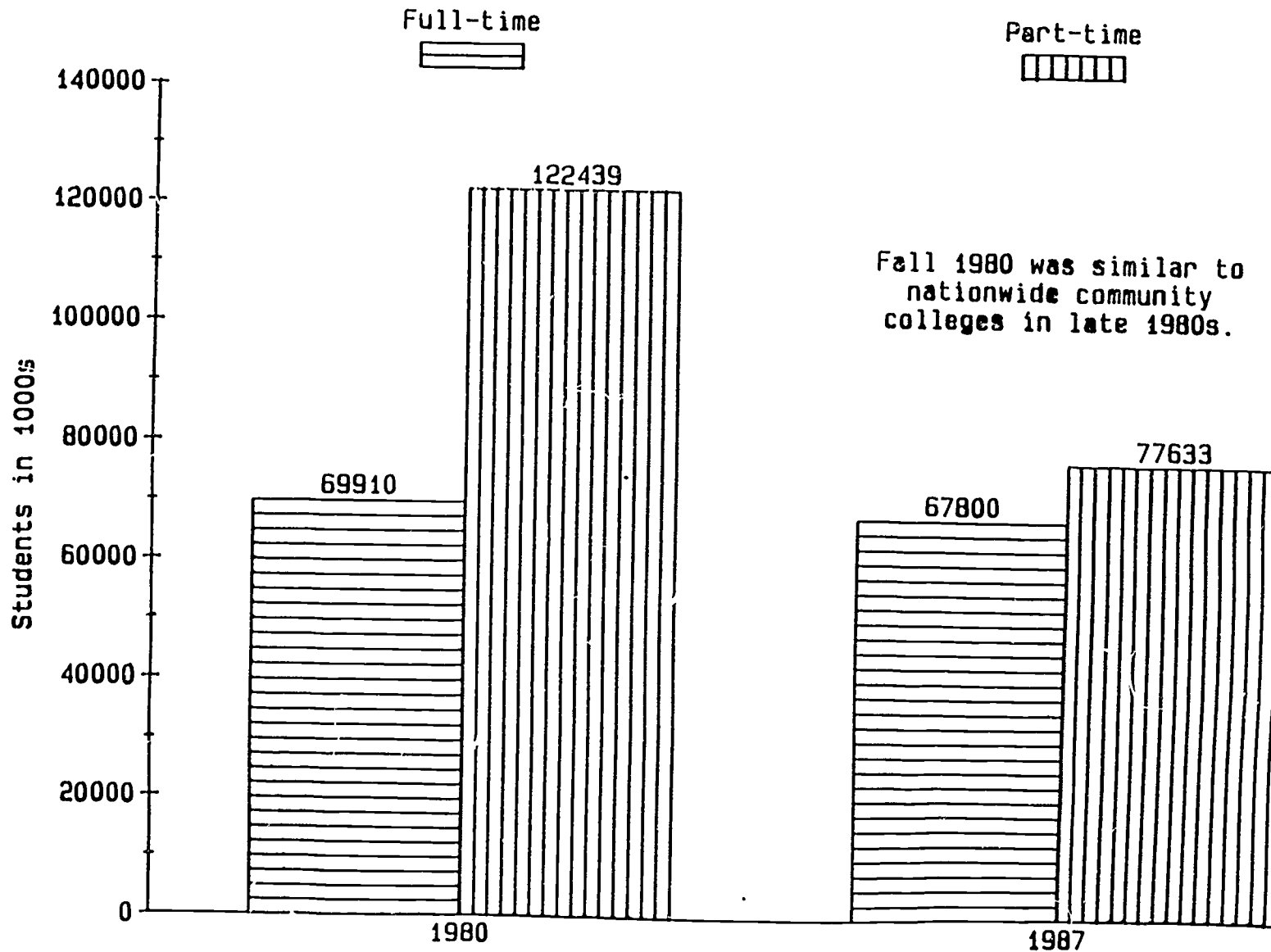
Nineteen colleges experienced the systemwide pattern of decreased enrollments over last fall as measured by FTEs in courses supported by state funds. One college continued the same enrollment levels as last year (less than one percent growth or decline). Seven colleges had enrollment increases.

COLLEGE/DISTRICT	FALL QUARTERS		CHANGE	
	1986	1987	ANNUAL	%
1 PENINSULA	1,042	997	-46	-4.4%
2 GRAYS HARBOR	1,242	1,191	-51	-4.1%
3 OLYMPIC	3,014	3,249	235	7.8%
4 SKAGIT VALLEY	2,566	2,362	-204	-8.0%
5 EVERETT	3,332	3,425	94	2.8%
6 DISTRICT				
SEATTLE CENTRAL	4,781	4,635	-146	-3.1%
SEATTLE NORTH	3,401	3,306	-96	-2.8%
SEATTLE SOUTH	3,042	3,203	162	5.3%
7 SHORELINE	4,487	4,375	-112	-2.5%
8 BELLEVUE	4,287	4,236	-51	-1.2%
9 HIGHLINE	4,881	4,791	-90	-1.8%
10 GREEN RIVER	3,776	3,719	-56	-1.5%
11 PIERCE	3,583	3,491	-92	-2.6%
12 DISTRICT				
CENTRALIA	1,756	1,733	-23	-1.3%
SO. PUGET SOUND	1,932	1,897	-36	-1.9%
13 LOWER COLUMBIA	1,985	2,059	75	3.8%
14 CLARK	4,589	4,340	-249	-5.4%
15 WENATCHEE VALLEY	1,769	1,721	-48	-2.7%
16 YAKIMA VALLEY	2,776	2,541	-235	-8.5%
17 DISTRICT				
SPOKANE	5,347	5,350	3	0.1%
SPOKANE FALLS	6,429	6,031	-398	-6.2%
18 BIG BEND	1,067	1,169	103	9.6%
19 COLUMBIA BASIN	3,316	3,368	51	1.6%
20 WALLA WALLA	2,083	2,010	-74	-3.5%
21 WHATCOM	1,049	825	-223	-21.3%
22 TACOMA	3,071	3,029	-42	-1.4%
23 EDMONDS	3,055	3,190	135	4.4%
SYSTEM TOTALS	83,658	82,243	-1,415	-1.7%

SOURCE: SBCCE Course MIS:SR2101, Version #1

STUDENTS BY FULL-TIME AND PART-TIME STATUS

Fall 1980 and 1987



STUDENTS BY FULL-TIME AND PART-TIME STATUS--STATE AND CONTRACT SUPPORTED

Fall Quarters 1983 thru 1987

FALL QUARTER	STUDENT HEADCOUNT	FULL-TIME		STUDENT HEADCOUNT	PART-TIME	
		% OF TOTAL	AVERAGE CREDITS		% OF TOTAL	AVERAGE CREDITS
1983	65,072	48.3%	15.3	69,713	51.7%	4.0
1984	64,559	46.9%	15.3	73,157	53.1%	4.0
1985	64,864	46.8%	15.4	73,778	53.2%	4.1
1986	67,149	46.6%	15.2	76,897	53.4%	4.0
1987	67,800	45.6%	15.0	77,633	53.4%	4.0

A smaller percentage of part-time students (enrolled for less than 10 credits) enroll in Washington community colleges (53 percent) than do community colleges nationally (67 percent). Budget cuts at the beginning of this decade forced cuts in courses normally taken by part-time students. As a result, fewer working people and those with home commitments are able to enroll in community colleges than in the past.

Full-time students average 15 credits each and generate three quarters of all the FTEs.

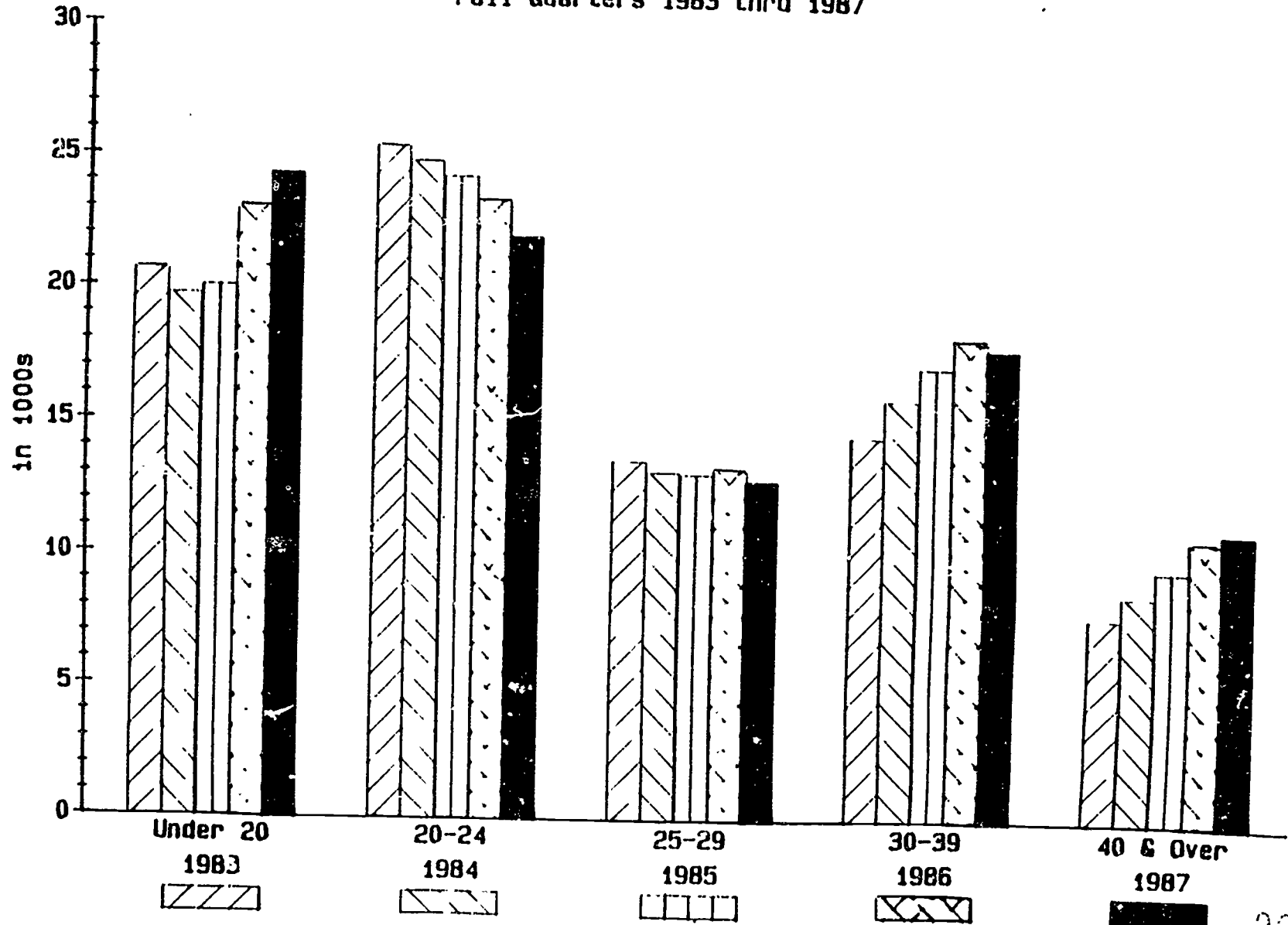
Fall Quarter 1987

COLLEGE	FULL-TIME		% OF COLLEGE FTEs	PART-TIME		% OF COLLEGE FTEs
	HEADCOUNT	FTEs		HEADCOUNT	FTEs	
1 PENINSULA	705	678	64.4%	1,953	375	35.6%
2 GRAYS HARBOR	872	875	73.1%	1,452	322	26.9%
3 OLYMPIC	2,352	2,244	69.1%	3,357	1,005	30.9%
4 SKAGIT VALLEY	1,893	1,859	72.8%	3,003	766	29.2%
5 EVERETT	2,364	2,377	69.3%	4,240	1,055	30.7%
6 DISTRICT						
SEATTLE CENTRAL	4,218	4,095	80.4%	3,200	1,001	19.6%
SEATTLE NORTH	2,383	2,292	67.5%	3,807	1,103	32.5%
SEATTLE SOUTH	2,080	2,397	72.8%	3,155	897	27.2%
7 SHORELINE	3,700	3,544	80.6%	2,902	853	19.4%
8 BELLEVUE	4,326	3,827	73.9%	4,527	1,351	26.1%
9 HIGHLINE	3,959	3,716	76.6%	3,879	1,138	23.5%
10 GREFN RIVER	3,076	3,092	80.9%	2,609	731	19.1%
11 PIERCE	3,683	3,431	71.0%	4,962	1,401	29.0%
12 DISTRICT						
CENTRALIA	1,604	1,744	81.4%	1,553	397	18.6%
SO. PUGET SOUND	1,385	1,317	62.5%	2,192	604	31.5%
13 LOWER COLUMBIA	1,556	1,617	78.5%	1,838	443	21.5%
14 CLARK	3,191	3,280	73.3%	4,515	1,195	26.7%
15 WENATCHEE VALLEY	1,336	1,380	79.9%	1,368	348	20.1%
16 YAKIMA VALLEY	2,173	2,132	80.7%	2,254	510	19.3%
17 DISTRICT						
SPOKANE	4,271	4,893	91.3%	1,698	469	8.7%
SPOKANE FALLS	4,933	5,248	83.8%	4,875	1,015	16.2%
18 BIG BEND	788	873	74.7%	1,227	296	25.3%
19 COLUMBIA BASIN	2,557	2,520	74.8%	3,174	849	25.2%
20 WALLA WALLA	1,741	1,869	79.8%	2,235	472	20.1%
21 WHATCOM	851	768	62.5%	1,646	462	37.5%
22 TACOMA	2,898	2,744	83.5%	1,851	540	16.4%
23 EDMONDS	2,905	2,777	71.3%	4,161	1,118	28.7%
SYSTEM TOTALS	67,800	67,589	76.5%	77,633	20,717	23.5%

SOURCE: 1983-85: SBCCE Student Enrollment Reports MIS-1:IM1020 & IM1021
 1986-87: SBCCE Student MIS:SR1102, Version #2.
 SBCCE Course MIS:SR2101, Version #1

STUDENTS BY AGE GROUP

Fall Quarters 1983 thru 1987



000' 14

AJ9/IS083

STUDENTS BY AGE GROUP -- STATE AND CONTRACT SUPPORTED

Fall Quarters 1983 thru 1987

The fastest growing student groups were young students under 20 years of age and those 40-45 years of age. The under 20 age group made up 27.5 percent of course effort. Those 40 and over comprised 12.6 percent of the FTE. The average student was enrolled full time for 9.1 credits. The under 20 group enrolled for 13.0 credits; the 20-29 age group, which is declining in size, enrolled for 9.8 credits; the 30-39 age group, also declining in size, enrolled for 7.5 credits; and the 40 and over group enrolled for 5.9 credits.

<u>STUDENT AGE</u>	<u>1983</u>	<u>1984</u>	<u>1985</u>	<u>1986</u>	<u>1987</u>
UNDER 20 YEARS					
Headcount	23,468	22,382	22,432	26,059	28,034
FTE	20,628	19,715	19,932	22,935	24,288
20-24 YEARS					
Headcount	33,420	32,704	31,752	31,692	30,445
FTE	25,345	24,823	24,223	23,356	21,993
25-29 YEARS					
Headcount	22,738	22,310	21,966	23,132	22,686
FTE	13,574	13,181	13,090	13,277	12,882
30-34 YEARS					
Headcount	17,746	18,729	19,335	20,940	20,699
FTE	9,247	9,829	10,343	10,785	10,576
35-39 YEARS					
Headcount	11,000	12,484	13,558	15,336	15,206
FTE	5,329	6,192	6,895	7,479	7,403
40-44 YEARS					
Headcount	6,739	7,255	7,826	8,816	9,644
FTE	3,400	3,761	4,068	4,432	4,710
45-49 YEARS					
Headcount	3,967	4,309	4,571	5,076	5,349
FTE	2,014	2,147	2,348	2,568	2,622
50 + YEARS					
Headcount	7,366	8,897	10,401	12,995	13,370
FTE	2,447	2,825	3,262	3,810	3,832
AGE NOT REPORTED*					
Headcount	8,341	8,646	6,801	(6,262)	(3,872)
FTE	3,009	2,975	2,208	(2,038)	(1,136)
TOTALS					
Headcount	134,785	137,716	138,642	144,046	145,433
FTE	84,994	85,448	86,431	88,642	88,306

SOURCE: 1983-85: SBCCE Student Enrollment Report MIS-1:IM1016.

1986-87: SBCCE Student MIS:SR1102, Version #2.

* Totals for Age Not Reported prorated among all age groups for Fall 1986 and 1987. Totals may not add due to rounding.

MEDIAN AGE

Fall 1987

Colleges with Youngest Students

Shoreline	22.9
Green River	24.6
Bellevue	24.7

SYSTEM AVERAGE 27.9

Colleges with Oldest Students

Peninsula	34.6
Grays Harbor	32.4
Everett	31.7

STUDENTS BY MEDIAN AGE BY COLLEGE

Fall Quarter 1987

The colleges with the youngest student population were Shoreline, Bellevue and Green River (median age 22.9 to 24.7). Peninsula served the oldest student population (median age 34.6).

COLLEGE/DISTRICT	MEDIAN AGE*		ALL STUDENTS
	MALE	FEMALE	
1 PENINSULA	31.6	35.6	34.6
2 GRAYS HARBOR	27.7	33.8	32.4
3 OLYMPIC	28.3	30.1	29.4
4 SKAGIT VALLEY	27.3	31.7	30.1
5 EVERETT	29.0	33.1	31.7
6 DISTRICT			
SEATTLE CENTRAL	26.7	28.1	27.4
SEATTLE NORTH	27.8	30.8	29.7
SEATTLE SOUTH	28.5	32.4	30.1
7 SHORELINE	21.4	25.4	22.9
8 BELLEVUE	21.7	26.7	24.7
9 HIGHLINE	23.1	26.6	25.0
10 GREEN RIVER	22.1	27.9	24.6
11 PIERCE	26.6	29.6	28.1
12 DISTRICT			
CENTRALIA	24.6	30.4	27.4
SO. PUGET SOUND	27.3	31.0	29.8
13 LOWER COLUMBIA	27.2	32.1	30.6
14 CLARK	26.2	30.7	28.8
15 WENATCHEE VALLEY	24.0	30.9	26.5
16 YAKIMA VALLEY	23.8	28.7	26.4
17 DISTRICT			
SPOKANE	25.8	27.1	26.4
SPOKANE FALLS	25.0	31.8	29.1
18 BIG BEND	22.8	30.0	27.0
19 COLUMBIA BASIN	25.6	30.6	28.0
20 WALLA WALLA	29.9	30.3	30.1
21 WHATCOM	25.7	30.4	29.0
22 TACOMA	24.3	29.1	27.2
23 EDMONDS	27.6	28.7	28.3
SYSTEM TOTALS	25.6	29.8	27.9

SOURCE: SBCCE Student MIS:SRI102, Version #2.

*Median Age: Half the students are older and half are younger than the median age. The median age of all Washington residents in 1980 was 29.8.

STUDENTS BY SEX BY COLLEGE -- STATE AND CONTRACT SUPPORTED

Fall Quarter 1987

COLLEGE/DISTRICT	FEMALES			MALES		
	HEADCOUNT	FTEs	% OF COLLEGE FTEs	HEADCOUNT	FTEs	% OF COLLEGE FTEs
1 PENINSULA	1,748	637	60.5%	902	413	39.2%
2 GRAYS HARBOR	1,600	764	63.9%	714	429	35.8%
3 OLYMPIC	3,052	1,634	50.3%	2,657	1,615	49.7%
4 SKAGIT VALLEY	3,017	1,443	55.0%	1,867	1,176	44.8%
5 EVERETT	4,170	2,015	58.7%	2,424	1,412	41.1%
6 DISTRICT						
SEATTLE CENTRAL	4,157	2,767	54.3%	3,188	2,296	45.1%
SEATTLE NORTH	3,327	1,656	48.8%	2,670	1,699	50.1%
SEATTLE SOUTH	2,280	1,254	38.1%	2,929	2,018	61.3%
7 SHORELINE	3,898	2,406	54.7%	2,636	1,952	44.4%
8 BELLEVUE	5,485	2,915	56.3%	3,367	2,264	43.7%
9 HIGHLINE	4,974	2,911	60.0%	2,859	1,941	40.0%
10 GREEN RIVER	3,008	1,867	48.8%	2,673	1,955	51.1%
11 PIERCE	4,343	2,354	48.7%	4,299	2,478	51.3%
12 DISTRICT						
CENTRALIA	1,601	960	44.8%	1,542	1,174	54.8%
SO. PUGET SOUND	2,212	1,112	57.9%	1,293	785	40.9%
13 LOWER COLUMBIA	2,106	1,138	55.3%	1,275	910	44.2%
14 CLARK	4,581	2,404	53.7%	3,119	2,067	46.2%
15 WENATCHEE VALLEY	1,394	842	48.7%	1,285	880	50.9%
16 YAKIMA VALLEY	2,633	1,557	59.0%	1,781	1,080	40.9%
17 DISTRICT						
SPOKANE	2,734	2,365	44.1%	3,210	2,985	55.7%
SPOKANE FALLS	5,827	3,346	53.4%	3,751	2,873	45.9%
18 BIG BEND	1,203	602	51.5%	806	566	48.4%
19 COLUMBIA BASIN	3,186	1,762	52.3%	2,509	1,594	47.3%
20 WALLA WALLA	1,880	1,050	44.9%	1,948	1,273	54.4%
21 WHATCOM	1,603	758	61.6%	790	442	36.0%
22 TACOMA	2,890	1,904	58.0%	1,826	1,358	41.3%
23 EDMONDS	3,885	2,064	53.0%	3,176	1,831	47.0%
SYSTEM TOTALS	82,794	46,488	52.6%	61,496	41,464	47.0%

SOURCE: SBCCE Student MIS:SRI102, Version#2

* Percents do not total 100 if sex of some students was not known.

STUDENT HEADCOUNT BY RACE -- STATE AND CONTRACT SUPPORTED

Fall Quarters 1983 thru 1987

	1983	1984	1985	1986	1987
WHITE/OTHER	119,461	121,242	121,604	125,526	126,070
% of Total	88.6%	88.0%	87.7%	87.1%	86.7%
ASIAN/PACIFIC	6,954	7,733	8,141	8,522	8,784
% of Total	5.2%	5.6%	5.9%	5.9%	6.0%
BLACK	3,566	3,545	3,357	3,484	3,960
% of Total	2.6%	2.6%	2.4%	2.4%	2.7%
HISPANIC	2,851	3,031	3,312	3,887	4,174
% of Total	2.1%	2.2%	2.4%	2.7%	2.9%
NATIVE AMER.	1,953	2,165	2,228	2,627	2,445
% of Total	1.4%	1.6%	1.6%	1.8%	1.7%
TOTAL	134,785	137,716	138,642	144,046	145,433

Community college enrollments have become increasingly diverse racially and ethnically, mirroring the state population as indicated at the bottom of the table below.

Fall Quarter 1987

COLLEGE/DISTRICT	ASIAN	BLACK	HISPANIC	NATIVE AMERICAN	WHITE/OTHER	% WHITE/OTHER
1 PENINSULA	70	23	66	83	2,416	90.9%
2 GRAYS HARBOR	32	4	48	85	2,155	92.7%
3 OLYMPIC	332	137	112	76	5,052	88.5%
4 SKAGIT VALLEY	139	44	171	90	4,452	90.9%
5 EVERETT	330	41	96	137	6,000	90.9%
6 DISTRICT						
SEATTLE CENTRAL	1,784	838	303	137	4,356	58.7%
SEATTLE NORTH	739	153	121	51	5,126	82.8%
SEATTLE SOUTH	975	244	129	110	3,777	72.1%
7 SHORELINE	509	61	64	38	5,930	89.8%
8 BELLEVUE	535	120	78	31	8,089	91.4%
9 HIGHLINE	648	198	144	87	6,761	86.3%
10 GREEN RIVER	178	62	66	68	5,311	93.4%
11 PIERCE	579	741	244	111	6,970	80.6%
12 DISTRICT						
CENTRALIA	47	67	78	76	2,889	91.5%
SO. PUGET SOUND	201	22	54	40	3,260	91.1%
13 LOWER COLUMBIA	45	10	22	21	3,296	97.1%
14 CLARK	321	85	177	98	7,025	91.2%
15 WENATCHEE VALLEY	28	12	216	128	2,320	85.8%
16 YAKIMA VALLEY	81	67	766	176	3,337	75.4%
17 DISTRICT						
SPOKANE	106	41	65	112	5,645	94.6%
SPOKANE FALLS	245	131	172	202	9,058	92.4%
18 BIG BEND	17	12	243	13	1,730	85.9%
19 COLUMBIA BASIN	105	32	314	17	5,263	91.8%
20 WALLA WALLA	47	163	151	59	3,556	89.4%
21 WHATCOM	72	12	27	242	2,144	85.9%
22 TACOMA	271	403	100	79	3,896	82.0%
23 EDMONDS	348	237	147	78	6,256	88.5%
SYSTEM TOTALS	8,784	3,960	4,174	2,445	126,070	
% of Total	6.0%	2.7%	2.9%	1.7%	86.7%	
% of Washington Pop-ulation by Race 1987	3.2%	2.7%	3.6%	1.5%	89.1%	

SOURCE: SBCCE Student MIS:SR1101, Version #1.
 SBCCE Student Enrollment Report MIS-1:IM1008.
 NOTE: White/Other category includes white, other, and not reported. 14

STUDENTS BY SUBJECT AREA

Fall Quarters 1986 and 1987

SUBJECT AREA	1986		1987	
	STUDENTS	% OF TOTAL	STUDENTS	% OF TOTAL
ACADEMIC TRANSFER & VOCATIONAL SUPPORT				
Academic Only	47,029	32.6%	47,861	32.9%
Academic + Remedial	5,516	3.8%	5,997	4.1%
Total	52,545	36.5%	53,858	37.0%
VOCATIONAL				
Vocational Only	51,045	35.4%	51,064	35.1%
Vocational + Remedial	2,416	1.7%	2,354	1.6%
Total	53,461	37.1%	53,418	36.7%
BOTH ACADEMIC & VOCATIONAL				
Both Only	18,793	13.0%	19,086	13.1%
Both + Remedial	2,760	1.9%	2,716	1.9%
Total	21,553	15.0%	21,802	15.0%
BASIC SKILLS ONLY	16,487	11.4%	16,355	11.2%
TOTAL	144,046	100.0%	145,433	100.0%

Fall Quarter 1987

COLLEGE	ACADEMIC: TRANS. & VOC SUPPORT + REMEDIAL		VOCATIONAL + REMEDIAL		BOTH ACADEMIC & VOCATIONAL + REMEDIAL		BASIC SKILLS ONLY	
	STUDENTS	% of TOTAL	STUDENTS	% of TOTAL	STUDENTS	% of TOTAL	STUDENTS	% of TOTAL
PENINSULA	1,075	40.4%	970	36.5%	460	17.3%	153	5.8%
GRAYS HARBOR	1,023	44.0%	774	33.3%	266	11.4%	261	11.2%
OLYMPIC	2,103	36.8%	2,339	41.0%	761	13.3%	506	8.9%
SKAGIT VALLEY	2,166	44.2%	1,549	31.6%	526	10.7%	655	13.4%
EVERETT	3,281	49.7%	2,036	30.8%	706	10.7%	581	8.8%
SEATTLE CENTRAL	2,099	28.3%	2,879	38.8%	779	10.5%	1,661	22.4%
NORTH SEATTLE	1,797	29.0%	3,248	52.5%	585	9.5%	560	9.0%
SOUTH SEATTLE	700	13.4%	3,426	65.4%	304	5.8%	805	15.4%
SHORELINE	2,928	44.4%	2,126	32.2%	1,193	18.1%	355	5.4%
BELLEVUE	4,364	49.3%	2,873	32.5%	1,473	16.6%	143	1.6%
HIGHLINE	3,180	40.6%	2,320	29.6%	1,736	22.1%	602	7.7%
GREEN RIVER	2,488	43.8%	1,847	32.5%	893	15.7%	457	8.0%
PIERCE	3,537	40.9%	3,054	35.3%	1,089	12.6%	965	11.2%
CENTRALIA	889	28.2%	1,302	41.2%	459	14.5%	507	16.1%
SO. PUGET SOUND	1,133	31.7%	1,515	42.4%	585	16.4%	344	9.6%
LOWER COLUMBIA	1,064	31.3%	1,309	38.6%	637	18.8%	384	11.3%
CLARK	2,996	38.9%	2,298	29.8%	1,427	18.5%	985	12.8%
WENATCHEE VALLEY	988	36.5%	662	24.5%	516	19.1%	538	19.9%
YAKIMA VALLEY	1,331	30.1%	1,363	30.8%	717	16.2%	1,016	23.0%
SPOKANE	1,642	27.5%	3,206	53.7%	1,060	17.8%	61	1.0%
SPOKANE FALLS	3,970	40.5%	2,597	26.5%	1,449	14.8%	1,792	18.3%
BIG BEND	508	25.2%	825	40.9%	411	20.4%	271	13.4%
COLUMBIA BASIN	2,236	39.0%	1,690	29.5%	1,066	18.6%	739	12.9%
WALLA WALLA	1,162	29.2%	1,640	41.2%	754	19.0%	420	10.6%
WHATCOM	1,061	42.5%	823	33.0%	292	11.7%	321	12.9%
TACOMA	1,762	37.1%	1,527	32.2%	744	15.7%	716	15.1%
EDMONDS	2,375	33.6%	3,220	45.6%	914	12.9%	557	7.9%
SYSTEM TOTALS	53,858	37.0%	53,418	36.7%	21,802	15.0%	16,355	11.2%

SOURCE: SMIS Database, SR33 NEW

15

STUDENTS BY SUBJECT AREA--FULL-TIME AND PART-TIME

Fall 1987

SUBJECT AREA	FULL-TIME		PART-TIME	
	STUDENTS	% OF TOTAL	STUDENTS	% OF TOTAL
ACADEMIC TRANSFER & VOCATIONAL SUPPORT				
Academic Only	22,271	32.8%	25,590	32.7%
Academic + Remedial	5,397	8.0%	600	0.8%
Total	27,668	40.8%	26,190	33.7%
VOCATIONAL				
Vocational Only	12,523	18.5%	38,541	49.6%
Vocational + Remedial	1,875	2.8%	479	0.6%
Total	14,398	21.2%	39,020	50.3%
BOTH ACADEMIC & VOCATIONAL				
Both Only	16,840	24.8%	2,246	2.9%
Both + Remedial	2,637	3.9%	79	0.1%
Total	19,477	28.7%	2,325	3.0%
BASIC SKILLS ONLY	6,257	9.2%	10,098	13.0%
TOTAL	67,800	100.0%	77,633	100.0%

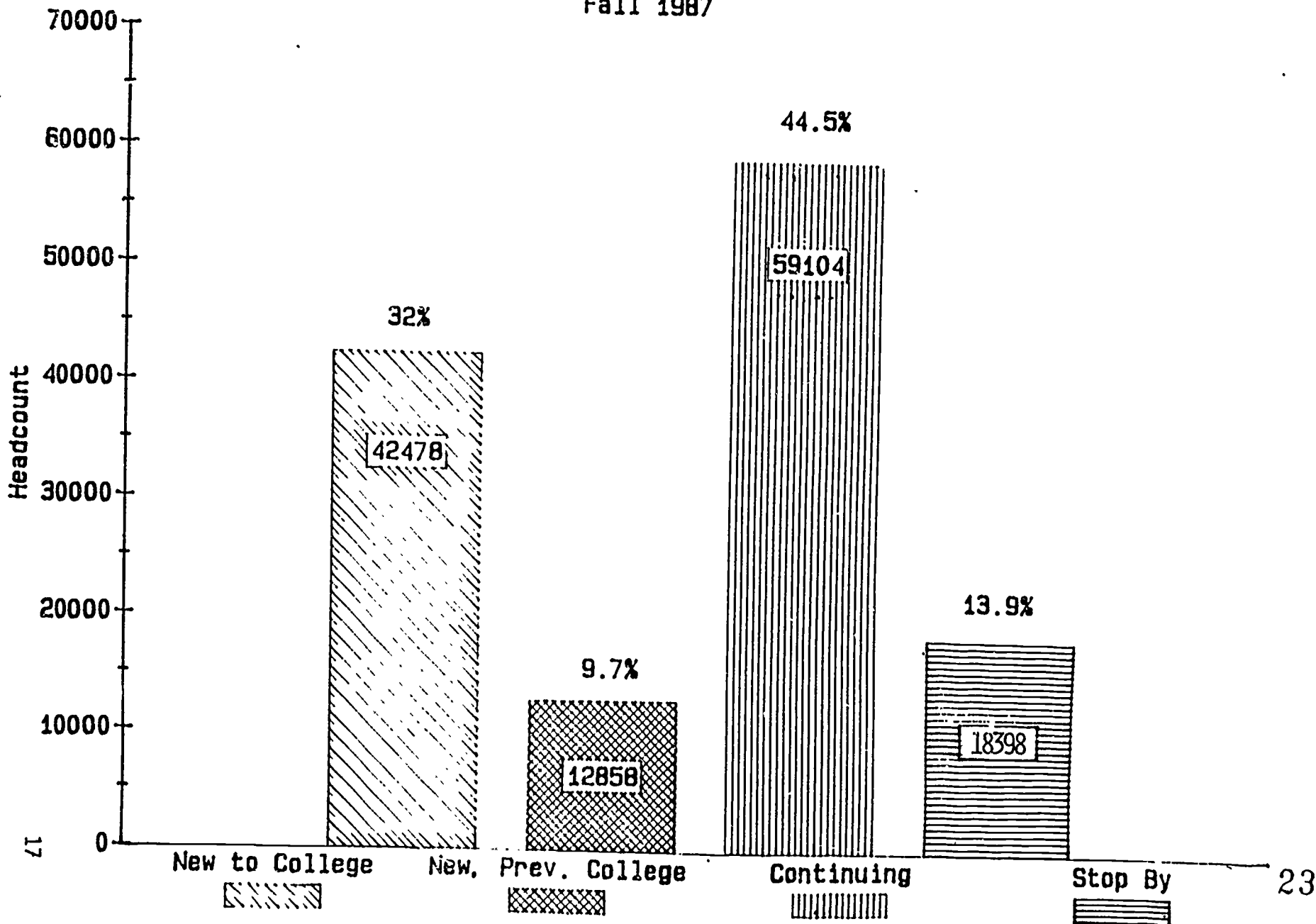
FULL-TIME STUDENTS BY SUBJECT AREA

COLLEGE	ACADEMIC: TRANS. & VOC SUPPORT + REMEDIAL		VOCATIONAL + REMEDIAL		BOTH ACADEMIC & VOCATIONAL + REMEDIAL		BASIC SKILLS ONLY	
	STUDENTS	% of TOTAL	STUDENTS	% of TOTAL	STUDENTS	% of TOTAL	STUDENTS	% of TOTAL
PENINSULA	222	31.4%	112	15.9%	365	51.7%	6	0.8%
GRAYS HARBOR	470	53.8%	125	14.3%	227	26.0%	50	5.7%
OLYMPIC	1,084	46.1%	534	22.7%	633	26.9%	101	4.3%
SKAGIT VALLEY	742	39.2%	341	18.0%	437	23.1%	373	19.7%
EVERETT	1,029	43.5%	582	24.6%	599	25.3%	154	6.5%
SEATTLE CENTRAL	1,267	30.0%	1,147	27.2%	718	17.0%	1,086	25.7%
NORTH SEATTLE	997	41.8%	761	31.9%	545	22.9%	80	3.4%
SOUTH SEATTLE	412	19.8%	1,002	48.1%	277	13.3%	389	18.7%
SHORELINE	2,004	54.1%	495	13.4%	1,099	29.7%	102	2.8%
BELLEVUE	2,587	59.8%	426	9.8%	1,302	30.1%	11	0.3%
HIGHLINE	1,654	41.8%	604	15.3%	1,558	39.3%	143	3.6%
GREEN RIVER	1,541	50.1%	660	21.4%	853	27.7%	22	0.7%
PIERCE	1,681	45.6%	654	17.8%	982	26.7%	366	9.9%
CENTRALIA	482	30.0%	437	27.2%	426	26.5%	259	16.1%
SO. PUGET SOUND	493	35.6%	375	27.1%	517	37.3%	0	0.0%
LOWER COLUMBIA	509	32.7%	355	22.8%	557	35.8%	135	8.7%
CLARK	1,224	38.3%	503	15.8%	1,167	36.6%	297	9.3%
WENATCHEE VALLEY	568	42.5%	253	18.9%	489	36.6%	26	1.9%
YAKIMA VALLEY	858	39.5%	348	16.0%	668	30.7%	299	13.8%
SPOKANE	1,214	28.4%	1,998	46.8%	1,024	24.0%	35	0.8%
SPOKANE FALLS	1,812	36.7%	570	11.6%	1,348	27.3%	1,203	24.4%
BIG BEND	277	35.1%	113	14.3%	380	48.2%	18	2.3%
COLUMBIA BASIN	1,051	41.1%	229	9.0%	962	37.6%	315	12.3%
WALLA WALLA	440	25.3%	477	27.4%	663	38.1%	161	9.2%
WHATCOM	496	58.2%	84	9.9%	236	27.7%	35	4.1%
TACOMA	1,189	41.0%	522	18.0%	696	24.0%	491	16.9%
EDMONDS	1,365	47.0%	691	23.8%	749	25.8%	100	3.4%
SYSTEM TOTALS	27,668	40.8%	14,398	21.2%	19,477	28.7%	6,257	9.2%

SOURCE: SBCCE SMIS Database, Data Express Report SR33 NEWDC

STUDENTS BY SOURCE

Fall 1987



STUDENTS BY SOURCE, STATE SUPPORTED ONLY

Fall 1987

Forty-two percent of all students enrolled in Fall 1987 were new to the college. Of the total number of new students (55,336), 9 percent had previously attended another Washington community college.

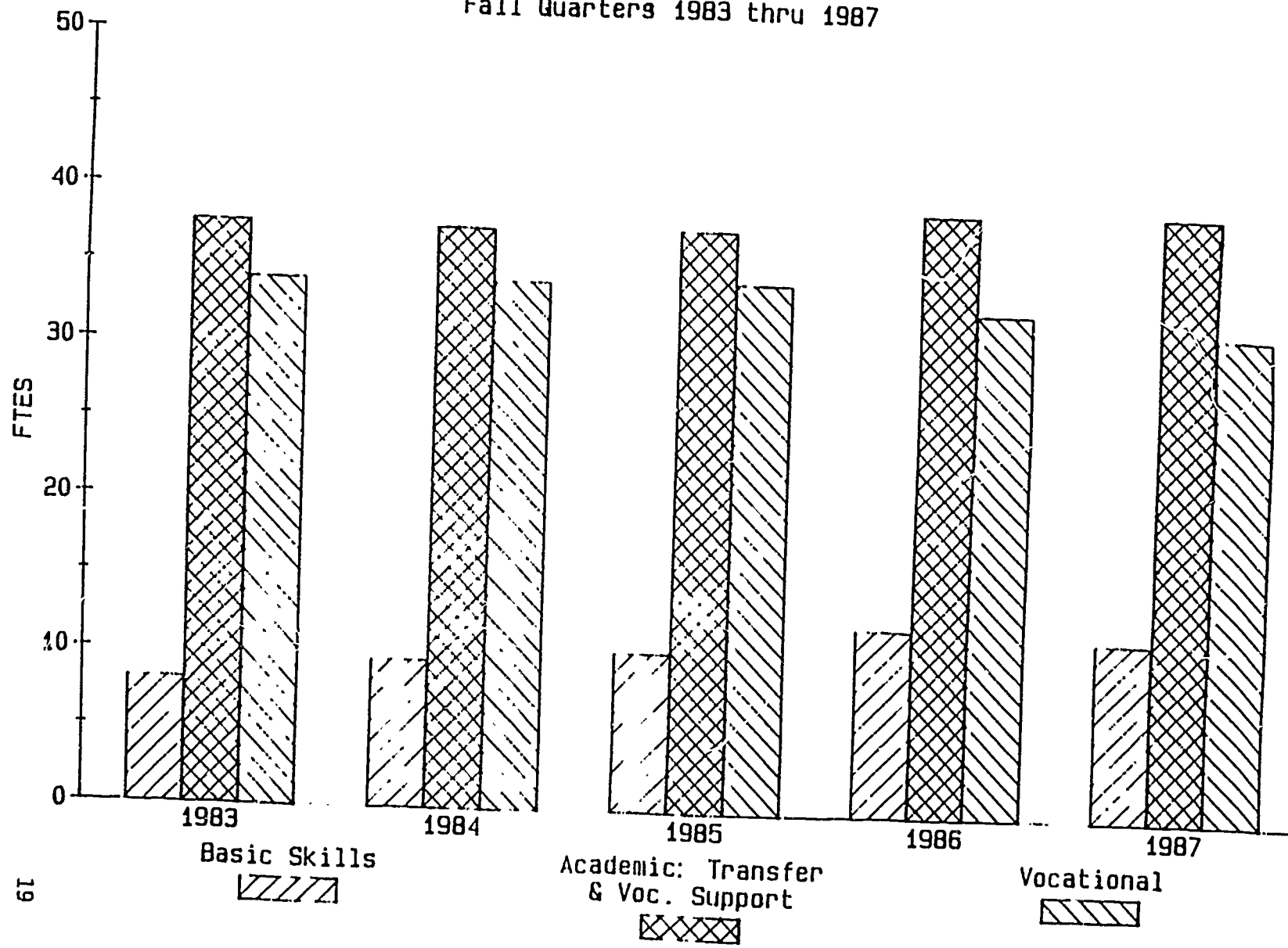
COLLEGE/DISTRICT	NEW					PREVIOUSLY ENROLLED	
	NEW TO COLLEGE	PREVIOUS COLLEGE EXPERIENCE			PERCENT ALL NEW OF TOTAL	FROM LAST SPRING OR SUMMER	FROM LAST WINTER OR EARLIER
		FROM WASH. 4-YEAR	FROM WASH C.C.	FROM OTHER			
1 PENINSULA	960	6	18	25	40.0%	972	539
2 GRAYS HARBOR	575	29	54	58	31.2%	936	645
3 OLYMPIC	2,125	23	32	49	39.0%	2,526	954
4 SKAGIT VALLEY	1,348	66	83	263	42.7%	1,912	452
5 EVERETT	1,815	133	297	235	38.0%	3,110	942
6 DISTRICT							
SEATTLE CENTRAL	1,775	217	378	463	41.5%	3,212	789
SEATTLE NORTH	1,281	312	390	396	39.7%	2,943	667
SEATTLE SOUTH	1,844	83	262	179	46.5%	2,229	495
7 SHORELINE	1,978	258	480	313	46.8%	2,934	513
8 BELLEVUE	2,464	122	134	185	41.8%	3,373	665
9 HIGHLINE	2,003	163	299	338	36.1%	3,627	1,342
10 GREEN RIVER	1,692	133	262	245	43.5%	2,503	532
11 PIERCE	2,031	51	178	137	43.4%	2,569	562
12 DISTRICT							
CENTRALIA	943	32	75	90	41.8%	1,140	445
SO. PUGET SOUND	1,046	127	179	186	43.4%	1,531	471
13 LOWER COLUMBIA	1,106	25	42	91	37.2%	1,610	520
14 CLARK	2,694	40	55	179	40.1%	3,278	1,148
15 WENATCHEE VALLEY	1,081	56	81	105	49.3%	922	438
16 YAKIMA VALLEY	1,643	134	83	169	47.9%	1,627	579
17 DISTRICT							
SPOKANE	2,037	103	260	233	44.4%	2,682	609
SPOKANE FALLS	2,794	145	232	297	39.5%	3,692	1,609
18 BIG BEND	818	57	92	94	52.7%	611	343
19 COLUMBIA BASIN	2,067	37	55	119	39.7%	2,565	888
20 WALLA WALLA	1,158	31	50	120	40.1%	1,307	726
21 WHATCOM	435	88	69	74	39.5%	769	251
22 TACOMA	1,376	102	219	291	45.3%	2,007	398
23 EDMONDS	1,389	211	403	378	41.2%	2,517	876
SYSTEM TOTALS	42,478	2,784	4,762	5,312	41.7%	59,104	18,398
PERCENT OF TOTAL	32.0%	2.1%	3.6%	4.0%		44.5%	13.8%

SOURCE: SBCCE MIS, OFM Reports SR3110 and SR3111

NOTE: "New to College" are students who did not list previous college experience at the time of admission. Some of these students may have previous college experience, but it was not indicated.

STATE-SUPPORTED FTES BY COURSE INTENT

Fall Quarters 1983 thru 1987



16

17 26

STATE-SUPPORTED FTES BY COURSE INTENT

Fall Quarters 1983 thru 1987

	1983	1984	1985	1986	1987
BASIC SKILLS*	8,067	9,492	10,194	12,037	11,484
% of Total	10.1%	11.7%	12.4%	14.4%	14.0%
ACADEMIC: TRANSFER & VOCATIONAL SUPP.*	37,606	37,385	37,518	38,965	39,216
% of Total	47.2%	46.2%	45.8%	46.6%	47.7%
VOCATIONAL	33,993	34,026	34,189	32,657	31,543
% of Total	42.7%	42.1%	41.7%	39.0%	38.4%
TOTAL	79,666	80,904	81,901	83,658	82,243
% Change	-0.4%	1.6%	1.2%	2.1%	-1.7%

Among state-supported courses, the academic category has experienced the most growth. This is largely due to growth in the number of both vocational and transfer students enrolled in math and English courses.

Basic skills courses serve those who are illiterate, those who are enrolled in Adult Basic Education programs to complete ninth-grade education, those working to obtain a high school diploma, those who need English-as-a-Second-Language training, and those whose skills are below the level necessary to complete college-level work. The decline reflects a change in the way basic skills FTEs are counted. Headcounts in basic skills remained unchanged from Fall 1986.

Vocational FTEs have declined annually because programs in the trade and industrial area have been reduced or eliminated due to low employment demand.

Fall Quarter 1987

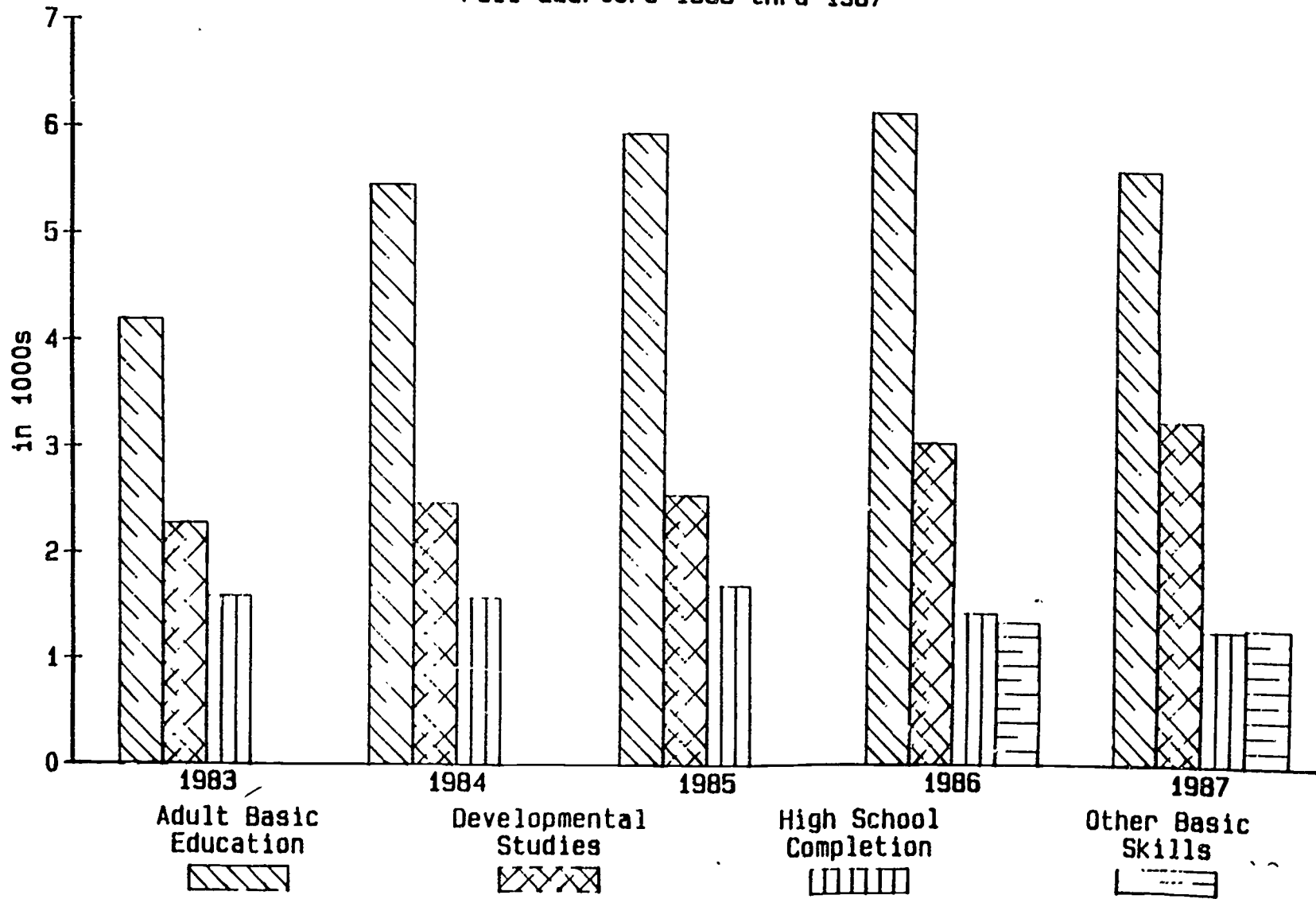
COLLEGE/DISTRICT	ACADEMIC: TRANSFER & VOCATIONAL SUPPORT	% OF COLLEGE TOTAL FTE	VOCATIONAL	% OF COLLEGE TOTAL FTE	BASIC SKILLS	% OF COLLEGE TOTAL FTE	TOTAL
1 PENINSULA	552	55.4%	410	41.2%	34	3.4%	997
2 GRAYS HARBOR	624	52.4%	344	28.9%	222	18.7%	1,191
3 OLYMPIC	1,569	48.3%	1,292	39.8%	388	11.9%	3,249
4 SKAGIT VALLEY	1,110	47.0%	797	33.8%	455	19.3%	2,352
5 EVERETT	1,697	49.5%	1,366	39.9%	362	10.6%	3,425
6 DISTRICT							
SEATTLE CENTRAL	1,649	35.6%	1,721	37.1%	1,265	27.3%	4,635
SEATTLE NORTH	1,317	39.9%	1,598	48.4%	390	11.3%	3,305
SEATTLE SOUTH	547	17.1%	1,999	62.4%	558	20.5%	3,203
7 SHORELINE	2,688	61.4%	1,371	31.3%	315	7.2%	4,375
8 BELLEVUE	2,927	69.1%	1,197	28.3%	112	2.6%	4,236
9 HIGHLINE	2,665	55.6%	1,684	35.2%	442	9.2%	4,791
10 GREEN RIVER	2,083	56.0%	1,354	36.4%	283	7.5%	3,719
11 PIERCE	1,739	49.8%	1,043	29.9%	708	20.3%	3,491
12 DISTRICT							
CENTRALIA	773	44.6%	655	37.8%	305	17.6%	1,733
SO. PUGET SOUND	849	44.7%	922	48.6%	126	6.6%	1,897
13 LOWER COLUMBIA	891	43.3%	859	41.7%	309	15.0%	2,059
14 CLARK	2,202	50.7%	1,527	35.2%	611	14.1%	4,340
15 WENATCHEE VALLEY	847	49.2%	607	35.3%	268	15.5%	1,721
16 YAKIMA VALLEY	1,251	49.2%	844	33.2%	446	17.5%	2,541
17 DISTRICT							
SPOKANE	1,636	30.6%	3,480	65.1%	233	4.4%	5,350
SPOKANE FALLS	2,931	48.6%	1,481	24.6%	1,619	26.8%	6,031
18 BIG BEND	528	45.2%	519	44.4%	122	10.5%	1,169
19 COLUMBIA BASIN	1,892	56.2%	1,097	32.6%	378	11.2%	3,368
20 WALLA WALLA	824	41.0%	975	48.5%	211	10.5%	2,010
21 WHATCOM	482	58.4%	204	24.7%	139	16.8%	825
22 TACOMA	1,336	44.1%	891	29.4%	802	26.5%	3,029
23 EDMONDS	1,606	50.4%	1,303	40.9%	280	8.8%	3,190
SYSTEM TOTALS	39,216	47.7%	31,543	38.4%	11,484	14.0%	82,243
% of Total	47.7%		38.4%		14.0%		

SOURCE: 1983-85: Actual vs. Formula Report MIS-2:IM2060. Basic Skills courses are the HEGIS 2500 series.

1986-87: SBCCCE Course MIS:SR2101, Version #1. Basic Skills courses are in the 32. CIP code series.

NOTES: Totals may not add due to rounding.

**FTES IN BASIC SKILLS AND DEVELOPMENTAL STUDIES
STATE-SUPPORTED COURSES
Fall Quarters 1983 thru 1987**



BASIC SKILLS & DEVELOPMENTAL STUDIES COURSES -- STATE-SUPPORTED
Fall 1987

Developmental Studies

These are college preparatory and remedial courses. These students tended to enroll full-time. They enrolled in academic and vocational courses along with remedial courses (nine credits in non-developmental and four credits in developmental studies courses on the average).

<u>Courses</u>	<u>Headcount</u>	<u>FTEs</u>	<u>Percent of Total Basic Skills</u>
Reading, Writing, Study Skills	6,593	1,908	16.6%
Math	4,549	1,267	11.0%
Social Sciences	134	37	0.3%
Sciences	32	12	0.1%
General	131	48	0.4%

Adult Basic Education (ABE) & ESL

ABE students generally have academic skills below the ninth grade level or are preparing for the high school graduate equivalency examination (GED). Non-white students participated in ABE at twice the rate that they participated in other courses. Colleges are responding to the greater need for basic skills education of non-white students as indicated in 1980 census data (percent of adults 25 and over who have not completed ninth grade: Black 12.8, Asian 15.6, Native Americans 16.6, Hispanics 31.5 and Whites 9.6 (1980 Census)).

ESL students, adults learning basic English, make up 39 percent of all ABE and ESL students. These students enrolled for an average of eight credits in ABE or ESL courses and most did not enroll in any other courses (average of one credit in other courses). The majority of ESL students were Asian (55 percent) and Hispanic (20 percent).

<u>ABE & ESL Headcount</u>	<u>FTEs</u>	<u>Percent of Total Basic Skills</u>
10,686	5,637	49.1%

High School Completion

These courses meet requirements for completion of a high school diploma. Each year the Washington community colleges award more than 1,000 high school diplomas. While these students tended to be younger than those in other courses, there were 72 students 50 or over enrolled in high school completion courses. Students enrolled on the average in six credits of high school completion courses and four other credits.

<u>Headcount</u>	<u>FTEs</u>	<u>Percent of Total Basic Skills</u>
2,968	1,285	11.2%

Special Needs

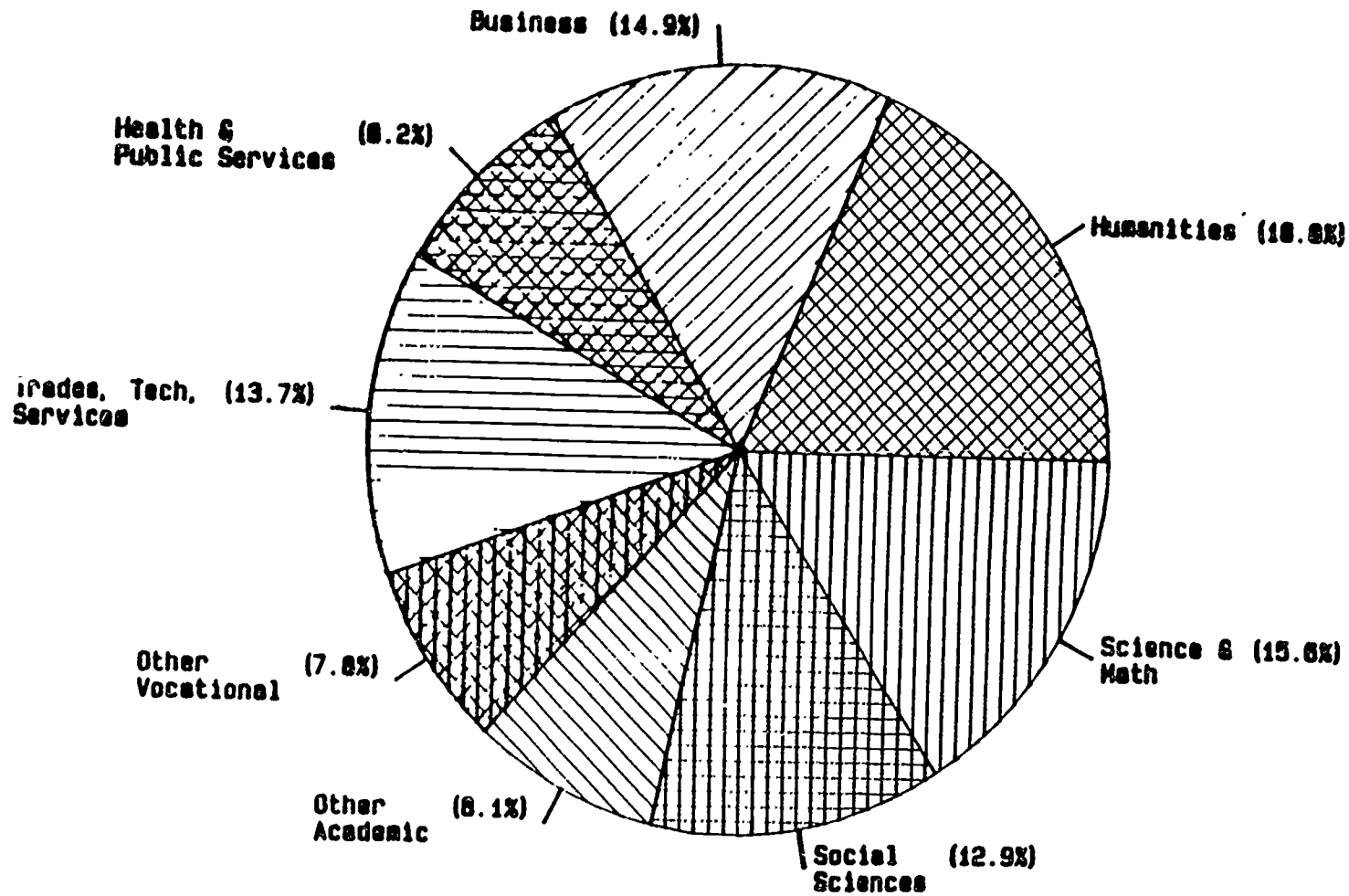
Includes courses in practical living skills and pre-vocational training for mildly to severely mentally impaired adults, courses for the visually impaired, and career exploration for special needs students.

<u>Headcount</u>	<u>FTEs</u>	<u>Percent of Total Basic Skills</u>
3,266	1,309	11.4%

Colleges with Largest Basic Skills Programs

	<u>Headcount</u>	<u>FTE</u>	<u>Percent FTE by Area</u>			
			<u>Developmental</u>	<u>ABE/ESL</u>	<u>HS</u>	<u>Special</u>
Spokane Falls	1,903	1,619	6.8%	67.6%	11.4%	14.1%
Seattle Central	2,166	1,265	29.9%	63.8%	3.8%	2.5%
Tacoma	1,420	802	50.3%	33.7%	0.5%	15.5%
Pierce	1,245	708	39.8%	31.1%	27.0%	2.2%

ACADEMIC AND VOCATIONAL COURSES Fall 1987

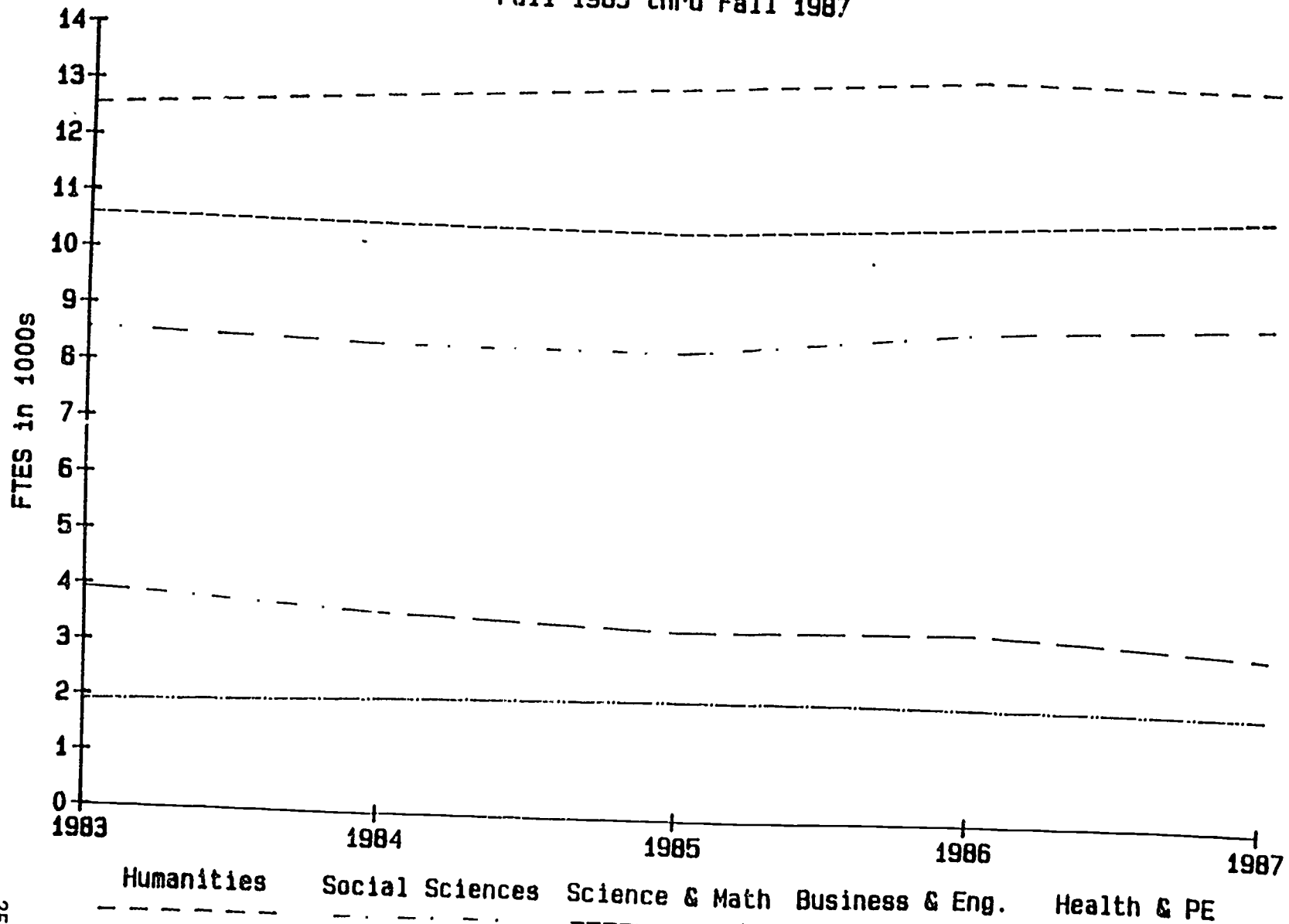


12/24

AJB/IG088

ACADEMIC FTES -- STATE SUPPORTED

Fall 1983 thru Fall 1987



25
33

AJB/ISD88-

ACADEMIC: TRANSFER & VOCATIONAL SUPPORT -- STATE SUPPORTED

Fall 1983 thru Fall 1987

Academic FTEs have grown 4 percent since 1983, with most growth in the humanities. The 1983-85 data were categorized by HEGIS code; 1986-87 data were categorized by CIP code. Both of these subject area codes were created by the U.S. Department of Education for the classification of instructional programs. The newer CIP codes do not aggregate identically to the HEGIS codes. A small part of the variance between 1985 and 1986 results from the coding changes.

	<u>1983</u>	<u>1984</u>	<u>1985</u>	<u>1986</u>	<u>1987</u>
Humanities	12,548	12,808	13,041	13,363	13,352
Social Sciences	8,520	8,364	8,350	8,873	9,116
Science & Math	10,588	10,501	10,462	10,731	11,021
Business & Engineering	3,942	3,591	3,377	3,489	3,190
Health & P. E.	1,906	2,047	2,125	2,114	2,093
Other	102	76	163	396	444
Total	<u>37,606</u>	<u>37,385</u>	<u>37,518</u>	<u>38,965</u>	<u>39,216</u>

SOURCE: 1983-1985 SBCCE Actual vs. Formula Report: MIS-2:IM2060

1986-1987 SBCCE MIS Data Express Reports SR88-1XX

NOTE: Totals may not add due to rounding.

Prior to 1986, some developmental math and English courses may have been coded as academic rather than basic skills; thus, growth in college level science and math and humanities FTEs may be understated here.

The major subject areas with the largest changes were:

	<u>1983</u>	<u>1987</u>	<u>% Growth</u>
Visual & Performing Arts	3,072	3,822	24.4%
Foreign Languages	1,426	1,683	18.0%
Sociology	1,390	1,539	10.7%
Health and PE	1,906	2,093	9.8%
Physical/Chemical Sciences	2,955	3,227	9.2%

ACADEMIC: TRANSFER & VOCATIONAL SUPPORT COURSES - STATE SUPPORTED

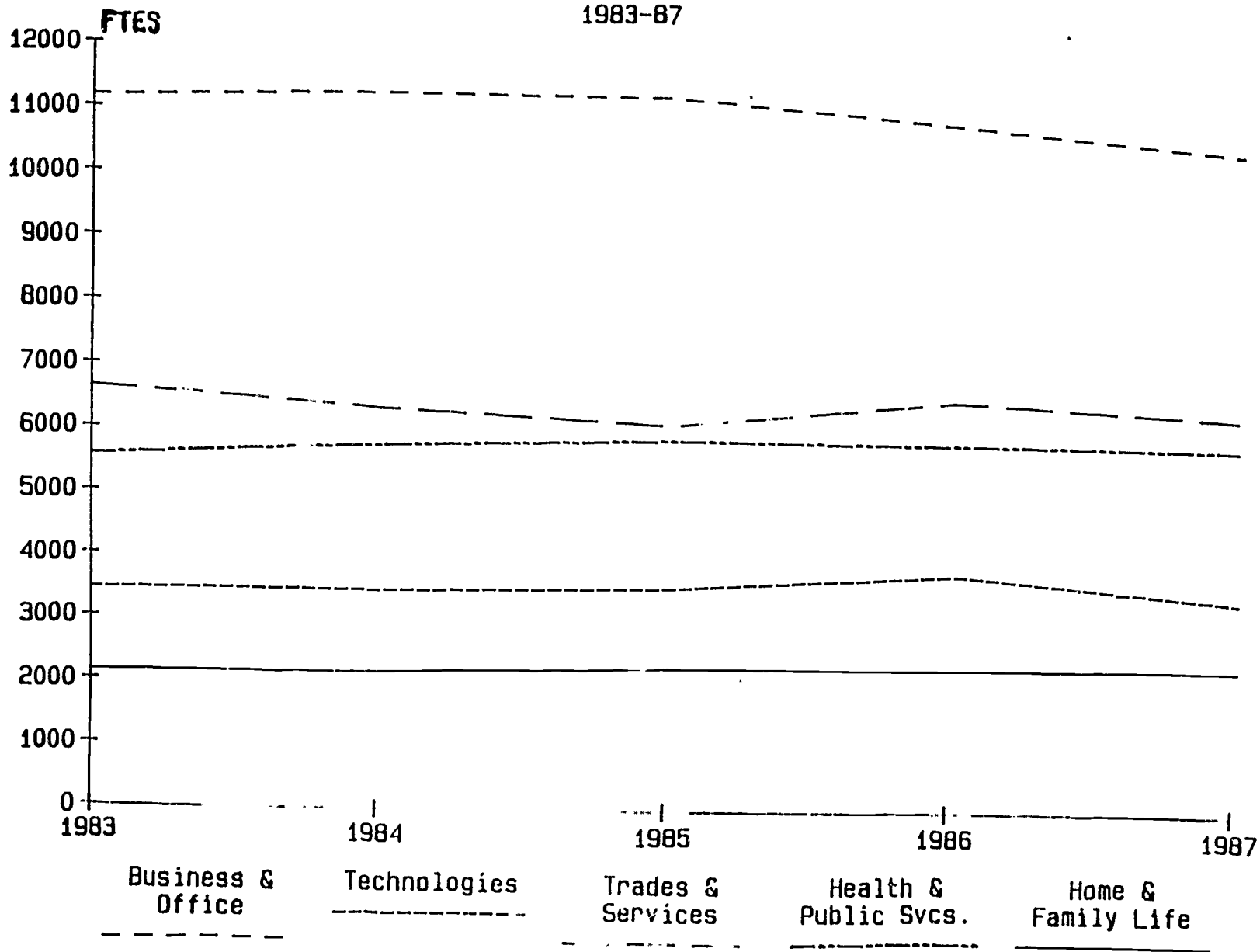
Fall 1986 and Fall 1987

	FALL 1986	FALL 1987	
	<u>FTES</u>	<u>FTES</u>	<u>% OF TOTAL ACADEMIC</u>
<u>Humanities</u>			
English and Speech (CIP 23 series)	6,521	6,463	16.5%
Visual and Performing Arts (CIP 50 series)	3,836	3,822	9.7%
Foreign Languages (CIP 16.0101)	1,616	1,683	4.3%
Other Humanities (CIP 30 and 38 series)	1,391	1,383	3.5%
Total Humanities	13,364	13,352	34.0%
<u>Social Sciences</u>			
Psychology (CIP 42 series)	2,726	2,715	6.9%
Sociology (CIP 45.1101)	1,494	1,539	3.9%
Economics (CIP 45.0601)	1,216	1,170	3.0%
Other Social Sciences (CIP 12, 43, 44, and 45 series, minus CIPS 45.1101 & 45.0601)	3,436	3,693	9.4%
Total Social Sciences	8,872	9,116	23.2%
<u>Science & Math</u>			
Mathematics (CIP 27 series)	5,748	5,841	14.9%
Life Sciences (CIP 26 series)	1,905	1,948	5.0%
Physical Sciences (CIP 40 series)	3,056	3,227	8.2%
Agriculture & Natural Resources (CIP 01, 02 and 03 series)	22	5	0.0%
Total Science & Math	10,731	11,021	28.1%
<u>Business & Engineering</u>			
Business and Computers (CIP 06, 08, and 11 series)	2,759	2,485	6.3%
Mass Communications/Journalism (CIP 09 series)	289	311	0.8%
Engineering (CIP 04 and 44 series)	440	394	1.0%
Total Business & Engineering	3,488	3,190	8.1%
<u>Other</u>			
Education, Physical Education & Health (CIP 13 and 34 series)	2,114	2,093	5.3%
Home Economics (CIP 19 series)	90	96	0.2%
Other	306	348	0.9%
Total Other	2,510	2,537	6.5%
TOTAL ACADEMIC	38,965	39,216	100.0%

Source: SBCCE SMIS Database, Data Express Reports SR88-1XX

27/28

VOCATIONAL FTES BY COURSE AREA 1983-87



AJB/ISD88-9

VOCATIONAL COURSES--STATE SUPPORTED

Fall 1983 thru Fall 1987

Vocational FTEs in Fall 1987 were 7 percent below the level of 1983. The 1983-85 data were categorized by HEGIS code, 1986-87 data were categorized by CIP code. Both of these subject area codes were created by the U.S. Department of Education for the classification of instructional programs. The newer CIP codes do not aggregate identically to the HEGIS codes. A small part of the variance between 1985 and 1986 results from the coding change. Additionally, starting in 1986, colleges coded some of the vocational support courses as basic skills rather than as vocational (1,197 FTEs in Fall 1985 were moved).

Declines in FTEs were primarily in Trades and Services due to the elimination of programs no longer required because of a changing labor force and in Business and Office due to reductions in marketing and special business courses. Since 1978, 169 programs have been eliminated. In the same period, 212 new entry-level vocational programs have been started to meet the emerging employer and student need.

	<u>1983</u>	<u>1984</u>	<u>1985</u>	<u>1986</u>	<u>1987</u>
Business & Office	11,175	11,249	11,231	10,890	10,507
Technologies	3,452	3,436	3,522	3,791	3,408
Trades & Services	6,647	6,371	6,103	6,552	6,318
Health & Public Services	5,656	5,743	5,864	5,857	5,832
Home & Family Life	2,141	2,153	2,254	2,285	2,350
Support Courses	2,343	2,286	2,294	1,958	1,669
Other	2,578	2,789	2,921	1,325	1,458
Total	<u>33,993</u>	<u>34,026</u>	<u>34,189</u>	<u>32,657</u>	<u>31,543</u>

SOURCE: Data Express Reports SR88-1XX

VOCATIONAL COURSES - STATE SUPPORTED

Fall 1986 and Fall 1987

	FALL 1986	FALL 1987	FALL 1987
	<u>FTEs</u>	<u>FTEs</u>	<u>% OF TOTAL</u> <u>ACADEMIC</u>
<u>Business & Office</u>			
Marketing, Banking & Real Estate (CIP 06 series)	2,748	2,630	8.3%
Secretarial (CIP 07.0401 & 07.0801)	2,520	2,436	7.7%
Legal Assisting (CIP 22.0103)	306	355	1.1%
Marketing and Sales (CIP 08 series)	896	847	2.7%
Data Processing (CIP 07.0303 & 11 series)	2,067	2,132	6.8%
Accounting and Banking (CIP 07.10XX-07.0295)	1,669	1,604	5.1%
Agri-Business (CIP 01.03, 01.04, 01.05, 01.06 series and 02 series)	685	503	1.6%
Other Business (CIP 06 series)	2,748	2,630	8.3%
Total Business & Office	10,890	10,507	33.3%
<u>Health Occupations & Human Services</u>			
Associate Degree Nursing (CIP 18.1101)	1,500	1,432	4.5%
Dental Related (CIP 17.0101-17.0103)	337	254	0.8%
Other Medical (CIP 17.02, 17.03, 17.05, 17.06, 17.07, 17.08 and 18.07 series)	1,737	1,703	5.4%
Human Services (CIP 17.04, 20.02 and 20.06 series)	1,314	1,343	4.3%
Total Health Occupations & Human Services	4,888	4,732	15.0%
<u>Technologies</u>			
Engineering Technology (CIP 15.02 series)	181	159	0.5%
Science Technologies (CIP 41 series)	38	32	0.1%
Communications Technologies (CIP 09 and 10 series)	217	196	0.6%
Electronics (CIP 15.03 and 15.04 series)	1,574	1,266	4.0%
Interior Design (CIP 04.0501)	48	40	0.1%
Drafting and Commercial Art (CIP 48.01 and 48.02 series)	1,151	1,196	3.8%
Manufacturing Technologies (CIP 15.06 series)	48	47	0.1%
Water/Waste Water, Environment (CIP 15.05 series)	95	84	0.3%
Natural Resources (CIP 03 series)	205	186	0.6%
Other Technologies (CIP 01.02 series, 04.0801, 06.1901, 15.09 series, 15.99 series, 50 series)	234	202	0.6%
Total Technologies	3,791	3,408	10.8%

VOCATIONAL COURSES -- STATE SUPPORTED --- "Continued"

	FALL 1986 FTES	FALL 1987 FTES	% OF TOTAL ACADEMIC
<u>Trades & Services</u>			
Mechanics and Repair (CIP 47 series)	2,880	2,805	8.9%
Machine Tools, Welding (CIP 48.05 series)	1,116	993	3.1%
Transportation and Materials (CIP 49 series)	298	245	0.8%
Construction Trades (CIP 15.10 and 46 series)	940	1,043	3.3%
Consumer & Personal Services (CIP 12 series)	430	404	1.3%
Food Services (CIP 19.0503 and 20.04 series)	835	779	2.5%
Other (CIP 48.03 series)	55	49	0.2%
Total Trades & Services	6,552	6,318	20.0%
<u>Public Services</u>			
Protective Services (CIP 43 series)	607	767	2.4%
Parks and Recreation (CIP 31 series)	62	59	0.2%
Other (CIP 13 series, 15.02, 15.07 series, and 44 series)	299	274	0.9%
Total Public Services	969	1,100	3.5%
<u>Home & Family Life</u>			
Parent Education (CIP 20.0102)	1,881	2,055	6.5%
Other Home & Family Life	404	296	0.9%
Total Home & Family Life	2,285	2,350	7.5%
<u>Support & Other</u>			
Vocational Support (23.9998, 26.9998, 27.1010, 27.9998, 45.9998)	1,958	1,669	5.3%
Other	1,325	1,458	4.6%
Total Support & Other	3,282	3,127	9.9%
TOTAL VOCATIONAL	32,657	31,543	100.0%

**DAY-ON-CAMPUS FTES BY COLLEGE
STATE SUPPORTED COURSES**

Fall Quarter 1987

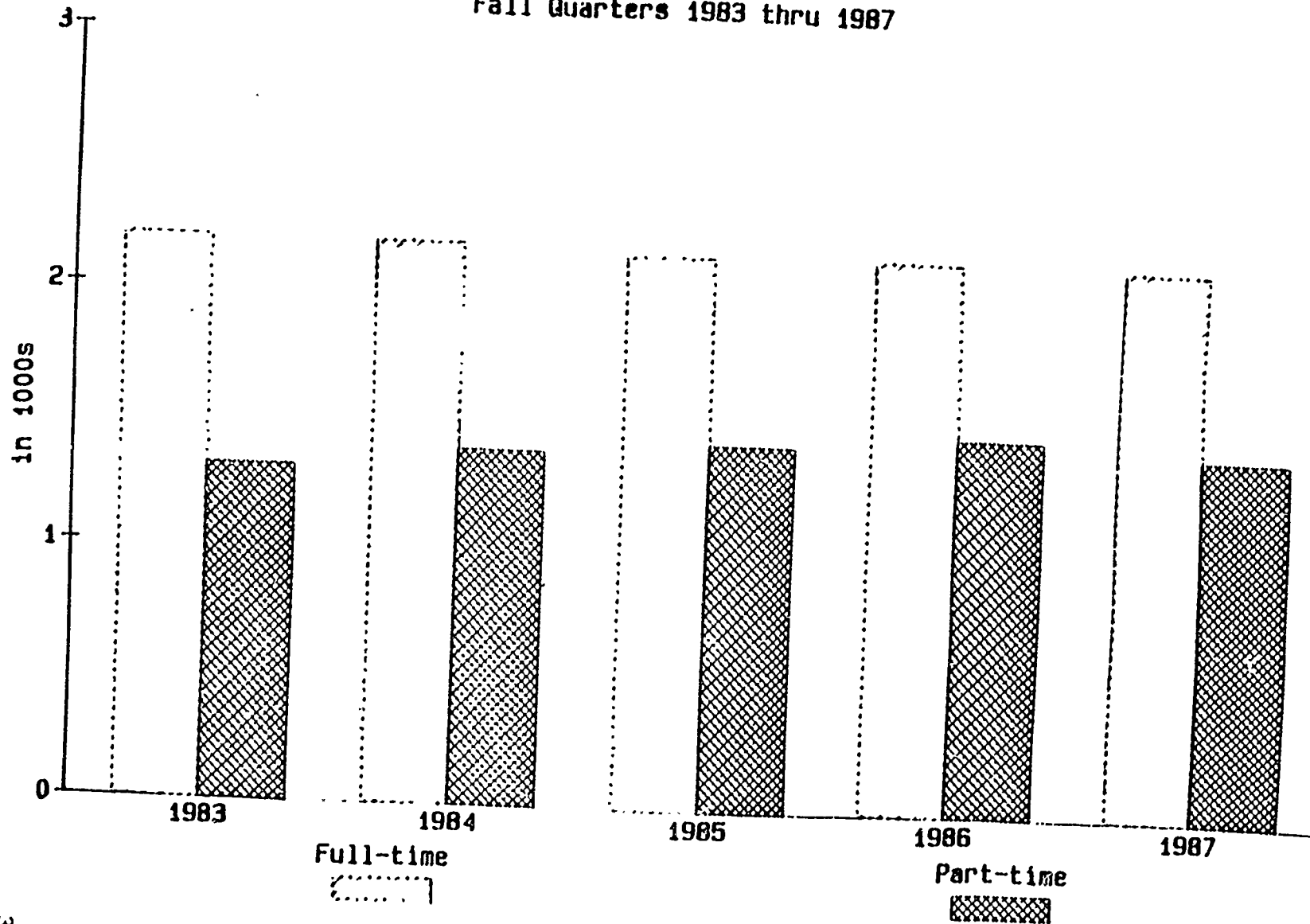
	<u>1983</u>	<u>1984</u>	<u>1985</u>	<u>1986</u>	<u>1987</u>
DAY-ON-CAMPUS	56,178	55,221	55,535	57,541	57,813
% of Total	70.5%	68.3%	67.8%	68.8%	70.3%
% of Change	-1.8%	-1.7%	0.6%	3.6%	0.5%

Day-on-campus FTEs increased 0.5 percent from Fall 1986 (57,541). Day-on-campus FTEs comprised 86 percent of all day and 70 percent of all course effort. The colleges with the largest percentage of day-on-campus programs were Bellevue, Spokane, Shoreline and Green River.

<u>COLLEGE/DISTRICT</u>	<u>DAY-ON-CAMPUS</u>	<u>% OF TOTAL STATE- SUPPORTED FTES</u>
1 PENINSULA	700	70.2%
2 GRAYS HARBOR	878	73.7%
3 OLYMPIC	1,745	53.7%
4 SKAGIT VALLEY	1,269	53.7%
5 EVERETT	2,070	60.4%
6 DISTRICT		
SEATTLE CENTRAL	3,528	76.1%
SEATTLE NORTH	2,356	71.3%
SEATTLE SOUTH	1,972	61.6%
7 SHORELINE	3,570	81.6%
8 BELLEVUE	3,863	91.2%
9 HIGHLINE	3,400	71.0%
10 GREEN RIVER	3,033	81.5%
11 PIERCE	2,021	57.9%
12 DISTRICT		
CENTRALIA	1,152	66.5%
SO. PUGET SOUND	1,327	70.0%
13 LOWER COLUMBIA	1,614	78.4%
14 CLARK	3,371	77.7%
15 WENATCHEE VALLEY	1,109	64.4%
16 YAKIMA VALLEY	1,893	74.5%
17 DISTRICT		
SPOKANE	4,405	82.3%
SPOKANE FALLS	3,342	55.4%
18 BIG BEND	880	75.2%
19 COLUMBIA BASIN	2,268	67.3%
20 WALLA WALLA	1,405	69.9%
21 WHATCOM	0	0.0%
22 TACOMA	2,403	79.3%
23 EDMONDS	2,238	70.2%
SYSTEM TOTALS	57,813	70.3%

SOURCE: SBCC Course MIS:SR2101, Version #4
NOTE: Totals may not add due to rounding.

TEACHING FACULTY (FTE-F) BY EMPLOYMENT STATUS
 STATE-SUPPORTED COURSES
 Fall Quarters 1983 thru 1987



**TEACHING FACULTY (FTE-F) BY EMPLOYMENT STATUS--STATE-SUPPORTED COURSES
Fall Quarters 1983 thru 1987**

STATUS	1983	1984	1985	1986	1987
FULL-TIME	2,193	2,185	2,154	2,161	2,153
PART-TIME	1,309	1,387	1,430	1,481	1,430
PARAPROFESSIONAL AND VOLUNTEER	55	58	66	60	65
TOTAL	<u>3,556</u>	<u>3,631</u>	<u>3,650</u>	<u>3,703</u>	<u>3,648</u>
% Change	5.5%	2.1%	0.5%	1.5%	-1.5%

The teaching faculty are those in the classroom. FTEF excludes non-teaching assignments such as counselors, librarians and department chairs. Fall 1987 teaching faculty was comparable for size to Fall 1985, both first years of the biennium.

Part-time faculty give community colleges the flexibility to offer courses outside the expertise of full-time faculty, to offer more evening and off-campus courses, and to adjust course offerings quickly in response to student demand or changes in funding. It is typical of community colleges in Washington and nationally that part-timers represent about 40 percent of the teaching effort.

Fall Quarter 1987

COLLEGE/DISTRICT	% OF COLLEGE		% OF COLLEGE		PARA-PROFESSIONAL & VOLUNTEER
	FULL-TIME	FTEF	PART-TIME	FTEF	
1 PENINSULA	36	59.6%	24	39.5%	1
2 GRAYS HARBOR	40	61.0%	23	35.4%	2
3 OLYMPIC	81	61.1%	51	38.6%	0
4 SKAGIT VALLEY	73	58.8%	43	34.6%	8
5 EVERETT	86	55.2%	67	42.9%	3
6 DISTRICT					
SEATTLE CENTRAL	108	56.4%	79	41.4%	4
SEATTLE NORTH	90	64.7%	48	34.0%	2
SEATTLE SOUTH	77	60.2%	51	39.8%	0
7 SHORELINE	119	61.0%	73	37.4%	3
8 BELLEVUE	90	57.4%	66	42.0%	1
9 HIGHLINE	106	55.4%	84	44.2%	1
10 GREEN RIVER	93	60.6%	58	37.6%	3
11 PIERCE	74	51.2%	67	46.4%	3
12 DISTRICT					
CENTRALIA	55	64.3%	30	35.2%	0
SO. PUGET SOUND	49	53.6%	41	44.9%	1
13 LOWER COLUMBIA	65	69.3%	25	27.2%	3
14 CLARK	110	55.4%	83	41.8%	6
15 WENATCHEE VALLEY	50	65.3%	26	33.6%	1
16 YAKIMA VALLEY	84	61.5%	52	38.1%	1
17 DISTRICT					
SPOKANE	186	71.9%	63	24.3%	10
SPOKANE FALLS	126	53.3%	108	45.7%	2
18 BIG BEND	43	61.7%	24	34.6%	3
19 COLUMBIA BASIN	86	53.5%	74	46.3%	0
20 WALLA WALLA	67	60.5%	43	38.7%	1
21 WHATCOM	20	49.5%	19	49.3%	0
22 TACOMA	63	50.3%	59	47.4%	3
23 EDMONDS	77	60.4%	48	37.9%	2
SYSTEM TOTALS	2,153	59.0%	1,430	39.2%	65

SOURCE: 1983-85: SBCCE Course Effort Report MIS-2:IM2057

1986-87: SBCCE Course MIS:SR2102, Version #1

NOTE: Part-time includes part-time, moonlight and contracted-out effort. Totals may not add due to rounding.

**COMMUNITY COLLEGE EMPLOYED COMPARED TO WASHINGTON EMPLOYED
BY SEX AND RACE**

Fall Quarter 1987

	PERCENT OF EMPLOYED WORKERS				
	COMMUNITY COLLEGES				WASHINGTON 1986 ESTIMATES
	FACULTY	EXEMPT	CLASSIFIED	TOTAL	
MALE	51%	60%	30%	46%	56%
FEMALE	49%	40%	70%	54%	44%
ASIAN	2.3%	1.9%	4.2%	2.8%	3.3%
BLACK	1.4%	4.7%	4.1%	2.3%	2.4%
HISPANIC	0.7%	2.3%	2.4%	1.3%	2.8%
NATIVE/AMERICAN	0.6%	0.7%	1.5%	0.9%	1.1%
WHITE/OTHER	94.9%	90.5%	87.7%	92.7%	90.4%

SOURCE: Community College Data Express PMIS 3X
 Washington: Labor Market and Economic Analysis Branch, Table 3,
 Affirmative Action Information 1987, unpublished. Race and sex
 percentage estimates were calculated using 1980 census detail on
 distribution of labor force by sex and race and 1986 population
 estimates.

EMPLOYEES & STUDENTS BY RACE, SEX AND FULL-TIME/PART-TIME STATUS

Fall Quarter 1987

BY SEX	STUDENTS*		FACULTY		ADMINISTRATION		CLASSIFIED	
	HEAD-COUNT	% OF TOTAL	HEAD-COUNT	% OF TOTAL	HEAD-COUNT	% OF TOTAL	HEAD-COUNT	% OF TOTAL
FULL-TIME								
Male	32,684	48.2%	1,762	61.9%	343	60.9%	851	32.4%
Female	34,919	51.5%	1,082	38.0%	220	39.1%	1,773	67.5%
Unreported	197	0.3%	3	0.1%	0	0.0%	1	0.0%
Total	67,800	100.0%	2,847	100.0%	563	100.0%	2,625	100.0%
PART-TIME								
Male	28,812	37.1%	2,038	44.5%	6	42.9%	64	15.5%
Female	47,875	61.7%	2,530	55.3%	8	57.1%	347	84.0%
Unreported	946	1.2%	9	0.2%	0	0.0%	2	0.5%
Total	77,633	100.0%	4,577	100.0%	14	100.0%	413	100.0%
ALL								
Male	61,496	42.3%	3,800	51.2%	349	60.5%	915	30.1%
Female	82,794	56.9%	3,612	48.7%	228	39.5%	2,120	69.8%
Unreported	1,143	0.7%	12	0.2%	0	0.0%	3	0.1%
Total	145,433	100.0%	7,424	100.0%	577	100.0%	3,038	100.0%
BY RACE								
Asian	8,784	6.0%	170	2.3%	11	1.9%	129	4.2%
Black	3,960	2.7%	107	1.4%	27	4.7%	125	4.1%
Hispanic	4,174	2.9%	55	0.7%	13	2.3%	74	2.4%
Native Am.	2,445	1.7%	47	0.6%	4	0.7%	45	1.5%
White/Oth.	126,070	86.7%	7,045	94.9%	522	90.5%	2,665	87.7%
Total	145,433	100.0%	7,424	100.0%	577	100.0%	3,038	100.0%

SOURCE: Students: SBCCE Student MIS:SR1101, Version #1
Staff: Data Express PMIS=3X

* State and Contract Supported Students Only

FULL-TIME EMPLOYEES BY AGE GROUP

Fall Quarter 1987

The age structure of faculty and administrators in the community college system was nearly identical: one in five under 40, two in five in their forties, and two in five 50 or over. Many of the faculty were hired in the late 1960's and early 1970's when college enrollments were increasing rapidly. Fewer faculty have been hired in more recent years. By 2008, 80 percent of the current faculty will have retired or be near retirement (60 or older). To maintain the current full-time faculty size, about 1,000 new teachers will need to be hired between now and the year 2000.

The classified staff was younger than the faculty or administrators.

<u>AGE</u>	<u>FACULTY</u>		<u>ADMINISTRATORS</u>		<u>CLASSIFIED</u>		<u>TOTAL</u>
	<u>MEN</u>	<u>WOMEN</u>	<u>MEN</u>	<u>WOMEN</u>	<u>MEN</u>	<u>WOMEN</u>	
20-29	15	17	3	2	93	165	295
30-39	289	243	60	64	308	567	1,531
40-49	700	454	150	90	228	521	2,153
50-59	578	275	128	58	165	396	1,600
60 +	150	66	16	20	57	129	451
Unknown	32	28	-	-	3	3	53
Total	<u>1,764</u>	<u>1,083</u>	<u>357</u>	<u>234</u>	<u>854</u>	<u>1,791</u>	6,083
	2,847		591		2,645		

SOURCE: SBCCE Staff MIS, Data Express PMIS 2X (Includes SBCCE Staff).