

DOCUMENT RESUME

ED 288 425

HE 020 892

TITLE Western Australian Post Secondary Education Commission. Tenth Annual Report for the Period 1 January to 31 December 1986.

INSTITUTION Western Australia Post Secondary Education Commission, Nedlands.

PUB DATE Feb 87

NOTE 50p.; For a prior report, see ED 250 989.

AVAILABLE FROM West Australian Post-Secondary Education Commission, P.O. Box 135, Nedlands, W.A. 6009, Australia.

PUB TYPE Reports - Descriptive (141)

EDRS PRICE MF01/PC02 Plus Postage.

DESCRIPTORS Annual Reports; *College Planning; Financial Policy; Financial Support; Foreign Countries; *Government School Relationship; *Postsecondary Education; Public Colleges; Public Policy; Resource Allocation; *State Boards of Education; State Universities; Technical Education; Technical Institutes

IDENTIFIERS *Australia (Western Australia); *Western Australian Post Secondary Education Comm

ABSTRACT

The 1986 annual report of the Western Australian Post Secondary Education Commission identifies objectives and achievements, policy initiatives, education program and related matters, resource planning activities, national and state consultation efforts, and related governmental developments. Education program and related matters include: accreditation, new teaching developments, doctorates, aboriginal education, external studies, dental nursing course review, postgraduate nursing course review, community studies, visual arts education, and a voluntary adult education grants scheme. The following resource planning issues are addressed: capital works, recurrent funding, resource provision, enrollment growth, higher education funding, statistical system developments, and population influences on enrollment growth. The national tertiary education statistics collection system is also considered. Appendices include: a list of the functions and duties of the Commission; information on 1986 major committees of the Commission and a list of committee members; a list of Commission staff at the end of 1986; and a list of Commission receipts and payments for 1986. (SW)

 * Reproductions supplied by EDRS are the best that can be made *
 * from the original document. *

TENTH ANNUAL REPORT

WESTERN AUSTRALIAN POST SECONDARY
EDUCATION COMMISSION

FOR THE PERIOD 1 JANUARY
TO 31 DECEMBER 1986



The Premier, in Port Hedland for the opening of Stage 2, Hedland College, tests some of the new equipment installed for the computing centre.

February 1987

To the Honourable R J Pearce, MLA
Minister for Education and Planning

Sir

In accordance with Section 14(f) of the Western Australian Post Secondary Education Commission Act 1970 and Section 66 of the Financial Administration and Audit Act 1985 I hereby submit for your information and presentation to Parliament the Annual Report of the Western Australian Post Secondary Education Commission for the period 1 January to 31 December 1986.

The Annual Report has been prepared in accordance with the provisions of the Financial Administration and Audit Act 1985.

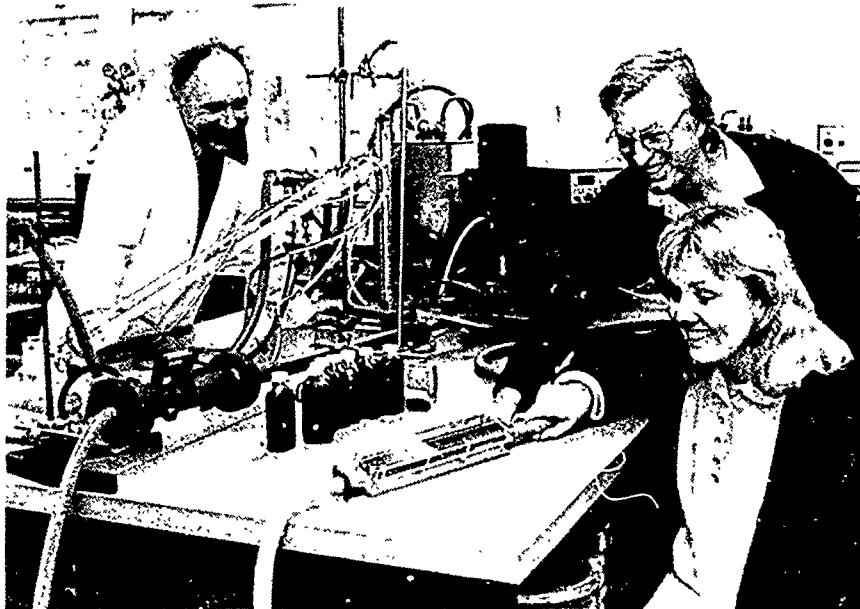
The major achievements of 1986 were:

- Preparation of advice for legislation to change the name and enhance the status of the WA Institute of Technology which is to be known as the Curtin University of Technology from 1 January 1987.
- Fulfilment of Government pledge through the opening of the Bunbury Institute of Advanced Education.
- Commencement of construction at Joondalup for an additional campus of the WA College of Advanced Education.
- Preparation of a vigorous and credible submission to the Commonwealth on the State's needs for the 1988-90 Triennium.
- Increased study opportunities by means of increased enrolment numbers and provision of new courses.
- Enhanced credibility of awards through implementation of Western Australian TAFE and advanced education accreditation procedures.
- Formulation of proposals for the acquisition of additional sites for tertiary education to serve the needs of the community well into the next century.

Western Australia has the highest participation rate in higher education in Australia and is the source of many initiatives which gain national cognition. The Commission's achievements result from the outstanding commitment by Commissioners and staff to serve post secondary education, the community and the Government. Such an acknowledgement is timely given the tight budgetary and staffing restraints which applied in 1986.

W A Pullman
CHAIRMAN

Western Australian
Post Secondary
Education Commission



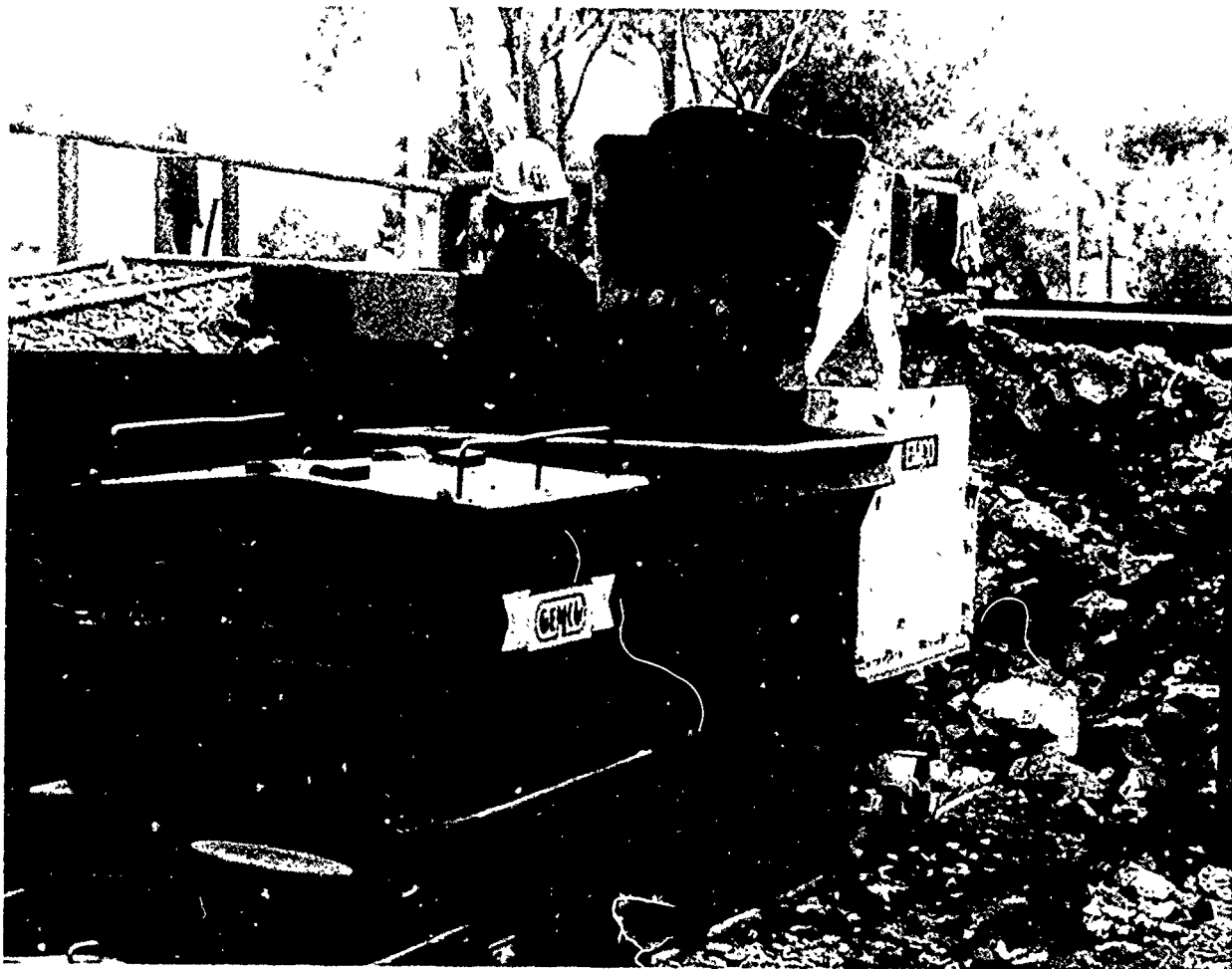
(L to R) Arthur Barton, John Millar and Carolyn Forth of WAIT working with a new testing rig that has brought together the areas of Medical Technology and Mechanical Engineering in order to solve problems associated with industrial corrosion. Arthur Barton, senior lecturer in Medical Technology, has been working for some time on testing biocides, chemicals developed to kill the micro-organisms which attack pipelines and industrial machinery. Photo by Pat Strong.

CONTENTS

Page Nos

Letter of Transmittal	
COMMISSION MEMBERSHIP	viii-ix
THE COMMISSION IN BRIEF	1-3
Role of the Commission	1-2
Membership of the Commission	2
Staffing of the Commission	2-3
Operation of the Commission	3
Commission Budget	3
OBJECTIVES AND POLICY	
ACHIEVEMENTS	5-9
Objectives and Achievements During 1986	5-6
Objectives	5
Achievements	5-6
Policy Reviews and Performance Indicators	6-9
Corporate Plan	6-7
Performance Indicators	7-9
PRINCIPAL ACTIVITIES	11-26
Government Policy Initiatives	11
Triennial Planning	11-12
State University Proposal	12
WAIT — Change of Name and Status	12
Overseas Students and Private Institutions	12-13
Education Program and Related Matters	13-18
Accreditation	13-14
New Teaching Developments	14
Doctorates	14
Aboriginal Education	14-15
External Studies	15
Dental Nursing Course Review	15
Postgraduate Nursing Courses Review	15-16
TAFE Participation and Equity Program Review	16
Community Studies	16-17
Visual Arts Education	17
Submission to the Australian Science and Technology Council	17-18
Voluntary Adult Education Grants Scheme	18
Resources Planning	18-23
TAFE Capital Works	18
TAFE Recurrent Funding	18
TAFE Resource Provision	18-19
Enrolment Growth in Higher Education	19-20
Funding of Higher Education	20-21
Statistical System Developments	22
Information Bulletins	22
Population Influences on Enrolment Growth	22
Unmet Demand	22-23
Sites	23
National and State Consultation	23-26
National Tertiary Education Statistics Collection System	23
Working Party on the Structure of Post Secondary Education	23-24

Australian Council on Tertiary Awards	24
CTEC/States Consultative Meeting	24
Conference of Chairmen	24
Working Party on Course-Related Matters	24
Standing Committee on External Studies	24-25
Minister's Education Council	25
Minister's Education Advisory Council	25
Telecommunications in Tertiary Education	25
Youth Income Support Anomalies Task Force	25
Nursing — Health Department	25
Tertiary Institutions Governance Committee	26
Future Commission Projects	26
Evaluative Study — Credit Transfer	26
Seminar on the Future of Post Secondary Education	26
 RELATED DEVELOPMENTS	 27-29
Commonwealth Reports	27
Review of Efficiency and Effectiveness in Higher Education	27
Review of TAFE Funding	27
Commonwealth Developments	27
Administration Fee	27
State and Institution Developments	27-28
Ministry of Education	27
Superannuation Funding	27-28
Managing Change in the Public Sector	28
The Financial Administration and Audit Act	28
Commission Developments	28-29
Administration	28
Equal Employment Opportunity Management Plan	28-29
Visitors	29
 CHAIRMAN'S SUMMARY — 1986 ACHIEVEMENTS AND 1987 PROJECTIONS	 31-32
Secretariat	31
Major Achievements for 1986	31
Projections for 1987	31-32
 APPENDICES	 33-39
Appendix A Constitution, Functions and Duties of the Commission	33-34
Appendix B Staff of the Commission	35
Appendix C Committees of the Commission	36
Appendix D Publications	37
Appendix E Statement of Receipts and Payments and Auditor General's Opinion	38-39



Student in the Underground Workers Course at Kalgoorlie College learning to handle Mechanical Bogger.

COMMISSION
MEMBERSHIP AS AT
31 DECEMBER 1986



**Chairman and
Chief Executive
Officer**

W A Pullman
MSc PhD(Birm)
CEng FIMechE MACE
(to 23 August 1988)

R Cook
President of W A Post Secondary
Student Association
(to 28 February 1987)

P R Grimwood
BSc BE(Hons) MEngSc(Syd)
MEng(AERO) PhD(Cornell)
Director of Finance and
Planning, Westrail
(to 28 February 1990,
resigned 4 July 1986)

M Jordan
BJuris LLB(WAust)
Solicitor in Charge of
the Pilbara
Regional Office of the
Legal Aid Commission of WA
(to 28 February 1989,
resigned 10 October 1986)

P T Carter
JP FAIM
Retired Managing Director
(to 28 February 1989)

J I Gill
BE PhD(Cantab) MPA(Harvard)
FIE(Aust)
Director (Management Services),
Main Roads Department
(to 28 February 1990,
appointed 25 September 1986)

G F Hawke
AAppSc GradDipBus(Admin)
GradDipScEd
PGDip/AppPhys(WAIT) GMIPA
Principal, Mount Lawley
Technical College
(to 28 February 1990)

A Kinnear
BSc(Hons) PhD(WAust)
AMusa
Senior Lecturer in Science,
Western Australian College
of Advanced Education
(to 28 February 1989)



M Liveris
 OBE BSc(Hons) PhD(WAust)
 Associate Director
 Division of Health Sciences
 Western Australian Institute
 of Technology
 (to 28 February 1988)

M E Nairn
 BVSc(Old) MSc(WAust)
 PhD(Minn) MACVSc ACVP
 Deputy Vice-Chancellor,
 Murdoch University
 (to 28 February 1990)

B R Scott
 ASTC MIEAust MICHemE
 ARACI FAIM
 Consultant — Education
 Liaison
 (to 28 February 1988)

D Mossenson
 BEd MA PhD(Ed) FACE
 Retired Director-General,
 Education Department of Western
 Australia
 (to 28 February 1987)

K D O'Sullivan
 AIT(WAust) GradDipEd
 (Admin)(WAIT) FACE
 Assistant Director,
 Catholic Education WA
 (to 28 February 1989)

**Secretary to
 the Commission**
W J Howse
 BSc BEd(Hons)(WAust)
 MA PhD(Iowa) MAIP MACS FACE

THE COMMISSION
IN BRIEF

Role of the Commission

The organisation of post secondary education in Australia reflects the federal system of government. Government funding for universities and colleges of advanced education is provided by the Commonwealth Government whereas both the Commonwealth and State Governments fund technical and further education. In Western Australia the universities, colleges of advanced education and three colleges under the Colleges Act are established under their own legislation with considerable autonomy. The major TAFE system is administered by the Technical Education Division of the Education Department of Western Australia.

The following indicators provide an overview of the post secondary education system in Western Australia:

Universities and Colleges of Advanced Education (1986 data)

- 37 400 students
- 5 436 equivalent full-time staff
- 6 855 course completions
- \$192 million recurrent funding
- \$19 million capital and equipment funding

Technical and Further Education (1985 and 1985/86 data)

- 81 000 students (excluding adult education)
- 2 640 teaching staff
- 1 525 non-teaching staff
- \$104 million recurrent funding
- \$35 million capital and equipment funding.

The Western Australian Post Secondary Education Commission was established in December 1976 in response to a perceived need for the State to play an enhanced role in the planning and co-ordination of post secondary education in Western Australia.

In accordance with the Commission's enabling Act it is concerned with the promotion, development and co-ordination of post secondary education throughout the State. The Commission fulfils this task by providing advice on a wide range of matters to the State Minister for Education, the State Government, the Commonwealth Tertiary Education Commission (CTEC) and post secondary education institutions, namely Hedland, Kalgoorlie and Karratha Colleges, Murdoch University, Technical Education Division of the Education Department of Western Australia, University of WA, WA College of Advanced Education and WA Institute of Technology.

The extract from the Commission's enabling Act, set out in Appendix A, shows that its role is an advisory one, with emphasis on consultation and collaboration. The Commission interacts with the institutions concerned, relevant State and Commonwealth authorities and other groups and organisations with an interest in post secondary education, in order to obtain a comprehensive understanding of the issues involved.

The Commission is indebted to the institutions and to other groups and individuals who contribute to its activities.

Most of the Commission's efforts are directed to the provision of advice on the following matters:

- the structure, balance and development of the post secondary education system in Western Australia;
- the overall level of enrolments in Western Australia and the distribution of these enrolments among sectors and institutions and by field of study, level of course and mode of enrolment;
- the education developments which are required to meet present and emerging needs within the State;
- the accreditation and national registration, when applicable, of academic awards;

- the resources required to meet the needs of the State for post secondary education, and the distribution of these among institutions; and
- the need for sites in strategic locations for future post secondary education institutions.

In addition to these policy and planning functions, the Commission and its staff are involved in a number of other activities including the provision of advice to State Government Departments, the administration of expenditure programs under the Commonwealth States Grants (Tertiary Education Assistance) Act, the provision of advice on industrial relations and legal matters and the development and dissemination of statistical information.

The Commission is responsible to the Minister for Education.

Membership of the Commission

At the end of February 1986 Messrs C W Lockhart, N P Rudeforth, P T Carter, Professor R M C Lourens and Mrs P M Smeeton completed their terms of appointment. The Governor reappointed Mr Carter for a further term of three years. Mr G F Hawke, Professor M E Nairn and Dr P R Grimwood were each appointed for four years. In addition, Mr R Cook was appointed for a term of one year. Tribute is paid to the contribution of Messrs Lockhart and Rudeforth, Professor Lourens and Mrs Smeeton to the work of the Commission.

Dr Grimwood tendered his resignation to take effect from 4 July 1986 due to his leaving Western Australia to take up a new position in New Zealand. Dr J I Gill was appointed in his place for a term ending in February 1990. Mrs M Jordan resigned from the Commission on 10 October 1986 due to professional commitments.

Staffing of the Commission

The Commission is supported by a full-time staff establishment of 16 (including the Chairman) and a number of part-time positions organised

in accordance with four areas of activity — education programs, resources, projects and administrative services.

The Chairman of the Commission has major responsibility for initiating policy development, ministerial liaison and developing external relationships with Commonwealth and State agencies and the education institutions. The Secretary of the Commission assists the Chairman with policy matters and co-ordinates the activities of the Commission's secretariat.

Principal functions associated with the four areas of activity are set out below:

Education programs—

- preparation of advice on the development of education programs, institution profiles of program areas, enrolments and policies for the accreditation of programs; and
- provision of services for Commission committees and working parties;

Resources—

- preparation of advice on capital works, equipment and recurrent funding needs;
- provision of statistical services for the Commission and external users; and
- provision of services for Commission committees and working parties;

Projects—

- undertaking of investigative studies and research as a basis for the development of Commission policies; and
- preparation of advice on matters relating to legislation;

Administrative services—

- provision of administrative services for the Commission and its secretariat.

During the budget process there was considerable uncertainty with regard to the level of the Commission's part-time staffing which was exacerbated by the late consideration of the State budget. This resulted in additional

pressures on the staff of the Commission for much of the middle part of the year when the Commission's workload was high and other adjustments were also required in response to staff changes.

In accordance with the Public Authorities Salaries Agreement the Commission has completed the salary broadbanding requirements and submitted Personal Data Forms for positions in the secretariat to the Office of Industrial Relations. Levels for positions will be determined in 1987. An information package has been developed for new staff members. With the introduction of broadbanding, the manual will require further revision, once staff levels under this system are known.

Operation of the Commission

In order to discharge its responsibilities, the Commission operates in a context of wide consultation, having regard both to the autonomy of the education institutions and to public policies as determined by State and Commonwealth Governments.

The Commission normally meets once a month. Its work is facilitated by regular meetings of its standing committees, including the Academic Committee and the Resources Committee. All Commissioners are members of one or both of

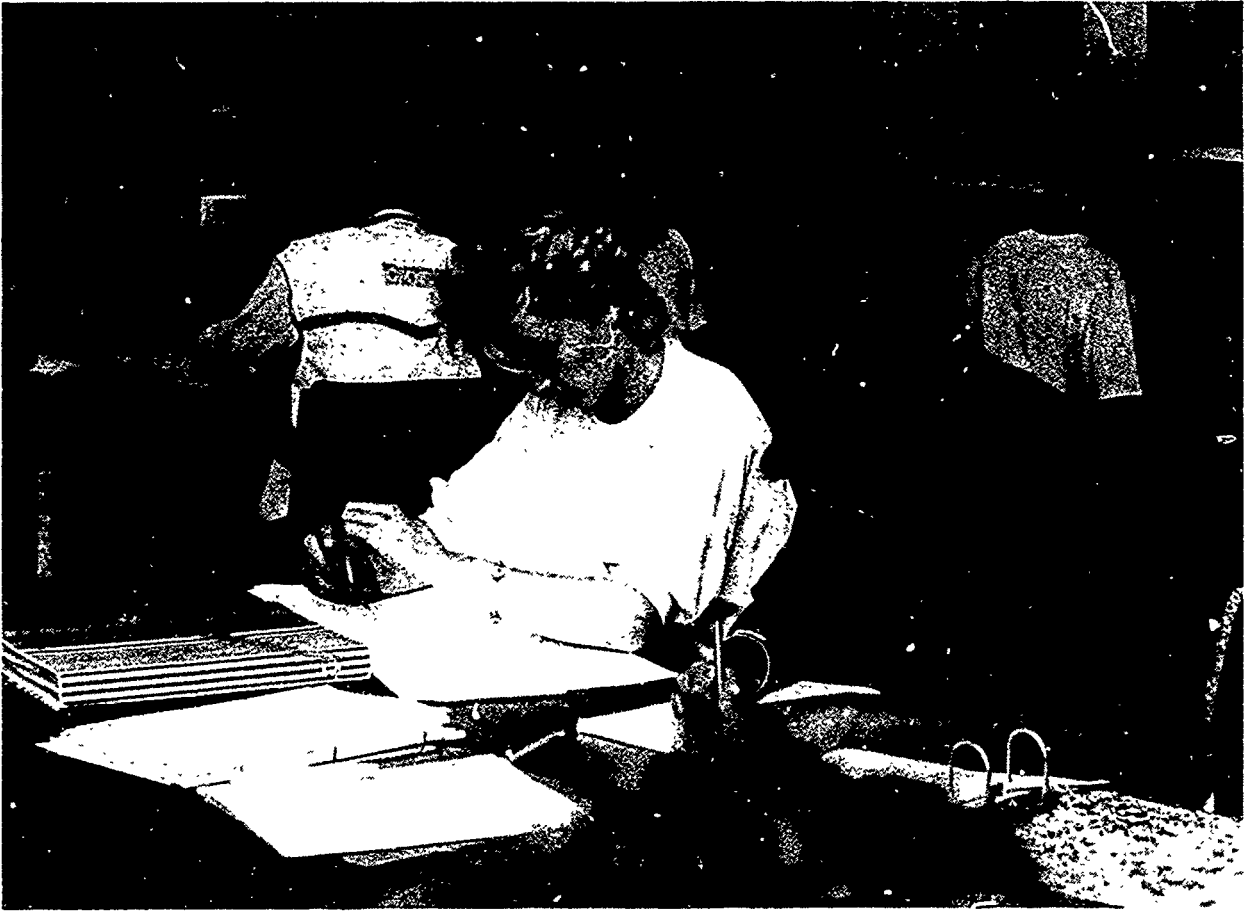
these committees and in 1986 attended at least 20 formal meetings in addition to participating in various discussions and other Commission activities.

Special purpose committees are also established when required and may include in their membership people from education, government, industry, commerce and the community. Details of the major committees which functioned in 1986 are listed in Appendix C.

Occasional seminars arranged by the Commission have also promoted interaction with people from different backgrounds who share an interest in issues of special significance.

Commission Budget

The approved consolidated revenue component of the budget for the 1986/87 financial year is \$989 000, an increase of approximately 12 per cent, most of which is committed to increases in rental costs for accommodation, facilities and projected salary costs. The Commission will be able to meet committed costs and maintain principal functions, albeit in a number of instances at a reduced level. However, as stated elsewhere in this Report, reductions in staff had to take place to enable the Commission to stay within the salaries allocation.



Karratha College students in secretarial studies.

OBJECTIVES AND
POLICY ACHIEVEMENTS

OBJECTIVES AND ACHIEVEMENTS DURING 1986

Objectives

The Commission is concerned with the planning, promotion and co-ordination of post secondary education in Western Australia. It does so in a context of funding support from the Commonwealth Government to post secondary education on a triennial basis and by the State Government on an annual basis. Thus while the objectives of the Commission vary from year to year in compliance with these differing time schedules, the broad goals remain relatively unchanged. These goals may be stated as the provision of a post secondary education system to meet the educational, social and economic needs of Western Australian citizens and in doing so to improve access, especially for disadvantaged groups, for all who are able to benefit from post secondary education.

Specific objectives for 1986 were:

- In recognition of the significance of the triennial planning system in the development of post secondary education in the State, to prepare a vigorous and credible statement of needs for Western Australia for the 1988-90 Triennium for submission to the Commonwealth by 31 December 1986 and to prepare for publication, a public statement of the Commission's assessment of those needs.
- In recognition of the value for credit transfer purposes, as well as national recognition of awards, to contribute to the establishment of revised registration guidelines at a national level to include accredited advanced education awards and for the first time, TAFE awards. Subsequently, to implement approved accreditation arrangements for TAFE and advanced education awards granted in Western Australia.
- Because of the importance to planning of a reliable statistical system, to promote the establishment of a national tertiary education

statistics collection system with an associated State involvement.

- Consistent with the goal of meeting the long-term needs of the State, particularly in relation to the establishment of new institutions, to establish a structured process for the acquisition of sites to meet future needs.
- To provide support and advice to the Minister as a means of assisting in the determination of national and State policies for post secondary education.
- To increase the efficiency of the Commission's office procedures through the application of updated word processing, telephone and computing facilities.

Achievements

Because the work of the Commission is carried out against a number of different time scales, it is not always possible to identify policy achievements in a particular year in relation to the objectives of that year, as the following examples illustrate:

- One of the major achievements in 1986 was the opening in November of the Bunbury Institute of Advanced Education. This initiative fulfilled the Government's commitment in the 1983 election and the Commission's subsequent advice about the provision of post secondary education in the Bunbury area.
- In a similar vein the study conducted in 1985 into the visual arts was published at the end of that year and responses received in the early part of 1986. For such a complex issue a considerable amount of discussion was required with affected parties before the Commission determined its position midway through the year and gave approval to the WA College of Advanced Education to expand its offerings in the visual arts area. This initiative is of particular significance for the phased development of the College's Joondalup campus on which construction commenced in 1986.

- Advice was also prepared for the legislation to change the name and enhance the status of the WA Institute of Technology which is to be known as the Curtin University of Technology from 1 January 1987. This action followed from the State Government's decision to provide for the Institute to respond more effectively to the education and research needs of the State.
- The Commission's 1988-90 Triennium Submission on the future needs of post secondary education was completed within the timetable set and on the basis of widespread consultation. This consultation, coupled with a large number of visits to institutions by Commissioners, helped to create an environment in which the work of the Commission was more readily understood and the need for compromise between the competing demands of institutions accepted.
- The guidelines for the national registration of awards in advanced education and TAFE were completed by the Australian Council on Tertiary Awards in November 1986 and the Western Australian procedures for the accreditation and registration of TAFE and advanced education awards in the State were accepted. These procedures will be implemented in 1987.
- A study of the needs for new sites in metropolitan and country areas was completed in the year and guidelines for site acquisition will be considered by the Commission early in 1987.
- The effectiveness of the Commission is to a large measure dependent upon the quality of policy advice which it provides and also on the opportunities provided for lay Commissioners to make an effective input into the preparation of such policies. The restrictions on staffing during the middle part of 1986 have reduced this latter opportunity. Nevertheless progress has been made on a national system of student statistical information such that a decision by State and

Commonwealth Ministers of Education in 1987 ought to be possible.

- While perhaps three quarters of the Commission staffing effort is taken up with policy advice, there are significant areas of work requiring staff input in connection with the administration of the post secondary education system and accountability to the Commonwealth Government for funds expended. Staffing shortages taxed the ability of the Commission to fulfil all of its obligations in this regard, even though these were offset to some extent by the introduction early in the year of an integrated word processing and computing facility. A computer consultant seconded from the WA College of Advanced Education helped establish systems and train staff in the use of the new equipment and assisted in their understanding of its potential.

POLICY REVIEWS AND PERFORMANCE INDICATORS

Corporate Plan

The Commission made steady progress throughout the year in the formalisation of its previous statements on goals and objectives into a corporate plan as specified by the Government. Two meetings between the consultant of the Co-ordination and Monitoring Committee and the Management Committee of the Commission were held in addition to several seminars involving staff in the identification of objectives and strategies. This documentation was completed and authorised by the Commission for forwarding to the committee.

The process of determining the major tasks or outcomes expected for 1986 resulted in triennial planning being allocated one half of total staff resources in recognition of its importance to the effectiveness of the Commission and the development of post secondary education in Western Australia.

Other tasks were necessarily reduced in emphasis and staff commitment as a consequence. Considerable care was taken in

assessing priorities to ensure that the vital input by the Commissioners to the formulation of policy was not unduly diminished because of lack of support services for committee meetings and study groups.

Performance Indicators

The Commission is concerned with policies and proposals for the development of an education system. It does not have the power of determining the resources to be allocated for the implementation of those policies and this divorce of ends and means makes the identification of performance indicators almost unique. For example, the Commission seeks to implement its co-ordination role by considering all proposals for the introduction of new courses in tertiary institutions and providing advice that some should proceed and that some should not. This is an exercise in judgement on the need for the course and does not lend itself to a direct quantitative performance indicator.

Similarly the accreditation assessment of education programs is conducted through a peer review process by specialists who contribute to the maintenance of standards and provide evidence of public accountability of institutions for their activities and funds expended. The Commission's role as a facilitating agent in this activity again cannot be readily measured by quantitative means. However, the reaction of those involved confirms that the benefits to students, institutions and community are such that the Commission's efforts and resources committed to this activity are worthwhile and justified.

Work continued, in association with the preparation of the corporate plan, on performance indicators dealing with the level of education provision in this State, its quality and the efficiency and effectiveness with which it is delivered. However, it is important to point out that the Commission is not in total control of its workload. Items of immediacy and urgency often arise from decisions by the Commonwealth Government or State Minister which require items to take precedence over other items identified at an earlier stage as being major tasks for the year. Thus the contribution to the preparation of legislation, the change of name and status of the WA Institute of Technology, a study of a State University proposal and the like make the simple application of performance indicators to tasks identified at an earlier time unnecessarily restrictive.

Notwithstanding these real difficulties it is possible to make some statements about the efficiency and effectiveness of the Commission's work.

In 1986 the principal task was to prepare and present to the Commonwealth on behalf of the State a submission for the 1988-90 Triennium covering policies, enrolment growth, recurrent and capital needs in respect of universities, colleges of advanced education and technical and further education. This was planned to absorb no more than half of the staff resources for the year. The various objectives subsumed within this one task are set out in tabular form below, as well as details of another major initiative of 1986.

Function 1:

Preparation of Planning Submission to the Commonwealth Tertiary Education Commission for the 1988-90 Triennium as a vigorous and realistic statement of the State's needs.

Objective	Comment on Efficiency and Effectiveness Achieved
Create opportunity for input by wider community to the process.	Public advertisement and direct approaches resulted in some forty letters and submissions being received by Commission for analysis. Final report to be made widely available.
Obtain clear understanding of institutional views and provide forum for interchange of information.	Discussions with representatives of governing bodies, administrations, staff and students, including visits to institutions resulted in high level of mutual understanding. Process augmented by consultation through correspondence, exchange of technical data, and study of institutions' submissions to the CTEC.
Consult with State Minister.	Formal and informal Minister-Commission discussions during the planning process resulted in acceptance of final report by Minister.
Maximise use of Commissioners' expertise.	Combined Commissioners-staff study groups on specialist themes, to visit institutions, analyse information and propose recommendations for full Commission consideration were highly regarded and effective for both institutions and the Commission in bringing forward well developed proposals. <ul style="list-style-type: none">• Submission presented on time.• Submission proposed inter alia: enrolment growth for higher education in the range of 3.9% to 4.5% per annum, enhanced recurrent funding levels, capital projects totalling \$126M, policies for improved access in regional areas.
Meet CTEC deadline for preliminary submissions by 31 October.	In discussions with the CTEC in Canberra by Commissioners and staff on 24 November no suggestions for change were made by the Commonwealth. <ul style="list-style-type: none">• Deadline achieved.• Effectiveness of submission will be known in 1987 in light of Commonwealth budgetary situation and Government policies.
Present final submission by 31 December.	
Dedicate half of the total staff resource to this function.	Not achieved within the constraints of normal work load because of commitments to other priority activities. Achieved only by staff commitment well in excess of that normally required.

Function 2:

Advice to and negotiation with the CTEC on enrolment levels of tertiary education institutions in the State.

Increase funded total enrolment levels.

Increase achieved at about the State's proportion on a population basis of the national pool available and at funding levels acceptable to the institutions involved.

Improve the provision of places for higher education at regional colleges.

20% increase achieved in the number of places to be made available. As a relatively new development there is no reliable data base of demand and need but local advice suggests that demand and need are far from satisfied. Information on attrition rates to be gathered to improve policy decision making in this area.

Increase Aboriginal participation.

Achieved through allocation to Western Australia of 20% of national pool of extra places for Aboriginal students.



Simon Forrest from the Department of Aboriginal and Intercultural Studies, WA College of Advanced Education, raises the Aboriginal flag, assisted by children from the Onslow Primary School during National Aborigines' Week.

PRINCIPAL ACTIVITIES

GOVERNMENT POLICY INITIATIVES

In February 1986 the Premier advised the Commission of the Government's policy initiatives outlined in the election which were relevant to the Commission and sought a response as to how these would be implemented without additional resources.

The ten points identified were all concerned with extensions of existing activities or policies of the Commission and a detailed response, endorsed by the Minister, was provided to the Premier.

TRIENNIAL PLANNING

Planning for the 1988-90 Triennium has been a major activity for the Commission in 1986. The process involves the Commonwealth and State Governments and their agencies and the post secondary education institutions. The Commission's role is to identify needs and priorities in presenting a strong case to the CTEC to ensure that Western Australia gains acceptance of its policies and receives the best possible share of Commonwealth funding for post secondary education.

A consultative approach was adopted by the Commission for this planning process, involving members of senates and councils, staff and students in the education institutions, as well as a large number of representatives of community interests. Members of the Commission visited several country centres and working groups were formed to consider particular issues. Discussions were also held with the Minister for Education. As well as these discussions, some forty submissions were received from the education institutions and the community.

The submission to the CTEC was presented to the Minister for Education and a summary of it circulated to those who have an interest in post secondary education in Western Australia.

The major issues and recommendations in the submission for the period 1988-90 were:

The Commission:

- proposes enrolment growth in higher education of between 3.9% and 4.5% per annum (the CTEC proposes 3% per annum national growth);
- supports a growth in TAFE of 3% per annum in student contact hours;
- justifies these rates of growth on the basis of:
 - projected population growth in Western Australia of 1.8% per annum (which is well above the national average of 1.3% per annum);
 - pipeline effects of increased intakes into higher education in 1986 and 1987;
 - the need for increased participation in tertiary education in Western Australia;
- details a series of matters relating to consolidation and rationalisation of academic programs as follows:
 - Asian language teaching;
 - external studies;
 - information technology and library studies;
 - and
 - stage and studio techniques;
- raises issues associated with the appropriate levels of academic awards for teacher education and paramedical education;
- raises issues concerned with child care provision for the children of tertiary students;
- reaffirms the need to plan for the establishment in 1990 of a Law School at Murdoch University;
- seeks extension of contracting provisions for country colleges;
- argues for increased flexibility of funding mechanisms to allow institutions to conduct more short courses;
- argues for realistic levels of recurrent funding for additional student places and for a higher funding base for student places in colleges of advanced education;

- seeks funds for capital expenditure in higher education of about \$37 million (at Dec '85 cost levels);
- seeks Commonwealth funding for TAFE capital works at the level of about \$48 million (at Dec '85 cost levels) — State funding of \$41 million is also to be sought;
- seeks additional research funding, particularly for activities associated with technological education and for the future Curtin University of Technology;
- stresses the need to overcome the present difficulties of tertiary education institutions to add to, and update, the equipment needed for teaching and research;
- seeks additional, realistic levels of funding for the renovation of facilities and for other minor works;
- reiterates its concern about the effects on colleges of advanced education of the Commonwealth's limit on its contribution to emerging cost superannuation schemes which, for these colleges in Western Australia, will mean a deficit of about \$3 million by 1990; and
- requests reasonable levels of establishment monies for the Joondalup Campus of the WA College of Advanced Education (\$0.3 million per annum) and the Bunbury Institute of Advanced Education (\$0.2 million in 1988).

The Commission stressed the importance of further consultation with the CTEC early in 1987 prior to the finalisation of the CTEC advice to the Commonwealth Government.

STATE UNIVERSITY PROPOSAL

Midway through the year the Minister required the Commission to examine and report, as a matter of urgency, on a proposal to form a state university through the amalgamation of Murdoch University, the WA Institute of Technology and the WA College of Advanced Education. A report was submitted to the

Minister on the principles involved and advice was received that no further work needed to be undertaken for the time being on this matter.

WAIT – CHANGE OF NAME AND STATUS

During the year the Government indicated its intention to proceed with the change of name of the Institute to the Curtin University of Technology. The Chairman of the Commission assisted in the preparation of legislation to bring about the changes required incorporating the functions for the institution and increased flexibility with respect to some property and financial matters. Expectations are that the Institute's status and its ability to attract industrial sponsorship and research funding will be enhanced. Legislation was passed in the Spring 1986 session of Parliament and the proclamation date of 1 January 1987 was set. Changes required in administrative arrangements and a number of policy issues arising from this initiative will be taken up by the Commission in 1987. There has been no agreement by the Commonwealth to increase the funding of the institution.

OVERSEAS STUDENTS AND PRIVATE INSTITUTIONS

A number of developments affecting overseas students occurred during the year, consequent upon the publication of the Commonwealth Guidelines in 1985. These have included private secondary institutions for study to tertiary entrance examination requirements, as well as vigorous promotion of study opportunities at Western Australian institutions for overseas students, either on campus or off-shore.

Murdoch University, the University of WA, WA College of Advanced Education and WA Institute of Technology, together with the Technical Education Division of the Education Department and Karratha College have all developed policies for admission of full fee-paying students. They are now participating with the State Government initiated EXIM Corporation in the promotion overseas of their programs.

The Commission has monitored developments including the role of Austrade with a view to ensuring that the wider interests of institutions and the community are safeguarded. In this context the Commission studied the WA Institute of Technology proposal to the Tokyu Corporation in Japan for the establishment of a campus at Yanchep. The impact which such a development might have on state-wide planning and whether there would be a significant enrolment at Yanchep of Australian students funded by the Commonwealth were considered. Later in the year the Premier announced that Tokyu Corporation had decided not to proceed with the project.

EDUCATION PROGRAM AND RELATED MATTERS

Accreditation

One of the first tasks of the Western Australian Council on Tertiary Awards (WACTA) which was established late in 1985 as a standing committee of the Commission, was to develop procedures for the accreditation of the TAFE awards of the Technical Education Division of the Education Department. These procedures, which were based on existing course development and validation procedures operating within the Division were subsequently endorsed for introduction by the Australian Council on Tertiary Awards (ACTA) at its meeting in June 1986.

The implementation of the new TAFE accreditation procedures was conditional upon a satisfactory report of a tripartite review of the capacity of the Technical Education Division, and in particular, that of its advisory committee system, to assess its courses for the purposes of recommending accreditation by WACTA prior to registration by ACTA. In fulfilling their remit, the three review committees were concerned primarily with the course evaluation process, rather than the graduating students. The review committees adopted the ACTA definition of course development: the process by which the

educational standard and appropriateness of a course is evaluated for accreditation purposes.

The three reviews were of the Trades and Associated Areas; the Sciences and Technologies; and Commercial and Business Studies, the Arts and Education. The reviews were carried out during the months of July and August 1986. WACTA considered the review reports and formulated a number of recommendations for the improvement of TAFE course development and evaluation procedures, including the constitution and functions of the advisory committee system. The recommendations have been accepted by the Technical Education Division and their implementation is expected to proceed in 1987. On this basis WACTA granted interim accreditation to courses in the Trades and Associated Areas and agreed that accreditation reviews for all other courses for which the Division would need to seek accreditation and national registration should proceed in 1987.

These accreditation procedures will embrace those Technical Education Division courses which are offered by the colleges established under the Colleges Act. Other TAFE courses which are offered by these colleges and the WA Academy of Performing Arts, for which national registration needs to be obtained, will be accredited through the Procedure B process described in the following paragraph.

During the year WACTA continued to conduct accreditation for advanced education courses in accordance with policies and procedures established by the Commission. Two procedures were used. Under the first, Procedure A, the Council, in consultation with the institution, is responsible for the administration and conduct of accreditation reviews. A second approach, Procedure B, allows institutions to assume greater responsibility for reviews. Under this procedure, the institution appoints review participants and is responsible for the conduct of the review, including preparation of appropriate documentation, administration and the provision of secretarial support.

WACTA also has now developed a third procedure for the accreditation of advanced education courses. The procedure, which has been termed 'self accreditation status' delegates to the council of an advanced education institution responsibility to carry out procedures for the accreditation of its courses in accordance with guidelines defined by WACTA. These proposals have since been endorsed by ACTA for implementation and major institution reviews for the WA College of Advanced Education and the WA Institute of Technology are scheduled for March 1987. It is anticipated that subject to satisfactory reviews these institutions will apply the new procedures from June 1987 onwards.

During 1986, nine Procedure A reviews were carried out. Of these, one related to courses at the WA College of Advanced Education and 8 for courses at the WA Institute of Technology. Five reviews were carried out using Procedure B, 3 at the WA College and 2 at the Institute. Twenty-two WA Institute of Technology courses and 8 WA College of Advanced Education courses were accredited in 1986. All accredited courses are subsequently entered on the national register of advanced education awards.

The annual report of WACTA was considered and accepted at the Commission's December meeting.

New Teaching Developments

Under the terms of its Act, the Commission has a responsibility to consider in general terms the academic development of post secondary education institutions, as well as the institutions' individual course proposals. The planning for new courses is fundamental to the development of post secondary education in Western Australia and therefore to the Commission's planning, co-ordination and promotion functions.

In 1986 the Commission's Academic Committee examined a total of 46 course proposals. Of these 14 were submitted from the university sector, 30 from the advanced education sector and 2 from

the TAFE sector. Thirty-four proposals were approved or endorsed, 3 were withdrawn, one was deferred and 8 were rejected. The number of proposals considered was similar to that in recent years, reflecting modest growth in both new courses and additional areas in existing courses.

During its deliberations on course approval the Academic Committee gave further consideration to its policy in regard to double degrees. A statement was circulated to institutions to provide guidelines for the submission of proposals for this type of award.

Towards the end of 1986 the Commission, through its Academic Committee, developed a new set of procedures for the consideration of new courses in the three sectors of post secondary education. These will be considered by the Commission early in 1987.

Doctorates

Consistent with its earlier statements on the need for the development of a form of doctorate appropriate to the needs and functions of colleges of advanced education, the matter was raised by Western Australia at the June 1986 meeting of the Australian Education Council. The Council agreed that discussions between the Commonwealth and the States should continue on this basis.

This was done at the thirteenth CTEC/States Consultative meeting and a committee, chaired by the Chairman of the Commission and including the Chairman of the Universities Advisory Council, the Chairman of the Advanced Education Advisory Council and the Director of the Queensland Institute of Technology, has been established. This group will be expected to report back in time for the June 1987 meeting of Ministers.

Aboriginal Education

In 1986 the CTEC, as part of its initiatives to overcome disadvantage, continued to provide

special assistance to increase the intakes of Aboriginal students into post secondary education. During the year 60 places were provided for these students in Western Australia — 45 places at the WA College of Advanced Education, 10 places at the WA Institute of Technology and 5 at the University of WA.

In 1986 the Commission continued to provide for the discussion of issues in Aboriginal education through its Aboriginal Education Committee.

In its discussions the committee considered new teaching developments for Aboriginal students, possible initiatives for the 1988-90 Triennium, and gave advice on a CTEC funded project on WA Institute of Technology bridging courses carried out by Dr A Gallagher of the CTEC.

External Studies

The External Studies Review Group in 1986 prepared the third of its annual reports. It focused on current areas of rationalisation in external studies provision in Western Australia. The first part of the report included general information on the nature and extent of rationalisation, while the second provided data on students involved in the external mode of study.

In May the Chairman of the CTEC's Standing Committee on External Studies discussed with the group the scope for rationalising the institution's production facilities for external studies learning materials. This matter also received attention in the CTEC Review of Efficiency and Effectiveness in Higher Education which was released in October.

During 1986 research in distance education included the following projects.

- an investigation into contracting in Western Australia as a case study in inter-sectoral co-operation conducted by Dr John Walsh, Head of Corporate Development and Extension Services at the WA Institute of Technology; and
- an investigation into interstate co-operation, based on a data bank for the development and

delivery of TAFE external studies courses conducted by Mr Roy Farren, Head of Technical Extension Service, Technical Education Division of the Education Department of Western Australia

The Commission is considering the possibility of further research and investigation in 1987 into the joint provision of services for the presentation of external studies.

Dental Nursing Course Review

Following on from the report on arrangements for the transfer of nurse education in Western Australia to colleges of advanced education which was completed in 1985, the Commission arranged for one of its members to convene a committee to consider future arrangements for the training of dental nurses. The Commission accepted the recommendation arising from the committee's review that this training should remain under the direction of the Perth Dental Hospital. Subsequently the committee has taken up issues related to additional duties for dental nurses and alterations to the duties of existing dental auxiliaries. The issues are complex with conflicting views being held by the parties involved. A satisfactory outcome in 1987 will be dependent on the full co-operation of all concerned.

Postgraduate Nursing Courses Review

Following the transfer of basic general nurse education from hospitals to colleges of advanced education, the Commission recognised that the increase in undergraduate opportunities for nurses was likely to lead to an increased demand for postgraduate studies. A review of these courses was initiated to assist institutions and the Commission in providing information on need and demand and facilitating the co-ordinated development of studies in this area. A steering committee was established, chaired by the Commission Secretary and with persons from the Health Department of Western Australia and the Schools of Nursing at the WA College of Advanced Education and the WA Institute of Technology. A member of the Commission

secretariat was assigned to undertake the review under the guidance of the steering committee, on the basis of interviews with interested individuals and organisations identified by the committee.

The review commenced in March 1986 and a report was prepared in August for submission to the Commission through its Academic Committee. The report indicated that while the need and demand for postgraduate courses in clinical nursing was likely to increase rapidly in future, significant increases were unlikely until the 1990s.

On this basis, the report recommended that both the WA College and the Institute have a role in providing postgraduate courses in nursing but that the College's entry into the field be delayed until 1990; and that the two institutions co-operate through their Advisory Committee structures to avoid unnecessary duplication of effort.

The Commission accepted the report's recommendations in principle and is consulting with both institutions to ensure that appropriate mechanisms are established for the future development of postgraduate nursing courses.

TAFE Participation and Equity Program Review

In October 1985 the Commission agreed to assist the CTEC with a Review of the TAFE Participation and Equity Program. The Assistant Secretary of the Commission was seconded to CTEC for a period of twelve months, ending in October 1986, to carry out the review. The program provides funding to State TAFE authorities and a small amount to community groups for special vocational short courses and other initiatives designed to help unemployed young people to improve their level of education and employment prospects.

The review has been completed and recommendations for a new program which incorporate features of the existing program,

together with streamlined administrative arrangements and increased emphasis on monitoring and program performance, are being considered by the CTEC.

Community Studies

The steering committee which was established to follow up the Commission's review of Community Studies completed in 1985, met throughout 1986 and held discussions with institutional representatives and professional groups in order to clarify matters contained in recommendations and to obtain agreement for action by institutions.

The report recommended the transfer of Social Work to Murdoch University from the University of WA. This was consistent with the Commission policies for the consolidation of courses within institutions which could provide the most appropriate environment and adequate resources for their ongoing development. During the year discussions were held between the two universities and the report's proposal was examined within the University of WA by a working party established by the Vice-Chancellor. The working party proposed that the Department of Social Work remain at the University of WA and that collaborative schemes at undergraduate and postgraduate levels be developed with Murdoch University. These included the program being changed to provide two years of general studies followed by two years of specialist studies in social work. Arrangements would provide for Murdoch students to transfer into the final two years and for Murdoch staff to contribute to the teaching, with the possibility of students obtaining a joint degree. The proposals will be considered further by the two institutions and the Commission.

The report also recommended the development of a framework for an articulated system of courses in the areas of residential and non-residential care. This would afford students who

completed a TAFE diploma the opportunity of proceeding directly to two years of further study for a Bachelors degree at the WA College of Advanced Education. Discussions initiated by the Commission with representatives of the College and the Technical Education Division of the Education Department produced arrangements in keeping with these recommendations. They included provision for common advisory committee membership between the two institutions and the publishing by both groups of credit arrangements for students from TAFE who sought to continue their studies at the College. The Commission has written to the WA Institute of Technology seeking similar transfer of credit arrangements.

In September of this year the steering committee made a final report to the Academic Committee on progress made in the implementation of the report's recommendations. The Academic Committee will continue to monitor the situation within institutions of actions taken with respect to the recommendations of the report.

Visual Arts Education

During 1986 the Commission's Academic Committee considered further the major recommendations of the Commission's Review of Visual Arts Education, completed in 1985, with a view to developing implementation strategies.

One of these recommendations proposed the establishment of an Academy of the Visual Arts. The Commission endorsed the desirability of an Academy but noted that, although funding limitations would hinder its development in the short term, in the longer term it was seen as a viable option. The Commission decided that after a five year interval to allow for the maturation of current developments in visual arts education it would review the option for an Academy. Consistent with its decision the Commission endorsed a proposal for the upgrading of the WA College's existing facilities with a School of the Visual Arts resourced

through the re-organisation of resources and priorities within the College.

The Commission noted the support that the WA Institute of Technology gave to the retention and development of its visual arts courses following the release of the report. The Commission supports the Institute developing a major centre for industrial design courses. In its response the Institute indicated its willingness to accept the spirit of the report and advised that it is working towards giving the area of design separate status within its organisational structure.

The report recommended the further development of the Centre for Fine Arts at the University of WA and the Commission has sought an early decision from Murdoch University on its future involvement in visual arts. These institutions have signified their support of the recommendations of the report and Murdoch University has listed the development of visual arts as one of the academic initiatives it is examining for the 1988-90 Triennium.

The Commission also wrote to the Director-General of Education requesting that the Technical Education Division carry out a review of its visual arts program. The Education Department has given support to this proposal but because of the need for wide consultation and internal planning initiatives during 1986 it will not be able to undertake this project until early in 1987.

In the submission to the CTEC for developments in the 1988-90 Triennium the Commission has indicated its support for development in the visual arts area consistent with its decisions on the recommendations of the Visual Arts Education Report.

Submission to the Australian Science and Technology Council

The Commission made a submission to the Review of Higher Education Research Funding conducted by the Australian Science and Technology Council. In its paper and in oral presentation, the Commission argued that particular attention should be given to the

promotion of academic-industrial collaboration in the technology transfer process in order to encourage the application of research findings within industry. To this end some changes to the CTEC policy on funding institutions for teaching and research were proposed.

Voluntary Adult Education Grants Scheme

In 1986 the Commission continued to be responsible for administration of the State's allocation from the Commonwealth funded Voluntary Adult Education Grants Scheme. The Commission's community-based committee, appointed for this purpose, gave invaluable service in overseeing implementation of the program.

Western Australia's allocation for the 1986 VAEGS program was \$121 000. The total available for distribution was \$114 950 after allowing for administration costs, which this year also included the cost of sending two delegates to the Non-Government Adult Education Program National Workshop in Tasmania.

The committee considered over 100 applications, of which 68 were successful covering a large range of needs amongst the socially and economically disadvantaged in the community. Grants were provided to the following groups: special interest groups \$26 612 (21 grants), the physically and intellectually handicapped \$26 921 (13 grants), disadvantaged women \$17 018 (11 grants), the unemployed \$10 621 (6 grants), people in isolated places \$10 411 (7 grants), senior citizens \$4 104 (2 grants), migrants \$8 272 (4 grants) and Aboriginal people \$10 495 (4 grants). The grants covered the following purposes: personal and social development which were allocated \$45 037, literacy and numeracy projects \$22 547, particular skill development \$23 673, information and counselling training \$11 504, general education \$7 053 and training teachers and helpers \$4 640.

The scheme plays an important role in widening educational opportunities in this State.

RESOURCES PLANNING

TAFE Capital Works

As part of the annual budget cycle the Commission collaborates with the Technical Education Division, the Colleges established under the Colleges Act and the WA College of Advanced Education for the WA Academy of Performing Arts, to determine a priority listing of capital projects for the following year. The Government's sale of the Perth Technical College site necessitated a significant variation to previous schedules for capital development in 1986/87.

Major TAFE projects in 1986/87 will be Perth Technical College Stage 2 (\$5.342m), Leederville Stage 1 (\$1.192m from State sources and \$2.89m in 1986 and 1987 from the Commonwealth), Midland Stage 2 (\$7.147m in 1986), Hedland College Residential (\$1.180m in 1986), the Newman Centre Library (\$0.581m in 1987) and Perth Technical College Stages 3 and 4 (\$6.867m in 1986 and 1987). General loan fund estimates allow for \$10.3m from State funds and \$11.9m in Commonwealth funds during 1986/87, both sources providing substantially less funding in 1986/87 than in 1985/86.

TAFE Recurrent Funding

On an annual basis the Commission, following consultation with the colleges established under the Colleges Act and the WA College of Advanced Education for the WA Academy of Performing Arts, provides advice to Treasury on the recurrent funding ramifications of the various educational initiatives of the institutions. A number of broad indicators of institutional growth and development are computed as part of this process.

As part of its attempts to reduce expenditures the State government is encouraging the review of work practices and other efficiency measures within the TAFE system. The financial results of these initiatives are not yet apparent.

TAFE Resource Provision

Recent trends in resource allocation to TAFE in Western Australia are set out in Table 1.

TABLE 1: RESOURCE ALLOCATION TO TAFE IN WESTERN AUSTRALIA 1983/84-1985/86 (\$,000)

Grant Category	Funding Source*	Financial Year		
		1983/84	1984/85	1985/86
Capital Works	C/w	7 721	12 595	15 930
	State	4 903	8 364	15 608
	Other	1 025	866	1 472
Minor Building Works	C/w	0	0	0
	State	240	529	372
Equipment	C/w	2 159	1 911	1 229
	State	2 190	2 138	2 564
Recurrent	C/w	10 662	13 279	14 463
	State	73 526	84 382	89 347
TOTAL	C/w	20 542	27 785	31 622
	State	80 859	95 413	107 891
	Other	1 025	866	1 472

Source: Annual CTEC Statistical Collections

*State and Commonwealth (C/w) sources of funding are identified in this Table. In the case of the Colleges established under the Colleges Act capital funding has also been provided from 'other' sources — including Regional Cultural Facilities Funds and private industry.

Enrolment Growth in Higher Education

Allowing for differences in the methods of calculating student load at universities and colleges of advanced education, there were some 1 000 additional equivalent full-time places in Western Australian institutions from 1984 to 1985 and a further 800 places from 1985 to 1986.

Following representations by the Commission

to the Commonwealth Tertiary Education Commission during 1986, additional funding has been provided for a further 235 places for commencing students in higher education in 1987. These places which will be accommodated at the University of WA (60 places), at Murdoch (80), at the WA Institute of Technology (45) and at the WA College of Advanced Education (50), are incorporated in the planning ranges for institutions in 1987 in Table 2 below.

TABLE 2: STUDENT LOAD IN UNIVERSITIES (EFTSU) AND COLLEGES OF ADVANCED EDUCATION (EFTS) IN WESTERN AUSTRALIA — ACTUAL 1984-86, PROJECTED 1987

Year	Murdoch University	University of WA	WA College of Advanced Education	WA Institute of Technology
1984	2 157	8 019	6 464	8 710
1985	2 428	7 804	7 033	8 943
1986	2 744	7 976	7 366	9 148
1987	3 030-3 230	7 860-8 160	7 360-7 660	9 165-9 565

Source: CTEC Report for 1985-87 Triennium Volume 4.

These figures exclude the special places for Aborigines and for nursing students funded respectively by the Commonwealth and the State.

Following capital works developments during the next few years, it is anticipated that 1 500 places in nursing will eventually be provided at the WA College and the WA Institute of Technology, an increase of 1 100 places over those available in 1986.

Funding of Higher Education

The 1985-87 Triennium commenced with a national increase in real terms of 2.8% in funds for 1985, compared with the previous year. Annual national budget figures indicated further increases of 1.9% in real terms for 1986 and 2.6% for 1987. However, without the introduction of the administration charge for the 1987 academic year which will increase the recurrent funds for institutions, funds would have declined by 1.0% in 1987.

Commonwealth funding for higher education institutions in Western Australia for the period 1985-87 is summarised in Table 3.

It should be noted that this table does not reflect the funds provided to higher education by the State Government. The transfer of basic nursing education to colleges of advanced education has required capital expenditure commitments of \$12.4 million and recurrent commitments in excess of \$9.0 million. The Bunbury Institute of Advanced Education was provided with \$4.9 million in 1985/86 and \$2.7 million in 1986/87 for capital works. Recurrent allocations will eventually total \$370 000 per annum. Additional State funds totalling \$880 000 are to be made available to the WA Institute of Technology to develop a Petroleum Exploration Centre as part of the Commonwealth funded Science and Technology building.

Table 3 indicates that Western Australia expects to receive 11.7% of available capital works funding in the 1985-87 Triennium. On the other hand the State receives somewhat less than its population-based share of resources, according to student load measures, for equipment, minor building works and general recurrent funding.

TABLE 3: COMMONWEALTH FUNDING FOR HIGHER EDUCATION IN WESTERN AUSTRALIA — ACTUAL 1985, ESTIMATED 1986-87 (\$,000)

Institution Grant	1985 (Actual)	1986	1987	% National Total +
A. CAPITAL GRANTS				
Major Buildings				
MU: Science Bldg., Stage 1	674	4 592	1 330	
UWA: Architecture Bldg.*	—	—	1 189	
WACAE: Joondalup Campus, Stage 1	500	3 232	2 605	
Library (Churchlands Campus)	—	1 452	1 947	
WAIT: Science/Technology Bldg.*	—	—	1 281	
SUB-TOTAL	1 174	9 276	8 352	11.7
Minor Building Projects				
Murdoch University	259	301	307	
University of WA	373	520	653	
WACAE	447	376	384	
WAIT	448	587	600	
SUB-TOTAL	1 527	1 784	1 944	9.0
Equipment				
Murdoch University	1 249	1 030	1 282	
University of WA	3 071	3 575	3 997	
WACAE	1 010	1 189	1 346	
WAIT	2 238	2 638	2 986	
SUB-TOTAL	7 568	8 432	9 611	8.3
B. RECURRENT GRANTS (GENERAL) #				
Murdoch University	22 474	25 833	28 000	
University of WA	63 321	68 701	68 935	
WACAE	34 664	38 813	40 080	
WAIT	53 681	59 065	59 664	
SUB-TOTAL	174 140	192 412	196 679	9.0

Source: Advice from the CTEC regarding amendments to the States Grants (Tertiary Education Assistance) Act 1984, provided in November 1986.

+ 1987 funding as a % of the corresponding national total (except for the capital figure of 11.7% which is the 1985-87 Triennium funding as a % of the corresponding national total). The national totals include data for ACT institutions. The reported percentages can be compared with the Western Australian proportions in 1987 of 9.6% of the estimated student load and 9.1% of the estimated national population, based on ABS Series A projections.

* Further funding is expected to allow completion.

Excludes special purpose grants, research grants, grants for expenditure on teaching hospitals or universities.

Statistical System Developments

As a consequence of the introduction of the new WANG computer system the Commission has gained enhanced access to data pertaining to higher education in Western Australia. Substantial use has been made of spreadsheets and graphing facilities in order to provide efficient and meaningful presentations of common data.

There has been considerable improvement in the CTEC's statistical collections, particularly in the areas of individual student records, field of study classifications and student load measures. Improvements in the definition and structure of fundamental data elements have been accompanied by an attempt to reduce the differences between the data collected for the various sectors of tertiary education. These changes have made it imperative that the Commission review its own use of and access to data. In 1987 resources will be committed to providing a flexible means of obtaining information specifically to enhance the Commission's monitoring role in tertiary education.

The CTEC has also indicated its desire to upgrade finance and staffing statistics. Following recent trials, the Finance Collection is expected to become fully operational in 1987. A new collection of staffing statistics is expected to undergo trials in 1987.

All of the above developments can be expected to put considerable pressure on the resources of the Commission during 1987.

Information Bulletins

The Commission has initiated a series of Information Bulletins which aim to provide broad overviews of key aspects of tertiary education in Western Australia. The bulletins published in 1986 were: Retention Rates in Education by State; Participation in Higher Education in 1986 by Region; and Enrolments in Higher Education in 1985 by 'Broad Field of Study'. The bulletins have been distributed to

education authorities and Government Ministers.

Population Influences on Enrolment Growth

As background material for institution planning for the 1988-90 Triennium the Commission developed several papers which estimated the effect of population change on higher education enrolment distribution. In its submission to the CTEC the Commission noted that demographic growth in Western Australia exceeds the national average and as a consequence the State needs to be considered in a different manner to those States which are not growing.

Unmet Demand

The Commission initiated a seminar to discuss the ramifications of a study of unmet demand undertaken by Dr N Bardsley of the WA Institute of Technology. Differences in definitions used by institutions and States make comparisons between courses, institutions and States difficult. However, it would appear that 'unmet demand' did decline in Western Australia in 1986 compared with 1985.

The Report of the Committee of Inquiry into Education in Western Australia (the Beazley Report), published in 1984, recommended significant changes to the structure of the school system, with respect to both administration and curriculum. Similarly, the Report on Assessment in the Upper School in Western Australia (the McGaw Report) in the same year considered the post compulsory years of secondary education. The McGaw Report recommended substantial broadening of the options available to students in Years 11 and 12 in Western Australia. As a result of action taken to implement recommendations of these reports, students will have a wider choice of subjects and it is expected that retention rates for upper secondary education will increase. This will affect tertiary education programs from 1987 onwards in two ways:

- the nature of the academic preparedness of some tertiary education entrants will change, and

- the size of the cohort who may qualify for admission will increase.

Consequently it seems likely that there will be a considerably greater demand for places in higher education and in TAFE. In addition, TAFE programs will need to be restructured as the proportion of students entering them from Year 12 increases.

In 1986 changes are being made to the scaling procedures adopted for tertiary entrance qualifications in Western Australia. This will result in an increase in the proportion of the 17-18 year old cohort who will be regarded as 'qualified' for entry to undergraduate programs in higher education, and is expected to double the current level of 'unmet demand'. This in turn will lead to community pressure for an increase in higher education and TAFE places. The revised scaling procedure will also bring Western Australian practice into line with the practices adopted in other States. The Commission brought these matters to the Minister's attention.

Sites

A major review of sites planning was started in July 1986, with the aim of setting up procedures for locating and acquiring sites for future institutions and evaluating the appropriateness of the sites currently designated for higher education. The project officer was a member of the WA College of Advanced Education staff who was attached to the Commission for this review.

The project coincided with the State Planning Commission's review of the Corridor Structure Plan for the metropolitan region, and thus there was considerable consultation between officers of the two Commissions. The town planners of all the outer metropolitan local government authorities were also consulted.

The study reported that a continuing decrease in population was expected in the established suburbs over the next 40 years, while the outer suburbs would experience substantial increases. These projections and the location of existing

education institutions indicated the need for sites to serve the outer metropolitan regions.

The study of site requirements raised several policy issues, including the relationship between the higher education sector and TAFE, and the role of higher education in regional development. The project, which ended in December, recommended that sites be acquired near Armadale, Midland, Rockingham and Mandurah and suggested options for particular sites. Discussions will continue in 1987 with the State Planning Commission and recommendations for a revised sites policy and specific site acquisitions will be brought before the Commission.

NATIONAL AND STATE CONSULTATION

National Tertiary Education Statistics Collection System

The establishment of an effective partnership between the States and the Commonwealth in the creation of a national tertiary education statistics system has been under discussion for some time and as a result of an initiative by Western Australia at the June 1986 meeting of Ministers, further progress was made. A working party was established to examine alternatives and prepare a proposal for a national centre to undertake the collection of data. The working party, chaired by the Chairman of the Commission and including representation from all States and Territories, has developed an alternative to a centralised Canberra-based model. The proposal is currently under consideration and a report is to be made to the June 1987 meeting of Ministers.

Working Party on the Structure of Post Secondary Education

Another working party of which the Chairman of the Commission was a member was concerned with the future structure of post secondary education. This working party, chaired by the Chairman of the CTEC, submitted its report to the June 1986 meeting of Ministers. The advice

of the working party, endorsed by Ministers, was that the present three sector system has served post secondary education well in coping with expansion, amalgamation, contraction and changing demands by the community. A major restructure was not considered necessary in order to eliminate the difficulties at the interface between sectors. Thus, for example, the report suggested that research by colleges of advanced education and within TAFE could be accommodated by suitable adjustments within the present system arrangements. The working party has now been discharged.

Australian Council on Tertiary Awards

The Australian Council on Tertiary Awards (ACTA) met on four occasions during the year. A major feature of its work has been the establishment of a single statement of guidelines for the registration of both advanced education and TAFE awards. The Chairman of the Commission is a member of ACTA.

CTEC/States Consultative Meeting

An important feature of Commonwealth-State communications is represented by the CTEC/States Consultative Meetings which are held twice annually with agenda items suggested by the Commonwealth or individual States.

Western Australia has submitted a number of items for consideration during the year, including doctorates in colleges of advanced education and policies governing the establishment of private tertiary institutions. The meetings provide a forum for discussion of policy matters.

Conference of Chairmen

Interstate consultation takes place by means of the Conference of Chairmen of State Tertiary Education Authorities and this provides a valuable informal forum in which to exchange information about developments in the States and identification of common problems. Four such meetings were held in 1986 at a time when Chairmen were meeting for business associated with the AEC, CTEC/States meetings and ACTA.

Working Party on Course-Related Matters

During 1985 a member of the Commission's secretariat participated on an Advanced Education Advisory Council Working Party on Course-Related Matters. The objectives of this working party were to conduct a broad inquiry into course-related matters affecting participation and equity in advanced education and to advise the Council and State Co-ordinating Authorities on appropriate course-related measures to improve participation and equity.

The report of the working party was sent to the Commission by CTEC in April 1986 with a request for comment by June 1986. The Commission's reply stressed that meaningful progress in increasing participation and equity in higher education is dependent upon the availability of earmarked funding. The Commission is aware that in the absence of such funding those institutions charged with providing and co-ordinating higher education are faced with the intractable question of how to allocate limited educational resources among competing applicant groups.

The Commission has addressed issues raised in the report in the context of its submission for the 1988-90 Triennium.

Standing Committee on External Studies

In 1985 the Commonwealth Minister for Education appointed a Standing Committee on External Studies to encourage the national co-ordination of external studies across the three sectors of post secondary education and to address major issues in distance education. The Western Australian representative on this committee is Dr Maureen Smith from the University of WA.

During 1986 the committee provided advice to the CTEC committee reviewing efficiency and effectiveness in higher education on possibilities for rationalisation of the provision of external studies with the aim of achieving economies in its operation.

The committee also prepared advice for the CTEC's 1988-90 Triennium report stressing the need for co-operation between institutions offering external studies, and the advantages to be obtained from the use of emerging technologies and other co-operative measures aimed at achieving greater efficiency and effectiveness in the delivery of external programs.

In 1986 the committee made available a limited amount of funds for research related to external studies provision and defined specific areas for research in 1987.

Minister's Education Council

In 1986 the Minister established an Education Council, comprising chief executive officers of departments and commissions within the Education portfolio, together with the head of the Catholic Schools Commission and a representative from the independent schools. A variety of topics of concern to the schools and post schools areas were considered, including implementation of the Beazley Report, unmet demand for tertiary education and certification of completion of high school study.

Minister's Education Advisory Council

The Council was established in 1983 as a forum for advice on education policy matters with membership drawn from a wide range of organisations with an interest in post secondary education. Following some questioning about the continued need for such a body the Minister sought comments from various parties and in the light of these decided in November to disband the Council.

Telecommunications in Tertiary Education

The Secretary to the Commission continued his membership of the WA Satellite Education Advisory Group, the national Working Party on Telecommunications in Tertiary Education and the WA Government Communications Advisory Committee. The most significant event of 1986 was the extension of the education television

programs produced by tertiary education institutions to distant parts of the State as a result of GWN commencing its satellite service as the Remote Commercial Television Licensee for Western Australia. Unfortunately, in the present tight financial situation, the Western Australian Government was unable to fund, in the 1986/87 Budget, the proposed 'Educational Satellite Network' referred to in the 1985 Report of the Commission.

Youth Income Support Anomalies Task Force

The Commonwealth Government is introducing major changes in the income support provisions for young people over the period 1986-88 as part of its Priority One strategy. Mechanisms have been established in each State and Territory to gauge the effectiveness of the changes and identify any anomalies. A task force has been convened by the Minister for Youth in Western Australia for this purpose and the Secretary of the Commission is a member. The group has canvassed widely views from the community as a basis for a report to the Minister for Youth and advice to the Commonwealth Government early in 1987. One of the issues being considered is the impact in Western Australia of the new Austudy scheme which replaces previous secondary and tertiary education allowance schemes.

Nursing - Health Department

The Committees established by the Health Department to facilitate the transfer of nurse education from hospital schools of nursing to colleges of advanced education completed their tasks during 1986 and were disbanded in November.

The working party established by the Nurses Board of Western Australia to review the regulations under the Nurses Act made a number of recommendations to the Board which were acceptable to tertiary education institutions and to the Board but the Board had not changed its regulations by the end of 1986. This is an unsatisfactory situation and the Commission will be pursuing the matter further in 1987.

Tertiary Institutions Governance Committee

The Tertiary Institutions Governance Committee concluded its task in August 1985 and the report was released to institutions and other bodies for comment, by the Minister late in 1985. Some 16 responses were received and analysed during the course of 1986 and it is anticipated that these and the report will form the basis of future legislative changes to membership and functions of the Senates and Councils of institutions

FUTURE COMMISSION PROJECTS

Evaluative Study – Credit Transfer

In September 1986 the Commonwealth Tertiary Education Commission advised this Commission that it had approved a grant of \$17 000 as a contribution towards the total cost of a project to investigate transfer of credit in the areas of engineering and visual arts within post secondary institutions in Western Australia.

Credit transfer falls outside the responsibility of any one institution and development of effective mechanisms requires negotiation across the interests of individual institutions. The Commission is committed to facilitating these negotiations on a positive basis. In 1984 the Commission convened a working party on credit transfer and its report was the subject of an open forum early in 1985. These initiatives showed that there was support amongst institutions for the development of credit transfer arrangements. The Commission was also encouraged by agreements on credit transfer between the Technical Education Division and the WA College of Advanced Education which arose out

of the Community Studies Review carried out in 1985.

The study will develop a model for credit transfer within the areas of engineering and visual arts as a guide to wider application. It is hoped that the selection of these two diverse fields will give the study greater standing in the development of a generic model.

The study commenced in November 1986 and it is anticipated that it will be completed and a report presented to the CTEC by May 1987.

Seminar on the Future of Post Secondary Education

The present three sector structure for post secondary education has been subjected to increasing criticism over the past twelve months, particularly by those seeking changes in the funding and status of the colleges of advanced education. Others have supported continuation of the existing structure, albeit in some instances, with greater provision for cross-sectoral developments.

During 1986 the Minister for Education made a number of announcements regarding his views of the future structure of post secondary education and invited the Commission to organise a national conference to be held early in 1987 on this topic. Arrangements are well in hand to involve a number of international and national figures in a seminar. It is hoped that the outcomes will be valuable in initiating a wider debate on the form of post secondary education system required to serve Australia's needs to the end of the century and beyond.

RELATED
DEVELOPMENTS

COMMONWEALTH REPORTS

Review of Efficiency and Effectiveness in Higher Education

The 1984 guidelines from the Commonwealth Government to the CTEC requested an enquiry into the efficiency and effectiveness of higher education institutions. This report was completed in the course of 1986 and was the subject of a national seminar conducted under the aegis of the Royal Australian Institute of Public Administration in Canberra on 25 November 1986. Sections of the report dealt with the impact of the recent periods of expansion and financial constraint, the need for a review of staffing conditions, research and doctorates in colleges of advanced education, creation of new institutions and renaming others as universities, and restructuring of the number of institutions providing external study. It is anticipated that the Government will respond to the recommendations of the committee in 1987 having regard to the reactions received following the release of the report.

Review of TAFE Funding

The review was undertaken by the CTEC in response to a request from the Commonwealth Government and was completed in May 1986. Recommendations from the review have been presented in a context of the need for continued Commonwealth assistance in response to the Commonwealth's objectives for TAFE.

While no major changes are proposed to the present framework for financial assistance, proposals are made for sharper focusing of programs on achievable outcomes, as well as improvements in monitoring and evaluation of program performance. The recommendations also provide for a clearer identification of Commonwealth and State commitments and responsibilities with respect to TAFE.

The Commonwealth Government will provide its response to the review in time for the CTEC to build necessary provisions into its initial planning advice to the Commonwealth Govern-

ment for the 1988-90 Triennium. This will be completed early in 1987.

COMMONWEALTH DEVELOPMENTS

Administration Fee

The Commonwealth Government has introduced for 1987 an administration fee of \$250 for all students undertaking award or non-award university and advanced education courses. The fee, to be collected by the institutions, will be adjusted in subsequent years for administrative cost increases. Commonwealth financial assistance for universities and colleges of advanced education will be reduced on a pro rata basis as a consequence of this charge. The impact of the fee on education participation and the adequacy of exemption and allowance provisions for cases of hardship will be watched closely in 1987.

STATE AND INSTITUTION DEVELOPMENTS

Ministry of Education

The Chairman and members of the Commission have discussed with the Minister on a number of occasions the creation of the proposed Ministry of Education. The Commission has been advised that its role as advisor to the Minister will not be materially affected by this development which seeks to co-ordinate inputs to the Minister.

Superannuation Funding

In its recent triennial submission to the CTEC the Commission drew attention to the completely unsatisfactory situation relating to the special funding provided for emerging cost superannuation schemes. This funding, which is limited to 14% of relevant salaries for payment of pensions, requires urgent resolution. The WA Institute of Technology, the WA College of Advanced Education and the Universities have taken action to reduce problems in the long term by joining the Superannuation Scheme for Australian Universities. The immediate

problems require a review of the present arrangements and resolution of differing views held by States and the Commonwealth.

In previous representations to the CTEC, the Commission has provided details of the outgoings and liabilities of the institutions. In 1985 the WA Institute of Technology expended 15% of salaries on pensions, and the WA College of Advanced Education 16%. The extra monies required to pay pensions have had to be taken from the funds provided for teaching purposes. Each of these institutions expects to have pension liabilities in excess of \$1 million per annum within the next few years, and the 14% limit on special funding for these purposes will force an even greater reduction in the monies available for teaching.

Managing Change in the Public Sector

The Commission has noted the State Government's White Paper, which stresses the need for a flexible and adaptive public sector suited to accommodating change, while providing for the career development of public employees. The paper sets out the Government's views on policy formulation, financial accountability and human resource management. Emphasis is placed on achieving flexibility in the Government workforce, and on redeployment and retraining of staff rather than retrenchment.

The paper will provide a guide for the Commission's future activities and management practices.

The Financial Administration and Audit Act

The Act requires that the Commission's Annual Report be completed within eight weeks of the end of the financial year i.e. by the end of February. For this Report the Commission is required to provide financial statements for the period 1 July 1985 to 31 December 1986 (see Appendix E). Full balance sheets will be required for subsequent Annual Reports. Other documents which the Commission must provide under the terms of the Act — a Corporate Plan,

Accounting Manual, Department of Computing and Information Technology Manual and Assets Register — have been produced and are being systematically reviewed and updated as necessary.

In accordance with the new Act the Commission's Administrative Officer will be responsible for the required 'Principal Accounting Officer' and 'Certifying Officer' functions.

COMMISSION DEVELOPMENTS

Administration

In January 1986 the Commission integrated its word processing and computing operations with a new WANG system. This facility enabled the Commission to increase its word processing output through workstation compatibility which was not previously available. Additionally, data storage and analysis can now be undertaken on an automated basis.

During the year the Commission's Computing Consultant produced a manual to meet the requirements of the Department of Computing and Information Technology detailing the needs of the Commission, the equipment installed and future areas where expansion will be required. This document is to be upgraded regularly to encompass any changes and needs as they occur.

The Commission's 10 year old switchboard facility was upgraded in January 1986 to allow direct dialling and free the operator for word processing duties.

Equal Employment Opportunity Management Plan

The Commission, in common with other public sector agencies, is required to prepare a management plan under the terms of the Equal Opportunity Act, 1984. The Director of Equal Opportunity contacted the Commission Chairman in April 1986 and agreed, in view of the heavy workload generated by the

Commission's triennial planning responsibilities, to arrange for a postponement of the Commission's involvement in this task. A member of the Commission's secretariat is expected to attend a seminar early in 1987 to obtain guidance on the development of an equal employment opportunity management plan for the Commission.

Visitors

The Commission was pleased to receive several distinguished visitors during the course of the year. These included:

Members of the Commonwealth Tertiary Education Commission and Councils

Professor N Dunbar
Dr G Ramsey
Ms M Bickley

Officers of Federal Staff Associations

Mr G McCulloch Federation of
College Academics

Mr L Wallis Federation of
Australian
Universities Staff
Association
Mr F Harpley Federation of
Australian
Universities Staff
Association

Shadow Minister for Education
Mr N Moore, MLC

Overseas Visitors

Dr W Birch Director, Bristol
Polytechnic, UK
Dr P Hackett Principal, Camborne
School of Mines, UK
Dr R Lewis Council for National
Academic Awards,
UK
Professor T Blackstone
Principal, Birkbeck
College, University
of London

Professor Blackstone also conducted a seminar at the Commission's offices for senior members of institutions, Commissioners and staff.



Clive Eger, Senior Lecturer in Small Animal Medicine and Surgery at Murdoch University gives some tips to James Pass (6) and Rochelle Smith (13).

CHAIRMAN'S SUMMARY
1986 ACHIEVEMENTS
1987 PROJECTIONS

Secretariat

The Commission secretariat provides an ongoing service for the maintenance of the committee structure for the Commission in order to maximise opportunities for input by lay members of the Commission. In addition the secretariat discharges some activities associated with the administration of the States Grants (Tertiary Education Assistance) Act; provides analyses, advice and information to other arms of Government (for example, to Treasury in respect of the budgets of the Colleges established under the Colleges Act and the WA Academy of Performing Arts); collaborates with the Technical Education Division in the establishment of state-wide programs of TAFE capital requirements for both State and Commonwealth funding; processes applications for the national registration of accredited awards; and assists in the fulfilment of the Commission's unique role in bringing together parties, (for example chief executive officers and planning officers from different institutions) for consideration of specific issues and general discussions such as evaluation of unmet demand, teacher supply and demand, and credit transfer between TAFE and higher education. Even this diverse list is not complete and it needs to be augmented by mention of involvement in national and state working parties.

There can be no doubt that the State is well-served by the work of those members of the community who accept appointment as Commissioners and by the diverse, complex and high level work carried out by members of the secretariat with enthusiasm, energy and competence.

Major Achievements for 1986

The following initiatives were completed in 1986:

- Preparation of advice for legislation to change the name and enhance the status of the WA Institute of Technology which is to be known

as the Curtin University of Technology from 1 January 1987.

- Fulfilment of Government pledge through the opening of the Bunbury Institute of Advanced Education.
- Commencement of construction at Joondalup for an additional campus of WACAE.
- Preparation of vigorous and credible submission to the Commonwealth on the State's needs for the 1988-90 Triennium as a preliminary to negotiations.
- Increased study opportunities by means of increased enrolment numbers and provision of new courses.
- Enhanced credibility of awards through implementation of approved Western Australian TAFE and advanced education accreditation procedures.
- Formulation of proposals for the acquisition of additional sites for tertiary education to serve the needs of the community well into the next century.

Projections for 1987

At the end of 1987 it should be possible to point to the achievement of the following:

- Significant improvements in access to post secondary education and enrolments in institutions in Western Australia, together with increased funding commitments for recurrent expenditure and capital projects as a result of the Commission's submission to the Commonwealth Tertiary Education Commission in 1986 and detailed negotiations during 1987.
- Promotion of ideas and discussion about the future structure of post secondary education in Australia as a result of the national seminar to be conducted by the Commission early in 1987.
- Effect changes required in policies and administrative procedures to provide appropriate status for the Curtin University of

Technology (which is to replace the WA Institute of Technology from 1 January 1987).

- Establishment of proposals for the improvement of credit transfer for students between TAFE and higher education as a result of the study carried out by the Commission under the financial sponsorship of the Commonwealth Tertiary Education Commission.
- Progress in the establishment of consolidated or consortium-type arrangements for the promotion of academic activities in areas of

small student demand and small departments in a number of education institutions.

- Devolution of responsibility for assessment and accreditation of courses to the WA Institute of Technology and the WA College of Advanced Education.
- Accreditation and national registration of the majority of programs within the TAFE sector in accordance with the procedures established by the Commission in 1986.
- Completion of the Commission's corporate plan, including operational plans.

APPENDICES

Appendix A Constitution, Functions and Duties of the Commission

Extract from the
Western Australian
Post-Secondary
Education
Commission Act,
1970.

Constitution of the Commission:

- 6 (1) The Commission shall consist of—
- (a) a person appointed as Chairman of the Commission who shall also be the chief executive officer of the Commission;
 - (b) eleven other members being persons selected for their knowledge of and interest in education, community affairs in the city and country, employment problems, or government.
- (2) Of the members other than the Chairman not more than four nor less than three shall be persons actively engaged in post-secondary education.

.....

- 6A The following provisions apply to and in relation to the Chairman, that is to say—
- (a) he shall be appointed by the Governor on the recommendation of the Minister for a term not exceeding seven years;
 - (b) the conditions of his service shall be such as the Governor determines;
 - (c) he shall be paid such remuneration and allowances as the Governor may from time to time determine;
 - (d) he may be re-appointed, from time to time at the expiration of a term of office, unless he has been removed from office by the Governor under paragraph (e) of this section;
 - (e) he may, at any time, be removed from office by the Governor for disability, bankruptcy, neglect of duty or misconduct, or if, without the consent of the Governor, he engages in any other remunerative employment; and
 - (f) he may at any time resign his office by writing under his hand addressed to the Governor.

Functions of the Commission:

- 12 (1) The Commission shall have the functions set out in subsection (2) of this section and shall perform those functions subject to the Minister and with due regard to the traditional autonomy of universities and to the major role of universities in areas outside the scope of post-secondary education.
- (2) The functions of the Commission are —
- (a) to assist the Minister, and the Government of the State, in the formation of State views on the promotion, development and co-ordination of post-secondary education and for that purpose to make recommendations to the Minister on those matters having regard to the needs of the State, the number of students to be provided for, and the financial and other resources available;
 - (b) to make recommendations to the Minister and where appropriate, the relevant Commonwealth Education Commissions on the establishment and location of, and the acquisition and reservation of sites for, new post-secondary education institutions;
 - (c) to advise the relevant Commonwealth Education Commissions on —
 - (i) the levels of financial support requested by post-secondary education institutions, or authorities governing such institutions, for the purposes of post-secondary education; and
 - (ii) requests for a variation from an approved triennial programme of a post-secondary education institution or an authority governing such institutions;
 - (d) for the purpose of achieving rationalisation of resources and the avoidance of unnecessary duplication, to —
 - (i) advise the governing authorities of the respective post-secondary education institutions; and
 - (ii) make recommendations, where appropriate, to the relevant Commonwealth Education Commissions, on proposals for the establishment of new post-secondary education courses of study;
 - (e) to advise the Minister and the governing authorities of the respective post-secondary education institutions on —
 - (i) the terms and conditions of appointment and employment, including salary payable, of the staff, whether academic or otherwise, of those institutions; and
 - (ii) all claims relating to the terms and conditions referred to in subparagraph (i) of this paragraph;
 - (ea) to advise the governing authorities of the respective post-secondary education institutions on—
 - (i) the fees to be charged by and paid to those institutions for classes or courses, examinations, and academic awards conferred; and
 - (ii) the criteria for entrance to those institutions with a view to avoiding multiple examinations and facilitating, where desirable, the movement of students between those institutions;
 - (f) to determine, when so requested by a post-secondary education institution or an authority governing such institutions, the minimum requirements for new academic awards and to accredit those awards; and
 - (g) to collaborate, where appropriate, with the relevant State and Commonwealth authorities with regard to the preparation of plans for buildings to be used by post-secondary education institutions, the letting of contracts for the building of such buildings, and the general supervision of building operations in relation to such buildings.

Duties of the Commission:

14 The Commission shall—

- (a) consider requests and submissions of educational institutions and authorities that relate to the proposals of those institutions and authorities for future developments in post-secondary education;
- (b) confer and collaborate, on matters relating to post-secondary education, with educational institutions and authorities and with departments of the Commonwealth and the States of the Commonwealth and other appropriate bodies or instrumentalities of the Commonwealth or the States of the Commonwealth;
- (c) constantly review all aspects of post-secondary education and, on its motion or the request of the Minister, make reports thereon;
- (d) consult with post-secondary education institutions for the purpose of encouraging, where it is desirable and feasible, the shared use of resources such as expert staff, libraries, computers, laboratories and expensive teaching or research equipment; and
- (e) promote and undertake research relevant to the planning, development and effective co-ordination of post-secondary education throughout the State.

Institutions Consultation with the Commission:

14A The Commission may require any post-secondary education institution to consult with the Commission, or with the Commission and any other post-secondary education institution or institutions, upon any aspect of the affairs of the institution that is relevant to the functions or duties of the Commission, and the institution shall comply with that requirement according to its tenor.

Duty of Institutions to provide information to the Commission:

14B (1) A post-secondary education institution shall —

- (a) before making any submission to the Tertiary Education Commission, or any of its agencies, relating to —
 - (i) the development or financing of the institution;
 - (ii) the introduction of new courses by the institution, the continuance or discontinuance of existing courses, or any significant change in the nature, duration or content of any existing course; or
 - (iii) any other significant matter relating to the administration of the institution, advise the Commission of the proposed submission and, subject to paragraph (b) of subsection (2) of this section, obtain the views of the Commission thereon; and
 - (b) furnish the Commission with such other information as the Commission may reasonably require for the purpose of performing any of its functions or duties.
- (2) Where a post-secondary education institution has advised the Commission of a proposed submission pursuant to paragraph (a) of sub-section (1) of this section —
- (a) the Commission shall use its best endeavours to examine the proposed submission and convey its views thereon to the institution as soon as is practicable;
 - (b) the institution may make the proposed submission notwithstanding that the Commission has not yet conveyed its views thereon to the institution if —
 - (i) it is authorised to do so by the Commission; or
 - (ii) a period of thirty days has elapsed since the Commission was advised of the proposed submission.
- (3) In subsection (1) of this section "the Tertiary Education Commission" means the Commission constituted under the Tertiary Education Commission Act 1977 of the Commonwealth, as amended from time to time, or any other authority constituted under a law of the Commonwealth to take over the functions of that Commission.

Appendix B

Staff of the Commission
as at 31 December 1986

Secretary Walter J Howse BSc BEd(Hons)(W Aust) MA PhD(Iowa) MAIP MACS FACE	Senior Research and Planning Officers Julie M Harris LLB(Hons)(Exeter)	Administrative Officer Gail Short TTC(Qld) TDipT(Lon)	Librarian (part-time) Evette House Cert Lib Prac(PTC)
Senior Assistant Secretary A Neil Stewart BA DipEd(W Aust) MEd PhD(Alberta) FACE FIEA	Evan H Jones BA(W Aust) (on secondment to PSB)	Clerk Wendy A Ingram	Clerical Assistants (part-time) Carmen Downes Marie Mack
Assistant Secretary A Royce Standish BEc(W Aust) MA(Econ)(Brunel)	Research and Planning Officers Marlene J Bevan DipTeach(Graylands)	Secretary to the Chairman Joanne D White	Typist (part-time) Dianne Martin
Principal Research and Planning Officer Laurie Money BA BEd(W Aust) MSc(Reading)	Jo M Jennings BA(ANU)	Secretary to the Secretary Vacant	Consultants Anne M B Rogers BA(W Aust) ALAA
	Patricia Reynolds MA(W Aust)	Typist/Receptionist Sue Cash	John Wilkie BCom(W Aust) Grad Dip(Comp)(WAIT) MACS
	Assistant Research and Planning Officers Dianne B Baruffi BA(Soc Sc) DipEd Grad Dip (Soc Sc)(WAIT)	Research and Planning Officer (part-time) Vacant	
	David R Lloyd BA(Hons)(W Aust)		

Appendix C Committees of the Commission

The terms of reference, membership structure and, where appropriate, membership during 1986 of the permanent Commission committees are shown

The Academic Committee

Terms of reference

To study and report on all academic issues affecting the promotion and co-ordination of post-secondary education and such other matters as are referred to it.

Membership structure

- Chairman of the Commission — ex officio
- Five members of the Commission (one of whom will be Chairman of the Committee)
- Secretary to the Commission — ex officio
- Senior Assistant Secretary — ex officio

The five Commission members were:

Chairman — Dr D Mossenson
Mr R Cook Professor M Nairn
Dr A Kinnear Mr D O'Sullivan

The Resources Committee

Terms of reference

To study and report on trends and needs in the level and distribution of enrolments and in the provision of physical and financial resources to meet the development requirements for post-secondary education in the State, and such matters as are referred to it.

Membership structure

- Chairman of the Commission — ex officio
- Six members of the Commission (one of whom will be Chairman of the Committee)
- Secretary to the Commission — ex officio
- Principal Research and Planning Officer

The six Commission members were:

Chairman — Mr B Scott
Mr P Carter Mr G Hawke
Dr J Gill Dr M Livers
Vacancy from 4 July 1986

The Management Committee

Terms of reference

To recommend on the Commission's:

- (a) budget
- (b) staffing requirements
- (c) conditions of service for staff
- (d) specific appointments of professional staff.

Membership structure

- Chairman — Chairman of the Commission
- Two Commission members
- Secretary to the Commission

The two Commission members were:

Mr B Scott
Dr P Grimwood to 4 July 1986
Professor M Nairn from 4 July 1986

The Executive Committee (established from time to time as necessary)

Terms of reference

To handle any urgent business which arises whilst the Commission is in recess in December-February and on such other occasions as required.

Membership structure

- Chairman of the Commission
- Chairman of the Academic Committee (or if unavailable, a member of that Committee)
- Chairman of the Resources Committee (or if unavailable, a member of that Committee)

The Voluntary Adult Education Committee

Terms of reference

To administer a Commonwealth Government

scheme involving the allocation of grants for voluntary adult education in Western Australia.

Membership structure

- A Commission representative as Chairman
- A member of the Commission
- A nominee involved in adult education within TAFE from the Education Department
- Five community members
- Members co-opted by the Committee

The Chairman was:

Mr R Ware (ex Commissioner) to 14 November 1986

The Commission member was:

Dr A Kinnear — Chairman from 14 November 1986

The TAFE nominee was:

Mr R Horner — Assistant Director Personnel, Technical Education Division

The five community members were:

Mr R Garlett
Mr J Fuhrmann
Ms K Shiels
Mr B Preen
Mrs L Husson
Ms K Pederick (co-opted member)

Western Australian Council on Tertiary Awards (WACTA)

Terms of reference

To develop and implement accreditation and registration procedures for TAFE and advanced education courses in Western Australia consistent with established policies and practices of the Commission and the Australian Council on Tertiary Awards.

Membership structure

- Chairman — selected by the Commission
- Two members — selected from the members of the Commission
- Two members — from advanced education one member nominated by the WA College of Advanced Education and the other by the WA Institute of Technology
- Two members — from TAFE nominated by the Director General of Education
- One member representing the Department of Employment and Training
- Four members — from the general community selected by the Commission
- Two members — being the two State members of the Australian Council on Tertiary Awards ex officio or their substitute representatives

The Chairman was, Mr D O'Sullivan, a member of the Commission.

The members from the Commission were:

Mr P Carter

Mr R Cook

The members from advanced education were:

Dr B Lawrence, Head of Academic Planning, WA College of Advanced Education

Dr J Sharpam, Associate Director (Academic Affairs), WA Institute of Technology

The members from TAFE were:

Mr J Hainsworth, Assistant Director of Studies, Technical Education Division

Mr D Russell, Director of programs and Development, Technical Education Division.

The member from Department of Employment and Training was: Mr M Cross, Executive Director.

The four community members were:

Dr N Dilworth

Mr W Duff

Mr C Gillam

Mrs L Pugh

The ex officio members were:

Mr P Forrest

Dr W Pullman

Other Committees

A number of other special purpose committees and working parties functioned during 1986.

Activities of these groups have been referred to in the text of the Report.

- Aboriginal Education Committee
- External Studies Review Group
- Sites Working Party
- Triennial Planning Study Groups

Appendix D

Publications

The Commission's Annual Reports are widely distributed to Government authorities, education agencies and public libraries. Copies of these and other reports are retained in the Commission's library. Reports published in 1986 are listed below:

- External Studies 1985 (Two Parts), Third Annual Report of the External Studies Review Group, Western Australian Post Secondary Education Commission, 1986; and
- Review of Postgraduate Courses in Nursing, Western Australian Post Secondary Education Commission, August 1986.

Other submissions and reports prepared by the Commission during the year are referred to in the text of the Report.

Appendix E
Western Australian
Post Secondary
Education Commission
1/7/85 - 31/12/86

Statement
of Receipts
and Payments

	18 months to 31 Dec 1986	12 months to June 30 1985
Funds on hand 1 July	1 390	2 867
Receipts:		
Consolidated Revenue Fund	1 444 000	815 000
Recoups:		
Accreditation Panels	24 847	30 464
Salary Deductions Superannuation	24 101	14 699
VAEGS Administration	11 750	4 986
Miscellaneous (Note 2)	<u>172 947</u>	<u>18 721</u>
	<u>233 645</u>	<u>68 870</u>
	<u>1 679 035</u>	<u>886 737</u>
Payments:		
Salaries normal time	857 731	512 214
Salaries temporary assistance	<u>49 442</u>	<u>25 845</u>
	<u>907 173</u>	<u>538 059</u>
Other Staffing Costs:		
Payroll tax	27 993	19 972
Superannuation	117 079	76 078
Workers Compensation	4 326	1 739
Commission Travel	73 099	61 102
Seminars	<u>3 372</u>	<u>2 291</u>
	<u>225 869</u>	<u>161 182</u>
Communications:		
Telephone	33 452	11 600
Postage	3 734	2 501
Courier	8 779	5 105
Miscellaneous Expenses	<u>100</u>	<u>-</u>
	<u>46 065</u>	<u>19 206</u>
Services:		
Office Rental	140 786	77 648
Equipment Rental	52 697	6 514
Advertising	5 715	2 708
Insurance	6 389	3 853
Planning & Research	2 295	3 491
Accreditation Panels	31 196	28 437
CTEC	14 623	
ACTA Budget	<u>53 622</u>	<u>122 651</u>
	<u>307 323</u>	
Consumable Supplies:		
Stationery	15 637	7 221
Consumables	6 214	2 624
Library	8 160	4 126
Printing	10 417	1 488
Meeting Expenses & Entertainment	10 083	7 878
	<u>50 511</u>	<u>23 337</u>
Maintenance of Assets:		
Maintenance Contracts	<u>9 713</u>	<u>3 762</u>
	<u>9 713</u>	<u>3 762</u>
Purchase of Plant & Equipment:		
New Equipment (Office)	1 461	
Furniture	28 717	4 456
Motor Vehicle	<u>15 116</u>	<u>12 694</u>
	<u>45 294</u>	<u>17 150</u>
	<u>1 591 948</u>	<u>885 347</u>
Funds on Hand:		
30 June 1985		1 390
31 December 1986	<u>87 087</u>	

Notes to and forming part of the Financial Statements.

1. In accordance with the Acts Amendment (Financial Administration and Audit Act) Act 1985, the financial year of the Commission shall end on 31 December each year.

The financial statements have been prepared to cover the period 1 July 1985 to 31 December 1986.

2. MISCELLANEOUS RECOUPS

Advertising	\$ 396
Committee Meetings	55
CTEC - Recoups	77 381
CTEC - Sundry Supplies	7 000
Insurance	330
Maintenance	49
Minister	12 000
Office Equipment	2 000
Public Service Board	57 019
Salaries - Temporary	900
Seminars	160
Sundries	866
Telephone	107
Travel - Commission	1 335
Motor Vehicle	<u>13 349</u>
	<u>\$172 947</u>

E. Short

Administrative Officer
Date February 26, 1987

**Report of the Auditor General
for Western Australia**

**Western Australian Post Secondary
Education Commission**

The accounts of the Western Australian Post Secondary Education Commission have been audited for the period July 1, 1985 to December 31, 1986 and were found to be in order.

In my opinion the Statement of Receipts and Payments is properly drawn up so as to present fairly the financial transactions for the period.

N. E. Smith

N E SMITH
ACTING AUDITOR GENERAL

April 29, 1987