

DOCUMENT RESUME

ED 258 620

JC 850 319

TITLE State of Wyoming, 1984. Annual Report of the  
Community College Commission: July 1, 1983 through  
June 30, 1984.

INSTITUTION Wyoming Community Coll. Commission, Cheyenne.

PUB DATE 84

NOTE 35p.

PUB TYPE Reports - Descriptive (141) -- Statistical Data (110)

EDRS PRICE MF01/PC02 Plus Postage.

DESCRIPTORS \*Agency Role; College Planning; Community Colleges;  
\*Educational Administration; \*Educational Finance;  
\*Enrollment Trends; Planning Commissions; \*State  
Agencies; State Boards of Education; \*Statewide  
Planning; Two Year Colleges

IDENTIFIERS \*Wyoming

ABSTRACT

This annual report discusses activities and accomplishments of the Wyoming Community College Commission for 1984. Introductory material presents a chart of organizational responsibilities for community college education in the state; lists the board members; and describes the role and responsibilities of board members and of the Commission. Next, the objectives and accomplishments of the Commission are presented under the ten major areas of Commission jurisdiction: (1) state agency administration; (2) budget development; (3) education planning, articulation, and curriculum development; (4) statistical compilation and dissemination; (5) college programs; (6) enrollments; (7) capital construction; (8) higher education computer network and telecommunications; (9) intergovernmental relations; and (10) commission direction and policy. Accomplishments of the Commission over the past year are summarized for each of the general program activities and a statement of objectives is proposed to build upon recent developments in each area. (HB)

\*\*\*\*\*  
\* Reproductions supplied by EDRS are the best that can be made \*  
\* from the original document. \*  
\*\*\*\*\*



PERMISSION TO REPRODUCE THIS  
MATERIAL HAS BEEN GRANTED BY  
O. M. Sundby

U.S. DEPARTMENT OF EDUCATION  
NATIONAL INSTITUTE OF EDUCATION  
EDUCATIONAL RESOURCES INFORMATION  
CENTER (ERIC)

( ) This document has been reproduced as  
received from the person or organization  
originating it  
X Minor changes have been made to improve  
reproduction quality

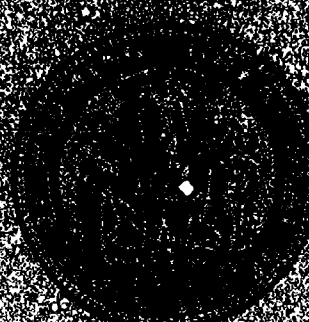
• Points of view or opinions stated in this docu-  
ment do not necessarily represent official NIE  
position or policy.

TO THE EDUCATIONAL RESOURCES  
INFORMATION CENTER (ERIC)."

ED 258620

# STATE OF WYOMING

1984



## ANNUAL REPORT

of the

## Community College Commission

BEST COPY AVAILABLE

July 1, 1983 through June 30, 1984

JC 850 319



STATE OF WYOMING

1984

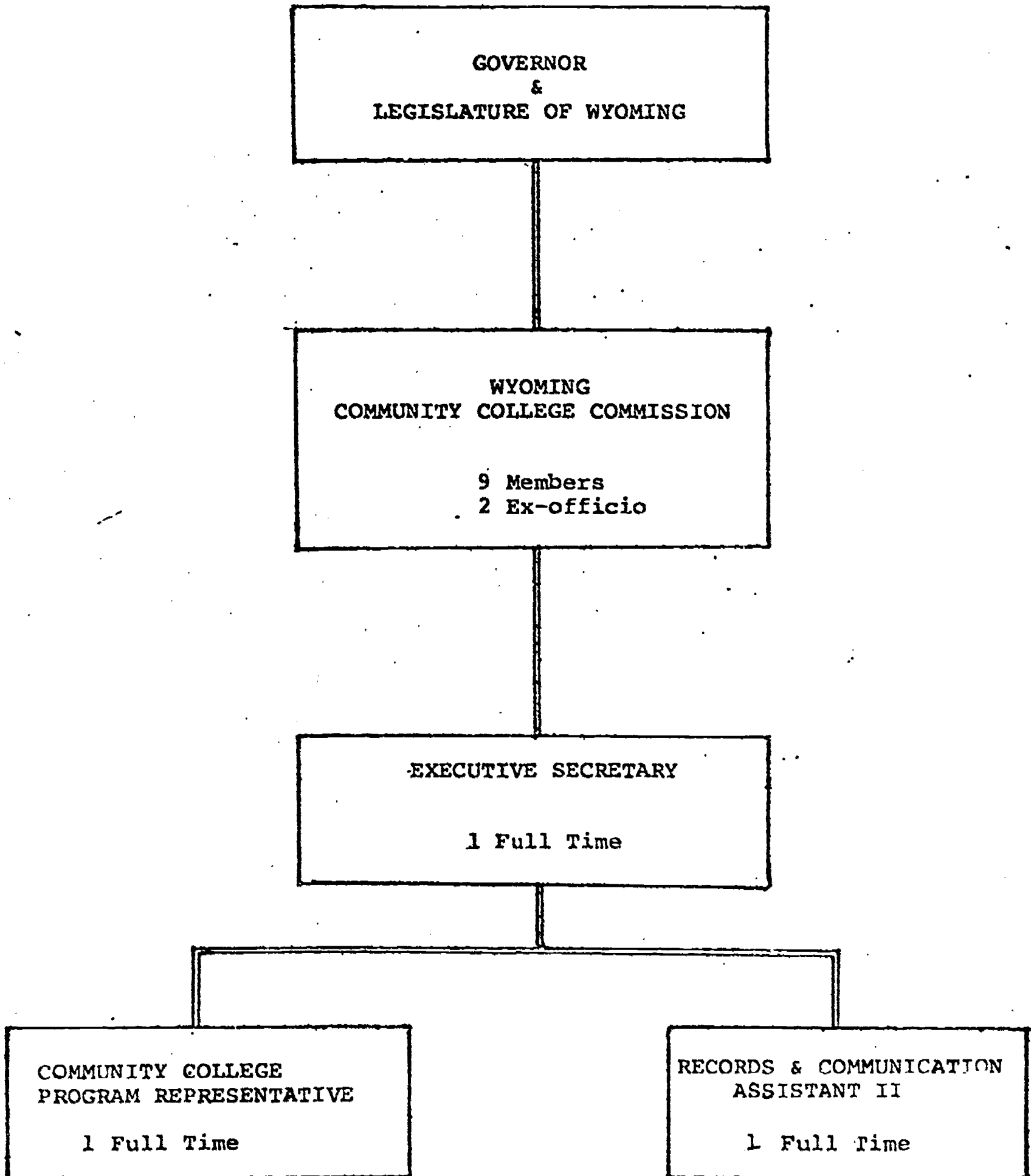
ANNUAL REPORT  
OF THE

---

WYOMING COMMUNITY COLLEGE COMMISSION

July 1, 1983 through June 30, 1984

ORGANIZATIONAL CHART



## TABLE OF CONTENTS

### COMMISSION MEMBERS AND ORGANIZATIONAL STRUCTURE

	PAGE
INTRODUCTION	1
STATE AGENCY ADMINISTRATION	2
BUDGET DEVELOPMENT	2-5
EDUCATION, PLANNING, ARTICULATION AND CURRICULUM DEVELOPMENT	5
STATISTICAL COMPILATION AND DISSEMINATION	6
COLLEGE PROGRAMS	6-7
ENROLLMENTS	8
Enrollment Summaries	9-18
CAPITAL CONSTRUCTION	8
HIGHER EDUCATION COMPUTER NETWORK AND TELECOMMUNICATIONS	19-20
INTERGOVERNMENTAL RELATIONS	20-21
COMMISSION DIRECTION AND POLICY	21-22

WYOMING COMMUNITY COLLEGE COMMISSION MEMBERS

Governor Ed Herschler, Ex officio  
Lynn Simons, State Superintendent  
of Public Instruction, Ex officio

Cheyenne, Wyoming

Cheyenne, Wyoming

Mrs. Alma Nicol, Chairman  
Mr. Russell E. Knight, Vice-Chairman  
Mrs. Darlene Elliott  
Mr. Bill Kidd  
Mr. Harold Coe  
Mr. Art Mercer  
Mrs. Ann Hinckley  
Mrs. Will McFadden  
Mr. M.L. "Bud" Hertzler

Hudson, Wyoming  
Newcastle, Wyoming  
Sheridan, Wyoming  
Casper, Wyoming  
Worland, Wyoming  
Cheyenne, Wyoming  
Powell, Wyoming  
Rock Springs, Wyoming  
Veteran, Wyoming

## I N T R O D U C T I O N

The Wyoming Community College Commission serves as the state coordinating agency for community colleges. The Commission has responsibility for formulating recommendations to the Governor and Legislature concerning post-secondary education in the Wyoming community college system. The Commission is authorized under Wyoming Statutes (W.S.21-18-210 through 21-18-214), and has served in its present organizational framework since 1971.

The eleven member Community College Commission consists of nine members appointed by the Governor with the advice and consent of the Senate. One member is appointed from each of the seven community college districts and two members are appointed from non-college districts. The Governor and the State Superintendent of Public Instruction are Ex officio voting members of the Commission.

Broad responsibilities for the Community College Commission exist and have been expanded for inter-governmental and legislative relations. Other major projects have been pursued in the organization and operation of the state administrative office. Recurring programs and projects which occur as Commission activities can be stated as follows:

1. State Agency Administration;
2. Budget Development;
3. Education Planning, Articulation and Curriculum Development;
4. Statistical Compilation and Dissemination
5. College Programs;
6. Enrollments;
7. Capital Construction;
8. Higher Education Computer Network and Telecommunications;
9. Intergovernmental Relations; and
10. Commission Direction and Policy.

Accomplishments of the Commission over the past fiscal year are summarized for each of the general program activities and a statement of objectives is proposed to build upon recent development in each area.

### STATE AGENCY ADMINISTRATION

The office staff described on the previous organizational chart shows the state agency personnel assigned to administer directives of the Commission, based upon policy guidelines and the Rules and Regulations of the agency. Commission staff activity is based on the acquisition and dissemination of information in many areas. The ability of the staff to accomplish this task is hampered by the growing amounts and types of information required to stay current in the field of Higher Education. The problem is compounded by the availability of staff time to properly treat this information. The Commission is not as well informed as it needs to be in that the staff must necessarily devote its time to the budgetary function and to unplanned activities and directives from all levels. The activities of the office then become reactive rather than proactive, to the detriment of any planning efforts which cannot then take place. A staff originated newsletter attempts to keep Commission members generally aware of issues and concerns in all areas of community college education and on any actions by external groups which affect the college system.

Objectives: The Commission will further its attempts to increase its capability to work effectively in the area of information acquisition and dissemination. An increase in the staff is seen as necessary for this purpose, and a capability for electronic data and information management is an objective that should be realized by early 1985.

The Commission will annually review its Policies and Rules and Regulations for their continued applicability. Colleges, college trustees, and the public will be encouraged to work with the Commission in this area.

The Commission staff will evaluate and develop internal management practices in order to provide the most efficient operation possible given limited availability of personnel and time.

### BUDGET DEVELOPMENT

The Commission developed its biennial budget for the college system within the constraints of state funding availability. Hearings on budget development were held in Casper in September of 1983 involving a four hour presentation from each college with respect to expanded and exception needs over and above the standard budget. Expanded requests from colleges were based upon projected enrollment gains at the colleges, requirements due to activation of new space and support necessary for instructional demand. Exception requests were primarily aimed at needs to address two year utility requirements. A summary of college requests is as follows:

	<u>STANDARD</u>	<u>EXCEPTION</u>	<u>EXPANDED</u>	<u>TOTAL</u>
CASPER	\$23,639,840	\$1,604,884	\$1,604,213	\$26,517,305
CENTRAL	9,639,414	1,094,062	82,896	11,320,372
EASTERN	7,565,834	104,034	883,403	8,553,271
L.C.C.C.	19,190,450	256,881	1,537,763	20,985,094



	<u>STANDARD</u>	<u>EXCEPTION</u>	<u>EXPANDED</u>	<u>TOTAL</u>
NORTHWEST	12,745,383	1,269,278	1,208,076	15,222,737
SHERIDAN	9,906,360	198,156	739,534	10,844,050
WESTERN	13,015,986	382,607	880,564	14,279,157

Following the initial budget hearing process, the Commission held follow-up hearings in Riverton to finalize the recommendation for each college. The total expenditure recommendations submitted to the Governor Legislature are shown as follows:

CASPER	\$25,114,727
CENTRAL	13,158,580
EASTERN	8,104,532
L.C.C.C.	20,178,949
NORTHWEST	13,577,483
SHERIDAN	10,651,167
WESTERN	13,450,110

This request was forwarded to the Governor in November. The Legislature, in February of 1984 determined a basic funding position that each college budget be increased by a factor of 3% over the previous biennium spending authority. This legislative position was inconsistent with specific recommendations based upon need as evaluated by the Commission and the Governor. The Legislature additionally appropriated an amount of \$800,000 to the Commission to address what the Commission perceived as system inequities caused by the application of the 3% factor to each college budget.

In April of 1984 the Commission met in Rock Springs to establish biennial budget authority levels for colleges for the 1985-86 biennium. A major concern of the colleges was to sustain an authority as near as possible to the Governor's budget recommendation. In order to accomplish this, the colleges collectively recommended to the Commission that existing severance tax funds available for allocation through W.C.C.C. discretion be provided for some items, particularly equipment, thereby allowing the colleges to approach the Governor's recommendation.

The Commission adopted this proposal, which resulted in the perception on the part of the State Auditor that severance tax funds were to be used for operating budget purposes. In fact, budget authority levels at the colleges were not intended to include, and did not include the authority to place severance funds in college operating budgets. With the State Auditor's questioning of the funding decisions the Attorney General generated an opinion stating that severance tax distributions could be used only "to build" facilities and that

Commission Rules and Regulations were unlawful to the extent they allowed severance funds to be expended for equipping new facilities and for other general expenses associated with construction projects. This matter will be discussed again in the capital construction section of this report.

Further complications with respect to the budgetary process for the college system occurred coincidentally with a major shortfall in local revenues occurring at Western Wyoming College at the same time a Governor's directive was issued in August 1983 that state agencies restrict from expenditure four percent of total state appropriations. The Commission used a combination of increased local resources at the other six colleges and budget authority deficit sharing to provide a solution to both problems. Final shortfalls in state appropriations from amounts necessary to fully fund total budget authority at all colleges were as follows:

CASPER	\$35,615
CENTRAL	22,675
EASTERN	19,634
L.C.C.C.	30,797
NORTHWEST	25,361
SHERIDAN	22,139
WESTERN	206,779

Another major concern which impacts upon the college funding process involves a directive incorporated as a footnote in the legislative appropriations bill that the Commission research and develop a recommendation that would identify new sources of revenue to support the funding requirements for the colleges. The required recommendation will also address the need to establish greater control and oversight upon capital construction projects initiated at the institutions. The Joint Education Committee of the Legislature is also attempting to assess potential legislative solutions to college funding concerns. The legislative study extends into the 1985 legislative session.

Objectives: The Commission will work with D.A.F.C. and with the colleges to develop firm audit guidelines which will allow for more understandable comparison of audit information relative to approved budget items. This will include requirements for greater standardization of and accounting for individual budget items as presented in college budget requests.

The Commission will continue to coordinate its efforts toward resolving the college funding concerns, including developing alternatives it considers to be most reasonable and effective.

Required recommendations to the Governor and Legislature will be formulated and submitted as directed by the Legislature.

#### EDUCATION PLANNING, ARTICULATION AND CURRICULUM DEVELOPMENT

A coordinated authoritative activity which would facilitate planning and articulation among the state's institutions of higher education does not exist at this time. At times in the past ten years, certain groups have had various degrees of concern in this area. These include the Wyoming Higher Education Council, established by statute and disbanded by statute; the Wyoming 1202 Commission; and the follow-on to it, the Wyoming Coordinating Council for Post-Secondary Education. Neither of the latter two groups had any statutory authority for action. They instead were a group of University of Wyoming Trustees and Wyoming Community College Commission members convened by executive order to administer a federal planning grant amounting to slightly less than \$35,000 a year. This grant was discontinued under national administration policy in 1982 and with that discontinuance the Coordinating Council essentially ceased to function. At this point, both the University and the Commission have appointed subcommittees for handling relations between the two public branches of higher education in the state. No activity on the part of either subcommittee, acting together, has taken place in Fiscal Year 1984.

The current status then, can be described as follows. There is no single group charged with coordination of the planning and/or articulation in the state. The closest thing to a dialogue on this subject takes place under the auspices of a semi-annual conference of academic deans from the colleges and the University sponsored by the University. Yet their recommendations for activities are entirely dependent on the attitudes of each of the eight institutions. For the present, this situation does provide excellent information exchange, yet it must see its recommendations in the planning and articulation area subjected to extreme budget limitations. The 1202 Commission was able to fund many of the proposals of the Deans' Conference, however no such funding is now available.

Objectives: The Commission will continue to support the semi-annual Deans' Conference as the only existing formal source of coordination and interaction among the eight institutions of higher education in the state.

The Commission will encourage institutional planning, particularly in the areas of program and capital construction.

The Commission will emphasize a more general planning concept, including articulation of statewide goals for the college system as they relate to student outcomes and desired state economic outcomes. The Commission will request the staff to more adequately address the planning process necessary for effective Commission operation.

The Commission will continue to support and fund, as available, the course transfer guide developed by the University and the College Deans.

### STATISTICAL COMPILATION AND DISSEMINATION

The Commission gains a great deal of useful information from the colleges. The information is used for responding to questions posed by the Commission and the public. Areas of analysis include enrollments, tuitions, expenditures, program review, personnel and capital needs. The only area of standardized reporting at this time is that of enrollment data. Other reports are generated periodically at the request of the Commission. Colleges have generally responded well to information requests and provide great assistance to the Commission and its staff in the administration of the college system.

In terms of planning requirements mentioned in the previous section, an education planning based upon the compilation of information regularly and accurately becomes increasingly important. Commission members have expressed that much information obtained from colleges is often in form and format that discourages comparison.

Objectives: The Commission will work toward establishment of a regularly scheduled comprehensive information request which can provide year to year comparison of necessary data for evaluation of and measurement of college activity and output. This will be similar to the national Higher Education General Information Survey (HEGIS), though applicable to state interests.

As noted in the objectives involved in the planning section of this report, the necessary staff and data management support have to be available. In order to give direction to this effort the Commission will propose to the 1985 Legislature that additional staff be brought to the Commission office for the purpose of: (1) More direct involvement in statewide planning and information use and (2) Strengthening the program analysis phase of Commission activity by concentration of duties in that area with more time available for that particular purpose.

### COLLEGE PROGRAMS

Calendar 1983-84 was not a year scheduled for program approval, however the following listing displays programs approved for the 1985 fiscal biennium.

#### Casper

Waste Water Technology (take over of an existing federally funded program)

Computer Maintenance and Repair

#### Central

Horticulture

Instructional Aid

#### Eastern

Digital Electronics

#### L.C.C.C.

Banking and Finance



L.C.C.C., continued  
Public Administration  
Respiratory Therapy  
Nuclear Medicine

Northwest  
Big Horn Basin Project

Sheridan  
Computer Information Systems  
Computer Assisted Drafting  
Computer Maintenance  
Respiratory Therapy Technician  
Physical Therapy Assistant  
Medical Records Technician  
Nuclear Medicine Technician  
Ultrasound Technician  
Summer School  
Adult Education - Agriculture  
Media Production and Development

Western  
Associate Degree, Nursing  
Instrumentation and Controls  
Information Processing  
Automotive Technology  
Legal Assistant

The Commission advised the colleges that programs approved would very likely not be funded for the biennium, however the schools were encouraged to initiate approved programs at the expense of existing programs which were no longer in demand. Programs in computer related areas were viewed by the Commission as most critical. Programs incorporating core curricula were also encouraged, as in the case of the Allied Health package at Sheridan College. Several requests were not interpreted to be new programs as such, and colleges were asked to incorporate them as options attached to existing programs.

Program review continues to be a haphazard process with colleges conducting their own reviews. No systematic report on program accountability currently exists at the Commission level due to lack of means to analyze and gauge effectiveness.

Objective:

Through staff re-emphasis on the program area gained through more direct attention in other areas, and additional personnel, the Commission hopes to provide more direct attention to analysis of college programs. Student outcomes measured against the student's original goals and against local, regional and state needs will gain more attention as opposed to analysis of students currently in the educational process. This will serve to reduce unnecessary duplication and expense in programs offered by the colleges, and help to insure that programs offered maintain their contribution to the student and the community.

## ENROLLMENTS

The data generated through enrollment reporting allows the Commission to understand general characteristics of student populations and growth of institutions. The FTE figure developed by each college includes full time, part time and non credit values for student populations. The FTE figure is used also for distribution of capital construction funds that are administered through the Commission. Enrollment statistics, in terms of what figures may or may not be counted toward the FTE figure, are proposed to be changed under new rule and regulation review. Emphasis will be made through changes in rules and regulations concerning criteria for inclusion of classes in the enrollment counting process and for limits to be placed on the use of non-district counts in the construction formula process.

The summaries on pages 9 through 18 provide individual college enrollment information for the end of the Spring semester, 1984, and three summaries of college growth from the Spring of 1983 to Spring of 1984.

### Objective:

The Commission will continue to review enrollments for current purposes, however the Commission will work toward better output analysis (completed students) of institutions as effectiveness measures rather than review of counts of non-completed students, as is currently the case.

## CAPITAL CONSTRUCTION

As noted in the segment of this report concerning budget activity, the area of capital construction at the colleges and its administration through the Commission have been argued as to the propriety of certain expenditures. This culminated in an Attorney General's opinion that construction funds could be utilized only "to build". Projects at this point require review by the State Auditor to insure that this condition is being met.

Funds continue to accrue the Commission account, however no regular distributions under the statutory formula are being made, nor are funds being allocated to colleges through Commission discretionary decisions.

The federal royalty bond program has been completed. Colleges have completed construction in the following projects:

### Casper

Business Building  
Career Studies Center

### Central

Fine Arts Center

### Eastern

Student Center

### L.C.C.C.

Horse Management Building/Arena  
P.E. Addition

SPRING 1984 ENROLLMENT SUMMARY

# 1. FTE AND HEADCOUNT GROWTH  
FROM 1983 TO 1984

	<u>1983 FTE</u>	<u>1984 FTE</u>	<u>PERCENT GROWTH</u>	<u>RANK</u>	<u>1983 HEADCOUNT</u>	<u>1984 HEADCOUNT</u>	<u>PERCENT GROWTH</u>	<u>RANK</u>
CASPER	2,790	2,750	-1.4	4	4,994	4,881	- 2.3	3
CENTRAL	1,399	1,375	-1.7	5	5,083	4,275	-15.9	7
EASTERN	1,086	1,080	- .5	3	5,401	5,082	- 5.9	4
L.C.C.C.	2,518	2,546	+1.1	2	6,486	6,933	+ 6.9	2
NORTHWEST	1,465	1,645	12.29	1	2,804	5,311	+89.4	1
SHERIDAN	1,220	1,157	-5.2	6	3,369	3,120	- 7.1	5
WESTERN	<u>1,455</u>	<u>1,364</u>	<u>-6.3</u>	7	<u>8,618</u>	<u>7,639</u>	<u>-11.4</u>	6
SYSTEM	11,933	11,917	- .1		36,755	37,241	+ 1.32	

Average FTE growth - .24%

Average headcount growth + 7.74%

FTE growth range - 6.3 to 12.29%

Headcount growth range -15.9 to +89.4%

Highest growth  
Northwest 12.29%

Highest growth  
Northwest 89.4%

Lowest growth  
Western - 6.3%

Lowest growth  
Central -15.9%

Medium growth  
Casper - 1.4%

Medium growth  
Eastern - 5.9%

NOTE: Spring 1984 FTE and Headcount figures are affected significantly with Northwest's inclusion of non-credit enrollments which increase their FTE by 150 and their headcount by 3,245. Northwest had not previously included these figures in reports to the Commission.

02. SPRING 1984 ENROLLMENT SUMMARY

	<u>TOTAL FTE</u>	<u>% FULL TIME CREDIT</u>	<u>% PART TIME CREDIT</u>	<u>% NON CREDIT</u>		<u>TOTAL HEADCOUNT</u>	<u>% FULL TIME CREDIT</u>	<u>% PART TIME CREDIT</u>	<u>% NON CREDIT</u>
CASPER	2,750	74.7	19.8	5.5	:	4,881	31.7	39.5	36.6
CENTRAL	1,375	50.3	23.5	26.2	:	4,275	12.8	27.8	59.4
EASTERN	1,080	49.2	21.7	29.2	:	5,082	7.9	18.4	73.7
L.C.C.C.	2,546	57.5	32.9	9.5	:	6,933	16.1	34.3	49.6
NORTHWEST	1,645	74.6	16.2	9.2	:	5,311	16.1	22.8	61.1
MERIDAN	1,157	60.7	22.2	17.1	:	3,120	17.3	26.2	56.5
WESTERN	<u>1,364</u>	<u>39.0</u>	<u>32.3</u>	<u>28.7</u>	:	<u>7,639</u>	<u>5.3</u>	<u>20.5</u>	<u>74.2</u>
SYSTEM	11,917	60.4	24.4	15.2	:	37,241	14.5	26.9	58.6



SPRING 1984 ENROLLMENT BY ACADEMIC AND VOCATIONAL PROGRAMS

# 3. FOR FULL TIME AND PART TIME CREDIT

	<u>TOTAL ACAD/ VOC. FTE</u>	<u>ACADEMIC FTE / %</u>	<u>VOCATIONAL FTE / %</u>	<u>TOTAL ACAD/ VOC HEADCOUNT</u>	<u>ACADEMIC HEADCOUNT/%</u>	<u>VOCATIONA HEADCOUNT/%</u>
CASPER	2,596	1,580/61%	1,016/39%	3,476	1,981/57%	1,495/ 43%
CENTRAL	1,015	668/66%	347/34%	1,735	1,311/76%	424/ 24%
EASTERN	765	527/69%	238/31%	1,339	1,066/80%	273/ 20%
L.C.C.C.	2,303	1,295/56%	1,008/44%	3,493	1,976/57%	1,517/ 43%
NORTHWEST	1,495	1,089/73%	4,061/27%	2,066	1,310/63%	756/ 37%
SHERIDAN	959	636/66%	323/34%	1,356	914/67%	442/ 33%
WESTERN	<u>973</u>	<u>579/59%</u>	<u>384/41%</u>	<u>1,972</u>	<u>1,184/60%</u>	<u>788/ 40%</u>
	10,106	6,374/63%	3,732/37%	15,437	9,742/63%	5,695/ 37%

NOTE: Non credit enrollment not included in this comparison.

ENROLLMENT REPORT  
WYOMING COMMUNITY COLLEGES

JUN 06 1984

REPORTING INSTITUTION: CASPER COLLEGE  
DATE: 05/18/84  
SEMESTER: SPRING 1984

CATEGORY	-----FULL-TIME STUDENTS-----				-----PART-TIME STUDENTS-----				-----ALL STUDENTS-----			
	MEN	WOMEN	TOTAL	FTE	MEN	WOMEN	TOTAL	FTE	MEN	WOMEN	TOTAL	FTE
FRESHMAN	512	434	946	1259.25	54	99	153	83.75	566	533	1099	1343.00
SOPHOMORE	314	277	591	782.67	32	72	104	59.50	346	349	695	842.17
SPECIAL	5	4	9	10.58	730	943	1673	399.92	735	947	1682	410.50
TOTAL	831	715	1546	2052.50	816	1114	1930	543.17	1647	1829	3476	2595.67
IN-DISTRICT	500	450	950	1231.08	716	1077	1793	501.25	1216	1527	2743	1732.33
OUT-OF-DIST.	271	249	520	717.83	96	37	133	40.33	367	286	653	758.17
OUT-OF-STATE	60	16	76	103.58	4	0	4	1.58	64	16	80	105.17
TOTAL	831	715	1546	2052.50	816	1114	1930	543.17	1647	1829	3476	2595.67
ACADEMIC	504	456	960	1272.92	412	609	1021	307.50	916	1065	1981	1580.42
OCCUPATIONAL	327	259	586	779.58	404	505	909	235.67	731	764	1495	1015.25
TOTAL	831	715	1546	2052.50	816	1114	1930	543.17	1647	1829	3476	2595.67
NON-CREDIT												
CONTINUING ED.	0	0	0	0.00	445	960	1405	154.48	445	960	1405	154.48
COMMUNITY ED WK	0	0	0	0.00	0	0	0	0.00	0	0	0	0.00
TOTAL	0	0	0	0.00	445	960	1405	154.48	445	960	1405	154.48
TOTAL	831	715	1546	2052.50	1261	2074	3335	697.65	2092	2789	4881	2750.15

REPORTING INSTITUTION Central Wyoming College

ENROLLMENT FORM

DATE May 10, 1984

WYOMING COMMUNITY COLLEGES

SEMESTER Spring 1984 (Final)

JUN 04 1984

JUN 0 1984

CATEGORY	FULL-TIME STUDENTS (12 OR MORE CREDITS)				PART-TIME STUDENTS (11 OR LESS CREDITS)				TOTAL	
	MEN	WOMEN	TOTAL	FTE	MEN	WOMEN	TOTAL	FTE	HEADCOUNT	FTE
FRESHMEN	207	189	395	506.19	48	86	134	61.83	529	568.02
SOPHOMORE	46	38	84	105.00	9	20	29	14.17	113	119.17
SPECIAL	21	45	66	81.17	409	618	1027	246.72	1093	327.89
TOTAL	274	271	545	692.36	466	721	1190	322.72	1735	1015.08
IN-DISTRICT	211	222	433	540.41	327	505	832	253.06	1265	793.47
OUT-OF-DISTRICT	34	22	56	74.25	139	217	356	69.15	412	143.40
OUT-OF-STATE	29	27	56	77.71	0	2	2	0.50	58	78.21
TOTAL	274	271	545	692.36	466	724	1190	322.72	1735	1015.08
ACADEMIC	136	182	318	408.03	365	628	993	260.47	1311	668.51
OCCUPATIONAL	138	89	227	284.33	101	96	197	62.24	424	346.57
TOTAL	274	271	545	692.36	466	724	1190	322.72	1735	1015.08
NON-CREDIT CONTINUING	XX	XX	XX	XX	1066	1474	2540	360.35	2540	360.35
TOTAL	274	271	545	692.36	1532	2198	3730	683.07	4275	1375.43

-13-

ENROLLMENT REPORT  
WYOMING COMMUNITY COLLEGES

JUN 06 1984

REPORTING: EASTERN WYOMING COLLEGE  
DATE: 01 JUN 1984  
DATA AS OF: 15 MAY 1984  
SEMESTER: SPRING, 1984  
DROPS: INCLUDES DROPS

C A T E G O R Y	.....FULL-TIME STUDENTS.....				.....PART-TIME STUDENTS.....				...T O T A L...	
	MEN	WOMEN	TOTAL	FTE	MEN	WOMEN	TOTAL	FTE	COUNT	FTE
FRESHMEN	95	143	236	309.83	18	49	67	30.00	303	339.82
SOPHOMORE	52	92	144	192.91	8	22	30	13.92	174	206.83
SPECIAL	12	11	23	28.17	277	562	839	190.05	862	214.22
T O T A L	157	246	403	530.90	303	633	936	233.97	1339	764.87
IN-DISTRICT	66	90	156	199.66	69	146	215	66.83	371	266.49
OUT-OF-DISTRICT	38	76	114	152.91	224	474	698	160.98	812	313.89
OUT-OF-STATE	53	80	133	178.33	10	13	23	6.17	156	184.50
T O T A L	157	246	403	530.90	303	633	936	233.97	1339	764.87
ACADEMIC	95	148	243	324.16	268	555	823	202.55	1066	526.71
OCCUPATIONAL	62	98	160	206.75	35	78	113	31.41	273	238.16
T O T A L	157	246	403	530.90	303	633	936	233.97	1339	764.87
NON-CREDIT	---	---	---	---	1156	2587	3743	315.56	3743	315.56
T O T A L	157	246	403	530.90	1459	3220	4679	549.52	5082	1080.43

-14-

4444 STUDENTS  
D ERRORS



ENROLLMENT REPORT  
WYOMING COMMUNITY COLLEGES

125.1

REPORTING LARAMIE COUNTY COMMUNITY COLLEGE  
DATE 24 MAY 1984  
SEMESTER SPRING 1984

C A T E G O R Y	FULL-TIME STUDENTS.....				PART-TIME STUDENTS.....				T O T A L	
	MEN	WOMEN	TOTAL	FTE	MEN	WOMEN	TOTAL	FTE	COUNT	FTE
FRESHMEN	201	159	360	439.66	601	634	1235	423.06	1595	862.71
SOPHOMORE	340	347	687	935.06	344	278	622	270.49	1309	1205.55
SPECIAL	36	31	67	88.41	237	285	522	146.57	589	234.98
T O T A L	577	537	1114	1463.14	1182	1197	2379	840.11	3493	2303.25
IN-DISTRICT	515	456	971	1251.47	1147	1168	2315	815.03	3286	2066.51
OUT-OF-DISTRICT	48	52	100	146.50	21	26	47	20.50	147	167.00
OUT-OF-STATE	14	29	43	65.17	14	3	17	4.58	60	69.75
T O T A L	577	537	1114	1463.14	1182	1197	2379	840.11	3493	2303.25
ACADEMIC	345	294	639	808.07	647	690	1337	486.55	1976	1294.62
OCCUPATIONAL	232	243	475	655.07	535	507	1042	353.56	1517	1008.63
T O T A L	577	537	1114	1463.14	1182	1197	2379	840.11	3493	2303.25
NON-CREDIT	---	---	---	---	963	2477	3440	242.47	3440	242.47
T O T A L	577	537	1114	1463.14	2145	3674	5819	1082.58	6933	2545.72

-15-



ENROLLMENT REPORT  
WYOMING COMMUNITY COLLEGES

REPORTING INSTITUTION Sheridan College

MUN 1 2 1082

DATE May 22, 1984  
SEMESTER Spring (ending)

CATEGORY	FULL-TIME STUDENTS (12 OR MORE CREDITS)				PART-TIME STUDENTS (11 OR LESS CREDITS)				TOTAL	
	MEN	WOMEN	TOTAL	FTE	MEN	WOMEN	TOTAL	FTE	HEADCOUNT	FTE
FRESHMEN	156	177	333	434.91	15	51	66	34.08	399	468.99
SOPHOMORE	79	90	169	225.41	11	20	31	17.50	202	242.91
SPECIAL	16	22	38	41.58	255	462	717	205.40	755	246.99
TOTAL	251	289	540	701.90	283	533	816	256.98	1356	958.89
IN-DISTRICT	141	183	324	412.58	174	336	510	168.24	834	580.81
OUT-OF-DISTRICT	69	85	154	204.16	106	194	300	87.16	454	291.32
OUT-OF-STATE	41	21	62	85.16	3	3	6	1.58	68	86.75
TOTAL	251	289	540	701.90	283	533	816	256.98	1356	958.89
ACADEMIC	146	207	353	445.99	166	395	561	190.41	914	636.40
OCCUPATIONAL	105	82	187	255.91	117	138	255	66.58	442	322.49
TOTAL	251	289	540	701.90	283	533	816	256.98	1356	958.89
NON-CREDIT CONTINUING	XX	XX	XX	XX	709	1055	1764	197.94	1764	197.94*
TOTAL	251	289	540	701.90	992	1588	2580	454.92	3120	1156.83

\* Several enrollees in the Mining Consortium program were not counted due to non-completion of enrollment forms. This loss of FTE is estimated in the 20-30 range based on previous experience. A genuine "glitch!"

REPORTING: NORTHWEST COMMUNITY COLLEGE  
 DATE: 22 MAY 1984 - *end*  
 SEMESTER: Spring 1984 - Preliminary Report - NON CREDIT NOT INCLUDED

MAY 20 1984

C A T E G O R Y	.....FULL-TIME STUDENTS.....				.....PART-TIME STUDENTS.....				...T O T A L...	
	MEN	WOMEN	TOTAL	FTE	MEN	WOMEN	TOTAL	FTE	COUNT	FTE
FRESHMEN	244	233	477	683.40	305	687	992	210.30	1469	893.70
SOPHOMORE	185	170	355	513.65	31	52	83	23.41	438	537.07
SPECIAL	13	9	22	30.33	52	85	137	33.45	159	63.79
T O T A L	442	412	854	1227.39	388	824	1212	267.17	2066	1494.56
IN-DISTRICT	169	166	335	469.24	169	352	521	129.65	856	598.89
OUT-OF-DISTRICT	167	146	313	457.20	216	470	686	135.44	999	592.63
OUT-OF-STATE	106	100	206	300.95	3	2	5	2.08	211	363.04
T O T A L	442	412	854	1227.39	388	824	1212	267.17	2066	1494.56
ACADEMIC	350	296	646	933.73	155	509	664	155.60	1310	1089.33
OCCUPATIONAL	92	116	208	293.66	233	315	548	111.57	756	405.23
T O T A L	442	412	854	1227.39	388	824	1212	267.17	2066	1494.56
NON-CREDIT	---	---	---	---	0	0	0	0.00	0	0.00
T O T A L	442	412	854	1227.39	388	824	1212	267.17	2066	1494.56

-17-

**ENROLLMENT REPORT  
WYOMING COMMUNITY COLLEGES**

MAY 21 1984

REPORTING INSTITUTION Western Wyoming Community College

DATE May 18, 1984

SEMESTER Spring 1984 (FINAL)

CATEGORY	FULL-TIME STUDENTS (12 OR MORE CREDITS)			
	MEN	WOMEN	TOTAL	FTE
Freshman	113	132	245	320.0
Sophomore	44	55	99	134.0
Special	23	38	61	78.0
<b>TOTAL</b>	<b>180</b>	<b>225</b>	<b>405</b>	<b>532.0</b>

In-District	138	185	323	417.0
Out-Of-District	24	28	52	74.0
Out-Of-State	18	12	30	41.0
<b>TOTAL</b>	<b>180</b>	<b>225</b>	<b>405</b>	<b>532.0</b>

Academic	117	147	264	342.0
Occupational	63	78	141	190.0
<b>TOTAL</b>	<b>180</b>	<b>225</b>	<b>405</b>	<b>532.0</b>

Non-Credit Continuing	XX	XX	XX	XX
--------------------------	----	----	----	----

<b>TOTAL</b>	<b>180</b>	<b>225</b>	<b>405</b>	<b>532.0</b>
--------------	------------	------------	------------	--------------

PART-TIME STUDENTS (11 OR LESS CREDITS)			
MEN	WOMEN	TOTAL	FTE
32	56	88	62.0
5	17	22	15.0
617	840	1457	364.0
<b>654</b>	<b>913</b>	<b>1567</b>	<b>441.0</b>

427	498	925	287.0
223	411	634	150.0
4	4	8	4.0
<b>654</b>	<b>913</b>	<b>1567</b>	<b>441.0</b>

338	582	920	237.0
316	331	647	204.0
<b>654</b>	<b>913</b>	<b>1567</b>	<b>441.0</b>

2380	3287	5667	391.0
------	------	------	-------

<b>3034</b>	<b>4200</b>	<b>7234</b>	<b>832.0</b>
-------------	-------------	-------------	--------------

TOTAL	
HEADCOUNT	FTE
333	382.0
121	149.0
1518	442.0
<b>1972</b>	<b>973.0</b>

1248	704.0
686	224.0
38	45.0
<b>1972</b>	<b>973.0</b>

1184	579.0
788	394.0
<b>1972</b>	<b>973.0</b>

5667	391.0
------	-------

<b>7639</b>	<b>1364.0</b>
-------------	---------------

-18-



### Northwest

Welding Building  
Library/Botany Building

### Sheridan

Science Center  
P.E. Complex

Institutions may and do construct facilities through local foundation and bond programs. The most significant of these is a \$42,000,000 bonded construction program which is aimed at tripling the space available at Western Wyoming College and developing a center in Green River. Sheridan College has worked with local authorities in Campbell County to renovate an old hospital as an extended campus.

#### Objective:

The Commission will pursue action to clarify those expenditures for which capital construction funds within its control may be used.

### HIGHER EDUCATION COMPUTER NETWORK AND TELECOMMUNICATIONS

The Higher Education Computer Network (HECN) is a cooperative agreement of the eight public higher education institutions in the state. The administration and hardware maintenance function is housed in the Division of Computer Services at the University of Wyoming. The community colleges form the network responsible for budget development and equipment needs analysis for the colleges. The colleges are tied to the computer system on the University of Wyoming campus for the primary purpose of academic computing needs at each school. A Harris computer system is housed at each college and is also tied to the University system for additional computing requirements. Administratively, schools can now use similar programs in several areas. Of importance to the Wyoming Community College Commission is the standardization of budget titles and codes in the development of budget requests and in the audit function.

In 1983, the HECN began the process for acquisition of equipment to handle anticipated growth requirements in administrative computing at the colleges. A thorough bid analysis process was developed and activated and a vendor chosen. Laramie County Community College was the first school to obtain the new administrative computer system, and machines are currently in place at Western, Sheridan and Eastern. All others will be in place by the end of the 1985-86 biennium.

A major advancement in the area of telecommunications in Wyoming occurred in early 1983 with KCWC, a public television station based at Central Wyoming College, going on the air. The station serves all of the Fremont County and other areas of central and western Wyoming with instructional and educational programming. The Commission viewed this effort as a beginning of an era in Wyoming which will require all levels of government and the public to react to advancements in technology and its applications. The Commission drafted legislation that would have formalized state support for application of technology throughout the state, however the concept was not accepted. Legislation to develop a

state public telecommunications authority was well on its way to passage, with Commission support, however it was defeated late in the legislative session. The colleges, the University and the Commission are participating in a consortium for telecommunications which is attempting to reorganize for formal legislative recognition.

Objectives:

The Wyoming Community College Commission will continue to support the HECN both philosophically and budgetarily.

The W.C.C.C. will make a major effort toward identification of educational needs in the data processing and computing areas. The field is expanding more rapidly than ever imagined and will require an understanding of equipment, functions, capabilities and costs for all areas within it. The HECN will play the major role in administrative and academic areas, however the automated needs for word processing and instructional assistance will be taken care of otherwise. This entire area is going to be the most highly visible, the most necessary, and possibly the most costly aspect of education in the years immediately ahead.

The Wyoming Community College Commission will continue to evaluate and pursue methods of incorporating telecommunications and technology into the community college system and into the social and economic structures of the communities served.

INTERGOVERNMENTAL RELATIONS

The Wyoming Community College Commission works as the state representative to several external governmental entities, as well as with governmental groups within the state.

Externally, a somewhat awkward situation exists in that the Commission Executive Secretary acts as the State Higher Education Executive Officer. This designation is due to the non-existence of any group or office at the executive branch level responsible for all areas of higher education. The Commission Executive Secretary also functions as the state contact for the Higher Education General Information Survey (HEGIS) activity, again representing all aspects of higher education in the state to outside educational interests. As a part of federal/state activity, Wyoming participates in the State Student Incentive Grant program. This federal financial aid program has provided approximately \$100,000 per year to Wyoming for student grants. The grants must be matched dollar for dollar by the institutions, since the state does not provide the match. In 1983-84, Sheridan College, Western Wyoming College, Eastern Wyoming College, Casper College, Northwest Community College, Central Wyoming College and the University of Wyoming participated in the program, however the state still returned part of the total grant. Again, the W.C.C.C. staff acts as the administrator for this program, which encompasses more areas than just the community colleges.

Within the state, the W.C.C.C. interacts with groups specifically oriented to higher education. The Association of Community College Trustees i 7

important voice in forwarding the position of college trustees statewide. The President's Council is another important group, especially in the area of the technicalities of college administration. A subcommittee of three college commissioners is permanently designated to act on a joint University of Wyoming/Wyoming Community College Commission committee for discussion of matters of concern to both groups. This committee may take on greater importance with the termination of the federally funded 1202/Coordinating Committee that terminated in January of 1982, however little has taken place in this area.

During most of this reporting period the Commission was being audited by the Legislative Service Office under direction of the Management Council. This audit was essentially completed by June 30, 1984. The Commission worked closely with the audit process with the aim of using the audit's recommendation as a foundation for improvement of the system. Major areas of concern within the audit were college budget growth, capital facility funding, Commission use of its five percent reserve and Commission establishment of and revision of biennial budget authority levels for the colleges.

Objectives:

The Wyoming Community College Commission will continue to work as the SHEEO and HEGIS contact for the state until such time as another means of operation is determined by legislative action or agreement with other levels of higher education in the state.

The W.C.C.C. will continue to work with trustees and administrators at the colleges to gain understanding of local philosophies and policies of operation. This will include Commission attendance and participation at the annual trustee's conference and frequent visitation to campuses by both Commission members and the staff.

The Commission will look toward a more active function for the joint UW/Commission subcommittee. The Commission considers its relationship with the University to be of highest importance.

The Commission and staff will work closely with all agencies in Wyoming to understand the full scope of higher education in the state, including the impact of proprietary institutions operating or planning to operate in the state.

COMMISSION DIRECTION AND POLICY

As mentioned at other points in this report, several areas of the Rules and Regulations have been internally reviewed over the past year. Because of major developments involving college funding changes and activity required for the audit review, it was determined by the Commission that proposed changes would be tabled until a clearer picture of the Commission's future activities emerged. This was projected to occur with the 1985 legislative session.

Objectives:

The Commission will continue its regular review process with respect to the Rules and Regulations, and will complete the first revision of the Rules and Regulations at the earliest feasible point.

The Commission will continue to work toward its own understanding of community college education in Wyoming, and the relationship of the college system to the state and other educational entities.

The Commission will continue its self evaluation process begun in 1982.