

DOCUMENT RESUME

ED 239 692

JC 840 069

TITLE Fall 1982 Retention Study.
 INSTITUTION Peralta Community Coll. District, Oakland, CA. Office of Research, Planning and Development.
 PUB DATE 82
 NOTE 64p.
 PUB TYPE Reports - Research/Technical (143) -- Statistical Data (110)

EDRS PRICE MF01/PC03 Plus Postage.
 DESCRIPTORS Academic Persistence; Community Colleges; *Dropout Rate; Educational Trends; *Enrollment Rate; *Grades (Scholastic); Intellectual Disciplines; Multicampus Districts; Two Year Colleges; *Withdrawal (Education)

ABSTRACT

In fall 1982, a study was conducted in the Peralta Community College District (PCCD) using withdrawal and grade distribution data to analyze student retention patterns. Successful retention rates were based on the percentage of students who received a passing grade, while total retention rates were based on the percentage of students who received any grade other than W (withdrawal). Study findings included the following: (1) class enrollment declined by 6.5% and headcount enrollment by 8.5% from fall 1981 to fall 1982, with Laney College being the only school in the district experiencing an increase; (2) PCCD's successful retention rate increased from 58.9% in fall 1981 to 62.9% in fall 1982; (3) physical education was the discipline with the greatest proportion of enrollments at four out of five colleges; (4) the following programs had over a 90% successful retention rate: General Studies (93%) and Diesel Mechanics (92.9%) at College of Alameda (COA), Speech (91.3%) at Laney College, Machine Technology (100%) and Nursing (91.5%) at Merritt College, and Italian (98.6%) at Vista College; (6) the lowest successful retention rate at COA was in Urban Studies (35.3%), at Laney in Carpentry (38.4%), at Merritt in Real Estate (30.4%), at Vista in Philosophy (21.4%), and at Feather River College in History (50.2%); and (7) A's and B's represented 60% of all passing grades given in the PCCD. Tables showing retention rates and grade distributions by college and discipline are appended.
 (LAL)

 * Reproductions supplied by EDRS are the best that can be made *
 * from the original document. *

"PERMISSION TO REPRODUCE THIS
MATERIAL HAS BEEN GRANTED BY

N. Galloro

TO THE EDUCATIONAL RESOURCES
INFORMATION CENTER (ERIC)."

PERALTA COMMUNITY COLLEGE DISTRICT
Office of Research, Planning and Development

U.S. DEPARTMENT OF EDUCATION
NATIONAL INSTITUTE OF EDUCATION
EDUCATIONAL RESOURCES INFORMATION
CENTER (ERIC)

This document has been reproduced as
received from the person or organization
originating it.

Minor changes have been made to improve
reproduction quality.

• Points of view or opinions stated in this docu-
ment do not necessarily represent official NIE
position or policy.

FALL 1982 RETENTION STUDY

*******HIGHLIGHTS*******

- ** Of those students enrolled in Peralta colleges as of Census Week IV (Fall 1982), 62.9% received passing grades. 27.8% received a W grade.
- ** Laney College experienced increase in both unduplicated headcount and class enrollment from Fall 1981 to Fall 1982. All the other colleges experienced decreases in both unduplicated headcount and class enrollment from Fall 1981 to Fall 1982.
- ** College of Alameda had the highest successful retention rate - 65.6%
- ** Physical Education continued to be the discipline with the highest class enrollment in the District. English, Math and Business were other disciplines in high demand by Peralta students.
- ** A's and B's represented 60% of all passing grades.

TABLE OF CONTENTS

Page

ii Reference of Tables

1 Introduction

1 Procedures

2 Summary

9 Summary

10 Appendix 1

13 Appendix 2

21 Appendix 3

REFERENCE OF TABLES

Page

2 Table 1: Comparison Between Unduplicated Headcount and Class Enrollment at Census Week 1

3 Table 2: Comparison by College of Student Retention - Fall 1980, Fall 1981 and Fall 1982

4 Table 3: Rank Order by Percentage of College Enrollment - Fall 1982

5 Table 4: Rank Order of High "Successful Retention" Rates - Fall 1982

6 Table 5: Rank Order of Low "Successful Retention" Rates - Fall 1982

7 Table 6: Distribution of Grades by College - Fall 1980, Fall 1981 and Fall 1982

8 Table 7: Comparison by College of the Change in Attrition Rates

REFERENCE OF TABLES

Page

14 Retention Study - College of Alameda - Fall 1982

15 Retention Study - Feather River College - Fall 1982

16 Retention Study - Laney College - Fall 1982

18 Retention Study - Merritt College - Fall 1982

20 Retention Study - Vista - Fall 1982

22 Trendline Comparison of Grade Distribution by Location

24 Grade Distribution by Department - College of Alameda - Fall 1982

26 Grade Distribution by Department - Feather River College - Fall 1982

REFERENCE OF TABLES

Page

~~28~~ Grade Distribution by Department - Laney
College - Fall 1982

31 Grade Distribution by Department - Merritt
College - Fall 1982

34 Grade Distribution by Department - Vista
College - Fall 1982

PERALTA COMMUNITY COLLEGE DISTRICT
Office of Research, Planning and Development

FALL 1982 RETENTION STUDY

Introduction

This report represents the third annual retention study for the District. The objective has been the acquisition and analysis of data pertinent to the retention patterns of students enrolled in the Peralta Community College District (PCCD). For the first report (Fall 1980) the Analysis Unit approached the problems this topic presents by the development of a format for organizing the data. The Office of Research, Planning and Development has continued to use that format in this year's report (Fall 1982). The classification of instructional areas is by discipline instead of TOP categories. The internal utility of this approach is in the ease with which college personnel are able to identify subject areas. As with the prior years' reports, readers are urged to use the data whenever appropriate. Finally, the colleges were invited to supply explanations for any unusual retention patterns. College of Alameda was the only college to provide such explanations.

The reader also should feel free to contact the Office of Research, Planning and Development if further clarification is needed.

Procedures

The data for this report were gleaned from the Tabulation of Withdrawals Report (SA 387) and the Grade Distribution Report (SA 160). The definitions for each variable remain the same as for the prior years' reports. Appendix 1 contains the guidelines and definitions for each variable. However, a brief description of the operational definitions follows:

CW1 Adjusted Enrollment - This term refers to the total enrollment at Census Week 1 (CW1) plus all students who enrolled after CW1 until the end of the semester.

Successful Retention - All students who received a passing grade (A, B, C, D, or CR).

Total Retention - All students who received a grade other than a "W" whether or not it was a passing grade. Total retention then refers to students who either received a passing grade (A, B, C, D, or CR) or one of the following grades: F, I, NC, or IP.

Results

TABLE 1
COMPARISON BETWEEN UNDUPLICATED HEADCOUNT AND CLASS ENROLLMENT
AT CENSUS WEEK 1

	COA		LANEY		MERRITT		VISTA		FRC		DISTRICT	
	N	% of Change	N	% of Change	N	% of Change	N	% of Change	N	% of Change	N	% of Change
Unduplicated Enrollment												
F-80	7,882	N/A	10,906	N/A	9,856	N/A	10,829	N/A	1,283	N/A	40,756	N/A
F-81	8,071	2.4	12,303	12.8	9,766	(1.0)	10,290	(5.0)	1,272	(1.0)	41,702	2.3
F-82	6,156	(23.7)	13,268	7.3	8,951	(8.3)	9,220	(10.4)	1,068	(16.0)	38,168	(8.5)
Class Enrollment												
F-80	19,419	N/A	29,081	N/A	29,439	N/A	15,527	N/A	4,086	N/A	97,552	N/A
F-81	18,862	(2.9)	33,339	14.6	28,493	(3.2)	18,233	17.4	3,955	(3.2)	102,872	5.5
F-82	15,693	(16.8)	35,471	6.4	24,323	(14.6)	17,617	(3.4)	3,095	(21.7)	96,199	(6.5)

Census Week 1 (fourth week of instruction) class enrollment declined by 6.5% and headcount enrollment declined by 8.5% from Fall 1981 to Fall 1982. Both class enrollment and headcount enrollment declined for all colleges in the District from Fall 1981 to Fall 1982 except for Laney College. Laney had increases both in unduplicated CWI headcount enrollment and in CWI adjusted class enrollment.

Much of the decline in class enrollment may be due to the deletion of courses from the credit program. As a result of the course classification system, initiated by the State Chancellor's Office, Physical Education was one discipline which experienced a large number of course deletions at all the District's colleges. Physical Education class enrollment declined by 18% Districtwide; and, the decline in Physical Education class enrollment was 36% of the total District's decline in class enrollment. Other disciplines which had severe drops in class enrollments and which had experienced a large number of course deletions were Real Estate at Vista and Merritt Colleges, Psychology at Vista College, and Art at College of Alameda.

However, at least two departments with course deletions actually experienced increased class enrollment: Physical Education at Laney College and Art at Vista College.

TABLE 2
COMPARISON BY COLLEGE OF STUDENT RETENTION
FALL 1980, FALL 1981 AND FALL 1982

College	CWI Adjusted Enrollment		Successful Retention			Total Retention		
	N	% of District	N	%	% of District	N	%	% of District
<u>COA</u>								
F-80	19,419	19.91	11,310	58.2	19.68	12,151	62.6	16.31
F-81	18,862	18.33	12,301	65.2	19.74	13,802	73.2	19.11
F-82	15,693	16.31	10,292	65.6	17.00	11,544	73.6	16.63
<u>FRC</u>								
F-80	4,086	4.19	2,298	56.2	4.00	2,712	66.4	3.64
F-81	3,955	3.84	2,632	66.6	4.22	3,233	81.7	4.48
F-82	3,095	3.22	2,028	65.5	3.35	2,462	79.6	3.55
<u>Laney</u>								
F-80	29,081	29.81	17,291	59.5	30.09	22,881	78.7	30.71
F-81	33,339	32.41	20,284	60.8	32.55	22,677	68.0	31.39
F-82	35,471	36.87	22,362	63.0	36.94	24,837	70.0	35.77
<u>Merritt</u>								
F-80	29,439	30.18	16,557	56.2	28.81	25,192	85.6	33.81
F-81	28,493	27.69	16,601	58.3	26.64	20,264	71.1	28.05
F-82	24,323	25.28	15,028	61.8	24.82	17,793	73.2	25.63
<u>Vista</u>								
F-80	15,527	15.92	10,006	64.4	17.41	11,567	74.5	15.53
F-81	18,233	17.72	10,490	57.5	16.84	12,256	67.2	16.97
F-82	17,617	18.31	10,828	61.5	17.89	12,800	72.7	18.43
<u>DISTRICT</u>								
F-80	97,552	100.00	57,462	58.9	100.00	74,503	76.4	100.00
F-81	102,882	100.00	62,308	60.7	100.00	72,232	70.2	100.00
F-82	96,199	100.00	60,538	62.9	100.00	69,436	72.2	100.00

Since the systematic attempt to study retention in the Peralta District began with the Fall 1980 retention study, the District's successful retention rate has increased from 58.9% (Fall 1980) to 62.9% (Fall 1982). The percentage of student withdrawals declined slightly from 29.8% (Fall 1981) to 27.8% (Fall 1982).

TABLE 3
RANK ORDER BY PERCENTAGE OF COLLEGE ENROLLMENT
FALL 1982

COA		LANEY		MERRITT		VISTA		FEATHER RIVER	
P.E.	16.3	P.E.	15.2	English	9.3	Bus. & Comm.	12.8	P.E.	19.1
English	11.4	English	9.6	Business	8.9	D.P.	11.3	Math	9.8
Math	9.7	Business	9.1	P.E.	8.4	Bus. & Mngmnt.	8.5	English	9.6
Business	9.0	Math	6.7	Math	7.8	Art	7.7	Biology	7.3
Office Ed.	4.4	Art	3.9	D.P.	6.1	English	6.5	Health Ed.	6.7

Similar to the past two years, Physical Education was the discipline with the greatest proportion of college enrollment at four out of five Peralta Community College District campuses. However, the proportion of total student enrollment in Physical Education classes has declined from prior years, possibly due to the elimination of a large number of avocational, recreational courses. In addition to Physical Education, English, Business and Mathematics continued to be disciplines in high demand by the students of the Peralta Community College District.

If Physical Education is excluded, English, Business and Mathematics are the disciplines in which students enroll at a high rate. The attraction of these disciplines to students may require some staffing considerations as staff in these disciplines opt for full retirement or the District's new early retirement program. It also may be helpful to review course scheduling patterns in these attractive disciplines to insure the availability of classes to students who desire to enroll in them.

TABLE 4
RANK ORDER OF HIGH "SUCCESSFUL RETENTION" RATES
FALL 1982

COA	LANEY	MERRITT	VISTA	FEATHER RIVER
General Studies 93.0	Speech 91.8	Machine Technology 100.00	Italian 98.6	Music 88.8
Diesel Mechanics 92.9	Vocational Nursing 88.5	Nursing 91.5	Music 87.7	Chemistry 87.5
Upholstery 88.9	Chinese 87.0	Radiologic Technology 89.8	Comm. Social Service 86.9	Administration of Justice 84.2
Physics 79.2	Word Tech. 85.1	Foreign Language 88.9	Dance 86.0	Geology 83.3
General Science 79.2	Recreational Leadership 96.0	Fire Science 88.1	History 84.2	Drama 81.8

The training programs are highly visible on this table. In past years it was suggested that the close student/teacher contact prompted higher retention rates. This explanation is still applicable. Also, there are some new disciplines on this list. Most notable is the Foreign Language Lab at Merritt College. This discipline had a successful retention rate of 17.7% in fall of 1981. Its emergence as one of the leading disciplines for successful retention at Merritt College signals a positive change. The staff did not provide an explanation for this change.

Feather River College experienced a significant change in the disciplines with high successful retention rates. Geology, Music and Chemistry retain less than 70% of the students enrolled in classes during the fall of 1981. However, these disciplines were among the leaders during the fall of 1982. An explanation for this improvement was not provided by the college.

TABLE 5
RANK ORDER OF LOW "SUCCESSFUL RETENTION" RATES
FALL 1982

COA	LANEY	MERRITT	VISTA	FEATHER RIVER
Urban Studies 35.3	Carpentry 38.4	Real Estate 30.4	Philosophy 21.4	History 50.2
Music 51.9	Business 41.6	Photography 32.6	Land Use Management 26.7	Business 53.3
Dance 52.2	French 43.3	Pharmacology 33.3	Biology 29.6	Recreation Leadership 54.5
Spanish 54.3	Spanish 44.3	D.P. 42.5	Real Estate 33.3	Work Experience 55.9
Social Science 54.5	Materials Technology 46.0	Philosophy 44.7	American Sign Language 42.0	Independent Study 57.1

College of Alameda provided information on their disciplines with relatively large fluctuations in retention from Fall 1981 to Fall 1982. Two disciplines at College of Alameda with relatively large declines in retention are Aviation Operation (-10.7%) and Fashion Arts (-15.1%). The staff at College of Alameda indicated that the decline in retention in the occupational areas of Aviation Operation and Fashion Arts may have been due to reduced employment opportunities in these areas. Both programs have been revised for 1983-84.

The Science and Arts programs at College of Alameda experienced an increase in retention. The comments from the staff at COA have been included as an appendix to this report.

TABLE 6
DISTRIBUTION OF GRADES BY COLLEGE
FALL 1980, FALL 1981 AND FALL 1982

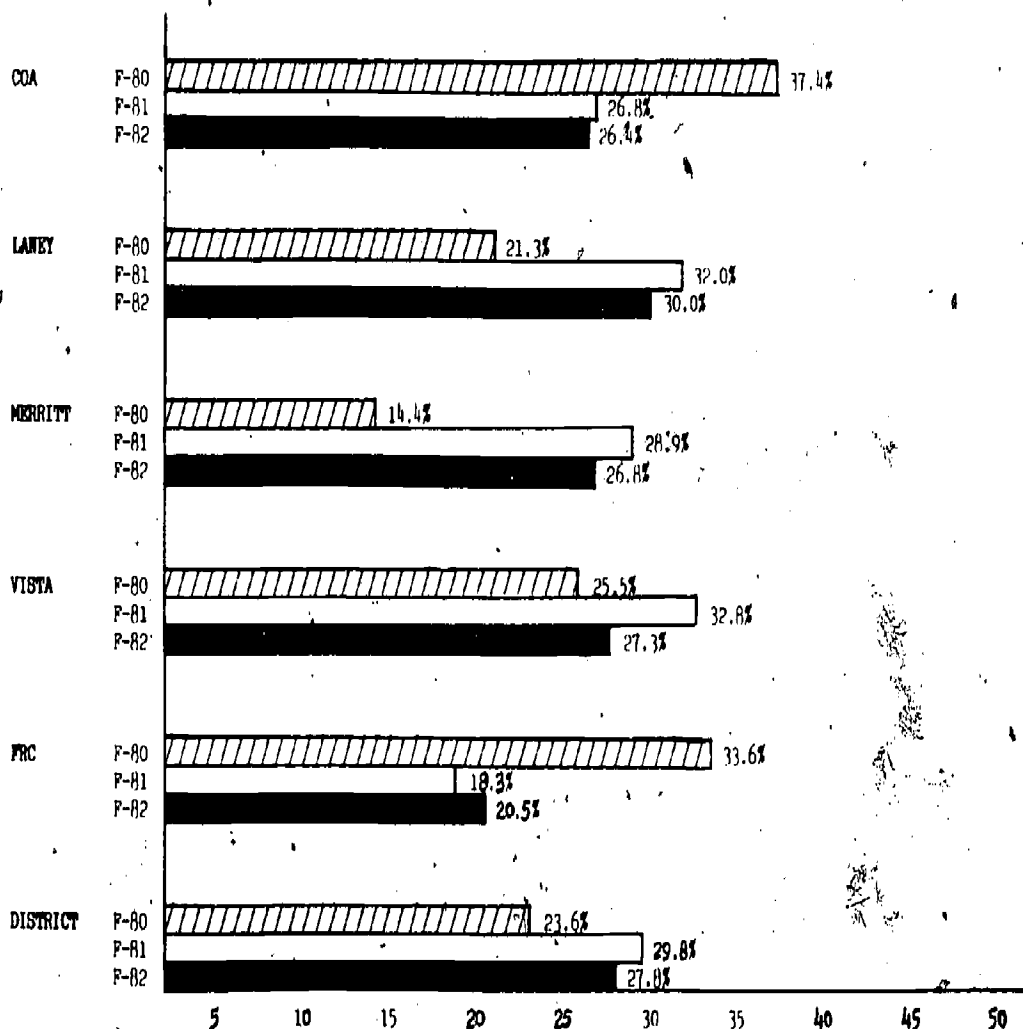
DISTRICT	ENROLLED	A	B	C	D	F	I	W	NC	CR	IP
COA											
F-80	17,502	28%	16%	12%	2%	0%	3%	31%	1%	7%	-
F-81	17,394	29%	20%	13%	3%	5%	1%	21%	2%	5%	1%
F-82	14,850	29%	18%	13%	3%	5%	1%	23%	1%	6%	1%
LANEY											
F-80	27,338	28%	19%	13%	2%	2%	1%	15%	18%	0%	-
F-81	30,674	27%	18%	14%	5%	6%	1%	16%	0%	2%	0%
F-82	34,288	27%	17%	14%	5%	5%	1%	28%	0%	2%	1%
MERRITT											
F-80	25,302	21%	17%	11%	2%	0%	4%	1%	30%	14%	-
F-81	26,321	20%	17%	13%	5%	8%	3%	23%	3%	8%	0%
F-82	23,274	19%	17%	14%	5%	7%	3%	24%	1%	9%	1%
VISTA											
F-80	15,686	16%	8%	3%	0%	0%	2%	26%	8%	37%	-
F-81	16,783	16%	6%	3%	1%	0%	1%	27%	9%	37%	0%
F-82	16,421	16%	8%	3%	0%	1%	2%	22%	9%	39%	0%
FRC											
F-80	3,677	30%	13%	6%	2%	1%	4%	25%	7%	12%	-
F-81	3,841	27%	15%	8%	2%	5%	1%	16%	8%	18%	0%
F-82	2,993	30%	14%	10%	2%	5%	2%	17%	8%	11%	1%
DISTRICT											
F-80	89,475	24%	16%	10%	2%	1%	2%	17%	16%	12%	-
F-81	95,013	24%	16%	11%	4%	5%	2%	24%	3%	11%	0%
F-82	91,826	24%	15%	11%	4%	5%	2%	24%	3%	11%	1%

New grading policies were put into effect during the fall of 1981. The most significant change was that colleges without an "F" grade option in the past could now give an "F" grade. Also, the time period for assigning a "W" grade had been changed to the period between the fourth and fourteenth weeks of the semester. As a result of these changes, the number of "F" grades increased substantially from Fall 1980 to Fall 1981.

Few noteworthy changes were observed in the grade distributions between Fall 1981 and Fall 1982. "A" and "W" were the most frequently awarded grades. The CR, NCR option was used more frequently at Vista College than at the other Peralta colleges. Vista's use of the CR and NCR accounts for the relatively low percentage of A, B, C and D grades at the college.

The percentage of "A" grades continued to be much lower at Merritt College than at Laney, College of Alameda or Feather River. Approximately 30% of the class enrollment at Laney, College of Alameda and Feather River received "A" grades while Merritt's percentage of "A" grades issued declined to 19%.

TABLE 7
COMPARISON BY COLLEGE OF THE CHANGE IN ATTRITION RATES



Attrition, as used in this report, refers to the difference between the CWI adjusted enrollment and the final class enrollment. The attrition rate is 100% minus the total retention percentage. Since there may have been numerous reasons for the observed attrition rates, a more detailed investigation is in order. If that investigation is properly planned, at least two factors should be included. First, the impact of intensive pre-registration counseling and advising should be determined. Second, the potential impact of more intensive student assessment should be determined. Information concerning these two issues would be important to Peralta's efforts to decrease the current level of student attrition.

Summary

The data presented in this report leaves many questions unanswered. Why has Laney College enrollment increased and enrollment at the other Peralta colleges declined? A student survey and/or a more detailed examination of Laney College programs could explain the reasons for the relative attractiveness of Laney College to our students.

The question of how attrition can be decreased and successful retention increased has also been largely unanswered. The retention rates by department indicate the departments in need of improvement. Examination of the retention rates for individual courses would further reveal those courses that contribute to low departmental rates.

The need for better student assessment has been emphasized in this report. Better and more intensive pre-registration counseling also would influence the retention patterns of our students. However, if the District's students are getting older and more part-time students are enrolling in classes, new strategies also may be needed if the retention patterns of these students are to be improved.

APPENDIX 1

PERALTA COMMUNITY COLLEGE DISTRICT
Office of Institutional Analysis

MEMORANDUM TO RECORD

DISTRICT INSTITUTIONAL ANALYSIS UNIT
Tuesday, February 10, 1981 - 10 a.m.
District Office

PRESENT: Remo Arancio, Laura Klein, Helen Steinmetz, McKinley Williams

VISITOR: Sagbondia Orobo-Osagie, U.C. Graduate Intern

I. Retention Study

The final details of the district-wide retention study were discussed. The method to compute retention should be employed uniformly by all members. It was agreed the method should entail the following steps:

1. Establish a total enrollment figure for each discipline by first calculating class enrollment at CWI. To do this the Tabulation of Withdrawals Report should be used - compute CWI enrollment by taking the initial enrollment and adding to it all students who enrolled before CWI. Subtract from that total all students who drop ("W's" on the Tabulation Report) before CWI. This gives you the CWI enrollment figure.
2. Add to the CWI enrollment all students entering courses after CWI until the end of the semester. The result of this computation should yield the total class enrollment to be used as the denominator in the retention equations.
3. "Successful Retention" - From the Grade Distribution Report, you should sum the number of A, B, C, D and CR grades for each discipline and for the college. Divide these sums by the total enrollment in each discipline. The result will be the percent of students who "successfully" completed the course.
4. "Total Retention" - Again using the Grade Distribution Report, take the "enrollment" figure listed immediately following the class title, and subtract from that number the total number of "W's" listed for that discipline on the Grade Report. Divide the result by the total class enrollment figure discussed earlier. This operation should yield the percent of students remaining in classes at the end of the term.

The format for presenting your college's information is outlined below. Please remember the analysis is by discipline, so include all of the same for your college.

FORMAT EXAMPLE

<u>Discipline</u>	<u>Total Enrolled</u>		<u>Successful Retention</u>		<u>Total Retention</u>	
	<u>N</u>	<u>%</u>	<u>N</u>	<u>%</u>	<u>N</u>	<u>%</u>
Biology	1,500	18.3	700	46.6	800	53.3
Business	1,600	19.5	500	31.3	600	37.5
Chemistry	2,100	25.6	800	38.1	950	45.2
English	3,000	36.6	1,000	33.3	1,200	40.0
COLLEGE TOTALS	8,200		3,000	36.6	3,550	43.3

The reports necessary for this analysis should be requested through your registrar's office. You can request directly, however, the response may not be as immediate. Due date is February 27th. If you have difficulty receiving reports, please let me know.

-12-

II. Transfer Students

If any one on your campus has information concerning students who have transferred to four year institutions or vice versa, please inform me. The Vice Chancellor of Educational Services is interested in gathering information on these students. Have campus personnel at your facility expended any efforts to gather such data? If so, please indicate those individuals, reports, etc.

III. Graduate Students

A copy of questionnaire for collecting data on students who receive the AA or AS degrees was distributed. It was asked that you respond by expressing your opinions regarding questions to be deleted, added, modified, etc. This questionnaire will be revised and used to develop a profile on students who graduate from Peralta College.

IV. Next Meeting

March 9, 1981, 10 a.m. at the District Office.

Per the request of members in attendance at the last meeting, attached to the memorandum you will find the Analysis Of The Schedule report.

MKW:leg

APPENDIX 2

PERALTA COMMUNITY COLLEGE DISTRICT
Office of Institutional Analysis

RETENTION STUDY
COLLEGE OF ALAMEDA
FALL 1982

DISCIPLINE	(CW1 ADJUSTED)		SUCCESSFUL		TOTAL	
	TOTAL	ENROLLED	RETENTION		RETENTION	
	N	%	N	%	N	%
Auto Mechanics	496	3.2	368	74.2	406	81.9
Anthropology	116	.7	81	69.8	92	79.3
Art	321	2.0	244	76.0	265	82.6
Autobody	113	.7	75	66.4	86	76.1
Aviation Maintenance	196	1.2	150	76.5	175	89.3
Aviation Operation	82	.5	46	56.1	47	57.3
Biology	502	3.2	295	58.8	399	79.5
Business	1405	9.0	851	60.6	946	67.3
Chemistry	121	.8	71	58.7	89	73.6
Cooperative Education	467	3.0	269	57.6	288	61.7
Dance	341	2.2	178	52.2	193	56.6
Dental Assisting	274	1.7	190	69.3	257	93.8
Diesel Mechanics	141	.9	131	92.9	132	93.6
Drama	148	.9	109	73.6	109	73.6
Economics	237	1.5	164	69.2	183	77.2
English	1786	11.4	1146	64.2	1286	72.0
Fashion	536	3.4	381	71.1	411	76.7
Foreign Language	42	.3	26	61.9	26	61.9
French	111	.7	69	62.2	84	75.7
General Science	24	.2	19	79.2	21	87.5
General Studies	545	3.5	507	93.0	507	93.0
Geography	76	.5	59	77.6	64	84.2
History	408	2.6	234	57.4	285	69.9
Health Education	25	.2	19	76.0	19	76.0
Humanities	97	.6	54	55.7	56	57.7
Mathematics	1523	9.7	914	60.0	1029	67.6
Medical Assisting	130	.8	85	65.4	91	70.0
Music	266	1.7	138	51.9	149	56.0
Nautical Science	172	1.1	101	58.7	126	73.3
Office Education	693	4.4	415	59.9	503	72.6
Physical Education	2551	16.3	1747	68.5	1962	76.9
Philosophy	71	.5	55	77.5	63	88.7
Physics	24	.2	19	79.2	19	79.2
Political Science	357	2.3	272	76.2	298	83.5
Psychology	609	3.9	382	62.7	422	69.3
Sociology	178	1.1	112	62.9	123	69.1
Social Science	112	.7	61	54.5	65	58.0
Spanish	221	1.4	120	54.3	129	58.4
Speech	60	.4	41	68.3	42	70.0
Upholstery	99	.6	88	88.9	88	88.9
Urban Studies	17	.1	6	35.3	9	52.9
TOTALS	15,693		10,292	65.6	11,544	73.6

-71-

PERALTA COMMUNITY COLLEGE DISTRICT
Office of Institutional Analysis

RETENTION STUDY
FEATHER RIVER COLLEGE
FALL 1982

DISCIPLINE	(CW1 ADJUSTED) TOTAL ENROLLED		SUCCESSFUL RETENTION		TOTAL RETENTION	
	N	%	N	%	N	%
Administration of Justice	19	.6	16	84.2	16	84.2
Agriculture	29	.9	20	69.0	24	82.8
Anthropology	37	1.2	25	67.6	31	83.8
Art	184	5.9	128	69.6	149	81.0
Biology	227	7.3	163	71.8	186	81.9
Business	199	6.4	106	53.3	139	69.8
Child Development	59	1.9	46	78.0	53	89.8
Chemistry	24	.8	21	87.5	22	91.7
Drama	33	1.1	27	81.8	28	84.8
English	298	9.6	191	64.1	241	80.8
FACS	37	1.2	28	75.7	29	78.4
Forestry	178	5.8	85	47.8	97	54.5
French	9	.3	7	77.8	7	77.8
Geology	6	.2	5	83.3	5	83.3
History	205	6.6	103	50.2	148	72.2
Health Education	207	6.7	152	73.4	185	89.4
Humanities	25	.8	17	68.0	21	84.0
Independent Study	14	.5	8	57.1	10	71.4
Industrial Tech.	137	4.4	99	72.3	124	90.5
Mathematics	303	9.8	185	61.1	220	72.6
Music	80	2.6	71	88.8	73	91.3
Physical Education	590	19.1	399	67.6	498	84.4
Political Science	39	1.3	29	74.4	34	87.2
Psychology	63	2.0	43	68.3	53	84.1
Recreation Leadership	11	.4	6	54.5	7	63.6
Sociology	18	.6	11	61.1	13	72.2
Work Experience	34	1.1	19	55.9	23	67.6
Welding Tech.	30	1.0	18	60.0	26	86.7
TOTALS	3,095		2,028	65.5	2462	79.5

-15-

NG:ng
03/03/83

PERALTA COMMUNITY COLLEGE DISTRICT
Office of Institutional Analysis

RETENTION STUDY
LANEY COLLEGE
FALL 1982

DISCIPLINE	(CW1 ADJUSTED)		SUCCESSFUL		TOTAL	
	TOTAL	ENROLLED	RETENTION		RETENTION	
	N	%	N	%	N	%
Architectural & Engin. Tech.	654	1.8	377	57.6	479	73.2
Anthropology	252	.7	159	63.1	210	83.3
Apprenticeship	284	.8	233	82.0	242	85.2
Art	1382	3.9	913	66.1	969	70.1
Asian Studies	50	.1	33	66.0	37	74.0
Biology	1148	3.2	699	60.9	775	67.5
Black Studies	324	.9	216	68.8	254	78.4
Banking and Finance	301	.8	251	83.4	251	83.4
Business	3227	9.1	1341	41.6	1844	57.1
Carpentry	341	1.0	131	38.4	231	67.7
Community Classes/Var. Loc.	619	1.7	619	100.0	619	100.0
Chemistry	395	1.1	189	47.8	230	58.2
Chinese	247	.7	215	87.0	215	87.0
Construction Technology	116	.3	88	75.9	96	82.8
Cooperative Education	807	2.3	432	53.5	514	63.7
Cosmetology	419	1.2	319	76.1	330	78.8
Data Processing	1144	3.2	587	51.3	687	60.1
Electronics/Elect. Tech.	1082	3.1	668	61.7	756	69.9
Economics	314	.9	170	54.1	189	60.2
English	3413	9.6	2045	59.9	2252	66.0
English as a Second Language	538	1.5	316	58.7	348	63.5
Fabric Care	169	.5	96	56.8	109	64.5
Food Preparation & Service	585	1.6	468	80.0	472	80.7
French	263	.7	114	43.3	131	49.8
Geography	99	.3	59	59.6	73	73.7
German	50	.1	38	76.0	39	78.0
Graphic Arts	422	1.2	279	66.1	284	67.3
History/Political Science	122	.3	80	65.6	94	77.0
History	517	1.5	389	75.2	412	79.7
Health Education	144	.4	112	77.8	113	78.5
Humanities	192	.5	103	53.6	107	55.7
Japanese	114	.3	60	52.6	61	53.5
Journalism	93	.3	49	52.7	49	52.7
Mex/Latin American Studies	102	.3	58	56.9	64	62.7
Management & Supervision	289	.8	151	52.2	181	62.6
Machine Shop	249	.7	183	73.5	187	75.1
Mathematics	2368	6.7	1157	48.9	1461	61.7
Materials Technology	137	.4	63	46.0	74	54.0
Media & Communications	956	2.7	692	72.4	701	73.3
Music	1160	3.3	671	57.8	724	62.4
Physical Education	5405	15.2	4180	77.3	4279	79.2
Philosophy	152	.4	70	46.1	85	55.9
Photography	391	1.1	211	54.0	260	66.5

-16-

RETENTION STUDY
LANEY COLLEGE - continued
FALL 1982

<u>DISCIPLINE</u>	<u>(CW1 ADJUSTED)</u>		<u>SUCCESSFUL</u>		<u>TOTAL</u>	
	<u>TOTAL</u>	<u>ENROLLED</u>	<u>RETENTION</u>	<u>RETENTION</u>	<u>RETENTION</u>	<u>RETENTION</u>
	<u>N</u>	<u>%</u>	<u>N</u>	<u>%</u>	<u>N</u>	<u>%</u>
Physics	134	.4	82	61.2	84	62.7
Physical Science	73	.2	49	67.1	54	74.0
Plastics Technology	118	.3	74	62.7	110	93.2
Political Science	160	.5	106	66.3	111	69.4
Psychology	639	1.8	398	62.3	465	72.8
Quality Control	70	.2	44	62.9	60	85.7
Recreational Leadership	25	.1	24	96.0	24	96.0
Air Cond. & Refrig. Tech.	278	.8	209	75.2	224	80.6
Sheet Metal	76	.2	58	73.7	62	81.6
Shoe Rebuilding	63	.2	47	74.6	47	74.6
Sociology	272	.8	148	54.4	206	75.7
Spanish	352	1.0	156	44.3	185	52.6
Speech	560	1.6	511	91.3	511	91.3
Theatre Arts	249	.7	152	61.0	152	61.0
Vocational Nursing	312	.9	276	88.5	285	91.3
Wood Technology	335	.9	285	85.1	287	85.7
Welding	556	1.6	364	65.5	387	69.6
	-----	-----	-----	-----	-----	-----
TOTALS	35,471		22,362	63.0	24,837	70.0

NG:ng
3/01/83

PERALTA COMMUNITY COLLEGE DISTRICT
Office of Institutional Analysis

RETENTION STUDY
MERRITT COLLEGE
FALL 1982

DISCIPLINE	(CW1 ADJUSTED)		SUCCESSFUL		TOTAL	
	TOTAL	ENROLLED	RETENTION	%	RETENTION	%
	N	%	N	%	N	%
Administration of Justice	518	2.1	251	48.5	358	69.1
Afro-American Studies	435	1.8	202	46.4	300	69.0
Anatomy	88	.4	51	58.0	55	62.5
Anatomy/Physiology	188	.8	111	59.0	143	76.1
Anthropology	109	.4	70	64.2	89	81.7
Apprenticeship	942	3.8	757	80.4	908	96.4
Art	598	2.5	384	64.2	432	72.2
Asian Studies	69	.3	43	62.3	48	69.6
Astronomy	39	.2	22	56.4	34	87.2
Auto Technology	53	.2	39	73.6	50	94.3
Bacteriology	69	.3	43	62.3	47	68.1
Biology	273	1.1	141	51.6	196	71.8
Business	2164	8.9	1177	54.4	1470	67.9
Carpentry	100	.4	48	48.0	50	50.0
Child Development	815	3.4	525	64.4	586	71.9
Chemistry	294	1.2	148	50.3	191	65.0
Chinese	2	0.0	2	100.0	2	100.0
Consumer Services	96	.4	50	52.1	74	77.1
Data Processing	1486	6.1	632	42.5	939	63.2
Drafting	95	.3	48	56.5	55	64.7
Ecology	134	.6	93	69.4	98	73.1
Economics	229	.9	167	72.9	204	89.1
Education	26	.1	17	65.4	17	65.4
Environment Health Tech.	868	3.6	868	100.0	868	100.0
Electronics Technology	570	2.3	382	67.0	441	77.4
English	2261	9.3	1516	67.1	1662	73.5
English as a Second Language	142	.6	110	77.5	116	81.7
Environmental Studies	131	.6	71	54.2	101	77.1
Family and Consumer Studies	606	2.5	393	64.9	471	77.7
Fire Science	277	1.1	244	88.1	263	95.0
Foreign Language	18	.1	16	88.9	18	100.0
French	107	.4	81	75.7	81	75.7
Geography	52	.2	26	50.0	46	88.5
Geology	187	.8	96	51.3	143	76.5
Government & Politics	140	.6	87	62.1	99	70.7
History	325	1.3	168	51.7	204	62.8
Health Education	143	.6	81	56.6	103	72.0
Ironworking	173	.7	85	49.1	85	49.1
Italian	104	.4	66	63.5	67	64.4
Latin and Mex/Amer. Studies	56	.2	44	78.6	53	94.6
Labor Studies	182	.7	125	68.7	138	75.8
Landscape Horticulture	1279	5.3	788	61.6	938	73.3
Latin	35	.1	27	77.1	28	80.0

-18-

DISCIPLINE	(CWI ADJUSTED)		SUCCESSFUL		TOTAL	
	TOTAL	ENROLLED	RETENTION	RETENTION	RETENTION	RETENTION
	N	%	N	%	N	%
Legal Assistant	285	1.2	134	47.0	187	65.6
Learning Resources	6	0.0	3	50.0	4	66.7
Machine Technology	23	.1	23	100.0	23	100.0
Mathematics	1894	7.8	1039	54.9	1257	66.4
Music	737	3.0	438	59.4	578	78.4
Nursing Aide	30	.1	19	63.3	22	73.3
Nursing	236	1.0	216	91.5	229	97.0
Ophthalmic Assistant	51	.2	33	64.7	33	64.7
Physical Education	2049	8.4	1326	64.7	1376	67.2
Pharmacology	36	.2	12	33.3	22	61.1
Philosophy	38	.2	17	44.7	23	60.5
Photography	129	.5	42	32.6	56	43.4
Physics	204	.8	142	69.6	164	80.4
Physical Science	32	.1	24	75.0	30	93.8
Physiology	58	.2	35	60.3	49	84.5
Psychology	694	2.9	427	61.5	462	66.6
Radiologic Technology	197	.8	177	89.8	186	94.4
Recreation and Leadership	138	.6	105	76.1	135	97.8
Real Estate	115	.5	35	30.4	36	31.3
Sociology	158	.6	95	60.1	115	72.8
Spanish	152	.6	71	46.7	120	78.9
Speech	147	.6	78	53.1	103	70.1
Welding	69	.3	60	87.0	63	91.3
Work Experience	377	1.6	182	48.3	249	66.0
TOTALS	24,323		15,028	61.8	17,793	73.2

NG:ng
3/01/83

-19-

PERALTA COMMUNITY COLLEGE DISTRICT
Office of Institutional Analysis

RETENTION STUDY
VISTA COLLEGE
FALL 1982

DISCIPLINE	(CWI ADJUSTED)		SUCCESSFUL		TOTAL	
	TOTAL	ENROLLED	RETENTION		RETENTION	
	N	%	N	%	N	%
American Sign Language	583	3.3	245	42.0	338	58.0
Art	1357	7.7	961	70.8	1045	77.0
Biology	159	.9	47	29.6	57	35.8
Botany	43	.2	30	69.8	30	69.8
Business and Comm.	2256	12.8	981	43.5	1388	61.5
Business and Management	1495	8.5	915	61.2	1030	68.9
Community Social Serv.	236	1.3	205	86.9	212	89.8
Data Processing	1986	11.3	1061	53.4	1451	73.1
Dance	386	2.2	332	86.0	338	87.6
Drama	368	2.1	309	84.0	319	86.7
Education	162	.9	120	74.1	130	80.2
English	1146	6.5	660	57.6	763	66.6
Environmental Studies	49	.3	26	53.1	26	53.1
Environmental Tech.	366	2.1	275	75.1	276	75.4
Family and Cons. Studies	760	4.3	554	72.9	619	81.4
French	159	.9	73	45.9	73	45.9
German	59	.3	28	47.5	30	50.8
Government and Politics	98	.6	65	66.3	74	75.5
History	367	2.1	309	84.2	353	96.2
Health Education	815	4.6	15	1.8	582	71.4
International Studies	848	4.8	625	73.7	720	84.9
Italian	140	.8	138	98.6	138	98.5
Job Preparation	138	.8	115	83.3	122	88.4
Land Use Management	30	.2	8	26.7	8	26.6
Mathematics	155	.9	73	47.1	95	61.3
Media and Communications	102	.6	51	50.0	57	55.9
Music	636	3.6	558	87.7	568	89.3
Nursing	287	1.6	212	73.9	212	73.9
Occupational Safety/Health	27	.2	19	70.4	24	88.9
Physical Education	334	1.9	258	77.2	310	92.8
Philosophy	14	.1	3	21.4	7	50.0
Photography	145	.8	69	47.6	121	83.4
Psychology	774	4.4	412	53.2	576	74.4
Real Estate	57	.3	19	33.3	20	35.1
Sol/Hazard. Waste Mgmt.	22	.1	12	54.5	16	72.7
Spanish	720	4.1	320	44.4	421	58.4
Transportation	204	1.2	159	77.9	171	83.8
Waste Water Tech.	134	.8	66	49.3	80	59.7
TOTALS	17617		10828	61.5	12800	72.7

NG:ng
03/02/83

C

APPENDIX 3

L

37

TRENDLINE COMPARISON OF GRADE DISTRIBUTION BY LOCATION

College	Final Enrolled	A	B	C	D	F	I	W	NC	CR	IP
<u>COA</u>											
F-79	15,297	26%	19%	12%	3%	0%	3%	29%	2%	5%	-
F-80	17,502	28%	16%	12%	2%	0%	3%	31%	1%	7%	-
F-81	17,394	29%	20%	13%	3%	5%	1%	21%	2%	5%	1%
F-82	14,850	29%	18%	13%	3%	5%	1%	23%	1%	6%	1%
<u>Laney</u>											
F-79	24,630	25%	18%	15%	4%	2%	0%	18%	18%	0%	-
F-80	27,338	28%	19%	13%	2%	2%	1%	15%	18%	0%	-
F-81	30,674	27%	18%	14%	5%	6%	1%	26%	0%	2%	1%
F-82	34,288	27%	17%	14%	5%	5%	1%	28%	0%	2%	1%
<u>Merritt</u>											
F-79	20,793	23%	19%	3%	2%	0%	5%	1%	28%	9%	-
F-80	25,302	21%	17%	11%	2%	0%	4%	1%	30%	14%	-
F-81	26,321	20%	17%	13%	5%	8%	3%	23%	3%	8%	0%
F-82	23,274	19%	17%	14%	5%	7%	3%	24%	1%	9%	1%
<u>Vista</u>											
F-79	9,522	18%	11%	4%	10%	0%	2%	25%	9%	30%	-
F-80	15,686	16%	8%	3%	0%	0%	2%	26%	8%	37%	-
F-81	16,783	16%	6%	3%	1%	0%	1%	27%	9%	37%	0%
F-82	16,421	16%	8%	3%	0%	1%	2%	22%	9%	39%	0%
<u>FRC</u>											
F-79	3,013	23%	14%	7%	2%	1%	4%	29%	6%	14%	-
F-80	3,677	30%	13%	6%	2%	1%	4%	25%	7%	12%	-
F-81	3,841	27%	15%	8%	2%	5%	1%	16%	8%	18%	0%
F-82	2,993	30%	14%	10%	2%	5%	2%	17%	8%	11%	1%
<u>District</u>											
F-79	73,255	22%	17%	12%	4%	7%	1%	19%	16%	8%	-
F-80	89,475	24%	16%	10%	2%	7%	2%	17%	16%	12%	-
F-81	95,013	24%	16%	11%	4%	5%	2%	24%	3%	11%	0%
F-82	91,826	24%	15%	11%	4%	5%	2%	24%	3%	11%	1%

GRADING POLICY

<u>GRADE</u>	<u>GRADE POINTS</u>	<u>DEFINITION</u>
A	4	Excellent
B	3	Good
C	2	Satisfactory
D	1	Passing, less than satisfactory
F	0	Failing
CR	0	Credit. At least satisfactory. Units awarded not counted in GPA (only assigned for courses with CR/NC option).
I	0	Incomplete
W	0	Withdrawal. "W" is assigned for students who withdraw officially from a class between the 4th and 14th weeks (3rd and 7th weeks for College of Alameda).
NC	0	No credit. NC means the student did not fulfill the academic requirements of the course. Only assigned for courses with CR/NC option.
IP	0	Indicates that a course extends beyond the normal end of the term, and that course work is "in progress".

GRADE DISTRIBUTION BY DEPARTMENT -
COLLEGE OF ALAMEDA
FALL 1982

<u>Discipline</u>	<u>Final Enrolled</u>	<u>A</u>	<u>B</u>	<u>C</u>	<u>D</u>	<u>F</u>	<u>I</u>	<u>W</u>	<u>NC</u>	<u>CR</u>	<u>IP</u>
Auto Mechanics	489	18%	28%	24%	5%	4%	4%	17%	0%	0%	0%
Anthropology	114	21%	19%	24%	7%	9%	3%	20%	0%	0%	0%
Art	312	48%	15%	5%	3%	7%	3%	15%	0%	7%	0%
Auto Body	104	13%	22%	33%	4%	11%	3%	17%	0%	0%	0%
Aviation Maintenance	195	13%	38%	22%	4%	6%	7%	10%	0%	0%	0%
Aviation Operation	72	26%	24%	12%	2%	0%	1%	35%	0%	0%	0%
Biology	491	20%	17%	17%	6%	20%	1%	18%	0%	1%	0%
Business	1,285	25%	20%	14%	8%	6%	1%	26%	0%	0%	0%
Chemistry	118	16%	20%	19%	6%	12%	3%	24%	0%	0%	0%
Cooperative Educ.	448	28%	17%	6%	0%	0%	2%	36%	1%	9%	1%
Dance	312	33%	10%	5%	4%	2%	1%	38%	2%	5%	0%
Dental Assisting	272	7%	20%	25%	9%	16%	8%	6%	0%	9%	0%
Diesel Mechanics	135	23%	32%	34%	8%	0%	0%	3%	0%	0%	0%
Drama	148	52%	9%	6%	7%	0%	0%	26%	0%	0%	0%
Economics	234	14%	20%	24%	12%	6%	2%	22%	0%	0%	0%
English	1,640	22%	22%	15%	4%	4%	2%	22%	1%	7%	1%
Fashion	524	36%	18%	14%	3%	3%	0%	22%	2%	2%	0%
Foreign Language	42	27%	9%	26%	0%	0%	0%	38%	0%	0%	0%
French	107	33%	23%	7%	2%	1%	4%	22%	8%	0%	0%
General Science	24	17%	29%	25%	8%	8%	0%	13%	0%	0%	0%
General Studies	540	53%	1%	1%	1%	0%	0%	6%	0%	38%	0%
Geography	74	33%	23%	13%	11%	7%	0%	13%	0%	0%	0%
History	385	20%	19%	15%	6%	12%	2%	26%	0%	0%	0%
Health Education	22	31%	10%	18%	9%	0%	0%	13%	0%	19%	0%
Humanities	76	15%	32%	23%	2%	0%	2%	26%	0%	0%	0%

GRADE DISTRIBUTION BY DEPARTMENT
 COLLEGE OF ALAMEDA - continued
 FALL 1982

<u>Discipline</u>	<u>Final Enrolled</u>	<u>A</u>	<u>B</u>	<u>C</u>	<u>D</u>	<u>F</u>	<u>I</u>	<u>W</u>	<u>NC</u>	<u>CR</u>	<u>IP</u>
Mathematics	1,448	27%	21%	10%	4%	7%	1%	29%	0%	1%	0%
Medical Assisting	127	23%	17%	18%	7%	4%	0%	29%	0%	2%	0%
Music	223	27%	18%	13%	4%	2%	2%	34%	0%	0%	0%
Nautical Science	171	5%	5%	3%	1%	0%	0%	27%	14%	45%	0%
Office Education	654	39%	14%	3%	3%	1%	0%	23%	0%	5%	12%
Physical Education	2,422	43%	11%	5%	0%	2%	0%	19%	7%	13%	0%
Philosophy	71	20%	27%	9%	22%	8%	3%	11%	0%	0%	0%
Physics	20	25%	25%	30%	15%	0%	0%	5%	0%	0%	0%
Political Science	337	32%	23%	23%	2%	4%	4%	11%	0%	1%	0%
Psychology	558	35%	20%	10%	4%	5%	2%	24%	0%	0%	0%
Sociology	162	19%	18%	24%	8%	7%	0%	24%	0%	0%	0%
Social Science	110	24%	20%	11%	0%	2%	2%	41%	0%	0%	0%
Spanish	60	20%	18%	11%	5%	3%	1%	41%	0%	1%	0%
Speech	96	20%	25%	16%	7%	0%	2%	30%	0%	0%	0%
Upholstery	12	18%	39%	15%	2%	0%	0%	8%	0%	18%	0%
Urban Studies		0%	8%	42%	0%	0%	25%	25%	0%	0%	0%

GRADE DISTRIBUTION BY DEPARTMENT
FEATHER RIVER COLLEGE
FALL 1982

<u>Discipline</u>	<u>Enrolled</u>	<u>A</u>	<u>B</u>	<u>C</u>	<u>D</u>	<u>F</u>	<u>I</u>	<u>W</u>	<u>NC</u>	<u>CR</u>	<u>IP</u>
Admin. of Justice	19	52%	21%	5%	6%	0%	0%	16%	0%	0%	0%
Agriculture	31	29%	3%	6%	0%	0%	0%	23%	13%	26%	0%
Anthropology	36	14%	22%	25%	8%	17%	0%	14%	0%	0%	0%
Art	178	30%	19%	8%	5%	0%	1%	16%	11%	10%	0%
Biology	223	20%	24%	22%	7%	7%	2%	17%	1%	0%	0%
Business	192	26%	16%	10%	3%	17%	0%	28%	0%	0%	0%
Child Development	54	39%	17%	14%	0%	0%	4%	2%	9%	15%	0%
Chemistry	21	50%	17%	16%	5%	0%	0%	8%	4%	0%	0%
Drama	34	65%	11%	3%	0%	3%	0%	18%	0%	0%	0%
English	301	32%	18%	11%	3%	6%	2%	20%	6%	0%	2%
FACS	37	0%	0%	0%	0%	0%	0%	22%	3%	75%	0%
Forestry	112	26%	24%	21%	3%	8%	2%	13%	1%	2%	0%
French	9	11%	44%	12%	11%	0%	0%	22%	0%	0%	0%
Geology	6	33%	33%	17%	0%	0%	0%	17%	0%	0%	0%
History	197	22%	11%	13%	2%	4%	14%	25%	5%	4%	0%
Health Education	208	14%	5%	3%	0%	4%	1%	11%	11%	51%	0%
Humanities	23	17%	18%	26%	13%	4%	0%	9%	13%	0%	0%
Independent Study	13	46%	8%	0%	0%	0%	15%	23%	0%	8%	0%
Industrial Tech.	135	17%	28%	12%	0%	0%	0%	8%	18%	17%	0%
Mathematics	295	31%	17%	9%	4%	5%	1%	25%	6%	2%	0%
Music	76	66%	7%	4%	10%	0%	0%	4%	3%	16%	0%
Physical Education	596	43%	5%	1%	0%	1%	0%	17%	15%	18%	0%
Political Science	39	41%	13%	16%	2%	5%	3%	13%	5%	2%	0%
Psychology	62	22%	20%	11%	7%	12%	4%	14%	0%	10%	0%

GRADE DISTRIBUTION BY DEPARTMENT
FEATHER RIVER COLLEGE - continued
FALL 1982

<u>Discipline</u>	<u>Final Enrolled</u>	<u>A</u>	<u>B</u>	<u>C</u>	<u>D</u>	<u>F</u>	<u>I</u>	<u>W</u>	<u>NC</u>	<u>CR</u>	<u>IP</u>
Recreation Leadership	11	37%	9%	9%	0%	9%	0%	36%	0%	0%	0%
Sociology	18	22%	17%	16%	6%	0%	0%	28%	11%	0%	0%
Work Experience	34	32%	6%	12%	6%	0%	0%	32%	12%	0%	0%
Welding Technology	30	17%	16%	20%	7%	3%	0%	14%	23%	0%	0%

GRADE DISTRIBUTION BY DEPARTMENT

LANEY COLLEGE

FALL 1982

<u>Discipline</u>	<u>Final Enrolled</u>	<u>A</u>	<u>B</u>	<u>C</u>	<u>D</u>	<u>F</u>	<u>I</u>	<u>W</u>	<u>NC</u>	<u>CR</u>	<u>IP</u>
Arch. & Eng. Tech.	642	23%	17%	13%	5%	15%	1%	26%	0%	0%	0%
Anthropology	251	46%	13%	4%	0%	18%	3%	16%	0%	0%	0%
Apprenticeship	294	21%	27%	18%	13%	3%	0%	18%	0%	0%	0%
Art	1,332	36%	22%	8%	3%	2%	2%	27%	0%	0%	0%
Asian Studies	46	28%	24%	11%	9%	2%	6%	20%	0%	0%	0%
Biology	1,097	27%	17%	16%	4%	4%	3%	29%	0%	0%	0%
Black Studies	309	12%	15%	19%	24%	8%	4%	18%	0%	0%	0%
Banking & Finance	301	20%	20%	44%	0%	0%	0%	16%	0%	0%	0%
Business	3,273	11%	11%	13%	6%	6%	1%	44%	0%	0%	8%
Carpentry	245	7%	5%	25%	16%	17%	24%	6%	0%	0%	0%
Commun. Classes	619	0%	0%	0%	0%	0%	0%	0%	0%	100%	0%
Chemistry	359	19%	16%	13%	5%	8%	3%	36%	0%	0%	0%
Chinese	243	66%	17%	3%	3%	0%	0%	11%	0%	0%	0%
Construction Tech.	116	21%	13%	32%	10%	7%	0%	17%	0%	0%	0%
Cooperative Education	707	28%	23%	9%	1%	4%	1%	27%	0%	0%	0%
Cosmetology	408	21%	23%	27%	7%	3%	0%	19%	0%	0%	0%
Data Processing	1,108	23%	16%	9%	5%	8%	1%	38%	0%	0%	0%
Electronics/Elec. Tech.	992	19%	19%	17%	12%	9%	0%	24%	0%	0%	0%
Economics	269	35%	16%	10%	2%	6%	1%	30%	0%	0%	0%
English	3,321	19%	19%	17%	7%	5%	1%	32%	0%	0%	0%
ESL	503	18%	18%	14%	13%	4%	2%	31%	0%	0%	0%
Fabric Care	168	3%	15%	24%	16%	7%	0%	35%	0%	0%	0%
Food Prep. & Service	581	21%	28%	29%	3%	0%	0%	19%	0%	0%	0%
French	238	22%	14%	9%	3%	6%	2%	44%	0%	0%	0%

GRADE DISTRIBUTION BY DEPARTMENT
LANEY COLLEGE - continued
FALL 1982

<u>Discipline</u>	<u>Enrolled</u>	<u>A</u>	<u>B</u>	<u>C</u>	<u>D</u>	<u>F</u>	<u>I</u>	<u>W</u>	<u>NC</u>	<u>CR</u>	<u>IP</u>
Geography	97	11%	19%	18%	12%	15%	0%	25%	0%	0%	0%
German	46	43%	20%	15%	4%	3%	0%	15%	0%	0%	0%
Graphic Arts	402	33%	20%	11%	5%	1%	0%	30%	0%	0%	0%
History/Pol. Sci.	119	12%	18%	24%	13%	11%	0%	21%	0%	1%	0%
History	516	13%	18%	22%	20%	3%	1%	20%	1%	2%	0%
Health Education	142	35%	14%	21%	9%	0%	0%	21%	0%	0%	0%
Humanities	185	16%	16%	18%	6%	0%	2%	42%	0%	0%	0%
Japanese	113	36%	14%	2%	1%	1%	0%	46%	0%	0%	0%
Journalism	91	30%	9%	14%	1%	0%	0%	46%	0%	0%	0%
Mex/Lat. Amer. Studies	101	20%	13%	21%	3%	0%	6%	37%	0%	0%	0%
Mngmnt. and Supervision	265	16%	23%	13%	5%	8%	4%	31%	0%	0%	0%
Machine Shop	236	17%	30%	23%	7%	2%	0%	21%	0%	0%	0%
Mathematics	2,377	18%	17%	9%	5%	7%	0%	39%	0%	0%	5%
Material Technology	88	16%	25%	29%	2%	12%	0%	16%	0%	0%	0%
Media & Communications	935	50%	15%	8%	1%	1%	0%	25%	0%	0%	0%
Music	1,107	25%	20%	12%	4%	3%	1%	35%	0%	0%	0%
Physical Education	5,209	59%	12%	8%	2%	2%	0%	17%	0%	0%	0%
Philosophy	145	17%	15%	12%	4%	7%	3%	42%	0%	0%	0%
Photography	382	11%	19%	19%	6%	11%	2%	32%	0%	0%	0%
Physics	133	11%	15%	27%	9%	1%	0%	37%	0%	0%	0%
Physical Science	72	6%	17%	37%	8%	7%	0%	25%	0%	0%	0%
Plastics Technology	113	33%	23%	7%	3%	32%	0%	2%	0%	0%	0%
Political Science	154	14%	31%	19%	5%	3%	0%	28%	0%	0%	0%
Psychology	635	16%	18%	18%	11%	8%	1%	26%	0%	0%	0%

GRADE DISTRIBUTION BY DEPARTMENT
LANEY COLLEGE - continued
FALL 1982

<u>Discipline</u>	<u>Final Enrolled</u>	<u>A</u>	<u>B</u>	<u>C</u>	<u>D</u>	<u>F</u>	<u>I</u>	<u>W</u>	<u>NC</u>	<u>CR</u>	<u>IP</u>
Quality Control	70	23%	37%	3%	0%	23%	0%	14%	0%	0%	0%
Recreational Leadership	25	24%	4%	68%	0%	0%	0%	4%	0%	0%	0%
Air Cond. & Refrig. Tech.	271	26%	36%	10%	5%	6%	0%	17%	0%	0%	0%
Sheet Metal	76	43%	22%	37%	4%	5%	0%	19%	0%	0%	0%
Shoe Rebuilding	60	32%	30%	17%	0%	0%	0%	21%	0%	0%	0%
Sociology	258	10%	22%	21%	4%	22%	1%	20%	0%	0%	0%
Spanish	324	16%	16%	10%	6%	7%	2%	43%	0%	0%	0%
Speech	360	46%	25%	20%	0%	0%	0%	9%	0%	0%	0%
Theatre Arts	241	31%	14%	9%	6%	3%	0%	37%	0%	0%	0%
Vocational Nursing	448	20%	30%	26%	7%	1%	1%	15%	0%	0%	0%
Wood Technology	326	34%	21%	25%	7%	0%	1%	12%	0%	0%	0%
Welding	544	13%	23%	21%	10%	4%	0%	29%	0%	0%	0%

GRADE DISTRIBUTION BY DEPARTMENT
MERRITT COLLEGE
FALL 1982

<u>Discipline</u>	<u>Final Enrolled</u>	<u>A</u>	<u>B</u>	<u>C</u>	<u>D</u>	<u>F</u>	<u>I</u>	<u>W</u>	<u>NC</u>	<u>CR</u>	<u>IP</u>
Admin. of Justice	503	13%	16%	16%	4%	10%	6%	29%	0%	0%	6%
Afro-Amer. Studies	393	14%	14%	13%	10%	13%	12%	24%	0%	0%	0%
Anatomy	74	23%	13%	27%	6%	5%	0%	26%	0%	0%	0%
Anatomy/Physiology	183	23%	13%	23%	2%	14%	3%	22%	0%	0%	0%
Anthropology	106	21%	26%	13%	6%	13%	3%	16%	2%	0%	0%
Apprenticeship	942	3%	5%	8%	1%	3%	0%	4%	12%	64%	0%
Art	578	30%	18%	10%	1%	6%	2%	25%	1%	7%	0%
Asian Studies	68	22%	14%	23%	4%	0%	1%	30%	6%	0%	0%
Astronomy	36	3%	19%	28%	11%	33%	0%	6%	0%	0%	0%
Auto Technology	53	25%	26%	17%	6%	11%	10%	5%	0%	0%	0%
Bacteriology	66	6%	21%	29%	9%	3%	3%	29%	0%	0%	0%
Biology	245	17%	17%	19%	4%	17%	6%	20%	0%	0%	0%
Business	2,061	17%	16%	17%	7%	11%	3%	29%	0%	0%	0%
Carpentry	86	15%	27%	8%	6%	2%	0%	42%	0%	0%	0%
Child Development	773	11%	13%	8%	2%	1%	4%	24%	3%	34%	0%
Chemistry	274	10%	10%	26%	8%	14%	2%	30%	0%	0%	0%
Chinese	2	100%	0%	0%	0%	0%	0%	0%	0%	0%	0%
Consumer Services	93	20%	13%	5%	0%	6%	17%	21%	2%	16%	0%
Data Processing	1,486	16%	12%	11%	5%	20%	1%	33%	0%	1%	1%
Drafting	82	22%	28%	8%	1%	8%	0%	33%	0%	0%	0%
Ecology	131	7%	10%	10%	2%	3%	0%	10%	0%	0%	0%
Economics	225	25%	20%	19%	10%	13%	3%	10%	0%	0%	0%
Education	25	12%	36%	20%	0%	0%	0%	32%	0%	0%	0%
Environ. Health Tech.	868	33%	44%	22%	1%	0%	0%	0%	0%	0%	0%

GRADE DISTRIBUTION BY DEPARTMENT
MERRITT COLLEGE
FALL 1982

<u>Discipline</u>	<u>Fiscal</u> <u>Enrolled</u>	<u>A</u>	<u>B</u>	<u>C</u>	<u>D</u>	<u>F</u>	<u>I</u>	<u>W</u>	<u>NC</u>	<u>CR</u>	<u>IP</u>
Electronics Tech.	546	25%	16%	15%	7%	7%	2%	19%	2%	7%	0%
English	2,153	14%	24%	17%	10%	5%	1%	23%	0%	6%	0%
ESL	137	15%	26%	24%	13%	4%	1%	15%	0%	2%	0%
Environmental Studies	133	10%	11%	11%	0%	13%	9%	24%	0%	22%	0%
Family & Consumer Stud.	579	26%	18%	14%	6%	6%	8%	18%	1%	3%	0%
Fire Science	273	5%	26%	5%	0%	1%	0%	4%	5%	54%	0%
Foreign Language	18	0%	0%	0%	0%	0%	0%	0%	11%	89%	0%
French	95	35%	28%	22%	0%	0%	0%	15%	0%	0%	0%
Geography	49	17%	18%	14%	5%	26%	14%	6%	0%	0%	0%
Geology	171	21%	13%	4%	1%	4%	23%	16%	1%	17%	0%
Government & Politics	130	18%	28%	11%	3%	5%	4%	24%	0%	7%	0%
History	309	14%	16%	15%	4%	7%	2%	33%	4%	5%	0%
Health Education	134	17%	21%	18%	4%	11%	5%	24%	0%	0%	0%
Ironworking	118	13%	14%	29%	16%	0%	0%	28%	0%	0%	0%
Italian	92	20%	16%	17%	8%	0%	0%	28%	1%	10%	0%
Latin & Mex/Am Studies	55	47%	22%	11%	0%	0%	16%	4%	0%	0%	0%
Labor Studies	176	42%	10%	16%	3%	0%	7%	22%	0%	0%	0%
Landscape Horticulture	1,129	16%	15%	8%	1%	6%	2%	17%	6%	29%	0%
Latin	33	21%	36%	24%	0%	3%	0%	16%	0%	0%	0%
Legal Assistant	262	17%	18%	10%	7%	15%	5%	28%	0%	0%	0%
Learning Resources	6	0%	0%	0%	0%	0%	17%	33%	0%	50%	0%
Machine Technology	23	0%	56%	44%	0%	0%	0%	0%	0%	0%	0%
Mathematics	1,798	16%	17%	16%	6%	10%	2%	30%	1%	2%	0%
Music	714	39%	7%	8%	1%	13%	4%	19%	2%	7%	0%

GRADE DISTRIBUTION BY DEPARTMENT
MERRITT COLLEGE
FALL 1982

<u>Discipline</u>	<u>Final Enrolled</u>	<u>A</u>	<u>B</u>	<u>C</u>	<u>D</u>	<u>F</u>	<u>I</u>	<u>W</u>	<u>NC</u>	<u>CR</u>	<u>IP</u>
Nursing Aide	28	25%	33%	10%	0%	0%	11%	21%	0%	0%	0%
Nursing	236	35%	31%	11%	1%	4%	2%	3%	0%	13%	0%
Optometric Assistant	51	23%	10%	26%	6%	0%	0%	35%	0%	0%	0%
Physical Education	2,082	30%	16%	12%	3%	0%	1%	34%	1%	3%	0%
Pharmacology	36	0%	8%	14%	6%	8%	6%	39%	13%	6%	0%
Philosophy	34	6%	27%	3%	14%	9%	6%	33%	2%	0%	0%
Photography	124	4%	8%	15%	2%	9%	1%	55%	1%	5%	0%
Physics	185	18%	33%	22%	4%	9%	3%	11%	0%	0%	0%
Physical Science	30	17%	26%	30%	7%	20%	0%	0%	0%	0%	0%
Physiology	56	9%	25%	7%	22%	19%	2%	13%	3%	0%	0%
Psychology	690	14%	17%	8%	6%	1%	3%	33%	1%	17%	0%
Radiologic Tech.	195	14%	19%	14%	6%	4%	0%	5%	0%	38%	0%
Recreation & Leisure Serv.	138	30%	24%	20%	2%	0%	22%	2%	0%	0%	0%
Real Estate	114	9%	8%	12%	1%	0%	1%	69%	0%	0%	0%
Sociology	147	35%	16%	7%	7%	5%	8%	22%	0%	0%	0%
Spanish	149	12%	13%	12%	9%	31%	0%	19%	2%	2%	0%
Speech	147	24%	14%	11%	4%	7%	10%	30%	0%	0%	0%
Welding	68	22%	25%	32%	9%	4%	0%	8%	0%	0%	0%
Work Experience	365	31%	15%	4%	0%	2%	17%	31%	0%	0%	0%

GRADE DISTRIBUTION BY DEPARTMENT
VISTA COLLEGE
FALL 1982

<u>Discipline</u>	<u>Final Enrolled</u>	<u>A</u>	<u>B</u>	<u>C</u>	<u>D</u>	<u>F</u>	<u>I</u>	<u>W</u>	<u>NC</u>	<u>CR</u>	<u>IP</u>
American Sign Lang.	559	9%	14%	6%	0%	1%	5%	40%	10%	15%	0%
Art	1,323	20%	10%	2%	0%	0%	0%	21%	6%	41%	0%
Biology	125	19%	14%	2%	0%	0%	7%	54%	1%	3%	0%
Botany	42	29%	7%	0%	0%	0%	0%	28%	0%	36%	0%
Business & Commerce	2,092	12%	10%	8%	1%	0%	6%	34%	13%	16%	0%
Business Management	1,284	9%	7%	3%	1%	1%	1%	20%	7%	51%	0%
Community Social Service	234	17%	3%	0%	0%	0%	0%	10%	2%	68%	0%
Data Processing	1,780	2%	0%	2%	0%	0%	6%	19%	15%	56%	0%
Dance	385	39%	9%	0%	0%	0%	0%	12%	1%	39%	0%
Drama	365	48%	5%	4%	0%	0%	0%	12%	3%	28%	0%
Education	146	26%	21%	11%	0%	0%	0%	11%	7%	24%	0%
English	1,095	15%	10%	8%	0%	1%	0%	30%	9%	27%	0%
Environmental Studies	50	4%	0%	0%	0%	0%	0%	48%	0%	48%	0%
Environmental Tech.	338	45%	14%	5%	0%	0%	0%	18%	1%	17%	0%
Family & Consum. Stud.	756	16%	7%	2%	0%	0%	0%	18%	9%	48%	0%
French	153	13%	5%	0%	0%	0%	0%	53%	0%	29%	0%
German	55	18%	5%	0%	0%	0%	2%	46%	1%	28%	0%
Government & Politics	97	12%	16%	20%	0%	0%	3%	24%	6%	19%	0%
History	365	9%	7%	0%	0%	0%	0%	4%	11%	69%	0%
Health Education	696	12%	4%	0%	0%	0%	0%	16%	10%	58%	0%
International Studies	813	16%	2%	1%	0%	0%	1%	11%	11%	58%	0%
Italian	140	74%	25%	0%	0%	0%	0%	1%	0%	0%	0%
Job Preparation	136	9%	10%	1%	0%	0%	0%	11%	5%	64%	0%
Land Use Management	30	26%	0%	0%	0%	0%	0%	74%	0%	0%	0%

GRADE DISTRIBUTION BY DEPARTMENT
VISTA COLLEGE
FALL 1982

<u>Discipline</u>	<u>Final Enrolled</u>	<u>A</u>	<u>B</u>	<u>C</u>	<u>D</u>	<u>F</u>	<u>I</u>	<u>W</u>	<u>NC</u>	<u>CR</u>	<u>IP</u>
Mathematics	129	22%	6%	3%	15%	2%	26%	0%	23%	0%	
Media & Communications	78	27%	10%	6%	0%	0%	0%	26%	8%	23%	0%
Music	628	15%	5%	1%	0%	0%	0%	10%	1%	68%	0%
Nursing	219	10%	0%	0%	0%	0%	0%	3%	0%	87%	0%
Occupational Safety/Health	26	27%	46%	0%	0%	0%	19%	8%	0%	0%	0%
Physical Education	330	6%	0%	0%	0%	0%	0%	7%	15%	72%	0%
Philosophy	11%	18%	0%	10%	0%	18%	18%	36%	0%	0%	0%
Photography	142	13%	0%	0%	0%	5%	11%	15%	21%	35%	0%
Psychology	698	18%	2%	1%	0%	0%	0%	18%	23%	38%	0%
Real Estate	57	0%	9%	2%	9%	0%	1%	65%	0%	14%	0%
Sol/Hazard Waste Mngmt.	22	28%	13%	0%	0%	0%	0%	27%	19%	13%	0%
Spanish	702	22%	11%	4%	1%	0%	0%	40%	14%	8%	0%
Transportation	199	28%	31%	16%	4%	3%	2%	14%	1%	1%	0%
Waste Water Tech.	121	35%	14%	6%	0%	5%	0%	34%	6%	0%	0%

ERIC® CLEARINGHOUSE FOR
JUNIOR COLLEGES
UNIVERSITY OF CALIFORNIA

MAR 9 1984

8118 Math-Sciences Building
Los Angeles, California 90024