

DOCUMENT RESUME

ED 226 073

UD 022 532

AUTHOR Wolf, Judith G.; Sylves, David
 TITLE The Impact of Higher Education Opportunity Programs..
 Post Prison Experience of Disadvantaged Students: A
 Preliminary Follow-Up of HEOP Exoffenders. Final
 Report.
 INSTITUTION JnD Research, Williamsville, N.Y.; New York State
 Education Dept., Albany.
 PUB DATE 81
 NOTE 177p.; For related document, see ED 133 406. Prepared
 in cooperation with Daemen College.
 PUB TYPE Reports - Evaluative/Feasibility (142)
 EDRS PRICE MF01/PC08 Plus Postage.
 DESCRIPTORS Cooperative Programs; *Correctional Education;
 Correctional Institutions; Data Analysis; Data
 Collection; Equal Education; Higher Education;
 Individual Characteristics; *Outcomes of Education;
 *Prisoners; *Program Effectiveness; Released Time;
 State Programs
 IDENTIFIERS *Higher Education Opportunity Program; New York

ABSTRACT

Under the Higher Education Opportunity Program (HEOP) of the New York State Education Department, inmates of correctional facilities have been able to enroll in courses leading to postsecondary degrees at accredited institutions. In cooperation with colleges having resident HEOP programs, New York State prisons implement (1) in-prison programs under which instructors teach courses at the prisons and (2) educational release programs under which inmates attend classes at college campuses but return to the correctional facility every day. To evaluate the program, data were collected on 277 male former inmates who participated in the program and had since been released from prison. Information collected included the subjects' individual and demographic characteristics; criminal experiences; time spent, credits earned, courses taken, services received, and academic achievement in the program; and subsequent crime record, employment, income, and educational status after release. The data indicated positive program results despite short periods of participation; over half of the subjects attended college and 75 percent had been employed after release, and the group's recidivism rate was comparatively low. The report presents several tables of data and extensive descriptions of instruments used, data collection, data processing, and the variables examined in the study. (MJL)

 * Reproductions supplied by EDRS are the best that can be made *
 * from the original document. *

ED226073

—THE IMPACT OF HIGHER EDUCATION OPPORTUNITY PROGRAMS—

POST PRISON EXPERIENCE OF DISADVANTAGED STUDENTS
A PRELIMINARY FOLLOW-UP OF HEOP EXOFFENDERS

FINAL REPORT

By
Judith G. Wolf, Ph.D.
and
David Sylves, Ed.D.

U.S. DEPARTMENT OF EDUCATION
NATIONAL INSTITUTE OF EDUCATION
EDUCATIONAL RESOURCES INFORMATION
CENTER (ERIC)

✓ This document has been reproduced as
received from the person or organization
originating it.
Minor changes have been made to improve
reproduction quality.

- Points of view or opinions stated in this document do not necessarily represent official NIE position or policy.

"PERMISSION TO REPRODUCE THIS
MATERIAL HAS BEEN GRANTED BY

JUDITH G. WOLF
JWD Research

TO THE EDUCATIONAL RESOURCES
INFORMATION CENTER (ERIC)."

UD 022 532

*JnD Research
Williamsville, New York*

—THE IMPACT OF HIGHER EDUCATION OPPORTUNITY PROGRAMS—

POST PRISON EXPERIENCE OF DISADVANTAGED STUDENTS
A PRELIMINARY FOLLOW-UP OF HEOP EXOFFENDERS

FINAL REPORT

By
Judith G. Wolf, Ph.D.
and
David Sylves, Ed.D.

in cooperation with

*Daemen College
Snyder, New York*

*New York State
Education Department
Albany, New York*

-1981-

TABLE OF CONTENTS

	Page
LIST OF TABLES	iv
LIST OF FIGURES	vi
I. INTRODUCTION	1
II. STATEMENT OF THE PROBLEM	2
III. METHODOLOGY	3
A. The Treatment	3
B. The Sample	4
C. The Instrumentation	5
D. The Procedure	6
1. Establishing the Sample	6
Process Considerations.....	6
2. Collecting the Data	7
Process Considerations	11
3. Defining the Variables.....	13
Process Considerations	14
4. Preparing the Data for Computer Entry	16
E. Analyzing the Data	17
IV. THE VARIABLES	18
A. Introduction	18
B. Variable Overview	19
C. Operational Definitions.....	21
D. Coding Scheme	38

V.	RESULTS AND CONCLUSIONS.....	50
A.	Introduction	50
B.	Pre Release Results.....	52
1.	Biographic/Demographic	52
2.	Previous Record.....	56
3.	Program Crime.....	60
4.	HEOP Prison Program.....	63
C.	Post Release Results.....	72
1.	Release Information.....	72
2.	Subsequent Record.....	76
3.	Parole Survey.....	97
4.	College.....	110
5.	Status Now.....	120
VI.	EXECUTIVE SUMMARY.....	123
VII.	APPENDICES	
A.	HEOP Programs.....	126
B.	Data Collection Forms	133
C.	Dictionary of Occupational Titles: Category Definitions.....	143
D.	Glossary.....	146
VIII.	SOURCES CONSULTED.....	151

LIST OF TABLES

		page
Table 1	Prisons and Affiliated Colleges	3
Table 2	Sample by Prison and Release Status	4
Table 3	Biographic/Demographic	54
Table 4	Biographic/Demographic Continued	55
Table 5	Previous Record	59
Table 6	Program Crime	62
Table 7	HEOP Prison Program-Credits, Time, GPA.	66
Table 8	HEOP Prison Program-Time, Major, Program Type	67
Table 9	HEOP Prison Program-Provision of Supportive Services	69
Table 10	HEOP Prison Program-Intake Prognosis	70
Table 11	HEOP Prison Program-Status Before Release	71
Table 12	Release Information-Year by Type	74
Table 13	Release Information-Release To Data Collection (Time).....	75
Table 14	Subsequent Record-Arrests:Total and With Conviction.....	78
Table 15	Subsequent Record-Most Severe Confrontation:Total Sample	79
Table 16	Subsequent Record-Most Severe Confrontation:Parolees	81
Table 17	Recidivism Rates by Most Severe Confrontation	83
Table 18	Subsequent Record by Length of Follow-up Period:	86
	Most Severe Confrontation	
Table 19	Recidivism Rates by Length of Follow-up Period:	87
	Most Severe Confrontation	
Table 20	Subsequent Record by Length of Follow-up Period:	89
	First Confrontation Leading to Return.	
Table 21	Comparison Between HEOP and DOCS Samples on Selected	93
	Characteristics.	

Table 22	Parole Survey: Age and Source of Information	98
Table 23	Parole Survey: Employment and/or School	103
Table 24	Parole Survey: Number of Jobs Since Release	104
Table 25	Parole Survey: Longest Known Time On Any Job	105
Table 26	Parole Survey: Occupation	106
Table 27	Parole Survey: Income	107
Table 28	Parole Survey: Source of Income	108
Table 29	Parole Survey: Family Situation	109
Table 30	College: Educational Status	115
Table 31	College: Number Attended	116
Table 32	College: Credits Obtained and Length of Enrollment.....	117
Table 33	College: Length of Enrollment	118
Table 34	College: Major and GPA	119
Table 35	Status Now	122

LIST OF FIGURES

Variable Overview 19

Previous Record 26

Subsequent Record / Explanation..... 32

Subsequent Record / Chart..... 33

I. INTRODUCTION

The Higher Education Opportunity Program (HEOP) was instituted by the State of New York as a vehicle to facilitate the provision of equal access to educational opportunity at independent institutions of higher learning within the State. The major thrust of this program is directed toward on-campus programs at independent two and four year colleges and universities.

Under the auspices of HEOP, an opportunity to participate in courses at the post secondary level has been extended to educationally and financially disadvantaged inmates of correctional facilities. The first such HEOP program was initiated in the Spring of 1973 at Green Haven, a maximum security facility in Eastern New York State. Since that time, HEOP programs have been instituted at three additional maximum security facilities within the State; Great Meadow, Attica, Auburn, and one medium security facility, Coxsackie. Great Meadow and Coxsackie began programs in the Spring of 1974; Attica in the Summer of 1975, and Auburn in the Fall of 1976.

Despite the fact that these programs have been in effect for a relatively short period of time, it is desirable and timely to investigate effects which they may produce. However, since they represent a revolutionary adjunct to existing strategies for rehabilitation and reform, there is no accountability precedent to provide formative or summative feedback. In fact, a review of the literature indicated that a study investigating either the process or the impact of higher educational programs in prisons has not been conducted.

There is then a need to design and implement strategies which provide this type of feedback and, therefore, aid in determining future program direction. In a time which is demanding accountability and justification of expenditures, the need for such an evaluation has been made a priority by the HEOP office.

II. STATEMENT OF THE PROBLEM

The Higher Education Opportunity Program of the State Education Department (SED) supports credit bearing courses in various correctional facilities in New York State. This preliminary follow-up of exoffenders who were enrolled in one of five HEOP programs while incarcerated was conducted to:

1. examine the impact of HEOP prison programs through a documentation of release experience, and
2. determine and document the processes inherent in the conduct of such an examination in order to determine the feasibility of evaluation strategies.

III. METHODOLOGY

A. The Treatment

Like the more traditional on-campus HEOP programs, incarcerated students are able to work toward and obtain a baccalaureate or associate degree by taking courses from an accredited institution. This is possible because each prison program is affiliated with an accredited area college or consortium of colleges which has a resident HEOP program. In general, two types of programs are in existence; the in-prison program and the educational release program. In the in-prison program, professors and instructors from the area college teach courses at the prison. In the educational release program, inmates are allowed to leave the prison in order to attend classes on the campus of the area college. They return to the correctional facility each day.

The prisons and the colleges with which they are affiliated are presented in Table 1 below. (Appendix A contains a more detailed description of the HEOP program at each of the prisons).

TABLE 1
Prisons and Affiliated Colleges

Green Haven	Marist College
Great Meadow	Skidmore College, University Without Walls
Coxsackie	Junior College of Albany Russell Sage College
Attica	Consortium of the Niagara Frontier Canisius College Daemen College Niagara University
Auburn	University College of Syracuse University

B. The Sample

The sample consists of 277 male exoffenders who attended HEOP programs while incarcerated in one of five maximum security prisons in the State of New York.

The parameters for inclusion in this sample were:

1. successful completion of at least one academic credit;
2. identification of release status by HEOP Prison Program Directors and;
3. verification of release status through the New York State Department of Correctional Services (DOCS).

Therefore, the sample includes those exoffenders who were released from prison at least three months prior to data collection at DOCS and whose names were forwarded to the researchers by the Prison Program Director. November 1, 1977 was given as the cutoff date. Since the sample size for the fifth program is so small (N=5) the cutoff date for this program was extended to December 1, 1977.

Table 2 below presents the sample size by prison and release status. The remainder of the biographic/demographic information is presented in the results section.

TABLE 2
Sample by Prison and Release Status

Prison	N%	Parole*	Type Of Release		
			Court Order	Reversal	Sero
Green Haven . .	47/17.0	46	1	0	0
Great Meadow . .	63/22.7	61	1	1	0
Coxsackie . . .	113/40.8	106	3	0	4
Attica	49/17.7	48	0	1	0
Auburn	5/1.8	5	0	0	0
	277/100	266/96.0%	5/1.8%	2/0.7%	4/1.4%

*Includes conditional release and Chapter 148.

C. The Instrumentation

The instrumentation for this study consists of a series of forms used to collect the data. The complete set of forms, presented in Appendix B, are described below.

Form #1 was used by project personnel to collect data from the Department of Correctional Services (DOCS). This form, patterned after a form used by the Division of Program Planning, Research and Evaluation at DOCS, contains biographic/demographic information, location of parole officer for follow-up purposes, and information relating to criminal record. (see Appendix B-1).

Form #2 was used by Prison Program personnel to supply information relating to the HEOP in-prison educational program. Data includes Grade Point Average, (GPA), Length of Time in Program, and Number of Hours Completed. Form #2 also includes a rating scale, Counselor's Prognosis, being investigated for use at intake to predict a student's success potential. In this study, all responses to this scale were ascertained post hoc. Therefore, the scale was accompanied by a reliability of rating scale in which the rater was asked to rate the accuracy of his potentiality rating. Nevertheless, given the limitation of time of rating, any finding(s) which may result from the use of the scale would have to be taken only as indicators to be replicated in a later study. The instrument was included in this study for pilot test purposes only. Form #2 in its entirety is presented in Appendix B-2.

Form #3 is a questionnaire used to elicit post release information from parole officers. The instrument was designed by project personnel and utilizes suggestions obtained through consultation with the Executive Director of Parole and parole officers. Form #3 requests information related to the career (i.e., employment), educational, and criminal records of the sample. Each questionnaire was accompanied by a consent form which was signed by each exoffender

prior to release of this data. A copy of the questionnaire and the consent form are contained in Appendix B-3.

Form #4 was used to collect educational information from colleges attended by the subjects after their release from prison. The form, designed by project personnel, first requested verification that the subject had been enrolled and, if so, asked for the dates of enrollment, length of enrollment, number of hours completed and GPA. (see Appendix B-4)

D. The Procedure

1. Establishing the Sample

a) HEOP Prison Program Directors were asked to identify and forward a list of names of those inmates who were no longer enrolled in the program and whom the director thought had been released from prison. In order to be included in this list, an inmate must have successfully completed at least one academic credit.

b) The names so forwarded were verified for release status through the New York State Department of Correctional Services (DOCS).

This was a two step process. First, Department Identification Numbers (DIN's) were obtained from prison officials at the request of HEOP Prison Program Directors. Second, the verification search was completed by project personnel at DOCS in Albany.

Process Considerations

In many cases the Prison Program Directors do not know whether an inmate has been released from prison or transferred to another prison. This necessitates the verification of release status through the New York State Department of Correctional Services. In order to complete this procedure, it is advantageous to have the DIN numbers of the exoffenders although it is possible to verify

status if an individual's birth date and years of incarceration are known. Since HEOP personnel do not keep a record of DIN numbers in their files, the numbers must be supplied by corrections personnel at each prison. In some cases, DIN numbers are difficult to obtain because the numbers are not always available at the individual prisons, especially for those individuals who were incarcerated before this classification procedure was instituted.

There is one advantageous aspect of the verification process which is extremely important to note. That is, when verifying whether or not an exoffender has been released from prison or simply transferred, it is possible to determine whether the subject has been reincarcerated. Therefore, this information (referred to in the discussion relating to subsequent record) was obtained at this step for all subjects.

2. Collecting the Data

a) The initial data needed to establish the sample was obtained through a letter from project staff to Prison Program Directors. The letter described the project, introduced project personnel, and detailed the information needed to select and determine eligibility of specific subjects. The letter was sent during the Summer of 1977.

b) The letter was followed by an on-site visit by project staff to each of the Prison Program Directors to explain the study more fully, to elicit their cooperation in communicating with prison personnel when necessary and in providing relevant HEOP program data, and finally to itemize the actual data which would be needed from each program. The visits took place during the Fall of 1977.

c) After several preliminary meetings with administrative personnel at the State University College at Buffalo and HEOP personnel at the State Education Department in Albany, it was determined that the best, most effective and effi-

cient way to obtain post release data for this study would be to obtain the support of the Executive Director of the New York State Executive Department, Division of Parole.

Prior to any direct communication by project personnel with the Executive Director, a letter of introduction and request for support was sent to him from the Chief of the Bureau of Higher Education Opportunity Programs.

d) Subsequently, a meeting with the Executive Director and project personnel was held in Albany during the early Fall of 1977. During this meeting the Executive Director was familiarized with the purpose of the study and his support was requested. He was most gracious in his response, agreeing to aid in the provision of access to data necessary for the completion of the study. As a first and necessary step, the Executive Director called together members of the Program Planning Committee of DOCS so that project personnel could present the study to them and obtain their approval. This presentation was later followed by a letter from JnD Research stating that the project was in compliance with research guidelines established by the Program Planning Committee. Additionally, at this first meeting with the Executive Director a procedure was established for collecting data. The procedure entailed the following steps:

Step 1. Utilizing records housed at DOCS to collect biographic/demographic data and to identify the parole area office where each exoffender had been assigned. This step was to be completed by project personnel using Form #1;

Step 2. Designing and printing a survey (referred to as Form #3) to be sent (through the Executive Director's Office) to each parole officer. This step was to be completed by project personnel, and;

Step 3. The distribution and collection of the survey. This step was to be completed by the Executive Director's office.

e) All forms used for the collection of data in this study were designed with input from appropriate personnel. For example, personnel associated with the criminal justice system and relevant HEOP personnel contributed and/or edited forms related to that aspect of the study. Personnel associated with HEOP programs consulted on forms related to the educational aspect of the study, and college personnel offered advice on collecting data from post release colleges.

f) Data contained on Form #1 was collected by project personnel for all subjects who had been verified as having been released from prison. Data collection was carried out in Albany in the file room of DOCS. Collection commenced in October 1977 and continued until April 1978.

g) In order to collect data related to the in-prison HEOP program, Form #2 was mailed to Prison Program Directors in the Spring of 1978. The form was completed by HEOP prison program personnel during the Spring semester and the Summer of 1978. When necessary, verification and recollection of data took place during the following school year.

h) The Parole Officer Survey (Form #3) was disseminated and collected through the Office of the Executive Director, Division of Parole, DOCS. Forms were mailed to parole officers in the Spring of 1978. Officers were asked to obtain the consent of parolees, complete the form, and return it within one month. The rate of return was high (approximately 85%).

For all surveys which had not been returned by the specified date, project personnel made follow-up telephone calls to parole officers. When possible, (that is, if consent had been given) the information was obtained over the telephone. If consent had not been obtained, the officer divulged any information which he felt would not be a breach of confidence. For example, if the parolee had no subsequent record or was attending a college, the officer might

have indicated this. It should be noted that since information regarding subsequent record was available to project personnel through DOCS, it was not necessary to obtain this particular information from parole officers in order for the study to be valid.

i) For those subjects who were no longer on parole (e.g., completed sentence), information contained on the Parole Officer Survey was obtained from the latest parole report in the subject's corrections/parole record. For those subjects who had never been on parole (e.g., Reversal, Court Order, Sero), information on subsequent record was obtained during the verification process (as it was for all subjects--see section 1). In addition, post release school information was obtained from HEOP Prison Program Directors whenever possible.

j) Based on responses from parole officers, from records at DOCS, and from HEOP Prison Program Directors, colleges attended by exoffenders in the study were identified. Approximately 62 colleges were identified from the two forms.

A conference was held with the Director of Admissions at SUCB in order to insure that the release of information by colleges was permissible without the specific consent of the subject. Project personnel were referred to the "Guide to Post-secondary Institutions for Implementation of the Family Educational Rights and Privacy Act of 1974 As Amended" prepared by Task Force on the Family Educational Rights and Privacy Act of 1974; "Buckley Amendment"; American Association of Collegiate Registrars and Admissions of 1976. This guide includes a statement that institutions may disclose education records without written consent of students if the information is to be used for research purposes and anonymity is preserved. (Section V; A,3,d).

In June 1978, Form #4 (the post release college survey) with a cover letter from HEOP-SED was sent to each college from the HEOP Albany office. The letter briefly described the study and requested help following up HEOP students. The

college was directed to return Form #4 to JnD Research. Neither the letter nor the form make any reference to the particular HEOP program so that the colleges could not possibly know that the subjects were exoffenders.

At the end of the Summer of 1978, project personnel telephoned all non-respondents to ascertain the reasons for not returning the survey and to obtain the information over the phone. Additionally, phone calls were made during the year the data were being coded to clarify discrepancies and/or fill in blanks.

Process Considerations

In order to gain access to the data necessary for completion of this study, it was necessary to obtain the cooperation of the New York State Department of Correctional Services and the New York State Executive Department, Division of Parole. Data relating to criminal record, both previous and subsequent, was available only through these Departments. This entailed establishing more extensive linkages between JnD Research, as the HEOP representative, and these aforementioned Departments than has previously existed.

Prior to January 1, 1978, the Division of Parole was part of the Department of Correctional Services. All personnel and records were housed at DOCS. On January 1, 1978, the Division became part of the Executive Department, an organizational arrangement which had previously existed between the years of 1930 and 1971. When the previous organization was re-established, the Division moved its offices and its records to a different location. Since the actual move did not take place until Spring 1978, it was possible for project personnel to obtain data related to biographics and demographics (and criminal record) contained on Form #1, and data related to parole information, such as name and location of current parole officer, at one location. This expedited a process which was already extremely time consuming. Future data collection in New York State

would have to be conducted at two locations.

In order to follow up released offenders, it was necessary not only to identify specific parole officers but also to establish contact with them, since parole officers have the best idea where to locate an exoffender. This brings up an important point. That is, without attempting to contact an exoffender directly using addresses or leads from the HEOP program files, a process which would be time consuming and a gamble at best, the parole officer is the only direct link to the exoffender. Any subject who is no longer on parole, or who has never been on parole cannot be assessed in detail using a secondary source. The words 'in detail' have been used because it is possible through DOCS records to ascertain simply whether or not a subject has been reincarcerated.

As stated previously, contact with parole officers was established for the project by the Executive Director of the Division of Parole. Obviously, the success of this particular project is highly related to the above procedural assistance. Any replication would also be dependent on this type of cooperation.

On the positive side, the most important process consideration was the supportive relationship established between HEOP, DOCS, and Parole. Most especially, the support of the Executive Director was invaluable. His interest and continued support contributed greatly to the completion of this study.

On the negative side, the most serious process consideration was the length of time necessary to collect the data at most levels. To say the least, data collection was slow and in some cases tedious.

More specifically, in order to locate and collect data from records maintained at DOCS, certain familiarity with the record system is required. The present project was fortunate in being able to obtain the services of data collectors who were not only familiar with these records but also possessed a

20

great deal of knowledge about the HEOP Program itself. In spite of this positive aspect, a minimum of twenty minutes per subject was required to complete Form #1. Resultingly, the data was somewhat expensive to collect.

Data collection was also slow at other stages. With the exception of the data collection at DOCS and the survey of parole officers, it was necessary to go back time and time again at the other collection stages. Forms were incomplete and/or did not make sense. Although both college personnel and HEOP personnel helped to make the data both complete and accurate, the process nevertheless took many months. It is interesting to note that the last piece of information was received from a college on January 23, 1980, one and one half years after the initial request was made.

As a result of the experiences incurred during the tenure of this project, several recommendations for HEOP emerge. It is highly recommended that HEOP programs keep complete, accurate records, at least on basic program variables. Perhaps the establishment of standard intake and process record forms, which could be used by all programs, would facilitate both research and evaluation.

In addition, it would be advantageous for a subsequent evaluation/follow-up utilizing an interview approach if HEOP prison personnel attempted to maintain close relationships with each student, encouraging or in some way bringing about communication from the student to HEOP personnel after the student has left the program. This would certainly facilitate direct follow-up with each student. Since this precedent has been established with at least one HECP prison program to date, it appears not to be as impossible as it might on first thought.

3. Defining the Variables

To reiterate, data were collected from four sources:

1. Department of Correctional Services and New York State Executive

Department, Division of Parole records. (Forms #1 and #3);

2. HEOP Prison Programs. (Form #2);
3. Parole Officers. (Form #3); and
4. Records from colleges attended by exoffenders after release. (Form #4).

a) In order to define each variable in the most opportune way, conferences were held with a variety of experts. These included: HEOP personnel at the program and state level; Correctional Services and Division of Parole personnel; Professors in the Criminal Justice Department at the State University College at Buffalo; attorneys working for the Division of Parole, in private practice, associated with family court, and working for legal aid; parole officers; and an exoffender who was serving as the coordinator of a federally funded Early Release Program.

b) A review of the literature was conducted to identify current methods of defining recidivism in order to incorporate them into an operational definition.

c) From the collected data, 73 variables were identified, operationally defined, and a coding scheme established for each variable.

d) The variables and coding schemes were presented for review to two members of the New York State Executive Department, Division of Parole, (i.e., the Executive Director and the Director of Evaluation and Planning). Both found the system acceptable.

Process Considerations

Seventy-three variables were developed from the data. From a process point of view, the development of these variables is extremely interesting. That is, it is interesting to see just what data it is possible to collect and how these data can be translated into usable form. The fact that many months were spent

in this endeavor is perhaps compensated by the fact that we hope the operationalization of variables has been done appropriately for this population.

One of the most difficult and challenging aspects of the variable development was operationalizing variables relating to recidivism. A major problem with using recidivism as a dependent variable is the difficulty in attempting to define it explicitly. A review of the literature indicates that there is no single, agreed upon definition used across research studies or reports.

Consensus simply does not exist.

In an attempt to respond to this, it was necessary to create a great many variables. Therefore, although 73 variables do exist, not all are separate and distinct. For example, for previous record, instead of coding variable #14, Number of Times Guilty; #15, Number of Times Not Guilty; and #16, Number of Times Don't Know (i.e., whether a subject was guilty or not guilty) as three separate variables, Number of Times Guilty could have been included as the only variable. However, since this is a process study, all possibilities were included. This was done in order to paint as nearly complete and fair a picture of each subject as possible. In addition, considering the lack of a consistent definition of recidivism in the literature, variables were coded so as to be comparable with as many definitions as possible.

Resultingly, although 73 variables have been developed from the data, not all of these variables will appropriately be used in an evaluation of impact. The major reason for this is that not all of the 73 variables are relevant in a determination of impact (e.g., #55, Information Release Signed). An additional reason was mentioned above, that is, some variables were created to provide a basis for comparison with existing definitions of recidivism. Therefore, several variables exist to be used in data analysis where they will be combined with other variables in order to generate necessary information. For example,

one set of subsequent record variables is coded in time increments. Accompanying each time period is a variable called Status which indicates essentially whether or not a subject was on parole during the preceding time period. There are seven such time periods and seven such status variables. Obviously, a status variable representing a six month or year time period is, in and of itself, of little interest.

One the other hand, two variables which are of extreme interest are #71 and #72, GPA in College (post release) and Status Now.

Finally, it is important to note that it was not possible to obtain up to date information for all subjects on all variables. For example, for subjects who were on parole, the information supplied through parole officers is considered to be both accurate and up to date. For others, only criminal record and post release college, if a college responded, can be considered up to date.

In actuality, this does not affect the data analysis procedures used in an 'examination' of impact. It does, however, somewhat affect the interpretation of results because the sample size for some follow-up variables has been lowered appreciably. For this reason, the lack of up to date information for some subjects would have to be considered a major limitation of the present study.

4. Preparing Data for Computer Entry

Based on the procedures described in the preceding section, the collected data was coded, posted, and keypunched for entry into the computer.

Process Considerations

Because of the need to clarify data contained on various forms (see subsection 2, collecting the data) and because of the complexity of the data itself, the actual coding was extremely time consuming. Additionally, because the data

were so complex, the possibility for coding errors was increased immeasurably. For this reason, the input was checked and rechecked to insure as accurate a data deck as possible-an equally time consuming task.

E. Analyzing the Data

For the data analysis in the present study, the data were pooled across the five prison programs. Statistical package for the Social Sciences (SPSS) was used to analyze these data. This system contains computer programs which provide descriptive statistics, simple frequency distributions and crosstabulations, as well as a large number of statistical procedures. Commonly used in the social sciences, the system is advantageous because it allows the user to handle large amounts of data and large numbers of variables easily. Specifically, the subprogram FREQUENCIES which computes and presents frequency distributions, histograms, and related statistics was used to describe the variables created from the records contained on the four forms. Utilizing the subprogram CROSSTABS, several crosstabulations were also performed. This procedure simultaneously displays the data on two or three variables.

IV. THE VARIABLES

A. Introduction

The three subsections which follow contain a presentation of the variables created for this study. Because the section is both comprehensive and detailed, and because it contains a large number of variables, an overview is presented first. This overview will help the reader organize the vast amount of information contained in the remainder of the section. The overview presents the variables organized by group (e.g., biographic/demographic data; previous record data) and by form. The number of each variable, a short description, and the page number which contains the definition are also presented for easy reference.

The definition subsection presents an operational definition of each variable (with the exception of those which are self explanatory). Charts as well as explanations and/or notes have been included when these were deemed necessary for clarity and replicability.

The final subsection presents the coding scheme used to code the 73 variables created for this study.

B. Variable Overview

Variable Group	Variable	Variable Label	Data Source Form	Definition Reference
PRE RELEASE				
<i>Biographic Demographic Data</i>	1	school	corrections/parole records Form No. 1.	not needed
	2	age (birth to March 1, 1979)		page 21
	3	ethnicity		not needed
	4	drug use		page 21
	5	highest grade attained		page 21
	6	high school graduation		page 21
	7	reading score		page 21
	8	math score		page 21
	9	grade level average		page 21
	10	I.Q.		page 22
<i>Previous Record Data</i>	11	age at first confrontation	corrections/parole records Form No. 1	page 22
	12	number of confrontations		page 23
	13	number of arrests		page 23
	14	times guilty		page 23
	15	times not guilty		page 24
	16	times don't know		page 24
	17	times in jail (short term)		page 25
	18	times incarcerated (long term)		page 25
	19	parole violations times guilty		page 25
	20	parole violations not guilty or don't know		page 25
	21	probation violations times guilty		page 25
	22	probation violations not guilty or don't know		page 25
<i>Program Crime</i>	23	severity index		page 27
	73	length of time in prison		page 27
<i>HEOP Prison Program Data</i>	24	number of credits in program	HEOP program records Form No. 2	page 27
	25	length of time in program		page 28
	26	in prison major		not needed
	27	in prison GPA		not needed
	28	type of program		page 28
	29	remedial supportive services		not needed
	30	tutorial supportive services		not needed
	31	counseling supportive services		not needed
	32	intake prognosis/potential		page 28
	33	intake prognosis/reliability of rating		page 28
	34	status before release		page 28

Variable Group	Variable	Variable Label	Data Source Form	Definition Reference
POST RELEASE				
<i>Release Information</i>	35	type of release	corrections/parole records Form No. 1	page 28
	36	year of release		page 28
	37	release to data collection		page 28
<i>Subsequent Record Data</i>	38	total arrests	corrections/parole records Form No. 1	page 29
	39	arrests-with conviction		page 29
	40	subsequent record within first 6 mths.		page 29
	41	status within first 6 mths.		page 31
	42	subsequent record 6 - 11.9 mths.		page 29
	43	status for 6 - 11.9 mths.		page 31
	44	subsequent record 12 - 23.9 mths.		page 29
	45	status for 12 - 23.9 mths.		page 31
	46	subsequent record 24 - 35.9 mths.		page 29
	47	status for 24 - 35.9 mths.		page 31
	48	subsequent record 36 - 47.9 mths.		page 29
	49	status for 36 - 47.9 mths.		page 31
	50	subsequent record for 48 - 59.9		page 29
	51	status for 48 - 59.9 mths.		page 31
52	subsequent record for more than 60 mths.	page 29		
53	status for more than 60 mths.	page 31		
54	most severe subsequent confrontation	page 31		
<i>Parole Survey Data</i>	55	parole information release signed	parole officers; corrections/parole records Form No. 3	not needed
	56	valid code and data source		page 34
	57	present or latest known employment or school		page 34
	58	present or latest known number of jobs		page 35
	59	longest known time on any job		not needed
	60	present or latest known occupation		page 35
	61	approximate present or latest known income		page 35
	62	present or latest known source of income		not needed
	63	CETA funds involved		not needed
64	present or latest known family situation	not needed		
<i>College Data</i>	65	educational status	college records Form No. 4	page 36
	66	number of colleges attended since release		page 36
	67	number of college attended with credit since release		page 36
	68	number of credits since release		page 36
	69	total length of enrollment in any college since release		page 36
	70	major in college		page 37
<i>Status Now</i>	71	GPA in college	page 37	
	72	status now	combination	page 37

C. Operational Definitions

BIOGRAPHIC/DEMOGRAPHIC

- #2 AGE The number of years old a subject was as of March 1, 1980.
Note: March 1, 1978 was the date of the last data collection at the Department of Correctional Services (DOCS).
- #4 DRUG USE *Note:* A distinction was made between two types of drug use, hard drugs and marijuana only. To be classified as a user of hard drugs, the subject must have taken one or more of the following substances: cocaine, heroin, amphetamines, LSD, THC, PCP and/or opium. To be classified as a user of marijuana only, the subject must have used marijuana or hashish one or more times. Alcohol was not included in either of the two categories.
- #5 HIGHEST GRADE ATTAINED The grade the subject was in at the time of withdrawal from school.
Note: If the subject had graduated from high school and had not continued his education, grade 12 was used.
- #6 HIGH SCHOOL GRADUATION *Note:* Response Choice (2) High School Equivalency A subject was considered to have obtained an Equivalency Diploma if: (a) his records indicated that he passed the examination (i.e., the Test of General Educational Development), or (b) his records indicated that he scored 225 or better on the examination.
- #7 READING SCORE
#8 MATH SCORE
#9 GRADE LEVEL AVERAGE *Note:* Scores for these variables were derived from the achievement test listed below. In cases where two or more reading scores of the same type were given (e.g., two vocabulary scores), scores were averaged. In cases where two different reading scores were given (i.e., spelling and vocabulary), the vocabulary score was used. These problems did not arise with math scores.

Tests: (The tests and forms listed below were found in the subjects' records at DOCS. References are included where possible):

Stanford Achievement Test. Buros, O.K. The Seventh Mental Measurement Yearbook, Highland Park, New Jersey: The Gryphon Press, 1972. Forms listed were: Form B; Intermediate J; Intermediate W-11; Advanced W; Advanced J.

Spanish Bursit-A reference for this test could not be identified.

PTI - The name of this test could not be located.

#10 I.Q.

Note: I.Q. scores were derived from the tests listed below. In cases where a full scale I.Q. score was not given but a verbal and a non-verbal score was available, the average of the two was computed and coded. A conversion table was not used because the test which had been administered was not always known.

Tests: (The tests and forms listed below were found in the subjects' records at DOCS. References are included where possible).

Revised Beta Examination. Buros, O.K. The Sixth Mental Measurement Yearbook, Highland Park, New Jersey: The Gryphon Press 1965.

Wechsler Adult Intelligence Scale. Buros, O.K. The Seventh Mental Measurement Yearbook, Highland Park, New Jersey: The Gryphon Press, 1972.

Otis Lennon Mental Ability Test. Ibid

Otis Quick Scoring Mental Ability Test. Ibid.

Beta ACCT. Identified through personal communication with test publishers. After World War I, the Army developed tests called the Army Alpha and the Army Beta which later became the Army General Classification Test.

Berrill IO - A reference for this test could not be identified.

Wechsler Beta - the Psychological Corporation, which publishes the Wechsler Adult Intelligence Scale, is unfamiliar with a Beta version.

PREVIOUS RECORD

The criminal record of a subject prior to his participation in the HEOP "in prison" program.

Note: The chart on page 26 presents a graphic which displays the relationship between variables contained in this grouping. As described in a previous section (III.D.3. Defining the Variables), each variable was coded separately in order to provide a data base which would be as flexible as possible.

#11 AGE AT FIRST
CONFRONTATION

The age of a subject on the date the first entry was made in his criminal record.

#12 NUMBER OF
CONFRONTATIONS

The total number of times a subject has gone on record as having some negative contact with the police regardless of age, disposition, or severity of crime.

#13 NUMBER OF
ARRESTS

The total number of times a subject has been arrested for some crime (regardless of severity or disposition) for which he could not be considered a JD or YO.

Note: If a subject was arrested for more than one crime on any given date, or if he was arrested one day and arrested again the next, such arrests were only counted once.

JD and YO arrests were not counted. As a result in a few instances the frequency count will show no jail time when in fact the subject served time as a YO or JD. For example, we show a subject as 0 arrests and times guilty when in fact he was in jail for a crime with a YO status.

#14 TIMES GUILTY

Number of convictions, i.e., the number of arrests resulting in conviction.

Note: If a subject was convicted of more than one crime for any given arrest such convictions were only counted once. (Therefore, number of convictions could not exceed number of arrests).

Excluded from this category are parole violations and probation violations.

A subject was considered to have been convicted if:

- the subject served time (time = days, months, or years)
- the subject was fined
- the subject was ordered to make restitution
- the subject was put on probation
- the subject was given a suspended sentence
- the subject was given a conditional discharge
- the subject was already on probation at the time of the offense and his probationary period was extended or continued
- the name of the correctional facility, county jail, rehabilitation center, drug facility, or reformatory where the subject was sent was listed for the disposition. (note: time spent in any of the above named institutions was counted as a conviction only)
- custody was suspended
- in cases where the disposition was a choice of paying a fine or going to jail, it was assumed that the subject elected to pay the fine. Thus, to cite an example, \$50.00 or 50 days was counted as a conviction but not as time spent in jail or state prison
- if the subject was sentenced to hard labor, this was counted as a conviction, and also as time spent in state prison

- the subject was committed to a state mental hospital. This was counted as a conviction only, and not as jail time
- the subject was discharged dishonorably from the army or navy
- the disposition was ACD - adjourned in contemplation of dismissal

#15 TIMES NOT GUILTY

The number of arrests that did not result in a conviction.

Note: Excluded from this category are Parole Violations and Probation Violations.

The disposition of the crime was considered to be a nonconviction if:

- the subject was acquitted
- the subject was given an unconditional discharge
- the case was dismissed, withdrawn or revoked
- the subject was never arraigned
- the case was not considered
- the crime for which the subject was arrested was never reported
- there was no bill
- there was insufficient evidence to convict the subject
- the disposition was "Nolle Prosequ"
- the case was dismissed without prejudice
- the subject was released

#16 TIMES DON'T KNCW

The number of arrests for which the disposition of the crime for which the subject was arrested is not known.

Note: Excluded from this category are Parole Violations and Probation Violations.

The disposition of the crime was considered to be unknown if:

- there were blanks, lines or question marks in the disposition column of the data collection sheets
- the sentence was pending at the time of the data collection
- the subject was held in lieu of bond
- the subject was made to forfeit bond
- there was no disposition, or the disposition was unavailable
- the subject was designated P.I.N.S. (Person in Need of Supervision)
- the charges were covered
- the subject was waiting arraignment at the time of the data collection
- the case was pending at the time of the data collection, but the subject was pleading guilty
- the disposition was D.O.R. (Disposition on Request)
- there was a disposition that was illegible or incomprehensible

#17 TIMES IN
JAIL
(short term)

The number of times the subject was sentenced for a term of less than one year for a crime that was a misdemeanor or felony.

Note: Not included in the category are parole violations and probation violations.

#18 TIMES
INCARCERATED
(long term)

The number of times a subject has been sentenced for a term of one year or more for a crime that was a misdemeanor or felony.

Note: Not included in this category are parole violations and probation violations.
A sentence served concurrently was not counted as an additional time in jail.

#19 PAROLE
VIOLATIONS
TIMES
GUILTY

The number of times the subject was guilty of a parole violation (i.e., returned, fined, sent to a drug facility, or absconded).

Note: If a new commitment and a return occurred simultaneously, the new commitment was counted.

The subject was considered to be guilty of a parole violation if:

- the subject was sent back to jail
- the subject was sent to a drug facility
- the subject absconded
- the subjects' parole was revoked

#20 PAROLE
VIOLATIONS
...NOT
GUILTY...

The number of times the subject was arrested for a parole violation and was found either to be not guilty, or the disposition of the crime was not known.

Note: The subject was put into this category if:
-there were blanks, lines or question marks in the disposition column of the data collection sheets
-the subject was awaiting a hearing at the time of the data collection
-the parole violation was cancelled
-the disposition was listed as indefinite
-the case was administratively closed

#21 PROBATION
VIOLATIONS
TIMES
GUILTY

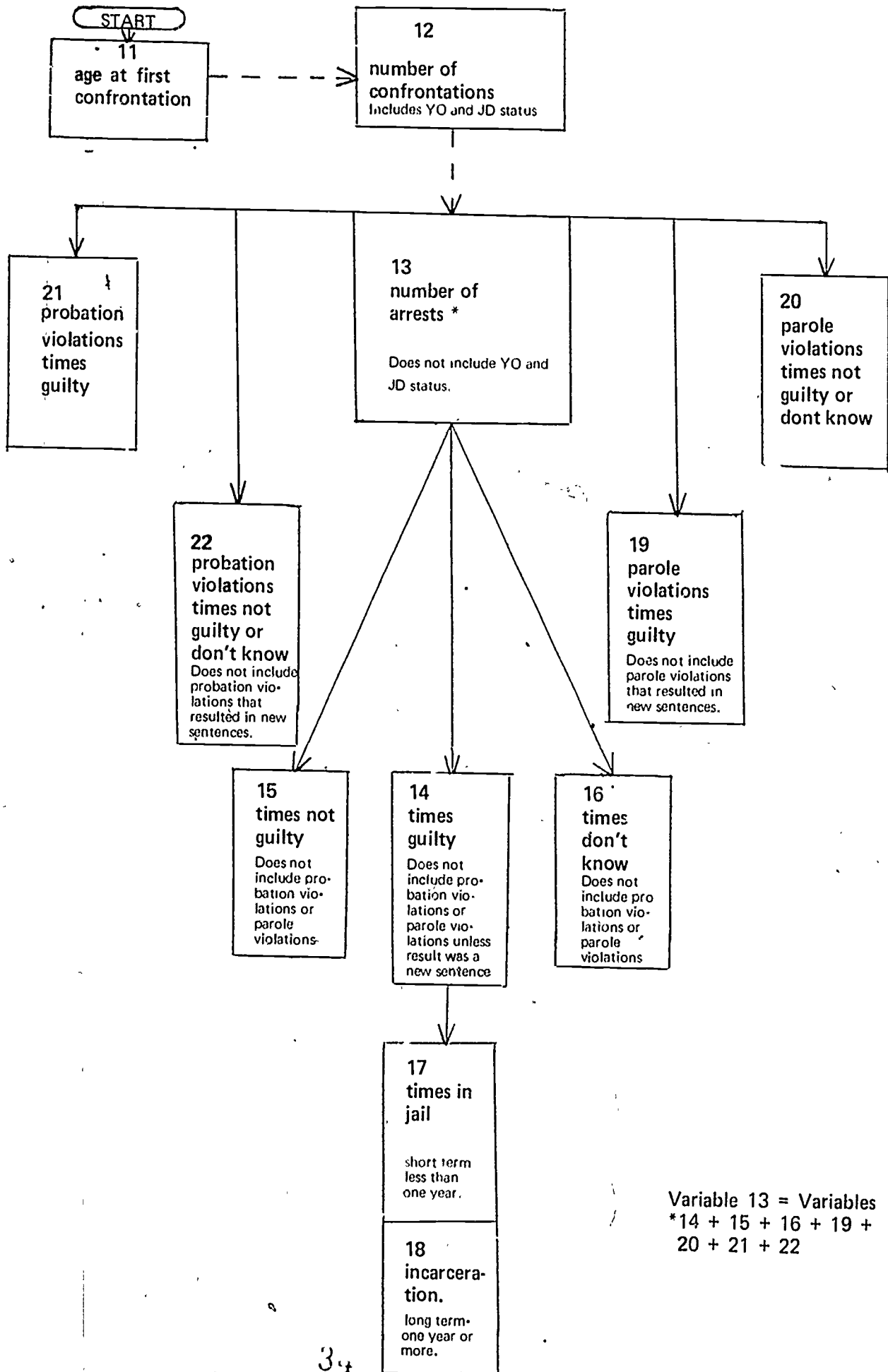
The number of times the subject was guilty of a violation of probation (i.e., guilty defined as sent to jail, probation continued).

#22 PROBATION
VIOLATIONS
....NOT
GUILTY....

The number of times the subject was arrested for a probation violation and was found to be not guilty or the disposition was not known.

Note: The disposition was considered unknown if:
-there were blanks, lines or question marks in the disposition column of the data collection sheets

PREVIOUS RECORD



Variable 13 = Variables
*14 + 15 + 16 + 19 +
20 + 21 + 22

PROGRAM CRIME

That crime which resulted in both the subject's incarceration and his enrollment in the HEOP program

#23 SEVERITY INDEX

The severity of the program crime.

Note: If the crime was a parole violation, the severity is based on the crime for which the subject was paroled.

Severity Index: The program crime was coded for severity using the index presented below. This index is based on the New York Sentence Charts, 1977.

<u>Class</u>	<u>Code</u>
AI Felonies	01
AII Felonies	02
AIII Felonies	03
B Felonies	04
C Felonies	05
D Felonies	06
E Felonies	07
A Misdemeanors	08
B Misdemeanors	09
Violations	10
<u>Additional Codes</u>	
Y.O.	11
J.D.	12
No degree	13

#73 LENGTH OF TIME IN PRISON

The time actually served for the program crime (not the time sentenced to serve) in months and days.

Note: This variable was calculated by subtracting the date the subject was received at prison from the date the subject was released from prison.

HEOP PRISON PROGRAM DATA

#24 NUMBER OF CREDITS IN PROGRAM

The number of college credits accrued while incarcerated for the program crime.

Note: Credits acquired through cross registration with other college programs (HEOP or non-HEOP related) were included in cases where the data were available. However, the sample included only those students who had accrued at least one credit while attending the "in-prison HEOP program".

- #25 LENGTH OF TIME IN PROGRAM
The number of semesters the subject took college courses while incarcerated for the program crime.
Note: If the subject was released, transferred to another prison or withdrew during a semester, the semester in which he left the program was counted. Summers were counted as semesters.
- #28 TYPE OF PROGRAM
The type of "in-prison" program in which the subject participated.
Note: There are two types of programs available:
(1) In-prison Program - the students take courses at the prison.
(2) Educational Release - the subject is permitted to leave the prison during the day and attend classes on a college campus.
Some subjects have participated in both kinds of programs although it is not possible to be enrolled in both types concurrently.
- #32 INTAKE PROGNOSIS/POTENTIAL
A measure of the subject's potential, both for academic success and success upon release from prison, at the time of acceptance into the HEOP program.
Note: For the present study, this measure consisted of the opinion of a counselor which was based on memory and/or files.
- #33 INTAKE PROGNOSIS/RELIABILITY
An opinion of the reliability of the assessment of potential described above (see variable #32).
- #34 STATUS BEFORE RELEASE
The HEOP program status of an inmate prior to his release (e.g., graduated, withdrew, terminated by program, etc.).
- RELEASE INFORMATION
- #35 TYPE OF RELEASE
The release status of the subject after serving the sentence associated with the program crime. (i.e., whether the subject was on parole, had been released by a Court Order, etc.).
- #36 YEAR OF RELEASE
The year the subject was released after serving his sentence for the program crime.
- #37 RELEASE TO DATA COLLECTION
The length of the follow-up period available or possible for each subject.
Note: For subjects who were no longer on parole, this variable is a measure of elapsed time between release date and the date of data collection at the Department of Correctional Services. For parolees, this variable is a measure of elapsed time between release date and the date data were

collected from parole officers. This period was approximately two to three months later than collection at DOCS. When a parole form was not dated, the date of March 15, 1978 was used.

SUBSEQUENT RECORD

The criminal record of a subject after his participation in the HEOP prison program and his release from prison for the program crime.

Note: See explanation and chart on pages 32 and 33.

#38 TOTAL
ARRESTS

The number of times a subject was arrested after being released for the program crime.

Note: Parole violations are included in this category.

#39 ARRESTS
WITH CON-
VICTION

The number of times a subject was found guilty of a crime after release for the program crime.

#40,42,44,46,
48,50 and 52.
(Time Periods)

The subsequent record of a subject in time increments

Note: The scale below presents an outline of categories used for coding. The scale in its entirety is presented in Subsection D. Coding Scheme. This scale is based on the New York State Criminal Law, and The Law Encounter Severity Scale (Witherspoon, A.R. deValera, E.K., & Jenkins, W.O. The Law Encounter Severity Scale (LESS); A criterion for Criminal Behavior and Recidivism, Montgomery, Alabama, Rehabilitation Research Foundation

- Scale
- (90) new commitment out-of-state
 - *(80) new commitment to New York State
 - ** (70) returned, arrested for felony
 - (60) returned, arrested for misdemeanor
 - (50) returned, arrested for parole violations. (minor or crime unspecified)
 - (40) returned, arrested for absconding
 - (30) incident
 - (20) charges pending
 - (10) warrant
 - (04) arrested, charges dropped
 - (00) no record

*New commitment to New York State (code 80). A new commitment to New York State was identified as such by the presence of a new DIN number on a subject's DOCS record.

**Returns (codes 40-70). In order to place the returns into some kind of perspective, the crime which resulted in a subject being arrested and eventually

reincarcerated was coded into one of four categories: felony, misdemeanor, absconding, or a parole violation (minor or crime unspecified). This was done because it was not always possible to determine from the records the actual reason for the return and/or the actual disposition of the arrest.

Coding notes

-50-return for a parole violation was coded as such when the violation was relatively minor (e.g., disorderly conduct, possession of a dangerous weapon) or the crime was unspecified.

-30-incident-dispositions include small fine, conditional discharge, probation, or short time in jail. The actual incidents themselves can be similar to incidents in other categories, the difference being that the subject was not returned. The incidents include disorderly conduct, traffic violations and loitering. Also included is one subject who was declared delinquent for absconding, but who was not returned to prison, and one subject who absconded, and who was given a conditional discharge for that and several additional incidents.

In order to place the crime within a given time period into perspective, a prefix was added to the codes. The prefix indicates if the particular incident was (1) the most severe; or (2) not the most severe (i.e., the subject has committed a more serious offense during another time period).

-Code 601 was used with a status code 5 when a subject was incarcerated for an entire time period. Otherwise, the code which best described his activity while out of prison was used. That could be a crime committed at the beginning or end of the time period which would receive coding precedence or a code such as 607 which indicates that he is out of prison, has no record this-time period, but has a prior record.

-In using 600 codes (eg. 606, 603), when two offenses were committed previously in two different time periods, the most severe was referred to in a later time period. For example, if a subject had a 230 and a 166, a later time period in which no record occurred was coded 606.

#41,43,45,47
49,51, and 53
(status)

Status (see code below) of a subject for each of the subsequent record time periods in six month increments.

Note: Each status variable refers to a subsequent record time period. For example, variable 40 describes the subsequent record of a subject during the first six months after release. Variable 41 describes the status of that subject at the time a crime (or incident) was committed during the time period or describes the status at the end of the first six month period after release. If two status codes occurred for a subject during a given time period (e.g., #1 and #2), the code selected was that number which describes the status of an exoffender at the end of the time period or at the time a crime was committed.

<u>Code</u>	
(1)	parolee
(2)	maxed-maximum expiration of sentence
(3)	deceased
(4)	time exceeds data collection point
(5)	incarcerated
(7)	other

#54 MOST SEVERE
CONFRONTATION

The most severe crime (e.g., new commitment out of state) or incident (e.g., warrant out, arrest with no conviction) committed by a subject after release for the program crime. The scale presented on page 29 was used to code this variable.

SUBSEQUENT RECORD

The chart on page 33 presents subsequent record by release status.

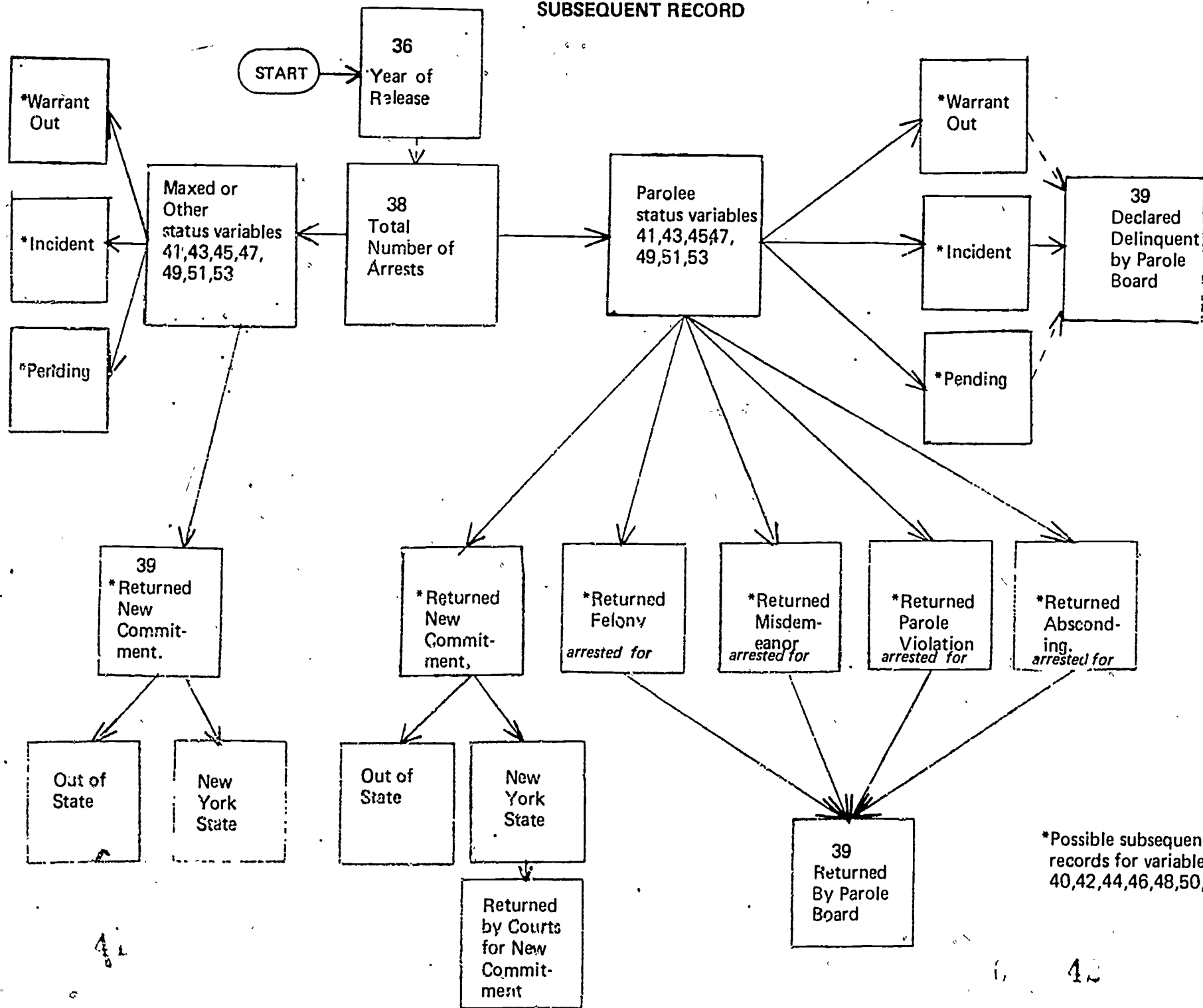
The purpose of this chart is to display for the reader those alternatives which actually have occurred for the two types of exoffenders in our sample:

- (1) the person who is on parole, and
- (2) the person who is not on parole.

For the person who is not on parole ((i.e., maxed (maximum expiration of sentence), or other)) the possibilities and, therefore, the occurrences are fewer. He cannot be reincarcerated unless he is given a new commitment either in New York State or in another state. It is possible for persons not on parole, however, to have small records which do not result in incarceration, to have charges pending, or to have warrants out.

For the person who is on parole, the possibilities and, therefore, the occurrences are greater. He can be returned to facility custody by the Court with a new commitment (i.e., new sentence). He can also be returned by the Parole Board without a new commitment after being arrested for a crime which was coded for this research as a felony, misdemeanor, parole violation, or absconding. In addition to the above, the parolee can be declared delinquent by the Parole Board for committing an incident which the Board does not deem severe enough for return. Finally, it is possible for parolees to have charges pending or to have warrants out.

SUBSEQUENT RECORD



*Possible subsequent records for variables: 40,42,44,46,48,50,52

PAROLE SURVEY DATA

#56 VALID CODE &
DATA SOURCE

The age and source of information related to parole survey data (i.e., variables 55-64).

Note: Age is calculated in increments of six months. Since parole forms were disseminated to parole officers on March 1, 1978, the information received was current as of that date. For subjects who were no longer on parole, however, the information is not as current. In fact, such information was only accurate as of the date that the last parole report was filed at DOCS (i.e., the date of ME - maximum expiration of sentence). The age of the data for subjects with ME status is the time which has elapsed between the ME date and March 1, 1978.

Parole survey information was not available for some subjects.

In some cases the parole survey forms were not returned. In other cases subjects had been released by a court order and, therefore, had no parole information. In both of these cases the code "0" for no information was used.

#57 PRESENT OR LATEST
KNOWN EMPLOYMENT
OR SCHOOL

The employment or school status of a subject after release for the program crime.

This variable is derived from items 1 and 3 on the parole form (#4). In cases where the information was obtained from parole officers (i.e., the subject was still on parole), the present employment and/or school status was coded. In cases where the information was obtained from DOCS (i.e., the subject had ME status) the latest known employment and/or school status was coded. All possibilities and combinations of school and/or employment were coded (e.g., casual labor and part-time student, part-time work and part time student, unemployed, etc.).

Note: -a subject was considered presently unemployed if he had worked since release but was not employed at the time of the data collection.
-subjects who had not worked since release were coded as such.
-in cases where only one status was known, that status was coded.
-information unavailable was used in only those cases where both items 1 and 3 were blank, or there was no parole form available.

- a CETA training program at a university was considered employment and coded for employment status only.
- a subject who was working full-time just for the summer but was a full-time student for the rest of the year was coded as a full-time student only.
- it is possible for a subject to be coded as presently attending school in this variable and as having dropped out in variable 65.

#58 PRESENT OR LATEST KNOWN NUMBER OF JOBS The number of different jobs (regardless of length of employment) a subject has had after his release from the program crime. As for variable #57, information received from parole officers was considered present while information received from DOCS was considered latest known.

- Note:* -if no length of time for a summer job was given, length of time was estimated to be between 1 - 3 months.
- in cases where no dates were given, and it was impossible to determine which job was held for the longest period of time, the code for no information was used.

#60 PRESENT OR LATEST KNOWN OCCUPATION This variable was coded using the Dictionary of Occupational Titles (DOT). Definitions of the nine DOT categories are presented in Appendix C.

For those subjects who were no longer on parole, the latest known occupation after release for the program crime was coded. For those subjects who were on parole, the present occupation was coded if the subject was working at the time of the data collection. In cases where the parolee was unemployed at the time of the data collection, the latest known occupation was coded.

- Note:* -in cases where the name of a place was given instead of an occupation, no information was coded.

#61 APPROXIMATE PRESENT OR LATEST KNOWN INCOME The approximate latest known income (for a subject who had ME status) or the approximate present or latest known income (for the subject who was on parole), was estimated on a per year basis.

- Note:* -in cases where income was given by the hour and the number of hours per week was known, income was calculated for the year.
- no attempt was made to calculate the yearly income for subjects who were working at casual labor.
 - when a subject's income came from more than one source, but only the income from one source was known, information unavailable was coded.

COLLEGE DATA

#65 EDUCATIONAL STATUS

The college educational record of a subject after his release for the program crime. A subject was considered to have attended college only after verification was received by the college.

Note: -a subject was considered to be presently attending college if the college verified that he registered for the Spring semester, 1978, and the college did not indicate that he dropped out.
-cases where the parole officer believed the subject to be attending college but no verification was received by the college were coded separately.
-also coded separately were cases where the subject had ME status and his last parole report indicated that he had attended college but follow-up was not possible as no social security number was available.

#66 NUMBER OF COLLEGES ATTENDED SINCE RELEASE

The total number of colleges that have a record of a subject's enrollment between the time of his release and the end of the Spring semester, 1978. This variable includes those subjects who received credit and those who enrolled in college after release but did not receive credit (i.e., dropped out, received an unofficial withdrawal, that is, they enrolled but did not attend, received an incomplete, or failed the course or courses).

#67 NUMBER OF COLLEGES ATTENDED SINCE RELEASE WITH CREDIT

The total number of colleges that have a record of the subject receiving at least one college credit between the time of his release and the end of the Spring semester, 1978.

#68 NUMBER OF CREDITS SINCE RELEASE

The total number of credits accrued by a subject after release for the program crime.

Note: Number of credits does not include credits accrued while in prison or transfer credits from colleges attended prior to incarceration.

#69 LENGTH OF ENROLLMENT

The total number of semesters a subject was enrolled in college(s) and/or graduate school since release.

Note: -summers were counted as semesters.
-three or four week Winter Sessions during which students took only one course were considered part of the Spring semester.
-no specific termination date was requested from the colleges. Therefore, the number of semesters recorded may include the semester a subject transferred or dropped out of college.

#70 MAJOR IN
COLLEGE

The chosen major of a subject at the time of graduation, withdrawal from college, or time of data collection. Therefore, in cases where a subject changed his major, the latest or most recent was coded.

#71 GPA IN
COLLEGE

Cumulative grade point average.

Note: This variable includes all previous credits deemed transferable by any given college. In cases where a subject had both a graduate and undergraduate GPA, the undergraduate grade point average was used. This was done because only two subjects had attended graduate school and each of them had only accrued three credits at the time of the data collection.

STATUS NOW

#72 STATUS
NOW

A description of what each subject was doing as of March 1, 1978.

Note: For subjects who were attending college, the cut of date was extended to the end of the Spring semester 1978. (Specific date varies by college).

This variable only takes into consideration current information, that is, information from current parole officer, information from current college, or information from DOCS if the subject has been reincarcerated. It does not include information obtained from old data sources such as an outdated parole report on file at DOCS.

Variable Group	Variable No.	Description	Codes	Column No.
PRE RELEASE				
<i>Biographic Demographic Data</i>	1	school	(1) Green Haven (2) Great Meadow (3) Coxsackie (4) Attica (5) Auburn	1
		identification number		2,3,4
		card number		5,6
		blank		7
	2	age	(99) Not applicable, subject deceased	8,9
	3	ethnicity	(1) Black (2) Hispanic (3) Native American (4) White (5) Oriental (0) information not available	10
	4	drug use	(1) yes, hard drugs (2) yes, marijuana only (3) no (4) yes, don't know type (0) information not available	11
	5	highest grade attained	(08) 8th grade (09) 9th grade (10) 10th grade (11) 11th grade (12) 12th grade (13) 1 year college (14) 2 years college (15) 3 years college (16) 4 years college (17) 1 year graduate school (00) information not available	12,13
	6	high school graduation	(1) graduated from high school (2) high school equivalency (3) not 1 or 2 (0) information not available	14

Variable Group	Variable No.	Description	Codes	Column No.
<i>Biographic Demographic Data Continued</i>	7	reading score	(000) information not available	15,16,17
	8	math score	(000)* information not available	18,19,20
	9	grade level average	(000) information not available	21,22,23
	10	I.Q.	(000) information not available	24,25,26
		blank		27
<i>Previous Record Data</i>	11	age 1st confrontation	(00) information not available (99) n/a subject has no record	28,29
	12	number of confrontations	(00) none, never arrested (44) information not available	30,31
	13	number of arrests	(00) none; as an adult (44) information not available (99) n/a; never arrested	32,33
	14	times guilty	(00) none; never found guilty (44) information not available (88) n/a; no adult arrests (99) n/a; never arrested	34,35
	15	times not guilty	(00) none; never acquitted (44) information not available (88) n/a; no adult arrests (99) n/a; never arrested	36,37
	16	times don't know whether guilty or not	(00) none; disposition always known (44) information not available (88) n/a; no adult arrests (99) n/a; never arrested	38,39
	17	times incarcerated (short term)	(44) information not available (55) none; never incarcerated (88) n/a; no adult arrests (99) n/a; never arrested	40,41
	18	times incarcerated (long term)	(00) none; no long term incarcerations (44) information not available (55) n/a; never incarcerated (88) n/a; no adult arrests (99) n/a; never arrested	42,43

40

Variable Group	Variable No.	Description	Codes	Column No.
<i>Previous Record Data Continued</i>	19	parole violations	(00) none; never convicted of a parole violation	44,45
			(44) information not available	
			(77) n/a; arrested, but not for a parole violation	
			(88) n/a; no adult arrests	
			(99) n/a; never arrested	
	20	parole violations not guilty or don't know	(00) none; never acquitted of a parole violation	46,47
(44) information not available				
(77) n/a; arrested, but not for a parole violation				
(88) n/a; no adult arrests				
			(99) n/a; never arrested	
	21	probation violations guilty	(00) none; never convicted of a probation violation	48,49
(44) information not available				
(66) n/a; arrested, but not for a probation violation				
(88) n/a; no adult arrests				
			(99) n/a; never arrested	
	22	probation violations not guilty or don't know	(00) none; never acquitted for a probation violation	50,51
(44) information not available				
(66) n/a; arrested, but not for a probation violation				
(88) n/a; no adult arrests				
			(99) n/a; never arrested	
<i>Program Crime</i>	23	severity index of the program crime	(01) A1 felony	56,57
			(02) All felony	
			(03) All felony	
			(04) B felony	
			(05) C felony	
			(06) D felony	
			(07) E felony	
			(08) A misdemeanors	
			(09) B misdemeanors	
			(10) violations	
			(11) youthful offender	
			(12) juvenile delinquent	
			(13) felony but not enough information to code further	
(00) information not available				

Variable Group	Variable No.	Description	Codes	Column No.
<i>Previous Record Data Continued</i>	73	length of time	() months	52,53
		in prison for the	() days	54,55
		program crime	(0000) information not available	
<i>HEOP Prison Program Data</i>	24	number of credits in	(0000) information not available	58,59
				60,61
	25	length of time in program	(01) 1 semester	62,63
			(02) 2 semesters	
			(03) 3 semesters	
			(04) 4 semesters	
			(05) 5 semesters	
			(06) 6 semesters	
			(07) 7 semesters	
			(08) 8 semesters	
			(09) 9 semesters	
			(10) 10 semesters	
			(00) information not available	
26	in prison major	(1) arts and letters	64	
		(2) educational studies		
		(3) health science		
		(4) science and math		
		(5) administration and business		
		(6) social science		
		(7) undeclared		
(0) information not available				
27	in prison GPA	(888) information not available	65,66,67	
28	type of program	(1) in-prison	68	
		(2) educational release		
		(3) both 1 and 2		
		(0) information not available		
29	remedial supportive services	(1) yes	69	
		(2) no		
		(0) information not available		
30	tutorial supportive services	(1) yes	70	
		(2) no		
		(0) information not available		
31	counseling supportive services	(1) yes	71	
		(2) no		
		(0) information not available		

Variable Group	Variable No.	Description	Codes	Column No.
HEOP Prison Program Data Continued	32	intake prognosis/potential	(1) weak potential for academic success	72
			(2) average potential for academic success	
			(3) strong potential for academic success	
			(0) information not available	
	33	intake prognosis/reliability of rating	(1) not so reliable	73
			(2) fairly reliable	
			(0) information not available	
	34	status before release	(1) graduated	74
			(2) withdrew	
			(3) terminated by program while incarcerated	
			(4) transferred to another prison while active	
			(5) active	
			(6) other, i.e., dead	
			(7) status unknown - transferred	
			(8) status unknown - paroled	

END OF FIRST CARD

POST RELEASE

		school	(1) Green Haven	1
			(2) Great Meadow	
			(3) Coxsackie	
			(4) Attica	
			(5) Auburn	
		identification number		2,3,4,
		card number		5,6
		blank		7
Release Information	35	type of release	(1) paroled/148/conditional release	8
			(2) court order	
			(3) reversal	
			(4) Sero	
	36	year of release		9,10
	37	release to data collection (coded in months and days)	0-5 days = 2	11,12,13
6-10 days = 3				
11-19 days = 5				
20 - 25 days = 7				
26 + days = next				

Variable Group	Variable No.	Description	Codes	Column No.
	38	total subsequent arrests		14
	39	subsequent arrests with conviction		15
		subsequent record variables referring to time periods (40,42,44,46,48,50,52)	(-90) new commitment out of state (-85) new commitment NY, plus parole violation (-83) new commitment NY, plus incident (-82) new commitment NY; plus charges pending (-81) new commitment NY; plus arrest with no conviction (-80) new commitment to NY only (-77) returned*for two felonies (-75) returned*felony; plus parole violation (-72) returned*felony; plus charges pending (-71) returned*felony; plus arrest with no conviction (-70) returned*felony (-63) returned*misdemeanor; plus incident (-62) returned*misdemeanor; plus charges pending (-60) returned*misdemeanor (-55) return for more than one parole violation (-53) return*for parole violation plus incident (-52) return*for parole violation, plus charges pending (-50) return*for a parole violation only (minor or crime unspecified) (-40) return*absconding (-33) two incidents (-32) incident; plus absconded still at large or charges pending (-31) incident; plus arrest with no conviction (-30) incident; (e.g., small fine or conditional discharge, probation, short time in jail (i.e., 90 days, 60 days, 45 days, 34 days, 15 days). (-22) two charges pending (-21) charges pending, plus arrest with no conviction (-20) charges pending, ROR, adjourned, no disposition (-10) warrant out; absconded still at large (-91) arrest with no conviction-charges dropped, dismissed, found not guilty, exonerated (609) no record but prior subsequent new commitment out-of-state (608) no record but prior subsequent record to NY (607) no record but prior subsequent return for felony (606) no record but prior subsequent return for misdemeanor (605) no record but prior return for a parole violation (604) no record but prior subsequent return for absconding (603) no record but prior subsequent small incident (613) no record but prior subsequent small incident, arrest with no conviction (600) no record	
		Prefixes: 1 - - most severe 2 - - not most severe 6 - - place holder		

*arrested for

Variable Group Variable No. Description -44- Codes Column No.

Subsequent Record Data Continued

- (615) no record but prior subsequent charges pending or warrant out
- (602) no record possible subject dead
- (601) no record possible subject in prison NY State
- (611) no record possible subject in prison out of state
- (699) no data available for this time period, time exceeds data collection point
- (600) no record ever
- (1) parole
- (2) maxed
- (3) deceased
- (4) time exceeds data collection point
- (5) incarcerated
- (7) other

40	subsequent record within first 6 mths.	16,17,18
41	status within 6 mths.	19
42	subsequent record 6 - 11.9 mths.	20,21,22
43	status 6 - 11.9 mths.	23
44	subsequent record 12 - 23.9 mths.	24,25,26
45	status 12 - 23.9 mths.	27
46	subsequent 24 - 35.9	28,29,30
47	status 24 - 35.9	31
48	subsequent record 36 - 47.9 mths.	32,33,34
49	status 36 - 47.9 mths.	35
50	subsequent record 48 - 59.9	36,37,38
51	status 48 - 59.9	39
52	subsequent record 60 mths or more.	40,41,42
53	status 60 mths or more	43

44,45

Variable Group	Variable No.	Description	Codes	Column No.
<i>Subsequent Record Data Continued</i>	54	most severe confrontation	(90) new commitment out of state	44,45
			(80) new commitment to NY	
			(70) returned felony	
			(60) returned misdemeanor	
			(50) returned parole violation (minor or crime unspecified)	
			(40) returned absconding	
			(30) incident	
			(20) charges pending	
			(10) warrant	
			(04) arrested with no conviction	
			(99) not applicable, subject deceased	
			(00) no record	
<i>Parole Survey Data</i>	55	parole information release signed	(1) yes	47
			(2) no	
			(9) not applicable (i.e., maxed, in jail, no form, subject deceased)	
56	valid code and data source	(1) parole form up to date	48	
		(2) max form 0-5 months old		
		(3) max form 6-11 months old		
		(4) max form 12-17 months old		
		(5) max form 18-23 months old		
		(6) max form 24 months old or older		
		(7) max form available, age unknown		
		(0) no information (i.e., no max sheet or parole form, released by court order, parole form sent but not filled out, maxed out)		
57	present or latest known employment/school	(01) full time employment (approx 40 hrs)	49,50	
		(02) part time regular employment (less than full time)		
		(03) casual labor		
		(04) full time student		
		(05) part time student		
		(06) unemployed		
		(07) enemployable due to sickness or injury		
		(08) subject has not worked since release		
		(10) maxed with school, but follow-up impossible because no security no. available		
		(13) casual and full time employment		
		(14) full time work, full time student		
		(15) full time work, part time student		
(24) part time employment, full time student				
(34) casual employment, full time student				
(99) not applicable				
(00) information not available				

Variable Group	Variable No.	Description	Codes	Column No.
Parole Survey Data Continued	58	number or latest known number of jobs since release	(0) none	51
			(9) information not available, insufficient information, or no form	
59	longest known time on any job	(01) less than 1 month	52,53	
		(02) 1 - 3.9 months		
		(03) 4 - 6.9 months		
		(04) 7 - 12.9 months		
		(05) 13 - 24.9 months		
		(06) 25 - 35.9 months		
		(07) more than 3 years		
		(99) not applicable subject not worked since release		
		(00) information not available, no form, or item blank		
		60		present or latest known occupation
(02) clerical and sales (incl. work study)				
(03) service organizations				
(04) farming, fishery and related occupations				
(05) processing occupations				
(06) machine trades occupations				
(07) bench work occupations				
(08) structural work occupations				
(09) miscellaneous (incl. truck driver)				
(99) not applicable subject is in school and never employed				
61	approximate or latest known income	(01) no income	56,57	
		(02) less than \$3600		
		(03) \$3601 - \$5100		
		(04) \$5101 - \$6500		
		(05) \$6501 - \$7800		
		(06) \$7801 - \$9000		
		(07) \$9001 - \$10,000		
		(08) \$10,001 - \$11,000		
		(09) \$11,001 - \$12,000		
		(10) \$12,001 - \$12,800		
(11) over \$12,800				
(00) information not available, or insufficient information, no form, or item blank				

Variable Group	Variable No.	Description	Codes	Column No.
<i>Parole Survey Data Continued</i>	62	present or latest known source of income	(01) employment (non college related)	58,59
			(02) education	
			(03) welfare	
			(04) disability and compensation	
			(05) unemployment	
			(06) family support	
			(07) other (i.e., fiance giving money, CETA training program)	
			(08) employment, education, welfare	
			(12) employment and education	
			(3) employment and welfare	
			(5) employment and unemployment	
			(16) employment and family	
			(23) education and welfare	
(25) education and unemployment				
(26) education and family				
(27) education and other				
(36) family and welfare				
(56) unemployment and family				
(99) not applicable-subject has no income				
(00) information not available				
63	CETA funds involved	(1) yes	60	
		(2) no		
		(0) information not available		
64	present or latest known family situation	(1) lives with family or a family member (i.e., mother)	61	
		(2) has family in vicinity		
		(3) has no family in the area		
		(0) information not available		
	blank		62	
<i>College Data</i>	65	educational status	(01) has not attended college since release	63,64
			(02) previously attended and dropped out (or flunked out)	
			(03) previously attended and graduated from 2 year college	
			(04) previously attended and graduated from a 4 year college	
			(05) parole officer believes attended, but not verified by college	
			(06) presently attending 2 year college	
			(07) graduated from 2 year college, presently attending 4 year college.	
			(08) presently attending 4 year college	
			(09) presently attending graduate school	
			(10) parole officer believes attending, but not verified by college	
			(11) maxed with school but follow up impossible	
			(12) attended graduate school	
(00) information unavailable				

50

Variable Group	Variable No.	Description		Codes	Column No.
<i>College Data Continued</i>	66	number of colleges attended since release	(0) (9)	none information not available, no form	65
	67	number of colleges attended since release with credit	(0) (9)	none information not available, no form (includes 11 code from variable 65)	66
	68	number of credits since release	(1) (2) (3) (4) (5) (6) (7) (8) (9) (0)	none 1 - 15 16 - 30 31 - 45 46 - 60 61 - 75 76 - 125 more than 125 not applicable-subject did not attend college after release information not available (includes 11 code from variable 65)	67
	69	total length of enrollment in any college since release	(01) (02) (03) (04) (05) (06) (07) (08) (09) (10) (11) (99) (00)	1 semester 2 semesters 3 semesters 4 semesters 5 semesters 6 semesters 7 semesters 8 semesters 9 semesters 10 semesters 11 semesters not applicable-subject did not attend college after release information not available	68,69
	70	major in school	(1) (2) (3) (4) (5) (6) (7) (9) (0)	arts and letters educational studies health science science and math administration and business social science undeclared not applicable-subject did not attend college after release information not available, no forms or item blank.	70

Variable Group	Variable No.	Description	Codes	Column No.
<i>College Data Continued</i>	71	GPA in school	(888) information not available (item is blank)	71,72,73
			(999) n/a subject did not attend college after release	
			(777) no GPA, official withdrawal therefore no credits and no GPA	
			(000) 0.00 GPA	
<i>Status Now</i>	72	status now	(01) in school 74,75	
			(02) working	
			(03) in prison (reincarcerated)	
			(04) not in prison but don't know what subject is doing	
			(05) in school and working	
			(06) awaiting trial	
			(08) unemployed (or collecting workmens compensation), not in school, and not in prison	
			(09) absconder	
			(26) working and awaiting trial	
			(07) on probation	
			(12) in school and working	
(10) deceased				
(11) in a mental institution				

50

V. RESULTS AND CONCLUSIONS

A. Introduction

Subprograms FREQUENCIES and CROSSTABS from the SPSS Package of Statistical Programs were used to analyze the data. The manner in which the results from these subprograms will be displayed is described below.

The data distribution computed by FREQUENCIES is presented in frequencies and percentages displayed in the following format:

Category Label	Code	Absolute Frequency	Relative Frequency (Percent)	Adjusted Frequency (Percent)	Cumulative Adjusted Frequency (Percent)
----------------	------	--------------------	------------------------------	------------------------------	---

The absolute frequency column presents the frequency of responses for each value. The frequency for each missing value (e.g., information unavailable) is included in this column. The relative frequency column presents the percentage of the sample response for each value. The adjusted frequency column presents the percentage of the sample response for each value when the missing values have been eliminated. Percentages for this column, therefore, are based only on those values which have not been previously defined as missing. The cumulative adjusted frequency column presents the cumulative percentage for all values other than missing values.

In the presentation of results for those variables which are displayed using this format, all columns will be displayed for each variable which contains missing values. When missing values are not present in the data for a given variable, the adjusted frequency column will not be included in the figure.

The Crosstabulations computed by subprogram CROSSTABS displays the data on two variables simultaneously resulting in a matrix of cells. Since the display is often fairly complex, the matrix displays are not included in the Results Section. Rather, relevant information from these displays is presented

in a more simplified form.

Finally, when neither of the above formats are appropriate, relevant statistics will be presented.

The results and discussions are presented separately for each large variable group (e.g., biographic/demographic, previous record). The discussion refers to data presented in the tables and also to additional results which are included in the narrative when they highlight the interpretation. All interpretation is based on the adjusted frequency (i.e., on those cases for whom data was available).

B. Pre Release Results

1. Biographic/Demographic

The results for the biographic/demographic set of variables are presented in Tables 3 and 4 (pages 54-55).

Examination of these results, and of additional results which have been included when they highlight the presentation, indicate that:

The sample is fairly young.

Approximately half of them (52%) are black; 40% are white.

About one-third (32%) have not used drugs of any type.

More than half (56%) have used hard drugs.

10% of the sample attended college.

For more than half (57%), tenth grade was the highest attained.

Three-quarters (75%) did not graduate high school and, therefore, are high school dropouts.

55% of the dropouts have obtained their High School Equivalency.

Reading, and math score averages are at the lower high school (9th) and junior high school (7th) levels respectively.

The grade level average for basic skills, therefore, is 8th grade.

The I.Q. score average for the sample (106.5) is slightly above the population average (100). The minimum score, however, is quite low (75) indicating limited potential for at least one subject.

6

TABLE 3
Biographic/Demographic

Variable No.	Variable Name	N	Missing Cases	Mean	Mode	Minimum	Maximum	Range
1 . .	School				<i>Reported previously</i>			
2 . .	Age	274	3	26.96	23.0	18.0	52.0	34.0
5 . .	Highest grade attained . .	243	34	10.33	10.0	5.0	15.0	10.0
7 . .	Reading score	214	63	9.29	10.5	3.3	14.5	11.2
8 . .	Math score	212	65	7.55	6.4	3.3	13.0	9.7
9 . .	Grade level average . . .	202	75	8.64	7.2	2.1	16.7	14.6
10 . .	I.Q.	252	25	106.51	107.0	75.0	129.0	54.0

65

64

TABLE 4
Biographic/Demographic Continued

<i>Variable: 3-Ethnicity</i>					
<i>Category Label</i>	<i>Code</i>	<i>Absolute Freq</i>	<i>Relative Freq(Pct)</i>	<i>Adjusted Freq(Pct)</i>	<i>Cumulative Freq(Pct)</i>
Black	1	141	50.9	52.0	52.0
Hispanic	2	22	7.9	8.1	60.1
Native American	3	0	0.0	0.0	60.1
White	4	108	39.0	39.9	100.0
Information unavailable	0	6	2.2	<i>Missing</i>	100.0
	TOTAL	277	100.0	100.0	
<i>Variable: 4-Drug Use</i>					
Yes, hard drugs	1	149	53.8	55.6	55.6
Yes, marijuana only	2	32	11.6	11.9	67.5
No	3	86	31.0	32.1	99.6
Yes, don't know type	4	1	0.4	0.4	100.0
Information unavailable	0	9	3.2	<i>Missing</i>	100.0
	TOTAL	277	100.0	100.0	
<i>Variable: 6-High School Graduation</i>					
Graduated high school	1	51	18.4	25.1	25.1
High school equivalency	2	112	40.4	55.2	80.3
Not 1 or 2	3	40	14.4	19.7	100.0
Information unavailable	0	74	26.7	<i>Missing</i>	100.0
	TOTAL	277	100.0	100.0	

2. Previous Record

The results relating to previous record are presented in Table 5 (page 59).

Examination of these results indicates that:

Many of the subjects were young when they first became involved with the law (mean = 16.54). The data also indicate that 92.5% had their first confrontation with the law before their 22nd birthdays.

The average number of confrontations was approximately 5. The average number of arrests was 4. The discrepancy between the two variables exists because JD and YO status confrontations have not been included in the arrest count. The differences in the means and the modes for the two variables displays this clearly. Whereas one mean is 5 and its mode is 4 (Number of Confrontations), the other mean is 4 with a mode of 0 (Number of Arrests). As stated above, many of these subjects had confrontations with the law at an early age.

The range of both of these variables is interesting because it is so wide.

The average number of times guilty for previous crimes is 2.28. The calculation of this mean is based on those subjects who were arrested and tried for crimes as adults. It does not include those subjects who (1) had no prior arrests ever, (2) had no prior arrests as adults, or (3) had no data for this variable. All three categories were coded as missing. That is why there are so many missing cases for this variable (49). The same is true for variables #17 (Times Incarcerated Short Term) and #18 (Times Incarcerated Long Term).

6.

Regarding prior incarcerations, of those in the sample who had been arrested as adults (i.e., 228 out of 276 or 82.6%), 95 or 42% had never been incarcerated short term (i.e., for less than one year). Additionally, 132 out of 228 or 58% of those arrested as adults had never previously been incarcerated long term (i.e., sentenced to a term of one year or more).

In relation to the total sample, however, (i.e., 276 Ss for whom data is available), 143 out of 276 or 52% have never been incarcerated short term. Additionally 180 out of 276 or 65% have never previously been incarcerated in a state correctional facility. A majority of our sample, therefore, is relatively new to prison.

TABLE 5
Previous Record

Variable No.	Variable Name	N	Missing Cases	Mean	Mode	Minimum	Maximum	Range
11	Age at first confrontation	254	23	16.54	16.0	8.0	39.0	31.0
12	Number of confrontations	276	1	5.11	4.0	0.0 <i>No prior record 29/276 or 10.5%</i>	33.0	33.0
13	Number of arrests	276	1	4.05	0.0	0.0 <i>No prior adult record 48/276 or 17.4%</i>	31.0	31.0
14	Times guilty	228	49*	2.28	1.0	0.0 <i>No prior convictions 99/276 or 35.9%</i>	25.0	25.0
17	Times incarcerated (short term)	228	49*	1.31	0.0	0.0 <i>Never incarcerated short term 143/276 or 51.8%</i>	22.0	22.2
18	Times incarcerated (long term)	228	49*	0.58	0.0	0.0 <i>Never incarcerated long term 180/276 or 65.2%</i>	7.0	7.0

*Coded as missing to obtain mean:
information unavailable
no prior arrests ever
no prior adult arrests

60

3. Program Crime

7.

Table 6 (page 62) presents the results which describe the program crime.

The most interesting result from the program crime data is the length of time subjects were incarcerated for the program crime. That is because this result provides an indication of the maximum length of time HEOP could hope to affect the educational lives of the sample. Examination of Table 6 reveals that this base level is 31.4 months or approximately 2 3/4 years. If the factors of transfer and parole are taken into consideration, it is not difficult to conclude that the length of time in which to exert an influence (educational or otherwise) is not very long.

TABLE 6
Program Crime

Variable No.	Variable Name	N	Missing Cases	Mean	Mode	Minimum	Maximum	Range
73	Length of time in prison "for the program crime"	276	1	31.43 <i>months</i>	18.2	6.0	191.7	185.7

Variable: 23-Severity Index

Category Label	Code	Absolute Freq	Relative Freq(Pct)	Adjusted Freq(Pct)	Cumulative Freq(Pct)
A I Felony	1	9	3.2	3.3	3.3
A II Felony	2	2	0.7	0.7	4.0
A III Felony	3	15	5.4	5.5	9.5
B Felony	4	44	15.9	16.0	25.5
C Felony	5	60	21.7	21.8	47.3
D Felony	6	69	24.9	25.1	72.4
E Felony	7	12	4.3	4.4	76.7
A Misdemeanors	8	2	0.7	0.7	77.5
B Misdemeanors	9	0	0.0	0.0	77.5
Violations	10	0	0.0	0.0	77.5
Youthful offender	11	44	15.9	16.0	93.5
J.D.	12	1	0.4	0.4	93.8
Felony-type unknown	13	17	6.1	6.2	100.0
Information unavailable	0	2	0.7	<i>Missing</i>	
	TOTAL	277	100.0	100.0	

4. HEOP Prison Program

Results describing both the "treatment" and outcomes for the in-prison program are presented in Tables 7-11 (pages 66-71).

Examination of the data indicates:

First and most important in a subsequent discussion of program impact, the subjects are not involved in the program to any great degree or for any great length of time. This is apparent from the number of credits earned, which are not that many, and the actual length of time in the program, which is not that long. (See Tables 7 and 8). For example, the mode (or greatest number of Ss earning a given number of credits) is 7.00. An interesting addition to this result is that 75% of the sample earned fewer than 24 credits in the program and 52% of them earned 10 credits or less. Of these, 64.4% were enrolled for 2 semesters or less. These are relatively short periods of both time and involvement in which to attempt to exert a strong influence or make a basic change in a person's life style.

Most of the Ss (87%) participate in an in-prison type program only. (See Table 8).

Again referring to Table 8, choice of major is interesting. Fifty-eight percent major in Arts and Letters while few major in the science or educational areas. Of course, few science or education majors are offered in prison programs. This can be explained in part by the offender status. It is not easy for convicted felons to be licensed. Additionally, some laboratory courses cannot be taught in correctional facilities.

The in-prison GPA of the sample includes a wide range (from 0.50 to 4.00). Both the mean and the mode, however, indicate that the sample does reasonably

well in those courses which are offered in prison. (See Table 7).

A description of the assistance received through the provision of support services is presented in Table 9. Fifty-nine percent received remedial support, 44% received tutorial support and, significantly, 99% received counseling support.

Indications of potential revealed by responses to the Intake Potential form are that: 81% were deemed to have average or strong potential. Not a surprising result. Sixty-six percent of these responses were judged by the respondent to be fairly reliable. (See Table 10).

Finally, and again important for both the interpretation of subsequent results and program policy decisions, Table 11 indicates that:

Of those in the sample whose status in the program was known at the time of transfer or release (i.e., 186 or 67%), 53 or 29% were transferred while participating in the program. Another 82 or 44% were released while active. Those who were released were encouraged and aided to transfer to another HEOP program functioning outside of the prison. Hopefully, many of the transfer-ees were also given an opportunity in prison to continue their education. If this is not the case, perhaps it should be.

7.

TABLE 7
HEOP Prison Program - Credits, Time, GPA.

Variable No.	Variable Name	N	Missing Cases	Mean	Mode	Minimum	Maximum	Range
24 . .	Number of credits in program	276	1	16.14	7.0	1.0	83.3	82.3
25 . .	Length of time in program	276	1	2.38*	1.0	1.0	9.0	8.0
				<i>See additional data in Table 8</i>				
27 . .	In prison GPA	212	.5	2.65	3.0	0.5	4.0	3.5

*Semesters

70

70

TABLE 8
HEOP Prison Program-Time, Major, Program Type

<i>Variable: 25-Length of Time In Program Category Label</i>	<i>Code</i>	<i>Absolute Freq</i>	<i>Relative Freq(Pct)</i>	<i>Adjusted Freq(Pct)</i>	<i>Cumulative Freq(Pct)</i>
1 Semester	1	106	38.3	38.4	38.4
2 Semesters	2	69	24.9	25.0	63.4
3 Semesters	3	47	17.0	17.0	80.4
4 Semesters	4	24	8.7	8.7	89.1
5 Semesters	5	16	5.8	5.8	94.9
6 Semesters	6	8	2.9	2.9	97.8
7 Semesters	7	2	0.7	0.7	98.6
8 Semesters	8	2	0.7	0.7	99.3
9 Semesters	9	2	0.7	0.7	100.0
Information unavailable	0	1	0.4	<i>Missing</i>	100.0
	TOTAL	277	100.0	100.0	

<i>Variable: 26-In Prison Major</i>					
Arts and Letters	1	132	47.7	58.4	58.4
Educational Studies	2	2	0.7	0.9	59.3
Health Sciences	3	0	0.0	0.0	59.3
Science and Math	4	5	1.8	2.2	61.5
Administration and Business	5	25	9.0	11.1	72.6
Social Science	6	24	8.7	10.6	83.2
Undeclared	7	38	13.7	16.8	100.0
Information unavailable	0	51	18.4	<i>Missing</i>	100.0
	TOTAL	277	100.0	100.0	

TABLE 8 - Continued

<i>Variable: 28-Type of Program</i>					
<i>Category Label</i>	<i>Code</i>	<i>Absolute Freq</i>	<i>Relative Freq(Pct)</i>	<i>Adjusted Freq(Pct)</i>	<i>Cumulative Freq(Pct)</i>
In prison	1	237	85.6	86.8	86.8
Educational release	2	4	1.4	1.5	88.3
Both 1 and 2	3	32	11.6	11.7	100.0
Information unavailable	0	4	1.4	<i>Missing</i>	100.0
	TOTAL	277	100.0	100.0	

TABLE 9
HEOP Prison Program - Provision of Supportive Services

<i>Variable: 29-Remedial Supportive Services</i>					
<i>Category Label</i>	<i>Code</i>	<i>Absolute Freq</i>	<i>Relative Freq(Pct)</i>	<i>Adjusted Freq(Pct)</i>	<i>Cumulative Freq(Pct)</i>
Yes	1	164	59.2	<i>No Missing Cases</i>	59.2
No	2	113	40.8		100.0
TOTAL		277	100.0		
<i>Variable: 30-Tutorial Supportive Services</i>					
Yes	1	123	44.4	<i>No Missing Cases</i>	44.4
No	2	154	55.6		100.0
TOTAL		277	100.0		
<i>Variable: 31-Counseling Supportive Services</i>					
Yes	1	275	99.3	<i>No Missing Cases</i>	99.3
No	2	2	0.7		100.0
TOTAL		277	100.0		

TABLE 10
HEOP Prison Program - Intake Prognosis

<i>Variable: 32-Intake Prognosis/ Potential</i>					
<i>Category Label</i>	<i>Code</i>	<i>Absolute Freq</i>	<i>Relative Freq(Pct)</i>	<i>Adjusted Freq(Pct)</i>	<i>Cumulative Freq(Pct)</i>
Weak potential	1	42	15.2	19.3	19.3
Average potential	2	98	35.4	45.0	64.2
Strong potential	3	78	28.2	35.8	100.0
Information unavailable	0	59	21.3	<i>Missing</i>	100.0
	TOTAL	277	100.0	100.0	
<hr/>					
<i>Variable: 33-Intake Prognosis/ Reliability of Rating</i>					
Not so reliable	1	34	12.3	15.7	15.7
Fairly reliable	2	183	66.1	84.3	100.0
Information unavailable	0	60	21.7	<i>Missing</i>	100.0
	TOTAL	277	100.0	100.0	

TABLE 11

HEOP Prison Program - Status Before Release

<i>Variable: 34-Status Before Release</i>					
<i>Category Label</i>	<i>Code</i>	<i>Absolute Freq</i>	<i>Relative Freq(Pct)</i>	<i>Adjusted Freq(Pct)</i>	<i>Cumulative Freq(Pct)</i>
Graduated	1	0	0.0	0.0	0.0
Withdrew	2	41	14.8	16.7	16.7
Terminated by program	3	4	1.4	1.6	18.4
Prison transfer while active	4	53	19.1	21.6	40.0
Active	5	82	29.6	33.5	73.5
Other-dead	6	6	2.2	2.4	75.9
<i>Subtotal</i>		186			
Unknown- transferred	7	31	11.2	12.7	88.6
Unknown-paroled.	8	28	10.1	11.4	100.0
Information unavailable	0	32	11.6	<i>Missing</i>	100.0
<i>Subtotal</i>		91			
	TOTAL	277	100.0	100.0	

8.4

C. Post Release Results

1. Release Information



Examination of the release information results presented in Tables 12 and 13 (pages 74-75) reveals that:

The mean release time for this sample is 21.44 months.

At the time the data were collected at the Department of Corrections, only a small percentage of the sample (11.1%) had been released from prison for three years or more. The majority (66.8%) had been released for between one and three years. These results are important, because they provide the time frame and point of reference for an interpretation of the remainder of the post release data.

Given the fact that the HEOP prison program was relatively new at the time this study was initiated, and given the fact that for this reason the study was conceptualized first and foremost as a process study, the results presented here are not surprising. Nevertheless, and in spite of the fact that a longer follow-up period would of course be preferable in any evaluation endeavor, the results presented here do indicate that the length of follow-up for this sample is long enough to enable meaningful conclusions. It would still be advisable, however, to complement this study with one that followed a greater number of Ss, the same number of Ss for a longer period of time, or both.

80

TABLE 12
Release Information - Year By Type

<i>Variable: 36-Year Of Release</i>	<i>Variable: 35-Type Of Release</i>	
	<i>Parole *</i>	<i>Other **</i>
1972	1	0
1973	3	0
1974	21	4
1975	71	3
1976	85	3
1977	85	1
TOTAL	266	11

*Includes conditional release and Chapter 148.
**Includes Sero, reversal, and court order.

TABLE 13
Release Information - Release to Data Collection (Time)

Variable No.	Variable Name	N	Missing Cases	Mean	Mode	Minimum	Maximum	Range
37	Release to data collection	277	0	21.41	12.5	2.0	56.2	54.2
<i>Category Label</i>		<i>Code</i>	<i>Absolute Freq</i>	<i>Relative Freq(Pct)</i>	<i>Adjusted Freq(Pct)</i>	<i>Cumulative Freq(Pct)</i>		
2.0 - 5.9 months		1	17	6.1	<i>No</i>	6.1		
6.0 - 11.9 months		2	44	15.9	<i>Missing</i>	22.0		
12.0 - 23.9 months		3	106	38.3	<i>Cases</i>	60.3		
24.0 - 35.9 months		4	79	28.5		88.8		
36.0 - 47.9 months		5	27	9.7		98.6		
48.0 - 59.9 months		6	4	1.4		100.0		
TOTAL			277	100.0				

-75-

80

80

2. Subsequent Record

Tables 14 through 20 (pages 78-89) present the results for subsequent record.

Examination of the arrest and arrest with conviction results presented in Table 14 (page 78) indicates that:

A majority of the sample had no arrests after release for the program crime (55.6%). Fifty-six percent had no arrests which resulted in conviction.

Because this data includes four Ss who died at an undetermined time after release, and because the above data relate only to arrest and not to crime, Table 14 has been included for 'background type' information only. Table 15 provides information basic to a determination of the recidivism rate(s) for this sample. The variable used for this particular determination is #54, Most Severe Confrontation, i.e., the most severe crime or incident committed by a subject after his release for the program crime. Table 15 is presented on page 79.

91

TABLE 14
Subsequent Record - Arrests: Total and With Conviction

<i>Variable: 38-Total Arrests *</i>					
<i>Category Label</i>	<i>Code</i>	<i>Absolute Freq</i>	<i>Relative Freq(Pct)</i>	<i>Adjusted Freq(Pct)</i>	<i>Cumulative Freq(Pct)</i>
No arrests	0	154	55.6	<i>No</i>	55.6
One arrest	1	72	26.0	<i>Missing</i>	81.6
Two arrests	2	35	12.6	<i>Cases</i>	94.2
Three arrests	3	12	4.3		98.6
Four arrests	4	1	0.4		98.9
Five arrests	5	2	0.7		99.6
Six arrests	6	1	0.4		100.0
	TOTAL	277	100.0		
<i>Variable: 39-Arrests With Conviction **</i>					
No arrests	0	155	56.0	<i>No</i>	56.0
One arrest	1	74	26.7	<i>Missing</i>	82.7
Two arrests	2	34	12.3	<i>Cases</i>	94.9
Three arrests	3	12	4.3		99.3
Five arrests	5	1	0.4		99.6
Six arrests	6	1	0.4		100.0
	TOTAL	277	100.0		

*Mean = 0.72

**Mean = 0.68

9.

TABLE 15

Subsequent Record - Most Severe Confrontation: Total Sample

<i>Variable: 54-Most Severe Confrontation. Category Label</i>	<i>Code</i>	<i>Absolute Freq</i>	<i>Relative Freq(Pct)</i>	<i>Adjusted Freq(Pct)</i>	<i>Cumulative Freq(Pct)</i>
No record	0	147	53.1	53.8	53.8
Warrant	10	6	2.2	2.2	56.0
Charges pending	20	17	6.1	6.2	62.3
Record - incident	30	27	9.7	9.9	72.2
Returned - arrested for:					
Absconding	40	3	1.1	1.1	73.3
Parole violation	50	17	6.1	6.2	79.5
Misdemeanor	60	8	2.9	2.9	82.4
Felony	70	21	7.6	7.7	90.1
New commitment New York	80	26	9.4	9.5	99.6
New commitment out of state	90	1	0.4	0.4	100.0
Dead	99	4	1.4	<i>Missing</i>	100.0
TOTAL		277	100.0	100.0	

Valid cases 273; Missing cases 4

If recidivism is defined as reincarceration in a correctional facility (codes 40 - 90), results provided in Table 15 (above) reveal that the recidivism rate for this sample is 27.84% (76/273).

By narrowing this slightly to eliminate new commitment out of state (i.e., eliminating code 90 but using codes 40 - 80) that rate becomes 27.47%.

If on the other hand, the definition includes new commitments only; both New York State and out of state (codes 80 and 90), the rate becomes 9.89%.

Finally, if the definition considers only those subjects with a new commitment in New York State, (code 80) the rate is 9.52%.

It should be noted that the results in Table 15 include all subjects. Table 16 presents results for this variable calculated with those Ss who were released to parole supervision. The calculations also include subjects with conditional release and Chapter 148. (See page 81).

TABLE 16
Subsequent Record - Most Severe Confrontation: Parolees

<i>Variable: 54-Most Severe Confrontation Category Label</i>	<i>Code</i>	<i>Absolute Freq</i>	<i>Relative Freq(Pct)</i>	<i>Adjusted Freq(Pct)</i>	<i>Cumulative Freq(Pct)</i>
No record	0	137	51.5	52.3	52.3
Warrant	10	6	2.3	2.3	54.6
Charges pending	20	17	6.4	6.5	61.1
Record - incident	30	27	10.2	10.3	71.4
Returned - arrested for:					
Absconding	40	3	1.1	1.1	72.5
Parole violation	50	17	6.4	6.5	79.0
Misdemeanor	60	8	3.0	3.1	82.1
Felony	70	21	7.9	8.0	90.1
New commitment New York	80	25	9.4	9.5	99.6
New commitment out of state	90	1	0.4	0.4	100.0
Dead	99	4	1.5	<i>Missing</i>	100.0
	TOTAL	266	100.0	100.0	

Valid cases 262; Missing cases 4

90

Examination of the results provided in Table 16 (page 81) indicates that:

Eleven Ss were not released to parole supervision and, therefore, were eliminated from this set of results. Of the eleven, ten had no subsequent record at all and one had a new commitment to a New York State correctional facility.

Again, using the inclusive definition of recidivism used previously (i.e., any type of return; codes 40 - 90) the rate for the sample of parolees is 28.63 (75/262).

Eliminating out of state commitment from this definition (i.e., using codes 40 - 80) provides a rate of 28.24%.

Considering new commitments only (codes 80 and 90) produces a rate of 9.92%.

And finally, using new commitments to New York State facilities (code 80) results in a rate of 9.54%.

Table 17 (page 83) summarizes the recidivism rates presented above.

Although the results presented in Table 17 are interesting, several exercises need to be performed in order to place these results into some kind of perspective. In particular, the parameter of time must be introduced. Additionally, the results need to be compared to existing recidivism rates. The remainder of this section addresses these tasks. (See Tables 18-20, pages 86-89).

TABLE 17
Recidivism Rates By Most Severe Confrontation

<i>Definition</i>	<i>Total Sample N = 273</i>	<i>Parolees N = 262</i>
Any type of return or new commitment (codes 40 - 90)	76/27.84%*	75/28.63%
Any type of return; new commitment to New York (codes 40 - 80)	75/27.47%	74/28.24%
Any type of new commitment (codes 80 - 90)	27/9.89%	26/9.92%
New commitment to New York (code 80)	26/9.52%	25/9.54%

*All rates have been calculated with adjusted frequencies.

Data Key: frequency/percentage

9,

Table 18 (page 86) presents subsequent record by length of follow-up period. Again, variable 54, Most Severe Confrontation was used as the subsequent record indicator.

Examination of Table 18 indicates that:

As one would expect, a greater percentage of Ss in the shorter follow-up periods have no subsequent record at all. The remaining subsequent record categories tend to vary somewhat across crimes and groups. In general, those in the lesser follow-up periods appear to commit fewer crimes.

An interesting aside; ten out of the eleven Ss released by Sero, reversal, or court order have no subsequent record at all.

Although it may be possible to tease further interpretation from this set of results, to do so may be inaccurate. The most obvious findings are again that a majority (53.8%) of the sample has no subsequent record at all, and 72.5% have never been reincarcerated.

Table 19 (page 87) presents recidivism rates for the sample by length of follow-up period. These rates are derived from the results presented in Table 18.

Examination of Table 19 indicates that:

Recidivism rates increase with increased availability of follow-up time; peaking at period four (24.0 - 35.9 months) and beginning to decrease in period five (36.0 - 47.9 months). The results for period six are spurious since the sample size is so small.

The summary results presented in Table 19 (i.e., one year or more, two years or more) are somewhat misleading. Although they do reveal that recidivism increases with increased length of follow-up time, they tend to bury the degree of crime in group 4 (i.e., follow-up period four Ss). On a percentage basis, group 4 Ss appear to have committed a good deal more crime than any other group. It is clearly apparent with the results describing new commitment to New York State (code 80). A recidivism rate of 16.7 far exceeds that of any other group, although in and of itself it is quite reasonable.

93

TABLE 18

Subsequent Record By Length of Follow-up Period: Most Severe Confrontation

Follow-up Period (months)	Parolees									Other			Total Sample (when different from Parolee's)			
	N	Record								N	Record		N	Record		
		No Record	10-30	40	50	60	70	80	90		No Record	80		No Record	80	
1 2.0 - 5.9	17	11 64.7	4 23.5	0	0	0	0	2 11.8	0							
2 6.0 - 11.9	44	29 65.9	7 15.9	0	2 4.5	2 4.5	3 6.8	1 2.3	0							
3 12.0 - 23.9	100	53 53.0	22 22.0	1 1.0	6 6.0	3 3.0	9 9.0	5 5.0	1 1.0	3 100.0			103 54.4	56		
4 24.0 - 35.9	75	31 41.3	14 18.6	2 2.7	6 8.0	3 4.0	6 8.0	13 17.3	0	3 100.0			78 43.6	34		
5 36.0 - 47.9	22	11 50.0	3 13.6	0	3 13.6	0	3 13.6	2 9.1	0	5 80.0	1 20.0		27 55.5	15	3 11.1	
6 48.0 - 59.9	4	2 50.0	0	0	0	0	0	2 50.0	0							
TOTAL	262*	137 52.3	48 18.3	3 1.1	17 6.5	8 3.1	21 8.0	25 9.5	1 0.4	11	10 90.9	1 0.91	273*	147 53.8	28 10.3	

*4 dead eliminated

Data Key: frequency/percentage of row N

Key 10-30 Warrant, charges pending, incident
 40 Return arrested for absconding
 50 Return arrested for parole violation
 60 Return arrested for misdemeanor
 70 Return arrested for felony
 80 New commitment to New York
 90 New commitment out of state

-98-

101

101

TABLE 19

Recidivism Rates By Length Of Follow-up Period: Most Severe Confrontation

	Follow-up Periods						One Year or More (12.0- 59.9 months; codes 3-6)	Two Years or More (24.0- 59.9 months; codes 4 - 6)
	1 2.0 - 5.9	2 6.0 - 11.9	3 12.0 - 23.9	4 24.0 - 35.9	5 36.0 - 47.9	6 48.0 - 59.9		
	Total Sample (Parolees)							
Definition	N = 17 (17)	N = 44 (44)	N = 103 (100)	N = 78 (75)	N = 27 (22)	N = 4 (4)	N = 212 (201)	N = 109 (101)
Any type of return or new commitment (codes 40 - 90)	2/11.8 (same)	8/18.2 (same)	25/24.3 (25/25.0)	30/38.5 (30/40.0)	9/33.3 (8/36.4)	2/50.0 (same)	66/31.1 (65/32.3)	41/37.6 (40/39.6)
-87- Any type of return; new commitment to New York (codes 40 - 80)	2/11.8 (same)	8/18.2 (same)	24/23.3 (24/24.0)	30/38.5 (30/40.0)	9/33.3 (8/36.4)	2/50.0 (same)	65/30.7 (64/31.8)	41/37.6 (40/39.6)
Any type of new commitment (codes 80 - 90)	2/11.8 (same)	1/2.3 (same)	6/5.8 (6/6.0)	13/16.7 (13/17.3)	3/11.1 (2/9.1)	2/50.0 (same)	24/11.3 (23/11.4)	18/16.5 (17/16.8)
New commitment to New York (code 80)	2/11.8 (same)	1/2.3 (same)	5/4.9 (5/5.0)	13/16.7 (13/17.3)	3/11.1 (2/9.1)	2/50.0 (same)	23/10.8 (22/10.9)	18/16.5 (17/16.8)

Data Key: frequency/percentage

To continue the examination of subsequent record for the present sample, it would be both interesting and revealing to examine the pattern of returns for each of the six groups (i.e., follow-up periods) by adding another dimension; that is the period in which returns actually occurred. In order to do this, period of first confrontation leading to return will be used as the subsequent record indicator. This new variable will be referred to subsequently as Initial Return. In tabulating this variable, each subject will be included only one time regardless of the number of returns he has actually experienced. This treatment of data is comparable to that used by DOCS in the Five Year Study (Bala, 1979).

Table 20 (page 89) presents subsequent record by length of follow-up period using initial return as the subsequent record indicator. Within each of the return periods, the crime which resulted in reincarceration is also presented. In this Table, recidivism is defined as any crime leading to incarceration (codes 40 - 90). Table 20 also presents a summary of return rates based on the total number of returns in the sample.

Examination of Table 20 indicates that:

Within each of the return periods, Ss in follow-up period 4 have a higher recidivism rate than Ss in any other follow-up group. Therefore, for this sample it would seem simply that group four committed more crimes than any of the other groups in the sample.

TABLE 20

Subsequent Record by Length of Follow-up Period: First Confrontation Leading to Return

Total Sample
(Parolees)

Follow-up Period	N	Return Period																														
		1					2					3					4					5					6					
		40	50	60	70	80	40	50	60	70	80	40	50	60	70	80	40	50	60	70	80	40	50	60	70	80	40	50	60	70	80	
1 2.0 - 5.9	17 (17)			2/11.8 (2/11.8)		2																										
2 6.0 - 11.9	44 (44)	1	1	5/11.4 (5/11.4)	2	1	1	1	3/6.8 (3/6.8)	1																						
3 12.0-23.9	103 (100)	4	1	11/10.7 (11/11.0)	3	3	1	2	8/7.8 (8/8.0)	90	1	1	1	6/5.8 (6/6.0)	3	1																
4 24.0-35.9	78 (75)	2		7/8.97 (7/9.3)		5	1	2	8/10.3 (8/10.7)		1	4	2	3	13/16.7 (13/17.3)	5	3	1		2/2.6 (2/2.7)		1										
5 36.0-47.9	27 (22)	1		4/14.8 (4/18.2)	2	1		1	3/11.1 (2/9.1)		1*	1	1		2/7.4 (2/9.1)		1															
6 48.0-59.9	4 (4)								1/50.0 (1/50.0)			1			1/50.0 (1/50.0)																	
TOTAL				29/273 = 10.6 (29/262 = 11.1)					23/256 = 8.98 (22/245 = 8.8)					22/212 = 10.4 (22/201 = 10.9)					2/109 = 1.8 (2/101 = 1.98)			0							0			
% returns/ total returns				29/76 = 38.2 (29/75 = 38.7)					23/76 = 30.3 (22/75 = 29.3)					22/76 = 28.9 (22/75 = 29.3)					2/76 = 2.6 (2/75 = 2.7)			0							0			
**4 dead eliminated																																

Key 40 Return arrested for absconding
 50 Return arrested for parole violation
 60 Return arrested for misdemeanor
 70 Return arrested for felony
 80 New commitment to New York
 90 New commitment out of state

Data Key: frequency/percentage of row N

Further examination of the results for the six return periods indicates, that:

Based on the number of available subjects within a given follow up period, the percent of total returns is quite similar for each of the first three return periods ((i.e., return period one (2.0 to 5.9 months) = 38.2; return period two = 30.3; return period three = 28.9)).

Although the percentage of returns is highest for the first three return periods, most returns do occur during the first six months after release. Return rates for periods two and three are somewhat lower and exhibit a decreasing trend. With period four there is a dramatic drop (2.6).

68.4% (52/76) of initial returns occur during the first year after release; 97% (74/76) of initial returns occur within two years of release.

Additionally, it is interesting to note that the DOCS Five Year Report states that two-thirds of those returned in their sample were returned within two years after release. (Bala, 1979: 2) The same pattern although somewhat higher (i.e., 75%) is reported in a discussion of the performance pattern derived from the California cohort data. (Adams, 1975: 57). Although the percentage for the HEOP sample is higher for the two year period than either of the above, the results seem to be demonstrating a similar trend.

Having presented relevant recidivism rates for the present HEOP sample, it would be interesting to compare them to rates which have been reported in the literature.

Until the mid-seventies, general consensus of laymen, criminologists, and corrections professionals placed the recidivism rate somewhere between fifty and seventy-five percent (Kassebaum, Ward and Wilner 1971; Martinson and Wilks 1976; New York Times 1976; Raab 1976). A dissenting voice was that of Daniel Glaser who stated in a book published in 1969 that the general recidivism rate was approximately one-third (Glaser 1969).

In 1976, the preliminary report of an analysis of existing literature funded by the National Institute of Law Enforcement and Criminal Justice, Law Enforcement Assistance Administration presented the general rate as below one-third and decreasing (Martinson and Wilks 1976). After conducting an extensive search to identify all relevant criminal justice research dealing with offender recidivism, the authors combined 3005 recidivism rates from 128 documents to produce a mean rate of 24.62 for the total set of studies. The authors coded the data to enable them to derive averages by: (1) type of research design (i.e., experimental or after only), (2) actual definition of recidivism used, (3) use of population sample, (4) length of follow-up, (5) concurrence of treatment and follow-up (e.g., treatment and follow-up encompass same period), (6) decade in which the study was done, (7) location in the criminal justice system, and (8) treatment code.

Using the total data set, results ranged across the eight categories described above from a low of 16.22 (for the one to six month follow-up category) to a high of 41.67 (in the location in the criminal justice category: partial physical custody prior to prison sentence but post conviction). The mean for each combination remained 24.62.

100

The next and more important comparison is with results from the Five Year Follow-up Study conducted by the New York State Department of Correctional Services and released in the Spring of 1980 (Bala, 1979). In that report, DOCS, like Martinson and Wilks, noted a change in the recidivism trends. The DOCS report states that since 1971, the proportion of cases returned as a result of technical violations has been decreasing while the proportion of cases returned with new commitments has been increasing. The latter adds new clarity and specificity to the general statement of Martinson and Wilks that the recidivism rate is decreasing.

The data summarized by DOCS in the Five Year Study provides the most current criteria for comparison with the HEOP sample. It is also the most relevant since both studies are concerned with New York State offenders.

The DOCS study followed 5,593 subjects who had been incarcerated for a five year period beginning in 1972. To answer the question just how comparable is the HEOP sample with the DOCS sample, selected characteristics of both groups are presented in Table 21 (page 93)

Examination of Table 21 indicates that although the data for the two groups are not identical, they are similar enough to enable a fair comparison. Some specifics presented in Table 21 are worthy of note:

The HEOP sample is all male; the DOCS sample contains a small percentage of females (3.1%).

Inmates released to parole, supervision comprise 82.5% of the DOCS sample while comprising 96% of the HEOP sample.

TABLE 21
 Comparison Between HEOP and DOCS Samples
 on Selected Characteristics

Variables	HEOP N = 277	DOCS N = 5593
Sex		
Male	277/100	5417/96.9
Female	0	176/3.1
Age		
Median	25.4	27.3
Range	18 to 52	16-18 to 65 and over
Ethnicity		
Black	141/50.8	3114/55.7
White	108/39.0	1634/29.2
Hispanic	22/7.9	824/14.7
Other or information unavailable	6/2.2	21/0.4
Type of release		
Parole	—	3582/64.0
Conditional release	—	1032/18.5
Subtotal	266/96.0	4614/82.5
Maximum expiration	0	979/17.5
Other	11/4.0	0
Previous Record*		
No prior adult record of arrest	48/17.4	936/16.7
Prior state penal commitment	96/34.8	1628/29.1

*HEOP N = 276

Data Key: frequency/percentage

110

Statistics in the previous record categories show similarities. In both samples, the percentage of Ss with no prior adult record is extremely close (HEOP - 17.4%; DOCS - 16.7%). The percentage of Ss with prior state penal commitments is also close (HEOP - 34.8%; DOCS - 29.1%).

In the Five Year Study, DOCS reports that the recidivism rate for their sample was 33.6. Return to a New York State correctional facility was the definition used to derive this rate. Using the same definition, Table 17 (page 83) indicates that the rate for the HEOP sample of parolees is 28.24. Since the HEOP study was conducted over a shorter period of time than the DOCS study, perhaps these results are not strictly comparable. They do, however, provide an indication that the HEOP sample is at least not appreciably worse than theirs. Examination of Table 19 (page 87), in which the data are organized by length of follow-up time, tends to support this interpretation. Here it is fairly clear that the figures for the HEOP sample were lower than or approach the 33.6 mark ranging between 11.8 and 40.0. It is important to note that the results for group four are a good deal higher than results for any other group and, in fact, are the only results which are appreciably above the figure of 33.6. Therefore, group four figures, when combined with those for other groups, elevate the rates. The results for group five of 36.4 are, on the other hand, considered to be reasonably close to the DOCS rate of 33.6. Group six results have not been included in this discussion because of the small sample size (N = 4).

Another definition of recidivism used by DOCS was return as new commitment to a New York State facility. With this definition, the rate for their sample of parolees was 13.7. This rate was obtained by combining their parole group (N = 3582 with 458 returned as new commitments) and their conditional release group (N = 1032 with 175 returned as new commitments) and recalculating the rate.

Examination of Table 17 (page 83) provides a recidivism rate of 9.5 for the HEOP sample of parolees. Examination of Table 19 (page 87) indicates that depending on the follow-up group used, the rates for the HEOP sample of parolees range between 2.3 and 17.3 with a mean of 9.3. (As in the previous discussion, results for group six have been eliminated). Again, with the exception of group four (17.3), all other individual groups are below the figure of 13.7. These findings could be quite exciting as they could lead to an interpretation that the in-prison HEOP program was beneficial to the inmates it served.

Research has indicated that rehabilitation efforts have not influenced recidivism (Martinson and Wilks 1976; Silberman 1979). Gottfredson notes and criticizes the general defeatist attitude regarding rehabilitation efforts which prevails in the criminology community (Gottfredson 1979). His derisive article contains a presentation of strategies used by critics to negate positive findings. As stated by the editors of Evaluation Studies Review Annual, Gottfredson's article has implications for future research since it suggests that it would be more appropriate to follow-up those studies which have positive findings rather than to continue to attack rehabilitation treatments (Sechrest 1979).

The relationship between education and recidivism has not been exempt from general negative results. In fact, prison education has been associated with a higher failure rate especially when associated with brief prison terms (Glaser 1969). In his book, Glaser does suggest, however, that the educational programs were not in and of themselves at fault in these instances. Rather, the operation of several other factors was related to the higher failure rate. These factors were: (1) providing educational access to academically disadvantaged inmates who are already poor risks for post release success, (2) competition among rehabilitation programs (an inmate may have benefited more from an alternative program such as

prison industries), (3) insincere and/or unmotivated participants (inmates participate merely to impress the Parole Board), and (4) as a result of participating in the academic program, vocational aspirations are increased without increasing the ability to satisfy these aspirations.

Regardless of the fact that Glaser's research was completed before the advent of HEOP, two points are especially relevant to the present study. First, higher recidivism rates have been associated with short periods of participation in an educational program. Second, higher recidivism rates have been associated with the participation of academically disadvantaged students in educational programs. In the present study, the sample contains academically disadvantaged students. In addition, the mean attendance of the program is 2.38 semesters; a decidedly short period of time. Nevertheless, the recidivism rates for this sample of HEOP students are within respectable, favorably comparable parameters.

3. Parole Survey

A description of the age and the source of the data derived from the parole survey (i.e., form #3) and presented in the remainder of this section is presented in Table 22 below.

TABLE 22
Parole Survey: Age and Source of Information

<i>Variable: 56-Valid Code and Data Source Category Label</i>	<i>Code</i>	<i>Absolute Freq</i>	<i>Relative Freq(Pct)</i>	<i>Adjusted Freq(Pct)</i>	<i>Cumulative Freq(Pct)</i>
<i>Age (Source)</i>					
Up to date (Parole officer)	1	132	47.7	66.3	66.3
0 - 5 months old (DOCS records)	2	7	2.5	3.5	69.8
6 - 11 months old (DOCS records)	3	24	8.7	12.1	81.9
12 - 17 months old (DOCS records)	4	15	5.4	7.5	89.4
18 - 23 months old (DOCS records)	5	8	2.9	4.0	93.5
24 or more months old (DOCS records)	6	10	3.6	5.0	98.5
Age of form unknown (DOCS records)	7	3	1.1	1.5	100.0
Information unavailable	0	78	28.2	<i>Missing</i>	100.0
TOTAL	277		100.0	100.0	
<i>Valid cases</i>	199				

Examination of Table 22 indicates that:

At the time the data was collected at DOCS, 132 subjects were still on or just completing parole and post release information contained on the parole survey (form #3) was obtained from parole officers. For an additional 67 subjects this post release information set was obtained from records at DOCS.

The currency of these records ranged from recent (i.e., 0 - 5 months old) to not recent (i.e., more than 24 months old).

It was not possible to have the parole survey completed or to obtain relevant information for these variables for 78 subjects.

In the presentation of results for this instrument, the number of subjects for which information is unavailable varies. In addition to the 78 subjects with no information on any variable, a varying number of subjects do not have complete data for the entire parole survey. This is true regardless of the data source (i.e., parole officers or records). Therefore, the size of the N in the no information category for a given variable reflects the degree of missing data for that variable. Accordingly, it is important to be cognizant of the size of the sample when examining the tables in the remainder of this section. For ease of reference, these tables are grouped together following the narrative.

Tables 23 through 28 (pages 103-108) document career related post release experiences of the HEOP sample of exoffenders. Table 23 (page 108) presents the "present" or "latest known" employment/school information.

Examination of this table indicates that:

General employment/school information was available for 158 or 57% of the sample. Of the 57%, 59 out of 158, or 37.3% were employed full-time and did not go to school, 40 or 25.3% were in school full-time and did not work, and 1 or 0.6% did both full-time. If the percentages are compiled on the basis of numbers who worked and numbers who went to school regardless of the degree of participation in each, the following percentages emerge:

At the time the data was collected, or at the time of the last parole report filed at DOCS, 94 of 158 or 59% were involved in some type of employment. 57 of 158 or 36.1% were attending school. (See Section 4 College for a more meaningful discussion of school attendance).

Of the 158 subjects with available information, only 4 or 2.5% of the sample had not participated in either a work or a school experience since release. Two of these or 1.3% were ill and were, therefore, unemployable.

The employment related results are supplemented by results presented in Tables 24 through 28 (pages 104-108). Please note that these results should be interpreted with caution since the sample sizes for a number of variables (i.e., V59 Longest Known Time on Any Job, V60 Occupation, and V61 Income) are comparatively small.

Examination of Tables 24 through 28 indicates that:

Of the 158 subjects for whom information was available, 119 subjects or 75% had held some type of employment after release. (Not all of these were employed at the time the data was collected which accounts for the difference in the number reported here and that reported in Table 23.) (See Table 24).

Most subjects (60.8%) had one or two jobs. (See Table 24). These jobs have not been maintained for any great length of time. (See Table 25). Three points are relevant: first there is a great deal of missing data; second, that part of the sample with the largest percentage of data for this variable are the parolees who have been released for "relatively" short lengths of time; and third, during the period of this study, the societal unemployment rate was high.

Information relating to occupation was unavailable for close to half of the sample (51.6%). An additional 39 subjects or 14.1% have not worked since release. Of the remaining 95 or 34.3% of the sample, the highest percentage of occupations are within the Clerical-Sales and Service categories (22.1% each). The Professional-Technical-Managerial and Miscellaneous categories follow closely (15.8% and 14.7% respectively). (See Table 26).

Information relating to income was available for 97 or 35% of the sample. Income for a majority of these subjects was fairly low. Three-quarters of the reported incomes were below \$7800.00 per year. Even though some were students, this is not a great deal of money on which to live. (See Table 27).

111 of the 277 subjects or 40.1% of the total sample received income from one source, 28 subjects or 10.1% from two or more sources, and 1 subject or 0.4% received no income. Information was unavailable for 136 subjects or 49.1% of the sample.

It is interesting to note that of the 141 subjects for whom information was available, 53 of 141 or 37.6% received at least some income from

education related sources and 72 of 141 or 51.1% obtained at least a portion of their funds from employment. (The latter figure does not include unemployment as a source of employment related income). Finally, families provided financial aid to 11 of 141 or 7.8% of the sample. (See Table 28).

Table 29 (page 109) presents results related to family situation. Examination of this Table indicates that:

Close to three quarters of those for whom information was available (130 of 175 or 74.3%) live with or near their families. Parole officers have suggested that exoffenders who do live with or near family members tend to do better after release (personal communication with Buffalo area parole officers). If this is true, the results presented above are encouraging.

11J

TABLE 23

Parole Survey: Employment and/or school

<i>Variable: 57-Present or Latest Known</i>					
<i>Employment or School</i>					
<i>Category Label</i>	<i>Code</i>	<i>Absolute Freq</i>	<i>Relative Freq(Pct)</i>	<i>Adjusted Freq(Pct)</i>	<i>Cumulative Freq(Pct)</i>
Employment-full time	1	59	21.3	37.3	37.3
Employment-part time	2	10	3.6	6.3	43.6
Casual Labor	3	14	5.1	8.9	52.5
Employment-full time and casual labor	13	1	0.4	0.6	53.1
Unemployed	6	13	4.7	8.2	61.3
Unemployable-ill	7	2	0.7	-1.3	62.6
No work since release	8	2	0.7	1.3	63.9
School-full time	4	40	14.4	25.3	89.2
School-part time	5	4	1.4	2.5	91.7
Employment and school full time	14	1	0.4	0.6	92.3
Employment-full time and school part time	15	2	0.7	1.3	93.6
Employment part time and school full time	24	6	2.2	3.8	97.4
Casual Labor and school full time	34	1	0.4	0.6	98.0
School full time but no follow-up	10	3	1.1	1.9	100.0
Information unavailable	0	119	43.0	<i>Missing</i>	100.0
	TOTAL	277	100.0	100.0	
		<i>Valid cases 158</i>			

TABLE 24
Parole Survey: Number of Jobs Since Release

<i>Variable: 58-Number of Jobs Since Release Category Label</i>	<i>Code</i>	<i>Absolute Freq</i>	<i>Relative Freq(Pct)</i>	<i>Adjusted Freq(Pct)</i>	<i>Cumulative Freq(Pct)</i>
None	0	39	14.1	24.7	24.7
One job since release	1	61	22.0	38.6	63.3
Two jobs since release	2	35	12.6	22.2	85.5
Three jobs since release	3	19	6.9	12.0	97.5
Four jobs since release	4	2	0.7	1.3	98.8
Five jobs since release	5	2	0.7	1.3	100.0
Information unavailable	9	119	43.0	<i>Missing</i>	100.0
	TOTAL	277	100.0	100.0	
	<i>Valid cases 158</i>				

121

TABLE 25
Parole Survey: Longest Known Time On Any Job

<i>Variable: 59-Longest Known Time On Any Job</i> <i>Category Label</i>	<i>Code</i>	<i>Absolute Freq</i>	<i>Relative Freq(Pct)</i>	<i>Adjusted Freq(Pct)</i>	<i>Cumulative Freq(Pct)</i>
Less than 1 month	1	7	2.5	9.3	9.3
1 - 3.9 months	2	34	12.3	45.3	54.7
4 - 6.9 months	3	12	4.3	16.0	70.7
7 - 12.9 months	4	14	5.1	18.7	89.3
13 - 24.9 months	5	5	1.8	6.7	96.0
25 - 36.9 months	6	3	1.1	4.0	100.0
Information unavailable	0	163	58.8	<i>Missing</i>	100.0
N/A no work since release	99	<u>39</u>	<u>14.1</u>	<u><i>Missing</i></u>	100.0
	TOTAL	277	100.0	100.0	

Valid cases 75; Missing cases 202(codes 0 and 99)

TABLE 26
Parole Survey: Occupation

<i>Variable: 60-Present or Latest Known Occupation Category Label</i>	<i>Code</i>	<i>Absolute Freq</i>	<i>Relative Freq(Pct)</i>	<i>Adjusted Freq(Pct)</i>	<i>Cumulative Freq(Pct)</i>
Professional/Technical/Managerial	1	15	5.4	15.8	15.8
Clerical/Sales	2	21	7.6	22.1	37.9
Service	3	21	7.6	22.1	60.0
Processing	5	2	0.7	2.1	62.1
Machine trades	6	9	3.2	9.5	71.6
Bench work	7	3	1.1	3.2	74.7
Structural work	8	10	3.6	10.5	85.3
Miscellaneous	9	14	5.1	14.7	100.0
Information unavailable	0	143	51.6	<i>Missing</i>	100.0
No work since release98	10	3.6	<i>Missing</i>	100.0
In school and never worked99	29	10.5	<i>Missing</i>	100.0
	TOTAL	277	100.0	100.0	

Valid cases 95; Missing cases 182(codes 0; 98; 99)

120

TABLE 27
Parole Survey: Income

Variable: 61- Approximate Present or Latest-Known Income. Category Label	Code	Absolute Freq	Relative Freq(Pct)	Adjusted Freq(Pct)	Cumulative Freq(Pct)
No income	1	6	2.2	6.2	6.2
Less than \$3600	2	20	7.2	20.6	26.8
\$3601 - \$5100	3	17	6.1	17.5	44.3
\$5101 - \$6500	4	22	7.9	22.7	67.0
\$6501 - \$7800	5	8	2.9	8.2	75.2
\$7801 - \$9000	6	7	2.5	7.2	82.4
\$9001 - \$10000	7	3	1.1	3.1	85.5
\$10001 - \$11000	8	7	2.5	7.2	92.7
\$11001 - \$12000	9	3	1.1	3.1	95.8
\$12001 - \$12800	10	2	0.7	2.1	97.9
Over \$12800	11	2	0.7	2.1	100.0
Information unavailable	0	180	65.0	Missing	100.0
	TOTAL	277	100.0	100.0	

Valid cases 97; Missing cases 180

TABLE 28

Parole Survey: Source of Income

<i>Variable: 62-Present or Latest Known Source of Income Category Label</i>	<i>Code</i>	<i>Absolute Freq</i>	<i>Relative Freq(Pct)</i>	<i>Adjusted Freq(Pct)</i>	<i>Cumulative Freq(Pct)</i>
Employment	1	57	20.6	40.4	40.4
Education	2	30	10.8	21.3	61.7
Welfare	3	10	3.6	7.1	68.8
Disability and compensation	4	3	1.1	2.1	70.9
Unemployment	5	4	1.4	2.8	73.8
Family support	6	6	2.2	4.3	78.8
Other	7	1	0.4	0.7	78.7
Employment-education-welfare	8	1	0.4	0.7	79.4
Employment and education	12	11	4.0	7.8	87.2
Employment and unemployment	15	1	0.4	0.7	87.9
Employment and family support	16	2	0.7	1.4	89.4
Education and welfare	23	6	2.2	4.3	93.6
Education and unemployment	25	1	0.4	0.7	94.3
Education and family support	26	1	0.4	0.7	95.0
Education and other	27	3	1.1	2.1	97.2
Family and welfare	36	1	0.4	0.7	97.9
Unemployment and family support	56	1	0.4	0.7	98.6
N/A subject has no income	99	2	0.7	1.4	100.0
Information unavailable	0	136	49.1	<i>Missing</i>	100.0
TOTAL		277	100.0	100.0	

Valid cases 141

*Variable: 63-CETA funds
Involved.*

Yes	1	12	4.3	14.5	14.5
No	2	71	25.6	85.5	100.0
Information unavailable	0	194	70.0	<i>Missing</i>	100.0
TOTAL		277	100.0	100.0	

Valid cases 83

12.

TABLE 29
Parole Survey: Family Situation

Variable: 64-Present or Latest
Known Family Situation

Category Label	Code	Absolute Freq	Relative Freq(Pct)	Adjusted Freq(Pct)	Cumulative Freq(Pct)
Lives with family	1	91	32.9	52.0	52.0
Has family in vicinity	2	39	14.1	22.3	74.3
Has no family in area	3	45	16.2	25.7	100.0
Information unavailable	0	<u>102</u>	<u>36.8</u>	<u>Missing</u>	100.0
	TOTAL	277	100.0	100.0	

Valid cases 175; Missing cases 102

4. College

Post release educational experiences of the HEOP sample are described in Tables 30 through 34 presented following the narrative on pages 115-119.

Table 30 provides a general description of the educational status of the sample. Examination of this Table on page 115 indicates that:

Some type of information relating to college attendance was available for approximately three quarters of the sample (213 or 77%). Information from various sources (i.e., parole officers, colleges, DOCS) indicated that 125 of 213 or 59% had participated in or were participating in a post release college experience; 47 of 213 or 22% presently, 65 of 213 or 31% previously and 13 of 213 or 6% historically (see code 11, maxed with school but follow-up not possible as no social security number was available). Of these 125 Ss, the previous or present attendance of 9 subjects was not verified by the college. In subsequent data analyses, these 9 were added to the code 1 group (i.e., has not attended college since release) changing that figure from 88 to 97 Ss. (See Tables 31-34).

Additionally, verification by a college was not requested for the 13 subjects referred to above as historical attenders (i.e., whose DOCS records indicated that they were in college upon maximum expiration of sentence). In subsequent data analyses, these 13 Ss were coded as information unavailable, changing that figure from 64 to 77. (See Tables 31-34).

Therefore, verified data describing post release college attendance was actually available for 200 Ss. Tables 31 through 34 (pages 116-119) present this data. Examination of these Tables indicates that:

103 of 200 or 52% were verified as having attended college.

Most of the 103 Ss attended one college (92 of 200 or 46%); the other 11

of 200 or 5.5% attended two colleges.

Of the 103 Ss who did attend college, 21 of these or 20% did not obtain credit. Conversely, 82 of 103 or 80% of those attending college did obtain credit. In terms of the sample of 200 for whom information was available on these variables, 82 of 200 or 41% of the HEOP sample were verified as having attended college and receiving credit. In terms of the total sample of 277 Ss, 82 of 277 or 30% received credit from college after release from prison. (See Table 31).

Actual number of credits obtained was supplied by the colleges for 100 Ss, not 103 as described in Table 31. For three subjects, it was not possible to figure the precise number of credits obtained and they were, therefore, added to the no information category.

Of the 100 Ss with information, 79 or 79% received one or more credits. 31 of 79 or 39% of those who actually obtained credit received between 1 and 15 credits, while 27 of 79 or 34% received between 16 and 45 credits. 73% (58 of 79 Ss); therefore, obtained 45 or fewer credits. (See Table 32).

The average length of enrollment for the HEOP sample is 3.3 semesters. At the time the data were collected (Spring 1978), 89 of 103 Ss with information available on this variable or 86.4% of the sample of college attenders had attended college for 5 semesters or less. Only 14 of 103 or 13.6% had attended between 6 and 11 semesters. (See Table 33).

The pattern which is apparent in Tables 32 and 33 is consistent with the information describing length of time between release and data collection presented in Table 13 (page 75). That is, since the mean release time for the sample is 21.4 months with a mode of 12 -23.9 months, the results describing credits and length of enrollment are as expected.

The major of 89 subjects was provided by the colleges. Of these, Social Science was chosen most frequently (33 of 89 or 37%), followed by Administration/Business (24 of 89 or 27%) and Arts and Letters (17 of 89 or 19%). (See Table 34). The present results are similar but not identical to the majors declared by the sample while in the prison program. At that time, as described in Table 8 (page 67), Arts and Letters was chosen most often (132 of 226 or 58%), followed by Undeclared (38 of 226 or 16.8%). Since Ss tended to participate in the in-prison program earlier in their education career, it is not surprising that a higher percent of the sample had not yet selected a major. If Arts and Science was later selected by Ss with undeclared majors and if a few subjects switched into Arts and Science from other areas, the discrepancy between the in-prison and post release choice of major is easily explained.

The dearth of HEOP students in the Science areas (i.e., Health Science, Science and Math) is consistent with earlier research, as is a preponderance of students in the Social Science area (Wolf, 1976). Since typically, science majors are not offered in prison programs, and since it is difficult for convicted felons to be licensed, one would not expect to find them majoring in Science after release from prison. This explanation would not apply to other groups of HEOP students, however, suggesting that students' prior preparation may be inadequate for success in a science major. Additionally, it is interesting that both groups are well represented in the Social Science areas.

Post release Grade Point Average for 86 subjects is 1.93. (See Table 34). This indicates a 27% decline from the in-prison average GPA of 2.65. (See Table 7, page 66). One plausible explanation for this is that in the post release college experience, it was possible for a subject to receive a GPA

of zero, thus obtaining no credits. In order to be part of the original sample for the present study, however, a subject must have obtained at least one credit while in the in-prison program and, therefore, could not have received a zero GPA.

TABLE 30
College: Educational Status

Variable	65-Educational Status					
Category	Label	Code*	Absolute Freq(Pct)	Relative Freq(Pct)	Adjusted Freq(Pct)	Cumulative Freq(Pct)
Has not attended since release . . .		1	88	31.8	41.3	41.3
<i>Previously attended:</i>						
Dropped out		2	58	20.9	27.2	68.5
Graduated two year college		3	1	0.4	0.5	69.0
Graduated four year college		4	2	0.7	0.9	70.0
Attended graduate school		12	1	0.4	0.5	70.5
Parole officer believes attended** .		5	3	1.1	1.4	71.9
<i>Presently attending:</i>						
Two year college		6	6	2.2	2.8	74.7
Four year college		8	34	12.3	16.0	90.7
Graduate school		9	1	0.4	0.5	91.2
Parole officer believes attending** .		10	6	2.2	2.8	94.0
Maxed while in college		11	13	4.7	6.1	100.0
Information unavailable		0	64	23.1	<i>Missing</i>	100.0
TOTAL			277	100.0	100.0	

Valid cases 213; Missing cases 64

*no responses for code 7-graduated from two year college, presently attending four year college.

**as of March,78, but not verified by college.

13

TABLE 31

College: Number Attended

Variable: 66-Number of Colleges
Attended Since Release

Category Label:

Code	Absolute Freq	Relative Freq(Pct)	Adjusted Freq(Pct)	Cumulative Freq(Pct)
None	0	97	35.0	48.5
One	1	92	33.2	46.0
Two	2	11	4.0	5.5
Information unavailable	9	77	27.8	Missing
		-----	-----	100.0
TOTAL	277	100.0	100.0	

Valid cases 200; Missing cases 77

Variable: 67-Number of Colleges Attended Since
Release With Credit

None	0	118	42.6	59.0	59.0
One	1	73	26.4	36.5	95.5
Two	2	9	3.2	4.5	100.0
Information unavailable	9	77	27.8	Missing	100.0
		-----	-----		
TOTAL	277	100.0	100.0		

TABLE 32

College: Credits Obtained and Length of Enrollment

<i>Variable: 68-Number of Credits Since Release</i> <i>Category Label:</i>	<i>Code</i>	<i>Absolute Freq</i>	<i>Relative Freq(Pct)</i>	<i>Adjusted Freq(Pct)</i>	<i>Cumulative Freq(Pct)</i>
None	1	21	7.6	21.0	21.0
1 - 15	2	31	11.2	31.0	52.0
16 - 30	3	12	4.3	12.0	64.0
31 - 45	4	15	5.4	15.0	79.0
46 - 60	5	9	3.2	9.0	88.0
61 - 75	6	6	2.2	6.0	94.0
76 - 125	7	6	2.2	6.0	100.0
Information unavailable	0	80	28.9	<i>Missing</i>	100.0
NA S did not attend college	9	97	35.0	<i>Missing</i>	100.0
	TOTAL	277	100.0	100.0	

Valid cases 100; Missing cases 177

TABLE 33
College: Length of Enrollment

Variable No	Variable Name	N	Missing Cases	Mean	Mode	Minimum	Maximum	Range
69	Total length of enrollment in any college since release	103	174	3.3 semesters	1.0	1.0	11.0	10.0

Category Label	Code	Absolute Freq	Relative Freq(Pct)	Adjusted Freq(Pct)	Cumulative Freq(Pct)
One semester	1	27	9.7	26.2	26.2
Two semesters	2	22	7.9	21.4	47.6
Three semesters	3	12	4.3	11.7	59.2
Four semesters	4	16	5.8	15.5	74.8
Five semesters	5	12	4.3	11.7	86.4
Six semesters	6	2	0.7	1.9	88.3
Seven semesters	7	3	1.1	2.9	91.3
Eight semesters	8	7	2.5	6.8	98.1
Nine semesters	9	1	0.4	1.0	99.0
Eleven semesters	11	1	0.4	1.0	100.0
Information unavailable	0	77	27.8	Missing	100.0
NA-S did not attend college	99	97	35.0	Missing	100.0
TOTAL		277	100.0	100.0	

TABLE 34
College: Major and GPA

Variable: 70-Major In School

Category Label	Code	Absolute Freq	Relative Freq(Pct)	Adjusted Freq(Pct)	Cumulative Freq(Pct)
Arts and Letters	1	17	6.1	19.1	19.1
Educational Studies	2	00	0.0	00.0	19.1
Health Science	3	2	0.7	2.2	21.3
Science and Math	4	1	0.4	1.1	22.4
Administration and Business	5	24	8.7	27.0	49.4
Social Science	6	33	11.9	37.1	86.5
Undeclared	7	12	4.3	13.5	100.0
Information unavailable	0	91	32.9	Missing	100.0
NA S did not attend college	9	97	35.0	Missing	100.0
TOTAL		277	100.0	100.0	
<i>Valid cases: 89</i>					

Variable No.	Variable Name	N	Missing Cases	Mean	Mode	Minimum	Maximum	Range
71	GPA in school	86	191	1.93	0.0	0.0	3.6	3.6

-119-

5. Status Now

Table 35 (page 122) presents the status of the sample as of March 1978. For those Ss who were attending school, their status is valid to June 1978. When the present study was planned, this variable was to be the major dependent variable of interest. That decision was made before it was known that it would be possible to provide more information from the large amount of data which subsequently became available. In spite of the greater amount of detail, however, many of the variables created from the wealth of available information do contain much missing data. For V72, Status Now, all Ss have been described in some fashion other than information unavailable. As a result, some of the percentages are lower than those reported previously. Since the previous percentages are based on adjusted frequency (i.e., they do not include Ss with no information), they are considered to be more meaningful.

Examination of Table 35 indicates that:

40 of 277 or 14.4% were known to be attending school in June 1978.

56 or 20.2% were known to be employed in March of 78.

On or around March 1, 1978, 54 or 19.5% were incarcerated. Section 2 presents a detailed discussion of recidivism for the sample. Since the previous figures are presented within a meaningful context, it is suggested that figures reported in that section be used rather than the ones presented above.

The largest percentage of subjects are in the unknown but not in prison category (91 of 277 or 32.9%). Therefore, the most poignant conclusion to be drawn from this data is the following, while it may not be possible to determine the exact whereabouts of one-third of the sample of exoffenders, it is possible to determine where they are not.

TABLE 35
Status Now

<i>Variable 72-Status Now</i>					
<i>Category Label</i>	<i>Code</i>	<i>Absolute Freq</i>	<i>Relative Freq(Pct)</i>	<i>Adjusted Freq(Pct)</i>	<i>Cumulative Freq(Pct)</i>
In school	1	29	10.5	No	10.5
Working	2	42	15.2	Missing	25.6
Reincarcerated	3	54	19.5	Cases	45.1
Unknown- not in prison	4	91	32.9		78.0
Awaiting trial	6	14	5.1		83.0
On probation	7	2	0.7		83.8
Not working and not in school or prison	8	17	6.1		89.9
Absconder	9	9	3.2		93.1
Deceased	10	4	1.4		94.6
In a mental institution	11	1	0.4		94.9
In school and working	12	11	4.0		98.9
Working and awaiting trial	26	3	1.1		100.0
TOTAL		277	100.0		

VI. EXECUTIVE SUMMARY

The present study was conducted for the New York State Bureau of Higher Education Opportunity Programs (HEOP) to provide a preliminary evaluation of the HEOP in-prison program and to investigate the feasibility of conducting such an impact study. The study was perceived as preliminary because these particular HEOP programs have been in existence for relatively short periods of time.

The sample was comprised of two hundred seventy-seven (277) exoffenders who had attended HEOP programs while incarcerated in five correctional facilities in New York State. Extensive data were collected from four sources: in-prison HEOP programs, corrections and parole files, parole officers, and colleges. The data was then operationalized resulting in the creation of seventy-two variables of interest.

Through the cooperation and assistance of the New York State Department of Correctional Services (DOCS) and the Executive Department, Division of Parole, it was possible to collect a great deal more data than originally proposed. The inclusion of all variables derived from criminal records, both past and present, was a direct result of this cooperation, as was the participation of parole officers. Without the goodwill of both of the above agencies, the study as it presently exists would not have been possible.

Although it was possible to collect a great deal of data, the collection process itself as well as the operationalization of variables were each time consuming and costly endeavors. Nevertheless, and regardless of the preliminary nature of the study, the results are both interesting and provocative. In addition, they appear to be sufficiently contributory to warrant the expenditure of both time and money; enough so that it is the recommendation of the authors

that the data base be expanded to include additional program participants who have been released since the cut off point used in the present study.

Highlights of the results for the present study are presented below:

1. HEOP students participate in the in-prison program for relatively short periods of time (average = 2.38 semesters). Regardless of this fact, beneficial results do occur.
2. Information from a variety of sources indicates that 125 of 213 Ss (59%) with available information attended college after their release from prison. Post release college attendance which was verified by colleges was available for 200 Ss. Of these, 103 of 200 or 52% attended college; 82 of 200 or 41% attended college and received credit.
3. Employment information was available for 158 Ss. One hundred nineteen or 75% of these had been involved in some type of employment after release. At the time the data was collected, 59% were employed.
4. 97.5% of the sample with available information (154 of 158) had participated in a school and/or a work experience after release from prison.
5. Recidivism rates for the sample compare favorably with rates reported in the literature. Most meaningfully, the rate of return to a New York State correctional facility is 28.24 for the HEOP sample compared to a rate of 33.6 as reported in the DOCS Five Year Study (Bala, 1979), although somewhat different time periods were involved in the two studies.

The major conclusion to be drawn from this study is that benefit is derived from participation in a HEOP in-prison program regardless of the fact

that the population is academically disadvantaged and in spite of the relatively short enrollment period. If it were possible for students to remain in the program for longer periods while incarcerated (i.e., to avoid transfer to another facility which does not have a program), these benefits might be even greater.

APPENDIX A

HEOP PROGRAM DESCRIPTION

All information contained in this appendix was obtained from Program proposals submitted for 1977-78 school years, HEOP Annual Reports (for years 1972-73, 1973-74, 1974-75, 1975-76), and correspondence from program directors.

Compiled by Linda A. Collins

In 1970 the Higher Education Opportunity Program (HEOP) was initiated at independent colleges and universities across the state. The Program was instituted in order that access to postsecondary higher education could be available to those residents of New York State who are economically and educationally disadvantaged.

In 1973 this goal of equalizing postsecondary education was taken a step further when a program was implemented at Green Haven Correctional Facility. Since then, disadvantaged students among inmate populations at four additional correctional facilities have been given access to HEOP programs.

Recruitment

Most inmates hear about HEOP through conversations with other inmates who are already enrolled in the program. There is, however, an effort made on the part of the program staff to actively recruit students for the program. This is usually accomplished through the use of announcements on the facility radio or PA system, through advertisements in the facility newspaper, and through the dissemination of flyers and handbooks. Another method used is recruiting inmates from college preparatory or skills development programs where they exist.

Eligibility and Admission

The New York State Education Law specifies that the HEOP program is intended for residents of the State who are "economically and educationally disadvantaged, as defined by the Regents." Any inmate wishing to attend a HEOP college program must meet these basic criteria. Although guidelines have been developed to indicate what constitutes economic disadvantage, inmates as wards of the State automatically become economically eligible.

Educational disadvantage is usually described as "non admissability to any regular academic program at a particular institution," and is generally based

on past high school performance and low test scores. An inmate's record must demonstrate that he is in fact academically disadvantaged.

In addition to the basic criteria, students are selected on the basis of their ability and willingness to complete a degree. All prospective students are interviewed, and factors such as references, the possession of a high school diploma (or its equivalent), writing ability, and test scores are often taken into consideration. Inmates are usually expected to be able to commit at least one year to the program. Therefore, inmates who are eligible for parole, transfer, or who are near their maximum expiration of sentence dates are generally not admitted to the program.

Supportive Services

Once admitted to the program, the inmate must be a matriculated student. He takes courses that are identical to those offered on campus at the sponsoring college, is taught by the same faculty, and is subject to the same grading system.

Although the college inmate is expected to perform at the college level, he is not expected to proceed at the same pace as his traditional student counterpart. During the first quarter of the course, an attempt is made by faculty and program staff to recognize and identify any basic academic deficiencies. Intensive tutorial services are then initiated, and with continued tutorial assistance and counseling, it is expected that the last third of the course can be taught at a level that approximates the level of teaching at the sponsoring colleges.

Supportive services are a vital part of any Higher Education Opportunity Program. This is especially true of the prison programs. Although there is some variation between programs, incarcerated students at all five correctional facilities generally receive tutoring, counseling and some degree of remedial or develop-

mental course work.

In most cases, tutoring is handled by professors and by students who are enrolled at the sponsoring college or university. Other programs utilize counselors or employ special teaching assistants as tutors. For security reasons, still other programs have adopted a tutoring program whereby incarcerated students tutor each other.

By design, there are several different types of counseling available to the incarcerated student. For example, all students are counseled to some degree before being enrolled in the program. Once admitted, however, an incarcerated student is likely (and in many cases required) to make himself available for academic, personal, vocational, and financial aid counseling.

The remedial and preparatory courses and programs that are part of the HEOP prison programs include mathematics, reading, writing, and pre-freshmen preparatory and developmental skills programs.

Evaluation

Incarcerated students are subject to evaluations. In most cases, this means that they are subjected to the same separation and termination policies that govern their regularly admitted counterparts at the supporting college. The prison programs do tend to be more flexible. It is understood, especially in the case of the incarcerated student, that there might be extenuating circumstances that can adversely affect academic performance (for example, court appearances, institutionally initiated disciplinary actions, and medical excuses). Despite this, however, an inmate is in many cases expected to maintain a grade point average of at least a 2.0. Failure to do so could result in termination. Other factors which might result in the incarcerated student being terminated

from the program include the accumulation of incompleting courses, lack of attendance, the failure to complete the necessary financial aid applications, and other behavior not consistent with an academic program.

Staff Orientation and Training

Due to the unique nature of the program, "orientations" and "in-service" training are especially important. Recognizing this, the state-wide HEOP Professional Organization provides conferences each year for both new and experienced counselors and staff. The HEOP Central Office runs an annual administrative training course for new project directors and assistant directors. The correctional facility will, in most cases, also provide some orientation for the staff in order to familiarize them with the rules, regulations, and hazards of working within a maximum security prison.

The chart which follows describes in more detail the specifics of each of the correctional facilities where programs have been implemented.

14.

PROGRAM DESCRIPTION CHART
(all info. based on 76-77 year)

	GREEN HAVEN	GREAT MEADOW	COX	ATTICA	AUBURN
<u>YEAR PROGRAM WAS IMPLEMENTED</u>	1973			1975	
<u>POPULATION FROM WHICH SAMPLE CAN BE DRAWN (approximate)</u>	1750	1200		1750	1600
<u>RECRUITMENT</u>					
announcements on radio or PA system	X	X		X	X
dissemination of flyers or handbooks	X	X	X	X	X
mailings to individuals	X				
Word of mouth	X	X	X	X	X
Ads in faculty newspaper	X	X			X
Referrals			X		
Through College Prep Program or skills development program	X	X	X		
<u>ELIGIBILITY & ADMISSION</u>					
Meet HEOP criteria of being economically and educationally disadvantaged	X	X	X	X	X
Testing (IQ)		X			
Testing (aptitude)		X	X	X	X
High school diploma or equivalency	X			X	
References			X		
Records	X				
Personal interview	X	X	X	X	X
Recommendations by program director and another program staff member	X	X			
Application	X	X			X
Previous school or job record			X		
Demonstration of writing ability	X				X
Commitment of 1 year				X	X
In a position to make commitment for 1 year				X	X
Number of applicants accepted	65/110	69/200		48/101	30/154
<u>SUPPORT SERVICES</u>					
<u>Counseling</u>					
For potential enrollees	X	X	X	X	X
Academic counseling for students	X	X	X	X	X
Personal " " "	X	X	X	X	X
Vocational " " "	X		X	X	X
Financial advisement	X	X		X	X
Counselor/student ratio	1:25	1:20	1:30	2:80	2:80

	GREEN HAVEN	GREAT MEADOW	COX	ATTICA	AUBURN
<u>Tutoring</u>					
By peers (other students in program)			X	X	
By peers (reg. students at affiliated college or university)	X	X	X		
By teachers (professors)		X		X	
By teaching assistants					X
By counselors					X
By use of taped lectures					X
By use of special learning lab	X				
Tutor/HEOP ratio	1:3	1:15	1:1 or small groups	1:1 or small groups	1:1 or small groups
<u>Remedial and Prep Courses and Programs</u>					
Mathematics	X			X	
Reading and writing	X	X		X	
Pre-freshman prep and dev. skills prog.	X	X	X	X	
<u>SCHEDULING</u>					
<u>Counseling sessions</u>					
counseling initiated by students available	X	X	X	X	X
counseling initiated by staff available	X	every 6 wks.	X	twice/sem.	3 X's/sem.
<u>Classes</u>					
classes held in evenings	X				
" " " week days	X	X	X	X	X
" " " Saturdays	X				
" " during summer	X	X	X		X
full-time courses offered	X		X		X
part-time courses offered	X				
max. number of hours per semester	3				12
<u>EVALUATION OF STUDENTS</u>					
GPA (graded)	X	X	X	X	X
Non-graded evaluations		X			
Students are warned or appear before academic review committees before being terminated from the program.	X				
requirements for staying in program -- maintain GPA of 2.0					
<u>STAFF ORIENTATION AND TRAINING</u>					
For tutors	X	X	X	X	X
For professors				X	X
For counselors	X			X	X

APPENDIX B: Data Collection Forms

Form #1: Corrections Form

Form #2: Program Form
Key to Program Form
Intake Prognosis Form

Form #3: Parole Form
Consent Form

Form #4: College Form

HEOP Prison Program _____

Parole Area Office _____

N.Y. City Officer _____

NYSIS No. _____

Name _____

Inmate (DIN) No. _____

D.O.B. _____

Program Crime _____

Race _____

County of Commitment _____

Drug Use

Date Sentenced _____

____ Yes (Type _____)

Date Received _____

____ No

Jail Time _____

Education

Term _____

Highest grade attained _____

Maximum _____

H.S. graduation _____

Release Date _____

H.S. equivalency _____

Type of Release _____

Other _____

Institute Released From _____

Achievement Scores

____ Reading (PM)

____ Math (AC)

____ Grade Average

Test _____

Previous Record

I.Q. Score _____

____ None

Test _____

____ Over

Subsequent Record

____ None

 Date / Crime / Disposition

Data Collector _____

Date _____

Previous Record

Date / Crime / Disposition

154

*Use Key

DATA COLLECTION FORM IN PRISON PROGRAM

Name	Type of Program *	Earned Number of Credits	Length of Time in Program *		Major	GPA	Status * (before release)	Reading Level	Math Level	Supportive Services * remedial tutorial counseling	Present * Status
			sem	sum							

150

150

-136-

Form #2

KEY

TYPE OF PROGRAM

- 1 = in prison
- 2 = ed release
- 3 = 1 & 2

EARNED NUMBER OF CREDITS

This refers to the number of credits earned while in the Prison Program.

LENGTH OF TIME IN PROGRAM

(count summers separately, e.g., 2 semesters, 1 summer)

STATUS (before release)

- 1 = graduated
- 2 = withdraw
- 3 = terminated (by program, e.g., kicked out)
- 4 = transferred (to another prison)
- 5 = active
- 6 = other (specify)

SUPPORTIVE SERVICES PROVIDED

remedial/developmental/compensatory YES NO
 tutorial YES NO
 counseling YES NO

STATUS PRESENT

- 1 = in college (if possible specify where)
- 2 = at work (specify type of work if possible)
- 3 = unemployed
- 4 = in court
- 5 = in prison - new incarceration
- 6 = other (specify)

GPA

PLEASE RESPOND:

1. What is the highest possible GPA? _____
2. How is GPA calculated (i.e., what happens to W, I, F)

15.

POTENTIAL *

*Upon acceptance into the program,
this student's potential was viewed
as being: (Circle one response)*

RELIABILITY OF RATING
*Based on memory and/or files,
this assessment of potential is:
(Circle one response)*

Name

Strong

Average

Weak

Fairly Reliable

Not so Reliable

*POTENTIAL - The definition of potential includes two factors. 1) academic success potential, and 2) potential for success upon release.

8a. Record Update since release

Arrest	Crime	Conviction	Commitment
1.		sentence	date
2.		sentence	date
3.		sentence	date

Parole Area Office _____

Parole Officer _____

b. Number of Misconduct Reports (submitted or pending) _____

c. Number of VP Reports (submitted or pending)

- _____ no warrant with disposition pending
- _____ no warrant after disposition
- _____ warrant - Revocation Hearing pending
- _____ criminal charges pending
- _____ incarceration in local facility
- _____ warrant - other _____
- _____ returned
- _____ returned when available
- _____ restored
- _____ returned - new commitment

The person named below has had access to the benefit of a college education through the Higher Education Opportunity Program (HEOP) while incarcerated. The impact of such education is presently being explored. To do so, current information concerning this person is necessary.

Your completion of the items contained inside this questionnaire would be of great assistance. Please complete the eight items in terms of the parole period which started with the date of release cited below. In the event the person is off parole because of completion of sentence or parole violation, please complete as of the date of ME or prior to being cited for parole violation. Make a note of this date on the top of the next page in the space provided.

Thank you.

Name _____ No. _____

Date of Release _____

Information release has been signed _____ Yes
 _____ No

Form #3

-139-

15J

16J

The date this questionnaire is valid for is _____

This person

- is on parole
 has completed sentence
 has been reincarcerated

1. Present Employment Status (check all that apply)
 full time (approximately 40 hours per week)
 part time (regular employment but less than full time)
 casual labor
 student

2. Employment Record since release
Type of Job Dates of Employment

1. _____
2. _____
3. _____

3. Educational Status (check appropriate response & fill in blanks)

Name of College Location Dates of Attendance

_____ presently enrolled _____

- full time
 part time

Name of College Location Dates of Attendance

_____ previously enrolled _____

- graduated
 dropped out

_____ has not attended college since release

4. Approximate Present Income _____
estimated on a per year basis

5. Present Source of Income (check all that apply)
_____ employment (non-college related)
_____ education

HEOP
 EOP
 TAP
 VA
 OVR
 Loan
 College Work Experience
 Other _____

_____ welfare

HR case simply
 HR case in program
 ADC case
 ADC in WIN program
 SSI

_____ disability and compensation

SS disability
 NYS disability
 Compensation

_____ unemployment

_____ family major support

_____ other _____

Are CETA funds involved?

- Yes
 No

6. Present Family Situation
 lives with family
 has family in the vicinity
 has no family in the area

7. Other Major Events Which Might Significantly Affect Living Situation (E.g., recent marriage, recent loss of job, etc.)

Sometimes people wonder whether college programs are beneficial for students. We want to be able to anticipate this and have answers ready. For this reason, a survey is being conducted to explore the impact of attending a college program while in prison.

In order to study the worth or merit of the college higher education opportunity program, we would like to have your permission for your parole officer to share with us information concerning your employment and income. Your signature below indicates that you have given this permission. Please be assured that even though we desire your consent, the information will remain anonymous.

We appreciate your cooperation. Your consent could help another person attain further college education through continued HEOP funding.

Signature _____

Date _____

150

College _____

Address _____

Name _____

Social Security Number _____

Ever Enrolled:

_____ No

_____ Yes If Yes:

1. _____ Presently enrolled _____
date of entry

_____ Previously enrolled _____
dates of attendance

2. Number of credits accrued at your institution _____

3. Length of enrollment at your institution
_____ *Number of semesters* *Number of summers*

4. Major _____

5. GPA (cummulative) _____

Please return to:

HEOP-
P.O. Box 2623-Amherst Branch
Buffalo, New York 14226

APPENDIX C

Dictionary of Occupational Titles:
Category Definitions

DEFINITIONS OF DOT CATEGORIES

0 1 Professional, Technical, and Managerial Occupations

This category includes occupations concerned with the theoretical or practical aspects of such fields of human endeavor as art, science, engineering, education, medicine, law, business relations, and administrative, managerial and technical work. Most of these occupations require substantial educational preparation (usually at the university, junior college, or technical institute level).

2 Clerical and Sales Occupations

This category includes occupations concerned with preparing, transcribing, transferring, systematizing, and preserving written communications and records; collecting accounts; distributing information; and influencing customers in favor of a commodity or service. Includes occupations closely identified with sales transactions even though they do not involve actual participation.

3 Service Occupations

This category includes occupations concerned with performing tasks in and around private households; serving individuals in institutions and in commercial and other establishments; and protecting the public against crime, fire, accidents, and acts of war.

4 Farming, Fishery, Forestry, and Related Occupations

This category includes occupations concerned with growing, harvesting, catching, and gathering land and aquatic plant and animal life and the products thereof; and occupations concerned with providing services in support of these activities.

5 Processing Occupations

This category includes occupations concerned with refining, mixing, compounding, chemically treating, heat treating, or similarly working materials and products. Knowledge of a process and adherence to formulas or other specifications are required in some degree. Vats, stills, ovens, furnaces, mixing machines, crushers, grinders, and related equipment or machines are usually involved.

6 Machine Trades Occupations

This category includes occupations concerned with feeding, tending, operating, controlling, and setting up machines to cut, bore, mill, abrade, print, and similarly work such materials as metal, paper, wood and stone. Throughout this category, the overall relationship of the worker to the machine is of prime importance. At the more complex levels, the important aspects of the work will include understanding machine functions, reading blueprints, making mathematical computations, and exercising judgment to attain conformance to specifications. Coordination of the eyes and hands is the most significant factor at the lower levels. Disassembly, repair, reassembly, installation, and maintenance of machines and mechanical equipment, and weaving, knitting, spinning, and similarly working textiles are included in this category.

7 Bench Work Occupations

This category includes occupations concerned with the use of body members, handtools, and bench machines to fit, grind, carve, mold, paint, sew, assemble, inspect, repair, and similarly work relatively small objects and materials, such as jewelry, phonographs, light bulbs, musical instruments, tires, footwear, pottery, and garments. The work is usually performed at a set position in a mill, plant, or shop at a bench, worktable, or conveyor. At the more complex levels, workers frequently read blueprints, follow patterns, use a variety of handtools, and assume responsibility for meeting standards. Workers of the less complex levels are required to follow standardized procedures.

8 Structural Work Occupations

This category includes occupations concerned with fabricating, erecting, installing, paving, painting, repairing, and similarly working structures or structural parts, such as bridges, buildings, roads, motor vehicles, cables, airplane engines, girders, plates and frames. The work generally occurs outside a factory or shop environment, except for factory production line occupations. Tools used are hand or portable power tools, and such materials as wood, metal, concrete, glass, and clay are involved. Workers are frequently required to have a knowledge of the materials with which they work, e.g., stress, strains, durability, and resistance to weather.

9 Miscellaneous Occupations

This category includes occupations concerned with transportation services; packaging and warehousing; utilities; amusement, recreation, and motion picture services; mining and logging; graphic arts; and various miscellaneous activities.

APPENDIX D

Glossary

Compiled by Linda A. Collins

G L O S S A R Y

- Abscond* To leave one's usual place of residence in order to avoid legal proceedings.
- A C.D.* Adjourned in contemplation of dismissal.
- Acquitted* Released; absolved, purged of an accusation; to be judicially discharged from accusation.
- Adjourned* To put off further proceedings either indefinitely or until a later time.
- Arraignment* To bring a prisoner to the bar of the court to answer the matter charged upon him in the indictment. The arraignment of the prisoner consists of calling him by name, reading him the indictment, asking him whether he is guilty or not guilty, and entering his plea.
- Arrest* The taking custody of another for the purpose of holding or detaining him to answer a criminal charge or civil demand.
- Bail Bond* A pledge of cash or property to assure a person's appearance in court.
- Bench Warrant* A warrant issued by a presiding judge or by a court against a person guilty of some contempt or indicted for some crime.
- Bill* A declaration in writing stating some wrong a complainant has suffered from a defendant.
- Case Revoked* The case was made void.
- Chapter 148* The conditional release of a person based on the credit of "good behavior" time. That is, a person may be conditionally released (if he so requests) when his total good behavior time is equal to the unserved portion of his sentence. (McKinney's Session Laws of New York, 1975, Chapter 148)
- Conditional Discharge* A decision of the court that the defendant will be released with respect to the conviction for which the sentence is imposed without imprisonment or probation supervision, but subject, during the period of conditional discharge to such conditions as the court may determine.
- Conditional Release* See Parole
- Conviction* A verdict of guilty.

- Crime* A violation of a U.S. law designated as a misdemeanor or felony.
- Custody* 1) The detaining of a man's person by virtue of lawful process or authority. 2) The care and keeping of anything as when an article is said to be in the "custody of the court".
- DIN Number* The number assigned to a person upon being received into a New York State correctional facility.
Example: 78 - A - 123
78 = the year that the prisoner was received at the correctional facility.
A = signifies a specific correctional facility (i.e., A = Attica)
123 = the number assigned to that prisoner for that year. (i.e., a prisoner with this DIN number would be the 123rd person received at Attica prison in 1978)
- Dishonorable Discharge* A dismissal from the service for bad conduct or a punishment imposed by sentence of a court martial for offenses against the military law.
- Dismissal* An order or judgment finally disposing of an action, suit, motion etc., by sending it out of court without a trial of the issues involved.
- Dismissal Without Prejudice* The act of sending a case out of court before being heard on its merits when the plaintiff is at liberty to bring another action for the same cause.
- Felony* A crime of graver or more atrocious nature than those designated as misdemeanors. Generally an offense punishable by death or imprisonment in excess of one year.
- Indeterminate Sentence* A form of sentence to imprisonment which instead of fixing rigidly the duration of the imprisonment declares that it shall be for a period "not less than" so many years and "no more than so many years", or not less than the minimum period prescribed by statute as the punishment for the particular offense or more than the maximum period.
- Indict* To be charged with a criminal offense.
- Juvenile Delinquency* 1) A status in a juvenile characterized by antisocial behavior (as truancy, waywardness, incorrigibility) that is beyond parental control and therefore subject to legal action. 2) A violation of the law of the U.S. that is committed by a juvenile and that is punishable by death or life imprisonment.
- Juvenile Delinquent (JD)* A person adjudged to be a delinquent under the age fixed by law (as 16 or 18 years or 21 years in a few states).

Misdemeanor

An offense, other than a "traffic infraction," for which a sentence to a term of imprisonment in excess of fifteen days may be imposed, but for which a sentence to a term of imprisonment in excess of one year cannot be imposed.

NYSTIS Number

(New York State Intelligence Inquiry Service). The number assigned to a person after being arrested and finger printed for a crime.

Offense

Conduct for which a sentence to a term of imprisonment or to a fine is provided by any law of this state; a breach of criminal laws.

Parole

The conditional release of an offender from a correctional institution, after he has served a portion of the sentence, to the supervision of a Parole Officer for the unexpired portion of the sentence. (New York State Division of Parole).

Parole Violator

One who violates the conditions of his parole.

Pending

Begun but not yet completed; in the process of settlement or adjustment.

P.I.N.S

(Person In Need of Supervision). A petition taken out usually by parents or by school officials at Family Court saying that the child is "habitually disobedient and beyond their lawful control".

Probation

The allowing of a person convicted of some minor offense (particularly juvenile offenders) to go at large under a suspension of sentence, during good behavior, and generally under the supervision of guardianship of a probation officer.

Probation Violator

One who violates the conditions of his probation.

Restitution

The act of making good or giving equivalent for any loss, damage or injury.

Reversal

The annulling or making void a judgment on account of some error or irregularity.

Sero Decision

A decision of the court which states that it is unlawful to impose a prison sentence for a crime that is classified as a misdemeanor (Sero V. Preiser 8.21.74)

Sentence

The judgment formally pronounced by the court or judge upon the defendant after his conviction in a criminal prosecution; the awarding of the punishment to be inflicted.

*Sentences to Run
Concurrently*

The accused is given the privilege of serving each day a portion of each sentence.

*Suspension of
Sentence*

This term may mean either a withholding or postponing sentencing of a prisoner after conviction. or postponing the execution of the sentence after it has been pronounced.

Violation

An offense, other than a "traffic infraction," for which a sentence to a term of imprisonment in excess of fifteen days may not be imposed.

Warrant

A writ issued by a magistrate, justice, or competent authority, addressed to a sheriff, constable, or other officer requiring him to arrest the person named and bring him before the magistrate or court to answer to the offense he is charged with having committed.

Withdrawal

A failure to prosecute by the person preferring charges.

Youthful Offender (YO)

A young lawbreaker usually between the ages of 16 and 22 who has not committed a crime punishable by death or life imprisonment and toward whom a criminal court may use juvenile court procedures to attempt rehabilitation without imprisonment or other usual penalties.

SOURCES CONSULTED

SOURCES CONSULTED

1. Adams, Stuart. Evaluative Research in Corrections: A Practical Guide. Washington D.C.: U.S. Department of Justice, 1975.
2. Black, Henry Campbell, B. Black's Law Dictionary, Revised Fourth Edition. St. Paul, Minnesota: West Publishing Company, 1968.
3. Buros, Oscar, K., ed. 1972 Seventh Mental Measurement Yearbook. New Jersey: The Gryphon Press, 1972.
4. Canudo, E.R. Criminal Law of New York. Jamaica, New York: Gould Publishing Company, 1979.
5. Glaser, Daniel. The Effectiveness of a Prison and Parole System. Abridged Edition. Indianapolis: Bobbs-Merril Educational Publishing, 1969.
6. Glaser, Daniel, ed. Handbook of Criminology. Chicago: Rand McNally College Publishing Co., 1974.
7. Gottfredson, Robert, F. Treatment Destruction Techniques. Edited by Lee Sechrest. Vol 4: Evaluation Studies Review. Beverly Hills: Sage Publications, Inc., 1979.
8. Kassebaum, G; Ward, D; and Wilner, D. Prison Treatment and Parole Survival, An Empirical Assessment. New York: John Wiley & Sons, Inc., 1971.
9. Martin, Julian A. Law Enforcement Vocabulary. Springfield, Illinois: Charles C. Thomas Pub., 1973.
10. McKinney's Session Laws of New York, c148. St. Paul, Minnesota: West Publishing Company, 1975.
11. Mitford, Jessica. Kind and Usual Punishment - The Prison Business. New York: Alfred A. Knopf, Inc., 1973.
12. Nettler, Gwynn. Explaining Crime. New York: McGraw Hill Book Company 1974.
13. New York Sentence Charts, Chart 10. St Paul, Minnesota: West Publishing Company, 1975.
14. Nie, Norman, H.; Hull, C. Hadlai; Jenkins, Jean G.; Steinbrenner, Karin; and Bent, Dale H. SPSS: Statistical Package for the Social Sciences 2nd ed. New York: McGraw Hill Book Company., 1975.
15. Penal Law, McKinney's 1975, with 1979-80 Pocket Part. St. Paul, Minnesota: West Publishing Company, 1975.
16. Penal Law of New York, Jamaica, New York: Gould Publishing Company, 1977.
17. Rush, G.E. Directory of Criminal Justice. Boston, Massachusetts: Holbrook Press, Inc. 1977.

18. Sechrest, Lee, ed. Evaluation Studies Review Annual. Vol. 4. Beverly Hills: Sage Publications, Inc., 1979.
19. Sellin, Thorsten and Wolfgang, Marvin E. The Measurement of Delinquency. New York: John Wiley and Sons Inc., 1964.
20. Siberman, Charles E. Criminal Violence, Criminal Justice. New York: Random House Inc., 1978.
21. United States Department of Labor, Bureau of Employment Security, Dictionary of Occupational Titles, 3rd edition, Volume 1. Definitions of Titles, Volume II. Occupational Classification. Washington, D.C.: U.S. Government Printing Office, 1965.

JOURNAL ARTICLES AND MAGAZINES

22. Baer, Daniel J; Jacobs, Peter J, and Carr, Frances E. "Instructors Ratings Of Delinquents After Outward Bound Survival Training and Their Subsequent Recidivism". Psychological Reports 36 (1975): 547-553.
23. Blumstein, Alfred and Larson, Richard C. "Problems In Modeling and Measuring Recidivism". Journal of Research on Crime and Delinquency 8 (1971): 124-132.
24. Buikhulson, W, and Hoekstra, H.A. "Factors Related to Recidivism". British Journal of Criminology 14 (1974): 63-69.
25. Cassel, Charlene Ann. "The Effects of Community Evaluation and Treatment on the Sentencing and Post Sentence Adjustment of Offenders". Dissertation Abstracts International 36 (1976): 5250.
26. Gath, D.; Tennent, G; and Pidduck, R. "Criminological Characteristics of Bright Delinquents". British Journal of Criminology 11 (1971): 275-279.
27. Gibson, R.E. "Periodic Detention Work Centres (Youth) in New Zealand". British Journal of Criminology 11 (1971): 285-290.
28. Jeffery, Robert and Woolpert, Stephen. "work Furlough as an Alternative to Incarceration: An Assessment of its Effects on Recidivism and Social Cost: The Journal of Criminal Law and Criminology 65 (1974): 405-415
29. Kraus, J. "A Comparison of Corrective Effects of Probation and Detention on Male Juvenile Offenders: British Journal of Criminology 14 (1974): 49-62.
30. Kraus, J. "Judicial Labels as a Typology of Offences Committed by Male Juveniles". British Journal of Criminology 13 (1973): 269-274.
31. Martinson, Robert. "In My Opinion". Corrections Magazine (December, 1976).
32. Maskin, Michael B. "The Differential Impact of Work-Oriented Vs. Communication-Oriented Juvenile Correction Programs Upon Recidivism Rates in Delinquent Males". Journal of Clinical Psychology 32 (1976): 432-433.

33. Odell, Brian Neal. "Accelerating Entry Into the Opportunity Structure: A Sociologically-Based Treatment for Delinquent Youth". Sociology and Social Research 58 (1973-1974): 312-316.
34. Roberts, Alan H; Erikson, Robert V; Riddle, Mary; and Bacon, Jane G. "Demographic Variables, Base Rates, and Personality Characteristics Associated with Recidivism in Male Delinquents". Journal of Consulting and Clinical Psychology 42 (1974): 833- 841.
35. Waldo, Gordon P and Chiricos, Theodore G. "Work Release and Recidivism, An Empirical Evaluation of a Social Policy". Evaluation Quarterly, 1 (1977): 87-108.
36. Walker, M.A. "Some Comments on a Sentencing Model". British Journal of Criminology 11 (1971): 280-284.

MICROFORM REPRODUCTIONS

37. Lenihan, Kenneth J. Unlocking the Second Gate: The Role of Financial Assistance In Reducing Recidivism Among Ex-Prisoners. Washington, D.C.: ERIC Document Reproduction Service ED 134 704, 1977.
38. McCollum, Sylvia G. "What Works: A Look at Effective Correctional Education and Training Experiences:" speech presented at the American Psychological Association Annual Conference, Washington, D.C., September 4, 1976. ERIC Document Reproduction Service, ED 130 005.
39. Russell, William J, and Others. Evaluation Reports Offender Assistance Through Community Colleges Program. Washington, D.C.: ERIC Document Reproduction Service, ED 130 703, 1976.
40. Venezia, Peter S., and McConnell, William, A. The Effect of Vocational Upgrading Upon Probationer Recidivism. (A One Year Evaluation Of The Singer/Graflex Monroe County Pilot Probation Project). Paramus, New Jersey: National Council on Crime & Delinquency: Crime and Juvenile Delinquency Microfiche, HV6025 M5 RC no. 25.1, January 1972.
41. Witherspoon, A.D; deValera, E.K.; and Jenkins, W.O. The Law Encounter Severity Scale (LESS): A Criterion For Criminal Behavior and Recidivism. Montgomery, Alabama: ERIC Document Reproduction Service ED 100 985, 1973.
42. Wolf, Judith G. The Impact of Higher Education Opportunity Programs - Post College Experience Of Disadvantaged Students: A Follow-up of HEOP Graduates and Dropouts, Final Report. JND RESEARCH in cooperation with Canisius College, Rosary Hill College, Niagara University, and the New York State Education Department. Buffalo, New York: ERIC Document Reproduction Service, ED 166 916, 1977.

NEWSPAPERS

43. "Parole Called One Hope of Poor to Work, Survive". Buffalo Courier Express, 16 December, 1978, p.33.
44. "Prison Study Shows Rate of Recidivism Is Improving in the State". Buffalo Evening News, 10 March, 1980.
45. "U.S. Study Finds Recidivism Rate of Convicts Lower than Expected". The New York Times, 7 November, 1976.

REPORTS

46. Bala, Gerald, and Donnelly, Henry, C. "1972 Releases: Five Year Post Release Follow-up". Albany, New York: Department of Correctional Services, Division of Program Planning, Research and Evaluation. December 1979.
47. Hamilton, Emma-Lou C and Macdonald, Donald. "Five Year Follow-up of 1969 Releases". Albany, New York: Department of Correctional Services, Division of Program Planning, Evaluation and Research. October 1975.
48. Hutchinson, Robert L. "Attitudes Of Selected College Administrators and Correctional Facility Personnel Towards the Development of Post Secondary Prisoner Education Programs in New York State". Albany, New York. October 1978.
49. Martinson, Robert and Wilks, Judith. "Knowledge In Criminal Justice Planning": (A Preliminary Report). New York: The Center for Knowledge In Criminal Justice Planning. October, 1976.
50. Stanton, John M. "Recidivism Rates of New York State Male Parolees". New York: State of New York Executive Department Division of Parole, Bureau of Research and Statistics. March 1970.
51. State of New York Department of Correctional Services. "Delinquency and Return Rates 1976". (Advance Release from Annual Statistical Report). Albany, New York: Division of Program Planning, Evaluation and Research. 1977.
52. State of New York Department of Correctional Services. "Parole Violators 1976". (Advance Release from Annual Statistical Report). Albany, New York: Division of Program Planning, Evaluation and Research. 1977.