

DOCUMENT RESUME

ED 224 399

HE 015 683

AUTHOR Viehland, Dennis W.; Kaufman, Norman S.
TITLE Tuition and Fees in Public Higher Education in the West, 1982-83.
INSTITUTION Western Interstate Commission for Higher Education, Boulder, Colo.
REPORT NO WICHE-2A115
PUB DATE Oct 82
NOTE 31p.
AVAILABLE FROM Western Interstate Commission for Higher Education, P.O. Drawer P, Boulder, CO 80302.
PUB TYPE Reports - Research/Technical (143) -- Statistical Data (110)

EDRS PRICE MF01/PC02 Plus Postage.
DESCRIPTORS College Credits; College Students; *Community Colleges; Comparative Analysis; Educational Economics; *Fees; Graduate Study; Higher Education; In State Students; Out of State Students; *State Colleges; *Student Costs; Trend Analysis; *Tuition; Undergraduate Study

IDENTIFIERS *Alaska; Arizona; California; Colorado; Hawaii; Idaho; Montana; Nevada; New Mexico; Oregon; *United States (West); Utah; Washington; Wyoming

ABSTRACT Changes in tuition and fee levels at public institutions from academic year 1981-82 to 1982-83 are reviewed, with specific state-by-state, institution-by-institution data provided for the three previous years. The states included are Alaska, Arizona, California, Colorado, Hawaii, Idaho, Montana, Nevada, New Mexico, Oregon, Utah, Washington, and Wyoming. Among the kinds of changes noted are one-time and per-term surcharges, changes in credits charged on a per-credit basis, and related graduate tuition to cost of instruction rather than undergraduate tuition. Trends include these: tuition increases averaged 10 to 20 percent in most cases; overall resident undergraduate tuition increased 5.8 percent; undergraduate nonresident charges increased an average of 11.3 percent; great variation in dollar rates exists between states; and graduate tuition averaged 19.2 percent more for residents, and 12.4 percent for nonresidents. Additional charts and tables present data on the number of institutions charging resident and nonresident tuition and fees within five brackets (\$0-1,999; \$2,000-2,499; \$2,500-2,999; \$3,000-3,499; \$3,500+), and a summary of tuition and fees by undergraduate and graduate status, resident and nonresident status, and institution type, in some cases giving the range, mean, and median. (Author/MSE)

 * Reproductions supplied by EDRS are the best that can be made *
 * from the original document. *



ED224399

Tuition and Fees in Public Higher Education in the West

1982-83

U.S. DEPARTMENT OF EDUCATION
NATIONAL INSTITUTE OF EDUCATION
EDUCATIONAL RESOURCES INFORMATION
CENTER (ERIC)

- This document has been reproduced as received from the person or organization originating it
- Minor changes have been made to improve reproduction quality
- Points of view or opinions stated in this document do not necessarily represent official NIE position or policy

"PERMISSION TO REPRODUCE THIS MATERIAL HAS BEEN GRANTED BY

WICHE

TO THE EDUCATIONAL RESOURCES INFORMATION CENTER (ERIC)."

Dennis W. Viehland
Norman S. Kaufman
Information Clearinghouse

HE 015.683

Western Interstate Commission for Higher Education

WICHE
Improving Education in The West

WICHE, the Western Interstate Commission for Higher Education, is a nonprofit regional organization. It helps the thirteen member states to work together to provide high-quality, cost-effective programs to meet the education and manpower needs of the West. Member states are Alaska, Arizona, California, Colorado, Hawaii, Idaho, Montana, Nevada, New Mexico, Oregon, Utah, Washington, and Wyoming. WICHE's Information Clearinghouse has initiated this Information Series to provide assistance to higher education and government policy makers in the West.

Published October 1982
Western Interstate Commission for Higher Education
P.O. Drawer P
Boulder, Colorado 80302
An Affirmative Action/Equal Opportunity Employer
Publication Number 2A115
Printed in the United States of America
01-100-534-000-400:1.2M:1082:WICHE:2A115

Contents

Foreword.....	v
Acknowledgements.....	vii
1. Tuition and Fees: 1982-83 Overview.....	1
2. Recent Trends in Tuition and Fee Setting.....	5
Appendix.....	17

Tables

Table 1 Average Undergraduate Resident Tuition and Required Fees.....	7
Table 2 Average Undergraduate Nonresident Tuition and Required Fees.....	8
Table 3 Average Graduate Resident Tuition and Required Fees...	9
Table 4 Average Graduate Nonresident Tuition and Required Fees.....	10
Table 5 Summary of Tuition and Required Fees at Public Four-Year Institutions in the West by Carnegie Classification.....	15
Table 6 Resident and Nonresident Undergraduate Tuition and Required Fees at Public Four-Year Institutions.....	19
Table 7 Resident and Nonresident Graduate Tuition and Required Fees at Public Four-Year Institutions.....	21
Table 8 Tuition and Required Fees at Public Four-Year Institutions by Carnegie Classification.....	23
Table 9 Resident Tuition and Required Fees at Public Two-Year Colleges in the West.....	25

Figures

Figure 1 Undergraduate Resident Tuition and Required Fees in the West.....	12
Figure 2 Undergraduate Nonresident Tuition and Required Fees in the West.....	13

Foreword

This report provides an overview of the changes in tuition and fee levels at public colleges and universities from academic year 1981-82 to 1982-83 and provides specific institution-by-institution data for the previous three academic years. For the last two years WICHE has addressed the broader topic of state policies and procedures for setting tuition and fees and the need for policies to guide the rational adjustment of student charges from year to year.* In an effort to eliminate the repetition of information detailing state policies and procedures for setting student charges, this report concentrates on providing an update on policy changes and the resulting levels of student charges. We refer the reader to our earlier reports for greater detail on state policy and practices.

This report is based on data supplied by the staff of state-level governing, coordinating, and supervisory boards in each western state. We extend our sincere thanks to these individuals, who are listed on the following pages, for their time and effort. WICHE is responsible, however, for the contents of this report. Please address any inquiries to the WICHE Information Clearinghouse, P.O. Drawer P, Boulder, Colorado 80302, telephone (303) 497-0221.

Phillip Sirotkin
Executive Director
Western Interstate Commission
for Higher Education

Boulder, Colorado
October 1982

*See Tuition and Fees in Public Higher Education in the West: Practices, Trends, Policy Considerations, (October 1980), and Tuition and Fees in Public Higher Education in the West: 1981-82, (December 1981).

Acknowledgements

The authors wish to acknowledge the individuals in each state who responded to our questionnaire. We appreciate their willingness to cooperate on this report.

Alaska

Jane Weiss, Alaska Postsecondary Education Commission

Thomas M. Healy, University of Alaska, Division of Community Colleges and Rural Education and Extension

Arizona

Robert L. Lawless, Arizona Board of Regents

Sharon M. Wheeler, State Board of Directors for Community Colleges of Arizona

California

Jesse Shaw, University of California

John C. Richards, The California State University

Dave Brilian, California Maritime Academy

Channing Yong, California Community Colleges

Colorado

Lindsay Windsor, Colorado Commission on Higher Education

Hawaii

Suzanne Yamashita, University of Hawaii

Gary M. Shibuya, University of Hawaii

Idaho

Karl L. Black, College of Southern Idaho

Josephine Webb, North Idaho College

Louise Elrod, Idaho Board of Education

Montana

Paul C. Dunham, Montana Board of Regents of Higher Education

Nevada

Warren Fox, University of Nevada System

New Mexico

Mark F. Valdes, Board of Educational Finance

Oregon

Mary K. Russell, Oregon Educational Coordinating Commission

Jewell C. Manspeaker, Oregon Department of Education, Community College Division

Utah

Russell C. Richards, Utah System of Higher Education

Washington

Norman M. Fischer, State Council for Postsecondary Education

Gil Carbone, State Board for Community College Education

Wyoming

Durward Long, University of Wyoming

Oliver M. Sundby, Wyoming Community College Commission

We extend our appreciation to our colleagues at WICHE who read and commented on our numerous drafts, and we give special thanks to Cherie Pedersen, who typed the report.

Dennis W. Viehland
Norman S. Kaufman
Information Clearinghouse

1. Tuition and Fees: 1982-83 Overview

Average Tuition and Fees at State Supported Four-Year Colleges and Universities			
	<u>1981-82</u>	<u>1982-83</u>	<u>One Year Increase</u>
<u>Residents</u>			
Undergraduate Students	\$ 720	\$ 834	15.8%
Graduate Students	808	963	19.2%
<u>Nonresidents</u>			
Undergraduate Students	\$2,842	\$3,164	11.3%
Graduate Students	2,954	3,321	12.4%

The figures above represent averages of tuition and fees at 87 state supported four-year colleges and universities in the West. In some states, fiscal difficulties triggered sharp increases. In a few cases, tuition surcharges were imposed in both academic years. The increase in resident graduate tuition at a greater pace than undergraduate tuition was influenced heavily by large increases in the state of Washington, which instituted a new tuition-setting mechanism. While regionwide averages are indicative of trends, they tend to mask the variations among the states and institutional groupings. They are discussed in more detail later in the report.

Impact of State Fiscal Constraints

Several western states increased their tuition and fee charges sharply as direct outgrowths of fiscal problems. In California, which saw the imposition of the tuition and fee surcharges midway through the 1981-82 academic year, both the University of California regents and the California

State University trustees approved sizable increases in student fees. (Note that neither system charges resident tuition, although both systems impose a uniform additional charge called nonresident tuition.) The state university trustees instituted a new fee, which for the first time covers general costs, not specific items or services. The fee charged to all students is \$150 per academic year for a full-time student. While not enacting any formal measures or policy changes, the University of California regents approved fee increases that averaged approximately 20 percent for resident students.

California, through the California Postsecondary Education Commission (CPEC), the university systems, and the legislature, is still studying and debating issues related to setting tuition and fees. Supplemental language to the 1982-83 budget act requests CPEC to report and make recommendations on a number of student fee and financial aid issues by December 1, 1982. Among the issues under study are: (a) the activities that will be funded with revenues from student charges, (b) the impact that student charges at one segment (university system) have on other segments, (c) the appropriate level of student charges for each segment, and (d) the level of additional financial aid required to maintain student access at various levels of student charges. In addition, the legislature requested that charges for graduate and professional post-baccalaureate programs be studied, with attention given to cost differences and other pertinent factors.

In Idaho, which has endured several consecutive years of economic and fiscal problems, the State Board of Education imposed a one-time surcharge of \$50 per semester for resident students and \$100 per semester for non-residents for the 1982-83 academic year. The surcharges were ordered in June following a declaration of financial emergency by the board, which governs the state's four senior institutions.

Oregon, which initiated a \$49 per term surcharge in January 1982, is continuing it through the 1982-83 school year.

Other Changes

The University of Alaska adopted a new tuition and fee schedule that raises the number of credits charged on a per credit basis from eight to twelve per semester, which amounts to a 50 percent increase in tuition for full-time students. Formerly, students taking more than eight credit hours paid a flat fee equal to the per credit charge multiplied by eight. For 1982-83 twelve credit hours per term will be used as the flat rate fee.

Washington's 1982 legislature extended to the graduate level the concept of relating undergraduate tuition and fee charges to the cost of instruction. Prior to 1982-83 graduate tuition rates were set at 1.2 times undergraduate rates, which were based on a computation of undergraduate instructional costs. For 1982-83 and future rate determinations, tuition rates for resident graduate students will be determined by taking 23 percent of the respective calculated per-student costs for graduate instruction at both the doctoral degree granting universities and the regional universities. Nonresident graduate students will pay 60 percent of the calculated instructional costs

at the doctoral universities and 75 percent at the regional universities and The Evergreen State College. This change in policy has the effect of significantly increasing resident and nonresident graduate student rates at the doctoral universities, and resident rates for graduate students at the regional universities and The Evergreen State College. Increases in nonresident graduate rates at the regional universities and The Evergreen State College are more modest, since the prior approach approximated the 75 percent relationship adopted by the 1982 Legislature. Increases in undergraduate rates reflect the second year of a two-year phase-in on rates that were established during the 1981 Legislative Session.

2. Recent Trends in Tuition and Fee Setting

This section provides a brief overview of the differences in student charges among the western states, the changes in these fees from 1979-80 to 1982-83, and the differentials charged to graduate and nonresident students. The summary data presented in this section were taken from tables 6 and 7, which appear in the appendix. We urge the reader to examine these tables, which provide institution-by-institution detail, to obtain a more complete view of interstate and interinstitutional variations in tuition and fee rates. The data presented in this section are combined figures for tuition and fees, which for the sake of brevity will be referred to as "student charges," or, simply, "charges." Because of the variations in community college finance among the states, this discussion concentrates solely on four-year colleges and universities. Student charges at two-year colleges are listed by institution in table 9, which appears in the appendix.

Student Charges

Earlier discussion has used the terms "tuition," "tuition and fees," and "student charges" interchangeably. In essence, they are the basic comprehensive charges that all students are required to pay as a condition of enrollment in the institution, varying in amount on the basis of the credit-hour load for which the student is enrolled, the student's residency, and in some cases, classification as an undergraduate or a graduate student.

To be more precise, the term "tuition" refers to that portion of the basic comprehensive charge whose revenue is used, along with state appropriations and other unrestricted institutional receipts, to fund portions of the budget relating to student education (as opposed to research, public service, auxiliary activities, and student financial aid). In some states tuition and fees are treated as revenue to the state general fund. These charges may or may not be known as tuition. Other designations include registration fee, educational fee, and incidental fee.

In some western states nonresident students pay a charge that is called nonresident tuition, but resident students pay no charge called tuition. Especially in California and Idaho, the imposing of a charge called tuition on resident students is viewed as a fundamental departure from long-established public policy; in Idaho, it is a constitutional question. In both states,

however, resident as well as nonresident students pay charges called fees, and a portion of the proceeds of these fees is used to fund activities relating to educational and general expenditures. This portion comes within the definition of "tuition" used in the balance of the report.

The term "required fees" refers to those fees charged all students to fund various specified activities and purposes generally separate from the activities for which tuition funds are used. Examples of such purposes are student activities, athletics, student health services, student union operations, and debt service.

It is common, though not universally practiced, to state student charges in terms of a comprehensive fee combining "tuition" and "required fees" as defined here. For this reason the data and much of the discussion in this report combine tuition and fees. The discussion that follows refers to combined tuition and fees.

From the standpoint of the student, it may be of no practical consequence whether the required charges are tuition or fees or both. From the perspective of the state, however, there are important differences. The portion defined here as tuition usually has a direct bearing on the amount of state appropriations required by the institution or, in some states, the amount of revenue to the state general fund. Fees, in contrast, are generally retained by the campus to fund the activities for which they are levied.

Changes in Tuition and Fee Levels

Tables 1 through 4 provide a summary of average charges* for resident and nonresident undergraduate and graduate students at public four-year colleges and universities in the West. Table 1 reports these figures for undergraduate resident students for 1979-80, 1981-82, and 1982-83 along with one-year (1981-82 to 1982-83) and three-year (1979-80 to 1982-83) percentage changes. One way to view the latter percentage change is to compare the difference between the tuition paid by a hypothetical freshman in 1979-80 and the tuition paid by the same student as a senior during the current school year. Table 2 reports the same averages for nonresident undergraduates; tables 3 and 4 report on resident and nonresident graduate students respectively.

The data presented in these tables reveal the following:

- Despite the uncertain economic and fiscal conditions in many states, tuition increases from 1981-82 to 1982-83 averaged between 10 and 20 percent in most cases and for most categories of students. In several states or institutional groupings, tuition increases were less than 10 percent.
- Overall 1982-83 resident undergraduate tuition in the West was up 15.8 percent from the previous year. As noted earlier, increases in California, Alaska, and Idaho helped to raise this average. Nationwide, as reported by the College Scholarship Service, student charges increased 20.1 percent at public four-year colleges and universities.

*The arithmetic mean of the separate institutional charges, not the amounts paid by the "average" student.

Table 1
Average Undergraduate Resident Tuition and Required Fees
at Public Four-Year Institutions in the West by State
1979-80, 1981-82, and 1982-83

State (Number of Institutions)	1979-80	1981-82	1982-83	--Percent Change--	
				1 Year	3 Years
ALASKA (3)	\$ 418	\$ 478	\$ 687	43.7%	64.4%
ARIZONA (3)	533	650	710	9.2%	33.2%
CALIFORNIA					
University of California (9)	741	993	1200	20.8%	61.9%
California State University (19)	204	320	441	37.8%	116.2%
California Maritime Academy (1)	841	892	896	0.4%	6.5%
COLORADO ^a					
University of Colorado and Colorado State University (2)	844	1045	1163	11.3%	37.8%
Colorado School of Mines	838	1910	2272	19.0%	171.1%
Others (9)	618	778	882	13.4%	42.7%
HAWAII ^b (3)					
	365	365	365	-0-	-0-
IDAHO (4)	445	668	791	18.4%	77.8%
MONTANA					
Universities (2)	600	711	765	7.6%	27.5%
Colleges (4)	486	587	641	9.2%	31.9%
NEVADA (2)	705	840	930	10.7%	31.9%
NEW MEXICO					
University of New Mexico and New Mexico State University (2)	627	733	778	6.1%	24.1%
Others (4)	480	602	624	3.7%	30.0%
OREGON ^c					
Universities (3)	855	1183	1364	15.3%	59.5%
Colleges (4)	845	1187	1350	13.7%	59.8%
UTAH (4)	624	761	829	8.9%	32.9%
WASHINGTON					
University of Washington and Washington State University (2)	687	1059	1176	11.0%	71.2%
Regional Universities and The Evergreen State College (4)	618	867	942	8.7%	52.4%
WYOMING (1)	592	592	616	4.1%	4.1%

Total West ^d (87)	541	720	834	15.8%	54.2%

^aThe University of Colorado Health Sciences Center, which has undergraduate programs, is excluded from these figures.

^bThese figures include the average of upper (\$325) and lower (\$105) division tuition and fees at the University of Hawaii, Hilo.

^cThe Oregon Health Sciences University is excluded from these figures.

^dThis figure is the average of all institutional figures reported in table 6. It does not represent the charges paid by the "average" student.

NOTES: All tuition and required fees are for a regular academic year--three quarters, two semesters, or two trimesters.

Data are derived from table 6, which gives complete data for each western institution.

Table 2

Average Undergraduate Nonresident Tuition and Required Fees
at Public Four-Year Institutions in the West by State
1979-80, 1981-82, 1982-83

State (Number of Institutions)	1979-80	1981-82	1982-83	--Percent Change--	
				1 Year	3 Years
ALASKA (3)	\$1054	\$1258	\$1647	30.9%	56.3%
ARIZONA (3)	2020	2800	3083	10.1%	52.6%
CALIFORNIA					
University of California (9)	3141	3873	4350	12.3%	38.5%
California State University (19)	2004	3155	3591	13.8%	79.2%
California Maritime Academy (1)	1486	2347	2648	12.8%	78.2%
COLORADO ^a					
University of Colorado, Boulder and Colorado State University (2)	3050	3813	4426	16.1%	45.1%
Colorado School of Mines	3816	5406	6060	12.1%	58.8%
Others (9)	2263	2912	3229	10.9%	42.7%
HAWAII (3)	1027	1027	1027	-0-	-0-
IDAHO (4)	1782	2393	2716	13.5%	52.4%
MONTANA					
Universities (2)	1968	2079	2205	6.1%	12.0%
Colleges (4)	1494	1685	1811	7.5%	21.2%
NEVADA (2)	2205	2840	2930	3.2%	32.9%
NEW MEXICO					
University of New Mexico and New Mexico State University (2)	1881	2245	2462	9.7%	30.9%
Others (4)	1504	1816	2010	10.7%	33.6%
OREGON ^b					
Universities (3)	2979	3761	3989	6.1%	33.9%
Colleges (4)	2283	2916	3128	7.3%	37.0%
UTAH (4)	1565	1983	2282	15.1%	45.8%
WASHINGTON					
University of Washington and Washington State University (2)	2394	3048	3255	6.8%	36.0%
Regional Universities and The Evergreen State College (4)	1983	2910	3210	10.3%	61.9%
WYOMING (1)	1720	1878	2076	10.5%	20.7%

Total West ^c (87)	2138	2842	3164	11.3%	48.0%

^aThe University of Colorado Health Sciences Center, which has undergraduate programs, is excluded from these figures.

^bThe Oregon Health Sciences University is excluded from these figures.

^cThis figure is the average of all institutional figures reported in table 6. It does not represent the charges paid by the "average" student.

NOTES: All tuition and required fees are for a regular academic year--three quarters, two semesters, or two trimesters.

Data are derived from table 6, which gives complete data for each western institution.

Table 3

Average Graduate Resident Tuition and Required Fees
at Public Institutions in the West by State
1979-80, 1981-82, and 1982-83

State (Number of Institutions)	1979-80	1981-82	1982-83	--Percent Change--	
				1 Year	3 Years
ALASKA (3)	\$ 590	\$ 685	\$ 987	44.1%	67.3%
ARIZONA (3)	587	650	710	9.2%	21.0%
CALIFORNIA					
University of California (9)	789	1043	1245	19.4%	57.8%
California State University (19)	204	320	441	37.8%	116.2%
COLORADO ^a					
University of Colorado, Boulder and Colorado State University (2)	876	1093	1219	11.5%	39.2%
Colorado School of Mines	872	1910	2272	19.0%	160.6%
Others (6)	659	835	976	16.9%	48.1%
HAWAII (1)	579	582	582	-0-	0.5%
IDAHO (3)	560	860	977	13.6%	74.5%
MONTANA					
Universities (2)	600	711	765	7.6%	27.5%
Colleges (4)	486	587	641	9.2%	31.9%
NEVADA ^b (2)	376	448	496	10.7%	31.9%
NEW MEXICO					
University of New Mexico and New Mexico State University (2)	638	733	778	6.1%	21.9%
Others (4)	480	602	624	3.7%	30.0%
OREGON ^c					
Universities (3)	1290	1744	2027	16.2%	57.1%
Colleges (3)	1286	1757	2024	15.9%	57.4%
UTAH (2)	644	787	860	9.3%	33.5%
WASHINGTON ^d					
University of Washington and Washington State University (2)	771	1239	1701	37.3%	120.6%
Regional Universities and The Evergreen State College (3, 4)	684	996	1320	32.5%	93.0%
WYOMING (1)	592	592	616	4.1%	4.1%

Total West ^e (78, 79) ^f	602	808	963	19.2%	60.0%

^aThe University of Colorado Health Sciences Center is excluded from these figures.

^bUnlike other western states, Nevada charges a flat hourly rate. In making comparisons, the reader should note that Nevada's use of an eight credit-hour load on which these figures are based is probably lower than the average credit-hour load of students paying the full-time rate in other states.

^cThe Oregon Health Sciences University is excluded from these figures.

^dThe Evergreen State College did not have any graduate programs in 1979-80, so the figures for that year include only the three regional universities. Because student charges at all four institutions are the same, the data remains comparable across all years.

^eThis figure is the average of all institutional figures reported in table 7; it does not represent the charges paid by the "average" student.

^fThe average is computed on data from 78 institutions in 1979-80 and 79 institutions in 1981-82 and 1982-83. (The Evergreen State College in Washington had no graduate programs in 1979-80.)

NOTES: All tuition and required fees are for a regular academic year--three quarters, two semesters, or two trimesters.

Data are derived from table 7, which gives complete data for each western institution.

Table 4

Average Graduate Nonresident Tuition and Required Fees
at Public Institutions in the West by State
1979-80, 1981-82, and 1982-83

State (Number of Institutions)	1979-80	1981-82	1982-83	--Percent Change--	
				1 Year	3 Years
ALASKA (3)	\$1226	\$1465	\$1887	28.8%	53.9%
ARIZONA (3)	2222	2800	3083	10.1%	38.7%
CALIFORNIA					
University of California (9)	3192	3923	4396	12.1%	37.7%
California State University (19)	2004	3155	3591	13.8%	79.2%
COLORADO^a					
University of Colorado, Boulder					
Colorado State University (2)	3179	3957	4495	13.6%	41.4%
Colorado School of Mines	3967	5406	6060	12.1%	52.8%
Others (6)	2451	3171	3487	10.0%	42.3%
HAWAII (1)	1404	1407	1407	-0-	.2%
IDAHO (3)	1993	2593	2911	12.3%	46.1%
MONTANA					
Universities (2)	1968	2079	2205	6.1%	12.0%
Colleges (4)	1494	1685	1811	7.5%	21.2%
NEVADA ^b (2)	1876	2448	2496	2.0%	33.0%
NEW MEXICO					
University of New Mexico and New Mexico State University (2)	1881	2245	2462	9.7%	30.9%
Others (4)	1504	1816	2010	10.7%	33.6%
OREGON^c					
Universities (3)	2205	2828	3275	15.8%	48.5%
Colleges (3)	2180	2841	3323	17.0%	52.4%
UTAH (3)	1639	2070	2385	15.2%	45.5%
WASHINGTON^d					
University of Washington and Washington State University (2)	2736	3600	4212	17.0%	53.9%
Regional Universities and The Evergreen State College (3, 4)	2256	3435	3882	13.0%	72.1%
WYOMING (1)	1720	1878	2076	10.5%	20.7%

Total West ^e (74, 79) ^f	2217	2954	3321	12.4%	49.8%

^aThe University of Colorado Health Sciences Center is excluded from these figures.

^bUnlike other western states, Nevada charges a flat hourly rate. In making comparisons, the reader should note that Nevada's use of an eight-hour load on which these figures are based is probably lower than the average credit-hour load of students paying the full-time rate in other states.

^cThe Oregon Health Sciences University is excluded from these figures.

^dThe Evergreen State College did not have any graduate programs in 1979-80, so the figures for that year include only the three regional universities. Because student charges at all four institutions are the same, the data remains comparable across all years.

^eThis figure is the average of all institutional figures reported in table 7. It does not represent the charges paid by the "average" student.

^fThe average is computed on data from 78 institutions in 1979-80 and 79 institutions in 1981-82 and 1982-83. (The Evergreen State College in Washington had no graduate programs in 1979-80.)

NOTES: All tuition and required fees are for a regular academic year--three quarters, two semesters, or two trimesters.

Data are derived from table 7, which gives complete data for each western institution.

- Institutions in eight of the thirteen western states charge less than the \$834 average tuition for undergraduate resident students.
- Undergraduate nonresident charges increased 11.3 percent to an average of \$3,164. In many states the lower percentage increase for nonresident students is accounted for by the imposition of a flat charge that was added to resident tuition after the latter was adjusted for 1982-83.
- Percentage increases in undergraduate tuition over the last three years have averaged 16-18 percent per year. Idaho, Oregon, California, and Washington--in part related to their fiscal crises--have exceeded these averages. Alaska, with its large one-year increase in 1982-83 also exceeded these averages.
- The percentage change figures for three years add perspective to the single year figures. For example, moderate single year percentage increases in president undergraduate tuition in Washington and Oregon should not obscure the much greater increases for the three-year period 1979-80 to 1982-83.
- Percentage increase figures may be misleading if the reader does not consider the actual dollar amounts charged. Thus, for example, despite a 43 percent increase this year, Alaska's charges are only slightly more than half of Oregon's.
- Graduate tuition increases averaged 19.2 percent for residents and 12.4 percent for nonresidents. Major increases occurred in Alaska, Washington, and at the California State University.
- On the average, these increases were less than the increases reported the previous year.

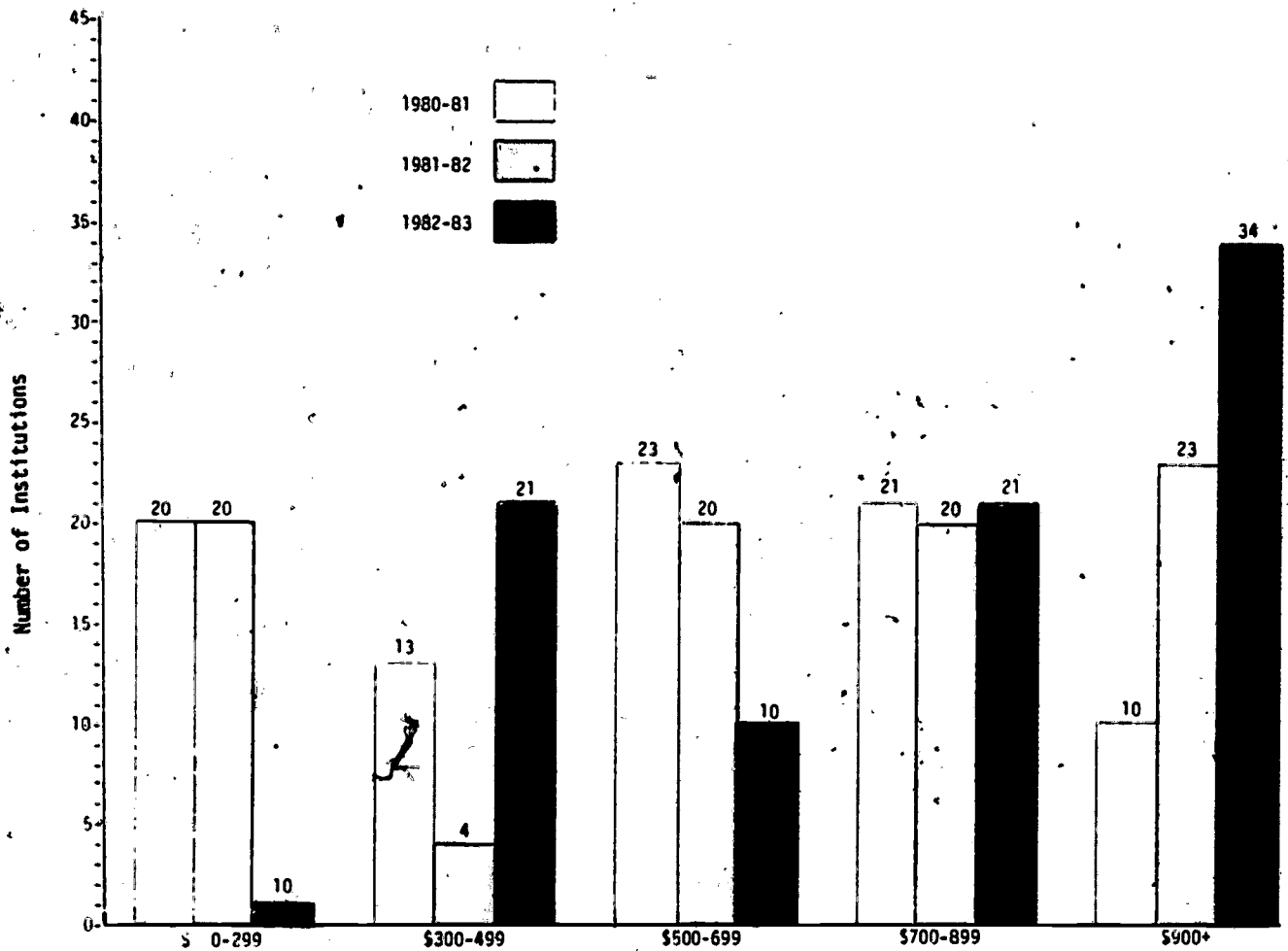
Bracket Creep

As tuition and fee charges rise each year, more and more institutions fall into the "moderate" and "high" tuition categories (relatively speaking for public institutions in the West) and correspondingly fewer institutions remain in the "low" tuition category. Figures 1 and 2 demonstrate this phenomenon for the last three years.

- The number of institutions charging undergraduate resident tuition and fees in excess of \$900 grew to 34 from 23 in 1981-82. The next greatest number of institutions falls in the \$700-899 range.
- Correspondingly, the largest segment of institutions now charge undergraduate nonresident students more than \$3,500. The number of institutions in this range increased from 16 in 1981-82 to 40 in 1982-83.

Figure 1

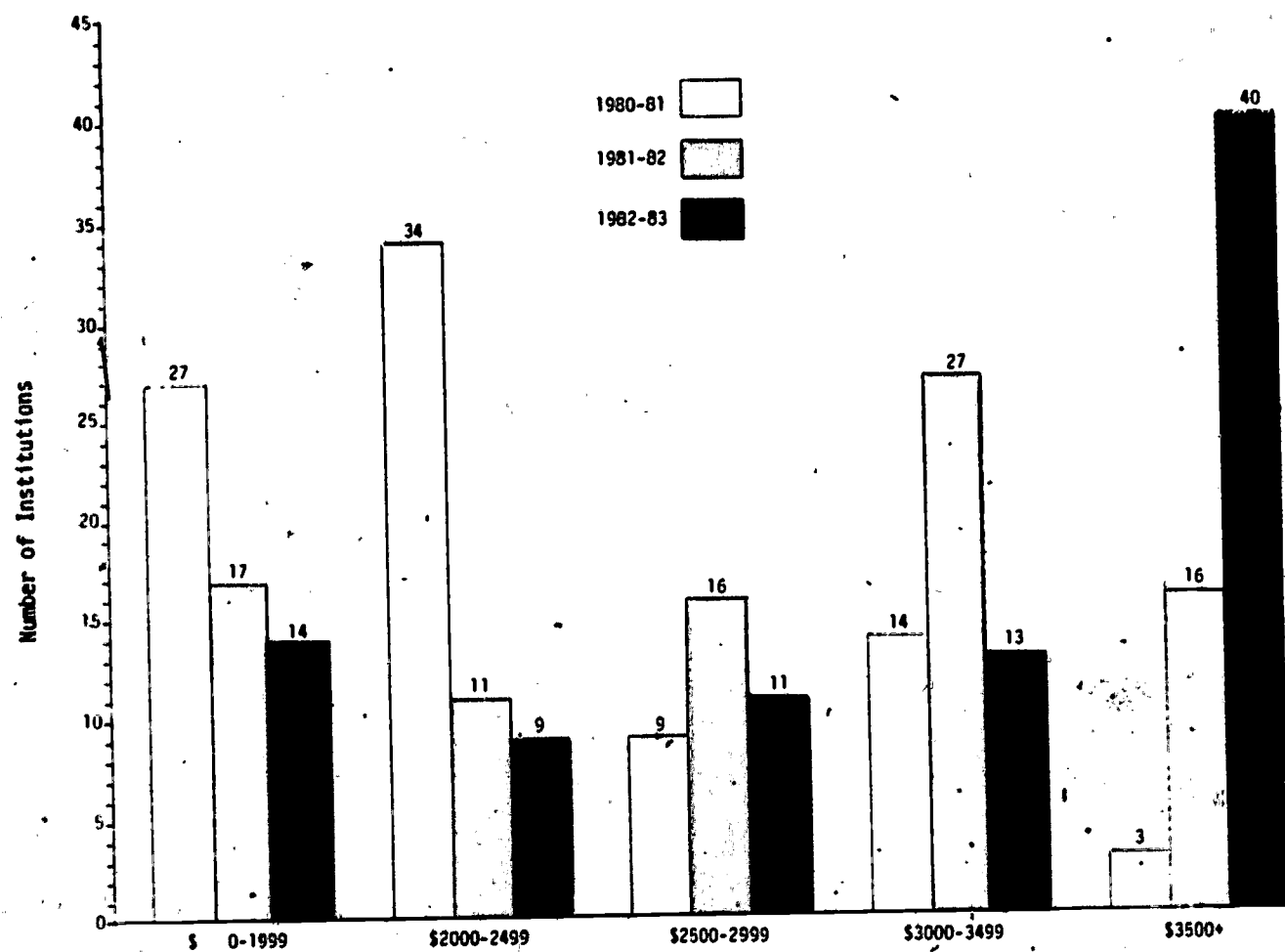
Undergraduate Resident Tuition and Required Fees in the West
1980-81, 1981-82, and 1982-83



NOTE: This figure was derived from table 6 in the appendix. Institutions are grouped by tuition and required fees levels.

Figure 2

Undergraduate Nonresident Tuition and Required Fees in the West
1980-81, 1981-82, and 1982-83



NOTE: This figure was derived from table 6 in the appendix. Institutions are grouped by tuition and required fees levels.

Tuition and Fees by Type of Institution

Table 5 groups all western public four-year institutions by their Carnegie Classification. This classification, which was developed in 1976 by the Carnegie Council on Policy Studies in Higher Education, attempts to identify peer groups of institutions based on selected attributes like highest degree offered, volume of research, size, and complexity.

- As one might expect, student charges tend to be higher in the research universities than in other categories of institutions.
- Reference to the institutional data in table 8 reveals that a single institution, the Colorado School of Mines, accounts for the high average (i.e., mean) charges under the category Schools of Engineering and Technology.
- Similarly, the 19 California State University campuses listed in table 9 affect both the mean and median tuition for Comprehensive Universities and Colleges I.

Table 5
 Summary of Tuition and Required Fees at
 Public Four-Year Institutions in the West
 By Carnegie Classification
 1982-83

Carnegie Classification	Number of Institutions	UNDERGRADUATE					
		-----Resident----- Range	Mean	Median	-----Nonresident----- Range	Mean	Median
1.1 and 1.2 Research Universities	16	\$ 481-1380	\$1070	\$1176	\$1156-4730	\$3508	\$3723
1.3 and 1.4 Doctorate-Granting Institutions	13	616-1267	900	805	1748-4417	3023	2816
2.1 Comprehensive Universities and Colleges I	31	402-1374	665	464	1985-3981	3325	3576
2.2 and 3.2 Comprehensive Universities and Colleges II and Liberal Arts Colleges	19	105-1352	701	648	925-3606	2375	1971
5.4 Schools of Engineering and Technology	4	626-2272	1250	1052	2066-6060	3635	3206

Carnegie Classification	Number of Institutions	GRADUATE					
		-----Resident----- Range	Mean	Median	-----Nonresident----- Range	Mean	Median
1.1 and 1.2 Research Universities	16	\$ 582-2043	\$1246	\$1224	\$1407-4674	\$3630	\$4264
1.3 and 1.4 Doctorate-Granting Institutions	13	496-1327	929	975	1988-4477	3987	2875
2.1 Comprehensive Universities and Colleges I	29	402-2037	731	464	1985-3882	3376	3592
2.2 and 3.2 Comprehensive Universities and Colleges II and Liberal Arts Colleges	14	427-2019	921	656	1707-3882	2765	3122
5.4 Schools of Engineering and Technology	3	626-2272	1211	734	2066-6060	3515	2418

NOTE: This table was derived from table 8, which gives complete data and a listing of western institutions under each Carnegie Classification.

Appendix

Table 6

Resident and Nonresident Undergraduate Tuition and Required Fees
at Public Four-Year Institutions in the West
1979-80 to 1982-83

Carnegie Classifi- cation	Institution	Resident				Nonresident			
		79-80	80-81	81-82	82-83	79-80	80-81	81-82	82-83
ALASKA									
1.4	University of Alaska, Fairbanks	\$ 532	\$ 572	\$ 572	\$ 788	\$1168	\$1352	\$1352	\$1748
2.2	University of Alaska, Anchorage	382	452	452	648	1018	1232	1232	1608
5.9	University of Alaska, Juneau	340	410	410	624	976	1190	1190	1584
ARIZONA									
1.1	University of Arizona	550	600	650	710	2100	2500	2950	3250
1.3	Arizona State University	550	600	650	710	2100	2500	2950	3250
2.1	Northern Arizona University	500	600	650	710	1860	2100	2500	2750
CALIFORNIA									
1.1	University of California, Berkeley	731	767	981	1173	3131	3167	3861	4323
1.1	University of California, Davis	713	770	993	1186	3113	3170	3873	4336
1.1	University of California, Los Angeles	702	759	973	1165	3102	3159	3853	4315
1.1	University of California, San Diego	738	748	965	1197	3138	3148	3845	4347
1.2	University of California, Irvine	744	768	991	1215	3144	3168	3871	4365
1.3	University of California, Riverside	738	774	988	1180	3138	3174	3868	4330
1.3	University of California, Santa Barbara	745	784	992	1195	3145	3184	3872	4345
1.3	University of California, Santa Cruz	795	831	1039	1267	3195	3231	3919	4417
2.1	California Polytechnic State University, San Luis Obispo	218	232	336	450	2018	2392	3171	3600
2.1	California State Polytechnic University Pomona	200	214	310	435	2000	2374	3145	3585
2.1	California State College, Bakersfield	182	192	288	402	1980	2352	3123	3552
2.1	California State University, Chico	220	232	338	462	2020	2392	3173	3612
2.1	California State University, Dominguez Hills	204	212	308	425	2004	2372	3143	3575
2.1	California State University, Fresno	204	220	326	464	2004	2380	3161	3614
2.1	California State University, Fullerton	216	228	324	444	2016	2388	3159	3594
2.1	California State University, Hayward	204	212	308	422	2004	2372	3143	3572
2.1	California State University, Hayward	208	218	333	447	2008	2378	3168	3597
2.1	California State University, Long Beach	200	212	318	432	2000	2372	3153	3582
2.1	California State University, Los Angeles	200	232	328	442	2000	2392	3163	3592
2.1	California State University, Northridge	200	212	308	426	2000	2372	3143	3576
2.1	California State University, Sacramento	200	212	308	426	2000	2372	3143	3576
2.1	Humboldt State University	208	227	336	456	2008	2387	3171	3606
2.1	San Diego State University	204	224	320	454	2002	2384	3155	3604
2.1	San Francisco State University	208	231	327	442	2008	2391	3162	3592
2.1	San Jose State University	205	222	322	460	2005	2382	3157	3610
2.1	San Jose State University	200	212	308	439	2000	2372	3143	3589
2.2	California State College, San Bernardino	200	212	313	427	2000	2372	3148	3574
2.2	California State College, Stanislaus	200	212	313	427	2000	2372	3148	3574
2.2	Sonoma State College	194	226	334	456	2994	2386	3169	3606
5.2	University of California, San Francisco	767	782	1017	1223	3167	3182	3897	4370
5.9	California Maritime Academy	841	856	892	896	1486	2311	2347	2648
COLORADO									
1.1	Colorado State University	795	928	978	1104	2849	2930	3496	4122
1.1	University of Colorado, Boulder	892	995	1111	1221	3250	3584	4130	4730
1.3	University of Northern Colorado	700	781	915	1065	2560	2841	3183	3789
2.1	University of Colorado, Colorado Springs	510	558	693	789	2138	2346	2672	3028
2.1	University of Colorado, Denver	556	624	706	798	2326	2608	2970	3418
2.1	Fort Lewis College	587	625	724	788	2101	2265	2758	3026
2.1	Metropolitan State College	513	593	672	766	1929	2265	2552	2928
2.1	University of Southern Colorado	702	781	850	974	2476	2755	3060	3604
2.1	Western State College	657	727	803	922	2264	2483	2779	3194
2.2	Adams State College	680	734	820	918	2346	3032	3404	2852
3.2	Mesa College	658	716	820	918	2226	2500	2826	3226
5.2	University of Colorado Health Sciences Center ^a	1456	1614	1744 ^b	1913 ^c	5638	6075	7334 ^b	7595 ^c
5.4	Colorado School of Mines	838	1426	1910	2272	3816	4708	5406	6060

^a Includes nursing and other allied health students. (Medical and dental students are not included.)

^b Nonresident students enrolled prior to 80-81 pay fees of \$6588; students enrolled in 80-81 or 81-82 pay fees of \$7234.

^c Figures are for nursing. Nine-month allied health programs charge \$1767/\$7453.

Table 6 (cont.) Undergraduate Tuition and Required Fees

Carnegie Classifi- cation	Institution	Resident				Nonresident			
		79-80	80-81	81-82	82-83	79-80	80-81	81-82	82-83
HAWAII									
1.1	University of Hawaii, Manoa	\$ 480	\$ 480	\$ 481	\$ 481	\$1155	\$1155	\$1156	\$1156
2.2	University of Hawaii, Hilo ^d	105	105	105	105	925	925	925	925
3.2	West Oahu College	400	400	400	400	1000	1000	1000	1000
IDAHO^e									
1.3	University of Idaho	474	490	701	816	1974	1990	2501	2816
1.4	Idaho State University	460	470	680	805	1760	1770	2380	2705
2.1	Boise State University	475	478	689	801	1975	1978	2389	2701
2.2	Lewis-Clark State College	370	382	600	740	1420	1430	2300	2640
MONTANA									
1.3	Montana State University	573	573	674	728	1941	1941*	2042	2168
1.3	University of Montana	626	635	747	801	1994	2003	2115	2241
2.2	Eastern Montana College	519	519	624	678	1527	1527	1632	1758
2.2	Northern Montana College	477	477	573	627	1485	1485	1581	1707
2.2	Western Montana College ^f	474	474	579	633	1402	1482	1587	1713
5.4	Montana College of Mineral Science and Technology	472	482	572	626	1480	1490*	1940	2066
NEVADA									
1.4	University of Nevada, Reno	690	720	840	930	2190	2220	2840	2930
2.1	University of Nevada, Las Vegas	720	720	840	930	2220	2220	2840	2930
NEW MEXICO									
1.2	University of New Mexico	624	664	721	757	1873	2038	2233	2441
1.3	New Mexico State University	630	708	745	798	1888	2082	2257	2482
2.1	Eastern New Mexico University	569	619	687	698	1453	1596	1802	1985
2.2	New Mexico Highlands University	398	474	511	531	1282	1451	1626	1818
2.2	Western New Mexico University	411	438	511	531	1296	1414	1626	1818
5.4	New Mexico Institute of Mining and Technology	543	633	698	734	1986	2007	2210	2418
OREGON^g									
1.1	Oregon State University	846	924	1175	1356	2970	3237	3753	3981
1.2	University of Oregon	860	969	1190	1380	2984	3282	3768	4005
2.1	Portland State University	858	933	1184	1356	2982	3246	3762	3981
2.1	Southern Oregon State College	858	942	1205	1374	2673	2946	3423	3618
2.2	Eastern Oregon State College	813	900	1151	1302	813	900	1053	1302
2.2	Western Oregon State College	842	921	1186	1352	2656	2925	3404	3596
5.4	Oregon Institute of Technology	867	956	1204	1370	2991	3269	3782	3995
UTAH									
1.1	University of Utah	693	786	876	966	1818	2034	2328	2733
1.2	Utah State University	651	702	780	852	1701	1860	2097	2367
2.1	Weber State College	588	633	705	762	1398	1524	1785	2055
2.2	Southern Utah State College	564	621	684	735	1344	1320	1722	1971
WASHINGTON									
1.1	University of Washington	687	687	1059	1176	2394	2394	3048	3255
1.2	Washington State University	686	686	1059	1176	2394	2394	3048	3255
2.1	Eastern Washington University	618	618	867	942	1983	1983	2910	3210
2.1	Western Washington University	618	618	867	942	1983	1983	2910	3210
2.2	Central Washington University	618	618	867	942	1983	1983	2910	3210
3.2	The Evergreen State College	618	618	867	942	1983	1983	2910	3210
WYOMING									
1.3	University of Wyoming	434	592	592	616	1720	1878	1878	2076

^dThe figure shown is for lower division; the upper division figure is \$325.

^eIncludes tuition surcharge of \$50 per semester residents, \$100 per semester nonresidents (1982-83).

^fWestern Montana College changed from a quarter to a semester system in the fall of 1981.

^gRevised 1981-82 resident undergraduate and graduate tuition and required fees include \$49 per term surcharge for winter and spring terms of 1981-82. This surcharge is also in effect for all three terms of 1982-83.

Table 7

Resident and Nonresident Graduate Tuition and Required Fees
at Public Institutions in the West
1979-80 to 1982-83

Carnegie Classifi- cation	Institution	Resident				Nonresident			
		79-80	80-81	81-82	82-83	79-80	80-81	81-82	82-83
ALASKA									
1.4	University of Alaska, Fairbanks	\$ 704	\$ 732	\$ 732	\$ 1088	\$ 1340	\$ 1512	\$ 1512	\$ 1988
2.2	University of Alaska, Anchorage	554	682	682	948	1190	1462	1462	1848
5.9	University of Alaska, Juneau	512	640	640	924	1148	1420	1420	1824
ARIZONA									
1.1	University of Arizona	605	600	650	710	2310	2500	2950	3250
1.3	Arizona State University	605	600	650	710	2310	2500	2950	3250
2.1	Northern Arizona University	550	600	650	710	2046	2100	2500	2750
CALIFORNIA									
1.1	University of California, Berkeley	790	826	1041	1233	3190	3226	3921	4383
1.1	University of California, Davis	752	808	1023	1215	3152	3208	3903	4365
1.1	University of California, Los Angeles	750	807	1021	1216	3150	3207	3901	4366
1.1	University of California, San Diego	781	790	1041	1233	3184	3190	3921	4383
1.2	University of California, Irvine	804	828	1039	1263	3224	3228	3919	4413
1.3	University of California, Riverside	774	810	1024	1222	3174	3210	3904	4372
1.3	University of California, Santa Barbara	770	808	1020	1224	3170	3208	3900	4374
1.3	University of California, Santa Cruz	885	891	1099	1327	3255	3291	3979	4477
2.1	California Polytechnic State University, San Luis Obispo	218	232	336	450	2018	2392	3171	3600
2.1	California State Polytechnic University, Pomona	200	214	310	435	2000	2374	3145	3585
2.1	California State College, Bakersfield	182	192	288	402	1980	2352	3123	3552
2.1	California State College, Chico	220	232	338	462	2020	2392	3173	3612
2.1	California State University, Dominguez Hills	204	212	308	425	2004	2372	3143	3575
2.1	California State University, Fresno	204	220	326	464	2004	2380	3161	3614
2.1	California State University, Fullerton	216	228	324	444	2016	2388	3159	3594
2.1	California State University, Hayward	204	212	308	422	2004	2372	3143	3572
2.1	California State University, Long Beach	208	218	333	447	2008	2378	3168	3597
2.1	California State University, Los Angeles	200	212	318	432	2000	2372	3153	3582
2.1	California State University, Northridge	200	232	328	442	2000	2392	3163	3592
2.1	California State University, Sacramento	200	212	308	426	2000	2372	3143	3576
2.1	Humboldt State University	208	227	336	456	2008	2387	3171	3606
2.1	San Diego State University	204	224	320	454	2002	2384	3155	3604
2.1	San Francisco State University	208	231	327	442	2008	2391	3162	3592
2.1	San Jose State University	205	222	322	460	2005	2382	3157	3610
2.2	California State College, San Bernardino	200	212	308	439	2000	2372	3143	3589
2.2	California State College, Stanislaus	200	212	313	427	2000	2372	3148	3577
2.2	Sonoma State College	194	226	334	456	1994	2386	3169	3606
5.2	University of California, San Francisco	767	782	1017	1220	3167	3182	3897	4370
COLORADO									
1.1	Colorado State University	825	859	1015	1147	2970	3066	3659	4316
1.1	University of Colorado, Boulder	926	1033	1171	1290	3388	3752	4255	4674
1.3	University of Northern Colorado	727	819	951	1110	2671	2976	3333	3969
2.1	University of Colorado, Colorado Springs	534	584	752	918	2224	2462	2942	3322
2.1	University of Colorado, Denver	582	654	778	952	2430	2736	3222	3706
2.1	University of Southern Colorado	727	810	850	974	2579	2883	3060	3604
2.1	Western State College	680	753	831	954	2358	2597	2905	3340
2.2	Adams State College	704	760	848	950	2442	3174	3564	2982
5.2	University of Colorado Health Sciences Center ^a	1456	1614	1744 ^b	1913 ^c	5638	6075	7234 ^b	7595 ^c
5.4	Colorado School of Mines	872	1426	1910	2272	3967	4708	5406	6060

^a Includes nursing and other allied health students. (Medical and dental students are not included.)

^b Nonresident students enrolled prior to 80-81 pay fees of \$6588; students enrolled in 1980-81 or 81-82 pay fees of \$7234.

^c Figures are for nursing. Nine-month allied health programs charge \$1767/\$7453.

Table 7 (cont.) Graduate Tuition and Required Fees

Carnegie Classifi- cation	Institution	Resident				Nonresident			
		79-80	80-81	81-82	82-83	79-80	80-81	81-82	82-83
HAWAII									
1.1	University of Hawaii, Manoa	\$ 579	\$ 582	\$ 582	\$ 582	\$1404	\$1407	\$1407	\$1407
IDAHO^d									
1.3	University of Idaho	644	660	871	986	2144	2160	2671	2986
1.4	Idaho State University	510	520	850	975	1810	1820	2550	2875
2.1	Boise State University	525	528	859	971	2025	2028	2559	2871
MONTANA									
1.3	Montana State University	573	573	674	728	1941	1941	2042	2168
1.3	University of Montana	626	635	747	801	1994	2003	2115	2241
2.2	Eastern Montana College	519	519	624	678	1527	1527	1632	1758
2.2	Northern Montana College	477	477	573	627	1485	1485	1581	1707
2.2	Western Montana College ^e	474	474	579	633	1482	1482	1587	1713
5.4	Montana College of Mineral Science and Technology	472	482	572	626	1480	1490	1940	2066
NEVADA									
1.4	University of Nevada, Reno	368	384	448	496	1868	1884	2448	2496
2.1	University of Nevada, Las Vegas	384	384	448	496	1884	1884	2448	2496
NEW MEXICO									
1.2	University of New Mexico	645	664	721	757	1871	2038	2233	2441
1.3	New Mexico State University	630	708	745	798	1885	2082	2257	2482
2.1	Eastern New Mexico University	569	619	682	698	1453	1506	1802	1985
2.2	New Mexico Highlands University	398	474	511	531	1282	1451	1626	1818
2.2	Western New Mexico University	411	438	511	531	1296	1414	1626	1818
5.4	New Mexico Institute of Mining and Technology	543	633	698	734	1986	2002	2210	2418
OREGON^f									
1.1	Oregon State University	1281	1395	1736	2019	2196	2388	2820	3267
1.2	University of Oregon	1295	1440	1751	2043	2210	2433	2835	3291
2.1	Portland State University	1293	1404	1745	2019	2208	2397	2829	3267
2.1	Southern Oregon State College	1293	1413	1766	2037	2208	2406	2850	3294
2.2	Eastern Oregon State College	1287	1410	1757	2019	2202	2403	2841	3267
2.2	Western Oregon State College	1277	1392	1747	2015	2129	2385	2831	3263
5.2	Oregon Health Sciences University	1370	1523	1885	2219	2285	2516	2969	3467
UTAH									
1.1	University of Utah	693	786	876	966	1818	2034	2328	2733
1.2	Utah State University	651	702	780	852	1701	1860	2097	2367
2.1	Weber State College	588	633	705	762	1398	1524	1785	2055
WASHINGTON									
1.1	University of Washington	771	771	1239	1701	2736	2736	3600	4212
1.2	Washington State University	770	770	1239	1701	2736	2736	3600	4212
2.1	Eastern Washington University	684	684	996	1320	2256	2256	3435	3882
2.1	Western Washington University	684	684	996	1320	2256	2256	3435	3882
2.2	Central Washington University	684	684	996	1320	2256	2256	3435	3882
3.2	The Evergreen State College ^g	N/A	N/A	996	1320	N/A	N/A	3435	3882
WYOMING									
1.3	University of Wyoming	434	592	592	616	1720	1878	1878	2076

^d Includes tuition surcharge of \$50 per semester for residents, \$100 per semester for nonresidents (1982-83).

^e Western Montana College changed from a quarter system to a semester system in the fall of 1981.

^f Revised 1981-82 resident undergraduate and graduate tuition and required fees includes \$49 per term surcharge for winter and spring terms of 1981-82. This surcharge is also in effect for all three terms of 1982-83.

^g The Evergreen State College had no graduate programs until 1981-82.

Table 8

Tuition and Required Fees
at Public Four-Year Institutions in the West
by Carnegie Classification
1982-83

Institution	Undergraduate		Graduate	
	Resident	Nonresident	Resident	Nonresident
Carnegie Classification 1.1--Research Universities I				
University of Arizona	\$ 710	\$3250	\$ 710	\$3250
University of California, Berkeley	1173	4323	1233	4383
University of California, Davis	1186	4336	1215	4365
University of California, Los Angeles	1165	4315	1216	4366
University of California, San Diego	1197	4397	1233	4383
Colorado State University	1104	4122	1147	4316
University of Colorado, Boulder	1221	4730	1290	4674
University of Hawaii, Manoa	481	1156	582	1407
Oregon State University	1366	3981	2019	3267
University of Utah	966	2733	966	2733
University of Washington	1176	3255	1701	4212
Carnegie Classification 1.2--Research Universities II				
University of California, Irvine	1215	3465	1263	4413
University of New Mexico	757	2441	757	2441
University of Oregon	1380	4005	2043	3291
Utah State University	852	2367	852	2367
Washington State University	1176	3255	1701	4212
Carnegie Classification 1.3--Doctorate-Granting Universities I				
Arizona State University	710	3250	710	3250
University of California, Riverside	1180	4330	1222	4372
University of California, Santa Barbara	1195	4345	1224	4374
University of California, Santa Cruz	1267	4417	1327	4477
University of Northern Colorado	1065	3789	1110	3969
University of Idaho	816	2816	986	2986
Montana State University	728	2168	728	2168
University of Montana	801	2241	801	2241
New Mexico State University	798	2482	798	2482
University of Wyoming	616	2076	616	2076
Carnegie Classification 1.4--Doctorate-Granting Universities II				
University of Alaska, Fairbanks	788	1748	1088	1988
Idaho State University	805	2705	975	2875
University of Nevada, Reno	930	2930	496	2496
Carnegie Classification 2.1--Comprehensive Universities and Colleges I				
Northern Arizona University	710	2750	710	2750
California Polytechnic State University, San Luis Obispo	450	3600	450	3600
California Polytechnic State University, Pomona	435	3585	435	3585
California State College, Bakersfield	402	3552	402	3552
California State College, Chico	462	3612	462	3612
California State University, Dominguez Hills	425	3575	425	3575
California State University, Fresno	464	3614	464	3614
California State University, Fullerton	444	3594	444	3594
California State University, Hayward	422	3572	422	3572
California State University, Long Beach	447	3597	447	3597
California State University, Los Angeles	432	3582	432	3582
California State University, Northridge	442	3592	442	3592
California State University, Sacramento	426	3576	426	3576

Table 8 (cont.) Tuition and Required Fees by Carnegie Classification

Institution	Undergraduate		Graduate	
	Resident	Nonresident	Resident	Nonresident
Carnegie Classification 2.1--Comprehensive Universities and Colleges I (continued)				
Humboldt State University (California)	\$ 456	\$3606	\$ 456	\$3606
San Diego State University (California)	454	3604	454	3604
San Francisco State University (California)	442	3592	442	3592
San Jose State University (California)	460	3610	460	3610
University of Colorado, Colorado Springs	789	3028	918	3322
University of Colorado, Denver	798	3418	952	3706
Fort Lewis College (Colorado)	788	3026		
Metropolitan State College (Colorado)	766	2928		
University of Southern Colorado	974	3604	974	3604
Western State College (Colorado)	922	3194	954	3340
Boise State University (Idaho)	801	2701	971	2871
University of Nevada, Las Vegas	930	2930	496	2406
Eastern New Mexico University	698	1985	698	1985
Portland State University (Oregon)	1356	3981	2019	3267
Southern Oregon State College	1374	3618	2037	3294
Weber State College (Utah)	762	2055	762	2055
Eastern Washington University	942	3210	1320	3882
Western Washington University	942	3210	1320	3882
Carnegie Classification 2.2--Comprehensive Universities and Colleges II				
University of Alaska, Anchorage	648	1608	948	1848
California State College, San Bernardino	439	3589	439	3589
California State College, Stanislaus	427	3577	427	3577
Sonoma State College (California)	456	3606	456	3606
Adams State College (Colorado)	918	2852	950	2982
University of Hawaii, Hilo	105	925		
Lewis-Clark State College (Idaho)	740	2640		
Eastern Montana College	678	1758	678	1758
Northern Montana College	627	1707	627	1707
Western Montana College	633	1713	633	1713
New Mexico Highlands University	531	1818	531	1818
Western New Mexico University	531	1818	531	1818
Eastern Oregon State College	1302	1302	2019	3267
Western Oregon State College	1352	3596	2015	3263
Southern Utah State College	735	1971		
Central Washington University	942	3210	1320	3882
Carnegie Classification 3.2--Liberal Arts Colleges II				
Mesa College (Colorado)	918	3226		
West Oahu College (Hawaii)	400	1000		
The Evergreen State College (Washington)	942	3210	1320	3882
Carnegie Classification 5.2--Medical Schools and Medical Centers				
University of California, San Francisco	1220	4370	1220	4370
University of Colorado Health Sciences Center	1913	7595	1913	7595
Oregon Health Sciences University			2219	3467
Carnegie Classification 5.4--Schools of Engineering and Technology				
Colorado School of Mines	2272	6060	2272	6060
Montana College of Mineral Science and Technology	626	2066	626	2066
New Mexico Institute of Mining and Technology	734	2418	734	2418
Oregon Institute of Technology	1370	3995		
Carnegie Classification 5.9--Other Specialized Institutions				
University of Alaska, Juneau	624	1584	924	1824
California Maritime Academy	896	2648		

Table 9

Resident Tuition and Required Fees
at Public Two-Year Colleges
in the West
1979-80 to 1982-83

Institution	Tuition and Required Fees			
	1979-80	1980-81	1981-82	1982-83
ALASKA^a				
Anchorage Community College	\$372-	\$442	\$442	\$450
Juneau-Douglas Community College ^b	340	n/a	n/a	n/a
Kenai Peninsula Community College	300	430	430	450
Ketchikan Community College	340	410	410	450
Kodiak Community College	340	410	410	450
Kuskokwim Community College	370	440	440	450
Mantanuska Susitna Community College	340	410	410	450
Northwest Community College	340	410	410	450
Sitka Community College	340	410	410	450
Tanana Valley Community College	452	517	517	450
ARIZONA				
Arizona Western College	200	250	310	390
Central Arizona College	192	246	288	312
Cochise College	200	320	350	380
Eastern Arizona College	170	177	270	300
Glendale Community College	100	190	250	264
Maricopa Technical Community College	100	190	250	264
Mesa Community College	100	190	250	264
Mohave Community College	120	180	210	224
Northland Pioneer College	80	100	100	100
Phoenix College	100	190	250	264
Pima Community College	140	308	308	308
Rio Salgado Community College	100	190	250	264
Scottsdale Community College	100	190	250	264
South Mountain Community College ^c	n/a	190	250	264
Yavapai College	168	252	310	400
CALIFORNIA^d				
COLORADO				
Aims Community College	221	293	324	396
Arapahoe Community College	447	572	649	716
Colorado Mountain College	353	450	369	387
Colorado Northwestern Community College	100	110	120	140
Community College of Denver (Auraria)	427	537	628	681
Community College of Denver (North)	447	551	628	659
Community College of Denver (Red Rocks)	421	525	628	664

^aTuition and fee structure was changed by the Board of Regents in July 1982.

^bJuneau-Douglas Community College is now part of the University of Alaska, Juneau.

^cClasses at South Mountain Community College began in 1980-81.

^dCalifornia community colleges do not charge tuition or other educational fees. The community college districts have the authority to charge eighteen different fees besides nonresident tuition. In those districts that have instituted required fees for services such as parking and health services, fees range from approximately \$2 to \$40 per academic year. Data for 1982-83 fees in California community colleges was not available at publication time.

SOURCE: The tuition and fee data for 1979-80 through 1981-82 are reprinted from the 1981 WICHE report Tuition and Fees in Public Higher Education in the West. The 1981-82 data were provided by the statewide governing board or supervisory agency in each state.

NOTE: The amounts shown represent tuition and required fees paid by a full-time resident student for a full academic year (three quarters, two semesters, two trimesters). Tuition is the minimum tuition charged, that is for a state, district or county resident. Required fees include charges other than tuition which a majority of full-time students are required to pay. (Optional fees and books and supplies are not included.)

Table 9 (cont.) Resident Tuition and Required Fees at Public Two-Year Colleges

Institution	Tuition and Required Fees			
	1979-80	1980-81	1981-82	1982-83
COLORADO (continued)				
Lamar Community College	\$533	\$637	\$701	\$801
Morgan Community College	419	523	582	651
Northeastern Junior College	312	348	396	423
Otero Junior College	540	643	702	750
Pikes Peak Community College	425	529	600	669
Pueblo Vocational Community College ^e	437	541	600	678
Trinidad State Junior College	518	642	641	771
HAWAII				
Hawaii Community College	90	90	90	90
Honolulu Community College	90	90	90	90
Kapiolani Community College	90	90	90	90
Kauai Community College	90	90	90	90
Leeward Community College	90	90	90	90
Maui Community College	90	90	90	90
Windward Community College	90	90	90	90
IDAHO				
College of Southern Idaho	336	400	455	600
North Idaho College	458	480	530	530
MONTANA				
Dawson College	285	285	375	375
Flathead Valley Community College	285	285	375	375
Miles Community College	338	338	338	338
NEVADA^f				
Clark County Community College	390	390	480	510
Northern Nevada Community College	390	390	480	510
Truckee Meadows Community College	390	390	480	510
Western Nevada Community College	390	390	480	510
NEW MEXICO				
Albuquerque Technical/Vocational Institute	20	20	20	20
Eastern New Mexico (Clovis Campus)	324	324	324	324
Eastern New Mexico (Roswell Campus)	375	375	412	412
Luna Vocational/Technical Institute	20	20	20	20
New Mexico Junior College	189	189	164	164
New Mexico Military Institute ^g	544	457	605	613
New Mexico State (Alamogordo Campus)	384	384	384	384
New Mexico State (Carlsbad Campus)	360	360	336	336
New Mexico State (Dona Ana Branch)	648	696	745	745
New Mexico State (Grants Campus)	336	336	360	360
Northern New Mexico Community College	319	319	336	336
San Juan College ^h	360	360	360	360
Tusamcari Area Vocational School	260	260	260	260
University of New Mexico (Gallup Campus)	348	348	348	348
University of New Mexico (Los Alamos Campus) ⁱ	n/a	318	318	318
University of New Mexico (Valencia County Branch) ^j	n/a	n/a	318	318

^eClasses at Pueblo Vocational Community College began in 1979-80.

^fDecrease in tuition and fees in 1979-80 reflects a redefinition of FTE student from 16 credit hours per semester to 15. Charge per credit hour remained the same.

^gThe figures shown for New Mexico Military Institute exclude required fees of room and board, laundry costs and personal account deposits. These fees have been excluded to provide greater comparability to other institutions.

^hNew Mexico State University, San Juan Branch, became an independent junior college July 1, 1982.

ⁱClasses at the University of New Mexico, Los Alamos Campus, began in 1980-81.

^jClasses at the University of New Mexico, Valencia County Branch, began in 1981-82.

Table 9 (cont.) Resident Tuition and Required Fees at Public Two-Year Colleges

Institution	Tuition and Required Fees			
	1979-80	1980-81	1981-82	1982-83
OREGON				
Blue Mountain Community College	\$411	\$411	\$468	\$540
Central Oregon Community College	396	432	480	540
Chemeketa Community College	450	450	540	540
Clackamas Community College	405	450	510	540
Clatsop Community College	396	396	468	576
Lane Community College	439	495	528	561
Linn-Benton Community College	423	459	504	612
Mt. Hood Community College	417	450	495	585
Portland Community College	399	432	473	540
Rogue Community College	432	468	504	504
Southwestern Oregon Community College	420	420	450	450
Tillamook Bay Area Education District ^k	n/a	n/a	473	468
Treasure Valley Community College	432	450	570	570
Treaty Oak Area Education District	394	399	399	576
Umpqua Community College	435	510	576	612
UTAH				
College of Eastern Utah	504	540	615	651
Dixie College	513	552	600	666
Snow College	528	576	630	666
Utah Technical College at Provo	468	513	570	627
Utah Technical College at Salt Lake	435	471	534	606
WASHINGTON				
Bellevue Community College	306	306	462	519
Big Bend Community College	306	306	495	519
Centralia College	306	306	471	519
Clark College	326	326	468	519
Columbia Basin College	321	321	473	525
Edmonds Community College	327	327	471	525
Everett Community College	306	306	486	519
Fort Steilacoom Community College	306	306	465	513
Grays Harbor College	312	312	471	519
Green River Community College	306	306	501	519
Highline Community College	306	306	471	519
Lower Columbia College	309	327	471	519
North Seattle Community College	288	288	458	506
Olympia Technical Community College	280	306	471	519
Olympic College	306	306	460	519
Peninsula College	309	306	465	513
Seattle Central Community College	293	288	458	506
Shoreline Community College	300	303	477	510
Skagit Valley College	306	306	471	519
South Seattle Community College	293	293	461	506
Spokane Community College	327	327	471	519
Spokane Falls Community College	327	327	471	519
Tacoma Community College	311	311	461	509
Walla Walla Community College	311	306	488	519
Wenatchee Valley College	324	324	477	525
Whatcom Community College	288	306	458	505
Yakima Valley College	312	312	474	522
WYOMING				
Casper College	298	380	380	380
Central Wyoming College	265	312	312	312
Eastern Wyoming College	300	330	330	330
Laramie County Community College	300	360	390	390
Northwest Community College	316	350	390	390
Sheridan College	361	340	408	408
Western Wyoming Community College	260	305	345	345

^kClasses at Tillamook Bay Area Education District began in 1981-82.

^lFor 15 credit hours per quarter.