

DOCUMENT RESUME

ED 207 373

HE 013 967

AUTHOR Grupe, Fritz H.; Sukanek, Kathleen L.
 TITLE Together We Do More: Cost-Effectiveness Through Interinstitutional Cooperation.
 INSTITUTION Associated Colleges of the St. Lawrence Valley, Potsdam, N. Y.
 SPONS AGENCY Carnegie Corp. of New York, N.Y.
 PUB DATE Apr 81
 NOTE 117p.; Not available in paper copy due to small print of original document.
 AVAILABLE FROM Associated Colleges of the St. Lawrence Valley, State University College of Potsdam, Potsdam, NY 13676.

EDRS PRICE MF01 Plus Postage. PC Not Available from EDRS.
 DESCRIPTORS Audiovisual Aids; *Consortia; *Cooperative Programs; *Cost Effectiveness; Curriculum Development; Departments; Educational Equipment; Equipment; Higher Education; Instructional Materials; *Intercollegiate Cooperation; Laboratory Equipment; Program Descriptions; *Shared Facilities; *Shared Services
 IDENTIFIERS *Associated Colleges of the Saint Lawrence Valley; Clarkson College of Technology NY; Saint Lawrence University NY; State University of New York Coll at Potsdam; State University of NY Agric Tech Coll Canton

ABSTRACT

Results of a project designed to extend the level of academic cooperation among four member colleges of the Associated Colleges of the St. Lawrence Valley are presented. The specific goal of the project, which was funded by the Carnegie Corporation of New York, was to initiate activities that were cost beneficial. Members of the consortia are: Clarkson College, St. Lawrence University, State University of New York (SUNY) Agricultural and Technical College at Canton, and SUNY College at Potsdam. Funds for the specific projects, which are listed by department, are detailed in terms of Carnegie Corporation grants, local matching funds, and specific uses of the monies. For each project, impacts are noted as follows: cost avoidance, cost effectiveness, cost efficiency, resource amplification, and resource attraction. In addition to a brief note on the nature of the impacts, brief project descriptions are presented. Among the projects are the following: anthropology films; team teaching of a course on human sexuality; employment of an art slide librarian; construction of plexiglass cubes for displaying sculpture, pottery, etc.; acquisition of instruction materials for biology courses; design of an interinstitutional cell and molecular biology concentration; development of a set of computer models for simulating the chemical analysis of DNA chains; development of a modular course in consumer economics; offering a new course in radio journalism; availability of an x-ray fluorescence unit at St. Lawrence to a Potsdam staff member; faculty sharing among the institutions through faculty exchanges, overload teaching, and a loan of faculty for specified periods of time; and plans for a cooperative radioactive waste disposal procedure. (SW)

HE 01.3 967

ED 207373

TOGETHER WE DO MORE:

Cost-Effectiveness Through Interinstitutional Cooperation.

A Project Partially Funded By

THE CARNEGIE CORPORATION OF NEW YORK

U.S. DEPARTMENT OF EDUCATION
NATIONAL INSTITUTE OF EDUCATION
EDUCATIONAL RESOURCES INFORMATION
CENTER (ERIC)

- ✓ This document has been reproduced as received from the person or organization originating it
- ✓ Minor changes have been made to improve reproduction quality
- Points of view or opinions stated in this document do not necessarily represent official NIE position or policy.

"PERMISSION TO REPRODUCE THIS MATERIAL HAS BEEN GRANTED BY

*Associated
Colleges of the
Midwest*

TO THE EDUCATIONAL RESOURCES INFORMATION CENTER (ERIC)."

Fritz H. Grupe, Executive Director

Kathleen L. Sukanek, Coordinator, Academic Programs

ASSOCIATED COLLEGES OF THE ST. LAWRENCE VALLEY

TABLE OF CONTENTS

	<u>Page</u>		
<u>Introduction</u>	i		
<u>Brochure</u>	ii		
<u>Project Impact Summary</u>	1		
<u>Project Descriptions</u>			
Anthropology	2	Engineering	20
Art	3	English	21
Biology	5	Foreign Language	24
Business Administration	12	Geology	25
Chemistry	13	History	32
Computer Science	16	Multidisciplinary	33
Computing/Television	18	Music	42
Economics	19	Physics	43
		Political Science	44
		Psychology	45
		Religious Studies	49
		Sociology	51

INTRODUCTION

In October of 1978, the Carnegie Corporation of New York responded favorably to a proposal made by the Associated Colleges of the St. Lawrence Valley. The proposal suggested that the four member colleges could extend the level of academic cooperation that then existed. The specific goal of the project was to initiate activities which were cost beneficial. Strategic planning sessions and pilot project grants were the core activities. Cost beneficial was taken to include five different forms:

Cost avoidance - eliminating the need for new expenditures.

Cost effectiveness - combining resources to achieve results otherwise not feasible.

Cost efficiency - making better use of investments already made.

Resource amplification - applying saved funds to new purposes.

Resource attraction - finding added support through consortial assistance.

A brochure describing the project as it was originally conceived follows this page. The major text of this report highlights most, although not all, of the activities sponsored through the Carnegie grant and through considerable local support.

Further information, additional copies of this report, and a prepared slide program describing the project and its outcomes are available upon request from the Associated Colleges of the St. Lawrence Valley, c/o Potsdam College, Potsdam, New York 13676.

FINAL REPORT TO:
THE CARNEGIE CORPORATION OF NEW YORK

PROJECT IMPACT SUMMARY

	<u>COST AVOIDANCE</u>	<u>COST EFFICIENCY</u>	<u>COST EFFECTIVENESS</u>	<u>RESOURCE AMPLIFICATION</u>	<u>RESOURCE ATTRACTION</u>	<u>CARNEGIE FUNDS APPROVED</u>	<u>MATCHING</u>
					\$	\$	\$
<u>ANTHROPOLOGY</u>							
Anthropology Films		X				-0-	3,500.
Human Sexuality	X	X				1,500.	1,150.
<u>ART</u>							
Art-Slide Librarian		X	X		10,000.	1,000.	1,400.
Audiovisual Materials	X				1,000.	3,000.	300.
Gallery Displays		X	X			300.	3,200.
Papermaking/Printmaking		X	X			1,500.	7,250.
<u>BIOLOGY</u>							
Articulation of Clarkson and A.T.C. Programs	X	X				-0-	-0-
Audiovisual Materials	X					2,400.	625.
Cell and Molecular Biology	X	X		X		500.	-0-
DNA Analysis Modeling		X				-0-	450.
Embryology Teaching Materials Development		X			2,000.	1,300.	5,400.
Entomology		X				1,500.	1,500.
Equipment List	X	X		X		-0-	-0-
Joint Recruitment						-0-	300.
Limnology and Aquatic Research	X				15,000.	820.	15,000.
Microbiology		X				1,000.	4,000.
Ornithology		X				850.	500.
Physiology	X	X				-0-	22,000.
Seminar Series			X			800.	900.
Tropical Biology	X					1,750.	25,100.
<u>BUSINESS ADMINISTRATION</u>							
Articulation of Clarkson and A.T.C. Business Programs						200.	-0-

FINAL REPORT TO:
THE CARNEGIE CORPORATION OF NEW YORK

1 (a).

PROJECT IMPACT SUMMARY

	<u>COST AVOIDANCE</u>	<u>COST EFFICIENCY</u>	<u>COST EFFECTIVENESS</u>	<u>RESOURCE AMPLIFICATION</u>	<u>RESOURCE ATTRACTION</u>	<u>CARNEGIE FUNDS APPROVED</u>	<u>MATCHING</u>
					\$	\$	\$
<u>CHEMISTRY</u>							
Advanced Organic Chemistry	X		X			1,330.	940.
Biochemistry	X		X			1,500.	1,250.
Computer Program Development For Freshman Chemistry	X		X			3,000.	12,100.
Equipment List	X	X	X			-0-	-0-
Magnetic Resonance Instru- mentation		X	X			1,500.	82,000.
Medicinal Chemistry		X				-0-	2,500.
<u>COMPUTER SCIENCE</u>							
Computer Terminal/Port Faculty Development in Computing		X	X			3,000.	3,000.
Geology Programs/Terminal	X	X	X			2,100.	24,500.
						3,300.	12,300.
<u>COMPUTING/TELEVISION</u>							
Telecommunications		X			1,600.	-0-	1,000.
<u>ECONOMICS</u>							
<u>COMPUSTAT</u>		X				1,500.	3,500.
Consumer Economics		X				1,500.	3,500.
<u>ENGINEERING</u>							
Articulation Among Chemistry, Physics, and Chemical Engineering Surveying Option	X	X				-0-	-0-
	X		X			-0-	-0-
<u>ENGLISH</u>							
Comedy and Terror	X			X		950.	4,500.
Faculty Loan	X					-0-	2,500.
Humanities Curriculum		X				200.	-0-
Program for Training Peer Tutors		X		X		1,500.	1,500.

FINAL REPORT TO:
THE CARNEGIE CORPORATION OF NEW YORK

1 (b)

PROJECT IMPACT SUMMARY

	<u>COST AVOIDANCE</u>	<u>COST EFFICIENCY</u>	<u>COST EFFECTIVENESS</u>	<u>RESOURCE AMPLIFICATION</u>	<u>RESOURCE ATTRACTION</u>	<u>CARNEGIE FUNDS APPROVED</u>	<u>MATCHING</u>
					\$	\$	\$
<u>ENGLISH (continued)</u>							
Radio Journalism		X				300.	1,500.
Shakespeare Series		X				3,000.	15,000.
<u>FOREIGN LANGUAGE</u>							
Introductory Spanish			X			-0-	2,500.
<u>GEOLOGY</u>							
Audiovisuals	X					1,850.	1,750.
Equipment List	X	X	X			-0-	-0-
Faculty Exchange-Geochemistry	X					2,000.	2,500.
Geology Option	X					-0-	-0-
Geophysics			X			-0-	28,000.
Independent Study in Geophysics	X					1,750.	1,000.
Observatory			X			-0-	-0-
Optical Petrography	X	X				2,000.	33,250.
Photogeology		X	X		12,000.	1,600.	4,300.
Planetarium		X				-0-	40,000.
Research Advisement	X	X	X			-0-	19,500.
X-Ray Diffraction	X					-0-	60,000.
X-Ray Fluorescence		X				-0-	80,500.
<u>HISTORY</u>							
Women's History		X				1,900.	3,200.
World History Series		X		X		2,200.	-0-
<u>MULTIDISCIPLINARY</u>							
Bi-Lingual Education				X		-0-	1,000.
Chemical Waste Disposal	X					1,500.	5,600.
Computerized Bibliographic Searching		X				75.	1,100.
Film Studies	X	X	X	X	X	9,000.	11,400.
Humanities Subjects Research	X					-0-	2,400.
Industrial Hygiene/Audiology Coordination	X				X	1,000.	113,000.



PROJECT IMPACT SUMMARY

	<u>COST AVOIDANCE</u>	<u>COST EFFICIENCY</u>	<u>COST EFFECTIVENESS</u>	<u>RESOURCE AMPLIFICATION</u>	<u>RESOURCE ATTRACTION</u>	<u>CARNEGIE FUNDS APPROVED</u>	<u>MATCHING</u>	
						\$	\$	
<u>MULTIDISCIPLINARY (Continued)</u>								
Joint Appointments			X				2,000.	30,000.
Joint Class Schedule		X					3,100.	-0-
Joint Exhibitions					4,000.	800.	1,700.	
Linguistics					11,500.	3,000.	-0-	
Promotional Literature		X				900.	-0-	
Radioactive Wastes	X					-0-	-0-	
Safety	X	X				500.	3,000.	
Seminars/Conferences		X			3,900.	4,300.	9,900.	
Technician's Assistant	X				9,500.	2,500.	12,000.	
Technician Meetings		X	X			150.	-0-	
Thematic Concentrations						-0-	1,000.	
Transportation		X				3,800.	6,000.	
<u>MUSIC</u>								
Music II	X			X		200.	7,500.	
Music and Industry		X				2,000.		
<u>PHYSICS</u>								
Equipment List	X	X	X			-0-	-0-	
Physics II			X			1,500.	5,000.	
<u>POLITICAL SCIENCE</u>								
Introduction to Latin America		X				1,500.	2,000.	
<u>PSYCHOLOGY</u>								
Animal Behavior		X				1,000.	101,000.	
Career Awareness Center		X				200.	4,200.	
Environmental Noise			X		X	1,500.	39,365.	
Equipment Exchange	X	X	X			-0-	12,000.	
Faculty Exchange		X	X			1,050.	4,000.	
Modular Introductory Psychology Course		X	X			1,500.	68,000.	
Seminar Series		X				600.	3,500.	
Statistics		X				1,000.	3,500.	



PROJECT IMPACT SUMMARY

	<u>COST AVOIDANCE</u>	<u>COST EFFICIENCY</u>	<u>COST EFFECTIVENESS</u>	<u>RESOURCE AMPLIFICATION</u>	<u>RESOURCE ATTRACTION</u>	<u>CARNEGIE FUNDS APPROVED</u>	<u>MATCHING</u>
<u>RELIGIOUS STUDIES</u>						\$	\$
Consortium Appointment			X			12,700.	500.
New Testament		X				1,500.	200.
World Religion		X				2,500.	1,000.
<u>SOCIOLOGY</u>							
Articulated Curriculum in Criminology		X				750.	-0-
Cooperative Degree in Criminal Justice			X			750.	-0-
Sex Roles in Managerial Settings						1,500.	1,800.
Sociology of Film	X			X		950.	4,500.
Visual Sociology		X				1,500.	4,000.

TOTALS

<u>Carnegie Funds Approved</u>	\$ 112,025
<u>Matching Funds</u>	\$ 1,003,830

FINAL REPORT TO:
THE CARNEGIE CORPORATION OF NEW YORK

APRIL 1981

DISCIPLINE: ANTHROPOLOGY

PROJECT TITLE: "ANTHROPOLOGY FILMS"

Description: Potsdam's anthropology department permitted the consortium to make available to other departments ten films which it holds. These are listed in the consortium's film catalog

Most Significant Impacts:

Cost Avoidance _____

Cost Efficiency

More frequent, cheaper usage of the films is possible.

Cost Effectiveness _____

Resource Amplification _____

Resource Attraction _____

FUNDS GRANTED BY THE CARNEGIE CORPORATION

\$ -0-

LOCAL MATCHING FUNDS
(Non-Grant Sources):

\$ 3,500

Detail

Films _____

3,500.

TOTAL

\$ 3,500.

DISCIPLINE: ANTHROPOLOGY

PROJECT TITLE: "HUMAN SEXUALITY"

Description: A pilot project for team-teaching the course "Human Sexuality" was funded. The course which enrolls six to eight Clarkson students per semester was team-taught by both a Clarkson administrator who is also a sex therapist, and a Potsdam faculty member. The positive course evaluations have led the institutions to explore a formalized administrator/faculty team-teaching arrangement.

Most Significant Impacts:

Cost Avoidance _____

The course is of high interest to Clarkson students. Late afternoon scheduling and guaranteed space means Clarkson can avoid duplication.

Cost Efficiency _____

By rearranging current expertise, the colleges can enhance their educational impact.

Cost Effectiveness _____

Resource Amplification _____

Resource Attraction _____

FUNDS GRANTED BY THE CARNEGIE CORPORATION

\$ 1,500.

LOCAL MATCHING FUNDS
(Non-Grant Sources):

\$ 100.

Detail

Film purchase _____

50

Secretarial support _____

1,000.

Faculty time (teaching) _____

1,150.

TOTAL

\$ 2,650.

FINAL REPORT TO:

THE CARNEGIE CORPORATION OF NEW YORK

APRIL, 1981

DISCIPLINE: ART

PROJECT TITLE: "ART SLIDE LIBRARIAN"

Description: An art slide librarian was retained to catalog and reorganize art slide collections. Two institutions, Potsdam and St. Lawrence hold over 150,000 slides. Duplicates were made of high priority slides and copyrighted ones were shared. There was some shared usage of copy cameras.

Most Significant Impacts:

- Cost Avoidance _____
- Cost Efficiency X Excellent use was made of existing collections.
- Cost Effectiveness X Some slides were accessible that would not have been purchased, given present budgets.
- Resource Amplification _____
- Resource Attraction X The position was CETA-funded - \$10,000 in salary and fringe benefits.

FUNDS GRANTED BY THE CARNEGIE CORPORATION \$ 1,000.

LOCAL MATCHING FUNDS
(Non-Grant Sources):

	<u>Detail</u>	
\$ 1,000	Materials	
400	Travel	
		1,400.
		4
<u>TOTAL</u>		<u>\$ 2,400.</u>

DISCIPLINE: ART

PROJECT TITLE: "AUDIOVISUAL MATERIALS"

Description: A number of films and film series were acquired for joint utilization. The films support commonly taught courses in art history, introduction to art and film animation. Since most art courses at present are very heavily enrolled, a primary area of cooperation is audiovisual sharing.

Most Significant Impacts:

- Cost Avoidance X Purchase of these titles enabled the colleges to eliminate rental costs (one series was running \$300 per year.)
- Cost Efficiency _____
- Cost Effectiveness _____
- Resource Amplification _____
- Resource Attraction X A grant of \$1,000 from the N. Y. State Council on the Arts provided some matching funds.

FUNDS GRANTED BY THE CARNEGIE CORPORATION \$ 3,000.

LOCAL MATCHING FUNDS
(Non-Grant Sources):

	<u>Detail</u>	
\$ 1,000	NVSCA	
300.	Contribution	
		1,300
<u>TOTAL</u>		<u>\$ 4,300.</u>



FINAL REPORT TO:

THE CARNEGIE CORPORATION OF NEW YORK

APRIL, 1981

DISCIPLINE: ART

PROJECT TITLE: "GALLERY DISPLAYS"

Description: plexiglass cubes for displaying sculpture, pottery, etc., were constructed. At the same time, St. Lawrence and Potsdam agreed to make the display units, (frames, wooden cubes, etc.) available for borrowing. In addition, a new Educational Resources Center at Clarkson has been fully decorated using artworks from Potsdam.

Most Significant Impacts:

Cost Avoidance _____

Cost Efficiency X Fuller use is being made of all display units.

Cost Effectiveness X Clarkson would not have purchased the artworks available to it.

Resource Amplification _____

Resource Attraction _____

FUNDS GRANTED BY THE CARNEGIE CORPORATION \$ 300.

LOCAL MATCHING FUNDS
(Non-Grant Sources):

	<u>Detail</u>	
\$ 1,000	<u>Other display units</u>	
3,000	<u>Artworks</u>	
200	<u>Labor</u>	
		3,200.
<u>TOTAL</u>		\$ 3,500.

DISCIPLINE: ART

PROJECT TITLE: "PAPERMAKING/PRINTMAKING"

Description: Faculty in St. Lawrence's and Potsdam's Art Departments are sharing an expensive pulp beater used in papermaking. In addition, they are being trained in papermaking, and constructing additional equipment (presses, etc.) Current efforts are aimed at strengthening existing printmaking courses. However, a non-credit course in papermaking was offered and a credit course is contemplated. The faculty involved are exchanging lectures.

Most Significant Impacts:

Cost Avoidance _____

Cost Efficiency X Fuller use was made of a \$3,000 pulp beater and other existing equipment.

Cost Effectiveness X A \$1,500 paper press at Potsdam had no function without pulp.

Resource Amplification _____

Resource Attraction _____

FUNDS GRANTED BY THE CARNEGIE CORPORATION \$ 1,500.

LOCAL MATCHING FUNDS
(Non-Grant Sources):

	<u>Detail</u>	
\$ 3,000.	<u>Pulp beater</u>	
1,500	<u>Paper press</u>	
2,500	<u>Faculty time</u>	
250	<u>Supplies</u>	7,250.
<u>TOTAL</u>		\$ 8,750.



FINAL REPORT TO:

THE CARNEGIE CORPORATION OF NEW YORK

6.

APRIL 1981

DISCIPLINE: BIOLOGY

DISCIPLINE: BIOLOGY

PROJECT TITLE: "CELL AND MOLECULAR BIOLOGY"Description:

An interinstitutional cell and molecular biology concentration is being designed, and a brochure highlighting institutional resources - courses, laboratories and equipment - is planned. Cooperation in this area has led to the cross-listing of Potsdam's cell physiology course at Clarkson. The course now enrolls 50% Potsdam and 50% Clarkson students.

Most Significant Impacts:Cost Avoidance

Clarkson avoids the heavy expense of laboratory set-up by being able to use Potsdam's facilities.

Cost Efficiency

Potsdam is able to increase its enrollments. Courses that otherwise might be considered low-enrollment now make better use of facilities and laboratories.

Cost EffectivenessResource Amplification

By avoiding the costs of duplicating some phases of cell study, the institutions can use existing "saved" resources to improve the total offering but concentrating on component parts.

Resource AttractionPROJECT TITLE: "DNA ANALYSIS MODELING"Description:

A set of computer models for simulating the chemical analysis of DNA chains were developed for use on the Tektronix 4052. The models were developed by a Clarkson professor and were provided to St. Lawrence for use on an identical machine.

Most Significant Impacts:Cost AvoidanceCost Efficiency

Once developed, the programs can be used at additional institutions without added cost.

Cost EffectivenessResource AmplificationResource AttractionFUNDS GRANTED BY THE CARNEGIE CORPORATION

\$ 500.

FUNDS GRANTED BY THE CARNEGIE CORPORATION

\$ -0-

LOCAL MATCHING FUNDS
(Non-Grant Sources):Detail

\$ _____

Unique laboratory facilities,
including electron microscopes.

-0-

LOCAL MATCHING FUNDS
(Non-Grant Sources):Detail

\$ 450.

Development costs (est.)

450.

TOTAL

\$ 500.

TOTAL

\$ 450.

FINAL REPORT TO:

THE CARNEGIE CORPORATION OF NEW YORK

7.

APRIL 1981

DISCIPLINE: BIOLOGY

DISCIPLINE: BIOLOGY

PROJECT TITLE: "EMBRYOLOGY TEACHING MATERIALS DEVELOPMENT"

PROJECT TITLE: "ENTOMOLOGY"

Description: Funds were applied toward the acquisition of selected instructional models, and for the preparation of 2 x 2 slides of existing models and specimens. The creation of this set of materials will be a composite of all of the embryological specimens available among the institutions.

Description: Faculty at Potsdam and St. Lawrence are collaborating to write, print and implement a common entomology laboratory program. Films, other instructional materials and laboratory materials will be shared.

Most Significant Impacts:

Most Significant Impacts:

Cost Avoidance _____

Cost Avoidance _____

Cost Efficiency _____

This approach greatly extends the use of existing materials and creates a pool of materials sharable by all campuses.

Cost Efficiency _____

Current lab manuals do not reflect the short field season which is typical of the area. By combining efforts, time and financial expenditures can be more efficiently used.

Cost Effectiveness _____

Cost Effectiveness _____

Resource Amplification _____

Resource Amplification _____

Resource Attraction _____

SUNY Central Administration awarded \$2,000 to the faculty member involved in producing laboratory exercises in neurobiology.

Resource Attraction _____

FUNDS GRANTED BY THE CARNEGIE CORPORATION \$ 1,300.

FUNDS GRANTED BY THE CARNEGIE CORPORATION \$ 1,500.

LOCAL MATCHING FUNDS (Non-Grant Sources):

LOCAL MATCHING FUNDS (Non-Grant Sources):

	<u>Detail</u>	
\$ 2,000	SUNY Central	
2,500	Faculty time	
1,000	Slides	
300	Audiovisual materials	
1,500	Models	
100	Supplies	
		<u>7,400.</u>

	<u>Detail</u>	
\$ 1,000.	Faculty time	
300.	Teaching materials	
200	Miscellaneous	
		<u>1,500.</u>

TOTAL \$ 8,700.

TOTAL \$ 3,000.

FINAL REPORT TO:

THE CARNEGIE CORPORATION OF NEW YORK

APRIL 1981

DISCIPLINE: BIOLOGY

PROJECT TITLE: EQUIPMENT LISTS

Description: Lists of major pieces of research and instructional equipment were generated and distributed among the campuses. Equipment and moveable resources have been and are being shared and exchanged for short and long terms. Some details are given in individual projects.

Most Significant Impacts:

Cost Avoidance X
Cost Efficiency X
Cost Effectiveness X
Resource Amplification
Resource Attraction

FUNDS GRANTED BY THE CARNEGIE CORPORATION

\$ -0-

LOCAL MATCHING FUNDS (Non-Grant Sources):

Table with columns for Detail and Unestimatable, showing a total of \$ -0-.

TOTAL

DISCIPLINE: BIOLOGY

PROJECT TITLE: JOINT RECRUITMENT

Description: Biology department chairmen, and Career and Placement directors met to design a recruiter recruitment program for Biology majors. Individually, each institution's number of graduates is not significant, but the combined pool of seniors offers industries a wider range of programs and students.

Most Significant Impacts:

Cost Avoidance
Cost Efficiency
Cost Effectiveness
Resource Amplification
Resource Attraction

FUNDS GRANTED BY THE CARNEGIE CORPORATION

\$ -0-

LOCAL MATCHING FUNDS (Non-Grant Sources):

Table with columns for Detail and Faculty and staff time, showing a total of \$ 300.

TOTAL



FINAL REPORT TO:

THE CARNEGIE CORPORATION OF NEW YORK

APRIL, 1981

DISCIPLINE: BIOLOGY

PROJECT TITLE: "LIMNOLOGY" and "AQUATIC RESEARCH"

Description: Faculty and students from three colleges are conducting research on the St. Lawrence River. They have received grants totaling \$15,000 to establish a pool of shared equipment for intercollege field studies. Equipment includes boats, motors, trailers, collecting and sampling equipment, and laboratory facilities and equipment. An interdisciplinary, interinstitutional group of faculty and students, the St. Lawrence River Study Group, meets regularly to share studies of the river.

Most Significant Impacts:

<u>Cost Avoidance</u>	<input checked="" type="checkbox"/>	The program at Potsdam need not be duplicated.
<u>Cost Efficiency</u>	<input type="checkbox"/>	
<u>Cost Effectiveness</u>	<input type="checkbox"/>	
<u>Resource Amplification</u>	<input type="checkbox"/>	
<u>Resource Attraction</u>	<input checked="" type="checkbox"/>	SUNY Mini-Grant Program, Seaway Development Corp. and the N. Y. State Sea Grant awarded grants totaling \$15,000.

FUNDS GRANTED BY THE CARNEGIE CORPORATION \$ 820.

LOCAL MATCHING FUNDS (Non-Grant Sources):

	<u>Detail</u>	
\$ 15,000	<u>SUNY Mini-Grant, Seaway Development Corp. and N.Y.State Sea Grant</u>	
		15,000.

TOTAL \$ 15,820.

DISCIPLINE: BIOLOGY

PROJECT TITLE: "MICROBIOLOGY"

Description: Faculty meet regularly to discuss the nature of their respective classes, materials and curriculum. They routinely exchange lectures and share materials. As mentioned elsewhere, Canton's microbiology option is being designed to allow Clarkson and St. Lawrence students access to many of the laboratory courses needed as prerequisites for the registered microbiologist exam. These lab courses are not available at either St. Lawrence or Clarkson. An autoclave (sterilizing unit) at Canton has been put on "permanent loan" to Clarkson.

Most Significant Impacts:

<u>Cost Avoidance</u>	<input type="checkbox"/>	
<u>Cost Efficiency</u>	<input checked="" type="checkbox"/>	Better use of current resources, faculty and equipment.
<u>Cost Effectiveness</u>	<input type="checkbox"/>	
<u>Resource Amplification</u>	<input type="checkbox"/>	
<u>Resource Attraction</u>	<input type="checkbox"/>	

FUNDS GRANTED BY THE CARNEGIE CORPORATION \$ 1,000

LOCAL MATCHING FUNDS (Non-Grant Sources):

	<u>Detail</u>	
\$ 4,000	<u>Autoclave</u>	
	<u>Other costs are unestimatable</u>	
		4,000.

TOTAL \$ -5,000.

FINAL REPORT TO:

THE CARNEGIE CORPORATION OF NEW YORK

10.

APRIL, 1981

DISCIPLINE: BIOLOGY

DISCIPLINE: BIOLOGY

PROJECT TITLE: "ORNITHOLOGY"

PROJECT TITLE: "PHYSIOLOGY"

Description: Potsdam and St. Lawrence currently offer ornithology. The faculty involved made better use of available resources and expanded course curricula to include new topics by relying on each other's expertise. The sharing of bird-study skin collections, the planning of joint field trips and the exchanging of seminars and guest lecturers have occurred. A portable cassette recorder was purchased to be used in conjunction with a parabolic microphone owned by St. Lawrence; cross-registration was encouraged.

Description: This area of study has had a variety of related activities. A Potsdam professor was "loaned" to Clarkson to teach a complete physiology course. This also involved the transportation of equipment. An outgrowth of the course was the assumption of two independent studies (students) by the professor, with the students utilizing the physiology laboratory at Potsdam.

Four metabolic chambers valued at \$1,000 were loaned by Potsdam to St. Lawrence faculty for one semester. St. Lawrence loaned a physiograph recorder to Potsdam, (\$250.)

Most Significant Impacts:

Most Significant Impacts:

Cost Avoidance _____

Cost Efficiency Enhanced educational impact by better use of existing resources; existing equipment made more useful to two institutions.

Cost Effectiveness _____

Resource Amplification _____

Resource Attraction _____

Cost Avoidance Clarkson avoided hiring a faculty member to teach this course, and equipping a laboratory.

Cost Efficiency Exceptionally better use was made of a \$10,000 physiograph, a \$7,000 osmometry unit, and other materials.

Cost Effectiveness _____

Resource Amplification _____

Resource Attraction _____

FUNDS GRANTED BY THE CARNEGIE CORPORATION \$ 850.

FUNDS GRANTED BY THE CARNEGIE CORPORATION \$ -0-

LOCAL MATCHING FUNDS (Non-Grant Sources):

LOCAL MATCHING FUNDS (Non-Grant Sources):

	<u>Detail</u>	
\$ 500.	Equipment, travel,	
	seminar speaker	
		500.

	<u>Detail</u>	
\$ 2,000	Teaching	
1,000	Indep. Study Advisement	
19,000	Equipment	
		22,000.

TOTAL \$ 1,350.

TOTAL \$ 22,000.



FINAL REPORT TO:

THE CARNEGIE CORPORATION OF NEW YORK

APRIL, 1981

DISCIPLINE: BIOLOGY

DISCIPLINE: BIOLOGY

PROJECT TITLE: SEMINAR SERIES

PROJECT TITLE: "TROPICAL BIOLOGY"

Description: The four biology departments pool resources to support a jointly sponsored traveling speakers' series. The series serves an important function of faculty and student renewal and enrichment.

Description: A joint field course in Tropical Biology was funded as a pilot project. Students from Clarkson, St. Lawrence and Potsdam participated with two faculty, one from Clarkson and another from Potsdam. The course included a field trip to St. Croix during the spring break. Initially partially funded by Carnegie, the course has been offered subsequently two times as a regular department offering at Potsdam. It continues to enroll students from two to three institutions.

Most Significant Impacts:

Cost Avoidance _____

Cost Efficiency _____

Cost Effectiveness X _____

Resource Amplification _____

Resource Attraction _____

The combination of speakers-series' budgets allows for a greater diversity and number of speakers than would otherwise be possible individually.

Most Significant Impacts:

Cost Avoidance x Cooperation enables two institutions to be able to offer a tropical field course without the expense.

Cost Efficiency _____

Cost Effectiveness _____

Resource Amplification _____

Resource Attraction x A proposal was written to Carey Trust Fund to subsidize the course.

FUNDS GRANTED BY THE CARNEGIE CORPORATION \$ 800.

FUNDS GRANTED BY THE CARNEGIE CORPORATION \$ 1,750.

LOCAL MATCHING FUNDS
(Non-Grant Sources):

\$ 900.

Detail

Faculty time in design
and preparation.

900.

TOTAL \$ 1,700.

LOCAL MATCHING FUNDS
(Non-Grant Sources):

\$ 15,000

Detail

Faculty time - three courses

6,500

Equipment

3,600

Faculty travel

25,100

TOTAL \$ 26,850.



FINAL REPORT TO:

THE CARNEGIE CORPORATION OF NEW YORK

APRIL 1981

DISCIPLINE: BUSINESS ADMINISTRATION

PROJECT TITLE: "ARTICULATION OF CLARKSON AND A.T.C. BUSINESS PROGRAMS.

Description: Faculty and administrators from Clarkson's and Canton's business programs designed and will implement articulation agreements between the two institutions in the areas of computer science and business administration. These agreements will facilitate the transfer of Canton's students to Clarkson's business programs.

Most Significant Impacts:

Cost Avoidance _____

Cost Efficiency _____

Cost Effectiveness _____

Resource Amplification _____

Resource Attraction _____

FUNDS GRANTED BY THE CARNEGIE CORPORATION

\$ 200.

LOCAL MATCHING FUNDS
(Non-Grant Sources):

Detail

\$ _____	_____
_____	_____
_____	_____
_____	_____

-0-

TOTAL

\$ 200.

FINAL REPORT TO:

THE CARNEGIE CORPORATION OF NEW YORK

13.

APRIL, 1981

DISCIPLINE: CHEMISTRY

DISCIPLINE: CHEMISTRY

PROJECT TITLE: "ADVANCED ORGANIC CHEMISTRY"

PROJECT TITLE: "BIOCHEMISTRY"

Description: Three advanced organic chemistry lecture courses enrolling six to eight students each were combined into a single, team-taught "traveling" course enrolling 22 students. The faculty involved each prepared lectures dealing with their particular field of expertise. The course conserved faculty time and brought chemistry majors into direct contact with faculty from the three colleges.

Description: Clarkson and Potsdam were each teaching a lecture biochemistry course to approximately 15 students. Clarkson additionally offered an introductory course with a physical chemistry emphasis. The faculty involved have decided to phase out one of the introductory courses. A two-course sequence has been designed. Students may now take introductory biochemistry at Potsdam in the fall, followed by physical biochemistry at Clarkson in the spring. Materials to be used at the four colleges have been purchased. Lectures are shared.

Most Significant Impacts:

<u>Cost Avoidance</u>	X	Rather than having three low-enrollment courses, a single course surfaced.
<u>Cost Efficiency</u>		
<u>Cost Effectiveness</u>	X	By pooling their expertise, faculty could cover more areas of advanced organic chemistry in greater depth. Faculty resources were made more available to students.
<u>Resource Amplification</u>		
<u>Resource Attraction</u>		

FUNDS GRANTED BY THE CARNEGIE CORPORATION \$ 1,330.

LOCAL MATCHING FUNDS
(Non-Grant Sources):

	<u>Detail</u>	
\$ 740.	Guest lecturers	
200	Library	
		940.

TOTAL \$ 2,270.

Most Significant Impacts:

<u>Cost Avoidance</u>	X	Clarkson avoids the cost of an additional introductory biochemistry course.
<u>Cost Efficiency</u>		
<u>Cost Effectiveness</u>	X	By pooling their resources, faculty and materials, the faculty involved were able to improve the educational options available to students.
<u>Resource Amplification</u>		
<u>Resource Attraction</u>		

FUNDS GRANTED BY THE CARNEGIE CORPORATION \$ 1,500.

LOCAL MATCHING FUNDS
(Non-Grant Sources):

	<u>Detail</u>	
\$ 250.	Shared materials	
1,000	Faculty preparation and exchanges	
		1,250.

TOTAL \$ 2,750.

FINAL REPORT TO:

THE CARNEGIE CORPORATION OF NEW YORK

APRIL, 1981

DISCIPLINE: CHEMISTRY

DISCIPLINE: CHEMISTRY

PROJECT TITLE: "COMPUTER PROGRAM DEVELOPMENT FOR FRESHMAN CHEMISTRY"

PROJECT TITLE: "EQUIPMENT LIST"

Description: Chemistry faculty from the four colleges collaborated to obtain and develop 107 BASIC programs to be used in Freshman Chemistry courses at each of the colleges. Existing resources were made accessible to other institutions and new programs were purchased. The faculty member coordinating this effort has recently become the editor of an American Chemical Society newsletter on computer applications in the teaching of chemistry. Consequently he is a focal point for disseminating information about his project and for obtaining additional information to benefit our colleges.

Description: Lists of major and unique pieces of equipment were prepared to promote cooperative research projects and equipment exchanges and distributed to all institutions.

Most Significant Impacts:

Most Significant Impacts:

Cost Avoidance X By accessing existing programs, institutions which were beginning to develop computer usage in their courses avoided many of the usual start-up costs.

Cost Efficiency ___

Cost Effectiveness X By planning together, the institutions could develop similar computer experiences for their Freshman Chemistry courses.

Resource Amplification ___

Resource Attraction ___

Cost Avoidance X

Cost Efficiency X

Cost Effectiveness X

Resource Amplification ___

Resource Attraction ___

FUNDS GRANTED BY THE CARNEGIE CORPORATION \$ 3,000.

FUNDS GRANTED BY THE CARNEGIE CORPORATION \$ -0-

LOCAL MATCHING FUNDS (Non-Grant Sources):

LOCAL MATCHING FUNDS (Non-Grant Sources):

	<u>Detail</u>	
\$ 3,500	<u>Student programmer</u>	
100	<u>Programs</u>	
2,500	<u>Computer time</u>	
6,000	<u>Faculty time</u>	12,100
<u>TOTAL</u>		<u>\$ 15,100</u>

	<u>Detail</u>	
\$ -0-	_____	

	_____	-0-
<u>TOTAL</u>		<u>\$ -0-</u>

APRIL, 1981

DISCIPLINE: CHEMISTRY

DISCIPLINE: CHEMISTRY

PROJECT TITLE: MAGNETIC RESONANCE INSTRUMENTATION

PROJECT TITLE: "MEDICINAL CHEMISTRY"

Description: Clarkson purchased a nuclear magnetic resonance spectrometer (NMR) valued at \$82,000. To promote use of the instrumentation by other institutions, especially students from other campuses, a computer control unit which permitted multiple-user access was acquired. Undergraduate instruction and research using this equipment has been conducted by students from three colleges.

Description: A special topics course, "Medicinal Chemistry," was organized by a faculty member at Clarkson. The course featured presentations by five faculty from the combined chemistry departments. 20 students were exposed to the expertise of faculty from the consortium.

Most Significant Impacts:

- Cost Avoidance _____
- Cost Efficiency Students from other campuses have access to an expensive and useful piece of equipment.
- Cost Effectiveness Better use is being made of an \$82,000 piece of equipment
- Resource Amplification _____
- Resource Attraction _____

Most Significant Impacts:

- Cost Avoidance _____
- Cost Efficiency Specializations of faculty were utilized in a manner that otherwise would not have been present for students of three colleges.
- Cost Effectiveness _____
- Resource Amplification _____
- Resource Attraction _____

FUNDS GRANTED BY THE CARNEGIE CORPORATION \$ 1,500.

FUNDS GRANTED BY THE CARNEGIE CORPORATION \$ -0-

LOCAL MATCHING FUNDS
(Non-Grant Sources):

	Detail	
\$ 82,000	NMR	
_____	_____	
_____	_____	
_____	_____	82,000
TOTAL		\$ 83,500

LOCAL MATCHING FUNDS
(Non-Grant Sources):

	Detail	
\$ 2,500	Faculty time	
_____	_____	
_____	_____	
_____	_____	2,500
TOTAL		\$ 2,500.



FINAL REPORT TO:

THE CARNEGIE CORPORATION OF NEW YORK

APRIL, 1981

DISCIPLINE: COMPUTER SCIENCE

PROJECT TITLE: "COMPUTER TERMINAL/PORT"

Description: A computer terminal has been acquired to permit SUNY at Canton faculty and students to access the new IBM 4341 at Clarkson. Installation of this terminal permits access to the data bases, computer-based modules, and special languages (such as SAS, PLANTRAN,) without extensive conversion. This is a pilot for future development.

Most Significant Impacts:

- Cost Avoidance _____
- Cost Efficiency X This effort eliminates the cost of software conversion for some faculty.
- Cost Effectiveness X Canton has a small computer. For the faculty to have and use some of the larger bases and languages, access to, and support for another computer is essential.
- Resource Amplification _____
- Resource Attraction _____

FUNDS GRANTED BY THE CARNEGIE CORPORATION \$ 3,000.

LOCAL MATCHING FUNDS (Non-Grant Sources):

	<u>Detail</u>	
\$ <u>3,000.</u>	<u>Estimated computer time</u>	

	_____	<u>3,000.</u>

TOTAL \$ 6,000.



DISCIPLINE: COMPUTER SCIENCE

PROJECT TITLE: "FACULTY DEVELOPMENT IN COMPUTING"

Description: The intercollege use of computers was seen as a potentially major means of sharing expensive resources, (hardware and software.) In order to stimulate faculty to utilize other campus's computers, ten workshops were held that highlighted particular, unique capabilities of these resources, and stipends of \$100 were provided to faculty who cross-registered for computer courses at another campus. The stipends were for books and mileage. In some of the workshops, text books were made available.

Most Significant Impacts:

- Cost Avoidance _____
- Cost Efficiency X Special languages such as "SAS," (Statistical Analysis System,) need only be acquired once. Existing programs were fully utilized.
- Cost Effectiveness X The schools were able to make greater use of computer facilities while improving the research and teaching capabilities of their faculty.
- Resource Amplification _____
- Resource Attraction _____

SAS Workshops \$ 400
 Stipends 1,500
 Publicity 200

FUNDS GRANTED BY THE CARNEGIE CORPORATION \$ 2,100.

LOCAL MATCHING FUNDS (Non-Grant Sources):

	<u>Detail</u>	
\$ <u>2,000</u>	<u>Staff time</u>	

<u>22,500</u>	<u>Estimated computer time*</u>	

	_____	<u>24,500.</u>

TOTAL \$ 26,500.

*Assumed 45 people running five projects five times each.



FINAL REPORT TO:

THE CARNEGIE CORPORATION OF NEW YORK

APRIL, 1981

DISCIPLINE: COMPUTER SCIENCE

PROJECT TITLE: "GEOLOGY PROGRAMS/TERMINAL"

Description: A terminal and printer were acquired to permit Potsdam College to access the Clarkson computer. Potsdam received 100 computer programs from Syracuse University's geology department. The programs represent a major asset that can be utilized by Clarkson's civil engineering department immediately and eventually by St. Lawrence's geology department. (For installation on the Clarkson machine.)

Most Significant Impacts:

Cost Avoidance

X

The programs are being obtained without charge. However, many are sold under other conditions. One program, ("Surface Trend Analysis"), sells for \$2,000.

Cost Efficiency

X

The computer center staff time and faculty time involved need not be replicated.

Cost Effectiveness

X

None of the institutions could have mounted the effort to replicate these programs.

Resource Amplification

Resource Attraction

FUNDS GRANTED BY THE CARNEGIE CORPORATION

\$ 3,300.

LOCAL MATCHING FUNDS
(Non-Grant Sources):

	<u>Detail</u>	
\$ <u>300.</u>	<u>Equipment purchase</u>	
<u>6,000. (est.)</u>	<u>Computer program value</u>	
<u>2,000.</u>	<u>Faculty time</u>	
<u>4,000.</u>	<u>Computer center staff</u>	<u>12,300.</u>

TOTAL

\$ 15,600.

FINAL REPORT TO:

THE CARNEGIE CORPORATION OF NEW YORK

APRIL, 1981

DISCIPLINE: COMPUTING/TELEVISION

PROJECT TITLE: "TELECOMMUNICATIONS"

Description: With the assistance of a consultant from the MITRE Corporation, a design for an intercampus microwave network was developed. The proposed network would have handled unlimited computer and audio channels, as well as four television channels. The proposal was submitted to the National Science Foundation but was not funded.

Most Significant Impacts:

Cost Avoidance _____

Cost Efficiency _____

Cost Effectiveness _____

Resource Amplification _____

Resource Attraction _____

_____ The project would have had a high initial cost, but low maintenance. It would have made better use of computer facilities.
X
_____ X Effort made.

FUNDS GRANTED BY THE CARNEGIE CORPORATION

\$ -0-

LOCAL MATCHING FUNDS
(Non-Grant Sources):

\$ 1,000

1,600

Detail

Proposal development time

MITRE consultant and travel

2,600

TOTAL

\$ 2,600

FINAL REPORT TO:

THE CARNEGIE CORPORATION OF NEW YORK

19.

APRIL, 1981

DISCIPLINE: ECONOMICS

DISCIPLINE: ECONOMICS

PROJECT TITLE: "COMPUSTAT"

PROJECT TITLE: "CONSUMER ECONOMICS"

Description: The PDE COMPUSTAT data base provides stock market information on approximately 3,500 industrial and non-industrial companies, and 120 industry indices and composites on a monthly basis. The data base is kept current and is available through Clarkson College. Students and faculty can, and do access the Clarkson computer via off-campus terminals and through class meetings at Clarkson's terminal rooms.

Description: A Canton professor developed a modular course in consumer economics that capitalized on audiovisual materials already present. A thorough curriculum was developed for eventual takeover by a Potsdam faculty member. The Canton professor, however, has taught the course twice at Potsdam through local funding. The course is, therefore, offered on two campuses. Individual modules relate to many other courses.

Most Significant Impacts:

Cost Avoidance _____

Cost Efficiency X This major data base can be shared without replicated purchases at two other campuses.

Cost Effectiveness _____

Resource Amplification _____

Resource Attraction _____

Most Significant Impacts:

Cost Avoidance _____

Cost Efficiency X A "transportable" course with considerable back-up audiovisual materials can now be shared.

Cost Effectiveness _____

Resource Amplification _____

Resource Attraction _____

FUNDS GRANTED BY THE CARNEGIE CORPORATION \$ 1,500.

FUNDS GRANTED BY THE CARNEGIE CORPORATION \$ 1,500.

LOCAL MATCHING FUNDS (Non-Grant Sources):

Detail

\$ <u>2,000.</u>	<u>Continued leasing</u>	
<u>1,500.</u>	<u>Staff time</u>	
		<u>3,500.</u>

TOTAL \$ 5,000.

LOCAL MATCHING FUNDS (Non-Grant Sources):

Detail

\$ <u>3,000.</u>	<u>Faculty time (two courses taught)</u>	
<u>500</u>	<u>Existing audiovisual materials</u>	
		<u>3,500.</u>

TOTAL \$ 5,000.



FINAL REPORT TO:

THE CARNEGIE CORPORATION OF NEW YORK

APRIL, 1981

DISCIPLINE: ENGINEERING

PROJECT TITLE: "ARTICULATION BETWEEN CHEMISTRY, PHYSICS & CHEMICAL ENGINEERING"

Description: A program will be initiated among the colleges that will allow chemistry and physics majors at Potsdam and St. Lawrence to complete a master's degree in chemical engineering at Clarkson in one to two years after graduating with a B. S. degree. Cross-registration and increased availability of undergraduate research projects across disciplines and institutions are planned to facilitate articulation between schools.

Most Significant Impacts:

<u>Cost Avoidance</u>	<u>X</u>	By Clarkson's sharing of research expertise and equipment, liberal arts schools can offer experiences within the field of engineering without supporting the costs of such a program
	and	
<u>Cost Efficiency</u>	<u>X</u>	
<u>Cost Effectiveness</u>	_____	
<u>Resource Amplification</u>	_____	
<u>Resource Attraction</u>	_____	

FUNDS GRANTED BY THE CARNEGIE CORPORATION

\$ -0-

LOCAL MATCHING FUNDS (Non-Grant Sources):

	<u>Detail</u>
\$ _____	_____
_____	_____
_____	_____
_____	_____

-0-

TOTAL

\$ -0-

DISCIPLINE: ENGINEERING

PROJECT TITLE: "SURVEYING OPTION"

Description: The Clarkson civil engineering department now offers a registered surveying curriculum in conjunction with its normal undergraduate major. The option allows a student to sit for the state examination in surveying. Geology courses at Potsdam and St. Lawrence, and surveying courses at Canton are accepted as required, or as elective courses. The availability of the full range of courses was important for registration of the program.

Most Significant Impacts:

<u>Cost Avoidance</u>	<u>X</u>	The available courses need not be replicated unnecessarily.

<u>Cost Efficiency</u>	_____	
<u>Cost Effectiveness</u>	<u>X</u>	The presence of all of the courses greatly enhanced the documentation for accreditation and registration.

<u>Resource Amplification</u>	_____	
<u>Resource Attraction</u>	_____	

FUNDS GRANTED BY THE CARNEGIE CORPORATION

\$ -0-

LOCAL MATCHING FUNDS (Non-Grant Sources):

	<u>Detail</u>
\$ _____	_____
_____	_____
_____	_____
_____	_____

-0-

TOTAL

\$ -0-



FINAL REPORT TO:

THE CARNEGIE CORPORATION OF NEW YORK

APRIL, 1981

DISCIPLINE: ENGLISH

PROJECT TITLE: "COMEDY AND TERROR"

Description: A course, "Film and Fiction," was offered at Potsdam under the theme "Comedy and Terror." The course utilized films being shown concurrently at St. Lawrence in a sociology course. The course was intended to demonstrate the practicality of rental-film sharing, beyond its educational impact. Selected videotapes of feature films were purchased for replay on the VHS recorder cited elsewhere.

Most Significant Impacts:

- Cost Avoidance Joint use of films permitted the schools to reduce expenditures.
- Cost Efficiency _____
- Cost Effectiveness _____
- Resource Amplification Funds saved were put into videotape acquisitions.
- Resource Attraction _____

FUNDS GRANTED BY THE CARNEGIE CORPORATION \$ 950.

LOCAL MATCHING FUNDS (Non-Grant Sources):

	<u>Detail</u>	
\$ 1,500.	<u>Film rentals</u>	
500	<u>Film purchases</u>	
2,500	<u>Faculty time</u>	
		<u>4,500.</u>

TOTAL \$ 5,450.

DISCIPLINE: ENGLISH

PROJECT TITLE: "FACULTY LOAN"

Description: A faculty member from Potsdam was "loaned" to the English department at Clarkson to teach one section of "Introduction to Fiction." Further loans of this type are expected to serve as means of redressing cross-registration imbalances, although several other 'loans' are not tied to cross-registration.

Most Significant Impacts:

- Cost Avoidance Clarkson was able to satisfy its teaching needs without hiring another person to teach this section.
- Cost Efficiency _____
- Cost Effectiveness _____
- Resource Amplification _____
- Resource Attraction _____

FUNDS GRANTED BY THE CARNEGIE CORPORATION \$ -0-

LOCAL MATCHING FUNDS (Non-Grant Sources):

	<u>Detail</u>	
\$ 2,500	<u>Faculty time</u>	
		<u>2,500.</u>

TOTAL \$ 2,500.



FINAL REPORT TO:

THE CARNEGIE CORPORATION OF NEW YORK

APRIL, 1981

22.

DISCIPLINE: ENGLISH

DISCIPLINE: ENGLISH

PROJECT TITLE: "HUMANITIES-CURRICULUM"

PROJECT TITLE: "PROGRAM FOR TRAINING PEER TUTORS"

Description: Prior to the receipt of the Carnegie grant, Canton obtained approval to offer a two-year degree in the Humanities. This program became available with the grant period. The program requires that courses in art, philosophy, and religion be taken through either St. Lawrence or Potsdam. Some projects noted under "Religious Studies" were specifically designed to enhance this program.

Description: Clarkson and St. Lawrence writing laboratory directors are jointly researching and developing a program for training peer tutors. Library and audiovisual aids were catalogued and shared; additional materials are being cooperatively purchased; a consultant was brought in to discuss peer tutor theory and practice in an open lecture; and two workshops with faculty from the four colleges were given. Potsdam will be establishing a Writing Center based on the discussions in the fall of 1981.

Most Significant Impacts:

Cost Avoidance _____

Cost Efficiency X Specialized courses need not be offered by Canton.

Cost Effectiveness _____

Resource Amplification _____

Resource Attraction ?

Most Significant Impacts:

Cost Avoidance _____

Cost Efficiency X By working together, faculty and staff working on similar projects can divide the work and costs and achieve better results.

Cost Effectiveness _____

Resource Amplification X Potsdam is developing a program.

Resource Attraction _____

FUNDS GRANTED BY THE CARNEGIE CORPORATION \$ 200.

Consultant \$ 500.
Peer Training Program 1,000.
FUNDS GRANTED BY THE CARNEGIE CORPORATION \$ 1,500.

LOCAL MATCHING FUNDS (Non-Grant Sources):

	<u>Detail</u>	
\$ <u>-0-</u>	No amount specifically attributable to this program.	
_____	_____	
_____	_____	
_____	_____	
		-0-

LOCAL MATCHING FUNDS (Non-Grant Sources):

	<u>Detail</u>	
\$ <u>1,100</u>	Consultant, travel and equipment.	
_____	_____	
_____	Library materials	
_____	_____	
		1,600.

TOTAL \$ 200.

TOTAL \$ 3,100.

FINAL REPORT TO:

THE CARNEGIE CORPORATION OF NEW YORK

APRIL, 1981

DISCIPLINE: ENGLISH

PROJECT TITLE: "RADIO JOURNALISM"

Description: A new course in radio journalism was offered to augment regular course offerings in journalism and technical writing. The course was expected to generate cross-registrations because of its special appeal to students involved in five campus and open-air radio-stations. This was not realized. A second effort considered was to orient the course toward the more technological aspects of radio production. The inadequacy of existing facilities prevented this from being undertaken.

Most Significant Impacts:

Cost Avoidance _____

Cost Efficiency X

The project was intended to accomplish this objective. However, this did not result.

Cost Effectiveness _____

Resource Amplification _____

Resource Attraction _____

FUNDS GRANTED BY THE CARNEGIE CORPORATION

\$ 300.

LOCAL MATCHING FUNDS
(Non-Grant Sources):

	<u>Detail</u>	
\$ <u>1,500</u>	<u>Faculty time</u>	
_____	_____	
_____	_____	
_____	_____	<u>1,500.</u>

TOTAL

\$ 1,800.

DISCIPLINE: ENGLISH

PROJECT TITLE: "SHAKESPEARE SERIES"

Description: One of the primary means of sharing in the Humanities is the sharing of audiovisual materials. The availability of the complete Shakespeare plays was of great interest to all four departments of English. The 37 plays are a major asset in eight courses focussing on Shakespeare. Two sets of the videotapes were ordered. The combined purchase led to a 10% cost reduction.

Most Significant Impacts:

Cost Avoidance _____

Cost Efficiency X

Three of the campuses would not have had access to this series without a joint purchase.

Cost Effectiveness _____

Resource Amplification _____

Resource Attraction _____

FUNDS GRANTED BY THE CARNEGIE CORPORATION

\$ 3,000.

LOCAL MATCHING FUNDS
(Non-Grant Sources):

	<u>Detail</u>	
\$ <u>10,000</u>	<u>St. Lawrence</u>	
<u>5,000</u>	<u>Associated Colleges</u>	
_____	_____	
_____	_____	<u>15,000.</u>

TOTAL

\$ 18,000.



FINAL REPORT TO:

THE CARNEGIE CORPORATION OF NEW YORK

APRIL, 1981

DISCIPLINE: FOREIGN LANGUAGE

PROJECT TITLE: "INTRODUCTORY SPANISH"

Description: A faculty member from Potsdam is being "loaned" to Canton to teach an introductory Spanish course in the fall of 1981. Canton has no offerings in foreign language, so this venture will permit testing of student interest without added expenditures.

Most Significant Impacts:

Cost Avoidance _____

Cost Efficiency _____

Cost Effectiveness X

Resource Amplification _____

Resource Attraction _____

FUNDS GRANTED BY THE CARNEGIE CORPORATION

\$ -0-

LOCAL MATCHING FUNDS
(Non-Grant Sources):

	<u>Detail</u>	
\$ <u>2,500</u>	<u>Faculty time</u>	
_____	_____	
_____	_____	
_____	_____	<u>2,500.</u>

TOTAL

\$ 2,500.

FINAL REPORT TO:

THE CARNEGIE CORPORATION / NEW YORK

APRIL, 1981

DISCIPLINE: GEOLOGY

DISCIPLINE: GEOLOGY

PROJECT TITLE: "AUDIOVISUALS"

PROJECT TITLE: "EQUIPMENT LIST"

Description: The consortium obtained an "off-air" license for the "Cosmos" series and secured a number of other videotapes and films in the earth sciences, particularly in astronomy where laboratories do not play a central role.

Description: A comprehensive listing of all major pieces of equipment held by the two geology departments has been made. These are available for on-site use, and most, if portable, are available on loan.

Most Significant Impacts:

- Cost Avoidance Through joint utilization, the institutions saved recurring rental costs, and enhanced instruction.
- Cost Efficiency
- Cost Effectiveness
- Resource Amplification
- Resource Attraction

Most Significant Impacts:

- Cost Avoidance
- Cost Efficiency
- Cost Effectiveness
- Resource Amplification
- Resource Attraction

FUNDS GRANTED BY THE CARNEGIE CORPORATION

\$ 1,850.

LOCAL MATCHING FUNDS (Non-Grant Sources):

\$ 1,750.

Detail

Films and video

1,750.

TOTAL

\$ 3,600.

FUNDS GRANTED BY THE CARNEGIE CORPORATION

\$ -0-

LOCAL MATCHING FUNDS (Non-Grant Sources):

\$ Unknown

Detail

TOTAL

\$ -0-



FINAL REPORT TO:

THE CARNEGIE CORPORATION OF NEW YORK

APRIL, 1981

DISCIPLINE: GEOLOGY

PROJECT TITLE: "FACULTY EXCHANGE-GEOCHEMISTRY"

Description: In return for the optical petrography course cited elsewhere, Potsdam agreed to send a geochemist to St. Lawrence. Inadequate enrollments at St. Lawrence, (three,) caused the course to be shifted back to Potsdam where six students had enrolled.

Most Significant Impacts:

<u>Cost Avoidance</u>	<u> X </u>	The objective of the exchange was to provide a course not otherwise available. The eventual shift back to Potsdam negated this prospect.
<u>Cost Efficiency</u>	<u> </u>	
<u>Cost Effectiveness</u>	<u> </u>	
<u>Resource Amplification</u>	<u> </u>	
<u>Resource Attraction</u>	<u> </u>	

FUNDS GRANTED BY THE CARNEGIE CORPORATION \$ 2,000.

LOCAL MATCHING FUNDS (Non-Grant Sources):

	<u>Detail</u>	
\$ 2,500.	Faculty time	
		2,500.

TOTAL \$ 4,500.

DISCIPLINE: GEOLOGY

PROJECT TITLE: "GEOLOGY OPTION"

Description: SUNY at Canton has introduced a two-year geology major requires that all courses above the "Introduction To Earth Science" level be taken at Potsdam or St. Lawrence. Canton has neither the faculty, equipment, or facilities to establish this program independently. The arrangement permits Canton to offer the relatively few students involved in this field each year an area of specialization with excellent resources, while making no investment in comparable resources.

Most Significant Impacts:

<u>Cost Avoidance</u>	<u> X </u>	An estimate of the costs saved would be so large that it approaches the totality of the individual departmental resources.*
<u>Cost Efficiency</u>	<u> </u>	
<u>Cost Effectiveness</u>	<u> </u>	
<u>Resource Amplification</u>	<u> </u>	
<u>Resource Attraction</u>	<u> </u>	

FUNDS GRANTED BY THE CARNEGIE CORPORATION \$ -0-

LOCAL MATCHING FUNDS (Non-Grant Sources):

	<u>Detail</u>	
\$ *	Unestimatable	
		-0-

TOTAL \$ -0-



FINAL REPORT TO:

THE CARNEGIE CORPORATION OF NEW YORK

APRIL, 1981

DISCIPLINE: GEOLOGY

PROJECT TITLE: "GEOPHYSICS"

Description: A Potsdam faculty member will be "on loan" to St. Lawrence for one course in geophysics. During the course, the professor will be using a variety of pieces of equipment for demonstrations. These will include:

Seismograph	\$ 4,000	Seismic Timer	\$ 3,000
Gravity Meter	12,000	Electrical Resistivity Unit	3,000
Magnetometer	2,000	Magnetic Susceptibility Unit	1,500

Most Significant Impacts:

- Cost Avoidance _____
- Cost Efficiency _____
- Cost Effectiveness X St. Lawrence does not have the staff or the equipment to conduct this course in the same manner.
- Resource Amplification _____
- Resource Attraction _____

FUNDS GRANTED BY THE CARNEGIE CORPORATION \$ -0-

LOCAL MATCHING FUNDS (Non-Grant Sources):

	<u>Detail</u>	
\$ 25,500	<u>Equipment usage</u>	
2,500	<u>Faculty time</u>	
		28,000-

TOTAL \$ 28,000.

57



DISCIPLINE: GEOLOGY

PROJECT TITLE: "INDEPENDENT STUDY IN GEOPHYSICS"

Description: A Potsdam faculty member developed an independent study course utilizing videotapes prepared by the American Petroleum Geologists Association. The course was offered in the spring of 1981 and provided access to this field of study for students at St. Lawrence, Potsdam and Clarkson, (a total of 20.) The faculty member prepared written materials for each module of the course. This course is now regularly available although it is offered as a traditional course irregularly.

Most Significant Impacts:

- Cost Avoidance X A full course is now available "on demand." The course is taught overload without cost to any institution.
- Cost Efficiency _____
- Cost Effectiveness _____
- Resource Amplification _____
- Resource Attraction _____

FUNDS GRANTED BY THE CARNEGIE CORPORATION \$ 1,750.

LOCAL MATCHING FUNDS (Non-Grant Sources):

	<u>Detail</u>	
\$ 1,000.	<u>Faculty time</u>	
		1,000.

TOTAL \$ 2,750.

58



FINAL REPORT TO:

THE CARNEGIE CORPORATION OF NEW YORK

APRIL, 1981.

DISCIPLINE: GEOLOGY

DISCIPLINE: GEOLOGY

PROJECT TITLE: "OBSERVATORY"

PROJECT TITLE: "OPTICAL PETROGRAPHY"

Description: Clarkson College maintains a small astronomical observatory just outside of Potsdam. The observatory contains a large reflectory telescope and related equipment. Although this observatory is not a significant research facility, it is a useful instructional site. Use of the observatory has been provided for astronomy classes at the other three schools.

Description: In an unusual venture, a St. Lawrence faculty member taught optical petrography at Potsdam. He gave large class lectures to 15 students from the two campuses. He then taught a laboratory for St. Lawrence students in the well-equipped optical petrography laboratory at Potsdam. A Potsdam faculty member led a laboratory section for Potsdam students.

Most Significant Impacts:

Cost Avoidance _____

Cost Efficiency _____

Cost Effectiveness _____

Resource Amplification _____

Resource Attraction _____

x The other institutions could not construct this type of facility for demonstration purposes.

Most Significant Impacts:

Cost Avoidance X

Cost Efficiency X

Cost Effectiveness _____

Resource Amplification _____

Resource Attraction _____

Potsdam needed this course to replace a faculty member who was on sabbatical.

St. Lawrence had no comparable facility. 16 optical petrographic microscopes at \$1,000 each were readily available at Potsdam.

FUNDS GRANTED BY THE CARNEGIE CORPORATION \$ -0-

FUNDS GRANTED BY THE CARNEGIE CORPORATION \$ 2,000.

LOCAL MATCHING FUNDS (Non-Grant Sources):

LOCAL MATCHING FUNDS (Non-Grant Sources):

	<u>Detail</u>	
\$ _____	Silo and telescope donated	
_____	_____	
_____	_____	
_____	_____	
		-0-

TOTAL \$ -0-

	<u>Detail</u>	
\$ <u>30,000</u>	Equipment	
<u>750</u>	Supplies	
<u>2,500</u>	Faculty time	
		33,250.

TOTAL \$ 35,250.



FINAL REPORT TO:

THE CARNEGIE CORPORATION OF NEW YORK

APRIL, 1981

DISCIPLINE: GEOLOGY

DISCIPLINE: GEOLOGY

PROJECT TITLE: "PHOTOGEOLOGY"

PROJECT TITLE: "PLANETARIUM:"

Description: A beginning set of maps, satellite and U-2 photographs and other materials for photogeology courses were acquired to strengthen two existing courses, and to initiate a third. The file is shifted from Potsdam to St. Lawrence, along with locally acquired materials. A recent evaluation team cited Potsdam for its forward-looking action in this area.

Description: Potsdam maintains a fully equipped planetarium. The equipment utilized for star and planetary movement projection is valued at \$40,000. This facility is now utilized five to six times per year by students from other institutions.

Most Significant Impacts:

Most Significant Impacts:

Cost/Avoidance _____

Cost Efficiency X All materials available are being shared.

Cost Effectiveness X Without cooperation, the third course could not have been offered.

Resource Amplification _____

Resource Attraction X \$500 from Title VI
\$11,500 from N.S.F.

Cost Avoidance _____

Cost Efficiency X The facility is only needed sporadically, but its value for demonstration purposes is considerable.

Cost Effectiveness _____

Resource Amplification _____

Resource Attraction _____

FUNDS GRANTED BY THE CARNEGIE CORPORATION \$ 1,600.

FUNDS GRANTED BY THE CARNEGIE CORPORATION \$ -0-

LOCAL MATCHING FUNDS (Non-Grant Sources):

LOCAL MATCHING FUNDS (Non-Grant Sources):

	<u>Detail</u>	
\$ 300.	<u>Materials</u>	
4,000.	<u>Faculty time, offered twice</u>	
		4,300.

	<u>Detail</u>	
\$ 40,000.	<u>Planetarium</u>	
		40,000.

TOTAL \$ 5,900.

TOTAL \$ 40,000.



FINAL REPORT TO:

THE CARNEGIE CORPORATION OF NEW YORK

APRIL, 1981

DISCIPLINE: GEOLOGY

PROJECT TITLE: "RESEARCH ADVISEMENT"

Description: Four St. Lawrence students are engaged in geochemical independent study with Potsdam faculty. Another student is engaged in seismographic research.

Most Significant Impacts:

- Cost Avoidance The seismograph used by the last student cited is alone worth \$30,000.
- Cost Efficiency Staff expertise is employed more fully to improve the educational process.
- Cost Effectiveness Specialized equipment at Potsdam is available which would not have been acquired by St. Lawrence.
- Resource Amplification _____
- Resource Attraction _____

FUNDS GRANTED BY THE CARNEGIE CORPORATION \$ -0-

LOCAL MATCHING FUNDS (Non-Grant Sources):

	<u>Detail</u>	
\$ <u>1,000.</u>	<u>Staff time</u>	
<u>18,000</u>	<u>Equipment usage (atomic absorption unit.)</u>	
<u>500</u>	<u>Supplies</u>	
		<u>19,500.</u>
<u>TOTAL</u>		\$ <u>19,500.</u>

DISCIPLINE: GEOLOGY

PROJECT TITLE: "X-RAY DIFFRACTION"

Description: A Potsdam faculty member has begun using an x-ray diffraction unit at St. Lawrence for his individual research. He has also been working with two St. Lawrence students on independent study projects that relate to lake-bottom sampling, and one Clarkson student working on solar cell development.

Most Significant Impacts:

- Cost Avoidance The x-ray diffraction unit is valued at \$60,000.
- Cost Efficiency _____
- Cost Effectiveness _____
- Resource Amplification _____
- Resource Attraction _____

FUNDS GRANTED BY THE CARNEGIE CORPORATION \$ -0-

LOCAL MATCHING FUNDS (Non-Grant Sources):

	<u>Detail</u>	
\$ <u>60,000</u>	<u>Equipment</u>	
		<u>60,000.</u>
<u>TOTAL</u>		\$ <u>60,000.</u>



FINAL REPORT TO:

THE CARNEGIE CORPORATION OF NEW YORK

APRIL, 1981

DISCIPLINE: GEOLOGY

PROJECT TITLE: "X-RAY FLUORESCENCE"

Description: An x-ray fluorescence unit at St. Lawrence has been made available to a Potsdam staff member. He now uses it for personal research and is supervising a St. Lawrence student for an independent research project.

Most Significant Impacts:

Cost Avoidance _____

Cost Efficiency _____

X

Better use of an \$80,000 device.
Faculty expertise available to St.
Lawrence.

Cost Effectiveness _____

Resource Amplification _____

Resource Attraction _____

FUNDS GRANTED BY THE CARNEGIE CORPORATION

\$ -0-

LOCAL MATCHING FUNDS
(Non-Grant Sources):

\$ 200.

Detail

Materials _____

300.

Travel _____

80,000.

Equipment _____

80,500.

TOTAL

\$ 80,500.

FINAL REPORT TO:

THE CARNEGIE CORPORATION OF NEW YORK

APRIL, 1981

DISCIPLINE: HISTORY

PROJECT TITLE: "WOMEN'S HISTORY"

Description: Several projects related to the assemblage of a women's studies curriculum concentration. A formal major or minor was not anticipated. The effort in this project was to: (1) Share and plan for the acquisition of library and audiovisual journals; (2) exchanging lecturers; (3) exchanging faculty; and (4) planning a complementary set of course offerings with a view toward better scheduling. Specific assistance was given to strengthening two comparable introductory courses at St. Lawrence and Potsdam.

Most Significant Impacts:

Cost Avoidance

Cost Efficiency X

By building upon the totality of courses offered in this field, a specialization is available that would not otherwise have been present.

Cost Effectiveness

Resource Amplification

Resource Attraction

FUNDS GRANTED BY THE CARNEGIE CORPORATION \$ 1,900.

LOCAL MATCHING FUNDS (Non-Grant Sources):

	Detail	
\$ 300.	Journal subscriptions	
2,500.	Faculty time	
400.	Brochures	
		3,200.

TOTAL \$ 5,100.

DISCIPLINE: HISTORY

PROJECT TITLE: "WORLD HISTORY SERIES"

Description: As is true of many disciplines in which equipment does not play a major role, audiovisual sharing can be an important common interest. A series of short films on World History, 1900-1950, were acquired and are used actively to enrich World History and Politics courses.

Most Significant Impacts:

Cost Avoidance

Cost Efficiency X

At a reasonable cost, the colleges each have access to a significant, educational asset.

Cost Effectiveness

Resource Amplification X

Funds saved were committed to a speakers series noted elsewhere.

Resource Attraction

FUNDS GRANTED BY THE CARNEGIE CORPORATION \$ 2,200.

LOCAL MATCHING FUNDS (Non-Grant Sources):

	Detail	
\$		
		-0-

TOTAL \$ 2,200.



FINAL REPORT TO:

THE CARNEGIE CORPORATION OF NEW YORK

APRIL, 1981

DISCIPLINE: MULTIDISCIPLINARY

PROJECT TITLE: "BI-LINGUAL EDUCATION"

Description: A consortium staff member, (a linguist,) prepared a major proposal for curriculum development involving the installation of courses to train teachers of Spanish, French, German and Native Americans. The \$160,000 project would be based at Potsdam but would draw on courses available at St. Lawrence. The curriculum would be available to students at St. Lawrence.

Most Significant Impacts:

Cost Avoidance _____

Cost Efficiency _____

Cost Effectiveness _____

Resource Amplification X Proposal submitted to the U. S. Office of Education.

Resource Attraction _____

FUNDS GRANTED BY THE CARNEGIE CORPORATION \$ 0-0-

LOCAL MATCHING FUNDS
(Non-Grant Sources):

	<u>Detail</u>	
\$ <u>1,000.</u>	<u>Faculty and staff time</u>	
_____	_____	
_____	_____	
_____	_____	<u>1,000.</u>
TOTAL		\$ <u>1,000.</u>

68



DISCIPLINE: MULTIDISCIPLINARY

PROJECT TITLE: "CHEMICAL WASTE DISPOSAL"

Description: The four colleges jointly contracted with Tri-Angle Resources Industries (formerly RAD Services) to dispose of the chemical wastes originating from many college facilities. Because of the "remote" location of the institutions, cooperative collection and disposal represents a great cost savings. Technicians meet regularly to discuss disposal procedures and other issues.

Most Significant Impacts:

Cost Avoidance X By working cooperatively, the institutions can pool their wastes to achieve the minimum ten-barrel pick up. If accomplished individually, each college would have to pay for disposal of ten barrels plus a "remote" charge of \$300 each.

Cost Efficiency _____

Cost Effectiveness _____

Resource Amplification _____

Resource Attraction _____

FUNDS GRANTED BY THE CARNEGIE CORPORATION \$ 1,500.

LOCAL MATCHING FUNDS
(Non-Grant Sources):

	<u>Detail</u>	
\$ <u>5,600</u>	<u>two years pick up</u>	
_____	_____	
_____	_____	
_____	_____	<u>5,600.</u>
TOTAL		\$ <u>7,100.</u>

69



FINAL REPORT TO:

THE CARNEGIE CORPORATION OF NEW YORK,

APRIL, 1981

DISCIPLINE: MULTIDISCIPLINARY

DISCIPLINE: MULTIDISCIPLINARY

PROJECT TITLE: "COMPUTERIZED BIBLIOGRAPHIC SEARCHING

PROJECT TITLE: "FILM STUDIES"

Description: Clarkson maintains a telecommunications computer link to a large data base library which includes many scientific and other journals. Computerized bibliographic searches can be made rapidly. Demonstrations of the capabilities of this library resource were given. Limited follow-through by faculty has taken place.

Description: A major effort was made to form an interdisciplinary group focusing on film studies. Although the creation of a coherent sequence of courses was not realized, major cost benefits were identified. The project affected five courses that dealt with cinematography and a variety of other courses that utilize the equipment secured. Within the project, a VHS 1/2" videotape/playback machine and four 6' screen video projectors were acquired.

The primary use for the projectors was the replay of feature films on videotape. Rental costs for 16mm. films are often four times more expensive than the purchase price of video copies that are more durable. In addition, a major cost-saving was realized through the joint purchase:

Most Significant Impacts:

Most Significant Impacts:

Cost Avoidance _____

Cost Efficiency X Clarkson already maintains this unique capability which can be used as needed.

Cost Effectiveness _____

Resource Amplification _____

Resource Attraction _____

Cost Avoidance X A reduction of 25% was realized on the purchase.

Cost Efficiency X 1/2" video copies of feature films can be purchased for 1/4 of the cost of the rental of 16mm copies. Videotapes can now be used and retained.

Cost Effectiveness X A joint purchase of the video projects led to a direct cost saving of 35% (\$4,000.) Videotapes will be available for other courses.

Resource Amplification X Savings in 16mm rentals will expand.

FUNDS GRANTED BY THE CARNEGIE CORPORATION \$ 75.

	Films/video	1,200	
	Projectors	6,000.	
	VHS Unit	1,800.	
<u>FUNDS GRANTED BY THE CARNEGIE CORPORATION</u>			\$ 9,000.

LOCAL MATCHING FUNDS (Non-Grant Sources):

LOCAL MATCHING FUNDS (Non-Grant Sources):

	<u>Detail</u>	
\$ 1,100.	Follow-up searches, 22 @	
	\$50. each	
		1,100.

	<u>Detail</u>	
\$ 5,400.	VHS units	
6,000.	Projectors	
		11,400.

TOTAL \$ 1,175.

TOTAL \$ 20,400.



FINAL REPORT TO:

THE CARNEGIE CORPORATION OF NEW YORK

APRIL, 1981

DISCIPLINE: MULTIDISCIPLINARY

DISCIPLINE: MULTIDISCIPLINARY

PROJECT TITLE: "HUMAN SUBJECTS RESEARCH"

The chairman of the psychology department at Potsdam
Description: held a seminar on the complexities involved in meeting the requirements of legislation to control research on human subjects. Subsequently, the campus review committee served as the authorizing body for a number of projects originating at St. Lawrence.

PROJECT TITLE: "INDUSTRIAL HYGIENE/AUDIOLOGY COORDINATION"

Description: Clarkson is developing an industrial hygiene program within its biology department. Potsdam is reorganizing the hearing science portion of a Speech and Hearing Clinic into its psychology department. Both programs plan to use each other's resources. Clarkson's industrial hygiene program will include two courses at Potsdam, Potsdam's hearing science program will recommend two to four of Clarkson's industrial hygiene courses to its students to increase their employment potential.

Most Significant Impacts:

<u>Cost Avoidance</u>	<u>X</u>	The review process is costly in personal time, and it is complex. St. Lawrence avoided the necessity for establishing and training a similar committee.
<u>Cost Efficiency</u>	_____	
<u>Cost Effectiveness</u>	_____	
<u>Resource Amplification</u>	_____	
<u>Resource Attraction</u>	_____	

Most Significant Impacts:

<u>Cost Avoidance</u>	<u>X</u>	By sharing their respective expertise and equipment, both programs will benefit educationally.
<u>Cost Efficiency</u>	_____	
<u>Cost Effectiveness</u>	_____	
<u>Resource Amplification</u>	_____	
<u>Resource Attraction</u>	<u>X</u>	Faculty involved have written letters of inquiry regarding funding possibilities for back-up programs.

FUNDS GRANTED BY THE CARNEGIE CORPORATION \$ -0-

FUNDS GRANTED BY THE CARNEGIE CORPORATION \$ 1,000.

LOCAL MATCHING FUNDS
(Non-Grant Sources):

	<u>Detail</u>	
\$ <u>2,400</u>	<u>12 proposals at \$200</u>	
_____	_____	
_____	_____	
_____	_____	
		<u>2,400.</u>

TOTAL \$ 2,400.

LOCAL MATCHING FUNDS
(Non-Grant Sources):

	<u>Detail</u>	
\$ <u>42,000</u>	<u>Sound equipment at Clarkson</u>	
<u>70,000</u>	<u>Sound equipment at Potsdam</u>	
<u>1,000</u>	<u>Safety committees at the</u>	
	<u>four colleges</u>	<u>113,000.</u>

TOTAL \$ 114,000.



FINAL REPORT TO:

THE CARNEGIE CORPORATION OF NEW YORK

APRIL, 1981

DISCIPLINE: MULTIDISCIPLINARY

DISCIPLINE: MULTIDISCIPLINARY

PROJECT TITLE: "JOINT APPOINTMENTS"

Description: Increasing attention is being given to the sharing of teaching faculty through faculty exchanges, overload teaching, and 'loans' of faculty for specified periods of time. The presence of several faculty who were teaching part-time on two different campuses suggested the potential for joint appointments. A major step forward was made when SUNY A. T. C. at Canton, and Potsdam College requested approval from SUNY Central Administration to enter into joint appointment agreements between themselves. This was the first such approval in SUNY. Two positions in economics and music are being developed in this manner.

Most Significant Impacts:

- Cost Avoidance
Cost Efficiency
Cost Effectiveness X Both institutions are acquiring faculty support in a manner that neither would have afforded separately.
Resource Amplification
Resource Attraction

FUNDS GRANTED BY THE CARNEGIE CORPORATION \$ 2,000.

LOCAL MATCHING FUNDS (Non-Grant Sources):

Table with 2 columns: Amount, Detail. Row 1: \$ 30,000, Two faculty salaries (estimated). Row 2: 30,000.

TOTAL \$32,000.

PROJECT TITLE: "JOINT CLASS SCHEDULE"

Description: Despite considerable publicity that was directed at the promotion of individual courses and at groups of courses in thematic concentrations, few courses supported by this project attracted many cross-registrants. Since the aim of the overall project was to encourage students to consider the most complete range of options available to them, a joint class schedule is now being printed. It is anticipated that the schedule will be continued in the future with local funding. 4,000 copies are printed each semester.

Most Significant Impacts:

- Cost Avoidance
Cost Efficiency X Better knowledge of courses available has increased the number of cross-registrations.
Cost Effectiveness
Resource Amplification
Resource Attraction

FUNDS GRANTED BY THE CARNEGIE CORPORATION \$ 3,100.

LOCAL MATCHING FUNDS (Non-Grant Sources):

Table with 2 columns: Amount, Detail. Row 1: \$, Anticipated take-over. Row 2: -0-

TOTAL \$ 3,100.



FINAL REPORT TO:

THE CARNEGIE CORPORATION OF NEW YORK

37.

APRIL, 1981

DISCIPLINE: MULTIDISCIPLINARY

DISCIPLINE: MULTIDISCIPLINARY

PROJECT TITLE: "JOINT EXHIBITIONS".

PROJECT TITLE: "LINGUISTICS"

Description: Three exhibitions were obtained and toured among the campuses: "Einstein," "Women At Work," and "Posters of the British Women's Suffrage Movement." The exhibitions received added funding from the N. Y. Council for the Humanities. A variety of intercollege workshops, lectures and panel discussions were held in conjunction with the exhibitions.

Description: A faculty member in linguistics was retained to teach courses at three campuses. In addition, a colloquium series was set up to bring all interested faculty together. Although courses were installed, there did not appear to be a consensus that a formal curriculum structure could be implemented in the near future.

The jointly appointed faculty member taught "Teaching English As A Second Language" in which tutors worked with foreign students at three campuses to improve their comprehension of English.

Most Significant Impacts:

Cost Avoidance
Cost Efficiency
Cost Effectiveness
Resource Amplification
Resource Attraction X

Funding from the N. Y. Council for the Humanities

Most Significant Impacts:

Cost Avoidance
Cost Efficiency
Cost Effectiveness
Resource Amplification
Resource Attraction X

Outside funding assisted in securing this position.

FUNDS GRANTED BY THE CARNEGIE CORPORATION \$ 800.

FUNDS GRANTED BY THE CARNEGIE CORPORATION \$ 3,000.

LOCAL MATCHING FUNDS (Non-Grant Sources):

	<u>Detail</u>	
\$ 4,000.	<u>Grants</u>	
<u>200.</u>	<u>Local funds</u>	
<u>1,500.</u>	<u>Speakers, faculty time</u>	
		<u>5,700.</u>

TOTAL \$ 6,500.

LOCAL MATCHING FUNDS (Non-Grant Sources):

	<u>Detail</u>	
\$ 11,500.	<u>Faculty member</u>	
		<u>11,500.</u>

TOTAL \$ 14,500.



FINAL REPORT TO:

THE CARNEGIE CORPORATION OF NEW YORK

APRIL, 1981

DISCIPLINE: MULTIDISCIPLINARY

PROJECT TITLE: "PROMOTIONAL LITERATURE"

Description: In an effort to provide higher levels of visibility for either individual courses or groups of courses within selected themes, or to simply promote the cross-registration process, a number of printed materials were prepared. This include a poster on cross-registration, thematic concentration flyers, news articles, posters on single courses, radio ads, library bookmarks, etc.

Most Significant Impacts:

<u>Cost Avoidance</u>	___	
<u>Cost Efficiency</u>	X	Students need to be fully aware of all of the resources available if they are to make wise choices.
<u>Cost Effectiveness</u>	___	
<u>Resource Amplification</u>	___	
<u>Resource Attraction</u>	___	

FUNDS GRANTED BY THE CARNEGIE CORPORATION \$ 900.

LOCAL MATCHING FUNDS (Non-Grant Sources):

	<u>Detail</u>	
\$	_____	

	_____	-0-

TOTAL \$ 900.

DISCIPLINE: MULTIDISCIPLINARY

PROJECT TITLE: "RADIOACTIVE WASTES"

Description: Following the success of the cooperative chemical waste disposal arrangement, faculty involved with radioactive wastes have begun planning a cooperative radioactive waste disposal procedure. Clarkson will act as the collector and contactor with the company. Wastes will be pooled and a collection will be synchronized with a nearby (90 miles) institution to avoid a larger "remote-setting" charge.

Most Significant Impacts:

<u>Cost Avoidance</u>	X	As with chemical waste disposal, by working together the colleges, small generators, can pool their wastes to avoid the three-barrel minimum charge and added shipping costs.
<u>Cost Efficiency</u>	___	
<u>Cost Effectiveness</u>	___	
<u>Resource Amplification</u>	___	
<u>Resource Attraction</u>	___	

FUNDS GRANTED BY THE CARNEGIE CORPORATION \$ -0-

LOCAL MATCHING FUNDS (Non-Grant Sources):

	<u>Detail</u>	
\$	_____	

	_____	-0-

TOTAL \$ -0-

FINAL REPORT TO:

THE CARNEGIE CORPORATION OF NEW YORK.

APRIL, 1981

DISCIPLINE: MULTIDISCIPLINARY

PROJECT TITLE: "SAFETY"

Description: A four-college safety committee meets regularly to share information concerns and programs. Safety films on high-rise fires and fire extinguisher usage have been cooperatively ordered. Equipment present on the campuses which can serve a safety function has been identified and shared. For example, a Clarkson velocimeter is used by the consortium's technician to check air flows in laboratory hoods on all four campuses. Detector tube systems present at Clarkson and St. Lawrence, are used by Potsdam and Canton. An infrared scanner from Potsdam is used by all four colleges; noise evaluation equipment present at Clarkson and Potsdam is used to evaluate employment situations on all campuses.

Most Significant Impacts:

- Cost Avoidance Those who borrow equipment owned by another institution avoid the cost of purchasing it.
- Cost Efficiency The equipment is better utilized as the result of sharing.
- Cost Effectiveness _____
- Resource Amplification _____
- Resource Attraction _____

FUNDS GRANTED BY THE CARNEGIE CORPORATION \$ 500.

LOCAL MATCHING FUNDS (Non-Grant Sources):

	<u>Detail</u>	
\$ <u>3,000</u>	Equipment shared	
_____	_____	
_____	_____	
_____	_____	
		<u>3,000.</u>
<u>TOTAL</u>		\$ <u>3,500.</u>

DISCIPLINE: MULTIDISCIPLINARY

PROJECT TITLE: "SEMINARS AND CONFERENCES"

Description: A major goal of the project was to bring faculty together in seminars, workshops and conferences to enable them to know one another better at both professional and personal levels. Continuing seminar series were begun in biology,* computing applications, psychology*, geology, St. Lawrence River Studies, Social Impact Studies, and Latin American Studies. Prior to the initiation of this project, seminar series were underway in economics and physics, and the Council for Women's Concerns. A large number of other sessions were scheduled in English, sociology and a host of other disciplines. Some of these programs were held in the context of funded activities. More than 60 programs were held in the last three years.

Most Significant Impacts:

- Cost Avoidance _____
- Cost Efficiency Although not the major goal of the project, fuller use has been made of speakers and special knowledge.
- Cost Effectiveness _____
- Resource Amplification _____
- Resource Attraction American Philosophical Society, N. Y. Council for the Humanities, IBM, Poets and Writers, SUNY Faculty Scholar's Program and SUNY Conversations in Disciplines

FUNDS GRANTED BY THE CARNEGIE CORPORATION \$ 4,830.

LOCAL MATCHING FUNDS (Non-Grant Sources):

	<u>Detail</u>	
\$ <u>9,900</u>	Associated Colleges	
<u>3,900</u>	Outside grants	
_____	_____	
_____	_____	
		<u>13,800.</u>
<u>TOTAL</u>		\$ <u>18,600</u>



FINAL REPORT TO:

THE CARNEGIE CORPORATION OF NEW YORK

APRIL, 1981

DISCIPLINE: MULTIDISCIPLINARY

PROJECT TITLE: "TECHNICIAN'S ASSISTANT"

Description: The need for additional technician expertise was identified as a priority early in the project. Potsdam and Canton had no technician available to them to repair and maintain scientific equipment. Clarkson's and Potsdam's existing technicians were increasingly aware of the need for additional technical support. A floating technician's assistant was originally funded by C.E.T.A. and trained by existing technicians. The position has been continued by the colleges. The existence of a shared technician has led to numerous "permanent equipment loans."

Most Significant Impacts:

<u>Cost Avoidance</u>	X	By sharing a technician, each institution avoids the cost of a full technician but still has access to equipment repair and maintenance on a regular basis.
<u>Cost Efficiency</u>		
<u>Cost Effectiveness</u>		
<u>Resource Amplification</u>		
<u>Resource Attraction</u>	X	C.E.T.A. funded the position to allow the individual time for training and for becoming familiar with the colleges.

FUNDS GRANTED BY THE CARNEGIE CORPORATION	Tools	\$ 500
	Salary	2,000 \$ 2,500.

LOCAL MATCHING FUNDS
(Non-Grant Sources):

	Detail	
\$ 9,500	C.E.T.A.	
12,000	Colleges	
		21,500

TOTAL \$ 24,000

82

DISCIPLINE: MULTIDISCIPLINARY

PROJECT TITLE: "TECHNICIAN MEETINGS"

Description: There have been two large meetings of all technicians employed by the four colleges, and tours of all the repair and maintenance facilities have been made. A directory of technical personnel and expertise was prepared and distributed. The science lab technicians meet regularly to exchange information on supply ordering, equipment exchange, and "permanent loans." They regularly share chemicals and supplies, and offer each other a support network. They have identified pieces of equipment for "permanent loan" to other institutions and share a list of excess chemicals for exchange.

Most Significant Impacts:

<u>Cost Avoidance</u>		
<u>Cost Efficiency</u>	X	By working together, the technical expertise and knowledge can be shared more efficiently.
<u>Cost Effectiveness</u>	X	Labs may function uninterruptedly that otherwise might have a breakdown or shortage.
<u>Resource Amplification</u>		
<u>Resource Attraction</u>		

FUNDS GRANTED BY THE CARNEGIE CORPORATION	\$ 150.
---	---------

LOCAL MATCHING FUNDS
(Non-Grant Sources):

	Detail	
\$	Unestimatable	
		-0-

TOTAL \$ 150.

83



FINAL REPORT TO:

THE CARNEGIE CORPORATION OF NEW YORK

41.

APRIL, 1981

DISCIPLINE: MULTIDISCIPLINARY

DISCIPLINE: MULTIDISCIPLINARY

PROJECT TITLE: "THEMATIC CONCENTRATIONS"

Description: As an outgrowth of other activities and meetings within the Carnegie project, several multidisciplinary groups sought added assistance to develop their areas of concern. A proposal submitted to the Fund for the Improvement of Postsecondary Education was invited for a full proposal, but was not funded. The project would have accommodated substantial course development in: (1) Latin American Studies; (2) Women's Studies; (3) Native American Studies; and (4) Film Studies, across institutional as well as departmental lines.

Most Significant Impacts:

- Cost Avoidance _____
- Cost Efficiency _____
- Cost Effectiveness _____
- Resource Amplification _____
- Resource Attraction X Applied for but not funded.

FUNDS GRANTED BY THE CARNEGIE CORPORATION \$ -0-

LOCAL MATCHING FUNDS
(Non-Grant Sources):

	<u>Detail</u>	
\$ 1,000.	<u>Proposal development time</u>	
_____	_____	
_____	_____	
_____	_____	1,000.
<u>TOTAL</u>		\$ <u>1,000.</u>

PROJECT TITLE: "TRANSPORTATION"

Description: Funds were provided to facilitate the movement of students to take advantage of courses and other resources at the campuses and in conjunction with joint field trips.

Most Significant Impacts:

- Cost Avoidance _____
- Cost Efficiency X Transportation is essential for students to be able to fully draw on all resources.
- Cost Effectiveness _____
- Resource Amplification _____
- Resource Attraction _____

FUNDS GRANTED BY THE CARNEGIE CORPORATION \$ 3,800.

LOCAL MATCHING FUNDS
(Non-Grant Sources):

	<u>Detail</u>	
\$ 6,000	<u>Bus program</u>	
_____	_____	
_____	_____	
_____	_____	6,000.
<u>TOTAL</u>		\$ <u>9,800.</u>



FINAL REPORT TO:

THE CARNEGIE CORPORATION OF NEW YORK

APRIL , 1981

DISCIPLINE: MUSIC

DISCIPLINE: MUSIC

PROJECT TITLE: "MUSIC II"

PROJECT TITLE: "MUSIC AND INDUSTRY"

Description: A Clarkson professor who taught an introductory music course retired in 1980. Potsdam will "lend" a faculty member to teach this course each semester. Consequently, Clarkson has decided that it will not appoint a person to replace the retiree.

Description: The original proposal contemplated an intercollege curriculum designed to enable Crane School of Music (Potsdam) students to move into music-related positions in the recording industry, concert-hall administration, booking agencies, etc. The curriculum would have required courses in business administration at Clarkson. The curriculum did develop as a minor, and has been adopted internally. However, it does not require courses from off-campus.

A course on "Arts Administration" was the primary focus of this effort. It has been offered three times.

Most Significant Impacts:

Most Significant Impacts:

<u>Cost Avoidance</u>	<u>X</u>	Clarkson saves the equivalent cost of a 1/3 time faculty member.
<u>Cost Efficiency</u>	_____	
<u>Cost Effectiveness</u>	_____	
<u>Resource Amplification</u>	<u>X</u>	Funds are reallocated to areas of higher priority.
<u>Resource Attraction</u>	_____	

<u>Cost Avoidance</u>	_____	
<u>Cost Efficiency</u>	<u>X</u>	Intended objective not realized.
<u>Cost Effectiveness</u>	_____	
<u>Resource Amplification</u>	_____	
<u>Resource Attraction</u>	_____	

FUNDS GRANTED BY THE CARNEGIE CORPORATION \$ 200

FUNDS GRANTED BY THE CARNEGIE CORPORATION \$ 2,000

LOCAL MATCHING FUNDS (Non-Grant Sources):

LOCAL MATCHING FUNDS (Non-Grant Sources):

	<u>Detail</u>	
\$ <u>2,500.</u>	<u>Faculty time</u>	
_____	_____	
_____	_____	
_____	_____	<u>2,500</u>

	<u>Detail</u>	
\$ <u>7,500.</u>	<u>Faculty time (teaching)</u>	
_____	_____	
_____	_____	
_____	_____	<u>7,500</u>

TOTAL \$ 2,700

TOTAL \$ 9,500



APRIL, 1981

DISCIPLINE: "PHYSICS"

DISCIPLINE: PHYSICS

PROJECT TITLE: "EQUIPMENT" LISTS"

PROJECT TITLE: "PHYSICS II"

Description:

Two comprehensive lists of major equipment pieces were generated. One lists categories of equipment by course or area of usage, and the other by institution. These lists were distributed to all institutions to promote equipment exchanges and cooperative research arrangements.

Description: Many students need to take a second semester physics course in the fall. Such a course was not available. The grant supported the creation of a team-taught course with faculty from two campuses, Canton and St. Lawrence. The team-teaching facilitated intercampus usage of laboratory equipment as the faculty worked together and students became more aware of the St. Lawrence faculty. The course has been offered twice since it began, although the team-teaching aspect of the course has been dropped.

Most Significant Impacts:

Cost Avoidance X
Cost Efficiency X
Cost Effectiveness X
Resource Amplification _____
Resource Attraction _____

Most Significant Impacts:

Cost Avoidance _____
Cost Efficiency _____
Cost Effectiveness X
Resource Amplification _____
Resource Attraction _____

Without the initiative supported by the grant, this successful effort would not have been undertaken.

FUNDS GRANTED BY THE CARNEGIE CORPORATION

\$ -0-

FUNDS GRANTED BY THE CARNEGIE CORPORATION

\$ 1,500.

LOCAL MATCHING FUNDS
(Non-Grant Sources):

	<u>Detail</u>	
\$	_____	

	_____	-0-
<u>TOTAL</u>		\$ -0-

LOCAL MATCHING FUNDS
(Non-Grant Sources):

	<u>Detail</u>	
\$	5,000.	
	Subsequent faculty time	

	_____	5,000.
<u>TOTAL</u>		\$ 6,500.



FINAL REPORT TO:

THE CARNEGIE CORPORATION OF NEW YORK

APRIL, 1981

DISCIPLINE: POLITICAL SCIENCE

PROJECT TITLE: "INTRODUCTION TO LATIN AMERICA"

Description: A St. Lawrence faculty member was "loaned" to Potsdam to teach an introductory course which was essential for a planned consortium concentration in Latin-American Studies. Support was applied toward building of library and film resources that would augment existing materials. Proposals for substantial curricular development emerged from an inter-college committee but were not funded. Future developments no longer seem feasible, although a seminar series and a discussion group continue.

Most Significant Impacts:

Cost Avoidance _____

Cost Efficiency X _____

The intent was to make better use of existing courses and faculty in a "concentration." This did not occur.

Cost Effectiveness _____

Resource Amplification _____

Resource Attraction X _____

Proposals submitted were not funded.

FUNDS GRANTED BY THE CARNEGIE CORPORATION

\$ 1,500.

LOCAL MATCHING FUNDS
(Non-Grant Sources):

\$ 2,000

Detail

Faculty time

2,000.

TOTAL

\$ 3,500.

FINAL REPORT TO:

THE CARNEGIE CORPORATION OF NEW YORK

45.

APRIL, 1981

DISCIPLINE: PSYCHOLOGY

DISCIPLINE: PSYCHOLOGY

PROJECT TITLE: "ANIMAL BEHAVIOR"

PROJECT TITLE: "CAREER AWARENESS CENTER"

Description: A three-college curriculum concentration has been designed to highlight the diversity of approaches to this field within the consortium. The project involves psychology, biology and anthropology faculty. A joint brochure and posters were printed, and audiovisual materials were acquired to augment existing holdings. A sequence of articulated courses has been recommended.

Description: Two faculty at Potsdam have initiated the assemblage of a career awareness and planning center. Resource materials on vocational outlets for psychology majors are continuously being ordered. Four-college course sequences for students interested in specializations such as art therapy, gerontology, etc., are being compiled. Better advisement of students is sought.

An outgrowth of this project has been lending animal traps owned by Potsdam to Clarkson's biology department for small animal trapping.

Most Significant Impacts:

Most Significant Impacts:

<u>Cost Avoidance</u>	_____	
<u>Cost Efficiency</u>	<u>X</u>	Potsdam has an animal behavior research laboratory valued in excess of \$100,000 which will be better used.
<u>Cost Effectiveness</u>	_____	
<u>Resource Amplification</u>	_____	
<u>Resource Attraction</u>	_____	

<u>Cost Avoidance</u>	_____	
<u>Cost Efficiency</u>	<u>X</u>	This effort seeks to encourage students to draw on the total course offerings of the colleges.
<u>Cost Effectiveness</u>	_____	
<u>Resource Amplification</u>	_____	
<u>Resource Attraction</u>	_____	

FUNDS GRANTED BY THE CARNEGIE CORPORATION \$ 1,000.

FUNDS GRANTED BY THE CARNEGIE CORPORATION \$ 200.

LOCAL MATCHING FUNDS (Non-Grant Sources):

LOCAL MATCHING FUNDS (Non-Grant Sources):

	<u>Detail</u>	
\$ 500.	<u>Audiovisual materials</u>	
500.	<u>Faculty time, (planning only.)</u>	
100,000.	<u>Equipment</u>	
		<u>101,000.</u>
<u>TOTAL</u>		<u>\$ 102,000.</u>

	<u>Detail</u>	
\$ 200.	<u>Materials and supplies</u>	
4,000.	<u>Faculty time</u>	
		<u>4,200.</u>
<u>TOTAL</u>		<u>\$ 4,400.</u>

FINAL REPORT TO:

THE CARNEGIE CORPORATION OF NEW YORK

APRIL 1981

DISCIPLINE: MULTIDISCIPLINARY

PROJECT TITLE: "TECHNICIAN'S ASSISTANT"

Description: The need for additional technician expertise was identified as a priority early in the project. Potsdam and Canton had no technician available to them to repair and maintain scientific equipment. Clarkson's and Potsdam's existing technicians were increasingly aware of the need for additional technical support. A floating technician's assistant was originally funded by C.E.T.A. and trained by existing technicians. The position has been continued by the colleges. The existence of a shared technician has led to numerous "permanent equipment loans."

Most Significant Impacts:

- Cost Avoidance By sharing a technician, each institution avoids the cost of a full technician but still has access to equipment repair and maintenance on a regular basis.
- Cost Efficiency _____
- Cost Effectiveness _____
- Resource Amplification _____
- Resource Attraction C.E.T.A. funded the position to allow the individual time for training and for becoming familiar with the colleges.

FUNDS GRANTED BY THE CARNEGIE CORPORATION Tools Salary \$ 500
2,000 \$ 2,500.

LOCAL MATCHING FUNDS (Non-Grant Sources):

	<u>Detail</u>	
\$ 9,500	C.E.T.A. _____	
12,000	Colleges _____	

		21,500

TOTAL \$ 24,000

DISCIPLINE: MULTIDISCIPLINARY

PROJECT TITLE: "TECHNICIAN MEETINGS"

Description: There have been two large meetings of all technicians employed by the four colleges, and tours of all the repair and maintenance facilities have been made. A directory of technical personnel and expertise was prepared and distributed. The science lab technicians meet regularly to exchange information on supply ordering, equipment exchange, and "permanent loans." They regularly share chemicals and supplies, and offer each other a support network. They have identified pieces of equipment for "permanent loan" to other institutions and share a list of excess chemicals for exchange.

Most Significant Impacts:

- Cost Avoidance _____
- Cost Efficiency By working together, the technical expertise and knowledge can be shared more efficiently.
- Cost Effectiveness Labs may function uninterruptedly that otherwise might have a breakdown or shortage.
- Resource Amplification _____
- Resource Attraction _____

FUNDS GRANTED BY THE CARNEGIE CORPORATION \$ 150.

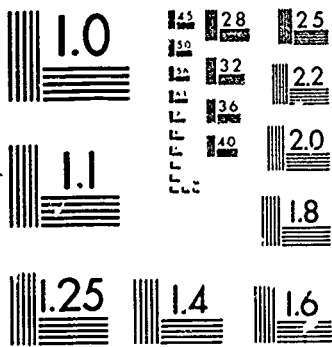
LOCAL MATCHING FUNDS (Non-Grant Sources):

	<u>Detail</u>	
\$ _____	Unestimatable _____	

		-0-

TOTAL \$ 150.





MICROCOPY RESOLUTION TEST CHART
 NATIONAL BUREAU OF STANDARDS
 STANDARD REFERENCE MATERIAL 1010a
 (ANSI and ISO TEST CHART No 2)

FINAL REPORT TO:

THE CARNEGIE CORPORATION OF NEW YORK

APRIL, 1981

DISCIPLINE: MULTIDISCIPLINARY

DISCIPLINE: MULTIDISCIPLINARY

PROJECT TITLE: "THEMATIC CONCENTRATIONS"

PROJECT TITLE: "TRANSPORTATION"

Description: As an outgrowth of other activities and meetings within the Carnegie project, several multidisciplinary groups sought added assistance to develop their areas of concern. A proposal submitted to the Fund for the Improvement of Postsecondary Education was invited for a full proposal, but was not funded. The project would have accommodated substantial course development in: (1) Latin American Studies; (2) Women's Studies; (3) Native American Studies; and (4) Film Studies, across institutional as well as departmental lines.

Description: Funds were provided to facilitate the movement of students to take advantage of courses and other resources at the campuses and in conjunction with joint field trips.

Most Significant Impacts:

Most Significant Impacts:

Cost Avoidance _____

Cost Avoidance _____

Cost Efficiency _____

Cost Efficiency X _____

Transportation is essential for students to be able to fully draw on all resources.

Cost Effectiveness _____

Cost Effectiveness _____

Resource Amplification _____

Resource Amplification _____

Resource Attraction X Applied for but not funded.

Resource Attraction _____

FUNDS GRANTED BY THE CARNEGIE CORPORATION \$ -0-

FUNDS GRANTED BY THE CARNEGIE CORPORATION \$ 3,800.

LOCAL MATCHING FUNDS (Non-Grant Sources):

LOCAL MATCHING FUNDS (Non-Grant Sources):

	<u>Detail</u>	
\$ <u>1,000.</u>	<u>Proposal development time</u>	

	_____	<u>1,000.</u>

	<u>Detail</u>	
\$ <u>6,000</u>	<u>Bus program</u>	

	_____	<u>6,000.</u>

TOTAL \$ 1,000.

TOTAL \$ 9,800.



FINAL REPORT TO:

THE CARNEGIE CORPORATION OF NEW YORK

APRIL, 1981

DISCIPLINE: MUSIC

DISCIPLINE: MUSIC

PROJECT TITLE: "MUSIC II"

PROJECT TITLE: "MUSIC AND INDUSTRY"

Description: A Clarkson professor who taught an introductory music course retired in 1980. Potsdam will "lend" a faculty member to teach this course each semester. Consequently, Clarkson has decided that it will not appoint a person to replace the retiree.

Description: The original proposal contemplated an intercollege curriculum designed to enable Crane School of Music (Potsdam) students to move into music-related positions in the recording industry, concert-hall administration, booking agencies, etc. The curriculum would have required courses in business administration at Clarkson. The curriculum did develop as a minor, and has been adopted internally. However, it does not require courses from off-campus.

A course on "Arts Administration" was the primary focus of this effort. It has been offered three times.

Most Significant Impacts:

Most Significant Impacts:

- Cost Avoidance Clarkson saves the equivalent cost of a 1/3 time faculty member.
- Cost Efficiency _____
- Cost Effectiveness _____
- Resource Amplification Funds are reallocated to areas of higher priority.
- Resource Attraction _____

- Cost Avoidance _____
- Cost Efficiency Intended objective not realized.
- Cost Effectiveness _____
- Resource Amplification _____
- Resource Attraction _____

FUNDS GRANTED BY THE CARNEGIE CORPORATION \$ 200.

FUNDS GRANTED BY THE CARNEGIE CORPORATION \$ 2,000.

LOCAL MATCHING FUNDS (Non-Grant Sources):

LOCAL MATCHING FUNDS (Non-Grant Sources):

	<u>Detail</u>	
\$ 2,500.	<u>Faculty time</u>	

	_____	2,500.

	<u>Detail</u>	
\$ 7,500.	<u>Faculty time (teaching)</u>	

	_____	7,500.

TOTAL \$ 2,700.

TOTAL \$ 9,500.



FINAL REPORT TO:

THE CARNEGIE CORPORATION OF NEW YORK

APRIL 1981

DISCIPLINE: "PHYSICS"

DISCIPLINE: PHYSICS

PROJECT TITLE: "EQUIPMENT LISTS"

PROJECT TITLE: "PHYSICS II"

Description:

Two comprehensive lists of major equipment pieces were generated. One lists categories of equipment by course or area of usage, and the other by institution. These lists were distributed to all institutions to promote equipment exchanges and cooperative research arrangements.

Description: Many students need to take a second semester physics course in the fall. Such a course was not available. The grant supported the creation of a team-taught course with faculty from two campuses, Canton and St. Lawrence. The team-teaching facilitated intercampus usage of laboratory equipment as the faculty worked together and students became more aware of the St. Lawrence faculty. The course has been offered twice since it began, although the team-teaching aspect of the course has been dropped.

Most Significant Impacts:

Most Significant Impacts:

Cost Avoidance X

Cost Avoidance _____

Cost Efficiency X

Cost Efficiency _____

Cost Effectiveness X

Cost Effectiveness X

Without the initiative supported by the grant, this successful effort would not have been undertaken.

Resource Amplification _____

Resource Amplification _____

Resource Attraction _____

Resource Attraction _____

FUNDS GRANTED BY THE CARNEGIE CORPORATION \$ -0-

FUNDS GRANTED BY THE CARNEGIE CORPORATION \$ 1,500.

LOCAL MATCHING FUNDS (Non-Grant Sources):

LOCAL MATCHING FUNDS (Non-Grant Sources):

	Detail	
\$ _____	_____	
_____	_____	
_____	_____	
_____	_____	-0-

	Detail	
\$ 5,000.	Subsequent faculty time	
_____	_____	
_____	_____	
_____	_____	5,000.

TOTAL 99 \$ -0-

TOTAL \$ 6,500.

99

100



FINAL REPORT TO:

THE CARNEGIE CORPORATION OF NEW YORK

APRIL, 1981

DISCIPLINE: POLITICAL SCIENCE

PROJECT TITLE: "INTRODUCTION TO LATIN AMERICA"

Description: A St. Lawrence faculty member was "loaned" to Potsdam to teach an introductory course which was essential for a planned consortium concentration in Latin-American Studies. Support was applied toward building of library and film resources that would augment existing materials. Proposals for substantial curricular development emerged from an inter-college committee but were not funded. Future developments no longer seem feasible, although a seminar series and a discussion group continue.

Most Significant Impacts:

Cost Avoidance _____

Cost Efficiency _____ X

The intent was to make better use of existing courses and faculty in a "concentration." This did not occur.

Cost Effectiveness _____

Resource Amplification _____

Resource Attraction _____ X

Proposals submitted were not funded.

FUNDS GRANTED BY THE CARNEGIE CORPORATION

\$ 1,500.

LOCAL MATCHING FUNDS
(Non-Grant Sources):

\$ 2,000

Detail

Faculty time

2,000.

TOTAL

\$ 3,500.

FINAL REPORT TO:

THE CARNEGIE CORPORATION OF NEW YORK

APRIL, 1981

DISCIPLINE: PSYCHOLOGY

PROJECT TITLE: "ANIMAL BEHAVIOR"

Description: A three-college curriculum concentration has been designed to highlight the diversity of approaches to this field within the consortium. The project involves psychology, biology and anthropology faculty. A joint brochure and posters were printed, and audiovisual materials were acquired to augment existing holdings. A sequence of articulated courses has been recommended.

An outgrowth of this project has been lending animal traps owned by Potsdam to Clarkson's biology department for small animal trapping.

Most Significant Impacts:

Cost Avoidance _____

Cost Efficiency _____

Cost Effectiveness _____

Resource Amplification _____

Resource Attraction _____

Potsdam has an animal behavior research laboratory valued in excess of \$100,000 which will be better used.

FUNDS GRANTED BY THE CARNEGIE CORPORATION \$ 1,000.

LOCAL MATCHING FUNDS
(Non-Grant Sources):

	<u>Detail</u>	
\$ <u>500.</u>	<u>Audiovisual materials</u>	
<u>500.</u>	<u>Faculty time, (planning only.)</u>	
<u>100,000.</u>	<u>Equipment</u>	
		<u>101,000.</u>
<u>TOTAL</u>		<u>\$ 102,000.</u>

102

DISCIPLINE: PSYCHOLOGY

PROJECT TITLE: "CAREER AWARENESS CENTER"

Description: Two faculty at Potsdam have initiated the assemblage of a career awareness and planning center. Resource materials on vocational outlets for psychology majors are continuously being ordered. Four-college course sequences for students interested in specializations such as art therapy, gerontology, etc., are being compiled. Better advisement of students is sought.

Most Significant Impacts:

Cost Avoidance _____

Cost Efficiency _____

Cost Effectiveness _____

Resource Amplification _____

Resource Attraction _____

This effort seeks to encourage students to draw on the total course offerings of the colleges.

FUNDS GRANTED BY THE CARNEGIE CORPORATION \$ 200.

LOCAL MATCHING FUNDS
(Non-Grant Sources):

	<u>Detail</u>	
\$ <u>200.</u>	<u>Materials and supplies</u>	
<u>2,000.</u>	<u>Faculty time</u>	
		<u>4,200.</u>
<u>TOTAL</u>		<u>\$ 4,400.</u>

103

FINAL REPORT TO:

THE CARNEGIE CORPORATION OF NEW YORK

APRIL, 1981.

DISCIPLINE: PSYCHOLOGY

PROJECT TITLE: "ENVIRONMENTAL NOISE"

Description: Offerings in environmental noise at Clarkson and Potsdam were strengthened. Equipment will be shared and lectures will be exchanged. Potsdam's staff strength in physiological effects and damage-risk criteria complements Clarkson's strength in psychological, biological and engineering aspects of noise as described elsewhere. A formal concentration in audiology at Potsdam is being proposed for Clarkson's Industrial Hygiene majors.

Most Significant Impacts:

- Cost Avoidance _____
- Cost Efficiency _____
- Cost Effectiveness X More efficient use of local expertise.
- Resource Amplification _____
- Resource Attraction X Funds are being requested from the National Institutes of Health.

FUNDS GRANTED BY THE CARNEGIE CORPORATION \$ 1,500.

**LOCAL MATCHING FUNDS
(Non-Grant Sources):**

	<u>Detail</u>
\$ 21,800	<u>Noise Pollution</u>
<u>17,565</u>	<u>Equipment - Potsdam College</u>
<u> </u>	<u>Acoustic equipment - Clarkson</u>
<u> </u>	<u>39,365.</u>

TOTAL \$ 40,865.

DISCIPLINE: PSYCHOLOGY

PROJECT TITLE: "EQUIPMENT EXCHANGE"

Description: Many examples of equipment exchange could be cited. Among the major ones are: (1) Potsdam loaned a \$5,000 audiometer to Clarkson; (2) Potsdam and Clarkson combined two devices essential to one another, (a tachistoscope valued at \$7,000 and a reaction measuring unit valued at \$2,000); small devices of \$100/500 value are frequently loaned out by all campuses.

Most Significant Impacts:

- Cost Avoidance X In several instances, added equipment would have been purchased had it not been present already.
- Cost Efficiency X
- Cost Effectiveness X Neither the tachistoscope nor its measuring unit could be used alone.
- Resource Amplification _____
- Resource Attraction _____

FUNDS GRANTED BY THE CARNEGIE CORPORATION \$ -0-

**LOCAL MATCHING FUNDS
(Non-Grant Sources):**

	<u>Detail</u>
\$ 12,000	<u>Equipment, (est. value)</u>
<u> </u>	_____
<u> </u>	_____
<u> </u>	<u>12,000.</u>

TOTAL \$ 12,000.



FINAL REPORT TO:

THE CARNEGIE CORPORATION OF NEW YORK

APRIL 1981

DISCIPLINE: PSYCHOLOGY

DISCIPLINE: PSYCHOLOGY

PROJECT TITLE: "FACULTY EXCHANGE"

Description: An exchange of faculty between Potsdam and Clarkson enabled each college to have courses offered that were otherwise not available to them. (Industrial Psychology, Developmental Psychology, respectively.) Grant funds for audiovisual support were an incentive to arranging the exchange.

Most Significant Impacts:

- Cost Avoidance _____
- Cost Efficiency X Better use of faculty expertise...
- Cost Effectiveness X Neither college had faculty trained in the course subject they received.
- Resource Amplification _____
- Resource Attraction _____

FUNDS GRANTED BY THE CARNEGIE CORPORATION \$ 1,050.

LOCAL MATCHING FUNDS (Non-Grant Sources):

	<u>Detail</u>	
\$ <u>4,000</u>	<u>Faculty time</u>	
_____	_____	
_____	_____	
_____	_____	
		<u>4,000.</u>

TOTAL \$ 5,050.

PROJECT TITLE: "MODULAR INTRODUCTORY PSYCHOLOGY COURSE"

Description: Potsdam College undertook a major revision of its multi-section "Introduction to Psychology" course. The course was divided into modules for which: (1) Videotapes were made to be shown to students; (2) Videotapes were made to update faculty in selected areas; (i.e., current brain-functioning research); (3) demonstration equipment was boxed; and (4) other instructional materials were developed. The modules can be shipped to all colleges in any sequence and in any number. The equivalent of one and one-quarter faculty lines were committed to this project. An offshoot of the project was the creation of a videotaping facility with significant amounts of equipment assembled from within the college. *(full-time)

Most Significant Impacts:

- Cost Avoidance _____
- Cost Efficiency X The availability of the modules significantly reduces the faculty time required to teach the multiple sections.
- Cost Effectiveness X Some of the equipment being utilized is only available at Potsdam and need not be replicated. Canton and Clarkson have minimal laboratory equipment or facilities.
- Resource Amplification _____
- Resource Attraction _____

FUNDS GRANTED BY THE CARNEGIE CORPORATION \$ 1,500.

LOCAL MATCHING FUNDS (Non-Grant Sources):

	<u>Detail</u>	
\$ <u>20,000</u>	<u>Faculty time</u>	
<u>8,000</u>	<u>Technician time</u>	
<u>30,000</u>	<u>Facility investment</u>	
<u>10,000</u>	<u>Demonstration equipment for modules.</u>	<u>68,000.</u>

TOTAL \$ 69,500.



FINAL REPORT TO:

THE CARNEGIE CORPORATION OF NEW YORK

48.

APRIL, 1981

DISCIPLINE: PSYCHOLOGY

DISCIPLINE: PSYCHOLOGY

PROJECT TITLE: SEMINAR SERIES

PROJECT TITLE: "STATISTICS"

Description: A colloquium series of between 10-12 programs has been organized each grant year and will, no doubt, continue. Most seminars involve 70-100 individuals with good representation from all campuses. A primary value of the series is greater familiarity among the faculty.

Description: A Potsdam faculty member has developed computer programs that are designed for a second-level statistics course. The courseware, in place and in preparation, goes beyond the use of statistical techniques for specific exercises. Instead, they are more tutorial in testing the problem-solving capabilities of the students.

Most Significant Impacts:

Cost Avoidance _____

Cost Efficiency The combined series provides each college with access to a greater range of speakers than they could possibly afford individually.

Cost Effectiveness _____

Resource Amplification _____

Resource Attraction _____

Most Significant Impacts:

Cost Avoidance _____

Cost Efficiency The techniques developed for this course will be usefully employed through transfer of the courseware to other campus computers.

Cost Effectiveness _____

Resource Amplification _____

Resource Attraction _____

FUNDS GRANTED BY THE CARNEGIE CORPORATION \$ 600.

FUNDS GRANTED BY THE CARNEGIE CORPORATION \$ 1,000.

LOCAL MATCHING FUNDS (Non-Grant Sources):

	<u>Detail</u>
\$ <u>200</u>	<u>Printing</u>
<u>3,000</u>	<u>Consultants and travel</u>
<u>300</u>	<u>Reception-costs</u>
	<u>Per Year- 3,500.</u>

LOCAL MATCHING FUNDS (Non-Grant Sources):

	<u>Detail</u>
\$ <u>2,000.</u>	<u>Faculty time (development)</u>
<u>1,500.</u>	<u>Computer time and materials.</u>
	<u>3,500.</u>

TOTAL \$ 4,100.

TOTAL \$ 4,500.



FINAL REPORT TO:

THE CARNEGIE CORPORATION OF NEW YORK

APRIL, 1981

DISCIPLINE: RELIGIOUS STUDIES

DISCIPLINE: RELIGIOUS STUDIES

PROJECT TITLE: "CONSORTIUM APPOINTMENT"

PROJECT TITLE: "NEW TESTAMENT"

Description: A faculty member was jointly appointed to teach courses in religious studies at St. Lawrence, Potsdam and Clarkson. She provided courses that strengthened the religious studies programs at St. Lawrence and Potsdam and offered introductory coursework at Clarkson.

Description:

A St. Lawrence faculty member taught the "New Testament" course at Potsdam on an overload basis. The availability of this and other religious studies courses cited elsewhere greatly enhanced the limited staff resources available at Potsdam in this discipline.

An offshoot of this position was the receipt of a small grant from the American Philosophical Society for visiting Scholars to give lectures.

Most Significant Impacts:

Cost Avoidance _____

Cost Efficiency _____

Cost Effectiveness X This appointment would not have occurred at three of the campuses unless it was through a joint appointment.

Resource Amplification _____

Resource Attraction X Both the joint appointment and the lecturer series received outside support.

FUNDS GRANTED BY THE CARNEGIE CORPORATION \$ 1,500.

LOCAL MATCHING FUNDS (Non-Grant Sources):

	<u>Detail</u>
\$ <u>11,500.</u>	<u>Faculty salary and fringe benefits.</u>
<u>1,200.</u>	<u>Grant funds for lecturers</u>
<u>500.</u>	<u>Local funds for lecturers</u>
	<u>13,200.</u>

TOTAL \$ 14,700.

Most Significant Impacts:

Cost Avoidance _____

Cost Efficiency X

Cost Effectiveness _____

Resource Amplification _____

Resource Attraction _____

Best use of available faculty teaching resources is being encouraged. Continuation of this process is under active consideration.

FUNDS GRANTED BY THE CARNEGIE CORPORATION \$ 1,500.

LOCAL MATCHING FUNDS (Non-Grant Sources):

	<u>Detail</u>
\$ <u>200.</u>	<u>Travel</u>
	<u>200.</u>

TOTAL \$ 1,700.

FINAL REPORT TO:

THE CARNEGIE CORPORATION OF NEW YORK

APRIL, 1981

DISCIPLINE: RELIGIOUS STUDIES

PROJECT TITLE: "WORLD RELIGION"

Description: A course on "World Religion" was offered by two St. Lawrence faculty for Canton students. The course was supported to obtain greater exposure for the expansive offerings of St. Lawrence, as well as for the individual faculty. It was also intended to strengthen the Humanities curriculum at Canton which was being initiated.

The TIME-LIFE series of videotapes on "The Long Search" was also acquired to support this and comparable courses within the consortium.

Most Significant Impacts:

Cost Avoidance _____

Cost Efficiency _____

X

The project was funded to encourage cross-registration of Canton students to St. Lawrence's courses that can accommodate added enrollments.

Cost Effectiveness _____

Resource Amplification _____

Resource Attraction _____

FUNDS GRANTED BY THE CARNEGIE CORPORATION

\$ 2,500.

LOCAL MATCHING FUNDS
(Non-Grant Sources):

Detail

\$ 1,000.

Videotapes

1,000.

TOTAL

\$ 3,500.

FINAL REPORT TO:

THE CARNEGIE CORPORATION OF NEW YORK

APRIL, 1981

DISCIPLINE: SOCIOLOGY

DISCIPLINE: SOCIOLOGY

PROJECT TITLE: "ARTICULATED CURRICULUM IN CRIMINOLOGY"

PROJECT TITLE: "COOPERATIVE DEGREE IN CRIMINAL JUSTICE"

Description: A four-year major in criminal justice is being phased out at Clarkson. Canton operates a two-year program in this field. Potsdam is setting up an articulated curriculum that would facilitate the transfer of Canton students to Potsdam. Potsdam's courses would be used to secure a bachelor's degree in psychology, sociology or another related field rather than in criminal justice.

Description: A curriculum sequence is being designed to enable Potsdam students to obtain an associate's degree in criminal justice from Canton, while they obtain a bachelor of arts degree from Potsdam. Consequently, a student secures one degree in the liberal arts and one in a vocational field during the usual four-year period of enrollment at Potsdam. This new option provides Potsdam students with access to a wholly new department without substantial investments on the part of Potsdam.

(See: "Cooperative Degree in Criminology.")

Most Significant Impacts:

Most Significant Impacts:

Cost Avoidance _____

Cost Avoidance _____

Cost Efficiency Facilitation of student transfer to fully utilize local resources is to be achieved.

Cost Efficiency _____

Cost Effectiveness _____

Cost Effectiveness A significantly enhanced set of offerings and specializations is created without new investments.*

Resource Amplification _____

Resource Amplification _____

Resource Attraction _____

Resource Attraction _____

FUNDS GRANTED BY THE CARNEGIE CORPORATION \$ 750.

FUNDS GRANTED BY THE CARNEGIE CORPORATION \$ 750.

LOCAL MATCHING FUNDS (Non-Grant Sources):

LOCAL MATCHING FUNDS (Non-Grant Sources):

Detail

Detail

\$ -0-

\$ Unestimatable due to

scale of courses involved.

-0-

-0-

TOTAL \$ 750.

TOTAL \$ 750.

FINAL REPORT TO:

THE CARNEGIE CORPORATION OF NEW YORK

APRIL, 1981

DISCIPLINE: SOCIOLOGY

DISCIPLINE: SOCIOLOGY

PROJECT TITLE: "SEX ROLES IN MANAGERIAL SETTINGS"

PROJECT TITLE: "SOCIOLOGY OF FILM"

Description: A Clarkson faculty member designed and offered a course to meet curriculum needs at three of the institutions. Clarkson has a management school which is increasing its recruitment of women. Potsdam has a personnel management program. Canton offers an associate degree in business administration. The course will be offered on a regular basis and will travel among the campuses.

Description: This course was the counterpart to "Comedy and Terror," listed under English. (See that description.)

Most Significant Impacts:

<u>Cost Avoidance</u>	X	A traveling course enables all the institutions to benefit without each developing such a course.
<u>Cost Efficiency</u>	___	
<u>Cost Effectiveness</u>	___	
<u>Resource Amplification</u>	___	
<u>Resource Attraction</u>	___	

Most Significant Impacts:

<u>Cost Avoidance</u>	___
<u>Cost Efficiency</u>	___
<u>Cost Effectiveness</u>	___
<u>Resource Amplification</u>	___
<u>Resource Attraction</u>	___

FUNDS GRANTED BY THE CARNEGIE CORPORATION \$ 1,500

FUNDS GRANTED BY THE CARNEGIE CORPORATION \$ 950.

LOCAL MATCHING FUNDS (Non-Grant Sources):

	Detail	
\$ 300	Library and support	
1,500	Faculty teaching	
		1,800
TOTAL		\$ 3,300.

LOCAL MATCHING FUNDS (Non-Grant Sources):

	Detail	
\$ 1,500	Film rentals	
500	Film purchases	
2,500	Faculty time	
		4,500.
TOTAL		\$ 5,450.

FINAL REPORT TO:

THE CARNEGIE CORPORATION OF NEW YORK

APRIL, 1981

DISCIPLINE: SOCIOLOGY

PROJECT TITLE: "VISUAL SOCIOLOGY"

Description: A course on visual sociology was developed at Potsdam. This course was an off-shoot of the film studies development effort. Unlike the "Sociology of Film" course, this one dealt with documentary films with an anthropological/sociological origin. Following its initiation at Potsdam, the course was offered at St. Lawrence on an overload basis.

Most Significant Impacts:

Cost Avoidance _____

Cost Efficiency _____

X

The faculty expertise was shared among campuses.

Cost Effectiveness _____

Resource Amplification _____

Resource Attraction _____

FUNDS GRANTED BY THE CARNEGIE CORPORATION

\$ 1,500.

LOCAL MATCHING FUNDS
(Non-Grant Sources):

Detail

\$ 4,000.

Faculty time (two courses).

4,000.

TOTAL

\$ 5,500.