

DOCUMENT RESUME

ED 170 8 82

EA 011 637

TITLE New Places for the Arts. Book Two.
 INSTITUTION Educational Facilities Labs., Inc., New York, N.Y.;
 National Endowment for the Arts, Washington, D.C.
 PUE DATE 78
 NOTE 61p.; For a related document, see ED 125 078; cover
 may be illegible
 AVAILABLE FROM Educational Facilities Laboratories, 850 Third
 Avenue, New York, New York 10022 (\$3.00 prepaid)
 EDRS PRICE MF01 Plus Postage. PC Not Available from EDRS.
 DESCRIPTORS *Arts Centers; *Building Design; Building Plans;
 Construction Costs; *Facility Guidelines; *Museums;
 *Performance Specifications; *Theaters

ABSTRACT
 Descriptions of facilities and centers built specifically for the arts and completed during the 1970s are included in this catalogue--a sequel to one published two years ago. The description of each building includes a brief listing of the specifications, cost, architects and other consultants responsible for the design, and an information contact. Floor plans accompany the great majority of the descriptions; however, a few contain photographs. Twenty buildings are categorized as arts centers, 20 as museums, and 19 as performing arts. (MIF)

 * Reproductions supplied by EDRS are the best that can be made *
 * from the original document. *

The National Endowment for the Arts was established by Congress in 1965 to foster the growth and development of the arts in the United States, to preserve and enrich the nation's cultural resources, and to provide opportunities for wider experience in all the arts.

National Endowment For The Arts
Livingston Biddle, Jr., Chairman

The Architecture + Environmental Arts Program was created to support exemplary design efforts and to stimulate active public interest in the quality of the built environment through grants to individuals and nonprofit organizations in the fields of architecture, planning, landscape architecture, and interior and industrial design.

National Endowment For The Arts
Architecture + Environmental Arts
Roy F. Knight, Acting Director

Educational Facilities Laboratories is a nonprofit corporation established in 1938 by The Ford Foundation to encourage and guide constructive change in education and related facilities.

Educational Facilities Laboratories
Alan C. Green, President

This project is supported with a grant from the National Endowment for the Arts in Washington, D.C., a federal agency.

Copies of this report are available for \$3.00 prepaid from EFL, 850 Third Avenue, New York, N.Y. 10022
First printing April 1978

© 1978 by Educational Facilities Laboratories

Contents

Arts Centers

Abilene Civic Center, Abilene, Texas	5
Civic Center of Onondaga County, Syracuse, N.Y.	6
Clark Arts Center, Rockford, Ill.	7
Fine Arts Center, Northfield, Minn.	8
Fine Arts Center, Allentown, Pa.	9
Hampshire Arts Village, Amherst, Mass.	10
Historical Center, Columbus, Ohio	11
Humanities and Fine Arts Center, Morris, Minn.	11
Iowa State Center, Ames, Iowa	12
List Art Center, Clinton, N.Y.	13
Mabee Fine Arts Center, Arkadelphia, Ark.	14
Minneapolis Society of Fine Arts, Minneapolis, Minn.	15
Mother Antonia McHugh Fine Arts Center, St. Paul, Minn.	16
Performing Arts Center, Purchase, N.Y.	17
Paul Mellon Center for the Arts, Wallingford, Conn.	18
Phoenix Civic Plaza, Phoenix, Ariz.	19
Ratzig Center, Minneapolis, Minn.	20
Sacramento Community Center, Sacramento, Calif.	21
Saginaw Civic Center, Saginaw, Mich.	21
Tulsa Performing Arts Center, Tulsa, Okla.	22

Museums

Art and Architecture Center, Salt Lake City, Utah	23
Columbus Gallery of Fine Arts, Columbus, Ohio	24
Denver Art Museum, Denver, Colo.	25
Elvehjem Art Center, Madison, Wis.	26
Chaffey Community College Museum-Gallery, Alta Loma, Calif.	27
Florida State Museum, Gainesville, Fla.	27
Fort Worth Art Museum, Fort Worth, Texas	28
Herbert F. Johnson Museum of Art, Ithaca, N.Y.	28
Hunter Museum of Art, Chattanooga, Tenn.	29
Indianapolis Museum of Art, Indianapolis, Ind.	30
Milwaukee Art Center, Milwaukee, Wis.	31
Mummers' Museum, Philadelphia, Pa.	32
Roy Neuberger Museum of Art, Purchase, N.Y.	33
Smith College Museum of Art, Northampton, Mass.	34
Southeastern Center for Contemporary Art, Winston-Salem, N.C.	35
The Stark Museum of Art, Orange, Texas	36
The University of California Art Museum, Berkeley, Calif.	37
University Museum Academic Wing, Philadelphia, Pa.	38
Worcester Art Museum Education Wing, Worcester, Mass.	39
Yale Center for British Art, New Haven, Conn.	40

Performing Arts

Angus Rowmer Theatre, Ashland, Oreg.	41
Art/Music Hall Building, Pueblo, Colo.	42
Artpark Theatre, Lewiston, N.Y.	43

B. Iden Payne Theatre, Austin, Texas	44
Aladdin Theatre for the Performing Arts Las Vegas, Nev	45
Concord Pavilion, Concord, Calif	45
Downey Theatre, Downey, Calif	46
East County Performing Arts Center, El Cajon, Calif	47
Fine Arts Complex, Mission Viejo, Calif	48
Hartford Stage Company, Hartford, Conn	49
Leeward Community College Theatre, Pearl City Hawaii	50
Lily Peter Auditorium, Helena, Ark	51
Louis B. Mayer Theater, Santa Clara, Calif	52
Marymount Manhattan College Theatre, New York, N.Y.	53
Pick-Staiger Concert Hall, Evanston, Ill	54
Salinas Community Center, Salinas, Calif	55
Power Center for the Performing Arts, Ann Arbor, Mich	56
Southwick Music Annex, Burlington, Vt	56
Stewart Theatre, Raleigh, N.C.	57

Introduction

This catalogue of facilities and centers built specifically for the arts and completed during the 1970s is one in a series of reports on arts facilities developed by EFL with support from the Architecture + Environmental Arts Program of the National Endowment for the Arts. Other reports in the series are described at the end of the book.

New Places for the Arts, Book Two and its predecessor *New Places for the Arts* (published two years ago) dramatize the commitment to facilities made by arts organizations and agencies all over the country—a commitment which is having a significant impact on the quality of life and the physical environment of many neighborhoods and urban centers.

Before building new arts facilities, the people who are going to operate and use them should be closely involved in the process of planning the places. Since few arts administrators get an opportunity to help plan more than one new arts center, there aren't many experienced people (apart from design consultants) taking part in the planning process. And, since there aren't many places where one can learn the process, arts administrators often find that they don't get all they really want in a new building.

To improve this unproductive situation, two organizations ran a weekend workshop in Cincinnati at the end of 1977. The workshop, called a "Design-In," was cosponsored by the American Council for the Arts and the American Institute of Architects, and received a grant from the Architecture + Environmental Arts Program of the National Endowment for the Arts. For two days architects and arts administrators jointly explored the process of designing a community arts center. The architects learned at first hand what arts people want and expect from facilities, and the administrators discovered how to get in tune with what architects are striving for.

The emphasis of a Design-In is on the process of interchanging information and ideas since the final result cannot be an absolute solution to any community's "real life" problem. Participants split into groups for designing a facility to meet the requirements of a design program written by the workshop organizers. The program outlined what the proposed art center should contain, such as an auditorium, a gallery, an education center, offices, storage, and toilets. The program also described in general terms where the building is, e.g., in a city on the Eastern seaboard, and what the climate would be. Since the workshop groups were creating many of their own rules as they progressed, some changed the criteria to suit their own preferences and thus the Eastern city building could become a Southwestern suburban site.

A universal sentiment appeared by the end of the day: Fitting the program into a building was the least important thing that happened. Where everyone came into agreement was in the importance of the process of creating an arts center—finding when to bring in the specialists in

fundraising, real estate, architecture, engineering, economics, etc. People who had not lived through a real encounter with developing a building expressed amazement at the complexity and number of steps to be taken before any architectural sketches could be propped up on an easel for the admiration of arts commissioners, donors, municipal officers, and the general public.

Working through the steps also uncovered a question that hadn't occurred to many participants. Do we really need an arts center, particularly if the initial motivation is simply that a donor has made a generous offer? An arts council member from the South said that because of what he learned from the workshop he was going to set up a search committee, with an architect on it, to find out if his old city hall really should be renovated for an arts center as everyone had assumed or whether they should look at alternative old buildings, or even if it would be more economical to build anew and get the exact facilities that the city really needs.

The process of planning requires a great deal of attention, and we hope that workshops such as the Cincinnati Design-In will help arts people to understand some of the basic steps of the process. The previous volume of *New Pieces for the Arts* gave a check list of planning steps, and among other topics it discussed three aspects of planning that deserve to be summarized here. Make sure you can afford to operate what you are planning to build, look for partners to share the cost of building and maintaining your facility, and ensure that your building and its programs will be accessible to the handicapped.

These topics have become more critical in the last two years because of the high costs of energy and labor and because of the federal mandates that require accessibility for all people to public buildings. Information on conserving energy and economically deploying labor can be obtained from many sources. Free materials on accessibility for the arts are available from the National Arts & the Handicapped Information Service which is sponsored by EFL and the National Endowment for the Arts. Write to ARTS, Box 2040, Grand Central Station, New York, N.Y. 10017.

Arts Centers

Abilene Civic Center

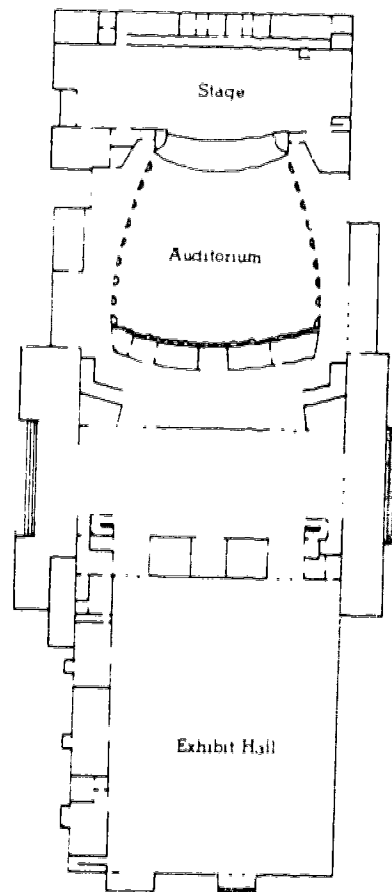
Abilene, Texas

Facilities: Auditorium seating 2,200, exhibit hall of 20,000 sq ft. and meeting rooms. Building equipped for handicapped. Completed 1970.

Cost: \$3,480,000. Public funding.

Credits: *Architect* Boone & Pope, Abilene
Mechanical and Electrical Engineer Tippet & Gee, Abilene
Acoustical and Audiovisual Consultant C.P. Boner, Austin, Texas

Contact: Manager, Abilene Civic Center, P O Box 60, Abilene, Texas 79604



Civic Center of Onondaga County

Syracuse, N.Y.

Facilities: Concert theater with 2,100 seats, studio theater with a maximum of 460 seats, and a hall for banquets, meetings or theater. Completed 1976

Cost: \$25 million. Public funding

Credits: *Architect* McAtee, Malo, Aillock, Lebensold, Nichol, Fayetteville, N.Y.

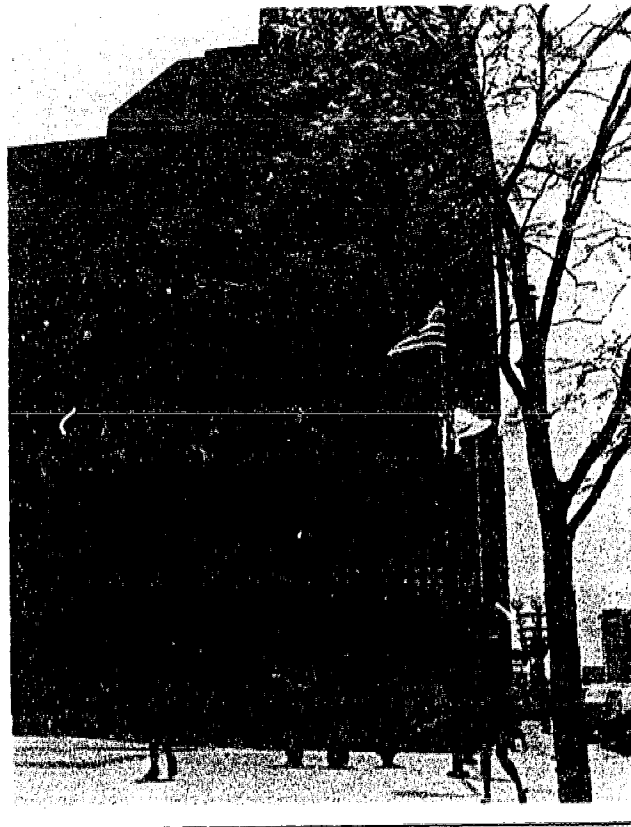
Structural Engineers: Snyder Burns, Syracuse, Nicolet Dressel & Mercille, Montreal, Que., Canada

Mechanical and Electrical Engineers: Robson Woese, Syracuse, Langis Croussey Bertrand, Montreal

Acoustical Consultant: Russell Johnson Associates, New York, N.Y.

Lighting: Robson Woese

Contact: Manager, Civic Center of Onondaga County, 411 Montgomery Street, Syracuse, N.Y. 13202



Clark Arts Center

Rockford, Ill

Facilities: Interior court surrounded by six arts and crafts studios, 500-seat theater, and three level unit housing art gallery and practice rooms. Completed 1970.

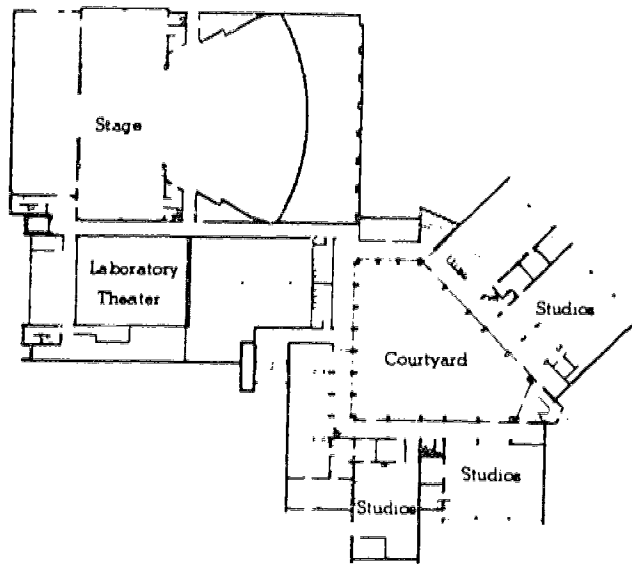
Cost: \$2,553,000 Private funding

Credits: *Architect* The Perkins & Will Partnership,
Chicago

Acoustical Consultant: Bolt Beranek & Newman, Inc.,
Chicago

Theater Consultant and Interior Design: G. Edward Hearn,
Los Angeles

Contact: Director, Clark Arts Center, Rockford College,
Rockford, Ill. 61101



Fine Arts Center

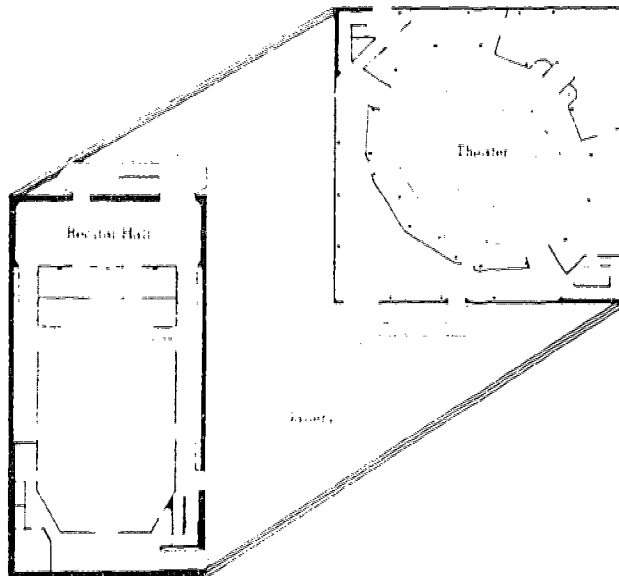
Northfield, Minn.

Facilities: Recital hall with 420 seats, theater in the round with 464 seats, and a 2,300-sq-ft art gallery. Completed 1972.

Cost: \$2,080,000. Private funding

Credits: *Architect:* Harry Weese & Associates, Chicago
Structural Engineer: The Engineers Collaborative, Chicago
Mechanical and Electrical Engineer: Cosentini Associates, Inc., New York, N.Y.
Acoustical Consultants: Lothar Cremer, Berlin, Germany; Michael Kodaras, New York, N.Y.
Theater Consultant: Lustig & Associates, St. Louis, Mo.
Landscaping: The Office of Dan Kiley, Charlotte, Vt.

Contact: Director, Fine Arts Center, Carleton College, Northfield, Minn. 55057



Fine Arts Center

Allentown, Pa.

Facilities: Galleries, studios, and offices line both sides of a 220-ft-long "street" with a glass roof. Recital hall and 950-seat auditorium contained in 3-story building. Completed 1977.

Cost: \$6 million. Public and private funding.

Credits: *Architects:* Johnson/Burgee Architects, New York, N.Y.; Wallace & Watson Associates, Bethlehem, Pa.

Structural Engineer: Wallace & Watson Associates

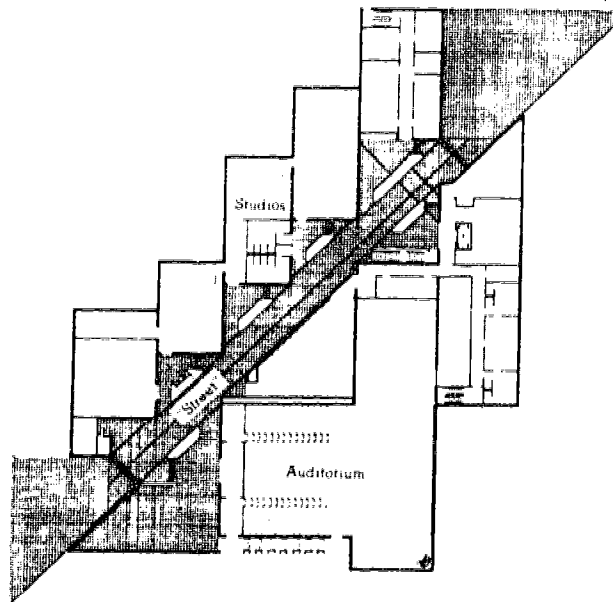
Mechanical and Electrical Engineer: T. A. Coughlin & Company, Easton, Pa.

Acoustical Consultant: Robert Hansen & Associates, New York, N.Y.

Lighting: Jack Kilpatrick, New York, N.Y.

Theater Consultant: Robert Brannigan, New York, N.Y.

Contact: Director of the Center for the Arts, Muhlenberg College, Allentown, Pa. 18104



Hampshire Arts Village

Amherst, Mass.

Facilities: Five low-cost prefabricated buildings connected by a covered plaza. The plaza canopy contains solar collectors for heating and cooling the buildings. Photography studios, \$466,000, completed 1978; music and drama studios, \$659,000, completed 1977; painting studios, \$470,000, completed 1976; a graphics arts building estimated at \$400,000 is under design and so is a \$730,000 drama building. A \$300,000 grant from the federal Energy Research and Development Administration helps fund the solar energy system. Public and private funding.

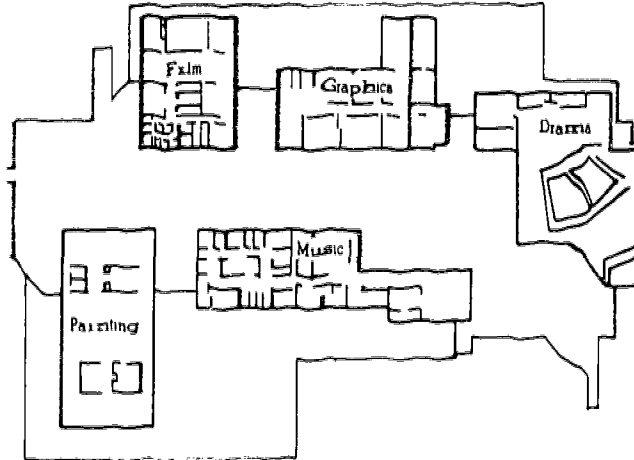
Credits: Architect: Juster-Pope Associates, Shelburne Falls, Mass.

Mechanical and Electrical Engineer: Cosentini Associates, New York, N.Y.

Acoustical Consultant: Cambridge Acoustical Associates, Cambridge

Solar Consultant: Joseph Frisora, Corning, N.Y.

Contact: Director of Public Relations, Hampshire College, Amherst, Mass. 01002



Historical Center

Columbus, Ohio

Facilities: 270,000-sq-ft building contains youth museum, three small theaters, and the state archives and historical library. Completed 1970.

Cost: \$7 million. Public funding.

Credits: *Architect:* Ireland & Associates, Columbus
Structural Engineer: Korda & Associates, Columbus
Mechanical and Electrical Engineer: Kramer, Comer & Passe, Columbus
Acoustical Consultant: Perry Borchers, Columbus
Lighting: H.A. Williams & Associates, Columbus
Museum Consultant: Herb Rosenthal & Associates, Los Angeles, Calif.

Contact: Director, Ohio Historical Center, 1982 Velma Avenue, 17th and 71st, Columbus, Ohio 43211

Humanities and Fine Arts Center

Morris, Minn.

Facilities: Teaching complex of speech and theater arts, music and fine arts facilities. Completed 1975.

Cost: \$3,722,000. Public funding.

Credits: *Architect:* Ralph Rapson & Associates, Inc., Minneapolis
Structural Engineer: Bakke & Kopp, Inc., Minneapolis
Mechanical and Electrical Engineer: Gausman & Moore, Inc., St. Paul, Minn.
Acoustical Consultant: Robert F. Lambert, St. Paul

Contact: Director, Humanities & Fine Arts Center, University of Minnesota, Morris, Minn. 56267

Iowa State Center

Ames, Iowa

Facilities: Auditorium with 2,640 seats, completed 1969. Coliseum with maximum of 15,000 seats and several meeting rooms, completed 1971. Theater with 424 seats, completed 1974. Conference building with 400-seat auditorium, completed 1975.

Cost: \$19,190,000. Gifts and grants.

Credits: *Architect:* Crites & McConnell, Cedar Rapids, Iowa

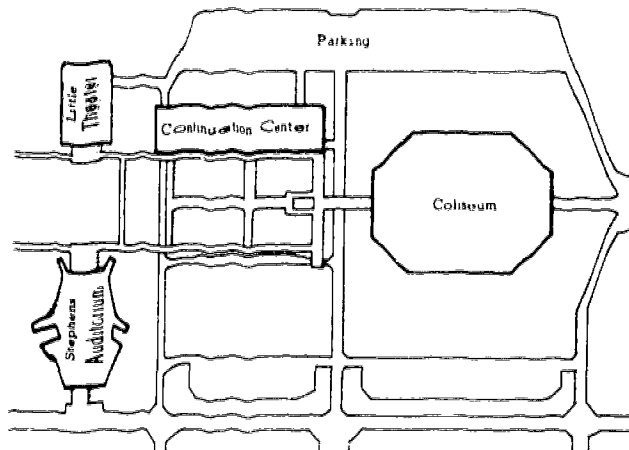
Structural, Mechanical and Electrical Engineer:

Brooks, Borg & Skiles, Des Moines, Iowa

Acoustical Consultant: Paul S. Veneklasen & Associates, Los Angeles

Landscaping: Jon Crose

Contact: Director, Iowa State Center, Iowa State University, Ames, Iowa 50010



List Art Center

Clinton, N. Y.

Facilities: 32,000-sq-ft, two-story structure houses 11 studios for the visual arts and an AV arena; 9 music rooms; 100-seat rehearsal hall; dance studio, and offices. Completed 1970.

Cost: \$1.2 million. Gift.

Credits: *Architect* Benjamin Thompson & Associates, Inc., Cambridge, Mass.

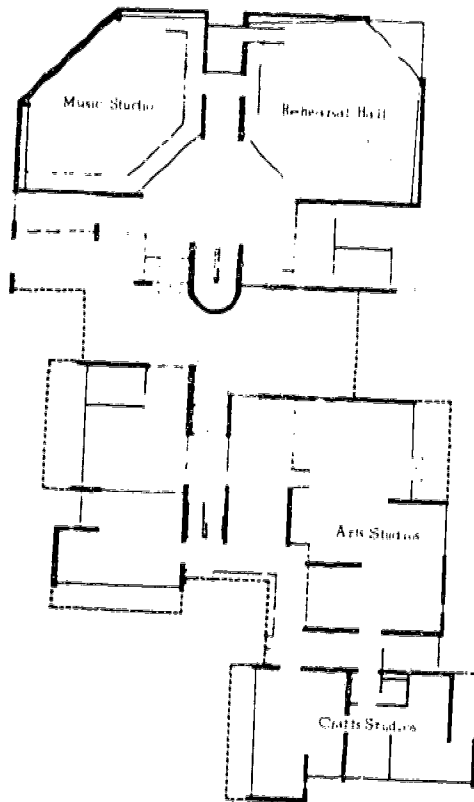
Structural Engineer: LeMessurier Associates, Inc., Cambridge

Mechanical and Electrical Engineer: Francis Associates, Marion, Mass.

Acoustical Consultant: Bolt Beranek & Newman, Inc., Cambridge

Landscaping: Carol R. Johnson, Cambridge

Contact: Director of Public Relations, Kirkland College, Clinton, N. Y. 13323



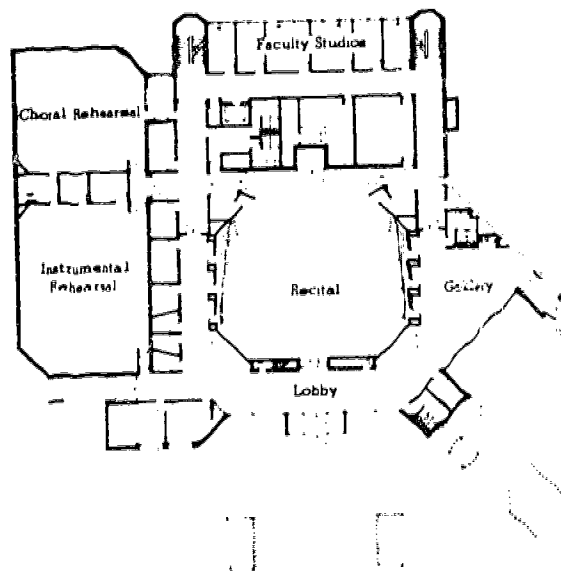
Mabee Fine Arts Center
Arkadelphia, Arkansas

Facilities: College facility used by the community. Recital hall with 270 seats, two rehearsal halls, studios, practice rooms. Painting and sculpture studios and workshops. Total area 35,000 sq ft. Completed 1975.

Cost: \$1.2 million. Philanthropy and fundraising.

Credits: *Architect* Blass Riddick Chilcote,
Little Rock, Ark
Acoustical Consultant Variable Acoustics, Inc.,
Ft. Worth, Texas

Contact: The Dean, School of Music, Ouachita Baptist
University, Arkadelphia, Ark. 71923



Minneapolis Society of Fine Arts

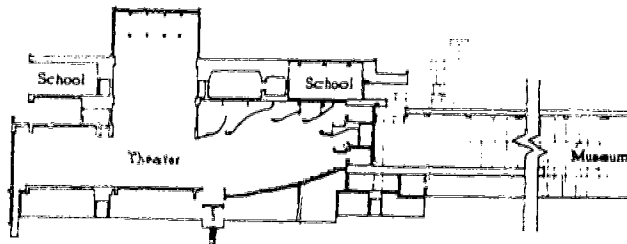
Minneapolis, Minn.

Facilities: College of Art and Design, 600 students, completed 1973. Children's Theatre with seats for 736 and Theatre School for 120 students, completed 1974. Museum addition of 110,000 sq ft includes galleries, classrooms, offices, and lecture halls, completed 1974.

Cost: \$26 million. Public and private funding.

Credits: *Architect:* Kenzo Tange & URTEC, Tokyo, Japan
Associate Architect: Parker Klein Associates, Minneapolis
Structural Engineer: Meyer-Borgman & Johnson, Inc., Minneapolis
Mechanical and Electrical Engineer: Michaud Cooley Hallberg Erickson & Associates, Minneapolis
Acoustical Consultant: Bolt Beranek & Newman, Inc., Downers Grove, Ill.
Lighting and Theater Consultant: S. Leonard Auerbach & Associates, San Francisco
Interior Design: Vignelli Associates, Ltd., New York, N.Y.

Contact: Director, The Minneapolis Society of Fine Arts, 100 East 22nd Street, Minneapolis, Minn. 55404



Mother Antonia McHugh Fine Arts Center

St. Paul, Minn.

Facilities: 1,800-seat auditorium with movable ceiling that can close off balcony, main floor seats 700. Experimental theater seats 200. Recital hall seats 180. Studios, rehearsal rooms, and shops. Completed 1970.

Cost: \$3,450,000. Gifts and loans.

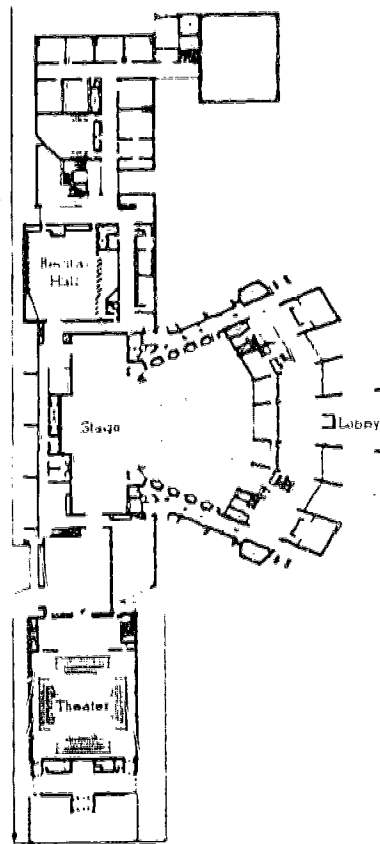
Credits: *Architect* Hammel, Green & Abrahamson, St. Paul

Structural Engineer Johnston & Sahlman, Minneapolis, Minn.

Acoustical Consultant: George Izenour & Associates, New Haven, Conn.

Interior Design: Westburg & Klaus Associates, Minneapolis

Contact: Manager, O'Shaughnessy Auditorium, The College of St. Catherine, St. Paul, Minn. 55105



Performing Arts Center

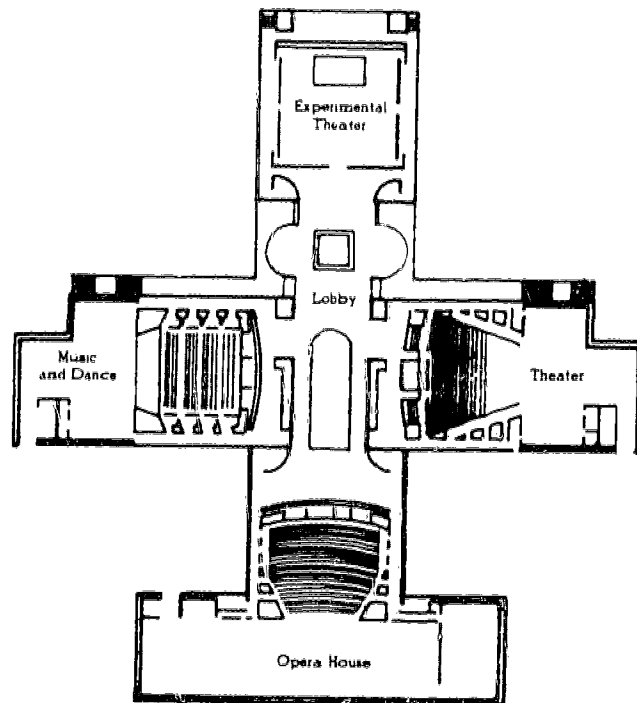
Purchase, N.Y.

Facilities: Opera house, 1,400 seats, completed 1977;
Music and dance theater, 600 seats, completed 1976;
Wrap-around theater, 750 seats, completed 1977;
Experimental theater, 500 seats, completed 1974.

Cost: \$25 million. Public funding.

Credits: *Architect:* Edward Larrabee Barnes, New York, N.Y.
Structural Engineer: Weiskopf & Pickworth, New York, N.Y.
Mechanical and Electrical Engineer: Segner & Dalton, Valhalla, N.Y.
Acoustical Consultant: Bolt Beranek & Newman, Inc., Cambridge, Mass.
Lighting: Jack Fitzpatrick, Red Bank, N.J.
Theater Consultant: Ming Cho Lee, New York, N.Y.
Interior Design: Mary Barnes, New York, N.Y.
Landscaping: Peter Rolland, Rye, N.Y.

Contact: The Dean, Division of Theater Arts,
SUNY College at Purchase, Purchase, N.Y. 10577



Paul Mellon Center for the Arts

Wallingford, Conn.

Facilities: Theater with seats for 840 or 400 with balcony closed off. Experimental theater, art studios and seminar rooms, recital room and student lounge. Total area 70,000 sq ft. Completed 1972.

Cost: \$4.7 million. Gift.

Credits: *Architect:* I.M. Pei & Partners, New York, N.Y.

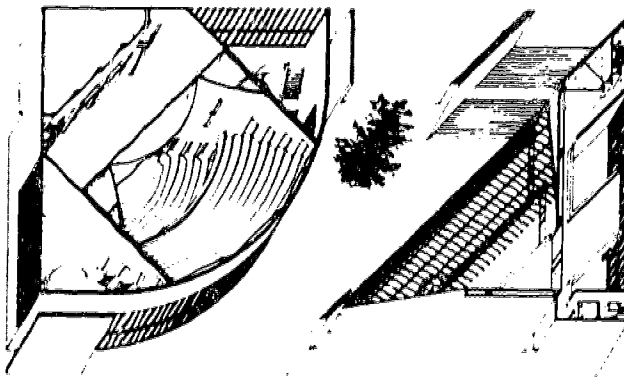
Structural Engineer: Olaf Soot, New York, N.Y.

Mechanical and Electrical Engineer: Campbell & Friedland, Williston Park, N.Y.

Theater Consultant: George Izenour & Associates, New Haven, Conn.

Landscaping: Joseph R. Gangemi, New York, N.Y.

Contact: Director, Paul Mellon Center for the Arts,
Choate School and Rosemary Hall, Wallingford, Conn.
06492



Phoenix Civic Plaza

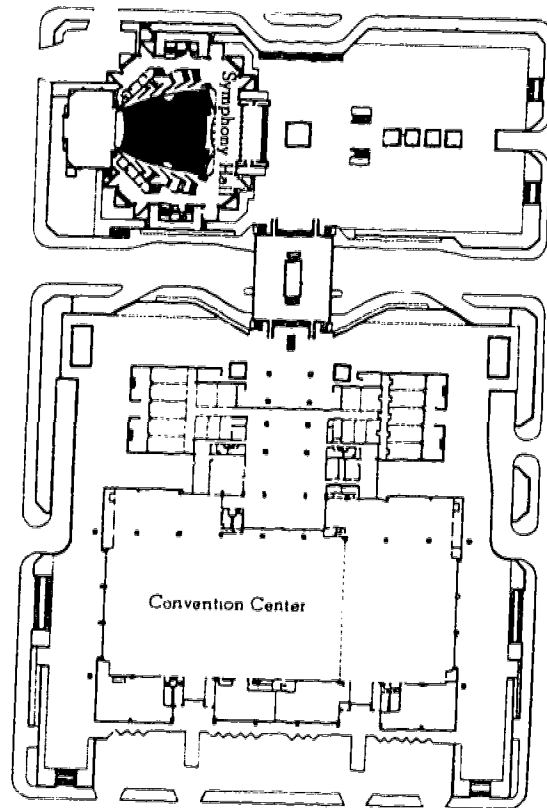
Phoenix, Ariz.

Facilities: Convention center with 250,000 sq ft, meeting rooms, and symphony hall with 2,557 seats. Completed 1972.

Cost: \$21 million. Public funding

Credits: *Architect:* Charles Luckman Associates, Phoenix
Associate Architect: John Schotanus, Jr., Phoenix
Structural Engineer: Magadini Associates, Phoenix
Mechanical and Electrical Engineer: Lowry & Sorensen Engineering Co., Phoenix
Acoustical Consultant: Vern O. Knudsen, (deceased), Los Angeles
Audiovisual Consultant: Ludwig W. Sepmeyer
Theater Consultant: George Thomas
Landscaping: F.J. MacDonald, Phoenix

Contact: Director, Phoenix Civic Plaza, 225 East Adams Street, Phoenix, Ariz. 85004



Rarig Center

Minneapolis, Minn.

Facilities: Six-story building containing Whiting Theatre, proscenium, 500 seats; Stohl Theatre, thrust stage, 500 seats, Arena Theatre, 210 seats, Experimental Theatre, maximum 150 seats Studios Completed 1973

Cost: \$6.8 million. Public and private funding

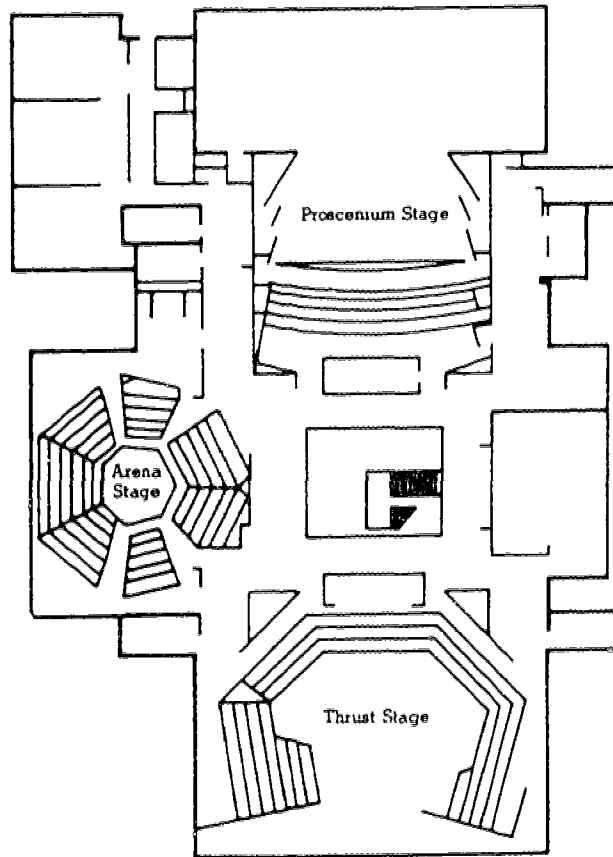
Credits: *Architect:* Ralph Rapson & Associates, Minneapolis

Structural Engineer: Meyer, Borgman & Johnson, Minneapolis

Mechanical and Electrical Engineer: Gausman & Moore, Inc., St. Paul, Minn.

Acoustical Consultant: Robert F Lambert, St. Paul

Contact: Managing Director, University Theatre, University of Minnesota, Minneapolis, Minn. 55455



Sacramento Community Center

Sacramento, Calif.

Facilities: Theater with 2,436 seats; exhibition hall of 48,000 sq ft; activities building containing 10 meeting rooms. Completed 1974

Cost: \$12.5 million. Public funding.

Credits: *Architect:* The Sacramento Architects Collaborative

Structural Engineer: Buehler, Cole, Yee & Schubert, Sacramento

Mechanical Engineer: Sanford Alessi-Turley, Sacramento

Electrical Engineer: Charles A. Martin & Associates, Sacramento

Acoustical and Theater Consultant: Bolt Beranek & Newman, Inc., San Francisco

Design Consultant: Pietro Belluschi, Portland, Ore.

Landscaping: Baronian & Danielson, San Francisco

Contact: General Manager, Sacramento Community Center, 1100 Fourteenth Street, Sacramento, Calif. 95814

Saginaw Civic Center

Saginaw, Mich.

Facilities: Sports arena with 4,700 permanent seats and a maximum of 7,400 seats; 10,000-sq-ft assembly room and two smaller meeting rooms; theater with 2,300 seats. Completed 1972.

Cost: \$11.5 million. Public funding.

Credits: *Architect:* Welton Becket & Associates, Los Angeles

Associate Architect and Structural Engineer: Prine Toshach Associates, Saginaw

Mechanical and Electrical Engineer: Del Case, Midland, Mich.

Acoustical Consultant: Robert Lindahl, Detroit

Lighting: Hub Electric, Chicago

Audiovisual Consultant: Rosenbury, Detroit

Contact: Manager, Saginaw Civic Center, 303 Johnson Street, Saginaw, Mich. 48607

Tulsa Performing Arts Center

Tulsa, Okla.

Facilities: Music Hall with 2,400 seats. Playhouse with 450 seats, and two studio theaters (3600 sq ft and 2600 sq ft). Several studios and two art galleries. Completed 1977

Cost: \$18.2 million. Public and private funding.

Credits: *Architect:* Minoru Yamasaki & Associates, Troy, Mich.

Associate Architect: Wozencraft-Mowery-Sanders, Tulsa

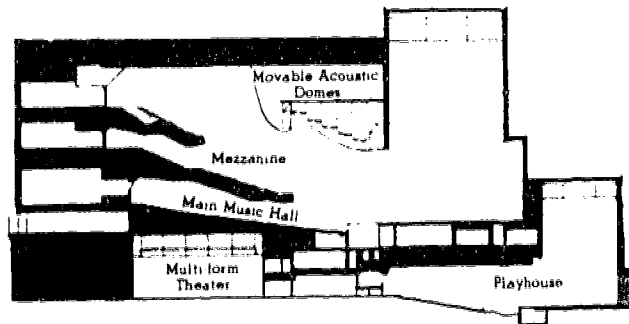
Structural Engineer: Skilling, Helle, Christiansen & Robertson, Seattle, Wash.

Electrical Engineer: Joseph R. Loring & Associates, New York, N.Y.

Acoustical, Theater, and Audiovisual Consultant: Bolt Beranek & Newman, Inc., Downers Grove, Ill.

Lighting: Claude Engle, III, Washington, D.C.

Contact: Managing Director, Tulsa Performing Arts Center, 2nd & Cincinnati, Tulsa, Okla, 74103



Museums

Art And Architecture Center

Salt Lake City, Utah

Facilities: School of Architecture, School of Art, and the Utah Museum of Fine Arts. Total area 134,000 sq ft. Museum has 13,000 sq ft of exhibition space and a 420-seat auditorium. Completed 1970.

Cost: \$3.6 million. Public funding.

Credits: *Architect:* Edwards & Daniels & Associates, Salt Lake City

Structural Engineer: Edmund Allen, Salt Lake City

Mechanical Engineer: Smith & Van Boerum, Salt Lake City

Electrical Engineer: Bates Engineering Company, Salt Lake City

Acoustical Consultant: Leland Irvine, Salt Lake City

Contact: Director, Utah Museum of Fine Arts, University of Utah, Salt Lake City, Utah 84112



Columbus Gallery of Fine Arts

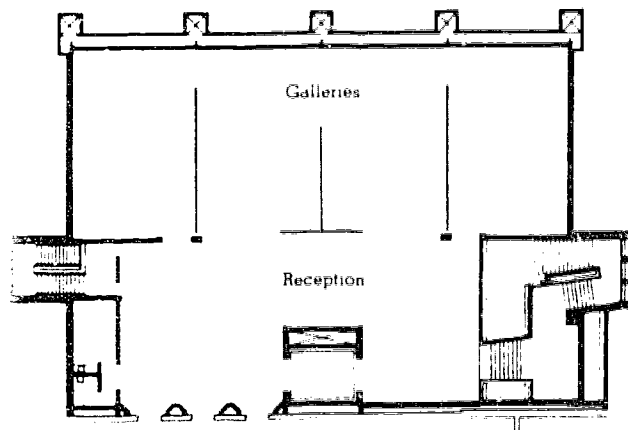
Columbus, Ohio

Facilities: 37,000-sq-ft addition has four large galleries, offices, and storage space. Completed 1974

Cost: \$2.3 million. Public and private funding.

Credits: *Architect:* Van Buren & Firestone, Architects, Inc., Columbus
Structural Engineer: Fling & Eeman, Columbus
Mechanical and Electrical Engineer: Kramer, Comer & Passe, Columbus
Landscaping: J.L. Tanner, Dublin, Ohio

Contact: Director, Columbus Gallery of Fine Arts, Columbus College of Art and Design, 480 East Broad Street, Columbus, Ohio 43215



Denver Art Museum

Denver, Colo.

Facilities: Eleven 10,000-sq-ft galleries in a 7-story building. Includes a 300-seat auditorium, one double-height gallery, underground parking, and restaurant on top floor. Completed 1971.

Cost: \$6.5 million. Public and private funding.

Credits: *Architects:* James Sudler Associates, Denver; Gio Ponti, Milan, Italy

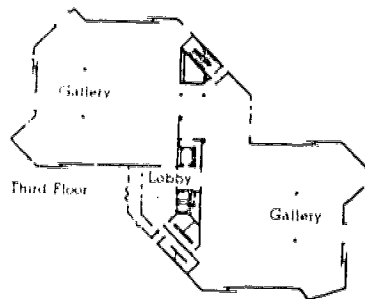
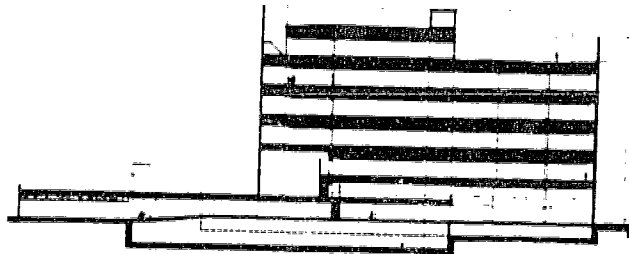
Structural Engineer: Anderson, Koerwitz & Hawes, Inc., Denver

Mechanical Engineer: Francis Stark (deceased) & Lynn Wray, Denver

Electrical Engineer: Swanson-Rink & Associates, Denver

Landscaping: Jane Silverstein Reis, Denver

Contact: Director, Denver Art Museum, 100 West 14th Avenue Parkway, Denver, Colo. 80204



Elvehjem Art Center

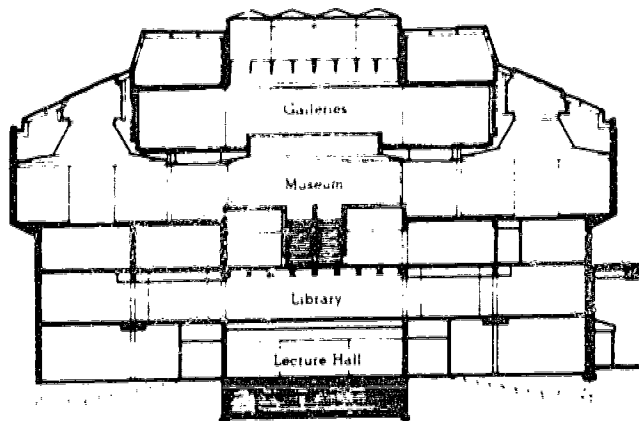
Madison, Wis

Facilities: Five-story, 384,000-sq-ft structure houses the university's art history and art reference library, galleries, and a lecture hall. Completed 1970.

Cost: \$10,915,000. Foundations, corporations, and private donations

Credits: *Architect:* Harry Weese & Associates, Chicago
Structural Engineer: The Engineers Collaborative, Chicago
Mechanical and Electrical Engineer: Samuel R. Lewis, Chicago
Acoustical Consultant: Bolt Beranek & Newman, Inc., Cambridge, Mass
Lighting: Edison Price, Inc., New York, N.Y.

Contact: Director, Elvehjem Art Center, University of Wisconsin, 800 University Avenue, Madison, Wis. 54302



Chaffey Community College Museum-Gallery

Alta Loma, Calif

Facilities: 4,400-sq-ft building includes exhibit hall for indoor showings, and small meeting room. Patio for large sculpture and outdoor commercial displays. Completed 1973.

Cost: \$148,000. Public funding

Credits: *Architect* Criley and McDowell Associates, Claremont, Calif

Structural Engineer Robert J. Moon, Inc., Ontario, Calif

Mechanical and Electrical Engineer Kocher & Nishimura Inc., Glendale, Calif

Contact: Director, Chaffey Community College Museum-Gallery, 5885 Haven Avenue, Alta Loma, Calif. 91701

Florida State Museum

Gainesville, Fla

Facilities: 34,000-sq-ft exhibition space, 23,000-sq-ft social science research, 45,000-sq-ft natural science research. Building is designed to conserve energy: storage rooms are below grade to maintain constant temperature, canopies shade windows. Completed 1976.

Cost: \$2,143,000. Public and private funding.

Credits: *Architect* William Morgan, Architects, Jacksonville, Fla

Structural Engineer Keister & Kelly, Jacksonville

Mechanical and Electrical Engineer Evans & Hammond, Inc., Jacksonville

Contact: Director, Florida State Museum, University of Florida, Gainesville, Fla 32601

Fort Worth Art Museum

Fort Worth, Texas

Facilities: Addition has galleries, workshops and storage. Completed 1974

Cost: \$1.3 million. Funding from three foundations

Credits: *Architect* Ford Powell & Carson, San Antonio, Tex.
Structural Engineer Feigenstan & Pinnell, San Antonio
Mechanical and Electrical Engineer Carter & Burgess, Ft. Worth
Interior Design Boswell-Foy Associates, Ft. Worth

Contact: Director, Fort Worth Art Museum, 1309 Montgomery Street, Fort Worth, Tex. 76107

Herbert F. Johnson Museum of Art

Ithaca, N.Y.

Facilities: 60,000-sq-ft, ten-story building has 20 galleries, 130-seat lecture room, and 50-seat conference room. Completed 1973

Cost: \$3.7 million. Gift

Credits: *Architect* I.M. Pei & Partners, New York, N.Y.
Structural Engineer Nicolet Dressel Mercille, Ltd., Montreal, Quebec, Canada
Mechanical and Electrical Engineer Segner & Dalton, Valhalla, N.Y.
Lighting Edison Price, Inc. and Carroll Cline, New York, N.Y.
Security David Vance, New York, N.Y.
Landscaping Dan Kiley & Partners, Charlotte, Vt.

Contact: Director, Herbert F. Johnson Museum of Art, Cornell University, Ithaca, N.Y. 14850

Hunter Museum of Art

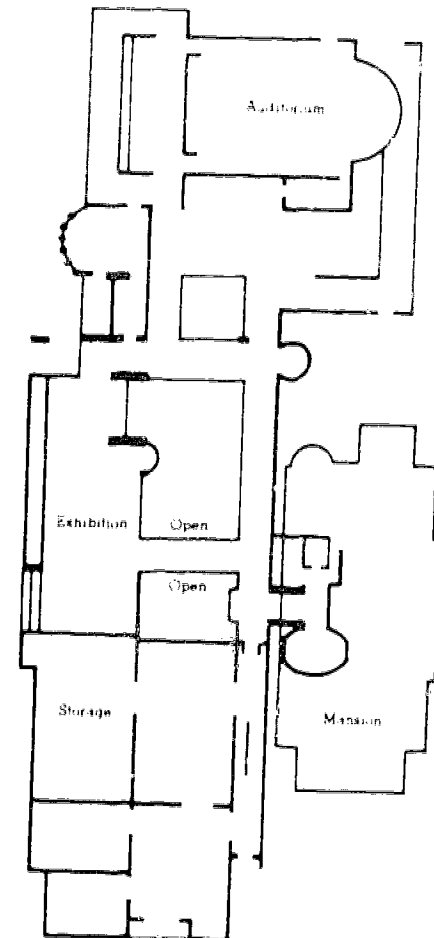
Chattanooga, Tenn.

Facilities: 50,000-sq-ft addition to original mansion.
Contains 2-story high exhibition space, 180-seat
auditorium, and classrooms. Completed 1976.

Cost: \$2.3 million. Private funding.

Credits: *Architect* Derthick & Henley, Chattanooga
Structural Engineer Bennett & Pless, Inc., Chattanooga
Mechanical and Electrical Engineer George Campbell &
Associates, Inc., Chattanooga
Landscaping Edith Henderson, Atlanta, Ga

Contact: Director, Hunter Museum of Art, 10 Bluff View,
Chattanooga, Tenn. 37403



Indianapolis Museum of Art

Indianapolis, Ind

Facilities: Two major and two small pavilions in large park complex containing concert terrace, sculpture court, fountain, greenhouses, theater and formal gardens.
Completed 1971

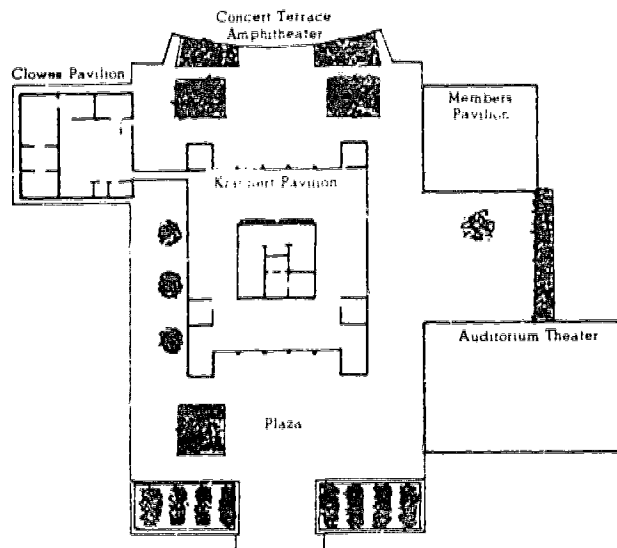
Cost: \$12,114,218 Private funding

Credits: *Architects:* Wright, Porteous & Lowe, Inc., Indianapolis, Richardson, Severns, Scheeler & Associates Inc., Champaign, Ill.

Structural Engineer: Lynch & Cheek, Inc., Indianapolis
Mechanical and Electrical Engineer: Mussett, Nicholas & Associates Inc., Indianapolis

Landscaping: Sasaki, Dawson, DeMay Associates Inc., Waterson, Mass.

Contact: Director, Indianapolis Museum of Art, 1200 West 38th Street, Indianapolis, Ind. 46208



Milwaukee Art Center

Milwaukee, Wis.

Facilities: 150,000-sq-ft addition with 55% of the area for exhibition space on three floors. Completed 1975.

Cost: \$6.75 million. Public and private funding.

Credits: *Architect:* Kahler Slater & Fitzhugh Scott Inc., Milwaukee.

Structural Engineer: Ammann & Whitney, New York, N.Y.

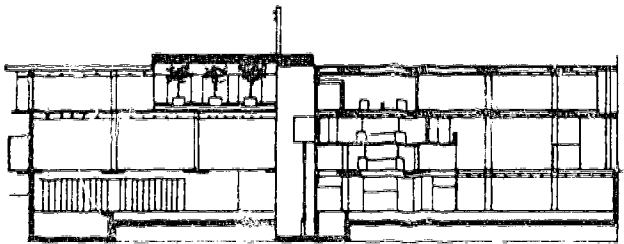
Mechanical Engineer: Bert Fredericksen, Inc., Milwaukee.

Electrical Engineer: Leedy & Petzold, Inc., Milwaukee.

Acoustical Consultant: Lyle Yerges, Downers Grove, Ill.

Lighting: Claude Engle, Washington, D.C.

Contact: Director, Milwaukee Art Center, 750 North Lincoln Memorial Drive, Milwaukee, Wis. 53202.



Mummers' Museum

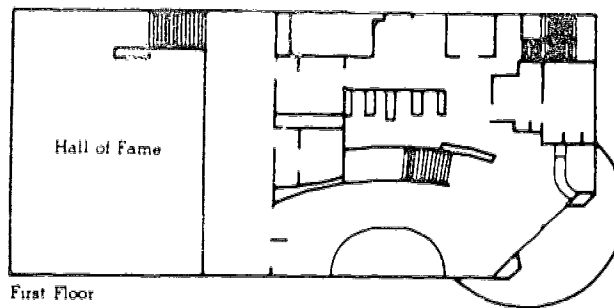
Philadelphia, Pa.

Facilities: Two-story, 19,000-sq-ft exhibition building.
Completed 1977

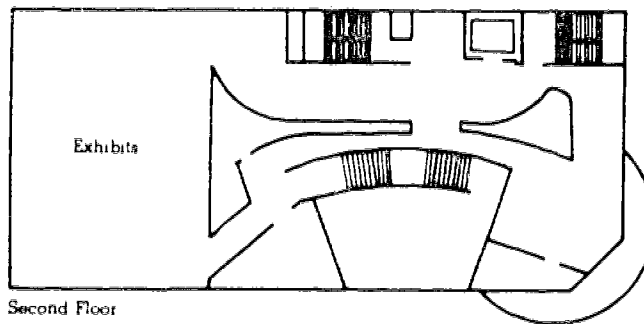
Cost: \$1,104,000 Public and private funds

Credits: *Architect* Ueland & Junker, Philadelphia
Structural Engineer Bernard N. Webb, Swarthmore, Pa.
Mechanical and Electrical Engineer M. Michael Garber
& Associates, Philadelphia
Audiovisual Consultant Nave, Fortson, Nicholson Design
Associates, Cherry Hill, N.J.
Museum Consultant George Bowditch, Rochester, N.Y.

Contact: Director, Mummers' Museum, 2nd Street &
Washington Avenue, Philadelphia, Pa. 19147



First Floor



Second Floor

Roy Neuberger Museum of Art

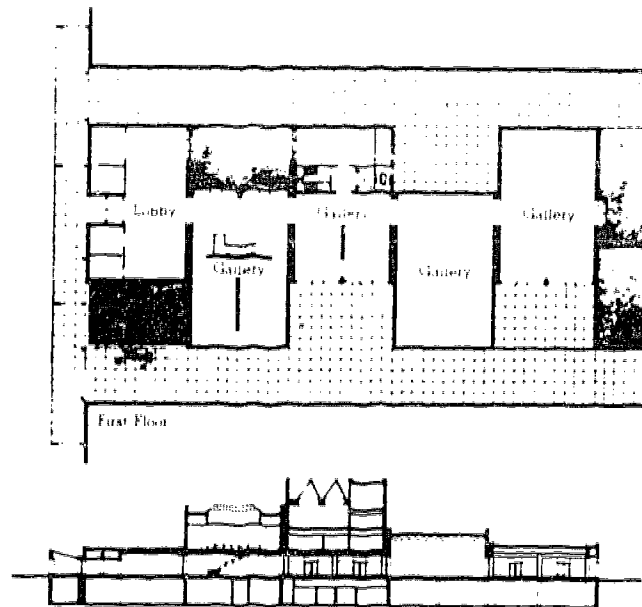
Purchase, N.Y.

Facilities: Teaching museum on state campus
Workshops, studios, and galleries. Completed 1974

Cost: \$3,200,000 Public funding

Credits: *Architect* Johnson Burgee, Architects,
New York, N.Y.
Structural Engineer Weiskopf & Pickworth,
New York, N.Y.
Mechanical and Electrical Engineer Segner & Dalton,
Valhalla, N.Y.
Acoustical Consultant Ranger Fartell, Irvington-on-
Hudson, N.Y.
Lighting Kilpatrick & Gellert, Red Bank, N.J.
Landscaping Peter Rolland, Rye, N.Y.

Contact: Director, The Neuberger Museum, SUNY,
College at Purchase, Purchase, N.Y. 10577



Smith College Museum of Art

Northampton, Mass.

Facilities: Three-story structure contains work and storage areas, library, 6 galleries, conservation laboratory, common room, and offices. Completed 1973

Cost: \$7.6 million. Gifts.

Credits: *Architect* John Andrews, Architects, Toronto, Ontario, Canada

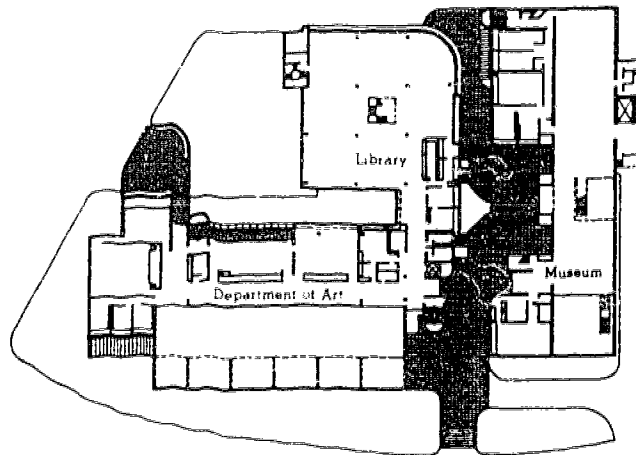
Structural Engineer William LeMessurier Associates, Ltd., Boston

Mechanical Engineer Smith & Anderson, Toronto

Electrical Engineer Jack Chisvin & Associates, Toronto

Landscaping Richard Strong Associates, Toronto

Contact: Director, Smith College Museum of Art,
Northampton, Mass. 01060



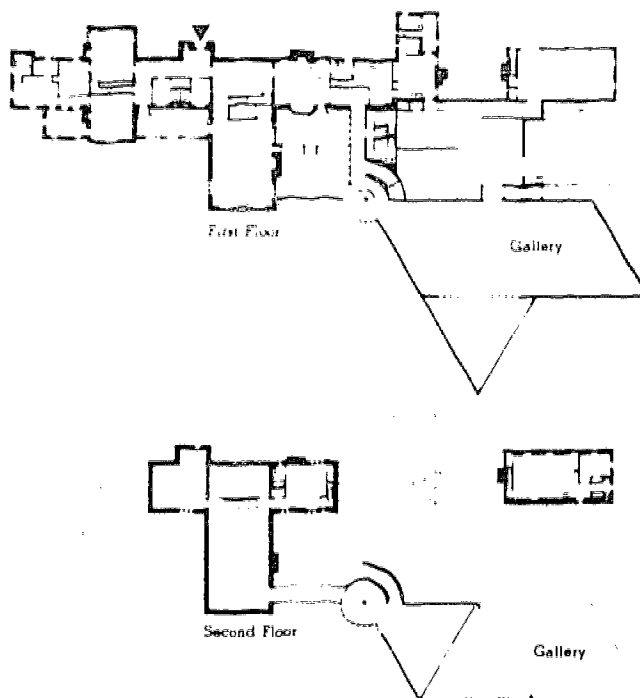
**Southeastern Center for
Contemporary Art**
Winston-Salem, N C

Facilities: Galleries in converted 10,000-sq-ft mansion
and a 10,000-sq-ft addition Completed 1977

Cost: \$600,000 Private contributions and grants

Credits: *Architect* Newman Calloway Johnson VanEtten
Winfree, Winston-Salem
Mechanical and Electrical Engineer Consultant
Engineering Service, Inc., Winston-Salem
Landscaping Brooks Wigginton, Wheeling, W. Va

Contact: Director, The Southeastern Center for
Contemporary Art, 750 Marguerite Drive, Winston-Salem,
N C 27106



The Stark Museum of Art

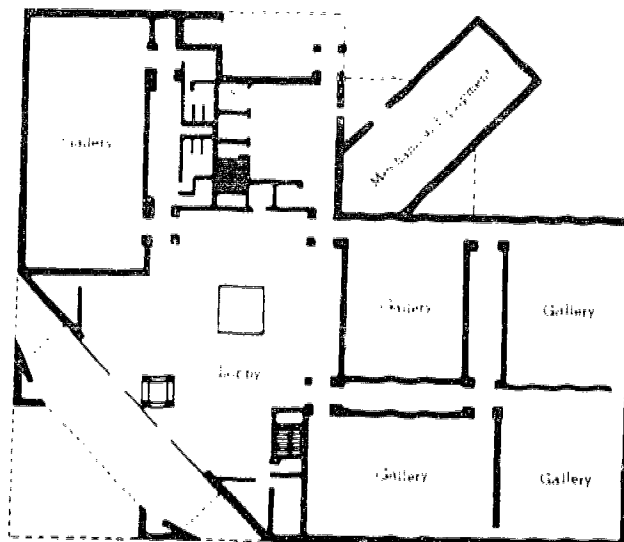
Orange, Texas

Facilities: 43,000-sq-ft, two-story building, five galleries on first floor, administration and support services on second. Completed 1976.

Cost: \$5,420,000 Foundation funding

Credits: *Architect* Page Southerland Page, Austin
Lighting Phocion S. Park, Austin
Interior Design Duke Gowin, Austin

Contact: Director, The Stark Museum of Art, Green Avenue at 7th Street, Orange, Texas 77630



The University of California Art Museum

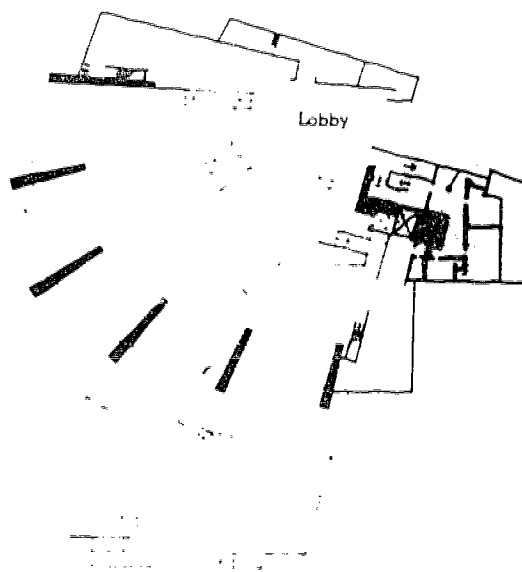
Berkeley, Calif.

Facilities: 95,000-sq-ft museum with five large galleries, 200-seat theater, and a sculpture garden
Completed 1970.

Cost: \$4,850,000 Funding by gifts, endowment funds, and student incidental fees.

Credits: *Architect* Mario Ciampi & Associates, San Francisco
Associate Architects Richard Jorasch & Ronald Wagner, San Francisco
Structural Engineer Isadore Thompson, San Francisco
Mechanical Engineer K.T. Belotelkin & Associates, San Francisco
Electrical Engineer Harold Wright, San Francisco
Lighting Richard C. Peters, Berkeley
Audiovisual Consultant Gary Essert, Los Angeles
Security Joseph M. Chapman, New York, N.Y.
Landscaping Frederick F. Warnke, Berkeley

Contact: Director, The University of California Art Museum, Berkeley, Calif. 94720



University Museum Academic Wing

Philadelphia, Pa.

Facilities: Five-story, 123,000-sq-ft addition includes a three-story library, lecture hall, restaurant, and exhibition galleries. Completed 1971.

Cost: \$5,017,000. Public funding.

Credits: *Architect:* Mitchell/Giurgola Associates, Philadelphia

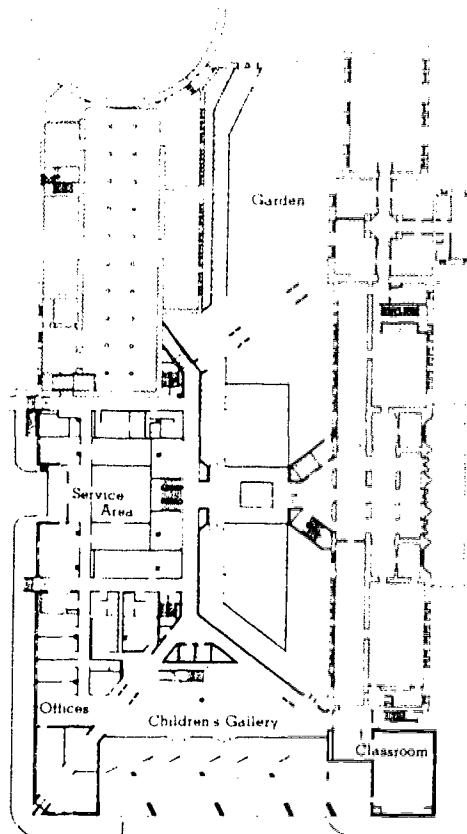
Structural Engineer: Keast & Hood Company, Philadelphia

Mechanical and Electrical Engineer: Vinokur-Pace Engineering Services, Inc., Jenkintown, Pa.

Acoustical Consultant: Robert Hanson, New York, N.Y.

Landscaping: John S. Kistler

Contact: Director, University Museum Academic Wing, University of Pennsylvania, 33rd & Spruce Street, Philadelphia, Pa. 19104



Worcester Art Museum Education Wing

Worcester, Mass.

Facilities: 43,000-sq-ft, two-story, L-shaped wing of studios and offices. Completed 1971.

Cost: \$1,655,000. Public and private funding.

Credits: *Architect:* The Architects Collaborative, Cambridge, Mass.

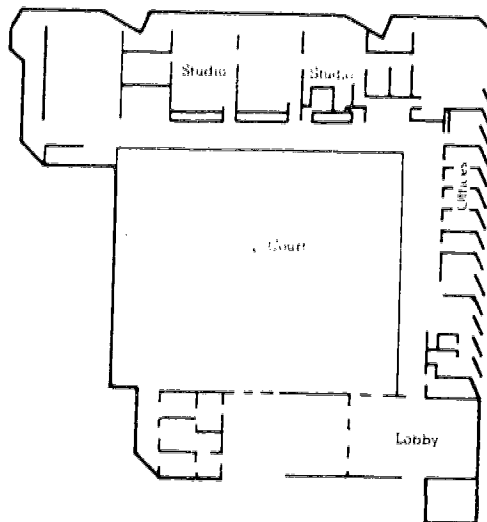
Structural Engineer: Souza & True, Cambridge

Mechanical Engineer: Fitzmeyer & Tocci, Melrose, Mass.

Electrical Engineer: Verne Norman Associates, Melton, Mass.

Lighting: William Lam, Cambridge

Contact: Director, Worcester Art Museum, 55 Salisbury Street, Worcester, Mass. 01608



Yale Center for British Art

New Haven, Conn.

Facilities: Four-story museum built around two skylit courts. Top gallery floor is skylit. Contains 200-seat lecture hall. Commercial stores at street level. Completed 1977.

Cost: \$9.6 million. Gift.

Credits: *Architects:* Louis I. Kahn—Completed after his death by Pellecchia & Meyers, Architects, Philadelphia
Structural Engineer: Pfisterer Tor & Associates, New York, N.Y.

Mechanical and Electrical Engineer: van Zelm, Heywood and Shadford, West Hartford, Conn.

Acoustical Consultant: Harold R. Mull, Bell & Associates

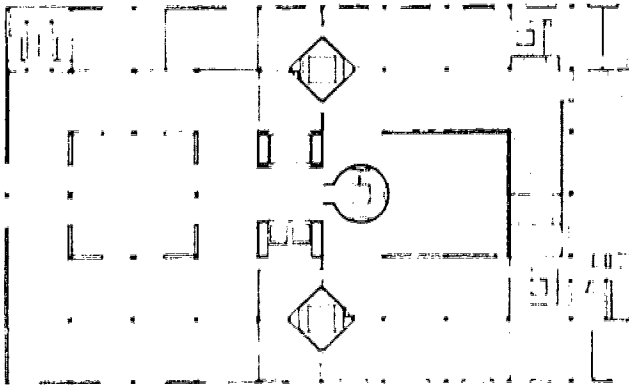
Lighting: Richard Kelly & Edison Price, New York, N.Y.

Interior Design: Benjamin Baldwin, East Hampton, N.Y.

Security: Joseph M. Chapman, New York, N.Y.

Landscaping: Zion & Breen Associates, Inc.

Contact: Director, Yale Center for British Art, Box 2120, Yale Station, New Haven, Conn. 06520



Performing Arts

Angus Bowmer Theatre

Ashland, Oreg.

Facilities: 600-seat theater with front part of stage on hydraulic lift to change configuration. Completed 1970.

Cost: \$1,320,000. Public and private funding.

Credits: *Architect:* Kirk, Wallace, McKinley, & Associates, Seattle, Wash.

Structural Engineer: Skilling, Helle, Christiansen, Robertson, Seattle

Mechanical Engineer: Valentine, Fisher & Tomlinson, Seattle

Electrical Engineer: Sparling & Associates, Seattle

Acoustical Consultant: Robin M. Towne & Associates, Inc., Seattle

Lighting: George T. Howard & Associates, Los Angeles, Calif.

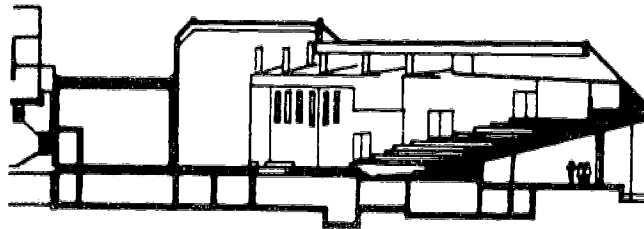
Audiovisual Consultant: Landry & Bogan, Palo Alto, Calif.

Theater Consultant: Richard L. Hay, Ashland

Interior Design: George Schwarz (deceased), Portland, Oreg.

Landscaping: Royston-Hanamoto-Bek-Abbey, San Francisco

Contact: Director, Angus Bowmer Theatre, 15 South Pioneer, Ashland, Oreg. 37520



Art/Music Hall Building

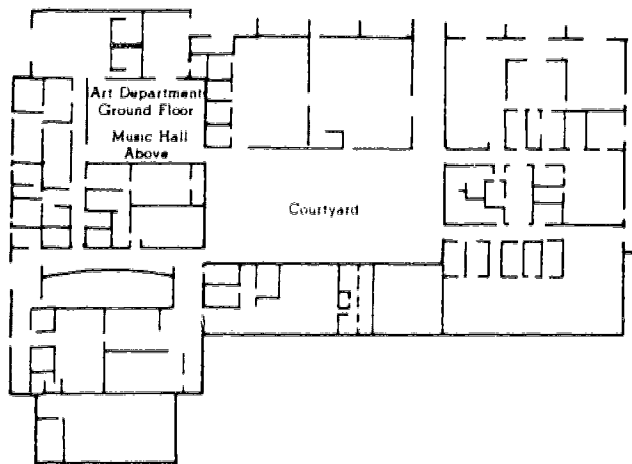
Pueblo, Colo.

Facilities: Theater with 600 seats, and 28,000 sq ft of crafts shops and studios. Completed 1972.

Cost: \$1,280,000. Public funding.

Credits: *Architect:* Rogers/Nagel/Langhart, Denver, Colo.
Structural Engineer: E. Thomas Punshon, Denver
Mechanical Engineer: Paul H. Koch & Associates, Denver
Electrical Engineer: F.J. Calvert & Associates, Denver
Acoustical and Audiovisual Consultant: Purcell & Noppe & Associates, Chatsworth, Calif.

Contact: Director, Facilities Planning, University of Southern Colorado, Pueblo, Colo. 81001.



Artpark Theatre

Lewiston, N.Y.

Facilities: Theater with 2,250 seats under cover and 2,000 seats on the lawn. Completed 1974

Cost: \$7.2 million Public funding

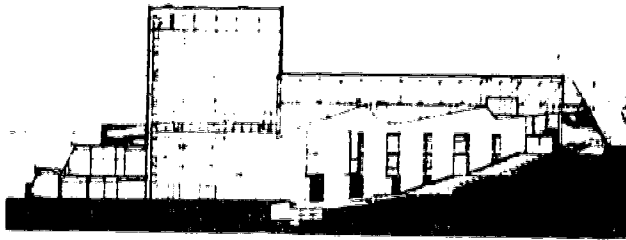
Credits: *Architect:* Vollmer Associates, New York, N.Y.
Mechanical and Electrical Engineer: Goldman & Sokolow, New York, N.Y.

Acoustical Consultants: Paul Veneklasen & Associates, Santa Monica, Calif.; Ranger Farrell, New York, N.Y.

Audiovisual Consultant: Paul Veneklasen & Associates

Lighting and Theater Consultant: Robert Brannigan Associates, New York, N.Y.

Contact: Regional Administrator, Niagara Frontier State Park & Recreation Commission, Prospect Park, Niagara Falls, N.Y. 14303



B. Iden Payne Theatre

Austin, Texas

Facilities: Theater with 500 seats, greenroom, offices, etc. Completed 1976.

Cost: \$5.5 million. Public funding.

Credits: *Architect:* Fisher & Spillman Architects, Inc., Dallas, Texas

Structural Engineer: Rosenlund & Company, Dallas

Mechanical and Electrical Engineer: Gaynor & Sirmen, Inc., Dallas

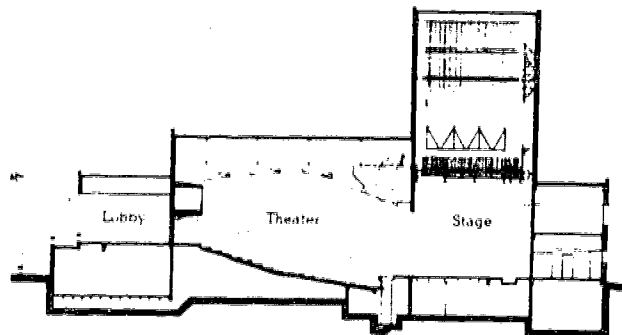
Acoustical Consultant: C.P. Boner & Associates, Austin

Lighting: Kliegl Brothers, Long Island City, N.Y.

Theater Consultant: Jean Rosenthal & Associates, Orange, N.J.

Landscaping: Shrickel & Rollins, Arlington, Texas

Contact: Director, B. Iden Payne Theatre, University of Texas, 200 West 21st Street, Austin, Texas 78712



Aladdin Theatre for the Performing Arts

Las Vegas, Nev.

Facilities: Theater with 7,500 seats in a domed building.
Completed 1976.

Cost: \$12 million. Private funding.

Credits: *Architects:* Joseph Locricchio, Clarkston, Mich;
Gary Wilson & Lee Litton, Las Vegas

Structural Engineer: John Michaels, Bloomfield Hills,
Mich.

Mechanical and Electrical Engineer: Johnson, Joeckel,
Bartley & Associates, Las Vegas

Lighting, Acoustical and Audiovisual Consultant:
Fantastic Sound, Inc., Long Beach, Calif.

Theater Consultant: Ralph Alswang, New York, N.Y.

Interior Design: Auer Nichols & Associates, Inc.,
Detroit

Landscaping: Jaramillo, North Las Vegas

Contact: Publicity Dept., Aladdin Hotel, Box 14217,
Las Vegas, Nev. 89114

Concord Pavilion

Concord, Calif.

Facilities: Open-air performing arts center seating 3,500
under the canopy, and space for 4,500 on the lawn.
Completed 1975.

Cost: \$3.6 million. Public and private funding.

Credits: *Architect:* Frank O. Gehry & Associates, Inc.,
Santa Monica, Calif.

Structural Engineer: Garfinkel & Kurily & Associates,
Santa Monica

Mechanical Engineer: John Kerr Associates, Downey,
Calif.

Electrical Engineer: Irving Schwartz Associates,
Elkins Park, Pa.

Lighting, Acoustical and Theater Consultant: Jaffe
Acoustics, Inc., Norwalk, Conn.

Landscaping: Sasaki-Walker & Associates,
Sausalito, Calif.

Contact: General Manager, Concord Performing Arts
Center Authority, Box 6166, Concord, Calif. 94524

Downey Theatre

Downey, Calif.

Facilities: Theater seating 748. Completed 1970.

Cost: \$1.6 million. Public funding.

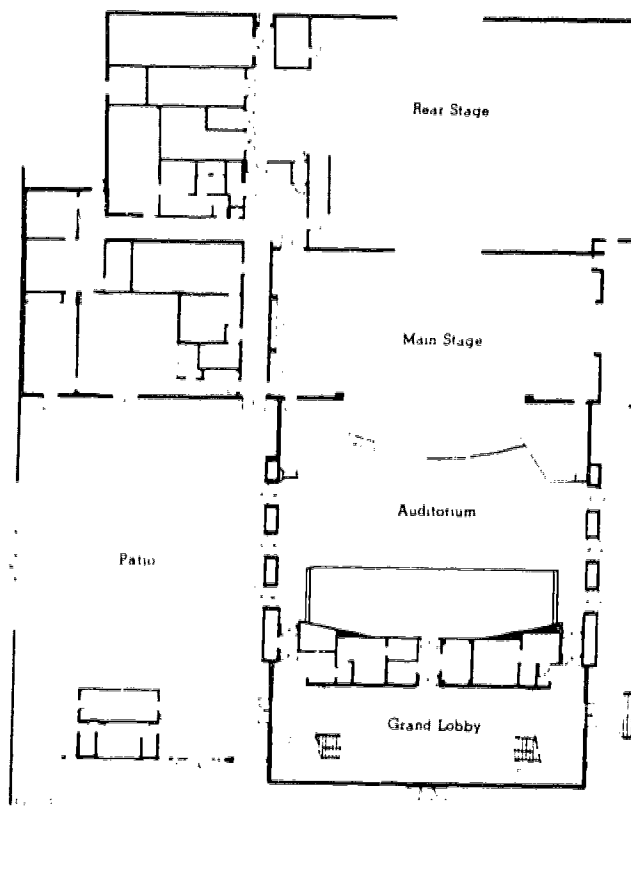
Credits: *Architect:* Adrian Wilson Associates, Los Angeles

Structural Engineer: John A. Martin & Associates,
Los Angeles

*Mechanical and Electrical Engineer; Lighting and
Audiovisual Consultant:* J.S. Hamel Engineers Inc.,
Los Angeles

Acoustical Consultant: Vern O. Knudsen (deceased),
Los Angeles

Contact: Manager, Downey Theatre, 8450 Second Street,
Downey, Calif. 90241



East County Performing Arts Center

El Cajon, Calif.

Facilities: Civic center with auditorium seating 1,190.
Completed 1977.

Cost: \$2.6 million. Public funding.

Credits: *Architect:* William Blurock & Partners, Newport Beach, Calif.

Associate Architect: Arthur D. Decker & Associates, Newport Beach

Structural Engineer: Blaylock-Willis & Associates, San Diego

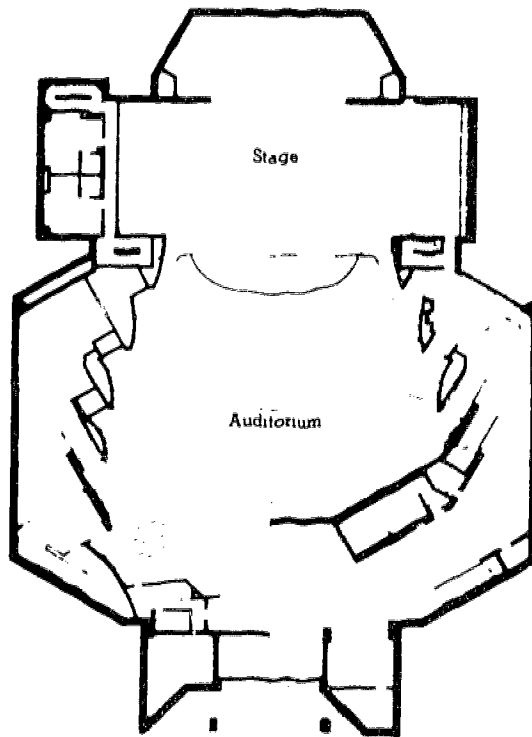
Mechanical Engineer: Merle Strum & Associates, San Diego

Electrical Engineer: Frederick Brown Associates, Newport Beach

Acoustical Consultant: Paul Veneklasen & Associates, Santa Monica

Theater Consultant: John von Szeliski, Newport Beach

Contact: Manager, East County Performing Arts Center,
210 East Main Street, El Cajon, Calif. 92020



Fine Arts Complex

Mission Viejo, Calif.

Facilities: 45,000-sq-ft theater with 420 seats surrounded by classroom, laboratories, and music rooms.
Completed 1978

Cost: \$3.6 million. Public funding.

Credits: *Architect:* William Blurock & Partners, Newport Beach, Calif.

Structural Engineer: Martin & Tranbarger, Newport Beach

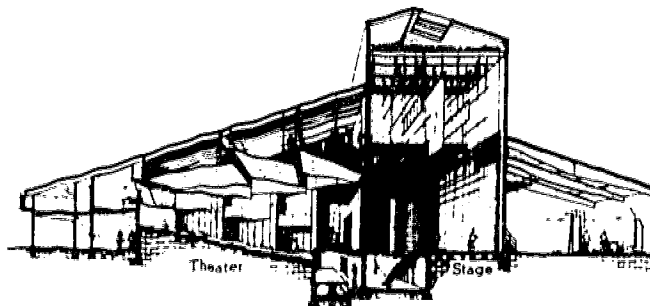
Mechanical Engineer: Nack & Sunderland, Los Angeles

Electrical Engineer: Frederick Brown Associates, Newport Beach

Acoustical Consultant: Jaffe Acoustics, Inc., Norwalk, Conn.

Theater Consultant: John von Szeliski, Newport Beach

Contact: Director, Fine Arts Complex, Saddleback College, 28000 Marguerite Parkway, Mission Viejo, Calif. 92675



Hartford Stage Company

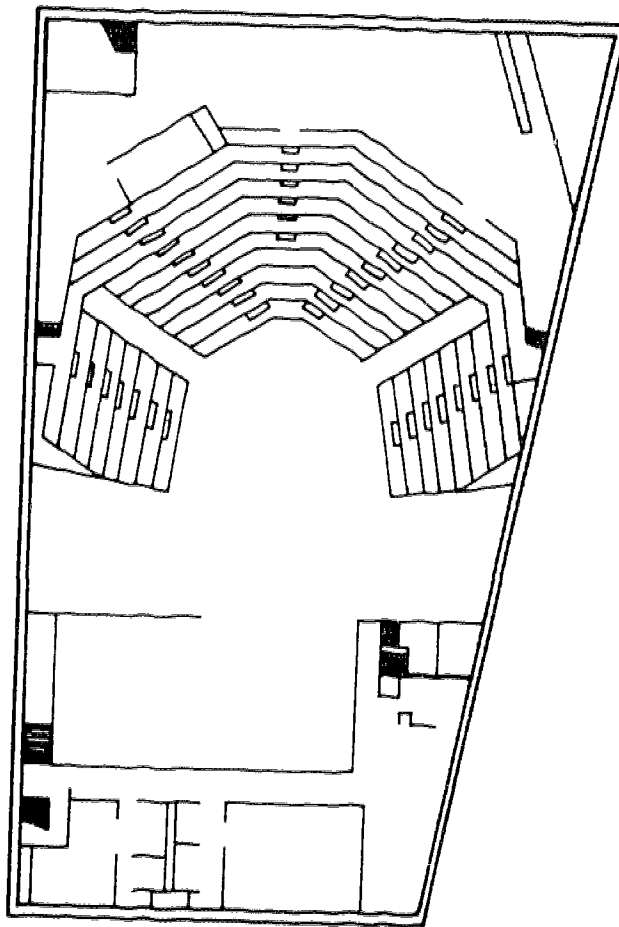
Hartford, Conn.

Facilities: Theater with 469 seats. Completed 1977.

Cost: \$2.5 million. Public and private funding.

Credits: *Architect:* Venturi & Rauch, Philadelphia
Structural Engineer: Keast & Hood, Philadelphia
Mechanical and Electrical Engineer: Vinokur-Pace, Philadelphia
Acoustical Consultant: C.P. Boner Associates, Austin, Texas
Lighting: Abe Feder & Peter Hunt, New York, N.Y.

Contact: Manager Director, Hartford Stage Company, 50 Church Street, Hartford, Conn. 06103



Leeward Community College Theatre

Pearl City, Hawaii

Facilities: 700-seat multi-purpose auditorium with hydraulic forestage. Completed 1974.

Cost: \$2,346,000. Public funding

Credits: *Architect* Group Architects Collaborative, Inc., Honolulu, Hawaii

Structural Engineer: Sata & Kunyoski, Inc.

Mechanical Engineer: Philip S. Wu & Associates, Inc.

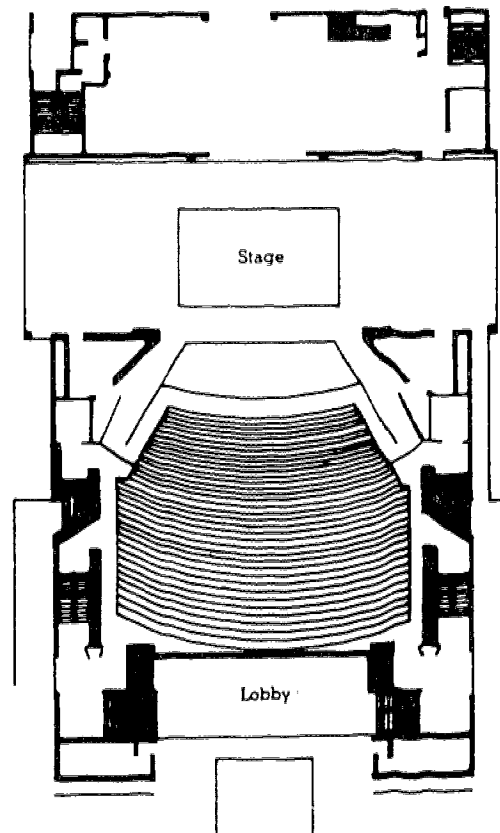
Electrical Engineer: Albert Chong Associates, Inc.

Acoustical Consultant: Dr. Iwao Miyake

Theater Consultant: Joel Trapido

Landscaping: Belt, Collins & Associates, Inc.

Contact: Director, Leeward Community College Theatre,
University of Hawaii, 96-045 Ala Ika, Pearl City,
Hawaii 96782



Lily Peter Auditorium

Helena, Ark.

Facilities: Auditorium seating 1,172. Exhibition hall and catering kitchen. Completed 1972.

Cost: \$1,140,000. Public and private funding.

Credits: *Architect:* Stuck Frier Lane Scott Beisner, Inc., Jonesboro, Ark.

Structural Engineer: Pickering Wooten Smith & Weis, Memphis, Tenn.

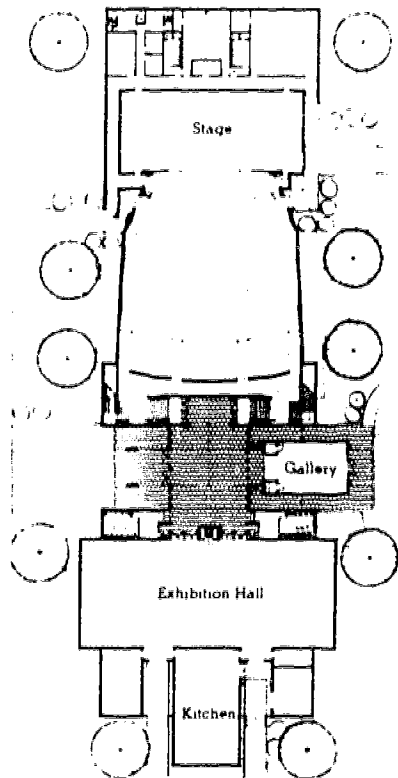
Mechanical Engineer: H.W. Goodman, Jr., Little Rock, Ark.

Electrical Engineer: Charles Deitz, Little Rock

Acoustical and Audiovisual Consultant: C.P. Boner & Associates, Austin, Tex.

Theater Consultant: Ron Jerit, Memphis

Contact: Director, Lily Peter Auditorium, Phillips Community College, Box 785, Helena, Ark. 72342



Louis B. Mayer Theater

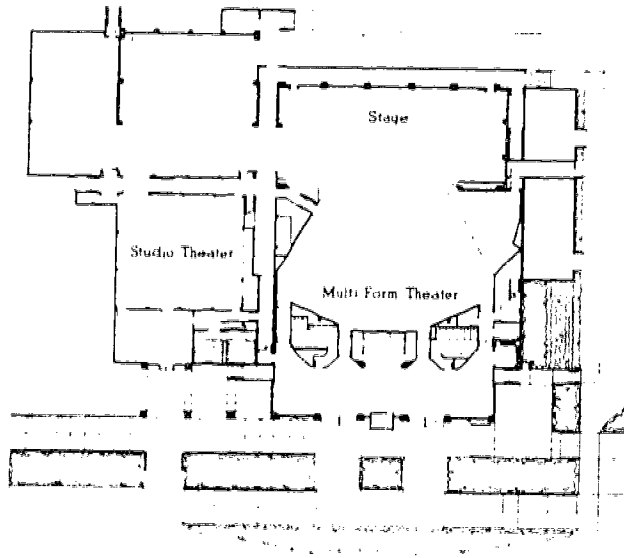
Santa Clara, Calif

Facilities: Main theater with 500 seats, studio theater, and rehearsal room. Completed 1975.

Cost: \$3.3 million. Public and private funding.

Credits: *Architect:* Mario Gaidano, San Francisco
Structural Engineer: Wong & Tuan, San Francisco
Mechanical Engineer: Yanow & Bauer, San Francisco
Electrical Engineer: Cammisa & Wipl, San Francisco
Acoustical Consultant: Bolt Beranek & Newman, Inc., San Francisco
Theater Consultant: Landry Hunt & Bogan, San Francisco

Contact: Theater Manager, Louis B. Mayer Theater Complex, University of Santa Clara, Santa Clara, Calif 95053



Marymount Manhattan College Theatre New York, N.Y.

Facilities: 250-seat theater for dance, drama, and films.
Completed 1975.

Cost: \$750,000. Public and private funding.

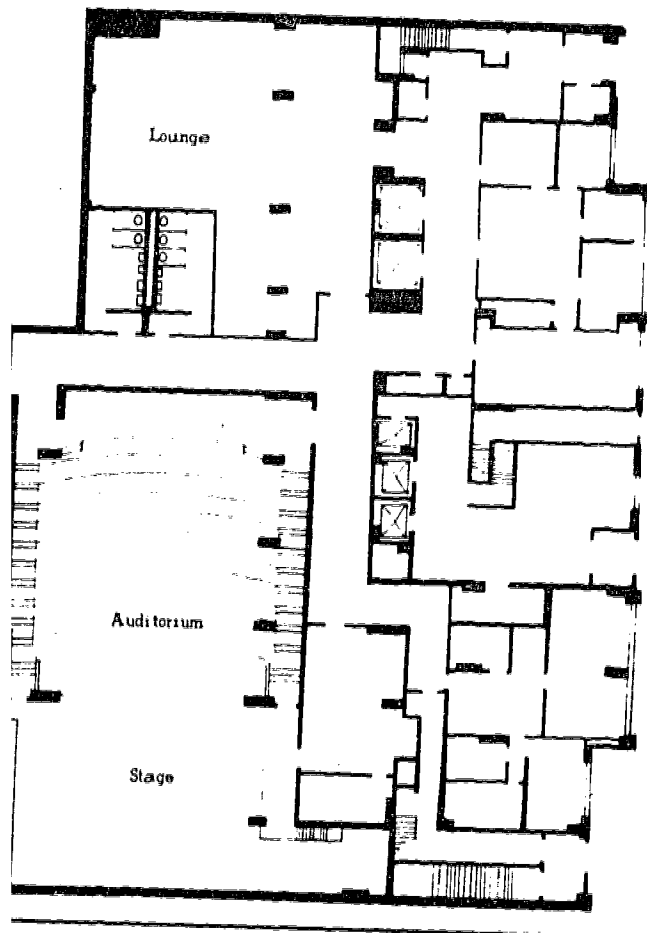
Credits: *Architect:* Evans-Delahanty-O'Brien & Justin,
New York, N.Y.

Structural Engineer: Fischer & Redlein, New York, N.Y.
Mechanical and Electrical Engineer: Irving Kleinman &
Associates, Massapequa, N.Y.

Theater Consultant: J. William Bordeau, New York, N.Y.

Interior Design: Bergin Interiors, Inc., New York, N.Y.

Contact: Managing Director, Marymount Manhattan
College, 221 East 71st Street, New York, N.Y. 10021



Pick-Staiger Concert Hall

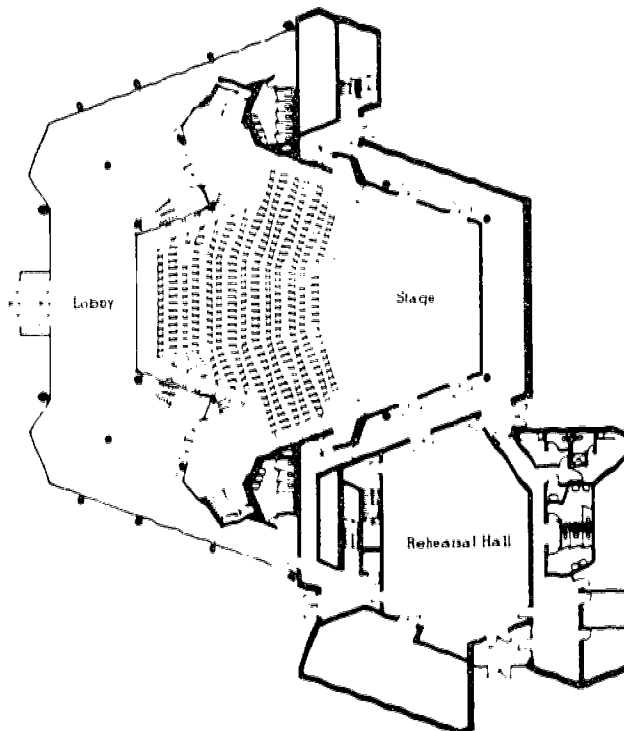
Evanston, Ill.

Facilities: Concert hall with seats for 1,000. Ceiling panels can be raised or lowered to "tune" the hall. Rehearsal hall adjacent to stage. Completed in 1976.

Cost: \$3.2 million. Private funding.

Credits: *Architect:* Loeb Schlossman Bennett & Dart, Chicago
Structural Engineer: Weisinger-Holland, Ltd., Chicago
Mechanical and Electrical Engineer: Gritschke & Cloke, Inc., Chicago
Acoustical Consultant: Bolt Beranek & Newman, Inc., Cambridge, Mass.
Lighting: Howard Brandston Lighting Design, Inc., New York, N.Y.
Interior Design: Sonia Cicero, Chicago

Contact: House Manager, Pick-Staiger Concert Hall, Northwestern University, 1977 Shendan Road, Evanston, Ill. 60201



Salinas Community Center

Salinas, Calif

Facilities: Multipurpose facility with 700 seats in balcony and 1,000 seats on movable units on flat main floor.
Meeting rooms adjacent to auditorium. Completed 1976.

Cost: \$4.7 million. Public funding.

Credits: *Architects* Richard K. Rhodes and Hall & Goodhue, Salinas

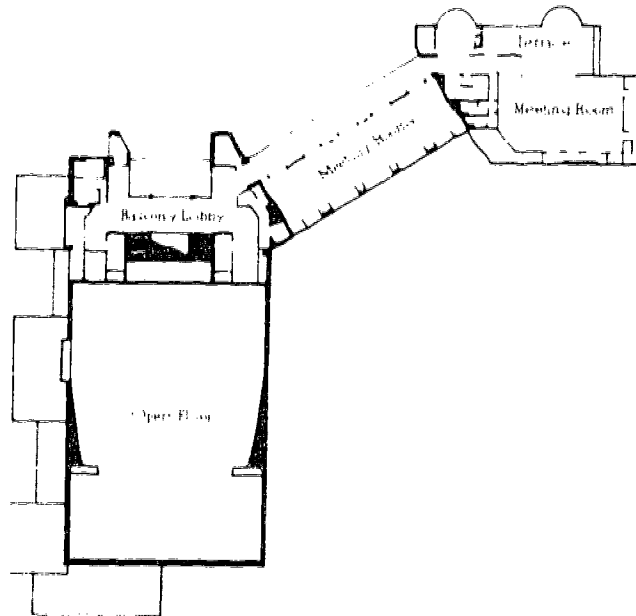
Structural Engineer Steven H. Sassoon & Associates, Inc., Monterey, Calif

Mechanical and Electrical Engineer Bentley Engineers, San Francisco

Lighting, Acoustical, Audiovisual and Theater Consultant Bolt Beranek & Newman, Inc., Downers Grove, Ill.

Landscaping Charles Robert Haugh, Salinas

Contact: General Manager, Salinas Community Center, 940 North Main Street, Salinas, Calif 93906



Power Center for the Performing Arts

Ann Arbor, Mich.

Facilities: Theater with 1,412 seats. 55-ft wide proscenium stage with elevator to form a thrust stage. Completed 1971.

Cost: \$3.5 million. Gift and public funding.

Credits: *Architect:* Kevin Roche, John Dinkeloo & Associates, Hamden, Conn.

Structural Engineer: Associated Engineers, New Haven, Conn.

Mechanical and Electrical Engineer: John L. Aitieri, Norwalk, Conn.

Acoustical Consultant: Bolt Beranek & Newman, Inc., Cambridge, Mass.

Lighting: Jo Mielziner (deceased), New York, N.Y.

Contact: Manager, Power Center for the Performing Arts, University of Michigan, Ann Arbor, Mich. 48109

Southwick Music Annex

Burlington, Vt.

Facilities: Two-story classroom wing and recital hall with 300 seats. Completed 1975.

Cost: \$1.5 million. Public and private funding.

Credits: *Architect:* Burlington Associates, Burlington

Structural Engineer: LeMessurier Associates, Inc., Cambridge, Mass.

Mechanical and Electrical Engineer: Robson & Woese, Inc., Syracuse, N.Y.

Acoustical Consultant: Bolt Beranek & Newman, Inc., Cambridge

Contact: Director, Southwick Music Annex, University of Vermont, Burlington, Vt. 05401

Stewart Theatre

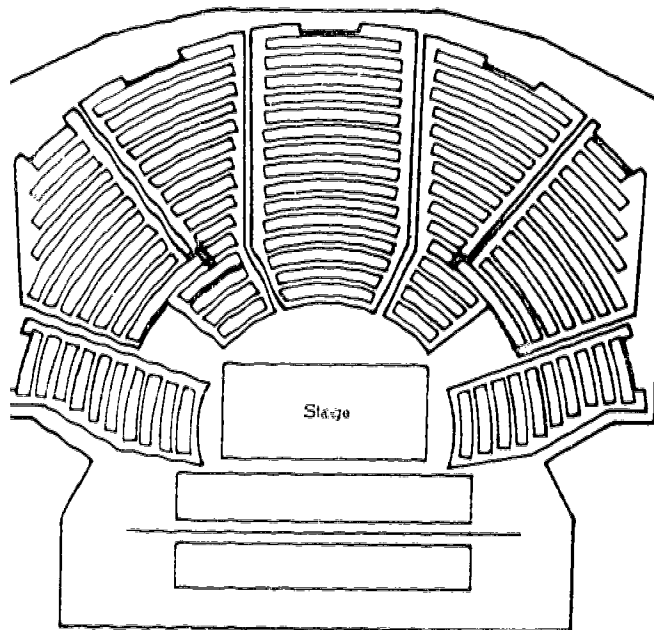
Raleigh, N.C.

Facilities: Theater with 816 seats incorporated within the 142,000 sq ft university student center. Completed 1972.

Cost: \$3,445,000. Public funding.

Credits: *Architect:* G. Milton Small & Associates, Raleigh
Structural Engineer: Ezra Meir Associates, Raleigh
Mechanical and Electrical Engineer: T.C. Cooke, Durham, N.C.
Acoustical Consultant: Bolt Beranek & Newman, Inc., Cambridge, Mass.
Theater Consultant: David W. Weiss, Charlottesville, Va.

Contact: Manager, Stewart Theatre, North Carolina State University, Raleigh, N.C. 27650



EFL Arts Related Publications

The following publications have been prepared by EFL with support from the Architecture + Environmental Arts Program, National Endowment for the Arts

Arts and the Handicapped: An Issue of Access. Gives over 150 examples of how arts programs and facilities have been made accessible to the handicapped. A great variety of programs are included, from tactile museums to halls for performing arts, and for all types of handicapped persons. Special emphasis on the law, the arts, and the handicapped. (1975) \$4.00

The Arts in Found Places. An extensive review of where and how the arts are finding homes in recycled buildings and in the process often upgrade urban centers and neighborhoods. Over 200 examples, with special emphasis on "do's and don'ts". (1976) \$7.00

Cooperative Use of Resources for the Arts. Describes cooperative planning and gives examples of joint use of resources. (1978) \$2.00

New Places for the Arts. Provides descriptions of several dozen recent museums, performing arts facilities for theater or music, and multi-use centers built especially for these purposes. Includes listing of the various professional consultants involved. (1976) \$5.00

The Place of the Arts in New Towns. Reviews approaches and experiences for developing arts programs and facilities in new towns and established communities. Gives insights and models for the support of the arts, including the role of the arts advocate, the use of existing space, and financing. (1973) \$3.00

Reusing Railroad Stations Book Two. Furthers the advocacy position of the first book and describes some of the completed and underway conversions in more detail. A large section of the book explains some of the intricacies of financing that a nonprofit group would have to understand before successfully developing a railroad station. (1975) \$4.00

Technical Assistance for Arts Facilities: A Sourcebook. Where arts groups can find help in planning arts facilities. Lists federal, state, and private sources. (1977) \$2.00

Design by Sanchez