

MICROCOPY RESOLUTION TEST CHART
NATIONAL BUREAU OF STANDARDS-1963-A

DOCUMENT RESUME

ED 168 905

SE 027 556

TITLE Fall 1978 Directory - Assembly of Life Sciences,
National Research Council.

INSTITUTION National Academy of Sciences, Washington, D.C.

PUB DATE 78

NOTE 64p.

EDRS PRICE MF01/PC03 Plus Postage.

DESCRIPTORS *Biological Sciences; *Federal Government; *Federal Programs; Research; Science Education; *Scientific Personnel; *Scientific Research; Scientists

IDENTIFIERS National Academy of Sciences; National Research Council

ABSTRACT

This directory of the Assembly of Life Sciences (ALS), National Research Council, reflects the status of all committees, their membership, Corresponding Societies, and ALS staff as of October, 1978. Organization charts illustrate the relationship between the Assembly of Life Sciences and the general structure of the National Academy of Sciences, as well as the internal structures of the Division of Biological Sciences, the Division of Medical Sciences, and the Board on Toxicology and Environmental Health Hazards. (Author/BB)

 * Reproductions supplied by EDRS are the best that can be made *
 * from the original document. *

ED168905

U.S. DEPARTMENT OF HEALTH, EDUCATION & WELFARE
NATIONAL INSTITUTE OF EDUCATION

THIS DOCUMENT HAS BEEN REPRODUCED AS IS, INCLUDING ALL ERRORS AND OMISSIONS. THE POINTS OF VIEW OR OPINIONS STATED HEREIN ARE NOT NECESSARILY REPRESENTATIVE OF THE NATIONAL INSTITUTE OF EDUCATION.

PERMISSION TO REPRODUCE THIS MATERIAL HAS BEEN GRANTED BY

National Academy
of Sciences

TO THE EDUCATIONAL RESOURCES INFORMATION CENTER (ERIC) AND USERS OF THE ERIC SYSTEM.

Directory

Fall 1978

ASSEMBLY
OF LIFE
SCIENCES

NATIONAL
RESEARCH
COUNCIL

NATIONAL ACADEMY OF SCIENCES

SE 027 556

Fall 1978
Directory

ASSEMBLY OF LIFE SCIENCES
NATIONAL RESEARCH COUNCIL

NATIONAL ACADEMY OF SCIENCES
Washington, D.C. 1978

ALS Directory

This Directory of the Assembly of Life Sciences (ALS), National Research Council, reflects the status of all committees, their membership, Corresponding Societies, and ALS staff as of October, 1978.

Organization charts illustrate the relationship between the Assembly of Life Sciences and the general structure of the National Academy of Sciences, as well as the internal structures of the Division of Biological Sciences, the Division of Medical Sciences, and the Board on Toxicology and Environmental Health Hazards.

Contents

I. ASSEMBLY OF LIFE SCIENCES

I.1.	Officers	1
I.2.	Members	1
I.3.	Radiation Effects Research Foundation, Advisory Committee on	1
I.4.	Cooperative Study	1
I.4.A.	Saccharin and Food Safety Policy, Committee for a Study on	1
I.4.A.1.	Saccharin and Its Impurities and Technical Means for Risk and Benefit Assessment.	1

II. DIVISION OF BIOLOGICAL SCIENCES

II.1.	Officers	5
II.2.	Aerobiology, Committee on	5
II.3.	Research Priorities in Tropical Biology, Committee on	5
II.4.	Food and Nutrition Board.	5
II.4.A.	Dietary Allowances, Committee on.	5
II.4.B.	Food Consumption Patterns, Committee on	5
II.4.C.	Food Protection, Committee on	5
II.4.C.1.	Codex Specifications, Subcommittee on	6
II.4.C.2.	Food Microbiology, Subcommittee on.	6
II.4.C.3.	Food Technology, Subcommittee on.	6
II.4.C.4.	Toxicology, Subcommittee on	6
II.4.D.	GRAS List Survey—Phase III, Committee on	6
II.4.E.	International Nutrition Programs, Committee on.	6
II.4.E.1.	Interactions of Nutrition and Infection, Subcommittee on	6
II.4.E.2.	Nutrition and Fertility, Subcommittee on	6
II.4.F.	Nutrition, Brain Development, and Behavior, Committee on	7
II.4.G.	Nutrition of the Mother and Preschool Child, Committee on.	7
II.5.	Institute of Laboratory Animal Resources	7
II.5.A.	Animal Models and Genetic Stocks, Committee on	7
II.5.B.	Animal Models for Research on Aging, Committee on	7
II.5.B.1.	Carnivores, Subcommittee on	7
II.5.B.2.	Lagomorphs and Rodents other than Rats and Mice, Subcommittee on	7
II.5.B.3.	Mice, Subcommittee on	8
II.5.B.4.	Nonhuman Primates, Subcommittee on	8
II.5.B.5.	Rats, Subcommittee on	8
II.5.C.	Conservation of Laboratory Animals, Committee on	8
II.5.D.	Genetics, Committee on	8

II.5.E.	Histologic Classification of Laboratory Animal Tumors, Committee on	8
II.5.F.	Laboratory Animal Facilities and Resources, Committee on	8
II.5.G.	Laboratory Animal Records, Committee on	8
II.5.H.	Marine Invertebrates, Committee on	8
II.5.I.	Nonhuman Primates, Committee on	9
II.5.I.1.	Care and Use, Subcommittee on	9
II.5.I.2.	Conservation of Natural Populations, Subcommittee on	9
II.5.I.3.	Genetics and Breeding, Subcommittee on	9
II.5.I.4.	Requirements, Subcommittee on	9
II.6.	U.S. National Committees	9
II.6.A.	U.S. National Committee for the International Union of Biological Sciences	9
II.6.B.	U.S. National Committee for the International Union of Nutritional Sciences	9
II.6.C.	U.S. National Committee for the International Union for Pure and Applied Biophysics	10
II.6.D.	U.S. National Committee for Photobiology	10

III. DIVISION OF MEDICAL SCIENCES

III.1.	Officers	13
III.2.	Biological Effects of Ionizing Radiations, Committee on	13
III.2.A.	Genetic Effects, Subcommittee on	13
III.2.B.	Somatic Effects, Subcommittee on	13
III.3.	Contraceptive Technology, Committee on	13
III.4.	Emergency Medical Services, Committee on	13
III.4.A.	Revise the Red Cross Manual "Advanced First Aid," Ad Hoc Committee to	14
III.5.	Health Effects of Fossil Fuel Combustion Products, Committee on Research Needs on the	14
III.6.	Laboratory-Associated Biological Risks, Committee on	14
III.7.	Maternal, Child, and Family Health Research, Board on	14
III.8.	Medical Follow-Up Agency	14
III.8.A.	Epidemiology and Veterans' Follow-up Studies, Committee on	14
III.8.A.1.	Twins, Subcommittee on	14
III.9.	Military Environmental Research, Committee on	14
III.9.A.	Land Renovation, Subcommittee on	15
III.10.	Radiation Registry of Physicians, Advisory Committee on	15
III.11.	Research on Surrogates for Humans in Motor Vehicle Crashes, Committee on Evaluation of	15
III.12.	U.S. National Committees	15

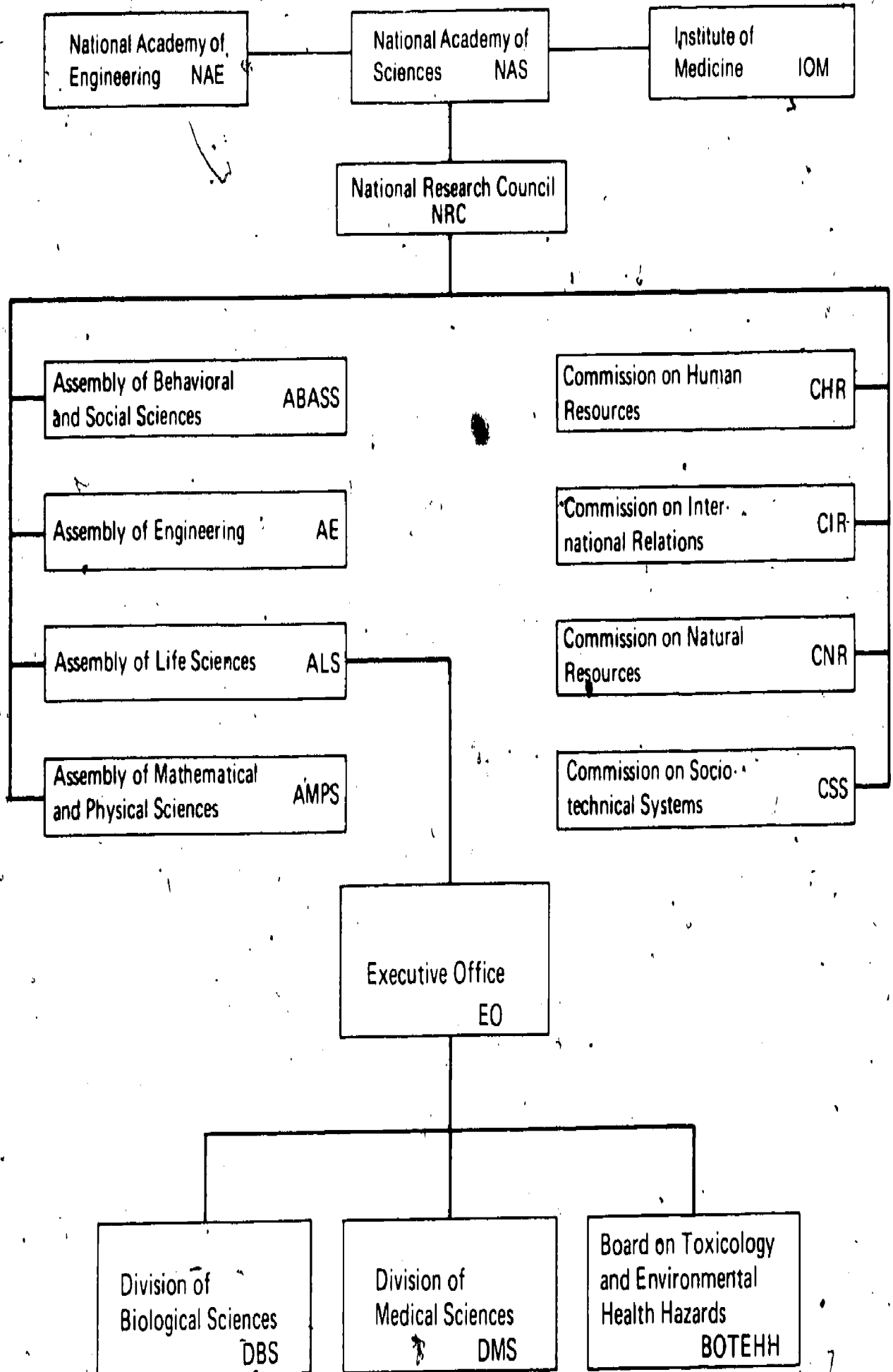
III.12.A. USA National Committee for the International Brain Research Organization	15
III.12.B. USA National Committee on the International Council of Societies of Pathology	15
III.12.C. USA National Committee for the International Union Against Cancer	15
III.12.D. USA National Committee for the International Union of Physiological Sciences	16
III.13. Veterinary Medical Sciences, Committee on	16
III.14. Cooperative Study	16
III.14.A. Extent of Radiation from the Pave Paws Radar, Panel on	16

IV. BOARD ON TOXICOLOGY AND ENVIRONMENTAL HEALTH HAZARDS

IV.1. Officers	19
IV.2. Members	19
IV.2.A. Odors from Stationary and Mobile Sources, Committee on	19
IV.2.B. Pesticides Information Review and Evaluation, Committee on	19
IV.2.C. Safe Drinking Water, Committee on	19
IV.2.C.1. Adsorption, Subcommittee on	19
IV.2.C.2. Chemistry of Disinfectants and Products, Subcommittee on	19
IV.2.C.3. Efficacy of Disinfection, Subcommittee on	20
IV.2.C.4. Epidemiology, Subcommittee on	20
IV.2.C.5. Nutrition, Subcommittee on	20
IV.2.C.6. Risk Assessment, Subcommittee on	20
IV.2.C.7. Toxicology, Subcommittee on	20
IV.2.D. Toxicology, Committee on	20
IV.2.D.1. Fire Toxicology, Subcommittee on	20
IV.2.E. Toxicology Information Program Committee	20
IV.3. Cooperative Studies	20
IV.3.A. Hazards Associated with Maritime Personnel Exposed to Multiple Cargo Vapors, Panel on Evaluation of	20
IV.3.B. Toxicology of Committee to Review Potomac River Estuary Water Treatment Plan Project, Panel on	21
CORRESPONDING SOCIETIES	24
COMMITTEE MEMBERS	32
STAFF	54
ACRONYMS	58

ASSEMBLY OF LIFE SCIENCES

Executive Office



I. Assembly of Life Sciences

I.1. OFFICERS

Chairman, Frank W. Putnam

Executive Director,
Councilman Morgan

Associate Executive Director,
Alvin G. Lazen

I.2. MEMBERS

Chairman, Frank W. Putnam

Edward H. Ahrens, Jr.

David Baltimore

Alexander G. Bearn

Harry Beevers

Lloyd M. Beidler

Floyd E. Bloom

Myron K. Brakke

John J. Burns, Jr.

Ex officio member, David A. Hamburg

Robert H. Burris

John E. Dowling

Paul A. Ebert

Jack R. Harlan

Howard H. Hiatt

James G. Hirsch

Alfred G. Knudson, Jr.

Gene E. Likens

Brian MacMahon

Beatrice Mintz

Norton Nelson

Gordon H. Orians

Charles H. Rammelkamp

Howard A. Schneiderman

Donald W. Seldin

I.3. RADIATION EFFECTS RESEARCH FOUNDATION, ADVISORY COMMITTEE ON (RERF)

Chairman, James F. Crow

Alexander G. Bearn

Michael A. Bender

Eugene P. Cronkite

Staff Officer, Seymour Jablon

Bernard G. Greenberg

Brian MacMahon

Robert W. Miller

Robert S. Stone

John B. Storer

I.4. COOPERATIVE STUDY

I.4.A. Saccharin and Food Safety Policy, Committee for a Study on (Institute of Medicine)

Chairman, Frederick C. Robbins

Stephen C. Breyer

David L. Call

Thomas Ehrlich

Emmanuel Farber

Clifford Grobstein

Richard L. Hall

Alexander Hollaender

George B. Hutchison

Kenneth L. Melmon

Walter A. Rosenblith

Gloria W. Schaffer

I.4.A.1. Saccharin and Its Impurities and Technical Means for Risk and Benefit Assessment (Saccharin Committee: Panel I)

Chairman, Emmanuel Farber

Fred P. Abramson

Charles C. Brown

James P. Carlos

Frank F. Davidoff

John Doull

Alfred E. Harper

Ian T. T. Higgins

Ronald K. Kalkhoff

Joyce McCann

Willard B. Robinson

Sheldon W. Samuels

Donald F. Steiner

Eliot Stellar

Staff Officers,

David F. Goldsmith

Alvin G. Lazen

Muriel M. Lippman

Councilman Morgan

Sushma Palmer

Frances M. Peter

Robert G. Tardiff

ASSEMBLY OF LIFE SCIENCES
Division of Biological Sciences

DIVISION OF BIOLOGICAL SCIENCES

Food and Nutrition Board (FNB)

Institute of Laboratory
Animal Resources (ILAR)

Committees:

- Aerobiology
- Research Priorities in Tropical Biology
- USNC/International Union of Biological Sciences
- USNC/International Union of Nutritional Sciences
- USNC/International Union for Pure and Applied Biophysics
- USNC/Photobiology

Committees:

- Dietary Allowances
- Food Consumption Patterns
- Food Protection
 - Subcommittees:*
 - Codex Specifications
 - Food Microbiology
 - Food Technology
 - Toxicology
- GRAS List Survey, Phase III
- International Nutrition Programs
 - Subcommittees:*
 - Interactions of Nutrition and Infection
 - Nutrition and Fertility
- Nutrition, Brain Development, and Behavior
- Nutrition of the Mother and Preschool Child

Committees:

- Animal Models and Genetic Stocks
- Animal Models for Research on Aging
 - Subcommittees:*
 - Carnivores
 - Lagomorphs and Rodents other than Rats and Mice
 - Mice
 - Nonhuman Primates
 - Rats
- Conservation of Laboratory Animals
- Genetics
- Histologic Classification of Laboratory Animal Tumors
- Laboratory Animal Facilities and Resources
- Laboratory Animal Records
- Marine Invertebrates
- Nonhuman Primates
 - Subcommittees:*
 - Care and Use
 - Conservation of Natural Populations
 - Genetics and Breeding Requirements

12

II. Division of Biological Sciences

II.1. OFFICERS

Chairman, Robert H. Burris *Executive Secretary*,
Russell B. Stevens

II.2. AEROBIOLOGY, COMMITTEE ON

Chairman, Robert L. Edmonds
Donald Aylor Bruce E. Eldridge Gabor Vali
Sheldon G. Cohen Russell C. Schnell Jack Robb Wallin
Robert L. Dimmick
Staff Officer, Russell B. Stevens

II.3. RESEARCH PRIORITIES IN TROPICAL BIOLOGY, COMMITTEE ON

Chairman, Peter Raven
Peter S. Ashton W. M. Lewis, Jr. Hilgard O'Reilly Sternberg
Gerardo Budowski Harold Mooney John J. Terborgh
Arturo Gomez Pompa Gordon H. Orians Frank H. Wadsworth
Daniel H. Janzen Harald Sioli Paul J. Zinke
Staff Officer, James J. Talbot

II.4. FOOD AND NUTRITION BOARD (FNB)

**Chairman*, Alfred E. Harper
**Vice Chairman*, Roslyn B. Alfin-Slater
Charles E. Butterworth, Jr. Gail G. Harrison Robert E. Olson
Sol H. Chafkin Ogden Carl Johnson George M. Owen
David B. Coursin Henry Kamin *Willard B. Robinson
*George K. Davis David Kritchevsky *Irwin H. Rosenberg
R. Gaurth Hansen Robert A. Neal
Executive Secretary, Myrtle L. Brown
Staff Officers,
Robert B. Bennett Kenneth R. Fulton
Durward F. Dodgen Margaret R. Stewart

II.4.A. Dietary Allowances, Committee on

Chairman, Hamish N. Munro
John G. Bieri Gilbert A. Leveille Roy M. Pitkin
George M. Briggs Walter Mertz Howerde E. Sauberlich
Charles E. Butterworth, Jr. George M. Owen
Staff Officer, Myrtle L. Brown

II.4.B. Food Consumption Patterns, Committee on

Chairman, Robert O. Nesheim
I. J. Abrams Helen A. Guthrie Gail G. Harrison
Henry Blackburn Timothy M. Hammonds Harold B. Houser
Doris H. Calloway
Staff Officer, Myrtle L. Brown

II.4.C. Food Protection, Committee on (FPC)

Chairman, Paul M. Newberne
Vice Chairman, Paul E. Kifer
Joseph F. Borzelleca James R. Kirk Stata E. Norton
John Doull Richard V. Lechowich Carl Vanderzant
Wendell W. Kilgore Sheldon D. Murphy
Staff Officer, Margaret R. Stewart

*FNB Executive Committee

II.4.C.1. Codex Specifications, Subcommittee on

Chairman, Willard B. Robinson
Vice Chairman, John C. Kirschman

Frank L. Boyd
 James J. Broderick
 Robert S. Bryant
 Bruce H. Campbell
 J. P. Fletcher

Edward O. Haenni
 Hartley Howard
 Thomas Medwick
 Fred A. Morecombe

Ronald O. Read
 Andrew J. Schmitz, Jr.
 Gerald E. Stobby
 Samuel M. Tuthill

Staff Officer, Durward F. Dodgen

II.4.C.2. Food Microbiology, Subcommittee on

Chairman, Carl Vanderzant

Richard V. Lechowich

Staff Officer, Margaret R. Stewart

II.4.C.3. Food Technology, Subcommittee on

Chairman, James R. Kirk

Paul E. Kifer

Staff Officer, Margaret R. Stewart

II.4.C.4. Toxicology, Subcommittee on

Chairman, John Doull

Joseph F. Borzelleca
 Sheldon D. Murphy

Paul M. Newberne
 Stata E. Norton

Staff Officer, Margaret R. Stewart

II.4.D. GRAS List Survey—Phase III, Committee on

Chairman, Lloyd J. Filer, Jr.

Vice Chairman, Richard L. Hall

Owen R. Fennema
 Dee M. Graham

Gilbert A. Leveille
 Willard B. Robinson

Arthur T. Schramm
 Bernard S. Schweigert

Staff Officer, Kenneth R. Fulton

II.4.E. International Nutrition Programs, Committee on

Chairman, Jean-Pierre Habicht

Gretchen Glode Berggen

George K. Davis

James S. Dinning

George M. Foster, Jr.

George G. Graham
 Abraham Horwitz
 Gerald T. Keusch
 John Michael Lane

James A. Olson
 Harold H. Sandstead
 Barbara A. Underwood
 Joe D. Wray

Staff Officer, Robert B. Bennett

II.4.E.1. Interactions of Nutrition and Infection, Subcommittee on

Chairman, Gerald T. Keusch

Michael C. Latham

Louis H. Miller

Irwin H. Rosenberg
 Noel W. Solomons

Kenneth S. Warren

Staff Officer, Robert B. Bennett

II.4.E.2. Nutrition and Fertility, Subcommittee on

Chairman, Joe D. Wray

James S. Dinning

Jean-Pierre Habicht

Jeanne Clare Ridley
 John B. Stanbury

Staff Officer, Robert B. Bennett

DIVISION OF BIOLOGICAL SCIENCES

7

II.4.F. Nutrition, Brain Development, and Behavior, Committee on

Chairman, David B. Coursin

Josef Brozek
Joaquin Cravioto
Robert Klein

Merrill S. Read
Henry N. Ricciuti
Mark R. Rosenzweig

Myron Winick
Richard J. Wurtman

Staff Officer, Myrtle L. Brown

II.4.G. Nutrition of the Mother and Preschool Child, Committee on

Chairman, Roy M. Pitkin

Virginia A. Beal
John L. Duhring
Frank Falkner

George Roderick Kerr
Janet C. King
Alvin M. Mauer

W. Ann Reynolds
William N. Spellacy

Staff Officer, Myrtle L. Brown

II.5. INSTITUTE OF LABORATORY ANIMAL RESEARCH (ILAR)

**Chairman*, Nicholas G. Bottiglieri

**Vice Chairman*, W. Jean Dodds

**Past Chairman*, Edward C. Melby, Jr.

John G. Adams
Nancy J. Alexander
James W. Atz
Kurt Benirschke
Emerson L. Besch
Philip B. Carter

Bruce H. Ewald
Kenneth C. Hayes
*Hiram Kitchen
*J. Russell Lindsey
Patrick J. Manning

*Donald F. Patterson
Allan M. Schrier
Richard O. Spertzel
Walter Erich Stumpf
*Robert A. Whitney, Jr.

Executive Secretary, Earl W. Grogan

Staff Officers,

Samuel Abramson
Andrea L. Cohen

Dorothy D. Greenhouse
Nancy A. Muckenhirn

II.5.A. Animal Models and Genetic Stocks, Committee on

Chairman, William H. Stone

Robert S. Anderson
Robert W. Bull
Linda K. Collins Cork

Thomas J. Gill, III
George A. Padgett

Peter K. T. Pang
Donald C. Shreffler

Staff Officer, Nancy A. Muckenhirn

II.5.B. Animal Models for Research on Aging, Committee on

Chairman, Bennett J. Cohen

Richard C. Adelman
Douglas Bowden
Carel F. Hollander

Leah Lowenstein
Takashi Makinoda

Roger McClellan
Henryk M. Wisniewski

Staff Officer, Dorothy D. Greenhouse

II.5.B.1. Carnivores, Subcommittee on

Chairman, Roger McClellan

Henry J. Baker, Jr.
Robert W. Bull

Harold W. Casey
Webster S. S. Jee

Joe L. Mauderly
R. Lee Pyle

Staff Officer, Dorothy D. Greenhouse

II.5.B.2. Lagomorphs and Rodents other than Rats and Mice, Subcommittee on

Chairman, Carel F. Hollander

Joe Dale Burek
Richard R. Fox

Alan L. Kraus
George A. Sacher

Albert L. Vincent

Staff Officer, Dorothy D. Greenhouse

*ILAR Executive Committee

II.5.B.3. Mice, Subcommittee on*Chairman*, Takashi Makinodan

Harold H. Draper

James F. Florini

David Harrison

Howard Hoffman

J. Michael Holland

Louis J. Serrano

Richard L. Sprott

Staff Officer, Dorothy D. Greenhouse**II.5.B.4. Nonhuman Primates, Subcommittee on***Chairman*, Douglas Bowden

Irwin S. Bernstein

Thomas B. Clarkson

Dorina Cohen

Andrew G. Hendrickx

Robert W. Prichard

Peter S. Rodman

William H. Stone

Henryk M. Wisniewski

Staff Officer, Dorothy D. Greenhouse**II.5.B.5. Rats, Subcommittee on***Chairman*, Richard C. Adelman

Miriam R. Anver

Merrill F. Elias

Philip W. Landfield

Edward J. Masoro

Joseph Meites

Jay Roberts

Staff Officer, Dorothy D. Greenhouse**II.5.C. Conservation of Laboratory Animals, Committee on***Chairman*, George T. Harrell

Carol M. Newton

F. Barbara Orlans

Herbert S. Rosenkranz

Staff Officer, Earl W. Grogan**II.5.D. Genetics, Committee on***Chairman*, Herman B. Chase

E. John Ainsworth

Larry E. Mobraaten

Willys K. Silvers

Staff Officer, Nancy A. Muckenhirn**II.5.E. Histologic Classification of Laboratory Animal Tumors, Committee on***Co-Chairmen*, Robert A. Squire

Harold L. Stewart

Harold W. Casey

Edwin D. Murphy

Svend W. Nielsen

Mearl F. Stanton

Staff Officer, Samuel Abramson**II.5.F. Laboratory Animal Facilities and Resources, Committee on***Chairman*, C. Max Lang

John G. Adams

Emerson L. Besch

Richard R. Fox

Robert R. Jorgensen

William A. Knapp, Jr.

James R. Pick, Jr.

Stefano Vivona

Staff Officer, Samuel Abramson**II.5.G. Laboratory Animal Records, Committee on***Chairman*, Arthur S. Hall

Norman H. Altman

Charles H. Frith

Roy V. Henrickson

Noel D. M. Lehner

Walter F. Loeb

Howard Moraff

Wendall C. Peacock

Gene P. Sackett

U. S. Seal

Staff Officer, Nancy Muckenhirn**II.5.H. Marine Invertebrates, Committee on***Chairman*, Ralph Hinegardner

James W. Atz

Rimmon C. Fay

Milton Fingerman

Robert K. Josephson

Norman A. Meinkoth

John W. Miller

Mary Esther Rice

Staff Officer, Nancy A. Muckenhirn

DIVISION OF BIOLOGICAL SCIENCES

9

II.5.1. Nonhuman Primates, Committee on

Chairman, Allan M. Schrier

Carolyn M. Crockett
John F. Eisenberg
Edward I. Goldsmith

William J. Goodwin
Kenneth C. Hayes
Noel D. M. Lehnér

Patrick J. Manning
James H. Vickers

Staff Officer, Nancy A. Muckenhirn

II.5.1.1. Care and Use, Subcommittee on

Chairman, Patrick J. Manning

Francis C. Cadigan, Jr.
Edward I. Goldsmith

Kenneth C. Hayes
Bernard F. Trum

James H. Vickers
Robert A. Whitney, Jr.

Staff Officer, Nancy A. Muckenhirn

II.5.1.2. Conservation of Natural Populations, Subcommittee on

Chairman, John F. Eisenberg

Carolyn M. Crockett

Theodore H. Fleming

Richard W. Thorington, Jr.

Staff Officer, Nancy A. Muckenhirn

II.5.1.3. Genetics and Breeding, Subcommittee on

Chairman, Noel D. M. Lehnér

Kenneth C. Hayes

Staff Officer, Nancy A. Muckenhirn

II.5.1.4. Requirements, Subcommittee on

Chairman, William J. Goodwin

Carolyn M. Crockett

Staff Officer, Nancy A. Muckenhirn

II.6. U.S. NATIONAL COMMITTEES

II.6.A. U.S. National Committee for the International Union of Biological Sciences (USNC/IUBS)

Chairman, Rita Colwell

Vice Chairman, Walter J. Bock

Secretary, Peter Raven

Harlan P. Banks
Robert H. Burris
Vincent G. Dethier
Phillipp Gerhardt

Frank B. Golley
Aubrey Gorbman
Jerry Hirsch
John A. Moore

Oliver E. Nelson, Jr.
Otto T. Solbrig
Peter H. von Hippel

Ex officio member, Edward S. Ayensu

Staff Officer, Samuel B. McKee

II.6.B. U.S. National Committee for the International Union of Nutritional Sciences (USNC/IUNS)

Chairman, George K. Davis

Vice Chairman, Roslyn B. Alfin-Slater

Secretary, Edwin T. Mertz

George G. Graham
Helen A. Guthrie

Alfred E. Harper
Kenneth E. Harshbarger

James A. Olson
Ruth L. Pike

Ex officio members,
Nevin S. Scrimshaw

Max Milner

Staff Officer, Samuel B. McKee

**II.6.C. U.S. National Committee for the International Union for Pure and Applied Biophysics
(USNC/IUPAB)**

Chairman, Andrew G. Szent-Gyorgyi
Vice Chairman, Michael Beer

Warren L. Butler
Helen Eberle¹

George Eisenman
Josef Eisinger

Richard Podolsky
Berton C. Pressman

Ex officio members,
Britton Chance

Lee D. Peachey

Frederic M. Richards

Staff Officer, Samuel B. McKee

II.6.D. U.S. National Committee for Photobiology (USNC/Photobiology)

Chairman, John Jagger
Roderick K. Clayton
Josef Eisinger
John H. Epstein
R. J. M. Fry

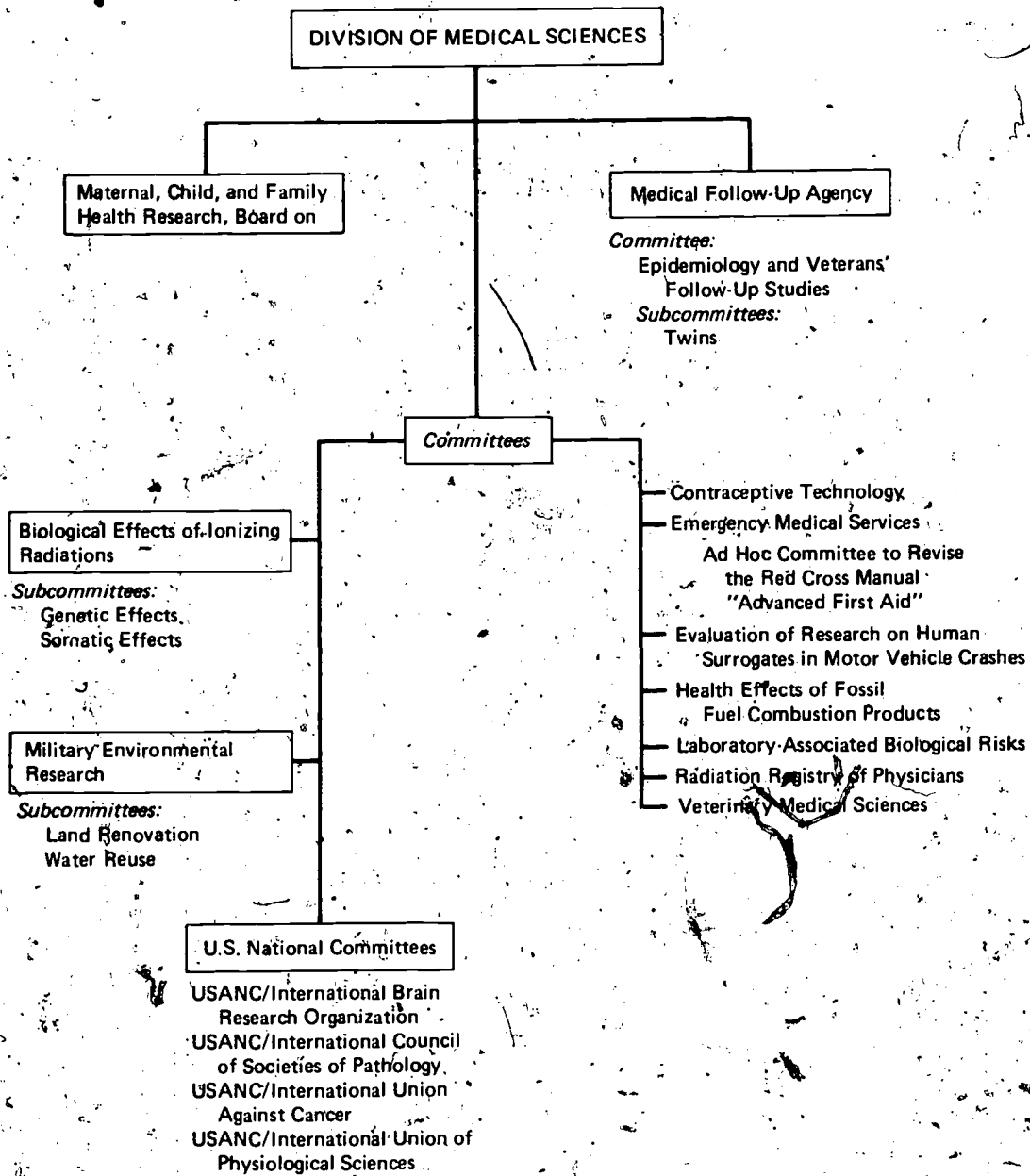
Leonard I. Grossweiner
Andre T. Jagendorf
Lois M. Hamerman Johnson
John W. Lee

David Stuart Nachtwey
Joseph W. Sausville
Myron Lee Wolbarsht

Ex officio member, Frederick Urbach

Staff Officer, Samuel B. McKee

ASSEMBLY OF LIFE SCIENCES
Division of Medical Sciences



III. Division of Medical Sciences

III.1. OFFICERS

Chairman
Alexander Bearn

Executive Secretary
Daniel L. Weiss

III.2. BIOLOGICAL EFFECTS OF IONIZING RADIATIONS, COMMITTEE ON (BEIR)

Chairman, Edward P. Radford
Seymour Abrahamson
Gilbert W. Beebe
Michael A. Bender
A. Bertrand Brill
Reynold F. Brown
Stephen F. Cleary
Cyril L. Comar
Staff Officer, Albert W. Hilberg

Carter Denniston
Jacob I. Fabrikant
Marylou Ingram
Charles E. Land
Charles W. Mays
Dade W. Moeller
Dean R. Parker

Harald H. Rossi
Liane B. Russell
William L. Russell
Paul B. Selby
Margaret H. Sloan
Edward W. Webster
Henry N. Wellman

III.2.A. Genetic Effects, Subcommittee on

Chairman, Dean R. Parker
Seymour Abrahamson
Michael A. Bender
Staff Officer, Albert W. Hilberg

Carter Denniston
Liane B. Russell

William L. Russell
Paul B. Selby

III.2.B. Somatic Effects, Subcommittee on

Chairman, Edward P. Radford
Gilbert W. Beebe
A. Bertrand Brill
Reynold F. Brown
Stephen F. Cleary
Cyril L. Comar
Staff Officer, Albert W. Hilberg

Jacob I. Fabrikant
Marylou Ingram
Charles E. Land
Charles W. Mays
Dade W. Moeller

Harald H. Rossi
Liane B. Russell
Margaret H. Sloan
Edward W. Webster
Henry N. Wellman

III.3. CONTRACEPTIVE TECHNOLOGY, COMMITTEE ON

Chairman, Elwood V. Jensen
Linda E. Atkinson
Philip A. Corfman
Don W. Fawcett
Staff Officer, Enriqueta Bond

Roy Hertz
Luigi Mastroianni, Jr.
Jane Ava Menken

Warren B. Miller
Sheldon J. Segal

III.4. EMERGENCY MEDICAL SERVICES, COMMITTEE ON (EMS)

Chairman, Donald S. Gann
Don M. Benson
Ann Bliss
William R. Drucker
Charles F. Frey
Geoffrey Gibson
Liaison members,
David R. Boyd
Staff Officers,
David A. McConaughy

William F. Hamilton
Martin D. Keller
Robert Mason
Eugene L. Nagel
Donald Penterman

Leslie Rudolf
Blair Sadler
Tamarath Yolles

Lawrence R. Rose

Daniel L. Weiss

III.4.A. Revise the Red Cross Manual Advanced First Aid, Ad Hoc Committee to*Chairman*, George T. AnastRichard Aguilar
Claude Atkins
Harry E. DavisAlan R. Dimick
Archer S. Gordon
Carol S. KramerPhillip A. Snodgrase
John G. Suelzer*Ex officio member*, Donald S. Gann*Staff Officers*,
David A. McConnaughey

Daniel L. Weiss

III.5. HEALTH EFFECTS OF FOSSIL FUEL COMBUSTION PRODUCTS, COMMITTEE ON RESEARCH NEEDS ON THE*Chairman*, Leonard D. HamiltonMary O. Amdur
Irwin M. Arias
Robert E. Carroll
Paul K. GlasoeBernard D. Goldstein
Ian T. T. Higgins
Paul E. Morrow
Jay A. NadelPeter C. Nowell
Harold B. Tukey, Jr.
Geoffrey S. Watson*Staff Officer*, Albert W. Hilberg**III.6. LABORATORY-ASSOCIATED BIOLOGICAL RISKS, COMMITTEE ON (CLABR)***Chairman*, Maelyn McCartyPaul Berg
Herman N. Eisen
Charlotte FriendClifford Grobstein
Rollin D. Hotchkiss
Arthur KelmanCyrus Levinthal
Charles H. Rammelkamp*Staff Officer*, Enriqueta Bond**III.7. MATERNAL, CHILD, AND FAMILY HEALTH RESEARCH, BOARD ON (MCFHR)***Chairman*, Richard E. BehrmanHenry L. Barnett
Jerome S. Harris
*Arthur J. Lesser
Edward F. Lis
Ruth Watson LubicMargaret E. Mahoney
Luigi Mastroianni, Jr.
Robert W. Miller
Jacqueline A. Noonan
Paul G. QuieFrédéric C. Robbins
Irving Schulman
Albert J. Solnit
Myron E. Wegman
Doris L. Wethers*Staff Officer*, Enriqueta Bond**III.8. MEDICAL FOLLOW-UP AGENCY (MFUA)****III.8.A. Epidemiology and Veterans' Follow-Up Studies, Committee on***Chairman*, Brian MacMahonRansom J. Arthur
Michael E. DeBakey
Joseph F. Fraumeni, Jr.
Leon GordisBarbara S. Hulka
Leonard T. Kurland
Robert W. McCollum
Paul MeierOglesby Paul
Dorothy P. Rice
H. Eldon Sutton*Staff Director*, Seymour Jablon*Staff Officers*,
Zdenek Hrubec
Robert J. KeehnJames E. Norman
C. Dennis Robinette

A. Hiram Simon

III.8.A.1. Twins, Subcommittee on*Chairman*, H. Eldon Sutton

Gordon Allen

Bruce K. Eckland

Sandra W. Scarr

III.9. MILITARY ENVIRONMENTAL RESEARCH, COMMITTEE ON (MER)*Chairman*, Gary A. Van GelderFranklin D. Aldrich
Edward J. Cleary
Robert C. CooperPaul D. Haney
Harold G. Petering
Leo WeaverLeonard H. Weinstein
Elizabeth K. Weisburger*Staff Officer*, John Redmond, Jr.

*Consultant

III.9.A. Land Renovation, Subcommittee on

Chairman, Franklin D. Aldrich

*Lloyd L. Kempe

Gary A. Van Gelder

Leonard H. Weinstein

Staff Officer, John Redmond, Jr.

III.9.B. Water Reuse, Subcommittee on

Chairman, Gary A. Van Gelder

Franklin D. Aldrich

Edward J. Cleary

Staff Officer, John Redmond, Jr.

*Riley D. Housewright

*Lloyd L. Kempe

Harold G. Petering

III.10. RADIATION REGISTRY OF PHYSICIANS, ADVISORY COMMITTEE ON

Chairman, Raymond Seltser

Roy E. Albert

Edward A. Lew

Staff Officer, Albert W. Hilberg

C. A. McWhorter

Harvey M. Patt

Antolin Raventos

III.11. RESEARCH ON SURROGATES FOR HUMANS IN MOTOR VEHICLE CRASHES, COMMITTEE ON EVALUATION OF (SHMVC)

Chairman, Ayub K. Ommaya

Brian D. Blackbourne

Thomas D. Brower

Arthur A. Ezra

Edward H. Harris

Staff Officer, Daniel L. Weiss

Robert Hess

William F. McCormick

John L. McDermott

Gerald W. Nyquist

T. Francis Ogilvie

Randall W. Smith

III.12. U.S. NATIONAL COMMITTEES

III.12.A. USA National Committee for the International Brain Research Organization (USANC/IBRO)

Chairman, Theodore H. Bullock

Vice Chairman, Robert W. Doty

W. Maxwell Cowan

George B. Koelle

Rodolfo Llinas

Staff Officer, Phyllis A. Gardner

Dominick P. Purpura

Eugene Roberts

Berta V. Scharrer

Richard F. Thompson

III.12.B. USA National Committee on the International Council of Societies of Pathology (USANC/ICSP)

Chairman, Leland D. Stoddard

Vice Chairman, H. Russell Fisher

William H. Hartmann

Ex officio member, F. K. Mostofi

Staff Officer, Phyllis A. Gardner

Bruce H. Smith

Robert E. Stowell

III.12.C. USA National Committee for the International Union Against Cancer (USANC/UICC)

Chairman, C. Chester Stock

Baruch S. Blumberg

David B. Clayson

Charles R. Ebersol, Sr.

Joseph F. Fraumeni, Jr.

Oscar N. Guerra

Ex officio members,

Gerald P. Murphy

Staff Officer, Phyllis A. Gardner

Thomas C. Hall

Robert C. Hickley

William B. Hutchinson

A. Hamblin Letton

William V. McDermott

W. Armin Willig

Edwin A. Miranda

W. P. Laird Myers

Gregory T. O'Conor

William W. Shingleton

George Weber

*Consultant

**III.12.D. USA National Committee for the International Union of Physiological Sciences
(USANC/IUPS)**

Chairman, William F. Ganong
Vice Chairman, John S. Cook
Secretary, Charlotte P. Mangum
 James B. Basingthwaight
 Charles F. Code

Robert E. Forster, II
 Francis J. Haddy

Arnost Kleinzeller

Ex officio members,
 John M. Brookhart

John R. Pappenheimer

Staff Officer, Phyllis A. Gardner

III.13. VETERINARY MEDICAL SCIENCES, COMMITTEE ON (VMS)

Chairman, Leo K. Bustad
 Walter C. Bowie
 Thomas B. Clarkson
 W. Jean Dodds

George T. Harrell
 Robert R. Marshak
 Edward C. Melby, Jr.

Calvin W. Schwabe
 William H. Stone

Staff Officer, Daniel L. Weiss

III.14. COOPERATIVE STUDY

**III.14.A. Extent of Radiation from the Pave Paws Radar, Panel on (PPP)
(Assembly of Engineering)**

Chairman, Stephen F. Cleary

W. Ross Adey
 Om P. Gandhi
 *Arthur W. Guy
 David Janes

Don R. Justesen
 Brockway McMillan
 *Oswald G. Villard, Jr.

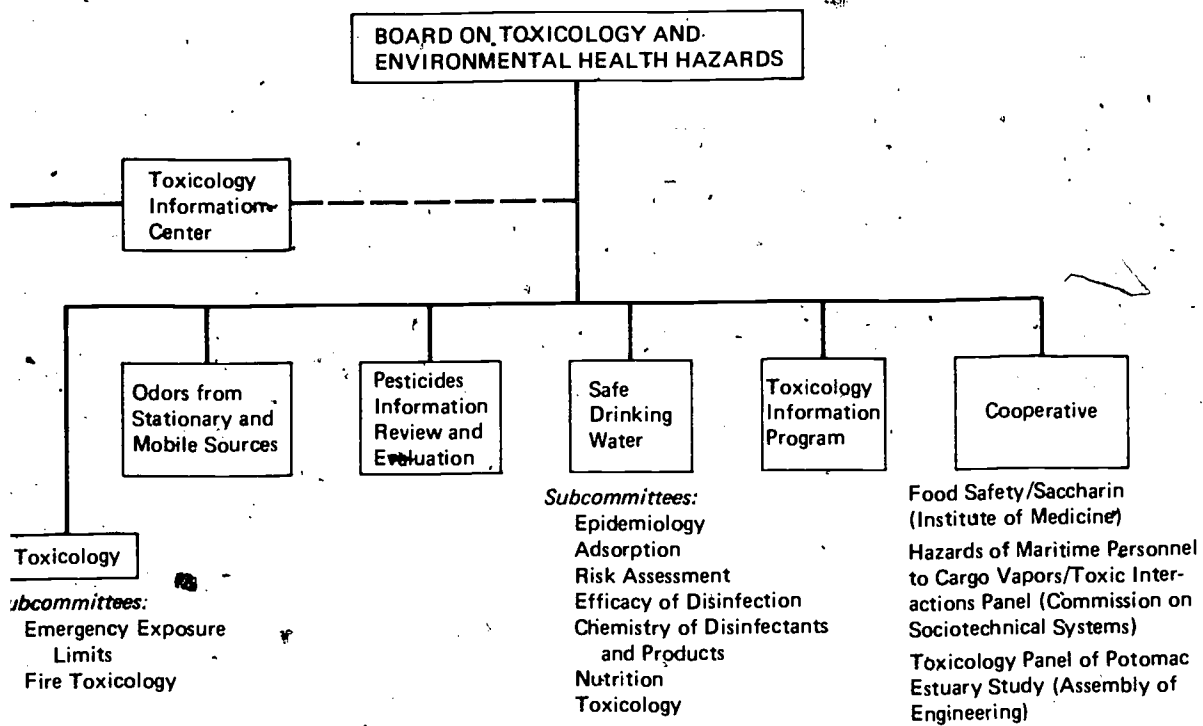
Shields Warren
 Clayton S. White
 George M. Wilkening

Staff Officers,
 Alvin G. Lazen

Kenneth McAlpine (AE)

*Consultant

ASSEMBLY OF LIFE SCIENCES
Board on Toxicology and Environmental Health Hazards





IV. Board on Toxicology and Environmental Health Hazards

IV.1. OFFICERS

Chairman,
Norton Nelson.

Executive Director,
Robert G. Tardiff

Associate Executive Director,
Gordon W. Newell

IV.2. MEMBERS

Chairman, Norton Nelson

Earl P. Benditt
John J. Burns, Jr.
John W. Drake
Ronald W. Estabrook

Ex officio members
Joseph F. Borzelleca
John Doull

Ronald W. Hart
Julius E. Johnson
Victor G. Laties
Brian MacMahon

David E. Reichle
Reuel A. Stallones
Bert V. Vallee
Gerald N. Wogan

Kurt Isselbacher
Tom S. Miya

Amos Turk

IV.2.A. Odors from Stationary and Mobile Sources, Committee on

Chairman, Amos Turk
Lloyd M. Beidler
David M. Benforado
William Cain
Thomas D. Crocker
Staff Officer, James A. Frazier

Andrew Dravnieks
Richard A. Duffee
Melvin W. First
R. David Flesh

J. Ronald Miner
David G. Moulton
Edward I. Selig
Janet T. Wittes

IV.2.B. Pesticides Information Review and Evaluation, Committee on (PIREC)

Chairman, Kurt J. Isselbacher
David B. Clayson
Stanley Goldfarb
James E. Grizzle
Staff Officer, Robert J. Golden

Jerard Hurwitz
Alexander Leaf
Dante G. Scarpelli

Edward A. Smuckler
Frank G. Standaert
Myron E. Wegman

IV.2.C. Safe Drinking Water, Committee on (SDW)

Chairman, John Doull
Joseph F. Borzelleca
Richard S. Engelbrecht
David G. Hoel
Cornelius W. Kruse
Edwin H. Lennette

J. Carrell Morris
Sheldon D. Murphy
Paul M. Newberne
Malcolm C. Pike

Marvin A. Schneiderman
Ronald C. Shank
Irwin H. Suffet
Sheldon Wolff

Staff Officers,
Robert J. Golden

Riley D. Housewright

Roy Widdus

IV.2.C.1. Adsorption, Subcommittee on

Chairman, Irwin H. Suffet
Martin Alexander
John T. Cookson, Jr.
Francis DiGiano

*Peter Harriott
Robert Kunin

Joseph Shands
Vernon E. Snoeyink

IV.2.C.2. Chemistry of Disinfectants and Products, Subcommittee on

Chairman, J. Carrell Morris
Vice Chairman, Russell F. Christman
William H. Glaze
George R. Helz

Robert C. Hoehn
Robert L. Jolley

*Consultant

IV.2.C.3. Efficacy of Disinfection, Subcommittee on*Chairman*, Richard S. EngelbrechtMartin Favero
Arnold Greenberg
J. Donald JohnsonCornelius W. Kruse
Edwin H. Lennette
Walter L. NewtonVincent P. Olivieri
Pasquale V. Scarpino
Otis J. Sproul**IV.2.C.4. Epidemiology, Subcommittee on***Chairman*, Marvin A. SchneidermanEdward C. Hammond
Ian T. T. HigginsGeorge B. Hutchison
Abraham M. LilienfeldMalcolm C. Pike
Arthur H. Wolff**IV.2.C.5. Nutrition, Subcommittee on***Chairman*, Paul M. NewberneRenate D. Kimbrough
Orville A. LevanderBoyd Lee O'Dell
Daphne A. Roe

Ronald C. Shank

IV.2.C.6. Risk Assessment, Subcommittee on*Chairman*, David G. HoelDavid Axelrod
Charles C. BrownRobert L. Dedrick
Ian C. MunroCarrol S. Weil
Sheldon Wolff**IV.2.C.7. Toxicology, Subcommittee on***Chairman*, Sheldon D. MurphyJoseph F. Borzelleca
James V. Bruckner
Donald R. Buhler
Hans R. DrobeckJames E. Gibson
Margaret Hitchcock
John C. Loper
Robert E. MenzerRudy J. Richardson
Robert J. Roberts
Craig Schnell**IV.2.D. Toxicology, Committee on (CT)***Chairman*, Joseph F. BorzellecaDavid Axelrod
Ian T. T. Higgins
Warren H. JonesH. George Mandel
Stata E. Norton
Charles F. ReinhardtJoseph V. Rodricks
Ronald C. Shank
Philip G. Watanabe*Staff Officer*, Gordon W. Newell**IV.2.D.1. Fire Toxicology, Subcommittee on***Chairman*, Charles F. ReinhardtHerbert H. Cornish
Arthur B. DuBois
Robert M. FristromJean H. Futrell
William E. GibbsJ. D. MacEwen
Carl W. Walter*Staff Officer*, Gary Keilson**IV.2.E. Toxicology Information Program Committee (TIPCOM)***Chairman*, Tom S. MiyaRalph L. Engle
Richard HendersonDorothy B. Hood
Robert E. MenzerGábriel L. Plaa
Barry H. Rumack*Staff Officer*, Robert G. Tardiff**IV.3. COOPERATIVE STUDIES****IV.3.A. Hazards Associated with Maritime Personnel Exposed to Multiple Cargo Vapors, Panel on Evaluation of (Commission on Sociotechnical Systems)***Chairman*, Sheldon D. Murphy*Co-Chairman*, Frederick W. OehmeDonald J. Ecobichon
Jerry R. Mitchell
Marvin A. SchneidermanCarl C. Smith
Christopher F. WilkinsonHanspeter Witschi
James S. Woods*Staff Officer*, Gordon W. Newell

**IV.3.B. Toxicology of Committee to Review Potomac River Estuary Water Treatment Plant
Project, Panel on (Assembly of Engineering)**

Chairman, Frank L. Lyman

Joseph F. Borzelleca

Frederick W. Oehme

Staff Officer, Robert G. Tardiff

ASSEMBLY OF LIFE SCIENCES
Corresponding Societies

Corresponding Societies

AEROSPACE MEDICAL ASSOCIATION

Walton Jones
Director
Occupational Medicine, NASA
Aerospace Medical Association
Washington, DC 20546
(202) 755-2206

AMERICAN ACADEMY OF NEUROLOGY

Stanley A. Nelson
Executive Director
American Academy of Neurology
4015 West 65th St.
Minneapolis, MN 55435
(612) 920-3636

AMERICAN ACADEMY OF ORTHOPAEDIC SURGEONS

Charles V. Heck
Executive Director
American Academy of Orthopaedic Surgeons
430 North Michigan Ave.
Chicago, IL 60611
(312) 822-0970

AMERICAN ACADEMY OF PEDIATRICS

Robert G. Frazier
Executive Director
American Academy of Pediatrics
P.O. Box 1034
Evanston, IL 60204
(312) 273-3646

AMERICAN AGRICULTURAL ECONOMICS ASSOCIATION

John C. Redman
Secretary-Treasurer
American Agricultural Economics Association
Dept. of Agricultural Economics
University of Kentucky
Lexington, KY 40506
(606) 258-5688

AMERICAN ASSOCIATION FOR CANCER RESEARCH, INC.

Frederick S. Philips
Secretary-Treasurer
American Association for Cancer Research, Inc.
Memorial Sloan-Kettering Cancer Center
1275 York Ave.
New York, NY 10021
(212) 794-7480

AMERICAN ASSOCIATION FOR LABORATORY ANIMAL SCIENCE

Joseph J. Garvey
Executive Secretary
American Association for Laboratory Animal Science
2317 West Jefferson St., Suite 208
Joliet, IL 60435
(815) 729-1161

AMERICAN ASSOCIATION OF ANATOMISTS

John E. Pauly
Secretary-Treasurer
American Association of Anatomists
Dept. of Anatomy
University of Arkansas Medical Center
Little Rock, AR 72201
(501) 664-5000, ext. 297

AMERICAN ASSOCIATION OF BLOOD BANKS

Ben L. Peake
Executive Director
American Association of Blood Banks
1828 L St., N.W., Suite 608
Washington, DC 20036
(202) 872-8333

AMERICAN ASSOCIATION OF CEREAL CHEMISTS

Raymond Tarleton
Executive Vice President
American Association of Cereal Chemists
3340 Pilot Knob Rd.
St. Paul, MN 55121
(612) 454-7250

AMERICAN ASSOCIATION OF CLINICAL CHEMISTS

William J. Campbell
Executive Director
American Association of Clinical Chemists
1725 K St., N.W.
Washington, DC 20006
(202) 833-3590

AMERICAN ASSOCIATION OF IMMUNOLOGISTS

Henry Metzger
Secretary
American Association of Immunologists
Bldg. 10, Rm. 9N-206
National Institutes of Health
Bethesda, MD 20014
(301) 530-7178

AMERICAN ASSOCIATION OF PATHOLOGISTS

G. Barry Pierce
President
American Association of Pathologists
University of Colorado Medical Center
Denver, CO 80220
(303) 399-1211

AMERICAN COLLEGE OF CARDIOLOGY

William D. Nelligan
Executive Director
American College of Cardiology
9650 Rockville Pike
Bethesda, MD 20014
(301) 530-1600

● AMERICAN COLLEGE OF LABORATORY ANIMAL MEDICINE

Albert E. New
President-Elect
American College of Laboratory Animal Medicine
National Cancer Institute
Bldg. 13, Rm. 2E55
National Institutes of Health
Bethesda, MD 20014
(301) 496-2527

THE AMERICAN COLLEGE OF OBSTETRICIANS AND GYNECOLOGISTS

Warren H. Pearse
Executive Director
The American College of Obstetricians and Gynecologists
One East Wacker Dr.
Chicago, IL 60601
(312) 222-1600

AMERICAN COLLEGE OF PHYSICIANS

Edward Rosenow, Jr.
Executive Vice President
American College of Physicians
4200 Pine St.
Philadelphia, PA 19104
(215) 243-1200

AMERICAN COLLEGE OF SURGEONS

C. Rollins Hanlon
Director
American College of Surgeons
55 East Erie St.
Chicago, IL 60611
(312) 664-4050

AMERICAN COLLEGE OF VETERINARY TOXICOLOGISTS

Frederick W. Oehme
Secretary-Treasurer
American College of Veterinary Toxicologists
Veterinary Medical Sciences Bldg.
Kansas State University
Manhattan, KS 66506
(913) 532-5679

AMERICAN DAIRY SCIENCE ASSOCIATION

C. J. Cruse
Executive Secretary
American Dairy Science Association
113 North Neil St.
Champaign, IL 61820
(217) 356-3182

AMERICAN DENTAL ASSOCIATION

Harvey W. Lyon
American Dental Association
211 East Chicago Ave.
Chicago, IL 60611
(312) 944-6730, ext. 255

AMERICAN FEDERATION FOR CLINICAL RESEARCH

David Rimoin
Secretary-Treasurer
American Federation for Clinical Research
UCLA-Harbor General Hospital
Torrence, CA 90509
(213) 328-2380

AMERICAN FISHERIES SOCIETY

Carl R. Sullivan
Executive Director
American Fisheries Society
5410 Grosvenor Lane
Bethesda, MD 20014
(301) 897-8616

AMERICAN GASTROENTEROLOGICAL ASSOCIATION

John A. Higgins
Secretary
American Gastroenterological Association
Mayo Clinic
Rochester, MN 55901
(507) 282-2511

AMERICAN GENETIC ASSOCIATION

Robert H. Miller
Secretary
American Genetic Association
Bldg. 173, BARC-East
U.S. Department of Agriculture, ARS
Beltsville, MD 20705
(301) 344-2445

AMERICAN INDUSTRIAL HYGIENE ASSOCIATION

William E. McCormick
Managing Director
American Industrial Hygiene Association
66 South Miller Rd.
Akron, OH 44313
(216) 836-9537

AMERICAN INSTITUTE OF NUTRITION

Willis A. Gortner
Executive Officer
American Institute of Nutrition
9650 Rockville Pike
Bethesda, MD 20014
(301) 530-7050

AMERICAN MEAT SCIENCE ASSOCIATION

H. Kenneth Johnson
Director
American Meat Science Assn.
c/o National Livestock and Meat Board
444 N. Michigan Ave.
Chicago, IL 60611
(312) 467-5520

AMERICAN MEDICAL ASSOCIATION

James E. Sammons
Executive Vice President
American Medical Association
535 North Dearborn St.
Chicago, IL 60610
(312) 751-6000

AMERICAN NEUROLOGICAL ASSOCIATION

Peritz Scheinberg
 Secretary
 American Neurological Association
 Dept. of Neurology
 University of Miami School of Medicine
 Jackson Memorial Hospital
 Miami, FL 33136
 (305) 350-6547

THE AMERICAN ORNITHOLOGISTS UNION

George E. Watson
 Secretary
 The American Ornithologists Union
 National Museum of Natural History
 Smithsonian Institution
 Washington, DC 20560
 (202) 381-5286

AMERICAN PHARMACEUTICAL ASSOCIATION

Edward G. Feldman
 Associate Executive Director for Scientific Affairs
 American Pharmaceutical Association
 2215 Constitution Ave., N.W.
 Washington, DC 20037
 (202) 628-4410

THE AMERICAN PHYSIOLOGICAL SOCIETY

Orr Reynolds
 Executive Secretary
 American Physiological Society
 9650 Rockville Pike
 Bethesda, MD 20014
 (301) 530-7164

THE AMERICAN PHYTOPATHOLOGICAL SOCIETY

Wiley N. Garrett
 Secretary
 The American Phytopathological Society
 Dept. of Plant Physiology and Genetics
 University of Georgia
 Athens, GA 30602
 (404) 542-2571

AMERICAN PSYCHIATRIC ASSOCIATION

Daniel X. Freedman
 Vice President
 American Psychiatric Association
 University of Chicago
 950 East 59th St.
 Chicago, IL 60637
 (312) 947-6481

AMERICAN PUBLIC HEALTH ASSOCIATION

William H. McBeath
 Executive Director
 American Public Health Association
 1015 18th St., N.W.
 Washington, DC 20036
 (202) 467-5050

AMERICAN ROENTGEN RAY SOCIETY

James F. Martin
 Secretary
 American Roentgen Ray Society
 Dept. of Radiology
 Bowman Gray School of Medicine
 Winston-Salem, NC 27103
 (919) 727-4505

THE AMERICAN SOCIETY FOR CELL BIOLOGY

Nancy L. R. Bucher
 Secretary
 The American Society for Cell Biology
 Huntington Laboratories
 Massachusetts General Hospital
 Boston, MA 02114
 (617) 726-3675

AMERICAN SOCIETY FOR CLINICAL INVESTIGATION

Thomas Andreoli
 Secretary-Treasurer
 American Society for Clinical Investigation
 Div. of Nephrology, Rm. 614
 Zeigler
 University Station
 Birmingham, AL 35294
 (205) 935-3585

AMERICAN SOCIETY FOR HORTICULTURAL SCIENCE

Cecil Blackwell
 Executive Director
 American Society for Horticultural Science
 National Center for American Horticulture
 Mount Vernon, VA 22121
 (703) 768-0700

AMERICAN SOCIETY FOR MICROBIOLOGY

Robert F. Acker
 Executive Director
 American Society for Microbiology
 1913 I St., N.W.
 Washington, DC 20006
 (202) 833-9680

AMERICAN SOCIETY FOR PHARMACOLOGY AND EXPERIMENTAL THERAPEUTICS

Ellsworth B. Cook
 Executive Officer
 American Society for Pharmacology and Experimental Therapeutics
 9650 Rockville Pike
 Bethesda, MD 20014
 (301) 530-7060

AMERICAN SOCIETY FOR PHOTOBIOLOGY

Norman I. Krinsky
 Dept. of Biochemistry and Pharmacology
 Tufts University School of Medicine
 Boston, MA 02111
 (617) 956-6861

AMERICAN SOCIETY OF AGRICULTURAL ENGINEERS

Russell H. Hahn
 Assistant Secretary for Technical Activities
 American Society of Agricultural Engineers
 2950 Niles Rd.
 St. Joseph, MI 49085
 (616) 983-6521

AMERICAN SOCIETY OF AGRONOMY

Matthias Stelly
 Executive Vice President
 American Society of Agronomy
 677 South Segoe Rd.
 Madison, WI 53711
 (608) 274-1212

AMERICAN SOCIETY OF ANIMAL SCIENCE

C. J. Kércher
 President-Elect
 American Society of Animal Science
 University Station, Box 3354
 Laramie, WY 82071
 (307) 766-2226

AMERICAN SOCIETY OF BIOLOGICAL CHEMISTS

Robert A. Harte
 Executive Officer
 American Society of Biological Chemists
 9650 Rockville Pike
 Bethesda, MD 20014
 (301) 530-7145

AMERICAN SOCIETY OF CLINICAL PATHOLOGISTS

Lewis P. James, Jr.
 Secretary
 American Society of Clinical Pathologists
 2100 W. Harrison St.
 Chicago, IL 60612
 (312) 738-1336

AMERICAN SOCIETY OF HEMATOLOGY

Thomas Bradley
 Secretary
 American Society of Hematology
 Hematology Section
 Veterans Administration Hospital
 4150 Clement St.
 San Francisco, CA 94121
 (415) 221-4810, ext. 556

AMERICAN SOCIETY OF HUMAN GENETICS

Edmund A. Murphy
 Secretary
 American Society of Human Genetics
 Div. of Medical Genetics
 The Johns Hopkins Hospital
 601 North Broadway
 Baltimore, MD 21205
 (301) 955-3122

AMERICAN SOCIETY OF ICHTHYOLOGISTS AND HERPETOLOGISTS

Richard Highton
 American Society of Ichthyologists and Herpetologists
 Dept. of Zoology
 University of Maryland
 College Park, MD 20742
 (301) 454-3201

AMERICAN SOCIETY OF LIMNOLOGY AND OCEANOGRAPHY

Claire L. Schelske
 Secretary
 American Society of Limnology and Oceanography
 Great Lakes Research Div.
 University of Michigan
 220 Bonisteel Blvd.
 Ann Arbor, MI 48109
 (313) 764-2422

AMERICAN SOCIETY OF MAMMALOGISTS

William L. Lidicker, Jr.
 President
 American Society of Mammalogists
 Museum of Vertebrate Zoology
 University of California
 Berkeley, CA 94720

AMERICAN SOCIETY OF PARASITOLOGISTS

Donald V. Moore
 Secretary-Treasurer
 American Society of Parasitologists
 University of Texas
 Southwestern Medical School
 Dallas, TX 75235
 (214) 631-3220, ext. 2269

AMERICAN SOCIETY OF PLANT PHYSIOLOGISTS

G. R. Noggle
 Business Executive
 The American Society of Plant Physiologists
 9650 Rockville Pike
 Bethesda, MD 20014
 (301) 530-9474

AMERICAN SOCIETY OF PLANT TAXONOMISTS

Janice C. Coffey
 Secretary
 American Society of Plant Taxonomists
 Biological Dept.
 Queens College
 Selwyn Ave.
 Charlotte, NC 28207
 (704) 332-7121

THE AMERICAN SOCIETY OF TROPICAL MEDICINE AND HYGIENE

Mark T. Hoekenga
 Secretary-Treasurer
 The American Society of Tropical Medicine and Hygiene
 Parkdale Branch
 P. O. Box 46502
 Cincinnati, OH 45246

AMERICAN SOCIETY OF ZOOLOGISTS

John L. Roberts
Secretary
American Society of Zoologists
Dept. of Zoology
University of Massachusetts
Amherst, MA 01003
(413) 545-0492

THE AMERICAN SURGICAL ASSOCIATION

James V. Maloney, Jr.
Secretary
The American Surgical Association
UCLA School of Medicine
Los Angeles, CA 90024
(213) 825-6176

AMERICAN UROLOGICAL ASSOCIATION, INC.

Hal B. Jennings, Jr.
Executive Director
American Urological Association, Inc.
1120 North Charles St.
Baltimore, MD 21201
(301) 727-1100

ANIMAL BEHAVIOR SOCIETY

Benjamin B. Beck
Secretary
Animal Behavior Society
Chicago Zoological Park
Brookfield, IL 60513

ASSOCIATION FOR TROPICAL BIOLOGY

Clifford Evans
Secretary-Treasurer
Association for Tropical Biology
c/o Anthropology, MNH 368
Smithsonian Institution
Washington, DC 20560
(202) 381-5972

ASSOCIATION OF AMERICAN PHYSICIANS

James B. Wyngaarden
Secretary
Association of American Physicians
Dept. of Medicine
Duke University Medical Center
Durham, NC 27710
(919) 684-2416

BIOMETRIC SOCIETY, EASTERN NORTH AMERICAN REGION

Charles E. Gates
Secretary-Treasurer
Biometric Society, Eastern North American
Region
Institute of Statistics
Texas A&M University
College Station, TX 77843
(713) 845-3141

BIOPHYSICAL SOCIETY

Margaret O. Dayhoff
Secretary
Biophysical Society
National Biomedical Research Foundation
Georgetown University
Medical Center
3900 Reservoir Rd., N.W.
Washington, DC 20007
(202) 625-2121

BOTANICAL SOCIETY OF AMERICA

Patricia Holmgren
Secretary
Botanical Society of America
The New York Botanical Gardens
Bronx, NY 10458
(212) 220-8626

CROP SCIENCE SOCIETY OF AMERICA

Matthias Stelly
Executive Secretary
Crop Science Society of America
677 South Segoe Rd.
Madison, WI 53711
(608) 274-1212

THE ECOLOGICAL SOCIETY OF AMERICA

J. Frank McCormick
Secretary
The Ecological Society of America
Director
Graduate Program in Ecology
University of Tennessee
Knoxville, TN 37916
(615) 774-3065

ENTOMOLOGICAL SOCIETY OF AMERICA

Wally Murdoch
Executive Secretary
Entomological Society of America
4603 Calvert Rd.
College Park, MD 20740
(301) 864-1334

GENETICS SOCIETY OF AMERICA

Gerald Fink
Secretary
Genetics Society of America
Dept. of Genetics, Development, and Physiology
216 Bradfield Hall
Cornell University
Ithaca, NY 14853
(607) 256-4524

HEALTH PHYSICS SOCIETY

Richard J. Burk, Jr.
Executive Secretary
Health Physics Society
4720 Montgomery Lane
Bethesda, MD 20014
(302) 654-3080

INSTITUTE OF FOOD TECHNOLOGISTS

Calvert L. Willey
Executive Director
Institute of Food Technologists
221 North LaSalle St., Suite 2120
Chicago, IL 60601
(312) 782-8424, ext. 5

INTERNATIONAL SOLAR ENERGY SOCIETY,
AMERICAN SECTION

W. Shropshire, Jr.
Chairman
International Solar Energy Society, American
Section
c/o Smithsonian Radiation Biology Laboratory
12441 Parklawn Dr.
Rockville, MD 20852
(301) 443-2333

THE MYCOLOGICAL SOCIETY OF AMERICA

C. W. Hesseltine
The Mycological Society of America
Northern Regional Research Laboratory
1815 North University St.
Peoria, IL 61604
(309) 685-4011, ext. 262

THE PALEONTOLOGICAL SOCIETY

Warren Addicott
Secretary
Paleontological Society
U. S. Geological Survey
345 Middlefield Rd.
Menlo Park, CA 94025
(415) 323-8111

PHYCOLOGICAL SOCIETY OF AMERICA

Michael J. Wynne
Secretary
Phycological Society of America
Dept. of Botany
University of Texas
Austin, TX 78712
(512) 471-5125

THE POULTRY SCIENCE ASSOCIATION, INC.

Donald Bray
The Poultry Science Association, Inc.
Animal Science Dept.
University of Illinois School of Agriculture
Urbana, IL 61801
(217) 333-3456

RADIATION RESEARCH SOCIETY

Richard J. Burk, Jr.
Executive Secretary
Radiation Research Society
4720 Montgomery Lane
Bethesda, MD 20014
(301) 654-3080

RETICULOENDOTHELIAL SOCIETY

Sherwood M. Reichard
Secretary
Reticuloendothelial Society
Medical College of Georgia
Augusta, GA 30902
(404) 828-2601

SOCIETY FOR CRYOBIOLOGY

Armand M. Karow
Secretary
Society for Cryobiology
Medical College of Georgia
Dept. of Pharmacology
Augusta, GA 30902
(404) 828-0211

SOCIETY FOR DEVELOPMENTAL BIOLOGY

James Weston
Secretary
Society of Developmental Biology
Dept. of Biology
University of Oregon
Eugene, OR 97403

SOCIETY FOR ECONOMIC BOTANY, INC.

John H. Beaman
Chief
Society of Economic Botany, Inc.
Dept. of Botany
Michigan State University
East Lansing, MI 48824
(517) 355-4696

SOCIETY FOR GYNECOLOGIC INVESTIGATION

Lawrence Longo
Secretary-Treasurer
Society of Gynecologic Investigation
Depts. of Obstetrics, Gynecology, and Physiology
Loma Linda University School of Medicine
Loma Linda, CA 92354
(714) 796-2817

SOCIETY FOR INVESTIGATIVE DERMATOLOGY

W. Mitchell Sams, Jr.
Secretary
Society for Investigative Dermatology
Dept. of Dermatology
University of North Carolina School of Medicine
Chapel Hill, NC 27515
(919) 966-3322

SOCIETY FOR NEUROSCIENCE

Marjorie G. Wilson
Executive Secretary
Society for Neuroscience
9650 Rockville Pike
Bethesda, MD 20014
(301) 530-8955

SOCIETY FOR PEDIATRIC RESEARCH

Jo Anne Brasel
Secretary-Treasurer
Society for Pediatric Research
Institute for Human Nutrition
Columbia University College of Physicians and
Surgeons
630 West 168th St.
New York, NY 10032
(212) 579-3984

SOCIETY FOR RANGE MANAGEMENT

David A. Smith
Executive Secretary
Society for Range Management
2760 West Fifth Ave.
Denver, CO 80222
(303) 765-3205

SOCIETY OF AMERICAN FORESTERS

M. B. Dickerman
 Director of Science Programs
 Society of American Foresters
 5400 Grosvenor Lane
 Bethesda, MD 20014
 (301) 897-8720

SOCIETY OF GENERAL PHYSIOLOGISTS

Harold G. Hempling
 Secretary
 Society of General Physiologists
 Dept. of Physiology
 Medical University of South Carolina
 Charleston, SC 29401
 (216) 368-3359

SOCIETY OF NEMATOLOGISTS

W. F. Mai
 Society of Nematologists
 Dept. of Plant Pathology
 New York State College of Agriculture
 Cornell University
 Ithaca, NY 14853
 (607) 256-3188

THE SOCIETY OF SYSTEMATIC ZOOLOGY

Terry L. Erwin
 Secretary
 The Society of Systematic Zoology
 Dept. of Entomology
 National Museum of Natural History
 Smithsonian Institution
 Washington, DC 20560
 (202) 381-5410

THE SOCIETY OF TOXICOLOGY

Leon Golberg
 President
 The Society of Toxicology
 Chemical Industry Institute of Toxicology
 P. O. Box 12137
 Research Triangle Park, NC 27709
 (919) 876-8100

SOIL SCIENCE SOCIETY OF AMERICA

Matthias Stelly
 Secretary
 Soil Science Society of America
 677 S. Segoe Rd.
 Madison, WI 53711
 (608) 274-1212

WEED SCIENCE SOCIETY OF AMERICA

C. L. Foy
 President-Elect
 Weed Science Society of America
 Dept. of Plant Pathology and Physiology
 Virginia Polytechnic Institute and State University
 Blacksburg, VA 24061
 (703) 951-6361

THE WILDLIFE SOCIETY

Fred G. Evenden
 Executive Director
 The Wildlife Society
 7101 Wisconsin Ave.
 Bethesda, MD 20014
 (301) 986-8700

ASSEMBLY OF LIFE SCIENCES

Committee Members

Committee Members

A

- ABRAHAMSON, Seymour (III.2.)**
III.2.A.)
Dept. of Zoology
University of Wisconsin
Madison, WI 53706
(608) 262-2506
- ABRAMS, I. J. (II.4.B.)**
Market Research Corporation
of America
624 South Michigan Ave.
Chicago, IL 60605
(312) 939-1500, ext. 302
- ABRAMSON, Fred P. (I.4.A.1.)**
Dept. of Pharmacology
The George Washington University
2300 I St., N.W., Rm. 611
Ross Hall
Washington, DC 20037
(202) 676-2946
- ADAMS, John G. (II.5., II.5.F.)**
Scientific and Professional Relations
Pharmaceutical Manufacturers
Association
1155 Fifteenth St., N.W.
Washington, DC 20005
(202) 296-2440
- ADELMAN, Richard C. (II.5.B., II.5.B.5.)**
Temple University Institute on Aging,
Old Medical School
3420 Broad St.
Philadelphia, PA 19140
(215) 221-4501
- ADEY, W. Ross (III.14.A.)**
Veterans Administration Hospital
11201 Benton St.
Loma Linda, CA 92357
(714) 825-7084, ext. 2264
- AGUILAR, Richard (III.4.A.)**
MARC-ER
20 West Ninth St.
Kansas City, MO 64105
(816) 924-0940
- AHRENS, Edward H., Jr. (I.2.)**
Rockefeller University
1230 York Ave.
New York, NY 10021
(212) 360-1245
- AINSWORTH, E. John (II.5.D.)**
Div. of Biological and Medical
Research
Argonne National Laboratory
D-202, B 117
Argonne, IL 60439
(312) 739-7711, ext. 2016
- ALBERT, Roy E. (III.10.)**
Institute of Environmental Medicine
New York University Medical Center
550 First Ave.
New York, NY 10016
(212) 679-3200, ext. 2557
- ALDRICH, Franklin D. (III.9., III.9.A., III.9.B.)**
Medical Dept.
IBM Corporation
P. O. Box 1900
Boulder, CO 80302
(303) 447-4224
- ALEXANDER, Martin (IV.2.C.1.)**
Cornell University
708 Bradfield Hall
Ithaca, NY 14850
(607) 256-3264
- ALEXANDER, Nancy J. (II.5.)**
Reproductive Physiology
Oregon Regional Primate Research
Center
505 N.W. 185th Ave.
Beaverton, OR 97005
(503) 645-1141
- ALFIN-SLATER, Roslyn B. (II.4., II.6.B.)**
Div. of Environmental and Nutritional
Science
University of California School of
Public Health
Los Angeles, CA 90024
(213) 825-5657
- ALLEN, Gordon (III.8.A.)**
Div. of Biometry and Epidemiology
National Institutes of Mental Health
Rockville, MD 20852
(301) 443-3364
- ALTMAN, Norman H. (II.5.G.)**
Papanicolaou Cancer Research
Institute
P. O. Box 6188
Miami, FL 33123
(305) 324-5572
- AMDUR, Mary O. (III.5.)**
Massachusetts Institute of
Technology, Rm. 56-217
Cambridge, MA 02139
(617) 253-3111
- ANAST, George T. (III.4.A.)**
Box LOA
Woodruff, WI 54568
(715) 356-2600
- ANDERSON, Robert S. (II.5.A.)**
Sloan-Kettering Institute for Cancer
Research
145 Boston Post Rd.
Rye, NY 10580
(914) 698-1100, ext. 272
- ANVER, Miriam R. (II.5.B.5.)**
Unit for Laboratory Animal Medicine
013 Animal Research Facility
University of Michigan
Medical School
Ann Arbor, MI 48109
(313) 764-0277
- ARIAS, Irwin M. (III.5.)**
Liver Research Center
Albert Einstein College of Medicine
1300 Morris Park Ave.
Bronx, NY 10461
(212) 430-2098 or 2379
- ARTHUR, Ransom J. (III.8.A.)**
Neuropsychiatric Institute
University of California
760 Westwood Plaza
Los Angeles, CA 90024
(213) 825-7288
- ASHTON, Peter S. (II.3.)**
Dept. of Botany
University of Aberdeen
St. Machar Dr.
Aberdeen, AB9 2UD, Scotland
- ATKINS, Claude (III.4.A.)**
National Naval Medical Center
Bethesda, MD 20014
(202) 295-0094
- ATKINSON, Linda E. (III.3.)**
The Ford Foundation
320 E. 43rd St.
New York, NY 10017
(212) 573-4932
- AXELROD, David (IV.2.C.6., IV.2.D.)**
Div. of Laboratories and Research
New York State Dept. of Health
Empire State Plaza
Albany, NY 12201
(518) 474-4170
- AYENSU, Edward S. (II.6.A.)**
Endangered Species Program
National Museum of Natural History
Washington, DC 20560
(202) 381-5841

AYLOR, Donald (II.2.)
Dept. of Ecology and Climatology
Connecticut Agricultural Experiment
Station
Box 1106
New Haven, CT 06504
(203) 787-7421

ATZ, James W. (II.5., II.5.H.)
American Museum of Natural History
79th St. and Central Park West
New York, NY 10024
(212) 873-1300, ext. 308

B

BAKER, Henry H., Jr. (II.5.B.1.)
Dept. of Comparative Medicine
University of Alabama
University Station
Birmingham, AL 35294
(205) 934-2117

BALTIMORE, David (I.2.)
Dept. of Biology
E17-517A
Massachusetts Institute of
Technology
Cambridge, MA 02139
(617) 253-6410

BANKS, Harlan P. (II.6.A.)
214 Plant Science Bldg.
Cornell University
Ithaca, NY 14850
(607) 256-3240

BARNETT, Henry L. (III.7.)
Albert Einstein College of Medicine
1300 Morris Park Ave.
Bronx, NY 10461
(212) 430-2476

BASSINGTHWAIGHTE, James B.
(III.12.D.)
Center for Bioengineering RF-52
University of Washington
Seattle, WA 98195
(206) 543-0960

BEAL, Virginia A. (II.4.G.)
Dept. of Food Science and Nutrition
Chenoweth Laboratory
University of Massachusetts
Amherst, MA 01003
(413) 545-0740

BEARN, Alexander G. (I.2., I.3.,
III.1.)
Cornell University Medical College
525 East 68th St.
New York, NY 10021
(212) 249-1548

BEEBE, Gilbert W. (III.2., III.2.B.)
7311 Stafford Rd.
Alexandria, VA 22307
(703) 765-8202

BEER, Michael (II.6.C.)
Dept. of Biophysics
Johns Hopkins University
Baltimore, MD 21218
(301) 338-7244

BEEVERS, Harry (I.2.)
Div. of Natural Sciences
University of California
Santa Cruz, CA 95064
(408) 429-2046

BEHRMAN, Richard E. (III.7.)
Rainbow Babies' and Children's
Hospital
2103 Adelbert Rd.
Cleveland, OH 44106
(216) 444-3884

BEIDLER, Lloyd M. (I.2., IV.2.A.)
Dept. of Biological Science
Unit 1, 239 B10
Florida State University
Tallahassee, FL 32306
(904) 644-3550 or 3076

BENDER, Michael A. (I.3., III.2.,
III.2.A.)
Medical Dept.
Brookhaven National Laboratory
Upton, L.I., NY 11973
(516) 345-3570

BENDITT, Earl P. (IV.2.)
Dept. of Pathology
University of Washington
Seattle, WA 98195
(206) 543-7472

BENFORADO, David M. (IV.2.A.)
Environmental Legislation and
Regulations
Bldg. 21-2W, #58
P. O. Box 33331
3M Company
St. Paul, MN 55133
(612) 778-5189

BENIRSCHKE, Kurt (II.5.)
Dept. of Pathology, M-012
University of California, San Diego
P. O. Box 109
La Jolla, CA 92037
(714) 452-4322

BENSON, Don M. (III.4.)
Aultman Anesthesia, Inc.
P. O. Box 1401
Station C
Canton, OH 44708
(216) 452-9911, ext. 381

BERG, Paul (III.6.)
Dept. of Biochemistry
Stanford University School of
Medicine
Stanford, CA 94305
(415) 497-6170

BERGGEN, Gretchen Glode (II.4.E.)
Harvard School of Public Health
665 Huntington Ave.
Boston, MA 02115
(617) 732-1232

BERNSTEIN, Irwin S. (II.5.B.4.)
Yerkes Field Facility
2409 Collins Hill Rd.
Lawrenceville, GA 30245
(404) 963-6281

BESCH, Emerson L. (II.5., II.5.F.)
College of Veterinary Medicine
University of Florida
Gainesville, FL 32610
(904) 392-2381

BIERI, John G. (II.4.A.)
Nutritional Biochemistry Section
National Institute of Arthritis,
Metabolism, and Digestive
Diseases

Bldg. 10, Rm. 5N-102
National Institutes of Health
Bethesda, MD 20014
(301) 496-5536

BLACKBOURNE, Brian D. (III.11.)
Office of the Chief Medical Examiner
19th and Massachusetts Ave., S.E.
Washington, DC 20003
(202) 724-4330

BLACKBURN, Henry (II.4.B.)
Laboratory of Physiological Hygiene
School of Public Health and Medical
School

University of Minnesota
Minneapolis, MN 55455
(612) 373-3586

BLISS, Ann (III.4.)
Yale University School of Medicine
333 Cedar St.
New Haven, CT 06510
(203) 436-3688

BLOOM, Floyd E. (I.2.)
Arthur V. David Center for
Behavioral Neurobiology
The Salk Institute
P. O. Box 1809
San Diego, CA 92112
(714) 453-4100

BLUMBERG, Baruch S. (III.12.C.)
The Fox Chase Cancer Center
7701 Burholme Ave.
Fox Chase
Philadelphia, PA 19111
(215) 728-2203

BOCK, Walter J. (II.6.A.)
Dept. of Biological Sciences
Columbia University
New York, NY 10027
(212) 280-4581, 4582, or 4487

BORZELLECA, Joseph F. (II.4.C.,
II.4.C.4., IV.2., IV.2.C., IV.2.C.7.,
IV.2.D., IV.3.B.)
Virginia Commonwealth University
Health Sciences Division
Medical College of Virginia
Dept. of Pharmacology
Richmond, VA 23298
(804) 786-0329

BOTTIGLIERI, Nicholas G. (II.5.)
American Cancer Society, Inc.
777 Third Ave.
New York, NY 10017
(212) 371-2900, ext. 227

**BOWDEN, Douglass (II.5.B.,
II.5.B.4.)**
Washington Regional Primate
Research Center
1421 Health Sciences Bldg. SI-50
University of Washington
Seattle, WA 98195
(206) 543-1430

BOWIE, Walter C. (III.13.)
School of Veterinary Medicine
Tuskegee Institute
Tuskegee, AL 36088
(205) 727-8465

BOYD, David R. (III.4.)
Div. of Emergency Medical Services
Dept. of Health, Education, and
Welfare, Suite 320
6525 Belcrest Rd.
West Hyattsville, MD 20782
(301) 436-6284

BOYD, Frank L. (II.4.C.1.)
Quality Assurance
Fritzsche, Dodge and Olcott
76 Ninth Ave.
New York, NY 10011
(212) 929-4100, ext. 297

BRÄKKE, Myron K. (I.2.)
U.S. Dept. of Agriculture
304 Plant Industry Bldg.
University of Nebraska
Lincoln, NE 68503
(402) 472-2858

BREYER, Stephen G. (I.4.A.)
Harvard Law School
Cambridge, MA 02138
(617) 495-4276

BRIGGS, George M. (II.4.A.)
Dept. of Nutritional Sciences
Morgan Hall, Rm. 119
University of California
Berkeley, CA 94720
(415) 642-5462

BRILL, A. Bertrand (III.2., III.2.B.)
Div. of Nuclear Medicine and
Biophysics
Vanderbilt University School of
Medicine
Nashville, TN 37232
(615) 322-2394

BRODERICK, James J. (II.4.C.1.)
Flavor Div.
H. Kohnstamm and Co., Inc.
161 Avenue of the Americas
New York, NY 10013
(212) 620-4800

BROOKHART, John M. (III.12.D.)
Dept. of Physiology
University of Oregon Medical School
3181 S.W. Sam Jackson Park Rd.
Portland, OR 97201
(503) 225-8262

BROWER, Thomas D. (III.11.)
Orthopedic Surgery
University of Kentucky College of
Medicine
800 Rose St.
Lexington, KY 40506
(606) 233-5533

**BROWN, Charles C. (I.4.A.1.,
IV.2.C.6.)**
Biometry Branch
National Cancer Institute
National Institutes of Health
Lindow Bldg., Rm. 5C08
Bethesda, MD 20014
(301) 496-3116

BROWN, Reynold F. (III.2., III.2.B.)
Office of Environmental Health
University of California
1344 - 3rd Ave.
San Francisco, CA 94143
(415) 666-1300

BROZEK, Josef (II.4.F.)
Dept. of Psychology
Lehigh University
Bethlehem, PA 18015
(215) 691-7000, ext. 2255

BRUCKNER, James V. (IV.2.C.7.)
Dept. of Pharmacology
University of Texas Medical School
Health Science Center
Houston, TX 77025
(713) 792-5630

BRYANT, Robert S. (II.4.C.1.)
Quality Assurance
Industrial Chemical Div.
Stauffer Chemical Co.
Westport, CT 06880
(203) 222-4253

BUDOWSKI, Gerardo (II.3)
Natural Resources Research Program
Centro Agronomico Tropical de
Investigacion y Ensenanza
(CATIE)
Turrialba, Costa Rica
Telephone: 560169 and 560122,
ext. 45

BUHLER, Donald R. (IV.2.C.7.)
Dept. of Agricultural Chemistry
Oregon State University
Corvallis, OR 97331
(503) 754-3791, 3792, 3793 or 3794

BULL, Robert W. (II.5.A., II.5.B.1.)
Dept. of Medicine
Michigan State University
B220 Life Science I Bldg.
East Lansing, MI 48823
(517) 335-4616

ASSEMBLY OF LIFE SCIENCES

BULLOCK, Theodore H. (III.12.A.)
Dept. of Neurosciences, A-001
University of California, San Diego
La Jolla, CA 92093
(714) 452-3636

BUREK, Joe Dale (II.5.B.2.)
Dow Chemical Company
1803 Building
Midland, MI 48640
(517) 636-0737

BURNS, John J., Jr. (I.2., IV.2.)
Hoffman-LaRoche, Inc.
Nutley, NJ 07110
(201) 235-2811

**BURRIS, Robert H. (II.1.,
II.6.A.)**
Dept. of Biochemistry
University of Wisconsin
420 Henry Hall
Madison, WI 53706
(608) 262-3042 or 233-5932

BUSTAD, Leo K. (III.13.)
College of Veterinary Medicine
Washington State University
Pullman, WA 99163
(509) 335-4569

BUTLER, Warren L. (II.6.C.)
Dept. of Biology
University of California, San Diego
La Jolla, CA 92037
(714) 452-3266

**BUTTERWORTH, Charles E., Jr.
(II.4., II.4.A.)**
Dept. of Nutrition Sciences
University of Alabama Medical
Center
Birmingham, AL 35294
(205) 934-4710

C

CADIGAN, Francis C., Jr. (II.5.I.1.)
Biomedical Laboratory
Edgewood Arsenal
Aberdeen Proving Grounds,
MD 21010
(301) 671-3018

CAIN, William (IV.2.A.)
John B. Pierce Foundation
Laboratory
Yale University School of Medicine
290 Congress Ave.
New Haven, CT 06519
(203) 562-9901

CALL, David L. (I.4.A.)
Cooperative Extension
College of Agriculture and Life
Sciences
Cornell University
Roberts Hall
Ithaca, NY 14850
(607) 256-1000

COMMITTEE MEMBERS

- CALLOWAY, Doris H. (II.4.B.)**
Dept. of Nutritional Sciences
University of California
Berkeley, CA 94720
(415) 642-5202
- CAMPBELL, Bruce H. (II.4.C.1.)**
J. T. Baker Chemical Co.
222 Red School Ln.
Phillipsburg, NJ 08865
(201) 859-2151
- CARLOS, James P. (I.4.A.1.)**
National Caries Program
National Institute of Dental Research
National Institutes of Health
Westward Bldg., Rm. 528
Bethesda, MD 20014
(301) 496-7239
- CARROLL, Robert E. (III.5.)**
Dept. of Preventive and Community
Medicine
Albany Medical College
Albany, NY 12208
(518) 445-5251
- CARTER, Philip B. (II.5.)**
Trudeau Institute
Saranac Lake, NY 12983
(518) 891-3080
- CASEY, Harold W. (II.5.B.1., II.5.E.)**
Dept. of Veterinary Pathology
Armed Forces Institute of Pathology
Washington, DC 20306
(202) 576-2601
- CHAFKIN, Sol H. (II.4.)**
Ford Foundation
320 E. 43rd St.
New York, NY 10017
(212) 573-5289
- CHANCE, Britton (II.6.C.)**
Johnson Research Foundation
University of Pennsylvania School of
Medicine
Philadelphia, PA 19104
(215) 243-7159
- CHASE, Herman B. (II.5.D.)**
Div. of Biology and Medicine
Brown University
Providence, RI 02912
(401) 863-2100
- CHRISTMAN, Russell F. (IV.2.C.2.)**
Dept. of Environmental Sciences and
Engineering
University of North Carolina
School of Public Health
201-H
Chapel Hill, NC 27514
(919) 966-1171
- CLARKSON, Thomas B. (II.5.B.4.,
III.13.)**
Dept. of Laboratory Animal
Medicine
The Bowman Gray School of
Medicine
Winston-Salem, NC 27103
(919) 727-4567
- CLAYSON, David B. (III.12.C.,
IV.2.B.)**
Eppley Cancer Institute
University of Nebraska Medical
Center
42nd and Dewey Ave.
Omaha, NE 68105
(402) 541-4937
- CLAYTON, Roderick (II.6.D.)**
Section of B.G.D.
Plant Science Bldg.
Cornell University
Ithaca, NY 14853
(607) 256-3091
- CLEARY, Edward J. (III.9., III.9.B.)**
32088 Waterside Ln.
Westlake Village, CA 91361
(213) 889-4146
- CLEARY, Stephen F. (III.2., III.2.B.,
III.14.A.)**
Dept. of Biophysics
Box 877 MCV Station
Medical College of Virginia
Virginia Commonwealth University
Richmond, VA 23298
(804) 786-9820
- CODE, Charles F. (III.12.D.)**
CURE-Bldg. 115
VA Wadsworth Hospital Center
Los Angeles, CA 90073
(213) 478-3711, ext. 6126
- COHEN, Bennett J. (II.5.B.)**
University of Michigan Medical
School
Ann Arbor, MI 48109
(313) 764-0277 or 0278
- COHEN, Donna (II.5.B.4.)**
Dept. of Psychiatry and Behavioral
Sciences
University of Washington
RP-10
Seattle, WA 98195
(206) 543-7530
- COHEN, Sheldon G. (II.2.)**
Immunology, Allergic and Immu-
nologic Disease Program
NIAID
Bldg. 31, Rm. 7A52
National Institutes of Health
Bethesda, MD 20014
(301) 496-1884
- COLWELL, Rita (II.6.A.)**
Dept. of Microbiology
University of Maryland
College Park, MD 20742
(301) 454-5376 or 2848
- COMAR, Cyril L. (III.2., III.2.B.)**
Electric Power Research Institute
P. O. Box 10412
Palo Alto, CA 94303
(415) 855-2572
- COOK, John S. (III.12.D.)**
Biology Div.
Oak Ridge National Laboratory
P. O. Box Y
Oak Ridge, TN 37830
(615) 483-8611, ext. 37586
- COOKSON, John T., Jr. (IV.2.C.1.)**
JTC Environmental Consultants, Inc.
7979 Old Georgetown Rd.
Bethesda, MD 20014
(301) 656-5850
- COOPER, Robert C. (III.9.)**
108 Earl Warren Hall
University of California School of
Public Health
Berkeley, CA 94720
(415) 642-1136
- CORFMAN, Philip A. (III.3.)**
National Institute of Child Health
and Human Development
Landow Bldg., Rm. A-721
Bethesda, MD 20014
(301) 496-1101
- CORK, Linda K. Collins (II.5.A.)**
Dept. of Pathology
Div. of Comparative Medicine
John Hopkins University School of
Medicine
Baltimore, MD 21205
(301) 955-3334 or 3273
- CORNISH, Herbert H. (IV.2.D.1.)**
University of Michigan School of
Public Health
Rm. 3550
Ann Arbor, MI 48104
(313) 953-7100
- COURSIN, David B. (II.4., II.4.F.)**
1503 Hillcrest Rd.
Lancaster, PA 17604
(717) 393-1731
- COWAN, W. Maxwell (III.12.A.)**
Dept. of Anatomy
Washington University School of
Medicine
660 So. Euclid Ave.
St. Louis, MO 63110
(314) 454-2405
- CRAVIOTO, Joaquín (II.4.F.)**
Scientific Research Div.
Hospital del Niño IMAN
Insurgentes Sur 3700
Mexico 22, D.F., Mexico
(905) 573-02-71
- CROCKER, Thomas D. (IV.2.A.)**
Dept. of Economics
University of Wyoming
Laramie, WY 82070
(307) 766-6423
- CROCKETT, Carolyn M. (II.5.I.,
II.5.I.2., II.5.I.4.)**
Dept. of Psychology, NI-25
University of Washington
13034 - 1st Ave. NE
Seattle, WA 98125
(206) 363-9527

CRONKITE, Eugene P. (I.3.)
Medical Dept.
Brookhaven National Laboratory
Upton, L.I., NY 11973
(516) 345-3568

CROW, James F. (I.3.)
Genetics Bldg.
University of Wisconsin
Madison, WI 53706
(608) 263-1993

D

DAVIDOFF, Frank F. (I.4.A.1.)
Dept. of Medicine
University of Connecticut
Health Center
Rm. L4708
Farmington, CT 06032
(203) 674-2000, ext. 2104

DAVIS, George K. (II.4., II.4.E.,
II.6.B.)
Nutrition Laboratory, IFAS
University of Florida
Gainesville, FL 32611
(904) 392-1924

DAVIS, Harry E. (III.4.A.)
Office of the Surgeon General
Dept. of the Army
HQDA (DASG-HCC-C)
Washington, DC 20310
(202) 697-1885

De BAKEY, Michael E. (III.8.A.)
Baylor College of Medicine
1200 Moursund Ave.
Houston, TX 77030
(713) 797-9353

DEDRICK, Robert L. (IV.2.C.6.)
Div. of Research Services
Biomedical Engineering and
Instrumentation Branch
National Institutes of Health
Bldg. 13, Rm. 3W1W
Bethesda, MD 20014
(301) 496-5771

DENNISTON, Carter (III.2., III.2.A.)
Laboratory of Genetics
University of Wisconsin
505 Genetics Bldg.
Madison, WI 53706
(608) 263-2457

DETHIER, Vincent G. (II.6.A.)
Dept. of Zoology
University of Massachusetts
Amherst, MA 01003
(413) 545-2046

DIGIANO, Francis (IV.2.C.1.)
Civil Engineering Dept.
University of Massachusetts
Amherst, MA 01003
(413) 545-0685

DIMICK, Alan R. (III.4.A.)
Dept. of Surgery
University of Alabama in
Birmingham
University Station
Birmingham, AL 35294
(205) 934-4903

DIMMICK, Robert L. (II.2.)
Aerosol Sciences Dept.
Naval Biosciences Laboratory
Oakland, CA 94625
(415) 832-5217

DINNING, James S. (II.4.E.,
II.4.E.2.)
Food Science and Human
Nutrition Dept.
University of Florida
Gainesville, FL 32611
(904) 392-1991

DODDS, W. Jean (II.5., III.13.)
Div. of Laboratories and Research
New York State Dept. of Health
Albany, NY 12201
(518) 457-2663

DOTY, Robert W. (III.12.A.)
Center for Brain Research
University of Rochester
Rochester, NY 14642
(716) 275-4026

DOULL, John (I.4.A.1., II.4.C.,
II.4.C.4., IV.2., IV.2.C.)
Dept. of Pharmacology
University of Kansas Medical Center
Rainbow Blvd. at 39th St.
Kansas City, KS 66103
(913) 588-7140

DOWLING, John E. (I.2.)
Biological Laboratories
Harvard University
16 Divinity Ave.
Cambridge, MA 02138
(617) 495-2245

DRAKE, John W. (IV.2.)
NIEHS
P. O. Box 12233
Research Triangle Park, NC 27709
(919) 541-3361

DRAPER, Harold H. (II.5.B.3.)
Dept. of Nutrition
College of Biological Sciences
University of Guelph
Guelph, Ontario, Canada
(519) 824-4120, ext. 2291

DRAVNIKS, Andrew (IV.2.A.)
211 Tampa St.
Park Forest, IL 60466
(312) 748-7213

DROBECK, Hans P. (IV.2.C.7.)
Toxicology Dept.
Sterling-Winthrop Research Institute
Rensselaer, NY 12144
(518) 445-8316

ASSEMBLY OF LIFE SCIENCES

DRUCKER, William R. (III.4.)
University of Rochester School
of Medicine
601 Elmwood Ave.
Rochester, NY 14642
(716) 275-5875

DuBOIS, Arthur B. (IV.2.D.1.)
John B. Pierce Foundation
Laboratory
290 Congress Ave.
New Haven, CT 06519
(203) 562-9901

DUFFEE, Richard A. (IV.2.A.)
TRC Corporation of New England
125 Silas Deane Hwy.
Wethersfield, CT 06109
(203) 563-1431

DUHRING, John L. (II.4.G.)
Dept. of Obstetrics and Gynecology
University of Kentucky Medical
Center
Lexington, KY 40506
(606) 233-5123

E

EBERLE, Helen (II.6.C.)
Radiation Biology and Biophysics
University of Rochester School of
Medicine and Dentistry
Rochester, NY 14642
(716) 275-3810

EBERSOL, Charles R., Sr. (III.12.C.)
P. O. Box 598
Torrington, CT 06790
(203) 482-8557

EBERT, Paul A. (I.2.)
Dept. of Surgery
University of California Medical
Center
Rm. 593 Moffitt
San Francisco, CA 94143
(415) 666-1236

ECKLAND, Bruce K. (III.8.A.1.)
Dept. of Sociology
University of North Carolina
Chapel Hill, NC 27514
(919) 966-1450

ECOBICHON, Donald J. (IV.3.A.)
Dept. of Pharmacology and
Therapeutics
McIntyre Medical Bldg.
McGill University
Montreal, Quebec, Canada
(514) 392-4267

EDMONDS, Robert L. (II.2.)
College of Forest Resources
University of Washington
Seattle, WA 98195
(206) 543-2757

EHRlich, Thomas (I.4.A.)
 Legal Services Corporation
 733 15th St., N.W.
 Washington, DC 20005
 (202) 376-5100

EISEN, Herman N. (III.6.)
 Center for Cancer Research
 Massachusetts Institute of
 Technology, E17-128
 77 Massachusetts Ave.
 Cambridge, MA 02139
 (617) 253-6406

**EISENBERG, John F. (II.5.I.,
 II.5.I.2.)**
 National Zoological Park
 Smithsonian Institution
 Washington, DC 20009
 (202) 381-7249

EISENMAN, George (II.6.C.)
 Dept. of Physiology
 University of California School of
 Medicine
 Los Angeles, CA 90024
 (213) 825-7138

EISINGER, Josef (II.6.C., II.6.D.)
 c/o Professor R. D. Keynes
 Physiological Laboratory
 Downing St.
 Cambridge, CB2 3EG, England

ELDRIDGE, Bruce F. (II.2.)
 Oregon State University
 Corvallis, OR 97331
 (503) 754-4733

ELIAS, Merrill F. (II.5.B.5.)
 Dept. of Psychology
 University of Maine at Orono
 Orono, ME 04473
 (207) 581-7857

**ENGELBRECHT, Richard S.
 (IV.2.C., IV.2.C.3.)**
 Dept. of Civil Engineering
 University of Illinois
 3230 Civil Engineering Bldg.
 Urbana, IL 61801
 (217) 333-3822

ENGLE, Ralph L., Jr. (IV.2.E.)
 Cornell University Medical College
 525 E. 68th St.
 New York, NY 10021
 (212) 472-6370

EPSTEIN, John H. (II.6.D.)
 Dept. of Dermatology
 University of California Medical
 Center
 San Francisco, CA 94122
 (415) 781-4083

ESTABROOK, Ronald W. (IV.2.)
 Dept. of Biochemistry
 University of Texas Medical School
 (Southwestern)
 Dallas, TX 75235
 (214) 688-3456

EWALD, Bruce H. (II.5.)
 Veterinary Medicine
 University City Office Bldg.
 Blacksburg, VA 24061
 (703) 961-6819

EZRA, Arthur A. (III.11.)
 Engineering Div.
 National Science Foundation
 1800 G St., N.W.
 Washington, DC 20550
 (202) 632-5787

F

**FABRIKANT, Jacob I. (III.2.,
 III.2.B.)**
 Donner Laboratory
 University of California
 Berkeley, CA 94720
 (415) 843-2740, ext. 6033

FALKNER, Frank (II.4.G.)
 Fels Research Institute
 Wright State University School of
 Medicine
 800 Livermore St.
 Yellow Springs, OH 45387
 (513) 767-1041

**FARBER, Emmanuel (I.4.A.,
 I.4.A.1.)**
 Dept. of Pathology
 University of Toronto
 Bantin Institute, Rm. 110
 Toronto, Ontario, Canada M5G 1L5
 (416) 978-2557

FAVERO, Martin (IV.2.C.3.)
 Hepatitis Laboratories
 Center for Disease Control
 Phoenix, AZ 85014
 (602) 261-3396

FAWCETT, Don W. (III.3.)
 Dept. of Anatomy
 Harvard Medical School
 Boston, MA 02115
 (617) 732-1735

FAY, Rimmon C. (II.5.H.)
 Pacific Bio-Marine Laboratories, Inc.
 P. O. Box 536
 Venice, CA 90291
 (213) 822-5757

FENNEMA, Owen R. (II.4.D.)
 Dept. of Food Science
 University of Wisconsin
 Babcock Hall
 Madison, WI 53706
 (608) 263-2010

FILER, Lloyd J., Jr. (II.4.D.)
 University of Iowa College of
 Medicine (Chairman)
 Iowa City, IA 52242
 (319) 356-2609

FINGERMAN, Milton (II.5.H.)
 Dept. of Biology
 Tulane University
 New Orleans, LA 70118
 (504) 865-6226

FIRST, Melvin W. (IV.2.A.)
 Harvard University School of Public
 Health
 Boston, MA 02115
 (617) 732-1164

FISHER, H. Russell (III.12.B.)
 1920 Melwood Dr.
 Glendale, CA 91207
 (213) 269-9211, ext. 247

FLEMING, Theodore H. (II.5.I.2.)
 Dept. of Biology
 University of Miami
 Coral Gables, FL 33124
 (305) 284-3973

FEESH, R. David (IV.2.A.)
 Environmental Sciences
 Copley International Corporation
 7817 Herschel Ave.
 La Jolla, CA 92037
 (714) 454-0391

FLETCHER, J. P. (II.4.C.1.)
 Research and Development Dept.
 Union Carbide Corporation
 P. O. Box 8361
 South Charleston, WV 25303
 (304) 747-4133

FLORINI, James F. (II.5.B.3.)
 Dept. of Biology
 Syracuse University
 Lyman Hall
 108 College Place
 Syracuse, NY 13210
 (315) 423-2510

FORSTER, Robert E., II (III.12.D.)
 Dept. of Physiology
 A-201 Richards Bldg., G-4
 University of Pennsylvania
 Philadelphia, PA 19174
 (215) 594-8725

FOSTER, George M., Jr. (II.4.E.)
 Dept. of Anthropology
 University of California
 Berkeley, CA 94720
 (415) 642-2864 or 3509

FOX, Richard R. (II.5.B.2., II.5.F.)
 The Jackson Laboratory
 Bar Harbor, ME 04609
 (207) 288-3373

**FRAUMENI, Joseph F., Jr. (III.8.A.,
 III.12.C.)**
 Environmental Epidemiology Br.
 National Cancer Institute
 National Institutes of Health
 Landow Bldg., Rm. 3607
 Bethesda, MD 20014
 (301) 496-1691

FREY, Charles F. (III.4.)
The Martinez Veteran's Hospital
150 Muir Rd.
Martinez, CA 94553
(415) 228-6800

FRIEND, Charlotte (III.6.)
Center for Experimental Cell Biology
Mount Sinai School of Medicine
100th St. and Fifth Ave.
New York, NY 10029
(212) 650-6360

FRISTROM, Robert M. (IV.2.D.1.)
Applied Physics Laboratory
The Johns Hopkins University
Johns Hopkins Rd.
Laurel, MD 20810
(301) 953-7100, ext. 2266

FRITH, Charles H. (II.5.G.)
Pathology Services Project
National Center for Toxicological
Research
Jefferson, AR 72079
(501) 541-4401

FRY, R. J. M. (II.6.D.)
Biology Div.
Oak Ridge National Laboratory
P. O. Box Y
Oak Ridge, TN 37830
(615) 483-8611, ext. 3-7881

FUTRELL, Jean H. (IV.2.D.1.)
Dept. of Chemistry
Chemistry Bldg. 1461
University of Utah
Salt Lake City, UT 84112
(801) 581-7307

G

GANDHI, OM P. (III.14.A.)
Dept. of Electrical Engineering and
Bioengineering
University of Utah
Salt Lake City, UT 84112
(801) 581-7743 or 6941

GANN, Donald S. (III.4., III.4.A.)
The Johns Hopkins University School
of Medicine
720 N. Rutland Ave.
Baltimore, MD 21205
(301) 955-3940

GANONG, William F. (III.12.D.)
Dept. of Physiology, S-762
University of California
San Francisco, CA 94143
(415) 666-1869

GERHARDT, Philipp (II.6.A.)
Dept. of Microbiology and Public
Health
Michigan State University
East Lansing, MI 48824
(517) 355-7530 or 353-1780

GIBBS, William E. (IV.2.D.1.)
Research and Development Div.
Foster Grant Co., Inc.
Leominster, MA 01453
(617) 534-6511

GIBSON, Geoffrey (III.4.)
Health Services R & D Center
The Johns Hopkins University
624 N. Broadway
Baltimore, MD 21205
(301) 955-6498

GIBSON, James E. (IV.2.C.7.)
Chemical Industry Institute of
Toxicology
Box 12137
Research Triangle Park, NC 27709
(919) 876-8100, ext. 34

GILL, Thomas J. III (II.5.A.)
Dept. of Pathology
University of Pittsburgh School of
Medicine
Pittsburg, PA 15261
(412) 624-2436

GLASOE, Paul K. (III.5.)
Chemistry Dept.
Wittenberg University
Springfield, OH 45501
(513) 327-6432

GLAZE, William H. (IV.2.C.2.)
Dept. of Chemistry
North Texas State University
P. O. Box 5068
Denton, TX 76203
(817) 788-2501 or 2031 or 2210

GOLDFARB, Stanley (IV.2.B.)
Dept. of Pathology - 509 SMI
University of Wisconsin School of
Medicine
470 N. Charter St.
Madison, WI 53706
(608) 262-2929

**GOLDSMITH, Edward I. (II.5.I.,
II.5.I.1.)**
New York Hospital
Cornell Medical Center
Rm. 2008
525 East 68th St.
New York, NY 10021
(212) 879-0519

GOLDSTEIN, Bernard D. (III.5.)
New York University Medical Center
550 First Ave.
New York, NY 10016
(212) 679-3200, ext. 3043

GOLLEY, Frank B. (II.6.A.)
Institute of Ecology
University of Georgia
Athens, GA 30602
(404) 542-2968 or 543-4454

GÓMEZ-POMPA, Arturo (II.3.)
Instituto de Investigaciones sobre
Recursos Bióticos, A.C.
Heroico Colegio Militar No. 7
Jalapa, Veracruz, Mexico
Telephone: 281-77469 or 72263

ASSEMBLY OF LIFE SCIENCES

**GOODWIN, William J. (II.5.I.,
II.5.I.4.)**
Medical Research Foundation of
Oregon
P. O. Box 449
Portland, OR 97207
(503) 643-4791

GORBMAN, Aubrey (II.6.A.)
Dept. of Zoology
University of Washington
Seattle, WA 98195
(206) 543-1683

GORDIS, Leon (III.8.A.)
Dept. of Epidemiology
The Johns Hopkins School of
Hygiene and Public Health
Baltimore, MD 21205
(301) 955-3286

GORDON, Archer S. (III.4.A.)
30001 Village 30
Camarillo, CA 93010
(805) 482-8413

GRAHAM, Dee M. (II.4.D.)
Del Monte Research Center
205 North Wiget Ln.
Walnut Creek, CA 94598
(415) 933-8000, ext. 313

**GRAHAM, George G. (II.4.E.,
II.6.B.)**
Div. of Human Nutrition
Johns Hopkins University School of
Hygiene and Public Health
615 N. Wolfe St.
Baltimore, MD 21205
(301) 955-3734

GREENBERG, Arnold (IV.2.C.3.)
Bioenvironmental Laboratories
California Dept. of Health
2151 Berkeley Way
Berkeley, CA 94704
(415) 843-7900, ext. 420

GREENBERG, Bernard G. (I.3.)
University of North Carolina School
of Public Health
Chapel Hill, NC 27514
(919) 966-1113

GRIZZLE, James E. (IV.2.B.)
Dept. of Biostatistics
University of North Carolina School
of Public Health
Chapel Hill, NC 27514
(919) 966-1107

GROBSTEIN, Clifford (I.4.A., III.6.)
La Valle Plateada
P. O. Box 1695
Rancho Santa Fe, CA 92067
(714) 452-3189

GROSSWEINER, Leonard I. (II.6.D.)
Dept. of Physics
Illinois Institute of Technology
Chicago, IL 60616
(312) 567-3375 or 3377

COMMITTEE MEMBERS

GUERRA, Oscar N. (III.12.C.)
Ellis Fischel State Cancer Hospital
115 Business Loop 70 West
Columbia, MO 65201
(314) 449-2711

GUTHRIE, Helen A. (II.4.B., II.6.B.)
Nutrition Program
202 Human Development
Pennsylvania State University
University Park, PA 16802
(814) 865-3447

GUY, Arthur W. (III.14.A.)
Dept. of Rehabilitation Medicine
University of Washington
Health Sciences Bldg.
BB 919
Seattle, WA 98195
(206) 543-1071

H

HABICHT, Jean-Pierre (II.4.E., II.4.E.2.)
Div. of Nutritional Sciences
Cornell University
Ithaca, NY 14853
(607) 256-4410

HADDY, Francis J. (III.12.D.)
Dept. of Physiology
United States University of the
Health Sciences
6917 Arlington Rd.
Bethesda, MD 20014
(301) 427-5121

HAENNI, Edward O. (II.4.C.1.)
Bureau of Foods
Food and Drug Administration
7007 Glenbrook Rd.
Bethesda, MD 20014
(301) 652-3108

HALL, Arthur S. (II.5.G.)
Animal Science Div.
Oregon Regional Primate Research
Center
505 N.W. 185th Ave.
Beaverton, OR 97005
(503) 645-1141

HALL, Richard L. (I.4.A., II.4.D.)
Science and Technology
McCormick and Co., Inc.
11350 McCormick Rd.
Hunt Valley, MD 21031
(301) 677-7331

HALL, Thomas C. (III.12.C.)
Tumor Clinic Medical Group, Inc.
635 East Union St.
Pasadena, CA 91101
(213) 684-1442

HAMBURG, David A. (I.2.)
Institute of Medicine
National Academy of Sciences
2101 Constitution Ave., N.W.
Washington, DC 20418
(202) 389-6187

HAMMONDS, Timothy M. (II.4.B.)
Food Marketing Institute
1750 K St., N.W., Suite 700
Washington, DC 20006
(202) 452-8444

HAMILTON, Leonard D. (III.5.)
Biomedical and Environmental
Assessment Div.
National Center for Analysis of
Energy Systems
Brookhaven National Laboratory
Associated Universities, Inc.
Upton, NY 11973
(516) 345-2004 or 2003

HAMILTON, William F. (III.4.)
Leonard Davis Institute of Health
Economics
University of Pennsylvania
3641 Locust Walk
Philadelphia, PA 19104
(215) 243-4752

HAMMOND, Edward C. (IV.2.C.4.)
American Cancer Society, Inc.
777 3rd Ave., 4th Floor
New York, NY 10017
(212) 371-2900

HANEY, Paul D. (III.9.)
Black and Veatch
P. O. Box 8405
Kansas City, MO 64114
(913) 967-3110

HANSEN, R. Gaurth (II.4.)
Dept. of Biochemistry
Utah State University, UMC 14
Logan, UT 84322
(801) 752-4100, ext. 7215

HARLAN, Jack R. (I.2.)
Dept. of Agronomy
University of Illinois
S-516 Turner Hall
Urbana, IL 61801
(217) 333-4256

HARPER, Alfred E. (I.4.A.1., II.4., II.6.B.)
Depts. of Biochemistry and
Nutritional Sciences
University of Wisconsin
Madison, WI 53706
(608) 262-2727

HARRELL, George T. (II.5.C., III.13.)
2010 Eastridge Rd.
Timonium, MD 21093
(301) 252-6818

HARRIOTT, Peter (IV.2.C.1.)
Chemical Engineering
Cornell University
Olin Hall
Ithaca, NY 14853
(607) 256-3529

HARRIS, Edward H. (III.11.)
Dept. of Mechanical Engineering
Tulane University
6823 St. Charles Ave.
New Orleans, LA 70118
(504) 865-6176

HARRIS, Jerome S. (III.7.)
Duke University Hospital
Box 3916
Durham, NC 27710
(919) 684-3035

HARRISON, David (II.5.B.3.)
The Jackson Laboratory
Bar Harbor, ME 04609
(207) 288-3371, ext. 296

HARRISON, Gail G. (II.4., II.4.B.)
Dept. of Family and Community
Medicine
University of Arizona
College of Medicine
Tucson, AZ 85724
(602) 626-6244

HARSHBARGER, Kenneth E. (II.6.B.)
Dept. of Dairy Science
University of Illinois
Urbana, IL 61801
(217) 333-3462

HART, Ronald W. (IV.2.)
Dept. of Radiology
Ohio State University Hospitals
Columbus, OH 43210
(614) 422-9378

HARTMANN, William H. (III.12.B.)
Dept. of Pathology
Vanderbilt University School of
Medicine
Nashville, TN 37232
(615) 322-2123

HAYES, Kenneth C. (II.5., II.5.I., II.5.I.1., II.5.I.3.)
Dept. of Nutrition
Harvard School of Public Health
665 Huntington Ave.
Boston, MA 02115
(617) 734-3300

HELZ, George R. (IV.2.C.2.)
Dept. of Chemistry
University of Maryland
College Park, MD 20742
(301) 454-4850

HENDERSON, Richard (IV.2.E.)
Health Sciences and Toxicologic
Research
Olin Corporation
Rm. 18H3
91 Shelton Ave.
New Haven, CT 06511
(203) 777-7911, ext. 1430

HENDRICKX, Andrew G. (II.5.B.4.)
California Primate Research Center
University of California
Davis, CA 95616
(916) 752-3045

HENRICKSON, Roy V. (II.5.G.)
National Center for Primate Biology
University of California
Davis, CA 95616
(916) 752-3670

HERTZ, Roy (III.3.)
Dept. of Pharmacology
Ross Hall, Rm. 655
The George Washington University
2300 Eye St., N.W.
Washington, DC 20037
(202) 676-2706

HESS, Robert (III.11.)
2901 Baxter Rd.
Ann Arbor, MI 48109
(313) 764-6504

HIATT, Howard H. (I.2.)
Harvard University School of Public
Health
677 Huntington Ave.
Boston, MA 02115
(617) 732-1025

HICKEY, Robert C. (III.12.C.)
M. D. Anderson Hospital and Tumor
Institute
6723 Bertner Ave.
Houston, TX 77030
(713) 792-3200

**HIGGINS, Ian T. T. (I.4.A.1., III.5.,
IV.2.C.4., IV.2.D.)**
Dept. of Epidemiology
University of Michigan School of
Public Health
Ann Arbor, MI 48104
(313) 763-3285

HINEGARDNER, Ralph (II.5.H.)
Dept. of Natural Sciences
University of California
Santa Cruz, CA 95060
(408) 429-2167

HIRSCH, James G. (I.2.)
The Rockefeller University
1230 York Ave.
New York, NY 10021
(212) 360-1296

HIRSCH, Jerry (II.6.A.)
Dept. of Psychology, Ecology,
Ethology, and Evolution
University of Illinois
Champaign, IL 61820
(217) 333-0373

HITCHCOCK, Margaret (IV.2.C.7.)
Dept. of Epidemiology and Public
Health
Yale University Medical School
290 Congress Ave.
New Haven, CT 06519
(203) 562-9901

HOEHN, Robert C. (IV.2.C.2.)
Dept. of Civil Engineering
Virginia Polytechnic Institute
and State University
Blacksburg, VA 24061
(763) 961-6131

HOEL, David G. (IV.2.C., IV.2.C.6.)
National Institute of Environmental
Health Sciences
P. O. Box 12233
Research Triangle Park, NC 27709
(919) 541-3441 or 3205

HOFFMAN, Howard (II.5.B.3.)
Biometry Branch, National Institute
of Child Health and Human
Development
National Institutes of Health
Landow Bldg., Rm. C-608
7910 Woodmont Ave.
Bethesda, MD 20014
(301) 496-6811

HOLLAENDER, Alexander (I.4.A.)
Associated Universities, Inc.
1717 Massachusetts Ave., N.W.
Washington, DC 20036
(202) 462-4475

HOLLAND, J. Michael (II.5.B.3.)
Biology Div.
Oak Ridge National Laboratory
P. O. Box Y
Oak Ridge, TN 37830
(615) 483-8611, ext. 37091

**HOLLANDER, Carel F. (II.5.B.,
II.5.B.2.)**
Medial Gerontology
State University of Utrecht
151, Lange Kleiweg
RIJSWIJK
The Netherlands
Telephone: (15) -14 09 30

HOOD, Dorothy B. (IV.2.E.)
Haskell Laboratory for Toxicology
and Industrial Medicine
E. I. duPont, deNemours and
Company
Newark, DE 19711
(302) 366-3531

HORWITZ, Abraham (II.4.E.)
U.S. Dept. of Health, Education, and
Welfare
National Institutes of Health
Public Health Service
National Library of Medicine
8600 Rockville Pike
Bethesda, MD 20014
(301) 496-1593 or 6520

HOTCHKISS, Rollin D. (III.6.)
The Rockefeller University
New York, NY 10021
(212) 360-1323

HOUSER, Harold B. (II.4.B.)
Dept. of Biometry
Case Western Reserve University
Wearn Bldg.
Cleveland, OH 44106
(216) 444-3491

HOUSEWRIGHT, Riley D. (III.9.B.)
National Academy of Sciences
2101 Constitution Ave., N.W.
Washington, DC 20418
(202) 389-6747

ASSEMBLY OF LIFE SCIENCES

HOWARD, Hartley (II.4.C.1.)
15 Oak Point Club
New Milford, CT 06776
(203) 354-8709

HULKA, Barbara S. (III.8.A.)
Dept. of Epidemiology
University of North Carolina
Chapel Hill, NC 27514
(919) 966-2241

HURWITZ, Jerard (IV.2.B.)
Dept. of Developmental Biology and
Cancer
Albert Einstein College of Medicine
Bronx, NY 10461
(212) 430-3127

**HUTCHISON, George B. (I.4.A.,
IV.2.C.4.)**
Dept. of Epidemiology
Harvard School of Public Health
665 Huntington Ave.
Boston, MA 02115
(617) 732-1051

**HUTCHINSON, William B.
(III.12.C.)**
Fred Hutchinson Cancer Research
Center
1124 Columbia St.
Seattle, WA 98104
(206) 292-2931

INGRAM, Marylou (III.2., III.2.B.)
Institute for Cell Analysis
University of Miami
School of Medicine
NCCH/Jackson Memorial Medical
Center
Miami, FL 33152
(305) 547-6432 or 6438

**ISSELBACHER, Kurt J. (IV.2.,
IV.2.B.)**
Gastrointestinal Unit
Massachusetts General Hospital
Fruit St.
Boston, MA 02114
(617) 726-2878

JAGENDORF, Andre T. (II.6.D.)
Biology Div.
Plant Science Bldg.
Cornell University
Ithaca, NY 14853
(607) 256-4489

JAGGER, John (II.6.D.)
Biology Program
University of Texas, Dallas
P. O. Box 688
Richardson, TX 75080
(214) 690-2522

COMMITTEE MEMBERS

41

JANES, David (II.14.A.)
Electromagnetic Radiation Analysis
Branch
Environmental Analysis Div.
Environmental Protection Agency
9100 Brookville Rd.
Silver Spring, MD 20910
(301) 427-7604

JANZEN, Daniel H. (II.3.)
Dept. of Biology
University of Pennsylvania
Philadelphia, PA 19104
(215) 243-5636

JEE, Webster S.S. (II.5.B.1.)
Radiobiology Laboratory
Bldg. 522
University of Utah
Salt Lake City, UT 84112
(801) 581-6600

JENSEN, Elwood V. (III.3.)
Ben May Laboratory for Cancer
Research
University of Chicago
950 E. 59th St., Box 424
Chicago, IL 60637
(312) 947-5073

JOHNSON, J. Donald (IV.2.C.3.)
Dept. of Environmental Sciences and
Engineering
University of North Carolina
Rosenau Hall, 201-H
Chapel Hill, NC 27514
(919) 933-2151

JOHNSON, Julius E. (IV.2.)
Dow Chemical, Co.
2020 Bldg.
Midland, MI 48640
(517) 636-5013

JOHNSON, Lois M. Hamerman
(II.6.D.)
Pennsylvania Hospital
8th and Spruce Sts.
Philadelphia, PA 19107
(215) 829-3303 or 3450

JOHNSON, Ogden Carl (II.4.)
Scientific Affairs
Hershey Foods Corporation
Corporate Headquarters
100 Mansion Road East
Hershey, PA 17033
(717) 534-4501

JOLLEY, Robert L. (IV.2.C.2.)
Oak Ridge National Laboratory
P. O. Box X
Oak Ridge, TN 37830
(615) 483-8611, ext. 31869 or
31296

JONES, Warren H. (IV.2.D.)
Health and Safety Lab
Eastman Kodak Co.
Rochester, NY 14650
(716) 458-1000, ext. 85638

JORGENSEN, Robert R. (II.5.F.)
Student Detachment
Industrial College of the Armed
Forces
National Defense University
Fort McNair
Washington, DC 20319
(202) 693-8305

JOSEPHSON, Robert K. (II.5.H.)
University of California School of
Biological Sciences
Irvine, CA 92664
(714) 833-5956

JUSTESEN, Don R. (III.14.A.)
Dept. of Neuro-Psychology
Veterans Administration Hospital
4801 Linwood Blvd.
Kansas City, MO 64128
(816) 861-4700, ext. 466

K

KALKHOFF, Ronald K. (I.4.A.1.)
Endocrine-Metabolic Section
The Medical College of Wisconsin
Milwaukee County General Hospital
8700 West Wisconsin Ave.
Milwaukee, WI 53226
(414) 257-6298

KAMIN, Henry (II.4.)
Dept. of Biochemistry
Duke University Medical Center
Durham, NC 27710
(919) 684-6064

KELLER, Martin D. (III.4.)
Div. of Community Health
Ohio State University,
Rm. B-117 S-L
410 W. Tenth Ave.
Columbus, OH 43210
(614) 422-5694

KELMAN, Arthur (III.6.)
Dept. of Plant Pathology
University of Wisconsin
1630 Linden Dr.
Madison, WI 53706
(608) 262-3171

KEMPE, Lloyd L. (III.9.A., III.9.B.)
Dept. of Chemical Engineering
University of Michigan
Ann Arbor, MI 48109
(313) 764-3322

KERR, George Roderick (II.4.G.)
Dept. of Nutrition
University of Texas
School of Public Health
Houston, TX 77025
(713) 792-4660

KEUSCH, Gerald T. (II.4.E.,
II.4.E.1.)
Mount Sinai School of Medicine
The City University of New York
Fifth Ave. and 100th St.
New York, NY 10029
(212) 650-6741

KIFER, Paul E. (II.4.C., II.4.C.3.)
Dept. of Food Science and
Technology
Oregon State University
Corvallis, OR 97331
(503) 754-3131

KILGORE, Wendell W. (II.4.C.)
Dept. of Environmental Toxicology
University of California
Davis, CA 95616
(916) 752-7010

KIMBROUGH, Renate D. (IV.2.C.5.)
Center for Disease Control
Toxicology Branch
Bldg. 31, Rm. 5
Atlanta, GA 30333
(404) 633-3311

KING, Janet C. (II.4.G.)
Dept. of Nutritional Sciences
University of California
Berkeley, CA 94720
(415) 642-1834

KIRK, James R. (II.4.C., II.4.C.3.)
Food Science and Human Nutrition
Dept.
367 Food Science Bldg.
University of Florida
Institute of Food and Agricultural
Sciences
Gainesville, FL 32611
(904) 392-2022

KIRSCHMAN, John C. (II.4.C.1.)
General Foods Corporation
Technical Center
White Plains, NY 10625
(914) 631-6400

KITCHEN, Hiram (II.5.)
Dept. of Environmental Practice
College of Veterinary Medicine
University of Tennessee
Knoxville, TN 37916
(615) 974-7226

KLEIN, Robert (II.4.F.)
Human Development Div.
Institute of Nutrition of Central
America and Panama,
Apartado 11-88
Guatemala City, Guatemala
Telephone: 43762, ext. 227

KLEINZELLER, Arnost (III.12.D.)
Dept. of Physiology
D205 Richards Bldg.
37th and Hamilton Walk
University of Pennsylvania
Philadelphia, PA 19174
(215) 243-8083

KNAPP, William A., Jr. (II.5.F.)
Flow Laboratories
General Research Corp.
7655 Old Springhouse Rd.
Westgate Research Park
McLean, VA 22101
(703) 893-5900, ext. 617

KNUDSON, Alfred G., Jr. (I.2.)
The Institute for Cancer Research
7701 Burholme Ave.
Philadelphia, PA 19111
(215) 728-2490 or 2491

KOELLE, George B. (III.12.A.)
Dept. of Pharmacology
University of Pennsylvania School of
Medicine
Philadelphia, PA 19084
(215) 243-8416

KRAMER, Carol S. (III.4.A.)
142-24 38th Ave.
Flushing, NY 11358
(212) 539-1309

KRAUS, Alan L. (II.5.B.2.)
University of Rochester
Medical Center
601 Elmwood Ave.
Rochester, NY 14642
(716) 275-2651

KRITCHEVSKY, David (II.4.)
The Wistar Institute
36th and Spruce Sts.
Philadelphia, PA 19104
(215) 387-6700, ext. 227

**KRUSÉ, Cornelius W. (IV.2.C.,
IV.2.C.3.)**
Dept. of Environmental Health
The Johns Hopkins University
615 N. Wolfe St.
Baltimore, MD 21205
(301) 955-3602

KUNIN, Robert (IV.2.C.1.)
1318 Moon Dr.
Yardley, PA 19067
(215) 736-2420

KURLAND, Leonard T. (III.8.A.)
Dept. of Epidemiology and Medical
Statistics
Mayo Clinic
Rochester, MN 55901
(507) 282-2511

L

LAND, Charles E. (III.2., III.2.B.)
13911 Castaway Dr.
Rockville, MD 20853
(301) 460-0492

LANDFIELD, Philip W. (II.5.B.5.)
Dept. of Psychobiology
University of California
Irvine, CA 92717
(714) 833-5357

LANE, John Michael (II.4.E.)
Center for Disease Control
1600 Clifton Rd.
Atlanta, GA 30333
(404) 633-3311

LANG, C. Max (II.5.F.)
Dept. of Comparative Medicine
Pennsylvania State University College
of Medicine
Hershey, PA 17033
(717) 543-8462

LATHAM, Michael C. (II.4.E.1.)
Div. of Nutritional Sciences
Cornell University
Ithaca, NY 14850
(607) 256-3041

LATIES, Victor C. (IV.2.)
Dept. of Radiation Biology and
Biophysics
University of Rochester School of
Medicine and Dentistry
Rochester, NY 14642
(716) 275-3791

LEAF, Alexander (IV.2.B.)
Medical Service
Boston General Hospital
Boston, MA 02114
(617) 726-2862

**LECHOWICH, Richard V. (II.4.C.,
II.4.C.2.)**
Dept. of Food Science and
Technology
Virginia Polytechnic Institute
and State University
Blacksburg, VA 24061
(703) 951-6806

LEE, John W. (II.6.D.)
Dept. of Biochemistry
University of Georgia
Athens, GA 30602
(414) 542-1334

**LEHNER, Noel D. M. (II.5.G., II.5.I.,
II.5.I.3.)**
Dept. of Comparative Medicine
The Bowman Gray School of
Medicine
Winston-Salem, NC 27102
(919) 727-4567

**LENNETTE, Edwin H. (IV.2.C.,
IV.2.C.3.)**
Biomedical Laboratories
California Dept. of Health
2151 Berkeley Way
Berkeley, CA 94704
(415) 843-7900, ext. 685

LESSER, Arthur J. (III.7.)
2924 Rittenhouse St., N.W.
Washington, DC 20015
(202) 244-5332

LETTON, A. Hamblin (III.12.C.)
315 Boulevard, N.E.
Atlanta, GA 30312
(404) 681-3733

ASSEMBLY OF LIFE SCIENCES

LEVANDER, Orville A. (IV.2.C.5.)
c/o Janet King
Dept. of Nutrition
University of California
Berkeley, CA 94720
(415) 642-1834 or 0809

**LEVEILLE, Gilbert A. (II.4.A.,
II.4.D.)**
Dept. of Food Science and Human
Nutrition
Michigan State University
East Lansing, MI 48824
(517) 355-8474

LEVINTHAL, Cyrus (III.6.)
Dept. of Biological Sciences
Columbia University
754 Schermerhorn
New York, NY 10027
(212) 280-2439

LEW, Edward A. (III.10.)
51 Mohegan Rd.
Larchmont, NY 10538
(914) 834-3790

LEWIS, W. M., Jr. (II.3.)
Dept. of EPO Biology
University of Colorado
Boulder, CO 80309
(303) 492-6378 or 5191

LIKENS, Gene E. (I.2.)
Dept. of Environmental Sciences
Clark Hall
University of Virginia
Charlottesville, VA 22903
(804) 924-7761

**LILIENFELD, Abraham M.
(IV.2.C.4.)**
The Johns University School
of Hygiene
615 N. Wolfe St.
Baltimore, MD 21205
(301) 955-3616

LINDSEY, J. Russell (II.5.)
Dept. of Comparative Medicine
University of Alabama School of
Medicine and Dentistry
Birmingham, AL 35294
(205) 934-2117

LIS, Edward F. (III.7.)
Div. of Services for Crippled Children
University of Illinois Hospital
Rm. 145 General Hospital
840 S. Wood St.
Chicago, IL 60612
(312) 996-7756

LLINAS, Rodolfo (III.12.A.)
Dept. of Physiology and Biophysics
New York University Medical Center
550 First Ave.
New York, NY 10016
(212) 679-3200, ext. 2376

LOEB, Walter F. (II.5.G.)
Litton Bionetics, Inc.
5516 Nicholson Ln.
Kensington, MD 20795
(301) 881-5600, ext. 530

LOPER, John C. (IV.2.C.7.)
Dept. of Microbiology
University of Cincinnati
College of Medicine
Cincinnati, OH 45267
(513) 872-5321

LOWEINSTEIN, Leah (II.5.B.)
Boston University
School of Medicine
Boston, MA 02118
(617) 247-6726

LUBIC, Ruth Watson (III.7.)
Maternity Center Association
48 E. 92nd St.
New York, NY 10028
(212) 369-7300

LYMAN, Frank (IV.3.B.)
48-A Long Beach Blvd.
North Beach, NJ 08008
(609) 494-0315

M

MacEWEN, J. Douglas (IV.2.D.1.)
Toxic Hazards Research Unit
Overlook Branch
P. O. Box 3067
Dayton, OH 45431
(513) 258-1261

**MacMAHON, Brian (I.2., I.3.,
III.8.A., IV.2.)**
Dept. of Epidemiology
Harvard School of Public Health
677 Huntington Ave.
Boston, MA 02115
(617) 732-1055

MAHONEY, Margaret E. (III.7.)
The Robert Wood Johnson
Foundation
P. O. Box 2316
Princeton, NJ 08540
(609) 452-8701

**MAKINODAN, Takashi (II.5.B.,
II.5.B.3.)**
VA Wadsworth Hospital Center
Wilshire and Sawtelle Blvds.
Los Angeles, CA 90073
(213) 478-3711

MANDEL, H. George (IV.2.D.)
16 Short St.
San Francisco, CA 94114

MANGUM, Charlotte P. (III.12.D.)
Dept. of Biology
College of William and Mary
Williamsburg, VA 23185
(804) 253-4240

**MANNING, Patrick J. (II.5., II.5.I.,
II.5.I.1.)**
Research Animal Resources
Unit of Comparative Medicine
Box 351 Mayo Memorial
Minneapolis, MN 55455
(612) 376-5097

MARSHAK, Robert R. (III.13.)
University of Pennsylvania School
of Veterinary Medicine
Philadelphia, PA 19174
(215) 243-8841

MASON, Robert (III.4.)
EMS Communications Consultant
P. O. Box N
Cottonwood, CA 96022
(916) 347-3292

MASORO, Edward J. (II.5.B.5.)
Dept. of Physiology
University of Texas
Health Science Center
3703 Floyd Curl Dr.
San Antonio, TX 78284
(512) 696-6581

**MASTROLANNI, Luigi, Jr. (III.3.,
III.7.)**
Dept. of Obstetrics and Gynecology
University of Pennsylvania School
of Medicine
3400 Spruce St.
Philadelphia, PA 19104
(215) 662-2970

MAUDERLY, Joe L. (II.5.B.1.)
Lovelace Inhalation Toxicology
Research Institute
P. O. Box 5890
Albuquerque, NM 87115
(505) 264-1169

MAUER, Alvin M. (II.4.G.)
St. Jude Children's Research Hospital
P. O. Box 318
Memphis, TN 38101
(901) 525-8381, ext. 272

MAYS, Charles W. (III.2., III.2.B.)
Radiobiology Laboratory
Bldg. 2
University of Utah Medical Center
Salt Lake City, UT 84112
(801) 581-6819

McCANN, Joyce (I.4.A.1.)
Dept. of Biochemistry
University of California
Berkeley, CA 94720
(415) 642-1586

McCARTY, Maclyn (III.6.)
The Rockefeller University
1230 York Ave.
New York, NY 10021
(212) 360-1200

**McCLELLAN, Roger (II.5.B.,
II.5.B.1.)**
Lovelace Inhalation Toxicology
Research Institute
P. O. Box 5890
Albuquerque, NM 87115
(505) 264-6835

McCOLLUM, Robert W. (III.8.A.)
Dept. of Epidemiology and Public
Health
Yale University School of Medicine
New Haven, CT 06510
(203) 436-3280

McCORMICK, William F. (III.11.)
Division of Neuropathology
Dept. of Pathology
University of Texas Medical Branch
Galveston, TX 77550
(713) 765-2881

McDERMOTT, John E. (III.11.)
801 Broadway
Seattle, WA 98122
(206) 624-2107

McDERMOTT, William V. (III.12.C.)
New England Deaconess Hospital
185 Pilgrim Rd.
Boston, MA 02215
(617) 536-2255

McMILLAN, Brockway (III.14.A.)
Military Systems
Bell Telephone Laboratories, Inc.
Whippany Rd.
Whippany, NJ 07981
(201) 386-4415

McWHORTER, C. A. (III.10.)
Dept. of Pathology
University Hospital
42nd and Dewey Ave.
Omaha, NE 68105
(402) 541-4486

MEDWICK, Thomas (II.4.C.1.)
College of Pharmacy
Rutgers University
Busch Campus
P. O. Box 789
Piscataway, NJ 08854
(201) 932-3281

MEIER, Paul (III.8.A.)
Dept. of Statistics
University of Chicago
5734 S. University Ave.
Chicago, IL 60637
(312) 753-8051

MEINKOTH, Norman A. (II.5.H.)
Dept. of Biology
Swarthmore College
Swarthmore, PA 19081
(215) 544-7900, ext. 223

MEITES, Joseph (II.5.B.5.)
Dept. of Physiology
Michigan State University
East Lansing, MI 48489
(517) 355-6478

**MELBY, Edward C., Jr. (II.5.,
III.13.)**
New York State College of
Veterinary Medicine
Cornell University
Ithaca, NY 14853
(607) 256-3201

MELMON, Kenneth L. (I.4.A.)
74 Oakdale
San Rafael, CA 94901
(415) 497-5454

MENKEN, Jane Ava (III.3.)
Office of Population Research
Princeton University
Princeton, NJ 08540
(609) 452-4948

**MENZER, Robert E. (IV.2.C.7.,
IV.2.E.)**
Dept. of Entomology
University of Maryland
College Park, MD 20742
(301) 454-4408 or 4389

MERTZ, Edwin T. (II.6.B.)
Dept. of Biochemistry
Purdue University
West Lafayette, IN 47907
(317) 749-2391

MERTZ, Walter (II.4.A.)
Nutrition Institute
Agricultural Research Service
U.S. Department of Agriculture
Beltsville, MD 20705
(301) 764-3277

MILLER, John W. (II.5.H.)
Dept. of Biology
Baldwin-Wallace College
Berea, OH 44017
(216) 826-2271

MILLER, Louis H. (II.4.E.1.)
Laboratory of Parasitic Disease
National Institute of Allergy and
Infectious Disease, NIH
Bldg. 5
Bethesda, MD 20014
(301) 496-2731

MILLER, Robert W. (I.3., III.7.)
Clinical Epidemiology Branch
National Cancer Institute
A521 Landow Bldg.
Bethesda, MD 20014
(301) 496-5785

MILLER, Warren B. (III.3.)
American Institutes for Research in
the Behavioral Sciences
P. O. Box 1113
Palo Alto, CA 94302
(415) 493-3550

MILNER, Max (II.6.B.)
American Institute of Nutrition
9650 Rockville Pike
Bethesda, MD 20014
(301) 530-7050

MINER, J. Ronald (IV.2.A.)
Dept. of Agriculture Engineering
Oregon State University
Corvallis, OR 97331
(503) 754-2041

MINTZ, Beatrice (I.2.)
Institute for Cancer Research
7701 Burholme Ave., Fox Chase
Philadelphia, PA 19111
(215) 728-2478

MIRAND, Edwin A. (III.12.C.)
Roswell Park Memorial Institute
666 Elm St.
Buffalo, NY 14263
(716) 845-3095

MITCHELL, Jerry R. (IV.3.A.)
Dept. of Internal Medicine
Baylor College of Medicine
Baylor Bldg., Rm. 826E
Houston, TX 77030
(713) 790-4721

MIYA, Tom S. (IV.2., IV.2.E.)
University of North Carolina School
of Pharmacy
Chapel Hill, NC 27514
(919) 966-1121

MOBRAATEN, Larry E. (II.5.D.)
The Jackson Laboratory
Bar Harbor, ME 04609
(207) 288-3373

MOELLER, Dade W. (III.2., III.2.B.)
Harvard School of Public Health
665 Huntington Ave.
Boston, MA 02115
(617) 732-1169 or 1170

MOONEY, Harold (II.3.)
Dept. of Biological Sciences
Stanford University
Stanford, CA 94305
(415) 497-1179

MOORE, John A. (II.6.A.)
Dept. of Biology
University of California
Riverside, CA 92502
(714) 787-3142

MORAFF, Howard (III.5.G.)
New York State College of
Veterinary Medicine
Cornell University
Ithaca, NY 14853
(607) 256-7687

MORECOMBE, Fred A. (II.4.C.1.)
Corporate Compendial Liaison
Abbott Laboratories
North Chicago, IL 60064
(312) 688-8472

**MORRIS, J. Carrell (IV.2.C.,
IV.2.C.2.)**
International Institute for Hydraulic
and Environmental Engineering
Oude Delft 95
P. O. Box 3015
Delft, The Netherlands
015 783648

MORROW, Paul E. (III.5.)
Dept. of Radiation Biology and
Biophysics
University of Rochester School of
Medicine and Dentistry
Rochester, NY 14642
(716) 275-3861

ASSEMBLY OF LIFE SCIENCES

MOSTOFI, F. K. (III.12.B.)
Armed Forces Institute of Pathology
Washington, DC 20306
(202) 576-2961

MOULTON, David G. (IV.2.A.)
Monell Chemical Senses Center
University of Pennsylvania
3500 Market St.
Philadelphia, PA 19104
(215) 243-4982

MUNRO, Hamish N. (II.4.A.)
Dept. of Nutrition and Food Science
Massachusetts Institute of
Technology
Cambridge, MA 02139
(617) 253-6785

MUNRO, Ian C. (IV.2.C.6.)
Health and Welfare Canada
Health Protection Branch
Tunney's Pasture
Ottawa, Ontario, Canada KIA0L2
(613) 995-5886

MURPHY, Edwin D. (II.5.E.)
The Jackson Laboratory
Bar Harbor, ME 04609
(207) 288-3373

MURPHY, Gerald P. (III.12.C.)
Roswell Park Memorial Institute
666 Elm St.
Buffalo, NY 14263
(716) 845-5770

**MURPHY, Sheldon D. (II.4.C.,
II.4.C.4., IV.2.C., IV.2.C.7.,
IV.3.A.)**
Dept. of Pharmacology
University of Texas Medical School
at Houston
P. O. Box 20708
Houston, TX 77025
(713) 792-5630

MYERS, W. P. Laird (III.12.C.)
Memorial Sloan-Kettering Cancer
Center
1275 York Ave.
New York, NY 10021
(212) 794-8380

N

NACHTWEY, David Stuart (II.6.D.)
SDS Biomedical Applications Branch
NASA-Johnson Space Center
Houston, TX 77058
(713) 483-3419

NADEL, Jay A. (III.5.)
Cardiovascular Research Institute
University of California
San Francisco, CA 94143
(415) 666-1105

COMMITTEE MEMBERS

45

NAGEL, Eugene L. (III.4.)
Dept. of Anesthesiology
The Johns Hopkins Hospital
601 N. Broadway
Baltimore, MD 21205
(301) 955-5606

NEAL, Robert A. (II.4.)
Dept. of Biochemistry
Vanderbilt University School of
Medicine
Nashville, TN 37232
(615) 322-2261

NELSON, Norton (I.2., IV.1., IV.2.)
Dept. of Environmental Medicine
New York University Medical Center
550 First Ave.
New York, NY 10016
(212) 679-7207

NELSON, Oliver E., Jr. (II.6.A.)
Laboratory of Genetics
University of Wisconsin
Madison, WI 53706
(608) 262-3344

NESHEIM, Robert O. (II.4.B.)
Science and Technology
The Quaker Oats Co.
617 W. Main St.
Barrington, IL 60010
(312) 381-1980

**NEWBERNE, Paul M. (II.4.C.,
II.4.C.4., IV.2.C., IV.2.C.5.)**
Dept. of Nutrition and Food Science
Massachusetts Institute of
Technology, Rm. B
Cambridge, MA 02139
(617) 253-6243

NEWTON, Carol M. (II.5.C.)
Dept. of Biomathematics
University of California School of
Medicine
Los Angeles, CA 90024
(213) 825-5800

NEWTON, Walter L. (IV.2.C.3.)
4709 Pickett Rd.
Fairfax, VA 22032
(703) 323-5637

NIELSEN, Svend W. (II.5.E.)
Northeastern Research Center for
Wildlife Diseases
University of Connecticut
Storrs, CT 06268
(203) 486-4000

NOONAN, Jacqueline A. (III.7.)
Dept. of Pediatrics
University of Kentucky Medical
Center
300 Rose St.
Lexington, KY 40506
(606) 233-5494

**NORTON, Stata E. (II.4.C., II.4.C.4.,
IV.2.D.)**
Dept. of Pharmacology
University of Kansas Medical Center
39th St. at Rainbow Blvd.
Kansas City, KS 66103
(913) 588-5695

NOWELL, Peter C. (III.5.)
Pathology Dept.
University of Pennsylvania School
of Medicine
Philadelphia, PA 19174
(215) 243-8061

NYQUIST, Gerald W. (III.11.)
Environmental Activities Staff
General Motors Corporation
GM Technical Center
Warren, MI 48090
(313) 575-1461

O'CONNOR, Gregory T. (III.12.C.)
National Cancer Institute
Bldg. 31, Rm. 11A19
National Institutes of Health
Bethesda, MD 20014
(301) 496-6618

O'DELL, Boyd Lee (IV.2.C.5.)
Dept. of Biochemistry
University of Missouri
334 Chemistry Bldg.
Columbia, MO 65201
(314) 882-7606

**OEHME, Frederick W. (IV.3.A.,
IV.3.B.)**
Comparative Toxicology Laboratory
Kansas State University
Manhattan, KS 66506
(913) 532-5679

OGILVIE, T. Francis (III.11.)
Dept. of Naval Architecture and
Marine Engineering
NA and ME Bldg., North Campus
University of Michigan
Ann Arbor, MI 48109
(313) 764-6470

OLIVIERI, Vincent P. (IV.2.C.3.)
Dept. of Environmental Health
The Johns Hopkins University
615 North Wolfe St.
Baltimore, MD 21205
(301) 955-3602

OLSON, James A. (II.4.E., II.6.B.)
Dept. of Biochemistry and
Biophysics
Iowa State University
Ames, IA 50010
(515) 294-6116

OLSON, Robert E. (II.4.)
Dept. of Biochemistry
St. Louis University
School of Medicine
St. Louis, MO 63104
(314) 664-9800, ext. 131

OMMAYA, Ayub K. (III.11.)
Branch of Surgical Neurology
NINCDS, Bldg. 10A, Rm. 3E68
National Institutes of Health
Bethesda, MD 20014
(301) 496-4983

ORIAN, Gordon H. (I.2., II.3.)
The Institute for Environmental
Studies
University of Washington
Seattle, WA 98195
(206) 543-1812 or 1658

ORLAND, F. Barbara (II.5.C.)
National Heart, Lung, and Blood
Advisory Council
National Heart, Lung, and Blood
Institute
National Institutes of Health
Bethesda, MD 20014
(301) 496-7548

OWEN, George M. (II.4., II.4.A.)
Human Nutrition Program, M 5170
University of Michigan School of
Public Health
1420 Washington Heights
Ann Arbor, MI 48109
(313) 764-3277

P

PADGETT, George A. (II.5.A.)
Dept. of Pathology
Michigan State University
East Lansing, MI 48824
(517) 355-0109

PANG, Peter K. T. (II.5.A.)
Pharmacology and Therapeutics
Texas Technological University
Lubbock, TX 79409
(806) 743-2437

**PAPPENHEIMER, John R.
(III.12.D.)**
Dept. of Physiology
Harvard Medical School
25 Shattuck St.
Boston, MA 02115
(617) 732-1849

PARKER, Dean R. (III.2., III.2.A.)
6002 Bullard Dr.
Austin, TX 78731
(512) 459-4060

PATT, Harvey M. (III.10.)
Laboratory of Radiobiology
University of California
San Francisco, CA 94143
(415) 666-1636

PATTERSON, Donald F. (II.5.)
Section of Medical Genetics
University of Pennsylvania School of
Veterinary Medicine
3800 Spruce St.
Philadelphia, PA 19104
(215) 243-8880

PAUL, Oglesby (III.8.A.)
Committee on Admission
Harvard Medical School
25 Shattuck St.
Boston MA 02115
(617) 732-1555

PEACHEY, Lee D. (II.6.C.)
Dept. of Biology/GB
University of Pennsylvania
Philadelphia, PA 19104
(215) 243-8336

PEACOCK, Wendell C. (II.5.G.)
New England Primate Research
Center
1 Pinehill Dr.
Southborough, MA 01772
(617) 481-0400

PENTERMAN, Donald G. (III.4.)
University of Nebraska Medical
Center
c/o State Health Department
1003 "O" St.
Lincoln, NE 68508
(402) 471-2158

**PETERING, Harold G. (III.9.,
III.9.B.)**
Kettering Laboratory
University of Cincinnati Medical
Center
3223 Eden Ave.
Cincinnati, OH 45267
(513) 872-5757

PICK, James R., Jr. (II.5.F.)
Div. of Laboratory Animal Medicine
University of North Carolina School
of Medicine
Chapel Hill, NC 27514
(919) 966-3111

PIKE, Malcolm C. (IV.2.C., IV.2.C.4.)
Dept. of Community Medicine
University of Southern California
School of Medicine
1840 North Soto St.
Los Angeles, CA 90032
(213) 226-2311

PIKE, Ruth L. (II.6.B.)
Pennsylvania State University
1275 Penfield Rd.
State College, PA 16801
(814) 237-3820

PITKIN, Roy M. (II.4.A., II.4.G.)
Dept. of Obstetrics and Gynecology
University Hospitals
University of Iowa
Iowa City, IA 52242
(319) 356-1976 or 2294

PLAA, Gabriel L. (IV.2.E.),
Dept. of Pharmacology
Faculty of Medicine
University of Montreal,
CP6128
Montreal, Quebec, Canada H3C 3J7
(514) 343-6334

PODOLSKY, Richard (II.6.C.)
Laboratory of Physical Biology
Bldg. 6, Rm. 110
National Institute of Arthritis and
Metabolic Diseases, NIH
Bethesda, MD 20014
(301) 496-5415

PRESSMAN, Berton C. (II.6.C.)
Dept. of Pharmacology
University of Miami
Box 875, Biscayne Annex
Miami, FL 33152
(305) 547-6643

PRICHARD, Robert W. (II.5.B.4.)
Dept. of Pathology
The Bowman Gray School of
Medicine
Wake Forest University
Winston Salem, NC
(919) 727-4222

PURPURA, Dominick P. (III.12.A.)
Dept. of Anatomy
Albert Einstein College of Medicine
Eastchester Rd. and Morris Park Ave.
Bronx, NY 10461
(212) 430-2408

PUTNAM, Frank W. (I.1., I.2.)
Dept. of Biology
Jordan Hall 206
Indiana University
Bloomington, IN 47401
(812) 337-8617

PYLE, R. Lee (II.5.B.1.)
Drawer V
Mississippi State University
Mississippi State
Mississippi 39762
(601) 325-3432

Q

QUIE, Paul G. (III.7.)
Pediatrics and Microbiology
P. O. Box 483
University of Minnesota Hospital
Minneapolis, MN 55455
(612) 373-5027

R

**RADFORD, Edward P. (III.2.,
III.2.B.)**
Dept. of Epidemiology
Graduate School of Public Health
University of Pittsburgh
130 De Sota St.
Pittsburgh, PA 15261
(412) 624-3009

**RAMMELKAMP, Charles H. (I.2.,
III.6.)**
Dept. of Medicine
Cleveland Metropolitan General
Hospital
3395 Scranton Rd.
Cleveland, OH 44109
(216) 398-6000

RAVEN, Peter (II.3., II.6.A.)
Missouri Botanical Garden
2315 Tower Grove Ave.
St. Louis, MO 63110
(314) 772-7600

RAVENTOS, Antolin (III. 10.)
Dept. of Radiology
University of California School of
Medicine
Davis, CA 95616
(916) 756-9026

READ, Merrill S. (II.4.F.)
Pan American Health Organization
525 - 23rd St., N.W.
Washington, DC 20037
(202) 331-4303

READ, Ronald O. (II.4.C.1.)
Div. of Additives and Pesticides
Food Directorate, Health Protection
Branch
Dept. of National Health and Welfare
Ottawa, Ontario, Canada K1A 0L2
(613) 995-7214

REICHLE, David E. (IV.2.)
Environmental Sciences Div., B3017
Oak Ridge National Laboratory
Box X
Oak Ridge, TN 37830
(615) 483-8611

**REINHARDT, Charles F. (IV.2.D.,
IV.2.D.1.)**
Haskell Laboratory for Toxicology
and Industrial Medicine
E. I. duPont deNemours and Co.
Newark, DE 19711
(302) 366-3575

REYNOLDS, W. Ann (II.4.G.)
Dept. of Anatomy
University of Illinois Medical Center
1835 W. Polk St.
Chicago, IL 60612
(312) 996-7584

RICCIUTI, Henry N. (II.4.F.)
Dept. of Human Development and
Family Studies
Cornell University
Ithaca, NY, 14850
(607) 256-3074 or 3099

RICE, Dorothy P. (III.8.A.)
National Center for Health Statistics
Center Bldg., Rm. 2-19
3700 East West Highway
Hyattsville, MD 20782
(301) 436-7016

COMMITTEE MEMBERS

RICE, Mary Esther (II.5.H.)
 Smithsonian Institution
 Ft. Pierce Bureau
 Rt. 1, Box 194
 Fort Pierce, FL 33450
 (305) 465-2400

RICHARDS, Frederic M. (II.6.C.)
 Dept. of Molecular Biophysics and
 Biochemistry
 Yale University
 Box 1937, Yale Station
 New Haven, CT 06520
 (203) 436-2032

RICHARDSON, Rudy, J. (IV.2.C.7.)
 Toxicology Research Laboratory
 Environmental and Industrial Health
 Dept.
 University of Michigan School of
 Public Health
 Ann Arbor, MI 48109
 (313) 764-5430

RIDLEY, Jeanne Clare (II.4.E.2.)
 Center for Population Research
 Kennedy Institute
 Georgetown University
 Washington, DC 20057
 (202) 625-3157

**ROBBINS, Frederick C. (I.4.A.,
 III.7.)**
 Case Western Reserve University
 School of Medicine
 2119 Abington Rd.
 Cleveland, OH 44106
 (216) 368-2820

ROBERTS, Eugene (III.12.A.)
 Div. of Neurosciences
 City of Hope National Medical
 Center
 Duarte, CA 91010
 (213) 359-8111, ext. 476

ROBERTS, Jay (II.5.B.5.)
 Dept. of Pharmacology
 Medical College of Pennsylvania
 3300 Henry Ave.
 Philadelphia, PA 19129
 (215) 842-7175

ROBERTS, Robert J. (IV.2.C.7.)
 Dept. of Pharmacology
 The Toxicology Center
 University of Iowa
 College of Medicine
 Iowa City, IA 52242
 (319) 353-3916

**ROBINSON, Willard B. (I.4.A.1.,
 II.4., II.4.C.1., II.4.D.)**
 Institute of Food Science
 Cornell University
 Geneva, NY 14456
 (315) 787-2254

RODMAN, Peter S. (II.5.B.4.)
 Dept. of Anthropology
 University of California
 Davis, CA 95616
 (916) 752-0745

RODRICKS, Joseph V. (IV.2.D.)
 Bureau of Foods
 Food and Drug Administration
 200 C St., S.W.
 Washington, DC 20204
 (202) 245-1564

ROE, Daphne A. (IV.2.C.5.)
 Div. of Nutritional Sciences
 Cornell University
 123 Savage Hall
 Ithaca, NY 14853
 (607) 256-5436

ROSE, Lawrence R. (III.4.)
 National Center for Health Services
 Research
 Health Resources Administration
 Parklawn Bldg., Rm. 15A 19
 Dept. of Health, Education, and
 Welfare
 Rockville, MD 20852
 (301) 436-8930

**ROSENBERG, Irwin H. (II.4.,
 II.4.E.1.)**
 Section of Gastroenterology
 University of Chicago
 950 E. 59th St.
 Chicago, IL 60637
 (312) 947-5561

ROSENBLITH, Walter A. (I.4.A.)
 Provost's Office
 Massachusetts Institute of
 Technology
 Cambridge, MA 02139
 (617) 253-1990

ROSENKRANZ, Herbert S. (II.5.C.)
 Dept. of Microbiology
 New York Medical College
 Basic Science Bldg.
 Valhalla, NY 10595
 (914) 347-5668

ROSENZWEIG, Mark R. (II.4.F.)
 Dept. of Psychology
 3210 Tolman Hall
 University of California
 Berkeley, CA 94720
 (415) 642-7132 or 5292

ROSSI, Harald H. (III.2., III.2.B.)
 Radiobiological Research Laboratory
 College of Physicians and Surgeons
 Columbia University
 630 W. 168th St.
 New York, NY 10032
 (212) 694-3543

RUDOLF, Leslie (III.4.)
 Dept. of Surgery
 University of Virginia Hospital
 Box 181
 Charlottesville, VA 22901
 (804) 924-2180

RUMACK, Barry H. (IV.2.E.)
 Rocky Mountain Poison Center
 West 8th and Cherokee Sts.
 Denver, CO 80204
 (303) 893-7775

**RUSSELL, Liane B. (III.2., III.2.A.,
 III.2.B.)**
 Biology Div.
 Oak Ridge National Laboratory
 P. O. Box Y
 Oak Ridge, TN 37830
 (615) 483-8611, ext. 3-7211

**RUSSELL, William L. (III.2.,
 III.2.A.)**
 Biology Div.
 Oak Ridge National Laboratory
 P. O. Box Y
 Oak Ridge, TN 37830
 (615) 483-8611, ext. 3-7211

S

SACHER, George A. (II.5.B.2.)
 Div. of Biological and Medical
 Research
 D202
 Argonne National Laboratory
 Argonne, IL 60439
 (312) 972-7702

SACKETT, Gene P. (II.5.G.)
 Regional Primate Research Center
 University of Washington
 Seattle, WA 98105
 (206) 543-4376

SADLER, Blair (III.4.)
 Scripps Clinic and Research
 Foundation
 10666 N. Torrey Pines Rd.
 La Jolla, CA 92037
 (714) 455-9100

SAMUELS, Sheldon W. (I.4.A.1.)
 American Federation of Labor and
 Congress of Industrial
 Organizations
 Industrial Union Dept.
 Rm. 311
 815 16th St., N.W.
 Washington, DC 20006
 (202) 393-5583

SANDSTEAD, Harold H. (II.4.E.)
 Human Nutrition Laboratory
 ARS/U.S. Dept. of Agriculture
 Box 7166, University Station
 2420 Second Ave., North
 Grand Forks, ND 58201
 (701) 775-3520

SAUBERLICH, Howerde E. (II.4.A.)
 Dept. of Nutrition
 Letterman Army Institute of Research
 Presidio
 San Francisco, CA 94129
 (415) 561-4323

SAUSVILLE, Joseph W. (II.6.D.)
 Lamp Div.
 Westinghouse Electric Corp.
 Bloomfield, NJ 07003
 (201) 465-3363

SCARPELLI, Dante G. (IV.2.B.)
Dept. of Pathology
Northwestern University School of
Medicine
Rm. 312 Wesley
Chicago, IL 60611
(312) 649-2417

SCARPINO, Pasquale V. (IV.2.C.3.)
Dept. of Civil and Environmental
Engineering
University of Cincinnati
639 Baldwin, No. 71
Cincinnati, OH 45221
(513) 861-7070

SCARR, Sandra W. (III.8.A.1.)
Dept. of Psychology
Yale University
2 Hillhouse Ave.
New Haven, CT 06520
(203) 432-4226

SCHAFFER, Gloria W. (I.4.A.)
State Capitol
Hartford, CT 06115
(203) 566-2739

SCHARRER, Berta V. (III.12.A.)
Dept. of Anatomy
Albert Einstein College of Medicine
1300 Morris Park Ave.
Bronx, NY 10461
(212) 430-2835

SCHMITZ, Andrew J., Jr. (II.4.C.1.)
Quality Control and Assurance
Pfizer, Inc.
235 E. 42nd St.
New York, NY 10017
(212) 573-3238 or 3126

SCHNEIDERMAN, Howard A. (I.2.)
Center for Pathobiology
University of California
Irvine, CA 92664
(714) 833-5957

SCHNEIDERMAN, Marvin A.
(IV.2.C., IV.2.C.4., IV.3.A.)
Field Studies and Statistics
National Cancer Institute
Landon Bldg., Rm. 4C03
Bethesda, MD 20014
(301) 496-1611

SCHNELL, Craig (IV.2.C.7.)
Purdue University School of
Pharmacy and Pharmacal Sciences
West Lafayette, IN 47097
(317) 493-2072

SCHNELL, Russell C. (II.2.)
NOAA/Atmospheric Pollution
Control Center

R31
Boulder, CO 80302
(303) 499-1000

SCHRAMM, Arthur T. (II.4.D.)
Food Materials Corporation
2711 W. Irving Park Rd.
Chicago, IL 60618
(312) 463-7600

SCHRIER, Allan M. (II.5., II.5.1.)
Psychology Dept.
Brown University
Providence RI 02912
(401) 863-2511

SCHULMAN, Irving (III.7.)
Dept. of Pediatrics
Stanford University Medical Center
Stanford, CA 94305
(415) 497-6134

SCHWABE, Calvin W. (III.13.)
Dept. of Epidemiology and
Preventive Medicine
University of California
Davis, CA 95616
(916) 752-1378

SCHWEIGERT, Bernard S. (II.4.D.)
Dept. of Food Science and
Technology
University of California
Davis, CA 95616
(916) 752-1465

SCRIMSHAW, Nevin S. (II.6.B.)
Dept. of Nutrition and Food Science
Massachusetts Institute of
Technology
Cambridge, MA 02139
(617) 253-5101

SEAL, U. S. (II.5.G.)
Veterans Administration Hospital
54th St. and 48th Ave., South
Minneapolis, MN 55417
(612) 725-6767, ext. 6583

SEGAL, Sheldon J. (III.3.)
Center for Biomedical Research
The Population Council
The Rockefeller University
66th St. and York Ave.
New York NY 10021
(212) 869-8500

SELBY, Paul B. (III.2., III.2.A.)
Biology Div.
Oak Ridge National Laboratory
P. O. Box Y
Oak Ridge, TN 37830
(615) 483-8611, ext. 3-5880

SELDIN, Donald W. (I.2.)
Dept. of Internal Medicine
University of Texas Health Science
Center

5323 Harry Hines Blvd.
Dallas, TX 75235
(214) 688-3486

SELIG, Edward I. (IV.2.A.)
Bracken, Selig and Baran
33 Mount Vernon St.
Boston, MA 02108
(617) 742-4950

SELTZER, Raymond (III.10.)
The Johns Hopkins School of
Hygiene and Public Health
615 N. Wolfe St.
Baltimore, MD 21205
(301) 955-3347

ASSEMBLY OF LIFE SCIENCES

SERRANO, Louis J. (II.5.B.3.)
Veterinary Medicine
Microbiological Associates
Biggs Ford Road
Bldg. 1
Walkersville, MD 21793
(301) 898-7025

SHANDS, Joseph (IV.2.C.1.)
The J. H. Miller Health Center
Div. of Infectious Diseases
Box J-277
University of Florida
Gainesville, FL 32610
(904) 392-4058

SHANK, Ronald C. (IV.2.C.,
IV.2.C.5., IV.2.D.)
Dept. of Community and
Environmental Medicine
University of California
College of Medicine
Irvine, CA 93106
(714) 833-5853

SHINGLETON, William W.
(III.12.C.)
Comprehensive Cancer Center
Duke University Medical Center
Durham, NC 27710
(919) 684-2282

SHREFFLER, Donald C. (II.5.A.)
Dept. of Genetics
Washington University School of
Medicine
St. Louis, MO 63110
(314) 454-2843

SILVERS, Willys K. (II.5.D.)
Dept. of Human Genetics
University of Pennsylvania School
of Medicine
36th St. and Hamilton Walk
Philadelphia, PA 19174
(215) 243-5174

SIOLI, Harald (II.3.)
Max Planck Institut für Limnologie
Postfach 165
D-232 Plön, West Germany
Telephone: 0 45 22/663

SLOAN, Margaret H. (III.2., III.2.B.)
Div. of Cancer Control and
Rehabilitation
722 Blair Bldg.
National Cancer Institute
8300 Colesville Rd.
Silver Spring, MD 20910
(301) 427-7968

SMITH, Bruce H. (III.12.B.)
Pathology Dept.
Veterans Administration Hospital
50 Irving St., N.W.
Washington, DC 20422
(202) 389-7252

SMITH, Carl C. (IV.3.A.)
Dept. of Environmental Health
University of Cincinnati
College of Medicine
Cincinnati, OH 45267
(513) 872-5745

COMMITTEE MEMBERS

49

- SMITH, Randall W. (III.11.)**
Dept. of Neurosurgery
University Hospital
University of California
San Diego, CA 92103
(714) 294-5699
- SMUCKLER, Edward A. (IV.2.B.)**
Dept. of Pathology, HSW 504
University of California
San Francisco, CA 94143
(415) 666-1701
- SNODGRASS, Phillip A. (III.4.A.)**
General Surgery
171 Louiselle
Mobile, AL 36607
(205) 432-0444
- SNOEYINK, Vernon L. (IV.2.C.1.)**
Dept. of Civil Engineering
3230 Civil Engineering Bldg.
University of Illinois
Urbana, IL 61801
(217) 333-4700
- SOLBRIG, Otto T. (II.6.A.)**
Dept. of Biology
Harvard University
22 Divinity Ave.
Cambridge, MA 02138
(617) 495-4302
- SOLNIT, Albert J. (III.7.)**
Yale Child Study Center
333 Cedar St.
New Haven, CT 06510
(203) 436-1190
- SOLOMONS, Noel W. (II.4.E.1.)**
Div. of Human Nutrition and Biology
Institute of Nutrition of Central
America and Panama
Carretera Roosevelt
Zona 11, Apartado 11-88
Guatemala City, Guatemala
Telephone: 43762, ext. 241
- SPELLACY, William N. (II.4.G.)**
Dept. of Obstetrics and Gynecology
University of Florida College of
Medicine
Gainesville, FL 32610
(904) 392-4163
- SPERTZEL, Richard O. (II.5.)**
Research Operations
U.S. Medical Research and
Development Command
Fort Detrick
Frederick, MD 21701
(301) 393-1839
- SPROTT, Richard L. (II.5.B.3.)**
The Jackson Laboratory
Bar Harbor, ME 04609
(207) 288-3371
- SPROUL, Otis J. (IV.2.C.3.)**
Dept. of Civil Engineering
Rm. 470, Hitchcock Hall
Ohio State University
Columbus, OH 43210
(614) 422-2771
- SQUIRE, Robert A. (II.5.E.)**
Div. of Comparative Medicine and
Pathology
The Johns Hopkins University
School of Medicine
Baltimore, MD 21205
(301) 955-3158
- STALLONES, Reuel A. (IV.2.)**
University of Texas School of Public
Health
P. O. Box 20186
Houston, TX 77025
(713) 792-4425
- STANBURY, John B. (II.4.E.2.)**
The Pathfinders Fund
1330 Boylston St.
Chestnut Hill (Boston), MA 02167
(617) 731-1700
- STANDAERT, Frank G. (IV.2.B.)**
Dept. of Pharmacology
Georgetown University School of
Medicine and Dentistry
Washington, DC 20007
(202) 625-7636
- STANTON, Mearl F. (II.5.E.)**
Laboratory of Pathology
National Cancer Institute
Bldg. 10, Rm. 2A23
National Institutes of Health
Bethesda, MD 20014
(301) 496-2633
- STEINER, Donald F. (I.4.A.1.)**
Dept. of Biochemistry
University of Chicago
920 East 58th St.
Chicago, IL 60637
(312) 753-3971
- STELLAR, Eliot (I.4.A.1.)**
University of Pennsylvania School
of Medicine
Philadelphia, PA 19104
(215) 243-7227
- STERNBERG, Hilgard O'Reilly
(II.3.)**
Dept. of Geography
University of California
Berkeley, CA 94720
(415) 642-5517 or 524-5597
- STEWART, Harold L. (II.5.E.)**
119 S. Adams St.
Rockville, MD 20850
(301) 496-6047
- STOBBY, Gerald E. (II.4.C.1.)**
258 Bldg.
Dow Chemical Company
Midland, MI 48640
(517) 636-2780
- STOCK, C. Chester (III.12.C.)**
Memorial Sloan-Kettering Cancer
Center
1275 York Ave.
New York, NY 10021
(212) 794-7524
- STODDARD, Leland D. (III.12.B.)**
Dept. of Pathology
Medical College of Georgia
Augusta, GA 30902
(404) 828-3555
- STONE, Robert S. (I.3.)**
University of Oregon Health Sciences
Center
Sam Jackson Park Rd.
Portland, OR 97201
(503) 225-8220
- STONE, William H. (II.5.A.,
-II.5.B.4., III.13.)**
Laboratory of Genetics
University of Wisconsin
Madison, WI 53706
(608) 262-3387
- STORER, John B. (I.3.)**
Biology Div.
Oak Ridge National Laboratory
P. O. Box Y
Oak Ridge, TN 37830
(615) 483-8611, ext. 37135
- STOWFI, Robert E. (III.12.B.)**
Dept. of Pathology
University of California School of
Medicine
Davis, CA 95616
(916) 752-2086
- STUMPF, Walter Frich (II.5.)**
Labes for Reproductive Biology
University of North Carolina at
Chapel Hill
Chapel Hill, NC 27514
(919) 966-1144
- SUELZER, John G. (III.4.A.)**
Orthopaedic Surgery
Winona Professional Bldg.
Suite 508
3266 N. Meridian St.
Indianapolis, IN
(317) 923-1339
- SUFFET, Irwin H. (IV.2.C.,
IV.2.C.1.)**
Environmental Studies Institute
Drexel University
Philadelphia, PA 19104
(215) 895-2270
- SUTTON, H. Eldon (III.8.A.,
III.8.A.1.)**
Dept. of Zoology
University of Texas
Austin, TX 78712
(512) 471-5420

56

SZENT-GYORGYI, Andrew G.
(II.6.C.)
Dept. of Biology
Brandels University
Waltham, MA 02145
(617) 657-2758

T

TERBORGH, John J. (II.3.)
Dept. of Biology
Princeton University
Princeton, NJ 08540
(609) 452-3837

THOMPSON, Richard F. (III.12.A.)
Dept. of Psychobiology
University of California
Irvine, CA 92664
(714) 833-5964

THORINGTON, Richard W., Jr.
(II.5.I.2.)
Smithsonian Institution
Museum of Natural History,
NHB 108
Washington, DC 20560
(202) 381-5393

TRUM, Bernard F. (II.5.I.1.)
Animal Research Center
Harvard Medical School
25 Shattuck St.
Boston, MA 02115
(617) 732-1285, 1286, 1287

TUKEY, Harold B., Jr. (III.5.)
Dept. of Floriculture and Ornamental
Horticulture
Plant Science Bldg.
Cornell University
Ithaca, NY 14853
(607) 256-4586

TURK, Amos (IV.2., IV.2.A.)
7 Tarrywile Lake Dr.
Danbury, CT 06810
(203) 748-6067

TUTHILL, Samuel M. (II.4.C.1.)
Corporate Analytical Services
Mallinckrodt, Inc.
P. O. Box 5439
St. Louis, MO 63147-
(314) 895-5393

U

UNDERWOOD, Barbara A. (II.4.E.)
Dept. of Nutrition and Food Science
Massachusetts Institute of
Technology, Rm. 20A-222
Cambridge, MA 02139
(617) 253-5141 or 5128

URBACH, Frederick (II.6.D.)
Dept. of Dermatology
Skin Cancer Hospital
Temple University School of
Medicine
Philadelphia, PA 19140
(215) 221-3924

V

VALI, Gabor (II.2.)
Dept. of Atmospheric Sciences
University of Wyoming
Box 3038, University Station
Laramie, WY 82071
(307) 766-3245

VALLEE, Bert V. (IV.2.)
Harvard University
Peter Bent Brigham Hospital
Biophysics Research Laboratory
Boston, MA 02115
(617) 732-6756

VAN GELDER, Gary A. (III.9.,
III.9.A., III.9.B.)
College of Veterinary Medicine
University of Missouri
Columbia, MO 65201
(314) 882-7011

VÄNDERZANT, Carl (II.4.C.,
II.4.C.2.)
Dept. of Animal Science
Texas A & M University
College Station, TX 77843
(713) 845-4424

VICKERS, James H. (II.5.I., II.5.I.1.)
Pathobiology and Primatology
Branch
Bureau of Biologics
Food and Drug Administration
Dept. of Health, Education, and
Welfare
8800 Rockville Pike
Bethesda, MD 20014
(301) 496-1165

VILLARD, Oswald G., Jr. (III.14.A.)
SRI International
Bldg. 320A, Rm. 67
333 Ravenswood Ave.
Menlo Park, CA 94025
(415) 326-6200, ext. 2017

VINCENT, Albert L. (II.5.B.2.)
Dept. of Comprehensive Medicine
University of South Florida
College of Medicine
Tampa, FL 33612
(813) 974-2259

VIVONA, Stefano (II.5.F.)
American Cancer Society, Inc.
219 E. 42nd St.
New York, NY 10017
(212) 371-2900

ASSEMBLY OF LIFE SCIENCES

VON HIPPEL, Peter H. (II.6.A.)
Institute of Molecular Biology
University of Oregon
Eugene, OR 97403
(503) 686-5151 or 344-3659

W

WADSWORTH, Frank H. (II.3.)
Institute of Tropical Forestry
P. O. Box AQ
Rio Piedras, PR 00928
(809) 753-4335 or 4937

WALLIN, Jack Robb (II.2.)
Dept. of Plant Pathology
312 Curtis Hall
University of Missouri
Columbia, MO 65201
(314) 882-6320

WALTER, Carl W. (IV.2.D.1.)
Dept. of Surgery
Harvard Medical School
25 Shattuck St.
Boston, MA 02115
(617) 232-6880

WARREN, Kenneth S. (II.4.E.1.)
Health Sciences
The Rockefeller Foundation
1133 Avenue of the Americas
New York, NY 10036
(212) 869-8500

WARREN, Shields (III.14.A.)
Cancer Research Institute
New England Deaconess Hospital
185 Pilgrim Rd.
Boston, MA 02215
(617) 734-7000, ext. 2401

WATANABE, Philip G. (IV.2.D.)
Dow Chemical USA
1803 Bldg.
Midland, MI 48640
(517) 636-1313

WATSON, Geoffrey S. (III.5.)
Dept. of Statistics
Princeton University
Princeton, NJ 08540
(609) 452-4218

WEAVER, Leo (III.9.)
Ohio River Valley Water Sanitation
Commission
414 Walnut St.
Cincinnati, OH 45202
(513) 421-1151

WEBER, George (III.12.C.)
Dept. of Pharmacology
Indiana University School of Medicine
1100 W. Michigan St.
Indianapolis, IN 46202
(317) 264-7921

COMMITTEE MEMBERS

WEBSTER, Edward W. (III.2., III.2.B.)

Div. of Radiological Sciences
Dept. of Radiology
Massachusetts General Hospital
Boston, MA 02114
(617) 726-3078 or 8326

WEGMAN, Myron E. (III.7., IV.2.B.)

University of Michigan School of
Public Health, M 6075
Ann Arbor, MI 48109
(313) 763-5249

WEIL, Carrol S. (IV.2.C.6.)

Carnegie-Mellon Institute of Research
Carnegie-Mellon University
4400 Fifth Ave.
Pittsburgh, PA 15213
(412) 327-1020, ext. 214

WEINSTEIN, Leonard H. (III.9., III.9.A.)

Boyce Thompson Institute for Plant
Research
1086 N. Broadway
Yonkers, NY 10701
(914) 965-0390, ext. 21

WEISBURGER, Elizabeth K. (III.9.)

Laboratory of Carcinogen
Metabolism
Div. of Cancer Cause and Prevention
National Cancer Institute
Bldg. 37, Rm. 3B27
Bethesda, MD 20014
(301) 496-5688

WELLMAN, Henry N. (III.2., III.2.B.)

Nuclear Medicine Div.
Indiana University School of
Medicine
1100 West Michigan St.
Indianapolis, IN 46202
(317) 264-8832

WETHERS, Doris L. (III.7.)

Clinical Pediatrics
St. Luke's Hospital Center
Amsterdam Ave. and 114th St.
New York, NY 10025
(212) 870-6844

WHITE, Clayton S. (III.14.A.)

Oklahoma Medical Research
Foundation
825 N.E. 13th St.
Oklahoma City, OK 73104
(405) 235-8331

WHITNEY, Robert A., Jr. (II.5., II.5.I.1.)

Veterinary Resources Branch
National Institutes of Health (ILAR
Exec. Comm.)
Bldg. 14G, Rm. 102
Bethesda, MD 20014
(301) 496-2527

WILKENING, George M. (III.14.A.)

Environmental Health and Safety
Dept.
Bell Telephone Laboratories, Inc.
600 Mountain Ave.
Murray Hill, NJ 07974
(201) 582-6565

WILKINSON, Christopher F. (IV.3.A.)

Dept. of Entomology
Cornell University
Ithaca, NY 14853
(607) 256-3051

WILLIG, W. Armin (III.12.C.)

2200 River Bluff Rd.
Louisville, KY 40207
(502) 895-4110

WINICK, Myron (II.4.F.)

Institute of Human Nutrition
Columbia University
701 W. 168th St.
New York, NY 10032
(212) 694-6991

WISNIEWSKI, Henryk M. (II.5.B., II.5.B.4.)

New York State Institute for Basic
Research in Mental Retardation
1050 Forest Hill Rd.
Staten Island, NY 10314
(212) 761-9300

WITSCHI, Hanspeter (IV.3.A.)

Biology Div.
Oak Ridge National Laboratory
P. O. Box Y
Oak Ridge, TN 37830
(615) 483-8611, ext. 3-5676

WITTES, Janet T. (IV.2.A.)

124 West 87th St.
New York, NY 10024
(212) 570-5701

WOGAN, Gerald N. (IV.2.)

Dept. of Nutrition and Food Science
Massachusetts Institute of
Technology
Cambridge, MA 02139
(617) 253-6223

WOLBARSH, Myron Lee (II.6.D.)

Duke University Eye Center
Durham, NC 27710
(919) 684-2032

WOLFF, Arthur H. (IV.2.C.4.)

School of Public Health
University of Illinois at the Medical
Center

P. O. Box 6998
Chicago, IL 60680
(312) 996-3332

WOLFF, Sheldon (IV.2.C., IV.2.C.6.)

Laboratory of Radiobiology, LR-104
University of California
San Francisco, CA 94122
(415) 666-4563 or 1636

WOODS, James S. (IV.3.A.)

Battelle HARC
4000 N.E. 41st St.
Seattle, WA 98105
(206) 525-3130

WRAY, Joe D. (II.4.E., II.4.E.2.)

Harvard School of Public Health
677 Huntington Ave.
Boston, MA 02146
(617) 732-1076

WURTMAN, Richard J. (II.4.F.)

Massachusetts Institute of
Technology
Bldg. 56-245
77 Massachusetts Ave.
Cambridge, MA 02139
(617) 253-6731

Y

YOLLES, Tamarath (III.4.)

Dept. of Community Medicine
Health Sciences Center
State University of New York School
of Medicine
Stony Brook, NY 11790
(516) 444-2407, 2094, or 2135

Z

ZINKE, Paul J. (II.3.)

School of Forestry
University of California
Berkeley, CA 94720
(415) 642-6472

ASSEMBLY OF LIFE SCIENCES

Staff

Staff

Telephone extensions can be reached from outside the Academy by dialing area code 202, then the prefix 389; i.e., to reach extension 6340, dial (202) 389-6340.

Mail should be addressed to the Assembly of Life Sciences staff as follows:

National Research Council, Room _____
2101 Constitution Avenue, N.W.
Washington, DC 20418

	<u>Room</u>	<u>Telephone Extension</u>		<u>Room</u>	<u>Telephone Extension</u>
ABRAMSON, Samuel	A		GREENHOUSE, Dorothy D.	JH 226	6692
	JH 226	6340	GROGAN, Earl W.	JH 226	6692
			GROSSBLATT, Norman	NAS 344B	6353
BANKS, Delores BANKS, Waldena BARRON, Susan G. BELOTE, Martha E. BENNETT, Robert B. BOND, Enriqueta C. BROWN, Eileen G. BROWN, Myrtle L. BUCKLEY, Barbara A. BUNIAK, Elsie B.	B		HAMAMURA, Hatsumi	H 621	6477
	JH 308	6747	HAMPTON, Rosemary J.	NAS 341	6308
	NAS 359	6351	HARVIN, Helen D.	JH 308	6747
	NAS 347	6393	HATCHER, Paula K.	NAS 343	6312
	JH 616	6467	HAYMAN, Ute S.	NAS 352	6867
	JH 224	6757	HICKS, Chiquita M.	JH 622	6475
	NAS 347	6393	HILBERG, Albert W.	NAS 353	6625
	NAS 349	6328	HOUSEWRIGHT, Riley D.	JH 308	6747
	JH 224	6366	HRUBEC, Zdenek	JH 616	6467
	NAS 341	6906	HUNTER, Elizabeth J.	NAS 940	6201
	JH 619	6316			
	COHEN, Andrea L.	C		JABLON, Seymour	JH 616
JH 226		6340	JACKSON, Ellen C.	JH 226	6692
DAVIS, Normandy M. DELLI CARPINI, Joan L. DODGEN, Durward F.	D		KEHN, Robert J.	JH 616	6467
	NAS 341	6906	KEILSON, Gary R.	JH 404	6751
	JH 226	6692	KING, Patricia M.	JH 616	6467
EGGE, Marcia L. EORDOGH, Ilse M.	E		LAZEN, Alvin G.	NAS 343	6312
	JH 662	6475	LIPPMAN, Muriel	NAS 359	6351
*FARLEY, Vivian A. *FERGUSON, Dorothy M. FRAZIER, James A. FULTON, Kenneth R.	F		*MAHON, Dorothy J.	St. Louis	
	941 N. Capital St.	275-1448	MALKANI, LATHA	JH 224	6330
	St. Louis		McCONNAUGHEY, David A.	NAS 354	6586
	NAS 346	6806	McKEE, Samuel B.	NAS 340	6437
GARDNER, Phyllis A. GASKIN, Agnes E. GOLDEN, Robert J. GOLDSMITH, David F. GRAVES, Geraldine R.	G		*McKINNIS, Sylvia D.	St. Louis	
	JH 621	6309	MILLARD, Edna E.	JH 404	6751
	NAS 356	6224	MORGAN, Councilman	NAS 343	6311
	JH 308	6747	MORGAN, Marle V.	JH 308	6747
	NAS 341	6906	MÜCKENHORN, Nancy A.	JH 226	6692
	JH 226	6692			

*Interoffice mail should be sent to JH 616.

54

60

STAFF

	<u>Room</u>	<u>Telephone Extension</u>		<u>Room</u>	<u>Telephone Extension</u>
N			S		
NEWELL, Gordon W.	NAS 356	6225	SALMON, Ellahu J.	NAS 355	6167
NEWMAN, June D.	NAS 343	6315	SEMASINGHE, Joan L.	NAS 348	6322
NORMAN, James E.	JH 616	6467	SIMMONS, Betty J.	NAS 353	6586
P			T		
PALMER, Sushma.	NAS 341	6937	SIMON, A. Hiram	JH 620	6474
PARMAN, George K.	JH 224	6366	SLOVER, Catherine E.	JH 616	6467
PERRIN, Jean E.	NAS 347	6805	SMITH, Barbara B.	NAS 343	6311
PERRY, Marlene M.	JH 224	6362	*SMITH, Lillian A.	941 N. Capitol St.	275-1448
PETER, Frances M.	NAS 345	6166	SPEARS, Brenda	JH 404	6751
PORTER, Emma V.	JH 623	6709	ST. PIERRE, René M.	NAS 353	6626
PORTER, Viola F.	JH 616	6467	STEPHENS, Christina C.	JH 226	6692
PRESTON, Thomas L.	JH 622	6475	STEVENS, Russell B.	NAS 340	6200
PRINCE, Jacqueline K.	NAS 358	6914	STEWART, Margaret R.	JH 224	6367
PUTNAM, Frank W.	NAS 343	6311	W		
Q			Z		
*QUEATHAM, Vera J.	St. Louis		TALBOT, James J.	NAS 340	6201
R			TARDIFF, Robert G.	NAS 357	6914
READ, Cecil M.	NAS 343	6326	TAYLOR, Margaret S.	NAS 340	6200
REDMOND, John, Jr.	NAS 352	6867	TAYLOR, Mary G.	JH 224	6362
REGGLES, Julie	JH 226	6692	THURGOOD, Delores H.	JH 226	6340
ROBINETTE, C. Dennis	JH 616	6467	Z		
ROSEN, Katherine S.	JH 622	6475	WATKINS, Michele	JH 623	6709
RUMFELT, Michael K.	JH 404	6751	WEISS, Daniel L.	NAS 344	6315
RUSSELL, Joyce A.	NAS 358	6914	WHITE, Virginia	JH 404	6751
			WIDDUS, Roy	JH 308	6747
			*ZUKE, Ellen K.	941 N. Capitol St.	275-1448

*mail should be addressed to JH 616

ACRONYMS

Acronyms

The following list of acronyms is limited to those most often used by the Assembly of Life Sciences staff and committee members:

AALAS	American Association for Laboratory Animal Science	MAB	Man and the Biosphere Program
ABASS	Assembly of Behavioral and Social Sciences	MCFHR	Board on Maternal, Child, and Family Health Research
AE	Assembly of Engineering	MER or COMER	Military Environmental Research, Committee on
AID	Agency for International Development	MFUA	Medical Follow-up Agency
ALS	Assembly of Life Sciences	NAE	National Academy of Engineering
AMPS	Assembly of Mathematical and Physical Sciences	NAS-NRC	National Academy of Sciences-National Research Council
BARR	Board on Agriculture and Renewable Resources	NCI	National Cancer Institute
BEIR	Advisory Committee on the Biological Effects of Ionizing Radiations	NEI	National Eye Institute
BIOP	Board on International Organizations and Programs	NHLBI	National Heart, Lung and Blood Institute
BOSTID	Board on Science and Technology for International Development	NIA	National Institute on Aging
BOTEHH	Board on Toxicology and Environmental Health Hazards	NIAID	National Institute of Allergy and Infectious Diseases
CHABA	Committee on Hearing, Bio-Acoustics, and Biomechanics	NIAMDD	National Institute of Arthritis, Metabolism and Digestive Diseases
CHR	Commission on Human Resources	NICHHD	National Institute of Child Health and Human Development
CINP	Committee on International Nutrition Programs	NIDA	National Institute of Drug Abuse
CIR	Commission on International Relations	NIDR	National Institute of Dental Research
CLABR	Committee on Laboratory Associated Biological Risks	NIEHS	National Institute of Environmental Health Service
CNR	Commission on Natural Resources	NIGMS	National Institute of General Medical Sciences
CPSC	Consumer Product Safety Commission	NIH	National Institutes of Health
CSS	Commission on Sociotechnical Systems	NIMH	National Institute of Mental Health
CT	Committee on Toxicology	NINCDS	National Institute of Neurological and Communicative Disorders and Stroke
DBS	Division of Biological Sciences	NIOSH	National Institute of Occupational Safety and Health
DHEW	Department of Health, Education, and Welfare	NLM	National Library of Medicine
DMS	Division of Medical Sciences	NOAA	National Oceanic and Atmospheric Administration
DNA	Defense Nuclear Agency	NRC	Nuclear Regulatory Commission
EMS	Committee on Emergency Medical Services	NRP	Neurosciences Research Program
EPA	Environmental Protection Agency	NSF	National Science Foundation
ESB	Environmental Studies Board	OSHA	Occupational Safety and Health Administration
FEPCA	Federal Environmental Pesticide Control Act	OTS	Office of Toxic Substances of EPA
FCC	Food Chemicals Codex	PIREC	Pesticide Information Review and Evaluation Committee
FDA	Food and Drug Administration	PPP	Panel on Extent of Radiation from the Pave Paws Radar
FNB	Food and Nutrition Board	RERF	Radiation Effects Research Foundation
FPC	Food Protection Committee	RDA	Recommended Dietary Allowances
GRAS	Generally recognized as safe	RRC	Report Review Committee
IARC	International Agency for Research on Cancer	SCHVC	Committee on Evaluation of Research on Surrogates for Humans in Motor Vehicle Crashes
IBP	International Biological Program	SDW	Safe Drinking Water Committee
ICSU	International Council of Scientific Unions	STAEP	Committee on Scientific and Technical Assessments on Environmental Pollutants (CNR)
ILAR	Institute of Laboratory Animal Resources	TIPCOM	Toxicology Information Program Committee
IOM	Institute of Medicine		
IRC's	International Reference Centers		
IUBS	International Union of Biological Sciences		

ACRONYMS

59

USANC/ IBRO	USA National Committee for the International Brain Research Organization	USNC/ IUNS	U.S. National Committee for the International Union of Nutritional Sciences
USANC/ ICSP	USA National Committee for the International Council of Societies of Pathology	USNC/ IUPAB	U.S. National Committee for the International Union for Pure and Applied Biophysics
USANC/ IUCC	USA National Committee for the International Union Against Cancer	USNC/Photobiology	U.S. National Committee for Photobiology
USANC/ IUPS	USA National Committee for the International Union of Physiological Sciences	UNESCO	United Nations Educational and Scientific Cultural Organization
USNC/ IUBS	U.S. National Committee for the International Union of Biological Sciences	VMS	Committee on Veterinary Medical Sciences
		WHO	World Health Organization

