

DOCUMENT RESUME

ED 143 352

IR 005 115

TITLE Annual Report of the South Carolina State Library (7th).

INSTITUTION South Carolina State Library, Columbia.

PUB DATE Jun 76

NOTE 41p.; For related document, see ED 121 264 ; Some parts may be marginally legible due to small type

EDRS PRICE MF-\$0.83 HC-\$2.06 Plus Postage.

DESCRIPTORS *Annual Reports; College Libraries; County Libraries; Directories; Federal Aid; Institution Libraries; Interlibrary Loans; Librarians; Library Collections; *Library Expenditures; *Library Surveys; Public Libraries; State Aid; *State Libraries; *Statistical Data; University Libraries

IDENTIFIERS. *South Carolina State Library

ABSTRACT

Library Annual Report data for the state of South Carolina, including services and publications for 1975-1976, are summarized. Tables list figures for circulation, county library construction, interlibrary loans, and state and federal expenditures, as well as income, expenditures, bookstock, and personnel for college, university, public, and institutional libraries. Directories of library board chairmen and directors of college, university, public, and institutional libraries are included. (KP)

* Documents acquired by ERIC include many informal unpublished *
* materials not available from other sources. ERIC makes every effort *
* to obtain the best copy available. Nevertheless, items of marginal *
* reproducibility are often encountered and this affects the quality *
* of the microfiche and hardcopy reproductions ERIC makes available *
* via the ERIC Document Reproduction Service (EDRS). EDRS is not *
* responsible for the quality of the original document. Reproductions *
* supplied by EDRS are the best that can be made from the original. *

ED143352

SEVENTH ANNUAL REPORT

THE SOUTH CAROLINA STATE LIBRARY

JULY 1, 1975-JUNE 30, 1976

U.S. DEPARTMENT OF HEALTH,
EDUCATION & WELFARE
NATIONAL INSTITUTE OF
EDUCATION

THIS DOCUMENT HAS BEEN REPRODUCED EXACTLY AS RECEIVED FROM THE PERSON OR ORGANIZATION ORIGINATING IT. POINTS OF VIEW OR OPINIONS STATED DO NOT NECESSARILY REPRESENT OFFICIAL NATIONAL INSTITUTE OF EDUCATION POSITION OR POLICY.



PERMISSION TO REPRODUCE THIS COPY
BOUND MATERIAL HAS BEEN GRANTED BY

TO ALL EDUCATIONAL ORGANIZATIONS OPERATING
UNDER AGREEMENTS WITH THE NATIONAL IN-
STITUTE OF EDUCATION. FURTHER REPRO-
DUCTION OUTSIDE THE ERIC SYSTEM RE-
QUIRES PERMISSION OF THE COPYRIGHT
OWNER.

PRINTED UNDER THE DIRECTION OF THE
STATE BUDGET AND CONTROL BOARD

R005115

TABLE OF CONTENTS

LETTER OF TRANSMITTAL	3
LIBRARY BOARD AND STAFF	5
ORGANIZATION CHART AND DESCRIPTION	6
COMPARATIVE SUMMARY: 1943-1976	7
Libraries and Librarians	
Bookstock, Circulation, Population	
Public Library Income	
SOUTH CAROLINA STATE LIBRARY	
Introduction	8
Reader Services	8
Legislative Reference Service	9
Reference and Interlibrary Loan Service	10
Government Documents	11
Technical Services	11
American Patriot Reading Club	12
Field Services	12
State Aid to Public Libraries	13
Federal Aid to South Carolina Libraries	14
Film Program	14
Continuing Education	15
Library Service for the Disadvantaged	15
Institutional Library Services	16
Library Services to the Blind and Physically Handicapped	16
Library Legislation Enacted, 1976	17
Public Library Construction	18
Interlibrary Loan Statistics	20
Public Library Bookstock, Circulation, and Support	21
Publications of the South Carolina State Library	22
Expenditures: State Funds	23
Expenditures: Federal Funds	24
PUBLIC, COLLEGE AND INSTITUTION LIBRARIES	
Library Board Chairmen	27
Directory of South Carolina Public Libraries	30
Directory of South Carolina Colleges and Universities	32
Directory of State Institutional Libraries	34
LIBRARY STATISTICS, 1975-76	
South Carolina State Supported Institutions	35
South Carolina Colleges and Universities	36
South Carolina Public Libraries	38

LETTER OF TRANSMITTAL
from
THE SOUTH CAROLINA STATE LIBRARY

*To His Excellency, the Honorable James B. Edwards, Governor of
South Carolina, and to The Honorable Members of the General
Assembly of South Carolina.*

Dear Sirs:

We have the honor to transmit the report of the South Carolina State Library for the fiscal year ending June 30, 1976.

We are pleased that the library was able to continue its high level of services in spite of fiscal conditions in the State which forced a reduction in library support. Federal funds again provided a significant portion of library resources. Expanded research personnel and services were offered to the members of the legislature and to State agencies to utilize more fully library resources and facilities. Aid to County and Institutional Libraries continued to be an important part of State Library services, and County Library facilities and services have grown during the year.

It has been a good year for the State Library, and we confidently look forward to a new year of excellence in 1977.

Respectfully submitted,

CARLANNA L. HENDRICK,
Chairman

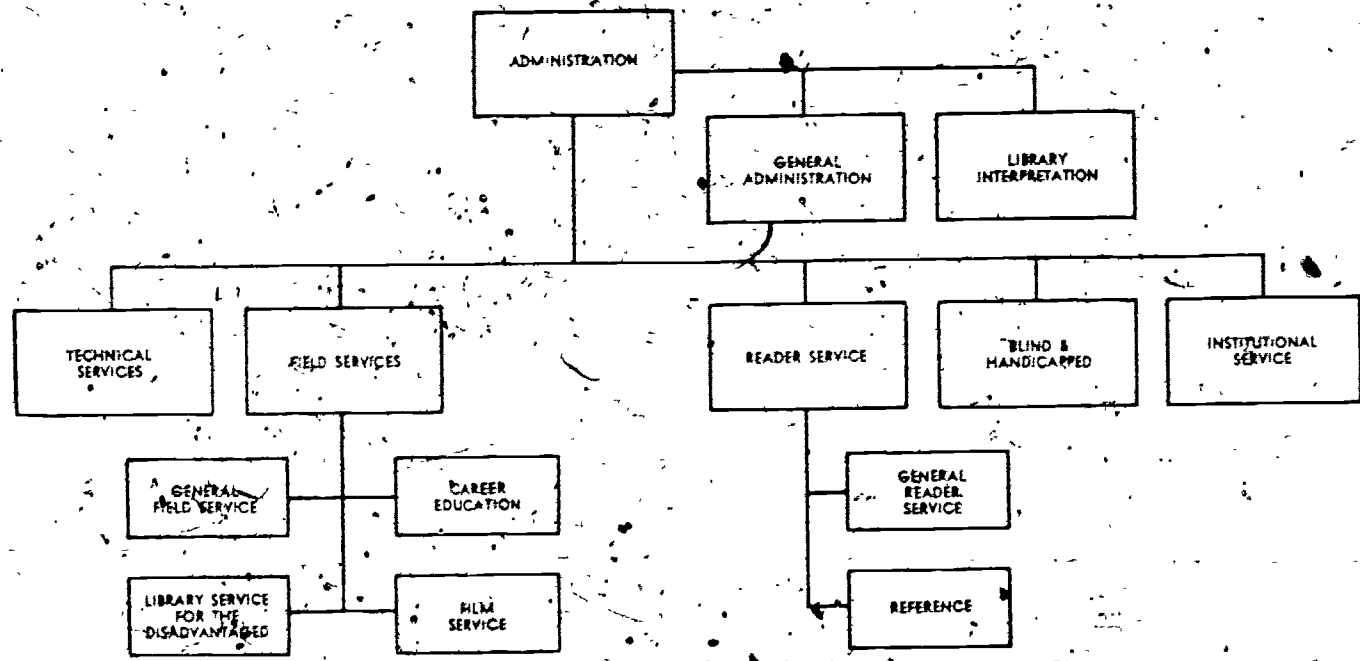
**SOUTH CAROLINA STATE LIBRARY
BOARD MEMBERS**

Chairman—Dr. Carlanna Hendrick, Florence
Secretary—Dr. Hugh E. Vincent, Jr., Anderson
Mr. Lester L. Bates, Jr., Columbia
Mr. H. Carlisle Bean, Spartanburg
Mr. Marshall Doswell, Fort Mill
Dr. G. Creighton Frampton, Charleston
Mrs. Thelma Busbee, Cayce

PROFESSIONAL STAFF

<i>Librarian</i>	Estellene P. Walker
<i>Deputy Librarian</i>	Betty E. Callahan
<i>Director of Field Services</i>	Margie E. Herron
<i>Technical Services Librarian</i>	Lois Barbara
<i>Director of Reader Services</i>	John H. Landrum
<i>Director of Library Services for the Blind and Physically Handicapped</i>	James B. Johnson, Jr.
<i>Institutional Library Consultant</i>	Theresa C. Mills
<i>Interlibrary Loan Librarian</i>	Lea Walsh
<i>Documents Librarian</i>	Mary B. Toll
<i>Acquisitions Librarian</i>	Mary H. White
<i>Field Service Librarian</i>	Anna E. Horn
<i>Field Service Librarian</i>	Aileen P. Law
<i>Field Service Librarian</i>	Alice I. Nolte
<i>Field Service Librarian for Audio-Visual Programs</i>	Ronald E. Anderson
<i>Assistant Reference Librarian</i>	Anne K. Middleton
<i>Assistant Reference Librarian</i>	Edna C. White
<i>Assistant Reference Librarian</i>	R. Bernard Leach
<i>Cataloger</i>	Francis S. Hite, Jr.
<i>Library Assistant</i>	Frances K. Case
<i>Business Manager</i>	Betty Q. Onley

S. C. State Library



6

PUBLIC LIBRARY STATISTICS

LIBRARIES AND LIBRARIANS

	1943-44	1955-56*	1975-76
No. Regional Libraries	1	2	4
No. Counties in Regions	2	5	11
No. County Libraries	26	34	35
No. Municipal Libraries	27	23	2
No. of Counties with County-wide Service	27	38	46
No. Professional Librarians	26	46	131

BOOKSTOCK, CIRCULATION, POPULATION

	1943-44	1955-56*	1975-76
Total Bookstock	620,550	1,473,132	3,403,089
Per Capita Bookstock	.3	.7	1.31
Total Circulation	3,726,222	5,318,682	7,167,886
Per Capita Circulation	1.96	2.5	2.77
Population	1,899,804	2,117,027	2,590,516
With Public Library Service	1,020,010	1,663,552	2,590,516

PUBLIC LIBRARY INCOME

	1943-44	1955-56*	1944-56 % of increase	1975-76	1956-76 % of increase
Library Income.					
SCSL Appropriation	\$ 15,000	\$101,638	576%	\$1,587,658	1,462%
State Aid	8,100	55,395	584%	908,681	1,537%
Per County	300	1,500		35¢ per capita	
Counties Participating	27	38		46	
Local Support.					
Total	259,374	845,723	226%	7,047,023	733%
Per Capita	13¢	40¢	206%	2.72	580%
Federal Funds: LSCA	-0-	-0-		740,064	
Total Public Library Income:					
All Sources	274,374	947,361	245%	8,944,154	844%
Per Capita	.14¢	45¢	221%	3.45	766%

* Beginning year for Library Services Act program (federal aid to public libraries).

THE SEVENTH ANNUAL REPORT THE SOUTH CAROLINA STATE LIBRARY

July 1, 1975-June 30, 1976

By Legislative Act number 464, 1969, the South Carolina State Library is responsible for a statewide program of library development and coordination. It is the central information source for State Government, State agencies and the libraries of the State. Accurate and up-to-date information is basic to good government and successful business operation. Under the law the agency's responsibilities include all the duties of a general State Library in addition to the development of statewide library service to meet the needs of the people of the State. In carrying out this responsibility and the specific responsibilities under the law, the State Library has established the following basic objectives. (1) to provide comprehensive library services and resources to the people of South Carolina, giving every individual access to the informational resources of the State. (2) to furnish reference, loan, and research services to State Government and State Government agencies. The State Library serves government as a major information resource, research facility, and as a link to other libraries and specialized data sources throughout the State and nation. In the following report each program designed to accomplish the basic objectives is described and a year's progress reported.

READER SERVICES

The Reader Services Department is responsible for providing assistance in the use of the reference and information resources of the State Library. Members of State government and State agencies make direct use of the library's resources. Citizens of the State have access to the library's services through their local public library.

REFERENCE AND INFORMATION SERVICE TO STATE GOVERNMENT

To perform effectively, State government needs access to current and retrospective information. A primary responsibility of the State Library is to provide research service and educational materials to meet the needs of State government and State agencies. Serving as an information center, the State Library maintains a strong collection of books, periodicals, microforms, and documents

for use by all agencies of State government and reduces unnecessary duplication of expensive books and materials in the various agencies. A staff of highly trained researchers works with library patrons to achieve the maximum benefit of all resources. In addition to materials available locally, the latest communication equipment is used to draw on other specialized research collections throughout South-Carolina and the nation.

To inform State agencies of the library's services, the reference staff maintains close contact with State agencies and periodically makes formal presentations to groups of State employees. Since materials are constantly being added to the collection, the State Library publishes and distributes monthly a selected listing of items entitled "New Resources for State Government and Agencies."

Library use statistics serve as one measure of the success of the library's many services. During 1975-76, 14,851 books were borrowed and 4,908 reference questions were answered. These statistics represent a 25% increase in the use of the State Library over the preceding year.

LEGISLATIVE REFERENCE SERVICE

For the past two years a researcher from the State Library has been present in the Legislative Council during statewide sessions to receive information requests from members of the General Assembly. With a direct line to the State Library, requests for research are transmitted for prompt processing. To increase awareness of the research services available, the State Library distributed a brochure, "Library and Information Service for State Legislators", to members of the General Assembly during the year. In addition to serving legislators, the State Library researcher worked closely with House and Senate researchers who use the State Library's collection to assist them in their work. During the year, legislators or their researchers borrowed 355 books and submitted 240 reference questions representing a 100% increase in use over the previous year. The State Library also provided over 1500 pages of photocopy in response to reference questions.

REFERENCE AND INTERLIBRARY LOAN SERVICE

The reference and interlibrary loan service of the State Library serves as a center for a statewide library network supplying specialized books and other materials to South Carolinians through their local library. The book collection of the State Library supplements that of the local library. When material requested is not available at the local level, the request is transmitted via In-WATS directly to the State Library. The utilization of telephone service enables interlibrary loan requests to be submitted and processed rapidly. In an attempt to make its resources more readily available, the State Library has placed microfilmed copies of its catalog in 35 public libraries throughout South Carolina. During the year an annual supplement to this catalog was distributed to libraries. This microfilm catalog enables public libraries to determine the holdings of the State Library.

To provide the highest level of service the State Library makes use of other major collections within the State as well as the nation. In order to gain access to the major collections within South Carolina, the State Library has microfilmed copies of the catalogs of Clemson University and the University of South Carolina making it easy to draw upon the resources of the State's two major university libraries. As more technical and sophisticated requests are received, the reference and interlibrary loan service also locates and borrows materials from libraries across the nation. To facilitate this operation, the State Library has become a member of SOLINET (Southeastern Library Network). With on-line capabilities drawing on a computerized data base of over 2,300,000 items representing the holdings of over 750 major libraries, the State Library can quickly determine the location of needed materials. Requests are transmitted rapidly to holding libraries through the library's teletypewriter facilities.

To coordinate and facilitate the exchange of information on reference services among types of libraries in the State, the State Library sponsored a statewide reference conference during the year. The conference was attended by 100 representatives of public, technical, college and university libraries.

During the year the reference and interlibrary loan service received 4,441 In-WATS telephone calls, answered 4,018 reference requests, and supplied 17,789 books and 8,920 pages of photocopy in reply to interlibrary loan requests.

GOVERNMENT DOCUMENTS

In 1970 the South Carolina State Library began a concentrated effort to establish a complete collection of South Carolina State documents, and the library is now the major depository for such materials. During the year 1473 publications were added to the collection, bringing the total number of documents to 16,469. The existing holdings have proved to be invaluable to researchers from this state and others. The documents provide up-to-date statistical information as well as serving as a good base for historical research on South Carolina. As the collection becomes better known, more and more State agencies are referring individuals to the State Library to use their publications, no longer available for distribution, reducing printing costs and unnecessary distribution of State publications. Annually the State Library compiles and publishes the *Checklist of South Carolina State Publications* which lists publications of State governmental departments received by State Library during the fiscal year.

TECHNICAL SERVICES

The Technical Services Department coordinated the selection and ordered and processed all materials for the State Library collection including large type books and audio-visual materials. The collection includes, in addition to books, Federal and State documents, periodicals and newspapers in both paper and microform, and the ERIC and other services in microfiche. Additions during the year are as follows.

	Additions	Totals
Books	8,993	128,563
State Documents	1,473	16,469
Federal Documents	5,304	13,487
Microfilm (Reels)	498	8,813
Microfiche	21,422	89,070

The first supplement to the microfilm edition of the State Library's card catalog was prepared and prints sent to holders of the original catalog. These include Area Reference Resource Centers and county and regional libraries.

The State Library completed a full year as a member of the Southeastern Library Network (SOLINET) which gives it access by contract to the Ohio College Library Center (OCLC) Data Base. The cataloging section is connected by direct telephone lines

to the data base and all cataloging is now being done through the computer terminal, including the ordering of catalog cards. The terminal is available to other departments to locate items needed for reference or interlibrary loan since all cataloging done through the system shows location of materials

STATEWIDE BICENTENNIAL PROGRAMS

An estimated 50,000 children and young people participated in the American Patriot Reading Club, a program planned by the South Carolina State Library as a major Bicentennial Program for Public, Institutional, Military, and Naval libraries throughout the state. Jointly sponsored by the State Library and the South Carolina American Revolution Bicentennial Commission, the two-year summer reading club carried out the themes of the American Revolution Bicentennial, 1776-1976, Heritage, Festivals, and Horizons. It was designed to inculcate an appreciation of American ideals and America's past, helping young people to identify with the history of their state and nation and giving them an opportunity to learn more about their community and its place in history. Contributing to the success of the program, local history societies provided speakers and sponsored visits to local historical sites. A handsome red, white, and blue certificate was presented to each child who completed the program requirements.

Other Bicentennial library activities included participation in the American Issues Forum. The State Library sponsored a workshop and also organized the statewide distribution of "Bicentennial Reading, Viewing, Listening"; a list compiled by the American Library Association and designed to be used with the American Issues Forum.

FIELD SERVICES

The field service program provides direct on-the-spot assistance to public libraries throughout the state. Its special charge is the extension and improvement of public library service. Now that statewide public library service has been established with library service in every county of the state, the concentration is upon the improvement of service and reaching groups in the community which are not habitual library users. To improve the level of service and to help libraries reach new readers, the field staff holds frequent conferences with librarians, library trustees, and others in the community interested in library service. Assistance

is given in achieving more efficient organization, in planning new services and programs, and in all matters pertaining to public library administration. The field staff is responsible for the direction and supervision of local library projects funded by state or federal aid. During the year the four field service librarians:

- worked with 39 library systems serving 46 counties
- made 251 field trips
- attended 54 local library board meetings
- supervised library budget including approximately \$6 million in local funds
- administered \$906,681 in State Aid grants to public libraries
- supervised LSCA projects providing approximately \$700,000 in grants-in-aid
- represented the State Library at local, state, and national conferences, conventions, workshops, professional associations, building dedications, civic organizations, and other state and local agencies
- provided recruiting, placement, and training services for public libraries

STATE AID TO PUBLIC LIBRARIES

State Aid for South Carolina's public libraries originated in 1943. The grants provided the incentive for the establishment of local library service and the organization of unified county library systems. In 1967 the amount of State Aid was increased and changed to a per capita basis distribution. Requirements for participation encouraged public libraries to employ trained staff, build book collections of high quality, and apply effective principles of management. State Aid also stimulated support by county governments. Since 1968, State Aid has increased from \$461,031 (20¢ per capita) to 906,680 (35¢ per capita), while local support has grown from \$2,343,240 to \$3,023,023 in 1975-76. All counties participate in the State Aid program which has been instrumental in the achievement of statewide public library service. Accelerating library costs and the public's burgeoning demand for library service will require greater state support for libraries in the future if South Carolinians are to continue to receive quality library service.

FEDERAL AID TO SOUTH CAROLINA LIBRARIES

The State Library administers funds under the Library Services and Construction Act. To qualify for funds under the Act, the State Library updates yearly a long range plan for library service and an annual program of projects. Participating libraries must meet requirements for staff support, qualifications of personnel, and library administration and must demonstrate performance in the area of specific programs. State planning and supervision insure that LSCA funds are used to achieve long range goals and to improve the level of service statewide, while local implementation of projects guarantees that grants will benefit the individual library user.

Public libraries of South Carolina have benefitted from the Library Services and Construction Act since 1956 and institutional libraries since 1966. Because of LSCA, libraries are reaching out to help the culturally and economically disadvantaged, the functionally illiterate, and isolated people who need special services. Because of LSCA, all types of libraries in the state are joined in an information network, sharing resources in order to meet the needs of all the people. LSCA has contributed to improved service for the blind and physically handicapped, to the construction of central and branch library buildings, and to educational opportunities for librarians. LSCA has added almost one million books and more than 1,800 annual periodical subscriptions to South Carolina library resources.

In addition to Library Services and Construction Act funds, some county and regional libraries have obtained Federal Revenue Sharing funds from local governments. These funds have been used for building construction, purchase of bookmobiles, or updating materials collections.

FILM PROGRAM

As a means of extending the informational resources of the public libraries of the State, the State Library has established a film program to provide a central collection of 16mm adult films for loan to public and institutional libraries within the State. In order to avoid expensive duplication of personnel and equipment, the State Library contracts with the Instructional Services Center of the University of South Carolina to maintain and distribute the films. To aid the libraries in the State to make the best use of the new film service, the State Library has employed a film consultant

who works closely with public and institutional libraries in planning for the use of the films and in training the staff to handle this new service. By the close of the second year of operation, forty libraries were using the films in organized film programs in community service. The libraries in the film program sponsored a total of 1,615 programs during this fiscal year, reaching a total audience of 46,473.

CONTINUING EDUCATION FOR LIBRARIANS

Recently there has been increased emphasis on continuing education by all of the professions. The State Library has supported such a program since 1958, having long been aware of the necessity for a well trained and informed staff to provide efficient and effective library service. To implement the program, the State Library provides in-service training opportunities for personnel of public and institutional libraries. Grants are awarded to professional and pre-professional librarians to attend workshops or institutes as well as regularly scheduled courses in library science. During 1975-76, scholarships were awarded to twelve pre-professional librarians from nine county and regional library systems to take basic courses in the areas of children's literature, cataloging and classification, and reference services. Five professional librarians also received grants to attend seminars in planning for continuing education programs, technical services, management, and service for the blind and physically handicapped.

The State Library also sponsored one statewide workshop for institutional librarians which was held in May and was attended by approximately thirty-five librarians and five administrators of institutions.

LIBRARY SERVICE TO THE DISADVANTAGED

There are now twenty-four county and regional library systems receiving grants-in-aid from the State Library to provide programs to serve the disadvantaged. Library programs, based on local needs and conditions, are now reaching an estimated 120,000 rural and urban South Carolinians with incomes below poverty levels in thirty-one counties. Through this program, participating libraries have been able to employ necessary personnel, provide transportation, develop collections of reading and audio-visual materials, and purchase special equipment needed to implement these services. Service to the disadvantaged is becoming an integral part of the

library program in these county and regional libraries as is shown by the use of more local funds in their support.

INSTITUTIONAL SERVICE

The State Library assists State supported institutions in the establishment and maintenance of library service for inmate population. Well-planned and administered library service by institutional libraries is important in the treatment and rehabilitation of residents. Of the 17 institutions served in this program, 13 employ a qualified librarian and have full service library programs. Four institutions which are too small to maintain a full library program are served either indirectly through contractual arrangements or directly with collections of appropriate materials.

The State Library provides grants-in-aid to the institutions for the purchase of appropriate books, periodicals, and audio-visual materials. Grants are made on the basis of institutional population, support and special needs.

A consultant on institutional service works closely with all State supported institutions. Technical assistance is provided on a consistent basis to the institutional librarian. In addition to 164 field visits to institutions, a workshop for institutional librarians and the administrators of institutions was organized and held in Columbia in the spring of 1976.

LIBRARY SERVICES TO THE BLIND AND PHYSICALLY HANDICAPPED

The South Carolina State Library, Division for the Blind and Physically Handicapped provides library services to people unable to read conventional print because of physical disability. This service, which consists of books and magazines in recorded form (disc and tape), braille, and in large print, is administered by the South Carolina State Library. Most readers use a recorded form and for them the library supplies a sound reproducer (either a talking book machine or a cassette playback machine). A contract is maintained with the North Carolina State Library for braille service. All service, including postage, is free to the readers.

As of June 30, 1976, the library had 3,514 registered readers, an increase of 810. These readers read 77,845 books and 9,457 magazines. A total of 7,777 books was added to the collection.

A project to record South Carolina books was begun this year. Four books were recorded, with seven more in the recording

process. These books are on cassette tapes. High speed tape duplicating equipment made this possible, as well as allowing the library to make extra copies of popular books and to repair damaged books.

The service is chiefly mail order service from Columbia, but steps are being taken to make it more personal. A quarterly newsletter is distributed and an In-WATS telephone line provided to help make communication with registered readers easier. All new readers are now contacted by their county library to insure the safe arrival of equipment and to ascertain if the reader understands how the program operates and the equipment works. In five counties, Anderson, Charleston, Greenville, Richland, and Spartanburg, browsing collections of several hundred talking books are provided.

LIBRARY LEGISLATION, ENACTED, 1976

S. C. Acts and Joint Resolutions, 1976; No. 736. An Act to amend Act 735 of 1962, as amended, relating to the Darlington County Library Commission, so as to provide for an increase in funds for the support of the library.

LSCA LIBRARY CONSTRUCTION (TITLE II)
1966 - 77

Library	Location	Completed	LSCA Grant	Local	ARDA & RS Grants
Abbeville County Headquarters— Abbeville-Greenwood Reg. Lib.	Abbeville	Apr. 14, 1969	\$ 38,823	\$ 20,600	
Anderson County Lib.	Anderson	Nov. 1, 1971	100,000	490,200	\$ 79,800 (ARDA)
Bamberg County Lib.—County Headquarters ABBE Reg. Lib.	Bamberg	Sept. 3, 1969	50,000	30,042	
Berkeley County Lib.	Moncks Corner	Oct. 18, 1970	75,000	100,000	
Charleston County Lib Dart Branch	Charleston	Aug. 1, 1968	50,000	121,800	
Cherokee County Lib.	Gaffney	July 31, 1972	75,000	250,100	51,100 (ARDA)
Fairfield County Lib.	Winnsboro	Authorized	50,000	205,183	
Florence County Lib.	Florence	Authorized	100,000	59,412	540,568 (RS)
Greenville County Lib.	Greenville	Mar 25, 1970	250,000	1,900,702	250,000 (ARDA)
Greenwood County Headquarters	Greenwood	Authorized	122,138	399,268	45,000 (RS)
Kershaw County Lib.	Camden	May 14, 1973	75,000	336,113	
Lancaster County Lib.	Lancaster	Aug. 21, 1970	75,000	227,632	
Laurens County Lib. Clinton Branch	Clinton	June 1, 1974	50,000	180,000	
Marion County Lib.	Marion	Feb. 27, 1976	75,000	105,000	
Newberry-Saluda Reg. Lib	Newberry	Sept 15, 1968	50,000	44,000	
Oconee County Lib. Seneca Branch	Seneca	July 5, 1968	50,000	35,640	13,860 (ARDA)
Pickens County Lib.	Easley	Jan. 13, 1970	75,000	51,200	30,000 (ARDA)
Richland County Public Lib. St Andrews Branch	Near Columbia	Feb 2, 1968	50,000	42,938	

S. C. State Library	Columbia	Nov. 14, 1969	946,192	752,857	
Spartanburg County Lib. Landrum Branch	Landrum	July 22, 1969	50,000	36,238	
Sumter County Lib.	Sumter	Mar. 19, 1968	100,000	287,343	
York County Library York Branch	York	Mar 15, 1968	50,000	32,442	
York County Library Fort Mill Branch	Fort Mill	May 28, 1972	50,000	81,950	
			<u>\$2,607,151</u>	<u>\$5,770,000</u>	<u>\$1,010,348</u>

**INTERLIBRARY LOAN REQUESTS
FOR FISCAL YEAR 1975-76**

	Total Requests Received	Reference Requests Received	Books Loaned	Photocopies Sent
Regional Libraries:				
Abbeville-Greenwood	315	89	366	118
Aiken-Bamberg-Barnwell-Edgefield	450	33	420	132
Allendale-Hampton-Jasper	734	248	1,006	815
Newberry-Saluda	113	16	119	8
County Libraries 100,000 and Over:				
Anderson County Library	847	194	874	518
Charleston County Library	617	85	399	197
Greenville County Library	1,134	133	763	519
Richland County Library	459	431	1,005	NA
Spartanburg County Library	548	143	423	347
County Libraries 50,000 to 100,000:				
Beaufort County Library	268	47	269	111
Berkeley County Library	281	60	320	253
Darlington County Library	391	12	354	271
Florence County Library	741	107	709	169
Horry County Library	179	59	170	104
Lexington County Library	95	5	59	58
Orangeburg County Library	422	96	441	166
Pickens County Library	492	180	558	155
Sumter County Library	528	136	487	395
York County Library	142	18	137	105
County Libraries 25,000 to 50,000:				
Cherokee County Library	688	126	552	302
Chester County Library	351	75	370	290
Chesterfield County Library	1,035	465	1,656	704
Colleton County Library	201	72	227	147
Dillon County Library	336	113	399	212
Dorchester County Library	626	56	606	175
Georgetown County Library	651	196	823	558
Kershaw County Library	569	148	573	212
Lancaster County Library	233	48	238	104
Laurens County Library	589	170	645	264
Marion County Library	62	9	56	3
Marlboro County Library	231	41	246	91
Oconee County Library	230	84	275	71
Union County Library	121	19	127	47
Williamsburg County Library	207	53	278	101
County Libraries 25,000 and Under:				
Calhoun County Library	480	22	494	89
Fairfield County Library	471	166	598	258
Lee County Library	75	17	85	25
McCormick County Library	70	26	111	2
Municipal and Township Libraries:				
Chapin Memorial Library	90	6	64	141
Interlibrary Loans to State Institutions	199	6	173	174
Interlibrary Loans to Other Libraries	440	32	320	511
Interlibrary Audio-Visual Loans			1,278	
SERVICES FOR STATE AGENCIES AND STATE GOVERNMENT		4,908	14,851	NA
TOTALS	16,711	8,950	32,918	8,920

**PUBLIC LIBRARY BOOKSTOCK
CIRCULATION AND SUPPORT BY COUNTY**

July 1, 1975 - June 30, 1976

County	Per Capita Bookstock	Per Capita Circulation	Total-Per Capita Support	Per Capita Support Local Only
Abbeville (see Greewood)				
Aiken*	1.09	3.30	2.40	1.68
Allendale**	1.40	1.24	1.48	0.99
Anderson	1.22	3.45	2.75	2.18
Bamberg (see Aiken)				
Barnwell (see Aiken)				
Beaufort	1.25	1.98	2.89	2.35
Berkeley	.79	2.10	1.77	1.39
Calhoun	2.89	3.00	3.32	2.47
Charleston	1.39	3.05	3.46	2.81
Cherokee	1.75	3.18	2.90	2.32
Chester	1.40	2.86	2.93	2.35
Chesterfield	0.93	1.35	2.04	1.54
Clarendon***		0.85	0.35	
Colleton	1.84	3.20	2.80	2.03
Darlington	2.03	3.08	3.45	2.91
Dillon	1.70	1.83	2.20	1.30
Dorchester	0.81	1.16	1.19	0.84
Edgefield (see Aiken)				
Fairfield	1.43	1.77	2.14	1.63
Florence	1.14	2.61	3.04	2.09
Georgetown	1.38	1.63	2.51	1.77
Greenville	1.52	4.45	7.03	6.21
Greenwood†	1.58	3.10	2.33	1.70
Hampton (see Allendale)				
Horry	1.49	3.89	2.94	2.21
Jasper (see Allendale)				
Kershaw	2.10	3.39	3.02	2.49
Lancaster	1.16	2.73	2.27	1.69
Laurens	1.49	2.43	2.96	2.22
Lee	1.06	1.54	1.08	0.73
Lexington	1.31	2.25	2.02	1.41
Marion	1.00	2.54	3.07	2.43
Marlboro	1.10	2.52	1.63	1.11
McCormick	0.93	0.84	1.31	0.74
Newberry†	1.26	2.96	1.85	1.36
Oconee	1.73	2.97	2.47	1.88
Orangeburg	0.67	2.10	1.63	1.20
Pickens	0.96	2.89	2.55	2.06
Richland	1.15	3.52	5.23	4.53
Saluda (see Newberry)				
Spartanburg	1.14	2.57	2.23	1.61
Sumter†	0.85	2.23	2.54	2.09
Union	0.84	1.14	1.92	1.30

**PUBLIC LIBRARY BOOKSTOCK
CIRCULATION AND SUPPORT BY COUNTY**

July 1, 1975 - June 30, 1976

County	Per Capita Bookstock	Per Capita Circulation	Total Per Capita Support	Per Capita Support Local Only
Williamsburg	0.53	0.54	0.70	0.35
York	1.23	2.77	2.77	2.00

- Includes Bamberg, Barnwell and Edgefield Counties as part of a regional library.
 - Includes Hampton and Jasper counties as part of a regional library.
 - Served by Sumter County.
 - † Includes Abbeville.
 - ‡ Includes Saluda County as part of a regional library.
- Since methods of counting circulation vary among counties, circulation figures should not be used for comparison.

**SOUTH CAROLINA STATE LIBRARY
PUBLICATIONS, 1975 - 76**

- American Patriot Reading Club books, 1974-75. [1974] 43p.
- American Patriot Reading Club books, 1974-75. 1st supplement. 1975. 6p.
- American Patriot Reading Club audio-visual materials list, 1974-1975. 1974. 16p.
- Annual Program, Library Services and Construction Act, 1975-1976, with FY 75 supplement. [1975] 1v. (unpaged)
- Catalog of 16mm films, 1975. viii, 39p.
- Checklist of South Carolina State publications, 1974/75. Sept. 1975. 58p.
- Librarian's handbook: American Patriot Reading Club, 1974/1975. [1974] 30p.
- Library and information service for State legislators. 1976. folder (4p.)
- New resources for State government and agencies. v.5, no.10—v.6, no.9.
- News about library services for the blind and physically handicapped. v.1, no.1—v.1, no.3.
- News for South Carolina libraries. v.7, no.7—v.8, no.8.
- Report, 6th, 1974/75. 40, [1] p.
- South Carolina State program for library development, 1975-1980; the third supplement to the 1972-1977 program (FY amendment). 1975. 45p.

**SOUTH CAROLINA STATE LIBRARY,
STATE EXPENDITURES**

July 1, 1975 - June 30, 1976

Salaries and Wages	\$ 433,423.55
Freight, Express and Deliveries	104.92
Travel	3,352.94
Telegraph and Telephone	7,668.54
Repairs	1,423.92
Printing, Binding and Advertising	6,469.34
Water, Heat, Light and Power	1,601.62
Other Contractual Services	17,880.00
Professional and Other Fees	120.00
Office Supplies	5,758.06
Motor Vehicle Supplies	1,756.66
Postage	1,500.00
Rents—Non State-Owned Real Property	4,800.00
Rents—State-Owned Real Property	100,002.00
Rents—Equipment	700.60
Rents—Other	540.00
Insurance	1,823.00
Contributions and Dues (Dues)	710.00
Office Equipment	3,133.40
Educational Equipment (Books for reference collection and for loan to individual communities)	24,224.00
Aid to County Libraries	909,513.60
Distributions to Subdivisions	15,877.00
TOTAL EXPENDITURES	\$ 1,542,383.15

**SOUTH CAROLINA STATE LIBRARY,
FEDERAL EXPENDITURES**

July 1, 1975 - June 30, 1976

1976 Funds

TITLE I: LIBRARY SERVICES:

Project I-A—General Administration:

Travel	\$	449.85
Printing, Binding and Advertising		425.90
Office Supplies		31.11
Postage		250.00

Total Project I-A	\$	1,156.86
-------------------	----	----------

Project II-A—General Operation:

Travel	\$	139.72
Repairs		538.76
Printing, Binding and Advertising		33.70
Office Supplies		867.93
Postage		882.25
Rents—Equipment		104.09
Rents—Other		55.00

Total Project II-A	\$	2,621.45
--------------------	----	----------

Project II-B—Strengthening the State Agency	\$	12,383.72
---	----	-----------

Project III-A—Field Services	\$	633.23
------------------------------	----	--------

Project III-C—Metropolitan Libraries	\$	90,000.00
--------------------------------------	----	-----------

Project III-D—Disadvantaged	\$	147,245.99
-----------------------------	----	------------

Project IV-A—Library Development	\$	155,807.96
----------------------------------	----	------------

Project V-D—Periodicals	\$	24,734.76
-------------------------	----	-----------

Project VI-B—Blind and Physically Handicapped	\$	557.39
---	----	--------



**SOUTH CAROLINA STATE LIBRARY,
FEDERAL EXPENDITURES**

➤ July 1, 1975 - June 30, 1976

Project VII—Film Program	\$	1,225.46
Project VIII—Service to Persons of Limited English Speaking Ability	\$	3,890.54
TOTAL EXPENDITURES—TITLE I (1976 Funds)	\$	440,257.36

**TITLE II: PUBLIC LIBRARY BUILDING
CONSTRUCTION**

\$ ~~220,816.72~~

TITLE III: INTERLIBRARY COOPERATION:

Project I—Communication Network	\$	21.30
Project II—Inter-Communication	\$	60.81
Project V—Interlibrary Loan	\$	292.30
Project VI—Training for Interlibrary Cooperation	\$	533.36

TOTAL EXPENDITURES—TITLE III (1976 Funds) \$ 907.77

TOTAL EXPENDITURES—ALL TITLES (1976 Funds) \$ 661,981.13

1975 Funds

TITLE I: LIBRARY SERVICES:

Project II-B—Strengthening the State Agency	\$	79,060.20
Project III-B-2—Workshops	\$	3,349.36
Project IV-A—Library Development	\$	61,733.82
Project V-A—Book Collection Improvement Project	\$	202,466.50

**SOUTH CAROLINA STATE LIBRARY,
FEDERAL EXPENDITURES**

July 1, 1975 - June 30, 1976

Project VI-B—Blind and Physically Handicapped	\$ 10,000.00
Project VII—Film Program	\$ 70,000.00
TOTAL EXPENDITURES—TITLE I (1975 Funds)	\$ 426,609.88
 TITLE III: INTERLIBRARY COOPERATION:	
Project I—Communication Network	\$ 2,026.75
Project II—Inter-Communication	\$ 1,394.14
Project III—Area Reference Resource Centers	\$ 30,000.00
Project V—Interlibrary Loan	\$ 7,834.71
Project VII—Solmet	\$ 4,811.40
TOTAL EXPENDITURES—TITLE III (1975 Funds)	\$ 46,067.00
TOTAL EXPENDITURES—ALL TITLES (1975 Funds)	\$ 472,676.88
TOTAL EXPENDITURES—ALL TITLES—ALL FUNDS	\$ 1,134,658.01

LIBRARY BOARD CHAIRMEN

Library	Chairman	Address
South Carolina State Library	Dr. Carlanna Hendrick	514 Iris Dr., Florence, S. C. 29501
Abbeville County Library	Mr. Fletcher W. Ferguson	101 Pine-wood Circle, Abbeville, S. C. 29620
Abbeville-Greenwood Regional Library	Mr. Edgar W. Davis, Jr.	P. O. Box 1138, Greenwood, S. C. 29646
Aiken-Bamberg-Barnwell-Edgefield Regional Library	Mrs. John F. McLaughlin, Jr.—Ehrhardt	S. C. 29081
Aiken County Library	Mr. Ronald Royal	602 Barnwell Ave., N. W., Aiken, S. C. 29801
Allendale-Hampton-Jasper Regional Library	Mrs. Charles A. Laffitte, Jr.	Box 163, Hampton, S. C. 29924
Allendale County Library	Mrs. T. O. Lawton, Sr.	RFD, Fairfax, S. C. 29827
Anderson County Library	Mr. Harold V. Sullivan	212 First Federal Building, N. Main St., Anderson, S. C. 29621
Bamberg County Library	Mrs. H. G. Hiers	Bamberg, S. C. 29003
Barnwell County Library	Mrs. W. C. Buist	Blackville, S. C. 29817
Beaufort County Library	Mr. Ravers L. Varn	207 Laurens St., Beaufort, S. C. 29902
Berkeley County Library	Mr. J. Russell Cross	Cross, S. C. 29436
Calhoun County Library	Mrs. Frank M. Wannamaker	St. Matthews, S. C. 29135
Chapin Memorial Library	Dr. Carl F. Compton	503 Fourth Ave., N. Myrtle Beach, S. C. 29577
Charleston County Library	Mr. Zacharia Gellman	44 Broad Street, Charleston, S. C. 29401
Cherokee County Library	Mr. R. Dean Ross	105 Hillside Dr., Gayles, S. C. 29340
Chester County Library	Mr. Harry Abernathy	20 Argonne Street, Great Falls, S. C. 29055
Chesterfield County Library	Mrs. Caroline Goforth	105 Wilson Street, Chesterfield, S. C. 29709

LIBRARY BOARD CHAIRMEN—Continued

Library	Chairman	Address
Clarendon County Library—	Mrs. James Hugh McFaddin—	231 Old Georgetown Rd., Manning, S. C. 29102
Colleton County Library—	Mr. C. Moye Padgett—	Lodge, S. C. 29082
Darlington County Library—	Dr. William R Blakeney—	111 Golf Course Rd., Hartsville, S. C. 29550
Dillon County Library—	Mr. C. B. Allen—	Box 174, Latta, S. C. 29565
Dorchester County Library—	Mr. George H Seago—	1120 S. Main, Summerville, S. C. 29483
Edgefield County Library—	Mr. Everett E Derrick—	Box 216, Johnston, S. C. 29832
Fairfield County Library—	Mr. Robert J. Fickling—	36 McKay Circle, Winnsboro, S. C. 29180
Florence County Library—	Mrs. William S. Dowis, Jr.—	322 W. Pine St., Florence, S. C. 29501
Georgetown County Library—	Mr. Allen D. Read—	Rt. 4, Box W7, Windsor Plantation, Georgetown, S. C. 29440
Greenville County Library—	Mrs. Robert S. Galloway, Jr.—	309 W. Faris Rd., Greenville, S. C. 29605
Greenwood City and County Public Library—	Dr. William T. Rice—	Forest Hills, Greenwood, S. C. 29646
Hampton County Library—	Mrs. Charles A. Laffitte, Jr.—	Box 163, Hampton, S. C. 29924
Horry County Library—	Mr. W. Burroughs Woodward—	Rt. 5, Box 98-AB, Conway, S. C. 29526
Jasper County Library—	Mrs. E. D. Collier—	Box 351, Hardeeville, S. C. 29927
Kershaw County Library—	Mr. John W. Hash—	500 Chestnut Street, Camden, S. C. 29020
Lancaster County Library—	Miss Elizabeth Wilson—	Box 839, Lancaster, S. C. 29720
Laurens County Library—	Mrs. Georgia B. Thomason—	405 S. Broad St., Clinton, S. C. 29325
Lee County Public Library—	Mrs. Charles M. Mimms, Jr.—	Elliott, S. C. 29046

LIBRARY BOARD CHAIRMEN—Continued

Library	Chairman	Address
Lexington County Circulating Library	Mr. C. E. Harmon	114 N. Lake Dr., Lexington, S. C. 29072
McCormick County Library	Miss Helen Brown	P. O. Box 687, McCormick, S. C. 29835
Marion County Library	Dr. T. B. Clark	115 Witcover St., Marion, S. C. 29571
Marlboro County Public Library	Mr. T. C. Bristow	Gibson Highway, McColl, S. C. 29570
Newberry-Saluda Regional Library	Mr. Earl Bergen	2221 Wells Park Dr., Newberry, S. C. 29108
Oconee County Library	Mrs. Mildred Spearman	210 Doyle St., Westminster, S. C. 29693
Orangeburg County Free Library	Miss Ellen P. Chaplin	Neeses, S. C. 29107
Pickens County Library	Dr. Henry Lefort	Box 65, Clemson, S. C. 29631
Richland County Public Library	Mrs. Jean Galloway Bissell	P. O. Box 168, Columbia, S. C. 29202
Spartanburg County Library	Mrs. John Davis Smith	331 Connecticut Ave., Spartanburg, S. C. 29302
Sumter County Library	Mr. Robert O. Purdy	Law Range, Sumter, S. C. 29150
Union Carnegie Library	Dr. H. L. Sutherland	504 Perrin Ave., Union, S. C. 29379
Williamsburg County Library	Mr. Maurice Joye	Greeleyville, S. C. 29056
York County Library	Mr. William M. Mauldin, Jr.	P. O. Box 2555, C.R.S., Rock Hill, S. C. 29730

DIRECTORY OF SOUTH CAROLINA PUBLIC LIBRARIES

LIBRARY	ADDRESS OF HEADQUARTERS	ZIP	PHONE	CHIEF LIBRARIAN
Abbeville-Greenwood Regional Library	North Main St., Greenwood	29846	223-4515	Mrs. Harold McCord, Director Mrs. Doris K Hughes Josephine Crouch, Director
Abbeville County Library	Main and Cherry Sts., Abbeville	29820	459-4009	
Aiken-Bamberg-Barnwell-Edgefield Reg. Library	P. O. Box 909, Aiken	29801	648-8961	
Aiken County Public Library	224 Laurens St., S.W., Aiken	29801	649-2352	Mrs. Maurine Lackey Miss Helen C. DeWitt Mr. Carl Stone, Director Mrs. Herman Rice
Allendale-Hampton-Jasper Reg. Library	435 Newberry St., S.W., Aiken	29810	584-2371	
Anderson County Library	War Memorial Bldg., Allendale	29821	225-1429	
Bamberg County Library	202 E. Greenville St., Anderson	29003	245-4280	Mrs. William Green Jenkins Julie Zachowski Mrs. Patricia Jackson
Barnwell County Library	North St., Bamberg	29812	259-3612	
Beaufort County Library	Hagood Ave., Barnwell	29902	524-5846	
Berkeley County Library	P. O. Box 1048, Beaufort	29461	899-2218	Mrs. Marian Alanna Blair Mrs. Shirley W. Boone Emily Sanders, Director
Calhoun County Public Library	100 Library St., Moncks Corner	29135	874-3389	
Chapin Memorial Library	St. Matthews	29577	448-3338	
Charleston County Library	14th Ave., N., Myrtle Beach	29403	723-1645	Mr. David A. Lyon, IV, Director Mr. William F Kay Norris Wootton
Cherokee County Public Library	404 King St., Charleston	29340	489-4381	
Chester County Free Public Library	Johnson and Rutledge Sts., Gaffney	29706	385-3630	
Chesterfield County Library	Main and Wylie St., Chester	29709	623-7489	Mrs. Lila Smoak Mr. Warren Lloyd Marie D. White
Colleton County Memorial Library	P. O. Box 810, Chesterfield	29709	549-5621	
Darlington County Library	130 Main St., Chesterfield	29488	393-5864	
Dillon County Library	600 Hampton St., Walterboro	29532	752-5389	Mrs. E. O. McMahan, Jr. Mrs. M. H. Mims Mrs. Peggy D. Watson
Dorchester County Library	127 N Main St., Darlington	29565	583-2331	
Edgefield County Library	Latta	29477	637-8347	
Fairfield County Library	St. George	29824	635-4971	Mrs. Marguerite G. Thompson, Director
Florence County Library	P. O. Box 68, Edgefield	29180	662-8424	
Georgetown County Memorial Library	Vanderhorst St., Winnsboro	29501	546-4220	
Greenville County Library	319 S Irby St., Florence	29440	242-5000	Miss Larry Nix Mrs Catherine Lewis Mr. Alan F. Rost
Horry County Memorial Library	Drawer D, Georgetown	29801	248-4898	
Kershaw County Library	Highmarket St., Georgetown	29526	432-5183	
Lancaster County Library	306 College St., Greenville	29020	285-1502	Mr. William C. Cooper, Director Carol Lynn Kirkley Mrs. Jane Griffin
Laurens County Library	1008 Fifth Ave., Conway	29720	984-0596	
Lee County Public Library	P. O. Box 874, Camden	29010	484-5921	
Lexington County Circulating Library	313 S. White St., Lancaster	29360	532-9223	Mrs. Dianne Batchelor Mrs. Cynthia Phelps Mrs. T. Fraser James Catherine Slaughter
McCormick County Library	321 S. Harper St., Laurens	29010	465-9112	
Marion County Library	Bishopville	29835	423-2244	
Marlboro County Public Library	Box 883, McCormick	29571	479-6201	
Newberry-Saluda Regional Library	101 E Court St., Marion	29512	278-0854	
	Bennettsville	29108		
	1300 Friend St., Newberry			

Oconee County Library
Orangeburg County Free Library
Pickens County Library
Richland County Public Library
Spartanburg County Library

Sumter County Library
Timrod Library
Union Carnegie Library
Williamsburg County Library
York County Library

South Carolina State Library

301 S. Spring St., Walhalla
P. O. Box 1367, Orangeburg
110 W. First Ave., Easley
1400 Sumter St., Columbia
P. O. Box 2409, Spartanburg
333 S. Pine St., Spartanburg
111 Harvm St., Sumter
Summerville
300 E. South St., Union
135 Hampton Ave., Kingstree
P. O. Box 32, Rock Hill
325 S. Oakland Ave., Rock Hill
1500 Senate Street, Columbia
P. O. Box 11469, Columbia

29891 638-5837
29115 534-1429
29640 859-9679
29201 799-9084
29302 585-2441
29302
29150 773-7273
29483
29379 427-7140
29556 354-9486
29730 328-8402
29730
29201 758-3181
29211 758-3181
758-3181
758-2728
758-3138
758-3138
758-3138
758-3138

Louise L. Marcum
Mrs. Beverly R. Ulmer
Mr. James Swan
Mrs. George King, Director
Mr. Dennis L. Bruce, Director

Mr. Chapman J. Milling, Jr.
Mrs. Joan Swanson
Mr. Edward Burwell
Mrs. Shirley Street
Mr. Joseph Garcia

Estellene P. Walker, Librarian
Betty E. Callahan, Deputy Librarian
Marga E. Herron, Director of Field Services
James B. Johnson, Jr., Dir., Lib. Serv. for Handicapped
Lois Barbare, Technical Services Librarian
John H. Landrum, Director of Reader Services
Mary B. Toll, Documents Librarian
Mrs. Betty Q. Onley, Business Manager

DIRECTORY OF SOUTH CAROLINA COLLEGES AND UNIVERSITIES

Name of Institution	Address	Zip	Phone	Ext.	Librarian
SENIOR COLLEGES					
Allen University	1530 Harden St., Columbia	29204	779-6490	355	Mrs. Charlotte A. Ferebee
Baptist College of Charleston	P. O. Box 10087, Charleston	29411	797-4718		Theims Elkins
Benedict College	Harden & Taylor, Columbia	29204	779-4990	413	Mrs. Mae S. Johnson
Bob Jones University	Greenville	29614	242-5100	298	L. Gene Elliott
Central Wesleyan College	Central	29630	639-2453	42	Mrs. Martha S. Evatt
Citadel	Charleston	29409	577-6900	2116	Col. James M. Hillard
Cladin College	Orangeburg	29115	534-2710	56	Mrs. Louisa S. Robinson
Clemson University	Clemson	29631	656-3028		J. W. Gordon Gouplay
Coker College	Hartsville	29550	332-1381	494	
College of Charleston	66 George St., Charleston	29401	722-0181	2030	T. Ellis Hodgkin
Columbia Bible College	P. O. Box 3122, Columbia	29203	754-4100	277	William Fraher Abernathy
Columbia College	Columbia	29203	786-3878		Helen L. Jordan
Converse College	E. Main St., Spartanburg	29301	585-6421	260	James C. Harrison, Jr.
Erskine College	Due West	29639	379-8998		Ardie L. Kelly
Francis Marion College	Florence	29501	669-4121	321	J. Mitchell Reames
Furman University	Greenville	29613	294-2191		Dr. Robert C. Tucker
Lander College	Greenwood	29648	229-8365		Ann T. Hare
Limestone College	Gaffney	29340	489-7151	179	Mrs. Harriet B. Oglesbee
Lutheran Theol. Southern Seminary	4201 Main St., Columbia	29203	786-6839		Dr. W. Richard Fritz
Medical University of S. C.	80 Barre St., Charleston	29401	792-2374		Warren A. Sawyer
Morris College	N. Main St., Sumter	29150	775-9371	216	Clara B. Gordon
Newberry College	Newberry	29108	276-5010	300	John E. Sukovich
Presbyterian College	Clinton	29325	833-2820	214	Dr. Leannart Pearson
South Carolina State College	College Ave., Orangeburg	29115	536-7045		Barbara J. Williams
University of South Carolina	Columbia	29208	777-3142		Kenneth E. Toombs
Voorhees College	Denmark	29042	793-9346	261	Jaynie M. Shelton (Acting)
Winthrop College	Rock Hill	29733	323-2131		Shirley M. Tarlton
Wofford College	Spartanburg	29301	585-4821	396	Frank J. Anderson
JUNIOR COLLEGES					
Anderson College	316 Boulevard, Anderson	29621	226-6181	264	Annie Frances Blackman
Clinton Junior College	Rock Hill	29730	327-7402		Mrs. H. B. Wilber
Friendship Junior College	Box 10750, Rock Hill	29730	327-1186		Donna E. Epps
North Greenville College	Tigerville	29688	865-1410	72	Edith Sayer
Southern Methodist College	760 Broughton St., S.E., Orangeburg	29115	534-6419		Marjorie Hall
Spartanburg Methodist College	Spartanburg	29301	576-3911	48	Walter M. Flexico, Jr.

TECHNICAL EDUCATION CENTERS

Aiken
 Chesterfield-Marlboro
 Florence-Darlington
 Greenville
 Horry-Georgetown
 Midlands-Airport Campus
 Midlands-Beltime Campus
 Orangeburg-Calhoun
 Piedmont
 Spartanburg
 Sumter
 Tri-County
 Trident-North Campus
 Trident-Palmer Campus
 York

P. O. Drawer 696, Aiken	29901	593-9231	76
Drawer 928, Cheraw	29520	537-5286	62
Drawer 8000, Florence	29501	662-8151	223
Box 5816, Station B., Greenville	29606	242-3170	321
Box 710, Conway	29526	347-3186	
P. O. Drawer Q, Columbia	29250	796-8401	127
P. O. Drawer Q, Columbia	29250	782-5471	265
Drawer 1767, Orangeburg	29115	536-0311	296
Drawer 1208, Greenwood	29648	223-8357	87
Drawer 4386, Spartanburg	29303	576-5770	168
506 N. Guignard Dr., Sumter	29150	773-9371	247
Box 87, Pendleton	29670	646-3227	240
7000 Rivers Ave., Charleston	29405	553-2375	
125 Bull St., Charleston	29401	722-0531	
U. S. 21 Bypass, Rock Hill	29730	328-3843	211

Mrs. Monette E. Rettslob
 Mrs. Carolyn S. Long
 Lynn Garrote
 Martin R. Pautz
 Karm Lynn Files
 Anna Andrews Haltiwabger
 Mrs. Frances C. Stuart
 Margaret F. Huff
 Mary Crider
 L. Wade Shipman
 Mrs. Fannie M. Davis
 Kaylene B. Wilber
 Deborah J. Leather
 Mrs. Marion L. Vogel
 Amanda Yu

LIBRARIES IN STATE INSTITUTIONS

INSTITUTIONS	ADDRESS & ZIP	PHONE	EXT	LIBRARIAN
Crafts-Farrow State Hospital	7901 Farrow Road Columbia, S. C. 29203	758-4864		Mrs. Bernetha H. Flemming
Department of Corrections	P. O. Box 766 Columbia, S. C. 29202	758-6700	62	Mr. Richard P. Coolidge
John de la Howe School	McCormick, S. C. 29835	443-2131		Mrs. Myra B. Creswell
John G. Richards School for Boys	3200 Broad River Road Columbia, S. C. 29210	758-6767		Mrs. Anne Fayard
Coastal Center	Jamison Road Ladson, S. C. 29456	873-5750	240	Mrs. Blanche F. Fowler
Midlands Center	8301 Farrow Road Columbia, S. C. 29208	758-4434		Mrs. Carolyn M. Bass
Willow Lane School for Girls	4650 Broad River Road Columbia, S. C. 29210	758-6228		Mrs. Frances F. Shuler
S. C. School for Boys	616 E. National Cemetery Rd. Florence, S. C. 29501	669-6658		Mrs. Kay Brown
School for the Deaf and Blind	Cedar Spring Station Spartanburg, S. C. 29302	585-7711		Mrs. Lewis D. Rouquie
Hoger Library, State Hospital	P. O. Box 119 Columbia, S. C. 29202	758-7357		Mrs Virginia McEachern
State Park Health Center	P. O. Box 115 State Park, S. C. 29147	758-4694		Miss Geneva Cobb
Whitten Village	P. O. Box 239 Clinton, S. C. 29325	833-2733	362	Mr. Hsiu-Yun Keng
William S Hall Psychiatric Institute	Bull Street, P. O. Box 119 Columbia, S. C. 29202	256-9911		Mrs. Neeta Shah

**SOUTH CAROLINA COLLEGES AND UNIVERSITIES
ANNUAL LIBRARY STATISTICS, 1975-76 FISCAL YEAR**

	OPERATING EXPENSES 1975-76				LIBRARY COLLECTIONS			PERSONNEL (Full-Time Equivalent)			
	Grand Total	Salaries & Wages	Books & Other Library Materials	Binding	Total Volumes	Volumes Added	Volumes Withdrawn	Professional	Non-Professional	Number of Hours of Student Assistance	Total Enrollment
FOUR YEAR COLLEGES AND UNIVERSITIES											
Allen University	No Report Received										
Baptist College of Charleston	\$ 398,297.81	\$ 140,032.89	\$ 195,321.51	\$ 8,000.00	90,125	15,886	688	7.5	12	12,159	1,984
Benedict College	435,451.00	143,347.00	289,739.00	2,365.00	113,088	15,128	In Process	6	10	31,269	1,626
Bob Jones University (a)	NA	NA	47,688.00	2,314.00	142,235	7,434	1,500	5	4.5	28,647	4,001
Central Wesleyan College	61,394.00	31,815.00	21,773.00	2,256.00	40,549	2,563	58	2	2	2,558	386
The Citadel (b)	347,315.00	152,062.00	157,701.00	2,222.00	148,045	6,637	805	5	10		3,351
Claffin College	216,938.00	89,424.00	109,388.00	3,466.00	83,789	6,906	8	4	8.5	7,465	2,183
Clemson University	1,552,293.00	633,930.00	754,540.00	47,141.00	618,131	41,434	791	17	53	14,580	481
Coker College	71,423.00	35,663.00	26,840.00	912.00	58,978	1,361	308	2	1.4	5,400	
College of Charleston (c)	714,482.00	326,908.00	288,192.00	13,414.00	167,786	10,806	58	10.5	20.8	24,320	
Columbia Bible College	62,620.00	43,305.00	15,222.00	945.00	107,777	2,321	1,525	2.1	4.4	3,987	954
Columbia College	184,000.00	66,840.00	63,378.00	2,484.00	107,777	9,422	3,478	3	7.5	6,542	1,135
Converse College	150,582.00	76,464.00	51,050.00	3,500.00	101,497	4,138	79	3.5	5.75	4,810	1,509
Erikine College	115,346.31	50,531.75	50,305.37	2,008.87	100,989	4,153	183	2	4.5	3,099	781
Francis Marion College	552,734.00	213,935.00	358,784.00	10,015.00	145,708	21,881	47	8	13	11,681	2,053
Furman University	335,956.00	187,026.00	153,636.00	10,035.00	227,980	7,057	2,958	7	9.6	11,404	2,329
Lander College	273,087.19	102,571.72	128,901.21	3,804.15	83,965	7,497	None	4	5.75	5,132	
Limestone College	40,932.00	19,003.00	16,379.00	1,173.00	49,355	934	98	1.6	1.8	2,880	575
Lutheran Theological Sem. Seminary	67,074.60	35,412.92	27,703.56	2,177.65	59,024	2,950	800	2	1	2,718	137
Medical University of S. C.	631,339.00	291,563.00	194,666.00	17,739.00	109,135	6,396	78	11	25	4,000	2,216
Morris College	79,780.00	34,495.00	44,083.00	None	25,569	3,837	None	2.5	2	2,321	1,227
Newberry College	101,029.00	52,903.00	43,095.00	1,400.00	61,605	3,027	2,796	4	4	3,061	
Presbyterian College	148,577.00	64,747.00	71,558.00	6,751.00	87,211	5,058	299	2.0	5.3	3,040	822
South Carolina State College	465,233.78	167,971.10	238,029.53	6,507.46	186,771	16,529	None	8	6		3,336
University of South Carolina (d)	3,407,147.00	1,703,222.00	1,511,231.00	99,900.00	1,700,676	102,952		47	96	117,920	24,381
Voorhees College	120,775.00	68,121.00	43,096.00	1,419.00	80,566	3,612	12	4	5	8,112	
Winthrop College	567,194.00	332,270.00	205,957.00	5,328.00	251,148	12,393	162	13	17.5	13,424	3,965
Wofford College (e)	174,103.00	113,703.00	48,000.00	7,000.00	135,002	5,978	929	5	5	7,273	1,131

SOUTH CAROLINA COLLEGES AND UNIVERSITIES
ANNUAL LIBRARY STATISTICS, 1975-76 FISCAL YEAR—Continued

FOUR YEAR COLLEGES AND UNIVERSITIES	OPERATING EXPENSES 1975-76				LIBRARY COLLECTIONS				PERSONNEL (Full-Time Equivalent)		
	Grand Total	Salaries & Wages	Books & Other Library Materials	Building	Total Volumes	Volumes Added	Volumes Withdrawn	Professional	Non-Professional	Number of Hours of Student Assistance	Total Enrollment
JUNIOR COLLEGES											
Anderson College	51,385.00	31,486.00	19,465.00	454.00	21,836	2,066	80	2	2	1,786	1,231
Clinton Junior College	No Report Received										
Friendship Junior College (f)	20,901.00	14,000.00	6,901.00	None	10,140	270	None	2	0	4,660	310
North Greenville College	50,028.00	29,052.00	14,427.00	2,042.00	32,211	2,008	80	3	3	2,859	775
Southern Methodist College	11,524.81	6,500.00	1,582.10	1,462.71	9,730	546	200	1	0	800	65
Spartanburg Methodist College	39,028.00	22,491.00	8,829.00	351.00	25,233	563	135	4	1.5	2,258	2,647
TECHNICAL EDUCATION CENTERS											
Aiken	79,047.00	31,947.00	47,100.00	None	5,889	950	None	2	4	None	1,200
Chesterfield-Marlboro	49,315.41	22,186.40	27,129.01	None	14,193	1,105	None	1	1	500	
Florence-Darlington	No Report Received										
Greenville	242,530.00	119,570.00	33,333.00	None	27,828	1,465	30	3	8.5	3,000	5,604
Horry-Georgetown	55,043.00	28,593.02	22,743.00	None	14,877	1,534	114	2	1	2,915	3,437
Midlands—Airport Campus	64,356.00	40,393.00	20,105.00	None	18,690	1,261	1,102	3	2	3,002	8,633
Midlands—Beltline Campus	93,189.00	71,639.00	19,051.00	None	25,065	1,287	255	3.8	2	3,238	4,372
Orangeburg-Calhoun	117,784.00	83,188.00	25,788.00	47.00	20,572	2,390	283	3.5	4	5,724	
Piedmont	55,750.00	15,750.00	27,500.00	None	13,858	2,183	1,784	1	3	8	3,765
Spartanburg	62,518.00	35,800.00	26,718.00	None	17,642	1,822	None	1	3	None	
Sumter	34,435.36	20,857.00	14,378.36	None	14,772	1,607	None	1	2	1,880	4,959
Tri-County (g)	99,723.00	34,325.00	32,670.00	23.00	20,417	2,941	None	1	3.4	1,258	11,258
Trident—North Campus	107,318.00	62,883.00	40,330.00	None	22,818	2,086	83	3	3	4,500	18,437
Trident—Palmer Campus	60,747.00	39,313.00	31,434.00	None	16,933	1,410	None	2	1	5,060	1,749
York	58,454.00	37,363.00	21,091.00	None	15,246	1,696	None	3	1	8,288	3,732

(a) Includes Music Library.

(b) Includes Chemistry Dept. & Civil Engineering Dept.

(c) Includes Towell Learning Resources Center & Grice Marine Biological Laboratory Library.

(d) Includes Following Regional Campuses: Aiken, Beaufort, Coastal Carolina, Lancaster, Salkehatchie, Spartanburg, Sumter, and Union Regional Campuses.

Note: Spartanburg did not report Salaries or Miscellaneous. These are not included in Totals.

The Following Statistics Are for USC Columbia Only: Total enrollment, Professional and Non-Professional Personnel.

(e) Includes Chemistry Dept., & Psychology Dept.

(f) Includes Media Center.

(g) Includes Child Development Center, Anderson, S. C.

**SOUTH CAROLINA STATE SUPPORTED INSTITUTIONS
LIBRARY STATISTICS, 1975 - 76**

	OPERATING EXPENSES						INCOME			BOOKSTOCK			PERSONNEL			
	Residents	Total	Salaries	Books & Other Materials	Audio-Visuals	Other Operating Expenses	Equipment or Capital Outlay	Total	Inst & Other Funds	State Library Grants	Total Volumes	Volumes Added	Newspapers	Periodicals	Professional	Non-Prof.
ADULT CORRECTIONAL INSTITUTIONS																
S. C. Department of Corrections Library	8,437(a)	\$75,517.00	\$ 33,751.00	\$ 26,730.00	\$ 5,229.00	\$ 9,807.00	\$	\$ 75,517.00	\$ 65,789.00	\$ 9,728.00	10,322	3,036	7	34	1	16
Central Correctional Institution*																
Kirkland Correctional Institution*																
Aiken Youth Correctional Center*																
Givens Youth Correctional Center*																
Women's Correctional Institution*																
Manning Correctional Institution*																
MacDougal Youth Correctional Institution*																
Walden Correctional Institution*																
Waterlee River Correctional Institution*																
Goodman Correctional Institution*																
Reception and Evaluation Center*																
Maximum Detention and Retraining Center*																
Youth Services Institutions																
Willow Lane School for Girls	172	15,297.00	14,173.00	1,124.00				15,297.00	14,673.00	624.00	5,031	116	5	31		1
John B. Richards School for Boys	201	12,066.00	10,470.00	1,596.00				12,066.00	10,970.00	1,096.00	2,436	154	3	45		1
S. C. School for Boys	129	13,970.00	12,706.00	1,264.00				13,970.00	13,194.00	776.00	4,254	142	5	39		
Institutions for the Mentally Retarded																
Coastal Center	548	20,171.00	9,579.00	4,367.45	3,824.55	1,400.00	8,000.00	20,171.00	17,979.00	2,192.00	5,018	617	8	86		1
Midlands Center	553	21,862.35	15,574.00	1,769.96	2,027.66	725.02	5,565.71	21,862.35	19,462.35	2,200.00	5,965	444	0	18		2
Whitten Village	2,100	66,738.00	44,538.00	10,210.00	6,545.00	5,445.00		66,738.00	61,738.00	5,000.00	17,577	1,966	9	79	1	4
Mental Health Institutions																
Craigs-Farrow State Hospital	1,738	32,385.50	24,758.00	5,664.31	1,335.89	627.50		32,385.50	27,385.50	5,000.00	8,074	988	29	76		3
S. C. State Hospital—Hogler Library	1,770	35,814.67	26,227.00	8,667.67		611.00	279.00	35,814.67	30,814.67	5,000.00	10,969	853	39	78	1	2
William S. Hall Institute(c)	0															
Institutions for Physically Handicapped Children																
S. C. School for the Blind	162	10,043.38	9,350.00	693.38				10,043.38	9,431.38	612.00	5,629	157	1	10		1
S. C. School for the Deaf	432	15,459.62	13,089.00	1,830.62	517.00		223.00	15,459.62	13,711.62	1,748.00	7,050	60	4	35	1	
S. C. Crippled Children's Convalescent Center(d)	36	2,000.00	1,450.00	500.00		50.00		2,000.00	2,000.00	2,000.00				8		1
Special Institutions																
John de la Howe School	260	18,128.85	13,890.00	3,828.09	410.76			18,128.85	17,128.23	1,000.62	4,132	795	6	35		2
State Park Health Center	717	18,502.44	15,248.94	2,574.05		114.65	564.80	18,502.44	17,898.44	604.00	9,945	215	7	72		2
Holmesview Center(e)	40	500.00		500.00				500.00		500.00						1
Earl A. Morris Village(e)	48	500.00		500.00				500.00		500.00						
Palmetto Center(e)	143	500.00		500.00				500.00		500.00						
GRAND TOTAL		\$359,255.81	\$244,803.94	\$72,149.53	\$ 19,889.66	\$ 18,780.17	\$ 3,832.51	\$359,255.81	\$320,175.19	\$ 39,080.62	96,420	9,543	123	646	4	37

* Served by S. C. Department of Corrections Library.

(a) Total Number of Residents for all 12 adult correctional centers served.

(b) Permanent collection not available at this unit. Receives service from Central Correctional Center's Library.

(c) Library for professional staff only (300 staff members.)

(d) Served by Florence County Library under contract between S. C. State Library, Florence County Library and the Convalescent Center.

(e) No library at the Center. The State Library selects and purchases paperback books for these institutions.

36B

36A

**SOUTH CAROLINA PUBLIC
ANNUAL LIBRARY STATISTIC**

OPERATING EXPENDITURES 1975-76

	Population of Area Taxed for Support 1970 Census	Total	Salaries	Books & Periodicals	Audio-visual Materials	Other Operating Expenses	Capital Outlay	Income 1975-76 Total Budget	Tax Rate Mills	Grants-In-Aid
Regional Libraries										
Abbeville-Greenwood	70,798	\$ 167,578.51	\$ 109,387.87	\$ 28,015.55	\$ 11,559.51	\$ 18,615.58	\$ 359,000.29	\$ 164,690.45	2	\$ 154,553.00
Aiken-Bamberg-Barnwell-Edgefield	139,841	322,147.36	199,771.49	64,466.97	5,781.85	52,127.05	715.32	335,452.60		100,927.00
Allendale-Hampton-Jasper	37,455	54,083.72	28,796.50	9,072.03	348.28	15,866.93	107,471.88	55,329.45		18,109.00
Newberry-Saluda	43,801	83,379.69	41,667.13	20,447.53	2,605.67	18,659.38		81,192.68		29,902.00
County Libraries 100,000 & Over										
Anderson County Library	105,474	274,678.70	134,305.52	53,087.73	9,900.76	77,384.69		290,062.91	2	61,774.00
Charleston County Library	247,650	839,174.03	530,363.41	191,194.15	5,574.12	112,042.35		856,747.80		160,549.00
Greenville County Library	240,546	1,580,669.00	881,568.00	398,589.00		300,512.00	109,425.00	1,691,073.00	7	196,677.00
Richland County Library	233,868	1,076,247.21	588,245.26	319,104.36	11,237.25	157,660.34	165,965.23	1,223,673.47	5	164,932.00
Spartanburg County Library	173,724	406,006.00	271,516.00	62,402.00	15,935.00	56,153.00	67,890.00	387,409.00	1	107,527.00
County Libraries 50,000 - 100,000										
Beaufort County Library	51,136	-142,102.00	89,745.00	28,798.00	5,474.00	18,087.00	288,903.00	147,871.00		27,509.00
Berkeley County Library	56,199	96,036.69	55,223.34	17,547.11	2,006.65	11,249.59	6,053.98	99,309.50		21,204.00
Darlington County Library	53,442	181,286.28	77,931.49	30,062.41	3,673.29	69,618.09		184,472.37	3	28,948.00
Florence County Library	89,636	281,453.08	136,282.53	60,794.38	2,184.19	63,191.98	2,625.38	272,893.90		84,978.00
Horry County Memorial Library	69,992	185,257.02	149,324.01	35,019.10	4,923.34	25,990.57		186,941.07		56,881.00
Lexington County Circulating Library	89,012	179,649.51	114,256.34	38,128.59	1,991.09	25,273.49		179,715.47		54,076.00
Orangeburg County Free Library	69,789	108,993.30	66,815.46	25,713.75	466.48	15,967.61		113,532.16		29,665.00
Pickens County Library	58,956	150,726.32	100,948.14	25,834.62	530.11	23,413.45	1,463.37	150,105.90		28,501.00
Sumter County Library	79,425	208,009.87	129,554.85	46,721.62	2,292.90	29,440.50		201,739.90		35,589.00
York County Library	85,216	229,980.51	106,750.69	53,986.48	6,944.34	62,299.00		235,773.61	2	65,168.00
County Libraries 25,000 - 50,000										
Charokey County Public Library	36,791	110,451.18	59,042.11	23,813.30	1,146.22	26,449.56		106,707.54	1	21,462.00
Chester County Free Public Library	29,811	77,249.39	41,734.15	19,647.41	475.00	15,393.12		87,448.89	2 75	17,279.00
Chesterfield County Library	33,667	67,958.00	32,525.43	3,858.96	584.01	30,989.80	16,454.86	68,598.86		16,763.00
Clarendon County Library	25,604	8,961.00				8,961.00		8,961.00		8,961.00
Colleton County Memorial Library	27,622	75,018.99	44,327.20	17,644.61	3,014.11	10,033.07	1,000.00	77,361.46		21,385.00
Dillon County Library	28,838	63,362.90	30,685.05	21,810.28	1,915.09	8,952.48	7,000.00	63,363.76		25,984.00
Dorchester County Library	32,276	39,077.18	19,624.29	10,343.86	1,500.00	7,609.03		38,529.95		11,298.00
Georgetown County Memorial Library	33,500	81,717.77	44,524.25	27,975.71	1,623.90	7,593.91	2,965.57	84,220.92		25,048.00
Kershaw County Library	34,727	104,938.91	65,615.59	23,644.30	90.10	15,588.92		104,799.65		18,377.00
Lancaster County Library	43,328	99,299.34	49,423.43	21,030.24	386.90	28,458.77		98,525.01		25,276.00
Laurens County Library	49,713	146,844.75	81,439.59	38,804.24	923.01	25,877.91		147,330.73		38,940.00
Marion County Library	30,270	84,618.98	47,993.05	22,975.34		13,650.50	201,590.81	92,977.87	4	95,462.00
Marlboro County Public Library	27,151	44,149.83	28,564.96	9,947.93	708.08	4,928.66	585.00	44,149.63		14,002.00
Oconee County Library	40,728	99,945.81	61,146.18	26,806.25	125.34	11,868.04		100,705.80		24,225.00
Union Carnegie Library	29,230	56,277.75	28,108.45	14,419.23	3,087.34	40,662.96	3,163.18	56,144.60		15,141.00
Williamsburg County Library	34,243	23,111.81	8,770.58	5,647.53	206.30	5,488.40		23,685.05		11,965.00
County Libraries 25,000 & Under										
Calhoun County Public Library	10,789	34,180.61	16,107.17	8,768.03	152.12	9,193.29		36,964.21	66	9,275.00
Fairfield County Library	19,999	40,429.05	25,068.02	9,439.03	742.69	5,179.31		42,753.10	3	56,950.00
Lee County Public Library	18,323	19,282.73	10,428.96	6,073.18		2,760.59		19,787.57		6,413.00
McCormick County Library	8,629	10,453.17	3,643.10	3,454.23	86.28	3,269.56		10,456.45		4,584.00
Municipal & Township Libraries										
Chapin Memorial Library	12,899	36,956.85	21,291.50	12,522.80		3,142.55		41,592.72		
Timrod Library (Summerville)	No Report Received									
South Carolina State Library										
TOTALS	2,604,019	\$ 7,871,723.81	\$ 4,948,161.09	\$ 1,952,976.63	\$ 110,194.07	\$ 1,412,593.82	\$ 1,342,329.63	\$ 8,644,154.38	88.75	\$ 1,915,488.00

* All 1975-76 statistics based on 1970 Census.

** Grants-In-Aid figures may vary from that shown on local reports because of date of receipt of funds. Includes 74, 75 and 76 funds. No construction Grants included.

† Clarendon served by Sumter.

‡ Total LSCA Income, including grants to libraries. County libraries income is from local support only. (Inclusive of Operating Revenue.)

PUBLIC LIBRARIES
1975-76 FISCAL YEAR

BOOKSTOCK			REGISTERED USERS		CIRCULATION		INTERLIBRARY LOANS							
Revenue Shared (Special)	Total Volumes	Volumes Added Y.	Newspapers	Periodicals	Total	Juvenile	Total	Juvenile	Loan Period (Days)	Volumes Lent	Volumes Borrowed	Reference & Reading Aid Transactions	Number of Branches	Bookmobiles Operated
	112,212	6,547	6	141	23,321	9,321	219,905	88,461	14	1	215	3,490	1	1
	152,397	9,230	16	332	44,350		172,086	461,088	28	10	468		1	1
	52,544	810	5	45	9,319	4,299	46,315	21,768	14		724	2,454		1
	55,217	3,632	7	112	10,931	3,395	129,838	44,650	14	1	103	5,370		1
61,000.00	128,161	8,152	11	230	7,919	1,826	363,553	151,179	14	6	632	3,000		1
	345,260	22,182	39	503	72,757		754,846	322,596	28	35	436	68,286		1
66,278.90	366,148	54,212	50	1,248			1,070,090		28	142	896	72,688		1
	329,921	32,202	33	796	16,823	4,126	822,929	299,645	21	3	848	100,623		1
	10,773	11,320	19	613	33,591	8,811	447,117	176,835	28	14	391	7,423		1
	63,889	4,977	13	149	13,347		101,094	32,395	14	1	251			1
	44,213	3,358	4	124	6,031	2,202	117,881	32,944	14		197			1
	108,728	4,328	31	321	22,375	9,287	164,429	75,594	14	37	392	9,418		1
	102,359	7,107	17	263	34,346	16,784	233,777	97,564	14	28	795	19,364		1
	92,410	6,462	11	253	21,953		211,850	51,650	21	4	191	5,102		1
20,821.00	116,313	7,943	8	158	47,356	25,155	200,288	89,998	14	5	67	8,332		1
	46,900	4,031	7	71	15,372	4,304	146,936	49,283	14		325			1
	56,439	3,454	9	158	25,351	11,320	170,651	58,268	28	2	523	9,850		1
	67,781	4,527	15	187	15,705	4,280	176,795	63,721	10	6	409	3,977		1
	164,640	6,937	19	362	17,566	6,253	236,092	99,677	14	117	234	6,279		1
41,313.96	64,439	3,175	7	156	11,181		117,005	41,902	14	28	499	2,622		1
	41,616	2,770	10	147	8,508	3,422	85,133	36,071	14		267	3,290		1
16,481.86	31,144	4,071	8	74	8,821	3,422	45,319	15,974	14		1,270			1
	50,960	3,445	6	74	7,331	3,415	88,452	32,167	14		193	3,211		1
	48,966	2,910	6	144	19,818	12,474	52,846	17,129	21		322			1
	26,245	1,565	3	37	5,842	3,326	37,281	17,362	14		504	7,172		1
	46,074	3,200	13	126	4,500		54,469	20,230	14	3	538			1
	73,041	3,582	11	131	10,009		117,840	35,654	14		574			1
5,000.00	50,390	3,744	5	10	11,868	3,737	118,221	43,372	14		197			1
18,000.00	74,255	6,007	9	145	20,000		120,637	56,466	28	3	457			1
	30,232	3,475	10	126	7,585		79,843	19,873	14	3	66	271		1
	29,823	1,479	7	77	7,078	1,261	68,371	28,547	14		167			1
	70,806	4,251	3	7	7,730		121,603	35,463	28	15	168	5,537		1
	24,546	2,367	6	146	4,275	1,014	33,344	8,983	28	1	94	150		1
	18,243	620	5	45	4,555	2,251	18,555	6,464	14		148			1
	31,101	977	6	72	2,574	1,225	32,349	17,221	14	0	494	536	0	1
	28,589	775	4	89	4,945	2,613	35,475	9,187	14		415	1,000		1
	19,467	838	2	50	4,253		28,312	8,226	14		88			1
	7,384	863	1	21	1,013	422	6,230	2,822	14		111	625		1
	23,330	2,182	13	71	8,226		88,876	16,168	28					
	128,583		9	1,372			32,640							
227,894.82	3,403,099	251,000	464	8,829	598,125	149,965	7,167,688	2,686,270	689	17,789	14,701	8,986	7	42
										18,254		356,995		