

DOCUMENT RESUME

ED 138 214

HE 008 886

AUTHOR Johnson, Jackie  
 TITLE Degree Inventory, 1975-76 Washington Colleges and Universities. Report No. 77-18.  
 INSTITUTION Washington State Council for Postsecondary Education, Olympia.  
 PUB DATE Apr 77  
 NOTE 80p.  
 AVAILABLE FROM Washington State Council for Postsecondary Education, 908 E. Fifth, Olympia, Washington 98504

EDRS PRICE MF-\$0.83 HC-\$4.67 Plus Postage.  
 DESCRIPTORS \*Associate Degrees; \*Bachelors Degrees; Community Colleges; Comparative Analysis; \*Doctoral Degrees; Ethnic Groups; Higher Education; Intellectual Disciplines; \*Masters Degrees; Minority Groups; Post Secondary Education; Private Colleges; State Colleges; \*State Surveys; State Universities; Statistical Data; \*Tables (Data); Trend Analysis  
 IDENTIFIERS \*Washington

ABSTRACT

Data derived from the HEGIS survey, "Degrees and Other Formal Awards Conferred," are presented in this 1975-76 inventory for the state of Washington. Total degrees conferred by institutions totaled 32,138 in 1975-76, an increase of 18.9 percent in the last 6 years, and an increase of 4.9 percent over the previous year. Associate degrees conferred by community colleges increased 63.7 percent over the 1970-72 level in all fields of study except data processing technologies. The number of bachelor's degrees conferred declined slightly since 1970-71, but master's degrees increased 2.5 percent. Doctoral degrees declined 10.8 percent from the 1970-71 level; first professional degrees increased in all fields of study since 1970-71. In addition to the information on degrees conferred by level of degree, area of study and sex, this report contains the first available data on degrees awarded by ethnic/minority categories of recipients. Appended are lists by institution of all 1975-76 associate degrees conferred in technical or occupational curricula, baccalaureate and graduate degrees, and all degree programs offered at public and private four-year colleges and universities. (Author/LBH)

\*\*\*\*\*  
 \* Documents acquired by ERIC include many informal unpublished \*  
 \* materials not available from other sources. ERIC makes every effort \*  
 \* to obtain the best copy available. Nevertheless, items of marginal \*  
 \* reproducibility are often encountered and this affects the quality \*  
 \* of the microfiche and hardcopy reproductions ERIC makes available \*  
 \* via the ERIC Document Reproduction Service (EDRS). EDRS is not \*  
 \* responsible for the quality of the original document. Reproductions \*  
 \* supplied by EDRS are the best that can be made from the original. \*  
 \*\*\*\*\*

HE08876

# Council for Postsecondary Education State of Washington



U.S. DEPARTMENT OF HEALTH  
EDUCATION & WELFARE  
NATIONAL INSTITUTE OF  
EDUCATION

THIS DOCUMENT HAS BEEN REPRODUCED EXACTLY AS RECEIVED FROM THE PERSON OR ORGANIZATION ORIGINATING IT. POINTS OF VIEW OR OPINIONS STATED DO NOT NECESSARILY REPRESENT OFFICIAL NATIONAL INSTITUTE OF EDUCATION POSITION OR POLICY.

Report No. 77-18

DEGREE INVENTORY

1975-76

WASHINGTON

COLLEGES AND UNIVERSITIES

April 1977

COUNCIL FOR POSTSECONDARY EDUCATION

CITIZEN MEMBERS

Mrs. Allison S. Cowles  
Chairman  
Spokane

Ms. Betty Fletcher  
Seattle

Walter C. Howe, Jr.  
Bellevue

Robert M. Humphrey  
Everett

Mrs. Ruth Shepherd  
Vice-Chairman  
Kennewick

Ms. Helen Thompson  
Tacoma

John L. VanAelstyn  
Seattle

Richard P. Wollenberg  
Longview

EX OFFICIO MEMBERS

James E. Brooks, President  
Central Washington State College

Frank B. Brouillet, Superintendent  
Office of the Superintendent of  
Public Instruction

John C. Mundt, Director  
State Board for Community College  
Education

John Murphy, Acting Director  
Commission for Vocational  
Education

Philip M. Phibbs, President  
University of Puget Sound

Harold Wosepka, President  
Trend Systems, Inc.

STAFF

Patrick M. Callan  
Executive Coordinator

William Chance, Deputy Coordinator  
Planning and Research

Carl Donovan, Deputy Coordinator  
Student Services

Denis J. Curry, Deputy Coordinator  
Finance and Information Systems

908 E. Fifth  
Olympia, Washington 98504

DEGREE INVENTORY  
1975-76  
WASHINGTON COLLEGES AND UNIVERSITIES

Council for Postsecondary Education

Jackie Johnson  
Information Systems Analyst

April 1977

4

TABLE OF CONTENTS

	<u>PAGE</u>
LIST OF TABLES . . . . .	ii
LIST OF CHARTS . . . . .	iv
ABSTRACT . . . . .	1
INTRODUCTION . . . . .	3
TOTAL DEGREES . . . . .	5
ASSOCIATE DEGREES . . . . .	8
BACHELORS DEGREES . . . . .	16
MASTERS DEGREES . . . . .	23
DOCTORAL AND FIRST PROFESSIONAL DEGREES . . . . .	29
BACCALAUREATE AND GRADUATE DEGREES BY ETHNIC/MINORITY . . . . .	39



LIST OF TABLES

	<u>PAGE</u>
TABLE 1: A COMPARISON: 1970/71 - 1975/76 DISTRIBUTION OF DEGREES CONFERRED ALL WASHINGTON INSTITUTIONS OF HIGHER EDUCATION . . . . .	6
TABLE 2: A COMPARISON: 1970/71 - 1975/76 A PERCENTAGE DISTRIBUTION OF DEGREES CONFERRED BY FIELD OF STUDY AND DEGREE LEVEL . . . . .	7
TABLE 3: A CHRONOLOGICAL COMPARISON: 1970/71 - 1975/76 ASSOCIATE DEGREES CONFERRED BY FIELD OF STUDY WASHINGTON COMMUNITY COLLEGES . . . . .	9
TABLE 4: A CHRONOLOGICAL COMPARISON: 1970/71 - 1975/76 ASSOCIATE DEGREES CONFERRED BY INSTITUTION WASHINGTON COMMUNITY COLLEGES . . . . .	10
TABLE 5: ASSOCIATE DEGREES CONFERRED BY FIELD OF STUDY BY INSTITUTION WASHINGTON COMMUNITY COLLEGES, 1975-76 . . . . .	12
TABLE 6: DEGREES CONFERRED BY ETHNIC/MINORITY WASHINGTON COMMUNITY COLLEGES, 1975-76 . . . . .	13
TABLE 7: A CHRONOLOGICAL COMPARISON: 1970/71 - 1975/76 BACHELOR'S DEGREES CONFERRED BY FIELD OF STUDY ALL WASHINGTON FOUR-YEAR COLLEGES AND UNIVERSITIES . . . . .	18
TABLE 8: A COMPARISON: 1970/71 - 1975/76 BACHELOR'S DEGREES CONFERRED BY FIELD OF STUDY AND SEX . . . . .	19
TABLE 9: A CHRONOLOGICAL COMPARISON: 1970/71 - 1975/76 BACHELOR'S DEGREES CONFERRED BY INSTITUTION . . . . .	21
TABLE 10: BACHELOR'S DEGREES CONFERRED BY FIELD OF STUDY BY INSTITUTION, 1975-76 . . . . .	22
TABLE 11: A CHRONOLOGICAL COMPARISON: 1970/71 - 1975/76 MASTER'S DEGREES CONFERRED BY FIELD OF STUDY ALL WASHINGTON FOUR-YEAR COLLEGES AND UNIVERSITIES . . . . .	24
TABLE 12: A COMPARISON: 1970/71 - 1975/76 MASTER'S DEGREES CONFERRED BY FIELD OF STUDY AND SEX . . . . .	25

LIST OF TABLES  
(Continued)

	<u>PAGE</u>
TABLE 13: A CHRONOLOGICAL COMPARISON: 1970/71 - 1975/76 MASTER'S DEGREES CONFERRED BY INSTITUTION . . . . .	27
TABLE 14: MASTER'S DEGREES CONFERRED BY FIELD OF STUDY BY INSTITUTION, 1975-76 . . . . .	28
TABLE 15: A CHRONOLOGICAL COMPARISON: 1970/71 - 1975/76 DOCTORAL DEGREES CONFERRED BY FIELD OF STUDY ALL WASHINGTON FOUR-YEAR COLLEGES AND UNIVERSITIES . . . . .	31
TABLE 16: A COMPARISON: 1970/71 - 1975/76 DOCTORAL DEGREES CONFERRED BY FIELD OF STUDY AND SEX . . . . .	32
TABLE 17: A CHRONOLOGICAL COMPARISON: 1970/71 - 1975/76 FIRST PROFESSIONAL DEGREES CONFERRED BY FIELD OF STUDY ALL WASHINGTON FOUR-YEAR COLLEGES AND UNIVERSITIES . . . . .	34
TABLE 18: A COMPARISON: 1970/71 - 1975/76 FIRST PROFESSIONAL DEGREES CONFERRED BY FIELD OF STUDY AND SEX . . . . .	35
TABLE 19: A CHRONOLOGICAL COMPARISON: 1970/71 - 1975/76 DOCTORAL AND FIRST PROFESSIONAL DEGREES CONFERRED BY INSTITUTION . . . . .	37
TABLE 20: DOCTORAL AND FIRST PROFESSIONAL DEGREES CONFERRED BY INSTITUTION . . . . .	38
TABLE 21: DEGREES CONFERRED BY ETHNIC/MINORITY ALL WASHINGTON FOUR-YEAR COLLEGES AND UNIVERSITIES 1975-76 . . . . .	40

LIST OF CHARTS

	<u>PAGE</u>
CHART 1: ASSOCIATE DEGREES CONFERRED 1970/71 - 1975/76 . . . . .	11
CHART 2: BACHELORS' DEGREES CONFERRED 1970/71 - 1975/76 . . . . .	20
CHART 3: MASTERS DEGREES CONFERRED 1970/71 - 1975/76 . . . . .	26
CHART 4: DOCTORAL DEGREES CONFERRED 1970/71 - 1975/76 . . . . .	33
CHART 5: FIRST PROFESSIONAL DEGREES CONFERRED 1970/71 - 1975/76 . . . . .	36



## ABSTRACT

Total degrees conferred by institutions totaled 32,138 in 1975-76, an increase of 18.9 percent in the last six years, and an increase of 4.9 percent over the previous year.

Associate degrees conferred by community colleges have increased 63.7 percent over the 1970-71 level. Increases were experienced in every field of study with the exception of data processing technologies and at all but three institutions (Centralia, Green River and Yakima). The greatest numerical increases occurred at Bellevue, Ft. Steilacoom, Highline and Spokane Falls.

The number of bachelors degrees conferred has declined slightly in the past three years with the total for 1975-76 only 321 (1.9 percent) higher than the 1970-71 level. The greatest numerical increases have been in the areas of biological science, health professions, public affairs and services, and interdisciplinary studies. In the interdisciplinary studies area, the emergence of The Evergreen State College has accounted for 74.3 percent of the six year increase experienced. Bachelors degrees conferred to men have declined by 1.8 percent while 7.1 percent more degrees have been conferred to women since 1970-71.

Slight increases were experienced in both the public and private sector, however, the three older state colleges experienced declines ranging from 11.0 to 32.5 percent. In the private sector, the greatest numerical increase in bachelors degrees conferred was at the University of Puget Sound while the greatest decrease was experienced at Seattle University.

Masters degrees have increased 11.5 percent over the 1970-71 level. The most significant change has been the increase of 34.8 percent in the masters degrees earned by women. In 1975-76, women received 42.0 percent of all masters degrees conferred. In the public sector, a slight net reduction in degrees has occurred when compared to the 1970-71 levels. This has been caused by a decrease at both the University of Washington (7.7 percent) and Central Washington State College (10.8 percent). In the private sector, however, a net increase of 69.6 percent has been experienced since 1970-71 primarily as a result of the growth of graduate programs at Pacific Lutheran University, Seattle University and the University of Puget Sound.

Doctoral degrees have declined 10.8 percent from the 1970-71 level. This is the result of a decline at the University of Washington of 15.5 percent offset by a 3.5 percent increase at

Washington State University. While doctoral degrees earned by men have declined 17.3 percent, women recipients showed a 35.2 percent increase. The percentage of total doctorates awarded to women has increased from 12.4 percent in 1970-71 to 18.8 percent in 1975-76.

The number of first professional degrees has increased in all fields of study since 1970-71.. While medical degrees awarded to men have decreased slightly (-2), women graduates have increased by 12 (150 percent). In the field of dentistry, Washington's first woman graduate was reported in 1975-76.

Although men still command the greatest percentage of first professional degrees (87.7 percent), degrees conferred to women have increased from 6.7 percent (1970-71) to 14.3 percent in 1975-76. While both the University of Washington and Washington State University have shown an approximate 23 percent increase in first professional degrees awarded, the most substantial increases have been in the law degrees awarded at the University of Puget Sound and Gonzaga University.

In addition to the information on degrees conferred by level of degree, area of study and sex, this report contains the first available data on degrees awarded by ethnic/minority categories of recipients. In reviewing these data, it is important to understand that this is the first reporting by the institutions and the time constraints under which they were operating did not allow sufficient lead time for computer programming at all institutions. These data will be reported relative to the 1976-77 degrees, and it is anticipated that a more complete and accurate inventory will be available in subsequent issues of this report.

Three appendices are separately available which list by institution all 1975-76 associate degrees conferred in technical or occupational curriculums (Appendix A), all 1975-76 baccalaureate and graduate degrees conferred by institution (Appendix B) and all degree programs offered at public and private four-year colleges and universities (Appendix C).

## INTRODUCTION

Data which appear on all tables in this report are derived from Office of Education Form 2300-2.1, "Degrees and Other Formal Awards Conferred" Higher Education General Information Survey (HEGIS). This survey is completed annually by the institutions as requested by U.S. Department of Health, Education and Welfare. The Council for Postsecondary Education acts as a coordinator in the collection of these data, maintaining one copy in the Council offices in order to facilitate data requests from institutions, agencies and the general public and to provide the basis for informational reports such as this.

Besides this inventory and catalogs and bulletins of institutions, there are four other major sources to which a person can refer for information regarding academic and occupational programs.

MYE: Mapping Your Education, 1976-77. A Handbook for Students, Parents, and Counselors.\* Abbot, Kerns & Bell Co., Portland, Oregon.

MYE provides an easy-to-read summary description of each college and its programs as prepared by the institution itself.

Vocational Education Programs in Washington Community Colleges  
State Board for Community College Education, Olympia, Washington.

The publication describes the various aspects of community college vocational education. It also provides a matrix

\*A publication of the Washington Council on High School-College Relations.

directory to programs by subject area, community college and geographical area.

Career Choices in Occupational Education. Commission for Vocational Education, Olympia, Washington.

The booklet provides, in matrix fashion, information about

- 1) specific jobs for which a person can receive training, and
- 2) the vocational-technical schools, community colleges and institutes which offer the training.

Washington Occupational Information Service (WOIS)

WOIS is a service available on a subscription basis to common schools, community colleges and four-year institutions. It provides information on Washington postsecondary programs and institutions in addition to the current general occupational outlook by vocation or profession.

This report is divided into sections relating to the level of the various degrees conferred. Separate appendices contain the detailed information on each degree program by institution. Information on associate degrees conferred in technical or occupational curriculums is contained in Appendix A. Baccalaureate and graduate degrees are detailed in Appendix B, and a listing of all degree programs offered at Washington four-year institutions is included in Appendix C.

## TOTAL DEGREES

Total degrees conferred by Washington two- and four-year institutions increased 18.9 percent in the last six years. There has been an increase in each year with the largest growth occurring in 1971-72 (7.5 percent) and the smallest increase (.2 percent) in 1974-75.

In 1975-76 1,505 more degrees were conferred (4.9 percent) than in 1974-75. As shown in Table 1, the greatest percentage increase has occurred in the first professional degrees (147.8 percent) and the greatest numerical increase has been in the associate degrees (3,881). Increases have also occurred at the baccalaureate level (1.9 percent) and the masters level (11.5 percent); however, there has been a decline in the number of doctoral degrees conferred (-10.8 percent).

Table 2 shows a comparison of the percentage distribution of degrees conferred by field of study\* and degree level.

\*For purposes of the summary portion of this report, "field of study" refers to the classification of program areas (e.g., physical sciences). The appendices contain information on discrete fields (e.g., chemistry).

TABLE 1

A COMPARISON: 1970/71 - 1975/76  
 DISTRIBUTION OF DEGREES CONFERRED  
 ALL WASHINGTON INSTITUTIONS OF HIGHER EDUCATION

	1970-71		1975-76		Change Since 1970-71
	Number	Percent	Number	Percent	
Associate	6,088	22.5%	9,969	31.0%	+ 63.7%
Bachelor's	16,557	61.2%	16,878	52.5%	+ 1.9%
Master's	3,427	12.7%	3,820	11.9%	+ 11.5%
Doctoral	574	2.1%	512	1.6%	- 10.8%
First Professional	387	1.4%	959	3.0%	+147.8%
Total	27,033	100.0%	32,138	100.0%	+ 18.9%

A COMPARISON: 1970/71 - 1975/76  
 A PERCENTAGE DISTRIBUTION OF DEGREES CONFERRED BY FIELD OF STUDY AND DEGREE LEVEL  
 ALL WASHINGTON COLLEGES AND UNIVERSITIES

	Associate		Bachelor's		Master's		Doctoral		First Professional	
	1970-71	1975-76	1970-71	1975-76	1970-71	1975-76	1970-71	1975-76	1970-71	1975-76
Arts & Science, General	55.5%	51.3%								
Data Processing Technology	2.9%	1.2%								
Health Services & Paramedical	10.2%	11.9%								
Mechanical & Engineering Technology	13.7%	11.8%								
Natural Science Technology	3.1%	4.0%								
Business & Commerce Technology	9.4%	12.0%								
Public Service Related Technology	5.2%	7.8%								
Agriculture & Natural Resources			1.8%	2.7%	2.5%	2.6%	5.9%	7.0%		
Architecture & Environmental Design			1.8%	1.9%	1.9%	1.6%	.2%	.4%		
Area Studies			.1%	.2%	.4%	.4%	.2%	.4%		
Biological Sciences			3.6%	5.8%	2.7%	2.3%	11.9%	12.9%		
Business & Management			12.7%	13.6%	10.8%	11.0%	1.6%	3.3%		
Communications			1.9%	2.9%	.3%	.4%	.4%	.8%		
Computer & Information Sciences			.1%	.2%	.5%	.7%	.5%	1.0%		
Education			15.6%	11.0%	29.5%	29.0%	11.3%	12.1%		
Engineering			5.5%	4.2%	7.1%	5.8%	12.5%	7.8%		
Fine & Applied Arts			3.6%	4.6%	4.4%	3.5%	2.6%	3.3%		
Foreign Languages			2.6%	1.5%	2.2%	1.5%	2.3%	3.1%		
Health Professions			4.4%	8.0%	4.1%	6.5%	1.4%	3.5%		
Home Economics			1.4%	2.3%	.8%	.6%	-	-		
Law			-	-	.2%	.5%	-	.2%		
Letters			9.7%	5.5%	6.2%	5.1%	9.2%	6.1%		
Library Science			-	-	5.0%	3.7%	-	-		
Mathematics			2.0%	1.5%	2.2%	1.1%	2.3%	2.2%		
Military Science			-	.2%	-	-	-	-		
Physical Science			2.9%	2.7%	3.6%	1.9%	15.7%	11.9%		
Psychology			5.1%	5.2%	2.0%	3.6%	6.5%	6.6%		
Public Affairs & Services			1.3%	4.1%	6.3%	7.3%	-	-		
Social Sciences			21.2%	13.4%	7.1%	8.0%	15.5%	16.6%		
Theology			.5%	.7%	.3%	2.7%	-	-		
Interdisciplinary			2.3%	6.9%	.4%	.2%	.2%	.8%		
Dentistry									19.9%	9.3%
Medicine									27.7%	12.2%
Veterinary Medicine									13.4%	6.6%
Law									38.2%	71.1%
Theology									.8%	.8%
TOTAL	100.0%	100.0%	100.0%	100.0%	100.0%	100.0%	100.0%	100.0%	100.0%	100.0%

## ASSOCIATE DEGREES

The number of associate degrees conferred by Washington community colleges has increased substantially over the last six years (63.7 percent). A 13.9 percent increase was achieved in 1975-76 over the previous year. These increases were apparent in every field of study with the exception of data processing technologies. All but three institutions (Centralia, Green River and Yakima) experienced an increase in total degrees conferred over the last six years. The greatest numerical increases have occurred at Bellevue, Ft. Steilacoom, Highline and Spokane Falls.

Tables 3 and 4 are a chronological comparison of total associate degrees conferred since 1970-71, both by field of study and by institution. Chart 1 historically illustrates both the total associate degrees conferred and the relationships of associate degrees in Arts and Sciences and all Occupational/Technologies programs. Table 5 is a more complete listing of degrees for 1975-76, again summarized by field of study and institution.

This is the first year that institutions have reported degrees conferred by ethnic/minority categories. While some institutions were not able to provide this data due to inadequate lead time for computer programming, Table 6 indicates the best (and only) available data at this time. Since institutions will again report degrees by ethnic/minority on the 1976-77 HEGIS report, this information will become increasingly more complete.



TABLE 3

A CHRONOLOGICAL COMPARISON: 1970/71 - 1975/76  
 ASSOCIATE DEGREES CONFERRED BY FIELD OF STUDY  
 WASHINGTON COMMUNITY COLLEGES

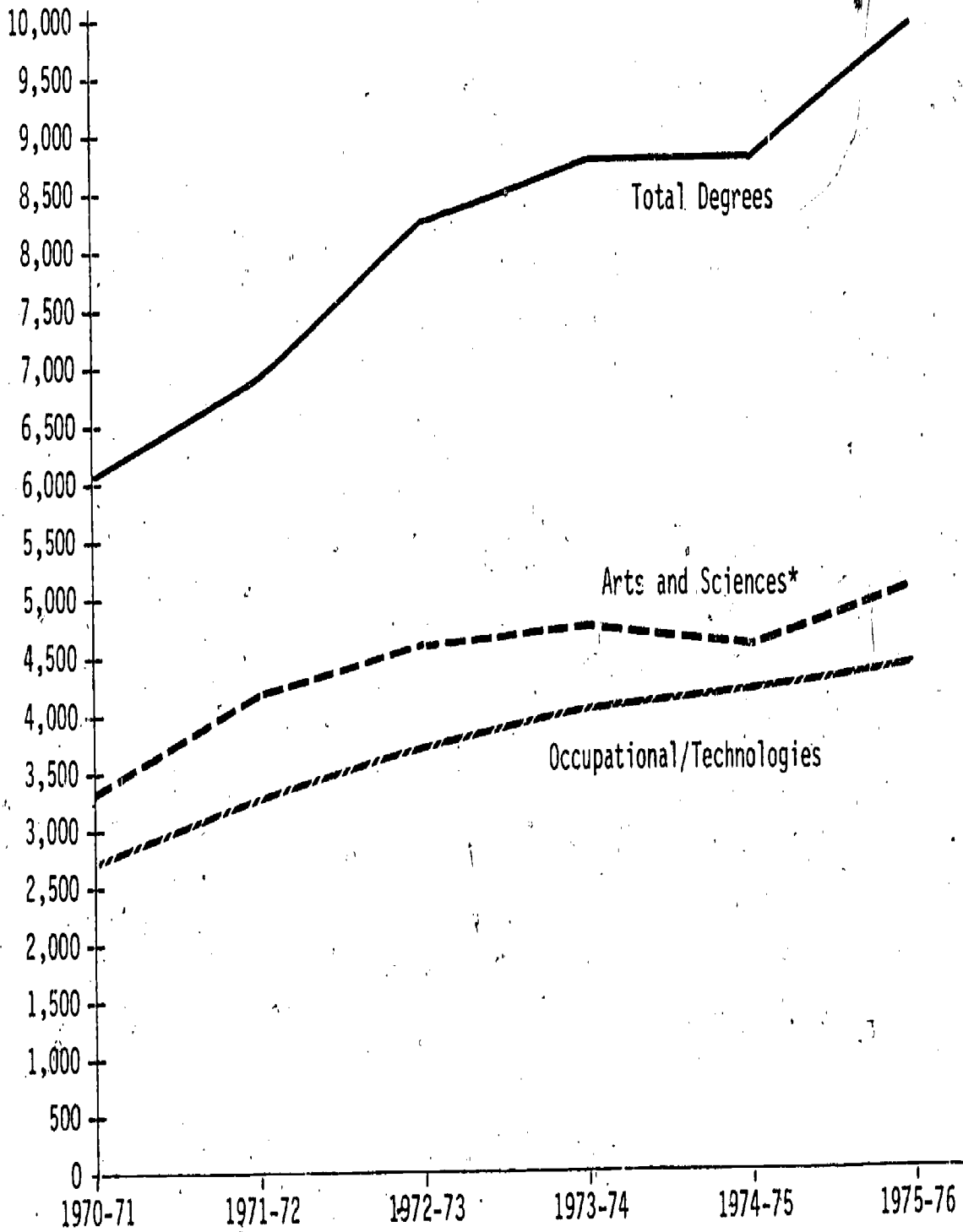
	<u>1970-71</u>	<u>1971-72</u>	<u>1972-73</u>	<u>1973-74</u>	<u>1974-75</u>	<u>1975-76</u>	<u>Increase/Decrease In The Past Six Years</u>
Arts & Sciences or General Programs Not Organized As Occupational Curriculums	3,378	4,191	4,585	4,769	4,565	5,111	+1,733
Data Processing Technologies	177	189	165	135	113	117	- 70
Health Service & Paramedical Technologies	622	805	860	987	1,095	1,190	+ 568
Mechanical & Engineering Technologies	833	880	815	943	968	1,174	+ 341
Natural Science Technologies	191	244	328	340	378	399	+ 208
Business & Commerce Technologies	571	683	865	860	955	1,198	+ 627
Public Service Related Technologies	316	474	653	745	675	780	+ 464
Total	<u>6,088</u>	<u>7,466</u>	<u>8,271</u>	<u>8,779</u>	<u>8,749</u>	<u>9,969</u>	<u>+3,881</u>

TABLE 4

A CHRONOLOGICAL COMPARISON: 1970/71 - 1975/76  
 ASSOCIATE DEGREES CONFERRED BY INSTITUTION  
 WASHINGTON COMMUNITY COLLEGES

	<u>1970-71</u>	<u>1971-72</u>	<u>1972-73</u>	<u>1973-74</u>	<u>1974-75</u>	<u>1975-76</u>	<u>Increase/Decrease in the Past Six Years</u>
Bellevue	160	259	376	420	460	531	+ 377
Big Bend	126	93	104	98	121	141	+ 15
Centralia	225	268	240	213	258	299	+ 74
Clark	382	336	314	317	288	317	- 65
Columbia Basin	281	314	359	316	345	332	+ 51
Edmonds	85	108	115	142	181	202	+ 117
Everett	352	528	528	550	539	569	+ 217
Ft. Steilacoom	66	199	315	385	408	572	+ 506
Grays Harbor	214	238	229	205	196	242	+ 28
Green River	449	462	454	429	409	447	- 2
Highline	371	482	579	560	608	744	+ 373
Lower Columbia	207	253	187	169	159	212	+ 5
Olympic	359	434	400	580	447	382	+ 23
Olympia Technical	-	28	51	41	44	82	+ 82
Peninsula	157	154	231	196	167	161	+ 4
Seattle Central	227	311	339	315	296	274	+ 47
North Seattle	79	191	318	376	379	337	+ 258
South Seattle	7	24	95	82	102	94	+ 87
Shoreline	483	560	593	675	649	658	+ 175
Skagit	167	195	242	272	237	236	+ 69
Spokane	348	361	367	600	549	784	+ 436
Spokane Falls	218	424	453	584	582	859	+ 641
Tacoma	419	517	504	495	525	594	+ 175
Walla Walla	195	204	253	222	200	258	+ 63
Wenatchee	192	237	253	224	281	310	+ 118
Whatcom	-	1	10	23	22	45	+ 45
Yakima	319	285	362	290	297	287	- 32
TOTAL	6,088	7,466	8,271	8,779	8,749	9,969	+3,881

CHART 1  
 ASSOCIATE DEGREES CONFERRED  
 1970/71 - 1975/76



\*Arts and Sciences or general programs not organized as occupational curriculums.

TABLE 5

ASSOCIATE DEGREES CONFERRED BY FIELD OF STUDY BY INSTITUTION  
WASHINGTON COMMUNITY COLLEGES  
1975-76

	Arts & Science		Data Processing		Health Services		Mechanical & Engineering		Natural Sciences		Business & Commerce		Public Services		Total	
	(1)	(2)	(1)	(2)	(1)	(2)	(1)	(2)	(1)	(2)	(1)	(2)	(1)	(2)	(1)	(2)
Bellevue	186	53	-	-	81	35	-	4	3	9	-	77	44	39	314	217
Big Bend	47	-	3	-	10	-	27	20	9	-	19	3	3	-	118	23
Centralia	206	-	-	9	2	-	-	22	-	17	7	21	-	15	215	84
Clark	142	-	-	3	-	74	-	42	-	6	-	29	-	21	142	175
Columbia Basin	151	-	-	8	-	38	-	72	-	7	-	29	-	27	151	181
Edmonds	71	15	-	-	-	-	-	10	-	6	-	15	-	85	71	131
Everett	237	83	-	3	-	94	-	46	1	5	9	44	2	45	249	320
Fort Steilacoom	253	20	-	5	43	24	-	1	-	-	16	165	20	25	332	240
Grays Harbor	148	-	4	-	1	-	-	20	13	-	56	-	-	-	222	20
Green River	208	28	-	-	-	31	-	65	-	27	-	51	-	37	208	239
Highline	342	21	-	18	1	73	5	51	3	33	10	105	-	82	361	383
Lower Columbia	86	-	8	-	23	-	-	63	2	-	8	9	13	-	140	72
Olympia Technical	2	-	6	-	13	-	12	21	-	5	16	7	-	-	49	33
Olympic	279	-	-	3	-	53	-	22	-	11	-	-	-	-	279	103
Peninsula	69	21	-	-	7	13	-	25	-	22	-	2	-	2	76	85
Seattle, Central	124	-	-	17	-	20	-	8	-	22	-	53	-	30	124	150
Seattle, North	97	-	-	10	-	27	-	73	-	-	-	34	-	96	97	240
Seattle, South	41	-	-	-	-	-	-	23	-	21	-	-	-	9	41	53
Shoreline	334	-	-	-	-	150	-	32	-	35	-	61	-	46	334	324
Skagit Valley	161	-	-	-	-	3	-	46	-	7	-	17	-	2	161	75
Spokane	154	-	-	13	-	61	-	328	-	105	-	78	-	45	154	630
Spokane Falls	688	-	-	-	-	-	-	-	-	-	-	154	-	17	688	171
Tacoma	291	89	-	2	-	103	-	28	-	1	-	48	-	32	291	303
Walla Walla	118	-	-	-	-	67	-	61	-	7	-	4	-	1	118	140
Wenatchee Valley	201	-	-	-	-	46	-	16	-	16	-	29	-	2	201	109
Whatcom	31	-	-	-	-	-	-	-	-	4	-	5	-	5	31	14
Yakima Valley	114	-	5	-	79	18	-	31	2	-	17	-	21	-	238	49
TOTAL	4781	330	26	91	260	930	44	1130	33	366	158	1040	103	677	5405	4564

(1) Work wholly or chiefly creditable toward a Bachelor's degree (Associate of Arts).

(2) Work not wholly or chiefly creditable toward a Bachelor's degree (Associate of Technical Arts).

TABLE 6

DEGREES CONFERRED BY ETHNIC/MINORITY  
WASHINGTON COMMUNITY COLLEGES  
1975-76

	Nonresident Alien		Black Non-Hispanic		American Indian Or Alaskan		Asian Or Pacific Island		Hispanic		White Non-Hispanic		Other	
	Men	Women	Men	Women	Men	Women	Men	Women	Men	Women	Men	Women	Men	Women
<u>BELLEVUE COMMUNITY COLLEGE</u>														
Associate of Technical Arts	1	4	5	1	1	2	1	4	1	0	99	98	0	0
Associate of Arts	0	4	3	1	0	4	1	2	1	1	106	191	0	0
<u>BIG BEND COMMUNITY COLLEGE</u>														
Associate of Technical Arts	0	0	0	0	0	0	0	0	2	0	21	0	0	0
Associate of Arts	6	7	0	0	0	0	0	0	7	0	69	29	0	0
<u>CENTRALIA COMMUNITY COLLEGE</u>														
Associate of Technical Arts	0	0	0	1	1	1	1	0	0	0	63	17	0	0
Associate of Arts	2	2	1	0	0	0	0	0	0	0	130	80	0	0
<u>CLARK COMMUNITY COLLEGE</u>														
Associate of Technical Arts	0	0	0	0	0	0	0	1	0	0	70	104	0	0
Associate of Arts	0	2	2	1	0	0	0	0	0	0	83	54	0	0
<u>COLUMBIA BASIN COMMUNITY COLLEGE</u>														
Associate of Technical Arts	0	0	0	0	0	0	0	0	0	0	120	61	0	0
Associate of Arts	0	0	0	0	0	0	0	0	0	0	65	86	0	0
<u>EDMONDS COMMUNITY COLLEGE</u>														
Associate of Technical Arts	0	0	0	0	0	0	0	0	1	0	77	53	0	0
Associate of Arts	0	0	0	0	0	0	1	0	0	0	40	30	0	0
<u>EVERETT COMMUNITY COLLEGE</u>														
Associate of Technical Arts	0	0	0	0	0	0	0	0	0	0	158	162	0	0
Associate of Arts	0	0	0	0	0	0	0	0	0	0	157	92	0	0
<u>FT. STELLACOOM COMMUNITY COLLEGE</u>														
Associate of Technical Arts	0	0	23	1	1	2	7	1	6	0	147	52	0	0
Associate of Arts	3	4	12	0	4	0	2	3	0	1	167	136	0	0
<u>GRAYS HARBOR COMMUNITY COLLEGE</u>														
Associate of Technical Arts	0	0	0	0	0	0	0	0	0	0	20	0	0	0
Associate of Arts	1	0	0	0	2	1	0	2	0	0	147	69	0	0

TABLE 6 continued

	Nonresident Alien		Black Non-Hispanic		American Indian 'Or Alaskan		Asian Or Pacific Island		Hispanic		White Non-Hispanic		Other	
	Men	Women	Men	Women	Men	Women	Men	Women	Men	Women	Men	Women	Men	Women
<u>GREEN RIVER COMMUNITY COLLEGE</u>														
Associate of Technical Arts	0	0	2	0	2	2	2	2	2	0	158	69	0	0
Associate of Arts	1	0	1	0	1	2	3	2	1	0	109	88	0	0
<u>HIGHLINE COMMUNITY COLLEGE</u>														
Associate of Technical Arts	2	0	3	3	0	1	3	2	0	0	178	191	0	0
Associate of Arts	5	2	1	1	1	1	6	1	0	0	171	172	0	0
<u>LOWER COLUMBIA COMMUNITY COLLEGE</u>														
Associate of Technical Arts	0	0	0	0	0	0	0	0	0	0	63	9	0	0
Associate of Arts	0	0	0	0	0	2	0	0	1	1	75	61	0	0
<u>OLYMPIA TECHNICAL COMMUNITY COLLEGE</u>														
Associate of Technical Arts	0	0	0	0	0	1	0	0	1	0	24	7	0	0
Associate of Arts	0	0	0	0	0	0	0	0	0	0	26	23	0	0
<u>OLYMPIC COMMUNITY COLLEGE</u>														
Associate of Technical Arts	0	0	0	0	0	0	0	0	0	0	51	52	0	0
Associate of Arts	0	0	0	0	0	0	0	0	0	0	202	77	0	0
<u>PENINSULA COMMUNITY COLLEGE</u>														
Associate of Technical Arts	0	0	0	0	2	3	0	0	0	0	61	19	0	0
Associate of Arts	2	1	0	0	2	0	0	0	0	0	27	44	0	0
<u>SEATTLE CENTRAL COMMUNITY COLLEGE</u>														
Associate of Technical Arts	8	2	7	12	1	1	5	5	1	2	65	34	6	1
Associate of Arts	6	8	9	9	0	0	7	4	3	2	35	32	3	6
<u>NORTH SEATTLE COMMUNITY COLLEGE</u>														
Associate of Technical Arts	0	1	7	0	1	0	5	2	0	1	134	89	0	0
Associate of Arts	0	1	1	0	0	0	0	0	0	0	44	51	0	0
<u>SOUTH SEATTLE COMMUNITY COLLEGE</u>														
Associate of Technical Arts	0	0	0	0	0	0	0	0	0	0	42	9	2	0
Associate of Arts	0	0	1	1	0	2	1	0	0	0	16	16	3	0
<u>SHORELINE COMMUNITY COLLEGE</u>														
Associate of Technical Arts	0	1	0	1	0	1	0	5	0	0	133	183	0	0
Associate of Arts	22	3	0	0	0	1	0	0	2	0	152	154	0	0

TABLE 6 continued

	Nonresident Alien		Black Non-Hispanic		American Indian Or Alaskan		Asian Or Pacific Island		Hispanic		White Non-Hispanic		Other	
	Men	Women	Men	Women	Men	Women	Men	Women	Men	Women	Men	Women	Men	Women
<u>SKAGIT VALLEY COLLEGE</u>														
Associate of Technical Arts	0	1	0	0	0	0	1	0	0	0	64	9	0	0
Associate of Arts	2	0	0	0	0	0	0	0	0	0	102	57	0	0
<u>SPOKANE COMMUNITY COLLEGE</u>														
Associate of Technical Arts	0	0	0	0	0	0	0	0	0	0	505	125	0	0
Associate of Arts	0	0	0	0	0	0	0	0	0	0	76	78	0	0
<u>SPOKANE FALLS COMMUNITY COLLEGE</u>														
Associate of Technical Arts	0	0	0	0	0	0	0	0	0	0	72	99	0	0
Associate of Arts	0	0	0	0	0	0	0	0	0	0	403	285	0	0
<u>TACOMA COMMUNITY COLLEGE</u>														
Associate of Technical Arts	3	0	19	9	1	3	2	2	1	0	134	129	0	0
Associate of Arts	0	1	14	7	1	0	1	0	5	0	165	97	0	0
<u>WALLA WALLA COMMUNITY COLLEGE</u>														
Associate of Technical Arts	0	0	0	0	0	0	0	0	0	0	69	71	0	0
Associate of Arts	0	0	0	0	0	0	0	0	0	0	88	30	0	0
<u>WENATCHEE COMMUNITY COLLEGE</u>														
Associate of Technical Arts	0	0	0	0	0	0	0	0	0	0	52	57	0	0
Associate of Arts	0	0	0	0	2	2	0	0	1	0	116	80	0	0
<u>WHATCOM COMMUNITY COLLEGE</u>														
Associate of Technical Arts	1	0	0	0	2	1	0	0	0	0	7	3	0	0
Associate of Arts	0	0	0	0	0	0	0	0	2	0	18	11	0	0
<u>YAKIMA COMMUNITY COLLEGE</u>														
Associate of Technical Arts	1	0	0	0	2	0	1	1	1	0	21	19	3	0
Associate of Arts	1	2	2	0	0	0	0	3	6	4	58	136	12	14
<u>TOTALS</u>														
Associate of Technical Arts	16	9	66	28	14	18	28	25	16	3	2608	1721	11	1
Associate of Arts	51	37	47	20	13	15	22	17	29	9	2847	2259	19	20

TOTAL DEGREES AWARDED

Associate of Technical Arts . . . 4564  
 Associate of Arts . . . . . 5405



## BACHELORS DEGREES

The number of bachelors degrees conferred has declined slightly in the past three years with the total for 1975-76 only 321 (1.9 percent) higher than the 1970-71 level.

As shown in Table 7, fields of study with the greatest numerical change during the six-year period covered in this report are as follows:

<u>Increases</u>	<u>Decreases</u>
Interdisciplinary Studies* (+785)	Social Science (-1,244)
Health Professions (+623)	Education (-712)
Public Affairs & Services (+620)	Letters (-673)
Biological Sciences (+389)	Engineering (-210)

If the above general changes were viewed by sex of the degree recipient (Table 8) the major exception to the general trend is that for men, communications would be on the list of major increases rather than health professions.

In the case of women, areas of major increase would include business and management rather than biological sciences. A greater decrease occurred in foreign language rather than engineering.

Degrees conferred to men have declined by 1.8 percent while 7.1 percent more degrees have been conferred to women at the baccalaureate level since 1970-71.

Chart 2 historically illustrates both the bachelors degrees conferred in total and by sex of the recipient.

\*The Evergreen State College accounts for 583 of the increase in this area.



Table 9 shows a chronological comparison of bachelors degrees by institution, while Table 10 indicates the 1975-76 degrees conferred by field of study and by institution. Both the public and private sector experienced a net increase in degrees awarded relative to 1970-71. In the public sector, the three older state colleges awarded substantially fewer bachelors degrees than in 1970-71. At Eastern Washington State College and Western Washington State College the decline was 11.0 percent and 12.2 percent respectively, while at Central Washington State College 32.5 percent fewer bachelor degrees were awarded in 1975-76 than in 1970-71. The 2.1 percent net increase for the public institutions is primarily attributable to the emergence of The Evergreen State College coupled with increases at the University of Washington (5.1 percent) and Washington State University (17.0 percent).

In the private sector, the 1.4 percent net increase was the result of modest increases at half of the institutions offset by similar decreases at the other half. Numerically, the University of Puget Sound experienced the greatest increase (+95) and Seattle University the greatest decrease (-108).

A CHRONOLOGICAL COMPARISON: 1970/71 - 1975/76  
 BACHELOR'S DEGREES CONFERRED BY FIELD OF STUDY  
 ALL WASHINGTON FOUR-YEAR COLLEGES AND UNIVERSITIES

	<u>1970-71</u>	<u>1971-72</u>	<u>1972-73</u>	<u>1973-74</u>	<u>1974-75</u>	<u>1975-76</u>	Increase or Decrease in the Past 5 <sup>1</sup> / <sub>2</sub> Years*
Agriculture & Natural Resources	298.0	299.0	346.0	396.0	433.0	449.0	+ 151
Architecture & Environment Design	298.0	318.0	372.0	353.0	327.5	317.0	+ 19
Area Studies	11.5	37.0	27.5	39.0	31.5	29.0	+ 17
Biological Sciences	596.0	675.5	772.0	847.8	874.5	985.0	+ 389
Business & Management	2,108.0	2,146.0	2,128.5	2,228.0	2,248.0	2,289.0	+ 181
Communications	309.0	311.0	312.5	370.0	455.0	482.0	+ 173
Computer & Information Sciences	9.0	23.0	29.0	39.0	39.0	34.0	+ 25
Education	2,576.5	2,793.0	2,534.0	2,160.8	1,987.0	1,865.0	- 712
Engineering	917.0	832.0	843.5	846.5	707.0	707.0	- 210
Fine & Applied Arts	593.8	648.5	730.0	730.0	781.5	776.0	+ 182
Foreign Languages	432.3	365.5	325.5	328.0	280.5	274.0	- 158
Health Professions	723.0	788.5	835.5	1,125.5	1,246.5	1,346.0	+ 623
Home Economics	234.5	289.5	276.0	339.5	421.5	385.0	+ 150
Law	--	--	--	--	--	--	--
Letters	1,609.0	1,484.3	1,265.5	1,160.8	1,028.5	936.0	- 673
Library Science	1.0	--	--	--	--	--	- 1
Mathematics	330.0	334.0	298.5	297.0	249.0	259.0	- 71
Military Sciences	2.0	3.5	3.0	2.0	15.5	33.0	+ 31
Physical Science	484.5	524.5	489.0	432.5	457.0	450.0	- 35
Psychology	850.0	1,015.0	901.8	1,008.3	973.0	887.0	+ 37
Public Affairs & Services	206.5	329.5	526.5	624.5	691.5	827.0	+ 620
Social Sciences	3,509.8	3,532.7	3,118.3	2,854.8	2,531.0	2,266.0	-1,244
Theology	76.0	97.0	82.0	111.0	95.5	115.0	+ 39
Interdisciplinary Studies	381.5	437.0	653.3	884.0	1,051.5	1,167.0	+ 785
Total	16,557.0	17,284.0	16,880.0	17,178.0	16,925.0	16,878.0	+ 321

\*Rounded.

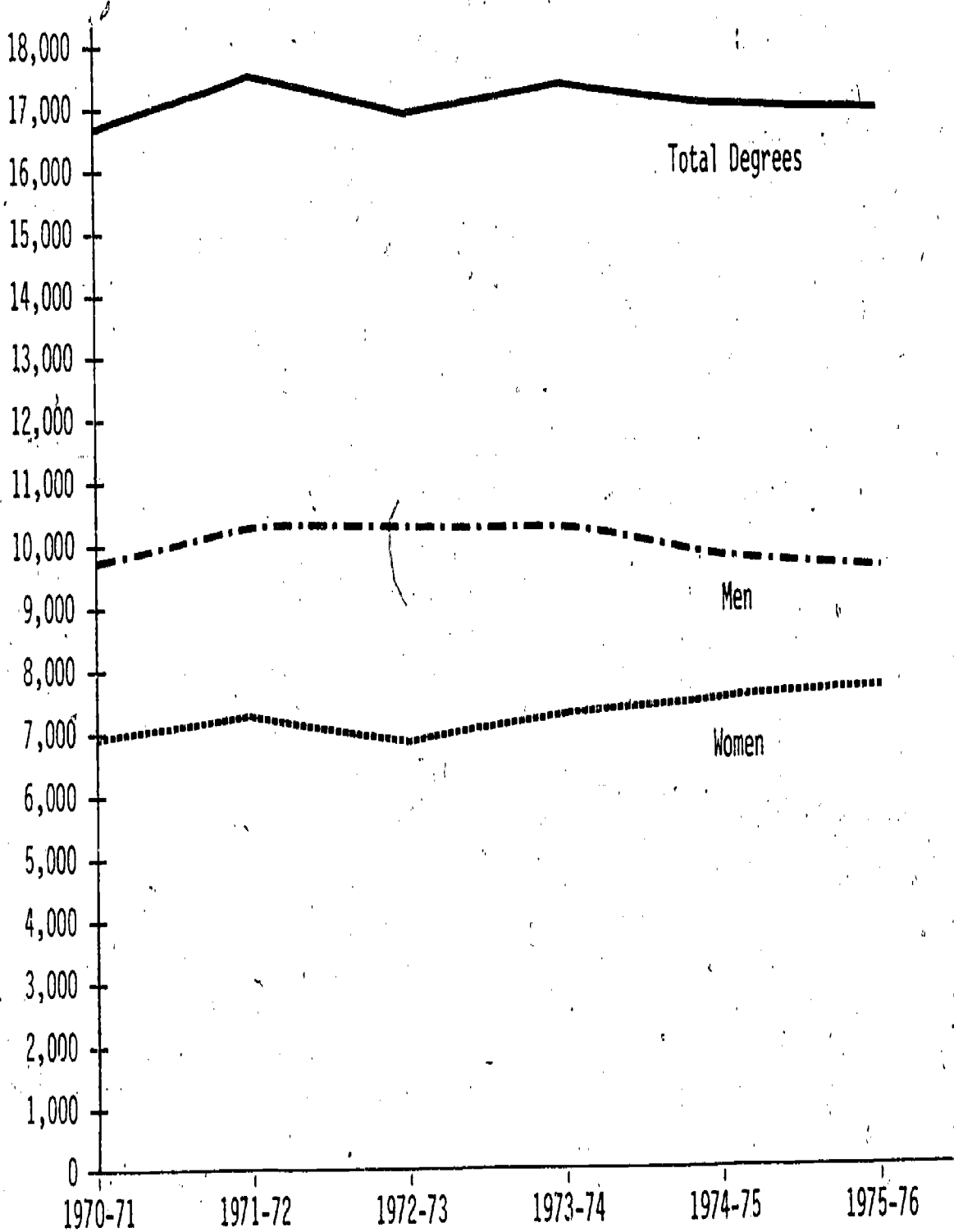
TABLE 8

A COMPARISON: 1970/71 - 1975/76  
 BACHELOR'S DEGREES CONFERRED BY FIELD OF STUDY AND SEX

	1970/71		1975/76		Increase/Decrease in the Past Six Years	
	Men	Women	Men	Women	Men	Women
	Agriculture & Natural Resources	278.0	20.0	361.0	88.0	+ 83.0
Architecture & Environmental Design	269.0	29.0	273.0	44.0	+ 4.0	+ 15.0
Area Studies	5.5	6.0	15.0	14.0	+ 9.5	+ 8.0
Biological Sciences	420.5	175.5	654.0	331.0	+233.5	+155.5
Business & Management	1,929.0	179.0	1,828.0	461.0	-101.0	+282.0
Communications	194.0	115.0	305.0	177.0	+111.0	+ 62.0
Computer & Information Sciences	8.0	1.0	33.0	1.0	+ 25.0	-
Education	840.5	1,736.0	710.0	1,155.0	-130.5	-581.0
Engineering	906.5	10.5	679.0	28.0	-227.5	+ 17.5
Fine & Applied Arts	250.0	343.8	338.0	438.0	+ 88.0	+ 94.2
Foreign Languages	112.5	319.8	74.0	200.0	- 38.5	-119.8
Health Professions	164.0	559.0	240.0	1,106.0	+ 76.0	+547.0
Home Economics	2.0	232.5	8.0	377.0	+ 6.0	+144.5
Letters	584.5	1,024.5	428.0	508.0	-156.5	-516.5
Library	-	1.0	-	-	-	- 1.0
Mathematics	215.0	115.0	189.0	70.0	- 26.0	- 45.0
Military Sciences	2.0	-	32.0	1.0	+ 30.0	+ 1.0
Physical Sciences	434.5	50.0	374.0	76.0	- 60.5	+ 26.0
Psychology	467.5	382.5	407.0	480.0	- 60.5	+ 97.5
Public Affairs & Services	115.5	91.0	447.0	380.0	+331.5	+289.0
Social Sciences	2,143.0	1,366.8	1,342.0	924.0	-801.0	-442.8
Theology	59.0	17.0	90.0	25.0	+ 31.0	+ 8.0
Interdisciplinary Studies	228.5	153.0	629.0	538.0	+400.5	+385.0
TOTAL	9,629.0	6,928.0	9,456.0	7,422.0	-173.0	+494.0

# BACHELORS DEGREES CONFERRED

1970/71 - 1975/76



-20-

39

40

TABLE 9

A CHRONOLOGICAL COMPARISON: 1970/71 - 1975/76  
 BACHELOR'S DEGREES CONFERRED BY INSTITUTION

	<u>1970-71</u>	<u>1971-72</u>	<u>1972-73</u>	<u>1973-74</u>	<u>1974-75</u>	<u>1975-76</u>	Increase/Decrease in the Past Six Years
University of Washington	5,572	5,786	5,847	5,802	5,793	5,857	+285
Washington State University	2,279	2,427	2,633	2,841	2,748	2,666	+387
Central Washington State College	1,930	2,018	1,737	1,673	1,414	1,303	-627
Eastern Washington State College	1,376	1,553	1,265	1,169	1,120	1,224	-152
The Evergreen State College	--	24	211	372	538	583	+583
Western Washington State College	1,698	1,774	1,615	1,561	1,410	1,490	-208
Subtotal	12,855	13,582	13,308	13,418	13,023	13,123	+268
Fort Wright College	45	52	46	44	52	61	+ 16
Gonzaga University	407	424	369	355	323	348	- 59
Northwest College	24	55	48	64	50	75	+ 51
Pacific Lutheran University	578	530	534	631	576	557	- 21
St. Martin's College	131	129	169	180	225	177	+ 46
Seattle Pacific College	420	379	392	400	431	401	- 19
Seattle University	706	703	577	607	564	598	-108
Sulpician Seminary	10	12	10	5	9	2	- 8
University of Puget Sound	670	693	757	752	869	755	+ 95
Walla Walla College	266	288	286	295	307	316	+ 50
Whitman College	214	204	195	228	215	210	- 4
Whitworth College	231	233	189	199	281	245	+ 14
Subtotal	3,702	3,702	3,572	3,760	3,902	3,755	+ 53
TOTAL	16,557	17,284	16,880	17,178	16,925	16,878	+321

TABLE 10

BACHELOR'S DEGREES CONFERRED BY FIELD OF STUDY BY INSTITUTION  
1975-76

	UW	WSU	CWSC	EWSC	TESC	WASC	Fort Wright	Conzaga	Northwest	PU	Saint Martin's	SPC	SU	Subicjan	UPS	Walla Walla	Whitman	Whitworth	Totals
Agriculture & Natural Resources	180	260									1								449
Architecture & Environmental Design	185	109		15		8													317
Area Studies	22	4				1		2											29
Biological Sciences	397	219	47	47		56	5	35		31	5	25	26		35	13	34	10	985
Business & Management	786	358	226	198		127		63		87	32	32	107		227	27		19	2,289
Communications	194	129	17	32		67		13				1	11		8	6		4	482
Computer & Information Sciences		25				9													34
Education	217	294	476	207		296				116	14	48	56		76	48		17	1,865
Engineering	430	137	9	10		41		25		2	19		18			16			707
Fine & Applied Arts	308	88	55	41		58	15	13		52		36	10		39	3	25	13	776
Foreign Languages	137	23	19	14		13	2	6		10		6	22		8	3	7	4	274
Health Professions	498	188	19	129		38	7	9		94		49	95		74	129		17	1,346
Home Economics	222	92	53	30		45						20			7	8		8	385
Law																			
Letters	396	90	36	63		82	5	56		25	6	53	26	1	38	1	34	24	936
Library Science																			
Mathematics	121	15	20	15		25		10		5	3	14	2		10	2	9	8	259
Military Sciences			31	1									1						33
Physical Sciences	211	32	12	34		44	2	11		22	1	15	4		32	7	15	8	450
Psychology	361	63	48	112		89	4	33		19	34	35	22		32	9	18	8	887
Public Affairs & Services	125	140	65	110		149				26	9	2	118		72	11			827
Social Sciences	975	242	159	145		209	6	70		68	51	53	53	1	103	5	68	50	2,266
Theology									75			12				28			115
Interdisciplinary Studies	141	158	11	21	583	133	15	2			3		27		4			47	1,167
TOTAL	5,257	2,666	1,301	1,224	583	1,490	61	348	75	557	177	401	598	2	765	316	210	245	16,878

123

43

4

## MASTERS DEGREES

Total masters degrees conferred (Table 11) have increased 11.5 percent over the 1970-71 level. All fields of study have shown some fluctuation, with the greatest numeric increase in health sciences (+107) and the greatest decrease in physical sciences (-51).

The most significant changes in masters degrees conferred are indicated on Table 12. While there has been only a slight decrease in degrees conferred to men (1.0 percent), degrees to women have increased 34.8 percent. In 1975-76, women received 42.0 percent of the masters degrees conferred.

In eight fields of study, degrees awarded to women have increased while decreasing numbers were awarded to men. In only two fields was the situation reversed.

Chart 3 illustrates historically the masters degrees conferred in total and by sex of the recipient.

Table 13 chronologically summarizes the degrees by institution. In the public sector, decreases at both the University of Washington (7.7 percent) and Central Washington State College (10.8 percent) have resulted in a net reduction of masters degrees when compared to the 1970-71 levels. In the private sector, however, a net increase of 69.6 percent has been experienced since 1970-71 primarily the result of the growth of graduate programs at Pacific Lutheran University, Seattle University and the University of Puget Sound.

Table 14 displays the 1975-76 degrees by field of study and by institution.

TABLE 11

A CHRONOLOGICAL COMPARISON: 1970/71 - 1975/76  
 MASTER'S DEGREES CONFERRED BY FIELD OF STUDY  
 ALL WASHINGTON FOUR-YEAR COLLEGES AND UNIVERSITIES

	<u>1970-71</u>	<u>1971-72</u>	<u>1972-73</u>	<u>1973-74</u>	<u>1974-75</u>	<u>1975-76</u>	<u>Increase/Decrease in the Past Six Years</u>
Agriculture & Natural Resources	84	90	69	75	107	98	+ 14
Architecture & Environment Design	66	51	53	48	43	62	- 4
Area Studies	15	15	12	15	16	17	+ 2
Biological Sciences	92	90	113	129	105	88	- 4
Business & Management	370	378	335	342	336	419	+ 49
Communications	11	4	10	5	7	17	+ 6
Computer & Information Sciences	17	35	28	24	29	26	+ 9
Education	1,012	1,002	996	1,054	1,074	1,110	+ 98
Engineering	244	233	248	205	205	223	- 21
Fine & Applied Arts	150	140	134	135	131	134	- 16
Foreign Languages	76	74	77	62	57	59	- 17
Health Professions	139	133	179	212	212	246	+107
Home Economics	26	27	15	28	17	24	- 2
Law	5	6	10	12	7	18	+ 13
Letters	214	192	180	206	183	194	- 20
Library Science	171	156	133	142	121	140	- 31
Mathematics	75	77	66	47	43	41	- 34
Military Sciences	--	--	--	--	--	--	--
Physical Science	122	117	106	95	84	71	- 51
Psychology	67	85	76	113	127	137	+ 70
Public Affairs & Services	204	197	197	239	261	278	+ 74
Social Sciences	244	245	215	247	325	305	+ 61
Theology	11	50	77	95	82	104	+ 93
Interdisciplinary Studies	12	5	8	6	44	9	- 3
<b>TOTAL</b>	<u>3,427</u>	<u>3,402</u>	<u>3,337</u>	<u>3,536</u>	<u>3,616</u>	<u>3,820</u>	<u>+393</u>



TABLE 12

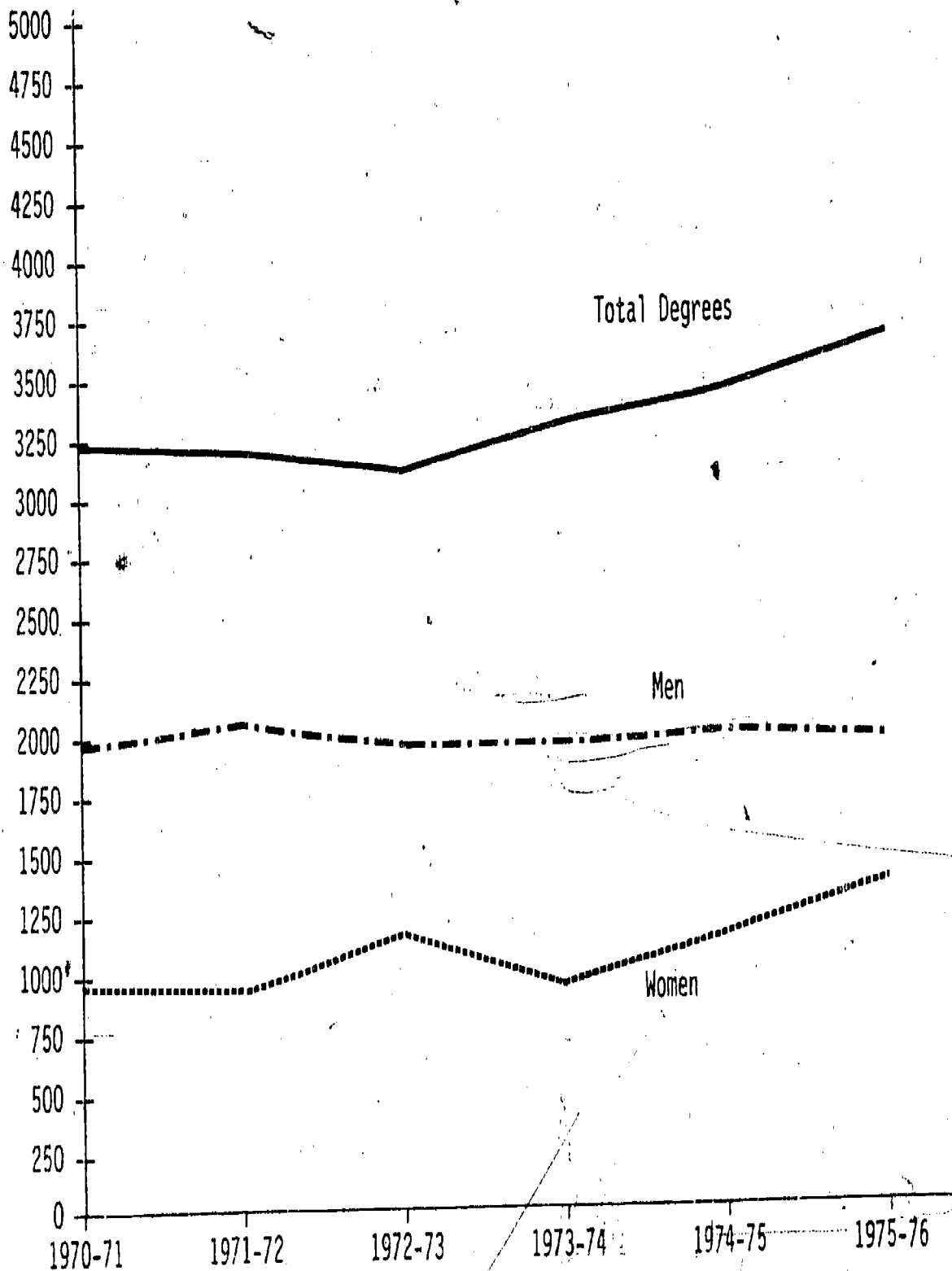
A COMPARISON: 1970/71 - 1975/76  
 MASTER'S DEGREES CONFERRED BY FIELD OF STUDY AND SEX

	1970/71		1975/76		Increase/Decrease In The Past Six Years	
	Men	Women	Men	Women	Men	Women
Agriculture & Natural Resources	73	11	85	13	+12	+ 2
Architecture & Environmental Design	60	6	52	10	- 8	+ 4
Area Studies	13	2	13	4	--	+ 2
Biological Sciences	69	23	62	26	- 7	+ 3
Business & Management	359	11	350	69	- 9	+58
Communications	9	2	7	10	- 2	+ 8
Computer & Information Sciences	13	4	20	6	+ 7	+ 2
Education	593	419	506	603	-87	+184
Engineering	243	1	214	9	-29	+ 8
Fine & Applied Arts	84	66	67	67	-17	+ 1
Foreign Languages	29	47	21	38	- 8	- 9
Health Professions	30	109	71	176	+41	+67
Home Economics	1	25	5	19	+ 4	- 6
Law	5	--	15	3	+10	+ 3
Letters	109	105	94	100	-15	- 5
Library Science	26	145	25	115	- 1	-30
Mathematics	58	17	33	8	-25	- 9
Physical Sciences	103	19	56	15	-47	- 4
Psychology	50	17	91	46	+41	+29
Public Affairs & Services	112	92	151	127	+39	+35
Social Sciences	183	61	247	58	+64	- 3
Theology	5	6	26	78	+21	+72
Interdisciplinary Studies	9	3	3	6	- 6	+ 3
TOTAL	2,236	1,191	2,214	1,606	-22	+415

CHART 3

MASTERS DEGREES CONFERRED

1970/71 - 1975/76



-26-

50

TABLE 13

A CHRONOLOGICAL COMPARISON: 1970/71 - 1975/76  
 MASTER'S DEGREES CONFERRED BY INSTITUTION

	<u>1970-71</u>	<u>1971-72</u>	<u>1972-73</u>	<u>1973-74</u>	<u>1974-75</u>	<u>1975-76</u>	<u>Increase/Decrease in the Past Six Years</u>
University of Washington	1,866	1,705	1,617	1,717	1,633	1,722	- 144
Washington State University	356	368	401	398	419	435	+ 79
Central Washington State College	240	238	246	215	208	214	- 26
Eastern Washington State College	151	149	168	149	154	183	+ 32
The Evergreen State College	--	--	--	--	--	--	--
Western Washington State College	226	295	245	259	264	269	+ 43
Subtotal	<u>2,839</u>	<u>2,755</u>	<u>2,677</u>	<u>2,738</u>	<u>2,678</u>	<u>2,823</u>	- 16
Fort Wright College	19	18	13	25	22	7	- 12
Gonzaga University	58	67	68	97	116	75	+ 17
Northwest College	--	--	--	--	--	--	--
Pacific Lutheran University	97	100	120	171	252	267	+ 170
St. Martin's College	--	--	--	--	--	--	--
Seattle Pacific College	29	60	51	41	43	33	+ 4
Seattle University	189	226	237	271	230	313	+ 124
Sulpician Seminary	--	1	3	1	2	4	+ 4
University of Puget Sound	94	84	97	119	167	198	+ 104
Walla Walla College	23	22	15	25	15	16	- 7
Whitman College	--	--	--	--	--	--	--
* Whitworth College	79	69	56	48	91	84	+ 5
Subtotal	<u>588</u>	<u>647</u>	<u>660</u>	<u>798</u>	<u>938</u>	<u>997</u>	+ 409
TOTAL	3,427	3,402	3,337	3,536	3,616	3,820	+ 393

TABLE 14

MASTER'S DEGREES CONFERRED BY FIELD OF STUDY BY INSTITUTION  
1975-76

	UW	WSU	CWSC	EWSC	WWSC	Fort Wright	Gonzaga	PLU	SPC	SU	Sulpician	UPS	Walla Walla	Whitworth	total
Agriculture & Natural Resources	61	37	-	-	-	-	-	-	-	-	-	-	-	-	98
Architecture & Environmental Design	62	-	-	-	-	-	-	-	-	-	-	-	-	-	62
Area Studies	17	-	-	-	-	-	-	-	-	-	-	-	-	-	17
Biological Sciences	26	48	3	6	2	-	-	1	-	-	-	-	2	-	88
Business & Management	164	28	-	24	-	-	24	32	-	64	-	83	-	-	419
Communications	17	-	-	-	-	-	-	-	-	-	-	-	-	-	17
Computer & Information Sciences	11	15	-	-	-	-	-	-	-	-	-	-	-	-	26
Education	297	78	136	81	160	-	38	56	27	111	-	49	14	62	1,109
Engineering	175	47	-	-	-	-	-	-	-	1	-	-	-	-	223
Fine & Applied Arts	60	17	20	13	6	-	-	9	-	-	-	9	-	-	134
Foreign Languages	44	7	-	3	5	-	-	-	-	-	-	-	-	-	59
Health Professions	215	11	-	16	-	-	-	-	-	-	-	4	-	1	247
Home Economics	5	16	3	-	-	-	-	-	-	-	-	-	-	-	24
Law	18	-	-	-	-	-	-	-	-	-	-	-	-	-	18
Letters	70	26	9	13	42	-	8	2	6	11	-	3	-	4	194
Library Science	140	-	-	-	-	-	-	-	-	-	-	-	-	-	140
Mathematics	18	11	6	-	6	-	-	-	-	-	-	-	-	-	41
Military Science	-	-	-	-	-	-	-	-	-	-	-	-	-	-	-
Physical Sciences	46	13	-	3	8	-	-	1	-	-	-	-	-	-	71
Psychology	15	23	25	18	20	-	-	20	-	-	-	-	-	16	137
Public Affairs & Services	187	10	-	-	-	-	-	1	-	30	-	50	-	-	278
Social Sciences	74	48	3	6	20	-	5	145	-	3	-	-	-	1	305
Theology	-	-	-	-	-	7	-	-	-	93	4	-	-	-	104
Interdisciplinary Studies	-	-	9	-	-	-	-	-	-	-	-	-	-	-	9
TOTAL	1,722	435	214	183	269	7	75	267	33	313	4	198	16	84	3,820

## DOCTORAL AND FIRST PROFESSIONAL DEGREES

Doctoral degrees conferred (Table 15) in 1975-76 indicate a 10.8 percent decline over the 1970-71 level. Engineering, letters and physical science are the fields of greatest decline while health professions shows the greatest increase.

Although there was a net decrease of 10.8 percent, Table 16 indicates doctoral degrees awarded to men decreased by 17.3 percent while women recipients showed a 35.2 percent increase. The percentage of total doctorates awarded to women has increased from 12.4 percent in 1970-71 to 18.8 percent in 1975-76. The major areas of increase have been in the biological sciences and the social sciences.

Chart 4 illustrates historically the doctoral degrees conferred in total and by sex of the recipient.

Table 17 shows the chronological comparison of first professional degrees conferred by field of study for the past six years. All categories show increased numbers of degrees conferred.

Table 18 indicates a slight decrease in medical degrees to men (-2) and an increase in degrees to women (+12). In the field of dentistry, the first woman graduate was reported during 1975-76.

Although men still command the greatest percentage of first professional degrees (87.7 percent), degrees conferred to women have increased from 6.7 percent (1970-71) to 14.3 percent in 1975-76.

Chart 5 illustrates historically the first professional degrees conferred in total and by sex of the recipient.

Table 19 summarizes both the doctoral and professional degrees conferred since 1970-71 by institution. Doctoral degrees awarded by the

University of Washington have declined 15.5 percent from the 1970-71 level while increasing slightly (3.5 percent) at Washington State University.

While both the University of Washington and Washington State University have shown an approximate 23 percent increase in first professional degrees awarded, the most substantial increases have been in the law degrees awarded at the private universities. The University of Puget Sound awarded 223 degrees in their program that began in 1972 and Gonzaga experienced an increase of 265 over their 1970-71 level.

Table 20 shows the 1975-76 doctoral and professional degrees by field of study and by institution.

TABLE 15

A CHRONOLOGICAL COMPARISON: 1970/71 - 1975/76  
 DOCTORAL DEGREES CONFERRED BY FIELD OF STUDY  
 ALL WASHINGTON FOUR-YEAR COLLEGES AND UNIVERSITIES\*

	<u>1970-71</u>	<u>1971-72</u>	<u>1972-73</u>	<u>1973-74</u>	<u>1974-75</u>	<u>1975-76</u>	<u>Increase/Decrease in the Past Six Years</u>
Agriculture & Natural Resources	34	36	38	32	34	36	+ 2
Architecture & Environment Design	1	3	4	7	4	2	+ 1
Area Studies	1	2	1	2	1	2	+ 1
Biological Sciences	68	68	96	59	77	66	- 2
Business & Management	9	8	20	14	11	17	+ 8
Communications	2	1	--	2	1	4	+ 2
Computer & Information Sciences	3	8	11	7	4	5	+ 2
Education	65	83	59	70	68	62	- 3
Engineering	72	44	56	54	42	40	-32
Fine & Applied Arts	15	8	8	8	9	17	+ 2
Foreign Languages	13	17	18	18	19	16	+ 3
Health Professions	8	11	10	13	10	18	+10
Home Economics	--	--	--	--	--	--	--
Law	--	--	--	--	--	1	+ 1
Letters	53	33	51	45	44	31	-22
Library Science	--	--	--	--	--	--	--
Mathematics	13	15	22	19	12	11	- 2
Military Sciences	--	--	--	--	--	--	--
Physical Sciences	90	70	75	60	62	61	-29
Psychology	37	30	40	31	42	34	- 3
Public Affairs & Services	--	--	--	--	--	--	--
Social Sciences	89	98	99	88	97	85	- 4
Theology	--	--	--	--	--	--	--
Interdisciplinary Studies	1	6	5	9	2	4	+ 3
TOTAL	574	541	613	538	539	512	-62

\*Only the University of Washington and Washington State University offer the doctorate.

TABLE 16

A COMPARISON: 1970/71 - 1975/76  
DOCTORAL DEGREES CONFERRED BY FIELD OF STUDY AND SEX

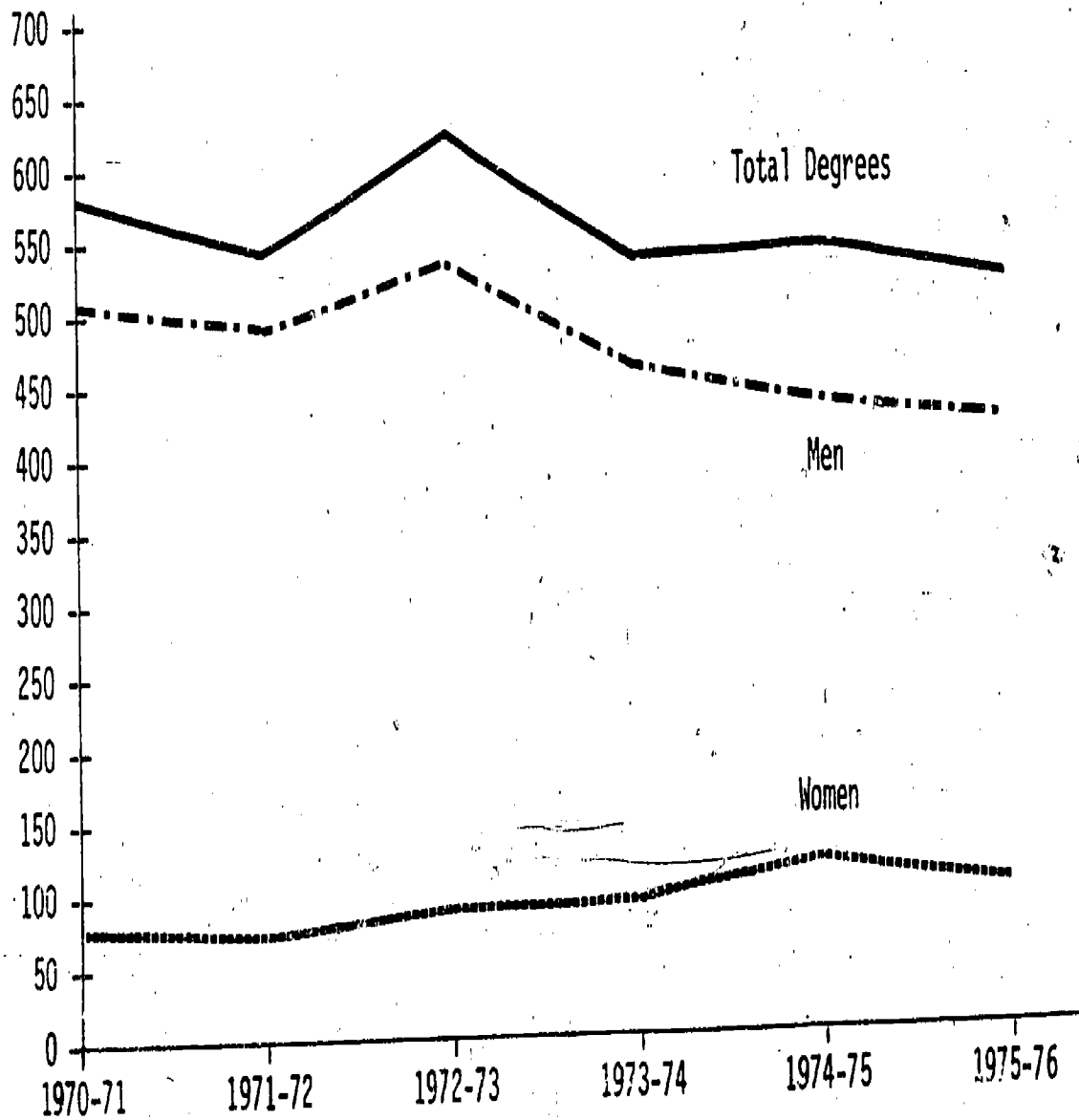
	1970-71		1975-76		Increase/Decrease In The Past Six Years	
	Men	Women	Men	Women	Men	Women
Agriculture & Natural Resources	34	-	33	3	- 1	+ 3
Architecture & Environmental Design	1	-	2	-	+ 1	-
Area Studies	1	-	1	1	-	+ 1
Biological Sciences	59	9	50	16	- 9	+ 7
Business & Management	9	-	17	-	+ 8	-
Communications	2	-	4	-	+ 2	-
Computer and Information Sciences	3	-	5	-	+ 2	-
Education	54	11	48	14	- 6	+ 3
Engineering	72	-	39	1	-33	+ 1
Fine & Applied Arts	6	9	10	7	+ 4	- 2
Foreign Languages	5	8	7	9	+ 2	+ 1
Health Professions	8	-	17	1	+ 9	+ 1
Law		-	1	-	+ 1	-
Letters		13	26	5	-14	- 8
Mathematics	11	2	11	-	-	- 2
Physical Sciences	89	1	54	7	-35	+ 6
Psychology	26	11	21	13	- 5	+ 2
Social Sciences	82	7	68	17	-14	+10
Interdisciplinary Studies	1	-	2	2	+ 1	+ 2
TOTAL	503	71	416	96	-87	+25



CHART 4

DOCTORAL DEGREES CONFERRED

1970/71 - 1975/76



-33-

A CHRONOLOGICAL COMPARISON: 1970/71 - 1975/76  
 FIRST PROFESSIONAL DEGREES CONFERRED BY FIELD OF STUDY  
 ALL WASHINGTON FOUR-YEAR COLLEGES AND UNIVERSITIES

	<u>1970-71</u>	<u>1971-72</u>	<u>1972-73</u>	<u>1973-74</u>	<u>1974-75</u>	<u>1975-76</u>	<u>Increase/Decrease in the Past Six Years</u>
Dentistry (UW)	77	69	78	81	84	89	+ 12
Medicine (UW)	107	97	98	120	101	117	+ 10
Veterinary Medicine (WSU)	52	44	61	60	57	64	+ 12
Law (UW, Gonzaga U, UPS)	148	164	260	278	558	681	+533
Theology (Sulpician)	<u>3</u>	<u>3</u>	<u>17</u>	<u>9</u>	<u>4</u>	<u>8</u>	<u>+ 5</u>
Total	387	377	514	548	804	959	+572

TABLE 18

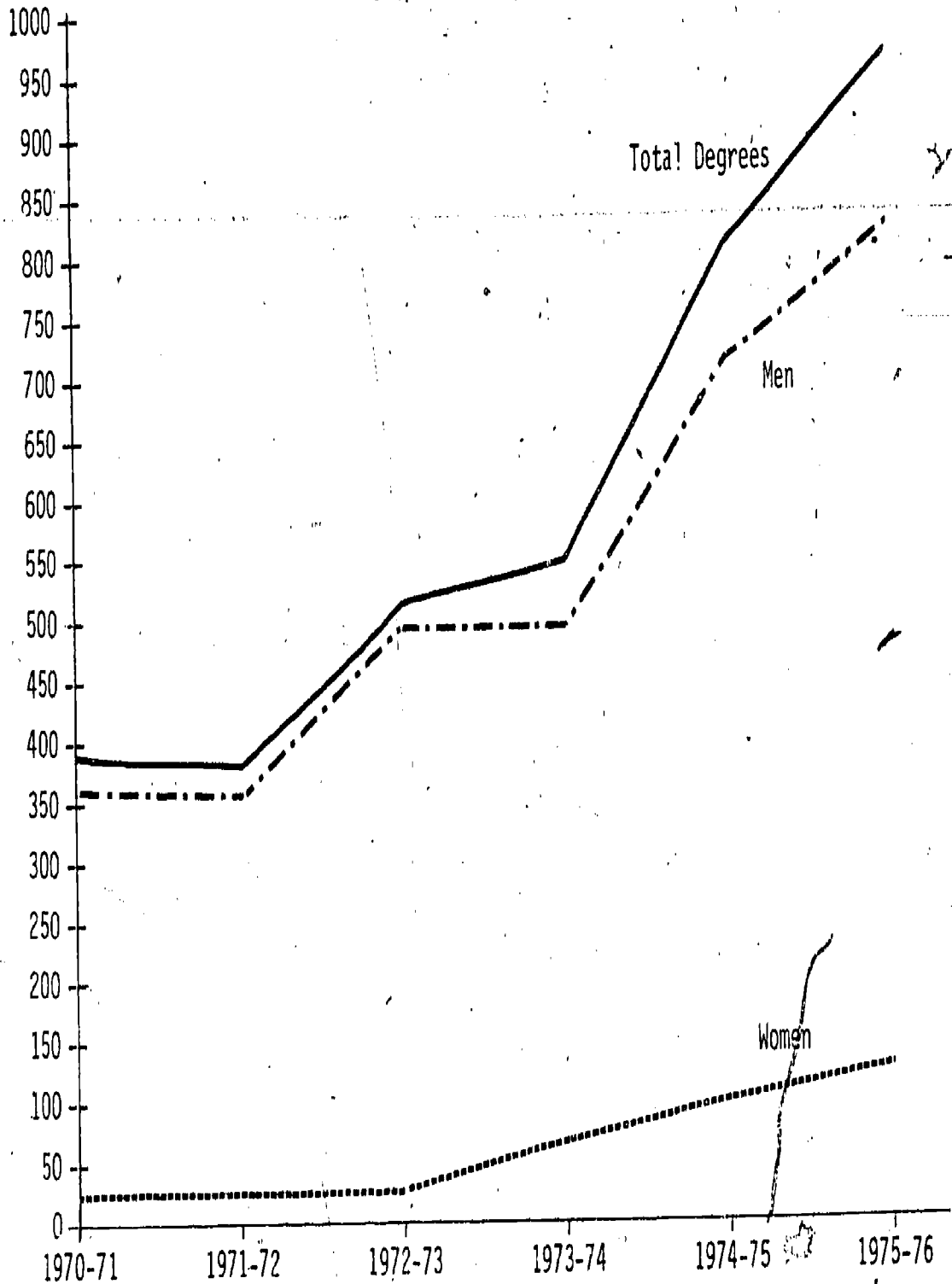
A COMPARISON: 1970/71 - 1975/76  
 FIRST PROFESSIONAL DEGREES CONFERRED BY FIELD OF STUDY AND SEX.

	1970-71		1975-76		Increase/Decrease In The Past Six Years	
	Men	Women	Men	Women	Men	Women
Dentistry	77	-	88	1	+ 11	+ 1
Medicine	99	8	97	20	- 2	+ 12
Veterinary Medicine	45	7	51	13	+ 6	+ 6
Law	137	11	578	103	+441	+ 92
Theology	3	-	8	-	+ 5	-
Total	<u>361</u>	<u>26</u>	<u>822</u>	<u>137</u>	<u>+461</u>	<u>+111</u>

CHART 5

FIRST PROFESSIONAL DEGREES CONFERRED

1970/71 - 1975/76



-36-

68

69

TABLE 19

A CHRONOLOGICAL COMPARISON: 1970/71 - 1975/76  
DOCTORAL AND FIRST PROFESSIONAL DEGREES CONFERRED BY INSTITUTION

	1970-71	1971-72	1972-73	1973-74	1974-75	1975-76	Increase/Decrease In the Past Six Years
<u>Doctoral Degrees</u>							
University of Washington	432	379	446	382	386	365	- 67
Washington State University	142	162	167	156	153	147	+ 5
TOTAL	574	541	613	538	539	512	- 62
<u>First Professional Degrees</u>							
University of Washington	297	293	331	333	325	364	+ 67
Washington State University	52	44	61	60	57	64	+ 12
Subtotal	349	337	392	393	382	428	+ 79
Gonzaga University	35	37	105	146	235	300	+ 265
Sulpician Seminary	3	3	17	9	4	8	+ 5
University of Puget Sound	-	-	-	-	183	223	+ 223
Subtotal	38	40	122	155	422	531	+ 493
TOTAL	387	377	514	548	804	959	+ 572

-37-

TABLE 20

## DOCTORAL AND FIRST PROFESSIONAL DEGREES CONFERRED BY INSTITUTION

	University Of Washington	Washington State University	Gonzaga University	Sulpician Seminary	University Of Puget Sound	Total
<u>Doctoral Degrees</u>						
Agriculture & Natural Resources	21	15				36
Architecture & Environmental Design	2	-				2
Area Studies	-	2				2
Biological Sciences	47	19				66
Business & Management	17	-				17
Communications	4	-				4
Computer & Information Sciences	2	3				5
Education	34	28				62
Engineering	37	3				40
Fine & Applied Arts	17	-				17
Foreign Languages	16	-				16
Health Professions	9	9				18
Home Economics	-	-				-
Law	1	-				1
Letters	26	5				31
Library Science	-	-				-
Mathematics	8	3				11
Military Sciences	-	-				-
Physical Sciences	51	10				61
Psychology	21	13				34
Public Affairs & Services	-	-				-
Social Sciences	48	37				85
Theology	-	-				-
Interdisciplinary Studies	4	-				4
Total	365	147				512
<u>First Professional Degrees</u>						
Dentistry	89	-				89
Medicine	117	-				117
Veterinary Medicine	-	63				63
Law	158	-	300		223	681
Theology	-	-		8		8
Total	364	63	300	8	223	958

BACCALAUREATE AND GRADUATE DEGREES BY ETHNIC/MINORITY CATEGORIES

The degrees by ethnic/minority categories for Washington four-year institutions has been compiled in Table 21 for all degrees conferred.

The reader should be reminded that this is the first year these data have been reported and is the best effort of the institutions given the time constraints that existed.

TABLE 21

DEGREES CONFERRED BY ETHNIC/MINORITY  
 WASHINGTON FOUR-YEAR COLLEGES AND UNIVERSITIES  
 1975-76

	Non-Resident Alien		Black Non-Hispanic		American Indian Or Alaskan		Asian Or Pacific Island		Hispanic		White Non-Hispanic		Other	
	Men	Women	Men	Women	Men	Women	Men	Women	Men	Women	Men	Women	Men	Women
<b>UNIVERSITY OF WASHINGTON</b>														
First Professional	1	0	8	5	1	1	13	1	8	0	271	55	0	0
Doctorate	36	5	2	3	0	0	2	2	0	0	251	64	0	0
Master	105	28	22	23	1	4	33	23	8	8	721	746	0	0
Bachelor	104	35	85	75	21	11	156	130	14	16	2978	2232	0	0
<b>WASHINGTON STATE UNIVERSITY</b>														
First Professional	0	0	0	0	0	0	1	0	0	0	50	13	0	0
Doctorate	15	1	4	2	1	0	1	0	2	0	102	19	0	0
Master	41	16	5	5	4	2	4	4	5	5	239	105	0	0
Bachelor	29	5	20	10	7	3	19	14	10	2	1489	1058	0	0
<b>CENTRAL WASHINGTON STATE COLLEGE</b>														
Doctorate	0	0	0	0	0	0	0	0	0	0	0	0	0	0
Master	0	0	1	0	0	0	4	1	0	0	123	85	0	0
Bachelor	0	0	6	11	13	11	2	4	8	7	653	588	0	0
<b>EASTERN WASHINGTON STATE COLLEGE</b>														
Doctorate	0	0	0	0	0	0	0	0	0	0	0	0	0	0
Master	5	2	0	0	0	0	2	5	1	0	96	72	0	0
Bachelor	0	0	1	3	0	1	1	1	0	0	683	534	0	0
<b>THE EVERGREEN STATE COLLEGE</b>														
Doctorate	0	0	0	0	0	0	0	0	0	0	0	0	0	0
Master	0	0	0	0	0	0	0	0	0	0	0	0	0	0
Bachelor	1	1	8	6	17	10	7	3	3	3	270	254	0	0
<b>WESTERN WASHINGTON STATE COLLEGE</b>														
Doctorate	0	0	0	0	0	0	0	0	0	0	0	0	0	0
Master	42	15	1	2	1	0	2	4	0	0	95	60	25	22
Bachelor	20	6	14	14	8	11	12	6	2	1	653	504	133	106
<b>FORT WRIGHT COLLEGE</b>														
Doctorate	0	0	0	0	0	0	0	0	0	0	0	0	0	0
Master	0	0	0	0	0	0	0	0	0	0	1	6	0	0
Bachelor	0	4	1	1	1	0	2	2	0	1	19	30	0	0

76



TABLE 21 continued

	Nonresident Alien		Black Non-Hispanic		American Indian Or Alaskan		Asian Or Pacific Island		Hispanic		White Non-Hispanic		Other	
	Men	Women	Men	Women	Men	Women	Men	Women	Men	Women	Men	Women	Men	Women
<b>GONZAGA UNIVERSITY</b>														
First Professional	1	0	1	0	0	0	2	3	1	0	264	28	0	0
Doctorate	0	0	0	0	0	0	0	0	0	0	0	0	0	0
Master	2	4	1	0	0	0	1	0	0	0	50	17	0	0
Bachelor	4	5	3	0	0	2	10	7	0	0	188	129	0	0
<b>NORTHWEST COLLEGE</b>														
Doctorate	0	0	0	0	0	0	0	0	0	0	0	0	0	0
Master	0	0	0	0	0	0	0	0	0	0	0	0	0	0
Bachelor	2	0	2	0	0	0	3	1	3	1	49	14	0	0
<b>PACIFIC LUTHERAN UNIVERSITY</b>														
Doctorate	0	0	0	0	0	0	0	0	0	0	0	0	0	0
Master	0	0	9	4	1	0	4	0	4	0	178	67	0	0
Bachelor	8	1	6	13	1	2	6	7	0	0	235	278	0	0
<b>ST. MARTIN'S COLLEGE</b>														
Doctorate	0	0	0	0	0	0	0	0	0	0	0	0	0	0
Master	0	0	0	0	0	0	0	0	0	0	0	0	0	0
Bachelor	1	0	5	0	1	0	4	0	1	0	133	32	0	0
<b>SEATTLE PACIFIC COLLEGE</b>														
Doctorate	0	0	0	0	0	0	0	0	0	0	0	0	0	0
Master	0	0	0	0	0	0	0	0	0	0	18	15	0	0
Bachelor	7	4	3	4	1	0	4	3	2	0	154	219	0	0
<b>SEATTLE UNIVERSITY</b>														
Doctorate	0	0	0	0	0	0	0	0	0	0	0	0	0	0
Master	4	2	4	5	0	0	6	1	1	2	155	133	0	0
Bachelor	20	9	19	23	4	1	17	11	4	0	255	235	0	0
<b>SULPICIAN SEMINARY</b>														
First Professional	0	0	0	0	0	0	0	0	0	0	8	0	0	0
Doctorate	0	0	0	0	0	0	0	0	0	0	0	0	0	0
Master	0	0	0	0	0	0	0	0	0	0	3	1	0	0
Bachelor	0	0	0	0	0	0	0	0	0	0	2	0	0	0
<b>UNIVERSITY OF PUGET SOUND</b>														
First Professional	0	0	1	0	0	0	2	1	0	0	189	30	0	0
Doctorate	0	0	0	0	0	0	0	0	0	0	0	0	0	0
Master	0	0	0	0	0	0	0	0	0	0	151	47	0	0
Bachelor	0	0	10	6	4	0	6	6	3	1	438	291	0	0

TABLE 21 continued

	Nonresident Alien		Black Non-Hispanic		American Indian Or Alaskan		Asian Or Pacific Island		Hispanic		White Non-Hispanic		Other	
	Men	Women	Men	Women	Men	Women	Men	Women	Men	Women	Men	Women	Men	Women
<u>WALLA WALLA COLLEGE</u>														
Doctorate	0	0	0	0	0	0	0	0	0	0	0	0	0	0
Master	0	0	0	0	0	0	0	0	0	0	13	3	0	0
Bachelor	16	30	0	1	0	0	0	2	0	0	119	148	0	0
<u>WHITMAN COLLEGE</u>														
Doctorate	0	0	0	0	0	0	0	0	0	0	0	0	0	0
Master	0	0	0	0	0	0	0	0	0	0	0	0	0	0
Bachelor	1	1	6	3	0	0	4	1	1	0	108	85	0	0
<u>WHITWORTH COLLEGE</u>														
Doctorate	0	0	0	0	0	0	0	0	0	0	0	0	0	0
Master	4	0	0	0	0	0	0	0	0	0	43	37	0	0
Bachelor	7	2	1	3	0	1	2	2	0	0	103	124	0	0
<u>TOTALS</u>														
First Professional	2	0	10	5	1	1	18	5	9	0	782	126	0	0
Doctorate	51	6	6	5	1	0	3	2	2	0	353	83	0	0
Master	203	67	43	39	7	6	56	38	19	15	1890	1394	25	22
Bachelor	220	103	190	173	78	53	255	200	51	32	8529	6755	133	106

TOTAL DEGREES AWARDED

First Professional . . . . .	959
Doctorate . . . . .	512
Master . . . . .	3,824
Bachelor . . . . .	16,878