

DOCUMENT RESUME

ED 136 760

IR 004 544

AUTHOR Frankie, Suzanne  
 TITLE ARL Statistics. 1975-1976. A Compilation of Statistics from the One Hundred and Five Members of the Association of Research Libraries.  
 INSTITUTION Association of Research Libraries, Washington, D.C.  
 PUB DATE 76  
 NOTE 47p.; For related document, see ED 129 224  
 EDRS PRICE MF-\$0.83 HC-\$2.06 Plus Postage.  
 DESCRIPTORS Doctoral Degrees; Librarians; Library Collections; Library Expenditures; Library Surveys; Microforms; Periodicals; \*Research Libraries; Serials; \*Statistical Data; \*Tables (Data); University Libraries  
 IDENTIFIERS \*Association of Research Libraries

ABSTRACT

This second annual statistical summary presents 1975-1976 data on the library collections, interlibrary loans, expenditures, and personnel of the 105 university and nonuniversity members of the Association of Research Libraries (ARL). Separate tables present figures on university enrollment, expenditures, Ph.D. degrees, and microform holdings by type. Member libraries are rank ordered by the following 13 factors: volumes in library, volumes added, microform holdings, current serials, professional staff, nonprofessional staff, total staff, materials expenditures, materials and binding expenditures, salaries and wages, total expenditures, total items loaned, and total items borrowed. (KP)

\*\*\*\*\*  
 \* Documents acquired by ERIC include many informal unpublished \*  
 \* materials not available from other sources. ERIC makes every effort \*  
 \* to obtain the best copy available. Nevertheless, items of marginal \*  
 \* reproducibility are often encountered and this affects the quality \*  
 \* of the microfiche and hardcopy reproductions ERIC makes available \*  
 \* via the ERIC Document Reproduction Service (EDRS). EDRS is not \*  
 \* responsible for the quality of the original document. Reproductions \*  
 \* supplied by EDRS are the best that can be made from the original. \*  
 \*\*\*\*\*

ED136760

U S DEPARTMENT OF HEALTH,  
EDUCATION & WELFARE  
NATIONAL INSTITUTE OF  
EDUCATION

THIS DOCUMENT HAS BEEN REPRO-  
DUCED EXACTLY AS RECEIVED FROM  
THE PERSON OR ORGANIZATION ORIGIN-  
ATING IT. POINTS OF VIEW OR OPINIONS  
STATED DO NOT NECESSARILY REPRESENT  
OFFICIAL NATIONAL INSTITUTE OF  
EDUCATION POSITION OR POLICY.

# ARL STATISTICS

1975-1976

A COMPILATION OF STATISTICS  
FROM THE ONE HUNDRED AND FIVE MEMBERS OF THE  
ASSOCIATION OF RESEARCH LIBRARIES

Compiled by

Suzanne Frankie

Association of Research Libraries  
1527 New Hampshire Avenue, N.W.  
Washington, D. C., 20036  
... 1976

K004344

## TABLE OF CONTENTS

	Page
I. Introduction	2
II. Library Codes	5
III. Statistical Tables	6
IV. University Statistics - HEGIS Data	18
V. Microform Statistics	20
VI. Analysis of Selected Variables	22
VII. Summary of Rank Order Tables	24
VIII. Rank Order Tables for University Libraries	
1 - Volumes in Library	27
2 - Volumes Added (Gross)	28
3 - Total Microform Holdings	29
4 - Current Serials	30
5 - Professional Staff (FTE)	31
6 - Nonprofessional Staff (FTE)	32
7 - Total Staff (FTE)	33
8 - Materials Expenditures	34
9 - Materials & Binding Expenditures	35
10 - Salaries & Wages Expenditures	36
11 - Total Expenditures	37
12 - Total Items Loaned	38
13 - Total Items Borrowed	39
14 - Current Periodicals Expenditures	40
IX. Instructions for Completion of Questionnaire	41
X. Footnotes	42

## INTRODUCTION

The figures in this year's ARL Statistics effectively document a now familiar theme: research libraries are spending a bit more, and enjoying it much less.\* The charts on pages 16-17 are especially illustrative of the impact of inflation on staffing and collection development. In their struggle against escalating prices, research libraries last year increased materials expenditure by a median 8.5%. Collections, however, grew by a meager 2.8%. Inflation affected all library operations, but monograph purchases clearly suffered the most. The median number of monographs added last year was 10.3% less than the previous year, and was the lowest in the eight years reported. The median number of volumes added in 1976 was 64,800, a dramatic contrast to the 89,800 added in 1969.

Although libraries are now diverting book funds to purchase serial titles, they are still barely able to maintain their serial collections in a "steady state" (.63% increase in the median number of serial titles held last year). Microform holdings are still expanding, (9.1% increase since 1975), but at a rate far slower than 1974's growth of 15.5%.

Aside from collection development, the area most seriously affected by inflation has been personnel. Even though more than 57% of library budgets are typically spent for salaries and wages, and even though median salary expenditures rose last year by 4.9%, the number of persons employed at all levels decreased during 1976. A few more specific facts put this in context:

- a) For the second consecutive year, the median number of professional librarians decreased. Professional employment dropped 4.6% in 1975 and an additional 4.8% this past year.
- b) Nonprofessional cutbacks were even worse, and have been cumulating longer. Nonprofessional staff decreased 2.9% in 1974, 5.3% in 1975, and 5.6% in 1976.
- c) The 7.5% decrease in the number of student assistants was the largest cutback of all.

The implications of these findings are clear: Although libraries are one of the most significant sectors of the knowledge industry, their ability to develop resources and deliver services is deteriorating -- even as demands for them escalate.

\*While we do not yet have accurate figures on the rate of inflation in higher education for 1976, it is clear that it is higher than that reflected in the consumer price index which increased by 5.8% in 1976. Since last year the median library operating budget increased by a scant 3.7%.

As this year's ARL Statistics have a number of new features, a few explanatory notes are in order.

Since the publication of ARL Statistics 1974-75, six\* university libraries have joined the Association. The statistics presented here include ARL's 105 members: 94 university libraries and 11 nonuniversity libraries.

Several new features in the presentation of the data include:

1. University Statistics. (The table on pages 18-19 display figures on university enrollment, expenditures, and Ph.D degrees and fields. These figures are those reported to the Office of Education as part of the Higher Education General Information Survey (HEGIS) and Library General Information Survey (LIBGIS) conducted by the Office of Education.
2. Periodical Expenditures. For the first time, we are also listing expenditures for current periodical subscriptions. These appear in column 12.5 of the charts and by rank order in the table on page 40. Since this is a new item, we have experienced a number of problems in compiling accurate figures, some of which are suggested in the footnotes. Even so, the figures give a rough indication of the dimensions of these expenditures. Note that, as in previous years, figures for the more inclusive category, "serials," are displayed in column 5 of the charts.
3. Total Staff. This is the second year that FTE Student Assistants have been included in the figures for total staff. Prior to 1974-75 the number of student assistants was not included in the total.
4. Historical Data. To provide some historical information the charts on pages 16 & 17 present university library medians since 1968-69 and the annual percentage change in these medians.

Suzanne O. Frankie  
Associate Executive Director

January 21, 1977

\* Hawaii, McMaster, Miami, Queen's, Virginia Polytechnic (VPI) and Western Ontario.

## GUIDE TO LIBRARY CODE NUMBERS

The institutions listed below are the 105 institutions who were members of the ARL in 1976. Each has been assigned a code number which has been used on the charts on pages 4-13 in place of the names of the institutions. (See columns labelled "Library Code No." to the left of columns 1 and 12). Numbers 1-94 have been used to designate the 94 university library members of the Association. Numbers 95-105 designate the 11 non-university members.

- |                           |                        |                                  |
|---------------------------|------------------------|----------------------------------|
| 1. Alabama                | 36. Iowa State         | 71. South Carolina               |
| 2. Alberta                | 37. Johns Hopkins      | 72. Southern California          |
| 3. Arizona                | 38. Joint University   | 73. Southern Illinois            |
| 4. Arizona State          | 39. Kansas             | 74. Stanford                     |
| 5. Boston                 | 40. Kent State         | 75. SUNY - Albany                |
| 6. Brigham Young          | 41. Kentucky           | 76. SUNY - Buffalo               |
| 7. British Columbia       | 42. Louisiana State    | 77. SUNY - Stony Brook           |
| 8. Brown                  | 43. McGill             | 78. Syracuse                     |
| 9. Calif., Berkeley       | 44. McMaster           | 79. Temple                       |
| 10. Calif., Davis         | 45. Maryland           | 80. Tennessee                    |
| 11. Calif., Los Angeles   | 46. Massachusetts      | 81. Texas                        |
| 12. Calif., San Diego     | 47. MIT                | 82. Texas A & M                  |
| 13. Calif., Santa Barbara | 48. Miami              | 83. Toronto                      |
| 14. Case Western Reserve  | 49. Michigan           | 84. Tulane                       |
| 15. Chicago               | 50. Michigan State     | 85. Utah                         |
| 16. Cincinnati            | 51. Minnesota          | 86. Virginia                     |
| 17. Colorado              | 52. Missouri           | 87. Virginia Polytechnic         |
| 18. Colorado State        | 53. Nebraska           | 88. Washington                   |
| 19. Columbia              | 54. New York           | 89. Washington State             |
| 20. Connecticut           | 55. North Carolina     | 90. Washington Univ. St. Louis   |
| 21. Cornell               | 56. Northwestern       | 91. Wayne State                  |
| 22. Dartmouth             | 57. Notre Dame         | 92. Western Ontario              |
| 23. Duke                  | 58. Ohio State         | 93. Wisconsin                    |
| 24. Emory                 | 59. Oklahoma           | 94. Yale                         |
| 25. Florida               | 60. Oklahoma State     | *95. Boston Public               |
| 26. Florida State         | 61. Oregon             | *96. Center for Research Libs.   |
| 27. Georgetown            | 62. Pennsylvania       | *97. John Crerar Library         |
| 28. Georgia               | 63. Pennsylvania State | *98. Library of Congress         |
| 29. Harvard               | 64. Pittsburgh         | *99. Linda Hall Library          |
| 30. Hawaii                | 65. Princeton          | *100. National Agricultural Lib. |
| 31. Houston               | 66. Purdue             | *101. National Lib. of Canada    |
| 32. Howard                | 67. Queen's            | *102. National Lib. of Medicine  |
| 33. Illinois              | 68. Rice               | *103. New York Public Library    |
| 34. Indiana               | 69. Rochester          | *104. New York State Library     |
| 35. Iowa                  | 70. Rutgers            | *105. Smithsonian Institution    |

\*Nonuniversity library.

# ASSOCIATION OF RESEARCH LIBRARIES

## LIBRARY STATISTICS

LIBRARY CODE NO.	COLLECTIONS					INTERLIBRARY LOANS					
	VOLUMES IN LIBRARY	VOLUMES ADDED (Gross)	VOLUMES ADDED (Net)	TOTAL MICROFORM UNITS IN LIBRARY	CURRENT SERIALS	LOANED			BORROWED		
						ORIGINALS	PHOTOCOPIES	TOTAL	ORIGINALS	PHOTOCOPIES	TOTAL
1	2	3	4	5	6	7	8	9	10	11	
1. +*CL	1,088,504	46,018	40,914	405,989	12,695	1,441	1,529	2,970	1,151	1,763	2,914
2. +LM	1,706,547	94,501	94,501	1,088,944	15,073	2,951	4,273	7,224	1,830	2,242	4,072
3.	1,836,012	116,619	112,815	927,655	21,206	2,826	3,842	6,668	1,842	1,336	3,178
4. +	1,227,596	84,577	74,029	754,371	12,883	1,626	1,712	3,338	2,517	1,922	4,439
5. +LM	1,180,381	62,830	53,053	702,543	20,006	2,706	1,684	4,390	1,820	1,907	3,727
6. *	1,347,548	80,650	80,348	541,623	20,454	2,281	1,066	3,347	1,390	1,485	2,873
7. LM	2,198,810	115,051	111,380	1,652,686	18,826	11,150	14,445	25,575	3,467	3,910	7,377
8. C	1,570,576	37,088	34,083	235,404	10,503	1,862	2,983	5,645	1,378	833	2,211
9. CL	4,785,595	150,529	132,802	912,089	96,143	15,138	13,790	28,928	4,383	3,148	7,531
10. LM	1,514,540	84,624	80,151	1,165,073	41,768	4,085	13,819	17,904	2,851	2,412	5,263
11. LM	3,632,831	117,318	113,407	1,397,718	54,688	14,357	13,347	57,704	5,158	1,857	7,015
12. M	1,168,945	69,387	66,213	518,663	24,755	3,914	8,721	12,635	2,399	2,084	4,483
13. +	1,187,925	62,760	57,607	952,461	18,687	1,227	1,033	2,260	4,047	4,238	8,285
14. +*LM	1,570,429	29,486	12,059	269,666	14,211	21,171	18,302	39,473	1,753	1,930	3,683
15. +LM	3,762,104	151,584	139,819	531,861	42,774	6,226	20,317	26,543	4,965	660	5,625
16. +LM	1,184,581	43,674	41,151	752,695	12,038	3,639	7,710	11,349	3,666	3,705	7,371
17. +CL	1,656,245	69,589	65,758	1,441,763	16,235	4,686	5,668	10,354	2,229	2,536	4,765
18. C	986,171	56,626	50,265	247,190	15,768	2,207	4,352	6,599	2,758	2,682	5,440
19. +LM	4,623,344	118,569	(38,569)	1,386,267	60,751	9,264	8,319	17,583	N/A	N/A	1,944
20. LM	1,476,657	80,307	75,882	848,696	24,119	8,975	13,670	22,645	2,749	3,325	6,074
21. LM	4,366,951	112,609	94,172	1,489,327	50,929	9,855	15,398	25,253	3,477	3,393	6,870
22.	1,204,918	37,566	32,445	519,302	14,988	2,846	3,920	6,766	931	1,588	2,519
23. +LM	2,764,348	144,239	140,059	262,948	32,347	9,145	3,861	13,006	1,451	606	2,057

+ - See Footnotes  
 \* - Bibliographic Count  
 \$ - Fringe Benefits Included in Salaries and Wages

C - Includes figures for main campus only  
 L - Includes Law Library  
 M - Includes Medical Library

N/A - Figures not available

ASSOCIATION OF RESEARCH



LIBRARIES

LIBRARY STATISTICS

LIBRARY CODE NO.	EXPENDITURES							PERSONNEL			
	LIBRARY MATERIALS	CURRENT PERIODICALS	BINDING	TOTAL MATERIALS & BINDING	TOTAL SALARIES & WAGES	OTHER OPERATING EXPENDITURES	TOTAL LIBRARY OPERATING EXPENDITURES	PROF. STAFF FTE	NON-PROF. STAFF FTE	STUDENT ASSTS. FTE	TOTAL STAFF FTE
	12	12.5	13	14	15	16	17	18	19	20	21
1.	676,916	379,740	40,767	717,685	973,437	364,767	2,055,887	42	60	41	143
2.	2,065,090	635,730	168,792	2,233,882	3,888,380	601,718	6,723,980	78	284	30	392
3.	1,416,157	314,712	106,266	1,522,423	1,622,469	296,642	3,441,534	56	102	44	202
4.	1,362,181	460,423	81,448	1,443,629	1,444,767	166,501	3,054,897	39	112	70	221
5.	865,902	465,340	73,079	938,981	1,838,599	357,210	3,134,790	68	118	39	225
6.	N/A	N/A	N/A	N/A	N/A	N/A	N/A	51	94	121	266
7.	1,741,021	508,367	144,266	1,885,287	5,344,412	584,994	7,814,693	99	318	51	468
8.	864,248	384,357	86,280	950,528	1,543,636	164,822	2,658,986	52	87	67	206
9.	2,141,376	826,218	279,872	2,421,248	6,685,168	622,412	9,728,828	163	289	89	541
10.	1,761,133	689,885	202,403	1,963,536	3,191,926	403,783	5,559,245	59	160	69	288
11.	2,183,647	1,104,106	376,520	2,560,167	6,544,108	629,987	9,734,262	145	244	197	586
12.	1,286,564	619,370	170,213	1,456,777	2,549,349	372,065	4,378,191	53	133	42	228
13.	1,408,264	703,000	130,533	1,538,797	2,819,826	270,279	4,628,902	56	144	69	269
14.	748,410	439,408	52,146	800,556	1,542,735	225,591	2,568,882	66	90	38	194
15.	1,438,465	500,910	144,617	1,583,082	2,996,160	637,168	5,216,410	74	158	79	311
16.	918,179	410,614	70,281	988,460	2,173,290	224,240	3,385,990	53	117	42	212
17.	850,205	531,790	60,000	910,205	2,128,256	89,962	3,128,423	45	107	47	199
18.	707,475	392,840	65,406	772,881	1,211,946	134,709	2,129,536	36	64	15	115
19.	1,734,282	N/A	175,891	1,910,173	5,212,237	518,615	7,641,025	142	301	96	539
20.	1,299,973	549,799	61,204	1,361,177	1,646,958	196,087	3,204,222	58	73	49	180
21.	1,892,929	N/A	190,095	2,083,024	4,179,220	687,410	6,949,654	121	244	50	415
22.	859,553	489,844	45,002	902,355	1,370,562	526,055	2,798,952	34	95	19	148
23.	1,347,475	606,052	122,178	1,469,653	2,420,111	276,736	4,166,500	83	149	39	271

+ - See Footnotes  
 \* - Bibliographic Count  
 \$ - Fringe Benefits Included in Salaries and Wages  
 C - Includes figures for main campus only  
 L - Includes Law Library  
 M - Includes Medical Library  
 N/A - Figures not available



# ASSOCIATION OF RESEARCH LIBRARIES

## LIBRARY STATISTICS

LIBRARY CODE NO.	COLLECTIONS					INTERLIBRARY LOANS					
	VOLUMES IN LIBRARY	VOLUMES ADDED (Gross)	VOLUMES ADDED (Net)	TOTAL MICROFORM UNITS IN LIBRARY	CURRENT SERIALS	LOANED			BORROWED		
						ORIGINALS	PHOTOCOPIES	TOTAL	ORIGINALS	PHOTOCOPIES	TOTAL
1	2	3	4	5	6	7	8	9	10	11	
24.+LM	1,596,581	247,777	242,669	620,412	14,454	2,634	14,094	16,728	2,505	2,465	4,970
25.+CLM	1,807,242	49,085	46,477	861,381	21,457	3,053	20,567	23,620	1,816	4,099	5,915
26.+L	1,167,970	45,148	41,895	1,285,339	12,152	2,241	1,582	3,823	2,031	597	2,628
27.+LM	902,668	49,214	35,578	423,909	14,568	1,791	2,528	4,319	1,305	1,761	3,066
28.CL	1,619,104	96,422	96,422	1,174,079	29,703	6,146	4,712	10,858	3,155	2,397	5,552
29.+LM	9,383,255	211,375	176,585	1,273,351	97,000	14,000	70,000	84,000	2,500	5,000	7,500
30.+CL	1,470,039	58,945	56,895	838,725	27,741	2,470	6,401	8,871	667	1,104	1,771
31.+L	1,265,584	102,306	95,390	1,274,917	14,075	2,051	3,903	5,954	2,751	2,262	5,013
32.LM	887,393	50,388	50,388	506,233	7,110	2,238	N/A	2,238	588	N/A	588
33.LM	5,670,416	171,428	160,868	1,324,840	85,000	N/A	N/A	372,926	N/A	N/A	10,203
34.+LM	4,220,978	194,552	176,456	955,874	34,905	13,660	15,361	29,021	7,816	5,859	13,675
35.LM	1,965,214	91,977	85,959	901,502	24,522	5,838	9,040	14,878	3,990	5,987	9,977
36.+SC	1,121,772	63,742	57,799	733,915	15,929	3,107	6,959	10,066	1,859	2,178	4,037
37.M	2,092,858	47,574	43,136	944,382	15,461	5,196	4,770	9,966	4,972	5,851	10,823
38.+LM	1,336,477	58,889	47,005	806,939	15,255	2,858	3,212	6,070	1,839	1,268	3,107
39.+C	1,618,306	63,873	60,173	536,367	20,495	5,085	3,571	8,656	2,789	3,740	6,529
40.C	1,125,039	60,488	56,579	478,856	19,127	4,067	787	4,854	4,006	2,454	6,460
41.*CLM	1,555,537	136,952	128,727	1,418,874	24,037	N/A	N/A	17,591	N/A	N/A	4,877
42.+CL	1,603,282	67,646	65,035	499,056	17,140	2,974	948	3,922	1,512	1,035	2,547
43.LM	1,735,928	56,068	56,068	297,263	16,252	13,703	16,169	29,872	5,659	2,801	8,460
44.M	806,674	50,232	49,249	742,244	9,718	2,906	7,088	9,994	2,788	5,036	7,824
45.+C	1,534,498	104,055	98,574	984,486	16,291	7,857	4,858	12,715	1,626	1,223	2,849
46.	1,453,314	99,331	90,345	505,228	14,611	3,419	3,768	7,187	2,426	1,152	3,578

+ - See Footnotes  
 \* - Bibliographic Count  
 \$ - Fringe Benefits Included in Salaries and Wages  
 C - Includes figures for main campus only  
 L - Includes Law Library  
 M - Includes Medical Library  
 N/A - Figures not available

## ASSOCIATION OF RESEARCH



## LIBRARIES

## LIBRARY STATISTICS

LIBRARY CODE NO.	EXPENDITURES							PERSONNEL			
	LIBRARY MATERIALS	CURRENT PERIODICALS	BINDING	TOTAL MATERIALS & BINDING	TOTAL SALARIES & WAGES	OTHER OPERATING EXPENDITURES	TOTAL LIBRARY OPERATING EXPENDITURES	PROF. STAFF FTE	NON-PROF. STAFF FTE	STUDENT ASSTS. FTE	TOTAL STAFF FTE
	12	12.5	13	14	15	16	17	18	19	20	21
24.	2,818,196	594,860	85,500	2,903,696	1,562,110	156,969	4,422,775	51	82	53	166
25.	1,048,656	637,499	106,771	1,155,407	2,073,597	121,055	3,350,059	77	118	57	252
26.	920,079	390,774	61,879	981,958	1,460,881	128,693	2,571,532	58	92	30	180
27.	766,931	250,210	60,266	827,197	1,463,062	258,298	2,548,557	47	77	56	180
28.	1,827,001	956,001	202,585	2,029,586	1,949,379	217,221	4,196,186	68	167	19	254
29.	2,998,256	1,320,000	423,178	3,421,414	7,795,537	1,455,602	12,672,553	219	559	96	874
30.	1,117,954	510,864	54,639	1,172,593	2,223,237	129,212	3,525,042	72	92	57	221
31.	2,148,607	671,915	47,895	2,196,502	1,628,301	356,476	4,181,279	50	110	63	223
32.	532,147	N/A	188,466	720,613	2,004,862	299,775	3,025,250	67	77	29	173
33.	1,979,083	1,138,004	187,840	2,166,923	5,501,881	833,498	8,502,302	207	294	123	624
34.	2,760,647	1,231,727	197,439	2,958,086	4,809,678	477,169	8,244,933	168	297	194	659
35.	1,609,841	871,575	127,374	1,737,215	2,124,985	138,413	4,000,613	72	106	59	237
36.	1,116,992	594,031	105,049	1,222,041	2,009,654	224,770	3,456,465	53	109	37	199
37.	1,110,104	634,992	51,066	1,161,170	1,950,494	577,240	3,688,904	61	110	41	212
38.	1,022,963	N/A	62,945	1,085,908	1,496,152	602,650	3,184,710	53	101	41	195
39.	993,213	314,864	54,569	1,047,782	1,532,477	300,020	2,880,279	48	88	45	181
40.	544,424	296,779	69,737	614,161	1,217,963	185,848	2,017,972	31	77	24	132
41.	1,199,682	695,699	72,507	1,272,189	1,760,680	217,838	3,250,707	68	110	49	227
42.	1,230,339	754,630	81,395	1,311,734	1,466,976	261,153	3,039,863	51	73	62	186
43.	1,223,382	637,635	124,219	1,347,601	3,758,474	308,298	5,414,373	91	275	40	406
44.	1,172,640	350,760	51,680	1,224,520	1,873,797	332,012	3,430,129	36	159	19	214
45.	1,674,347	823,077	162,963	1,837,310	2,991,590	523,846	5,352,746	86	175	81	342
46.	914,822	543,378	70,642	985,464	1,852,442	182,360	3,020,266	56	96	57	209

+ - See Footnotes

\* - Bibliographic Count

S - Fringe Benefits Included in Salaries and Wages

C - Includes figures for main campus only

L - Includes Law Library

M - Includes Medical Library

N/A - Figures not available

# ASSOCIATION OF RESEARCH LIBRARIES

## LIBRARY STATISTICS

LIBRARY CODE NO.	COLLECTIONS					INTERLIBRARY LOANS					
	VOLUMES IN LIBRARY	VOLUMES ADDED (Gross)	VOLUMES ADDED (Net)	TOTAL MICROFORM UNITS IN LIBRARY	CURRENT SERIALS	LOANED			BORROWED		
						ORIGINALS	PHOTOCOPIES	TOTAL	ORIGINALS	PHOTOCOPIES	TOTAL
	1	2	3	4	5	6	7	8	9	10	11
47.	1,620,041	68,712	46,858	615,772	18,329	2,869	10,636	13,505	1,435	1,794	3,229
48. *LM	1,171,186	53,462	52,729	690,902	10,699	1,669	5,526	7,195	1,269	1,625	2,894
49. +CLM	4,790,805	138,999	122,476	1,178,964	50,821	8,776	13,293	22,069	4,430	1,621	6,051
50. +	2,196,410	101,103	93,958	934,973	25,421	5,499	15,924	21,423	2,457	1,352	3,809
51. +LM	3,662,739	109,256	87,769	1,065,882	36,689	20,391	81,909	102,300	14,060	10,785	24,845
52. LM	1,836,458	47,709	42,562	1,659,353	19,000	6,236	4,852	11,088	1,990	1,228	3,218
53. L	1,258,053	53,291	49,602	425,460	19,931	2,631	1,997	4,628	1,656	1,717	3,373
54. LM	2,528,134	89,316	71,908	1,045,401	17,897	N/A	N/A	5,279	N/A	N/A	2,503
55. +LM	2,192,224	77,030	66,584	1,097,671	22,849	17,810	3,989	21,799	3,707	587	4,294
56. +LM	2,536,611	89,984	65,209	617,150	26,848	4,680	6,523	11,203	3,016	1,890	4,906
57. +L	1,277,752	30,177	28,950	414,238	12,718	386	1,409	1,795	1,306	819	2,125
58. *CLM	3,142,500	126,541	109,368	1,019,047	25,738	17,964	N/A	17,964	4,947	N/A	4,947
59. +LM	1,338,802	53,124	49,074	845,973	14,234	2,772	7,267	10,039	2,192	5,564	7,756
60. C	1,158,881	37,493	17,863	685,232	9,950	2,673	3,100	5,773	1,216	1,620	2,836
61. L	1,307,473	45,970	41,239	553,856	20,225	6,030	1,520	7,550	2,463	1,161	3,624
62. +LM	2,713,905	91,129	81,750	1,027,044	38,512	N/A	N/A	15,430	N/A	N/A	6,667
63. +	1,889,173	80,831	64,112	1,685,422	32,766	9,009	12,477	21,486	3,048	2,773	5,821
64. +LM	2,075,909	116,978	92,903	840,282	20,827	8,709	21,738	30,447	2,606	3,147	5,753
65.	2,812,253	101,527	96,795	980,566	29,665	10,552	6,106	16,658	859	646	1,505
66. +C	1,247,975	37,298	16,593	809,876	18,477	2,433	8,584	11,017	2,893	1,264	4,157
67. +LM	1,227,545	49,491	48,614	581,788	14,951	N/A	N/A	6,014	N/A	N/A	7,266
68.	917,432	42,275	41,555	937,849	8,101	6,070	7,877	13,947	695	417	1,112
69. +M	1,600,000	60,000	57,500	1,272,000	14,000	4,500	13,000	17,500	2,500	3,200	5,700

+ - See Footnotes  
 \* - Bibliographic Count  
 \$ - Fringe Benefits Included in Salaries and Wages

C - Includes figures for main campus only  
 L - Includes Law Library  
 M - Includes Medical Library

N/A - Figures not available

## ASSOCIATION OF RESEARCH



## LIBRARIES

## LIBRARY STATISTICS

LIBRARY CODE NO.	EXPENDITURES							PERSONNEL			
	LIBRARY MATERIALS	CURRENT PERIODICALS	BINDING	TOTAL MATERIALS & BINDING	TOTAL SALARIES & WAGES	OTHER OPERATING EXPENDITURES	TOTAL LIBRARY OPERATING EXPENDITURES	PROF. STAFF FTE	NON-PROF. STAFF FTE	STUDENT ASSTS. FTE	TOTAL STAFF FTE
	12	12.5	13	14	15	16	17	18	19	20	21
47.	781,280	181,918	50,276	851,556	1,880,366	258,059	2,969,981	59	154	24	217
48.	750,409	587,000	65,088	815,497	1,567,217	142,209	2,324,923	48	105	49	202
49.	2,129,487	777,691	167,447	2,296,934	5,300,721	559,355	8,157,010	158	517	118	593
50.	1,165,309	566,643	97,895	1,261,200	2,574,770	213,747	4,049,721	75	115	112	298
51.	1,914,924	975,342	182,107	2,097,051	5,452,284	676,577	8,225,892	159	227	166	552
52.	1,174,366	828,157	91,020	1,265,586	1,245,719	172,995	2,682,100	47	99	20	166
53.	1,091,880	549,861	58,045	1,149,925	1,578,321	151,635	2,879,881	55	99	49	203
54.	1,170,477	589,693	120,251	1,290,228	3,102,672	225,961	4,619,561	65	177	46	288
55.	1,513,760	518,602	147,570	1,651,150	2,667,048	338,843	4,637,021	80	167	43	290
56.	1,428,675	641,798	115,117	1,541,792	2,855,158	818,301	5,213,251	98	145	87	350
57.	577,257	348,317	31,977	609,234	1,106,918	138,790	1,854,942	59	88	21	148
58.	1,368,653	556,051	45,177	1,411,830	3,588,412	394,527	5,394,769	92	202	84	378
59.	977,584	450,589	73,892	1,051,476	1,223,573	216,013	2,491,062	47	84	44	175
60.	666,566	374,543	60,605	727,171	858,078	166,581	1,751,830	54	52	44	150
61.	791,423	464,105	44,237	855,660	1,502,412	102,367	2,440,439	48	76	58	182
62.	1,208,893	656,150	156,355	1,365,248	3,138,232	366,736	4,870,216	92	175	50	317
63.	1,692,991	760,553	126,203	1,819,194	4,044,202	577,852	6,441,248	107	282	65	452
64.	1,317,722	515,354	108,122	1,425,844	2,590,550	468,996	4,485,390	129	129	71	329
65.	1,799,890	829,339	100,070	1,899,960	3,069,548	382,907	5,352,415	94	204	41	359
66.	1,048,170	643,763	71,901	1,120,071	1,703,225	120,418	2,943,714	42	140	28	210
67.	1,115,844	N/A	74,563	1,188,407	2,007,202	130,248	3,325,857	47	160	24	231
68.	650,413	564,108	42,419	672,832	791,282	146,158	1,610,272	27	54	8	89
69.	960,000	565,000	87,000	1,047,000	1,716,000	251,000	3,014,000	51	96	27	174

+ - See Footnotes

C - Includes figures for main campus only

\* - Bibliographic Count

L - Includes Law Library

N/A - Figures not available

\$ - Fringe Benefits Included in Salaries and Wages

M - Includes Medical Library

# ASSOCIATION OF RESEARCH LIBRARIES

## LIBRARY STATISTICS

LIBRARY CODE NO.	COLLECTIONS					INTERLIBRARY LOANS					
						LOANED			BORROWED		
	VOLUMES IN LIBRARY	VOLUMES ADDED (Gross)	VOLUMES ADDED (Net)	TOTAL MICROFORM UNITS IN LIBRARY	CURRENT SERIALS	ORIGINALS	PHOTOCOPIES	TOTAL	ORIGINALS	PHOTOCOPIES	TOTAL
	1	2	3	4	5	6	7	8	9	10	11
70.*IM	1,927,021	97,175	87,127	1,079,289	22,365	5,813	25,485	31,298	2,837	2,395	5,232
71.CL	1,457,350	85,228	85,024	1,270,572	12,747	3,824	800	4,624	2,563	1,742	4,305
72.*LM	1,725,457	60,941	54,578	921,564	18,654	2,596	3,371	5,967	933	1,736	2,669
73.*CL	1,450,655	78,894	63,674	1,484,502	18,926	10,239	9,440	19,679	1,661	1,262	2,923
74.*\$LM	4,175,976	145,367	102,053	1,231,888	49,502	16,182	35,000	51,182	3,775	N/A	3,775
75.	1,039,710	38,095	32,103	1,351,383	14,578	4,515	5,477	9,992	7,340	6,766	14,106
76.*LM	1,601,524	80,178	77,677	1,112,256	16,104	N/A	N/A	24,526	N/A	N/A	11,740
77.*M	1,018,406	62,267	61,922	1,211,628	11,572	N/A	N/A	7,153	2,044	3,372	5,416
78.*CL	1,585,163	88,895	62,853	1,588,888	21,837	1,524	1,980	3,504	2,470	1,840	4,310
79.*LM	1,315,834	77,276	68,523	626,912	15,560	4,443	4,057	8,500	1,338	2,461	3,799
80.*L	1,280,388	59,900	50,965	763,751	20,392	6,371	3,687	10,058	1,920	1,580	3,500
81.CL	3,878,535	212,396	152,401	1,359,212	60,000	8,579	5,284	13,863	3,134	1,737	4,871
82.CM	1,027,458	109,935	100,676	885,699	15,184	2,393	13,562	15,955	2,490	5,810	8,300
83.*LM	4,560,148	217,167	177,654	1,133,820	47,866	16,780	12,934	29,714	5,197	3,002	8,199
84.\$LM	1,245,664	31,055	27,997	758,548	10,176	N/A	N/A	11,377	N/A	N/A	5,800
85.*	1,615,410	94,645	92,567	1,068,544	16,733	3,027	3,027	6,054	2,264	2,263	4,527
86.*LM	2,083,424	83,325	64,649	1,774,786	17,541	6,801	2,619	9,420	2,035	654	2,689
87.	941,007	75,326	63,476	1,385,759	32,355	1,749	3,809	5,558	1,103	1,429	2,532
88.*CLM	2,273,656	94,292	85,739	1,771,866	40,790	8,130	30,569	38,699	1,828	432	2,260
89.	1,060,964	54,227	50,753	1,304,675	24,739	1,456	2,330	3,786	872	1,160	2,032
90.*LM	1,619,795	63,204	58,885	549,575	14,722	4,294	7,135	11,429	2,360	3,746	6,106
91.*CLM	1,663,297	60,672	52,306	492,798	13,601	2,276	18,464	20,740	559	1,632	2,191
92.*CLM	1,075,923	75,345	75,345	908,405	11,111	3,296	3,789	7,085	2,668	2,198	4,866

\* - See Footnotes  
 - Bibliographic Count  
 \$ - Fringe Benefits Included in Salaries and Wages

C - Includes figures for main campus only  
 L - Includes Law Library  
 M - Includes Medical Library

N/A - Figures not available

## ASSOCIATION OF RESEARCH



## LIBRARIES

## LIBRARY STATISTICS

LIBRARY CODE NO.	EXPENDITURES							PERSONNEL			
	LIBRARY MATERIALS	CURRENT PERIODICALS	BINDING	TOTAL MATERIALS & BINDING	TOTAL SALARIES & WAGES	OTHER OPERATING EXPENDITURES	TOTAL LIBRARY OPERATING EXPENDITURES	PROF. STAFF FTE	NON-PROF. STAFF FTE	STUDENT ASSTS. FTE	TOTAL STAFF FTE
	12	12.5	13	14	15	16	17	18	19	20	21
70.	1,846,197	N/A	155,327	2,001,524	2,789,258	609,470	5,400,252	99	215	78	392
71.	1,028,813	356,317	89,962	1,118,775	1,424,234	182,756	2,725,765	47	96	55	198
72.	1,082,004	684,234	95,687	1,177,691	2,284,303	308,618	3,770,612	81	127	86	294
73.	1,118,961	623,458	86,894	1,255,855	1,766,472	356,747	3,359,074	56	70	77	203
74.	2,327,272	1,062,040	175,186	2,602,458	4,999,769	1,322,182	8,924,409	158	274	68	480
75.	716,345	267,000	46,390	792,735	1,744,600	192,050	2,729,385	54	107	20	181
76.	921,251	405,582	112,924	1,034,175	2,889,200	384,925	4,308,300	98	160	43	301
77.	994,100	449,437	65,000	1,057,100	2,007,509	257,822	3,322,431	54	112	41	207
78.	898,000	242,375	52,933	950,933	1,487,995	172,627	2,611,555	50	124	84	258
79.	1,091,672	277,460	87,746	1,179,418	2,341,583	143,567	3,667,568	83	121	62	266
80.	1,267,074	521,398	104,033	1,371,107	1,565,410	346,501	3,283,018	52	136	18	206
81.	3,208,324	1,028,082	134,000	3,342,324	3,949,919	474,139	7,766,382	119	237	108	464
82.	1,372,998	270,000	56,981	1,429,979	1,229,375	249,521	2,908,875	43	107	36	186
83.	3,117,815	750,057	278,817	3,396,662	8,761,405	738,344	12,896,409	213	677	55	945
84.	655,273	171,565	51,483	706,756	1,162,708	156,193	2,025,657	40	82	21	143
85.	986,135	234,613	65,078	1,051,213	1,488,495	268,885	2,808,593	43	85	61	189
86.	1,581,125	688,817	126,248	1,707,373	2,454,690	467,287	4,609,350	74	181	59	314
87.	900,231	482,745	120,378	1,020,609	1,291,405	407,277	2,719,291	45	85	28	158
88.	1,807,924	1,090,533	224,239	2,032,163	4,095,298	205,810	6,333,271	114	235	101	450
89.	1,080,134	564,069	74,804	1,154,938	1,799,125	469,178	3,423,241	48	108	50	206
90.	1,208,739	619,373	90,998	1,299,757	1,740,372	499,821	3,540,150	49	129	34	212
91.	1,096,621	436,670	72,186	1,168,807	2,342,612	1,187,870	4,699,289	63	112	59	234
92.	1,393,831	509,882	121,565	1,517,396	3,202,550	343,431	5,063,397	63	230	26	369

+ - See Footnotes

\* - Bibliographic Count

S - Fringe Benefits Included in Salaries and Wages

C - Includes figures for main campus only

L - Includes Law Library

M - Includes Medical Library

N/A - Figures not available

## ASSOCIATION OF RESEARCH



## LIBRARIES

## LIBRARY STATISTICS

LIBRARY CODE NO.	COLLECTIONS					INTERLIBRARY LOANS					
	VOLUMES IN LIBRARY	VOLUMES ADDED (Gross)	VOLUMES ADDED (Net)	TOTAL MICROFORM UNITS IN LIBRARY	CURRENT SERIALS	LOANED			BORROWED		
						ORIGINALS	PHOTOCOPIES	TOTAL	ORIGINALS	PHOTOCOPIES	TOTAL
1	2	3	4	5	6	7	8	9	10	11	
93.+CLM	3,132,863	162,683	159,563	1,246,940	48,195	34,869	56,891	91,760	10,691	5,031	15,722
94.LM	6,692,632	180,882	173,784	931,827	59,372	12,135	3,984	16,119	3,351	507	3,858
95.	4,070,851	234,625	207,065	1,364,621	15,601	25,058	1,797	26,855	2,000	6	2,006
96.	3,127,725	127,725	127,725	669,485	14,000	20,717	50	20,767	N/A	N/A	N/A
97.+	1,154,863	19,294	19,294	406,422	11,138	24,980	29,031	54,011	327	-0-	327
98.	17,888,790	499,182	433,795	2,519,199	82,680	227,134	N/A	227,154	1,959	N/A	1,959
99.+	422,342	18,687	17,527	490,739	30,116	27,298	60,523	87,821	14	53	67
100.+*	1,548,028	41,591	41,591	128,378	19,000	2,419	20,906	23,325	N/A	N/A	12,543
101.+	502,700	35,800	35,800	703,275	12,323	28,938	5,810	34,748	753	175	928
102.+	1,385,543	46,876	46,876	29,439	18,086	20,991	184,704	205,695	-0-	8,684	8,684
103.+S	4,672,995	100,587	99,359	1,262,246	132,275	907	6,555	7,462	N/A	N/A	640
104.+M	1,606,822	32,186	31,000	1,480,298	26,500	36,708	529,519	566,227	N/A	N/A	350
105.+	709,593	N/A	15,220	N/A	14,916	1,118	5,256	6,374	46,269	2,441	48,710
Univ. Medians	1,592,582	78,085	64,842	924,610	18,876	4,369	5,597	11,053	2,460	1,907	4,505
Hi-Univ.	9,383,255	247,777	242,669	1,774,786	97,000	34,869	81,909	372,926	14,060	10,785	24,845
Lo-Univ.	806,674	29,486	12,059	235,404	7,110	386	787	1,795	559	417	588
TOTALS - UNIVERSITY LIBRARIES											
	193,530,258	8,237,834	7,208,891	87,592,794	2,362,260	553,805	895,500	1,910,439	240,990	203,794	495,793
TOTALS - NONUNIVERSITY LIBRARIES											
	37,171,252	1,156,553	1,075,252	9,054,102	376,544	416,268	844,151	1,260,439	51,322	11,359	76,214
GRAND TOTALS - ALL ARL LIBRARIES											
	230,701,510	9,394,387	8,284,143	96,646,896	2,738,804	970,073	1,739,651	3,170,878	292,312	215,153	572,007
+ - See Footnotes						C - Includes figures for main campus only					
- Bibliographic Count						L - Includes Law Library					
\$ - Fringe Benefits Included in Salaries and Wages						M - Includes Medical Library					
						N/A - Figures not available or not applicable					

## ASSOCIATION OF RESEARCH



## LIBRARIES

## ACADEMIC LIBRARY STATISTICS

LIBRARY CODE NO.	EXPENDITURES							PERSONNEL			
	LIBRARY MATERIALS	CURRENT PERIODICALS	BINDING	TOTAL MATERIALS & BINDING	TOTAL SALARIES & WAGES	OTHER OPERATING EXPENDITURES	TOTAL LIBRARY OPERATING EXPENDITURES	PROF. STAFF FTE	NON-PROF. STAFF FTE	STUDENT ASSTS. FTE	TOTAL STAFF FTE
	12	12.5	13	14	15	16	17	18	19	20	21
93.	2,163,621	1,091,861	140,940	2,304,564	3,854,557	689,378	6,848,499	112	224	110	446
94.	2,551,273	955,681	218,399	2,569,672	5,750,482	1,890,747	10,210,901	179	444	37	660
95.	2,246,458	N/A	N/A	2,246,458	7,127,056	1,582,985	10,956,499	168	354	45	567
96.	403,276	82,364	N/A	403,276	426,418	746,638	1,576,332	15	30	7	52
97.	248,183	229,842	13,238	261,721	601,050	845,393	1,708,164	26	50	5	81
98.	3,689,115	965,119	1,013,907	4,733,352	72,373,171	40,121,039	117,227,562	3249	1681	0	4930
99.	377,323	287,314	39,395	408,322	362,675	181,299	952,296	16	18	11	45
100.	614,000	300,000	78,000	692,000	2,927,000	1,761,000	5,380,000	76	101	20	197
101.	650,000	72,000	40,000	690,000	5,747,066	1,834,736	8,271,802	165	304	0	469
102.	859,572	515,743	91,666	951,238	3,540,000	1,520,056	6,011,294	109	96	41	246
103.	2,228,000	616,000	448,000	2,676,000	11,917,000	2,931,000	17,524,000	176	565	122	863
104.	891,019	N/A	102,028	993,047	2,096,134	259,633	3,328,814	69	101	17	187
105.	342,233	141,863	73,000	415,235	1,198,402	180,468	1,794,105	35	67	2	104
Univ. Medians	1,173,503	526,594	90,480	1,268,788	2,007,356	299,898	3,490,754	59	118	197	226
Hi-Univ.	3,208,524	1,320,000	423,178	3,421,414	8,761,403	1,890,747	12,896,409	219	677	49	945
Lo-Univ.	532,147	171,565	31,977	609,234	791,282	89,962	1,610,272	27	52	8	89
TOTALS - UNIVERSITY LIBRARIES											
	125,949,270	50,884,028	11,325,198	136,374,468	243,412,175	35,985,590	415,772,233	7,171	14,840	5,409	27,420
TOTALS - NONUNIVERSITY LIBRARIES											
	125,549,811	3,210,245	1,920,838	14,470,649	108,315,972	51,944,247	174,730,868	4,104	3,367	270	7,741
GRAND TOTALS - ALL ARL LIBRARIES											
	138,499,081	54,094,273	13,246,036	150,845,117	351,728,147	87,929,837	590,563,101	11,275	18,207	5,679	35,161
* - See Footnotes				C - Includes figures for main campus only				N/A - Figures not available			
* - Bibliographic Count				L - Includes Law Library							
\$ - Fringe Benefits Included in Salaries and Wages				M - Includes Medical Library							



## ASSOCIATION OF RESEARCH



## LIBRARIES

## LIBRARY STATISTICS

	COLLECTIONS					INTERLIBRARY LOANS					
	VOLUMES IN LIBRARY	VOLUMES ADDED (Gross)	VOLUMES ADDED (Net)	TOTAL MICROFORM UNITS IN LIBRARY	CURRENT SERIALS	LOANED			BORROWED		
						ORIGINALS	PHOTOCOPIES	TOTAL	ORIGINALS	PHOTOCOPIES	TOTAL
1	2	3	4	5	6	7	8	9	10	11	
MEDIANS - UNIVERSITY LIBRARIES											
75/76	1,592,582	78,085	64,842	924,610	18,876	4,369	5,597	11,053	2,460	1,907	4,505
74/75	1,549,589	77,960	72,281	847,758	18,758	4,197	5,994	10,827	2,265	1,942	4,225
73/74	1,553,192	78,671	71,525	733,755	19,345	3,640	5,006	10,525	2,236	1,591	3,681
72/73	1,522,961	83,354	70,668	646,467	17,352	N/A	N/A	N/A	N/A	N/A	N/A
71/72	1,486,412	86,473	81,273	589,020	17,160	N/A	N/A	N/A	N/A	N/A	N/A
70/71	1,590,167	96,254	86,635	527,207	N/A	N/A	N/A	N/A	N/A	N/A	N/A
69/70	1,370,902	94,314	88,989	412,869	N/A	N/A	N/A	N/A	N/A	N/A	N/A
68/69	1,268,159	94,138	89,859	355,490	N/A	N/A	N/A	N/A	N/A	N/A	N/A
ANNUAL CHANGE IN MEDIANS - UNIVERSITY LIBRARIES											
75/76	2.8	.16	(10.5)	9.1	.63	4.1	(6.6)	2.1	8.6	(1.8)	6.6
74/75	(.23)*	(.90)	1.1	15.5	(3.0)	15.3	19.7	2.9	1.3	22.1	14.8
73/74	2.0	(5.6)	1.2	13.5	11.5	N/A	N/A	N/A	N/A	N/A	N/A
72/73	2.5	(3.6)	(13.0)	9.8	1.1	N/A	N/A	N/A	N/A	N/A	N/A
71/72	6.9	(.10)	(6.2)	11.7	N/A	N/A	N/A	N/A	N/A	N/A	N/A
70/71	1.4	2.1	(2.6)	27.7	N/A	N/A	N/A	N/A	N/A	N/A	N/A
69/70	8.1	.19	(.97)	16.1	N/A	N/A	N/A	N/A	N/A	N/A	N/A
68/69	N/A	N/A	N/A	N/A	N/A	N/A	N/A	N/A	N/A	N/A	N/A

\* Figures in parentheses reflect decreases

N/A - Figures not available.

## ASSOCIATION OF RESEARCH



## LIBRARIES

## LIBRARY STATISTICS

	EXPENDITURES							PERSONNEL			
	LIBRARY MATERIALS	CURRENT PERIODICALS	BINDING	TOTAL MATERIALS & BINDING	TOTAL SALARIES & WAGES	OTHER OPERATING EXPENDITURES	TOTAL LIBRARY OPERATING EXPENDITURES	PROF. STAFF FTE	HON-PROF. STAFF FTE	STUDENT ASSTS. FTE	TOTAL STAFF FTE
	12	12.5	13	14	15	16	17	18	19	20	21
MEDIANS - UNIVERSITY LIBRARIES											
75/76	1,173,503	526,594	90,480	1,268,788	2,007,356	299,898	3,490,754	59	118	49	226
74/75	1,081,147	N/A	90,825	1,165,081	1,913,406	292,488	3,366,697	62	125	53	N/A
73/74	1,062,002	N/A	89,744	1,172,990	1,865,171	236,399	3,243,492	65	132	50	N/A
72/73	884,253	N/A	85,348	1,080,048	1,701,413	204,405	3,026,243	63	136	47	N/A
71/72	906,642	N/A	88,751	998,178	1,596,398	185,720	2,855,735	65	131	49	N/A
70/71	932,172	N/A	83,000	1,026,270	1,496,365	178,812	2,776,105	65	129	49	N/A
69/70	910,010	N/A	80,536	996,008	1,454,922	170,872	2,698,072	70	130	48	N/A
68/69	770,165	N/A	74,122	850,667	1,268,039	157,785	2,293,112	69	118	49	N/A
CHANGE IN MEDIANS - UNIVERSITY LIBRARIES											
75/76	8.5	N/A	(.38)	8.9	4.9	2.5	3.7	(4.8)	(5.6)	(7.5)	N/A
74/75	1.8	N/A	1.2	(.67)	2.6	23.7	3.8	(4.6)	(5.3)	6.0	N/A
73/74	20.1	N/A	.5.2	8.6	9.6	15.7	7.2	3.2	(2.9)	6.4	N/A
72/73	(2.5)	N/A	(3.8)	8.2	6.6	10.1	6.0	(3.1)	3.8	(4.1)	N/A
71/72	(2.7)	N/A	6.9	(2.7)	6.7	3.9	2.9	0	1.6	0	N/A
70/71	2.4	N/A	3.1	3.0	2.8	4.6	2.9	(7.1)	(.77)	2.1	N/A
69/70	18.2	N/A	8.7	17.1	14.7	8.3	17.7	1.4	10.2	(2.0)	N/A
68/69	-	-	-	-	-	-	-	-	-	-	-

## UNIVERSITY STATISTICS - HEGIS DATA

Institution	Ph.D's Awarded	Ph.D Fields	University Expenditures*	ENROLLMENTS - FALL 1976			
				Total Full-time	Full-time Graduate	Total FTE Part-time	Part-time Graduate FTE
Alabama	81	38	58,487,313	13,699	1,220	3,217	1,651
Alberta	147	38	94,388,000	19,736	1,912	10,803	710
Arizona	215	78	171,396,933	20,020	2,231	8,518	4,224
Arizona State	121	25	68,465,221	21,187	1,886	13,177	7,776
Boston	288	12	104,541,933	16,624	2,938	7,668	2,975
Brigham Young	54	36	N/A	22,343	1,728	1,270	609
British Columbia	159	41	110,366,464	20,068	1,990	2,911	769
Brown	139	30	47,232,563	5,063	1,453	410	219
Calif., Berkeley	743	89	226,299,938	28,019	8,948	2,290	565
Calif., Davis	561	48	195,332,677	16,711	3,272	928	247
Calif., L.A.	445	56	358,872,684	20,407	10,864	1,153	812
Calif., San Diego	151	30	177,807,558	9,211	1,984	4,721	49
Calif., S.B.	158	28	68,638,408	13,948	1,941	636	97
Case Western Res.	193	48	78,431,027	6,333	3,321	2,360	1,546
Chicago	404	55	120,586,457	8,022	5,572	998	998
Cincinnati	185	40	113,812,240	22,170	3,293	16,617	2,662
Colorado	289	43	76,169,499	19,214	2,981	2,404	1,138
Colorado State	151	33	75,098,557	16,790	1,662	2,144	463
Columbia	390	51	217,815,628	12,479	6,126	3,670	1,339
Connecticut	218	82	91,905,035	22,696	3,988	4,579	1,868
Cornell	466	77	233,694,813	16,550	4,034	1,163	N/A
Dartmouth	27	10	N/A	4,004	634	71	25
Duke	201	30	101,571,341	8,153	2,808	694	519
Emory	85	21	59,479,599	6,283	636	878	457
Florida	302	45	164,698,309	24,413	4,349	3,776	1,377
Florida State	345	45	73,552,441	17,005	2,971	4,379	1,072
Georgetown	75	26	67,812,985	6,165	896	1,547	964
Georgia	204	43	131,973,296	21,001	2,437	4,499	1,534
Harvard	492	41	223,841,566	15,016	8,259	5,482	370
Hawaii	116	31	94,803,983	16,540	1,380	4,421	1,734
Houston	345	26	52,579,006	20,622	3,837	15,499	4,464
Howard	41	24	84,579,710	8,300	2,549	1,326	792
Illinois	704	85	201,501,276	35,811	7,714	3,843	2,736
Indiana	581	109	241,413,751	45,906	8,231	30,999	10,733
Iowa	313	55	193,839,439	18,102	3,251	4,934	250
Iowa State	216	85	113,684,594	19,287	1,982	2,464	1,460
Johns Hopkins	179	32	121,434,784	4,461	2,207	5,650	3,562
Joint Univ.	205	45	59,188,792	8,207	1,295	863	600
Kansas	242	50	57,049,020	16,984	2,212	5,210	2,593
Kent State	114	16	48,030,293	15,937	1,528	4,120	2,134
Kentucky	150	47	121,337,212	16,178	1,683	2,457	1,242
Louisiana State	137	49	54,836,326	20,527	2,909	4,264	1,900
McGill	142	52	104,613,460	17,156	4,034	3,913	900
McMaster	96	22	48,035,985	10,083	1,239	4,367	708
Maryland	353	59	107,054,920	35,890	2,856	9,102	4,473
Massachusetts	334	45	82,332,000	22,724	2,558	3,160	2,937
MIT	384	24	269,250,000	7,953	3,603	521	446

\*Total educational and general expenditures and mandatory transfers Part B, Line 12 of HEGIS XI: Financial Statistics of Institutions of Higher Education for FY ending 1976.

## UNIVERSITY STATISTICS - HEGIS DATA

Institution	Ph.D's Awarded	Ph.D's Fields	University Expenditures*	ENROLLMENTS - FALL 1976			
				Total Full-time	Full-time Graduate	Total FTE Part-time	Part-time Graduate FTE
Miami	110	31	96,836,991	11,142	2,690	3,659	1,626
Michigan	688	83	268,477,608	31,286	6,952	6,219	4,049
Michigan State	533	89	127,503,460	36,926	5,324	7,654	3,750
Minnesota	494	88	277,804,985	47,434	8,677	28,171	3,725
Missouri	211	57	129,735,662	25,924	6,273	1,762	1,033
Nebraska	167	42	76,056,769	22,380	3,624	3,284	1,241
New York	539	91	282,256,000	10,095	4,347	12,138	10,844
North Carolina	299	54	148,044,080	17,561	2,727	3,054	2,174
Northwestern	356	55	126,787,000	11,456	4,548	3,934	1,392
Notre Dame	110	68	37,728,852	8,290	1,005	379	80
Ohio State	678	71	229,867,400	43,972	5,900	6,123	2,961
Oklahoma	162	44	56,021,068	17,761	3,543	5,328	2,729
Oklahoma State	116	35	61,140,150	17,568	1,826	3,465	2,083
Oregon	214	36	36,979,559	14,491	3,172	4,439	3,221
Pennsylvania	423	99	285,595,000	14,739	7,198	5,641	1,464
Penn. State	401	92	217,436,015	46,477	3,808	18,822	954
Pittsburgh	362	65	162,649,847	20,962	5,027	14,158	5,481
Princeton	247	37	68,614,773	5,802	1,406	173	50
Purdue	420	52	122,654,700	25,528	3,502	3,395	1,797
Queen's	71	26	47,415,000	10,116	1,073	1,478	139
Rice	73	23	29,893,000	3,598	760	146	66
Rochester	163	44	88,288,864	6,238	1,502	1,941	600
Rutgers	215	63	178,559,811	29,687	3,149	16,619	7,482
South Carolina	146	42	60,778,787	17,140	3,279	6,911	5,074
Southern Calif.	290	49	175,103,639	16,802	3,085	11,272	9,187
Southern Ill.	210	20	97,817,509	17,808	1,172	3,406	2,268
Stanford	484	61	N/A	12,684	4,975	N/A	1,186
SUNY-Albany	90	20	54,994,751	11,239	1,920	4,175	3,074
SUNY-Buffalo	290	53	83,290,000	19,884	3,081	7,233	6,613
SUNY-Stony Brook	120	56	60,870,400	11,488	2,070	4,622	3,525
Syracuse	237	92	79,269,840	13,492	2,553	6,716	3,606
Temple	152	26	140,556,000	14,569	3,613	12,933	3,835
Tennessee	248	53	73,493,888	22,888	3,777	7,111	3,246
Texas	435	56	164,376,220	37,882	6,116	4,716	1,070
Texas A & M	224	46	85,674,945	21,753	2,144	3,162	2,348
Toronto	330	65	156,210,000	32,633	7,808	14,000	4,097
Tulane	81	27	53,541,325	7,383	3,488	1,808	884
Utah	207	50	104,471,228	17,520	1,778	6,458	2,700
Virginia	241	48	73,708,915	15,179	3,865	1,431	992
VPI	186	39	83,844,658	17,254	1,969	1,226	856
Wash., Seattle	365	60	208,867,000	28,122	7,439	7,850	3,633
Wash., State	147	35	73,649,400	15,210	1,508	1,127	451
Wash. Univ., Mo.	136	40	121,056,490	7,261	1,658	4,098	1,116
Wayne State	213	43	125,264,111	25,856	6,651	12,217	4,404
Western Ontario	87	36	74,488,836	16,186	1,631	2,568	160
Wisconsin	776	125	253,599,402	32,661	7,118	5,884	2,201
Yale	334	44	190,022,000	5,144	4,577	N/A	N/A

\*Total educational and general expenditures and mandatory transfers Part B, Line 12 of HEGIS XI: Financial Statistics of Institutions of Higher Education for FY ending 1976.

## ANALYSIS OF MICROFORM HOLDINGS\*

Institution	Reels of Microfilm	Number of Microcards	Number of Microprint Sheets	Number of Microfiches
Alabama	55,391	51,436	N/A	299,162
Alberta	57,596	154,249	441,003	436,096
Arizona	N/A	N/A	N/A	N/A
Arizona State	44,400	115,506	162,198	432,267
Boston	31,186	27,382	415,844	228,131
Brigham Young	33,951	45,043	152,964	309,665
British Columbia	45,541	111,680	885,000	610,465
Brown	18,842	41,486	74,018	101,058
California, Berkeley	152,005	163,272	114,735	482,077
California, Davis	47,503	198,467	309,202	609,901
California, Los Angeles	94,380	N/A	N/A	N/A
California, San Diego	10,332	53,578	-0-	454,753
California, Santa Barbara	25,266	86,351	150,621	690,223
Case Western Reserve	16,631	85,065	-0-	167,970
Chicago	67,158	15,894	74,471	374,338
Cincinnati	38,764	17,972	127,483	568,476
Colorado	36,190	79,212	195,700	1,130,661
Colorado State	19,602	14,756	2,749	210,083
Columbia	106,124	180,534	343,214	756,395
Connecticut	43,056	29,330	425,921	350,389
Cornell	81,160	55,867	751,460	600,840
Dartmouth	38,567	45,267	152,138	283,330
Duke	36,337	N/A	N/A	N/A
Emory	22,847	N/A	N/A	N/A
Florida	80,004	210,174	170,140	401,063
Florida State	57,562	247,455	379,615	600,707
Georgetown	14,211	47,044	225,116	137,538
Georgia	83,256	114,462	413,667	562,694
Harvard	124,636	86,458	585,710	476,547
Hawaii	65,775	127,587	210,376	434,987
Houston	80,266	89,186	170,869	934,596
Howard	13,273	103	N/A	492,857
Illinois	121,462	83,892	459,670	659,816
Indiana	96,704	112,813	234,620	511,737
Iowa	61,655	91,480	129,590	618,777
Iowa State	22,887	6,328	173,670	531,030
Johns Hopkins	32,630	116,750	416,136	378,866
Joint University	17,968	61,732	314,349	412,890
Kansas	34,935	67,304	211,648	222,480
Kent State	42,261	N/A	N/A	N/A
Kentucky	75,000	271,019	315,499	757,356
Louisiana State	70,319	130,463	38,717	259,557
McGill	23,851	N/A	N/A	N/A
McMaster	22,154	83,115	108,907	528,068
Maryland	52,069	N/A	N/A	N/A
Massachusetts	66,120	3,702	5,965	429,441
MIT	11,262	137,670	-0-	466,840
Miami	20,849	N/A	N/A	N/A
Michigan	100,497	N/A	N/A	N/A
Michigan State	90,166	N/A	264,690	N/A
Minnesota	88,466	165,374	312,546	499,496
Missouri	95,206	187,530	680,689	695,828
Nebraska	23,862	33,488	159,615	208,495

\* - Figures for nonuniversity members are included at the end of the table.

N/A - Figures not available.

## ANALYSIS OF MICROFORM HOLDINGS

21

Institution	Reels of Microfilm	Number of Microcards	Number of Micro-print Sheets	Number of Microfiches
New York	44,096	358,557	249,920	392,828
North Carolina	73,844	71,013	502,829	449,985
Northwestern	34,236	110,566	41,696	430,652
Notre Dame	60,652	N/A	N/A	152,596
Ohio State	59,994	61,497	348,334	549,222
Oklahoma	N/A	N/A	N/A	N/A
Oklahoma State	20,921	66,006	228,501	369,804
Oregon	35,041	96,271	256,295	166,249
Pennsylvania	50,058	100,543	469,764	406,679
Pennsylvania State	128,264	N/A	260,345	N/A
Pittsburgh	48,422	99,372	418,652	273,836
Princeton	63,334	184,289	351,228	381,715
Purdue	27,363	148,410	-0-	634,103
Queen's	36,660	329,945	-0-	215,183
Rice	28,364	133,211	472,014	304,260
Rochester	26,000	171,000	622,000	453,000
Rutgers	70,971	81,684	449,307	477,327
South Carolina	59,495	622,201	423,584	165,292
Southern California	24,938	170,080	531,966	194,580
Southern Illinois	86,167	143,974	999,677	254,684
Stanford	91,435	N/A	N/A	N/A
SUNY-Albany	202,674	26,920	392,965	728,824
SUNY-Buffalo	37,023	177,908	467,294	430,031
SUNY-Stony Brook	44,206	136,287	594,639	436,496
Syracuse	35,526	236,482	687,495	629,385
Temple	36,726	50,217	121,790	418,179
Tennessee	42,477	N/A	N/A	N/A
Texas	74,935	132,500	458,909	692,868
Texas A & M	27,899	96,000	215,472	546,328
Toronto	58,988	57,833	736,149	280,850
Tulane	N/A	N/A	N/A	N/A
Utah	N/A	N/A	N/A	N/A
Virginia	64,172	178,822	239,781	1,292,011
Virginia Polytechnic	71,203	N/A	N/A	804,180
Washington, Seattle	64,182	38,622	1,549,427	119,635
Washington State	59,996	167,602	522,261	554,816
Washington Univ., St. Louis	23,787	25,247	170,815	329,726
Wayne State	32,751	55,346	39,171	365,530
Western Ontario	3,420	19,335	404,328	449,322
Wisconsin	33,980	133,550	92,838	986,572
Yale	83,363	314,356	325,189	208,919
*Boston Public	79,922	11,851	955,479	317,369
*Center for Research Libs.	209,660	N/A	239,784	N/A
*John Crerar Library	5,916	80,000	-0-	320,506
*Library of Congress	802,027	N/A	N/A	1,291,120
*Linda Hall Library	9,078	84,620	-0-	397,041
*National Agricultural Lib.	8,046	616	47,291	72,425
*National Library of Canada	53,063	10,062	424,422	215,728
*National Lib. of Medicine	22,764	-0-	-0-	6,675
*New York Public Library	162,424	858,680	N/A	241,142
*New York State Library	66,599	151,094	517,793	744,812
*Smithsonian Institution	N/A	N/A	N/A	N/A

\* - Nonuniversity library  
 A - Figures not available

## ANALYSIS OF SELECTED VARIABLES OF UNIVERSITY LIBRARIES

The percentages and ratios below are intended to supplement the basic data in our statistical charts. The high, low, and median figures indicate the range as well as the midpoint for ARL's 94 university library members.

<u>Category</u>	<u>High</u>	<u>Low</u>	<u>Median</u>
1. Percent Professional Staff	39.2	16.8	26.4
2. Percent Nonprofessional Staff	75.9	34.5	52.8
3. Percent Student Assistant Staff	45.5	5.6	19.8
4. Ratio of Professional to Nonprofessional Staff (excluding student assistants)	1:1	1:4.5	1:2
5. Ratio of I.L.L. Items Loaned to Items Borrowed	37:1	1:4	3:1
6. Percent Materials Expenditures	63.7	17.6	31.6
7. Percent Salary Expenditures	69.4	30.8	57.5
8. Ratio of Salary Expenditures to Materials Expenditures	3.8:1	1:2	1.8:1
9. Library Expenditures as a Percent of University Expenditures (88 libraries)	8.3	1.1	3.5

Among other things, these figures illustrate the advantages of using median figures when there is a wide dispersion in a distribution. Because of the characteristic of the mean as a "balance point," a few very high or low scores may sometimes pull the mean away from the actual point at which values cluster. As the measure of central tendency which focuses on the midpoint in a distribution, medians are thus much preferable for our purposes.

All of this is by way of emphasizing again the need for exercising great care in using the quantitative data presented here to make qualitative evaluations of library programs and services. In all cases, in a number of significant ways these evaluations must be judged on the basis of an institution's local needs and characteristics which are based on other nonquantitative information.

RANK ORDER TABLES  
FOR ARL UNIVERSITY LIBRARIES

1975 - 76



## SUMMARY OF RANK ORDER TABLES FOR UNIVERSITY LIBRARIES\*

The table below presents for each university library its rankings in each of the categories for which rank order tables are prepared. In addition to these rankings, note that in the individual rank order tables on pages 27-40 group codes are used. This is done because in a number of cases there is a relatively insignificant difference between two institutions (which are nevertheless given two different rankings), and it was decided that a "coarser" ranking of institutions was desirable. Therefore, in addition to the individual rankings, institutions are clustered into groups according to ranges. The number of libraries within each group is then presented graphically to illustrate the distribution of libraries among the groups.

The table numbers in the chart below refer to the following categories:

Table 1 - Volumes in Library	Table 8 - Materials Expenditures
Table 2 - Volumes Added (Gross)	Table 9 - Materials & Binding Expenditures
Table 3 - Total Microform Holdings	Table 10 - Salaries & Wages Expenditures
Table 4 - Current Serials	Table 11 - Total Expenditures
Table 5 - Professional Staff (FTE)	Table 12 - Total Items Loaned
Table 6 - Nonprofessional Staff (FTE)	Table 13 - Total Items Borrowed
Table 7 - Total Staff (FTE)	

INSTITUTION	TABLES												
	1	2	3	4	5	6	7	8	9	10	11	12	13
Alabama	83	82	89	83	84	92	89	87	89	91	88	91	72
Alberta	37	33	32	67	31	10	19	13	12	17	16	63	54
Arizona	33	19	47	37	51	64	66	31	32	65	49	69	68
Arizona State	71	41	62	80	87	51	51	36	36	78	63	90	49
Boston	76	59	66	43	38	47	48	76	77	55	61	83	60
Brigham Young	59	44	76	40	64	72	39	94	94	94	94	89	74
British Columbia	23	20	5	48	18	4	12	22	23	8	11	16	17
Brown	49	91	94	89	62	78	61	77	76	68	79	77	85
Calif., Berkeley	5	10	49	2	6	9	9	11	9	3	5	14	15
Calif., Davis	63	40	28	14	47	30	34	21	20	22	19	28	37
Calif., Los Angeles	14	17	11	7	9	15	7	8	8	4	4	5	20
Calif., San Diego	78	53	80	28	58	41	46	40	35	35	36	43	48
Calif., Santa Barbara	74	60	42	49	51	37	37	32	31	30	31	92	11
Case Western Reserve	50	94	91	76	42	75	71	84	84	69	82	7	61
Chicago	12	9	78	13	33	34	29	29	29	26	25	15	33
Cincinnati	75	85	63	85	58	49	54	72	72	42	52	46	18
Colorado	39	52	9	59	80	59	68	79	78	43	62	51	46
Colorado State	89	69	93	60	88	91	93	86	86	87	87	70	35
Columbia	6	16	12	4	10	6	10	23	21	10	13	30	90
Connecticut	53	45	54	31	49	89	78	39	42	63	59	20	26
Cornell	8	21	7	8	13	15	17	16	16	13	14	17	21
Dartmouth	73	88	79	68	91	71	87	78	79	80	74	68	82

\*Table 14 was tabulated after this chart was prepared.

INSTITUTION	TABLES												
	1	2	3	4	5	6	7	8	9	10	11	12	13
Duke	18	12	92	20	27	35	36	37	34	37	40	41	88
Emory	58	1	70	74	64	82	85	4	5	82	35	32	40
Florida	34	79	53	36	32	47	42	61	59	45	54	19	28
Florida State	79	84	18	84	49	73	79	71	74	77	81	86	79
Georgetown	92	78	87	72	75	84	80	82	82	76	83	84	70
Georgia	42	30	27	22	38	28	41	18	18	51	38	50	34
Harvard	1	4	20	1	1	2	2	3	1	2	2	4	16
Hawaii	54	67	57	24	36	73	50	52	56	41	47	59	91
Houston	67	25	19	77	68	54	49	10	13	64	39	75	39
Howard	93	75	81	94	41	84	83	93	88	49	65	93	94
Illinois	3	7	16	3	3	8	5	14	14	6	7	1	7
Indiana	9	5	41	18	5	7	4	5	4	12	8	13	4
Iowa	29	31	51	30	36	62	43	26	26	44	42	37	8
Iowa State	82	57	65	61	58	57	67	53	52	46	48	52	55
Johns Hopkins	26	81	43	64	46	54	56	55	58	50	44	57	6
Joint University	61	68	59	65	58	65	70	64	64	72	60	71	69
Kansas	43	56	77	39	71	76	77	66	68	70	71	60	23
Kent State	81	64	85	45	93	84	91	92	92	88	90	80	24
Kentucky	51	14	10	32	38	54	47	46	47	58	58	29	43
Louisiana State	45	55	83	55	64	88	73	42	44	75	64	85	80
McGill	35	70	90	58	25	13	18	43	43	19	20	11	9
McMaster	94	76	64	92	89	33	53	48	51	53	50	55	13
Maryland	52	24	39	57	26	26	23	25	24	27	23	42	75
Massachusetts	56	28	82	71	51	68	58	73	73	54	66	65	63
MIT	40	54	72	52	47	40	52	81	81	52	68	40	66
Miami	77	72	67	88	71	63	65	83	83	81	86	64	73
Michigan	4	13	26	9	8	5	6	12	11	9	10	21	27
Michigan State	24	27	45	27	35	50	31	50	49	34	41	24	57
Minnesota	13	23	35	17	7	19	8	15	15	7	9	2	1
Missouri	32	80	4	46	75	66	84	47	48	84	78	48	67
Nebraska	68	73	86	44	55	66	63	57	61	66	72	81	65
New York	21	37	36	53	43	25	35	49	46	24	32	79	83
North Carolina	25	49	31	33	30	28	33	28	28	32	30	22	52
Northwestern	20	36	71	25	20	36	25	30	30	29	26	47	42
Notre Dame	66	93	88	82	87	76	88	91	93	90	91	94	87
Ohio State	15	15	38	26	23	23	21	35	39	20	22	27	41

INSTITUTION	TABLES												
	1	2	3	4	5	6	7	8	9	10	11	12	13
Oklahoma	60	74	55	75	75	81	81	68	66	86	84	54	14
Oklahoma State	80	89	68	91	91	94	92	88	87	92	92	76	76
Oregon	64	83	74	42	71	87	75	80	80	71	85	62	62
Pennsylvania	19	35	37	16	23	26	27	44	41	23	28	36	22
Pennsylvania State	31	43	3	19	17	11	14	24	25	15	17	23	29
Pittsburgh	28	18	56	38	12	42	26	38	38	33	34	10	31
Princeton	17	26	40	23	22	22	24	20	22	25	24	33	92
Purdue	69	90	58	51	84	38	57	62	62	62	69	49	53
Queen's	71	77	73	69	75	30	45	54	53	48	55	73	19
Rice	91	86	44	93	94	93	94	90	91	93	93	38	93
Rochester	47	65	21	78	64	68	82	69	69	61	67	31	32
Rutgers	30	29	33	34	18	21	20	17	19	31	21	9	38
South Carolina	55	39	22	81	75	68	69	63	63	79	76	82	51
Southern California	36	62	48	50	29	44	32	59	55	40	43	74	78
Southern Illinois	57	47	8	47	51	90	64	51	50	57	53	26	71
Stanford	10	11	24	10	11	14	11	6	6	11	6	6	59
Suny-Albany	86	87	15	72	56	59	76	85	85	59	75	56	3
Suny-Buffalo	46	46	30	60	20	30	30	70	70	28	37	18	5
Suny-Stony Brook	88	61	25	86	56	51	59	65	65	47	56	66	36
Syracuse	48	38	6	35	68	45	40	75	75	74	80	88	50
Temple	62	48	69	63	27	46	38	58	54	38	45	61	58
Tennessee	65	66	60	41	62	39	62	41	40	67	57	53	64
Texas	11	3	14	5	14	17	13	1	3	16	12	39	44
Texas A & M	87	22	52	66	82	59	74	34	37	85	70	35	10
Toronto	7	2	29	12	2	1	1	2	2	1	1	12	12
Tulane	70	92	61	90	86	82	90	89	90	89	89	45	30
Utah	44	32	34	56	82	79	72	67	67	73	73	72	47
Virginia	27	42	1	54	33	24	28	27	27	36	33	58	77
VPI & SU	90	50	13	20	80	79	86	74	71	83	77	78	81
Washington	22	34	2	15	15	18	15	19	17	14	18	8	84
Washington State	85	71	17	29	71	58	60	60	60	56	51	87	89
Washington U (St. Louis)	41	58	75	70	70	42	55	45	45	60	46	44	25
Wayne State	38	63	84	79	44	51	44	56	57	39	29	25	86
Western Ontario	84	50	50	87	44	12	22	33	33	21	27	67	45
Wisconsin	16	8	23	11	16	20	16	9	10	18	15	3	2
Yale	2	6	46	6	4	3	3	7	7	5	3	34	56

RANK ORDER TABLE 1: VOLUMES IN LIBRARY

See explanatory note on p. 24.  
Group ranges (in thousands) are:

- |                |                |
|----------------|----------------|
| 1- over 9,000  | 6- 4,000-4,999 |
| 2- 8,000-8,999 | 7- 3,000-3,999 |
| 3- 7,000-7,999 | 8- 2,000-2,999 |
| 4- 6,000-6,999 | 9- 1,000-1,999 |
| 5- 5,000-5,999 | 10- 500- 999   |



Gr.	Rank	Institution	Volumes Held
1	1	Harvard	9,383,255
2		None	
3		None	
4	2	Yale	6,692,632
5	3	Illinois	5,670,416
6	4	Michigan	4,790,805
	5	Calif., Berkeley	4,785,595
	6	Columbia	4,623,344
	7	Toronto	4,560,148
	8	Cornell	4,366,951
	9	Indiana	4,220,978
	10	Stanford	4,175,976
7	11	Texas	3,878,535
	12	Chicago	3,762,104
	13	Minnesota	3,662,739
	14	Calif., Los Angeles	3,632,831
	15	Ohio State	3,142,500
	16	Wisconsin	3,132,863
8	17	Princeton	2,812,253
	18	Duke	2,764,348
	19	Pennsylvania	2,713,905
	20	Northwestern	2,536,611
	21	New York	2,528,134
	22	Washington	2,273,656
	23	British Columbia	2,198,810
	24	Michigan State	2,196,410
	25	North Carolina	2,192,224
	26	Johns Hopkins	2,092,858
	27	Virginia	2,083,424
	28	Pittsburgh	2,075,909
9	29	Iowa	1,965,214
	30	Rutgers	1,927,021
	31	Pennsylvania State	1,889,173
	32	Missouri	1,836,458
	33	Arizona	1,836,012
	34	Florida	1,807,242
	35	McGill	1,735,928
	36	Southern Calif.	1,725,457
	37	Alberta	1,706,547
	38	Wayne State	1,663,297
	39	Colorado	1,656,245
	40	MIT	1,620,041
	41	Wash. Univ. (Mo.)	1,619,795
	42	Georgia	1,619,104
	43	Kansas	1,618,306
	44	Utah	1,613,410

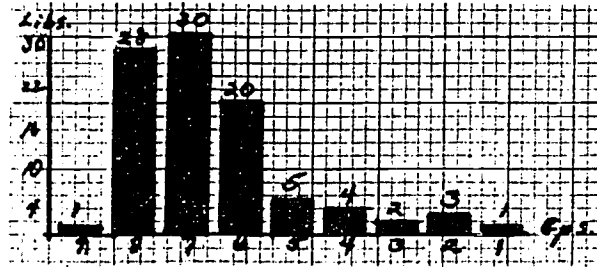
Gr.	Rank	Institution	Volumes Held
9	45	Louisiana State	1,603,282
	46	SUNY-Buffalo	1,601,524
	47	Rochester	1,600,000
	48	Syracuse	1,585,163
	49	Brown	1,570,576
	50	Case Western Res.	1,570,429
	51	Kentucky	1,555,537
	52	Maryland	1,534,498
	53	Connecticut	1,476,657
	54	Hawaii	1,470,039
	55	South Carolina	1,457,350
	56	Massachusetts	1,453,314
	57	Southern Illinois	1,450,655
	58	Emory	1,396,581
	59	Brigham Young	1,347,548
	60	Oklahoma	1,338,802
	61	Joint University	1,336,477
	62	Temple	1,315,884
	63	Calif., Davis	1,314,540
	64	Oregon	1,307,473
	65	Tennessee	1,280,388
	66	Notre Dame	1,277,752
	67	Houston	1,265,584
	68	Nebraska	1,258,053
	69	Purdue	1,247,975
	70	Tulane	1,245,664
	71	Arizona State	1,227,596
	71	Queen's	1,227,545
	73	Dartmouth	1,204,918
	74	Calif., Santa Barb.	1,187,925
	75	Cincinnati	1,184,581
	76	Boston	1,180,381
	77	Miami	1,171,186
	78	Calif., San Diego	1,168,945
	79	Florida State	1,167,970
	80	Oklahoma State	1,158,881
	81	Kent State	1,125,039
	82	Iowa State	1,121,772
	83	Alabama	1,088,504
	84	Western Ontario	1,075,923
	85	Washington State	1,060,964
	86	SUNY-Albany	1,039,710
	87	Texas A & M	1,027,458
	88	SUNY-Stony Brook	1,018,406
10	89	Colorado State	986,171
	90	VPI	941,007
	91	Rice	917,432
	92	Georgetown	902,668
	93	Howard	887,393
	94	McMaster	806,674

## RANI. ORDER TABLE 2: VOLUMES ADDED (GROSS)

See explanatory note on p. 24.

The ranges for the groups below are:

- 1- 240,000-269,000    6- 90,000-119,999  
 2- 210,000-239,999    7- 60,000- 89,999  
 3- 180,000-209,999    8- 30,000- 59,999  
 4- 150,000-179,000    9- under 29,999  
 5- 120,000-149,999



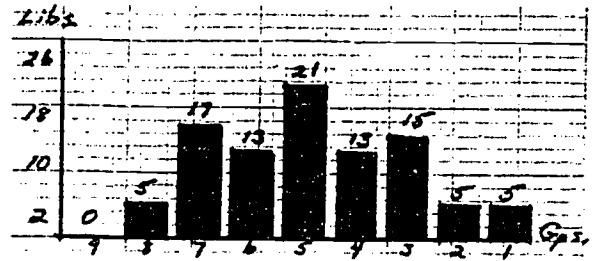
Gr.	Rank	Institution	Volumes Added
1	1	Emory	247,777
2	2	Toronto	217,167
	3	Texas	212,396
	4	Harvard	211,375
3	5	Indiana	194,552
	6	Yale	180,882
4	7	Illinois	171,428
	8	Wisconsin	162,683
	9	Chicago	151,584
	10	Calif., Berkeley	150,529
5	11	Stanford	145,367
	12	Duke	144,239
	13	Michigan	138,999
	14	Kentucky	136,952
	15	Ohio State	126,341
6	16	Columbia	118,569
	17	Calif., Los Angeles	117,318
	18	Pittsburgh	116,978
	19	Arizona	116,619
	20	British Columbia	115,051
	21	Cornell	112,609
	22	Texas A & M	109,935
	23	Minnesota	109,256
	24	Maryland	104,055
	25	Houston	102,306
	26	Princeton	101,527
	27	Michigan State	101,403
	28	Massachusetts	99,331
	29	Rutgers	97,175
	30	Georgia	96,422
	31	Iowa	94,977
	32	Utah	94,645
	33	Alberta	94,501
	34	Washington	94,292
	35	Pennsylvania	91,129
7	36	Northwestern	89,984
	37	New York	89,316
	38	Syracuse	88,895
	39	South Carolina	85,228
	40	Calif., Davis	84,524
	41	Arizona State	84,577
	42	Virginia	83,325
	43	Pennsylvania State	80,831
	44	Brigham Young	80,650
	45	Connecticut	80,307

Gr.	Rank	Institution	Volumes Added
7	46	SUNY-Buffalo	80,178
	47	Southern Illinois	78,894
	48	Temple	77,276
	49	North Carolina	77,030
	50	Western Ontario	75,345
	50	VPI	75,326
	52	Colorado	69,589
	53	Calif., San Diego	69,387
	54	MIT	68,712
	55	Louisiana State	67,646
	56	Kansas	63,873
	57	Iowa State	63,742
	58	Wash. Univ. (Mo.)	63,204
	59	Boston	62,830
	60	Calif., Santa Barb.	62,760
	61	SUNY-Stony Brook	62,267
	62	Southern Calif.	60,941
	63	Wayne State	60,672
	64	Kent State	60,488
	65	Rochester	60,000
8	66	Tennessee	59,900
	67	Hawaii	58,945
	68	Joint University	58,889
	69	Colorado State	56,626
	70	McGill	56,068
	71	Washington State	54,227
	72	Miami	53,462
	73	Nebraska	53,291
	74	Oklahoma	53,124
	75	Howard	50,388
	76	McMaster	50,232
	77	Queen's	49,491
	78	Georgetown	49,114
	79	Florida	49,085
	80	Missouri	47,709
	81	Johns Hopkins	47,574
	82	Alabama	46,018
	83	Oregon	45,970
	84	Florida State	45,148
	85	Cincinnati	43,674
	86	Rice	42,275
	87	SUNY-Albany	38,095
	88	Dartmouth	37,566
	89	Oklahoma State	37,493
	90	Purdue	37,298
	91	Brown	37,088
	92	Tulane	31,055
	93	Notre Dame	30,177
9	94	Case Western Res.	29,486

RANK ORDER TABLE 3: MICROFORM HOLDINGS

See explanatory note on p. 24.  
The ranges for the groups below are:

- 1- 1,600,000 and over
- 2- 1,400,000-1,599,999
- 3- 1,200,000-1,399,999
- 4- 1,000,000-1,199,999
- 5- 800,000-999,999
- 6- 600,000-799,999
- 7- 400,000-599,999
- 8- 200,000-399,999



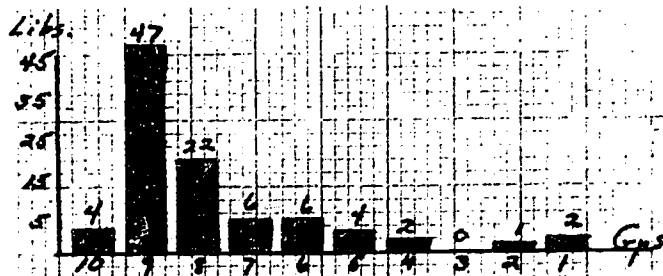
Gp.	Rank	Institution	Microforms
1	1	Virginia	1,774,786
	2	Washington	1,771,866
	3	Pennsylvania State	1,685,422
	4	Missouri	1,659,253
	5	British Columbia	1,652,686
2	6	Syracuse	1,588,888
	7	Cornell	1,489,327
	8	Southern Illinois	1,484,502
	9	Colorado	1,441,763
	10	Kentucky	1,418,874
3	11	Calif., Los Angeles	1,397,718
	12	Columbia	1,386,267
	13	VPI	1,385,759
	14	Texas	1,359,212
	15	SUNY-Albany	1,351,383
	16	Illinois	1,324,840
	17	Washington State	1,304,675
	18	Florida State	1,285,339
	19	Houston	1,274,917
	20	Harvard	1,273,351
	21	Rochester	1,272,000
22	South Carolina	1,270,572	
23	Wisconsin	1,246,940	
24	Stanford	1,231,888	
25	SUNY-Stony Brook	1,211,628	
4	26	Michigan	1,178,964
	27	Georgia	1,174,079
	28	Calif., Davis	1,165,073
	29	Toronto	1,133,820
	30	SUNY-Buffalo	1,112,256
	31	North Carolina	1,097,671
	32	Alberta	1,088,944
	33	Rutgers	1,079,289
	34	Utah	1,068,544
	35	Minnesota	1,065,882
	36	New York	1,045,401
	37	Pennsylvania	1,027,044
	38	Ohio State	1,019,047
5	39	Maryland	984,486
	40	Princeton	980,566
	41	Indiana	955,874
	42	Calif., Santa Barb.	952,461
	43	Johns Hopkins	944,382
	44	Rice	937,849
	45	Michigan State	934,973
	46	Yale	931,827

Gp.	Rank	Institution	Microforms
5	47	Arizona	927,655
	48	Southern Calif.	921,564
	49	Calif., Berkeley	912,089
	50	Western Ontario	908,405
	51	Iowa	901,502
	52	Texas A & M	885,699
	53	Florida	861,381
	54	Connecticut	848,696
	55	Oklahoma	845,973
	56	Pittsburgh	840,282
	57	Hawaii	838,725
58	Purdue	809,876	
59	Joint University	806,939	
6	60	Tennessee	763,751
	61	Tulane	758,548
	62	Arizona State	754,371
	63	Cincinnati	752,695
	64	McMaster	742,244
	65	Iowa State	733,915
	66	Boston	702,543
	67	Miami	690,902
	68	Oklahoma State	685,232
	69	Temple	626,912
	70	Emory	620,412
	71	Northwestern	617,150
	72	MIT	615,772
	7	73	Queen's
74		Oregon	553,856
75		Wash. Univ. (Mo.)	549,575
76		Brigham Young	541,623
77		Kansas	536,367
78		Chicago	531,861
79		Dartmouth	519,302
80		Calif., San Diego	518,663
81		Howard	506,233
82		Massachusetts	505,228
83		Louisiana State	499,056
84		Wayne State	492,798
85		Kent State	478,856
86		Nebraska	425,460
87		Georgetown	423,909
88	Notre Dame	414,238	
89	Alabama	405,989	
8	90	McGill	297,263
	91	Case Western Res.	269,666
	92	Duke	262,948
	93	Colorado State	247,190
	94	Brown	235,404

RANK ORDER TABLES 4: SERIALS

See explanatory note on p. 24.  
The ranges for the groups below are:

- 1- 90,000-99,999    6- 40,000-49,999
- 2- 80,000-89,999    7- 30,000-39,999
- 3- 70,000-79,999    8- 20,000-29,999
- 4- 60,000-69,999    9- 10,000-19,999
- 5- 50,000-59,999    10- under - 9,999



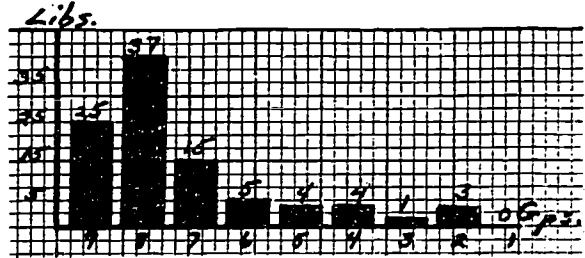
Gr.	Rank	Institution	Serials	
1	1	Harvard	97,000	
	2	Calif., Berkeley	96,143	
2	3	Illinois	85,000	
3		None		
4	4	Columbia	60,751	
	5	Texas	60,000	
5	6	Yale	59,372	
	7	Calif., Los Angeles	54,688	
	8	Cornell	50,929	
	9	Michigan	50,821	
6	10	Stanford	49,502	
	11	Wisconsin	48,195	
	12	Toronto	47,866	
	13	Chicago	42,774	
	14	Calif., Davis	41,768	
	15	Washington	40,790	
7	16	Pennsylvania	38,512	
	17	Minnesota	36,689	
	18	Indiana	34,905	
	19	Pennsylvania State	32,766	
	20	VPI	32,355	
	20	Duke	32,347	
	8	22	Georgia	29,703
		23	Princeton	29,665
24		Hawaii	27,741	
25		Northwestern	26,848	
26		Ohio State	25,738	
27		Michigan State	25,421	
28		Calif., San Diego	24,755	
29		Washington State	24,739	
30		Iowa	24,522	
31		Connecticut	24,119	
32		Kentucky	24,037	
33		North Carolina	22,849	
34		Rutgers	22,365	
35		Syracuse	21,837	
36		Florida	21,457	
37		Arizona	21,206	
38	Pittsburgh	20,827		
39	Kansas	20,495		
40	Brigham Young	20,454		
41	Tennessee	20,392		
42	Oregon	20,225		
43	Boston	20,006		
9	44	Nebraska	19,931	
	45	Kent State	19,127	

Gr.	Rank	Institution	Serials
9	46	Missouri	19,000
	47	Southern Illinois	18,926
	48	British Columbia	18,826
	49	Calif., Santa Barb.	18,687
	50	Southern Calif.	18,654
	51	Purdue	18,477
	52	MIT	18,329
	53	New York	17,897
	54	Virginia	17,541
	55	Louisiana State	17,140
	56	Utah	16,733
	57	Maryland	16,291
	58	McGill	16,252
	59	Colorado	16,235
	60	SUNY-Buffalo	16,104
	61	Iowa State	15,929
	62	Colorado State	15,768
	63	Temple	15,560
	64	Johns Hopkins	15,461
	65	Joint University	15,255
	66	Texas A & M	15,184
	67	Alberta	15,073
	68	Dartmouth	14,988
	69	Queen's	14,931
	70	Wash. Univ. (Mo.)	14,722
	71	Massachusetts	14,611
	72	SUNY-Albany	14,578
	72	Georgetown	14,568
	74	Emory	14,434
	75	Oklahoma	14,234
76	Case Western Res.	14,211	
77	Houston	14,075	
78	Rochester	14,000	
79	Wayne State	13,601	
80	Arizona State	12,883	
81	South Carolina	12,747	
82	Notre Dame	12,718	
83	Alabama	12,695	
84	Florida State	12,152	
85	Cincinnati	12,038	
86	SUNY-Stony Brook	11,572	
87	Western Ontario	11,111	
88	Miami	10,699	
89	Brown	10,503	
90	Tulane	10,176	
10	91	Oklahoma State	9,950
	92	McMaster	9,718
	93	Rice	8,101
	94	Howard	7,110

RANK ORDER TABLE 5: PROFESSIONAL STAFF (FTE)

See explanatory note on p. 24.  
The ranges for the groups below are:

- 1- 225 and over
- 2- 200-224
- 3- 175-199
- 4- 150-174
- 5- 125-149
- 6- 100-124
- 7- 75- 99
- 8- 50- 74
- 9- 25- 49



Gr.	Rank	Institution	Staff
1		None	
2	1	Harvard	219
	2	Toronto	213
	3	Illinois	207
3	4	Yale	179
	5	Indiana	168
4	6	Calif., Berkeley	163
	7	Minnesota	159
	8	Michigan	158
	9	Calif., Los Angeles	145
5	10	Columbia	142
	11	Stanford	138
	12	Pittsburgh	129
	13	Cornell	121
6	14	Texas	119
	15	Washington	114
	16	Wisconsin	112
	17	Pennsylvania State	107
	18	British Columbia	99
7	18	Rutgers	99
	20	SUNY-Buffalo	98
	20	Northwestern	98
	22	Princeton	94
	23	Pennsylvania	92
	23	Ohio State	92
	25	McGill	91
	26	Maryland	86
	27	Temple	83
	27	Duke	83
	29	Southern Calif.	81
	30	North Carolina	80
31	Alberta	78	
32	Florida	77	
8	33	Virginia	74
	33	Chicago	74
	35	Michigan State	73
	36	Iowa	72
	36	Hawaii	72
	38	Kentucky	68
	38	Georgia	68
	38	Boston	68
	41	Howard	67
	42	Case Western Res.	66
	43	New York	65
	44	Wayne State	63
44	Western Ontario	63	

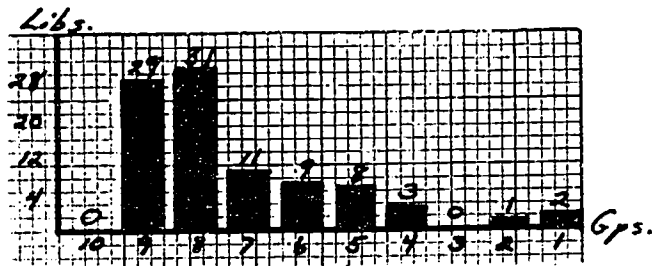
Gr.	Rank	Institution	Staff
8	46	Johns Hopkins	61
	47	Calif., Davis	59
	47	MIT	59
	49	Connecticut	58
	49	Florida State	58
	51	Southern Illinois	56
	51	Massachusetts	56
	51	Calif., Santa Barb.	56
	51	Arizona	56
	55	Nebraska	55
	56	SUNY-Stony Brook	54
	56	SUNY-Albany	54
	58	Iowa State	53
	58	Cincinnati	53
	58	Joint University	53
	58	Calif., San Diego	53
	62	Brown	52
	62	Tennessee	52
64	Louisiana State	51	
64	Emory	51	
64	Rochester	51	
64	Brigham Young	51	
68	Houston	50	
68	Syracuse	50	
9	70	Wash. Univ. (Mo.)	49
	71	Oregon	48
	71	Kansas	48
	71	Washington State	48
	71	Miami	48
	75	South Carolina	47
	75	Georgetown	47
	75	Queen's	47
	75	Oklahoma	47
	75	Missouri	47
	80	VIP	45
	80	Colorado	45
	82	Utah	43
	82	Texas A & M	43
	84	Alabama	42
	84	Purdue	42
86	Tulane	40	
87	Notre Dame	39	
87	Arizona State	39	
89	Colorado State	36	
89	McMaster	36	
91	Oklahoma State	34	
91	Dartmouth	34	
93	Kent State	31	
94	Rice	27	



RANK ORDER TABLE 6: NONPROFESSIONAL STAFF (FTE)

See explanatory note on p.24.  
The ranges for the groups below are:

- 1- 450 and over
- 2- 400-449
- 3- 350-399
- 4- 300-349
- 5- 250-299
- 6- 200-249
- 7- 150-199
- 8- 100-149
- 9- 50- 99
- 10- 0- 49

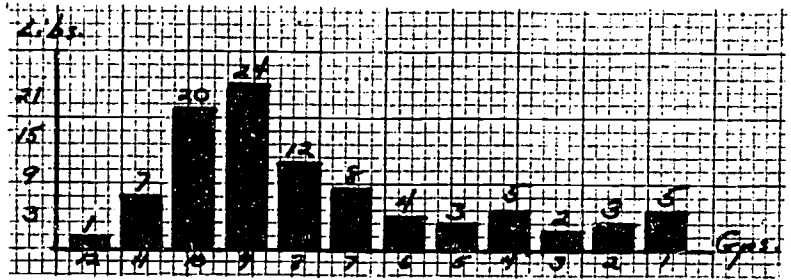


Gr.	Rank	Institution	Staff
1	1	Toronto	677
	2	Harvard	559
2	3	Yale	444
3		None	
4	4	British Columbia	318
	5	Michigan	317
	6	Columbia	301
5	7	Indiana	297
	8	Illinois	294
	9	Calif., Berkeley	289
	10	Alberta	284
	11	Pennsylvania State	282
	12	Western Ontario	280
	13	McGill	275
6	14	Stanford	274
	15	Calif., Los Angeles	244
	15	Cornell	244
	17	Texas	237
	18	Washington	235
	19	Minnesota	227
	20	Wisconsin	224
	21	Rutgers	215
	22	Princeton	204
	23	Ohio State	202
7	24	Virginia	181
	25	New York	177
	26	Pennsylvania	175
	26	Maryland	175
	28	North Carolina	167
	28	Georgia	167
	30	Queen's	160
	30	SUNY-Buffalo	160
	30	Calif., Davis	160
	33	McMaster	159
8	34	Chicago	158
	35	Duke	149
	36	Northwestern	145
	37	Calif., Santa Barb.	144
	38	Purdue	140
	39	Tennessee	136
	40	MIT	134
	41	Calif., San Diego	133
	42	Wash. Univ. (Mo.)	129
42	Pittsburgh	129	

Gr.	Rank	Institution	Staff
8	44	Southern Calif.	127
	45	Syracuse	124
	46	Temple	121
	47	Florida	118
	47	Boston	118
	49	Cincinnati	117
	50	Michigan State	113
	51	Arizona State	112
	51	SUNY-Stony Brook	112
	51	Wayne State	112
	54	Johns Hopkins	110
	54	Kentucky	110
	54	Houston	110
	57	Iowa State	109
	58	Washington State	108
9	59	Colorado	107
	59	SUNY-Albany	107
	59	Texas A & M	107
	62	Iowa	106
	63	Miami	105
	64	Arizona	102
	65	Joint University	101
	66	Missouri	99
	66	Nebraska	99
	68	Massachusetts	96
	68	South Carolina	96
	68	Rochester	96
	71	Dartmouth	95
	72	Brigham Young	94
	73	Hawaii	92
	73	Florida State	92
	75	Case Western Res.	90
	76	Notre Dame	88
	76	Kansas	88
78	Brown	87	
79	VPI	85	
79	Utah	85	
81	Oklahoma	84	
82	Emory	82	
82	Tulane	82	
84	Georgetown	77	
84	Kent State	77	
84	Howard	77	
87	Oregon	76	
88	Louisiana State	73	
88	Connecticut	73	
90	Southern Illinois	70	
91	Colorado State	64	
92	Alabama	60	
93	Rice	54	
94	Oklahoma	52	

See explanatory note on p. 24.  
Group ranges are:

- 1- over 600
- 2- 550-599
- 3- 500-549
- 4- 450-499
- 5- 400-449
- 6- 350-399
- 7- 300-349
- 8- 250-299
- 9- 200-249
- 10- 150-199
- 11- 100-149
- 12- 50- 99



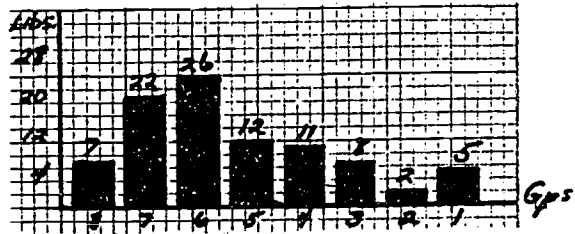
Gp.	Rank	Institution	Staff	
1	1	Toronto	945	
	2	Harvard	874	
	3	Yale	660	
	4	Indiana	659	
	5	Illinois	624	
2	6	Michigan	593	
	7	Calif., Los Angeles	586	
	8	Minnesota	552	
3	9	Calif., Berkeley	541	
	10	Columbia	539	
4	11	Stanford	480	
	12	British Columbia	468	
	13	Texas	464	
	14	Pennsylvania State	452	
	15	Washington	450	
5	16	Wisconsin	446	
	17	Cornell	415	
	18	McGill	406	
6	19	Alberta	392	
	19	Rutgers	392	
	21	Ohio State	378	
	22	Western Ontario	369	
7	23	Maryland	342	
	24	Princeton	339	
	25	Northwestern	350	
	26	Pittsburgh	329	
	27	Pennsylvania	317	
	28	Virginia	314	
	29	Chicago	311	
	30	SUNY-Buffalo	301	
	8	31	Michigan State	298
		32	Southern California	294
33		North Carolina	290	
34		Calif., Davis	288	
34		New York	288	
36		Duke	271	
37		Calif., Santa Barb.	269	
38		Temple	266	
38		Brigham Young	266	
40		Syracuse	258	
41		Georgia	254	
42		Florida	252	
9	43	Iowa	237	
	44	Wayne State	234	
	45	Queen's	231	
	46	Calif., San Diego	228	

Gp.	Rank	Institution	Staff
9	47	Kentucky	227
	48	Boston	225
	49	Houston	223
	50	Hawaii	221
	50	Arizona State	221
	52	MIT	217
	53	McMaster	214
	54	Cincinnati	212
	54	Wash., Univ. (Mo.)	212
	54	Johns Hopkins	212
	57	Purdue	210
	58	Massachusetts	209
	59	SUNY-Stony Brook	207
	60	Washington State	206
	60	Brown	206
	60	Tennessee	206
	63	Nebraska	203
	63	Southern Illinois	203
	65	Miami	202
	65	Arizona	202
10	67	Iowa State	199
	67	Colorado	199
	69	South Carolina	198
	70	Joint University	195
	71	Case Western Res.	194
	72	Utah	189
	73	Louisiana State	186
	73	Texas A & M	186
	75	Oregon	182
	76	SUNY-Albany	181
	76	Kansas	181
	78	Connecticut	180
	78	Florida State	180
	78	Georgetown	180
	81	Oklahoma	175
	82	Rochester	174
	83	Howard	173
	84	Missouri	166
84	Emory	166	
86	VPI	158	
11	87	Dartmouth	148
	87	Notre Dame	148
	89	Alabama	143
	89	Tulane	143
	91	Kent State	132
	92	Oklahoma State	130
	93	Colorado State	115
12	94	Rice	89

RANK ORDER TABLE 8: MATERIALS EXPENDITURES

See explanatory note on p. 24.  
Group ranges (in thousands) are:

- 1- 2,500-2,799      5- 1,300-1,599
- 2- 2,200-2,499      6- 1,000-1,299
- 3- 1,900-2,199      7- 700- 999
- 4- 1,600-1,899      8- 400- 699



Gr.	Rank	Institution	Expenditures
1	1	Texas	3,208,324
	2	Toronto	3,117,845
	3	Harvard	2,998,236
	4	Emory	2,818,196
	5	Indiana	2,760,647
2	6	Stanford	2,427,272
	7	Yale	2,351,273
3	8	Calif., Los Angeles	2,183,647
	9	Wisconsin	2,163,624
	10	Houston	2,148,607
	11	Calif., Berkeley	2,141,376
	12	Michigan	2,129,487
	13	Alberta	2,065,090
	14	Illinois	1,979,083
	15	Minnesota	1,914,924
4	16	Cornell	1,892,929
	17	Rutgers	1,846,197
	18	Georgia	1,827,001
	19	Washington	1,807,924
	20	Princeton	1,799,890
	21	Calif., Davis	1,761,133
	22	British Columbia	1,741,021
	23	Columbia	1,734,282
	24	Pennsylvania State	1,692,991
	25	Maryland	1,674,347
	26	Iowa	1,609,841
5	27	Virginia	1,581,125
	28	North Carolina	1,513,760
	29	Chicago	1,438,465
	30	Northwestern	1,428,675
	31	Arizona	1,416,157
	32	Calif., Santa Barb.	1,408,264
	33	Western Ontario	1,395,831
	34	Texas A & M	1,372,998
	35	Ohio State	1,368,653
	36	Arizona State	1,362,181
	37	Duke	1,347,475
	38	Pittsburgh	1,317,722
6	39	Connecticut	1,299,973
	40	Calif., San Diego	1,286,564
	41	Tennessee	1,267,074
	42	Louisiana State	1,230,339
	43	McGill	1,223,382
	44	Pennsylvania	1,208,893
	45	Wash. Univ. (Mo.)	1,208,759
	46	Kentucky	1,199,682

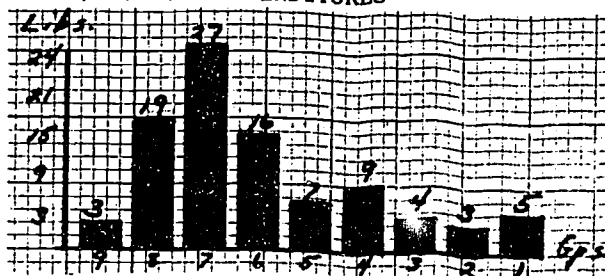
Gr.	Rank	Institution	Expenditures
6	47	Missouri	1,174,366
	48	McMaster	1,172,640
	49	New York	1,170,477
	50	Michigan State	1,163,309
	51	Southern Illinois	1,148,961
	52	Hawaii	1,117,954
	53	Iowa State	1,116,992
	54	Queen's	1,113,844
	55	Johns Hopkins	1,110,104
	56	Wayne State	1,096,621
	57	Nebraska	1,091,880
	58	Temple	1,091,672
	59	Southern Calif.	1,082,004
	60	Washington State	1,080,134
	61	Florida	1,048,636
	62	Purdue	1,048,170
	63	South Carolina	1,028,813
64	Joint University	1,022,963	
7	65	SUNY-Stony Brook	994,100
	66	Kansas	993,213
	67	Utah	986,135
	68	Oklahoma	977,584
	69	Rochester	960,000
	70	SUNY-Buffalo	921,251
	71	Florida State	920,079
	72	Cincinnati	918,179
	73	Massachusetts	914,822
	74	VPI	900,231
	75	Syracuse	898,000
	76	Boston	865,902
	77	Brown	864,248
	78	Dartmouth	859,353
79	Colorado	850,205	
80	Oregon	791,423	
81	MIT	781,280	
82	Georgetown	766,931	
83	Miami	750,409	
84	Case Western Res.	748,410	
85	SUNY-Albany	746,345	
86	Colorado State	707,475	
8	87	Alabama	676,916
	88	Oklahoma State	666,566
	89	Tulane	655,273
	90	Rice	630,413
	91	Notre Dame	577,257
	92	Kent State	544,424
	93	Howard	532,147

\*Brigham Young figures not available.

RANK ORDER TABLE 9: MATERIALS & BINDING EXPENDITURES

See explanatory note on p. 24.  
Group ranges (in thousands) are:

- 1- 2,800-3,099
- 2- 2,500-2,799
- 3- 2,200-2,499
- 4- 1,900-2,199
- 5- 1,600-1,899
- 6- 1,300-1,599
- 7- 1,000-1,299
- 8- 700- 999
- 9- 400- 699



Gr.	Rank	Institution	Expenditures	Gr.	Rank	Institution	Expenditures
1	1	Harvard	3,421,414	7	45	Wash. Univ. (Mo.)	1,299,757
	2	Toronto	3,396,662		46	New York	1,290,728
	3	Texas	3,342,324		47	Kentucky	1,272,189
	4	Indiana	2,958,086		48	Missouri	1,265,386
	5	Emory	2,903,696		49	Michigan State	1,261,204
2	6	Stanford	2,602,458		50	Southern Illinois	1,235,855
	7	Yale	2,569,672		51	McMaster	1,224,320
	8	Calif., Los Angeles	2,560,167		52	Iowa State	1,222,041
3	9	Calif., Berkeley	2,421,248		53	Queen's	1,188,407
	10	Wisconsin	2,304,564		54	Temple	1,179,418
	11	Michigan	2,296,934		55	Southern Calif.	1,177,691
	12	Alberta	2,233,882		56	Hawaii	1,172,593
4	13	Houston	2,196,502		57	Wayne State	1,168,807
	14	Illinois	2,166,923		58	Johns Hopkins	1,161,170
	15	Minnesota	2,097,031		59	Florida	1,155,407
	16	Cornell	2,083,024		60	Washington State	1,154,938
	17	Washington	2,032,163		61	Nebraska	1,149,925
	18	Georgia	2,029,586		62	Purdue	1,120,071
	19	Rutgers	2,001,524		63	South Carolina	1,118,775
	20	Calif., Davis	1,963,536		64	Joint University	1,085,908
	21	Columbia	1,910,173		65	SUNY-Stony Brook	1,057,100
5	22	Princeton	1,899,960	66	Oklahoma	1,051,476	
	23	British Columbia	1,885,287	67	Utah	1,051,213	
	24	Maryland	1,837,310	68	Kansas	1,047,782	
	25	Pennsylvania State	1,819,194	69	Rochester	1,047,000	
	26	Iowa	1,737,215	70	SUNY-Buffalo	1,034,175	
	27	Virginia	1,707,373	71	VPI	1,020,609	
	28	North Carolina	1,631,130	8	72	Cincinnati	988,460
6	29	Chicago	1,583,082		73	Massachusetts	985,464
	30	Northwestern	1,541,792		74	Florida State	981,958
	31	Calif., Santa Barb.	1,538,797		75	Syracuse	950,933
	32	Arizona	1,522,423		76	Brown	950,528
	33	Western Ontario	1,517,396		77	Boston	938,981
	34	Duke	1,469,653		78	Colorado	910,205
	35	Calif., San Diego	1,456,777		79	Dartmouth	902,355
	36	Arizona State	1,443,629		80	Oregon	835,660
	37	Texas A & M	1,429,979		81	MIT	831,556
	38	Pittsburgh	1,425,844		82	Georgetown	827,197
	39	Ohio State	1,411,830		83	Miami	815,497
	40	Tennessee	1,371,107	84	Case Western Res.	800,556	
	41	Pennsylvania	1,365,248	85	SUNY-Albany	792,735	
	42	Connecticut	1,361,177	86	Colorado State	772,881	
	43	McGill	1,347,601	87	Oklahoma State	727,171	
	44	Louisiana State	1,311,734	88	Howard	720,613	
				89	Alabama	717,683	
				90	Tulane	706,756	
				9	91	Rice	672,832
					92	Kent State	614,161
					93	Notre Dame	609,234

\*Brigham Young figures not available.

RANK ORDER TABLE 10: SALARIES & WAGES

See explanatory note on p. 24.  
Group ranges (in thousands) are:

- 1- 8,000-9,000      6- 3,000-3,999
- 2- 7,000-7,999      7- 2,000-2,999
- 3- 6,000-6,999      8- 1,000-1,999
- 4- 5,000-5,999      9-    0- 999
- 5- 4,000-4,999



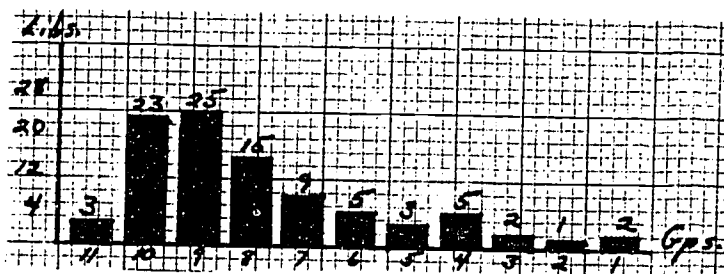
Gr.	Rank	Institution	Salaries & Wages
1	1	Toronto	8,761,403
2	2	Harvard	7,795,537
3	3	Calif., Berkeley	6,685,168
4	4	Calif., Los Angeles	6,544,108
4	5	Yale	5,750,482
6	6	Illinois	5,501,881
7	7	Minnesota	5,452,284
8	8	British Columbia	5,344,412
9	9	Michigan	5,300,721
10	10	Columbia	5,212,237
5	11	Stanford	4,999,769
12	12	Indiana	4,809,678
13	13	Cornell	4,179,220
14	14	Washington	4,095,298
15	15	Pennsylvania State	4,044,202
6	16	Texas	3,949,919
17	17	Alberta	3,888,380
18	18	Wisconsin	3,854,557
19	19	McGill	3,758,474
20	20	Ohio State	3,588,412
21	21	Western Ontario	3,202,550
22	22	Calif., Davis	3,191,926
23	23	Pennsylvania	3,138,232
24	24	New York	3,102,672
25	25	Princeton	3,069,548
7	26	Chicago	2,996,160
27	27	Maryland	2,991,590
28	28	SUNY-Buffalo	2,889,200
29	29	Northwestern	2,853,138
30	30	Calif., Santa Barb.	2,819,826
31	31	Rutgers	2,789,258
32	32	North Carolina	2,667,048
33	33	Pittsburgh	2,590,550
34	34	Michigan State	2,574,770
35	35	Calif., San Diego	2,549,349
36	36	Virginia	2,434,690
37	37	Duke	2,420,111
38	38	Temple	2,344,583
39	39	Wayne State	2,342,612
40	40	Southern Calif.	2,284,303
41	41	Hawaii	2,223,237
42	42	Cincinnati	2,173,290
43	43	Colorado	2,128,256
44	44	Iowa	2,124,985

Gr.	Rank	Institution	Salaries & Wages
7	45	Florida	2,073,597
46	46	Iowa State	2,009,654
47	47	SUNY-Stony Brook	2,007,509
48	48	Queen's	2,007,202
49	49	Howard	2,004,862
8	50	Johns Hopkins	1,950,494
51	51	Georgia	1,949,379
52	52	MIT	1,880,366
53	53	McMaster	1,873,797
54	54	Massachusetts	1,852,442
55	55	Boston	1,838,599
56	56	Washington State	1,799,125
57	57	Southern Illinois	1,766,472
58	58	Kentucky	1,760,680
59	59	SUNY-Albany	1,744,600
60	60	Wash. Univ. (Mo.)	1,740,572
61	61	Rochester	1,716,000
62	62	Purdue	1,703,225
63	63	Connecticut	1,646,958
64	64	Houston	1,628,301
65	65	Arizona	1,622,469
66	66	Nebraska	1,578,321
67	67	Tennessee	1,565,410
68	68	Brown	1,543,636
69	69	Case Western Res.	1,542,735
70	70	Kansas	1,532,477
71	71	Oregon	1,502,412
72	72	Joint University	1,496,152
73	73	Utah	1,488,495
74	74	Syracuse	1,487,995
75	75	Louisiana State	1,466,976
76	76	Georgetown	1,463,062
77	77	Florida State	1,460,881
78	78	Arizona State	1,444,767
79	79	South Carolina	1,424,234
80	80	Dartmouth	1,370,562
81	81	Miami	1,367,217
82	82	Emory	1,362,110
83	83	yPI	1,291,405
84	84	Missouri	1,243,719
85	85	Texas A & M	1,229,375
86	86	Oklahoma	1,223,573
87	87	Colorado State	1,221,946
88	88	Kent State	1,217,963
89	89	Tulane	1,162,708
90	90	Notre Dame	1,106,918
9	91	Alabama	973,437
92	92	Oklahoma State	858,078
93	93	Rice	791,282

\*Brigham Young figures not available.

See explanatory note on p. 24.  
Group ranges (in thousands) are:

- 1- 11,000 and over
- 2- 10,000-10,999
- 3- 9,000- 9,999
- 4- 8,000- 8,999
- 5- 7,000- 7,999
- 6- 6,000- 6,999
- 7- 5,000-5,999
- 8- 4,000-4,999
- 9- 3,000-3,999
- 10- 2,000-2,999
- 11- 1,000-1,999



Gr.	Rank	Institution	Expenditures
1	1	Toronto	12,896,409
	2	Harvard	12,672,553
2	3	Yale	10,210,901
	4	Calif., Los Angeles	9,734,262
3	5	Calif., Berkeley	9,728,828
	6	Stanford	8,924,409
4	7	Illinois	8,502,302
	8	Indiana	8,244,933
	9	Minnesota	8,225,892
	10	Michigan	8,157,010
5	11	British Columbia	7,814,693
	12	Texas	7,766,382
	13	Columbia	7,641,025
6	14	Cornell	6,949,654
	15	Wisconsin	6,848,499
	16	Alberta	6,723,980
	17	Pennsylvania State	6,441,248
	18	Washington	6,333,271
	7	19	Calif., Davis
20		McGill	5,414,373
21		Rutgers	5,400,252
22		Ohio State	5,394,769
23		Maryland	5,352,746
24		Princeton	5,352,415
25		Chicago	5,216,410
26		Northwestern	5,213,231
27		Western Ontario	5,063,397
8		28	Pennsylvania
	29	Wayne State	4,699,289
	30	North Carolina	4,637,021
	31	Calif., Santa Barb.	4,628,902
	32	New York	4,619,361
	33	Virginia	4,609,350
	34	Pittsburgh	4,485,390
	35	Emory	4,422,775
	36	Calif., San Diego	4,378,191
	37	SUNY-Buffalo	4,308,300
	38	Georgia	4,196,186
	39	Houston	4,181,279
	40	Duke	4,166,500
	41	Michigan State	4,049,721
	42	Iowa	4,000,613
9	43	Southern Calif.	3,770,612
	44	Johns Hopkins	3,688,904

Gr.	Rank	Institution	Expenditures
9	45	Temple	3,667,568
	46	Wash., Univ. (Mc.)	3,540,150
	47	Hawaii	3,525,042
	48	Iowa State	3,456,465
	49	Arizona	3,441,534
	50	McMaster	3,430,129
	51	Washington State	3,423,241
	52	Cincinnati	3,385,990
	53	Southern Illinois	3,359,074
	54	Florida	3,350,059
	55	Queen's	3,325,857
	56	SUNY-Stony Brook	3,322,431
	57	Tennessee	3,283,018
	58	Kentucky	3,250,707
	59	Connecticut	3,204,222
	60	Joint University	3,184,710
	10	61	Boston
62		Colorado	3,128,423
63		Arizona State	3,054,897
64		Louisiana State	3,039,863
65		Howard	3,025,250
66		Massachusetts	3,020,266
67		Rochester	3,014,000
68		MIT	2,969,981
69		Purdue	2,943,714
70		Texas A & M	2,908,875
71		Kansas	2,880,279
72		Nebraska	2,879,881
73		Utah	2,808,593
74	Dartmouth	2,798,952	
75	SUNY-Albany	2,729,385	
76	South Carolina	2,725,765	
77	VPI	2,719,291	
78	Missouri	2,682,100	
79	Brown	2,658,986	
80	Syracuse	2,611,555	
81	Florida State	2,571,532	
82	Case Western Res.	2,568,882	
83	Georgetown	2,548,557	
84	Oklahoma	2,491,062	
85	Oregon	2,440,439	
86	Miami	2,324,923	
87	Colorado State	2,129,536	
88	Alabama	2,055,887	
89	Tulane	2,025,657	
90	Kent State	2,017,972	
11	91	Notre Dame	1,854,942
	92	Oklahoma State	1,751,830
	93	Rice	1,610,272

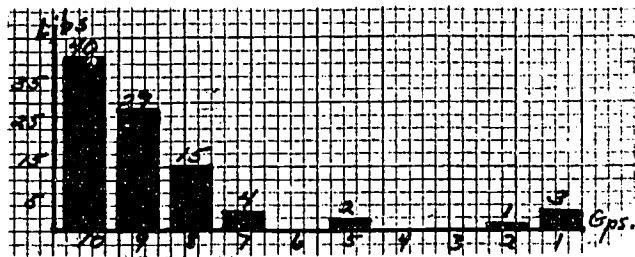
\*Brigham Young figures not available.



RANK ORDER TABLE 12: TOTAL ITEMS LOANED

See explanatory note on p. 24.  
The ranges for the groups below are:

- 1- 90,999 and over
- 2- 80,000-89,999
- 3- 70,000-79,999
- 4- 60,000-69,999
- 5- 50,000-59,999
- 6- 40,000-49,000
- 7- 30,000-39,000
- 8- 20,000-29,999
- 9- 10,000-19,999
- 10- 0- 9,999



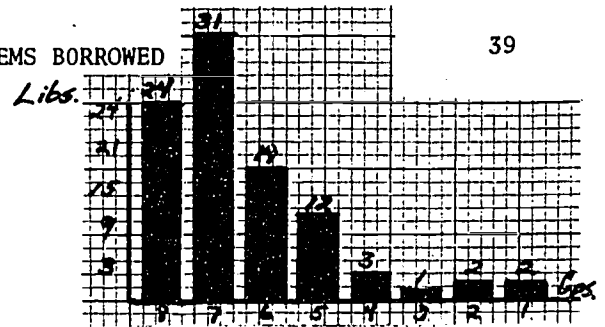
Gr.	Rank	Institution	Loaned
1	1	Illinois	372,926
	2	Minnesota	102,300
	3	Wisconsin	91,760
2	4	Harvard	84,000
3		None	
4		None	
5	5	Calif., Los Angeles	57,704
	6	Stanford	51,182
6		None	
7	7	Case Western Res.	39,473
	8	Washington	38,699
	9	Rutgers	31,298
	10	Pittsburgh	30,447
8	11	McGill	29,872
	12	Toronto	29,714
	13	Indiana	29,021
	14	Calif., Berkeley	28,928
	15	Chicago	26,543
	16	British Columbia	25,575
	17	Cornell	25,253
	18	SUNY-Buffalo	24,526
	19	Florida	23,620
	20	Connecticut	22,645
	21	Michigan	22,069
	22	North Carolina	21,799
	23	Pennsylvania State	21,486
24	Michigan State	21,423	
25	Wayne State	20,740	
9	26	Southern Illinois	19,679
	27	Ohio State	17,964
	28	Calif., Davis	17,904
	29	Kentucky	17,591
	30	Columbia	17,583
	31	Rochester	17,500
	32	Emory	16,728
	33	Princeton	16,658
	34	Yale	16,119
	35	Texas A & M	15,955
	36	Pennsylvania	15,430
	37	Iowa	14,878
	38	Rice	13,947
	39	Texas	13,863
	40	MIT	13,505
	41	Duke	13,006
	42	Maryland	12,715
	43	Calif., San Diego	12,635
	44	Wash., Univ. (Mo.)	11,429

Gr.	Rank	Institution	Loaned
9	45	Tulane	11,377
	46	Cincinnati	11,349
	47	Northwestern	11,203
	48	Missouri	11,088
	49	Purdue	11,017
	50	Georgia	10,858
	51	Colorado	10,354
	52	Iowa State	10,066
	53	Tennessee	10,058
	54	Oklahoma	10,039
10	55	McMaster	9,994
	55	SUNY-Albany	9,992
	57	Johns Hopkins	9,966
	58	Virginia	9,420
	59	Hawaii	8,871
	60	Kansas	8,656
	61	Temple	8,500
	62	Oregon	7,550
	63	Alberta	7,224
	64	Miami	7,195
	65	Massachusetts	7,187
	66	SUNY-Stony Brook	7,153
	67	Western Ontario	7,085
	68	Dartmouth	6,766
	69	Arizona	6,668
	70	Colorado State	6,599
	71	Joint University	6,070
	72	Utah	6,054
	73	Queen's	6,014
74	Southern Calif.	5,967	
75	Houston	5,954	
76	Oklahoma State	5,773	
77	Brown	5,645	
78	VPI	5,558	
79	New York	5,279	
80	Kent State	4,854	
81	Nebraska	4,628	
82	South Carolina	4,624	
83	Boston	4,390	
84	Georgetown	4,319	
85	Louisiana State	3,922	
86	Florida State	3,823	
87	Washington State	3,786	
88	Syracuse	3,504	
89	Brigham Young	3,347	
90	Arizona State	3,338	
91	Alabama	2,970	
92	Calif., Santa Barb.	2,260	
93	Howard	2,238	
94	Notre Dame	1,795	

RANK ORDER TABLE 13: TOTAL ITEMS BORROWED

See explanatory note on p. 24.  
The ranges for the groups below are:

- 1- 15,000 and over
- 2- 13,000-14,999
- 3- 11,000-12,999
- 4- 9,000-10,999
- 5- 7,000-8,999
- 6- 5,000-6,999
- 7- 3,000-4,999
- 8- 1,000-2,999



Gr.	Rank	Institution	Borrowed
1	1	Minnesota	24,845
	2	Wisconsin	15,722
2	3	SUNY-Albany	14,106
	4	Indiana	13,675
3	5	SUNY-Buffalo	11,749
4	6	Johns Hopkins	10,823
	7	Illinois	10,203
	8	Iowa	9,977
5	9	McGill	8,460
	10	Texas A & M	8,300
	11	Calif., Santa Barb.	8,285
	12	Toronto	8,199
	13	McMaster	7,824
	14	Oklahoma	7,756
	15	Calif., Berkeley	7,531
	16	Harvard	7,500
	17	British Columbia	7,377
	18	Cincinnati	7,371
	19	Queen's	7,266
20	Calif., Los Angeles	7,015	
6	21	Cornell	6,870
	22	Pennsylvania	6,667
	23	Kansas	6,529
	24	Kent State	6,460
	25	Wash., Univ. (Mo.)	6,106
	26	Connecticut	6,074
	27	Michigan	6,051
	28	Florida	5,915
	29	Pennsylvania State	5,821
	30	Tulane	5,800
	31	Pittsburgh	5,753
	32	Rochester	5,700
	33	Chicago	5,625
	34	Georgia	5,552
	35	Colorado State	5,440
	36	SUNY-Stony Brook	5,416
	37	Calif., Davis	5,263
	38	Rutgers	5,232
	39	Houston	5,013
7	40	Emory	4,970
	41	Ohio State	4,947
	42	Northwestern	4,906
	43	Kentucky	4,877
	44	Texas	4,871
	45	Western Ontario	4,866

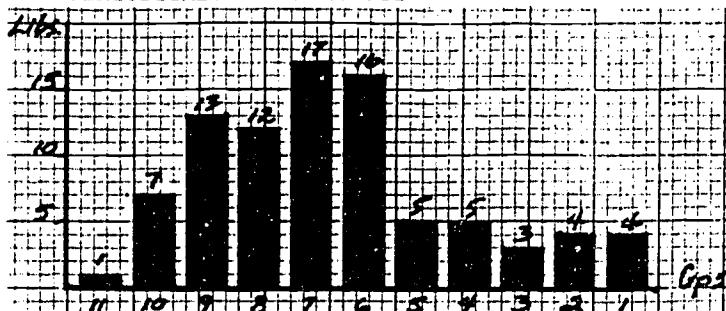
Gr.	Rank	Institution	Borrowed
7	46	Colorado	4,765
	47	Utah	4,527
	48	Calif., San Diego	4,483
	49	Arizona State	4,439
	50	Syracuse	4,310
	51	South Carolina	4,305
	52	North Carolina	4,294
	53	Purdue	4,157
	54	Alberta	4,072
	55	Iowa State	4,037
	56	Yale	3,858
	57	Michigan State	3,809
	58	Temple	3,799
59	Stanford	3,775	
60	Boston	3,727	
61	Case Western Res.	3,683	
62	Oregon	3,624	
63	Massachusetts	3,578	
64	Tennessee	3,500	
65	Nebraska	3,373	
66	MIT	3,229	
67	Missouri	3,218	
68	Arizona	3,178	
69	Joint University	3,107	
70	Georgetown	3,066	
8	71	Southern Illinois	2,923
	72	Alabama	2,914
	73	Miami	2,894
	74	Brigham Young	2,873
	75	Maryland	2,849
	76	Oklahoma State	2,836
	77	Virginia	2,689
	78	Southern Calif.	2,669
	79	Florida State	2,628
	80	Louisiana State	2,547
	81	VPI	2,532
	82	Dartmouth	2,519
	83	New York	2,503
	84	Washington	2,260
85	Brown	2,211	
86	Wayne State	2,191	
87	Notre Dame	2,125	
88	Duke	2,057	
89	Washington State	2,032	
90	Columbia	1,944	
91	Hawaii	1,771	
92	Princeton	1,505	
93	Rice	1,112	
94	Howard	588	



RANK ORDER TABLE 14: CURRENT PERIODICALS EXPENDITURES

See explanatory note on p. 24  
The ranges for the groups below are:

- 1 - 1,100 and over
- 2 - 1,000 - 1,099
- 3 - 900 - 999
- 4 - 800 - 899
- 5 - 700 - 799
- 6 - 600 - 699
- 7 - 500 - 599
- 8 - 400 - 499
- 9 - 300 - 399
- 10 - 200 - 299
- 11 - under 200



Rank	Institution	Expenditures	Rank	Institution	Expenditures
1	1 Harvard	1,320,000	7	46 Massachusetts	543,278
	2 Indiana	1,231,727		47 Colorado	531,790
	3 Illinois	1,138,004		48 Tennessee	521,398
	4 Calif., Los Angeles	1,104,106		49 North Carolina	518,602
2	5 Wisconsin	1,091,864		50 Pittsburgh	515,354
	6 Washington	1,090,533		51 Hawaii	510,864
	7 Stanford	1,062,040		52 Western Ontario	509,882
	8 Texas	1,028,082		53 British Columbia	508,367
				54 Chicago	500,910
3	9 Minnesota	975,342	8	55 Dartmouth	489,844
	10 Georgia	956,001		56 VPI	482,745
	11 Yale	955,681		57 MIT	481,918
4	12 Iowa	871,575		58 Boston	465,340
	13 Princeton	829,339		59 Oregon	464,105
	14 Missouri	828,157		60 Arizona State	460,423
	15 Calif., Berkeley	826,218		61 Oklahoma	450,589
	16 Maryland	823,077		62 SUNY-Stony Brook	449,437
5	17 Michigan	777,691		63 Wayne State	446,670
	18 Pennsylvania State	760,553		64 Case Western Res.	439,408
	19 Louisiana State	754,630		65 Cincinnati	410,614
	20 Toronto	750,057		66 SUNY-Buffalo	405,582
	21 Calif., Santa Barb.	703,000	9	67 Emory	394,860
6	22 Kentucky	695,699		68 Colorado State	392,840
	23 Calif., Davis	689,885		69 Florida State	390,774
	24 Virginia	688,817		70 Miami	387,000
	25 Southern Calif.	684,234		71 Brown	384,357
	26 Houston	671,915		72 Alabama	379,740
	27 Pennsylvania	656,150		73 Oklahoma State	374,543
	28 Purdue	643,763		74 Rice	364,108
	29 Northwestern	641,798		75 South Carolina	356,317
	30 McGill	637,635		76 McMaster	350,760
	31 Florida	637,499		77 Notre Dame	348,317
	32 Alberta	635,730		78 Kansas	314,864
	33 Johns Hopkins	634,992		79 Arizona	314,712
	34 Southern Illinois	623,458	10	80 Kent State	296,779
	35 Wash., Univ. (Mo.)	619,573		81 Temple	277,460
	36 Calif., San Diego	619,370		82 Texas A & M	270,000
	37 Duke	606,052		83 SUNY-Albany	267,000
7	38 Iowa State	594,031		84 Georgetown	250,210
	39 New York	589,693		85 Syracuse	242,575
	40 Michigan State	566,643		86 Utah	234,613
	41 Rochester	565,000	11	87 Tulane	171,565
	42 Washington State	564,069			
	43 Ohio State	556,051			
	44 Nebraska	549,861			
	44 Connecticut	549,799			

\*See charts for institutions not included.



## INSTRUCTIONS FOR COMPLETION OF THE QUESTIONNAIRE

FOR

ARL STATISTICS 1975-1976

1. Definitions of the statistical categories used in this questionnaire can be found in Library Statistics: A Handbook of Concepts, Definitions and Terminology (Chicago: American Library Association, 1966).
2. Because of the number of questions raised regarding the counting of periodicals, we again called to your attention the definition of a periodical (item 6) recommended by the Committee on Statistics and approved by the membership:  
 Periodicals: Publications constituting one issue in a continuous series under the same title published at regular or irregular intervals, over an indefinite period, individual issues in the series being numbered consecutively or each issue being dated. Newspapers as well as publications appearing annually or less frequently are included in the definition.
3. The number of FTE student assistants (item 14) should be determined on the basis of the length of the work week in the reporting library.
4. Those libraries whose reports include figures for branch campus libraries are asked to indicate this fact in a footnote.
5. Please note that only the number of Ph.D degrees awarded (item 22) are to be counted. Statistics on all other advanced degrees are not required for this survey.
6. With regard to fields in which Ph.Ds are awarded (item 23), reporting libraries should use as a standard the fields listed in the form used by the Department of Health, Education and Welfare in collecting statistics on higher education. The official title of the form is: "Higher Education General Information Survey, Degrees and Other Formal Awards Conferred." It is designated: E Form-2300-2.1. This form is also referred to as the "HEGIS Report."
7. All figures should be rounded off to the nearest whole number.
8. The reporting libraries are urged to note any circumstance that would clarify the figures submitted. A second sheet is provided for indication of explanatory footnotes which will be included with the published statistics.
9. After the questionnaire has been completed, please compare the statistics with those submitted last year. On occasion, an error will be detected because of an unusual difference between the figures submitted this year and those for the preceding year.
10. Please return one copy of the questionnaire to the ARL Office by October 1, 1976. If there are any questions about the procedure to be followed in completing this questionnaire, please contact the ARL Office.

FOOTNOTES TO ARL STATISTICS, 1975-76

Alabama	(1)*	1974-75 volume count corrected.
Alberta		Excludes Extension Library, Boreal Institute Library, St. Joseph's College Library and Map Library.
Arizona State	(1)	1974-75 volume count corrected.
Boston		Includes the Theology Library.
Calif., Santa Barbara	(1)	1974-75 volume count corrected.
	(6)	Current serials only.
Case Western Reserve	(3)	Includes 13,734 volumes lost in flood of Sears Library.
Chicago	(1,2,3,4)	Include microforms.
Cincinnati	(1)	1974-75 volume count corrected.
	(6)	1974-75 serials count corrected.
Colorado		Figures this year include Boulder campus only.
Columbia	(1,3)	138,239 college catalogs withdrawn.
Duke	(1)	1974-75 volume count revised to 2,624,289.
Emory		Figures included for Oxford College Division of Librarianship, Dental and Theology Libraries.
	(1,2)	Includes 185,300 volumes from purchase of Hartford Seminary Collection.
	(5)	Excludes depository serials on microcards which were previously included.
	(6,7,8)	Medical School Library combines statistics for originals and photocopies loaned.
Florida	(1)	1974-75 volume count corrected.
Florida State		In addition to campus libraries includes the libraries of the Florence and London Study Centers.
Georgetown		Excludes Woodstock Theological Center Library (149,776 volumes) and three other small collections totalling 5,000 volumes.

\*Numbers in parentheses indicate the columns in tables on pages 4-13 to which the footnotes refer.

Harvard	(17)	Excludes \$1,655,055 building and maintenance charges and \$1,019,128 budgeted contributions to retirement and health programs. Total reported expenditures are \$15,346,736.
Hawaii		Figures exclude three libraries on the campus not under the administrative jurisdiction of the University library.
Houston		Includes Clear Lake, Downtown College and Victoria campus libraries.
	(1)	1974-75 volume count corrected.
	(4)	1974-75 microform figures corrected.
Indiana		Excludes photocopies from Medical Library.
		The statistics are for the State University system, i.e. the Bloomington campus including Law Library, the six Indianapolis campuses, and six regional campuses. Figures from Sex Institute Libraries have been revised.
Iowa State		Figures include Veterinary Medical Library and several small extramural collections.
John Crerar		Figures for collections and expenditures are Crerar Library data only and are for the period October 1, 1974 through September 30, 1975.
	(6-11)	Figures for calendar 1975.
	(18-21)	Includes all service, grant and contract operations (e.g., Regional Medical Library Management Office, National Translations Center, IIT library operations, Research Information Service.)
Joint University	(1)	1974-75 volume count revised.
	(16)	Includes \$150,000 for building and maintenance.
Kansas		Figures this year do not include Law and Medical Libraries which were included in previous years.
Linda Hall	(7)	Includes 11,591 microfilmed items.
Louisiana State	(6)	Excludes government documents.
Maryland		Excludes College of Library and Information Science Library.
	(1)	1974-75 volume count corrected.

Michigan	(1)	1974-75 volume count corrected.
Michigan State	(4)	1974-75 microform count corrected.
Minnesota		Includes coordinate campus libraries at Crookston, Duluth, Morris and Waseca.
	(1)	1974-75 volume count corrected.
	(6-11)	Includes MINITEX transactions.
	(15)	Includes salaries for INFORM, MINITEX, and Photoduplication Service \$341,948.
	(16)	Includes operating expenses for MINITEX, INFORM, Photoduplication Service, \$252,844.
	(18-21)	Includes FTE's for INFORM, MINITEX, and Photoduplication Service (Prof. 4, Non-Prof. 23, Student FTE 15.7).
National Agric. Lib.		Excludes USDA Agency Field Libraries.
National Lib. of Canada	(5)	Excludes serials in the Foreign and International Official Publications and Canadian Official Publications Sections.
National Library of Medicine	(1,5)	Figures revised based upon physical inventory.
New York Public Lib.	(5)	Cataloged serial titles in Central Serial Record. For previous years only periodical titles listed.
New York State	(5)	Excludes newspapers.
North Carolina	(6-11)	Figures on photocopies incomplete. No figures available for Health Science (Medical) Library.
Northwestern		1974-75 volume count corrected.
Notre Dame	(12.5)	Estimated figures for Law Library.
Oklahoma	(1)	1974-75 volume count corrected.
Pennsylvania		Morris Arboretum and ROTC libraries no longer included. Their holdings totaled 7,958 volumes in July 1975.
Pennsylvania State		Excludes Hersey Medical Center and Capitol Campus Graduate Center at Middletown, Pennsylvania.
Pittsburgh		Includes four regional campus libraries.
	(1)	1974-75 count corrected.

Purdue	(4)	1974-75 microform count corrected.
Queen's	(12,16,17)	Excludes Industrial Relations Centre Library Excludes \$170,000 of trust funds.
Rochester		Includes Rush Rhees (main campus) Library, Sibley Music Library, Edward G. Miner Medical Library and River Campus libraries.
Rutgers		Includes eight major libraries including two law schools, service to a non-Rutgers medical school and colleges and professional schools in Camden, Newark and New Brunswick.
	(5)	Includes current periodicals only.
	(20,21)	Excludes federally funded work-study students.
Smithsonian		Excludes Hirshhorn Museum, National Col- lection of Fine Arts/National Portrait Gallery.
Southern Calif.		Includes Andrus Gerontology Center Library and Hancock Library of Biology and Oceano- graphy.
Southern Illinois	(1)	1974-75 volume count corrected to exclude microforms.
Stanford	(5)	Reduction due to recount and cancellations. Includes Hopkins Marine Station.
SUNY-Stony Brook		1974-75 Ph.D. figure corrected. Excludes Li- brary of the Institute for the Advanced Study of World Religions.
Syracuse	(1)	1974-75 volume count corrected.
Temple		Includes 5 departmental and 3 branch libraries.
Tennessee		Figures are for Knoxville campus only.
Toronto		This survey includes 43 departmental, federated and affiliated libraries of related institutions.
	(1)	1974-75 volume count corrected.
	(12.5)	Central library only.
	(15)	Total salaries and wages excludes an amount of \$154,911 for binding staff.
	(21)	Excludes 11 professional and 28 non-profes- sional employees in the Library Automation Systems Division.

Virginia	(1)	1974-75 volume count corrected.
Washington	(6-11, 15,17, 18-21)	Excludes figures for all grant funding and self-sustaining operations which were previously reported.
Washington St. Louis	(1)	1974-75 volume count corrected.
	(4)	Excludes Medical Library microform holdings.
Western Ontario	(5)	Includes current periodicals only.
Wisconsin		For the first time figures for the Social Work Library, the Instructional Materials Center and two new law collections are included (Total 50,611 volumes).