

DOCUMENT RESUME

ED 135 567

RC 009 732

TITLE A Directory of Rural Organizations.
 INSTITUTION National Rural Center, Washington, D.C.
 SPONS AGENCY Economic Development Administration (DOC),
 Washington, D.C.
 PUB DATE 76
 NCTE 61p.
 EDRS PRICE MF-\$0.83 HC-\$3.50 Plus Postage.
 DESCRIPTORS *Classification; *Directories; Group Membership;
 *Indexes (Locaters); *Organizations (Groups);
 Political Influences; Publications; Research; *Rural
 Areas; Social Services

ABSTRACT

The purposes of this directory are to provide a ready reference for individuals and organizations with rural interests; to provide a sense of perspective on the various professions, ethnic groups, and special concerns represented by national organizations with rural interests; and to facilitate cooperation among organizations with similar priorities. Each organizational entry (N=approximately 130 entries) is coded according to lobbying, membership, research, and/or service categories, and the code(s) appear at the bottom of each entry and in the index at the back of the directory. Each entry includes: organizational name and address; contact person's name and phone number; a brief description of the organization including membership, staff, and other relevant statistics; and organizational publications. Information regarding these organizations is drawn from a number of individuals and a few published sources including; the Encyclopedia of Associations, Volume I, tenth edition, Margaret Fisk, Editor; Who's Involved with Hunger: An Organization Guide, Patricia L. Kutzner and Timothy X. Sullivan, Editors; and the Research Centers Directory, fifth edition, Archie M. Palmer, Editor. (JC)

 * Documents acquired by ERIC include many informal unpublished *
 * material not available from other sources. ERIC makes every effort *
 * to obtain the best copy available. Nevertheless, items of marginal *
 * reproducibility are often encountered and this affects the quality *
 * of the microfiche and hardcopy reproductions ERIC makes available *
 * via the ERIC Document Reproduction Service (EDRS). EDRS is not *
 * responsible for the quality of the original document. Reproductions *
 * supplied by EDRS are the best that can be made from the original. *

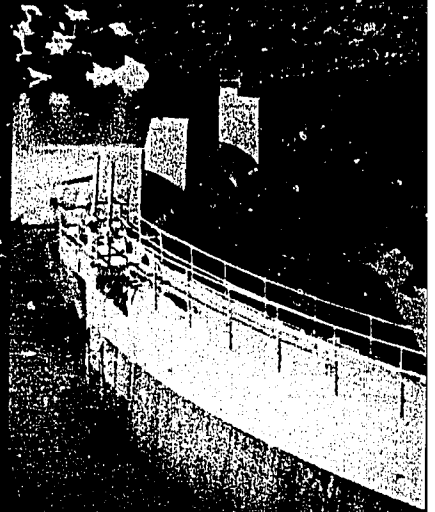
ED135567

national
rural center

1200 18th St. NW
Washington, D.C. 20036

U.S. DEPARTMENT OF HEALTH,
EDUCATION & WELFARE
NATIONAL INSTITUTE OF
EDUCATION

THIS DOCUMENT HAS BEEN REPRODUCED EXACTLY AS RECEIVED FROM THE PERSON OR ORGANIZATION ORIGINATING IT. POINTS OF VIEW OR OPINIONS STATED DO NOT NECESSARILY REPRESENT OFFICIAL NATIONAL INSTITUTE OF EDUCATION POSITION OR POLICY.





ABOUT THE NATIONAL RURAL CENTER . . .

. . . The National Rural Center (NRC), which opened in March, 1976, is an independent, non-profit organization created to develop policy alternatives and to provide information to help rural people and their communities. The well-being of rural poor people is a principal concern of the NRC. The NRC also is committed to the proposition that all people should have a real choice in deciding where they want to live and a chance for a decent life in the community they choose.

Through its policy development and information programs, the NRC seeks better ways for people in rural areas to voice their concerns and desires, to shape policies affecting them and to gain access to federal agencies and private organizations. It seeks, also, to build public awareness of the mutual interests rural and urban dwellers have in solving rural problems.

A major component of the NRC is the National Rural Information Center. The Information Center maintains a specialized library of research and data on rural affairs, including Congressional and Executive-branch documents. Its computerized information retrieval system enables the staff to respond to requests for bibliographic information and other data on a wide range of rural-related issues. As a clearinghouse, the Information Center helps state and local officials, community organizations, and individuals with rural concerns gain access to government and private organizations which can provide financial or technical assistance relating to community development and revitalization programs.

Photo credits: social worker and family - Community Services Administration, Weaver - Arthur Tress (CSA), dam - Bureau of Indian Affairs, rural industry and people at country fair - USDA Photographs.

ABOUT THE DIRECTORY OF RURAL ORGANIZATIONS...

...One of the first tasks of the National Rural Center was to call together representatives from a number of national organizations for a series of briefings and an exchange of ideas about rural concerns and the specific mission of the National Rural Center. At that time a number of representatives expressed the need for more complete information in regard to organizations and agencies interested in rural development and revitalization. In response to that request, the NRC has prepared this directory of major national organizations involved in various aspects of rural development and policies.

The purposes of this directory are varied: to provide a ready reference for individuals and organizations with rural interests; to provide a sense of perspective on the various professions, ethnic groups, and special concerns represented by national organizations with rural interests; and to facilitate cooperation among organizations with similar priorities.

Each organization has been coded according to these categories:

Lobbying	(L)
Membership	(M)
Research	(R)
Service	(S)

The code appears at the bottom of each entry and at the index at the back of the directory.

The loose-leaf format was chosen because the NRC plans to supply periodic updates, and new sections which might include lists of rural-interest foundations and federal/regional contacts.

Although the goal was to develop a reasonably comprehensive listing of major national organizations involved in rural affairs, omissions are almost inevitable. It is hoped that omissions and any errors will be brought to the attention of the National Rural Center for future updating.

Information has been drawn from a number of individuals and a few published sources including the Encyclopedia of Associations, Volume I, tenth edition, Margaret Fisk, Editor; Who's Involved With Hunger: An Organization Guide, Patricia L. Kutzner and Timothy X. Sullivan, Editors; and the Research Centers Directory, fifth edition, Archie M. Palmer, Editor.

This brochure was prepared and printed with funds from a grant by the Department of Commerce Economic Development Administration's Technical Assistance program. The material is the result of a tax-supported program and as such is not copyrightable. It may be freely reprinted with the customary crediting of the source.

ACADEMY FOR CONTEMPORARY PROBLEMS

1501 Neil Avenue
Columbus, Ohio 43201

Phone: (614) 421-7700

Ralph R. Widner, President Kenneth D. Rainey, Vice President for
Program Management

Washington Office: 2030 M. St., N.W., Washington, D.C. 20036 (202) 467-6625

Staff: 65. Founded: 1975. To assist its seven Member organizations of state and local officials in their search for solutions to critical problems in American states and communities. Research teams carry out policy studies or provide technical assistance in urban and regional development, public finance, crime and justice, and other areas of critical concern to the Academy's seven Member organizations. The Academy's Urban and Regional Development Center carries out long-term research in order to identify economic and social changes in the nation and their potential impacts on the various regions, states, and communities and to develop alternative approaches to state growth and development policy in view of the varying problems among sections of the country. Rural focus: rural development.

Publications: POLICY REPORTER (quarterly, free); PUBLIC SERVICES IN RURAL AREAS (1973); RURALISM AND REALISM (1974); EMERGING COMMUNITY DEVELOPMENT PROBLEMS IN THE U.S. (1975).

Code: R

AGRIBUSINESS ACCOUNTABILITY PROJECT/THE AGBIZ TILLER

P.O. Box 5646

Phone: (415) 665-6970

San Francisco, California 94101

A.V. Krebs, Editor/Publisher

Affiliated with the Center for Community Change in Washington, the Agribusiness Accountability Project is a public interest research organization. Research has focused on land grant colleges, food policy, and the concentration and abuses of corporate power in agriculture. The final report of the Project is being prepared by Susan DeMarco and Susan Sechler on domestic food policy. Plans are underway to move the Project from Washington to San Francisco where THE AGBIZ TILLER is published. The AGBIZ TILLER is a monthly newsletter established to monitor the activities of agribusiness from a public interest perspective.

Publications: THE AGBIZ TILLER (monthly, \$12.00/yr.); THE 1976 DIRECTORY OF MAJOR U.S. CORPORATIONS INVOLVED IN AGRIBUSINESS; HARD TOMATOES, HARD TIMES: THE FAILURE OF THE LAND GRANT COLLEGE COMPLEX (1972, \$4.95); THE GREAT AMERICAN GRAIN ROBBERY (1972, \$4.50); WHO'S MINDING THE CO-OP? (1974, \$3.50); THE FIELDS HAVE TURNED BROWN (1975, \$3.50); publication list available.

Code: R

AMERICAN AGRI-WOMEN (AAW)
6690 Walker Avenue, N.W.
Grand Rapids, Michigan 49504
Mrs. Sharon Steffens, National Coordinator

Phone: (616) 784-2821

Staff: 11. Members: 1,200. Founded: 1974. Women's agricultural organizations and individuals united together to communicate with one another and with other consumers to promote agriculture for the benefit of the American people and the world. Rural focus: supports farmer cooperatives, investigates local land use proposals, and supports estate tax reform.

Publications: THE VOICE OF THE AMERICAN AGRI-WOMEN (6/yr., \$2.00).

Code: M

AMERICAN ASSOCIATION FOR COMPREHENSIVE HEALTH PLANNING
801 North Fairfax Street, Suite 212
Alexandria, Virginia 22314
Mr. David G. Stanley, President A. Kent Ballard, Executive Director

Phone: (703) 836-2501

Staff: 12. Founded: 1972. Members are health systems agencies, state health planning development agencies, state health coordinating councils, centers for health planning, universities, affiliate members and individuals. Serves as a clearinghouse for health planning concepts, conducts programs of technical assistance, conducts research, and provides continuing education. Rural focus: has had a Committee on Rural Health in the past and continues to work on rural health and rural health planning.

Publications: HEALTH PLANNING IN TRANSITION (biweekly, \$35.00/yr.); AMERICAN JOURNAL OF HEALTH PLANNING (quarterly, \$25.00/yr.); HEALTH PLAN DEVELOPMENT (\$7.00); ENHANCING THE ROLE OF THE CONSUMER (\$7.50); research papers.

Code: M,R,S

AMERICAN COUNTRY LIFE ASSOCIATION
2118 South Summit Avenue
Sioux Falls, South Dakota 57105
Osgood Magnuson, President

Phone: (605) 336-5236

Founded: 1919. A voluntary organization of people in various private and public walks of life interested in current issues and ideas affecting the economics, well-being and quality of life in nonmetropolitan areas of the country. Its main activity is convening annual forums which concentrate on some issue or theme of pertinent concern to the long-range welfare and progress of rural areas. Rural focus: various aspects of rural development.

Publications: Proceedings of annual conferences: RURAL AMERICA IN TIMES OF AUSTERITY (1975, \$2.00); RURAL DEVELOPMENT: OF THE PEOPLE, BY THE PEOPLE, FOR THE PEOPLE (1974, \$1.00); POLICY AND POLITICS OF RURAL DEVELOPMENT (1973, \$1.00); RURAL AMERICA: BY WHAT STANDARDS (1972, \$1.00).

Code: M

AMERICAN FRIENDS SERVICE COMMITTEE (AFSC)

1501 Cherry Street

Phone: (215) 241-7000

Philadelphia, Pennsylvania 19102

Louis W. Schneider, Executive Secretary

Founded: 1917. Regional offices in 10 cities in U.S. Related to the Religious Society of Friends, the AFSC attempts to relieve human suffering and to find new approaches to world peace and nonviolent social change. Activities include: working for basic human rights, peace education, providing technical and medical assistance abroad, and providing opportunities for reconciliation and peace-building both at home and abroad. Rural focus: various programs related to fighting poverty and injustice including work with Native Americans, land and food control issues in California, rural housing, hunger, and human rights.

Code: S

AMERICAN HOSPITAL ASSOCIATION

840 North Lake Shore Drive

Phone: (312) 645-9400

Chicago, Illinois 60611

John Alexander McMahon, President

Leo Gehrig, M.D., Senior Vice President

Washington Office: One Farragut Square - South 20006, (202) 393-6066

Staff: 665. Members: 7,000 institutional, 20,000 individuals. Founded: 1898. Promotes the welfare of the public through its leadership and through its assistance to members in the provision of better health care for all people. Conducts research on a wide range of topics in the hospital and health care fields; holds institutes, workshops, conferences and seminars; provides information, advice and assistance to members and other organizations; and helps shape health policy. Provides information to Congressional committees and Administration offices regarding health care and health legislation. Rural focus: various aspects of rural health and health institutions.

Publications: HOSPITALS (monthly, members); WASHINGTON DEVELOPMENTS (semi-monthly, \$15.00/yr. for non-members); MODEL RURAL HEALTH PROGRAMS (1972, \$4.00).

Code: L,M,R,S

AMERICAN INSTITUTE OF COOPERATION

Suite 504, 1129 20th Street., N.W.

Phone: (202) 296-6825

Washington, D.C. 20036

Owen K. Hallberg, President

Staff: 8. Members: over 1,000. Founded: 1925. A national educational organization supported by agricultural cooperatives. Educational programs and materials are designed to help acquaint the public with the role of cooperatives in the American competitive enterprise system. Educational and training services are made available through a national agribusiness Institute, several regional Institutes, publications and various consulting activities by the staff. Rural focus: rural and agricultural cooperatives.

Publications: AIC NEWSLETTER (monthly, free), various leaflets, publication list available.

Code: M,S

AMERICAN INSTITUTE OF PLANNERS

1776 Massachusetts Avenue., N.W.

Washington, D.C. 20036

Leon Eplan, President

Phone: (202) 872-0611

Al Massoni, Executive Director

Staff: 20. Members: 11,500. Founded: 1917. A professional society of planners working with city, county, regional, state and national government, private consulting firms, universities and research organizations. Ongoing programs include: national legislative liaison, work with federal agencies on planning programs, social concerns programs to help minorities enter the planning field, development of general and technical papers to assist the planning practitioner, and assisting planners in keeping up with new trends in the field. Rural focus: advocates balanced planning concepts to aid rural America.

Publications: PRACTICING PLANNER (quarterly, \$15.00/yr.), JOURNAL OF AIP (quarterly, \$15.00/year).

Code: M,R

AMERICAN MEDICAL ASSOCIATION-DEPARTMENT OF RURAL AND COMMUNITY HEALTH

535 North Dearborn Street

Chicago, Illinois 60610

Richard E. Palmer, MD, President

Phone: (312) 751-6422

James H. Sammons, MD, Exec. Vice President

Washington Office: 1776 K. Street., N.W. Washington, D.C. 20006, (202) 833-8310

Staff: 800. Members: 215,000. Founded: 1847. An association of physicians who are members in good standing in 55 state associations. Aims to improve access to and quality of health and medical care for rural areas and to provide positive response to national health planning issues and to home health care. Rural focus: delivery of rural health services, community organization for rural health services, and health education for rural people for personal health improvement. Holds annual National Conference on Rural Health and participates in state and national meetings.

Publications: HEALTH CARE DELIVERY IN RURAL AREAS (\$1.50); COMMUNITY ORGANIZATION FOR RURAL HEALTH SERVICES (free); REPORTS ON RURAL HEALTH SERVICES (free).

Code: L,M,R,S

AMERICAN NURSES' ASSOCIATION (ANA)

2420 Pershing Road

Kansas City, Missouri 64108

Margaret F. Carroll, Acting Executive Director

Phone: (816) 474-5720

Washington Office: 1030 15th Street, N.W., Suite 408, Washington, D.C.
20005, (202) 296-8010.

Staff: 100. Members: 206,000. Founded: 1896. National professional organization of registered nurses comprised of 53 constituent and territorial associations in the 50 states, the District of Columbia, Guam, and the Virgin Islands and over 900 district associations. Fosters high standards of nursing practice and promotes the professional and educational advancement of nurses, to the end that all people may have better nursing care. Interprets trends in government and acts on legislation that bears importantly on nurses, nursing and health. Has established an Academy of Nursing and sets standards and policies for education.

Rural focus: the Division of Community Health Nursing, one of 5 divisions maintained by the ANA, has principal responsibility for rural nursing. Since nurses have traditionally provided a major burden in delivering health care in rural areas, the ANA keeps abreast of legislation and policies impacting upon rural health.

Publications: AMERICAN JOURNAL OF NURSING (monthly, \$10.00); THE AMERICAN NURSE (monthly, membership); CAPITAL COMMENTARY (monthly, membership), FACTS ABOUT NURSING (annual, \$6.50); publication list available.

Code: L,M,R,S

AMERICAN PUBLIC HEALTH ASSOCIATION

1015 18th Street, N.W.

Washington, D.C. 20036

William H. McBeath, M.D., Executive Director

Phone: (202) 467-5000

Staff: 119. Members: 25,000, 25,000 affiliates, and 200 organizations. Founded: 1872. Seeks to protect and promote personal and environmental health. It is an interdisciplinary membership association whose objective is to improve the health of the people of the United States. Members come from a wide variety of backgrounds including environmentalists, physicians, nurses, educators, social workers, pharmacists, dentists, community health specialists, and consumers. Develops standards for water and waste water, air quality, and examination of foods and dairy products. Rural focus: has formed a task force to study rural health problems.

Publications: AMERICAN JOURNAL OF PUBLIC HEALTH (monthly, \$30.00/yr.); THE NATION'S HEALTH (monthly newsletter, \$5.00/yr.); WASHINGTON NEWSLETTER (monthly, \$40.00/yr.); HEALTH CRISIS IN AMERICA (1970).

Code: M,R,S

AMERICAN PUBLIC POWER ASSOCIATION
2600 Virginia Avenue, N.W.
Washington, D.C. 20037
Charles Duckworth, President

Phone: (202) 333-9200

Alex Radin, Executive Director

Staff: 29. Members: 1,400. Founded: 1942. A service organization representing interests of local publicly-owned electric utilities and their consumers in 48 states, Puerto Rico, Virgin Islands and Guam. Holds workshops in training courses; supplies research, advertising, and public relations services; and represents members before Congress and the Executive Branch. Rural focus: "Average public power system, located in small, medium-size community, frequently in rural areas, seeks to supply adequate and reliable electricity at reasonable prices in an environmentally acceptable manner."

Publications: PUBLIC POWER (bi-monthly, \$8.50/yr.); PUBLIC POWER WEEKLY NEWSLETTER (\$150.00/yr.)

Code: L,M,R,S

AMERICAN PUBLIC WELFARE ASSOCIATION
1155 16th Street., N.W.
Washington, D.C. 20036
Steven A. Minter, President

Phone: (202) 833-9250

Edward T. Weaver, Executive Director

Staff: 32. Members: 6,000 individuals, 1,700 agencies. Founded: 1930. Seeks to exert a positive influence on the shaping of national social policy and to promote the professional development of persons working in public welfare. Rural focus: represents its members, including local public welfare agencies, on public welfare issues such as social services, food stamps, child welfare, child abuse and neglect laws, adult protective services, and medical assistance. Works for policies which are more equitable, less complex, and easier to administer so welfare agency personnel can respond more efficiently and effectively to the needs of individual clients.

Publications: PUBLIC WELFARE (quarterly journal, \$8.00), WASHINGTON REPORT (monthly newsletter, except June and December, \$12.00).

Code: M,R

AMERICAN PUBLIC WORKS ASSOCIATION
1313 East 60th Street
Chicago, Illinois 60637
Robert D. Bugher, Executive Director

Phone: (312) 947-2520

Washington Office: 1776 Massachusetts Ave., N.W., 20036 (202) 833-1168.

Staff: 30. Members: 16,500. Founded: 1894. A non-profit organization made up of top-ranking officials engaged in various phases of the broad field of public works in the United States and Canada. Provides a variety of services to its members including information service, workshops and training courses, life insurance, and research foundation. Institutes for development include: Equipment Services, Municipal Engineering, Solid Wastes, Transportation, and Water Resources.

Publications: APWA REPORTER (monthly, membership), books, manuals, and special reports.

Code: M,R,S

AMERICAN SOCIETY OF ALLIED HEALTH PROFESSIONS

One DuPont Circle, N.W., Suite 300

Phone: (202) 293-3422

Washington, D.C. 20036

William M. Samuels, Executive Director

Staff: 18. Members: 1,500. Founded 1967. Colleges and universities, professional organizations and societies, members of professional groups and educators. Provides leadership in education; promotes development of new programs; encourages research; and provides liaison with other health organizations, professional groups and educational and governmental organizations. Rural focus: rural health.

Publications: ALLIED HEALTH TRENDS (monthly newsletter, \$25.00/yr.); JOURNAL OF ALLIED HEALTH (quarterly, membership).

Code: M,R,S

AMERICAN SOCIETY OF PLANNING OFFICIALS (ASPO)

1313 East 60th Street

Phone: (312) 947-2560

Chicago, Illinois 60637

Israel Stollman, Executive Director

Staff: 45. Members: 13,500. Founded: 1934. Public and private planning and urban renewal agency officials, professional planners, planning educators, and other persons. Fosters the best techniques and decisions for the planned development of communities and regions. Provides a Planning Advisory Service on an annual subscription basis which conducts research and answers inquiries on planning, zoning, and urban renewal.

Publications: PLANNING MAGAZINE (monthly); LAND USE LAW AND ZONING DIGEST (monthly, \$1.00/yr.); TAB JOBS IN PLANNING (semi-monthly); PLANNING ADVISORY SERVICE INFORMATION REPORTS (monthly); PAS MEMOS (irregular); also publishes special reports, bibliographies, and books.

Code: M,R,S

ARKANSAS INSTITUTE FOR SOCIAL JUSTICE

523 West 15th Street

Phone: (501) 376-2615

Little Rock, Arkansas 72202

John T. Lavey, President

Thomas F. Hickey, Director

Staff: 4. Founded: 1972. A non-profit organization specializing in the support and development of successful community organizing techniques and projects. Provides consultants for organizations of low to moderate income people that desire assistance in program planning, execution and evaluation. The Institute has developed an organizing model that has been successfully implemented by the Association of Community Organizations for Reform Now (ACORN) - a collection of 120 neighborhood organizations in low to middle income communities in six states. The Institute conducts workshops on various issues on a regional basis; provides on-site consultation in some instances; conducts intensive, week-long seminars in Little Rock providing an in-depth introduction to a practicing, successful community organization; and conducts regional conferences on community organizing.

Code: S

ASPEN INSTITUTE FOR HUMANISTIC STUDIES

717 Fifth Avenue

New York, New York 10022

J.E. Slater, President

Phone: (212) 759-1053

Washington Office: Program on Communications and Society, 1785 Massachusetts Avenue, N.W. 20006, (202) 462-2011, Roland S. Hemet, Jr., Director

Staff: 70. Founded: 1949. An educational and research organization serving as a workshop and seminar center to bring together business, educational, and cultural leaders from America and abroad to discuss a wide array of issues and to initiate action. Programs include: communications and society; science technology and humanism; international affairs; justice, society and the individual; and pluralism and the commonwealth. Rural focus: telecommunications in rural areas.

Publications: ASPEN OCCASIONAL PAPER SERIES; ASPEN INSTITUTE QUARTERLY.

Code: R,S

ASSOCIATION ON AMERICAN INDIAN AFFAIRS, INC.

432 Park Avenue South

New York, N.Y. 10016

Professor Alfonso Ortiz, President

Phone: (212) 689-8720

William Byler, Executive Director

Staff: 12. Members: 50,000. Founded: 1923. Promotes the welfare of American Indians in the U.S. by creating an enlightened public opinion; by assisting and protecting them against encroachment of their constitutional rights; by aiding in the improvement of health and educational conditions; and in preserving their arts and crafts. Aids tribes in mobilizing federal, state and private resources for a coordinated attack on the problems of poverty and injustice. Rural focus: Provides legal, technical, and financial assistance programs to Indian communities.

Publications: INDIAN AFFAIRS (quarterly, \$3.00/yr); INDIAN FAMILY DEFENSE (quarterly, free); FEDERAL POLICY AND AMERICAN INDIAN HEALTH NEEDS: THE ROLE OF CONSUMERS IN A NATIONAL HEALTH PROGRAM (\$1.00).

Code: M,S

BLACK CHILD DEVELOPMENT INSTITUTE

1463 Rhode Island Avenue, N.W.

Washington, D.C. 20005

Maurine McKinley, President

Phone: (202) 387-1281

Evelyn K. Moore, Executive Director

Staff: 13. Members: 500. Founded: 1970. Serves as a national advocacy organization concerned for the educational, racial, and cultural awareness of black youngsters. It disseminates research by black scholars in the field of child development; monitors and analyzes legislation and federal and state programs; and conducts conferences and seminars. It also provides technical assistance to affiliates for administrative staff training, and curriculum and economic development. Rural focus: serves affiliates that are located in both urban and rural areas to foster optimum development for black children and youth.

Publications: BLACK CHILD ADVOCATE (newsletter, subscriptions for organizations - \$100, for local communities - \$25, and regular - \$15); series of 8 seminar papers (\$1.50 each); CURRICULUM APPROACHES FROM A BLACK PERSPECTIVE (\$2.75); BLACK CHILDREN KEEP ON GROWING (\$13.50).

Code: M,R,S

THE BOX PROJECT, INC.

P.O. Box 435

Plainville, Court 06062

Sybille Brewer, M.D., President

Phone: (203) 747-8182

Richard Barnett, Executive Director

Staff: 5. Members: 4,000. Founded: 1962. To assist rural poverty families with their basic needs and to expose to middle-income American families the problems of poverty in the hope that this will provide a stop-gap type of help to families living in poverty "until such time as the federal government makes the decision to eliminate poverty in the United States." Rural focus: sponsor families assist needy families who are referred by field workers, community centers, and personal appeals in such areas as housing, education, welfare benefits, food, and clothing. Needy families are located in the rural South and on Native American reservations in the upper Midwest.

Publications: BOX PROJECT NEWSLETTER (bi-monthly, members).

Code: M,S

BREAD FOR THE WORLD
207 East 16th Street
New York, N.Y. 10003

Phone: (212) 751-3925

Eugene Carson Blake, President Rev. Arthur Simon, Executive Director

Members: 15,000. Founded: 1973. A Christian citizens' lobby movement concerned with issues bearing on hunger, such as assistance to poor countries, trade, military spending and investment and employment. Members are urged to work with others in local hunger action groups and to contact Members of Congress and other government leaders regarding U.S. policy matters that affect hungry people. Rural focus: supporting fair return to U.S. farmers for their production, curbs against windfall profits and special measures to assist family farmers, just wages for farm workers, and appropriate control of multinational corporations with particular attention to agribusiness.

Publications: NEWSLETTER (monthly), BREAD FOR THE WORLD (paperback book, \$1.50), and miscellaneous flyers and fact sheets.

Code: L,M

THE BROOKINGS INSTITUTION
1775 Massachusetts Avenue, N.W.
Washington, D.C. 20036

Phone: (202) 797-6000

Stanley A. Nicholson, Director of Administration

Staff: 250. Founded: 1927. A private nonprofit organization devoted to research, education, and publication in economics, government, foreign policy, and the social sciences generally. Rural focus: analysis of rural health policy and examination of alternative models of primary health care in rural areas.

Publications: THE BROOKINGS BULLETIN (quarterly, free); DISPERSING POPULATION: WHAT AMERICA CAN LEARN FROM EUROPE (James L. Sundquist, \$3.95); THE DISTRIBUTION OF FARM SUBSIDIES (Charles L. Schultze, \$1.50); SETTING NATIONAL PRIORITIES (analysis of annual federal budget); publication list available.

Code: R

CENTER FOR AGRICULTURAL AND RURAL DEVELOPMENT
Iowa State University
Ames, Iowa 50010

Phone: (515) 294-3133

Earl O. Heady, Executive Director

Staff: 35. Founded: 1958. Supported by university and other research grants. Conducts research relating to structure, income, employment and policies of agriculture and rural communities.

Publications: RURAL DEVELOPMENT: RESEARCH PRIORITIES (\$2.95); RURAL INDUSTRIALIZATION: PROBLEMS AND POTENTIALS (\$4.95); COMMUNITIES LEFT BEHIND: ALTERNATIVES FOR DEVELOPMENT (\$4.95); RURAL HEALTH SERVICES: ORGANIZATION, DELIVERY, AND USE (\$6.00). List of reports and other publications available.

Code: R

CENTER FOR COMMUNITY CHANGE
1000 Wisconsin Avenue
Washington, D.C. 20007
Pablo Eisenberg, President

Phone: (202) 338-6310

Staff: 30. Founded: 1968. Provides technical assistance and other support to low-income and minority community organizations throughout the country. Support includes help in program planning and implementation, large-scale physical development projects, resource development, internal administration, training and workshops, and general information. Does not provide financial assistance to local groups. Rural focus: has engaged in a variety of technical assistance, intervention, public information and advocacy activities with groups of farmworkers, small farmers, Appalachians and other rural minorities. Special projects have included research on rural education, the Agribusiness Accountability Project, and the Youth Project which has embarked on a journalistic exposure of the ill-treatment of miners in Appalachia and has studied the effects of large scale strip mining on the Northern Plains.

Publications: FEDERAL PROGRAMS MONITOR (bi-monthly, \$10.00), series of CITIZEN ACTION GUIDES.

Code: R,S

CENTER FOR COMMUNITY ECONOMIC DEVELOPMENT
639 Massachusetts Avenue
Cambridge, Massachusetts 02139
DeForest Brown, Executive Director

Phone: (617) 547-9695

Susan Horn-Moo, Director of Public Affairs

Staff: 24. Founded: 1969. A national research and advocacy organization for the concept of community economic development. Holds that local residents should determine the kind of economic and social environment in which they are to live and should be aided to bring about their vision of such an environment. Research library is available to the public, and there is some ability to find materials in response to letters and phone calls. Also, has some capacity to provide speakers and development assistance to new groups wishing to set up a community development corporation. Rural focus: concerned that rural areas receive the resources they need to implement a community based economic development program.

Publication: CENTER FOR COMMUNITY ECONOMIC DEVELOPMENT NEWSLETTER (bi-monthly, free), publication list available.

Code: R,S

CENTER FOR COMMUNITY ORGANIZATION AND AREA DEVELOPMENT (CENCOAD)
2118 S. Summit Phone: (605) 336-5236
Sioux Falls, South Dakota 57105
Mrs. Pat Rudolph, President Victor Pavlenko, Director

Staff: 8 full-time, 8 part-time. Founded: 1969. Seeks to enable rural people to design and implement their own future and realize the economy of scale required to implement the desired future. Consulting services include: leadership training, community analysis, management consultation, citizen feedback systems, curriculum development and community goal setting. Some programming is done nationally, but its primary focus is an 18-county area in the three states of Iowa, Minnesota, and South Dakota. Rural focus: specific, local community needs such as industrial development, public education, elderly population, health care, etc., as well as regional issues such as land use planning, water supply management, transportation, and energy requirements of agriculture.

Publications: 8 LEARNING KITS ON COMMUNICATION, PLANNING, LEADERSHIP, etc. (\$2.00/kit); various articles (\$1.00/copy)

Code: S

CENTER FOR NEW CORPORATE PRIORITIES
1516 Westwood Boulevard Suite 202 Phone: (213) 475-5856
Los Angeles, California 90024
Jim Lowery, Director

Staff: 4. Founded: 1970. Seeks economic reform, focusing on banks and credit policy. Researches the environmental impact of bank lending decisions. Its National Task Force on Credit Policy has sought new credit policies to better serve minorities, women, small farmers, and urban dwellers. Rural focus: has researched agribusiness financing in the past and will probably continue this research in the future.

Publications: LONG TERM NOTES (monthly newsletter, \$12.00/yr.).

Code: R

CENTER FOR RURAL STUDIES
1499 Potrero Phone: (415) 648-2094
San Francisco, California 94110
Mark Ritchie

Staff: 12. Founded: 1972. A public interest research group with the primary objective of encouraging a reorientation of government policies. Believes that land, wealth and power in rural America should be more equitably distributed. Rural focus: research delves into all aspects of rural life and development including patterns of land ownership, corporate agriculture, railroad landholdings, environmental impact of agribusiness, research priorities of land-grant colleges, enforcement of reclamation laws and the applicability of anti-trust laws on agriculture, and the impact of tax laws on rural society.

Publications: BIBLIOGRAPHY OF LAND REFORM (\$1.25), WHO OWNS THE LAND (60¢)

Code: R

CENTER FOR SOCIAL RESEARCH AND DEVELOPMENT
University of Denver, 2142 South High Street
Spruce Hall, Room 21
Denver, Colorado 80210
Edward C. Baumheier, Director

Phone: (303) 753-3464

Staff: 30. Founded: 1971. Conducts applied social research focusing on social problems and policy issues relevant to local, regional, national, and international concerns. Provides technical assistance and consultation to governmental agencies and to non-profit community service and educational organizations. Rural focus: has conducted an extensive review of problems, policies and research related to human services in rural America. Rank orderings by county of demographic, health, ethnic, economic, welfare, and education variables for a number of Western and Midwestern states.

Publications: HUMAN SERVICES IN RURAL AMERICA (1973, \$3.00); Working papers documenting the findings of HUMAN SERVICES IN RURAL AMERICA on economic development, manpower, transportation, education, housing, health, etc. (\$1.00/each); THE MIGRANT FARMWORKER: SOCIAL PROGRAMS, POLICIES, AND RESEARCH (1973, \$3.00).

Code: R,S

CENTER FOR THE STUDY OF LOCAL GOVERNMENT
22 Fifth Avenue South
St. Cloud, Minnesota 56301
Dr. L. Dennis Kleinsasser, Director

Phone: (612) 253-7110

Staff: 14. Founded: 1968. To assist individuals solve problems by applying the principles and strategies of applied behavioral science. Focus of Center activity can be on an individual, group, organization, or community level. Provides packaged instructional materials concerning land use planning, personnel management, supervisory training, and school governance. Organizational consultation includes organizational development, team building, process consultation, etc. Also has conference design expertise. Rural focus: working to make rural local government officials more knowledgeable and effective in their governmental roles has been the primary concern of the Center since its inception in 1968.

Publications: MICROPOLIS IN TRANSITION; numerous articles and monographs.

Code: R,S

CHILDREN'S FOUNDATION

1028 Connecticut Avenue, N.W. Suite 1112 Phone: (202) 296-4450
Washington, D.C. 20036
Barbara Bode, President

Staff: 12. Founded: 1969. Works with community groups and individuals to help them obtain federal food assistance funds. Consults with the U.S. Department of Agriculture on program regulations. Has staff specialists for each program. Regional offices in Atlanta; Reno, Nevada; and Sante Fe, New Mexico. Rural focus: targets rural areas in the South and Southwest in particular which are representative of different kinds of rural problems in regard to food programs. Seeks to identify advocates and work with them to develop model programs that can be replicated. Focus on programs include: school breakfast, food stamps, WIC, and food for family day care centers.

Publications: FEED KIDS (monthly newsletter, \$4.50/yr.); publication list available.

Code: S

CLEARINGHOUSE FOR RURAL HEALTH SERVICES RESEARCH

College of Community Health Services Phone: (205) 348-4770
P.O. Box 6291
Univeristy, Alabama 35486
Stephen Nye Barton, M.D., Director

Staff: 12. Founded: 1975. To foster the creation, coordination and communication of rural health services research nationally and internationally; to utilize an interdisciplinary, interagency, inter-institutional approach to the solution of rural health problems and through the interaction of rural communities, scholars, governmental officials, and business leaders, both urban and rural, to improve the health of people. Has sponsored inter-community exchanges; provides consultation to rural communities; and participates in local, regional, national, and international conferences.

Rural focus: rural health.

Publications: RURAL HEALTH COMMUNICATIONS (bimonthly, free).

Code: R,S

COMMISSION ON RURAL WATER/NATIONAL DEMONSTRATION WATER PROJECT

1820 Jefferson Place, N.W.

Phone: (202) 296-6955

Washington, D.C. 20036

Stanley Zimmerman, Executive Director Edwin L. Cobb, Director of Research

Staff: 12. Members: 22 organizational members. Founded: 1972. The Commission on Rural Water is an advisory body and publications aegis for the National Demonstration Water Project. The latter organization is a publicly-funded program with a mandate to find ways of improving water and sewer services to rural residents, particularly low-income persons. State-wide water-sewer development projects are underway in seven states (Virginia, West Virginia, Florida, Arkansas, California, New Mexico, and South Carolina) and smaller local projects in four others (Mississippi, Texas, Washington, and Iowa). Engages in an active research program and in various public education activities. Conducting a major portion of the Rural Water Survey called for in the Safe Drinking Water Act of 1974. Provides management and technical assistance on water-sewer problems and has several manuals for developing and supporting facilities. Rural focus: water and sewer in the context of rural development.

Publications: RURAL WATER NEWS (6/year, free); and list of books available for sale on request.

Code: M,R,S

COMMUNITIES IN ACTION TOGETHER

917 15th Street, N.W., Suite 202

Phone: (202) 638-7201

Washington, D.C. 20026

James Oliver, President

David Bradley, Executive Director

Staff: 2. Members: 867 Community Action Agencies. Founded: 1972. Washington-based organization for Community Action Agencies. Monitors federal programs and legislation and serves as a resource and information service for Community Action Agencies. Rural focus: supports the goals and activities of Community Action Agencies in rural areas which include economic development, weatherization of homes, transportation services, community food and nutrition, etc.

Publications: WASHINGTON WRAP-UP (monthly, free).

Code: M,S

CONGRESSIONAL RURAL CAUCUS (CRC)

309 House Annex Building

Washington, D.C. 20515

Phone: (202) 225-5080

Representative John B. Breckenridge, Chairman Frank G. Tsutras, Director

Staff: 2 full-time, with additional assistance from CRC members' staffs. Founded: 1973. A bi-partisan group of U.S. Representatives dedicated to the orderly growth and development of rural America. Seeks to bring together maximum federal and non-governmental resources available to rural communities throughout the nation. Rural focus: priorities center on the issues of education, health, public works, transportation, sewage and water, sewage treatment, housing, financial resources and credit requirements, implementation of the Rural Development Act of 1972, job opportunities, agriculture, Congressional Budget and Impoundment Control process, and legal oversight and perspectives.

Code: M

COOPERATIVE LEAGUE OF THE U.S.A.

1828 L. Street., N.W.

Washington, D.C. 20036

Stanley D. Dreyer, President

Phone: (202) 672-0550

Sheiby E. Southard, Rural Affairs

Staff: 40. Members: 27 million. Founded: 1916. National federation of customer-owner businesses including farm marketing, supply, rural electric, farm credit, rural telephone, credit unions, mutual insurance, housing, health, etc. Services provided for member organizations include advocacy on legislation, liaison with government, education, organization, and training. Rural focus: adequate funding for rural development accenting preservation of the family farm, increased direct marketing from farm to urban consumer, better farmer-consumer relations, adequate rural medical care and transportation, and preservation of the rights of farmers to organize under the Capper-Volstead Act.

Publications: COOPERATIVE NEWS SERVICE (weekly); CLUSAGRAM (biweekly); WASHINGTON/A COOPERATIVE SLANT (biweekly); CO-OP ADVOCATE (bimonthly).

Code: L,M,S

COUNCIL ON SOCIAL WORK EDUCATION

345 East 46th Street

New York, New York 10017

James R. Dumpson, President

Phone: (212) 697-0467

Richard Lodge, Executive Director

Staff: 40. Members: 4,000. Founded: 1952. The Council gives leadership and service to social work education in the U.S. in order to assure an adequate supply of appropriately educated professional, paraprofessional and technical social work personnel needed to plan, administer, provide and improve social services and other related human services. Provides leadership in relation to national issues and legislation affecting social work education and in furthering understanding and support of social work education. The Council carries out its purpose through accreditation, as well as through other standard-setting activities, consultation, conferences and workshops, research, publications, special projects, and through other means. Rural focus: development of resource material for faculty in preparing students for social work practice in rural areas.

Publications: SOCIAL WORK EDUCATION REPORTER (triannually, members);
JOURNAL OF EDUCATION FOR SOCIAL WORK (triannually, members).

Code: M,R,S

COUNCIL OF STATE GOVERNMENTS

Ironworks Pike

Lexington, Kentucky 40511

Brevard Carihfield, Executive Director

Phone: (606) 252-2291

Washington Office: 1150 17th Street, N.W., Washington, D.C. 20036,
(202) 785-5610, C. Raymond Marvin, Director.

Staff: 200. Founded: 1925. A joint agency of all the state governments-created, supported and directed by them. It conducts research on state programs and problems; maintains an information service available to state agencies, officials and legislators; assists in federal-state liaison; promotes regional and state-local cooperation; and provides staff for affiliated organizations. Has regional offices in New York, Chicago, Atlanta, and San Francisco. Rural focus: provides research, services, and technical services to state governments in a variety of subject areas-some with rural dimensions. Recent projects have focused on the aging, innovation transfer, criminal justice, planning, environmental planning and management, community development, state growth policy, fisheries resources, and rural rail preservation.

Publications: BRIEFS (legislative newsletter, bimonthly, \$10.00/yr); STATE HEADLINES (bimonthly, \$8.00/yr.); STATE GOVERNMENT (quarterly, \$10.00/yr.); THE STATES AND RURAL RAIL PRESERVATION (1975, \$6.00).

Code: R,S

EMERGENCY LAND FUND (ELF)

836 Beecher Street., S.W.
Atlanta, Georgia 30310

Phone: (404) 758-5506

Robert S. Browne, President

Joseph F. Brooks, Executive Director

Staff: 16. Founded: 1971. Maintains that broad based landownership by blacks in the rural South is in the best interest of the larger black community and the national interest as well. Further, that through landownership blacks can maintain the option of remaining in rural areas. Seeks to address the decline of black land loss, toward the end of ultimately reversing the land loss trend and to increase black land holdings. Activities include outreach, educational and instructional functions and land-use demonstration and applied research. Rural focus: concerned about discrimination against black landowners in the rural South, and seeks to redress the absence or underextension of capital, markets and other technical development resources for black landowners or would-be landowners. Provides legal, financial, management and technical assistance for black landowners or would-be landowners in Mississippi, Alabama, Georgia, and South Carolina, and provides extended services to other Southern states.

Publications: ELF MISSISSIPPI NEWSLETTER (monthly, free); ADVERSE POSSESSION and WILLS - primers on real property law written in laymen language (\$1.00/each); and 16 other primers are being researched for publication.

Code: R,S

ENVIRONMENTAL POLICY INSTITUTE

317 Pennsylvania Avenue, S.E.
Washington, D.C. 20003

Phone: (202) 544-8200

Louise C. Dunlap, President

Andrea Larson, Director

Staff: 5. Founded: 1975. Principal purpose is to conduct non-legislative research and analytical projects with special emphasis on energy, land use, and water resource issues and provide that information. Has conducted a conference for consumer, agricultural and environmental groups on the environmental and economic implication of synthetic fuels development. Rural focus: Questions on which the Institute concentrates concern the consequences of options for energy resources and systems, and the costs of those resources and systems, on industrial and agricultural productivity, community health and welfare, and resources depletion and degradation. Research has been conducted on the destruction of high capability agricultural land by strip mining and water availability for Western states' farming and grazing needs.

Publications: ENERGY AND AGRICULTURE (research paper), AN ANALYSIS OF LEGISLATIVE HISTORY OF THE SURFACE MINING CONTROL AND RECLAMATION ACT OF 1975 (research paper).

Code: R

ERIC CLEARINGHOUSE ON RURAL EDUCATION AND SMALL SCHOOLS
Box 3AP, New Mexico State University Phone: (505) 646-2623
Las Cruces, New Mexico 88003
Everett D. Edington, Director

Staff: 15. Founded: 1966. A national information system operated by the National Institute of Education. Provides ready access to descriptions of exemplary programs, research and development efforts, and related information that can be used in developing more effective educational programs. Responsible for acquiring, indexing, abstracting and disseminating information related to all aspects of education of American Indians, Mexican Americans, migrants, as well as outdoor education, education in small schools and rural areas. Directs workshops and provides consultation services. Rural focus: education.

Publications: RURAL EDUCATION IN THE UNITED STATES (1970, \$3.50/yr.), NEWSLETTER (CRESS-CROSS) (4/yr., \$1.00), COMMUNITY SCHOOLS IN RURAL AREAS (1974, \$1.00.), DEVELOPMENT (1974, \$4.00), publication list available.

Code: R,S

FARM FOUNDATION
1211 West 22nd Street Phone: (312) 986-9393
Oak Brook, Illinois 60521
R.J. Hildreth, Managing Director

Staff: 2. Founded: 1933. Seeks to further the well-being of rural people by increasing the understanding of policy issues and alternative solutions and to raise the quality of the policy debate. Works closely with land-grant universities, the U.S. Department of Agriculture, national, state and local groups, including the rural church, agencies interested in rural health care and rural education, and agriculture-related businesses. Brings together representatives from these institutions and organizations to encourage the development and dissemination of the knowledge people need to make better informed decisions. It does not make grants as such, but modest amounts are provided annually to help finance the training of extension educators in land-grant colleges as well as rural clergymen. Does not take positions on public policy issues.

Publications: ANNUAL REPORT (free).

Code: S

FARMERS UNION GREEN THUMB
1012 14th Street, N.W. #607 Phone: (202) 638-2769
Washington, D.C. 20005
Tony T. Dechant, President John A. Baker, Chief Staff Person

National staff: 27. Founded: 1965. Seeks to provide employment to rural, elderly low income people. Activities for Green Thumbers include highway beautification, landscaping, weatherization, fire protection services, health services, law enforcement, water supply, library services, drivers, and masons. Available services to Green Thumbers include education, employment, training, and legal aid. Rural focus: employment for elderly.

Publications: Green Thumb Brochure.

Code: S

FRIENDS COMMITTEE ON NATIONAL LEGISLATION

245 2nd Street, N.E.

Washington, D.C. 20002

Edward F. Snyder, Executive Secretary

Phone: (202) 547-4343

Staff: 18. Members: 6,800 subscribers. Founded: 1943. An appointed committee of members of the Religious Society of Friends seeking to influence national legislation as it relates to the attainment of peace and social justice. Testifies before Congressional committees, interviews Members of Congress and their staffs on particular concerns, and encourages individuals to communicate their concerns to their elected officials. Areas of concern include: human rights at home and abroad, demilitarization of foreign policy, hunger, health, global political and economic order with justice, and equitable distribution of wealth and resources. Rural focus: rural development and agriculture as related to human needs.

Publications: FCNL NEWSLETTER SERVICE - includes federal budget analysis, Congressional directory, record of key votes, analysis of presidential candidates, FCNL'S Congressional testimony, special action mailings, staff studies, and How To's on political participation (11 newsletters/yr., \$10.00).

Code: L,M,R

THE GRANTSMANSHIP CENTER

1015 West Olympic Boulevard

Los Angeles, California 90015

Norton J. Kiritz, Executive Director

Phone: (213) 485-9094

Washington Office: 1728 L Street, N.W., Washington, D.C. 20036, (202) 331-0833.

Staff: 14. Founded: 1972. A nonprofit tax-exempt educational institution responding to the critical need of nonprofit and public agencies for low-cost training in program planning and resource development. Conducts a workshop that develops and improves participants' funding and program planning skills. Maintains a library and research capability. Conducts week-long grantsmanship training programs in various locations across the country. Rural focus: while it does not specialize in training rural entities alone, rural groups and community officials seeking revenue sharing funds, private grants, public contracts, etc. have been served.

Publications: THE GRANTSMANSHIP CENTER NEWS (8/yr., \$15.00/yr.); reprints of articles are also available.

Code: S

HEALTH POLICY CENTER, GEORGETOWN UNIVERSITY
3600 M Street, N.W., Room 305
Washington, D.C. 20057
Verne Horn, Director

Phone: (202) 625-3092

Deborah J. Carr, Director of Program
Services

Staff: 15. Founded: 1975. Serves as a national service center for health policymakers. Designed to assist state, county, and municipal governments in formulating and implementing health care policies through improved communication of information and ideas. Provides new resources for national health policy development through better understanding of the activities and capacities of state and local programs in relation to both private and federal health programs. Provides research and technical assistance; maintains a network of state correspondents reporting on health in their states; sponsors conferences; and acts as a clearinghouse for state and local officials involved in formulating health policy. Rural focus: rural health care.

Publications: STATE HEALTH NEWS (bimonthly, free); HEALTH PROGRAMS IN THE STATES: A SURVEY (\$3.00); CATALOGUE: WASHINGTON HEALTH NEWS-LETTERS (free); ISSUE OF THE MONTH PAPERS.

Code: R,S

HEALTH SECURITY ACTION COUNCIL
821 15th Street, N.W.
Washington, D.C. 20005
Leonard Woodcock, Chairman

Phone: (202) 737-1177

Max Fine, Executive Director

Staff: 10. Founded: 1969. The lobbying arm of the Committee for National Health Insurance. Helps coordinate a Washington coalition of organizations seeking enactment of the Kennedy-Corman Health Security Act. The Committee for National Health Insurance conducts research and education activities around the issue of health security. Rural focus: Health Security as it relates to the development and growth of health maintenance organizations and overcoming many of the present barriers to recruiting and holding needed health workers in rural or deprived areas.

Publications: HEALTH SECURITY NEWS (monthly, free); HEALTH SECURITY AND RURAL AMERICANS (1976, 10¢/copy).

Code: L

HOUSING ASSISTANCE COUNCIL

1601 Connecticut Avenue, N.W.
Washington, D.C. 20009

Phone: (202) 483-1426

Gordon Cavanaugh, Executive Director

Staff: 20. Founded: 1971. Seeks to strengthen the commitment and capability of government at all levels to provide decent housing for the rural poor, and to increase the expertise and productivity of rural housing organizations. Services include: 1) revolving seed money loan fund for organizations that build or repair housing for rural low-income citizens, 2) technical assistance and training in using federal and state housing and community development programs, 3) research and information (statistical, technical, and general) on current rural housing issues, particularly those that affect minority groups and the system by which housing resources are delivered to low-income communities and individuals in rural areas. Rural focus: improvement of government housing and community development programs for low-income rural residents and small towns, especially those serving rural minority groups.

Publications: HAC NEWS (twice monthly, free), HOUSING AND COMMUNITY DEVELOPMENT PROGRAM GUIDE FOR SMALL TOWNS (\$5.00), HOUSING OF MINORITIES IN RURAL AMERICA (\$2.00), RURAL HOUSING GOALS AND GAPS (\$5.00), publication list available.

Code: R,S

INDEPENDENT BANKERS ASSOCIATION OF AMERICA

P.O. Box 267

Sauk Centre, Minnesota 56378

Howard F. Bell, Executive Director

Phone: (612) 352-2279

Washington Office: 1625 Massachusetts Avenue., N.W. 20036. (202) 265-1921
Glen Swanson, Washington Manager

Staff: 18. Members: 7,400. Founded: 1930. A national organization of member community banks, locally owned and operated and dedicated to meeting the financial needs of their communities. Holds that a diffused banking structure is best for America and opposes trends toward concentration of economic and financial power. Rural focus: majority of member banks are located in rural areas and maintains an Agricultural - Rural America Committee. Seeks ample funding and implementation of the Rural Development Act of 1972.

Publications: THE INDEPENDENT BANKER (monthly, members); INDEPENDENT BANKING SERVES AMERICA (1976).

Code: L,M,S

INTERRELIGIOUS TASKFORCE ON U.S. FOOD POLICY

110 Maryland Ave., N.E.
Washington, D.C. 20002
George A. Chauncey, Chairman

Phone: (202) 543-2800

Staff: 5. Founded: 1975. A team of Washington-based staff of national religious agencies working together to influence and help the American religious community influence U.S. policy for the sake of justice for the hungry at home and abroad. The Taskforce works on international development assistance and food aid, international economic policy, domestic nutrition programs, and agricultural policy. Rural focus: preservation of the family farm and estate tax reform.

Publications: FOOD POLICY NOTES (semi-monthly, \$5.00/yr.), also from the the National IMPACT Network-HUNGER and HUNGER/ACTION (occasional resource and action papers, \$5.00/yr.).

Code: M,R

JOINT ACTION IN COMMUNITY SERVICES (JACS)

1730 M Street, N.W., Suite 500
Washington, D.C. 20036
L.H. Schmitz, Executive Director

Phone: (202) 223-0912

Staff: 30. Founded: 1967. Formed by leaders of national Protestant, Catholic and Jewish associations, it has developed a local-level network of 5,000 volunteers who are available on-call to assist disadvantaged persons in dealing with the many problems they face in the areas of housing, employment education, transportation, budget planning, legal and medical aid, training opportunities, and citizenship information.

Publications: JACS VOLUNTEER, (monthly).

Code: S

LEAGUE OF WOMEN VOTERS OF THE UNITED STATES

1730 M Street, N.W.
Washington, D.C. 20036
Ruth Clusen, President

Phone: (202) 296-1770

Peggy Lampl, Executive Director

Staff: 80. Founded: 1920. Members: 140,000. Works to promote political responsibility through informed and active participation of citizens in government. Distributes information on candidates but does not support or oppose either political parties or candidates. Rural focus: while issues and activities at the national level do not focus exclusively on rural, urban or suburban areas, rural concerns are integrated into all aspects of the national program. Concerns include environmental quality, land use, human resources, international relations, representative government, and regional economic development.

Publications: VOTER (4 times per year, other publications on national issues and organizing techniques.

Code: L,M,R

LUTHERAN RESOURCES COMMISSION - WASHINGTON (LRC-W)
1346 Connecticut Avenue, N.W., Suite 823 Phone: (202) 872-0110
Washington, D.C. 20036
Dr. Henry Endress, Executive Director

Staff: 4. Founded: 1969. A grants consultation agency serving units of the American Lutheran Church, Lutheran Church in America, Lutheran Church-Missouri Synod, The National Benevolent Association of the Christian Church, The Presbyterian Church in the U.S., and The United Methodist Church to help develop resources for social progress. LRC-W has no funds of its own to disburse. It identifies resource opportunities of all kinds and reports this information to the denominational offices, from which it receives requests and proposals for funding of broad community services in the fields of health, welfare, housing, education, and the arts and humanities. Provides information and professional guidance in final preparation of proposals, how to apply for grants, and follow-through with prospective donors before and after grants are made. Rural focus: Small percentage of proposals have rural interests, e.g. cooperative farming, housing for the elderly, legal aid, health, etc. Newsletter has section on rural concerns mentioning conferences on rural America, transportation, water and sewer systems, and ministry.

Publications: NEWSBRIEFS (monthly, \$50.00/yr. or \$4.50/copy).

Code: S

MEXICAN AMERICAN LEGAL DEFENSE AND EDUCATIONAL FUND, INC. (MALDEF)
145 Ninth Street Phone: (415) 864-6000
San Francisco, California 94103
Vilma S. Martinez, President and General Counsel

Washington Office: 1028 Connecticut Avenue, N.W. 20036, (202) 659-5166,
Al I. Perez, Associate Counsel

Staff: 39. Founded: 1968. To advance the civil rights of Chicanos and Latinos through legal action and legal education. Litigates class action suits that strive to secure equal employment and educational opportunity and equal political access for Hispanic Americans. Available services include: loan forgiveness/scholarship funds for Chicano law students, community education and activation, and legal and sociological research into issues affecting the Chicano community. Rural focus: has handled land and water rights cases for Chicanos in rural areas of Texas and New Mexico. Political access litigation and equal educational opportunity litigation has focused on the needs of rural Chicanos, particularly in South Texas.

Publications: MALDEF ANNUAL REPORT (free); MALDEF NEWSLETTER (ad hoc basis, free); VOTING RIGHTS HANDBOOK (free).

Code: R,S

MIGRANT LEGAL ACTION PROGRAM, INC.
1910 K Street., N.W.
Washington, D.C. 20006
Raphael Gomez, Executive Director

Phone: (202) 785-2475

Staff: 11. Members: 2,300. Founded: 1970. Seeks to defend the rights of economically deprived agricultural workers. Engages in legislative monitoring and federal agency advocacy and provides neighborhood legal services for people unable to secure legal counsel, particularly farm workers. Rural focus: National advocacy centers on issues of workman's compensation, minimum wage, occupational safety and health standards, housing, food stamps, and fair labor standards.

Publications: EARTHBOND (6/yr., \$3.00 donation, more for non-attorneys).

Code: M,S

NATIONAL AREA DEVELOPMENT INSTITUTE (NADI)
P.O. Box 967
Rockport, Texas 78382
John D. Leslie, President

Phone: (512) 729-6878

Harry M. Griggs, Editor,

Staff: 3. Founded: 1971. Seeks to improve the knowledge and practice of the area development process to affect the revitalization of nonmetropolitan areas while striving for balanced economic growth of the U.S. that is environmentally sound. NADI assists in the production of the National Rural Development Leaders School, held 3 times yearly by the U.S. Department of Agriculture's Rural Development Service. Has given 6 training courses in "Financing Area Development" throughout the country, has produced studies for various governmental agencies, and has conducted a series of "research needs in area development" conferences for the National Science Foundation. Rural focus: publishes a newsletter which focuses on legislation, programs and recent publications of interest to rural development practitioners.

Publications: AREA DEVELOPMENT INTERCHANGE (newsletter, twice monthly, \$21.00/yr.), FINANCING RURAL DEVELOPMENT (text used for Rural Leaders School).

Code: R,S

NATIONAL ASSOCIATION FOR THE ADVANCEMENT OF COLORED PEOPLE (NAACP)
1790 Broadway Phone: (212) 245-2100
New York, New York 10019
Benjamin Hooks, Executive Director

Staff: 140. Members: 450,000. Founded: 1909. To insure the political, educational, social and economic equality of all citizens, to achieve equality of rights and eliminate race prejudice; to remove all barriers of racial discrimination through democratic processes. Every department at national headquarters provides guidance and expertise to assist regional offices, state conferences and individual branches, rural and urban, with their programs by: organizing and participating in workshops and also arranging for outside specialists to participate; sending information and action guides to branches; providing advice on current problems; and advising and monitoring government activity at all levels. Rural focus: because most branches and about half of all members live in rural areas, activities are aimed at both urban and rural concerns. The Emergency Relief Fund is aimed chiefly at the rural population in alliating hunger in critical areas of the South. Voter education and registration program also has significance for rural areas.

Publications: THE CRISIS (monthly, \$6.00/yr.); SMALL RURAL SCHOOLS CAN HAVE ADEQUATE CURRICULUMS (1975); NAACP CIVIL RIGHTS HANDBOOK (1976, \$1.00); NAACP REPORT ON MINORITY TESTING (1976, \$1.00); publication list available.

Code: M,R,S

NATIONAL ASSOCIATION OF CONSERVATION DISTRICTS
1025 Vermont Avenue, N.W. #1105 Phone: (202) 347-5995
Washington, D.C. 20005
David G. Unger, Executive Vice President

Staff: 25. Members: 3,000 districts (17,000 people). Founded: 1946. Promotes conservation and orderly development of natural resources with maximum local self-government. Its members are the conservation districts of the nation and their state associations. It provides needed materials and special services to districts and state associations and maintains relationships with organizations and agencies that cooperate with districts or whose actions affect their programs. Rural focus: Supports resource management on a natural unit basis - incorporating rural development with resource management. Conservation of soil and water.

Publications: TUESDAY LETTER (weekly, \$10.00/yr.), ENVIRONMENTAL ACTION GUIDE (brochure, free single), AMERICA'S CONSERVATION DISTRICTS (brochure, free single).

Code: M,S

NATIONAL ASSOCIATION OF COUNTIES (NACO)

1735 New York Avenue, N.W.

Phone: (202) 785-9577

Washington, D.C. 20006

Bernard F. Hillenbrand, Executive Director

Staff: over 100. Members: 1,530 member counties. Founded: 1935. The only association representing county governments on the national level. Membership consists of county governments and about 35,000 elected and appointed county officials. In addition, there are 14 functional affiliates and 1 regional affiliate. It is dedicated to research and education with the view of stimulating and contributing to the continuing improvement of county government. Rural focus: has adopted a FAIR SHARE Program for Rural Counties with positions on rural development, transportation, economic development, education, health, housing, public lands, solid waste management, taxation and finance, welfare and social services, energy, and criminal justice.

Publications: COUNTY NEWS (weekly, \$15.00); 1976 COUNTY YEARBOOK (standard sourcebook on local government and development, \$19.50); publication list available.

Code: M,R,S

NATIONAL ASSOCIATION OF DEVELOPMENT ORGANIZATIONS (NADO)

3173 First National Bank

St. Paul, Minnesota 55101

Robert Chandler, President

Robert Edman, Chief Staff Person

Washington Office: 806 15th Street, N.W. 20005, (202) 783-0340

Bill Bivens, Washington contact

Staff: 5. Members: 250. Founded: 1967. NADO is comprised of regional organizations, economic development districts, state agencies, cities and individuals all with a commitment to orderly economic growth. Provides a national framework for economic development planning and assists its members in increasing the effectiveness of local development efforts. Provides the tools and knowledge essential for sound development programs through its technical assistance training program and also provides up-to-date information on federal government activities which directly affect area growth plans. Rural focus: manpower, economic development planning, and programming from local units to multi-state units.

Publications: NEWS IN BRIEF (monthly, members).

Code: M,S

NATIONAL ASSOCIATION OF FARMWORKER ORGANIZATIONS

1328 E. Street., N.W., Suite 1145
Washington, D.C. 20004

Phone: (202) 347-2407

Humberto Fuentes, President

Tom Jones, National Representative

Staff: 5. Members: 40. Founded: 1973. Advocate for coherent federal policies and services to farmworkers and rural poor. Acts as a clearinghouse of information for farmworker programs and as a catalyst for farmworkers and their organizations. Provides training and technical assistance. Monitors and analyzes legislation, federal policies, and regulations and their impact on farmworkers. Rural focus: manpower, housing, health, economic development, child development, and other issues with respect to program/policies which affect programs for farmworkers.

Code: M,R,S

NATIONAL ASSOCIATION OF HOUSING AND REDEVELOPMENT OFFICIALS (NAHRO)

2600 Virginia Avenue, N.W., Suite 404
Washington, D.C. 20037

Phone: (202) 333-2020

Robert W. Maffin, Executive Director

Judy Morris, Rural housing staff person

Staff: 35. Members: 8,500. Founded: 1933. An action, information, and career advancement center that serves local, state and federal agencies, officials, and civic leaders involved directly in the nationwide effort to provide decent living environments for all Americans. Provides inquiry service to members, and conducts conferences and workshops on a national and regional basis. Rural focus: rural housing and small city community development.

Publications: JOURNAL OF HOUSING (monthly, \$12.00/yr.); NAHRO LETTER (weekly, members); numerous monographs (publication list available).

Code: M,R,S

NATIONAL ASSOCIATION OF REGIONAL COUNCILS

1700 K. Street., N.W.
Washington, D.C. 20006

Phone: (202) 296-5253

Richard C. Hartmann, Executive Director

Staff: 10. Members: 525 regional councils and associate members. Founded: 1967. A membership organization of regional councils from across the country. Provides current information and technical assistance to assist policy officials and staff in setting up and improving regional council programs and activities. Develops national policy proposals on issues of regional impact and acts as a liaison with federal and state agencies. Rural focus: land use, rural and economic development, comprehensive planning and management, housing and community development, transportation, water quality, criminal justice and manpower.

Publications: DIRECTORY OF REGIONAL COUNCILS (annual, \$7.50), FROM A REGIONAL PERSPECTIVE (monthly); WASHINGTON REPORT (as needed).

Code: M,S

NATIONAL ASSOCIATION OF STATE UNIVERSITIES AND LAND-GRANT COLLEGES (NASULGC)
Suite 710, One DuPont Circle Phone: (202) 293-7120
Washington, D.C. 20036
Harry M. Philpott, President Ralph K. Huitt, Executive Director

Staff: 25. Members: 133 member institutions. Founded: 1963. Acts as a catalyst to bring the collective strength of the membership to bear on key educational issues which concern them all. Informs Congress and other units of the federal government of the positions of state and land-grant universities related to legislation affecting higher education. Also serves as a communications link among member institutions and other organizations and agencies-public and private. Rural focus: "The knowledge and expertise of state and land-grant university specialists today are applied in research to try and find solutions for such national problems as inner city poverty, transportation shortages, air and water pollution, and lack of opportunity in rural areas."

Publications: THE CIRCULAR LETTER (\$20.00/yr., members); ADVANCEMENT NEWSLETTER (monthly, from Office for Advancement of Public Negro Colleges).
Code: M,R,S

NATIONAL CABLE TELEVISION ASSOCIATION, INC.
918 16th Street., N.W. Phone: (202) 457-6700
Washington, D.C. 20006
Robert L. Schmidt, President Thomas Wheeler, Executive Vice President

Staff: 35. Members: 3,487 cable TV systems. Founded: 1952. A trade organization which serves as national medium for exchange of experiences and opinions concerning the industry. Provides services to members in areas such as legal affairs, government relations, public information, engineering and statistical services. Rural focus: interested in expanding cable television in rural areas to help meet educational, informational, and social service needs.

Publications: NCTA BULLETIN (bi-weekly, membership); PERSPECTIVE ON CABLE TELEVISION (quarterly magazine, free), special reports issued on an irregular basis.
Code: L,M,S

NATIONAL CATHOLIC RURAL LIFE CONFERENCE

3801 Grand Avenue

Des Moines, Iowa 50312

Rev. John J. McRaith, Executive Director

Phone: (515) 274-1581

Stephen E. Bossi, Research Director

Staff: 9. Members: 3,783. Founded: 1923. Promotes "the responsible development and just distribution of the earth's resources and the fruits thereof, rural community and economic development, and improved Church ministry in the rural community." Provides educational materials, workshops and training sessions in natural resources and rural issues, speakers bureau, advocacy with government agencies and officials, and research and resource assistance. Rural focus: (1) natural resource policy - land use, energy development and soil conservation; (2) food policy - farm programs, vertical integration and corporate agriculture; (3) rural development - housing, health care, and employment; (4) rural ministry - training of ministers and encouraging local parish activity in the rural area.

Publications: CATHOLIC RURAL LIFE (monthly, \$5.00/yr.); NCRLC WASHINGTON MEMORANDUM (monthly, \$3.50/yr.); RURAL LIFE PAGE (monthly, contribution); and RURAL PARISH SERVICE (monthly, \$24.00/yr).

Code: M,R,S

NATIONAL CENTER FOR APPROPRIATE TECHNOLOGY

P.O. Box 3838

Butte, Montana 59701

Anthony Maggiore

Phone: (202) 667-8970

Founded: 1976. To facilitate and encourage transfer of both high and low level technologies to meet the needs of the economically disadvantaged. Will provide training and technical assistance, small grants, original research, and production of audio-visual materials. The office will be in full operation by January, 1977. Rural focus: because of the nature of Appropriate Technology the primary focus will necessarily be in rural areas, especially in the fields of solar technology, wind generation, methane production, food production, agriculture, etc.

Code: R,S

NATIONAL CENTER ON BLACK AGED (NCBA)

1730 M. Street., N.W. Suite 811

Washington, D.C. 20036

Dr. Delores A. Davis, Executive Director

Phone: (202) 785-8766

Staff: 10. Members: 600. Founded: 1973. Seeks to bring to public view the plight of the black elderly and to attempt to ameliorate the problems which plague a disproportionate number of this group. Provides technical assistance and training to groups working with the elderly; research on the black elderly; training opportunities for minority students and students interested in the black elderly. Rural focus: large number of black elderly who live in poverty in rural areas and who suffer from all the problems related to those conditions - poor health, substandard housing, inadequate transportation, limited educational and employment opportunities, etc.

Publications: NCBA NEWSLETTER (monthly); SPECIAL ISSUE BULLETINS (as needed).

Code: M,R,S

NATIONAL CENTER FOR COMMUNITY ACTION
1328 New York Ave., N.W.
Washington, D.C. 20005
Ambrose Lane, Executive Director

Phone: (202) 667-8970

Staff: 18. Members: 1567. Founded: 1974. Assists Community Action Agencies and related organizations in combatting the problems of poverty throughout the nation. The Center, a private nonprofit corporation, carries out its mission through a coordinated program of research, information, training and technical assistance services. Rural focus: all rural affairs as they affect the poor - legislation, reports of national rural organizations, migrants, Native Americans, rural transportation, food cooperatives, rural energy, health, food and nutrition, water and sewer development, economic development, youth, aging, Farmers Home loans, housing, and manpower. Serves between 500 and 600 rural Community Action Agencies across the country.

Publications: THE NATIONAL CENTER REPORTER (monthly, \$18.50/yr.); WHERE THE MONEY IS (\$5.00); HUMAN WORK FOR HUMAN NEEDS (\$5.00).

Code: M,R,S

NATIONAL CENTER FOR STATE COURTS (NCSC)
1660 Lincoln Street., Suite 200
Denver, Colorado 80203
Justice James A. Finch, President

Phone: (303) 892-1261

Edward B. McConnell, Executive Director

Staff: about 100. Founded: 1971. Initiates and carries out research into the problems of state courts and helps states consider and implement solutions. Acts as a clearinghouse for information about court activities and for information of concern to judges and other court personnel. Supports and coordinates the efforts of all organizations active in court improvement. Acts as a secretariat to associations of court personnel. Information services are available to courts and interested organizations. Six regional offices in Boston, St. Paul, Williamsburg, Norman, Atlanta, and San Francisco. Rural focus: Rural Courts Workshops Project - a project to study the issues and concerns of court management in rural areas and hold a series of two-state workshops to address the issues as they apply in the two states. Proposed Lay Judge Pilot Study - a project to investigate the role of non-lawyer judges, most of whom now sit in courts located in rural areas. Project research on rural courts under contract or grant.

Publications: NCSC REPORT (monthly); RURAL COURTS PROJECT REPORT; other project reports.

Code: R,S

NATIONAL CHILD LABOR COMMITTEE

145 East 32nd Street
New York, NY 10016

Phone: (212) 683-4545

Ronald H. Brown, President

Jeffrey Newman, Executive Director

Staff: 12. Members: 5,000 contributors. Founded: 1904. Seeks to promote the rights and dignity of children and youth as they are related to work and working. Rural focus: serves as a clearinghouse and advocate for the education of migrant children. Maintains a small emergency scholarship program for migrant students in college. Seeks protection of young children from work abuse, particularly in agricultural situations. Serves as an advocate for unemployed and underemployed youth.

Publications: RITE OF PASSAGE: THE CRISIS OF YOUTH'S TRANSITION FROM SCHOOL TO WORK; NEW GENERATION (quarterly, \$1.25 an issue); NEWSLETTER (information on youth employment, bi-monthly, \$25.00/yr).

Code: M,S

NATIONAL COMMITTEE AGAINST DISCRIMINATION IN HOUSING

1425 H. Street., N.W.
Washington, D.C. 20005

Phone: (202) 783-8150

Robert C. Weaver, President

Edward L. Holmgren, Executive Director

Staff: 20. Founded: 1950. A non-profit, civil rights organization working with national metropolitan and local fair housing advocacy groups to insure the rights of minorities and the poor to decent housing of their choice. Offers legal, technical, field services, research and public information programs. Rural focus: seeks an end to housing discrimination whether it occurs in urban, suburban, or rural areas. Has been involved in a legal suit in a rural community in New York.

Publications: TRENDS (monthly, \$5.00)

Code: R,S

NATIONAL CONFERENCE OF STATE LEGISLATURES

1405 Curtis Street., 23rd Floor
Denver, Colorado 80202

Phone: (303) 623-6600

Earl S. Mackey, Executive Director

Washington Office: 444 North Capitol Street, 20001 (202) 785-8830,
Jerry Sohns, Director of Federal-State Relations

Staff: 60. Founded: 1975. Non-partisan organization serving state legislators and their staffs. Seeks to improve the effectiveness of state legislatures and to assure states an important role in the federal decision-making process. Compiles research, publishes studies, provides technical assistance, sponsors training programs, fosters inter-state communication and cooperation, and sponsors grant projects. Rural focus: Committee on Rural Development will begin in early 1977. Present issues include full implementation of the Rural Development Act of 1972, rural development on the state level, agricultural legislation, health, and transportation.

Publications: DATELINE WASHINGTON (biweekly, \$25.00/yr.); STATE LEGISLATURES (journal, 10/yr., \$13.00).

Code: R,S

NATIONAL CONGRESS OF AMERICAN INDIANS/NCAI FUND

1430 K Street, N.W., Suite 700

Phone: (202) 347-9520

Washington, D.C. 20005

Charles Trimble, Executive Director

Staff: 10. Members: 125 tribal members. Founded: 1944. Serves as an information clearinghouse and a legislative advocate for Indian tribes. Seeks to protect, conserve and develop Indian land, mineral, timber and human resources and to improve the health, education, and economic condition of American Indians. Rural focus: protection of reservation lands and resources and the improvement of socioeconomic conditions of rural Native Americans.

Publications: THE BULLETIN (monthly, associate organization-\$50.00; associate individual - \$25.00).

Code: L,M,S

NATIONAL CONGRESS FOR COMMUNITY ECONOMIC DEVELOPMENT (NCCED)

1029 Vermont, N.W. Suite 304

Phone: (202) 659-8411

Washington, D.C. 20005

Phillip A. LoPresti, President

Staff: 5. Members: 102. Founded: 1970. Exists as a trade association and support group for organizations involved in economic development and revitalization of low-income communities. Primary vehicle is the community development corporation. Provides start-up assistance, legislative analysis, communications and information exchange, and request and referral service. Rural focus: a large number of community development corporations are located in rural areas, and a special committee of NCCED's Board of Directors examines rural issues.

Publications: NCCED VENTURE BOOK (bi-yearly, \$4.50 for non-members); NCCED S.I.C. CODE BOOK (bi-yearly, \$2.50 for non-members).

Code: M,R,S

THE NATIONAL COUNCIL ON THE AGING, INC.

1828 L. Street., N.W.

Phone: (202) 223-6250

Washington, D.C. 20036

Mother M. Bernadette de Lourdes, O.C., President

Jack Ossofsky, Executive Director

Staff: 67. Members: 2,693. Founded: 1950. A private, nonprofit organization that provides leadership, consultation, training, technical assistance, publications, training materials, and referral services to public and private agencies in the field of aging at national, regional, state, and local levels. It is a central, national resource on such aging concerns as employment and retirement, housing, health, protective services, institutional care, community organization, community services, senior centers, aging and the arts, adult education, leisure time activities and public policy. Rural focus: espouses a "national effort through the voluntary public and private sectors to utilize the capabilities of rural older adults to restore them to productiveness and to expand and develop services to enable rural older adults to enjoy a life of dignity, health, and safety."

Publications: MEMO FROM THE NATIONAL INSTITUTE OF SENIOR CITIZENS (monthly, membership or annual subscription of \$10.00); COMPREHENSIVE PROGRAM FOR THE ELDERLY IN RURAL AREAS (\$1.00); HOW TO ORGANIZE A SENIOR CENTER (\$2.50); MYTH & REALITY OF AGING IN AMERICA (\$9.00).

Code: M,R,S

NATIONAL COUNCIL ON AGRICULTURAL LIFE AND LABOR (NCALL)
Division and Bradford Streets Phone: (302) 678-8522
Dover, Delaware 19901
Jeanine Kleimo, Executive Secretary

Staff: 3. Founded: reinvigorated in 1976. Addressing the housing needs of migrant farmworkers primarily in Pennsylvania, New Jersey, Delaware, Maryland and Virginia. NCALL is establishing a program of education and technical assistance, organization and the mobilization of resources designed to increase the housing opportunities of migrant and seasonal farmworkers. Operates as a liaison with local organizations to assist them to develop housing projects, to meet the needs of farmworkers, to better coordinate the services they offer to farmworkers, to represent the interests of farmworkers and to involve them in planning for programs to meet their needs. Rural focus: housing for migrant farmworkers.

Publications: quarterly newsletter.

Code: S

NATIONAL COUNCIL OF COMMUNITY MENTAL HEALTH CENTERS
2233 Wisconsin Avenue, N.W. Phone: (202) 337-7530
Washington, D.C. 20009
John C. Wolfe, Ph.D., Ex. Director Jonas V. Morris,
Government Affairs Rep.

Staff: 4. Members 333 full, 162 associate, and 53 subscribers. Founded: 1969. Established to promote the concept of, funding, and delivery to community mental health centers. Provides technical guidance and support to its members. Serves as a means for cooperation and communication between community mental health centers. Works as a liaison with other human service agencies as a protagonist for community mental health. Lobbies on behalf of community mental health centers. Rural focus: large number of community mental health centers serve rural areas, and as such the national council has a strong interest in the delivery of mental health services to rural areas.

Publications: BEHAVIOR DYNAMICS IN INDUSTRY: AN EMPLOYEE ASSISTANCE PROGRAM (1976, \$10.00/nonmembers); CHILDREN'S LEGAL RIGHTS IN COUNSELING (1975, \$8.00/nonmembers), MENTAL HEALTH CENTERS AND THE LOCAL CLERGY (1976, \$8.00/nonmembers).

Code: M,S

NATIONAL COUNCIL OF FARMER COOPERATIVES

1129 20th Street., N.W.

Phone: (202) 659-1525

Washington, D.C. 20036

Kenneth D. Naden, President

Paul S. Weller, Vice President

Staff: 18. Members: 151 cooperatives. Founded: 1929. A nationwide association of cooperative businesses which are owned and controlled by farmers. Represents farmer cooperatives on national and international matters and works closely with the Congress, the executive branch, and federal regulatory agencies. Rural focus: rural development, taxation, marketing, trade, farm finance, supply, environmental concerns, grain marketing, transportation, and farm labor.

Publications: COUNCILOR (weekly, free to members); WASHINGTON SITUATION (monthly, free to members and media).

Code: L,M,R

NATIONAL COUNCIL OF LA RAZA

1025 15th Street, N.W.

Phone: (202) 659-1251

Washington, D.C. 20005

Raul Yzaguirre, National Director

Eduardo Terrones, Deputy Director

Staff: 21. Members: 81 affiliate organizations. Founded: 1968. Serves as a nationally based research and advocacy organization for a host of community groups located throughout the country, voicing their concerns before those agencies and institutions charged with responding to their needs and problems. Rural focus: provides technical assistance to Spanish-speaking individuals and groups in such areas as employment, housing, education, health, and economic and business development.

Publications: AGENDA (quarterly journal) and AGENDA NEWSLETTER (monthly, \$10.00/yr. for both journal and newsletter).

Code: M,R,S

NATIONAL COUNCIL FOR THE TRANSPORTATION DISADVANTAGED (NCTD)

Cape May County Airport

Phone: (609) 886-2011

Rio Grande, New Jersey 08242

John O. Salvesen, Executive Director

Members: 750. Founded: 1974. An organization of leaders in the field of transportation voicing concerns on transportation legislation, policies, standards, technology, operations and financing. Focuses on the unique needs of the elderly, the ill, the handicapped, the poor, children, the under and unemployed, the inadequately trained or educated, the carless, and other persons in urban and rural areas who lack adequate transportation. Sponsors state and national conferences. Rural focus: Seeks to redress the inequity of "48% of the population getting less than 1% of transportation funds".

Publications: ROUNDRIPPER (quarterly, \$25.00/yr. membership).

Code: M

NATIONAL ECONOMIC DEVELOPMENT LAW PROJECT

Earl Warren Legal Institute

Phone: (415) 642-2826

2313 Warring Street

Berkeley, California 94704

Arthur I. Blausten and Michael G. Smith, Co-Directors

Staff: 20. Founded: 1968. A component of the Earl Warren Legal Institute; seeks to serve community development corporations and Legal Services attorneys specializing in economic development. Provides legal assistance in such areas as corporate law, tax law as it applies to corporations and associations and securities law as it deals with community development. Programs component includes program analysis, representation for groups trying to get programs, training conferences, and planning assistance. Rural focus: monitors federal programs and legislation-Farmers Home Administration, Rural Development Act of 1972, housing programs for community groups, Housing and Community Development Act, health care delivery systems, health maintenance organizations, job development (CETA), water and land reclamation in California, and small farms feasibility study - impact of state and federal activities.

Publications: ECONOMIC DEVELOPMENT LAW PROJECT BULLETIN (bimonthly); JOB DEVELOPMENT: CETA AND COMMUNITY ECONOMIC DEVELOPMENT (\$7.50); THE HOUSING AND COMMUNITY DEVELOPMENT ACT; conference transcripts on health maintenance organizations, housing and community development opportunities, and job development (\$10.00/ea).

Code: R,S

NATIONAL FARMERS ORGANIZATION

720 Davis Ave.

Phone: (515) 322-3131

Corning, Iowa 50841

Oren Lee Staley, President

Legislative Office: 485 L'Enfant Plaza, S.W., Washington, D.C. 20024, (202) 484-7075, Charles L. Frazier, Director.

Staff: 1,000. Founded: 1955. A non-partisan organization of farmers banding together to bargain collectively for the sale of farm commodities. Seeks to assure the survival of the family farm in America. Rural focus: includes support for the Family Farm Antitrust Act of 1975, programs for conservation of soil and water, and rural electrification and telephone.

Publications: NFO REPORTER (monthly, \$2.00 for nonmembers).

Code: M

NATIONAL FARMERS UNION

P.O. Box 39251
12025 E. 45th Avenue
Denver, Colorado 80239
Tony T. Dechant, President

Phone: (303) 371-1760

Washington Office: 1012 14th Street, N.W., (202) 628-9774, Robert G. Lewis, National Secretary

Staff: 40. Members: 250,000 farm families. Founded: 1902. A family farm organization which carries on a broad range of educational and legislative activities. Promotes programs to assure the continuation and strengthening of the individual family-type farm as the system of agriculture in the United States. Develops and promotes programs to strengthen family farming and rural life and espouses new national food, farm, energy and land policies. Rural focus: supports programs to promote the general welfare of rural America including conservation, rural development, health, full employment, and electrification, and the development of farmer cooperatives.

Publications: WASHINGTON NEWSLETTER (weekly, \$10.00/yr.).

Code: M,S

NATIONAL FEDERATION OF INDEPENDENT BUSINESS

150 West 20th Avenue
San Mateo, California 94403
Wilson S. Johnson, President

Phone: (415) 341-7441

Washington Office: L'Enfant Plaza, S.E., Washington, D.C. 20024
(202) 554-9000.

Staff: 550. Members: 475,000. Founded: 1943. Lobby for small, independent businesses. Policy is set by polling its membership, and results are presented to state and national legislative bodies. Rural focus: with 65% of its members located in rural areas, rural development is an ongoing concern.

Publications: THE MANDATE (10/yr., members); various pamphlets of interest to member businessmen.

Code: L,M

NATIONAL GOVERNOR'S CONFERENCE

444 North Capitol Street

Washington, D.C. 20001

Stephen B. Farber, Director

Phone: (202) 785-5600

Staff: 40. Members: Governors of the states, territories and Puerto Rico. Founded: 1908. The vehicle through which Governors collectively influence the development and implementation of national policy and apply creative leadership to state problems. Seeks to improve state government, work on problems requiring interstate cooperation and to facilitate federal-state and state-local relations concerning intergovernmental affairs. Rural focus: Committee on Community and Economic Development is primarily responsible for agriculture and rural affairs. Seeks increased funding and better implementation of the Rural Development Act of 1972.

Code: M

NATIONAL GRANGE

1616 H Street, N.W.

Washington, D.C. 20006

John W. Scott, Master

Phone: (202) 628-3507

Robert M. Frederick, Legislative Director

Staff: 25. Members: 500,000. Founded: 1867. A fraternal organization of rural families engaging in community service. Promotes agriculture and the economic well-being of rural people through legislative, social, educational, community service, home economics, youth, aid for handicapped, cooperatives, insurance, and credit union programs. Rural focus: policies and programs of the Grange pertain to a broad array of circumstances affecting the lives of rural Americans. Issues include: rural development, soil and water conservation, enforcement of anti-trust laws, an end to tax-loss farming, and health.

Publications: VIEW FROM THE HILL (bi-weekly, \$2.50/yr.); GRANGE NEWSLETTER (monthly, membership).

Code: M,S

NATIONAL HEALTH COUNCIL

1740 Broadway

New York, New York 10019

Edward H. Van Hess, Executive Vice President

Phone: (212) 582-6040

Washington Office: 919 18th Street, N.W., Washington, D.C. 20006, (202) 785-3913

Staff: 37. Members: 73 organizations. Founded: 1921. Federation of voluntary and professional societies in the health field, federal government agencies concerned with health, and national organizations and business groups with strong health interests. Sponsors the annual National Health Forum as well as regional forums to discuss issues of common concern. Provides a clearinghouse role in the health field and monitors and evaluates legislation. Rural focus: health care, health manpower distribution, health demonstration projects in shortage areas, and is developing a roster of placement services.

Publications: GOVERNMENT RELATIONS NOTE (monthly, members); DIRECTORY OF PRECEPTORSHIP PROGRAMS; REVIEW OF INCENTIVE PROGRAMS; HEALTH MANPOWER DISTRIBUTION (regional workshops report).

Code: M,R,S

NATIONAL HOUSING CONFERENCE

1126 16th Street, N.W. Suite 211

Washington, D.C. 20036

Leon N. Weiner, President

Phone: (202) 223-4844

Gene R. Schaefer, Executive Director

Staff: 4. Members: 675. Founded: 1931. Promotes better communities and decent homes for all Americans. Mobilizes support across the nation and in Washington for effective programs in community development and shelter for all Americans. Promotes good national, regional, and urban planning and adequate research in housing and urban renewal. Rural focus: to promote better rural housing and development.

Publications: NEWSLETTER (free to members); POLITICS AND THE HOUSING CRISIS SINCE 1930 (\$2.50).

Code: M,R

NATIONAL HOUSING LAW PROJECT
Earl Warren Legal Institute
2313 Warring Street
Berkeley, California
Al Hirshen, Director

Phone: (415) 642-2826

Staff: 20. Evolved out of the National Economic Development Law Project. A component of the Earl Warren Legal Institute; seeks to serve community development corporations and Legal Services attorneys specializing in economic development. Rural focus: to get better implementation of Farmers Home Administration programs in terms of number of units constructed and groups reached; building public housing by developing regional housing authorities; housing code enforcement in rural areas; housing Indians and migrants; and states' role in housing rural poor.

Publications: LAW PROJECT BULLETIN, HOUSING SECTION (bimonthly).

Code: R,S

NATIONAL INDIAN YOUTH COUNCIL
201 Hermosa N.E.
Albuquerque, New Mexico 87108
Lawrence Roberts, President

Phone: (505) 266-7966

Gerald Wilkinson, Executive Director

Staff: 44. Members: 15,000. Founded: 1961. An Indian organization with non-Indian associate members. The goal is to protect and enrich the Indian tribal communities. Rural focus: main constituency is rural Indians. Involved in rural CETA manpower program, advocacy for Indian people in uranium, copper, and coal leases, litigation on environmental matters, community organizing of rural Indians affected by corporate energy projects, research on natural resources including water, and self-determination for Indian tribes.

Publications: AMERICANS BEFORE COLUMBUS (monthly, \$8.00/yr.); research papers and books.

Code: M,R,S

NATIONAL INSTITUTE FOR COMMUNITY DEVELOPMENT
2021 K Street, N.W., Suite 207
Washington, D.C. 20006
Lawrence J. Brailsford, President

Phone: (202) 872-1590

Charles E. Countee, Director of Marketing

Staff: 30. Founded: 1970. A private, minority-owned management consulting firm founded on the concept of providing for its clients the variety of services necessary to improve and enrich the life of communities. These services are concerned with planning and evaluation of programs, operational management systems, information/computer sciences, and training and technical assistance in the fields of health, substance abuse, housing, transportation, education, environment and economic development. Services are available nationwide, and emphasis is placed on time-responsive performance, close communication with clients, multi-disciplinary delivery teams, and cost-beneficial final products. Rural focus: land-use planning, regional transportation planning, census data usage, health and social services delivery system development, housing development, and economic development.

Code: S

NATIONAL LAND FOR PEOPLE/NATIONAL LAND FOR PEOPLE FOUNDATION

1759 Fulton, Room 11
Fresno, California 93721
George Ballis, President

Phone: (209) 233-4727

Geneva Gillard, Chief Staff Person

Staff: 6. Members: 600. Founded: 1974. Does research, litigation and public education on large issues of peoples' legal land and water rights. Focus is on enforcement of the 160 Acre Limitation (Reclamation Law) "which if enforced, would break-up corporate holdings throughout the 11 Western States and primarily in the San Joaquin Valley." Also interested in showing possibilities for application of appropriate technology and alternative energy to the small farmers who will populate the land, as well as encourage land trusts and cooperative ventures. Conducts research on land ownership patterns and shares research skills with other organizations. Helps others start buying clubs (food). Media presentations are available to educate people about the importance of retaining healthy small towns by encouraging small farms. Rural focus: believes that water-land policies have urban, as well as rural, significance; national and international, as well as local, ramifications.

Publications: NATIONAL LAND FOR PEOPLE (monthly, \$5.00/yr.) A RURAL TOWN FOR THE WEST SIDE OF THE SAN JOAQUIN VALLEY (\$3.00) WHO OWNS THE LAND (nationwide survey of land ownership, 40¢), 160-ACRE BIBLIOGRAPHY (\$1.50).

Code: M,R,S

NATIONAL LEAGUE FOR NURSING

10 Columbus Circle
New York, New York 10019

Phone: (212) 582-1022

Margaret E. Walsh, Executive Director

Staff: 200. Members: 15,000 individuals, 1,900 agencies. Founded: 1952. Assesses nursing needs, works to improve organized nursing agencies and nursing education, acts as official accrediting agency for nursing schools and seeks greater cooperation between nursing and other health community services. Provides consultation services, continuing education, pre-admission tests and achievement tests, and education and career information. Conducts studies and demonstration projects on community planning for nursing, nursing service and nursing education. Rural focus: seeks to provide nursing where it is needed and recognizes an acute need in many rural areas. Department of Home Health Agencies and Community Health Services has a number of members serving rural areas.

Publications: NLN NEWS (10/yr., members); publication catalogue.

Code: M,R,S

NATIONAL PLANNING ASSOCIATION (NPA)
1606 New Hampshire Avenue, N.W.
Washington, D.C. 20009
John Miller, President

Phone: (202) 265-7685

Staff: 100. Members: 2,000 subscribers. Founded: 1934. A private, non-profit organization seeking to bring together representatives of business, labor, and agriculture to encourage economic planning and cooperation. NPA's staff undertakes technical research designed to provide data and ideas for policy makers in government and the private sector. Representatives serve on domestic and international policy committees. Rural focus: standing Agriculture Committee has principal responsibility for developing policy positions in regard to rural development. Center for Health Policy Studies conducts research on rural health.

Publications: LOOKING AHEAD (10/yr., 75¢/ea. or membership subscription of \$20/yr.); NEW INTERNATIONAL REALITIES (3/yr, membership or \$4/yr.); TOWARD A RURAL DEVELOPMENT POLICY (1973, \$1.00); policy reports.

Code: M,R

NATIONAL RURAL CENTER (NRC)
1200 18th Street, N.W.
Washington, D.C. 20036
Dr. Ray Marshall, President

Phone: (202) 331-0258

John M. Cornman, Executive Director

Staff: 18. Founded: 1976. An independent, non-profit organization created to develop policy alternatives and to provide information which can help rural people achieve full potential. Develops policy alternatives by conducting demonstration programs, by using the results of existing research, by program evaluations and where needed, basic research. Information clearinghouse helps state and local officials, community organizations, and individuals with rural concerns find out about and gain access to sources of federal and private funds and expertise. Maintains a library of research and data on rural affairs, including legislative and executive-branch documents. Offices in Atlanta, Georgia and Austin, Texas. Rural focus: all aspects of rural development and revitalization including health, transportation, communications, manpower, migration trends, legal services, and education.

Publications: DIRECTORY OF RURAL ORGANIZATIONS (free); brochures and activities reports upon request.

Code: R,S

NATIONAL RURAL ELECTRIC COOPERATIVE ASSOCIATION (NRECA)
2000 Florida Ave., N.W. Phone: (202) 265-7400
Washington, D.C. 20009
Robert D. Partridge, Executive Vice President

Staff: 150. Members over 1,000 rural electric systems. Founded: 1942. Rural electric cooperative systems, public power districts, and public utility districts in 46 states. It seeks to represent the national interests of members through legislative services, programs in management, insurance, public relations and advertising, research and energy and environment. Rural focus: rural electrification and rural development.

Publications: RURAL ELECTRIC NEWSLETTER, (38/year); RURAL ELECTRICIFICATION MAGAZINE, (monthly); MANAGEMENT QUARTERLY MAGAZINE; and FACT BOOK (quadrennial).

Code: L,M,R,S

NATIONAL RURAL HOUSING COALITION
1346 Connecticut Avenue, N.W. Phone: (202) 296-4945
Washington, D.C. 20036
Aaron E. Henry, President Cushing N. Dolbeare, Executive Secretary

Staff: 2. Members 500. Founded: 1969. Basic goal is a decent, affordable home in a suitable living environment for every rural and small town American. Lobbies for enactment of federal legislation and funding of federal programs aimed at providing decent housing for low and moderate income people in rural areas and small towns. Provides information about pending federal legislation affecting rural housing and community development. Rural focus: community development, housing, and water and sewer development.

Publications: RURAL HOUSING (periodically); CONGRESSIONAL ROUND-UP (approximately biweekly); Annual dues: \$10 individual, \$50 sustaining, and \$100 organizational.

Code: L,M

NATIONAL RURAL WATER ASSOCIATION
Box 1604 Phone: (405) 252-0615
Duncan, Oklahoma 73533
R.K. Johnson, Executive Secretary

Washington Office: Suite 600, 1776 K Street, N.W., 20006, (202) 833-9481, John H. Montgomery.

Staff: 2. Founded: 1976. Formed in April, 1976 to represent state rural water associations and to foster a means of obtaining a coordinated response to federal and state rural water issues. Seeks to encourage the formation of state rural water associations. Washington office will work with federal officials to urge them to be more responsive to rural water needs in the operation of the Federal Pollution Control Act, the Safe Drinking Water Act, Farmers Home Administration programs, and other federal activities impacting on rural areas. The national association assists state associations in training and technical assistance. Rural focus: rural water.

Code: M,S

NATIONAL SHARECROPPERS FUND/RURAL ADVANCEMENT FUND

2128 Commonwealth Avenue
Charlotte, North Carolina 28205

Phone: (704) 334-3051

Dr. Benjamin E. Mays, Chairman

James M. Pierce, Executive Director

Staff: 12. Founded: 1934. The National Sharecroppers Fund seeks the enactment of national legislation which promotes and protects the interests of rural poor people. The central mission of the Rural Advancement Fund which began in 1965 is the improvement of the social and economic condition of America's rural poor through agricultural skill training and the advancement of community-based cooperative organizations. Conducts educational programs to acquaint the public with problems of rural America and their relationship to urban problems. Rural focus: major activity is rural training at the Frank P. Graham Center near Wadesboro, N.C.

Publications: RURAL ADVANCE (quarterly, free); CONDITION OF SMALL FARMERS AND FARMWORKERS (annual, free).

Code: L,R

NATIONAL TELEPHONE COOPERATIVE ASSOCIATION

2626 Pennsylvania Avenue, N.W.
Washington, D.C. 20037

Phone (202) 338-9400

Frank James, President

David C. Fullarton, Executive Vice President

Staff: 40. Members: 240 telephone cooperatives and 40 commercial companies. Founded: 1954. Primary objective is the promotion and enhancement of its members ideals and objectives as rural telephone systems. Strives to attain constant and constructive relationships of members' systems with State and Federal Government, administrative, legislative, and regulatory bodies. Conducts workshops and seminars related to the field. Rural focus: rural telephone cooperatives.

Publications: PHONE CALL (monthly magazine, membership), NCTA REPORT (biweekly legislative newsletter, membership), MANAGEMENT NEWSLETTER (monthly newsletter for systems managers).

Code: L,M,S

NATIONAL WILDLIFE FEDERATION

1412 16th Street, N.W.

Washington, D.C. 20036

Phone: (202) 797-6800

Thomas L. Kimball, Executive Vice President Louis S. Clapper, Conservation
Division Director

Staff: 300. Members: 3.3 million. Founded: 1936. A nongovernmental, nationwide conservation education organization composed of groups and individuals who share a common interest in nature in general, wildlife in particular, and the interrelationship of all living organisms with the earth. Among the many conservationist principles of the federation is better planning to give "more careful attention to questions of where we build our homes, industries, public and private buildings- so that we will increase our chances of having more health and natural, less compacted and quieter places to live and work." Rural focus: land use, soil conservation, public lands, and water resources.

Publications: NATIONAL WILDLIFE MAGAZINE, (6/yr., \$7.50/yr); CONSERVATION REPORT (weekly when Congress is in session, free); CONSERVATION NEWS (bi-monthly, free).

Code: M,R,S

NATIONAL YOUTH ALTERNATIVES PROJECT (NYAP)

1346 Connecticut Avenue, N.W.

Washington, D.C. 20036

Phone: (202) 785-0764

William Treanor, Project Coordinator

Founded: 1973. Dedicated to the development of a variety of social services for youth, particularly those which include youth participation in the design and provision of service. Offers services to locally controlled groups attempting to establish, expand or evaluate innovative services aimed at meeting the needs of young people who have rejected or who have been rejected by traditional social institutions. Primary activities are: the provision of training and technical assistance to youth services staff, network and coalition building among youth programs, research on the problems of youth and the needs of youth service workers, teaching evaluation skills to existing programs, and the maintenance of an information clearinghouse. Rural focus: under contract from HEW-OYD to provide technical assistance to the national runaway program and has provided technical assistance to individual projects. Advocate on behalf of funding for rural projects under authorizing legislation of JJDP and Runaway Youth Act. Networking efforts on behalf of rural projects includes casework and staff participation in local conferences. Issues include lack of recognition in legislation mandates for youth services in rural areas and planning of human service delivery systems for rural projects without a "rural" consciousness.

Publications: NATIONAL DIRECTORY OF RUNAWAY CENTERS (annually, \$4.00); STALKING THE LARGE GREEN GIANT (\$5.00); GUIDES TO THE JUVENILE JUSTICE ACT (periodically, \$2.00); RUNAWAYS AND RUNAWAY CENTERS, A BIBLIOGRAPHY (periodically, free).

Code: R,S

NATIVE AMERICAN RIGHTS FUND (NARF)

1506 Broadway

Boulder, Colorado 80302

David R. Risling, Chairman

Phone: (303) 447-8760

Thomas W. Fredericks, Director

Washington Office: 1712 N Street, N.W., 20036, (202) 785-4166

Staff: 46. Founded: 1970. A non-profit nationwide Indian legal program. Legal resources are concentrated on five problem areas: tribal existence, tribal resources (protection of Indian lands, water, minerals, etc.), human rights (including the right to an education which complements the culture, the right to adequate health care, and equitable treatment of Native American prisoners), accountability, and Indian law development.

Rural focus: most clients are located in the rural setting of Indian reservations. NARF has contact with over 200 tribes in the nation, many in the Western states with recent developments on the East Coast.

Publications: ANNOUNCEMENTS (quarterly, \$10/yr.); NATIONAL INDIAN LAW LIBRARY CATALOGUE (1975, \$20).

Code: S

NETWORK

224 D Street, S.E.

Washington, D.C. 20003

Carol Coston, O.P., Executive Director

Phone: (202) 544-1371

Staff: 7 full-time, 14 interns. Members: 3,000 subscribers. Founded 1971. A Catholic lobby group seeking national legislation which is responsive to the needs of all people, especially the poor, the hungry, the jobless, and the imprisoned. Conducts an annual referendum of its membership to determine issue priorities. Current issues include: equitable food planning and programs at home and abroad, national health insurance, full employment and welfare reform, alternatives to incarceration, and decreased militarization. Rural focus: preservation of family farms and support for land reform.

Publications: NETWORK NEWSLETTER (\$8.00), NETWORK QUARTERLY (\$18.00, includes newsletter).

Code: L,M,R

OPEN SPACE INSTITUTE

425 Park Avenue

New York, New York 10022

Winsome D. McIntosh, President

Phone: (212) 838-2700

Founded: 1975. 1) To serve as a national tax-exempt center through which funds and expertise for local environmental litigation could be channeled; and 2) to undertake policy studies on important environmental questions, the results of which would be made available to key organizations and individuals across the country. It has been reinstated after a dormant period. Rural focus: has conducted research on the environmental impact of the development of Barrier Islands on the East Coast and on strip mining nationwide and funded Kansas Hillside Dam case brought against the Army Corps of Engineers by local farmers with environmental concerns.

Publications: STEWARDSHIP (not presently available).

Code: R,S

PUBLIC CITIZEN'S TAX REFORM RESEARCH GROUP

133 C Street, S.E.

Phone: (202) 544-1710

Washington, D.C. 20003

Ralph Nader (President, Public Citizen, Inc.)

Robert M. Brandon, Director

Staff 7. Founded: 1971. Seeks to reform the tax systems in America, so as to make them equitable, simple, and efficient, and to inform the public as to the ways the tax systems work. Provides information on tax matters and (where resources permit) assistance to local groups interested in tax reform. Lobbies for beneficial tax reform in Congress. Rural focus: as part of basic tax reform, seeks to eliminate farming tax shelters and to make property taxation fairer. Also, seeks a fair, somewhat redistributive estate tax system, which recognizes the special problems of farmers.

Publications: PEOPLE AND TAXES (monthly, \$7.50/yr. or \$12/yr. for business organizations).

Code: L,R

RESOURCES FOR THE FUTURE

1755 Massachusetts Avenue, N.W.

Phone: (202) 462-4400

Washington, D.C. 20036

Charles J. Hitch, President

Staff: 100. Founded: 1952. A private, non-profit organization for research and education in the development, conservation, and use of natural resources and improvement of the quality of the environment. Specific fields of interest embrace the basic resources of land, water, minerals, and air, and the goods and services derived from them. Rural focus: primarily land use, although most work, e.g., on environmental quality, affects rural populations as well as urban.

Publications: RESOURCES (3/yr., free), LAND USE AND THE STATES (paperback, \$2.95), CARS, CANS, AND DUMPS: SOLUTIONS FOR RURAL RESIDENTS (book, \$12.95), publication list available.

Code: R

RURAL AMERICA

1346 Connecticut Avenue, N.W.

Phone: (202) 785-2936

Washington, D.C. 20036

Clay L. Cochran, President

Staff: 11. Members: 1,000. Founded: 1974. A non-profit, membership organization established to meet the need for a continuing national organization to serve rural people. Main goal is to assure rural people equity and to serve as a national service center for rural individuals and groups. Involved in a national program of policy and action-oriented research, public information, education and advocacy, designed to improve human opportunities in rural areas. This includes preparation and distribution of educational materials, reports, studies and other publications, plus the development of a broad coalition of concerned groups and individuals.

Publications: rural america (monthly journal, membership or \$10/yr.), TOWARD A PLATFORM FOR RURAL AMERICA (report on the First National Conference on Rural America, \$2.50), and various position papers.

Code: M,R,S

RURAL HOUSING ALLIANCE (RHA)

1346 Connecticut Avenue, N.W. Suite 500 Phone: (202) 659-1680
Washington, D.C. 20036
Karen Tobin, Chairman Clay L. Cochran, Executive Director

Staff: 25. Members: 400. Founded: 1966. A non-profit corporation organized to help rural Americans obtain decent housing. Its basic premise is that all families should be able to obtain decent housing, wherever they may be, without depriving themselves of other basic necessities. Provides technical assistance to farmworker and other rural housing projects throughout the country in all types of housing. It serves as an ombudsman in Washington for rural groups seeking equity in their dealings with the bureaucracy. Administers a land loan fund for building sites. Rural focus: research program produces studies on various aspects of rural housing.

Publications: RHA REPORTER (monthly, \$10.00/yr.); MORE THAN BRICKS AND MORTAR (1974, singles free); SIX YEARS OF PROGRESS (1974, 75¢); publication list available.

Code: M,R,S

THE RURAL PRACTICE PROJECT

University Square, 143 West Franklin Street Phone: (919) 967-9281
Chapel Hill, N.C. 27514
Donald I. Johnson, M.D., Director

Staff: 9. Founded: 1975. Seeks out a limited number of outstanding physicians and administrators who, joining together as a team with other supporting health personnel, can create in participating rural communities a medical practice model that will demonstrate new ways of providing health care to rural residents. Rural focus: expanding health care in rural areas.

Code: S

RURAL/REGIONAL EDUCATION ASSOCIATION

1201 16th Street, N.W. Phone: (202) 833-4460
Washington, D.C. 20036
Lewis R. Tamblyn, Executive Director

Staff: 3. Members: 1,000. Founded: 1907. A department of the National Education Association. Seeks to improve and expand educational opportunities in rural areas and smaller communities throughout the U.S.; to engage in research projects and studies and provide information concerning rural education to its members and the general public; to encourage research and to endeavor to focus attention on rural education problems. Rural focus: serves as an advocate organization to develop appropriate educational programs for rural/regional use. It develops programs directed toward new political or governmental situations in which rural/regional education must function and identifies priority needs of rural schools and regional agencies.

Publications: RURAL EDUCATION NEWS (bi-monthly, membership), occasional monographs such as INEQUALITY: A PORTRAIT OF RURAL AMERICA (\$2.00).

Code: L,M,R

RURAL SOCIOLOGICAL SOCIETY

306A Comer Hall
Auburn University
Auburn, Alabama 36830
Dr. Sheldon G. Lowry, President

Phone: (205) 826-4802

Staff: 1. Membership: 1100. Founded: 1935. Professional society of educators and others employed in the field of rural sociology. Seeks to give assistance to leaders in agriculture and rural life through research, training, and extension. Rural focus: Facilitates understanding of the nature of present-day rural society, the forces producing change, the nature of their impact, and ways in which social action can be effective in guiding change.

Publications: RURAL SOCIOLOGY (quarterly) and NEWSLINE (bimonthly).

Code: M,R

SAVE THE CHILDREN FEDERATION

48 Wilton Road
Westport, Connecticut 06880
David L. Guyer, Executive Director

Phone: (203) 226-7271

Staff: 90 at headquarters. Founded: 1932. A non-sectarian agency seeking to advance the well-being of children, families, and communities both at home and abroad. Maintains offices in New York City. Rural focus: family self-help and community development in Appalachia, Chicano communities, Native American reservations, rural South, as well as U.S. inner cities and developing nations.

Publications: quarterly reports, reprints of articles.

Code: S

SMALL TOWNS INSTITUTE

Box 517
Ellensburg, Washington 98926
Anne Smith Denman, Clayton C. Denman, Co-Directors

Phone: (509) 963-3221

Staff: 4. Members: 4,000. Founded 1969. Educational and information services directed toward finding new solutions to problems affecting small towns and rural areas. Searching for new as well as long-forgotten ways of increasing the quality of life, both social and economic, in small towns and rural America. Seeks alternatives to the view that solutions to community problems lie only in urban concepts of planning, technology, and federal funding. Serves as a general clearinghouse for national information relating to small communities within rural areas. Rural focus: wide variety of issues affecting the countryside environment, including industrial development, population fluctuations, environmental concerns, jobs, the elderly, family farms, housing, historic preservation, cultural development, health, small business, recreation, local government, planning, and a wide range of other concerns.

Publications: SMALL TOWN (monthly, individuals-\$15/yr. and professional and institutional-\$25/yr.); IDEAS & RESOURCES FOR YOUR COMMUNITY (free); THE PLANNING PROCESS IN SMALL TOWNS (\$1.50).

Code: M,R

SOIL CONSERVATION SOCIETY OF AMERICA

7515 N.E. Ankeny Road

Ankeny, Iowa 50021

H. Wayne Pritchard, Executive Vice President

Phone: (515) 289-2331

Staff: 12. Members: 15,000. Founded: 1945. To advance the science and art of good land use. The Society functions through local chapters in each state. Cooperates in the sponsorship of several symposia. Rural focus: land use planning, erosion and sedimentation, water resources, surface mine reclamation, soil, resources, air, plant, fish and wildlife resources, environmental conservation education, waste management, and outdoor recreation.

Publications: JOURNAL OF SOIL AND WATER CONSERVATION (bimonthly, \$15.00/yr.)

Code: M,R

STUDENT NATIONAL MEDICAL ASSOCIATION (SNMA)

1875 Connecticut Avenue, N.W., Suite 1020

Washington, D.C. 20009

Michael V. Bonne, Executive Administrator

Phone: (202) 483-7704

Staff: 12. Members: 3,200. Founded: 1964. An association of minority medical students in pursuit of medical education. Provides information clearinghouse, scholarship fund, and health awareness programs. Rural focus: conducts a Clinical Preceptorship Program designed to offer third and fourth year medical students who are members of SNMA practical experience serving alongside physicians in communities which are seriously deprived of health resources.

Publications: BLACK BAG (quarterly journal, \$10.00); SNMA NEWSLETTER (monthly, \$6.00).

Code: M,S

UNITED AUTOMOBILE, AEROSPACE & AGRICULTURAL IMPLEMENT WORKERS OF AMERICA (UAW)

8000 E. Jefferson

Detroit, Michigan 48214

Leonard Woodcock, President

Phone: (313) 926-5000

Washington Office: 1125 15th St., N.W., Washington, D.C. 20036 (202) 296-7848

Dick Warden, Legislative Office Director

Staff: 1349. Members: 1,592,902. Founded: 1935. Strives to achieve a fuller measure of dignity and security for the worker as an important member of the company and of the society as a whole. Rural focus: rural housing, expanding public lands, and conservation of natural resources. Works with various rural groups on particular issues.

Publications: SOLIDARITY (magazine \$16/yr., membership), WASHINGTON REPORT (weekly, membership).

Code: L,M,S

UNITED FARM WORKERS, AFL-CIO
P.O. Box 62
Keene, California 93501
Cesar Chavez, President

Phone: (805) 822-5571

Founded: 1965. Organized farm workers dedicated to obtaining better wages, improved working conditions, and job security. Rural focus: organizing farm workers and obtaining contracts to protect them.

Publications: EL MAC (biweekly, \$6.00).

Code: M,S

UNITED METHODIST CHURCH WOMEN'S DIVISION "FAMILY FARM PROJECT"
Box 316
LaFarge, Wisconsin 54639
Jane Johnson, Project Organizer

Phone: (608) 625-4505

Methodist women organized in 37 of the 55 Methodist Conferences to promote the survival of the family farm and the values it contributes to society. Encourages stewardship of land and resources for present and future generations. Rural focus: participants are involved in land tenure studies, monitoring land use and farm labor legislation, soil surveys to estimate productivity of soil in case of future fertilizer shortages, land-grant college interviews, estate tax reform, and OSHA regulations.

Code: M,R

UNITED MINE WORKERS OF AMERICA
900 15th Street, N.W.
Washington, D.C. 20036
Arnold Miller, President

Phone: (202) 638-0530

Staff: 150. Members: 276,700. Founded: 1890. Organized mine-workers seeking safe working conditions and adequate living standards. Rural focus: organizing health clinics and development of housing.

Publications: UNITED MINE WORKERS JOURNAL (semi-monthly).

Code: L,M,R,S

VOLUNTEERS IN TECHNICAL ASSISTANCE

3706 Rhode Island Avenue
Mt. Rainier, Maryland 20822
Robert M. Goldhoff, Chairman

Phone: (301) 277-7000

Thomas H. Fox, Executive Director

Staff: 18 to coordinate requests and projects. Members: 5,000 volunteers. Founded: 1960. A non-profit organization dedicated to providing technical assistance to developing countries and rural areas within the United States. Participates in discussions among U.S., state and regional groups interested in the general area of appropriate technology. Services include providing library information as well as personalized problem solving by Volunteers in agriculture, housing, water supplies, sanitation, animal husbandry, food processing, small business development, etc. Rural focus: domestic activities are restricted to answering a small number of cases from groups where the problems are by and large technical rather than social, are related to rural development, and involve small-scale technologies.

Publications: VILLAGE TECHNOLOGY HANDBOOK (1970, \$9.00), various technical manuals, publication list available.

Code: S

BOOKER T. WASHINGTON FOUNDATION/CABLECOMMUNICATIONS RESOURCE CENTER

4234 Georgia Avenue, N.W.
Washington, D.C. 20011

Phone: (202) 296-5810

Charles Tate, Executive Director of Cablecommunications Resource Center

Staff: 40. Founded: 1973. A public non-profit foundation which in coordination with the National Business League undertakes major research and development activities which foster minority, economic, business, institutional, and human resources development. Programs of the Booker T. Washington Foundation include: Public Policy Research, Resource Development, Telecommunications, and Science and Technology. The Cablecommunications Resource Center is a national information clearinghouse, business resource center, and research and development organization for minorities in the field of cable television and related telecommunications. Rural focus: telecommunications.

Publications: CABLELINES (bimonthly, \$5.00/yr.); A PRELIMINARY REVIEW OF CURRENT PRACTICES AND TRENDS IN RURAL TELECOMMUNICATIONS DEVELOPMENT AND RECOMMENDATIONS FOR FUTURE DEVELOPMENT.

Code: R

WORLD HUNGER EDUCATION SERVICE

P.O. Box 2474

Phone: (202) 544-4162

Washington, D.C. 20013

Dr. Patricia L. Kutzner, Executive Director

Founded: 1976. Facilitates communication among organizations and individuals working on global and national hunger and poverty issues. Clearinghouse of information, referral service. Educational assistance through consultation or creation of new resources. Rural focus: rural poverty, malnutrition, small farms, and estate tax reform.

Publications: HUNGER WORKSHOP NOTES (12/yr., \$6.00, also organizational subscriptions); WHO'S INVOLVED WITH HUNGER: AN ORGANIZATIONAL GUIDE (with American Freedom From Hunger Foundation 1976, \$1.00).

Code: R,S

I N D E X

NAME OF ORGANIZATION	PAGE #	L	M	R	S
Academy for Contemporary Problems	2			X	
Agribusiness Accountability Project/ The Agbiz Tiller	2			X	
American Agri-Women (AAW)	3		X		
American Association for Comprehensive Health Planning	3		X	X	X
American Country Life Association	3		X		
American Friends Service Committee (AFSC)	4				X
American Hospital Association	4	X	X	X	X
American Institute of Cooperation	4		X		X
American Institute of Planners	5		X	X	
American Medical Association-Department of Rural and Community Health	5	X	X	X	X
American Nurses' Association (ANA)	6	X	X	X	X
American Public Health Association	6		X	X	X
American Public Power Association	7	X	X	X	X
American Public Welfare Association	7		X	X	
American Public Works Association	7		X	X	X
American Society of Allied Health Professions	8		X	X	X
American Society of Planning Officials	8		X	X	X
Arkansas Institute for Social Justice	8				X
Aspen Institute for Humanistic Studies	9			X	X
Association on American Indian Affairs	9		X		X
Black Child Development Institute	10		X	X	X
The Box Project, Inc.	10		X		X
Bread for the World	11	X	X		
The Brookings Institution	11			X	
Center for Agricultural and Rural Development	11			X	
Center for Community Change	12			X	X
Center for Community Economic Development	12			X	X
Center for Community Organization and Area Development (CENCOAD)	13				X
Center for New Corporate Priorities	13			X	
Center for Rural Studies	13			X	
Center for Social Research and Development	14			X	X
Center for the Study of Local Government	14			X	X
Children's Foundation	15				X
Clearinghouse for Rural Health Services Research	15			X	X
Commission on Rural Water/National Demonstration Water Project	16		X	X	X
Communities in Action Together	16		X		X
Congressional Rural Caucus	17		X		
Cooperative League of the U.S.A.	17	X	X		X

Lobby (L)

Membership (M)

Research (R)

Service (S)

NAME OF ORGANIZATION	PAGE #	L	M	R	S
Council on Social Work Education	18		X	X	X
Council of State Governments	18			X	X
Emergency Land Fund (ELF)	19			X	X
Environmental Policy Institute	19			X	
Eric Clearinghouse on Rural Education and Small Schools	20			X	X
Farm Foundation	20				X
Farmers Union Green Thumb	20				X
Friends Committee on National Legislation	21	X	X	X	
The Grantsmanship Center	21				X
Health Policy Center, Georgetown University	22			X	X
Health Security Action Council	22	X			
Housing Assistance Council	23			X	X
Independent Bankers Association of America	23	X	X		X
Interreligious Taskforce on U.S. Food Policy	24		X	X	
Joint Action in Community Services (JACS)	24				X
League of Women Voters of the United States	24	X	X	X	
Lutheran Resources Commission - Washington (LRC-W)	25				X
Mexican American Legal Defense and Educational Fund, Inc. (MALDEF)	25			X	X
Migrant Legal Action Program, Inc.	26		X		
National Area Development Institute	26			X	X
National Association for the Advancement of Colored People (NAACP)	27		X	X	X
National Association of Conservation Districts	27		X		X
National Association of Counties (NACO)	28		X	X	X
National Association of Development Organizations (NADO)	28		X		X
National Association of Farmworker Organizations	29		X	X	X
National Association of Housing and Redevelopment Officials (NAHRO)	29		X	X	X
National Association of Regional Councils	29		X		X
National Association of State Univer- sities and Land-Grant Colleges (NASULGC)	30		X	X	X
National Cable Television Association	30	X	X		X
National Catholic Rural Life Conference	31		X	X	X
National Center for Appropriate Technology	31			X	X
National Center for Community Action	32		X	X	X
National Center for State Courts (NCSC)	32			X	X
National Child Labor Committee	33		X		X

Lobby (L) Membership (M) Research (R) Service (S)

NAME OF ORGANIZATION	PAGE #	L	M	R	S
National Committee Against Discrimination in Housing	33			X	X
National Conference of State Legislatures	33			X	X
National Congress of American Indians/ NCAI Fund	34	X	X		X
National Congress for Community Economic Development (NCCED)	34		X	X	X
The National Council on the Aging, Inc.	34		X	X	X
National Council on Agricultural Life and Labor (NCALL)	35				X
National Council of Community Mental Health Centers	35		X		X
National Council of Farmer Cooperatives	36	X	X	X	
National Council of La Raza	36		X	X	X
National Council for the Transportation Disadvantaged (NCTD)	36		X		
National Economic Development Law Project	37			X	X
National Farmers Organization	37		X		
National Farmers Union	38		X		X
National Federation of Independent Business	38	X	X		
National Governor's Conference	39		X		
National Grange	39		X		X
National Health Council	40		X	X	X
National Housing Conference	40		X	X	
National Housing Law Project	41			X	X
National Indian Youth Council	41		X	X	X
National Institute for Community Development	41				X
National Land for People/National Land For People Foundation	42		X	X	X
National League for Nursing	42		X	X	X
National Planning Association (NPA)	43		X	X	
National Rural Center	43			X	X
National Rural Electric Cooperative Association (NRECA)	44	X	X	X	X
National Rural Housing Coalition	44	X	X		
National Rural Water Association	44		X		X
National Sharecroppers Fund/Rural Advancement Fund	45	X		X	
National Telephone Cooperative Association	45	X	X		X
National Wildlife Federation	46		X	X	X
National Youth Alternative Projects	46			X	X
Native American Rights Fund (NARF) Network	47				X
Open Space Institute	47	X	X	X	
Public Citizen's Tax Reform Research Group	48	X		X	
Resources for the Future	48			X	

Lobby (L) Membership (M) Research (R) Service (S)

NAME OF ORGANIZATION	PAGE #	L	M	R	S
Rural America	48		X	X	X
Rural Housing Alliance (RHA)	49		X	X	X
The Rural Practice Project	49				X
Rural/Regional Education Association	49	X	X	X	
Rural Sociological Society	50		X	X	
Save the Children Federation	51				X
Small Towns Institute	51		X	X	
Soil Conservation Society of America	51		X	X	
Student National Medical Association	51		X		X
United Automobile, Aerospace & Agricultural Implement Workers of America (UAW)	51	X	X		X
United Farm Workers, AFL-CIO	52		X		X
United Methodist Church Women's Division "Family Farm Project"	52		X	X	
United Mine Workers of America	52	X	X	X	X
Volunteers in Technical Assistance	53				X
Booker T. Washington Foundation/ Cablecommunications Resource Center	53			X	
World Hunger Education Service	54			X	X

Lobby (L) Membership (M) Research (R) Service (S)

