

DOCUMENT RESUME

ED 134 213

IR 004 404

AUTHOR Lee, S. Young; And Others  
 TITLE Public Television Licensees. Fiscal Year 1974.  
 INSTITUTION Corporation for Public Broadcasting, Washington, D.C.  
 SPONS AGENCY National Center for Education Statistics (DHEW), Washington, D.C.  
 PUB DATE 76  
 NOTE 73p.  
 EDRS PRICE MF-\$0.83 HC-\$3.50 Plus Postage.  
 DESCRIPTORS Broadcast Industry; Employment Patterns; \*Employment Statistics; Graphs; Income; Mass Media; Occupational Surveys; \*Operating Expenses; \*Public Television; Statistical Data; \*Statistical Surveys  
 IDENTIFIERS United States

ABSTRACT

This publication is part of a continuing series of reports on public broadcasting. The report includes statistics on financial, employment, broadcast, and population activities of 154 stations in the aggregate United States for the 1974 fiscal year. Information is compiled relating to capital expenditures and direct operating costs. Also examined is employment status with relation to sex and minority groups. Data are presented in eight figures with 37 tables. Appendices include definitions of selected terms and organizations, surveys, and a list of stations on the air as of June 30, 1974. (AP)

\*\*\*\*\*  
 \* Documents acquired by ERIC include many informal unpublished \*  
 \* materials not available from other sources. ERIC makes every effort \*  
 \* to obtain the best copy available. Nevertheless, items of marginal \*  
 \* reproducibility are often encountered and this affects the quality \*  
 \* of the microfiche and hardcopy reproductions ERIC makes available \*  
 \* via the ERIC Document Reproduction Service (EDRS). EDRS is not \*  
 \* responsible for the quality of the original document. Reproductions \*  
 \* supplied by EDRS are the best that can be made from the original. \*  
 \*\*\*\*\*

ED134

U S DEPARTMENT OF HEALTH,  
EDUCATION & WELFARE  
NATIONAL INSTITUTE OF  
EDUCATION

THIS DOCUMENT HAS BEEN REPRO-  
DUCED EXACTLY AS RECEIVED FROM  
THE PERSON OR ORGANIZATION ORIGIN-  
ATING IT. POINTS OF VIEW OR OPINIONS  
STATED DO NOT NECESSARILY REPRESENT  
OFFICIAL NATIONAL INSTITUTE OF  
EDUCATION POSITION OR POLICY

**PUBLIC TELEVISION LICENSEES  
FISCAL YEAR 1974**

by

**S. Young Lee**

and

**Mary Anna Dunn**

**Corporation for Public Broadcasting**

and

**Ronald J. Pedone**

**National Center for Education Statistics**

404 404

**U.S. DEPARTMENT OF HEALTH, EDUCATION AND WELFARE**

David Mathews, Secretary

Virginia Y. Trotter, Assistant Secretary for Education

**NATIONAL CENTER FOR EDUCATION STATISTICS**

Marie D. Eldridge, Administrator

National Center for Education Statistics

**CORPORATION FOR  
PUBLIC BROADCASTING**

Henry Loomis,

President

HIGHLIGHTS

Table A.--Total income, direct operating costs, and gross capital expenditures for television operations of public television licensees in current and 1973-1974 dollars: Aggregate United States, fiscal years 1970 - 1974

(in thousand dollars)

	FY 1970	FY 1971	FY 1972	FY 1973	FY 1974	Percent change
						1973 - 1974
(Number of licensees) . . .	(128)	(133)	(138)	(150)	(154)	
In current dollars:						
Income for television operations	\$99,956	\$140,816	\$157,915	\$174,653	\$199,788	+14.4%
Direct operating costs for television operations	83,677	113,362	122,860	137,232	161,732	+17.9%
Capital expenditures for television operations	20,460	29,220	36,211	30,828	31,828	+ 3.1%
In 1973-1974 dollars:						
Income for television operations	\$128,014	\$169,690	\$180,764	\$190,130	\$199,788	+ 5.1%
Direct operating costs for television operations	103,356	133,289	139,289	149,547	161,732	+ 8.1%
Capital expenditures for television operations	29,468	38,309	42,744	33,405	31,828	- 4.7%

Table B.--Employees of public television licensees, by all and minority employees, and by employment status: June 30, 1970 - 1974

All and minority employees and employment status	1970	1971	1972	1973	1974	Percent change 1973 - 1974
All employees*	7,583	7,865	8,175	8,477	9,293	+ 9.6
Full-time employees	5,354	6,008	6,068	6,385	7,100	+ 11.2
Part-time employees	2,229	1,857	2,107	2,092	2,193	+ 4.8
(Total employees in U.S.)...	(7,242)	(7,460)	(7,802)	(8,193)	(8,935)	(+ 9.1)
Minority employees**	683	739	903	869	1,081	+ 24.4
Full-time employees	349	460	543	593	756	+ 27.5
Part-time employees	334	279	361	276	325	+ 17.8

\* For aggregate United States. \*\* For United States only.

Table C.--Percentage distribution of broadcast and production hours: Aggregate United States, 1970 - 1974

	FY 1970	FY 1971	FY 1972	FY 1973	FY 1974
<b>Broadcast Hours</b>					
Annual broadcast hours per station	100.0% (3,171 hrs.)	100.0% (3,314 hrs.)	100.0% (3,431 hrs.)	100.0% (3,663 hrs.)	100.0% (3,873 hrs.)
By type of programing:					
Classroom (ITV)	34.3%	35.4%	34.0%	32.1%	29.5%
General audience	65.7	64.6	66.0	67.9	70.5
By source of programing:					
Local	27.1%	23.0%	21.1%	18.7%	17.0%
National interconnection	23.1	27.5	39.2	45.8	46.4
All other sources	49.8	49.5	39.7	35.5	36.6
<b>Production Hours</b>					
Annual production hours per licensee	**	100.0% (294 hrs.)	100.0% (271 hrs.)	100.0% (260 hrs.)	100.0% (266 hrs.)
By type of programing:					
Classroom (ITV)	**	26.6%	21.8%	17.9%	20.0%
General audience	**	73.4	78.2	82.1	80.0
By type of color					
Black and white	**	63.6%	53.4%	38.3%	30.5%
Color	**	36.4	46.6	61.7	69.5
By type of distribution:					
Local	**	**	71.1%	70.9%	74.7%
Regional and other networks	**	**	26.1	25.8	21.9
National	**	**	2.8	3.3	3.4

## **FOREWORD**

This publication is part of a continuing series of statistical reports on public broadcasting based on data provided annually by public television and radio station licensees to the Corporation for Public Broadcasting (CPB). This report presents statistics of financial, employment, and broadcast activities of the 154 public television licensees and stations on the air in the aggregate United States during fiscal year 1974.

The National Center for Education Statistics (NCES) and CPB have jointly supported the data collection and analysis of these reports. Ben Posner, Vice President for Finance and Administration, and Treasurer, CPB, and Marjorie O. Chandler, Director, Division of Statistical Information and Studies, NCES have represented the two agencies in these endeavors. Ronald J. Pedone, Project Officer, NCES, Michael Graham, Director of Information Systems, CPB, and S. Young Lee, Director of Information Analysis, CPB, have coordinated the preparation of this report. Survey instrument design and data collection and processing were handled by the Information Systems staff at CPB.

We sincerely appreciate the time and information provided by participating organizations.

Henry Loomis  
President, Corporation for  
Public Broadcasting

Marie D. Eldridge,  
Administrator, National  
Center for Education Statistics

## CONTENTS

Foreword .....	iii
I. Introduction and Analysis Design .....	1
II. Public Television Licensees and Stations .....	2
III. Finance .....	3
Income .....	3
Total Money Income .....	3
Income by Source .....	3
Income by State .....	3
Subscribers and Subscription Income .....	4
Earmarked Income .....	4
Institutional Support and Gifts .....	4
Direct Operating Costs .....	5
Total Direct Operating Costs .....	5
Direct Operating Costs by Disbursement Purpose .....	5
Capital Expenditures .....	5
Gross Capital Expenditures .....	5
Total Gross Capital Expenditures to Date .....	6
IV. Employment .....	7
All Employment .....	7
All Employees and Employment Status .....	7
Full-time Employees .....	7
Part-time Employees .....	7
All Employees and Type of Occupation .....	8
Minority Employment .....	8
Minority Employees and Employment Status .....	8
Minority Employees and Type of Minority Group .....	8
Minority Employees and Type of Occupation .....	8
V. Broadcast and Production .....	9
Broadcast Hours .....	9
Annual Broadcast Hours and Type of Programming .....	9
Broadcast Hours by Source .....	9
Broadcast Hours by Day of Week .....	9
Production Hours .....	11
Total Production Hours and Type of Production .....	11
Production Hours and Type of Programming .....	11
Production Hours and Type of Distribution .....	11
Production Hours for Minority Programs .....	11
 Appendixes	
A. Income of Public Television Licensees, by Source of Income and State: Aggregate United States, Fiscal Year 1974 .....	52
B. Definitions of Selected Terms and Organizations .....	53
C. Survey of Public Television Licensees .....	57
D. Computations of Broadcast Hours .....	59
E. Questionnaire Items .....	61
F. List of Public Television Stations on the Air as of June 30, 1974 .....	73

### Figures

1. Money income of public television licensees, by major source: Fiscal years 1970-1974 .....	3
2. Percentage distribution of public television licensees' income, by source: Fiscal year 1974 .....	3
3. Total income of public television licensees, by instructional television (ITV) and other income: Fiscal year 1974 .....	4
4. Percentage distribution of public television licensees' direct operating costs: Fiscal year 1974 .....	5
5. All employees of public television licensees, by employment status and by sex: Aggregate United States, June 30, 1970-1974 .....	7
6. Minority full-time and part-time employees of public television licensees, by type of minority group and sex: United States, June 30, 1974 .....	8
7. Broadcast hours of PTV licensees, by type of programming and source of programming: Fiscal years 1970-1974 .....	10
8. Production hours of PTV licensees: Fiscal years 1971-1974 .....	12

## Summary Tables

1	Total income, transferred income, and loan income for television operations of public television licensees, by type of licensee, geographic region, and adjusted budget size: Aggregate United States, fiscal year 1974	14
2	Institutional support, gifts, and instructional television (ITV) income for television operations of public television licensees, by type of licensee, geographic region, and adjusted budget size: Aggregate United States, fiscal year 1974	15
3	Direct operating costs, gross capital expenditures, transferred funds, and repayment of loans for television operations of public television licensees, by type of licensee, geographic region, and adjusted budget size: Aggregate United States, fiscal year 1974	16
4	Total income for television operations of public television licensees, by source of income: Aggregate United States, fiscal years 1970-1974	17
5	Total income for television operations of public television licensees, by type of licensee and source of income: Aggregate United States, fiscal year 1974	18
6	Total direct operating costs for television operations of public television licensees, by purpose of cost: Aggregate United States, fiscal years 1970-1974	19
7	Total direct operating costs for television operations of public television licensees, by salaries and wages and other expenses: Aggregate United States, fiscal year 1974	20
8	Total direct operating costs for television operations of public television licensees, by type of licensee and purpose of direct operating costs: Aggregate United States, fiscal year 1974	21
9	Total gross capital expenditures for television operations of public television licensees, by type of licensee and type of capital expenditures: Aggregate United States, fiscal year 1974	22
10	Total employees of public television licensees, by all employment, minority employment, employment status, and sex: June 30, 1970-1974	23
11	Television-only employees of public television licensees, by employment status and sex, and by type of licensee: Aggregate United States, June 30, 1974	24
12	Joint employees of public television licensees, by employment status, type of licensee: Aggregate United States, June 30, 1974	25
13	Total full-time employees of public television licensees, by sex and type of occupation: Aggregate United States, June 30, 1974	26
14	Full-time television-only employees of public television licensees, by type of license, sex, and type of occupation: Aggregate United States, June 30, 1974	27
15	Total part-time employees of public television by type of occupation: Aggregate United States, June 30, 1974	28
16	Part-time television-only employees of public television licensees, by type of licensee and occupation: Aggregate United States, June 30, 1974	29
17	Minority employees of CPB-qualified public radio stations, by employment status and by type of minority group: Aggregate United States, June 30, 1974	30
18	Total full-time minority employees of public television licensees, by sex and type of occupation, United States, June 30, 1974	31
19	Broadcast hours of public television stations, by type of programming and type of licensee: Aggregate United States, fiscal years 1970-1974	32
20	Total broadcast hours of public television stations, by type of programming and by type of licensee: Aggregate United States, fiscal year 1974	33
21	Broadcast hours of public television during school-in-session, by type of programming and by type of licensee: Aggregate United States, fiscal year 1974	34
22	Broadcast hours of public television stations during school-not-in-session, by type of programming and by type of licensee: Aggregate United States, fiscal year 1974	35
23	Percent distributions of broadcast hours of public television stations, by type of programming and source of programming: Aggregate United States, fiscal years 1970-1974	36
24	Percent distribution of broadcast hours of public television stations, by type of licensee and source of programming: Aggregate United States, fiscal year 1974	37
25	Percent distribution of broadcast hours for programming for classroom of public television stations, by type of licensee and source of programming: Aggregate United States, fiscal year 1974	38
26	Percent distribution of broadcast hours for programming for general audience of public television stations, by type of licensee and source of programming: Aggregate United States, fiscal year 1974	39

	Page
27. Mean weekly broadcast hours of public television stations during school-in-session, by day of week and type of programming: Aggregate United States, fiscal year 1974 .....	40
28. Mean weekly broadcast hours of public television stations during school-not-in-session, by day of week and type of programming: Aggregate United States, fiscal year 1974 .....	41
29. Mean weekly broadcast hours of public television stations' programming for classroom during school-in-session, by day of week and type of licensee: Aggregate United States, fiscal year 1974 .....	42
30. Mean weekly broadcast hours of public television stations programming for general audience during school-in-session, by day of week and type of licensee: Aggregate United States, fiscal year 1974 .....	43
31. Mean weekly broadcast hours of public television stations programming for classroom during school-not-in-session, by day of week and type of licensee: Aggregate United States, fiscal year 1974 .....	44
32. Mean weekly broadcast hours of public television programming for general audience during school-not-in-session, by day of week and type of licensee: Aggregate United States, fiscal year 1974 .....	45
33. Total production hours of public television licensees, by type of programming, type of color, and type of production: Aggregate United States, fiscal years 1971-1974 .....	46
34. Production hours for classroom of public television licensees by type of licensee, type of color, and type of production: Aggregate United States, fiscal year 1974 .....	47
35. Production hours for general audience of public television licensees, by type of licensee, type of color, and type of production: Aggregate United States, fiscal year 1974 .....	48
36. Production hours of public television licensees by type of distribution, by type of licensee, geographic region, and adjusted budget size: Aggregate United States, fiscal year 1974 .....	49
37. Total production hours of public television licensees, by type of distribution and fiscal year: Aggregate United States, fiscal years 1972-1974 .....	50

## I. INTRODUCTION AND ANALYSIS DESIGN

Public television added 5 new licensees and 7 new stations in fiscal year 1974; an average station's air time increased 5.7 percent over the previous year; and an average licensee's production hours increased 2.3 percent. The money income of public television licensees increased from \$175 million in fiscal year 1973 to nearly \$200 million in fiscal year 1974, up 14.4 percent. However, considering the inflation during the year, such increase in real terms was only slightly over 5 percent (see highlights).

This report covers financial, employment, broadcast and production activities of public television licensees<sup>1</sup> and stations<sup>2</sup> in fiscal year 1974. The data for finance and employment—based on all 154 licensees on the air during fiscal year 1974, and (2) data for broadcast and production hours from 149 licensees and 235 stations on the air from the beginning of fiscal year 1974.

Financial data are presented and examined by source of income and purpose of expenditures. Detailed examinations are made of income, operating costs, and capital expenditures for television operations of the licensees. Employment data are tabulated for all employment and minority employment in terms of employment status, sex, and occupation. Data on broadcast hours are computed and presented in terms of total broadcast hours, type of programing, programing hours by day of week, and source of programing. These programing hours are derived from station estimates of a typical week's daily broadcast hours for the periods when local schools are in-session and not-in-session. Figures thus derived cannot be considered to be exact. For data on production, local production hours are computed by type of programing, production, and distribution.

Previous fiscal years' data (historical data) available on the subject are also presented to show trends of public television licensees through fiscal year 1974. To show the varying characteristics of licensee and station activities, data are presented and analyzed by three variables: type of licensee, geographic region, and adjusted budget size.

### Four Types of Licensees

The licensees were categorized into four types in terms of the organizations to whom the television licenses were given. Such as:

**Institutions of Higher Education**—Universities and colleges.

**Local Public School Systems**—Local administrative units that primarily operate schools or contract for school services. These units may or may not be coterminous with county, city, or town boundaries.

**State/Municipal Authorities**—State boards of education, State authorities, and commissions set up by acts of legislation specifically to operate public stations and networks. Also included are the one municipal authority established by the city of New York and the four nondomestic licensees in American Samoa, Guam, Puerto Rico, and the Virgin Islands.

**Community Organizations**—Independently created corporations and foundations not part of State or local governments.

### Five Geographic Regions (Aggregate United States)

The geographic regions are delineated according to the television's regional network systems.

#### Northeast

(Regional Network:

Eastern Educational Television Network)  
Connecticut  
Delaware<sup>3</sup>  
District of Columbia  
Maine  
Maryland  
Massachusetts  
New Hampshire  
New Jersey  
New York  
Pennsylvania  
Rhode Island  
Vermont  
West Virginia

#### Central

(Regional Networks:

Central Educational Network and Midwestern Educational Television)  
Illinois  
Indiana  
Iowa  
Kansas  
Michigan  
Minnesota  
Missouri  
Nebraska  
North Dakota  
Ohio  
South Dakota  
Wisconsin

#### West

(Regional Networks:

Rocky Mountain Public Broadcasting Network and Western Educational Network)  
Alaska  
Arizona  
California  
Colorado  
Hawaii  
Idaho  
Montana<sup>3</sup>  
Nevada  
New Mexico  
Oregon  
Utah  
Washington  
Wyoming<sup>3</sup>

#### South

(Regional Network:

Southern Educational Communications Association)  
Alabama  
Arkansas  
Florida  
Georgia  
Kentucky  
Louisiana  
Mississippi  
North Carolina  
Oklahoma  
South Carolina  
Tennessee  
Texas  
Virginia<sup>3</sup>



### Outlying Areas

American Samoa  
Canal Zone<sup>3</sup>  
Guam  
Puerto Rico  
Trust Territory of  
Pacific Islands<sup>2</sup>  
Virgin Islands of U.S.

<sup>1</sup>A licensee is an independently operated broadcast organization.

<sup>2</sup>A station is a unit with a set of call letters that transmits a television signal on a single channel.

<sup>3</sup>Had no public television licensee as of June 30, 1974.

### Five Adjusted Budget Sizes

Adjusted budget sizes were based on the licensees' operating expenses and the estimated value of institutional support from the supporting organizations. The smallest and the largest categories were arbitrarily determined, with all seven major production centers included in the largest budget size category.

Under \$200,000  
\$200,000 - \$599,999  
\$600,000 - \$999,999  
\$1,000,000 - \$3,374,999  
\$3,375,000 and over

The data contained in this report were collected in the 1974 Annual Survey of Public Television Licensees conducted between August 1974 and April 1975 by the Corporation for Public Broadcasting. All 156 licensees returned the questionnaires. Of this total, 154 licensees were on the air during the fiscal year. In most cases data were gathered from station general managers or executive directors. All information from the survey was manually edited and checked for errors. Follow-up procedures were employed to make necessary corrections. Verified data were then entered into the computer files and checked again to ensure accuracy. Since the basic data used in this report were actual and total counts, inferential statistical tests were not demonstrated and all data are presented simply in terms of the actual number, mean, and percentage. Definitions of the selected terms are presented in Appendix B.

## II. PUBLIC TELEVISION LICENSEES AND STATIONS

As of June 1974, there were 154 public television licensees in the aggregate United States. This is an increase of 2.7 percent over the previous fiscal year. These licensees owned and operate 243 stations on the air. The following table shows the number of licensees and stations operating on the air since fiscal year 1970:

Public television licensees and stations, fiscal years  
1970-1974 in the Aggregate United States

Type of licensee	FY 1970	FY 1971	FY 1972	FY 1973	FY 1974
<b>All types</b>					
Number of licensees	128	133	138	150	154
Number of stations	195	207	223	236	243
<b>Institutions of higher education</b>					
Number of licensees	43	44	49	53	53
Number of stations	59	61	67	72	74
<b>Public school systems</b>					
Number of licensees	23	22	19	19	19
Number of stations	24	23	21	20	20
<b>State/municipal authorities</b>					
Number of licensees	18	21	21	26	26
Number of stations	60	67	74	81	84
<b>Community organizations</b>					
Number of licensees	44	46	49	52	56
Number of stations	52	56	61	63	65

### III. FINANCE

#### INCOME

##### Total Money Income

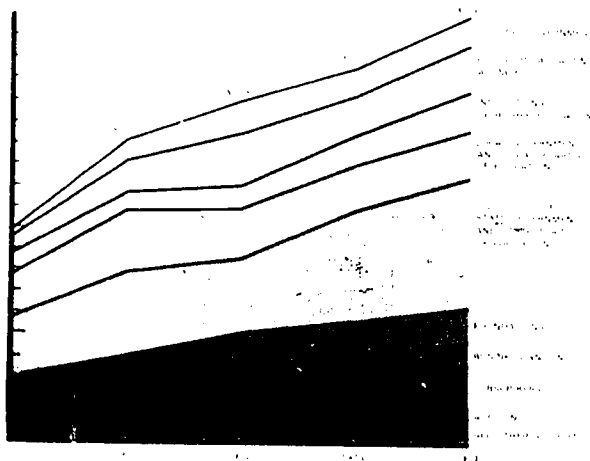
Total income for television operations for 154 licensees amounted to \$199.7 million during fiscal year 1974, up 14.4 percent over the 1973 total income of \$174.7 million. The following table summarizes the growth of PTV licensees' income since fiscal year 1970:

##### Money Income of PTV licensees: fiscal years 1970-1974

Fiscal year	Number of licensees	Income (In thousands)
1970	128	\$ 99,956
1971	133	140,816
1972	138	157,915
1973	150	174,653
1974	154	199,766

Among the major sources, income from business and industry showed the largest increase (53.2 percent) between fiscal years 1973 and 1974. The State boards of education were the next largest increase (50.2 percent) during the period, followed by other local governments (32.5 percent), public broadcasting agencies (32.2 percent), and subscribers (26.9 percent). However income from foundations suffered a 14.5 percent decrease during the same period (figure 1 and table 4).

FIGURE 1. MONEY INCOME OF PUBLIC TELEVISION LICENSEES BY MAJOR SOURCES FISCAL YEARS 1970-1974



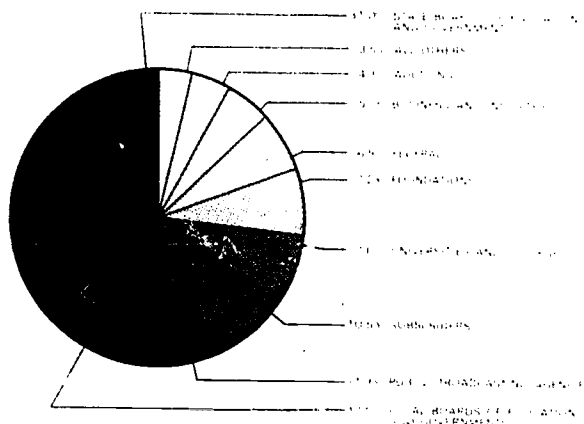
Community licensees received the largest amount of income (\$94.8 million or 47.4 percent), while local public school system licensees reported the smallest amount (\$14.2 million or 7.1 percent). In terms of mean income per licensee, State/municipal licensees were first with \$2.1 million, closely followed by community licensees with \$1.7 million (table 5).

##### Income by Source

During fiscal year 1974, the largest amount of income for all licensees came from other State governments (17.4 percent), followed by State boards of education (13.6 percent), and public broadcasting agencies (11.9 percent). The Federal Government contributed 6.5 percent of the total income; however, this represents only the amounts that the Federal Government contributed directly to the licensees. In addition, sizable amounts of Federal monies were distributed to the licensees through CPB. Accordingly, the real Federal amount was about 17 percent of the total income received by public television licensees during the period (figure 2 and tables 4 and 5).

FIGURE 2. PERCENTAGE DISTRIBUTION OF PUBLIC TELEVISION LICENSEES' INCOME BY SOURCE FISCAL YEAR 1974

(total cash income: \$199,788,261)



Patterns of income by source varied widely among types of licensees. The recipients of the largest amounts of funds from institutions of higher education, local school boards, State school boards, and other State government sources were the corresponding types of public television licensees. Most of the funds from foundations, auctions, business and industry, and subscribers and individuals went to community licensees. Although CPB allocated its funds to all types of licensees, most of its funds were distributed to community licensees. Direct contributions to the licensees from the Federal Government were primarily distributed under HEW Facilities Grants (58.7 percent of the total) to all licensees (table 5).

##### Income by State

Income sources of public television licensees varied greatly among States. Seventeen percent of money income of all licensees was received from Federal and CPB sources, 51.0 percent from local and State tax sources<sup>4</sup>, and the remaining 32.1 percent from all other sources. In some

<sup>4</sup>Local and State tax sources include income from local boards of education, local governments, State boards of education, State governments, and State Institutions of higher education.

States, local and State tax monies comprised almost the entire income of the licensees, while only a fraction of the licensees' income was attributed to such sources in other States. (For detailed information see Appendix A.)

Public television licensees in the States and U.S. territories listed below received over 80 percent of their total cash income from local and State tax sources in fiscal year 1974:

Alaska	Maryland	South Carolina
Arkansas	Mississippi	West Virginia
Georgia	New Jersey	Guam
Iowa	North Carolina	Puerto Rico
Kentucky	Oklahoma	Virgin Islands

The licensees in the following States received less than 30 percent of their income from local and State tax sources.

California	Iowa	Texas
District of Columbia	Massachusetts	Utah
Indiana	Minnesota	American Samoa
	North Dakota	

#### Subscribers and Subscription income of Public Television

Subscription income for all licensees amounted to \$21.1 million during fiscal year 1974, representing a 26.9 percent increase over 1973. Subscribers also increased in 1974, up 32.3 percent over 1973. Subscription income and the number of subscribers by type of licensee are presented in the following table:

#### Number of subscribers and subscription income of public television licensees: Aggregate United States, fiscal year 1974

Type of Licensee	Number of subscribers	Income from subscription
All licensees	1,021,414	\$21,094,735
Institution of higher education	72,613	1,220,268
Public school systems	10,427	126,608
State/municipal authorities	7,340	119,719
Community organizations	931,034	19,628,140

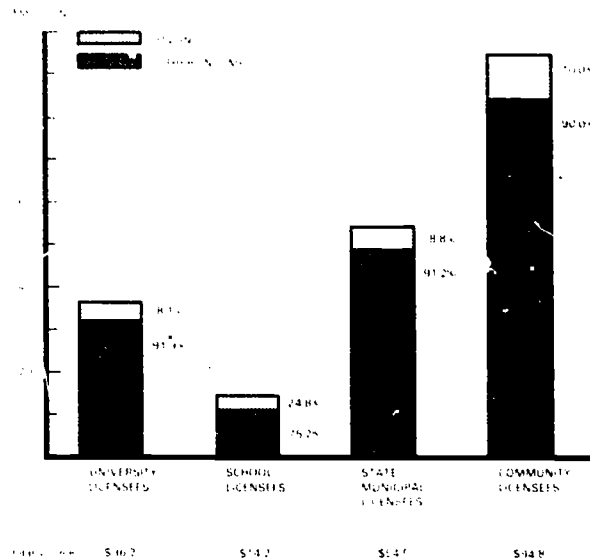
As this table indicates, nearly 93 percent of total subscription income of all licensees and 91.2 percent of the total subscribers were attributed to community licensees (table 4).

#### Earmarked Income

Income earmarked for contracted instructional television services (ITV) was estimated to be \$20.7 million during fiscal year 1974. This was 10.4 percent of the total money income for television operations of all licensees. Other earmarked income amounted to \$18.8 million for national program underwriting, \$12.1 million for local underwriting,

5.1 million for other production contracts, and \$28.7 million for capital expenditures (figure 3 and table 2).

FIGURE 3 TOTAL INCOME OF PUBLIC TELEVISION LICENSEES, BY INSTRUCTIONAL TELEVISION (ITV) AND OTHER INCOME FISCAL YEAR 1974



#### Major earmarked income of public television licensees: Aggregate United States, fiscal year 1974

Major earmarked income	Amount (In thousands)
National underwriting	\$18,778
Local underwriting	12,068
Other production contract	5,113
Instructional television (ITV)	20,703
Capital expenditures	28,745

#### Institutional Support and Gifts

Total institutional support exceeded \$20.4 million during fiscal year 1974. This is not money income but an estimated dollar amount for the free services and tangible help for television operations received by the licensees from other supporting institutions. Of this amount, 44.7 percent was reported by institutions of higher education and 31.6 percent was reported by community licensees.

The total amount of gifts-in-kind was estimated at slightly less than 1/2 million. Most of these gifts (54.8 percent of the total) were contributed to State/municipal licensees (table 2).

As the following table shows, the combined amounts of institutional support and gifts have substantially increased every year since fiscal year 1970:

**Institutional support and gifts of PTV licensees:  
fiscal years 1970-1974**

Fiscal year	Number of licensees	Institutional support and gifts (In thousands)
1970	128	\$ 5,500
1971	133	8,421
1972	138	10,439
1973	150	15,774
1974	154	20,950

services, whereas community licensees spent 3.4 percent of their operating costs for this purpose (figure 4 and table 8).

**DIRECT OPERATING COSTS**

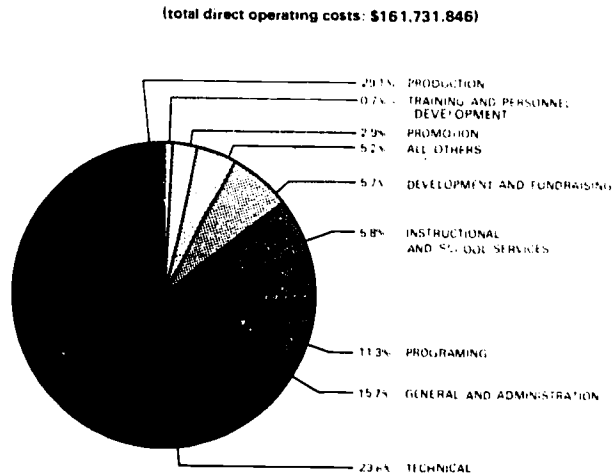
**Total Direct Operating Costs**

Direct operating costs of the 154 licensee: amounted to \$161.7 million during fiscal year 1974, an increase of 17.9 percent over the costs for the 150 licensees in fiscal year 1973. The most notable increases over fiscal year 1973 were in the categories of training and personnel development (38.0 percent) and production (32.4 percent), whereas the spending on programming decreased (6.5 percent) during the same period (tables 3, 6 and 7).

**Direct operating costs of PTV licensees:  
fiscal years 1970-1974**

Fiscal year	Number of licensees	Direct operating costs (In thousands)
1970	128	\$ 83,677
1971	133	113,362
1972	138	122,860
1973	150	137,232
1974	154	161,732

**FIGURE 4 PERCENTAGE DISTRIBUTION OF PUBLIC TELEVISION LICENSEES' DIRECT OPERATING COSTS: FISCAL YEAR 1974**



**CAPITAL EXPENDITURES**

**Gross Capital Expenditures**

Total gross capital expenditures during fiscal year 1974 amounted to \$30.4 million, which represents a 1.4 percent decrease from fiscal year 1973. The gross capital expenditures of public television licensees during the last fiscal years were as follows:

**Gross capital expenditures of PTV licensees:  
fiscal years 1970-1974**

Fiscal year	Number of licensees	Gross capital expenditures (In thousands)
1970	128	\$ 20,460
1971	133	29,220
1972	138	36,211
1973	150	30,868
1974	154	30,428

**Direct Operating Costs by Disbursement Purpose**

Of the total direct operating costs, (\$161.7 million) 54.0 percent was expended for salaries and the remaining 46.0 percent was spent for other expenses during the reporting period (table 7). Under more specific categories the largest portion of the total direct operating costs was spent for production (29.1 percent), followed by technical costs (23.6 percent), and general and administrative costs (15.7 percent). This pattern of disbursement differed among licensee types, especially in the categories of production, technical, instructional and school services, and development and fundraising. Community and public school licensees expended the largest portion of their monies on production, while State/municipal authorities and university licensees reported the greatest expenditures for technical purposes. Community licensees spent a considerable amount on development and fundraising (9.4 percent), while all other types spent only small amounts for this purpose. Local public school systems expended 18.9 percent of their total costs, for instructional and school

The leading categories of specific capital expenditures were transmitters (15.2 percent), buildings (11.5 percent), TV cameras (11.1 percent), and videotape recorders (11.1 percent) (table 9).

State/municipal authorities spent 36.8 percent of the total capital expenditures, followed by community licensees (32.7 percent), institutions of higher education (22.2 percent), and local public school systems (8.3 percent) (tables 3 and 9).



### **Total Gross Capital Expenditures to Date**

Total capital expenditures to date (accumulated expenditures) plus gifts-in-kind reached \$312.4 million at the end of fiscal year 1974. Community licensees spent the largest amount of this total, \$107.4 million, while public school systems expended the smallest amount, \$23.3 million.

### **Capital expenditures to date of public television licensees: Fiscal Year 1974**

<b>Type of Licensee</b>	<b>Amount (In thousands)</b>	<b>Percent</b>
Total capital expenditures to date	\$312,403	100.0
Institutions of higher education	84,720	27.1
Local public school systems	23,262	7.4
State/municipal authorities	97,014	31.1
Community organizations	107,407	34.4

Current capital expenditures in a given fiscal year do not represent the overall capital investments and viability of licensees and stations in operation. It merely shows how much capital expenditures were during the fiscal year. The total gross capital expenditures to date shows how much public television licensees had invested since their origination. However, the amount of capital expenditures to date in this report was not adjusted for depreciation or appreciation over the years.

## IV EMPLOYMENT

### ALL EMPLOYMENT

#### All Employees and Employment Status

Employment counts were made as of June 30, 1974 for persons who worked for television operations exclusively and for persons who worked for both television and radio operations of dual licensees (joint employees). Most of the joint employees worked primarily for television operations.

In 1974, the 154 public television licensees employed 9,293 persons in the aggregate United States: 7,100 full-time and 2,193 part-time. Of these, 8,578 worked exclusively for television and 715 worked for both television and radio operations. Of the total, 69.6 percent were males and 30.4 percent were females. In 1974 the number of public television licensee employees increased by 9.6 percent over 1973. The increase was greater among full-time employees (11.2 percent), than among part-time employees (4.6 percent).

#### Full-Time Employees

Of the 7,100 full-time employees, 6,567 were television

only employees and 533 were joint employees. Full-time male employees outnumbered females by about 7 to 3.

As the following table shows, the total number of full-time employees has steadily increased over the past 5 fiscal years, 1970-74:

The percent change for 1973-74 showed an 11.2 percent increase in employment with an 8.8 percent increase for male employees and a 17.3 percent increase for females. The overall pattern for employment is similar for the 5 year period: the number of full-time employees increased by 32.6 percent with the females showing the highest increase, 40.8 percent, compared to the males, 29.5 percent (tables 10, 11 and 12).

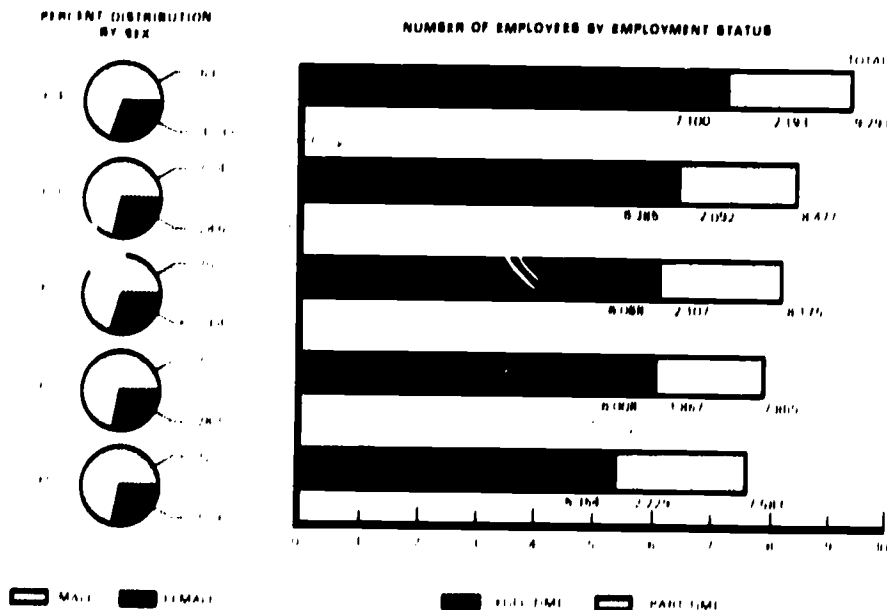
#### Part-Time Employees

Of the total 2,193 employees in this category, 2,011 were television-only employees and 182 were joint employees. More male than female part-time workers were employed by public television licensees, 66.9 percent were male and 33.1 percent were female (tables 10, 11 and 12).

Full-time employees of public television licensees:  
Aggregate United States, 1970-1974

	1970	1971	1972	1973	1974	% Change 1973-74	% Change 1970-74
Number of licensees (All employees)	(128) (7,583)	(133) (7,865)	(138) (8,175)	(150) (8,477)	(154) (9,293)	(+ 2.7) (+ 9.6)	(+21.9) (+22.6)
Full-time employees	5,354	6,008	6,068	6,385	7,100	+11.2	+ 32.6
Percent	100.0	100.0	100.0	100.0	100.0		
Male	3,869	4,327	4,426	4,603	5,009	+ 8.8	+ 29.5
Percent of total	72.3	72.0	72.9	72.1	70.5		
Female	1,485	1,681	1,642	1,782	2,091	+17.3	+ 40.8
Percent of total	27.7	28.0	27.1	27.9	29.5		

FIGURE 6 ALL EMPLOYEES OF PUBLIC TELEVISION LICENSEES, BY EMPLOYMENT STATUS AND BY SEX, AGGREGATE UNITED STATES, JUNE 30, 1970-1974



**All Employees and Type of Occupation**

Of the total 7,100 full-time employees, 37.6 percent were classified as management and supervisory positions and 62.4 percent were classified as other. The greatest proportion of the management and supervisory personnel were males (78.9 percent); only 21.1 percent were females. As the following table indicates, only a small number of part-time workers were classified as management and supervisory personnel (2.5 percent).

**Public television licensees' full-time and part-time management and supervisory personnel and other personnel: Aggregate United States, June 30, 1974**

	All	Management	Other
Total	9,293	2,725	6,568
Percent	100.0	29.3	70.7
Full-time	7,100	2,671	4,429
Percent	100.0	37.6	62.4
Part-time	2,193	54	2,139
Percent	100.0	2.5	97.5

**MINORITY EMPLOYMENT**

The minority employment statistics contained in this report are based on data for four minority groups in the United States: Black, Spanish surnamed, American Indian, and oriental. As the term "minority" has different meanings in various outlying areas (American Samoa, Guam, Puerto Rico and the Virgin Islands), inclusion of minority employees as a proportion of all employees in this region would be greatly misleading and would not provide a valid basis for comparison. Accordingly, such data from the outlying areas are excluded from the minority counts.

**Minority Employees and Employment Status**

As of June 30, 1974, the public television licensees in the United States reported 1,081 minority employees (997 television-only and 84 joint employees). Of these, 756 were full-time and the remaining 325 were part-time.

These 1,081 minority employees constitute 11.6 percent of the total employees of public television licensees in the United States. As in the case of all employees, in all types of employment status, males outnumbered females, although the magnitudes of difference in employment rates between the sexes were not as distinctive (figure 6 and table 17).

**Minority Employees and Type of Minority Group**

As the following table indicates, Blacks led employee counts in both full-time and part-time status among the four minority groups, followed by Spanish-surnamed employees. Orientals and American Indians were represented in very small numbers.

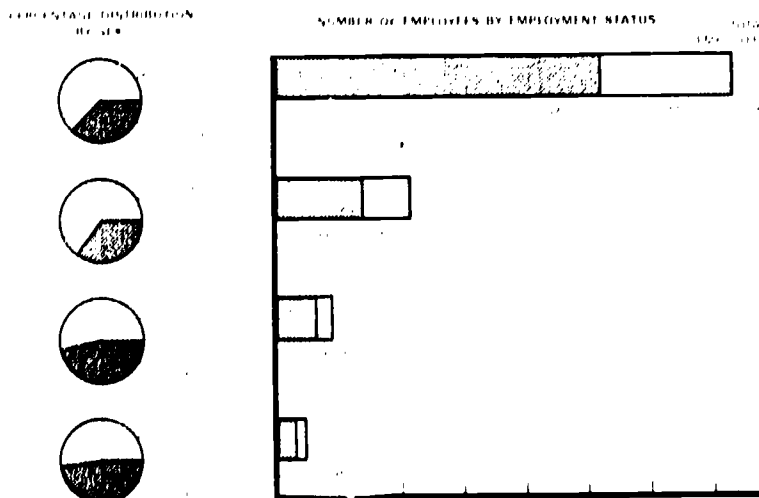
**Minority Employment by Minority Group: United States, June 30, 1974**

Minority group	Total	Full-time	Part-time
Total	1,081	756	325
Black	731	520	211
Spanished-surnamed	212	144	68
American Indian	46	29	17
Oriental	92	63	29

**Minority Employees and Type of Occupation**

Minority employees were generally under-represented among management and supervisory employees in the United States; 7.3 percent, or 159 of the total management and supervisory employees, 2,178, in the United States.

**FIGURE 6 MINORITY FULL TIME AND PART TIME EMPLOYEES OF PUBLIC TELEVISION LICENSEES BY TYPE OF MINORITY GROUP AND SEX UNITED STATES, JUNE 30, 1974**





## V. BROADCAST AND PRODUCTION

A television station is "a unit that transmits a single television signal on a single channel." In public television, a considerable number of stations are equipped only with transmitting facilities and have no production facilities (studios). A number of public television stations during fiscal year 1974 were simply "repeaters." On the other hand, most licensees managed a station or stations that operated one or more production facilities. Therefore, in this report, all broadcast activities were examined by stations and all production analyses were based on licensees.

There were 154 public television licensees and 243 stations on the air during fiscal year 1974, an increase of 4 licensees and 7 stations over the previous fiscal year. Since several of these new licensees and stations were in operation for a relatively short period during the year, statistics for these stations and licensees would have a distorting influence on the annual broadcast and production patterns of public television. To avoid such misleading statistics these new stations and licensees were eliminated from the analyses in this section of the report. Accordingly, the 235 stations on the air from the beginning of fiscal year 1974 and the 149 licensees active throughout that interval were designated as the basic units for the analysis.

### BROADCAST HOURS

#### Annual Broadcast Hours and Type of Programming

During fiscal year 1974, the 235 public television stations broadcast a total of 910,149 hours in the aggregate United States, up 12.4 percent over the previous fiscal year. The number of stations also increased by 6.3 percent during the period. The annual mean broadcast hours per station rose sizably, a 5.7 percent increase.

Annual broadcast hours of an average PTV station, fiscal years 1970-1974

Fiscal year	Annual mean broadcast hours
1970	3,171
1971	3,314
1972	3,431
1973	3,663
1974	3,673

The annual mean broadcast hours per station for general audience programming increased by 9.7 percent, while classroom programming decreased by 2.6 percent. This increase of general audience programming was largely due to the increase in air-time during the week-ends (figure 7 and table 19).

During this reporting period, 70.5 percent of all air time was transmitted for general audience programming and the remaining 29.5 percent for classroom use. This difference in air time by type of programming was most apparent among stations licensed to universities, while it was less distinct among those stations licensed to local public school systems and State/municipal authorities. State/municipal stations were largest in both total broadcast hours and mean broadcast hours per station, followed by stations licensed to community organizations and universities. Compared to other types of stations, school stations devoted the largest proportion of all broadcast hours to classroom programming (tables 19-22).

#### Broadcast Hours by Source

The Public Broadcasting Service (PBS), the national interconnection, increased its position as the largest source of programming, providing 46.4 percent of the total hours broadcast in fiscal year 1974. Since 1971, when it was the leading source of programming for the first time with 27.5 percent of total broadcast time, PBS jumped to 39.2 percent in 1972, and 45.6 percent in 1973. However, the growth rate of PBS programming had slowed down somewhat in 1974. Locally produced programs, the leading source of programming until fiscal year 1970, slipped from 23.0 percent in 1971, to 21.1 percent in 1972, and 16.7 percent in 1973. In 1974 local programming declined to 17.0 percent but still remained the leading source of classroom programming (25.2 percent). Regional Interconnection, Agency for Instructional Television/National Instructional Television (AIT/NIT), State interconnection, and commercial syndicates were the other notable sources of programming during the period (figure 7 and tables 24-26).

#### Percent distributions of PTV broadcast hours by type of programming; fiscal years 1970-1974

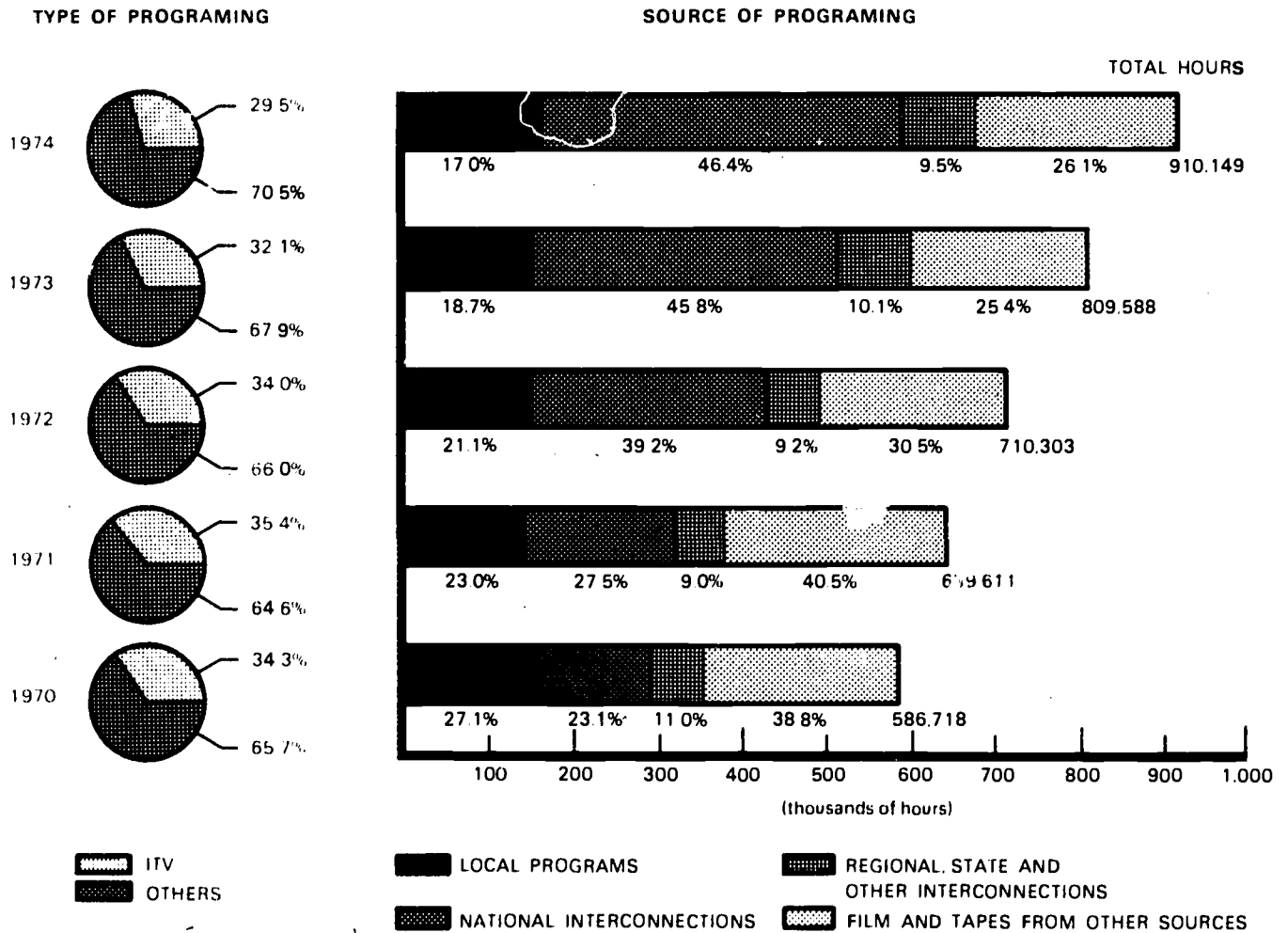
Type of programming	FY 1970	FY 1971	FY 1972	FY 1973	FY 1974
Total	100.0	100.0	100.0	100.0	100.0
Classroom	34.3	35.4	34.0	32.1	29.5
General audience	65.7	64.6	66.0	67.9	70.5

#### Broadcast Hours by Day of Week

The weekly broadcast schedules of public television stations varied for the school-in-session and not-in-session. On the average the broadcast schedule for the in-school period ran for 36 weeks and the schedule for out-of-school period ran for 16 weeks.

During the school-in-session period, broadcast hours per day differed considerably according to the day of the week, with stations on the air longer on weekdays (Monday

**FIGURE 7. BROADCAST HOURS OF PTV LICENSEES, BY TYPE OF PROGRAMING AND SOURCE OF PROGRAMING: FISCAL YEARS 1970-1974**



**Percent distribution of PTV broadcast hours by source of programming, fiscal years 1970-1974**

Source of programming	FY 1970	FY 1971	FY 1972	FY 1973	FY 1974
Total	100.0%	100.0%	100.0%	100.0%	100.0%
Local	27.1	23.0	21.1	18.7	17.0
National interconnection (PBS)	23.1	27.5	39.2	45.8	46.4
Other interconnection	11.0	9.0	9.2	10.1	9.5
All other sources	38.8	40.5	30.5	25.4	27.1

17

through Friday: 13.4 hours per day) than on weekends (Saturday and Sunday: 11.1 and 7.6 hours respectively). By programming type, 62.4 percent of the time was devoted to general audience and the remaining 37.6 percent was for classroom programming (tables 27, 29, and 30).

During the school-not-in-session period, most stations broadcast almost exclusively general audience programs (94.2 percent), and only 5.8 percent of air time was devoted to classroom use (tables 28, 31 and 32).

In summary, classroom programming was on the air primarily when local schools were reported to be in-session, and programming for general audience was broadcast evenly all year round.

#### PRODUCTION HOURS

##### Total Production Hours and Type of Production

Total production hours during fiscal year 1974 totaled 39,679, an increase of 8.3 percent over 1973. These 149 licensees produced nearly 70 percent of their programs in color. This shows a tremendous increase in color production considering that only a few years ago such production was merely 36.4 percent of the total production. In 1974 an average licensee produced 266 hours of programs, an increase of 2.3 percent over fiscal year 1973 (figure 8 and table 33).

##### Production Hours and Type of Programming

Total production hours for general audience use amounted to 80.0 percent of the total and the remaining 20.0 percent was for classroom use. More than half of the production hours for classroom use were made in black and white (59.2 percent), while production hours for general audience were mostly produced in color (76.6 percent). General audience programs were largely produced on tape (55.7 percent) and live (42.1 percent); classroom programs were mostly produced on tape (93.2 percent).

Production hours for classroom use increased considerably (20.7 percent) over the previous year, while hours produced for general audience increased by 5.6 percent (tables 33 and 35). The percent distributions of production hours by type of programming during the last 4 years are represented below:

##### Percent distributions of PTV licensees' production hours by type of programming, fiscal years 1971 - 1974

Type of programming	FY 1971	FY 1972	FY 1973	FY 1974
Total	100.0	100.0	100.0	100.0
Classroom (ITV)	26.6	21.8	17.9	20.0
General audience	73.4	78.2	82.1	80.0

##### Production Hours and Type of Distribution

Of the total production hours, programs produced for local distribution were the leading category (74.7 percent), followed by regional and other interconnections (21.9 percent), and national distribution (3.4 percent). Of programs produced for national distribution, most (74.7 percent) were produced for PBS.

##### Percentage distribution of PTV licensees' production hours by type of distribution: fiscal years 1970-1974

Type of distribution	FY 1972	FY 1973	FY 1974
Total	100.0	100.0	100.0
Local	71.1	70.9	74.7
Regional and other	26.1	25.8	21.9
National	2.8	3.3	3.4

Production hours by type of distribution varied widely among types of licensees. Although all licensee types produced most of their programs for local distribution, public school systems provided nearly 93 percent of the production for such purpose, while State/municipal licensees produced their programs for both local (65 percent) and State network (32 percent) distribution. Community licensees provided the largest number of program hours for national distributions (figure 8 and tables 36 and 37).

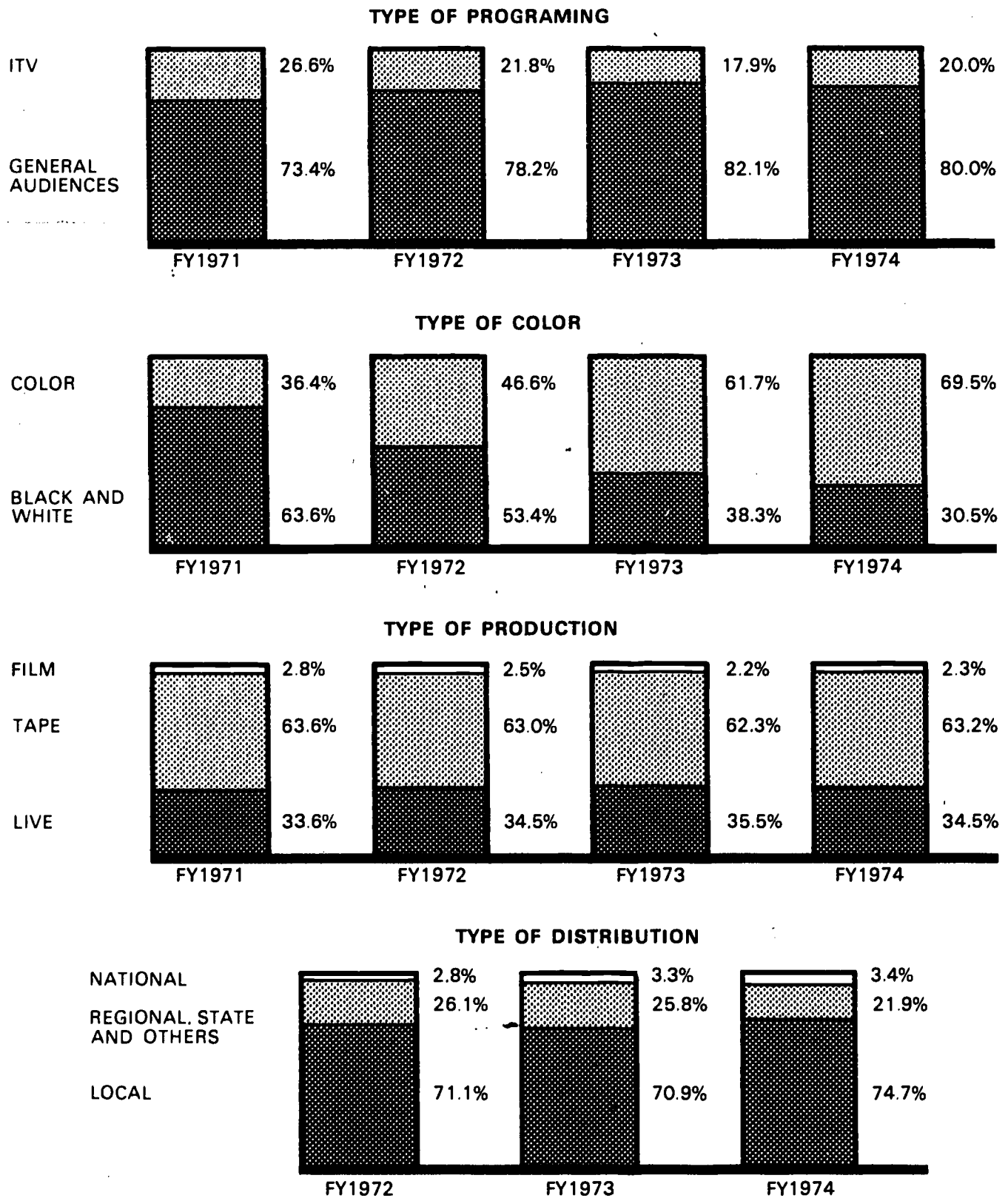
##### Production Hours for Minority Programs

In fiscal year 1974, 3,228 or 8.1 percent of the total production hours were devoted to ethnic, racial, and religious minority group programs, as shown in the following table:

##### Production hours for minority programs by type of licensee, fiscal year 1974

Licensee type	Number of licensees	Minority hours	Mean
All licensees	149	3,228	21.7
Institutions of higher education	52	1,088	20.9
Local public school systems	18	270	15.0
State/municipal authorities	26	841	23.3
Community organizations	53	1,029	19.4

**FIGURE 8. PRODUCTION HOURS OF PTV LICENSEES:  
FISCAL YEARS 1971-1974**



SUMMARY TABLES

Table 1.--Total income, transferred income, and loan income for television operations of public television licensees, by type of licensee, geographic region, and adjusted budget size: Aggregate United States, fiscal year 1974

Type of licensee, geographic region, and adjusted budget size	Number of licensees	Incoming funds		
		Total income	Transferred income	Loan income
Total	154	\$199,788,261	\$25,732,388	\$2,793,967
Percent	100.0	100.0	100.0	100.0
Type of licensee:				
Institutions of higher education	53	36,220,937	2,947,307	15,688
Percent of total	34.4	18.1	11.5	0.6
Local public school systems	19	14,223,032	755,241	0
Percent of total	12.3	7.1	2.9	0.0
State/municipal author- ities	26	54,543,575	5,272,774	0
Percent of total	16.9	27.3	20.5	0.0
Community organizations	56	94,800,717	16,757,066	2,778,279
Percent of total	36.4	47.5	65.1	99.4
Geographic region:				
Northeast	31	71,444,081	13,956,829	1,777,788
Percent of total	20.1	35.7	54.2	63.6
Central	44	39,231,197	5,675,502	385,610
Percent of total	28.6	19.6	22.1	13.8
South	41	53,226,854	4,482,078	449,581
Percent of total	26.6	26.7	17.4	16.1
West	34	30,341,782	1,572,881	180,988
Percent of total	22.1	15.2	6.1	6.5
Outlying areas	4	5,544,347	45,098	0
Percent of total	2.6	2.8	0.2	0.0
Adjusted budget size:				
Below \$200,000	13	2,455,926	251,834	102,000
Percent of total	8.4	2.1	1.0	3.7
\$200,000 - \$599,999	52	24,197,667	2,901,314	164,910
Percent of total	33.8	12.1	11.3	5.9
\$600,000 - \$999,999	34	35,157,518	4,514,868	30,871
Percent of total	22.1	17.7	17.5	1.1
\$1,000,000 - \$3,374,999	46	77,877,080	11,882,392	450,432
Percent of total	29.9	38.9	46.2	16.1
\$3,375,000 and over	9	60,100,070	6,181,980	2,045,754
Percent of total	5.8	30.1	24.0	73.2

Table 2.--Institutional support, gifts, and instructional television (ITV) income for television operations of public television licensees, by type of licensee, geographic region, and adjusted budget size: Aggregate United States, fiscal year 1974

Instructional support, gifts, and ITV income				
Type of licensee, geographic region, and adjusted budget size	Number of licensees	Institutional support	Gifts	Instructional television income
Total	154	\$20,465,920	\$483,935	\$20,703,080
Percent	100.0	100.0	100.0	100.0
Type of licensee:				
Institutions of higher education	53	9,146,714	48,842	2,945,393
Percent of total	34.4	44.7	10.1	14.2
Local public school systems	19	1,684,673	83,725	3,525,356
Percent of total	12.3	8.2	17.3	17.0
State/municipal authorities	26	3,167,912	265,326	4,782,723
Percent of total	16.9	15.5	54.8	23.1
Community organizations	56	6,466,621	86,042	9,449,608
Percent of total	36.4	31.6	17.8	45.7
Geographic region:				
Northeast	31	6,477,277	51,558	5,220,087
Percent of total	20.1	31.7	10.6	25.2
Central	44	4,769,186	282,137	3,408,202
Percent of total	28.6	23.3	58.3	16.4
South	41	5,727,681	73,365	8,173,236
Percent of total	26.6	28.0	15.2	39.5
West	34	3,360,776	76,875	2,373,087
Percent of total	22.1	16.4	15.9	11.5
Outlying areas	4	131,000	0	1,528,468
Percent of total	2.6	0.6	0.0	7.4
Adjusted budget size:				
Below \$200,000	13	545,915	61,847	154,487
Percent of total	8.4	2.7	12.8	0.7
\$200,000 - \$599,999	52	4,058,631	291,422	2,504,036
Percent of total	33.8	19.8	60.2	12.1
\$600,000 - \$999,999	34	5,283,366	58,318	4,719,951
Percent of total	22.1	25.8	12.1	22.8
\$1,000,000 - \$374,999	46	8,354,674	72,348	10,865,476
Percent of total	29.9	40.8	14.9	52.5
\$3,375,000 and over	9	2,223,334	0	2,459,130
Percent of total	5.8	10.9	0.0	11.9

Table 3.--Direct operating costs, gross capital expenditures, transferred funds, and repayment of loans for television operations of public television licensees, by type of licensee, geographic region, and adjusted budget size: Aggregate United States, fiscal year 1974

Disbursement of funds					
Type of licensee, geographic region, and adjusted budget size	Number of licensees	Direct operating costs	Gross capital expenditures	Transferred to next fiscal year	Repayment of loans
Total	154	\$161,731,846	\$30,427,735	\$34,577,295	\$10,635,508
Percent	100.0	100.0	100.0	100.0	100.0
Type of licensee:					
Institutions of higher education	53	28,664,735	6,760,706	3,693,531	60,346
Percent of total	34.4	17.7	22.2	10.7	0.5
Local public school systems	19	10,056,875	2,520,955	2,608,222	77,595
Percent of total	12.3	6.2	8.3	7.5	0.7
State/municipal authorities	26	39,049,289	11,185,544	9,789,405	91,400
Percent of total	16.9	24.1	36.8	28.3	1.0
Community organizations	56	83,960,947	9,960,530	18,486,237	10,406,167
Percent of total	36.4	52.0	32.7	53.5	97.8
Geographic region:					
Northeast	31	64,529,222	7,806,681	13,548,204	7,418,169
Percent of total	20.1	39.9	25.7	39.2	69.7
Central	44	28,374,211	9,863,997	6,063,882	1,365,502
Percent of total	28.6	17.5	32.4	17.5	12.9
South	41	39,242,845	7,350,754	11,890,258	1,253,313
Percent of total	26.6	24.3	24.2	34.3	11.8
West	34	25,069,542	4,568,303	2,702,550	598,524
Percent of total	22.1	15.5	15.0	7.8	5.6
Outlying areas	4	4,516,026	838,000	372,401	0
Percent of total	2.6	2.8	2.7	1.2	0.0
Adjusted budget size:					
Below \$200,000	13	1,468,556	1,007,333	437,907	125,224
Percent of total	8.4	1.0	3.3	1.3	1.2
\$200,000 - \$599,999	52	16,675,190	5,109,659	4,855,128	1,352,544
Percent of total	33.8	10.3	16.8	14.0	12.7
\$600,000 - \$999,999	34	21,379,748	7,104,473	13,027,259	928,271
Percent of total	22.1	13.2	23.4	37.7	8.7
\$1,000,000 - \$3,374,999	46	64,689,833	12,539,822	11,243,985	1,785,782
Percent of total	29.9	40.0	41.2	32.5	16.8
\$3,375,000 and over	9	57,518,519	4,666,448	5,013,016	6,443,687
Percent of total	5.8	35.5	15.3	14.5	60.6



Table 4.--Total income for television operations of public television licensees, by source of income:  
Aggregate United States, fiscal years 1970, 1971, 1972, 1973, and 1974

Source of income (Number of licensees)	Total income by fiscal year					Percent change
	FY 1970 (128)	FY 1971 (133)	FY 1972 (138)	FY 1973 (150)	FY 1974 (154)	1973 - 1974 (+ 2.7)
All sources Percent	\$99,956,372 100.0	\$140,816,318 100.0	\$157,914,742 100.0	\$174,653,199 100.0	\$199,788,261 100.0	+ 14.4
Federal Government Percent of total	4,631,732 4.6	8,934,954 6.3	14,169,155 9.0	12,635,590 7.2	13,034,718 6.5	+ 3.2
HEW facilities grant		8,062,613	11,628,383	10,787,318	7,653,626	
All others		872,341	2,540,772	1,848,272	5,381,092	
Public broadcasting agencies Percent of total	8,194,268 8.2	14,766,453 10.5	16,586,119 10.5	17,940,300 10.3	23,713,452 11.9	+ 32.2
Corporation for Public Broadcasting		12,033,867	14,194,969	14,072,889	20,373,119	+ 44.8
All others		2,732,586	2,391,150	3,867,411	3,340,333	- 13.6
Institutions of higher education Percent of total	9,277,270 9.3	9,553,531 6.8	19,486,692 12.3	14,255,718 8.2	15,089,480 7.6	+ 5.8
State colleges and universities	8,818,588	8,914,109	18,909,583	13,584,260	13,813,324	+ 1.7
Other colleges and universities	458,682	639,422	547,109	671,458	1,276,156	+ 90.1
Local boards of education Percent of total	17,349,586 17.4	17,111,870 12.1	17,690,611 11.2	18,322,046 10.5	19,759,195 9.9	+ 7.8
Other local government sources Percent of total	3,390,577 3.4	2,948,048 2.1	3,028,302 1.9	3,862,203 2.2	5,119,165 2.6	+ 32.5
State boards of education Percent of total	10,658,221 10.7	14,994,538 10.6	13,694,998 8.7	18,091,787 10.4	27,178,118 13.6	+ 50.2
Other State government sources Percent of total	16,929,167 16.9	31,559,011 22.4	23,741,906 15.0	33,836,881 19.3	34,720,573 17.4	+ 2.6
Foundations Percent of total	8,498,892 8.5	15,880,903 11.3	18,330,874 11.6	16,837,133 9.6	14,399,332 7.2	- 14.5
National foundations	7,401,673	14,465,464	15,904,218	13,373,396	10,282,619	- 23.1
Other foundations	1,097,219	1,415,439	2,426,656	3,463,737	4,116,713	+ 18.9
Business and industry Percent of total	2,122,333 2.1	3,043,999 2.2	2,554,197 1.6	6,582,051* 3.8	10,081,141 5.0	+ 53.2
Subscribers and industry Percent of total	6,412,577 6.4	8,444,612 6.0	10,356,682 6.6	16,619,298 9.5	21,094,735 10.5	+ 26.9
Auctions Percent of total	3,453,241 3.5	3,883,302 2.8	5,671,592 3.6	7,487,805 4.3	8,527,688 4.3	+ 13.9
All other sources Percent of total	9,038,508 9.0	9,695,097 6.9	12,603,614 8.0	8,182,387* 4.7	7,070,664 3.5	- 13.6

\* These sudden changes from the previous fiscal year are due to alterations in the 1973 survey instrument rather than a real income change for each of these items.

Table 5.--Total income for television operations of public television licensees, by type of licensee and source of income: Aggregate United States, fiscal year 1974

Total income, by type of licensee					
Source of income (Number of licensees)	All types (154)	Institutions of higher education (53)	Local public school systems (19)	State/municipal authority (26)	Community organiza- tions (56)
All sources	\$199,788,261	\$36,220,937	\$14,223,032	\$54,543,575	\$94,800,717
Percent	100.0	100.0	100.0	100.0	100.0
Federal Government	13,034,718	1,959,253	1,001,646	3,418,528	6,645,291
Percent of total	6.5	5.4	7.1	6.3	7.0
HEW facilities grant	7,653,626	1,396,596	948,060	2,989,082	2,319,888
All others	5,381,092	562,657	63,586	429,446	4,325,403
Public broadcasting agen- agencies	23,713,452	4,892,626	1,222,722	3,126,437	14,471,667
Percent of total	11.9	13.5	8.6	5.7	15.3
CPB/CSG	13,364,808	4,131,177	1,197,603	2,781,602	5,254,426
CPB/others	7,008,311	223,795	6,314	344,155	6,434,047
All others	3,340,333	537,654	18,805	680	2,783,194
Institutions of higher education	15,089,480	13,675,894	38,379	477,253	897,954
Percent of total	7.6	37.8	0.3	0.9	0.9
State colleges and universities	13,813,324	13,098,024	24,347	477,253	213,700
Other colleges and universities	1,276,156	577,870	14,032	0	684,254
Local boards of educa- tion	19,759,195	4,163,776	9,246,675	208,026	6,140,713
Percent of total	9.9	11.5	65.0	0.4	6.5
Other local government	5,119,165	562,900	193,220	3,019,667	1,343,378
Percent of total	2.6	1.6	1.4	5.5	1.4
State boards of educa- tion	27,178,118	1,865,889	679,788	15,387,029	9,245,412
Percent of total	13.6	5.1	4.8	28.2	9.7
Other State government sources	34,720,573	4,672,270	12,482	28,391,376	1,643,845
Percent of total	17.4	12.9	0.1	52.1	1.7
Foundations	14,399,332	422,940	15,770	69,234	13,891,388
Percent of total	7.2	1.2	0.1	0.1	14.7
National foundations	10,282,619	66,118	0	26,500	10,190,001
Other foundations	4,116,713	356,822	15,770	42,734	3,701,387
Business and industry	10,081,141	443,479	1,071,103	130,552	8,436,007
Percent of total	5.0	1.2	7.5	0.2	8.9
Subscribers and individuals	21,094,735	1,220,268	126,608	119,719	19,628,140
Percent of total	10.5	3.4	3.2	0.2	20.7
Auction	8,527,688	923,689	150,338	0	7,453,661
Percent of total	4.3	2.5	1.1	0.0	7.9
All other sources	7,070,664	1,417,953	454,301	195,154	5,003,256
Percent of total	3.5	3.9	3.2	0.4	5.3

Table 6.-- Total direct operating costs for television operations of public television licensees, by Purpose of direct operating costs: Aggregate United States, fiscal years 1970 - 1974

Purpose of direct operating costs (Number of licensees) . . .	Direct operating costs, by fiscal year					Percent change
	FY 1970 (128)	FY 1971 (133)	FY 1972 (138)	FY 1973 (150)	FY 1974 (154)	1973 - 1974 (+2.7)
Total	\$83,677,225	\$113,362,449	\$122,860,359	\$137,232,021	\$161,731,846	+ 17.9
Percent	100.0	100.0	100.0	100.0	100.0	
Technical	21,325,217	25,701,889	26,952,728	32,968,900	38,152,280	+ 15.7
Percent of total	25.5	22.7	21.9	24.0	23.6	
Programming	13,559,988	17,389,277	17,158,098	19,524,527	18,259,712	- 6.5
Percent of total	16.2	15.3	14.0	14.2	11.3	
Production	18,531,663	32,674,145	33,423,173	35,560,804	47,082,741	+ 32.4
Percent of total	22.1	28.8	27.2	26.0	29.1	
Instructional and school services	6,849,861	8,775,832	8,465,466	8,588,454	9,377,099	+ 9.2
Percent of total	8.2	7.7	6.9	6.3	5.8	
Development and fund raising	3,134,405	4,109,799	5,301,325	7,585,912	9,257,037	+ 22.0
Percent of total	3.7	3.6	4.3	5.5	5.7	
Promotion	2,245,603	2,995,395	3,369,252	3,766,452	4,630,870	+ 22.3
Percent of total	2.7	2.7	2.8	2.7	2.9	
Training and personnel development	205,889	226,624	994,793	828,122	1,142,669	+ 38.0
Percent of total	0.3	0.2	0.8	0.6	0.7	
General and administrative	12,622,529	15,551,713	20,401,418	21,304,459	25,420,719	+ 19.3
Percent of total	15.1	13.8	16.6	15.5	15.7	
All other operating expenses	5,202,070	5,837,775	6,794,106	7,104,391	8,408,719	+ 18.4
Percent of total	6.2	5.2	5.5	5.2	5.2	



Table 7.--Total direct operating costs for television operations of public television licensees, by salaries and wages and other expenses: Aggregate United States, fiscal year 1974

Direct operating costs, by salaries and other expenses			
Purpose of direct operating costs	Total operating costs	Salaries and wages	Other expenses
All purposes Percent	\$161,731,846 100.0	87,336,662 100.0	74,395,184 100.0
Technical Percent of total	38,152,280 23.6	24,982,675 28.6	13,169,605 17.7
Programming Percent of total	18,259,712 11.3	8,470,154 9.7	9,789,558 13.1
Production Percent of total	47,082,741 29.1	27,891,729 31.9	19,191,012 25.8
Instructional and school services Percent of total	9,377,099 5.8	5,181,755 5.9	4,195,344 5.6
Development and fund raising Percent of total	9,257,037 5.7	3,217,460 3.7	6,039,577 8.1
Promotion Percent of total	4,630,870 2.9	2,171,599 2.5	2,459,271 3.3
Training and personnel development Percent of total	1,142,669 0.7	273,939 0.3	868,730 1.1
General and administrative Percent of total	25,420,719 15.7	12,552,042 14.4	12,868,677 17.3
All other operating expenses Percent of total	8,408,719 5.2	2,595,309 3.0	5,813,410 8.0

Table 8.--Total direct operating costs for television operations of public television licensees, by type of licensee and purpose of direct operating costs: Aggregate United States, fiscal year 1974

Direct operating costs, by type of licensee					
Purpose of direct operating costs (Number of licensees) . . .	All types (154)	Institutions of higher education (53)	Local public school systems (19)	State/municipal authorities (26)	Community organizations (56)
All purposes	\$161,731,846	\$28,664,735	\$10,056,875	\$39,049,289	\$83,960,947
Percent	100.0	100.0	100.0	100.0	100.0
Technical	38,152,280	8,579,444	2,229,394	12,255,364	15,088,078
Percent of total	23.6	29.9	22.2	31.4	18.0
Programming	18,259,712	4,044,077	1,094,066	4,760,323	8,361,246
Percent of total	11.3	14.1	10.9	12.2	10.0
Production	47,082,741	7,353,285	2,786,408	8,946,597	27,996,451
Percent of total	29.1	25.7	27.7	22.9	33.3
Instructional and school services	9,377,099	1,426,958	1,897,097	3,148,190	2,904,854
Percent of total	5.8	5.0	18.9	8.1	3.4
Development and fund raising	9,257,037	726,162	149,788	469,440	7,911,647
Percent of total	5.7	2.5	1.5	1.2	9.4
Promotion	4,630,870	916,745	124,402	826,562	2,763,161
Percent of total	2.9	3.2	1.2	2.1	3.3
Training and personnel development	1,142,669	237,289	14,994	82,332	808,054
Percent of total	0.7	0.8	0.1	0.2	1.0
General and administrative	25,420,719	3,914,063	1,112,564	5,807,621	14,586,471
Percent of total	15.7	13.7	11.1	14.9	17.4
All other operating expenses	8,408,719	1,466,712	648,162	2,752,860	3,540,985
Percent of total	5.2	5.1	6.4	7.0	4.2

Table 9.--Total gross capital expenditures for television operations of public television licensees, by type of licensee and type of capital expenditures: Aggregate United States, fiscal year 1974

Capital expenditures, by type of licensee					
Types of capital expenditures (Number of licensees) ...	All types (154)	Institutions of higher education (53)	Local public school systems (19)	State/municipal authorities (26)	Community organizations (56)
All expenditures	\$30,427,735	\$6,760,706	\$2,520,955	\$11,185,544	\$9,960,530
Percent	100.0	100.0	100.0	100.0	100.0
Land and land improvements	284,296	30,852	0	238,991	14,453
Percent of total	0.9	0.5	0.0	2.1	0.1
Buildings	3,488,169	250,544	41,791	935,492	2,260,342
Percent of total	11.5	3.7	1.7	8.4	22.7
Antenna systems	2,415,729	119,412	320,985	1,173,249	802,083
Percent of total	7.9	1.8	12.7	10.5	8.1
Transmitters	4,639,897	265,597	239,348	2,962,580	1,172,372
Percent of total	15.2	3.9	9.5	26.5	11.8
Translators	1,095,195	186,715	0	561,372	347,108
Percent of total	3.6	2.8	0.0	5.0	3.5
Microwave equipment	527,887	95,211	51,560	201,051	180,065
Percent of total	1.7	1.4	2.0	1.8	1.8
Remote equipment	844,352	440,643	0	34,250	369,459
Percent of total	2.8	6.5	0.0	0.3	3.7
Control room equipment	2,869,671	760,909	142,220	806,285	1,160,257
Percent of total	9.4	11.3	5.6	7.2	11.6
Video tape recorders	3,364,952	1,395,458	300,678	808,742	860,074
Percent of total	11.1	20.6	11.9	7.2	8.6
TV cameras	3,378,239	1,394,372	239,414	1,317,140	427,313
Percent of total	11.1	20.6	9.5	11.8	4.3
Film chains	1,463,645	695,364	156,224	224,436	387,621
Percent of total	4.8	10.3	6.2	2.0	3.9
Other studio equipment	2,161,273	740,101	131,696	504,141	785,335
Percent of total	7.1	10.9	5.2	4.5	7.9
Furniture and office equipment	601,020	78,778	16,630	170,421	335,191
Percent of total	2.0	1.2	0.7	1.5	3.4
All other	3,293,410	306,750	880,409	1,247,394	858,857
Percent of total	10.9	4.5	35.0	11.2	8.6

Table 10.--Total employees of public television licensees, by all employment, minority employment, employment status, and sex: June 30, 1970, 1971, 1972, 1973, and 1974

All employees, by fiscal year*					
Employment status (Number of licensees) . . .	FY 1970 (127)	FY 1971 (133)	FY 1972 (138)	FY 1973 (150)	FY 1974 (154)
<u>All employment</u>					
Total employees <sup>+</sup>	7,583	7,865	8,175	8,477	9,293
Percent	100.0	100.0	100.0	100.0	100.0
Male	5,466	5,653	5,739	6,049	6,477
Female	2,117	2,212	2,436	2,428	2,816
Total full-time employees	5,354	6,008	6,068	6,385	7,100
Percent of total	70.6	76.4	74.2	75.3	76.4
Male	3,869	4,327	4,426	4,603	5,009
Female	1,485	1,681	1,642	1,782	2,091
Total part-time employees	2,229	1,857	2,107	2,092	2,193
Percent of total	29.4	23.6	25.8	24.7	23.6
Male	1,597	1,326	1,313	1,446	1,468
Female	632	531	794	646	725

Minority employees, by fiscal year**					
Employment status (Number of licensees) . . .	FY 1970 (125)	FY 1971 (129)	FY 1972 (133)	FY 1973 (142)	FY 1974 (145)
<u>Minority employment</u>					
Total employees <sup>+</sup>	718	788	962	908	1,081
Percent	100.0	100.0	100.0	100.0	100.0
Male	478	516	558	554	668
Female	240	272	404	354	413
Total full-time employees	361	471	554	612	756
Percent of total	50.3	59.8	57.6	67.4	69.9
Male	251	302	362	387	459
Female	110	169	192	225	297
Total part-time employees	357	317	408	296	325
Percent of total	49.7	40.2	42.4	32.6	30.1
Male	227	214	196	167	209
Female	130	103	212	129	116

\* For Aggregate United States.  
 \*\* For United States.  
 + Total includes joint employees.



Table 11.--Total employees of public television licensees, by employment status and sex, and by type of licensee: Aggregate United States, June 30, 1974

Employees, by employment status*									
Type of licensee	All employees			Full-time employees			Part-time employees		
	Total	Male	Female	Total	Male	Female	Total	Male	Female
Total	8,578	6,037	2,541	6,267	4,683	1,884	2,011	1,354	657
Percent	100.0	100.0	100.0	100.0	100.0	100.0	100.0	100.0	100.0
Type of licensee:									
Institutions of higher education	2,474	1,842	632	1,143	1,113	330	1,031	729	302
Percent of total	28.8	30.5	24.9	21.9	23.7	17.5	51.3	53.8	46.0
Local public school systems	709	490	219	566	392	174	143	98	45
Percent of total	8.3	8.1	8.6	8.6	8.4	9.2	7.1	7.2	6.9
State/municipal authority	2,283	1,695	588	1,895	1,442	453	388	253	135
Percent of total	26.6	28.1	23.1	28.8	30.8	24.1	19.3	18.7	20.5
Community organizations	3,112	2,010	1,102	2,663	1,736	927	449	274	175
Percent of total	36.3	33.3	43.4	40.6	37.1	49.2	22.3	20.3	26.6

\* Joint employees are not included.

Table 12.--Joint employees of public television licensees, by employment status, type of licensee:  
Aggregate United States, June 30, 1974

Type of licensee	Joint employees, by employment status			
	Number of dual licensees*	Total	Full-time	Part-time
Total	40	715	533	182
Percent	100.0	100.0	100.0	100.0
Type of licensee:				
Institutions of higher education	24	346	237	109
Percent of total	60.0	48.4	44.5	59.9
Local public school systems	2	15	15	0
Percent of total	5.0	2.1	2.8	0.0
State authority, State education agency, municipal authority, and other licensed agencies	3	57	51	6
Percent of total	7.5	8.0	9.6	3.3
Community organizations	11	297	230	67
Percent of total	27.5	41.5	43.1	36.8

\* Number of dual (TV and radio) licensees reporting joint employees.

Table 13.--Total full-time employees of public television licensees, by sex and type of occupation, June 30, 1974

Type of occupation	Total Full-time employees			Full-time employees			Joint Full-time employees		
	Total	Male	Female	Total	Male	Female	Total	Male	Female
Total full-time employees	7,100	5,009	2,091	6,587	4,683	1,884	533	326	207
Percent	100.0	100.0	100.0	100.0	100.0	100.0	100.0	100.0	100.0
Subtotal, management and supervisory	2,671	2,107	564	2,399	1,887	512	272	220	52
Percent of total	37.6	42.0	27.0	36.6	40.3	27.2	51.0	67.5	25.1
General Manager	143	140	3	102	99	3	41	41	0
Station manager	67	65	2	54	53	1	13	12	1
Operations manager	71	66	5	61	57	4	10	9	1
Program manager	135	119	16	123	107	16	12	12	0
Traffic manager	124	29	95	118	28	90	6	1	5
Production manager	119	113	6	116	110	6	3	3	0
Producer - director	618	509	109	606	499	107	12	10	2
Business manager	74	45	29	57	32	25	17	13	4
Chief engineer	155	155	0	120	120	0	35	35	0
Supervisory engineer	338	337	1	311	310	1	27	27	0
Film director	112	108	4	110	106	4	2	2	0
Public relations director	63	30	33	50	24	26	13	6	7
Promotion director	74	26	48	59	19	40	15	7	8
Development director	69	53	16	56	42	14	13	11	2
Art director	86	70	16	78	63	15	8	7	1
School service director	120	68	52	115	65	50	5	3	2
Other management and supervisory	303	174	129	263	153	110	40	21	19
Subtotal, other employees	4,429	2,902	1,527	4,168	2,796	1,372	261	106	155
Percent of total	62.4	58.0	73.0	63.4	59.7	72.8	49.0	32.5	74.9
On-air talent	170	101	69	165	98	67	5	3	2
Graphic artists	165	103	62	161	101	60	4	2	2
Production crew	678	580	98	675	578	97	3	2	1
Broadcasting engineer	1,439	1,427	12	1,386	1,374	12	53	53	0
Film editor	140	126	14	139	125	14	1	1	0
All other professional	541	268	273	509	256	253	32	12	20
All other non-professional	181	119	62	158	114	44	23	5	18
Clerical	994	72	922	878	63	815	116	9	107
Manual/custodial	121	106	15	97	87	10	24	19	5

Table 14.--Full-time employees of public television licensees, by type of licensee, sex, and type of occupation: Aggregate United States, June 30, 1974

Full-time employees, by type of licensee*											
Type of occupation (Number of licensees) . . .	All types (154)		Institutions of higher education (53)		Local public school systems (19)		State/municipal author- ity (26)		Community organi- zations (56)		
	Male	Female	Male	Female	Male	Female	Male	Female	Male	Female	
	Total, all types		Percent		Total, all types		Percent		Total, all types		Percent
Total, all types	4,683	1,884	1,113	330	392	174	1,442	454	1,736	927	
Percent	100.0	100.0	100.0	100.0	100.0	100.0	100.0	100.0	100.0	100.0	
Subtotal, management and supervisory Percent	1,887	512	568	112	170	42	497	121	652	238	
	40.3	27.2	51.1	33.9	43.4	24.1	34.5	26.7	37.6	25.7	
General manager	99	3	24	0	13	2	22	0	40	1	
Station manager	53	1	19	1	5	0	18	1	11	0	
Operations manager	57	4	23	0	5	1	10	1	19	2	
Program manager	107	16	34	5	9	5	24	1	40	5	
Traffic manager	28	90	7	30	1	11	6	17	14	32	
Production manager	110	6	32	0	14	0	17	1	47	5	
Producer - director	499	107	168	26	49	4	105	22	177	55	
Business manager	32	25	6	5	2	2	8	9	16	9	
Chief engineer	120	0	36	0	16	0	29	0	39	0	
Supervisory engineer	310	1	102	0	19	0	123	1	66	0	
Film director	106	4	28	0	13	0	31	1	34	3	
Public relations director	24	26	10	6	0	3	7	3	7	14	
Promotion director	19	40	5	14	1	2	5	8	8	16	
Development director	42	14	6	3	4	1	6	0	26	10	
Art director	63	15	28	3	6	1	13	5	16	6	
School service director	65	50	16	6	8	8	20	23	21	13	
Other management and supervisory	153	110	24	13	5	2	53	28	71	67	
Subtotal, other employees Percent of total	2,796	1,372	545	218	222	132	945	333	1,084	689	
	59.7	72.8	48.9	66.1	56.6	75.9	65.5	73.3	62.4	74.3	
On-air talent	98	67	13	7	22	37	19	6	44	17	
Graphic artists	101	60	16	16	11	11	42	18	32	15	
Production crew	578	97	86	19	52	4	194	26	246	48	
Engineering	1,374	12	338	2	86	1	434	2	516	7	
Writer	125	14	43	4	8	1	33	3	41	6	
All other professional	256	253	37	35	24	10	82	55	113	153	
All other non-professional	114	44	5	10	8	5	86	21	15	8	
Clerical	63	815	4	125	2	62	6	194	51	434	
Manual/custodial	87	10	3	0	9	1	49	8	26	1	

\* Joint full-time employees are not included.

Table 18.--Total part-time employees of public television by type of occupation: Aggregate United States, June 30, 1974

Part-time and joint part-time employees, by occupation			
Type of occupation	Total part-time employees	part-time employees	Joint part-time employees
Part-time total Percent	2,193 100.0	2,011 100.0	182 100.0
Male	1,468	1,354	114
Female	725	657	68
Subtotal, part-time management and super- visory Percent	54 2.5	43 2.1	11 6.0
Male	27	22	5
Female	27	21	6
Subtotal, part-time other employees Percent	2,139 97.5	1,968 97.9	171 94.0
Male	1,441	1,332	109
Female	698	636	62
Part-time technical and production	1,147	1,073	74
Male	919	856	63
Female	228	217	11
Part-time on-air and performing talent	243	228	15
Male	141	132	9
Female	102	96	6
Part-time paid trainee	279	269	10
Male	203	198	5
Female	76	71	5
Part-time clerical	306	256	50
Male	50	36	14
Female	256	220	36
Part-time manual and custodial	57	54	3
Male	50	48	2
Female	7	6	1
Part-time other non- professional	107	88	19
Male	78	62	16
Female	29	26	3

Table 16.--Part-time employees of public television licensees, by type of licensee and occupation:  
Aggregate United States, June 30, 1974

Part-time employees, by type of licensee*					
Type of occupation (Number of licensees) . . .	All types (154)	Institutions of higher education (53)	Local public school systems (19)	State/munici- pal author- ity (26)	Community organi- zations (56)
Total, all types	2,011	1,031	143	388	449
Percent	100.0	100.0	100.0	100.0	100.0
Male	1,354	729	98	253	274
Female	657	302	45	135	175
Management and supervisory	43	21	4	2	16
Percent of total	2.1	2.0	2.8	0.5	3.6
Male	22	11	4	1	6
Female	21	10	0	1	10
Other employees	1,968	1,010	139	386	433
Percent of total	97.9	98.0	97.2	99.5	96.4
Male	1,516	718	94	252	268
Female	452	292	45	134	165
Technical and production	1,073	641	54	164	214
Male	856	509	36	143	168
Female	217	132	18	21	46
On-air talent	228	62	28	101	37
Male	132	41	17	51	23
Female	96	21	11	50	14
Trainees (paid)	269	181	33	22	33
Male	198	130	27	17	24
Female	71	51	6	5	9
Clerical	256	82	10	63	101
Male	220	9	1	11	15
Female	36	73	9	52	86
Manual and custodial	54	5	3	24	22
Male	48	5	2	21	20
Female	6	0	1	3	2
All other non-professional	88	39	11	12	26
Male	62	24	11	9	18
Female	26	15	0	3	8

\* Joint part-time employees are not included.

Table 17.--Minority employees of CPB-qualified public radio stations, by employment status and by type of minority group: United States, June 30, 1974

Minority employees, by employment status					
Type of minority group	Total	Television only		Joint	
		Full-time	Part-time	Full-time	Part-time
Total, all minority employees	1,081	699	298	57	27
Percent	100.0	100.0	100.0	100.0	100.0
Male	668	434	196	25	13
Female	413	265	102	32	14
Black	731	489	196	31	15
Percent of total	67.6	70.0	65.8	54.4	55.6
Male	458	295	141	16	6
Female	273	194	55	15	9
Spanish surname	212	134	66	10	2
Percent of total	19.6	19.1	22.1	17.5	7.4
Male	137	95	40	1	1
Female	75	39	26	9	1
American Indian	46	18	9	11	8
Percent of total	4.3	2.6	3.0	19.3	29.6
Male	24	12	1	7	4
Female	22	6	8	4	4
Oriental	92	58	27	5	2
Percent of total	8.5	8.3	9.1	8.8	7.4
Male	49	32	14	1	2
Female	43	26	13	4	0

Table 18.--Total full-time minority employees of public television licensees, by sex and type of occupation, United States, June 30, 1974

Type of occupation	Full-time minority employees								
	Total Full-time employees			Full-time employees			Joint Full-time employees		
	Total	Male	Female	Total	Male	Female	Total	Male	Female
Total full-time employees Percent	756 100.0	459 100.0	297 100.0	699 100.0	434 100.0	265 100.0	57 100.0	25 100.0	32 100.0
Subtotal, management and supervisory Percent of total	159 21.0	105 22.9	54 18.2	149 21.3	101 23.2	48 18.1	10 17.5	4 16.0	6 18.8
General manager	1	1	0	1	0	0	0	0	0
Station manager	3	3	0	2	2	0	1	1	0
Operations manager	3	3	0	3	3	0	0	0	0
Program manager	3	2	1	2	1	1	1	1	0
Traffic manager	8	3	5	8	3	5	0	0	0
Production manager	3	2	1	3	2	1	0	0	0
Producer - director	64	40	24	64	40	24	0	0	0
Business manager	3	1	2	2	1	1	1	0	1
Chief engineer	4	4	0	4	4	0	0	0	0
Supervisory engineer	12	12	0	12	12	0	0	0	0
Film director	8	8	0	8	8	0	0	0	0
Public relations director	6	3	3	5	3	2	1	0	1
Promotion director	1	0	1	0	0	0	1	0	1
Development director	2	1	1	2	1	1	0	0	0
Art director	4	2	2	4	2	2	0	0	0
School service director	6	3	3	6	3	3	0	0	0
Other management and supervisory	28	17	11	23	15	8	5	2	3
Subtotal, other employees Percent of total	597 79.0	354 77.1	243 81.8	550 78.7	333 76.7	217 81.9	47 82.5	21 84.0	26 81.2
On-air talent	33	15	18	29	13	16	4	2	2
Graphic artists	15	11	4	15	11	4	0	0	0
Production crew	99	84	15	99	84	15	0	0	0
Broadcasting engineer	116	115	1	114	113	1	2	2	0
Film editor	18	17	1	18	17	1	0	0	0
All other professional	56	27	29	54	25	29	2	2	0
All other non-professional	25	18	7	20	16	4	5	2	3
Clerical	193	30	163	169	25	144	24	5	19
Manual/custodial	42	37	5	32	29	3	10	8	2



Table 19.---Broadcast hours of public television stations, by type of programming and type of licensee: Aggregate United States, fiscal years 1970, 1971, 1972, 1973, and 1974

Broadcast hours, by type of programming							
Type of licensee	Number of stations	All types		Programming for classroom		Programming for general audience	
		Total	Mean	Total	Mean	Total	Mean
<b>All types</b>							
FY 1970	185	586,718	3,171	201,275	1,088	385,443	2,083
FY 1971	193	639,611	3,314	226,165	1,172	413,446	2,142
FY 1972	207	710,303	3,431	241,806	1,168	468,497	2,263
FY 1973	221	809,588	3,663	260,067	1,177	549,521	2,487
FY 1974	235	910,149	3,873	268,766	1,144	641,383	2,729
<b>Institutions of higher education</b>							
FY 1970	58	174,864	3,015	47,306	816	127,558	2,109
FY 1971	58	174,241	3,004	49,315	850	124,926	2,154
FY 1972	62	191,783	3,126	54,156	873	139,627	2,252
FY 1973	67	225,291	3,363	59,162	883	166,129	2,480
FY 1974	72	255,728	3,552	62,688	871	193,040	2,681
<b>Local public school systems</b>							
FY 1970	22	57,036	2,593	27,677	1,258	29,359	1,335
FY 1971	23	61,549	2,676	27,997	1,217	33,552	1,459
FY 1972	21	58,233	2,773	26,992	1,285	31,241	1,488
FY 1973		57,758	3,040	21,938	1,155	35,820	1,885
FY 1974	19	60,342	3,176	22,144	1,165	38,198	2,010
<b>State/municipal authorities</b>							
FY 1970	54	188,438	3,490	72,714	1,347	115,724	2,143
FY 1971	60	222,162	3,703	89,989	1,500	132,173	2,203
FY 1972	67	253,858	3,789	100,558	1,501	153,300	2,288
FY 1973	74	299,927	4,053	117,157	1,583	182,770	2,470
FY 1974	81	346,962	4,283	117,775	1,454	229,187	2,829
<b>Community organizations</b>							
FY 1970	51	166,380	3,262	53,578	1,051	112,802	2,212
FY 1971	52	181,659	3,493	58,864	1,132	122,795	2,361
FY 1972	57	204,429	3,586	60,100	1,054	144,329	2,532
FY 1973	61	226,612	3,715	61,810	1,013	164,802	2,702
FY 1974	63	247,117	3,922	66,159	1,050	180,958	2,872

Note: Data pertain only to those stations on air from beginning of fiscal year.

Table 20.--Total broadcast hours of public television stations, by type of programming and by type of licensee: Aggregate United States, fiscal year 1974

Broadcast hours, by type of programming								
Type of licensee	Number of Stations	Mean weeks broadcast*	<u>All types</u>		<u>Programing for classroom</u>		<u>Programing for general audience</u>	
			Total	Mean	Number	Mean	Number	Mean
Total	235	51	910,149	3,873	268,766	1,144	641,383	2,729
Type of licensee:								
Institutions of higher education	72	52	255,728	3,552	62,688	871	193,040	2,681
Local public school systems	19	49	60,342	3,176	22,144	1,165	38,198	2,010
State/municipal authorities	81	52	346,962	4,283	117,775	1,454	229,187	2,829
Community organizations	63	51	247,117	3,922	66,159	1,050	180,958	2,872

\* Based on number of weeks reported by stations broadcasting during both school-in-session and school-not-in-session.

Note: Data pertain only to those stations on air from beginning of fiscal year.



Table 21.--Broadcast hours of public television during school-in-session, by type of programming and by type of licensee: Aggregate United States, fiscal year 1974

Broadcast hours, by type of programming								
Type of licensee	Number of Stations	Mean weeks broadcast*	All types		Programming for classroom		Programming for general audience	
			Total	Mean	Number	Mean	Number	Mean
Total	235	35	683,360	2,908	256,210	1,090	427,150	1,818
Type of licensee:								
Institutions of higher education	72	35	191,273	2,657	60,377	839	130,896	1,818
Local public school systems	19	36	48,737	2,565	21,406	1,127	27,331	1,438
State/municipal authorities	81	36	263,908	3,258	110,262	1,361	153,646	1,897
Community organizations	63	34	179,442	2,848	64,165	1,018	115,277	1,830

\* Based on number of weeks reported by stations broadcasting during school-in-session.

Note: Data pertain only to those stations on air from beginning of fiscal year.

Table 22.-- Broadcast hours of public television stations during school not-in-session, by type of programming and by type of licensee: Aggregate United States, fiscal year 1974

Type of licensee	Number of stations	Mean weeks broadcast*	Broadcast hours, by type of programming					
			All types		Programming for classroom		Programming for general audience	
			Total	Mean	Number	Mean	Number	Mean
Total	235	16	226,789	965	12,556	53	214,233	912
Type of licensee:								
Institutions of higher education	72	16	64,455	895	2,311	32	62,144	863
Local public school systems	19	14	11,605	611	738	39	10,867	572
State/municipal authorities	81	16	83,054	1,025	7,513	93	75,541	933
Community organizations	63	18	67,675	1,074	1,994	32	65,681	1,043

\* Based on number of weeks reported by stations broadcasting during school-not-in-session.

Note: Data pertain only to those stations on air from beginning of fiscal year.

Table 23.--Percent distributions of broadcast hours of public television stations, by type of programming and source of programming: Aggregate United States, fiscal years 1970, 1971, 1972, 1973, and 1974

Percent of total broadcast hours, by type of programming

Source of programming	All types					Programming for classroom					Programming for general audience				
	FY 1970	FY 1971	FY 1972	FY 1973	FY 1974	FY 1970	FY 1971	FY 1972	FY 1973	FY 1974	FY 1970	FY 1971	FY 1972	FY 1973	FY 1974
(Number of stations broadcasting) . . .	(185)	(193)	(207)	(221)	(235)	(185)	(193)	(207)	(221)	(235)	(185)	(193)	(207)	(221)	(235)
(Total broadcast hours) . . .	(586,718)	(639,611)	(710,303)	(809,588)	(910,149)	(201,275)	(226,165)	(241,806)	(260,067)	(268,766)	(385,443)	(413,446)	(468,497)	(549,521)	(641,383)
Total	100.0	100.0	100.0	100.0	100.0	100.0	100.0	100.0	100.0	100.0	100.0	100.0	100.0	100.0	100.0
Programs locally produced	27.1	23.0	21.1	18.7	17.0	44.2	35.9	34.3	29.7	25.4	18.2	16.0	14.3	13.5	13.6
National interconnection	23.1	27.5	39.2	45.8	46.4	2.4	6.9	9.2	11.2	14.5	33.9	38.8	54.7	62.1	59.7
Regional interconnection	6.1	5.1	5.4	5.2	5.3	4.6	3.2	5.4	5.3	5.3	6.9	6.1	5.4	5.1	5.2
State interconnection	4.9 <sup>+</sup>	3.9 <sup>+</sup>	1.8	3.5	2.6	6.0 <sup>+</sup>	5.5 <sup>+</sup>	2.6	5.7	4.3	4.3 <sup>+</sup>	3.0 <sup>+</sup>	1.5	2.5	1.9
Other interconnection			2.0	1.4	1.6			4.0	2.8	3.1			0.9	0.7	1.0
Film and tape from Public Broadcasting Service				1.2	3.2				0.8	1.1				1.4	4.0
Film and tape from National Educational Television	9.7	6.9	4.1	0.9	0.6	1.6	1.8	1.9	0.7	0.3	14.0	9.7	5.2	1.0	0.7
Film and tape from regional networks	4.9	5.2	3.7	2.7	2.4	7.0	6.5	5.3	4.5	3.3	3.7	4.5	2.8	1.8	2.0
Film and tape from Public Television Library	3.7	3.4	2.9	2.3	2.0	0.6	1.1	0.6	0.5	0.4	5.4	4.7	4.2	3.2	2.7
Film and tape from National Instructional Television Center	2.8	3.8	4.9	3.8	3.8	7.9	10.6	14.2	11.6	12.7	0.1	0.1	*	0.2	0.1
Film and tape from Great Plains National Instructional Television Library	3.4	3.4	3.4	2.8	2.5	9.2	9.0	9.8	8.2	7.7	0.4	0.3	0.1	0.2	0.3
Film and tape from other public television stations	3.4	3.3	2.6	1.8	2.3	6.4	5.6	3.1	3.3	4.7	1.9	2.0	2.3	1.1	1.3
Film and tape from commercial syndicates	4.3	3.1	2.1	3.5	5.7	1.4	0.8	1.0	4.4	8.5	5.8	4.4	2.7	3.1	4.5
Film and tape from all others	6.6	11.4	6.8	6.4	4.6	8.7	13.1	8.6	11.3	8.7	5.5	10.4	5.9	4.1	2.9

\* Percent greater than 0 but less than 0.05.

<sup>+</sup> Percent from State interconnection in FY 1970 and FY 1971 were reported under other interconnection.

† Percent apply only to those stations on air from beginning of fiscal year.

Table 24.--Percent distribution of broadcast hours of public television stations, by type of licensee and source of programing: Aggregate United States, fiscal year 1974

Source of programing	All types	Institutions of higher education	Local public school systems	State/municipal authorities	Community organizations
(Number of stations broadcasting) . . .	(235)	(72)	(19)	(81)	(63)
(Broadcast hours) . . .	(910,149)	(255,728)	(60,342)	(346,962)	(247,117)
<b>Total</b>	<b>100.0</b>	<b>100.0</b>	<b>100.0</b>	<b>100.0</b>	<b>100.0</b>
Programs locally produced	17.0	12.0	21.2	21.9	14.4
National interconnection	46.4	51.6	47.1	41.7	47.6
Regional interconnection	5.3	5.4	2.0	3.8	7.9
State interconnection	2.6	1.9	1.2	0.2	6.9
Dther interconnection	1.6	0.6	3.0	2.1	1.7
Film and tape from Public Broadcasting Service	3.2	4.1	0.4	3.5	2.5
Film and tape from National Educational Television	0.6	0.8	0.9	0.4	0.6
Film and tape from regional networks	2.4	3.4	0.7	2.0	2.4
Film and tape from Public Television Library	2.0	2.3	3.8	1.6	1.9
Film and tape from National Instructional Television Center	3.8	3.8	4.4	4.7	2.4
Film and tape from Great Plains National Instructional Television Library	2.5	2.1	1.8	3.9	1.2
Film and tape from other public television stations	2.3	2.2	1.6	2.4	2.4
Film and tape from commercial syndicates	5.7	4.4	4.3	8.6	3.3
Film and tape from all others	4.6	5.4	7.6	3.2	4.9

Note: Data pertain only to those stations on air from beginning of fiscal year.

Table 25.--Percent distribution of broadcast hours for programming for classroom of public television stations, by type of licensee and source of programming: Aggregate United States, fiscal year 1974

Percent of broadcast hours for programming for classroom, by type of licensee

Source of programming	All types	Institutions of higher education	Local public school systems	State/municipal authorities	Community organizations
(Number of stations broadcasting) . . .	(235)	(72)	(19)	(81)	(63)
(Broadcast hours) . . .	(268,766)	(62,688)	(22,144)	(117,775)	(66,159)
<b>Total</b>	<b>100.0</b>	<b>100.0</b>	<b>100.0</b>	<b>100.0</b>	<b>100.0</b>
Programs locally produced	25.4	15.4	34.2	30.4	22.9
National interconnection	14.5	16.5	17.9	12.4	15.4
Regional interconnection	5.3	10.2	0.0	0.9	10.0
State interconnection	4.3	5.6	2.3	0.0	11.2
Other interconnection	3.1	1.7	4.5	3.9	2.6
Film and tape from Public Broadcasting Service	1.1	2.1	1.2	1.0	0.5
Film and tape from National Educational Television	0.3	0.5	1.6	0.0	0.4
Film and tape from regional networks	3.3	3.7	1.0	2.9	4.3
Film and tape from Public Television Library	0.4	0.7	0.7	0.1	0.5
Film and tape from National Instructional Television Center	12.7	15.4	11.2	14.0	8.6
Film and tape from Great Plains National Instructional Television Library	7.7	7.9	4.9	10.0	4.3
Film and tape from other public television stations	4.7	4.2	2.7	5.4	4.5
Film and tape from commercial syndicates	8.5	5.0	3.5	13.4	4.7
Film and tape from all others	8.7	11.1	14.3	5.6	10.1

Note: Data pertain only to those stations on air from beginning of fiscal year.



Table 26.--Percent distribution of broadcast hours for programming for general audience of public television stations, by type of licensee and source of programming: Aggregate United States, fiscal year 1974

Percent of broadcast hours for programming for general audience, by type of licensee

Source of programming (Number of stations broadcasting) . . .	All types (235)	Institutions of higher education (72)	Local public school systems (19)	State/municipal authorities (81)	Community organiza- tions (63)
(Broadcast hours) . . .	(641,383)	(193,040)	(38,198)	(229,187)	(180,958)
<b>Total</b>	<b>100.0</b>	<b>100.0</b>	<b>100.0</b>	<b>100.0</b>	<b>100.0</b>
Programs locally produced	13.6	10.9	14.1	17.6	10.9
National interconnection	59.7	63.0	63.1	56.7	63.0
Regional interconnection	5.2	3.8	3.1	5.4	3.8
State interconnection	1.9	0.7	0.7	0.3	0.7
Other interconnection	1.0	0.2	2.2	1.3	0.2
Film and tape from Public Broadcasting Service	4.0	4.7	0.0	4.8	4.7
Film and tape from National Educational Television	0.7	1.0	0.5	0.6	1.0
Film and tape from regional networks	2.0	3.3	0.6	1.5	3.3
Film and tape from Public Television Library	2.7	2.8	5.4	2.3	2.8
Film and tape from National Instructional Television Center	0.1	0.0	0.6	0.0	0.0
Film and tape from Great Plains National Instructional Television Library	0.3	0.3	0.1	0.7	0.3
Film and tape from other public television stations	1.3	1.5	1.0	0.8	1.5
Film and tape from commercial syndicates	4.5	4.2	4.7	6.2	4.2
Film and tape from all others	2.9	3.6	3.9	2.0	3.6

Note: Data pertain only to those stations on air from beginning of fiscal year.

Table 27.--Mean weekly broadcast hours of public television stations during school-in-session, by day of week and type of programing: Aggregate United States, fiscal year 1974

Mean weekly broadcast hours, by day of week					
Monday through Friday					
Type of programing	Week total	Total	( Per day )	Saturday	Sunday
Total	19,452.4	15,818.4	(3,163.7)	1,965.5	1,668.5
Percent	100.0	100.0	( 100.0 )	100.0	100.0
Number of stations broadcasting	235	235	( 235 )	177	218
Percent of stations broadcasting	100.0	100.0	( 100.0 )	75.3	92.8
Broadcast hours per station	82.8	67.3	( 13.4 )	11.1	7.6
Programing for classroom	7,311.2	7,206.6	(1,441.3)	58.3	46.3
Percent of total	37.6	45.6	( 45.6 )	3.0	2.8
Number of stations broadcasting	226	226	( 226 )	29	28
Percent of stations broadcasting	96.2	96.2	( 96.2 )	12.3	11.9
Broadcast hours per station	32.3	31.8	( 6.3 )	2.0	1.6
Programing for general audience	12,141.2	8,611.8	(1,722.3)	1,907.2	1,622.2
Percent of total	62.4	54.4	( 54.4 )	97.0	97.2
Number of stations broadcasting	232	232	( 232 )	177	218
Percent of stations broadcasting	98.7	98.7	( 98.7 )	75.3	92.8
Broadcast hours per station	52.3	37.1	( 7.4 )	10.7	7.4

Note: Data pertain only to those stations on air from beginning of fiscal year.

Table 28.--Mean weekly broadcast hours of public television stations during school-not-in-session, by day of week and type of programming: . Aggregate United States, fiscal year 1974

Mean weekly broadcast hours, by day of week					
Monday through Friday					
Type of programming	Week total	Total	( Per day )	Saturday	Sunday
Total	13,726.8	10,209.1	(2,041.8)	1,898.8	1,518.9
Percent	100.0	100.0	( 100.0 )	100.0	100.0
Number of stations broadcasting	232	232	( 232 )	175	218
Percent of stations broadcasting	98.7	98.7	( 98.7 )	74.4	92.7
Broadcast hours per station	59.1	44.0	( 8.8 )	10.8	7.4
Programming for classroom	801.7	758.5	( 151.7 )	24.0	19.2
Percent of total	5.8	7.4	( 7.4 )	1.3	1.2
Number of stations broadcasting	67	58	( 58 )	8	12
Percent of stations broadcasting	28.5	24.6	( 24.6 )	3.4	5.1
Broadcast hours per station	12.0	13.1	( 2.6 )	3.0	1.6
Programming for general audience	12,925.1	9,450.6	(1,890.0)	1,874.8	1,599.7
Percent of total	94.2	92.6	( 92.6 )	98.7	98.8
Number of stations broadcasting	232	232	( 232 )	175	218
Percent of stations broadcasting	98.7	98.7	( 98.7 )	74.4	92.7
Broadcast hours per station	55.7	40.7	( 8.1 )	10.7	7.3

Note: Data pertain only to those stations on air from beginning of fiscal year.

Table 29.--Mean weekly broadcast hours of public television stations programming for classroom during school-in-session, by day of week and type of licensee: Aggregate United States, fiscal year 1974

Mean weekly broadcast hours, by day of week					
Monday through Friday					
Type of public television licensee	Week total	Total	( Per day )	Saturday	Sunday
Total, all types	7,311.2	7,206.6	( 1,441.3 )	58.3	46.3
Percent	100.0	100.0	( 100.0 )	100.0	100.0
Number of stations broadcasting	226	226	( 226 )	29	28
Percent of stations broadcasting	96.2	96.2	( 96.2 )	12.3	11.9
Broadcast hours per station	32.3	31.8	( 6.3 )	2.0	1.6
Institutions of higher education	1,749.2	1,721.9	( 344.4 )	11.0	16.3
Percent of total	23.9	23.9	( 23.9 )	18.9	35.2
Number of stations broadcasting	68	68	( 68 )	4	13
Percent of stations broadcasting	94.4	94.4	( 94.4 )	5.6	18.1
Broadcast hours per station	25.7	25.3	( 5.0 )	2.7	1.2
Local public school systems	586.3	585.5	( 117.1 )	0.3	0.5
Percent of total	8.1	8.1	( 8.1 )	0.5	1.1
Number of stations broadcasting	19	19	( 19 )	1	1
Percent of stations broadcasting	100.0	100.0	( 100.0 )	5.3	5.3
Broadcast hours per station	30.8	30.8	( 6.1 )	0.3	0.5
State authority, State education agency, municipal authority, and other licensed agencies	3,055.2	3,007.7	( 601.5 )	30.5	17.0
Percent of total	41.7	41.7	( 41.7 )	52.3	36.7
Number of stations broadcasting	78	78	( 78 )	19	11
Percent of stations broadcasting	96.3	96.3	( 96.3 )	23.5	13.6
Broadcast hours per station	39.1	38.5	( 7.7 )	1.6	1.5
Community organizations	1,920.5	1,891.5	( 378.3 )	16.5	12.5
Percent of total	26.3	26.3	( 26.3 )	28.3	27.0
Number of stations broadcasting	61	61	( 61 )	5	3
Percent of stations broadcasting	96.8	96.8	( 96.8 )	7.9	4.8
Broadcast hours per station	31.4	31.1	( 6.2 )	3.3	4.1

Note: Data pertain only to those stations on air from beginning of fiscal year.

Table 30.--Mean weekly broadcast hours of public television stations programming for general audience during school-in-session, by day of week and type of licensee: Aggregate United States, fiscal year 1974

Type of public television licensee	Mean weekly broadcast hours, by day of week					
	Week total	Monday through Friday			Saturday	Sunday
		Total	( Per day )			
<b>Total, all types</b>	<b>12,141.2</b>	<b>8,611.8</b>	<b>( 1,722.3 )</b>	<b>1,907.2</b>	<b>1,622.2</b>	
Percent	100.0	100.0	( 100.0 )	100.0	100.0	
Number of stations broadcasting	232	232	( 232 )	177	218	
Percent of stations broadcasting	98.7	98.7	( 98.7 )	75.3	92.8	
Broadcast hours per station	52.3	37.1	( 7.4 )	10.7	7.4	
<b>Institutions of higher education</b>	<b>3,753.0</b>	<b>2,841.9</b>	<b>( 568.4 )</b>	<b>442.4</b>	<b>468.7</b>	
Percent of total	30.9	33.0	( 33.0 )	23.2	28.9	
Number of stations broadcasting	72	72	( 72 )	51	66	
Percent of stations broadcasting	100.0	100.0	( 100.0 )	70.8	91.7	
Broadcast hours per station	52.1	39.4	( 7.8 )	8.6	7.1	
<b>Local public school systems</b>	<b>749.3</b>	<b>573.0</b>	<b>( 114.6 )</b>	<b>85.3</b>	<b>91.0</b>	
Percent of total	6.2	6.7	( 6.7 )	4.5	5.6	
Number of stations broadcasting	19	19	( 19 )	10	14	
Percent of stations broadcasting	100.0	100.0	( 100.0 )	52.6	73.7	
Broadcast hours per station	39.4	30.8	( 6.0 )	85.3	6.5	
<b>State/municipal authorities</b>	<b>4,225.2</b>	<b>2,864.7</b>	<b>( 572.9 )</b>	<b>760.0</b>	<b>600.5</b>	
Percent	34.8	33.3	( 33.3 )	39.9	37.0	
Number of stations broadcasting	81	81	( 81 )	63	80	
Percent of stations broadcasting	100.0	100.0	( 100.0 )	77.8	98.8	
Broadcast hours per station	52.1	35.3	( 7.0 )	12.0	7.5	
<b>Community organizations</b>	<b>3,413.7</b>	<b>2,332.2</b>	<b>( 466.4 )</b>	<b>619.5</b>	<b>462.0</b>	
Percent	28.1	27.0	( 27.0 )	32.4	28.5	
Number of stations broadcasting	60	60	( 60 )	53	58	
Percent of stations broadcasting	95.2	95.2	( 95.2 )	84.1	92.1	
Broadcast hours per station	56.9	38.8	( 7.7 )	11.6	7.8	

Note: Data pertain only to those stations on air from beginning of fiscal year.

Table 31.--Mean weekly broadcast hours of public television stations programing for classroom during school-not-in-session, by day of week and type of licensee: Aggregate United States, fiscal year 1974

Mean weekly broadcast hours, by day of week					
Type of public television licensee	Week total	Monday through Friday		Saturday	Sunday
		Total	( Per day )		
Total, all types	301.7	758.5	{ 151.7 }	24.0	19.2
Percent	100.0	100.0	{ 100.0 }	100.0	100.0
Number of stations broadcasting	67	58	{ 58 }	0	12
Percent of stations broadcasting	28.5	24.8	{ 24.8 }	3.4	5.1
Broadcast hours per station	12.0	13.1	{ 2.6 }	3.0	1.6
Institutions of higher education	144.9	132.9	{ 26.6 }	8.5	3.5
Percent of total	18.1	17.5	{ 17.5 }	35.4	18.2
Number of stations broadcasting	16	16	{ 16 }	2	2
Percent of stations broadcasting	22.2	22.2	{ 22.2 }	2.8	2.8
Broadcast hours per station	9.0	8.3	{ 1.6 }	4.2	1.7
Local public school systems	50.0	50.0	{ 10.0 }	0.0	0.0
Percent of total	6.2	6.6	{ 6.6 }	0.0	0.0
Number of stations broadcasting	6	6	{ 6 }	0	0
Percent of stations broadcasting	31.6	31.6	{ 31.6 }	0.0	0.0
Broadcast hours per station	8.3	8.3	{ 1.6 }	0.0	0.0
State/municipal authorities	469.5	453.0	{ 90.6 }	4.5	12.0
Percent of total	58.6	59.7	{ 59.7 }	18.8	62.5
Number of stations broadcasting	33	25	{ 25 }	3	8
Percent of stations broadcasting	40.7	30.9	{ 30.9 }	3.7	9.9
Broadcast hours per station	14.2	18.1	{ 3.6 }	1.5	1.5
Community organizations	137.3	122.6	{ 24.5 }	11.0	3.7
Percent of total	17.1	16.2	{ 16.2 }	45.8	19.3
Number of stations broadcasting	12	11	{ 11 }	3	2
Percent of stations broadcasting	19.1	17.5	{ 17.5 }	4.8	3.2
Broadcast hours per station	11.4	11.1	{ 2.2 }	3.6	1.8

Note: Data pertain only to those stations on air from beginning of fiscal year.

Table 32.--Mean weekly broadcast hours of public television programming for general audience during school-not-in-session, by day of week and type of licensee: Aggregate United States, fiscal year 1974

Mean weekly broadcast hours, by day of week						
Type of public television licensee	Week total	Monday through Friday			Saturday	Sunday
		Total	( Per day )			
<b>Total, all types</b>	12,925.1	9,450.6	( 1,890.1 )		1,874.8	1,599.7
Percent	100.0	100.0	( 100.0 )		100.0	100.0
Number of stations broadcasting	232	232	( 232 )		175	218
Percent of stations broadcasting	98.7	98.7	( 98.7 )		74.5	92.8
Broadcast hours per station	55.7	8.1	( 8.1 )		10.7	7.3
<b>Institutions of higher education</b>	3,730.5	2,804.6	( 560.9 )		455.0	470.9
Percent of total	28.9	29.7	( 29.7 )		24.3	29.4
Number of stations broadcasting	72	72	( 72 )		51	67
Percent of stations broadcasting	100.0	100.0	( 100.0 )		70.8	93.1
Broadcast hours per station	51.8	38.9	( 7.8 )		8.9	7.0
<b>Local public school systems</b>	754.5	583.5	( 116.7 )		82.5	88.5
Percent of total	5.8	6.2	( 6.2 )		4.4	5.5
Number of stations broadcasting	18	18	( 18 )		10	14
Percent of stations broadcasting	94.7	94.7	( 94.7 )		52.6	73.7
Broadcast hours per station	41.9	32.4	( 6.4 )		8.2	6.3
<b>State/municipal authorities</b>	4,795.0	3,446.2	( 689.2 )		758.0	590.8
Percent of total	37.1	36.4	( 36.4 )		40.4	37.0
Number of stations broadcasting	81	81	( 81 )		62	80
Percent of stations broadcasting	100.0	100.0	( 100.0 )		76.5	98.8
Broadcast hours per station	64.9	42.5	( 8.5 )		12.2	7.3
<b>Community organizations</b>	3,645.1	2,616.3	( 523.3 )		579.3	449.5
Percent of total	28.2	27.7	( 27.7 )		30.9	28.1
Number of stations broadcasting	61	61	( 61 )		52	57
Percent of stations broadcasting	96.8	96.8	( 96.8 )		82.5	90.5
Broadcast hours per station	59.7	42.8	( 8.5 )		11.1	7.8

Note: Data pertain only to those stations on air from beginning of fiscal year.

Table 33.-- Total production hours of public television licensees, by type of programming, type of color, and type of production: Aggregate United States, fiscal years 1971 - 1974.

	<u>FY 1971</u>	<u>FY 1972</u>	<u>FY 1973</u>	<u>FY 1974</u>	<u>Percent change 1973-1974</u>
Total, Production hours	37,050	36,007	36,630	39,679	+ 8.3
Percent	100.0	100.0	100.0	100.0	
By type of programming:					
Programming for classroom (ITV)	9,839	7,860	6,544	7,896	+20.7
Percent of total	26.6	21.8	17.9	20.0	
Programming for general audience	27,211	28,147	30,086	31,783	+ 5.6
Percent of total	73.4	78.2	82.1	80.0	
By color/black and white:					
Color	13,490	16,784	22,614	27,563	+21.9
Percent of total	36.4	46.6	61.7	69.5	
Black and white	23,560	19,223	14,016	12,116	-13.6
Percent of total	63.6	53.4	38.3	30.5	
By type of production:					
Live	12,458	12,436	12,999	13,706	+ 5.4
Percent of total	33.6	34.5	35.5	34.5	
Tape	23,544	22,680	22,829	25,077	+ 9.8
Percent of total	63.6	63.0	62.3	63.2	
Film	1,048	891	802	896	+11.7
Percent of total	2.8	2.5	2.2	2.3	





Table 34.--Production hours for classroom of public television licenses by type of licensee, type of color, and type of production: Aggregate United States, fiscal year 1974

Type of production (Number of licensees)	All types (149)	Institutions of higher education (52)	Local public school systems (18)	State/municipal authorities (26)	Community organiza- tions (53)
Total	7,896	1,236	1,204	4,352	1,104
Percent	100.0	100.0	100.0	100.0	100.0
Color	3,224	813	933	563	915
Black and white	4,672	423	271	3,789	189
Live	334	95	94	10	135
Percent of total	4.2	7.7	7.8	0.2	12.2
Color	225	27	85	10	103
Black and white	109	68	9	0	32
Tape	7,361	1,066	1,046	4,321	928
Percent of total	93.2	86.2	86.9	99.3	84.1
Color	2,828	717	792	547	772
Black and white	4,533	349	254	3,774	156
Film	201	75	64	21	41
Percent of total	2.6	6.1	5.3	0.5	3.7
Color	171	69	56	6	40
Black and white	30	6	8	15	1

Note: Data pertain only to those licensees in operation (on the air) from the beginning of the fiscal year.

Table 35.--Production hours for general audience of public television licensees, by type of licensee, type of color, and type of production: Aggregate United States, fiscal year 1974

Type of production (Number of licensees) . . .	All types (149)	Institutions of higher education (52)	Local public school systems (24)	State/municipal authorities (26)	Community organiza- tions (53)
Total	31,783	10,283	2,605	5,730	13,165
Percent	100.0	100.0	100.0	100.0	100.0
Color	24,339	7,936	974	4,295	11,134
Black and white	7,444	2,347	1,631	1,435	2,031
Live	13,372	4,006	1,017	1,920	6,429
Percent of total	42.1	38.9	39.1	33.5	48.8
Color	10,533	3,172	550	1,668	5,143
Black and white	2,839	834	467	252	1,286
Tape	17,716	6,062	1,551	3,594	6,509
Percent of total	55.7	59.0	59.5	62.7	49.5
Color	13,211	4,589	395	2,452	5,775
Black and white	4,505	1,473	1,156	1,142	734
Film	695	215	37	216	227
Percent of total	2.2	2.1	1.4	3.8	1.7
Color	595	175	29	175	216
Black and white	100	40	8	41	11

Note: Data pertain only to those licensees in operation (on the air) from the beginning of the fiscal year.

Table 36.--Production hours of public television licenses by type of distribution, by type of licensee, geographic region, and adjusted budget size: Aggregate United States, fiscal year 1974

Production hours, by type of distribution					
Type of licensee, geographic region, and adjusted budget size	Number of licensees	Total	Local	Regional/State	National
Total	149	39,679	29,649	8,697	1,333
Percent	100.0	100.0	100.0	100.0	100.0
Type of licensee:					
Institutions of higher education	52	11,519	8,408	2,943	167
Percent of total		29.0	28.3	33.3	12.5
Local public school systems	18	3,809	3,529	271	9
Percent of total		9.6	11.9	3.1	0.7
State/municipal authority	26	10,082	6,572	3,254	256
Percent of total		25.4	22.2	37.4	19.2
Community organizations	53	14,270	11,140	2,229	901
Percent of total		36.0	37.6	25.7	67.6
Geographic region:					
Northeast	31	8,623	5,384	2,543	696
Percent of total		21.8	18.2	29.2	52.2
Central	43	8,228	5,967	2,077	184
Percent of total		20.8	20.1	23.9	13.8
South	41	10,884	7,291	3,347	246
Percent of total		27.4	24.6	38.5	18.5
West	30	6,747	5,810	730	207
Percent of total		17.0	19.6	8.4	15.5
Outlying areas	4	5,197	5,197	0	0
Percent of total		13.0	17.5	0.0	0.0
Adjusted budget size:					
Under \$200,000	11	1,813	1,732	81	0
Percent of total		4.6	5.8	0.9	0.0
\$200,000 - \$599,999	50	7,161	5,011	1,131	19
Percent of total		18.0	20.3	13.0	1.4
\$600 - \$999,999	33	7,634	6,266	1,103	265
Percent of total		19.2	21.1	12.7	19.8
\$1,000,000 - \$3,374,999	46	18,619	13,223	5,151	245
Percent of total		47.0	44.6	59.2	18.4
\$3,375,000 and over	9	4,452	2,417	1,231	804
Percent of total		11.2	8.2	14.2	60.4

Note: Data pertain only to those licensees in operation (on the air) from the beginning of the fiscal year.

Table 37.--Total production hours of public television licensees, by type of distribution and fiscal year: Aggregate United States, fiscal years 1972 - 1974

	<u>FY 1972</u>	<u>FY 1973</u>	<u>FY 1974</u>	<u>Percent change 1973-1974</u>
Total, all distribution	36,007	36,630	39,679	+ 8.3
Percent	100.0	100.0	100.0	
Classroom use (ITV)	7,860	6,544	7,896	+ 20.7
General audience use	28,147	30,086	31,783	+ 5.6
Local	25,592	25,948	29,649	+ 14.3
Percent of total	71.1	70.9	74.7	
Classroom use (ITV)	5,872	4,464	6,081	+ 36.2
General audience use	19,720	21,484	23,568	+ 9.7
Regional, State and private network	9,403	9,455	8,697	- 8.0
Percent of total	26.1	25.8	21.9	
Classroom use (ITV)	1,775	1,951	1,526	- 21.8
General audience use	7,628	7,504	7,171	- 4.4
National	1,012	1,227	1,333	+ 8.6
Percent of total	2.8	3.3	3.4	
Classroom use (ITV)	213	129	289	+124.0
General audience use	799	1,098	1,044	- 4.9

Note: Data pertain only to those licensees in operation (on the air) from the beginning of the fiscal year.

**APPENDIXES**

APPENDIX A

Public television licensees' income, by source of income and State: Aggregate United States, fiscal year 1974

State	Number of licensees	Total income	Percent of total income				
			All tax sources	Federal and CPB	State tax sources*	Local tax sources	All others
'Aggregate United States	156**	\$200,680,097	67.9%	16.9%	38.6%	12.4%	32.1%
Alabama	1	2,629,907	98.5	13.5	84.5	0.5	1.5
Alaska	2	1,036,354	96.9	19.2	77.7	0.0	3.1
Arizona	2	1,523,496	83.5	13.8	67.5	2.2	16.5
Arkansas	1	4,668,525	99.9	14.0	85.9	0.0	0.1
California	12	15,801,801	40.4	10.7	3.8	25.9	59.6
Colorado	2	1,457,829	83.3	12.1	1.0	70.2	16.7
Connecticut	1	2,115,848	74.0	19.2	53.7	1.1	26.0
Oelaware	0	0	0.0	0.0	0.0	0.0	0.0
Oistrict of Columbia	1	4,738,182	33.0	30.9	0.1	2.0	67.0
Florida	9	8,278,662	63.9	10.2	34.9	18.8	36.1
Georgia	3	5,862,227	98.4	16.4	66.3	15.7	1.6
Hawaii	1	1,198,426	97.7	18.1	0.0	79.6	2.3
Idaho	3	1,108,516	96.4	18.7	0.0	77.7	3.6
Illinois	4	6,340,010	86.4	22.8	59.6	4.0	13.6
Indiana	7	2,173,595	65.2	44.9	19.2	1.1	34.8
Iowa	1	4,142,052	99.9	8.7	91.2	0.0	0.1
Kansas	2	535,718	29.5	24.2	4.2	1.1	70.5
Kentucky	2	4,202,907	93.0	8.6	67.1	17.3	7.0
Louisiana	2	2,443,292	69.0	23.9	42.4	2.7	31.0
Maine	2	1,860,491	77.5	18.4	57.9	1.2	22.5
Maryland	1	4,461,808	96.6	9.9	85.9	0.8	3.4
Massachusetts	2	10,119,310	38.6	37.3	0.8	0.5	61.4
Michigan	6	3,705,072	65.7	13.5	41.6	10.6	34.3
Minnesota	4	1,919,600	37.5	16.1	4.6	16.8	62.5
Mississippi	1	2,686,212	99.0	6.4	92.6	0.0	1.0
Missouri	3	2,302,669	43.4	19.0	3.0	21.4	56.6
Montana	0	0	0.0	0.0	0.0	0.0	0.0
Nebraska	2	3,547,467	76.5	7.5	68.9	0.1	23.5
Nevada	1	1,050,991	89.2	9.3	14.9	65.0	10.8
New Hampshire	1	1,011,887	72.1	10.8	52.5	8.8	27.9
New Jersey	1	3,719,485	99.6	4.4	95.2	0.0	0.4
New Mexico	3	1,509,560	99.1	37.4	54.6	7.1	0.9
New York	10	29,725,852	42.5	12.3	19.1	11.1	57.5
North Carolina	2	2,184,211	99.4	8.7	66.0	24.7	0.6
North Dakota	1	421,231	74.5	73.6	0.0	0.9	25.2
Ohio	9	8,070,917	64.9	10.9	43.0	11.0	25.5
Oklahoma	2	943,556	99.0	16.4	54.9	27.7	1.0
Oregon	1	1,279,382	95.0	37.5	57.5	0.0	5.0
Pennsylvania	7	9,702,253	43.1	11.0	17.7	14.4	56.9
Rhode Island	1	1,090,545	99.7	37.6	62.1	0.0	0.3
South Carolina	1	4,714,294	98.5	11.4	87.1	***	1.5
South Oakota	3	1,262,876	92.7	17.2	75.5	***	7.3
Tennessee	4	3,969,462	71.7	18.7	38.8	14.2	28.3
Texas	8	5,878,950	31.0	11.4	9.4	10.2	69.0
Utah	2	1,631,191	33.2	23.5	9.7	0.0	66.8
Vermont	1	752,725	88.5	11.6	76.5	0.4	11.5
Virginia	5	4,764,649	64.8	9.1	9.4	46.3	35.2
Washington	6	3,604,951	85.5	24.1	15.8	45.6	14.5
West Virginia	3	2,100,479	99.8	12.9	38.8	48.1	0.2
Wisconsin	3	4,886,327	89.5	17.2	53.7	18.6	10.5
Wyoming	0	0	0.0	0.0	0.0	0.0	0.0
American Samoa	1	2,468,750	13.6	2.5	0.1	11.0	86.4
Guam	1	340,896	99.1	18.1	1.0	80.0	0.9
Puerto Rico	1	2,302,578	100.0	7.1	0.0	92.9	0.0
Virgin Islands	1	432,123	0.0	4.6	0.0	95.4	0.0

\* Includes income from State colleges and universities.

\*\* Also includes two licensees not on the air during fiscal year 1974.

\*\*\* Percent greater than 0 but less than 0.05.

## APPENDIX B

### DEFINITIONS OF SELECTED TERMS AND ORGANIZATIONS

Adjusted Budget Size--Total operating expenses plus estimated value of institutional support.

Aggregate United States--All States of the United States; District of Columbia; and U.S. territories such as American Samoa, Guam, Puerto Rico, and the Virgin Islands.

Broadcast Hours--Hours broadcast by public television stations during fiscal year 1974.

Capital Expenditures--Expenditures for acquiring land, buildings, machinery, equipment, facilities, hardware, automotive equipment, and for significant improvements to existing major items of property and equipment. Not included (charged to operating costs) are supplies and materials, items with a life expectancy of less than 2 or 3 years, and items of inconsequential cost.

Constant Dollars--Financial data adjusted for inflation by price and cost indexes of a given year, such as 1973-1974 dollars.

Corporation for Public Broadcasting (CPB)--A nonprofit corporation established by Congress in 1967 to promote and help finance development of public radio and television. Its board is appointed by the President with the advice and consent of the Senate.

Current Dollars--Financial data not adjusted for inflation.

Direct Operating Costs (Operating Expenses)--Actual costs of operations which were budgeted for, and were under the management control of the individual station, network, or center. Depreciation, capital expenditures, repayment of loans, invested money, allocation of money to reserve funds, or costs absorbed by other institutions are not included in this category.

Earmarked Income--Income received by licensee that is intended to provide for specific services or activities, such as instructional television (ITV) services, underwriting, production contracts, and capital expenditures.

Employment Status--Consists of full-time and part-time employees.

- (1) Full-time Employees--Those employees of the station or institution who were on the payroll as of June 30, 1973, and were paid for the full normal work week at no less than the Federal minimum wage--whether or not part of their time was allocated to other activities such as radio, closed-circuit television (CCTV), instructional television fixed service (ITFS), teaching, or other academic pursuits.
- (2) Part-time Employees--All other paid employees as of June 30, 1973, excluding unpaid students, volunteers, and occasional hourly workers.

Gifts--Donations of machinery, equipment, supplies, or other tangible things of value, as distinct from money.



Great Plains National Instructional Television Library (GPNITL)--A non-profit organization of the University of Nebraska in Lincoln, Nebraska, which develops and distributes instructional television courses to educational institutions and interested agencies.

Income--All sources of money or appropriations of money received or entered in the books as receivable in the current reporting year. This does not include monies withdrawn from reserve accounts established with income or funds received in prior years, borrowed monies from banks and other sources, or gifts and institutional support from individuals and other institutions.

Instructional Support--Estimated value of services and use of facilities provided by supporting institutions.

Interconnection includes:

- (1) National Interconnection--Broadcast interconnection systems for national delivery of programs. Current administering agency is the Public Broadcasting Service (PBS).
- (2) Regional Interconnection--Broadcast interconnection systems for regional delivery of programs, e.g.:
  - Central Educational Network (CEN) (Chicago, Illinois)
  - Eastern Education Television Network (EEN) (Newton Falls, Mass.)
  - Midwestern Educational Television, Inc. (MET) (St. Paul, Minn.)
  - Rocky Mountain Corporation for Public Broadcasting (RMCPCB)  
(Albuquerque, New Mexico)
  - Southern Educational Communications Association (SECA) (Columbia, South Carolina)
  - Western Educational Network (WEN) (Spokane, Washington)
- (3) State Interconnection--Broadcast interconnection system which consists of the stations operated by independent licensees within a given state (e.g., New York State interconnection).
- (4) Other Interconnection--Broadcast interconnection systems other than those listed above (e.g., private interconnections of independent stations).

Minority Employees--Employees with the following racial or ethnic backgrounds; Black, Spanish surnamed, American Indian, or Oriental. Because the term minority has different meanings in the outlying areas, data on minority employees from outlying areas were excluded from minority counts in this report.

National Education Television, Ann Arbor (NET)--The tape and film distribution center for National Educational Television, division of WNET, New York.

National Instructional Television Center (NITC)--A nonprofit organization of the Indiana University Foundation in Bloomington, Indiana, whose major function is to develop and distribute educational television materials.

Production Costs--Costs associated with the production of programs and programing materials at a local station or network.

Programing Costs--Costs of acquiring and scheduling programs.

Programing for Classroom--Programing intended for classroom audiences, in-service training, college credits, etc. (Sometimes known as programing for instructional television, ITV.)

Programing for General Audience--All programing other than programing for classroom.

Public Broadcasting Service (PBS)--A nonprofit corporation in Washington, D.C., which manages the public television network; responsible for scheduling and operating the national program interconnection system.

Public Television Library (PTL)--A nonprofit organization in Bloomington, Indiana, whose primary function is acquisition and distribution of public television programs.

Public Television Licensee--Organization that holds one or more licenses to operate a public television station(s).

Public Television Station--Unit that transmits a single public television signal on a single channel with a set of identifying call letters.

School-in-Session--The period of the fiscal year when local schools are in session.

School-not-in-Session--The period of the fiscal year when local schools are closed for vacations.

Source of Programing--Origin of program delivery, such as programs locally produced, national interconnection, etc.

Technical Costs--Costs associated with repairs, maintenance, control, and technical operations not includable elsewhere.

Television Operations--This category is provided for setting out amounts which apply to broadcast television operations or production only. This does not include radio and other operations, such as CCTV, ITFS, and other university or academic activities.

Total Gross Capital Expenditures to Date--Accumulated gross capital expenditures through June 30, 1974. Depreciation and inflation factors of the expenditures over the years are not taken into account for these amounts.

Trainees--Paid employees engaged primarily in formal on-the-job training programs.

Transfers of Funds from (Withdrawn from Investments and Prior Years' Appropriations)--Transfers of funds from reserve accounts, investments, or building funds and from other balances of funds appropriated or received in previous years.

Type of Distribution (Purpose of Production)--Consists of (1) local distribution, (2) regional, State, and other interconnection distribution, and (3) national distribution.

Type of Production--Programs locally produced either live, on tape, or on film.

Type of Programing--Programing for classroom or for general audience.

United States--All States of the United States and District of Columbia, including the States of Alaska and Hawaii.

APPENDIX C  
SURVEY OF PUBLIC TELEVISION LICENSEES

I. History and general description of surveys of public television licensees: 1969 - 1974.

In July, 1969, the Corporation for Public Broadcasting (CPB), aware of the need for credible statistics and information concerning its constituents' broadcasting operations, issued a grant to the National Association of Educational Broadcasters (NAEB) to develop and implement a management information system.

To develop an appropriate survey instrument, various survey forms were examined and key people within the broadcasting industry and among station personnel were interviewed. Findings from these examinations and interviews were incorporated into the design of the fiscal year 1969 survey instrument.

The Fiscal Year 1969 Survey of Public Television Licensees (the first comprehensive survey of this kind) was launched at the beginning of 1970. The survey instruments were forwarded to the 124 known public television licensees; of these, 120 returned completed questionnaires. Because of failures in recordkeeping by licensees and because of possible ambiguities in the survey instrument, some data could not be obtained from certain stations. These data categories were dropped for all licensees and not included in the computer files. In July 1970, the information project was placed under direct administration of the CPB, and the establishing of computer files of selected data gathered by the fiscal year 1969 survey was completed.

Experience gained from the fiscal year 1969 survey was applied to revising and refining the instrument before the 1970 survey was undertaken. Of 137 licensees contacted for the latter survey, CPB received 136 responses.

The contents of the fiscal year 1971 survey instrument were basically the same as those of the previous year; however, the survey was conducted in two parts: Part I was intended to collect information on quantitative data (financial, broadcast schedule, employment) which vary on a fiscal year basis. Part II was designed to obtain information on static data, such as listings of management personnel, station facilities, and studio equipment. The Part II instrument consisted of listings of computer records of these static data of the

previous year and required only corrections to update the information. Out of 142 licensees contacted, all 142 responded for the fiscal year 1971 survey.

Only slight changes (such as modification of the financial and employment survey forms and some terminology) differentiated the fiscal years 1972 - 1974 survey instruments from their predecessors. All television licensees responded to the surveys for the period (145, 152, and 155) licensees for fiscal years 1972 through 1974 respectively).

## II. Processing procedures and list of computer files for public television licensees

Raw data from the survey questionnaires were manually edited and corrected for obvious error. Followup procedures were initiated with licensees to make the necessary corrections. Verified information was then entered into the computer files and checked again to ensure accuracy.

The Corporation has constantly modified and improved its management-information computer files, primarily through utilization of time-sharing and remote-access retrieval capabilities.

The following is a list of the computer files developed from data obtained through the annual surveys of the public television licensees:

1. Financial file - Financial and promotion data
2. Employee file - Employee data
3. Station file - Station and transmission facilities and broadcast data
4. Studio file - Studio facilities and production data
5. Personnel file - Names, addresses, and phones of management personnel

## COMPUTATIONS OF BROADCAST HOURS

- (A) Mean weekly broadcast hours for weeks broadcast (based on stations' broadcast hours of a typical week).

$$WBH_{wk} = \frac{\sum_{i=1}^n X_i}{N}$$

Where

$WBH_{wk}$  = Mean weekly broadcast hours.

$X_i$  = Weekly broadcast hours of  $i^{th}$  station.

$N$  = Number of broadcast stations.

- (B) Broadcast hours during school-in-session

$$BH_1 = \sum_{i=1}^n f_i X_i$$

Where

$BH_1$  = Broadcast hours during school-in-session.

$f_i$  = Number of broadcast weeks of the  $i^{th}$  station during school-in-session.

$X_i$  = Weekly broadcast hours of the  $i^{th}$  station during school-in-session.

- (C) Broadcast hours during school not-in-session.

$$BH_2 = \sum_{i=1}^n f_i' Y_i$$

Where

$BH_2$  = Broadcast hours during school-not-in-session.

$f_i$  = Number of broadcast weeks of the  $i^{th}$  station.

$Y_i$  = Weekly broadcast hours of the  $i^{th}$  station during school-not-in-session.

- (D) Broadcast hours for programing for classroom

$$BH_{pc} = \sum_{i=1}^n (f_i X_i + f_i' X_i')$$

Where

$BH_{pc}$  = Broadcast hours for programing for classroom.

$f_i$  = Number of broadcast weeks of the  $i^{th}$  station during school-in-session.

$X_i$  = Weekly broadcast hours of the  $i^{th}$  station for programing for classroom during school-in-session.

$f_i'$  = Number of broadcast weeks of the  $i^{th}$  station during school-not-in-session.

$X_i'$  = Weekly broadcast hours of the  $i^{th}$  station for programing for classroom during school-not-in-session.

- (E) Broadcast hours for programing for general audience

$$BH_{pga} = \sum_{i=1}^n (f_i Y_i + f_i' Y_i')$$

Where

- $BH_{pga}$  = Broadcast hours for programing for general audience.  
 $f_i$  = Number of broadcast weeks of the  $i^{th}$  station during school-in-session.  
 $Y_i$  = Weekly broadcast hours of the  $i^{th}$  station for programing for general audience during school-in-session.  
 $f_i'$  = Number of broadcast weeks of the  $i^{th}$  station during school-not-in session.  
 $Y_i'$  = Weekly broadcast hours of the  $i^{th}$  station for programing for general audience during school-not-in-session.

(F) Total (year) broadcast hours

$$TBH_{tot} = BH_1 + BH_2 = BH_{pc} + BH_{pga}$$

Where

$TBH_{tot}$  = Total (year) broadcast hours

(G) Broadcast hours by source of programing

Percent distributions of broadcast hours by source of programing were computed as follows:

- i. Percent of all categories of source of programing were converted to broadcast hours for both programing for classroom and programing for general audience for each station.
- ii. Total broadcast hours of each category of source of programing were calculated by adding those of the stations involved.
- iii. Finally, percent distributions of broadcast hours by source of programing were made for both programing for classroom and programing for general audience by converting the broadcast hours of each category to percent of the total.





## APPENDIX F

### PUBLIC TELEVISION STATIONS ON THE AIR AS OF JUNE 30, 1974 (Number in parenthesis indicates number of broadcast channel)

#### ALABAMA

WAIQ (26)  
 Montgomery, Alabama  
 WBIQ (10)  
 Birmingham, Alabama  
 WCIQ (7)  
 Mt. Cheaha, Alabama  
 WDIQ (2)  
 Dozier, Alabama  
 WEIQ (42)  
 Mobile, Alabama  
 WFIQ (36)  
 Florence, Alabama  
 WGIQ (43)  
 Louisville, Alabama  
 WHIG (25)  
 Huntsville, Alabama  
 WIIQ (41)  
 Decopolis, Alabama  
 Alabama Educational Television  
 Commission

#### ALASKA

KYUK (4)\*  
 Bethel, Alaska  
 Bethel Broadcasting, Inc.

KUAC (9)  
 Fairbanks, Alaska  
 University of Alaska

#### ARIZONA

KAET (8)  
 Phoenix, Arizona  
 Arizona Board of Regents

KUAT (6)  
 Tucson, Arizona  
 University of Arizona

#### ARKANSAS

KETS (2)  
 Little Rock, Arkansas  
 Arkansas Educational Television  
 Commission

#### CALIFORNIA

KOCE (50)\*  
 Huntington Beach, California  
 Board of Trustees  
 Coast Community College D  
 District

KEE\* (13)  
 Eureka, California  
 Redwood Empire Educational  
 Television, Inc.

KCET (28)  
 Los Angeles, California  
 Community Television of  
 Southern California

KLCS (19)  
 Los Angeles, California  
 Board of Education  
 Los Angeles City Schools

KVST (68)  
 Los Angeles, California  
 Viewer Sponsored Television  
 Foundation

KIXE (9)  
 Redding, California  
 Northern California Educational  
 Television Association, Inc.

KVIE (6)  
 Sacramento, California  
 Central California  
 Educational Television

KVCR (24)  
 San Bernardino, California  
 San Bernardino Community  
 College District

KPBS (15)  
 San Diego, California  
 California State University  
 San Diego

KQED (9)  
 San Francisco, California  
 KQEC (32)  
 San Francisco, California  
 Bay area Educational  
 Television Association

KTEH (54)  
 San Jose, California  
 Office of Education  
 County of Santa Clara

KCSM (14)  
 San Mateo, California  
 San Mateo Community College  
 District

#### COLORADO

KRMA (6)  
 Denver, Colorado  
 School District #1  
 City and County of Denver and  
 State of Colorado

KTSC (8)  
 Pueblo, Colorado  
 Southern Colorado State  
 College

#### CONNECTICUT

WEDH (24)  
 Hartford, Connecticut  
 WEDW (49)  
 Bridgeport, Connecticut  
 WEDN (53)  
 Norwich, Connecticut  
 Connecticut Educational  
 Television Corporation

#### WASHINGTON, D. C.

WETA (26)  
 Washington, D. C.  
 Greater Washington Educational  
 Telecommunications  
 Association, Inc.

#### FLORIDA

WUFT (5)  
 Gainesville, Florida  
 Board of Regents  
 State of Florida

WJCT (7)  
 Jacksonville, Florida  
 Community Television, Inc.

WPBT (2)  
 Miami, Florida  
 Community Television  
 Foundation of South  
 Florida, Inc.

WTHS (2)  
 Miami, Florida  
 WLRN (17)  
 Miami, Florida  
 Dade County School Board

WMFE (24)  
 Orlando, Florida  
 Florida Central East  
 Coast Educational  
 Television, Inc.

WSRE (23)  
 Pensacola, Florida  
 Board of Trustees,  
 Pensacola Junior College

WFSU (11)  
 Tallahassee, Florida  
 Board of Regents for  
 Florida State University

WEDU (3)  
 Tampa, Florida  
 Florida West Coast  
 Educational Television, Inc.

WUSF (16)  
 Tampa, Florida  
 University of South  
 Florida

#### GEORGIA

WGTV (8)  
 Athens/Atlanta, Georgia  
 University of Georgia

WETV (30)  
 Atlanta, Georgia  
 Board of Education  
 City of Atlanta

WCLP (18)  
 Chatsworth, Georgia  
 WDCO (15)  
 Cochran, Georgia  
 WJSP (28)  
 Columbus, Georgia  
 WACS (25)  
 Dawson, Georgia  
 WABW (14)  
 Pelham, Georgia  
 WVAN (9)  
 Savannah, Georgia  
 WXGA (8)  
 Waycross, Georgia  
 WCES (20)  
 Wrens, Georgia  
 Georgia State Board  
 of Education

#### HAWAII

KHET (11)  
 Honolulu, Hawaii  
 KMEB (10)  
 Hailuku, Hawaii  
 University of Hawaii

**IDAHO**

KUID (12)  
Moscow, Idaho  
University of Idaho

KAID (4)  
Boise, Idaho  
Boise State College

KBGL (10)  
Pocatello, Idaho  
State Board of Education  
Trustees Idaho State  
University

**ILLINOIS**

WSIU (8)  
Carbondale, Illinois  
WUSI (16)  
Olney, Illinois  
Southern Illinois University

WTTM (11)  
Chicago, Illinois  
WXXW (20)  
Chicago, Illinois  
Chicago Educational  
Television Association

WTVP (47)  
Peoria, Illinois  
Illinois Valley Public  
Telecommunications  
Corporation

WILL (12)  
Urbana, Illinois  
University of Illinois

**INDIANA**

WTIU (30)  
Bloomington, Indiana  
Trustees of Indiana  
University

WNIN (9)  
Evansville, Indiana  
Southwest Indiana Public  
Television, Inc.

WFYI (20)  
Indianapolis, Indiana  
Metropolitan Indianapolis  
Television Association

WIPB (49)  
Muncie, Indiana  
Ball State University

WCAE (50)  
St. John, Indiana  
Lake Central School  
Corporation

WVUT (22)  
Vincennes, Indiana  
Vincennes University

**IOWA**

KDIN (11)  
Des Moines, Iowa  
KIIN (12)  
Iowa City, Iowa

State Educational Radio and  
Television Facility Board

**KANSAS**

KTHW (11)  
Topeka, Kansas  
Washburn University of  
Topeka

KPTS (8)  
Wichita, Kansas  
The Sunflower Educational  
Television Corporation

**KENTUCKY**

WKAS (25)  
Ashland, Kentucky  
WKGB (53)  
Bowling Green, Kentucky  
WCVN (54)  
Covington, Kentucky  
WKZT (23)  
Elizabethtown, Kentucky  
WKHA (35)  
Hazard, Kentucky  
WKLE (46)  
Lexington, Kentucky  
WKMJ (68)  
Louisville, Kentucky  
WKHA (35)  
Madisonville, Kentucky  
WKMR (38)  
Morehead, Kentucky  
WKMU (21)  
Murray, Kentucky  
WKON (52)  
Owenton, Kentucky  
WKPI (22)  
Pikeville, Kentucky  
WKSO (29)  
Somerset, Kentucky  
Kentucky State Board of  
Education

WKPC (15)  
Louisville, Kentucky  
Board of Education of  
Jefferson County

**LOUISIANA**

WYES (12)  
New Orleans, Louisiana  
Greater New Orleans  
Educational Television  
Foundation

**MAINE**

WCBB (10)  
Augusta, Maine  
Colby-Bates-Bowdoin  
Educational Telecasting  
Corporation

WMEB (12)  
Orono, Maine  
WMED (13)  
Calais, Maine  
WMEH (10)  
Presque Isle, Maine  
University of Maine

**MARYLAND**

WMPB (67)  
Baltimore, Maryland  
WCPB (28)  
Salisbury, Maryland  
Maryland Public Broadcasting  
Commission

**MASSACHUSETTS**

WGBH (2)  
Boston, Massachusetts  
WGBX (44)  
Boston, Massachusetts  
WGBY (57)\* †  
Springfield, Massachusetts  
WGBH Educational  
Foundation

**MICHIGAN**

WTVS (56)  
Detroit, Michigan  
Detroit Educational  
Television Foundation

WKAR (23)  
East Lansing, Michigan  
Board of Trustees of  
Michigan State  
University

WGVC (35)\*  
Grand Rapids, Michigan  
Board of Control  
Grand Valley State College

WNPB (13)\*  
Marquette, Michigan  
Northern Michigan  
University

WCMU (14)  
Mount Pleasant, Michigan  
Central Michigan  
University

WUCM (19)  
University Center, Michigan  
Delta College

**MINNESOTA**

KWCM (10)  
Appleton, Minnesota  
Twin City Area Educational  
Television Corporation  
and West Central  
Minnesota

KAVT (15)\*  
Austin, Minnesota  
Independent School  
District #492

WDSE (8)  
Duluth, Minnesota  
Duluth-Superior Area  
Educational Television  
Corporation

KTCA (2)  
St. Paul-Minneapolis,  
Minnesota  
KTCI (17)  
St. Paul-Minneapolis,  
Minnesota  
Twin City Area  
Educational Television  
Corporation

MISSISSIPPI

WMAA (29)  
Jackson, Mississippi  
WMAA (2)  
State College, Mississippi  
WMAU (17)  
Bude, Mississippi  
WMAO (23)  
Greenwood, Mississippi  
WMAH (19)  
Biloxi, Mississippi  
WMAV (18)  
Oxford, Mississippi  
WMAW (14)  
Meridian, Mississippi  
The Mississippi Authority  
for Educational  
Television

MISSOURI

KCPT (19)  
Kansas City, Missouri  
Community Service Broadcasting  
of Mid-America, Inc.

KETC (9)

St. Louis, Missouri  
St. Louis Educational  
Television Commission

NEBRASKA

KTNE (13)  
Alliance, Nebraska  
KMNE (7)  
Bassett, Nebraska  
KMNE (29)  
Hastings, Nebraska  
KLNE (3)  
Lexington, Nebraska  
KRNE (12)  
Merriman, Nebraska  
KXNE (19)  
Norfolk, Nebraska  
KPNE (9)  
North Platte, Nebraska  
KYNE (26)  
Omaha, Nebraska  
Nebraska Educational  
Television Commission

KUON (12)

Lincoln, Nebraska  
University of Nebraska

NEVADA

KLVX (10)  
Las Vegas, Nevada  
Clark County School District

NEW HAMPSHIRE

WEDB (40)  
Berlin, New Hampshire  
WENH (11)  
Durham, New Hampshire  
WHD (15)  
Hanover, New Hampshire  
WEXW (52)  
Keene, New Hampshire  
WLED (49)  
Littleton, New Hampshire  
University of New Hampshire

NEW JERSEY

WNJS (23)  
Camden, New Jersey  
WNJM (50)  
Montclair, New Jersey  
WNJB (58)  
New Brunswick, New Jersey  
WNJT (52)  
Trenton, New Jersey  
New Jersey Public Broadcasting  
Authority

NEW MEXICO

KME (5)  
Albuquerque, New Mexico  
University of New Mexico  
and Board of Education  
Albuquerque Public Schools  
KRWG (22)\*  
Las Cruces, New Mexico  
Board of Regents  
New Mexico State University

NEW YORK

WSKG (46)  
Binghamton, New York  
Southern Tier Educational  
Television Association,  
Inc.  
WNYE (25)  
New York, New York  
Board of Education of the  
City of New York  
WNED (17)  
Buffalo, New York  
Western New York Educational  
Television Association, Inc.  
WLIW (21)  
Garden City, New York  
Long Island Educational  
Television Council, Inc.  
WNET (13)  
New York, New York  
Educational Broadcasting  
Corporation  
WNYC (31)  
New York, New York  
City of New York  
Municipal Broadcasting System  
WXXI (21)  
Rochester, New York  
Rochester Area Educational  
Television Association, Inc.

WMHT (17)

Schenectady, New York  
Mohawk-Hudson Council on  
Educational Television,  
Inc.

WCNY (24)

Syracuse, New York  
The Educational Television  
Council of Central New  
York, Inc.

WNPI (18)

Norwood, New York  
WNPE (16)  
Watertown, New York  
St. Lawrence Valley  
Educational Television  
Council, Inc.

NORTH CAROLINA

WUNC (4)  
Chapel Hill, North Carolina  
WUND (2)  
Columbia, North Carolina  
WUNE (17)  
Linville, North Carolina  
WUNF (33)  
Asheville, North Carolina  
WUNG (58)  
Concord, North Carolina  
WUNJ (39)  
Wilmington, North Carolina  
WUNK (25)  
Greenville, North Carolina  
WUNL (26)  
Winston-Salem, North  
Carolina  
University of North Carolina  
WTVI (42)  
Charlotte, North Carolina  
Charlotte-Mecklenburg  
Board of Education

NORTH DAKOTA

KFME (13)  
Fargo, North Dakota  
North Central Educational  
Television, Inc.

OHIO

WNEO (45)\*  
Alliance, Ohio  
WOET (16)  
Dayton, Ohio  
Ohio Educational  
Television Network  
Commission  
WOUB (20)  
Athens, Ohio  
Ohio University  
WBGU (57)  
Bowling Green, Ohio  
Bowling Green State  
University  
WOUC (44)  
Cambridge, Ohio  
Ohio University  
WCET (48)  
Cincinnati, Ohio  
Greater Cincinnati  
Television Educational  
Foundation  
WVIZ (28)  
Cleveland, Ohio  
The Educational Television  
Association of  
Metropolitan Cleveland  
WOSU (34)  
Columbus, Ohio  
The Ohio State University  
WGSF (31)  
Newark, Ohio  
Newark Public School  
District  
WMUB (14)  
Oxford, Ohio  
President and Trustees  
of the Miami University

WPBO (42)  
Portsmouth, Ohio  
The Ohio State University

WGTE (30)  
Greater Toledo  
Educational Television  
Foundation, Inc.

#### OKLAHOMA

KETA (13)  
Oklahoma City, Oklahoma  
KOEO (11)  
Tulsa, Oklahoma  
The Oklahoma Educational  
Television Authority

KOKH (25)  
Oklahoma City, Oklahoma  
Independent School District  
#89 of Oklahoma County

#### OREGON

KOAC (7)  
Corvallis, Oregon  
KOAP (10)  
Portland, Oregon  
Oregon State Board of  
Higher Education

#### PENNSYLVANIA

WLVT (39)  
Allentown, Pennsylvania  
Lehigh Valley Educational  
Television Corporation

WQLN (54)  
Erie, Pennsylvania  
Public Broadcasting of  
Northwest Pennsylvania, Inc.

WITF (33)  
Hershey, Pennsylvania  
South Central Educational  
Broadcasting Council

WUHY (35)  
Philadelphia, Pennsylvania  
WHYY (12)  
Wilmington, Delaware  
WHYY, Inc.

WQED (13)  
Pittsburgh, Pennsylvania  
WQEX (16)  
Pittsburgh, Pennsylvania  
Metropolitan Pittsburgh  
Public Broadcasting, Inc.

WVIA (44)  
Scranton, Pennsylvania  
Northeastern Pennsylvania  
Educational Television  
Association

WPSX (3)  
Clearfield, Pennsylvania  
Pennsylvania State University

#### RHODE ISLAND

WSBE (36)  
Providence, Rhode Island  
Board of Regents for  
Education  
State of Rhode Island and  
Providence Plantation

#### SOUTH CAROLINA

WEBA (14)  
Allendale, South Carolina  
WITV (7)  
Charleston, South Carolina  
WRLK (35)  
Columbia, South Carolina  
WJPM (33)  
Florence, South Carolina  
WNTV (29)  
Greenville, South Carolina  
South Carolina Educational  
Television Commission

#### SOUTH DAKOTA

KESO (8)  
Brookings, South Dakota  
South Dakota State University

KDSD (16)  
Aberdeen, South Dakota  
KTSD (10)  
Pierre, South Dakota  
KBHE (9)  
Rapid City, South Dakota  
South Dakota Educational  
Television Board of  
Directors

KUSD (2)  
Vermillion, South Dakota  
University of South Dakota

#### TENNESSEE

WTCT (45) †  
Chattanooga, Tennessee  
WLJI (11)  
Lexington, Tennessee  
MSKJ (2)  
Knoxville-Sneedville,  
Tennessee  
Tennessee State Board of  
Education

WKNO (10)  
Memphis, Tennessee  
Memphis Community Television  
Foundation

WDCN (2)  
Nashville, Tennessee  
Metropolitan Board of  
Education

#### TEXAS

KLRN (9)  
Austin-San Antonio, Texas  
Southwest Texas Educational  
Television Council

KAMU (15)  
College Station, Texas  
Texas A&M University

KEDT (16) \*  
Corpus Christi, Texas  
South Texas Educational  
Broadcasting Council

KERA (13)  
Dallas, Texas  
Public Communication  
Foundation for North  
Texas

KUHT (8)  
Houston, Texas  
University of Houston

KNCT (46)  
Killeen, Texas  
Central Texas College

KTXT (5)  
Lubbock, Texas  
Texas Tech University

KIDZ (24)  
Wichita Falls, Texas

#### UTAH

KBYU (11)  
Provo, Utah  
Brigham Young University

KUED (7)  
Salt Lake City, Utah  
University of Utah

#### VERMONT

WETK (33)  
Burlington, Vermont  
WVER (28)  
Rutland, Vermont  
WVTB (20)  
St. Johnsbury, Vermont  
WVTA (41)  
Windsor, Vermont  
University of Vermont

#### VIRGINIA

WVMT (53)  
Goldvein, Virginia  
Northern Virginia  
Educational  
Television Association

WVPT (51)  
Harrisonburg, Virginia  
Shenandoah Valley  
Educational Television  
Corporation

WHRO (15)  
Norfolk, Virginia  
The Hampton Roads  
Educational Television  
Association, Inc.

WCVE (23)  
Richmond, Virginia  
WCVW (57)  
Richmond, Virginia  
Central Virginia  
Educational Television  
Corporation

WBRA (15)  
Roanoke, Virginia  
WSVN (47)  
Norton, Virginia  
Blue Ridge Educational  
Television Association  
Inc.

#### WASHINGTON

KPEC (56)  
Lakewood Center, Washington  
Clover Park School District 400  
Pierce County

KWSU (10)  
Pullman University  
Washington State University

KCTS (9)  
Seattle, Washington  
University of Washington

KSPS (7)  
Spokane, Washington  
School District #81

KTPS (62)  
Tacoma, Washington  
Tacoma School District #10

KYVE (47)  
Yakima, Washington  
Yakima School District #7

#### WEST VIRGINIA

WSWP (9)<sup>†</sup>  
Grandview, West Virginia  
WMUL (33)  
Huntington, West Virginia  
West Virginia Educational  
Broadcasting Authority

WVU (24)  
Morgantown, West Virginia  
West Virginia Educational  
Broadcasting Authority

#### WISCONSIN

WHWC (28)  
Colfax, Wisconsin  
Educational Communications  
Board

WPNE (38)  
Green Bay, Wisconsin  
Educational Communications Board  
Board

WHLA (31)  
La Crosse, Wisconsin  
Educational Communications  
Board

WHA (21)  
Madison, Wisconsin  
University of Wisconsin

WMVS (10)  
Milwaukee, Wisconsin  
WMVT (36)  
Milwaukee, Wisconsin  
District #9 Area Board of  
Vocational, Technical,  
and Adult Education

#### PUERTO RICO

WIPR (6)  
San Juan, Puerto Rico  
WIPM (3)  
Mayaguez, Puerto Rico  
Department of Education

#### VIRGIN ISLANDS

WTJX (12)\*  
St. Thomas, Virgin Islands  
Virgin Islands Public  
Television System

#### AMERICAN SAMOA

KVZK (2)  
Pago Pago, American Samoa  
Department of Education  
Government of American Samoa

#### GUAM

KGTF (12)  
Agana, Guam  
Guam Educational Tele-  
communications Commission

