

DOCUMENT RESUME

ED 133 207

SE 021 869

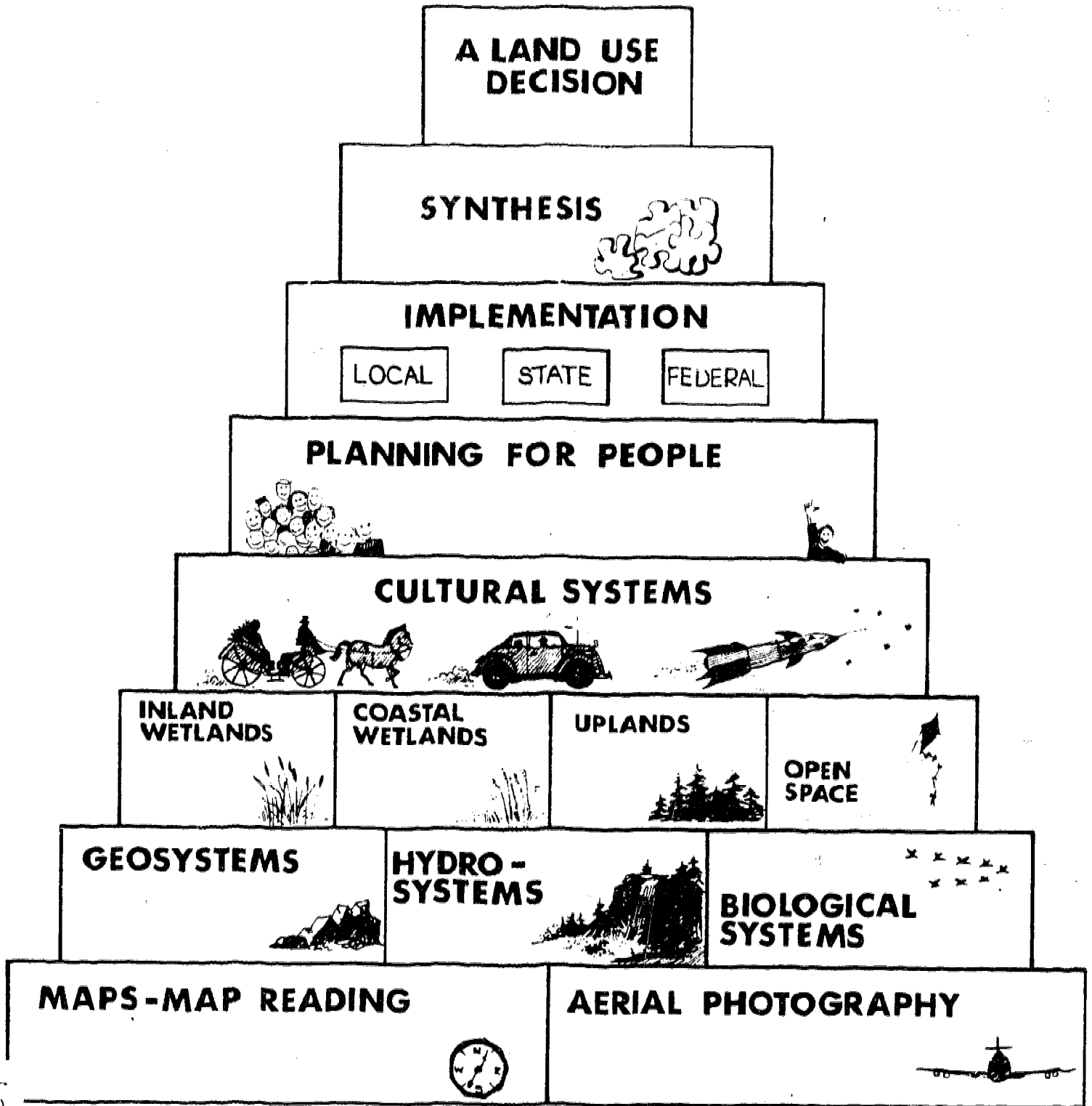
AUTHOR Schaefer, Larry, Ed.
 TITLE A Citizen's Guide to Information on Land Use Decision Making.
 INSTITUTION Area Cooperative Educational Services, New Haven, Conn. Environmental Education Center.
 SPONS AGENCY Office of Education (DHEW), Washington, D.C. Office of Environmental Education.
 PUB DATE [75]
 NOTE 42p.; For related documents, see SE 021 868-882; Not available in hard copy due to marginal legibility of original document
 AVAILABLE FROM E-P Education Services, c/o ACES, 800 Dixwell Avenue, New Haven, CT 06511 (no price quoted)
 EDRS PRICE MF-\$0.83 Plus Postage. HC Not Available from EDRS.
 DESCRIPTORS *Community Planning; *Environment; Environmental Education; Higher Education; *Instructional Materials; *Land Use; Resource Materials; Secondary Education; *Units of Study (Subject Fields)

ABSTRACT

These materials are designed to provide a compact listing of sources of information as well as a collection of tested formats for collecting resource information for a town or city. It provides supplementary materials for the Land Use Decision Making Kit. Among materials included are listings of federal agencies involved in water and land use programs, a town level checklist/questionnaire designed to assemble data needed for evaluation of land use plans, a census data form, and a community survey form to determine the desires and the attitudes of the community. The program is designed to be used with secondary school students, college students, and interested citizens. (RH)

 * Documents acquired by ERIC include many informal unpublished *
 * materials not available from other sources. ERIC makes every effort *
 * to obtain the best copy available. Nevertheless, items of marginal *
 * reproducibility are often encountered and this affects the quality *
 * of the microfiche and hardcopy reproductions ERIC makes available *
 * via the ERIC Document Reproduction Service (EDRS). EDRS is not *
 * responsible for the quality of the original document. Reproductions *
 * supplied by EDRS are the best that can be made from the original. *

A CITIZEN'S GUIDE TO INFORMATION ON LAND USE DECISION MAKING



A CITIZEN'S GUIDE TO INFORMATION ON LAND USE DECISION MAKING

The citizen's guide is designed as a compact listing of sources of information as well as a collection of tested formats for collecting resource information on your town.

Below is an annotated list of the contents of the citizen's guide.

Page #

- 1. A listing of Federal Agencies Involved in Water and Land Use Programs. A complete listing of federal agencies that have a direct or indirect role in land use decisions. Their involvement is characterized by direct roles (research, planning preparation, construction, operation maintenance), indirect roles (advice and counseling on research, planning, etc.), or financial assistance (grants, loans, advances, bonds). 1
- 2A. State of Connecticut Agencies Involved in Water and Land Use Planning. A listing of agencies and a description of the roles they play. 4
- 2B. i. Regional Agencies Exercising Control over Land and Water Use Decisions. 5
 ii. Local Bodies Exercising Control over Land and Water Use Decisions.
- 3. A Directory of Region I (New England) EPA Offices. 6
- 4. A Flow Chart of the Organization of the Connecticut Department of Environmental Protection. 7
- 5. A Directory of Public and Private Agencies Involved in Land Use. 8
 - a) Regional Offices of the Department of Environmental Protection
 - b) Soil Conservation Service District Offices
 - c) Regional Planning Agencies
 - d) County Extension Agents
 - e) National Non-governmental Organizations
 - f) Connecticut Non-governmental Organizations
- 6. Summary of Natural Resource Data for the Town of Glastonbury - this is a sample form that is available for each town in Connecticut from the Natural Resource Center, Department of Environmental Protection, State Office Building, Hartford, Conn. 06115 (phone 566-3540). The summary sheet contains a listing of the sources of topographic, geologic, soils, hydro-logic and natural areas data that is available for a town. 10
- 7. TOWN LEVEL CHECKLIST/QUESTIONNAIRE - this checklist/questionnaire has been designed to assemble data needed for evaluation of consistency in plans for land use and merits of proposed specific land uses by towns. The sources of all data needed in each section is provided near questions. Highly recommended. 13
- 8. 1970 Census Data for A Town or City - A chart that helps a decision maker collect information on the population of their community. Located in Planning for People Unit, guide sheet # 18, Part V.
- 9. COMMUNITY SURVEY - A sample survey that can assist decision makers in determining the desires and attitudes of their community. Located in Planning for People Unit, guide sheet # 19.

Edited by:
Larry Schaefer

The project presented herein was performed pursuant to a grant from the U.S. Office of Education, Department of Health, Education and Welfare. However, the opinions expressed herein do not necessarily reflect the position or policy of the U.S. Office of Education, and no official endorsement by the U.S. Office of Education should be inferred.

We acknowledge the generosity and support of J. Pershman & Co.
Paper Recyclers
50 Bow Street
New Haven, CT 06511



Federal Agencies Involved in Water and Land Use Programs

I. Department of Agriculture

- A. Agricultural Research Service
 - * 1. Hydrological and Geological Research
- B. Agricultural Stabilization and Conservation Service
 - + 1. Irrigation, Drainage and Land Management p
 - + 2. Water Pollution Control and Wastewater Disposal p
 - + 3. Forestry p
 - + 4. Fish and Wildlife Conservation p
- C. Economic Research Service
 - * 1. Economic and Statistical Research
- D. Farmers Home Administration
 - + 1. Water Supply p/d/a/b
 - + 2. Flood Control d/a
 - + 3. Irrigation, Drainage and Land Management d/a/b
 - + 4. Water Pollution Control and Wastewater Disposal p/d/a/b
 - + 5. Forestry d/a/b
 - + 6. Recreation d/a/b
 - + 7. Water-borne Transportation d/a
- E. Federal Extension Service
 - *+ 1. Irrigation, Drainage and Land Management p
 - *+ 2. Forestry p
 - *+ 3. Recreation p

- F. Forest Service
 - o*+ 1. Flood Control p
 - o*+ 2. Irrigation, Drainage and Land Management p
 - o*+ 3. Forestry p
 - 4. Fish and Wildlife Conservation
- G. Soil Conservation Service
 - o* 1. Water Supply a
 - o*+ 2. Flood Control p
 - o*+ 3. Irrigation, Drainage and Land Management p
 - o*+ 4. Recreation p
 - o*+ 5. Fish and Wildlife Conservation p

II. Department of Commerce

- A. Economic Development Administration
 - + 1. Water Supply p/d/a
 - + 2. Flood Control p/d/a
 - + 3. Water Pollution Control and Wastewater Disposal p/d/a
 - + 4. Water-borne Transportation p/d/a
- B. National Oceanic and Atmospheric Administration
 - o*+ 1. Fish and Wildlife Conservation p
 - o*+ 2. Hydrological and Geological Research
 - o*+ 3. Marine Sciences p
 - o* 4. Mining and Mine Water Disposal
 - o* 5. Weather and Atmospheric Research
- C. Office of Business Economics
 - o* 1. Economic and Statistical Research
- D. Office of Regional Economic Development
 - * 1. Economic and Statistical Research

III. Department of Defense

- A. Department of the Army, Corps of Engineers
 - o* 1. Water Supply
 - o* 2. Flood Control
 - o* 3. Navigation
 - o* 4. Irrigation, Drainage and Land Management
 - o* 5. Recreation
 - o* 6. Fish and Wildlife Conservation
 - o* 7. Hydroelectric Power
 - o* 8. Hydrological and Geological Research

Key

o Direct role (research, planning preparation, construction, operation maintenance)

* Indirect role (advice and counseling in research, planning, engineering of technical fields, use of federal facilities)

+ Financial assistance (grants, loans, advances, underwriting of bond issues)

For agency programs with a financing component:

p project or formula grants d direct loans

a advances b guarantee of bond issue or loans

B. Department of the Navy, Office of Naval Research

- o 1. Hydrological and Geological Research

IV. Department of Housing and Urban Renewal

- + 1. Water Supply
+ 2. Water Pollution Control and Wastewater Disposal

p/d/a/b

p/d/a/b

V. Department of the Interior

A. Bureau of Mines

- o*+ 1. Water Pollution Control and Wastewater Disposal
o*+ 2. Mining and Mine Water Disposal

p

B. Bureau of Outdoor Recreation

- o*+ 1. Recreation

p

C. Fish and Wildlife service

- o*+ 1. Recreation
o*+ 2. Fish and Wildlife Conservation
o*+ 3. Economic and Statistical Research

p

p/d/a

D. Geological Survey

- o* 1. Hydrological and Geological Research

E. National Park Service

- o* 1. Irrigation, Drainage and Land Management
o* 2. Recreation
o* 3. Fish and Wildlife Conservation

F. Office of Water Research and Technology

- + 1. Hydrological and Environmental Quality Research

p

VI. Department of Justice

Office of Attorney General [protection against violation of federal laws]

VII. Department of Transportation

A. Coast Guard

- o* 1. Navigation
o* 2. Water Pollution Control and Wastewater Disposal
o* 3. Water-borne Transportation
o* 4. Marine Sciences

B. Federal Highway Administration

- + 1. Irrigation, Drainage and Land Management

p

VIII. Executive Office of the President

A. Atomic Energy Commission

- o*+ 1. Water Pollution Control and Wastewater Disposal

p

B. Environmental Protection Agency

- o*+ 1. Water Supply
o*+ 2. Water Pollution Control and Wastewater Disposal
o* 3. Water-borne Transportation

p

p

C. Council on Environmental Quality

- o 1. Irrigation, Drainage and Land Management
o 2. Water Pollution Control and Wastewater Disposal
o 3. Forestry
o 4. Fish and Wildlife Conservation
o 5. Water-borne Transportation
o 6. Marine Sciences

D. Office of Emergency Preparedness

- o 1. water Supply
o 2. Irrigation, Drainage and Land Management

E. Federal Power Commission

- o 1. Hydroelectric Power
o 2. Economic and Statistical Research

F. Interstate Commerce Commission

- o 1. Water-borne Transportation
- o 2. Economic and Statistical Research

G. National Science Foundation

- *+ 1. Water Pollution Control and Wastewater Disposal P
- *+ 2. Hydrological and Geological Research P
- *+ 3. Weather and Atmospheric Research P
- *+ 4. Economic and Statistical Research P

H. Water Resources Council

- o+ 1. Water Supply P
- o+ 2. Flood Control P
- o+ 3. Navigation P
- o+ 4. Irrigation, Drainage and Land Management P
- o+ 5. Water Pollution Control and Wastewater Disposal P
- o+ 6. Forestry P
- o+ 7. Recreation P
- o+ 8. Fish and Wildlife Conservation P
- o+ 9. Water-borne Transportation P
- o+ 10. Hydroelectric Power P
- o+ 11. Hydrological and Geological Research P
- o+ 12. Mining and Mine Water Disposal P

I. Department of Community Affairs

- 1. Grants to Municipalities for Harbor Improvement
- 2. Grants to Local Housing Development Corporations
- 3. Grants for Housing Site Development
- 4. Grants for Demolishing Unsound Structures

II. Office of State Planning

- 1. Regional Planning Grants for Water and Sewer

III. Connecticut Well Drilling Board

- 1. Issuance of Permits for Wells

IV. Industrial Building Commission

- 1. Pollution Abatement Grants
- 2. Loan Insurance

V. Department of Environmental Protection

Preservation and Conservation Division

- 1. Flood Control Studies
- 2. Regulation of State Controlled Shellfish Grounds
- 3. Assistance to Towns for Open Space Acquisition
- 4. Supervision and Promotion of Boating
- 5. Long-range Water Resources Planning
- 6. Supervision of Water Resources Utilization
- 7. Regulation of Dredging and Construction in Connecticut Waters
- 8. Inventory and Regulation of Tidal Wetlands
- 9. Shore Erosion and Control

Division of Environmental Quality

- 1. Grants for Separation of Storm and Sanitary Sewers
- 2. Grants for Municipal Pollution Abatement Facilities
- 3. Establishing and Enforcing Water Pollution Standards
- 4. Enforcement of Air Quality
- 5. Evaluation of Pollution Contamination in Shellfish Grounds
- 6. Grants and Equipment for Solid Waste Disposal Plants
- 7. Enforcement and Control of Solid Waste Disposal

VI. Connecticut Development Commission

- 1. Development of Marine Commerce Industry

VII. Department of Health

- 1. Control of Water-borne Diseases
- 2. Regulation of Sub-surface Sewage Disposal

Regional Agencies Exercising Control
over Land and Water Use Decisions

Interstate

New England Regional Commission

New England River Basins Commission

Interstate Sanitation Commission

New England Interstate Water Pollution Control
Compact Commission

Atlantic States Marine Fisheries Commission

Connecticut Interstate Water Compact

Tri State Planning Commission

Intrastate

Regional Planning Agencies (6)

Southeastern Connecticut

Connecticut River Estuary

South Central Connecticut

Greater Bridgeport

Valley

Southwestern Connecticut

Local Bodies Exercising Control
over Land and Water Use Decisions

Planning Boards

Zoning Boards

Appeals Boards

Conservation Commissions

Licensing Boards

Building Departments

Sewer Boards

Police Departments

Boards of Health

Public Works Departments

ENVIRONMENTAL IMPACT OFFICE

Director: Wallace Stickney
Room 2203, John F. Kennedy Federal Building
Boston, Ma. 02203
(617) 223-4635

The Environmental Impact Office:

- *Prepares environmental impact statements for proposed EPA actions as required by the National Environmental Policy Act (NEPA).
- *Reviews statements prepared by other agencies and comments on environmental areas (air, water, noise, solid waste, pesticides, and radiation) that fall within its area of expertise and advises agencies on alternatives which may avoid significant adverse environmental impacts.

REGIONAL ADMINISTRATOR: John A. S. McLennon
Deputy Regional Administrator: Kenneth L. Johnson
Room 2203, John F. Kennedy Federal Building
Boston, Ma. 02203
(617) 223-7210

The Regional Administrator and the Deputy Regional Administrator are the official spokesmen for EPA in the New England Region. They are responsible for interpreting national program goals and seeing that national programs are carried out, taking into account the unique environmental characteristics of the Region.

AIR AND HAZARDOUS MATERIALS DIVISION

Director: Merrill S. Hohman
Room 2113, John F. Kennedy Federal Building
Boston, Ma. 02203
(617) 223-5186

The Air and Hazardous Materials Division coordinates and conducts regional programs for control of air pollution, pesticides regulation, solid and hazardous wastes, noise, and radiation. Specific activities include:

- *Awards annual support grants to states for air pollution control activities.
- *Provides technical assistance in development of state pesticide plans, including certification of applicators.
- *Provides technical assistance to state air pollution control agencies in activities to prevent and abate air pollution.
- *Monitors compliance with the Federal Insecticide, Fungicide, and Rodenticide Act (FIFRA), including producer-distributor registration, port of entry inspections, and registered use violations.
- *Advises on environmental radiation problems.
- *Collects data for use in developing national noise standards.
- *Provides technical assistance on solid waste and hazardous materials disposal.
- *Awards annual state program support grants and demonstration grants for new technology in solid waste management.

OFFICE OF THE REGIONAL COUNSEL

Regional Counsel: Robert C. Thompson
Room 2203, John F. Kennedy Federal Building
Boston, Ma. 02203
(617) 223-5752

The Regional Counsel:

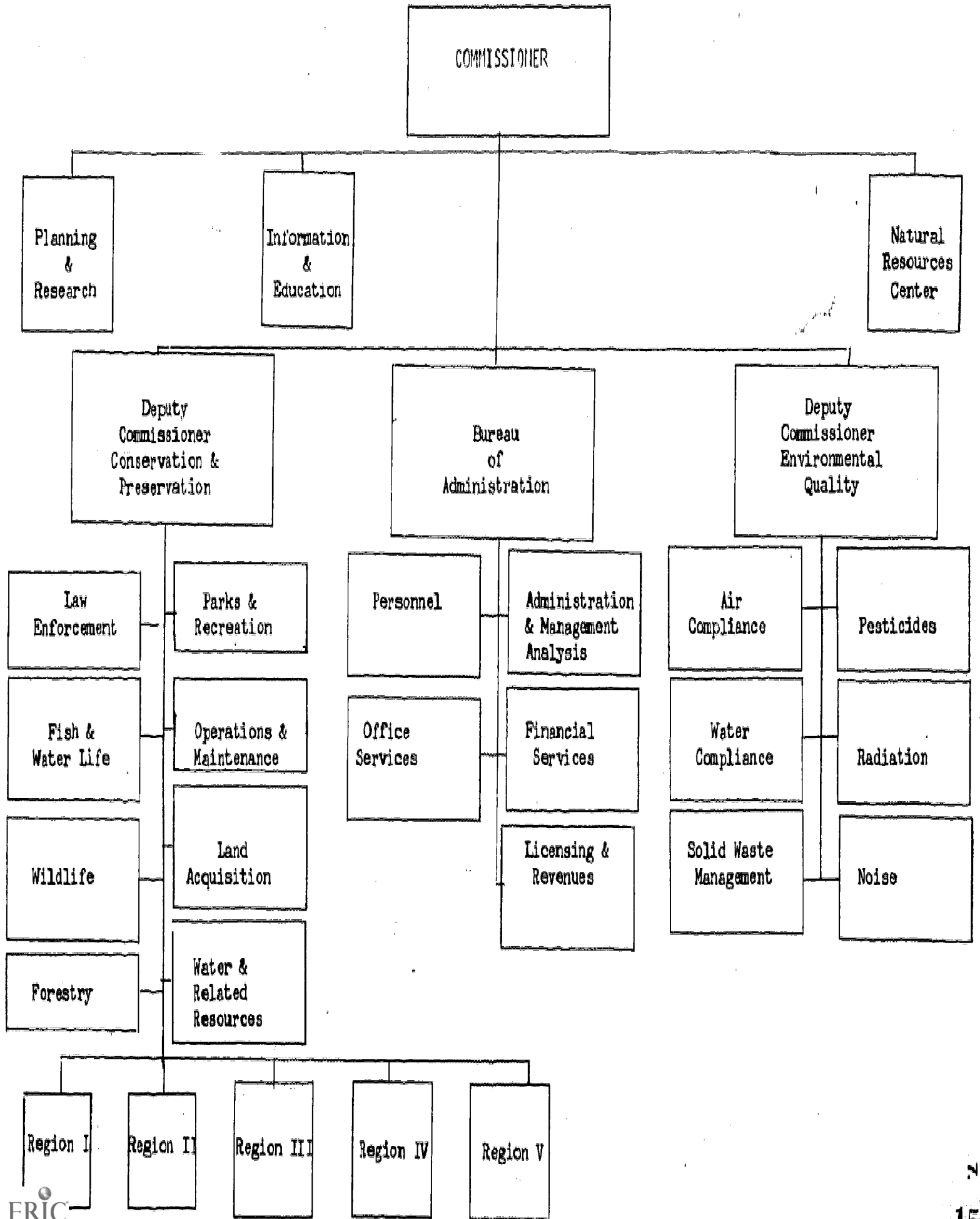
- *Provides legal services to the Regional Administrator, and office and program directors.
- *Provides policy guidance in the development and implementation of regional programs.
- *Advises New England states on assuming authority for environmental programs mandated by federal law.
- *Assists in development and implementation of state programs authorized by federal law.
- *Reviews construction grants and handles bid complaints.
- *Provides guidance to EPA employees on the application of conflict of interest and other statutes governing their conduct.

WATER PROGRAMS DIVISION

Director: Lester A. Sutton
Room 2313, John F. Kennedy Federal Building
Boston, Ma. 02203

The Water Programs Division has three branches dealing with water quality, municipal facilities, and drinking water supplies. Specific activities include:

- *Awards annual support grants to state and interstate agencies for water pollution control activities.
- *Assists in development and review of statewide continuing planning process, basin plans, and areawide waste treatment management plans.
- *Administers Construction Grants Program, which authorizes grants to local communities of federal funds to cover 75 percent of the eligible costs for needed sewage treatment facilities.
- *Inspects federally-aided municipal facilities and advises on correct operation and maintenance.
- *Issues municipal discharge permits under NPDES.
- *Administers federal responsibilities under the Safe Drinking Water Act, including giving technical assistance and financial aid to states for development and implementation of effective state programs.
- *Provides technical assistance, surveillance, and evaluation for pollution controls at federal installation.



5 DEPARTMENT OF ENVIRONMENTAL PROTECTION REGIONS

8.

REGION 1

Mr. Anthony Cantele
P. O. Box 161
Pleasant Valley, CT 06063
370-2530

REGION 3

Mr. John Spencer
Rt #2, Box 150A
East Hampton, CT 06424
295-9523

REGION 5

Mr. Robert Jones
P. O. Box 89
Waterford, CT 06385
443-0166

REGION 2

Mr. Martin Charafski
Judd Hill Road
Middlebury, CT 06762
759-1753

REGION 4

Mr. John Olsen
RFD #1
Voluntown, CT 06384
376-2513

DISTRICT CONSERVATIONISTS AND SOIL AND WATER CONSERVATION DISTRICTS

FAIRFIELD COUNTY

Mr. David Thomson
Route 6, Stony Hill
Bethel, CT 06901
743-5453

MIDDLESEX COUNTY

Mr. Barry Cavanna
Middlesex Agric. Center
Haddam, CT 06438
345-4511

TOLLAND COUNTY

Mr. Donald Summers
Tolland County Agric. Center
Rockville, CT
875-3881

HARTFORD COUNTY

Mr. Laverne S. Anderson
Route 5, So. Main Street
Warehouse Pt., CT
523-0607

NEW HAVEN COUNTY

Mr. Frank Indorf
New Haven Agric. Center
Wallingford, CT
269-7509

WINDHAM COUNTY

Mr. Albion Weeks
Windham Agric. Center
Brooklyn, CT
774-0224

LITCHFIELD COUNTY

Mr. Arthur B. Cross
Litchfield Agric. Center
Litchfield, CT 06759
567-8288

NEW LONDON COUNTY

Mr. C. Sherman Chase
562 New London Turnpike
Norwich, CT 06360
887-4163

REGIONAL PLANNING AGENCIES IN CONNECTICUT

CAPITOL REGION COUNCIL OF GOVERNMENTS
79 Elm Street
Hartford, CT 06106
522-2217

MIDSTATE REGIONAL PLANNING AGENCY
209 Court Street
Middletown, CT 06457
347-7214 or 347-7215

CENTRAL CONN. REGIONAL PLANNING AGENCY
30 Bank Street, Third Floor
New Britain, CT 06051
224-2695

NORTHEASTERN CONN. REGIONAL PLANNING AGENCY
P. O. Box 198
Brooklyn, CT 06234
774-1253

CENTRAL NAUGATUCK VALLEY REGIONAL
PLANNING AGENCY
Essex Square Theatre Building
Essex, CT 06426
767-9494

REGIONAL PLANNING AGENCY OF SOUTH
CENTRAL CONNECTICUT
96 Grove Street
New Haven, CT 06510
777-4795 or 777-4796

GREATER BRIDGEPORT REGIONAL PLANNING
AGENCY
202 Professional Building
White Plains Road
Trumbull, CT 06611
268-0014

SOUTHEASTERN CONNECTICUT REGIONAL
PLANNING AGENCY
139 Boswell Avenue
Norwich, CT 06360
889-2324

HOUSATONIC VALLEY COUNCIL OF
ELECTED OFFICIALS
256 Main Street
Danbury, CT 06810
748-1471

SOUTHWESTERN REGIONAL PLANNING
AGENCY
137 Rowayton Avenue, Second Floor
Rowayton, CT 06853
866-5543

LITCHFIELD HILLS REG. PLANNING AGENCY
40 Main Street
Torrington, CT 06790
482-5575

VALLEY REGIONAL PLANNING AGENCY
366 Main Street
Ansonia, CT 06401
735-8689

NORTHWESTERN CONN. REGIONAL PLANNING
AGENCY
Sackett Hill Road
Warren, CT 06754
868-7341

WINDHAM REGIONAL PLANNING AGENCY
33 Church Street
Williamantic, CT 06226
423-8661 or 423-0511

COUNTY EXTENSION AGENTS

9.

FAIRFIELD COUNTY

Mr. Howard Kemmerer
Route 6, Stony Hill
Bethel, CT 06801
748-3523

MIDDLESEX COUNTY

Mr. Lloyd D. Wilhelm
Middlesex Agric. Center
Haddam, CT 06438
345-4511

TOLLAND COUNTY

Mrs. Carmen Burrows
24 Hyde Ave., Rte. 30
Pockville, CT 06966
975-3331

HARTFORD COUNTY

Mr. Fred Nelson
1230 Asylum Avenue
Carriage House
Hartford, CT 06105
235-6151

NEW HAVEN COUNTY

Mr. Charles Derby
322 North Main Street
Wallingford, CT 06492
269-7788

WINDHAM COUNTY

Mr. Donald Francis
Windham Agric. Center
Brooklyn, CT 06234
774-9601

LITCHFIELD COUNTY

Mr. John Nye
Litchfield Agric. Center
Litchfield, CT 06759
569-9447

NEW LONDON COUNTY

Mr. Russell Hibbard
562 New London Turnpike
Norwich, CT 06360
987-1609

NATIONAL NON-GOVERNMENTAL ORGANIZATIONS

APPALACHIAN MOUNTAIN CLUB
5 Joy Street
Boston, MA 02108
Exec. Dir.: C. F. Belcher

NATURAL RESOURCES DEFENSE COUNCIL, INC.
15 West 44th Street
New York, NY 10036
Exec. Dir.: John H. Adams

ENVIRONMENTAL DEFENSE FUND, INC.
162 Old Town Road
East Setauket, NY 11733
Exec. Dir.: Roderick A. Cameron

THE NATURE CONSERVANCY
Suite 800
1800 North Kent Street
Arlington, VA 22209
Pres.: Patrick F. Noonan

NATIONAL WILDLIFE FEDERATION
1412 16th Street, N.W.
Washington, DC 20036
Pres.: N. A. Winter, Jr.

NATIONAL AUDUBON SOCIETY
950 Third Avenue
New York, NY 10022
Pres.: Elvis J. Stahr

SIERRA CLUB
1050 Mills Tower
San Francisco, CA 94104
Pres.: Laurence I. Moss

ZERO POPULATION GROWTH, INC.
1346 Connecticut Avenue, N.W.
Washington, DC 20036

CONNECTICUT NON-GOVERNMENTAL ORGANIZATIONS

CONNECTICUT WILDLIFE FEDERATION
438 Main Street
P. O. Box 7
Middletown, CT 06457

THE NATURE CONSERVANCY
CONNECTICUT CHAPTER
Science Tower, P.O. Box MMM
Wesleyan Station
Middletown, CT 06456

CONNECTICUT AUDUBON SOCIETY
2325 Burr Street
Fairfield, CT 06430
Dir.: Marshal T. Case

E-P (ENVIRONMENTAL-POPULATION)
EDUCATION SERVICES, INC.
21 Merritt Street
Hamden, CT 06511

SIERRA CLUB
C/O ENVIRONMENTAL SERVICE CENTER
60 Washington Street
Hartford, CT 06106

CONNECTICUT CONSERVATION
ASSOCIATION
Northrop Street
Bridgewater, CT 06752
Dir.: Robert F. Kunz

LEAGUE OF WOMEN VOTERS OF CONNECTICUT
60 Connolly Parkway
Hamden, CT 06514
Env. Quality Dir.: Bettejane Karnes

WILDLIFE MANAGEMENT INSTITUTE
200 Audubon Lane
Fairfield, CT 06430
Field Rep.: Philip Barske

CONNECTICUT FOREST AND
PARK ASSOCIATION, INC.
P. O. Box 389
1010 Main Street
East Hartford, CT 06100
Secretary-Forester:
John E. Hibbard

NATURAL RESOURCES COUNCIL
OF CONNECTICUT, INC.
P. O. Box 352
West Haven, CT 06516

ZERO POPULATION GROWTH
CONNECTICUT CHAPTER
21 Merritt Street
Hamden, CT 06511

FOR THE TOWN OF GLASTONBURY

This is a summary of the available data and Natural Resource information for your town. The Natural Resources Center, Department of Environmental Protection, is charged with providing a centralized source for natural resources data, information, and expertise to help the towns in their land use planning and decisions. This summary is intended to keep your town abreast of the various types of natural resources data that are available, and to identify agencies which are responsible for or have expertise concerning the data. Inquiries concerning additions, changes, and corrections of information on these summaries should be sent to the Natural Resource Center, Department of Environmental Protection, State Office Building, Hartford, Connecticut 06115. (Phone 566-3540)

I. Topographic and Geologic Information

- A. The Quadrangle Name(s) refer to the 1:24,000 scale U.S. Geological Survey 7½ minute quadrangle map (area bounded by 7½ minutes of latitude and longitude equalling approximately 55 square miles). Topographic maps display, on a plane surface, planimetric features (roads, rivers, towns, and other political boundaries) and elevation contour lines above mean sea level at 10 foot intervals. Topographic maps serve as excellent bases on which to plot various kinds of natural resources data. Because quadrangle maps depict areas within boundaries of longitude and latitude, rather than political boundaries, more than one quadrangle may be required to cover the area within a town. In the tabulation below, the column entitled Quadrangle Name lists the quadrangles needed to cover your town.
- B. The Approx. % of Area column shows roughly the percentage of your town that falls in each of the listed quadrangles.
- C. The Latest Revision column identifies the data of the latest topographic edition that is available. The letters PR following the date, if present, indicate the edition is a photo-revision of the previous complete or standard map.
- D. Geologic Maps are produced using a topographic base and basically fall into two categories, the Surficial map and the Bedrock map. The Surficial Geology map describes the nature and distribution of the surficial deposits or overburden that lie between the bedrock and the land's surface. The Bedrock Geology map describes the nature and distribution of the solid rock that underlies all areas. The number and letter designation in the surficial and bedrock columns identify the published geologic maps. If the number and letter designation falls between the two columns, it indicates one map includes both surficial and bedrock geology.
- E. Orthophotogquads are distortion-corrected black and white photos covering the aerial limits of the 7½ minute quadrangle, scale 1:24,000. Available in: photocopy continuous tone paper prints for \$3.25; diazo copies for \$0.75; stable base (mylar) continuous copy \$7.00; film positives or negatives, continuous tone or screened \$13.00. Order from Eastern Mapping Center, U.S.G.S. National Center, Stop 562, Reston, Va. 22092.

Topographic maps and geologic maps can be purchased at the State Library, Hartford (topographic maps \$0.75; geologic maps \$1.00). Connecticut Valley Urban Area Project maps are \$0.75. For distribution information, contact the Natural Resource Center.

<u>Quadrangle Name</u>	<u>Orthophoto Quads</u>	<u>Approx. % of area</u>	<u>Latest Revision</u>	<u>Surficial Geology</u>	<u>Bedrock Geology</u>
Glastonbury		80	72PR		QR 5
Marlborough	yes	19	72PR	open file	GQ-791
Hartford South		1	72PR	QR 20	

Other Topographic and Geologic Data Available:

Glastonbury: CVUAP Thickness of Principal Clay Unit, MF-561 A; Contour Map of the Bedrock Surface, MF-561 B; Natural Land Slopes, Contr. 110
 Marlborough: CVUAP Flood Prone Areas, Contr. 105; Unconsolidated Materials, MF-645 A
 Drainage Areas, MF-645 B

Hartford South: CVUAP Contour Map of Bedrock Surface, MF-487 A; Thickness of Principal Clay Unit, MF-487 B; Thickness of Material Overlying Principal Clay Unit, MF-487 C; Depth to Bedrock, MF-487 D

II. Soils Information

- A. Detailed Soils Maps display the aerial extent of the various soil units which are differentiated on the basis of their physical and chemical properties, as well as such landscape considerations as slope, drainage, stoniness, etc. With this map, generalized and specific interpretations can be made through the use of special keys for Natural Soil Groups, Agricultural Classes, Urban Groups, Percolation Rate Classes, Slope, etc. Certain keys may be obtained from the Natural Resource Center. To make the Detailed Soils map, the soil surveyor, in the field, identifies, names, and locates the various soils on a town basis and plots this information on aerial survey photographs. These photographs are published at a scale of 1:15,840 on a county basis (Hartford County was published at a scale of 1:20,000). Usually it requires many photographs to cover a particular town. To make a single map of a town's soils therefore requires the photographs to be mosaicked or fitted together to minimize overlap and distortion. The Soil Conservation Service produces mosaicked town detailed soils maps only when requested by individual towns.
- B. Stream Belt Maps inventory a broad range of land, water, and natural resources, and define their capabilities, limitations, and potentials for local planning purposes.
- C. General Soils Maps depict broad soil groups, based on the association or pattern of individual soil units to each other (scale - 1:24,000).

	Mapped	Published	Mosaicked
Detailed Soils	<u>yes</u>	<u>Hartford Co., 1958</u>	<u>yes</u>
General Soils	<u>yes</u>		
Streambelt	<u> </u>	<u> </u>	

For information please contact your Regional Planning Agency or District Conservationist. See item VII.

III. Hydrology Data

Since 1961 the U.S. Geological Survey has undertaken a series of river basin studies to determine the quantity and quality of water available at any location in the State. For these studies the State has been subdivided into 10 river basin areas. At the completion of each study the data, maps, and results are published in two separate Connecticut Water Resources Bulletins.

Hydrogeologic Data (Basic Data)

Water Resources Inventory of
Connecticut (Interpretative)

Upper Conn., CWR Bull. 25, 1971

Other Data

- "Gazetteer of Natural Drainage Areas of Streams and Water Bodies Within the State of Connecticut"
- Preliminary Drainage Area Maps (quadrangle base)
- Annually published "Water Resources Data for Connecticut"

For inquiries concerning these reports and other information, contact the Natural Resource Center or the U.S. Geological Survey, Water Resources Division, 235 Post Office Building, Box 715, Hartford, Connecticut 06101, phone 244-2528.

IV. Natural Areas

Listed areas were identified by the Connecticut Forest and Park Association, 1010 Main St., East Hartford, Conn. 06108, in a recent statewide survey to locate unique, unusual, or otherwise natural features. Both biological and physical were included. The number and name identify the area. Towns should review the list and notify the Forest and Park Association or the Natural Resource Center of additional Natural Areas that the town recognizes.

C270 Glastonbury Meadows

C422 Great Pond

C271 Salmon Brook Pitch Pine Stand

C280 Roaring Brook and Cotton Hollow

C421 Addison Bog

V. Other Resource Data

- A. Department of Environmental Protection, Water and Related Resources, Room 205, State Office Building, Hartford, Conn. 06115 (telephone 566-7220):
1. Inland Wetland Maps (by town). As applies to Public Act 155 (price \$.80)
 2. Tidal Wetland Maps (by unit). As applies to Public Act 695 (price \$.80)
 3. Stream Channel Encroachment lines
- B. Department of Environmental Protection, Natural Resources Center, Room 561, State Office Building, Hartford, Conn. 06115 (telephone 566-3540):
1. 1970 Aerial Photographs (scale 1:450). Available for viewing.
 2. 1975 " " (scale 1:1000) " " "
- C. Department of Finance and Control, Planning and Budget Division, 340 Capitol Ave., Hartford, Conn. 06115 (telephone 566-4057):
1. 1970 Land Use Inventory (scale 1:24,000, on a quadrangle base). A 58 category land use inventory map based on 1970 data, available through PBD (above) or Regional Planning Agency (see VII).
 2. 1970 Location of Existing Sanitary and Water Related Facilities, Services, and Uses (scale 1:48,000 on a quadrangle base). Map showing the location of sewer service areas, water service areas, water supply lands, storage sites, waste disposal sites, and other related information. Copies available from the Planning and Budget Division or copies are available for inspection at the Natural Resources Center.
 3. Plan of Conservation and Development: Executive Order No. 28.
- D. Department of Transportation, Bureau of Highways, Soils and Foundations:
1. Construction Aggregate Availability Studies (sand and gravel availability studies): These studies show on maps the preliminary estimates of the location and volumes of sand and gravel deposits in the State. Inquiries should be directed to the Natural Resources Center. Published by quadrangle at a scale of 1:24,000 for most of the state; 1:48,000 for the remainder.

VI. Biologic Data: Fish management areas, wildlife management areas, preserves, reports, etc. Collection of Connecticut biologic information for use in land planning and resource management was actively initiated by the Natural Resources Center with the hiring of a full time biologist in the fall of 1974. For the preliminary stages of this project particular stress is being placed on inventories of those species, associated habitats and their location within the State which are considered rare, endangered or otherwise unique. As this program progresses we hope vegetation/habitat maps on a quadrangle basis will be developed for the entire State.

VII. Regional Agencies Important to Your Town:

- A. University of Connecticut, Cooperative Extension Agent:

Mr. Fred Nelson
1280 Asylum Ave., Carriage House
Hartford, Conn. 06105 Phone: 236-6151

- B. Regional Planning Agency:

Mr. Dana Hanson
Capitol Region Council of Governments
79 Elm St., Hartford, Conn. 06106 Phone: 522-2217

- C. District Conservationists and Soil and Water Conservation Districts:

Mr. Vern Anderson
Route 5, South Main St.
Warehouse Point, Conn. 06088 Phone: 623-8607

- D. Department of Environmental Protection Regions:

Region 3
Mr. John Spencer
RR #2, Box 150A, East Hampton, Conn. 06424 Phone: 295-9523

7 Town Level Checklist/Questionnaire

This checklist/questionnaire has been formulated by Meta systems Inc. under contract with the Office of Water Resources Research, U.S. Department of the Interior. The contract, No. 14-31-0001-4211, is entitled "An Operational Framework for Coastal Zone Management Planning."

The attached checklist/questionnaire has been designed to assemble data needed for evaluation of consistency in plans for land use and the merits of proposed specific land uses by towns in the coastal zone. The major goal of the questionnaire is to develop a data base consistent for all towns in the coastal zone. To this end it is important that all questions be answered fully and in the units specified. The sources for all data in each section should be listed.

to be filled out by _____
 Department _____

Source and year of population estimates:
 The U.S. Dept. of Commerce, Bureau of Economic Analysis provides yearly revisions of population projections by counties for the years 1980, 1990, 2000, and 2010. The Connecticut Department of Finance and Control, Planning Division uses BEA techniques to disaggregate these estimates to the town level.

EMPLOYMENT

Total employment _____
 Employed town population (those living in Town) _____
 Unemployment rate _____

Employment by one digit SIC¹:

- 01: Agriculture, forestry, and fishing _____
- 10: Mining _____
- 15: Construction _____
- 20: Manufacturing _____
- 40: Transportation, communications, electric, gas, and sanitary services _____
- 50: Wholesale trade _____
- 52: Retail trade _____
- 60: Finance, insurance, and real estate _____
- 70: Services _____
- 90: Public administration _____

POPULATION

Present population (1974) _____
 1980 population estimate _____
 1990 population estimate _____
 2000 population estimate _____
 2010 population estimate _____

¹ For an explanation of the Standard Industrial Classification system, see The Standard Industrial Classification Manual, Office of Management and Budget, Washington, D.C., 1972.

Source and year of employment data: The Connecticut Department of Labor, Research and Information Division compiles town level data on total employment, employment in the various SIC categories, and unemployment. Data on employed town population (living in the town) are contained in the U.S. Census.

EMPLOYMENT (continued)

Manufacturing by two digit SIC:

- 20: Food and kindred products _____
- 21: Tobacco manufactures _____
- 22: Textile mill products _____
- 23: Apparel and other finished products made from fabrics and similar materials _____
- 24: Lumber and wood products except furniture _____
- 25: Furniture and fixtures _____
- 26: Paper and allied products _____
- 27: Printing, publishing, and allied industries _____
- 28: Chemicals and allied products _____
- 29: Petroleum refining and related industries _____
- 30: Rubber and miscellaneous plastics products _____
- 31: Leather and leather products _____
- 32: Stone, clay, glass, and concrete products _____
- 33: Primary metal industries _____
- 34: Fabricated metal products, except machinery and transportation equipment _____
- 35: Machinery, except electrical _____
- 36: Electrical and electronic machinery, equipment, and supplies _____

- 37: Transportation equipment _____
- 38: Measuring, analyzing, and controlling instruments; photographic, medical and optical goods; watches and clocks _____
- 39: Miscellaneous manufacturing industries _____

FISCAL

Tax rate _____

Equalized tax rate _____

Grand List _____

Total revenue from local sources:

Revenue from sales tax _____

Revenue from municipal charges:

Sewer _____

Water _____

Electric _____

Other (specify) _____

Revenue from inter-governmental transfers:

Education _____

Other (specify) _____

Total budget _____

Budget items:

General government _____

Public safety _____

Public works _____

Health _____

Public Welfare _____

1. (continued)

Items (continued):

Education _____

Libraries _____

Recreation _____

service: _____

General purpose _____

Schools _____

Sewers _____

Urban renewal _____

Total debt service _____

Principal credit rating _____

FISHING

Tons of catch:

Shellfish _____

Other fish _____

Source and year of fiscal data:

Local town budgets provide data on the items listed. The Connecticut Tax Department compiles comparative data for all towns in the state on grand lists, tax rates and equalization rates. This is published yearly in the document Information Relative to the Assessment and Collection of Taxes.

Source and year of fishing data:

The U.S. Dept. of Commerce, National Marine Fisheries Service, Statistical and Market News Division collects data on all fish landings. In published form the data are available only at the county level. However, the data are actually collected by town and an individual town might obtain town level figures by requesting a special tabulation.

The U.S. Army Corps of Engineers in its annual publication Waterborne Commerce of the United States lists fish landings (in the two categories "Shellfish" and "Other Fish") by point of landing. Town totals could be obtained by totaling all landing points within a town.

SHIPPING

Total tonnage:

Internal (river) (tons/year) _____

Coastwise (tons/year) _____

Foreign (tons/year) _____

Source and year of shipping data:

The U.S. Army Corps of Engineers' annual publication Waterborne Commerce of the United States provides these data by point of shipment and by point of landing. Town totals may be obtained by totaling the shipment and landing points within a town.

INSTITUTIONAL

Government employment (SIC 90: Public Administration) _____

Educational and medical employment (SIC's 80: Health Services, and 82: Educational Services) _____

Source and year of institutional data:

The U.S. Census of Population provides data on these types of employment but only by place of residence of the employee, not by place of work.

LAND USE

Total area _____

Total land acreage (total town area minus water areas) _____

Total water acreage _____

Residential acreage:

Total residential acreage _____

Total number of dwelling units _____

Number of seasonal dwelling units _____

Acreage zoned residential presently undeveloped _____

Density of residential dwelling units:

Density (units per acre)	Number of Acres
< .5 du/acre	
.5 - 1.0 du/acre	
1.0 - 2.0 du/acre	
2.0 - 8.0 du/acre	
> 8.0 du/acre	

Industrial acreage:

Light (SIC's 20, 21, 23, 25, 27, 30, 31, 34, 35, 36, 38, 39) _____

Heavy (SIC's 22, 24, 26, 28, 29, 32, 33, 37) _____

Acreage zoned light industrial presently undeveloped _____

Acreage zoned heavy industrial presently undeveloped _____

Institutional acreage (schools, hospitals, town buildings, etc.) _____

Agricultural acreage (active agricultural use) _____

LAND USE (continued)

Acreage zoned light industrial presently undeveloped _____

Acreage zoned heavy industrial presently undeveloped _____

Institutional acreage (schools, hospitals, town buildings, etc.) _____

Agricultural acreage (active agricultural use) _____

Reserved conservation acreage:

 Coastal wetlands _____

 Other wetlands _____

 Open lands _____

 Forest lands _____

Undeveloped and unused acreage _____

Other acreage (specify) _____

Source and year of acreage and dwelling unit density data:

The basic source of land use data is the 1970 Land Use Tabulations prepared by the Conn. Dept. of Transportation, Bureau of Planning and Research, and the Conn. Dept. of Finance and Control, Office of State Planning. Acreages for 58 types of land use are available on a whole town basis, and by census tracts, census block groups, and traffic zones within each town.

The basic source of housing data is the Census of Housing.

Miles of coast line (detailed miles) _____

Total miles _____

By type and ownership:

Number of Miles			
Ownership →	Private	Private with Public Access	Public
Type ↓			
Sandy beach			
Rocky beach			
Boulders/cliffs			
Wetlands			
Recreation: docks and marinas			
Commercial: warehousing and docks			
Other (specify):			

Source and year of coastline data:

An adequate data base is lacking in this area. The U.S. Dept. of the Interior, Bureau of Outdoor Recreation's study for LISS (the Long Island Sound Study) entitled Outdoor Recreation in Long Island Sound, Planning Aid Report # 3: Demand Supply Needs provides town by town data but of an incomplete and difficult to interpret sort (in acres of beach rather than linear feet) on beach area and beach ownership. There appears to be no systematic data available on coastline other than recreation beach.

RECREATION

Non-beach recreation (acres):

Private _____

Private with public access _____

Public _____

Beach used for recreation (acres):

Private _____

Private with public access _____

Public _____

Boating (number):

Slips _____

Moorings _____

Public boat ramps _____

Parking spaces for use by boaters _____

MINING

Sand and gravel production (tons/year):

Offshore production from dredging _____

Inland _____

Crushed stone production (tons/year) _____

Quarry storage:

Active:

Quarry pits (acres) _____

Ancillary areas (acres) _____

Inactive (acres): _____

Source and year of mining data:

The LISS study Mineral Resources and Mining prepared by the U.S. Army Corps of Engineers gives aggregate demand and supply for the region. Apparently no town level data presently exist.

Source and year of recreation data:

Information on all types of recreation facilities at the town level is provided in the U.S. Bureau of Outdoor Recreation's study for LISS Outdoor Recreation and Long Island Sound, Planning Aid Report No. 3: Demand Supply Needs, June, 1973.

COMMERCE

Retail sales (dollars/year) _____

Number of retail employees _____

Square feet of retail area _____

Source and year of commerce data:

The Connecticut Department of Commerce collects yearly retail sales information on a town-by-town basis.

OFFSHORE ACTIVITIES

Number of islands _____
 Acreage of islands _____
 Miles of island shoreline (detailed miles) _____
 Offshore population _____
 Offshore dwelling units:
 Permanent _____
 Seasonal _____
 Municipal expenditures applied to islands
 (specify type and amount): _____

Source and year of offshore activities data:

This is an important area which has received little or no systematic attention. The study team was unable to find any data on such questions as offshore area and ownership.

ELECTRICAL ENERGY

Generating capacity (MW):	<u>Capacity</u>	<u>Plant Name</u>
Fossil steam	_____	_____
Nuclear	_____	_____
Hydro	_____	_____
Pumped storage	_____	_____
Gas turbine/internal combustion	_____	_____

Cooling: _____ Plant Name 22

Fresh water requirements (mgd): _____

Fresh water source:

Stream _____

Estuary/marine _____

Cooling lake _____

Type cooling: (Please circle)

Heat exchanger/effluent to water body _____ Plant Name

Natural draft tower:

Number of towers _____

Forced draft tower:

Number of towers _____

Receiving water body: (Please circle)

Stream _____

Estuary/marine _____

Cooling lake _____

Present heat input into receiving water body (BTU's per day) _____

Limit on heat input into receiving water body under State Water Quality Implementation Plan (BTU's per day) _____

Source and year of electrical energy data:

The LISS study Electric Power Generation provides town-by-town data on generating capacities. Utility companies are the main source for additional items.

LAND FORMING PROCESSES

Offshore dredging (except sand and gravel):

Total tonnage per year _____

Acres created/filled by dredging per year _____

Acres filled with other materials per year _____

Beach erosion (acres/year) _____

Beach deposition (acres/year) _____

Beach construction (acres/year) _____

Source and year of land forming processes data:

This is a critical area where little information is available. The U.S. Army Corps of Engineers report for LISS Erosion and Sedimentation provides some data for the region. The study team was unable to locate any town level data.

WATER

Peak daily water consumption (mgd) _____

Average daily water consumption (mgd) _____

Number of dwelling units supplied by distribution system _____

Number of dwelling units supplied by wells or other on-property means _____

Percent of dwelling units supplied by distribution system _____

Percent of dwelling units metered _____

Percent of industrial establishments metered _____

Percent of commercial establishments metered _____

Amount of industrial water self-supplied (mgd) _____

Residential water rates (price per 1,000 gallons) (specify if not linear) _____

Commercial water rates (price per 1,000 gallons) _____

Industrial water rates (price per 1,000 gallons) _____

Total residential water consumption (mgd) _____

Total commercial water consumption (mgd) _____

Total industrial water consumption (mgd) _____

Source and year of water supply data:

The various water companies serving the area have these data. The various regional planning agencies have within the last two years done comprehensive plans for water supply and wastewater treatment in their regions. These plans contain some of the information needed.

SEWERAGE

SEWERAGE (continued)

Number of dwelling units with:

- Sewer hook-ups _____
- Septic tanks _____
- Cesspools _____
- Package unit hook-ups _____
- Other (specify): _____

Sewer rates (specify type of rate -- flat, etc.-- as well as price):

- Residential _____
- Commercial _____
- Industrial _____

Amount of industrial sewage self-treated (mgd) _____

Treatment plant:

- Capacity (mgd) _____
- Present flow into plant (mgd) _____

Processes used in plant: (Please circle)

Primary units:

- Settling tank
- Inhoff tank
- Lagoon
- Septic tank

Intermediate units:

- Chemical feed and flocculation
- Modified aeration
- Lagoon

Processes used in plant (continued) (Please circle):

Secondary units:

- Trickling filters
- Activated sludge
- Lagoon

Tertiary units:

- Mixed media filter
- Sand or other media filter
- Chemical precipitation for Phosphorus removal
- Other (specify): _____

Nitrogen removal:

- Nitrogen stripping
- Other (specify): _____

Activated carbon

Pressure filtration

Chlorination or disinfection units:

- Pre-chlorination
- Post-chlorination

- BOD concentration in incoming sewage (mg/l) _____
- BOD concentration in treated sewage (mg/l) _____
- Phosphorus concentration in incoming sewage (mg/l) _____
- Phosphorus concentration in treated sewage (mg/l) _____



AIR QUALITY (continued)

Fuel use and emission standards:

Special state standards for town more stringent/lenient than state-wide standards: (Please specify)

Heating oil

Industrial

Other

Local standards: (Please specify)

Residential trash and leaf burning

Industrial

Other

Source and year of air quality data:

Data on air quality and emissions inventories at the town level (and on a one kilometer grid within the town in the case of emissions inventories) are available from the Connecticut Department of Environmental Protection, Division of Environmental Quality, Air Monitoring and Detection Office.

The ambient air quality standards are available from the Connecticut Department of Environmental Protection, Connecticut Air Quality Implementation Plan, Hartford, 1973.

SOLID WASTE

Source (tons/year):

Industrial

Commercial

Residential

Sewage treatment plant

Is there a municipal collection system (yes/no)

Percent of dwelling units served

Percent of commercial establishments served

Percent of industrial establishments served

Disposal method (tons/year):

Fill

Fill with compaction

Incineration

Ocean disposal

Disposal charges (specify type of rate -- flat, etc. -- as well as price):

Residential

Commercial

Industrial

Source and year for solid waste disposal data:

Information on solid wastes is available from town departments of public works.



SEWERAGE (continued)

Receiving body for treatment plant outflow: (please circle)

Stream

Estuary

Ocean

Other (specify) _____

Present State classification of receiving water body (please circle)

If stream or estuary: AA A B C

If ocean: SA SB SC

Water quality goal for receiving water body under Connecticut Water Quality Implementation Plan (please circle):

If stream or estuary: AA A B C

If ocean: SA SB SC

Water body limit for BOD from treatment plant to meet water quality goal (lbs/day) _____

Water body limit for phosphorus from treatment plant to meet water quality goal (lbs/day) _____

Source of data on sewerage:

Data on sewer plants and sewer flows are available from the various town sewer authorities. Some of the data are available in the comprehensive sewer plans done by the various regional planning agencies in the last two years.

AIR QUALITY

Background levels¹ of:

Particulates ($\mu\text{g}/\text{m}^3$)

Annual geometric mean _____

Maximum 24-hour concentration _____

Sulfur oxides ($\mu\text{g}/\text{m}^3$)

Annual arithmetic mean _____

Maximum 24-hour concentration _____

Maximum 3-hour concentration _____

Carbon monoxide (mg/m^3)

Maximum 8-hour concentration _____

Maximum 1-hour concentration _____

(Extrapolate from the nearest measuring station if none is located in the town.)

Ambient air quality standards:

Particulates ($\mu\text{g}/\text{m}^3$)

Annual geometric mean _____

Maximum 24-hour concentration _____

Sulfur oxides ($\mu\text{g}/\text{m}^3$)

Annual arithmetic mean _____

Maximum 24-hour concentration _____

Maximum 3-hour concentration _____

Carbon monoxide (mg/m^3)

Maximum 8-hour concentration _____

Maximum 1-hour concentration _____

¹ The air quality categories are those used in Connecticut Air Quality Implementation Plan, Connecticut Department of Environmental Protection, Hartford, Connecticut, 1972.

