

DOCUMENT RESUME

ED 132 801

EC 092 370

TITLE Los Angeles County Parks and Recreation.
INSTITUTION Iowa Univ., Iowa City. Recreation Education Program.
SPONS AGENCY Bureau of Education for the Handicapped (DHEW/OE), Washington, D.C.
PUB DATE [76]
NOTE 30p.; A project of the National Institute on New Models for Community Based Recreation Programs and Services for Handicapped Children and Youth (Los Angeles, California); For related information, see EC 092 362-372

EDRS PRICE MF-\$0.83 HC-\$2.06 Plus Postage.
DESCRIPTORS Activities; Budgets; *Community Programs; Demonstration Projects; Exceptional Child Services; Financial Support; *Handicapped; Leisure Time; *Normalization (Handicapped); Objectives; Personnel; *Program Descriptions; Recreational Facilities; *Recreational Programs; Rehabilitation; Surveys
IDENTIFIERS California (Los Angeles)

ABSTRACT

Presented are duplications of the responses given by the Los Angeles County Parks and Recreation Rehabilitation Unit (California) as part of a project to collect, share, and compile information about, and techniques in the operation of 18 community action models for recreation services to the disabled. Model programs are categorized as consumer, client competency, recreation and leisure services, parks and recreation, rehabilitation, and voluntary health agency models. Reported are program services in the following areas: population served (all types of disabilities); primary activities (music, drama, sports, camping, motor development, arts and crafts, swimming, behavior modification, and leisure skills); primary facilities used (county parks); staffing (a recreation specialist III, two recreation specialist II's, one recreation specialist I, and 30 recreation specialist aides); total budget (\$150,000 for salaries) and primary sources of support (county); and values and goals achieved through the program (leisure skills, mainstreaming, increases self esteem, and normalization). A copy of the completed survey form is also provided. (SBH)

* Documents acquired by ERIC include many informal unpublished *
* materials not available from other sources. ERIC makes every effort *
* to obtain the best copy available. Nevertheless, items of marginal *
* reproducibility are often encountered and this affects the quality *
* of the microfiche and hardcopy reproductions ERIC makes available *
* via the ERIC Document Reproduction Service (EDRS). EDRS is not *
* responsible for the quality of the original document. Reproductions *
* supplied by EDRS are the best that can be made from the original. *

ED132801

U.S. DEPARTMENT OF HEALTH,
EDUCATION & WELFARE
NATIONAL INSTITUTE OF
EDUCATION

THIS DOCUMENT HAS BEEN REPRO-
DUCED EXACTLY AS RECEIVED FROM
THE PERSON OR ORGANIZATION ORIGIN-
ATING IT. POINTS OF VIEW OR OPINIONS
STATED DO NOT NECESSARILY REPRESENT
OFFICIAL NATIONAL INSTITUTE OF
EDUCATION POSITION OR POLICY



Model: Los Angeles County Parks and Recreation

155 West Washington Boulevard

Los Angeles, California 90015

213-749-6941, ext. 171

Rochelle Swanson, Recreation Specialist

Community Population Size: 7,032,000

New Models for Community Based Recreation

for Handicapped Children and Youth

The Project	The Sponsor	The Implementor
National Institute on New Models for Community Based Recreation Programs and Services for Handicapped Children and Youth	Bureau of Education for the Handicapped, Office of Education, U. S. Department of Health, Education and Welfare	John A. Nesbitt, Project Director, Recreation Education Program, The University of Iowa, Iowa City, Iowa 52242 (tel. 319/353-)

EC092370

The University of Iowa

Iowa City, Iowa 52242



Recreation Education Program

(319) 353-4989

Dear Colleague:

The project, "National Institute on Models for Community Based Recreation for Handicapped Children and Youth," is entering its second year. During the first year, a survey and identification of existing programs was undertaken, as well as the convening of the National Institute at the University of Iowa.

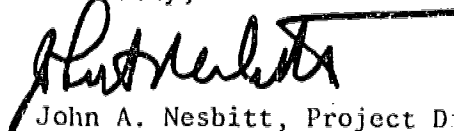
The National Institute, held July 7-9, endeavored to collect, share, and compile information about, and techniques in, the operation of the most feasible and effective methods of community action models for recreation service to the disabled.

As an outgrowth of these efforts, training materials are being developed and plans are being made for the replication of the National Institute in all regions of the United States.

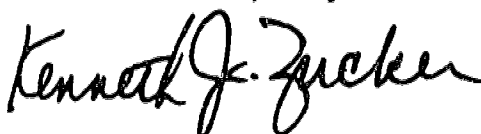
A number of successful models were identified and have transmitted data to the project staff with permission for us to distribute the information.

Enclosed are duplications of the responses from eighteen of the identified models. Additional training materials will be distributed based upon completion of response forms.

Sincerely,



John A. Nesbitt, Project Director



Kenneth J. Zucker, Research Assistant

CONSUMER MODELS

National Wheelchair
Basketball Association
University of Kentucky
Lexington, Kentucky
Stan Labanowich

Berkeley Outreach
Recreation Program
Berkeley, California
Susan Sygall and
Diane Schecter

CLIENT COMPETENCY MODEL

Avocational Counseling Project
Milwaukee Public Schools
Division of Recreation and Adult Education
Milwaukee, Wisconsin
Robert P. Overs

RECREATION AND LEISURE SERVICE MODELS

Recreation Center for the Handicapped
San Francisco, California
Janet Pomeroy

Recreation Services for the
Handicapped, Inc.
Memphis, Tennessee
Paul Regan

PARKS AND RECREATION MODELS

Maine-Niles Association of
Special Recreation
Skokie, Illinois
Barbara Sternfeld

ANCHOR
Town of Hempstead
Hempstead, New York
Douglas Baylis

Leisure Center
City of Portland
Portland, Maine
Karen Boulos and
Beth Barney

Recreation Programs for the
Handicapped
City of Miami
Miami, Florida
Max Forman

Program for Special
Populations
City of Wilmington
Wilmington, North Carolina
Ellen Lilyquist

Recreational Services for
the Handicapped
City of Baltimore
Baltimore, Maryland
Doris Samuels

Rehabilitation Unit
County of Los Angeles
Los Angeles, California
Rochelle Swanson

Special Services Programs
King County
Seattle, Washington
Christopher Eubanks

REHABILITATION MODELS

Coordinated Approach to
Community Recreation
Temple University
Philadelphia, Pennsylvania
Viki Annand

Leisure Services
State Technical Institute
and Rehabilitation Center
Plainwell, Michigan
Carol Peterson

VOLUNTARY HEALTH AGENCY MODELS

Westchester Lighthouse
New York Association for the Blind
White Plains, New York
Chester T. Williams

Socio-Recreative Programs
for the CP and/or Multiply
Handicapped
United Cerebral Palsy
Hartford, Connecticut
Craig Huber

I. Program Overview

The respondent reports their service in the following areas:

- Who served, how many people served, and the geography or political area served
- Primary activities provided
- Primary facilities used
- Staffing (number and titles)
- Total budget and primary sources of support
- Values and goals achieved through your program

The Rehabilitation Unit serves all types of disabilities within the geographical boundaries of the County on a request basis. Requests are considered from schools, parent groups, voluntary health organizations, and other leisure services agencies. Activities provided include music, drama, sports, camping, motor development, arts and crafts, swimming, behaviour modification, and leisure skills. The primary usage sites are County parks; however, hospitals, bowling alleys, and recreation facilities owned by other agencies are utilized. The Unit currently has one Recreation Specialist III, two Recreation Specialist II's, and one Recreation Specialist I. Additional staff includes 30 Recreation Specialist Aides. The total budget comes from the general tax fund, although alternatives and contractual agreements are being explored. For FY 1975-'76, the Unit budget for salaries is approximately \$150,000. All other costs are included in the general County overhead (approximately 27.1%). Primary values and goals are leisure skills, mainstreaming, increased self esteem, and normalization. Staff is heavily involved in the development of training materials and involvement of other public leisure agencies within the 79 cities of Los Angeles County.

II. Number of Handicapped Served

General Category: The model respondent indicated the scope of disabilities served and their numbers, when available.

	0-2 Infant	2-4 Pre-school	6-12 Elementary Age	13-15 Junior High	16-19 High School	20-30 Young Adult	31-45 Adult	46-61 Mature Adult	62 and Over - Retirement	Total
<u>Aged with Impairments</u>								X	X	725
<u>Blind and Visually Handicapped</u>			X	X						60
<u>Deaf and Hard of Hearing</u>										
<u>Deaf-Blind</u>										
<u>Drug Problems</u>										
<u>Learning Disabilities</u>		X	X	X	X					160
<u>Mentally Retarded - Trainable</u>	X	X	X	X	X	X	X	X	X	2900
<u>Mentally Retarded - Educable</u>			X	X	X	X				489
<u>Physically Handicapped</u>	X	X	X	X	X	X	X	X	X	250
<u>Speech and Communication Impairments</u>			X							10
<u>Social Offenders - Adult (alcoholic)</u>				X	X	X	X	X		650
<u>Social Offenders - Youth</u>										
<u>Other Health Impairments (mentally ill)</u>					X	X	X	X		500

5144

Specific Category:

This category was submitted when participants could be identified by age and specific disability.

	0-2 Infant	2-4 Pre-school	6-12 Elementary Age	13-15 Junior High	16-19 High School	20-30 Young Adult	31-45 Adult	46-61 Mature Adult	62 and Over - Retirement	Total
Amputees										
Autistic		X	X	X	X					90
Blind and Visually Impaired			X	X						60
Deaf and Hard of Hearing										
Deaf-Blind										
Diabetic										
Epileptic										
Heart Related Illness/Impairment								X	X	50
Homebound (Home Care)										
Learning Impaired			X	X	X					75
Mentally Ill					X	X	X	X	X	500
Mentally Retarded	X	X	X	X	X	X	X	X	X	3389
Multiple-Severely Handicapped (DCH)	X	X	X	X	X	X	X	X	X	80
Multiple Sclerosis										
Muscular Dystrophy										
Neurologically Impaired	X	X	X	X	X					200
Orthopedically Impaired				X	X	X	X	X	X	250
Paraplegics/Quadraplegics										
Perceptual Impairment	X	X	X	X	X					300
Respiratory Illness										
Severely (Multi) Handicapped				X	X	X	X	X	X	120
Social Offenders (alcoholic)				X	X	X	X	X	X	650
Spinal Bifida										
Speech Impaired										
Other										
Other										
Other										
Other										

III. Objectives/Goals

The outcomes relate to the overall philosophy and goals toward the handicapped program and services within this agency. The indication of the level of concern is in regard to the program outcomes.

← Program Outcome Handicapped Programs →	← Level of Concern →			
	Very High	High	Moderate Concern	Is of no Concern
For Fun and Enjoyment	X			
For Activity Skill Acquisition	X			
For Career Education			X	
For Physical Rehabilitation			X	
For Equality of Opportunity		X		
For Normalization	X			
For Social Skill Acquisition	X			
For Physical Fitness		X		
For Independent Living			X	
For Leisure Fulfillment	X			
For Self-Expression		X		
For Cultural Enrichment		X		

IV. Philosophy

The circled response indicates the agency's level of agreement with each of the following statements.

Statements	Agree	←————→			Disagree
	5	4	3	2	1
1. Recreation programs for the handicapped should be considered <u>basic</u> to a total recreation program.	(5)	4	3	2	1
2. Evaluation procedures of a recreation program should include input in the process handicapped representations.	5	(4)	3	2	1
3. Recreation programs for the handicapped require professionally trained staff personnel.	5	4	(3)	2	1
4. Our recreation agency recognizes a need for a statewide Therapeutic Recreation Specialist for consultation with community recreation agencies.	5	4	(3)	2	1
5. The handicapped citizenry of a community have the <u>right</u> to consistent availability of <u>recreation</u> and leisure services.	(5)	4	3	2	1
6. Recreation programs for the handicapped are more costly than "normal" recreation program activities.	5	4	3	(2)	1
7. Insurance is a "barrier" to the initiation of recreation programming for the handicapped.	5	4	3	2	(1)
8. It is important that recreation and park professionals take action to remove architectural barriers from their present facilities and require future facilities to be barrier-free.	(5)	4	3	2	1
9. There exist some direct values to having consumer input thru handicapped people in recreation planning and design.	5	(4)	3	2	1
10. At this time, there are no <u>specific</u> federally funded programs for the provision of actual recreation services to the handicapped.	5	4	(3)	2	1

11. In many instances, existing municipal recreation and park personnel can adequately conduct and supervise recreation programs for the handicapped.	5	4	3	2	1
12. Recreation programs for the handicapped are best provided in a segregated manner--that is separate activities and facilities for the handicapped.	5	4	3	2	1
13. Recreation has the potential to promote positive change--that is it has the potential to be "therapeutic."	5	4	3	2	1
14. At the present time, local, state and federal funding assistance is sufficient to meet handicapped programming needs.	5	4	3	2	1
15. When designing recreation programs for the handicapped, integrated programs are best--those that combine handicapped and non-handicapped participation.	5	4	3	2	1
16. The involvement of municipal recreation agencies to research activity is important.	5	4	3	2	1
17. The present city government recognizes fully the importance of recreation and leisure fulfillment for its citizens and the community at large.	5	4	3	2	1
18. Recreation programs for the handicapped should be considered <u>supplemental</u> to the total recreation program.	5	4	3	2	1
19. Activity programs for the handicapped often require expenditure outlays for special recreational equipment.	5	4	3	2	1
20. Overcoming mis-perceptions and attitude barriers is often needed when initiating a recreation program for the handicapped.	5	4	3	2	1

V. Consumerism

The consumer involvement in decision making through this service is indicated below.

	Serve on General Recreation or Park Commission		Serve on Special Advisory or Policy Committee or Board for Handicapped Persons	
	Yes	No	Yes	No
Handicapped youth		X		X
Handicapped adults		X	X	
Parents/Relatives of Handicapped		X	X	
Advocates for Handicapped		X	X	
Voluntary Health Agency Representatives		X	X	
Professional Rehabilitation Representatives		X		X

Description of other consumerism and advocacy activities related to the program for handicapped.

Staff is involved with the preparation of GRS requests, information and referral for families of the disabled, citizen awareness days, and other similar events.

Vi. Funding

Below is information on the budget for the current fiscal year, or the most recent year available. In some cases, figures are approximate.

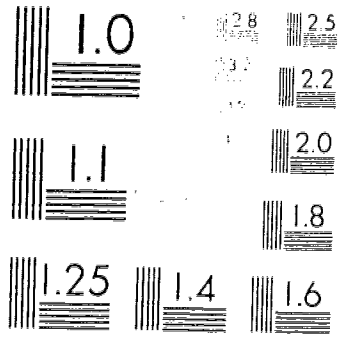
A. The total budget/expenditures for the Program for Handicapped during the current fiscal year is 1975-'76 \$ 150,000

B. The major sources of funds which make up this budget are the following:

City parks and recreation funds	_____	\$	_____
Local school district funds	_____	\$	_____
Other city agency/department funds	_____	\$	_____
County source of funds	_____	\$	150,000
Special district funds	_____	\$	_____
State grants	_____	\$	_____
Federal grants	_____	\$	_____
Contributions, donations	_____	\$	_____
Concessions	_____	\$	_____
Fees & Charges	_____	\$	_____
Other	_____	\$	_____
Total		\$	<u>150,000</u>

C. Information on the sources of Federal and State public funds. These can be used to gain insight into means developed to provide support for leisure services for the handicapped.

	SOURCE OF FUNDS (exact title please)	AMOUNT	TYPE POPULATION SERVED	NUMBER SERVED
Federal*	Community Development Funds	\$240,000	Architectural barrier removal program	Approximately 800,000
State*				
County	Tax funds	\$150,000	As previously mentioned	Approximately 6,500
Local				



2000

DOCUMENT RESUME

ED 132 801

EC 092 370

TITLE Los Angeles County Parks and Recreation.
 INSTITUTION Iowa Univ., Iowa City. Recreation Education Program.
 SPONS AGENCY Bureau of Education for the Handicapped (DHEW/OE), Washington, D.C.
 PUB DATE [76]
 NOTE 30p.; A project of the National Institute on New Models for Community Based Recreation Programs and Services for Handicapped Children and Youth (Los Angeles, California); For related information, see EC 092 362-372

EDRS PRICE MF-\$0.83 HC-\$2.06 Plus Postage.
 DESCRIPTORS Activities; Budgets; *Community Programs; Demonstration Projects; Exceptional Child Services; Financial Support; *Handicapped; Leisure Time; *Normalization (Handicapped); Objectives; Personnel; *Program Descriptions; Recreational Facilities; *Recreational Programs; Rehabilitation; Surveys
 IDENTIFIERS California (Los Angeles)

ABSTRACT

Presented are duplications of the responses given by the Los Angeles County Parks and Recreation Rehabilitation Unit (California) as part of a project to collect, share, and compile information about, and techniques in the operation of 18 community action models for recreation services to the disabled. Model programs are categorized as consumer, client competency, recreation and leisure services, parks and recreation, rehabilitation, and voluntary health agency models. Reported are program services in the following areas: population served (all types of disabilities); primary activities (music, drama, sports, camping, motor development, arts and crafts, swimming, behavior modification, and leisure skills); primary facilities used (county parks); staffing (a recreation specialist III, two recreation specialist II's, one recreation specialist I, and 30 recreation specialist aides); total budget (\$150,000 for salaries) and primary sources of support (county); and values and goals achieved through the program (leisure skills, mainstreaming, increases self esteem, and normalization). A copy of the completed survey form is also provided. (SBH)

 * Documents acquired by ERIC include many informal unpublished *
 * materials not available from other sources. ERIC makes every effort *
 * to obtain the best copy available. Nevertheless, items of marginal *
 * reproducibility are often encountered and this affects the quality *
 * of the microfiche and hardcopy reproductions ERIC makes available *
 * via the ERIC Document Reproduction Service (EDRS). EDRS is not *
 * responsible for the quality of the original document. Reproductions *
 * supplied by EDRS are the best that can be made from the original. *

ED132801

U.S. DEPARTMENT OF HEALTH,
EDUCATION & WELFARE
NATIONAL INSTITUTE OF
EDUCATION

THIS DOCUMENT HAS BEEN REPRO-
DUCED EXACTLY AS RECEIVED FROM
THE PERSON OR ORGANIZATION ORIGIN-
ATING IT. POINTS OF VIEW OR OPINIONS
STATED DO NOT NECESSARILY REPRESENT
OFFICIAL NATIONAL INSTITUTE OF
EDUCATION POSITION OR POLICY



Model: Los Angeles County Parks and Recreation

155 West Washington Boulevard

Los Angeles, California 90015

213-749-6941, ext. 171

Rochelle Swanson, Recreation Specialist

Community Population Size: 7,032,000

New Models for Community Based Recreation

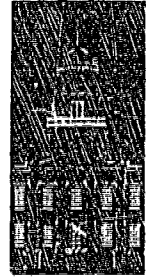
for Handicapped Children and Youth

The Project	The Sponsor	The Implementor
National Institute on New Models for Community Based Recreation Programs and Services for Handicapped Children and Youth	Bureau of Education for the Handicapped, Office of Education, U. S. Department of Health, Education and Welfare	John A. Nesbitt, Project Director, Recreation Education Program, The University of Iowa, Iowa City, Iowa 52242 (tel. 319/353-)

EC092370

The University of Iowa

Iowa City, Iowa 52242



1847

Recreation Education Program

(319) 353-4989

Dear Colleague:

The project, "National Institute on Models for Community Based Recreation for Handicapped Children and Youth," is entering its second year. During the first year, a survey and identification of existing programs was undertaken, as well as the convening of the National Institute at the University of Iowa.

The National Institute, held July 7-9, endeavored to collect, share, and compile information about, and techniques in, the operation of the most feasible and effective methods of community action models for recreation service to the disabled.

As an outgrowth of these efforts, training materials are being developed and plans are being made for the replication of the National Institute in all regions of the United States.

A number of successful models were identified and have transmitted data to the project staff with permission for us to distribute the information.

Enclosed are duplications of the responses from eighteen of the identified models. Additional training materials will be distributed based upon completion of response forms.

Sincerely,

John A. Nesbitt, Project Director

Kenneth J. Zucker, Research Assistant

National Wheelchair
Basketball Association
University of Kentucky
Lexington, Kentucky
Stan Labanowich

Berkeley Outreach
Recreation Program
Berkeley, California
Susan Sygall and
Diane Schecter

CLIENT COMPETENCY MODEL

Avocational Counseling Project
Milwaukee Public Schools
Division of Recreation and Adult Education
Milwaukee, Wisconsin
Robert P. Overs

RECREATION AND LEISURE SERVICE MODELS

Recreation Center for the Handicapped
San Francisco, California
Janet Pomeroy

Recreation Services for the
Handicapped, Inc.
Memphis, Tennessee
Paul Regan

PARKS AND RECREATION MODELS

Maine-Niles Association of
Special Recreation
Skokie, Illinois
Barbara Sternfeld

ANCHOR
Town of Hempstead
Hempstead, New York
Douglas Baylis

Leisure Center
City of Portland
Portland, Maine
Karen Boulos and
Beth Barney

Recreation Programs for the
Handicapped
City of Miami
Miami, Florida
Max Forman

Program for Special
Populations
City of Wilmington
Wilmington, North Carolina
Ellen Lilyquist

Recreational Services for
the Handicapped
City of Baltimore
Baltimore, Maryland
Doris Samuels

Rehabilitation Unit
County of Los Angeles
Los Angeles, California
Rochelle Swanson

Special Services Programs
King County
Seattle, Washington
Christopher Eubanks

REHABILITATION MODELS

Coordinated Approach to
Community Recreation
Temple University
Philadelphia, Pennsylvania
Viki Annand

Leisure Services
State Technical Institute
and Rehabilitation Center
Plainwell, Michigan
Carol Peterson

VOLUNTARY HEALTH AGENCY MODELS

Westchester Lighthouse
New York Association for the Blind
White Plains, New York
Chester T. Williams

Socio-Recreative Programs
for the CP and/or Multiply
Handicapped
United Cerebral Palsy
Hartford, Connecticut
Craig Huber

I. Program Overview

The respondent reports their service in the following areas:

- Who served, how many people served, and the geography or political area served
- Primary activities provided
- Primary facilities used
- Staffing (number and titles)
- Total budget and primary sources of support
- Values and goals achieved through your program

The Rehabilitation Unit serves all types of disabilities within the geographical boundaries of the County on a request basis. Requests are considered from schools, parent groups, voluntary health organizations, and other leisure services agencies. Activities provided include music, drama, sports, camping, motor development, arts and crafts, swimming, behaviour modification, and leisure skills. The primary usage sites are County parks; however, hospitals, bowling alleys, and recreation facilities owned by other agencies are utilized. The Unit currently has one Recreation Specialist III, two Recreation Specialist II's, and one Recreation Specialist I. Additional staff includes 30 Recreation Specialist Aides. The total budget comes from the general tax fund, although alternatives and contractual agreements are being explored. For FY 1975-'76, the Unit budget for salaries is approximately \$150,000. All other costs are included in the general County overhead (approximately 27.1%). Primary values and goals are leisure skills, mainstreaming, increased self esteem, and normalization. Staff is heavily involved in the development of training materials and involvement of other public leisure agencies within the 79 cities of Los Angeles County.

II. Number of Handicapped Served

General Category: The model respondent indicated the scope of disabilities served and their numbers, when available.

	0-2 Infant	2-4 Pre-school	6-12 Elementary Age	13-15 Junior High	16-19 High School	20-30 Young Adult	31-45 Adult	46-61 Mature Adult	62 and Over - Retirement	Total
Aged with Impairments								X	X	725
Blind and Visually Handicapped			X	X						60
Deaf and Hard of Hearing										
Deaf-Blind										
Drug Problems										
Learning Disabilities		X	X	X	X					160
Mentally Retarded - Trainable	X	X	X	X	X	X	X	X	X	2900
Mentally Retarded - Educable			X	X	X	X				489
Physically Handicapped	X	X	X	X	X	X	X	X	X	250
Speech and Communication Impairments			X							10
Social Offenders - Adult (alcoholic)					X	X	X	X	X	650
Social Offenders - Youth										
Other Health Impairments (mentally ill)						X	X	X	X	500

5144

Specific Category:

This category was submitted when participants could be identified by age and specific disability.

	0-2 Infant	2-4 Pre-school	6-12 Elementary Age	13-15 Junior High	16-19 High School	20-30 Young Adult	31-45 Adult	46-61 Mature Adult	62 and Over - Retirement	Total
Amputees										
Autistic		X	X	X	X					90
Blind and Visually Impaired			X	X						60
Deaf and Hard of Hearing										
Deaf-Blind										
Diabetic										
Epileptic										
Heart Related Illness/Impairment								X	X	50
Homebound (Home Care)										
Learning Impaired			X	X	X					75
Mentally Ill					X	X	X	X	X	500
Mentally Retarded	X	X	X	X	X	X	X	X	X	3389
Multiple-Severely Handicapped (DCH)	X	X	X	X	X	X	X	X	X	80
Multiple Sclerosis										
Muscular Dystrophy										
Neurologically Impaired	X	X	X	X	X					200
Orthopedically Impaired				X	X	X	X	X	X	250
Paraplegics/Quadraplegics										
Perceptual Impairment	X	X	X	X	X					300
Respiratory Illness										
Severely (Multi) Handicapped				X	X	X	X	X	X	120
Social Offenders (alcoholic)				X	X	X	X	X	X	650
Spinal Bifida										
Speech Impaired										
Other										
Other										
Other										
Other										

III. Objectives/Goals

The outcomes relate to the overall philosophy and goals toward the handicapped program and services within this agency. The indication of the level of concern is in regard to the program outcomes.

← Program Outcome Handicapped Programs →	← Level of Concern →			
	Very High	High	Moderate Concern	Is of no Concern
For Fun and Enjoyment	X			
For Activity Skill Acquisition	X			
For Career Education			X	
For Physical Rehabilitation			X	
For Equality of Opportunity		X		
For Normalization	X			
For Social Skill Acquisition	X			
For Physical Fitness		X		
For Independent Living			X	
For Leisure Fulfillment	X			
For Self-Expression		X		
For Cultural Enrichment		X		

IV. Philosophy

The circled response indicates the agency's level of agreement with each of the following statements.

Statements	Agree	←—————→			Disagree
	5	4	3	2	1
1. Recreation programs for the handicapped should be considered <u>basic</u> to a total recreation program.	(5)	4	3	2	1
2. Evaluation procedures of a recreation program should include input in the process handicapped representations.	5	(4)	3	2	1
3. Recreation programs for the handicapped require professionally trained staff personnel.	5	4	(3)	2	1
4. Our recreation agency recognizes a need for a statewide Therapeutic Recreation Specialist for consultation with community recreation agencies.	5	4	(3)	2	1
5. The handicapped citizenry of a community have the <u>right</u> to consistent availability of recreation and leisure services.	(5)	4	3	2	1
6. Recreation programs for the handicapped are more costly than "normal" recreation program activities.	5	4	3	(2)	1
7. Insurance is a "barrier" to the initiation of recreation programming for the handicapped.	5	4	3	2	(1)
8. It is important that recreation and park professionals take action to remove architectural barriers from their present facilities and require future facilities to be barrier-free.	(5)	4	3	2	1
9. There exist some direct values to having consumer input thru handicapped people in recreation planning and design.	5	(4)	3	2	1
10. At this time, there are no <u>specific</u> federally funded programs for the provision of actual recreation services to the handicapped.	5	4	(3)	2	1

11. In many instances, existing municipal recreation and park personnel can adequately conduct and supervise recreation programs for the handicapped.	5	4	3	2	1
12. Recreation programs for the handicapped are best provided in a segregated manner--that is separate activities and facilities for the handicapped.	5	4	3	2	1
13. Recreation has the potential to promote positive change--that is it has the potential to be "therapeutic."	5	4	3	2	1
14. At the present time, local, state and federal funding assistance is sufficient to meet handicapped programming needs.	5	4	3	2	1
15. When designing recreation programs for the handicapped, integrated programs are best--those that combine handicapped and non-handicapped participation.	5	4	3	2	1
16. The involvement of municipal recreation agencies to research activity is important.	5	4	3	2	1
17. The present city government recognizes fully the importance of recreation and leisure fulfillment for its citizens and the community at large.	5	4	3	2	1
18. Recreation programs for the handicapped should be considered <u>supplemental</u> to the total recreation program.	5	4	3	2	1
19. Activity programs for the handicapped often require expenditure outlays for special recreational equipment.	5	4	3	2	1
20. Overcoming mis-perceptions and attitude barriers is often needed when initiating a recreation program for the handicapped.	5	4	3	2	1

V. Consumerism

The consumer involvement in decision making through this service is indicated below.

	Serve on General Recreation or Park Commission		Serve on Special Advisory or Policy Committee or Board for Handicapped Persons	
	Yes	No	Yes	No
Handicapped youth		X		X
Handicapped adults		X	X	
Parents/Relatives of Handicapped		X	X	
Advocates for Handicapped		X	X	
Voluntary Health Agency Representatives		X	X	
Professional Rehabilitation Representatives		X		X

Description of other consumerism and advocacy activities related to the program for handicapped.

Staff is involved with the preparation of GRS requests, information and referral for families of the disabled, citizen awareness days, and other similar events.

VI. Funding

Below is information on the budget for the current fiscal year, or the most recent year available. In some cases, figures are approximate.

- A. The total budget/expenditures for the Program for Handicapped during the current fiscal year is 1975-'76 \$ 150,000
- B. The major sources of funds which make up this budget are the following:

City parks and recreation funds	_____	\$	_____
Local school district funds	_____	\$	_____
Other city agency/department funds	_____	\$	_____
County source of funds	_____	\$	_____
Special district funds	_____	\$	150,000
State grants	_____	\$	_____
Federal grants	_____	\$	_____
Contributions, donations	_____	\$	_____
Concessions	_____	\$	_____
Fees & Charges	_____	\$	_____
Other	_____	\$	_____
Total		\$	<u>150,000</u>

- C. Information on the sources of Federal and State public funds. These can be used to gain insight into means developed to provide support for leisure services for the handicapped.

	SOURCE OF FUNDS (exact title please)	AMOUNT	TYPE POPULATION SERVED	NUMBER SERVED
Federal*	Community Development Funds	\$240,000	Architectural barrier removal program	Approximately 800,000
State*				
County	Tax funds	\$150,000	As previously mentioned	Approximately 6,500
Local				

VII. Budget Allocation

Total budget for this program/service \$18,000,000*

Percent budget earmarked for special populations

program 1%

Classification of Budget Expenditures: An indication of percentage and service.

A. Services

- 1. Salaries -time 40%
- 2. Salaries -time 60%
- 3. Other functions _____

B. Services

- 1. Comm. _____
- 2. Transp. _____
- 3. Print. _____
- 4. Heat, lighting, and advertising _____
- 5. Repai. power and water _____
- 6. Janit. (equipment/structures) _____
- 7. Cleaning, other services _____

C. Commodities

- 1. Suppl. _____
- 2. Mater. _____

D. Current

- 1. Rents _____
- 2. Insur. _____
- 3. Refund. _____

E. Current

- 1. Pension. _____ indemnities
- 2. Grants. _____ retirements
- 3. Taxes. _____ subsidies

F. Properties

- 1. Buildi. _____ improvements
- 2. Equipm. _____
- 3. Land _____

G. Debt

*Includes these costs from other funds (county overhead) courses, construction, planning, maintenance, program



VIII. Personnel

This relates to the number and type of staff utilized in program delivery for handicapped children and youth; the number and type recommended for their present situation; and the employment of handicapped individuals.

Key Terms: Full-Time - Staff Individuals whose responsibilities are concentrated on handicapped programs.
 Part-Time - Staff individuals whose responsibilities are partially concentrated on handicapped programs; or staff employed for handicapped programs on a percentage of time basis.
 (1/2 time; 1/4 time)

← Actual Staffing Pattern Present →

← Recommended Staffing Pattern →

Handicapped
Individuals
Employed

-10-

Job Descriptions--

Job Descriptions--	Total Number Employed		Education Preparation Possessed						Experience Level Possessed				
	Full-Time	Part-Time	Less than High School	High School	A.A.	B.A. or B.S.	M.A. or M.S.	Ed.D. or Ph.D.	0-1 Year	1-3 Years	3-5 Years	5-8 Years	8-Over Years
	Consultant												
Administrator	1		1								1		
Supervisor (TR Specialist)*	3				1	2					3		
Leader (TR Worker)**	30		5	9	14	2		4	6	5	12	3	
Aide II (TR Technician)*													
Aide I (TR Assistant)													
Volunteer	75		24	20	20	10	1	60	10	5			

Job Descriptions--	Total Number Employed		Education Preparation Recommended						Experience Level Recommended				
	Full-Time	Part-Time	Less than High School	High School	A.A.	B.A. or B.S.	M.A. or M.S.	Ed.D. or Ph.D.	0-1 Year	1-3 Years	3-5 Years	5-8 Years	8-Over Years
	Consultant												
Administrator	1					1						1	
Supervisor (TR Specialist)*	7				4	3			1	2	2	2	
Leader (TR Worker)**	30		5	9	14	2		4	6	5	12	3	
Aide II (TR Technician)*													
Aide I (TR Assistant)													
Volunteer	200	50	50	65	30	5		50	50	50	50		

Job Descriptions--	Total Number Employed	
	Full-Time	Part-Time
	Consultant	
Administrator		
Supervisor (TR Specialist)*		
Leader (TR Worker)**	7	
Aide II (TR Technician)*		
Aide I (TR Assistant)		
Volunteer		

*Titles in parenthesis are nomenclature of National Therapeutic Recreation Society's Registration Levels.

Staff personnel involved and the training topics presently conducted in this agency. Also, recommended status.

Participants in Staff Development

	Presently Conducted										Recommended												
	Orientation (Agency Policy/Philosophy, etc)	Administrative/Management Skills	Program Activity Skills	Support Services	Special Equipment Needs	Safety/First Aid Procedures	Physical Barriers	Attitudinal Barriers	Leadership Training	Behavior Modification	Other Topics (Fill In)	Orientation (Agency Policy/Philosophy, etc)	Administrative/Management Skills	Program Activity Skills	Support Services	Special Equipment Needs	Safety/First-Aid Procedures	Physical Barriers	Attitudinal Barriers	Leadership Training	Behavior Modification	Other Topics (Fill In)	
Consultant																							
Board Members																							
Administrator	X	X	X				X	X	X	X	X	X	X	X	X	X	X	X	X	X	X	X	
Supervisor	X	X	X	X			X	X	X	X	X	X	X	X	X	X	X	X	X	X	X	X	
Leader	X		X			X	X	X	X	X	X	X	X	X	X	X	X	X	X	X	X	X	
Aide																							
Volunteer	X		X			X	X	X	X	X	X	X	X	X	X	X	X	X	X	X	X	X	
Other																							

X. Interagency Coordination

Identification of those agencies with which the model coordinates programs and services and the type of coordination utilizing the following code.

- "1" - Formal written agreement
- "2" - Informal agreement, frequent coordination
- "3" - Information agreement, infrequent coordination
- "4" - No coordination utilized

- Clients/Participants
- Contracted Programs
- Equipment
- Facilities
- Monetary/Fund Support
- Personnel-Consultant
- Personnel-Supervisor
- Personnel-Leaders
- Personnel-Volunteers
- Public Information
- Training
- Transportation
- Other:
- Other:
- Other:

Voluntary Health Agencies

Arthritis	4																			
Blind	3										X									
Cancer	4																			
Cerebral Palsy	2	X		X						X	X		X							
Deaf	3										X									
Epilepsy	4																			
Heart	4																			
Mentally Ill	1	X	X							X	X									
Mentally Retarded	1	X	X		X					X	X									
Muscular Dystrophy	3										X									
Multiple Sclerosis	4																			
Other: Parent groups	1	X	X		X					X	X		X							
Other:																				

General Social/Rehabilitation Services

Goodwill Industries	4																			
Red Cross	1			X	X					X	X	X	X							
United Fund	3											X								
Other:																				
Other:																				

Public Social/Rehabilitation Services

Local Education Agencies	1	X	X	X	X						X	X	X							
State Education Agencies	2											X	X							
Mental Retardation-State Service	1	X	X								X	X	X	X						
Mental Illness - State Service	1	X	X		X						X	X	X							
Corrections - State Service	4																			
Nursing Home/Convalescent	1	X	X	X	X						X	X	X							
Extended Care/Board and Care	1	X	X		X						X	X	X							
Aging-State Service	3											X								
Vocational Rehabilitation	4																			
Crippled Children	2	X			X							X	X							
Other:																				
Other:																				

Medical/Rehabilitation

Community Hospital	4																			
Rehabilitation Center	4																			
General Medical Facility	4																			
Other: Medical schools	2																			

XI. Public Information

This information relates to the type and frequency of public information methods utilized by this program/service.

← Methods Utilized →		← Frequency →							
		Do You Utilize		Once a Day	Once a Week	Once a Month	Once a Quarter	Once a Half-Year	Once a Year
Yes	No								
	X								
X									X
X				X					
X								X	
X									X
X				X					
X									X
	X								
	X								

XII. Handicapped Find

Potential Participant Identification: Methods used to locate individuals eligible to participate in the special populations program/service

	Utilize		Frequency of Mechanism Use					Effectiveness		
	Yes	No	Continuous	Weekly	Monthly	Yearly	Randomly Throughout Year	Very Effective	Effective	Ineffective
Church Groups		X								
Civic Organizations	X						X			X
Community Education		X								
Health Agencies	X		X					X		
Local Task Force		X								
Media Campaign (Radio & TV)		X								
Printed Material (Brochures & Pamphlets)	X		X							X
Public School System	X		X					X		
Questionnaire to General Community		X								
Questionnaire to Present Participants		X								
Telephone Contacts	X						X		X	
Voluntary Agencies	X		X					X		
Word-of-Mouth	X		X					X		
Other DPSS	X		X						X	

-14-

If "other" please explain: DPSS -- Department of Public Social Services (Welfare)



XIII. Special Problems Areas

The respondent reported their experience on these common areas of program obstacles.

Problem Areas	This was a problem in providing service		The agency has solved this problem	
	Yes	No	Yes	No
Architectural barriers	X		X	
Transportation for participants	X			X
Insurance for staff participants, volunteers		X		
Staff and indirect barriers	X			X
Community attitudinal barriers	X			X
Locating or finding handicapped	X			X
Inadequate funding for programs	X			X
Training of staff to serve handicapped		X		
Employment of Handicapped in Recreation and Leisure Service	X			X

Efforts and success in eliminating any of the above problems or other special problems.

Community Development Funds totaling \$240,000 were obtained to remove architectural barriers in over 100 county parks. This figure also includes the purchase and installation of accessible equipment in play areas.

Transportation problems have been solved in only one program, that for autistic children, through cooperative efforts with the Regional Centers for the Developmentally Disabled.

XIV. Program

The following six pages are related to the activity structure of the program/service. Each page is divided into two sections -- one dealing with the age group the program is concerned with and the second dealing with the frequency with which each activity is offered.

Currently offer this program/activity by program/activity Group served by program/activity Frequency that program/activity is offered

	Currently offer this program/activity by program/activity		Group served by program/activity						Frequency that program/activity is offered						
	Yes	No	Pre-School (0-5)	School-Aged (6-12)	Teen (13-19)	Young Adult (20-35)	Adult (36-62)	Senior Citizen (63+)	Daily	Weekly	Monthly	Yearly	Other	Summer	Randomly
<u>Aquatics</u>															
- Life Saving		X													
- Swimming - Instructional	X		X	X	X				X			X			
- Swimming - Free	X		X	X	X	X	X	X				X			
- Water Sports		X													
- Water Safety	X		X	X	X	X	X	X				X			
- Other: <u>Diving</u>	X			X	X	X						X			
- Other: <u>Skin Diving</u>	X			X	X				X						

	Yes	No	Pre-School (0-5)	School-Aged (6-12)	Teen (13-19)	Young Adult (20-35)	Adult (36-62)	Senior Citizen (63+)	Daily	Weekly	Monthly	Yearly	Other	Summer	Randomly
<u>Crafts</u>															
- Floral Crafts	X		X	X	X	X								X	
- Leather Crafts	X			X	X									X	
- Mechanical Crafts	X			X	X									X	
- Metal Crafts		X													
- Paper Crafts	X		X	X	X	X	X	X	X						
- Wood Crafts	X			X	X	X			X						
- Handicrafts	X		X	X	X	X	X	X	X						
- Other: <u>Copper enameling</u>	X			X	X	X								X	
- Other: _____															

	Yes	No	Pre-School (0-5)	School-Aged (6-12)	Teen (13-19)	Young Adult (20-35)	Adult (36-62)	Senior Citizen (63+)	Daily	Weekly	Monthly	Yearly	Other	Summer	Randomly
<u>Cultural/Ethnic</u>															
- Festival	X		X	X	X	X	X	X							
- Exhibits/Demonstrations	X		X	X	X	X	X	X			X				
- Other: _____															
- Other: _____															

	Yes	No	Pre-School (0-5)	School-Aged (6-12)	Teen (13-19)	Young Adult (20-35)	Adult (36-62)	Senior Citizen (63+)	Daily	Weekly	Monthly	Yearly	Other	Summer	Randomly
<u>Arts-Graphics</u>															
- Art Appreciation		X													
- Art exhibit-shows	X		X	X	X	X	X	X							X
- Drawing	X		X	X	X	X	X	X							
- Painting	X		X	X	X	X	X	X							
- Photography		X							X						
- Sculpture	X		X	X											
- Other: <u>Ceramics</u>	X		X	X	X										
- Other: _____															

Currently offer this program/activity by program/activity Group served by program/activity Frequency that program/activity is offered

Dance

- Ballet
- Ethic
- Folk
- Modern
- Record Dance
- Social
- Square
- Other: _____
- Other: _____

	Yes No		Pre-School (0-5)	School-Aged (6-12)	Teen (13-19)	Young Adult (20-35)	Adult (36-62)	Senior Citizen (63+)
	Yes	No						
Ballet	X			X	X	X		
Ethic	X			X	X	X	X	
Folk	X			X	X	X	X	X
Modern	X			X	X	X		
Record Dance	X			X	X	X		
Social	X			X	X	X		
Square	X			X	X	X		
Other:	X			X	X	X	X	X
Other:								

	Daily	Weekly	Monthly	Yearly	Other	Summer	Randomly
Ballet						X	
Ethic			X				
Folk		X					
Modern						X	
Record Dance			X				
Social			X				
Square			X				
Other:			X				
Other:							

Drama

- Children's Theater
- Community Theater
- Creative Character
- Pageants
- Readings - Poetry/Prose
- Stage Craft
- Puppetry
- Radio/TV
- Talent Shows
- Other: Videotape
- Other: _____

	Yes No		Pre-School (0-5)	School-Aged (6-12)	Teen (13-19)	Young Adult (20-35)	Adult (36-62)	Senior Citizen (63+)
	Yes	No						
Children's Theater		X						
Community Theater		X						
Creative Character	X		X	X	X	X	X	X
Pageants	X		X	X	X	X	X	X
Readings - Poetry/Prose		X						
Stage Craft		X						
Puppetry	X		X	X	X	X	X	X
Radio/TV		X						
Talent Shows	X		X	X	X	X	X	X
Other: Videotape	X		X	X	X	X		
Other:								

	Daily	Weekly	Monthly	Yearly	Other	Summer	Randomly
Children's Theater							
Community Theater							
Creative Character			X				
Pageants				X			
Readings - Poetry/Prose							
Stage Craft							
Puppetry			X				
Radio/TV							
Talent Shows							X
Other: Videotape							X
Other:							

Career Education/Guidance

- Community Based Recreation
- Leisure Entertainment and Enterprises
- Resource Based Recreation
- Tourism and Hospitality
- Career Guidance
- Career Placement
- Other: _____
- Other: _____

	Yes No		Pre-School (0-5)	School-Aged (6-12)	Teen (13-19)	Young Adult (20-35)	Adult (36-62)	Senior Citizen (63+)
	Yes	No						
Community Based Recreation		X						
Leisure Entertainment and Enterprises		X						
Resource Based Recreation		X						
Tourism and Hospitality		X						
Career Guidance		X						
Career Placement		X						
Other:								
Other:								

	Daily	Weekly	Monthly	Yearly	Other	Summer	Randomly
Community Based Recreation							
Leisure Entertainment and Enterprises							
Resource Based Recreation							
Tourism and Hospitality							
Career Guidance							
Career Placement							
Other:							
Other:							

Collecting and Hobbies

- Collecting
- Hobbies
- Other: _____
- Other: _____

	Yes No		Pre-School (0-5)	School-Aged (6-12)	Teen (13-19)	Young Adult (20-35)	Adult (36-62)	Senior Citizen (63+)
	Yes	No						
Collecting	X		X	X	X	X	X	X
Hobbies	X		X	X	X	X	X	X
Other:								
Other:								

	Daily	Weekly	Monthly	Yearly	Other	Summer	Randomly
Collecting							X
Hobbies							X
Other:							
Other:							

Currently offer Group served by Frequency that
 this program/ program/activity program/activity
 activity is offered

Educational Activities

- Budget/Monetary Skills
- Communication Skills
- Cooking Skills
- Grooming/Hygiene
- Sex Education
- Shopping Skills
- Time Skills
- Travel Skills
- Other: _____
- Other: _____

		Pre-School (0-5)	School-Aged (6-12)	Teen (13-19)	Young Adult (20-35)	Adult (36-62)	Senior Citizen (63+)
Yes	No						
X		X	X	X	X	X	
X		X	X	X	X	X	
X		X	X	X	X	X	
X		X	X	X	X	X	
	X						
X		X	X	X	X	X	
X		X	X	X	X	X	
X		X	X	X	X	X	

Daily	Weekly	Monthly	Yearly	Other	Summer	Randomly
	X					
X						
		X				
X						
			X			
	X					
X						

Entertainment

- Radio
- TV
- Theater
- Sporting Event
- Other: Amusement parks
- Other: T-V studios

Yes	No	Pre-School (0-5)	School-Aged (6-12)	Teen (13-19)	Young Adult (20-35)	Adult (36-62)	Senior Citizen (63+)
X		X	X	X	X	X	
X		X	X	X	X	X	
X			X	X	X	X	
X			X	X	X	X	
X		X	X	X	X	X	
X		X	X	X	X	X	

Daily	Weekly	Monthly	Yearly	Other	Summer	Randomly
						X
						X
						X
						X
						X
						X

Fitness

- Exercise Program
- Weight Program
- Jogging
- Mobility Training
- Gymnastics
- Other: _____
- Other: _____

Yes	No	Pre-School (0-5)	School-Aged (6-12)	Teen (13-19)	Young Adult (20-35)	Adult (36-62)	Senior Citizen (63+)
X		X	X	X	X	X	
X			X	X	X	X	
X			X	X	X	X	
X		X	X	X	X	X	
X		X	X	X	X	X	

Daily	Weekly	Monthly	Yearly	Other	Summer	Randomly
	X					
			X			
X						
X						

Games

- Card Games
- Board Games
- Puzzles
- Other: Outdoor games
- Other: Erisbee, etc

Yes	No	Pre-School (0-5)	School-Aged (6-12)	Teen (13-19)	Young Adult (20-35)	Adult (36-62)	Senior Citizen (63+)
X		X	X	X	X		
X		X	X	X	X		
X		X	X	X	X	X	
X		X	X	X	X	X	
X		X	X	X	X	X	

Daily	Weekly	Monthly	Yearly	Other	Summer	Randomly
						X
						X
						X
						X
						X

Leisure Education

- Skills Classes
- Leisure Education Classes
- Survey Community Resources
- Other: _____
- Other: _____

Yes	No	Pre-School (0-5)	School-Aged (6-12)	Teen (13-19)	Young Adult (20-35)	Adult (36-62)	Senior Citizen (63+)
X		X	X	X	X	X	
	X						
X		X	X	X	X	X	

Daily	Weekly	Monthly	Yearly	Other	Summer	Randomly
X						
X						

Currently offer this program/activity Group served by program/activity Frequency that program/activity is offered

	Yes		No		Pre-School (0-5)	School-Aged (6-12)	Teen (13-19)	Young Adult (20-35)	Adult (36-62)	Senior Citizen (63+)	Daily	Weekly	Monthly	Yearly	Other	Summer	Randomly
<u>Social/Organization</u>																	
- Church Groups			X														
- Clubs	X					X	X	X	X	X		X					
- Consumer Groups			X														
- Special Interest Groups			X														
- Fraternal Organization			X														
- Parties	X				X	X	X	X	X	X		X			X		
- Picnics	X				X	X	X	X	X	X		X			X		
- Political Groups			X														
- Volunteer Groups	X					X	X	X	X						X		
- Other _____																	
- Other _____																	

<u>Special Events</u>																	
- Birthdays	X				X	X	X	X	X	X					X		
- Fairs	X						X	X	X	X					X		
- Holiday Ceremonies	X				X	X	X	X	X	X					X		
- Other _____																	
- Other _____																	

<u>Sports, Individual-Competiter</u>																	
- Bowling	X				X	X	X	X	X	X		X					
- Golf	X					X	X	X	X	X				X	X		
- Horseshoes	X					X	X	X	X	X				X	X		
- Pocket Billiard	X					X	X	X	X	X				X	X		
- Table Tennis	X					X	X	X	X	X		X		X	X		
- Tennis	X					X	X	X	X	X		X					
- Track & Field	X					X	X	X	X	X		X					
- Wrestling	X				X	X	X	X	X	X		X					
- Badminton																	

<u>Sports, Individual Non-Competitive</u>																	
- Archery			X														
- Bicycling	X																
- Horseback Riding	X																X
- Ice Skating	X												X				
- Rifelry	X												X				
- Roller Skating			X														
- Winter Sports	X																X
- Croquet	X																X

Currently offer this program/activity Group served by program/activity Frequency that program/activity is offered

	Yes		No		Pre-School (0-5)	School-Aged (6-12)	Teen (13-19)	Young Adult (20-35)	Adult (36-62)	Senior Citizen (63+)	Daily	Weekly	Monthly	Yearly	Other	Summer	Randomly
Sports, Team - Competitive																	
- Baseball			X														
- Basketball	X				X	X	X									X	
- Football			X														
- Field Hockey			X														
- Soccer	X				X	X	X									X	
- Softball	X				X	X	X	X					X				
- Volleyball	X				X	X	X	X								X	
- Other <u>Floor hockey</u>	X				X	X	X	X			X						
- Other <u>Bowling</u>	X				X	X	X	X	X	X	X						
Tourism and Travel																	
- Outings	X				X	X	X	X	X	X						X	
- Hostelng			X														
- Out-of-state Travel	X				X	X	X	X					X				
- International Travel	X						X	X								X	
- Special Olympics	X				X	X	X	X	X	X							
- Other _____																	
- Other _____																	
Voluntary Service																	
- Leisure Leader Activities	X				X	X	X	X			X						
- Community Activities	X				X	X	X	X			X						
- Teacher/Tutor	X				X	X	X	X			X						
- Conversing	X				X	X	X	X			X						
- Other _____																	
- Other _____																	

XV. Facilities

The major facilities utilized by the special populations recreation program.

Primary facilities owned, controlled, or directed:

1. Over 100 local and regional parks, including William S. Hart Ranch, Hollywood Bowl, the Devil's Punchbowl recreation area, and the Puddingstone-Bonelli complex

Primary facilities owned, controlled, or directed by public agencies, i.e., recreation center, school, museum, etc.:

1. Other recreation agency facilities in the 79 cities in Los Angeles county
2. Various schools
3. State universities and colleges
4. Public hospitals

Primary facilities privately owned, controlled, or directed, i.e., bowling alleys, theaters, etc.:

1. Various bowling alleys
2. Various convalescent homes
3. Foundations -- (spastic childrens, L. B. Retarded Childrens Foundation), etc.
4. Dodger Stadium
5. Private schools and colleges

XVI. Assessment/Evaluation/Accountability

These procedures are used for assessment, evaluation, and accountability in the program and service by and of participants, or personnel, of programs, of activities and/or of methods.

1. County performance evaluation of personnel.
2. Continuous assessment of participants based on program goals. Also, information profile submitted by parents and/or guardians.
3. Programs evaluated by supervisory visits, requesting organization input, participant reaction.
4. Methods and activities developed and evaluated in cooperation of inter-disciplinary team.