

DOCUMENT RESUME

ED 131 994

RC 009 589

TITLE State of Washington Population Trends, 1976.
 Washington State Information Report.

INSTITUTION Washington State Office of Program Planning and
 Fiscal Management, Olympia.

PUB DATE Aug 76

NOTE 85p.; Prepared by the Population Studies Division.
 For related document, see ED 127 071

EDRS PRICE MF-\$0.83 HC-\$4.67 Plus Postage.

DESCRIPTORS Abortions; Age; American Indians; Asian Americans;
 Birth Rate; *Census Figures; Death; *Demography;
 Divorce; Ethnic Groups; Futures (of Society); Housing
 Patterns; Illegitimate Births; Marital Status;
 Negroes; *Population Distribution; *Population
 Trends; Residential Patterns; Rural Population;
 Spanish Americans; *Tables (Data)

IDENTIFIERS Spanish Surnamed; *Washington

ABSTRACT

As of April 1, 1976, Washington's population was estimated at 3,571,591--an increase of 158,341 since 1970. This annual report presents data pertaining to: official April 1 population estimates for cities, towns, and counties; components of population change; changes in household size from 1970 to 1976; assessment of accuracy of population estimates for cities and towns; and county censuses since 1970. Data were obtained from city and county officials, Armed Forces personnel at major bases in the State, housing directors of the colleges and universities, and various divisions of the Department of Social and Health Services. Tabular data cover: classification of cities and counties by population size; annexations by cities and towns; population of selected ethnic categories (Spanish surnamed, American Indian, Black, and Asian American); Armed Forces population; general fertility rate--1930-1976; population 65 years and over; abortions per 1,000 live births in selected states; population change from 1950 to 1970; and household size. Corrected 1970 population data by 5-year age groups for the State and counties is included for the first time. Guidelines for cities to use when considering a special census are also given. (NQ)

 * Documents acquired by ERIC include many informal unpublished *
 * materials not available from other sources. ERIC makes every effort *
 * to obtain the best copy available. Nevertheless, items of marginal *
 * reproducibility are often encountered and this affects the quality *
 * of the microfiche and hardcopy reproductions ERIC makes available *
 * via the ERIC Document Reproduction Service (EDRS). EDRS is not *
 * responsible for the quality of the original document. Reproductions *
 * supplied by EDRS are the best that can be made from the original. *

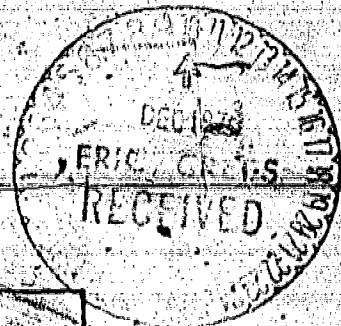
ED121974



Washington State Information Report

U.S. DEPARTMENT OF HEALTH,
EDUCATION & WELFARE
NATIONAL INSTITUTE OF
EDUCATION

THIS DOCUMENT HAS BEEN REPRODUCED EXACTLY AS RECEIVED FROM THE PERSON OR ORGANIZATION ORIGINATING IT. POINTS OF VIEW OR OPINIONS STATED DO NOT NECESSARILY REPRESENT OFFICIAL NATIONAL INSTITUTE OF EDUCATION POSITION OR POLICY.



State of Washington
POPULATION TRENDS
1976

RC009589

Population Studies Division
Office of Program Planning & Fiscal Management

STATE OF WASHINGTON
POPULATION TRENDS

1976

OFFICE OF PROGRAM PLANNING & FISCAL MANAGEMENT
POPULATION STUDIES DIVISION
AUGUST, 1976

TABLE OF CONTENTS

PREFACE	i
HIGHLIGHTS	ii-iii
LIST OF TABLES	iv-vi
LIST OF FIGURES	vii
I POPULATION ESTIMATES, APRIL, 1976	1-24
II COMPONENTS OF POPULATION CHANGE	25-35
III SPECIAL REPORTS	
SHOULD A CITY OR TOWN CENSUS: SOME GUIDELINES	36-39
CHANGES IN HOUSEHOLD SIZE 1970-1976	40-47
ASSESSMENT OF ACCURACY OF POPULATION ESTIMATES FOR CITIES & TOWNS MADE BY THE POPULATION STUDIES DIVISION	48-58
COUNTY CENSUSES IN WASHINGTON SINCE 1970	59-66

PREFACE

Population Trends is prepared annually to make frequently requested population information available in one publication. Official April 1 population estimates for cities, towns, and counties in Washington are again included. Corrected 1970 population data by five year age groups for the state and counties is being released for the first time. These data are corrected for the 1970 census overcount of centenarians and for other errors found after the 1970 tabulations were complete. Corrected counts by single years of age are available upon request.

The Special Reports section covers guidelines cities should use when considering a special census, changes in household size 1970-76, special county census, and the accuracy of OPP&FM's official estimates. These reports should be of value to local officials and other interested persons.

Any comments or suggestions regarding the content or format of this publication are always welcome.

Special acknowledgement is given to the following persons or agencies because of their continued help and cooperation:

The Vital Statistics Section, Department of Social and Health Services, for the provision of residence and provisional vital statistics data; the Office of Research, Department of Social and Health Services, for the provision of institutional population counts for cities and unincorporated places; the housing directors of the colleges and universities requested to submit April 1 dormitory population counts; the Armed Forces personnel at major bases in the state who have provided excellent data in current armed forces counts and future expectations; and, all of the city and county officials who have helped in providing data used in the development of our April 1 estimates.

POPULATION STUDIES DIVISION

John R. Walker, Chief
Donald B. Pittenger, Assistant Chief

Research Analysts:

Elberta L. Everett
Theresa J. Lowe
Lawrence M. Weissér

Interns:

Sharon K. Panian
Dean C. Randall
Lucky M. Tedrow

Secretary:

Carolyn L. Hunt

1976 HIGHLIGHTS

The April 1, 1976 population of Washington State is estimated at 3,571,591 an increase of 158,341 (4.6%) since 1970.

A net immigration of persons to Washington has continued for the third year; total net immigration for the 1973-76 period is estimated at 88,045. This contrasts the estimated net out-migration of 59,200 persons from Washington between 1970 and 1973.

The number of armed forces personnel in the State, which declined from 60,082 in 1970 to 44,860 in 1973, has increased to 56,200 in 1976. This represents an increase of 11,340 for the 1973-76 period.

Between 1974 and 1976 Kitsap county had an increase of 5,130 armed forces personnel, from 3,790 in 1974 to 8,920 in 1976. The majority of the military increase (87%) is due to an increase of 4,456 naval personnel aboard ships undergoing repair at the Puget Sound Naval Shipyard.

In 1976 84 cities and two counties censused to determine their April 1 population. The Population Studies Division staff conducted 10 census training sessions at central locations through the state. These sessions were attended by 228 people representing a total of 39 cities that intended to census.

Population of the remaining 181 cities and towns was estimated from information provided by the cities on building permits issued, housing units completed, change in house trailers/mobile homes, and utility connections. Population Studies Division staff spent a total of 4 man months field checking city estimates and censuses.

Seattle's April 1, 1976 population is estimated at 503,500, a decline of 27,331 (5.1%) since 1970.

The 1976 population of both Spokane (174,500), and Tacoma (156,500) show an increase over 1970. Since 1970 Spokane and Tacoma have increased 3,984 and 2,093 respectively.

Other municipalities showing large increases for the 1970-76 period are Kennewick (6,089), Redmond (5,425), Bellevue (4,804), and Vancouver (4,641).

Total incorporated population of the State increased to 2,022 in 1976, an increase of 69,413 (3.6%) since 1970.

Municipalities annexed 70.7 square miles of land and 22,042 persons between 1970 and 1976 which helped contribute to their growth.

Cities annexing territory with the most substantial population between 1970 and 1976 were Yakima (2,487), Des Moines (2,490), Lynnwood (1,448), and Kennewick (1,345).

- The number of people living in unincorporated areas of the State in 1976 was 1,549,277, an increase of 88,928 (6.1%) since 1970.
- The total ethnic population in Washington is estimated at 291,700 as of April 1, 1976. Of this total, 86,800 (29.8%) are black.
- The Spanish surname population in the State in 1976 is estimated at 89,300.
- Blacks and persons of Spanish descent are the largest ethnic groups in Washington and represent, respectively, 2.4% and 2.5% of the total state population.
- In the fall of 1975, approximately 4,500 Indo-China refugees were placed in Washington from the various relocation centers throughout the United States.
- Population 65 years and older in Washington is estimated at 374,510 in 1976, an increase of 53,798 (16.8%) since 1970. Persons 65 years and older now represent 10.5% of the total population in the State.
- There were an estimated 51,727 births in Washington between April 1975 and April 1976 compared to 50,127 for the 1974-75 period. This increase represents the third year the number of births in the State has increased. The current increase in births is due to an increase in the number of women of childbearing age in Washington, not an increase in birth rates.
- The Annual number of abortions in Washington has continued to increase. There were 20,963 abortions recorded in 1975, an increase of 15.3 percent over the previous years total of 18,185.
- Consistent with national trends, the divorce/dissolution rate in Washington is the highest in history- 7.4 per 1,000 population.

LIST OF TABLES

TABLE NUMBER	TITLE	PAGE NUMBER
1	Official April 1, 1976 Population of Cities, Towns and Counties, State of Washington	1
2	Classification of Cities by Population Size, State of Washington.	11
3	Classification of Counties by Population Size, State of Washington.	11
4	Alphabetical Listing of Official April 1, 1976 Population of the Cities, State of Washington.	12
5	Annexations by Cities and Towns, State of Washington	16
6	Official April 1, Population of Selected Ethnic Categories, State of Washington, 1970 and 1975	22
7	Armed Forces Station Strength for Selected Counties, State of Washington, 1970-1976	23
8	Population 65 Years of Age and Over by County, State of Washington, 1970-1976	24
9	Components of Population Change, State of Washington 1920 to 1976	25
10	Components of Population Change by County, State of Washington, April 1, 1970 to April 1, 1976	26
11	General Fertility Rate, State of Washington, 1930-1976.	28
12	Number of Abortions by Age Group, State of Washington, 1971-1975.	30

LIST OF TABLES

TABLE NUMBER	TITLE	PAGE NUMBER
13	Number of Abortions by Marital Status, State of Washington, 1971-1975.	30
14	Number of Live Births, Illegitimate Live Births and Illegitimacy Ratio, State of Washington, 1965-1975	30
15	Number of Induced Abortions, Live Births and Ratio of Induced Abortions per 1,000 Live Births, Selected States	31
16	Marriages and Divorces/Dissolutions, State of Washington, 1960-1975.	32
17	Corrected 1970 Population by County, By Five Year Age Groups, State of Washington.	33
18	Estimate of Resident Population, April 1, 1960-1970.	34
19	Population Change 1950-1970, State of Washington	35
20	Census Costs & Number of Residents More than OPP&FM Estimates Required to Recover Census Costs; by City Population & Per Capita Enumeration Cost	39
21	Households by Size, United States.	42
22	Change in Household Size for Cities Under 2,500 Population in 1970, State of Washington, 1970-1976	44
23	Change in Household Size by Structure Type for Cities of Over 2,500 in 1970, State of Washington, 1970-1976.	46
24	Mean & Standard Deviation Values for Percent Differences Between Census & Estimates for Cities by Size, State of Washington	50

LIST OF TABLES

TABLE NUMBER	TITLE	PAGE NUMBER
25	Cumulative Absolute Percentage Differences Between Census & Estimates for Cities by Size, State of Washington.	50
26	Comparison of Statistics of Percent Difference Between Estimates & Census Populations for State Estimates, City Estimates, & Estimates Using the Federal Census of 1970.	53
27	Absolute Percent Differences Between Census & Estimated Population for Unadjusted & Adjusted Estimates, State of Washington.	55
28	Comparison of Statistics of Percent Difference Between Estimate & Census Population for Selected Censusing Cities of Greater than 1,000 Population & Those Cities of Greater than 1,000 Population that had less than 2.5% Difference Between Reported & Censused Number of Housing Units.	57
29	Counties Conducting Special Population Censuses 1970-1976, State of Washington.	59
30	Population & Housing Units, Adams County.	61
31	Population & Housing Units, Cowlitz County.	61
32	Population & Housing Units, Kitsap County	61
33	Population & Housing Units, San Juan County	62
34	Population & Housing Units, Stevens County.	62
35	Population & Housing Units, Wahkiakum County.	62

LIST OF FIGURES

FIGURE NUMBER	TITLE	PAGE NUMBER
1	Natural Increase Trends, State of Washington, 1910-1976.	27
2	A Demographic Roller Coaster, Birth and Fertility Rates for Washington, 1910-1976.	29
3	Ratio of Abortions per 1,000 Live Births by Year, Selected States.	31
4	Percent of Difference by Size of City.	51
5	Percent Difference by Number of Cities.	51
6	Percent Difference Between Reported & Censused Numbers of Housing Stock for Cities of Greater than 1,000 Population.	55

I

1976

POPULATION

ESTIMATES

TABLE 1

OFFICIAL APRIL 15, 1976, POPULATION
OF THE
CITIES, TOWNS AND COUNTIES, STATE OF WASHINGTON

*ACTUAL CENSUS

MUNICIPALITY BY COUNTY	1970*	1971	1972	1973	1974	1975	1976
ADAMS	12,014	12,200	12,300	12,300	12,300	12,400	13,709*
UNINCORPORATED	4,968	4,991	4,893	4,901	4,904	4,985	6,240
INCORPORATED	7,046	7,209	7,407	7,399	7,396	7,415	7,469
HATTON	60	56	70*	68*	65*	70	74*
LIND	622	622	622	622	622	631*	651*
OTHELLO	4,172	4,350*	4,534*	4,528*	4,528	4,508*	4,504*
RITZVILLE	1,876	1,876	1,876	1,876	1,876	1,881*	1,936*
WASHTUCNA	316	305*	305	305	305	325*	304*
ASOTIN	13,799	13,900	13,900	13,900	14,000	14,300	14,800
UNINCORPORATED	6,850	6,799	6,777	6,543	6,354	6,600	7,034
INCORPORATED	6,949	7,101	7,123	7,357	7,646	7,700	7,766
ASOTIN	637	673*	673	673	846*	825	846
CLARKSTON	6,312	6,428	6,450	6,604	6,800	6,875	6,920
BENTON	67,540	67,700	67,800	68,200	69,800	73,300	78,700
UNINCORPORATED	20,871	20,789	20,631	20,025	19,526	20,551	21,257
INCORPORATED	46,669	46,911	47,169	48,175	50,272	52,749	57,443
BENTON CITY	1,070	1,093*	1,090	1,100	1,125	1,315*	1,422*
KENNEWICK	15,212	15,400	15,580	16,200	16,800	18,253*	21,301*
PROSSER	2,954	2,975	2,990	3,050	3,100	3,104*	3,150
HIGHLAND	26,290	26,300	26,350	26,600	26,000	28,600	30,000*
WEST HIGHLAND	1,143	1,143	1,154*	1,225*	1,247*	1,477*	1,561*
CHELAN	41,103	41,200	41,300	41,300	41,200	40,900	41,100
UNINCORPORATED	17,696	17,644	16,997	16,756	16,566	16,519	16,669
INCORPORATED	23,407	23,501	24,303	24,552	24,634	24,381	24,431
CASHMERE	1,976	1,976	1,970	1,987	1,987	1,975	1,956*
CHELAN	2,837	2,837	2,850	2,920	2,950	2,980	2,992
ENTIAI	360	366	361	373*	375	374*	381
LEAVENWORTH	1,322	1,322	1,322	1,322	1,322	1,322	1,402*
WENATCHEE	16,912	17,000	17,800	17,950	18,000	17,750	17,700
CLALLAM	34,770	34,900	35,100	35,200	35,600	37,000	39,800
UNINCORPORATED	15,174	15,177	14,972	14,747	15,011	16,440	18,836
INCORPORATED	19,596	19,723	20,128	20,453	20,789	20,560	20,964
FORKS	1,680	1,713	1,734	1,788	1,867*	1,893	1,948
PORT ANGELES	16,367	16,450	16,600	16,765	16,800	16,242*	16,506
SEQUIM	1,549	1,560	1,794*	1,900	2,322	2,425	2,510
CLARK	128,454	130,100	132,800	135,200	140,300	149,000	154,300
UNINCORPORATED	74,187	74,769	76,019	77,486	80,349	86,890	94,001
INCORPORATED	54,267	55,331	56,781	57,714	59,951	60,110	60,299
BATTLE GROUND	1,438	1,533*	1,609*	1,927*	2,029*	2,116*	2,288*
CAMAS	5,790	5,825	5,920	5,970	5,990	5,990	5,990
LACENTER	300	300	300*	300*	412*	420	420

OFFICIAL APRIL 1, 1976, POPULATION
OF THE
CITIES, TOWNS AND COUNTIES, STATE OF WASHINGTON

*ACTUAL CENSUS MUNICIPALITY BY COUNTY	1970	1971	1972	1973	1974	1975	1976
CLARK (CONT)							
RIDGEFIELD	1,004	1,014	1,014	988*	1,000	1,039*	1,026
VANCOUVER	41,859	42,766	44,000	44,490	46,500	46,500	46,500
WASHOUGAL	3,388	3,394	3,430	3,500	3,475*	3,500	3,530
YACOLT	488	499*	508*	545*	545	545	545
COLUMBIA	4,439	4,300	4,300	4,300	4,200	4,300	4,500
UNINCORPORATED	1,627	1,484	1,402	1,375	1,371	1,461	1,647
INCORPORATED	2,812	2,816	2,898	2,925	2,829	2,839	2,853
DAYTON	2,596	2,596	2,608*	2,625*	2,625	2,632	2,646*
STARBUCK	216	220	290	300	264*	207*	207
COWLITZ ²	68,616	69,600	69,800	69,900	70,600	70,700	71,600
UNINCORPORATED	25,572	26,443	25,999	25,507	26,445	26,323	26,393
INCORPORATED	43,044	43,157	43,801	44,393	44,155	44,377	45,207
CASTLE ROCK	1,647	1,680	1,730	1,830	1,890*	1,890	1,905
KALAMA	1,106	1,120*	1,120	1,120	1,037	1,035	1,052*
NELSO	10,296	10,300	10,387	10,410	10,400	10,400	10,900
LONGVIEW	28,373	28,400	28,800	29,200	28,900	29,049*	29,550
WOODLAND	1,622	1,657	1,764*	1,833*	1,928	2,003*	2,140
DOUGLAS	16,787	17,100	17,300	17,500	17,700	18,100	19,000
UNINCORPORATED	13,537	13,540	13,714	13,902	14,069	14,398	14,377
INCORPORATED	3,250	3,560	3,586	3,598	3,631	3,702	4,623
BRIDGEPORT	952	1,065*	1,060	1,060	1,060	1,050	1,480
EAST WENATCHEE	913	1,027*	1,033	1,003	1,045	1,130	1,528
MANSFIELD	273	302*	303	303	347*	345	375*
ROCK ISLAND	193	193*	217*	222*	239*	247*	310*
WATERVILLE	919	973*	973	950	940	930	930
FERRY	3,655	3,600	3,600	3,600	3,600	4,200	4,300
UNINCORPORATED	2,793	2,735	2,674	2,636	2,608	3,175	3,205
INCORPORATED	862	865	926	964	992	1,025	1,095
REPUBLIC	862	865	926	964*	992*	1,025	1,095
FRANKLIN	25,816	26,000	26,000	26,000	26,200	26,700	27,500
UNINCORPORATED	10,153	10,267	10,128	9,997	9,958	10,091	10,510
INCORPORATED	15,663	15,733	15,872	16,003	16,242	16,609	16,990
CONNELL	1,161	1,290*	1,348*	1,388*	1,572*	1,670*	1,780*
KAHLOTUS	308	250	250	285*	285	203	194*
NESA	274	273	274	280	280	280	398*
PASCO	13,920	13,920	14,000	14,050	14,100	14,450	14,618*
GARFIELD	2,911	2,900	2,900	2,900	2,800	2,800	2,900
UNINCORPORATED	1,088	1,060	1,000	1,035	959	960	1,040
INCORPORATED	1,823	1,840	1,900	1,865	1,841	1,840	1,860

OFFICIAL APRIL 1, 1976, POPULATION
OF THE
CITIES, TOWNS AND COUNTIES, STATE OF WASHINGTON

*ACTUAL CENSUS

MUNICIPALITY BY COUNTY	1970	1971	1972	1973	1974	1975	1976
GARFIELD (CONT)							
POMEROY	1,823	1,840	1,900	1,865	1,841	1,840	1,860
GRANT	41,881	42,800	43,300	43,300	43,000	42,700	43,900
UNINCORPORATED	16,637	17,028	17,508	17,726	17,325	17,037	17,855
INCORPORATED	25,244	25,772	25,792	25,574	25,675	25,663	26,045
COULEE CITY	558	571	572	588	559	568	565
ELECTRIC CITY	651	750	865	888	864	864	851
EPHATA	5,255	5,255	5,150	5,150	5,150	5,140	5,230
GEORGE	273	273	273	275	275	272	272
GRAND COULEE	1,302	1,543	1,525	1,525	1,400	1,400	1,380
HARTLINE	189	172	183	176	180	172	177
KRUPP	52	62	62	77	75	70	94
MATTAWA	180	150	169	153	203	244	231
MOSES LAKE	10,310	10,253	10,280	10,200	10,300	10,300	10,165
QUINCY	3,237	3,237	3,237	3,240	3,240	3,210	3,309
ROYAL CITY	477	600	600	600	654	633	714
SOAP LAKE	1,064	1,064	1,064	1,206	1,206	1,200	1,396
WARDEN	1,254	1,369	1,359	1,312	1,366	1,400	1,471
WESTLAKE	258	258	250				
WILSON CREEK	184	215	206	206	203	190	190
GRAYS HARBOR	59,553	60,000	60,000	60,100	60,100	60,200	60,500
UNINCORPORATED	20,836	20,358	20,475	20,556	20,874	21,038	20,772
INCORPORATED	38,717	39,642	39,525	39,544	39,226	39,162	40,728
ABERDEEN	18,489	18,489	18,400	18,450	18,100	18,067	18,980
COSMOPOLIS	1,599	1,600	1,600	1,600	1,597	1,600	1,600
ELMA	2,227	2,227	2,300	2,375	2,435	2,470	2,470
HOUQUIAM	10,466	10,430	10,300	10,250	10,100	10,054	10,445
MCCLEARY	1,265	1,324	1,324	1,313	1,313	1,275	1,312
MONTESANO	2,847	2,847	2,850	2,775	2,775	2,790	2,790
OAKVILLE	460	443	460	490	503	503	574
OCEAN SHORES		918	909	909	1,021	1,071	1,021
WESTPORT	1,364	1,364	1,382	1,382	1,382	1,382	1,536
ISLAND	27,011	27,700	27,900	28,200	28,600	30,000	33,500
UNINCORPORATED	16,594	17,271	16,333	16,370	16,390	17,050	20,737
INCORPORATED	10,417	10,429	11,567	11,830	12,210	12,950	12,763
COUPEVILLE	703	703	742	812	889	870	962
LANGLEY	547	523	525	505	595	574	590
OAK HARBOR	9,167	9,203	10,300	10,405	10,720	10,900	11,271
JEFFERSON	10,661	10,700	10,600	10,600	10,600	11,100	11,600
UNINCORPORATED	5,420	5,459	5,450	5,400	5,370	5,715	6,300
INCORPORATED	5,241	5,241	5,150	5,200	5,230	5,385	5,300
PORT TOWNSEND	5,241	5,241	5,150	5,200	5,230	5,385	5,300

OFFICIAL APRIL 1, 1976, POPULATION
OF THE
CITIES, TOWNS AND COUNTIES, STATE OF WASHINGTON

*ACTUAL CENSUS

MUNICIPALITY
BY COUNTY

	1970	1971	1972	1973	1974	1975	1976
KING	1,159,375	1,158,200	1,146,000	1,143,800	1,146,200	1,148,000	1,155,700
UNINCORPORATED	411,757	413,176	409,197	405,809	413,651	413,284	417,524
INCORPORATED	747,618	745,024	736,803	737,991	732,549	734,716	738,176
ALGONA	1,276	1,230	1,230	968	1,000	995	1,030
AUBURN	21,653	21,706	23,000	21,256	21,600	22,300	22,600
BEAUX ARTS	475	378	350	362	372	372	372
BELLEVEUE	61,196	63,000	62,343	63,000	63,940	66,000	67,000
BLACK DIAMOND	1,160	1,164	1,164	1,164	1,000	1,000	1,050
BOTHELL	4,979	5,386	5,423	5,550	5,755	5,885	6,036
CARNATION	530	572	572	600	600	600	600
CLYDE HILL	3,150	3,018	3,026	3,113	3,160	3,185	3,185
DES MOINES	3,951	4,752	4,908	4,699	4,697	4,250	6,460
DUVALL	607	575	560	590	600	553	550
ENUNCLAW	4,703	4,900	4,963	4,599	4,600	4,600	4,800
HUNTS POINT	578	578	578	467	467	480	480
ISSAQUAH	4,361	4,435	4,395	4,539	4,705	4,750	4,860
KENT	16,596	16,805	16,940	16,945	17,000	16,928	17,500
KIRKLAND	15,070	16,100	15,100	15,100	14,850	14,950	15,100
LAKE FOREST PARK	2,539	2,545	2,545	2,545	2,550	2,550	2,500
MEDINA	3,455	3,455	3,475	3,400	3,480	3,241	3,270
MERCER ISLAND	19,819	19,800	20,300	21,000	20,032	20,500	20,800
NORMANDY PARK	4,202	4,240	4,245	4,280	4,330	4,330	4,351
NORTH BEND	1,625	1,631	1,650	1,650	1,650	1,650	1,665
PACIFIC	1,831	1,730	1,700	1,650	1,650	1,601	1,665
REDMOND	11,020	11,634	12,150	12,134	13,955	15,217	16,445
RENTON	25,878	25,578	25,200	26,250	27,300	27,300	26,500
SEATTLE	530,831	525,090	515,000	515,000	507,000	503,500	503,500
SKYKOMISH	283	283	283	283	283	280	290
SNOQUALMIE	1,260	1,260	1,260	1,260	1,260	1,260	1,210
TUKWILA	3,509	3,150	3,317	3,420	3,416	3,370	3,300
YANHOV POINT	1,101	1,119	1,126	1,107	1,096	1,069	1,067
KITSAP	101,732	106,200	101,600	103,100	104,300	116,090	116,600
UNINCORPORATED	59,131	59,333	59,310	59,387	61,054	70,608	71,976
INCORPORATED	42,601	46,867	42,290	43,713	43,246	45,482	44,624
BREMERTON	35,307	39,400	34,750	35,975	35,260	37,132	37,900
PORT ORCHARD	3,904	3,900	3,940	4,030	4,072	4,065	4,248
POULSO	1,861	1,962	1,939	2,010	2,104	2,115	2,660
WINSLOW	1,529	1,605	1,661	1,750	1,810	1,810	1,816
KITITAS	25,039	25,400	25,500	25,200	25,100	25,300	25,500
UNINCORPORATED	7,704	7,625	7,429	7,579	7,639	7,634	8,434
INCORPORATED	17,335	17,775	18,071	17,621	17,461	17,666	17,065
CLIFTON	1,725	1,725	1,725	1,725	1,725	1,710	1,725
ELLENBURG	13,568	14,000	14,126	13,690	13,530	13,600	13,200
KITITAS	617	645	704	704	704	769	750



OFFICIAL APRIL 1, 1976, POPULATION
OF THE
CITIES, TOWNS AND COUNTIES, STATE OF WASHINGTON

*ACTUAL CENSUS

MUNICIPALITY BY COUNTY	1970	1971	1972	1973	1974	1975	1976
KITTITAS (CONT)							
KOSLYN	1,031	1,031	1,031	1,031	1,031	1,000	1,000
SOUTH CLE ELUM	374	374	405	391	391	390	390
KLICKITAT	12,138	12,700	12,900	12,900	12,800	13,009	13,200
UNINCORPORATED	7,398	7,369	7,320	7,316	7,161	7,453	7,596
INCORPORATED	4,740	5,331	5,580	5,584	5,639	5,557	5,604
BINGEN	671	726	750	714	720	668	708
GOLDENDALE	2,484	2,965	3,160	3,200	3,249	3,275	3,290
WHITE SALMON	1,585	1,640	1,670	1,670	1,670	1,600	1,606
LEWIS	45,467	45,800	46,000	46,400	46,400	47,100	48,600
UNINCORPORATED	25,253	25,384	25,423	25,517	25,272	25,734	27,048
INCORPORATED	20,214	20,416	20,577	20,883	21,128	21,366	21,552
CENTRALIA	10,054	10,207	10,300	10,300	10,300	10,415	10,582
CHEHALIS	5,027	5,727	5,750	5,900	5,900	5,900	5,940
MORTON	1,134	1,231	1,250	1,266	1,409	1,410	1,410
MOSSYPOCK	409	409	409	443	443	451	420
NAPAVINE	377	377	377	418	460	534	534
PELL	582	540	553	553	600	660	630
TOLEDO	654	639	642	633	639	622	635
VADER	387	390	396	396	399	400	420
WINLOCK	890	896	900	974	978	974	981
LINCOLN	9,572	9,500	9,400	9,400	9,300	9,300	9,500
UNINCORPORATED	3,932	3,843	3,632	3,546	3,416	3,361	3,538
INCORPORATED	5,640	5,657	5,768	5,854	5,884	5,939	5,962
ALMIRA	376	380	380	404	405	410	410
CHESTON	325	325	342	356	350	350	350
DAVENPORT	1,363	1,363	1,363	1,370	1,370	1,450	1,440
HARRINGTON	489	480	485	490	490	490	505
ODESSA	1,074	1,074	1,090	1,139	1,130	1,100	1,104
REARDAN	389	401	432	425	461	461	508
SPRAGUE	550	550	536	538	536	536	545
WILBUR	1,074	1,084	1,140	1,140	1,140	1,140	1,100
MASON	20,918	21,100	21,300	21,500	21,500	22,200	24,300
UNINCORPORATED	14,403	14,500	14,480	14,600	14,600	15,722	17,820
INCORPORATED	6,515	6,600	6,720	6,900	6,900	6,478	6,480
SHELTON	6,515	6,600	6,720	6,900	6,900	6,478	6,480
OKANOGAN	25,867	26,200	26,400	26,500	26,400	26,500	26,900
UNINCORPORATED	12,069	11,836	11,700	11,756	11,776	11,823	12,052
INCORPORATED	13,798	14,364	14,700	14,754	14,624	14,677	14,848
BREWSTER	1,059	1,176	1,150	1,143	1,143	1,120	1,143
CONCONULLY	122	125	125	135	135	140	172

OFFICIAL APRIL 1, 1976, POPULATION
OF THE
CITIES, TOWNS AND COUNTIES, STATE OF WASHINGTON

*ACTUAL CENSUS

MUNICIPALITY BY COUNTY	1970	1971	1972	1973	1974	1975	1976
OKANOGAN (CONT)							
COULEE DAM	1,458	1,704*	1,718*	1,652*	1,547*	1,530*	1,506
ELMER CITY	324	340	389*	399	363	374*	342
NESPELEM	323	330	330	335	335	335	340
OKANOGAN	2,015	2,068*	2,170	2,225	2,207*	2,225	2,242
OMAK	4,164	4,250	4,300	4,400	4,425	4,440	4,400
OROVILLE	1,555	1,555	1,555	1,555	1,555	1,555	1,560
PATEROS	472	486	520	530	530	545*	540
RIVERSIDE	228	248	255*	255	255	265*	265
TONASKET	951	965	955	970	985	985	985
TRISP	756	777*	777	777	750*	750*	745
WINTHROP	371	340	376*	376*	394*	408*	408
PACIFIC							
UNINCORPORATED	15,776	15,800	15,800	15,800	15,800	15,900	15,800
INCORPORATED	9,401	9,392	9,407	9,233	9,226	9,441	9,338
ILWACO	506	510	510	543*	550	550	650
LONG BEACH	968	968	968	1,059*	1,059	1,059	1,059
RAYMOND	3,126	3,130	3,115	3,115	3,115	3,050	3,050
SOUTH BEND	1,795	1,800	1,800	1,850	1,850	1,800	1,803*
PEND OREILLE							
UNINCORPORATED	6,025	6,000	6,040	6,000	6,000	6,500	6,900
INCORPORATED	3,271	3,255	3,223	3,174	3,134	3,592	3,940
CUSICK	275*	274*	277*	282*	286*	2,908	2,960
IGONE	257	250	250	250	271*	271	271
METALINE	529	529	530	530	530	530	560*
METALINE FALLS	197	214	208	220	220	225*	225
NEWPORT	307	300	315*	315	320	350	370
PIENCE							
UNINCORPORATED	412,344	410,800	404,800	404,300	411,000	413,500	420,700
INCORPORATED	213,627	211,012*	204,237	203,061	208,254	209,931	215,808
BONNEY LAKE	198,717	199,788	200,563	200,639	202,746	203,569	204,892
HUCKLEY	2,700	2,838	2,900*	2,824*	3,100*	3,510	4,187*
CARRONADO	3,446	3,380	3,300	3,165	3,100	3,132*	3,085
DU PONT	394	394*	390	390	419*	413	396*
LATORVILLE	38*	340*	384*	38*	38*	490*	495
FIFE	852	860	860	860	902*	910	929
FRICKENT	1,458	1,423*	1,423	1,339*	1,339	1,339	1,619*
GIG HARBOR	5,651	5,700	5,716	5,750	5,870	5,880	5,800
MILTON	1,666	1,666	1,595*	1,577*	1,603*	1,625	1,744*
ORTING	2,607	2,624*	2,624*	2,624*	2,624*	2,600	2,650
ROYALUP	1,643	1,643	1,643	1,643	1,630	1,630	1,654*
HOY	14,742	15,000	15,100	15,200	15,645	15,600	15,500
RUSTON	381	380*	381*	364*	381*	393	393*
	688	688	688	688	662*	670	676

DATE 07/01/76

OFFICIAL APRIL 1, 1976, POPULATION
OF THE
CITIES, TOWNS AND COUNTIES, STATE OF WASHINGTON

*ACTUAL CENSUS

MUNICIPALITY BY COUNTY	1970	1971	1972	1973	1974	1975	1976
PIERCE (CONT)							
SOUTH PRAIRIE	206	217	217	217	217	217	210
STELLACOOM	2,850	3,064	3,200	3,500	3,700	3,930	4,450
SUNNER	4,325	4,325	4,325	4,325	4,385	4,480	4,327
TACOMA	154,407	155,800	155,500	155,500	156,500	156,500	156,500
WILKESON	317	317	317	297	285	276	277
SAN JUAN	3,856	3,900	3,900	4,000	4,000	4,500	5,700
UNINCORPORATED	3,053	3,097	3,085	3,111	3,105	3,575	4,700
INCORPORATED	808	803	815	889	895	925	970
FRIDAY HARBOR	803	803	815	889	895	925	970
SKAGIT	52,381	52,700	52,900	53,000	53,000	53,400	54,100
UNINCORPORATED	26,403	26,458	26,185	26,080	25,775	25,057	25,356
INCORPORATED	25,978	26,242	26,715	26,920	27,225	28,343	28,744
ANACORTES	7,701	7,760	7,790	7,800	7,810	7,940	8,010
BURLINGTON	3,138	3,348	3,400	3,440	3,349	3,413	3,400
CONCRETE	573	573	570	570	570	580	590
HAMILTON	201	191	198	196	199	236	223
LA CONNER	639	640	640	660	660	643	636
LYMAN	324	317	317	317	317	320	325
MOUNT VERNON	8,804	8,804	8,900	9,000	9,270	10,021	10,300
SEDR0 WOOLLEY	4,598	4,620	4,900	4,977	5,050	5,180	5,260
SKAMANIA	5,845	5,900	5,900	5,900	5,900	5,900	5,800
UNINCORPORATED	4,470	4,504	4,505	4,546	4,526	4,514	4,483
INCORPORATED	1,375	1,396	1,395	1,354	1,374	1,381	1,317
NORTH BONNEVILLE	459	470	469	480	500	477	387
STEVENSON	916	926	926	874	874	904	930
SNOHOMISH	265,236	265,600	265,900	265,600	267,100	268,000	270,100
UNINCORPORATED	127,952	127,990	128,040	126,140	127,147	127,390	129,736
INCORPORATED	137,284	137,610	137,860	139,460	139,953	140,610	140,364
ARLINGTON	2,261	2,261	2,220	2,250	2,290	2,350	2,675
BRIER	3,093	3,093	3,093	3,090	3,030	3,000	3,000
DARRINGTON	1,094	1,120	1,156	1,160	1,046	1,058	1,058
EDMONDS	23,998	24,000	24,125	24,600	25,110	25,650	25,039
EVENETT	53,622	54,000	53,940	53,400	53,225	53,200	52,500
GOLD HAN	504	504	504	504	501	500	540
GRANITE FALLS	813	793	810	795	795	792	795
INDEX	169	169	168	172	171	170	173
LAKE STEVENS	1,283	1,283	1,283	1,270	1,270	1,191	1,185
LYNNWOOD	16,919	17,371	17,500	19,125	19,431	19,672	20,150
MARYSVILLE	4,343	4,300	4,220	4,220	4,220	4,190	4,570
MUNROE	2,687	2,700	2,700	2,700	2,705	2,680	2,695
MOUNTLAKE TERRACE	16,600	16,538	16,625	16,725	16,750	16,750	16,400

OFFICIAL APRIL 1, 1976, POPULATION
OF THE
CITIES, TOWNS AND COUNTIES, STATE OF WASHINGTON

*ACTUAL CENSUS

MUNICIPALITY
BY COUNTY

	1970	1971	1972	1973	1974	1975	1976
SNOHOMISH (CONT)							
MUKILTEO	1,369	1,360	1,390	1,390	1,400	1,320*	1,320
SNOHOMISH	5,174	4,753*	4,753	4,753	4,652*	4,665	4,795*
STANWOOD	1,357	1,352*	1,380	1,359*	1,360	1,417*	1,463*
SULTAN	1,119	1,150	1,150	1,150	1,150	1,150	1,156
WOODWAY	879	863*	843*	837*	847*	849*	850*
SPOKANE							
UNINCORPORATED	287,487	290,800	293,100	295,000	296,500	298,000	300,600
INCORPORATED	102,083	104,649	104,993	106,864	106,634	107,421	109,896
AIRWAY HEIGHTS	185,404	188,151	188,107	188,136	189,861	190,579	190,704
CHENEY	744	875	1,090	1,015*	1,202*	1,350	1,350
DEER PARK	6,358	6,500*	6,600	6,718*	6,718	6,589*	6,637
FAIRFIELD	1,295	1,300	1,350	1,370	1,460	1,473	1,558*
LATAH	469	509*	514	479*	490	505*	488
MEDICAL LAKE	169	168	159	160	160	162	146
MILLWOOD	3,529	3,400	3,588*	3,525	3,365	3,477*	3,595
ROCKFORD	1,770	1,790	1,800	1,838*	1,838	1,838	1,838
SPANGLE	327	350	350	367	367	415*	415
WAVERLY	179	212	197	200	200	203	198
WAVERTY	170,516	171,000	172,400	172,400	174,000	174,500	174,500
WAVERTY	48	56	59	64	61*	67	69*
STEVENS							
UNINCORPORATED	17,405	17,400	17,400	17,500	17,600	19,000	22,900
INCORPORATED	10,564	10,415	10,296	10,118	10,098	11,374	14,965
CHEWELAH	6,841	6,985	7,104	7,382	7,502	7,626	7,935
COLVILLE	1,365	1,431*	1,511*	1,578*	1,592*	1,692*	1,780*
KETTLE FALLS	3,742	3,834	3,880	4,050	4,135	4,135	4,350
MARCUS	920	923*	923	923	962*	962	975
NORTHPORT	148	155	150	142	142	142	169
SPRINGDALE	451	427*	415*	449*	431*	456*	429
SPRINGDALE	215	215	225	240	240	239*	232
THURSTON							
UNINCORPORATED	76,894	78,700	80,500	81,300	83,900	85,900	94,300
INCORPORATED	36,132	37,151	37,902	38,625	39,459	40,076	41,925
BUCUDA	40,762	41,549	42,598	42,675	44,441	45,824	46,375
LACEY	421	425	435	427	469*	490	500
OLYMPIA	9,696	9,880	10,300	10,100	10,733*	11,724*	11,860
TENINO	23,296	23,800	24,000	24,200	25,000	25,250	25,480
TUMWATER	382	390	421*	548*	633*	690*	727*
YELM	962	962	1,140	1,048*	1,138*	1,160	1,174*
YELM	5,373	5,440	5,670	5,720	5,768*	5,820*	5,894
YELM	632	632	632	632	700	690	740
WAHIAKUM							
UNINCORPORATED	3,542	3,600	3,600	3,600	3,500	3,500	3,682*
INCORPORATED	2,945	2,948	2,954	2,954	2,854	2,860	3,051
INCORPORATED	647	652	646	646	646	640	631

OFFICIAL APRIL 1, 1976, POPULATION
OF THE
CITIES, TOWNS AND COUNTIES, STATE OF WASHINGTON

*ACTUAL CENSUS

MUNICIPALITY BY COUNTY	1970	1971	1972	1973	1974	1975	1976
WAHIAKUM (CONT) CATHLAMET	647	652	646	646	646	640	631*
WALLA WALLA UNINCORPORATED	42,176	42,100	42,000	42,100	42,000	42,200	43,000
INCORPORATED	12,852	12,713	12,878	12,727	12,482	12,329	12,660
COLLEGE PLACE	29,324	29,387	29,122	29,373	29,518	29,871	30,340
PRESCOTT	4,510	4,590	4,588*	4,623	4,637	4,899*	5,120
WAITSBURG	242	267*	259*	305*	226*	260*	305*
WALLA WALLA	953	853	975	995	1,005	1,053*	1,075
	23,619	23,577	23,300	23,450	23,450	23,653*	23,840
WHATCOM UNINCORPORATED	81,983	83,800	85,000	85,000	85,200	86,200	90,000
INCORPORATED	34,004	35,004	35,110	35,295	34,557	34,658	37,156
BELLINGHAM	47,979	48,796	49,890	49,705	50,643	51,542	52,844
BLAINE	39,375	39,700	40,500	40,200	40,500	41,000	42,100
EVERSON	1,955	2,000	2,000	2,050	2,120	2,240	2,265
FERNDALE	633	670*	675	680	690	700	730
LYNDEN	2,164	2,500	2,740	2,800	2,927*	3,030	3,100
NOOKSACK	2,808	2,850	2,900	2,950	3,360	3,525	3,540
SUMAS	322	352*	352	352	352	353	413*
	722	724*	723*	673*	694*	694*	696*
WHITMAN UNINCORPORATED	37,900	38,000	38,900	38,700	38,600	38,700	40,500
INCORPORATED	8,288	6,972	6,990	6,241	6,058	6,179	7,682
ALBION	29,612	31,028	31,910	32,459	32,542	32,521	32,818
CULFAX	687	650*	662*	613*	600	600	600
COLTON	2,664	2,640	2,684	2,750	2,700	2,700	2,700
ENDICOTT	279	310	317*	314*	283*	272*	311*
FARMINGTON	333	342*	342	359*	362*	374*	370*
GARFIELD	140	142*	162*	156*	156	156	156
LA CROSSE	610	614*	614	649*	649	650	655
LAMONT	426	410	412*	395*	407*	422*	398*
MALDEN	88	88	88	77	83	85	98
OAKESDALE	219	220	220	230	229*	227	211*
PALOUSE	447	447	447	447	445	447	447
PULLMAN	948	973*	1,046*	1,046	1,020	970*	970
ROSLIA	20,509	21,915*	22,600	23,000	23,200	23,259*	23,500
SAINT JOHN	569	602*	600	600	600	600	600
TEKOA	575	557*	563*	550*	573*	539*	557*
UNIONTOWN	808	808	808	911*	900	920	920
	310	310	345	362	335	300	325
YAKIMA UNINCORPORATED	145,212	145,200	145,200	145,200	145,200	147,600	153,300
INCORPORATED	69,654	68,955	68,455	68,227	68,973	68,057	70,689
GRANDVIEW	75,558	76,245	76,745	76,973	76,227	79,553	82,611
	3,605	3,683	3,708	3,735	3,620	4,044*	4,326

OFFICIAL APRIL 1, 1976, POPULATION
OF THE
CITIES, TOWNS AND COUNTIES, STATE OF WASHINGTON

*ACTUAL CENSUS

MUNICIPALITY BY COUNTY	1970	1971	1972	1973	1974	1975	1976
YAKIMA (CONT)							
GRANGER	1,567	1,536	1,538	1,550	1,500	1,562*	1,640
HARRAH	305	304	336*	336	354*	350	350
MABTON	926	938	1,052*	1,056*	1,056	1,059*	1,059
MOXEE CITY	600	600	610	630	717	800	800
NACHES	666	666	666	676*	700	700	700
SELAH	3,311	3,301	3,440	3,438*	3,460	3,637*	3,650
SUNNYSIDE	6,751	6,840	6,910	7,115	7,150	7,250	7,440
TIETON	476	476	470	443*	475*	485	486*
TOPPENISH	5,744	5,826	5,850	5,880	5,909*	6,000	6,050
UNION GAP	2,040	2,075	2,100	2,024*	2,521	2,571	2,630
WAPATO	2,841	3,000	3,015	3,015	3,000	3,050	3,060
YAKIMA	45,588	45,850	45,875	45,875	46,300	46,750	49,100
ZILLAH	1,138	1,150	1,175	1,200	1,205	1,290	1,320
STATE TOTAL	3,413,250	3,430,100	3,418,800	3,424,300	3,448,100	3,493,990	3,571,591
UNINCORPORATED	1,460,349	1,463,450	1,451,800	1,447,470	1,462,943	1,493,967	1,549,277
INCORPORATED	1,952,901	1,966,650	1,967,000	1,976,830	1,985,157	2,000,023	2,022,314

¹ OFFICIAL ESTIMATES ARE PUBLISHED ANNUALLY AND ARE DEVELOPED FROM THE BEST DATA AVAILABLE AT THE TIME OF THE ESTIMATE DATE. ANNUAL ESTIMATES IN THIS OFFICIAL SERIES ARE NOT REVISED ON THE BASIS OF SPECIAL CENSUSES OR OTHER INFORMATION WHICH BECOMES AVAILABLE AFTER THE ESTIMATE DATE.

² THE POPULATION OF COWLITZ COUNTY AS COUNTED IN THE SEPTEMBER 10, 1973 SPECIAL CENSUS WAS 70,408. THE 1974 ESTIMATE REFLECTS THIS COUNT.

³ INCORPORATED WITH MOSES LAKE.

⁴ OCEAN SHORES INCORPORATED NOVEMBER 18, 1970.

⁵ ESTIMATES FOR BRIMERTON AND KITSAP COUNTY INCLUDE POPULATION ON NON-HOMEPORTED NAVAL SHIPS DOCKED AT THE PUGET SOUND NAVAL SHIPYARD ON APRIL 1. THE 1970 FEDERAL CENSUS DID NOT ALLOCATE THIS POPULATION TO BREMERTON, KITSAP COUNTY, OR THE STATE OF WASHINGTON.

⁶ THE POPULATION OF SAN JUAN COUNTY AS COUNTED IN THE SEPTEMBER 22, 1975 SPECIAL CENSUS WAS 5,493. THE 1976 ESTIMATE REFLECTS THIS COUNT.

⁷ THE POPULATION OF STEVENS COUNTY AS COUNTED IN THE SEPTEMBER 25, 1975 SPECIAL CENSUS WAS 22,708. THE 1976 ESTIMATE REFLECTS THIS COUNT.

TABLE 2

CLASSIFICATION OF CITIES BY POPULATION SIZE¹
STATE OF WASHINGTON

Classification	Population
First Class	*20,000 or more
Second Class	*10,000 or more
Third Class	*At least 1,500
Fourth Class	**Not less than 300

¹ R.C.W. 35.01.040

* At time of its organization or reorganization.

** At time of its organization.

TABLE 3

CLASSIFICATION OF COUNTIES BY POPULATION SIZE²
STATE OF WASHINGTON

Classification	Population
Class AA	500,000 or more
Class A	210,000 or more
First Class	125,000 - 209,999
Second Class	70,000 - 124,999
Third Class	40,000 - 69,999
Fourth Class	18,000 - 39,999
Fifth Class	12,000 - 17,999
Sixth Class	8,000 - 11,999
Seventh Class	5,000 - 7,999
Eighth Class	3,300 - 4,999
Ninth Class	Under 3,299

²R.C.W. 36.13.010

TABLE 4

 OFFICIAL APRIL 1, 1976, POPULATION
 OF THE
 CITIES, STATE OF WASHINGTON

CITY	COUNTY	POPULATION 1976	CITY	COUNTY	POPULATION 1976
AHERDEEN	GRAYS HARBOR	18,980	CHENEY	SPOKANE	6,637
AIRWAY HEIGHTS	SPOKANE	1,350	CHEWELAH	STEVENS	1,780*
ALBION	WHITMAN	600	CLARKSTON	ASOTIN	6,920
ALGONA	KING	1,030	CLE ELUM	KITTITAS	1,725
ALMIRA	LINCOLN	410	CLYDE HILL	KING	3,185
ANACORTES	SKAGIT	8,010	COLFAX	WHITMAN	2,700
ARLINGTON	SNOHOMISH	2,675	COLLEGE PLACE	WALLA WALLA	5,120
ASOTIN	ASOTIN	846	COLTON	WHITMAN	311*
AUBURN	KING	22,600	COLVILLE	STEVENS	4,350
BATTLE GROUND	CLARK	2,288*	CONCONULLY	OKANOGAN	172*
BEAUX ARTS	KING	372	CONCRETE	SKAGIT	590
BELLEVUE	KING	67,000	CONNELL	FRANKLIN	1,780*
BELLINGHAM	WHATCOM	42,100	COSMOPOLIS	GRAYS HARBOR	1,600
BENTON CITY	BENTON	1,422*	COULEE CITY	GRANT	565*
BINGEN	KLICKITAT	708*	COULEE DAM	OKANOGAN	1,506
BLACK DIAMOND	KING	1,050	COUPEVILLE	ISLAND	902*
BLAINE	WHATCOM	2,265	CHESTON	LINCOLN	350
BONNELY LAKE	PIERCE	4,187*	CUSICK	PEND OREILLE	271
BOTHELL	KING	6,036*	DARRINGTON	SNOHOMISH	1,058
BREMERTON	KITSAP	37,900	DAVENPORT	LINCOLN	1,440
BREWSTER	OKANOGAN	1,343*	DAYTON	COLUMBIA	2,646*
BRIDGEPORT	DOUGLAS	1,480	DEER PARK	SPOKANE	1,558*
BRIEN	SNOHOMISH	3,000	DES MOINES	KING	6,460
BUCKLEY	PIERCE	3,085	DU PONT	PIERCE	495
BUCODA	THURSTON	500	DUVALL	KING	550
HURLINGTON	SKAGIT	3,400	EAST WENATCHEE	DOUGLAS	1,520
CANAS	CLARK	5,990	EATONVILLE	PIERCE	929
CANONADO	PIERCE	396*	EDMONDS	SNOHOMISH	25,039*
CANWATION	KING	600	ELECTRIC CITY	GRANT	851*
CASHMERE	CHELAN	1,950*	ELLENSBURG	KITTITAS	13,200
CASTLE ROCK	COMLITZ	1,965	ELMA	GRAYS HARBOR	2,470
CATHLAMET	WAHKIAKUM	631*	ELMER CITY	OKANOGAN	342
CENTRALIA	LEWIS	10,582*	ENDICOTT	WHITMAN	370*
CHEHALIS	LEWIS	5,940	ENTIAT	CHELAN	381
CHELAN	CHELAN	2,995	ENUNCLAW	KING	4,000

OFFICIAL APRIL 1, 1976, POPULATION
OF THE
CITIES, STATE OF WASHINGTON

CITY	COUNTY	POPULATION 1976	CITY	COUNTY	POPULATION 1976
EPHRATA	GRANT	5,230	KETTLE FALLS	STEVENS	975
EVERETT	SNOHOMISH	52,500	KIRKLAND	KING	15,100
EVERSON	WHATCOM	730	KITTITAS	KITTITAS	750
FAIRFIELD	SPOKANE	488	KRUPP	GRANT	94*
FARMINGTON	WHITMAN	150	LA' CONNER	SKAGIT	636*
FERNDALE	WHATCOM	3,100	LA CRUSSE	WHITMAN	398*
FIFE	PIERCE	1,619*	LACENTER	CLARK	420
FIRCREST	PIERCE	5,800	LACEY	THURSTON	11,800
FORKS	CLALLAM	1,948	LAKE FOREST PARK	KING	2,500
FRIDAY HARBOR	SAN JUAN	970	LAKE STEVENS	SNOHOMISH	1,185
GARFIELD	WHITMAN	655	LAMONT	WHITMAN	98
GEORGE	GRANT	272	LANGLEY	ISLAND	590*
GIG HARBOR	PIERCE	17,744*	LATAH	SPOKANE	146
GOLD BAR	SNOHOMISH	540	LEAVENWORTH	CHELAN	1,402*
GULDENVALE	KLICKITAT	3,290	LIND	ADAMS	651*
GRAND COULEE	GRANT	1,380	LONG BEACH	PACIFIC	1,059
GRANDVIEW	YAKIMA	4,326	LONGVIEW	COWLITZ	29,550
GRANGER	YAKIMA	1,640	LYMAN	SKAGIT	325
GRANITE FALLS	SNOHOMISH	795	LYNDEN	WHATCOM	3,540
HAMILTON	SKAGIT	223*	LYNNWOOD	SNOHOMISH	20,150
HARHAH	YAKIMA	350	MABTON	YAKIMA	1,059
HARRINGTON	LINCOLN	505*	MALDEN	WHITMAN	211*
HARTLINE	GRANT	177	MANSFIELD	DOUGLAS	375*
HATTON	ADAMS	74*	MARCUS	STEVENS	169
HOQUIAM	GRAYS HARBOR	10,445	MARYSVILLE	SNOHOMISH	4,570
HUNTS POINT	KING	480	MATTAWA	GRANT	231*
ILWACO	PACIFIC	550	MCCLEARY	GRAYS HARBOR	1,312*
INDEX	SNOHOMISH	173	MEDICAL LAKE	SPOKANE	3,505
IONIA	PEND OREILLE	560*	MEDINA	KING	3,270
ISSAQUAH	KING	4,850*	MERCER ISLAND	KING	20,000
KANLUTUS	FRANKLIN	194*	MESA	FRANKLIN	398*
KALAMA	COWLITZ	1,052*	METALINE	PEND OREILLE	225
KELSO	COWLITZ	10,500	METALINE FALLS	PEND OREILLE	370
KENNEWICK	BLUNTON	21,301*	MILLWOOD	SPOKANE	1,838
KENT	KING	17,500	MILTON	PIERCE	2,650

OFFICIAL APRIL 1, 1976, POPULATION
OF THE
CITIES, STATE OF WASHINGTON

CITY	COUNTY	POPULATION 1976	CITY	COUNTY	POPULATION 1976
MONROE	SNOHOMISH	2,695	PORT ANGELES	CLALLAM	16,506
MONTESANO	GRAYS HARBOR	2,790	PORT ORCHARD	KITSAP	4,248
MORTON	LEWIS	1,410	PORT TOWNSEND	JEFFERSON	5,500
MOSES LAKE	GRANT	10,165	POULSBY	KITSAP	2,660
MOSSYROCK	LEWIS	420	PRESCOTT	WALLA WALLA	305
MOUNT VERNON	SKAGIT	10,300	PROSSER	BENTON	3,150
MOUNTLAKE TERRACE	SNOHOMISH	16,400	PULLMAN	WHITMAN	23,500
MOXEE CITY	YAKIMA	800	PUYALLUP	PIERCE	15,500
MUKILTEO	SNOHOMISH	1,320	QUINCY	GRANT	3,309
NACHES	YAKIMA	700	RAINIER	THURSTON	727
NAPAVINE	LEWIS	534	RAYMOND	PACIFIC	3,050
NESPELEM	OKANOGAN	340	REARDAN	LINCOLN	508
NEWPORT	PEND OREILLE	1,534	REDMOND	KING	16,445
NOOKSACK	WHATCOM	413	RENTON	KING	26,500
NORMANDY PARK	KING	4,351	REPUBLIC	FERRY	1,095
NORTH BEND	KING	1,665	RICHLAND	BENTON	30,004
NORTH BONNEVILLE	SKAMANIA	387	RIDGEFIELD	CLARK	1,026
NORTHPORT	STEVENS	429	RITZVILLE	ADAMS	1,936
OAK HARBOR	ISLAND	11,271	RIVERSIDE	OKANOGAN	265
OAKESDALE	WHITMAN	447	ROCK ISLAND	DOUGLAS	310
OAKVILLE	GRAYS HARBOR	574	ROCKFORD	SPOKANE	415
OCEAN SHORES	GRAYS HARBOR	1,021	ROSALIA	WHITMAN	600
ODESSA	LINCOLN	1,104	RUSLYN	KITTITAS	1,000
OKANOGAN	OKANOGAN	2,242	ROY	PIERCE	393
OLYMPIA	THURSTON	25,480	ROYAL CITY	GRANT	714
OMAK	OKANOGAN	4,400	RUSTON	PIERCE	676
OROVILLE	OKANOGAN	1,560	SAINT JOHN	WHITMAN	557
ORTINO	PIERCE	1,654	SEATTLE	KING	503,500
OTHELLO	ADAMS	4,504	SEBU WOOLLEY	SKAGIT	5,260
PACIFIC	KING	1,665	SELAH	YAKIMA	3,650
PALOUSE	WHITMAN	970	SEQUIM	CLALLAM	2,510
PASCO	FRANKLIN	14,610	SHELTON	MASON	6,480
PATEKOS	OKANOGAN	540	SKYKOMISH	KING	290
PELL	LEWIS	630	SNOHOMISH	SNOHOMISH	4,795
POMEROY	GARFIELD	1,860	SNOQUALMIE	KING	1,210

OFFICIAL APRIL 1, 1976, POPULATION
OF THE
CITIES, STATE OF WASHINGTON

CITY	COUNTY	POPULATION 1976	CITY	COUNTY	POPULATION 1976
SOAP LAKE	GRANT	1,390	WASHTUCNA	ADAMS	300
SOUTH BEND	PACIFIC	1,803	WATERVILLE	DOUGLAS	930
SOUTH CLE ELUM	KITTITAS	390	WAVERLY	SPOKANE	690
SOUTH PRAIRIE	PIERCE	210	WENATCHEE	CHELAN	17,700
SPANGLE	SPOKANE	198	WEST HIGHLAND	BENTON	1,861
SPOKANE	SPOKANE	174,500	WESTPORT	GRAYS HARBOR	1,836
SPRAGUE	LINCOLN	549	WHITE SALMON	Klickitat	1,000
SPRINGDALE	STEVENS	232	WILBUN	LINCOLN	1,100
STANWOOD	SNOHOMISH	1,063	WILKESON	PIERCE	277
STARBUCK	COLUMBIA	207	WILSON CREEK	GRANT	190
STELLACOOMA	PIERCE	4,450	WINLOCK	LEWIS	981
STEVENSON	SKAMANIA	930	WINSLOW	KITSAP	1,810
SULTAN	SNOHOMISH	1,156	WINTHROP	OKANOGAN	408
SUMAS	WHATCOM	690	WOODLAND	COWLITZ	4,140
SUNNEX	PIERCE	4,327	WOODWAY	SNOHOMISH	850
SUNNYSIDE	YAKIMA	7,440	YACOLT	CLARK	545
TACOMA	PIERCE	156,500	YAKIMA	YAKIMA	49,100
TEKOA	WHITMAN	920	YARROW POINT	KING	1,067
TENINO	THURSTON	1,174	YELM	THURSTON	740
TIETON	YAKIMA	486	ZILLAH	YAKIMA	1,320
TOLEDO	LEWIS	635			
TONASKET	OKANOGAN	905			
TUPPENISH	YAKIMA	6,050			
TUKWILA	KING	3,300			
TUMWATER	THURSTON	5,894			
TWISP	OKANOGAN	745			
UNION GAP	YAKIMA	2,630			
UNIONTOWN	WHITMAN	325			
VADER	LEWIS	420			
VANCOUVER	CLARK	46,500			
WAITSBURG	WALLA WALLA	1,075			
WALLA WALLA	WALLA WALLA	23,840			
WAPATO	YAKIMA	3,060			
WAKUEN	GRANT	1,471			
WASHOUGAL	CLARK	3,530			

**TABLE 5
ANNEXATIONS BY CITIES & TOWNS
STATE OF WASHINGTON**

APPROVED BY THE OFFICE OF PROGRAM PLANNING AND FISCAL MANAGEMENT

Municipality by County by District	Annexations Approved Between April 2, 1975-April 1, 1976					Annexations Approved Between April 2, 1970-April 1, 1976				
	No. of Parcels	(2) Area In Sq. Miles	(1) Dwelling Units Total Occupied	Annexed Pop.		No. of Parcels	(2) Area In Sq. Miles	(1) Dwelling Units Total Occupied	Annexed Pop.	
WASHINGTON STATE TOTAL	160	9.82	2,050	1,931	5,541	819	70.74	7,751	7,291	22,042
ADAMS Hatton Lind Othello Ritzville Washburne	1	.13	1	1	4	5	.19	1	1	4
ASOTIN ^a Asotin Clarkston ^a	1	.00	1	1	3	7	.10	121	118	381
BENTON ^a Benton City Kennewick Prosser Richland W. Richland ^a	27	.74	249	203	679	76	9.96	472	417	1,367
CHELAN Cashmere Chelan Entiat Laavenworth Wenatchee	1	.00	1	1	2	23	.56	229	216	689
CLALLAM ^a Forks Port Angeles Sequim ^a	3	.18	17	17	53	26	.86	70	67	212
CLARK ^a Battle Ground Camas LaCenter Ridgefield Vancouver ^a Washougal Yacolt	1	.06	0	0	0	25	3.77	462	414	1,068
COLUMBIA Dayton Starbuck	6	.51	32	32	85	17	1.01	247	239	599
COWLITZ Castle Rock Kalama Kalso Longview Woodland	1	.15	28	28	73	3	.35	46	46	134
DOUGLAS Bridgeport E. Wenatchee Hansford Rock Island Waternite	6	.17	236	233	526	11	.32	258	255	504
FERRY ^a Republic ^a	6	.17	236	233	526	10	.31	258	255	584
FRANKLIN Connell Kahlotus Mesa Pasco	1	.01	0	0	0	1	.01	0	0	0
	1	.01	0	0	0	1	.00	0	0	0
	10	.34	10	9	27	10	.34	10	9	27
	6	.09	1	1	2	6	.09	1	1	2
	4	.25	9	8	25	4	.25	9	8	25

TABLE 5
ANNEXATIONS BY CITIES & TOWNS
STATE OF WASHINGTON
 APPROVED BY THE OFFICE OF PROGRAM PLANNING AND FISCAL MANAGEMENT

Municipality by County by District	Annexations Approved Between April 2, 1975-April 1, 1976					Annexations Approved Between April 2, 1970-April 1, 1976				
	No. of Parcels	(1) Area In Sq. Miles	(1) Dwelling Units Total Occupied	(1) Dwelling Units Total Occupied	Annexed Pop.	No. of Parcels	(2) Area In Sq. Miles	(2) Dwelling Units Total Occupied	(2) Dwelling Units Total Occupied	Annexed Pop.
GARFIELD										
Pomeroy										
GRANT	1	.06	0	0	0	99	.50	45	35	115
Coulee City										
Electric City	1	.06	0	0	0	1	.06	0	0	0
Ephrata						3	.10	1	1	5
George										
Grand Coulee										
Hartline										
Krupp										
Mattawa										
Moses Lake						3	.48	48	41	209
Quincy						1	.02	7	7	26
Royal City						1	.06	37	27	125
Soap Lake										
Warden										
Westlake							.23	48	41	250
Wilson Creek										
GRAYS HARBOR	2	.13	146	143	457	7	1.41	151	148	476
Aberdeen	1	.13	145	142	455	4	1.37	149	146	469
Cosmopolis										
Elma	1	.00	1	1	2	2	.01	1	1	2
Hoquiam						1	.04	1	1	5
McCleary										
Montesano										
Oakville										
Ocean Shores										
Westport										
ISLAND						10	.60	72	70	159
Coupeville						2	.03	1	0	0
Jangley						1	.02	0	0	0
Oak Harbor						7	.55	71	70	159
JEFFERSON										
Port Townsend										
KING	22	1.08	305	289	692	95	6.69	1,775	1,676	4,974
Algona										
Auburn	2	.34	1	1	1	5	1.16	47	39	131
Beaux Arts										
Bellevue						14	.88	243	237	704
Black Diamond										
Bothell	3	.14	6	6	18	17	.96	161	138	499
Carnation										
Clyde Hill										
Des Moines	1	.03	151	145	247	4	.43	954	919	2,490
Duvall						1	.24	3	3	11
Enumclaw	1	.01	0	0	0	7	.66	34	34	88
Hunts Point										
Issaquah						4	.21	11	11	33
Kent	2	.14	44	39	148	9	.52	96	89	296
Kirkland	3	.03	0	0	0	6	.81	55	52	245
Lake Forest Pk						1	.00	0	0	0
Medina										
Mercer Island										
Normandy Park	1	.20	69	65	184	3	.23	82	78	243
North Bend						1	.03	6	6	6
Pacific										
Redmond	4	.02	0	0	0	11	.32	11	11	40
Renton	3	.17	33	32	93	6	.22	64	57	184
Seattle										
Skykomish										
Snoqualmie	1	.01	0	0	0	2	.01	0	0	0
Tukwila	1	.00	1	1	1	4	.02	3	2	4
Yarrow Point										

TABLE 5
ANNEXATIONS BY CITIES & TOWNS
STATE OF WASHINGTON
 APPROVED BY THE OFFICE OF PROGRAM PLANNING AND FISCAL MANAGEMENT

Municipality by County by District	Annexations Approved Between April 2, 1975-April 1, 1976					Annexations Approved Between April 2, 1970-April 1, 1976				
	No. of Parcels	(2) Area in Sq. Miles	(1) Dwelling Units Total Occupied	Annexed Pop.		No. of Parcels	(2) Area in Sq. Miles	(1) Dwelling Units Total Occupied	Annexed Pop.	
KITSAP	3	.03	14	14	38	19	8.98	97	92	287
Bremerton	2	.03	3	3	12	5	8.09	8	7	26
Port Orchard						3	.08	6	6	18
Poulsbo	1	.01	11	11	20	9	.65	77	73	216
Winslow						2	.16	6	6	27
KITTITAS	1	.01	1	1	4	12	.16	23	23	57
Cle Elum										
Ellensburg	1	.01	1	1	4	9	.15	20	20	52
Kittitas						2	.01	1	1	3
Roslyn						1	.09	2	2	2
S. Cle Elum										
KLICKITAT	2	.05	2	2	6	11	.27	28	27	82
Bingen	1	.02	2	2	6	1	.02	2	2	6
Goldendale	1	.03	0	0	0	7	.23	4	3	11
White Salmon						3	.03	22	22	65
LEWIS & CLATSOP	10	.10	17	14	39	17	1.04	142	134	493
Centralia	2	.01	1	1	4	5	.44	114	109	290
Chehalis	5	.08	15	12	33	6	.60	22	19	181
Morton	2	.02	0	0	0	3	.03	3	3	16
Hosnyrock										
Napavine										
Pe Ell										
Toledo						1	.01	0	0	0
Vader							.05	0	0	0
Winlock	1	.00	1	1	2	2	.01	3	3	6
LINCOLN	1	.01	1	1	2	2	.04	20	20	62
Almira										
Creston										
Davenport										
Harrington	1	.01	1	1	2	1	.01	1	1	2
Odessa										
Reardan										
Sprague										
Wilbur						1	.04	19	19	60
MASON	1	.10	0	0	0	7	.48	12	10	32
Shelton	1	.10	0	0	0	7	.48	12	10	32
OKANOGAN	2	.01	0	0	0	21	.14	34	34	110
Brewster						2	.01	1	1	4
Conconully										
Coulee Dam										
Elmer City										
Hesperlem										
Okanogan	2	.01	0	0	0	4	.05	5	5	15
Omak						11	.06	21	21	73
Oroville										
Pateros						1	.09	5	5	11
Riverside										
Tonasket						3	.01	2	2	7
Twisp										
Winthrop										
PACIFIC	1	.08	0	0	0	4	.10	0	0	0
Ilwaco	1	.08	0	0	0	3	.10	0	0	0
Long Beach						1	.00	0	0	0
Raymond										
South Bend										
PEND OREILLE	1	.02	0	0	0	5	.04	1	1	2
Cusick										
Ione										
Metalline										
Metalline Falls										
Newport	1	.02	0	0	0	5	.04	1	1	2

**TABLE 5
ANNEXATIONS BY CITIES & TOWNS
STATE OF WASHINGTON**

APPROVED BY THE OFFICE OF PROGRAM PLANNING AND FISCAL MANAGEMENT

Municipality by County by District	Annexations Approved Between April 2, 1976-April 1, 1976					Annexations Approved Between April 2, 1970-April 1, 1976				
	No. of Parcels	(2) Area in Sq. Miles	(1) Dwelling Units Total Occupied	Annexed Pop.		No. of Parcels	(2) Area in Sq. Miles	(1) Dwelling Units Total Occupied	Annexed Pop.	
PIERCE	3	.19	1	0	0	21	6.93	125	112	349
Bonney Lake	1	.02	0	0	0	1	.02	0	0	0
Buckley						1	.04	0	0	0
Carbonado										
Du Pont						2	5.01	2	2	7
Eatonville										
Fife						1	.01	0	0	0
Fircrest						1	.01	0	0	0
Big Harbor	1	.01	0	0	0	7	.06	6	6	16
Milton										
Orting										
Puyallup						1	.01	0	0	0
Roy										
Ruston										
South Prairie						2	.56	58	51	178
Stellacoom						1	.17	1	0	0
Sumner	1	.17	1	0	0	4	.05	58	53	148
Tacoma										
Wenatchee										
SAN JUAN	1	.00	1	0	0	3	.01	1	0	0
Friday Harbor	1	.00	1	0	0	3	.01	1	0	0
SKAGIT	8	.96	59	56	160	29	2.39	152	145	411
Anacortes						4	.13	10	10	26
Burlington	2	.11	9	9	22	1	.09	0	0	0
Concrete										
Hamilton						1	.09	1	1	2
La Conner										
Lyman										
Mount Vernon	6	.85	50	47	138	21	2.07	141	134	383
Sedro Woolley						2	.02	0	0	0
SKAHANIA	5	1.59	66	48	120	11	1.94	111	93	260
N. Bonneville	4	1.59	65	47	117	6	1.77	94	76	197
Stevenson	1	.00	1	1	3	5	.17	17	17	63
SNOHOMISH	17	.81	172	172	411	88	3.15	1,169	1,029	3,630
Arlington	1	.66	108	108	282	4	.86	113	112	294
Brier										
Darrington						1	.01	0	0	0
Edmonds	5	.01	0	0	0	13	.18	277	265	840
Everett						2	.51	224	200	694
Gold Bar										
Granite Falls						1	.02	0	0	0
Index										
Lake Stevens	1	.00	0	0	0	2	.01	2	2	9
Lynnwood	2	.00	2	2	7	13	.59	417	393	1,448
Marysville	4	.06	49	49	87	9	.46	51	51	93
Monroe	1	.00	2	2	6	9	.14	5	4	9
Mountlake Terrace						18	.13	25	20	75
Mukilteo										
Snohomish	2	.07	11	11	29	7	.13	31	31	102
Stanwood	1	.00	0	0	0	6	.04	3	1	2
Sultan						2	.06	11	11	37
Woodway						1	.02	10	9	36
SPOKANE	1	.01	18	16	24	11	.82	52	48	92
Airway Hts.										
Cheney						5	.58	25	25	50
Ueer Park	1	.01	18	16	24	3	.19	24	21	35
Fairfield						1	.00	0	0	0
Latah										
Medical Lake										
Millwood										
Rockford										
Spangle										
Spokane						2	.04	3	2	7
Waverly										

TABLE 5
ANNEXATIONS BY CITIES & TOWNS
STATE OF WASHINGTON
 APPROVED BY THE OFFICE OF PROGRAM PLANNING & FISCAL MANAGEMENT

Municipality by County by District	Annexations Approved Between April 2, 1975-April 1, 1976					Annexations Approved Between April 2, 1970-April 1, 1976				
	No. of Parcels	Area in Sq. Miles	Dwelling Units Total	Occupied	Annexed Pop.	No. of Parcels	Area in Sq. Miles	Dwelling Units Total	Occupied	Annexed Pop.
STEVENS	2	.04	3	3	7	14	.29	48	48	126
Chewelah						3	.17	8	8	28
Colville	2	.04	3	3	7	11	.12	40	40	98
Kettle Falls										
Marcus										
Northport										
Springdale										
THURSTON	3	1.85	16	15	74	49	3.60	288	265	746
Bucoda						3	.19	0	0	0
Lacey						34	1.26	247	229	597
Olympia	1	.00	0	0	0	2	.03	0	0	0
Rainier										
Tenino										
Tumwater	2	1.84	16	15	74	8	1.88	22	18	82
Yelm						2	.23	19	18	67
WAHKIAKUM										
Cathlamet										
WALLA WALLA	5	.01	0	0	0	57	3.18	137	132	454
College Place	3	.01	0	0	0	14	.13	61	60	180
Prescott										
Waitsburg						1	.01	5	5	10
Walla Walla	2	.00	0	0	0	42	3.05	71	67	264
WHATCOM										
Bellingham						14	5.32	147	140	505
Blaine						1	1.14	1	1	2
Everson						3	2.83	0	0	0
Ferndale						4	.09	1	1	5
Lynden						1	.25	25	24	94
Hooksett						5	1.02	120	114	404
Sumas										
WHITMAN	4	.05	0	0	0	16	.68	60	59	133
Albion										
Colfax						3	.13	45	45	81
Colton						1	.00	1	0	0
Endicott										
Farmington										
Garfield										
La Crosse										
Lamont										
Malden										
Oakesdale										
Palouse										
Pullman	2	.03	0	0	0	10	.53	14	14	52
Rosalia										
St. John	2	.02	0	0	0	2	.02	0	0	0
Tekoa										
Uniontown										
YAKIMA	18	.83	691	669	2,155	86	5.85	1,191	1,144	3,616
Grandview	3	.10	76	73	277	11	2.66	10	106	383
Granger										
Harrah										
Mabton										
Hoxee City						1	.01	1	0	0
Haches	1	.01	0	0	0	3	.01	15	15	33
Selah	4	.04	2	2	4	12	.64	16	16	50
Sunnyside	1	.01	1	1	2	14	.28	39	37	128
Tieton										
Toppenish	1	.00	0	0	0	5	.10	1	1	8
Union Gap						7	.97	185	171	518
Wapato										
Yakima	8	.67	612	593	1,872	33	1.18	824	798	2,487
Zillah										



FOOTNOTES:

¹Detail may not sum to total due to rounding.

²Parcels added by a municipality prior to January 1, 1970 are not included in this report as they were included in the 1970 Federal Census.

³Pend Oreille County, City of Newport: A parcel was annexed that included 7.19 acres located in Bonner County, Idaho; as this area is not located in Washington, the 7.19 acres are not included in the area total for Newport or Pend Oreille County.

⁴Thurston County, City of Olympia: A portion of a road was given to Olympia by Thurston County by means of Quit Claim Deed; this was added to the city 11-8-71 and approved by this Office 2-28-74. This parcel is not included in this report as the action taken was not an annexation.

⁵Street, road or highway annexations included:

Benton County

West Richland - one parcel, approved 8-15-74

Douglas County

East Wenatchee - one parcel, approved 3-31-76

Ferry County

Republic - one parcel, approved 5-26-71

Grant County

Ephrata - one parcel, approved 2-25-75

King County

Bellevue - one parcel was a street deletion, approved 12-23-71 with -0.26 acres

Skamania County

North Bonneville - one parcel, approved 11-17-75

Snohomish County

Edmonds - one parcel, approved 7-16-70; five parcels, approved 2-23-76

Lynnwood - one parcel, approved 7-15-71

Marysville - one parcel, approved 11-27-70

⁶Population in group quarters included:

Asotin County

Clarkston - one parcel contained a population of 13 in group quarters (approved 2-26-73)

Clallam County

Sequim - one parcel contained a population of 20 in group quarters (approved 2-28-74)

Clark County

Vancouver - one parcel contained a population of 109 in group quarters (approved 8-28-74)

King County

Des Moines - one parcel contained a population of 494 in group quarters (approved 2-19-71)

Des Moines - one parcel contained a population of 101 in group quarters (approved 11-26-74)

Kirkland - one parcel contained a population of 130 in group quarters (approved 3-15-74)

Lewis County

Chehalis - one parcel contained a population of 128 in group quarters (approved 11-24-72)

Walla Walla County

Walla Walla - one parcel contained a population of 77 in group quarters (approved 5-5-72)

⁷Lewis County, Town of Morton: Ordinance Number 248, approved 8-11-75, repeals all or parts of Ordinance Numbers 213, 225, and 245; there is no population adjustment as the area contained population was already included in the population estimate for 1974. There are 10.04 additional acres in this parcel.

TABLE 6
 OFFICIAL APRIL 1 POPULATION OF SELECTED ETHNIC CATEGORIES
 STATE OF WASHINGTON
 1970 TO 1976

STATE	TOTAL POPULATION		WHITES EXCLUDING SPANISH SURNAME		SPANISH SURNAME ¹		BLACK		INDIAN		ASIAN ²		OTHER	
	1970	1976	1970	1976	1970	1976	1970	1976	1970	1976	1970	1976	1970	1976
STATE	3,413,280	3,571,591	3,184,313	3,279,891	70,746	89,300	71,331	86,800	33,400	44,100	44,088	60,000	9,372	11,500
Adams	12,014	13,709	10,199	11,319	1,601	2,125	46	65	33	40	67	90	68	70
Anotin	13,799	14,800	13,587	14,520	97	140	†	†	71	85	†	†	†	†
Benton	67,640	78,700	64,559	74,775	1,897	2,425	437	580	225	305	228	410	194	205
Chelan	41,103	41,100	40,344	40,050	248	400	42	60	281	320	70	145	118	125
Clallam	34,770	39,800	32,888	37,240	240	350	53	120	1,368	1,775	180	225	73	90
Clark	128,454	154,300	125,955	150,005	1,010	1,500	569	1,000	398	845	371	735	161	215
Columbia	4,439	4,500	3,949	3,925	489	590	†	†	†	†	†	†	†	†
Cowlitz	68,616	71,600	67,180	69,425	639	1,000	109	150	357	425	209	445	122	155
Douglas	16,787	19,000	16,476	18,605	104	175	†	25	115	105	45	55	31	35
Ferry	3,655	4,300	2,888	3,310	35	35	84	†	613	915	†	†	28	25
Franklin	25,816	27,500	22,705	23,345	1,300	2,025	1,388	1,600	105	135	138	215	180	180
Garfield	2,911	2,900	2,904	2,890	†	†	†	†	†	†	†	†	†	†
Grant	41,881	43,900	36,362	37,805	3,922	4,500	656	660	376	290	422	495	143	150
Grays Harbor	59,553	60,500	57,033	57,240	625	775	36	40	1,465	1,955	260	335	134	155
Island	27,011	33,500	25,634	31,585	515	675	272	375	68	130	383	530	139	205
Jefferson	10,661	11,800	10,223	11,275	35	75	28	35	320	340	36	50	†	25
King	1,159,375	1,155,700	1,057,980	1,028,535	20,952	25,400	40,600	48,150	7,393	8,935	29,153	39,600	3,297	4,080
Kitsap	101,732	118,600	96,326	111,135	1,369	2,000	1,451	2,000	913	1,220	1,350	1,850	323	395
Kittitas	25,039	25,500	24,304	24,565	317	440	71	120	105	100	174	200	68	75
Klickitat	12,138	13,200	11,604	12,545	154	200	†	25	279	320	67	80	†	30
Lewis	45,467	48,600	44,981	47,855	95	200	39	60	242	305	67	115	43	65
Lincoln	9,572	9,500	9,375	9,270	94	130	†	†	81	70	†	†	†	†
Mason	20,918	24,300	20,028	23,010	192	275	95	120	518	785	64	80	†	30
Okanogan	25,867	26,900	23,555	23,540	146	225	73	75	1,999	2,960	†	25	73	75
Pacific	15,796	15,800	15,406	15,290	124	175	†	35	163	200	58	70	25	30
Pend Oreille	6,025	6,900	5,837	6,655	†	40	†	†	135	160	†	30	†	†
Pierce	412,344	420,700	374,463	374,040	9,242	11,335	18,517	22,500	3,351	4,085	5,387	6,710	1,384	2,030
San Juan	3,856	5,700	3,809	5,620	†	†	†	†	25	25	†	†	†	†
Skagit	52,381	54,100	50,075	51,315	1,295	1,600	45	100	650	740	134	160	182	185
Skamania	5,845	5,800	5,713	5,645	†	25	†	†	93	180	†	†	†	†
Snohomish	265,236	270,100	257,537	259,745	3,226	4,100	1,012	1,650	2,105	2,600	937	1,510	419	495
Spokane	287,487	300,600	277,280	287,030	2,894	4,050	2,989	3,700	1,988	2,695	1,821	2,495	515	630
Stevens	17,405	22,900	16,374	21,340	146	200	†	30	821	1,275	†	25	30	30
Thurston	76,894	94,300	74,798	90,965	687	1,000	207	600	582	845	393	600	227	290
Wahkiakum	3,592	3,682	3,525	3,617	†	†	†	†	49	50	†	†	†	†
Walla Walla	42,176	43,000	40,088	40,395	1,077	1,500	481	500	171	180	229	285	130	140
Whatcom	81,983	90,000	78,334	85,140	956	1,300	201	325	1,949	2,495	310	485	233	255
Whitman	37,900	40,500	36,503	38,665	436	575	164	280	102	110	551	700	144	170
Yakima	145,212	153,300	123,532	126,660	14,560	16,750	1,571	1,750	3,886	6,175	887	1,170	776	795

¹Derived from the persons of Spanish language in the 1970 Census.

²Includes Japanese, Chinese, Filipino, Hawaiian, Korean, and Vietnamese.

†Less than 25 people.

SOURCE: 1970 U.S. Census, 1976 estimate OPP&M.

TABLE 7

**ARMED FORCES STATION STRENGTH
FOR SELECTED COUNTIES
STATE OF WASHINGTON
1970 - 1976¹**

STATE	1970	1971	1972	1973	1974	1975 ²	1976 ³
	60,082	61,130	45,650	44,860	49,230	53,300	56,200
Clallam	585	560	560	550	540	520	520
Franklin	264	240	230	170	140	60	60
Grays Harbor	244	240	240	250	230	210	310
Island	4,960	4,300	4,860	5,510	5,470	5,520	6,020
King	3,464	3,120	3,120	3,120	3,390	3,020	2,920
Kitsap	5,132	2,830	2,750	3,360	3,790	7,920 ²	8,920 ³
Pierce	39,306	43,840	28,120	26,400	30,030	30,480	31,860
Snohomish	597	520	580	660	660	660	660
Spokane	4,315	4,380	4,530	4,250	4,420	4,360	4,360
Thurston	686	630	380	360	410	410	430
Walla Walla	205	150	110	100	70	10	10
Whatcom	324	320	170	130	140	130	130

¹Corrected station strength count in April 1, 1970. Following years are estimated on the basis of July 1 station strength counts by the Department of Defense, and information provided by the large bases in Washington. Station strength count in counties with less than 100 Armed Forces personnel is reported by the Department of Defense as a miscellaneous total. This total of approximately 200-300 is proportionately distributed among the counties for which station strength figures are reported.

²Includes 4,576 naval personnel on board ships at the Puget Sound Naval Shipyard.

³Includes 5,564 naval personnel on board ships at the Puget Sound Naval Shipyard.

PFM P-182
8/76

TABLE 8
POPULATION 65 YEARS AND OVER, BY COUNTY
STATE OF WASHINGTON
1970 - 1976

Census	1970	1971	1972	1973	1974	1975	1976
STATE	320,712	327,690	334,840	342,920	351,480	363,730	374,510
Adams	857	880	1,010	1,140	1,190	1,230	1,260
Asotin	1,931	1,950	1,970	1,990	2,010	2,080	2,160
Benton	4,368	4,610	4,830	5,120	5,360	5,540	5,700
Chelan	5,216	5,250	5,340	5,540	5,730	5,940	6,120
Clallam	4,355	4,530	4,720	4,950	5,190	5,370	5,530
Clark	11,591	11,960	12,370	12,760	13,200	13,660	14,060
Columbia	668	670	660	680	690	720	740
Cowlitz	5,967	6,140	6,310	6,560	6,700	7,020	7,230
Douglas	1,496	1,600	1,680	1,760	1,780	1,830	1,880
Ferry	319	320	310	320	330	340	350
Franklin	1,689	1,770	1,800	1,860	1,950	2,020	2,080
Garfield	365	350	350	330	330	340	350
Grant	2,884	3,020	3,140	3,230	3,340	3,460	3,560
Grays Harbor	6,760	6,820	6,890	6,980	7,100	7,350	7,570
Island	2,465	2,580	2,810	3,010	3,200	3,290	3,370
Jefferson	1,413	1,470	1,520	1,590	1,700	1,750	1,800
King	101,358	103,270	105,230	107,300	109,780	113,620	117,000
Kitsap	9,949	10,240	10,520	10,800	11,100	11,470	11,800
Kittitas	2,261	2,280	2,300	2,350	2,400	2,480	2,560
Klickitat	1,378	1,400	1,420	1,440	1,470	1,530	1,570
Lewis	6,179	6,210	6,250	6,300	6,390	6,620	6,820
Lincbln	1,398	1,440	1,480	1,480	1,490	1,540	1,590
Mason	2,487	2,540	2,600	2,720	2,780	2,880	2,960
Okanogan	2,892	2,980	3,080	3,160	3,260	3,370	3,480
Pacific	2,415	2,470	2,510	2,560	2,610	2,690	2,770
Pend Oreille	836	840	860	880	890	930	960
Pierce	33,777	34,580	35,320	36,060	36,780	38,060	39,190
San Juan	767	800	830	870	890	920	950
Skagit	6,469	6,620	6,670	6,810	7,050	7,300	7,520
Skamania	506	520	540	560	570	580	600
Snohomish	19,537	20,140	20,630	21,250	21,960	22,720	23,380
Spokane	31,810	32,400	32,920	33,450	34,000	35,190	36,230
Stevens	2,227	2,300	2,320	2,320	2,350	2,430	2,500
Thurston	7,638	7,980	8,300	8,670	9,030	9,350	9,630
Wahkiakum	455	470	460	470	480	490	510
Walla Walla	5,396	5,440	5,530	5,640	5,740	5,940	6,110
Whatcom	9,564	9,490	9,610	9,850	10,070	10,430	10,740
Whitman	2,992	2,990	2,990	3,000	2,990	3,100	3,200
Yakima	16,077	16,370	16,760	17,160	17,520	18,150	18,690

¹Estimates developed on the basis of change in federal medicare enrollment.

PFM P-195
8/76

II

COMPONENTS OF
CHANGE AND
OTHER INFORMATION

TABLE 9
 COMPONENTS OF POPULATION CHANGE
 STATE OF WASHINGTON
 1920 - 1975

(FIGURES IN THOUSANDS)

-----COMPONENTS OF CHANGE FROM PREVIOUS PERIOD-----

APRIL 1,	POPULATION	POPULATION CHANGE		BIRTHS		DEATHS		NATURAL INCREASE	NET MIGRATION	
		NUMBER	PERCENT	NUMBER ¹	RATE ²	NUMBER ¹	RATE ²		NUMBER ¹	RATE ²
Ten Year Intervals										
1920	1,856.6	214.6	18.8	227.7	167.8	122.4	90.2	105.2	109.4	80.6
1930	1,568.0	211.4	15.6	248.2	158.3	151.1	96.4	97.1	114.3	72.9
1940	1,736.2	168.2	10.7	233.6	134.5	176.9	101.9	56.7	111.5	64.2
1950	2,379.0	642.8	37.0	452.5	190.2	211.6	88.9	240.9	401.9	168.9
1960	2,853.2	474.3	19.9	625.9	219.4	241.9	84.8	384.1	90.2	31.6
1970	3,413.2	560.0	19.6	588.5	172.4	283.0	82.9	305.5	254.5	74.6
Single Years										
1965	3,065.0	57.0	1.9	55.9	18.2	27.3	8.9	28.6	28.4	9.3
1966	3,125.0	60.0	2.0	52.2	16.7	28.1	9.0	24.0	36.0	11.5
1967	3,229.0	104.0	3.3	52.9	16.4	28.8	8.9	24.1	79.9	24.7
1968	3,336.0	107.0	3.3	54.9	16.4	30.1	9.0	24.8	82.2	24.6
1969	3,397.0	61.0	1.8	58.0	17.1	30.6	9.0	27.4	33.5	9.9
1970	3,413.2	16.2	0.5	59.9	17.6	30.0	8.8	30.0	13.7	-4.0
1971	3,430.1	16.8	0.5	60.0	17.5	29.8	8.7	30.3	13.4	-3.9
1972	3,418.8	-11.3	-0.3	53.1	15.5	30.4	8.9	22.7	-34.0	-9.9
1973	3,424.3	5.5	0.2	47.7	13.9	30.4	8.9	17.3	-11.8	-3.5
1974	3,448.1	23.8	0.7	48.2	14.0	29.9	8.7	18.2	5.6	1.6
1975	3,494.0	45.9	1.3	50.1	14.3	30.3	8.7	19.8	26.1	7.5
1976	3,571.6	77.6	2.2	51.7	14.5	30.5	8.5	21.2	56.4	15.8

¹Calendar year figures for 1920 to 1940, April to April figures from 1950 to present. Figures may not add due to rounding.

²Rates per 1,000 population.

³Estimated

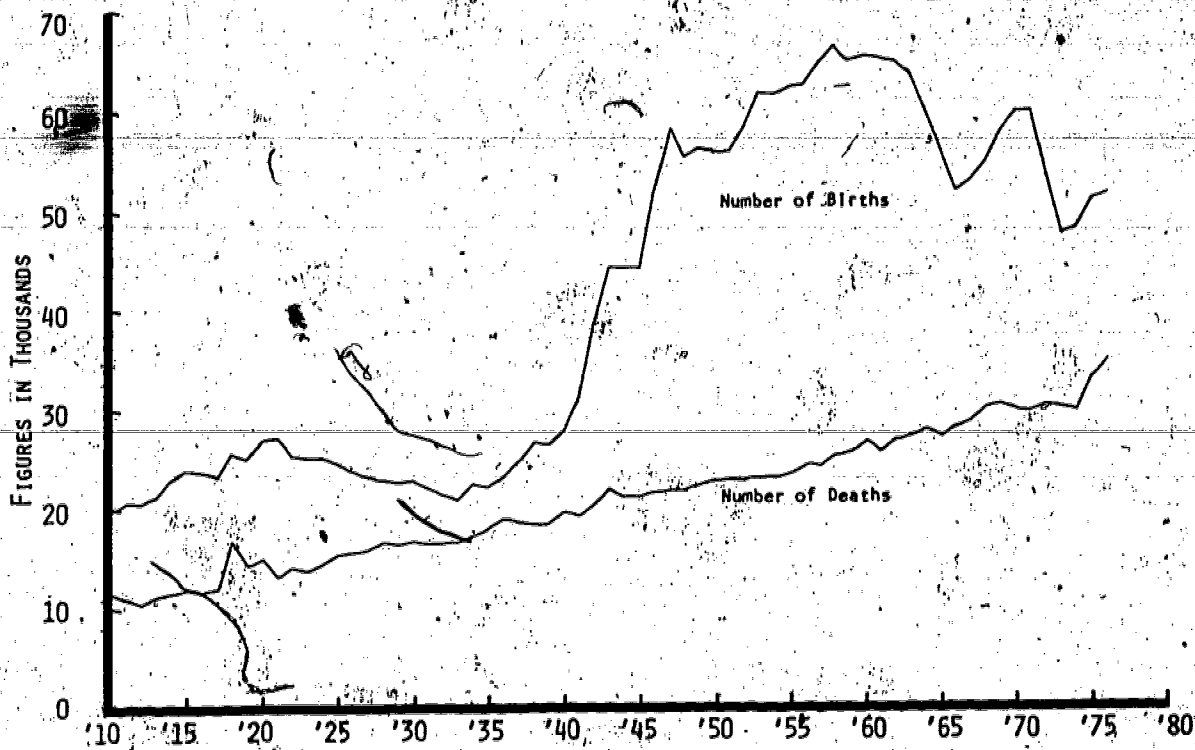
TABLE 10

COMPONENTS OF POPULATION CHANGE BY COUNTY
STATE OF WASHINGTON
APRIL 1, 1970 TO APRIL 1, 1976

	POPULATION				COMPONENTS OF CHANGE			
	1970	1976	CHANGE NUMBER	CHANGE PERCENT	BIRTHS	DEATHS	NATURAL INCREASE	NET MIGRATION
STATE	3,413,250	3,571,591	158,341	4.6	310,837	181,327	129,510	28,831
Adams	12,014	13,709*	1,695	14.1	1,542	508	1,034	661
Asotin	13,799	14,800	1,001	7.3	1,330	1,041	289	712
Benton	67,540	78,700	11,160	16.5	6,433	2,784	3,649	7,511
Chelan	41,103	41,100	-3	-	3,147	2,576	571	-574
Clallam	34,770	39,800	5,030	14.5	3,625	2,399	1,226	3,804
Clark	128,454	154,300	25,846	20.1	13,980	6,897	7,083	18,763
Columbia	4,439	4,500	61	1.4	283	325	-42	103
Cowlitz	68,616	71,600	2,984	4.3	7,068	3,459	3,609	-625
Douglas	16,787	19,000	2,213	13.2	1,411	685	726	1,487
Ferry	3,655	4,300	645	17.6	425	183	242	403
Franklin	25,816	27,500	1,684	6.5	3,057	1,206	1,851	-167
Garfield	2,911	2,900	-11	-0.4	237	179	58	-69
Grant	41,881	43,900	2,019	4.8	4,592	1,916	2,676	-657
Grays Harbor	59,553	60,500	947	1.6	5,627	4,097	1,530	-583
Island	27,011	33,500	6,489	24.0	3,664	1,271	2,393	4,096
Jefferson	10,661	11,800	1,139	10.7	802	729	73	1,066
King	1,159,375	1,155,700	-3,675	-0.3	88,711	57,709	31,002	-34,677
Kitsap	101,732	118,600	16,868	16.6	9,983	5,559	4,424	12,444
Kittitas	25,039	25,500	461	1.8	1,841	1,169	672	-211
Klickitat	12,138	13,200	1,062	8.7	1,285	777	508	554
Lewis	45,467	48,600	3,133	6.9	4,514	3,228	1,286	1,847
Lincoln	9,572	9,500	-72	-0.8	707	661	46	-118
Mason	20,918	24,300	3,382	16.2	1,816	1,256	560	2,822
Okanogan	25,867	26,900	1,033	4.0	2,606	1,679	927	106
Pacific	15,796	15,800	4	-	1,283	1,252	31	-27
Pend Oreille	6,025	6,900	875	14.5	698	436	262	613
Pierce	412,344	420,700	8,356	2.0	41,260	20,351	20,909	-12,553
San Juan	3,856	5,700	1,844	47.8	261	304	-43	1,887
Skagit	52,381	54,100	1,719	3.3	4,704	3,431	1,273	446
Skamania	5,845	5,800	-45	-0.8	527	256	271	-316
Snohomish	265,236	270,100	4,864	1.8	25,167	11,636	13,531	-8,667
Spokane	287,487	300,600	13,113	4.6	28,862	17,563	11,299	1,814
Stevens	17,405	22,900	5,495	31.6	1,831	1,143	688	4,807
Thurston	76,894	94,300	17,406	22.6	8,026	4,161	3,865	13,541
Wahkiakum	3,592	3,682*	90	2.5	340	252	88	2
Walla Walla	42,176	43,000	824	2.0	3,160	2,849	311	513
Whatcom	81,983	90,000	8,017	9.8	7,556	4,816	2,740	5,277
Whitman	37,900	40,500	2,600	6.9	2,905	1,508	1,397	1,203
Yakima	145,622	153,300	8,088	5.6	15,571	9,076	6,495	1,593

*Actual Census

FIGURE I
 NATURAL INCREASE TRENDS
 STATE OF WASHINGTON
 1910 - 1976



SOURCE: DSHS, VITAL STATISTICS SECTION -Calendar year data Prior to 1950.

PFM P-151
 8/76



TABLE 11
 GENERAL FERTILITY RATE¹
 STATE OF WASHINGTON
 1930-1976

Year	Females 15-44	Live Births ²	General Fertility Rate
1930	358,525	23,019	64.2
1940	398,246	27,952	70.2
1950	512,005	55,755	108.9
1960	554,814	65,251	117.6
1965	603,200	55,879	92.6
1966	619,700	52,161	84.2
1967	648,900	52,897	81.5
1968	681,100	54,888	80.6
1969	701,100	58,012	82.7
1970	710,460	59,930	84.4
1971	720,400	60,031	83.3
1972	722,100	53,096	73.5
1973	732,000	47,697	65.2
1974	748,500	48,159	64.3
1975	769,200	50,127	65.2
1976	799,700	51,727 ³	64.7

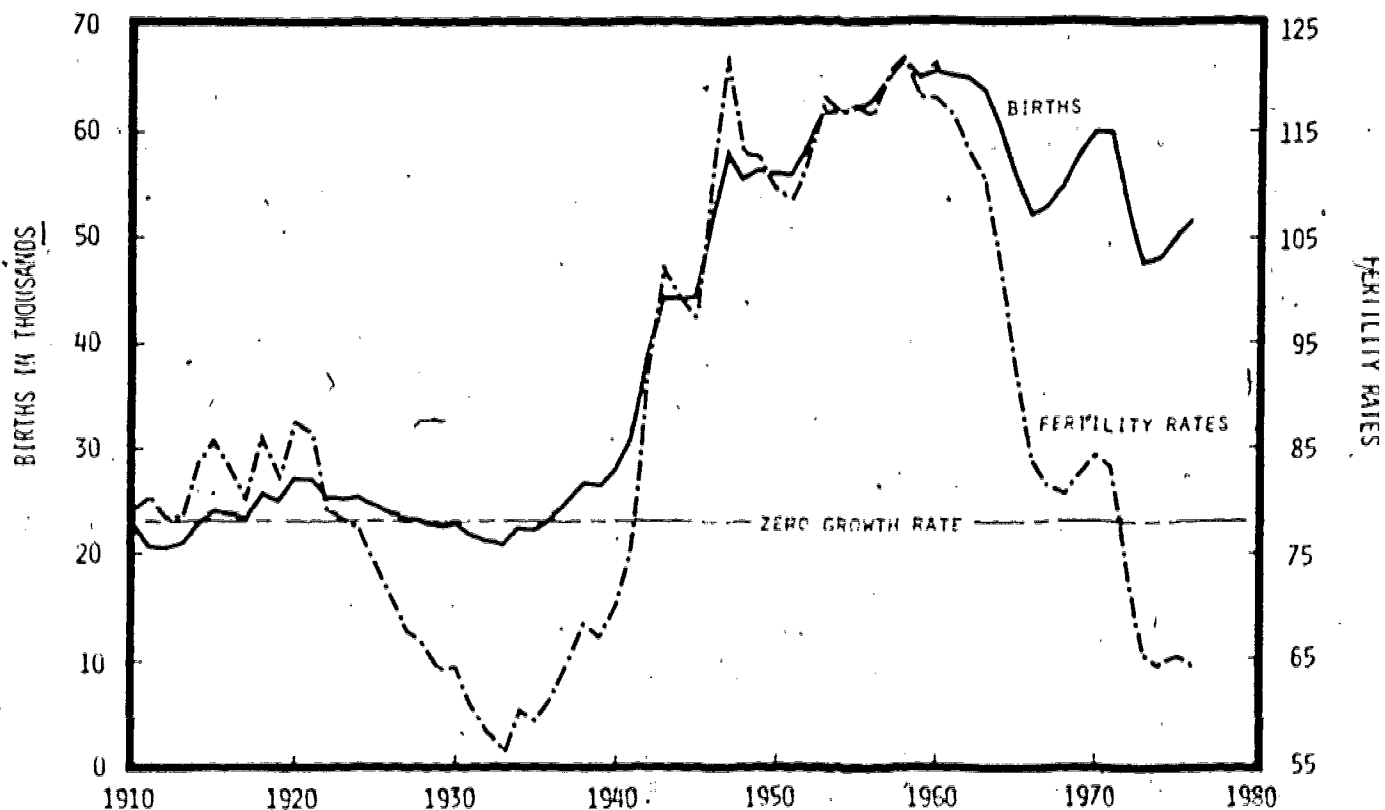
¹Births per 1,000 women 15-44 years.

²Calendar year figures for 1930 to 1960, April to April figures for 1965 to present.

³Provisional figures.

FIGURE 2

**A DEMOGRAPHIC ROLLER COASTER,
BIRTH AND FERTILITY RATES FOR WASHINGTON
1910 - 1980**



- THE NUMBER OF BIRTHS IN WASHINGTON HAVE CONTINUED TO INCREASE FOR THE THIRD STRAIGHT-YEAR, FROM 48,159 IN 1974, TO 50,127 IN 1975, TO 51,727 IN 1976. THESE INCREASES ARE DUE TO AN INCREASE IN THE NUMBER OF WOMEN OF CHILDBEARING AGE, NOT INCREASING FERTILITY RATES.
- THE GENERAL FERTILITY RATE IN WASHINGTON IS NOW 64.7, STILL SUBSTANTIALLY LOWER THAN THE RATE OF ABOUT 70.0 REQUIRED FOR POPULATION REPLACEMENT - ZERO GROWTH.
- EVEN IF FERTILITY RATES CONTINUED AT BELOW REPLACEMENT LEVEL, WITH NO MIGRATION TO WASHINGTON, THE STATE POPULATION WOULD CONTINUE TO GROW THROUGH 2,070 BY NATURAL INCREASE.
- THE CURRENT DECLINE IN FERTILITY CAN BE PARTLY ATTRIBUTED TO THE TREND AWAY FROM EARLY MARRIAGE AND EARLY CHILDBEARING:
 - TODAY, 40 PERCENT OF THE WOMEN 20-24 YEARS ARE STILL SINGLE. THIS COMPARES TO 28 PERCENT STILL SINGLE IN THIS AGE GROUP IN 1960.
 - IN 1975 57 PERCENT OF THE MARRIED WOMEN 20-24 YEARS OF AGE HAD ONE OR MORE CHILDREN. IN 1960, 76 PERCENT OF THE WOMEN IN THE AGE-GROUP HAD ONE OR MORE CHILDREN.
- DECLINING FERTILITY IS ALSO DUE TO AN INCREASING PREFERENCE FOR THE TWO CHILD FAMILY. IN THE LAST SIX YEARS, THE AVERAGE NUMBER OF BIRTHS EXPECTED BY AMERICAN WIVES 18-24 YEARS HAS DECLINED FROM 2.9 TO 2.2.
- AVERAGE LIFETIME BIRTH EXPECTATIONS OF 2.2 FOR YOUNG WIVES IMPLY AVERAGE LIFETIME BIRTHS OF 2.0 FOR YOUNG WOMEN OF ALL MARITAL CLASSES WHEN ALLOWANCES ARE MADE FOR OTHER WOMEN WHO NEVER MARRY AND FOR THE EFFECT OF DISRUPTED MARRIAGES. THIS IS SLIGHTLY BELOW THE AVERAGE OF 2.11 BIRTHS PER WOMAN REQUIRED FOR A STATIONARY POPULATION.

TABLE 12
NUMBER OF ABORTIONS BY AGE GROUP
STATE OF WASHINGTON
1971-1975

Age Group	1971 Number	1972 Number	1973 Number	1974 Number	1975 Number
Under 15 Years	106	214	228	255	256
15-19 Years	3,985	6,598	6,296	6,553	7,810
20-24 Years	4,173	5,747	5,627	5,887	6,639
25-29 Years	1,879	2,594	2,630	2,971	3,524
30-34 Years	1,038	1,399	1,410	1,405	1,600
35-39 Years	693	878	802	769	803
40 Years & Over	322	327	323	313	330
Unknown	--	10	3	12	1
Total	12,251	17,767	17,319	18,185	20,963

¹In 1971 unknowns were 2,096; these are not included in this table.

TABLE 13
NUMBER OF ABORTIONS BY MARITAL STATUS
STATE OF WASHINGTON
1971-1975

Marital Status	1971 Number	1972 Number	1973 Number	1974 Number	1975 Number
Never	8,027	10,447	10,786	10,661	12,827
Currently	4,152	4,721	4,580	4,892	5,423
Formerly	1,981	2,566	2,405	2,521	2,711
Unknown	127	33	48	61	2
Total	14,347	17,767	17,319	18,185	20,963

TABLE 14
NUMBER OF LIVE BIRTHS, ILLEGITIMATE LIVE BIRTHS
AND ILLEGITIMACY RATIO
STATE OF WASHINGTON
1965-1975

Year	Live Births ¹ (Resident)	Illegitimate Live Births ² (Resident)	Illegitimate Live Births Per 1,000 Live Births
1965	52,806	1,119	21.2
1966	51,777	1,065	20.6
1967	54,875	1,094	20.0
1968	57,206	1,041	18.2
1969	59,354	1,184	19.9
1970	60,499	1,292	21.4
1971	55,964	1,219	21.8
1972	48,250	1,091	22.6
1973	47,636	1,121	23.5
1974	50,096	1,229	24.5
1975	50,021	1,108	22.1

¹Calendar year data

²Births not completed or born in welfare

TABLE 15

NUMBER OF INDUCED ABORTIONS, LIVE BIRTHS
AND RATIO OF INDUCED ABORTIONS PER 1,000 LIVE BIRTHS
SELECTED STATES

STATE	YEAR	NUMBER OF INDUCED ABORTIONS	BIRTHS	RATIO PER 1,000 LIVE BIRTHS
California	1968	5,018	339,721	14.8
	1969	15,339	352,937	43.8
	1970	65,369	362,652	180.7
	1971	116,749	329,826	354.0
	1972	138,584	306,375	452.3
	1973	131,870*	297,834	442.8
	1974	135,762*	311,668	435.6
	1975	143,000†	317,607†	450.2
Colorado	1968	521‡	36,842	14.1
	1969	1,000‡	39,189	25.5
	1970	2,581‡	41,480	62.2
	1971	4,273‡	40,360	105.9
	1972	5,383‡	38,585	139.5
	1973	7,451‡	38,507	193.5
	1974	9,027‡	39,036	231.7
	1975	9,744‡	39,991	243.7
Oregon	1969	1,407	34,486	40.8
	1970	2,196	35,800	201.0
	1971	6,984	33,344	209.5
	1972	7,143	31,308	228.2
	1973	7,447	30,902	241.0
	1974	8,794	32,506	270.5
	1975	10,641	33,352	319.1
Washington	1971	14,347	55,304	259.4
	1972	17,767	48,250	368.2
	1973	17,319	47,636	363.6
	1974	18,185	50,096	363.0
	1975	20,963	50,821	413.5

‡ Estimate

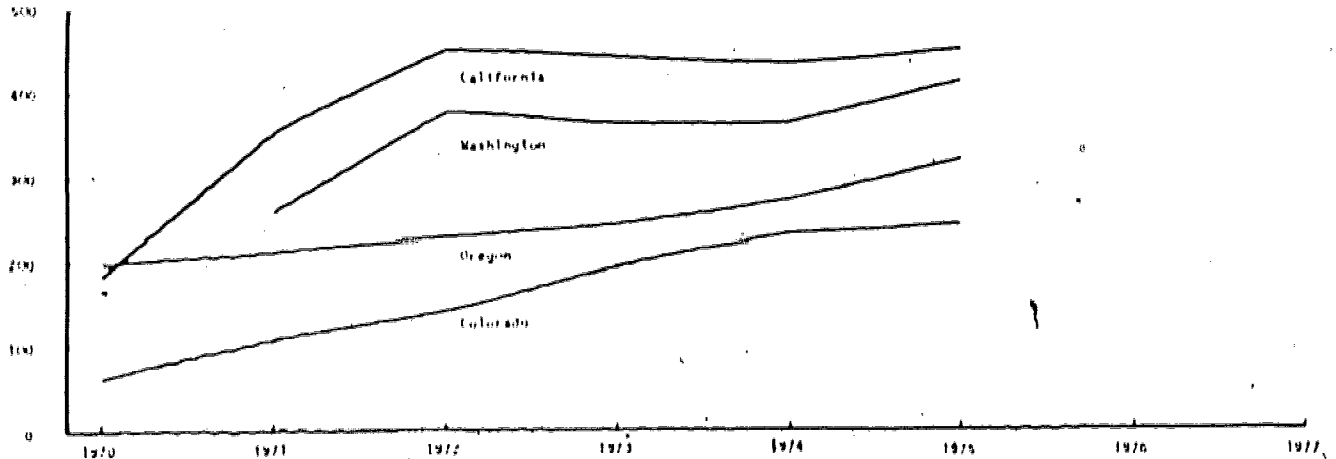
* Occurrence Basis

† Provisional

‡ Does not include Abortions Performed in Private Physician's Offices

FIGURE 5

RATIO OF ABORTIONS PER 1,000 LIVE BIRTHS
BY YEAR - SELECTED STATES



PH. P. 141
8/78

TABLE 16
MARRIAGES & DIVORCES/DISSOLUTIONS
STATE OF WASHINGTON
1960-1975

Year	April 1 Population State	Marriages ¹	Crude ² Marriage Rate	Divorces ¹	Crude ² Divorce Rate
1960	2,853,214	28,230	9.9	9,146	3.2
1961	2,897,000	28,247	9.8	9,355	3.2
1962	2,948,000	29,778	10.1	9,829	3.3
1963	2,972,000	29,320	9.9	9,953	3.3
1964	3,008,000	29,777	9.9	10,864	3.6
1965	3,065,000	31,509	10.3	10,651	3.5
1966	3,125,000	34,567	11.1	11,307	3.6
1967	3,229,000	38,477	11.9	12,836	4.0
1968	3,336,000	40,640	12.2	15,806	4.7
1969	3,397,000	40,966	12.1	16,665	4.9
1970	3,413,250	41,310	12.1	17,881	5.2
1971	3,430,100	40,981	11.9	19,019	5.5
1972	3,418,800	41,618	12.2	20,534	6.0
1973	3,424,300	41,359	12.1	21,369	6.2
1974	3,448,100	41,607	12.1	23,756	6.9
1975	3,493,990	41,767	12.0	25,783	7.4

¹Calendar year figures

²Marriages and divorces per 1,000 population

TABLE 17

CORRECTED 1970 POPULATION
BY COUNTY, BY FIVE YEAR AGE GROUPS¹
STATE OF WASHINGTON

	Total	0-4	5-9	10-14	15-19	20-24	25-29	30-34	35-39	40-44	45-49	50-54	55-59	60-64	65-69	70-74	75-79	90-84	85+
STATE TOTAL	3,413,244	280,875	329,044	349,562	330,510	296,500	239,138	193,731	181,315	193,141	204,234	189,065	167,147	138,250	107,159	84,464	62,732	40,412	25,945
ADAMS	12,014	1,088	1,350	1,498	1,230	727	754	660	708	716	750	684	565	427	345	297	145	110	50
ASOTIH	13,799	1,076	1,380	1,530	1,308	748	698	723	739	781	775	774	702	634	562	510	368	295	196
BENTON	67,540	5,715	7,604	7,992	6,919	3,835	4,198	4,086	3,790	4,245	4,361	4,034	3,851	2,742	1,792	1,118	759	441	259
CHELAN	41,103	2,844	3,637	4,165	4,187	2,486	2,183	2,072	2,077	2,381	2,640	2,507	2,439	2,275	1,833	1,388	963	592	440
CLALLAM	34,770	2,669	3,311	3,614	3,196	2,151	2,019	1,808	1,764	1,874	2,057	2,129	2,048	1,775	1,693	1,176	768	476	332
CLARK	128,454	11,633	13,482	13,706	11,835	9,177	9,286	7,595	6,706	7,229	7,518	7,168	6,374	5,154	3,884	3,050	2,291	1,516	940
COLUMBIA	4,439	287	352	425	400	220	217	225	215	266	285	326	288	265	214	193	114	82	65
COWLITZ	68,616	6,309	7,049	7,221	6,559	5,023	4,737	3,861	3,677	3,944	4,032	3,788	3,499	2,950	2,091	1,584	1,218	685	389
DOUGLAS	16,787	1,293	1,736	1,931	1,655	920	1,025	1,022	1,023	1,026	995	1,006	913	746	541	470	289	161	105
FERRY	3,655	301	366	403	468	196	229	213	178	175	223	210	293	171	121	85	61	34	18
FRAKILIN	25,816	2,253	2,637	3,132	2,898	1,814	1,536	1,244	1,376	1,656	1,752	1,622	1,261	946	589	457	345	185	113
GARFIELD	2,911	161	274	353	306	86	129	141	178	161	213	213	205	126	104	86	88	52	35
GRAH	41,881	3,696	4,730	5,291	4,614	2,540	2,364	2,257	2,276	2,553	2,622	2,434	2,098	1,522	1,096	812	404	291	201
GRAYS HARBOR	59,553	4,987	5,655	6,060	5,721	3,899	3,579	3,052	2,881	3,308	3,566	3,561	3,620	2,995	2,232	1,818	1,296	893	521
ISLAND	27,011	2,334	2,730	2,677	2,240	3,359	1,931	1,730	1,344	1,206	1,456	1,315	1,148	1,076	963	656	456	234	156
JEFFERSON	10,661	734	930	1,103	1,070	572	595	491	512	601	644	608	696	692	543	395	272	119	84
KING	1,159,369	95,118	109,433	114,458	102,762	102,397	91,866	71,213	64,105	67,640	73,761	65,394	55,825	44,039	33,277	26,185	19,910	13,364	8,622
KITSAP	101,732	8,120	9,316	9,773	9,514	9,743	6,773	5,497	5,208	5,618	6,217	6,037	5,374	4,593	3,569	2,672	1,840	1,136	724
KITTITAS	25,039	1,678	1,790	1,952	3,254	4,929	1,661	1,120	950	1,035	1,125	1,169	1,157	950	741	595	479	284	162
KLICHTAT	12,138	943	1,217	1,372	1,177	599	704	631	667	638	630	778	751	653	475	366	258	156	123
LEWIS	45,467	3,511	4,225	4,773	4,439	2,649	2,474	2,267	2,221	2,401	2,788	2,678	2,584	2,278	1,955	1,648	1,239	805	532
LITCHKLI	9,572	665	815	952	842	407	485	495	505	503	596	657	649	600	447	391	322	147	101
MASON	20,918	1,578	1,889	2,097	1,975	1,456	1,246	1,035	994	1,213	1,246	1,321	1,217	1,164	892	750	434	272	139
OKANOGAN	25,667	1,941	2,503	2,971	2,503	1,304	1,284	1,396	1,493	1,558	1,497	1,540	1,554	1,422	1,013	805	537	317	220
PACIFIC	15,796	1,141	1,207	1,513	1,600	899	814	691	675	835	923	1,027	1,070	1,016	880	627	424	292	192
PENNOOREILLE	6,025	436	585	673	533	242	286	313	315	349	354	397	366	340	310	217	155	92	53
PIERCE	412,344	33,711	38,746	40,675	44,809	50,048	28,459	22,082	21,740	22,932	22,875	20,668	17,425	14,317	11,392	9,127	6,696	4,164	2,488
SAN JUAN	3,856	205	282	304	248	166	181	193	150	100	221	280	342	337	316	203	135	64	49
SKAGIT	52,381	3,362	4,860	5,385	4,831	3,274	3,106	2,899	2,630	3,017	3,123	3,225	2,994	2,706	2,188	1,690	1,312	799	480
SKAMIA	5,845	462	657	695	538	292	373	352	302	304	333	312	365	354	213	123	91	68	21
SNOHOMISH	265,236	25,215	29,682	30,256	23,884	19,544	20,867	17,407	15,806	15,528	15,149	12,907	10,848	8,606	6,674	5,075	3,776	2,424	1,588
SPOKANE	287,487	22,872	26,843	29,444	28,893	24,840	17,861	14,634	14,529	15,699	16,982	16,116	14,452	12,512	9,877	8,263	6,487	4,339	2,844
STEVENS	17,405	1,359	1,785	2,009	1,642	724	882	914	957	928	951	1,059	1,043	925	771	577	475	257	147
THURSTON	76,894	6,446	7,759	8,240	7,395	5,492	5,083	4,267	4,160	4,529	4,693	4,379	3,659	3,154	2,539	2,109	1,505	873	612
WAIKIAKUM	3,592	301	358	389	313	198	201	196	189	171	203	233	197	188	140	108	102	64	41
WALLA WALLA	42,176	2,880	3,421	4,000	4,679	3,768	2,419	2,083	2,020	2,350	2,517	2,417	2,194	2,032	1,697	1,417	1,094	708	490
WIATCOM	81,983	6,407	7,151	7,660	9,150	8,859	5,278	3,948	3,704	4,131	4,280	4,302	3,993	3,556	3,066	2,480	1,931	1,214	873
WITTHAI	37,900	2,553	2,598	2,742	6,252	7,574	2,762	1,703	1,453	1,495	1,564	1,561	1,431	1,220	898	794	627	416	257
YAKIMA	145,212	12,121	14,696	16,128	14,597	9,344	8,593	7,207	7,098	7,965	8,317	8,240	7,947	6,882	5,407	4,317	3,079	1,991	1,283

SOURCE: U.S. Bureau of the Census

PHI P-140
6/76

¹Data by single years of age available on request

ESTIMATE OF RESIDENT POPULATION

APRIL 1

1960 - 1970

	1960	1961	1962	1963	1964	1965	1966	1967	1968	1969	1970
Washington	2,853,214	2,897,000	2,948,000	2,972,000	3,000,000	3,065,000	3,125,000	3,229,000	3,336,000	3,397,000	3,413,250
Adams	9,929	10,100	10,300	10,100	10,200	10,400	10,600	11,000	11,000	11,400	12,014
Asotin	12,909	12,700	13,000	13,100	12,900	12,900	13,100	13,600	13,600	13,500	13,799
Benton	62,070	62,300	62,800	62,400	62,300	62,500	63,100	64,300	65,200	66,000	67,540
Chelan	40,744	40,600	40,700	40,100	40,000	39,800	39,700	40,400	40,600	40,300	41,103
Clallam	30,022	30,400	31,000	30,900	31,300	31,900	32,500	33,600	34,300	34,600	34,770
Clark	93,809	96,800	99,900	102,200	105,000	108,500	111,900	117,200	122,500	129,000	128,454
Columbia	4,569	4,600	4,400	4,500	4,500	4,300	4,400	4,500	4,700	4,500	4,439
Cowlitz	57,001	58,800	59,800	60,600	61,400	62,500	63,800	65,900	68,200	69,000	68,616
Douglas	14,090	15,100	15,000	15,200	15,300	15,300	15,600	16,100	16,600	16,600	16,767
Ferry	3,809	4,100	3,800	3,900	3,900	3,800	3,800	3,900	3,800	3,600	3,655
Franklin	23,342	23,500	23,900	23,800	24,100	24,200	24,400	25,200	25,600	26,100	25,816
Garfield	2,976	2,900	2,900	2,700	2,700	2,800	2,800	2,900	2,900	2,800	2,911
Grant	46,477	46,100	46,700	44,600	43,900	44,500	46,100	43,300	42,900	40,000	41,881
Grays Harbor	54,465	55,000	55,400	55,600	55,900	56,400	57,200	58,800	59,300	59,200	59,553
Island	19,638	20,300	20,900	21,100	21,700	22,400	23,100	24,200	25,000	25,700	27,011
Jefferson	9,639	9,800	9,700	9,800	9,900	9,800	10,000	10,300	10,700	10,200	10,661
King	935,014	952,300	971,600	984,400	1,000,200	1,024,000	1,047,500	1,098,500	1,150,000	1,161,000	1,159,375
Kitsap	84,176	85,500	86,700	87,400	88,100	89,500	91,600	93,300	96,200	103,000	101,732
Kittitas	20,467	20,900	21,200	21,700	22,000	22,400	22,800	23,600	24,600	24,700	25,039
Klickitat	13,455	13,300	13,300	13,100	12,900	12,900	12,500	12,600	12,600	12,500	12,138
Lewis	41,058	42,300	42,500	42,500	42,400	42,900	43,400	44,200	45,300	45,700	45,467
Lincoln	10,919	10,700	10,600	10,400	10,200	10,100	10,000	10,000	10,000	9,700	9,572
Mason	16,251	16,500	17,100	17,200	17,400	17,800	18,400	19,100	19,600	20,200	20,918
Okanogan	25,520	25,500	25,400	25,000	25,000	25,100	25,000	25,200	25,600	25,100	25,867
Pacific	14,674	14,500	14,700	14,900	14,700	14,700	15,000	14,500	14,800	15,300	15,796
Pend Oreille	6,914	6,700	6,000	6,500	6,300	6,100	6,200	6,100	6,000	6,000	6,025
Pierce	321,590	329,100	337,300	342,700	349,200	358,600	368,400	383,300	398,100	412,000	412,344
San Juan	2,072	2,900	2,900	3,000	3,000	3,100	3,100	3,400	3,600	3,600	3,856
Skagit	51,350	51,300	51,600	51,100	50,800	50,900	51,200	52,000	52,600	52,000	52,391
Skamania	5,207	5,200	5,300	5,400	5,400	5,500	5,300	5,500	5,700	5,700	5,845
Snohomish	172,199	179,900	188,400	195,300	203,000	212,700	222,500	235,700	249,000	267,000	265,236
Spokane	270,333	270,700	279,800	278,500	277,900	277,200	276,600	274,200	276,300	280,000	287,487
Stevens	17,084	18,000	18,000	17,500	17,400	17,500	17,500	17,600	17,600	17,400	17,495
Thurston	55,049	56,800	59,000	60,300	62,000	64,400	66,600	69,700	72,900	76,500	76,834
Wahkiakum	3,426	3,500	3,500	3,300	3,300	3,400	3,400	3,600	3,300	3,400	3,592
Walla Walla	42,195	42,000	42,200	41,600	41,500	41,400	41,200	42,000	41,300	41,000	42,176
Whatcom	70,317	71,300	72,500	72,800	73,700	75,100	76,600	79,100	81,200	82,000	81,983
Whitman	31,263	31,900	32,400	33,000	33,400	34,000	34,700	35,800	37,300	37,000	37,900
Yakima	145,112	145,100	145,000	143,800	143,200	143,400	143,400	144,600	145,500	143,700	145,212

TABLE 19

POPULATION CHANGE 1950-1970¹
STATE OF WASHINGTON

APRIL-APRIL PERIOD	POPULATION AT END OF PERIOD	COMPONENTS OF CHANGE				
		CHANGE	BIRTHS	DEATHS	NATURAL INCREASE	MIGRATION
1960-1970	3,413,250	560,036	588,469	282,968	305,501	254,535
1969-70	3,413,250	16,250	59,930	29,966	29,964	-13,714
1968-69	3,397,000	61,000	58,012	30,594	27,418	33,582
1967-68	3,336,000	107,000	54,888	30,066	24,822	82,178
1966-67	3,229,000	104,000	52,897	28,791	24,106	79,894
1965-66	3,125,000	60,000	52,161	28,126	24,035	35,965
1964-65	3,065,000	57,000	55,879	27,279	28,600	28,400
1963-64	3,008,000	36,000	60,354	28,110	32,244	3,756
1962-63	2,972,000	24,000	63,919	27,201	36,718	-12,718
1961-62	2,948,000	51,000	65,101	27,078	38,023	12,977
1960-61	2,897,000	43,786	65,328	25,757	39,571	4,215
1950-1960	2,853,214	474,251	625,920	241,851	384,069	90,182
1959-60	2,853,214	32,214	65,652	26,880	38,772	-6,558
1958-59	2,821,000	48,000	65,186	25,641	39,545	8,455
1957-58	2,773,000	49,000	66,587	25,270	41,317	7,683
1956-57	2,724,000	56,000	65,146	24,295	40,851	15,149
1955-56	2,668,000	64,000	62,694	24,412	38,282	25,718
1954-55	2,604,000	88,000	62,466	23,453	39,013	48,987
1953-54	2,516,000	50,000	61,764	23,110	38,654	11,346
1952-53	2,466,000	18,000	61,933	23,170	38,763	-20,763
1951-52	2,448,000	24,000	58,446	22,802	35,644	-11,644
1950-51	2,424,000	45,037	56,046	22,818	33,228	11,809
1950	2,378,963					

¹Estimates from 1951-59 developed by U.S. Bureau of the Census CPR P-25 No. 304;
Estimates from 1961-69 developed by OPP&FM.

PFM P-151
8/76

III

SPECIAL
REPORTS

SHOULD A CITY OR TOWN CENSUS: SOME GUIDELINES

Censuses can be taken for many reasons. The Federal decennial censuses were originally taken in order to apportion membership in the House of Representatives amongst the states. Other censuses have been taken so that the number of males of military age could be determined.

In Washington State, censuses of incorporated cities and towns are usually taken in order to verify a change in size class or to insure that the municipality is receiving its fair share of state funds that are allocated to incorporated places on a per capita basis. Washington State census results are also incorporated in the Federal revenue sharing data base. Some city censuses, in addition to establishing a population value for revenue purposes, gather data that are useful for planning purposes. Such data might include the age, occupation, and ethnic group of each resident.

Censuses normally cost a city or town money. Very small places can be canvassed by the clerk or other municipal personnel. Occasionally, civic or religious groups provide enumerators who will canvass without pay. At the other extreme, a city might hire an experienced census director and an enumeration crew, pay for their time and car mileage, install extra telephone lines in City Hall, have special census schedules printed, and incur a host of other direct expenses.

Essentially, the cost of censusing is a function of enumerator compensation, the physical layout of the city, and the quality of the organization of the census staff. Obviously, enumerators who are paid make a census much more costly than volunteer enumerators; however, they are likely to be better motivated to do a good job. A spread-out, suburban area is usually costly to enumerate because enumerators canvass fewer persons per hour than in densely settled places and because more miles of car use are required to get them to where they must canvass. Poor organization can

prove costly because it usually means that the census will take longer to complete than an efficiently run census; in census-taking, time is money.

Population Studies Division provides a manual for potential census administrators which presents a detailed discussion of costs. For the purposes of this report, we shall assume that most municipal censuses cost between 10 and 30 cents per resident. Panel A of Table 20 presents total census costs for a range of city sizes and for three cost factors: 10, 20, and 30 cents per resident. If paid enumerators are used, the 20¢ figure would be realistic. However, if a city has not censused before, and no benchmark exists, the 30¢ cost might be used as a high, but possible, estimate. Population Studies Division personnel can further help refine the cost estimate by providing actual costs per resident for some recently taken censuses.

Most municipal budgets are tight, so there usually must be a tangible benefit to justify the expense of taking a census. The justification is normally an increase in revenues from the State, if city officials assume that they are correct and Population Studies Division is wrong regarding municipal population size.

Panel B of Table 20 indicates the number of residents a census must count beyond the Population Studies Division estimate before a census can recover its costs. Again, city sizes and per resident enumeration cost factors of 10, 20, and 30 cents are used. The table values also assume per capita revenue of \$25.

Let us consider a fictitious example. In 1976, Population Studies Division estimates the population of Smith City at 8,400 persons. Smith City officials believe that the population is 8,600. According to the table, a census would cost around \$1,700 at 20 cents per resident and \$2,500 or \$2,600 at 30 cents. The additional people needed to recover the census costs would range from nearly 70 to about 103. In this case, even the high cost population gain requirement is only about half of the

200-resident difference of opinion between Population Studies Division and Smith City. Therefore, if their estimate is correct, Smith City should census.

The table does not say whether the Population Studies Division or the municipality has the correct population estimate, but we do hope that it will be a helpful device for municipal officials weighing a decision on censusing.

TABLE 20
CENSUS COSTS & NUMBER OF RESIDENTS MORE THAN OPP&FM ESTIMATES
REQUIRED TO RECOVER CENSUS COSTS; BY CITY POPULATION &
PER CAPITA ENUMERATION COST

Population	A. Total Census Cost by Cost Per Resident (In Dollars)			B. Additional Residents Needed to Recover Costs by Cost Per Resident*		
	\$0.10	\$0.20	\$0.30	\$0.10	\$0.20	\$0.30
250	25	50	75	1	2	3
500	50	100	150	2	4	6
750	75	150	225	3	6	9
1,000	100	200	300	4	8	12
1,250	125	250	375	5	10	15
1,500	150	300	450	6	12	18
1,750	175	350	525	7	14	21
2,000	200	400	600	8	16	24
2,250	225	450	675	9	18	27
2,500	250	500	750	10	20	30
3,000	300	600	900	12	24	36
3,500	350	700	1,050	14	28	42
4,000	400	800	1,200	16	32	48
4,500	450	900	1,350	18	36	54
5,000	500	1,000	1,500	20	40	60
6,000	600	1,200	1,800	24	48	72
7,000	700	1,400	2,100	28	56	84
8,000	800	1,600	2,400	32	64	96
9,000	900	1,800	2,700	36	72	108
10,000	1,000	2,000	3,000	40	80	120
12,500	1,250	2,500	3,750	50	100	150
15,000	1,500	3,000	4,500	60	120	180
17,500	1,750	3,500	5,250	70	140	210
20,000	2,000	4,000	6,000	80	160	240
22,500	2,250	4,500	6,750	90	180	270
25,000	2,500	5,000	7,500	100	200	300
30,000	3,000	6,000	9,000	120	240	360
40,000	4,000	8,000	12,000	160	320	480
50,000	5,000	10,000	15,000	200	400	600

*Assume per capita revenue at \$25 per year.

CHANGES IN HOUSEHOLD SIZE 1970-1976

Introduction

The ratio of persons per household, or "household size" is one of the critical variables used in estimating city populations by the housing unit method. In this method, the estimated number of occupied housing units in a city is multiplied by a ratio of persons per occupied housing unit to obtain an estimate of household population. People in group quarters (e.g., dormitories, nursing homes) are added to household population to obtain an estimate of total population for a city. The Population Studies Division's usual household size estimation procedure is to pick out censusing cities that are similar to the city being estimated and obtain ratios of city household size in the local census to the city household size from the 1970 decennial census. Where possible, these ratios are for housing units by structure type. 1970 household size values for the city being estimated are then scaled to assumed estimation year values by household size change ratios estimated from the data obtained for the censusing cities.

In the nation and in Washington State, household size remained relatively stable between 1940 and 1960. Since 1960 the average number of persons per household has declined steadily. Washington had an average household size of 3.09 in 1960. By 1970 household size in the state had dropped by 3.6 percent, to 2.977. From 1960 to 1970 household size declined nationally by 5.7 percent, from 3.33 to 3.14. This decline has accelerated since 1970. National declines have approximated 1.4 percent per year since 1970¹, and local censuses in Washington indicate comparable, or greater declines are occurring here.

¹U.S. Bureau of the Census, Current Population Reports, "Household and Family Characteristics: March 1975," Series P-20, No. 291, p. 1.

Reasons for Decline in Household Size

The most pertinent statistics relating to the current decline in household size are only available at the national level. National statistics indicate two main reasons for the rapid decline in persons per household: the declining birth rate which has reduced average family size, and the sharp increase in one-person households. Declining birth rates are the single most important factor contributing to the drop in persons per household. Households containing families (i.e., two or more related persons living together) comprise 78 percent of all households, thus any change in family size has a substantial impact on household size.

Between 1960 and 1975, family size in the U.S. dropped from 3.67 (persons per family) to 3.42, with most of the decline occurring during the 1970-75 period.² Several factors are associated with the decline in family size:

1. There has been an increasing preference for smaller families. In the last six years the average number of children expected by young wives (ages 18-24 years) has declined from 2.9 to 2.2.³
2. Current divorce and separation rates are high and there has been a rapid increase in female-headed households. Divorce rates in the U.S. are the highest in national history, jumping from 2.2 (per 1,000) in 1960 to 3.5 in 1970 to 4.8 in 1974.⁴
3. The changing age structure of family heads has resulted in a large number of young couples who have not completed their families, and a large number of older couples where children have grown and left the home.

²U.S. Bureau of the Census, Current Population Reports, Series P-20, No. 291, p. 3.

³U.S. Bureau of the Census, Current Population Reports, "Fertility History and Prospects of American Women: June 1975," Series P-20, No. 288, p. 1.

⁴Vital Statistics Reports, Vol. 24, No. 13, p. 12, 13.

The second most important factor associated with the decline in persons per household is the rapid increase in one-person households. Between 1970 and 1975 one-person households increased by 29 percent. This dramatic increase is probably due to:

1. movement of a large number of young adults out of their parental homes to establish nonfamily households of their own, and
2. an aging population coupled with the greater longevity of women resulting in an increasing number of widows.

TABLE 21
HOUSEHOLDS BY SIZE
UNITED STATES
(Numbers in Thousands)⁵

Size of Household	1970	1975	1970-1975 Percent Change
All Households.....	63,401	71,121	12.1
1 person.....	10,851	13,939	28.5
2 person.....	18,333	21,753	18.7
3 person.....	10,949	12,384	13.1
4 person.....	9,991	11,103	11.1
5 person.....	6,548	6,399	-2.3
6 person or more.....	6,729	5,543	-17.6

⁴In 1975 women 65 years or older headed over half (52%) of the one-person households, and nearly eighty percent (79%) of the one-person households occupied by persons 65 and older.⁶

The potential for further state and national declines in household size is still great as the population continues to age. There will be rela-

⁵U.S. Bureau of the Census, Current Population Reports, Series P-20, No. 291, p. 2.

⁶U.S. Bureau of the Census, Current Population Reports, Series P-20, No. 291, p. 3.

tively large numbers of young adults leaving their parental homes for the next 6-10 years. These young adults are likely to continue to marry late, postpone first births and have smaller (two children) families.

CHANGES IN HOUSEHOLD SIZE FOR MUNICIPALITIES IN WASHINGTON

Tables 22 and 23 show changes in household size for the 82 municipalities that censused in Washington in 1976 ranked by city size. Fifty-two of the 67 cities shown in Table 22 show a decline in household size. The largest 1970-76 declines for cities under 2,500 population in 1970 occurred in Fife (23.4%) and Gig Harbor (17.7%).

Fifteen of the cities that censused showed increases in household size since 1970. Several explanations for the increases are possible. First, the majority of the cities showing increases in household size were less than 500 in population. In these small cities and towns the immigration of a few families- or the death of a few elderly persons in one-person households- can have an impact on household size. There also may have been some error in the 1970 or special census household counts.

Table 23 shows 1970-76 changes in population per household for cities over 2,500 in 1970. All of these larger cities experienced declines in household size over the 1970-76 period. The largest declines are shown for Port Orchard (17.3%) and Bothell (17.2%).

In the past, declines in household size have generally been greater for households in structures containing two or more housing units than for one unit structures. For six of the fifteen cities shown in Table 23, household size declines were greater in one unit structures than for housing structures with two or more units. Again, some explanations are possible. Kennewick, for example, has experienced a rapid growth of population for the last three years and the housing market may be considered "tight". In such situations, many families which would ordinarily occupy single family residences are temporarily residing in multi unit structures.

TABLE 22

CHANGE IN HOUSEHOLD SIZE FOR CITIES UNDER 2,500 POPULATION IN 1970
STATE OF WASHINGTON
1970-1976

City	Population		Population Per Household		Percent Change in Population per Household 1970-1976
	1976	1970	1976	1970	
Bonney Lake	4,187	3,435	3.141	3.435	-8.56
Poulsbo	2,660	2,495	2.404	2.495	-3.65
Battle Ground	2,288	2,862	2.652	2.862	-7.34
Ritzville	1,936	2,535	2.310	2.535	-8.88
Winslow	1,816	2,785	2.362	2.785	-15.19
South Bend	1,803	2,858	2.661	2.858	-6.89
Chewelah	1,780	2,514	2.501	2.514	-0.52
Connell	1,780	3,207	3.134	3.207	-2.28
Gig Harbor	1,744	2,781	2.289	2.781	-17.69
Orting	1,654	3,010	2.791	3.010	-7.28
Fife	1,619	3,025	2.317	3.025	-23.40
West Richland	1,561	3,016	2.673	3.016	-11.37
Deer Park	1,558	2,812	2.654	2.812	-5.62
Westport	1,536	2,717	2.329	2.717	-14.28
Newport	1,534	2,656	2.574	2.656	-3.09
Warden	1,471	3,688	3.405	3.688	-7.67
Stanwood	1,463	2,596	2.535	2.596	-2.35
Benton City	1,422	3,093	2.956	3.093	-4.43
Leavenworth	1,402	2,949	2.532	2.949	-14.14
Soap Lake	1,396	2,249	2.071	2.249	-7.91
Brewster	1,343	2,541	2.435	2.541	-4.17
McCleary	1,312	2,949	2.705	2.949	-8.27
Tenino	1,174	3,054	2.730	3.054	-10.61
Odessa	1,104	2,564	2.426	2.564	-5.38
Wilbur	1,100	2,698	2.307	2.698	-14.49
Yarrow Point	1,067	3,484	3.138	3.484	-9.93
Kalama	1,052	3,107	2.718	3.107	-12.52
Winlock	981	2,781	2.695	2.781	-3.09
Coupeville	902	2,547	2.573	2.547	1.02
Electric City	851	2,701	2.837	2.701	5.04
Woodway	850	3,776	3.311	3.776	-12.31
Rainier	727	3,322	3.260	3.322	-1.87
Royal City	714	3,786	3.336	3.786	-11.89
Bingen	708	2,414	2.529	2.414	4.76
Sumas	696	3,099	2.762	3.099	-10.87
Lind	651	2,789	2.523	2.789	-9.54
La Conner	636	2,827	2.596	2.827	-8.17
Toledo	635	3,042	2.761	3.042	-9.24
Cathlamet	631	2,596	2.644	2.596	1.85
Langley	590	2,256	2.100	2.256	-6.91
Oakville	574	2,644	2.958	2.644	11.88
Coulee City	565	2,595	2.404	2.595	-7.36
Ione	560	2,939	2.857	2.939	-2.79
St. John	557	2,751	2.543	2.751	-7.56
Reardan	508	2,343	2.717	2.343	15.96
Harrington	505	2,542	2.451	2.542	-3.58
Tieton	486	2,883	2.585	2.883	10.34
Nooksack	413	3,067	3.153	3.067	2.80
La Crosse	398	2,878	2.503	2.878	-13.03
Mesa	398	3,703	4.061	3.703	9.67

TABLE 22 (CONTINUED)

CHANGE IN HOUSEHOLD SIZE FOR CITIES UNDER 2,500 POPULATION IN 1970
STATE OF WASHINGTON
1970-1976

City	Population	Population Per Household		Percent Change in Population per Household 1970-1976
	1976	1970	1976	
Carbonado	396	3,152	2,933	-6.95
Roy	393	3,202	2,848	-11.06
North Bonneville	387	2,691	2,465	-8.40
Mansfield	375	2,459	2,841	15.54
Endicott	370	2,281	2,403	5.35
Colton	311	2,968	3,274	10.31
Rock Island	310	3,446	3,039	-11.81
Prescott	305	2,847	2,748	-3.48
Washucna	304	3,010	2,868	-4.72
Mattawa	231	3,273	2,718	-16.96
Hamilton	223	2,899	2,593	-10.56
Malden	211	2,355	2,319	-1.53
Kahlötus	194	3,790	2,553	-32.64
Conconnully	172	2,068	2,263	9.43
Krupp	94	2,476	3,481	40.59
Hatton	74	3,750	3,895	3.87
Waverly	69	2,087	2,464	18.06

TABLE 23

CHANGE IN HOUSEHOLD SIZE BY STRUCTURE TYPE
FOR CITIES OF OVER 2,500 IN 1970¹
STATE OF WASHINGTON
1970-1976

City	1976 Population	1970 Population Per Household				1976 Population Per Household				1970-1976 Percent Change in Population Per Household			
		Total	1 Unit	2 or More Units	Trailers/ Mobile Homes	Total	1 Unit	2 or More Units	Trailers/ Mobile Homes	Total	1 Unit	2 or More Units	Trailers/ Mobile Homes
Richland	30,009	3.213	3.460	2.598	2.154	2.849	3.165	2.316	2.103	-11.33	-8.53	-10.85	-2.37
Edmonds	25,039	3.280	3.530	2.205	2.939	2.876	3.177	1.868	1.798	-12.32	-10.00	-15.28	-38.82
Kennewick	21,301	3.106	3.376	2.041	2.222	2.763	3.191	2.145	2.202	-11.04	-5.48	5.10	-0.90
Redmond	16,445	3.362	3.631	2.389	1.867	2.901	3.406	1.768	1.940	-13.71	-6.20	-25.99	3.91
Pasco	14,618	2.901	3.326	2.127	2.585	2.604	2.949	2.158	2.070	-10.24	-11.33	1.46	-19.92
Oak Harbor	11,271												
Centralia	10,682	2.590	2.798	1.574	2.100	2.394	2.629	1.542	2.019	-7.57	-6.04	-2.03	-3.86
Moses Lake	10,165	3.303	3.531	2.249	2.339	2.910	3.224	1.816	1.848	-11.90	-8.69	-19.25	-20.99
Bothell	6,036	3.305	3.768	2.256	1.987	2.738	3.331	1.746	1.865	-17.16	-11.60	-22.61	-6.14
Issaquah	4,850	3.149	3.398	2.537	2.412	2.704	3.229	1.773	1.845	-14.13	-4.97	-30.11	-23.51
Snohomish	4,795	2.948	3.219	1.816	2.421	2.496	2.747	1.541	1.938	-15.33	-14.66	-15.14	-19.95
Othello	4,450	3.519	3.925	2.532	2.640	3.249	3.600	2.446	2.467	-7.67	-8.28	-3.40	-6.55
Sumner	4,327	2.916	3.122	2.157	1.000	2.548	2.883	1.772	2.000	-12.62	-7.66	-17.85	100.00
Port Orchard	4,248	3.089	3.115	2.114	2.089	2.556	2.809	1.937	1.889	-17.25	-9.82	-8.37	-9.57
Quincy	3,309	3.357	3.660	2.623	1.844	3.046	3.266	2.478	2.381	-9.26	-10.77	-5.53	29.12
Dayton	2,646	2.648	2.679	1.738	3.875	2.419	2.545	1.582	2.400	-8.65	-5.00	-8.98	-38.06

¹Population and housing unit data by structure type not available for cities of 2,500 or more population in 1970.

FFM P-120
8/76

Pasco, Othello, and Quincy, all of which showed increases in average household size for two or more unit structures, have had a relatively large influx of migrant labor population which tend to have larger families. Many of the migrant families are occupying duplexes and fourplexes and this serves to increase the household size in the two or more unit category.

Consistent with national trends, continued declines in population per household are expected to continue in Washington. These declines must be carefully assessed and incorporated in the housing unit method for accurate estimates for municipalities or other areas. The tables presented in this report may be of use to municipal officials of non-censusing cities who wish to assess likely household size changes in their own cities and towns.

ASSESSMENT OF ACCURACY OF POPULATION ESTIMATES FOR CITIES AND TOWNS MADE BY THE POPULATION STUDIES DIVISION

Introduction and Methodology

This study investigates the accuracy of the population estimates for cities and towns of the State of Washington made by the Population Studies Division of the Office of Program Planning and Fiscal Management. Population Estimates are prepared by this office as of April 1st for the 265 incorporated cities and towns in the State of Washington. The population estimate and census values used in this study were drawn from Table 1 of this publication.

Seventy-three of the 265 cities met the following preliminary criteria for inclusion in the study:

1. The city censused at least once in the years 1974, 1975, or 1976.
2. The city had not censused during the three previous years.

Inclusion of these criteria stems from the assumption that one can be fairly confident of population estimates for the first year or two following a census, and therefore a three-year gap would provide a reasonable test of the estimation procedures. The number of years to a prior census, for these cities, could range from 4 to 6 years; all were censused in 1970, some censused in 1971 or 1972.

Three of the cities, Cashmere, Westport, and Starbuck, were eliminated from the analysis due to inadequate information on housing stock or by estimation problems created by the type of housing in place on the estimation date.

The best analysis for accuracy of estimates would involve comparing estimates and censuses for the same year. However, because estimates are not prepared for the years in which cities census, this study must compare the census with estimates for the previous year.

In order to compare the census population with the population estimate for the previous year, a percentage difference was computed by subtracting the census population from the prior year estimate, dividing that quantity by the census population, and then multiplying by 100. The percentage difference, when negative, indicates that the prior year's estimate was less than the population at the time of the census. If the percentage difference is positive, the prior year's estimate was greater than the census population.

Means and standard deviations were also computed for both the percent difference and the absolute (minus signs are treated as pluses) percent difference between estimate and census populations. These statistics are presented on the following page.

Discussion

Table 24 presents mean and standard deviation values for the 70 test cities grouped by census population and combined into a total. The upper panel makes use of both positive and negative differences, whereas the lower panel examines differences without regard to sign. Both sets of data indicate that percentage differences become less as city sizes increase. This is to be expected because, for small cities and towns, even slight numerical differences can mean large percentage differences. The negative algebraic data in the top panel indicate that the estimates tended to be lower than the census counts. This seems intuitively reasonable, as cities that choose to census are usually cities that are assumed to be growing; if they are growing, they should be larger than the previous year's estimate.

Table 25 shows the cumulative absolute difference percentages for all cities and towns and for size groupings. The data indicate that the estimates tended to be closer to subsequent census counts for the larger cities, further confirming what the previous table suggested.

TABLE 24

MEAN & STANDARD DEVIATION VALUES FOR PERCENT DIFFERENCES
BETWEEN CENSUS & ESTIMATES FOR CITIES BY SIZE,
STATE OF WASHINGTON

City Size	Algebraic Value		
	Mean	Standard Deviation	N
All Sizes	-2.1019	6.0873	70
Less than 1000	-4.6018	8.2931	23
1000-2500	-0.9616	5.0440	18
Greater than 2500	-0.8271	3.7668	29

City Size	Absolute Value		
	Mean	Standard Deviation	N
All Sizes	4.2117	4.8525	70
Less than 1000	6.3513	6.9816	23
1000-2500	3.6772	3.4790	18
Greater than 2500	2.8465	2.0555	29

TABLE 25

CUMULATIVE ABSOLUTE PERCENTAGE DIFFERENCES
BETWEEN CENSUS & ESTIMATES FOR CITIES BY SIZE,
STATE OF WASHINGTON

Absolute Percent Difference	Census Population Size			
	All Cities (N=70)	Less than 1000 (N=23)	1000-2500 (N=18)	Greater than 2500 (N=29)
Less than 2.5	42.9	30.4	38.9	55.2
Less than 5.0	68.6	56.5	72.2	75.9
Less than 10.0	92.9	82.6	94.4	100.0
Less than 15.0	97.1	91.3	100.0	100.0
-----	100.0	100.0	100.0	100.0

Figures 4 and 5 graphically represent the difference percentages for the 70 cities and towns under study. Figure 4 presents the percent difference between estimate and census population by size of place for each of the 70 cities and towns. It may be observed that the greatest variation in

FIGURE 1

Percent of Difference by Size of City

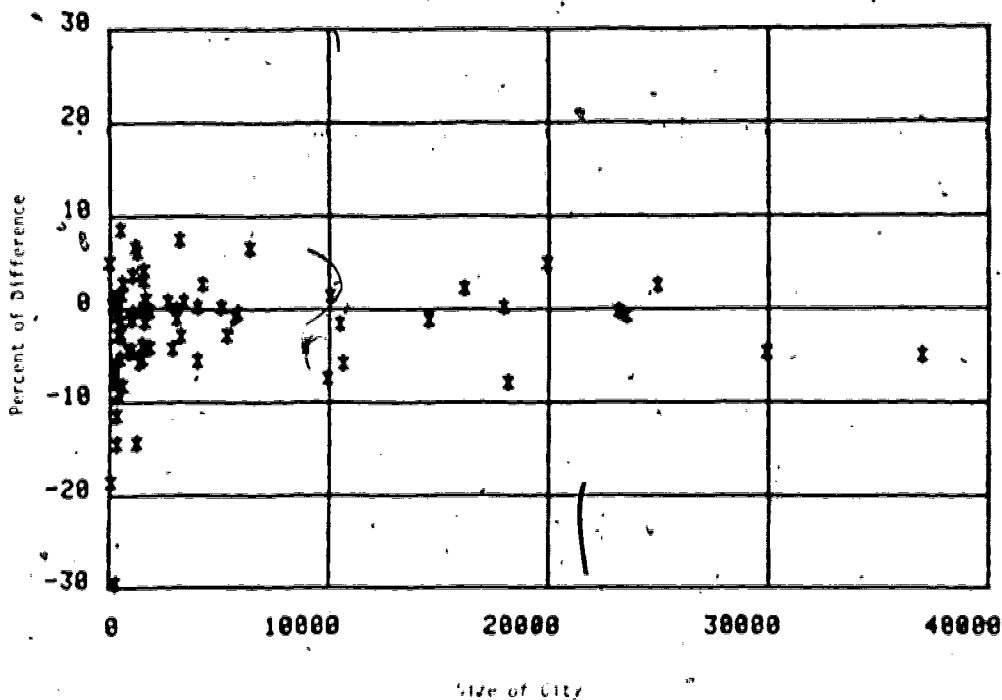
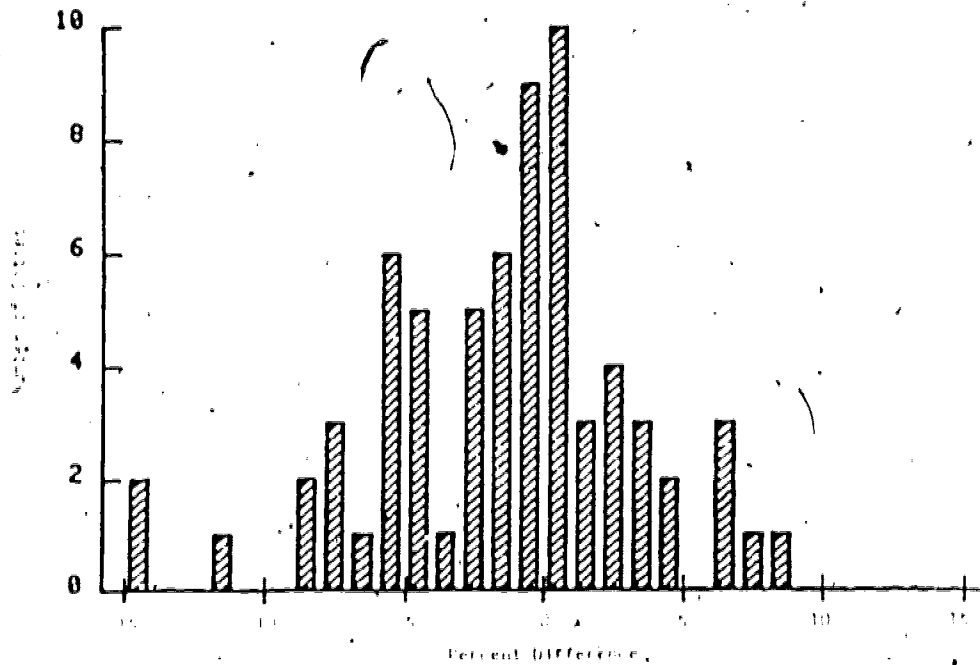


FIGURE 2

Percent Difference by Number of Cities*



*Two cities not shown in chart had percent differences of -10 and -20.

percent difference occurs for places with population of less than 1000. Figure 5 is a vertical bar chart which illustrates the number of cities within one percent difference interval unit categories. The percent difference interval unit, 0 to +1, contains ten cities, the modal number of cities in the distribution. The percent difference interval having the next highest number of cities (9) is the 0 to -1 interval.

As an additional analysis of estimation accuracy, comparisons were made of population estimates for cities and towns prepared by the Population Studies Division with estimates submitted by the city and town officials and with the 1970 Federal Census population. The use of the 1970 census data yields data which are indicative of the amount of difference and the degree of dispersion which would occur if estimates of cities and towns were assumed to be the 1970 census values. That is, these would be the estimates if no estimates were made at all. For cities of all sizes and for cities grouped by size classification, the means and standard deviations of the percent difference distribution using the Federal Census in 1970 are consistently higher than estimates prepared by the state and the cities and towns (see Table 26).

Since it can be assumed that the true number of inhabitants of a place is likely to change in the year between the estimate and the census, an attempt was made to update the estimate to the census year.

Two adjustments were made. One adjustment was to take housing stock change into account by multiplying the estimated population by the ratio of the number of housing units counted by the census to the number of housing units used in preparing the estimate. In other words, the estimate is changed in proportion to the change in the housing stock.

The other adjustment was for change in household size. For the purpose of this analysis, we assume the household size estimate for each city for the year prior to the city census is correct. This is because it is based on the change in household size between the 1970 Census and the estimation year reported for censusing cities that are considered analogous to the city being estimated. In

TABLE 26

COMPARISON OF STATISTICS OF PERCENT DIFFERENCE BETWEEN ESTIMATES AND CENSUS POPULATIONS
FOR STATE ESTIMATES, CITY ESTIMATES, & ESTIMATES USING THE FEDERAL CENSUS OF 1970

	<u>Algebraic Percent Difference</u>		<u>Absolute Percent Difference</u>	
	<u>Mean</u>	<u>Standard Deviation</u>	<u>Mean</u>	<u>Standard Deviation</u>
	<u>City Size</u>			
	<u>All Cities (70)</u>			
State Estimates	-2.1012	6.0877	4.2117	4.8525
City Estimates	-0.0223	6.7517	4.7172	4.7970
Federal Census 1970	-5.2436	9.2116	7.2980	7.6661
	<u>Less than 1000 (23)</u>			
State Estimates	-4.6018	8.2931	6.3513	6.9816
City Estimates	-3.7243	8.3622	6.1370	6.7121
Federal Census 1970	-9.0369	11.2228	10.5321	9.7653
	<u>1000-2499 (18)</u>			
State Estimates	-0.9616	5.0440	3.6772	3.4790
City Estimates	0.3024	5.2499	4.1892	3.0128
Federal Census 1970	-2.1092	7.9807	5.5012	6.0298
	<u>Greater than 2500 (29)</u>			
State Estimates	-0.8271	3.7668	2.8465	2.5505
City Estimates	2.7124	4.6463	3.9190	3.6471
Federal Census 1970	-4.1927	7.2246	5.8483	5.9142

update household size, we used a rough adjustment which consisted of the change in 1970-to-census household size ratios for all censusing cities from the estimate year to the census year. For example, say we wish to update a 1973 estimate to 1974. In 1973, the 91 censusing cities had an average household size of 2.791 as compared to the 3.0 household size they had in 1970. Therefore, their 1970-73 decline ratio was 0.9303. In 1974, 73 cities censused and had an aggregate household size of 2.772 as compared to their 1970 value of 3.059, a ratio of 0.9062. To update a 1973 estimate to 1974, we multiplied it by the 1973-74 change ratio 0.9062/. 0.9303=0.9741. Obviously, this adjustment is not as refined as would be the case for a true estimate because analog cities are not used. But we cannot use such a selection process because we would then run the risk of being accused of tampering with data, since we already know the true census year household size values for the cities.

No vacancy rate adjustments were made, so the vacancy rates in the prior estimate and the census year "estimate" are implicitly assumed to be the same.

Table 27 shows the results of the adjustments by various percent difference levels for the 70 cities and towns under analysis. The adjustments yielded estimates which were farther from the censused populations than were the unadjusted estimates. There are many possible explanations for this result, but the most readily testable one is that the housing unit count in the estimate year was inaccurate. Such inaccuracies could stem from either poor quality 1970 census data, or poor reporting of post-1970 housing stock changes.

In order to investigate the possible effect of inaccurate housing unit counts, we plotted Figure 6 which displays the 45 cities in this study, with population greater than 1000 distributed by interval units of percent difference between census-year housing unit counts based on 1970 data and annual change reports and the number of housing units counted in the census.

TABLE 27

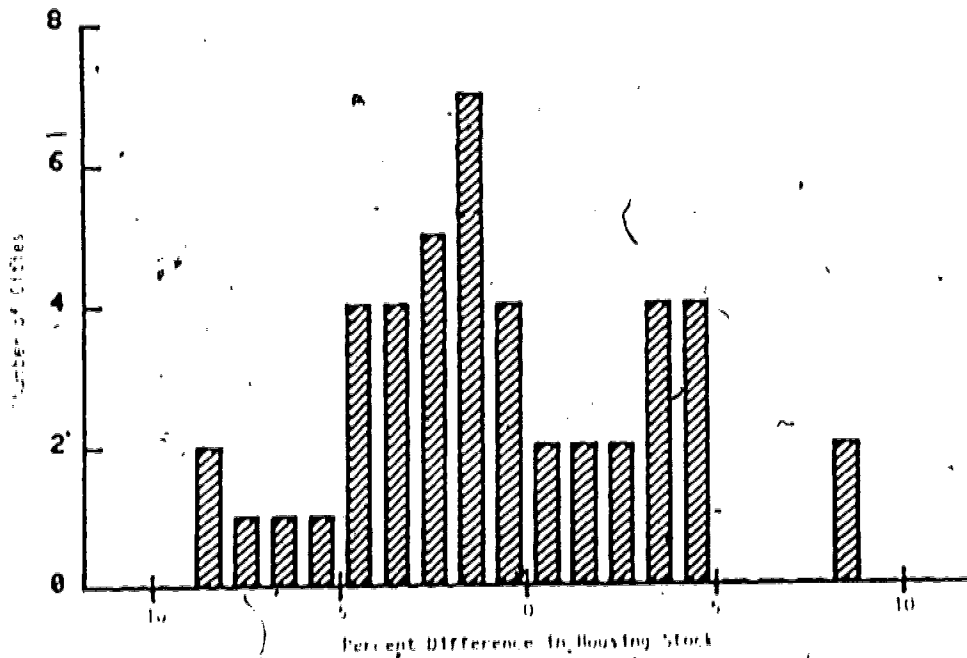
ABSOLUTE PERCENT DIFFERENCES BETWEEN CENSUS & ESTIMATED POPULATION
FOR UNADJUSTED & ADJUSTED ESTIMATES
STATE OF WASHINGTON

Absolute Percent Difference	No Adjustment	Housing Stock Change Adjustment	Housing Stock & Household Size Change Adjustment
Less than 5	68.6	55.7	57.1
Less than 10	92.9	92.8	82.8
Less than 15	97.2	89.9	89.9
Total*	100.1	99.9	99.9

*Total not equal to 100% due to rounding.

FIGURE 6

Percent Difference
Between Reported & Censused Numbers of Housing Stock
For Cities of Greater than 1000 Population (N=45)



*Two cities, Ephrata and Oak Harbor, were not included due to inadequate housing information.

Positive numbers indicate more expected than enumerated housing units, negative values mean that the census count was the larger number. Seven cities are found in the modal percent difference in housing stock interval of 1 to 2 percent. Only twenty cities are found in the range of ± 2.5 percent difference, a difference which we shall define as a reasonable degree of fit for purposes of adjusting population estimates. Approximately 56 percent of the 45 cities have differences between reported and censused housing stock in excess of 2.5 percent.

The statistical analyses reported earlier in this report were repeated for the 20 cities with relatively accurate housing data. Table 28 presents the results; the upper panel contains the prior year estimate comparison; the lower panel adjusts the estimate for change in housing stock and household size. Data for all 45 cities are included for comparison, as are the locally prepared estimates and the use of 1970 census counts as the estimates for the 20 cities.

Although the algebraic mean for the Population Studies Division estimate before adjustment is negative, it appears that, after adjustment, there is a tendency for these estimates to be greater than the censused population values. It may be observed that the lowest mean in the Absolute Percent Difference panel occurs for the Population Studies Division estimates which had less than 2.5 percent difference between reported and censused housing stock units. It is also interesting to note that the dispersion about this mean, of which the standard deviation is a measure, is lower for the Population Studies Estimates than for any other estimate. The means and standard deviations for the estimates submitted by the cities fall between the means and standard deviation values for the state estimates and those values obtained by using the federal census data.

No matter which section of the table is examined, overall estimation accuracy, as measured by the standard deviation values, is enhanced by having good housing data; this is to be expected. What is more interesting

is the effect of the adjustments which supposedly are to bring the estimates into line with the following year's census counts. In every case, there is a shift in a positive direction which has the effect of increasing the "error" of the estimate. Limitations in the adjustment procedures used in this study make strong conclusions impossible. However, it seems likely that Population Studies Division estimates, at least during the period 1973-1975, tended to overestimate actual city and town populations. Our only consolation is that Population Studies Division estimates appear to be more correct than estimates prepared by the cities and towns, and more correct than using the 1970 census counts as estimates.

TABLE 28

Comparison of Statistics of Percent Difference Between Estimate & Census Population for Selected Censusing Cities of Greater than 1000 Population & Those Cities of Greater than 1000 Population that had Less than 2.5% Difference Between Reported & Censused Number of Housing Units

<u>Unadjusted</u>						
<u>Estimate's Source</u>	<u>N</u>	<u>Algebraic Percent Difference</u>		<u>Absolute Percent Difference</u>		
		<u>Mean</u>	<u>Standard Deviation</u>	<u>Mean</u>	<u>Standard Deviation</u>	
Population Studies	20	-0.0593	3.6361	2.9394	2.0323	
City	20	2.2617	4.2693	3.6027	3.1542	
1970 Census	20	-1.9730	4.8147	3.7003	3.5869	
Population Studies*	45	-0.9258	4.3370	3.2971	2.9371	

<u>Adjusted</u>						
<u>Estimate's Source</u>	<u>N</u>	<u>Algebraic Percent Difference</u>		<u>Absolute Percent Difference</u>		
		<u>Mean</u>	<u>Standard Deviation</u>	<u>Mean</u>	<u>Standard Deviation</u>	
Population Studies	20	1.8733	4.0537	3.5510	2.6179	
City	20	4.2557	5.0247	5.3210	3.8091	
Population Studies*	45	1.4683	5.2767	4.1418	3.5361	

* Cities with population greater than 1000.

Summary

The following observations may be made as a result of this analysis:

- Nearly 70 percent of the city and town population estimates prepared by the Population Studies Division are within the interval range of ± 5 percent difference between estimate and the following year's census.
- The percent difference between census and estimate tends to decrease as city sizes increase.
- Some cities have large discrepancies between the reported and censused numbers of housing units which may lead to erroneous estimates of city population.
- Estimates prepared for cities of population greater than 1000 with reported and censused number of housing units within 2.5 percent of one another had the lowest mean and standard deviation for absolute percent difference between census and estimate.
- The greatest variation in percent difference between estimate and census population occurs for places with populations of less than 1,000 because the small numerical differences can result in large percentage differences.
- There is a lower mean and standard deviation for percentage difference between estimate and census for Population Studies Division estimates than for either the estimates submitted by cities or by using the 1970 census populations as estimates.
- The evidence suggests that Population Studies Division tended to slightly overestimate municipal population in 1973, 1974, and 1975.

COUNTY CENSUSES IN WASHINGTON SINCE 1970

Introduction

Six counties in Washington have conducted special censuses since 1970 (Table 29). These censuses have been motivated by several concerns. Cowlitz county (1973) and Stevens county (1975) conducted special censuses to advance their county classification (RCW 36.13.050). Adams county censused in 1975 to have a current population count upon which to redistrict Commissioner Districts. Kitsap, San Juan, and Wahkiakum counties conducted their special censuses to establish a current population base for planning purposes and for the allocation of state revenues. According to RCW 66.08.200 the last federal census or official county census, whichever is the most recent, is used by the State to allocate liquor revenues to counties. Thus, all special county censuses certified by the Office of Program Planning and Fiscal Management are used for distributing liquor revenues to counties. Revenues approximate \$3.50 per person in the unincorporated area.

TABLE 29

COUNTIES CONDUCTING SPECIAL POPULATION
CENSUSES 1970-1976
STATE OF WASHINGTON

County	Census Date	Major Purpose of Census
Adams	April 1, 1976	Redistricting Commissioner Districts in current population.
Cowlitz	Sept. 10, 1973	Reclassification of county on basis of population.
Kitsap	April 17, 1976	Establish current census base for allocation of revenues
San Juan	Sept. 22, 1975	Establish current population base for allocation of revenues.
Stevens	Sept. 25, 1975	Reclassification of county on basis of population.
Wahkiakum	April 1, 1976	Establish current population base for allocation of revenues.

Census Costs and Results

County censuses are generally more costly (per person enumerated) than city censuses because population in the unincorporated area is more dispersed. As the average distance between households increases, census costs increase in terms of enumerator hours and mileage. At the present time, the direct cost¹ of a county census is about \$.50 per person enumerated if only a population and housing unit count is desired and if existing county staff are responsible for preparing for and directing the census. Thus, the only direct costs incurred by the county are for enumerator and supervisor wages, mileage, and office materials. If additional census information is desired (e.g.; occupation, income) or existing county staff are not available to handle census responsibilities, direct census costs may approximate \$1.25 per person enumerated. Direct census costs incurred by the counties that censused in Washington have ranged from less than \$.10 per person enumerated in Stevens county to \$1.00 per person enumerated in Adams county. In Stevens county, existing county staff handled all census responsibilities--county road crews and assessors were assigned enumerator responsibilities--thus direct costs were minimized. In Adams county, a consultant was hired to conduct the census.

Tables 30 to 36 show basic population and housing unit data for incorporated places and the unincorporated area for all counties that have censused since 1970. Kitsap county, showed the largest numerical gain, from 101,732 in 1970 to 116,090 in 1975. San Juan county, however, one of the smallest counties to census, grew from 3,865 in 1970 to 5,493 in September of 1975, a gain of 43 percent. Consistent with national trends, all counties showed declines in household size since 1970. Declines in household size for incorporated places versus the unincorporated area were noticeably

¹Direct cost means money that must be specifically appropriated from the county budget for census purposes.

TABLE 30
POPULATION AND HOUSING UNITS, ADAMS COUNTY
1970-1976

Area	Total Population		Percent Change	Population in Housing Units		Total Housing Units		Occupied Housing Units		Average Pop. Per Occ. H.U.		Percent Change in PPH	Group Quarters	
	Federal Census 1970	4/1/76 Census		1970	4/1/76	1970	4/1/76	1970	4/1/76	1970	4/1/76		1970	4/1/76
ADAMS	12,014	13,702	14.1	11,951	13,596	3,936	4,619	3,553	4,388	3.36	3.10	-7.7	63	113
Unincorporated	4,968	6,240	25.6	4,958	6,240	1,552	1,956	1,349	1,822	3.68	3.42	-7.1	10	-
Incorporated	7,046	7,462	6.0	6,993	7,356	2,384	2,663	2,204	2,566	3.17	2.87	-9.5	53	113
Waton	63	74	23.3	63	74	17	22	16	19	3.75	3.69	-1.7	-	-
Lind*	622	651	4.7	622	651	260	270	223	258	2.79	2.52	-9.7	-	-
Uchello	4,172	4,504	8.0	4,172	4,444	1,211	1,410	1,141	1,368	3.66	3.25	-11.2	-	-60
Ritzville	1,376	1,936	41.2	1,823	1,655	776	843	719	815	2.54	2.31	-9.1	53	53
Washtunga	316	304	-3.8	316	304	120	118	105	106	3.01	2.87	-4.7	-	-

TABLE 31
POPULATION AND HOUSING UNITS, COMALITZ COUNTY
1970-1976

Area	Total Population*		Percent Change	Population in Housing Units		Total Housing Units		Occupied Housing Units		Average Pop. Per Occ. H.U.		Percent Change in PPH	Group Quarters	
	Federal Census 1970	9/10/73 Census		1970	9/10/76	1970	9/10/76	1970	9/10/76	1970	9/10/76		1970	9/10/76
COMALITZ	68,616	70,400	2.6	68,080	69,715	23,512	25,058	22,140	24,228	3.07	2.68	-6.2	536	693
Unincorporated	25,695	26,982	5.0	25,561	26,843	8,145	9,156	7,524	8,458	3.40	3.15	-6.5	134	139
Incorporated	42,921	43,418	1.2	42,519	42,872	15,367	16,702	14,616	15,770	2.91	2.72	-6.5	402	554
Castle Rock	1,642	1,761	6.9	1,642	1,761	627	679	539	640	2.80	2.73	-2.5	-	-
Palma	1,106	1,037	-6.2	1,106	1,037	378	381	356	361	3.11	2.87	-7.7	-	-
Relso	10,296	10,297	0.0*	10,183	10,232	3,864	4,179	3,640	3,900	2.80	2.62	-6.4	113	65
Corvew	20,373	20,490	0.4	20,084	20,001	9,956	10,772	9,512	10,224	2.95	2.74	-7.1	259	489
Woodland	1,499	1,841	23.8	1,499	1,841	542	691	519	651	2.89	2.83	-2.1	-	-

*Less than 0.01 percent

TABLE 32
POPULATION AND HOUSING UNITS, KITSAP COUNTY
1970-1975

Area	Total Population		Percent Change	Population in Housing Units		Total Housing Units		Occupied Housing Units		Average Pop. Per Occ. H.U.		Percent Change in PPH	Group Quarters	
	Federal Census 1970	4/17/75 Census		1970	4/17/75	1970	4/17/75	1970	4/17/75	1970	4/17/75		1970	4/17/75
KITSAP	101,712	116,029	14.1	26,858	105,706	36,095	41,889	32,856	38,360	2.95	2.76	-6.4	4,874	10,314
Unincorporated	59,131	70,762	19.5	58,217	69,928	21,239	26,599	18,663	23,605	3.12	2.96	-5.1	894	710
Incorporated	42,581	45,267	6.6	38,641	35,778	14,856	15,290	14,193	14,755	2.72	2.42	-11.0	1,980	9,674
Bremerton	15,307	17,112	11.8	11,518	28,000	12,206	12,147	11,694	11,720	2.70	2.39	-11.5	3,709	9,132
Port Orchard	1,904	4,065	4.1	1,825	1,833	1,196	1,472	1,310	1,419	2.94	2.70	-8.2	49	212
Foulso	1,861	2,415	29.8	1,699	2,196	672	919	644	917	2.64	2.39	-9.5	162	219
Washou	1,229	1,010	-18.4	1,229	1,219	582	732	545	691	2.81	2.49	-11.4	-	91

TABLE 33

POPULATION AND HOUSING UNITS, SAN JUAN COUNTY
1970-1975

Area	Total Population		Percent Change	Population in Housing Units		Total Housing Units		Occupied Housing Units		Average Pop. Per Occ. H.U.		Percent Change in PPH	Group Quarters	
	Federal Census 1970	9/22/75 Census		1970	9/22/75	1970	9/22/75	1970	9/22/75	1970	9/22/75		1970	9/22/75
SAN JUAN ¹	3,856	5,493	42.5	3,814	5,432	2,673	3,746	1,514	2,341	2.52	2.32	-7.9	42	61
Unincorporated	3,053	4,531	48.4	3,053	4,517	2,321	3,302	1,205	1,939	2.53	2.33	-7.9	-	14
Incorporated	803	962	19.8	761	915	352	444	309	402	2.46	2.28	-7.3	42	47
Total Islands	3,856	5,493	42.5	3,814	5,432	2,673	3,746	1,514	2,341	2.52	2.32	-7.9	42	61
Lopez	647	884	36.6	647	854	466	680	N.A.	379	N.A.	2.33	N.A.	-	47
Orcas	1,219	1,741	42.8	1,219	1,727	822	1,086	N.A.	749	N.A.	2.31	N.A.	-	14
San Juan ²	1,853	2,529	36.5	1,811	2,482	1,019	1,376	N.A.	1,059	N.A.	2.34	N.A.	42	47
Friday Harbor	803	962	19.8	761	915	352	444	309	402	2.46	2.28	-7.9	42	47
Snaw	70	99	41.4	70	99	123	121	N.A.	51	N.A.	1.94	N.A.	-	-
Waldron	14	88	528.6	14	88	37	93	N.A.	32	N.A.	2.75	N.A.	-	-
Other Islands	53	152	186.8	53	152	206	390	N.A.	71	N.A.	2.14	N.A.	-	-

¹San Juan County, because of its uniqueness, is shown with islands containing 50 or more people.
²Includes Friday Harbor.

TABLE 34

POPULATION AND HOUSING UNITS, STEVENS COUNTY
1970-1975

Area	Total Population		Percent Change	Population in Housing Units		Total Housing Units		Occupied Housing Units		Average Pop. Per Occ. H.U.		Percent Change in PPH	Group Quarters	
	Federal Census 1970	9/25/75 Census		1970	9/25/75	1970	9/25/75	1970	9/25/75	1970	9/25/75		1970	9/25/75
STEVENS	17,405	22,708	30.5	17,167	22,501	7,167	9,596	5,580	7,750	3.08	2.90	-5.8	238	207
Unincorporated	10,584	14,958	41.6	10,463	14,898	4,585	6,513	3,177	4,811	3.29	3.10	-5.8	101	60
Incorporated	6,841	7,750	13.3	6,704	7,603	2,582	3,083	2,403	2,939	2.79	2.59	-7.2	137	147
Chewelah	1,365	1,691	23.9	1,325	1,659	575	717	527	690	2.51	2.40	-4.4	40	32
Colville	3,742	4,291	14.7	3,645	4,176	1,380	1,694	1,305	1,629	2.79	2.56	-8.2	97	115
Kettle Falls	920	926	0.7	920	926	317	360	307	335	3.00	2.76	-8.0	-	-
Marcus	148	169	14.2	148	169	41	56	41	53	3.61	3.19	-11.6	-	-
Northport	451	429	-4.9	451	429	184	167	148	144	3.05	2.98	-2.3	-	-
Springdale	215	244	13.5	215	244	85	89	75	88	2.87	2.77	-3.5	-	-

TABLE 35

POPULATION AND HOUSING UNITS, WAHIAKUM COUNTY
1970-1975

Area	Total Population		Percent Change	Population in Housing Units		Total Housing Units		Occupied Housing Units		Average Pop. Per Occ. H.U.		Percent Change in PPH	Group Quarters	
	Federal Census 1970	4/1/76 Census		1970	4/1/76	1970	4/1/76	1970	4/1/76	1970	4/1/76		1970	4/1/76
WAHIAKUM	3,592	3,682	2.5	3,536	3,618	1,279	1,396	1,150	1,254	3.07	2.90	-5.5	56	44
Unincorporated	2,945	3,051	3.6	2,944	3,051	1,033	1,166	927	1,032	3.19	3.06	-7.7	1	-
Incorporated	647	631	-2.5	592	567	246	230	223	222	2.80	2.64	-1.5	55	44
Lathlamet	647	631	-2.5	592	567	246	230	223	222	2.80	2.64	-1.5	55	44

greater in Kitsap county. In Kitsap county household size in incorporated places declined by 11.0 percent compared to 5.1 percent for the unincorporated area.

Rural Population Growth
Fact or Fantasy in Washington's Experience

County censuses in Washington may lend some evidence to support or disclaim what is considered to be an unprecedented national trend in population movement--a metropolitan to non metropolitan movement, with the western states leading the nation.² On the basis of population estimates released by the Bureau of the Census, between 1970 and 1974 the metropolitan counties in the U.S. grew by 3.4 percent, while the non metropolitan counties grew by 5.6 percent.³ This difference is more accentuated in the Western Region with the highest rates of non metropolitan growth being highest for counties adjacent to metropolitan areas. More remote, non metropolitan western counties that are not adjacent to metropolitan areas indicate a somewhat lower rate of population growth, but their 1970-74 growth rate was still 9.2, more than double the U.S. average.⁴

Calvin L. Beale, a demographer regarded as an authority on rural population growth, attributes the recent trend of urban to rural growth to:

1. the spread of manufacturing to more remote areas,
2. the growth of retirement and recreation areas in more rural areas,
3. rural growth fostered by the location of state capitols and colleges in non metropolitan counties,

²"Rural Population Growth More than a Transient Fad", Western Wire Rural Development Center, Vol. 1, No. 2, December 1975, p. 1.

³Metropolitan areas are counties with urban centers of 50,000 or more, plus any adjoining counties that meet certain criteria relating to metropolitan character and commuting patterns.

⁴"Rural Population Growth, More than a Transient Fad", P. 1.

4. stabilization of the farm population and rural economy, and
5. a return-to-the earth movement associated with antimaterialistic and antisuburban sentiment.

In general, the special censuses in Washington have tended to support substantial growth of population in non metropolitan counties; those both adjacent to and not adjacent to metropolitan counties.

Three of the counties that conducted special censuses, Kitsap, Stevens, and Cowlitz were adjacent to metropolitan areas. Kitsap county, which is adjacent to the Seattle-Everett SMSA, has shown an overall growth rate of 14 percent since 1970 and will gain metropolitan status by 1980. Stevens county, adjacent to the Spokane SMSA had an overall growth rate of 30.5 percent for the 1970-75 period; this rapid 1970-75 growth followed four decades of relative population stability or decline. Population growth in the two enumeration districts adjacent to the Spokane metropolitan area represented 23 percent of the total 1970-75 population change in the county. Nonetheless, if the population growth in the enumeration districts absorbing the suburban sprawl of Spokane were eliminated from consideration, Stevens county would have still had a 23.3 percent growth rate for the 1970-75 period. Much of this additional growth being due to the construction of Northwest Alloy at Addy. It might also be mentioned that 1970-75 population estimates for contiguous Ferry and Pend Oreille counties also indicate population growth after several decades of population loss.

Cowlitz county is adjacent to Portland SMSA which includes Clark county in Washington. Over the 1960 to 1970 decade Cowlitz had an average growth rate of approximately 2 percent per year. The 1973 census in the county showed a growth rate of 2.6 percent for the 1970-73 period, which indicates

⁵"Rural Population Growth, More than a Transient Fad", p. 3.

no substantial change in growth pattern since 1970.

Three counties that censused, San Juan, Adams, and Wahkiakum are not adjacent to metropolitan areas. San Juan county is a good example of population growth in a rural area. The population of San Juan county remained relatively stable from 1910 (3,603) to 1970 (3,856) and then increased by 1,637 (43 percent) between 1970 and 1975. This growth has not been fostered by any substantial change in the economic base, but by retirement population and many return-to-the-earth type young families establishing their homes on the islands.

Adams county showed a growth rate of 14.1 percent for the 1970-76 period, which is somewhat greater than its 1960-1970 average annual growth rate of 2.1 percent. The increase in population in Adams is largely due to an improvement in the agricultural economy due to the Columbia Basin Irrigation Project.

The population of Wahkiakum county fluctuated but remained relatively stable from 1920 (3,472) to 1970 (3,592), and on the basis of the 1976 special census count of 3,682, the county has not yet experienced any remarkable growth.

In sum, two of the counties that conducted special censuses, Stevens and San Juan, appear clearly to support this new metropolitan to non metropolitan movement. Both counties showed stable population for several decades prior to 1970 and then experienced a rapid surge of growth. Both counties have attracted recreational, retirement, and return-to-the-earth type populations.

There is little doubt that there have been unprecedented population increases in non metropolitan counties in Washington and in several regions of the U.S. but the magnitude of the urban-to-rural shift may still be questioned. 1970-74 population estimates for counties released by the U.S. Census Bureau have provided the basis for assessing this new trend. Two of the estimation techniques used by the Bureau (Component Method II and

Administrative Records) have known underestimation biases for metropolitan counties. This would tend to exaggerate the growth for non metropolitan counties. It will take the 1980 federal census to accurately assess the new turnaround to non metropolitan growth.