

DOCUMENT RESUME

ED 110 685

CE 004 477

TITLE Public Employment in 1974. GE 74 No. 1.
 INSTITUTION Bureau of the Census (DOC), Suitland, Md.
 PUB DATE May 75
 NOTE 37p.
 AVAILABLE FROM Superintendent of Documents, U. S. Government
 Printing Office, Washington, D. C. 20402; and U. S.
 Department of Commerce district offices (\$0.80)

EDRS PRICE MF-\$0.76 HC-\$1.95 Plus Postage
 DESCRIPTORS Employment Patterns; *Employment Statistics;
 Employment Trends; *Government Employees; Local
 Government; *National Surveys; State Government;
 *Statistical Data; *Tables (Data); Wages

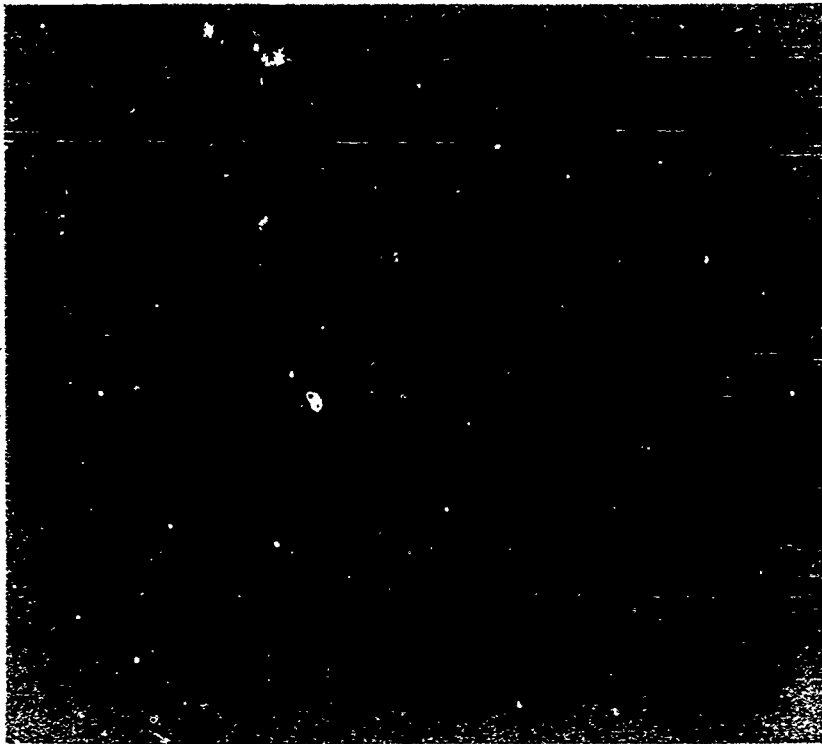
ABSTRACT

The statistical report on public employment in 1974 briefly summarizes the trend of increasing public employment (especially at the State and local level), increases and variations in average monthly earnings of government employees, the distribution of State and local government employment by type of government and by State areas, and the sources and reliability of the data presented. Twenty-five pages of the document consist of detailed tables which present the statistical data on which the introductory summary is based. (JR)

 * Documents acquired by ERIC include many informal unpublished *
 * materials not available from other sources. ERIC makes every effort *
 * to obtain the best copy available. nevertheless, items of marginal *
 * reproducibility are often encountered and this affects the quality *
 * of the microfiche and hardcopy reproductions ERIC makes available *
 * via the ERIC Document Reproduction Service (EDRS). EDRS is not *
 * responsible for the quality of the original document. Reproductions *
 * supplied by EDRS are the best that can be made from the original. *

ED1110685

GOVERNMENT EMPLOYMENT/GE 74 NO. 1



PUBLIC EMPLOYMENT IN 1974

U.S. DEPARTMENT OF HEALTH,
EDUCATION & WELFARE
NATIONAL INSTITUTE OF
EDUCATION

THIS DOCUMENT HAS BEEN REPRODUCED EXACTLY AS RECEIVED FROM THE PERSON OR ORGANIZATION ORIGINATING IT. POINTS OF VIEW OR OPINIONS STATED DO NOT NECESSARILY REPRESENT OFFICIAL NATIONAL INSTITUTE OF EDUCATION POSITION OR POLICY

Issued May 1975

U. S. DEPARTMENT OF COMMERCE Rogers C. B. Morton, Secretary

James L. Pate, Assistant Secretary for Economic Affairs

Social and Economic Statistics Administration

Edward D. Failor, Administrator

BUREAU OF THE CENSUS Vincent P. Barabba, Director

Robert L. Hagan, Deputy Director

CE 004 477





BUREAU OF THE CENSUS

Vincent P. Barabba, Director
Robert L. Hagan, Deputy Director
Shirley Kallek, Associate Director
for Economic Fields

GOVERNMENTS DIVISION

Sherman Landau, Chief

ACKNOWLEDGMENTS. This report was prepared in the Governments Division by the Employment Branch, headed by Alan V. Stevens, under the direction of Alan R. Jones, Assistant Division Chief for Special Governmental Statistics. Henry Wuif of the Employment Branch served as project director and was assisted by Donna Tracy and Dean Wilkinson.

Data were assembled by the Eastern Sector Branch headed by Howard S. Sales and the Western Sector Branch headed by Richard J. Neach under the general direction of Kenneth E. Anderson, Assistant Division Chief for Survey Operations. Valuable assistance in assembling data was also provided by the Data Preparation Division, O. Brian Benton, Chief. Federal Government data were compiled by Gerard Keffer of the Governments Division.

Data processing operations were directed by Judith Jennings of the Governments Division's Computer Utilizations staff and carried out by the Computer Services Division.

The Publications Services Division, Social and Economic Statistics Administration, provided advice and service in the preparation of copy for publication. Publication copy was prepared in the Governments Division, supervised by Helen D. Files.

Grateful acknowledgment is made of the cooperation of thousands of State and local government officials who provided information and other assistance for preparation of this report.

Library of Congress Catalog Card Number: 40-26613

SUGGESTED CITATION

U.S. Bureau of the Census, Public Employment in 1974
Series GE74-No. 1

U.S. Government Printing Office, Washington, D.C., 1975

For sale by the
Superintendent of Documents, U.S. Government Printing Office, Washington, D.C., 20402, and U.S.
Department of Commerce district offices. Price 80 cents

CONTENTS

| | Page |
|--|------|
| Introduction | 1 |
| Table | |
| 1. Public Employment and Payrolls, by Level of Government and by Function: October 1973 and 1974 . . | 7 |
| 2. Employment and Payrolls of State and Local Governments, by Type of Government: 1952 to 1974 . . . | 8 |
| 3. Employment of State and Local Governments, by Function: October 1974 | 9 |
| 4. Payrolls of State and Local Governments, by Function: October 1974 | 10 |
| 5. Employment and Payrolls of Local Governments, by Type of Government and by Function: October 1974 | 11 |
| 6. Number of Public Employees, by Level of Government and by State: October 1974 | 12 |
| 7. State and Local Government Payrolls and Average Earnings of Full-Time State and Local Government Employees, by State: October 1974 | 13 |
| 8. Employment and Payrolls of State and Local Governments, by Type of Government and by State: October 1974 | 14 |
| 9. Full-Time Equivalent Employment of State and Local Governments, by Function and by State: October 1974 | 20 |
| 10. Payrolls of State and Local Governments, by Function and by State: October 1974 | 25 |
| 11. Full-Time Equivalent Employment of State and Local Governments Per 10,000 Population, by Function and by State: October 1974 | 30 |

INTRODUCTION

There were 14.7 million civilian public employees in October 1974, an increase of 529,000 over October 1973. The increase was accounted for by State and local governments, which had 11.8 million employees in October 1974 as compared with 11.4 million in October 1973. The number of Federal civilian employees increased slightly to 2.9 million.

Public civilian payrolls for October 1974 totaled \$12.1 billion, about \$1.1 billion more than for October 1973. The Federal Government portion amounted to about \$3.3 billion and payrolls of State and local governments were \$8.8 billion.

The figure below summarizes employee and payroll trends in the public sector since 1964.

Approximately 22 percent of all persons counted as paid employees of State and local governments in October 1974 were employed on a part-time basis. When the number of these employees is discounted by applying average full-time earning rates, it is found that the full-time equivalent of all State and local government employment was 9,881,000 in October 1974. Of

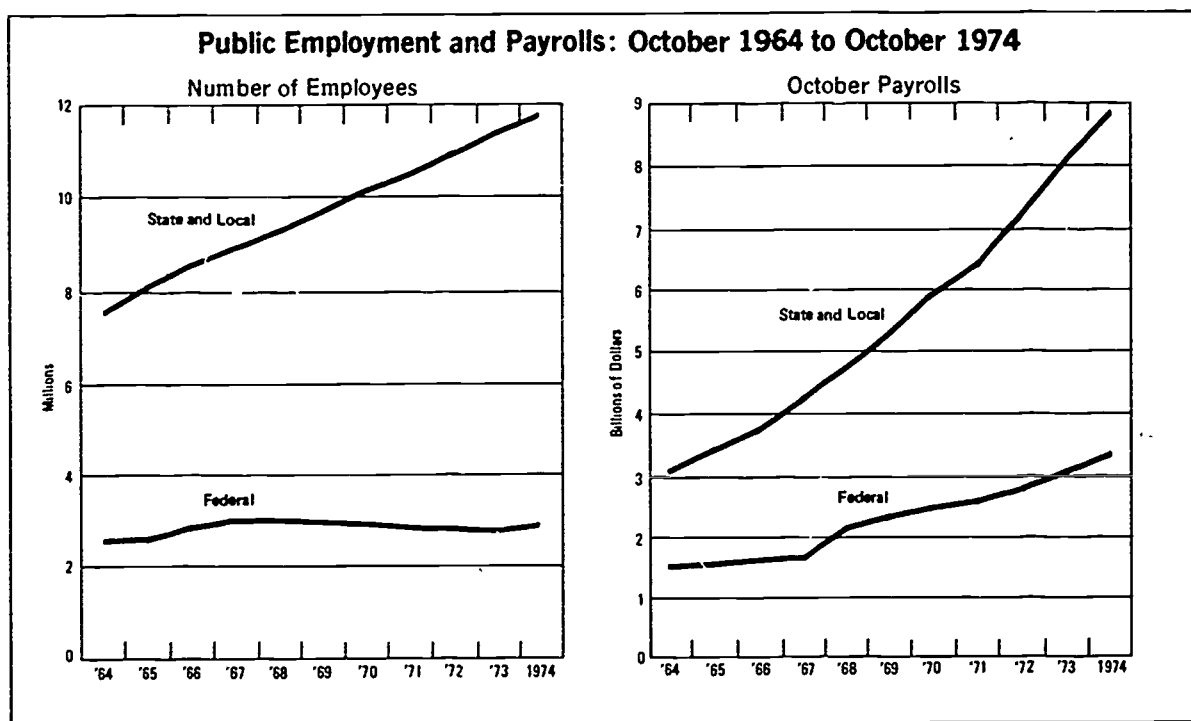
this total, local governments accounted for approximately 73 percent, or 7,228,000 of the full-time equivalent employment.¹

Nearly one-half of the full-time equivalent number of State and local government employees were in the education function in October 1974, a total of 4,931,000.

TRENDS IN PUBLIC EMPLOYMENT

Total governmental employment in the United States has risen each year since 1953, with State and local governments accounting for most of the changes in this 21-year period. Civilian Federal employment reached a peak of approximately 3.4 million persons during World War II, was cut back to 2.0 million in 1947, and

¹ Full-time equivalent is a computed statistic representing the number of full-time employees that could have been employed if all personnel were engaged on a full-time basis at the average monthly pay applying to full-time workers. It is calculated, for a particular function of a government, by dividing the average monthly pay for full-time employees of that function into the total pay for all full- and part-time employees in the function.



subsequently rose to 2.5 million in 1951. After several years of only minor change, Federal civilian employment moved up to nearly 3.0 million in 1967 and has since receded to its present level of 2.9 million. Most of this recent change involves Federal civilian employment for national defense. Total employment of State and local governments dropped somewhat during World War II, from 3.4 million in 1941 to 3.2 million in 1945. Since then it has shown a significant increase nearly every year.²

Table 2 provides summary historical data on employment and payrolls of State and local governments since 1952. During the 22-year period ending with October 1974, the full-time equivalent number of State and local government employees rose 146 percent, and October payrolls of these governments went up 686 percent.

The 1973-74 increase in the full-time equivalent number of persons employed by State and local governments was 303,000 as compared with a rise of 401,000 during the previous year. Approximately 60 percent of the 1973-74 rise was accounted for by employees in the education function. Recent annual rates of change in full-time equivalent employment and in October payrolls of State and local governments are indicated in table A.³

Each of the several major types of local governments, as well as the States, have shared in the recent rise in public employment (table 2). Table B is a summary of growth rates in the full-time equivalent number of State and local employees, by type of government.

Three fields of Federal Government activity have no counterpart at the State-local level—national defense, postal service, and space research and technology. These three functions account for more than 60 percent of all employees and payrolls of the Federal government, and for about one-eighth of Federal-State-local government employment and more than one-sixth of Federal-State-local government payrolls in the United States.

The local schools category covers only the provision of elementary and secondary grades. Employees of institutions of higher education operated by local governments are included in the institutions of higher education category.

²See 1972 Census of Governments, Vol. 6, No. 4: Historical Statistics on Governmental Finances and Employment. It provides summary nationwide data by level of government for the period 1940 through 1972, and also State-by-State figures, by function, for selected years.

³Local government data other than for 1957, 1962, 1967 and 1972 involve estimates based on a sample of governmental units.

Table A. Changes in State and Local Government Employment and Payrolls

| Item | Year-to-year increase (percent) | | |
|---|------------------------------------|----------------|-------------------------|
| | All func- tions | Educa- tion | Other func- tions |
| Full-time equivalent employment: | | | |
| 1973 to 1974..... | 3.2 | 3.8 | 2.5 |
| 1972 to 1973..... | 3.7 | 3.6 | 3.8 |
| 1971 to 1972..... | 4.2 | 4.2 | 4.2 |
| 1970 to 1971..... | 3.3 | 3.4 | 3.1 |
| 1969 to 1970..... | 4.5 | 4.8 | 4.2 |
| 1968 to 1969..... | 3.6 | 4.2 | 2.9 |
| 1967 to 1968..... | 5.7 | 6.6 | 4.9 |
| Average, 1967 to 1972..... | 4.4 | 4.6 | 4.1 |
| Average, 1962 to 1967..... | 4.6 | 6.0 | 3.3 |
| Average, 1954 to 1974..... | 4.2 | 5.1 | 3.5 |
| October payrolls: | | | |
| 1973 to 1974..... | 10.2 | 10.4 | 10.0 |
| 1972 to 1973..... | 10.7 | 9.7 | 11.8 |
| 1971 to 1972..... | 9.9 | 9.0 | 10.9 |
| 1970 to 1971..... | 8.1 | 6.7 | 9.6 |
| 1969 to 1970..... | 12.5 | 12.0 | 13.0 |
| 1968 to 1969..... | 10.5 | 11.2 | 9.7 |
| 1967 to 1968..... | 12.8 | 13.4 | 12.1 |
| Average, 1967 to 1972..... | 11.4 | 11.2 | 11.7 |
| Average, 1962 to 1967..... | 10.0 | 11.1 | 8.8 |
| Average, 1954 to 1974..... | 9.9 | 10.7 | 9.2 |

About 64 percent of all local school employees, as shown in table 3, consists of instructional staff. School systems canvassed were asked to include under this heading not only teachers, but also teacher aides, principals, supervisors of instruction, school librarians, and guidance personnel. Other employees of public schools include administrative and clerical personnel, plant operation and maintenance employees, and any bus drivers, lunchroom, health, and recreational personnel. The category "other education" is applied only to State governments. It is comprised mainly of central agencies for the supervision of public education, and special State schools for the physically handicapped.

General control is comprised of legislative bodies, courts, and the chief executives and central staff agencies of governments. The police and fire protection

Table B. Changes in Employment for States and Types of Local Governments

| Type of government | Year-to-year increase in full-time equivalent employment (percent) | |
|--------------------|--|-----------------------|
| | 1973 to 1974 | Average, 1963 to 1973 |
| Total..... | 3.2 | 4.3 |
| State..... | 4.2 | 5.0 |
| Local..... | 2.8 | 4.1 |
| Counties..... | 1.9 | 5.1 |
| Municipalities.... | 0.8 | 3.1 |
| Townships..... | 0.3 | 4.2 |
| School districts.. | 4.5 | 4.1 |
| Special districts, | 4.8 | 6.4 |

Table C. State and Local Government Employment by Function

| Function | Full-time equivalent employment | |
|--|---------------------------------|---------|
| | Number (thousands) | Percent |
| Total..... | 9,881 | 100.0 |
| Education..... | 4,930 | 49.9 |
| Local schools..... | 3,839 | 38.9 |
| Institutions of higher education..... | 1,005 | 10.2 |
| Other education..... | 87 | 0.9 |
| Hospitals..... | 935 | 9.5 |
| Highways..... | 561 | 5.7 |
| Police protection..... | 532 | 5.4 |
| General control..... | 317 | 3.2 |
| Public welfare..... | 316 | 3.2 |
| Financial administration.. | 242 | 2.4 |
| Local fire protection.... | 211 | 2.1 |
| Correction..... | 185 | 1.9 |
| Local utilities other than water supply ¹ | 181 | 1.8 |
| Health..... | 179 | 1.8 |
| Natural resources..... | 169 | 1.7 |
| Local parks and recreation | 136 | 1.4 |
| Sanitation other than sewerage..... | 124 | 1.3 |
| Water supply..... | 118 | 1.2 |
| Employment security administration..... | 85 | 0.9 |
| Sewerage..... | 78 | 0.8 |
| All other..... | 582 | 5.9 |

¹Electric power, transit, and gas supply systems.

categories include not only uniformed forces but also administrative and clerical employees concerned with these services. Sanitation other than sewage refers to refuse collection and disposal, and street cleaning.

The nature of governmental activities comprising other functional classes is generally evident from their designations.

Table C above summarizes the functional distribution of State and local government employment in October 1974.

A more detailed presentation of State and local government employment data by function appears in table 3.

AVERAGE MONTHLY EARNINGS

Full-time employees of State and local governments were paid an average of \$899 for the month of October 1974—\$52 a month more than for October 1973.

As shown in table 4, there is a marked range in average earnings for employees engaged in different functions. In part, this results from differences in the proportion of highly trained personnel engaged in various fields. However, other factors may also be noted. For example, in the education function the relatively higher average monthly earnings are influenced by the fact that some employees are paid on a 9- or 10-month basis rather than uniformly throughout the calendar year. Also, in the hospital function relatively low average monthly salaries are partly affected by the exclusion of any payments for housing, meals or other "in kind" compensation supplementary to cash payments. Such perquisites are more commonly provided to hospital personnel than to public employees in other functions.

Generally higher pay rates in metropolitan and urban areas help to account for the higher average earnings for functions that are concentrated heavily in urban areas such as police and fire protection, water supply, and other local utilities.

DATA BY TYPE OF GOVERNMENT

Table D below shows the distribution of State and local government employment by type of government in October 1974.

Greater functional detail of nationwide amounts for each type of local government is shown in table 5 and type-of-government figures for each State appear in table 8. As the data in table 8 indicate, there is marked interstate diversity in the relative scale of the several kinds of governments. This reflects variations in governmental structure and functional assignments, as well as differing degrees of urbanization and population density from State to State.

Table D. State and Local Government Employment by Type of Government

| Function | Employees (full-time and part-time) | |
|--------------------|--|---------|
| | Number (thousands) | Percent |
| Total..... | 11,794 | 100.0 |
| State..... | 3,155 | 26.7 |
| Local..... | 8,639 | 73.3 |
| County..... | 1,490 | 12.6 |
| Municipal..... | 2,491 | 21.1 |
| Township..... | 379 | 3.2 |
| School districts.. | 3,906 | 33.1 |
| Special districts. | 374 | 3.2 |

DATA FOR STATE AREAS

The number of Federal civilian employees working in various States ranges widely—from more than 299,000 in California to fewer than 10,000 in each of seven States, as indicated in table 6. This distribution is strongly influenced by the location of large-scale Federal establishments, including regional offices and field headquarters.

A wide interstate range appears also in employment of State and local governments—from more than 1 million in California and New York to fewer than 28,000 in Alaska and Wyoming. Ranking the States by State and local government employment generally resembles, but does not directly coincide with, their ranking in terms of total population.

Because of the differing proportions of part-time employment among areas, the relationship between public employment and population can best be considered in terms of full-time equivalent numbers. On this basis, State and local government employment in October 1974 ranged from approximately 394 per 10,000 population in Pennsylvania to more than 763 per 10,000 in the District of Columbia (table 6). Following is a distribution of the 50 States and the District of Columbia in terms of the full-time equivalent number of State and local government employees per 10,000 population:

| | |
|---------------------|----|
| Total | 51 |
| Less than 400 | 1 |
| 400-424 | 5 |
| 425-449 | 8 |
| 450-474 | 13 |
| 475-499 | 9 |
| 500-524 | 6 |
| 525 or more | 9 |

Local government employment, on a full-time equivalent basis, averaged 342 per 10,000 population, or more than 2-1/2 times the related average ratio for State government employment—126 per 10,000. The marked interstate differences in the relative magnitude of the State and local government components arise, in part, from differences in the allocation of responsibility for administration of various functions.

A functional distribution of State and local government employment in each State is provided in table 9 and payroll amounts by function appear in table 10. The relation of employment for various functions to the population of individual States is indicated in table 11. Table E provides summary figures based on the data in table 11.

Table E. Comparison of the Number of State and Local Government Employees in Relation to Population

| Function | State and local government full-time equivalent employment per 10,000 population | | |
|---|--|----------------------------|---------------------------|
| | United States average | Highest State ¹ | Lowest State ¹ |
| Education ³ | 233 | 332 | 187 |
| Local schools..... | 182 | 248 | 149 |
| Instructional staff..... | 126 | 169 | 106 |
| Other..... | 55 | 87 | 35 |
| Institutions of higher education.. | 48 | 125 | 22 |
| All functions other than education ² | 234 | 407 | 184 |
| Selected functions: | | | |
| Hospitals..... | 44 | 89 | 17 |
| Highways..... | 27 | 60 | 18 |
| Police protection.. | 25 | 39 | 15 |
| General control.... | 15 | 43 | 10 |
| Public welfare..... | 15 | 30 | 6 |
| Financial administration..... | 12 | 30 | 6 |
| Local fire protection..... | 10 | 22 | 4 |

¹Excludes the District of Columbia, because of its uniquely urban nature.

²Includes categories not shown separately.

October payroll amounts on a State-by-State basis are summarized by level of government in table 7. Table F distributes the 50 States and the District of Columbia in terms of the average October 1974 earnings of full-time employees of State and local governments.

Table F. Distribution of States by Average Earnings of Full-Time State and Local Government Employees

| Average earnings: October 1974 | Education employees | Other employees |
|-----------------------------------|------------------------|--------------------|
| Total..... | 51 | 51 |
| Less than \$600..... | - | 3 |
| \$600 to \$699..... | 2 | 11 |
| \$700 to \$799..... | 19 | 16 |
| \$800 to \$899..... | 10 | 12 |
| \$900 to \$999..... | 7 | 5 |
| \$1,000 or more..... | 13 | 4 |

- Represents zero or rounds to zero.

Any comparison or interpretation of earning averages for individual States should take into account the factors, such as those discussed above, related to nationwide averages for particular functions.

SOURCES AND RELIABILITY OF DATA

Local government data in this report represent estimates based on information collected by mail questionnaire from a sample of governmental units. Survey coverage in each State applies to the State government (including all its constituent agencies, departments, and institutions) and a random sample of local governments. The sample was selected from the total number of local governments enumerated in the 1972 Census of Governments. In selecting the sample, all local governments within each State were stratified by type of government, i.e., counties, municipalities, townships, school districts, and special districts, and within each type, by the magnitude of their annual expenditures as reported in the 1972 Census of Governments.

For this report, information was sought concerning all State governments and approximately 17,100 sample local governments and school systems. Mail requests for data were sent to over 4,400 State government agencies and to approximately 19,100 local government units or agencies. Usable replies were received from 87 percent of the panel canvassed. For nonrespondent governmental units and agencies included in the panel, prior year data were utilized.

For this annual survey, employee and payroll figures reported by State and local government officials are generally accepted as being substantially correct. In some cases, varying interpretations of the instructions or deficiencies in governmental employment and payroll records may make it difficult for officials to render complete and accurate reports for their governments. These difficulties are dealt with by (1) careful definitions of terms and detailed instructions in difficult cases, (2) supplementary correspondence and telephone follow-up to officials, and (3) intensive examination of data collected—i.e., verification of internal consistency and comparison with previous reports, and other sources of data. Errors that may be introduced during processing (input preparation, etc.) are minimized through the use of intensive computer editing of the data at various stages of the processing system.

The statistics in this report that are based wholly or partly on data from the sample are apt to differ somewhat from the results of a survey covering all governments but otherwise conducted using the same schedules and procedures. In addition to possible nonsampling errors as discussed above, the estimates based on a sample survey are subject to sampling variability. The particular sample used in this survey is one of a large number of all possible samples of the same size that could have been selected using the same sample design. Each of the possible samples would yield somewhat different results. The standard error is a measure of the variation among the estimates from all possible samples and thus is a measure of the precision with which an estimate from a particular sample approximates the average result of all possible samples.

Estimates of the standard errors of the 1974 public employment data for local government totals of full-time employees, full-time employee payrolls and full-time equivalent employment in each State were found to be generally within 2 percent of the estimated figures, and less than 1 percent for 37 States. The results of the computations of standard errors for local government totals on a relative standard error basis are summarized in table G below:

Table G. Relative Standard Errors of Local Government Totals of Full-Time Employees, Full-Time Employee Payrolls, and Full-Time Equivalent Employment by States as a Percent of Estimated Total

| 0.5 or less | 0.5 - 1.0 | 1.0 - 2.0 |
|----------------------|----------------|----------------|
| California | Alaska | Alabama |
| Connecticut | Arizona | Arkansas |
| District of Columbia | Colorado | Idaho |
| Florida | Delaware | Iowa |
| Hawaii | Georgia | Maine |
| Indiana | Illinois | Mississippi |
| Maryland | Kansas | Montana |
| Massachusetts | Kentucky | New Hampshire |
| Nevada | Louisiana | North Dakota |
| New Jersey | Michigan | South Carolina |
| New York | Minnesota | Utah |
| Ohio | Missouri | Vermont |
| Pennsylvania | Nebraska | Virginia |
| Rhode Island | New Mexico | Wyoming |
| Tennessee | North Carolina | |
| | Oklahoma | |
| | Oregon | |
| | South Dakota | |
| | Texas | |
| | Washington | |
| | West Virginia | |
| | Wisconsin | |

A two-thirds confidence interval may be constructed in the following manner. The lower bound is obtained by subtracting one standard error from the estimate. The upper bound is obtained by adding one standard error to the estimate. Constructing intervals in this manner, we can say with two-thirds confidence that the interval for a particular sample will include the figure that would have been obtained from a complete census.

State government figures are not subject to sampling; consequently, State-local aggregates shown here for individual States are more reliable (on a relative standard error basis) than the local government estimates they include. Nationwide estimates in this report are based upon the summation of State-by-State figures and, consequently, are more reliable than the State-area

data. Estimates of major U.S. totals for local governments are subject to a sampling variability of less than one-half of 1 percent and other local government totals are subject to sampling variability of less than 1 percent.

State-area estimates shown in table 8 for particular types of local governments, and State-area estimates reported for particular locally performed functions, are likely to have a larger sampling variability than their related local government aggregates. Estimates for components that make up a relatively minor part of local government totals in a State may be subject to particularly large variability, and should be interpreted with special caution.

As calculated for this report, the standard error also partially measures the effect of certain nonsampling errors but does not measure any possible systematic biases in the data.

Persons desiring further information on estimation of sampling error of published statistics in this report may send inquiries to Governments Division, Bureau of the Census.

This report is one of four recurrent annual publications based on a survey of government employment in October. One companion report, City Employment in 1974, presents data individually for 405 municipalities and major townships which had a population of 50,000 or more in 1970. The second companion report, Local Government Employment in Selected Metropolitan Areas and Large Counties: 1974, presents data on the employment and payrolls of local governments in the standard metropolitan areas which had a population in 1972 of 500,000 or more and 68 large county areas outside these SMSA's. County Government Employment in 1974, a new annual report in this series, provides data for each of the 337 individual county governments which had a population of 100,000 or more in 1973 plus National and size-group totals for all counties.

Final reports from the 1972 Census of Governments, particularly Compendium of Public Employment, Vol. 3, No. 2, provide National and State-by-State figures on public employment in October 1972, together with additional geographic detail based on a canvass of all local governments.

Table 1. Public Employment and Payrolls, by Level of Government and by Function:
October 1974 and 1973

| Function | October 1974 | | | October 1973 | | | Percent increase or decrease (-), 1973 to 1974 | | |
|---|----------------------|--|--|----------------------|--|--|---|--|--|
| | All govern- ments | Federal Govern- ment (civilian) ¹ | State and local govern- ments | All govern- ments | Federal Govern- ment (civilian) ¹ | State and local govern- ments | All govern- ments | Federal Govern- ment (civilian) ¹ | State and local govern- ments |
| EMPLOYEES (THOUSANDS) | | | | | | | | | |
| FULL-TIME AND PART-TIME | 14 668 | 2 874 | 11 794 | 14 139 | 2 786 | 11 353 | 3.7 | 3.2 | 3.9 |
| NATIONAL DEFENSE AND INTERNA- TIONAL RELATIONS | 1 067 | 1 067 | - | 1 053 | 1 053 | - | 1.4 | 1.4 | - |
| POSTAL SERVICE | 699 | 699 | - | 692 | 692 | - | 1.0 | 1.0 | - |
| SPACE RESEARCH AND TECHNOLOGY . . | 26 | 26 | - | 27 | 27 | - | -3.5 | -3.5 | - |
| EDUCATION | 6 228 | 25 | 6 202 | 5 922 | 21 | 5 901 | 5.2 | 22.8 | 5.1 |
| HIGHWAYS | 602 | 5 | 596 | 604 | 5 | 597 | -3.4 | 4.4 | -3.8 |
| HEALTH AND HOSPITALS | 1 419 | 236 | 1 183 | 1 375 | 221 | 1 154 | 3.2 | 6.8 | 2.5 |
| POLICE PROTECTION | 652 | 54 | 597 | 616 | 35 | 581 | 5.7 | 54.8 | 2.8 |
| NATURAL RESOURCES | 436 | 241 | 197 | 413 | 225 | 188 | 6.4 | 7.5 | 5.0 |
| FINANCIAL ADMINISTRATION | 376 | 102 | 274 | 381 | 112 | 269 | -1.2 | -8.7 | 1.9 |
| GENERAL CONTROL | 479 | 41 | 438 | 459 | 47 | 412 | 4.5 | -11.5 | 6.3 |
| ALL OTHER | 2 683 | 377 | 2 306 | 2 599 | 350 | 2 249 | 3.2 | 7.6 | 2.6 |
| OCTOBER PAYROLLS (MILLIONS OF DOLLARS) | | | | | | | | | |
| TOTAL | 12 126.6 | 3 294.3 | 8 832.3 | 11 026.9 | 3 012.0 | 7 8 014.9 | 10.0 | 9.4 | 10.2 |
| NATIONAL DEFENSE AND INTERNA- TIONAL RELATIONS | 1 185.3 | 1 185.3 | - | 1 117.3 | 1 117.3 | - | 6.1 | 6.1 | - |
| POSTAL SERVICE | 785.6 | 785.6 | - | 720.4 | 720.4 | - | 9.0 | 9.0 | - |
| SPACE RESEARCH AND TECHNOLOGY . . | 50.8 | 50.8 | - | 47.5 | 47.5 | - | 6.8 | 6.8 | - |
| EDUCATION | 4 648.1 | 27.9 | 4 620.3 | 4 204.7 | 19.9 | 4 184.8 | 10.5 | 40.1 | 10.4 |
| HIGHWAYS | 458.1 | 7.5 | 450.5 | 439.1 | 7.0 | 432.1 | 4.3 | 7.5 | 4.3 |
| HEALTH AND HOSPITALS | 1 085.4 | 252.9 | 832.5 | 977.6 | 219.7 | 757.9 | 11.0 | 15.1 | 9.8 |
| POLICE PROTECTION | 606.6 | 75.7 | 530.9 | 527.4 | 47.9 | 479.5 | 15.0 | 58.0 | 10.7 |
| NATURAL RESOURCES | 430.5 | 287.6 | 142.9 | 369.7 | 241.2 | 128.5 | 16.4 | 19.2 | 11.2 |
| FINANCIAL ADMINISTRATION | 318.7 | 121.1 | 197.7 | 308.2 | 132.1 | 176.1 | 3.4 | -8.4 | 12.3 |
| GENERAL CONTROL | 328.3 | 46.7 | 281.6 | 316.5 | 55.5 | 261.0 | 3.7 | -15.9 | 7.9 |
| ALL OTHER | 2 229.1 | 453.2 | 1 775.9 | 1 998.4 | 403.4 | 1 595.0 | 11.5 | 12.3 | 11.3 |

Note: Statistics for local governments are subject to sampling variation; see text. Because of rounding, detail may not add to totals.

- Represents zero or rounds to zero.

¹Revised.

²Comprises all Federal civilian employees, including those outside the United States. On a full-time equivalent basis, Federal employees totaled 2,742,654 in October 1974, or about 2.8 percent more than the 2,668,291 figure for October 1973. Federal figures on this basis are not available by function or by State.

GOVERNMENT EMPLOYMENT IN 1974

Table 2. Employment and Payrolls of State and Local Governments, by Type of Government: 1952 to 1974

| Item | State and local Governments | | | State governments | Local Governments | | | | | |
|---|-----------------------------|-----------|-----------------|-------------------|-------------------|-----------|----------------|-----------|------------------|-------------------|
| | Total | Education | Other functions | | Total | Cour ties | Municipalities | Townships | School districts | Special districts |
| EMPLOYEES (THOUSANDS) | | | | | | | | | | |
| ALL EMPLOYEES (OCTOBER 1974) | 11 794 | 6 202 | 5 592 | 3 155 | 8 639 | 1 490 | 2 491 | 379 | 3 906 | 374 |
| FULL-TIME | 9 203 | 4 461 | 4 742 | 2 470 | 6 733 | 1 270 | 2 021 | 205 | 2 944 | 293 |
| PART-TIME | 2 591 | 1 741 | 850 | 685 | 1 906 | 219 | 471 | 174 | 962 | 80 |
| FULL-TIME EQUIVALENT | 9 881 | 4 931 | 4 950 | 2 653 | 7 228 | 1 343 | 2 127 | 233 | 3 212 | 312 |
| FULL-TIME EQUIVALENT: | | | | | | | | | | |
| 1973 (OCTOBER) | 9 578 | 4 751 | 4 827 | 2 547 | 7 031 | 1 318 | 2 109 | 232 | 3 074 | 298 |
| 1972 (OCTOBER) | 9 237 | 4 585 | 4 651 | 2 487 | 6 750 | 1 242 | 2 029 | 215 | 2 981 | 283 |
| 1971 (OCTOBER) | 8 806 | 4 403 | 4 403 | 2 384 | 6 422 | 1 153 | 1 960 | 200 | 2 865 | 244 |
| 1970 (OCTOBER) | 8 528 | 4 258 | 4 271 | 2 302 | 6 226 | 1 098 | 1 922 | 192 | 2 786 | 228 |
| 1969 (OCTOBER) | 8 160 | 4 063 | 4 097 | 2 179 | 5 981 | 1 053 | 1 858 | 191 | 2 656 | 221 |
| 1968 (OCTOBER) | 7 879 | 3 898 | 3 982 | 2 085 | 5 795 | 1 034 | 1 813 | 185 | 2 555 | 207 |
| 1967 (OCTOBER) | 7 455 | 3 658 | 3 797 | 1 946 | 5 509 | 973 | 1 715 | 175 | 2 449 | 196 |
| 1966 (OCTOBER) | 7 263 | 3 543 | 3 720 | 1 864 | 5 399 | 948 | 1 701 | 181 | 2 369 | 200 |
| 1965 (OCTOBER) | 6 937 | 3 337 | 3 600 | 1 751 | 5 186 | 893 | 1 638 | 177 | 2 287 | 191 |
| 1964 (OCTOBER) | 6 586 | 3 132 | 3 434 | 1 639 | 4 947 | 859 | 1 584 | 165 | 2 164 | 176 |
| 1963 (OCTOBER) | 6 282 | 2 948 | 3 334 | 1 558 | 4 724 | 804 | 1 549 | 154 | 2 056 | 161 |
| 1962 (OCTOBER) | 5 958 | 2 730 | 3 228 | 1 478 | 4 480 | 784 | 1 486 | 145 | 1 901 | 165 |
| 1961 (OCTOBER) | 5 845 | 2 652 | 3 193 | 1 435 | 4 410 | 760 | 1 491 | 149 | 1 836 | 152 |
| 1960 (OCTOBER) | 5 570 | 2 525 | 3 045 | 1 353 | 4 217 | 728 | 1 447 | (NA) | 1 729 | (NA) |
| 1959 (OCTOBER) | 5 342 | 2 396 | 2 946 | 1 302 | 4 039 | 703 | 1 406 | (NA) | 1 630 | (NA) |
| 1958 (OCTOBER) | 5 171 | 2 270 | 2 901 | 1 259 | 3 912 | 678 | 1 372 | (NA) | 1 572 | (NA) |
| 1957 (APRIL) | 4 793 | 2 093 | 2 700 | 1 154 | 3 638 | 647 | 1 297 | 122 | 1 452 | 420 |
| 1956 (OCTOBER) | 4 687 | 2 032 | 2 655 | 1 136 | 3 551 | 632 | 1 292 | 110 | 1 415 | 103 |
| 1955 (OCTOBER) | 4 487 | 1 935 | 2 552 | 1 081 | 3 406 | 604 | 1 252 | 139 | 1 341 | 400 |
| 1954 (OCTOBER) | 4 309 | 1 826 | 2 483 | 1 024 | 3 284 | 587 | 1 234 | 102 | 1 264 | 97 |
| 1953 (OCTOBER) | 4 126 | 1 737 | 2 389 | 966 | 3 160 | 561 | 1 200 | 105 | 1 197 | 98 |
| 1952 (OCTOBER) | 4 012 | 1 678 | 2 334 | 958 | 3 054 | 538 | 1 175 | 99 | 1 146 | 97 |
| MONTHLY PAYROLL (MILLIONS OF DOLLARS) | | | | | | | | | | |
| 1974 (OCTOBER), TOTAL FOR FULL-TIME EMPLOYEES | 8 832.3 | 4 620.3 | 4 212.0 | 2 409.5 | 6 422.8 | 1 057.2 | 1 985.3 | 199.8 | 2 922.5 | 258.0 |
| FOR PART-TIME EMPLOYEES | 8 281.0 | 4 231.7 | 4 049.3 | 2 239.2 | 6 041.9 | 1 006.4 | 1 892.4 | 176.9 | 2 717.7 | 245.5 |
| TOTAL PAYROLL | 551.2 | 388.5 | 162.7 | 170.4 | 380.9 | 50.8 | 92.9 | 19.9 | 204.8 | 12.4 |
| TOTAL PAYROLL: | | | | | | | | | | |
| 1973 (OCTOBER) | 8 014.9 | 4 184.8 | 3 830.1 | 2 158.2 | 5 856.8 | 951.7 | 1 855.3 | 192.4 | 2 622.9 | 274.4 |
| 1972 (OCTOBER) | 7 240.0 | 3 814.3 | 3 425.8 | 1 936.6 | 5 303.4 | 857.4 | 1 654.0 | 166.4 | 2 427.9 | 157.8 |
| 1971 (OCTOBER) | 6 382.2 | 3 382.4 | 2 999.7 | 1 741.7 | 4 640.5 | 722.4 | 1 481.8 | 137.8 | 2 146.1 | 150.3 |
| 1970 (OCTOBER) | 5 906.4 | 3 169.7 | 2 736.7 | 1 612.2 | 4 294.2 | 639.5 | 1 360.7 | 122.3 | 2 031.7 | 170.0 |
| 1969 (OCTOBER) | 5 252.3 | 2 830.6 | 2 421.7 | 1 430.5 | 3 821.7 | 571.6 | 1 195.6 | 114.4 | 1 816.3 | 125.9 |
| 1968 (OCTOBER) | 4 751.9 | 2 544.8 | 2 207.1 | 1 256.6 | 3 495.2 | 531.8 | 1 097.1 | 107.2 | 1 644.0 | 115.2 |
| 1967 (OCTOBER) | 4 213.2 | 2 244.0 | 1 969.2 | 1 105.5 | 3 107.7 | 465.4 | 971.5 | 96.2 | 1 475.0 | 99.6 |
| 1966 (OCTOBER) | 3 798.2 | 2 020.3 | 1 777.9 | 975.2 | 2 823.0 | 414.4 | 891.7 | 87.1 | 1 332.9 | 96.9 |
| 1965 (OCTOBER) | 3 400.3 | 1 777.7 | 1 622.5 | 849.2 | 2 551.1 | 377.3 | 818.2 | 80.5 | 1 188.6 | 86.5 |
| 1964 (OCTOBER) | 3 097.2 | 1 607.9 | 1 489.3 | 761.1 | 2 336.1 | 345.5 | 760.5 | 71.7 | 1 079.9 | 78.6 |
| 1963 (OCTOBER) | 2 840.3 | 1 463.8 | 1 376.6 | 696.4 | 2 143.9 | 311.2 | 707.9 | 64.9 | 992.3 | 67.6 |
| 1962 (OCTOBER) | 2 619.3 | 1 325.1 | 1 294.2 | 634.6 | 1 984.7 | 295.4 | 662.3 | 59.8 | 899.3 | 67.8 |
| 1961 (OCTOBER) | 2 419.9 | 1 204.6 | 1 215.3 | 586.2 | 1 833.7 | 272.2 | 630.4 | 59.9 | 811.6 | 60.2 |
| 1960 (OCTOBER) | 2 215.0 | 1 095.0 | 1 125.0 | 524.1 | 1 690.9 | 249.4 | 583.4 | (NA) | 735.4 | (NA) |
| 1959 (OCTOBER) | 2 041.7 | 999.3 | 1 042.4 | 485.4 | 1 556.7 | 229.1 | 547.9 | (NA) | 669.5 | (NA) |
| 1958 (OCTOBER) | 1 885.8 | 905.7 | 980.1 | 446.5 | 1 437.3 | 212.8 | 511.2 | (NA) | 618.2 | (NA) |
| 1957 (APRIL) | 1 614.5 | 757.8 | 856.8 | 372.5 | 1 242.0 | 184.3 | 461.0 | 36.7 | 520.1 | 39.9 |
| 1956 (OCTOBER) | 1 565.7 | 734.3 | 831.4 | 366.5 | 1 194.2 | 176.4 | 450.0 | 35.5 | 503.7 | 35.5 |
| 1955 (OCTOBER) | 1 418.8 | 661.7 | 757.1 | 325.9 | 1 092.9 | 161.8 | 413.8 | 30.8 | 453.3 | 33.2 |
| 1954 (OCTOBER) | 1 318.3 | 600.0 | 718.2 | 300.7 | 1 017.5 | 151.7 | 396.2 | 28.5 | 409.9 | 31.2 |
| 1953 (OCTOBER) | 1 220.5 | 552.0 | 668.5 | 278.5 | 941.9 | 140.6 | 367.6 | 26.3 | 376.0 | 31.4 |
| 1952 (OCTOBER) | 1 123.7 | 502.9 | 620.8 | 260.3 | 863.4 | 123.9 | 345.0 | 24.5 | 338.9 | 31.1 |

Notes: Statistics for local governments, except for 1972, 1967, 1962, and 1957, are subject to sampling variation; see text. Because of rounding, detail may not add to totals.

NA Not available.

¹Revised.

Table 3. Employment of State and Local Governments, by Function:
October 1974

| Function | All employees (full-time and part-time, in thousands) | | | Full-time employees (thousands) | | | Full-time equivalent employment (thousands) | | |
|--|---|---------------------|---------------------------|------------------------------------|---------------------|---------------------------|--|---------------------|---------------------------|
| | Total | State government | Local govern- ments | Total | State government | Local govern- ments | Total | State government | Local govern- ments |
| ALL FUNCTIONS. | 11 794 | 3 152 | 8 639 | 9 203 | 2 470 | 6 733 | 9 881 | 2 653 | 7 228 |
| EDUCATION. | 6 202 | 1 357 | 4 845 | 4 461 | 795 | 3 666 | 4 931 | 929 | 4 002 |
| LOCAL SCHOOLS. | 4 561 | 17 | 4 544 | 3 531 | 14 | 3 517 | 3 838 | 14 | 3 824 |
| INSTRUCTIONAL PERSONNEL. | 2 918 | 12 | 2 906 | 2 601 | 10 | 2 591 | 2 671 | 11 | 2 660 |
| OTHER. | 1 644 | 6 | 1 638 | 928 | 3 | 925 | 1 169 | 4 | 1 165 |
| INSTITUTIONS OF HIGHER EDUCATION | 1 547 | 1 246 | 301 | 847 | 698 | 149 | 1 005 | 827 | 178 |
| INSTRUCTIONAL PERSONNEL. | 545 | 395 | 150 | 334 | 261 | 73 | 387 | 298 | 89 |
| OTHER. | 1 003 | 852 | 151 | 513 | 437 | 76 | 618 | 529 | 89 |
| OTHER EDUCATION. | 94 | 94 | - | 84 | 84 | - | 87 | 87 | - |
| FUNCTIONS OTHER THAN EDUCATION | 5 592 | 1 798 | 3 794 | 4 742 | 1 674 | 3 067 | 4 950 | 1 725 | 3 226 |
| HIGHWAYS. | 596 | 280 | 316 | 550 | 274 | 276 | 561 | 277 | 284 |
| PUBLIC WELFARE. | 327 | 144 | 183 | 309 | 140 | 169 | 316 | 142 | 174 |
| HOSPITALS. | 991 | 489 | 502 | 888 | 456 | 432 | 935 | 472 | 463 |
| HEALTH. | 192 | 84 | 108 | 172 | 80 | 92 | 180 | 81 | 98 |
| POLICE PROTECTION. | 597 | 69 | 528 | 516 | 68 | 448 | 532 | 69 | 463 |
| LOCAL FIRE PROTECTION. | 290 | - | 290 | 205 | - | 205 | 211 | - | 211 |
| SEWERAGE. | 86 | - | 86 | 76 | - | 76 | 78 | - | 78 |
| SANITATION OTHER THAN SEWERAGE | 130 | - | 130 | 121 | - | 121 | 124 | - | 124 |
| LOCAL PARKS AND RECREATION | 199 | - | 199 | 120 | - | 120 | 136 | - | 136 |
| NATURAL RESOURCES. | 197 | 161 | 36 | 155 | 130 | 25 | 169 | 141 | 28 |
| HOUSING AND URBAN RENEWAL. | 76 | - | 76 | 70 | - | 70 | 72 | - | 72 |
| AIRPORTS. | 18 | - | 18 | 17 | - | 17 | 17 | - | 17 |
| WATER TRANSPORT AND TERMINALS. | 15 | 6 | 9 | 13 | 5 | 8 | 14 | 6 | 8 |
| CORRECTION. | 190 | 116 | 75 | 182 | 113 | 69 | 185 | 114 | 71 |
| LOCAL LIBRARIES. | 90 | - | 90 | 55 | - | 55 | 64 | - | 64 |
| EMPLOYMENT SECURITY ADMINISTRATION | 90 | 90 | - | 81 | 81 | - | 85 | 85 | - |
| FINANCIAL ADMINISTRATION. | 274 | 108 | 166 | 234 | 104 | 130 | 243 | 105 | 137 |
| GENERAL CONTROL. | 438 | 71 | 367 | 291 | 59 | 232 | 317 | 63 | 254 |
| LOCAL UTILITIES. | 313 | - | 313 | 296 | - | 296 | 299 | - | 299 |
| WATER SUPPLY. | 129 | - | 129 | 115 | - | 115 | 118 | - | 118 |
| ELECTRIC POWER. | 62 | - | 62 | 60 | - | 60 | 61 | - | 61 |
| TRANSIT. | 112 | - | 112 | 111 | - | 111 | 111 | - | 111 |
| GAS SUPPLY. | 10 | - | 10 | 9 | - | 9 | 9 | - | 9 |
| STATE LIQUOR STORES. | 16 | 16 | - | 14 | 14 | - | 14 | 14 | - |
| OTHER AND UNALLOCABLE. | 467 | 164 | 303 | 380 | 152 | 228 | 398 | 155 | 243 |

Note: Statistics for local governments are subject to sampling variation, see text. Because of rounding, detail may not add to totals.
- Represents zero or rounds to zero.

GOVERNMENT EMPLOYMENT IN 1974

Table 4. Payrolls of State and Local Governments, by Function: October 1974

| Function | October payroll (millions of dollars) | | | October payroll of full-time employees (millions of dollars) | | | Average October earnings of full-time employees | | |
|--|--|---------------------|----------------------|---|---------------------|----------------------|--|---------------------|----------------------|
| | Total | State government | Local governments | Total | State government | Local governments | Total | State government | Local governments |
| ALL FUNCTIONS | 8 832 | 2 410 | 6 423 | 8 281 | 2 239 | 6 042 | 899 | 906 | 897 |
| EDUCATION | 4 620 | 932 | 3 688 | 4 232 | 806 | 3 426 | 949 | 1 023 | 934 |
| LOCAL SCHOOLS | 3 507 | 16 | 3 491 | 3 278 | 15 | 3 263 | 928 | 1 096 | 927 |
| INSTRUCTIONAL PERSONNEL | 2 753 | 13 | 2 740 | 2 675 | 12 | 2 663 | 1 028 | 1 217 | 1 027 |
| OTHER | 754 | 3 | 751 | 602 | 3 | 599 | 647 | 740 | 647 |
| INSTITUTIONS OF HIGHER EDUCATION | 1 034 | 837 | 197 | 877 | 713 | 164 | 1 035 | 1 021 | 1 099 |
| INSTRUCTIONAL PERSONNEL | 563 | 436 | 127 | 486 | 382 | 104 | 1 453 | 1 464 | 1 417 |
| OTHER | 471 | 401 | 70 | 391 | 331 | 60 | 763 | 757 | 792 |
| OTHER EDUCATION | 80 | 80 | - | 78 | 78 | - | 920 | 920 | - |
| FUNCTIONS OTHER THAN EDUCATION | 4 212 | 1 476 | 2 735 | 4 049 | 1 434 | 2 616 | 853 | 147 | 80 |
| HIGHWAYS | 451 | 238 | 212 | 442 | 236 | 206 | 803 | 859 | 747 |
| PUBLIC WELFARE | 240 | 111 | 130 | 235 | 109 | 126 | 762 | 781 | 746 |
| HOSPITALS | 674 | 355 | 319 | 641 | 343 | 298 | 721 | 751 | 689 |
| HEALTH | 159 | 77 | 82 | 151 | 75 | 76 | 885 | 947 | 831 |
| POLICE PROTECTION | 531 | 70 | 461 | 516 | 70 | 446 | 999 | 1 019 | 995 |
| LOCAL FIRE PROTECTION | 225 | - | 225 | 219 | - | 219 | 1 068 | - | 1 068 |
| SEWERAGE | 66 | - | 66 | 64 | - | 64 | 842 | - | 842 |
| SANITATION OTHER THAN SEWERAGE | 96 | - | 96 | 94 | - | 94 | 779 | - | 779 |
| LOCAL PARKS AND RECREATION | 105 | - | 105 | 92 | - | 92 | 769 | - | 769 |
| NATURAL RESOURCES | 143 | 122 | 21 | 132 | 113 | 19 | 849 | 866 | 760 |
| HOUSING AND URBAN RENEWAL | 64 | - | 64 | 63 | - | 63 | 896 | - | 896 |
| AIRPORTS | 15 | - | 15 | 15 | - | 15 | 879 | - | 879 |
| WATER TRANSPORT AND TERMINALS | 14 | 5 | 9 | 14 | 5 | 9 | 1 048 | 927 | 1 134 |
| CORRECTION | 169 | 104 | 65 | 166 | 103 | 63 | 914 | 911 | 920 |
| LOCAL LIBRARIES | 45 | - | 45 | 39 | - | 39 | 698 | - | 698 |
| EMPLOYMENT SECURITY ADMINISTRATION | 77 | 77 | - | 73 | 73 | - | 901 | 901 | 1 018 |
| FINANCIAL ADMINISTRATION | 198 | 92 | 106 | 191 | 90 | 101 | 817 | 872 | 773 |
| GENERAL CONTROL | 282 | 68 | 214 | 260 | 63 | 197 | 893 | 1 081 | 846 |
| LOCAL UTILITIES | 300 | - | 300 | 297 | - | 297 | 1 001 | - | 1 001 |
| WATER SUPPLY | 99 | - | 99 | 97 | - | 97 | 844 | - | 844 |
| ELECTRIC POWER | 62 | - | 62 | 61 | - | 61 | 1 016 | - | 1 016 |
| TRANSIT | 130 | - | 130 | 130 | - | 130 | 1 163 | - | 1 163 |
| GAS SUPPLY | 8 | - | 8 | 8 | - | 8 | 878 | - | 878 |
| STATE LIQUOR STORES | 11 | 11 | - | 11 | 11 | - | 788 | 788 | - |
| OTHER AND UNALLOCABLE | 349 | 146 | 203 | 334 | 142 | 192 | 882 | 939 | 844 |

Note: Statistics for local governments are subject to sampling variation; see text. Because of rounding, detail may not add to totals.

- Represents zero or rounds to zero.

Table 5. Employment and Payrolls of Local Governments, by Type of Government and by Function: October 1974

| Function | All local governments | Counties | Municipalities | Townships | School districts | Special districts |
|---|-----------------------|-----------|----------------|-----------|------------------|-------------------|
| EMPLOYEES (FULL-TIME AND PART-TIME) | | | | | | |
| ALL FUNCTIONS | 8 639 292 | 1 489 803 | 2 491 153 | 378 514 | 3 905 979 | 373 843 |
| EDUCATION | 4 845 039 | 334 247 | 482 261 | 122 552 | 3 905 979 | - |
| LOCAL SCHOOLS | 4 543 772 | 294 756 | 438 175 | 122 552 | 3 688 289 | - |
| INSTRUCTIONAL PERSONNEL | 2 905 633 | 185 221 | 295 371 | 83 614 | 2 341 427 | - |
| OTHER | 1 638 134 | 109 535 | 142 804 | 38 938 | 1 346 862 | - |
| INSTITUTIONS OF HIGHER EDUCATION | 301 267 | 39 491 | 44 086 | - | 217 690 | - |
| INSTRUCTIONAL PERSONNEL | 150 102 | 20 496 | 24 569 | - | 105 017 | - |
| OTHER | 151 165 | 18 995 | 19 497 | - | 112 673 | - |
| FUNCTIONS OTHER THAN EDUCATION | 3 794 253 | 1 155 556 | 2 008 892 | 255 962 | - | 373 843 |
| HIGHWAYS | 316 408 | 131 048 | 139 286 | 49 989 | - | 5 687 |
| PUBLIC WELFARE | 182 766 | 134 724 | 46 508 | 1 534 | - | - |
| HOSPITALS | 501 963 | 237 971 | 139 897 | 1 687 | - | 122 408 |
| HEALTH | 107 910 | 60 514 | 41 315 | 2 870 | - | 3 211 |
| POLICE PROTECTION | 528 411 | 103 320 | 389 029 | 36 062 | - | - |
| LOCAL FIRE PROTECTION | 289 690 | 13 430 | 226 872 | 26 801 | - | 22 587 |
| SEWERAGE | 86 047 | 8 439 | 55 468 | 3 455 | - | 18 665 |
| SANITATION OTHER THAN SEWERAGE | 130 004 | 6 544 | 117 010 | 5 810 | - | 640 |
| LOCAL PARKS AND RECREATION | 198 689 | 28 747 | 140 142 | 10 635 | - | 19 165 |
| NATURAL RESOURCES | 35 606 | 14 071 | 2 333 | 1 004 | - | 18 198 |
| HOUSING AND URBAN RENEWAL | 76 198 | 2 556 | 33 846 | 181 | - | 39 621 |
| AIRPORTS | 18 025 | 3 629 | 9 891 | 95 | - | 4 410 |
| WATER TRANSPORT AND TERMINALS | 9 180 | 321 | 3 227 | 33 | - | 5 605 |
| CORRECTION | 74 566 | 57 845 | 16 707 | 14 | - | - |
| LOCAL LIBRARIES | 69 580 | 21 428 | 50 721 | 6 064 | - | 11 376 |
| FINANCIAL ADMINISTRATION | 156 212 | 72 229 | 69 993 | 23 990 | - | - |
| GENERAL CONTROL | 366 803 | 154 095 | 165 661 | 47 027 | - | - |
| LOCAL UTILITIES | 313 312 | 6 557 | 210 050 | 4 964 | - | 91 741 |
| WATER SUPPLY | 129 373 | 4 806 | 98 982 | 3 958 | - | 21 625 |
| ELECTRIC POWER | 62 399 | 191 | 47 758 | 1 006 | - | 13 444 |
| TRANSIT | 111 891 | 1 524 | 56 544 | - | - | 53 823 |
| GAS SUPPLY | 9 649 | 34 | 6 766 | - | - | 2 449 |
| OTHER AND UNALLOCABLE | 302 868 | 98 074 | 159 918 | 33 747 | - | 11 129 |
| OCTOBER PAYROLL (THOUSANDS OF DOLLARS) | | | | | | |
| ALL FUNCTIONS | 6 422 752 | 1 057 218 | 1 985 305 | 199 758 | 2 922 492 | 257 979 |
| EDUCATION | 3 687 613 | 241 281 | 425 354 | 98 486 | 2 922 492 | - |
| LOCAL SCHOOLS | 3 490 824 | 214 490 | 354 511 | 98 486 | 2 793 342 | - |
| INSTRUCTIONAL PERSONNEL | 2 739 966 | 169 394 | 308 699 | 80 504 | 2 161 369 | - |
| OTHER | 750 867 | 45 096 | 75 811 | 17 982 | 611 973 | - |
| INSTITUTIONS OF HIGHER EDUCATION | 196 785 | 26 792 | 40 844 | - | 129 149 | - |
| INSTRUCTIONAL PERSONNEL | 126 514 | 16 197 | 29 287 | - | 81 034 | - |
| OTHER | 70 266 | 10 595 | 11 557 | - | 48 115 | - |
| FUNCTIONS OTHER THAN EDUCATION | 2 735 139 | 815 937 | 1 559 951 | 101 272 | - | 257 979 |
| HIGHWAYS | 212 184 | 88 290 | 96 743 | 22 978 | - | 4 175 |
| PUBLIC WELFARE | 129 416 | 91 529 | 37 395 | 692 | - | - |
| HOSPITALS | 318 568 | 152 911 | 99 584 | 915 | - | 65 158 |
| HEALTH | 61 521 | 45 776 | 32 582 | 1 228 | - | 1 935 |
| POLICE PROTECTION | 461 014 | 84 661 | 349 232 | 23 125 | - | - |
| LOCAL FIRE PROTECTION | 224 910 | 13 054 | 194 447 | 8 751 | - | 6 259 |
| SEWERAGE | 65 591 | 6 873 | 42 153 | 2 524 | - | 14 041 |
| SANITATION OTHER THAN SEWERAGE | 96 114 | 4 741 | 86 964 | 4 024 | - | 389 |
| LOCAL PARKS AND RECREATION | 105 052 | 17 979 | 72 610 | 4 436 | - | 10 067 |
| NATURAL RESOURCES | 20 714 | 9 820 | 1 713 | 366 | - | 8 816 |
| HOUSING AND URBAN RENEWAL | 64 020 | 1 660 | 34 617 | 137 | - | 27 611 |
| AIRPORTS | 15 026 | 2 941 | 8 108 | 81 | - | 3 996 |
| WATER TRANSPORT AND TERMINALS | 9 031 | 267 | 3 157 | 15 | - | 5 592 |
| CORRECTION | 64 766 | 47 807 | 16 953 | 7 | - | - |
| LOCAL LIBRARIES | 48 706 | 10 194 | 28 012 | 2 293 | - | 4 202 |
| FINANCIAL ADMINISTRATION | 105 766 | 49 859 | 48 407 | 7 500 | - | - |
| GENERAL CONTROL | 213 633 | 113 400 | 69 153 | 11 079 | - | - |
| LOCAL UTILITIES | 299 652 | 5 947 | 198 372 | 3 680 | - | 94 653 |
| WATER SUPPLY | 99 305 | 4 042 | 78 787 | 2 819 | - | 16 657 |
| ELECTRIC POWER | 61 683 | 112 | 45 991 | 861 | - | 14 420 |
| TRANSIT | 130 291 | 1 769 | 68 319 | - | - | 60 203 |
| GAS SUPPLY | 8 173 | 24 | 5 276 | - | - | 2 473 |
| OTHER AND UNALLOCABLE | 203 603 | 64 224 | 120 754 | 7 441 | - | 11 184 |

Note: Statistics are subject to sampling variation. See text. Because of rounding, detail may not add to total.
 - Represents zero or rounds to zero.

Table 6. Number of Public Employees, by Level of Government and by State:
October 1974

| State | All employees (full-time and part-time) | | | | | Full-time equivalent employment of State and local governments | | | | | |
|--------------------------------|---|--------------------|-----------------------------|-----------|-----------|--|-----------|-----------|---|-------|-------|
| | All governments | Federal (civilian) | State and local governments | | | Number | | | Number per 10,000 population ² | | |
| | | | Total | State | Local | Total | State | Local | Total | State | Local |
| UNITED ST. S, TOTAL . . . | 14 549 972 | 2 755 946 | 11 794 026 | 3 154 734 | 8 639 292 | 9 880 872 | 2 653 259 | 7 227 613 | 467 | 126 | 342 |
| ALABAMA | 236 284 | 56 933 | 179 351 | 59 452 | 119 899 | 157 127 | 51 017 | 106 110 | 439 | 143 | 297 |
| ALASKA | 41 420 | 14 129 | 27 291 | 13 823 | 13 468 | 24 596 | 13 068 | 11 528 | 730 | 388 | 342 |
| ARIZONA | 155 467 | 31 054 | 124 413 | 36 522 | 87 891 | 103 910 | 29 083 | 74 827 | 483 | 135 | 348 |
| ARKANSAS | 119 825 | 18 147 | 101 678 | 34 130 | 67 548 | 84 528 | 29 063 | 55 465 | 410 | 141 | 269 |
| CALIFORNIA | 1 549 042 | 299 036 | 1 250 006 | 262 852 | 987 154 | 1 017 061 | 212 840 | 804 221 | 486 | 102 | 385 |
| COLORADO | 206 298 | 46 298 | 160 000 | 50 093 | 109 907 | 128 848 | 39 120 | 89 728 | 516 | 157 | 359 |
| CONNECTICUT | 171 416 | 21 270 | 150 146 | 45 996 | 104 150 | 127 360 | 39 394 | 87 966 | 412 | 128 | 285 |
| DELAWARE | 40 272 | 5 285 | 34 987 | 17 114 | 17 873 | 32 798 | 16 507 | 16 291 | 572 | 288 | 284 |
| DISTRICT OF COLUMBIA | 400 234 | 341 041 | 59 193 | - | 59 193 | 55 178 | - | 55 178 | 763 | - | 763 |
| FLORIDA | 511 452 | 76 315 | 435 137 | 101 116 | 334 021 | 389 432 | 91 234 | 298 198 | 481 | 113 | 369 |
| GEORGIA | 351 754 | 75 580 | 276 174 | 79 100 | 197 074 | 245 934 | 70 928 | 175 006 | 504 | 145 | 358 |
| HAWAII | 72 712 | 25 407 | 46 305 | 35 452 | 10 853 | 38 983 | 28 926 | 10 057 | 460 | 342 | 119 |
| IDAHO | 59 219 | 9 415 | 49 804 | 17 533 | 32 271 | 39 821 | 14 196 | 25 625 | 498 | 178 | 321 |
| ILLINOIS | 699 364 | 108 101 | 591 263 | 138 571 | 452 692 | 478 879 | 113 485 | 365 394 | 430 | 102 | 328 |
| INDIANA | 313 684 | 42 810 | 270 874 | 73 709 | 197 165 | 218 675 | 54 304 | 164 371 | 410 | 102 | 308 |
| IOWA | 185 879 | 19 500 | 166 379 | 44 494 | 121 885 | 132 281 | 36 421 | 95 860 | 463 | 128 | 336 |
| KANSAS | 168 851 | 23 046 | 145 805 | 44 733 | 101 072 | 114 126 | 35 096 | 79 030 | 503 | 155 | 348 |
| KENTUCKY | 196 921 | 36 837 | 160 084 | 58 936 | 101 148 | 136 909 | 51 659 | 85 250 | 406 | 154 | 254 |
| LOUISIANA | 242 815 | 29 063 | 213 752 | 75 115 | 138 637 | 184 937 | 61 774 | 123 163 | 491 | 144 | 327 |
| MAINE | 68 425 | 12 570 | 55 855 | 19 179 | 36 676 | 46 410 | 17 380 | 29 030 | 443 | 166 | 277 |
| MARYLAND | 278 561 | 65 106 | 213 455 | 64 951 | 148 504 | 196 469 | 41 117 | 135 352 | 480 | 149 | 331 |
| MASSACHUSETTS | 377 118 | 62 358 | 314 760 | 77 640 | 237 140 | 244 328 | 69 725 | 194 603 | 456 | 120 | 336 |
| MICHIGAN | 612 442 | 95 069 | 517 373 | 139 728 | 417 645 | 429 854 | 106 957 | 322 897 | 472 | 118 | 355 |
| MINNESOTA | 263 447 | 30 381 | 233 066 | 41 444 | 171 622 | 184 255 | 48 100 | 136 155 | 470 | 123 | 348 |
| MISSISSIPPI | 150 542 | 23 060 | 127 482 | 39 26 | 88 456 | 108 533 | 33 305 | 75 228 | 467 | 143 | 324 |
| MISSOURI | 309 915 | 67 296 | 242 619 | 67 926 | 174 693 | 204 594 | 55 926 | 148 668 | 428 | 117 | 311 |
| MONTANA | 59 529 | 11 723 | 47 806 | 17 499 | 30 307 | 39 130 | 14 415 | 24 715 | 532 | 196 | 336 |
| NEBRASKA | 122 964 | 16 372 | 106 592 | 32 306 | 74 286 | 84 542 | 26 313 | 58 269 | 548 | 171 | 378 |
| NEVADA | 44 301 | 8 797 | 35 504 | 10 678 | 24 826 | 30 427 | 8 786 | 21 641 | 531 | 153 | 378 |
| NEW HAMPSHIRE | 54 724 | 8 332 | 46 392 | 15 131 | 31 261 | 34 624 | 12 283 | 22 341 | 429 | 152 | 276 |
| NEW JERSEY | 453 302 | 69 247 | 384 055 | 78 584 | 305 471 | 328 194 | 69 813 | 258 381 | 448 | 95 | 352 |
| NEW MEXICO | 96 914 | 27 225 | 69 689 | 28 429 | 41 260 | 60 871 | 23 873 | 36 998 | 543 | 213 | 330 |
| NEW YORK | 1 320 181 | 177 666 | 1 142 515 | 202 716 | 939 799 | 1 062 764 | 188 416 | 814 348 | 554 | 104 | 450 |
| NORTH CAROLINA | 310 986 | 41 680 | 269 306 | 86 860 | 182 446 | 230 249 | 77 047 | 153 222 | 429 | 144 | 286 |
| NORTH DAKOTA | 60 480 | 9 034 | 51 446 | 14 478 | 36 968 | 29 328 | 10 338 | 18 990 | 460 | 162 | 298 |
| OHIO | 631 672 | 96 710 | 534 962 | 119 148 | 415 814 | 430 999 | 96 491 | 334 508 | 401 | 90 | 312 |
| OKLAHOMA | 206 038 | 53 654 | 152 384 | 55 005 | 97 379 | 128 250 | 44 950 | 83 300 | 473 | 166 | 307 |
| OREGON | 172 932 | 25 298 | 147 634 | 47 786 | 99 848 | 116 358 | 36 988 | 79 370 | 513 | 163 | 350 |
| PENNSYLVANIA | 687 370 | 137 935 | 549 435 | 147 720 | 401 715 | 466 053 | 131 009 | 335 044 | 394 | 111 | 283 |
| RHODE ISLAND | 60 486 | 13 102 | 47 384 | 20 204 | 27 180 | 41 213 | 17 535 | 23 678 | 440 | 187 | 253 |
| SOUTH CAROLINA | 181 930 | 29 726 | 152 204 | 54 902 | 97 302 | 132 072 | 48 403 | 83 669 | 474 | 174 | 301 |
| SOUTH DAKOTA | 54 390 | 10 253 | 44 127 | 14 491 | 29 636 | 32 973 | 11 321 | 21 652 | 483 | 166 | 317 |
| TENNESSEE | 264 731 | 50 263 | 214 468 | 63 508 | 150 960 | 193 149 | 55 221 | 137 928 | 468 | 134 | 334 |
| TEXAS | 778 922 | 152 230 | 626 692 | 162 633 | 464 059 | 547 346 | 135 707 | 411 639 | 454 | 113 | 342 |
| UTAH | 110 624 | 37 467 | 73 157 | 28 934 | 44 223 | 58 977 | 25 181 | 33 796 | 503 | 215 | 288 |
| VERMONT | 35 965 | 4 222 | 31 743 | 12 504 | 19 239 | 23 259 | 10 007 | 13 252 | 495 | 213 | 282 |
| VIRGINIA | 351 995 | 78 226 | 273 769 | 95 625 | 178 144 | 237 937 | 79 831 | 158 106 | 485 | 163 | 322 |
| WASHINGTON | 273 123 | 55 218 | 217 905 | 76 960 | 140 945 | 174 591 | 57 652 | 116 9 9 | 502 | 166 | 336 |
| WEST VIRGINIA | 107 861 | 15 023 | 92 838 | 38 096 | 54 742 | 81 697 | 33 167 | 48 66 | 457 | 185 | 272 |
| WISCONSIN | 291 304 | 24 734 | 266 570 | 62 996 | 203 574 | 207 441 | 50 438 | 157 003 | 454 | 110 | 344 |
| WYOMING | 33 469 | 5 712 | 27 757 | 8 708 | 19 051 | 22 382 | 7 449 | 14 933 | 623 | 207 | 416 |

Note: Statistics for local governments are subject to sampling variation; see text. Because of rounding, detail may not add to totals.

- Represents zero or rounds to zero.

¹Federal civilian employees within the United States as of December 1974. Total accordingly differs from Federal data reported on table 1, which pertains to October 1974 and includes employees working outside the United States.

²See table 10 for estimated State populations as of July 1, 1974.

Table 7. State and Local Government Payrolls and Average Earnings of Full-Time State and Local Government Employees, by State: October 1974

| State | Amount of payroll (thousands of dollars) | | | Percent of October payroll | | Average earnings of full-time State and local government employees | | | | |
|--------------------------------|---|---------------------|----------------------|-------------------------------|---------------------------|---|---------------------|--|--|--------------------------------------|
| | Total | State government | Local governments | State govern- ment | Local govern- ments | All employees | Education employees | | | Other than education employees |
| | | | | | | | All | Instruc- tional personnel, local schools | Instruc- tional personnel, institutions of higher education | |
| UNITED STATES, TOTAL | 8 832 282 | 2 409 531 | 6 422 751 | 27.3 | 72.7 | 899 | 948 | 1 028 | 1 453 | 853 |
| ALABAMA | 109 705 | 41 489 | 68 215 | 37.8 | 62.2 | 705 | 756 | 778 | 1 323 | 664 |
| ALASKA | 31 130 | 15 965 | 15 166 | 51.3 | 48.7 | 1 267 | 1 352 | 1 452 | 1 458 | 1 218 |
| ARIZONA | 98 698 | 29 042 | 69 656 | 29.4 | 70.6 | 956 | 1 020 | 1 097 | 1 827 | 889 |
| ARKANSAS | 53 075 | 21 244 | 31 830 | 40.0 | 60.0 | 635 | 685 | 694 | 1 394 | 582 |
| CALIFORNIA | 1 134 660 | 242 287 | 892 374 | 21.4 | 78.6 | 1 119 | 1 148 | 1 284 | 1 553 | 1 096 |
| COLORADO | 110 181 | 37 943 | 72 238 | 34.5 | 65.6 | 864 | 884 | 916 | 1 423 | 881 |
| CONNECTICUT | 122 079 | 36 216 | 85 863 | 29.7 | 70.3 | 962 | 1 029 | 1 099 | 1 427 | 868 |
| DELAWARE | 25 016 | 11 580 | 13 436 | 46.3 | 53.7 | 760 | 781 | 886 | 1 078 | 786 |
| DISTRICT OF COLUMBIA | 57 706 | - | 57 706 | - | 100.0 | 1 047 | 1 080 | 1 185 | 1 611 | 1 034 |
| FLORIDA | 328 479 | 81 630 | 246 850 | 24.9 | 75.1 | 846 | 900 | 993 | 1 647 | 801 |
| GEORGIA | 173 217 | 56 403 | 116 813 | 32.6 | 67.4 | 711 | 735 | 783 | 1 233 | 693 |
| HAWAII | 40 423 | 30 475 | 9 947 | 75.4 | 24.6 | 1 035 | 1 100 | 1 200 | 1 397 | 983 |
| IDAHO | 28 572 | 11 461 | 17 111 | 40.1 | 59.9 | 722 | 764 | 775 | 1 051 | 683 |
| ILLINOIS | 483 116 | 110 962 | 372 154 | 23.0 | 77.0 | 1 014 | 1 101 | 1 187 | 1 536 | 927 |
| INDIANA | 167 670 | 44 673 | 122 998 | 26.6 | 73.4 | 775 | 863 | 956 | 1 427 | 672 |
| IOWA | 108 200 | 34 164 | 74 036 | 31.6 | 68.4 | 824 | 879 | 898 | 1 477 | 758 |
| KANSAS | 83 410 | 28 113 | 55 297 | 33.7 | 66.3 | 736 | 785 | 796 | 1 155 | 686 |
| KENTUCKY | 95 221 | 37 855 | 57 366 | 39.8 | 60.2 | 706 | 761 | 799 | 1 397 | 648 |
| KENTUCKY | 125 238 | 45 770 | 79 468 | 36.5 | 63.5 | 681 | 721 | 793 | 1 237 | 642 |
| LOUISIANA | 33 723 | 13 568 | 20 155 | 40.2 | 59.8 | 733 | 744 | 781 | 1 164 | 721 |
| MAINE | 182 337 | 54 949 | 127 387 | 30.1 | 69.9 | 932 | 982 | 1 126 | 1 197 | 880 |
| MARYLAND | 245 023 | 61 040 | 183 982 | 24.9 | 75.1 | 933 | 986 | 1 054 | 1 356 | 891 |
| MASSACHUSETTS | 464 841 | 111 871 | 352 971 | 24.1 | 75.9 | 1 090 | 1 162 | 1 325 | 1 680 | 996 |
| MICHIGAN | 174 205 | 49 034 | 125 172 | 28.1 | 71.9 | 952 | 1 014 | 1 073 | 1 552 | 877 |
| MINNESOTA | 66 738 | 23 589 | 43 150 | 35.3 | 64.7 | 622 | 672 | 668 | 1 234 | 575 |
| MISSISSIPPI | 158 848 | 45 180 | 113 668 | 28.4 | 71.6 | 782 | 821 | 882 | 1 340 | 743 |
| MISSOURI | 31 138 | 12 582 | 18 555 | 40.4 | 59.6 | 797 | 863 | 884 | 1 427 | 723 |
| MONTANA | 63 619 | 21 050 | 42 569 | 33.1 | 66.9 | 754 | 784 | 786 | 1 119 | 724 |
| NEBRASKA | 29 019 | 8 652 | 20 367 | 29.8 | 70.2 | 956 | 946 | 1 029 | 1 301 | 963 |
| NEVADA | 26 199 | 10 131 | 16 068 | 38.7 | 61.3 | 764 | 798 | 837 | 1 201 | 729 |
| NEW HAMPSHIRE | 324 693 | 71 743 | 252 950 | 22.1 | 77.9 | 993 | 1 111 | 1 219 | 1 797 | 871 |
| NEW JERSEY | 44 232 | 18 241 | 25 991 | 41.2 | 58.8 | 730 | 754 | 804 | 1 110 | 703 |
| NEW MEXICO | 1 068 163 | 194 922 | 873 242 | 18.2 | 81.8 | 1 072 | 1 182 | 1 329 | 1 627 | 1 003 |
| NEW YORK | 176 867 | 62 866 | 114 001 | 35.5 | 64.5 | 779 | 833 | 946 | 1 415 | 722 |
| NORTH CAROLINA | 21 694 | 8 482 | 13 212 | 39.1 | 60.9 | 752 | 780 | 780 | 1 329 | 714 |
| NORTH DAKOTA | 363 441 | 89 119 | 280 322 | 24.1 | 75.9 | 862 | 893 | 951 | 1 427 | 830 |
| OHIO | 86 377 | 32 868 | 53 509 | 38.1 | 61.9 | 678 | 729 | 742 | 1 352 | 631 |
| OKLAHOMA | 154 083 | 34 413 | 69 670 | 33.1 | 66.9 | 896 | 906 | 958 | 1 373 | 883 |
| OREGON | 417 124 | 123 409 | 293 715 | 29.6 | 70.4 | 900 | 944 | 1 025 | 1 631 | 861 |
| PENNSYLVANIA | 36 724 | 14 882 | 21 842 | 40.5 | 59.5 | 895 | 1 001 | 1 123 | 1 282 | 77 |
| RHODE ISLAND | 88 941 | 36 280 | 52 661 | 40.8 | 59.2 | 684 | 726 | 751 | 1 883 | 639 |
| SOUTH CAROLINA | 23 100 | 9 054 | 14 045 | 39.2 | 60.8 | 711 | 758 | 732 | 1 192 | 679 |
| SOUTH DAKOTA | 134 830 | 41 161 | 93 669 | 30.5 | 69.5 | 704 | 767 | 834 | 1 389 | 652 |
| TENNESSEE | 406 558 | 111 014 | 295 544 | 27.3 | 72.7 | 746 | 782 | 819 | 1 435 | 706 |
| TEXAS | 44 276 | 19 278 | 24 999 | 43.5 | 56.5 | 761 | 759 | 845 | 884 | 764 |
| UTAH | 18 201 | 8 613 | 9 588 | 47.3 | 52.7 | 795 | 805 | 818 | 987 | 781 |
| VERMONT | 186 317 | 64 368 | 121 949 | 34.5 | 65.5 | 785 | 853 | 884 | 1 410 | 729 |
| VIRGINIA | 167 800 | 57 681 | 110 119 | 34.4 | 65.6 | 963 | 1 003 | 1 039 | 1 440 | 924 |
| WASHINGTON | 55 215 | 23 002 | 32 213 | 41.7 | 58.3 | 665 | 734 | 803 | 1 513 | 585 |
| WEST VIRGINIA | 189 293 | 53 194 | 136 100 | 28.1 | 71.9 | 919 | 962 | 995 | 1 284 | 869 |
| WISCONSIN | 16 868 | 6 025 | 10 843 | 35.7 | 64.3 | 761 | 823 | 859 | 1 218 | 700 |
| WYOMING | | | | | | | | | | |

Note: Statistics for local governments are subject to sampling variation; see text. Because of rounding, detail may not add to totals.

- Represents zero or rounds to zero.

Table 8. Employment and Payrolls of State and Local Governments, by Type of Government and by State: October 1974

| State and type of government | Number of employees | | | October payroll, total (thousands of dollars) | Average earnings of full-time employees | |
|--------------------------------|---------------------|----------------|----------------------|---|---|--------------------------------|
| | Total | Part-time only | Full-time equivalent | | All | Other than education employees |
| UNITED STATES, TOTAL | 11 794 026 | 9 203 078 | 9 880 872 | 8 832 282 | 899 | 853 |
| STATE, | 3 154 734 | 2 470 083 | 2 653 259 | 2 409 531 | 906 | 855 |
| LOCAL, TOTAL | 8 639 292 | 6 732 995 | 7 227 613 | 6 422 752 | 897 | 852 |
| COUNTIES | 1 489 803 | 1 270 404 | 1 343 219 | 1 057 218 | 792 | 771 |
| MUNICIPALITIES | 2 491 153 | 2 020 627 | 2 127 074 | 1 985 305 | 936 | 909 |
| TOWNSHIPS, | 378 514 | 204 889 | 232 798 | 199 758 | 877 | 794 |
| SCHOOL DISTRICTS | 3 905 979 | 2 943 704 | 3 212 175 | 2 922 492 | 923 | - |
| SPECIAL DISTRICTS, | 373 843 | 293 371 | 312 347 | 257 979 | 836 | 836 |
| ALABAMA, TOTAL | 179 351 | 147 106 | 157 127 | 109 704 | 705 | 664 |
| STATE, | 59 452 | 48 333 | 51 017 | 41 489 | 809 | 765 |
| LOCAL, TOTAL | 119 699 | 98 773 | 106 110 | 68 215 | 655 | 604 |
| COUNTIES | 15 196 | 14 010 | 14 395 | 8 118 | 562 | 562 |
| MUNICIPALITIES | 33 372 | 28 181 | 29 228 | 19 145 | 656 | 656 |
| SCHOOL DISTRICTS | 61 207 | 47 671 | 53 114 | 36 216 | 709 | - |
| SPECIAL DISTRICTS, | 10 124 | 8 911 | 9 373 | 4 736 | 505 | 505 |
| ALASKA, TOTAL | 27 291 | 23 497 | 24 596 | 31 131 | 1 267 | 1 218 |
| STATE, | 13 823 | 12 431 | 13 068 | 15 965 | 1 218 | 1 182 |
| LOCAL, TOTAL | 13 468 | 11 066 | 11 528 | 15 166 | 1 322 | 1 280 |
| BOROUGHs | 7 557 | 6 347 | 6 596 | 8 680 | 1 322 | 1 108 |
| MUNICIPALITIES | 5 911 | 4 719 | 4 932 | 6 486 | 1 323 | 1 352 |
| ARIZONA, TOTAL | 124 413 | 96 467 | 103 910 | 98 698 | 956 | 889 |
| STATE, | 36 522 | 26 052 | 29 083 | 29 042 | 1 005 | 871 |
| LOCAL, TOTAL | 87 891 | 70 415 | 74 827 | 69 656 | 938 | 897 |
| COUNTIES | 12 700 | 11 868 | 12 180 | 9 701 | 797 | 799 |
| MUNICIPALITIES | 19 335 | 16 269 | 16 890 | 15 544 | 923 | 923 |
| SCHOOL DISTRICTS | 52 229 | 38 836 | 42 272 | 40 567 | 972 | - |
| SPECIAL DISTRICTS, | 3 627 | 3 442 | 3 485 | 3 844 | 1 106 | 1 105 |
| ARKANSAS, TOTAL | 101 678 | 77 675 | 84 528 | 53 074 | 635 | 582 |
| STATE, | 34 130 | 27 255 | 29 063 | 21 244 | 729 | 673 |
| LOCAL, TOTAL | 67 548 | 50 420 | 55 465 | 31 830 | 584 | 500 |
| COUNTIES | 12 054 | 9 870 | 10 597 | 4 594 | 435 | 435 |
| MUNICIPALITIES | 15 310 | 9 531 | 10 424 | 5 865 | 563 | 563 |
| SCHOOL DISTRICTS | 39 135 | 30 542 | 33 834 | 21 027 | 639 | - |
| SPECIAL DISTRICTS, | 1 049 | 477 | 610 | 345 | 578 | 578 |
| CALIFORNIA, TOTAL | 1 250 006 | 939 027 | 1 017 061 | 1 134 661 | 1 119 | 1 096 |
| STATE, | 262 852 | 193 362 | 212 840 | 242 287 | 1 138 | 1 140 |
| LOCAL, TOTAL | 987 154 | 745 665 | 804 221 | 892 374 | 1 115 | 1 082 |
| COUNTIES | 215 179 | 190 195 | 198 874 | 206 943 | 1 041 | 1 041 |
| MUNICIPALITIES | 181 728 | 156 955 | 162 009 | 188 482 | 1 168 | 1 168 |
| SCHOOL DISTRICTS | 533 758 | 351 379 | 394 070 | 449 928 | 1 151 | - |
| SPECIAL DISTRICTS, | 56 489 | 47 136 | 49 268 | 47 021 | 961 | 961 |
| COLORADO, TOTAL | 160 000 | 117 284 | 128 848 | 110 181 | 864 | 841 |
| STATE, | 50 093 | 35 334 | 39 120 | 37 943 | 977 | 953 |
| LOCAL, TOTAL | 109 907 | 81 950 | 89 728 | 72 238 | 815 | 784 |
| COUNTIES | 14 033 | 11 625 | 12 434 | 7 897 | 641 | 641 |
| MUNICIPALITIES | 26 965 | 22 814 | 23 914 | 20 561 | 860 | 860 |
| SCHOOL DISTRICTS | 65 123 | 45 492 | 50 844 | 41 974 | 839 | - |
| SPECIAL DISTRICTS, | 3 786 | 2 019 | 2 536 | 1 806 | 740 | 740 |
| CONNECTICUT, TOTAL | 150 146 | 121 061 | 127 360 | 122 079 | 962 | 888 |
| STATE, | 45 996 | 37 522 | 39 394 | 36 216 | 917 | 859 |
| LOCAL, TOTAL | 104 150 | 83 539 | 87 966 | 85 863 | 982 | 917 |
| MUNICIPALITIES | 43 232 | 37 040 | 38 513 | 37 299 | 973 | 929 |
| TOWNSHIPS, | 55 531 | 42 897 | 45 639 | 45 083 | 996 | 886 |
| SCHOOL DISTRICTS | 1 838 | 1 587 | 1 636 | 1 407 | 863 | - |
| SPECIAL DISTRICTS, | 3 549 | 2 015 | 2 178 | 2 075 | 976 | 976 |
| DELAWARE, TOTAL | 34 987 | 31 523 | 32 798 | 25 016 | 760 | 786 |
| STATE, | 17 114 | 16 188 | 16 507 | 11 580 | 701 | 777 |
| LOCAL, TOTAL | 17 873 | 15 335 | 16 291 | 13 436 | 822 | 803 |
| COUNTIES | 2 047 | 1 595 | 1 775 | 1 363 | 758 | 758 |
| MUNICIPALITIES | 4 462 | 4 001 | 4 206 | 3 502 | 803 | 838 |
| SCHOOL DISTRICTS | 10 881 | 9 284 | 9 848 | 8 207 | 842 | - |
| SPECIAL DISTRICTS, | 483 | 455 | 462 | 364 | 786 | 786 |

See footnotes at end of table.

Table 8. Employment and Payrolls of State and Local Governments, by Type of Government and by State: October 1974—Continued

| State and type of government | Number of employees | | | October payroll, total (thousands of dollars) | Average earnings of full-time employees | |
|---------------------------------------|---------------------|----------------|----------------------|---|---|--------------------------------|
| | Total | Full-time only | Full-time equivalent | | All | Other than education employees |
| DISTRICT OF COLUMBIA, TOTAL | 59 193 | 53 381 | 55 178 | 57 706 | 1 047 | 1 034 |
| LOCAL, TOTAL | 59 193 | 53 381 | 55 178 | 57 706 | 1 047 | 1 034 |
| MUNICIPALITIES | 54 080 | 48 291 | 50 081 | 52 270 | 1 045 | 1 029 |
| SPECIAL DISTRICTS | 5 113 | 5 090 | 5 097 | 5 435 | 1 066 | 1 066 |
| FLORIDA, TOTAL | 435 137 | 370 963 | 389 432 | 328 480 | 846 | 801 |
| STATE | 101 116 | 86 708 | 91 234 | 81 630 | 895 | 824 |
| LOCAL, TOTAL | 334 021 | 284 255 | 298 198 | 246 850 | 831 | 789 |
| COUNTIES | 55 388 | 51 407 | 52 684 | 43 111 | 818 | 818 |
| MUNICIPALITIES | 72 017 | 63 542 | 65 555 | 53 978 | 824 | 824 |
| SCHOOL DISTRICTS | 184 291 | 149 656 | 159 179 | 137 274 | 869 | - |
| SPECIAL DISTRICTS | 22 325 | 19 650 | 20 780 | 12 487 | 601 | 601 |
| GEORGIA, TOTAL | 276 174 | 227 641 | 245 934 | 173 216 | 711 | 693 |
| STATE | 79 100 | 64 809 | 70 928 | 56 403 | 802 | 786 |
| LOCAL, TOTAL | 197 074 | 162 832 | 175 006 | 116 813 | 675 | 643 |
| COUNTIES | 23 694 | 20 450 | 21 431 | 14 021 | 656 | 656 |
| MUNICIPALITIES | 38 213 | 32 115 | 33 305 | 22 449 | 673 | 673 |
| SCHOOL DISTRICTS | 99 514 | 79 943 | 87 717 | 60 813 | 709 | - |
| SPECIAL DISTRICTS | 35 653 | 30 324 | 32 553 | 19 530 | 602 | 602 |
| HAWAII, TOTAL | 46 305 | 36 655 | 38 983 | 40 422 | 1 035 | 983 |
| STATE | 35 452 | 26 795 | 28 926 | 30 475 | 1 052 | 976 |
| LOCAL, TOTAL | 10 853 | 9 860 | 10 057 | 9 947 | 990 | 990 |
| COUNTIES | 2 736 | 2 496 | 2 539 | 2 475 | 974 | 974 |
| MUNICIPALITIES | 8 112 | 7 364 | 7 518 | 7 472 | 995 | 995 |
| IDAHO, TOTAL | 49 804 | 36 860 | 39 821 | 28 572 | 722 | 683 |
| STATE | 17 533 | 13 325 | 14 196 | 11 461 | 806 | 774 |
| LOCAL, TOTAL | 32 271 | 23 535 | 25 625 | 17 111 | 674 | 595 |
| COUNTIES | 5 657 | 4 320 | 4 719 | 2 594 | 548 | 548 |
| MUNICIPALITIES | 6 036 | 3 843 | 4 256 | 2 822 | 665 | 665 |
| SCHOOL DISTRICTS | 18 255 | 13 920 | 15 039 | 10 809 | 729 | - |
| SPECIAL DISTRICTS | 2 323 | 1 452 | 1 611 | 886 | 551 | 551 |
| ILLINOIS, TOTAL | 591 263 | 444 890 | 478 879 | 483 116 | 1 014 | 927 |
| STATE | 138 571 | 103 258 | 113 485 | 110 962 | 970 | 896 |
| LOCAL, TOTAL | 452 692 | 341 632 | 365 394 | 372 154 | 1 027 | 942 |
| COUNTIES | 41 422 | 36 329 | 37 737 | 29 517 | 785 | 785 |
| MUNICIPALITIES | 101 818 | 79 948 | 83 728 | 85 504 | 1 025 | 1 025 |
| TOWNSHIP | 14 328 | 3 899 | 5 439 | 2 935 | 549 | 549 |
| SCHOOL DISTRICTS | 250 742 | 190 280 | 205 359 | 222 829 | 1 095 | - |
| SPECIAL DISTRICTS | 44 382 | 31 176 | 33 131 | 31 369 | 961 | 961 |
| INDIANA, TOTAL | 270 874 | 200 153 | 218 675 | 167 671 | 775 | 672 |
| STATE | 73 709 | 49 318 | 54 304 | 44 673 | 820 | 737 |
| LOCAL, TOTAL | 197 165 | 150 835 | 164 371 | 122 998 | 761 | 645 |
| COUNTIES | 33 987 | 27 636 | 30 222 | 16 397 | 543 | 540 |
| MUNICIPALITIES | 44 325 | 33 538 | 35 209 | 24 871 | 706 | 706 |
| TOWNSHIP | 3 808 | 616 | 1 064 | 589 | 566 | 566 |
| SCHOOL DISTRICTS | 108 614 | 85 226 | 93 424 | 77 421 | 849 | - |
| SPECIAL DISTRICTS | 6 431 | 3 819 | 4 452 | 3 721 | 871 | 871 |
| IOWA, TOTAL | 166 379 | 120 111 | 132 281 | 108 200 | 824 | 758 |
| STATE | 44 494 | 32 741 | 36 421 | 34 164 | 936 | 857 |
| LOCAL, TOTAL | 121 885 | 87 370 | 95 860 | 74 036 | 782 | 696 |
| COUNTIES | 20 184 | 16 632 | 17 973 | 11 308 | 632 | 632 |
| MUNICIPALITIES | 26 418 | 15 988 | 17 307 | 13 141 | 763 | 763 |
| SCHOOL DISTRICTS | 74 372 | 54 083 | 59 863 | 49 119 | 836 | - |
| SPECIAL DISTRICTS | 911 | 667 | 717 | 469 | 655 | 655 |
| KANSAS, TOTAL | 145 805 | 104 385 | 114 126 | 83 410 | 736 | 686 |
| STATE | 44 733 | 32 263 | 35 096 | 28 113 | 803 | 747 |
| LOCAL, TOTAL | 101 072 | 72 122 | 79 030 | 55 297 | 706 | 644 |
| COUNTIES | 14 719 | 12 150 | 13 129 | 6 712 | 513 | 513 |
| MUNICIPALITIES | 24 177 | 15 361 | 16 570 | 11 512 | 695 | 695 |
| TOWNSHIP | 2 243 | 704 | 986 | 561 | 590 | 590 |
| SCHOOL DISTRICTS | 56 695 | 41 715 | 46 013 | 34 123 | 752 | - |
| SPECIAL DISTRICTS | 3 238 | 2 192 | 2 332 | 2 388 | 1 032 | 1 032 |
| KENTUCKY, TOTAL | 160 084 | 125 839 | 136 909 | 95 221 | 706 | 648 |
| STATE | 58 936 | 48 848 | 51 659 | 37 855 | 734 | 667 |
| LOCAL, TOTAL | 101 148 | 76 991 | 85 250 | 57 366 | 689 | 629 |
| COUNTIES | 13 318 | 10 883 | 11 591 | 6 391 | 552 | 552 |
| MUNICIPALITIES | 21 822 | 17 845 | 18 600 | 12 587 | 677 | 677 |
| SCHOOL DISTRICTS | 63 702 | 47 104 | 53 684 | 37 573 | 727 | - |
| SPECIAL DISTRICTS | 2 306 | 1 159 | 1 375 | 815 | 607 | 607 |

See footnotes at end of table.

Table 8. Employment and Payrolls of State and Local Governments, by Type of Government and by State: October 1974—Continued

| State and type of government | Number of employees | | | October payroll, total (thousands of dollars) | Average earnings of full-time employees | |
|--------------------------------|---------------------|----------------|----------------------|---|---|--------------------------------|
| | Total | Full-time only | Full-time equivalent | | All | Other than education employees |
| LOUISIANA, TOTAL | 213 752 | 174 110 | 184 937 | 125 238 | 681 | 642 |
| STATE | 75 115 | 58 167 | 61 774 | 45 770 | 740 | 698 |
| LOCAL, TOTAL | 138 637 | 115 943 | 123 163 | 79 468 | 651 | 589 |
| PARISHES | 14 814 | 12 175 | 12 927 | 7 542 | 584 | 584 |
| MUNICIPALITIES | 31 292 | 26 448 | 27 864 | 17 193 | 616 | 616 |
| SCHOOL DISTRICTS | 84 494 | 70 825 | 75 317 | 51 300 | 691 | - |
| SPECIAL DISTRICTS | 8 037 | 6 495 | 7 055 | 3 433 | 488 | 488 |
| MAINE, TOTAL | 55 855 | 42 902 | 46 410 | 33 723 | 733 | 721 |
| STATE | 19 179 | 16 535 | 17 380 | 13 568 | 781 | 770 |
| LOCAL, TOTAL | 36 676 | 26 367 | 29 030 | 20 155 | 703 | 647 |
| COUNTIES | 1 097 | 658 | 762 | 414 | 540 | 540 |
| MUNICIPALITIES | 11 412 | 9 324 | 9 889 | 7 254 | 736 | 697 |
| TOWNSHIP | 13 442 | 7 861 | 9 078 | 6 137 | 689 | 590 |
| SCHOOL DISTRICTS | 9 883 | 8 030 | 8 728 | 5 970 | 696 | - |
| SPECIAL DISTRICTS | 842 | 494 | 573 | 380 | 650 | 650 |
| MARYLAND, TOTAL | 213 855 | 188 252 | 196 469 | 182 336 | 932 | 880 |
| STATE | 64 951 | 58 179 | 61 117 | 54 949 | 904 | 905 |
| LOCAL, TOTAL | 148 904 | 130 073 | 135 352 | 127 387 | 944 | 862 |
| COUNTIES | 100 457 | 85 370 | 89 595 | 88 865 | 996 | 932 |
| MUNICIPALITIES | 44 855 | 41 270 | 42 267 | 35 327 | 838 | 792 |
| SPECIAL DISTRICTS | 3 592 | 3 433 | 3 490 | 3 195 | 919 | 919 |
| MASSACHUSETTS, TOTAL | 314 780 | 250 541 | 264 328 | 245 022 | 933 | 891 |
| STATE | 77 640 | 66 632 | 69 725 | 61 040 | 874 | 837 |
| LOCAL, TOTAL | 237 140 | 183 909 | 194 603 | 183 982 | 954 | 924 |
| COUNTIES | 6 685 | 6 018 | 6 293 | 4 704 | 746 | 747 |
| MUNICIPALITIES | 106 814 | 88 580 | 91 752 | 88 889 | 973 | 913 |
| TOWNSHIP | 105 532 | 73 510 | 80 177 | 72 312 | 915 | 851 |
| SCHOOL DISTRICTS | 8 328 | 6 631 | 7 137 | 6 227 | 883 | - |
| SPECIAL DISTRICTS | 9 781 | 9 170 | 9 244 | 11 851 | 1 284 | 1 284 |
| MICHIGAN, TOTAL | 557 373 | 395 006 | 429 854 | 464 842 | 1 090 | 996 |
| STATE | 139 728 | 99 452 | 106 957 | 111 871 | 1 043 | 994 |
| LOCAL, TOTAL | 417 645 | 295 554 | 322 897 | 352 971 | 1 105 | 997 |
| COUNTIES | 44 877 | 39 263 | 41 069 | 36 751 | 897 | 897 |
| MUNICIPALITIES | 87 354 | 68 340 | 72 090 | 76 599 | 1 067 | 1 067 |
| TOWNSHIP | 20 912 | 3 396 | 4 944 | 4 626 | 938 | 938 |
| SCHOOL DISTRICTS | 258 567 | 180 090 | 199 765 | 230 667 | 1 175 | - |
| SPECIAL DISTRICTS | 5 935 | 4 465 | 5 029 | 4 327 | 860 | 860 |
| MINNESOTA, TOTAL | 233 066 | 168 207 | 184 255 | 174 206 | 952 | 877 |
| STATE | 61 644 | 42 941 | 48 100 | 49 034 | 1 019 | 921 |
| LOCAL, TOTAL | 171 422 | 125 266 | 136 155 | 125 172 | 928 | 855 |
| COUNTIES | 26 740 | 22 738 | 24 493 | 18 926 | 776 | 776 |
| MUNICIPALITIES | 39 912 | 24 303 | 26 675 | 24 403 | 919 | 919 |
| TOWNSHIP | 2 919 | 317 | 619 | 300 | 490 | 490 |
| SCHOOL DISTRICTS | 97 330 | 74 076 | 80 429 | 77 814 | 979 | - |
| SPECIAL DISTRICTS | 4 521 | 3 832 | 3 939 | 3 729 | 948 | 948 |
| MISSISSIPPI, TOTAL | 127 482 | 98 636 | 108 533 | 66 739 | 622 | 575 |
| STATE | 39 026 | 30 612 | 33 305 | 23 589 | 708 | 651 |
| LOCAL, TOTAL | 88 456 | 68 024 | 75 228 | 43 150 | 583 | 522 |
| COUNTIES | 18 611 | 15 907 | 16 857 | 8 261 | 490 | 490 |
| MUNICIPALITIES | 17 716 | 13 744 | 14 687 | 8 255 | 558 | 558 |
| SCHOOL DISTRICTS | 51 517 | 37 975 | 43 244 | 26 372 | 632 | - |
| SPECIAL DISTRICTS | 612 | 398 | 440 | 262 | 596 | 596 |
| MISSOURI, TOTAL | 242 619 | 190 485 | 204 594 | 158 848 | 782 | 743 |
| STATE | 67 926 | 51 948 | 55 926 | 45 180 | 805 | 732 |
| LOCAL, TOTAL | 174 693 | 138 537 | 148 668 | 113 668 | 774 | 751 |
| COUNTIES | 17 433 | 14 788 | 15 685 | 9 927 | 655 | 655 |
| MUNICIPALITIES | 44 643 | 34 940 | 36 652 | 29 868 | 815 | 815 |
| TOWNSHIP | 1 486 | 307 | 497 | 252 | 499 | 499 |
| SCHOOL DISTRICTS | 103 706 | 82 962 | 89 788 | 69 845 | 790 | - |
| SPECIAL DISTRICTS | 7 425 | 5 540 | 6 046 | 3 777 | 656 | 656 |
| MONTANA, TOTAL | 47 806 | 36 529 | 39 130 | 31 137 | 797 | 723 |
| STATE | 17 499 | 13 416 | 14 415 | 12 582 | 868 | 798 |
| LOCAL, TOTAL | 30 307 | 23 113 | 24 715 | 18 555 | 756 | 643 |
| COUNTIES | 5 680 | 4 776 | 5 032 | 2 957 | 588 | 588 |
| MUNICIPALITIES | 4 881 | 3 221 | 3 494 | 2 569 | 736 | 736 |
| SCHOOL DISTRICTS | 19 112 | 14 803 | 15 807 | 12 829 | 820 | - |
| SPECIAL DISTRICTS | 634 | 313 | 382 | 201 | 532 | 532 |

See footnotes at end of table.

Table 8. Employment and Payrolls of State and Local Governments, by Type of Government and by State: October 1974—Continued

| State and type of government | Number of employees | | | October payroll, total (thousands of dollars) | Average earnings of full-time employees | |
|---------------------------------|---------------------|----------------|----------------------|---|---|--------------------------------|
| | Total | Full-time only | Full-time equivalent | | All | Other than education employees |
| NEBRASKA, TOTAL | 106 592 | 77 107 | 84 582 | 63 619 | 754 | 724 |
| STATE | 32 306 | 23 575 | 26 313 | 21 050 | 787 | 694 |
| LOCAL, TOTAL | 74 286 | 53 532 | 58 269 | 42 569 | 739 | 739 |
| COUNTIES | 12 737 | 10 300 | 11 097 | 6 256 | 565 | 565 |
| MUNICIPALITIES | 15 195 | 10 042 | 10 894 | 8 479 | 780 | 780 |
| TOWNSHIP | 537 | 85 | 160 | 69 | 534 | 534 |
| SCHOOL DISTRICTS | 39 180 | 27 618 | 30 405 | 22 136 | 739 | - |
| SPECIAL DISTRICTS | 6 637 | 5 487 | 5 713 | 5 629 | 993 | 993 |
| NEVADA, TOTAL | 35 504 | 29 141 | 30 427 | 29 019 | 956 | 963 |
| STATE | 10 678 | 8 329 | 8 786 | 8 652 | 981 | 974 |
| LOCAL, TOTAL | 24 826 | 20 812 | 21 641 | 20 367 | 946 | 957 |
| COUNTIES | 8 182 | 7 262 | 7 480 | 6 958 | 931 | 931 |
| MUNICIPALITIES | 3 994 | 3 549 | 3 613 | 3 711 | 1 028 | 1 028 |
| SCHOOL DISTRICTS | 11 922 | 9 358 | 9 894 | 9 131 | 932 | - |
| SPECIAL DISTRICTS | 728 | 643 | 654 | 567 | 871 | 871 |
| NEW HAMPSHIRE, TOTAL | 46 392 | 31 743 | 34 624 | 26 199 | 764 | 729 |
| STATE | 15 131 | 11 406 | 12 233 | 10 131 | 822 | 800 |
| LOCAL, TOTAL | 31 261 | 20 337 | 22 341 | 16 068 | 731 | 663 |
| COUNTIES | 2 655 | 2 172 | 2 329 | 1 165 | 500 | 500 |
| MUNICIPALITIES | 8 830 | 7 438 | 7 874 | 6 398 | 819 | 771 |
| TOWNSHIP | 7 742 | 2 059 | 2 765 | 1 724 | 632 | 632 |
| SCHOOL DISTRICTS | 10 178 | 8 411 | 9 001 | 6 525 | 736 | - |
| SPECIAL DISTRICTS | 1 856 | 257 | 372 | 256 | 728 | 728 |
| NEW JERSEY, TOTAL | 384 055 | 312 045 | 328 194 | 324 693 | 993 | 871 |
| STATE | 78 584 | 66 445 | 69 813 | 71 743 | 1 021 | 928 |
| LOCAL, TOTAL | 305 471 | 245 600 | 258 381 | 252 950 | 985 | 844 |
| COUNTIES | 48 522 | 42 750 | 44 321 | 36 790 | 826 | 787 |
| MUNICIPALITIES | 98 809 | 76 674 | 81 212 | 76 426 | 945 | 884 |
| TOWNSHIP | 24 216 | 16 773 | 18 162 | 16 774 | 929 | 869 |
| SCHOOL DISTRICTS | 126 787 | 103 334 | 108 407 | 117 818 | 1 099 | - |
| SPECIAL DISTRICTS | 7 137 | 6 069 | 6 279 | 5 141 | 821 | 821 |
| NEW MEXICO, TOTAL | 69 689 | 57 685 | 60 871 | 44 232 | 730 | 703 |
| STATE | 28 429 | 22 656 | 23 873 | 18 241 | 764 | 739 |
| LOCAL, TOTAL | 41 260 | 35 029 | 36 998 | 25 991 | 708 | 664 |
| COUNTIES | 4 987 | 4 537 | 4 672 | 2 844 | 608 | 608 |
| MUNICIPALITIES | 9 456 | 8 296 | 8 549 | 5 954 | 697 | 697 |
| SCHOOL DISTRICTS | 26 568 | 22 030 | 23 604 | 17 096 | 735 | - |
| SPECIAL DISTRICTS | 249 | 166 | 173 | 97 | 560 | 560 |
| NEW YORK, TOTAL | 1 142 515 | 940 403 | 1 002 764 | 1 068 164 | 1 072 | 1 003 |
| STATE | 202 716 | 182 968 | 188 416 | 194 922 | 1 032 | 997 |
| LOCAL, TOTAL | 939 799 | 757 435 | 814 348 | 873 242 | 1 082 | 1 005 |
| COUNTIES | 107 260 | 94 607 | 98 326 | 85 426 | 866 | 845 |
| MUNICIPALITIES | 529 370 | 432 776 | 467 809 | 520 602 | 1 122 | 1 053 |
| TOWNSHIP | 43 723 | 27 375 | 30 334 | 23 722 | 782 | 782 |
| SCHOOL DISTRICTS | 249 148 | 193 111 | 208 242 | 228 524 | 1 116 | - |
| SPECIAL DISTRICTS | 10 298 | 9 566 | 9 637 | 14 966 | 1 558 | 1 558 |
| NORTH CAROLINA, TOTAL | 269 306 | 214 625 | 230 269 | 176 867 | 779 | 722 |
| STATE | 86 860 | 73 160 | 77 047 | 62 866 | 820 | 796 |
| LOCAL, TOTAL | 182 446 | 141 465 | 153 222 | 114 001 | 758 | 662 |
| COUNTIES | 139 308 | 105 186 | 115 695 | 88 496 | 785 | 631 |
| MUNICIPALITIES | 36 215 | 30 185 | 31 071 | 21 216 | 683 | 683 |
| SPECIAL DISTRICTS | 6 923 | 6 094 | 6 456 | 4 289 | 664 | 664 |
| NORTH DAKOTA, TOTAL | 51 446 | 25 972 | 29 328 | 21 694 | 752 | 714 |
| STATE | 14 478 | 9 384 | 10 338 | 8 482 | 823 | 757 |
| LOCAL, TOTAL | 36 968 | 16 588 | 18 990 | 13 212 | 712 | 673 |
| COUNTIES | 3 988 | 3 006 | 3 213 | 1 907 | 594 | 593 |
| MUNICIPALITIES | 5 822 | 2 483 | 2 803 | 2 158 | 773 | 773 |
| TOWNSHIP | 8 049 | 90 | 452 | 214 | 503 | 503 |
| SCHOOL DISTRICTS | 16 261 | 10 909 | 12 265 | 8 776 | 732 | - |
| SPECIAL DISTRICTS | 2 848 | 100 | 257 | 158 | 717 | 717 |
| OHIO, TOTAL | 534 962 | 397 465 | 430 999 | 369 441 | 862 | 830 |
| STATE | 119 148 | 88 967 | 96 491 | 89 119 | 913 | 857 |
| LOCAL, TOTAL | 415 814 | 308 498 | 334 508 | 280 322 | 847 | 819 |
| COUNTIES | 60 102 | 55 230 | 57 286 | 40 226 | 702 | 702 |
| MUNICIPALITIES | 109 255 | 80 710 | 85 140 | 77 109 | 906 | 916 |
| TOWNSHIP | 16 416 | 2 242 | 4 130 | 3 009 | 801 | 801 |
| SCHOOL DISTRICTS | 221 262 | 164 154 | 180 957 | 155 136 | 873 | - |
| SPECIAL DISTRICTS | 8 779 | 6 162 | 6 995 | 4 842 | 701 | 701 |

See footnotes at end of table.

Table 8. Employment and Payrolls of State and Local Governments, by Type of Government and by State: October 1974—Continued

| State and type of government | Number of employees | | | October payroll, total (thousands of dollars) | Average earnings of full-time employees | |
|--|---------------------|----------------|----------------------|---|---|--------------------------------|
| | Total | Full-time only | Full-time equivalent | | All | Other than education employees |
| OKLAHOMA, TOTAL | 152 384 | 116 154 | 128 250 | 86 377 | 678 | 631 |
| STATE | 55 005 | 39 102 | 44 950 | 32 868 | 732 | 663 |
| LOCAL, TOTAL | 97 379 | 77 052 | 83 300 | 53 509 | 650 | 605 |
| COUNTIES | 13 790 | 11 706 | 12 299 | 6 082 | 493 | 493 |
| MUNICIPALITIES | 26 948 | 21 230 | 22 415 | 14 977 | 669 | 669 |
| SCHOOL DISTRICTS | 55 677 | 43 530 | 47 923 | 32 107 | 685 | - |
| SPECIAL DISTRICTS | 964 | 586 | 663 | 344 | 515 | 515 |
| OREGON, TOTAL | 147 634 | 105 760 | 116 358 | 104 083 | 896 | 885 |
| STATE | 47 786 | 32 496 | 36 988 | 34 413 | 927 | 871 |
| LOCAL, TOTAL | 99 848 | 73 264 | 79 370 | 69 670 | 882 | 896 |
| COUNTIES | 14 582 | 12 372 | 13 080 | 10 763 | 825 | 825 |
| MUNICIPALITIES | 14 606 | 12 357 | 12 670 | 12 152 | 962 | 962 |
| SCHOOL DISTRICTS | 63 601 | 43 730 | 48 461 | 42 100 | 872 | - |
| SPECIAL DISTRICTS | 7 059 | 4 805 | 5 159 | 4 655 | 909 | 909 |
| PENNSYLVANIA, TOTAL | 549 435 | 440 313 | 466 053 | 417 124 | 900 | 861 |
| STATE | 147 720 | 125 677 | 131 009 | 123 409 | 942 | 901 |
| LOCAL, TOTAL | 401 715 | 314 636 | 335 044 | 293 715 | 823 | 830 |
| COUNTIES | 39 001 | 34 699 | 36 593 | 22 672 | 620 | 620 |
| MUNICIPALITIES | 82 131 | 65 548 | 66 388 | 64 699 | 945 | 945 |
| TOWNSHIP | 24 039 | 10 929 | 13 336 | 9 675 | 730 | 730 |
| SCHOOL DISTRICTS | 233 611 | 184 995 | 197 454 | 179 977 | 921 | - |
| SPECIAL DISTRICTS | 22 933 | 18 465 | 19 273 | 16 692 | 872 | 872 |
| RHODE ISLAND, TOTAL | 47 384 | 39 154 | 41 213 | 36 724 | 895 | 798 |
| STATE | 20 204 | 16 430 | 17 535 | 14 882 | 848 | 812 |
| LOCAL, TOTAL | 27 180 | 22 724 | 23 678 | 21 842 | 928 | 778 |
| MUNICIPALITIES | 15 710 | 13 361 | 13 834 | 13 109 | 952 | 795 |
| TOWNSHIPS | 10 466 | 8 617 | 9 061 | 8 133 | 906 | 753 |
| SCHOOL DISTRICTS | 350 | 323 | 335 | 297 | 888 | - |
| SPECIAL DISTRICTS | 654 | 423 | 448 | 302 | 677 | 677 |
| SOUTH CAROLINA, TOTAL | 152 204 | 121 470 | 132 072 | 88 941 | 684 | 639 |
| STATE | 54 902 | 44 722 | 48 403 | 36 280 | 752 | 686 |
| LOCAL, TOTAL | 97 302 | 76 748 | 83 669 | 52 661 | 644 | 587 |
| COUNTIES | 16 578 | 13 964 | 14 798 | 8 615 | 583 | 583 |
| MUNICIPALITIES | 14 496 | 11 182 | 11 729 | 6 847 | 583 | 583 |
| SCHOOL DISTRICTS | 62 865 | 48 596 | 54 034 | 35 280 | 677 | - |
| SPECIAL DISTRICTS | 3 363 | 3 006 | 3 108 | 1 919 | 619 | 619 |
| SOUTH DAKOTA, TOTAL | 44 127 | 29 646 | 32 973 | 23 099 | 711 | 679 |
| STATE | 14 491 | 10 659 | 11 321 | 9 054 | 802 | 752 |
| LOCAL, TOTAL | 29 636 | 18 987 | 21 652 | 14 045 | 660 | 598 |
| COUNTIES | 4 451 | 3 182 | 3 527 | 1 849 | 529 | 528 |
| MUNICIPALITIES | 6 747 | 3 216 | 3 731 | 2 503 | 675 | 675 |
| TOWNSHIP | 655 | 32 | 174 | 34 | 285 | 285 |
| SCHOOL DISTRICTS | 17 506 | 12 489 | 14 115 | 9 610 | 692 | - |
| SPECIAL DISTRICTS | 277 | 68 | 105 | 49 | 469 | 469 |
| TENNESSEE, TOTAL | 214 468 | 182 584 | 193 149 | 134 830 | 704 | 652 |
| STATE | 63 508 | 52 715 | 55 221 | 41 161 | 740 | 672 |
| LOCAL, TOTAL | 150 960 | 129 871 | 137 928 | 93 669 | 689 | 642 |
| COUNTIES | 69 537 | 58 041 | 63 681 | 38 195 | 614 | 532 |
| MUNICIPALITIES | 76 446 | 67 978 | 70 016 | 52 772 | 756 | 706 |
| SCHOOL DISTRICTS | 1 077 | 921 | 987 | 609 | 635 | - |
| SPECIAL DISTRICTS | 3 900 | 2 931 | 3 244 | 2 092 | 648 | 648 |
| TEXAS, TOTAL | 62 692 | 513 816 | 547 346 | 406 558 | 746 | 706 |
| STATE | 162 633 | 125 518 | 135 707 | 111 014 | 813 | 738 |
| LOCAL, TOTAL | 464 059 | 388 298 | 411 639 | 295 544 | 725 | 691 |
| COUNTIES | 54 589 | 47 868 | 50 284 | 30 164 | 600 | 600 |
| MUNICIPALITIES | 113 311 | 99 037 | 102 096 | 76 142 | 746 | 746 |
| SCHOOL DISTRICTS | 274 709 | 223 616 | 240 235 | 177 295 | 749 | - |
| SPECIAL DISTRICTS | 21 450 | 17 777 | 19 024 | 11 942 | 629 | 629 |
| UTAH, TOTAL | 73 157 | 54 350 | 58 977 | 44 277 | 761 | 764 |
| STATE | 28 934 | 23 964 | 25 181 | 19 278 | 767 | 787 |
| LOCAL, TOTAL | 44 223 | 30 386 | 33 796 | 24 999 | 756 | 742 |
| COUNTIES | 6 762 | 5 103 | 5 584 | 4 053 | 729 | 729 |
| MUNICIPALITIES | 8 087 | 5 413 | 5 890 | 4 403 | 766 | 766 |
| SCHOOL DISTRICTS | 28 258 | 19 114 | 21 492 | 15 998 | 765 | - |
| SPECIAL DISTRICTS | 1 116 | 756 | 830 | 545 | 655 | 655 |

See footnotes at end of table.

Table 8. Employment and Payrolls of State and Local Governments, by Type of Government and by State: October 1974—Continued

| State and type of government | Number of employees | | | October payroll, total (thousands of dollars) | Average earnings of full-time employees | |
|--------------------------------|---------------------|----------------|----------------------|---|---|--------------------------------|
| | Total | Full-time only | Full-time equivalent | | All | Other than education employees |
| VERMONT, TOTAL | 31 743 | 20 919 | 23 259 | 18 201 | 795 | 781 |
| STATE | 12 504 | 9 508 | 10 007 | 8 613 | 858 | 822 |
| LOCAL, TOTAL | 19 239 | 11 411 | 13 252 | 9 588 | 741 | 690 |
| COUNTIES | 51 | 22 | 28 | 16 | 571 | 571 |
| MUNICIPALITIES | 2 170 | 1 409 | 1 491 | 1 115 | 748 | 748 |
| TOWNSHIP | 5 317 | 1 340 | 2 184 | 1 379 | 635 | 635 |
| SCHOOL DISTRICTS | 11 393 | 8 592 | 9 453 | 7 035 | 758 | - |
| SPECIAL DISTRICTS | 308 | 48 | 96 | 43 | 575 | 575 |
| VIRGINIA, TOTAL | 273 769 | 223 038 | 237 937 | 186 317 | 785 | 729 |
| STATE | 95 625 | 73 964 | 79 831 | 64 368 | 803 | 721 |
| LOCAL, TOTAL | 178 144 | 149 074 | 158 106 | 121 949 | 777 | 738 |
| COUNTIES | 92 958 | 74 726 | 80 212 | 64 465 | 811 | 783 |
| MUNICIPALITIES | 82 945 | 72 539 | 75 718 | 56 315 | 748 | 727 |
| SPECIAL DISTRICTS | 2 241 | 1 809 | 2 176 | 1 169 | 547 | 547 |
| WASHINGTON, TOTAL | 217 905 | 160 375 | 174 591 | 167 800 | 963 | 924 |
| STATE | 76 950 | 52 160 | 57 652 | 57 681 | 991 | 922 |
| LOCAL, TOTAL | 140 945 | 108 215 | 116 939 | 110 119 | 950 | 925 |
| COUNTIES | 16 750 | 14 742 | 15 283 | 12 618 | 827 | 827 |
| MUNICIPALITIES | 29 598 | 22 681 | 23 876 | 23 500 | 988 | 988 |
| SCHOOL DISTRICTS | 76 342 | 58 648 | 64 294 | 61 807 | 971 | - |
| SPECIAL DISTRICTS | 18 255 | 12 144 | 13 486 | 12 194 | 927 | 927 |
| WEST VIRGINIA, TOTAL | 92 858 | 78 102 | 81 857 | 55 215 | 665 | 585 |
| STATE | 38 096 | 30 778 | 33 167 | 23 002 | 668 | 577 |
| LOCAL, TOTAL | 54 762 | 47 324 | 48 690 | 32 213 | 662 | 598 |
| COUNTIES | 5 773 | 4 766 | 5 168 | 2 648 | 513 | 513 |
| MUNICIPALITIES | 10 019 | 7 554 | 8 150 | 5 162 | 636 | 636 |
| SCHOOL DISTRICTS | 37 751 | 34 136 | 34 435 | 23 718 | 687 | - |
| SPECIAL DISTRICTS | 1 219 | 868 | 937 | 685 | 739 | 739 |
| WISCONSIN, TOTAL | 266 570 | 191 458 | 207 441 | 189 294 | 919 | 869 |
| STATE | 62 996 | 46 137 | 50 438 | 53 194 | 1 056 | 989 |
| LOCAL, TOTAL | 203 574 | 145 321 | 157 003 | 136 100 | 876 | 826 |
| COUNTIES | 37 169 | 31 724 | 33 426 | 24 894 | 744 | 744 |
| MUNICIPALITIES | 71 908 | 55 473 | 58 368 | 54 258 | 931 | 915 |
| TOWNSHIP | 17 153 | 1 840 | 3 597 | 2 228 | 631 | 631 |
| SCHOOL DISTRICTS | 76 642 | 55 679 | 60 996 | 54 022 | 901 | - |
| SPECIAL DISTRICTS | 702 | 605 | 616 | 697 | 1 134 | 1 134 |
| WYOMING, TOTAL | 27 757 | 20 567 | 22 382 | 16 868 | 761 | 700 |
| STATE | 8 706 | 6 941 | 7 449 | 6 025 | 817 | 780 |
| LOCAL, TOTAL | 19 051 | 13 626 | 14 933 | 10 843 | 732 | 624 |
| COUNTIES | 3 806 | 2 933 | 3 248 | 1 945 | 599 | 599 |
| MUNICIPALITIES | 2 873 | 1 981 | 2 122 | 1 451 | 685 | 685 |
| SCHOOL DISTRICTS | 11 598 | 8 300 | 9 075 | 7 186 | 801 | - |
| SPECIAL DISTRICTS | 774 | 412 | 488 | 261 | 516 | 516 |

Note: Statistics for local governments are subject to sampling variation, see text. Estimates for items of small magnitude in relation to State totals are subject to relatively high sampling variation. Because of rounding, detail may not add to totals.

- Represents zero or rounds to zero.

Table 9. Full-Time Equivalent Employment of State and Local Governments, by Function and by State: October 1974

| State | All functions | | Education | | | | | | | |
|--------------------------------|-----------------------------|-----------------------|-----------------------------|-----------------------|-----------------------------|---------------------|-----------|-----------------------|---------------------|-------|
| | State and local governments | State government only | Total | | Local schools | | | | | |
| | | | State and local governments | State government only | State and local governments | | | State government only | | |
| | | | | | Total | Instructional staff | Other | Total | Instructional staff | Other |
| UNITED STATES, TOTAL . . . | 9 880 872 | 2 653 259 | 4 930 646 | 928 605 | 3 638 933 | 2 670 300 | 1 168 633 | 14 480 | 10 583 | 3 897 |
| ALABAMA | 157 127 | 51 017 | 73 499 | 20 385 | 53 114 | 38 689 | 14 425 | - | - | - |
| ALASKA | 24 596 | 13 068 | 10 875 | 4 147 | 8 358 | 5 416 | 2 942 | 1 630 | 922 | 708 |
| ARIZONA | 103 910 | 29 083 | 54 300 | 11 712 | 38 991 | 26 013 | 12 978 | - | - | - |
| ARKANSAS | 84 528 | 29 063 | 44 497 | 10 663 | 33 342 | 23 692 | 9 650 | - | - | - |
| CALIFORNIA | 1 017 061 | 212 840 | 477 840 | 83 733 | 356 127 | 239 703 | 116 424 | - | - | - |
| COLORADO | 128 848 | 39 120 | 70 927 | 20 083 | 49 722 | 34 478 | 15 244 | - | - | - |
| CONNECTICUT | 127 360 | 39 394 | 67 488 | 10 415 | 57 073 | 43 478 | 13 595 | - | - | - |
| DELAWARE | 32 798 | 16 507 | 19 047 | 7 382 | 11 665 | 8 363 | 3 302 | - | - | - |
| DISTRICT OF COLUMBIA | 55 178 | - | 15 422 | - | 13 319 | 9 085 | 4 234 | - | - | - |
| FLORIDA | 389 432 | 71 234 | 183 567 | 24 388 | 148 588 | 97 622 | 50 966 | - | - | - |
| GEORGIA | 245 934 | 70 928 | 113 529 | 25 812 | 87 220 | 61 908 | 25 312 | - | - | - |
| HAWAII | 38 983 | 28 926 | 18 202 | 18 202 | 12 792 | 9 625 | 3 167 | 12 792 | 9 625 | 3 167 |
| IDAHO | 39 821 | 18 196 | 19 569 | 4 530 | 14 574 | 10 749 | 3 825 | - | - | - |
| ILLINOIS | 478 879 | 113 485 | 244 261 | 38 902 | 194 092 | 136 205 | 57 887 | - | - | - |
| INDIANA | 218 675 | 54 304 | 120 854 | 26 949 | 93 424 | 63 787 | 29 637 | - | - | - |
| IOWA | 132 281 | 36 421 | 74 064 | 14 201 | 57 124 | 40 630 | 16 494 | - | - | - |
| KANSAS | 114 126 | 35 096 | 59 804 | 13 791 | 43 525 | 30 962 | 12 563 | - | - | - |
| KENTUCKY | 136 909 | 51 659 | 73 439 | 19 755 | 53 684 | 37 003 | 16 681 | - | - | - |
| LOUISIANA | 184 937 | 61 774 | 93 634 | 18 317 | 75 285 | 48 414 | 26 871 | - | - | - |
| MAINE | 46 410 | 17 380 | 24 775 | 5 020 | 19 813 | 14 455 | 5 358 | 58 | 36 | 22 |
| MARYLAND | 196 469 | 61 117 | 101 547 | 21 407 | 75 619 | 53 223 | 22 396 | - | - | - |
| MASSACHUSETTS | 264 328 | 69 725 | 119 381 | 15 093 | 104 186 | 78 436 | 25 750 | - | - | - |
| MICHIGAN | 429 854 | 106 957 | 248 065 | 48 300 | 192 585 | 127 411 | 65 174 | - | - | - |
| MINNESOTA | 184 255 | 48 100 | 101 364 | 20 935 | 80 429 | 57 012 | 23 417 | - | - | - |
| MISSISSIPPI | 108 533 | 33 305 | 54 938 | 11 694 | 40 189 | 29 358 | 10 831 | - | - | - |
| MISSOURI | 204 594 | 55 926 | 105 922 | 16 134 | 84 978 | 57 677 | 27 301 | - | - | - |
| MONTANA | 39 130 | 14 415 | 21 042 | 5 235 | 15 644 | 11 477 | 4 167 | - | - | - |
| NEBRASKA | 84 582 | 26 313 | 42 900 | 12 495 | 29 634 | 21 879 | 7 755 | - | - | - |
| NEVADA | 30 427 | 8 786 | 12 735 | 2 841 | 9 894 | 6 902 | 2 992 | - | - | - |
| NEW HAMPSHIRE | 34 624 | 12 283 | 17 137 | 4 254 | 12 883 | 10 024 | 2 859 | - | - | - |
| NEW JERSEY | 328 194 | 69 813 | 167 779 | 18 192 | 144 820 | 105 209 | 39 611 | - | - | - |
| NEW MEXICO | 60 871 | 23 873 | 33 493 | 9 889 | 23 604 | 16 662 | 6 942 | - | - | - |
| NEW YORK | 1 002 764 | 188 416 | 409 547 | 36 964 | 338 768 | 228 715 | 110 053 | - | - | - |
| NORTH CAROLINA | 230 260 | 77 047 | 120 504 | 27 654 | 85 787 | 57 084 | 28 703 | - | - | - |
| NORTH DAKOTA | 29 328 | 10 338 | 16 976 | 4 684 | 12 161 | 8 755 | 3 406 | - | - | - |
| OHIO | 430 999 | 96 491 | 223 754 | 36 263 | 177 778 | 125 632 | 52 146 | - | - | - |
| OKLAHOMA | 128 250 | 44 950 | 64 625 | 16 702 | 47 493 | 33 647 | 13 846 | - | - | - |
| OREGON | 116 358 | 36 988 | 60 751 | 12 290 | 43 151 | 29 580 | 13 571 | - | - | - |
| PENNSYLVANIA | 466 053 | 131 009 | 221 063 | 23 609 | 193 303 | 134 478 | 58 825 | - | - | - |
| RHODE ISLAND | 41 213 | 17 535 | 20 272 | 5 308 | 14 964 | 11 394 | 3 570 | - | - | - |
| SOUTH CAROLINA | 132 072 | 48 403 | 70 360 | 16 326 | 54 034 | 38 169 | 15 665 | - | - | - |
| SOUTH DAKOTA | 32 973 | 11 321 | 18 015 | 3 900 | 14 112 | 10 276 | 3 836 | - | - | - |
| TENNESSEE | 193 149 | 55 221 | 88 683 | 19 349 | 69 334 | 47 542 | 21 792 | - | - | - |
| TEXAS | 547 346 | 131 707 | 294 640 | 53 536 | 230 544 | 165 381 | 65 163 | - | - | - |
| UTAH | 58 977 | 25 181 | 35 547 | 14 055 | 21 492 | 15 061 | 6 431 | - | - | - |
| VERMONT | 23 259 | 10 207 | 12 905 | 3 452 | 9 453 | 7 173 | 2 280 | - | - | - |
| VIRGINIA | 237 937 | 79 431 | 130 259 | 26 849 | 103 410 | 70 258 | 33 152 | - | - | - |
| WASHINGTON | 174 591 | 57 652 | 89 282 | 24 988 | 64 172 | 45 138 | 19 034 | - | - | - |
| WEST VIRGINIA | 81 857 | 33 167 | 43 745 | 9 310 | 34 435 | 23 288 | 11 147 | - | - | - |
| WISCONSIN | 207 441 | 50 438 | 112 422 | 26 185 | 79 912 | 57 133 | 22 779 | - | - | - |
| WYOMING | 22 382 | 7 449 | 11 400 | 2 325 | 8 333 | 6 049 | 2 284 | - | - | - |

See footnotes at end of table.

Table 9. Full-Time Equivalent Employment of State and Local Governments, by Function and by State: October 1974—Continued

| State | Education—Continued | | | | | | | All functions other than education | |
|--------------------------------|----------------------------------|---------------------|---------|-----------------------|---------------------|---------|-------------------------|------------------------------------|-----------|
| | Institutions of higher education | | | | | | Other education (State) | | |
| | State and local governments | | | State government only | | | | | |
| | Total | Instructional staff | Other | Total | Instructional staff | Other | | | |
| UNITED STATES, TOTAL . . . | 1 004 593 | 386 607 | 617 986 | 827 005 | 297 612 | 529 393 | 87 120 | 4 950 226 | 1 724 654 |
| ALABAMA | 17 172 | 5 847 | 11 325 | 17 172 | 5 947 | 11 325 | 3 213 | 83 628 | 30 632 |
| ALASKA | 2 205 | 1 023 | 1 182 | 2 205 | 1 023 | 1 182 | 312 | 13 721 | 8 921 |
| ARIZONA | 14 421 | 5 279 | 9 142 | 10 824 | 3 790 | 7 034 | 888 | 49 610 | 17 371 |
| ARKANSAS | 8 814 | 3 090 | 5 724 | 8 322 | 2 869 | 5 453 | 2 341 | 40 031 | 18 400 |
| CALIFORNIA | 117 309 | 49 356 | 67 953 | 79 329 | 29 861 | 49 468 | 4 404 | 539 221 | 129 107 |
| COLORADO | 20 641 | 5 727 | 14 914 | 19 519 | 5 248 | 14 271 | 564 | 57 921 | 19 037 |
| CONNECTICUT | 8 395 | 3 375 | 5 020 | 8 395 | 3 375 | 5 020 | 2 020 | 59 872 | 28 979 |
| DELAWARE | 7 147 | 1 688 | 5 459 | 7 147 | 1 688 | 5 459 | 235 | 13 751 | 9 125 |
| DISTRICT OF COLUMBIA | 2 103 | 808 | 1 295 | - | - | - | - | 39 756 | - |
| FLORIDA | 32 338 | 12 575 | 19 763 | 21 747 | 7 876 | 13 871 | 2 641 | 205 865 | 66 846 |
| GEORGIA | 23 042 | 7 373 | 15 669 | 22 545 | 7 023 | 15 522 | 3 267 | 132 405 | 45 116 |
| HAWAII | 5 257 | 2 076 | 3 181 | 5 257 | 2 076 | 3 181 | 153 | 20 781 | 10 724 |
| IDAHO | 4 524 | 1 890 | 2 634 | 4 059 | 1 552 | 2 507 | 471 | 20 252 | 9 666 |
| ILLINOIS | 47 677 | 19 172 | 28 505 | 36 410 | 14 261 | 22 149 | 2 492 | 234 618 | 74 583 |
| INDIANA | 25 237 | 9 666 | 15 566 | 24 751 | 9 478 | 15 273 | 2 198 | 97 821 | 27 355 |
| IOWA | 15 556 | 5 735 | 9 821 | 12 817 | 4 418 | 8 399 | 1 384 | 58 217 | 22 220 |
| KANSAS | 15 501 | 7 472 | 8 029 | 13 013 | 6 225 | 6 788 | 778 | 54 322 | 21 305 |
| KENTUCKY | 14 515 | 4 952 | 9 563 | 14 515 | 4 952 | 9 563 | 5 240 | 63 470 | 31 904 |
| LOUISIANA | 16 224 | 6 434 | 9 786 | 16 192 | 6 409 | 9 783 | 2 125 | 91 303 | 43 457 |
| MAINE | 4 055 | 1 123 | 2 932 | 4 055 | 1 123 | 2 932 | 907 | 21 635 | 12 340 |
| MARYLAND | 24 081 | 10 961 | 13 120 | 19 560 | 8 854 | 10 706 | 1 847 | 94 922 | 39 710 |
| MASSACHUSETTS | 14 065 | 5 843 | 8 222 | 13 963 | 5 770 | 8 193 | 1 130 | 144 947 | 54 632 |
| MICHIGAN | 52 992 | 17 566 | 35 426 | 45 812 | 13 933 | 31 879 | 2 488 | 181 789 | 58 657 |
| MINNESOTA | 20 009 | 4 950 | 11 059 | 20 009 | 8 950 | 11 059 | 926 | 82 891 | 27 165 |
| MISSISSIPPI | 13 239 | 4 573 | 8 666 | 10 184 | 3 037 | 7 147 | 1 510 | 53 595 | 21 611 |
| MISSOURI | 19 403 | 9 142 | 10 261 | 14 593 | 7 423 | 7 170 | 1 541 | 98 672 | 39 792 |
| MONTANA | 4 995 | 1 831 | 3 164 | 4 832 | 1 732 | 3 100 | 403 | 18 088 | 9 180 |
| NEBRASKA | 12 565 | 4 354 | 8 211 | 11 794 | 3 953 | 7 841 | 701 | 41 682 | 13 818 |
| NEVADA | 2 583 | 864 | 1 719 | 2 583 | 864 | 1 719 | 258 | 17 692 | 5 945 |
| NEW HAMPSHIRE | 3 799 | 1 077 | 2 722 | 3 799 | 1 077 | 2 722 | 455 | 17 487 | 8 029 |
| NEW JERSEY | 21 010 | 8 810 | 12 200 | 16 243 | 6 970 | 9 273 | 1 949 | 160 415 | 51 621 |
| NEW MEXICO | 9 152 | 2 334 | 6 818 | 9 152 | 2 334 | 6 818 | 737 | 27 378 | 13 984 |
| NEW YORK | 63 922 | 30 711 | 33 211 | 30 107 | 11 186 | 18 921 | 6 857 | 593 217 | 151 452 |
| NORTH CAROLINA | 31 616 | 11 047 | 20 569 | 24 553 | 7 146 | 17 407 | 3 101 | 109 765 | 49 393 |
| NORTH DAKOTA | 4 448 | 1 694 | 2 753 | 4 317 | 1 615 | 2 702 | 367 | 12 352 | 5 654 |
| OHIO | 44 172 | 15 947 | 28 225 | 34 459 | 11 707 | 22 752 | 1 804 | 207 245 | 60 228 |
| OKLAHOMA | 15 673 | 5 091 | 10 582 | 15 243 | 4 839 | 10 404 | 1 459 | 63 625 | 28 248 |
| OREGON | 16 630 | 8 080 | 8 550 | 11 320 | 5 315 | 6 005 | 970 | 55 607 | 24 698 |
| PENNSYLVANIA | 25 414 | 9 447 | 15 967 | 21 263 | 7 313 | 13 950 | 2 346 | 244 990 | 107 400 |
| RHODE ISLAND | 4 283 | 1 553 | 2 730 | 4 283 | 1 553 | 2 730 | 1 025 | 20 941 | 12 227 |
| SOUTH CAROLINA | 11 458 | 2 400 | 8 858 | 11 458 | 2 600 | 8 858 | 4 868 | 61 712 | 32 077 |
| SOUTH DAKOTA | 3 588 | 1 325 | 2 260 | 3 585 | 1 325 | 2 260 | 315 | 14 958 | 7 421 |
| TENNESSEE | 16 538 | 6 114 | 10 423 | 16 538 | 6 115 | 10 423 | 2 811 | 104 466 | 35 872 |
| TEXAS | 60 130 | 20 310 | 39 820 | 49 570 | 15 391 | 34 179 | 3 966 | 252 706 | 82 171 |
| UTAH | 13 328 | 3 225 | 10 103 | 13 328 | 3 225 | 10 103 | 727 | 23 430 | 11 126 |
| VERMONT | 3 126 | 1 377 | 1 749 | 3 126 | 1 377 | 1 749 | 326 | 10 354 | 6 555 |
| VIRGINIA | 24 335 | 9 179 | 15 156 | 24 335 | 9 179 | 15 156 | 2 514 | 107 678 | 52 982 |
| WASHINGTON | 24 012 | 9 537 | 14 475 | 23 890 | 9 462 | 14 428 | 1 098 | 85 309 | 32 664 |
| WEST VIRGINIA | 8 039 | 3 213 | 4 826 | 8 039 | 3 213 | 4 826 | 1 291 | 38 112 | 23 857 |
| WISCONSIN | 30 991 | 14 136 | 16 855 | 24 666 | 10 366 | 14 300 | 1 519 | 95 019 | 24 253 |
| WYOMING | 2 869 | 1 044 | 1 820 | 2 127 | 694 | 1 433 | 198 | 10 982 | 5 124 |

See footnotes at end of table.

Table 9. Full-Time Equivalent Employment of State and Local Governments, by Function and by State: October 1974—Continued

| State | Highways | | Public welfare | | Hospitals | | Health | | Police protection | |
|--------------------------------|-----------------------------|-----------------------|-----------------------------|-----------------------|-----------------------------|-----------------------|-----------------------------|-----------------------|-----------------------------|-----------------------|
| | State and local governments | State government only | State and local governments | State government only | State and local governments | State government only | State and local governments | State government only | State and local governments | State government only |
| UNITED STATES, TOTAL . . . | 561 624 | 277 182 | 315 706 | 141 503 | 935 323 | 471 860 | 179 553 | 81 493 | 531 877 | 68 530 |
| ALABAMA | 13 987 | 5 931 | 3 761 | 3 326 | 22 736 | 9 610 | 2 842 | 1 051 | 7 015 | 815 |
| ALASKA | 2 011 | 1 618 | 519 | 902 | 563 | 425 | 476 | 516 | 882 | 315 |
| ARIZONA | 6 249 | 3 790 | 1 664 | 1 603 | 7 132 | 3 798 | 1 302 | 358 | 6 268 | 1 270 |
| ARKANSAS | 7 284 | 3 758 | 1 712 | 1 587 | 9 383 | 4 073 | 1 768 | 1 404 | 3 167 | 579 |
| CALIFORNIA | 17 232 | 16 318 | 37 499 | 1 437 | 78 561 | 21 657 | 21 138 | 6 337 | 61 185 | 9 913 |
| COLORADO | 7 449 | 2 878 | 3 437 | 902 | 8 591 | 4 756 | 2 757 | 316 | 6 423 | 787 |
| CONNECTICUT | 7 918 | 4 126 | 2 556 | 1 913 | 9 322 | 8 677 | 2 058 | 939 | 7 697 | 1 172 |
| DELAWARE | 1 664 | 1 332 | 1 064 | 1 064 | 1 651 | 1 661 | 751 | 747 | 1 510 | 576 |
| DISTRICT OF COLUMBIA | 1 388 | - | 3 388 | - | 2 983 | - | 4 053 | - | 5 913 | - |
| FLORIDA | 17 014 | 7 194 | 7 790 | 5 893 | 42 172 | 13 462 | 7 356 | 5 914 | 22 680 | 2 149 |
| GEORGIA | 14 917 | 7 957 | 4 725 | 4 720 | 43 422 | 12 230 | 6 322 | 3 868 | 11 108 | 1 562 |
| HAWAII | 1 828 | 834 | 532 | 525 | 2 092 | 2 092 | 1 299 | 1 162 | 2 235 | - |
| IDaho | 5 066 | 1 567 | 936 | 784 | 2 854 | 922 | 1 460 | 1 386 | 1 766 | 247 |
| ILLINOIS | 19 627 | 7 423 | 15 623 | 11 681 | 39 532 | 21 937 | 6 666 | 2 220 | 31 368 | 2 426 |
| INDIANA | 11 198 | 5 286 | 5 143 | 773 | 24 943 | 10 065 | 2 036 | 592 | 9 885 | 1 359 |
| IOWA | 10 178 | 4 006 | 3 968 | 2 418 | 12 714 | 6 197 | 1 287 | 607 | 5 464 | 1 212 |
| KANSAS | 9 612 | 4 029 | 3 051 | 2 395 | 11 031 | 6 399 | 1 388 | 477 | 4 753 | 564 |
| KENTUCKY | 10 484 | 8 233 | 4 249 | 3 872 | 11 184 | 5 737 | 2 238 | 1 099 | 5 933 | 1 284 |
| LOUISIANA | 11 784 | 7 259 | 4 959 | 4 326 | 21 805 | 15 322 | 2 790 | 1 552 | 9 006 | 1 116 |
| MAINE | 4 863 | 3 171 | 815 | 753 | 2 440 | 1 904 | 500 | 371 | 1 960 | 402 |
| MARYLAND | 9 175 | 4 664 | 4 630 | 865 | 15 483 | 11 055 | 5 729 | 3 082 | 12 290 | 2 050 |
| MASSACHUSETTS | 13 137 | 6 178 | 7 335 | 6 860 | 29 236 | 18 418 | 3 097 | 1 623 | 15 597 | 1 689 |
| MICHIGAN | 17 481 | 4 738 | 12 965 | 10 557 | 36 156 | 17 855 | 5 721 | 1 501 | 21 414 | 2 759 |
| MINNESOTA | 12 363 | 5 193 | 5 798 | 627 | 17 208 | 8 815 | 2 533 | 1 230 | 6 932 | 774 |
| MISSISSIPPI | 9 243 | 3 476 | 2 157 | 2 026 | 15 551 | 5 878 | 2 121 | 1 583 | 4 367 | 830 |
| MISSOURI | 11 580 | 6 672 | 5 991 | 5 667 | 24 374 | 13 589 | 3 562 | 1 431 | 12 004 | 1 588 |
| MONTANA | 3 342 | 1 893 | 1 075 | 880 | 2 370 | 1 456 | 520 | 322 | 1 730 | 315 |
| NEBRASKA | 5 527 | 2 342 | 2 711 | 908 | 7 085 | 3 981 | 1 207 | 304 | 3 320 | 511 |
| NEVADA | 2 079 | 1 293 | 672 | 559 | 2 631 | 328 | 553 | 308 | 2 243 | 200 |
| NEW HAMPSHIRE | 3 075 | 1 772 | 2 394 | 703 | 2 368 | 1 809 | 455 | 361 | 1 674 | 272 |
| NEW JERSEY | 17 913 | 7 975 | 10 790 | 3 638 | 23 823 | 13 950 | 4 803 | 1 911 | 25 379 | 3 697 |
| NEW MEXICO | 4 247 | 3 027 | 1 508 | 1 507 | 4 506 | 2 082 | 804 | 720 | 2 975 | 642 |
| NEW YORK | 48 697 | 17 762 | 49 982 | 1 580 | 123 753 | 60 422 | 24 106 | 8 510 | 63 446 | 4 639 |
| NORTH CAROLINA | 14 555 | 11 808 | 5 795 | 1 139 | 21 758 | 13 168 | 4 812 | 1 064 | 10 802 | 2 040 |
| NORTH DAKOTA | 2 577 | 1 059 | 809 | 211 | 1 436 | 1 436 | 307 | 184 | 1 046 | 139 |
| OHIO | 23 910 | 10 089 | 15 401 | 1 297 | 32 692 | 18 716 | 7 773 | 2 013 | 21 363 | 2 122 |
| OKLAHOMA | 9 239 | 3 530 | 5 993 | 5 868 | 12 638 | 7 301 | 1 858 | 999 | 5 439 | 1 004 |
| OREGON | 7 271 | 5 461 | 4 152 | 3 328 | 6 073 | 4 371 | 1 754 | 625 | 5 296 | 1 106 |
| PENNSYLVANIA | 32 586 | 20 205 | 25 344 | 12 432 | 35 516 | 30 738 | 5 671 | 2 693 | 28 681 | 4 928 |
| RHODE ISLAND | 1 893 | 901 | 1 735 | 1 721 | 3 289 | 3 289 | 935 | 915 | 2 250 | 236 |
| SOUTH CAROLINA | 7 240 | 5 275 | 3 504 | 3 390 | 16 517 | 8 783 | 3 984 | 3 218 | 5 189 | 1 097 |
| SOUTH DAKOTA | 3 152 | 1 521 | 957 | 910 | 1 752 | 1 332 | 414 | 299 | 1 288 | 314 |
| TENNESSEE | 13 203 | 6 008 | 4 464 | 3 601 | 11 963 | 9 990 | 4 243 | 2 773 | 6 871 | 899 |
| TEXAS | 31 784 | 17 424 | 11 628 | 10 893 | 56 748 | 23 313 | 6 252 | 4 631 | 23 370 | 1 730 |
| UTAH | 3 375 | 2 099 | 956 | 781 | 3 512 | 2 625 | 1 129 | 398 | 2 542 | 420 |
| VERMONT | 2 374 | 1 134 | 5 505 | 502 | 1 064 | 1 064 | 355 | 332 | 942 | 377 |
| VIRGINIA | 16 016 | 12 443 | 5 162 | 237 | 18 033 | 16 077 | 5 852 | 5 056 | 9 889 | 1 531 |
| WASHINGTON | 11 140 | 5 447 | 4 620 | 4 410 | 10 050 | 6 514 | 2 144 | 523 | 7 247 | 1 192 |
| WEST VIRGINIA | 6 222 | 7 399 | 2 640 | 2 613 | 7 828 | 5 109 | 1 131 | 779 | 2 730 | 707 |
| WISCONSIN | 13 594 | 2 023 | 6 180 | 1 076 | 16 982 | 5 570 | 2 976 | 989 | 10 451 | 784 |
| WYOMING | 1 861 | 1 251 | 402 | 402 | 2 783 | 790 | 263 | 200 | 895 | 191 |

See footnotes at end of table.

Table 9. Full-Time Equivalent Employment of State and Local Governments, by Function and by State: October 1974—Continued

| State | Fire protection (local) | Sewerage (local) | Sanitation other than sewerage (local) | Parks and recreation (local) | Natural resources | | Correction | | Libraries (local) |
|--------------------------------|-------------------------|------------------|--|------------------------------|-----------------------------|-----------------------|-----------------------------|-----------------------|-------------------|
| | | | | | State and local governments | State government only | State and local governments | State government only | |
| UNITED STATES, TOTAL . . . | 211 048 | 78 032 | 123 797 | 136 279 | 169 016 | 141 402 | 184 521 | 114 017 | 64 179 |
| ALABAMA | 3 151 | 929 | 3 404 | 1 546 | 2 840 | 2 731 | 1 867 | 1 232 | 530 |
| ALASKA | 4 327 | 166 | 158 | 215 | 1 006 | 998 | 563 | 538 | 124 |
| ARIZONA | 1 661 | 434 | 1 553 | 1 719 | 2 424 | 1 519 | 1 928 | 1 037 | 607 |
| ARKANSAS | 1 342 | 444 | 1 000 | 465 | 2 837 | 2 586 | 799 | 657 | 265 |
| CALIFORNIA | 24 066 | 6 100 | 5 877 | 20 881 | 17 466 | 10 440 | 30 484 | 11 951 | 9 565 |
| COLORADO | 2 343 | 1 117 | 794 | 2 433 | 2 079 | 1 707 | 2 237 | 1 665 | 1 020 |
| CONNECTICUT | 4 166 | 1 170 | 1 538 | 1 768 | 1 105 | 1 054 | 2 121 | 2 121 | 1 076 |
| DELAWARE | 238 | 507 | 271 | 370 | 773 | 760 | 645 | 645 | - |
| DISTRICT OF COLUMBIA | 1 470 | 665 | 2 148 | 903 | - | - | 1 893 | - | 601 |
| FLORIDA | 8 312 | 3 709 | 7 017 | 8 217 | 8 325 | 6 609 | 9 872 | 8 323 | 1 679 |
| GEORGIA | 4 616 | 1 774 | 5 113 | 2 422 | 5 020 | 4 783 | 4 194 | 2 937 | 678 |
| HAWAII | 1 213 | 421 | 569 | 1 235 | 1 153 | 1 137 | 432 | 357 | 5 |
| IDAHO | 711 | 198 | 125 | 367 | 2 023 | 2 110 | 361 | 301 | 190 |
| ILLINOIS | 10 266 | 5 746 | 4 546 | 10 131 | 5 004 | 4 218 | 7 537 | 4 881 | 3 915 |
| INDIANA | 5 037 | 2 291 | 2 091 | 2 449 | 2 600 | 2 067 | 3 246 | 2 020 | 2 395 |
| IOWA | 1 675 | 993 | 679 | 1 181 | 2 829 | 2 122 | 1 449 | 1 052 | 787 |
| KANSAS | 2 242 | 664 | 898 | 911 | 2 495 | 2 249 | 1 628 | 1 121 | -318 |
| KENTUCKY | 2 876 | 1 145 | 2 030 | 812 | 4 535 | 4 406 | 1 882 | 1 519 | 518 |
| LOUISIANA | 3 673 | 1 335 | 3 458 | 2 416 | 4 847 | 4 232 | 2 403 | 1 599 | 1 016 |
| MAINE | 1 215 | 293 | 189 | 343 | 1 881 | 1 865 | 817 | 718 | 182 |
| MARYLAND | 4 608 | 2 151 | 2 705 | 4 029 | 2 539 | 2 442 | 5 291 | 4 408 | 1 949 |
| MASSACHUSETTS | 12 848 | 1 526 | 2 671 | 2 754 | 2 963 | 2 435 | 4 226 | 2 866 | 3 474 |
| MICHIGAN | 7 831 | 2 444 | 3 680 | 5 739 | 4 853 | 4 127 | 5 489 | 3 219 | 2 272 |
| MINNESOTA | 2 215 | 1 432 | 817 | 2 348 | 3 255 | 2 723 | 2 642 | 1 505 | 1 477 |
| MISSISSIPPI | 1 614 | 668 | 2 118 | 622 | 3 396 | 3 242 | 906 | 796 | 329 |
| MISSOURI | 4 364 | 1 682 | 1 017 | 2 487 | 3 542 | 3 239 | 3 079 | 1 550 | 1 487 |
| MONTANA | 457 | 162 | 326 | 140 | 1 302 | 1 235 | 534 | 443 | 248 |
| NEBRASKA | 1 194 | 385 | 302 | 810 | 2 624 | 1 921 | 912 | 794 | 439 |
| NEVADA | 1 071 | 175 | 63 | 657 | 742 | 640 | 875 | 451 | 216 |
| NEW HAMPSHIRE | 1 103 | 180 | 324 | 199 | 786 | 720 | 525 | 379 | 241 |
| NEW JERSEY | 7 904 | 2 679 | 3 930 | 4 519 | 2 511 | 2 127 | 7 171 | 3 424 | 3 353 |
| NEW MEXICO | 902 | 360 | 744 | 656 | 1 597 | 1 401 | 708 | 538 | 234 |
| NEW YORK | 22 128 | 6 436 | 18 285 | 15 031 | 8 270 | 7 843 | 20 848 | 9 931 | 5 930 |
| NORTH CAROLINA | 3 780 | 2 009 | 4 971 | 1 855 | 5 117 | 4 188 | 5 641 | 4 945 | 694 |
| NORTH DAKOTA | 351 | 74 | 256 | 126 | 1 021 | 848 | 215 | 186 | 38 |
| OHIO | 10 150 | 5 454 | 5 520 | 5 017 | 5 620 | 4 984 | 7 918 | 5 830 | 3 057 |
| OKLAHOMA | 3 028 | 729 | 2 278 | 1 393 | 2 709 | 2 251 | 1 745 | 1 468 | 537 |
| OREGON | 2 656 | 1 178 | 275 | 1 456 | 3 467 | 3 074 | 2 048 | 1 335 | 513 |
| PENNSYLVANIA | 7 204 | 4 828 | 5 737 | 5 290 | 5 917 | 5 802 | 8 146 | 4 112 | 1 734 |
| RHODE ISLAND | 1 816 | 302 | 360 | 352 | 458 | 455 | 685 | 685 | 189 |
| SOUTH CAROLINA | 1 521 | 1 004 | 2 645 | 827 | 2 818 | 2 685 | 2 368 | 2 035 | 445 |
| SOUTH DAKOTA | 330 | 146 | 147 | 239 | 1 078 | 902 | 326 | 231 | 164 |
| TENNESSEE | 4 495 | 1 396 | 3 787 | 2 139 | 4 279 | 3 904 | 3 505 | 2 457 | 883 |
| TEXAS | 11 992 | 3 984 | 8 631 | 6 287 | 9 268 | 6 307 | 7 582 | 4 641 | 2 924 |
| UTAH | 813 | 384 | 395 | 673 | 1 535 | 1 344 | 760 | 567 | 354 |
| VERMONT | 249 | 105 | 65 | 98 | 839 | 798 | 363 | 363 | 38 |
| VIRGINIA | 4 105 | 2 313 | 3 711 | 3 257 | 3 657 | 3 323 | 5 349 | 3 987 | 1 515 |
| WASHINGTON | 4 268 | 1 131 | 877 | 2 358 | 4 534 | 3 602 | 4 039 | 2 674 | 1 795 |
| WEST VIRGINIA | 934 | 532 | 955 | 575 | 2 136 | 2 046 | 1 179 | 987 | 202 |
| WISCONSIN | 4 195 | 1 975 | 2 439 | 3 407 | 3 121 | 2 406 | 2 992 | 2 313 | 1 637 |
| WYOMING | 213 | 83 | 252 | 135 | 914 | 795 | 256 | 203 | 144 |

See footnotes at end of table.

Table 9. Full-Time Equivalent Employment of State and Local Governments, by Function and by State: October 1974—Continued

| State | Employment security administration (State) | Financial administration | | General control | | Local utilities | | State liquor stores | Other and unallocable | |
|--------------------------------|--|-----------------------------|-----------------------|-----------------------------|-----------------------|-----------------|---------|---------------------|-----------------------------|-----------------------|
| | | State and local governments | State government only | State and local governments | State government only | Water supply | Other | | State and local governments | State government only |
| UNITED STATES, TOTAL . . . | 85 105 | 242 690 | 105 287 | 317 083 | 62 997 | 117 884 | 181 564 | 14 483 | 500 462 | 161 017 |
| ALABAMA | 1 246 | 2 807 | 1 074 | 3 633 | 766 | 2 131 | 1 789 | 1 091 | 6 323 | 1 759 |
| ALASKA | 390 | 1 017 | 537 | 1 450 | 948 | 138 | 280 | - | 3 334 | 2 338 |
| ARIZONA | 1 010 | 2 809 | 962 | 3 593 | 648 | 1 254 | 2 555 | - | 5 428 | 1 376 |
| ARKANSAS | 1 070 | 2 016 | 985 | 2 197 | 546 | 1 078 | 500 | - | 2 704 | 1 155 |
| CALIFORNIA | 10 360 | 31 565 | 13 886 | 35 677 | 2 602 | 15 249 | 25 591 | - | 70 725 | 24 006 |
| COLORADO | 904 | 3 870 | 1 825 | 4 601 | 1 475 | 2 142 | 959 | - | 4 745 | 1 622 |
| CONNECTICUT | 1 219 | 3 168 | 1 456 | 3 951 | 2 318 | 885 | 402 | - | 7 752 | 3 982 |
| DELAWARE | 206 | 874 | 517 | 1 127 | 737 | 153 | 120 | - | 1 817 | 880 |
| DISTRICT OF COLUMBIA | 1 222 | 485 | - | 2 305 | - | 601 | 4 317 | - | 6 458 | - |
| FLORIDA | 1 840 | 10 908 | 3 983 | 13 284 | 4 308 | 4 519 | 6 048 | - | 25 123 | 7 172 |
| GEORGIA | 1 054 | 4 423 | 1 242 | 6 306 | 1 723 | 3 749 | 3 395 | - | 9 167 | 3 040 |
| HAWAII | 364 | 1 038 | 724 | 1 823 | 1 000 | 853 | 23 | - | 3 676 | 2 529 |
| IDAHO | 231 | 1 456 | 585 | 1 297 | 276 | 241 | 69 | 254 | 1 607 | 703 |
| ILLINOIS | 3 987 | 9 634 | 3 898 | 16 798 | 3 148 | 5 573 | 13 715 | - | 25 130 | 8 762 |
| INDIANA | 1 467 | 4 794 | 1 583 | 6 246 | 689 | 1 851 | 2 782 | - | 7 367 | 1 454 |
| IOWA | 908 | 3 280 | 979 | 3 573 | 578 | 1 205 | 977 | 730 | 4 340 | 1 411 |
| KANSAS | 691 | 2 989 | 1 063 | 3 780 | 407 | 1 736 | 1 696 | - | 4 417 | 1 908 |
| KENTUCKY | 428 | 1 930 | 1 167 | 4 651 | 721 | 1 935 | 919 | - | 5 721 | 3 836 |
| LOUISIANA | 1 225 | 4 216 | 2 196 | 4 497 | 1 082 | 2 812 | 945 | - | 8 112 | 3 346 |
| MAINE | 539 | 1 386 | 712 | 1 259 | 417 | 352 | 89 | 314 | 2 198 | 1 194 |
| MARYLAND | 1 304 | 5 384 | 3 030 | 6 019 | 2 173 | 1 959 | 155 | - | 9 522 | 2 737 |
| MASSACHUSETTS | 2 822 | 8 093 | 4 289 | 8 406 | 2 074 | 3 569 | 3 075 | - | 14 918 | 5 378 |
| MICHIGAN | 3 903 | 8 825 | 3 540 | 14 604 | 1 858 | 4 160 | 5 357 | 359 | 16 736 | 4 441 |
| MINNESOTA | 1 378 | 4 598 | 1 517 | 5 507 | 872 | 1 499 | 1 082 | - | 7 851 | 2 529 |
| MISSISSIPPI | 1 044 | 2 209 | 890 | 2 444 | 374 | 1 353 | 488 | 124 | 2 841 | 1 348 |
| MISSOURI | 1 924 | 4 056 | 1 875 | 6 418 | 1 227 | 2 319 | 2 311 | - | 6 475 | 1 030 |
| MONTANA | 408 | 1 472 | 914 | 1 460 | 267 | 285 | 22 | 278 | 1 761 | 773 |
| NEBRASKA | 472 | 2 028 | 667 | 2 890 | 676 | 914 | 5 313 | - | 3 553 | 1 042 |
| NEVADA | 545 | 1 361 | 732 | 1 316 | 308 | 316 | 40 | - | 2 140 | 581 |
| NEW HAMPSHIRE | 327 | 809 | 455 | 783 | 230 | 364 | 20 | 401 | 1 459 | 600 |
| NEW JERSEY | 3 583 | 7 338 | 2 815 | 12 830 | 2 742 | 2 614 | 578 | - | 18 691 | 5 749 |
| NEW MEXICO | 621 | 1 956 | 1 022 | 1 822 | 961 | 529 | 340 | - | 2 829 | 1 463 |
| NEW YORK | 9 564 | 21 976 | 11 571 | 34 757 | 5 677 | 7 866 | 44 389 | - | 65 753 | 13 953 |
| NORTH CAROLINA | 1 849 | 4 921 | 1 948 | 5 887 | 3 487 | 2 845 | 994 | - | 11 280 | 3 857 |
| NORTH DAKOTA | 368 | 1 012 | 369 | 1 111 | 145 | 245 | 48 | - | 1 312 | 672 |
| OHIO | 3 475 | 9 140 | 3 789 | 16 951 | 1 774 | 6 694 | 4 750 | 2 092 | 20 262 | 4 047 |
| OKLAHOMA | 1 283 | 2 809 | 1 105 | 3 702 | 1 035 | 1 965 | 479 | - | 5 801 | 2 404 |
| OREGON | 1 281 | 3 688 | 1 776 | 3 787 | 985 | 1 699 | 1 630 | 233 | 7 150 | 2 923 |
| PENNSYLVANIA | 5 006 | 13 377 | 6 488 | 18 554 | 2 828 | 4 217 | 10 728 | 4 583 | 21 871 | 7 585 |
| RHODE ISLAND | 647 | 1 311 | 767 | 1 231 | 709 | 476 | - | - | 3 012 | 1 902 |
| SOUTH CAROLINA | 1 114 | 2 860 | 1 413 | 2 669 | 413 | 1 531 | 433 | - | 5 043 | 2 654 |
| SOUTH DAKOTA | 367 | 1 382 | 338 | 1 254 | 307 | 286 | 179 | - | 1 497 | 900 |
| TENNESSEE | 1 185 | 4 022 | 1 967 | 4 477 | 954 | 3 489 | 7 452 | - | 7 613 | 2 134 |
| TEXAS | 4 181 | 11 892 | 2 828 | 13 792 | 1 525 | 10 181 | 7 993 | - | 20 217 | 4 696 |
| UTAH | 657 | 1 453 | 803 | 1 439 | 386 | 687 | 467 | 190 | 2 109 | 856 |
| VERMONT | 332 | 803 | 482 | 872 | 368 | 137 | 182 | 166 | 845 | 617 |
| VIRGINIA | 1 288 | 5 584 | 2 095 | 6 004 | 1 607 | 2 394 | 771 | 1 507 | 11 271 | 3 829 |
| WASHINGTON | 2 087 | 5 469 | 2 203 | 4 552 | 734 | 1 937 | 6 871 | 1 016 | 9 174 | 2 262 |
| WEST VIRGINIA | 884 | 1 827 | 889 | 1 820 | 310 | 720 | 163 | 911 | 2 723 | 1 223 |
| WISCONSIN | 1 726 | 5 473 | 2 923 | 6 978 | 1 449 | 1 957 | 1 061 | - | 7 875 | 2 994 |
| WYOMING | 223 | 841 | 513 | 999 | 159 | 230 | 22 | 32 | 734 | 365 |

Note: Statistics for local governments are subject to sampling variation. see text. Estimates for items of small magnitude in relation to State totals are subject to relatively high sampling variation. Because of rounding, detail may not add to totals.

- Represents zero or rounds to zero.

The category of Employment Security Administration, normally a State government function, is applied to the District of Columbia because of its unique governmental status. However, this amount is included in local government totals as are all other data for the District of Columbia.

**Table 10. Payrolls of State and Local Governments, by Function and by State:
October 1974**

(Thousands of dollars)

| State | All functions | | Education | | | | | | | |
|--------------------------------|-----------------------------|-----------------------|-----------------------------|-----------------------|-----------------------------|---------------------|---------|-----------------------|---------------------|-------|
| | State and local governments | State government only | Total | | Local schools | | | | | |
| | | | State and local governments | State government only | State and local governments | | | State government only | | |
| | | | | | Total | Instructional staff | Other | Total | Instructional staff | Other |
| UNITED STATES, TOTAL . . . | 8 832 282 | 2 409 531 | 4 620 265 | 932 652 | 3 506 591 | 2 752 647 | 753 744 | 15 762 | 12 880 | 2 882 |
| ALABAMA | 109 705 | 41 489 | 54 228 | 18 012 | 36 217 | 30 125 | 6 092 | - | - | - |
| ALASKA | 31 130 | 15 945 | 14 434 | 5 408 | 11 070 | 7 866 | - | 2 044 | 1 302 | 742 |
| ARIZONA | 98 698 | 29 042 | 54 823 | 14 034 | 36 799 | 28 539 | 8 260 | - | - | - |
| ARKANSAS | 53 075 | 21 244 | 29 873 | 8 846 | 20 723 | 16 460 | 4 263 | - | - | - |
| CALIFORNIA | 1 134 660 | 242 287 | 545 211 | 95 229 | 401 172 | 308 608 | 93 164 | - | - | - |
| COLORADO | 110 181 | 37 943 | 61 750 | 19 776 | 40 932 | 31 592 | 9 340 | - | - | - |
| CONNECTICUT | 122 079 | 36 216 | 68 917 | 11 293 | 57 624 | 47 827 | 9 797 | - | - | - |
| DELAWARE | 25 016 | 11 580 | 14 180 | 4 473 | 9 706 | 7 415 | 2 291 | - | - | - |
| DISTRICT OF COLUMBIA | 57 706 | - | 16 561 | - | 14 007 | 10 769 | 3 238 | - | - | - |
| FLORIDA | 328 479 | 81 630 | 163 746 | 26 472 | 125 952 | 97 028 | 28 924 | - | - | - |
| GEORGIA | 173 217 | 56 403 | 81 731 | 20 918 | 60 414 | 48 479 | 11 935 | - | - | - |
| HAWAII | 40 423 | 30 475 | 19 985 | 19 985 | 13 682 | 11 551 | 2 131 | 13 682 | 11 551 | 2 131 |
| IDAHO | 78 572 | 11 461 | 14 770 | 3 962 | 10 430 | 8 339 | 2 091 | - | - | - |
| ILLINOIS | 483 116 | 110 962 | 266 869 | 44 040 | 209 637 | 161 676 | 47 961 | - | - | - |
| INDIANA | 167 670 | 44 673 | 102 240 | 24 452 | 77 421 | 61 026 | 16 395 | - | - | - |
| IOWA | 108 200 | 34 164 | 64 259 | 15 142 | 56 515 | 36 488 | 10 027 | - | - | - |
| KANSAS | 83 410 | 28 113 | 46 313 | 12 190 | 31 976 | 24 650 | 7 326 | - | - | - |
| KENTUCKY | 95 221 | 37 855 | 54 123 | 16 550 | 37 574 | 29 590 | 7 984 | - | - | - |
| LOUISIANA | 125 238 | 45 770 | 66 710 | 15 410 | 51 266 | 38 400 | 12 866 | - | - | - |
| MAINE | 33 723 | 13 568 | 18 223 | 4 043 | 14 216 | 11 303 | 2 913 | 36 | 27 | 9 |
| MARYLAND | 182 337 | 54 949 | 98 741 | 18 944 | 74 420 | 59 974 | 14 446 | - | - | - |
| MASSACHUSETTS | 245 023 | 61 040 | 116 106 | 15 288 | 100 706 | 81 886 | 18 820 | - | - | - |
| MICHIGAN | 464 841 | 111 871 | 284 215 | 53 548 | 220 942 | 168 889 | 52 053 | - | - | - |
| MINNESOTA | 174 205 | 49 034 | 101 831 | 24 017 | 77 814 | 61 209 | 16 605 | - | - | - |
| MISSISSIPPI | 66 738 | 23 589 | 35 812 | 9 440 | 24 217 | 19 614 | 4 603 | - | - | - |
| MISSOURI | 156 848 | 45 180 | 85 813 | 15 968 | 65 829 | 50 908 | 14 921 | - | - | - |
| MONTANA | 31 138 | 12 542 | 18 098 | 5 247 | 12 664 | 10 157 | 2 507 | - | - | - |
| NEBRASKA | 63 619 | 21 050 | 33 547 | 11 411 | 21 511 | 17 205 | 4 306 | - | - | - |
| NEVADA | 29 019 | 8 652 | 11 991 | 2 860 | 9 131 | 7 104 | 2 027 | - | - | - |
| NEW HAMPSHIRE | 26 199 | 10 131 | 13 547 | 3 682 | 9 865 | 8 389 | 1 476 | - | - | - |
| NEW JERSEY | 324 693 | 71 753 | 185 066 | 23 838 | 156 112 | 128 223 | 27 889 | - | - | - |
| NEW MEXICO | 44 232 | 18 241 | 24 987 | 7 891 | 17 096 | 13 406 | 3 690 | - | - | - |
| NEW YORK | 1 068 163 | 194 922 | 474 767 | 43 862 | 388 747 | 304 328 | 84 419 | - | - | - |
| NORTH CAROLINA | 176 867 | 62 866 | 97 667 | 23 534 | 67 382 | 54 027 | 13 355 | - | - | - |
| NORTH DAKOTA | 21 694 | 8 482 | 12 979 | 4 184 | 8 670 | 6 834 | 1 836 | - | - | - |
| OHIO | 369 441 | 89 119 | 197 767 | 37 486 | 151 942 | 119 592 | 32 350 | - | - | - |
| OKLAHOMA | 86 377 | 32 868 | 46 201 | 14 094 | 31 737 | 24 988 | 6 749 | - | - | - |
| OREGON | 104 083 | 34 413 | 54 994 | 12 894 | 37 098 | 28 360 | 8 738 | - | - | - |
| PENNSYLVANIA | 417 124 | 123 409 | 206 641 | 26 563 | 176 136 | 137 923 | 38 213 | - | - | - |
| RHODE ISLAND | 36 724 | 14 882 | 20 030 | 4 951 | 15 079 | 12 805 | 2 274 | - | - | - |
| SOUTH CAROLINA | 88 941 | 36 280 | 49 480 | 14 200 | 35 280 | 28 694 | 6 586 | - | - | - |
| SOUTH DAKOTA | 23 100 | 9 054 | 13 082 | 3 472 | 9 610 | 7 529 | 2 081 | - | - | - |
| TENNESSEE | 134 830 | 41 161 | 66 839 | 17 033 | 49 806 | 39 675 | 10 131 | - | - | - |
| TEXAS | 406 558 | 111 014 | 228 235 | 50 371 | 168 472 | 135 555 | 32 917 | - | - | - |
| UTAH | 44 276 | 19 278 | 26 537 | 10 538 | 15 998 | 12 734 | 3 264 | - | - | - |
| VERMONT | 18 201 | 8 613 | 10 254 | 3 219 | 7 035 | 5 873 | 1 162 | - | - | - |
| VIRGINIA | 186 317 | 64 368 | 107 906 | 26 475 | 81 710 | 62 123 | 19 587 | - | - | - |
| WASHINGTON | 167 800 | 57 881 | 89 330 | 27 3 | 61 710 | 46 925 | 14 785 | - | - | - |
| WEST VIRGINIA | 55 215 | 23 002 | 32 502 | 8 84 | 23 718 | 18 716 | 5 002 | - | - | - |
| WISCONSIN | 189 293 | 53 194 | 107 138 | 29 229 | 72 228 | 56 870 | 15 358 | - | - | - |
| WYOMING | 16 868 | 6 025 | 9 215 | 2 029 | 6 593 | 5 197 | 1 396 | - | - | - |

See footnotes at end of table.

Table 10. Payrolls of State and Local Governments, by Function and by State:
October 1974—Continued
(Thousands of dollars)

| State | Education—Continued | | | | | | | All functions other than education | |
|--------------------------------|----------------------------------|---------------------|---------|-----------------------|---------------------|---------|-------------------------|------------------------------------|-----------------------|
| | Institutions of higher education | | | | | | Other education (State) | State and local governments | State government only |
| | State and local governments | | | State government only | | | | | |
| | Total | Instructional staff | Other | Total | Instructional staff | Other | | | |
| UNITED STATES, TOTAL . . . | 1 033 450 | 562 621 | 470 828 | 336 665 | 436 103 | 400 562 | 80 225 | 4 212 017 | 1 476 878 |
| ALABAMA | 15 442 | 7 740 | 7 702 | 15 442 | 7 740 | 7 702 | 2 570 | 55 476 | 23 477 |
| ALASKA | 2 985 | 1 492 | 1 493 | 2 985 | 1 492 | 1 493 | 379 | 16 696 | 10 556 |
| ARIZONA | 17 203 | 9 596 | 7 607 | 13 212 | 7 203 | 6 008 | 822 | 43 874 | 15 008 |
| ARKANSAS | 7 417 | 4 319 | 3 098 | 7 113 | 4 129 | 2 984 | 1 733 | 23 202 | 12 399 |
| CALIFORNIA | 139 123 | 76 683 | 62 441 | 90 314 | 44 981 | 45 333 | 4 915 | 589 450 | 147 058 |
| COLORADO | 20 245 | 8 121 | 12 124 | 19 203 | 7 589 | 11 614 | 573 | 48 432 | 18 167 |
| CONNECTICUT | 9 221 | 4 819 | 4 402 | 9 221 | 4 819 | 4 402 | 2 071 | 53 162 | 24 923 |
| DELAWARE | 4 212 | 1 814 | 2 398 | 4 212 | 1 814 | 2 398 | 262 | 10 836 | 7 107 |
| DISTRICT OF COLUMBIA | 2 354 | 1 302 | 1 252 | - | - | - | - | 41 145 | - |
| FLORIDA | 35 311 | 20 617 | 14 694 | 23 989 | 13 780 | 10 209 | 2 443 | 164 734 | 55 158 |
| GEORGIA | 18 624 | 9 107 | 9 517 | 18 225 | 8 826 | 9 400 | 2 693 | 91 486 | 35 485 |
| HAWAII | 6 164 | 2 900 | 3 264 | 6 164 | 2 900 | 3 264 | 139 | 20 438 | 10 491 |
| IDAH0 | 3 937 | 1 991 | 1 946 | 3 559 | 1 691 | 1 868 | 403 | 13 802 | 7 499 |
| ILLINOIS | 54 472 | 29 447 | 25 023 | 41 280 | 21 560 | 19 741 | 2 760 | 216 246 | 66 922 |
| INDIANA | 22 871 | 13 798 | 9 073 | 22 502 | 13 622 | 8 880 | 1 949 | 65 430 | 20 221 |
| IOWA | 16 551 | 8 481 | 8 071 | 13 947 | 6 951 | 6 996 | 1 193 | 43 941 | 19 024 |
| KANSAS | 13 719 | 8 635 | 5 084 | 11 572 | 7 361 | 4 211 | 618 | 37 096 | 15 922 |
| KENTUCKY | 12 345 | 7 003 | 5 542 | 12 345 | 7 003 | 5 542 | 4 005 | 41 098 | 21 305 |
| LOUISIANA | 13 702 | 7 965 | 5 737 | 13 669 | 7 934 | 5 735 | 1 741 | 58 528 | 30 360 |
| MAINE | 3 212 | 1 308 | 1 904 | 3 212 | 1 308 | 1 904 | 795 | 15 500 | 9 525 |
| MARYLAND | 22 358 | 13 251 | 9 106 | 16 981 | 9 903 | 7 078 | 1 963 | 83 596 | 36 006 |
| MASSACHUSETTS | 14 397 | 7 429 | 6 367 | 14 284 | 7 840 | 6 443 | 1 004 | 128 916 | 45 752 |
| MICHIGAN | 60 649 | 29 531 | 31 118 | 50 924 | 23 288 | 27 637 | 2 624 | 180 626 | 58 322 |
| MINNESOTA | 23 053 | 13 893 | 9 160 | 23 553 | 13 893 | 9 160 | 964 | 72 375 | 25 017 |
| MISSISSIPPI | 10 483 | 5 672 | 4 811 | 8 329 | 4 355 | 3 973 | 1 112 | 30 926 | 14 148 |
| MISSOURI | 18 693 | 12 253 | 6 440 | 14 678 | 10 057 | 4 621 | 1 291 | 73 035 | 29 212 |
| MONTANA | 5 092 | 2 617 | 2 474 | 4 927 | 2 506 | 2 422 | 341 | 13 040 | 7 313 |
| NEBRASKA | 11 517 | 4 893 | 6 624 | 10 892 | 4 541 | 6 351 | 319 | 30 072 | 9 639 |
| NEVADA | 2 641 | 1 124 | 1 518 | 2 641 | 1 124 | 1 518 | 219 | 17 028 | 5 792 |
| NEW HAMPSHIRE | 3 280 | 1 295 | 1 985 | 3 280 | 1 295 | 1 985 | 402 | 12 652 | 6 449 |
| NEW JERSEY | 26 806 | 15 800 | 11 006 | 21 690 | 13 264 | 8 426 | 2 148 | 139 626 | 47 905 |
| NEW MEXICO | 7 304 | 2 593 | 4 711 | 7 304 | 2 593 | 4 711 | 587 | 19 245 | 10 350 |
| NEW YORK | 78 144 | 49 738 | 28 406 | 35 987 | 18 964 | 17 023 | 7 875 | 593 397 | 151 060 |
| NORTH CAROLINA | 27 559 | 15 371 | 12 218 | 20 838 | 11 033 | 9 805 | 2 695 | 79 200 | 39 332 |
| NORTH DAKOTA | 4 014 | 2 255 | 1 759 | 3 888 | 2 168 | 1 720 | 296 | 8 715 | 4 298 |
| OHIO | 44 102 | 22 920 | 21 182 | 35 763 | 18 164 | 17 599 | 1 723 | 171 674 | 51 633 |
| OKLAHOMA | 13 183 | 6 853 | 6 291 | 12 814 | 6 647 | 6 167 | 1 280 | 40 176 | 18 774 |
| OREGON | 17 035 | 10 953 | 6 081 | 12 033 | 7 892 | 4 121 | 862 | 49 089 | 21 519 |
| PENNSYLVANIA | 27 932 | 15 205 | 12 727 | 24 090 | 12 801 | 11 289 | 2 573 | 210 484 | 96 746 |
| RHODE ISLAND | 4 017 | 1 992 | 2 023 | 4 017 | 1 992 | 2 023 | 934 | 16 694 | 9 931 |
| SOUTH CAROLINA | 9 833 | 4 898 | 4 934 | 9 833 | 4 898 | 4 934 | 4 367 | 39 461 | 22 080 |
| SOUTH DAKOTA | 3 228 | 1 627 | 1 600 | 3 227 | 1 627 | 1 600 | 245 | 10 017 | 5 582 |
| TENNESSEE | 14 767 | 8 494 | 6 273 | 14 767 | 8 494 | 6 273 | 2 267 | 67 990 | 24 128 |
| TEXAS | 56 551 | 29 119 | 27 432 | 47 158 | 23 322 | 23 837 | 3 213 | 178 322 | 60 643 |
| UTAH | 9 926 | 2 852 | 7 074 | 9 926 | 2 852 | 7 074 | 612 | 17 740 | 8 739 |
| VERMONT | 2 939 | 1 360 | 1 579 | 2 939 | 1 360 | 1 579 | 280 | 7 947 | 5 393 |
| VIRGINIA | 24 189 | 12 952 | 11 237 | 24 189 | 12 952 | 11 237 | 2 007 | 78 412 | 38 173 |
| WASHINGTON | 26 323 | 13 750 | 12 773 | 26 426 | 13 686 | 12 740 | 1 097 | 78 470 | 30 158 |
| WEST VIRGINIA | 7 898 | 4 863 | 3 035 | 7 898 | 4 863 | 3 035 | 886 | 22 713 | 14 218 |
| WISCONSIN | 33 335 | 18 115 | 15 220 | 27 654 | 14 129 | 13 525 | 1 576 | 82 155 | 23 964 |
| WYOMING | 2 462 | 1 273 | 1 189 | 1 869 | 917 | 952 | 160 | 7 653 | 3 996 |

See footnotes at end of table.

Table 10. Payrolls of State and Local Governments, by Function and by State:
October 1974—Continued
(Thousands of dollars)

| State | Highways | | Public welfare | | Hospitals | | Health | | Police Protection | |
|--------------------------------|-----------------------------|-----------------------|-----------------------------|-----------------------|-----------------------------|-----------------------|-----------------------------|-----------------------|-----------------------------|-----------------------|
| | State and local governments | State government only | State and local governments | State government only | State and local governments | State government only | State and local governments | State government only | State and local governments | State government only |
| UNITED STATES, TOTAL . . . | 450 540 | 238 354 | 240 124 | 110 508 | 673 613 | 355 045 | 158 887 | 77 366 | 530 916 | 69 898 |
| ALABAMA | 8 034 | 4 070 | 2 677 | 2 454 | 14 625 | 7 469 | 2 147 | 904 | 5 260 | 680 |
| ALASKA | 2 521 | 1 971 | 529 | 509 | 600 | 417 | 506 | 361 | 1 270 | 510 |
| ARIZONA | 5 551 | 3 515 | 1 411 | 1 371 | 5 101 | 2 692 | 1 119 | 350 | 6 344 | 1 319 |
| ARKANSAS | 4 200 | 2 624 | 1 097 | 1 048 | 4 707 | 2 378 | 1 072 | 911 | 1 920 | 451 |
| CALIFORNIA | 41 800 | 19 333 | 33 413 | 1 351 | 73 900 | 21 894 | 25 107 | 9 640 | 76 944 | 10 829 |
| COLORADO | 6 119 | 2 961 | 2 763 | 914 | 6 555 | 3 918 | 2 381 | 512 | 5 711 | 757 |
| CONNECTICUT | 6 480 | 3 534 | 1 981 | 1 475 | 7 259 | 6 779 | 1 896 | 928 | 7 864 | 1 162 |
| DELAWARE | 1 387 | 1 127 | 763 | 763 | 1 011 | 1 011 | 612 | 607 | 1 427 | 555 |
| DISTRICT OF COLUMBIA | 1 531 | - | 2 962 | - | 2 767 | - | 3 768 | - | 6 875 | - |
| FLORIDA | 12 525 | 5 993 | 5 788 | 4 416 | 28 561 | 9 590 | 6 040 | 5 072 | 21 843 | 1 953 |
| GEORGIA | 9 884 | 6 054 | 4 102 | 4 099 | 25 940 | 8 542 | 4 857 | 3 124 | 8 566 | 1 351 |
| HAWAII | 1 731 | 888 | 432 | 422 | 1 673 | 1 673 | 1 354 | 1 221 | 2 423 | - |
| IDAHO | 2 370 | 1 398 | 668 | 598 | 1 561 | 481 | 1 036 | 978 | 1 169 | 205 |
| ILLINOIS | 18 764 | 7 226 | 11 933 | 9 827 | 30 651 | 17 824 | 6 032 | 2 403 | 34 496 | 2 716 |
| INDIANA | 7 039 | 3 607 | 3 177 | 596 | 14 467 | 6 536 | 1 607 | 634 | 7 761 | 1 343 |
| IOWA | 8 287 | 3 981 | 2 688 | 1 937 | 8 237 | 4 695 | 976 | 516 | 4 377 | 1 175 |
| KANSAS | 6 411 | 3 140 | 1 998 | 1 717 | 6 419 | 4 080 | 1 028 | 401 | 3 597 | 647 |
| KENTUCKY | 6 959 | 5 698 | 2 806 | 2 348 | 5 901 | 3 193 | 1 635 | 926 | 4 624 | 1 086 |
| LOUISIANA | 7 446 | 5 172 | 3 515 | 3 293 | 12 442 | 9 442 | 2 019 | 1 186 | 6 438 | 801 |
| MAINE | 3 474 | 2 516 | 594 | 555 | 1 703 | 1 385 | 365 | 305 | 1 517 | 333 |
| MARYLAND | 7 575 | 4 065 | 3 529 | 615 | 11 819 | 9 316 | 4 919 | 2 758 | 12 123 | 2 237 |
| MASSACHUSETTS | 11 308 | 5 993 | 5 593 | 5 175 | 22 076 | 13 523 | 2 637 | 1 466 | 16 390 | 1 819 |
| MICHIGAN | 17 731 | 5 363 | 11 677 | 9 880 | 32 543 | 15 904 | 5 731 | 1 742 | 25 162 | 3 295 |
| MINNESOTA | 11 634 | 5 229 | 4 641 | 628 | 12 641 | 7 185 | 2 310 | 1 172 | 6 952 | 880 |
| MISSISSIPPI | 4 939 | 2 341 | 1 345 | 1 285 | 7 572 | 2 748 | 1 436 | 1 105 | 2 913 | 754 |
| MISSOURI | 4 422 | 5 294 | 3 726 | 3 465 | 16 407 | 9 457 | 2 563 | 1 112 | 10 583 | 1 447 |
| MONTANA | 2 844 | 1 793 | 664 | 583 | 1 396 | 955 | 425 | 285 | 1 242 | 268 |
| NEBRASKA | 3 821 | 1 840 | 1 645 | 577 | 3 904 | 2 124 | 706 | 239 | 2 568 | 451 |
| NEVADA | 2 075 | 1 352 | 593 | 496 | 2 083 | 268 | 529 | 295 | 2 495 | 229 |
| NEW HAMPSHIRE | 2 429 | 1 581 | 1 335 | 533 | 1 436 | 1 137 | 399 | 336 | 1 383 | 264 |
| NEW JERSEY | 15 886 | 8 250 | 8 141 | 3 124 | 18 227 | 11 054 | 4 120 | 1 840 | 25 662 | 3 922 |
| NEW MEXICO | 2 798 | 2 105 | 951 | 950 | 2 711 | 1 284 | 629 | 562 | 2 284 | 583 |
| NEW YORK | 43 151 | 17 392 | 39 872 | 1 740 | 109 366 | 56 118 | 23 070 | 9 511 | 76 565 | 5 668 |
| NORTH CAROLINA | 10 755 | 8 995 | 3 913 | 857 | 14 625 | 9 394 | 3 831 | 1 065 | 8 685 | 1 989 |
| NORTH DAKOTA | 1 908 | 935 | 526 | 202 | 794 | 794 | 231 | 144 | 778 | 109 |
| OHIO | 20 196 | 9 149 | 10 646 | 1 152 | 23 004 | 14 195 | 6 298 | 1 992 | 21 272 | 1 910 |
| OKLAHOMA | 5 307 | 2 591 | 4 036 | 3 973 | 6 606 | 3 966 | 1 353 | 860 | 3 845 | 760 |
| OREGON | 6 510 | 3 331 | 3 334 | 2 754 | 4 775 | 3 744 | 1 604 | 593 | 5 221 | 1 060 |
| PENNSYLVANIA | 26 498 | 17 702 | 18 466 | 11 044 | 29 307 | 25 423 | 5 237 | 2 751 | 29 139 | 5 727 |
| RHODE ISLAND | 1 277 | 604 | 1 385 | 1 376 | 2 491 | 2 491 | 812 | 801 | 2 109 | 286 |
| SOUTH CAROLINA | 4 301 | 3 263 | 2 162 | 2 110 | 9 886 | 5 558 | 2 772 | 2 289 | 3 567 | 887 |
| SOUTH DAKOTA | 2 274 | 1 281 | 644 | 624 | 930 | 727 | 286 | 224 | 904 | 270 |
| TENNESSEE | 7 456 | 3 978 | 2 798 | 2 377 | 13 992 | 5 715 | 3 259 | 2 247 | 6 551 | 784 |
| TEXAS | 23 219 | 14 607 | 7 868 | 7 409 | 32 383 | 13 816 | 6 491 | 3 899 | 20 709 | 1 505 |
| UTAH | 2 813 | 1 899 | 753 | 628 | 1 912 | 1 470 | 894 | 367 | 2 015 | 388 |
| VERMONT | 1 767 | 984 | 401 | 399 | 709 | 709 | 304 | 287 | 788 | 380 |
| VIRGINIA | 11 050 | 8 618 | 3 714 | 204 | 10 596 | 9 617 | 4 885 | 4 198 | 8 313 | 1 370 |
| WASHINGTON | 10 492 | 5 269 | 3 918 | 3 826 | 6 827 | 4 973 | 1 806 | 504 | 7 344 | 1 208 |
| WEST VIRGINIA | 4 498 | 4 440 | 1 581 | 1 567 | 3 922 | 2 480 | 754 | 543 | 1 904 | 540 |
| WISCONSIN | 11 117 | 2 146 | 4 609 | 1 001 | 12 747 | 4 840 | 2 842 | 1 042 | 10 344 | 852 |
| WYOMING | 1 568 | 1 155 | 263 | 263 | 1 609 | 457 | 197 | 161 | 638 | 165 |

See footnotes at end of table.

Table 10. Payrolls of State and Local Governments, by Function and by State:
October 1974—Continued
(Thousands of dollars)

| State | Fire protection (local) | Sewerage (local) | Sanitation other than sewerage (local) | Parks and recreation (local) | Natural resources | | Correction | | Libraries (local) |
|--------------------------------|-------------------------|------------------|--|------------------------------|-----------------------------|-----------------------|-----------------------------|-----------------------|-------------------|
| | | | | | State and local governments | State government only | State and local governments | State government only | |
| UNITED STATES, TOTAL . . . | 226 510 | 65 591 | 96 118 | 105 092 | 142 905 | 122 190 | 169 200 | 104 435 | 44 706 |
| ALABAMA | 2 657 | 554 | 1 651 | 837 | 2 238 | 2 182 | 1 319 | 872 | 289 |
| ALASKA | 563 | 229 | 198 | 237 | 1 223 | 1 217 | 679 | 653 | 91 |
| ARIZONA | 1 833 | 386 | 1 252 | 1 325 | 2 162 | 1 346 | 1 653 | 924 | 427 |
| ARKANSAS | 899 | 239 | 475 | 237 | 1 840 | 1 696 | 515 | 434 | 109 |
| CALIFORNIA | 33 817 | 6 563 | 5 850 | 19 521 | 19 978 | 12 633 | 33 616 | 14 008 | 7 564 |
| COLORADO | 2 310 | 907 | 618 | 1 836 | 2 236 | 1 927 | 2 242 | 1 661 | 604 |
| CONNECTICUT | 4 584 | 1 093 | 1 300 | 1 431 | 1 085 | 1 045 | 1 916 | 1 916 | 778 |
| DELAWARE | 224 | 322 | 175 | 230 | 530 | 525 | 608 | 608 | - |
| DISTRICT OF COLUMBIA | 2 108 | 732 | 2 101 | 1 039 | - | - | 2 098 | - | 474 |
| FLORIDA | 8 402 | 2 793 | 5 045 | 3 812 | 6 889 | 5 377 | 8 431 | 7 077 | 1 213 |
| GEORGIA | 3 770 | 1 106 | 2 795 | 1 515 | 3 629 | 3 503 | 3 157 | 2 303 | 497 |
| HAWAII | 1 311 | 399 | 466 | 974 | 1 174 | 1 153 | 462 | 386 | 5 |
| IDAHO | 553 | 124 | 72 | 223 | 1 924 | 1 684 | 255 | 209 | 105 |
| ILLINOIS | 12 059 | 6 377 | 4 378 | 8 603 | 4 178 | 3 424 | 6 799 | 4 756 | 2 430 |
| INDIANA | 4 155 | 1 462 | 1 323 | 1 375 | 1 913 | 1 649 | 2 490 | 1 677 | 1 470 |
| IOWA | 1 471 | 754 | 480 | 745 | 2 066 | 1 579 | 1 341 | 973 | 561 |
| KANSAS | 1 801 | 461 | 556 | 599 | 2 047 | 1 842 | 1 176 | 913 | 168 |
| KENTUCKY | 1 926 | 809 | 1 199 | 556 | 2 329 | 2 464 | 1 173 | 966 | 269 |
| LOUISIANA | 2 747 | 804 | 1 628 | 1 101 | 4 130 | 3 835 | 1 558 | 1 098 | 539 |
| MAINE | 916 | 172 | 110 | 223 | 1 432 | 1 419 | 647 | 587 | 107 |
| MARYLAND | 4 760 | 1 939 | 1 964 | 2 784 | 2 485 | 2 377 | 5 314 | 4 518 | 1 372 |
| MASSACHUSETTS | 13 431 | 1 212 | 2 099 | 2 133 | 2 421 | 2 038 | 4 024 | 2 819 | 2 496 |
| MICHIGAN | 9 642 | 2 501 | 3 814 | 4 894 | 5 022 | 4 407 | 5 817 | 3 408 | 1 835 |
| MINNESOTA | 2 511 | 1 403 | 734 | 2 137 | 2 946 | 2 645 | 2 621 | 1 484 | 1 040 |
| MISSISSIPPI | 1 091 | 338 | 988 | 313 | 7 410 | 2 342 | 576 | 516 | 131 |
| MISSOURI | 4 099 | 1 112 | 716 | 1 808 | 3 119 | 2 936 | 2 161 | 1 026 | 835 |
| MONTANA | 403 | 121 | 220 | 101 | 1 171 | 1 023 | 414 | 350 | 135 |
| NEBRASKA | 1 107 | 306 | 191 | 576 | 1 884 | 1 435 | 742 | 663 | 286 |
| NEVADA | 1 258 | 169 | 55 | 581 | 746 | 670 | 889 | 457 | 160 |
| NEW HAMPSHIRE | 888 | 131 | 221 | 139 | 658 | 621 | 420 | 315 | 141 |
| NEW JERSEY | 8 663 | 2 227 | 2 831 | 3 434 | 2 087 | 1 837 | 6 576 | 3 312 | 2 260 |
| NEW MEXICO | 787 | 230 | 434 | 391 | 1 241 | 1 124 | 544 | 428 | 150 |
| NEW YORK | 28 205 | 6 643 | 21 483 | 12 555 | 7 789 | 7 370 | 22 683 | 10 766 | 4 670 |
| NORTH CAROLINA | 3 005 | 1 250 | 2 626 | 1 096 | 3 931 | 3 539 | 4 377 | 3 977 | 533 |
| NORTH DAKOTA | 302 | 57 | 177 | 80 | 851 | 771 | 156 | 137 | 27 |
| OHIO | 10 652 | 4 753 | 4 333 | 4 059 | 4 591 | 4 165 | 7 026 | 5 376 | 1 921 |
| OKLAHOMA | 2 410 | 477 | 1 215 | 843 | 1 576 | 1 371 | 1 220 | 1 012 | 295 |
| OREGON | 3 116 | 1 094 | 250 | 1 066 | 2 864 | 2 610 | 1 217 | 1 197 | 317 |
| PENNSYLVANIA | 7 346 | 3 799 | 5 547 | 4 092 | 5 585 | 5 501 | 7 382 | 4 213 | 1 416 |
| RHODE ISLAND | 1 638 | 239 | 268 | 211 | 326 | 324 | 696 | 696 | 114 |
| SOUTH CAROLINA | 1 079 | 657 | 1 192 | 421 | 1 783 | 1 714 | 1 719 | 1 525 | 226 |
| SOUTH DAKOTA | 242 | 111 | 87 | 157 | 868 | 784 | 230 | 173 | 89 |
| TENNESSEE | 3 852 | 798 | 1 983 | 1 182 | 2 649 | 2 485 | 2 323 | 1 627 | 560 |
| TEXAS | 11 110 | 2 541 | 5 067 | 4 003 | 6 262 | 4 566 | 5 216 | 3 193 | 1 776 |
| UTAH | 771 | 281 | 264 | 450 | 1 084 | 950 | 622 | 468 | 248 |
| VERMONT | 199 | 72 | 39 | 61 | 696 | 686 | 331 | 330 | 26 |
| VIRGINIA | 3 828 | 1 636 | 2 127 | 2 091 | 2 936 | 2 750 | 3 847 | 2 959 | 1 073 |
| WASHINGTON | 4 599 | 1 068 | 773 | 1 969 | 4 853 | 4 219 | 4 466 | 2 373 | 1 240 |
| WEST VIRGINIA | 761 | 313 | 531 | 297 | 1 384 | 1 339 | 649 | 588 | 110 |
| WISCONSIN | 4 445 | 1 760 | 2 059 | 2 667 | 2 755 | 2 268 | 3 037 | 2 412 | 1 244 |
| WYOMING | 175 | 64 | 157 | 83 | 730 | 622 | 171 | 139 | 80 |

See footnotes at end of table.

**Table 10. Payrolls of State and Local Governments, by Function and by State:
October 1974—Continued**

(Thousands of dollars)

| State | Employment security administration (State) | Financial administration | | General control | | Local utilities | | State liquor stores | Other and unallocable | |
|--------------------------------|--|-----------------------------|-----------------------|-----------------------------|-----------------------|-----------------|---------|---------------------|-----------------------------|-----------------------|
| | | State and local governments | State government only | State and local governments | State government only | Water supply | Other | | State and local governments | State government only |
| UNITED STATES, TOTAL . . . | 76 828 | 197 662 | 91 896 | 281 620 | 67 987 | 99 305 | 200 347 | 11 452 | 442 601 | 151 146 |
| ALABAMA | 1 048 | 2 044 | 892 | 2 593 | 740 | 1 322 | 1 234 | 748 | 4 219 | 1 419 |
| ALASKA | 399 | 1 156 | 642 | 1 881 | 1 267 | 203 | 469 | - | 3 983 | 2 610 |
| ARIZONA | 882 | 2 179 | 743 | 3 286 | 679 | 1 095 | 3 057 | - | 4 813 | 1 185 |
| ARKANSAS | 849 | 1 160 | 647 | 1 314 | 482 | 582 | 316 | - | 1 671 | 879 |
| CALIFORNIA | 10 510 | 31 746 | 14 018 | 41 089 | 3 354 | 17 064 | 32 108 | - | 78 860 | 29 488 |
| COLORADO | 859 | 2 968 | 1 566 | 4 079 | 1 537 | 1 719 | 798 | - | 3 725 | 1 555 |
| CONNECTICUT | 1 071 | 2 674 | 1 236 | 3 856 | 2 423 | 877 | 374 | - | 6 643 | 3 355 |
| DELAWARE | 179 | 675 | 367 | 1 021 | 657 | 121 | 96 | - | 1 455 | 708 |
| DISTRICT OF COLUMBIA | 226 | 547 | - | 2 683 | - | 462 | 4 771 | - | 5 879 | - |
| FLORIDA | 1 823 | 8 695 | 3 196 | 12 271 | 5 169 | 3 648 | 5 867 | - | 19 269 | 5 291 |
| GEORGIA | 940 | 3 299 | 1 099 | 5 066 | 1 696 | 2 432 | 3 058 | - | 6 867 | 2 774 |
| HAWAII | 361 | 1 087 | 749 | 2 093 | 1 127 | 825 | 28 | - | 3 640 | 2 512 |
| IDAHO | 467 | 925 | 468 | 890 | 326 | 165 | 65 | 141 | 1 068 | 545 |
| ILLINOIS | 3 892 | 7 761 | 3 346 | 14 705 | 3 994 | 5 998 | 15 086 | - | 21 776 | 7 514 |
| INDIANA | 1 213 | 3 087 | 1 208 | 4 140 | 673 | 1 307 | 2 820 | - | 4 623 | 1 086 |
| IOWA | 753 | 2 253 | 810 | 2 842 | 692 | 999 | 894 | 557 | 3 663 | 1 357 |
| KANSAS | 568 | 1 837 | 816 | 2 360 | 420 | 1 253 | 1 777 | - | 3 060 | 1 376 |
| KENTUCKY | 289 | 1 360 | 905 | 3 038 | 688 | 1 283 | 795 | - | 3 947 | 2 749 |
| LOUISIANA | 1 002 | 2 865 | 1 503 | 3 053 | 882 | 1 564 | 698 | - | 4 980 | 2 146 |
| MAINE | 426 | 879 | 492 | 890 | 738 | 254 | 58 | 215 | 1 494 | 904 |
| MARYLAND | 1 168 | 5 101 | 2 954 | 6 118 | 2 494 | 1 878 | 121 | - | 8 427 | 3 501 |
| MASSACHUSETTS | 2 247 | 6 348 | 3 529 | 7 412 | 2 033 | 3 249 | 10 344 | - | 13 497 | 5 110 |
| MICHIGAN | 3 324 | 8 335 | 3 460 | 14 937 | 2 418 | 4 275 | 6 153 | 510 | 16 721 | 4 612 |
| MINNESOTA | 1 193 | 3 742 | 1 326 | 4 993 | 900 | 1 457 | 2 864 | - | 6 594 | 2 285 |
| MISSISSIPPI | 860 | 1 433 | 690 | 1 562 | 395 | 738 | 347 | 86 | 1 849 | 1 026 |
| MISSOURI | 1 436 | 2 677 | 1 074 | 4 630 | 1 204 | 1 773 | 2 185 | - | 4 782 | 762 |
| MONTANA | 345 | 968 | 629 | 985 | 290 | 196 | 16 | 161 | 1 233 | 633 |
| NEBRASKA | 420 | 1 319 | 508 | 1 948 | 572 | 734 | 5 284 | - | 2 630 | 809 |
| NEVADA | 488 | 1 215 | 650 | 1 348 | 356 | 296 | 38 | - | 2 009 | 531 |
| NEW HAMPSHIRE | 261 | 567 | 348 | 602 | 237 | 277 | 12 | 322 | 1 635 | 495 |
| NEW JERSEY | 3 228 | 5 979 | 2 481 | 11 978 | 3 356 | 2 031 | 546 | - | 15 750 | 5 500 |
| NEW MEXICO | 461 | 1 366 | 786 | 1 515 | 903 | 337 | 287 | - | 2 128 | 1 143 |
| NEW YORK | 9 498 | 20 126 | 11 094 | 34 514 | 6 810 | 7 350 | 57 043 | - | 68 815 | 15 087 |
| NORTH CAROLINA | 1 484 | 3 734 | 1 628 | 4 596 | 2 916 | 1 813 | 727 | - | 8 207 | 3 488 |
| NORTH DAKOTA | 301 | 676 | 267 | 684 | 148 | 179 | 35 | - | 951 | 440 |
| OHIO | 3 032 | 7 488 | 3 442 | 13 516 | 1 972 | 5 973 | 4 435 | 1 595 | 16 684 | 3 652 |
| OKLAHOMA | 961 | 1 669 | 694 | 2 607 | 1 029 | 1 249 | 351 | - | 4 138 | 1 536 |
| OREGON | 1 113 | 2 978 | 1 398 | 3 374 | 1 015 | 1 548 | 1 724 | 181 | 6 203 | 2 505 |
| PENNSYLVANIA | 4 692 | 10 484 | 5 350 | 15 279 | 2 854 | 3 695 | 10 257 | 4 221 | 18 037 | 7 267 |
| RHODE ISLAND | 519 | 960 | 606 | 1 018 | 645 | 329 | - | - | 2 302 | 1 572 |
| SOUTH CAROLINA | 892 | 1 983 | 1 024 | 1 735 | 392 | 965 | 322 | - | 3 900 | 2 427 |
| SOUTH DAKOTA | 304 | 741 | 260 | 766 | 246 | 204 | 130 | - | 1 047 | 689 |
| TENNESSEE | 924 | 2 869 | 1 454 | 3 377 | 1 027 | 2 367 | 6 062 | - | 4 968 | 1 528 |
| TEXAS | 3 509 | 8 594 | 2 784 | 10 716 | 1 753 | 6 832 | 6 861 | - | 15 163 | 4 001 |
| UTAH | 756 | 1 046 | 583 | 1 194 | 300 | 521 | 355 | 127 | 1 633 | 714 |
| VERMONT | 265 | 538 | 347 | 726 | 379 | 100 | 155 | 124 | 644 | 503 |
| VIRGINIA | 1 128 | 4 035 | 1 512 | 4 464 | 1 053 | 1 681 | 587 | 1 187 | 9 235 | 3 576 |
| WASHINGTON | 1 777 | 4 814 | 2 311 | 4 137 | 810 | 1 822 | 7 767 | 841 | 8 956 | 2 046 |
| WEST VIRGINIA | 679 | 1 049 | 570 | 1 080 | 229 | 417 | 126 | 414 | 1 846 | 870 |
| WISCONSIN | 1 630 | 5 090 | 3 025 | 6 227 | 1 692 | 1 668 | 808 | - | 7 106 | 3 054 |
| WYOMING | 176 | 604 | 409 | 470 | 109 | 158 | 15 | 22 | 473 | 258 |

Note. Statistics for local governments are subject to sampling variation. see text. Estimates for items of small magnitude in relation to State totals are subject to relatively high sampling variation. Because of rounding, detail may not add to totals.

- Represents zero or rounds to zero.

The category of Employment Security Administration, normally a State government function, is applied to the District of Columbia because of its unique governmental status. However, this amount is included in local government totals as are all other data for the District of Columbia.

Table 11. Full-Time Equivalent Employment of State and Local Governments Per 10,000 Population, by Function and by State: October 1974

| State | All functions | Education | | | | | | | Other education |
|--------------------------------|---------------|-----------|---------------|----------------------|-------|----------------------------------|----------------------|-------|-----------------|
| | | Total | Local schools | | | Institutions of higher education | | | |
| | | | Total | Instruc-tional staff | Other | Total | Instruc-tional staff | Other | |
| UNITED STATES, TOTAL . . | 467.4 | 233.2 | 181.6 | 126.3 | 55.3 | 47.5 | 18.3 | 29.2 | 4.1 |
| ALABAMA | 439.3 | 205.5 | 148.5 | 108.2 | 40.3 | 48.0 | 16.3 | 31.7 | 9.0 |
| ALASKA | 729.9 | 322.7 | 248.0 | 160.7 | 87.3 | 65.4 | 30.4 | 35.1 | 9.3 |
| ARIZONA | 482.6 | 252.2 | 181.1 | 120.8 | 60.3 | 67.0 | 24.5 | 42.5 | 4.1 |
| ARKANSAS | 409.9 | 215.8 | 161.7 | 114.9 | 46.8 | 42.7 | 15.0 | 27.8 | 11.4 |
| CALIFORNIA | 486.5 | 228.6 | 170.3 | 114.7 | 55.7 | 56.1 | 23.6 | 32.5 | 2.1 |
| COLORADO | 516.2 | 284.2 | 199.2 | 138.1 | 61.1 | 82.7 | 22.9 | 59.8 | 2.3 |
| CONNECTICUT | 412.4 | 218.5 | 184.8 | 140.8 | 44.0 | 27.2 | 10.9 | 16.3 | 6.5 |
| DELAWARE | 572.4 | 332.4 | 203.6 | 146.0 | 57.5 | 124.7 | 29.5 | 95.3 | 4.1 |
| DISTRICT OF COLUMBIA | 763.2 | 213.3 | 184.2 | 125.7 | 58.6 | 29.1 | 11.2 | 17.9 | - |
| FLORIDA | 481.4 | 226.9 | 183.7 | 120.7 | 63.0 | 40.0 | 15.5 | 24.4 | 3.3 |
| GEORGIA | 503.8 | 232.5 | 178.7 | 126.8 | 51.8 | 47.2 | 15.1 | 32.1 | 6.7 |
| HAWAII | 460.2 | 214.9 | 151.0 | 113.6 | 37.4 | 62.1 | 24.5 | 37.6 | 1.8 |
| IDAHO | 498.4 | 244.9 | 182.4 | 134.5 | 47.9 | 56.6 | 23.7 | 33.0 | 5.9 |
| ILLINOIS | 430.2 | 219.4 | 174.4 | 122.4 | 52.0 | 42.8 | 17.2 | 25.6 | 2.2 |
| INDIANA | 410.3 | 226.7 | 175.3 | 119.7 | 55.6 | 47.3 | 18.1 | 29.2 | 4.1 |
| IOWA | 463.3 | 259.4 | 200.1 | 142.3 | 57.8 | 54.5 | 20.1 | 34.4 | 4.8 |
| KANSAS | 502.8 | 263.5 | 191.7 | 136.4 | 55.3 | 68.3 | 32.9 | 35.4 | 3.4 |
| KENTUCKY | 407.8 | 218.8 | 159.9 | 110.2 | 49.7 | 43.2 | 14.8 | 28.5 | 15.6 |
| LOUISIANA | 491.3 | 248.8 | 200.0 | 128.6 | 71.4 | 43.1 | 17.1 | 26.0 | 5.6 |
| MAINE | 443.3 | 236.6 | 189.2 | 138.1 | 51.2 | 38.7 | 10.7 | 28.0 | 8.7 |
| MARYLAND | 479.9 | 248.0 | 184.7 | 130.0 | 54.7 | 58.8 | 26.8 | 32.0 | 4.5 |
| MASSACHUSETTS | 455.7 | 205.8 | 179.6 | 135.2 | 44.4 | 24.3 | 10.1 | 14.2 | 1.9 |
| MICHIGAN | 472.5 | 272.7 | 211.7 | 140.0 | 71.6 | 58.2 | 19.3 | 38.9 | 2.7 |
| MINNESOTA | 470.4 | 258.8 | 205.3 | 145.6 | 59.8 | 51.1 | 22.8 | 28.2 | 2.4 |
| MISSISSIPPI | 467.0 | 236.4 | 172.9 | 126.3 | 46.6 | 57.0 | 19.7 | 37.3 | 6.5 |
| MISSOURI | 428.2 | 221.7 | 177.9 | 120.7 | 57.2 | 40.6 | 19.1 | 21.5 | 3.2 |
| MONTANA | 532.4 | 286.3 | 212.8 | 156.1 | 56.7 | 68.0 | 24.9 | 43.0 | 5.5 |
| NEBRASKA | 548.2 | 278.0 | 192.1 | 141.8 | 50.3 | 81.4 | 28.2 | 55.2 | 4.5 |
| NEVADA | 531.0 | 222.3 | 172.7 | 120.5 | 52.2 | 45.1 | 15.1 | 30.0 | 4.5 |
| NEW HAMPSHIRE | 428.5 | 212.1 | 159.4 | 124.1 | 35.4 | 47.0 | 13.3 | 33.7 | 5.6 |
| NEW JERSEY | 447.7 | 228.9 | 197.6 | 143.5 | 54.0 | 28.7 | 12.0 | 16.6 | 2.7 |
| NEW MEXICO | 542.5 | 298.5 | 210.4 | 148.5 | 61.9 | 81.6 | 20.8 | 60.8 | 6.6 |
| NEW YORK | 553.7 | 226.1 | 187.1 | 126.3 | 60.8 | 35.3 | 17.0 | 18.3 | 3.8 |
| NORTH CAROLINA | 429.4 | 224.7 | 160.0 | 106.4 | 53.5 | 59.0 | 20.6 | 38.4 | 5.8 |
| NORTH DAKOTA | 460.4 | 266.5 | 190.9 | 137.4 | 53.5 | 69.8 | 26.6 | 43.2 | 5.8 |
| OHIO | 401.4 | 206.4 | 165.6 | 117.0 | 48.6 | 41.1 | 14.9 | 26.3 | 1.7 |
| OKLAHOMA | 473.4 | 238.6 | 175.3 | 124.2 | 51.1 | 57.9 | 18.8 | 39.1 | 5.4 |
| OREGON | 513.5 | 268.1 | 190.4 | 130.5 | 59.9 | 73.4 | 35.7 | 37.7 | 4.3 |
| PENNSYLVANIA | 393.8 | 186.6 | 163.3 | 113.6 | 49.7 | 21.5 | 8.0 | 13.5 | 2.0 |
| RHODE ISLAND | 439.8 | 216.4 | 159.7 | 121.6 | 38.1 | 45.7 | 16.6 | 29.1 | 10.9 |
| SOUTH CAROLINA | 474.4 | 252.7 | 194.1 | 137.1 | 57.0 | 41.2 | 9.3 | 31.8 | 17.5 |
| SOUTH DAKOTA | 483.5 | 264.1 | 206.9 | 150.7 | 56.2 | 52.6 | 19.4 | 33.2 | 4.6 |
| TENNESSEE | 467.8 | 214.8 | 167.9 | 115.1 | 52.8 | 40.1 | 14.8 | 25.2 | 6.8 |
| TEXAS | 454.2 | 244.5 | 191.3 | 137.2 | 54.1 | 49.9 | 16.9 | 33.0 | 3.3 |
| UTAH | 502.8 | 303.0 | 185.2 | 128.4 | 54.8 | 113.6 | 27.5 | 86.1 | 6.2 |
| VERMONT | 494.9 | 274.6 | 201.1 | 152.6 | 48.5 | 66.5 | 29.3 | 37.2 | 6.9 |
| VIRGINIA | 484.8 | 265.4 | 210.7 | 143.1 | 67.5 | 49.6 | 18.7 | 30.9 | 5.1 |
| WASHINGTON | 502.3 | 256.9 | 184.6 | 129.9 | 54.8 | 69.1 | 27.4 | 41.6 | 3.2 |
| WEST VIRGINIA | 457.0 | 244.2 | 192.3 | 130.0 | 62.2 | 44.9 | 17.9 | 26.9 | 7.1 |
| WISCONSIN | 454.3 | 246.2 | 175.0 | 125.1 | 49.9 | 67.9 | 31.0 | 36.9 | 3.3 |
| WYOMING | 623.5 | 317.5 | 232.1 | 168.5 | 63.6 | 79.9 | 29.2 | 50.7 | 5.5 |

See footnotes at end of table.

Table 11. Full-Time Equivalent Employment of State and Local Governments Per 10,000 Population, by Function and by State: October 1974—Continued

| State | Functions other than education | | | | | | | | | | |
|--------------------------------|--------------------------------|----------|----------------|-----------|--------|-------------------|-------------------------|------------------|--|------------------------------|-------------------|
| | Total | Highways | Public welfare | Hospitals | Health | Police protection | Fire protection (local) | Sewerage (local) | Sanitation other than sewerage (local) | Parks and recreation (local) | Natural resources |
| UNITED STATES, TOTAL . . . | 234.2 | 26.6 | 14.9 | 44.2 | 8.5 | 25.2 | 10.0 | 3.7 | 5.9 | 6.4 | 8.0 |
| ALABAMA | 233.8 | 39.1 | 10.5 | 63.6 | 7.9 | 19.6 | 8.8 | 2.6 | 9.5 | 4.3 | 7.9 |
| ALASKA | 407.2 | 59.7 | 15.4 | 16.7 | 14.2 | 26.2 | 12.7 | 4.9 | 4.7 | 6.4 | 29.9 |
| ARIZONA | 230.4 | 29.0 | 7.7 | 33.1 | 6.0 | 29.1 | 7.7 | 2.1 | 7.2 | 8.0 | 11.3 |
| ARKANSAS | 194.1 | 35.3 | 8.3 | 45.5 | 8.6 | 15.4 | 6.5 | 2.2 | 4.8 | 2.3 | 13.8 |
| CALIFORNIA | 257.9 | 17.8 | 17.9 | 37.6 | 10.1 | 29.3 | 11.5 | 2.9 | 2.8 | 10.0 | 8.4 |
| COLORADO | 232.1 | 29.9 | 13.8 | 34.4 | 11.0 | 25.7 | 9.4 | 4.5 | 3.2 | 9.7 | 8.3 |
| CONNECTICUT | 193.9 | 25.6 | 8.3 | 30.2 | 6.7 | 24.9 | 13.5 | 3.8 | 5.0 | 5.7 | 3.6 |
| DELAWARE | 240.0 | 29.0 | 18.6 | 29.0 | 13.1 | 26.4 | 4.2 | 8.8 | 4.7 | 6.5 | 13.5 |
| DISTRICT OF COLUMBIA | 549.9 | 19.2 | 45.5 | 41.3 | 56.1 | 81.8 | 20.5 | 9.3 | 30.4 | 12.5 | - |
| FLORIDA | 254.5 | 21.0 | 9.6 | 52.1 | 9.1 | 28.0 | 10.3 | 4.6 | 8.7 | 10.2 | 10.3 |
| GEORGIA | 271.2 | 30.6 | 9.7 | 88.9 | 12.9 | 22.8 | 9.5 | 3.6 | 10.5 | 5.0 | 10.3 |
| HAWAII | 245.3 | 21.6 | 6.3 | 24.7 | 15.3 | 26.4 | 14.3 | 5.0 | 6.7 | 14.6 | 13.6 |
| IDAHO | 253.5 | 38.4 | 11.7 | 35.7 | 18.3 | 22.1 | 8.9 | 2.5 | 1.6 | 4.8 | 34.1 |
| ILLINOIS | 210.8 | 17.6 | 14.0 | 35.5 | 6.0 | 28.2 | 9.2 | 2.2 | 4.1 | 9.1 | 4.5 |
| INDIANA | 183.5 | 21.0 | 9.6 | 46.8 | 3.8 | 18.5 | 9.5 | 4.3 | 3.9 | 4.6 | 4.9 |
| IOWA | 203.9 | 35.6 | 13.9 | 44.5 | 4.5 | 19.1 | 5.9 | 3.5 | 2.4 | 4.1 | 9.9 |
| KANSAS | 239.3 | 42.3 | 13.4 | 48.7 | 6.1 | 20.9 | 9.9 | 2.9 | 4.0 | 4.0 | 11.0 |
| KENTUCKY | 189.1 | 31.2 | 12.7 | 33.3 | 6.7 | 17.7 | 8.6 | 3.4 | 6.0 | 2.4 | 13.5 |
| LOUISIANA | 242.6 | 31.3 | 13.2 | 57.9 | 7.4 | 23.9 | 9.8 | 3.5 | 9.2 | 6.4 | 12.9 |
| MAINE | 206.6 | 46.4 | 7.8 | 23.3 | 4.8 | 18.7 | 11.6 | 2.8 | 1.8 | 3.3 | 18.0 |
| MARYLAND | 231.9 | 22.4 | 11.3 | 37.8 | 14.0 | 30.0 | 11.3 | 5.3 | 6.6 | 9.8 | 6.2 |
| MASSACHUSETTS | 249.9 | 22.6 | 13.0 | 50.4 | 5.3 | 26.9 | 22.2 | 2.6 | 4.6 | 4.7 | 5.1 |
| MICHIGAN | 199.8 | 19.2 | 14.3 | 41.9 | 6.3 | 23.5 | 8.6 | 2.7 | 4.0 | 6.3 | 5.3 |
| MINNESOTA | 211.6 | 31.6 | 14.7 | 43.9 | 6.5 | 17.7 | 5.7 | 3.7 | 2.1 | 6.0 | 8.3 |
| MISSISSIPPI | 230.6 | 39.8 | 9.3 | 66.9 | 9.1 | 18.8 | 6.9 | 2.9 | 9.1 | 2.7 | 14.6 |
| MISSOURI | 206.6 | 24.2 | 12.5 | 51.0 | 7.5 | 25.1 | 9.1 | 3.5 | 2.1 | 5.2 | 7.4 |
| MONTANA | 246.1 | 45.5 | 14.6 | 32.2 | 7.1 | 23.5 | 6.2 | 2.2 | 4.4 | 1.9 | 20.4 |
| NEBRASKA | 270.1 | 35.8 | 17.6 | 45.9 | 9.8 | 21.5 | 7.7 | 2.5 | 2.0 | 5.2 | 17.0 |
| NEVADA | 308.8 | 36.3 | 11.7 | 45.9 | 7.7 | 39.1 | 18.7 | 3.1 | 1.1 | 11.5 | 12.9 |
| NEW HAMPSHIRE | 216.4 | 38.1 | 29.6 | 29.3 | 5.6 | 20.7 | 13.7 | 2.2 | 4.0 | 2.5 | 9.7 |
| NEW JERSEY | 218.8 | 24.4 | 14.7 | 32.5 | 6.6 | 34.6 | 10.8 | 3.7 | 5.4 | 6.2 | 3.4 |
| NEW MEXICO | 244.0 | 37.9 | 13.4 | 40.2 | 7.2 | 26.5 | 8.0 | 3.2 | 6.6 | 5.8 | 14.2 |
| NEW YORK | 327.5 | 26.9 | 27.6 | 68.3 | 13.3 | 36.1 | 12.2 | 3.6 | 10.1 | 8.3 | 4.6 |
| NORTH CAROLINA | 204.7 | 27.1 | 10.8 | 40.6 | 9.0 | 20.1 | 7.0 | 3.7 | 9.3 | 3.5 | 9.5 |
| NORTH DAKOTA | 193.9 | 40.5 | 12.7 | 22.5 | 4.8 | 16.4 | 5.5 | 1.2 | 4.0 | 2.0 | 16.0 |
| OHIO | 193.0 | 22.3 | 14.3 | 30.4 | 7.2 | 19.9 | 9.5 | 5.1 | 5.1 | 4.7 | 5.2 |
| OKLAHOMA | 234.9 | 34.1 | 22.1 | 46.7 | 6.9 | 20.1 | 11.2 | 2.7 | 8.4 | 5.1 | 10.0 |
| OREGON | 245.4 | 32.1 | 18.3 | 26.8 | 7.7 | 23.4 | 11.7 | 5.2 | 1.2 | 6.4 | 15.3 |
| PENNSYLVANIA | 207.0 | 27.5 | 21.4 | 30.0 | 4.8 | 24.2 | 6.1 | 4.1 | 4.8 | 4.5 | 5.0 |
| RHODE ISLAND | 223.5 | 20.2 | 18.5 | 35.1 | 10.0 | 24.0 | 19.4 | 3.2 | 3.8 | 3.8 | 4.9 |
| SOUTH CAROLINA | 221.7 | 26.0 | 12.6 | 59.3 | 14.3 | 18.6 | 5.5 | 3.6 | 9.5 | 3.0 | 10.1 |
| SOUTH DAKOTA | 219.3 | 46.2 | 14.0 | 25.7 | 6.1 | 18.9 | 4.8 | 2.1 | 2.2 | 3.5 | 15.8 |
| TENNESSEE | 253.0 | 32.0 | 10.8 | 60.5 | 10.3 | 21.5 | 10.9 | 3.4 | 9.2 | 5.2 | 10.4 |
| TEXAS | 209.7 | 26.4 | 9.6 | 47.1 | 6.8 | 21.1 | 10.0 | 3.3 | 7.2 | 5.2 | 7.7 |
| UTAH | 199.7 | 28.8 | 8.2 | 29.9 | 9.6 | 21.7 | 6.9 | 3.3 | 3.4 | 5.7 | 13.1 |
| VERMONT | 220.3 | 30.5 | 10.7 | 22.6 | 7.6 | 20.0 | 5.3 | 2.2 | 1.4 | 2.1 | 17.9 |
| VIRGINIA | 219.4 | 32.6 | 10.5 | 36.7 | 11.9 | 20.1 | 8.4 | 4.7 | 7.6 | 6.6 | 7.5 |
| WASHINGTON | 245.4 | 32.0 | 13.3 | 28.9 | 6.2 | 20.8 | 12.3 | 3.3 | 2.5 | 6.8 | 13.0 |
| WEST VIRGINIA | 212.8 | 45.9 | 14.7 | 43.7 | 6.3 | 15.2 | 5.2 | 3.0 | 5.3 | 3.2 | 11.9 |
| WISCONSIN | 208.1 | 29.8 | 13.5 | 37.2 | 6.5 | 22.9 | 9.2 | 4.3 | 5.3 | 7.5 | 6.8 |
| WYOMING | 305.9 | 51.8 | 11.2 | 77.5 | 7.3 | 24.9 | 5.9 | 2.3 | 7.0 | 3.8 | 25.5 |

See footnotes at end of table.

Table 11. Full-Time Equivalent Employment of State and Local Governments Per 10,000 Population, by Function and by State: October 1974—Continued

| State | Functions other than education--Continued | | | | | | | | | Exhibit: Estimated State population July 1, 1974 (thousands) |
|--------------------------------|---|--------------------|---|---------------------------------------|--------------------|-----------------|-------|---------------------------|----------------------------------|--|
| | Correc- tion | Libraries local | Employ- ment security adminis- tration (State) | Finan- cial adminis- tration | General control | Local utilities | | State liquor stores | Other and unallo- cable | |
| | | | | | | Water supply | Other | | | |
| UNITED STATES, TOTAL . . . | 8.7 | 3.0 | 4.0 | 11.5 | 15.0 | 5.6 | 8.6 | 0.7 | 23.7 | 211 392 |
| ALABAMA | 5.2 | 1.5 | 3.5 | 7.8 | 10.2 | 6.0 | 5.0 | 3.1 | 17.7 | 3 577 |
| ALASKA | 16.7 | 3.7 | 11.6 | 30.2 | 43.0 | 4.1 | 8.3 | - | 98.9 | 3 337 |
| ARIZONA | 9.0 | 2.8 | 4.7 | 13.0 | 16.7 | 5.8 | 11.9 | - | 25.2 | 2 153 |
| ARKANSAS | 3.9 | 1.3 | 5.2 | 9.8 | 10.7 | 5.2 | 2.4 | - | 13.1 | 2 062 |
| CALIFORNIA | 14.6 | 4.6 | 5.0 | 15.1 | 17.1 | 7.3 | 12.2 | - | 33.8 | 20 907 |
| COLORADO | 9.0 | 4.1 | 3.6 | 15.5 | 18.4 | 8.6 | 3.8 | - | 19.0 | 2 496 |
| CONNECTICUT | 6.9 | 3.5 | 3.9 | 10.3 | 12.8 | 2.9 | 1.3 | - | 25.1 | 3 088 |
| DELAWARE | 11.3 | - | 3.6 | 15.3 | 19.7 | 2.7 | 2.1 | - | 31.7 | 573 |
| DISTRICT OF COLUMBIA | 26.2 | 6.3 | 13.1 | 6.7 | 31.9 | 8.3 | 59.7 | - | 89.3 | 723 |
| FLORIDA | 12.2 | 2.1 | 2.3 | 13.5 | 16.4 | 5.6 | 7.5 | - | 31.1 | 8 090 |
| GEORGIA | 8.6 | 1.4 | 2.2 | 9.1 | 12.9 | 7.7 | 7.0 | - | 18.8 | 4 882 |
| HAWAII | 5.1 | 0.1 | 4.3 | 12.3 | 21.5 | 10.0 | 0.3 | - | 43.4 | 847 |
| IDAH0 | 4.8 | 2.4 | 6.6 | 18.2 | 16.2 | 3.0 | 0.9 | 3.2 | 20.1 | 799 |
| ILLINOIS | 6.6 | 3.5 | 3.6 | 8.7 | 15.1 | 5.0 | 12.3 | - | 22.6 | 11 131 |
| INDIANA | 6.1 | 4.5 | 2.8 | 9.0 | 11.7 | 3.5 | 5.2 | - | 13.8 | 5 330 |
| IOWA | 5.1 | 2.8 | 3.2 | 11.5 | 12.5 | 4.2 | 3.4 | 2.6 | 15.2 | 2 855 |
| KANSAS | 7.2 | 1.4 | 5.0 | 13.2 | 16.7 | 7.6 | 7.5 | - | 19.5 | 2 270 |
| KENTUCKY | 5.6 | 1.5 | 1.3 | 5.7 | 13.9 | 5.8 | 2.7 | - | 17.0 | 3 357 |
| LOUISIANA | 6.4 | 2.7 | 3.3 | 11.2 | 11.9 | 7.5 | 2.5 | - | 21.6 | 3 764 |
| MAINE | 7.8 | 1.7 | 5.1 | 13.2 | 12.0 | 3.4 | 0.9 | 3.0 | 21.0 | 1 047 |
| MARYLAND | 12.9 | 4.8 | 5.2 | 13.2 | 14.7 | 4.2 | 0.4 | - | 23.3 | 4 094 |
| MASSACHUSETTS | 7.3 | 6.0 | 4.9 | 14.0 | 14.5 | 6.2 | 13.9 | - | 25.7 | 5 800 |
| MICHIGAN | 5.0 | 2.5 | 3.9 | 9.7 | 16.1 | 4.6 | 5.9 | 0.6 | 18.4 | 9 098 |
| MINNESOTA | 6.7 | 3.8 | 3.5 | 11.7 | 14.1 | 3.8 | 7.9 | - | 20.0 | 3 917 |
| MISSISSIPPI | 3.9 | 1.4 | 4.5 | 9.5 | 10.5 | 5.8 | 2.1 | 0.5 | 12.2 | 2 324 |
| MISSOURI | 6.4 | 3.1 | 4.0 | 8.5 | 13.4 | 4.9 | 4.8 | - | 13.4 | 4 777 |
| MONTANA | 7.3 | 3.4 | 5.5 | 20.0 | 19.9 | 3.9 | 0.3 | 3.8 | 24.0 | 735 |
| NEBRASKA | 5.9 | 2.8 | 3.1 | 13.1 | 16.7 | 5.9 | 34.4 | - | 23.0 | 1 543 |
| NEVADA | 15.3 | 3.8 | 9.5 | 23.8 | 23.0 | 5.5 | 0.7 | - | 37.3 | 573 |
| NEW HAMPSHIRE | 6.5 | 3.0 | 4.0 | 10.0 | 9.7 | 4.5 | 0.2 | 5.0 | 18.1 | 808 |
| NEW JERSEY | 9.8 | 4.6 | 4.9 | 10.0 | 17.5 | 3.6 | 0.3 | - | 25.5 | 7 330 |
| NEW MEXICO | 6.3 | 2.1 | 5.5 | 17.6 | 16.2 | 4.7 | 3.0 | - | 25.2 | 1 122 |
| NEW YORK | 11.5 | 3.3 | 5.3 | 12.1 | 19.2 | 4.3 | 24.5 | - | 36.3 | 18 111 |
| NORTH CAROLINA | 10.5 | 1.7 | 3.4 | 9.2 | 11.0 | 5.3 | 1.9 | - | 21.0 | 5 363 |
| NORTH DAKOTA | 3.4 | 0.6 | 5.8 | 15.9 | 17.4 | 3.8 | 0.6 | - | 20.6 | 637 |
| OHIO | 7.4 | 2.8 | 5.2 | 8.5 | 15.8 | 6.2 | 4.4 | 1.9 | 18.9 | 10 727 |
| OKLAHOMA | 6.4 | 2.0 | 4.7 | 10.4 | 13.7 | 7.3 | 1.8 | - | 21.4 | 2 709 |
| OREGON | 9.0 | 2.3 | 5.7 | 16.3 | 15.7 | 7.5 | 7.2 | 1.0 | 31.6 | 2 266 |
| PENNSYLVANIA | 6.9 | 1.5 | 4.2 | 11.3 | 16.7 | 3.6 | 4.1 | 3.9 | 18.5 | 11 635 |
| RHODE ISLAND | 7.3 | 2.0 | 6.9 | 14.0 | 13.1 | 5.1 | - | - | 32.1 | 937 |
| SOUTH CAROLINA | 8.5 | 1.6 | 4.0 | 10.3 | 9.6 | 5.5 | 1.6 | - | 18.1 | 2 784 |
| SOUTH DAKOTA | 4.8 | 2.4 | 5.4 | 20.3 | 16.4 | 4.2 | 2.6 | - | 22.0 | 682 |
| TENNESSEE | 8.5 | 2.1 | 2.9 | 9.7 | 10.8 | 6.4 | 16.0 | - | 14.4 | 4 129 |
| TEXAS | 6.3 | 2.4 | 3.5 | 9.9 | 11.4 | 6.4 | 6.6 | - | 16.8 | 12 050 |
| UTAH | 6.5 | 5.0 | 5.6 | 12.4 | 12.3 | 5.9 | 4.0 | 1.6 | 18.0 | 1 173 |
| VERMONT | 8.1 | 0.8 | 7.1 | 17.1 | 18.6 | 2.9 | 3.9 | 3.5 | 19.0 | 470 |
| VIRGINIA | 10.9 | 3.1 | 2.6 | 11.4 | 12.2 | 4.9 | 1.6 | 3.1 | 23.0 | 4 900 |
| WASHINGTON | 11.6 | 5.2 | 6.0 | 15.7 | 13.1 | 5.6 | 19.8 | 2.9 | 26.4 | 3 476 |
| WEST VIRGINIA | 6.6 | 1.1 | 4.9 | 10.2 | 10.2 | 4.0 | 0.9 | 5.1 | 15.2 | 1 791 |
| WISCONSIN | 6.6 | 3.6 | 3.8 | 12.0 | 15.3 | 4.3 | 2.3 | - | 17.2 | 4 566 |
| WYOMING | 7.1 | 4.0 | 6.2 | 23.4 | 19.5 | 6.4 | 0.6 | 0.9 | 20.4 | 359 |

Note. Statistics for local governments are subject to sampling variation, see text. Estimates for items of small magnitude in relation to State totals are subject to relatively high sampling variation. Because of rounding, detail may not add to totals.

- Represents zero or rounds to zero.

The category of Employment Security Administration, normally a State government function, is applied to the District of Columbia because of its unique governmental status. However, this amount is included in local government totals as are all other functions for the District of Columbia.