

DOCUMENT RESUME

ED 104 461

JC 750 248

TITLE Report for Public Community Colleges, 1973-74.
INSTITUTION Florida State Dept. of Education, Tallahassee. Div.
of Community Junior Colleges.
PUB DATE Mar 75
NOTE 97p.

EDRS PRICE MF-\$0.76 HC-\$4.43 PLUS POSTAGE
DESCRIPTORS Administrative Organization; Adult Education;
Articulation (Program); College Faculty; *Educational
Finance; *Educational History; Educational
Objectives; Enrollment Trends; *Junior Colleges;
State Aid; *State School District Relationship;
*State Surveys; Statewide Planning; Statistical Data;
Teacher Salaries; Vocational Education

IDENTIFIERS *Florida

ABSTRACT

This report is intended to provide information with which to answer those questions most frequently asked by members of the legislature, state agencies, external agencies, citizens, administrators, faculty members, and students. The information is presented in two categories: (1) Narrative Description of the history, organization, goals and philosophy of the Florida community college system; and (2) Twenty-three tables of descriptive data on enrollments, personnel, academic programs, and finances. The first category also includes descriptions of the state articulation program and of the responsibilities at the district level for vocational, occupational, and adult education. Since its conception in 1957, the Florida community college master plan has been a national model for long-range planning and for the orderly development of a statewide system of community colleges. It has also received national recognition because of its unusual balance of local control with state coordination and support. In addition to the statistical data, appendices include a glossary of terms, and charts of the community college program structure. This report is compiled from a series of reports submitted to the Division of Community Colleges by the colleges. (Author/DC)

U.S. DEPARTMENT OF HEALTH
EDUCATION & WELFARE
NATIONAL INSTITUTE OF
EDUCATION
EDUCATIONAL MATERIALS CENTER
1234 EAST 17TH AVENUE
DENVER, COLORADO 80202
TELEPHONE (303) 733-4100
FEDERAL GOVERNMENT PRINTING OFFICE
1974 O - 280-123

ED104461

REPORT FOR PUBLIC COMMUNITY COLLEGES
1973-74

DEPARTMENT OF EDUCATION
DIVISION OF COMMUNITY COLLEGES
TALLAHASSEE, FLORIDA

March, 1975

JC 750 248

FOREWORD

The Report for Florida's Public Community Colleges is intended to provide information with which to answer those questions most frequently asked by members of the legislature, state agencies, external agencies, citizens, administration, faculty and students. The information presented herein is of two categories: that describing the history, organization, goals and philosophy of the community college system; and, that consisting of descriptive statistics for enrollments, personnel, academic programs, and finances.

Information in this report is compiled from a series of reports submitted to the Division by the colleges.

TABLE OF CONTENTS

FOREWORD	iii
LIST OF TABLES	vii
INTRODUCTION	1
PHILOSOPHY AND GOALS	4
COMMUNITY COLLEGE ORGANIZATION	8
ARTICULATION	14
VOCATIONAL EDUCATION	20
OCCUPATIONAL AND ADULT EDUCATION PROGRAMS.	22
APPENDIX A: STATISTICAL DATA.	23
APPENDIX B: COMMUNITY COLLEGE PROGRAM STRUCTURE	79
APPENDIX C: GLOSSARY.	89

LIST OF TABLES

<u>TABLE</u>		<u>PAGE</u>
1	1973 Opening Fall Enrollment; College Level (Headcount) (By Class)	25
2	1973 Opening Fall Enrollment; College Level (Headcount) (By Program)	26
3	Origin of 1973 Opening Fall Enrollment; First Time In College	27
4	Headcount Enrollment by Term, 1973-74	28
5	Annual FTE by Term	32
6	Annual FTE by Discipline	33
7	Advanced and Professional Enrollment by Program	36
8	Annual Report of Occupational Enrollment	41
9	Headcount of Students Served in Developmental and Community Instructional Services Programs	46
10	Acceleration Report; Dual Enrollment and Early Admissions	47
11	Degrees and Other Formal Awards	48
12	Occupational Programs (Inventory)	49
13	Summary of Scheduled Salary Ranges for 1973-74 Instructional Personnel	56
14	Report of Annual Salaries for 1973-74 Full-Time Instructional Personnel	57
15	Report of Annual Salaries for 1973-74 Full-Time Executive, Administrative and Managerial Personnel	58
16	Report of Annual Salaries for 1973-74 Full-Time Non-Instructional Professional Personnel	59
17	Salaries for Selected Positions 1973-74	60
18	Statement of Revenues and Other Receipts for Education and General Operations: 1973-74	61
19	Statement of Educational and General Expenditures, General and Restricted Current Funds: 1973-74	62

<u>TABLE</u>		<u>PAGE</u>
20	Unexpended Plant Fund Revenues 1973-74	66
21	Unexpended Plant Fund Expenditures 1973-74	67
22	Full Cost Summary Report	68
23	Cost Analysis - Direct Cost Report	69

INTRODUCTION

In 1957 the State Board of Education adopted the Community College Council's long-range plan to provide post-high school educational opportunities within commuting distance of 99 percent of the State's population. In the development and implementation of this plan, Florida became a national model for long-range planning and for the orderly development of a statewide system of community colleges.

The Florida system has also received national recognition because of its unusual balance of local control with state coordination and support. Florida's community colleges are locally controlled institutions operating within a broad framework of State Board of Education Regulations that provide minimum standards and essential system-wide coordination. Originally, the colleges were developed as components of local school systems and were operated by boards of public instruction. In 1968, the Legislature established independent local boards of trustees and gave those boards corporate authority for operating community colleges within the framework of law and state regulations. In 1971, the local school boards were relieved of financial responsibility for community colleges, and the cost is now provided largely by the State, with additional funding coming from minimal student fees and limited federal grants.

State level administration and coordination is provided by the Department of Education through the Division of Community Colleges with the advice and support of a lay State Community College Council. The Council is composed of seven prominent citizens appointed to overlapping terms by the State Board of Education.

From the outset, Florida's community colleges have been designed as comprehensive institutions and are so described in both law and regulation.

The Florida Statutes provide that the community colleges shall serve the post-high school educational needs of local communities by providing education in three major areas:

1. adult continuing education, including community services;
2. occupational education; and
3. general and academic education parallel to that of the first and second years of the State University System.

The history of Florida's community colleges had its beginning in 1933 at which time Palm Beach Junior College in West Palm Beach was established as a public two-year college. From that date, until 1947 when St. Petersburg Junior College changed its status from private to public, Palm Beach Junior College remained the only public college in Florida. During the year 1947, the Florida Minimum Foundation Program was enacted allowing for combined state and local support for community colleges. With this incentive two more public junior colleges were established in 1948, Chipola Junior College and Pensacola Junior College.

The initial report of the Council for the Study of Higher Education in Florida, issued in January 1955, recommended

"that the development of a system of public community colleges be undertaken on a sound basis as a way to which collegiate enrollment at the lower level can be dispersed and to provide for programs appropriate to a broader range of educational needs than can be met in a university program."

This and other recommendations of the Council were based upon the strong beliefs that there was a need for diversity in post-high school education and that the needs of the State for post-high school education can best be met by a partnership among the State University System, a system of locally controlled community colleges, and the private degree-granting institutions in the State.

Largely as a result of these recommendations of the Council, the legislature in 1955 established the Community College Council, whose report was

published in 1957 under the title, "The Community Junior College in Florida's Future." This report, which was approved by the State Board of Education, contained recommendations for needed legal changes and a plan for establishing a system of public community colleges in Florida which ultimately would provide post-high school education within commuting distance for more than 99 percent of Florida's population. At the time this plan was adopted, colleges were in operation in four counties in Florida.

Also, at this time, the legislature authorized creation of the Division of Community Colleges in the State Department of Education and appropriated funds for six new community colleges to begin implementation of the Master Plan. The first of the new institutions, Gulf Coast Community College, was established in 1957. The other five, established in 1958, were Central Florida, Daytona Beach, Manatee, North Florida, and St. Johns River Community Colleges. In 1960, Brevard, Indian River, Miami-Dade and Broward Community Colleges came into being. Following in 1962 were Lake City, Lake-Sumter, and Edison Community Colleges. In 1964 and 1965, Florida Keys, Okaloosa-Walton and Polk Community Colleges were established. In 1966, Florida Junior College at Jacksonville, Santa Fe, Seminole, South Florida and Tallahassee Community Colleges were added, followed by Valencia Community College in 1967 and Hillsborough Community College in 1968. With the 1972 opening of Pasco-Hernando Community College, the implementation of the Master Plan bringing community colleges within commuting distance of 99 percent of Florida's population has been achieved.

Emphasis today is on strengthening the State's existing community college system. While each college expands to meet its community's needs and to accommodate growing numbers of students, there is great cooperation among the colleges to continually improve the system through the various professional councils coordinated by the Division.

PHILOSOPHY AND GOALS

The rapid but orderly implementation of the state-wide plan for community junior colleges has resulted in a substantially higher percentage of high school graduates in Florida continuing their education than had been feasible in the past and a considerable increase in opportunities for post-high school occupational programs especially in the technical and health-related occupations.

Significantly, the community colleges have become a major source of students for the upper divisions of Florida's universities. Currently, public community colleges are providing approximately two-thirds of the first-time-in-college enrollment in the State. The opportunity for post-high school education at the freshman-sophomore level in the community colleges has enabled the University System to direct more of its energies toward responsibilities in upper division and graduate education. This sharing of responsibility for offerings which lead to the baccalaureate degree has proved to be a very valuable asset to the citizens of Florida.

The Southern Regional Education Board Commission on Goals for Higher Education in the South recommend that "each state should develop a strong system of two-year community colleges." The Commission amplifies this recommendation as follows:

These non-residential institutions, generally located in urban areas, can serve a variety of functions for which four-year institutions are not required. Among these are freshmen and sophomore college courses, vocational and technical programs, guidance and counseling services, specific programs to meet community needs and adult education.

The community college is economical for both student and taxpayer. It can be responsive to local needs and a vital force in the community.

These colleges, as now organized, are parts of the local public school programs, separate two-year state colleges, or affiliates of the state university system. Whatever the basis of the organization, however, three things are essential:

1. They must be integral parts of the state system of higher education and fully coordinated with the other parts of the system.
2. They must resist pressure to expand into four-year institutions, concentrating rather on achieving excellence in their two-year programs.
3. Their distinctive function must be recognized and respected. They are neither mere extensions of the high school nor decapitated versions of the four-year college.

As more colleges accept the idea of comprehensiveness, they will necessarily stress programs and curricula designed to meet the post-high school educational needs of all persons in the community. In adopting the philosophy of comprehensiveness and following the recommendations of the Council for the Study of Higher Education and the Community College Council, the Florida Legislature assigned three major functions to the community college. Florida Statutes provide that community colleges shall offer:

1. freshmen and sophomore level education parallel to that commonly offered in the state universities;
2. occupational education often referred to as vocational-technical education; and
3. courses and programs of adult continuing education.

In addition to these functions, the community colleges have become centers for community educational activities, including guidance, counseling, and cultural activities.

Although the great majority of students enrolled in community colleges today express as their goal completion of baccalaureate degree programs, less than one-third of the entering freshmen actually do. In recognition of this fact, community colleges are placing increasing emphasis on providing occupational programs to meet the needs of individual students and to serve the ever increasing needs of business and industry in the State. Special emphasis in the occupational programs has been placed in the industrial

technician areas, in the health occupations, and in those occupations relating to service and distribution which are so important to tourism and to the economy of Florida.

As Florida expands industrially, the occupational programs in community colleges assume increasing importance among the offerings in higher education. New emphasis on career education at all levels as expressed in federal legislation and by various studies conducted nationally will thrust the community colleges into assuming an ever increasing responsibility in this area.

The following statements summarize most of the policies which are required to enable community colleges to continue to fulfill their assigned roles in providing post-high school education for the citizens of Florida.

1. The major purpose of the community college is to extend educational opportunity at less than the baccalaureate degree level to persons in the community.
2. Programs of occupational education should be provided in the community colleges to the extent needed in each area of the state. Insofar as possible, all post-high school occupational education should be centered in the community colleges.
3. Community colleges should be recognized as the institutions where the majority of the freshmen and sophomore level students will attend college.
4. Community colleges should provide continuing educational opportunities for adults. Adult education activities in a community should be coordinated and duplication should be avoided.
5. Local control of the community college is essential.
6. Adequate sources of funding must be provided in order to support existing programs.
7. Since opportunity for post-high school education is of benefit not only to the individual but also to the economy of the state, students should be encouraged to attend by holding costs as low as practicable and by making loans and/or scholarships available to defray such expenses as are necessary.
8. Educational opportunities should be available within commuting distance of all citizens of Florida.

9. The Community College Council and the State Board of Education should continue their coordination at this level of education. Provisions for scholarships should be made where necessary to make community college education available to all citizens, and to make available to all citizens of the State special occupational programs not provided in all community colleges.
10. Development of programs of study for each college requires careful attention to the needs of individuals as well as those of business and industry. Each community college should give careful consideration to all these factors and should develop programs particularly needed in its area of community.
11. Community colleges should maintain on-going programs of institutional research to determine ways of maintaining and improving quality of programs and of increasing efficiency and economy of operation. Year-round operation, educational television, cooperative work-study programs, independent study programs, and extended day programs are examples of successful developments that should be considered.
12. Since the diversity of educational offerings provided by a community college is specifically designated by law, community colleges should be maintained as community colleges and cannot be considered as a base for developing baccalaureate institutions.
13. Since the community colleges are required to maintain programs of study below the junior level of the university programs, they should assume principal responsibility for publicly supported lower division programs.
14. Admission to the post-high school programs of a community college should be based upon high-school graduation or its equivalent except:
 - a. when the specific program requires definable skills, abilities, or background in addition to high-school grades, or
 - b. when special permission is granted to students who demonstrate that they will profit from the course.Admission to non-credit courses should be based upon factors relative to the course itself.
15. Adequate physical facilities must be provided to house the varied programs of the community college.
16. Continued emphasis should be placed upon activities and agreements which will facilitate the smooth transfer of students from high school to community college to university. These activities should give particular emphasis to articulation of high-school and post-high school programs in the area of curriculum and counseling.

COMMUNITY COLLEGE ORGANIZATION

Community colleges are part of the state system of public education in Florida. Chapter 288.041(1)(b), Florida Statutes, defines community colleges as "educational institutions operated by local community college district boards of trustees under specific authority and regulations of the state board and offering courses and programs of general and academic education parallel to that of the first and second years of work in institutions in the state university system, of occupational education and of adult continuing education."

Since community colleges are local institutions operated by local Boards of Trustees and at the same time part of the state system of public education in Florida, their organization necessarily involves several different entities. Following is a brief description of each of the various organizational entities to which each community college is related:

A. The State Board of Education is the state agency designated to provide and establish the framework within which the community colleges may operate in Florida. Chapter 299.012, Florida Statutes, states that the State Board of Education shall consist of the governor, secretary of state, attorney general, comptroller, treasurer, commissioner of agriculture, and the commissioner of education. It further states that the governor shall be the chairman of the board and the commissioner of education shall be its secretary and executive officer. The state board is given responsibilities for community colleges in Chapter 230.75 -- 230.770, Florida Statutes, which includes the following specific responsibilities:

1. appoint state community college council;
2. prescribe minimum standards for community colleges;
3. approve planning and construction of facilities;
4. authorize the matriculation or tuition fees to be charged to students;
5. adopt regulations relating to preparation and approval of community college budgets;
6. adopt regulations for community college teachers relating to certification, tenure, leaves of absence of all types, including sabbaticals, etc.

- B. The State Community College Council is made up of seven members appointed in accordance with Chapter 230.751, Florida Statutes. The Council consists of seven prominent and representative citizens of the State appointed by the State Board of Education for four-year overlapping terms. Not more than one member shall reside in any community college district. The Council annually elects a chairman.

The Council has the responsibility for recommending statewide policy regarding the operation of the community colleges and determining ways and means to effect articulation and coordination of community colleges with other institutions subject to the approval of the State Board of Education. Specific duties of the State Community College Council are enumerated in Section 6A-8.041, State Board of Education Regulations.

- C. Department of Education. Chapter 229.75, Florida Statutes, provides that the Department of Education shall act as an administrative and supervisory agency under the direction of the State Board of Education. The law specifically details the functions of the Department as providing professional leadership and guidance, and in carrying out policies, procedures, and duties authorized by law or by the State Board of Education as necessary to attain the purpose and objectives of the school code.
- D. State Commissioner of Education. The Commissioner of Education, as Secretary of the State Board of Education, has both general and specific responsibilities relating to community colleges. The laws of the State, as well as State Board Regulations, specify that in addition to these general responsibilities for the community colleges, he shall approve budgets and act as executive officer of the State Board of Education relating to community college recommendations.
- E. District Board of Trustees is the corporate body created under statutes to govern and operate the community college. Specific duties and powers of boards of trustees are enumerated in Chapter 230.754, Florida Statutes.
- F. The Division of Community Colleges was organized in the Department in July, 1957, pursuant to a recommendation of the Community College Council. It operates on the same legal basis as do other divisions of the Department, (Chapter 229.77, Florida Statutes) and is responsible for the coordination of community college programs and the implementation of recommendations concerning the development of community colleges in Florida.
1. The authority and responsibility of the Division of Community Colleges and the State Community College Council are contained in the following Laws of Florida: Sections 20.15, 228.041, 229.031, 229.75 -- 229.78, 230.751 -- 230.774, Florida Statutes.

2. In accordance with Section 20.15, Florida Statutes, the State Board of Education has assigned to the Division of Community Colleges the powers, duties, responsibilities and functions necessary to insure the greatest possible coordination, efficiency and effectiveness of the Community College System of Florida.
3. Section 230.751, Florida Statutes, created the State Community College Council to advise the Division of Community Colleges. Section 6A-8.042, State Board of Education Regulations, provides that the activities of the Council shall be financed within the budget of the Division of Community Colleges.

In carrying out the assignment and responsibilities, the Division of Community Colleges finds its work distributed among three major avenues of effort:

1. The Division is charged with implementing the laws and regulations provided by the Legislature and the State Board of Education while serving these agencies of government in an advisory and informative capacity.
2. The Division also constantly maintains an effective dialogue with other divisions in the Department of Education in order to assure cooperation and insure the success of education at all levels throughout the state.
3. In its relationship to the community colleges, the Division places a major emphasis on its leadership role, rather than the regulatory aspect of this responsibility because such emphasis is necessary if the Division is to be a major contributor to the Federal-State-Local partnership in education at the community college level.

The Division stresses coordination and support, mainly as these are related to intermediate and long-range planning and implementation of educationally related programs. Essential to this philosophy are the following components:

1. recommendation to the State Board of Education of basic policies, directives, priorities, and targets, including recommendations on resource allocation, in coordination with other divisions of the Department of Education as needed to integrate educational development with the economic, cultural, and social development of the State;

2. planning, cooperation, and coordination with other divisions and state agencies in an attempt to smoothly implement budgets, to insure successful articulation of students, to maintain a unilateral and unduplicated effort in the area of vocational education, and to cooperate with other agencies in all matters relating to community colleges;
3. coordinated diagnosis and evaluation of the performance, problems, and the needs of the existing community college system;
4. translation of overall objectives and specific educational programs, projects, development plans, and the revision of plans in light of achievements and new developments; and,
5. implementation of plans, programs, and projects at the state, regional, and institutional levels, supported at all levels by financial and consultative assistance.

In carrying out its legal responsibilities under this philosophy, the Division exercises its leadership responsibilities and operates cooperatively with all of Florida's public community colleges as part of a total community college system. In so doing, emphasis is on the development of competency and expertise in the personnel of each community college, thereby supplementing the Division staff in carrying out its functions. This is the basis behind the development of a resource bank of other personnel in the individual colleges and in other divisions of the Department of Education who can provide consulting help in specific areas of education and management. Such consultants serve in an advisory capacity to those who are charged with specific responsibility for implementing programs at the institutional level, and consult in activities and areas such as planning, research, curriculum, accounting, management, public information, innovative practices, and staff and program development.

In order to carry out its philosophy, it is necessary that the Division have an adequate staff of highly qualified personnel to properly fulfill the requirement of the three-dimensional effort required of the Division. The objective of such a team approach is to provide a working relationship among the individuals within the Division so that improved leadership services can be provided to the individual community colleges.

The functions under which the Division activities can be grouped are: division administration; program planning, coordination, and evaluation; research and development; and administrative planning, coordination and operation.

- G. Council of Presidents. The president of each community college serves as a member of the Council of Presidents. He serves on the Council as long as he continues in his capacity as president of a college, or until the Board approves his successor. The Director of the Division of Community Colleges serves as permanent Chairman of the Council. The Council develops recommendations on matters which affect community colleges, and the Chairman of the Council transmits these recommendations to the State Community College Council and others as appropriate.
- H. Council of Academic Affairs. The Council of Academic Affairs consists of the chief academic officer(s), as appointed by the president, of each of the community colleges and the Administrator, Academic Affairs of the Division of Community Colleges, who is Chairman of the Council. The Council serves in an advisory capacity to the Council of Presidents. It develops recommendations of statewide concern relating to all academic matters, and the Chairman of the Council transmits these recommendations to the Council of Presidents for appropriate action.
- I. Council of Business Affairs. The Council of Business Affairs consists of the chief business officer, as appointed by the president, of each community college and the Administrator, Financial Affairs of the Division of Community Colleges, who is the Chairman of the Council. The Council serves in an advisory capacity to the Council of Presidents and develops recommendations relating to financial and business matters and submits them to the Council of Presidents for appropriate action.
- J. Council of Student Affairs. The Council of Student Affairs consists of the chief student personnel officer(s), as appointed by the president, of each of the community colleges and the Coordinator, Student Personnel Services of the Division of Community Colleges, who is the Chairman of the Council. The Council serves in an advisory capacity to the Council of Presidents. It develops recommendations of statewide concern relating to all student affairs matters and the Chairman of the Council transmits these recommendations to the Council of Presidents for appropriate action.
- K. The Florida Community College Conference. The conference was organized in 1964 by action of the Council of Presidents to promote and regulate intercollegiate activities as an integral part of the education program of the member institutions. Membership is institutional and is open to any Florida community college, public or private, which is accredited by the State Department of Education and/or the Southern Association of Colleges and Schools.

The Conference functions as a parent organization to such bodies as the Florida Community College Student Government Association; absorbs the activities of the former Florida Community College Athletic Association; and concerns itself with forensics competitions, informal sports and other matters common to community colleges.

At least one meeting of the Conference must be held each year and each member institution has one vote which is cast by its president or his designated proxy. Each institution is allowed two representatives who are appointed and certified in advance by the president of the member college and one of whom must be from a non-athletic area.

The state is divided into divisions (currently four) for the purpose of encouraging and coordinating all regional activities. There are approximately the same number of member colleges in each division and each is headed by a division secretary. In addition, there is a standing committee for each activity.

The work of the Conference is carried on throughout the year by an Executive Committee consisting of the four officers of the Conference, the four Division Secretaries, the Executive Secretary, ex officio, and the NJCAA Region VIII (Florida) Director, ex officio and non-voting. This body meets at least four times a year to receive reports and recommendations from the standing committees and the Division Committees and reports to the conference at its annual meeting in the spring of each year. Financial support is based on an annual assessment of each member college and depends on the size of FTE enrollments.

ARTICULATION

The concern for the articulation of the programs and services of community colleges with those of other public educational institutions in Florida has been evidenced throughout the development of the system. Both the Council for the Study of Higher Education in Florida (in 1956) and the Florida Community College Council (in 1957) proposed the basic strategy which has made Florida a forerunner among the states in the development of articulated programs for serving students.

The strength of the Florida strategy for articulation is in the provision of opportunity for professional personnel who are providing services to students in any one component of public education to relate directly to their counterparts who are providing services to students enrolled in other components of the system. While Board and administrative structures foster such relationships, articulation which facilitates student flow through the system of public education appears to come from the association and interaction of the professional personnel who serve students.

The Professional Committee

Acting on the recommendations of the Council for the Study of Higher Education in Florida, the state-level staffs of the community colleges and state universities proposed the establishment of the Professional Committee for Relating Public Secondary and Higher Education. Following the approval of the proposal by the State Board of Education in 1958, the committee was organized with membership representing the secondary schools, the community colleges, the state universities, and the state-level staffs for all three levels of education in Florida.

Early among the achievements of the Professional Committee which still

stands is the 1959 agreement on general education. Under that agreement which was duly ratified by the appropriate authorities, any student who completes an announced general education program in a community college is assured that he has satisfied the lower division general education program of any state university in Florida to which he may transfer.

Principal accomplishments of the Professional Committee came through a series of subject task forces which identified and worked out inconsistencies in the expectations and in the program of studies required of students specializing in the respective fields. Some twenty-one such task forces have served the interests of students who transfer from community colleges to continue their studies in upper divisions of state universities. Even though the Professional Committee has been superseded by another body, subject matter task forces continue both to update task force reports and to extend the approach to new program areas.

The Articulation Coordinating Committee

During the period in which community colleges were being developed under the 1957 master plan, the number of community college transfer students enrolling in the state universities of Florida grew from an insignificant number until 1973 when there were approximately 27,000 such transfer students in the state universities.

This heavy reliance of the state universities on the community colleges for their upper division students prompted the Division of Community Colleges and the Division of Universities, with the active participation of institutional representatives, to expand the 1959 general education agreement into a broader articulation agreement which addressed itself directly to the transfer of students from the community colleges to baccalaureate degree programs

of the state universities. That agreement was approved by the State Board of Education in April, 1971.

The 1971 Articulation Agreement has provisions which continue the 1959 general education agreement, define the associate of arts degree as the basic transfer degree, assure the transferability of associate of arts degrees which are awarded under conditions set forth in the agreement, continue the use of subject area task forces, encourage and provide assurance of transfer for students who complete experimental programs, and establish the Articulation Coordinating Committee which is given the charge "to review and evaluate current articulation policies and to formulate additional policies" as needed. The Articulation Agreement, together with annotations showing interpretations made by the Articulation Coordinating Committee, is published each year. Copies of the Annotated Articulation Agreement are available to the colleges and universities of the State through the respective Divisions of the Department of Education.

The Articulation Coordinating Committee, which is the successor to the Professional Committee, consists of three community college people (one from the Division of Community Colleges and two from community colleges), three university people (one from the staff of the Board of Regents and two from universities), and the Deputy Commissioner of Education, who serves as chairman of the committee. The Articulation Coordinating Committee thus relates directly to each of the Divisions and through the Commissioner to the State Board of Education. Decisions and interpretations made by the committee are made on behalf of the Commissioner.

The Articulation Coordinating Committee hears cases brought by a student (or by an institution on behalf of a student) appealing an action by a university thought to be in conflict with the provisions of the Articulation

Agreement. In resolving such appeals the Articulation Committee acts for the State Board of Education and its rulings are binding on the institutions.

The Articulation Coordinating Committee has continued to sponsor the activities of subject area task forces which were initiated under the Professional Committee and it initiates new task forces upon request of the two Divisions.

The Articulation Agreement charges the Articulation Coordinating Committee with responsibility for formulating additional articulation policies. In this dimension of its work the committee has established a task force to advise it concerning the use of external examination programs for awarding credit to students in transfer programs. Based on the work of that task force the committee has formulated an amendment to the Articulation Agreement which provides for the use of the College Level Examination Program (CLEP) as a basis for awarding credit to students in transfer programs. The CLEP amendment which has been approved by both Divisions and the State Board of Education assures the transferability of credit awarded on CLEP general and subject examinations for students scoring at or above the 50th percentile of the sophomore norms.

A second amendment to the Articulation Agreement includes credit granted in the Advanced Placement Program under the mandatory transfer provisions of the Agreement.

Under auspices of the Articulation Coordinating Committee there has been developed a common transcript form which is being utilized in the community colleges. There is a standing committee on the common transcript which has developed the form and has responsibility for its utilization by the colleges.

The Articulation Coordinating Committee has sponsored research studies through which the effect of articulation policies is assessed. One such study, which is made on a continuing basis, examines the academic performance of community college transfer students enrolled in state universities.

Additionally, there has been established a task force to evaluate the policies of the CLEP amendment which will make a more detailed analysis of students with CLEP credit, including those who transfer from community colleges to state universities.

Other Articulation Activities

In addition to the activities under the Articulation Agreement there are other activities relating to the Department of Education which contribute to the development of articulated programs for students in the public system of education in Florida.

One of these is the Course Numbering Project which utilizes subject area task forces to develop a taxonomy of courses in each discipline and to identify the similarity and dissimilarity of courses in community colleges, state universities, area vocational/technical schools, and participating private colleges and universities.

Another thrust which is expected to facilitate student flow through educational institutions in Florida emerges from the concern for time variable, time-shortened education. The State Board of Education, with the endorsement of the 1973 session of the Legislature, has established a Committee on Time-Shortened Education, with representatives from the elementary and secondary schools as well as from community colleges and state universities. The committee, chaired by a Deputy Commissioner of Education, provides a vehicle for articulation at all levels of public education, and its work is related to the Articulation Coordinating Committee through overlapping membership of

Divisional representatives and of the chairman. The Committee on Time-Shortened Education has been given responsibility for advising the Commissioner regarding school calendars under a regulation that mandates that calendars provide three common entry points during the year in order to facilitate movement of students from one level of education to another.

VOCATIONAL EDUCATION

Responsibilities at the district level for vocational education are delineated in Section 6A-8.56 of the State Board of Education Regulations. Specifically these responsibilities and their assignments are as follows:

- (1) Each school board has primary responsibility for assuring that vocational education, as provided in Section 6A-8.58 of these regulations, is available to students in grades 1 through 12 and to youths under 19 years of age who left school before high-school graduation.
- (2) Each post-secondary area vocational-technical center is assigned to a school board.
- (3) Each school assigned a post-secondary area vocational-technical center established in accordance with Section 230.63, Florida Statutes, shall have primary responsibility for non-college credit courses and certificate vocational programs for youths and adults of all ages residing in the service area of that center as approved by the State Board of Vocational Education.
- (4) Each community college with a department designated as an area vocational education school by the State Board for Vocational Education under the provisions of the Vocational Education Act of 1963, Public Law 88-210 or as amended by Public Law 90-576, shall have primary responsibility for certificate and non-college credit vocational education programs and courses and also for college credit courses and associate degree vocational programs for youths and adults 19 years of age or older who reside in the service area of that area school as approved by the State Board for Vocational Education.
- (5) Each community college not having a department designated as an area vocational education school shall have primary responsibility for associate degree and certificate vocational programs based on college credit courses and for short courses, institutes, or similar activities, related to the vocational programs and responsibilities of that college.
- (6) Community colleges with departments designated as area vocational education schools may, with the approval of the board of trustees and upon the request of a school board in its vocational service area, provide on behalf of that school board vocational education programs and courses for youths under 19 years of age who left school before graduating from high school and for high school students in grades 10-12.

- (7) A board of trustees administering a community college which does not have a department designated as an area vocational school may enter into a cooperative agreement with a school board which operates an area vocational-technical center designated by the state board for vocational education to provide vocational-technical education courses which a community college will accept for college credit or for the community college to use the facilities of the area vocational-technical center for instructional services.
- (8) Any school board or any community college board of trustees may enter into contractual or cooperative agreements with any other school board or community college board of trustees to provide specific vocational-technical education services or courses to assist in meeting the vocational education need of the persons to be served.
- (9) School boards and community college boards of trustees are responsible for avoidance of unwarranted duplication of programs and services and for articulating and coordinating vocational educational programs, services, and activities, including counseling for persons served by the respective boards, based upon written agreements between school boards and community college boards of trustees. Such articulation and coordination shall be accomplished in the establishment of a local coordination council as set forth in Section 6A-8.57 of these regulations. School boards and community college boards of trustees are responsible for making comprehensive vocational programs available to all residents in their areas and are authorized to use any appropriate means to that end, including expenditures for advertising the availability of programs and courses.
- (10) None of the above provisions shall contradict or supersede existing agreements between school boards, area centers and community colleges concerning vocational education as provided in Chapter 70-211, Laws of Florida.

Those community colleges with a department designated as an area vocational education school are the following:

Brevard Community College	Lake City Community College
Central Florida Community College	North Florida Junior College
Chipola Junior College	Okaloosa-Walton Junior College
Daytona Beach Community College	Santa Fe Community College
Florida Junior College at Jacksonville	Seminole Junior College
Florida Keys Community College	South Florida Junior College
Indian River Community College	

OCCUPATIONAL AND GENERAL ADULT EDUCATION PROGRAMS

Section 6A-8.52 of State Board of Education Regulations provides that:

"The Commissioner of Education, after consultation with the board of trustees and the district school boards of counties contributing to the support of a community college shall determine the respective responsibilities of the community college and other educational agencies for occupational and general adult education programs."

APPENDIX A
STATISTICAL DATA
1973-74

TABLE 1
1973 OPENING FALL ENROLLMENT
COLLEGE LEVEL (HEADCOUNT)

College	Freshmen		Sophomores		Unclassified		Total Full-Time	Total Part-Time	Colleges Total	% Change
	F-T	P-T	F-T	P-T	F-T	P-T				
Brevard	2452	2598	1052	811	0	296	3504	3705	7209	11.51
Broward	3102	4697	1465	1105	195	393	4762	6165	10927	20.86
Central Florida	633	218	377	136	19	105	1029	459	1488	4.57
Chipola	396	124	308	117	0	33	704	274	978	-11.25
Daytona Beach	1119	524	492	208	92	337	1703	1069	2772	5.76
Edison	832	800	313	151	6	518	1151	1469	2620	38.04
Florida J.C. at Jacksonville	3154	3302	1638	1799	55	202	4847	5303	10150	13.52
Florida Keys	220	177	108	110	44	324	372	511	983	- 3.63
Gulf Coast	759	424	530	272	84	302	1373	998	2371	5.47
Hillsborough	1497	3226	569	1236	45	267	2111	4729	6840	12.83
Indian River	963	1130	334	356	35	643	1332	2129	3461	62.26
Lake City	522	519	372	241	16	145	910	905	1815	12.94
Lake-Sumter	317	258	170	69	25	441	512	768	1280	2.81
Manatee	945	1375	652	240	80	166	1677	1781	3458	10.66
Miami-Dade	9181	5489	6028	4802	551	4046	15760	14337	30097	7.39
Northern Florida	319	58	207	36	0	131	526	225	751	-21.03
Ocala	814	877	196	297	14	134	1024	1308	2332	1.79
Palm Beach	1824	2093	991	1109	58	1004	2873	4206	7079	5.03
Pasco-Hernando	172	523	57	48	4	142	233	713	946	33.24
Pensacola	2039	1783	1288	629	58	317	3385	2729	6114	7.26
Polk	1064	1199	598	394	18	490	1680	2083	3763	7.39
St. Johns River	368	232	270	72	9	80	647	385	1032	- 1.81
St. Petersburg	3574	2803	1961	1078	73	181	5608	4062	9670	2.89
Santa Fe	2385	1049	1465	455	0	0	3850	1504	5354	17.34
Seminole	1120	864	169	286	44	65	1333	1215	2548	44.69
South Florida	125	173	65	27	1	37	191	237	428	2.88
Tallahassee	757	383	573	339	39	260	1369	982	2351	- 5.32
Valencia	1885	1380	445	622	194	880	2524	2882	5406	25.37
Totals	42538	38279	22693	17045	1759	11909	66990	67233	134223	11.08

TABLE 2
1973 OPENING FALL ENROLLMENT
COLLEGE LEVEL (HEADCOUNT)

College	Advanced and Professional	Occupational (Credit)	Other Objectives	College Total
Brevard	3250	3663	296	7209
Broward	8363	2282	282	10927
Central Florida	995	375	118	1488
Chipola	854	90	34	978
Daytona Beach	1625	718	429	2772
Edison	1307	270	1043	2620
Florida J.C. @ Jacksonville	8314	1579	257	10150
Florida Keys	348	267	258	883
Gulf Coast	1289	696	386	2371
Hillsborough	3509	1805	1526	6840
Indian River	1310	1571	580	3461
Lake City	1159	512	144	1815
Lake-Sumter	531	108	641	1280
Manatee	2599	776	83	3458
Miami-Dade	17507	7508	5082	30097
North Florida	601	19	131	751
Okaloosa-Walton	2036	277	19	2332
Palm Beach	2431	2071	2577	7079
Pasco-Hernando	454	460	32	946
Pensacola	5107	1007	0	6114
Polk	1768	1150	845	3763
St. Johns River	760	195	77	1032
St. Petersburg	7063	2607	0	9670
Santa Fe	3884	1310	160	5354
Seminole	1956	374	218	2548
South Florida	321	70	37	428
Tallahassee	1897	454	0	2351
Valencia	2651	1409	1346	5406
Totals	83889	33623	16711	134,223

TABLE 3
OPENING FALL ENROLLMENT - COLLEGE LEVEL HEADCOUNT
FALL 1974

Colleges	Early Admissions		First Time in College		Returning Students		Transfer Students		College Total
			HS Grad	Other	Enrolled Prev Year	Not Enroll. Prev Year	In-State Instit.	Out-State Instit.	
Brevard	14	616	2,236	2,866	4,165	242	272	60	332
Kroward	191	1,710	2,041	3,942	6,138	601	590	609	1,199
Central Florida	14	392	222	618	632	95	56	34	90
Cnipola	18	371	111	507	415	55	19	19	38
Daytona Beach	24	512	1,212	2,048	764	372	105	190	295
Edison	1	462	1,553	1,016	931	31	352	292	644
FJC at Jacksonville	42	1,523	1,640	3,205	6,153	664	1,235	197	1,432
Florida Keys	23	127	279	429	517	41	61	179	240
Gulf Coast	34	448	400	932	1,191	286	71	132	203
Hillsborough	10	1,368	1,605	2,991	5,091	818	818	136	818
Indian River	32	606	1,254	1,254	1,114	173	117	72	253
Lake City	35	303	236	624	972	225	115	187	279
Lake-Sumter	61	241	313	115	524	106	203	57	260
Manatee	46	596	955	1,590	1,158	490	145	264	409
Miami-Dade	856	4,736	3,551	9,143	18,214	2,280	1,726	300	2,026
North Florida	35	133	93	261	402	90	37	35	72
Okaloosa-Malton	20	405	468	893	1,124	105	202	131	333
Palm Beach	73	1,105	924	2,102	2,871	521	661	1,310	1,971
Pasco-Hernando	52	116	547	715	502	66	105	71	176
Pensacola	205	2,251	2,456	2,456	2,826	172	1,559	1,559	1,559
Polk	67	629	1,242	1,242	2,181	328	328	328	328
St. Johns River	100	230	546	506	400	106	43	59	107
St. Petersburg	123	1,587	1,271	2,986	5,453	1,078	471	611	1,082
Santa Fe	17	867	426	1,310	797	672	3,287	3,287	3,287
Seminole	36	576	468	1,080	1,223	173	218	193	411
South Florida	6	115	147	268	215	22	51	19	70
Tallahassee	11	341	420	760	983	585	265	23	288
Valencia	226	1,965	130	2,321	2,106	715	731	455	1,186
Systems Total	2,435	24,623	21,651	48,709	69,329	10,184	13,848	5,448	19,296
									147,518

Source: EF-1
750610 03/25/75

TABLE 4
HEADCOUNT ENROLLMENT BY TERM 1973-74

College	Adv.-Prof.	Occ.	Compens.	Developmental Adult	Total	Citizen.	Comm. Instr. Avocat.	Instr. Servs.	Total	Other Personal Objectives	College Total
Brevard											
Fall	3,295	7,080	186	0	186	1,669	0	0	1,669	318	12,548
Winter	2,849	8,347	269	0	269	1,708	36	0	1,744	371	13,580
Summer	3,394	4,179	168	0	168	637	0	0	637	493	8,871
Annual Unduplic.	5,161	15,831	0	0	0	0	0	0	0	0	20,992
Broward											
Fall	5,096	2,561	0	0	0	0	0	0	0	5,574	13,231
Winter	2,753	1,973	7	0	7	590	0	0	590	7,781	13,104
Summer	2,38	1,959	114	0	114	397	0	0	397	5,787	8,495
Annual Unduplic.	2,453	6,372	164	0	164	1,433	0	0	1,433	12,959	23,381
Central Florida											
Fall	997	2,804	0	166	166	606	0	0	606	128	4,701
Winter	932	3,012	203	119	322	721	0	0	721	152	5,139
Summer	530	1,195	258	33	291	562	0	0	562	20	2,598
Annual Unduplic.	1,637	6,950	1,614	1,372	2,986	2,533	0	0	2,533	0	14,106
Chipola											
Fall	854	850	0	0	0	84	12	0	96	34	1,834
Winter	764	683	0	0	0	179	83	0	262	31	1,740
Summer	399	469	0	0	0	43	66	0	109	8	985
Annual Unduplic.	1,229	1,157	0	0	0	278	156	0	434	0	2,820
Daytona Beach											
Fall	1,625	3,803	0	1,406	1,406	2,319	0	0	2,319	429	9,582
Winter	1,483	4,079	0	1,960	1,960	2,238	0	0	2,238	866	10,625
Summer	1,339	1,333	0	3,639	3,639	791	0	0	791	512	7,614
Annual Unduplic.	2,335	6,542	0	0	0	0	0	0	0	0	8,877
Edison											
Fall	1,301	1,338	89	0	89	56	2,087	0	2,143	836	5,707
Winter	1,016	1,575	0	0	0	119	376	0	495	897	3,983
Summer	452	557	9	0	9	272	197	0	469	0	1,487
Annual Unduplic.	1,923	4,010	116	0	116	902	2,118	0	3,020	748	9,817
FJC at Jacksonville											
Fall	7,899	11,031	0	8,781	8,781	3,317	410	0	3,727	245	31,683
Winter	9,464	8,707	0	9,733	9,733	4,047	455	0	4,502	0	32,406
Summer	5,090	7,687	0	9,777	9,777	4,522	615	0	5,137	1,130	28,821
Annual Unduplic.	10,615	20,023	0	18,897	18,897	8,817	882	0	9,699	1,039	60,273
Florida Keys											
Fall	391	408	0	0	0	0	0	0	0	348	1,147
Winter	393	284	0	0	0	0	0	0	0	574	1,251
Summer	486	358	0	0	0	0	0	0	0	72	916
Annual Unduplic.	606	744	5	0	5	0	0	0	0	966	2,321

Source: EA-1,EA-2,EA-3,ET-1,ET-2,ET-3,ET-3Q,ET-4Q

TABLE 4 (Continued)
HEADCOUNT ENROLLMENT BY TERM 1973-74

College	Adv.-Prof.	Occ.	Compens.	Developmental		Total	Citizen.	Comm. Instr. Servs. Avocat.	Total	Other Personal Objectives	College Total
				Adult	Other						
Gulf Coast											
Fall	1,559	3,814	0	0	0	0	1,047	483	1,530	0	6,903
Winter	1,096	2,733	0	0	0	0	1,359	562	1,921	404	6,154
Summer	2,551	674	0	0	0	0	131	207	338	291	3,854
Annual Unduplic.	1,733	8,292	0	0	0	0	2,052	1,043	3,095	0	13,120
Hillsborough											
Fall	3,416	2,990	0	0	0	0	1,523	711	2,234	1,735	10,375
Winter	3,451	2,581	0	0	0	0	1,234	382	1,616	1,862	9,510
Spring	3,311	2,289	140	0	140	0	972	559	1,531	1,825	9,096
Summer	1,784	1,172	51	0	51	0	1,071	124	1,195	1,115	5,317
Annual Unduplic.	4,642	5,110	114	0	114	0	1,757	399	2,156	4,430	16,452
Indian River											
Fall	1,225	3,458	45	633	678	0	8,807	0	8,807	580	14,748
Winter	1,372	3,812	65	316	381	0	11,233	0	11,233	808	17,606
Summer	644	1,199	143	645	788	0	5,022	0	5,022	167	7,820
Annual Unduplic.	2,284	3,201	0	980	980	0	20,722	0	20,722	191	27,378
Lake City											
Fall	1,039	1,473	0	331	331	0	0	0	0	125	2,968
Winter	913	1,487	0	462	462	0	0	0	0	194	3,056
Summer	996	608	181	1,129	1,310	0	0	0	0	258	3,172
Annual Unduplic.	2,214	1,547	0	0	0	0	0	0	0	632	4,393
Lake-Sumter											
Fall	796	108	0	0	0	0	272	291	563	357	1,824
Winter	629	106	0	0	0	0	372	451	823	297	1,855
Summer	461	45	0	0	0	0	57	106	163	162	831
Annual Unduplic.	972	139	0	0	0	0	602	681	1,283	759	3,153
Manatee											
Fall	2,599	1,042	83	0	83	0	1,597	0	1,597	0	5,321
Winter	2,433	1,050	57	0	57	0	0	1,745	1,745	0	5,285
Summer	722	1,015	20	0	20	0	368	104	472	0	2,229
Annual Unduplic.	3,611	2,562	0	0	0	0	0	0	0	0	6,173
Miami-Dade											
Fall	17,911	12,699	0	338	338	0	3,853	4,703	8,556	5,675	45,179
Winter	17,849	11,538	0	1,081	1,081	0	2,888	6,827	9,715	6,591	46,774
Summer	12,768	9,112	0	754	754	0	2,431	5,021	7,452	5,231	35,317
Annual Unduplic.	25,931	21,777	0	1,651	1,651	0	8,255	14,896	23,151	13,485	85,995
North Florida											
Fall	765	294	0	91	91	0	66	0	66	0	1,216
Winter	740	317	0	78	78	0	0	0	0	0	1,135
Summer	263	41	0	0	0	0	0	19	19	15	338
Annual Unduplic.	1,063	544	0	157	157	0	66	0	66	79	1,909



TABLE 4 (Continued)
HEADCOUNT ENROLLMENT BY TERM 1973-74

College	Adv.-Prof.	Occ.	Compens.	Developmental		Total	Citizen.	Comm. Instr. Avocat.	Servs.	Total	Other Personal Objectives	College Total
				Adult	Other							
Okaloosa-Walton												
Fall	1,986	1,353	63	412	475	0	0	364	364	0	19	4,197
Winter	1,846	1,388	88	372	460	0	0	573	573	0	44	4,311
Summer	1,290	1,056	88	301	389	0	0	384	384	0	30	3,149
Annual Unduplic.	3,301	6,362	109	515	624	0	0	641	641	0	0	10,928
Palm Beach												
Fall	3,667	3,736	652	0	652	0	0	0	0	0	1,769	9,824
Winter	3,008	3,367	0	0	0	0	0	0	0	0	1,863	8,238
Summer	1,988	2,217	0	0	0	0	0	0	0	0	658	4,863
Annual Unduplic.	9,067	5,056	0	0	0	48	0	0	48	0	858	15,029
Pasco-Hernando												
Fall	581	512	0	0	0	227	0	172	399	0	225	1,717
Winter	413	609	0	0	0	99	0	211	310	0	368	1,700
Summer	281	429	0	0	0	269	0	59	328	0	126	1,164
Annual Unduplic.	901	1,064	0	0	0	0	0	0	0	0	966	2,931
Pensacola												
Fall	4,732	3,413	0	2,578	2,578	0	0	985	985	0	375	12,083
Winter	3,886	3,856	435	2,808	3,243	0	0	1,430	1,430	0	466	12,881
Summer	2,758	3,119	248	2,676	2,924	0	0	601	601	0	392	9,794
Annual Unduplic.	8,217	8,509	0	0	0	0	0	0	0	0	0	16,726
Polk												
Fall	1,768	1,150	0	0	0	950	0	3,139	4,089	0	845	7,852
Winter	1,701	4,140	0	0	0	75	0	913	988	0	765	7,594
Summer	0	0	0	0	0	0	0	0	0	0	0	0
Annual Unduplic.	5,122	2,071	0	0	0	2,965	0	3,075	6,040	0	0	13,233
St. Johns River												
Fall	781	348	0	0	0	0	0	56	56	0	6	1,191
Winter	642	339	0	0	0	107	0	42	149	0	10	1,140
Summer	276	105	0	0	0	0	0	44	44	0	24	449
Annual Unduplic.	978	529	3	0	3	104	0	129	233	0	0	1,743
St. Petersburg												
Fall	7,489	5,688	0	0	0	740	0	1,364	2,104	0	0	15,281
Winter	7,351	7,131	0	0	0	655	0	1,848	2,503	0	0	16,985
Summer	3,505	2,309	0	0	0	714	0	704	1,418	0	0	7,232
Annual Unduplic.	10,943	11,235	0	0	0	1,547	0	1,880	3,427	0	30	25,635
Santa Fe												
Fall	3,906	2,101	572	0	572	70	0	960	1,030	0	0	7,609
Winter	3,813	1,488	400	0	400	59	0	900	6,959	0	0	6,660
Spring	3,588	1,676	500	0	500	118	0	1,800	1,918	0	0	7,682
Summer	2,078	658	0	0	0	0	0	0	0	0	54	2,790
Annual Unduplic.	6,421	8,683	706	0	706	1,016	0	5,462	6,478	0	0	22,288

Source: EA-1,EA-2,EA-3,ET-1,ET-2,ET-3,ET-30,ET-4Q

TABLE 4 (Continued)
 HEADCOUNT ENROLLMENT BY TERM 1973-74

College	Adv.-Prof.	Occ.	Compens.	Developmental Adult	Total	Citizen.	Comm. Instr. Avocat.	Servs. Total	Other Personal Objectives	College Total
Seminole										
Fall	2,109	1,534	0	1,028	1,028	2,550	0	2,550	103	7,324
Winter	2,051	1,939	0	1,361	1,361	2,852	0	2,852	104	8,307
Summer	1,517	1,357	0	952	952	1,996	0	1,996	97	5,919
Annual Unduplic.	3,395	5,076	17	4,289	4,306	1,014	62	1,076	241	14,094
South Florida										
Fall	321	1,113	0	359	359	89	0	89	38	1,920
Winter	330	891	0	334	334	313	0	313	93	1,961
Summer	0	0	0	0	0	0	0	0	0	0
Annual Unduplic.	607	2,107	0	674	674	460	0	460	0	3,848
Tallahassee										
Fall	1,889	705	7	0	7	0	0	0	0	2,601
Winter	1,942	661	0	0	0	115	0	115	0	2,718
Summer	889	446	13	0	13	0	0	0	0	1,348
Annual Unduplic.	2,853	1,393	0	0	0	0	0	0	0	4,246
Valencia										
Fall	4,785	1,165	49	0	49	0	212	212	13	6,224
Winter	4,761	665	50	0	50	0	0	0	20	5,496
Summer	2,203	1,488	0	0	0	0	550	550	1,314	5,555
Annual Unduplic.	8,307	2,992	0	0	0	0	2,408	2,408	0	13,707
Systems Total	128,521	159,878	2,848	28,535	31,383	54,571	33,832	88,403	37,383	445,568

Source: EA-1,EA-2,EA-3,ET-1,ET-2,ET-3,ET-3Q,ET-4Q

TABLE 5
ANNUAL FTE BY TERM
1973-1974

College	FALL		WINTER		SPRING		SUMMLR		Annual Total
	Initial	Other	Initial	Other	Initial	Other	Initial	Other	
Brevard	2,410.4	382.7	2,309.4	513.0	2,322.4		845.9	144.0	6,605.4
Broward	3,300.1	136.4	3,436.5	159.1	3,288.9		761.6	519.5	8,006.5
Central Fl	607.4	475.5	1,082.9	422.9	1,025.2		193.9	144.2	2,446.2
Chipolaj	582.1	11.9	594.0	14.1	542.8		167.4	14.3	1,318.5
Dayt. Bch.	1,347.8	594.7	1,942.5	579.0	1,945.2		435.1	483.2	4,806.0
Edison	1,339.7	59.2	898.9	64.4	803.9		261.2	20.0	1,984.0
FJC at Jax	3,212.0	2,589.4	5,801.4	3,112.1	6,218.3		1,032.8	2,573.2	15,625.7
Fla. Keys	271.9	25.8	297.7	16.3	294.6		160.1	14.8	767.2
Gulf Coast	877.7	69.6	947.3	43.5	856.8		279.9	28.3	2,112.3
Hlsborough	1,812.5	17.6	1,830.1	30.6	1,811.5	1,672.2	748.1	18.7	6,098.5
Indian Riv	1,010.7	369.1	1,379.8	538.2	1,513.1		401.9	111.5	3,506.3
Lake City	769.0	117.3	886.8	122.0	879.9		262.0	279.3	2,308.0
Lk. Sumter	358.4	10.3	368.7	17.4	336.6		99.2	34.5	839.0
Manatee	1,145.0	43.9	1,188.4	41.1	1,119.7		321.3	9.9	2,639.8
Miami-Trade	11,394.9	259.2	11,654.1	347.1	11,600.7		5,570.5	167.9	28,993.2
North Fla.	396.0	6.8	402.8	101.6	369.4		95.2	95.2	867.4
Okal-Halt	963.0	25.8	988.8	72.3	951.1		476.7	11.1	2,427.7
Palm Beach	2,067.0	82.9	2,149.9	109.0	1,960.9		634.1	19.4	4,764.3
Pasco-Hern	177.5	59.0	236.5	53.8	269.9		90.8	38.3	635.5
Pensacola	3,242.5	257.0	3,499.5	309.1	3,369.5		1,564.5	161.6	8,595.1
Polk	1,193.0	64.7	1,257.7	69.0	1,220.0		1,465.3	25.0	2,968.0
St. Johns	382.6	6.2	388.8	19.4	350.3		88.5	2.4	830.0
St. Peters	3,771.0	28.7	3,771.0	11.7	3,676.9		1,037.5	1,037.5	8,435.4
Santa Fe	1,768.2	305.9	1,796.9	382.2	1,808.7	1,671.7	897.6	7.3	6,182.2
Seminole	1,144.8	15.3	1,450.7	11.6	1,466.9		633.9	229.9	3,781.4
South Fla.	300.1	20.7	315.4	25.1	265.0		43.1	12.1	635.6
Tallahassee	639.2	37.3	659.9	76.4	659.8		298.9	16.6	2,034.0
Valencia	1,728.7	37.3	1,766.0	76.4	1,659.8		773.2	32.3	4,231.3
System Tot	47,913.2	6,073.4	53,986.6	46,024.6	53,286.6	3,334.0	27.8	3,361.8	23,759.5
									18,640.2
									5,119.3
									23,759.5

Source: FA-5
23474 01/21/75

TABLE 6
ANNUAL FTE by DISCIPLINE
1973-1974

Programs	BREV	BROW	NFLA	CHIP	DAYT	EDIS	FJAX	FKEY	CULF	HILL
1.1001 Agricul. & Nat. Res.					28.6					
1.1002 Architect. & Environ.			4.3						111.8	426.1
1.1003 Area Studies	219.0	368.2	122.9	64.7	147.9	130.1	596.2	63.0		
1.1004 Biological Sciences			75.9	17.8	38.2	95.5		59.6		
1.1005 Business & Management	13.4	33.4	20.7	3.2	3.2	3.7	14.7		7.4	8.8
1.1006 Communications			7.7					3.6		
1.1007 Computer & Info. Sci.								21.1	105.9	26.5
1.1008 Education	233.3	392.3	65.9	30.1	71.9	76.1	158.1			
1.1009 Engineering			12.2	8	18.4					
1.1010 Fine & Applied Arts	200.2	497.7	197.1	32.2	215.4	142.0	899.9	76.8	97.3	291.9
1.1011 Foreign Languages	63.0	139.7	8.5	5.5	15.6	30.4	73.2	18.9	26.6	121.9
1.1012 Health Professions	19.2		11.5							
1.1013 Home Economics				1.8						
1.1014 Law						8.0		12.0		757.0
1.1015 Letters	736.6	1,067.5	191.2	140.6	330.3	310.9	1,223.1	70.6	322.0	
1.1016 Library Science										
1.1017 Mathematics	393.1	639.6	124.0	95.8	208.4	137.6	739.1	49.3	150.9	551.5
1.1018 Military Science	4.5		5							8.0
1.1019 Physical Sciences	409.6	480.6	74.8	80.2	162.1	98.5	504.7	49.8	140.3	176.0
1.1020 Psychology	320.9	388.8	84.1	30.8	109.6	178.9	633.7	55.4	122.7	448.4
1.1021 Public Affairs							2.6			
1.1022 Social Sciences	597.0	901.4	162.0	189.9	303.0	175.3	1,321.6	74.9	304.8	1,020.8
1.1049 Interdiscip. Studies	331.5	36.6		74.2	1.6	11.0	102.0		20.9	15.1
Total Advanced & Profes.	3,541.3	5,008.6	1,151.1	817.6	1,654.2	1,400.0	6,268.9	555.0	1,410.6	3,852.0
1.2100 Agriculture	3.2	57.9	39.3	51.8	35.9	.8				
1.2200 Distributive	286.8	729.2	48.6	24.9	214.5	237.2	448.9	4.8	114.6	155.0
1.2300 Health	126.0	511.1	126.6	46.6	381.7	60.2	603.8	40.5	73.3	207.6
1.2400 Home Economics	360.0		136.9	3.2	5.6	10.0	755.1		14.7	
1.2500 Office	610.1	689.6	83.2	24.7	291.0	62.0	1,281.5	37.8	236.5	789.9
1.2600 Trade and Industrial	662.4		498.2	287.1	733.6		1,537.6	8.6	214.7	132.0
1.2700 Technical	560.8	561.7	104.4	23.7	180.2	99.5	346.3	116.5		449.5
Total Occupational	2,617.3	2,549.5	1,037.2	462.0	1,842.5	469.7	4,973.2	208.2	653.8	1,734.0
1.3100 Compensatory	267.1	426.4	113.3	21.2	124.5	25.6		4.0		322.0
1.3200 Adult Elem. and Sec.			50.8		911.2		3,265.8			
Total Developmental	267.1	426.4	164.1	21.2	1,035.7	25.6	3,265.8	4.0		322.0
1.4100 Citizenship	178.3	22.0	93.8	6.3	273.6	22.1	1,014.8		29.2	58.4
1.4200 Avocational	1.4			11.4		66.6	103.0		18.7	132.1
Total Comm. Instr. Svcs.	179.7	22.0	93.8	17.7	273.6	88.7	1,117.8		47.9	190.5
College Total	6,605.4	8,006.5	2,446.2	1,310.5	4,806.0	1,984.0	15,625.7	767.2	2,112.3	6,098.5

TABLE 6 (Continued)

ANNUAL FTE by DISCIPLINE

1973-1974

Programs	INDR	LCTY	LSUM	MANA	MIAM	NFLA	OKAL	PALM	PASC	PEHS
1.1001 Agricul. & Nat. Res.										
1.1002 Architect. & Environ.										
1.1003 Area Studies	6.0	60.8	59.5	126.8	1,161.2	53.5	113.8	316.4	60.2	473.1
1.1004 Biological Sciences	124.7		27.1	29.9	1,506.7	46.9		223.3	30.0	459.4
1.1005 Business & Management	3.9	4.2	2.0	90.5		2.4	2.3	7.1	2.6	26.9
1.1006 Communications			6.2							105.6
1.1007 Computer & Info. Sci.	108.6	80.8	19.8	175.1	1,609.9	61.0	112.4	212.0	21.2	228.5
1.1008 Education			8.8	4.6				5.1		17.2
1.1009 Engineering			71.4	203.7	2,657.0	98.7	175.9	295.9	45.5	584.6
1.1010 Fine & Applied Arts	36.4	117.2	7.3	13.9	637.5	3.1	34.3	53.7	1.8	88.0
1.1011 Foreign Languages	17.6									193.9
1.1012 Health Professions										101.1
1.1013 Home Economics										
1.1014 Law						7.4		26.3		
1.1015 Letters	213.9	244.9	141.5	429.7	2,895.6	111.4	226.6	723.7	58.5	578.7
1.1016 Library Science	1									23.0
1.1017 Mathematics	152.6	100.0	65.2	161.1	2,066.1	50.8	192.2	327.7	28.3	437.5
1.1018 Military Science					7.9					
1.1019 Physical Sciences	100.6	99.4	32.9	73.4	1,527.6	29.9	115.2	269.5	21.0	517.4
1.1020 Psychology	31.7	134.8	44.6	96.6	1,337.5	18.3	63.8	208.7	54.1	256.8
1.1021 Public Affairs			10.4	34.6						122.5
1.1022 Social Sciences	197.2	183.6	159.9	281.8	4,066.5	140.3	234.6	594.7	91.1	750.4
1.1049 Interdiscip. Studies	138.0	1.0		127.1		.9			7.0	
Total Advanced & Profes.	1,181.3	1,034.0	665.7	1,596.6	19,725.7	630.3	1,271.1	3,264.1	422.4	4,964.6
1.2100 Agriculture	27.4	262.9			36.8	30.2		3.1	1.6	
1.2200 Distributive	255.5	60.8	31.0	206.6	720.7	6.7	67.1	351.1	71.6	46.3
1.2300 Health	144.7	53.3		205.6	1,512.7	29.3	6.6	355.2	24.6	404.4
1.2400 Home Economics	172.9	37.6		9.5	190.6	4.3	53.4	49.6	5.4	1.2
1.2500 Office	222.2	125.0	46.6	142.4	1,310.4	10.0	225.9	73.6	40.2	630.2
1.2600 Trade and Industrial	301.8	601.4		123.3	597.9	123.7	271.7	10.0	23.8	825.0
1.2700 Technical	119.2	33.2	24.7	205.6	2,759.7	6.6	305.6	541.0	20.9	62.4
Total Occupational	1,243.2	1,174.8	102.3	893.2	7,189.0	211.3	930.3	1,383.6	186.1	1,969.5
1.3100 Compensatory	125.4	36.3	45.5	59.5	1,037.2		28.0	116.6	1.4	157.8
1.3200 Adult Elem. and Sec.	245.7	62.9			62.5	25.1	190.4			1,399.5
Total Developmental	371.1	99.2	45.5	59.5	1,099.7	25.1	213.4	1.6.6	1.4	1,557.3
1.4100 Citizenship	602.8		11.2	72.0	378.6	.7			17.0	
1.4200 Vocational	7.9		14.3	18.5	600.2		7.9		6.6	103.7
Total Com. Instr. Svcs.	610.7		25.5	90.5	978.8	.7	7.9		23.6	
Collene Total	3,406.3	2,308.0	839.0	2,639.8	28,993.2	867.4	2,427.7	4,764.3	635.5	8,595.1

Source: FA-4
23474 01/21/75

TABLE 6 (Continued)
ANNUAL FTE by DISCIPLINE
1973-1974

Programs	POLK	ST. J	ST. P	SANF	SEMI	SFLA	TALL	VALE	SYSTEM TOT.
1.1001 Agricul. & Nat. Res.						3.7			4.8
1.1002 Architect. & Environ.									32.9
1.1003 Area Studies									6.0
1.1004 Biological Sciences	143.4	60.9	672.2	320.1	113.0	21.6	94.2	263.6	6,488.9
1.1005 Business & Management		10.5			90.5	15.3	12.8		2,739.4
1.1006 Communications	.8	2.3	39.5	19.7	2.4		6.1	8.4	329.6
1.1007 Computer & Info. Sci.					21.4			68.2	212.7
1.1008 Education	104.2	51.2	237.7	107.3	132.9	10.9	99.5	114.7	4,728.9
1.1009 Engineering					7.2	1.4		9.9	85.6
1.1010 Fine & Applied Arts	192.2	65.8	689.4	572.4	233.2	37.9	212.7	217.9	9,161.3
1.1011 Foreign Languages	43.7	3.5	43.3	60.2	19.1	2.2	21.6	59.0	1,604.5
1.1012 Health Professions									224.6
1.1013 Home Economics								3.4	106.3
1.1014 Law									67.0
1.1015 Letters	431.2	125.3	969.6	799.7	316.2	13.3	286.5	600.2	14,376.0
1.1016 Library Science		.2			.2	53.0			23.5
1.1017 Mathematics	171.8	63.1	691.8	461.7	183.1	13.0	164.7	230.2	8,650.2
1.1018 Military Science	2.2	.8					.6		25.8
1.1019 Physical Sciences	155.7	50.1	566.8	408.0	202.3	14.3	143.9	254.6	6,759.2
1.1020 Psychology	123.9	46.4	470.6	314.5	150.6	17.1	70.1	257.9	6,121.3
1.1021 Public Affairs									170.1
1.1022 Social Sciences	320.5	119.1	1,149.6	615.3	362.6	39.9	392.3	648.7	15,405.8
1.1049 Interdiscip. Studies		.9		517.4				240.2	1,625.4
Total Advanced & Profes.	1,697.6	603.1	5,550.5	4,196.3	1,834.7	251.6	1,505.0	2,976.9	79,030.8
1.2100 Agriculture	17.0		24.4	42.6	21.4	48.4		9.4	714.1
1.2200 Distributive	107.7	63.8	438.0	101.7	98.0	21.8	53.7	79.1	5,105.9
1.2300 Health	311.4	2.4	407.6	441.1	50.3	12.9	117.7	216.6	6,474.0
1.2400 Home Economics			10.8	74.9	103.0	22.0	4.3	14.6	2,047.8
1.2500 Office	326.4	59.9	1,264.3	441.9	249.6	39.0	153.4	411.0	9,880.9
1.2600 Trade and Industrial			387.8	211.7	296.3	154.1		16.4	8,019.1
1.2700 Technical	441.5	73.4		338.1	248.3	22.0	136.3	263.6	8,044.7
Total Occupational	1,206.0	199.5	2,533.1	1,652.0	1,066.9	320.2	465.4	1,010.7	40,286.5
1.3100 Compensatory					17.6	12.1	63.6	211.8	3,534.2
1.3200 Adult Elem. and Sec.				.6	701.0	44.0			6,959.5
Total Developmental		17.8	200.5	99.6	718.6	56.1	63.6	211.8	10,493.7
1.4100 Citizenship	.3	3.3	130.9	36.9	157.9	7.7		9.9	3,127.7
1.4200 Vocational	64.1	6.3	70.4	197.4	3.3			22.0	1,455.8
Total Comm. Instr. Svcs.	64.4	9.6	201.3	234.3	161.2	7.7		31.9	4,583.5
College Total	2,963.0	830.0	8,485.4	6,182.2	3,781.4	635.6	2,034.0	4,231.3	134,394.5



TABLE 7

ADVANCED and PROFESSIONAL ENROLLMENTS by PROGRAM
(HEADCOUNT)
1973-1974

Colleges	Freshmen		Agriculture		Completes		Biological and Physical Sciences		Freshmen		Business		Completes
			Soph.	Other	Freshmen	Soph.	Other	Completes	Freshmen	Soph.	Other		
Brevard			193	86	22	15	348	333	68	122			
Broward	9	4	69	95	23	17	47	35	17	9			
Central Florida	19	15	20	19		22	123	66		30			
Chinola	15	10			1		89	70	3	36			
Daytona Beach	8	4	55	31		20	268	150		70			
Edison													
FJC at Jacksonville													
Florida Keys			54	17		4	73	20		4			
Gulf Coast	2	7	34	26	1	14	101	96	4	18			
Hillsborough	2						388	499		122			
Indian River													
Lake City	19	27	4	5		2	33	37		7			
Lake-Sumter	9	6	15	17	2	10	80	38	14	13			
Manatee	6	7			2		48	118	29	29			
Miami-Jade	105	86	372	590	22	312	1,393	2,266	67	913			
North Florida					2		8	5	1				
Okaloosa-Walton	31	5	121	36	18	12	672	203	61	76			
Palm Beach	10	5	132	115	22	35	447	293	70	70			
Pasco-Hernando													
Pensacola			91	101	13	54	673	344	96	127			
Polk	43	19	56	33	3	22	290	191	61	86			
St. Johns River	5	6	9	21	2	8	30	61	8	18			
St. Petersburg	41	27	113	124	7	230	586	530	56				
Santa Fe			765	335									
Seminole	6	9	76	55	10	14	296	252	8	70			
South Florida	8		23	2		1	67	6	3	4			
Tallahassee													
Valencia	14	7	76	37			576	283					
Systems Total	352	245	18	66	2,298	1,747	144	792	6,647	5,911	512	1,797	

Source: LA-1
13174 03/06/75

TABLE 7 (Continued)
 ADVANCED and PROFESSIONAL ENROLLMENTS by PROGRAM
 (HEADCOUNT)
 1973-1974

Colleges	Education			Engineering and Architecture			Fine Arts					
	Freshmen	Soph.	Other	Completes	Freshmen	Soph.	Other	Completes	Freshmen	Soph.	Other	Completes
Brevard	244	211	28	100	110	111	24	22	178	126	26	32
Broward	105	139	31	29	175	260	40	56	181	208	44	89
Central Florida	187	107	19	52	57	19	10	11	24	10	11	11
Chipola	66	81	19	53	27	12	4	4	44	39	11	22
Daytona Beach	187	105		74	52	35		10	85	48		18
Edison												
FJC at Jacksonville	73	40		7	6	2			40	9		2
Florida Keys	93	113	9	28	48	29	2	5	31	31	2	9
Gulf Coast	304	323		154	271	210		47	128	91		16
Hillsborough												
Indian River	54	69		29	13	22		6	10			2
Lake City	44	32	9	18	21	15	5	2	34	13	6	4
Lake-Sumter	93	153	57	93	18	41	10		32	38	10	
Manatee	706	1,222	33	553	969	1,326	40	23	515	581	23	238
Miami-Dade												
North Florida	303	107	19	41	158	42	12	7	351	64	35	22
Okaloosa-Walton	307	237	45	83	133	100	24	27	243	126	23	33
Palm Beach	17	23	29	8								
Pasco-Hernando	225	183	23	75	51	52	2	21	141	68	36	17
Pensacola	332	186	52	111	100	54	2	13	23	9	4	6
Polk	46	111	28	42	22	20	2	8	8	15	4	6
St. Johns River	379	428	28	34	163	165	23		189	114	16	
St. Petersburg	114	50	9	58	58	47	2	14	950	407	9	266
Santa Fe	142	90	20	12	15	4		2	122	74	2	39
Seminole	36	28							22	5		3
South Florida												
Tallahassee												
Valencia	397	195			192	95			74	36		
Systems Total	4,454	4,293	411	1,567	2,679	2,669	196	786	3,426	2,112	252	857

37 42

Source: EA-1
 13174 03/06/75

TABLE 7 (Continued)
 ADVANCED and PROFESSIONAL ENROLLMENTS by PROGRAM
 (HEADCOUNT)
 1973-1974

Colleges	Health			Humanities and Letters			Inter-Disciplinary			
	Freshmen	Soph.	Other	Freshmen	Soph.	Other	Freshmen	Soph.	Other	
Brevard	111	78	9	45	41	3	12	25	2	20
Broward	107	94	19	133	171	15	30	52	2	20
Central Florida	76	35	1	17	5		14			
Chipola	46	51	5	9	3		3			
Jaytona Beach	79	54		11	7		2			
Edison										
FJC at Jacksonville	10	3		4	2					
Florida Keys	40	43	7	16	20	1	9			
Gulf Coast	254	203		42						
Hillsborough										
Indian River										
Lake City	16	26		10	2	2	8	20	7	6
Lake-Sumter	56	23		20	2		4			
Manatee	35	59		14	32	11	11	8	24	6
Miami-Dade	886	1,140		1,429	1,561	76	633			
North Florida	1					3				
Okaloosa-Walton	241	58	19	64	15	9	7	13	5	2
Palm Beach	162	130	22	39	20	11	4	34	9	5
Pasco-Hernando	4		1			1				
Pensacola	157	68	15	26	20		40	210	192	9
Polk	132	76		32	7		7			
St. Johns River	37	43	5	1	26	5	14		3	1
St. Petersburg	302	253	42	21	33	2	2			
Santa Fe				940	403		207	553	237	169
Seminole	73	53	9	32	32	2	11			
South Florida	10	2		1			1			
Tallahassee										
Valencia	230	114		46	22			105	51	
Systems Total	3,105	2,641	227	2,378	2,421	141	1,086	1,020	559	49
				330						170

Source: EA-1
 13174 03/06/75

TABLE 7 (Continued)
 ADVANCED and PROFESSIONAL ENROLLMENTS by PROGRAM
 (HEADCOUNT)
 1973-1974

Colleges	Law		Math and Computer Science		Public Service			
	Freshmen	Soph.	Freshmen	Soph.	Freshmen	Soph.	Other	Completes
Brevard	36	72	37	27	25	23	5	6
Broward	15	17	20	7	67	84	15	22
Central Florida	6	7	21	13	28	21		6
Chipola	17	10	5	2	38	28		17
Daytona Beach	24	15	28	13				
Edison								
FJC at Jacksonville								
Florida Keys	3	2	7	5				
Gulf Coast	29	22	28	18	50	74	4	30
Hillsborough	36	43	13		107	145		54
Indian River								
Lake City	4	10	5	3	509	103	1	19
Lake-Sumter	9	10	4	6	67	39	12	23
Manatee	51	46	4	11	23	40	12	12
Miami-Dade	341	439	107	140	423	583	18	265
North Florida			2			1		
Okaloosa-Walton	51	4	111	34	143	29	8	17
Palm Beach	74	57	36	42	99	98	12	38
Pasco-Hernando	4	2	1					
Pensacola			163	85	310	134	30	19
Polk	66	53	17	12	34	18		21
St. Johns River	15	17	5	9	7	23		10
St. Petersburg	61	57	25	29	131	143	8	
Santa Fe			494	212				
Seminole	44	32	29	14	9	3		3
South Florida	8	1	5		8		1	
Tallahassee								
Valencia	119	58	77	38				
Systems Total	1,118	974	1,231	720	2,086	1,589	126	550

Source: EA-1
 13174 03/05/75

TABLE 7 (Continued)

ADVANCED and PROFESSIONAL ENROLLMENTS by PROGRAM
(HEADCOUNT)
1973-1974

Colleges	Freshmen		Social Science		Completes	Gen. Degree: Freshmen		Transfer and Non-Trains		Freshmen	Total Enrollment		Completes
			Soph.	Other		Soph.	Other	Soph.	Other		Soph.	Other	
Jeward	120	75	7	40	1,327	820	126	309	2,824	2,003	334	733	
Broward	64	64	16	14	209	25	270	30	1,017	1,180	256	292	
Central Florida	54	34	1	29	294	142	42	67	695	405	279	228	
Chipola	5	1		4	671	373		76	1,486	849	85	255	
Daytona Beach	13	9			1,336	502	35	263	1,336	502	85	319	
Edison					7,887	2,728		1,451	7,887	2,728		1,451	
FJC at Jacksonville	32	9		3	138	51		17	445	161		38	
Florida Keys	12	13		9	548	99	60	74	1,040	601	92	228	
Gulf Coast					605	903		353	2,225	2,417		801	
Hillsborough					1,303	447	534	294	1,303	447	534	264	
Indian River				2	807	338	58	38	1,504	650	60	148	
Lake City				9	144	80	42	35	545	316	111	133	
Lake-Sumter	42	23	3		1,795	492	184		2,138	1,095	378	356	
Manatee	11	29	10		4,452	2,277	190	637	12,286	13,078	567	5,136	
Miami-Dade	508	867	33	354	307	330	390	202	320	341	402	202	
North Florida	2	3	1	20				35	2,428	662	211	280	
Ocala	169	60	8	51	2,203	790	2,416	125	4,130	2,224	2,713	558	
Palm Beach	211	152	40		361	139	286	46	4,000	179	322	57	
Pasco-Hernando	1				2,946	1,055	599	604	5,028	2,334	855	1,054	
Pensacola	61	52	6	39	2,852	364		128	4,038	1,084	101	481	
Polk	67	49	32	32	152	121	15	39	361	516	192	192	
St. Johns River	24	32	4	18	4,581	1,459	378	1,374	6,799	3,554	590	1,374	
St. Petersburg	187	192	19	200	346	1,058	147	52	4,495	1,926	207	1,358	
Santa Fe	659	232		54	228	52	20	25	1,354	1,834	46	1,359	
Seminole	121	30	7	1	1,188	1,244	421	351	1,488	1,244	421	351	
South Florida	25	5			2,953	1,455	590		5,172	2,545	590	556	
Tallahassee													
Valencia	313	154											
Systems Total	2,786	2,193	155	879	39,773	17,355	6,861	6,595	73,853	45,429	9,239	17,520	

Source: EA-1
13174 03/06/75



TABLE 8

ANNUAL REPORT OF OCCUPATIONAL PROGRAMS
(HEADCOUNT)
1973-1974

Collene	Consumer & Occupational						College Total					
	Agriculture	Distribution	Health	Homemaking	Preparation	Office		Technical	Trades & Industrial			
Brevard												
Secondary												442
Post-Secon.		689	507	132	139	595	1,841	1,097	5,000			
Adult	84	312	290	4,533		1,505	222	2,943	10,339			
Cooperative			2			9	18	2	31			
Completions			74	5	4	51	71	169	374			
Broward												
Secondary												
Post-Secon.		3,920	248			476	731	989	6,372			
Adult												
Cooperative		1				4	15	2	22			
Completions		30	3			13	71	31	148			
Central Florida												
Secondary												
Post-Secon.			146	5	56	82	176	10	10			
Adult	28	1,179	1,125	691		829	32	541	1,040			
Cooperative	105		4		2	25	6	3	5,900			
Completions	1	1,137	64	46	19	16	21	465	1,076			
Chinoia												
Secondary			26			33	158	133	185			
Post-Secon.	42	6	306	134				291	972			
Adult												
Cooperative	42	17	294	134		33	123	129	59			
Completions									713			
Daytona Beach												
Secondary	7											
Post-Secon.	34	133	463			264	400	256	263			
Adult		790	1,094		53	677	162	493	1,787			
Cooperative								1,716	4,492			
Completions	15	590	655		41	381	66	971	2,719			
Edison												
Secondary												
Post-Secon.		1,452	236			74	112		1,874			
Adult	31	780	124	40	18	593	542		2,136			
Cooperative												
Completions	25	633	135	32	18	500	466		1,809			

Source: EA-2
13274 03/24/75

TABLE 3 (Continued)
ANNUAL REPORT OF OCCUPATIONAL PROGRAMS
(HEADCOUNT)
1973-1974

Collene	Agriculture	Distribution	Health	Consumer & Home-making	Occupational Preparation	Office	Technical	Trades & Industrial	College Total
FJC at Jacksonville									
Secondary		320	899	97	112	728	488	255	2,899
Post-Secon. Adult		3,375	149	3,813	1,683	2,560		5,544	17,124
Cooperative Completions		3,012	362	3,550	1,629	2,809	83	5,406	16,851
Florida Keys									
Secondary		26	285	15	2	90	265	61	744
Post-Secon. Adult									
Cooperative Completions			190	15		11	135	5	356
Gulf Coast									
Secondary		393	451	1		458	6,783	201	8,292
Post-Secon. Adult									
Cooperative Completions		5	46	1		14	68	15	99
Hillsborough									
Secondary		382	300		15	707	850	183	2,437
Post-Secon. Adult		1,624	341	378		232	41	57	2,679
Cooperative Completions		33	116			51	144	4	348
Indian River									
Secondary		1,098	206	419		368	54	910	3,426
Post-Secon. Adult								75	75
Cooperative Completions		42	8	12		4	17	51	138
Lake City									
Secondary		53	68			95		533	1,024
Post-Secon. Adult		51	66			9		428	523
Cooperative Completions		2	99			11		20	82
		87				20		204	412

Source: EA-2
13274 03/24/75

TABLE 8 (Continued)
ANNUAL REPORT OF OCCUPATIONAL PROGRAMS
(HEADCOUNT)
1973-1974

College	Agriculture	Distribution	Health	Consumer & Occupational Homemaking Preparation	Office	Technical	Trades & Industrial	College Total
Lake-Sumter Secondary Post-Secon. Adult Cooperative Completions Manatee		3	2		102	32		139
Secondary Post-Secon. Adult Cooperative Completions Miami-Dade		1,294	610		252	331	75	2,562
Secondary Post-Secon. Adult Cooperative Completions Miami-Dade	80	6,282	3,702	222	4,085	5,076	2,072	21,777
Secondary Post-Secon. Adult Cooperative Completions North Florida	16	178	839	4	417	10 577	266	2,356
Secondary Post-Secon. Adult Cooperative Completions Okaloosa-Walton	10 23	11 4	19 77	50	11 22	45	76 196	127 417
Secondary Post-Secon. Adult Cooperative Completions Ocala	6	3	20				61	90
Secondary Post-Secon. Adult Cooperative Completions Palm Beach		271 437	39	119 163	1,717 706	861 846	110 1,002	3,084 3,278
Secondary Post-Secon. Adult Cooperative Completions Palm Beach		3		2	21	28	25	79
Secondary Post-Secon. Adult Cooperative Completions	50	515 416	949 563	91 96	441 132	550 529	226 498	2,772 2,284
Secondary Post-Secon. Adult Cooperative Completions	50	443	774	110	155	602	537	2,676

Source: EA-2
13274 03/24/75

TABLE C (Continued)
 ANNUAL REPORT OF OCCUPATIONAL PROGRAMS
 (HEADCOUNT)
 1973-1974

College	Agriculture	Distribution	Health	Consumer & Homemaking	Occupational Preparation	Office	Technical	Trades & Industrial	College Total
Pasco-Hernando									
Secondary			66		26	144	54	100	1,064
Post-Second. Adult	18	656							
Cooperative Completions	1	2			1		1		4
Pensacola									
Secondary			970	46	74	406	99	807	2,417
Post-Second. Adult		417	432			2,035	185	3,023	6,092
Cooperative Completions		40	188		7	163	14	247	659
Polk									
Secondary			842			375	612		2,071
Post-Second. Adult	65	177							
Cooperative Completions	7	7	69			23	51		157
St. Johns River									
Post-Second. Adult		26	24			220	96	17	359
Cooperative Completions		67					79		170
Cooperative Completions		62	22			28	80	2	194
St. Petersburg									
Secondary			1,011		205	960	1,005		3,502
Post-Second. Adult		4,962	729	162	74	598	1,208		7,733
Cooperative Completions		4,156	874	142	100	697	1,292		7,261
Santa Fe									
Secondary			1,033	34		982	564	160	3,378
Post-Second. Adult	40	565			122	879	520	3,081	5,305
Cooperative Completions	229	474	512	17	95	1,365	485	2,812	6,507
Cooperative Completions	226	44							44

Source: EA-2
 13274 03/24/75

TABLE 8 (Continued)
 ANNUAL REPORT OF OCCUPATIONAL PROGRAMS
 (HEADCOUNT)
 1973-1974

College	Agriculture	Distribution	Health	Consumer & Homemaking	Occupational Preparation	Office	Technical	Trades & Industrial	College Total
Senirole									
Secondary	59	140	45	406		50		1,114	1,814
Post-Second.		150	121			1,035	564	609	2,479
Adult		333				450			783
Cooperative		116							116
Completions	41	350	82	306		323	46	1,470	2,618
South Florida									
Secondary	64	143			26		10	108	208
Post-Second.	16	125	245	94	2	55	115	73	406
Adult	19					391		619	1,493
Cooperative									
Completions	30	215	211	70	13	263	10	604	1,421
Tallahassee									
Secondary		491	297			190	122	293	1,393
Post-Second.									
Adult									
Cooperative									
Completions		491	77			14	1	6	589
Valencia									
Secondary		241	923	76		855	676	198	2,992
Post-Second.	23								
Adult									
Cooperative									
Completions									
Systems Total		16	107	10		48	38		219
Secondary	140	177	90	406	26	61	10	2,139	3,049
Post-Second.	717	1,637	14,729	1,350	986	15,811	22,660	10,490	36,379
Adult	516	15,799	5,241	9,874	2,131	11,596	4,366	20,925	70,450
Cooperative	43	237	6		2	50	50	27	415
Completions	610	12,449	5,898	4,346	2,100	7,484	4,484	13,491	50,868

Source: EA-2
 13274 03/24/75

TABLE 9
HEADCOUNT OF STUDENTS SERVED IN DEVELOPMENTAL
AND COMMUNITY INSTRUCTIONAL SERVICES PROGRAMS
1973-74

College	Developmental			CIS			Total	Other Personal Objectives
	Compensatory	Adult Elementary and Secondary	Total	Citizenship	Avocational	Total		
Brevard	623	0	623	4,014	36	4,050	1,182	
Broward	2,315	0	2,315	1,720	0	1,728	12,959	
Central Florida	1,793	1,524	3,317	2,815	0	2,815	2,277	
Chionla	0	0	0	406	204	610	0	
Daytona Beach	328	5,943	6,271	5,358	0	5,358	0	
Edison	1,643	0	1,643	911	2,229	3,140	748	
FJC at Jacksonville	0	46,766	46,766	12,920	1,831	14,751	1,039	
Florida Keys	40	0	40	0	0	0	966	
Gulf Coast	0	0	0	2,614	1,266	3,880	0	
Hillsborough	730	0	730	1,020	635	2,555	4,430	
Indian River	774	930	1,754	20,722	0	20,722	191	
Lake City	94	3,199	3,293	0	0	0	632	
Lake-Sumter	363	0	363	640	768	1,408	759	
Manatee	0	0	0	2,254	899	3,753	0	
Miami-Dade	4,944	1,651	6,595	8,255	14,896	23,151	13,485	
North Florida	0	157	157	66	0	66	79	
Okaloosa-Walton	204	797	1,001	0	1,289	1,289	0	
Palm Beach	571	0	571	164	0	164	858	
Pasco-Hernando	11	0	11	527	208	815	966	
Pensacola	1,225	4,854	6,052	0	3,406	3,406	0	
Polk	0	0	0	3,020	3,137	6,157	0	
St. Johns River	78	0	78	112	152	264	20	
St. Petersburg	2,269	0	2,269	2,724	5,487	8,211	30	
Santa Fe	743	0	743	1,000	5,750	6,819	0	
Sevinole	158	4,336	4,494	1,041	65	1,106	241	
South Florida	121	929	1,050	475	0	475	0	
Tallahassee	684	0	684	0	0	0	0	
Valencia	431	0	431	0	2,408	2,408	0	
Systems Total	20,145	71,017	91,162	74,355	44,746	119,101	33,862	

Note: The above may be a duplicate count (i.e., students may be counted in more than one program).

Source: EA-3
13374 2/04/75

TABLE 10
ACCELERATION REPORT
DUAL ENROLLMENT AND EARLY ADMISSIONS

College	C L E P		CEEB Advanced Placement	Institutional Examinations	Other Examinations	Total Credit By Examination	College/High School	College/University or Other Colleges	Total Dual Enrollment	Early Admissions	Grand Total	
	No. of Students	Credits										No. of Students
Brevard	231	3085	9	161	0	269	1811	0	256	28	6001	
Broward	30	279	7	208	0	62	1486	0	225	19	2268	
Central Florida	4	24	0	49	0	15	102	0	19	10	335	
Chipola	61	900	0	0	0	61	181	0	33	3	1092	
Daytona Beach	139	1632	0	0	0	139	117	4	27	7	1932	
Edison	67	427	0	0	0	76	0	0	0	0	499	
Fla. JC @ Jax.	218	2879	16	324	9	499	0	0	0	0	6440	
Florida Keys	29	296	0	99	24	304	177	49	84	27	491	
Gulf Coast	230	3354	0	0	200	74	166	4	47	22	1132	
Hillsborough	410	3723	0	521	34	396	140	0	48	74	4095	
Indian River	1	18	0	3	15	243	271	320	373	4	6166	
Jacksonville	13	91	0	0	0	21	300	1	39	11	618	
Lake-Sumter	0	0	0	0	1	94	207	0	35	18	950	
Manatee	282	846	0	102	0	30	424	0	61	15	958	
Miami-Dade	464	6361	50	4461	0	282	260	0	35	36	1394	
North Florida	31	291	0	0	0	1340	8079	129	1878	75	20855	
Ocala	21	216	0	0	0	31	81	0	19	26	906	
Ocala-Walton	64	636	0	193	0	216	480	0	91	43	145	
Palm Beach	59	435	0	35	0	102	637	25	157	5	1580	
Pasco-Hernando	72	1424	31	784	0	470	526	13	155	32	1686	
Pensacola	168	1524	0	60	0	981	1540	105	1739	6	1147	
Polk	3	33	0	0	0	188	424	0	104	39	4177	
St. Johns River	967	11946	3	0	0	3	438	0	93	1295	3303	
St. Petersburg	67	846	0	0	0	970	2272	29	324	12	739	
Santa Fe	70	961	0	0	0	67	6	42	44	32	1326	
Seminole	1	6	0	0	0	72	825	0	0	29	1608	
South Florida	70	312	0	541	0	1	21	0	94	104	2902	
Tallahassee	465	2409	0	141	0	227	580	0	29	3	88	
Valencia	4877	44954	116	8006	68	674	573	10	201	103	1502	
Totals	4877	44954	116	8006	399	6906	22104	4912	4710	808	12866	
											12424	94767

TABLE 11
DEGREES AND OTHER FORMAL AWARDS
1973-74

College	A. A.		A. S.		Cert. & Other Awards		T O T A L S	
	Male	Female	Male	Female	Male	Female	Male	Female
Brevard	412	337	138	68	1	17	551	422
Broward	489	353	358	510	64	48	911	911
Central Florida	137	100	36	34	12	0	185	134
Chipola	132	121	1	22	0	0	133	143
Daytona Beach	161	158	98	51	0	23	259	232
Edison	189	149	0	0	1	1	190	150
Fla JC @ Jax.	885	517	87	178	2	179	974	874
Florida Keys	38	27	21	13	2	3	61	43
Gulf Coast	181	144	45	60	1	10	227	214
Hillsborough	568	302	92	118	1	3	661	423
Indian River	139	117	20	39	1	45	160	201
Lake City	90	54	68	29	104	17	262	100
Lake-Sumter	89	54	11	15	0	0	100	69
Manatee	216	168	72	97	9	4	297	269
Miami-Dade	2145	1779	565	565	53	134	2763	2478
North Florida	97	108	0	7	63	39	160	154
Okaloosa-Walton	167	92	9	16	48	4	224	112
Palm Beach	332	259	142	208	17	27	491	494
Pasco-Hernando	34	30	2	2	0	0	36	32
Pensacola	672	350	57	126	166	366	895	842
Polk	263	194	67	94	0	0	330	288
St. Johns River	109	100	0	0	1	3	110	103
St. Petersburg	717	565	185	326	13	4	915	895
Santa Fe	626	540	34	105	0	0	660	645
Seminole	289	126	52	17	32	1	373	144
South Florida	25	21	2	2	0	0	27	23
Tallahassee	240	184	0	0	0	0	240	184
Valencia	314	215	90	127	0	0	431	342
Totals	9783	7164	2252	2829	591	928	12626	10921
								23547

TABLE 12 OCCUPATIONAL PROGRAMS

Symbols:
 1 = Degree
 2 = Certificate
 3 = Both Degree and Certificate

AGRICULTURE	Brevard	Central Florida	Chipola	Daytona Beach	Edison	Florida JC & Tech	Florida Keys	Gulf Coast	Hillsborough	Inolan River	Lake City	Lake Sumter	Manatee	Miami-Dade	North Florida	Okaloosa-Walton	Palm Beach	Pasco-Hernando	Pensacola	Polk	St. Johns River	St. Petersburg	Santa Fe	Seminole	South Florida	Tallahassee	Valencia				
Agribusiness	3						1	2									1														
Agriculture			1					2													1										
Agricultural Mechanics		2						3	2													1									
Animal Science								2													1										
Citrus Technology								2													1										
Forestry	1								3																						
Horticulture			2											2																	
Landscaping	1							2	3				1																		
Pest Control	1																														
Zoo Technology																															
DISTRIBUTIVE EDUCATION																															
Banking	1			1	3			2					1				1	1													
Distributive Education			2																												
Fashion	1			1									1	2																	
Food Service	2																3														
Hotel/Restaurant Management	1		1	3	1	1	1	2			2	1	1																		
Insurance	3																														
Marketing	1	3		1	2	1	2	1	2			3	1																		

TABLE 12 OCCUPATIONAL PROGRAMS (Continued)

Symbols:
 1 = Degree
 2 = Certificate
 3 = Both Degree and Certificate

	Bradford	Orange	Central Florida	Orange	Deertrona Beach	Florida SC & Jax.	Florida Keys	Key West Coast	Hillsborough	Indian River	Lake City	Lake Sumter	Manatee	Miami Dade	North Florida	Orlando-Haaton	Palm Beach	Pasco-Hernando	Pensacola	Polk	St. Johns River	St. Petersburg	Santa Fe	Seminole	South Florida	Tallahassee	Valencia	
DISTRIBUTIVE EDUCATIONAL Continued:																												
Merchandising										2						3		2	2									
Purchasing	1																											
Real Estate	1					3	2	3	2	3	2	3	1	2		2	3	2	1									1
Tourism	1																											
Transportation					1																							
HEALTH OCCUPATIONS																												
Cardiovascular Technology																							3					
Dental Assisting	3					2	3									2	2	2				2						
Dental Hygiene						1						1				1	1	1				1						
Dental Laboratory																1	3											
Dietary Technology	1																											
Electroencephalographic Technology												1																
Emergency Medical Technology	1					1	2		2									2				1	2			2		
Health Care Management																												
Medical Assisting	3					2																		1				
Medical Records													1															
Medical Technology	1	1				3	1								1	1	1	1									1	
Mental Health																												

TABLE 12 OCCUPATIONAL PROGRAMS (Continued)

Symbols:
 1 = Degree
 2 = Certificate
 3 = Both Degree and Certificate

	Brevard	DeSoto	Duval	Franklin	Hardee	Alachua	Jefferson	Madison	Manatee	Miami Dade	North Florida	Okaloosa-Walton	Palm Beach	Pasco-Hernando	Polk	St. Johns River	Santa Fe	Seminole	South Florida	Tallahassee	Valencia
HEALTH OCCUPATIONS CONTINUED:																					
Mortuary Science									1												
Nurses Aide							2			2		2		2							
Nursing (LPN)	2					2	2		2	2			1	1		2	2				
Nursing (RN)	1	1	1	1	1	1	1	1	1	1	1	1	1	1	1	1	1	1	1	1	1
Occupational Therapy																					
Operating Room Technology							2	2													
Optometric Technology																					
Physical Therapy										1											
Radiology	1	1																			
Respiratory Technology	1																				
Hard Clerk																					
HOME ECONOMICS																					
Child Care	2	3	2	1	3	2					3	3				3	1	2	2	1	
Clothing																					
Foods	2																				
Home Economics																					
Interior Design																					

TABLE 12 OCCUPATIONAL PROGRAMS (Continued)

Symbols:
 1 = Degree
 2 = Certificate
 3 = Both Degree and Certificate

OFFICE OCCUPATIONS	Deerfield	Central Florida	Orlando	Davie Beach	Edison	Florida Keys	Fort Lauderdale	Fort Lauderdale	Indian River	Lake City	Lake Sumter	Manatee	North Dade	North Florida	Okaloosa-Walton	Palm Beach	Pasco-Hernando	Pensacola	Polk	St. Johns River	St. Petersburg	Santa Fe	Seminole	South Florida	Tallahassee	Valencia			
Accounting	2	3	2	1	1																								
Business	1	3	1	1	3	3	1	3	1	1	1	1	1	1	1	1	1	1	1	2	1	2	1	1					
Business Education				2																									
Clerical	2			2	2	2	2	2	2	2	1	1	2	1	2	1	3	3	2	1	3	2	2	2	2				
Data Processing	1	3	3	1	3	3	2	3	2	3	1	1	2	3	3	3	3	3	1	3	1	1	1	1	1				
Income Tax Preparation	2																												
Secretarial	2	3	3	1	3	3	3	3	2	3	1	3	1	2	3	3	1	3	3	1	1	1	1	3	3				
TRADE AND INDUSTRIAL OCCUPATIONS																													
Air Conditioning/Refrigeration	3	1	2	2	2	3	3	3	3	3	1	3	1	2	3	3	1	3	3	1	1	1	1	3	2	2	1		
Appliance Repair	2	2																											
Architectural Technology	1			2							2	1														3			
Automotive Careers	2	2	2	3	2	2	3	3	2	3	2	1	2	1	2	2								3	1	2	1		
Blueprint Reading																													
Broadcasting																													
Building Construction	2	1	1	3	1	3	1	3	1	3	1	1	1	1	1	1	1	1	1	1	1	1	1	1	1	1	1		
Cabinet Making																													
Carpentry			2	2	2																					2	2		
Civil Technology			2		1	2			1		1	3	1			3										2		1	1

TABLE 12 OCCUPATIONAL PROGRAMS (Continued)

Symbols:
1 = Degree
2 = Certificate
3 = Both Degree and Certificate

TRADE & INDUSTRIAL OCCUPATIONS CONT:	Brevard	Central Florida	Chryola	Dixona Beach	Edison	Florida JC o Jax	Gulf Coast	Hillsborough	Indian River	Lake City	Lake Sumter	Manatee	Miami Dade	North Florida	Okaloosa-Walton	Palm Beach	Pasco-Hernando	Pensacola	Polk	St. Johns River	St. Petersburg	Santa Fe	Seminole	South Florida	Tallahassee	Valencia	
Commercial Art	1				1					1							3										
Cosmetology	2	2 2 2	2	2	2		2 2						2				3				2		2				
Diesel Technology					2																						
Drafting	1	3 2 2 2 3		2 3	3		3 2 1		2 1 2	3 3							3			3	1 1 2						
Dry Cleaning				2																							
Electrical Careers		2		2	2		1 2		1 1 1	1							3				2						
Electronics	3	1 1 3 3 2 3 1	3 1 3 2	3 1 3 2	3 1 3 2		3 1		3 1	3 3							3			3 1 3 2 2							
Engineering Careers	1	1 1 1 1 1		1	3				1 1 1											1 3 1							
Environmental Science	1																			1 1 1							
Fire Science	1	3		1 1	1 1	1 2				1 1 1							1			1 3 3 2							
Gasoline Engines	2	2 2																					2				
Illustration				1																							
Instrument Repair							2																				
Journalism																											
Law Enforcement	2	3 3 1 1 3 3 2 3 2 3 1	3 2 3 2 3 1	3 2 3 1	3 2 3 1		3 3 1		3 3 1 3	3 3 1 3										3 1 3 3 1 3							
Legal Assistant Technology							1																				
Library Technology																											
Machine Shop	2	2	2	2	2	2																					

TABLE 12 OCCUPATIONAL PROGRAMS (Continued)

Symbol:
 1 = Degree
 2 = Certificate
 3 = Both Degree and Certificate

TRADE & INDUSTRIAL OCCUPATIONS CONT:	Bradford	Central Florida	Chryola	Taylors Beach	Edison	Florida IC a Day	Florida Tech	South Coast	Hillsborough	Indian River	Lake City	Lake Sumter	Manatee	Miami-Dade	North Florida	Okaloosa-Walton	Palm Beach	Pasco-Hernando	Polk	St. Johns River	St. Petersburg	Santa Fe	Seminole	South Florida	Tallahassee	Valencia
Marine Careers	1		2		3	1						1											2			
Masonry		2	2		2			2	2	2					2	1						2	2			
Meteorology												1														
Multimedia Technology																				1						
Music																										
Photography	1		3																							
Plumbing			2		2					2																
Printing			2		2																					
Quality Control																										
Recreation																										
Sheet Metal					2																					
Social Work																										
Steel Fabrication										2																
Teacher Aide Technology	1	1																								
Traffic Management		2																								
Upholstry																										
Urban Relations																										
Watch Repair																										

TABLE 12 OCCUPATIONAL PROGRAMS (Continued)

Symbols:
 1 = Degree
 2 = Certificate
 3 = Both Degree and Certificate

TRADE & INDUSTRIAL OCCUPATIONS CONT:	Brevard	Brevard	Central Florida	Chapala	Daytona Beach	Edison	Florida JC a Lak.	Florida Keys	Gulf Coast	Hillsborough	Indian River	Lake City	Lake Sumter	Manatee	Miami-Dade	North Florida	Okaloosa-Walton	Palm Beach	Pasco-Hernando	Pensacola	Polk	St. Johns River	St. Petersburg	Santa Fe	Seminole	South Florida	Tallahassee	Volusia	
Water/Wastewater Control	2					2	2	2	2															2					
Welding	2		2	2	2	2				2	2					2													



TABLE 13
 FLORIDA COMMUNITY COLLEGES
 SUMMARY OF SCHEDULED SALARY RANGES FOR 1973-74
 INSTRUCTIONAL PERSONNEL

College	Contract Length Days	Bachelors Degree or Less (Rank III)		Masters Degree (Rank II)		Masters Degree Plus 30 Hrs. (Rank I A)		Doctorate (Rank I)	
		Min.	Max.	Min.	Max.	Min.	Max.	Min.	Max.
Brevard	180	8600	13700	9100	14200	9600	14700	10600	15700
	200	9555	15221	10110	15776	10666	16332	15700	17443
	224			10600	16000	11100	16500	12100	17700
	229	10941	17429	11577	18066	12213	18702	13486	19974
Broward	200	9100	15197	10192	16289	11557	17654	12558	18564
Central Florida	200	8333	12083	8778	12728	9111	13211	9444	13694
	210	8750	12688	9217	13364	9567	13872	9917	14379
	224	9167	13292	9656	14001	10022	14532	10389	15064
	248	10000	14500	10533	15273	10933	15853	11333	16433
Chipola	180	7380	9912	8964	11496	9384	12336	11172	13704
	252	8594	13217	11952	15328	12512	16446	14896	18272
Daytona Beach	180	7119	11855	7689	12802	8304	13827	8968	14933
	210	8306	13830	8970	14937	9684	16131	10463	17421
	253	9492	15805	10252	17070	11072	18435	11957	19909
Edison	197	8554	(1)	8972	(1)	9390	(1)	10227	(1)
Florida JC @ Jax.	196	8044	11650	9094	13203	9800	14222	10819	15696
	230	9439	13671	10672	15493	11500	16689	12696	18418
Florida Keys	200	7182	18149	7918	20009	8314	21009	9167	23162
	252	8618	21779	9502	24010	9977	25211	11000	27794
Gulf Coast	180	8651	10451	9284	11400			10234	12000
	240	11054	13240	11960	14720			13110	15410
Hillsborough	180	7469	12449	8299	13279	9129	14109	9959	14939
	210	8440	14067	9378	15003	10315	15943	11254	16881
	260	9411	15685	10457	16731	11503	18404	12549	20078
Indian River	200	9750	15950	9750	18350			13750	20350
Lake City	200	8858	10795	9891	11829	10537	13120	12216	15444
	231	10231	12469	11425	13664	12171	15154	14109	17838
	250	11072	13395	12365	14787	13172	16200	15270	19305
	260	11515	14035	12860	15379	13699	17056	15881	20077
Lake-Sumter	198	9000	12400	10030	13400	10500	13900	11000	14400
	180	8181	11273	9092	12182	9545	12636	10000	13091
Manatee	196	9300	13400	10500	14600	11200	15300	11900	16000
	246	11160	16080	12600	17520	13440	18360	14280	19200
Miami-Dade	232	10954	(2)	(2)	(2)	(2)	(2)	(2)	21413
	200	9444							18460
North Florida	170	6375	9401	6800	9826	7344	9996	7514	11220
	200	7500	11060	8000	11560	8640	11760	8840	13200
	220	8250	12166	8800	12716	9504	12936	9724	14520
	240	9000	13272	9600	13871	10368	14112	10608	15840
Okaloosa-Walton	199	8630	12585	9305	13965	9630	14480	10615	16675
	248	9336	13608	11166	16758	11556	17376	12738	20010
Palm Beach	180	8000	12400	8800	15200	9200 ⁽³⁾	15600 ⁽³⁾	10000	16400
Pasco-Hernando	180	7000	11200	7700	11900	8050	12250	8750	12950
	240	9333	14933	10267	15867	10733	16333	11667	17267
Pensacola	200	8300	15106	8715	16185	9130	16600	10375	19173
	230	9545	17372	10022	18612	10500	19090	11931	22049
	250	9960	18127	10458	19422	10956	19920	12450	23008
Polk	195	8003	11872	8745	12614	9593	13462	10441	14310
	227	9316	13820	10180	14684	11167	15671	12154	16658
St. Johns River	180	6665	8690	7430	10373	7700	10643	8339	12011
	200	7405	9655	8256	11526	8556	11826	9265	13345
	220	8146	10621	9081	12678	9381	12978	10192	14680
	252	9331	12166	10402	14522	10702	14822	11675	16815
St. Petersburg	180	8032	12909	9072	13948	9478	14581	10281	15838
	248	10709	17212	12096	18597	12637	19441	13708	21117
Santa Fe	180	7600	(1)	8100	(1)	8600	(1)	9100	(1)
Seminole	200	8700	12500	9800	13600	10260	14060	10950	15350
	252	10440	15000	11760	16320	12312	16872	13140	18420
South Florida	201	8747	13818	9347	14418			10347	15418
Tallahassee	180	8300	12284	8800	13024			9800	14504
	220	10145	15014	10756	15918			11978	17727
Valencia	200	8439	12804	9518	13868	10284	14624	11051	15380
	240	10127	15365	11422	16642	12341	17549	13261	18456

- (1) No Maximum
- (2) Salary Schedule based on professional rank (Instructor, Assistant Professor, Associate Professor, Professor).
- (3) Masters Plus 24 hours.

TABLE 14
 FLORIDA COMMUNITY COLLEGES
 REPORT OF ANNUAL SALARIES 1973-74
 FULL-TIME INSTRUCTIONAL PERSONNEL

College	Mean Contract Days	DOCTORATES			MASTERS PLUS THIRTY			MASTERS DEGREE			BACHELORS DEGREE			LESS THAN BACHELORS			COLLEGE TOTAL		
		Num-ber	Mean Daily Rate	Mean Years Exper.	Num-ber	Mean Daily Rate	Mean Years Exper.	Num-ber	Mean Daily Rate	Mean Years Exper.	Num-ber	Mean Daily Rate	Mean Years Exper.	Num-ber	Mean Daily Rate	Mean Years Exper.	Num-ber	Mean Daily Rate	Mean Years Exper.
BREWARD	196.8	15	\$79.17	12.20	44	\$75.11	13.50	111	\$67.58	10.43	15	\$59.13	9.40	15	\$62.38	12.00	200	\$69.08	11.28
BROWARD	201.3	16	83.81	(3)	81	79.97	(3)	158	73.31	(3)	22	64.16	(3)	277	75.15	(3)	277	75.15	(3)
CENTRAL FLA.	213.0	3	65.17	13.00	17	62.90	12.71	24	53.19	7.17	27	48.22	6.22	71	54.20	8.38	71	54.20	8.38
CHIPOLA	183.1	4	66.83	5.50	14	64.93	13.50	36	59.77	10.81	15	44.74	4.07	69	57.91	9.58	69	57.91	9.58
DAYTONA BCH.	210.3	3	70.53	8.33	15	72.89	11.00	95	64.84	10.02	38	62.95	11.24	151	65.29	10.39	151	65.29	10.39
EDISON	196.1	7	61.02	3.29	9	61.73	5.11	37	54.23	4.22	4	46.04	1.50	57	55.68	4.05	57	55.68	4.05
FLA JC @ JAX	196.0	38	64.08	(3)	129	60.97	(3)	193	58.00	(3)	41	53.84	(3)	401	59.11	(3)	401	59.11	(3)
FLORIDA KEYS	202.6	3	69.25	10.00				13	62.08	10.38	2	53.06	9.00	2	46.71	6.00	20	60.61	9.75
GULF COAST	185.1	2	66.07	12.00				57	62.60	9.70	10	54.96	7.20	69	61.63	9.41	69	61.63	9.41
HILLSBOROUGH	209.9	21	74.47	3.38	18	70.12	4.00	101	65.88	3.74	13	60.38	2.69	154	66.89	3.62	154	66.89	3.62
INDIAN RIVER	202.7	6	72.75	2.17	43	67.78	5.44	31	58.74	8.10	7	51.25	1.57	10	53.53	3.20	66	64.21	4.39
LAKE CITY	217.4	4	69.09	9.75	11	66.01	11.45	21	58.32	9.05	6	53.33	9.38	14	52.82	10.07	68	58.52	9.29
LAKE-SUNTER	194.0	4	71.34	14.25	9	69.14	13.67	37	66.58	11.76	2	48.23	3.00	36	61.98	10.44	36	61.98	10.44
MANATEE	196.8	9	75.45	12.33	11	71.38	10.73	37	69.23	11.76	6	64.71	12.00	63	70.06	11.68	63	70.06	11.68
MIAMI-DADE	228.7	57	77.70	(4)	129	75.29	(4)	442	66.58	(4)	96	60.91	(4)	8	59.68	(4)	732	68.17	(4)
NORTH FLA.	205.4	3	64.80	11.00	5	56.90	10.80	34	54.65	10.41	4	46.42	4.50	8	47.63	7.63	50	54.34	10.04
OKAL.-WALTON	199.0	7	69.71	11.14	12	62.51	11.00	42	59.04	11.00	4	46.42	4.50	7	49.94	8.14	72	59.07	10.38
PALM BEACH	180.0	14	82.86	10.93	(5)31	81.39	12.48	123	76.65	11.61	11	60.00	6.27	6	67.78	8.50	185	76.64	11.29
PASCO-HERN.	180.0	1	52.50	3.00	4	54.44	5.25	4	56.88	7.50							9	55.3-	6.00
PENSACOLA	200.5	48	81.94	11.48	36	62.56	10.94	98	60.90	9.70	67	54.38	8.43	249	63.47	9.98	249	63.47	9.98
POLK	201.8	12	69.69	8.17	14	69.20	10.71	89	64.90	10.89	7	52.70	6.43	122	65.20	10.34	122	65.20	10.34
ST. JOHNS RIV.	200.6	2	54.89	6.00	11	54.31	10.91	24	54.33	10.33	1	47.40	12.00	38	54.10	10.32	38	54.10	10.32
ST. PETERSBURG.	181.0	20	83.84	10.35	111	77.74	10.95	133	71.75	9.86	12	61.64	7.83	276	74.58	10.24	276	74.58	10.24
SANTA FE	229.0	33	63.29	2.94	57	60.14	3.40	83	57.08	3.71	26	54.54	2.50	199	58.67	3.34	199	58.67	3.34
SEMINOLE	212.1	7	64.76	7.29	21	62.51	9.48	53	56.68	7.34	15	50.18	7.27	99	57.22	7.89	99	57.22	7.89
SOUTH FLA.	201.0	9	76.16	9.00	49	70.08	9.55	17	58.87	8.41	5	56.37	9.60	22	58.30	8.68	22	58.30	8.68
TALLAHASSEE	182.3	10	64.31	7.20	23	63.91	9.26	47	57.57	7.68	7	49.14	5.29	62	70.39	9.34	62	70.39	9.34
VALENCIA	214.1																117	58.89	7.80
STATEWIDE	205.3	358	\$73.73	8.39	812	\$69.97	10.00	2225	\$64.74	8.84	465	\$56.56	7.22	74	\$55.68	8.61	3934	\$65.50	8.81

- Note: (1) Mean Contract Days is the weighted average of the number of working days in each reported contract period.
 (2) Mean Years Exper. is the weighted average number of years of work experience credited as per the salary schedule.
 (3) This information was not available at the time of reporting.
 (4) Salary increments recommended and approved by the President. Increments are also related to academic rank.
 (5) Masters plus 24 hours.
 (6) The maximum number of creditable years of experience (as per the salary schedule) is 15 or more years except for Daytona Beach - 13 years, St. Petersburg - 12 years and Tallahassee - 12 years.

TABLE 15

FLORIDA COMMUNITY COLLEGES

REPORT OF ANNUAL SALARIES 1973-74

FULL-TIME EXECUTIVE, ADMINISTRATIVE AND MANAGERIAL PERSONNEL
(includes Presidents)

College	Contract Days	DOCTORATES			MASTERS PLUS THIRTY			MASTERS DEGREE			BACHELORS DEGREE			LESS THAN BACHELORS			COLLEGE TOTAL			
		Num-ber	Mean Daily Rate	Mean Years Exper.	Num-ber	Mean Daily Rate	Mean Years Exper.	Num-ber	Mean Daily Rate	Mean Years Exper.	Num-ber	Mean Daily Rate	Mean Years Exper.	Num-ber	Mean Daily Rate	Mean Years Exper.	Num-ber	Mean Daily Rate	Mean Years Exper.	
BREVARD	251.0	10	\$79.08	9.60	2	\$70.71	13.50	25	\$68.69	11.68	12	\$59.07	(3)	7	\$47.22	(3)	37	\$71.61	11.22	
BROWARD	260.0	8	94.93	(3)	6	71.27	12.50	14	65.49	(3)	2	52.82	(3)	16	70.41	(3)	41	66.24	(3)	
CENTRAL FLA.	248.0	2	93.98	10.50	6	69.13	14.50	5	65.12	12.60	7	67.69	14.57	2	37.75	15.00	12	71.44	12.58	
CHIPOLA	246.0	1	115.10	1.00	16	68.23	13.31	16	63.19	4.00	1	76.23	3.00	2	46.19	9.00	32	70.48	13.69	
DAYTONA BCH.	253.0	7	87.76	13.29	14	63.19	(3)	14	63.19	(3)	5	57.69	(3)	3	56.83	(3)	23	68.34	5.09	
EDISON	244.0	6	86.44	6.67	21	71.15	(3)	26	62.31	(3)	2	80.83	7.50	2	49.50	3.00	72	69.97	(3)	
FLA JC @ JAX	260.0	17	86.15	(3)	5	70.03	4.20	5	70.03	4.20	2	80.83	7.50	10	73.30	4.80	10	73.30	4.80	
FLORIDA KEYS	246.8	1	123.75	6.00	17	67.37	11.88	17	67.37	11.88	3	51.55	4.67	3	65.48	3.00	21	68.14	11.00	
SULF COAST	240.5	1	126.60	15.00	24	70.28	4.25	24	70.28	4.25	5	71.26	2.80	3	65.48	3.00	37	72.30	3.84	
HILLSBOROUGH	260.0	3	100.44	1.67	12	75.98	4.25	12	75.98	4.25	6	60.63	3.17	2	46.08	6.50	21	72.33	3.76	
INDIAN RIVER	234.3	3	81.43	3.00	4	66.71	13.50	4	57.72	5.50	10	54.53	4.30	2	46.08	6.50	26	62.31	7.27	
LAKE CITY	248.1	6	80.14	9.50	4	66.71	13.50	2	76.23	15.00	2	84.98	13.50	3	57.95	7.00	7	81.66	15.00	
LAKE-SUMTER	241.4	3	94.40	15.00	2	66.81	15.00	2	76.23	15.00	21	72.93	(4)	8	64.83	(4)	13	85.58	12.23	
MANATEE	246.0	4	111.07	15.00	1	97.56	15.00	3	75.61	12.00	4	50.34	7.50	3	57.95	7.00	103	82.98	(4)	
MIAMI-DADE	238.4	23	101.72	(4)	10	87.40	(4)	41	80.21	(4)	4	50.34	7.50	2	52.35	13.50	24	65.07	11.77	
MORTH FLA.	238.3	3	87.17	12.00	1	62.50	15.00	5	58.21	14.40	3	49.51	7.00	2	52.35	13.50	13	62.83	11.77	
OKAL--WALTON	248.0	5	87.00	12.00	4	69.54	14.25	10	59.52	9.90	3	49.51	7.00	2	52.35	13.50	24	65.07	11.00	
PALM BEACH	244.8	4	96.28	13.50	(5)	4	90.69	15.00	11	82.65	13.91	2	61.21	5.00	1	70.83	6.69	21	84.76	13.19
PASCO-HERN.	240.0	5	84.75		8	66.25	12.38	19	64.56	12.47	1	70.83		1	70.83		6	82.43		
PENSACOLA	246.3	12	90.33	13.25	5	80.15	12.60	8	65.93	10.25	13	57.08	6.69	36	53.65	7.39	52	68.93	11.19	
POLK	236.9	6	83.57	10.00	5	80.15	12.60	8	65.93	10.25	3	47.56	5.00	1	38.71	3.00	19	77.21	10.79	
St. JOHNS RIV.	252.0	2	90.28	7.50	30	75.45	11.90	8	55.36	10.25	15	68.00	4.87	1	38.71	3.00	18	59.71	10.06	
ST.PETERSBURG.	247.3	22	90.02	11.05	9	74.83	2.56	33	72.48	11.55	8	58.62	2.63	1	38.71	3.00	101	76.21	10.47	
SANTA FE	252.0	11	82.64	1.73	6	73.91	14.00	4	69.39	3.50	8	58.62	2.63	1	38.71	3.00	32	72.78	2.41	
SEMINOLE	252.0	3	90.74	13.00	6	73.91	14.00	14	66.46	10.43	4	48.10	4.75	1	38.71	3.00	27	68.09	10.67	
SOUTH FLA.	252.0	1	121.45	15.00	8	73.49	9.00	6	70.69	11.00	1	64.90	12.00	1	38.71	3.00	8	76.31	11.63	
TALLAHASSEE	252.0	4	95.77	12.00	8	73.49	9.00	9	74.69	11.33	2	48.88	6.00	1	38.71	3.00	16	74.49	10.50	
VALENCIA	248.0	7	83.06	6.29	8	73.49	9.00	19	72.87	8.11	1	69.96	15.00	36	53.65	7.39	35	74.96	8.14	
STATEWIDE	248.3	180	\$90.83	9.77	134	\$73.85	11.64	360	\$69.52	9.85	133	\$62.24	6.01	36	\$53.65	7.39	843	\$72.95	9.48	

- Note: (1) Mean Contract Days is the weighted average of the number of working days in each reported contract period.
(2) Mean Years Exper. is the weighted average number of years of work experience credited as per the salary schedule.
(3) This information was not available at the time of reporting.
(4) Salary increments recommended and approved by the President. Increments are also related to academic rank.
(5) Masters plus 24 hours.
(6) The maximum number of creditable years of experience (as per the salary schedule) is 15 or more years except for Daytona Beach - 13 years, St. Petersburg - 12 years and Tallahassee - 12 years.

TABLE 16
 FLORIDA COMMUNITY COLLEGES
 REPORT OF ANNUAL SALARIES 1973-74
 FULL-TIME NON-INSTRUCTIONAL PROFESSIONAL PERSONNEL

College	Contract Days	DOCTORATES		MASTERS PLUS THIRTY		MASTERS DEGREE		BACHELORS DEGREE		LESS THAN BACHELORS		COLLEGE TOTAL				
		Num-ber	Mean Daily Rate	Mean Daily Rate	Mean Daily Rate	Mean Daily Rate	Mean Daily Rate	Mean Daily Rate	Mean Daily Rate	Mean Daily Rate	Mean Daily Rate	Mean Daily Rate	Mean Daily Rate	Mean Daily Rate		
BREVARD	251.0			3	\$38.63	4.33			3	\$28.85	(3)			3	\$38.63	4.33
BROWARD	260.0			8	\$53.88	9.75			1	55.07	15.00			3	28.85	(3)
CENTRAL FLA.	243.3			5	61.45	12.60								8	53.88	9.75
CHIPOLA	180.0			9	64.10	10.67								7	61.00	12.86
DAYTONA BCH.	253.0			6	52.63	2.50								11	64.73	10.64
EDISON	213.3			3	46.65	5.00								7	52.86	2.29
FLA JC @ JAX																
FLORIDA KEYS	239.0			6	61.06	3.83			2	48.75	1.00			10	60.39	2.90
GULF COAST				5	65.45	15.00			1	31.32	3.00			1	31.32	3.00
HILLSBOROUGH	220.0	2	\$70.00	2.00					3	39.36	11.00			5	65.45	15.00
INDIAN RIVER	260.0			7	62.52	9.57			10	66.60	(4)			14	59.79	9.07
LAKE CITY	217.6			15	75.11	(4)								92	69.48	(4)
LAKE-SUMTER	238.9			2	66.26	7.50										
MANATEE	231.3			1	68.85	15.00			1	47.59	12.00			10	54.02	10.80
MIAMI-DADE				(5)	78.49	12.00			3	45.60	2.33			22	69.97	10.55
NORTH FLA.	248.0			3	59.25	8.00			7	52.38	6.43			8	52.75	5.25
OKAL.-WALTON	248.0			3	70.08	15.00			1	86.69	15.00			31	56.24	9.68
PALM BEACH	248.0	1	81.77	12.00					2	52.10	9.00			1	86.69	15.00
PASCO-HERN.	240.0	1	60.28	6.00					4	47.64	2.50			3	55.28	11.00
PENSACOLA	245.2			11	79.12	11.45			4	47.64	2.50			26	70.13	9.27
POLK	248.0			3	51.35	3.33			3	44.29	3.33			3	51.85	3.33
ST. JOHNS RIV.	210.0			4	65.65	10.50			3	53.12	6.00			3	44.29	3.33
ST. PETERSBURG.	232.3	1	85.42	12.00					4	65.65	10.50			7	60.28	8.57
SANTA FE	252.0			12	49.42	4.92			3	53.12	6.00			15	50.74	5.53
SEMINOLE	252.0			49	\$69.84	10.12			43	\$51.65	5.87			294	\$62.29	8.11
SOUTH FLA.																
TALLAHASSEE	252.0			3	56.03	7.00										
VALENCIA	248.0															
STATEWIDE	236.4	14	\$73.64	6.57					186	\$62.05	8.81			2	\$50.67	15.00

- Note.
- (1) Mean Contract Days is the weighted average of the number of working days in each reported contract period
 - (2) Mean Years Exper. is the weighted average number of years of work experience credited as per the salary schedule.
 - (3) This information was not available at the time of reporting.
 - (4) Salary increments recommended and approved by the President. Increments are also related to academic rank.
 - (5) Masters plus 24 hours.
 - (6) The maximum number of creditable years of experience (as per the salary schedule) is 15 or more years except for Daytona Beach - 13 years, St. Petersburg - 12 years and Tallahassee - 12 years.

TABLE 17
FLORIDA PUBLIC COMMUNITY/JUNIOR COLLEGES
Salaries for Selected Positions

1973-74

College	President	Vice President	Chief Academic Officer	Chief Business Officer	Chief Student Affairs Officer	Chief Librarian / Learning Resources	Chief Student Records (Registrar)	Director of Admissions
Brevard	\$ 33,000	\$ 29,700	\$ 23,000	\$ 23,000	\$ 16,300	\$ 18,900	\$ 18,100	\$ 18,700
Broward	33,120			25,000	25,000	21,000	20,000	
Central Florida	27,200		19,853	19,273	19,413	16,213	15,061	
Chipola	29,004		21,108	18,600	17,621	17,208	17,208	
Daytona Beach	32,000	23,366		23,931	20,000	17,100	19,900	19,900
Edison	30,000	25,500		18,600	20,500	16,500	15,649	
Florida JC @ Jacksonville	38,605		30,181	31,699	19,240	16,182	21,882	17,950
Florida Keys	31,485		23,350	22,750	16,500	16,522	16,000	
Gulf Coast	31,650	20,573	19,518	18,990	18,990	16,155	16,880	15,062
Hillsborough	33,246	25,000	25,000	26,404	23,250	15,900	11,000	16,500
Indian River	30,000		23,500	23,000	19,835	14,475*	17,385	13,260
Lake City	28,600	21,585	19,835	18,840	20,030	18,356		18,830
Lake-Sumter	28,500		21,420	18,830	25,344	16,580	24,000	
Manatee	30,096	28,512	25,344	24,000	22,801	22,718	19,643	18,671
Miami-Dade	46,241	36,497	32,314	28,800	22,801	14,060		15,000
North Florida	26,500		18,630	15,740	17,630	16,804	16,355	
Okaloosa-Walton	29,600		20,157	21,029	20,116	21,560	21,560	
Palm Beach	29,187		24,320	23,800	22,760	10,407	14,933	
Pasco-Hernando	26,000		21,000	17,200	20,700	14,500	18,900	18,300
Pensacola	34,500	28,000	24,500	25,000	24,500	16,300	17,320	17,320
Polk	29,000	24,000	20,500	21,500	21,500	11,200	13,700	15,000
St. Johns River	26,000	19,500	18,000	17,400	18,500	21,157	18,047	16,136
St. Petersburg	40,246		25,704	25,704	25,704		21,000	
Santa Fe	29,800		24,800	23,000	24,000	17,683	17,092	
Seminole	28,500		21,231	20,640	20,371	17,307		17,490
South Florida	30,606		22,135	16,355	14,215	16,884	18,924	
Tallahassee	30,200		21,708	24,168	21,708	16,884	17,400	
Valencia	31,350	22,150		21,150	21,150	18,400		

Note: Salaries reported are for 12 month contracts except * which is 11 months.

TABLE 18
FLORIDA COMMUNITY COLLEGES
STATEMENT OF REVENUES AND OTHER RECEIPTS FOR EDUCATION AND GENERAL OPERATIONS: 1973-74

COLLEGE	R E V E N U E B Y S O U R C E						TOTAL REVENUE NON-REV. RECEIPTS AND BEGINNING BALANCE
	STATE			LOCAL			
	CCPF	OTHER(1)	OTHER(2)	STUDENT FEES	FEDERAL GOVT.	TOTAL REVENUES	
Brevard	\$ 6,230,065	\$ 40,344	\$ 254,304	\$ 1,619,959	\$ 360,081	\$ 8,464,409	\$ 185,342
Broward	7,403,004	1,251	292,249	2,563,397	395,132	10,694,126	323,107
Central Florida	2,259,965		75,003	331,089	208,074	2,875,382	73,896
Chipola	1,440,781		52,423	266,591	63,830	1,823,625	51,637
Daytona Beach	4,208,023	2,321	155,729	928,482	163,738	5,458,293	99,417
Edison	1,689,728		80,042	560,805	161,876	2,492,451	73,869
Florida JC @ Jax.	13,766,161	7,667	352,023	1,953,177	1,352,460	17,431,488	358,224
Florida Keys	805,567	38,026	13,385	235,011	146,769	1,238,766	37,758
Gulf Coast	2,025,913	993	42,307	497,721	140,093	2,707,027	72,542
Hillsborough	5,154,171	2,861	72,936	1,620,857	550,055	7,400,880	124,449
Indian River	2,939,649	2,861	132,657	581,311	430,085	4,129,494	60,606
Lake City	2,208,156	987	24,584	490,498	428,946	3,153,171	70,792
Lake-Sumter	966,102	382	18,863	240,038	33,224	1,258,609	37,713
Manatee	2,461,046	91,754	151,244	897,763	36,335	3,638,142	85,257
Miami-Dade	24,402,869	21,823	902,978	9,597,125	2,054,382	36,979,177	959,999
North Florida	1,162,224		25,868	161,507	72,729	1,422,328	22,312
Okaloosa-Malton	2,213,912	1,211	84,646	573,481	93,613	2,966,863	79,482
Palm Beach	4,875,402	85,258	178,198	1,450,297	54,606	6,643,761	35,542
Pasco-Hernando	846,489	400	4,496	188,203	200,562	1,240,250	22,695
Pensacola	7,406,426	203,263	222,737	1,868,879	399,555	10,100,960	330,158
Polk	2,717,386	39,205	117,214	869,441	130,735	3,873,981	577,499
St. Johns River	1,057,528	10,204	28,979	240,026	39,883	1,376,620	6,425
St. Petersburg	7,886,759	3,813	172,678	2,810,341	385,288	11,258,879	268,204
Santa Fe	5,374,870	2,673	75,078	1,606,414	856,960	7,915,995	283,633
Seminole	3,292,116		5,692	737,197	514,680	4,549,685	122,622
South Florida	678,459	358	31,857	139,172	88,186	938,032	(8,047)
Tallahassee	1,920,253	904	151,077	538,086	91,706	2,702,026	54,792
Valencia	3,836,310		52,363	1,256,728	479,208	5,624,609	41,289
Totals	\$121,229,334	\$601,490	\$3,771,610	\$34,823,604	\$9,932,991	\$170,359,029	\$3,936,970
Percentages	71.16	.35	2.21	20.44	5.83	100.00	\$19,507,840

(1) Includes: States Voc. Ed. Improvement Fund, COBDS Administrative Charges withheld by State
 (2) Includes: Rents, services, interest and gain or loss on investments
 (3) Includes: Prior years refunds and transfers from other funds

TABLE 19
STATEMENT OF EDUCATIONAL AND GENERAL EXPENDITURES - GENERAL
AND RESTRICTED CUPPEN FUNDS 1973-74

COLLEGE	GENERAL ADMIN.	STUDENT SERVICES	GENERAL EXPENSE	PHYSICAL PLANT	LEARNING RESOURCES	INSTRUCTIONAL		ACTIVITIES RELATED TO INSTRUCTIONAL	OTHER	TOTAL F. & G. EXPENSES	TRANSFERS	ENDING FUND BALANCE	TOTAL EXPENSES, TRANSFERS & BALANCES
						COLLEGE PARALLEL	ADULT						
Brevard	\$ 458,251	\$ 611,097	\$ 158,468	\$ 504,277	\$ 319,664	\$ 2,101,910	\$ 302,991	\$	\$	\$ 5,822,575	\$ 275,960	\$ 513,783	\$ 9,075,194
Salaries	138,471	44,136	947,605	421,037	96,026	115,706	26,424			1,815,293			
Current Expense	13,185	9,975	2,033	47,093	225,377	37,372	11,011			1,815,293			
Capital Outlay	609,907	665,208	1,108,106	972,367	641,067	2,888,993	343,428			8,285,451			
Total													
Broward	\$ 569,323	\$ 860,675	\$ 113,234	\$ 691,158	\$ 409,178	\$ 3,848,252	\$ 65,443	\$ 4,446	\$ 171,472	\$ 7,640,759	\$ 737,001	\$ 980,927	\$ 12,116,369
Salaries	168,366	431,658	893,389	513,962	39,055	168,040	20,185			2,311,609			
Current Expense	17,314	11,675	6,913	45,568	114,705	54,980	24,776			341,035			
Capital Outlay	755,003	1,304,008	1,013,536	1,250,688	562,938	4,071,272	273,262	4,446	231,447	10,401,341			
Total													
Central Florida	\$ 166,982	\$ 171,470	\$ 67,459	\$ 127,973	\$ 95,267	\$ 552,637	\$ 386,983	\$ 4,321	\$ 3,950	\$ 1,830,239	\$ 287,481	\$ 629,473	\$ 3,432,555
Salaries	12,068	2,928	293,505	116,969	16,852	34,174	28,930			522,070			
Current Expense	3,421	3,510	207	43,417	45,123	8,396	59,056			162,352			
Capital Outlay	182,471	177,906	361,771	288,359	157,242	595,207	474,989	4,321	3,950	2,515,681			
Total													
Chipola	\$ 94,223	\$ 120,487	\$ 42,878	\$ 101,971	\$ 85,041	\$ 685,364	\$ 12,505	\$ 24,718	\$	\$ 1,374,374	\$ 115,406	\$ 99,321	\$ 2,013,386
Salaries	8,791	8,047	212,042	89,196	5,253	24,755	16,789			301,952			
Current Expense	543	269	4,338	4,338	22,216	1,817	3,250			31,832			
Capital Outlay	93,557	128,803	254,920	195,505	112,510	711,936	14,766	24,718		1,796,639			
Total													
Daytona Beach	\$ 259,467	\$ 384,482	\$ 188,148	\$ 248,732	\$ 156,717	\$ 1,047,500	\$ 442,488	\$ 44,134	\$ 70,699	\$ 4,184,639	\$ 45,054	\$ 713,576	\$ 6,291,447
Salaries	47,041	51,306	327,421	344,499	24,573	149,923	40,140			1,228,163			
Current Expense	2,557	1,232	205	2,525	30,797	24,256	3,507			137,788			
Capital Outlay	309,065	837,020	515,774	595,756	212,087	1,221,679	486,135	4,234	84,384	5,532,810			
Total													
Edison	\$ 182,356	\$ 220,280	\$ 59,396	\$ 102,613	\$ 114,974	\$ 696,906	\$ 99,566	\$	\$ 60,350	\$ 1,773,266	\$ 75,135	\$ 489,984	\$ 3,118,281
Salaries	36,005	37,914	251,534	184,525	17,707	39,895	42,627			642,108			
Current Expense	3,294	4,759	19,602	17,312	55,394	17,505	1,396			137,788			
Capital Outlay	221,655	262,953	330,532	304,450	188,065	754,306	143,591			2,555,162			
Total													
Florida JC & Jax	\$ 800,511	\$ 1,208,152	\$ 152,824	\$ 836,183	\$ 415,071	\$ 2,959,897	\$ 1,981,521	\$ 34,200	\$ 11,375,224	\$ 1,598,706	\$ 1,282,429	\$ 19,243,788	
Salaries	120,572	220,717	1,347,779	501,634	90,530	356,972	378,324			3,714,649			
Current Expense	31,810	27,318	14,792	101,250	400,139	177,390	57,593			1,272,780			
Capital Outlay	562,893	1,456,187	1,515,395	1,439,067	905,740	3,494,259	2,417,442	45,378	67,649	16,362,653			
Total													
Florida Keys	\$ 121,493	\$ 159,848	\$ 29,858	\$ 65,562	\$ 42,192	\$ 292,772	\$ 36,094	\$	\$ 895,330	\$ 35,145	\$ 131,231	\$ 1,444,307	
Salaries	26,159	27,990	109,645	65,549	11,975	36,703	1,899			316,018			
Current Expense	114		2,672	4,350	7,694	50,530	528			66,583			
Capital Outlay	147,766	187,838	142,175	135,861	61,861	330,170	42,720			1,277,931			
Total													
Gulf Coast	\$ 143,862	\$ 334,580	\$ 49,992	\$ 133,187	\$ 59,307	\$ 943,471	\$ 236,447	\$ 34,200	\$	\$ 2,538,128	\$ 248,150	\$ 533,265	\$ 3,903,685
Salaries	19,462	26,068	102,015	110,548	12,192	97,999	431,149			3,160,181			
Current Expense		2,062	18,266	1,268	56,574	21,125	53,698			152,993			
Capital Outlay	163,324	362,710	170,273	245,003	128,073	1,062,595	708,517	45,378		3,122,270			
Total													

TABLE 19 (Continued)
STATEMENT OF EDUCATIONAL AND GENERAL EXPENDITURES, GENERAL
AND RESTRICTED CURRENT FUNDS 1973-74

COLLEGE	GENERAL ADMIN.	STUDENT SERVICES	GENERAL EXPENSE	PHYSICAL PLANT	LEARNING RESOURCES	INSTRUCTION			ACTIVITIES RELATED TO INSTRUCTIONAL	OTHER	TOTAL SAL & G EXPENSES	TRANSFERS	ENDING FUND BALANCE	TOTAL EXPENSES & BALANCE
						COLLEGE PARALLEL	OCCUPATIONAL	ADULT						
Hillsborough	\$ 923,521	\$ 488,274	\$ 113,217	\$ 147,369	\$ 299,940	\$ 2,144,530	\$ 931,889	\$ 140,709	\$	\$ 5,199,449	\$	\$	\$	\$
Salaries	219,172	103,395	533,413	246,022	97,036	397,185	174,013	5,210	151,522	1,925,446	151,522	702,525	8,322,303	
Current Expense	3,777	605,446	21,995	3,997	137,078	35,719	131,808	286		343,361				
Capital Outlay	1,152,393		768,626	396,368	534,054	2,577,434	1,237,710	196,205		7,468,256				
Total	241,051	248,404	49,194	154,084	102,287	699,609	397,023	440,138	113,672	2,451,282	405,037	304,642	4,703,779	
Indian River	94,657	33,236	376,725	321,266	26,507	78,345	103,931	144,282	47	1,178,996				
Salaries	7,006	61,224	5,688	39,444	46,229	11,841	73,853	18,457		263,822				
Current Expense	342,794	342,864	431,607	514,794	175,023	789,795	574,807	602,877	113,719	3,894,100				
Capital Outlay	215,170	258,358	71,620	142,642	81,416	54,453	596,531	253,091		2,173,781				
Salaries	32,998	25,055	442,855	133,643	17,209	49,259	104,480	7,621		812,720				
Current Expense	8,729	3,320	12,444	52,168	52,168	53,509	91,165	18,457		227,109				
Capital Outlay	256,497	266,733	526,919	282,059	150,793	657,221	782,115	261,212		3,213,610				
Total	99,773	129,974	43,063	65,772	53,454	499,330	596,531	31,666		923,032				
Lake-Sumter	19,340	67,698	56,400	47,957	18,957	62,986	18,957	4,592		277,530				
Salaries	1,060	2,218	833	3,100	39,153	1,950	7,214			55,528				
Current Expense	120,173	195,890	100,296	116,439	111,561	564,266	785,771	43,472		1,256,090				
Capital Outlay	238,652	280,612	128,476	242,827	95,298	976,950	508,698	46,070		2,517,543				
Salaries	49,308	44,171	205,745	219,537	37,163	162,254	125,194	9,558		852,530				
Current Expense	970	2,826	72,453	29,645	43,408	38,240	71,906	1,146		260,694				
Capital Outlay	288,930	327,609	408,374	492,009	175,039	1,177,444	785,771	56,774		3,630,767				
Total	2,427,753	2,039,657	402,045	2,504,957	1,978,011	10,149,018	5,082,465	512,499	1,693,706	26,770,153	1,499,819	4,142,918	42,591,008	
Salaries	729,754	143,116	4,379,159	1,825,791	293,575	709,988	293,575	25,186	567,902	8,789,560	1,499,819			
Current Expense	36,097	11,660	26,708	70,152	386,494	3,600	125,891	346,977	346,977	1,358,596	1,499,819			
Capital Outlay	3,193,644	2,194,433	4,807,912	4,100,900	2,658,170	11,241,635	5,603,345	537,685	2,610,827	36,548,271	1,499,819			
Total	90,432	156,942	50,040	95,161	60,848	493,524	116,787	15,845		1,079,579				
Salaries	13,765	24,474	170,006	78,088	5,206	32,417	23,034	1,137		348,130				
Current Expense	708	16	5	641	2,500	6,800	8,285			39,640				
Capital Outlay	104,905	181,432	220,051	174,791	89,341	531,741	148,108	16,982		1,467,349				
Total	174,193	192,661	34,792	189,516	121,889	693,716	454,445	66,089		2,007,301				
Salaries	32,278	34,061	143,830	182,406	18,215	88,971	101,319	8,966	1,739	628,785				
Current Expense	6,618	2,472	4,870	8,772	38,087	7,070	44,735			127,812				
Capital Outlay	207,149	226,722	281,092	386,694	196,171	789,579	600,519	75,055	18,735	2,783,896				
Total	303,050	463,064	176,773	457,389	279,700	2,575,502	1,158,692	30,125		5,434,295				
Salaries	20,680	21,999	683,828	238,504	22,258	109,637	93,209	93,209		1,189,715				
Current Expense	2,951	3,301	3,999	6,997	93,946	12,654	87,028			206,633				
Capital Outlay	326,381	477,964	863,754	699,792	395,904	2,697,794	1,338,929	30,125		6,830,643				
Total	7,770,191													

TABLE 19 (Cont. from p. 18)
STATEMENT OF EDUCATIONAL AND GENERAL EXPENDITURES - GENERAL
AND RESTRICTED CURRENT FUNDS - 1973-74

COLLEGE	GENERAL ADMIN	STUDENT SERVICES	GENERAL EXPENSE	PHYSICAL PLANT	LEARNING RESOURCES	COLLEGE PARALLEL	INSTRUCTION		ACTIVITIES RELATED TO INSTRUCTIONAL	OTHER	TOTAL E & G EXPENSES	TRANSFERS	ENDING FUND BALANCE	TOTAL EXPENSES TRANSFERS & BALANCES
							ADULT	ADULT						
Passo-Hernando	\$ 64,836	\$ 106,817	\$ 8,015	\$ 8,740	\$ 193	\$ 273,747	\$ 93,396	\$ 14,259	\$	\$	\$ 694,305	\$ 23,808	\$ 170,592	\$ 1,296,874
Salaries	8,390	71,910	98,226	22,341	183	53,477	16,093	786			777,406			
Current Expense	3,485	7,350	1,261,185	4,851	57,832	5,116	71,628	184			222,763			
Capital Outlay	76,771	176,727	237,426	35,332	57,832	332,310	181,117	75,329			1,104,474	23,808		
Total														
Pensacola														
Salaries	511,655	676,775	302,176	462,826	492,491	2,115,807	1,802,655	873,685			7,238,070	473,912		
Current Expense	32,739	50,816	325,943	136,318	136,318	145,542	260,258	103,400			1,979,869			
Capital Outlay	5,323	7,350	11,578	14,695	330,002	35,838	135,507	56,668			996,961			
Total	567,708	744,341	1,239,697	784,353	958,811	2,139,187	2,138,420	1,033,753			9,814,900	473,912		11,098,617
Polk														
Salaries	198,174	355,594	82,237	154,508	174,058	1,216,845	454,446	141,466			2,777,328	105,615		
Current Expense	32,739	63,370	428,875	140,263	76,810	62,431	52,005	11,938			818,431			
Capital Outlay	1,677	7,512	2,652	1,205	65,025	4,564	54,003	508			137,117			
Total	202,530	426,476	513,764	295,977	265,893	1,283,840	560,454	153,912			3,732,906	105,615		4,389,513
St. Johns River														
Salaries	219,227	70,818	9,572	81,734	37,026	483,223	75,274				976,874	23,560		
Current Expense	45,572	40,930	85,762	108,332	6,887	18,616	22,663				37,762			
Capital Outlay	2,302	111,748	94,334	190,378	18,076	287	12,348				33,325			
Total	267,101	323,496	189,668	372,440	61,989	582,126	110,285				1,037,967	23,560		1,760,975
St. Petersburg														
Salaries	522,565	1,018,829	384,865	569,305	367,851	4,828,311	1,049,883	539,317	1,717		9,282,643	247,609		
Current Expense	31,177	35,774	1,220,076	358,628	20,416	172,180	151,449	75,445	3,428		2,070,341			
Capital Outlay	31,014	3,723	2,958	16,807	86,495	31,152	107,354	3,528	491		253,522			
Total	584,756	1,058,326	1,607,899	944,740	474,762	5,031,644	1,208,686	578,290	2,719		11,606,506	247,609		12,073,716
Santa Fe														
Salaries	444,285	659,043	187,185	608,323	441	2,013,742	1,351,447	350,834			6,056,554	265,820		
Current Expense	80,815	55,598	624,667	450,219	134,435	172,180	274,164	41,818			1,724,151			
Capital Outlay	17,538	26,445	17,940	56,549	108,312	87,064	198,164	3,310			483,322			
Total	542,638	741,086	829,792	1,135,191	682,547	2,162,986	1,723,775	385,962			8,264,027	265,820		9,103,315
Seminole														
Salaries	156,873	199,031	278,059	177,147	114,925	936,171	661,606	421,595	22,704		2,752,305	87,667		
Current Expense	18,192	119,492	41,933	62,019	43,007	169,875	169,875	119,053	3,470		966,498			
Capital Outlay	1,162	7,257	319,892	5,477	144,109	44,257	94,969	17,321	511		361,862			
Total	176,227	325,780	719,884	245,643	362,041	1,187,226	926,450	557,969	26,685		4,080,665	87,667		5,374,968
South Florida														
Salaries	81,214	49,161	33,021	33,021	32,748	211,368	151,004	42,946			601,132			
Current Expense	15,391	7,318	46,936	46,936	4,101	24,162	39,652	3,511			189,354			
Capital Outlay	2,534	41	1,525	1,525	20,238	2,124	24,109	499			82,216			
Total	105,139	56,520	81,482	81,482	57,087	237,654	214,765	46,956			873,052			1,212,741
Tallahassee														
Salaries	232,188	180,159	47,809	143,493	137,025	963,908	279,469	67,771			1,979,131	94,397		
Current Expense	25,315	20,319	211,725	27,395	15,976	47,324	14,309	429,152			82,216			
Capital Outlay	1,473	2,504	1,121	1,121	60,914	10,963	32,078	128			114,213			
Total	269,976	202,982	260,655	232,019	208,913	1,022,295	326,756	6,896			2,522,496	94,397		3,105,617

TABLE 19 (Continued)
STATEMENT OF EDUCATIONAL AND GENERAL EXPENDITURES, GENERAL
AND RESTRICTED CURRENT FUNDS 1973-74

COLLEGE	GENERAL ADMIN.	STUDENT SERVICES	GENERAL EXPENSE	PHYSICAL PLANT	LEARNING RESOURCES	INSTRUCTION			ACTIVITIES RELATED TO INSTRUCTIONAL	OTHER	TOTAL C.A.G. EXPENSES	TRANSFERS	ENDING FUND BALANCE	TOTAL EXPENSES TRANSFERS & BALANCES
						COLLEGE PARALLEL	OCCUPATIONAL	ADULT						
Valencia	\$ 353,154	\$ 385,467	\$ 120,509	\$ 323,955	\$ 217,434	\$ 633,164	\$ 158,685	\$	\$ 141,428	\$ 3,952,884	\$	\$	\$	
Salaries	40,251	18,049	556,518	235,856	414	50,576	29,280		47,750	1,213,036	327,871			
Current Expense	5,154	5,243	15,976	23,017	7,125	57,967	2,492		22,253	2,207,756				
Capital Outlay	398,559	408,759	793,003	582,828	305,973	741,707	190,857		211,431	5,386,196	327,871	619,554	6,334,770	
Total														
STATEMIDE TOTALS	10,284,275	12,030,711	3,173,845	9,374,825	6,809,861	24,105,746	7,514,392	1,908,279	478,140	122,262,525	7,599,458			
Salaries	2,137,689	1,832,105	16,127,533	7,176,875	1,270,976	3,364,400	1,170,169	24,918	98,282	37,482,723	7,599,458			
Current Expense	201,679	209,217	430,965	566,976	2,751,437	2,279,551	323,509	303,326	55,869	8,371,437				
Capital Outlay	12,623,643	14,072,033	19,732,343	17,118,676	10,832,274	29,749,697	3,008,070	3,927,623	633,231	180,106,185		19,075,978	194,741,717	
GRAND TOTAL														
PERCENTAGE	6.12	7.17	1.89	5.58	4.05	14.34	4.47	1.13	.28	72.75				
Salaries	1.27	1.09	9.59	4.27	1.76	2.00	.70	.45	.06	22.30				
Current Expense	.12	.12	.26	.34	1.64	1.36	.09	.22	.03	4.95				
Capital Outlay	7.57	8.38	11.74	10.19	6.45	17.70	5.36	1.80	.37	100.00				

TABLE 20
UNEXPENDED PLANT FUND REVENUES 1973-74

COLLEGE	STATE		LOCAL			FEDERAL		TOTAL REVENUE	NON-REVENUE RECEIPTS & TRANSFERS	BEGINNING BALANCES	TOTAL TRANSFERS, PAYMENTS AND BAL.
	WEB	COADS	SFB BONDS	GENERAL REVENUE	LOCAL (1)	WFA	YOC				
Brevard	111,934	173,808	2,047,481	5,351	2,938			2,221,289	363,208	2,565,667	4,786,956
Broward		148,567	57,914		215			626,704	185,063	1,271,694	2,261,606
Central Florida	30,000	52,169	13,280	3,138	217		300,000	83,664		625,354	896,281
Chippola		54,310	4,544					92,609		448,962	541,171
Daytona Beach		186,806			375		(326)	186,806		122,123	308,929
Edison	400,843	46,181	15,463					462,682	5,742	106,982	575,186
Florida Jr & Jax	675,734	476,715	163,856	104	168,553			1,484,532	1,294,000	2,550,562	5,329,094
Florida Keys	1,238,840	20,028	3,396		500,368			1,262,368	200,000	972,084	1,363,409
Gulf Coast		44,111	12,218		47,133			199,582	343,000	101,041	1,371,666
Hillsborough	1,350,000	165,120	16,469		143,254			2,031,957		939,499	5,437,703
Indian River	700,000	97,391			500,368			839,524		132,846	2,122,023
Lake County	224,701	36,200	5,757		6,312			116,026	108,305	108,305	224,331
Lake Sumter	82,000	20,014	7,700		3,775			125,866	481,400	481,400	758,303
Manatee	50,271	71,820			612,883		231,976	1,769,800	750,000	9,885,356	12,405,156
Miami-Dade	21,553	651,192	252,196					35,065		60,665	941,418
North Florida		57,401	725,307		6,378			789,086		152,332	894,155
Ocala	8,622	217,298			1,717			524,564		369,591	894,155
Ocala-Haltom	348,886	32,027		2,530	43,929		298,644	382,640		1,417,582	1,800,222
Palm Beach		316,637			43,087			363,105		977,505	1,340,610
Pasco-Hernando		76,224			1,086			112,311		566,565	685,876
Pensacola		11,532			1,086			18,004		146,078	161,082
Polk	2,386	306,928			43,695			998,542		431,499	1,430,041
St. Johns River	647,949	175,737						926,237		3,916,092	4,842,329
St. Petersburg	600,000	103,582			43,695			3,418,478	975	1,961,465	5,376,918
Santa Fe	2,011,076	22,119	1,184,694		115,126			632,502		58,366	690,868
Seminole	608,392	59,338	26,595	300	1,991			410,633		76,912	503,845
South Florida	324,700	151,259	17,295		31,091			501,864		1,018,313	1,820,177
Tallahassee											
Valencia	302,219										
TOTALS	9,740,116	3,809,578	4,554,165	11,432	1,768,793	150,500	830,294	20,864,878	3,629,462	34,830,249	59,324,589

(1) Interest on Investments, Private Donations, Local Loans

TABLE 21
FLORIDA COMMUNITY COLLEGES
UNEXPENDED PLANT FUND EXPENDITURES
1973-74

College	Buildings and Fixed Equipment			Other Structures and Improvements		Library Books and Films		Total Expenditure	Ending Balance 6/30/74	Total Expenditures and End. Bal.
	Land	Equipment	Land	Equipment	Other Capital Outlay	Books and Films				
Brevard	166,887	14,190	166,379	14,190	95,330	73,204	2,091,760	2,695,196	4,786,956	
Broward	1,498,972	75,149		75,149			1,742,655	518,951	2,261,606	
Central Florida	555,400	3,055		3,055			558,455	297,826	856,281	
Chipola	241,070	19,422	1,922	19,422			262,414	278,757	541,171	
Daytona Beach	231,452	17,544	44,906	17,544			293,902	15,027	308,929	
Edison			57,394				57,394	517,792	575,186	
Florida JC @ Jax.	356,215	6,932	513	6,932			363,660	4,965,434	5,329,094	
Florida Keys	246,963	20,206	25,555	20,206			311,529	1,051,879	1,363,408	
Gulf Coast	17,706		2,459				20,165	1,351,500	1,371,665	
Hillsborough	2,582,950	250,952	49,105	250,952			2,883,007	2,554,696	5,437,703	
Indian River	1,228,651		260,111				1,488,762	633,260	1,22,022	
Lake City	126,997	990	78,155	990			206,142	193,362	399,504	
Lake-Sumter	32,337	19,083	15,552	19,083			66,972	157,359	224,331	
Manatee	552,205	26,720	7,681	26,720			586,606	171,697	758,303	
Miami-Dade	2,317,888	1,687,372	200,948	1,687,372			4,482,585	7,922,571	12,405,156	
North Florida	1,406						1,400	94,330	95,730	
Ocala	46,222	4,038	5,223	4,038			56,483	185,872	241,355	
Palm Beach	274,937	251	12,901	251			288,089	606,066	894,155	
Pasco-Hernando	1,066,332	44,763	53,686	44,763	5,122	11,436	1,181,339	618,883	1,800,222	
Pensacola	400,048	168,865	17,221	168,865	3,551	7,636	597,321	743,289	1,340,610	
Polk		19,495	2,400	19,495			21,895	693,591	715,486	
St. Johns River	99,114		19,751				19,751	141,331	161,082	
St. Petersburg	3,970,911	8,134	8,922	8,134	33,000		171,144	1,258,897	1,430,041	
Santa Fe	2,450,228	54,313	23,391	54,313			4,081,806	760,523	4,842,329	
Seminole	406,811		6,264				2,456,492	2,919,958	5,376,450	
South Florida	55,951	271		271			406,811	284,057	690,868	
Tallahassee	579,825	15,013	324,368	15,013			56,222	447,623	503,845	
Valencia	609,737						1,528,943	291,234	1,820,177	
TOTALS	21,084,889	2,456,758	1,384,807	2,456,758	137,003	111,081	26,282,704	32,370,961	58,653,665	

TABLE 22
FULL COST SUMMARY REPORT

College	Advanced and Professional		Occupational	Developmental	Community Instructional Service		Total
	\$				\$		
Brevard	\$ 1,144.20		\$ 1,276.50	\$ 1,157.40	\$ 978.60	\$ 1,191.90	
Broward	1,256.40		1,350.00	1,344.00	883.80	1,289.70	
Central Florida	1,036.20		1,058.70	700.50	686.10	1,014.90	
Chipola	1,425.90		1,371.60	1,532.10	938.70	1,401.60	
Daytona Beach	1,130.70		1,371.30	963.30	922.50	1,175.10	
Edison	1,258.20		1,294.50	1,042.80	1,001.70	1,255.20	
Florida JC @ Jax.	964.80		1,101.00	923.10	886.50	993.90	
Florida Keys	1,599.30		1,923.60	1,917.60		1,689.00	
Gulf Coast	1,075.80		1,128.60		955.50	1,089.45	
Hillsborough	1,162.80		1,386.00	1,072.80	1,943.40	1,237.80	
Indian River	1,029.00		1,190.10	1,011.00	1,022.70	1,085.10	
Lake City	1,271.70		1,406.10	1,260.60		1,339.20	
Lake-Sumter	1,427.10		1,535.40	1,254.30	1,897.20	1,461.60	
Manatee	1,285.50		1,436.10	1,154.70	1,253.40	1,332.30	
Miami-Dade	1,160.10		1,527.90	1,210.50	1,159.50	1,253.10	
North Florida	1,718.40		1,481.70	1,579.50		1,653.00	
Okaloosa-Walton	1,114.80		1,149.90	1,235.70	1,444.50	1,146.30	
Palm Beach	1,331.40		1,671.90	1,776.60		1,441.20	
Pasco-Hernando	1,487.10		1,545.60	1,606.50	1,240.20	1,495.80	
Pensacola	1,100.40		1,151.10	1,025.70	1,163.70	1,099.20	
Polk	1,272.90		1,329.00		1,032.00	1,290.90	
St. Johns River	1,604.10		1,602.00		1,341.00	1,601.70	
St. Petersburg	1,333.50		1,463.10	1,763.40	990.30	1,374.30	
Santa Fe	1,209.60		1,611.00	2,559.60	1,366.80	1,345.50	
Seminole	1,013.10		1,182.60	897.30	972.90	1,035.60	
South Florida	1,431.30		1,396.20	1,317.60	2,220.00	1,413.00	
Tallahassee	1,196.70		1,412.70	1,253.40		1,248.00	
Valencia	1,166.40		1,535.70	1,171.80	1,476.90	1,262.40	
System-Wide Average	\$ 1,186.23		\$ 1,357.53	\$ 1,065.06	\$ 1,055.16	\$ 1,224.18	

TABLE 23
COST ANALYSIS - DIRECT COST REPORT

Advanced and Professional Instruction Expenditures/Full-Time Equivalent Enrollment

College	FTE	Personnel Costs			Support	Supplies Services	Equipment Depreciation	Total Direct Costs
		Instructional	Professional	Other				
Brevard	3,520	\$ 472.79	\$ 44.21	\$ 19.11	\$ 19.07	\$ 8.13	\$ 563.31	
Broward	5,009	442.67	134.20	30.59	19.84	10.16	637.46	
Central Florida	1,164	476.70	55.81	21.58	12.96	11.88	578.93	
Chipola	817	692.89	24.77	21.25	26.28	11.41	776.60	
Daytona Beach	1,654	562.13	30.31	45.52	23.23	12.46	673.65	
Edison	1,339	447.61		13.12	19.81	6.05	486.59	
Florida JC @ Jax.	6,269	401.52	17.65	2.25	27.13	12.21	460.76	
Florida Keys	555	450.51			47.95	32.66	531.12	
Gulf Coast	1,411	452.80	25.58	29.99	65.65	10.10	584.12	
Hillsborough	3,864	368.23	24.65	9.46	13.14		415.48	
Indian River	1,152	378.39			42.62	14.08	435.09	
Lake City	1,027	497.97	3.74	40.01	64.10	26.07	631.89	
Lake-Sumter	666	554.08	20.36	13.61	25.03	9.03	622.11	
Maratee	1,597	494.61	18.04	59.57	42.10	12.07	627.29	
Miami-Dade	19,752	358.11	61.69	21.57	13.46	6.14	460.97	
North Florida	631	747.27	4.14	15.43	34.12	13.19	814.15	
Ocala-Walton	1,268	480.39	3.60	15.54	23.19	10.00	532.72	
Palm Beach	3,264	647.05	24.77	22.65	14.86	12.07	721.40	
Pasco-Hernando	422	440.26	6.80	19.54	79.85	.68	547.13	
Pensacola	4,852	500.38	37.77	29.80	30.76	15.51	614.22	
Polk	1,702	535.04	54.15	24.26	27.55	59.31	700.31	
St. Johns River	647	628.46	36.23	8.04	18.40	13.66	704.79	
St. Petersburg	5,550	629.53	36.44	35.48	16.89	8.34	726.68	
Santa Fe	4,064	488.20	25.64	15.07	12.08	16.71	557.70	
Seminole	1,835	475.69	36.98	22.79	60.23	15.29	610.98	
South Florida	252	676.51	3.58		70.83	8.55	759.47	
Tallahassee	1,499	479.88	.61	34.80	18.34	14.51	548.14	
Valencia	2,896	479.17	18.59	21.50	23.94	6.75	549.95	
System Average	78,738	\$ 461.26	\$ 41.78	\$ 22.08	\$ 22.65	\$ 10.96	\$ 558.72	

TABLE 23 (Continued)
COST ANALYSIS - DIRECT COST REPORT

Occupational Expenditures/Full-Time Equivalent Enrollment

College	FTE	Personnel Costs				Support	Supplies Services	Equipment Depreciation	Total Direct Costs
		Instructional	Professional	Other	Support				
Brevard	2,619	\$ 525.05	\$ 30.51	\$ 20.17	\$ 56.48	\$ 61.14	\$ 693.35		
Broward	2,548	413.12	190.67	33.98	28.67	49.64	716.08		
Central Florida	1,060	389.81	115.04	23.15	32.50	40.99	601.49		
Chipola	462	567.09	29.18	2.43	100.29	33.46	732.44		
Caytona Beach	1,842	670.44	59.12	64.53	72.52	50.44	917.05		
Edison	469	430.34		4.71	55.18	34.54	524.77		
Florida JC @ Jax.	4,973	422.88	47.00	25.15	60.51	41.22	596.76		
Florida Keys	209	519.95	60.80		153.24	121.68	855.67		
Gulf Coast	654	444.09	16.46	21.79	88.98	65.37	636.69		
Hillsborough	1,807	509.48	43.50	27.05	19.85		599.88		
Indian River	1,243	425.63	21.95	36.89	94.37	39.34	581.29		
Lake City	1,146	522.61	16.06	12.64	121.47	68.50	765.53		
Lake-Sumter	102	580.74	39.51	69.20	30.87	66.60	730.36		
Manatee	893	480.68	68.58	20.23	99.82	59.84	778.12		
Miami-Dade	7,186	469.79	140.19	10.35	62.56	32.09	724.86		
North Florida	232	432.34		.86	87.37	47.41	577.47		
Ocala	926	444.11	.67		55.15	44.44	545.23		
Palm Beach	1,384	839.45	54.81	43.44	72.54	51.70	1,061.94		
Pasco-Hernando	188	300.46	6.01	64.54	109.39	110.96	591.36		
Pensacola	1,962	469.10	28.11	24.37	100.74	36.03	658.35		
Polk	1,227	580.74	50.79	28.30	33.42	63.80	757.05		
St. Johns River	174	615.78	135.59	44.69	145.57	82.40	1,024.03		
St. Petersburg	2,533	656.12	57.31	51.72	64.07	26.92	856.14		
Santa Fe	1,656	646.34	69.31	71.45	65.42	106.58	959.10		
Seminole	1,067	548.56	42.00	41.66	111.57	38.89	782.68		
South Florida	320	457.80		39.67	100.36	93.88	652.04		
Tallahassee	465	559.75	3.19	29.91	32.55	49.50	684.66		
Valencia	1,088	711.90	51.69	29.91	62.17	63.54	919.21		
System Average	40,435	\$ 517.46	\$ 70.37	\$ 30.56	\$ 65.47	\$ 46.06	\$ 729.92		

TABLE 23 (Continued)
COST ANALYSIS - DIRECT COST REPORT

College	FTE	Instructional	Personnel Costs				Support	Supplies Services	Equipment Depreciation	Total Direct Costs
			Professional	Other	Support	Supplies Services				
Brevard	327	\$ 460.80	\$ 43.20	\$ 47.40	\$ 24.00	\$ 7.50	\$ 582.90			
Broward	426	446.94	202.68	38.41	1.14	12.99	702.16			
Central Florida	111	225.95	17.53				243.48			
Chipola	21	793.64	28.92	41.75	20.19	18.54	903.04			
Daytona Beach	1,036	411.02	45.77	35.40	14.24	4.09	510.52			
Edison	1	271.58					271.58			
Florida JC @ Jax.	3,266	358.21	30.77	12.86	12.28	4.95	419.07			
Florida Keys	4	849.50					849.50			
Gulf Coast							0			
Hillsborough	322	348.21			3.83		352.04			
Indian River	371	278.86			99.34	4.74	382.94			
Lake City	99	542.08	1.86	14.24	45.40	17.23	620.81			
Lake-Sumter	46	393.71	29.61	18.60	28.25	4.48	474.65			
Manatee	60	384.30	111.73		.58		496.61			
Miami-Dade	1,086	396.36	76.05	11.70	11.25	7.12	502.48			
North Florida	22	627.55			35.97		675.37			
Okaloosa-Walton	218	830.02			42.14		884.27			
Palm Beach	117	1,011.90	78.00	36.09	19.16	21.45	1,166.60			
Pasco-Hernando	1	783.93					783.93			
Pensacola	1,564	446.61	78.29	33.92	32.34	13.50	604.66			
Polk							0			
St. Johns River	201	894.19	155.85	72.14	18.62	15.80	1,156.50			
St. Petersburg	88	789.54	172.50	507.40	309.04	129.31	1,907.79			
Santa Fe	719	351.34	20.37	39.26	81.17	5.21	497.35			
Seminole	56	508.16	28.82		58.67	14.07	609.72			
South Florida	64	526.66	.42	36.07	15.75	11.72	590.62			
Tallahassee	236	482.86	39.09	4.51	19.56	.07	546.09			
System Average	10,462	421.85	52.13	26.52	26.85	8.00	535.34			

TABLE 23 (Continued)
COST ANALYSIS - DIRECT COST REPORT

Community Instructional Service

College	FTE	Personnel Costs			Supplies Services	Equipment Depreciation	Total Direct Costs
		Instructional	Professional	Other Support			
Brevard	196	\$ 317.40	\$ 28.20	\$ 25.20	\$ 22.80	\$ 4.20	\$ 397.80
Broward	23	131.93			119.31		251.24
Central Florida	112	197.78	24.96	3.79	1.51	1.07	229.11
Chipola	18	200.46	19.31		61.75		281.52
Daytona Beach	274	346.28	63.49	44.04	17.76	1.81	473.38
Edison	87	230.63					230.63
Florida JC @ Jax.	1,118	259.09	70.87	30.25	19.26	2.65	382.12
Florida Keys							0
Gulf Coast	48	127.05	171.99	66.22	97.35	1.23	463.84
Hillsborough	106	209.36			13.85		223.21
Indian River	611	357.00			59.10		416.10
Lake City							0
Lake-Sumter	25	522.22	357.54	142.48	60.37	9.68	1,092.29
Maratee	91	382.77	97.61	68.48	43.07	3.17	595.10
Miami-Dade	979	101.30	200.14	7.54	29.64		338.62
North Florida							0
Okaloosa-Walton	8	564.44			314.25		878.69
Palin Beach							0
Pasco-Hernando	23	219.57		404.10	35.40	1.57	660.64
Pensacola	104	294.58	166.67	63.72	145.88		670.85
Polk	64	330.23			97.01	31.93	459.17
St. Johns River	6	288.71					288.71
St. Petersburg	201	344.61			38.75	.03	383.39
Santa Fe	228	454.95	49.12	89.73	89.27	32.02	715.09
Seminole	161	348.59	98.08	27.07	81.17	18.05	572.96
South Florida	8	525.59		288.03	598.33	22.85	1,434.80
Tallahassee							0
Valencia	19	642.56			187.62	30.16	860.34
System Average	4,510	265.52	82.41	25.44	41.15	4.00	418.52

TABLE 23 (Continued)
COST ANALYSIS - DIRECT COST REPORT

College	FTE	Expenditures/Full-Time Equivalent Enrollment					Total Direct Costs
		Community Services		Personnel Costs			
		Administrative	Professional	Support	Supplies Services	Equipment Depreciation	
Brevard	6,662	\$ 6.33	\$ 1.30	\$ 2.32	\$ 3.94	\$.02	\$ 0
Broward	8,006						13.91
Central Florida	2,447						0
Chipola	1,318						0
Daytona Beach	4,805	3.02		.63	.99		4.64
Edison	1,957						0
Florida JC @ Jax.	15,625	15.66		7.73	3.26		26.65
Florida Keys	768						0
Gulf Coast	2,113						0
Hillborough	6,098						0
Indian River	3,376						0
Lake City	2,273			6.25			6.25
Lake-Sumter	839		.42				.42
Manatee	2,640						0
Miami-Dade	29,002	1.78	1.68	3.14	.61	2.02	9.23
North Florida	884						0
Okaloosa-Walton	2,428	6.02		4.05	3.29	2.60	15.96
Palm Beach	4,764						0
Passo-Hernando	635						0
Pensacola	8,481						0
Polk	2,993						0
St. Johns River	827						0
St. Petersburg	8,485	.13	10.51	6.55	.97	.18	18.34
Santa Fe	6,037	1.60		1.01	1.71	.51	4.83
Seminole	3,782	12.15	2.85	9.65	12.41	.19	37.25
South Florida	635						0
Tallahassee	2,027						0
Valencia	4,239						0
System Average	134,146	1.43	1.19	1.78	.95	.53	5.87

TABLE 23 (Continued)
COST ANALYSIS - DIRECT COST REPORT

College	FTE	Personnel Costs				Supplies Services	Equipment Depreciation	Total Direct Costs
		Administrative	Other		Support			
			Professional	Support				
Brevard	6,662	\$ 38.90	\$ 45.56	\$ 21.57	\$ 23.62	\$ 18.99	\$ 148.64	
Broward	8,006	16.28	27.18	27.10	5.89	17.89	94.34	
Central Florida	2,447	27.88		32.35	16.33	25.14	101.70	
Chipola	1,318	55.74	48.05	33.70	9.79	25.12	172.40	
Daytona Beach	4,805	19.68	16.37	20.96	4.95	5.50	67.46	
Edison	1,957	73.15	25.77	55.41	40.16	21.46	215.95	
Florida JC @ Jax.	15,625	40.77	17.14	39.41	22.46	32.33	152.11	
Florida Keys	768	111.45	15.80	69.20	58.23	23.62	278.30	
Gulf Coast	2,113	20.39	14.76	21.52	5.77	17.63	80.07	
Hillsborough	6,090	51.95	15.02	100.84	58.95		226.76	
Indian River	3,376	34.97	13.30	45.04	8.47	1.54	103.32	
Lake City	2,273	39.64	21.90	52.58	38.87	22.19	175.18	
Lake-Sumter	839	55.92	56.44	58.20	32.83	52.66	256.05	
Manatee	2,640	27.30	31.39	32.54	12.78	33.71	137.72	
Miami-Dade	29,002	63.78	.65	48.21	13.71	31.31	157.66	
North Florida	884	25.66	58.44	31.02	19.25	18.66	153.03	
Okaloosa-Walton	2,428	16.53	76.25	38.04	15.26	4.46	151.54	
Palm Beach	4,764	36.54	29.55	42.79	10.48	21.93	141.29	
Pasco-Hernando	635	79.85	54.99	100.36	88.29	12.23	335.72	
Pensacola	8,481	9.93	42.20	53.37	26.54		132.04	
Polk	2,953	28.87	48.12	28.34	9.30	10.18	124.81	
St. Johns River	827	60.09	24.46	23.10	17.08	4.96	129.69	
St. Petersburg	8,485	28.69	46.88	27.17	8.23	15.41	126.38	
Santa Fe	6,037	21.98	25.22	40.13	24.96	13.52	125.81	
Seminole	3,782	23.95	12.02	20.27	12.86	7.72	76.82	
South Florida	635	58.77		34.47	33.02	2.73	128.99	
Tallahassee	2,027	38.27	20.52	41.50	18.25	44.52	163.06	
Valencia	4,239	21.76	29.20	101.28	40.64	14.46	207.34	
System Average	134,146	38.84	22.78	43.65	19.62	19.82	144.71	

TABLE 23 (Continued)
COST ANALYSIS - DIRECT COST REPORT

College	FTE	Personnel Costs				Expenditures/Full-Time Equivalent Enrollment		
		Administrative	Professional	Other	Support	Supplies Services	Equipment Depreciation	Total Direct Costs
Brevard	6,662	\$ 26.95	\$ 36.57	\$ 22.22	\$ 8.64	\$.70	\$ 95.08	
Broward	8,006	21.40	29.94	43.94	10.75	2.11	108.14	
Central Florida	2,447	35.26		28.80	2.38	.96	67.40	
Chipola	1,318	49.38	38.88	18.82	5.62	1.23	113.93	
Daytona Beach	4,805	27.21	28.25	28.32	4.43	1.15	89.36	
Edison	1,957	48.31	24.31	50.91	27.55	1.18	152.26	
Florida JC @ Jax.	15,625	14.55	23.47	51.59	12.07	1.03	102.71	
Florida Keys	768	30.55	22.52	100.56	17.47	1.18	172.28	
Gulf Coast	2,113	8.56	53.54	35.34	12.34	5.88	115.66	
Hillsborough	6,098	7.09	22.66	38.26	2.55		70.56	
Indian River	3,376	12.29	28.23	29.75	35.28	.09	105.64	
Lake City	2,273	35.84	19.42	29.97	13.62	1.68	100.53	
Lake-Sumter	839	50.16	79.15	43.33	9.47	1.17	183.28	
Manatee	2,640	14.20	55.15	18.53	4.91	1.10	93.89	
Miami-Dade	29,002	40.51	2.83	76.72	10.93	.96	131.95	
North Florida	884	21.20	29.13	17.62	6.94	1.60	76.49	
Okaloosa-Walton	2,428	37.11	23.08	16.62	8.02	1.33	86.16	
Palm Beach	4,764	30.83	43.84	42.29	15.88	2.27	135.11	
Pasco-Hernando	635	31.93	80.62	57.50	108.91	.84	279.80	
Pensacola	8,481		51.46	30.98	5.80		98.24	
Polk	2,993	46.24	50.19	17.51	5.61	11.02	130.57	
St. Johns River	827	46.20	39.88	67.66	18.95	1.97	174.66	
St. Petersburg	8,485	26.19	71.24	48.85	5.26	2.01	153.55	
Santa Fe	6,037	24.21	42.32	25.52	4.40	2.57	99.02	
Seminole	3,782	10.81	35.97	11.66	5.49	1.00	64.93	
South Florida	635	43.64	9.46		7.56	.30	60.96	
Tallahassee	2,027	8.83	23.61	6.49	2.03	.09	41.05	
Valencia	4,239	23.97	32.18	46.00	4.26	1.03	107.44	
System Average	134,146	25.54	29.29	44.67	9.95	1.42	110.87	

TABLE 23 (Continued)
COST ANALYSIS - DIRECT COST REPORT

Institutional Expenditures/Full-Time Equivalent Enrollment

College	FTE	Personnel Costs				Supplies Services	Equipment Depreciation	Total Direct Costs
		Administrative	Professional	Other	Support			
Brevard	6,662	\$ 29.77	\$ 25.04	\$ 77.79	\$ 56.42	\$ 2.23	\$ 191.25	
Broward	8,006	53.93	40.28	79.87	98.60	10.08	282.76	
Central Florida	2,447	71.64		42.82	62.81	4.86	182.13	
Chipola	1,318	50.43	9.45	58.28	73.42	36.63	228.21	
Daytona Beach	4,805	39.45	1.87	57.39	76.80	1.83	174.34	
Edison	1,957	62.19		102.91	91.66	4.88	261.64	
Florida JC @ Jax.	15,625	27.06		48.14	69.00	3.08	147.28	
Florida Keys	768	128.11		103.58	151.27	34.25	417.21	
Gulf Coast	2,113	57.54		108.47	102.41	27.65	296.07	
Hillsborough	6,098	59.37	15.95	80.55	47.19	87.97	291.03	
Indian River	3,376	68.98	7.31	45.04	131.34		252.67	
Lake City	2,273	69.99	5.77	54.60	84.90		225.70	
Lake Sumter	839	78.84	34.44	64.39	59.71	10.44	239.54	
Manatee	2,640	76.35	8.88	90.84	65.04	2.16	254.78	
Miami-Dade	29,002	56.14	11.46	103.36	170.28	12.35	353.59	
North Florida	884	73.55	92.60	194.79	124.93	12.71	498.58	
Okaloosa-Walton	2,428	69.28	29.19	28.74	49.13	1.46	177.80	
Palm Beach	4,764	48.16	12.88	74.86	51.59	3.17	190.66	
Pasco-Hernando	635	59.44		55.25	101.25	47.91	263.85	
Pensacola	8,481	23.63	27.08	67.04	42.38		160.13	
Polk	2,993	49.63	4.51	74.51	73.75	12.44	214.84	
St. Johns River	827	99.35	17.90	89.01	96.40	15.15	317.81	
St. Petersburg	8,485	35.44	32.14	56.66	65.33	1.99	191.56	
Santa Fe	6,037	57.41	11.76	129.34	63.53	3.09	275.13	
Seminole	3,782	36.24	10.41	27.63	42.82	8.89	125.99	
South Florida	635	138.72		67.00	63.42	13.15	281.99	
Tallahassee	2,027	121.55	12.33	87.47	125.68	9.42	356.43	
Valencia	4,239	51.42	16.79	36.60	49.26	1.90	155.97	
System Average	134,146	50.72	14.77	75.75	91.41	11.02	243.68	

TABLE 23 (Continued)
COST ANALYSIS - DIRECT COST REPORT

College	FTE	Personnel Costs				Support	Supplies Services	Equipment Depreciation	Total Direct Costs
		Administrative	Professional	Other	Total				
Brevard	6,662	\$	\$ 16.17	\$ 60.17	\$ 63.15	\$ 6.84	\$ 146.33		
Broward	8,006	6.87	.03	70.61	52.36	3.64	133.51		
Central Florida	2,447			57.28	47.80	4.30	109.38		
Chipola	1,318	9.52		60.13	57.32	3.60	130.57		
Daytona Beach	4,805	2.13	2.32	52.39	60.43	.81	118.08		
Edison	1,957	5.51		44.57	83.16	3.64	136.88		
Florida JC @ Jax.	15,625	1.50		53.72	43.94	2.93	102.09		
Florida Keys	768	12.57		73.35	85.38	2.36	173.66		
Gulf Coast	2,113						0		
Hillsborough	6,098	17.33		61.15	107.47		185.95		
Indian River	3,376	4.69		40.75	95.16	2.96	143.76		
Lake City	2,273	5.47		57.50	64.32	4.51	131.80		
Lake-Sumter	839	16.91		57.86	49.04	1.87	125.68		
Manatee	2,640	5.90		94.20	63.09	8.89	172.08		
Miami-Dade	29,002	2.76		27.58	45.67	1.03	77.04		
North Florida	884			88.36	85.66	2.15	176.17		
Okaloosa-Walton	2,428	5.30		77.59	57.11	8.64	148.64		
Palm Beach	4,764	11.45		82.56	49.83	1.69	145.53		
Pasco-Hernando	635			13.76	36.72	1.53	52.01		
Pensacola	8,481		2.32	57.16	36.18		95.66		
Polk	2,993	5.92	.39	49.39	41.54	5.39	102.63		
St. Johns River	827			74.43	129.74	5.51	209.68		
St. Petersburg	8,485	5.29		67.74	42.65	1.28	116.96		
Santa Fe	6,037	3.31	2.47	63.98	73.90	3.46	147.12		
Seminole	3,782	11.19		54.13	16.61	12.67	94.60		
South Florida	635			53.24	68.19	7.16	128.59		
Tallahassee	2,027	4.85		65.93	42.99	2.36	116.13		
Valencia	4,239		3.23	82.55	55.64	4.27	145.69		
System Average	134,146	4.24	1.26	53.71	53.25	2.86	115.31		

TABLE 23 (Continued)
COST ANALYSIS - DIRECT COST REPORT

College	FTE	Personnel Cost					Expenditures/Full-Time Equivalent Enrollment				Total Direct Cost	
		Administrative	Instructional	Professional	Support	Supplies Services	Equipment Depreciation	Direct Cost				
Grand Total												
Brevard	6,662	\$ 488.18	\$ 133.93	\$ 123.35	\$ 202.83	\$ 185.95	\$ 57.60	\$ 1,191.84				
Broward	8,006	432.60	260.24	98.74	255.83	193.49	56.58	1,297.48				
Central Florida	2,447	414.96	213.12		181.73	149.64	58.74	1,018.19				
Chippewa	1,318	643.80	191.39	96.37	185.62	198.74	85.68	1,401.60				
Daytona Beach	4,805	558.80	135.08	48.82	206.60	186.48	33.90	1,169.68				
Edison	1,957	433.68	192.18	50.08	204.93	270.90	43.76	1,255.53				
Florida JC @ Jax.	15,625	389.07	117.43	40.61	206.62	181.56	58.61	993.90				
Florida Keys	768	471.46	314.86	38.31	354.42	391.91	118.09	1,689.04				
Gulf Coast	2,113	442.71	112.56	68.30	193.60	194.11	78.17	1,032.45				
Hillsborough	6,098	406.25	164.25	53.63	294.81	230.80	87.97	1,237.71				
Indian River	3,376	380.97	129.21	48.84	160.59	341.12	24.39	1,035.12				
Lake City	2,273	512.32	160.80	47.10	238.22	293.93	85.91	1,338.28				
Lake Sumter	839	547.67	235.20	170.45	241.45	178.03	73.68	1,446.48				
Manatee	2,640	483.58	163.74	95.41	297.90	206.55	85.58	1,332.76				
Miami-Dade	29,002	378.54	251.30	16.61	279.42	267.28	60.07	1,253.24				
North Florida	884	661.79	123.36	180.18	345.81	284.90	56.95	1,652.99				
Okaloosa-Walton	2,428	496.62	136.38	128.51	174.57	171.74	40.66	1,148.48				
Palm Beach	4,764	711.86	161.78	86.27	271.52	159.50	52.87	1,443.80				
Pasco-Hernando	631	391.47	177.52	135.61	273.88	421.95	95.87	1,496.30				
Pensacola	8,481	480.71	78.15	123.06	238.27	159.56	19.70	1,099.45				
Polk	2,903	549.37	182.27	103.21	195.14	161.65	99.59	1,291.23				
St. Johns River	827	623.35	262.57	82.24	269.91	307.26	55.64	1,600.97				
St. Petersburg	8,485	636.96	140.36	160.77	247.32	153.98	34.73	1,374.12				
Santa Fe	6,037	534.73	159.17	81.78	300.55	202.49	66.75	1,345.47				
Seminole	3,782	467.20	132.18	61.24	154.76	169.78	50.62	1,035.78				
South Florida	635	549.68	244.80		167.64	263.17	75.51	1,300.80				
Tallahassee	2,027	499.66	174.67	56.46	237.34	210.48	78.85	1,257.46				
Valencia	4,239	539.84	125.29	81.39	289.05	184.03	42.72	1,262.32				
System Average	134,146	468.52	173.33	69.28	244.66	211.68	56.72	1,224.19				

APPENDIX B
COMMUNITY COLLEGE PROGRAM STRUCTURE

COMMUNITY COLLEGE PROGRAM STRUCTURE

1.0 Instruction

This program includes formally organized activities designed for the purpose of transmitting knowledge, skills, and attitudes to a specifically identified target or clientele group.

1.10 Advanced and Professional Instruction

These are courses and curricula designed to provide the first two years of course work leading to an advanced or professional degree (e.g., bachelors degree). It includes both General Education and specialized lower division courses. An associate degree is awarded persons completing program requirements in this area. Not included are non-credit courses preliminary to work on a baccalaureate or associate degree or non-credit improvement courses.

1.20 Occupational Instruction

This subprogram includes both credit and non-credit courses and curricula designed to prepare persons for an occupation without subsequent training or education in an institution of higher education. Many of the courses classified in Occupational Instruction are transferable to State universities to apply toward a bachelors degree, but they are placed in this subprogram since they are required for an occupational degree or certificate because of their specialized context. In other words, the classification of a course as Occupational Instruction has no bearing on its transferability. This subprogram should include non-credit occupational courses and curricular programs.

- 1.21 Agriculture
- 1.22 Distributive
- 1.23 Health
- 1.24 Home Economics
- 1.25 Office
- 1.26 Trade & Industrial
- 1.27 Technical

Category & Subcategory Codes

Use the USOE Handbook VI codes (3rd through the 6th digit) for the Category and Subcategory.

1.30 Developmental Instruction

These are courses and curricula established to prepare persons with college entry level knowledge, skills, and attitudes.

1.31 Compensatory Instruction

Instructional activities designed to meet the academic and personal needs of educationally disadvantaged students. These activities are intended to bridge the gap between secondary school and college for students with specifically identified deficiencies.

1.32 Adult Elementary and Secondary Instruction

This includes instructional activities for literacy, high school completion, and adult basic education (ABE), and GED.

1.40 Community Instructional Services

This subprogram contains organized instructional activities designed for specific clientele groups in the community. It should not include instructional activities developed for matriculated students. Courses in this subprogram are not part of the degree or certificate requirement in any of the other instructional programs. Non-credit occupational courses are not included. They should be classified in 1.20 Occupational Instruction.

1.41 Citizenship Instruction

These are formal instructional activities which contribute to the development of understanding and attitudes conducive to participation in civic affairs; examine the responsibilities of citizens; and contribute to the strength of society through improvements in family life, child care, family economics, personal health, nutrition, instruction for senior citizens, etc. Non-credit Occupational courses are not included.

1.42 Avocational Instruction

These are seminars, lectures, short courses, institutes, and conferences which have traditionally been called "avocational" or "non-vocational" because they are designed primarily to satisfy the personal objectives of the participant. These activities are distinguished from those in Citizenship Instruction (1.41) by the fact that they are directed more at satisfying personal needs of individuals than at providing specific social benefits. They are non-vocational since they are not concerned with transmitting skills and knowledge related to the future employment of the participant. State funds cannot be used to support these activities.

1.90 Other Personal Objectives

This subprogram is established to account for students who do not intend to complete a curricular program offered by the college, but who are taking credit courses to satisfy their personal objectives. An example would be a teacher taking a course to be used for renewal of certificate, in which case the teacher is not seeking to complete degree or certificate requirements.

This subprogram is used only for accounting for students by field of study; it is not applicable to the classification of courses or disciplines.

2.0 Organized Research

The organized research program comprises all research related activities established within an institution or separately budgeted and conducted with internal funds. A research related activity is one that is established to undertake an investigation of a specific scope as defined by the commissioning agency to produce research outcomes that may include the creation of new knowledge, the reorganization of knowledge, and the application of knowledge.

3.0 Public Service

3.10 Community Service

This subprogram includes community services which are designed to improve the quality of community life and to assist in the identification and solution of community problems. These community services may include but are not limited to library, clinical, and educational counseling services for citizens not enrolled at the college; consultative and technical services provided to community groups; cultural enrichment programs; and community use of facilities.

4.0 Academic Support

This program includes activities that directly support, supplement, or augment the Instructional Program.

4.10 Learning Resources

Included in this subprogram are activities which provide for the collection, storage, distribution, and use of instructional materials and equipment for the entire college. It includes:

- A. Libraries - which consist of activities that directly support the operation of a cataloged collection of published materials.
- B. Audio-Visual Services - which include activities associated with providing audio and/or visual materials, media, and equipment in support of the instructional program.
- C. Museums and Galleries - which include program elements established to provide services related to the collection, preservation, and exhibition of historical materials, art objects, scientific displays, etc.

This subprogram should include the centralized activities of learning resources for instructional purposes. If a library, audio-visual laboratory, or exhibit is established and maintained by a specific instructional area (discipline, department, division), it should be accounted for in the Instruction Program.

4.40 Instructional Computing Services

This subprogram includes computing support to the Instruction Program. It should not include administrative data processing which is accounted for in the Instructional Support Program (6.0). Where these two activities are combined in a single organizational unit and budgetary account, provision should be made to distribute cost accordingly.

4.50 Ancillary Operations

This subprogram includes activities of instructional organizational units which provide training or work-experience for students, as well as services to the community. In the past, these activities have been classified as "Activities Related to Instruction." Examples of ancillary operations are:

- A. Automobile repair shop
- B. Dental Hygiene Clinic

4.60 Academic Administration

This subprogram includes academic administrative and managerial activities of offices or positions with college- or campus-wide responsibilities. It should include the offices and positions of academic vice-presidents, academic deans, deans of instruction, etc. It should not include departmental or divisional administrative activities related to specific instructional organizational units since provision is made to account for these activities in the Instructional Program. It should not include offices or positions responsible for curriculum planning and development. These activities should be classified in 4.70 Course and Curriculum Development.

4.70 Course and Curriculum Development

This subprogram includes activities related to designing new courses, developing new course materials, and planning and implementing new curricular programs. It does not include faculty members time, or other resources associated with preparing for or conducting existing courses. It is therefore the resources and costs of development, rather than maintenance of existing courses and curricula. However, when a major revision is made to existing course materials or the mode in which such materials are presented is significantly changed, such costs may be identified with this subprogram.

4.80 Professional Personnel Development

This subprogram includes activities related to the development and improvement of the colleges instructional professional staff. It would include activities such as in-service training programs, sabbatical leaves, training institutes, seminars, workshops, etc.

5.0 Student Services

This program includes those activities provided by the college to assist and provide services for students, as well as to augment certain aspects of the instructional program.

5.10 Social and Cultural Development

This subprogram includes activities related to the students' social and cultural development outside of the context of the formal academic program. Objectives of this subprogram usually focus on personal hygiene, participatory recreational activities, involvement in civic affairs, and appreciation of various artistic and communication forms. It includes:

Student Activities: clubs, newspapers, etc.

Cultural Events: conferences, lectures, convocations, etc.

Student Organizations

Recreational Activities

Intramural Sports

5.20 Organized (Inter-collegiate) Athletics

This subprogram includes activities established for the purpose of competing with other colleges in basketball, baseball, track, swimming, tennis, golf, etc.

5.30 Counseling and Advisement

This subprogram includes activities such as counseling students and parents, evaluating student abilities (testing), assisting students in career planning, and assisting students in personal and social adjustment and development. It should also include related types of activities such as orientation, career laboratories, and career days. It should include centralized advisement activities if they are made available to students.

5.40 Placement Services

This subprogram includes activities related to placing students in the job market upon completion of all or a portion of a college program.

5.50 Financial Aid Administration

This subprogram includes activities established to administer the financial aid program of the college. It does not include revenue or expenditures for student loans or scholarships.

5.60 Student Records and Admissions

This subprogram includes activities related to developing, processing, maintaining, and distributing of student records; e.g.,

- A. Admissions
- B. Registration
- C. Records
- D. Transcripts
- E. Transfer Evaluation
- F. Degree Certification
- G. Statistics

5.70 Health Services

This subprogram includes activities established to provide health services to students.

5.80 Services for Special Students

This subprogram includes activities established to provide non-instructional services to students with special needs or problems. It includes services for veterans, foreign students, and disadvantaged or handicapped students. Financial aid or compensatory instructional activities should not be included.

5.90 Student Service Administration

This subprogram includes activities established to administer the student service program. Included in this subprogram are those administrative offices and positions with college or campus-wide management responsibilities; e.g., vice-presidents of student services, deans of student personnel services, directors of student services, etc.

6.0 Institutional Support

This program consists of those activities within the institution that provide campus-wide support to the other programs.

6.10 Executive Management

This subprogram includes activities established for college-wide policy development, planning, management, institutional research, and evaluation.

6.20 Fiscal Operations

This subprogram includes activities related to fiscal accounting, control, management, and investment.

6.30 General Administrative Services

This subprogram includes services and general institutional expense which cannot be logically classified in one of the other subfunctions.

6.40 Logistical Services

This subprogram includes activities which provide procurement services, supply and maintenance of provisions, orderly movement of materials on campus, and security and safety services.

6.60 Administrative and Support Staff Services

This subprogram includes activities related to administrative and support staff development, improvement, and general services.

6.70 Community Relations

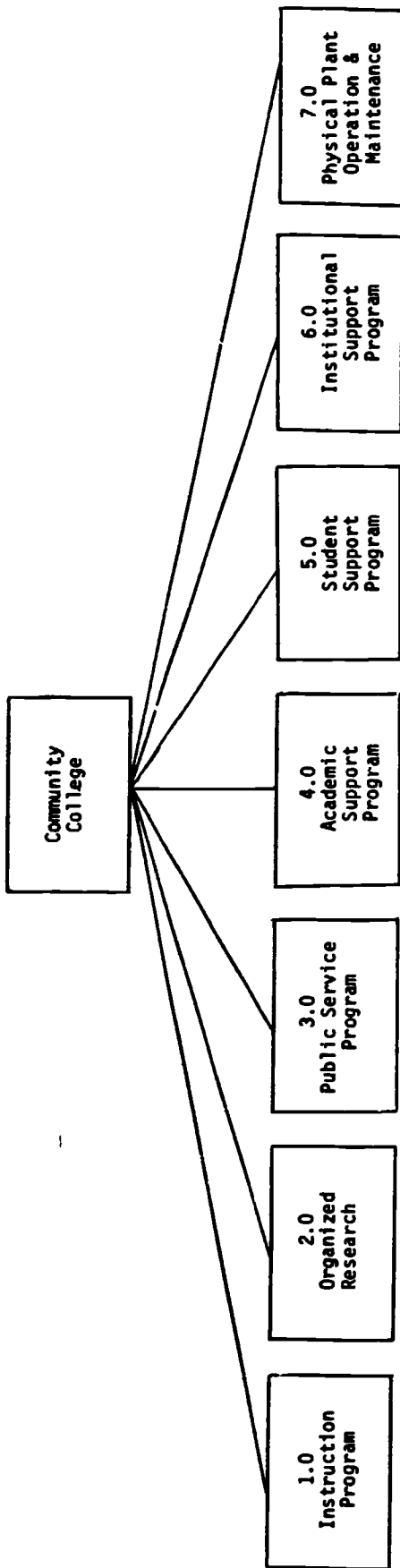
This subprogram includes activities established to maintain relationships with the general community and the college's alumni.

7.0 Physical Plant Operation and Maintenance

This program includes activities established to provide services and support related to the operation and maintenance of the physical plant. It includes the following activities:

- A. Building Maintenance
- B. Grounds Maintenance and Operation
- C. Custodial and Janitorial Services
- D. Utilities
- E. Plant Operational Expense
(including insurance on buildings and equipment,
electricity and water bills)
- F. Repairs of Furniture and Equipment
- G. Minor repairs, alterations or renovations of existing
buildings financed from General Current Funds.

Organization of the Program Structure



Subprograms:

- 1.10 Advanced & Professional
- 1.20 Occupational
- 1.30 Developmental
- 1.40 Community Instructional Service

Subprograms:

- 2.10 Research Institute and Centers
- 2.20 Individual or Project Research

Subprogram:

- 3.10 Community Services

Subprograms:

- 4.10 Learning Resources
- 4.40 Instructional Computing Service
- 4.50 Ancillary Op.
- 4.60 Academic Admin.
- 4.70 Course and Curriculum Development
- 4.80 Personnel Development

Subprograms:

- 5.10 Social and Cult. Develop.
- 5.20 Organized Ath.
- 5.30 Counseling & Advisement
- 5.40 Placement Servs.
- 5.50 Financial Aid
- 5.60 Student Records & Admissions
- 5.70 Health Services
- 5.80 Services for Special Students
- 5.90 Student Service Administration

Subprograms:

- 6.10 Executive Management
- 6.20 Fiscal Operations
- 6.30 General Admin. Services
- 6.40 Logistical Services
- 6.60 Administrative & Support Staff Service
- 6.70 Community Relations

APPENDIX C

GLOSSARY

GLOSSARY

Associate in Arts (AA) Degree

The two-year degree which will transfer to the state university system.

Associate in Science (AS) Degree

The two-year degree which is awarded in those programs which are not necessarily designed for transfer to the state university system.

CCPF (Community College Program Fund)

Those monies allocated by the Legislature to operate the colleges for the next fiscal year.

CO&DS (Capital Outlay and Debt Service)

Trust funds established by the State under Article XII of the Florida Constitution with funds derived from a portion of fees collected for automobile license tag fees and distributed to school districts and community colleges to finance construction of school and community college facilities and to service debts incurred by them for construction of educational facilities.

College Level -- AA Degree -- Freshman

Any student enrolled in college level courses who has as an educational objective an AA or higher degree and who has earned less than 24 semester (36 quarter) hours of college work at time of registration.

College Level -- AA Degree -- Sophomore

Any student enrolled in college level courses who has as an educational objective an AA or higher degree and who has earned 24 or more semester (36 quarter) hours of college work at time of registration.

College Level -- AS Degree -- Freshman

Any student enrolled in a planned program of college level courses requiring at least two years but less than four years for completion which culminates in the awarding of an Associate in Science degree and who has earned less than 24 semester (36 quarter) hours of college work at time of registration.

College Level -- AS Degree -- Sophomore

Any student enrolled in a planned program of college level courses requiring at least two years but less than four years for completion which culminated in the awarding of an Associate in Science degree and who has earned 24 or more semester (36 quarter) hours of college work at time of registration.

College Level -- Non-Degree -- Certificate

Any student enrolled in a sequential program of study in college-level courses not culminating in an associate degree but in which a certificate or other formal award is made.

College Level -- Non-Degree -- Non-Occupational

Any student enrolled in college level courses which are normally acceptable by other colleges at full (or virtually full) value toward a baccalaureate degree. These students are not working toward a certificate or an Associate of Arts degree.

College Level -- Non-Degree -- Occupational

Any student enrolled in a curriculum or courses designed to prepare students for immediate employment. The courses may or may not transfer to four-year colleges. Courses would tend not to transfer more than to transfer. Students would not be working toward a certificate or AS degree.

Direct Costs

Those costs associated with conducting activities classified according to the principles and definitions in the Program Structure (See Appendix A).

Educational and General Operations

Those activities supported by the general current fund and the restricted current fund.

Full Costs

Those costs related to producing a specific quantity of output. Full costing is accomplished only for instructional programs the assumption being that instruction is the production function of the Florida community colleges.

Full-Time -- Credit Student

Any degree credit student enrolled for 12 semester hours or more.

Full-Time Equivalent Enrollment (Annualized)

The total student semester hours divided by 30.

General Current Fund

The fund used to account for resources that are available for the general financial requirements of the college, the only restrictions being those imposed by law or the budget.

HEB (High Education Bonds)

Bonds sold by the State under the provision of Article XII of the Florida Constitution for the purpose of financing the construction of higher education facilities. The bonds are retired from the proceeds of revenue derived from a one percent gross utility receipt tax.

Restricted Current Fund

The fund used to account for resources that are available for the operation and support of the educational programs but are restricted by donors or other outside agencies as to the specific purpose for which they may be expended.

SBE (State Board of Education) Bonds

Bonds sold by the State Board of Education under the authority of the Constitution for and on behalf of school districts and community colleges. The bonds become a liability of the school district or college. They are serviced and retired by them from the distribution of CO&DS funds.

Unexpended Plant Fund

The fund used to account for resources that are available for the acquisition or construction of physical property to be used for institutional purposes and resources designated for the major repair and/or replacement of institutional property.

THE STATE BOARD OF EDUCATION

Reubin O'D. Askew, President
Ralph D. Turlington, Secretary
Bruce A. Smathers
Robert L. Shevin
Gerald A. Lewis
Thomas D. O'Malley
Doyle Conner

Governor
Commissioner of Education
Secretary of State
Attorney General
Comptroller
Treasurer
Commissioner of Agriculture

DIVISION OF COMMUNITY COLLEGES

Dr. Lee G. Henderson
Mrs. Melbra Maddox
Dr. Harold H. Kastner, Jr.
Mrs. Jerry Smith
Mrs. Virginia W. Christy
Dr. Juanita Gibson
(904/488-1721)

Director
Secretary
Assistant Director
Secretary
Administrative Assistant
Educational Consultant

Bureau of Fiscal Administration

Mr. Thomas M. Baker
Mrs. Linda P. Bennett
Mr. Jack R. Eberley
Mr. Kenneth E. Jarrett
Dr. Robert N. Foss
Mrs. Glenda Ganey
(904/488-7926)
Dr. James K. Umholtz, Jr.
Mr. E. Bruce Glueck
Mrs. Melita V. Lovett
(904/488-8597)

Bureau Chief
Staff Assistant
Consultant, Fiscal Affairs
Consultant, Fiscal Affairs
Specialist, Fiscal Affairs
Secretary

Coordinator, Physical Facilities
Specialist, Physical Facilities
Fiscal Assistant

Bureau of Program Services

Dr. Myron R. Blee
Mrs. Kathy Culpepper
Dr. Frederick W. Atherton
Dr. Katherine E. Hunter
Mrs. Pam Goding
(904/488-0555)

Bureau Chief
Secretary
Consultant
Consultant
Secretary

UNIVERSITY OF CALIF.
LOS ANGELES

MAY 2 1975

CLEARINGHOUSE FOR
JUNIOR COLLEGE
INFORMATION

Bureau of Research and Information Services

Dr. William R. Odom
Mrs. Barbara A. Smith
Dr. Wallace E. Bell

Mr. Lloyd B. Lauffer

Mr. John W. Burrill
(904/488-8597)

Bureau Chief
Secretary
Research Associate, Research
and Publications
Research Associate, Information
Services
Reports Coordinator

97