

DOCUMENT RESUME

ED 095 662

EA 006 395

TITLE Schools of Interest 2: Additions and Renovations.
INSTITUTION North Carolina State Board of Education, Raleigh.
Div. of School Planning.

PUB DATE Jul 73

NOTE 51p.; Photographs may reproduce poorly. A related document is EA 006 394

EDRS PRICE MF-\$0.75 HC-\$3.15 PLUS POSTAGE

DESCRIPTORS Architectural Character; *Building Design; Building Plans; Elementary Schools; *Facility Planning; *School Design; *School Improvement; *School Planning; Secondary Schools

IDENTIFIERS *North Carolina

ABSTRACT

This publication of photographs and building plans of 27 selected educational facilities in North Carolina is planned to acquaint school officials, planners, and citizens with the concepts and trends in new school design and to encourage them to visit the schools presented, as well as similar ones throughout the State.
(Author/MLF)

INTEREST

2 additions & renovations
SCHOOLS OF

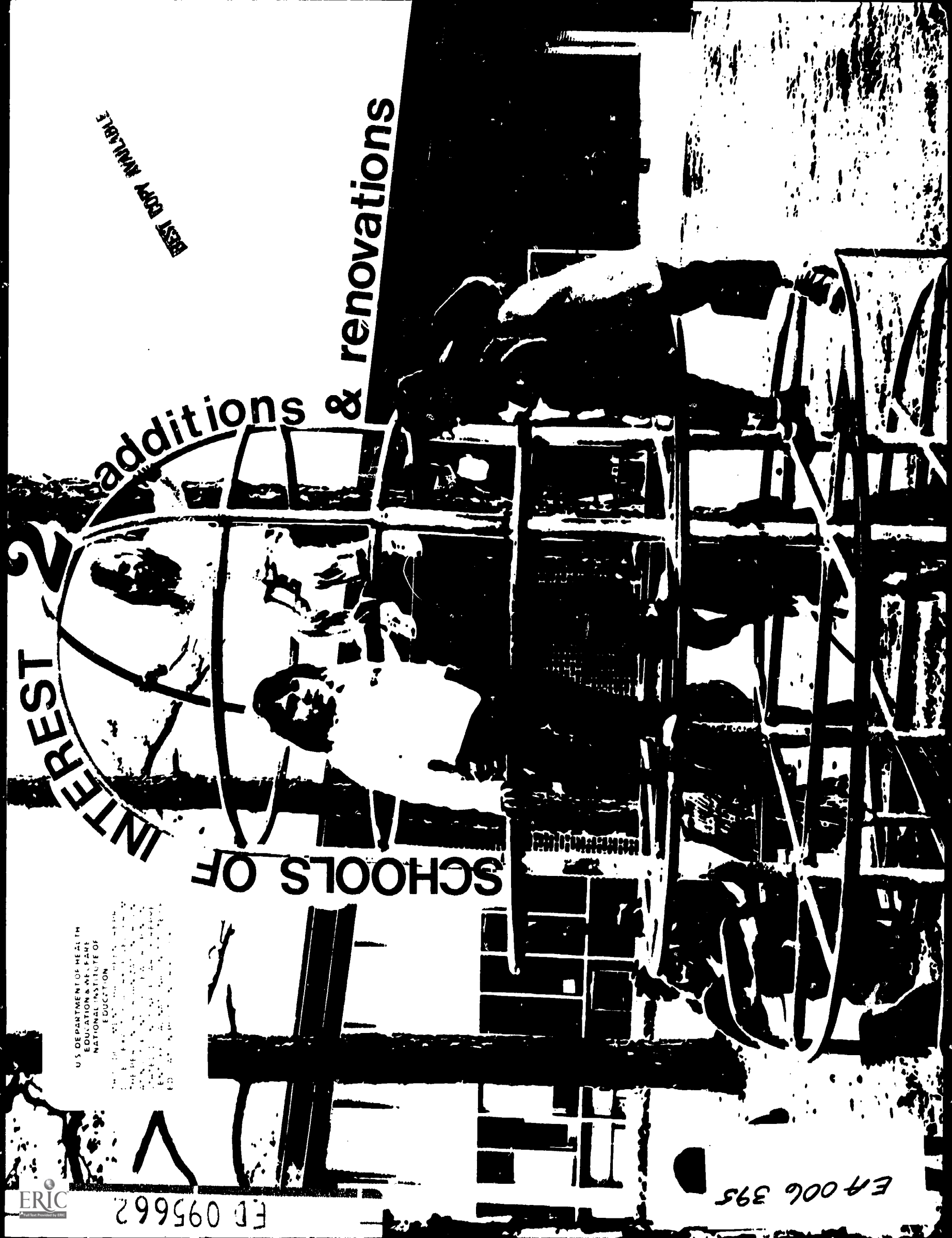
BEST COPY AVAILABLE

U.S. DEPARTMENT OF HEALTH
EDUCATION & WELFARE
NATIONAL INSTITUTE OF
EDUCATION

ERIC
Full Text Provided by ERIC

ED 095662

EA 006 395



BEST COPY AVAILABLE

BEST COPY AVAILABLE

A. CRAIG PHILLIPS, State Superintendent
North Carolina Department of Public Instruction

W. O. FIELDS, JR., Assistant Superintendent
Administrative Services Area

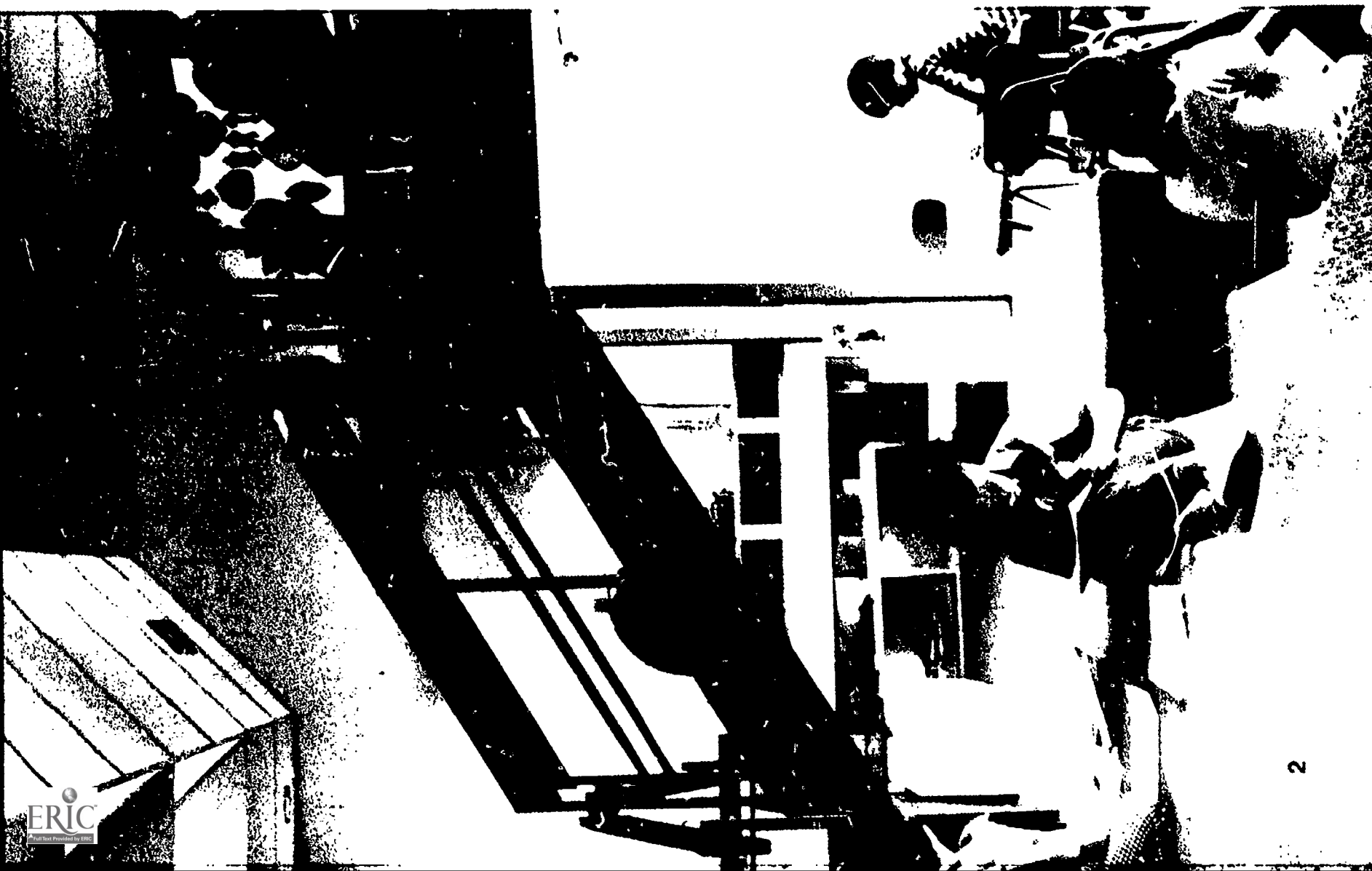
J. L. PIERCE, Director
Division of School Planning

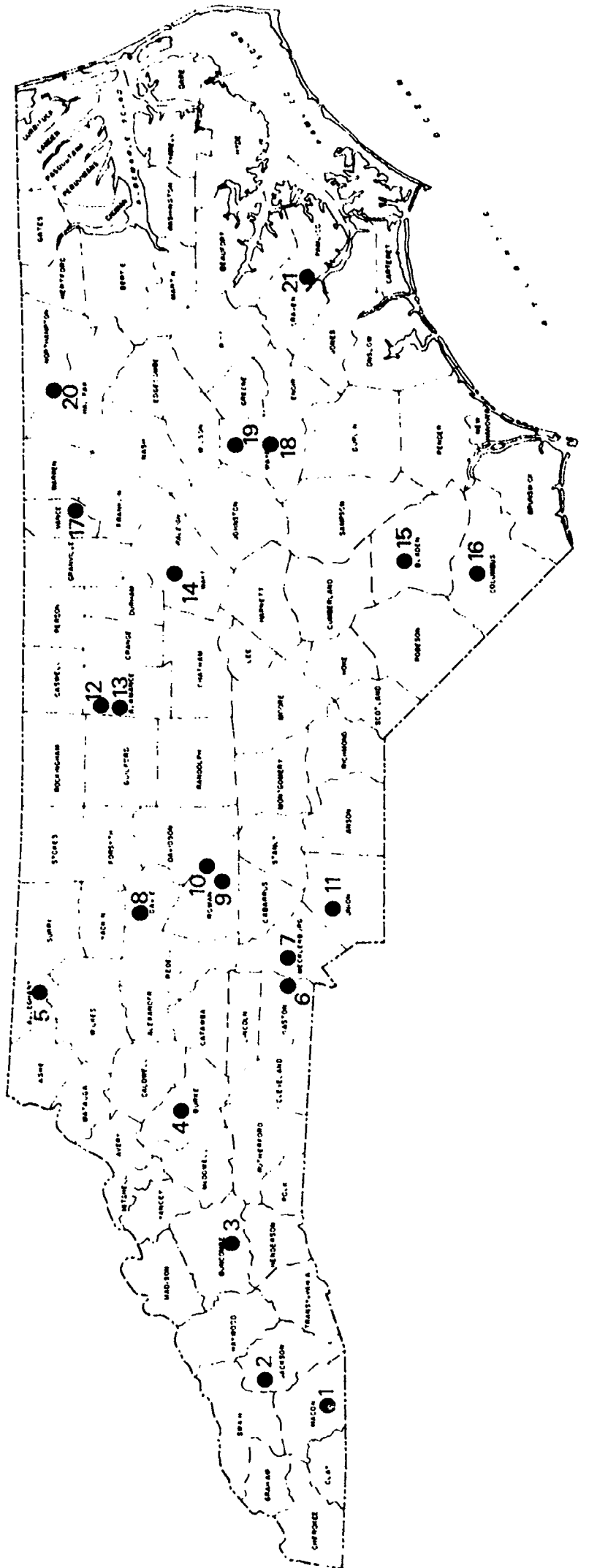


TABLE OF CONTENTS

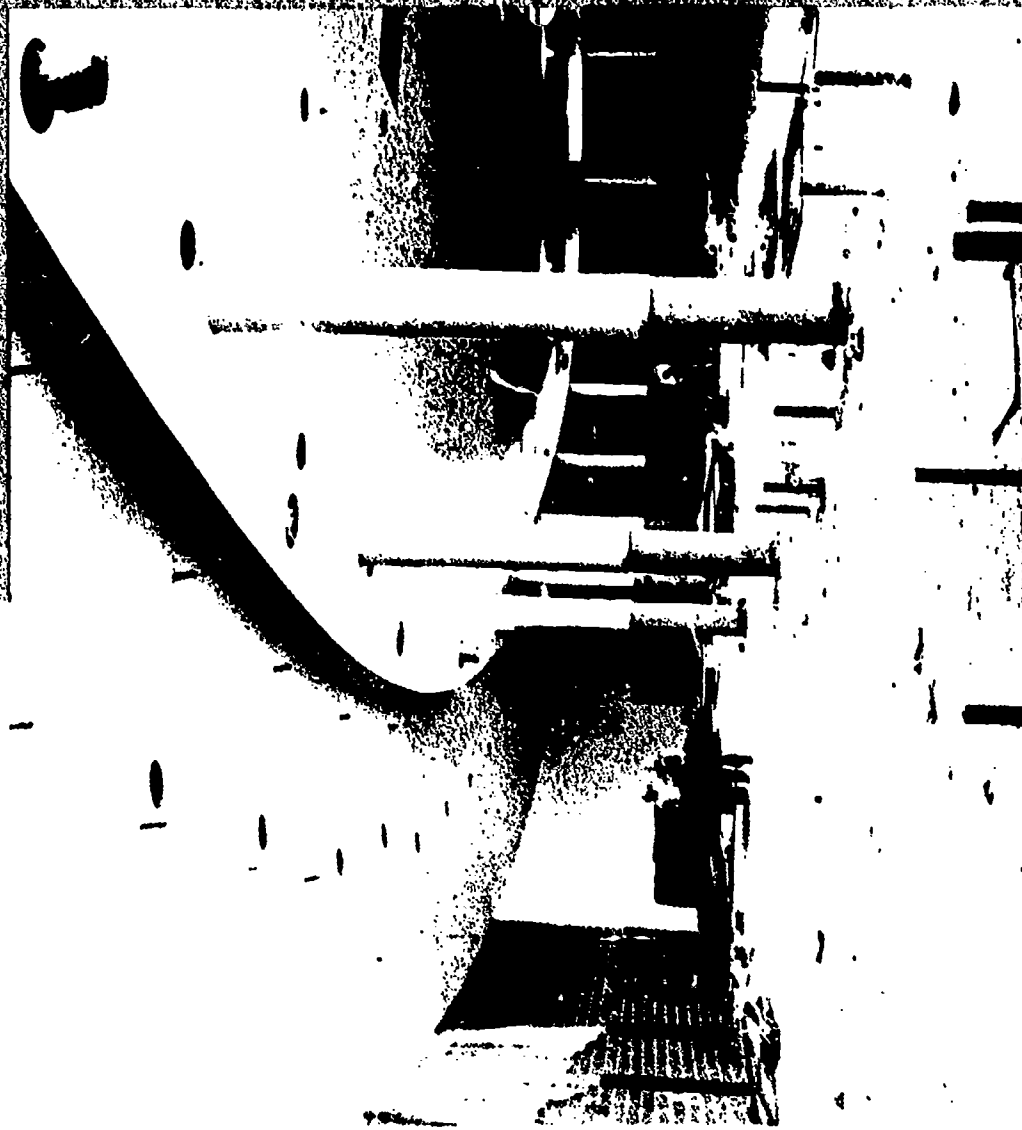
TABLE OF CONTENTS

Alleghany High	14
Altamahaw Ossippee Elementary	10
Asheville High	6
A. V. Baucom Elementary	43
Boyden High	12
Briarcliff Elementary	47
Bridgeton Elementary	28
Columbus County Administrative Center	16
East Bladen High	34
Elon College Elementary	20
Fairview Elementary	37
Franklin High	9
Fred Olds Elementary	40
Freedom High	4
Goldboro High East	18
Hemby Bridge Elementary	41
Henry R. Adams Elementary	46
Ida Rankin Elementary	32
Jeffreys Grove Elementary	45
Lincoln Heights Elementary	44
North Rowan Primary	36
Pikeville Elementary	22
Roanoke Rapids High	38
Swift Creek Elementary	48
Vance High	26
West Charlotte High	30
William R. Davie Elementary	24



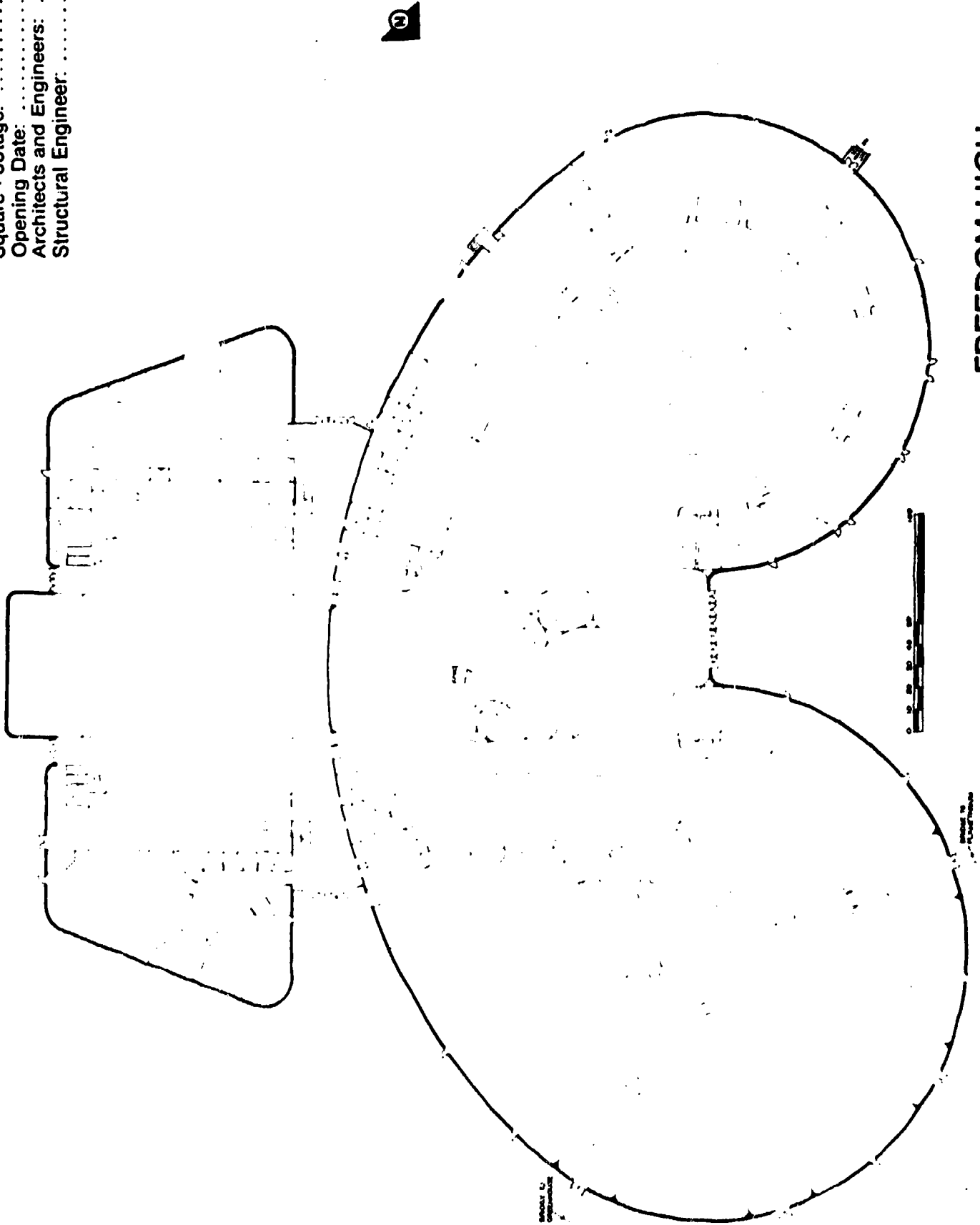


This school is distinctive because of the amount of open and semioopen space provided for a high school program. The total effect of the freely arranged plan is that of sculpture, inside and out. Because of very high ceilings throughout much of the building, many partitions are about eight feet high and freestanding. Plans call for a large amount of interior electronic equipment, including closed circuit television. An enclosed swimming pool was part of the original project. It may be added later.



DSP Property Number: 120-1254
 Administrative Unit: Burke County
 Superintendent: Charles H. Weaver
 Grade Organization: High School
 Type of Building: New
 Approximate Capacity: 1,500
 Square Footage: 176,000 ft.²
 Opening Date: September, 1973
 Architects and Engineers: Shaver and Company
 Structural Engineer: Carl Walker and Associates

BEST COPY AVAILABLE



FREEDOM HIGH

ASHEVILLE HIGH

VOCATIONAL ADDITION

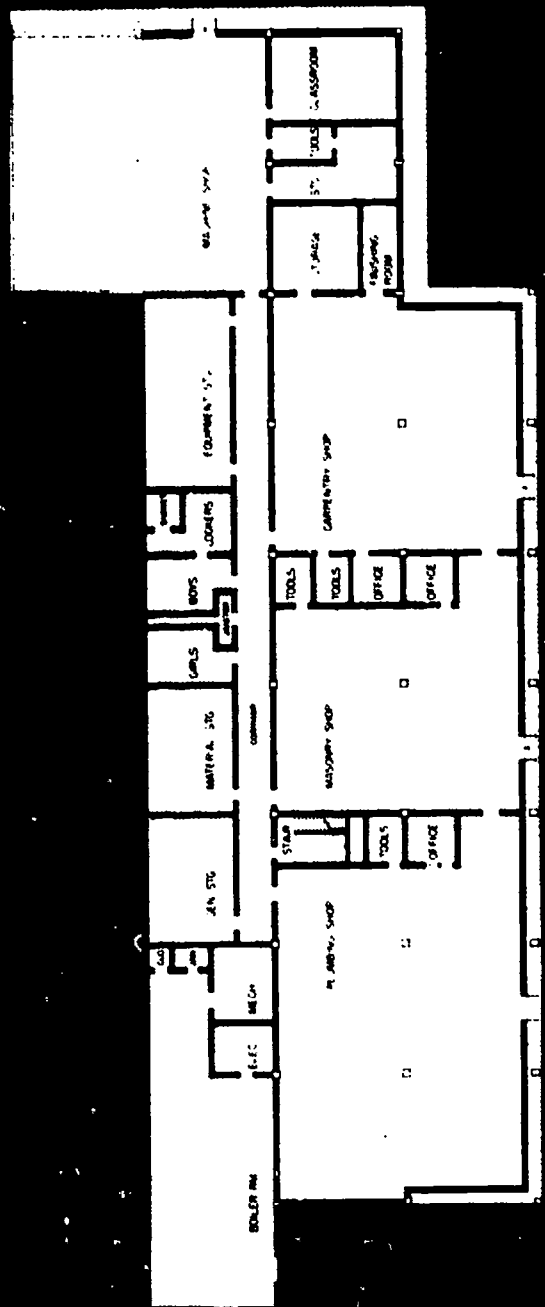
This is probably the largest new occupational education building in North Carolina to date. The three-level structure contains a variety of laboratories, shops, and classrooms. The child care laboratory is particularly interesting. Basic construction is concrete frame and waffle slab throughout, which allows for change of room shapes and sizes when programs change. The building is well sited on sloping terrain. One of the most attractive school buildings in the State.



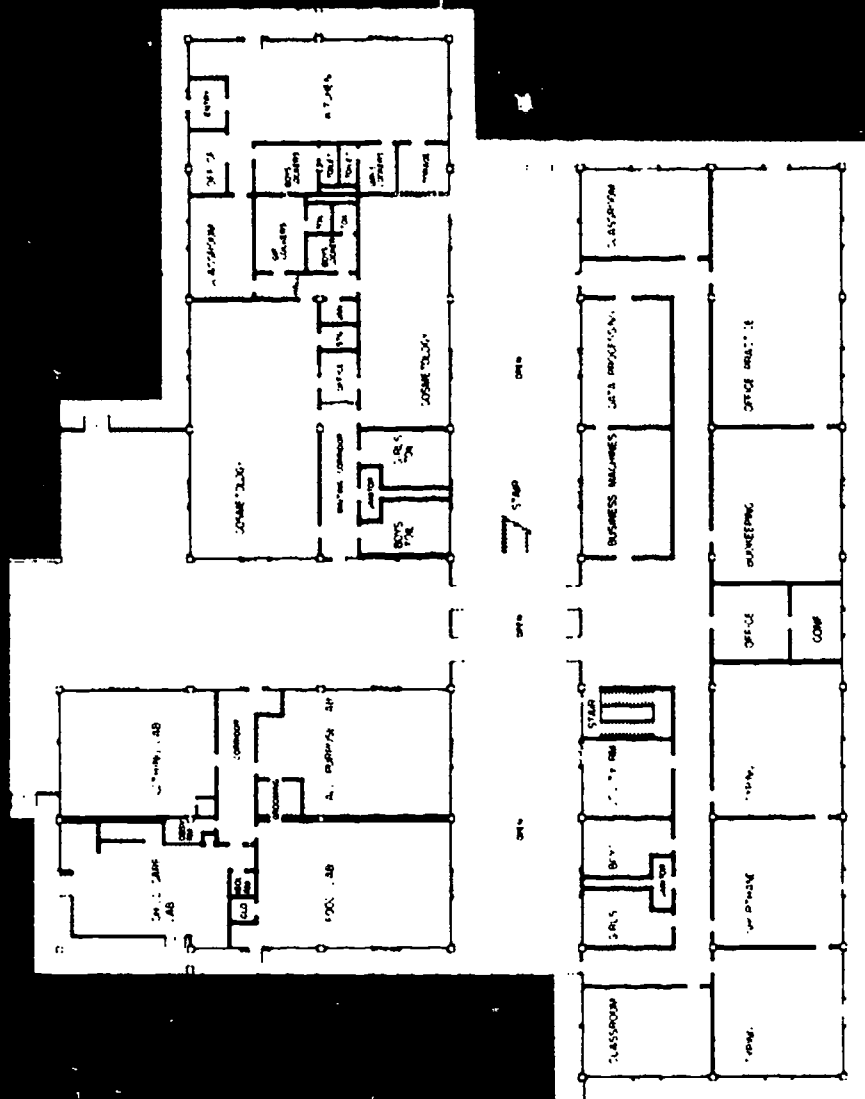
BEST COPY AVAILABLE

DSP Property Number: 111-1211
Administrative Unit: Asheville
Superintendent: W. P. Griffin
Grade Organization: 10-12
Type of Building: Vocational
Approximate Capacity: 650
Square Footage: 72,000 ft.²
Opening Date: September, 1969
Architect: J. Bertram King
Structural Engineer: Charles Kahn
Mechanical Engineer: J. C. Harrison
Electrical Engineer: Joseph S. Holladay

BEST COPY AVAILABLE

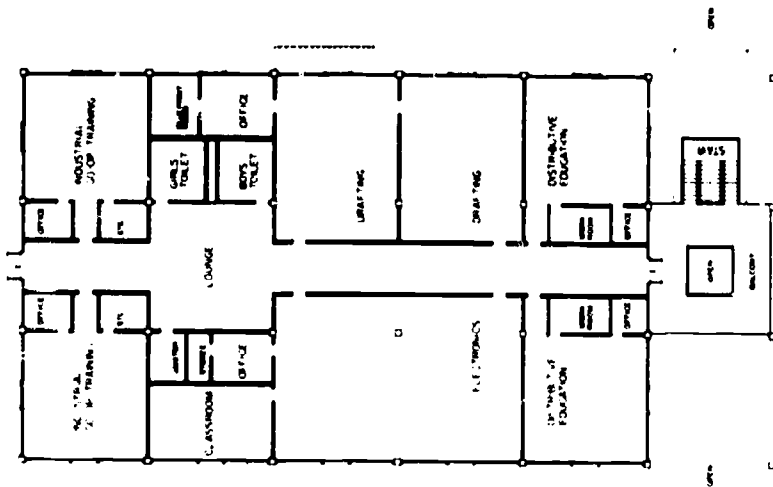


4

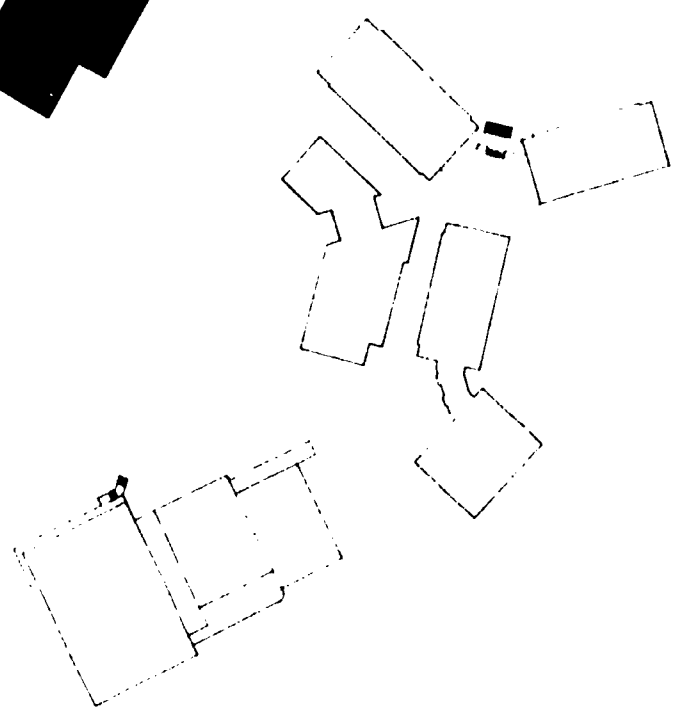
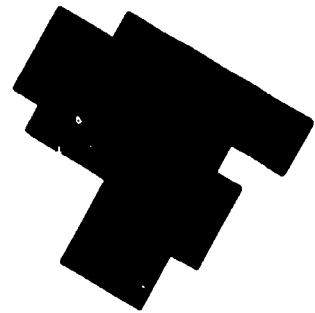


BEST COPY AVAILABLE

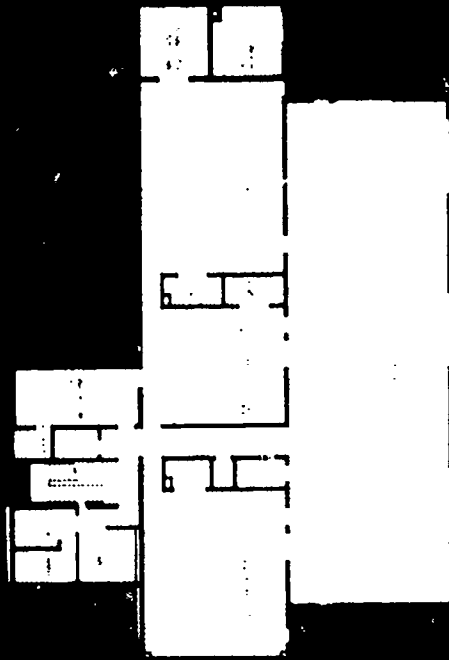
ASHEVILLE HIGH



THIRD FLOOR



FRANKLIN HIGH

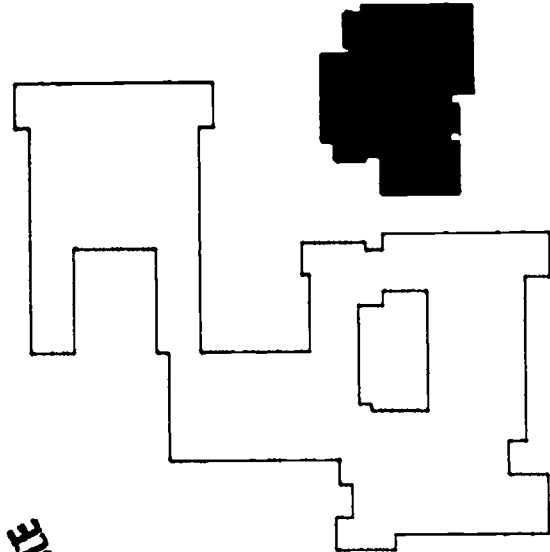


ALTAMAHAW OSSIPPEE ELEMENTARY CLASSROOM ADDITION

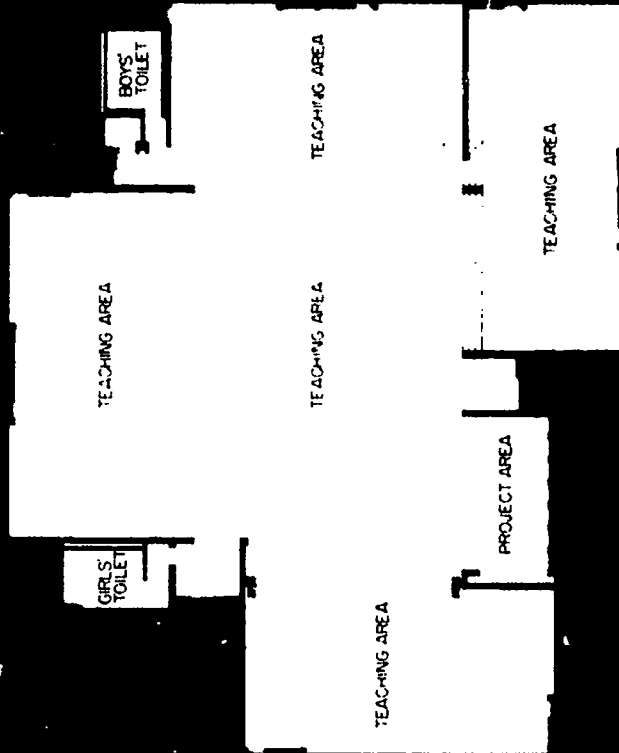
This is a primary classroom addition to an existing building of self-contained elementary classrooms. Spatial variety is accomplished by means of differing ceiling heights and floor levels, and varying light intensities from artificial to natural. The asymmetrical floor plan provides additional spatial interest.



DSP Property Number: 010-1002
 Administrative Unit: Alamance County
 Superintendent: Robert A. Nelson
 Grade Organization: 1-8
 Type of Building: Classroom
 Approximate Capacity: 240
 Square Footage: 11,620 ft.²
 Opening Date: September, 1966
 Architect and Engineer: J. Hyatt Hammond
 Associates, Inc.
 Mechanical and Electrical
 Engineers: Amin and Owen



BEST COPY AVAILABLE



BOYDEN HIGH

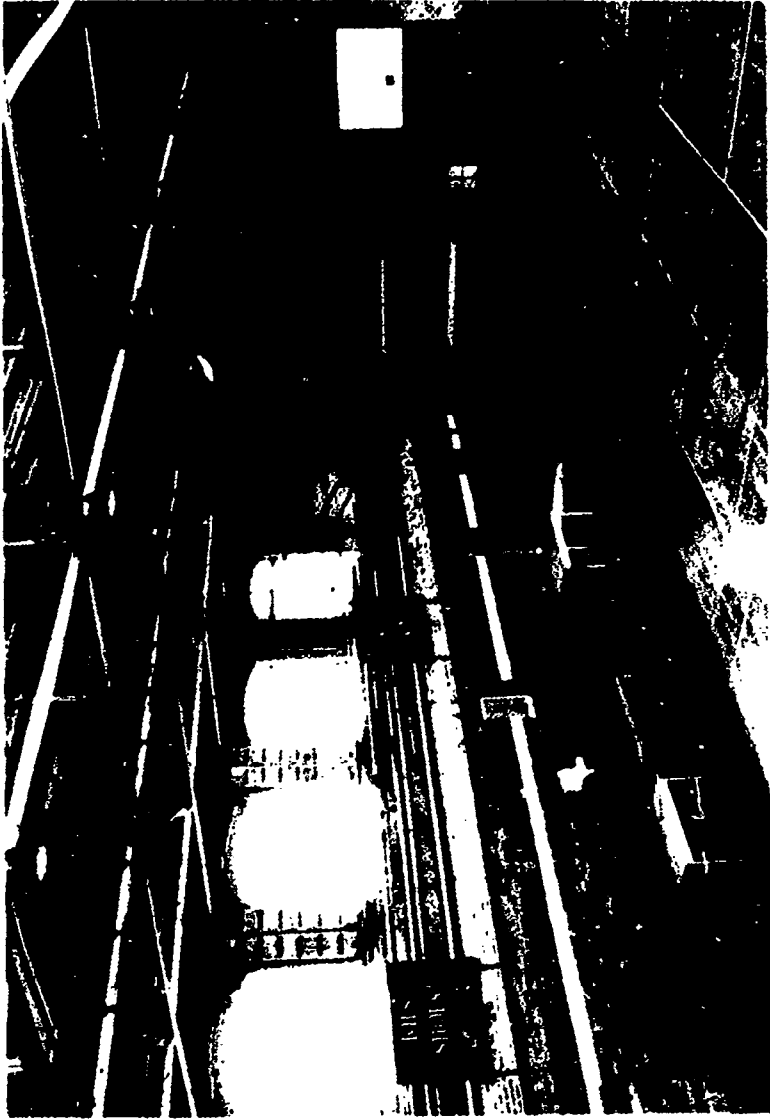
When in 1968 Boyden High needed a larger media center, the old gymnasium was renovated for this purpose. The large, open space was kept open except for extending an existing spectator balcony area. Part of the balcony is built over existing locker rooms, part of it continues into the open space of the former ball court. The high double-decked room is inviting and functional.

BEST COPY AVAILABLE

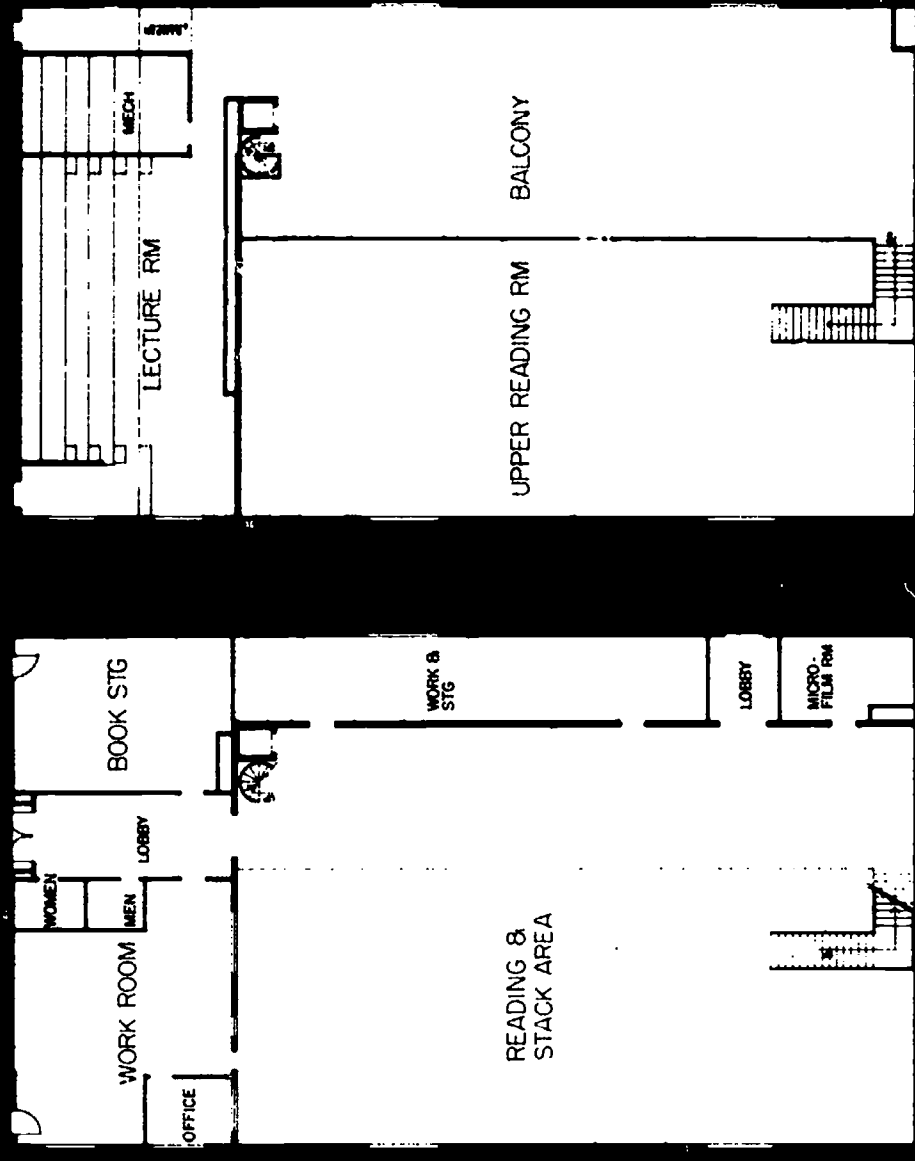
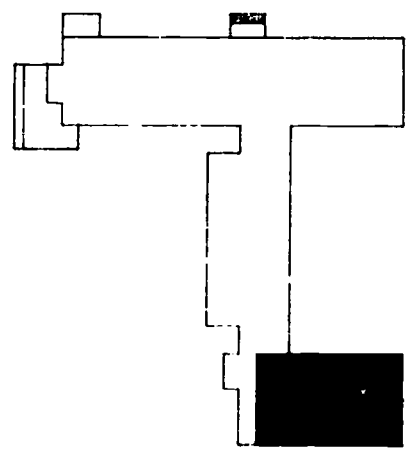
AFTER



BEFORE



BEST COPY AVAILABLE

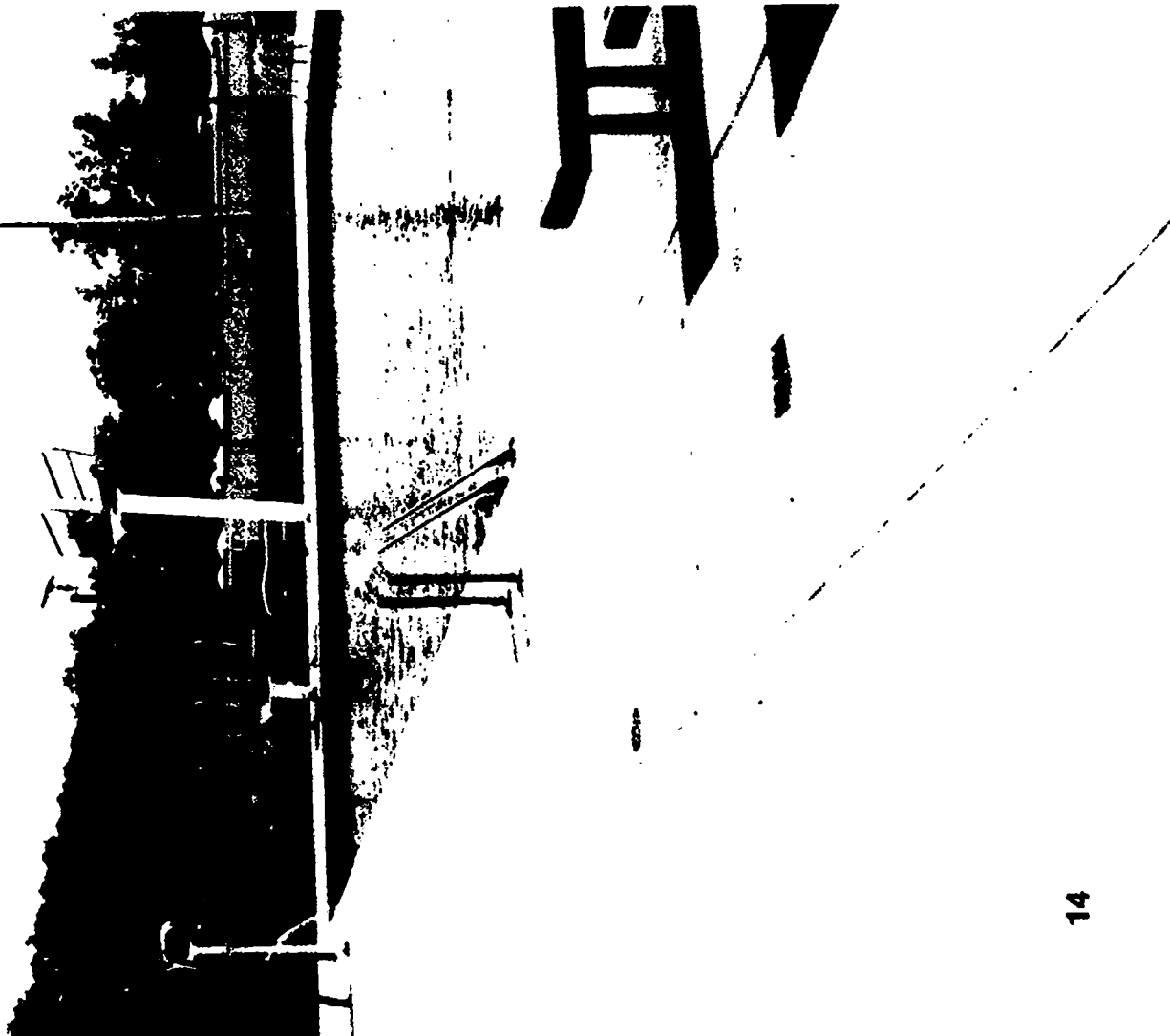


DSP Property Number: 801-3080
 Administrative Unit: Salisbury
 Superintendent: H. D. Isenberg
 Grade Organization: 10-12
 Type of Building: Gymnasium converted to Library
 Square Footage: 11,630 ft.
 Opening Date: September, 1969
 Architect: Robert F. Stone
 Mechanical and Electrical Engineers: Associated Engineers, Inc.

ALLEGHANY HIGH

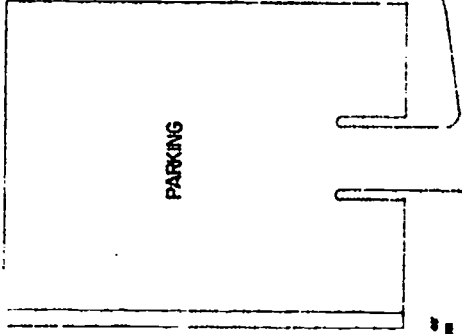
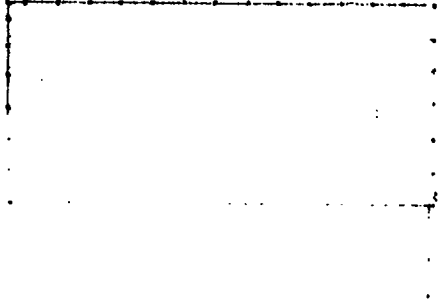
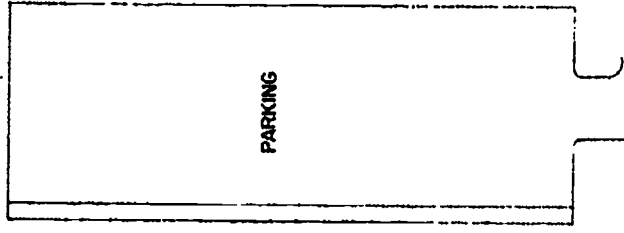
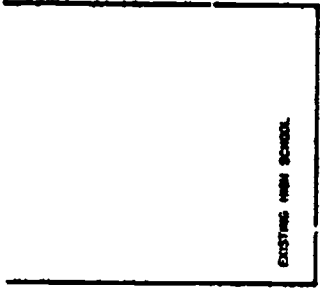
POOL ADDITION

When the Alleghany County Recreation Commission considered the construction of a recreation park and swimming pool in Sparta, it was decided to give the proposed facilities as much use as possible. Broad backing of the project was insured by including help of local citizens, the local school board, and the federal government. A site adjacent to the high school was found. The swimming pool, used by community and schools, is the first part of a large project in progress.



BEST COPY AVAILABLE

DSP Property Number: 030-1059
Administrative Unit: Alleghany County
Superintendent: John F. Woodruff
Grade Organization: 9-12
Type of Building: Swimming Pool
Opening Date: 1972
Architect: Stinson, Hines and Associates

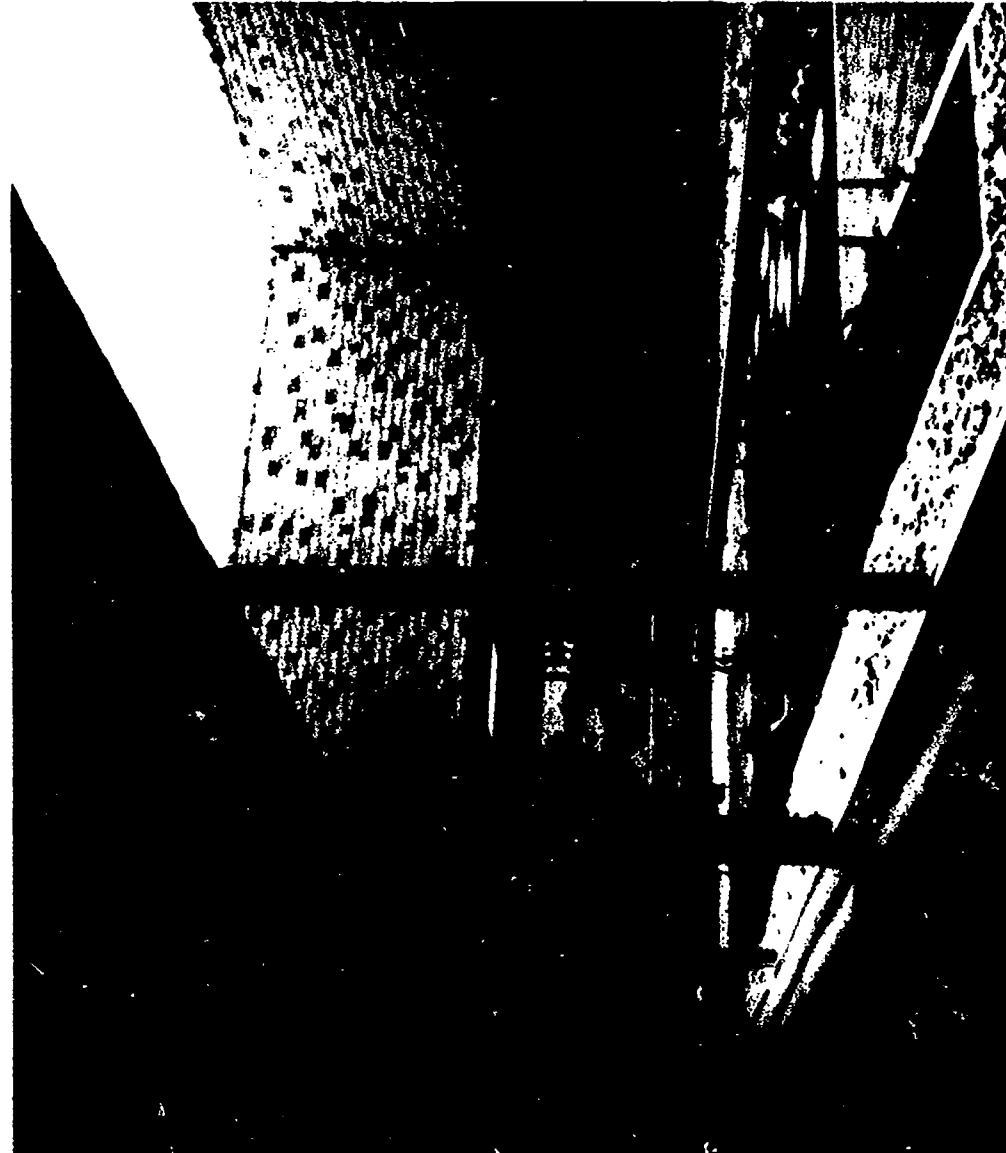


SCALE
1" = 100'

ALLEY GRADY HIGH

COLUMBUS COUNTY ADMINISTRATIVE CENTER

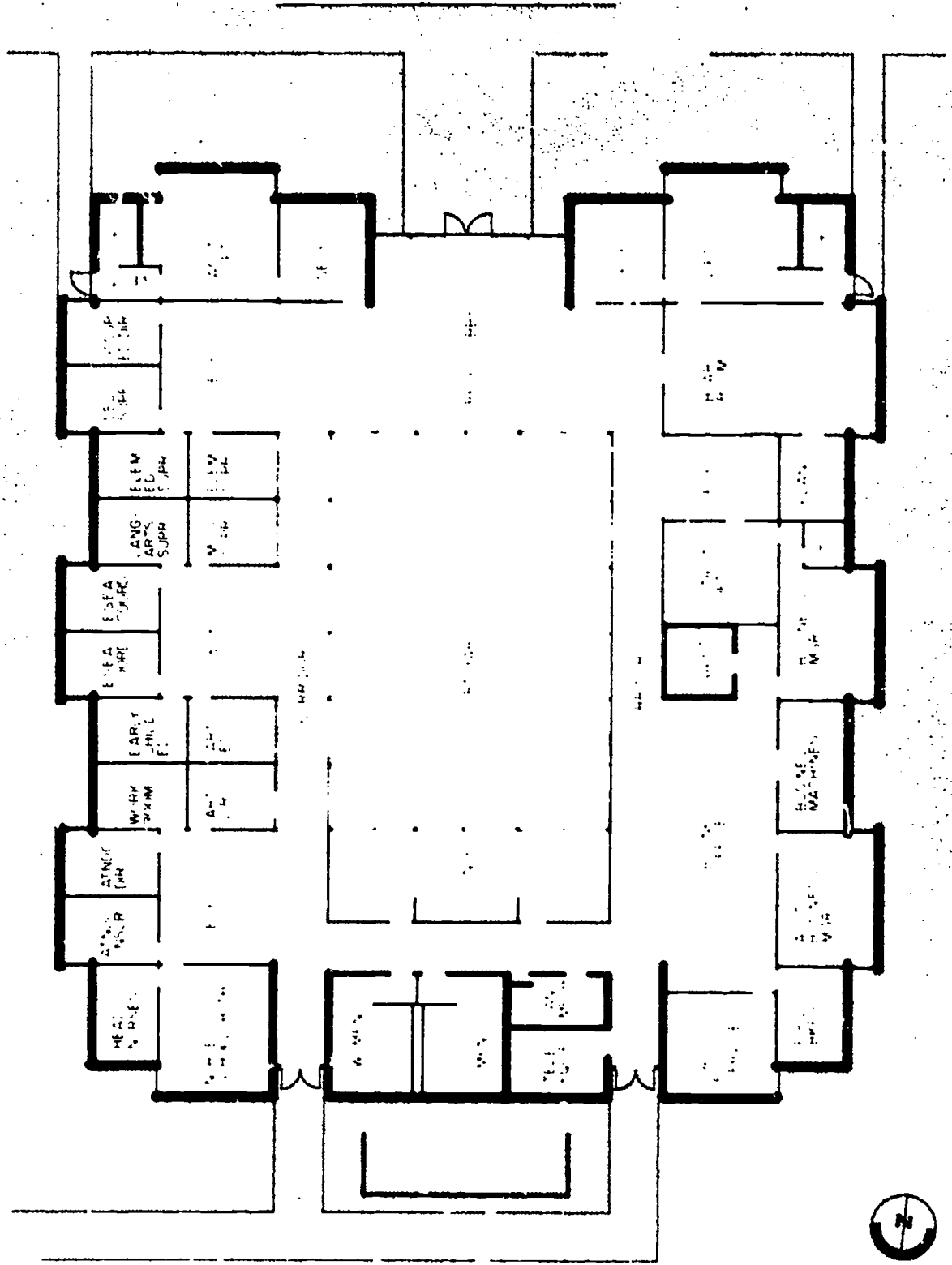
This facility is built around an open court. The landscaped court is an attractive focal point for the reception area at one end and the staff lounge at the other. Sliding doors provide access. Open secretarial areas contribute to the interior spaciousness. A future addition will include central storage rooms and a community meeting hall.



BEST COPY AVAILABLE

DSP Property Number: 240-3585
Administrative Unit: Columbus County
Superintendent: Jerry Paschal
Type of Building: Administrative
Square Footage: 10,440 ft.²
Opening Date: 1972
Architect: Ballard, McKim and Sawyer
Mechanical and Electrical Engineers: H. L. Buffaloe and Associates

COLUMBUS COUNTY ADMINISTRATIVE CENTER

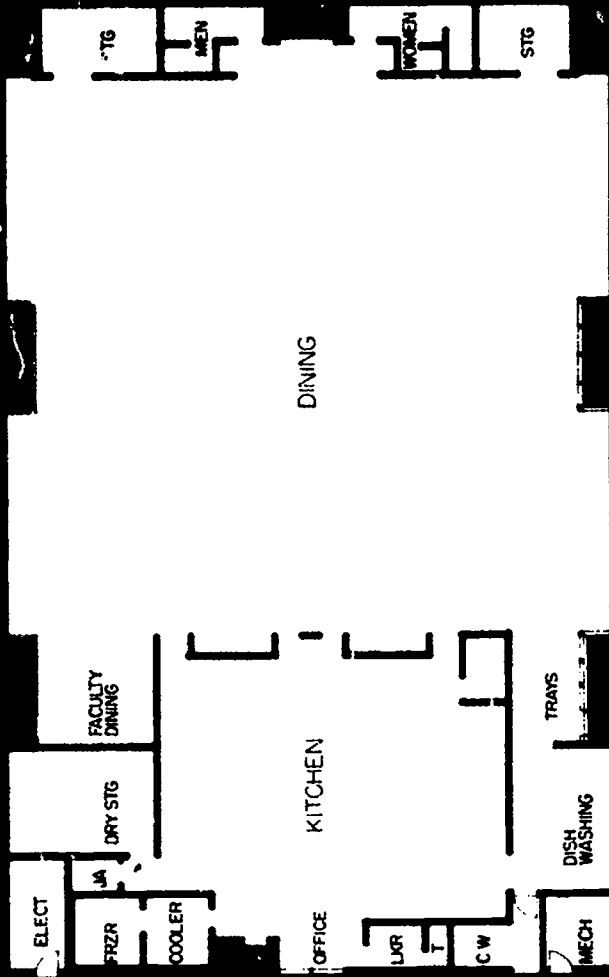
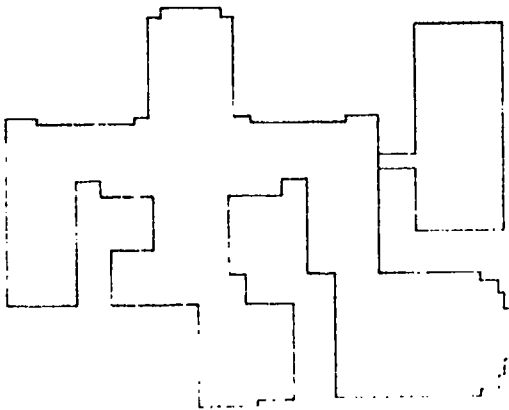


BEST COPY AVAILABLE



GOLDSBORO HIGH EAST

BEST COPY AVAILABLE



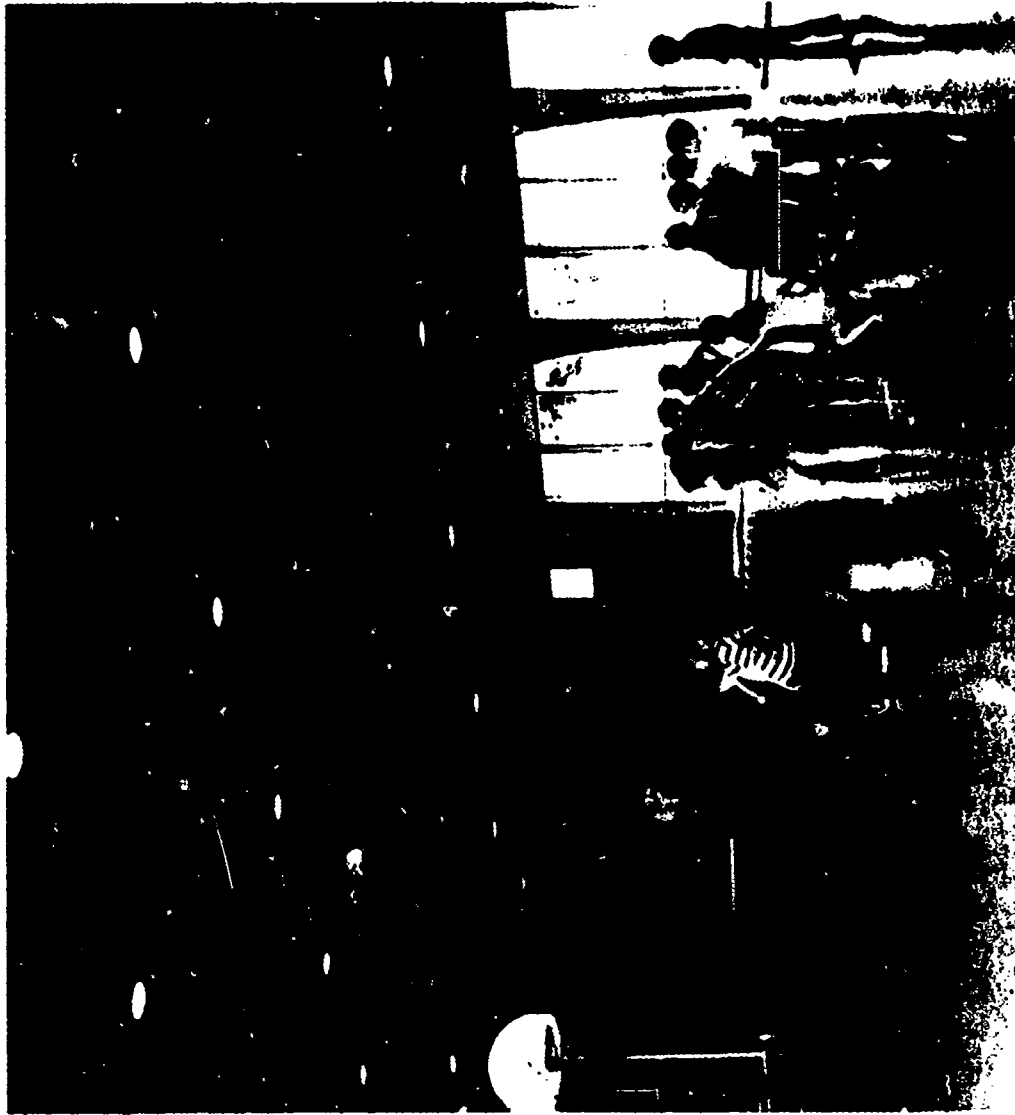
GOLDSBORO HIGH EAST

ELON COLLEGE ELEMENTARY

GYMNASIUM ADDITION

This semiattached multipurpose room serves as gymnasium or auditorium. It can be used as an overflow area for the cafeteria.

The simple laminated wood structure is suitably scaled to elementary school children. Wide glass windows visually relate the interior space to the site. A very pleasant play room.

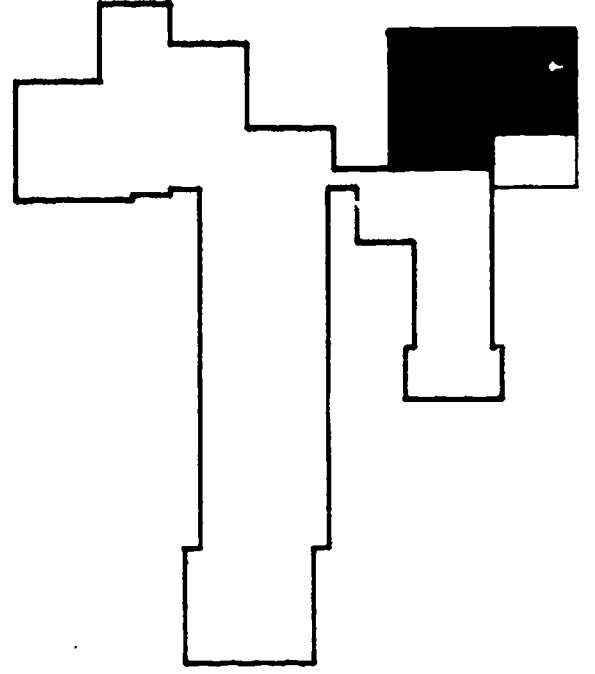
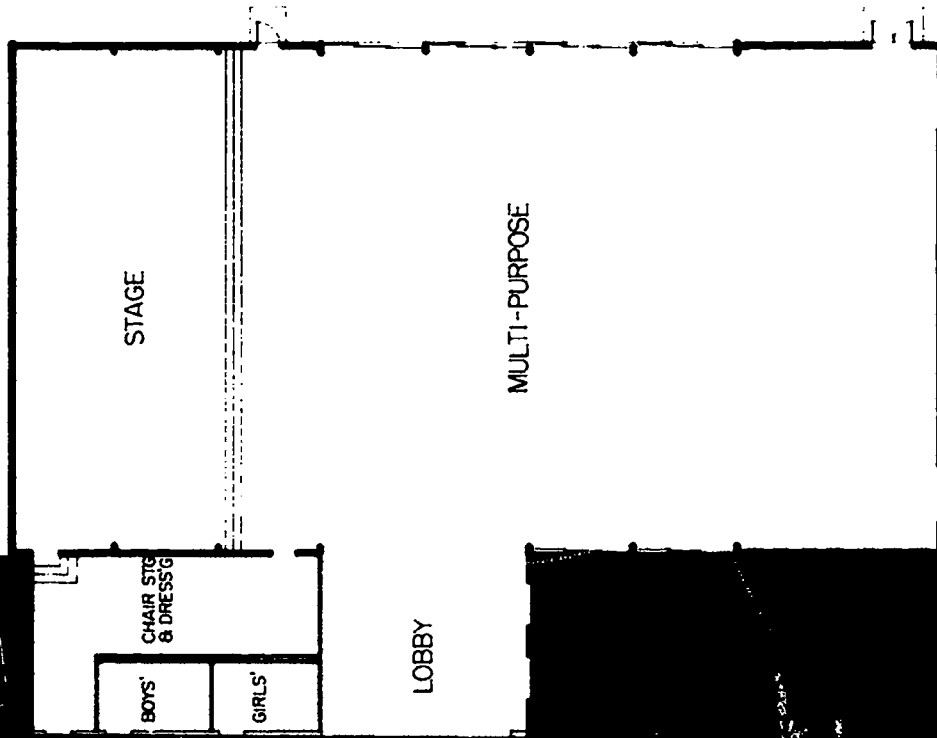


DSP Property Number: 010-1009
Administrative Unit: Alamance County
Superintendent: Robert A. Nelson
Grade Organization: Multipurpose Room 6-8
Type of Building: Multipurpose Room
Square Footage: 7,680 ft.
Opening Date: September, 1967
Architect and Engineer: . J. Hyatt Hammond Associates, Inc.
Mechanical and Electrical Engineers: Amin and Owen

BEST COPY AVAILABLE

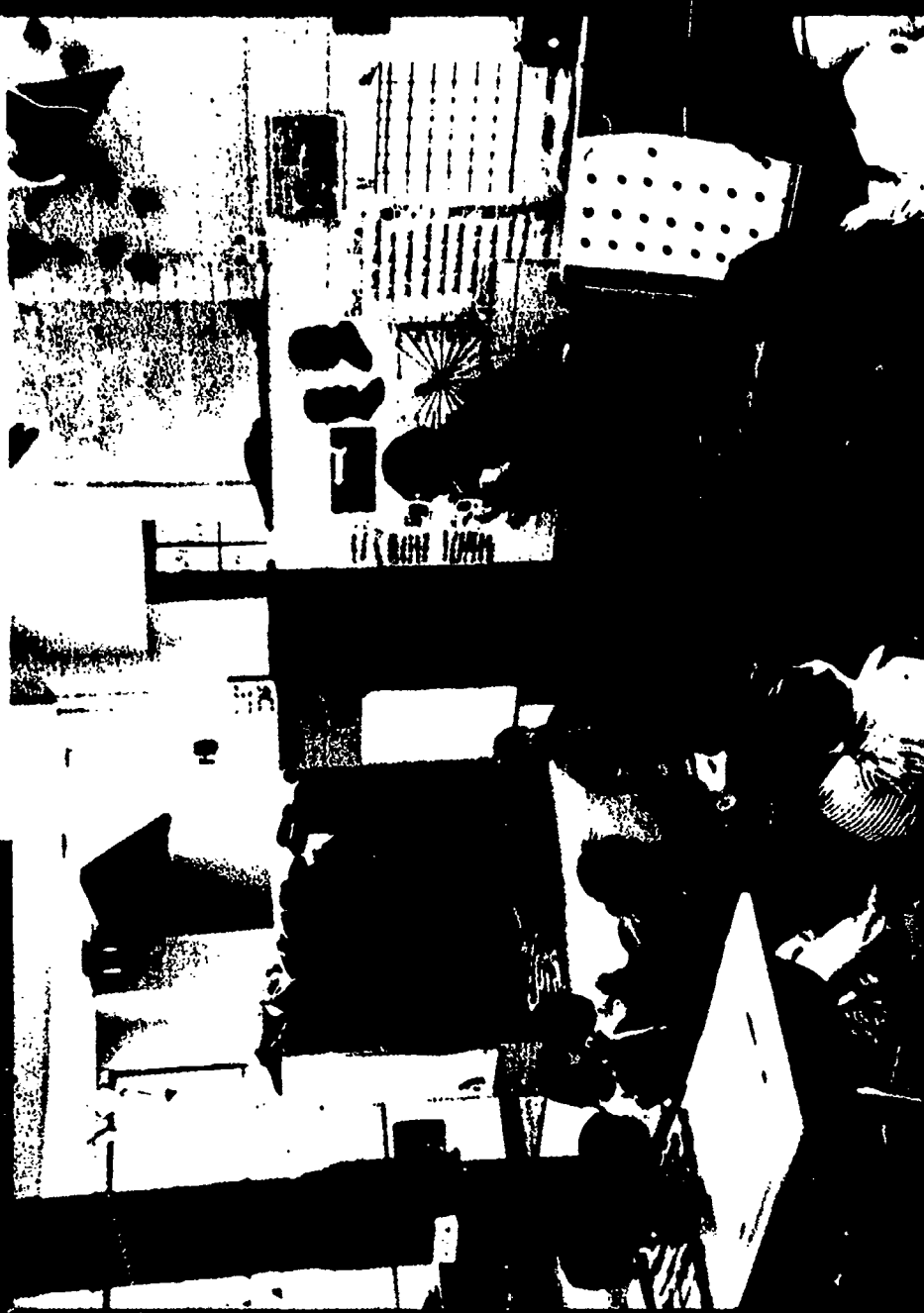
BEST COPY AVAILABLE

ELON COLLEGE ELEMENTARY



PIKEVILLE ELEMENTARY

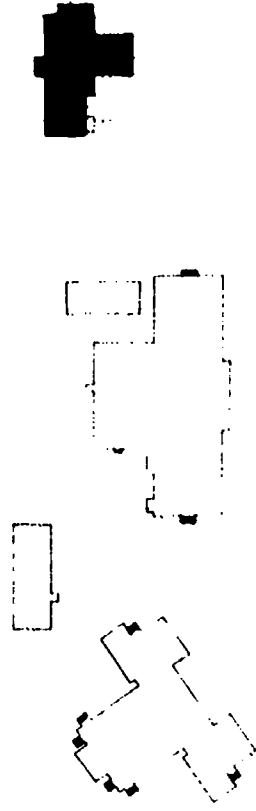
BEST COPY AVAILABLE



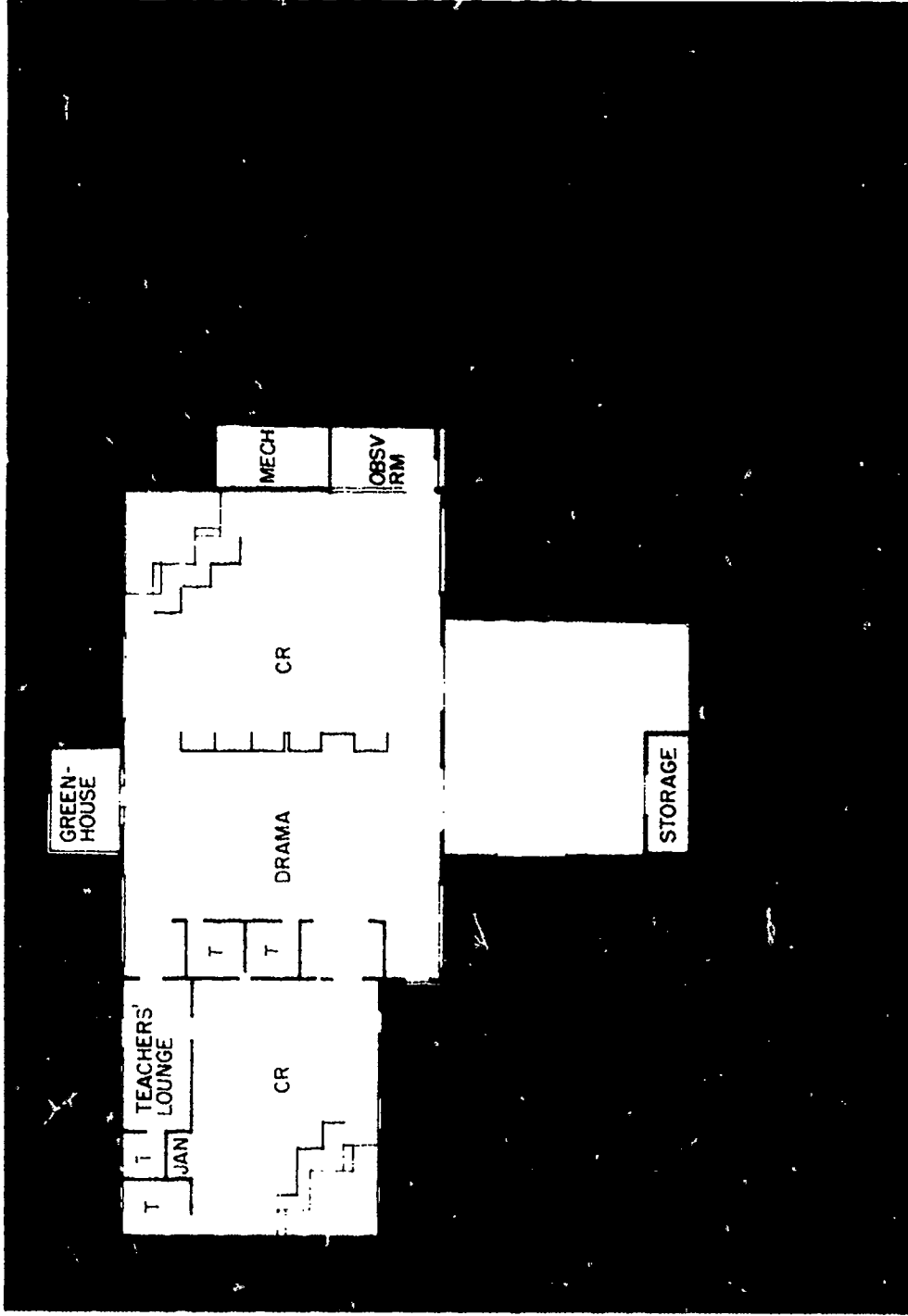
An existing agriculture shop building was the shell of this facility. Thoughtful and straightforward remodeling created a well-scaled and inviting interior. Color, openness, simple detailing and a good interior-exterior relationship provide the necessary setting for a good kindergarten. Exterior development was limited by budget problems. One of the most attractive kindergartens in the State.

DSP Property Number: 960-3465
 Administrative Unit: Wayne County
 Superintendent: John K. Wooten
 Grade Organization: K-6
 Type of Building: Kindergarten
 Approximate Capacity: 50
 Square Footage: 4,270 ft.²
 Opening Date: 1971
 Architect: Tolson, Doggett, Buie, Architects
 Mechanical and Electrical
 Engineers: Paul H. Brown and Associates, Inc.

BEST COPY AVAILABLE



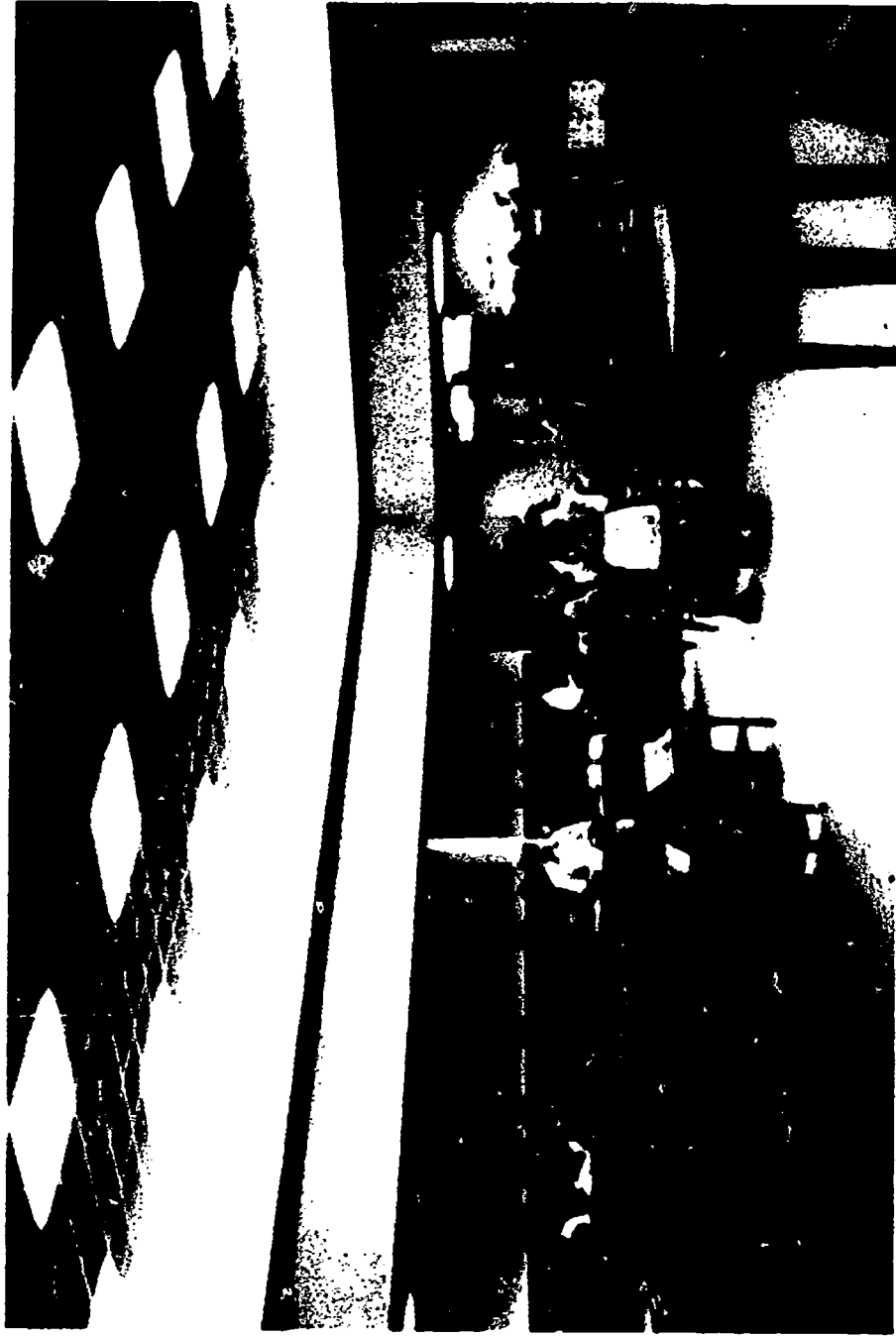
PIKEVILLE ELEMENTARY



WILLIAM R. DAVIE ELEMENTARY

CLASSROOM ADDITION

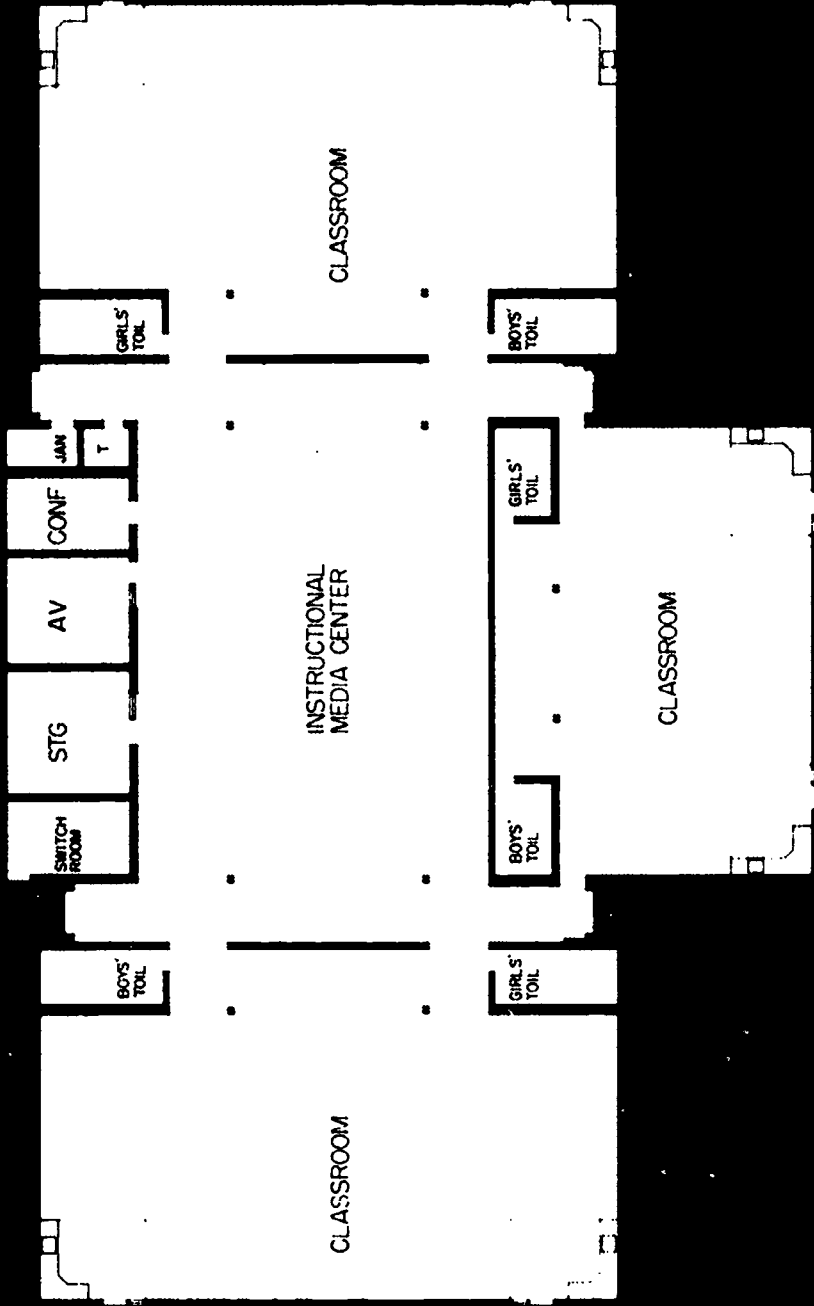
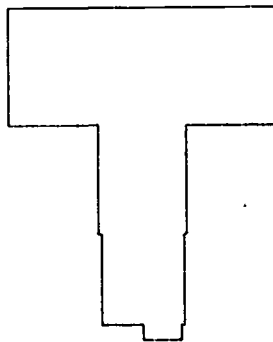
The plan is similar to parts of other Davie County new school projects which have been built recently. This pattern of space and organization has proved to be very useful in other instances. The semiopen arrangement satisfies a program which requires three teacher groups to work together. All other similar Davie County projects have located the media center convenient to the teaching clusters as shown on this plan.



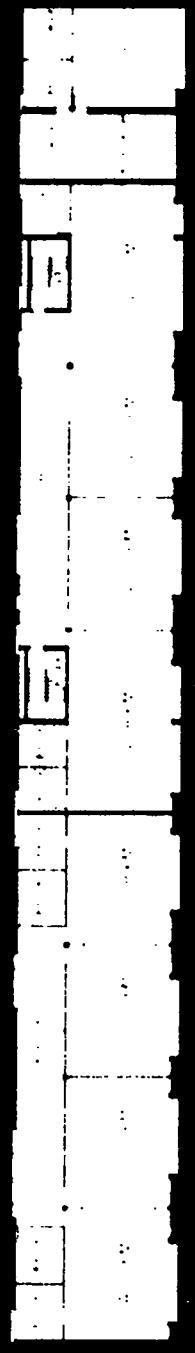
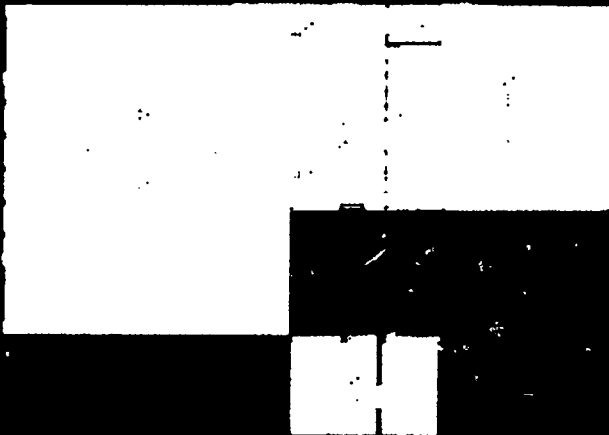
BEST COPY AVAILABLE

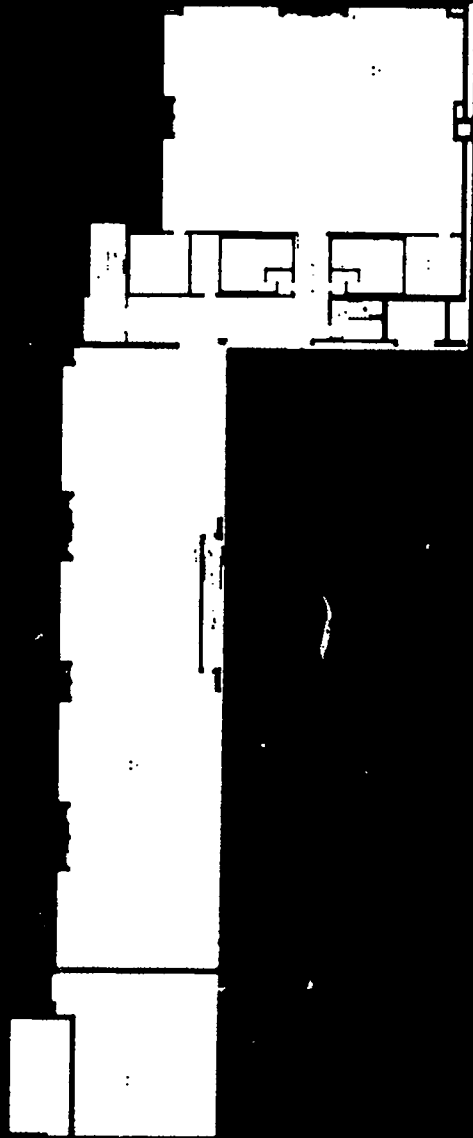
DSP Property Number:	300-1694
Administrative Unit:	Davie County
Superintendent:	James E. Everidge
Grade Organization:	1-8
Type of Building:	Classrooms and Library
Approximate Capacity:	300
Square Footage:	13,420 ft. ²
Architects and Engineers:	Vaughan-Talley Associates

BEST COPY AVAILABLE



VANCE HIGH





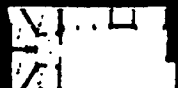
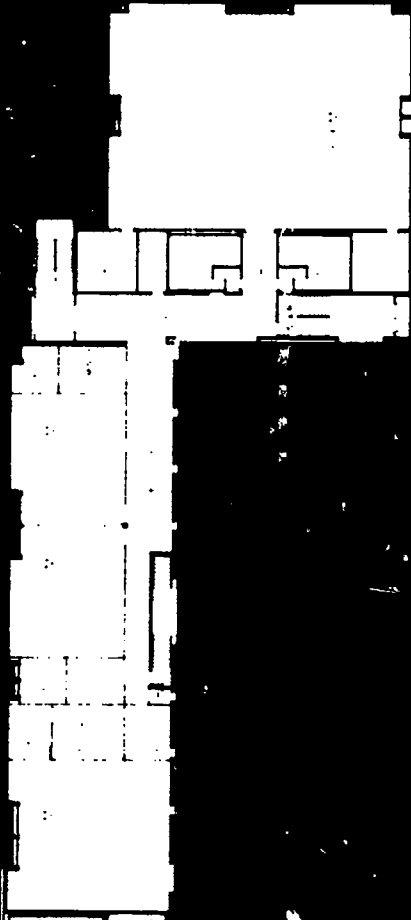
E

A & B

C

D

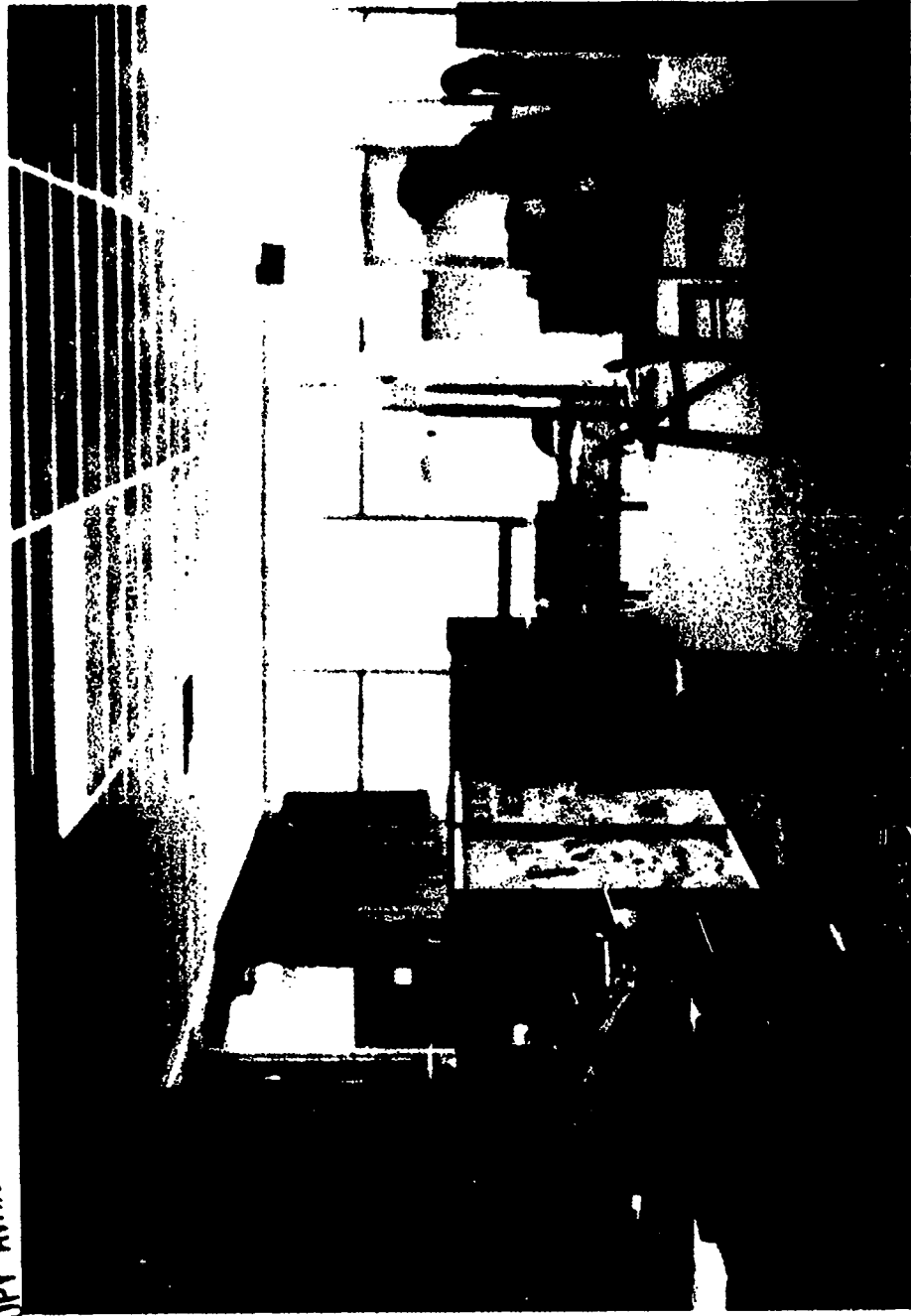
E



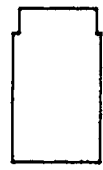
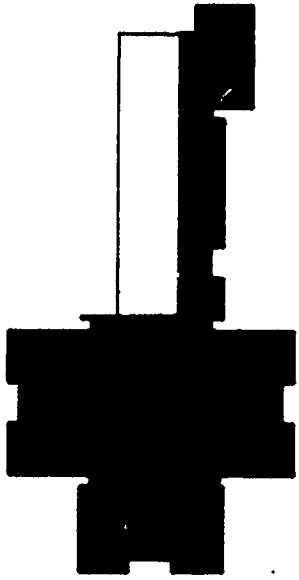
BRIDGETON ELEMENTARY

CLASSROOM ADDITION

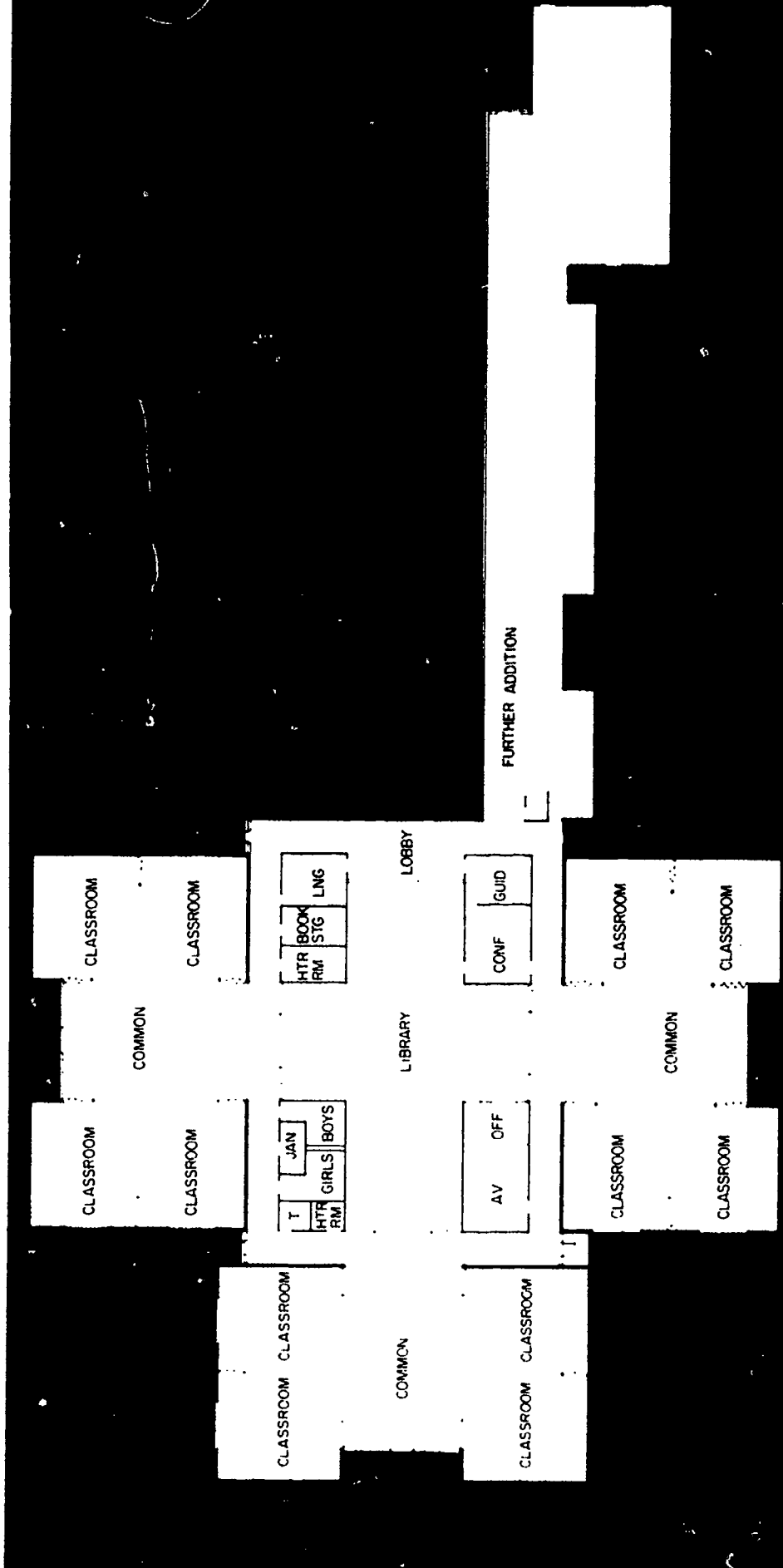
The renewal of this small elementary school on a beautiful river site started with the demolition of an old classroom building. A new open-classroom addition was built in which three groups of teaching stations expand into their own commons area. This commons relates to the site through large window expanses on one side. The architectural combination of open, closed, roofed, and unroofed areas has transformed the old facility into a new and interesting school.



DSP Property Number: 250-1519
 Administrative Unit: Craven County
 Superintendent: Hiram J. Mayo
 Grade Organization: 1-8
 Type of Building: Classrooms
 Approximate Capacity: 350
 Square Footage: 26,300 ft.
 Opening Date: 1966
 Architect: John N. Peterson
 Structural Engineer: Bigger and Agnew
 Mechanical and Electrical Engineers: H. L. Buffaloe and Associates



BEST COPY AVAILABLE



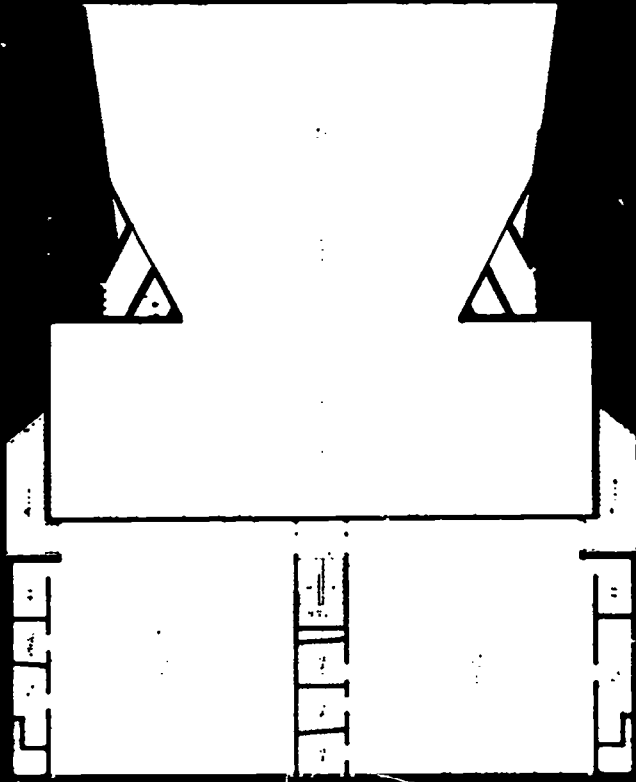
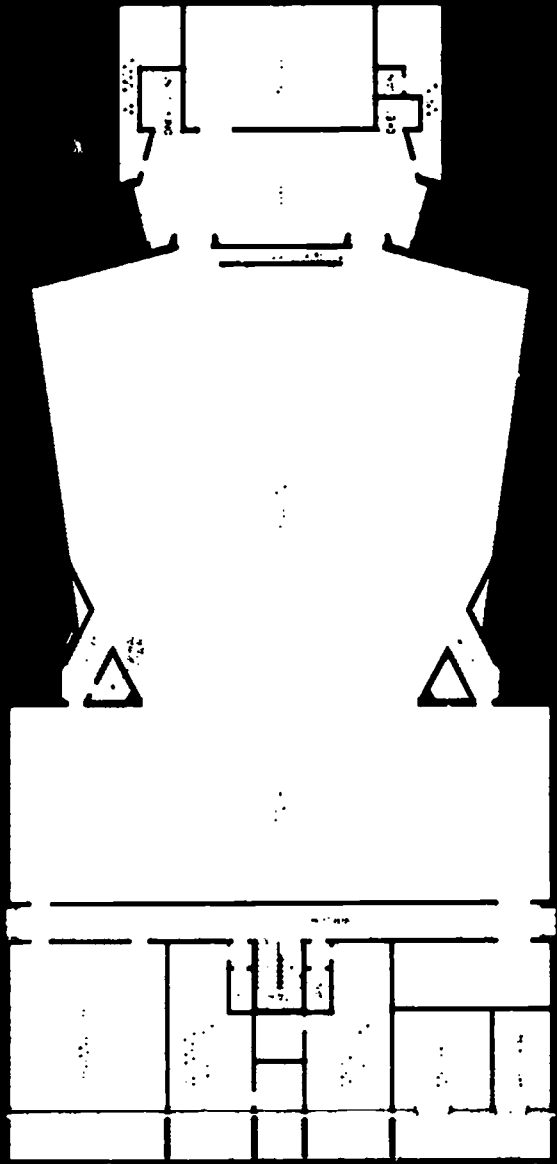


BEST COPY AVAILABLE

DSP Property Number: 600-2553
Administrative Unit: Charlotte-Mecklenburg
Superintendent: Rolland W. Jones
Grade Organization: Auditorium 10-12
Type of Building:
Square Footage: 22,740 ft.²
Architect: The Freeman-White Associates, Inc.
Structural Engineer: Frank B. Hicks
Mechanical Engineer: John Malcolm McDermott
Electrical Engineer: Charles F. Hall



WEST CHARLOTTE HIGH



BEST COPY AVAILABLE

WEST CHARLOTTE HIGH

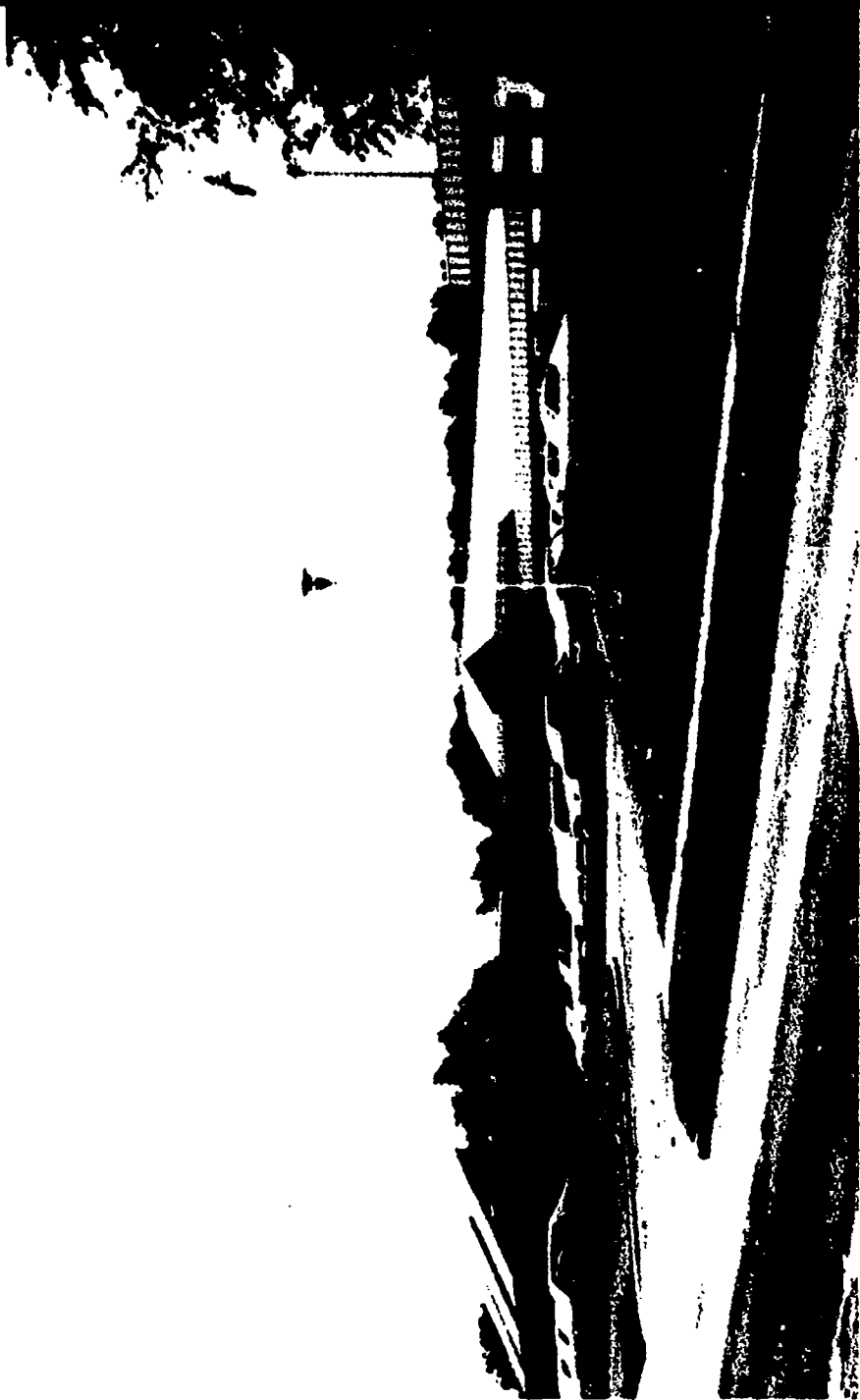


BEST COPY AVAILABLE

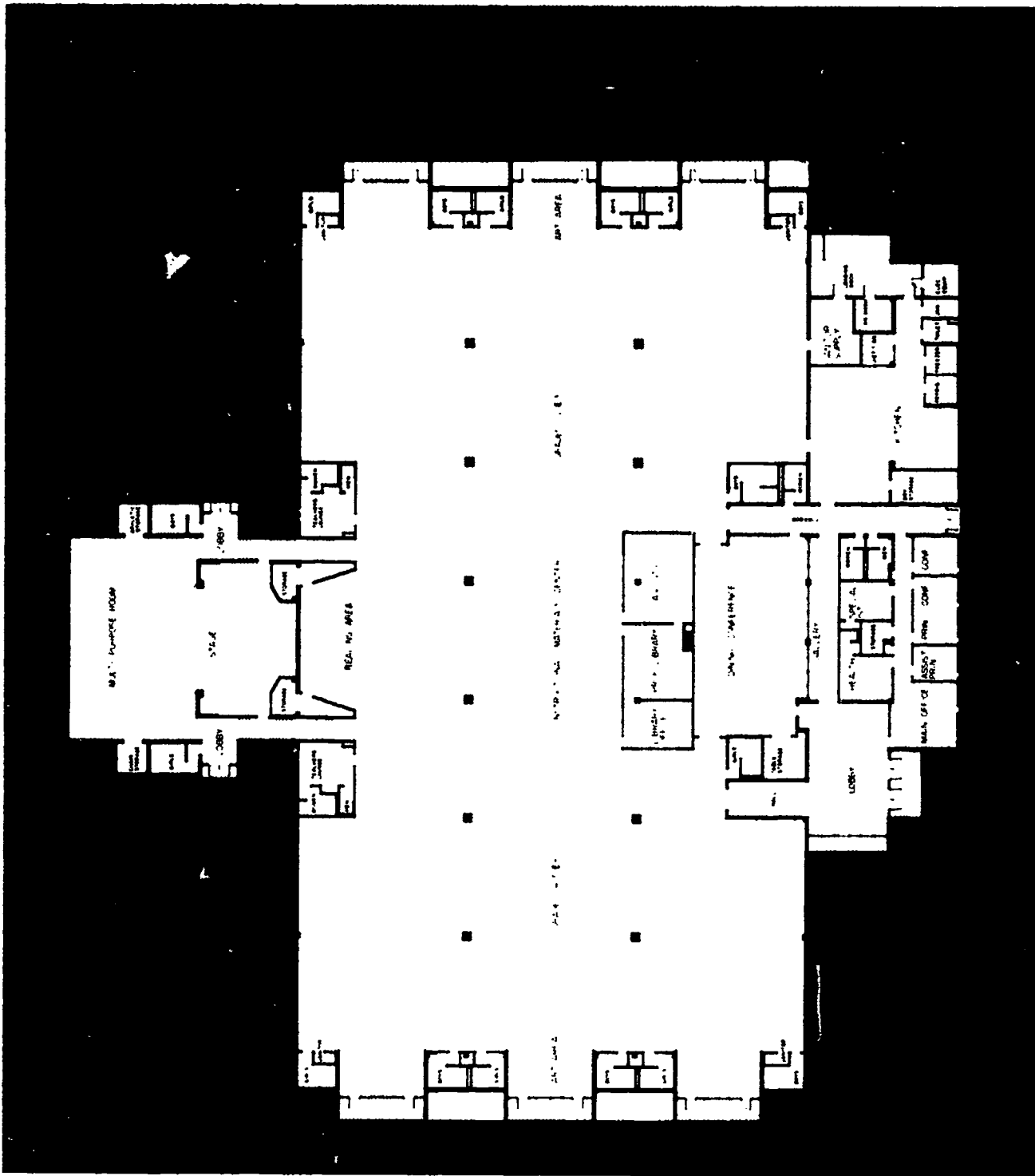
IDA RANKIN ELEMENTARY

The 95' x 220' open classroom area is surrounded by support facilities which define the periphery. Mobile cabinets and relocatable dividers are used to delineate particular teaching stations as programs evolve and change. There are about 20,000 square feet of partitionless space.

DSP Property Number: 360-1918
Administrative Unit: Gaston County
Superintendent: William H. Brown
Grade Organization: K-6
Type of Building: New
Approximate Capacity: 850
Square Footage: 51,850 ft.²
Opening Date: September, 1972
Architects and Engineers: Wilber, Kendrick, Workman
and Warren



BEST COPY AVAILABLE

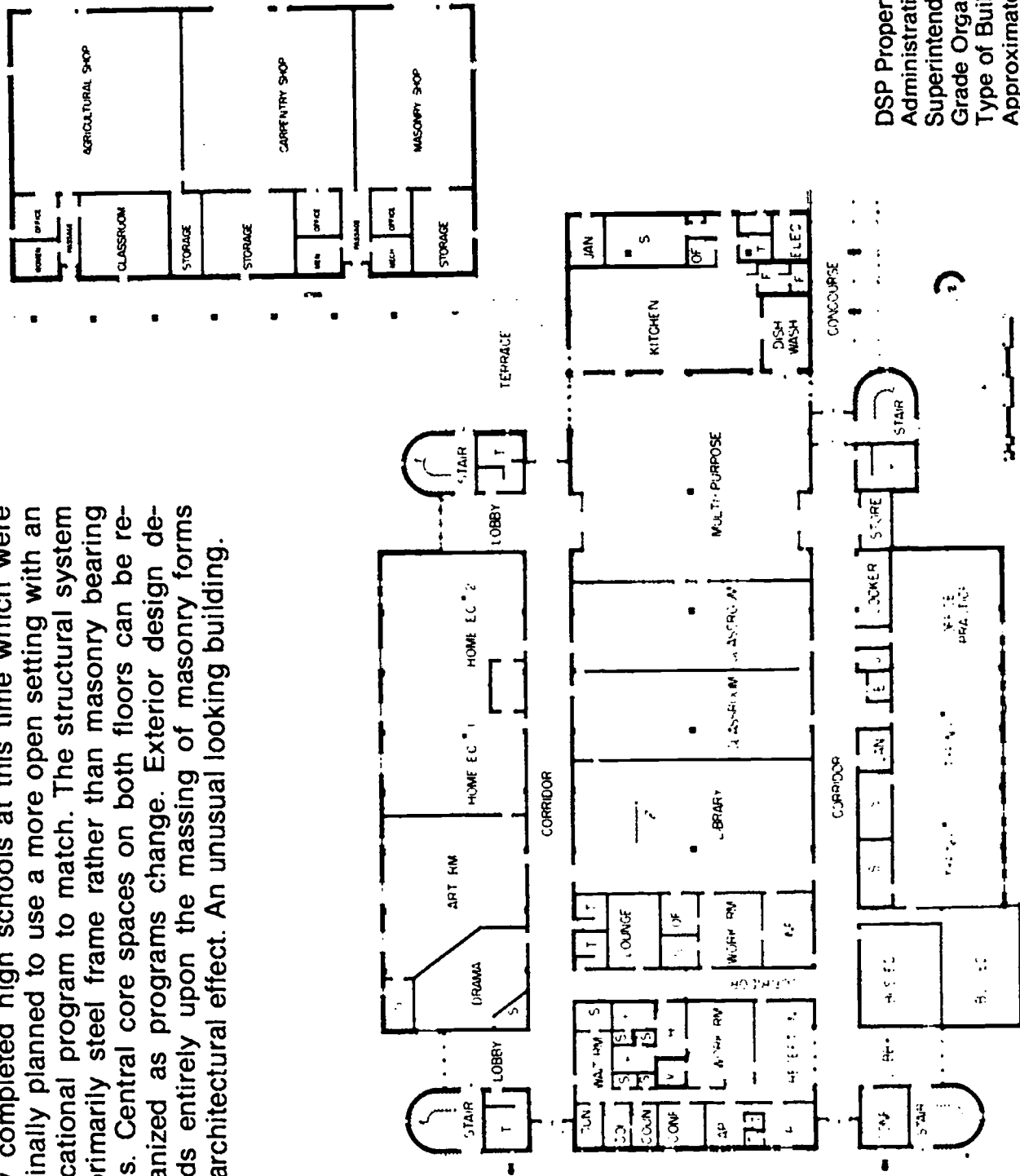


IDA RANKIN ELEMENTARY



EAST BLADEN HIGH

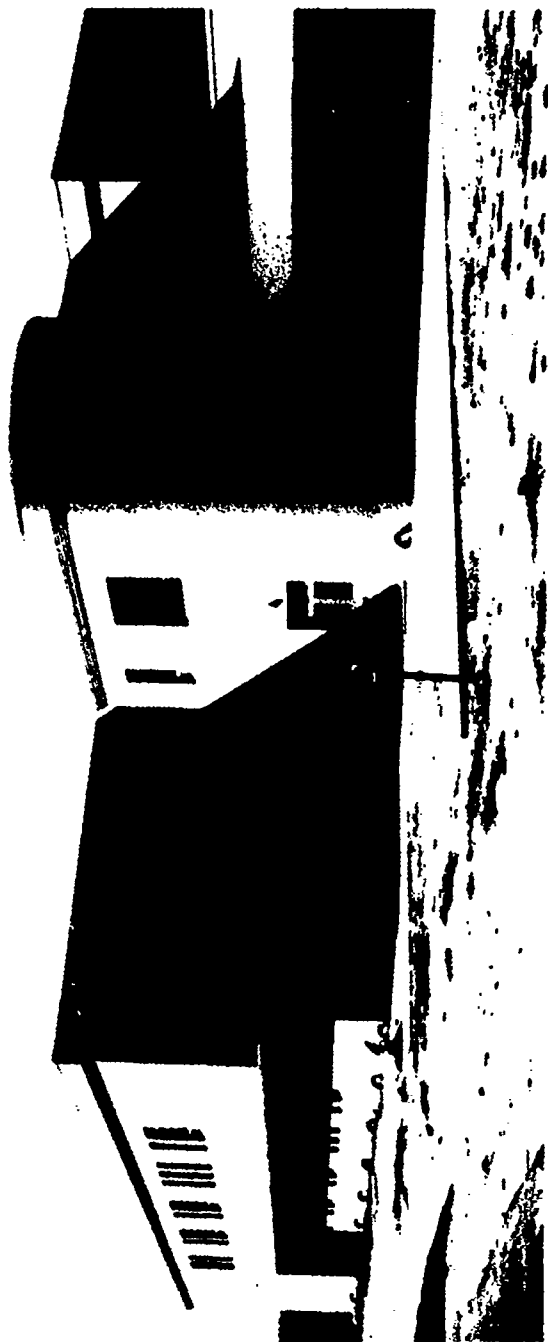
This school and the two in Burke County are the only completed high schools at this time which were originally planned to use a more open setting with an educational program to match. The structural system is primarily steel frame rather than masonry bearing walls. Central core spaces on both floors can be re-organized as programs change. Exterior design depends entirely upon the massing of masonry forms for architectural effect. An unusual looking building.



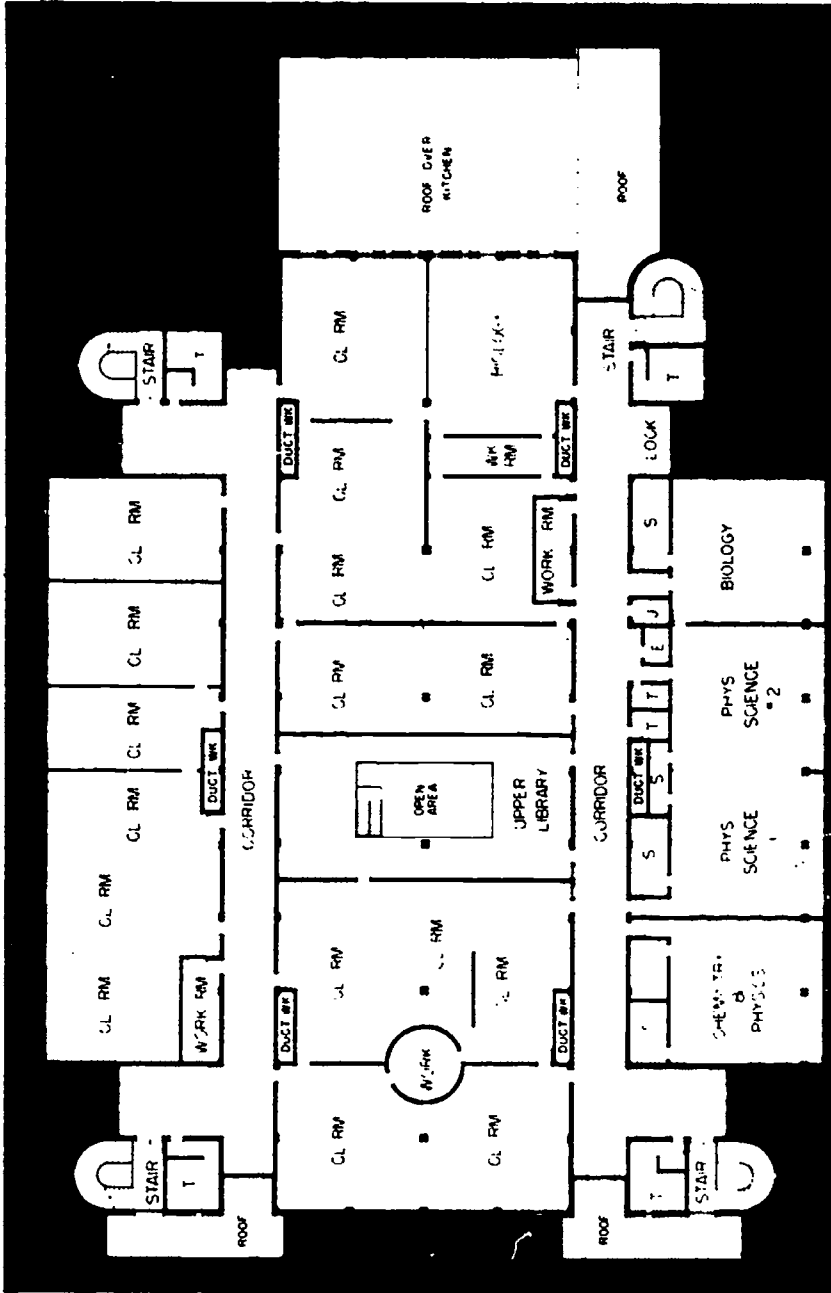
DSP Property Number: 090-1141
 Administrative Unit: Bladen County
 Superintendent: W. J. Hair
 Grade Organization: 10-12
 Type of Building: New
 Approximate Capacity: 1,250
 Square Footage: 75,300 ft.
 Opening Date: 1972
 Architect: Leslie N. Boney
 Structural Engineer: Sam M. Hunter
 Mechanical and Electrical Engineers: Walter G. Smith

BEST COPY AVAILABLE

BEST COPY AVAILABLE

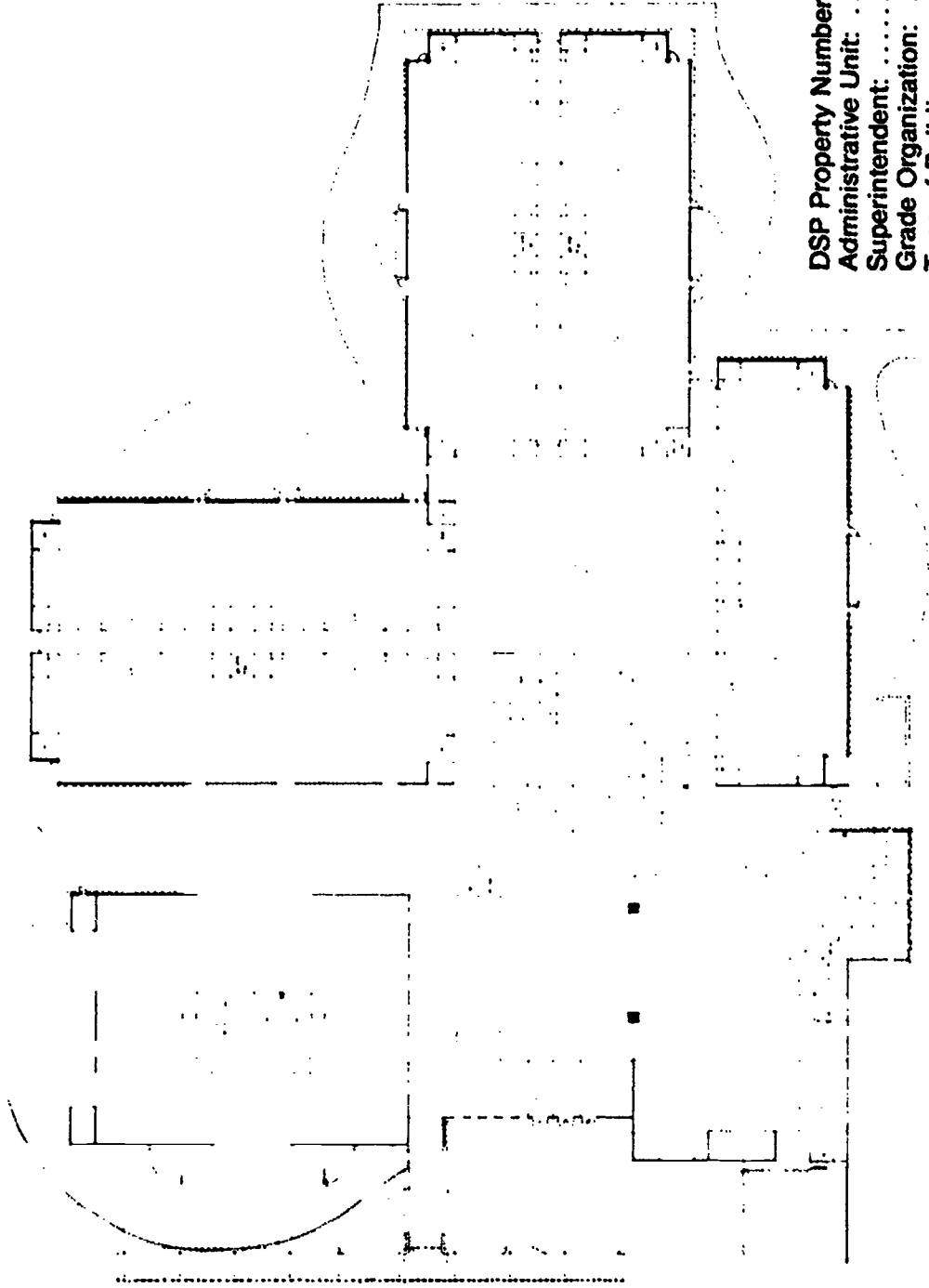


EAST BLADEN HIGH



BEST COPY AVAILABLE

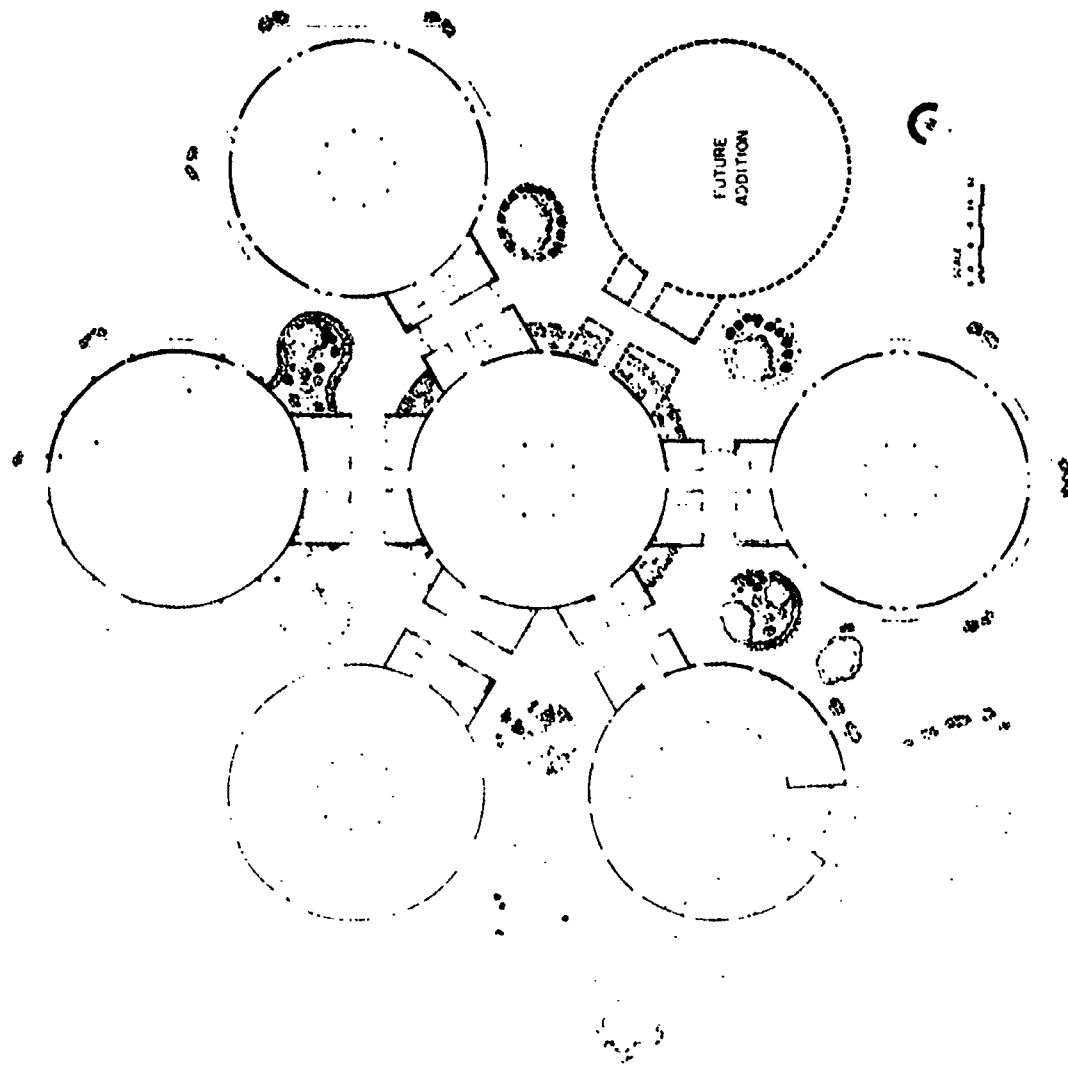
The plan of this facility is formed by four separate clusters. These clusters are placed around areas used in common such as media center, dining area, kitchen, and service rooms. Connecting areas between the clusters have become main circulation paths and exits.



36

DSP Property Number: 800-3592
Administrative Unit: Rowan County
Superintendent: C. Wade Mobley
Grade Organization: K-4
Type of Building: New
Approximate Capacity: 1000
Square Footage: 11,630 ft.
Opening Date: September, 1973
Architect: Robert F. Stone
Structural Engineer: Samuel L. Payne
Mechanical and Electrical Engineers: H. L. Buffalo and Associates

The unusual plan of this project resulted from the interest of school board members in building a round school. The architect gave them several round buildings joined together by service spaces. Open plan methodologies are intended to be used in each eight teacher pod. The media center equipment and furnishings are especially functional because they are modular and interchangeable. Another somewhat similar school is planned for the Glenville-Cashiers area.



DSP Property Number: 500-2285
 Administrative Unit: Jackson County
 Superintendent: R. Paul Buchanan
 Grade Organization: K-8
 Type of Building: New
 Approximate Capacity: 750
 Square Footage: 55,500 ft.²
 Opening Date: September, 1973
 Architect: Foy and Lee
 Structural Engineer: Hallett J Bowen
 Mechanical and Electrical Engineers: David R. Noland, P. E.

ROANOKE RAPIDS HIGH

LUNCHROOM ADDITION

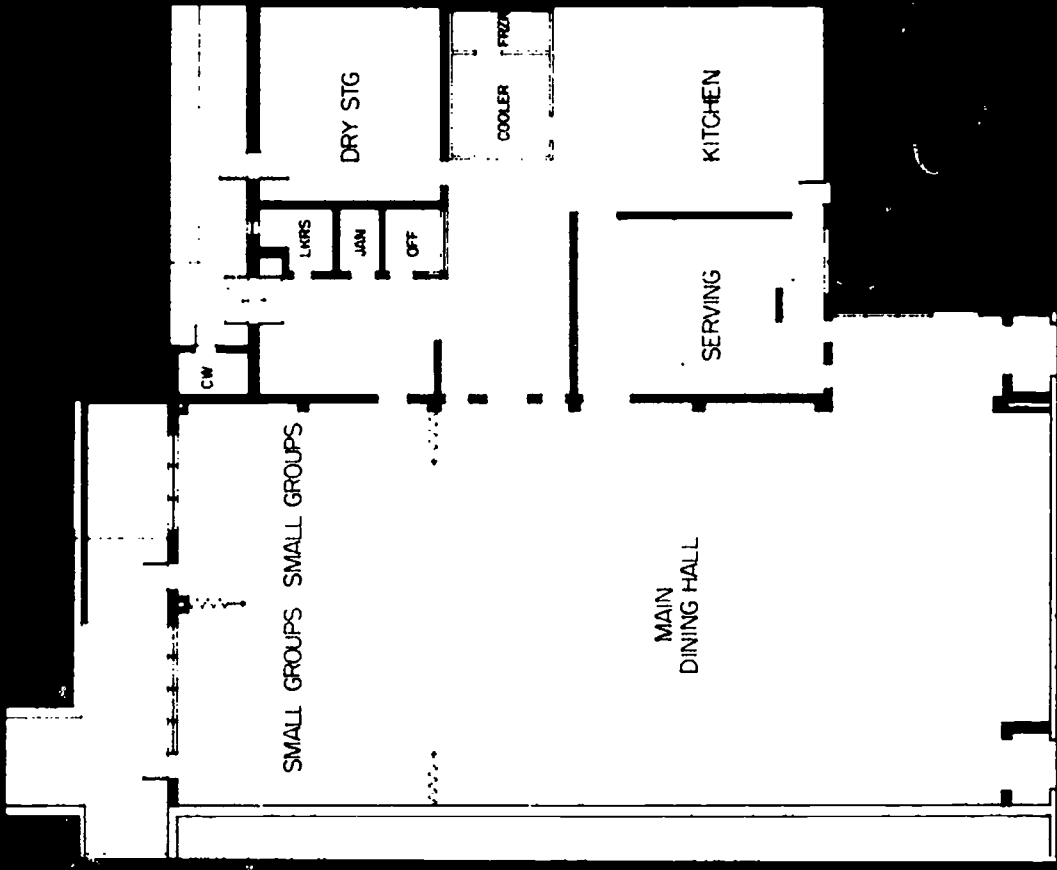
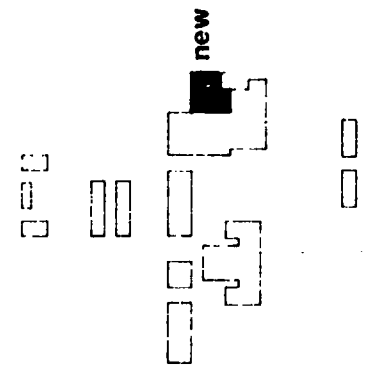
This dining space is more like a restaurant and less like a mess hall. Carefully selected finishes and lighting fixtures are used throughout. Change in floor color and materials, and movable partitions and carpeting define smaller areas. Tables for four are used throughout also. The low walls can be used for art display. A very pleasant place for student dining and community meetings.



BEST COPY AVAILABLE

DSP Property Number: 421-2123
Administrative Unit: Roanoke Rapids
Superintendent: J. W. Tailey
Grade Organization: 8-12
Type of Building: Cafeteria
Square Footage: 9,450 ft.
Opening Date: September, 1968
Architect and Engineer: Charles C. Davis
Mechanical and Electrical
Engineers: P. H. Brown and Associates, Inc.

BEST COPY AVAILABLE



ROANOKE RAPIDS HIGH



BEST COPY AVAILABLE

FRED OLDS ELEMENTARY

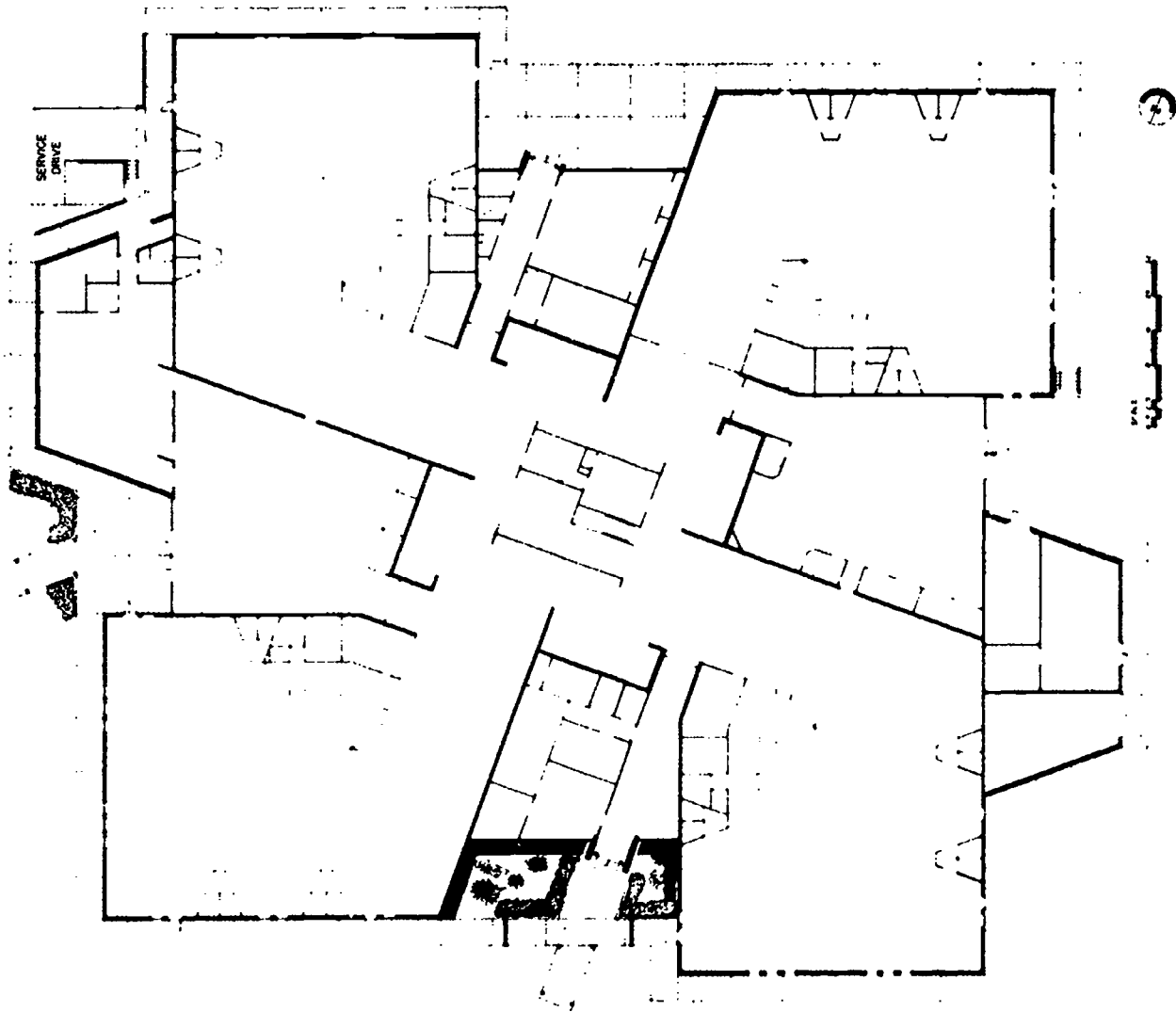
This 1927 facility had a large, seldom-used auditorium and a conventional library. The Raleigh school administration using its own labor force converted the auditorium into a very pleasant media center. The flat auditorium floor made development easy. The stage was connected to the main space by several steps. The steps double as seating.

A spiral stair connects the second floor directly to the new media center. Carpeting, comfortable furniture, and a relaxed atmosphere produce an attractive environment.

DSP Property Number: 921-3393
Administrative Unit: Raleigh
Superintendent: Conrad L. Hooper
Grade Organization: 1-5
Type of Building: Auditorium converted to Library
Opening Date: September, 1972

BEST COPY AVAILABLE

An unusual plan form evolved from a program requirement of locating the media center at the school center. The media center is planned to flow into each pod as much as educational programs require. The open balcony above offices can be used for special programs, individual study or easy reading. The principal requested that his operations base be at the center of the school so that he could be more involved in the education activities of the teachers and students. Each pod is designed to accommodate six teacher groups.



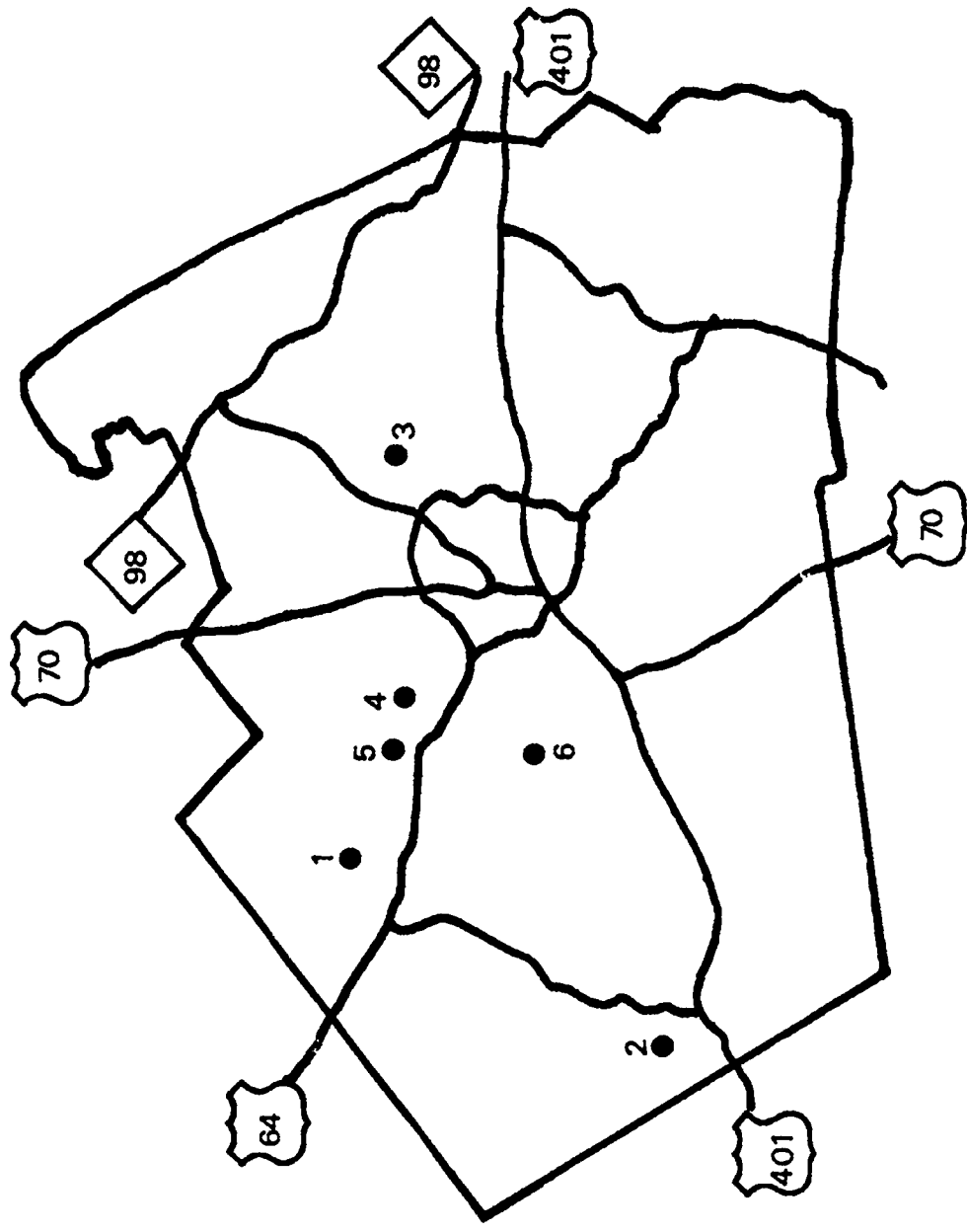
DSP Property Number: 900-3608
Administrative Unit: Union County
Superintendent: Paul Hammack
Grade Organization: 1-6
Type of Building: New
Approximate Capacity: 650
Square Footage: 40,800 ft.
Opening Date: 1974
Architect: Ferebee, Walters and Associates
Structural Engineer: James Harmon Byrd
Mechanical and Electrical Engineers: Edgar C. Jones

WAKE COUNTY SCHOOLS

The next six projects have been grouped together because the plan of each evolved from the same educational specifications. Each architect interpreted educational specifications according to the specific requirements of each site and its existing buildings. The variety of design solutions is particularly interesting because of this common starting point.

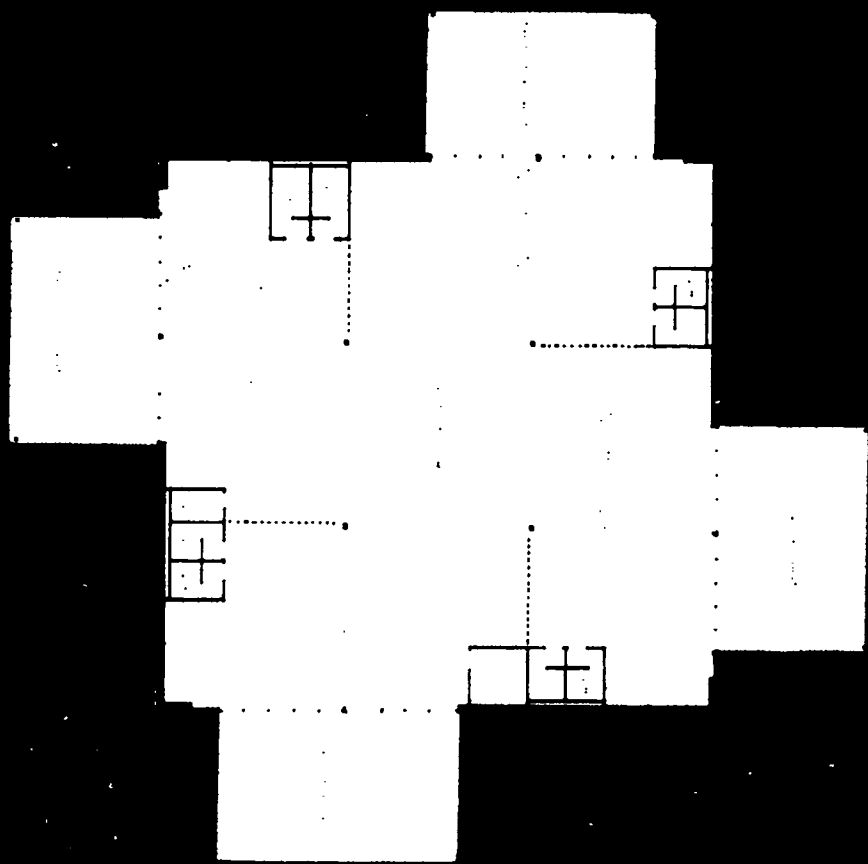
The openness of these Wake County additions reflects a willingness of community and staff to accept new concepts in education. The educational specifications provided a direction only. Each school group defined where they wanted to start in achieving the new objectives.

Cabinets were designed by the county administration with the advice of each school staff. Drawings of the furniture were given to each architect to be included in his design.

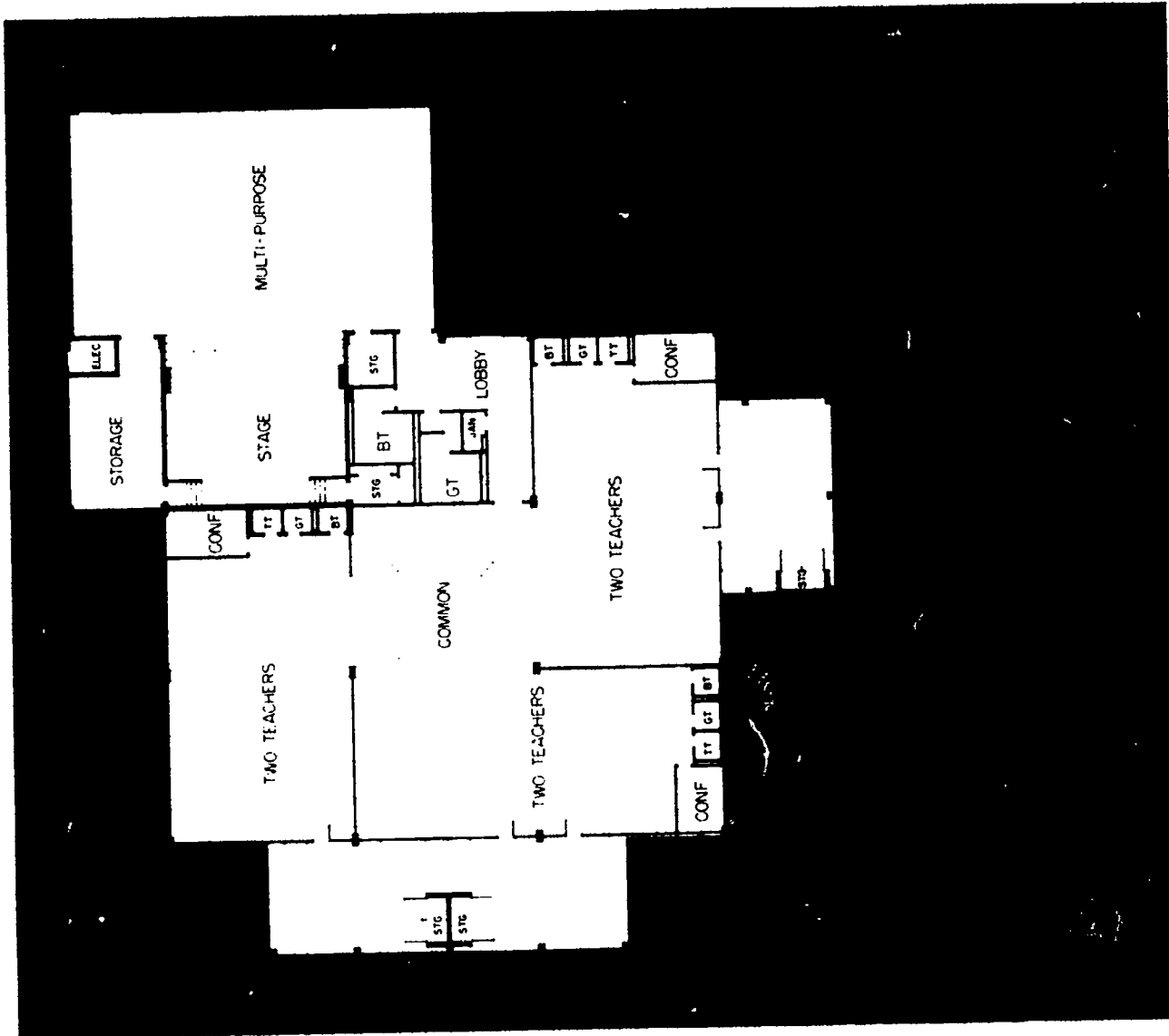


1. A. V. Baucom Elementary
2. Lincoln Heights Elementary
3. Jeffreys Grove Elementary
4. Henry R. Adams Elementary
5. Briarcliff Elementary
6. Swift Creek Elementary

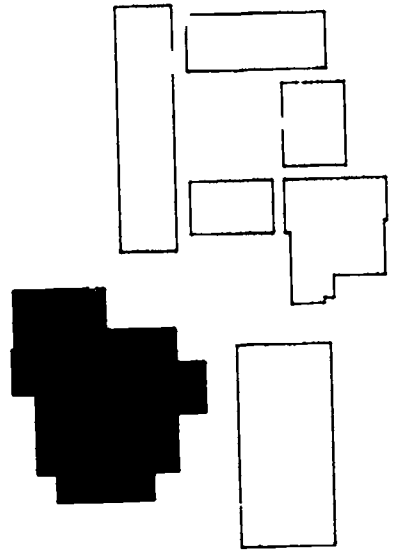
A. V. BAUCOM ELEMENTARY



BEST COPY AVAILABLE



LINCOLN HEIGHTS ELEMENTARY

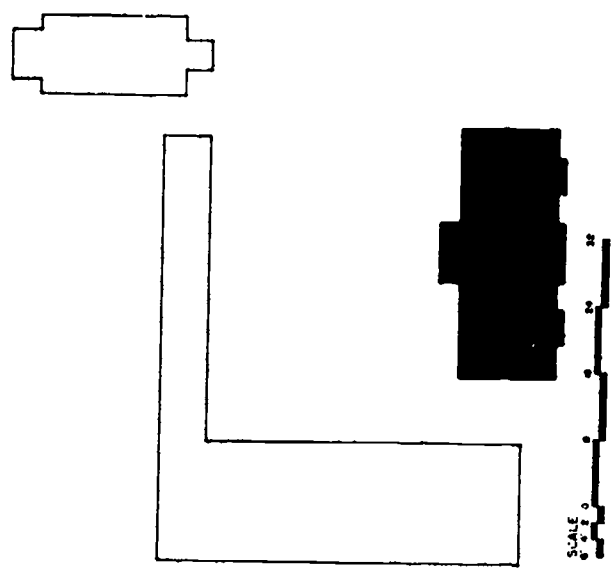
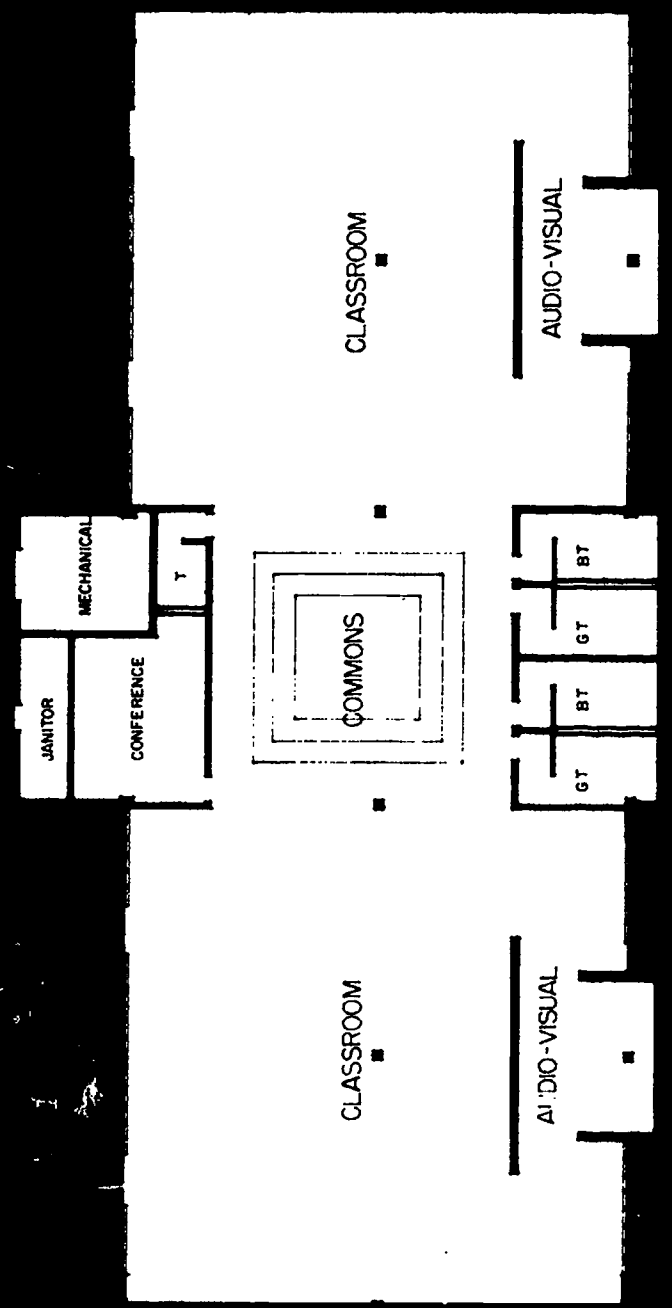


DSP Property Number: 920-3350
 Administrative Unit: Wake County
 Superintendent: Aaron E. Fussell
 Grade Organization: 1-3
 Type of Building: Classroom
 Approximate Capacity: 215
 Square Footage: 12,220 ft.²
 Opening Date: 1973
 Architect: Haskins and Rice
 Structural Engineer: Robert E. Lasater
 Mechanical and Electrical Engineers: P. H. Brown and Associates, Inc.

BEST COPY AVAILABLE

JEFFREYS GROVE ELEMENTARY

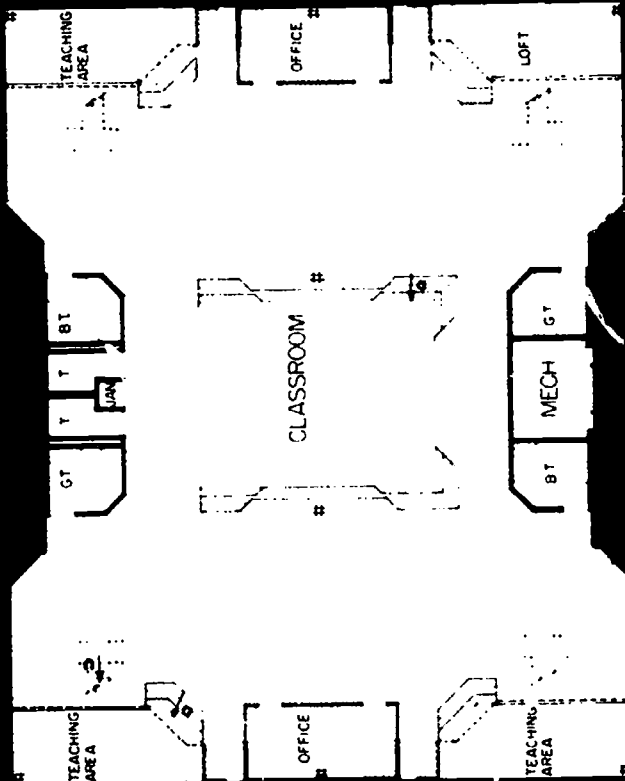
DSP Property Number: 920-3347
 Administrative Unit: Wake County
 Superintendent: Aaron E. Fussell
 Grade Organization: K-5
 Type of Building: Classrooms
 Approximate Capacity: 215
 Square Footage: 10,400 ft.²
 Opening Date: September, 1972
 Architect: McGee, Scovil and Rairden
 Structural Engineer: Bigger and Agnew
 Mechanical and Electrical Engineer: Bass, Nixon and Kennedy, Engineers



HENRY R. ADAMS ELEMENTARY

DSP Property Number: 920-3345
 Administrative Unit: Wake County
 Superintendent: Aaron E. Fussell
 Grade Organization: 1-5
 Type of Building: Classrooms
 Approximate Capacity: 215
 Square Footage: 8,180 ft.
 Opening Date: 1973
 Architect: Dodge and Beckwith
 Structural Engineer: Kimley-Horn and Associates
 Mechanical and Electrical Engineers: feister C. Cease

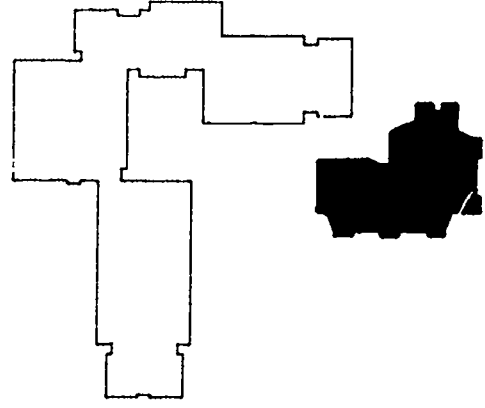
BEST COPY AVAILABLE



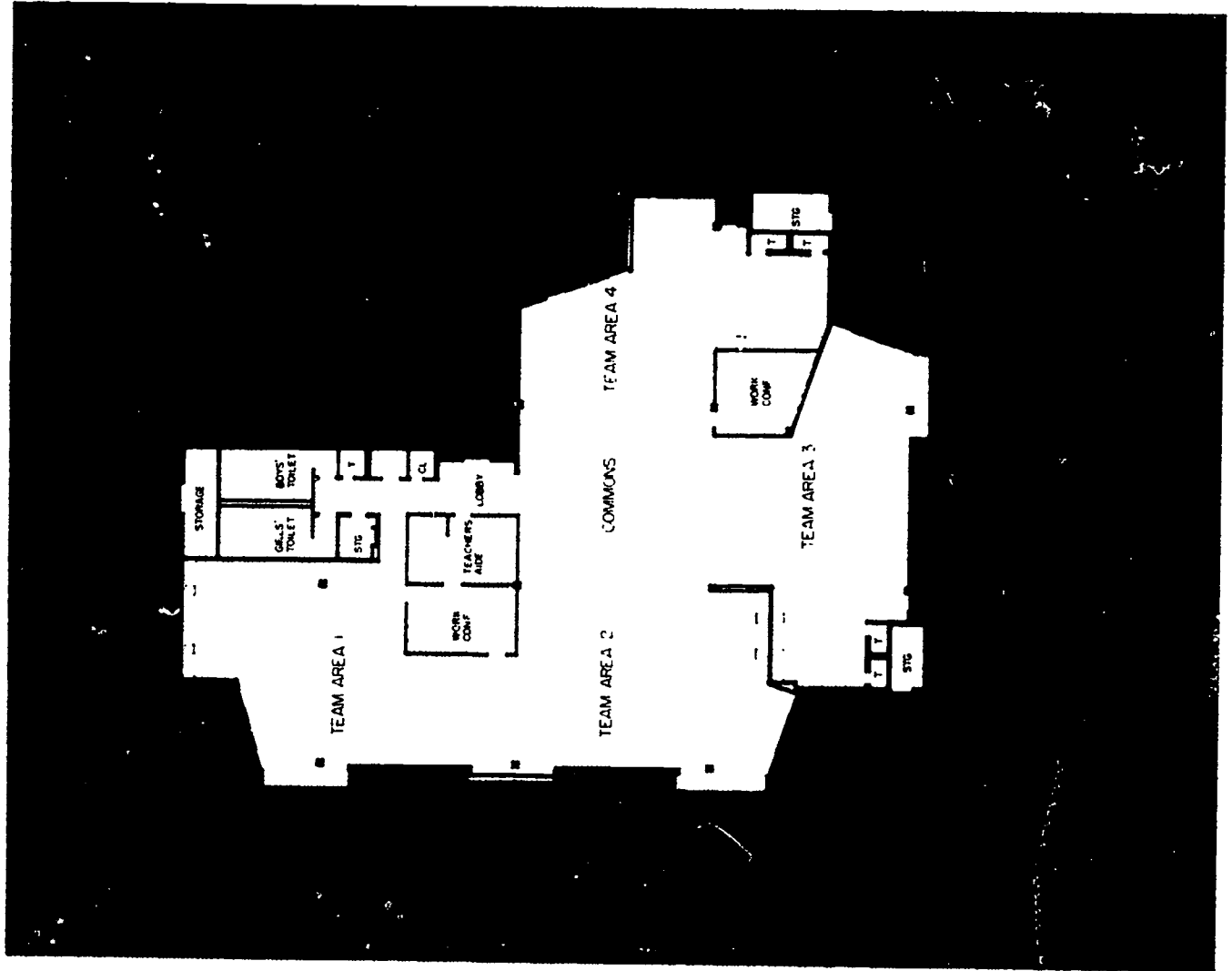
new

BRIARCLIFF ELEMENTARY

DSP Property Number: 920-3334
 Administrative Unit: Wake County
 Superintendent: Aaron E. Fussell
 Grade Organization: 1-5
 Type of Building: Classrooms
 Approximate Capacity: 215
 Square Footage: 10,770 ft.²
 Opening Date: September, 1972
 Architect: Ovan F. Smith
 Engineers: Shelton Y. Adcock

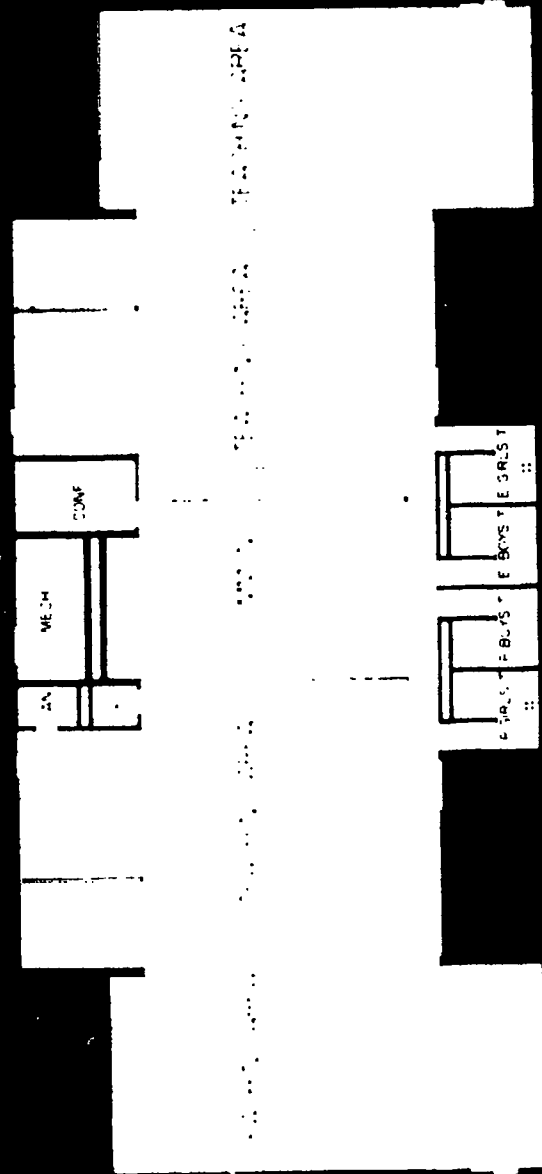


BEST COPY AVAILABLE



SWIFT CREEK ELEMENTARY

new



Many of the building projects illustrated in this publication represent an architectural planning response to evolving educational programs. In the past about all school building plans reflected an administratively convenient pattern in which educational programming was teacher-oriented rather than child-oriented. Uniformly sized boxes were arranged in single or double rows. The number of boxes was determined by the number of teachers assigned to each school. The number of students per box was determined by dividing the total number of students by the assigned number of teachers. This method of school planning, which included a system of grade levels, was mostly an easy way to keep records.

During the past few years it became apparent that a school building is more than an adjunct to a filing system. The building need not get in the way of whatever educational program and pupil groupings may be appropriate in any learning situation. This means that school buildings can become applied environmental educational tools rather than administrative containers. If education is moving toward a maximum of individualization, then school building design needs to be responsive to the many nontraditional physical settings necessary to implement pupil-oriented programs. One result of this design-responsiveness is more architectural variety, with the only limitations being those of imagination and money.

