

## DOCUMENT RESUME

ED 092 284

88

RC 007 934

**TITLE** Educational Opportunities of Rural Consolidation: Final Report of District-Wide Opinion Survey--Title III, ESEA Project.

**INSTITUTION** Olympia Community Unit District 16, Minier, Ill.

**SPONS AGENCY** Bureau of Elementary and Secondary Education (DHEW/OE), Washington, D.C.

**PUB DATE** [73]

**NOTE** 47p.; For related document, see ED082900

**EDRS PRICE** MF-\$0.75 HC-\$1.85 PLUS POSTAGE

**DESCRIPTORS** Attendance Patterns; \*Community Surveys; \*Demography; \*Educational Research; Elementary Schools; Federal Programs; High Schools; Parent Attitudes; \*Rural Areas; \*Tables (Data)

**IDENTIFIERS** Elementary Secondary Education Act Title III; ESEA Title III; Illinois; \*Olympia

**ABSTRACT**

In March 1973, a door-to-door District census was directed by the Olympia Title III, Elementary and Secondary Education Act (ESEA) Project Office (Illinois). Assisted by the Olympia Citizens Advisory Council and over 300 volunteers, the ESEA Office obtained population data from the census for the rural area. At the same time, a questionnaire to obtain citizen's opinions regarding education in Olympia was distributed to every adult member of households visited by the census takers. Of the 7,237 questionnaires distributed, 2,486 were returned for a 34.4% response rate. This publication is a report of these responses. In Section I, the responses are tabulated and reported only on a District-wide basis. In Section II, the responses are tabulated and reported by elementary attendance area as well as by District. (KM)

4

U.S. DEPARTMENT OF HEALTH,  
EDUCATION & WELFARE  
NATIONAL INSTITUTE OF  
EDUCATION  
1200 K STREET, N.W.  
WASHINGTON, D.C. 20004

## INTRODUCTION

On March 5, 1973, a door-to-door District census was directed by the Olympia Title III, ESEA Project Office. Assisted by the Olympia Citizens Advisory Council and over 500 District volunteers, the Title III, ESEA Office obtained data from the census regarding the District's population.

At the same time the census was conducted, a questionnaire designed to obtain citizens' opinions regarding education in the Olympia District was distributed to every adult member of households visited by the census-takers. Of the 7,237 questionnaires distributed, 2,486 were returned yielding a 34.4% response.

This publication is a report of the responses received and is written in two parts, Section I and Section II. In Section I, the responses are tabulated and reported only on a District-wide basis. In Section II, the responses are tabulated and reported by elementary attendance area as well as on a District-wide basis.

# SECTION I

BEST COPY AVAILABLE

QUESTION 1

Of the following goals of elementary and secondary education, which three would you consider the most important and number them 1, 2 and 3 in their order of importance.

The table that follows indicates that the most important goal of elementary and secondary education, as expressed by those responding, is "A general education," followed by a distant second, "Develop moral standards and values."

	1	2	3
A general education	56.7%	14.0%	7.9%
Develop moral standards and values	18.5%	28.3%	12.8%
Prepare students for technical training	2.3%	10.3%	11.2%
Prepare students for a job after high school	14.6%	24.9%	25.9%
Prepare students for college	5.7%	13.7%	17.5%
Develop an interest in community and world problems	2.2%	8.7%	24.7%

QUESTION 2

There are many important subjects taught in the public schools. To what extent do you think Olympia should stress the offering of courses in the following areas?

Better than 90% of those answering this question indicated that Music, Art, Building Trades, Physical Education, Foreign Language and Work/Study Programs either definitely or probably should be taught; almost 80% indicated Sex Education definitely or probably should be taught, and more than 70% indicated the Study of Religions should either definitely or probably be taught. Conversely, almost 30% of the respondents indicated that the Study of Religions either probably or definitely should not be taught.

	Definitely Should Be Taught	Probably Should Be Taught	Probably Should Not Be Taught	Definitely Should Not Be Taught
Music	64.8%	33.6%	1.4%	0.2%
Art	43.2%	52.2%	4.1%	0.5%
Sex Education	35.5%	43.7%	12.5%	8.2%
Study of Religions	28.0%	43.1%	20.1%	8.8%
Building Trades	62.1%	34.8%	2.9%	0.2%
Physical Education	73.2%	24.3%	2.0%	0.5%
Foreign Language	45.1%	47.5%	5.7%	1.7%
Work/Study Programs	66.9%	30.4%	2.1%	0.6%

BEST COPY AVAILABLE

## QUESTION 3

What is your opinion about the amount of emphasis placed on boys' athletics in the Olympia District?

22.6% Too much emphasis

72.2% About right

5.1% Too little emphasis

## QUESTION 4

What is your opinion about the amount of emphasis placed on girls' athletics in the Olympia District?

7.2% Too much emphasis

60.8% About right

32.0% Too little emphasis

## QUESTION 5

What is your opinion about the emphasis placed on "other activities" such as dramatics, clubs, etc.?

10.8% Too much emphasis

77.5% About right

11.7% Too little emphasis

## QUESTION 6

How important do you feel that parents/citizens opinions should be to school officials when making decisions about each of the following. (Only one column was to be checked for each item.)

Those responding indicated that the opinions of parents/citizens should be very important to school officials when considering the following: School Boundaries and Bussing; Discipline and Codes, such as dress code; Planning Building and Budgets.

	<u>Very Important</u>	<u>Moderately Important</u>	<u>Of Little Importance</u>
Courses or curriculum	47.4%	46.4%	6.2%
School boundaries and bussing	60.1%	33.1%	6.8%
Discipline and codes such as dress code	55.6%	35.6%	8.8%
Ability grouping of students	26.4%	47.7%	25.9%
Selection of textbooks	26.5%	41.1%	32.4%
Size of classes	29.8%	46.2%	24.0%
Planning building and budgets	58.5%	32.0%	9.4%

BEST COPY AVAILABLE

## QUESTION 7

How well do the schools keep you informed about educational policies, school finances, efforts to improve education, and related matters?

- 17.5% Very well  
52.9% Satisfactorily  
20.4% Not especially well  
9.1% Very poorly

## QUESTION 8

The responses to this question point the way for future communication in the Olympia District with the School Newsletters receiving a rating of "1" by 47.1% of those responding. Considering the combined ratings of "1," "2" and "3," the School Newsletters are still rated higher than any other source of information (81.5%) with newspapers in second place (72.3%). All other sources of information received much lower ratings.

Of the following sources of information about Olympia school matters, choose the three which provide you with the most information and number them 1, 2 and 3 in the order of best source, second best source and third best source respectively.

	<u>1</u>	<u>2</u>	<u>3</u>
Radio	2.9%	4.7%	8.8%
T.V.	1.2%	2.2%	2.2%
Newspapers	28.4%	27.9%	16.0%
School Newsletters	47.1%	26.0%	8.4%
Children in school	10.3%	16.4%	20.6%
Conversation with other people	5.0%	14.6%	26.8%
Citizens Advisory Council	.8%	2.1%	3.4%
Parent-Teacher organization	1.2%	3.1%	6.7%
School staff members	2.1%	2.0%	4.0%
School Board members	1.0%	1.3%	3.0%

## QUESTION 9

In terms of space, how adequate do you think the elementary school buildings are in your area?

- 63.6% Generally adequate  
24.9% Adequate, but there is some crowding  
11.5% Generally inadequate

BEST COPY AVAILABLE

## QUESTION 10

Are the school buildings currently used sufficiently for community and recreational activities?

41.2% Used sufficiently

33.7% Not used sufficiently

25.1% No opinion

## QUESTION 11

Would you be interested in attending adult education courses offered in the evenings?

63 ~~30.0%~~ No

37 ~~62.4%~~ Yes

## QUESTION 12

If the school facilities were to be used more for community activities, recreational activities and adult education, additional costs would be incurred. How do you believe these additional costs could be met?

The majority of persons responding, 59.8%, felt that those people involved in using school facilities for the activities mentioned should bear the additional costs through payment of fees; 30.6% felt that these costs should be shared between tax funds and fees.

4.0% Tax Funds

59.8% Fees

30.6% Shared between tax funds and fees

5.5% Other

## QUESTION 13

Overall, how do you feel about the Olympia schools?

25.4% Extremely pleased

61.3% Fairly well pleased

10.1% Moderately displeased

3.3% Extremely displeased

## QUESTION 14

Were you living in the area that is now the Olympia District prior to January 1, 1967?

80.4% Yes

19.6% No

BEST COPY AVAILABLE



## QUESTION 15

How did you feel about the Olympia consolidation issue at the time it was being considered?

- 34.7% Strongly supported
- 29.8% Moderately supported
- 14.1% Moderately opposed
- 15.6% Strongly opposed
- 5.8% Had no opinion about the issue

## QUESTION 16

How do you feel the consolidation has worked out?

- 34.2% Very well
- 37.0% Fairly well
- 4.9% Poorly
- 23.9% Too early to tell

## QUESTION 17

Do you have any children currently enrolled in kindergarten through grade 8?

- 39.6% Yes
- 60.4% No

## QUESTION 18

Indicate the type of elementary school in which your children are enrolled:  
Check only one answer.

- 94.3% One of the Olympia District elementary schools
- 4.6% A parochial or other school outside the Olympia District
- 1.0% Both answers above - in the Olympia District and outside the Olympia District

## QUESTION 19

Do you currently have any children enrolled in high school?

- 25.3% Yes
- 74.7% No

BEST COPY AVAILABLE

## QUESTION 20

Indicate the type of high school in which your children are enrolled:  
Check only one answer.

92.9% Olympia High School

5.4% A parochial or other high school outside the Olympia District

1.7% Both answers above - in Olympia High School and in a high school outside the Olympia District.

## QUESTION 21

In your opinion, are the individual needs of the students being met in the classroom?

21.6% Yes, very well

65.3% Yes, reasonably well

13.0% No, not particularly well

## QUESTION 22

How satisfied are you with the guidance and counseling program?

14.4% Well satisfied

67.8% Satisfied

17.8% Somewhat dissatisfied

## QUESTION 23

How satisfied are you with the provisions made for parent-teacher conferences?

22.5% Well satisfied

64.9% Satisfied

12.7% Somewhat dissatisfied

## QUESTION 24

How worthwhile have you found parent-teacher conferences?

30.3% Very worthwhile

32.8% Somewhat worthwhile

10.3% Generally not too helpful

3.4% Waste of time

23.2% Never had such a conference

BEST COPY AVAILABLE

QUESTION 25

How do you feel about the discipline in the elementary school in your area?

- 3.2% Too strict
- 74.0% About right
- 22.9% Not strict enough

QUESTION 26

How do you feel about the discipline in Olympia High School?

- 2.1% Too strict
- 67.2% About right
- 30.7% Not strict enough

QUESTION 27

In your opinion, to what extent should students have a voice in school decisions in the Olympia District?

- 14.6% They should have more voice generally
- 31.6% About right the way it is
- 12.2% They should have less voice generally
- 21.6% No opinion

QUESTION 28

Are there any facilities you feel are lacking in the elementary school in your area?

- 73.3% No
- 26.7% Yes

QUESTION 29

In your opinion, how many of the teachers in the elementary school in your area are well prepared and effective teachers?

- 31.0% All
- 55.9% All but a few
- 7.2% More than half
- 5.9% Half or less

BEST COPY AVAILABLE

## QUESTION 30

In your opinion, how many of the teachers in Olympia High School are well prepared and effective teachers?

- 20.7% All  
57.4% All but a few  
14.0% More than half  
8.0% Half or less

## QUESTION 31

In your opinion, the arrangements provided for bussing of participants involved in extra-curricular activities are:

- 84.5% Satisfactory  
15.5% Unsatisfactory

## QUESTION 32

In which elementary attendance center do you reside?

- |                       |                         |
|-----------------------|-------------------------|
| <u>8.2%</u> Armington | <u>10.2%</u> McLean     |
| <u>16.8%</u> Atlanta  | <u>16.4%</u> Minier     |
| <u>16.9%</u> Danvers  | <u>10.6%</u> Stanford   |
| <u>13.6%</u> Hopedale | <u>4.2%</u> Waynesville |

## QUESTION 33

What is your sex?

- 43.2% Male  
56.8% Female

## QUESTION 34

Employment Status

- 53.1% Employed outside the home  
32.5% Not employed outside the home  
14.4% Retired

## QUESTION 35

What was your age on your last birthday?

The population of the Olympia District appears to be relatively young with 55.7% of those responding below age 45 and 33.7% below age 35. It must be remembered that only adults were asked to complete survey forms.

- |                       |                         |
|-----------------------|-------------------------|
| <u>10.5%</u> Under 25 | <u>16.3%</u> 45-54      |
| <u>23.2%</u> 25-34    | <u>13.4%</u> 55-64      |
| <u>22.0%</u> 35-44    | <u>14.6%</u> 65 or over |

BEST COPY AVAILABLE

## QUESTION 36

How many years of school did you finish?

More than 75% of the respondents have completed at least a high school education (76.4%), while 35.9% have some education beyond high school.

- 2.8% None, or up to 7 years of elementary school
- 10.3% 8 years - elementary school graduate
- 10.6% 9 - 11 years -- some high school
- 40.5% 12 years -- high school graduate
- 7.7% Trade or commercial school beyond high school
- 14.8% 13 - 15 years -- some college
- 10.1% 16 years - college graduate
- 3.3% Master's degree or higher

## QUESTION 37

Are you the head of the household?

- 52.5% Yes
- 47.5% No

## QUESTION 38

Which is his/her sex?

- 57.4% Male
- 42.6% Female

## QUESTION 39

Employment status

- 56.3% Employed outside the home
- 31.8% Not employed outside the home
- 11.9% Retired

## QUESTION 40

What was his/her age on his/her last birthday?

The data for this question agree quite closely with the data from question 35.

- |                      |                         |
|----------------------|-------------------------|
| <u>8.1%</u> Under 25 | <u>10.2%</u> 45-54      |
| <u>24.2%</u> 25-34   | <u>13.4%</u> 55-64      |
| <u>24.3%</u> 35-44   | <u>11.7%</u> 65 or over |

BEST COPY AVAILABLE

## QUESTION 41

How many years of school did he/she finish?

The data for this question agree quite closely with that from question 36. This agreement indicates high reliability in the answers obtained.

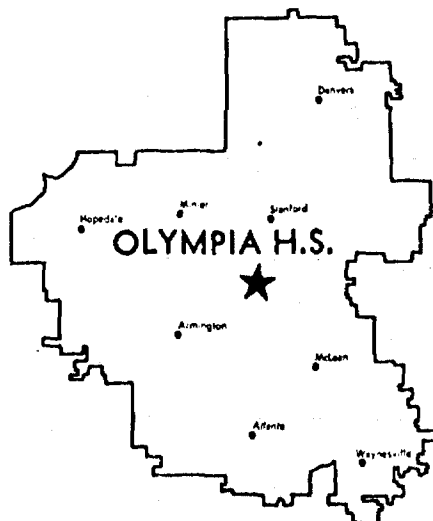
- 3.3% None, or up to 7 years of elementary school
- 9.1% 8 years - elementary school graduate
- 11.1% 9 - 11 years -- some high school
- 42.8% 12 years - high school graduate
- 7.9% Trade or commercial school beyond high school
- 13.3% 13-15 years -- some college
- 9.5% 16 years - college graduate
- 3.0% Master's degree or higher

## QUESTION 42

What was your approximate gross family income for 1972?

Almost 30% of those responding indicated a gross family income of \$15,000 or more, while over 60% indicated a gross family income of \$10,000 or more.

- 9.5% Under \$4,000
- 8.9% \$4,000 - 5,999
- 18.9% \$6,000 - 9,999
- 32.7% \$10,000 - 14,999
- 13.5% \$15,000 - 19,999
- 16.4% \$20,000 or over



BEST COPY AVAILABLE

# SECTION II

BEST COPY AVAILABLE

## QUESTION 1

Of the following goals of elementary and secondary education, which three would you consider the most important and number them 1, 2 and 3 in their order of importance?

The table that follows indicates that the most important goal of elementary and secondary education, as expressed by those responding, is "A general education," followed by a distant second, "Develop moral standards and values."

A GENERAL EDUCATION

Per Cent for Each Rating

	<u>1</u>	<u>2</u>	<u>3</u>
Armington	60.2	12.3	7.9
Atlanta	58.4	10.8	7.3
Danvers	57.7	16.0	6.5
Hopedale	55.1	16.9	10.1
McLean	53.2	13.0	7.6
Minier	58.3	14.0	7.6
Stanford	55.5	11.2	9.6
Waynesville	50.0	21.1	6.7
DISTRICT-WIDE	56.7	14.0	7.9

DEVELOP MORAL STANDARDS AND VALUES

Armington	20.9	30.8	11.0
Atlanta	14.1	32.0	12.4
Danvers	16.4	25.7	13.3
Hopedale	23.4	30.2	12.8
McLean	16.5	24.8	12.4
Minier	18.1	27.7	10.8
Stanford	18.6	24.4	14.3
Waynesville	30.9	35.6	12.4
DISTRICT-WIDE	18.5	28.3	12.8

PREPARE STUDENTS FOR TECHNICAL TRAINING

Per Cent for Each Rating

	<u>1</u>	<u>2</u>	<u>3</u>
Armington	2.1	9.2	16.8
Atlanta	2.7	12.9	10.2
Danvers	2.6	11.9	14.7
Hopedale	2.6	7.1	10.7
McLean	2.8	11.4	4.8
Minier	1.1	9.6	11.0
Stanford	2.1	9.7	12.6
Waynesville	2.1	3.3	6.7
DISTRICT-WIDE	2.1	10.3	11.1

PREPARE STUDENTS FOR A JOB AFTER HIGH SCHOOL

Armington	8.9	26.2	25.7
Atlanta	15.6	24.2	25.1
Danvers	14.6	23.2	24.5
Hopedale	11.5	21.0	26.5
McLean	19.8	29.3	23.1
Minier	16.4	26.2	23.7
Stanford	14.8	28.3	23.1
Waynesville	9.6	23.3	31.5
DISTRICT-WIDE	14.6	24.9	25.1



PREPARE STUDENTS FOR COLLEGE

Armington	6.3	13.3	19.4
Atlanta	8.2	12.9	16.1
Danvers	6.3	13.1	15.8
Hopedale	3.8	16.6	15.1
McLean	5.2	12.2	21.3
Minier	3.3	13.7	17.4
Stanford	7.2	15.9	16.1
Waynesville	4.3	14.4	23.6
DISTRICT-WIDE	5.7	13.7	17.5

DEVELOP AN INTEREST IN COMMUNITY AND WORLD PROBLEMS

Per Cent for Each Rating

	<u>1</u>	<u>2</u>	<u>3</u>
Armington	1.6	8.2	19.4
Atlanta	1.1	7.1	28.0
Danvers	2.3	10.1	25.3
Hopedale	3.5	8.3	24.8
McLean	2.4	9.3	24.9
Minier	2.8	8.8	26.5
Stanford	1.7	10.5	18.7
Waynesville	3.2	5.6	18.0
DISTRICT-WIDE	2.2	8.7	24.7



BEST COPY AVAILABLE.

## QUESTION 2

There are many important subjects taught in the public schools of which a few are listed below. To what extent do you think that we should stress the offering of courses in each of the following areas?

Better than 90% of those answering this question indicated that Music, Art, Building Trades, Physical Education, Foreign Language and Work/Study Programs either definitely or probably should be taught, almost 80% indicated Sex Education definitely or probably should be taught and more than 70% indicated the Study of Religions should either definitely or probably be taught. Conversely, almost 30% of the respondents indicated that the Study of Religions either probably or definitely should not be taught.

MUSIC

## Per Cent Responding

	<u>Definitely Should be Taught</u>	<u>Probably Should be Taught</u>	<u>Probably Should not Be Taught</u>	<u>Definitely Should not Be Taught</u>
Armington	69.1	29.3	1.6	0.0
Atlanta	64.3	34.7	0.8	0.3
Danvers	64.5	32.6	2.6	0.3
Hopedale	67.3	30.7	1.3	0.7
McLean	64.5	34.7	0.8	0.0
Minier	67.0	32.2	0.8	0.0
Stanford	62.6	35.8	1.6	0.0
Waynesville	53.1	43.9	2.0	1.0
DISTRICT-WIDE	64.8	33.6	1.4	0.2

ART

	<u>Definitely Should be Taught</u>	<u>Probably Should be Taught</u>	<u>Probably Should not Be Taught</u>	<u>Definitely Should not Be Taught</u>
Armington	43.5	52.7	3.3	0.5
Atlanta	43.4	52.9	3.2	0.5
Danvers	42.9	51.5	5.7	0.0
Hopedale	39.6	57.0	2.0	1.4
McLean	38.4	57.0	4.2	0.4
Minier	46.7	49.5	3.5	0.3
Stanford	47.4	47.0	4.7	0.9
Waynesville	46.4	47.4	6.2	0.0
DISTRICT-WIDE	43.2	52.2	4.1	0.5

SEX EDUCATION

## Per Cent Responding

	<u>Definitely Should be Taught</u>	<u>Probably Should be Taught</u>	<u>Probably Should not Be Taught</u>	<u>Definitely Should not Be Taught</u>
Armington	25.4	48.1	15.5	11.0
Atlanta	40.2	42.8	9.7	7.3
Danvers	33.8	42.0	14.4	9.8
Hopedale	28.0	43.7	17.0	11.3
McLean	39.1	43.8	12.0	5.2
Minier	35.2	45.6	11.8	7.4
Stanford	45.2	43.4	6.6	4.8
Waynesville	38.0	42.0	11.0	9.0
DISTRICT-WIDE	35.5	43.7	12.5	8.2

STUDY OF RELIGIONS

Armington	27.6	42.5	22.7	7.2
Atlanta	27.6	41.4	23.6	7.4
Danvers	23.4	44.1	22.0	10.5
Hopedale	30.3	43.3	16.0	10.4
McLean	20.7	48.3	21.6	9.5
Minier	29.1	42.5	21.5	7.0
Stanford	33.6	43.2	13.5	9.6
Waynesville	36.1	37.1	19.6	7.2
DISTRICT-WIDE	28.0	43.1	20.1	8.8

BUILDING TRADES

Armington	66.7	31.7	1.7	0.0
Atlanta	65.5	31.6	2.3	0.5
Danvers	60.8	35.5	3.8	0.0
Hopedale	52.5	40.7	6.1	0.7
McLean	61.1	38.1	0.4	0.4
Minier	63.8	33.2	3.0	0.0
Stanford	65.5	31.5	3.0	0.0
Waynesville	56.4	42.6	1.1	0.0
DISTRICT-WIDE	62.1	34.8	2.9	0.2

PHYSICAL EDUCATION

Per Cent Responding

	<u>Definitely Should be Taught</u>	<u>Probably Should be Taught</u>	<u>Probably Should not Be Taught</u>	<u>Definitely Should not Be Taught</u>
Armington	76.5	20.8	2.2	0.5
Atlanta	75.5	23.3	1.0	0.3
Danvers	72.6	25.1	1.3	0.3
Hopedale	67.4	28.3	3.0	1.3
McLean	77.5	19.2	2.5	0.8
Minier	74.1	23.8	2.2	0.0
Stanford	68.5	28.2	2.9	0.4
Waynesville	76.0	24.0	0.0	0.0
DISTRICT-WIDE	73.2	24.3	2.0	0.5

FOREIGN LANGUAGE

Armington	44.1	49.2	3.4	3.4
Atlanta	42.2	49.9	7.1	0.8
Danvers	42.3	50.4	5.7	1.6
Hopedale	52.0	42.3	3.4	2.3
McLean	42.8	49.2	6.4	1.7
Minier	52.5	41.2	5.0	1.4
Stanford	42.4	48.5	8.2	0.9
Waynesville	36.2	52.1	7.4	4.3
DISTRICT-WIDE	45.1	47.5	5.7	1.7

BEST COPY AVAILABLE

WORK/STUDY PROGRAMS

Armington	64.9	32.8	2.3	0.0
Atlanta	69.0	28.1	1.9	1.1
Danvers	67.0	30.9	1.6	0.5
Hopedale	66.9	29.8	3.0	0.7
McLean	65.8	30.8	2.5	0.8
Minier	69.6	29.0	1.1	0.3
Stanford	68.6	27.0	4.0	0.4
Waynesville	55.3	43.6	0.0	1.1
DISTRICT-WIDE	66.9	30.4	2.1	0.6

In your opinion, are there any specific courses which should be added to the curriculum of the Olympia District?

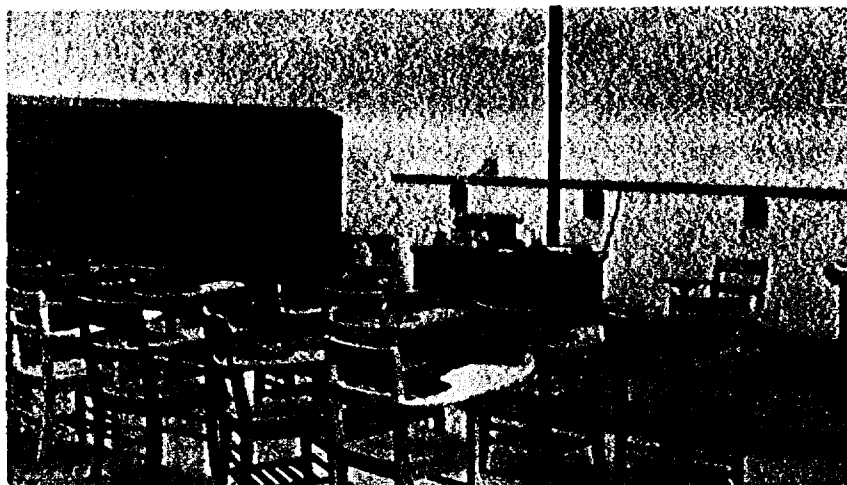
1. Hygiene
2. Common Sense
3. Gardening
4. Forestry
5. History
6. Ceramics
7. Music, Art and P.E. every day in grade schools
8. Marketing
9. Pledge allegiance to the flag
10. Dating
11. Soil Conservation
12. Landscape Designing
13. Elementary Bicycle Safety
14. Advanced Music
15. Advanced Drama
16. Biology II
17. Chemistry II
18. Training in field of own interest
19. Dance
20. Square Dance
21. American-Community Problems
22. Advanced Science
23. Business Law
24. Gymnastics
25. First Aid--5 people
26. Religion--27 people
27. Smoking
28. Discipline and Respect--2 people
29. Marriage Counseling--4 people
30. Psychology--12 people
31. Ecology--3 people
32. People Problems
33. Different Ethnic Cultures
34. Social Sciences
35. Math--6 people
36. Science
37. Classics
38. Latin--11 people
39. Russian
40. Chinese
41. Obedience
42. Reading--3 people
43. Writing--5 people
44. Advanced Swimming
45. More work/study fields
46. Job Training
47. Electronics--2 people
48. Jr. High Shop--4 people
49. Jr. High Home Ec.--4 people
50. Honor courses for qualified students--2 people
51. Communication of Generations
52. Reasoning Courses
53. Thinking Courses--3 people
54. Drama as credit course--3 people
55. Family Life as credit course--4 people
56. Creative courses of all kinds--2 people
57. Business--3 people
58. Theatre
59. Bible or Religion as literature course--5 people
60. Art II--3 people
61. Speech--3 people
62. English--2 people
63. Philosophy--2 people
64. How to study at high school level--3 people
65. Public Speaking--3 people
66. Home Ec.-- 3 people
67. Bible study and history--2 people
68. French
69. Sex Education--18 people-Comments included with this suggestion were: No co-ed classes, depends on teacher and how taught, optional, with parental consent only, 7th and 8th grades only, basic fundamentals only.
70. Junior Achievement
71. Job skills for boys
72. Communism so that a student knows what U. S. A. really means to country that is not free.
73. Christianity
74. Orthography
75. Local and State Government--2 people
76. Industrial Arts
77. Medical--3 people
78. Full Gospel Bible
79. Budgeting--2 people
80. Bureaucracy
81. Logic
82. Extensive Data Processing--2 people

BEST COPY AVAILABLE

83. Mechanics--6 people
84. Engineering--2 people
85. Interior Decorating
86. Architecture
87. Mini courses
88. Introduce foreign languages in primary grades--4 people
89. Foreign language--5 people
90. Key punch
91. Business Machines--2 people
92. Personal Typing on Pass/Fail
93. Football
94. Drug Use and Abuse--2 people
95. Typing--4 years
96. Electronics--2 people
97. In-depth courses--2 people
98. More co-ed
99. Extra-credit Music--3 people
100. Extra-credit Art--2 people
101. Botany
102. Agricultural--5 people
103. Chemistry
104. Distributive Education
105. Diversified Occupations
106. Patriotism--2 people
107. Tailoring
108. Building--3 people
109. Computer--2 people
110. Orchestra--4 people
111. Humanities
112. Advanced business courses
113. Judo--2 people
114. Machine Shorthand
115. Grammar
116. Spelling--3 people
117. Fine Arts (Photography to Basic Design)--2 people
118. Health Education
119. Astronomy
120. Earth Science
121. Nursing Trades--2 people
122. Math Trades
123. Scuba Diving
124. Consumer Ed.--4 people
125. Sociology
126. Elementary honors courses--2 people
127. History and Resources of Illinois
128. Manners
129. Salesmanship
130. Advanced Math--2 people
131. Elementary ability grouping
132. P. E. for Adult life
133. Understanding of Self



BEST COPY AVAILABLE



In your opinion, are there any specific courses which should be omitted from the curriculum of the Olympia District?

1. Sex Education--24 people
2. Advanced Physical Science if equipment cannot be furnished
3. Too much emphasis on sports--11 people
4. Creative Writing
5. Music
6. History
7. P.E.--5 people
8. Golf
9. Drama
10. Wrestling--2 people
11. Drivers Training
12. Languages
13. Religion
14. Governmental
15. Football
16. Swimming--3 people
17. Home Repair
18. Latin

### QUESTION 3

What is your opinion about the amount of emphasis placed on boys' athletics in the Olympia District?

#### Per Cent Responding

	<u>Too Much Emphasis</u>	<u>About Right</u>	<u>Too Little Emphasis</u>
Armington	28.8	69.1	2.1
Atlanta	22.2	71.0	6.8
Danvers	20.2	76.0	3.8
Hopedale	25.8	70.2	4.0
McLean	25.1	70.6	4.3
Minier	18.8	76.4	4.8
Stanford	18.5	73.9	7.7
Waynesville	23.7	70.1	6.2
DISTRICT-WIDE	22.6	72.2	5.1

QUESTION 4

What is your opinion about the amount of emphasis placed on girls' athletics in the Olympia District?

	Per Cent Responding		
	<u>Too Much Emphasis</u>	<u>About Right</u>	<u>Too Little Emphasis</u>
Armington	7.8	60.6	31.7
Atlanta	6.4	58.7	34.9
Danvers	5.5	65.3	29.2
Hopedale	9.9	62.8	27.3
McLean	4.8	58.7	36.5
Minier	6.6	61.0	32.5
Stanford	8.5	58.7	32.9
Waynesville	7.4	53.2	39.4
DISTRICT-WIDE	7.2	60.8	32.0

QUESTION 5

What is your opinion about the emphasis placed on "other activities" such as dramatics, clubs, etc?

	Per Cent Responding		
	<u>Too Much Emphasis</u>	<u>About Right</u>	<u>Too Little Emphasis</u>
Armington	10.2	81.8	8.0
Atlanta	7.5	80.2	12.3
Danvers	12.7	74.6	12.7
Hopedale	12.6	85.9	9.2
McLean	9.2	75.5	15.3
Minier	12.5	77.6	9.9
Stanford	10.7	74.8	14.5
Waynesville	12.2	71.1	16.7
DISTRICT-WIDE	10.8	77.5	11.7



QUESTION 6

How important do you feel that parents/citizens opinions should be to school officials when making decisions about each of the following?

Those responding indicated that the opinions of parents/citizens should be very important to school officials when considering the following: School Boundaries and Bussing; Discipline and Codes, such as dress code; Planning Building and Budgets.

COURSES OR CURRICULUM

Per Cent Responding

	<u>Very im- portant</u>	<u>Moderately important</u>	<u>Of Little importance</u>
Armington	47.8	47.8	4.3
Atlanta	49.2	46.0	4.8
Danvers	47.4	44.1	8.5
Hopedale	50.2	44.1	5.7
McLean	43.5	47.7	8.8
Minier	46.3	47.2	6.5
Stanford	50.2	44.9	4.8
Waynesville	36.6	60.2	3.2
DISTRICT-WIDE	47.4	46.4	6.2

SCHOOL BOUNDARIES AND BUSSING

Armington	68.2	24.0	7.8
Atlanta	61.9	31.5	6.6
Danvers	57.1	35.6	7.3
Hopedale	62.5	30.8	6.7
McLean	56.8	36.5	6.6
Minier	55.9	36.9	7.3
Stanford	61.3	32.6	6.1
Waynesville	58.8	33.0	8.2
DISTRICT-WIDE	60.1	33.1	6.8





DISCIPLINE AND CODES SUCH AS DRESS CODE

	Per Cent Responding		
	<u>Very im- portant</u>	<u>Moderately important</u>	<u>Of Little importance</u>
Armington	55.1	39.6	5.3
Atlanta	57.5	34.5	7.9
Danvers	55.8	37.6	6.6
Hopedale	59.6	29.0	11.4
McLean	52.3	38.5	9.2
Minier	50.5	36.7	12.8
Stanford	56.0	37.6	6.4
Waynesville	61.6	32.3	6.1
DISTRICT-WIDE	55.4	35.6	8.8

ABILITY GROUPING OF STUDENTS

Armington	27.3	55.1	17.6
Atlanta	30.9	44.0	25.1
Danvers	27.3	45.9	26.8
Hopedale	24.0	49.0	27.1
McLean	26.9	44.1	29.0
Minier	22.2	48.3	29.5
Stanford	26.2	47.6	26.2
Waynesville	29.8	48.9	21.3
DISTRICT-WIDE	26.4	47.7	25.9

SELECTION OF TEXTBOOKS

Armington	33.9	37.2	28.9
Atlanta	28.6	37.0	34.4
Danvers	25.1	46.2	28.7
Hopedale	21.0	46.8	32.2
McLean	21.3	43.9	34.7
Minier	30.1	37.0	32.9
Stanford	25.0	35.4	33.9
Waynesville	18.9	49.5	31.6
DISTRICT-WIDE	26.5	41.1	32.4

SIZE OF CLASSES

	Per Cent Responding		
	<u>Very im- portant</u>	<u>Moderately important</u>	<u>Of Little importance</u>
Armington	33.1	48.1	18.8
Atlanta	27.7	47.6	24.7
Danvers	31.1	46.3	22.6
Hopedale	24.9	47.1	27.9
McLean	27.5	52.5	20.0
Minier	29.0	44.0	27.0
Stanford	31.3	44.9	23.8
Waynesville	36.5	38.5	25.0
DISTRICT-WIDE	29.3	46.2	24.5

BEST COPY AVAILABLE

PLANNING BUILDING AND BUDGETS

Armington	60.9	31.6	7.5
Atlanta	58.2	33.8	8.0
Danvers	60.1	32.1	7.9
Hopedale	56.2	31.5	12.3
McLean	56.5	32.6	10.9
Minier	58.9	30.9	10.2
Stanford	59.2	31.1	9.6
Waynesville	50.5	38.1	11.3
DISTRICT-WIDE	58.5	32.0	9.4

QUESTION 7

How well do the schools keep you informed about educational policies, school finances, efforts to improve education, and related matters?

Per Cent Responding

	<u>Very Well</u>	<u>Satisfactorily</u>	<u>Not Especially Well</u>	<u>Very Poorly</u>
Armington	12.0	56.3	24.6	7.1
Atlanta	20.6	56.4	15.5	7.5
Danvers	19.0	50.9	21.1	9.0
Hopedale	11.3	50.0	25.0	13.7
McLean	16.0	49.8	22.8	11.4
Minier	21.1	57.6	17.0	4.3
Stanford	15.5	51.5	22.7	10.3
Waynesville	22.4	48.0	18.4	11.2
DISTRICT-WIDE	17.5	52.9	20.4	9.1

QUESTION 8

Of the following sources of information about Olympia school matters, choose the three which provide you with the most information and number them 1, 2 and 3 in the order of best source, second best source, and third best source respectively.

The responses to this question point the way for future communication in the Olympia District with the School Newsletters receiving a rating of "1" by 47.1% of those responding. Considering the combined ratings of "1," "2" and "3," the School Newsletters are still rated higher than any other source of information (81.5%) with newspapers in second place (72.3%). All other sources of information received much lower ratings.

RADIO

Per Cent for Each Rating

	<u>1</u>	<u>2</u>	<u>3</u>
Armington	1.1	5.3	7.4
Atlanta	3.6	4.3	7.6
Danvers	4.7	6.5	10.3
Hopedale	1.6	2.1	5.9
McLean	2.1	3.9	10.6
Minier	2.6	3.7	6.7
Stanford	2.1	6.0	15.0
Waynesville	3.2	8.0	9.9
DISTRICT WIDE	2.9	4.7	

TELEVISION

Armington	2.2	1.4	3.1
Atlanta	0.8	2.7	3.1
Danvers	0.8	1.0	1.4
Hopedale	1.6	1.5	2.2
McLean	0.8	0.8	1.8
Minier	0.9	2.1	2.4
Stanford	0.4	3.2	1.4
Waynesville	1.1	3.0	3.3
DISTRICT-WIDE	1.2	2.2	2.2

NEWSPAPERS

Per Cent for Each Rating

	<u>1</u>	<u>2</u>	<u>3</u>
Armington	42.0	25.6	10.5
Atlanta	22.9	29.9	15.4
Danvers	19.0	28.0	18.6
Hopedale	37.5	23.9	18.1
McLean	16.9	32.3	18.0
Minier	37.1	29.8	12.1
Stanford	31.3	23.0	19.6
Waynesville	20.2	32.0	19.2
DISTRICT-WIDE	28.4	27.9	16.0

SCHOOL NEWSLETTERS

Armington	37.6	32.4	11.7
Atlanta	55.7	25.8	7.3
Danvers	52.9	24.6	7.7
Hopedale	34.2	20.2	8.5
McLean	51.9	24.9	9.7
Minier	44.6	31.3	7.3
Stanford	42.7	27.4	9.3
Waynesville	58.5	24.0	8.8
DISTRICT-WIDE	47.1	26.0	8.4

CHILDREN IN SCHOOL

Armington	8.3	15.5	23.5
Atlanta	8.3	15.5	21.3
Danvers	13.3	18.8	19.8
Hopedale	14.5	19.9	22.9
McLean	11.5	15.2	16.6
Minier	6.6	13.6	18.2
Stanford	9.2	15.9	22.0
Waynesville	11.7	15.0	20.9
DISTRICT-WIDE	10.3	16.4	20.6

CONVERSATION WITH OTHER PEOPLE

Per Cent for Each Rating

	<u>1</u>	<u>2</u>	<u>3</u>
Armington	5.0	11.6	29.6
Atlanta	3.0	12.3	24.1
Danvers	3.6	12.0	23.8
Hopedale	5.6	23.5	25.1
McLean	9.5	14.8	30.0
Minier	3.7	12.5	32.4
Stanford	6.7	16.7	25.2
Waynesville	2.1	11.0	26.4
DISTRICT-WIDE	5.0	14.6	27.2

CITIZENS ADVISORY COUNCIL

Armington	0.6	3.0	6.9
Atlanta	0.5	2.3	5.1
Danvers	1.8	2.4	5.2
Hopedale	0.3	0.3	3.0
McLean	1.2	1.6	1.6
Minier	0.3	2.1	5.0
Stanford	0.8	1.6	2.3
Waynesville	0.0	0.0	0.0
DISTRICT-WIDE	0.8	2.1	3.4

PARENT-TEACHER ORGANIZATION

Armington	0.6	1.9	5.6
Atlanta	0.8	2.7	8.4
Danvers	1.0	4.6	10.0
Hopedale	2.0	3.1	5.9
McLean	1.2	3.1	2.8
Minier	0.9	1.5	2.4
Stanford	1.7	2.4	0.5
Waynesville	1.1	4.0	4.4
DISTRICT-WIDE	1.2	3.1	6.7

SCHOOL STAFF MEMBERS

Per Cent for Each Rating

	<u>1</u>	<u>2</u>	<u>3</u>
Armington	1.1	1.0	3.1
Atlanta	2.3	1.3	4.2
Danvers	1.8	1.1	3.7
Hopedale	2.0	3.1	3.7
McLean	3.7	1.3	5.5
Minier	2.9	1.3	6.1
Stanford	1.7	3.2	3.4
Waynesville	0.0	2.0	2.2
DISTRICT-WIDE	2.1	2.0	4.0

SCHOOL BOARD MEMBERS

Armington	1.7	1.1	0.5
Atlanta	1.3	1.5	5.5
Danvers	1.0	0.7	1.1
Hopedale	0.7	2.1	4.3
McLean	1.2	1.5	3.7
Minier	0.6	0.5	2.1
Stanford	0.4	0.3	2.1
Waynesville	2.1	1.0	2.2
DISTRICT-WIDE	1.0	1.3	3.0

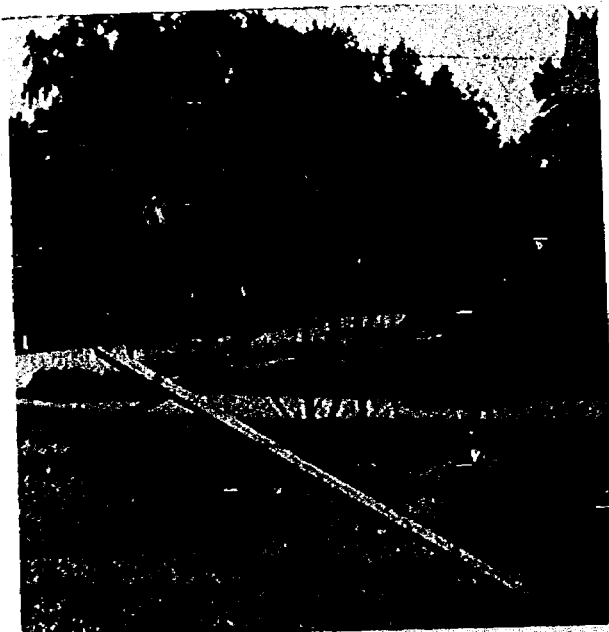
BEST COPY AVAILABLE

QUESTION 9 In terms of space, how adequate do you think the elementary school buildings are in your area?

	Per Cent Responding		
	<u>Generally Adequate</u>	<u>Adequate, but there is some crowding</u>	<u>Generally Inadequate</u>
Armington	82.8	10.3	6.9
Atlanta	80.9	14.1	5.0
Danvers	83.0	12.9	4.0
Hopedale	64.1	29.5	6.4
McLean	49.8	33.8	16.5
Minier	38.3	40.6	21.1
Stanford	44.7	34.1	21.2
Waynesville	49.5	24.2	26.3
DISTRICT-WIDE	63.6	24.9	11.5

QUESTION 10 Are the school buildings currently used sufficiently for community and recreational activities?

	Per Cent Responding		
	<u>Used Sufficiently</u>	<u>Not Used Sufficiently</u>	<u>No Opinion</u>
Armington	37.3	39.5	23.2
Atlanta	42.3	34.5	23.1
Danvers	49.9	21.8	28.3
Hopedale	59.0	18.2	22.8
McLean	24.0	49.8	26.2
Minier	34.5	35.7	29.8
Stanford	28.6	50.0	21.4
Waynesville	52.1	35.4	12.5
DISTRICT-WIDE	41.2	33.7	25.1



## QUESTION 11

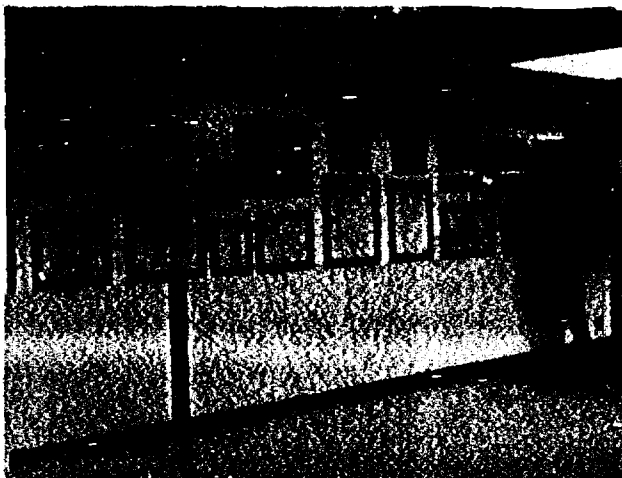
Would you be interested in attending adult education courses offered in the evenings?

## Per Cent Responding

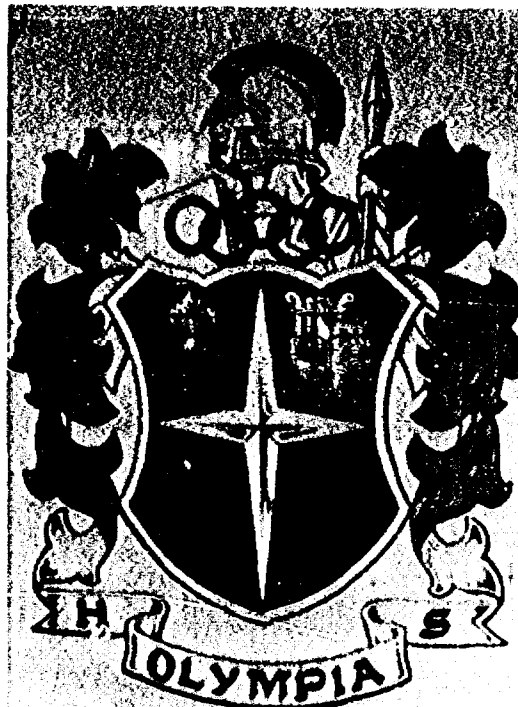
	<u>YES</u>	<u>NO</u>
Armington	29.1	70.9
Atlanta	40.3	59.7
Danvers	34.2	65.8
Hopedale	35.6	64.4
McLean	42.1	57.9
Minier	37.2	62.8
Stanford	42.5	57.5
Waynesville	35.0	65.0
DISTRICT-WIDE	37.0	63.0

If yes, please list the course or courses you would like to see offered.  
The following courses were listed:

- |                                   |                             |
|-----------------------------------|-----------------------------|
| 1. World Affairs--10              | 24. Farm Management--5      |
| 2. Child Development--5           | 25. Swimming--adults--82    |
| 3. Organ--2                       | 26. Swimming--children--2   |
| 4. Math--13                       | 27. P.E./Exercises--59      |
| 5. Religion--5                    | 28. First Aid--14           |
| 6. Photography--5                 | 29. Scuba Diving--5         |
| 7. Safe Driving--2                | 30. Yoga--4                 |
| 8. Bridge--3                      | 31. Judo--3                 |
| 9. Poodle Grooming--2             | 32. Lifesaving--1           |
| 10. Piano--2                      | 33. Tennis--2               |
| 11. Karate--3                     | 34. Volleyball/Badminton--4 |
| 12. Music--13                     | 35. GED--12                 |
| 13. Income Tax--11                | 36. English--27             |
| 14. Art Appreciation--2           | 37. Foreign Languages--28   |
| 15. Sociology--2                  | 38. History--4              |
| 16. Stock Market--5               | 39. College Credit--4       |
| 17. Air Conditioning--5           | 40. Speed Reading--7        |
| 18. Antiques--6                   | 41. Science--5              |
| 19. Writing--4                    | 42. Psychology--10          |
| 20. Dancing--3                    | 43. New Math--8             |
| 21. Heating--1                    | 44. Spanish--5              |
| 22. Bowling--1                    | 45. French--2               |
| 23. Parent-child Relationships--1 | 46. German--5               |



- 47. Art--43
- 48. Crafts--34
- 49. Home/Interior Decorating--19
- 50. Cooking/Nutrition--15
- 51. Canning--2
- 52. Painting--13
- 53. Woodworking--33
- 54. Jewelrymaking--2
- 55. Landscaping--7
- 56. Plants/horticulture--11
- 57. Welding--47
- 58. Cake Decorating--12
- 59. Electrical Wiring--15
- 60. Carpentry--5
- 61. Home Repairs--7
- 62. Drafting--4
- 63. Electronics--9
- 64. Agriculture--30
- 65. Auto Mechanics--20
- 66. Farm Mechanics--13
- 67. Ind. Arts/Shop/Building Trades--35
- 68. Practical Nursing--1
- 69. Typing--58
- 70. Shorthand--32
- 71. Bookkeeping--32
- 72. Accounting--9
- 73. Data Processing--13
- 74. Key punch--5
- 75. Economics--5
- 76. Office Practice/Machines--16
- 77. Business Courses--45
- 78. Business English--2
- 79. Business Law--1
- 80. Sewing--80
- 81. Adv. Sewing/Tailoring--19
- 82. Macrame--2
- 83. Knitting--25
- 84. Crocheting--9
- 85. Upholstery--24
- 86. Ceramics--15
- 87. Furniture Refinishing--8
- 88. Needlecraft--4
- 89. Decoupage--3
- 90. Nutrition--1
- 91. Sex Education--2
- 92. Cosmetology--Beauty--3
- 93. Conservation--1
- 94. Reading--3
- 95. Golf--1
- 96. Real Estate--1
- 97. Gymnastics/Ballet--1
- 98. Metals--3
- 99. Astrology--1
- 100. Philosophy--2
- 101. Estate Planning--1
- 102. Police Science--1
- 103. Cabinet Making--1
- 104. Drug Abuse--2
- 105. Occult--2
- 106. Pharmaceutical--1
- 107. Nursing Refresher--1
- 108. Waste Water Treatment--1
- 109. Budgeting/Money Mgmt.--4
- 110. Dale Carnegie course--1
- 111. Hotel/Hotel Mgmt.--1
- 112. Private Pilot's Lessons--1
- 113. Printing--2
- 114. Archaeology--1
- 115. T.V. Repair--1



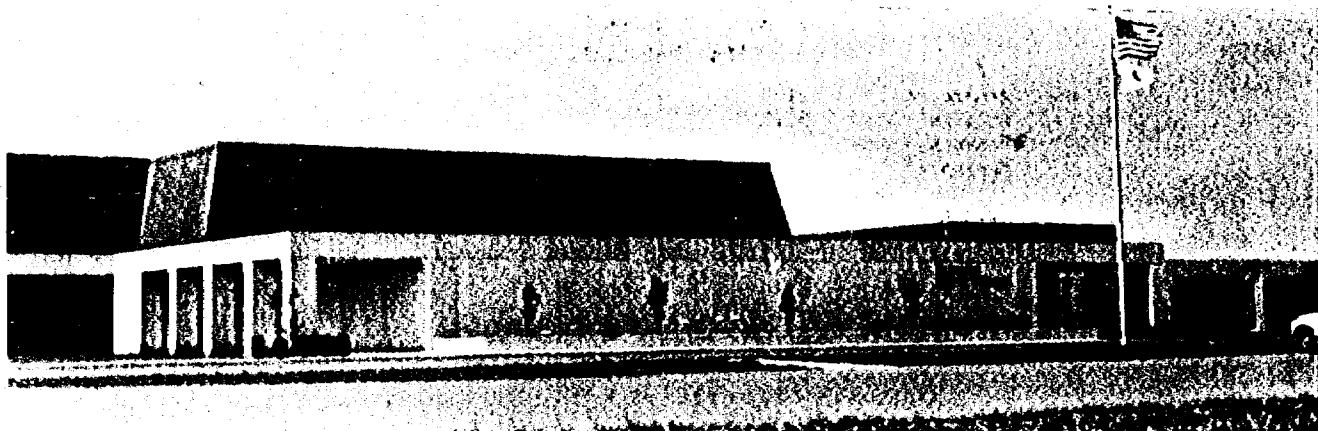
## QUESTION 12

If the school facilities were to be used more for community activities, recreational activities and adult education, additional costs would be incurred. How do you believe these additional costs could be met?

The majority of persons responding, 59.8%, felt that those people involved in using school facilities for the activities mentioned should bear the additional costs through payment of fees; 30.6% felt that these costs should be shared between tax funds and fees.

## Per Cent Responding

	<u>Tax Funds</u>	<u>Fees</u>	<u>Shared between tax funds and fees</u>	<u>Other</u>
Armington	3.3	63.4	27.9	5.5
Atlanta	4.5	55.5	36.1	3.9
Danvers	2.6	65.0	28.8	3.6
Hopedale	3.0	59.9	30.1	7.0
McLean	5.4	57.5	32.1	5.0
Minier	4.0	59.4	28.7	8.0
Stanford	6.2	55.6	32.9	5.3
Waynesville	3.1	68.8	22.9	5.2
DISTRICT-WIDE	4.0	59.8	30.6	5.5



## QUESTION 13

Overall, how do you feel about the Columbia schools?

## Per Cent Responding

	<u>Extremely Pleased</u>	<u>Fairly Well Pleased</u>	<u>Moderately Displeased</u>	<u>Extremely Displeased</u>
Armington	20.7	61.4	12.5	5.4
Atlanta	28.8	61.9	7.5	1.8
Danvers	30.0	60.0	7.6	2.4
Hopedale	15.8	64.8	12.9	6.5
McLean	20.3	64.0	14.0	1.7
Minier	33.2	54.5	9.3	3.0
Stanford	27.0	64.6	7.6	0.8
Waynesville	20.2	62.8	12.8	4.3
DISTRICT-WIDE	25.4	61.3	10.1	3.3



QUESTION 14

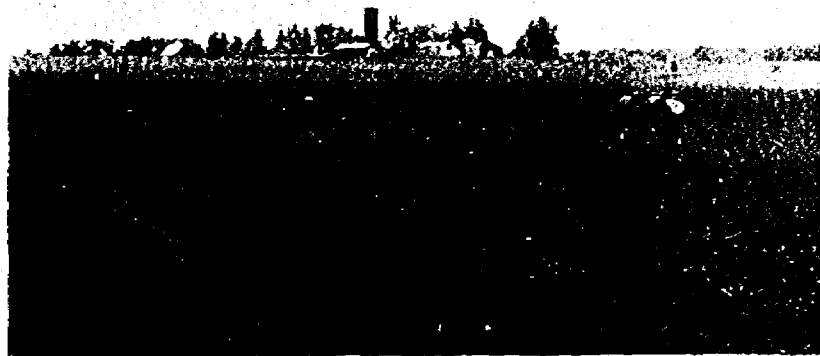
Were you living in the area that is now the Olympia District prior to January 1, 1973?

	Per Cent Responding	
	<u>Yes</u>	<u>No</u>
Armington	86.7	13.3
Atlanta	82.5	17.5
Danvers	72.1	27.9
Hopedale	81.3	18.7
McLean	75.1	24.9
Minier	84.5	15.5
Stanford	85.3	14.7
Waynesville	79.4	20.6
DISTRICT-WIDE	80.4	19.6

QUESTION 15

How did you feel about the Olympia consolidation issue at the time it was being considered?

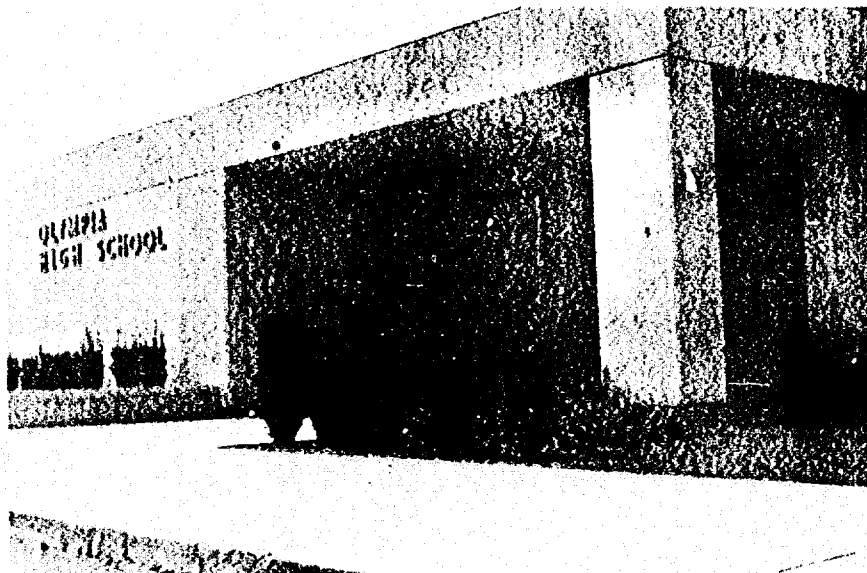
	Per Cent Responding				
	<u>Strongly Supported</u>	<u>Moderately Supported</u>	<u>Moderately Opposed</u>	<u>Strongly Opposed</u>	<u>No Opinion</u>
Armington	22.5	28.7	15.7	27.5	5.6
Atlanta	38.0	33.4	10.3	13.4	4.9
Danvers	44.2	29.4	10.6	8.9	6.9
Hopedale	19.2	26.4	23.9	25.4	5.1
McLean	34.4	28.6	15.9	13.8	7.4
Minier	43.2	30.1	14.6	6.7	5.5
Stanford	41.4	28.6	9.5	15.0	5.5
Waynesville	24.1	34.2	11.4	29.1	1.3
DISTRICT-WIDE	34.7	29.8	14.1	15.6	5.8



QUESTION 16

How do you feel the consolidation has worked out?

	Per Cent Responding			
	<u>Very Well</u>	<u>Fairly Well</u>	<u>Poorly</u>	<u>Too Early To Tell</u>
Armington	32.9	31.2	6.4	29.5
Atlanta	40.4	35.4	5.0	19.2
Danvers	39.5	33.1	4.3	23.1
Hopedale	22.4	40.3	8.2	29.1
McLean	30.5	46.0	3.7	19.8
Minier	44.6	31.8	2.4	21.1
Stanford	28.7	40.3	2.8	28.2
Waynesville	22.5	45.0	10.0	22.5
DISTRICT-WIDE	34.2	37.0	4.9	23.9



Do you have any children currently enrolled in kindergarten through grade 8?

	Per Cent Responding	
	<u>Yes</u>	<u>No</u>
Armington	37.4	62.6
Atlanta	38.6	61.4
Danvers	47.9	52.1
Hopedale	45.4	54.6
McLean	40.1	59.9
Minier	30.1	69.9
Stanford	38.8	61.2
Waynesville	46.9	53.1
DISTRICT-WIDE	39.6	60.4

## QUESTION 18

Indicate the type of elementary school in which your children are enrolled.

	Per Cent Responding		
	<u>Olympia District Elementary School</u>	<u>Parochial or School Outside Olympia District</u>	<u>Both</u>
Armington	90.1	9.9	0.0
Atlanta	94.4	5.6	0.0
Danvers	92.2	3.9	3.9
Hopedale	95.9	4.1	0.0
McLean	97.0	3.0	1.6
Minier	95.1	3.3	0.0
Stanford	95.8	4.2	0.0
Waynesville	96.0	4.0	0.0
DISTRICT-WIDE	94.3	4.6	1.0

## QUESTION 19

Do you currently have any children enrolled in high school?

	Per Cent Responding	
	<u>Yes</u>	<u>No</u>
Armington	24.0	76.0
Atlanta	26.9	73.1
Danvers	26.6	73.4
Hopedale	32.3	67.7
McLean	21.9	78.1
Minier	22.9	77.1
Stanford	29.2	71.8
Waynesville	13.5	86.5
DISTRICT-WIDE	25.3	74.7

## QUESTION 20

Indicate the type of high school in which your children are enrolled.

	Per Cent Responding		
	<u>Olympia High School</u>	<u>Parochial or Other High School Outside Olympia District</u>	<u>Both</u>
Armington	91.7	8.3	0.0
Atlanta	91.3	5.8	2.9
Danvers	87.7	9.4	2.8
Hopedale	95.9	2.0	2.0
McLean	96.5	3.5	0.0
Minier	95.5	2.2	2.2
Stanford	98.5	1.5	0.0
Waynesville	92.9	7.1	0.0
DISTRICT-WIDE	92.9	5.4	1.7

## QUESTION 21

In your opinion, are the individual needs of the students being met in the classroom?

	Per Cent Responding		
	<u>Yes, Very Well</u>	<u>Yes, Reasonably Well</u>	<u>No, Not Particularly Well</u>
Armington	19.1	67.4	13.5
Atlanta	25.8	64.7	9.5
Danvers	24.3	65.6	10.1
Hopedale	23.1	64.7	12.1
McLean	20.5	57.4	22.1
Minier	17.4	69.5	13.2
Stanford	20.4	67.6	12.0
Waynesville	15.8	63.2	21.1
DISTRICT-WIDE	21.8	65.3	13.0

## QUESTION 22

How satisfied are you with the guidance and counseling program?

	Per Cent Responding		
	<u>Well Satisfied</u>	<u>Satisfied</u>	<u>Somewhat Dissatisfied</u>
Armington	9.9	61.7	28.4
Atlanta	22.5	68.0	9.6
Danvers	19.0	67.3	13.7
Hopedale	10.5	65.1	24.4
McLean	5.1	68.4	26.5
Minier	12.7	70.3	17.1
Stanford	16.3	71.4	12.0
Waynesville	9.4	75.5	15.1
DISTRICT-WIDE	14.4	67.8	17.8

## QUESTION 23

How satisfied are you with the provisions made for parent-teacher conferences?

	Per Cent Responding		
	<u>Well Satisfied</u>	<u>Satisfied</u>	<u>Somewhat Dissatisfied</u>
Armington	24.1	60.2	15.7
Atlanta	19.3	74.0	6.6
Danvers	29.8	59.1	11.1
Hopedale	19.5	65.9	14.6
McLean	11.9	72.0	16.1
Minier	22.1	62.3	15.6
Stanford	25.5	59.8	14.7
Waynesville	25.0	66.1	8.9
DISTRICT-WIDE	22.5	64.9	12.7

## QUESTION 24

How worthwhile have you found parent-teacher conferences?

	Per Cent Responding				
	<u>Vary Worth- While</u>	<u>Somewhat Worth- While</u>	<u>Generally Not Too Helpful</u>	<u>Waste of Time</u>	<u>Never Had Such a Conference</u>
Armington	18.4	28.7	10.3	4.6	37.9
Atlanta	28.6	35.7	7.1	2.7	25.8
Danvers	40.5	24.3	7.1	4.3	23.8
Hopedale	25.7	40.9	11.7	3.5	18.1
McLean	24.0	43.8	14.9	4.1	13.2
Minier	29.4	27.0	13.5	3.1	27.0
Stanford	34.3	27.8	9.3	2.8	25.9
Waynesville	35.7	39.3	12.5	1.8	10.7
DISTRICT-WIDE	30.3	32.8	10.3	3.4	23.2

## QUESTION 25

How do you feel about the discipline in the elementary school in your area?

	Per Cent Responding		
	<u>Too Strict</u>	<u>About Right</u>	<u>Not Strict Enough</u>
Armington	1.4	80.6	18.1
Atlanta	6.6	69.5	24.0
Danvers	2.0	81.2	16.8
Hopedale	1.9	85.2	12.9
McLean	0.9	66.7	32.4
Minier	3.6	71.4	25.0
Stanford	4.0	55.6	40.4
Waynesville	3.9	76.5	19.6
DISTRICT-WIDE	3.2	74.0	22.9

## QUESTION 26

How do you feel about the discipline in Olympia High School?

	Per Cent Responding		
	<u>Too Strict</u>	<u>About Right</u>	<u>Not Strict Enough</u>
Armington	0.0	63.6	36.4
Atlanta	4.8	72.6	22.6
Danvers	2.4	75.0	22.6
Hopedale	0.0	52.8	47.2
McLean	1.5	71.6	26.9
Minier	1.0	66.7	32.4
Stanford	2.6	76.6	20.8
Waynesville	3.7	51.9	44.4
DISTRICT-WIDE	2.1	67.2	30.7

QUESTION 27

In your opinion, to what extent should students have a voice in school decisions in the Olympia District?

	Per Cent Responding			
	<u>They Should Have More Voice Generally</u>	<u>About Right The Way It Is</u>	<u>They Should Have Less Voice Generally</u>	<u>No Opinion</u>
Armington	10.5	53.5	17.4	18.6
Atlanta	18.8	53.9	9.4	17.8
Danvers	12.0	57.4	9.7	20.8
Hopedale	13.6	47.5	15.8	23.2
McLean	13.3	47.5	15.8	23.3
Minier	14.5	51.2	13.3	21.1
Stanford	18.5	52.8	9.3	19.4
Waynesville	17.5	45.6	5.3	31.6
DISTRICT-WIDE	14.6	51.6	12.2	21.6

QUESTION 28

Are there any facilities you feel are lacking in the elementary school in your area?

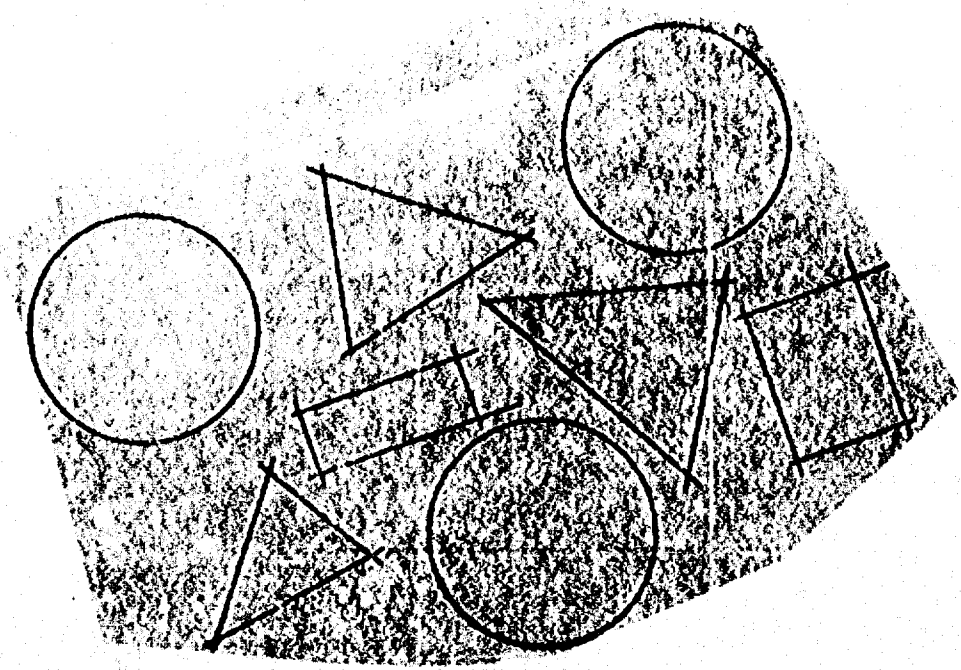
	Per Cent Responding	
	<u>Yes</u>	<u>No</u>
Armington	25.0	75.0
Atlanta	16.6	83.4
Danvers	23.2	76.8
Hopedale	24.2	75.8
McLean	44.4	55.6
Minier	32.3	67.7
Stanford	26.7	73.3
Waynesville	36.7	63.3
DISTRICT-WIDE	26.7	73.3

QUESTION 29

In your opinion, how many of the teachers in the elementary school in your area are well prepared and effective teachers?

	Per Cent Responding			
	<u>All</u>	<u>All But A Few</u>	<u>More Than Half</u>	<u>Half Or Less</u>
Armington	25.7	58.6	5.7	10.0
Atlanta	29.8	55.9	6.8	7.5
Danvers	28.7	63.6	6.2	1.5
Hopedale	38.3	48.1	7.1	6.5
McLean	22.6	61.3	9.4	6.6
Minier	35.2	46.1	10.2	8.6
Stanford	32.0	57.7	6.2	4.1
Waynesville	27.3	63.6	6.8	2.3
DISTRICT-WIDE	31.0	55.9	7.2	5.9





**QUESTION 30**

In your opinion, how many of the teachers in Olympia High School are well prepared and effective teachers?

	Per Cent Responding			
	<u>All</u>	<u>All But a Few</u>	<u>More Than Half</u>	<u>Half Or Less</u>
Armington	16.7	50.0	22.9	10.4
Atlanta	26.2	53.3	14.0	6.5
Danvers	23.3	62.9	10.3	3.4
Hopedale	17.0	56.0	11.0	16.0
McLean	25.0	56.7	16.7	1.7
Minier	14.9	58.6	19.5	6.9
Stanford	16.4	64.2	11.9	7.5
Waynesville	22.7	54.5	9.1	13.6
DISTRICT-WIDE	20.7	57.4	14.0	8.0

**QUESTION 31**

In your opinion, the arrangements provided for bussing of participants involved in extra-curricular activities are:

	Per Cent Responding	
	<u>Satisfactory</u>	<u>Unsatisfactory</u>
Armington	87.3	12.7
Atlanta	79.4	20.6
Danvers	82.6	17.4
Hopedale	82.9	17.1
McLean	84.9	15.1
Minier	85.6	14.4
Stanford	92.9	7.1
Waynesville	90.7	9.3
DISTRICT-WIDE	84.5	15.5

In which elementary attendance center do you reside? Check only one.

<u>Elementary Attendance Center</u>	<u>Per Cent Responding</u>
Armington	8.2
Atlanta	16.8
Denvers	16.9
Hopedale	13.6
McLean	10.2
Minier	16.4
Stanford	10.6
Waynesville	4.2
No Answer	3.2

## QUESTION 33

What is your sex?

	<u>Per Cent Responding</u>	
	<u>Male</u>	<u>Female</u>
Armington	42.3	57.7
Atlanta	43.9	56.1
Denvers	44.7	55.3
Hopedale	41.5	58.4
McLean	45.1	54.9
Minier	42.0	58.0
Stanford	42.7	57.3
Waynesville	40.6	59.4
DISTRICT-WIDE	43.2	56.8





BEST COPY AVAILABLE

## QUESTION 34

## Employment Status

	Per Cent Responding		
	<u>Employed Outside The Home</u>	<u>Not Employed Outside The Home</u>	<u>Retired</u>
Armington	47.3	14.2	10.5
Atlanta	62.1	23.3	14.6
Danvers	50.6	17.7	11.6
Hopedale	43.7	40.8	15.5
McLean	57.8	12.5	9.7
Minier	53.8	19.1	17.1
Stanford	52.7	19.1	14.3
Waynesville	53.7	12.6	13.7
DISTRICT-WIDE	53.1	12.5	14.4

OCCUPATIONS LISTED

- |  |                                      |
|--|--------------------------------------|
| 1. Teacher--58<br>Part-time--2                           | 11. Kitchen Helper--3                |
| 2. Registered Nurse--13<br>Part-time--3<br>Instructor--1 | 11. Maintenance Man--9               |
| 3. Factory Worker--69<br>Part-time--3                    | 20. Mental Health Technician--4      |
| 4. Technician--2   | 21. LPH--2                           |
| 5. Secretary--53<br>Part-time--3                         | 22. Resident Assistant--1            |
| 6. Farmer--138   | 23. Nurse's Aide--12<br>Part-time--1 |
| 7. Court Reporter--1                                     | 24. Student--15                      |
| 8. Office Worker--31<br>Part-time--4                     | 25. Bookkeeper--16<br>Part-time--4   |
| 9. Self-employed--18                                     | 26. Barber--5                        |
| 10. Substitute Teacher--6                                | 27. Librarian--2<br>Part-time--1     |
| 11. Laborer--10  | 28. Sheet Metal Worker--1            |
| 12. Farmworkers--6<br>Part-time--1                       | 29. Machine Operator--10             |
| 13. Truck Driver--17                                     | 30. Stationary Engineer--1           |
| 14. Construction Worker--14                              | 31. Carpenter--6                     |
| 15. Sales--17<br>Part-time--2                            | 32. Beautician--6<br>Part-time--1    |
| 16. Waitress--6<br>Part-time--3                          | 33. Insurance salesman--2            |
| 17. Cook--10   | 34. Brakeman--1                      |
|  | 35. Machinist--17                    |
|  | 36. Insurance--6                     |
|  | 37. Accountant--6                    |
|  | 38. Clerk--42<br>Part-time--1        |

- 39. Homemaker--2
- 40. Domestic--5  
    Part-time--1
- 41. Buyer--1
- 42. Businessman--8
- 43. Mechanic--6
- 44. Sales Clerk--6  
    Part-time--1
- 45. Business Manager--8
- 46. Factory Assembly--9
- 47. Veterinarian--1
- 48. Physician--3
- 49. Lab Analyst--1
- 50. Not Applicable--3
- 51. Department Manager--23
- 52. Store Owner--11  
    Part-time--1
- 53. Supervisors--13
- 54. Heavy equipment operator--3
- 55. Commercial Artist--1
- 56. Printer--2
- 57. Gas Fitter--1
- 58. Illustrator--1
- 59. Gasman--1
- 60. Operating Engineer--5
- 61. Construction Electrician--3
- 62. Caseworker--2
- 63. Service Man--6
- 64. Painter--4
- 65. City--3  
    Part-time--1
- 66. State--2
- 67. Federal--3
- 68. None--1
- 69. Navy--1
- 70. Kiln Worker--1
- 71. Bank Teller--2
- 72. Banking--5
- 73. Warehouseman--4
- 74. Receptionist--3
- 75. Engineer--2
- 76. Asst. Engineer--1
- 77. Contractors--3
- 78. Field Engineer--1
- 79. Groundworker--1
- 80. Computer Operator--4
- 81. Research Assembler--2
- 82. Professional--3
- 83. X-Ray Technician--1
- 84. Clergyman
- 85. Education--9  
    Part-time--4
- 86. Bartender--2
- 87. Cashier--6
- 88. Composer--1
- 89. Programmer Analyst--4
- 90. Boiler Fireman--3
- 91. Slave--1
- 92. Retired--5
- 93. Mason Worker--3
- 94. Reporter--3
- 95. Welder--4
- 96. Bus Driver--3
- 97. Agronomist--1
- 98. Seamstress--1
- 99. RR Engineer--1
- 100. Mail Carrier--3
- 101. Lab Technician--1
- 102. Inspector--4
- 103. Communications Consultant--1
- 104. SS Attendant--2
- 105. Guidance Counselor--1
- 106. Systems Analyst--1
- 107. Telephone Operator--1
- 108. Traffic Engineer--2
- 109. Hod Carrier--1
- 110. Tire Builder--1
- 111. Tool Grinder--1
- 112. Millwright--2
- 113. Meat Cutter--2
- 114. Barge Line Captain--1
- 115. RR Carman--2
- 116. Babysitting--3
- 117. Leadman--1
- 118. Police--2
- 119. Glass Worker--1
- 120. Plumber--1
- 121. Research--1
- 122. Real Estate--2
- 123. Industrial Psychologist--1
- 124. Production Scheduler--1
- 125. Ag. Related--1
- 126. Funeral Director--2
- 127. Animal Husbandry--1
- 128. Planning Engineer--1
- 129. Pipefitter--1
- 130. Security Officer--2
- 131. Electroplater--1
- 132. Refuse--1

QUESTION 35

What was your age on your last birthday?

The population of the Olympia District appears to be relatively young with 55.7% of those responding below age 45 and 33.7% below age 35. It must be remembered that only adults were asked to complete survey forms.

	Per Cent Responding					
	<u>Under 25</u>	<u>25-34</u>	<u>35-44</u>	<u>45-54</u>	<u>55-64</u>	<u>65 or over</u>
Arlington	7.7	22.4	20.4	17.9	15.3	16.3
Atlanta	17.3	21.1	21.1	14.3	13.1	13.1
Banvers	6.7	28.5	22.3	15.6	14.1	12.9
Bojdale	7.9	21.6	24.9	16.4	12.8	16.4
McLean	10.7	23.4	24.6	17.2	11.1	13.1
Linier	8.1	18.8	19.3	19.3	17.0	17.5
Stanford	10.6	21.7	25.2	15.4	12.6	14.6
Jaynesville	18.8	34.7	17.8	12.9	5.9	9.9
DISTRICT-WIDE	10.5	23.2	22.0	16.3	13.4	14.6



## QUESTION 36

How many years of school did you finish?

More than 75% of the respondents have completed at least a high school education (76.4%), while 35.9% have some education beyond high school.

## Per Cent Responding

	<u>None, or up to 7 years of Elementary School</u>	<u>8 years Elementary School Graduate</u>	<u>9-11 years Some High School</u>	<u>12 years-- High School Graduate</u>
Armington	3.6	8.2	13.4	44.8
Atlanta	2.8	9.2	10.4	42.0
Danvers	2.7	10.4	11.7	36.8
Hopedale	3.1	13.0	5.6	37.2
McLean	2.9	5.3	6.1	38.1
Minier	1.5	12.3	13.8	39.0
Stanford	3.6	11.7	8.5	44.1
Waynesville	2.0	5.0	9.0	54.0
DISTRICT-WIDE	2.8	10.3	10.6	40.5
	<u>Trade or Commercial School Beyond High School</u>	<u>13-15 Years Some College</u>	<u>16 years College Graduate</u>	<u>Master's Degree or Higher</u>
Armington	8.8	13.9	5.7	1.5
Atlanta	8.7	13.5	13.7	2.8
Danvers	9.0	15.2	13.7	3.5
Hopedale	6.2	16.7	10.8	3.4
McLean	9.0	20.1	15.2	3.3
Minier	6.4	12.3	9.7	4.9
Stanford	6.1	16.6	7.7	1.6
Waynesville	9.0	9.0	3.0	4.0
DISTRICT-WIDE	7.7	14.8	10.1	3.3

## QUESTION 37

Are you the head of the household?

## Per Cent Responding

	<u>Yes</u>	<u>No</u>
Armington	50.5	49.5
Atlanta	50.3	49.7
Danvers	54.5	45.3
Hopedale	51.6	48.4
McLean	52.1	47.3
Minier	54.3	45.7
Stanford	53.2	46.3
Waynesville	47.3	52.6
DISTRICT-WIDE	52.5	47.5

## QUESTION 38

Which is his/her sex?

## Per Cent Responding

	<u>Male</u>	<u>Female</u>
Armington	60.1	39.9
Atlanta	60.1	39.9
Danvers	58.1	41.9
Hopedale	54.5	45.5
McLean	58.1	41.9
Minlar	56.6	43.4
Stanford	55.4	44.6
Waynesville	56.2	43.8
DISTRICT-WIDE	57.4	42.6

## QUESTION 39

Employment Status:

## Per Cent Responding

	<u>Employed Outside The Home</u>	<u>Not Employed Outside The Home</u>	<u>Retired</u>
Armington	49.0	33.8	17.2
Atlanta	60.0	26.9	13.1
Danvers	55.6	35.3	9.1
Hopedale	51.1	36.6	12.3
McLean	61.4	30.5	8.1
Minlar	54.8	30.4	14.9
Stanford	59.5	30.5	10.0
Waynesville	61.8	30.3	7.9
DISTRICT-WIDE	56.3	31.8	11.9

OCCUPATIONS LISTED

- |                               |                                 |
|-------------------------------|---------------------------------|
| 1. Machine Operator--7        | 25. Plumber--2                  |
| 2. Housewife--5               | 26. SS Attendant--2             |
| 3. Supervisor--13             | 27. Distributor--2              |
| 4. Printer--3                 | 28. Contractor--5               |
| 5. Nurses Aide--3             | 29. Physician--4                |
| 6. Computer Operator--4       | 30. Tax Consultant--1           |
| 7. Systems Analyst--3         | 31. Accountant--3               |
| 8. Computer Programmer--5     | 32. Clergyman--4                |
| 9. Truck Owner--1             | 33. Police--3                   |
| 10. Maintenance Man--13       | 34. State--3                    |
| 11. Water Station Operator--1 | 35. Federal--2                  |
| 12. Real Estate--2            | 36. County--3                   |
| Part-time--1                  | 37. Brickmason--6               |
| 13. Bus Driver--3             | 38. Mod Carrier--1              |
| 14. Assembler--5              | 39. Heavy Equipment Operator--5 |
| 15. Heat Cutter--1            | 40. Librarian--1                |
| 16. Educator--5               | 41. Librarian's Aide--1         |
| 17. Welder--5                 | 42. Captain - Barge Co.--1      |
| 18. Insurance--11             | 43. Veteranarian--1             |
| 19. Barber--5                 | 44. Mail Carrier--2             |
| Part-time--1                  | 45. Bartender--1                |
| 20. Professional--2           | 46. Mental Health Technician--3 |
| 21. Medical Technologist--1   | 47. Refrigeration Controller--1 |
| 22. Serviceman--7             | 48. Inspector--4                |
| 23. Engineer--7               | 49. Window Man--1               |
| 24. Cashier--3                | 50. Agronomist--1               |

- |                           |                             |
|---------------------------|-----------------------------|
| 51. Brakeman--2           | 50. Farmers--147            |
| 52. Clockman--1           | Part-time--1                |
| 53. Baker--1              | 51. Truck Driver--30        |
| 54. Abstract Work--2      | 92. Factory Worker--50      |
| 55. Lineman--2            | Part-time--1                |
| 56. Clothes Designer--1   | 93. Laborers--25            |
| 57. Switchman--2          | 94. Office Worker--20       |
| 58. Commercial Artist--1  | 95. Cook--6                 |
| 59. Reporter--3           | 96. Self-employed--13       |
| 60. Trackman--1           | 97. Registered Nurse--7     |
| 61. Bldg. & Trades--1     | Part-time--3                |
| 62. Analyst--3            | 98. Department Manager--5   |
| 63. Warehouse Worker--2   | 99. Education--7            |
| 64. Telephone Operator--1 | 100. Clerk--24              |
| 65. Lab Analyst--1        | Substitute--1               |
| 66. Painter--1            | Part-time--4                |
| 67. Inventory Control--3  | 101. Salesman--15           |
| 68. Journeyman--1         | Part-time--3                |
| 69. Podiatry--1           | 102. Carpenter--8           |
| 70. LPN--2                | 103. Substitute Teachers--5 |
| 71. Tank Teaser--1        | 104. Farm Worker--8         |
| 72. Savings Consultant--1 | Part-time--2                |
| 73. Teacher's Aide--1     | 105. Machinist--11          |
| 74. Banking--2            | 106. Waitress--2            |
| 75. Proof Cutter--1       | 107. Beautician--4          |
| 76. Millwright--3         | 108. Bookkeeper--8          |
| 77. Photographer--2       | 109. Tool & Die Maker--4    |
| 78. Iron Worker--1        | 110. Businessman--8         |
| 79. Custom Work--1        | 111. Business Owner--11     |
| 80. Compositor--1         | 112. Sales Clerk--3         |
| 81. Health Services--1    | 113. Mechanic--5            |
| 82. Disabled--1           | 114. Student--2             |
| 83. Security Guard--2     | 115. Domestic--5            |
| 84. Pipefitter--2         | Part-time--1                |
| 85. RR Carman--2          | 116. Electrician--6         |
| 86. Boiler Fireman--1     | 117. Department Manager--7  |
| 87. X-Ray Technician--1   | 118. Business Manager--7    |
| 88. Teachers--35          | 119. Navy--1                |
| 89. Secretary--29         | 120. Not Relevant--1        |
| Part-time--2              |                             |

## QUESTION 40

What was his/her age on his/her last birthday?

The date for this question agree quite closely with the data from question 35.

## Per Cent Responding

	<u>Under 25</u>	<u>25-34</u>	<u>35-44</u>	<u>45-54</u>	<u>55-64</u>	<u>65 or over</u>
Armington	9.1	29.8	33.9	21.5	18.2	20.7
Atlanta	13.5	21.8	21.5	17.2	12.9	13.2
Danvers	4.6	30.7	24.4	18.1	13.5	8.6
Hopedale	5.1	23.1	28.2	18.4	11.9	13.4
McLean	8.8	23.3	26.0	20.5	12.1	9.3
Minier	6.1	19.7	23.2	20.3	17.4	13.2
Stanford	8.9	21.6	25.8	19.2	16.0	8.5
Waynesville	16.7	41.0	25.6	15.4	6.4	10.3
DISTRICT-WIDE	8.1	24.2	24.3	18.2	13.4	11.7

QUESTION 41

How many years of school did he/she finish?

Per Cent Responding

	<u>None, or up to 7 years of Elementary School</u>	<u>8 years-Elementary School Graduate</u>	<u>9-11 years Some High School</u>	<u>12 years--High School Graduate</u>
Armington	5.5	8.5	13.9	43.0
Atlanta	3.4	8.5	10.5	43.0
Danvers	2.6	9.2	11.8	38.9
Hopedale	4.0	10.9	8.0	41.3
McLean	4.2	5.6	7.5	37.6
Minier	3.8	11.2	16.3	40.4
Stanford	2.4	8.1	10.0	53.1
Waynesville	2.2	5.6	6.7	59.6
DISTRICT-WIDE	3.3	9.1	11.1	42.8

	<u>Trade or Commercial School Beyond High School</u>	<u>13-15 Years Some College</u>	<u>16 years College Graduate</u>	<u>Master's Degree or Higher</u>
Armington	10.3	12.1	4.8	1.8
Atlanta	9.1	14.8	8.3	2.3
Danvers	9.2	14.4	9.8	4.0
Hopedale	5.8	13.4	13.4	3.3
McLean	9.4	16.9	14.6	4.2
Minier	5.1	11.5	9.0	3.8
Stanford	8.1	11.4	6.6	0.5
Waynesville	6.7	10.1	5.6	3.4
DISTRICT-WIDE	7.9	13.3	9.5	3.0





QUESTION 42

What was your approximate gross family income for 1972?

Almost 30% of those responding indicated a gross family income of \$15,000 or more, while over 60% indicated a gross family income of \$10,000 or more.

Per Cent Responding

	Under \$4,000	\$4,000-5,999	\$6,000-9,999	\$10,000-14,999	\$15,000-19,999	\$20,000 or over
Armington	12.5	11.1	19.4	26.4	8.3	22.2
Atlanta	7.7	10.0	22.8	37.3	12.5	9.7
Danvers	11.5	7.5	20.2	34.0	13.0	13.8
Hopedale	9.4	7.2	15.2	33.0	11.2	23.9
McLean	3.7	5.5	16.1	30.9	17.1	26.7
Minier	12.4	10.6	17.0	29.7	15.2	15.2
Stanford	7.8	9.6	16.9	35.2	15.5	15.1
Waynesville	10.2	9.1	28.4	29.5	15.9	6.8
DISTRICT-WIDE	9.5	8.9	18.9	32.7	13.5	16.4

