

DOCUMENT RESUME

ED 081 520

RC 007 227

TITLE Migrant Programs in Florida.
INSTITUTION National Migrant Information Clearinghouse, Austin,
Tex. Juarez-Lincoln Center.
SPONS AGENCY Office of Economic Opportunity, Washington, D.C.
PUB DATE Jul 73
NOTE 106p.
AVAILABLE FROM Juarez-Lincoln Center, National Migrant Information
Clearinghouse, 3001 South Congress Ave., Austin,
Texas 78704 (\$2.00)

EDRS PRICE MF-\$0.65 HC-\$6.58
DESCRIPTORS Agriculture; Community Migrant Projects;
*Directories; Health Services; Manpower Needs;
*Migrant Education; Migrant Housing; *Migrants;
*Program Descriptions; Rural Areas; *Seasonal Labor;
Statistical Data

IDENTIFIERS *Florida

ABSTRACT

As the last of 3 directories, this lists services available to migrants in Florida. Migrant programs, Community Action Agencies, and labor camps in the state are identified by county. Information for each county includes total population, estimated migrant population, migrant labor demand, estimated migrant wages, crops, work periods, migrant programs, migrant labor camps and their licensed capacity. The appendix gives a brief discussion of the methodology used to survey Florida's migrant programs; a brief description of the East Coast Migrant Health Project; farm labor by county; Florida farm wages; and a map of Florida based migrants in the United States. (NQ)

ED 081520



MIGRANT PROGRAMS IN FLORIDA

U.S. DEPARTMENT OF HEALTH
EDUCATION & WELFARE
NATIONAL INSTITUTE OF
EDUCATION

THIS DOCUMENT HAS BEEN REPRODUCED EXACTLY AS RECEIVED FROM THE PERSON OR ORGANIZATION ORIGINATING IT. POINTS OF VIEW OR OPINIONS STATED DO NOT NECESSARILY REPRESENT OFFICIAL NATIONAL INSTITUTE OF EDUCATION POSITION OR POLICY.

**NATIONAL MIGRANT INFORMATION
CLEARINGHOUSE**

JUÁREZ-LINCOLN CENTER

July 1973

The Juárez-Lincoln Graduate School has received a grant from the U.S. Office of Economic Opportunity, for the establishment of a special migrant project. Funding of the Juárez-Lincoln Graduate School was received through the Colorado Migrant Council and Antioch College. The Juárez-Lincoln Graduate School has selected the materials contained herein for dissemination, and this decision does not necessarily reflect the position or policies of the Colorado Migrant Council or Antioch College.

The project reported in this report was performed pursuant to a grant from the U. S. Office of Economic Opportunity. The opinions expressed herein represent solely the views and opinions of the Juárez-Lincoln Graduate School, but do not necessarily reflect the position or policy of the U. S. Office of Economic Opportunity, and no official endorsement of said office should be inferred.

\$ 2 ⁰⁰

Juárez-Lincoln Center
National Migrant Information Clearinghouse
3001 South Congress Ave.
Austin, Texas 78704
(512) 444-1863



JUÁREZ-LINCOLN CENTER

3001 S. Congress, Austin, Texas 78704

Phone (512) 444-1863

National
Migrant
Information
Clearinghouse

Colorado
Migrant
Council

Dear Sir(s):

MIGRANT PROGRAMS IN FLORIDA was developed by a grant from the U. S. Office of Economic Opportunity, Migrant Division, to the Colorado Migrant Council's Juarez-Lincoln Graduate Center. This book is the last in a series of three and follows MIGRANT PROGRAMS IN TEXAS and MIGRANT PROGRAMS IN CALIFORNIA. With these three volumes we have attempted to document programs serving migrants in the home-base states.

This handbook was compiled for use by agencies working with migrant farm workers. It is our objective that in the utilization of this directory, the awareness of programmatic services and needs of migrant farm workers will be increased.

Sincerely yours,

ANDRE GUERRERO, M. Ed.
Co-Director

LEONARD J. MESTAS, Ed. D.
Co-Director

AG/LJM/ad

JUAREZ-LINCOLN CENTER STAFF

Frank Carrasco, M. Ed. Director of Research
Oscar Cerda Logistics and Supply Manager
M. Arnold Chavez, M. Ed. Deputy Director
Nydia C. Cuevas Receptionist
Annie Dalton Secretary
Manuel Escamilla, M. Ed. . . . Director of Field Operations
Juan Gallardo Research Abstract Specialist
Carmen Lomas Garza, M. Ed. Illustrator
Andre Guerrero, M. Ed. Co-Director
Larry Hill, M.L.S. Librarian
William Manzanares Field Data Specialist
Leonard J. Mestas, Ed. D. Co-Director
Gloria Rivera Secretary
Maria Lucia Trujillo Executive Secretary

GOVERNING BOARD

Colorado Migrant Council

Ralph Martinez Director
Pete Moreno Chairman of the Board

INTRODUCTION

The situations and programs encountered by migrant farm workers in Florida are similar to the situations and programs encountered in the other home-base states of Texas and California.

According to the Florida Legislative Commission, in the peak period of migrant employment, March 15, 1972, approximately 68,657 migrant farm workers were employed in Florida. Of this number, 50,288 were considered local migrants (seasonals); 4,100 were classified as intra-state and 14,268 came from other parts of the United States. In 1971 they reported 75,000 hired field workers; 29% were non-Florida residents. Of these 29% the West Indies accounted for 10% of the hired field workers. The remaining 19% of the hired field-workers came from other parts of the United States.

In a study conducted by the University of Miami, migrant farm labor in Palm Beach County was analyzed.

The 1968-69 study re-emphasized the migrant situation. The following is an abstract of the study:

Primarily migrant farm workers were employed in harvesting of vegetables, citrus and flowers. The life expectancy of a migrant was 49 years as opposed the average life expectancy age of 62 years; (at the time the study was taken).

The housing provisions for migrants were considered inadequate. Housing conditions affected the migrant's health, not only physical but also emotional. Structural defects in housing caused accidents. Over crowding resulted in emotional problems. Also, over crowding and poor sanitation and water facilities encouraged the spread of communicable disease.

The migrant farm workers were found to be in poor health. They had poor diets and were eating, in some cases, food that was spoiled. This was attributed to lack of income, and lack of kitchen facilities both for cooking and storage.

Unfortunately, the migrant situation has changed little in Florida.

On March 17, 1973, the New York Times reported that a farm labor contractor (crew leader) was charged with "imprisoning" 28 Black migrant workers. Workers were reported "saying they worked in the fields daily working for promised wages but wound up owing the contractor money". The camp was described as a "squalid reeking collection of 9 by 9 foot cement block cubicles clustered amid tomato fields and mango groves".

More recently in Homestead, Florida, the migrant farm worker was brought into the news by a typhoid epidemic which hospitalized 200 people. The cause of the epidemic was traced to faulty water distribution which caused drinking water to become contaminated.

And so the migrants' problems continue. Migrant programs in Florida are attempting to confront and resolve the problems with some success. At the State level, the Legislative Migrant Commission and the Governor's Coordinating Task Force on Migrant and Rural Poor are wrestling with methods and solutions to assist the migrant farm worker.

In its final report the Governor's Task Force made the following recommendations:

SUMMARY OF RECOMMENDATIONS

1. Increase coordination of services to and planning for farm workers and rural poor through use of existing and proposed planning and coordinating structures.
2. Establishment of inter-agency committees composed of local agency personnel to coordinate service delivery; increase accessibility of services through:
 - a. location of service offices in close proximity.
 - b. development of transportation systems in to the offices from outlying areas and between existing offices located some distance apart.
 - c. Establishment of a direct line or central telephone number (possibly by county or region) to call in order to find out about the availability of local services.
3. Increase the number of paraprofessional positions in the State Career Service with special emphasis on locating as many as possible in rural areas of the State, and on allowing career advancement based on experience as well as education.
4. Establishment of a data control center in the Division of Planning for all State agencies where information on all types of data collected would be located, through which data requests would be channeled, and where information needed could be determined.
5. Enactment of legislation for agricultural workers in the areas of minimum wage, unemployment compensation, workmen's compensation, child labor, and field sanitation.
6. Affirm, by word and action, that it is the policy of the State of Florida to assure for farm workers free collective bargaining power substantially equal to the power enjoyed by their employers.
7. State participation in the provision of legal services to the indigent.
8. Establish a generalist (service advocate) position as being developed by HRS, to be utilized by all State Agencies within a defined geographical area.
9. Formation of departmental committees in each State agency concerned with the delivery of services to migrants and rural poor modeled after that of HRS in order to:
 - a. more effectively respond to currently identified needs and
 - b. anticipate future needs through comprehensive research and planning
10. Endorsement of the Community Action Agency as a model for obtaining client group input to State agencies. This would include the establishment of mechanisms for communication channels and increasing the number of rural counties covered by Community Action Agencies or similar structures.

11. Establish a set of guidelines for the delivery of services to borderline poor.
12. Designate a single agency in Florida to be charged with the responsibility of providing immediate short-term assistance to individuals in response to crisis situations. This would include the coordinated planning and distribution of Federal Emergency Food and Medical Services funds.
13. Enlarge responsibilities of the Division of State Planning to include review and coordination of all Federally funded programs active in Florida and establish procedures with Federal agencies to insure that adequate and timely information about all applications for Federal assistance and Federally sponsored developmental projects is furnished to the Bureau of Intergovernmental Relations, which functions as the State Planning and Development Clearinghouse.
14. Develop strong role for the State in the Coordination and provision of services to Indians in Florida.
15. Request that each agency resolve the problems identified with that agency, as listed in the sections pertaining to need areas and general problems.
16. Provide for follow-up procedures regarding the implementation of the recommendations contained in this report. This should be accomplished through a request from the Office of the Governor for Progress reports from the agencies and offices involved in implementation at the intervals of six months and one year.

Given the information in this publication, migrant programs and other interested agencies or individuals now have a foundation upon which to build to assist migrants in Florida.

TABLE OF CONTENTS

	<u>Page</u>
INTRODUCTION	i
MIGRANT PROGRAMS	
Brevard County	1
Broward County	3
Charlotte County	9
Collier County	11
Dade County	15
Duval County	22
Flagler County	24
Glades County	25
Hardee County	26
Hendry County	28
Highlands County	30
Hillsborough County	32
Indian River County	35
Lake County	37
Lee County	38
Leon County	41
Manatee County	46
Martin County	49
Okeechobee County	52
Orange County	54
Osceola County	59
Palm Beach County	60
Pasco County	71
Polk County	73
Putnam County	77
St. John's County	78
St. Lucie County	80
Sarasota County	83
Seminole County	86
Sumter County	89
Volusia County	90

APPENDIX

Page

Methodology For The Survey	A
East Coast Migrant Health Project	B
Florida Farm Wages	C
Farm Labor By County	D
Map of Florida Based Migrant Population in U. S.	E

MIGRANT PROGRAMS

1

BREVARD COUNTY

GENERAL INFORMATION

Total Population: 230,006 (1970)
Estimated Migrant Population: 965 (January)
Migrant Labor Demand: Information not available
Estimated Migrant Wages: \$1.50 - \$2.00 per hr.

CROPS OF COUNTY AND WORK PERIODS

<u>Name of Crop</u>	<u>Harvest Work Period</u>	<u>Other Work Periods</u>
Oranges	November 1-June 30	
Grapefruit	November 1-June 30	
Temples	November 1-June 30	
Tangelos	November 1-June 30	
Tangerines	November 1-June 30	
Murcotts	November 1-June 30	

MIGRANT PROGRAMS IN COUNTY

Title I Migrant Education
Monroe Center
705 Avocado Avenue
Cocoa, Florida 32922
305 632-2510

Funded by: U.S.D.H.E.W.
Service Area: Brevard County
Migrant Population Served: 21
Migrant Population Not Served: Information not available

One Program for migrant education is provided in this county at Mims Elementary School in Mims, Florida. Their target population are migrant children ages 4-5 inclusive. The objective of the program is to provide positive experiences for the migrant child and to develop language, social and cognitive skills.

Brevard County Community Action Agency, Inc.
2460 N. Courtenay Parkway
Merrit Island, Florida 32952
305 632-6114

Funded by: U.S.D.O.L., U.S.D.H.E.W., U.S.O.E.O. and State of Florida.
Service Area: Brevard County
Migrant Population Served: 350 per month during migrant season
Migrant Population Not Served: Information not available

Under this Community Action Agency, migrant farm workers are served in a program called "Project Companion". They provide emergency food, clothing, transportation and relief assistance to migrants enroute. This county is not agricultural but rather lies in the "migrant stream". Migrants in transit through Florida go through Brevard County.

Service Center Sites for this program are located at:

Harry T. Moore Social Service Center 311 Avocado Avenue Cocoa, Florida 32922 305 632-6114	Peter Wright Social Service Center 615 New Haven Avenue Melbourne, Florida 32901 305 727-1412
--	--

Palmetto Social Service Center
1025 Palmetto St.
Titusville, Florida 32780
305 269-7273

Agencies that might serve Migrants

Some programs administered by the State of Florida are designed to assist low-income people. Migrants might be able to receive assistance from these programs. Each office should be contacted to determine to what extent they might assist migrant farm workers.

Division of Family Services
P O Box 3387
550 St. Johns St.
Cocoa, Florida 32922
305 636-2933

Vocational Rehabilitation Division
1229 S. Florida Avenue
Rockledge, Florida 32955
305 636-8015

Florida State Employment Service
840 Forest Avenue
Cocoa, Florida

Florida State Employment Service
405 E. New Haven Avenue
Melbourne, Florida

Migrant Labor Camps

Funded by: Privately owned
Service Area: Brevard County
Migrant Population Served: 40
Migrant Population Not Served: Information not available

In 1959 the State of Florida enacted a law by which migrant labor camps must be licensed if they provide housing for fifteen or more seasonal temporary or migrant workers. Even if rent is not paid, camps used for occupancy must be licensed. In order to be licensed, camps must meet minimum standards in areas such as housing space, sanitation and water supply. Local health departments have these regulations available to the public.

In this county there is one licensed labor camp with the licensed capacity indicated.

<u>Name of Camp</u>	<u>Licensed capacity</u>
Mims Citrus Growers Association	40

BROWARD COUNTY

GENERAL INFORMATION

Total Population: 620,100
Estimated Migrant Population: 14,000 (January)
Migrant Labor Demand: Information not available
Estimated Migrant wages: \$1.50 - \$2.50 per hr.

CROPS OF COUNTY AND WORK PERIODS

<u>Name of Crop</u>	<u>Harvest Work Period</u>	<u>Other Work Periods</u>
Snap Beans	October 15-June 15	
Eggplant	October 1-August 1	
Green Peppers	October 20-July 1	
Squash	September 1-July 1	
Tomatoes	October 20-July 1	August 30-May 15
Oranges	October 15-June 30	
Grapefruit	October 15-June 30	
Temples	October 15-June 30	
Tangelos	October 15-June 30	
Tangerines	October 15-June 30	
Sweet Corn	September 25-July 10	September 15-May 30

MIGRANT PROGRAMS IN COUNTY

Broward County Migrant Health Project
Pompano Labor Camp
Hammondville Road
Pompano Beach, Florida
305 972-6450

Funded by: U.S.D.H.E.W. and Broward County Health Department
Service Area: Broward County
Migrant Population Served: 1576
Migrant Population Not Served: 10,424

This migrant health program has been providing services despite a reported lack of personnel and lack of equipment in dental clinics. Services provided include: immunizations, physical examinations, chest x-rays screening, T.B. testing, family planning, nursing care, maternity and V.D. clinics and hospital and dental referrals.

This program has a policy advisory board consisting of 9 members; five consumers and 4 non-consumer members.

Community Action Migrant Program, Inc.
Region V
921 N.W. 6th Avenue
Pompano Beach, Florida 33062
305 543-3033

Funded by: U.S.D.H.E.W.; U.S.O.E.O.
Service Area: Broward County
Migrant Population Served: 1,919
Migrant Population Not Served: Information not available

The regional offices of the CAMP program are involved in delivering a variety of services to the migrant farm worker population. Services rendered include occupational, educational and sustenance assistance.

The regional office provides job placement in upward mobility jobs, refers migrants to training programs and provides stipends and contracts with various programs to provide remedial education and English language training.

In the area of education early childhood development programs are offered and referrals made to colleges, vocational education programs, High School Equivalency Programs and adult basic education classes.

Health referrals are also provided to children that are not enrolled in local head start programs.

Elderly migrants are provided with meals and social services.

General services such as funds for food and medical assistance, assistance in school desegregation and sponsoring food co-ops are also provided.

Pompano Beach Migrant Manpower Delivery System
1108 Hammondville Road
Pompano Beach, Florida 33063
305 781-4220

Funded by: U.S.D.O.L.
Service Area: North Broward County
Migrant Population Served: 450
Migrant Population Not Served: Information not available

This program attempts to provide vocational training and supportive services to trainee families.

Trainees are instructed in General Education, Institutional Training and On-the-Job Training. Once the trainee has finished his training the Migrant Manpower Delivery System provides placement and follow-up services to the trainee. Some of the services available to the trainee's family include: health, education, food stamps, day care, housing, legal and financial assistance, relocation and social services.

Community Action Migrant Program, Inc.
Pompano Beach Child Development Center
1781 N.W. Tenth Drive
Pompano Beach, Florida 33062
305 974-6163

Funded by: U.S.D.H.E.W.
Service Area: Broward County
Migrant Population Served: 40
Migrant Population Not Served: Information not available

This child development center serves children from 2 to 5 years of age. The curriculum emphasis is on intellectual, social and emotional development, motor skill development and oral language development.

Supportive services provided include hot lunches and snacks, transportation to and from the center, physical examinations, and follow-up medical care.

Migrant Child Care Center of North Broward, Inc.
1551 N.W. 10th Drive
Pompano Labor Camp
Pompano Beach, Florida 33062
305 972-4460

Funded by: Private Sources
Service Area: Pompano Labor Camp and North Broward County
Migrant Population Served: 70
Migrant Population Not Served: Information not available

This program provides comprehensive services to children of the labor camp. Both infant care and child care are provided. Children enrolled are from ages 5 months to 5 1/2 years old. The program operates year round except for the month of July.

Services provided by the center include basic early childhood education, meals, immunizations, physical examinations and screening.

Blanche Ely Community Career Complex
801 N.W. 10th St.
Pompano Beach, Florida 33060
305 943-3933

Funded by: U.S.D.O.L.; U.S.O.E.O.
Service Area: Broward County
Migrant Population Served: Approximately 110
Migrant Population Not Served: Information not available

Operated under the Adult Migrant Education program, this program offers counseling, job related education, occupational training and supportive services to eligible adult migrant or seasonal farm workers in hopes of creating upward job mobility.

Supportive services offered in this program vary from transportation being provided to and from the training center to stipends being provided for training. (For more information see the Adult Migrant Education profile in Leon County.)

Migrant Labor Camps

Funded by: Privately owned
Service area: Broward County
Migrant Population Served: 3,388
Migrant Population Not Served: Information not available

In 1959, the State of Florida enacted a law by which migrant labor camps must be licensed if they provide housing for fifteen or more seasonal, temporary or migrant workers. Even if rent is not paid, camps used for occupancy must be licensed. In order to be licensed, camps must meet minimum standards in areas such as housing space, sanitation and water supply. Local health departments have these regulations available to the public.

In this county there are eight licensed labor camps with the licensed capacity indicated.

<u>Name of Camp</u>	<u>Licensed Capacity</u>
Bruschi's Duplexes	76
Four Point Camp	114
Pompano Harness Raceway	741
Pompano Farm Labor Camp	2140
W.W. Cheshire Farms	62
Hinson Brothers Farm Housing	49
Scott-Mattson Farms, Inc.	144
John I. Whitworth Wiles Farm Housing	62

Community Action Migrant Program, Inc.
3521 W. Broward Boulevard
Suite 10
Ft. Lauderdale, Florida 33312
305 584-7880

Funded by: U.S.D.H.E.W.; U.S.O.E.O. Title III-B
Service Area: Brevard, Broward, Charlotte, Collier, Dade, Glades, Hardee, Hendry, Sarasota, Indian River, Lee, Manatee, Martin, Okeechobee, Osceola, Highlands, Hillsborough, Palm Beach, Polk, St. Lucie
Migrant Population Served: 6,292 (six month period)
Migrant Population Not Served: Information not available

The Community Action Migrant Program, Inc. (CAMP) has been in operation for approximately nine years. In that time they have expanded to include seven regional offices in their operation. The primary objectives of CAMP are:

- *To provide emergency food and medical assistance to migrant and seasonal farm workers.
- *To develop cooperative enterprises which will assist farm workers to obtain nutritional foods at lower costs.
- *To provide day care services for migrant children of parents working in the fields or enrolled in training programs. Nineteen child care centers are operated.

*To provide elderly farm workers with nutritionally balanced meals and social services as needed through six or more senior citizens centers.

*To provide jobs, training opportunities, educational and supportive services to farm workers.

*To identify and refer migrant students in post secondary institutions, High School Equivalency programs, Adult Basic Education courses and to assist trainees with financial assistance.

*To provide activities which assist educational institutions in the desegregation of schools.

*To identify and refer migrant pre-school children not enrolled in Head Start for health services.

Additionally, the CAMP is involved in providing training opportunities, development of housing and general referrals.

The main office in Fort Lauderdale is the administrative office. No services are provided by this office. The regional offices provide services. The central office does, however, administer the day care center network.

Community participation is extensive in the CAMP program. Each regional office has a regional council of at least eight members. These members are elected by the consumer population of the area served by the regional office. Regional councils develop all priorities for the regional area. The State office operates under the auspices of a board of directors. Each regional council has at least one member on the board of directors.

CAMP regional offices are located at:

1150 Palmetto St. Bartow, Florida 33830 813 533-0988	P O Box 206 Immokalee, Florida 33934 813 657-3614	58 W. Mowery St. Homestead, Florida 33030 305 247-7730
--	---	--

P O Box 758 Indiantown, Florida 33456 305 597-2178	116 N.E. 10th Ave. Boynton Beach, Florida 33435 305 732-3441
--	--

448 S. W. Avenue "E" Belle Glade, Florida 33430 305 996-7659	921 N.W. 6th Avenue Pompano Beach, Florida 33062 305 943-3033
--	---

Title I Migrant Education
650 N. Andrews Avenue
Ft. Lauderdale, Florida 33310
305 764-5150

Funded by: U.S.D.H.E.W.
Service Area: Broward County
Migrant Population Served: Information not available
Migrant Population Not Served: Information not available

The Title I Migrant Education Programs in this county are Learn and Earn and early childhood development units. Learn and Earn is a vocationally oriented education program intended to reduce the drop-out rate of migrant children. Relocatable mobile learning laboratories are used for education in auto tune-up, supermarket cashiering, hospital patient care, motel housekeeping and agribusiness. The early childhood components are designed to develop the language and social-personal aspect of a child. Primarily the program serves three and four year olds. As part of the early childhood programs children receive breakfast, snacks and lunch. They receive medical examinations and preventive medicine is administered when necessary.

Schools participating in the Learn and Earn program include:

Deerfield Beach, Florida 33441

Deerfield Beach Middle School
720 Robinson St.
305 421-1400

Deerfield Beach High School
910 S.W. 15th St.
305 421-2080

Fort Lauderdale, Florida 33308

Everglades Middle School
2400 N.W. 26th St.
305 731-3500

Richards Middle School
6000 N.E. 9th Avenue
305 772-5990

Hollywood, Florida 33020

Attucks Middle School
3500 N. 22nd Avenue
305 923-0501

Margate, Florida 33063

Margate Middle School
500 N.W. 65th Avenue
305 972-2401

Schools participating in the early childhood development program are:

Dania, Florida 33004

Collins Elementary School
1050 N.W. 2nd
305 922-4516

Deerfield Beach, Florida 33441

Deerfield Park Elementary
627 S.W. 2nd Avenue
305 399-1122

Fort Lauderdale, Florida 33308

Lincoln Park Elementary
600 N.W. 19th
305 524-6574

Sabal Palm Elementary
591 N.W. 31st Avenue
305 584-2110

Hollywood, Florida 33020

Bethune Elementary School
2400 Meade St.
305 922-3591

Oakland Park, Florida 33308

Oakland Park Elementary School
939 N.E. 33rd
305 564-9641

Pompano Beach, Florida 33063

Charles Drew Elementary School
2600 N.W. 9th St. Ct.
305 972-0111

Robert R. Markham Elementary School
1501 N.W. 15th
305 972-2010

Park Ridge Elementary School
5200 N.E. 9th St.
305 421-2093

Agencies that might serve Migrants

Division of Family Services

750 N.E. 36th St.
P O Box 5966
Pompano Beach, Florida 33064
305 946-1404

370 S. E. 2nd St.
Ft. Lauderdale, Florida
305 525-8165

P. O. Box 4065
650 N. Andrews Avenue
Ft. Lauderdale, Florida 33300
305 525-2832

Florida Christian Migrant Ministry
1178 Brant St.
Hollywood, Florida 330250

Vocational Rehabilitation Division
3520 W. Broward Blvd.
Ft. Lauderdale, Florida 33312
305 587-7660

Florida Rural Legal Services
1539 Hammondville Rd.
Pompano Beach, Florida

Florida State Employment Service
105 - 107 E. Broward Blvd.
Fort Lauderdale, Florida

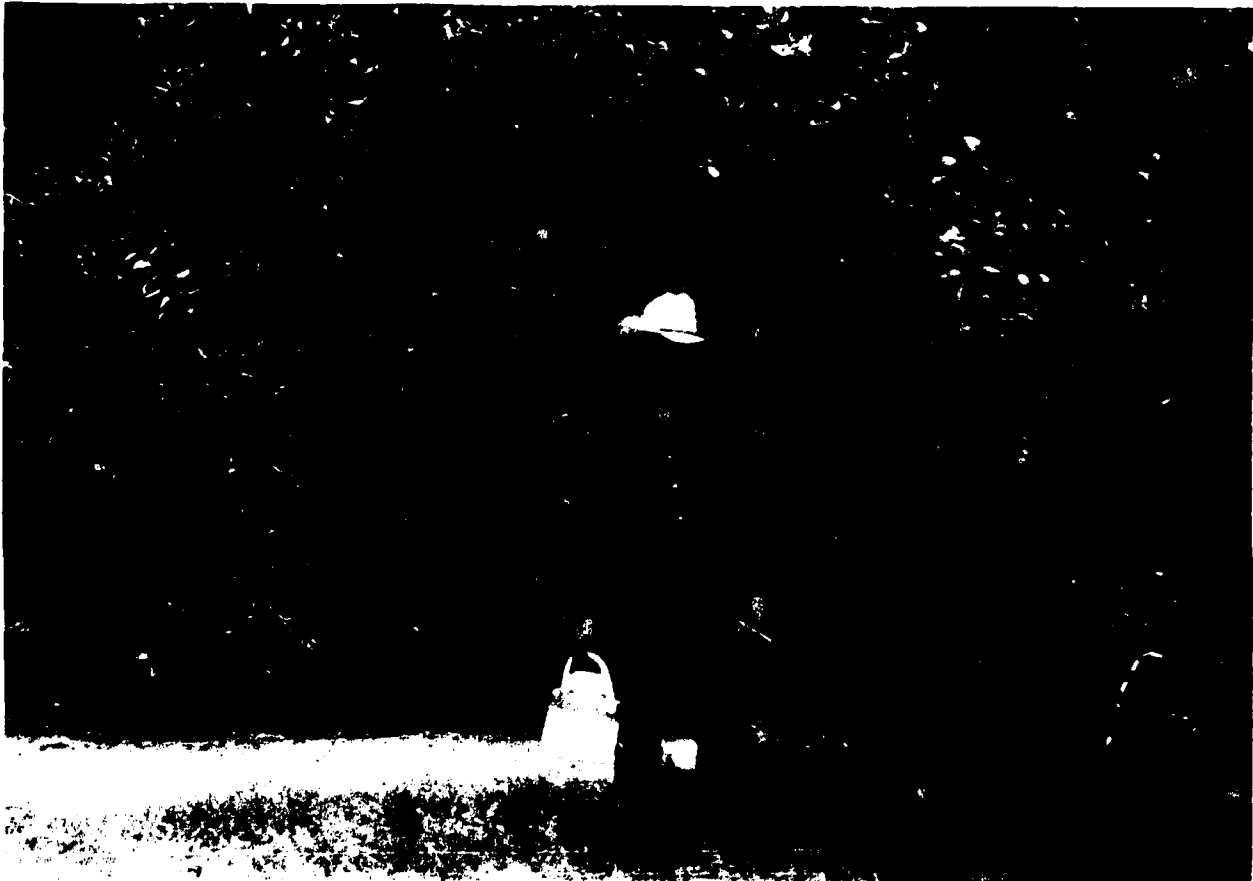
Broward County Migrant Council
2020 S. Andrews Avenue
Ft. Lauderdale, Florida 33316

Florida State Employment Service
4265 Hollywood Blvd.
Hollywood, Florida

Ft. Lauderdale WIN
209 E. Broward Blvd.
Box 1542
Ft. Lauderdale, Florida 33302

Hollywood WIN
5720 Johnson St.
Box 2448
Hollywood, Florida 33022

Economic Opportunity
Coordinating Group
212 N. Andrews Avenue
P O Box 22209
Ft. Lauderdale, Florida 33315
305 522-7458



CHARLOTTE COUNTY

GENERAL INFORMATION

Total Population: 27,559
Estimated Migrant Population: Information not available
Migrant Labor Demand: 900
Estimated Migrant Wages: \$1.50 per hr.

CROPS OF COUNTY AND WORK PERIODS

<u>Name of Crop</u>	<u>Harvest Work Period</u>	<u>Other Work Periods</u>
Cabbage	January 1-April 15	September 1-March 15
Sweetcorn	November 15-June 15	July 25-May 1
Cucumbers	November 1-December 15	August 1-April 1
Peppers	April 20-June 1	August 1-March 15
	November 15-June 15	
Potatoes	January 15-June 1	September 15-March 1
Squash	November 15-May 15	August 15-April 1
Tomatoes	November 15-June 1	July 25-September 1
Watermelons	May 1-July 1	December 15-April 1

MIGRANT PROGRAMS IN COUNTY

Community Action Migrant Program Inc.
Region II
P. O. Box 206
Immokalee, Florida 33934
813 657-3614

Funded by: U.S.D.H.E.W.; U.S.O.E.O. Title III-B
Service Area: Charlotte, Collier, Lee and Western half of Hendry County
Migrant Population Served: 539
Migrant Population Not Served: Information not available

The regional office of the CAMP program is located in Collier County. However, service migrant residents in this county also.

The regional offices are involved in delivering a variety of services to the migrant farm worker population. Services rendered include occupational, educational and sustenance assistance.

The regional office provides job placement in upward mobility jobs, refers migrants to training programs and provides stipends. Also they contract with various programs to provide remedial education and English language training for the migrants.

In the area of education they offer early childhood development programs and make referrals to colleges, vocational education programs, high school equivalency programs and adult basic education classes.

Health referrals are made for migrant pre-school children who are not enrolled in the local Head Start Classes.

Elderly migrants are provided with meals and social services.

Other services are offered which include funds for food and medical assistance, assistance in school desegregation and sponsoring food co-ops.

Migrant Labor Camps

Funded by: Privately owned
Service Area: Charlotte County
Migrant Population Served: 16

Migrant Population Not Served: Information not available

In 1959 the State of Florida enacted a law by which migrant labor camps must be licensed if they provide housing for fifteen or more seasonal temporary or migrant workers. Even if rent is not paid, camps used for occupancy must be licensed. In order to be licensed, camps must meet minimum standards in areas such as housing space, sanitation and water supply. Local health departments have these regulations available to the public.

In this county there is one licensed labor camp with the licensed capacity indicated.

<u>Name of Camp</u>	<u>Licensed Capacity</u>
Gilbert Camp	16

COLLIER COUNTY

GENERAL INFORMATION

Total Population: 38,040
Estimated Migrant Population: 18,800 estimate peak migrant population
Migrant Labor Demand: 400
Estimated Migrant Wages: \$1.50

CROPS OF COUNTY AND WORK PERIODS

<u>Name of Crop</u>	<u>Harvest Work Period</u>	<u>Other Work Periods</u>
Cabbage	October 25-June 15	September 1-March 15
Sweetcorn	September 25-July 10	July 25-May 1
Cucumbers	September 20-July 1	August 1-April 1
Peppers	October 20-July 1	August 1-March 15
Potatoes	January 1-July 1	September 15-March 1
Squash	September 1-July 1	August 15-April 1
Tomatoes	October 20-July 1	July 25-September 1
Watermelons	April 10-July 15	December 15-April 1

MIGRANT PROGRAMS IN COUNTY

Community Action Migrant Program, Region II
P. O. Box 206
Immokalee, Florida 33934
813 657-3614

Funded by: U.S.D.H.E.W. and U.S.O.E.O. Title III-B
Service Area: Collier, Charlotte, and Lee Counties and the Western half of Hendry County
Migrant population Served: 539
Migrant Population Not Served: Information not available

Although the CAMP program is funded to provide a variety of services through its seven regional offices, this particular region only provides child development services. (For additional information on the CAMP program see the profile in Broward County).

There are two child development centers in Collier County servicing a total of 80 children. These centers are:

Our Lady of Guadalupe Mission Child Development Center
S. Ninth St.
Immokalee, Florida 33934
813 657-3703

CAMP Happy Child Development Center
Route 3 Pine Ridge Road
Naples, Florida 33940
813 597-4393

Migrant Labor Camps

Funded by: Privately owned
Service area: Collier County
Migrant Population Served: Information not available
Migrant Population Not Served: Information not available

In 1959, the State of Florida enacted a law by which migrant labor camps must be licensed if they provide housing for fifteen or more seasonal temporary or migrant workers. Even if rent is not paid, camps used for occupancy must be licensed. In order to be licensed camps must meet minimum standards in areas such as housing space, sanitation and water supply. Local health departments have these regulations available to the public.

In this county there are 42 licensed labor camps with the licensed capacity indicated.

<u>Name of Camp</u>	<u>Licensed Capacity</u>
Gomez Camp	64
Barfield Brothers Cabins	60
McKinney's Camp	54
Melson Camp	36
Hunter's Trailer Camp	100
Robert's Apartments	32
Perryman's Camp	48
Lambert Apartments	120
Davis Camp	22
Turner's Rooms	37
Immokalee Drive Inn	20
Sunset Inn Rooms	18
Simpkins Camp	32
A & J Rentals	36
Camp Sandy	100
June's Camp	32
Plantation Camp	50
Wall's Trailer Camp	24
S. M. Conde Camp	48
Herrera Apartments	24
Garza Camp	24
How's Camp	23
Sanchez Camp	11
Lake Trafford Room House	11
Bass Apartments	28
Phillip Barnhart Camp	11
Lake Trafford Cabins	36
Crawford's Apartments	192
Joe Lee Rooms	30
Utopia Apartments	100
Ben Barnhart Rooms	18
Cox Camp	20
H. L. Carter Trailer Camp	24
Sledge's Moonlight	27
Novella Rooms	24
Kemp's Trailer Camp	42
Oliver-Brown Camp	47
Pine Grove Rooming House	14
Lee & Chambers Apartments	26
El Morocco	20
Gonzales Camp	40
Houston Camp #1	76

Title I Migrant Education
1001 Third Avenue
Naples, Florida

Funded by: U.S.D.H.E.W.
Service Area: Collier County
Migrant Population Served: 2,014
Migrant Population Not Served: Information not available

The County under Title I migrant education provides three programs, one in language development and another in Learn and Earn and the other in early childhood development. (For additional information consult the Title I Migrant education profile in Broward County.)

Participating schools in Language Development programs are:

School	Enrollment
Avalon Elementary	13
Bethune Elementary	258
East Naples Middle School	44
Everglades Elementary & Middle	19
Golfview Middle School	25

Highlands Elementary	366
Seagate Elementary	72
Tomy Basfield Elementary	90
Lake Trafford Elementary	376

Participating schools in Learn and Earn Are:

Immokalee Middle School	478
-------------------------	-----

Participating schools in Early Childhood Units are:

Pine Crest Early Childhood	<u>273</u>
TOTAL	<u>2014</u>

Organized Migrants in Community Action

P. O. Box 760
 Immokalee, Florida 33934
 305 657-3697

Funded by: Private sources
 Service Area: Collier County and surrounding areas
 Migrant Population Served: Information not available
 Migrant Population Not Served: Information not available

The OMICA office in Immokalee is a branch office of the main office in Homestead. (For additional information consult the OMICA profile in Dade County).

Community Action Migrant Program

Region III
 P. O. Box 206
 Immokalee, Florida 33934
 813 657-3614

Funded by: U.S.D.H.E.W.; U.S.O.E.O. Title III-B
 Service Area: Collier, Charlotte, Lee and Western half of Hendry County
 Migrant Population Served: Information not available
 Migrant Population Not Served: Information not available

The regional offices of the CAMP program are involved in delivering a variety of services to the migrant farm worker population. Services rendered include occupational, educational and sustenance assistance.

The regional office provides job placement in upward mobility jobs, refers migrants to training programs and provides stipends and contracts with various programs to provide remedial education and English language training.

In the area of education early childhood development programs are offered and referrals made to colleges, vocational education programs, High School Equivalency programs and adult basic education classes.

Health referrals are also provided to children that are not enrolled in local head start programs.

Elderly migrants are provided with meals and social services.

General services such as funds for food and medical assistance, assistance in school desegregation and sponsoring food co-ops are also provided.

Additionally, the CAMP program operates two day care centers in Collier County. The curriculum emphasis of the migrant day care center is in motor skill coordination, intellectual and emotional development and development of a positive self-image for the migrant child.

Supportive services provided include medical examinations, snacks, lunch and transportation to and from the center.

The childhood development centers are:

Our Lady of Guadalupe Mission Child Development Center
 South Ninth St.
 Immokalee, Florida 33934
 813 657-3703

Camp Happy Child Development Center
Route 3 Pine Ridge Road
Naples, Florida 33940
813 597-4393



DADE COUNTY

GENERAL INFORMATION

Total Population: 1,267,792
Estimated Migrant Population: 20,000 (January)
Migrant Labor Demand: Information not available
Estimated Migrant Wages: \$1.60 - \$2.00 per hr.

CROPS OF COUNTY AND WORK PERIODS

<u>Name of Crop</u>	<u>Harvest Work Period</u>	<u>Other Work Periods</u>
Snap Beans	October 15-June 15	
Cabbage	October 25-June 15	
Cucumbers	September 20-July 1	
Irish Potatoes	January 1-July 1	October 1-March 31
Squash	September 1-July 1	
Strawberries	December 15-May 15	
Tomatoes	October 20-July 1	September 30-March 15
Corn	September 25-July 10	
Pole Beans	November 1-March 31	September 30-March 1

MIGRANT PROGRAMS IN COUNTY

Community Action Migrant Program
Region VI
58 W. Mowery
Homestead, Florida 33030
305 247-7730

Funded by: U.S.D.H.E.W.; U.S.O.E.O. Title III-B
Service Area: Dade County
Migrant Population Served: 250 per month (June-November)
Migrant Population Not Served: Information not available

The regional offices of the CAMP program are involved in delivering a variety of services to the migrant farm worker population. Services rendered include occupational, educational and sustenance assistance.

The regional office provides job placement in upward mobility jobs, refers migrants to training programs and provides stipends and contracts with various programs to provide remedial education and English language training.

In the area of education early childhood development programs are offered and referrals made to colleges, vocational education programs, High School Equivalency Programs and adult basic education classes.

Health referrals are also provided to children that are not enrolled in local head start programs.

Elderly migrants are provided with meals and social services.

General services such as funds for food and medical assistance, assistance in school desegregation and sponsoring food co-ops are also provided.

Additionally, the CAMP program operates a child development center for migrants.

The center provides a curriculum for educational, social and emotional development of the migrant child. As supportive services, the center provides hot lunches and snacks, transportation to and from the center and medical examinations and referrals.

The child development center serving approximately forty children is:

The South Dade Child Development Center
 344 S. W. Fourth Street
 Homestead, Florida 33030
 305 248-7623

Title I Migrant Education
 1410 N.E. Second Street
 Miami, Florida 33132
 305 350-3241

Funded by: U.S.D.H.E.W.
 Service Area: Dade County
 Migrant Population Served: 1,582
 Migrant Population Not Served: Information not available

This county migrant education program utilizes three basic components: Early Childhood Learning, Community schools and Language Arts Support Programs. The early childhood program is designed for migrant children ages 3-5. Classes are housed in relocatable trailers on three labor camps and one school campus. Early childhood centers operate Monday through Friday 7 a.m. to 5 p.m. Community schools are programs set up to provide after-school recreational and educational activities for migrant children and adults. The language arts support program seeks to provide experiences which will enable migrant children to listen, speak, read, write and develop fundamental study skills commensurate with his abilities.

Participating schools and their enrollment include:

Florida City

Florida City Elementary 55
 364 N.W. 6 Avenue
 247-4676

Goulds Elementary 2
 21300 S. W. 122 Avenue
 235-2126

Mays Jr. High 8
 11700 Hainlin Mill Drive
 233-2300

Pine Villa Elementary 43
 21799 S. W. 117 Ct.
 247-5366

Homesead, Florida

Avocado Elementary 188
 16969 S. W. 294 St.
 247-4942

Cooper, N. K. Elementary 61
 520 N.W. First Avenue
 247-3715

Homestead Jr. High 104
 650 N.W. 2 Avenue
 247-4221

Leisure City 64
 149 S. W. 288 St.
 247-5431

Lewis, A. L. Elementary 10
 505 S. W. 8 St.
 247-3933

Redland Elementary 208
 24701 S. W. 162 Avenue
 247-8141

Redland Jr. High 128
 16001 S.W. 248 St.
 Route #1
 247-6112

Redondo Elementary 84
 18480 S. W. 304 St.
 247-5943

Scuth Dade Sr. High 44
 28401 S. W. 167 Avenue
 247-4244

West Homestead Elementary 47
 1550 S. W. 6 St.
 248-0812

Miami, Florida

Cutler Ridge Elementary 119
 20210 Coral Sea Rd.
 235-4611

Cutler Ridge Jr. High 1
 19400 S. W. 97 Avenue
 235-4761

Gulfstream Elementary 1
 20900 S. W. 97 Avenue
 235-6811

Richmond Elementary 10
 16929 S. W. 104 Avenue
 238-5194

South Miami Heights Elementary 1
12231 S. W. 190 Terr.
238-6610

Naranja

Naranja Elementary 148
13990 S. W. 264 St.
247-6852

Perrine

Perrine Elementary 12
9895 S. W. 184 St.
235-2442

Community Health of South Dade, Inc.
Migrant Health Services Project
Suite 2
10700 Caribbean Boulevard
Miami, Florida 33157

Funded by: Patient fees, U. S. Public Health Service, United Fund, Dade County
Service Area: South Dade County
Migrant Population Served: 4,530
Migrant Population Not Served: 15,470

This particular program operates two health service centers and holds contracts with area hospitals for emergency care or extensive in-patient care. Hospital contracts are held with:

Variety Children's Hospital
6125 S. W. 31st St.
Miami, Florida

Jackson Memorial Hospital
1700 N. W. 10th Avenue
Miami, Florida

Other hospitals with contracts are: South Miami Hospital, Miami-Dade Hospital, and James Archer Smith Hospital.

Also operating as part of the Community Health of South Dade, Inc. (CHI) are the Martin Luther King Jr. Clinica Campesina and the South Dade Community Health Center.

The Martin Luther King Jr. Clinica Campesina provides transportation, referrals, health education, immunizations, family planning and well baby clinics. Screening, lab tests, physical exams, prenatal and post partum care are also provided. Hours of operation are from 8a.m. to 8p.m. year round Monday through Friday.

The South Dade Community Health Center provides in addition to the above services specialty clinics in dietetics, surgery, podiatry, pediatrics, orthopedics, internal medicine, gynecology, dermatology, and arthritis. This center operates twenty-four hours a day seven days a week.

Both health services are also advised in their operation by advisory boards composed of consumers of the services.

The centers are located at:

Martin Luther King Jr. Clinica Campesina
177 W. Mowery St.
Homestead, Florida 33030
305 248-3911
305 248-4334

South Dade Community Health Center
21521 S. W. 216th St.
Goulds, Florida 33170
305 248-3571

Homestead Migrant Manpower Delivery System
700 N. W. 10th Avenue
Homestead, Florida 33030
305 248-6212

Funded by: U.S.D.O.L.
Service Area: South Dade County
Migrant Population Served: 361

Migrant Population not Served: Information not available

Trainees and their families are provided with employability and family supportive services by this program. The objective of this program is to provide training to migrant farm workers so they may become employed in a more stable job. Training services consists of general education courses such as language development, mathematics, reasoning; also, institutional and on-the-job training is provided. Once the trainee has completed training, the Manpower Delivery System tries to place the trainee in a job and do follow-up counseling.

Part of the family supportive services include: housing, health care, food stamps, counseling, transportation, legal assistance, social services and financial assistance.

Migrant Labor Camps

Funded by: Privately owned
Service Area: Dade County
Migrant Population Served: 6,495
Migrant Population Not Served: Information not available

In 1959 the State of Florida enacted a law by which migrant labor camps must be licensed if they provide housing for fifteen or more seasonal temporary or migrant workers. Even if rent is not paid, camps used for occupancy must be licensed. In order to be licensed, camps must meet minimum standards in areas such as housing space, sanitation and water supply. Local health departments have these regulations available to the public.

In this county there are 11 licensed labor camps with the licensed capacity indicated.

<u>Name of Camp</u>	<u>Licensed Capacity</u>
W. R. Anderson Labor Camp	60
Far South Labor Camp	166
Redland Labor Camp	2,248
H. D. Cross Camp	39
Collins Camp	107
South Dade Migrant Farm Labor Camp	2,649
Borinquen Labor Camp	204
Brooks Quarters	88
Kettles Camp #2	60
H. L. Cox & Son	80
Princeton Labor Camp	794

Migrant Services Foundation
P.O.Box 1383
Homestead, Florida 33030
305 248-8733

Funded by: Private Sources
Service Area: State
Migrant Population Served: Information not available
Migrant Population Not Served: Information not available

This private non-profit foundation provides no direct services to migrants. Instead it provides legal counsel to farm worker groups and organizations on request.

Organized Migrants In Community Action (OMICA)
P.O.Box 1351
Homestead, Florida 33030
305 248-4711
305 248-4712

or
P. O. Box 760
Immokalee, Florida 33934
305 657-3697

Funded by: Private Donations
Service Area: State
Migrant Population Served: Not applicable. See profile below
Migrant Population Not Served: Not applicable.

Actively involved as an advocate organization, OMICA is a private non-profit group organized to assist migrant farmworkers by facilitating establishments of health clinics, recruiting participants for migrant manpower delivery systems training and providing information to the U.S. Senate Hearings on migrant farm workers. Also during the recent typhoid epidemic OMICA established a typhoid emergency fund and coordinated all federal, state and county aid during the epidemic.

OMICA is governed by a Board of Directors exclusively composed of migrant and seasonal farm workers. The board makes all policy decisions and determines the priorities and objectives of OMICA.

Redlands Christian Migrant Association
29355 S. Federal Highway (101)
Homestead, Florida 33030

Funded by: U.S.D.H.E.W. Title IV-A, United Fund of Dade County, private donations
Service Area: South Dade County
Migrant Population Served: 1,000-2,000 families
Migrant Population Not Served: 2,100 families

The primary objectives of this program are to act as advocate of migrant farm workers and to generate public interest in the problems of migrants in housing, health, education and other social services. Some of the services provided include emergency relief and day care services to migrants.

The emergency relief fund is used to purchase emergency food, clothing, health services and to provide for other needs of migrant seasonal farm workers demanding immediate financial assistance.

The day care centers operated by the Redlands Christian Migrant Association are located in migrant labor camps. Their total enrollment is approximately 160 children ages 3-5.

Three types of child care are offered at both centers: Infant care ages 0-2; day care ages 3-5 and pre-school kindergarten for children about to enter school. The services provided include comprehensive early childhood education, physical examinations, immunizations, meals and snacks and transportation to and from the center if needed.

The child care centers are located at:

South Dade Labor Camp
3600 S. W. 312th St.
Homestead, Florida 33030
305 248-2076

Redlands Labor Camp
29355 S. Federal Highway 101
Homestead, Florida 33030
305 247-6269

Farm Labor and Rural Manpower Service
342 Washington Avenue
P. O. Box 1350
Homestead, Florida 33030
305 247-8323

Funded by: U.S.D.O.L.
Service Area: Dade County
Migrant Population Served: Information not available
Migrant Population Not Served: Information not available

This office provides farm labor placements and initial contacts for participation in manpower training programs.

High School Equivalency Program
University of Miami
1223 Dickinson Drive
Building 48H
P. O. Box 8171
Coral Gables, Florida 33124

Funded by: U.S.O.E.O. Title III-B
Service Area: Florida, Alabama, and Georgia
Migrant Population Served: 51
Migrant Population Not Served: Information not available

This program allows migrant and seasonal youth ages 18-24 who are single to continue their high school education to earn a GED. In addition to the education program supportive services are also provided to students. These include: health services, financial assistance, transportation and tutoring. Also, graduates are placed in vocational training courses, upward mobility jobs or referred to colleges and universities.

The HEP Program has an advisory board of 12 members composed of four farm workers, 3 HEP students and 5 members of the community at large.

Vocational-Technical and Adult Education
Lindsey-Hopkins Education Center
1410 N.E. 2nd Avenue
Miami, Florida 33132
305 350-3011

Funded by: U.S.D.O.L., U.S.O.E.O.
Service Area: Dade County
Migrant Population Served: 110 (40 during one training period)
Migrant Population Not Served: Information not available

This program provides job related educational curriculum in addition to occupational training or job placement. Additional services such as health, transportation and stipends are also provided for trainees in case of need.

Agencies That Might Serve Migrants

The State of Florida administers offices which provide services to low-income people. These offices might be of assistance to migrant farm workers. Each office, however, should be contacted to determine of what assistance they might be to migrant farm workers.

DFS Food Stamp Office
Store # 500
Perrine Shopping Center
Perrine, Florida 33157
305 233-6767

DFS Food Stamp Office
400 N. Miami Avenue
Miami, Florida 33218
305 358-4880

DFS Food Stamp Office
777 N.W. 54th St.
Miami, Florida 33127
305 757-0613

DFS Food Stamp Office
1370 Washington Avenue
Miami Beach, Florida 33139
305 531-8101

Division of Family Services
P O Box 634, Biscayne Annex
1350 N.W. 12th & 127 N.W. 2nd St.
Miami, Florida 33128
305 377-3751

St. Ann's Mission - Catholic
13890 S. W. 264th St.
Naranja, Florida 33931
Emergency Financial help and counseling

Far South Emergency Relief
Sacred Heart Catholic Church
106 S.E. Second Rd.
Homestead, Florida 33030
Emergency Financial help and counseling

Protestant Social Welfare Services
245 S. Krome Avenue
Homestead, Florida 33030
Emergency Financial help and counseling

Florida Rural Legal Services
1320 N. Federal Hwy.
Homestead, Florida 33030

Vocational Rehabilitation Division
1350 N.W. 12th Avenue
Miami, Florida 33136
305 377-9231



Miami WIN
46 S. W. 1st St.
4th Floor
Miami, Florida

Commodities
2222 N.W. 10th Avenue
Miami, Florida 33152
305 635-8488

Economic Opportunity Program, Inc.
395 N. W. 1st St.
Miami, Florida
305 377-8601

Florida State Emergency Service
1350 N.W. 12th Avenue
Miami, Florida

DUVAL COUNTY

GENERAL INFORMATION

Total Population: 528,865
Estimated Migrant Population: Information Not available
Migrant Labor Demand: Information not available
Estimated Migrant Wages: Information not available

CROPS OF COUNTY AND WORK PERIODS

The County of Duval is incorporated into the city of Jacksonville. It is included in this publication because state agencies serving migrants are located in Jacksonville.

MIGRANT PROGRAMS IN COUNTY

Department of Health & Rehabilitation Services
Division of Family Services
Day Care Section
5920 Arlington Expressway
P. O. Box 2050
Jacksonville, Florida 32211
904 725-3080
Ext. 328 or 329

Funded by: State of Florida, Private Sources, U.S.D.H.E.W.
Service Area: State
Migrant Population Served: None directly
Migrant Population Not Served: Information not applicable

The primary objective of this program is to purchase day care services for low-income children through matching private funds with federal funds under Title IVA of the Social Security Act. In Addition they attempt to provide innovative ideas in day care through demonstration projects, training sessions, and work shops for day care personnel throughout the State. One of the functions of this agency is also to provide periodic inspection and licensing of day care facilities in the State.

The Division of Family Services Day Care Section, has contracted for the delivery of day care services to migrant children with six agencies in the state. These agencies are:

1. Community Coordinated Child Care of Orange County
2. Community Coordinated Child Care of Palm Beach County
3. The Homestead Housing Authority
4. Wee Care Incorporated
5. Hendry County School Board Harlem Academy
6. Lee County Day Care Advisory Board

Department of Health and Rehabilitated Services
Division of Health
Bureau of Local Health Services
Sanitation Section
1217 Hurrol Street
P. O. Box 210
Jacksonville, Florida 32201
904

Funded by: State of Florida
Service Area: State of Florida
Migrant Population Served: Information not available
Migrant Population Not Served: Not applicable

This agency provides no direct services to migrants. The extent of its involvement with migrants, is to insure that persons owning or operating labor camps adhere to the minimum standards of health and safety. This agency, therefore,

promulgate and repeals rules and regulations as it deems necessary to protect the health and safety of migrants living in labor camps. The agency inspects migrant labor camps and investigates conditions and practices or matters pertaining to housing to determine whether any provision of the Florida Statute 381 of the Sanitary Code of Florida has been violated. Primary function of this agency is to issue operating permits to those camps which have undergone satisfactory inspections.

Department of Health and Rehabilitation
Division of Health
Migrant Health Project
1217 Hurrol St.
Jacksonville, Florida 32201
904 354-3961

Funded by: U.S.D.H.E.W.; State of Florida
Service Area: State
Migrant Population Served: None directly
Migrant Population Not Served: Not applicable

The primary objective of this agency is to provide health care and where possible comprehensive care to migrant and seasonal agricultural farm workers and their families. This objective is accomplished through the medium of migrant project family health service clinics of the general nature and through county health department clinics offering preventive type care. Health care services offered to the target population by the migrant health projects includes: medical care, dental care, health education, nutrition, family planning, drugs, immunizations, hospital out-patient care, nursing referrals to other health and non-health oriented agencies plus referrals to other counties and states for continuity of health care. The state level project offers primarily, consultative, coordinative, advisory and evaluative services to local projects.

Agencies That Might Serve Migrants :

Although there are no specific "migrant programs" in this county, the State of Florida provides services which migrant farm workers might be able to utilize. Each office should be contacted to determine to what extent they will assist migrant farm workers.

Division of Family Services
2030 Boulevard
Jacksonville, Florida 32201
904 356-8411

Division of Family Services
227 Park St.
P. O. Box 1199
Jacksonville, Florida 32201
904 353-1251

Commodities
140 Davis St.
Jacksonville, Florida 32201
904 356-1496

Vocational Rehabilitation Division
577 College St.
Jacksonville, Florida 32204
904 356-0492
Counties Served: Duval, Nassau, Baker,
Clay & St. Johns

Florida State Employment Service
215 Market St.
Jacksonville, Florida 32202

Greater Jacksonville Economic Opportunity,
Incorporated
P. O. Box 408
Jacksonville, Florida 32201
904 356-8541

FLAGLER COUNTY

GENERAL INFORMATION

Total Population: 4,454 (1970)
Estimated Migrant Population: 1,100 (approximately)
Migrant Labor Demand: 200
Estimated Migrant Wages: \$1.40 - \$1.60 per hr.

CROPS OF COUNTY AND WORK PERIODS

<u>Name of Crop</u>	<u>Harvest Work Period</u>	<u>Other Work Periods</u>
Cabbage	January 1-April 15	
Cucumbers	April 20 June 1	
Potatoes	January 15 -June 1	
Corn	November 15-June 15	

MIGRANT PROGRAMS IN COUNTY

Bunnell Migrant Health Clinic
1510 E. Moody Blvd.
Bunnell, Florida 32010
904 427-3113

Funded by: U.S.D.H.E.W.
Service Area: Flagler County
Migrant Population Served: 4-40 per week
Migrant Population Not Served: Information not available

This clinic is administered and services rendered in conjunction with the state migrant health project based in Jacksonville. Services provided by the clinic include: immunizations, health education, curative medical services, referrals and clinics for children, venereal disease and tuberculosis.

In its operation the clinic is assisted by an advisory board to advise on operations and services needed.

Clinic hours June - October are:

Tuesdays 8:00 a.m. to 5:00 p.m.
Thursdays 8:00 a.m. to 5:00 p.m.

Clinic hours in October - May are:

Tuesdays 8:00 a.m. to 5:00 p.m.
Thursdays 1:00 p.m. to 5:00 p.m.
6:00 p.m. to 10:00 p.m.

DFS Food Stamp Office
105 N. Bay St.
Bunnell, Florida 32010
904 437-3377
437-3378

Funded by: State of Florida Division of Family Service
Service Area: Flagler County
Migrant Population Served: Serves low-income; no migrant figures available
Migrant Population Not Served: Information not available

This particular office serves low income people in obtaining food stamps, and distributing food stamps. Migrant farm workers might be assisted by this office.

GLADES COUNTY

GENERAL INFORMATION

Total Population 3,669
 Estimated Migrant Population: 400
 Migrant Labor Demand: 400
 Estimated Migrant Wages: \$1.50 per hr.

CROPS OF COUNTY AND WORK PERIODS

<u>Name of Crop</u>	<u>Harvest Work Period</u>	<u>Other Work Periods</u>
Cabbage	January 1-April 15	September 1-March 15
Sweetcorn	November 15-June 15	July 25-May 1
Cucumbers	November 1-December 15	August 1-April 1
Peppers	November 15-June 15	August 1-March 15
Squash	November 15-May 15	August 15-April 1
Tomatoes	November 15-June 1	July 25-September 1
Watermelons	May 1-July 1	December 15-April 1

MIGRANT PROGRAMS IN COUNTY

Washington Park Child Development Center
 Washington Park
 Moor Haven, Florida 33471
 813 946-6761

Funded by: U.S.D.H.E.W.
 Service Area: Glades County
 Migrant Population Served: 40
 Migrant Population Not Served: Information not available

As part of its services to migrants, CAMP operates a day care center for children ages 3-5. The early childhood curriculum utilized at the center emphasizes oral language development, motor skill development and other activities that promote intellectual, social and emotional development of the migrant child. Auxiliary services provided by the center include hot lunches, snacks, transportation to and from the center, physical examinations and follow-up medical care.

Migrant Labor Camps

Funded by: Privately owned
 Service Area: Glades County
 Migrant Population Served: 1073
 Migrant Population Not Served: Information not available

In 1959 the State of Florida enacted a law by which migrant labor camps must be licensed if they provide housing for fifteen or more seasonal, temporary or migrant workers. Even if rent is not paid, camps used for occupancy must be licensed. In order to be licensed, camps must meet minimum standards in areas such as housing space, sanitation and water supply. Local health departments have these regulations available to the public.

In this county there are four licensed labor camps with the licensed capacity indicated.

<u>Name of Camp</u>	<u>Licensed Capacity</u>
Benbow-U.S. Sugar Corporation	286
Sugarcane Harvesting, Inc.	151
Shawnee Farms Labor Camp	252
Glades Co. Sugar Growers Coop. Assoc.	384

HARDEE COUNTY

GENERAL INFORMATION

Total Population: 14,889
 Estimated Migrant Population: Information not available
 Migrant Labor Demand: 1681
 Estimated Migrant Wages: \$1.45 to \$1.50 per hr.

CROPS OF COUNTY AND WORK PERIODS

<u>Name of Crop</u>	<u>Harvest Work Period</u>	<u>Other Work Periods</u>
Citrus	October through July	
Oranges		
Grapefruit		
Temples		
Tangelos		
Tangerines		
Murcotts		
Cucumbers	September 20-July 1	August 1-April 1
Eggplant	October 1-August 1	July 15-April 1
Peppers	October 20-July 1	August 1-May 15
Tomatoes	October 20-July 1	July 25-September 1
Watermelons	April 10-July 15	December 15-April 1

MIGRANT PROGRAMS IN COUNTY

Title I Migrant Education Project
 P. O. Box 757
 Wauchula, Florida 33873
 813 773-4189

Funded by: U.S.D.H.E.W.
 Service Area: Hardee County
 Migrant Population Served: 1010
 Migrant Population Not Served: Information not available

The migrant education program in this county operates in five schools listed below. The migrant population served is from kindergarten to grade 12. Educational services provided include social services, reading, learn and earn, language development and early childhood development.

Participating schools in this county are:

	<u>Enrollment</u>
Bowling Green Elementary	225
Wauchula Elementary	287
Saflo Elementary	314
Hardee Middle School	239
Hardee High School	88

(For additional informatio. see the Title I Migrant Education Profile in Leon County.)

Spanish Mission Day Care Center
 West Sixth Avenue
 Saflo Springs, Florida
 813 735-2151

Funded by: Private Sources
 Service Area: Saflo Springs
 Migrant Population Served: 33
 Migrant Population Not Served: Information not available

This day care center is operated by private sources in the community of Saflo Springs. Its target population is children from low income families and is not necessarily limited to migrant children.

Community Action Migrant Program, Inc.
1150 Palmetto St.
Bartow, Florida 33830
813 533-0983

Funded by: U.S.D.H.E.W.; U.S.O.E.O. Title III-B
Service Area: Hardee, Manatee and Western Half of Polk County
Migrant Population Served: 1500 families
Migrant Population Not Served: Information not available

The regional offices of the CAMP program are involved in delivering a variety of services to the migrant farm worker population. Services rendered include occupational, educational and sustenance assistance.

The regional office provides job placement in upward mobility jobs, refers migrants to training programs and provides stipends and contracts with various programs to provide remedial education and English language training.

In the area of education early childhood development programs are offered and referrals made to colleges, vocational education programs, High School Equivalency Programs and adult basic education classes.

Health referrals are also provided to children that are not enrolled in local Head Start programs.

Elderly migrants are provided with meals and social services.

General services such as funds for food and medical assistance, assistance in school desegregation and sponsoring food co-ops are also provided.



HENDRY COUNTY

GENERAL INFORMATION

Total Population:
Estimated Migrant Population: 4,220
Migrant Labor Demand: 3,414
Estimated Migrant Wages: \$1.50 per hr.

CROPS OF COUNTY AND WORK PERIODS

<u>Name of Crop</u>	<u>Harvest Work Period</u>	<u>Other Work Periods</u>
Sugar Cane	October 1 through May 1	
Cabbage	October 25-June 15	September 1-March 15
Sweetcorn	September 25-July 10	July 25-May 1
Cucumbers	September 20-July 1	August 1-April 1
Peppers	October 20-July 1	August 1-March 15
Potatoes	January 1-July 1	September 15-March 1
Squash	September 1-July 1	August 15-April 1
Tomatoes	October 20-July 1	July 25-September 1
Watermelons	April 10-July 15	December 15-April 1

MIGRANT PROGRAMS IN COUNTY

Title I Migrant Education
P. O. Box 787
LaBelle, Florida 33935
813 675-4001

Funded by: U.S.D.H.E.W.
Service Area: Hendry County
Migrant Population Served: 240
Migrant Population Not Served: Information not available

This Title I Migrant Education Program offers three of the four components in Migrant education. The components offered are: Early Childhood Education, Language Development and Learn and Earn. The Early Childhood Education Programs are held at Harlem Academy and LaBelle Elementary School. Language Development classes are held also at LaBelle Elementary School. The Learn and Earn Program is held at LaBelle High School. (For further information on Title I Migrant Education Components see the profile in Leon County).

Hendry-Glades Counties Migrant Health Project
Corner of Bridge and Oklahoma Streets
LaBelle, Florida

Funded by: U.S.D.H.E.W.
Service Area: Hendry and Glades Counties
Migrant Population Served: 1,787
Migrant Population Not Served: Information not available

Operating a network of clinics this Migrant Health Program provides family health services to migrant agricultural farm workers. Three clinics are conducted in population centers where a majority of the migrants live. While a fourth clinic is held in a large camp about 30 miles from the nearest town. Clinics are staffed by a licensed physician, a registered nurse, a clerk and a clinic aide. All needed medications are supplied either by the project or through a prescription paid for by the health project. Laboratory tests are not available although they are contracted through local physicians and hospitals. Pap Smears are paid for by the migrant project. A particular problem in serving the migrant population is transportation. Also, 24 hour service through the local county hospital is available and fairly convenient. This is within 35 miles of all migrants. No monies are provided for in-hospital care unless the migrant is eligible for medicare or county welfare. General clinics are located at LaBelle, Clewiston and Moorehaven.

The clinic schedules are as follows:

LaBelle

Monday	9-11 a.m. and 2-4 p.m.
Tuesday	1-10 p.m.
Thursday	1-3:30 p.m. and 6-9:30 p.m. on a seasonal basis
Friday	3-5 p.m.

Clewiston

Monday	9-11 a.m. and 1-3:30 p.m.
Friday	9-11 a.m.

Moorehave

Tuesday	9-11 a.m.
Wednesday	9-11 a.m. and 1-3:30 p.m.

Hendry County Child Development Center
Bridge Street South
P.O. Box 1175
LaBelle, Florida 33935
813 675-7961

Funded by: U.S.D.H.E.W.
Service Area: Hendry County
Migrant Population Served: 40
Migrant Population Not Served: Information not available

As part of its services to migrants, CAMP operates a day care center in LaBelle for children ages 3-5. The early childhood curriculum utilized at the center emphasizes oral language development, motor skill development and other activities that promotes intellectual, social and emotional development. Auxiliary services provided include hot lunches and snacks, transportation to and from the center, physical examinations and follow-up medical care.

Also administered out of this office are 19 child development centers operated by the Community Action Migrant Programs (CAMP) in 12 surrounding counties. These centers serve a total of approximately 800 children and are located in Immokalee, Heights, Naples, Charleston, Ruskin, Bartow, Avon Park, Pompano, Stuart, Okeechobee, Belle Glade, Lantana, Homestead, Pahokee, Moorehaven, Lake Harbor, Indian Town, and Flavor Pick.

Migrant Labor Camps

Funded by: Privately owned
Service Area: Hendry County
Migrant Population Served: 660
Migrant Population Not Served: Information not available

In 1959 the State of Florida enacted a law by which migrant labor camps must be licensed if they provide housing for fifteen or more seasonal, temporary or migrant workers. Even if rent is not paid camps used for occupancy must be licensed. In order to be licensed camps must meet minimum standards in areas such as housing space, sanitation and water supply. Local health departments have these regulations available to the public.

In this county there are four licensed labor camps with the licensed capacity indicated.

<u>Name of Camp</u>	<u>Licensed Capacity</u>
Saunders' Labor Camp	390
Devils Gardens Trailer Camp	200
Florida Lettuce #1	46
Bob Paul's Motel Camp	24

HIGHLANDS COUNTY

GENERAL INFORMATION

Total Population: 28,507
Estimated Migrant Population: 4,000
Migrant Labor Demand: 525
Estimated Migrant Wages: \$1.40 - \$2.00 per hr.

CROPS OF COUNTY AND WORK PERIODS

<u>Name of Crop</u>	<u>Harvest Work Period</u>	<u>Other Work Periods</u>
Citrus	October through July	
Oranges		
Grapefruit		
Temples		
Tangelos		
Tangerines		
Cucumbers	September 20-July 1	August 1-April 1
Eggplant	October 1-August 1	July 15-April 1
Peppers	October 20-July 1	August 1-March 15
Tomatoes	October 20-July 1	July 25-September 1
Watermelons	April 10-July 15	December 15-April 1

MIGRANT PROGRAMS IN COUNTY

Avon Park Child Development Center
406 Lakeside Park
P. O. Box 1327
813 453-7490

Funded by: U.S.D.H.E.W.; U.S.O.E.O. Title III-B
Service Area: Highlands County
Migrant Population Served: 40
Migrant Population Not Served: Information not available

This Child Development Center is part of the CAMP network providing for the early childhood needs of the migrant pre-school child. Its program consists of educational activities designed to promote the intellectual, social and emotional development of the child. More specifically, motor skill development and oral language development comprise the educational curriculum. Also provided as part of the services are hot lunches and snacks, transportation to and from the center, physical examinations and follow-up medical care when needed.

Title I Migrant Education Project
Courthouse
Third Floor
Sebring, Florida 33870
813 385-5161

Funded by: U.S.D.H.E.W.
Service Area: Highlands County
Migrant Population Served: Information not available
Migrant Population Not Served: Information not available

Information was not released from this particular Title I Migrant Education Program.

Migrant Labor Camps

Funded by: Privately owned
Service Area: Highlands County
Migrant Population Served: 142
Migrant Population Not Served: Information not available

In 1959 the State of Florida enacted a law by which migrant labor camps must be licensed if they provide housing for fifteen or more seasonal temporary or

migrant workers. Even if rent is not paid camps used for occupancy must be licensed. In order to be licensed, camps must meet minimum standards in areas such as housing space, sanitation and water supply. Local health departments have these regulations available to the public.

In this county there are three licensed labor camps with the licensed capacity indicated.

<u>Name of Camp</u>	<u>Licensed Capacity</u>
Flo-Cal #1	77
Consolidated Labor Camp	41
Redwine Camp	24



HILLSBOROUGH COUNTY

GENERAL INFORMATION

Total Population: 490,265
Estimated Migrant Population: Information not available
Migrant Labor Demand: Information not available
Estimated Migrant Wages: \$1.45 to \$2.00

CROPS OF COUNTY AND WORK PERIODS

<u>Name of Crop</u>	<u>Harvest Work Period</u>	<u>Other Work Periods</u>
Citrus	October through July	
Oranges		
Grapefruit		
Temples		
Tangelos		
Tangerines		
Murcotts		
Pole Beans	October 15-June 15	August 15-April 1
Lima Beans	October 15-June 15	August 15-April 1
Cabbage	October 25-June 15	September 1-March 15
Lettuce	October 20-June 1	August 25-April 1
Peppers	October 20-July 1	August 1-March 15
Potatoes	January 1-July 1	September 15-March 1
Squash	September 1-July 1	August 15-April 1
Strawberries	December 15-May 15	October 1-November 15
Watermelons	April 10-July 15	December 15-April 1

MIGRANT PROGRAMS IN COUNTY

Adult Migrant Education
2309 Mitchell Avenue
Tampa, Florida
813 229-7166

Funded by: U.S.D.O.L.; U.S.O.E.O.
Service Area: Hillsborough County
Migrant Population Served: 113
Migrant Population Not Served: Information not available

The primary objective of this program is to provide vocational training for migrant and seasonal agricultural farm workers. To meet these objectives specialized education is provided for trainees with high motivation and educational ability. English is taught to non-English speakers bi-lingually so they may be able to receive and benefit from the job-related education and/or occupational training and job placement available through this program. Also, a consumer education curriculum including family living skills, health and safety education, nutrition and use of finances is provided. As auxiliary services monthly counseling is provided to each trainee and physical examinations are provided free of charge for those who need it.

An advisory council composed of 12 members meets once a month to advise the staff on policy decisions and to discuss grievances. The advisory council is comprised of students who were former migrants, migrant farm workers and business men.

Referral Manpower Area Office
U. S. 301 and State Road 60
Tampa, Florida
813 626-7138

Funded by: U.S.D.O.L.
Service Area: Tampa
Migrant Population Served: Information Not available

Migrant Population Not Served: Information not available

Under the Florida Adult Migrant Education Project initiated in 1966, this program provides vocational training for migrants. Primary goal of this program is to provide counseling, job related education, occupational training and supportive services to eligible adult migrant or seasonal farm worker trainees so they may qualify for, achieve and maintain upward mobility jobs leading to a career. Stipends are provided during training.

Community Action Day Care Center
501 S. Tamiami Trail
Ruskin, Florida 33570
813 645-3042

Funded by: U.S.D.H.E.W.
Service Area: Ruskin and surrounding areas
Migrant Population Served: 22
Migrant Population Not Served: Information not available

This program designed for children ages 3-5 utilizes the early childhood curriculum developed by South West Educational Development Laboratories based in Texas. In addition to the educational component nutrition services, health and day care are also provided by the center. The center is opened 10 months out of the year and has a capacity for 45 children.

Although there is no formal parent advisory committee established, parents do need, when it is necessary, to establish policies or to consider problems arising out of the operation of the child development center.

At this time a medical advisory committee is also being formed to assist the program in serving the health needs of the children. Currently, the medical advisory committee is made up of two local doctors and one parent. The function of this committee is to set up health policies.

This day care center is part of the network of day care services provided by the CAMP program in Florida.

Joyce Ely Center
Hillsborough County
Migrant Health Project
P. O. Box 338
Ruskin, Florida 3357-
813 645-3219

Funded by: U.S.D.H.E.W.
Service Area: Hillsborough County
Migrant Population Served: 170 per week
Migrant population Not Served: Information not available

Established in 1971, this clinic based out of a trailer operates three nights out of the week. On Mondays, Tuesdays and Thursday for approximately four hours per night. The services offered include: general medical services, referrals, well baby clinics, and family planning. If patients can afford it, there is a \$2.00 fee for each visit. As an additional service, dental care is often provided to approximately 10 people per week. Dental work is handled by dentists in Tampa.

Staffing for the clinics include two public health nurses who work full time in the clinics, camps and schools.

To insure community participation, a local board has been established that sets policies for the clinic. It is made up of 15 members, 13 of which are elected by the consumer population and 3 are designated by the grand team. They meet once a month to discuss policies and operation of the clinic.

Title I Migrant Education
707 E. Columbus Drive
Tampa, Florida 33602
813 223-5331

Funded by: U.S.D.H.E.W.
Service Area: Hillsborough County
Migrant Population Served: Approximately 3,000
Migrant Population Not Served: Information not available

The Title I Migrant Education Program in Hillsborough County offers programs in Early Childhood, Learn and Earn and Reading. About 450 children are enrolled in the Early Childhood program while 2500 are enrolled in the other two programs. The information necessary to identify participating schools in this county and the number of children enrolled in each individual school was not available. (For further information on the programs in Title I Migrant Education refer to the Title I Migrant Education profile in Leon County).

Migrant Labor Camps

Funded by: Privately owned
Service Area: Hillsborough County
Migrant Population Served: 1,549
Migrant Population Not Served: Information not available

In 1959 the State of Florida enacted a law by which migrant labor camps must be licensed if they provide housing for fifteen or more seasonal, temporary or migrant workers. Even if rent is not paid camps used for occupancy must be licensed. In order to be licensed camps must meet minimum standards in areas such as housing space, sanitation and water supply. Local health departments have these regulations available to the public.

In this county there are 24 licensed labor camps with the licensed capacity indicated.

<u>Name of Camp</u>	<u>Licensed Capacity</u>
Leisey & Todd Farms Labor Camp	61
H. Sims Labor Camp	48
Hillsborough Harvesters Camp	21
Council's Camp #1	96
Council's Camp #2	40
E. A. Brantley Labor Camp	45
Lonnie Bobo's Camp	35
Leisey's Camp	44
Elsberry Farm #2	39
Elsberry Farms, Inc. Camp #1	73
Elsberry Farms #3	40
Elsberry Farms, Inc. Camp #4	90
Chain of Lakes Camp	238
B. W. Elsberry #2	82
Howlee Heights	36
Villemaire Labor Camp	57
Elsberry #5	38
Troy Almand #1	59
Troy Almand #2	60
Glisson & Williford Camp	72
Elsberry #6	35
Cox Labor Camp	20
Willia Camp	124
Spencer's Camp	96

INDIAN RIVER

GENERAL INFORMATION

Total Population: 35,992 (1970)
Estimated Migrant Population: 1500 (January)
Migrant Labor Demand: 1380
Estimated Migrant Wages: \$1.40 - \$2.00 per hr.

CROPS OF COUNTY AND WORK PERIODS

<u>Name of Crop</u>	<u>Harvest Work Period</u>	<u>Other Work Periods</u>
Tomatoes	November 15-June 1	
Oranges	November 1-June 30	
Temples	November 1-June 30	
Tangelos	November 1-June 30	
Grapefruit	November 1-June 30	
Tangerines	November 1-June 30	
Murcotts	November 1-June 30	

MIGRANT PROGRAMS IN COUNTY

Farm Labor and Rural Manpower Service
2535 14th Avenue
Vero Beach, Florida 32560
305 567-7957

Funded by: U.S.D.O.L.
Service Area: Indian River County
Migrant Population Served: Information not available
Migrant Population Not Served: Information not available

This office is part of the state network of Farm Labor and rural manpower services. Its services include farm labor placements and initial contact point for manpower training programs. (For additional information see the profile in Leon County).

Migrant Labor Camps

Funded by: Privately owned
Service Area: Indian River County
Migrant Population Served: 36
Migrant Population Not Served: Information not available

In 1959 the State of Florida enacted a law by which migrant labor camps must be licensed if they provide housing for fifteen or more seasonal temporary or migrant workers. Even if rent is not paid, camps used for occupancy must be licensed. In order to be licensed, camps must meet minimum standards in areas such as housing space, sanitation and water supply. Local health departments have these regulations available to the public.

In this county there is one licensed labor camp with the licensed capacity indicated.

<u>Name of Camp</u>	<u>Licensed Capacity</u>
Deerfield Labor Camp	36

Agencies That Might Serve Migrants

The State of Florida administers offices that provide services to low-income people. These offices might be able to provide services to migrant farm workers. Each office should be contacted to determine to what extent they will assist migrant farm workers.

DFS Food Stamp Office
1235 16th St.
Vero Beach, Florida 32560
305 283-2300

Economic Opportunity Council of Indian River, Inc.
4580 33rd Avenue
Vero Beach, Florida 32560
305 562-4177



LAKE COUNTY

GENERAL INFORMATION

Total Population: 69,305
Estimated Migrant Population: 2,880
Migrant Labor Demand: 1,710
Estimated Migrant Wages: \$1.50 - \$2.00 per hr.

CROPS OF COUNTY AND WORK PERIODS

<u>Name of Crop</u>	<u>Harvest Work Period</u>	<u>Other Work Periods</u>
Citrus	October through July	
Oranges		
Grapefruit		
Temples		
Tangelos		
Tangerines		
Murcotts		
Cucumbers	September 20-July 1	August 1-April 1
Peppers	October 20-July 1	August 1-March 15

MIGRANT PROGRAMS IN COUNTY

Title I Migrant Education
P. O. Box 427
Howey in the Hills, Florida

Funded by: U.S.D.H.E.W.
Service Area: Lake County
Migrant Population Served: 635
Migrant Population Not Served: Information not available

The Lake County Title I Migrant Education Program encompasses all four components of the State migrant education plan. These are: Early Childhood Education, Reading, Language Development, and Learn and Earn. (For more information on these specific programs refer to the Title I Migrant Education profile in Leon County).

Migrant Labor Camps

Funded by: Privately owned
Service Area: Lake County
Migrant Population Served: 500
Migrant Population Not Served: Information not available

In 1959 the State of Florida enacted a law by which migrant labor camps must be licensed if they provide housing for fifteen or more seasonal temporary or migrant workers. Even if rent is not paid camps used for occupancy must be licensed. In order to be licensed camps must meet minimum standards in areas such as housing space, sanitation and water supply. Local health departments have these regulations available to the public.

In this county there are two licensed labor camps with the licensed capacity indicated.

<u>Name of Camp</u>	<u>Licensed Capacity</u>
Lake Region Packing Association	300
Golden Gem Labor Camp	200

LEE COUNTY

GENERAL INFORMATION

Total Population: 105,216
Estimated Migrant Population: 7,250 peak migrant population
Migrant Labor Demand: 1,820
Estimated Migrant Wages: \$1.50 per hr.

CROPS OF COUNTY AND WORK PERIODS

<u>Name of Crop</u>	<u>Harvest Work Period</u>	<u>Other Work Periods</u>
Cabbage	October 25-June 15	September 1-March 15
Sweetcorn	September 25-July 10	July 25-May 1
Cucumbers	September 20-July 1	August 1-April 1
Peppers	October 20-July 1	August 1-March 15
Potatoes	January 1-July 1	September 15-March 1
Squash	September 1-July 1	July 25-September 1
Tomatoes	April 10-July 15	December 15-April 1
Watermelons		

MIGRANT PROGRAMS IN COUNTY

Charleston Health Development Center P O Box 12 Alva, Florida 33920 813 728-2382	Harlem Heights Child Development Center Route 3, Box 548 Fort Myers, Florida 813 481-5878
---	--

Funded by: U.S.D.H.E.W.
Service Area: Lee County
Migrant Population Served: 40 per center
Migrant Population Not Served: Information not available

As part of its services to migrants, Community Action Migrant Program (CAMP) operates day care centers in Lee County for Children ages 3-5. The early childhood curriculum utilized at the centers emphasizes oral language development, motor skill development and other activities that promotes intellectual, social, and emotional development.

Auxiliary services provided include hot lunches and snacks, transportation to and from the center, physical examinations and follow-up medical care.

Health Services for Migrants & Dependents
P O Box 1226
Fort Myers, Florida 33902
813 332-1747

Funded by: U.S.D.H.E.W.
Service Area: Lee County
Migrant Population Served: 4,000
Migrant Population Not Served: Information not available

This program offers a comprehensive range of diagnostic, therapeutic and follow-up medical services through intermittently scheduled clinics. In general, these clinic sessions are backed by referrals of patients, by nurses, and out-reach workers to local physicians on a free-for-service basis at times when clinics are not in session. Provisions are also made for caring of other health needs such as dental care, health counseling and out-reach services in addition to preventive services. Environmental health activities are also an element of the project. Migrant Clinic schedules are as follows:

Harlem Heights: Monday & Tuesday
Michigan Apartment Clinic: Tuesdays & Wednesdays
Bonita Clinic: Thursdays

Downtown Dental Clinic: Monday & Wednesday by appointment
Charleston Park: Wednesday
Bill Clark Clinic Health Department Downtown: Thursdays

Title I Migrant Education
2235 First Street
Fort Myers, Florida 33901
813 334-1102

Funded by: U.S.D.H.E.W.
Service Area: Lee County
Migrant Population Served: 339
Migrant Population Not Served: Information not available

Lee County offers all four components of the Title I Migrant Education Program in the State of Florida. These are a Reading Program, Learn and Earn, Early Childhood Education and a Language Development Program. (For information on these specific components refer to the Title I Migrant Education profile in Leon County.)

Participating schools in Lee County and their enrollment are as follows:

Reading Program:

Allen Heart Elementary School	13
Bonita Springs Elementary School	27
Orange River Elementary School	65
Tice Elementary School	37
Michigan Elementary School	30
Cypress Lake Middle School	Information not available

Learn and Earn Program:

Michigan Elementary School	Information not available
Cypress Lake Middle School	32
Billas Elementary School	15

Early Childhood Education:

Michigan Elementary School	85
Heights Elementary	30

Language Development:

Cypress High School	5
---------------------	---

Southwest Florida
South HEP Housing, Inc.
2830 St. Charles St.
Fort Myers, Florida
813 334-4137

Funded by: U.S.O.E.O., United Fund, Land Revolving Act
Service Area: Fort Myers & Immokalee
Migrant Population Served: 17 families
Migrant Population Not Served: Information not available

This particular housing program has two objectives. One, to train the migrant and seasonal agricultural farm worker in the vocation of carpentry and house building and the other is to give migrants and seasonal farm-workers an opportunity to build and own their own homes. As part of the educational program, weekly meetings of building associations are held for migrants and seasonal farm workers in this South HEP Housing Program for instruction in the use of carpentry tools and house building. Also, home education classes are held in which participants are taught how to write checks, how to register to vote and how to make simple home repairs. Additionally, the project instructs participants on how to apply for different loans or exemptions for which they may qualify.

Making the policy decisions of this organization is a 17-member board that meets every other month. An executive board comprised of only seven members also meets

every other month to set policies and make decisions affecting the operation of the program.

Migrant Labor Camps

Funded by: Privately owned
Service Area: Lee County
Migrant Population Served: 55
Migrant Population Not Served: Information not available

In 1959 the State of Florida enacted a law by which migrant labor camps must be licensed if they provide housing for fifteen or more seasonal temporary or migrant workers. Even if rent is not paid camps used for occupancy must be licensed. In order to be licensed, camps must meet minimum standards in areas such as housing space, sanitation and water supply. Local health departments have these regulations available to the public.

In this county there are two licensed labor camps with the licensed capacity indicated.

<u>Name of Camp</u>	<u>Licensed Capacity</u>
Carlos Rivera Camp	40
A & W Glad Farm	15



LEON COUNTY

GENERAL INFORMATION

Total Population: 103,047

Estimated Migrant Population: Information not available

Migrant Labor Demand: Information not available

Estimated Migrant Wages: \$1.30 per hr.

CROPS OF COUNTY AND WORK PERIODS

<u>Name of Crop</u>	<u>Harvest Work Period</u>	<u>Other Work Periods</u>
Corn		
Oats		
Cotton		
Pecans		

MIGRANT PROGRAMS IN COUNTY

Adult Migrant Education
State of Florida Department of Education
216 S. Duval
Pepper Building
Tallahassee, Florida
904 488-1712

Funded by: U.S.D.O.L., U.S.O.E.O. Title III-B
Service Area: Broward, Dade, Hillsborough, Indian River, Manatee, Martin,
Orange, Palm Beach, St. Lucie, Sarasota, Seminole, Okeechobee
Migrant Population Served: 1350
Migrant Population Not Served: Information not available

The Florida Adult Migrant Education Project was initiated in 1966 to provide vocational training for migrants.

The main goal of this program is to provide counseling, job-related education, occupational training, and supportive services to 1350 eligible adult migrants or seasonal farm workers in order for them to qualify for, achieve and retain upward mobility jobs leading to a career. Stipends are provided during training.

In order to be eligible for program recipients follow this procedure:

*First, the potential students in the county area go through a recruiting process utilizing O.E.O. eligibility determination guidelines to find 1350 migrant adults and seasonal farm workers who have the ability and desire to profit from intensive, short term job related education and/or occupational training.

*Project personnel will place those trainees with special educational skills in programs leading to licensing or other certification requirements for their chosen careers.

*If no training is available in certain areas, this program will obtain on-the-job training positions.

Services provided include:

*Specialized education provided for trainees with high motivation and educational ability.

*Teaching non-English speakers bi-lingually to enable these trainees to receive and benefit from job related education and/or occupational training and job placement.

*A consumer education curriculum including family living skills, health and safety education, nutrition and use of finances.

*Monthly counseling at least once per month per trainee.

*Physical exams are provided free of charge for those who need them.

- *Transportation for trainees to attend classes or training if needed.
- *Referrals to agencies that can help the trainees and information of all services available in the community.
- *Job placement for those trainees who complete the job related education and/or occupational training.
- *Finally, follow-up and supportive services to trainees who complete their training.
- *Housing relocation and automobile assistance to trainees.
- *Driver's Education training to participants desiring assistance.
- *Given project staffs composed substantially of para-professionals, designing and implementing a continuous staff development program made up of total program training programs and mini sessions in single county projects or two county projects.

This program is a year round program and has no deadlines. Trainees can start anytime and finish their training at anytime. They attend program works with the vocational schools in Florida and the State School Board sets up the policies for the programs with the advice of the advisory committee composed of 18 farmworkers and seven residents representing the 12 county area.

Comprehensive Migrant Manpower Delivery
 Room 351
 Caldwell Building
 Tallahassee, Florida
 904 488-6244

Funded by: U.S.D.O.L.
 Service Area: Broward, Dade and Palm Beach Counties
 Migrant Population Served: 1200 families
 Migrant Population Not Served: Information not available

The objective of the Migrant Manpower Delivery Service (MMDS) is to enable migrants and their families to leave the migrant stream. The MMDS develops training and supportive resources to upgrade skills and facilitate the migrants' family ability to develop a skill that will help them stay out of the stream. This program utilizes developed techniques for providing a sound environment and encouraging self-organization and self motivation for the migrant.

MMDS is responsible for providing direct services to migrants in the program. It recruits participants, provides program orientation, employment preparation, and work orientation based on each individual's need. Follow through and follow-up coaching is provided as migrants move through the program and into employment. Personal, social, vocational and family counseling is provided as a direct supportive service. Job development and placement services are provided, and when necessary, mobility assistance is rendered. Physical examinations are provided for each trainee and his or her family. Transportation is arranged, when needed, to enable migrants to participate.

Each trainee receives a minimum of \$46 per week plus \$5 per each dependent up to 6 dependents plus \$5 for travel. This is on a weekly basis. If a second or third member of a family is involved in the training he or she receives only the minimum plus \$5 for travel.

Supportive services from public and private sources are provided by involving local community and county agencies in a total family approach delivery system. MMDS makes referrals to existing sources of support and when necessary contracts for supportive services like:

- *Housing
- *Health
- *Day Care
- *Food Programs etc. . . .

Migrant representation exists in the MMDS State Advisory Board and local MMDS Advisory Board.

Local MMDS Advisory Boards were developed in unison with the establishment of each site. Local Boards include migrant representation in proportion to their ethnic and cultural distribution in the local migrant population. Other members of the boards include MMDS staff members, representatives of agencies providing supportive services and city and county government representatives of local groups who have demonstrated a strong interest in serving the needs of migrants.

There are three local area boards, one in each county served. They meet once a month and the number of members varies from county to county.

- 51 Original members in Palm Beach County (Del Ray Beach)
- 27 Original members in Broward County (Pompano Beach)
- 34 Original members in Dade County (Homestead)

There is also a State Board which has met only once and is composed of two members from each area council and six citizens of the State of Florida.

State Title I Migrant Education Program
Florida Migratory Child Compensatory Program
Knott Building
Tallahassee, Florida

Funded by: U.S.D.H.E.W.

Service Area: Brevard, Broward, Collier, Dade, De Soto, Glades, Hardee, Hendry, Highlands, Hillsborough Lake, Lee, Manatee, Martin, Okeechobee, Orange, Palm Beach, Pasco, Polk, St. Johns, St. Lucie, Sarasota, Seminole

Migrant Population Served: 35,000

Migrant Population Not Served: Information not available

The Florida Migratory Child Compensatory Program was established to assist public schools in developing educational programs for migrant children and to provide the proper climate for its development. The program consists of four components and each participating county offers only those components that are needed in that specific county.

Learning Laboratories:

The program's learning laboratories provide an environment with materials and equipment especially designed to meet the needs and interests of each child. Individual mobile units are staffed by a teacher and two aides from 7 a.m. to 5 p.m. daily. The children are provided with a balanced program of nutrition.

The program emphasizes:

- *Physical and dental examinations
- *Nutrition
- *Language development
- *Social and personal development
- *Physical development

Learn & Earn:

The Learn and Earn program is designed to help the migrant students, ages 14-17, improve their self concept by achieving success in a short term occupational course. Mobile laboratories provide training experiences which help the students develop positive attitudes toward themselves, the world of work, their peers and the relevancy of school.

The following programs are offered:

- *Auto tune up
- *Supermarket
- *Patient Care
- *Typing
- *Small Engine Technology
- *Marine Engine Technology
- *Agriculture
- *Hospital-Hotel Housekeeping

There are 57 learning mobile laboratories classrooms. They are designed to simulate the actual occupational area which is being presented. These units contain individual learning carrels, ample audiovisual equipment, visual aids and a library of pertinent material.

Right to Read:

The goal of the Right to Read Program is to give each student the opportunity to progress at his own rate and experience success that will ensure life-long enthusiasm in reading. The program provides material and personnel to offer individualized assessments and instruction.

The material includes multiple oral language and supplementary reading material that will serve migrant students from pre-school through junior high school. The units are placed in schools with the highest concentration of migrant children. Inservice education for participating teachers and assistants by regional and county consultants is an important part of this program.

Oral Language Development:

It is a program that is presently being planned to implement an ESL bilingual/bicultural program to meet the needs of these children. The program will be designated with an emphasis on primary and elementary grade levels, with eventual inclusion of pre-school, middle and high school levels.

Florida Farm Labor Department
Rural Manpower Office
Florida Department of Commerce
36A Caldwell Building
Tallahassee, Florida

Funded by: U.S.D.O.L.

Service Area: Bay, Broward, Calhoun, Charlotte, Collier, Columbia, Dade, De Soto, Dixie, Escambia, Gadsden, Glades, Gulf, Hamilton, Hendry, Holmes, Jackson, Jefferson, Lafayette, Taylor, Wakulla, Walton, Lee, Leon, Liberty, Madison, Monroe, Okaloosa, Palm Beach, Santa Rosa, Suwanee, Washington

Migrant Population Served: 5,000 (approximately)

Migrant Population Not Served: Information not available

Recruitment and Labor:

During March and April, the Florida Farm Labor Department arranged and scheduled crew leader orders from participating eastern seaboard and midwestern states. All crew leaders with summer commitments and available crew leaders were called in to the nearest and most convenient Farm Labor Office to discuss summer jobs. A total of 640 crew leaders and 22,445 workers received full or partial job commitments for the entire summer until they were needed in the fall here in Florida. There were 5,679 workers who requested job development for summer work. Generally speaking, there was a need by at least 50 percent of the crew leaders for additional or full time employment for the summer. It was urged that all states with orders listing adequate wages, hours and working conditions submit orders this year to Florida for summer work. Local offices reported available crews for interstate job commitments during the summer. In addition to assisting crew leaders find summer employment, field staff helped crew leaders prepare FLCR forms, gas tax forms and other forms required when traveling through the eastern seaboard states. This year, the annual worker plan will probably be reduced partly due to the lack of orders.

In the fall of 1971, Florida interstate recruitment was stopped due to continued crop losses and a large group of surplus workers. This delayed significant agricultural labor demands until late spring. The largest increase in surplus workers that migrated into Florida appears to be in Latin origin workers coming out of Texas and surrounding states. Other groups were noted coming from North Carolina, South Carolina, Georgia, Alabama, Mississippi and Tennessee.

During the coming season there will be an increased demand for individuals to work in nurseries and on flower farms. Mechanization will not seriously affect the need for farm labor in this area during 1973.

With available housing decreasing, the situation will be very critical in 1973. It is hoped this situation will be alleviated in the next few years. The food stamp program and other community services may attract workers to remain in this area in greater numbers than ever before during the summer months. Combined with the normal seasonal lull in vegetable crop activity, this situation could possibly produce a very high level of unemployment and underemployment among agricultural workers during June, July, August and early September. Services to agro-related industries are expected to further expand in keeping with the Rural Manpower Concept.



Office of Migrant Labor Division
2571 Executive Center Circle East
Tallahassee, Florida
904 488-7756

Funded by: State of Florida
Service Area: State of Florida
Migrant Population Served: General
Migrant Population Not Served: Not Applicable

The Office of Migrant Labor Division does not provide any services to migrant farm workers. Instead their function has been to compile a comprehensive review of state programs affecting migrants and local poor. It makes recommendations, based on findings, to the Florida Department of Administration.

MANATEE COUNTY

GENERAL INFORMATION

Total Population: 97,115
Estimated Migrant Population: 5900
Migrant Labor Demand: 1,800
Estimated Migrant Wages: \$1.45 to \$2.00

CROPS OF COUNTY AND WORK PERIODS

<u>Name of Crop</u>	<u>Harvest Work Period</u>	<u>Other Work Periods</u>
Citrus	October through July	
Oranges		
Grapefruit		
Temples		
Tangelos		
Cabbage	October 25-June 15	September 1 -March 15
Cauliflower	December 15-April 15	September 15-January 1
Strawberries	December 15-May 15	October 1-November 15
Tomatoes	October 20-July 1	July 25-September 1
Watermelons	April 10-July 1	December 15-April 1

MIGRANT PROGRAMS IN COUNTY

Community Action Migrant Program, Inc.
1150 Palmetto St.
Bartow, Florida 33830
813 533-0988

Funded by: U.S.D.H.E.W., U.S.O.E.O. (Title III-B)
Service Area: Manatee, Hardee and Western half of Polk County
Migrant Population Served: 1500
Migrant Population Not Served: Information not available

The regional offices of the CAMP program are involved in delivering a variety of services to the migrant farm worker population. Services rendered include occupational, educational and sustenance assistance.

The regional office provides job placement in upward mobility jobs, refers migrants to training programs and provides stipends and contracts with various programs to provide remedial education and English language training.

In the area of education early childhood development programs are offered and referrals made to colleges, vocational education programs, High School equivalency programs and adult basic education classes.

Health referrals are also provided to children that are not enrolled in local head start programs.

Elderly migrants are provided with meals and social services.

General services such as funds for food and medical assistance, assistance in school desegregation and sponsoring food co-ops are also provided.

Adult Migrant Education
5603 34th St. W.
Bradenton, Florida 33505
813 755-2641

Funded by: U.S.D.O.L., U.S.O.E.O.
Service Area: Manatee County
Migrant Population Served: 9
Migrant Population Not Served: Information not available

In operation for about two years, this program operated under the auspices of the Florida Department of Education offers training and education for migrant farm workers and former migrants. Due to funding procedures, this program has only begun to recruit trainees. Operating at full enrollment this program will serve 40 migrant trainees. (For additional information see the Adult Migrant Education profile in Leon County).

Title I Migrant Education
 P. O. Box 655
 Ellenton, Florida 33532
 813 746-1098

Funded by: U.S.D.H.E.W.
 Service Area: Manatee County
 Migrant Population Served: 907
 Migrant Population Not Served: Information not available

Operating in five cities in the county this Title I Migrant education program offers programs in Early Childhood Development, Learn and Earn, Language Development and Reading. Participating schools in each city are listed below with enrollment. (For additional information see Title I Migrant Education profile in Leon County.)

Bradenton

Ballard Elementary	3
Bayshore Elementary	4
Bradenton Elementary	8
Daughtrey Elementary	4
Manatee Elementary	85
Orange Ridge Elementary	12
Palma Sola Elementary	12
BayShore Middle School	2
Bradenton Middle School	17
Manatee High	10
South East High	18
Manatee Head Start	32

Palmetto

Blackburn Elementary	124
Palmetto Elementary	33
Tillman Elementary	113
Lincoln Middle School	31
Palmetto High	52

Myakka City

Myakka Elementary	23
-------------------	----

Samoset

Samoset Elementary	2
Oneco Elementary	34

Migrant Labor Camps

Funded by: Privately owned
 Service Area: Manatee County
 Migrant Population Served: 636
 Migrant Population Not Served: Information not available

In 1959 the State of Florida enacted a law by which migrant labor camps must be licensed if they provide housing for fifteen or more seasonal temporary or migrant workers. Even if rent is not paid, Camps used for occupancy must be licensed. In order to be licensed camps must meet minimum standards in areas such as housing space, sanitation and water supply. Local health departments have these regulations available to the public.

In this county there are nine licensed labor camps with the licensed capacity indicated.

<u>Name of Camp</u>	<u>Licensed Capacity</u>
Avalos Labor Camp	80
Palmetto Tomato Growers Labor Camp	119
Whisenant Farms Labor Camp	138
Valley Farm Labor Camp	100
Perless-Manatee, Inc. Labor Camp	50
Millcreek Farms Labor Camp	65
Lorraine Farms Labor Camp	30
Taylor-Fulton, Inc. Labor Camp	30
Jackson Field Camp	24

MARTIN COUNTY

GENERAL INFORMATION

Total Population: 28,035 (1970)
Estimated Migrant Population: 700
Migrant Labor Demand: Information not available
Estimated Migrant Wages: \$1.40 - \$2.00 per hr.

CROPS OF COUNTY AND WORK PERIODS

<u>Name of Crop</u>	<u>Harvest Work Period</u>	<u>Other Work Periods</u>
Corn	October 15-June 15	September 15-May 30
Oranges	October 15-June 30	August 1-October 15
Temples	October 15-June 30	August 1-October 15
Tangelos	October 15-June 30	August 1-October 15
Grapefruit	October 15-June 30	August 1-October 15
Tangerines	October 15-June 30	August 1-October 15
Murcotts	October 15-June 30	August 1-October 15
Flowers	December - June	

MIGRANT PROGRAMS IN COUNTY

Title I Migrant Education
Martin County Schools
500 E. Ocean Blvd.
Stuart, Florida 33494
305 287-6400

Funded by: U.S.D.H.E.W.
Service Area: Martin County
Migrant Population Served: 491
Migrant Population Not Served: Information not available

The Title I Migrant Education Program in this county is operating in Indiantown, Florida. Participating schools include programs in Early Childhood Education, Reading and Learn and Earn. The Early Childhood Education Programs are geared for children ages 4 and 5 and kindergarten. The Reading program is for grades 1 through 5 while the Learn and Earn Program is operating in grades 5-8. (For further information on these migrant education components refer to the Title I Migrant Education profile in Leon County).

Participating schools in the Title I Migrant Education Program are:

Warfield Elementary School
P. O. Box 248
Jackson Avenue
Indiantown, Florida 33456
305 597-2551

Indiantown Middle School
P. O. Box 728
West Farm Road
Indiantown, Florida 33456
305 597-2146

Community Action Migrant Program, Inc. (CAMP)
Region VII Office
P. O. Box 758
Indiantown, Florida 33456
305 597-2178

Funded by: U.S.D.H.E.W.; U.S.O.E.O.; Title III-B
Service Area: Martin County, St. Lucie, Okeechobee and Indian River County
Migrant Population Served: Information not available

Migrant Population Not Served: Information not available

The regional offices of the CAMP program are involved in delivering a variety of services to the migrant farm worker population. Services are rendered in the areas of occupation, education and sustenance assistance.

The regional office provides job placement in upward mobility jobs, refers migrants to training programs and provides stipends and contracts with various programs to provide remedial education and English language training.

In the area of education, Early Childhood Development Programs are offered and referrals are made to colleges, vocational education programs, High School Equivalency Programs, and adult basic education classes.

Health referrals are also provided to children that are not enrolled in local head start programs.

Elderly migrants are provided with meals and social services.

General services such as funds for food and medical assistance, assistance in school desegregation and sponsoring food co-ops are also provided.

As part of its services to migrants in this county CAMP operates two day care centers for children ages 3-5. The Early Childhood Curriculum utilized at the centers emphasizes oral language development, motor skills development and other activities that promote intellectual, social and emotional development.

Auxiliary services provided include hot lunches and snacks, transportation to and from the center, physical examinations and follow-up medical care. The two centers in the county are located at:

East Stuart Child Development Center
Stuart Housing Authority
P.O. Box 5
Stuart, Florida 33494
305 287-1489

Booker Park Child Development Center
P.O. Box 57
Indiantown, Florida 33456
305 597-3129

Agencies That Might Serve Migrants

Although there are no specific "migrant programs" in this county, The State of Florida administers offices which provide services to low-income people. Migrant farm workers might be assisted by these offices. Individual offices should be contacted to determine the extent of their assistance to migrant farm workers.

DFS Food Stamp Office
246 C. Osceola Avenue
Stuart, Florida 33934
305 283-2300

Division of Family Services
31 E. Ocean Boulevard
Stuart, Florida 33494
305 287-8585

Migrant Labor Camps

Funded by: Privately owned
Service Area: Martin County
Migrant Population Served: 355
Migrant Population Not Served: Information not available

In 1959, the State of Florida enacted a law by which migrant labor camps must be licensed if they provide housing for fifteen or more seasonal temporary or migrant workers. Even if rent is not paid camps used for occupancy must be licensed. In order to be licensed camps must meet the minimum standards in areas such as housing space, sanitation and water supply. Local health departments have these regulations available to the public.



In this county there are four licensed labor camps with the licensed capacity indicated.

<u>Name of Camp</u>	<u>Licensed Capacity</u>
Hodgson Grove	140
Port Mayaca	135
Hood-Martin Grove	60
Zarella Farms, Inc.	20

OKEECHOBEE COUNTY

GENERAL INFORMATION

Total Population: 11,233 (1970)
Estimated Migrant Population: Information not available
Migrant Labor Demand: 700
Estimated Migrant Wages: \$1.40 - \$2.00 per hr.

CROPS OF COUNTY AND WORK PERIODS

<u>Name of Crop</u>	<u>Harvest Work Period</u>	<u>Other Work Periods</u>
Watermelons	May - June	
Tomatoes	Nov. - Dec. & April - May	
Grapefruit	November 1-June 30	
Tangerines	November 1-June 30	
Murcotts	November 1-June 30	
Oranges	November 1-June 30	
Temples	November 1-June 30	
Tangelos	November 1-June 30	
Corn	December 1-May 15	

MIGRANT PROGRAMS IN COUNTY

Community Action Migrant Program, Inc.
Douglas Brown Child Development Center
812 Morton Street
Okeechobee, Florida 33472
813 763-7567

Funded by: U.S.D.H.E.W.
Service Area: Okeechobee County
Migrant Population Served: 40
Migrant Population Not Served: Information not available

As part of its services to migrants, CAMP operates a day care center in Okeechobee for children ages 3-5. The Early Childhood curriculum utilized at the center emphasizes oral language development, motor skill development and other activities that promote intellectual, social and emotional development.

Auxiliary services provided include hot lunches and snacks, transportation to and from the center, physical examinations and follow-up medical care.

Title I Migrant Education
Okeechobee County Schools
812 Morton Street
Okeechobee, Florida 33472
813 763-3725

Funded by: U.S.D.H.E.W.
Service Area: Okeechobee County
Migrant Population Served: 470
Migrant Population Not Served: Information not available

The migrant education program in this county operates primarily two programs Early Childhood Education and Reading. The two Early Childhood Education Programs serving 36 migrant children ages 4-5 are located at the McArthur Dairy Farm; one of them 15 miles north of Okeechobee on Highway 441 the other one six miles east of Okeechobee on Highway 70. The Reading program is operated in schools in Okeechobee ranging from grades 1-6. Participating schools are:

Okeechobee Primary School 610 Southwest Fifth Avenue 813 763-4312	South Elementary School Route 4, Box 220 813 763-3182	Okeechobee Elementary 700 Southwest 2nd Ave. 813 763-3721
---	---	---

(For further information on Title I Migrant Education refer to the Title I Migrant Education Program profile in Leon County.)

Agencies That Might Serve Migrants

Although there are no specific "migrant programs" in this county, the State of Florida administers offices which provide services to low-income people. Migrant farm workers might be assisted by these offices. Individual offices should be contacted to determine the extent of their assistance to migrant farm workers.

Commodities
Old Jail Building
Okeechobee, Florida 33472
305 763-3212

Migrant Labor Camps

Funded by: Privately owned
Service Area: Okeechobee County
Migrant Population Served: 393
Migrant Population Not Served: Information not available

In 1959 the State of Florida enacted a law by which migrant labor camps must be licensed if they provide housing for fifteen or more seasonal temporary or migrant workers. Even if rent is not paid, camps used for occupancy must be licensed. In order to be licensed camps must meet minimum standards in areas such as housing space, sanitation and water supply. Local health departments have these regulations available to the public.

In this county there are nine licensed labor camps with the licensed capacity indicated.

<u>Name of Camp</u>	<u>Licensed Capacity</u>
Sharpe's Camp	30
Buddy Camp #1	32
Buddy's Labor Camp #2	48
Rice Camp #2	24
Rice Labor Camp #3	50
Williams Harvesting Quarters	16
Williams Harvesting Quarters #2	40
Rice Camp #1	28
Evans Packing Company	125

ORANGE COUNTY

GENERAL INFORMATION

Total Population: 344,311
 Estimated Migrant Population: 7,250 (January)
 Migrant Labor Demand: Information not available
 Estimated Migrant Wages: \$1.50 - \$2.00 per hr.

CROPS OF COUNTY AND WORK PERIODS

<u>Name of Crop</u>	<u>Harvest Work Period</u>	<u>Other Work Periods</u>
Green Peppers	November 15-June 15	
Cabbage	January 1-April 15	
Celery	December 15-June 1	October 1-April 15
Cucumbers	November 1-December 15 April 20-June 1	
Lettuce	December 1-May 1	
Grapefruit	October 1-June 30	July 1-September 30
Tangerines	October 1-June 30	July 1-September 30
Murcotts	October 1-June 30	July 1-September 30
Oranges	October 1-June 30	July 1-September 30
Temples	October 1-June 30	July 1-September 30
Tangelos	October 1-June 30	July 1-September 30
Corn	May 15-July 15	

MIGRANT PROGRAMS IN COUNTY

Community Coordinated Child Care of Orange County
 816 Broadway
 Orlando, Florida 42803
 305 425-0509

Funded by: U.S.D.H.E.W.
 Service Area: Orange County
 Migrant Population Served: 164
 Migrant Population Not Served: Information not available

Funded under Title IV A of the Social Security Act the Community Coordinated Child Care of Orange County attempts to coordinate local efforts in child care and to mobilize community resources, seeks new sources of funding for child care programs. This organization has sub-contracted with 10 day care centers in Orange County to provide services to low-income children. Two of the centers are specifically for migrant children. The centers operate year round, Monday through Friday, from 6a.m. to 6p.m. Main services provided by these centers include educational, nutritional, health, recreational and transportation. The two migrant day care centers are:

Tildenville Day Care Center
 P.O. Box 999
 Winter Garden, Florida 32787
 305 656-2167 (servicing communities of Harlem Heights, Oakland and Winter Garden)

Zellwood Day Care Center
 P.O. Box 326
 Zellwood, Florida
 904 383-6313 (servicing communities of Plymouth, Mount Dora, Zellwood and Tangerine)

There is a fee of at least \$0.50 per week for all children enrolled.

Mid-Florida Technical School
2900 Oak Ridge Road
Orlando, Florida 32809
305 855-7676

Funded by: U.S.D.O.L., U.S.O.E.O.
Service Area: Orange County
Migrant Population Served: Approximately 110
Migrant Population Not Served: Information not available

Operating under the auspices of the Florida Adult Migrant Education Project, the main goal of this program is to provide counseling, job related educational, occupational training and supportive services to eligible adult migrants and seasonal farm workers so that they may qualify for, achieve and retain upward mobility jobs leading to a career. Stipends are provided during training.

Farm Labor and Rural Manpower Service
8015 North Orange Blossom Trail
U. S. Highway 441
P. O. Box 17188
Orlando, Florida 32810
305 295-2242

Funded by: U.S.D.O.L.
Service Area: Orange County
Migrant Population Served: 3,715
Migrant Population Not Served: Information not available

This office of the Rural Manpower Service is operated for the recruitment of agricultural farm workers within the state of Florida. Some training services are offered under the auspices of this office. Placement contacts and assessments are made both for farm labor and rural manpower needs.

Title I Migrant Education
Region II Office
7001 Lake Eleanor Drive
Suite 252
Orlando, Florida 32809
305 855-6830

Funded by: U.S.D.H.E.W.
Service Area: Brevard, Lake, Martin, Okeechobee, Orange, Palm Beach, Seminole, St. Johns and St. Lucie Counties
Migrant Population Served: None directly
Migrant Population Not Served: Not applicable

The primary purpose of this particular office of Title I Migrant Education is to help establish, implement, improve and administer programs of supplementary education for migrant children in counties listed above in the service area.

Orange County Migrant Health Project
1703 South Central Avenue
Apopka, Florida 32703
305 249-3326

Funded by: U.S.D.H.E.W.
Service Area: Orange County
Migrant Population Served: 2,351
Migrant Population Not Served: 5,149

Formerly, under the Orange County Health Department, this program is now under the auspices of the West Orange Farm Workers Health Association.

The objectives of this program is to provide medical, dental and health education services to the migrant population. As means of achieving the stated objectives, this program emphasizes coordination, cooperation, and solicitation of community agencies in assisting in programs for the betterment of migrant families.

As a means to involve the migrant population, a policy advisory board has been

established by a volunteer method. Most of the migrant participants come from two licensed labor camps in the County. Although the board has not met, their purpose will be to advise, recommend and provide guidance to the program administration.

Health services provided by the clinics include health education, immunizations, screening tests and physical examinations, hospital referrals and follow-up care, dental care and some transportation. Also, maternity, family planning, infant and pre-school, tuberculosis, venereal disease, and general clinics are scheduled.

During the peak migrant season three migrant medical evening clinics are scheduled each week; one at the Apopka Clinic and two at the Winter Garden Clinic. The night clinics are in addition to the day clinics conducted 8 hours a day.

Clinics are located at:

Apopka Health Center
25 W. Fifth Street
Apopka, Florida 32703
305 889-2871

Winter Garden Health Center
110 South Main Street
Winter Garden, Florida 32787
305 656-3896

Title I Migrant Education
Orange County Schools
Woods Street Annex
410 Woods Avenue
Orlando, Florida
305 843-5481

Funded by: U.S.D.H.E.W.
Service Area: Orange County
Migrant Population Served: Over 850
Migrant Population Not Served: information not available

Through cooperation of 15 schools in this county, educational programs have been established for migrants from kindergarten through grade 12. Migrant education in Orange County utilizes a Reading program, Early Childhood Education, and Learn and Earn.

Participating schools, program they operate and enrollment are listed below.

Apopka, Florida	<u>Program</u>	<u>Enrollment</u>
Apopka Memorial High School 425 North Park Avenue 305 889-4194	Learn and Earn & Reading	78
Apopka Junior High School 675 West Dixie Highway 305 889-4345	Learn and Earn & Reading	45
Dream Lake Elementary School 500 North Park Avenue 305 886-1201	Reading	Not available
Lovell Elementary School 815 South Roger Williams Road 305 889-3556	Reading	23
Phyllis Wheatley Elementary School 2 West 18th Street 305 889-3114	Early Childhood Education & Reading	152

Ocoee, Florida

Ocoee Elementary School	Reading	Not available
Ocoee High School 300 South Bluford Street 305 656-4133	Learn and Earn & Reading	114

Orlando, Florida

Carver Junior High 4500 W. Columbia Avenue	Learn & Earn & Reading	14
---	------------------------------	----

Eccleston Elementary School 305 295-1988	Reading	23
---	---------	----

Winter Garden, Florida

Dillard Street Elementary School 310 North Dillard Street 305 656-4109	Reading	Not available
--	---------	---------------

Lakeview High School West Day Street 305 656-2424	Learn & Earn & Reading	75
---	------------------------------	----

Maxey Elementary School 305 656-4733	Early Childhood Education & Reading	125
---	---	-----

Tildenville Elementary School Route 2, Box 128-D 305 656-4323	Early Childhood Education & Reading	69
---	---	----

Winter Garden Elementary School 208 South Main Street 305 656-1133	Reading	14
--	---------	----

Zellwood Elementary School P. O. Box 248 305 886-0464	Early Childhood Education & Reading	117
---	---	-----

Agencies That Might Serve Migrants

Although there are no specific "migrant programs" in this county, the State of Florida administers offices which provide services to low-income people. Migrant farm workers might be assisted by these offices. Individual offices should be contacted to determine the extent of their assistance to migrant farm workers.

DFS Food Stamp Office 2300 Orange Blossom Trail Orlando, Florida 32804 305 843-6630	Division of Family Services State Office Building 941 West Morse Blvd. Winter Park, Florida 32789 305 647-5000
--	--

Division of Family Services 1013 East Colonial Drive Orlando, Florida 32803 305 841-7541	Florida Christian Migrant Ministry 100 South Liberty Orlando, Florida 32800
---	---

Vocational Rehabilitation Div. 70 East South Street Orlando, Florida 32801 305 422-7181	Florida State Employment Service 117 South Court Orlando, Florida
--	---

Orange County Economic Opportunity, Inc. 32 North Orange Avenue Rm-137 Orlando, Florida 32801 305 422-2441	Florida State Employment Service State Office Building 941 West Morse Blvd. Winter Park, Florida
---	---

Orlando WIN
123 South Court
Orlando Florida 32801

OSCEOLA COUNTY

GENERAL INFORMATION

Total Population: 25,267 (1970)
Estimated Migrant Population: 991 (January)
Migrant Labor Demand: 340
Estimated Migrant Wages: \$1.45 - \$1.50 per hour

CROPS OF COUNTY AND WORK PERIODS

<u>Name of Crop</u>	<u>Harvest Work Period</u>	<u>Other Work Periods</u>
Oranges	November 1-June 30	
Grapefruit	November 1-June 30	
Temples .	November 1-June 30	
Tangelos	November 1-June 30	
Tangerines	November 1-June 30	
Murcotts	November 1-June 30	

Agency That Might Serve Migrants

The State of Florida provides services to low-income families which migrant farm workers might be able to utilize. Each office should be contacted to determine to what extent they will assist migrant farm workers.

Division of Family Services
1703 N. Main St.
Kissimmee, Florida 32741
305 847-3280



PALM BEACH COUNTY

GENERAL INFORMATION

Total Population: 348,753
 Estimated Migrant Population: 38,358 (January)
 Migrant Labor Demand: Information not available
 Estimated Migrant Wages: \$1.50 - \$2.50 per hr.

CROPS OF COUNTY AND WORK PERIODS

<u>Name of Crop</u>	<u>Harvest Work Period</u>	<u>Other Work Periods</u>
Snap Beans	October 15-June 15	
Celery	October 25-July 10	October 15-May 30
Sweetcorn	September 25-July 10	
Cucumbers	September 20-July 1	
Egg Plant	October 1-August 1	
Escarole	October 20-June 1	
Lettuce	October 20-June 1	
Green Peppers	October 20-July 1	
Irish Potatoes	January 1-July 1	
Squash	September 1-July 1	
Tomatoes	October 20-July 1	August 30-May 15
Corn	September 15-June 15	September 15-May 30
Oranges	November 1-June 1	
Temples	November 1-June 1	
Tangelos	November 1-June 1	
Grapefruit	November 1-June 1	
Tangerines	November 1-June 1	
Murcotts	November 1-June 1	
Sugar Cane	October 15-April 20	July 15-October 15

MIGRANT PROGRAMS IN COUNTY

Rural Health Committee, Inc.
 Home Family Day Care (Home Start)
 401 Shirley Drive
 Pahokee, Florida 33476
 305 924-2564

Funded by: Private Donations; U.S.D.H.E.W.
 Service Area: Fremd Village Housing Project
 Migrant Population Served: 13
 Migrant Population Not Served: Information not available

This project started in June 1973 and it provides Home Start services as part of the Palm Beach County Community coordinated child care organization.

The 13 children presently served by this program are not all migrant children. Instead they are children of seasonal agricultural farm workers. It is located in a housing project for migrant and seasonal farm workers operated by the Pahokee Housing Authority.

Funded for approximately 25 children the program is still recruiting additional enrollees. The children it is equipped to serve can be from the ages of 6 months to 2 1/2 years and come from a family where the mother is the head of the household. Also, the family must be a recipient of aid to dependent children.

In this program there is no classroom or school setting. Instead women are hired who act as day care mothers. Each day care mother provides care for about three children. Infant care is provided from 6a.m. to 6p.m. Monday through Friday on a year round basis.

Wee Care, Inc.
209 Southwest 10th Street
Belle Glade, Florida 33430
305 996-6196

Funded by: U.S.D.H.E.W., Private Donations
Service Area: Lake and Palm Beach Counties
Migrant Population Served: 105
Migrant Population Not Served: Information not available

This program serves migrant children ages 2-5 years old, subdivided into three categories:

1. 2-3 year olds
2. 4 year olds
3. 5 year olds

Funded under Title IV A of the Social Security Act the program provides comprehensive child care including nutrition, health and education. Specific services provided include immunizations, physical examinations, dental examinations, curative treatment and meals and snacks.

During the months September through May inclusive, the day care center operates Monday through Friday from 6:30a.m. through 6:30p.m. During the months of June, July and August the centers operate Monday through Friday 7 a.m. to 5 p.m.

In order to incorporate parent participation in their program the Wee Care Center has a parent-teacher association made up of teachers at the center and approximately 85 parents. This group meets regularly and provides an opportunity for communication between teachers and parents. Recommendations from this group are used by the administration to implement policies and services at the center.

Community Action Migrant Program, Inc.
Region III Office
448 Southwest Avenue "E"
Belle Glade, Florida 33430
305 996-7659

Funded by: U.S.D.H.E.W.; U.S.O.E.O.; Title III-B
Service Area: Western half of Palm Beach County, Glade County and Eastern half of Hendry County
Migrant Population Served: 759
Migrant Population Not Served: Information not available

Community Action Migrant Program, Inc.
Region IV
116 Northeast 10th Avenue
Boynton Beach, Florida 33435
305 732-3441

Funded by: U.S.D.H.E.W.; U.S.O.E.O.; Title III-B
Service Area: Eastern half of Palm Beach County
Migrant Population Served: 2,000
Migrant Population Not Served: Information not available

The regional offices of the CAMP program are involved in delivering a variety of services to the migrant farm worker population. Services are rendered in the areas of occupation, education and sustenance assistance.

The regional office provides job placement and upward mobility jobs, refers migrants to training programs, and provides stipends and contracts with various programs to provide remedial education and English Language training.

In the area of education, Early Childhood Development Programs are offered and referrals are made to colleges, vocational educational programs, High School Equivalency programs, and adult basic education classes.

Health referrals are also provided to children that are not enrolled in local Head Start Programs.

Elderly migrants are provided with meals and social services.

General services such as funds for food and medical assistance, assistance in school desegregation and sponsoring food co-ops are also provided.

As part of its services to migrants in this county the CAMP program operates five day care centers for children ages 3-5. The average enrollment in these day care centers is 40 children. The Early Childhood Curriculum utilized at these centers emphasizes oral language development, motor skills development and other activities that promote intellectual, social and emotional development.

Auxiliary services provided include hot lunches and snacks, transportation to and from the center when needed, physical examinations and follow-up medical care.

Day care centers operated by CAMP are:

Okeechobee Day Care Center
20 Carver Street
Belle Glade, Florida 33430
305 996-9067

Frend Village Child Development Center
401 Shirley Drive
Pahokee, Florida 33476
305 924-5002

American Foods Child Development Center
P. O. Box 3606
Lantana, Florida 33460
305 967-0082

Flavor Pick Child Development Center
P O Box 2125
Delray Beach, Florida 33444
305 276-5487

Lake Harver Child Development Center
P. O. Box 108
Lake Harver, Florida 33459
305 996-6876

Palm Beach County Migrant Health Project
826 Ebernia Street
West Palm Beach, Florida 33402
305 832-8561

Funded by: U.S.D.H.E.W.
Service Area: Palm Beach County
Migrant Population Served: 5,756
Migrant Population Not Served: 32,244

The Palm Beach County Migrant Health Project provides all day clinic services in five clinic sites and one satellite clinic site with selected evening clinics available. Two mobile clinics operate in various areas on a schedule basis. The project provides payment for emergency room care at area hospitals to supplement an augment clinic service and in lieu of clinic service in times when clinics are not open.

Project provides out-patient and emergency room treatment and referrals to physicians offices for consultation and care not provided or available at the clinic. Diagnostic and laboratory services are provided as necessary; and prescriptions for clinic patients, filled at the county welfare pharmacy, are paid for on a cost basis by the project. Dental care is provided in health department dental clinics.

A consumer policy board meeting monthly advises the migrant health project in its operation and the services they are providing. The consumer policy board consists of 51% migrant and seasonal farm workers or their representatives, professional people and members of the community at large.

Clinics and their schedules operating as part of this migrant health program are:

Southeast County Health Center
3455 Congress Avenue
Delray Beach, Florida 33444
305 278-7711

Maternity In-Take	1-4 p.m. 9-12 noon	Wednesday Friday
Maternity Clinic	8-12 noon 1-4 p.m.	Monday
Family Planning Clinic	6-10 p.m. 12-5 p.m. 6-10 p.m.	Tuesday Wednesday Thursday
Pediatric Clinic	9-12 noon	Monday, Tuesday, Wednesday & Thursday
Pediatric Infant Clinic	9-3:30 p.m.	Friday
Pediatric Clinic	1-4 p.m.	Friday
Family Health Clinic	6-10 p.m. 8-12 noon 6-10 p.m. 8-12 noon	Monday Tuesday Wednesday Thursday
Immunization Clinic	1:30-4 p.m.	Wednesday
Boca Raton Neighborhood Center Immunization Clinic	2-4 p.m.	2nd & 4th Tuesday
Boynton-St. John's Paptist Church Immunization Clinic	1:30-4 p.m.	1st & 3rd Wednesday
Chest Clinic	1-4 p.m.	Thursday
Venereal Disease Clinic	1:30-4 p.m.	Tuesdays, Thursdays
Dental Clinic (by appointment)	8:30-5 p.m.	Monday-Friday
Food Handlers Clinic	8-12 noon	Monday-Friday
Glacoma Screening	Phone health center for schedule	
Cancer Detection Clinic	Available in family planning, venereal dis- ease, or family health clinics	
Public Health Nurse Conference Hours	8-12 noon	Monday-Friday
West Palm Beach Clinic 826 Ebernia Street West Palm Beach, Florida 33402 305 832-8561		
Maternity In-Take	by appointment	
Maternity Clinic	12-4 p.m. 8-10 a.m.	Mondays Wednesdays
Family Planning Clinic	1-4 p.m. 10-12 noon	Tuesdays Wednesdays
Vasectomy Clinic	by appointment	
Immunization Clinic	2-4 p.m.	Tuesdays
Overseas Immunization Clinic	2-4 p.m.	Fridays
Chest Clinic	8:30-1 p.m.	Fridays
Dental Clinic (by appointment)	8:30-5 p.m.	Daily
Food Handlers	9-11 a.m. 1:30-4 p.m.	Monday-Thursdays Wednesday, Thursdays

Immunization Clinic	1-4 p.m.	Monday-Friday
Medical Clinic	1-3:30 p.m.	Fridays
Diabetics Clinic (blood sugars only)	8-10:30 a.m.	Wednesdays
Food Handlers Clinic (health cards)	1-4 p.m.	Tuesdays
Mobile X-ray Unit	1-3:30 p.m.	2nd & 4th Mondays
Public Health Nurse Conference Hours	1-2 p.m.	Monday-Friday

NOTE: Priority is given to the patients with appointments

Belle Glade Health Center
P. O. Box 934
1024 Northwest Avenue
Belle Glade, Florida 33430
305 996-5219

Maternity In-take	1-4 p.m.	Thursdays
Maternity Clinic	9-3 p.m.	Monday
Family Planning	by appointment	Monday & Tuesday
Immunization Clinic	1-4 p.m.	Monday-Friday
Pediatric Clinic	5 p.m.	Wednesdays
Pediatric Nursing Clinic	1 p.m.	Tuesdays
Screening Physicals	by appointment	Fridays
Medical Clinic	9:30-4 p.m.	Thursdays
Chest Clinic	12 noon - closing	Wednesdays
Dental Clinic	by appointment	Monday-Friday
Diabetics Clinic (blood sugars only)	8-10 a.m.	Monday-Wednesday
Food Handlers (health cards)	8-11 a.m.	Tuesday & Friday
Venereal Disease Clinic	8:30-12 noon	Wednesdays
Psychiatric Clinic	by appointment	Tuesdays & Thursdays
Out-reach clinic - South Bay	9-4:30 p.m.	Wednesdays
Okeechobee Center	1-4 p.m.	2nd Thursday of month

NOTE: Priority is given to patients with appointments

Delray Beach Migrant Manpower Delivery System
3033 State Road 7
P. O. Box 266 (Green Acres City)
Lakeworth, Florida 33460
305 967-9129

Funded by: U.S.D.O.L.
Service Area: South Palm Beach County
Migrant Population Served: 318
Migrant Population Not Served: Information not available

Schools Physical Clinic	1-4 p.m.	Thursdays
Venereal Disease	8:30-11 a.m.	Monday, Tuesday, Thursday
Cancer Detection	Available during family planning, venereal disease and medical care clinics	
West Palm Beach Clinic 45th Street Annex Diabetics Clinic		
	8:15 a.m.	Thursdays
Medical Clinic	12-5 p.m.	Monday, Wednesday, Friday
Pediatric Clinic	12-1:30 p.m.	Friday
Northeast County Health Center 1500 West 8th Street Riviera Beach, Florida 33404 305 844-3561		
Maternity In-take	9-12 noon 1-4 p.m.	Thursdays
Maternity & Family Planning Clinic	11:30 a.m.	Tuesdays
Family Planning Clinic	11:30 a.m.	Wednesdays
Pediatric Clinic	by appointment	Monday, Wednesday, Thursday, Friday
Immunization Clinic	2-4 p.m.	Mondays
Immunization Clinic in Jupiter	2-4 p.m.	Wednesdays
Immunization Clinic in Lakeworth Shuffleboard Building East Room	1-4 p.m.	1st Wednesday of month
Immunization Clinic - Green Acres Community Hall	1-4 p.m.	1st Friday of month
Dental Clinic (by appointment)	8:30 a.m.-5 p.m.	Monday-Friday
Out-reach Clinic (South Ridge Project)	2-4 p.m.	Tuesdays
Cancer Detection	Available in family planning, venereal disease and medical care clinics	
Public Health Nurse Conference Hours	8:30 a.m.-9:30 a.m. 3:30 p.m.-5 p.m.	Monday-Friday
Pahokee Health Center P. O. Box 204 1759 East Main Street Pahokee, Florida 33476 305 924-7151		
Maternity In-take	1-4 p.m.	Wednesdays
Maternity Clinic	8-9:30 a.m.	Fridays
Family Planning	9-12 noon	Fridays
Pediatric Clinic	8-Closing	Mondays

The objective of the Migrant Manpower Delivery System (MMDS) is to enable migrants and their families to leave the migrant stream. MMDS develops training and supportive resources to upgrade skills and facilitate migrant family ability to develop a skill that will help them stay out of the stream. This program utilizes developed techniques for providing a sound environment and encouraging self-organization and self motivation for the migrant farm worker.

MMDS recruits participants, provides program orientation, employment preparation and work orientation based on each individual's need. Follow-through and follow-up coaching is provided as migrants move through the program and into employment. Personal, social, vocational and family counseling is provided as a direct supportive service. Job development and placement services are provided and when necessary, mobility assistance is rendered. Physical examinations are provided for each trainee and his or her family. Transportation is arranged when needed to enable migrants to participate in the training program.

Each trainee receives a minimum of \$46 per week plus \$5 for each dependent up to six dependents and \$5 for travel on a weekly basis. If a second or third member of the family is involved in the training, he or she receives only the minimum amount allowable plus \$5 for travel.

Adult and Veteran Education
3323 Belvedere Road
West Palm Beach, Florida 33401
305 683-0050

Funded by: U.S.D.O.L., U.S.O.E.O.
Service Area: Palm Beach County
Migrant Population Served: approximately 110
Migrant Population Not Served: Information not available

This program operated under the Florida Adult Migrant Education Project has as its main goal, to provide counseling, job-related education, occupational training and supportive services to eligible adult migrant and seasonal farm workers so they may qualify for, achieve and retain upward mobility jobs leading to a career. Stipends are provided during training.

American Friends Service Committee, Inc.
4482 Clinton Boulevard
Lake Worth, Florida 33460
305 965-6991

Funded by: U.S.O.E.O. Title-III-B
Service Area: Palm Beach, Martin, Indian River & Highland Counties
Migrant Population Served: Approximately 100 families per year.
Migrant Population Not Served: Information not available

This particular program has as its goal to aid migrants and seasonal farm worker families in getting housing loans from Farmers Home Administration and special programs of Federal Housing Administration. Formerly, American Friends Service Committee was also involved in family planning, employment referrals and community organizing. This program however, does not expect to be refunded at the end of its program year and will continue to use its own funds. Because of this the American Friends Service Committee only plans to continue its housing component in the future and drop all others. To maintain active community participation in its program, the American Friends Service Committee has an advisory council to advise the program in its priorities and direction. The advisory council is comprised of migrant and seasonal farm workers concerned citizens, professional people and staff members of various community organizations.

Operation Concern, Inc.
1640 South Military Trail
West Palm Beach, Florida 33406
305 967-7400

Funded by: Donations & contributions from church and service group
Service Area: East Palm Beach County (Range line area)

Migrant Population Served: Several hundred
Migrant Population Not Served: Information not available

This particular organization is a local non-profit charity organization that provides help and assistance to migrant farm workers and other needy people. The program is geared to the self development of an individual and provides services relating to spiritual counseling and guidance, youth and family counseling, emergency food and clothing help, referrals, medical assistance and provides some recreation activities.

Farm Labor & Rural Manpower
300 Southwest 16th Street
P. O. Box 100
Belle Glade, Florida
305 996-3067

Funded by: U.S.D.O.L.
Service Area: Belle Glade
Migrant Population Served: 12,135
Migrant Population Not Served: Information not available

Farm Labor & Rural Manpower Service
415 Southeast First Avenue
P. O. Box 1989
Delray Beach, Florida 33444
305 278-0301

Funded by: U.S.D.O.L.
Service Area: Delray Beach
Migrant Population Served: 11,500
Migrant Population Not Served: Information not available

These offices of the Rural Manpower Service are operated for the placement, assessments and for employment and employer contacts. They are both farm labor and rural manpower. Some training is offered under the auspices of these offices.

(For additional information on Rural Manpower Services see the profile in Leon County).

Title I Migrant Education
Palm Beach County
3323 Belvedere Road
Building 503
West Palm Beach, Florida 33402
305 683-0050

Funded by: U.S.D.H.E.W.
Service Area: Palm Beach County
Migrant Population Served: 3,738
Migrant Population Not Served: Information not available

The Title I Migrant Education Program in Palm Beach County encompasses 36 participating schools. Programs operated by these schools includes Early Childhood Education, Learn and Earn and Criterion Assessment or Language Development Program.

The Early Childhood Education Program has 22 self-contained classrooms that provide an educational environment with a variety of materials and equipment especially designed to meet the needs and interests of each migrant child. The individual mobile unit are staffed with a teacher and two teacher assistants during the 7 a.m. to 5 p.m. day. The children are provided with a well balanced program that emphasizes physical and dental examinations, nutrition, language development, social, personal and physical development.

Participating schools in the Early Childhood Education program are:

Hagen Road Elementary	East Lake Elementary	Gove Elementary
Lee Brother's Camp	Lake Shore Elementary	Rosenwald Elementary
Belle Glade Elementary	Pahokee Elementary	

The Learn and Earn Program is designed to help the migrant child between the ages of 14-17 to improve a much damaged self-concept by achieving success in a short term occupational course. Six mobile units provide training experiences which help the students develop a positive attitude towards themselves, the world of work, their peers and the school. The Learn and Earn Program offers programs in the areas of auto tune-up, supermarket, patient care, hospital-hotel housekeeping.

Participating schools in Learn and Earn are:

Carver Middle School
Glades Central Annex

Lake Shore Junior High School
Pahokee Junior-Senior High School

The Language Arts Program (Criterion Assessment), a learning management system, is a most high level reading assessment designed to diagnose, prescribe and evaluate an organized sequence of learning skills and behaviors. The program assists the teacher in organizing and individualizing an instructional reading program for teaching the migrant child. Efficient and effective use of the Criterion Assessment system is further enhanced by the cross referencing of skills with the right to read materials provided by the migrant education section of the State Department of Education. This program provides diagnostic, prescriptive and evaluative assessment system that will facilitate more effective teaching of listening, speaking, reading and writing skills to the migrant children on an individualized basis.

Participating schools in the Language Arts Program are:

Hagen Elementary
Canal Point Elementary
Glade View Elementary
Lake Shore Elementary
Rosenwald Elementary

Belle Glade Elementary
East Lake Elementary
Gove Elementary
Pahokee Elementary
South Bay Elementary

In addition to the educational programs already cited, the County Health Department cooperates with the county school system to provide physical examinations, referrals for corrective and remedial work and immunizations to the migrant students. Also, through the cooperation of the county health department and the Palm Beach Dental Association, dental services are provided.

As an auxiliary service to the migrant child education program, an FM radio station with the transmitter site and two broadcasting control rooms provide families of migrant children with the opportunity of listening to the voices of their children and the faculty of this school, hearing spot announcements in Spanish and English related to the well-being of the farm worker. Their goal is to establish a communication link between the home and school and to improve the effectiveness of the program by the involvement of migrant families in a positive reinforcement of student motivation for learning.

Agencies that might Serve Migrants

Although there are specific "migrant programs" in this county, the state of Florida administers offices which provide services to low-income people. Migrant farm workers might be assisted by these offices. Individual offices should be contacted to determine the extent of their assistance to migrant farm workers.

Florida Rural Legal Services
132 Southwest Avenue "B"
Belle Glade, Florida 33430

Florida Rural Legal Services
110 Northwest Fifth Avenue
Delray Beach, Florida 33444

Glades Organization of Poor People
(GOPP)
483 Bardin Avenue
Pahokee, Florida 33476

Florida State Employment Service
910 Evernia Street
West Palm Beach, Florida

West Palm Beach WIN
421-A Clematis Street
P. O. Box 508
West Palm Beach, Florida 33401

Vocational Rehabilitation Commission
2711 Exchange Court
West Palm Beach, Florida 33401
305 833-5679

Migrant Bible Mission Store Palm Beach County Community Action Council
 5100 State Road 10 P. O. Box 6605
 Deerfield Beach, Florida West Palm Beach, Florida 33405
 305 421-9729 305 683-3768

Department of Health and Rehabilitated Services
 Comprehensive Services Delivery System

Service Centers:

12300 Seacrest Blvd. 324 Northwest 10th St. "S"
 Delray Beach, Florida Belle Glade, Florida

2701 Lake Avenue
 West Palm Beach, Florida

Migrant Labor Camps

Funded by: Privately owned
 Service Area: Palm Beach County
 Migrant Population Served: 17,254
 Migrant Population Not Served: Information not available

In 1959 the State of Florida enacted a law by which migrant labor camps must be licensed if they provide housing for fifteen or more seasonal, temporary or migrant workers. Even if rent is not paid camps used for occupancy must be licensed. In order to be licensed camps must meet minimum standards in areas such as housing space, sanitation and water supply. Local health departments have these regulations available to the public.

In this county there are ninety-five licensed labor camps with the licensed capacity indicated.

<u>Name of Camp</u>	<u>Licensed Capacity</u>
Billy Rogers Braddock Quarters	96
Bill Rogers Cres Building	108
Cane Contractors	137
Osceola Farms Company Agricultural Camp #1	700
Osceola Farms Company Agricultural Camp #2	320
Beardsley Farms	97
Bryant Village	1,020
Lewis Friends' Quarters	73
Rewis Labor Quarters	30
Okeelanta Sugar Division Home Camp #1	950
Okeelanta Sugar Division Home Camp #2	800
Pelican Lake Village	688
Atlantic Sugar Association Labor Center	998
A. Duda & Sons Labor Center	207
Sugar Cane Growers Cooperative Camp #1	409
Sugar Cane Growers Cooperative Camp #2	409
Sugar Cane Growers Cooperative Camp #3	409
Sugar Cane Growers Cooperative Camp #4	409
Ritta Village	642
Runyon Village	510
Talisman Labor Quarters	1,276
Vandergriff-Williams	201
South Shore Village	676
Prewitt Village	649
Miami Locks Village	568
C. A. Thomas Camp	168
Henry Rau	30
Melendez Camp	39
Lee Brothers Home Camp	243
Michael D. Jones Labor Camp	90
Fred's Motel	280
Farmer's Motel	216
Dixon Farms #1	30
Crossman Farms	20
Arvida Flowers	52

American Foods #1	264
American Foods #2	48
American Foods #3	20
American Foods #4	56
Bedner Camp	50
Pineland Farms	22
Pilkin Flower Farm	30
Sugar Cane Growers Cooperative Camp #5	180
Mungai Camp	46
Ted Winsberg Farm	39
Flavor Pict Camp #1	54
Flavor Pict Camp #2	59
Flavor Pict Camp #5	54
Flavor Pict Camp #6	59
Flavor Pict Camp #4	24
Kristyak Camp	19
Flavor Pict Camp #3	125
Cheshire MLC #1	30
Julian Cortez Quarters	56
George McMurrian Farms	41
Chief Ho-To-Pi Camp #1	58
Chief Ho-To-Pi Camp #2	54
Mazzoni Farms, Inc.	26
Okeelanta Home Camp #3	78
Dubois Farms MLC #1	38
Dubois Farms MLC #3	34
Dubois Farms MLC #4	51
Dubois Farms MLC #5	36
Cheshire MLC #2	30
Gayler Labor Camp	48
Scott-Matts Labor Camp #1	240
Scott-Mattson Labor Camp #2	43
Paul Fichera Camp	40
Cook Brothers Camp #1	70
Cook Brothers Camp #2	46
Alvarado Camp	36
Dubois Farms MLC #6	33
W. H. Jones	50
Rainbow Farms	48
American Foods MLC #5	36
Peerless Acres	16
Jones Labor Foundation	198
John Fichera Camp-Delray	46
Pompano Beach Farms #4	104
Pompano Beach Farms #3	30
Jose Hernandez	32
Sloan Labor Foundation Camp	256
James Wing Camp	40
Floral Acres	147
Dubois Farms MLC #2	28
Scott-Mattson MLC #3	108
E & S Farms	50
Jada Farms Camp	50
Sunstream Groves	52
Foodland Farms Camp	20
Valley View Farms MLC	25
Earl Johns Labor Camp	20
Warren Smith Labor Camp	24
Jack Martin's Labor Camp	33
Mecca Farms Camp	54

PASCO COUNTY

GENERAL INFORMATION

Total Population: 75,955
Estimated Migrant Population: Information not available
Migrant Labor Demand: 1,320
Estimated Migrant Wages: \$1.45 to \$2.00 per hr.

CROPS OF COUNTY AND WORK PERIODS

<u>Name of Crop</u>	<u>Harvest Work Period</u>	<u>Other Work Periods</u>
Citrus Oranges Grapefruit Temples Tangelos Tangerines Murcotts Watermelons	October through July April 10-July 15	 December 15-April 1

MIGRANT PROGRAMS IN COUNTY

Title I Migrant Education
612 Meridian Avenue
Dade City, Florida

Funded by: U.S.D.H.E.W.
Service Area: Pasco County
Migrant Population Served: 912-1040
Migrant Population Not Served: Information not available

This Title I Migrant Education Program provides services in early childhood development, reading, Learn and Earn and language development. Currently six schools participate in the program, most of them located in Dade City. Pasco Elementary offers an early childhood program for 20 children and a language development program for 196 children in grades kindergarten to 5. Dade City Elementary offers an early childhood program for 40 children with the language development program serving 304 migrant children in grades kindergarten through 5. Moore Plains Middle Schools provide a language development program for 66 migrant children in grades 6 and 7. Lacoochee Elementary in Lacoochee provides early childhood programs for 40 children and language development for 112 migrant children in grades kindergarten through 5. Pasco Junior High operates a learn and earn program for 55 migrant students.

As part of the supportive services available to migrants, Pasco County schools participate in the National School Lunch Program. Under this program schools are able to provide school lunches to needy children either free of charge or at a reduced rate. Eligibility and amount of payment for school lunches are determined by guidelines established by the U. S. Department of Agriculture.

Migrant Labor Camps

Funded by: Privately owned
Service Area: Pasco County
Migrant Population Served: 736
Migrant Population Not Served: Information not available

In 1959 the State of Florida enacted a law by which migrant labor camps must be licensed if they provide housing for fifteen or more seasonal temporary or migrant workers. Even if rent is not paid, camps used for occupancy must be licensed. In order to be licensed camps must meet minimum standards in areas such as housing space, sanitation and water supply. Local health departments have these regulations available to the public.



In this county there are 10 licensed labor camps with the licensed capacity indicated.

<u>Name of camp</u>	<u>Licensed Capacity</u>
W. H. Clark Fruit Company Yard Camp	24
W. H. Clark Fruit Company Labor Camp	142
Pasco Labor Camp	93
Buffalo Labor Camp	130
Evans Pasadena Labor Camp	80
Plant Camp	40
Slough Labor Camp #1	82
Slough Labor Camp #2	50
Oakley Labor Camp	35
Ft. King Apartments	60

POLK COUNTY

GENERAL INFORMATION:

Total Population: 227,222
 Estimated Migrant Population: Information not available
 Migrant Labor Demand: 5300
 Estimated Migrant Wages: \$1.45 to \$1.50 per hr.

CROPS OF COUNTY AND WORK PERIODS

<u>Name of Crop</u>	<u>Harvest Work Period</u>	<u>Other Work Periods</u>
Citrus	October through July	
Oranges		
Grapefruits		
Temples		
Tangelos		
Tangerines		
Murcotts		
Watermelons	May 1-July 15	December 15-April 1
Bush & Pole Beans	October 25-June 15	August 15-April 1
Lima Beans	October 25-June 15	August 15-April 1
Cabbage	October 25-June 15	September 1-March 1
Lettuce	October 20-June 1	August 25-April 1
Peppers	October 20-July 1	August 1-March 15
Potatoes	January 1-July 1	September 15-March 1
Squash	September 1-July 1	August 15-April 1
Strawberries	December 15-May 15	October 1-November 15

Migrant Labor Camps

Funded by: Privately owned
 Service Area: Polk County
 Migrant Population Served: 1229
 Migrant Population Not Served: Information not available

In 1959 the State of Florida enacted a law by which migrant labor camps must be licensed if they provide housing for fifteen or more seasonal temporary or migrant workers. Even if rent is not paid, camps used for occupancy must be licensed. In order to be licensed, camps must meet minimum standards in areas such as housing space, sanitation and water supply. Local health departments have these regulations available to the public.

In this county there are 11 licensed labor camps with the licensed capacity indicated.

<u>Name of Camp</u>	<u>Licensed Capacity</u>
Florence Citrus Growers, Inc. Labor Camp	70
Waverly Growers Cooperative Labor Camp	184
Alcoma Barracks	48
Chain of Lakes Groves, Inc.	120
Dundee Citrus Growers Assoc. Labor Camp	104
Florence Citrus Growers, Inc. Labor Camp	76
Haines City Citrus Growers Association	200
Russ Loughman Labor Camp	78
Lester Young Labor Camp	19
B.C. Cook & Sons Labor Camp	175
Adams Labor Camp	155

Community Action Migrant Program, Inc.
 1150 Palmetto St.
 Bartow, Florida 33830
 813 533-0988

Funded by: U.S.D.H.E.W.; U.S.O.E.O. Title III-B

Service Area: Western half of Polk County, Manatee and Hardee County
Migrant Population Served: 1500 families
Migrant Population Not Served: Information not available

The regional offices of the CAMP program are involved in delivering a variety of services to the migrant farm worker population. Services are rendered in the areas of occupation, education and sustenance assistance.

The regional office provides job placement in upward mobility jobs, refers migrants to training programs and provides stipends and contracts with various programs to provide remedial education and English language training.

In the area of education, early childhood development programs are offered and referrals made to colleges, vocational education programs, High School Equivalency programs and adult basic education classes.

Health referrals are also provided to children that are not enrolled in local Head Start programs.

Elderly migrants are provided with meals and social services.

General services such as funds for food and medical assistance, assistance in school desegregation and sponsoring food co-ops are also provided.

(For additional information see CAMP profile in Broward County).

Dundee Rural Manpower Area Office
U.S. Highway 27
Dundee, Florida

Funded by: U.S.D.O.L.
Service Area: Polk County
Migrant Population Served: About 5000
Migrant Population Not Served: Information not available

This office of the rural manpower service is operated for the recruitment of agricultural farm workers within the state of Florida. Some training services are offered under the auspices of this office.

(For additional information on Rural Manpower Services see the profile in Leon County.)

C.A.M.P., Inc. Child Development Center
1150 Palmetto St.
Bartow, Florida 33830
813 533-0988

Funded by: U.S.D.H.E.W.
Service Area: Polk County
Migrant Population Served: 40
Migrant Population Not Served: Information not available

As part of its services to migrants, CAMP operates a day care center in Bartow for children ages 3-5. The early childhood curriculum utilized at the center emphasizes oral language development, motor skill development and other activities that promote intellectual, social and emotional development.

Auxiliary services provided include hot lunches and snacks, transportation to and from the center, physical examinations and follow up medical care.

Title I Migrant Education
P. O. Box 391
Bartow, Florida 33830
813 533-3101

Funded by: U.S.D.H.E.W.
Service Area: Polk County
Migrant Population Served: 8241
Migrant Population Not Served: Information not available

This program is the largest in Florida and one of the largest Title I Migrant education programs in the U.S. Its educational programs range from early childhood to grade twelve. The components included in its program of early childhood education include materials for ages 3-5. Schools participating in the early childhood education program include:

North Winter Haven Kindergarten	60
Davenport	60
Lewis	29
Frostproof	54
Roosevelt	75
Behtune	75
Eastside	60
South Winter Haven	60
Auburndale	75
Dudnee	32

Language development and accountable reading is also part of the migrant education program in Polk County. Three elementary schools operate English as a Second Language program. These include Lewis Elementary School with an enrollment of 40, Eastside Elementary School with an enrollment of 40 and Snively Elementary School with an enrollment of 45 migrant students.

A large portion of the Title I migrant education program is devoted to a seven month Criterion Reading program. Participating schools include:

Alta Vista	220	Frostproof	220
Alturas	85	Garner	80
Auburndale Central	130	Hillcrest	70
Babson Park	68	Lake Wales Middle	160
Bartow	200	Lena Vista	95
Bethune	400	Lewis	140
Brigham	20	Lincoln Avenue	65
Caldwell	100	Polk Avenue	130
Davenport	142	Rochelle	60
Dundee	115	Snively	252
Eastside	285	Spook Hill	210
Floral Avenue	65	Wahneta	250

At the Junior High School level the reading program utilizes a systems approach to individualized reading. Eight junior high schools participate in this program and each is equipped to serve a maximum of 150 migrant students. Participating schools include:

Auburndale Junior High
 Bartow Junior High
 Denison Junior High
 Haines City Junior High
 Lakeland Junior High
 Lake Wales Junior High
 Lake Wales Senior High
 Northeast Junior High

Another program at the junior high level is the Learn and Earn Program. This program attempts to teach the migrant students to discover and develop skills and abilities. Programs are oriented around vocational skills and include emphasis on one of the following: Supermarket, auto tune-up, hospital training, Hotel-Motel office training and agri-business. Participating schools are:

Lakeland Junior High
 Haines City Junior High
 Denison Junior High
 Lake Wales Junior High
 Bartow Junior High
 Auburndale Junior High

Rounding out the migrant education program in this county are the migrant mobile opportunity laboratory. This program is designed to meet the needs not only of migrant students, but also their families. This particular program serves approximately 450 migrants, both children and adults. Its main thrust is to create learning situations involving parents, community and the school.

The migrant mobile opportunity laboratory operates in Haines City on Monday and Tuesday, in Lake Wales on Wednesday and Thursday and in Winter Haven on Friday. Operating hours every day are from 1:30 p.m. to 9 p.m.

PUTNAM COUNTY

GENERAL INFORMATION

Total Population: 36,290 (1970)
Estimated Migrant Population: 1,100 (March - April)
Migrant Labor Demand: 760
Estimated Migrant Wages: \$1.40 - \$1.60 per hr.

CROPS OF COUNTY AND WORK PERIODS

<u>Name of Crop</u>	<u>Harvest Work Period</u>	<u>Other Work Periods</u>
Cabbage	January 1-April 15	
Cucumbers	April 20-June 1	
Potatoes	January 15-June 1	
Corn	November 15-June 15	

Migrant Labor Camps

Funded by: Privately owned
Service Area: Putnam County
Migrant Population Served: 40
Migrant Population Not Served: Information not available

In 1959 the State of Florida enacted a law by which migrant labor camps must be licensed if they provide housing for fifteen or more seasonal, temporary or migrant workers. Even if rent is not paid, camps used for occupancy must be licensed. In order to be licensed camps must meet minimum standards in areas such as housing space, sanitation and water supply. Local health departments have these regulations available to the public.

In this county there is one licensed labor camp with the licensed capacity indicated.

<u>Name of County</u>	<u>Licensed Capacity</u>
McBride's Camp	40

Agencies That Might Serve Migrants

Although there are no specific "migrant programs" in this county, the State of Florida provides services which migrant farm workers might be able to utilize. Each office should be contacted to determine to what extent they will assist migrant farm workers.

DFS Food Stamp Office
307 Main St.
Palatka, Florida 32077
904 328-2754

Division of Family Services
2503 President St.
P. O. Box 1279
Palatka, Florida 32077

Florida State Employment Service
225 N. Second
Palatka, Florida

Putnam County Community Action Committee, Inc.
P. O. Box 728
Palatka, Florida 32077
904 328-1482

ST. JOHN'S COUNTY

GENERAL INFORMATION

Total Population: 30,737
Estimated Migrant Population: 1,110
Migrant Labor Demand: 520
Estimated Migrant Wages: \$1.40 - \$1.60 per hr.

CROPS OF COUNTY AND WORK PERIODS

<u>Name of Crop</u>	<u>Harvest Work Period</u>	<u>Other Work Periods</u>
Cabbage	January 1-April 15	September 30-March 1
Cucumbers	November 1-December 15 April 20-June 1	
Irish Potatoes	January 15-June 1	January 1-March 31
Corn	May 15-July 15	

MIGRANT PROGRAMS IN COUNTY

Title I Migrant Education
St. John's County Schools
P. O. Box 500
St. Augustine, Florida 32084
904 829-6571

Funded by: U.S.D.H.E.W.
Service Area: St. John's County
Migrant Population Served: 294
Migrant Population Not Served: Information not available

The Migrant Education Program in St. John's County only operates in Hastings, Florida. The programs operated by the school district in Hastings are a reading program, Learn and Earn and Early Childhood Education program. The Reading program enrolls 134 children in grades kindergarten through 6, the Learn and Earn program enrolls 121 migrant children grades 7-12 and the Early Childhood Education Program serving children from age 5 to 6 enrolls 39.

(For additional information on the description of the various programs, refer to the Title I Migrant Education profile in Leon County).

Participating schools in the Migrant Education Program are:

Hastings Elementary P. O. Box 397 904 692-1154	Hastings High School P. O. Box 336 904 692-1515
--	---

Hastings Migrant Health Clinic
104 Halt Street
P. O. Box 247
Hastings, Florida 32045
904 692-2194

Funded by: U.S.D.H.E.W.
Service Area: St. John's and Putnam Counties
Migrant Population Served: 200 - 300 per month
Migrant Population Not Served: Information not available

This clinic operated and administered under the auspices of the State Migrant Health Project in Jacksonville provides health services to migrants. Services provided include dental care, well-baby clinic, prescriptions, hospital referrals, health education, screening, curative general medical services and laboratory services.

The clinic is opened year round with the following hours of operation:

Monday, Tuesday & Wednesday	1:00 p.m. to 9:30 p.m. with a physician present
Thursday	8:00 a.m. to 5:00 p.m. without a physician present
Friday	8:00 a.m. to 5:00 p.m. with a physician present

To incorporate community and consumer participation into the health project there is a project policy board. The majority of the members of the board are migrant or seasonal farm workers or their representatives. Regular meetings are scheduled to discuss problems of concern and to make appropriate recommendations for changes or improvements in the services delivered by the migrant health clinic.

Agencies that might Serve Migrants

Although there are specific "migrant programs" in this county, the State of Florida administers offices which provide services to low-income people. Migrant farm workers might be assisted by these offices. Individual offices should be contacted to determine the extent of their assistance to migrant farm workers.

DFS Food Stamp Office
21 Palmer Street
St. Augustine, Florida 32084
904 829-5654

Division of Family Services
117 Bridge Street
P O.Box 1475
St. Augustine, Florida 32084
904 824-2853



ST. LUCIE COUNTY

GENERAL INFORMATION

Total Population: 50,836 (1970)

Estimated Migrant Population: 3,350 during peak season (December-January)

Migrant Labor Demand: 1,190

Estimated Migrant Wages: \$1.40 - \$1.60 per hr.

CROPS OF COUNTY AND WORK PERIODS

<u>Name of Crop</u>	<u>Harvest Work Period</u>	<u>Other Work Periods</u>
Tomatoes	November 15-June 1	
Oranges	October 1-June 30	
Temples	October 1-June 30	
Tangelos	October 1-June 30	
Grapefruit	October 1-June 30	
Tangerines	October 1-June 30	
Murcotts	October 1-June 30	
Lemons	October 1-June 30	

MIGRANT PROGRAMS IN COUNTY

St. Lucie County
Migrant Health Project
813-A North 13th St.
Fort Pierce, Florida 33460
305 461-1402

Funded by: U.S.D.H.E.W.
Service Area: St. Lucie County
Migrant Population Served: 1,800
Migrant Population Not Served: 1,550

Utilizing two clinics, this migrant health program makes medical care available to the entire migrant family. When necessary, referrals are made to physicians on a fee-for-service basis. Medical as well as dental services are provided by the clinic. Through individual home visits and group health education, this program seeks to upgrade housing and general environmental conditions of migrants.

In order to insure migrant influx, a consumer advisory-policy board composed of 51% migrants and 49% community representatives is utilized. Members of the board are elected from the general consumer population, serve for one year and meet monthly.

The two existing clinics and services which they provide are:

St. Lucie County Migrant Health Project
813-A N. 13th Street
Fort Pierce, Florida 33450
305 461-1402

Services they provide are: Immunizations, health education, emergency dental care, prescriptions, general medical care, home management education (Budgeting, home economics, consumer buying) referrals, X-rays, lab tests, hospital, optometric and other sources of assistance.

St. Lucie County Health Center
P. O. Box 580
714 Avenue "C"
Fort Pierce, Fla. 33450
305 461-5350

Services they provide are: Clinics for tuberculosis, venereal disease, planned parenthood, pre-natal and immunizations.

Title I Migrant Education
2909 Delaware Avenue
Fort Pierce, Florida 44350
305 464-8220

Funded by: U.S.D.H.E.W.
Service Area: St. Lucie County
Migrant Population Served: 788
Migrant Population Not Served: Information not available

Under this program, educational opportunities are afforded to migrants in six schools. The education provided ranges from pre-kindergarten age to secondary grade level. The primary emphasis of the educational programs are Early Childhood Education, Reading Program and Vocational Training Occupational Learning.

All the schools participating in the Title I Migrant Education Program are located in Fort Pierce, Florida. The schools listed below are those participating in the Title I Migrant Education Program, with the program they offer and their standing enrollment.

Means Court Kindergarten 532 N. 13th Street 305 461-8761	Early Childhood Education	211
Frances Kay Sweet School 1400 Avenue "Q" 305 464-1268	Reading	115
St. Lucie Middle School 1800 S. 13th Street 305 461-5830	Learn and Earn	113
Chester A. Moore Elementary 827 N. 29th Street 305 461-5670	Reading	130
Fairlawn Elementary 1900 S. 33rd Street 305 461-2580	Reading	104
Dan McCarty Middle School 1201 Mississippi Avenue 305 464-1750	Learn and Earn	115

Adult and Occupational Education
Indian River Community College
3209 Virginia Avenue
Fort Pierce, Florida 33450
305 464-2000

Funded by: U.S.D.O.L., U.S.O.E.O.
Service Area: St. Lucie County
Migrant Population Served: 40 at any one time or approximately 110
Migrant Population Not Served: Information not available

This project was initiated in 1966 to provide vocational training for migrants.

The main goal of this program is to provide counseling, job-related education, occupational training, and supportive services to 110 eligible adult migrants or seasonal farm workers in order for them to qualify for, achieve and retain upward mobility jobs leading to a career. Stipends are provided during training.

Farm Labor and Rural Manpower Service
2425 Okeechobee Rd.
Fort Pierce, Florida 33450
305 464-3434

Funded by: U.S.D.O.L.
 Service Area: St. Lucie County
 Migrant Population Served: 3,625
 Migrant Population Not Served: Information not available

This office provides farm labor placements, farm labor mass placements, farm labor employer contacts, rural manpower assessment, rural manpower placements and rural manpower employer contacts.

Agencies That Might Serve Migrants

The State of Florida administers offices which provide services to low-income people. These offices might be of assistance to migrant farm workers. Each office, however, should be contacted to determine of what assistance they might be to migrant farm workers.

Division of Family Services
 P. O. Box 789
 1505 Delaware Avenue
 Fort Pierce, Florida 33450
 305 464-5550

Commodities
 410 Browns Court
 Fort Pierce, Florida 33450
 305 461-5134

Florida State Employment Service
 1409 Orange Avenue
 Fort Pierce, Florida

Community Action Organization
 P. O. Box 3070
 Fort Pierce, Florida 33450
 305 464-4612

Migrant Labor Camps

Funded by: Privately owned
 Service Area: St. Lucie County
 Migrant Population Served: 438
 Migrant Population Not Served: Information not available

In 1959 the State of Florida enacted a law by which migrant labor camps must be licensed if they provide housing for fifteen or more seasonal, temporary or migrant workers. Even if rent is not paid camps used for occupancy must be licensed. In order to be licensed camps must meet minimum standards in areas such as housing space, sanitation and water supply. Local health departments have these regulations available to the public.

In this county there are five licensed labor camps with the licensed capacity indicated.

<u>Name of Camp</u>	<u>Licensed Capacity</u>
Ten Mile Creek Groves, Inc. #1	14
North Canal Groves, Inc. #1	134
North Canal Labor Camp #2	120
Minute Maid Labor Camp-Cloud Groves	120
Robinson's Labor Camp	50

SARASOTA COUNTY

GENERAL INFORMATION

Total Population: 120,413
Estimated Migrant Population: 2,500
Migrant Labor Demand: 2,000
Estimated Migrant Wages: \$1.45 to \$2.00

CROPS OF COUNTY AND WORK PERIODS

<u>Name of Crop</u>	<u>Harvest Work Period</u>	<u>Other Work Periods</u>
Citrus Oranges Grapefruits	October through July	
Cabbage	October 25-June 15	September 1-March 15
Celery	October 25-July 10	August 1-April 15
Escarole	October 20-June 1	August 25-April 1
Chicory		
Lettuce	October 20-June 1	August 25-April 1
Radishes	September 20-June 15	September 1-May 15

MIGRANT PROGRAMS IN COUNTY

Adult Migrant Education
4748 Beneva Road
Sarasota, Florida 33581
831 924-1365

Funded by: U.S.D.O.L.; U.S.O.E.O.
Service Area: Sarasota County
Migrant Population Served: Currently, 11 (possible slots for additional 20)
Migrant Population Not Served: Information not available

Operated under the Florida Adult Migrant Education Project, this program provides vocational training for migrants.

The main goal of this program is to provide counseling, job-related education, occupational training and supportive services to eligible adult migrants and seasonal farm workers in order for them to qualify for, achieve and retain upward mobility jobs leading to a career. Stipends are provided during training.

Services provided include specialized education for trainees with high motivation and educational ability, teaching non-English speakers bi-lingually so that these trainees may receive and benefit, job related education and/or occupational training and job placement. A consumer education curriculum is also provided; this includes family living skills, health and safety education, nutrition and the use of finances. Monthly counseling is also available once per month per trainee. If necessary, physical examinations are provided free of charge for those trainees needing physical examinations for employment.

Title I Migrant Education
2418 Hatton Street
Sarasota, Florida 33577
813 958-8831

Funded by: U.S.D.H.E.W.
Service Area: Sarasota County
Migrant Population Served: 221
Migrant Population Not Served: Information not available

The Florida Migratory Child Compensatory Program was established to assist public schools in developing educational programs for migrant children and to provide the proper climate for its development. The program consists of four

components and each participating county offers only those components that are needed in that specific county. Educational components available include Learning Laboratories, Learn and Earn, Right to Read, Early Childhood Education and Oral Language Development programs.

In this county it was not possible to determine what schools have what programs. Participating schools in the Title I Migrant Education Program and their enrollment are:

Alta Vista Elementary	2	Booker North Elementary	9
Bay Haven Elementary	2	Booker Middle School	1
Booker Elementary	3	Fruitville Elementary	102
Gocio Elementary	16	Golf Gate Elementary	4
Southside Elementary	3	Tuttle Elementary	48
Wilkinson Elementary	10	Brookside Junior High	1
McIntosh Junior High	21	Sarasota Junior High	5
Riverview High School	1	Sarasota High School	9
Sarasota County Student Center	12		

Title I Migrant Education
Regional Office I
1900 Main Street
Sarasota, Florida
813 959-7073

Funded by: U.S.D.H.E.W.
Service Area: Hardee, Hillsborough, Manatee, DeSoto, Pasco, Polk and Sarasota County
Migrant Population Served: Information not applicable
Migrant Population Not Served: Information not applicable

This regional office of the Title I Migrant Education Program provides assistance and resources to the Title I Migrant Education Programs in the seven counties listed above. As such they provide no direct services to migrants.

Sarasota County Health Department
1938 Laurel Street
Sarasota, Florida 33578
813 955-8101

Funded by: U.S.D.H.E.W.
Service Area: Sarasota County
Migrant Population Served: 2,500
Migrant Population Not Served: Information not available

By using intermittently scheduled clinics, three times a week for three to four hours each time, this migrant health program offers a comprehensive range of diagnostic, therapeutic and follow-up medical services to migrant and seasonal farm workers. Generally, these clinic sessions are backed up by referrals to local physicians on a free-for-service basis at times when clinics are not in session. Provisions are also made for caring for other health needs such as dental care health, counseling and out-reach services in addition to the preventive services. Environmental health activities are also an element of this project.

To insure community and consumer participation a policy board comprised of 15 members meet every month to evaluate the health services offered to migrants. Members of the board include migrant seasonal farm workers, growers and professional health people.

Fruitville Area
Medical and Education
6100 Homer Blvd.
Sarasota, Florida

Funded by: Private contributions, in-kind contributions
Service Area: Sarasota County
Migrant Population Served: 55
Migrant Population Not Served: Information not available

This program operating in three licensed labor camps in Sarasota, offers day care services, nutrition, health education and other educational services. The program operates independently of any other program and supports itself totally by private donations and in-kind contributions. This program has been in operation for approximately eight years. It is opened year round from 7 a.m. to 6 p.m.

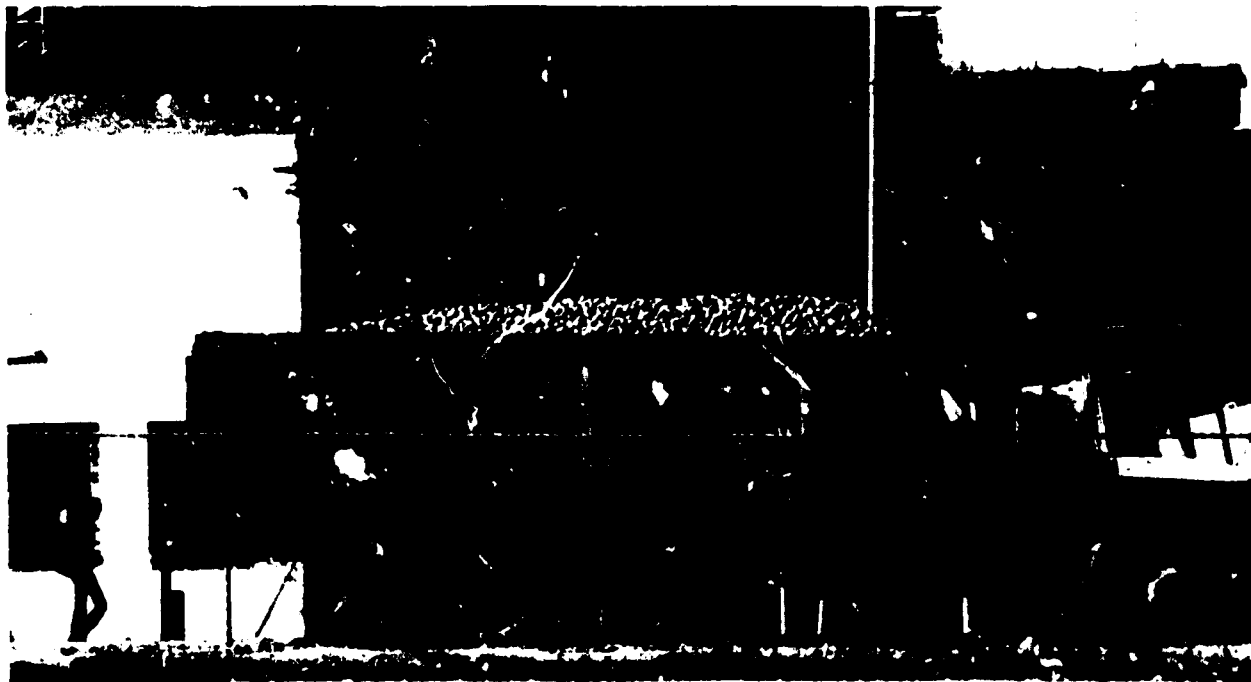
Migrant Labor Camps

Funded by: Privately owned
Service Area: Sarasota County
Migrant Population Served: 184
Migrant Population Not Served: Information not available

In 1959 the State of Florida enacted a law by which migrant labor camps must be licensed if they provide housing for fifteen or more seasonal temporary or migrant workers. Even if rent is not paid camps used for occupancy must be licensed. In order to be licensed camps must meet minimum standards in areas such as housing space, sanitation and water supply. Local health departments have these regulations available to the public.

In this county there are three licensed labor camps with the licensed capacity indicated.

<u>Name of Camp</u>	<u>Licensed Capacity</u>
Keyser's Camp	70
Sabado Ranch	89
Fancee Farm	25



SEMINOLE COUNTY

GENERAL INFORMATION

Total Population: 83,692
 Estimated Migrant Population: 12,859 (March)
 Migrant Labor Demand: Information not available
 Estimated Migrant Wages: \$1.50 - \$2.00 per hr.

CROPS OF COUNTY AND WORK PERIODS

<u>Name of Crop</u>	<u>Harvest Work Period</u>	<u>Other Work Periods</u>
Cabbage	October 25-June 15	
Celery	December 15-June 1	
Cucumbers	November 1-December 15 April 20-June 1	
Lettuce	December 1-May 1	
Green Peppers	November 15-June 15	
Corn	November 25-June 1	
Oranges	November 1-June 30	
Temples	November 1-June 30	
Tangelos	November 10-June 30	
Grapefruit	November 1-June 30	
Tangerines	November 1-June 30	
Murcotts	November 1-June 30	

MIGRANT PROGRAMS IN COUNTY

Seminole County Health Services
 Migrant and Rural Poor
 P. O. Box 1856
 900 South French St.
 Sanford, Florida 32771
 305 322-2724

Funded by: U.S.D.H.E.W.
 Service Area: Seminole County
 Migrant Population Served: 5,467
 Migrant Population Not Served: Information not available

Under the auspices of the Seminole County Migrant Health Project, health services are available to migrants at three migrant clinics as well as at the county health department clinic at Sanford. The health department clinic is opened 8 hours a day, six days a week. All clinics are opened year round.

The objectives of this health program are to provide a comprehensive health care program for the agricultural migrant worker and his dependents. Methods by which this is accomplished are:

1. Attempting to upgrade the housing and working environment
2. Emphasizing health education and awareness of community health resources
3. Soliciting understanding and acceptance from the community

The following health services are provided to migrants at each of the clinics, through clinic sessions, home visits, school visits, visits to day care centers, as well as referrals to physicians, dentists, hospitals and other regularly scheduled clinics.

1. Curative general medical services
2. Health education
3. Dental referral
4. Nursing out-reach
5. Clinics of various kinds, for example: family planning, pre-natal and post partum, well-baby, venereal disease, immunizations, glaucoma testing, X-rays, cancer screening and pediatric

Clinics providing services under the Seminole County Migrant Health Project are:

Midway Migrant Health Clinic
Sipes Avenue
Midway, Florida 32343
305 322-8645

Oviedo Migrant Health Clinic
Division Street
Oviedo, Florida 32765
305 365-3022

Lake Monroe Migrant Health Clinic
Gilbert Street
Lake Monroe, Florida 32747
305 322-0431

Title I Migrant Education
Seminole County Schools
202 Commercial Avenue
Sanford, Florida 32771
305 322-1252

Funded by: U.S.D.H.E.W.
Service Area: Seminole County
Migrant Population Served: 690
Migrant Population Not Served: Information not available

The Title I Migrant Education Program in this county is composed of three of the four components available in the State of Florida for migrant education. The components utilized in this county are Early Childhood Education, Reading Program, and Learn and Earn. (For additional information on these components refer to the Title I Migrant Education section in Leon County profile).

Participating schools in the Early Childhood Education Program are:

Goldsboro Elementary	50	Lawton Elementary	63
1301 W. 16th St.		Oviedo, Florida	32765
Sanford, Florida	32771	305 365-3257	
305 322-7933			

Midway Elementary	43
Sanford, Florida	32771
305 322-1791	

Participating schools in the Reading Program are:

Goldsboro Elementary	34	Hopper Elementary	81
1301 W. 16th St.		1101 Bay Avenue	
Sanford, Florida	32771	Sanford, Florida	32771
305 322-7933		305 322-9230	

Lake Mary Elementary	49	Lawton Elementary	37
Lake Mary Blvd. & Country		Oviedo, Florida	32765
Club Road		305 365-3257	
Lake Mary, Florida	32746		
305 322-5218			

Midway Elementary	117	Pine Crest Elementary	17
Sanford, Florida	32771	405 W. 22nd	
305 322-1791		Sanford, Florida	32771
		305 322-1711	

Sanford Grammer School	17	Lakeview Middle School	20
7th Street & Myrtle Ave.		Sanford, Florida	32771
Sanford, Florida	32771	305 322-1610	
305 322-1942			

Sanford Middle School	102
Sanford, Florida	32771
305 322-3063	

Participating schools in the Learn and Earn Program are:

Lakeview Middle School
Sanford, Florida 32771
305 323-1610

Sanford Middle School 40
Sanford, Florida 32771
305 322-3063

Adult Migrant Education
Seminole Junior College
Sanford, Florida 32771
305 323-1450

Funded by: U.S.D.O.L., U.S.O.E.O.
Service Area: Seminole County and adjacent counties
Migrant Population Served: 40 per training period (approximately 110 yearly)
Migrant Population Not Served: Information not available

The main goal of this program operated under the Florida Adult Migrant Education Project, is to provide counseling, job-related education, occupational training, and supportive services to eligible adult migrants or seasonal farm workers. In order for them to qualify for, achieve and retain upward mobility jobs leading to a career. Stipends are provided during training.

Specific services provided by this program include specialized education for trainees showing high motivation and educational ability, teaching non-English speakers bi-lingually to enable these trainees to receive and to benefit from job-related education and/or occupational training and job placement. A consumer education curriculum including family living skills, health and safety education, nutrition and management of finances. Physical examinations are provided free of charge for those trainees requiring physical examinations before employment.

Agencies That Might Serve Migrants

Although there are specific "migrant programs" in this county, there are offices which provide services to low-income people. Migrant farm workers might be assisted by these offices. Individual offices should be contacted to determine the extent of their assistance to migrant farm workers.

DFS Food Stamp Office
4322 S. Orlando Drive
Sanford, Florida 32771
305 323-4000

Division of Family Services
921 E. First St.
Sanford, Florida 32771
305 322-1661

Florida State Employment Service
200 South French Avenue
Sanford, Florida

Seminole Community Action, Inc.
P. O. Box 1389
Sanford, Florida 32771
305 322-0060

SUMTER COUNTY

GENERAL INFORMATION

Total Population: 14,839 (1970)
Estimated Migrant Population: Information not available
Migrant Labor Demand: Information not available
Estimated Migrant Wages: \$1.50 - \$2.00 per hr.

CROPS OF COUNTY AND WORK PERIODS

<u>Name of crop</u>	<u>Harvest Work Period</u>	<u>Other Work Periods</u>
Cucumbers	April 20-June 1	
Squash	November 15-May 15	
Watermelons	May 1-July 1	
Corn	November 15-June 15	
Oranges	November 1-June 30	

Agency that might serve Migrants

The State of Florida provides services to low-income families which migrant farm workers might be able to utilize. Each office should be contacted to determine to what extent they will assist migrant farm workers.

Division of Family Services
304 N. Main St.
Wildwood, Florida 32785
904. 748-1811

Migrant Labor Camps

Funded by: Privately owned
Service area: Sumter County
Migrant Population Served: 24
Migrant Population Not Served: Information not available

In 1959 the State of Florida enacted a law by which migrant labor camps must be licensed if they provide housing for fifteen or more seasonal temporary or migrant workers. Even if rent is not paid, camps used for occupancy must be licensed. In order to be licensed camps must meet minimum standards in areas such as housing space, sanitation and water supply. Local health departments have these regulations available to the public.

In this county there is one licensed labor camp with the licensed capacity indicated.

<u>Name of Camp</u>	<u>Licensed Capacity</u>
K. W. Strawbridge	24

VOLUSIA COUNTY

GENERAL INFORMATION

Total Population: 169,487 (1970)
 Estimated Migrant Population: 1,483 (February)
 Migrant Labor Demand: Information not available
 Estimated Migrant Wages: \$1.50 - \$2.00 per hr.

CROPS OF COUNTY AND WORK PERIODS

<u>Name of Crop</u>	<u>Harvest Work Period</u>	<u>Other Work Periods</u>
Oranges	November 1-June 30	
Grapefruit	November 1-June 30	
Temples	November 1-June 30	
Tangelos	November 1-June 30	
Tangerines	November 1-June 30	
Murcotts	November 1-June 30	
Cabbage	January 1-April 15	
Cucumbers	April 20-June 1	
Green Peppers	November 15-June 15	

Agencies That Might Serve Migrants

Although there are no specific "migrant programs" in this county, the State of Florida administers offices which provide services to low-income people. Migrant farm workers might be assisted by these offices. Individual offices should be contacted to determine the extent of their assistance to migrant farm workers.

Division of Family Service 724 S. Segrave Avenue Daytona Beach, Florida 32105 904 255-3361	Florida State Employment Service 702 S. Ridgewood Avenue Daytona Beach, Florida
Division of Family Services 245 S. Amelia Avenue Daytona Beach, Florida 904 734-2766	Project Upgrade, Inc. P.O. Box 2116 Daytona Beach, Florida 904 252-2517
Commodities Office 336 Carswell St. Holly Hill, Florida 904 255-6533	Vocational Rehabilitation Division 1077 Mason Avenue Daytona Beach, Florida 32017 904 253-6533

Migrant Labor Camps

Funded by: Privately owned
 Service Area: Volusia County
 Migrant Population Served: 100
 Migrant Population Not Served: Information not available

In 1959, the State of Florida enacted a law by which migrant labor camps must be licensed if they provide housing for fifteen or more seasonal, temporary or migrant workers. Even if rent is not paid, camps used for occupancy must be licensed. In order to be licensed camps must meet minimum standards in areas such as housing space, sanitation and water supply. Local health departments have these regulations available to the public.

In this county there are two licensed labor camps with the licensed capacity indicated.

<u>Name of Camp</u>	<u>Licensed Capacity</u>
Pattillo Fruit Sales Labor Camp	60
Acme Circus Operating Company	40

APPENDIX

METHODOLOGY FOR MIGRANT PROGRAMS IN FLORIDA

In order to acquire and compile data for this report, a standard research design was implemented. This included preliminary research from central information sources, identification of a data base, on-site visits and final compilation of information. Because of the use of secondary sources, the information in this report is as accurate as the agencies and programs that supplied us with information.

PRELIMINARY RESEARCH. Preliminary information on Florida was conducted by utilizing the U. S. Office of Economic Opportunity, Migrant Division, Florida state agencies, and local social agencies. From correspondence with these agencies, counties with migrant population and/or programs were identified. Additionally, funding proposals of Title III-B programs were at our disposal. After identification of migrant counties and programs, a verification process was implemented in which all identified migrant programs were contacted by phone or mail to verify their operation and the existence of a migrant population.

IDENTIFICATION OF DATA BASE. After preliminary information had been accumulated and verified, counties to be surveyed were established according to the following criteria:

1. Significant (over 100) migrant population during any season, or
2. Existence of a migrant program, or
3. Inclusion in service area of a migrant program.

According to our information and sources listed below, 31 of the 67 counties in Florida met the criteria.

INFORMATION SOURCES.

1. County Population - Population figures for all Florida counties are from the official U. S. 1970 Census. This is the source for the latest available statistics on population.
2. County Migrant Population - Estimates of migrant population by county are from the County Health Departments operating migrant health services.
3. Migrant Wages - Wage estimates are from the In-Season Farm Labor Report March 30, 1973, Manpower Administration, U. S. Dept. of Labor.
4. Migrant Labor Demand - Figures were not available from any source we contacted.
5. Crops Grown in County - This information is from the following booklets published by the Crop and Livestock Reporting Service of the Florida State Department of Agriculture:

Florida Agricultural Statistics - Vegetable Summary 1972

Florida Agricultural Statistics - Citrus Summary 1972

Florida Agricultural Statistics - Field Crop Summary 1972
and Guide to Seasonal Farmwork Areas in the Eastern Seaboard States, by
U.S.D.O.L. Bureau of Employment Statistics

ON-SITE VISITS. Projects and agencies visited on-site were designated according to the amounts of information which were available. On-site visits were made to all Title III-B Grantees.

FINAL COMPILATION OF INFORMATION. All information gathered from field visits, correspondence and research was compiled on agency and county profile forms designed and developed specifically for this project. From these information forms, data was edited and compiled into the resulting report.



EAST COAST MIGRANT HEALTH PROJECT

Funded in 1970 by the U. S. Department of Health, Education and Welfare, the East Coast Migrant Health Project is sponsored by the Leadership Conference of Women Religious. The primary goals of the East Coast Migrant Health project are: to improve and provide health care services to migrants, and to supplement local health service agencies. The method used by the East Coast Migrant Health Project to achieve its goals is to work in conjunction with existing health service systems of the various states by supplying them with additional skilled professionals; religious sisters and lay people to expand the system to provide more services and reach greater numbers of people.

As the name signifies, this particular program provides supportive services to migrant health programs in the eastern migrant stream. In addition to Florida, other states served include New York, Virginia and North Carolina. In Florida, the East Coast Migrant Health Project has worked with migrant health projects or county health departments serving migrants in the counties of Dade, Collier, Flagler, Hardee, Hillsborough, Orange, Palm Beach, Polk, Putnam and St. John's.

The current objectives of the program for this year are:

- a. Publish The Sounding Board newsletter on a monthly basis to share information and resources among health providers and domestic agricultural migratory workers.
- b. Implement recommendations for improvement of Migrant Health Service Referral Index from varied sources of input, including the mobile team's report and the multidisciplinary teams already serving along the migrant stream.
- c. Update the directories of health providers in English and Spanish for distribution to the migrants desiring to assist themselves.
- d. Develop a vehicle for monthly communication among the Policy Board members during the interim between quarterly meetings.
- e. Devise more effective ways to objectively evaluate the project's progress.
- f. Continue plans for the future continuity of this project and its approach to service using "The Exploratory Study On Future Funding Possibilities" as a partial guide.

The East Coast Migrant Health Project Headquarters are located at:

1325 Massachusetts Avenue, N.W.
Washington, D. C. 20005
202 347-7377

FLORIDA FARM WAGES

<u>Activity</u>	<u>Unit</u>	<u>Rate</u>
Citrus Grove Care	hr.	\$1.30-1.85
Grapefruit Harvest	box	.25
Melon Preharvest (watermelon)	hr.	1.30
Strawberry Harvest	hr.	1.30
Cabbage Preharvest	hr.	1.30
Celery Preharvest	hr.	1.30-1.60
Potato Preharvest	hr.	1.30
Tomato Preharvest	hr.	1.30-1.50
Cotton Preharvest	hr.	1.30
Sugarcane Preharvest	hr.	1.85
Tobacco Preharvest	hr.	1.30
Ground Land preparation	hr.	1.30
Melon Harvest (watermelon)	hr.	2.00-3.00
Orange Harvest	bushel	.35- .40
Peach Preharvest-Harvest	hr.	1.30
Bean Preharvest-Harvest	hr.	1.30-1.50
Cabbage Harvest	hr.	1.40
Celery Harvest	hr.	1.30
Potato Harvest	hr.	1.30-1.40
Tomato Harvest	hr.	1.30
Corn Harvest	hr.	1.30-1.45
Sugar Cane Harvest	hr.	1.85

Tobacco
Harvest

hr.

1.30

Nursery
Labor

hr.

1.30



*SOURCE: U.S. DEPT. OF LABOR

FARM LABOR WAGES IN FLORIDA BY COUNTIES

NORTH FLORIDA (Total Employed: 4,755)

Hourly Rate	South Flomaton	Marianna	Quincy	Green-ville	Orange Heights	Totals
\$1.30	1,000	425	900	900		3,225
1.40					125	125
1.50		200			500	750
1.60					305	305
Totals	1,000	625	900	900	980	4,405
Avg. Hr. Wg.	1.30	1.364	1.30	1.30	1.518	1.358

CENTRAL RIDGE (Total Employed: 26,580)

Hourly Rate	Tampa	Fort Pierce	Dundee	Orlando	Totals
\$1.30	2,204	2,780	550	4,723	10,257
1.35			820		820
Totals	2,204	2,780	1,370	4,723	11,077
Avg Hr Wg	1.30	1.30	1.33	1.30	1.304

SOUTH FLORIDA (Total Employed: 35,857)

Hourly Wage	Belle Glade	Delray Beach	Homestead	Immokalee	Totals
\$1.50		6,950		5,445	12,395
1.60			5,220		5,220
1.85	25				25
2.00	12,458				12,458
Totals	12,483	6,950	5,220	5,445	30,098
Avg Hr Wg	2.00	1.50	1.60	1.50	1.725

STATEWIDE

(69,833)

(67,192)

Hourly Wage	31 December, 1971		31 December, 1973	
	Number Employed	Wages Per Hour	Number Employed	Wages Per Hour
\$1.30	16,071	\$20,892.30	13,752	\$17,877.60
1.35	1,109	1,497.15	820	1,107.00
1.40	800	1,120.00	125	175.00
1.50	11,487	17,230.50	13,145	19,717.50
1.60			5,525	8,840.00
1.65	1,250	2,062.50		
1.75	11,913	20,847.75		
1.85	20	37.00	25	46.25
2.00			12,458	2,916.00
Totals	42,650	63,687.20	45,850	72,679.35
Av Hrly Wage		1.493		1.585

Source: Division of Migrant Labor Newsletter, Florida Department of Labor

