

## DOCUMENT RESUME

ED 075 000

HE 004 080

TITLE Resource Requirements Prediction Model 1.6 Reports.

INSTITUTION Western Interstate Commission for Higher Education, Boulder, Colo. National Center for Higher Education Management Systems.

SPONS AGENCY National Inst. of Education (DHEW), Washington, D.C.

REPORT NO TR-34B

PUB DATE 73

NOTE 47p.

EDRS PRICE MF-\$0.65 HC-\$3.29

DESCRIPTORS \*Budgeting; Educational Administration; \*Educational Economics; \*Educational Finance; Educational Planning; \*Higher Education; Planning; \*Resource Allocations

## ABSTRACT

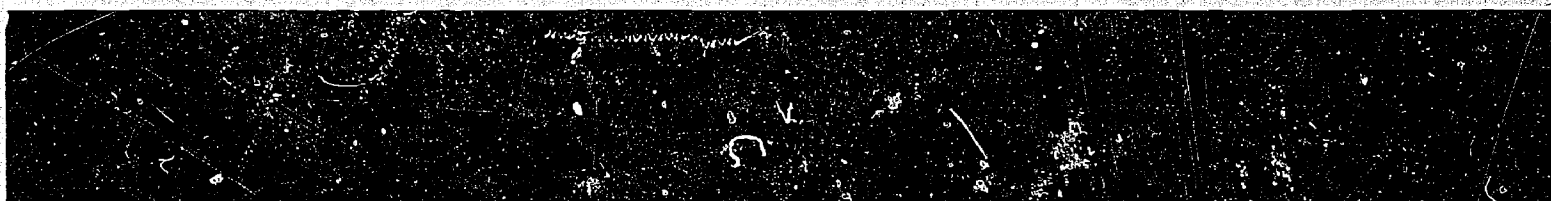
The Resource Requirements Prediction Model (RRPM) 1.6 is a model by which college and university administrators might determine their own budgetary requirements at their own institutions. This document presents data concerning budgets at institutions already using RRPM 1.6. Summing all three organizational levels for all organizational units, the program displays totals for the institution. These reports are referred to as Organizational Budgets. The next report, the Program Budget, displays the data for each user-defined program. The final report, the Institutional Summary report, displays not only the data associated with instruction, but also the data related to other user-defined, noninstructional activities. (Author/HS)

HE

# RESOURCE REQUIREMENTS PREDICTION MODEL 1.6 REPORTS

ED 075000

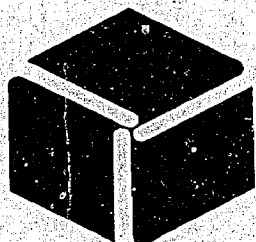
Technical Report 34B



National  
Center for  
Higher  
Education  
Management  
Systems  
at WICHE

U.S. DEPARTMENT OF HEALTH,  
EDUCATION & WELFARE  
OFFICE OF EDUCATION  
THIS DOCUMENT HAS BEEN REPRO-  
DUCED EXACTLY AS RECEIVED FROM  
THE PERSON OR ORGANIZATION ORIG-  
INATING IT. POINTS OF VIEW OR OPIN-  
IONS STATED DO NOT NECESSARILY  
REPRESENT OFFICIAL OFFICE OF EDU-  
CATION POSITION OR POLICY

HE 004080





## National Center for Higher Education Management Systems at WICHE

An Equal Opportunity Employer

**Executive Director, WICHE:**

**Robert H. Kroepsch**

**Associate Director, WICHE, and  
Director, National Center for  
Higher Education Management Systems  
at WICHE:**

**Ben Lawrence**

**Assistant Director, NCHEMS:**

**Gordon Ziemer**

**Director, Research and Development Program:**

**Robert A. Wallhaus**

**Director, Applications and Implementation  
Program:**

**Robert A. Huff**

**Program Associate:**

**John Minter**

**Communication Associate:**

**Joanne E. Arnold**

The Western Interstate Commission for Higher Education (WICHE) is a public agency through which the 13 western states work together

- ... to increase educational opportunities for westerners.
- ... to expand the supply of specialized manpower in the West.
- ... to help universities and colleges improve both their programs and their management.
- ... to inform the public about the needs of higher education.

The Program of the National Center for Higher Education Management Systems at WICHE was proposed by state coordinating agencies and colleges and universities in the West to be under the aegis of the Western Interstate Commission for Higher Education. The National Center for Higher Education Management Systems at WICHE proposes in summary:

To design, develop, and encourage the implementation of management information systems and data bases including common data elements in institutions and agencies of higher education that will:

- provide improved information to higher education administration at all levels.
- facilitate exchange of comparable data among institutions.
- facilitate reporting of comparable information at the state and national levels.

RESOURCE REQUIREMENTS PREDICTION MODEL 1.6

ED 075000

RESOURCE REQUIREMENTS PREDICTION MODEL 1.6 REPORTS

Technical Report 34B

1973

This document is part of a program supported by the National  
Institute of Education.

National Center for Higher Education Management Systems at  
Western Interstate Commission for Higher Education

P. O. Drawer P

Boulder, Colorado 80302

*An Equal Opportunity Employer*

This edition of Resource Requirements Prediction Model 1.6 Reports supersedes all previous versions of RRPM 1.6 Reports for NCHEMS Training Seminar (Micro-U II) and RRPM 1.6 Reports (Micro-U II).

This document has been reviewed and approved for publication by the staff and Technical Council of the National Center for Higher Education Management Systems at WICHE. This publication does not necessarily reflect official positions or policies of the National Institute of Education, and endorsement by NIE should not be inferred.

## WARRANTY

The user is referred to the RRPM 1.6 System Documentation for a detailed description of the computer programs and their limitations. NCHEMS has released these programs as Type IA software. A complete description of a Type I program product is contained in the warranty section of the RRPM 1.6 System Documentation.

NCHEMS certifies that the RRPM 1.6 programs meet conventional ANS COBOL programming standards and will meet the performance characteristics indicated in the RRPM 1.6 System Documentation. If such is not the case, NCHEMS will make appropriate program modifications and distribute such changes to institutions that have earlier versions. NCHEMS will assume no responsibility for other modifications of RRPM 1.6 programs.

Users of RRPM 1.6 should understand that the large amount of flexibility afforded institutions in selecting such conventions as cost allocation procedures, student and faculty definitions, and levels of aggregation make interinstitutional RRPM output comparisons difficult. Only if very careful attention is given by all cooperating campuses to the use of standard definitions and other conventions can output comparisons be made.

## TABLE OF CONTENTS

INTRODUCTION . . . . .	1
ORGANIZATIONAL BUDGETS . . . . .	3
History Discipline. . . . .	5
History Department. . . . .	6
English Discipline. . . . .	7
English Department. . . . .	8
Mathematics Discipline. . . . .	9
Mathematics Department. . . . .	10
Biology Discipline. . . . .	11
Botany Discipline . . . . .	12
Zoology Discipline. . . . .	13
Biology Department. . . . .	14
Chemistry Discipline. . . . .	15
Physics Discipline. . . . .	16
Chemistry/Physics Department. . . . .	17
Arts and Sciences School/College. . . . .	18
Elementary Education Discipline . . . . .	19
Elementary Education Department . . . . .	20
Secondary Education Discipline. . . . .	21
Secondary Education Department. . . . .	22
Physical Education Discipline . . . . .	23
Physical Education Department . . . . .	24
Education School/College. . . . .	25
Accounting Discipline . . . . .	26
Accounting Department . . . . .	27
Economics Discipline. . . . .	28
Economics Department. . . . .	29
Marketing Discipline. . . . .	30
Marketing Department. . . . .	31
Business School/College . . . . .	32
All Organizational Levels . . . . .	33



TABLE OF CONTENTS (Continued)

PROGRAM BUDGET . . . . .	35
INSTITUTIONAL SUMMARY . . . . .	41

## INTRODUCTION

The Resource Requirements Prediction Model (RRPM) 1.6 offers the user a number of reports that display various data and information in different formats. Any one or all of the reports may be requested, and these reports may relate to any year or iteration for which data have been provided.

The sample reports displayed here were derived from the use of MICRO-U II, A Body of Hypothetical Institutional Data To Be Used in NCHEMS Training Exercises. These examples are for the first year of the five years of data shown in the MICRO-U II booklet.

RRPM 1.6 generates many reports. However, only the user reports are displayed in this document. RRPM-06 creates the user reports. It formats and displays the data in a way that can be easily understood by the user. The program displays data for each of the three user-defined organizational levels (for example, discipline, department, and school or college). Summing all three organizational levels for all organizational units, the program displays totals for the institution. These reports are referred to as "ORGANIZATIONAL BUDGETS." The next report, the "PROGRAM BUDGET," displays the data for each user-defined program. The final report, the "INSTITUTIONAL SUMMARY" report, displays not only the data associated with instruction, but also the data related to other user-defined, noninstructional activities (for example, library or physical plant).

**ORGANIZATIONAL BUDGET**

\*\*\*\*\*  
 \* (0001) HISTORY  
 \* (0001) HISTORY  
 \* (0001) ARTS + SCIENCES SCHOOL/COLLEGE  
 \*\*\*\*\*

	SALARY RATE	FULL TIME EQUIVALENT	PERCENT	COSTS	PERCENT OF ORGANIZATIONAL BUDGET	PERCENT OF INSTRUCTIONAL BUDGET
CHAIRMAN	19,897	.98		19,499	9.76	1.0832
FACULTY (BY RANK)						
(FP) PROFESSOR	17,000	2.51	25.13	42,670	21.36	2.3705
(AP) ASSOC. PROFESSOR	14,500	3.12	31.23	45,240	22.65	2.5132
(TP) ASST. PROFESSOR	11,500	2.71	27.13	31,165	15.60	1.7313
(IN) INSTRUCTOR	9,500	1.03	10.31	9,785	4.90	.5436
(TA) TEACH ASSISTANT	6,800	.62	6.21	4,216	2.11	.2342
(**) FACULTY TOTALS	13,321	9.99	100.00	133,076	66.62	7.3928
STAFF (BY CATEGORY)						
(SS) SUPPORT STAFF	5,118	2.79	74.01	14,278	7.15	.7932
(AD) ACADEMIC DEAN	19,591	.98	25.99	19,199	9.61	1.0666
(**) STAFF TOTALS	8,880	3.77	100.00	33,477	16.76	1.8598
EXPENSES (BY TYPE)						
(SU) SUPPLIES				3,113	1.56	.1729
(EQ) EQUIPMENT				1,878	.94	.1043
(MI) MISCELLANEOUS				1,886	.94	.1048
(**) EXPENSE TOTALS				6,877	3.44	.3820
ADDITIONAL EXPENSES				6,820	3.41	.3789
*** TOTALS ***		14.74		199,749	100.00	11.0967

	COST	PER-CENT	HOURS PRODUCED	PER-CENT	TOT HRS	UNIT COST	FTE FACULTY	PER-CENT	PRODUCT RATIO
COSTS BY COURSE LEVEL									
(LD) LOWER DIVISION	53,403	26.74	1,108	41.13	5.81	48.20	3.09	30.93	358.58
(UD) UPPER DIVISION	80,740	40.42	1,122	41.65	5.88	71.96	4.07	40.74	275.68
(GD) GRAD DIVISION	65,606	32.84	464	17.22	2.43	141.39	2.83	28.33	163.96
(**) CRSE LVL TOTALS	199,749	100.00	2,694	100.00	14.12	74.15	9.99	100.00	269.67

```

*****
*
* ORGANIZATIONAL BUDGET
*
* (0001) HISTORY DEPARTMENT
* (0001) ARTS + SCIENCES SCHOOL/COLLEGE
*****

```

	SALARY RATE	FULL TIME EQUIVALENT	PERCENT	COSTS	PERCENT OF ORGANIZATIONAL BUDGET	PERCENT OF INSTRUCTIONAL BUDGET
CHAIRMAN	19,897	.98		19,499	9.76	1.0832
FACULTY (BY RANK)						
(FP) PROFESSOR	17,000	2.51	25.13	42,670	21.36	2.3705
(AP) ASSOC. PROFESSOR	14,500	3.12	31.23	45,240	22.65	2.5132
(TP) ASST. PROFESSOR	11,500	2.71	27.13	31,165	15.60	1.7313
(IN) INSTRUCTOR	9,500	1.03	10.31	9,785	4.90	.5436
(TA) TEACH ASSISTANT	6,800	.62	6.21	4,216	2.11	.2342
(**) FACULTY TOTALS	13,321	9.99	100.00	133,076	66.62	7.3928
STAFF (BY CATEGORY)						
(SS) SUPPORT STAFF	5,118	2.79	74.01	14,278	7.15	.7932
(AD) ACADEMIC DEAN	19,591	.98	25.99	19,199	9.61	1.0666
(**) STAFF TOTALS	8,880	3.77	100.00	33,477	16.76	1.8598
EXPENSES (BY TYPE)						
(SU) SUPPLIES				3,113	1.56	.1729
(EQ) EQUIPMENT				1,878	.94	.1043
(MI) MISCELLANEOUS				1,886	.94	.1048
(**) EXPENSE TOTALS				6,877	3.44	.3820
ADDITIONAL EXPENSES				6,820	3.41	.3789
*** TOTALS ***		14.74		199,749	100.00	11.0967

	COST	PER-CENT	HOURS PRODUCED	PER-CENT TOT HRS	UNIT COST	FTE FACULTY	PER-CENT	PRODUCT. RATIO
COSTS BY COURSE LEVEL								
(LD) LOWER DIVISION	53,403	26.74	1,108	5.81	48.20	3.09	30.93	358.58
(UD) UPPER DIVISION	80,740	40.42	1,122	5.88	71.96	4.07	40.74	275.68
(GD) GRAD DIVISION	65,606	32.84	464	2.43	141.39	2.83	28.33	163.96
(**) CRSE LVL TOTALS	199,749	100.00	2,694	14.12	74.15	9.99	100.00	269.67

M I C R O U N I V E R S I T Y I I  
RESOURCE REQUIREMENTS PREDICTION MODEL

\*\*\*\*\*  
\* (0002) ENGLISH  
\* (0002) ENGLISH DEPARTMENT  
\* (0001) ARTS + SCIENCES SCHOOL/COLLEGE  
\*\*\*\*\*

PERCENT OF PERCENT OF  
ORGANIZATIONAL INSTRUCTIONAL  
BUDGET BUDGET

CHAIRMAN	SALARY RATE	FULL TIME EQUIVALENT	PERCENT	COSTS	PERCENT OF ORGANIZATIONAL BUDGET	PERCENT OF INSTRUCTIONAL BUDGET
(FP) PROFESSOR	17,000	2.84	25.00	48,280	21.85	2.6821
(AP) ASSOC. PROFESSOR	14,500	3.52	30.99	51,040	23.09	2.6354
(TP) ASST. PROFESSOR	11,500	3.09	27.20	35,535	16.08	1.9741
(IN) INSTRUCTOR	9,500	1.18	10.39	11,210	5.07	.6228
(TA) TEACH ASSISTANT	6,800	.73	6.43	4,964	2.25	.2758
(**) FACULTY TOTALS	13,295	11.36	100.00	151,029	68.34	8.3901

STAFF (BY CATEGORY)	SALARY RATE	FULL TIME EQUIVALENT	PERCENT	COSTS	PERCENT OF ORGANIZATIONAL BUDGET	PERCENT OF INSTRUCTIONAL BUDGET
(SS) SUPPORT STAFF	5,115	3.28	76.81	16,778	7.59	.9321
(AD) ACADEMIC DEAN	19,393	.99	23.19	19,199	8.69	1.0666
(**) STAFF TOTALS	8,426	4.27	100.00	35,977	16.28	1.9986

EXPENSES (BY TYPE)	SALARY RATE	FULL TIME EQUIVALENT	PERCENT	COSTS	PERCENT OF ORGANIZATIONAL BUDGET	PERCENT OF INSTRUCTIONAL BUDGET
(SU) SUPPLIES				3,638	1.65	.2021
(EQ) EQUIPMENT				1,996	.90	.1109
(MI) MISCELLANEOUS				2,050	.93	.1139
(**) EXPENSE TOTALS				7,684	3.48	.4269

ADDITIONAL EXPENSES	SALARY RATE	FULL TIME EQUIVALENT	PERCENT	COSTS	PERCENT OF ORGANIZATIONAL BUDGET	PERCENT OF INSTRUCTIONAL BUDGET
(**) TOTALS ***				6,820	3.09	.3789
(**) TOTALS ***				221,009	100.00	12.2777

COSTS BY COURSE LEVEL	SALARY RATE	FULL TIME EQUIVALENT	PERCENT	COSTS	PERCENT OF ORGANIZATIONAL BUDGET	PERCENT OF INSTRUCTIONAL BUDGET	FTE FACULTY	PER-CENT	PRODUCT. RATIO
(LD) LOWER DIVISION	61,377	27.77	42.85	47,75	3.64	32.04	3.64	32.04	353.02
(UD) UPPER DIVISION	87,344	39.52	40.88	71,24	4.50	39.61	4.50	39.61	272.44
(GD) GRAD DIVISION	72,288	32.71	16.27	148.13	3.22	28.35	3.22	28.35	151.55
(**) CRSE LVL TOTALS	221,009	100.00	100.00	73.69	11.36	100.00	11.36	100.00	264.00

\*\*\*\*\*  
\* O R G A N I Z A T I O N A L B U D G E T \*  
\* (0002) ENGLISH DEPARTMENT \*  
\* (0001) ARTS + SCIENCES SCHOOL/COLLEGE \*  
\*\*\*\*\*

	SALARY RATE	FULL TIME EQUIVALENT	PERCENT	COSTS	PERCENT OF ORGANIZATIONAL BUDGET	PERCENT OF INSTRUCTIONAL BUDGET	PRODUCT. RATIO
CHAIRMAN	19,696	.99		19,499	8.82	1.0832	
FACULTY (BY RANK)							
(FP) PROFESSOR	17,000	2.84	25.00	48,280	21.85	2.6821	
(AP) ASSOC. PROFESSOR	14,500	3.52	30.99	51,040	23.09	2.8354	
(TP) ASST. PROFESSOR	11,500	3.09	27.20	35,535	16.08	1.9741	
(IN) INSTRUCTOR	9,500	1.18	10.39	11,210	5.07	.6228	
(TA) TEACH ASSISTANT	6,800	.73	6.43	4,964	2.25	.2758	
(**) FACULTY TOTALS	13,295	11.36	100.00	151,029	68.34	8.3901	
STAFF (BY CATEGORY)							
(SS) SUPPORT STAFF	5,115	3.28	76.81	16,778	7.59	.9321	
(AD) ACADEMIC DEAN	19,393	.99	23.19	19,199	8.69	1.0666	
(**) STAFF TOTALS	8,426	4.27	100.00	35,977	16.28	1.9986	
EXPENSES (BY TYPE)							
(SU) SUPPLIES				3,633	1.65	.2021	
(EQ) EQUIPMENT				1,996	.90	.1109	
(MI) MISCELLANEOUS				2,050	.93	.1139	
(**) EXPENSE TOTALS				7,684	3.48	.4269	
ADDITIONAL EXPENSES				6,820	3.09	.3789	
*** TOTALS ***		16.62		221,009	100.00	12.2777	

	PER-CENT	HOURS PRODUCED	PER-CENT	UNIT COST	FTE FACULTY	PER-CENT	PRODUCT. RATIO
COSTS BY COURSE LEVEL							
(LD) LOWER DIVISION	27.77	1,285	42.85	47.76	3.64	32.04	353.02
(UD) UPPER DIVISION	39.52	1,226	40.88	71.24	4.50	39.61	272.44
(GD) GRAD DIVISION	32.71	488	16.27	148.13	3.22	28.35	151.55
(**) CRSE LVL TOTALS	100.00	2,999	100.00	73.69	11.36	100.00	264.00



M I C R O U N I V E R S I T Y I I I  
RESOURCE REQUIREMENTS PREDICTION MODEL

(DD) DEFAULT DATA  
BASE = (\*\*)

\*\*\*\*\*  
\* O R G A N I Z A T I O N A L B U D G E T \*  
\*\*\*\*\*  
\* (0003) MATHEMATICS DEPARTMENT \*  
\* (0003) MATHEMATICS SCHOOL/COLLEGE \*  
\* (0001) ARTS + SCIENCES \*  
\*\*\*\*\*

	SALARY RATE	FULL TIME EQUIVALENT	PERCENT	COSTS	PERCENT OF ORGANIZATIONAL BUDGET	PERCENT OF INSTRUCTIONAL BUDGET	FTE FACULTY	PER-CENT	PRODUCT RATIO
CHAIRMAN	22,447	.49		10,999	10.76	.6110			
FACULTY (BY PANK)									
(FP) PROFESSOR	18,000	1.09	22.43	19,620		1.0900			
(AP) ASSOC. PROFESSOR	15,000	1.57	32.30	23,550	22.52	1.3083			
(TP) ASST. PROFESSOR	12,000	1.46	30.04	17,520	16.33	.9733			
(IN) INSTRUCTOR	9,500	.74	15.23	7,030	6.75	.3905			
(**) FACULTY TOTALS	13,934	4.86	100.00	67,720	65.05	3.7621			
STAFF (BY CATEGORY)									
(SS) SUPPORT STAFF	5,134	1.45	59.43	7,445	7.15	.4136			
(AD) ACADEMIC DEAN	13,332	.99	40.57	13,199	12.68	.7332			
(**) STAFF TOTALS	8,461	2.44	100.00	20,644	19.83	1.1468			
EXPENSES (BY TYPE)									
(SU) SUPPLIES				1,506	1.45	.0837			
(EQ) EQUIPMENT				2,334	2.24	.1297			
(MI) MISCELLANEOUS				90	.87	.0504			
(**) EXPENSE TOTALS				4,748	4.56	.2538			
ADDITIONAL EXPENSES									
*** TOTALS ***		7.79		104,111	100.00	5.7837			
COSTS BY COURSE LEVEL									
(LD) LOWER DIVISION	78,027	1,178	81.19	66,24	6.17	3.70	76.13	318.38	
(UD) UPPER DIVISION	26,084	273	18.81	95,55	1.43	1.16	23.87	235.34	
(**) CRSE LVL TOTALS	104,111	1,451	100.00	71.75	7.60	4.86	100.00	298.56	



\*\*\*\*\*  
 \* O R G A N I Z A T I O N A L B U D G E T \*  
 \* (0003) MATHEMATICS DEPARTMENT \*  
 \* (0001) ARTS + SCIENCES SCHOOL/COLLEGE \*  
 \*\*\*\*\*

	SALARY RATE	FULL TIME EQUIVALENT	PERCENT	COSTS	PERCENT OF INSTRUCTIONAL BUDGET
CHAIRMAN	22,447	.49		10,999	10.56
FACULTY (BY RANK)					
(FP) PROFESSOR	18,000	1.09	22.43	19,620	18.85
(AP) ASSOC. PROFESSOR	15,000	1.57	32.30	23,550	22.62
(TP) ASST. PROFESSOR	12,000	1.46	30.04	17,520	16.83
(IN) INSTRUCTOR	9,500	.74	15.23	7,030	6.75
(**) FACULTY TOTALS	13,934	4.86	100.00	67,720	65.05
STAFF (BY CATEGORY)					
(SS) SUPPORT STAFF	5,134	1.45	59.43	7,445	7.15
(AD) ACADEMIC DEAN	13,332	.99	40.57	13,199	12.68
(**) STAFF TOTALS	8,461	2.44	100.00	20,644	19.83

EXPENSES (BY TYPE)					
(SU) SUPPLIES				1,506	1.45
(EQ) EQUIPMENT				2,334	2.24
(MI) MISCELLANEOUS				908	.87
(**) EXPENSE TOTALS				4,748	4.56
ADDITIONAL EXPENSES					
*** TOTALS ***		7.79		104,111	100.00
					5.7837

	COST	PER-CENT	HOURS PRODUCED	PER-CENT TOT HRS	UNIT COST	FTE FACULTY	PER-CENT	PRODUCT RATIO
COSTS BY COURSE LEVEL								
(LD) LOWER DIVISION	78,027	74.95	1,178	6.17	66.24	3.70	76.13	318.38
(UD) UPPER DIVISION	26,084	25.05	273	1.43	95.55	1.16	23.87	235.34
(**) CRSE LVL TOTALS	104,111	100.00	1,451	7.60	71.75	4.86	100.00	298.56

\*\*\*\*\*  
 \* (0004) BIOLOGY DISCIPLINE \*\*\*\*\*  
 \* (0004) BIOLOGY DEPARTMENT \*\*\*\*\*  
 \* (0001) ARTS + SCIENCES SCHOOL/COLLEGE \*\*\*\*\*  
 \*\*\*\*\*

	SALARY RATE	FULL TIME EQUIVALENT	PERCENT	COSTS	PERCENT OF ORGANIZATIONAL BUDGET	PERCENT OF INSTRUCTIONAL BUDGET
CHAIRMAN	24,000	.16		3,840	5.28	.2133
FACULTY (BY RANK)						
(FP) PROFESSOR	18,000	.37	10.03	6,660	9.15	.3700
(AP) ASSOC. PROFESSOR	15,000	.74	20.05	11,100	15.25	.6166
(TP) ASST. PROFESSOR	12,000	1.10	29.81	13,200	18.13	.7333
(IN) INSTRUCTOR	9,500	.74	20.05	7,030	9.66	.3905
(TA) TEACH ASSISTANT	6,800	.74	20.05	5,032	6.91	.2795
(**) FACULTY TOTALS	11,659	3.69	100.00	43,022	59.10	2.3900
STAFF (BY CATEGORY)						
(SS) SUPPORT STAFF	5,200	1.11	52.61	5,772	7.93	.3207
(AD) ACADEMIC DEAN	6,000	1.00	47.39	6,000	8.24	.3333
(**) STAFF TOTALS	5,579	2.11	100.00	11,772	16.17	.6540
EXPENSES (BY TYPE)						
(SU) SUPPLIES				8,431	11.58	.4684
(EQ) EQUIPMENT				4,952	6.80	.2751
(MI) MISCELLANEOUS				775	1.06	.0431
(**) EXPENSE TOTALS				14,158	19.45	.7865
ADDITIONAL EXPENSES						
*** TOTALS ***		5.96		72,792	100.00	4.0438
COSTS BY COURSE LEVEL						
(LD) LOWER DIVISION	72,792	100.00	802	90.76	3.69	100.00
(**) CRSE LVL TOTALS	72,792	100.00	802	90.76	3.69	100.00
						217.34
						217.34

\*\*\*\*\*  
\* O R G A N I Z A T I O N A L B U D G E T \*  
\* (0005) BOTANY \*  
\* (0004) BIOLOGY \*  
\* (0001) ARTS + SCIENCES SCHOOL/COLLEGE \*  
\*\*\*\*\*

	SALARY RATE	FULL TIME EQUIVALENT	PERCENT	COSTS	PERCENT OF ORGANIZATIONAL BUDGET	PERCENT OF INSTRUCTIONAL BUDGET
CHAIRMAN	25,195	.40		10,078	9.15	.5599
FACULTY (BY RANK)						
(FP) PROFESSOR	18,000	1.11	25.69	19,980	18.14	1.1100
(AP) ASSOC. PROFESSOR	15,000	1.41	32.64	21,150	19.20	1.1749
(TP) ASST. PROFESSOR	12,000	1.21	28.01	14,520	13.18	.8066
(IN) INSTRUCTOR	9,500	.45	10.42	4,275	3.88	.2375
(TA) TEACH ASSISTANT	6,800	.14	3.24	952	.86	.0529
(**) FACULTY TOTALS	14,092	4.32	100.00	60,877	55.26	3.3819
STAFF (BY CATEGORY)						
(SS) SUPPORT STAFF	5,237	1.37	58.05	7,175	6.51	.3986
(AD) ACADEMIC DEAN	19,392	.99	41.95	19,198	17.43	1.0665
(**) STAFF TOTALS	11,175	2.36	100.00	26,373	23.94	1.4651
EXPENSES (BY TYPE)						
(SU) SUPPLIES				3,949	3.58	.2194
(EQ) EQUIPMENT				4,532	4.11	.2518
(MI) MISCELLANEOUS				949	.86	.0527
(**) EXPENSE TOTALS				9,430	8.56	.5239
ADDITIONAL EXPENSES				3,410	3.10	.1894
*** TOTALS ***		7.08		110,168	100.00	6.1202

	PER-CENT	HOURS PRODUCED	PER-CENT	PERCENT TOT HRS	UNIT COST	FTE FACULTY	PER-CENT	PRODUCT. RATIO
(LD) LOWER DIVISION	28.48	269	42.50	1.41	116.64	1.36	31.48	197.79
(UD) UPPER DIVISION	38.46	270	42.65	1.41	156.92	1.73	40.05	156.07
(GD) GRAD DIVISION	33.06	94	14.85	.49	387.47	1.23	28.47	76.42
(**) CRSE LVL TOTALS	100.00	633	100.00	3.32	174.04	4.32	100.00	146.53

\*\*\*\*\*  
 \* (0006) ZOOLOGY DISCIPLINE \*\*\*\*\*  
 \* (0004) BIOLOGY DEPARTMENT \*\*\*\*\*  
 \* (0001) ARTS + SCIENCES SCHOOL/COLLEGE \*\*\*\*\*  
 \*\*\*\*\*

	SALARY RATE	FULL TIME EQUIVALENT	PERCENT	COSTS	PERCENT OF ORGANIZATIONAL BUDGET	PERCENT OF INSTRUCTIONAL BUDGET
CHAIRMAN	25,198	.40		10,079	8.01	.5599
FACULTY (BY RANK)						
(FP) PROFESSOR	18,000	1.12	21.17	20,160	16.03	1.1200
(AP) ASSOC. PROFESSOR	15,000	1.71	32.33	25,650	20.39	1.4249
(TP) ASST. PROFESSOR	12,000	1.66	31.38	19,920	15.84	1.1066
(IN) INSTRUCTOR	9,500	.59	11.15	5,605	4.46	.3114
(TA) TEACH ASSISTANT	6,800	.21	3.97	1,428	1.14	.0793
(**) FACULTY TOTALS	13,755	5.29	100.00	72,763	57.85	4.0422
STAFF (BY CATEGORY)						
(SS) SUPPORT STAFF	5,262	1.67	63.02	8,787	6.99	.4881
(AD) ACADEMIC DEAN	19,590	.98	36.98	19,198	15.26	1.0665
(**) STAFF TOTALS	10,560	2.65	100.00	27,985	22.25	1.5547
EXPENSES (BY TYPE)						
(SU) SUPPLIES				5,029	4.00	.2794
(EQ) EQUIPMENT				5,383	4.28	.2990
(MI) MISCELLANEOUS				1,126	.90	.0626
(**) EXPENSE TOTALS				11,538	9.17	.6410
ADDITIONAL EXPENSES				3,410	2.71	.1894
*** TOTALS ***		8.34		125,775	100.00	6.9872

	PER-CENT	HOURS PRODUCED	PER-CENT	UNIT COST	PER-CENT	FACULTY	PER-CENT	PRODUCT. RATIO
COSTS BY COURSE LEVEL								
(LD) LOWER DIVISION	34.95	395	49.01	111.30	2.07	2.01	38.00	196.52
(UD) UPPER DIVISION	36.93	312	38.71	148.88	1.64	2.00	37.81	156.00
(GD) GRAD DIVISION	28.11	99	12.28	357.18	.52	1.28	24.20	77.34
(**) CRSE LVL TOTALS	100.00	806	100.00	156.05	4.22	5.29	100.00	152.36

\*\*\*\*\*  
\* O R G A N I Z A T I O N A L B U D G E T \*  
\*\*\*\*\*  
\* (0004) BIOLOGY DEPARTMENT \*  
\* (0001) ARTS + SCIENCES SCHOOL/COLLEGE \*  
\*\*\*\*\*

	SALARY RATE	FULL TIME EQUIVALENT	PERCENT	COSTS	PERCENT OF ORGANIZATIONAL BUDGET	PERCENT OF INSTRUCTIONAL BUDGET
CHAIRMAN	24,997	.96		23,997	7.77	1.3331
FACULTY (BY RANK)						
(FP) PROFESSOR	18,000	2.60	19.55	46,800	15.16	2.5999
(AP) ASSOC. PROFESSOR	15,000	3.86	29.02	57,900	18.75	3.2165
(TP) ASST. PROFESSOR	12,000	3.97	29.85	47,640	15.43	2.6466
(IN) INSTRUCTOR	9,500	1.78	13.38	16,910	5.48	.9394
(TA) TEACH ASSISTANT	6,800	1.09	8.20	7,412	2.40	.4118
(**) FACULTY TOTALS	13,283	13.30	100.00	176,662	57.22	9.8141
STAFF (BY CATEGORY)						
(SS) SUPPORT STAFF	5,237	4.15	58.29	21,734	7.04	1.2074
(AD) ACADEMIC DEAN	14,948	2.97	41.71	44,396	14.38	2.4663
(**) STAFF TOTALS	9,288	7.12	100.00	66,130	21.42	3.6737
EXPENSES (BY TYPE)						
(SU) SUPPLIES				17,409	5.64	.9671
(EQ) EQUIPMENT				14,867	4.82	.8259
(MI) MISCELLANEOUS				2,850	.92	.1583
(**) EXPENSE TOTALS				35,126	11.38	1.9514
ADDITIONAL EXPENSES				6,820	2.21	.3789
*** TOTALS ***		21.38		308,735	100.00	17.1512

	COST	PER-CENT	HOURS PRODUCED	PER-CENT	PERCENT TOT HRS	UNIT COST	FTE FACULTY	PER-CENT	PRODUCT. RATIO
(LD) LOWER DIVISION	148,131	47.98	1,466	65.42	7.68	101.04	7.06	53.08	207.65
(UD) UPPER DIVISION	88,821	28.77	582	25.97	3.05	152.61	3.73	28.05	156.03
(GD) GRAD DIVISION	71,783	23.25	193	8.61	1.01	371.93	2.51	18.87	76.89
(**) CRSE LVL TOTALS	308,735	100.00	2,241	100.00	11.74	137.77	13.30	100.00	168.50

\*\*\*\*\*  
 \* O R G A N I Z A T I O N A L B U D G E T \*  
 \* (0007) CHEMISTRY DISCIPLINE \*  
 \* (0005) CHEM/PHYSICS DEPARTMENT \*  
 \* (0001) ARTS + SCIENCES SCHOOL/COLLEGE \*  
 \*\*\*\*\*

	SALARY RATE	FULL TIME EQUIVALENT	PERCENT	COSTS	PERCENT OF ORGANIZATIONAL BUDGET	PERCENT OF INSTRUCTIONAL BUDGET
CHAIRMAN	23,876	.49		11,699	9.82	.6499
FACULTY (BY RANK)						
(FP) PROFESSOR	18,500	1.04	19.89	19,240	16.15	1.0688
(AP) ASSOC. PROFESSOR	16,000	1.55	29.64	24,800	20.81	1.3777
(TP) ASST. PROFESSOR	12,000	1.41	26.96	16,920	14.20	.9400
(IN) INSTRUCTOR	10,000	.87	16.63	8,700	7.30	.4833
(TA) TEACH ASSISTANT	7,200	.36	6.88	2,592	2.18	.1440
(**) FACULTY TOTALS	13,815	5.23	100.00	72,252	60.63	4.0138
STAFF (BY CATEGORY)						
(SS) SUPPORT STAFF	5,231	1.66	62.64	8,683	7.29	.4824
(AD) ACADEMIC DEAN	12,120	.99	37.36	11,999	10.07	.6666
(**) STAFF TOTALS	7,805	2.65	100.00	20,682	17.36	1.1490
EXPENSES (BY TYPE)						
(SU) SUPPLIES				7,386	6.20	.4103
(EQ) EQUIPMENT				5,894	4.95	.3274
(MI) MISCELLANEOUS				1,255	1.05	.0697
(**) EXPENSE TOTALS				14,535	12.20	.8075
ADDITIONAL EXPENSES						
*** TOTALS ***		8.37		119,168	100.00	6.6202

	PER-CENT	HOURS PRODUCED	PER-CENT	PERCENT TOT HRS	UNIT COST	FTE FACULTY	PER-CENT	PRODUCT. RATIO
COSTS BY COURSE LEVEL								
(LD) LOWER DIVISION	32.39	358	46.68	1.88	107.82	1.83	34.99	195.63
(UD) UPPER DIVISION	67.61	409	53.32	2.14	196.99	3.40	65.01	120.29
(**) CRSE LVL TOTALS	100.00	767	100.00	4.02	155.37	5.23	100.00	146.65

\*\*\*\*\*  
\* O R G A N I Z A T I O N A L B U D G E T \*  
\* (0008) PHYSICS DISCIPLINE \*  
\* (0005) CHEM/PHYSICS DEPARTMENT \*  
\* (0001) ARTS + SCIENCES SCHOOL/COLLEGE \*  
\*\*\*\*\*

	SALARY RATE	FULL TIME EQUIVALENT	PERCENT	COSTS	PERCENT OF ORGANIZATIONAL BUDGET	PERCENT OF INSTRUCTIONAL BUDGET
CHAIRMAN	23,876	.49		11,699	12.99	.64
FACULTY (BY RANK)						
(FP) PROFESSOR	18,500	.90	24.26	16,650	18.48	.9250
(AP) ASSOC. PROFESSOR	16,000	1.00	26.95	16,000	17.76	.8889
(TP) ASST. PROFESSOR	12,000	1.11	29.92	13,320	14.79	.7400
(IN) INSTRUCTOR	10,000	.48	12.94	4,800	5.33	.2667
(TA) TEACH ASSISTANT	7,200	.22	5.93	1,584	1.76	.0980
(**) FACULTY TOTALS	14,112	3.71	100.00	52,354	58.12	2.9084
STAFF (BY CATEGORY)						
(SS) SUPPORT STAFF	5,270	.73	42.44	3,847	4.27	.2137
(AD) ACADEMIC DEAN	12,120	.99	57.56	11,999	13.32	.6667
(**) STAFF TOTALS	9,213	1.72	100.00	15,846	17.59	.8803
EXPENSES (BY TYPE)						
(SU) SUPPLIES				3,158	3.51	.1754
(EQ) EQUIPMENT				6,063	6.73	.3368
(MI) MISCELLANEOUS				957	1.06	.0532
(**) EXPENSE TOTALS				10,178	11.30	.5654
ADDITIONAL EXPENSES						
*** TOTALS ***		5.92		90,077	100.00	5.0041

	PER-CENT	HOURS PRODUCED	PER-CENT TOT HRS	UNIT COST	FTE FACULTY	PER-CENT PRODUCT. RATIO
COSTS BY COURSE LEVEL						
(LD) LOWER DIVISION	24,770	193	39.71	128.34	1.11	29.92
(UD) UPPER DIVISION	65,307	293	60.29	222.89	2.60	70.08
(**) CRSE LVL TOTALS	90,077	486	100.00	185.34	3.71	100.00
(**) CRSE LVL TOTALS						173.87
						112.69
						131.00

\*\*\*\*\*  
 \* O R G A N I Z A T I O N A L B U D G E T \*  
 \* (0005) CHEM/PHYSICS DEPARTMENT \*  
 \* (0001) ARTS + SCIENCES SCHOOL/COLLEGE \*  
 \*\*\*\*\*

	SALARY RATE	FULL TIME EQUIVALENT	PERCENT	COSTS	PERCENT OF ORGANIZATIONAL BUDGET	PERCENT OF INSTRUCTIONAL BUDGET
CHAIRMAN:	23,876	.98		23,398	11.18	1.2998
FACULTY (BY RANK)						
(FP) PROFESSOR	18,500	1.94	21.70	35,890	17.15	1.9938
(AP) ASSOC. PROFESSOR	16,000	2.55	28.52	40,800	19.50	2.2666
(TP) ASST. PROFESSOR	12,000	2.52	28.19	30,240	14.45	1.6799
(IN) INSTRUCTOR	10,000	1.35	15.10	13,500	6.45	.7500
(TA) TEACH ASSISTANT	7,200	.58	6.49	4,176	2.00	.2320
(**) FACULTY TOTALS	13,938	8.94	100.00	124,606	59.55	6.9223
STAFF (BY CATEGORY)						
(SS) SUPPORT STAFF	5,243	2.39	54.69	12,530	5.99	.6961
(AD) ACADEMIC DEAN	12,120	1.98	45.31	23,998	11.47	1.3332
(**) STAFF TOTALS	8,359	4.37	100.00	36,528	17.46	2.0292
EXPENSES (BY TYPE)						
(SU) SUPPLIES				10,544	5.04	.5658
(EQ) EQUIPMENT				11,957	5.71	.6642
(MI) MISCELLANEOUS				2,212	1.06	.1229
(**) EXPENSE TOTALS				24,713	11.81	1.3729
ADDITIONAL EXPENSES						
*** TOTALS ***		14.29		209,245	100.00	11.6242

COSTS BY COURSE LEVEL	COST	PER-CENT	HOURS PRODUCED	PER-CENT TOT HRS	UNIT COST	FTE FACULTY	PER-CENT	PRODUCT. RATIO
(LD) LOWER DIVISION	63,371	30.29	551	43.97	115.01	2.94	32.89	187.41
(UD) UPPER DIVISION	145,874	69.71	702	56.03	207.80	6.00	67.11	117.00
(**) CRSE LVL TOTALS	209,245	100.00	1,253	100.00	167.00	8.94	100.00	140.16



\*\*\*\*\*  
 \* O R G A N I Z A T I O N A L B U D G E T \*  
 \* (0001) ARTS + SCIENCES SCHOOL/COLLEGE \*  
 \*\*\*\*\*

	SALARY RATE	FULL TIME EQUIVALENT	PERCENT	COSTS	PERCENT OF ORGANIZATIONAL BUDGET	PERCENT OF INSTRUCTIONAL BUDGET	
CHAIRMAN	22,135	4.40		97,392	9.34	5.4104	
FACULTY (BY RANK)							
(FP) PROFESSOR	17,601	10.98	22.66	193,260	18.53	10.7362	
(AP) ASSOC. PROFESSOR	14,947	14.62	30.18	218,530	20.96	12.1400	
(TP) ASST. PROFESSOR	11,789	13.75	28.39	162,100	15.54	9.0052	
(IN) INSTRUCTOR	9,611	6.08	12.55	58,435	5.60	3.2462	
(TA) TEACH ASSISTANT	6,877	3.02	6.23	20,768	1.99	1.1537	
(**) FACULTY TOTALS	13,480	48.45	100.00	653,093	62.63	36.2814	
STAFF (BY CATEGORY)							
(SS) SUPPORT STAFF	5,175	14.06	64.00	72,765	6.98	4.0423	
(AD) ACADEMIC DEAN	15,170	7.91	36.00	119,991	11.51	6.6659	
(**) STAFF TOTALS	8,774	21.97	100.00	192,756	18.48	10.7082	
EXPENSES (BY TYPE)							
(SU) SUPPLIES				36,210	3.47	2.0116	
(EQ) EQUIPMENT				33,032	3.17	1.8350	
(MI) MISCELLANEOUS				9,906	.95	.5503	
(**) EXPENSE TOTALS				79,148	7.59	4.3969	
ADDITIONAL EXPENSES				20,460	1.96	1.1365	
*** TOTALS ***		74.82		1,042,849	100.00	57.9335	
COSTS BY COURSE LEVEL					FTE FACULTY	PER-CENT	PRODUCT. RATIO
(LD) LOWER DIVISION	404,309	5,588	52.53	72,35	20.43	42.17	273.52
(UD) UPPER DIVISION	428,863	3,905	36.71	109.82	19.46	40.17	200.67
(GD) GRAD DIVISION	209,677	1,145	10.76	183.12	8.56	17.67	133.76
(**) CRSE LVL TOTALS	1,042,849	10,638	100.00	98.03	48.45	100.00	219.57

ITER = (DD) DEFAULT DATA  
 BASE = (\*\*)

M I C R O U N I V E R S I T Y I I  
 RESOURCE REQUIREMENTS PREDICTION MODEL

OCT-1972  
 1.6-(06) PAGE 15

\*\*\*\*\*  
 \* (0009) ELEMENTARY EDUC. DISCIPLINE \*  
 \* (0006) ELEMENTARY EDUC. DEPARTMENT \*  
 \* (0002) EDUCATION SCHOOL/COLLEGE \*  
 \*\*\*\*\*

	SALARY RATE	FULL TIME EQUIVALENT	PERCENT	COSTS	PERCENT OF ORGANIZATIONAL BUDGET	PERCENT OF INSTRUCTIONAL BUDGET
CHAIRMAN	22,221	.99		21,999	11.03	1.2221
FACULTY (BY RANK)						
(FP) PROFESSOR	17,500	2.59	27.52	45,325	22.73	2.5179
(AP) ASSOC. PROFESSOR	15,000	3.17	33.69	47,550	23.85	2.6416
(TP) ASST. PROFESSOR	11,500	3.19	33.90	36,685	18.40	2.0380
(IN) INSTRUCTOR	9,500	.23	2.44	2,185	1.10	.1214
(TA) TEACH ASSISTANT	6,800	.23	2.44	1,564	.78	.0869
(**) FACULTY TOTALS	14,167	9.41	100.00	133,309	66.86	7.4057
STAFF (BY CATEGORY)						
(SS) SUPPORT STAFF	5,118	2.72	73.32	13,921	6.98	.7734
(AD) ACADEMIC DEAN	17,777	.99	26.68	17,599	8.83	.9777
(**) STAFF TOTALS	8,496	3.71	100.00	31,520	15.81	1.7510
EXPENSES (BY TYPE)						
(SU) SUPPLIES				1,846	.93	.1026
(EQ) EQUIPMENT				1,549	.78	.0861
(MI) MISCELLANEOUS				2,333	1.17	.1296
(**) EXPENSE TOTALS				5,728	2.87	.3182
ADDITIONAL EXPENSES				6,820	3.42	.3789
*** TOTALS ***		14.11		199,376	100.00	11.0760

	PER-CENT	HOURS PRODUCED	PER-CENT	PERCENT TOT HRS	UNIT COST	FTE FACULTY	PER-CENT	PRODUCT. RATIO
COSTS BY COURSE LEVEL								
(LD) LOWER DIVISION	10.14	370	15.42	1.94	54.62	1.14	12.11	324.56
(UD) UPPER DIVISION	38.63	1,164	48.52	6.10	66.17	3.73	39.64	312.06
(GD) GRAD DIVISION	51.23	865	36.06	4.53	118.09	4.54	48.25	190.53
(**) CRSE LVL TOTALS	100.00	2,399	100.00	12.57	83.11	9.41	100.00	254.94

***** * O R G A N I Z A T I O N A L B U D G E T * *****		***** * (0006) ELEMENTARY EDUC. DEPARTMENT * * (0002) EDUCATION SCHOOL/COLLEGE * *****		PERCENT OF	PERCENT OF	PERCENT OF	PERCENT OF
SALARY	FULL TIME	PERCENT	COSTS	ORGANIZATIONAL	INSTRUCTIONAL	PRODUCT.	PRODUCT.
RATE	EQUIVALENT			BUDGET	BUDGET	RATIO	RATIO
CHAIRMAN	.99		21,999	11.03	1.2221		
=====							
FACULTY (BY RANK)							
(FP) PROFESSOR	2.59	27.52	45,325	22.73	2.5179		
(AP) ASSOC. PROFESSOR	3.17	33.69	47,550	23.85	2.6416		
(TP) ASST. PROFESSOR	3.19	33.90	36,685	18.40	2.0380		
(IN) INSTRUCTOR	.23	2.44	2,185	1.10	.1214		
(TA) TEACH ASSISTANT	.23	2.44	1,564	.7c	.0869		
(**) FACULTY TOTALS	9.41	100.00	133,309	66.86	7.4057		
=====							
STAFF (BY CATEGORY)							
(SS) SUPPORT STAFF	2.72	73.32	13,921	6.98	.7734		
(AD) ACADEMIC DEAN	.99	26.68	17,599	8.83	.9777		
(**) STAFF TOTALS	3.71	100.00	31,520	15.81	1.7510		
=====							
EXPENSES (BY TYPE)							
(SU) SUPPLIES			1,846	.93	.1026		
(EQ) EQUIPMENT			1,549	.78	.0861		
(MI) MISCELLANEOUS			2,333	1.17	.1296		
(**) EXPENSE TOTALS			5,728	2.87	.3182		
=====							
ADDITIONAL EXPENSES			6,820	3.42	.3789		
** TOTALS **	14.11		199,376	100.00	11.0760		
=====							
COSTS BY COURSE LEVEL	PER-	HOURS	PER-	PERCENT	UNIT	FTE	PER-
	CENT	PRODUCED	CENT	TOT HRS	COST	FACULTY	CENT
(LD) LOWER DIVISION	10.14	370	15.42	1.94	54.62	1.14	12.11
(UD) UPPER DIVISION	38.63	1,164	48.52	6.10	66.17	3.73	39.64
(GD) GRAD DIVISION	51.23	865	36.06	4.53	118.09	4.54	48.25
(**) CRSE LVL. TOTALS	100.00	2,399	100.00	12.57	83.11	9.41	100.00
=====							
							254.94
=====							

\*\*\*\*\*  
\* O R G A N I Z A T I O N A L B U D G E T \*  
\* \* \* \* \*  
\* (0010) SECONDARY EDUC. DISCIPLINE \*  
\* (0007) SECONDARY EDUC. DEPARTMENT \*  
\* (0002) EDUCATION SCHOOL/COLLEGE \*  
\*\*\*\*\*

	SALARY RATE	FULL TIME EQUIVALENT	PERCENT	COSTS	PERCENT OF ORGANIZATIONAL BUDGET	PERCENT OF INSTRUCTIONAL BUDGET
CHAIRMAN	20,407	.98		19,999	9.27	1.1110
FACULTY (BY RANK)						
(FP) PROFESSOR	17,500	2.91	27.25	50,925	23.61	2.8290
(AP) ASSOC. PROFESSOR	15,000	3.65	34.18	54,750	25.39	3.0415
(TP) ASST. PROFESSOR	11,500	3.52	32.96	40,480	18.77	2.2488
(IN) INSTRUCTOR	9,500	.30	2.81	2,850	1.32	.1583
(TA) TEACH ASSISTANT	6,800	.30	2.81	2,040	.95	.1133
(**) FACULTY TOTALS	14,143	10.68	100.00	151,045	70.04	8.3910
STAFF (BY CATEGORY)						
(SS) SUPPORT STAFF	5,137	2.76	73.80	14,177	6.57	.7876
(AD) ACADEMIC DEAN	17,958	.98	26.20	17,599	8.16	.9777
(**) STAFF TOTALS	8,496	3.74	100.00	31,776	14.73	1.7653
EXPENSES (BY TYPE)						
(SU) SUPPLIES				1,616	.75	.0898
(EQ) EQUIPMENT				1,873	.87	.1041
(MI) MISCELLANEOUS				2,524	1.17	.1402
(**) EXPENSE TOTALS				6,013	2.79	.3340
ADDITIONAL EXPENSES				6,820	3.16	.3789
** TOTALS **		15.40		215,653	100.00	11.9802

	COST	PEK-CENT	HOURS PRODUCED	PER-CENT	PERCENT TOT HRS	UNIT COST	FTE FACULTY	PER-CENT	PRODUCT-RATIO
(LD) LOWER DIVISION	25,136	11.66	459	19.94	2.41	54.76	1.49	13.95	308.05
(UD) UPPER DIVISION	63,234	29.32	835	36.27	4.38	75.73	3.20	29.96	260.94
(GD) GRAD DIVISION	127,283	59.02	1,008	43.79	5.28	126.27	5.99	56.09	168.28
(**) CRSE LVL TOTALS	215,653	100.00	2,302	100.00	12.06	93.68	10.68	100.00	215.54

\*\*\*\*\*  
\* O R G A N I Z A T I O N A L B U D G E T \*  
\* (0007) SECONDARY EDUC. DEPARTMENT \*  
\* (0002) EDUCATION SCHOOL/COLLEGE \*  
\*\*\*\*\*

	SALARY RATE	FULL TIME EQUIVALENT	PERCENT	COSTS	PERCENT OF ORGANIZATIONAL BUDGET	PERCENT OF INSTRUCTIONAL BUDGET
CHAIRMAN	20,407	.98		19,999	9.27	1.1110
FACULTY (BY RANK)						
(FP) PROFESSOR	17,500	2.91	27.25	50,925	23.61	2.8290
(AP) ASSOC. PROFESSOR	15,000	3.65	34.18	54,750	25.39	3.0415
(TP) ASST. PROFESSOR	11,500	3.52	32.96	40,480	18.77	2.2488
(IN) INSTRUCTOR	9,500	.30	2.81	2,850	1.32	.1583
(TA) TEACH ASSISTANT	6,800	.30	2.81	2,040	.95	.1133
(**) FACULTY TOTALS	14,143	10.68	100.00	151,045	70.04	8.3910
STAFF (BY CATEGORY)						
(SS) SUPPORT STAFF	5,137	2.76	73.80	14,177	6.57	.7876
(AD) ACADEMIC DEAN	17,958	.98	26.20	17,599	8.16	.9777
(**) STAFF TOTALS	8,496	3.74	100.00	31,776	14.73	1.7653
EXPENSES (BY TYPE)						
(SU) SUPPLIES				1,616	.75	.0898
(EQ) EQUIPMENT				1,873	.87	.1041
(MI) MISCELLANEOUS				2,524	1.17	.1402
(**) EXPENSE TOTALS				6,013	2.79	.3340
ADDITIONAL EXPENSES				6,820	3.16	.3789
*** TOTALS ***		15.40		215,653	100.00	11.9802
COSTS BY COURSE LEVEL						
(LD) LOWER DIVISION	25,136	459	19.94	54.76	1.49	13.95
(UD) UPPER DIVISION	53,234	835	36.27	75.73	3.20	29.96
(GD) GRAD DIVISION	127,283	1,008	43.79	126.27	5.99	56.09
(**) CRSE LVL TOTALS	215,653	2,302	100.00	93.68	10.68	100.00
						215.54
						308.05
						260.94
						168.28

\*\*\*\*\*  
\* O R G A N I Z A T I O N A L B U D G E T \*  
\* (0011) PHYSICAL EDUC. DISCIPLINE \*  
\* (0008) PHYSICAL EDUC. DEPARTMENT \*  
\* (0002) EDUCATION (SCHOOL/COLLEGE) \*  
\*\*\*\*\*

	SALARY RATE	FULL TIME EQUIVALENT	PERCENT	COSTS	PERCENT OF ORGANIZATIONAL BUDGET	PERCENT OF INSTRUCTIONAL BUDGET
CHAIRMAN	20,686	.29		5,399	8.28	.3333
FACULTY (BY RANK)						
(FP) PROFESSOR	17,500	.11	2.45	1,925	2.66	.1069
(AP) ASSOC. PROFESSOR	15,000	.90	20.04	13,500	18.64	.7500
(TP) ASST. PROFESSOR	11,500	.90	20.04	10,350	14.29	.5750
(IN) INSTRUCTOR	9,500	2.58	57.46	24,510	33.84	1.3616
(**) FACULTY TOTALS	11,199	4.49	100.00	50,285	69.42	2.7935
STAFF (BY CATEGORY)						
(SS) SUPPORT STAFF	5,214	.44	30.77	2,294	3.17	.1274
(AD) ACADEMIC DEAN	8,888	.99	69.23	8,799	12.15	.4888
(**) STAFF TOTALS	7,757	1.43	100.00	11,093	15.31	.6163
EXPENSES (BY TYPE)						
(SU) SUPPLIES				3,093	4.27	.1718
(EQ) EQUIPMENT				862	1.19	.0479
(MI) MISCELLANEOUS				1,102	1.52	.0612
(**) EXPENSE TOTALS				5,057	6.98	.2809
ADDITIONAL EXPENSES						
*** TOTALS ***		6.21		72,434	100.00	4.0239
COSTS BY COURSE LEVEL						
(LD) LOWER DIVISION	54,173	74.79	85.96	68.06	3.40	75.72
(UD) UPPER DIVISION	18,261	25.21	14.04	140.47	1.09	24.28
(**) CRSE LVL TOTALS	72,434	100.00	100.00	78.22	4.49	100.00
PRODUCT. RATIO						
(LD) LOWER DIVISION						234.12
(UD) UPPER DIVISION						119.27
(**) CRSE LVL TOTALS						206.24



\*\*\*\*\*  
 \* O R G A N I Z A T I O N A L B U D G E T \*  
 \* (0008) PHYSICAL EDUC. DEPARTMENT \*  
 \* (0002) EDUCATION SCHOOL/COLLEGE \*  
 \*\*\*\*\*

	SALARY RATE	FULL TIME EQUIVALENT	PERCENT	COSTS	PERCENT OF ORGANIZATIONAL BUDGET	PERCENT OF INSTRUCTIONAL BUDGET
CHAIRMAN	20,686	.29		5,999	8.28	.3333
FACULTY (BY RANK)						
(FP) PROFESSOR	17,500	.11	2.45	1,925	2.66	.1069
(AP) ASSOC. PROFESSOR	15,000	.90	20.04	13,500	18.64	.7500
(TP) ASST. PROFESSOR	11,500	.90	20.04	10,350	14.29	.5750
(IN) INSTRUCTOR	9,500	2.58	57.46	24,510	33.84	1.3616
(**) FACULTY TOTALS	11,199	4.49	100.00	50,285	69.42	2.7935
STAFF (BY CATEGORY)						
(SS) SUPPORT STAFF	5,214	.44	30.77	2,294	3.17	.1274
(AD) ACADEMIC DEAN	8,888	.99	69.23	8,799	12.15	.4888
(**) STAFF TOTALS	7,757	1.43	100.00	11,093	15.31	.6163
EXPENSES (BY TYPE)						
(SU) SUPPLIES				3,093	4.27	.1718
(EQ) EQUIPMENT				862	1.19	.0479
(MI) MISCELLANEOUS				1,102	1.52	.0612
(**) EXPENSE TOTALS				5,057	6.98	.2809
ADDITIONAL EXPENSES						
*** TOTALS ***		6.21		72,434	100.00	4.0239

	PER-CENT	HOURS PRODUCED	PER-CENT	PER-TOT HRS	UNIT COST	FTE FACULTY	PER-CENT	PRODUCT. RATIO
COSTS BY COURSE LEVEL								
(LO) LOWER DIVISION	74.79	796	85.96	4.17	68.06	3.40	75.72	234.12
(UO) UPPER DIVISION	25.21	130	14.04	.68	140.47	1.09	24.28	119.27
(**) CRSE LVL TOTALS	100.00	926	100.00	4.85	78.22	4.49	100.00	206.24



\*\*\*\*\*  
 \* O R G A N I Z A T I O N A L B U D G E T \*  
 \* (10002) EDUCATION \*  
 \* SCHDDL/COLLEGE \*  
 \*\*\*\*\*

	SALARY RATE	FULL TIME EQUIVALENT	PERCENT	COSTS	PERCENT OF ORGANIZATIONAL BUDGET	PERCENT OF INSTRUCTIONAL BUDGET
CHAIRMAN	21,238	2.26		47,997	9.85	2.6664
FACULTY (BY RANK)						
(FP) PROFESSOR	17,500	5.61	22.82	98,175	20.14	5.4539
(AP) ASSOC. PROFESSOR	15,000	7.72	31.41	115,800	23.76	6.4331
(TP) ASST. PROFESSOR	11,500	7.61	30.96	87,515	17.95	4.8617
(IN) INSTRUCTOR	9,500	3.11	12.65	29,545	6.06	1.6413
(TA) TEACH ASSISTANT	6,800	.53	2.16	3,604	.74	.2002
(**) FACULTY TOTALS	13,614	24.58	100.00	334,639	68.65	18.5902

	SALARY RATE	FULL TIME EQUIVALENT	PERCENT	COSTS	PERCENT OF ORGANIZATIONAL BUDGET	PERCENT OF INSTRUCTIONAL BUDGET
STAFF (BY CATEGORY)						
(SS) SUPPORT STAFF	5,134	5.92	66.67	30,392	6.23	1.6884
(AD) ACADEMIC DEAN	14,864	2.96	33.33	43,997	9.03	2.4442
(**) STAFF TOTALS	8,377	8.88	100.00	74,389	15.26	4.1325

	COST	HOURS PRODUCED	PER-CENT	PERCENT TOT HRS	UNIT COST	FTE FACULTY	PER-CENT	PRODUCT. RATIO
EXPENSES (BY TYPE)								
(SU) SUPPLIES	99,518	1,625	26.88	8.52	61.24	6.03	24.53	269.49
(EQ) EQUIPMENT	158,515	2,129	37.84	11.16	74.46	8.02	32.63	265.46
(MI) MISCELLANEOUS	229,430	1,873	33.29	9.82	122.49	10.53	42.84	177.87
(**) EXPENSE TOTALS	487,463	5,627	100.00	29.49	86.63	24.58	100.00	228.93
ADDITIONAL EXPENSES								
*** TOTALS ***	487,463	35.72			487,463	100.00		27.0801

	COST	HOURS PRODUCED	PER-CENT	PERCENT TOT HRS	UNIT COST	FTE FACULTY	PER-CENT	PRODUCT. RATIO
COSTS BY COURSE LEVEL								
(LD) LOWER DIVISION	99,518	1,625	26.88	8.52	61.24	6.03	24.53	269.49
(UD) UPPER DIVISION	158,515	2,129	37.84	11.16	74.46	8.02	32.63	265.46
(GO) GRAD DIVISION	229,430	1,873	33.29	9.82	122.49	10.53	42.84	177.87
(**) CRSE LVL TOTALS	487,463	5,627	100.00	29.49	86.63	24.58	100.00	228.93



\*\*\*\*\*  
\* (0012) ACCOUNTING  
\* (0009) ACCOUNTING  
\* (0003) BUSINESS  
\*\*\*\*\*  
DISCIPLINE DEPARTMENT SCHOOL/COLLEGE  
\*\*\*\*\*

	SALARY RATE	FULL TIME EQUIVALENT	PERCENT	COSTS	PERCENT OF ORGANIZATIONAL BUDGET	PERCENT OF INSTRUCTIONAL BUDGET
CHAIRMAN	23,269	.29		6,748	9.68	.3749
FACULTY (BY RANK)						
(FP) PROFESSOR	18,000	.70	25.27	12,600	18.08	.7000
(AP) ASSOC. PROFESSOR	15,000	.88	31.77	13,200	18.94	.7333
(TP) ASST. PROFESSOR	12,000	.85	30.69	10,200	14.64	.5666
(IN) INSTRUCTOR	9,500	.23	8.30	2,185	3.14	.1214
(TA) TEACH ASSISTANT	6,800	.11	3.97	748	1.07	.0416
(**) FACULTY TOTALS	14,055	2.77	100.00	38,933	55.87	2.1629

	SALARY RATE	FULL TIME EQUIVALENT	PERCENT	COSTS	PERCENT OF ORGANIZATIONAL BUDGET	PERCENT OF INSTRUCTIONAL BUDGET
STAFF (BY CATEGORY)						
(SS) SUPPORT STAFF	5,225	.81	45.00	4,232	6.07	.2351
(AD) ACADEMIC DEAN	13,999	.99	55.00	13,859	19.89	.7699
(**) STAFF TOTALS	10,051	1.80	100.00	18,091	25.96	1.0050

	SALARY RATE	FULL TIME EQUIVALENT	PERCENT	COSTS	PERCENT OF ORGANIZATIONAL BUDGET	PERCENT OF INSTRUCTIONAL BUDGET
EXPENSES (BY TYPE)						
(SU) SUPPLIES				1,323	1.90	.0715
(EQ) EQUIPMENT				1,315	1.89	.0715
(MI) MISCELLANEOUS				997	1.43	.0594
(**) EXPENSE TOTALS				3,635	5.22	.2019

	SALARY RATE	FULL TIME EQUIVALENT	PERCENT	COSTS	PERCENT OF ORGANIZATIONAL BUDGET	PERCENT OF INSTRUCTIONAL BUDGET
ADDITIONAL EXPENSES						
(**) TOTALS ***		4.86		69,680	100.00	3.8709

	COST	PER-CENT	HOURS PRODUCED	PER-CENT TOT HRS	UNIT COST	FTE FACULTY	PER-CENT	PRODUCT RATIO
COSTS BY COURSE LEVEL								
(LD) LOWER DIVISION	12,318	17.68	183	28.50	67.31	.56	20.22	326.79
(UD) UPPER DIVISION	28,451	40.83	288	44.86	98.79	1.18	42.60	244.07
(GD) GRAD DIVISION	28,911	41.49	171	26.64	169.07	1.03	37.18	166.02
(**) CRSE LVL TOTALS	69,680	100.00	642	100.00	108.54	2.77	100.00	231.77

ITER = (00) DEFAULT DATA

MICRO UNIVERSITY II

OCT-1972

BASE = (#)

RESOURCE REQUIREMENTS PREDICTION MODEL

1.6-(06) PAGE 23

\*\*\*\*\*

\*\*\*\*\*

\*

\*

\*

\*

\* ORGANIZATIONAL BUDGET \*

\* (0009) ACCOUNTING

\* DEPARTMENT

\*

\*

\*

\*

\* (0002) BUSINESS

\* SCHOOL/COLLEGE

\*

\*\*\*\*\*

\*\*\*\*\*

	SALARY RATE	FULL TIME EQUIVALENT	PERCENT	COSTS	PERCENT OF ORGANIZATIONAL BUDGET	PERCENT OF INSTRUCTIONAL BUDGET
CHAIRMAN	23,269	.29		6,748	9.68	.3749
FACULTY (BY RANK)						
(FP) PROFESSOR	18,000	.70	25.27	12,600	18.08	.7000
(AP) ASSOC. PROFESSOR	15,000	.88	31.77	13,200	18.94	.7333
(TP) ASST. PROFESSOR	12,000	.85	30.69	10,200	14.64	.5666
(IN) INSTRUCTOR	9,500	.23	8.30	2,185	3.14	.1214
(TA) TEACH ASSISTANT	6,800	.11	3.97	748	1.07	.0416
(**) FACULTY TOTALS	14,055	2.77	100.00	38,933	55.87	2.1629
STAFF (BY CATEGORY)						
(SS) SUPPORT STAFF	5,225	.81	45.00	4,232	6.07	.2351
(AD) ACADEMIC DEAN	13,999	.99	55.00	13,859	19.89	.7699
(**) STAFF TOTALS	10,051	1.80	100.00	18,091	25.96	1.0050
EXPENSES (BY TYPE)						
(SU) SUPPLIES				1,323	1.90	.0735
(EQ) EQUIPMENT				1,315	1.89	.0731
(MI) MISCELLANEOUS				997	1.43	.0554
(**) EXPENSE TOTALS				3,635	5.22	.2019
ADDITIONAL EXPENSES						
				2,273	3.26	.1263
*** TOTALS ***		4.86		69,680	100.00	3.8709
COSTS BY COURSE LEVEL						
(LD) LOWER DIVISION	12,318	17.68	28.50	67.31	.56	20.22
(UD) UPPER DIVISION	28,451	40.83	44.86	98.79	1.18	42.60
(GD) GRAD DIVISION	28,911	41.49	26.64	169.07	1.03	37.18
(**) CRSE LVL TOTALS	69,680	100.00	3.36	108.54	2.77	100.00
						231.77



\*\*\*\*\*  
 \* O R G A N I Z A T I O N A L B U D G E T \*  
 \* (0013) ECONOMICS DISCIPLINE \*  
 \* (0010) ECONOMICS DEPARTMENT \*  
 \* (0003) BUSINESS SCHOOL/COLLEGE \*  
 \*\*\*\*\*

	SALARY RATE	FULL TIME EQUIVALENT	PERCENT	COSTS	PERCENT OF ORGANIZATIONAL BUDGET	PERCENT OF INSTRUCTIONAL BUDGET
CHAIRMAN	23,954	.48		11,498	9.03	.6388
FACULTY (BY RANK)						
(FP) PROFESSOR	18,000	1.24	20.56	22,320	17.53	1.2399
(AP) ASSOC. PROFESSOR	15,000	1.54	25.54	23,100	18.15	1.2833
(TP) ASST. PROFESSOR	12,000	1.98	32.84	23,760	18.66	1.3199
(IN) INSTRUCTOR	9,500	.73	12.11	6,935	5.45	.3853
(TA) TEACH ASSISTANT	6,800	.54	8.96	3,672	2.88	.2040
(**) FACULTY TOTALS	13,232	6.03	100.00	79,787	62.68	4.4324
STAFF (BY CATEGORY)						
(SS) SUPPORT STAFF	5,125	1.98	66.89	10,148	7.97	.5638
(AD) ACADEMIC DEAN	18,855	.98	33.11	18,478	14.52	1.0265
(**) STAFF TOTALS	9,671	2.96	100.00	28,626	22.49	1.5903
EXPENSES (BY TYPE)						
(SU) SUPPLIES				1,779	1.40	.0988
(EQ) EQUIPMENT				1,707	1.34	.0948
(MI) MISCELLANEOUS				1,631	1.28	.0906
(**) EXPENSE TOTALS				5,117	4.02	.2843
ADDITIONAL EXPENSES				2,273	1.79	.1263
*** TOTALS ***		9.47		127,301	100.00	7.0720
COSTS BY COURSE LEVEL						
(LD) LOWER DIVISION	51,996	40.84	56.61	58.10	2.71	44.94
(UD) UPPER DIVISION	38,154	29.97	27.58	87.51	1.79	29.68
(GD) GRAD DIVISION	37,151	29.18	15.81	148.60	1.53	25.37
(**) CRSE LVL TOTALS	127,301	100.00	100.00	80.52	6.03	100.00
PRODUCT. RATIO						
						330.26
						243.58
						163.40
						262.19

M I C R O U N I V E R S I T Y I I  
RESOURCE REQUIREMENTS PREDICTION MODEL

USER = (DD) DEFAULT DATA  
BASE = (\*\*)

\*\*\*\*\*  
\*  
\* O R G A N I Z A T I O N A L B U D G E T \*  
\* (0010) ECONOMICS DEPARTMENT \*  
\* (0003) BUSINESS SCHOOL/COLLEGE \*  
\*\*\*\*\*

	SALARY RATE	FULL TIME EQUIVALENT	PERCENT	COSTS	PERCENT OF ORGANIZATIONAL BUDGET	PERCENT OF INSTRUCTIONAL BUDGET
CHAIRMAN	23,954	.48		11,498	9.03	.6388
FACULTY (BY RANK)						
(FP) PROFESSOR	18,000	1.24	20.56	22,320	17.53	1.2399
(AP) ASSOC. PROFESSOR	15,000	1.54	25.54	23,100	18.15	1.2833
(TP) ASST. PROFESSOR	12,000	1.98	32.84	23,760	18.66	1.3199
(IN) INSTRUCTOR	9,500	.73	12.11	6,935	5.45	.3853
(TA) TEACH ASSISTANT	6,800	.54	8.96	3,672	2.88	.2040
(**) FACULTY TOTALS	13,232	6.03	100.00	79,787	62.68	4.4324
STAFF (BY CATEGORY)						
(SS) SUPPORT STAFF	5,125	1.98	66.89	10,143	7.97	.5638
(AD) ACADEMIC DEAN	18,855	.98	33.11	18,478	14.52	1.0265
(**) STAFF TOTALS	9,671	2.96	100.00	28,626	22.49	1.5903
EXPENSES (BY TYPE)						
(SU) SUPPLIES				1,779	1.40	.0988
(EQ) EQUIPMENT				1,707	1.34	.0948
(MI) MISCELLANEOUS				1,631	1.28	.0906
(**) EXPENSE TOTALS				5,117	4.02	.2843
ADDITIONAL EXPENSES				2,273	1.79	.1263
*** TOTALS ***		9.47		127,301	100.00	7.0720

	PER- CENT	HOURS PRODUCED	PER- CENT	PERCENT TOT HRS	UNIT COST	FTE FACULTY	PER- CENT	PRODUCT. RATIO
(LD) LOWER DIVISION	40.84	895	56.61	4.69	58.10	2.71	44.94	330.26
(UD) UPPER DIVISION	29.97	436	27.58	2.28	87.51	1.79	29.68	243.58
(GD) GRAD DIVISION	29.18	250	15.81	1.31	148.60	1.53	25.37	163.40
(**) CRSE LVL TOTALS	100.00	1,581	100.00	8.29	80.52	6.03	100.00	262.19

M I C R O U N I V E R S I T Y I I  
RESOURCE REQUIREMENTS PREDICTION MODEL

\*\*\*\*\*  
\* (0014) MARKETING DISCIPLINE \*\*\*\*\*  
\* (0011) MARKETING DEPARTMENT \*\*\*\*\*  
\* (0003) BUSINESS SCHOOL/COLLEGE \*\*\*\*\*  
\*\*\*\*\*

	SALARY RATE	FULL TIME EQUIVALENT	PERCENT	COSTS	PERCENT OF ORGANIZATIONAL BUDGET	PERCENT OF INSTRUCTIONAL BUDGET
CHAIRMAN	22,445	.49		10,998	15.11	.6110
FACULTY (BY RANK)						
(FP) PROFESSOR	18,000	.74	27.31	13,320	18.30	.7400
(AP) ASSOC. PROFESSOR	15,000	.78	28.78	11,700	16.07	.6500
(TP) ASST. PROFESSOR	12,000	.93	34.32	11,160	15.33	.6200
(IN) INSTRUCTOR	9,500	.19	7.01	1,805	2.48	.1003
(TA) TEACH ASSISTANT	6,800	.07	2.58	476	.65	.0264
(**) FACULTY TOTALS	14,192	2.71	100.00	38,461	52.84	2.1366
STAFF (BY CATEGORY)						
(SS) SUPPORT STAFF	5,228	.79	44.63	4,130	5.67	.2294
(AD) ACADEMIC DEAN	14,142	.98	55.37	13,859	19.04	.7699
(**) STAFF TOTALS	10,163	1.77	100.00	17,989	24.72	.9993
EXPENSES (BY TYPE)						
(SU) SUPPLIES				939	1.29	.0522
(EQ) EQUIPMENT				1,107	1.52	.0615
(MI) MISCELLANEOUS				1,018	1.40	.0566
(**) EXPENSE TOTALS				3,064	4.21	.1702
ADDITIONAL EXPENSES				2,273	3.12	.1263
*** TOTALS ***		4.97		72,785	100.00	4.0434

	PER-CENT	HOURS PRODUCED	PER-CENT	PERCENT TOT HRS	UNIT COST	FTE FACULTY	PER-CENT	PRODUCT RATIO
(LD) LOWER DIVISION	11.33	121	20.37	.63	68.17	.35	12.92	345.71
(UD) UPPER DIVISION	42.33	283	47.54	1.48	108.88	1.20	44.28	235.83
(GD) GRAD DIVISION	46.33	190	31.99	1.00	177.49	1.16	42.80	163.79
(**) CRSE LVL TOTALS	100.00	594	100.00	3.11	122.53	2.71	100.00	219.19

\*\*\*\*\*  
\*  
\* O R G A N I Z A T I O N A L B U D G E T \*  
\*  
\*\*\*\*\*  
\*  
\* (0011) MARKETING DEPARTMENT \*  
\* (0003) BUSINESS SCHOOL/COLLEGE \*  
\*\*\*\*\*

	SALARY RATE	FULL TIME EQUIVALENT	PERCENT	COSTS	PERCENT OF ORGANIZATIONAL BUDGET	PERCENT OF INSTRUCTIONAL BUDGET	PRODUCT. RATIO
CHAIRMAN	22,445	.49		10,998	15.11	.6110	
FACULTY (BY RANK)							
(FP) PROFESSOR	18,000	.74	27.31	13,320	18.30	.7400	
(AP) ASSOC. PROFESSOR	15,000	.78	28.78	11,700	16.07	.6500	
(TP) ASST. PROFESSOR	12,000	.93	34.32	11,160	15.33	.6200	
(IN) INSTRUCTOR	9,500	.19	7.01	1,805	2.48	.1003	
(TA) TEACH ASSISTANT	6,800	.07	2.58	476	.65	.0264	
(**) FACULTY TOTALS	14,192	2.71	100.00	38,461	52.84	2.1366	
STAFF (BY CATEGORY)							
(SS) SUPPORT STAFF	5,228	.79	44.63	4,130	5.67	.2294	
(AD) ACADEMIC DEAN	14,142	.98	55.37	13,859	19.04	.7699	
(**) STAFF TOTALS	10,163	1.77	100.00	17,989	24.72	.9993	
EXPENSES (BY TYPE)							
(SU) SUPPLIES				939	1.29	.0522	
(EQ) EQUIPMENT				1,107	1.52	.0615	
(MI) MISCELLANEOUS				1,018	1.40	.0566	
(**) EXPENSE TOTALS				3,064	4.21	.1702	
ADDITIONAL EXPENSES				2,273	3.12	.1263	
*** TOTALS ***		4.97		72,785	100.00	4.0434	

	PER-CENT	HOURS PRODUCED	PER-CENT	PERCENT TOT HRS	UNIT COST	FTE FACULTY	PER-CENT	PRODUCT. RATIO
(LD) LOWER DIVISION	11.33	121	20.37	.63	68.17	.35	12.92	345.71
(UD) UPPER DIVISION	42.33	283	47.64	1.48	108.88	1.20	44.28	235.83
(GD) GRAD DIVISION	46.33	190	31.99	1.00	177.49	1.16	42.80	163.79
(**) CRSE LVL TOTALS	100.00	594	100.00	3.11	122.53	2.71	100.00	219.19

\*\*\*\*\*  
\* O R G A N I Z A T I O N A L B U D G E T \*  
\* (0003) BUSINESS \*  
\* SCHOOL/COLLEGE \*  
\*\*\*\*\*

	SALARY RATE	FULL TIME EQUIVALENT	PERCENT	COSTS	PERCENT OF ORGANIZATIONAL BUDGET	PERCENT OF INSTRUCTIONAL BUDGET
CHAIRMAN	23,210	1.26		29,244	10.84	1.6246
FACULTY (BY RANK)						
(FP) PROFESSOR	18,000	2.68	23.28	48,240	17.88	2.6799
(AP) ASSOC. PROFESSOR	15,000	3.20	27.80	48,000	17.79	2.6666
(TP) ASST. PROFESSOR	12,000	3.76	32.67	45,120	16.73	2.5066
(IN) INSTRUCTOR	9,500	1.15	9.99	10,925	4.05	.6069
(TA) TEACH ASSISTANT	6,800	.72	6.26	4,896	1.81	.2720
(**) FACULTY TOTALS	13,656	11.51	100.00	157,181	58.27	8.7319
STAFF (BY CATEGORY)						
(SS) SUPPORT STAFF	5,170	3.58	54.82	18,510	6.86	1.0283
(AD) ACADEMIC DEAN	15,660	2.95	45.18	46,196	17.12	2.5663
(**) STAFF TOTALS	9,909	6.53	100.00	64,706	23.99	3.5946
EXPENSES (BY TYPE)						
(SU) SUPPLIES	4,041			4,041	1.50	.2245
(EQ) EQUIPMENT	4,129			4,129	1.53	.2294
(MI) MISCELLANEOUS	3,646			3,646	1.35	.2025
(**) EXPENSE TOTALS	11,816			11,816	4.38	.6564
ADDITIONAL EXPENSES						
				6,819	2.53	.3788
*** TOTALS ***		19.30		269,766	100.00	14.9864

COSTS BY COURSE LEVEL	COST	PER-CENT	HOURS PRODUCED	PER-CENT	TOT HRS	UNIT COST	FTE FACULTY	PER-CENT	PRODUCT RATIO
(LD) LOWER DIVISION	72,563	26.90	1,199	42.56	6.28	60.52	3.52	31.45	331.22
(UD) UPPER DIVISION	97,418	36.11	1,007	35.75	5.28	96.74	4.17	36.23	241.49
(GD) GRAD DIVISION	99,785	36.99	611	21.69	3.20	163.31	3.72	32.32	164.25
(**) CRSE LVL TOTALS	269,766	100.00	2,817	100.00	14.76	95.76	11.51	100.00	244.74



\*\*\*\*\*  
\*  
\*  
\*  
\*  
\*\*\*\*\*

\*\*\* ALL ORGANIZATIONAL LEVELS \*\*\*

PERCENT OF ORGANIZATIONAL BUDGET

PERCENT OF INSTRUCTIONAL BUDGET

PERCENT OF PRODUCT RATIO

CHAIRMAN	SALARY RATE	FULL TIME EQUIVALENT	PERCENT	COSTS	PERCENT OF ORGANIZATIONAL BUDGET	PERCENT OF INSTRUCTIONAL BUDGET	PERCENT OF PRODUCT RATIO
	22,050	7.92		174,633	9.70	9.7014	
FACULTY (BY RANK)							
(FP) PROFESSOR	17,627	19.27	22.75	339,675	18.87	18.8700	
(AP) ASSOC. PROFESSOR	14,970	25.54	30.21	382,330	21.24	21.2396	
(TP) ASST. PROFESSOR	11,733	25.12	29.71	294,735	16.37	16.3735	
(IN) INSTRUCTOR	9,565	10.34	12.23	98,905	5.49	5.4945	
(TA) TEACH ASSISTANT	6,854	4.27	5.05	29,268	1.63	1.6259	
(**) FACULTY TOTALS	13,543	84.54	100.00	1,144,913	63.60	63.6035	
STAFF (BY CATEGORY)							
(SS) SUPPORT STAFF	5,164	23.56	63.03	121,667	6.76	6.7590	
(AD) ACADEMIC DEAN	15,209	13.82	36.97	210,184	11.68	11.6764	
(***) STAFF TOTALS	8,878	37.38	100.00	331,851	18.44	18.4354	
EXPENSES (BY TYPE)							
(SU) SUPPLIES				46,806	2.60	2.6002	
(EQ) EQUIPMENT				41,445	2.30	2.3024	
(MI) MISCELLANEOUS				19,511	1.08	1.0839	
(**) EXPENSE TOTALS				107,762	5.99	5.9865	
ADDITIONAL EXPENSES							
				40,919	2.27	2.2732	
*** TOTALS ***		129.84		1,800,078	100.00	100.0000	
COSTS BY COURSE LEVEL							
(LD) LOWER DIVISION	576,390	32.02	44.08	68,52	30.08	35.58	279.65
(UD) UPPER DIVISION	684,796	38.04	36.90	97,25	31.65	37.44	222.46
(GD) GRAD DIVISION	538,892	29.94	19.02	148.50	22.81	26.98	159.10
(**) CRSE LVL TOTALS	1,800,078	100.00	100.00	94.33	84.54	100.00	225.72

## PROGRAM BUDGET

\*\*\*\*\*  
\* P R O G R A M B U D G E T \* C O S T P E R S T U D E N T \*  
\*\*\*\*\*

INSTRUCTIONAL PROGRAM (BY STUDENT LEVEL)

		COST PER STUDENT	NUMBER OF STUDENTS	PERCENT PROGRAM STUDENTS	PERCENT TOTAL STUDENTS	PROGRAM COST	PERCENT PROGRAM BUDGET	PERCENT INSTR BUDGET
(0001)	HISTORY							
	(LO) LOWER DIVISION	910.92	74.00	39.57	5.54	67,408.08	32.20	3.74
	(UD) UPPER DIVISION	1,144.93	87.00	46.52	6.51	99,608.91	47.58	5.53
	(GD) GRAD DIVISION	1,628.00	26.00	13.90	1.95	42,328.00	20.22	2.35
	(**) WTD. AVG./TOTALS	1,119.49	187.00	100.00	14.00	209,344.99	100.00	11.63
(0002)	ENGLISH							
	(LO) LOWER DIVISION	900.65	58.00	36.71	4.34	52,237.70	29.70	2.90
	(UD) UPPER DIVISION	1,106.33	77.00	48.73	5.76	85,187.41	48.44	4.73
	(GD) GRAD DIVISION	1,671.53	23.00	14.56	1.72	38,445.19	21.86	2.14
	(**) WTD. AVG./TOTALS	1,113.10	158.00	100.00	11.83	175,870.30	100.00	9.77
(0003)	BIOLOGY							
	(LO) LOWER DIVISION	1,191.67	42.00	39.62	3.14	50,050.14	23.53	2.78
	(UD) UPPER DIVISION	2,072.45	48.00	45.28	3.59	99,477.60	46.77	5.53
	(GD) GRAD DIVISION	3,947.98	16.00	15.09	1.20	63,167.68	29.70	3.51
	(**) WTD. AVG./TOTALS	2,006.56	106.00	100.00	7.93	212,695.42	100.00	11.82
(0004)	CHEMISTRY							
	(LO) LOWER DIVISION	1,175.80	32.00	45.07	2.40	37,625.60	27.85	2.09
	(UD) UPPER DIVISION	2,499.06	39.00	54.93	2.92	97,463.34	72.15	5.41
	(**) WTD. AVG./TOTALS	1,902.66	71.00	100.00	5.31	135,088.94	100.00	7.50
(0005)	PHYSICS							
	(LO) LOWER DIVISION	1,233.97	21.00	52.50	1.57	25,913.37	33.87	1.44
	(UD) UPPER DIVISION	2,663.14	19.00	47.50	1.42	50,599.66	66.13	2.81
	(**) WTD. AVG./TOTALS	1,912.83	40.00	100.00	2.99	76,513.03	100.00	4.25

M I C R O U N I V E R S I T Y I I  
RESOURCE REQUIREMENTS PREDICTION MODEL

BASE = (\*\*) DEFAULT DATA  
R = (DD) RESOURCE REQUIREMENTS PREDICTION MODEL

\*\*\*\*\*  
\* P R O G R A M B U D G E T \* C O S T P E R S T U D E N T \*  
\*\*\*\*\*  
\* \* \* \* \*  
\*\*\*\*\*

INSTRUCTIONAL PROGRAM (BY STUDENT LEVEL)	COST PER STUDENT	NUMBER OF STUDENTS	PERCENT PROGRAM STUDENTS	PERCENT TOTAL STUDENTS	PROGRAM COST	PERCENT PROGRAM BUDGET	PERCENT INSTR BUDGET
(0006) ELEMENTARY EDUC.							
(LD) LOWER DIVISION	959.62	112.00	34.89	8.38	107,477.44	28.63	5.97
(UD) UPPER DIVISION	1,164.43	125.00	38.94	9.36	145,553.75	38.77	8.09
(GD) GRAD DIVISION	1,457.02	84.00	26.17	6.29	122,389.68	32.60	6.80
(**) WTD. AVG./TOTALS	1,169.54	321.00	100.00	24.03	375,420.87	100.00	20.86
(0007) BUSINESS							
(LD) LOWER DIVISION	957.27	64.00	33.16	4.79	61,265.28	22.99	3.40
(UD) UPPER DIVISION	1,401.83	77.00	39.90	5.76	107,940.91	40.51	6.00
(GD) GRAD DIVISION	1,870.65	52.00	26.94	3.89	97,273.80	36.50	5.40
(**) WTD. AVG./TOTALS	1,380.73	193.00	100.00	14.45	266,479.99	100.00	14.80
(0008) UNDECIDED SCI.							
(LD) LOWER DIVISION	1,167.78	74.00	100.00	5.54	86,415.72	100.00	4.80
(**) WTD. AVG./TOTALS	1,167.78	74.00	100.00	5.54	86,415.72	100.00	4.80
(0009) UNDECIDED HUM.							
(LD) LOWER DIVISION	911.26	53.00	100.00	3.97	48,296.78	100.00	2.68
(**) WTD. AVG./TOTALS	911.26	53.00	100.00	3.97	48,296.78	100.00	2.68
(0010) SECONDARY EDUC.							
(GD) GRAD DIVISION	1,640.66	110.00	100.00	8.23	180,472.60	100.00	10.03
(**) WTD. AVG./TOTALS	1,640.66	110.00	100.00	8.23	180,472.60	100.00	10.03
(0011) SPECIAL STUDENTS							
(UD) UPPER DIVISION	1,127.06	10.00	43.48	.75	11,270.60	34.96	.63
(GD) GRAD DIVISION	1,613.26	13.00	56.52	.97	20,972.38	65.04	1.17
(**) WTD. AVG./TOTALS	1,401.87	23.00	100.00	1.72	32,242.98	100.00	1.79

\*\*\*\*\*  
\* P R O G R A M B U D G E T \*  
\* \* \* \* \* C O S T P E R S T U D E N T \* \* \* \* \*  
\*\*\*\*\*

INSTRUCTIONAL PROGRAM (BY STUDENT LEVEL)

	COST PER STUDENT	NUMBER OF STUDENTS	PERCENT PROGRAM STUDENTS	PERCENT TOTAL STUDENTS	PROGRAM COST	PERCENT PROGRAM BUDGET	PERCENT INSTR BUDGET
(****) INSTITUTIONAL SUMMARY							
(LD) LOWER DIVISION	1,012.62	530.00		39.67	536,690.11		29.81
(UD) UPPER DIVISION	1,446.27	482.00		36.08	697,102.18		38.73
(GD) GRAD DIVISION	1,743.98	324.00		24.25	565,049.33		31.39
(**) WTD. AVG./TOTALS	1,346.44	1,336.00		100.00	1,798,841.62		99.93

INSTITUTIONAL SUMMARY



\*\*\*\*\*  
\* I N S T I T U T I O N A L S U M M A R Y \*  
\* A C T I V I T Y C O S T S \*  
\*\*\*\*\*

ACTIVITY NAME      ACTIVITY COST      CONSTANT      ENROLL.      FACULTY      STAFF      HOURS      BUDGET

1.00 INSTRUCTION PMH	1,000,074	1,800,078	10.00	300.00			
1.10 GENERAL ACADEMIC	95,663	82,303		500.00			
1.40 EXTENSION INST.							
SUB-TOTAL	1,895,741						
2.00 ORGANIZED RSRCH	44,194	34,832					
2.10 INST.+ RSRCH CTR	46,490	44,220					
2.20 IND/PROJ RSRCH							
SUB-TOTAL	146,684						
3.00 PUBLIC SERVICE	12,967	12,122		10.00			
3.10 CONTINUING EDUC.	8,882	4,655		50.00			
3.20 COMMUNITY SERV.							
SUB-TOTAL	21,849						
4.00 ACADEMIC SUPPORT	233,794	74,832	100.00	300.00			
4.10 LIBRARIES	34,914	28,015	2.00	50.00			
4.20 MUSEUM-GALLERY	75,458	53,644	10.00	100.00			
4.40 COMPUTING SUPP.							
SUB-TOTAL	344,166						
5.00 STUDENT SERVICE	250	264,380	100.00	500.00			
5.10 SOC-CUL DEVELOP.	40,100	60,100					
5.20 SUPPL. EDUC. SER	47,560	47,560					
5.30 COUNSELING/GUID.	32,290	32,290					
5.40 FINANCIAL AID	799,910	666,310	100.00				
5.50 STUDENT SUPP							
SUB-TOTAL	1,380,110						
6.00 INST. SUPPORT	168,878	147,064	10.00	100.00			
6.10 EXECUTIVE MGT.	52,549	46,986	1.00	50.00			
6.20 FINANCIAL OPER.	244,222	207,712	21.00	100.00			
6.30 GEN. ADMIN. SERV	103,615	85,559	10.00	55.55			
6.40 LOGISTICAL SERV.	283,889	271,428		100.00			
6.50 PHYS. PLANT OPER	75,357	73,176	1.00	10.00			
6.70 COMMUNITY REL.							.210
SUB-TOTAL	928,910						

\*\*\*\*\*  
\* I N S T I T U T I O N A L S U M M A R Y \*  
\* A C T I V I T Y C O S T S \*  
\*\*\*\*\*

ACTIVITY NAME                      ACTIVITY COST                      ESTIMATING EQUATION COEFFICIENTS  
-----                      -----                      -----  
CONSTANT                      ENROLL.                      FACULTY                      STAFF                      HOURS                      FAC-\$                      STAFF-\$                      BUDGET  
\*\*\*\*\*  
\*\*\* TOTAL \*\*\*                      4,717,060  
=====

2641971000045400(50%):  
934160000045200(50%):  
5M: 373:GD:Hirsch:2BA75



# Advisory Structure for the NATIONAL CENTER FOR HIGHER EDUCATION MANAGEMENT SYSTEMS at WICHE

## EXECUTIVE COMMITTEE

- |   |  |  |
|---|--|--|
| <p><b>Robert Mautz (Chairman)</b><br/>Chancellor, State University<br/>System of Florida</p> <p><b>Thomas S. Smith (Vice-Chairman)</b><br/>President, Lawrence University</p> <p><b>Frank C. Abbott</b><br/>Executive Director, Colorado<br/>Commission on Higher Education</p> <p><b>Rutherford H. Adkins</b><br/>Vice President, Fisk University</p> <p><b>Fred E. Balderston</b><br/>Chairman, Center for Research in<br/>Management Science, University of<br/>California, Berkeley</p> <p><b>Hale Champlon</b><br/>Financial Vice President<br/>Harvard University</p> <p><b>Donald H. Clark</b><br/>Chairman, Higher Education Advisory<br/>Committee to the Midwest</p> <p><b>Kenneth Creighton</b><br/>Deputy Vice President for Finance<br/>Stanford University</p> <p><b>Ted E. Davis</b><br/>Financial Vice President<br/>University of Utah</p> | <p><b>Alan Ferguson</b><br/>Executive Director, New England<br/>Board of Higher Education</p> <p><b>James Furman</b><br/>Executive Coordinator, Washington<br/>Council on Higher Education</p> <p><b>Richard Gibb</b><br/>Commissioner of Higher Education<br/>South Dakota State Board of Regents</p> <p><b>James F. Gollattscheck</b><br/>President, Valencia Community<br/>College</p> <p><b>George Kaludis</b><br/>Vice Chancellor, Operations and<br/>Fiscal Planning, Vanderbilt<br/>University</p> <p><b>Douglas MacLean</b><br/>Vice President for Management Services<br/>University of Houston</p> <p><b>Robert McCambridge</b><br/>Assistant Commissioner for Higher<br/>Education Planning, New York State<br/>Education Department</p> <p><b>James Miller</b><br/>Professor, Center for the Study of<br/>Higher Education, The University<br/>of Michigan</p> | <p><b>G. Theodore Mitau</b><br/>Chancellor, The Minnesota State<br/>College Board</p> <p><b>Gordon Osborn</b><br/>Assistant Vice Chancellor for<br/>Management, State University of<br/>New York, Central Administration</p> <p><b>Garland P. Peed</b><br/>Assistant Superintendent of<br/>Business, State Center Junior<br/>College District, California</p> <p><b>Donald E. Percy</b><br/>Vice President for Budget Planning<br/>and Analysis, University of<br/>Wisconsin System</p> <p><b>Richard S. Takasaki</b><br/>Chancellor, University of Hawaii,<br/>Manoa</p> <p><b>Marvin Wachman</b><br/>Vice President for Academic<br/>Affairs, Temple University</p> <p><b>Fred L. Wellman</b><br/>Executive Secretary, Illinois<br/>Junior College Board</p> <p><b>Martin Zeigler</b><br/>Associate Provost<br/>University of Illinois</p> |
|---|--|--|

## TECHNICAL COUNCIL

- |  |  |   |
|--|--|---|
| <p><b>James Eden (Chairman)</b><br/>Director of Administrative<br/>Services and Assistant to the<br/>President, University of<br/>Rochester, River Campus</p> <p><b>John F. Chaney (Vice-Chairman)</b><br/>Vice Provost for Management<br/>Systems, University of Colorado</p> <p><b>W. K. Boutwell, Jr.</b><br/>Director, Office of Planning and<br/>Evaluation, Florida State<br/>University System</p> <p><b>Mary Jane Calais</b><br/>Vice President, Financial Affairs<br/>and Treasurer, The Junior College<br/>District of St. Louis</p> | <p><b>Denis J. Curry</b><br/>Deputy Coordinator for Information<br/>Systems, Washington Council on<br/>Higher Education</p> <p><b>William Dempsey</b><br/>Assistant to the President, State<br/>University of New York, Plattsburgh</p> <p><b>Boyd W. Horne</b><br/>Assistant Chief, Budget Planning<br/>and Administration, The California<br/>State University and Colleges</p> <p><b>Hans H. Jenny</b><br/>Vice President of Finance and<br/>Business, Director of Administrative<br/>Computer Services, College of<br/>Wooster</p> | <p><b>T. Harry McKinney</b><br/>Director, Planning Division Bureau<br/>of Higher Education, Michigan Department<br/>of Education</p> <p><b>William R. Odom</b><br/>Coordinator, PPBS Development, Division<br/>of Community Colleges, Florida State<br/>Department of Education</p> <p><b>Michael M. Roberts</b><br/>Director, Management Systems<br/>Stanford University</p> <p><b>Ron Sapp</b><br/>Director, Office of Administrative<br/>Systems, Johns Hopkins University</p> |
|--|--|---|