

## DOCUMENT RESUME

ED 073 627

EM 010 757

AUTHOR Atkinson, Richard C.  
TITLE Ingredients for a Theory of Instruction. Technical Report Number 187.  
INSTITUTION Stanford Univ., Calif. Inst. for Mathematical Studies in Social Science.  
SPONS AGENCY Office of Naval Research, Washington, D.C. Personnel and Training Research Programs Office.  
PUB DATE 26 Jun 72  
NOTE 44p.  
EDRS PRICE MF-\$0.65 HC-\$3.29  
DESCRIPTORS \*Computer Assisted Instruction; Decision Making; Early Reading; Educational Psychology; \*Educational Strategies; Individualized Reading; \*Instructional Design; Language Development; Language Instruction; \*Learning Theories; Response Mode; Second Language Learning  
IDENTIFIERS \*Optimal Control Theory

## ABSTRACT

The requirements for a theory of instruction can be described in the following list of criteria: 1) a model of the learning process; 2) specification of admissible instructional actions; 3) specification of instructional objectives; 4) a measurement scale that permits costs to be assigned to each of the instructional actions and payoffs to the achievement of instructional objectives. From these four elements it is possible to derive optimal instructional strategies. A theory of instruction is, in fact, a special case of what has come to be known in mathematical and engineering literature as optimal control theory. Precisely the same problems are posed in the area of instruction except that the system to be controlled is the human learner. To the extent that the above four criteria can be formulated explicitly, methods of the control theory can be used to derive optimal instructional strategies. Two examples involving the derivation of such strategies are considered in this paper: a computer-assisted instruction program for early reading and an individualized program for learning a foreign language vocabulary. Both are analyzed on control theoretic principles.  
(Author/MC)

FILMED FROM BEST AVAILABLE COPY

ED 073627

# INGREDIENTS FOR A THEORY OF INSTRUCTION

BY

RICHARD C. ATKINSON

TECHNICAL REPORT NO. 187

JUNE 26, 1972

PSYCHOLOGY & EDUCATION SERIES

Reproduction in Whole or in Part is Permitted for Any  
Purpose of the United States Government

This research was sponsored by the Personnel and Training  
Research Programs, Psychological Sciences Division, Office  
of Naval Research, under Contract No. N00014-67-A-0112-0054,  
Contract Authority Identification Number, NR No. 154-326.

INSTITUTE FOR MATHEMATICAL STUDIES IN THE SOCIAL SCIENCES  
STANFORD UNIVERSITY  
STANFORD, CALIFORNIA



TECHNICAL REPORTS

PSYCHOLOGICAL

INSTITUTE FOR MATHEMATICS STUDIES IN THE SOCIAL SCIENCES

Place of publication shown in parentheses, if published title is different from above. (For details, see back cover.)  
 This is also known as *Technical Reports*.

(For reports no. 1-44, see Technical Reports, 1963.)

- 50 R. C. Atkinson and R. C. Calfee. Mathematical learning theory. January 2, 1963. (In E. B. Weir, (Ed.), *Scientific Foundations of Learning*. Basic Books, Inc., 1965. Pp. 254-275)
- 51 P. Suppes, E. Crothers, and K. Weir. Application of mathematical learning theory and linguistic analysis to vowel phoneme matching of Russian words. December 26, 1962.
- 52 R. C. Atkinson, R. C. Calfee, G. Sommer, W. Jeffrey and R. Shoemaker. A test of three models for stimulus compounding with choices. January 29, 1963. (*J. exp. Psychol.*, 1964, 67, 52-58)
- 53 E. Crothers. General Markov models for learning with inter-trial forgetting. April 8, 1963.
- 54 J. L. Myers and R. C. Atkinson. Choice behavior and reward structure. May 24, 1963. (*Journal math. Psychol.*, 1964, 1, 10-26)
- 55 R. C. Robinson. A set-theoretical approach to empirical meaningfulness of measurement statements. June 10, 1963.
- 56 E. Crothers, R. Weir and P. Palmer. The role of transcription in the learning of the orthographic representations of Russian words. June 17, 1963.
- 57 P. Suppes. Problems of optimization in learning a list of simple items. July 22, 1963. (In Maynard W. Shettle, II and Glenn L. Bower (Eds.), *Human Judgments and Optimality*. New York: Wiley, 1964. Pp. 116-125)
- 58 R. C. Atkinson and E. J. Crothers. Theoretical note: all-or-none learning and intertrial forgetting. July 24, 1963.
- 59 R. C. Calfee. Long-term behavior of rats under probabilistic reinforcement schedules. October 1, 1963.
- 60 R. C. Atkinson and E. J. Crothers. Tests of acquisition and retention, learning for paired-associate learning. (In J. L. Myers and R. C. Atkinson (Eds.), *Mathematical Models of Paired-Associate Learning*. *J. math. Psychol.*, 1964, 1, 265-316)
- 61 W. J. McGill and J. Gibbon. The general-gamma distribution and reaction times. November 20, 1963. (*J. math. Psychol.*, 1964, 2, 1-7)
- 62 M. F. Norman. Incremental learning on random trials. December 9, 1963. (*J. math. Psychol.*, 1964, 1, 374-351)
- 63 P. Suppes. The development of mathematical concepts in children. February 25, 1964. (On the behavioral foundations of mathematical concepts. *Monographs of the Society for Research in Child Development*, 1965, 30, 60-96)
- 64 P. Suppes. Mathematical concept formation in children. April 10, 1964. (*Amer. Psychologist*, 1964, 21, 139-150)
- 65 R. C. Calfee, R. C. Atkinson, and T. Shelton, Jr. Mathematical models for verbal learning. August 21, 1964. (In N. Wiener and J. P. Rosenbly (Eds.), *Cybernetics of the Nervous System: Progress in Brain Research*. Amsterdam, The Netherlands: Elsevier Publishing Co., 1965. Pp. 333-340)
- 66 I. Keller, M. Cole, C. J. Burke, and W. K. Estes. Paired associate learning with differential rewards. August 20, 1964. (Reward and information values of trial outcomes in paired associate learning. (*Psychol. Monogr.*, 1965, 79, 1-21)
- 67 M. F. Norman. A probabilistic model for free-responding. December 14, 1964.
- 68 W. K. Estes and H. A. Taylor. Visual detection in relation to display size and redundancy of critical elements. January 25, 1965. (*Perception and Psychophysics*, 1966, 1, 9-16)
- 69 P. Suppes and J. Conio. Foundations of stimulus-sampling theory for continuous-time processes. February 9, 1965. (*J. math. Psychol.*, 1965, 4, 202-225)
- 70 R. C. Atkinson and R. A. Kinchla. A learning model for forced-choice detection experiments. February 10, 1965. (*J. math. psychol.*, 1965, 18, 184-206)
- 71 E. J. Crothers. Presentation orders for items from different categories. March 10, 1965.
- 72 P. Suppes, G. Groen, and M. Schlag-Rey. Some models for response latency in paired-associates learning. May 5, 1965. (*J. math. Psychol.*, 1966, 3, 99-128)
- 73 M. V. Levine. The generalization function in the probability learning experiment. June 3, 1965.
- 74 D. Hansen and T. S. Rodgers. An exploration of psycholinguistic units in initial reading. July 6, 1965.
- 75 B. C. Arnold. A correlated urn-scheme for a continuum of responses. July 20, 1965.
- 76 C. Izawa and W. K. Estes. Reinforcement-test sequences in paired-associate learning. August 1, 1965. (*Psychol. Reports*, 1966, 19, 9-49)
- 77 S. L. Biehart. Pattern discrimination learning with Rhesus monkeys. September 1, 1965. (*Psychol. Reports*, 1966, 19, 311-324)
- 78 J. L. Phillips and R. C. Atkinson. The effects of display size on short-term memory. August 31, 1965.
- 79 R. C. Atkinson and R. M. Shiffrin. Mathematical models for memory and learning. September 20, 1965.
- 80 P. Suppes. The psychological foundations of mathematics. October 25, 1965. (*Colloques Internationaux du Centre National de la Recherche Scientifique*. Editions du Centre National de la Recherche Scientifique. Paris: 1967. Pp. 213-242)
- 81 P. Suppes. Computer-assisted instruction in the schools: potentialities, problems, prospects. October 24, 1965.
- 82 R. A. Kinchla, J. Townsend, J. Yellott, Jr., and R. C. Atkinson. Influence of correlated visual cues on auditory spatial detection. November 2, 1965. (*Perception and Psychophysics*, 1966, 1, 67-73)
- 83 P. Suppes, M. Jerman, and G. Groen. Arithmetic drills and review on a computer-based teletype. November 5, 1965. (*Psychologic. Telemat.*, April 1966, 303-309.
- 84 P. Suppes and L. Hyman. Concept learning with non-verbal geometrical stimuli. November 15, 1965.
- 85 P. Holland. A variation on the minimum chi-square test. (*J. math. Psychol.*, 1967, 3, 3-7-113)
- 86 P. Suppes. Accelerated program in elementary-school mathematics -- the second year. November 22, 1965. (*Psychology of the Schools*, 1966, 3, 294-307)
- 87 P. Lorenzen and F. Binford. Logic as a dialogical game. November 29, 1965.
- 88 I. Keller, W. J. Thomson, J. R. Tweedy, and R. C. Atkinson. The effects of reinforcement interval on the acquisition of paired-associate responses. December 10, 1965. (*J. exp. Psychol.*, 1967, 73, 268-277)
- 89 J. I. Yellott, Jr. Some effects on noncontingent success in human probability learning. December 15, 1965.
- 90 P. Suppes and G. Groen. Some counting models for first-grade performance data on simple addition facts. January 14, 1966. (In J. M. Scandura (Ed.), *Research in Mathematics Education*. Washington, D. C.: NCTM, 1967. Pp. 35-43.
- 91 P. Suppes. Information processing and choice behavior. January 31, 1966.
- 92 G. Groen and R. C. Atkinson. Models for optimizing the learning process. February 11, 1966. (*Psychol. Bulletin*, 1966, 66, 309-320)
- 93 R. C. Atkinson and D. Hansen. Computer-assisted instruction in initial reading: Stanford project. March 17, 1966. (*Reading Research Quarterly*, 1966, 2, 5-25)
- 94 P. Suppes. Probabilistic inference and the concept of total evidence. March 23, 1966. (In J. Hintikka and P. Suppes (Eds.), *Aspects of Inductive Logic*. Amsterdam: North-Holland Publishing Co., 1966. Pp. 49-65.
- 95 P. Suppes. The axiomatic method in high-school mathematics. April 12, 1966. (*The Role of Axiomatics and Problem Solving in Mathematics*. The Conference Board of the Mathematical Sciences, Washington, D. C. Ginn and Co., 1966. Pp. 69-76.

(Continued on inside back cover)

ED 073627

U.S. DEPARTMENT OF HEALTH  
EDUCATION & WELFARE  
OFFICE OF EDUCATION  
THIS DOCUMENT HAS BEEN REPRODUCED EXACTLY AS RECEIVED FROM THE PERSON OR ORGANIZATION ORIGINATING IT. POINTS OF VIEW OR OPINIONS STATED DO NOT NECESSARILY REPRESENT OFFICIAL OFFICE OF EDUCATION POSITION OR POLICY.

INGREDIENTS FOR A THEORY OF INSTRUCTION

by

Richard C. Atkinson

TECHNICAL REPORT NO. 187

June 26, 1972

PSYCHOLOGY AND EDUCATION SERIES

Reproduction in Whole or in Part is Permitted for Any  
Purpose of the United States Government

This research was sponsored by the Personnel and Training Research Programs, Psychological Sciences Division, Office of Naval Research, under Contract No. M00014-67-A-0112-0054, Contract Authority Identification Number, NR No. 154-326.

INSTITUTE FOR MATHEMATICAL STUDIES IN THE SOCIAL SCIENCES

STANFORD UNIVERSITY

STANFORD, CALIFORNIA

Security Classification

DOCUMENT CONTROL DATA - R&D

(Security classification of title, body of abstract and indexing information must be entered when the overall report is classified)

1. ORIGINATING AGENCY (Corporate address)		2a. REPORT SECURITY CLASSIFICATION	
Institute for Mathematical Studies in the Social Sciences Stanford University		Confidential	
3. REPORT TITLE			
Ingredients for a Theory of Instruction			
4. DESCRIPTIVE NOTES (Type of report and inclusive dates)			
Technical Report			
5. AUTHOR(S) (Last name, first name, initial)			
Richard C. Atkinson			
6. REPORT DATE	7a. TOTAL NO. OF PAGES	7b. NO. OF REFS	
June 26, 1972	51	32	
8a. CONTRACT OR GRANT NO.	9a. ORIGINATOR'S REPORT NUMBER(S)		
NO0014-67-A-0012-0054	Technical Report No. 187		
b. PROJECT NO.	9b. OTHER REPORT NO(S) (Any other numbers that may be assigned this report)		
NR 154-326			
c.			
d.			
10. AVAILABILITY/LIMITATION NOTICES			
Approved for public release; distribution unlimited.			
11. SUPPLEMENTARY NOTES		12. SPONSORING MILITARY ACTIVITY	
		Personnel and Training Research Program Office of Naval Research Arlington, Va. 22217	
13. ABSTRACT			
<p>The requirements for a theory of instruction are discussed and summarized in the following list of criteria: 1) a model of the learning process; 2) specification of admissible instructional actions; 3) specification of instructional objectives; 4) a measurement scale that permits costs to be assigned to each of the instructional actions and payoffs to the achievement of instructional objectives. If these four elements can be given a precise interpretation, then in general it is possible to derive optimal instructional strategies. In terms of these criteria it is clear that a theory of instruction is, in fact, a special case of what has come to be known in the mathematical and engineering literature as <u>optimal control theory</u>. Precisely the same problems are posed in the area of instruction except that the system to be controlled is the human learner, rather than a machine or a group of industries. To the extent that the above four criteria can be formulated explicitly, methods of the control theory can be used to derive optimal instructional strategies. Two examples involving the derivation of optimal strategies are considered in this paper. One deals with the development of a computer-assisted instruction program for teaching initial reading in the early grades; the second example deals with learning a foreign-language vocabulary. In both cases, analyses based on control theoretic principles proved to be highly advantageous.</p>			



14	KEY WORDS	LINK A		LINK B		LINK C	
		ROLE	WT	ROLE	WT	ROLE	WT
	Instructional Theory Computerized Instruction Optimizing Learning Optimizing Reading Instruction Optimizing Second Language Learning						

**INSTRUCTIONS**

**1. ORIGINATING ACTIVITY:** Enter the name and address of the contractor, subcontractor, grantee, Department of Defense activity or other organization (*corporate author*) issuing the report.

**2a. REPORT SECURITY CLASSIFICATION:** Enter the overall security classification of the report. Indicate whether "Restricted Data" is included. Marking is to be in accordance with appropriate security regulations.

**2b. GROUP:** Automatic downgrading is specified in DoD Directive 5200.10 and Armed Forces Industrial Manual. Enter the group number. Also, when applicable, show that optional markings have been used for Group 3 and Group 4 as authorized.

**3. REPORT TITLE:** Enter the complete report title in all capital letters. Titles in all cases should be unclassified. If a meaningful title cannot be selected without classification, show title classification in all capitals in parenthesis immediately following the title.

**4. DESCRIPTIVE NOTES:** If appropriate, enter the type of report, e.g., interim, progress, summary, annual, or final. Give the inclusive dates when a specific reporting period is covered.

**5. AUTHOR(S):** Enter the name(s) of author(s) as shown on or in the report. Enter last name, first name, middle initial. If military, show rank and branch of service. The name of the principal author is an absolute minimum requirement.

**6. REPORT DATE:** Enter the date of the report as day, month, year; or month, year. If more than one date appears on the report, use date of publication.

**7a. TOTAL NUMBER OF PAGES:** The total page count should follow normal pagination procedures, i.e., enter the number of pages containing information.

**7b. NUMBER OF REFERENCES:** Enter the total number of references cited in the report.

**8a. CONTRACT OR GRANT NUMBER:** If appropriate, enter the applicable number of the contract or grant under which the report was written.

**8b, 8c, & 8d. PROJECT NUMBER:** Enter the appropriate military department identification, such as project number, subproject number, system numbers, task number, etc.

**9a. ORIGINATOR'S REPORT NUMBER(S):** Enter the official report number by which the document will be identified and controlled by the originating activity. This number must be unique to this report.

**9b. OTHER REPORT NUMBER(S):** If the report has been assigned any other report numbers (*either by the originator or by the sponsor*), also enter this number(s).

**10. AVAILABILITY/LIMITATION NOTICES:** Enter any limitations on further dissemination of the report, other than those

imposed by security classification, using standard statements such as:

- (1) "Qualified requesters may obtain copies of this report from DDC."
- (2) "Foreign announcement and dissemination of this report by DDC is not authorized."
- (3) "U. S. Government agencies may obtain copies of this report directly from DDC. Other qualified DDC users shall request through \_\_\_\_\_."
- (4) "U. S. military agencies may obtain copies of this report directly from DDC. Other qualified users shall request through \_\_\_\_\_."
- (5) "All distribution of this report is controlled. Qualified DDC users shall request through \_\_\_\_\_."

If the report has been furnished to the Office of Technical Services, Department of Commerce, for sale to the public, indicate this fact and enter the price, if known.

**11. SUPPLEMENTARY NOTES:** Use for additional explanatory notes.

**12. SPONSORING MILITARY ACTIVITY:** Enter the name of the departmental project office or laboratory sponsoring (*paying for*) the research and development. Include address.

**13. ABSTRACT:** Enter an abstract giving a brief and factual summary of the document indicative of the report, even though it may also appear elsewhere in the body of the technical report. If additional space is required, a continuation sheet shall be attached.

It is highly desirable that the abstract of classified reports be unclassified. Each paragraph of the abstract shall end with an indication of the military security classification of the information in the paragraph, represented as (TS), (S), (C), or (U).

There is no limitation on the length of the abstract. However, the suggested length is from 150 to 225 words.

**14. KEY WORDS:** Key words are technically meaningful terms or short phrases that characterize a report and may be used as index entries for cataloging the report. Key words must be selected so that no security classification is required. Identifiers, such as equipment model designation, trade name, military project code name, geographic location, may be used as key words but will be followed by an indication of technical context. The assignment of links, rules, and weights is optional.



# INGREDIENTS FOR A THEORY OF INSTRUCTION<sup>1</sup>

Richard C. Atkinson<sup>2</sup>

Stanford University

The term "theory of instruction" has been in widespread use for over a decade and during that time has acquired a fairly specific meaning. By consensus it denotes a body of theory concerned with optimizing the learning process; stated otherwise, the goal of a theory of instruction is to prescribe the most effective methods for acquiring new information, whether in the form of higher-order concepts or rote facts. Although usage of the term is widespread, there is no agreement on the requirements for a theory of instruction. The literature provides an array of examples ranging from speculative accounts of how children should be taught in the classroom to formal mathematical models specifying precise branching procedures in computer-controlled instruction.<sup>3</sup> Such diversity is healthy; to focus on only one approach would not be productive in the long run. I prefer to use the term "theory of instruction" to encompass both experimental and theoretical research, with the theoretical work ranging from general speculative accounts to specific quantitative models.

The literature on instructional theory is growing at a rapid rate. So much so that, at this point, a significant contribution could be made by someone willing to write a book summarizing and evaluating work in the area. I am reminded here of Hilgard's book, Theories of Learning first published in 1948; it played an important role in the development of learning theory by effectively summarizing alternative approaches and placing them in perspective. A book of this type is needed now in the area of instruction. My intention in this paper is to present an overview of one of the chapters

that I would like to see included in such a book; a title for the chapter might be "A decision-theoretic analysis of instruction." Basically, I shall consider the factors that need to be examined in deriving optimal instructional strategies and then use this analysis to identify the key elements of a theory of instruction.

#### A DECISION-THEORETIC ANALYSIS OF INSTRUCTION

The derivation of an optimal strategy requires that the instructional problem be stated in a form amenable to a decision-theoretic analysis. Analyses based on decision theory vary somewhat from field to field, but the same formal elements can be found in most of them. As a starting point it will be useful to identify these elements in a general way, and then relate them to an instructional situation. They are as follows:

1. The possible states of nature.
2. The actions that the decision-maker can take to transform the state of nature.
3. The transformation of the state of nature that results from each action.
4. The cost of each action.
5. The return resulting from each state of nature.

In the context of instruction, these elements divide naturally into three groups. Elements 1 and 3 are concerned with a description of the learning process; elements 4 and 5 specify the cost-benefit dimensions of the problem; and element 2 requires that the instructional actions from which the decision maker is free to choose be precisely specified.



For the decision problems that arise in instruction, elements 1 and 3 require that a model of the learning process exist. It is usually natural to identify the states of nature with the learning states of the student. Specifying the transformation of the states of nature caused by the actions of the decision-maker is tantamount to constructing a model of learning for the situation under consideration. The learning model will be probabilistic to the extent that the state of learning is imperfectly observable or the transformation of the state of learning that a given instructional action will cause is not completely predictable.

The specification of costs and returns in an instructional situation (elements 4 and 5) tends to be straightforward when examined on a short-term basis, but virtually intractable over the long-term. For the short-term one can assign costs and returns for the mastery of specific, identifiable reading skills, but sophisticated determinations for the long-term value of these skills to the individual and society are difficult to make. There is an important role for detailed economic analyses of the long-term impact of education, but such studies deal with issues at a more global level than we shall consider here. The present analysis will be limited to those costs and returns directly related to a specific instructional task.

Element 2 is critical in determining the effectiveness of a decision-theory analysis; the nature of this element can be indicated by an example. Suppose we want to design a supplementary set of exercises for an initial reading program that involve both sight-word identification and phonics. Let us assume that two exercise formats have been developed, one for training on sight words, the other for phonics. Given these formats, there are many ways to design an overall program. A variety of optimization problems

Atkinson

can be generated by fixing some features of the curriculum and leaving others to be determined in a theoretically optimal manner. For example, it may be desirable to determine how the time available for instruction should be divided between phonics and sight word recognition, with all other features of the curriculum fixed. A more complicated question would be to determine the optimal ordering of the two types of exercises in addition to the optimal allocation of time. It would be easy to continue generating different optimization problems in this manner. The main point is that varying the set of actions from which the decision-maker is free to choose changes the decision problem, even though the other elements remain the same.

Once these five elements have been specified, the next task is to derive the optimal strategy for the learning model that best describes the situation. If more than one learning model seems reasonable, a number of competing candidates for the optimal strategy can be deduced. When these tasks have been accomplished, an experiment can be designed to determine which strategy is best. There are several possible directions in which to proceed after the initial comparison of strategies, depending on the results of the experiment. If none of the supposedly optimal strategies produces satisfactory results, then further experimental analysis of the assumptions of the underlying learning models is indicated. New issues may arise even if one of the procedures is successful. In the second example that we shall discuss, the successful strategy produces an unusually high error rate during learning, which is contrary to a widely accepted principle of programmed instruction (Skinner, 1968). When anomalies such as this occur, they suggest new lines of experimental inquiry, and often require a reformulation of the learning model.<sup>4</sup>

### CRITERIA FOR A THEORY OF INSTRUCTION

Our discussion to this point can be summarized by listing four criteria that must be satisfied prior to the derivation of an optimal instructional strategy:

1. A model of the learning process.
2. Specification of admissible instructional actions.
3. Specification of instructional objectives.
4. A measurement scale that permits costs to be assigned to each of the instructional actions and payoffs to the achievement of instructional objectives.

If these four elements can be given a precise interpretation then it is generally possible to derive an optimal instructional policy. The solution for an optimal policy is not guaranteed, but in recent years some powerful tools have been developed for discovering optimal or near optimal procedures if they exist.

The four criteria listed above, taken in conjunction with methods for deriving optimal strategies, define either a model of instruction or a theory of instruction. Whether the term theory or model is used depends on the generality of the applications that can be made. Much of my own work has been concerned with the development of specific models for specific instructional tasks; hopefully, the collection of such models will provide the groundwork for a general theory of instruction.

In terms of the criteria listed above, it is clear that a model or theory of instruction is in fact a special case of what has come to be known in the mathematical and engineering literature as optimal control

Atkinson

theory or, more simply, control theory (Naiman, Faib, & Arbib, 1969). The development of control theory has progressed at a rapid rate both in the United States and abroad, but most of the applications involve engineering or economic systems of one type or another. Precisely the same problems are posed in the area of instruction except that the system to be controlled is the human learner, rather than a machine or group of industries. To the extent that the above four elements can be formulated explicitly, methods of control theory can be used in deriving optimal instructional strategies.

To make some of these ideas more precise, we shall consider two examples. One involves a response-insensitive strategy and the other a response-sensitive strategy. A response-insensitive strategy orders the instructional materials without taking into account the student's responses (except possibly to provide corrective feedback) as he progresses through the curriculum. In contrast, a response-sensitive strategy makes use of the student's response history in its stage-by-stage decisions regarding which curriculum materials to present next. Response-insensitive strategies are completely specified in advance and consequently do not require a system capable of branching during an instructional session. Response-sensitive strategies are more complex, but have the greatest promise for producing significant gains for they must be at least as good, if not better, than the comparable response-insensitive strategy.

#### OPTIMIZING INSTRUCTION IN INITIAL READING

The first example is based on work concerned with the development of a computer-assisted instruction (CAI) program for teaching reading in the primary grades (Atkinson & Fletcher, 1972). The program provides individualized instruction in reading and is used as a supplement to normal

classroom teaching; a given student may spend anywhere from zero to 30 minutes per day at a CAI terminal. For present purposes only one set of results will be considered, where the dependent measure is performance on a standardized reading achievement test administered at the end of the first grade. Using our data a statistical model can be formulated that predicts test performance as a function of the amount of time the student spends on the CAI system. Specifically, let  $P_i(t)$  be student  $i$ 's performance on a reading test administered at the end of first grade, given that he spends time  $t$  on the CAI system during the school year. Then within certain limits the following equation holds:

$$P_i(t) = \alpha_i - \beta_i \exp(-\gamma_i t)$$

Depending on a student's particular parameter values, the more time spent on the CAI program the higher the level of achievement at the end of the year. The parameters  $\alpha$ ,  $\beta$ , and  $\gamma$ , characterize a given student and vary from one student to the next;  $\alpha$  and  $(\alpha - \beta)$  are measures of the student's maximal and minimal levels of achievement respectively, and  $\gamma$  is a rate of progress measure. These parameters can be estimated from a student's response record obtained during his first hour of CAI. Stated otherwise, data from the first hour of CAI can be used to estimate the parameters  $\alpha$ ,  $\beta$ , and  $\gamma$  for a given student, and then the above equation enables us to predict end-of-year performance as a function of the CAI time allocated to that student.

The optimization problem that arises in this situation is as follows: Let us suppose that a school has budgeted a fixed amount of time  $T$  on the CAI system for the school year and must decide how to allocate the time

among a class of  $n$  first-grade students. Assume, further, that all students have had a preliminary run on the CAI system so that estimates of the parameters  $\alpha$ ,  $\beta$ , and  $\gamma$  have been obtained for each student.

Let  $t_i$  be the time allocated to student  $i$ . Then the goal is to select a vector  $(t_1, t_2, \dots, t_n)$  that optimizes learning. To do this let us check our four criteria for deriving an optimal strategy.

The first criterion is that we have a model of the learning process. The prediction equation for  $P_i(t)$  does not offer a very complete account of learning; however, for purposes of this problem the equation suffices as a model of the learning process, giving all of the information that is required. This is an important point to keep in mind: the nature of the specific optimization problem determines the level of complexity that must be represented in the learning model. For some problems the model must provide a relatively complete account of learning in order to derive an optimal strategy, but for other problems a simple descriptive equation of the sort presented above will suffice.

The second criterion requires that the set of admissible instructional actions be specified. For the present case the potential actions are simply all possible vectors  $(t_1, t_2, \dots, t_n)$  such that the  $t_i$ 's are non-negative and sum to  $T$ . The only freedom we have as decision makers in this situation is in the allocation of CAI time to individual students.

The third criterion requires that the instructional objective be specified. There are several objectives that we could choose in this situation. Let us consider four possibilities:

- (a) Maximize the mean value of  $P$  over the class of students.



- (b) Minimize the variance of P over the class of students.
- (c) Maximize the number of students who score at grade level at the end of the first year.
- (d) Maximize the mean value of P satisfying the constraint that the resulting variance of P is less than or equal to the variance that would have been obtained if no CAI was administered.

Objective (a) maximizes the gain for the class as a whole; (b) aims to reduce differences among students by making the class as homogeneous as possible; (c) is concerned specifically with those students that fall behind grade level; (d) attempts to maximize performance of the whole class but insures that differences among students are not amplified by CAI. Other instructional objectives can be listed, but these are the ones that seemed most relevant. For expository purposes, let us select (a) as the instructional objective.

The fourth criterion requires that costs be assigned to each of the instructional actions and that payoffs be specified for the instructional objectives. In the present case we assume that the cost of CAI does not depend on how time is allocated among students and that the measurement of payoff is directly proportional to the students' achieved value of P.

In terms of our four criteria, the problem of deriving an optimal instructional strategy reduces to maximizing the function

$$\begin{aligned}\phi(t_1, t_2, \dots, t_n) &= \frac{1}{n} \sum_{i=1}^n P_i(t_i) \\ &= \frac{1}{n} \sum_{i=1}^n \alpha_i + \beta_i \exp(-\gamma_i t_i)\end{aligned}$$

subject to the constraint that

$$\sum_{i=1}^n t_i = T$$

and

$$t_i \geq 0.$$

This maximization can be done by using the method of dynamic programming (Bellman, 1961). In order to illustrate the approach, computations were made for a first-grade class where the parameters  $\alpha$ ,  $\beta$ , and  $\gamma$  had been estimated for each student. Employing these estimates, computations were carried out to determine the time allocations that maximized the above equation. For the optimal policy the predicted mean performance level of the class,  $\bar{P}$ , was 15% higher than a policy that allocated time equally to students (i.e., a policy where  $t_i = t_j$  for all  $i$  and  $j$ ). This gain represents a substantial improvement; the drawback is that the variance of the  $F$  scores is roughly 15% greater than for the equal-time policy. This means that if we are interested primarily in raising the class average, we must let the rapid learners move ahead and progress far beyond the slow learners.

Although a time allocation that complies with objective (a) did increase overall class performance, the correlated increase in variance leads us to believe that other objectives might be more beneficial. For comparison, time allocations also were computed for objectives (b), (c), and (d). Figure 1 presents the predicted gain in  $\bar{P}$  as a percentage of  $\bar{P}$  for the equal-time

-----  
 Insert Figure 1 about here  
 -----

policy. Objectives (b) and (c) yield negative gains and so they should since

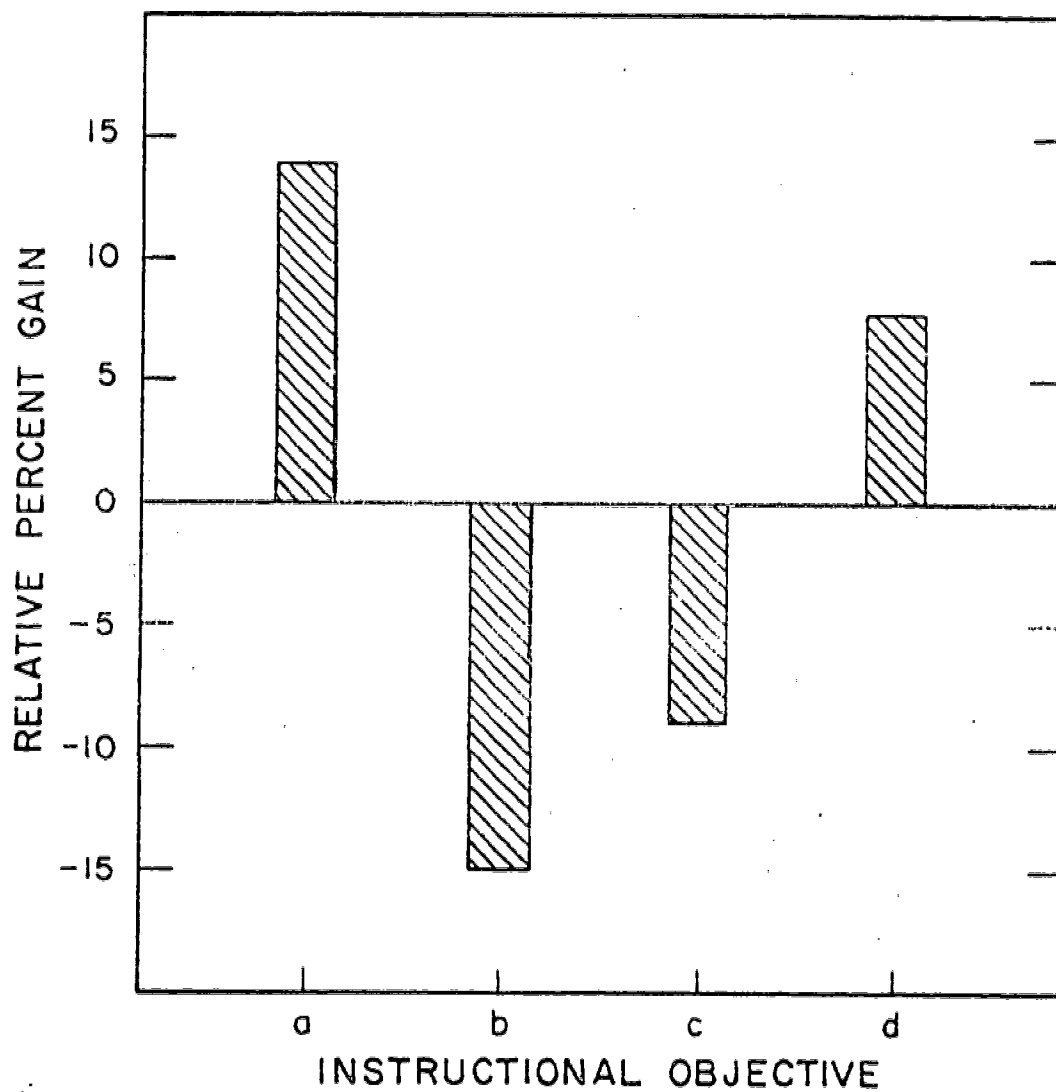


Figure 1: Percent gains in the mean value of P when compared with an equal-time policy for four policies each based on a different instructional objective.

their goal is to reduce variability, which is accomplished by holding back on the rapid learners and giving a lot of attention to the slower ones. The reduction in variability for these two objectives, when compared with the equal-time policy, is 12% and 10%, respectively. Objective (d), which attempts to strike a balance between objective (a) on the one hand and objectives (b) and (c) on the other, yields an 8% increase in  $\bar{P}$  and yet reduces variability by 6%.

In view of these computations, objective (d) seems to be preferred; it offers a substantial increase in mean performance while maintaining a low level of variability. As yet, we have not implemented this policy, so only theoretical results can be reported. Nevertheless, these examples yield differences that illustrate the usefulness of this type of analysis. They make it clear that the selection of an instructional objective should not be done in isolation, but should involve a comparative analysis of several alternatives taking into account more than one dimension of performance. For example, even if the principal goal is to maximize  $\bar{P}$ , it would be inappropriate in most educational situations to select a given objective over some other if it yielded only a small average gain while variability mushroomed.

Techniques of the sort presented above have been developed for other aspects of the CAI reading program. One of particular interest involves deciding for each student, on a week-by-week basis, how time should be divided between training in phonics and in sight-word identification (Chant & Atkinson, 1972). However, these developments will not be considered here; it will be more useful to turn to another example of a quite different type.

## OPTIMIZING THE LEARNING OF A SECOND-LANGUAGE VOCABULARY

The second example deals with learning a foreign-language vocabulary. A similar example could be given from our work in initial reading, but this particular example has the advantage of permitting us to introduce the concept of learner-controlled instruction. In developing the example we will consider first some experimental work comparing three instructional strategies and only later explain the derivation of the optimal strategy.<sup>5</sup>

The goal is to individualize instruction so that the learning of a second-language vocabulary occurs at a maximum rate. The constraints imposed on the task are typical of a school situation. A large set of German-English items are to be learned during an instructional session that involves a series of trials. On each trial one of the German words is presented and the student attempts to give the English translation; the correct translation is then presented for a brief study period. A predetermined number of trials is allocated for the instructional session, and after an intervening period of one week a test is administered over the entire vocabulary. The optimization problem is to formulate a strategy for presenting items during the instructional session so that performance on the delayed test will be maximized.

Three strategies for sequencing the instructional material will be considered. One strategy (designated the random-order strategy) is simply to cycle through the set of items in a random order; this strategy is not expected to be particularly effective but it provides a benchmark against which to evaluate others. A second strategy (designated the learner-controlled strategy) is to let the student determine for himself how best to sequence the material. In this mode the student decides on each trial

which item is to be tested and studied; the learner rather than an external controller determines the sequence of instruction. The third scheme (designated the response-sensitive strategy) is based on a decision-theoretic analysis of the instructional task. A mathematical model of learning that has provided an accurate account of vocabulary acquisition in other experiments is assumed to hold in the present situation. This model is used to compute, on a trial-by-trial basis, an individual student's current state of learning. Based on these computations, items are selected from trial to trial so as to optimize the level of learning achieved at the termination of the instructional session. The details of this strategy are complicated and can be more meaningfully discussed after the experimental procedure and results have been presented.

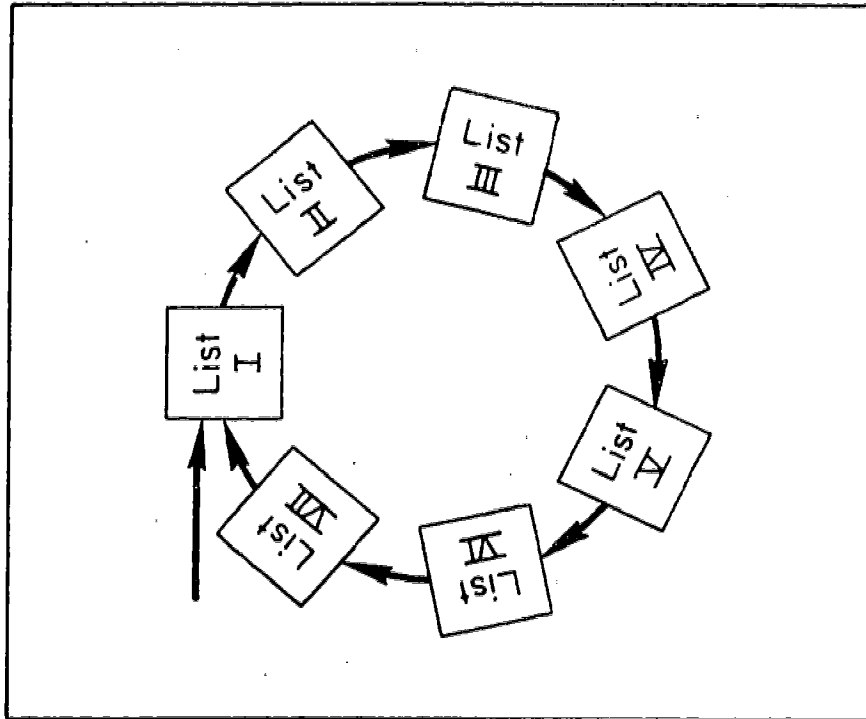
Instruction in this experiment is carried out under computer control. The students are required to participate in two sessions: an instructional session of approximately two hours and a briefer delayed-test session administered one week later. The delayed test is the same for all students and involves a test over the entire vocabulary. The instructional session is more complicated. The vocabulary items are divided into seven lists each containing twelve German words; the lists are arranged in a round-robin order (see Figure 2). On each trial of the instructional session a list is

-----  
Insert Figure 2 about here  
-----

displayed and the student inspects it for a brief period of time. Then one of the items on the displayed list is selected for test and study. In the random-order and response-sensitive conditions the item is selected by the



### Round-robin of Seven Lists



### Typical List

1. das Rad
2. die Seite
3. das Kino
4. die Gans
5. der Fluss
6. die Gegend
7. die Kamera
8. der Anzug
9. das Geld
10. der Gipfel
11. das Bein
12. die Ecke

Figure 2: Schematic representation of the round-robin of display lists

and an example of one such list.

computer. In the learner-controlled condition the item is chosen by the student. After an item has been selected for test, the student attempts to provide a translation; then feedback regarding the correct translation is given. The next trial begins with the computer displaying the next list in the round-robin and the same procedure is repeated. The instructional session continues in this fashion for 336 trials (see Figure 3).

-----  
Insert Figure 3 about here  
-----

The results of the experiment are summarized in Figure 4. Data are

-----  
Insert Figure 4 about here  
-----

presented on the left side of the figure for performance on successive blocks of trials during the instructional session; on the right side are results from the test session administered one week after the instructional session. Note that during the instructional session the probability of a correct response is highest for the random-order condition, next highest for the learner-controlled condition, and lowest for the response-sensitive condition. The results, however, are reversed on the delayed test. The response-sensitive condition is best by far with 79% correct; the learner-controlled condition is next with 58%; and the random-order condition is poorest at 38%. The observed pattern of results is expected. In the learner-controlled condition the students are trying, during the instructional session, to test and study those items they do not know. I should have a

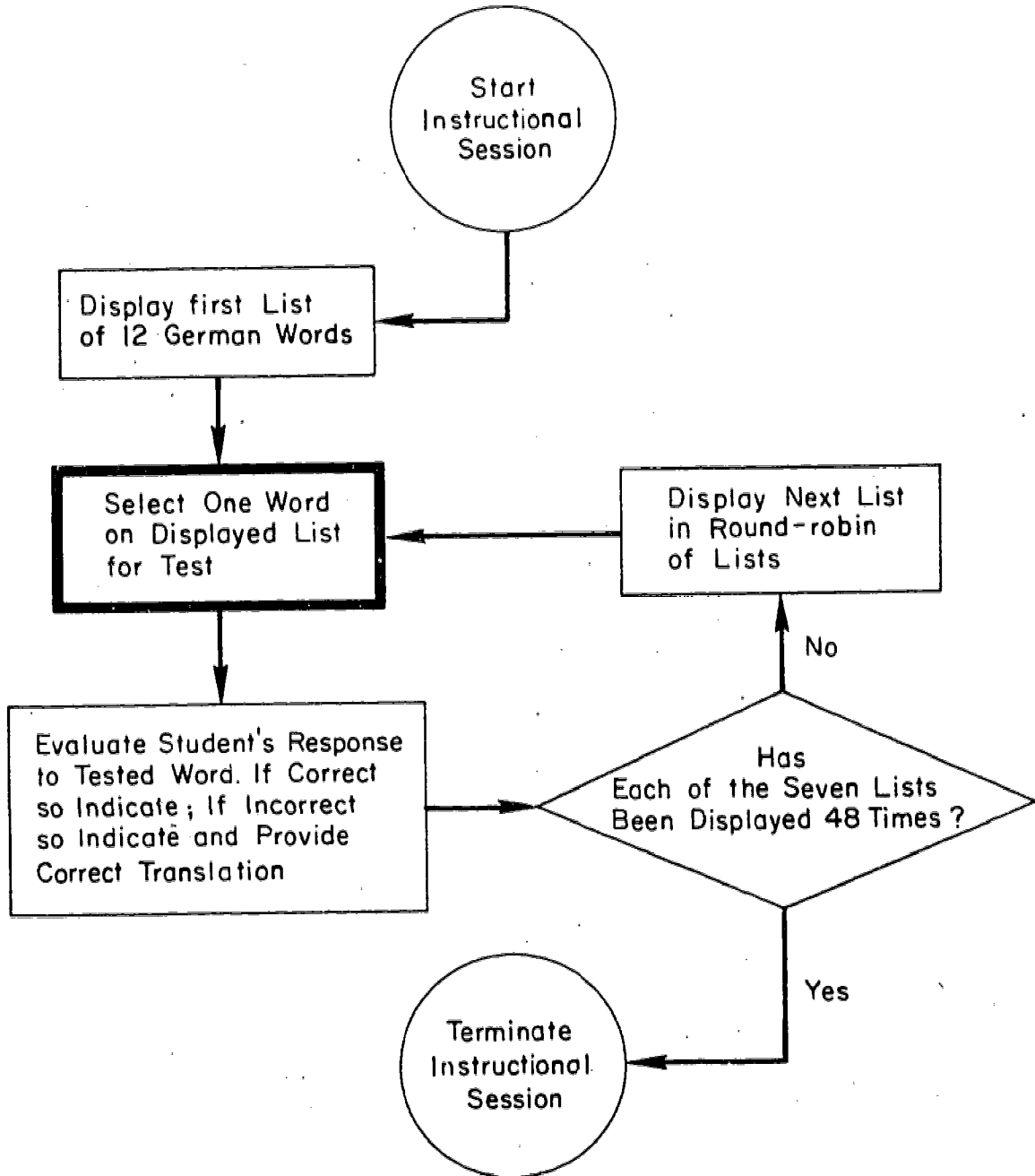


Figure 3: Flow chart describing the trial sequence during the instructional session. The selection of a word for test on a given trial (box with heavy border) varied over experimental conditions.

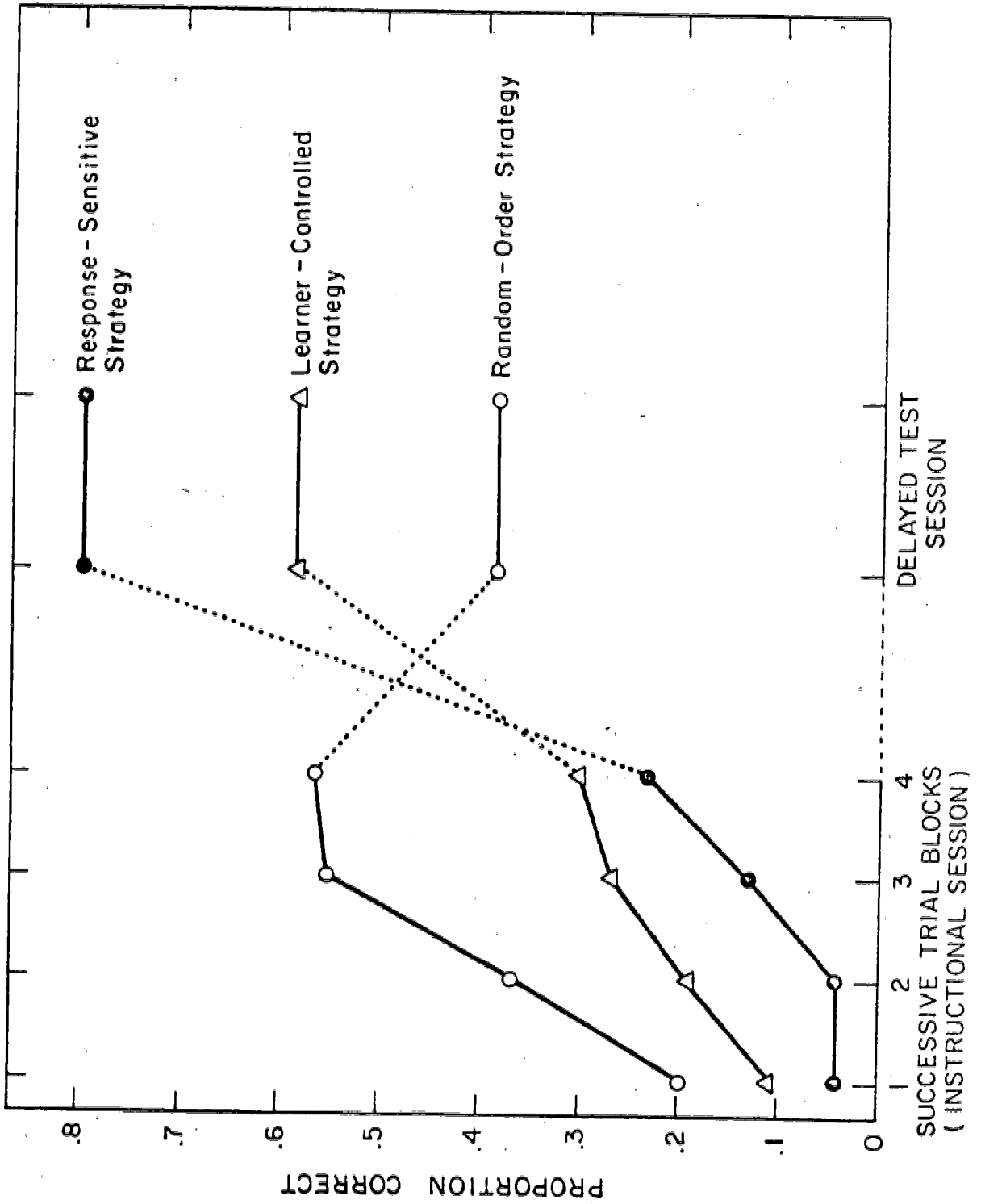


Figure 4: Proportion of correct responses in successive trial blocks during the instructional session, and on the delayed test administered one week later.

lower score than students in the random-order condition where testing is random and includes many items already mastered. The response-sensitive procedure also attempts to identify for test and study those items that have not yet been mastered and thus also produces a high error rate during the instructional session. The ordering of groups on the delayed test is reversed since now the entire set of words is tested; when all items are tested the probability of a correct response tells us how much of the list actually has been mastered. The magnitude of the effects observed on the delayed test are large and of practical significance.

Now that the effectiveness of the response-sensitive strategy has been established, let us turn to a discussion of how it was derived. The strategy is based on a model of vocabulary learning that has been investigated in the laboratory and shown to be quite accurate (Atkinson & Crothers, 1964; Atkinson, 1972). The model assumes that a given item is in one of three states (P, T, and U) at any moment in time. If the item is in state P then its translation is known and this knowledge is "relatively" permanent in the sense that the learning of other vocabulary items will not interfere with it. If the item is in state T then it is also known, but on a "temporary" basis; in state T other items can give rise to interference effects that cause the item to be forgotten. In state U the item is not known and the student is unable to provide a translation. Thus in states P and T a correct translation is given with probability one, whereas in state U the probability is zero.

When a test and study occurs on a given item the following transition matrix describes the possible change in state from the onset of the trial

to its termination:

$$\underline{\underline{A}} = \begin{matrix} & \begin{matrix} P & T & U \end{matrix} \\ \begin{matrix} P \\ T \\ U \end{matrix} & \begin{bmatrix} 1 & 0 & 0 \\ a & 1-a & 0 \\ bc & (1-b)c & 1-c \end{bmatrix} \end{matrix}$$

Rows of the matrix represent the state of the item at the start of the trial and columns its state at the end of the trial. On a trial when some other item is presented for test and study, a transition in the learning state of our original item also may take place; namely, forgetting is possible in the sense that if the item is in state T it may transit into state U. This forgetting can occur only if the student makes an error on the other item; in that case the transition matrix applied to the original item is as follows:

$$\underline{\underline{F}} = \begin{matrix} & \begin{matrix} P & T & U \end{matrix} \\ \begin{matrix} P \\ T \\ U \end{matrix} & \begin{bmatrix} 1 & 0 & 0 \\ 0 & 1-f & f \\ 0 & 0 & 1 \end{bmatrix} \end{matrix}$$

To summarize, consider the application of matrices  $\underline{\underline{A}}$  and  $\underline{\underline{F}}$  to some specific item on the list; when the item itself is presented for test and study transition matrix  $\underline{\underline{A}}$  is applied; when some other item is presented that elicits an error then matrix  $\underline{\underline{F}}$  is applied. The above assumptions provide a complete account of the learning process. The parameters in matrices  $\underline{\underline{A}}$  and  $\underline{\underline{F}}$  measure the difficulty level of a German-English pair and vary across items. On the basis of prior experiments, numerical estimates of these parameters exist for each of the items used in the experiment.



As noted earlier, the formulation of a strategy requires that we be precise about the quantity to be maximized. For the present task, the goal is to maximize the number of items correctly translated on the delayed test. To do this, a theoretical relationship must be specified between the state of learning at the end of the instructional session and performance on the delayed test. The assumption made here is that only those items in state P at the end of the instructional session will be translated correctly on the delayed test; an item in state T is presumed to be forgotten during the intervening week. Thus, the problem of maximizing delayed-test performance involves, at least in theory, maximizing the number of items in state P at the termination of the instructional session.

Having numerical values for parameters and knowing the student's response history, it is possible to estimate his current state of learning. And, more precisely, the learning model can be used to derive equations and, in turn, compute the probabilities of being in states P, T and U for each item at the start of trial  $n$ , conditionalized on the student's response history up to and including trial  $n-1$ . Given numerical estimates of these probabilities a strategy for optimizing performance is to select that item for presentation (from the current display list) that has the greatest probability of moving into state P if it is tested and studied on the trial. This strategy has been termed the one-stage optimization procedure because it looks ahead one trial in making decisions. The true optimal policy (i.e., an  $N$ -stage procedure) would consider all possible item-response sequences for the remaining trials and select the next item so as to maximize the number of items in state P at the termination of the instructional session. For the present case the  $N$ -stage policy cannot be applied because the necessary computations

are too time consuming even for a large computer. Fortunately, Monte Carlo studies indicate that the one-stage policy is a good approximation to the optimal strategy for a variety of Markov learning models; it was for this reason, as well as the relative ease of computing, that the one-stage procedure was employed.<sup>7</sup> The computational procedure described above was implemented on the computer and permitted decisions to be made on-line for each student on a trial-by-trial basis.

The response-sensitive strategy undoubtedly can be improved upon by elaborating the learning model. Those familiar with developments in learning theory will see a number of ways of introducing more complexity into the model and thereby increasing its precision. We will not pursue such considerations here, however, since our reason for presenting the example was not to theorize about the learning process but rather to demonstrate how a simple learning model can be used to define an instructional procedure.

#### CONCLUDING REMARKS

Hopefully, these two examples illustrate the steps involved in developing an optimal strategy for instruction. Both examples deal with relatively simple problems and thus do not indicate the range of developments that have been made or that are clearly possible. It would be a mistake, however, to conclude that this approach offers a solution to the problems facing education. There are some fundamental obstacles that limit the generality of the work.

The major obstacles may be identified in terms of the four criteria we specified as prerequisites for an optimal strategy. The first criterion concerns the formulation of learning models. The models that now exist are

totally inadequate to explain the subtle ways by which the human organism stores, processes, and retrieves information. Until we have a much deeper understanding of learning, the identification of truly effective strategies will not be possible. However, an all-inclusive theory of learning is not a prerequisite for the development of optimal procedures. What is needed instead is a model that captures the essential features of that part of the learning process being tapped by a given instructional task. Even models that may be rejected on the basis of laboratory investigation can be useful in deriving instructional strategies. The two learning models considered in this paper are extremely simple, and yet the optimal strategies they generate are quite effective. My own preference is to formulate as complete a learning model as intuition and data will permit and then use that model to investigate optimal procedures; when possible the learning model will be represented in the form of mathematical equations but otherwise as a set of statements in a computer-simulation program. The main point is that the development of a theory of instruction cannot progress if one holds the view that a complete theory of learning is a prerequisite. Rather, advances in learning theory will affect the development of a theory of instruction, and conversely the development of a theory of instruction will influence research on learning.

The second criterion for deriving an optimal strategy requires that admissible instructional actions be clearly specified. The set of potential instructional inputs places a definite limit on the effectiveness of the optimal strategy. In my opinion powerful instructional strategies must necessarily be adaptive; that is, they must be sensitive on a moment-to-moment basis to a learner's unique response history. My judgment on this

matter is based on limited experience, restricted primarily to research on teaching initial reading. In this area, however, the evidence seems to be absolutely clear: the manipulation of method variables accounts for only a small percentage of the variance when not accompanied by instructional strategies that permit individualization. Method variables like the modified teaching alphabet, oral reading, the linguistic approach, and others undoubtedly have beneficial effects. However, these effects are minimal in comparison to the impact that is possible when instruction is adaptive to the individual learner. Significant progress in dealing with the nation's problem of teaching reading will require individually prescribed programs, and sophisticated programs will necessitate some degree of computer intervention either in the form of CAI or computer-managed instruction. As a corollary to this point, it is evident from observations of students on our CAI Reading Program that the more effective the adaptive strategy the less important are extrinsic motivators. Motivation is a variable in any form of learning, but when the instructional process is truly adaptive the student's progress is sufficient reward in its own right.

The third criterion for an optimal strategy deals with instructional objectives, and the fourth with cost-benefit measures. In the analyses presented here, it was tacitly assumed that the curriculum material being taught is sufficiently beneficial to justify allocating time to it. Further, in both examples the costs of instruction were assumed to be the same for all strategies. If the costs of instruction are equal for all strategies, they may be ignored and attention focused on the comparative benefits of the strategies. This is an important point because it greatly simplifies the analysis. If both costs and benefits are significant variables, then it

is essential that both be accurately estimated. This is often difficult to do. When one of these quantities can be ignored, it suffices if the other can be assessed accurately enough to order the possible outcomes. As a rule, both costs and benefits must be weighed in the analysis, and frequently subtopics within a curriculum vary significantly in their importance. In some cases, whether or not a certain topic should be taught at all is the critical question. Smallwood (1971) has treated problems similar to the ones considered in this article in a way that includes some of these factors in the structure of costs and benefits.

My last remarks deal with the issue of learner-controlled instruction. One way to avoid the challenge and responsibility of developing a theory of instruction is to adopt the view that the learner is the best judge of what to study, when to study, and how to study. I am alarmed by the number of individuals who advocate this position despite a great deal of negative evidence. Don't misinterpret this remark. There obviously is a place for the learner's judgments in making instructional decisions. In several CAL programs that I have helped develop, the learner plays an important role in determining the path to be followed through the curriculum. However, using the learner's judgment as one of several items of information in making an instructional decision is quite different from proposing that the learner should have complete control. Our data, and the data of others, indicate that the learner is not a particularly effective decision maker. Arguments against learner-controlled programs are unpopular in the present climate of opinion, but they need to be made so that we will not be seduced by the easy answer that a theory of instruction is not required because, "who can be a better judge of what is best for the student than the student himself."

The aim of this paper was to illustrate the steps involved in deriving an optimal strategy and their implications for a theory of instruction. I want to emphasize a point made at the outset--namely that the approach is only one of many that needs to be pursued. Obviously the main obstacle is that adequate theories as yet do not exist for the learning processes that we most want to optimize. However, as the examples indicate, analyses based on highly simplified models can be useful in identifying problems and focusing research efforts. It seems clear that this type of research is a necessary component in a program designed to develop a general theory of instruction.



## REFERENCES

- Atkinson, R. C. Optimizing the learning of a second-language vocabulary. Journal of Experimental Psychology, 1972, in press.
- Atkinson, R. C., & Crothers, E. J. A comparison of paired-associate learning models having different acquisition and retention axioms. Journal of Mathematical Psychology, 1964, 1, 285-315.
- Atkinson, R. C., & Fletcher, J. D. Teaching children to read with a computer. The Reading Teacher, 1972, 25, 319-327.
- Atkinson, R. C., & Paulson, J. A. An approach to the psychology of instruction. Psychological Bulletin, 1972, in press.
- Bellman, R. Adaptive control processes. Princeton: Princeton University Press, 1961.
- Bruner, J. S. Toward a theory of instruction. Cambridge, Massachusetts: Harvard University Press, 1966.
- Calfee, R. C. The role of mathematical models in optimizing instruction. Scientia: Revue Internationale de Synthèse Scientifique, 1970, 105, 1-25.
- Carroll, J. B. A model of school learning. Teachers College Record, 1963, 64, 723-733.
- Chant, V. G., & Atkinson, R. C. Optimal allocation of instructional effort: interrelated learning strands. Journal of Mathematical Psychology, 1972, in press.
- Crothers, E. J., & Suppes, P. Experiments in second-language learning. New York: Academic Press, 1967.
- Dear, R. E., Silberman, H. F., Estavan, D. P., & Atkinson, R. C. An optimal strategy for the presentation of paired-associate items. Behavioral Science, 1967, 12, 1-13.

- Gagné, R. M. The conditions of learning, (2nd ed.) New York: Holt, Rinehart, & Winston, 1970.
- Groen, G. J., & Atkinson, R. C. Models for optimizing the learning process. Psychological Bulletin, 1966, 66, 309-320.
- Hilgard, E. R. Theories of learning. New York: Appleton-Century-Crofts, 1948.
- Hilgard, E. R. (Ed.) Theories of learning and instruction: The Sixty-Third Yearbook of the National Society for the Study of Education. Chicago: The University of Chicago Press, 1964.
- Kalman, R. E., Falb, P. L., & Arbib, M. A. Topics in mathematical system theory. New York: McGraw-Hill, 1969.
- Laubsch, J. H. Optimal item allocation in computer-assisted instruction. IAG Journal, 1970, 3, 295-311.
- Pask, G., & Scott, B. C. E. Learning and teaching strategies in a transformational skill. British Journal of Mathematical and Statistical Psychology, 1971, 24, 205-229.
- Seidel, R. J., & Hunter, H. G. The application of theoretical factors in teaching problem-solving by programmed instruction. International Review of Applied Psychology, 1970, 19, 41-81.
- Skinner, B. F. The technology of teaching. New York: Appleton-Century-Crofts, 1968.
- Smallwood, R. D. A decision structure for teaching machines. Cambridge, Massachusetts: MIT Press, 1962.
- Smallwood, R. D. The analysis of economic teaching strategies for a simple learning model. Journal of Mathematical Psychology, 1971, 8, 285-301.

## FOOTNOTES

- <sup>1</sup>A briefer version of this paper was presented as an invited address at the meetings of the American Educational Research Association, Chicago, April, 1972. This research was sponsored in part by National Science Foundation Grant No. NSF GJ-443X2 and by Office of Naval Research Contract No. N00014-67-A-0112-0054.
- <sup>2</sup>Requests for reprints should be sent to Richard C. Atkinson, Department of Psychology, Stanford University, Stanford, California 94305.
- <sup>3</sup>See, for example, Smallwood (1962), Carroll (1963), Hilgard (1964), Bruner (1966), Groen and Atkinson (1966), Crothers and Suppes (1967), Gagne (1970), Seidel and Hunter (1970), Pask and Scott (1971), and Atkinson and Paulson (1972).
- <sup>4</sup>For a more extensive discussion of some of these points see Atkinson and Paulson (1972), Calfee (1970), Dear, et al. (1967), Laubsch (1970), and Smallwood (1971).
- <sup>5</sup>A detailed account of this research can be found in Atkinson (1972).
- <sup>6</sup>The student's response history is a record (for each trial) of the item presented and the response that occurred. It can be shown that a sufficient history exists which contains only the information necessary to estimate the student's current state of learning; the sufficient history is a function of the complete history and the assumed learning model. For the model considered here the sufficient history is fairly simple, but cannot be readily described without extensive notation.

<sup>7</sup>For a discussion of one-stage and N-stage policies and Monte Carlo studies comparing them, see Groen and Atkinson (1966), Calfee (1970), and Laubsch (1970).

DISTRIBUTION LIST

NAVY

- |  |   |
|--|---|
| 5 Director, Personnel and Training<br>Research Programs<br>Office of Naval Research<br>Arlington, Virginia 22217                                     | 1 Chief of Naval Air Training<br>Code 017<br>Naval Air Station<br>Pensacola, Florida 32508                                    |
| 1 Director<br>ONR Branch Office<br>495 Summer Street<br>Boston, Massachusetts 02210  | 1 Chief of Naval Training<br>Naval Air Station<br>Pensacola, Florida 32508<br>ATTN: CAPT Allen F. McMichael                   |
| 1 Director<br>ONR Branch Office<br>1030 East Green Street<br>Pasadena, California 91101  | 1 Chief of Naval Technical Training<br>Naval Air Station Memphis (75)<br>Millington, Tennessee 38054                          |
| 1 Director<br>ONR Branch Office<br>536 South Clark Street<br>Chicago, Illinois 60605   | 1 Chief<br>Bureau of Medicine and Surgery<br>Code 513<br>Washington, D. C. 20390  |
| 1 Office of Naval Research<br>Area Office<br>1976 Mission Street<br>San Francisco, California 94103  | 1 Commander Naval Air Reserve<br>Naval Air Station<br>Glenview, Illinois 60026  |
| 1 Commander<br>Operational Test and Evaluation<br>Force<br>U.S. Naval Base<br>Norfolk, Virginia 23511  | 1 Commander<br>Naval Air Systems Command<br>Navy Department, AIR-4130<br>Washington, D. C. 20360                              |
| 6 Director<br>Naval Research Laboratory<br>Code 2627<br>Washington, D. C. 20390  | 1 Commander<br>Submarine Development Group Two<br>Fleet Post Office<br>New York, New York 09501                               |
| 12 Defense Documentation Center<br>Cameron Station, Building 5<br>5010 Duke Street<br>Alexandria, Virginia 22314                                     | 1 Commanding Officer<br>Naval Air Technical Training Center<br>Jacksonville, Florida 32213                                    |
| 1 Chairman<br>Behavioral Science Department<br>Naval Command and Management Division<br>U.S. Naval Academy<br>Luce Hall<br>Annapolis, Maryland 21402 | 1 Commanding Officer<br>Naval Personnel and Training<br>Research Laboratory<br>San Diego, California 92152                    |
|  | 1 Commanding Officer<br>Service School Command<br>U.S. Naval Training Center<br>San Diego, California 92133<br>ATTN: Code 303 |

- 1 Head, Personnel Measurement Staff  
Capital Area Personnel Service Office  
Ballston Tower #3, Room 1204  
601 N. Randolph Street  
Arlington, Virginia 22203
- 1 Behavioral Sciences Department  
Naval Medical Research Institute  
National Naval Medical Center  
Bethesda, Maryland 20014
- 1 Program Coordinator  
Bureau of Medicine and Surgery  
(Code 710)  
Department of the Navy  
Washington, D. C. 20380
- 1 COL George Caridakis  
Director  
Office of Manpower Utilization  
Headquarters, Marine Corps (ASCH)  
MCB  
Quantico, Virginia 22134
- 1 Research Director, Code 06  
Research and Evaluation Department  
US Naval Examining Center  
Building 2711 - Green Bay Area  
Great Lakes, Illinois 60388  
ATTN: Lt. S. Wisniewski
- 1 Mr. Sidney Friedman  
Special Assistant for Research  
and Studies  
OASN (M&PA)  
The Pentagon, Room 4179A  
Washington, D. C. 20350
- 1 Superintendent  
Naval Postgraduate School  
Monterey, California 93940  
ATTN: Library (Code 2124)
- 1 Mr. George N. Graeme  
Naval Ship Systems Command  
(SHIPS 03H)  
Department of the Navy  
Washington, D. C. 20360
- 1 Technical Director  
Naval Personnel Research and  
Development Laboratory  
Washington Navy Yard  
Building 200  
Washington, D. C. 20390
- 1 CDR Richard E. Martin, USN  
COMFAIRMIRAMAR F-14  
NAS Miramar, California 92145
- 1 Technical Director  
Personnel Research Division  
Bureau of Naval Personnel  
Washington, D. C. 20380
- 1 Mr. Lee Miller (AIR 413E)  
Naval Air Systems Command  
5600 Columbia Pike  
Falls Church, Virginia 22042
- 1 Dr. James J. Regan  
Code 55  
Naval Training Center  
Orlando, Florida 32813
- 1 Technical Library (Pers-115)  
Bureau of Naval Personnel  
Department of the Navy  
Washington, D. C. 20360
- 1 Dr. A. E. Slafkosky  
Scientific Advisor (Code Ax)  
Commandant of the Marine Corps  
Washington, D. C. 20380
- 1 Technical Library  
Naval Ship Systems Command  
National Center  
Building 5, Room 3  
S-08  
Washington, D. C. 20360
- 1 LCDR Charles E. Theisen, Jr., MSC, USN  
161  
Naval Air Development Center  
Warminster, Pennsylvania 18974
- 1 Technical Reference Library  
Naval Medical Research Institute  
National Naval Medical Center  
Bethesda, Maryland 20014

ARMY

- 1 Behavioral Sciences Division  
Office of Chief of Research and  
Development  
Department of the Army  
Washington, D. C. 20310
- 1 U.S. Army Behavior and Systems  
Research Laboratory  
Rosslyn Commonwealth Building, Room 239  
1300 Wilson Boulevard  
Arlington, Virginia 22209
- 1 Director of Research  
U.S. Army Armor Human Research Unit  
ATTN: Library  
Building 2422 Morse Street  
Fort Knox, Kentucky 40121
- 1 COMMANDANT  
U.S. Army Adjutant General School  
Fort Benjamin Harrison, Indiana 46216  
ATTN: AFSAG-EA
- 1 Commanding Officer  
ATTN: LTC Montgomery  
USACDC - PASA  
Ft. Benjamin Harrison, Indiana 46249
- 1 Director  
Behavioral Sciences Laboratory  
U.S. Army Research Institute of  
Environmental Medicine  
Natick, Massachusetts 01760
- 1 Commandant  
United States Army Infantry School  
ATTN: AFSIN-H  
Fort Benning, Georgia 31905
- 1 Army Motivation and Training Laboratory  
Room 239  
Commonwealth Building  
1300 Wilson Boulevard  
Arlington, Virginia 22209
- 1 Mr. Edmund Fuchs  
BESRL  
Commonwealth Building, Room 239  
1320 Wilson Boulevard  
Arlington, Virginia 22209

AIR FORCE

- 1 AFHRL (TR/Dr. G. A. Eckstrand)  
Wright-Patterson Air Force Base  
Ohio 45433
- 1 AFHRL (TR/Dr. Ross L. Morgan)  
Wright-Patterson Air Force Base  
Ohio 45433
- 1 AFHRL/MD  
701 Prince Street  
Room 200  
Alexandria, Virginia 22304
- 1 AFOSR (NL)  
1400 Wilson Boulevard  
Arlington, Virginia 22209
- 1 COMMANDANT  
USAF School of Aerospace Medicine  
ATTN: Aeromedical Library (SAL-4)  
Brooks AFB, Texas 78235
- 1 Personnel Research Division  
AFHRL  
Lackland Air Force Base  
San Antonio, Texas 78236
- 1 Headquarters, U.S. Air Force  
Chief, Personnel Research and  
Analysis Division (AF/DPXY)  
Washington, D. C. 20330
- 1 Research and Analysis Division  
AF/DPXYR, Room 4C200  
Washington, D. C. 20330
- 1 Headquarters Electronic Systems  
Division  
ATTN: Dr. Sylvia R. Mayer/MEM  
IG Hanscom Field  
Bedford, Massachusetts 01730
- 1 CAPT Jack Thorpe USAF  
Department of Psychology  
Bowling Green State University  
Bowling Green, Ohio 43403

DOD

- 1 Mr. William J. Stormer  
DOD Computer Institute  
Washington Navy Yard  
Building 175  
Washington, D. C. 20390
- 1 Mr. Joseph J. Cowan, Chief  
Psychological Research Branch (P-1)  
U.S. Coast Guard Headquarters  
400 Seventh Street, SW  
Washington, D. C. 20590

MISCELLANEOUS

- 1 Dr. Scarvia Anderson  
Executive Director for Special  
Development  
Educational Testing Service  
Princeton, New Jersey 08540

- 1 Professor John Annett  
The Open University  
Waltonlee, BLETCHLEY  
Bucks, ENGLAND

- 1 Dr. Bernard M. Bass  
University of Rochester  
Management Research Center  
Rochester, New York 14627

- 1 Professor Mats Bjorkman  
University of Umea  
Department of Psychology  
Radhusplanaden 2  
S-902 47 UMEA/SWEDEN

- 1 Dr. David G. Bowers  
Institute for Social Research  
University of Michigan  
Ann Arbor, Michigan 48106

- 1 Mr. H. Dean Brown  
Stanford Research Institute  
333 Ravenswood Avenue  
Menlo Park, California 94025

- 1 Dr. Jaime Carbonell  
Bolt Beranek and Newman  
50 Moulton Street  
Cambridge, Massachusetts 02138

- 1 Dr. Kenneth E. Clark  
University of Rochester  
College of Arts and Sciences  
River Campus Station  
Rochester, New York 14627

- 1 ERIC  
Processing and Reference Facility  
4833 Rugby Avenue  
Bethesda, Maryland 20014

OTHER GOVERNMENT

- 1 Dr. Alvin E. Goins, Chief  
Personality and Cognition Research  
Section  
Behavioral Sciences Research Branch  
National Institute of Mental Health  
5600 Fishers Lane  
Rockville, Maryland 20852
- 1 Dr. Andrew R. Molnar  
Computer Innovation in Education  
Section  
Office of Computing Activities  
National Science Foundation  
Washington, D. C. 20550
- 1 Office of Computer Information  
Center for Computer Sciences and  
Technology  
National Bureau of Standards  
Washington, D. C. 20234



- 1 Dr. Victor Fields  
Department of Psychology  
Montgomery College  
Rockville, Maryland 20850
- 1 Dr. Robert Glaser  
Learning Research and Development  
Center  
University of Pittsburgh  
Pittsburgh, Pennsylvania 15213
- 1 Dr. Albert S. Glickman  
American Institutes for Research  
8555 Sixteenth Street  
Silver Spring, Maryland 20910
- 1 Dr. Bert Green  
Department of Psychology  
Johns Hopkins University  
Baltimore, Maryland 21218
- 1 Dr. Duncan N. Hansen  
Center for Computer-Assisted  
Instruction  
Florida State University  
Tallahassee, Florida 32306
- 1 Dr. M. D. Havron  
Human Sciences Research, Inc.  
Westgate Industrial Park  
7710 Old Springhouse Road  
McLean, Virginia 22101
- 1 Human Resources Research Organization  
Division #3  
Post Office Box 5787  
Presidio of Monterey, California 93940
- 1 Human Resources Research Organization  
Division #4, Infantry  
Post Office Box 2086  
Fort Benning, Georgia 31905
- 1 Human Resources Research Organization  
Division #5, Air Defense  
Post Office Box 6057  
Fort Bliss, Texas 79916
- 1 Library  
HumRRO Division Number 6  
P. O. Box 428  
Fort Rucker, Alabama 36360
- 1 Dr. Lawrence B. Johnson  
Lawrence Johnson and Associates, Inc.  
2001 "S" Street, NW  
Suite 502  
Washington, D. C. 20009
- 1 Dr. Norman J. Johnson  
Associate Professor of Social Policy  
School of Urban and Public Affairs  
Carnegie-Mellon University  
Pittsburgh, Pennsylvania 15213
- 1 Dr. Roger A. Kaufman  
Graduate School of Human Behavior  
U.S. International University  
8655 E. Pomerada Road  
San Diego, California 92128
- 1 Dr. E. J. McCormick  
Department of Psychological Sciences  
Purdue University  
Lafayette, Indiana 47907
- 1 Dr. Robert R. Mackie  
Human Factors Research, Inc.  
Santa Barbara Research Park  
6780 Cortona Drive  
Goleta, California 93017
- 1 Mr. Luigi Petruccio  
2431 North Edgewood Street  
Arlington, Virginia 22207
- 1 Dr. Robert D. Pritchard  
Assistant Professor of Psychology  
Purdue University  
Lafayette, Indiana 47907
- 1 Dr. Diane M. Ramsey-Klee  
R-K Research & System Design  
3947 Ridgemont Drive  
Malibu, California 90265

- 1 Dr. Joseph W. Rigney  
Behavioral Technology Laboratories  
University of Southern California  
3717 South Grand  
Los Angeles, California 90007
- 1 Dr. Leonard L. Rosenbaum, Chairman  
Department of Psychology  
Montgomery College  
Rockville, Maryland 20850
- 1 Dr. George E. Rowland  
Rowland and Company, Inc.  
Post Office Box 61  
Haddonfield, New Jersey 08033
- 1 Dr. Benjamin Schneider  
Department of Psychology  
University of Maryland  
College Park, Maryland 20742
- 1 Dr. Robert J. Seidel  
Human Resources Research Organization  
300 N. Washington Street  
Alexandria, Virginia 22314
- 1 Dr. Arthur I. Siegel  
Applied Psychological Services  
Science Center  
404 East Lancaster Avenue  
Wayne, Pennsylvania 19087
- 1 Dr. Henry Solomon  
George Washington University  
Department of Economics  
Washington, D. C. 20006
- 1 Dr. Benton J. Underwood  
Department of Psychology  
Northwestern University  
Evanston, Illinois 60201
- 1 Dr. David Weiss  
University of Minnesota  
Department of Psychology  
Elliott Hall  
Minneapolis, Minnesota 55455

(Continued from inside front cover)

- 96 R. C. Atkinson, J. W. Brelsford, and R. M. Shiffrin. Multi-process models for memory with applications to a continuous presentation task. April 13, 1966. (*J. math. Psychol.*, 1967, 4, 277-300).
- 97 P. Suppes and E. Crothers. Some remarks on stimulus-response theories of language learning. June 12, 1966.
- 98 R. Bjork. All-or-none subprocesses in the learning of complex sequences. (*J. math. Psychol.*, 1968, 1, 182-195).
- 99 E. Gammon. The statistical determination of linguistic units. July 1, 1966.
- 100 P. Suppes, L. Hyman, and M. Jerman. Linear structural models for response and latency performance in arithmetic. In J. P. Hill (ed.), *Minnesota Symposia on Child Psychology*. Minneapolis, Minn.: 1967. Pp. 160-200.
- 101 J. L. Young. Effects of intervals between reinforcements and test trials in paired-associate learning. August 1, 1966.
- 102 H. A. Wilson. An investigation of linguistic unit size in memory processes. August 3, 1966.
- 103 J. T. Townsend. Choice behavior in a cued-recognition task. August 8, 1966.
- 104 W. H. Batchelder. A mathematical analysis of multi-level verbal learning. August 9, 1966.
- 105 H. A. Taylor. The observing response in a cued psychophysical task. August 10, 1966.
- 106 R. A. Bjork. Learning and short-term retention of paired associates in relation to specific sequences of interpresentation intervals. August 11, 1966.
- 107 R. C. Atkinson and R. M. Shiffrin. Some Two-process models for memory. September 30, 1966.
- 108 P. Suppes and G. Ihrke. Accelerated program in elementary-school mathematics--the third year. January 30, 1967.
- 109 P. Suppes and I. Rosenthal-Hill. Concept formation by kindergarten children in a card-sorting task. February 27, 1967.
- 110 R. C. Atkinson and R. M. Shiffrin. Human memory: a proposed system and its control processes. March 21, 1967.
- 111 Theodore S. Rodgers. Linguistic considerations in the design of the Stanford computer-based curriculum in initial reading. June 1, 1967.
- 112 Jack M. Knutson. Spelling drills using a computer-assisted instructional system. June 30, 1967.
- 113 R. C. Atkinson. Instruction in initial reading under computer control: the Stanford Project. July 14, 1967.
- 114 J. W. Brelsford, Jr. and R. C. Atkinson. Recall of paired-associates as a function of overt and covert rehearsal procedures. July 21, 1967.
- 115 J. H. Stelzer. Some results concerning subjective probability structures with semiorders. August 1, 1967.
- 116 D. E. Rumelhart. The effects of interpresentation intervals on performance in a continuous paired-associate task. August 11, 1967.
- 117 E. J. Fishman, L. Keller, and R. E. Atkinson. Massed vs. distributed practice in computerized spelling drills. August 18, 1967.
- 118 G. J. Groen. An investigation of some counting algorithms for simple addition problems. August 21, 1967.
- 119 H. A. Wilson and R. C. Atkinson. Computer-based instruction in initial reading: a progress report on the Stanford Project. August 25, 1967.
- 120 F. S. Roberts and P. Suppes. Some problems in the geometry of visual perception. August 31, 1967. (*Synthese*, 1967, 17, 173-201)
- 121 D. Jamison. Bayesian decisions under total and partial ignorance. D. Jamison and J. Kozielceki. Subjective probabilities under total uncertainty. September 4, 1967.
- 122 R. C. Atkinson. Computerized instruction and the learning process. September 15, 1967.
- 123 W. K. Estes. Outline of a theory of punishment. October 1, 1967.
- 124 T. S. Rodgers. Measuring vocabulary difficulty: An analysis of item variables in learning Russian-English and Japanese-English vocabulary parts. December 18, 1967.
- 125 W. K. Estes. Reinforcement in human learning. December 20, 1967.
- 126 G. L. Wolford, D. L. Wessel, W. K. Estes. Further evidence concerning scanning and sampling assumptions of visual detection models. January 31, 1968.
- 127 R. C. Atkinson and R. M. Shiffrin. Some speculations on storage and retrieval processes in long-term memory. February 2, 1968.
- 128 John Holmgren. Visual detection with imperfect recognition. March 29, 1968.
- 129 Lucille B. Miodnosky. The Frostig and the Bender Gestalt as predictors of reading achievement. April 12, 1968.
- 130 P. Suppes. Some theoretical models for mathematics learning. April 15, 1968. (*Journal of Research and Development in Education*, 1967, 1, 5-22)
- 131 G. M. Olson. Learning and retention in a continuous recognition task. May 15, 1968.
- 132 Ruth Norene Hartley. An investigation of list types and cues to facilitate initial reading vocabulary acquisition. May 29, 1968.
- 133 P. Suppes. Stimulus-response theory of finite automata. June 19, 1968.
- 134 N. Moler and P. Suppes. Quantifier-free axioms for constructive plane geometry. June 20, 1968. (in J. C. H. Gerretsen and F. Oort (Eds.), *Compositio Mathematica*, Vol. 20. Groningen, The Netherlands: Wolters-Noordhoff, 1968. Pp. 143-152.)
- 135 W. K. Estes and D. P. Horst. Latency as a function of number or response alternatives in paired-associate learning. July 1, 1968.
- 136 M. Schlag-Rey and P. Suppes. High-order dimensions in concept identification. July 2, 1968. (*Psychom. Sci.*, 1968, 11, 141-142)
- 137 R. M. Shiffrin. Search and retrieval processes in long-term memory. August 15, 1968.
- 138 R. D. Freund, G. R. Loftus, and R.C. Atkinson. Applications of multiprocess models for memory to continuous recognition tasks. December 18, 1968.
- 139 R. C. Atkinson. Information delay in human learning. December 18, 1968.
- 140 R. C. Atkinson, J. E. Holmgren, and J. F. Juola. Processing time as influenced by the number of elements in the visual display. March 14, 1969.
- 141 P. Suppes, E. F. Loftus, and M. Jerman. Problem-solving on a computer-based teletype. March 25, 1969.
- 142 P. Suppes and Mona Morningsstar. Evaluation of three computer-assisted instruction programs. May 2, 1969.
- 143 P. Suppes. On the problems of using mathematics in the development of the social sciences. May 12, 1969.
- 144 Z. Domotor. Probabilistic relational structures and their applications. May 14, 1969.
- 145 R. C. Atkinson and T. D. Wickens. Human memory and the concept of reinforcement. May 20, 1969.
- 146 R. J. Titlev. Some model-theoretic results in measurement theory. May 22, 1969.
- 147 P. Suppes. Measurement: Problems of theory and application. June 12, 1969.
- 148 P. Suppes and C. Ihrke. Accelerated program in elementary-school mathematics--the fourth year. August 7, 1969.
- 149 D. Rundus and R.C. Atkinson. Rehearsal in free recall: A procedure for direct observation. August 12, 1969.
- 150 P. Suppes and S. Feldman. Young children's comprehension of logical connectives. October 15, 1969.

(Continued on back cover)

( Continued from inside back cover )

- 151 Joaquim H. Laubsch. An adaptive teaching system for optimal item allocation. November 14, 1969.
- 152 Roberta L. Klatzky and Richard C. Atkinson. Memory scans based on alternative test stimulus representations. November 25, 1969.
- 153 John E. Holmgren. Response latency as an indicator of information processing in visual search tasks. March 16, 1970.
- 154 Patrick Suppes. Probabilistic grammars for natural languages. May 15, 1970.
- 155 E. Gammon. A syntactical analysis of some first-grade readers. June 22, 1970.
- 156 Kenneth N. Wexler. An automaton analysis of the learning of a miniature system of Japanese. July 24, 1970.
- 157 R. C. Atkinson and J.A. Paulson. An approach to the psychology of instruction. August 14, 1970.
- 158 R.C. Atkinson, J.D. Fletcher, H.C. Chetin, and C.M. Stauffer. Instruction in initial reading under computer control: the Stanford project. August 13, 1970.
- 159 Dewey J. Rundus. An analysis of rehearsal processes in free recall. August 21, 1970.
- 160 R.L. Klatzky, J.F. Juola, and R.C. Atkinson. Test stimulus representation and experimental context effects in memory scanning.
- 161 William A. Rottmayer. A formal theory of perception. November 13, 1970.
- 162 Elizabeth Jane Fishman Loftus. An analysis of the structural variables that determine problem-solving difficulty on a computer-based teletype. December 18, 1970.
- 163 Joseph A. Van Campen. Towards the automatic generation of programmed foreign-language instructional materials. January 11, 1971.
- 164 Jamesine Friend and R.C. Atkinson. Computer-assisted instruction in programming: AID. January 25, 1971.
- 165 Lawrence James Hubert. A formal model for the perceptual processing of geometric configurations. February 19, 1971.
- 166 J. F. Juola, I.S. Fischler, C.T. Wood, and R.C. Atkinson. Recognition time for information stored in long-term memory.
- 167 R.L. Klatzky and R.C. Atkinson. Specialization of the cerebral hemispheres in scanning for information in short-term memory.
- 168 J.D. Fletcher and R.C. Atkinson. An evaluation of the Stanford CAI program in initial reading (grades K through 3). March 12, 1971.
- 169 James F. Juola and R.C. Atkinson. Memory scanning for words versus categories.
- 170 Ira S. Fischler and James F. Juola. Effects of repeated tests on recognition time for information in long-term memory.
- 171 Patrick Suppes. Semantics of context-free fragments of natural languages. March 30, 1971.
- 172 Jamesine Friend. Instruct coders' manual. May 1, 1971.
- 173 R. C. Atkinson and R.M. Shiffrin. The control processes of short-term memory. April 19, 1971.
- 174 Patrick Suppes. Computer-assisted instruction at Stanford. May 19, 1971.
- 175 D. Jamison, J.D. Fletcher, P. Suppes and R.C. Atkinson. Cost and performance of computer-assisted instruction for compensatory education.
- 176 Joseph Offir. Some mathematical models of individual differences in learning and performance. June 28, 1971.
- 177 Richard C. Atkinson and James F. Juola. Factors influencing speed and accuracy of word recognition. August 12, 1971.
- 178 P. Suppes, A. Goldberg, G. Kanz, B. Searle and C. Stauffer. Teacher's handbook for CAI courses. September 1, 1971.
- 179 Adele Goldberg. A generalized instructional system for elementary mathematical logic. October 11, 1971.
- 180 Max Jerman. Instruction in problem solving and an analysis of structural variables that contribute to problem-solving difficulty. November 12, 1971.
- 181 Patrick Suppes. On the grammar and model-theoretic semantics of children's noun phrases. November 29, 1971.
- 182 Georg Kreisel. Five notes on the application of proof theory to computer science. December 10, 1971.
- 183 James Michael Moloney. An investigation of college student performance on a logic curriculum in a computer-assisted instruction setting. January 28, 1972.
- 184 J.E. Friend, J.D. Fletcher and R.C. Atkinson. Student performance in computer-assisted instruction in programming. May 10, 1972.
- 185 Robert Lawrence Smith, Jr. The syntax and semantics of erica. June 14, 1972.
- 186 Adele Goldberg and Patrick Suppes. A computer-assisted instruction program for exercises on finding axioms. June 23, 1972.
- 187 Richard C. Atkinson. Ingredients for a theory of instruction. June 26, 1972.