

DOCUMENT RESUME

ED 066 636

AC 012 783

TITLE Statistical Study of the Initial Group Chosen for Project Newgate at the Federal Youth Center, Ashland, Kentucky.

INSTITUTION Morehead State Univ., Ky.

PUB DATE Sep 69

NOTE 15p.

EDRS PRICE MF-\$0.65 HC-\$3.29

DESCRIPTORS *Age; Caucasians; Corrective Institutions; *Delinquents; *Geographic Distribution; Males; *Mental Development; Negroes; *Racial Composition; Research Reviews (Publications); Statistical Studies; Student Characteristics; Test Results; Young Adults

IDENTIFIERS Dyer Act; Federal Youth Center; Kentucky; *Project Newgate; Scholastic Aptitude Test

ABSTRACT

This statistical study attempted to determine the average age, mental rating, geographic distribution, present and prior commitments, and races of the initial group of 39 Newgate students at the Federal Youth Center, Ashland, Kentucky. The results indicated that (1) the average age was 18 plus; (2) the highest grade completed upon entering the Newgate program was 9.24; (3) 10.25% of the students had a beta score of 94; (4) the average Scholastic Aptitude Test score was 8.73; (5) 64.10% of the students had violated the Dyer Act; (6) over one-half of the students had had no prior commitments; (7) 7 of the students were from Ohio; and (8) 32 of the students were Caucasian. (JS)

ED 066636

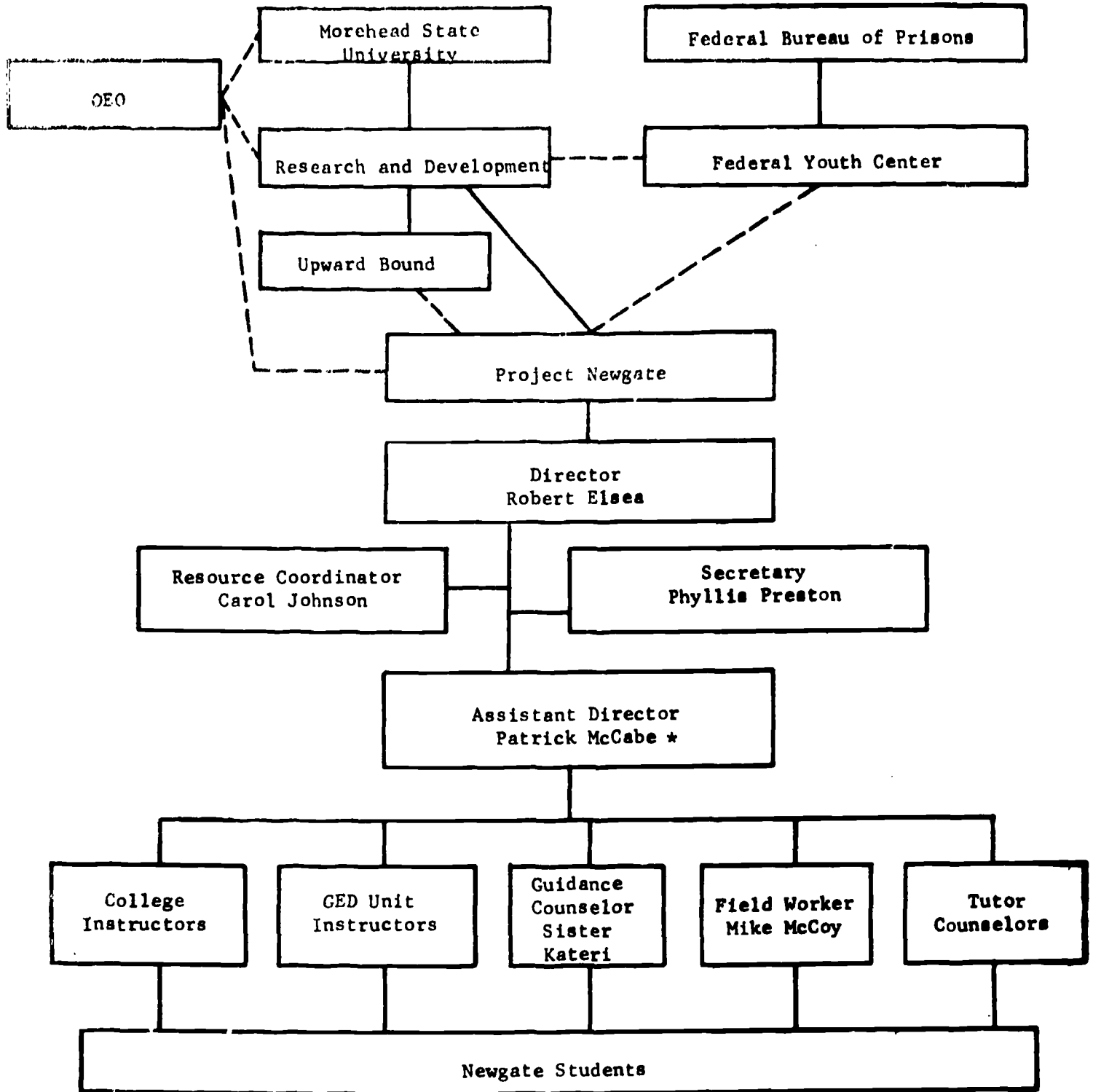
U S DEPARTMENT OF HEALTH,
EDUCATION & WELFARE
OFFICE OF EDUCATION
THIS DOCUMENT HAS BEEN REPRO-
DUCED EXACTLY AS RECEIVED FROM
THE PERSON OR ORGANIZATION ORIG-
INATING IT. POINTS OF VIEW OR OPIN-
IONS STATED DO NOT NECESSARILY
REPRESENT OFFICIAL OFFICE OF EDU-
CATION POSITION OR POLICY

**STATISTICAL STUDY OF THE INITIAL
GROUP CHOSEN FOR PROJECT NEWGATE AT
THE FEDERAL YOUTH CENTER
ASHLAND, KENTUCKY**

Summer, 1969

**Project Newgate
Morehead State University
Morehead, Kentucky
September, 1969**

ED 066636



*Joined Staff August 18, 1969

STATISTICAL STUDY OF THE INITIAL
GROUP CHOSEN FOR PROJECT NEWGATE AT
THE FEDERAL YOUTH CENTER
ASHLAND, KENTUCKY
SUMMER 1969

Introduction to the Study

This study involves the initial group of thirty-nine (39) students chosen for Project Newgate at the Federal Youth Center at Ashland, Kentucky.

Problem

To determine the average age, mental rating, geographic distribution, present and prior commitments and races of the initial group of the thirty-nine (39) Newgate students.

Objectives

To determine: age of each student in the initial group.

highest grade completed by each before entering the Federal Youth Center.

Beta and Sat ratings each registered before entrance to Project Newgate.

most recent offense committed by the student and number of prior commitments.

states represented by this group.

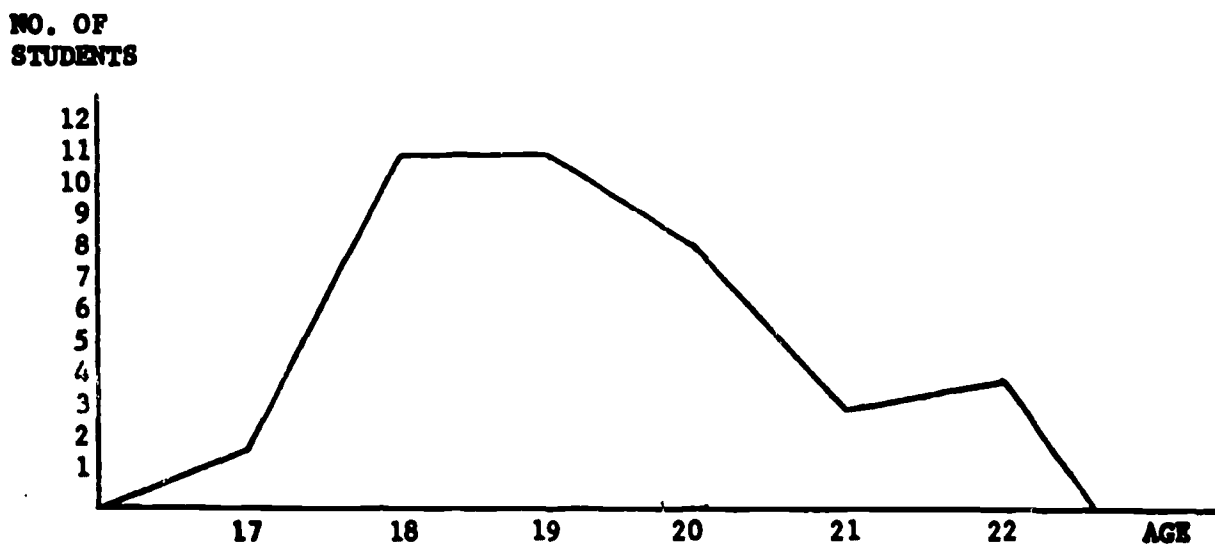
Procedure

A listing of the thirty-nine (39) students was compiled stating the age, highest grade completed, Beta, Sat, offense, prior commitments, home state, and race of each student. This data was sorted and categorized on eight (8) tables and seven (7) charts.

TABLE I
AGES OF THE INITIAL GROUP OF NEWGATE STUDENTS

AGE OF THE STUDENTS	NO. OF STUDENTS AT THIS AGE	PERCENTAGE OF TOTAL GROUP
17	2	5.12
18	11	28.20
19	11	28.20
20	8	20.51
21	3	7.69
22	4	10.25
TOTAL	<u>39</u>	<u>100.00</u>

CHART I
AGE DISTRIBUTION



The average age of the thirty-nine (39) Newgate students is (18 plus). Of the total group, twenty-two (22) of the students were in the 18 to 19 year old categories. The age distribution is from seventeen (17) to twenty-two (22).

TABLE II

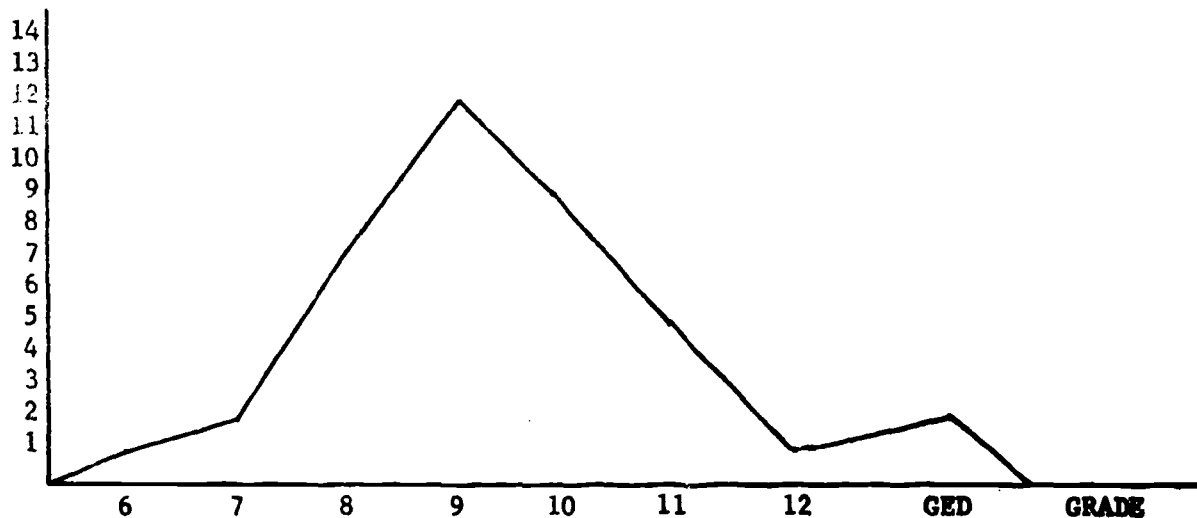
HIGHEST GRADE COMPLETED UPON ENTERING THE NEWGATE PROGRAM OF STUDIES

HIGHEST GRADE COMPLETED UPON ENTRANCE TO THE FEDERAL YOUTH CENTER	NO. OF STUDENTS AT THIS LEVEL	PERCENTAGE OF TOTAL GROUP
6	1	2.56
7	2	5.12
8	7	17.94
9	12	30.77
10	9	23.09
11	5	12.84
12	1	2.56
GED	2	5.12
TOTAL	39	100.00

CHART II

DISTRIBUTION OF HIGHEST GRADE

NO. OF STUDENTS



The highest average grade completed by the students upon entering the Newgate program was (9.24). Two (2) students had already obtained their General Equivalency Diploma.

TABLE III
BETA SCORE OF EACH NEWGATE STUDENT

BETA SCORES	NO. OF STUDENTS WITH THIS BETA SCORE	PERCENTAGE OF THE TOTAL GROUP
90	2	5.12
93	2	5.12
94	4	10.25
97	1	2.56
99	2	5.12
100	1	2.56
101	2	5.12
103	1	2.56
104	2	5.12
105	1	2.56
107	2	5.12
109	3	7.69
110	3	7.69
111	2	5.12
112	2	5.12
113	2	5.12
115	3	7.69
116	1	2.56
117	1	2.56
118	1	2.56
123	<u>1</u>	<u>2.56</u>
TOTAL	39	100.00

CHART III
DISTRIBUTION OF BETA SCORES

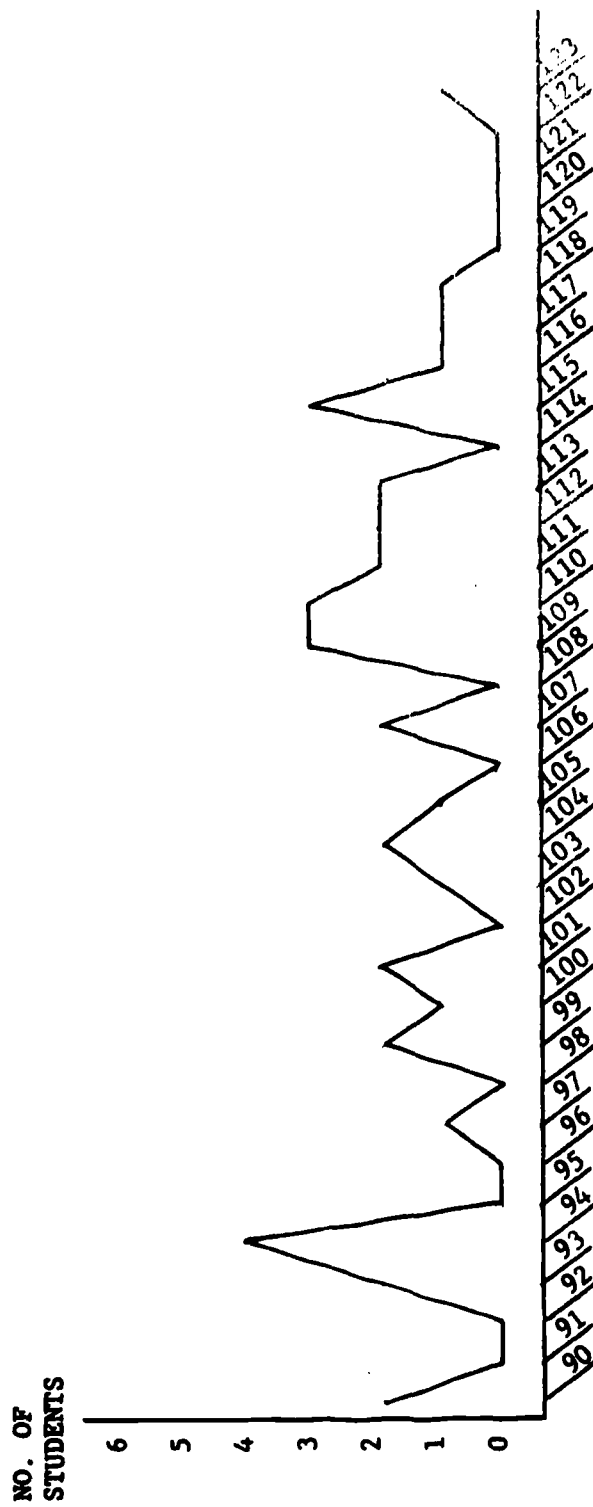
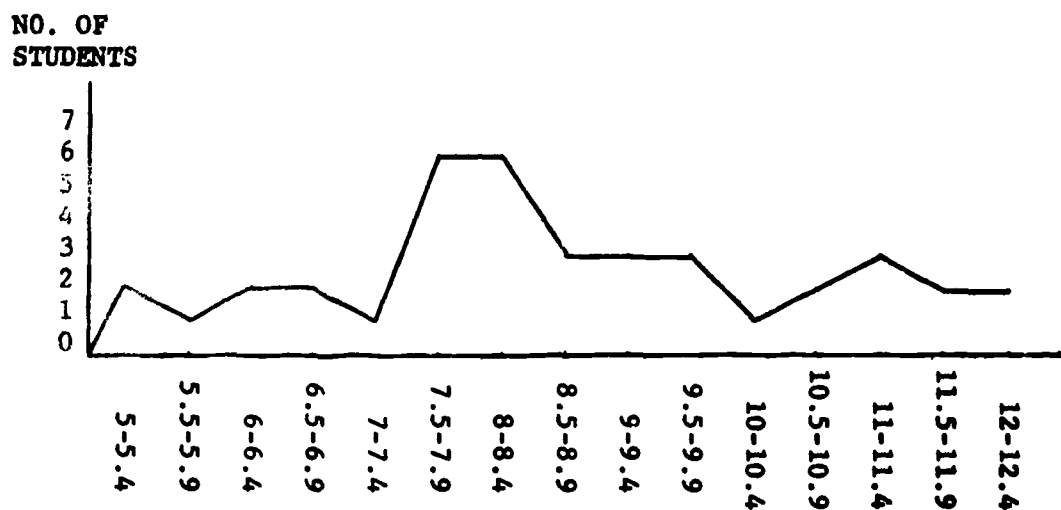


TABLE IV
SAT SCORES OF THE NEWGATE STUDENTS

SAT SCORES	NO. OF STUDENTS IN SAT RANGE	PERCENTAGE OF THE TOTAL GROUP
5-5.4	2	5.12
5.5-5.9	1	2.56
6-6.4	2	5.12
6.5-6.9	2	5.12
7-7.4	1	2.56
7.5-7.9	6	15.38
8-8.4	6	15.38
8.5-8.9	3	7.69
9-9.4	3	7.69
9.5-9.9	3	7.69
10-10.4	1	2.56
10.5-10.9	2	5.12
11-11.4	3	7.69
11.5-11.9	2	5.12
12-12.4	2	5.12
TOTAL	39	100.00

CHART IV
DISTRIBUTION OF SAT SCORES

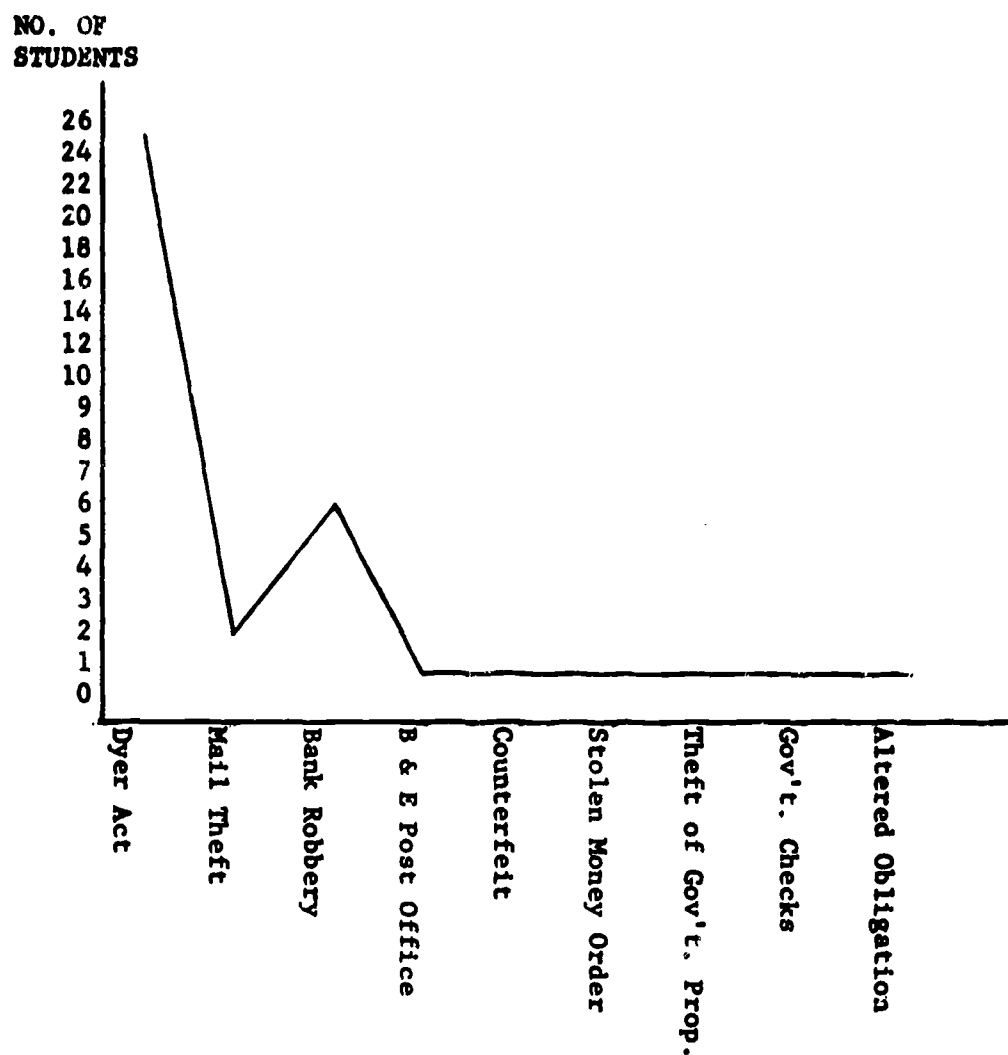


The average Sat score of the Newgate students was (8.73).

TABLE V
OFFENSES FOR WHICH THE NEWGATE STUDENTS ARE SERVING TIME

OFFENSES	NO. COMMITTING THE OFFENSE	PERCENTAGE OF THE TOTAL GROUP
Dyer Act	25	64.10
Mail Theft	2	5.12
Bank Robbery	6	15.38
Breaking and Entering Post Office	1	2.56
Counterfeit	1	2.56
Stolen Money Order	1	2.56
Theft of Gov't Property	1	2.56
Gov't. Checks	1	2.56
Altered Obligation	<u>1</u>	<u>2.56</u>
TOTAL	39	100.00

CHART V
DISTRIBUTION OF OFFENSES

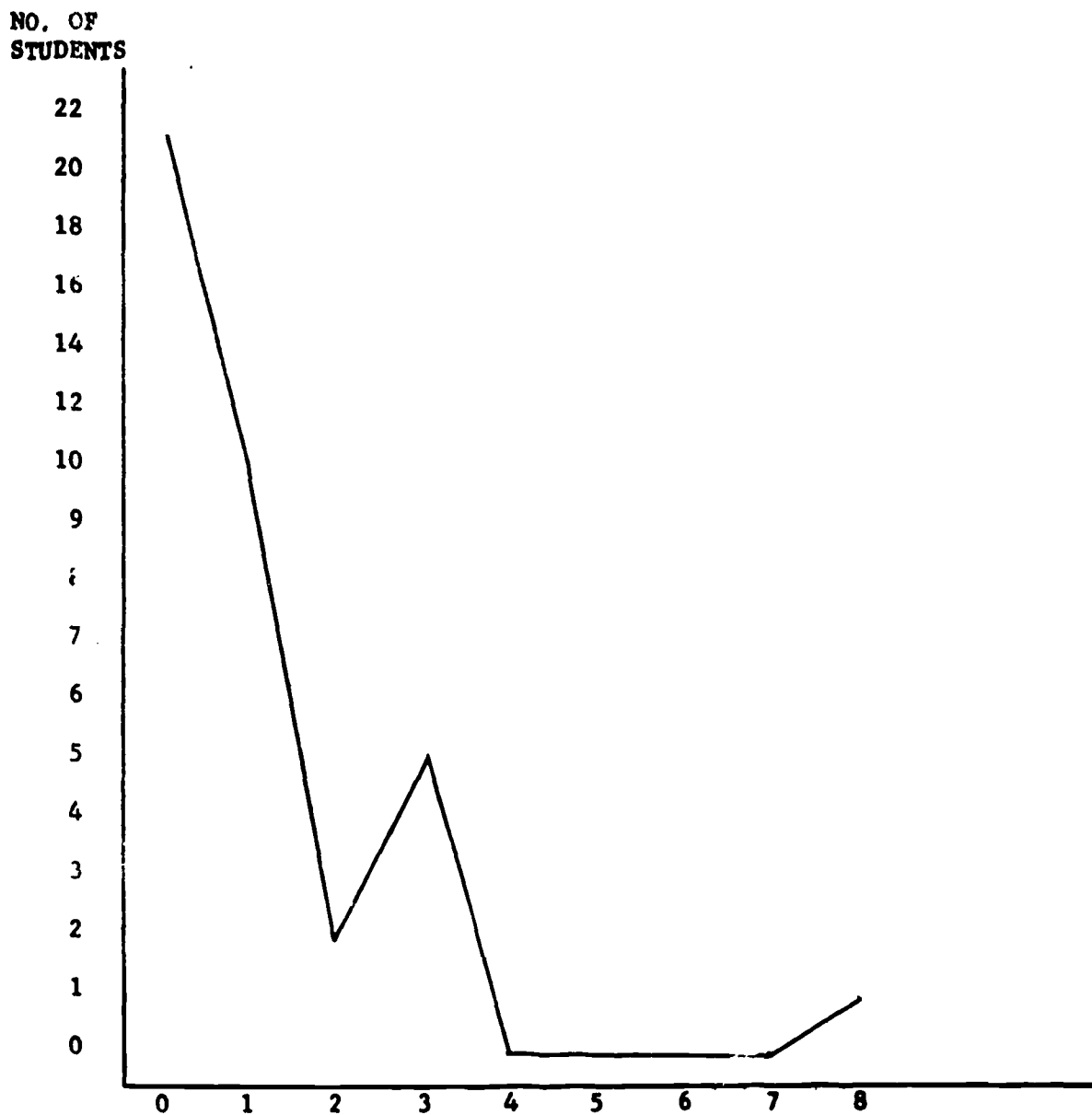


A total of nine (9) offenses are represented. The Dyer Act was committed by twenty-five (25) students for (64.10%).

TABLE VI
NUMBER OF PRIOR COMMITMENTS OF THE NEWGATE STUDENTS

PRIOR COMMITMENTS	NO. OF STUDENTS WITH THIS MANY PRIOR COMMITMENTS	PERCENTAGE OF THE TOTAL GROUP
0	21	53.84
1	10	25.64
2	2	5.12
3	5	12.82
4	0	0
5	0	0
6	0	0
7	0	0
8	<u>1</u>	<u>2.56</u>
TOTAL	39	100.00

CHART VI
DISTRIBUTION OF PRIOR COMMITMENTS

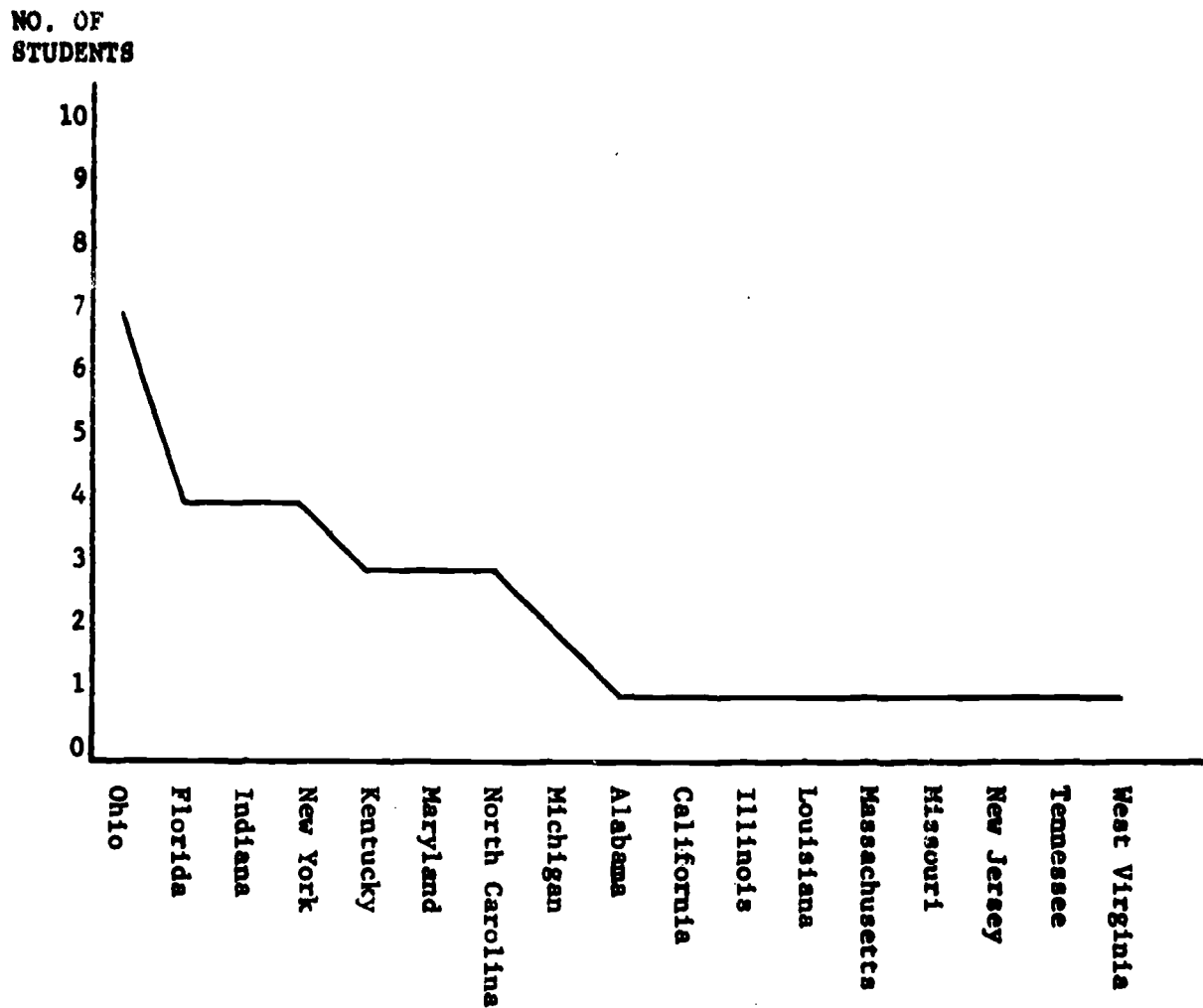


More than one-half (53.84%) of the initial group of Newgate students had no prior commitments. (25.65%) had one (1) prior commitment. (5.12%) had two (2) prior commitments. (12.83%) had three (3) prior commitments. Only one (1) student for (2.56%) had committed over three (3) offenses.

TABLE VII
STATES REPRESENTED BY THE INITIAL GROUP OF NEWGATE STUDENTS

STATE	NO. OF STUDENTS FROM THIS STATE	PERCENTAGE OF THE TOTAL GROUP
Ohio	7	17.94
Florida	4	10.25
Indiana	4	10.25
New York	4	10.25
Kentucky	3	7.69
Maryland	3	7.69
North Carolina	3	7.69
Michigan	2	5.12
Alabama	1	2.56
California	1	2.56
Illinois	1	2.56
Louisiana	1	2.56
Massachusetts	1	2.56
Missouri	1	2.56
New Jersey	1	2.56
Tennessee	1	2.56
West Virginia	<u>1</u>	<u>2.56</u>
TOTAL	39	100.00

CHART VII
DISTRIBUTION OF GEOGRAPHIC REPRESENTATION



Ohio is the predominant contributor with seven (7) students for (17.94%) of the total body. A total of seventeen (17) states are represented.

TABLE VIII
 RACES OF THE INITIAL GROUP OF NEWGATE STUDENTS

RACE	NO. OF STUDENTS OF THIS RACE	PERCENTAGE OF THE TOTAL GROUP
Negro	7	17.94
Caucasian	<u>32</u>	<u>82.06</u>
TOTAL	<u>39</u>	100.00

ERIC Clearinghouse

AUG 28 1972

on Adult Education