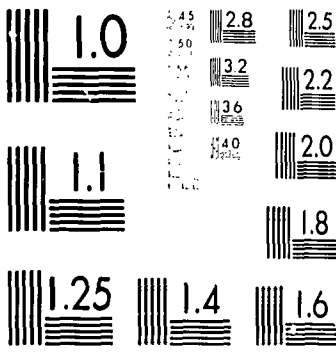


1 OF 1
ED
066 449



MICROCOPY RESOLUTION TEST CHART
NATIONAL BUREAU OF STANDARDS 1963 A

DOCUMENT RESUME

ED 066 449

TM 001 779

AUTHOR Herdegen, Mary M., Ed.
TITLE Test Collection Bulletin, Vol. 3, No. 2, April, 1969.
INSTITUTION Educational Testing Service, Princeton, N.J.
PUB DATE 69
NOTE 6p.
AVAILABLE FROM Eleanor V. Horne, Test Collection, Educational Testing Service, Princeton, New Jersey 08540

EDRS PRICE MF-\$0.65 HC Not Available from EDRS.
DESCRIPTORS Achievement Tests; Aptitude Tests; Behavioral Objectives; *Bulletins; Educational Testing; Evaluation Techniques; *Information Dissemination; Instructional Materials; *Measurement Instruments; Psychology; *Reference Materials; Resource Materials; *Testing; Test Reviews; Test Scoring Machines

ABSTRACT

The Test Collection Bulletin is a quarterly digest of information on tests in education and psychology. The extensive Test Collection of the Educational Testing Service includes publishers' catalogs and descriptive materials, information on scoring services and systems, test reviews, and reference volumes on testing. The tests are indexed by title, author, accession number, and subject. Addresses of those publishers and organizations whose materials and services are mentioned are also listed. Presented in this issue are listings under the headings of: acquisitions of test materials issued in the United States on Achievement; Acquisitions from foreign countries on Achievement and Miscellaneous; Announcements Received; Tests No Longer Available; Publisher Changes; New Addresses and Publishers; Test Scoring Services and Systems; New References and Listings of Tests; and Test Reviews. (LS)

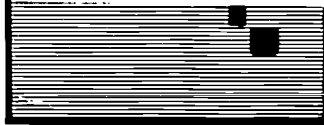
PERMISSION TO REPRODUCE THIS COPY
RIGHTED MATERIAL BY MICROFICHE ONLY
HAS BEEN GRANTED BY

ETS TEST COLLECTION

TO ERIC AND ORGANIZATIONS OPERATING
UNDER AGREEMENTS WITH THE U.S. OFFICE
OF EDUCATION. FURTHER REPRODUCTION
OUTSIDE THE ERIC SYSTEM REQUIRES PER-
MISSION OF THE COPYRIGHT OWNER.

U.S. DEPARTMENT OF HEALTH,
EDUCATION & WELFARE
OFFICE OF EDUCATION
THIS DOCUMENT HAS BEEN REPRO-
DUCED EXACTLY AS RECEIVED FROM
THE PERSON OR ORGANIZATION ORIG-
INATING IT. POINTS OF VIEW OR OPIN-
IONS STATED DO NOT NECESSARILY
REPRESENT OFFICIAL OFFICE OF EDU-
CATION POSITION OR POLICY.

A QUARTERLY DIGEST OF INFORMATION ON TESTS



test collection bulletin

Mary M. Herdegen, Editor

April, 1969

Vol. 3, No. 2

The Test Collection of Educational Testing Service contains an extensive collection of standardized tests as well as some experimental tests in education and psychology. It also includes publishers' catalogs and descriptive materials, information on scoring services and systems, test reviews, and reference volumes on testing. The tests are indexed by title, author, number (an accession number assigned when the test is indexed), and subject.

Qualified persons, both inside and outside of Educational Testing Service, may have access to the materials in the Test Collection. Publishers' restrictions regarding access to test materials are carefully observed.

For further information about materials and services listed in this Bulletin, readers are requested to communicate directly with the appropriate publisher or organization. Addresses are listed on pages 5-6

For additional information about the Test Collection or the
Test Collection Bulletin, write to:

Test Collection
Educational Testing Service
Princeton, New Jersey 08540

Composite issues of the 1967 *Test Collection Bulletin*,
(Vol. 1, Nos. 1-6,) and the 1968 *Test Collection Bulletin*,
(Vol. 2, Nos. 1-6,) can be obtained at no charge by writing
to the Test Collection.

ACQUISITIONS

Test Materials Issued in the United States

ACHIEVEMENT:

*American School Reading Readiness Test, Revised
(Form X)* by Willis E. Pratt and George A. W. Stouffer;
c1964; Kindergarten; Bobbs-Merrill Company, Inc.

Subtests are Picture Vocabulary, Discrimination of Forms,
Letter Form Recognition, Letter Combination Recognition,
Word Recognition, Word Matching, Following Directions, and
Memory for Designs.

Mid-Year Algebra Test; c1968; Grades 8-12; Harcourt,
Brace and World Inc.

May be used for assessment, guidance, and instructional
purposes.

Mid-Year Geometry Test; c1968; Grades 8-12; Harcourt,
Brace and World Inc.

May be used for assessment, guidance, and instructional
purposes.

APTITUDE:

California Abbreviated WISC by Carmen J. Finley and
Jack M. Thompson; c1966; Ages 5-16 years; Western
Psychological Services.

Form I: For the Educable Mentally Retarded includes the
following subtests from the *Wechsler Intelligence Scale for
Children*, (The Psychological Corporation), Information,

Picture Arrangement, Picture Completion, Coding, and Block Design. Subtests for Form II: For the Intellectually Gifted, are the same except that Similarities replaces Information.

E.R.C. Stenographic Aptitude Test by Walter L. Deemer, Jr.; c1943-47; Grades 9-12 and Adults; Science Research Associates, Inc.

Subtests are Speed of Writing, Word Discrimination, Phonetic Spelling, Vocabulary, and Dictation.

The Hunt-Minnesota Test for Organic Brain Damage by Howard F. Hunt; c1943-66; Ages 6-70 years; Western Psychological Services.

The Ohwaki-Kohs Tactile Block Design Intelligence Test for the Blind by Yoshikazu Ohwaki; c1965; Age 6 years and over; Western Psychological Services.

PERSONALITY, INTERESTS, ATTITUDES AND OPINIONS:

Omnibus Personality Inventory: Form F by Paul Heist and George Yonge; c1962-68; Grades 13-16; The Psychological Corporation.

Scales are Thinking Introversion, Theoretical Orientation, Estheticism, Complexity, Autonomy, Religious Orientation, Social Extroversion, Impulse Expression, Personal Integration, Anxiety Level, Altruism, Practical Outlook, Masculinity-Femininity, and Response Bias.

MISCELLANEOUS, SENSORY-MOTOR, UNIDENTIFIED:

Alpha Biographical Inventory; c1966-68; Grades 9-16; Institute for Behavioral Research in Creativity.

Yields scores for Academic Performance and Creative Talent.

The Personality Evaluation Form by Charlotte Buhler and Gertrude Howard; c1955-66; Age 5 years to Adults; Western Psychological Services.

An aid in Recording, Organizing, and Interpreting Personality Data.

Sklar Aphasia Scale by Maurice Sklar; c1966; Adults; Western Psychological Services.

Subtests are Auditory Verbal Comprehension, Reading Comprehension, Oral Expression, and Graphic Production.

Southern California Figure-Ground Visual Perception Test by A. Jean Ayres; c1966; Ages 4-10 years; Western Psychological Services.

Uses figure-ground designs of embedded objects and forms.

Southern California Kinesthesia and Tactile Perception Test by A. Jean Ayres; c1966; Ages 4-8 years; Western Psychological Services.

Subtests are Kinesthesia, Manual Form Perception, Finger Identification, Graphesthesia, Localization of Tactile Stimuli, and Double Tactile Stimuli Perception.

Southern California Motor Accuracy Test by A. Jean Ayres; c1964; Ages 4-7 years; Western Psychological Services.

The task of tracing a line design is used to diagnosis perceptual-motor dysfunction.

The Thorman Family Relations Conference Situation Questionnaire by George Thorman; c1965; Children and Adults; Western Psychological Services.

For use in family therapy.

The Thorman Family Relations Protocol Booklet by George Thorman; c1965; Children and Adults; Western Psychological Services.

Facilitates recording, evaluating, and summarizing family therapy data.

The WPS Supervisor-Executive Tri-Dimensional Evaluation Scales; c1966; Adults; Western Psychological Services.

Composed of self, supervisor, and colleague ratings in 11 areas of job performance.

ACQUISITIONS

Test Materials Issued in Foreign Countries

Unless otherwise indicated, the tests in this section are given in the native language of the country in which they are published.

ACHIEVEMENT:

Victorian Matriculation Physics Testing Programme; c1966-

67; Grades 9-12; Australian Council for Educational Research, Australia.

Tests include Particles and Waves, Behavior of Light, Motion in

Gravitational Fields, Momentum, Energy, Electricity, Electromagnetic Effects, Atomic Models, and Physics Achievement Test.

MISCELLANEOUS SENSORY-MOTOR, UNIDENTIFIED:

Study of Adolescent Living Patterns; c1966-68; Ages 15-19 years; La Trobe University, Australia.

ANNOUNCEMENTS RECEIVED

Bayley Scales of Infant Development; The Psychological Corporation.

Cooperative School and College Ability Tests: Braille and Large Print Editions; American Printing House for the Blind.

Available in Forms 2A, 3A, 4A, and 5A. Standard edition published by Educational Testing Service.

Cooperative Sequential Tests of Educational Progress: Braille and Large Print Editions; American Printing House for the Blind.

Available in Forms 2B, 3B, and 4B. Listening Test also available in Forms 2A, 3A, and 4A. Standard edition published by Educational Testing Service.

Davis Rorschach Miniature Location Charts in Color: Klopfer Scoring Areas; Western Psychological Services.

Diagnostic Reading Tests: Braille Edition; American Printing House for the Blind.

Available in Form A, Lower and Upper Levels. Standard edition published by the Committee on Diagnostic Reading Tests.

House-Tree-Person Technique: Revised Manual; Western Psychological Services.

Iowa Tests of Basic Skills: Braille Edition; American Printing House for the Blind.

Available in multilevel edition for grades 3-9, Form 3. Test W1-Map Reading has been omitted. Standard Edition published by Houghton Mifflin Company.

Junior College Placement Program; Science Research Associates, Inc.

Martin Performance Appraisal; Western Psychological Services.

Picture Word Test: 1965 Revision; Western Psychological Services.

The Purdue Tests (Revised forms of the State High School

Tests for Indiana); High School Testing Service.

See also *Test Collection Bulletin* Volume 3, Numbers 1 and 2 for tests in this series which are no longer available.

Reading-Arithmetic Index; Science Research Associates, Inc.

The Reading Diagnosis Series; Science Research Associates, Inc.

Rorschach Evaluograph: Revised 1965; Western Psychological Services.

Rorschach Miniature Inkblots in Color: Location and Scoring Forms; Western Psychological Services.

Standard Achievement Tests: Braille and Large Print Editions; American Printing House for the Blind.

Available in Forms J-N for Primary, Elementary, Intermediate, and Advanced Batteries. Standard edition published by Harcourt, Brace and World, Inc.

Standardized Oral Reading Paragraphs: Braille Edition; American Printing House for the Blind.

Standard edition published by Bobbs-Merrill Company.

Stanford Achievement Tests: Braille and Large Print Editions; American Printing House for the Blind.

Available in Forms W and X for Primary, Intermediate I, Intermediate II, and Advanced Batteries. Standard edition published by Harcourt, Brace and World, Inc.

Strong Vocational Interest Blank; Stanford University Press.

A revised women's booklet will be available in Spring 1969 (Form TW398). Offered for both the men's and women's *Strong Vocational Interest Blank* are the new Basic Interest Scales and Administrative Indices.

The Thorman Family Relations Technique; Western Psychological Services.

The Vane Kindergarten Test; Clinical Psychology Publishing Company, Inc.

Vocational Planning Inventory; Science Research Associates, Inc.

Volleyball Skills Test; American Association for Health, Physical Education, and Recreation.

WPS Two-Copy Personnel Interview Resume Report; Western Psychological Services.

Work Values Inventory; Houghton Mifflin Company.

Available Spring 1969.

TESTS NO LONGER AVAILABLE

The tests listed below are no longer available from the indicated distributors.

American School Reading Readiness Test (Forms A-D); Bobbs-Merrill Company, Inc.

Gates Reading Survey: 1958 Hand Scored Edition; Teachers College Press, Columbia University.

Cotswold Junior Ability Test, Forms A, B; Robert Gibson and Sons, Glasgow, Ltd., Scotland.

Gates Reading Survey: 1958 Machine Scored Edition; Teachers College Press, Columbia University.

Forms C, D, E, F are still available.

Junior High School Civics Test, First Semester; High School Testing Service.

Cotswold Junior Arithmetic Ability Test, Forms A, B; Robert Gibson and Sons, Glasgow, Ltd., Scotland.

Junior High School Civics Test, Second Semester; High School Testing Service

Forms C, D, E, F are still available.

Cotswold Junior English Ability Test, Form A; Robert Gibson and Sons, Glasgow, Ltd., Scotland.

Northwestern University Religious Education Tests; Garrett Biblical Institute.

Forms B, C, D, E, F are still available.

Gates Advanced Primary Reading Test; Teachers College Press, Columbia University.

Revised Tressler English Minimum Essentials Test, Form AM; Bobbs-Merrill Company.

Gates Basic Reading Test; Teachers College Press, Columbia University.

Typewriting Test, Fourth Semester; High School Testing Service.

Gates Primary Reading Test; Teachers College Press, Columbia University.

Typewriting Test, Third Semester; High School Testing Service.

PUBLISHER CHANGES

The State High School Testing Service for Indiana is now the High School Testing Service, Measurement and Research Center, Purdue University, Lafayette, Indiana 47907.

pany is now available from Western Psychological Services, 12031 Wilshire Boulevard, Los Angeles, California 90025.

NEW ADDRESSES:

Freeman Technical Associates, 4850 Brywill Circle, Sarasota, Florida 33580

The Vocational Preference Inventory formerly distributed by the Educational Research Service is now distributed by Consulting Psychologists Press as the *Holland Vocational Preference Inventory*.

TEST DISTRIBUTION:

The Hackman-Gaither Interest Inventory formerly distributed by Palmer Associates is now being distributed by the Psychological Service Center of Philadelphia, Suite 1, Medical Building, 1500 Vine Street, Philadelphia 19102.

NEW PUBLISHERS

American Printing House for the Blind, 1839 Frankfort Avenue, Louisville, Kentucky 40206

The Hand Test formerly published by Mark James Com-

Institute for Behavioral Research in Creativity, P. O. Box 298, Greensboro, North Carolina 27402

TEST SCORING SERVICES AND SYSTEMS

Science Research Associates no longer provide scoring services for the Achievement Series, Forms A and B.

NEW REFERENCES AND LISTINGS OF TESTS

Grade 7 and 8 Mathematics Test Item Pool; The Ontario Institute for Studies in Education, Canada.

TEST REVIEWS

The Adult Basic Learning Examination; Harcourt, Brace and World, Inc. Reviewed by James W. Hall, Northwestern University in the *Journal of Educational Measurement*, Fall, 1968, pp. 271-274.

Nelson Biology Test: Revised Edition; Harcourt, Brace and World, Inc. Reviewed by Joseph D. Novak, Cornell Uni-

versity in the *Journal of Educational Measurement*, Fall, 1968, pp. 269-270.

School and College Abilities Test: Series II; Educational Testing Service. Reviewed by S. David Farr, State University of New York at Buffalo, in the *Journal of Counseling Psychology*, November, 1968, pp. 583-586.

ADDRESSES

Below are the addresses of those publishers and organizations whose materials and services are mentioned in this Bulletin.

American Association for Health, Physical Education, and Recreation, 1201 Sixteenth Street, N. W., Washington, D. C. 20036.

American Printing House for the Blind, 1839 Frankfort Avenue, Louisville, Kentucky 40206

Australian Council for Educational Research, Frederick Street, Hawthorn E. 2, Victoria, Australia

Bobbs-Merrill Company, Inc., 4300 West 62nd Street, Indianapolis, Indiana 46206

Clinical Psychology Publishing Company, Inc., 4 Conant Square, Brandon, Vermont 05733

Committee on Diagnostic Reading Tests, Inc., Mountain Home, North Carolina 28758

Consulting Psychologists Press, Inc., 577 College Avenue, Palo Alto, California 94306

Educational Testing Service, Princeton, New Jersey 08540

Freeman Technical Associates, 4850 Brywill Circle, Sarasota, Florida 33580

Garrett Biblical Institute, Northwestern University, Evanston, Illinois 62204

Harcourt, Brace and World, Inc., 757 Third Avenue, New York, New York 10017

High School Testing Service, Measurement and Research Center, Purdue University, Lafayette, Indiana 47907

Houghton Mifflin Company, 110 Tremont Street, Boston, Massachusetts 02107

Institute for Behavioral Research in Creativity, P. O. Box 298, Greensboro, North Carolina 27402

La Trobe University, Bundorra, Victoria 3083, Australia

The Ontario Institute for Studies in Education, Department of Measurement and Evaluation, 102 Bloor Street West, Toronto 5, Ontario, Canada

The Psychological Corporation, 304 East 45th Street, New York, New York 10017

Psychological Service Center of Philadelphia, Suite 1, Medical Building, 1500 Vine Street, Philadelphia, Pennsylvania 19102

Robert Gibson and Sons, Glasgow, Ltd., 2 West Regent
Street, Glasgow C.2, Scotland

Science Research Associates, Inc., 259 East Erie Street,
Chicago, Illinois 60611

Stanford University Press, Stanford, California 94305

Teachers College Press, Teachers College, Columbia
University, 525 West 120th Street, New York, New York
10027

Western Psychological Services, 12031 Wilshire Boulevard,
Los Angeles, California 90025