

DOCUMENT RESUME

ED 058 994

RC 005 929

TITLE 'A Federal-State Partnership for Economic Growth.'
Fourth Annual Report.

INSTITUTION Four Corners Regional Commission, Farmington, N.
Mex.

SPONS AGENCY Department of Commerce, Washington, D.C.

PUB DATE 71

NOTE 24p.

EDRS PRICE MF-\$0.65 HC-\$3.29

DESCRIPTORS American Indians; *Annual Reports; *Depressed Areas
(Geographic); Economic Development; Mexican
Americans; *Regional Planning; Rural Areas; *Rural
Development; *State Federal Aid; Tables (Data)

IDENTIFIERS Southwestern States

ABSTRACT

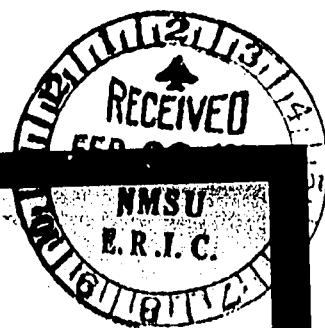
The Four Corners Regional Commission (FCRC) is a state-Federal partnership, the purpose of which is to initiate long-range planning, provide data for specific plans, promote private investment, promote legislation, establish plans and program priorities, and initiate and coordinate economic developmental districts in 92 counties in Arizona, Colorado, New Mexico, and Utah. In the 1971 FCRC annual report, activities are described in the following areas: vocational-technical education, community facilities, health, agriculture, minerals and fuels, tourism and recreation, transportation, human resources, water, and industrial development. Graphs and tables show population growth, grant awards and technical assistance funds, and budget. Related documents are ED 048 985 and ED 048 986. (LS)

ED 058994



'A Federal-State Partnership For Economic Growth'

U.S. DEPARTMENT OF HEALTH,
EDUCATION & WELFARE
OFFICE OF EDUCATION
THIS DOCUMENT HAS BEEN REPRODUCED EXACTLY AS RECEIVED FROM THE PERSON OR ORGANIZATION ORIGINATING IT. POINTS OF VIEW OR OPINIONS STATED DO NOT NECESSARILY REPRESENT OFFICIAL OFFICE OF EDUCATION POSITION OR POLICY.



Fourth Annual Report

ERIC
Full Text Provided by ERIC

		FOUR CORNERS REGIONAL COMMISSION U.S. Department of Commerce Washington, D.C. 20230
UTAH	COLORADO	Area Code 202 987-5534
ARIZONA	NEW MEXICO	OFFICE OF THE FEDERAL COCHAIRMAN

The President of the Senate
The Speaker of the House of Representatives

Gentlemen:

This report demonstrates the transitional stage through which the Commission has passed in the last twelve months. The research studies of the pertinent sectors of the economy have been completed and the Comprehensive Development Plan is under final review.

The four member states of the Four Corners Regional Commission in concert with Federal Government Agencies have launched the action program necessary to fulfill the Commission's goals. Financial assistance responding to state and local government needs have made possible the projects shown here.

To a greater extent than found elsewhere in the nation, the problems of the Spanish-American and Indian minorities within the Region constitute the greatest challenge. The economic well-being of the Region lags behind the nation principally because of the "job-gap" centered in these two minority groups.

It is to these and similar problems that the Commission, as a State-Federal partnership will continue to bend its energy in this year and the years ahead.

Respectfully,

Stanley Womer
Stanley Womer
Federal Cochairman



FEDERAL COCHAIRMAN
Stanley Womer



STATE COCHAIRMAN
Calvin L. Rampton
Governor of Utah



GALVIN L. RAMPTON
GOVERNOR

STATE OF UTAH
OFFICE OF THE GOVERNOR
SALT LAKE CITY

The President of the Senate
and
The Speaker of the House of Representatives

Gentlemen:

This Fourth Annual Report demonstrates that there has been a significant and continuous improvement during the past year in this federal-state partnership for economic development in the Four Corners Region.

This mechanism of bringing together the landlord and tenant is essential if the underdeveloped rural regions of the four respective states are going to join the mainstream of economic growth which is prevalent throughout the urban centers of the states.

The preliminary research and sector studies are now culminating in the Comprehensive Development Plan. This document will provide the guidelines for the Action Plans that are necessary if we hope to close the job-gap which is at the root of the economic problem. The 92 counties in the Four Corners Region are beginning to respond to the development programs and there is new evidence that the citizens of the region hold new promise where little existed before.

It is my hope that Congress will strengthen the Commission and accept a greater role in providing the financial tools, as the predominant landlord, to achieve our goals.

Sincerely,

Calvin L. Rampton
Governor

PHOTO CREDITS

Cover: Upper Left:
Double Arches, Arches National Monument
(Utah Travel Council)
Upper Right:
Mount Sneffels near Ridgeway
(Colorado Dept. of
Commerce and Development)
Lower Left:
Grand Canyon in Winter
(Arizona Highways Magazine)
Lower Right:
Shiprock-Legendary Indian Bird
(J. Gerald Conley, Farmington, N. M.).

Page 8: Navajo Tribal Experimental Farm
(Bureau of Indian Affairs)
Page 13: Navajo Mine
(Utah International, Inc.)
Page 17: Mesa Verde's Cliff Palace
(Colorado Dept. of
Commerce and Development)
Taos Indian Pueblo
(New Mexico Department of Development)
Other photos furnished by the Four Corners Regional
Commission, Farmington, N. M.



ARIZONA MEMBER
Jack Williams
Governor of Arizona



COLORADO MEMBER
John A. Love
Governor of Colorado



NEW MEXICO MEMBER
Bruce King
Governor of New Mexico



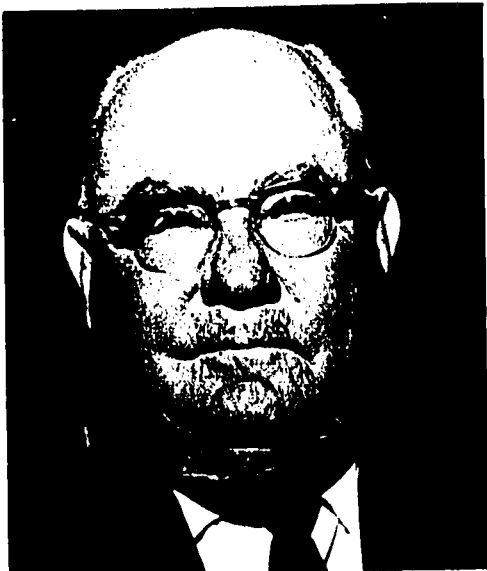
ARIZONA ALTERNATE
Hawley Atkinson

**FOUR CORNERS REGIONAL
COMMISSION
PROFESSIONAL STAFF**

Allan T. Howe
Executive Director
Linus L. Burk
Project Coordinator
William F. Gibbons
Regional Development Planner
Gilbert R. Valdez
Administrative Officer
Carl A. Larson
Natural Resources Officer
Quincy C. Cornelius
Water Specialist
Bosko Krivokapich
Educational Resources Officer



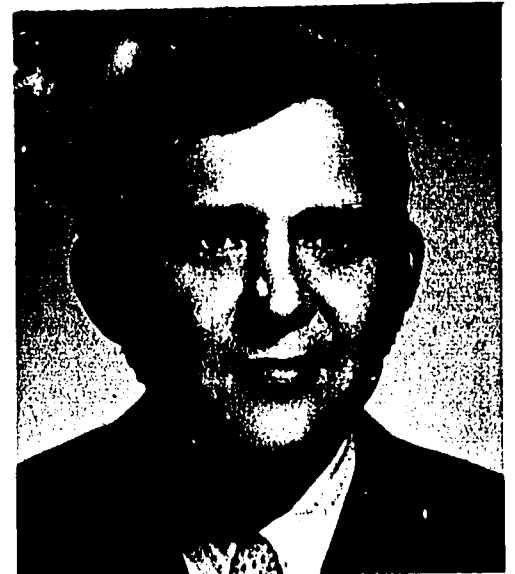
COLORADO ALTERNATE
Dwight E. Neill



UTAH ALTERNATE
D. Howe Moffat



EXECUTIVE DIRECTOR
Allan T. Howe



NEW MEXICO ALTERNATE
Keith Dotson

The Four Corners Regional Commission

The operation of the Four Corners Regional Commission, building upon previous regional action-planning and analysis, has moved, toward substantial accomplishment of project implementation in Fiscal Year 1971. This report, covering Commission activities from July 1, 1970 to June 30, 1971, documents some of the highlights of this period. The Commission's continual goal is the economic improvement of the vast 288,000 square mile Region for its 2,000,000 citizens, but the Four Corners Regional Commission's contribution toward this goal will continue to be only one part of the broad coordinated attack involving Federal-State-local government sources and heavy involvement from the private sector. While this report shows the activities for Fiscal Year 1971 and gives indication of that which must be accomplished in the future, it is recognized that it is still very much a beginning. The hope in the Four Corners Region is that these improvements are but a prologue to the significant changes which must come about.



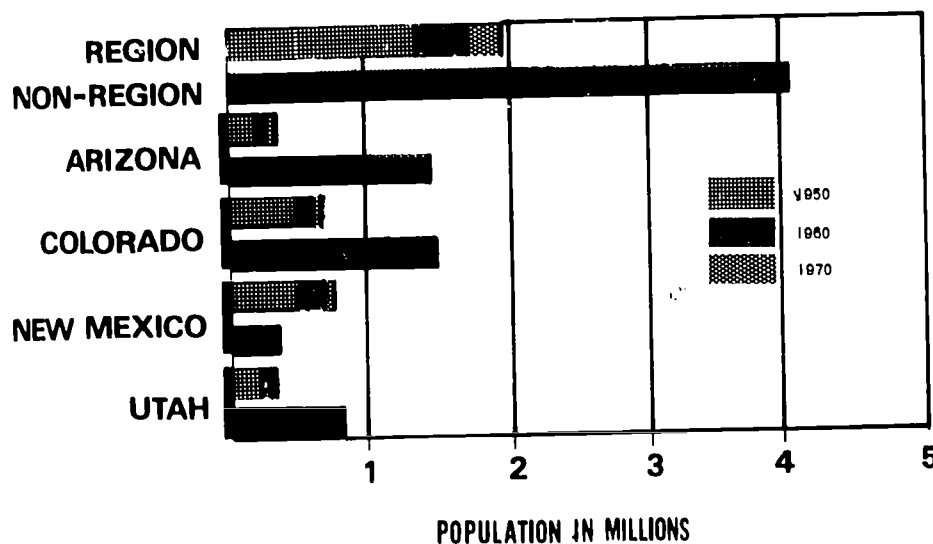
During a meeting in Santa Fe, New Mexico, the Governors of the four states in the Four Corners Region met with the Federal Cochairman. Here they reviewed programs in progress and outlined some of the new programs to be undertaken by the Commission.

During this fiscal year former Governor David F. Cargo of New Mexico served as the State Cochairman through December 31, 1970, and was succeeded on January 1, 1971, by Governor Calvin L. Rampton of Utah. Elected Governor of New Mexico, Bruce King succeeded David F. Cargo as the New Mexico Commission member on January 1, 1971.

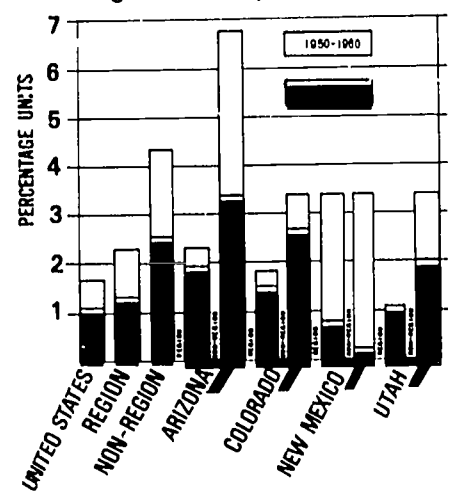
Stanley Womer has continued during the entire fiscal year as the Federal Cochairman. Continuing state members have been Governor Jack Williams of Arizona, Governor John A. Love of Colorado and Governor Calvin L. Rampton of Utah.

The Commission has progressed from its organizational meeting in September, 1967, and the opening of its offices

Four Corners State Populations



Avg. Annual Population Growth



*Source: Four Corners Comprehensive Regional Development Plan, 1971.

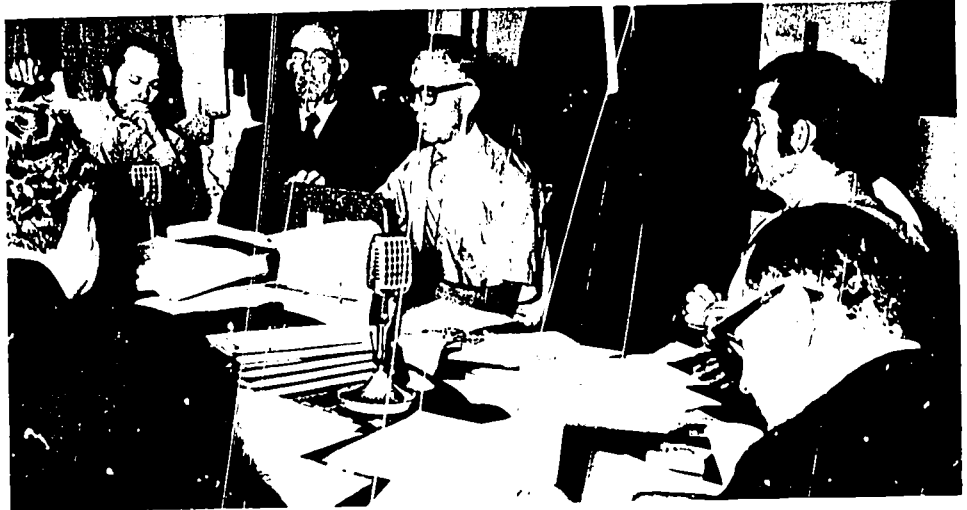
in Farmington, New Mexico, in March, 1968, to a functioning regional agency which coordinates and formulates economic planning and development project implementation for the 92 Counties of the Region.

The Four Corners Regional Commission functions through its five members: four State Governors and the Federal Cochairman, appointed by the President, to serve as the federal member. More of the work load during this year has been carried by the alternate members, whom each Governor appoints to meet more frequently with the Federal Cochairman and the staff. Under this policy direction, the Executive Director, staff and consultants to the Commission have carried out the various programs authorized.

Fiscal Year 1971 saw the completion of most sectors in the regional planning program and the compilation of the Comprehensive Regional Developmental Plan. Now published, this document will help guide future Commission actions involving implementation of the planning program.

Many Commission projects, instigated at the beginning of the program, were completed during this past fiscal year. Many more were started. These projects touch nearly every sector of economic development as shown in this report.

On most projects the Four Corners Regional Commission served as a catalyst, blending the efforts of government, Federal, State and local, with private sector participation, in some cases, toward an integrated, coordinated approach to economic planning and development for the Four Corners Region.



Stanley Womer, Federal Cochairman, and the Commission Alternates meet periodically to transact Commission business. The group considers new proposals and revisions for programs in progress under the sponsorship of the Four Corners Regional Commission.



Meetings of the Four Corners Regional Commission and of the Alternates, as shown above during a Salt Lake City, Utah meeting, are rotated among the various states in the Region and consist of all day work sessions for the Commission staff.



The Commission Members and Federal Cochairman listen as Allan T. Howe, executive director, reports on the status of various Commission programs. Fiscal Year 1971 saw the Commission involved in 58 technical assistance programs and 93 supplemental grant programs in the Four Corners Region.

Inside

Vocational-Technical Education.....	4
Industrial Development.....	7
Agriculture and Agri-Business.....	8
Community Facilities.....	10
Minerals and Fuels.....	13
Health.....	14
Transportation.....	16
Tourism and Recreation.....	17
Planning.....	18
Fiscal Year 1971 Report.....	19
Supplemental Grant Program..	20
Technical Assistance Program.....	21



Fiscal Year 1971 Activities

.....Vocational- Technical Education

Realizing that the greatest strength of the Region is its human resource, the Four Corners Regional Commission has participated in numerous projects designed to aid people of the Region to better support themselves. Job training, job skill improvement programs and training for completely new skill areas have been emphasized. By creating a cadre of skilled workers, the Commission is encouraging the attractiveness of the Region as an ideal location for new job sources. In some cases, the Commission has funded technical assistance planning projects to design and adequately prepare new facilities to serve job training demands. The regional plan for vocational-technical education, previously completed, has served as the basic blueprint for these projects.

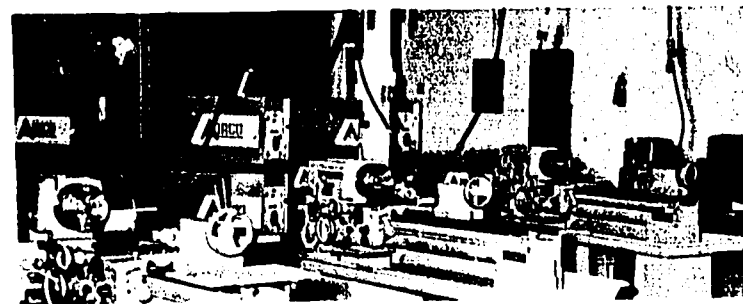
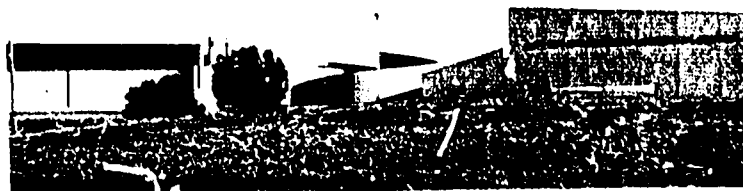
The Four Corners Regional Commission's commitments to the field of vocational education this fiscal year ranged from the newly opened Santa Fe Vocational Technical School in Santa Fe, New Mexico, to a fleet of mobile classroom-laboratories, bringing occupational education facilities in a variety of fields to rural secondary schools in all four states in the Region.

Permanent Facilities

Three new permanent vocational educational facilities began classes in the Region during fiscal year 1971. Another was scheduled to start construction.

First funded by a commission supplemental grant in FY 69, Santa Fe Vocational

Technical School received additional Commission funding this year to bring the total Commission participation to \$352,705. The additional funding was to help offset rising construction costs and to allow completion following the originally planned specifications. The basic agency was the Economic Development Administration, \$990,500; State and local, \$637,795.



Designed to accommodate 2,000 students daily, the Santa Fe Vocational-Technical School in New Mexico was aided by two Four Corners Regional Commission grants totaling \$352,705. A complete range of vocational courses is offered in the \$1,981,000 facility. Enrollment is now 700.

Santa Fe Vocational Technical School presently has an enrollment of 700 students with a staff of 44. The educational plant is designed to handle 2,000 students a year. Courses offered range from auto mechanics through business skills to electronics.

In Moab, Utah, the recently completed \$477,000 Moab Area Vocational Center is providing an occupational education facility for high school students, adults and the disadvantaged. The plant is designed for a capacity of 800 day and night students a year and has a complete range of vocational courses. Basic agency was the Department of Health, Education and Welfare through the Utah State Board for Vocational Education, \$130,000; Commission, \$178,000; and State and Local funds \$168,700.

Opened in April, 1971, the Espanola Area Vocational Technical School in Espanola, New Mexico, received an Economic Development Administration grant of \$731,200; Commission supplemental grant of \$80,000; and state and local funds of \$202,800. Present enrollment is 600 day and night students, but the facility is designed to handle 1,800 students a year. A complete range of courses is offered.

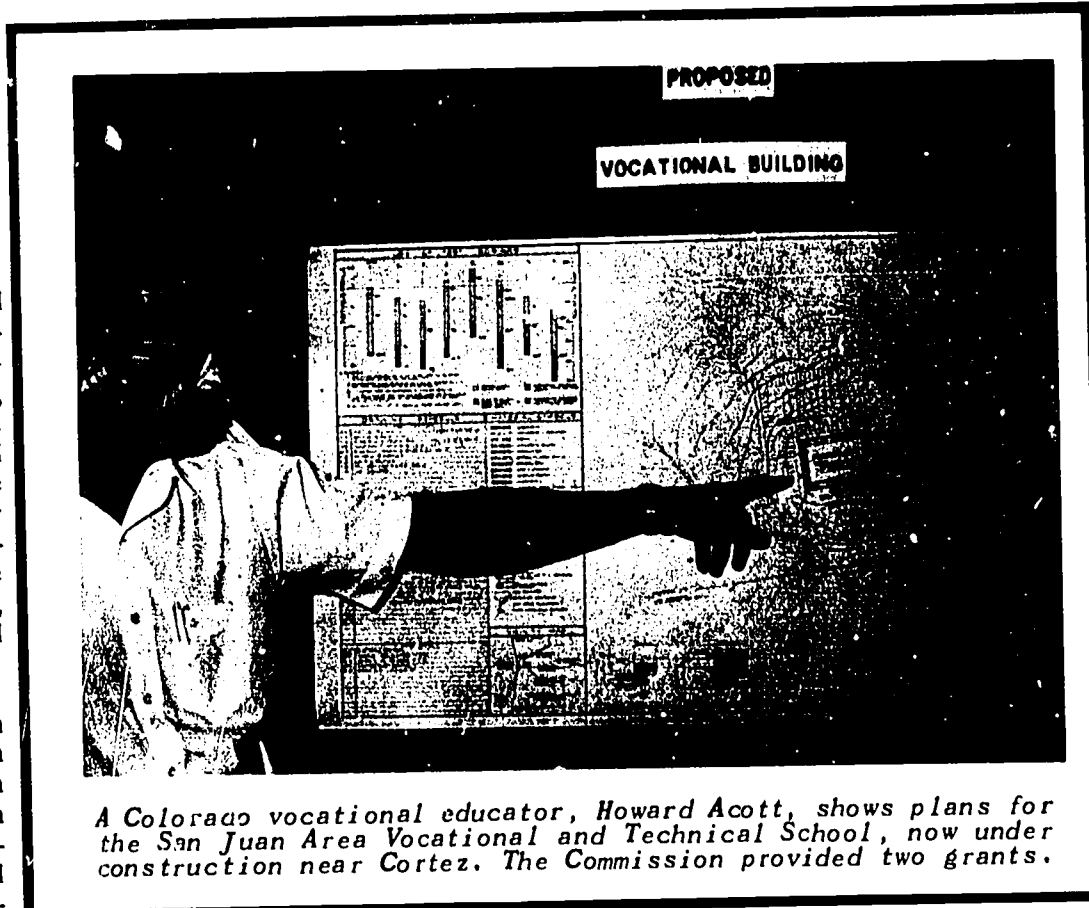
Construction has begun on the San Juan Area Vocational and Technical School near Cortez, Colorado. The facility, planned through a previous Commission technical assistance grant, is scheduled to begin classes with the fall term of 1972. The plant is designed

to accommodate 1,100 students a year, ranging from high school students through adults, with special consideration given to the large nearby Indian population.

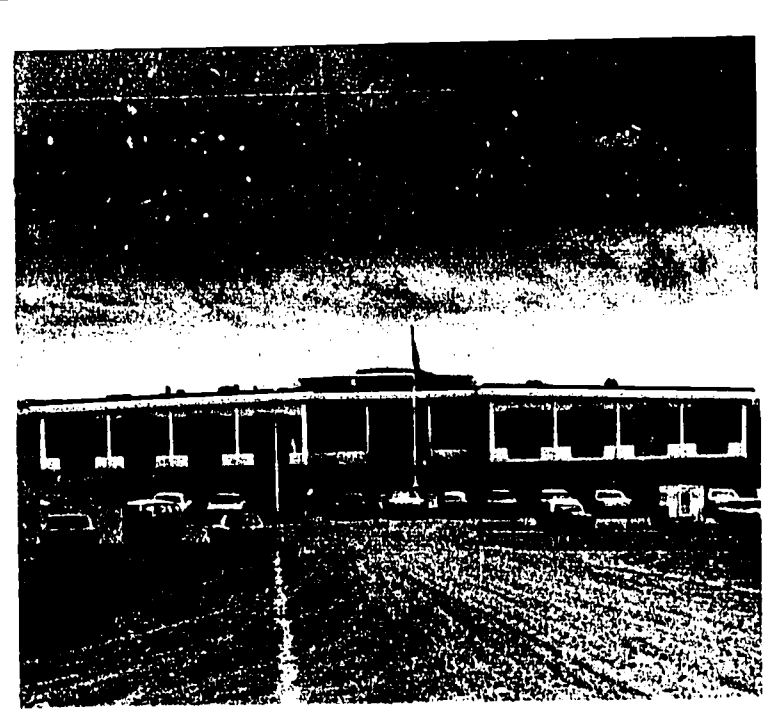
Commission funds have been provided to aid in the development of a vocational facility in the Blanding, Utah, area. This follows the Commission's course of continuing the development of needed vocational training facilities in the Region

and will greatly assist the large Indian population.

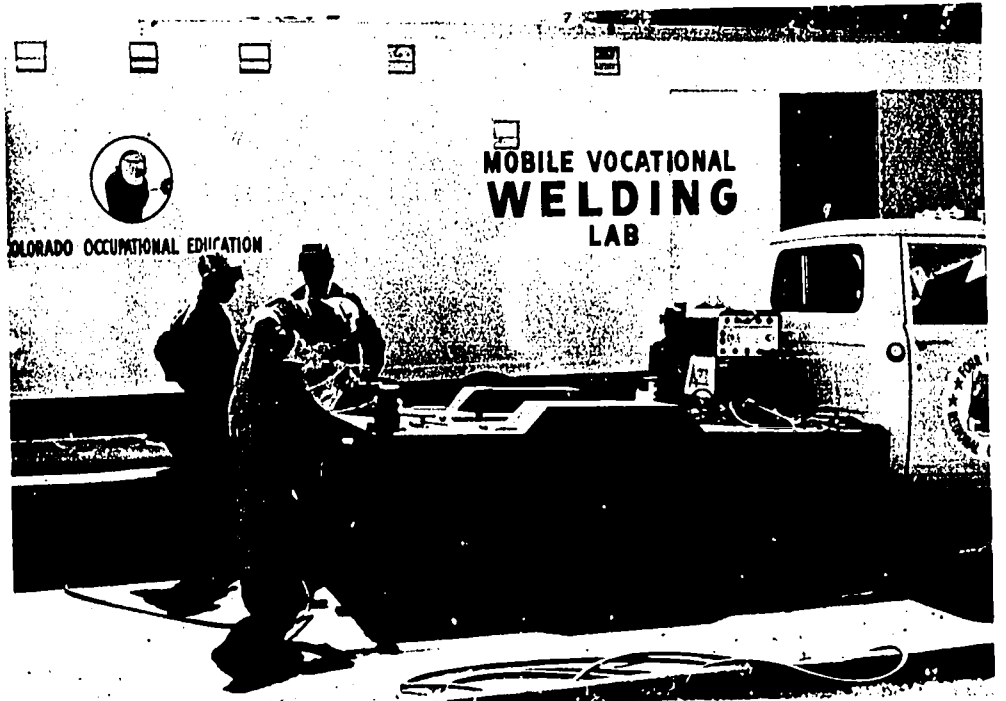
The Commission also participated in funding two New Mexico vocational facility expansion projects; one at Silver City, the other at Cobre High School in Bayard. Both projects were additions to high school facilities, allowing them to also be used for post-high school occupational training.



A Colorado vocational educator, Howard Acott, shows plans for the San Juan Area Vocational and Technical School, now under construction near Cortez. The Commission provided two grants.



Opened this fiscal year were the Moab Area Vocational Center (left) in Moab, Utah and the Espanola Area Vocational School (right) in Espanola, New Mexico. Both facilities have been designed as complete range vocational schools to be used for both day and night class sessions.



Two mobile welding classroom-laboratories, now in service in Colorado, started as steel laid out in a field in Farmington, New Mexico. The Commission funded these and other mobile units under its technical assistance program to bring vocational education to students in rural secondary schools and to workers at job sites, for the upgrading of work skills in the Region.

Mobile Facilities

Considering sparse population and rural schools with limited taxing resources, the Four Corners Region has presented educators and economic developers with a unique challenge to carry some needed facilities to the people in the isolated communities through mobile units.

Expansion of the mobile library service in northern Arizona, previously funded by the Commission, has made this service available to an increasing number of citizens in Navajo, Apache and Coconino Counties.

Three mobile office simulation laboratories, funded by the Commission's technical assistance program as demonstration projects, are bringing occupational education to students in rural secondary schools in Colorado, New Mexico and Utah. Each is equipped with modern office equipment and a qualified instructor, giving students an opportunity to learn proper modern office procedures and prepare to compete for jobs in the growing areas in the Region. These are operated under the state vocational education departments.

Colorado's State Board of Community Colleges and Occupational Education was assisted by the Commission with the addition of three other mobile classroom-laboratory units. Two mobile weld-

ing classroom-laboratories, built in Farmington, New Mexico, to special design and specifications, now serve rural Colorado communities at Florence, Kit Carson and Cheyenne Wells. Each unit is designed to instruct between 30 and 45 students daily and is used for high school, adult and job skill improvement programs. The other Commission sponsored mobile unit in Colorado is an electronics laboratory in the Lamar area.

In the field of education, Fiscal Year 1971 saw the Four Corners Regional Commission participating in the opening of three major permanent vocational education facilities; breaking ground for another; planning to meet future facility needs and moving mobile classroom-laboratories on the road to reach students in isolated communities in the four states of the Region.

FOUR CORNERS REGIONAL COMMISSION EDUCATIONAL PROJECTS FISCAL YEAR 1971

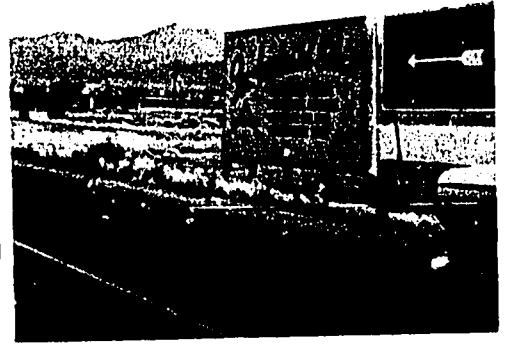
TECHNICAL ASSISTANCE

Upgrading Workshops for Trade & Industrial Education Teachers	\$ 12,775.00
Occupational Demand In Central Arizona	18,356.00
Skill Centers Planning - Phase II	29,000.00
Vocational Education Management	8,340.00
Continuation & Expansion of Mobile Library Services II	50,000.00
Lamar Area Mobile Welding & Electric Laboratories	55,100.00
Pueblo Area Welding Laboratory	32,600.00
Mobile Office Laboratory (Colorado)	33,350.00
Mobile Office Laboratory (New Mexico)	33,470.00
Correspondence Program for Improvement & Apprenticeship Training II	20,600.00
Cluster Approach to Pre-Vocational Education	28,000.00
Health Occupations Teachers' Preparation	4,840.00
Mobile Office Occupations Classroom (Utah)	24,430.00
Mobile Power Sewing Machine Operators Classroom - Shop	16,400.00
Blue Mountain Environmental Science School	8,000.00
Plute County Vocational Education Planning	23,000.00
Blanding Vocational Education Planning	22,900.00

SUPPLEMENTAL GRANTS

San Juan Area Vo-Tech School	180,000.00
Buena Vista Library	20,000.00
Cobre Vocational Education Facility	15,000.00
Silver City Vocational Education Facility	15,000.00
Santa Fe Vocational Education School II	200,000.00
New Mexico Girls' Welfare Vocational Education Project	4,200.00
Moab Vocational Education Facility II	31,000.00

Industrial Development.....



Completion of an action planning program for selective industrial development in the Four Corners Region which gives specific direction to industrial development prospecting and use of the Commission's technical assistance and supplemental grant programs for specialized project help and public support facilities for industrial expansions and new industrial locations in several communities, were major accomplishments in Fiscal Year 1971.

With the completion this year of the Battelle Memorial Institute's analysis, "Economic Structure and Industrial Feasibility of the Four Corners Region," the Commission now has a unique tool for planning and programming selective industrial expansions and new industrial locations for the Region.

The plan examines more than 400 standard industrial classifications in the country and through a computerized system, analyzes the attributes of sub-regions within the Four Corners region in a matching process of industry needs and community resources.

Industrial and community leaders have already shown interest in this approach.

More immediate industrial development activities were aided by Commission technical assistance grants:

-Assisting in the development of a tribal-owned welding industry for the Goshute Indians, now manufacturing items ranging from cattle guards to trailers.

-Compiling a data bank for the Utah portion of the Four Corners Region with information concerning industrial site locations, facilities and other information by funding a study by the University of Utah's Bureau of Business and Economic Research.

-Financing for minority-owned business enterprises is now being made available in northern New Mexico through CAMBIO, an organization utilizing business research and management talents from the University of New Mexico.

-Purchasing a portable adobe block making machine, currently being used by New Mexico Pueblo Indians for building projects. The unit will also be made available throughout the Region for rural home expansion and construc-



Dr. Charles W. Minshall of Battelle Memorial Institute briefs regional industrial development leaders on the progress of Battelle's Regional Economic and Industrial Potential Report.

FOUR CORNERS REGIONAL COMMISSION INDUSTRIAL DEVELOPMENT PROJECTS FISCAL YEAR 1971

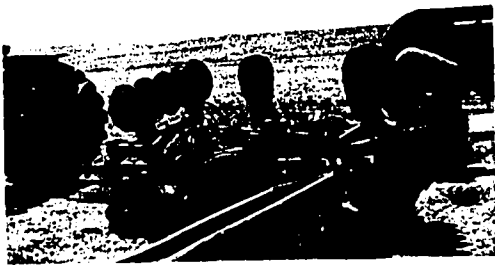
TECHNICAL ASSISTANCE

CAMBIO - Minority Business Enterprise	\$49,400
Portable Adobe Making Machine	10,200
Industrial Site & Building Survey Analysis	12,800
Goshute Indian Business Management	24,000

SUPPLEMENTAL GRANTS

Many supplemental grant projects for the improvement of public facilities have given strong support to industrial development in the Region. While these projects are listed in other sections of the Report, the following examples indicate their linkage with industrial development:

-At Kingman, Arizona, and Leadville, Colorado, expansions in the mining industry have been served through these grants. The improvements to the Winslow Airport at Winslow, Arizona, have provided better airport facilities to support the nearby Hopi Industrial Park and the improvements to the Cedar City Airport at Cedar City, Utah, have improved air access to the growing ski industry at Brian Head and other existing industries.



.....Agriculture and Agri-Business

Commission support for the economic improvement of those dependent upon the agricultural sector for their income has centered in several projects utilizing technical and supplemental grant funds. Certain programs have employed innovative and new methods of improving the pioneer agriculture industry in the Region.

The Commission has continued to strongly support the completion of the Navajo Indian Irrigation Project, including the preparation and training of Navajo people for full participation in the economic benefits thereof.

Close coordination has been achieved through the work of the Commission with the Regional Rural Development Council, a coordinating board of Department of Agriculture agencies. Joint planning with the Council in many facets of agricultural pursuits have assured the combined impact of federal, state, local and private sources.

With New Mexico State University as prime contractor and the support of the other three state land grant universities in the Region, the Comprehensive Agricultural Study, previously funded, nears completion.

In an effort to seek out the major opportunities for growth and expansion in the agriculture and agri-business areas, the Commission continued the work of its Regional Agricultural Analysis through the state land grant universities for the selection of optimum project possibilities.

Commitments by the Four Corners Regional Commission to agriculture and agri-business in Fiscal Year 1971 ranged

from participation in the \$120,000 Summit Creek Irrigation and Canal company project in Santaquin, Utah, preserving a small farming community's annual \$120,000 operation; to a cement pipeline for flood protection of Navajo farmers on a portion of the Navajo Reservation in San Juan County, Utah.

The Commission funded a demonstration project providing farm training and

crop production experimentation on the 730 acres of an experimental farm.

The training on this project opens the way for additional planning which must be done when the \$206 million Navajo Indian Irrigation Project is completed. The project has prepared young Navajos for a career in machine method farming along with experience in farm management and crop marketing.

Funding for the training program is from the Navajo Tribe's Department of Resources through the Bureau of Indian Affairs, \$50,000; and the Commission, \$50,000.

Severe floods to several portions of the Region during the fall of 1970 caused extensive damage. The Four Corners Regional Commission participated in several projects directly related to flood control:

—The Farmers Mutual Ditch Company's project in San Juan County, New Mexico, serves a tri-ethnic group, including Navajos. The project included structural and vegetative treatment to 310 acres above the ditch system to end periodic flood damage to the ditch and gate valves and included cement lining of 5,700 feet of ditch. The system presently serves 142 families farming some 4,182 acres. The



Harvest time on the reservation found this Navajo trainee operating a combine on the Navajo Tribe's experimental farm. The classroom farm is located in northwestern New Mexico.

new cement lining is saving enough water to cultivate an additional 165 acres for an estimated crop worth of \$82,000 annually.

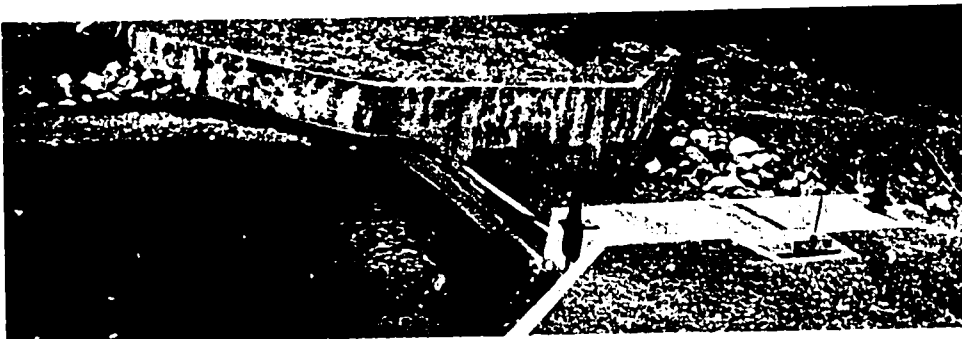
-A flood-ruined irrigation system was replaced on the poverty stricken portion of the Navajo Indian Reservation in San Juan County, Utah. A ditch system was replaced with cement piping and the future of Indian farmers in that area has been considerably brightened.

-Severe damage to the Terrace Reservoir in Conejos County, Colorado, prompted the Commission to participate in system repairs as an emergency measure

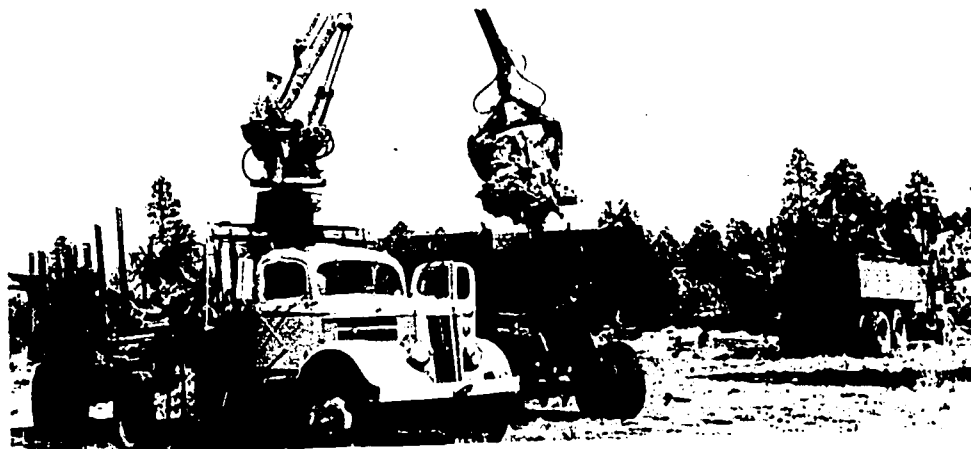
Other Commission projects during Fiscal Year 1971 included funding of a water diversion structure on the Rio Grande River in Colorado to irrigate 60,000 acres in Rio Grande, Alamosa and Conejos Counties. It is estimated that the water loss prevented will be worth \$125,000 annually.

Another water conservation project the Commission was involved in was the Lyman ditch revamping in arid Apache County, Arizona. The system serves some 160 farms with about 5,200 acres under cultivation. Seepage from the earth ditches had been estimated at 45 per cent and had caused frequent water shortages. To stabilize the water supply, 12,500 feet of ditch was cement lined.

In another portion of Arizona, Pinal County, too much water was the problem. Located south of Phoenix, this agricultural district had been plagued by continuing floods causing crop damage and other losses. The Commission participated in the funding of flood control retaining structures to end this problem.



The Summit Creek water diversion structure at Santaquin, Utah.



Tests are conducted near Flagstaff, Arizona, on one of the Four Corners Region's major ponderosa pine stump resource areas. These logged-over areas may eventually become a major source of raw materials for rosin, pine oil and turpentine.

FOUR CORNERS REGIONAL COMMISSION AGRICULTURE AGRI-BUSINESS PROJECTS FISCAL YEAR 1971

TECHNICAL ASSISTANCE

Navajo Farm Training & Crop Production	\$ 50,000.00
Ponderosa Pine Stump III	10,000.00
Digital Computer Salinity	30,000.00
Aztec Watershed	22,275.00
Zuni Watershed Project Plan	12,200.00
Apple Orchard Demonstration	15,900.00
Implementation Feedlot Meat-Packing	15,000.00
Feasibility Study for Dam Site on Muddy Creek	16,700.00
Moab Flood Control	7,000.00

SUPPLEMENTAL GRANTS

Lyman Irrigation	\$ 71,280.00
Midway Flood Control	46,340.00
Commonwealth Irrigation	15,000.00
Pine River Water	28,000.00
Terrace Reservoir	12,000.00
Prairie Ditch	4,590.00
Norwood Irrigation	60,300.00
Farmers Mutual Ditch	20,000.00
Springer Irrigation	35,850.00
Cubero Irrigation	20,500.00
Hogback Irrigation	8,400.00
La Possession Irrigation	9,940.00
Ponderosa Irrigation	20,310.00
Rio Costilla Irrigation	29,500.00
Nambe Irrigation	39,000.00
Summit Creek Irrigation	60,000.00
Teasdale Irrigation	53,750.00
Tropic Irrigation	7,000.00
Bluff Pipeline	5,000.00
Ferron Irrigation	12,330.00
Cottonwood Irrigation	4,200.00
North Fields Irrigation	6,000.00
Manti Irrigation	9,000.00
Wales Irrigation	5,400.00
Lost Creek Irrigation	4,800.00
Moroni Irrigation	15,600.00
Beaver Irrigation	4,800.00
Deseret Irrigation	12,000.00



The Farmers Mutual Ditch conveys irrigation water to farms near the Navajo Indian Reservation.



...Community Facilities

Basic to the preparation of the Region for any type of economic growth is the improvement of the community facilities within its many counties, communities, and Indian reservations which provide the necessary public services. With sparse population and a declining tax base in many locations, local leaders find themselves frustrated in seeking new ways to acquire needed public facilities and improvements. With the use of technical assistance and supplemental grant funds, the Commission has provided a new partnership link in making some of these projects a reality. Knowing that it is impossible for the Commission, or any other agency, to bear the full burden of total funding, the Commission has pursued its statutory responsibilities as a coordinator in the pooling of funds with several agencies — federal, state and local — to accomplish these improvements. Care has been taken not to confuse a program which treats the symptoms of economic trouble with those long-range solutions needed to solve underlying economic problems.



This multi-community sewage treatment plant neared completion during Fiscal Year 1971 in Carbon County, Utah. John J. Neilson, project manager, points to construction progress on this facility designed to aid that area's community and industrial expansion.

Commission involvement in this field is guided by the Region's need for stimulation of industrial and community development. Projects with participation by the Four Corners Regional Commission included sewage treatment systems for Kingman, Arizona and the establishment of a child day care center on the Navajo Indian Reservation in Shiprock, New Mexico.

One of the Commission's first major industrial and community grants, made in Fiscal Year 1969, neared completion in Carbon County, Utah. The \$3.1 million project involves a 33-mile-long sewage interceptor line serving seven communities.

The results will be many: cleaning up the Price River, a county-long open sewage system for almost a century, making it possible for needed housing projects to be planned and developed, and, allowing the area's coal industry to use the river's water all year around.

With the aid of Commission funding, the City of Kingman, in Arizona's rapidly expanding Mohave County, is replacing two inadequate lagoon-type sewage systems with larger and adequate facilities.

Another type of community facility planning funded by the Commission, was a comprehensive plan for helping rural reservation Indians to more readily adapt to the newness of city life. This involves a projected Indian center in downtown Phoenix, Arizona, that will

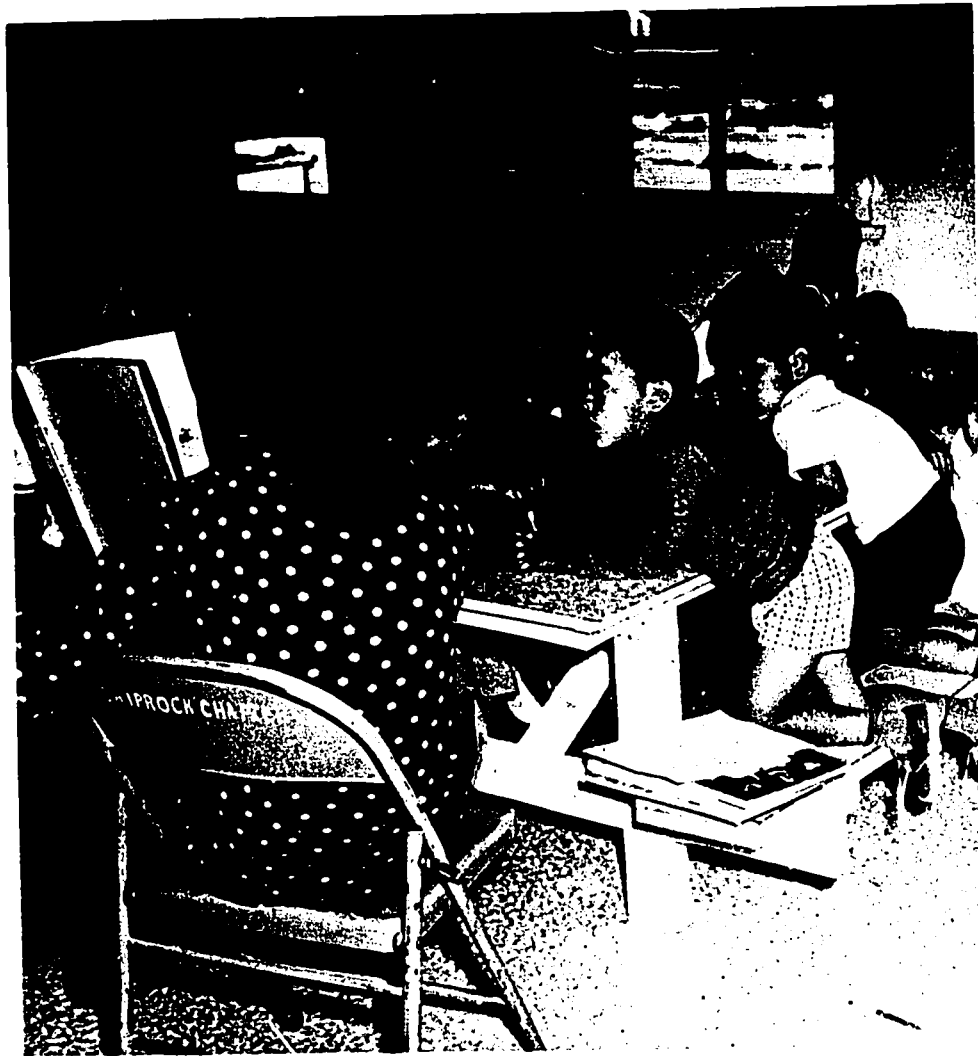
eventually include health care facilities, employment counseling and guidance and other services.

A demonstration project funded with \$25,000 by the Commission was for the development of a day care center for the children of working parents on the Navajo Reservation in Shiprock, New Mexico. The daily attendance, since the beginning of the program, has averaged about 125 children, ranging in age from two weeks to five years. The day care center was needed because most of the working mothers are employed at the nearby Fairchild Semiconductor plant.

Another Commission-involved project is located in Emery County, Utah, in the Huntington area, site of a proposed power generating plant. Water facilities under construction will serve four communities, a coal mining operation and the power plant, along with the area's farming population.

A total of 235 new jobs are expected to be created for Emery County, one of the Region's most economically depressed areas.

Commission funding also aided other water projects such as the following: Torrance County, New Mexico; Juab County, Utah; La Plata County, Colorado; where municipal water systems were improved. The Commission participated in many sewage treatment facility improvements, some of which were in Torrance County, New Mexico; Montezuma County, Colorado; and Mohave County, Arizona.



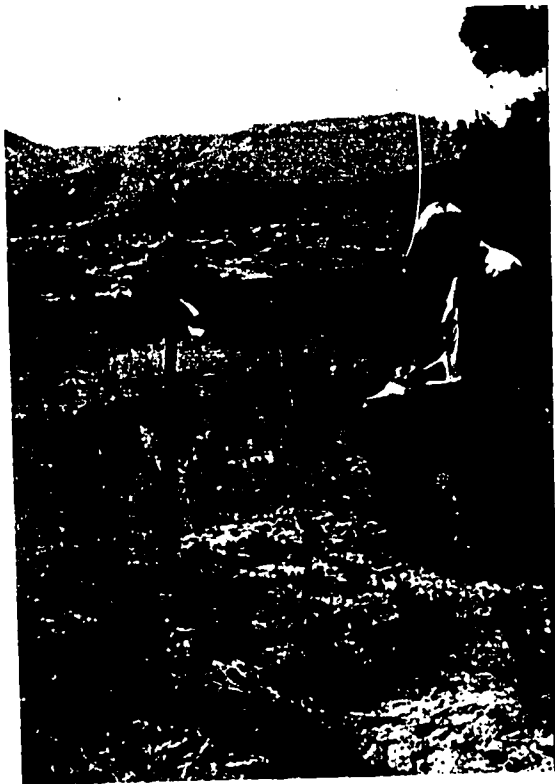
Listening attentively to a nursery tale is this group of pre-school children at the Shiprock Day Care Center, located on the Navajo Indian Reservation in Shiprock, New Mexico. Pre-school children, from infants to kindergarden age, are taught, fed, entertained and receive health care while their parents work at nearby jobs. The Four Corners Regional Commission participated with technical assistance funds.



Arizona Indian Center official shows a model of proposed Phoenix Indian Complex.



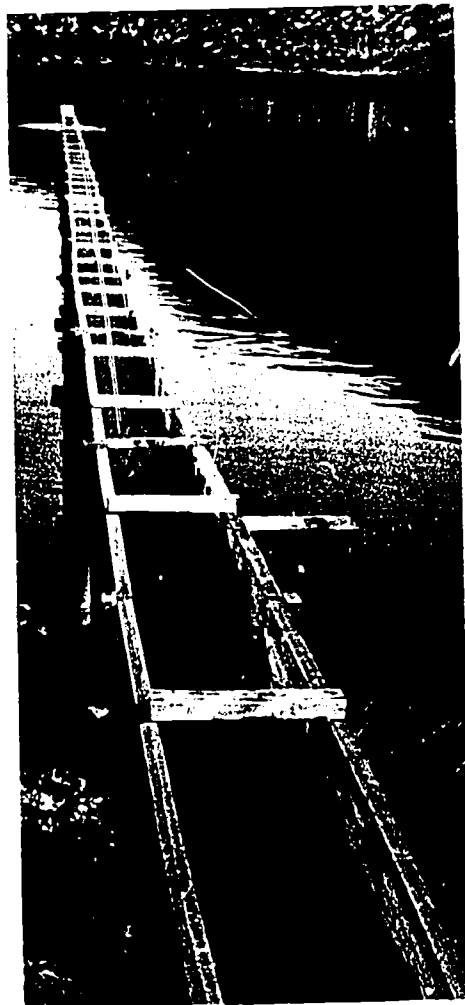
North Emery water plan in Utah is shown by an official of the development district.



Checking a new water system site near Durango, Colorado, to expand water facilities there.



The expansion and improvement of a small community's municipal sewage collection and treatment system in Mancos, Colorado, led directly to a new business there.



This open wooden sewage trough is being replaced as Kingman, Arizona, modernizes and enlarges its sewage treatment facilities.

FOUR CORNERS REGIONAL COMMISSION COMMUNITY FACILITIES PROJECTS FISCAL YEAR 1971

TECHNICAL ASSISTANCE

Arizona Indian Centers, Inc. — Phase I	\$ 35,000.00
Feasibility Study & Report on Valley Pipeline	20,000.00
All Pueblo Cultural Center	3,300.00
Blanding Community Facilities Analysis & Capital Investment Program	3,000.00
Provo Canyon Sewer Line	9,000.00

SUPPLEMENTAL GRANTS

Kingman Sanitation	153,300.00
La Jara Water	25,000.00
Central Grand Valley Sanitation District	195,000.00
Leadville Sanitation	15,000.00
Mancos Sewage	18,160.00
Creede Sewage Collection	62,000.00
Creede Sewage Treatment	38,000.00
Northeast Durango Water	44,100.00
La Junta Sanitation	133,200.00
Fairplay Sanitation	40,000.00
Monument Lake	36,000.00
Delta Sanitation	28,200.00
Espanola Sanitation	86,270.00
Pecos Sewage Collection	39,810.00
Pecos Sewage Treatment	26,560.00
Mountainair Water & Sewage II	26,640.00
Springer Water II	50,000.00
Taos Sanitation	75,000.00
Santa Rosa Sanitation	46,000.00
Bayard Sanitation	53,380.00
Los Lunas Sanitation II	27,230.00
Tres Piedras Water	10,500.00
Pie Town Water	4,000.00
Bernalillo Park Development	64,950.00
Springdale Water	33,680.00
Clawson Water	25,500.00
Oakley Sewage Collection	28,600.00
Oakley Sewage Treatment	18,160.00
Jensen Water	75,900.00
Salem Water	15,000.00
Nephi Water	58,400.00
Neola Water	90,000.00
North Emery Water	186,000.00

Minerals and Fuels...



Rich deposits of a variety of minerals and abundant fossil fuel deposits have been one of the main economic factors in the Region's development. Recognizing this, the Four Corners Regional Commission has supported programs designed to improve the economy through these industries. During Fiscal Year 1971, the regional action-planning sector for minerals and fuels, prepared under the direction of the University of Arizona's Bureau of Business and Economic Research, has been completed. This document will be utilized by the Commission in future programs to strengthen this important job and income source.

The Commission's regional action-planning program, involving the minerals and fuels sector, has carefully analyzed past production and income flow, but has concentrated on best opportunities for future growth. The specific mineral and fuel commodities that appear to offer the best economic potential for the Region during the next 15 years include: copper, silver, molybdenum, beryllium, magnesium and lithium, titanium, uranium, fluorite, sulfuric acid, construction aggregates, coal, oil shale and other bitumens and natural gas.

The industry can be assisted in its growth by needed public support functions. Recommendations for some of these include:

- support of certain land surveying and mapping programs designed to provide useful information about the topography and geology.

- support of new technology research to develop improved industrial techniques and methods.

- improved roads for access to copper ore deposits and improved housing and expanded community facilities in all copper-producing areas in the Region.

- new and improved all-weather roads to facilitate primary molybdenum mining operations and increased housing and expanded community facilities in the molybdenum by-products districts.

- better access roads throughout the Region to the low-grade coal fields, better roads between the coal fields and the primary users and improved community facilities in the nearby towns.

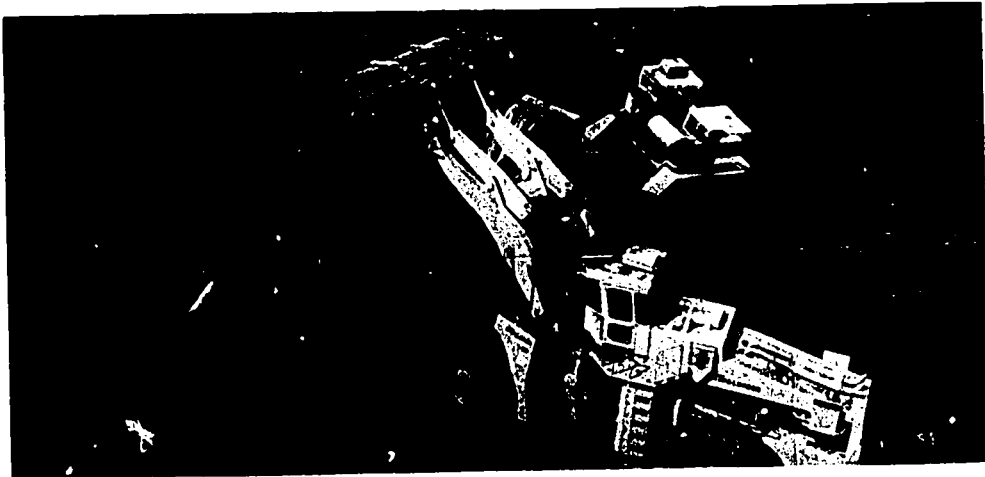
- creation of new facilities and the improvement of present transportation facilities for the handling of sulfuric acid. With the passage of recent air pollution control legislation by the States in the Region, what is now a high-priced commodity will become, through the usage of sulfur retaining devices, a more normal-

ly priced product for use in ore processing operations and in agriculture.

Most of the problems which historically have hindered the development of mineral resources in the Region still exist: inadequate transportation, long distances to markets and an incomplete knowledge of the Region's mineral resources. Added to this are the problems of community

facilities becoming obsolete and overburdened and the consideration of environmental matters, along with increased taxes and changing public land usage policies.

The Commission hopes to closely link its programs to some of these needs to assure an expanding mineral and fuels industry in the Region.



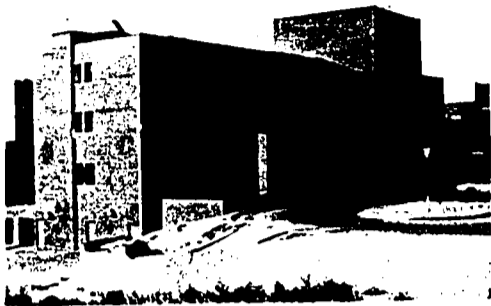
Navajo Mine's soft coal stripping operation in New Mexico.

FOUR CORNERS REGIONAL COMMISSION MINERALS AND FUELS PROJECTS FISCAL YEAR 1971

While the funding authority of the Commission does not allow direct grants to the private sector for the development of the minerals and fuels industry, it does allow considerable support to the industry through public facilities required. The following projects are listed elsewhere in the report but also have some impact on the minerals and fuels industry.

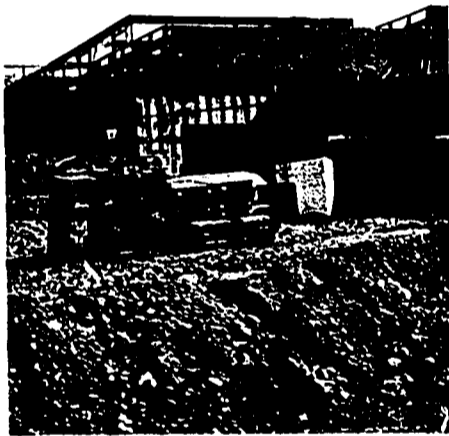
Projects funded by the Commission for the improvement of sanitation systems at Kingman, Arizona, and Leadville, Creede, and Fairplay, Colorado, illustrate situations where new sanitation facilities were needed to meet the demands from an expanding minerals industry. The North Emery Water project in Utah, provided support for the new coal-fired power plant at Huntington Canyon. Also, in Utah, improvements to State Highway 215 continued the support previously given by the Commission for an improved highway to the Brush-Beryllium plant, a major new mineral processing operation which has provided many new jobs.

Several airport projects have directly served the mining industry, such as, the improvements at Silver City and Grants-Milan airports in New Mexico, Grand Junction, Colorado, and Vernal, Utah.



..... Health

The Four Corners Region suffers all of the symptoms of most rural areas in the inadequacy of health services and facilities. Particularly among its many Indians and Spanish-American citizens in small isolated areas in the Region, the level of health care is extremely poor. Believing that it is impossible for substantial economic improvement to move forward in the Region without a parallel improvement in the physical and mental well-being of its citizens, the Commission has utilized its technical assistance and supplemental grant funds to make possible many accomplishments in this field. Support in this area has encouraged the orderly development of comprehensive health planning through designated State and sub-regional agencies.



Construction is underway on the Trinidad Hospital in Colorado. This 70-bed facility will serve patients from two states.

In the field of health, the Commission's participation ranged from interest in the \$3,352,000 Trinidad Area Hospital in Colorado, through a center for retarded children on the Navajo Reservation in Arizona, to a service area health needs study in Washington County, Utah.

Designed as the cornerstone of a medical complex that will eventually include a United States Public Health Service Hospital, the 79-bed Chinle Extended Care Facility on the Navajo Reservation in Arizona opened its doors shortly after the end of Fiscal Year 1971. A prior Commission grant aided in its construction. The facility is the first extended care unit on an Indian Reservation in the United States.

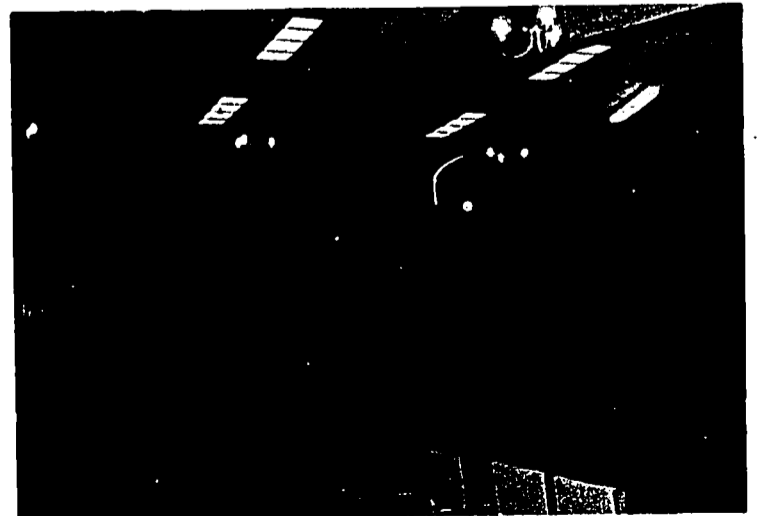
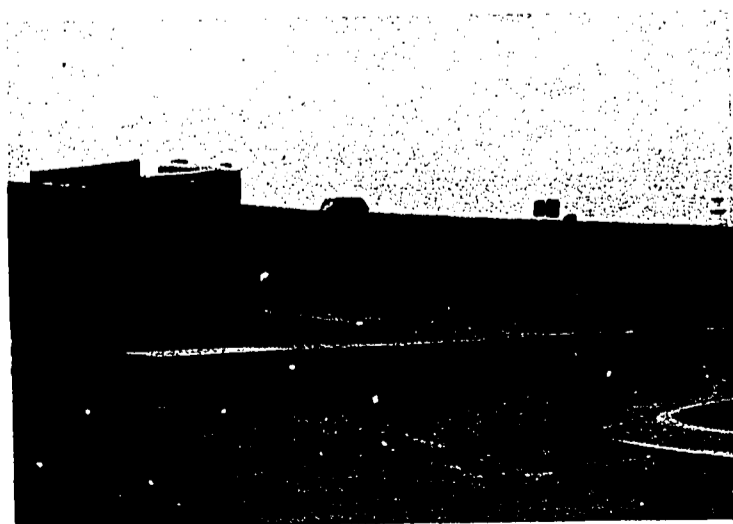
To further the goal of a comprehensive reservation medical care complex, the Commission made a grant of \$120,000

toward construction of the nearby Chinle Valley School for Children, a 24-bed residential facility for the rehabilitation of mentally retarded children up to the age of six. The Chinle Valley School is designed to provide complete medical and para-medical facilities.

Total cost for the children's facility is \$381,250.

To help offset rising construction costs and to allow the original design specifications to be met, the Commission made an additional grant in Fiscal Year 1971 of \$50,000 to the Trinidad Area Health Association toward completion of its 70-bed general hospital.

The new \$3,352,890 facility is replacing an 80-year-old health care center.



Located on the Navajo Indian Reservation in eastern Arizona, the Chinle Extended Care Facility offers convalescent and nursing home facilities. Believed to be the first facility of its type on an Indian reservation, it is planned as the cornerstone for a complete medical complex.



The Commission participated in a service area health needs study for fast-growing Washington County in southwestern Utah. The nearby planned recreational community of Bloomington (model) will throw severe stress on the facilities of St. George's Dixie Pioneer Memorial Hospital.

In addition to providing medical care for residents of Colorado's Trinidad and Las Animas counties, the facility, in conjunction with Trinidad State Junior College, will conduct training programs for nurses, technologists and other health care personnel.

Hospital funding included: Department of Health, Education and Welfare (Hill-Burton), \$1,508,800; Commission, \$190,140 (total); and Trinidad Area Health Association, Inc., \$1,653,950.

Another Colorado general hospital in La Junta, was aided in construction by a \$94,500 Commission grant. The \$3,060,595 80-bed facility replaces a 44-year-old structure which adjoins the new building and is being modified to serve as a long-term nursing care facility.

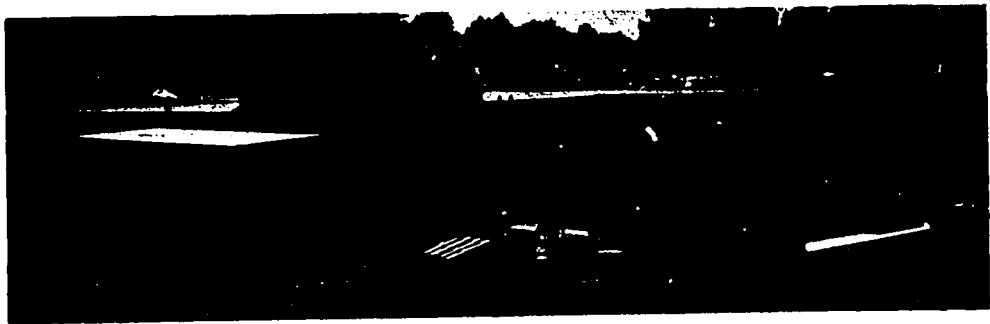
The La Junta Medical Center now serves Otero County residents along with people from the adjoining counties of Bend, Crowley and Las Animas.

This facility, in conjunction with Otero Junior College, will conduct training programs to help local persons qualify for jobs at the hospital. Sixty new jobs are expected to be generated at the new facility.

An additional grant was made this fiscal year by the Commission of \$50,000 to the Northern Colfax County Hospital board to help offset increased construction costs.

The \$1,650,000 plant, a 60 bed general hospital, will serve patients from all of New Mexico's Colfax County as well as residents of parts of nearby Harding, San Miguel and Taos Counties, along with persons from Colorado's Las Animas County.

Scheduled to open shortly after the close of fiscal year 1971, the 13-bed extended care addition to the Kane County Hospital will help upgrade hospital facilities and will serve the growing needs of retired persons in southern Utah and northern Arizona. The facility will also serve as a strong enticement for the location of badly needed industries in the sparsely populated



The Kane County Hospital in southwestern Utah has added this 16-patient extended care facility to meet that area's needs.



During a Salt Lake City meeting, Commission Alternates hear a medical care proposal for the Navajo 'Checkerboard' area.

FOUR CORNERS REGIONAL COMMISSION HEALTH PROJECTS FISCAL YEAR 1971

TECHNICAL ASSISTANCE

San Luis Valley Streptococcus Culture Service	\$ 9,156.00
Checkerboard Area Health Services	17,250.00
Washington County Health Needs	7,500.00

SUPPLEMENTAL GRANTS

Navajo Rehabilitation Center	120,000.00
La Junta Community Hospital	94,500.00
Trinidad Hospital II	50,000.00
Trinidad Mental Retardation Center	70,000.00
Northern Colfax County Hospital II	50,000.00
Kane County Hospital II	18,120.00
Gunnison Valley Hospital II	28,000.00



..... Transportation

Knowing that one of the serious handicaps for the Four Corners Region is its relative isolation and inadequate transportation network, the Four Corners Regional Commission has continued to support the orderly growth and expansion of the Region's highway and air transportation systems, compatible with environmental values. Planning work previously accomplished for high priority road improvements have been updated and some small sectors have been completed. Yet the bulk of highway needs remain unmet by present funding levels for highways through the federal, state, local or Commission budgets.

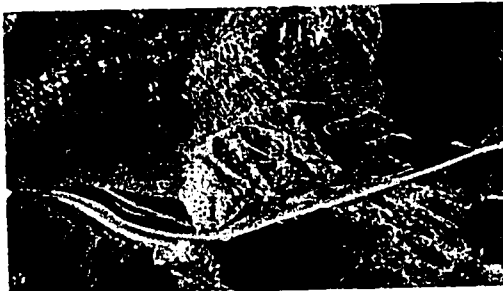
The recently completed air transportation study for the Region will carefully mesh with the facility planning in each State for improvements in air service in future years.

The Commission has participated in numerous transportation projects during the past fiscal year involving both highway and airport improvements. Surface transportation on the Region's roads and highways is by far the primary mode of transportation for both personnel and freight; every segment serves multi-purposes.

The Region's road system is inadequate. The high costs of road construction across the Region's predominately rugged terrain results in only the highest priorities being considered and only a few of them being funded.

Good air transportation is essential to the efficient movement of personnel, equipment, manufactured and processed products. Because of the distances between major communities and the under-

developed surface transportation systems, both highway and rail, air transportation plays a more important role in this Region than perhaps would be the case in any other part of the country. The Commission has been able to carefully place limited quantities of its funding in the improvement of airports which are rapidly becoming important stations on the Region's air transportation system.



The White River bridge (above) is aiding Arizona's White Mountain Apache Tribe's lumber industry, while the Hall's Crossing highway (side) opens a tourist corridor to the Glen Canyon Recreation Area on Utah's picturesque Lake Powell.



Airport improvements under construction at Walker Field, Grand Junction, Colorado.

FOUR CORNERS REGIONAL COMMISSION TRANSPORTATION PROJECTS FISCAL YEAR 1971

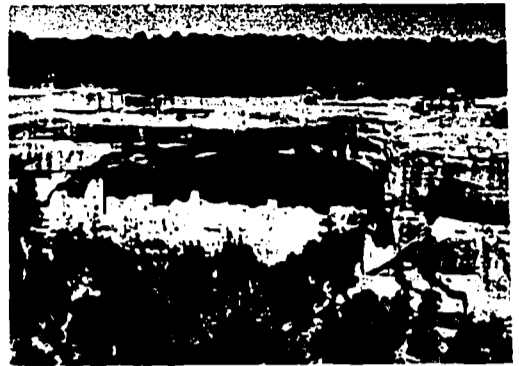
TECHNICAL ASSISTANCE

Air Transportation Study Design	\$ 5,700.00
Air Transportation Demand	38,000.00

SUPPLEMENTAL GRANTS

Whiteriver Bridge	100,000.00
Winslow Airport	61,370.00
Roosevelt-Miami Road	500,000.00
Grand Junction Airport	278,900.00
Mancos Road	105,500.00
Navajo Lake Airport III	670.00
Silver City-Grant County Airport	76,590.00
Grants-Milan Airport	32,550.00
Carrizozo Municipal Airport	35,780.00
Santa Rosa Airport	11,930.00
Gallup Airport	126,490.00
Conchas State Park Airport	8,880.00
Cedar City Airport	109,780.00
Brush-Beryllium Road II	119,000.00
Vernal Airport	110,080.00
Hall's Crossing Road II	101,590.00

Tourism and Recreation



Aware of the growing importance of the tourism-recreation industry to the economy of the Four Corners Region, the Commission has completed its action-planning work for project implementation of the recreational development opportunities showing the greatest potential. Recommendations of the prime contractor, Development Research Associates, urge the recognition of the tremendous recreational assets of the Region and project suggestions to make the Region a "destination center" for tourists. Funding from technical assistance and supplemental grant sources have made possible the Commission's participation in a number of projects which capitalize on the varied scenic and locational advantages realized in the Region for tourism-recreation.

The Four Corners Region, its 288,000 square miles encompassing more area than the State of Texas, contains an abundance of breathtaking scenic wonders and a large portion of the Nation's national parks and national monuments. It is a vast, yet mainly undeveloped, natural mecca for tourists.

Typical programs include:

—a study of the Interstate 70 Highway corridor through Utah's scenic and unique San Rafael Swell, a beautifully remote rugged area. The development of a master plan includes environmental studies, the creation of tourist "destination points" and the carefully designed and controlled development of tourist facilities.

—the selection and training of Indians from the Eight Northern Pueblos in New Mexico to provide a staff to conduct educational tours through the Pueblos. The program is designed to produce a sound and profitable business enterprise for the Pueblos.

—the enlargement and modernization of facilities at the Lisboa Springs Fish Hatchery in San Miguel County, New Mexico. The hatchery provides game fish for New Mexico streams and is one of the area's major tourist attractions.

—Fiscal Year 1971 saw the completion of a Commission-funded regional tourism information system program. The system is designed to provide a constant and interlocking source of information concerning the actual economic impact of the Region's tourism industry. The program is shaped to mesh perfectly with current operating systems within the relative four State agencies.



The ancient Indian Pueblo of Taos, a tourist favorite in the Region is one of several New Mexico Pueblos being assisted under a Commission project for tourism-business development.

FOUR CORNERS REGIONAL COMMISSION TOURISM-RECREATION PROJECTS FISCAL YEAR 1971

TECHNICAL ASSISTANCE

Regional Tourism Information System	\$	20,000.00
Eight Northern Pueblos Business Development		55,500.00
Eagle Nest Recreation		1,500.00
Moab Recreation Study		11,000.00
Tourism Master Plan I-70 Corridor		19,000.00

SUPPLEMENTAL GRANTS

Red River Fish Hatchery	19,050.00
Lisboa Springs Fish Hatchery	7,090.00



..... Planning

Fiscal year 1971 has seen the production of the revised Comprehensive Regional Development Plan following individual sector studies in Manpower, Agriculture and Forestry, Early Employment Opportunities, Vocational-Technical Education, Minerals and Fuels, Tourism, Recreation and Retirement, Economic Structure and Industrial Feasibility, and Transportation, both ground and air. These reports have generated an analysis of the present situation regarding each sector of the economy and its contribution to the present employment and income levels. They have further provided substantial current data for planning and project decisions and recommendations for future courses of action. This continuing program is designed to use and integrate the planning and development activities from community and county levels to multi-county and state levels, frequently supported with Commission funds. These multi-level programs have resulted in an effective and coordinated regional plan.

REGIONAL, SUBREGIONAL AND STATE PLANNING

REGIONAL:

Advisory committees, combining the talents of local, state and federal government experts, together with Indian Tribal representation and private sector representation, have provided much assistance in the initial formulation of the regional action planning program, selection of contractors and the monitoring of the work product.

The Commission contracted with the Center for Business and Economic Research, Brigham Young University, to produce the final Comprehensive Regional Development Plan. This plan

analyzes the economy of the Region and its problems and professionally presents, through the use of a computerized model, an analysis of the investment alternatives for closing the job gap in the Region.

It is realized that the planning process is a continuing one and it will be necessary to revise the plan and update it from time to time. The plan does not purport to give total direction to every needed economic development activity in the Region but it does cite the major problems with suggested programs to overcome them.



Data concerning the Four Corners Region is gathered here in the Arizona State Planning Office.



Run through a computer at the University of Utah, the data prints out in regional map form.



Dr. Merrill Bateman of Brigham Young University's Center for Business and Economic Research briefs Four Corners Regional Commission staff members on the progress of the Comprehensive Regional Development Plan. The Plan was completed this year.

SUBREGIONAL:

So far as possible, planning efforts by the Commission have been designed for application in subregional areas. These have coincided with designated state planning districts in each State so that information and data developed by the states can be utilized at the subregional level. The Commission has supported subregional planning and development through joint venture contracts with the individual State Planning Offices. Some specialized, micro area planning projects have received technical assistance funding, such as, the Community Facilities Analysis and Capital Investment Program for Blanding, Utah, and the San Miguel Basin study in Colorado.

The Commission continued to work very closely with various federal, state and local government groups, as well as private groups which share the responsibility for economic development in the Region. Some of these include Economic Development Districts, Community Action Programs, Resource and Conservation Development Districts and many others.

STATE PLANNING:

As part of the continuing program of the Commission for state planning assistance, contracts were drawn with each State Planning Office in the amount of \$19,500 for their work in an outline of planning activities which include:

-Developing criteria and procedures for evaluation and selection of good and productive projects.

-Refining of data sources and programming these sources for quick recall at county, subregional and state levels.

-Assisting the Commission's contractors on design and assembly of the Comprehensive Regional Development Plan.

-Providing assistance and technical advice to the Commission's contractor for development of the regional Composite Mapping System (CMS).

**FOUR CORNERS REGIONAL COMMISSION
REGIONAL, SUB-REGIONAL AND STATE PLANNING PROJECTS
FISCAL YEAR 1971**

TECHNICAL ASSISTANCE

Human Resources Synthesis	\$ 13,690.00
Computer Services for Composite Mapping Program	48,212.00
Regional Comprehensive Plan	74,200.00
Commission Task Forces & Committees	54,806.47
Arizona State Development Planning	19,500.00
Arizona Technical & Administrative Support	22,500.00
San Miguel Basin Analysis	25,700.00
Colorado State Development	19,500.00
Colorado Technical & Administrative Support	22,500.00
New Mexico State Development Planning	19,500.00
New Mexico Technical & Administrative Support	22,500.00
Forecasting & Evaluating Alternative State Futures	100,000.00
Utah State Development Planning	19,500.00
Utah Technical & Administrative Support	22,500.00

Financial Report for Fiscal Year 1971

SUPPLEMENTAL GRANT PROGRAM FY 1971

FY 1971 Funds	\$ 5,100,000.00
Transfer - New England Regional Commission	51,500.00
Total Available	5,151,500.00
Obligations	
Balance	- 0 -

TECHNICAL ASSISTANCE FUNDS

FY 1970 Carry-over	\$ 230,181.24
FY 1971 Funds	1,199,500.00
Transfer from OREC *	50,000.00
Total Available	1,479,681.24
Project Obligations	(1,436,150.47)
FY 1971 Carry-over	\$ 43,530.77

COMMISSION ADMINISTRATIVE EXPENSES FY 1971

Personnel Costs	\$ 264,757.62
Travel	47,223.49
Other Services	70,774.16
Total	\$ 382,755.27

FEDERAL COCHAIRMAN'S OFFICE ADMINISTRATIVE EXPENSE FY 1971

Personnel Costs	\$ 158,631.28
Travel	26,479.58
Other Services	32,683.05
Total	\$ 217,793.91

Supplemental Grant Program for Fiscal Year 1971

ARIZONA	Total Cost	Basic Grant	FCRC Grant	State/Local Funds
Whiteriver Bridge	\$ 451,000	\$ 260,800	\$ 100,000	\$ 90,200
Winslow Airport	319,000	193,506	61,370	64,125
Kingman Sanitation	1,016,100	304,830	153,300	557,970
Navajo Rehabilitation Center	350,000	100,000	120,000	130,000
Lyman Irrigation	178,200	71,280	71,280	35,640
Midway Flood Control	108,000	40,000	46,340	21,660
Roosevelt-Miami Road	2,000,000	1,000,000	500,000	500,000
	\$4,422,300	\$1,970,415	\$1,052,290	\$1,399,595
COLORADO				
Commonwealth Irrigation	\$ 50,000	\$ 25,000	\$ 15,000	\$ 10,000
La Jara Water	314,450	65,700	25,000	223,750
Central Grand Valley Sanitation Dist.	1,923,470	614,300	195,000	1,114,170
Pine River Water	93,335	46,668	28,000	18,667
Leadville Sanitation	354,200	116,880	15,000	222,320
La Junta Community Hospital	3,060,595	1,377,268	94,500	1,588,827
Mancos Sewage	59,600	17,880	18,160	23,560
Terrace Reservoir	67,000	10,000	12,000	45,000
Creede Sewage Collection	446,800	75,000	62,000	309,800
Creede Sewage Treatment	76,000	22,800	38,000	15,200
San Juan Area Vo-Tech School	647,774	300,000	180,000	167,774
Grand Junction Airport	2,507,340	1,321,368	278,900	907,072
Northeast Durango Water	147,000	73,500	44,100	29,400
La Junta Sanitation	444,000	222,000	133,200	88,800
Fairplay Sanitation	226,000	71,000	40,000	115,000
Trinidad Hospital (overrun)	852,890	383,800	50,000	419,090
Monument Lake	197,000	97,710	36,000	63,290
Mancos Road	463,532	265,326	105,500	92,706
Prairie Ditch	15,300	7,650	4,590	3,060
Norwood Irrigation	201,000	100,500	60,300	40,200
Trinidad Mental Retard. Center	246,400	82,535	70,000	93,865
Delta Sanitation	56,400	16,920	28,200	11,280
Buena Vista Library	60,080	20,000	20,000	20,080
	\$12,510,166	\$5,333,805	\$1,553,450	\$5,622,911
NEW MEXICO				
Farmers Mutual Ditch	\$ 63,700	\$ 20,000	\$ 20,000	\$ 23,700
Espanola Sanitation	387,450	116,230	86,270	184,950
Navajo Lake Airport III (overrun)	2,754	1,624	670	460
Cobre Voc. Ed. Facility	30,146	5,146	15,000	10,000
Silver City Voc. Ed. Facility	44,270	11,270	15,000	18,000
Pecos Sewage Collection	189,810	105,000	39,810	45,000
Pecos Sewage Treatment	99,635	29,880	26,560	43,195
Mountainair Water and Sewer (overrun)	32,680	6,040	26,640	-0-
Northern Colfax County Hospital	364,886	274,075	50,000	40,811
Silver City-Grant County Airport	321,020	180,221	76,590	64,209
Springer Irrigation	71,710	14,343	35,850	21,517
Cubero Irrigation	41,000	8,200	20,500	12,300
Springer Water (overrun)	56,603	-0-	50,000	6,603
Grants-Milan Airport	136,425	76,590	32,550	27,285
Taos Sanitation	440,000	220,000	75,000	145,000
Hogback Irrigation	28,000	14,000	8,400	5,600
Carrizozo Municipal Airport	149,987	84,202	35,780	30,005
Santa Rosa Airport	50,026	28,090	11,930	10,006
Santa Fe Voc. Ed. School (overrun)	200,000	-0-	200,000	-0-
Red River Fish Hatchery	63,500	31,750	19,050	12,700
Lisboa Springs Fish Hatchery	23,634	11,817	7,090	4,727
Santa Rosa Sanitation	369,994	184,997	46,000	138,997
Bayard Sanitation	75,925	22,545	53,380	-0-
Los Lunas Sanitation (overrun)	57,867	19,100	27,230	11,537
Tres Piedras Water	35,000	17,500	10,500	7,000
Gallup Airport	553,000	310,510	126,490	116,000
Conchas State Park Airport	37,243	20,912	8,880	7,451
NMex Girls' Welfare Voc. Ed.	12,440	5,748	4,200	2,492
La Possession Irrigation	19,888	3,978	9,940	5,970
Ponderosa Irrigation	40,622	8,124	20,310	12,188
Pie Town Water	10,000	4,000	4,000	2,000
Rio Costilla Irrigation	59,000	11,800	29,500	17,700
Nambe Irrigation	78,000	15,600	39,000	23,400
Bernalillo Park Development	216,508	108,254	64,950	43,304
	\$23,362,723	\$1,971,546	\$1,297,070	\$1,094,107

FY 1971 FCRC SUPPLEMENTAL GRANT PROGRAM (cont'd)

UTAH	Total Cost	Basic Grant	FCRC Grant	State/Local Funds
Springdale Water	\$ 118,680	\$ 44,000	\$ 33,680	\$ 41,000
Clawson Water	54,000	5,500	25,500	23,000
Summit Creek Irrigation	120,000	30,000	60,000	30,000
Moab Voc. Ed. Facility II (overrun)	157,000	30,000	31,000	96,000
Oakley Sewage Collection	143,000	85,800	28,600	28,600
Oakley Sewage Treatment	90,799	27,230	18,160	45,409
Kane County Hospital (overrun)	55,428	27,714	18,120	9,594
Gunnison Valley Hospital (overrun)	38,000	5,000	28,000	5,000
Jensen Water	345,000	92,600	75,900	176,500
Teasdale Irrigation	235,000	20,000	53,750	161,250
Salem Water	50,800	25,400	15,000	10,400
Cedar City Airport	567,375	344,113	109,780	113,482
Nephi Water Project	292,000	175,200	58,400	58,400
Tropic Irrigation	14,000	4,200	7,000	2,800
Bluff Pipeline	10,000	3,000	5,000	2,000
Neola Water	221,400	50,000	90,000	81,400
Ferron Irrigation	45,000	22,500	12,330	10,170
Brush-Beryllium Road (overrun)	119,000	-0-	119,000	-0-
Vernal Airport	568,920	345,050	110,080	113,790
Cottonwood Irrigation	14,500	7,250	4,200	3,050
Hall's Crossing Road	101,590	-0-	101,590	-0-
North Fields Irrigation	20,000	6,000	6,000	8,000
Manti Irrigation	30,000	9,000	9,000	12,000
Wales Irrigation	18,000	5,400	5,400	7,200
Lost Creek Irrigation	16,000	4,800	4,800	6,400
Moroni Irrigation	52,000	15,600	15,600	20,800
Beaver Irrigation	16,000	4,800	4,800	6,400
Deseret Irrigation	40,000	12,000	12,000	16,000
North Emery Water	1,060,000	530,000	186,000	344,000
	\$4,613,492	\$1,932,157	\$1,248,690	\$1,432,645
GRAND TOTAL	\$25,908,681	\$11,207,923	\$5,151,500	\$9,549,258

Technical Assistance Program for Fiscal Year 1971

Title of Project	FCRC Cost	Title of Project	FCRC Cost
REGIONAL			
Human Resources Synthesis	13,690.00	CAMBIO - Minority Business Enterprise	49,400.00
Portable Adobe Making Machine	10,200.00	Eight Northern Pueblos Business Development	55,500.00
Air Transportation Study Design	5,700.00	Checkerboard Area Health Services	17,250.00
Computer Services for Composite Mapping Program	48,212.00	Cluster Approach to Pre-Vocational Education	28,000.00
Regional Comprehensive Plan	74,200.00	Health Occupations' Teachers Preparation	4,840.00
Navajo Farm Training and Crop Production	50,000.00	All Pueblo Cultural Center	3,300.00
Regional Tourism Information System	20,000.00	Aztec Watershed	22,275.00
Upgrading Workshops for Trade and Industrial Education Teachers	12,775.00	Eagle Nest Recreation	1,500.00
Air Transportation Demand Study, 1971-1990	38,000.00	Zuni Watershed Project Plan	12,200.00
Commission Task Forces and Committees	54,806.47	Apple Orchard Demonstration	15,900.00
		New Mexico State Development Planning	19,500.00
		New Mexico Technical & Administrative Support	22,500.00
ARIZONA		UTAH	
Arizona Indian Centers, Inc. - Phase I	35,000.00	Mobile Office Occupations Classroom	24,430.00
Occupational Demand in Central Arizona	18,356.00	Mobile Power Sewing Machine Operators Classroom - Shop	16,400.00
Skill Centers Planning - Phase II	29,000.00	Implementation Feedlot Meat-Packing	15,000.00
Ponderosa Pine Stump III	10,000.00	Blanding Community Facilities Analysis and Capital Investment Program	3,000.00
Vocational Education Management	8,340.00	Provo Canyon Sewer Line	9,000.00
Continuation and Expansion of Mobile Library Services - II	50,000.00	Blue Mountain Environmental Science School	8,000.00
Arizona State Development Planning	19,500.00	Feasibility Study for Dam Site on Muddy Creek	16,700.00
Arizona Technical & Administrative Support	22,500.00	Moab Flood Control	7,000.00
		Moab Recreation Study	11,000.00
COLORADO		Piute County Vocational Education Planning	23,000.00
San Miguel Basin Analysis	25,700.00	Forecasting and Evaluating Alternative State Futures	* 100,000.00
San Luis Valley Streptococcus Culture Service	9,156.00	Washington County Health Needs	7,500.00
Feasibility Study and Report on Valley Pipeline	20,000.00	Industrial Site & Building Survey Analysis	12,800.00
Digital Computer Salinity	30,000.00	Goshute Indian Business Management	24,000.00
Lamar Area Mobile Welding and Electric Laboratories	55,100.00	Tourism Master Plan I-70 Corridor	19,000.00
Pueblo Area Welding Laboratory	32,600.00	Blanding Vocational Education Planning	22,900.00
Mobile Office Laboratory	33,350.00	Utah State Development Planning	19,500.00
Colorado State Development Planning	19,500.00	Utah Technical & Administrative Support	22,500.00
Colorado Technical & Administrative Support	22,500.00		
		GRAND TOTAL	\$1,436,150.47
NEW MEXICO			
Mobile Office Laboratory	33,470.00		
Correspondence Program for Improvement & Apprenticeship Training - II	20,600.00		

* 50% funding by OREC

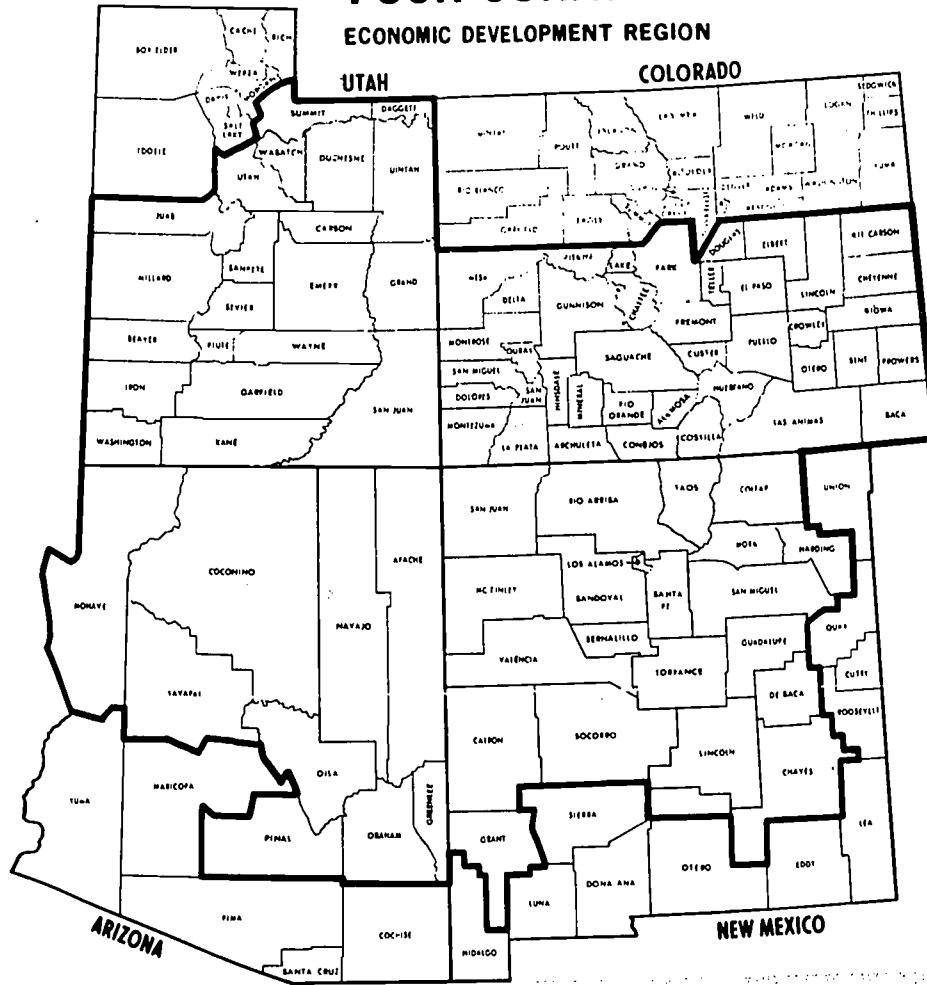
FOUR CORNERS REGIONAL COMMISSION
 Suite 238, Petroleum Plaza Building
 3535 East 30th Street
 Farmington, New Mexico
 87401

BULK RATE
 U. S. POSTAGE PAID
 Farmington, N. M.
 Permit No. 5

MRS. BETTY ROSE D. RICS
 SUPERVISOR OF ACQUISITIONS
 NEW MEXICO STATE UNIVERSITY
 BOX 3AP
 LAS CRUCES, NEW MEXICO
 88001

FOUR CORNERS

ECONOMIC DEVELOPMENT REGION



For additional information contact:

Four Corners Regional Commission
 Suite 238, Petroleum Plaza Building
 3535 East 30th Street
 Farmington, New Mexico 87401

or

Four Corners Regional Commission
 Office of the Federal Cochairman
 Department of Commerce Building, Room 1898
 Washington, D. C. 20235

or

Four Corners Regional Commission
 Federal Field Office
 Room 2429, Federal Building
 517 Gold Avenue, S.W.
 Albuquerque, New Mexico 87101