

DOCUMENT RESUME

ED 058 263

TM 000 973

AUTHOR Ellis, E. N.
TITLE The Withdrawal of Students from Vancouver Secondary Schools During the 1969-1970 School Year.
INSTITUTION Vancouver Board of School Trustees (British Columbia).
REPORT NO RR-71-01
PUB DATE Dec 70
NOTE 25p.
EDRS PRICE MF-\$0.65 HC-\$3.29
DESCRIPTORS Academic Achievement; *Data Analysis; *Dropouts; Educational Interest; Financial Problems; Instructional Programs; Intelligence Level; *School Holding Power; *Secondary School Students; Sex Differences; *Withdrawal

ABSTRACT

An analysis of data is provided relating to the withdrawal of secondary school students during the 1969-70 school years. These findings are compared with those of 1961-62. Data concerns age, sex, program enrollment, intelligence quotient, achievement ratings, financial problems, lack of interest, and other lesser reasons for withdrawing. (MS)

ED058263

RESEARCH REPORT

The Withdrawal of Students from
Vancouver Secondary Schools During
the 1969-1970 School Year

December, 1970

E. N. Ellis

Research Report 71-01

U.S. DEPARTMENT OF HEALTH,
EDUCATION & WELFARE
OFFICE OF EDUCATION
THIS DOCUMENT HAS BEEN REPRO-
DUCED EXACTLY AS RECEIVED FROM
THE PERSON OR ORGANIZATION ORIG-
INATING IT. POINTS OF VIEW OR OPIN-
IONS STATED DO NOT NECESSARILY
REPRESENT OFFICIAL OFFICE OF EDU-
CATION POSITION OR POLICY.

U.S. DEPARTMENT OF HEALTH, EDUCATION & WELFARE
OFFICE OF EDUCATION
RESEARCH REPORT 71-01
Vancouver, B.C.

THE WITHDRAWAL OF STUDENTS
FROM
VANCOUVER SECONDARY SCHOOLS
DURING THE
1969-1970 SCHOOL YEAR

December, 1970.

E. N. Ellis

Assistant Head, Planning and Evaluation

Research Report 71-01

Department of Planning and Evaluation
Board of School Trustees,
1595 West 10th Avenue,
Vancouver 9, B. C.

ACKNOWLEDGMENTS

The writer gratefully acknowledges the contributions of:

Mr. C. C. Cooke, Coordinator of Counselling, in gathering the data,

and of

Mr. L. C. Benzley, Supervisor of Data Processing, in providing
computer-analyses

TABLE OF CONTENTS

	<u>Page</u>
Acknowledgments	i
List of Tables	iii, iv
List of Figures	v
Abstract	1
Findings	1
Discussion	2
Report	3
Appendix	17

LIST OF TABLES

Table		Page
I	Withdrawals from Vancouver Secondary Schools during the 1969-70 School Year	3
II	Withdrawals from Grades 7 to 10, Inclusive of Vancouver Secondary Schools, by Programme, by Sex, and by School, for the 1969-70 School Year	4
III	Withdrawals from Grades 11 and 12 of Vancouver Secondary Schools, by Programme, by Sex and by School, for the 1969-70 School Year	6
IV	Withdrawals for Financial Reasons from Vancouver Secondary Schools during the 1969-70 School Year Showing the Extent to which Finances were Responsible for Withdrawals	7
V	Intelligence Distribution of Students who Withdrew from Vancouver Secondary Schools during the 1969-70 School Year	8
VI	Scholarship Rating of Students who Withdrew from Vancouver Secondary Schools during the 1969-70 School Year	9
VII	Reason for Leaving of Students who Withdrew from Vancouver Secondary Schools during the 1969-70 School Year	10
VIII	Placements of Students who Withdrew from Vancouver Secondary Schools during the 1969-70 School Year	11
IX	Grade Placements of Students who for Financial Reasons, Withdrew from Vancouver Secondary Schools during the 1969-70 School Year	12

Table		Page
X	Grade Placements of Students who Withdrew from Vancouver Secondary Schools during the 1969-70 School Year	13
XI	Ages of Students who Withdrew from Vancouver Secondary Schools during the 1969-70 School Year	16

LIST OF FIGURES

Figure		Page
1	Grade Placement of Students who Withdrew from Vancouver Secondary Schools during the 1969-70 School Year	14
2	Ages of Students who Withdrew from Vancouver Secondary Schools during the 1969-70 School Year	15

The Withdrawal of Students from Vancouver Secondary Schools
During the 1969-70 School Year

ABSTRACT

This study provides an analysis of data relating to the withdrawal of students from Vancouver secondary schools during the 1969-70 school year and a comparison of the findings with those of an earlier "Pupil Withdrawal Survey" for the 1961-62 school year.

Information about each student was provided on cards (see Appendix) and the data were compiled at the Computing Centre, Vancouver City College.

Findings:

- (1) The incidence of student withdrawals was slightly lower (4.6%) in 1969-70 than it was in 1961-62 (5.0%).
- (2) The range among schools of frequency of withdrawals in 1969-70 was smaller (1.3 to 8.0%) than it was in 1961-62 (0.6 to 28.8%).
- (3) A larger proportion of the withdrawals was on the Academic-Technical Program than formerly.

The distribution of drop-outs by program was:

Academic-Technical Program	39.1% (17.2% in the earlier survey)
Non-Academic Programs	57.4% (74.1% in the earlier survey)
Occupational Program	3.5% (6.4% in the earlier survey)

Related to enrolments, the incidence of withdrawal was:

Academic-Technical Program	2.7% (formerly 2%)
Non-Academic Programs	7.9% (formerly 16%)
Occupational Program	8.7% (formerly 14%)
Special Classes	6.5% (formerly 10%)
Total	4.6% (formerly 5%)

- (4) Financial need appeared to be a factor in a smaller proportion of withdrawals than formerly.
- (5) The median I. Q. (107.0) was somewhat higher than that (100.4) in the 1961-62 survey. (City median in Grade IX: 107.5).
- (6) Poor achievement appeared to be an increasingly significant characteristic of students who withdrew from school; 57.9% (compared with 40.9% in the earlier survey) were rated "D" or "E" in their school work.
- (7) The most frequently cited reason for leaving continued to be "lack of interest".
- (8) Approximately one-half of the withdrawals (51.5% in 1969-70; 49.2% in 1961-62) were "seeking work" or had a "job opportunity".
- (9) More students left to study elsewhere (291, 22.6%) than in 1961-62 (86, 6.9%).
- (10) Of those students who left school for financial reasons, a larger proportion than formerly was on the Academic-Technical Program.
- (11) The largest numbers of withdrawals continued to occur in Grades 10, 11 and 12 but there was an increase in the proportion withdrawing from Grade 8.
- (12) More than half of the students who withdrew were 17 or 18 years of age. (50.2% in 1969-70; 58.5% in 1961-62).

- (13) The median age of students who withdrew was 17 years, 2 months.
- (14) A slightly larger proportion (34.8%) was under 17 years of age than in the previous survey (29%).

Discussion:

The problem of school withdrawals should be kept in perspective. While "withdrawing" is a serious matter for those who choose to leave school, the reader should recognize that it involves relatively few students. Less than 5% of the secondary school population withdrew from school during the 1969-70 school year.

Retention rates in Vancouver Secondary Schools have always been well above average. Currently, the enrolment in grade twelve is more than 96% of the corresponding enrolment in grade eight four years ago. (The Education Division, Dominion Bureau of Statistics reports that during the 1969-70 school year 13,262 students "dropped out" of secondary schools in British Columbia and this figure represents 7.2% of the secondary school enrolment.)

Furthermore, withdrawals should not be regarded as essentially negative. Approximately one-quarter of the withdrawing students left for a job opportunity and almost as many more went to study elsewhere. Unfortunately, the data do not indicate how many of the withdrawing students would attend night school or subsequently re-enrol in a secondary school or college. Undoubtedly, for some students there comes a time when the decision to leave school is a constructive one.

**Report on the Withdrawal of Students from Vancouver Secondary Schools
During the 1969-70 School Year**

The number of students who withdrew from Vancouver Secondary Schools during the 1969-70 school year was 1,291 which represented 4.6% of the total enrolment.

(The corresponding figures for the 1961-62 school year were 1,267 and 5.0%).

The incidence of student withdrawals ranged from 1.3% to 8.0% of the school's enrolment.

The number of withdrawals from each school is listed in Table I together with the corresponding percentage of enrolment.

**TABLE I: WITHDRAWALS FROM VANCOUVER SECONDARY SCHOOLS DURING
THE 1969-70 SCHOOL YEAR**

Secondary Schools	Withdrawals	% of School Enrolment
1	85	6.3%
2	35	2.0
3	55	3.0
4	72	3.9
5	93	5.3
6	105	4.7
7	148	7.7
8	35	7.1
9	134	8.0
10	15	1.7
11	53	4.7
12	40	3.7
13	143	6.8
14	71	3.4
15	81	4.2
16	25	1.4
17	3	1.3
18	88	5.1
Totals	1,291*	4.6%

* Totals in other tables of this report may not agree because complete information was not provided for all students.

The withdrawals from Grades 7-10, inclusive, are listed in Table II, by programme, by sex, and by school.

TABLE II: WITHDRAWALS FROM GRADES 7 TO 10, INCLUSIVE, OF VANCOUVER SECONDARY SCHOOLS, BY PROGRAMME, BY SEX, AND BY SCHOOL, FOR THE 1969-70 SCHOOL YEAR

Secondary Schools	Academic-Technical			Non-Academic			Occupational Programme			All Programmes		
	Boys	Girls	Total	Boys	Girls	Total	Boys	Girls	Total	Boys	Girls	Total
1	10	7	17	18	9	27	-	-	-	28	16	44
2	3	8	11	2	-	2	-	-	-	5	8	13
3	3	6	9	14	3	17	1	-	1	18	9	27
4	3	8	11	10	17	27	3	-	3	16	25	41
5	6	6	12	21	16	37	-	1	1	27	23	50
6	13	19	32	26	6	32	-	-	-	39	25	64
7	7	12	19	15	17	32	8	7	15	30	36	66
8	1	3	4	9	5	14	-	-	-	10	8	18
9	14	15	29	21	17	38	4	2	6	39	34	73
10	-	1	1	4	1	5	-	-	-	4	2	6
11	9	7	16	4	5	9	-	-	-	13	12	25
12	6	2	8	6	-	6	-	-	-	12	2	14
13	16	4	20	34	30	64	7	-	7	57	34	91
14	6	5	11	15	11	26	1	4	5	22	20	42
15	2	5	7	14	5	19	1	-	1	17	10	27
16	5	2	7	2	2	4	-	-	-	7	4	11
17	-	-	-	-	1	1	-	-	-	-	1	1
18	14	10	24	20	7	27	1	-	1	35	17	52
Totals	118	120	238	235	152	387	26	14	40	379	286	665
% (by sex)	50%	50%		61%	39%		65%	35%		57%	43%	100%
% of w/drawals (by prog.)	18%	18%	36%	35%	23%	58%	4%	2%	6%	57%	43%	100%

The distribution of withdrawals from Grades 7 to 10, inclusive, was
by programmes:

Non-Academic Programmes	58%	Boys	57%
Academic-Technical Programme	36%	Girls	43%
Occupational Programme	6%		

It is noteworthy that while for the Academic-Technical programme a few more girls than boys withdrew from school, there were on other programmes many more boys than girls who withdrew from school. The boy/girl ratios among withdrawals from different programmes were:

Academic-Technical Programme	0.98
Non-academic Programmes	1.55
Occupational Programme	1.86

The withdrawals from Grades 11 and 12 are listed in Table III, by programme, by sex, and by school.

The distribution of withdrawals from Grades 11 and 12 by programmes was:

Academic	236	(43%)
Commercial	139	(25%)
Industrial	89	(16%)
Non-academic	32	(6%)
Visual and Performing Arts	23	(4%)
Community Services	19	(4%)
Vocational	6	(1%)
Occupational	3	(1%)

A somewhat greater number of boys than girls withdrew from Grades 11 and 12, and the proportions varied markedly among the programmes.

If the data from Tables II and III were combined, the distribution would be
by programmes:

Academic-Technical Programme	39.1%	Boys	54.7%
Non-Academic Programmes	57.4%	Girls	45.3%
Occupational Programme	3.5%		

Withdrawals related to enrolments on various programmes as follows:

<u>Programme</u>	<u>Enrol- ment</u>	<u>With- drawals</u>	<u>1969-70 Incidence</u>	<u>1961-62 Incidence</u>
Academic-Technical Grades 8-12	17,673*	474	2.7%	2%
Non-Academic Grades 8-12	8,852*	695	7.9%	16%
Academic-Technical Gr. 11 and 12	6,668	236	3.5%	
Non-Academic (combined) Gr. 11 & 12	3,340	308	9.2%	
- Commercial Programme	1,744	139	8.0%	
- Industrial Programme	992	89	9.0%	
- Community Services Programme	192	19	9.9%	
- Visual and Performing Arts	237	23	9.7%	
Occupational Programme	497	43	8.7%	14%
Special Classes	323	21	6.5%	10%

* Estimated

TABLE III: WITHDRAWALS FROM GRADES 11 AND 12 OF VANCOUVER SECONDARY SCHOOLS, BY PROGRAMME, BY SEX AND BY SCHOOL, FOR THE 1969-70 SCHOOL YEAR

Secondary Schools	Academic			Non-Academic			Industrial			Commercial			Vocational			Community Services			Visual Performing Arts			Occupational			All Programmes					
	B	G	T	B	G	T	B	G	T	B	G	T	B	G	T	B	G	T	B	G	T	B	G	T	B	G	T	Boys	Girls	Totals
1	9	3	12	-	4	4	7	1	3	4	7	1	2	1	2	3	5	-	2	2	-	-	-	22	16	38				
2	5	7	12	-	1	1	5	1	5	5	5	-	-	-	-	-	-	-	-	-	-	-	-	6	12	18				
3	14	4	18	-	1	1	2	4	2	2	2	-	-	-	-	-	-	-	-	-	-	-	-	18	7	25				
4	8	1	9	-	-	-	11	-	2	9	11	-	-	-	-	2	2	-	1	2	3	-	-	16	14	30				
5	11	6	17	6	1	7	8	-	-	8	8	-	-	-	2	2	-	-	-	-	-	-	23	17	40					
6	5	6	11	5	-	5	13	-	2	11	13	-	-	-	1	1	-	-	4	5	-	-	17	22	39					
7	15	15	30	3	2	5	17	2	2	15	17	2	2	-	-	-	-	-	-	-	-	-	40	34	74					
8	5	4	9	-	-	-	5	1	1	4	5	1	1	2	-	-	-	-	-	-	-	-	8	9	17					
9	18	8	26	-	1	1	13	-	5	8	13	-	-	-	-	-	-	3	4	7	-	-	33	21	54					
10	4	-	4	-	-	-	-	2	-	-	-	1	-	-	-	-	-	-	-	-	-	-	7	-	7					
11	16	12	28	1	1	2	3	3	-	1	1	-	-	-	-	-	-	-	-	-	-	-	20	14	34					
12	4	10	14	1	-	1	5	-	-	5	5	-	-	-	-	-	-	-	-	-	-	-	6	15	21					
13	4	1	5	-	1	1	10	-	1	9	10	-	-	-	2	2	-	1	1	2	3	3	17	17	34					
14	3	4	7	2	-	2	11	-	4	7	11	-	-	-	1	1	-	-	-	-	-	-	11	12	23					
15	10	7	17	1	-	1	16	-	1	15	16	-	-	-	3	3	3	1	1	2	-	-	22	26	48					
16	2	5	7	-	-	-	3	2	-	3	3	-	-	-	1	1	-	-	-	1	-	-	5	9	14					
17	1	-	1	-	1	1	-	-	-	-	-	-	-	-	-	-	-	-	-	-	-	-	1	1	2					
18	6	3	9	1	-	1	12	-	1	11	12	-	-	-	2	2	-	-	1	1	-	-	12	17	29					
Totals	140	96	236	20	12	32	139	3	3	6	19	8	15	23	2	17	19	8	15	23	-	3	3	284	263	547				
% by Sex	59	41%		62	38%			50	50%		89%	35	65%		11	89%		35	65%		0	100%								
% of withdrawals					6%				1%		4%		4%			4%			4%			< 1%			52%	48%				
% by sex and programme	26	17%		4	2%			16	0%	4	21%	16	0%	16%	0%	4%	16%	16	0%	16%	0	< 1%								



The extent to which financial need was responsible for withdrawals is indicated in Table IV.

TABLE IV: WITHDRAWALS FOR FINANCIAL REASONS FROM VANCOUVER SECONDARY SCHOOLS DURING THE 1969-70 SCHOOL YEAR SHOWING THE EXTENT TO WHICH FINANCES WERE RESPONSIBLE FOR WITHDRAWALS.

Secondary Schools	Mainly Responsible	Partly Responsible	Not Responsible
1	13	2	70
2	-	1	34
3	2	4	49
4	6	7	58
5	7	6	80
6	5	5	95
7	27	19	92
8	4	-	31
9	3	6	124
10	-	-	15
11	2	3	57
12	4	-	35
13	14	17	112
14	6	3	62
15	22	14	44
16	3	1	19
17	-	-	3
18	2	6	79
Totals	120	94	1,059
% of Withdrawals	9.4%	7.4%	83.2%

Almost one-tenth of the students who withdrew, left school "mainly" for financial reasons, and almost as many more indicated that financial need contributed to the reason for leaving. A comparison with the earlier survey reveals that financial need is now a factor in a smaller proportion of the withdrawals:

	1969-70 School Year	1961-62 School Year
Finances were <u>mainly</u> responsible for withdrawal	9.4%	7.0%
Finances were <u>partly</u> responsible for withdrawal	7.4%	24.6%
Finances were <u>not</u> responsible for withdrawal	83.2%	68.4%

Table V summarizes the distribution of mental ability as measured by the Otis test in Grade 9 among students who withdrew from Vancouver Secondary Schools. The distribution is generally "normal", though somewhat leptokurtic with a marked clustering in the C categories. The median I. Q. for the group is 107 (more than 5 points higher than in the 1961-62 survey).

TABLE V: INTELLIGENCE DISTRIBUTION OF STUDENTS WHO WITHDREW FROM VANCOUVER SECONDARY SCHOOLS DURING THE 1969-70 SCHOOL YEAR

Secondary Schools	Letter Grade*							Not Known	Total
	A	B	C+	C	C-	D	E		
1	-	4	8	21	19	15	1	14	82
2	2	3	7	6	4	4	-	-	26
3	1	6	9	16	7	3	-	6	48
4	-	4	13	20	14	10	2	2	65
5	-	5	10	31	13	8	2	18	87
6	-	3	11	28	13	15	2	20	92
7	-	1	14	49	13	8	-	19	104
8	-	4	5	14	7	1	1	1	33
9	1	17	12	31	12	6	3	29	111
10	-	2	1	5	1	2	-	2	13
11	5	13	12	9	10	6	-	1	56
12	3	10	6	5	2	4	-	2	32
13	-	11	17	54	27	8	1	16	134
14	-	4	2	12	14	8	1	7	48
15	-	5	12	18	23	9	6	4	77
16	-	6	6	5	5	-	-	1	23
17	-	-	2	-	-	-	-	1	3
18	5	5	14	23	8	16	4	5	80
Totals	17	103	161	347	192	123	23	148	1,114
% of Withdrawals	1.5%	9.2%	14.5%	31.1%	17.2%	11.0%	2.1%	13.3%	

* Letter Grade Equivalents Corresponding to Ranges of I. Q. on the Otis Quick-Scoring Gamma Test of Mental Ability, Grade 9, Vancouver Secondary Schools, 1959-1968 (N=47,843).

A	127 or higher
B	116 - 126
C+	111 - 115
C	105 - 110
C-	100 - 104
D	89 - 99
E	88 or lower

Table VI presents the scholarship ratings of students who withdrew from Vancouver Secondary Schools. More than 19% of the group had "E" standing and another 38% were rated "D".

TABLE VI: SCHOLARSHIP RATING OF STUDENTS WHO WITHDREW FROM VANCOUVER SECONDARY SCHOOLS DURING THE 1969-70 SCHOL YEAR

Secondary Schools	Letter Grade					Not Known	Total
	A	B	C	D	E		
1	-	1	13	33	21	12	80
2	-	4	12	8	4	-	28
3	1	4	13	18	3	6	45
4	-	3	34	17	8	5	67
5	-	3	26	22	19	17	87
6	1	1	34	35	8	16	95
7	-	1	30	39	15	19	104
8	-	1	9	8	11	2	31
9	1	6	36	34	16	25	118
10	-	-	3	4	4	2	13
11	-	2	16	25	15	1	59
12	-	3	16	13	-	1	33
13	-	7	51	51	15	14	138
14	-	-	16	11	14	4	45
15	-	2	26	25	9	8	70
16	-	1	8	5	11	-	25
17	-	-	-	1	1	1	3
18	1	2	27	31	16	5	82
Totals	4	41	370	380	190	138	1,123
% of 985 withdrawals of known scholarship rating	.4%	4.2%	37.6%	38.6%	19.3%		

Failure in achievement appears to be an increasingly significant characteristic of students who withdrew from school as indicated in the comparison below:

	Normal	Withdrawals 1961-62	Withdrawals 1969-70
A	5%	0.5%	0.4%
B	20%	1.7%	4.2%
C+	15	6.7	37.6%
C	20	25.7	
C-	15	24.2	
D	20%	27.3%	38.6%
E	5%	13.9%	19.3%

The reasons that students gave for leaving are categorized in Table VII. The most frequently cited reason was "lack of interest" (38.5%). Other reasons given were:

"needs money" (9.2%)
 "violated rules" (3.6%)
 "lacks ability" (3.2%)
 "poor health" (2.7%)

TABLE VII: REASON FOR LEAVING OF STUDENTS WHO WITHDREW FROM VANCOUVER SECONDARY SCHOOLS DURING THE 1969-70 SCHOOL YEAR

Secondary Schools	Needs Money	Lacks Ability	Lacks Interest	Poor Health	Violated Rules	Drugs	Alcohol	Other	Total
1	12	6	40	-	-	-	-	24	82
2	-	1	15	1	-	-	1	16	34
3	2	-	16	-	1	-	-	33	52
4	6	4	21	-	2	1	-	34	68
5	4	3	28	4	8	-	-	31	78
6	5	5	33	1	6	-	-	53	103
7	26	2	48	4	3	1	-	47	131
8	3	1	17	1	-	-	-	8	30
9	3	2	37	5	1	1	-	77	126
10	-	-	3	1	2	-	-	8	14
11	1	-	28	4	1	-	-	14	48
12	3	-	17	1	1	-	-	14	36
13	13	4	43	2	9	-	-	68	139
14	6	4	29	2	2	-	-	26	69
15	22	2	42	-	2	-	-	10	78
16	3	1	6	1	3	-	-	8	22
17	-	-	2	-	-	-	-	-	2
18	1	3	33	5	2	-	-	35	79
Totals	110	38	458	32	43	3	1	506	1,191
% of withdrawals	9.2%	3.2%	38.5%	2.7%	3.6%	.3%	.1%	42.5%	

The placements of students who withdrew from Vancouver Secondary Schools are summarized in Table VIII. "Job Opportunities" or "Seeking Work" accounted for 51.1% of all withdrawals (compared with 49.2% in the earlier survey). The next frequent placement was "to study elsewhere"; the proportion (22.6%) was larger than it was eight years earlier (6.9%).

TABLE VIII: PLACEMENTS OF STUDENTS WHO WITHDREW FROM VANCOUVER SECONDARY SCHOOLS DURING THE 1969-70 SCHOOL YEAR

Secondary Schools	Study Elsewhere	Marriage	Armed Services	Correctional Institute	Job/Career	Seek Work	At Home	Other	Totals
1	5	2	1	-	37	27	7	6	85
2	19	-	1	-	5	6	2	2	35
3	20	-	-	-	10	15	4	6	55
4	21	1	2	1	21	20	2	4	72
5	21	1	1	-	20	16	17	17	93
6	27	3	2	1	22	23	5	22	105
7	28	5	-	3	38	47	7	18	146
8	3	-	-	-	5	12	4	11	35
9	37	1	2	-	17	39	9	29	134
10	3	-	1	-	2	2	1	6	15
11	8	2	-	1	17	17	8	10	63
12	14	1	-	-	9	7	3	6	40
13	47	1	-	3	30	39	14	9	143
14	6	-	-	2	13	23	25	2	71
15	6	2	1	-	33	27	9	3	81
16	1	-	-	-	10	3	6	5	25
17	-	-	-	-	1	1	-	1	3
18	25	-	-	-	18	27	9	9	88
Totals	291	19	11	11	308	351	132	166	1,289
% of Withdrawals	22.6%	1.5%	.9%	.9%	23.9%	27.2%	10.2%	12.9%	

The grade-placements of students who, for financial reasons, withdrew from Vancouver Secondary Schools are listed in Table IX. The largest numbers left from Grades 11 and 12. Twenty-eight of the students who left for financial reasons were on the Academic-Technical Programme. This number represents 23.3% of the total group. (In the 1961-62 survey, approximately 19% of those who left school for financial reasons were enrolled on the Academic Programme).

TABLE IX: GRADE PLACEMENTS OF STUDENTS WHO FOR FINANCIAL REASONS, WITHDREW FROM VANCOUVER SECONDARY SCHOOLS DURING THE 1969-70 SCHOOL YEAR

Secondary Schools	Gr. 8	Gr. 9	Gr. 10	Gr. 11	Gr. 12	Occupational	Sp. Cl.	Totals	Academic-Technical Programme
1	-	-	8	3	2	-	-	13	2
2	-	-	-	-	-	-	-	-	-
3	-	-	-	1	-	1	-	2	-
4	-	1	2	2	1	-	-	6	1
5	-	2	2	1	2	-	-	7	1
6	-	2	-	2	1	-	-	5	-
7	-	4	1	8	4	10	-	27	7
8	-	1	-	1	2	-	-	4	2
9	-	-	1	-	1	1	-	3	1
10	-	-	-	-	-	-	-	-	-
11	-	-	1	-	1	-	-	2	2
12	-	-	-	2	2	-	-	4	2
13	-	4	2	-	-	3	5	14	-
14	-	-	2	1	3	-	-	6	2
15	-	1	-	12	9	-	-	22	5
16	1	-	1	1	-	-	-	3	2
17	-	-	-	-	-	-	-	-	-
18	-	-	-	2	-	-	-	2	1
Totals	1	15	20	36	28	15	5	120	28
%age of Total	.8%	12.5%	16.7%	30.0%	23.3%	12.5%	4.2%	100.0%	23.3%

The grade-placements of all students who withdrew from Vancouver Secondary Schools appear in Table X and are represented graphically in Figure 1. The largest proportions withdrew from Grades 10, 11 and 12 (67.1% compared with 71.9% in the earlier survey). There were no withdrawals from classes for "New Canadians".

TABLE X: GRADE PLACEMENTS OF STUDENTS WHO WITHDREW FROM VANCOUVER SECONDARY SCHOOLS DURING THE 1969-70 SCHOOL YEAR

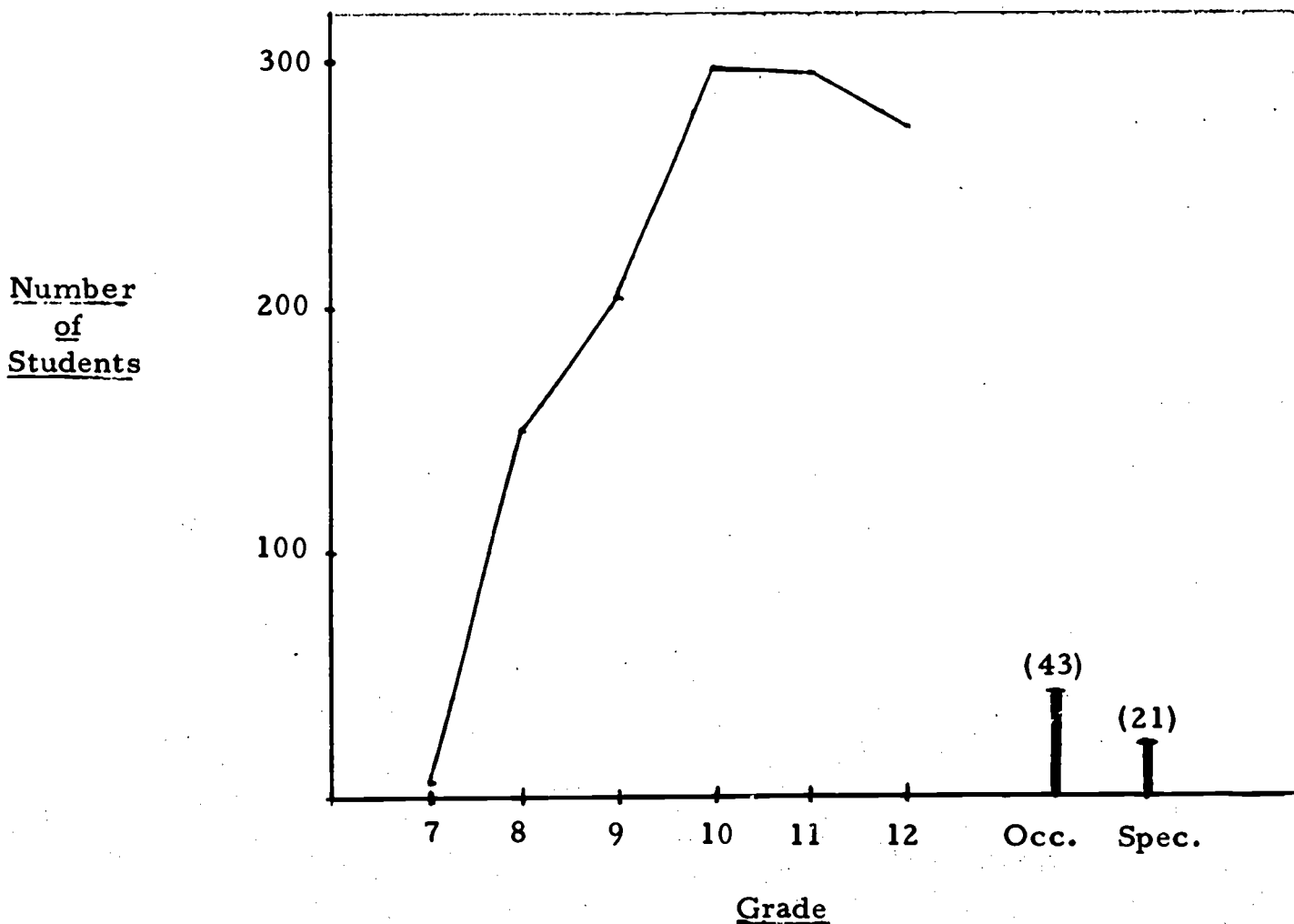
Secondary Schools	Grade						Occu- pational	Special	New Canadian	Totals
	7	8	9	10	11	12				
1	-	12	8	23	26	13	1	2	-	85
2	-	5	4	4	11	11	-	-	-	35
3	-	3	5	18	18	9	-	2	-	55
4	-	3	16	22	12	19	-	-	-	72
5	-	10	14	25	19	23	2	-	-	93
6	-	24	25	16	21	18	-	1	-	105
7	-	13	18	25	39	36	17	-	-	148
8	-	-	7	11	6	11	-	-	-	35
9	2	12	17	39	29	25	9	1	-	134
10	-	2	3	2	3	5	-	-	-	15
11	-	8	5	15	16	18	-	1	-	63
12	-	2	5	7	11	15	-	-	-	40
13	5	27	35	20	18	17	10	11	-	143
14	-	6	10	28	10	13	4	-	-	71
15	-	2	13	14	30	22	-	-	-	81
16	-	4	4	3	6	8	-	-	-	25
17	-	-	-	1	1	1	-	-	-	3
18	-	16	15	24	20	10	-	3	-	88
Totals	7	149	204	297	296	274	43	21	-	1,291
% of With- drawals	6	11.6	15.8	23.0	22.9	21.2	3.3	1.6		100.0%

The data of Table X may be compared with those of the earlier survey:

	<u>1969-70</u>	<u>1961-62</u>
Withdrawals from Grade 7	0.6%	1.5%
Grade 8	11.6%	6.4%
Grade 9	15.8%	17.3%
Grade 10	23.0%	24.1%
Grade 11	22.9%	24.4%
Grade 12	21.2%	23.1%
Grade 13	*	0.9%
Special Classes	1.6%	2.3
Occupational Classes	3.3%	*

* (There was no "Occupational Programme in 1961-62 and no "Grade XIII" in Secondary Schools in 1969-70).

Figure 1: Grade Placement of Students Who Withdrew from Vancouver Secondary Schools During the 1969-70 School Year



The ages of students who withdrew from Vancouver Secondary Schools are listed in Table XI and they are represented graphically in Figure 2. The median age was 17 years, 2 months.

Figure 2: Ages of Students Who Withdrew From Vancouver Secondary Schools During the 1969-70 School Year

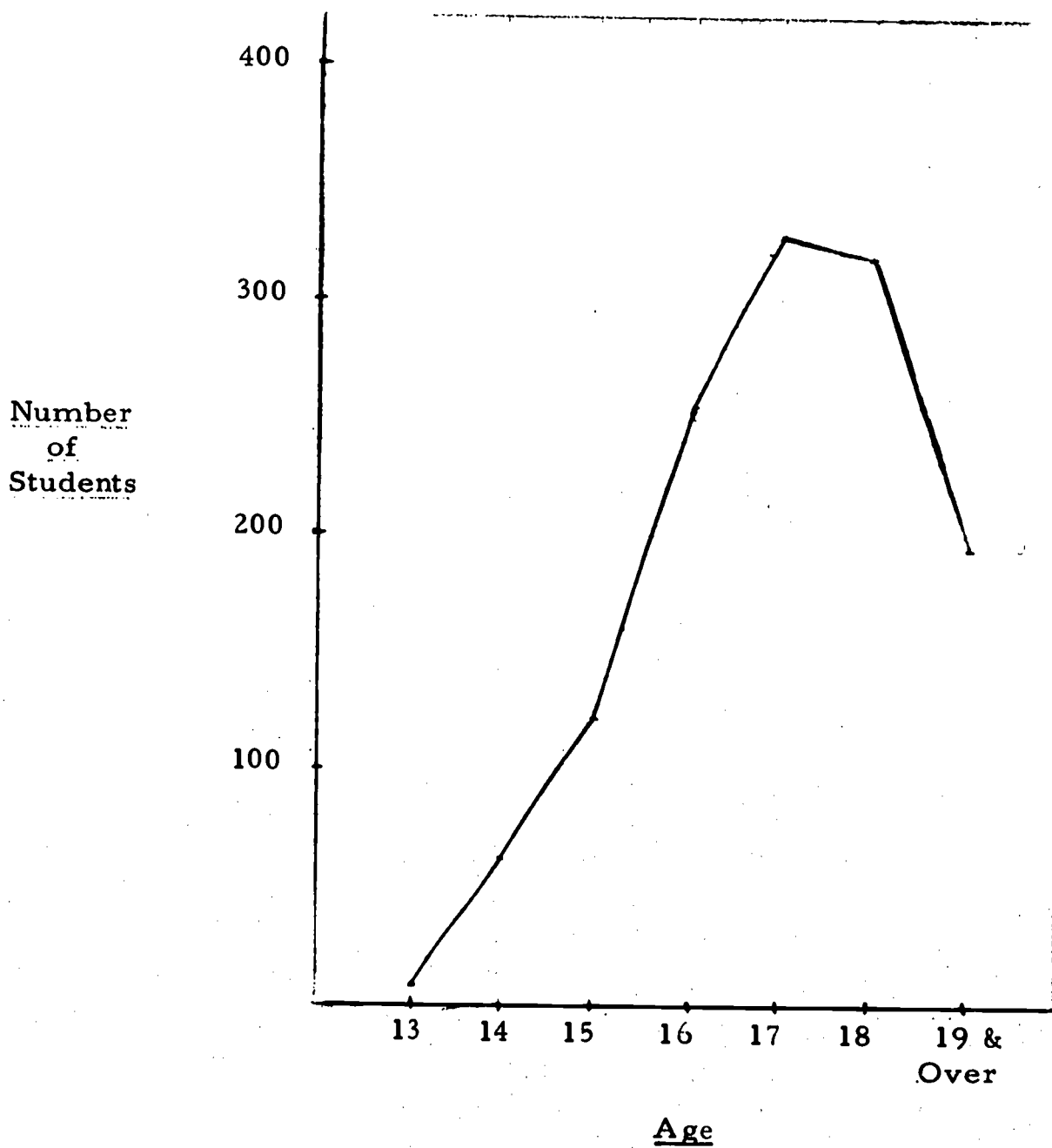


TABLE XI: AGES OF STUDENTS WHO WITHDREW FROM VANCOUVER SECONDARY SCHOOLS DURING THE 1969-70 SCHOOL YEAR

Secondary Schools	Age 13		Age 14		Age 15		Age 16		Age 17		Age 18		Age 19 & Over		Sex Total	School Total
	M	F	M	F	M	F	M	F	M	F	M	F	M	F		
1	0	0	0	0	5	3	12	7	9	9	12	8	13	7	51	85
2	0	0	0	4	2	2	2	3	4	5	4	5	3	1	15	35
3	0	0	1	1	2	1	10	3	10	4	10	6	6	1	39	55
4	0	0	0	0	6	6	5	9	13	13	7	5	8	4	33	73
5	0	0	3	3	4	4	7	9	15	17	17	9	7	8	40	94
6	1	0	4	4	9	8	17	6	10	17	10	9	7	3	58	105
7	0	0	1	5	5	5	11	16	16	19	22	22	16	9	71	148
8	0	0	0	0	0	2	5	16	5	19	3	3	5	5	77	18
9	1	0	3	2	7	5	11	15	13	13	17	17	15	4	18	35
10	0	0	0	0	0	2	2	2	0	0	0	0	0	0	4	6
11	0	0	2	2	3	3	4	7	18	3	7	10	6	1	37	63
12	0	0	2	0	1	1	4	4	6	6	7	7	2	2	26	40
13	4	1	6	7	5	9	18	19	20	9	14	12	13	7	80	144
14	0	0	0	0	4	3	5	15	12	6	5	9	8	4	34	71
15	0	0	0	0	2	2	4	3	12	6	16	10	10	6	44	81
16	0	0	2	0	3	0	1	3	2	2	1	6	3	2	37	25
17	0	0	0	0	0	0	0	1	0	0	0	0	1	1	1	3
18	0	0	3	5	6	6	13	5	12	13	10	9	5	1	49	88
Totals	6	2	27	35	62	60	130	125	180	147	165	153	129	64	699 (54.4%)	1,285
Percentage of Total	Both	8	62	122	255	327	318	255	327	318	193	193	15.0%	15.0%	24.8%	19.9%

APPENDIX

TO BE COMPLETED BY COUNSELLOR AND RETURNED TO ASSISTANT SUPERINTENDENT WITH
THE NOTICE OF WITHDRAWAL, REQUEST FOR CROSS-BOUNDARY TRANSFER OR CANCELLATION

DATE _____

STUDENT NO. PRESENT PROGRAM CHECK SEX OF PARENT IF SINGLE PARENT FAMILY M F

STUDENT'S SURNAME _____ STUDENT'S GIVEN NAME _____ SEX _____

STUDENT'S ADDRESS _____ PHONE _____ SCHOOL _____

ACHIEVEMENT A B C D E * (* NOT KNOWN)CITIZENSHIP 1 SUPERIOR 2 AVERAGE 3 POOR * SCHOLASTIC APTITUDE A B C+ C C- D E * STUDENT REFERRED TO 1 FAMILY PHYSICIAN, SPECIFY _____2 SPECIAL COUNSELLOR 3 SCHOOL CONFERENCE 4 MENTAL HYGIENE CLINIC5 PSYCHIATRIST 6 AGENCIES, SPECIFY _____

GUIDANCE PROCEDURES FOLLOWED _____

COUNSELLOR'S SIGNATURE _____

DEPARTMENT OF RESEARCH AND SPECIAL SERVICES

THIS SIDE TO BE FILLED IN ONLY WHEN THE STUDENT IS LEAVING THE VANCOUVER
PUBLIC SCHOOL SYSTEM

STUDENT NO.

DATE _____

STUDENT WITHDREW

1 TO STUDY ELSEWHERE2 TO MARRIAGE3 TO ARMED SERVICES4 TO CORRECTIONAL INSTITUTE5 TO JOB/CAREER6 TO SEEK WORK7 AT HOME8 TO OTHER

REASONS FOR LEAVING, ENTER "M" FOR MAIN & "C" FOR CONTRIBUTING REASONS

1 DESIRE/NEEDS MONEY2 LACKS ABILITY/ACHIEVEMENT3 LACK OF INTEREST4 POOR HEALTH5 VIOLATED SCHOOL RULES6 DRUGS7 ALCOHOL8 OTHER

