

DOCUMENT RESUME

ED 043 688

24

TM 000 188

TITLE Farly Education Screening Test Battery of Basic Skills Development: Criteria for Personalizing Programs.

INSTITUTION University City School District, Mo.

SPONS AGENCY Office of Education (DHEW), Washington, D.C. Bureau of Research.

BUREAU NO BR-6-1328

PUB DATE Jan 69

CONTRACT OEC-3-7-061328-0322

NOTE 33p.

EDRS PRICE MF-\$0.25 HC-\$1.75

DESCRIPTORS Basic Skills, Farly Childhood Education, Evaluation Criteria, *Kindergarten Children, *Norms, *Preschool Tests, *Profile Evaluation, *Screening Tests, Standardized Tests, Statistical Analysis, Tables (Data)

IDENTIFIERS *Early Education Screening Test Battery

ABSTRACT

The development and content of the Farly Education Screening Test Battery are described elsewhere (TM 000 184). This report provides norms for the Gross Motor Test (GMO), Visual-Motor Integration (VMI), four scales of the Illinois Test of Psycholinguistic Abilities (ITPA), Peabody Picture Vocabulary Test (PPVT), and the Behavior Rating Scale (BRS). For each test, tables are included which allow one to obtain the age equivalent, psycholinguistic age, mental age, standard deviation, standard score, or IQ score, as required, from the raw test scores. Tables are also provided which allow one to interpret these derived scores in terms of developmental skill level--very superior, superior, high borderline, etc. A profile sheet on which the latter results may be graphed is included. With a completed profile, a teacher can determine a child's strengths and weaknesses at a glance. (DG)

CONTENTS

	PAGE
OVERVIEW	1
DEVELOPMENT OF CRITERIA	2
TEST NORMS AND PROFILE	4
Interpreting the Test Norms	5
Gross Motor Observations - GMO	6
Visual-Motor Integration - VMI	9
Illinois Test of Psycholinguistic Abilities - ITPA	12
Visual Reception - VR	
Auditory Reception - AR	
Verbal Expression - VE	
Grammatic Closure - GC	
Peabody Picture Vocabulary Test - PPVT	21
Behavior Rating Scale - BRS	27
Completing the Test Profile	28
REFERENCES	30
Table 1. Early Education Screening Test Battery and Recommended Order of Test Administration	1
Table 2. Standard Score and Standard Deviation Equivalents	3
Figure 1. Interpretation of Standard Deviation and Standard Score in Terms of Percentage of the General Population	2
Figure 2. Sample Profile.	29

EARLY EDUCATION SCREENING TEST BATTERY
of Basic Skills Development

CRITERIA FOR PERSONALIZING PROGRAMS

OVERVIEW

The selection of tests to identify basic perceptual and cognitive strengths and weaknesses in young children was an outgrowth of a U.S.O.E. Prekindergarten-Kindergarten research study conducted over a two year period (1, 2, 3, 4, 5). The resulting Early Education Screening Test Battery (6) provides a short, objective instrument for the assessment of motor, auditory, visual, visual-motor, language, and cognitive skill development. The Battery also includes a subjective evaluation of behavior with an intra- interpersonal relations scale. The tests, together with the recommended order of testing, are listed in Table 1. The present booklet provides criteria and norms for personalizing program recommendations.

Table 1. Early Education Screening Test Battery
and Recommended Order of Test Administration

Test	Testing Order	
	One Tester	Tester No. 1
MISCELLANEOUS INSTRUMENTS		
PPVT - Peabody Picture Vocabulary Test (7)	1	1
VMI - Visual-Motor Integration: Beery (8)	2	2
GMO - Gross Motor Observations (3, 4)	3	3
BRS - Behavior Rating Scale (5)	4 ^a	4 ^a
		Tester No. 2
ITPA - ILLINOIS TEST OF PSYCHOLINGUISTIC ABILITIES (9, 10)		
AR - Auditory Reception (ITPA-1, Auditory Decoding) ^b	5	1
VR - Visual Reception (ITPA-2, Visual Decoding) ^b	6	2
VE - Verbal Expression (ITPA-5, Vocal Encoding) ^b	7	3
GC - Grammatic Closure (ITPA-7, Auditory-Vocal Automatic) ^b	8	4

^aTo be completed by the examiner at any time during testing.

^bThe first subtest designation refers to the 1968 Revised Edition to be used in the Screening Test Battery. The entry in parenthesis refers to the 1961 Experimental Edition used in this research.

DEVELOPMENT OF CRITERIA

In the general population, most children score about average for age on most tests. Some score considerably higher or lower than average, and a few obtain extremely high or low scores. The extent of deviation of a child's score from the average can be interpreted statistically in terms of the standard deviation (SD) of a particular score above or below the mean score earned by children of the same age. A Standard Score (SS), based on the standard deviation, also can be used for this purpose. Figure 1 presents this concept graphically. In using the Screening Test Battery, a knowledge of both concepts is necessary because four of the tests are interpreted by standard deviation (SD), while the revised ITPA uses standard scores (SS).

In terms of standard deviation, children can be designated as average (-1.16 to +1.16 S.D.), high borderline (+1.17 to +1.50 SD), superior to very superior (+1.51 SD and above), low borderline (-1.17 to -1.50 SD), deficient to very deficient (-1.51 SD and below). The corresponding standard scores are: average (30 to 42 SS), high borderline (43 to 45 SS), superior to very superior (46 SS and above), low borderline (29 to 27 SS), deficient to very deficient (26 SS and below).

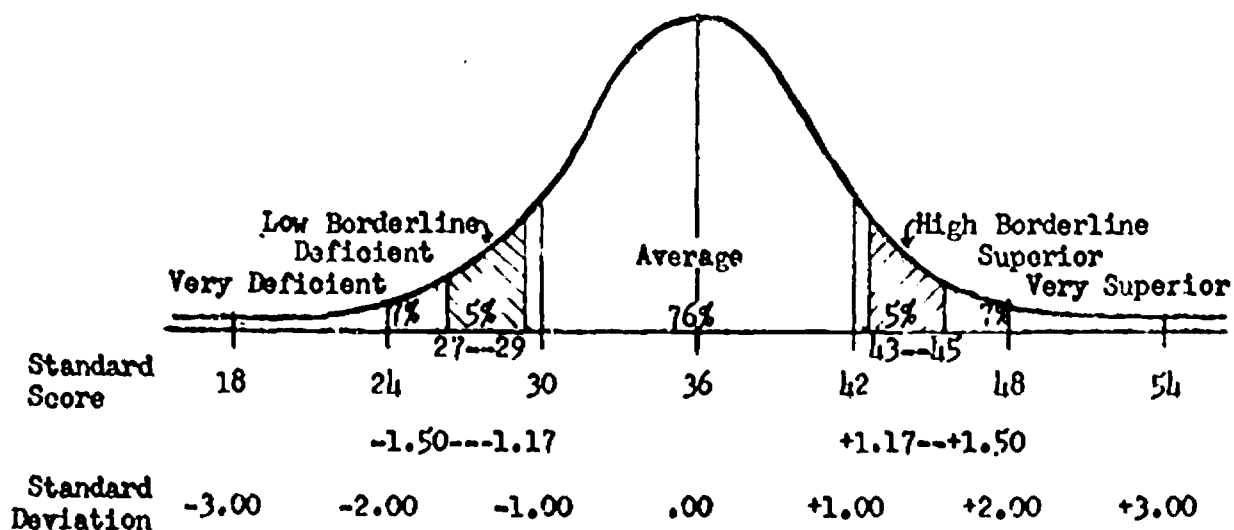


Figure 1. Interpretation of Standard Deviation and Standard Score in Terms of Percentage of the General Population

Standard deviation and standard score equivalents are given in Table 2.

Table 2. Standard Score and Standard Deviation Equivalents

SS	SD	SS	SD	SS	SD	SS	SD
Superior and Very Superior		High Borderline		Deficient and Very Deficient			
66	+5.00	45	+1.50	26	-1.67	5	-5.17
65	+4.83	44	+1.33	25	-1.83	4	-5.33
64	+4.67	43	+1.17	24	-2.00	3	-5.50
63	+4.50	Average		23	-2.17	2	-5.67
62	+4.33	42	+1.00	22	-2.33	1	-5.83
61	+4.17	41	+ .83	21	-2.50	0	-6.00
60	+4.00	40	+ .67	20	-2.67		
59	+3.83	39	+ .50	19	-2.83		
58	+3.67	38	+ .33	18	-3.00		
57	+3.50	37	+ .17	17	-3.17		
56	+3.33	36	.00	16	-3.33		
55	+3.17	35	- .17	15	-3.50		
54	+3.00	34	- .33	14	-3.67		
53	+2.83	33	- .50	13	-3.83		
52	+2.67	32	- .67	12	-4.00		
51	+2.50	31	- .83	11	-4.17		
50	+2.33	30	-1.00	10	-4.33		
49	+2.17	Low Borderline		9	-4.50		
48	+2.00	29	-1.17	8	-4.67		
47	+1.83	28	-1.33	7	-4.83		
46	+1.67	27	-1.50	6	-5.00		

TEST NORMS AND PROFILE

	PAGE
INTERPRETING THE TEST NORMS	5
GROSS MOTOR OBSERVATIONS - GMO	
Age Equivalent from Raw Score by Sex	6
Standard Deviation from Raw Score by Age Group	
BOYS	7
GIRLS	8
VISUAL-MOTOR INTEGRATION - VMI	
Age Equivalent from Raw Score by Sex	9
Standard Deviation from Raw Score by Age Group	
BOYS	10
GIRLS	11
ILLINOIS TEST OF PSYCHOLINGUISTIC ABILITIES - ITPA	
Psycholinguistic Age from Raw Score on Four Selected Tests	
BOTH SEXES	12
Standard Score from Raw Score by Age Group on Four	
Selected Tests	
BOTH SEXES	13
PEABODY PICTURE VOCABULARY TEST - PPVT	
Mental Age from Raw Score, Form A	
BOTH SEXES	21
Intelligence Quotient and Standard Deviation from	
Raw Score by Age Group	
BOTH SEXES	22
BEHAVIOR RATING SCALE - BRS	
Standard Deviation from Raw Score for Ages 3-10 to 5-9	
BOYS AND GIRLS Separately.	27
COMPLETING THE TEST PROFILE	28
Sample Profile - Early Education Screening Test Battery . . .	29



INTERPRETING THE TEST NORMS

Norms are presented for each test in the Early Education Test Battery in the order they appear from left to right on the Profile (page 29). For each test, the age equivalent (AE); psycholinguistic age (PLA), mental age (MA), standard deviation (SD), standard score (SS), or intelligence quotient (IQ), as required, can be obtained directly from the raw score.

In using the tables of norms, care should be taken that the correct page is located before a score is interpreted as the method of presenting the figures necessarily varies from test to test.

The Gross Motor Test (GMO) and Visual-Motor Integration (VMI) provide age equivalents separately for boys and girls and standard deviations both by age group and by sex.

For the Illinois Test of Psycholinguistic Abilities (ITPA), the same figures are used for both sexes in obtaining the psycholinguistic ages and standard scores, but standard scores are also arranged by age groups.

The Peabody Picture Vocabulary Test (PPVT), provides mental ages for both sexes in a single table. The intelligence quotients and standard deviations are arranged by age group, the same Table being used for both sexes.

For the Behavior Rating Scale (ERS), standard deviations are given for boys and girls separately between 3 years, 10 months and 5 years, 9 months. As behavior did not seem to correlate with increasing age, no age norms could be developed.

A careful check of the information supplied for each test will enhance the accuracy of interpreting the raw scores.

GROSS MOTOR OBSERVATIONS (GMO)^a

Age Equivalent (AE) from Raw Score (RS) by Sex

Raw Score	BOYS	GIRLS
	Age Equivalent (AE)	
19		A.N. ^b
18		5-5
17	A.N. ^b	5-0
16	5-5	4-11
15	5-3	4-9
14	5-0	4-7
13	4-8	4-5
12	4-4	4-2
11	4-3	4-0
10	4-2	3-11
9	4-1	B.N. ^c
8	4-0	
7	4-0	
6	3-11	
5	B.N. ^c	

^aDevised and normed locally.

^bA.N. - Above Norm.

^cB.N. - Below Norm.

GROSS MOTOR OBSERVATIONS (GMO)^a

Standard Deviation (SD) from Raw Score (RS) by Age Group

Raw Score	BOYS - AGE GROUP						
	3-10 to 4-0	4-1 to 4-3	4-4 to 4-6	4-7 to 4-9	4-10 to 5-0	5-1 to 5-3	5-4 to 5-7
	Standard Deviation (SD)						
24	3.61	2.58	2.17	2.10	2.38	2.28	1.18
23	3.41	2.39	1.98	1.90	2.16	2.05	1.03
22	3.20	2.20	1.79	1.70	1.93	1.82	.89
21	3.00	2.02	1.60	1.49	1.71	1.58	.75
20	2.80	1.83	1.41	1.29	1.48	1.35	.60
19	2.59	1.64	1.21	1.09	1.26	1.12	.46
18	2.39	1.46	1.02	.88	1.03	.88	.32
17	2.19	1.27	.83	.68	.81	.65	.18
16	1.99	1.09	.64	.48	.58	.42	.03
15	1.78	.90	.45	.28	.36	.19	-.11
14	1.58	.71	.25	.07	.13	-.05	-.25
13	1.38	.53	.06	-.13	-.09	-.28	-.39
12	1.17	.34	-.12	-.33	-.31	-.51	-.54
11	.97	.15	-.32	-.54	-.54	-.74	-.68
10	.77	-.03	-.51	-.74	-.76	-.98	-.82
9	.56	-.22	-.70	-.94	-.99	-1.21	-.97
8	.36	-.41	-.90	-1.14	-1.21	-1.44	-1.11
7	.16	-.59	-1.09	-1.35	-1.44	-1.68	-1.25
6	-.05	-.78	-1.28	-1.55	-1.66	-1.91	-1.39
5	-.25	-.96	-1.47	-1.75	-1.89	-2.14	-1.54
4	-.45	-1.15	-1.66	-1.96	-2.11	-2.37	-1.68
3	-.65	-1.34	-1.86	-2.16	-2.33	-2.61	-1.82
2	-.86	-1.52	-2.05	-2.36	-2.56	-2.83	-1.96
1	-1.06	-1.71	-2.24	-2.56	-2.78	-3.07	-2.11
0	-1.26	-1.90	-2.43	-2.77	-3.01	-3.31	-2.25
Number	27	34	34	53	20	15	17
Mean	6.22222	10.17647	12.67647	13.64159	13.40000	14.20000	15.76470
SD	4.92411	5.36585	5.21152	4.93005	4.45421	4.29262	7.00864

^aDevised and normed locally.

GROSS MOTOR OBSERVATIONS (GMO)^a

Standard Deviation (SD) from Raw Score (RS) by Age Group

Raw Score	G I R L S - A G E G R O U P						
	3-10 to 4-0	4-1 to 4-3	4-4 to 4-6	4-7 to 4-9	4-10 to 5-0	5-1 to 5-3	5-4 to 5-7
	Standard Deviation (SD)						
24	2.55	2.59	1.90	1.48	1.38	1.73	1.20
23	2.37	2.37	1.73	1.28	1.22	1.49	.99
22	2.19	2.16	1.55	1.07	1.05	1.24	.77
21	2.01	1.94	1.38	.87	.88	.99	.56
20	1.83	1.72	1.20	.67	.72	.74	.35
19	1.65	1.51	1.03	.46	.55	.50	.14
18	1.47	1.29	.86	.26	.39	.25	-.07
17	1.29	1.08	.68	.06	.22	.00	-.28
16	1.11	.86	.51	-.15	.06	-.25	-.49
15	.93	.64	.33	-.35	-.11	-.50	-.70
14	.75	.43	.16	-.55	-.28	-.74	-.92
13	.57	.21	-.01	-.76	-.44	-.99	-1.13
12	.39	-.01	-.19	-.96	-.61	-1.24	-1.34
11	.21	-.22	-.36	-1.16	-.77	-1.49	-1.55
10	.02	-.44	-.53	-1.37	-.94	-1.73	-1.76
9	-.16	-.65	-.71	-1.57	-1.11	-1.98	-1.97
8	-.34	-.87	-.88	-1.77	-1.27	-2.23	-2.18
7	-.52	-1.09	-1.06	-1.98	-1.44	-2.48	-2.40
6	-.70	-1.31	-1.23	-2.18	-1.60	-2.72	-2.60
5	-.88	-1.52	-1.40	-2.38	-1.77	-2.97	-2.82
4	-1.06	-1.74	-1.58	-2.59	-1.93	-3.22	-3.03
3	-1.23	-1.96	-1.75	-2.79	-2.10	-3.47	-3.24
2	-1.42	-2.17	-1.93	-2.99	-2.27	-3.72	-3.45
1	-1.60	-2.39	-2.10	-3.20	-2.43	-3.96	-3.66
0	-1.78	-2.61	-2.27	-3.40	-2.60	-4.21	-3.87
Number	29	28	40	68	12	21	24
Mean	9.86206	12.03571	13.07500	16.72058	15.66667	17.00000	18.33333
SD	5.51432	4.61737	5.75059	4.91649	6.03231	4.03555	4.73168

^aDevised and normed locally.

VISUAL-MOTOR INTEGRATION (VMI)^a

Age Equivalent (AE) from Raw Score (RS) by Sex

Raw Score	BOYS	GIRLS
	Age Equivalent (AE)	
24	15-11	15-9
23	14-10	14-10
22	13-9	13-11
21	12-8	13-0
20	11-9	12-0
19	10-11	11-1
18	10-2	10-3
17	9-4	9-6
16	8-7	8-8
15	7-10	7-11
14	7-4	7-2
13	6-10	6-7
12	6-5	6-2
11	6-0	5-10
10	5-7	5-6
9	5-3	5-3
8	5-0	4-11
7	4-9	4-8
6	4-6	4-4
5	4-4	4-1
4	4-1	3-10
3	3-2	3-2
2	3-0	3-0
1	2-10	2-10

^aAdapted from Keith E. Beery, Developmental Test of Visual-Motor Integration: Administration and Scoring Manual. 1967. p.66.

VISUAL-MOTOR INTEGRATION (VMI)^a

Standard Deviation (SD) from Raw Score (RS) by Age Group

Raw Score	BOYS - AGE GROUP						
	3-10 to 4-0	4-1 to 4-3	4-4 to 4-6	4-7 to 4-9	4-10 to 5-0	5-1 to 5-3	5-4 to 5-7
	Standard Deviation (SD)						
21						5.47	
20						5.02	5.49
19					5.34	4.57	5.02
18				5.22	4.90	4.12	4.56
17				4.76	4.47	3.67	4.10
16			5.59	4.31	4.04	3.22	3.64
15		5.35	5.04	3.85	3.60	2.77	3.18
14	5.26	4.83	4.49	3.39	3.17	2.32	2.72
13	4.74	4.31	3.95	2.94	2.73	1.86	2.25
12	4.22	3.79	3.40	2.48	2.30	1.41	1.79
11	3.69	3.26	2.85	2.02	1.87	.96	1.33
10	3.17	2.74	2.30	1.56	1.43	.51	.87
9	2.64	2.22	1.76	1.11	1.00	.06	.41
8	2.12	1.70	1.21	.65	.56	-.39	-.05
7	1.59	1.17	.66	.19	.13	-.84	-.52
6	1.07	.65	.11	-.27	-.30	-1.29	-.98
5	.55	.13	-.43	-.72	-.74	-1.74	-1.44
4	.02	-.39	-.98	-1.18	-1.17	-2.20	-1.90
3	-.50	-.92	-1.53	-1.64	-1.61	-2.65	-2.36
2	-1.03	-1.44	-2.08	-2.10	-2.04	-3.10	-2.82
1	-1.55	-1.96	-2.62	-2.55	-2.47	-3.55	-3.29
0	-2.08	-2.48	-3.17	-3.01	-2.91	-4.00	-3.75
Number	25	65	58	67	40	15	17
Mean	3.96000	4.75384	5.79310	6.58208	6.70000	8.86666	8.11764
SD	1.90745	1.91376	1.82660	2.18644	2.30434	2.21710	2.16610

^aNorms derived from a composite of Beery and local norms.

VISUAL-MOTOR INTEGRATION (VMI)^a

Standard Deviation (SD) from Raw Score (RS) by Age Group

Raw Score	G I R L S - A G E G R O U P						
	3-10 to 4-0	4-1 to 4-3	4-4 to 4-6	4-7 to 4-9	4-10 to 5-0	5-1 to 5-3	5-4 to 5-7
	Standard Deviation (SD)						
20							5.15
19				5.28	5.26		4.69
18				4.85	4.80	5.32	4.24
17			5.35	4.43	4.34	4.82	3.78
16		5.20	4.87	4.00	3.88	4.33	3.33
15	5.48	4.72	4.39	3.58	3.42	3.83	2.87
14	4.97	4.25	3.91	3.15	2.96	3.34	2.42
13	4.46	3.77	3.43	2.73	2.50	2.84	1.96
12	3.94	3.29	2.95	2.30	2.04	2.35	1.51
11	3.43	2.82	2.47	1.88	1.58	1.85	1.05
10	2.92	2.34	1.99	1.45	1.11	1.36	.59
9	2.40	1.87	1.51	1.03	.65	.87	.14
8	1.86	1.39	1.03	.60	.19	.37	-.32
7	1.38	.92	.55	.18	-.27	-.12	-.77
6	.87	.44	.07	-.25	-.73	-.62	-1.23
5	.36	-.04	-.41	-.67	-1.19	-1.11	-1.68
4	-.15	-.51	-.88	-1.10	-1.65	-1.61	-2.14
3	-.67	-.99	-1.36	-1.52	-2.11	-2.10	-2.59
2	-1.18	-1.46	-1.84	-1.95	-2.57	-2.60	-3.05
1	-1.69	-1.94	-2.32	-2.37	-3.03	-3.09	-3.51
0	-2.20	-2.42	-2.80	-2.80	-3.49	-3.59	-3.96
Number	30	52	64	82	43	20	23
Mean	4.30000	5.07692	5.84375	6.58536	7.58139	7.25000	8.69565
SD	1.95192	2.10170	2.08580	2.35273	2.16990	2.02175	2.19554

^aNorms derived from a composite of Beery and local norms.

ILLINOIS TEST OF PSYCHOLINGUISTIC ABILITIES (ITPA)^a

Psycholinguistic Age (PLA) from Raw Score (RS)
for Both Sexes on Four Selected Subtests

Raw Score	BOTH SEXES - FOUR SUBTESTS				Raw Score	BOTH SEXES - FOUR SUBTESTS			
	Visual Recep.	Audit. Recep.	Verbal Expres.	Gram. Clos.		Visual Recep.	Audit. Recep.	Verbal Expres.	Gram. Clos.
	Psycholinguistic Age (PLA)					Psycholinguistic Age (PLA)			
41		10-2	10-11		20	6-5	5-2	5-10	6-8
40		9-10	10-5		19	6-2	5-0	5-8	6-5
39		9-6	10-2		18	6-0	4-10	5-6	6-2
38		9-2	9-10		17	5-10	4-7	5-4	6-0
37		8-10	9-4		16	5-7	4-5	5-2	5-10
36		8-7	9-1		15	5-5	4-3	5-0	5-8
35		8-4	8-10		14	5-2	4-1	4-10	5-6
34		8-0	8-7		13	5-0	4-0	4-8	5-4
33		7-9	8-4		12	4-10	3-10	4-6	5-2
32		7-6	8-1		11	4-7	3-8	4-3	5-0
31	10-10	7-3	7-10		10	4-4	3-6	4-0	4-10
30	10-4	7-0	7-8	10-4	9	4-1	3-5	3-10	4-8
29	9-10	6-10	7-5	9-8	8	3-10	3-3	3-8	4-5
28	9-3	6-8	7-3	9-2	7	3-7	3-1	3-4	4-2
27	8-10	6-5	7-0	8-10	6	3-4	2-11	3-1	3-10
26	8-4	6-3	6-10	8-6	5	3-1	2-10	2-10	3-7
25	7-9	6-0	6-8	8-2	4	2-10	2-8	2-9	3-3
24	7-4	5-10	6-6	7-11	3	2-7	2-6	2-7	2-10
23	7-1	5-8	6-4	7-7	2	2-4	2-4	2-5	2-6
22	6-10	5-6	6-2	7-3	1	2-1	2-2	2-2	2-2
21	6-7	5-4	6-0	7-0	0	- -	2-1	2-0	- -

^a Adapted from Samuel A. Kirk, James J. McCarthy, and Winifred D. Kirk, Illinois Test of Psycholinguistic Abilities: Examiner's Manual. 1968. p.102.

ILLINOIS TEST OF PSYCHOLINGUISTIC ABILITIES (ITPA)^a

Standard Score (SS) from Raw Score (RS)
by Age Group on Four Selected Subtests

Raw Score	BOTH SEXES AGES 3-8 to 3-11				Raw Score	BOTH SEXES AGES 3-8 to 3-11			
	Visual Recep.	Audit. Recep.	Verbal Expres.	Gram. Clos.		Visual Recep.	Audit. Recep.	Verbal Expres.	Gram. Clos.
	Standard Score (SS)					Standard Score (SS)			
38		66			18	52	43	52	63
37		64			17	50	42	51	60
36		63			16	48	41	49	58
35		61			15	47	40	47	56
34		60			14	46	39	46	54
33		59			13	44	38	43	52
32		58			12	42	36	42	50
31		57			11	41	35	40	48
30		56			10	40	34	38	45
29	66	54			9	38	33	37	43
28	65	53			8	37	32	35	41
27	64	52	66		7	35	31	34	39
26	62	51	65		6	34	30	32	36
25	61	50	64		5	32	29	29	34
24	60	49	62		4	31	28	28	32
23	58	48	60		3	29	26	26	30
22	57	47	58		2	27	25	24	28
21	56	46	56		1	26	24	23	26
20	54	45	55	67	0	25	23	22	24
19	53	44	54	65					

^aAdapted from Samuel A. Kirk, James J. McCarthy, and Winifred D. Kirk, Illinois Test of Psycholinguistic Abilities: Examiner's Manual. 1968. p. 107.

ILLINOIS TEST OF PSYCHOLINGUISTIC ABILITIES (ITPA)^a

Standard Score (SS) from Raw Score (RS)
by Age Group on Four Selected Subtests

Raw Score	BOTH SEXES AGES 4-0 to 4-3				Raw Score	BOTH SEXES AGES 4-0 to 4-3			
	Visual Recep.	Audit. Recep.	Verbal Expres.	Gram. Clos.		Visual Recep.	Audit. Recep.	Verbal Expres.	Gram. Clos.
	Standard Score (SS)					Standard Score (SS)			
41		66			20	52	41	51	63
40		65			19	50	41	50	60
39		65			18	49	40	48	59
38		64			17	47	39	47	57
37		62			16	46	38	45	55
36		60			15	45	37	44	52
35		59			14	44	36	42	50
34		58			13	42	35	40	49
33		57			12	40	34	39	46
32		56			11	39	33	38	44
31	66	54			10	38	32	36	42
30	65	53	67		9	36	31	35	40
29	64	52	65		8	35	30	33	38
28	63	50	64		7	34	29	32	36
27	61	49	62		6	32	28	30	34
26	60	48	60		5	30	27	28	32
25	58	47	59		4	29	26	26	30
24	57	45	58		3	28	24	25	27
23	56	44	56		2	26	23	24	26
22	54	43	55	66	1	25	22	22	24
21	53	42	53	64	0	24	21	21	22

^aAdapted from Samuel A. Kirk, James J. McCarthy, and Winifred D. Kirk, Illinois Test of Psycholinguistic Abilities: Examiner's Manual. 1968. p.108.

ILLINOIS TEST OF PSYCHOLINGUISTIC ABILITIES (ITPA)^a

Standard Score (SS) from Raw Score (RS)
by Age Group on Four Selected Subtests

Raw Score	BOTH SEXES AGES 4-4 to 4-7				Raw Score	BOTH SEXES AGES 4-4 to 4-7			
	Visual Recep.	Audit. Recep.	Verbal Expres.	Gram. Clos.		Visual Recep.	Audit. Recep.	Verbal Expres.	Gram. Clos.
	Standard Score (SS)					Standard Score (SS)			
44		66			21	51	41	50	60
43		65			20	49	40	48	58
42		64			19	48	40	47	56
41		63			18	47	39	46	55
40		63			17	45	38	44	53
39		62			16	44	37	43	51
38		62			15	42	36	41	48
37		60			14	41	35	40	47
36		59			13	40	34	38	45
35		57			12	38	32	37	43
34		56			11	37	31	36	41
33	66	55			10	36	30	34	39
32	64	54	66		9	34	29	33	37
31	63	52	65		8	33	28	32	36
30	62	51	63		7	32	27	30	34
29	61	50	61		6	30	26	29	32
28	60	49	60		5	29	25	27	30
27	58	47	58		4	28	24	26	27
26	57	46	57		3	26	23	24	25
25	56	45	56	66	2	25	22	23	24
24	54	44	54	65	1	24	20	22	22
23	53	43	53	64	0	23	19	20	20
22	52	42	52	62					

^aAdapted from Samuel A. Kirk, James J. McCarthy, and Winifred D. Kirk, Illinois Test of Psycholinguistic Abilities: Examiner's Manual. 1968. p.109.

ILLINOIS TEST OF PSYCHOLINGUISTIC ABILITIES (ITPA)^a

Standard Score (SS) from Raw Score (RS)
by Age Group on Four Selected Subtests

Raw Score	BOTH SEXES AGES 4-8 to 4-11				Raw Score	BOTH SEXES AGES 4-8 to 4-11			
	Visual Recep.	Audit. Recep.	Verbal Expres.	Gram. Clos.		Visual Recep.	Audit. Recep.	Verbal Expres.	Gram. Clos.
	Standard Score (SS)					Standard Score (SS)			
47		66			23	50	41	50	60
46		65			22	50	40	49	58
45		64			21	48	39	47	56
44		63			20	47	38	46	54
43		62			19	46	38	45	53
42		62			18	44	37	43	51
41		61			17	43	35	42	49
40		61			16	42	34	41	47
39		60			15	40	33	39	45
38		59			14	39	32	38	44
37		58			13	38	31	36	42
36		56	66		12	37	30	35	40
35	66	55	65		11	36	29	34	38
34	64	54	64		10	34	28	32	36
33	63	53	62		9	33	27	31	35
32	62	52	61		8	31	26	30	33
31	60	50	60		7	30	25	29	31
30	60	49	59		6	29	24	28	30
29	58	48	57		5	27	23	26	28
28	57	47	56		4	26	22	25	26
27	56	46	55	67	3	25	21	23	23
26	55	44	54	65	2	24	20	22	22
25	53	43	52	63	1	22	19	21	20
24	52	42	51	62	0	21	17	20	19

^aAdapted from Samuel A. Kirk, James J. McCarthy, and Winifred D. Kirk, Illinois Test of Psycholinguistic Abilities: Examiner's Manual. 1968. p. 110.

ILLINOIS TEST OF PSYCHOLINGUISTIC ABILITIES (ITPA)^a

Standard Score (SS) from Raw Score (RS)
by Age Group on Four Selected Subtests

Raw Score	BOTH SEXES AGES 5-0 to 5-3				Raw Score	BOTH SEXES AGES 5-0 to 5-3			
	Visual Recep.	Audit. Recep.	Verbal Expres.	Gram. Clos.		Visual Recep.	Audit. Recep.	Verbal Expres.	Gram. Clos.
	Standard Score (SS)					Standard Score (SS)			
50		66			24	50	42	47	58
49		65			23	48	41	46	56
48		64			22	47	40	45	54
47		64			21	46	39	44	52
46		63			20	45	38	43	50
45		63			19	44	37	42	49
44		62			18	43	36	40	47
43		61			17	41	34	39	45
42		60			16	40	33	38	43
41		60	66		15	39	32	37	42
40		59	65		14	38	31	36	40
39		59	64		13	37	30	35	38
38		58	63		12	35	29	34	37
37	66	57	62		11	34	28	32	35
36	65	56	62		10	33	27	31	33
35	63	54	61		9	31	26	30	32
34	62	53	60		8	30	25	29	30
33	61	52	58		7	29	24	28	28
32	60	51	57		6	27	22	26	27
31	58	50	56		5	26	21	25	25
30	57	48	55		4	25	20	24	23
29	56	47	53	66	3	24	19	22	21
28	54	46	52	64	2	22	18	21	20
27	53	45	51	63	1	21	17	20	18
26	52	44	50	61	0	20	16	19	16
25	51	43	49	59					

^aAdapted from Samuel A. Kirk, James J. McCarthy, and Winifred D. Kirk, Illinois Test of Psycholinguistic Abilities: Examiner's Manual. 1968. p.111.

ILLINOIS TEST OF PSYCHOLINGUISTIC ABILITIES (ITPA)^a

Standard Score (SS) from Raw Score (RS)
by Age Group on Four Selected Subtests

Raw Score	BOTH SEXES AGES 5-4 to 5-7				Raw Score	BOTH SEXES AGES 5-4 to 5-7			
	Visual Recep.	Audit. Recep.	Verbal Expres.	Gram. Clos.		Visual Recep.	Audit. Recep.	Verbal Expres.	Gram. Clos.
	Standard Score (SS)					Standard Score (SS)			
50		64			24	47	39	44	54
49		63			23	46	38	43	52
48		62			22	45	37	42	50
47		62	66		21	44	36	41	48
46		61	65		20	43	35	40	47
45		60	64		19	42	34	39	45
44		60	64		18	41	33	38	43
43		59	63		17	40	32	37	41
42		58	62		16	38	31	36	39
41		57	61		15	37	30	35	38
40		57	60		14	36	29	34	36
39	66	56	59		13	35	28	32	35
38	65	56	58		12	34	27	31	33
37	63	55	57		11	32	26	30	31
36	62	53	57		10	31	25	29	30
35	60	52	56		9	30	24	28	29
34	59	50	55		8	28	23	27	27
33	58	48	54		7	27	22	26	25
32	57	47	52	66	6	26	20	25	24
31	56	46	51	64	5	25	19	24	22
30	54	45	50	63	4	24	18	23	20
29	53	44	49	62	3	23	17	22	18
28	52	43	48	60	2	21	16	21	17
27	51	42	48	59	1	20	15	20	15
26	50	41	47	57	0	19	14	19	13
25	49	40	45	55					

^aAdapted from Samuel A. Kirk, James J. McCarthy, and Winifred D. Kirk, Illinois Test of Psycholinguistic Abilities: Examiner's Manual. 1968. p.112.

ILLINOIS TEST OF PSYCHOLINGUISTIC ABILITIES (ITPA)^a

Standard Score (SS) from Raw Score (RS)
by Age Group on Four Selected Subtests

Raw Score	BOTH SEXES AGES 5-8 to 5-11				Raw Score	BOTH SEXES AGES 5-8 to 5-11			
	Visual Recep.	Audit. Recep.	Verbal Expres.	Gram. Clos.		Visual Recep.	Audit. Recep.	Verbal Expres.	Gram. Clos.
	Standard Score (SS)					Standard Score (SS)			
50		61	64		24	45	37	41	50
49		60	63		23	44	36	40	48
48		60	62		22	43	35	39	46
47		59	61		21	42	34	38	44
46		58	60		20	41	33	37	43
45		58	60		19	40	32	36	42
44		57	59		18	39	31	35	40
43		56	58		17	38	30	34	38
42		55	58		16	37	29	34	36
41		55	56		15	36	28	33	35
40	66	54	55		14	34	27	32	33
39	64	54	54		13	33	27	30	32
38	62	53	53		12	32	25	29	30
37	61	51	53		11	31	24	28	28
36	60	50	52		10	30	23	27	26
35	58	49	51		9	28	22	26	25
34	57	48	50		8	27	21	26	24
33	55	47	49	64	7	25	20	25	22
32	54	46	48	62	6	24	19	24	20
31	53	44	47	61	5	23	18	23	18
30	52	43	46	60	4	22	16	22	17
29	51	42	45	58	3	21	15	21	15
28	50	41	44	57	2	20	14	20	14
27	49	40	44	55	1	19	13	19	12
26	48	39	43	53	0	18	12	18	11
25	47	38	42	52					

^aAdapted from Samuel A. Kirk, James J. McCarthy, and Winifred D. Kirk, Illinois Test of Psycholinguistic Abilities: Examiner's Manual, 1968, p. 113.

ILLINOIS TEST OF PSYCHOLINGUISTIC ABILITIES (ITPA)^a

Standard Score (SS) from Raw Score (RS)
by Age Group on Four Selected Subtests

Raw Score	BOTH SEXES AGES 6-0 to 6-3				Raw Score	BOTH SEXES AGES 6-0 to 6-3			
	Visual Recep.	Audit. Recep.	Verbal Expres.	Gram. Clos.		Visual Recep.	Audit. Recep.	Verbal Expres.	Gram. Clos.
	Standard Score (SS)					Standard Score (SS)			
50		59	61		24	43	35	39	47
49		58	60		23	42	34	38	45
48		58	59		22	41	33	37	44
47		57	58		21	40	33	36	42
46		56	57		20	38	32	35	41
45		55	57		19	38	31	34	39
44		54	56		18	36	30	33	37
43		54	55		17	35	29	33	36
42		53	54		16	34	28	32	34
41		52	53		15	33	27	31	32
40	64	52	52		14	32	26	30	31
39	63	51	51		13	31	25	29	30
38	60	50	50		12	30	24	28	28
37	59	49	50		11	29	23	27	26
36	58	48	49		10	28	22	26	25
35	56	47	48		9	26	21	25	23
34	54	46	47		8	25	20	24	22
33	52	45	46	62	7	24	19	24	20
32	51	44	45	60	6	23	17	23	18
31	50	43	44	58	5	22	16	22	17
30	49	41	44	57	4	21	15	21	15
29	48	40	43	55	3	20	14	20	13
28	47	40	42	54	2	19	13	19	12
27	46	39	42	52	1	18	12	18	10
26	45	38	41	51	0	17	11	17	9
25	44	36	40	49					

^aAdapted from Samuel A. Kirk, James J. McCarthy, and Winifred D. Kirk, Illinois Test of Psycholinguistic Abilities: Examiner's Manual. 1968. p.114.

PEABODY PICTURE VOCABULARY TEST (PPVT)^a

Mental Age (MA) from Raw Score (RS) for Both Sexes, FORM A

Raw Score	Mental Age	Raw Score	Mental Age	Raw Score	Mental Age
109	18-0	79	10-7	49	4-11
108	17-9	78	10-5	48	4-10
107	17-6	77	10-4	47	4-8
106	17-2	76	10-2	46	4-7
105	16-11	75	10-0	45	4-5
104	16-7	74	9-8	44	4-3
103	16-3	73	9-5	43	4-1
102	15-11	72	9-2	42	4-0
101	15-9	71	8-11	41	3-11
100	15-7	70	8-9	40	3-10
99	15-5	69	8-7	39	3-9
98	15-3	68	8-5	38	3-8
97	15-1	67	8-3	37	3-7
96	14-10	66	8-1	36	3-6
95	14-6	65	7-10	35	3-5
94	14-3	64	7-8	34	3-4
93	13-11	63	7-6	33	3-3
92	13-7	62	7-3	32	3-3
91	13-2	61	7-1	31	3-2
90	12-11	60	6-10	30	3-1
89	12-9	59	6-8	29	3-0
88	12-7	58	6-6	28	2-11
87	12-5	57	6-3	27	2-11
86	12-3	56	6-1	26	2-10
85	12-1	55	5-11	25	2-9
84	11-9	54	5-9	24	2-8
83	11-4	53	5-7	23	2-8
82	11-0	52	5-5	22	2-7
81	10-10	51	5-2	21	2-6 ^b
80	10-8	50	5-1	20	2-6

^aAdapted from Lloyd M. Dunn, Peabody Picture Vocabulary Test: Expanded Manual. 1965. p.12.

^bFigures below this point are ext. polated.

PEABODY PICTURE VOCABULARY TEST (PPVT)^a

Intelligence Quotient (IQ) and Standard Deviation (SD)
from Raw Score (RS) by Age Group

BOTH SEXES -- AGES 3-3 to 3-8

RS	IQ	SD	RS	IQ	SD	RS	IQ	SD
85	175	4.69	58	134	2.13	31	93	-.44
84	174	4.62	57	133	2.06	30	91	-.56
83	173	4.56	56	131	1.94	29	90	-.63
82	171	4.44	55	130	1.88	28	88	-.75
81	169	4.31	54	128	1.75	27	87	-.81
80	168	4.25	53	127	1.69	26	85	-.94
79	166	4.13	52	125	1.56	25	84	-1.00
78	165	4.06	51	124	1.50	24	82	-1.13
77	163	3.94	50	122	1.28	23	80	-1.25
76	162	3.88	49	121	1.31	22	79	-1.31
75	160	3.75	48	119	1.19	21	77	-1.44
74	159	3.69	47	117	1.06	20	76	-1.50
73	157	3.56	46	116	1.00	19	74	-1.53
72	155	3.44	45	114	.88	18	73	-1.69
71	153	3.31	44	113	.81	17	71	-1.81
70	152	3.25	43	111	.69	16	70	-1.88
69	151	3.19	42	110	.63	15	68	-2.00
68	149	3.06	41	108	.50	14	67	-2.06
67	148	3.00	40	107	.44	13	65	-2.19
66	147 ^b	2.94	39	105	.31	12	63	-2.31
65	145	2.81	38	104	.25	11	62	-2.38
64	144	2.75	37	102	.13	10	60	-2.50
63	142	2.63	36	101	.06	9	59	-2.56
62	141	2.56	35	99	-.06	8	57	-2.69
61	139	2.44	34	97	-.19	7	56	-2.75
60	138	2.38	33	96	-.25	6	52 ^c	-3.00
59	136	2.25	32	94	-.38	5	50	-3.13

^aAdapted from Lloyd M. Dunn, Peabody Picture Vocabulary Test: Expanded Manual. 1965. pp. 14, 15, 46, 48 using SD equals 16 IQ points.

^bFigures above this point are extrapolated.

^cFigures below this point are extrapolated.

PEABODY PICTURE VOCABULARY TEST (PPVT)

Intelligence Quotient (IQ) and Standard Deviation (SD)
from Raw Score (RS) by Age Group

BOTH SEXES -- AGES 3-9 to 4-2

RS	IQ	SD	RS	IQ	SD	RS	IQ	SD
86	175	4.69	59	125	1.56	32	85	-.94
85	173	4.56	58	123	1.44	31	84	-1.00
84	171	4.44	57	122	1.38	30	82	-1.13
83	169	4.31	56	120	1.25	29	81	-1.19
82	167	4.19	55	119	1.19	28	80	-1.25
81	165	4.06	54	117	1.06	27	78	-1.38
80	162	3.88	53	116	1.00	26	77	-1.44
79	160	3.75	52	114	.88	25	75	-1.56
78	157	3.56	51	113	.81	24	74	-1.63
77	154	3.38	50	111	.69	23	72	-1.75
76	152	3.25	49	110	.63	22	71	-1.81
75	149	3.06	48	109	.56	21	69	-1.94
74	147	2.94	47	107	.44	20	68	-2.00
73	145 ^a	2.81	46	106	.38	19	67	-2.06
72	143	2.69	45	104	.25	18	65	-2.19
71	142	2.63	44	103	.19	17	64	-2.25
70	141	2.56	43	101	.06	16	62	-2.38
69	139	2.44	42	100	.00	15	61	-2.44
68	138	2.38	41	98	-.13	14	59	-2.56
67	136	2.25	40	97	-.19	13	58	-2.63
66	135	2.19	39	96	-.25	12	56	-2.75
65	133	2.06	38	94	-.38	11	55 ^b	-2.81
64	132	2.00	37	93	-.44	10	54	-2.88
63	130	1.88	36	91	-.56	9	52	-3.00
62	129	1.81	35	90	-.63	8	50	-3.13
61	127	1.69	34	88	-.75	7	48	-3.25
60	126	1.63	33	87	-.81	6	46	-3.38

^aFigures above this point are extrapolated.

^bFigures below this point are extrapolated.

PEABODY PICTURE VOCABULARY TEST (PPVT)

Intelligence Quotient (IQ) and Standard Deviation (SD)
from Raw Score (RS) by Age Group

BOTH SEXES - AGES 4-3 to 4-8

RS	IQ	SD	RS	IQ	SD	RS	IQ	SD
88	175	4.69	61	127	1.69	34	80	-1.25
87	173	4.56	60	125	1.56	33	78	-1.38
86	171	4.44	59	123	1.44	32	76	-1.50
85	169	4.31	58	122	1.38	31	75	-1.56
84	167	4.19	57	120	1.25	30	73	-1.69
83	166	4.13	56	118	1.13	29	71	-1.81
82	164	4.00	55	116	1.00	28	69	-1.94
81	162	3.88	54	115	.94	27	68	-2.00
80	160	3.75	53	113	.81	26	66	-2.13
79	159	3.69	52	111	.69	25	64	-2.25
78	157	3.56	51	109	.56	24	63	-2.31
77	155	3.44	50	108	.50	23	61	-2.44
76	153	3.31	49	106	.38	22	59	-2.56
75	152	3.25	48	104	.25	21	57	-2.69
74	150	3.13	47	102	.13	20	56	-2.75
73	148	3.00	46	101	.06	19	54 ^b	-2.88
72	146 ^a	2.88	45	99	-.06	18	52	-3.00
71	144	2.75	44	97	-.19	17	50	-3.13
70	142	2.63	43	96	-.25	16	48	-3.25
69	141	2.56	42	94	-.38	15	46	-3.38
68	139	2.44	41	92	-.50	14	45	-3.44
67	137	2.31	40	90	-.63	13	43	-3.56
66	135	2.19	39	89	-.69	12	41	-3.69
65	134	2.13	38	87	-.81	11	39	-3.81
64	132	2.00	37	85	-.94	10	37	-3.94
63	130	1.88	36	83	-1.06	9	36	-4.00
62	129	1.81	35	82	-1.13	8	35	-4.06

^aFigures above this point are extrapolated.

^bFigures below this point are extrapolated.

PEABODY PICTURE VOCABULARY TEST (PPVT)

Intelligence Quotient (IQ) and Standard Deviation (SD)
from Raw Score (RS) by Age Group

BOTH SEXES - - AGES 4-9 to 5-5

RS	IQ	SD	RS	IQ	SD	RS	IQ	SD
90	175	4.69	63	123	1.44	36	74	-1.63
89	173	4.56	62	122	1.38	35	72	-1.75
88	171	4.44	61	120	1.25	34	70	-1.88
87	169	4.31	60	118	1.13	33	68	-2.00
86	168	4.25	59	116	1.00	32	67	-2.06
85	166	4.13	58	114	.88	31	65	-2.19
84	164	4.00	57	112	.75	30	63	-2.31
83	162	3.88	56	111	.69	29	61	-2.44
82	160	3.75	55	109	.56	28	59	-2.56
81	158	3.63	54	107	.44	27	57	-2.69
80	156	3.50	53	105	.31	26	56	-2.75
79	154	3.38	52	103	.19	25	53 ^b	-2.94
78	152	3.25	51	101	.06	24	51	-3.06
77	150	3.13	50	100	.00	23	48	-3.25
76	147	2.94	49	98	-.13	22	46	-3.38
75	145 ^a	2.81	48	96	-.25	21	44	-3.50
74	144	2.75	47	94	-.38	20	42	-3.63
73	142	2.63	46	92	-.50	19	41	-3.69
72	140	2.50	45	90	-.63	18	40	-3.75
71	138	2.38	44	89	-.69	17	38	-3.88
70	136	2.25	43	87	-.81	16	36	-4.00
69	134	2.13	42	85	-.94	15	34	-4.13
68	133	2.06	41	83	-1.06	14	33	-4.19
67	131	1.94	40	81	-1.19	13	31	-4.31
66	129	1.81	39	79	-1.31	12	29	-4.44
65	127	1.69	38	78	-1.38	11	27	-4.56
64	125	1.56	37	76	-1.50	10	25	-4.69

^aFigures above this point are extrapolated.

^bFigures below this point are extrapolated.

PEABODY PICTURE VOCABULARY TEST (PPVT)

Intelligence Quotient (IQ) and Standard Deviation (SD)
from Raw Score (RS) by Age Group

BOTH SEXES - - AGES 5-6 to 6-5

RS	IQ	SD	RS	IQ	SD	RS	IQ	SD
93	175	4.69	66	121	1.31	39	67	-2.06
92	173	4.56	65	119	1.19	38	65	-2.19
91	171	4.44	64	117	1.06	37	63	-2.31
90	169	4.31	63	115	.94	36	61	-2.44
89	167	4.19	62	113	.81	35	59	-2.56
88	165	4.06	61	111	.69	34	57	-2.69
87	163	3.94	60	109	.56	33	55	-2.81
86	161	3.81	59	107	.44	32	54 ^b	-2.88
85	159	3.69	58	105	.31	31	53	-2.94
84	157	3.56	57	103	.19	30	51	-3.06
83	155	3.44	56	101	.06	29	49	-3.19
82	153	3.31	55	99	-.06	28	47	-3.31
81	151	3.19	54	97	-.19	27	45	-3.44
80	149	3.06	53	95	-.31	26	43	-3.56
79	147	2.94	52	93	-.44	25	41	-3.69
78	145 ^a	2.81	51	91	-.56	24	40	-3.75
77	143	2.69	50	89	-.69	23	38	-3.88
76	141	2.56	49	87	-.81	22	36	-4.00
75	139	2.44	48	85	-.94	21	34	-4.13
74	137	2.31	47	83	-1.06	20	32	-4.25
73	135	2.19	46	81	-1.19	19	30	-4.38
72	133	2.06	45	79	-1.31	18	28	-4.50
71	131	1.94	44	77	-1.44	17	25	-4.69
70	129	1.81	43	75	-1.56	16	22	-4.88
69	127	1.69	42	73	-1.69	15	19	-5.06
68	125	1.56	41	71	-1.81	14	18	-5.13
67	123	1.44	40	69	-1.94	13	16	-5.25

^aFigures above this point are extrapolated.

^bFigures below this point are extrapolated.

BEHAVIOR RATING SCALE (BRS)^a

Standard Deviation (SD) from Raw Score (RS)
for Ages 3-10 to 5-9 by Sex

Raw Score	BOYS	GIRLS
	Standard Deviation (SD)	
20	1.34	1.14
19	1.08	.83
18	.82	.52
17	.55	.21
16	.29	.09
15	.02	-.40
14	-.24	-.71
13	-.51	-1.02
12	-.77	-1.33
11	-1.04	-1.64
10	-1.30	-1.95
9	-1.57	-2.26
8	-1.83	-2.57
7	-2.09	-2.87
6	-2.36	-3.18
5	-2.62	-3.49
4	-2.89	-3.80
3	-3.15	-4.11
2	-3.42	-4.42
1	-3.68	-4.73
0	-3.95	-5.04
Number	170	215
Mean	14.91764	16.30697
SD	3.77985	3.23766

^aDevised and normed locally.

COMPLETING THE TEST PROFILE

A Profile sheet should be completed for each child tested. The Profile provides space at the top to record the child's legal name (last name first), school, sex, examiner(s) name, date of test administration, birthdate, age (in years and months), and program recommendations (major and minor).

At the bottom of the sheet space is provided to record the raw score; standard deviation or standard score; and psycholinguistic age, age equivalent, or mental age. (No age score is available for behavior rating.) The I.Q. should be recorded under the letters PPVT.

When all test scores have been recorded, the points for each test indicated by the standard deviation or standard score should be designated and connected. From the completed Profile, a child's strengths and weaknesses (superior, high borderline, average, low borderline, deficient) can be determined at a glance.

A sample profile is illustrated in Figure 2.

PROFILE - EARLY EDUCATION SCREENING TEST BATTERY

Legal Name Smith, Lawrence Richard Date of Test 10
 School Waverly Birthdate 64 2 24
 (Last) (First) (Middle) (Subtract)
 Sex M
 EXAMINERS: ITPA J. Jones Other H. Stein AGE-Years & Months 5-3
 PROGRAM RECOMMENDATION
 Major L (Language)
 Minor A (Arithmetic)

DEVELOP- MENTAL SKILL LEVEL	COORDIN- ATION		RECEPTION		EXPRESSION		COGNITION	BEHAVIOR	SCORE SCALE
	Gross Motor	Visual Motor	VISUAL Visual Perception	AUDITORY Auditory Perception	LANGUAGE Gram. Description	Syntax			
Very Superior									ITPA SS
Superior									66 5.00
High Borderline									60 4.00
AVERAGE									54 3.00
Low Borderline									48 2.00 45 1.50 43 1.17 42 1.00
Deficient									36 .00
Very Deficient									30 -1.00 29 -1.17 27 -1.50 24 -2.00
TEST	Gross Mot. Obs.	Beery VMI	ITPA Vis. Rec.	ITPA Aud. Rec.	ITPA Verb. Exp.	ITPA Gram. Clo.	PPVT	Behavior Rating	18 -3.00
Raw Score	24	9	19	14	7	3	58	7	12 -4.00
SD or SS	2.28 SD	.06 SD	44 SS	31 SS	28 SS	21 SS	.88 SD	-2.09 SD	6 -5.00
FLA or Age Score	5-5+ A.N.	5-3	6-2	4-1	3-4	2-7	6-6	—	0 -6.00

REMARKS
ON
BACK
PLEASE

Figure 2. Sample Profile.



REFERENCES

1. Coffman, Alice O., and Dunlap, James M. The Effects of Assessment and Personalized Programming on Subsequent Intellectual Development of Prekindergarten and Kindergarten Children. Unpublished report, Cooperative Research Project No. 6-1328, Office of Education, U. S. Department of Health, Education, and Welfare. University City, Missouri: School District of University City. July 1967. 113p.
2. Coffman, Alice O., and Dunlap, James M. The Effects of Assessment and Personalized Programming on Subsequent Intellectual Development of Prekindergarten and Kindergarten Children. Unpublished report, Cooperative Research Project No. 6-1328, Office of Education, U. S. Department of Health, Education, and Welfare. University City, Missouri: School District of University City. July 1968. 82p.
3. Office of Research and Testing. Prekindergarten Research Study: Steps toward a Skills Development Screening Test for Prekindergarten and Kindergarten Children. University City, Missouri: School District of University City. March 1968. 11p.
4. Office of Research and Testing. Prekindergarten Research Study: Criteria for Identifying Skills Development Needs for Use with Steps toward a Skills Development Screening Test for Prekindergarten and Kindergarten Children. University City, Missouri: School District of University City. April 1968. 15p.
5. Office of Research and Testing. Prekindergarten Research Study: Tentative Criteria for the Behavior Rating Scale for Use with Steps toward a Skills Development Screening Test for Prekindergarten and Kindergarten Children. University City, Missouri: School District of University City. April 1968. 4p.
6. Office of Research and Testing. Early Education Screening Test Battery of Basic Skills Development: A Study of Test Selection. University City, Missouri: School District of University City. January 1969. 21p.
7. Dunn, Lloyd M. Peabody Picture Vocabulary Test: Expanded Manual. Minneapolis: American Guidance Service, Inc. 1965. 51p.
8. Peery, Keith E. Developmental Test of Visual-Motor Integration: Administration and Scoring Manual. Chicago: Follett Publishing Company. 1967. 80p.

9. Kirk, Samuel A., McCarthy, James J., and Kirk, Winifred D. Illinois Test of Psycholinguistic Abilities: Examiner's Manual, Revised Edition. Urbana, Illinois: Board of Trustees of the University of Illinois. 1968. 136p.
10. McCarthy, James J., and Kirk, Samuel A. Illinois Test of Psycholinguistic Abilities: Examiner's Manual, Experimental Edition. Urbana, Illinois: Institute for Research on Exceptional Children, University of Illinois. 1961. 130p.

CONTRIBUTORS

Alice O. Coffman, Director
Prekindergarten Research Center

Gordon W. Apperson, Research Associate
On leave for active service with
the United States Army

Shirley Berman, Project Secretary

Esther R. Satz, Research Secretary and
Statistical Assistant

James M. Dunlap, Coordinator
Research and Testing