

DOCUMENT RESUME

ED 034 049

08

VT 009 682

AUTHOR Brill, Donald M.; And Others
TITLE Wisconsin Research Coordinating Unit for Vocational Education. Final Report.
INSTITUTION Wisconsin Departmental Research Center for Vocational Education, Madison.
Spons Agency Office of Education (DHEW), Washington, D.C. Bureau of Research.
Bureau No ER-5-1216
Pub Date Sep 69
Grant OEG-C-9-051216-0712(085)
Note 63p.

EDRS Price MF-\$0.50 HC-\$3.25
Descriptors Conferences, Information Dissemination, *Research Coordinating Units, Research Projects, Seminars, *Vocational Education, Workshops
Identifiers *Wisconsin

Abstract

This publication includes two reports of the Wisconsin Research Coordinating Unit for Vocational Education (RCU) for the respective periods January 1966-September 1968 and October 1968-August 1969. The general objectives of the RCU were stimulation, coordination, and dissemination of research. Some major activities were related to stimulating occupational education research projects within local schools and districts, state universities, and the University of Wisconsin Center for Studies in Vocational and Technical Education. Coordination of occupational research was effected through participation in pertinent conferences and personal contacts with research leadership, employment service personnel, and others. Newsletters and reports were used for research dissemination, and a research library was established and expanded. Inservice training was provided through workshops and seminars, and field support was provided at the district and local school level. Over 300 surveys and projects were completed or in progress during the earlier report period and about 200 during the latter period. Both reports present listings of specific research activities. (JK)

BR 5-1216
PA 08
OE/BR

ED034049

FINAL REPORT

Contract No. OEG-O-9-051216-0712 (085)

WISCONSIN RESEARCH COORDINATING UNIT
FOR VOCATIONAL EDUCATION

September, 1969

U.S. DEPARTMENT OF
HEALTH, EDUCATION AND WELFARE

Office of Education
Bureau of Research

UT 009682

U.S. DEPARTMENT OF HEALTH, EDUCATION & WELFARE
OFFICE OF EDUCATION

THIS DOCUMENT HAS BEEN REPRODUCED EXACTLY AS RECEIVED FROM THE
PERSON OR ORGANIZATION ORIGINATING IT. POINTS OF VIEW OR OPINIONS
STATED DO NOT NECESSARILY REPRESENT OFFICIAL OFFICE OF EDUCATION
POSITION OR POLICY.

FINAL REPORT

Contract No. OEG-9-051216-0712 (085)

WISCONSIN RESEARCH COORDINATING UNIT
FOR VOCATIONAL EDUCATION

Donald M. Brill
Roland J. Krogstad
William H. Woods

The research reported herein was performed pursuant to a contract with
the Office of Education, U. S. Department of Health, Education, and Welfare.
Contractors undertaking such projects under Government sponsorship are
encouraged to express freely their professional judgment in the conduct of
the project. Points of view or opinions stated do not, therefore,
necessarily represent official Office of Education position or policy.

U.S. DEPARTMENT OF
HEALTH, EDUCATION AND WELFARE

Office of Education

Bureau of Research

SUMMARY

The Wisconsin Research Coordinating Unit for Vocational Education was approved to continue under a new contract commencing October 1, 1968 as a five-year project under section 4(c) of P. L. 88-210. Passage of P. L. 90-576 caused termination of the project August 31, 1969. The (RCU) will continue to operate in the Wisconsin Board of Vocational, Technical and Adult Education under State Board control.

The general objectives of the unit were stimulation, coordination, and dissemination of research in vocational and technical education in the state.

Major issues and problems were identified and given priorities for further detailed study. These include teacher education and leadership development, follow-up procedures, organization and administration of newly formed area vocational, technical and adult education districts, present and emerging occupations, information for program planning and development, multimedia instruction, behavioral objectives, and a pilot project with the Quarter System.

Major activities were concerned with stimulating occupational education research projects within local schools and districts, State universities and the Center for Studies in Vocational and Technical Education at the University of Wisconsin.

The coordination of occupational research was affected through participation in pertinent conferences, meetings and seminars involving vocational educators and personal contacts with the existent research leadership, employment service personnel and other individuals and groups.

Dissemination of research and research related information was developed through use of newsletters and quarterly reports. The purposes of dissemination and the development of a research consciousness among associates in vocational education were furthered by means of seminars and correspondence. A library of research findings in vocational education has been expanded, which includes both original hard copy materials and microfiche. The microfiche are obtained from the Educational Research Information Center (ERIC).

The staff of the RCU participated in a number of State and national conferences in both vocational education and educational research. The benefits gained were disseminated through in-service educational conferences.

The in-service training phases of the program included workshops and seminars conducted by the Unit to upgrade vocational education personnel in educational research. A large amount of in-service education was pro-

vided different individuals, as staff members aided them in designing research projects.

Approximately 200 surveys and projects were completed or in progress during the report period. This was a considerable increase over the original project annual average.

The operation of field support in research in the area vocational, technical and adult education districts completes the line of communication and research information dissemination from the federal level through the state down to the district and local school level.

INTRODUCTION

This is a final report for the project, "Wisconsin Research Coordinating Unit for Vocational Education." Contract No. OEG-0-9-051216-0712 (085), commencing October 1, 1968 and ending August 31, 1969. This project afforded continuation of the Departmental Research Center (RCU) previously approved under 4(c) of P.L. 88-210 on January 3, 1966 and was extended to September 30, 1968.

The major functions of the Research Coordinating Unit are those of coordination, stimulation, and dissemination of research related to vocational education.

The specific objectives listed in the original proposal are indicated in the part of this report entitled "Results and Findings."

After the Unit was in operation, the objectives were analyzed to determine which should be given top priority during the initial year of operation. As a result of the analysis, major emphasis was placed on the following activities to accomplish the objectives.

1. Identify issues and priorities of problems in vocational education needing research.
2. Continue liaison with State agencies, Wisconsin State Employment Service and others interested in research in vocational education.
3. Sponsor, coordinate and encourage in-service training in research methods and design for those interested in research related to vocational education.
4. Work with institutions of higher education in initiating and conducting research related to vocational education.
5. Encourage vocational, technical and adult education districts to design and conduct research projects.
6. Improve research capabilities of RCU staff to provide better consultative services to vocational, technical and adult schools or other groups conducting research in vocational education.
7. Locate completed research related to vocational education and expand the library of research, labor market, and curriculum materials.
8. Disseminate findings of research in vocational education.
9. Aid vocational, technical and adult school districts and other institutions in securing funds to conduct research in vocational education.

This final report describes the activities performed, the methods used, results and findings obtained and the conclusions developed from the project operations.

METHODS

The Research Coordinating Unit (RCU) is located in the state office of the Wisconsin Board of Vocational, Technical and Adult Education and is directly responsible to the Program Administrator of the Educational Development and Special Services Division. Refer to Appendix "A" for the organizational structure. The RCU functions in the same Division as the supervisors of curriculum, student services, facilities, field services and teacher education.

At full strength the RCU includes three full-time supervisors of research, including the director; a stenographer, and a clerk typist. The director works with other agencies and institutions in coordinating educational and occupational research. One supervisor's prime responsibilities are consultative services in developing proposals. The third supervisor's prime responsibilities are writing and summarizing research studies and disseminating information. During the period of operation the clerical staff were assigned to a clerical "pool".

The professional staff worked together in effecting the major objectives of the Unit. They worked directly with the State Universities, University of Wisconsin, local vocational, technical and adult districts and schools, Wisconsin State Employment Service, the Center for Studies in Vocational and Technical Education, Department of Public Instruction, State Bureau of Planning, State Department of Administration, and the Coordinating Council for Higher Education in Wisconsin. These working relationships resulted in development of several research proposals, position papers, planning guidelines, curriculum guides, and reports in vocational and technical education.

Professional staff serve on inter-agency liaison planning and research committees, coordinate task force groups, attend research conferences, belong to professional organizations, conduct and participate in in-service activities, disseminate information, perform consultative services, conduct research studies, and host meetings.

Through encouragement of the Unit by the State Director of Vocational, Technical and Adult Education, field support for research has continued in the area vocational, technical and adult education districts through appointment of a district research and planning coordinator or supervisor either on a part-time or full-time basis. Communication lines with these staff persons completes the communication linkage from the federal level through state level down to the local action level.

The RCU performs the following functions for state level vocational, technical and adult education staff:

1. Presenting ideas for study pertinent to improvement of curriculum in all subject fields, student services, teacher education, extended services, planning, and administrative services.
2. Maintaining a reference library of abstracts, bibliographies, microfiche and hard copy of studies and reports pertinent to vocational education.
3. Routing, summarizing and disseminating appropriate research studies, reports and information for review and implementation.
4. Obtaining appropriate materials upon request.
5. Lending technical and consultative assistance in designing, writing and conducting research studies.
6. Coordinating needed labor market studies with Wisconsin State Employment Service and other institutions.
7. Coordinating needed pilot and experimental staffing and instructional studies and programs.
8. Coordinating needed placement and follow-up procedures.

The RCU performs the following functions for Area Vocational, Technical and Adult Education Districts:

1. Presenting ideas for research and study.
2. Lending technical and consultative assistance in developing research proposals.
3. Improving district research and planning capabilities through coordination and development of various in-service educational activities.
4. Developing a state-wide plan of research priorities.
5. Developing procedures and guidelines for research operations.
6. Maintaining a library of abstracts, bibliographies, microfiche, proposals, studies, reports and limited data bank.
7. Supplying a certain amount of informational services upon request.
8. Keeping them informed of plans, procedures and progress in research activities.
9. Bringing critical issues to the Research Committee of the Wisconsin Association of Vocational, Technical and Adult Education Administrators.
10. Coordinating cooperatively conducted studies with other districts and agencies.
11. Providing supervisory assistance to districts in the development and effective pursuit of a district research program.

The above methods and functions were helpful in progressing toward accomplishment of the objectives.

RESULTS AND FINDINGS

This portion of the report is devoted to highlighting the accomplishments related to the major objectives of the RCU. Much of the contributions and impact resulting from the Unit cannot be readily assessed. These include an increased awareness of, and capabilities for, research by vocational educators. Hopefully these concerns will be reflected in improved vocational education programs to meet the needs of people. Following are the original objectives with major results and findings for each objective:

1. Stimulate and encourage occupational education research and development activities in state departments, local school districts, colleges and universities, and nonprofit organizations.

Research Coordinating Unit staff met several times with researchers, teacher educators, and others at Stout State University, University of Wisconsin, The Center for Studies in Vocational and Technical Education at the University of Wisconsin, The University of Wisconsin Extension, The Coordinating Council for Higher Education, The Wisconsin State Employment Service, The State Bureau of Planning, The State Department of Administration, The Department of Public Instruction, Local and Area Districts of Vocational, Technical and Adult Education, and institutional researchers in the state universities.

Staff were involved in various state liaison, planning and research committees including information systems development, the governor's commission to study possible reorganization of education in Wisconsin follow-up procedures, enrollment projections, student housing and others.

Consultative services were given to persons including several graduate students, state staff and local school officials interested in planning, developing and conducting research projects in vocational and technical education.

Position papers and guidelines for evaluation of district vocational programs have been developed.

Refer to Appendix "B" of this report which lists research projects and activities conducted in Wisconsin.

2. Coordinate occupational research activities conducted within the state, and, further, coordinate such research activities with those being conducted outside the state.

The staff worked through the research committee of the Wisconsin

Association of Vocational, Technical and Adult Education Administrators, the Coordinating Council for Higher Education and other organizations listed under objective 1 to coordinate research activities.

The RCU operating in the Educational Development and Special Services Division coordinates research in the various subject and ancillary services areas. Refer to the section on "Methods" for a listing of the RCU services to state and local educational staff.

The RCU Director is a liaison representative on the Council for Administration of Title I projects under the Higher Education Act of 1965.

A regional meeting was held with RCU staff of neighboring states to explore cooperative projects.

3. Disseminate information on the progress and applications of the results of occupational education research.

A newsletter "Bits About Research" has periodically been published and disseminated to vocational educators, RCU's, and other agencies and organizations.

Quarterly reports of research projects and activities were published.

Summaries and reports of conferences, surveys and studies were prepared and disseminated.

Approximately thirty five requests for over fifty documents per quarter were fulfilled or referred to other sources.

A library of bibliographies, abstracts, reports, microfiche, and hard copy have been expanded. Microfiche reading and development equipment continue to be a part of the RCU operations.

4. Stimulate activities which will result in increased interest and improved competence in research such as encouraging pre-service and in-service training of occupational researchers.

Research Coordinating Unit staff participated in national research seminars and pre-session research meetings. Staff are conducting local and district in-service teacher education programs to explain the ERIC system.

A two-week research seminar was conducted by Stout State University

for vocational, technical and adult education district coordinators of research and planning and student services personnel. Section meetings for these research staff were held at the annual Professional Growth Week Conference. Publications on sources of funds, research associations and sources of research information were disseminated.

5. Participate in the development, monitoring or conduct, as appropriate, of occupational research and development projects supported by federal, state, local or private organization funds.

Staff have encouraged and assisted graduate students, state staff, teacher educators, and others in developing and conducting studies in vocational and technical education. Refer to Appendix "B" of this report listing research projects and activities conducted. Many of these were encouraged, reviewed and supported by the Research Coordinating Unit and the Wisconsin Board of Vocational, Technical and Adult Education. Cover letters of support were prepared and accompanied studies.

Some of the projects were funded partially through the Research Coordinating Unit. Staff belong to the following state and national research and vocational education association: AERA, AVERA, AVA, WERA, and WAIR. The RCU hosted the North Central RCU Regional Conference. It conducted a national survey on retrieval systems. Wisconsin, through its RCU has been accepted to participate with six other pilot states to test the "Guidelines for a State Vocational and Technical Education Information Dissemination System." This pilot program is coordinated and partially supported through the VT - ERIC clearinghouse.

6. Identify and maintain an inventory of available occupational research and development resources in light of anticipated needs and programs within the state.

The unit library was expanded during the period. Lists of bibliographies, abstracts and other sources of information were prepared. Reference books on research methodologies, reports of studies, examples of proposals, surveys, U. S. Department of Labor and Health Education and Welfare and state reports have been added to the library. A library of microfiche of approximately 25,000 documents cited in "Research in Education" is established.

7. Survey available data on employment opportunities, emerging occupational trends and future job projections as a base for planning vocational programs within the state.

Staff worked closely with the Wisconsin State Employment Service in obtaining and developing formats and types of information needed for planning vocational education programs. Examples of labor market projection methodologies were acquired. A report "Occupational Opportunities Information" was prepared by the Wisconsin State Employment Service. U. S. Department of Labor reports, state agency reports on population, and other economic data were identified and disseminated.

Staff are represented on the liaison committee with the State Employment Service.

8. Identify issues and problems relating to the nature and place of vocational education in the state school system, and determining the contributions which occupational research and development could make in resolving them.

A study of "Research Needs in Vocational-Technical Education" was conducted in 1966 through the Graduate School of Stout State University. The purpose of the study was to identify components under each of fourteen categories which was considered to be in the most critical need for research. The top ranking topic in each category was considered by various committees and workshop groups in the development of research projects in the state.

Major problem areas include present and emerging occupations, job competencies, community attitudes, career decisions, teacher shortages, administrative design of area districts, leadership development, information needed in program planning and standardization of follow-up procedures, long range planning, and others.

Working committees and task force groups were developed to work on these studies.

CONCLUSIONS

As a result of the Research Coordinating Unit (RCU) staff involvement in research in vocational and technical education the following conclusions are presented:

1. The RCU has made a contribution to research in vocational and technical education in Wisconsin.
2. The magnitude and degree of contributions is commensurate with the availability of staff and funds.
3. Location of the RCU in the state division or department of

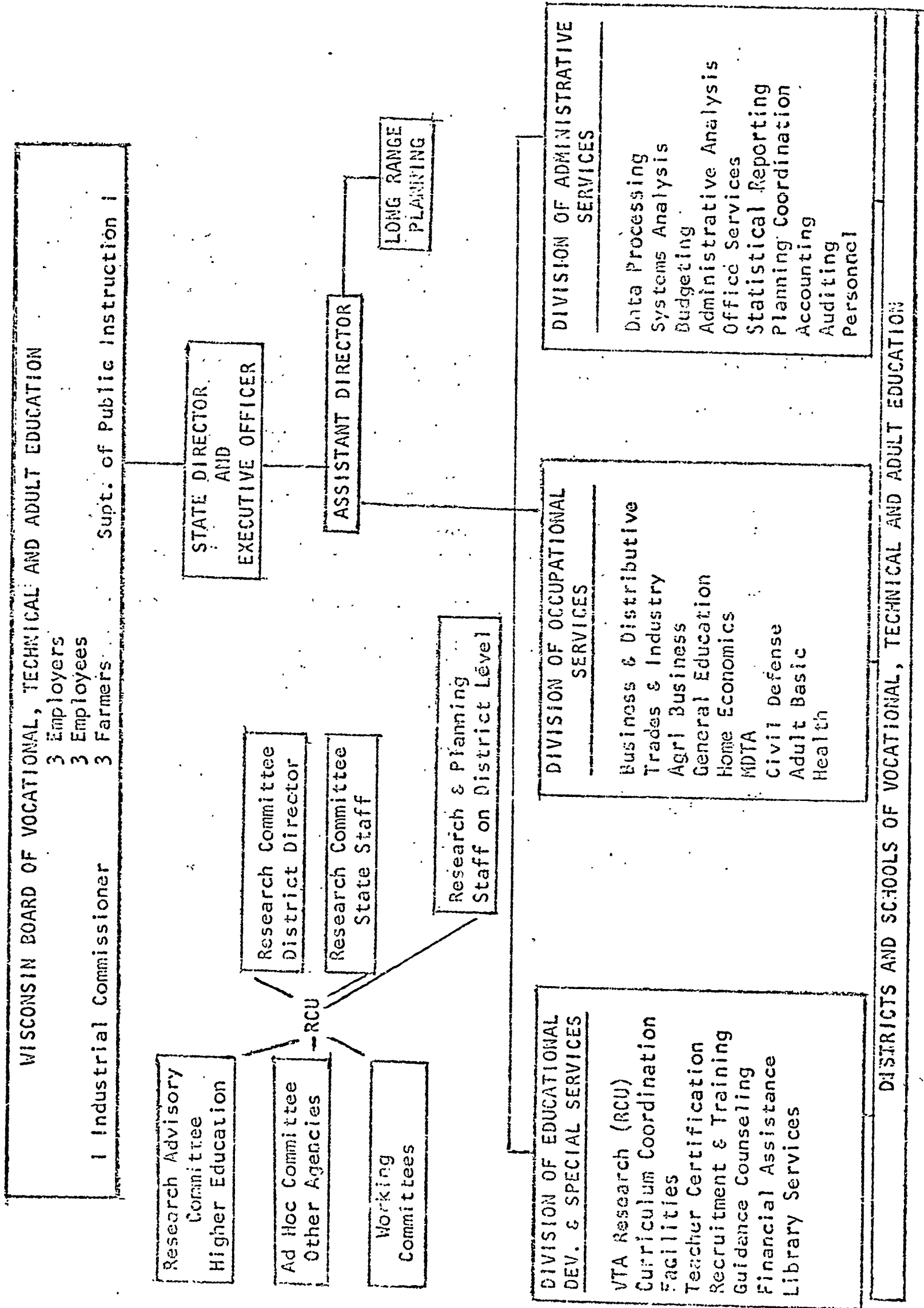
vocational education facilitates identification of problems and increased awareness and interest in research needs by the practitioner.

4. Continuation of the Research Coordinating Unit concept would assist in developing research studies in problem areas in vocational and technical education.
5. Further study is needed to identify types and format of labor market information for vocational education program planning.
6. A considerable increase in reported studies and projects since the last annual report indicate greater participation by districts in research activities.

RECOMMENDATION

1. Continuation of the Research Coordinating Unit concept with adequate federal financial support.
2. Continuation of professional development of staff capabilities in research activities.

APPENDIX A



APPENDIX B

RESEARCH ACTIVITIES

The information included in this section indicates research activities which have been reported as completed or in progress during the report period. The mere listing of activities in the report is in no way meant to indicate that the RCU was involved in the planning or conducting of the activity.

Undoubtedly, there are other activities being conducted which for various reasons are not included in this report.

- Note:
- WBVTAE = Wisconsin Board of Vocational, Technical and Adult Education
 - SVTAE = Local School of Vocational, Technical and Adult Education - city
 - UW = University of Wisconsin, Madison, Wisconsin
 - WSES = Wisconsin State Employment Service, Hill Farms, Madison, Wisconsin
 - CSVTE = Center for Studies in Vocational and Technical Education, University of Wisconsin
 - DPI = Department of Public Instruction, 126 Langdon, Madison, Wis.
 - WSU = Wisconsin State University - City
 - TC = Technical College - City
 - TI = Technical Institute - City
 - USOE = U. S. Office of Education
 - UW-C & I = University of Wisconsin, Department of Curriculum & Instruction
 - CCHE = Coordinating Council for Higher Education, 732 N. Midvale Blvd., Madison, Wisconsin
 - VTAE = Vocational, Technical and Adult Education District - Number

Agency/Institution Involved

Title of Activity, Study On Project
Investigator(s)

USOE

Nation-Wide Study of Characteristics of Vocational Education Teachers and Students

USOE-BSSR

Nation-Wide Study of Community Colleges and Vocational-Technical Education Centers-Selected Schools

USOE - MTC (Milwaukee)

Evaluation of Residential Schools and Essential Factors which contribute to their operation - Erickson, Parkinson

CCHE

College Transfer, Associate Degree, Vocational Diploma & Apprenticeship Enrollments in Vocational, Technical and Adult Education (Fall, 1967) - Lins & Hawthorne

Enrollment Projections for Vocational and Technical Education in Wisconsin - Lins

A Study of the Nature and Characteristics of Middle Management in Retail Department Store, Master's Study, University of Wisconsin, 1968 - Opachich, Samson

UW - C & I

Involvement and Attitude of Credit Personnel in Continuing Education Activities, Master's Study in Progress - Baranowski, Samson

A Curriculum for Purchasing, Doctoral Dissertation in Progress - Pinkerton, Samson

Characteristics of Purchasers of Ubiquitous Products in Wisconsin Plastic Manufacturers, Master's Study in Progress - Markos, Samson

Study to Establish Personal and Professional Characteristics Most Desired for Industrial Distributor Salesmen in Milwaukee County, Master's Study in Progress - Klein, Samson

Agency/Institution Involved

Title of Activity, Study or Project
Investigator(s)

UW - C & I

A Survey of the Data Processing Environment in a Four County Area Served by the Kenosha Technical Institute, Master's Study in Progress - Harb, Samson

Materials and Readings for Fashion Merchandising Students, Master's Study in Progress - Von Gunten, Samson

Comparison of Educators and Executives on Desired Characteristics for Retail Department Store Middle Management, Doctoral Dissertation in Progress - Ball, Samson

Follow-up Study of Adult Course Dropouts at Waukesha Technical Institute, Master's Study in Progress - Bailey, Samson

UW - CERS

Comprehensive Vocational Education Needs Study of VTAE District 18 - Strong, Dept. of Administration - VTAE 18

UW - Bus. Ed.

Characteristics Desired in Industrial Salesman, Milwaukee Area - Samson & Klein

U.W. - Bus. Ed & VTAE, Dist 8

Analysis of Adult Education Dropouts in District 8, Waukesha - Samson, Bailey

CSVTE

Application of Cost Benefits Analysis to Vocational and Technical Education in Wisconsin, A Pilot Study - Peterson

Comparative Study of Selected Characteristics of Post High School Students in Terminal Programs and Students in Transfer Programs Who do not Complete a Baccalaureate Degree - Whinfield

Effectiveness of Establishing New Programs in the Wisconsin System of Vocational, Technical and Adult Education System - Barocci, Somers

Agency/Institution Involved

Title of Activity, Study On Project
Investigator(s)

WSU-Whitewater, WBVTAE, &
District 7

Education, Sources and Recruitment of
Wisconsin Vocational, Technical Teachers -
Gibbs

WSU-Menomonie

High School Dropouts and Vocational
Education in Wisconsin - Roomkin

Evaluation of Accounting Associate
Degree Programs Using Employers
Evaluation of Graduates - Mazurek

General Subject Areas of Related
Instruction Indentured Apprentices in
Wisconsin - Lamont

Instructional Package for Basic 102
Metals, (machine Shop) - Bankowski

Present and Projected Needs for Teachers
of Technical Subjects in Associate
Degree Programs in Vocational, Technical
And Adult Schools of the State of
Wisconsin - Ruehl & Martinez

Factor analysis of Teacher Training
Needs in Four States Area - Courtney &
Halfin

A Personal and Professional Profile of
the Home Economics Coordinator in Wis-
consin Vocational, Technical and Adult
Education - Pontar

The Use of Instructional Packages in
Teaching Welding as Compared to the
Traditional Lecture Method - Neuverth

Availability and Recommended Usage of
Personal Protective Equipment in the
Machine Tool Operation Laboratories of
Selected Wisconsin Vocational, Technical
and Adult Education Schools - Strodman

Agency/Institution Involved

Title of Activity, Study or Project
Investigator(s)

WDBVTAE

Survey of Health Occupation Programs
under MDTA in six North Central States
during years 1967 to January 1969 - Palen

Follow-up of 1968 graduates

National Survey of Indexing and Retrieval
Procedures in Vocational-Technical
Education Research Coordinating Units
(In ERIC ED 026 540)

VTAE, District 1, Eau Claire

A study of September, 1967 Enrollees who
Dropped from School Prior to the
Completion of One Year of Training. High
School record, class rank, achievement
tests and aptitude tests, and other data
from the student's personal file are being
considered - Beyreis

The Success of Low Ability Students in
Vocational Training programs. Otis IQ
scores relative to completion of training
program - Silvernail

A Civil-Structural Technology Study.
This study is intended to determine
skills employers expect civil technicians
to be capable of performing upon initial
employment - Grunke

A Comparison Study of Local ACT Scores -
in Associate Degree Programs at District
One Technical Institute with National
Norms for Type I Colleges - Silvernail

Backgrounds of the Periphrastic and
Inflected Genitives in English - Kearney

An Analysis of Students Enrolled in Trade
and Industrial Training Programs and
Mathematics Achievement: Snader Mathe-
matics Test Results, California Mathe-
matics Achievement Test Results, High
School Mathematics Achievement, General

Agency/Institute Involvement

Title of Activity, Study or Project -
Investigator(s)

Scholastic Ability and the different units covered in mathematics classes at the District One Technical Institute where identified and compared in relation to the students nine weeks achievement - Hogstad

Study of Business Department Accounting Graduates to Determine the Difference Between what was taught in Accounting and What they are Using on Their Jobs - Devine

Survey of Data Processing Departments to Determine Data Processing Job Descriptions, Job Titles, and Job Requirements - Shea

Follow-Up Study of Business Education Graduates from 1964-68 - Druschel

Follow-up Study of Graduates of last 3 years to Determine the Effectiveness of the Communication Skills Taught to Associate Degree Students in the Trade and Industrial Department - Walde

A Study of the History of Vocational, Technical and Adult Education Designed to Identify Historical Factors Influencing the Development of Vocational, Technical Education in Eau Claire area - Van Gorden

Transitionary Development of QFP First and Second Year Diploma Curriculum to Hotel and Restaurant Cookery Associate Degree Curriculum - Johnson

First Year QFP Laboratory Experimental and Demonstration Project - Johnson and Wallace

Survey of Hospital Clinical Laboratories for Six Months Practicum for Laboratory Assistant Students (Hospitals Outside of Eau Claire) - Deininger

Agency/Institution Involved

Title of Activity, Study or Project -
Investigator(s)

VTAE, District 2, LaCrosse

Teaching With an Air Flow Duct Trainer -
Rolbiecki

An Analyzation of Duplicating in Selected
Offices in Eau Claire, Wisconsin - Bygd

A Study to Identify the Factors Necessary
for Improvement of Instruction in Records
Management at the Post-Secondary Level -
Harley

Material Used in Accounting Instruction
and What the Student is Actually Using
on the Job - Devine

Computerized Study of the Inventory of
Sex Knowledge of Students at the District
One Technical Institute. All Students
Enrolled in Psychology of Human Relation
Classes Were Surveyed - Beyreis

Statement of Mission and Objectives -
Temte

Model Office Internship Program -
Regelein

Student Profiles 1965-68 - Temte

Follow-up of Non-returning Students -
Temte

Study of Disadvantaged Population of
District 2 - Staff

Local Norms for DAT - Temte & Campbell

Community Involvement in Adult Basic
Education through Educational Television -
Temte & Friedline

Three year follow-up of graduates - Temte

A Pilot Program to Establish the Quarter

Agency/Institution Involved

Title of Activity, Study of Project -
Investigator(s)

VTAE, District 3, Fennimore

WSES, VTAE District 3

System as the Method of Operation in Area
Vocational, Technical and Adult Education
District 2 - Staff

A Comparative Analysis of the Freshman
Classes at Western Wisconsin Technical
Institute and Wisconsin State University -
LaCrosse - Temte

A Study of Criteria Relating to
Achievement in Technical Mathematics I -
Schlafmann

Study of the Drop-out 1968 - Temte, Vitale

Study of Feasibility of Providing Bus
Transportation - Temte

Status Study for North Central
Association of Colleges and Secondary
Schools - Staff

Determination of Need for Two-Year
Post-High Program in Tractor-Implement
Mechanics - Staff

District Long Range Plan: Phase Three:
Conclusions and Recommendations Summary -
Duffy

District Long Range Plan Phase One:
Geographic Description, Economic
Description, Population, School Enroll-
ments, Labor Market - Duffy

Adult High School Offerings Survey - Staff

Adult Education Course Offerings
Survey - Staff

Occupational Needs Survey Crawford,
Grant, Iowa, Lafayette and Richland
Counties - WSES

Agency/Institution Involved

Title of Activity, Study or Project -
Investigator(s)

VTAE, District 4, Madison

“Seven Areas of the World of Work” an
Analysis of the Southwest Wisconsin
Occupational Needs Survey - WSES

Grade distribution for 1967-68 - Staff

Follow-up Study-Graduates of 1968 - Staff

Utilization of Instructional Media -
September 9 - Dec. 1, 1968 - Staff

Student Attrition - Staff

Faculty Turn Over - Staff

Faculty Teaching Load - Staff

Norms for Ability Levels - ACT

Pilot Study on Teaching Methods (Social
Science)

Educational Needs Study - Sauk &
Columbia County

Educational Needs Study - Jefferson
County

Manpower Needs of Jefferson County -
WSES, Watertown

Teaching Mathematics (Computer Method)

Utilization Study - Audio-Visual Material

Transfer of Students from other
Institutions - staff

Transfer of Students to other
Institutions - staff

VTAE, District 6, Kenosha

Kenosha County Study-Vocational,
Technical and Adult Education Needs -
Graf

Agency/Institution Involved

Title of Activity, Study, Project -
Investigator(s)

VTAE, District 6, Kenosha

1968 Graduate Follow-up Study - Graf

Job Entry Skills of 1968 Graduates of
Interior Decoration & Horticulture
Students - Graf

Teacher Opinionaire - Merit Rating -
Graf

Aerospace Workshop - Hogan

Written Communications Predictive
Instrument - Graf

Effectiveness of Multi-Media Instruction
in Economics (proposal) - Graf

Higher Education General Information
Survey 1969-70 - Graf

Critical Situation Driving Range - Hogan

Employer Follow-Up of 1968 Medical
Assistant Graduates - Graf

Police Clerk Survey - Hogan

Survey of Characteristics of Vocational
Education Teachers and Students - Graf

District Long Range Plans - Graf

Vocational-Technical Cost Benefit
Study - Graf

Student Station Utilization Report -
First Semester 1968-69 - Graf

ACT-KTI GPA Correlation Study - Graf

Supplement to Institutional Self
Study - Banerdt

Vocational-Technical Education Interest
Survey Walworth County - Graf

Agency/Institution Involved

Title of Activity, Study or Project -
Investigator(s)

VTAE, District 6, Kenosha

Proposed Method of Teacher Evaluation -
Graf

Usability of the Cooperative Mathematics
Test To Assist Students in Course
Selection at KTI - Graf & Dosemagen

Mission Statement and Objectives -
Banerdt, Graf & Hogan

Vocational, Technical and Adult Education
District Employment Policies (Proposal
completed) - Graf

Effectiveness of Multi-Media Instruction
in Economics (Proposal completed) -
Cornell & Graf

Walworth County Vocational, Technical
and Adult Education Study - Banerdt &
Graf

ACT Analysis - 1968 Summer - Graf

Educational Personnel Development
Proposal - Graf

Job Entry Skills of 1967 Graduate Dental
Assistants - Graf

Proposal under College Library Resource
Program Title II - Higher Education Act
1965 - Graf

Written communications Predictive
Instrument (not available) - Graf

Safety Training Plan - Hogan

Survey of Scientific Activities of
Institutions of Higher Education - Graf

Determine if a Relationship Exists Between
Standardized Test Scores and Classroom

Agency/Institution Involved

Title of Activity, Study or Project -
Investigator(s)

VTAE, District 8, Waukesha

Performance in Written Communications and
Communication Skills - Graf

Random Sample of the Characteristics of
Vocational Education Teachers and Students
(not available) - Graf

General Education Rationale - Catania

Preliminary Survey of the Training and
Use of Teacher-Aides District 8 - Catania

Planning for the Future - Forecasting
Implications Due to Technological Change -
Anderson

Programmed Learning - Accounting -
Fredricks

Behavioral Objectives - Winter, McGuire

Child Care Training Study - Flater, Jensen

SVTAE, West Allis

Survey of West Allis June 1968 High
School Graduates - Staff

SVTAE, Shorewood

Adult Evening School Survey

VTAE, District 10, Fond du Lac

Population Study of District 10 - Weiner

High School Graduates Entering Post High
School Education - Weiner

Survey of Canneries & Freezers in Wisconsin
to Determine Employment Trends - Weiner

System to Annually Update Population and
Determine Job Opportunities - Weiner

Long Range Plan, District 10 - Weiner

Projected High School Graduates (District
10) - Weiner

Agency/Institution Involved

Title of Activity, Study, Project -
Investigator(s)

	History of Vocational Education, District 10 - Weiner
VTAE, District 11, Sheboygan	Developmental Data (District 11 VTAE) - Staff
	Long Range Plan - Staff
	First Semester Follow-up of Withdrawn Students
VTAE, District 11, Sheboygan	Micro-form System- District 11
	Placement Study
	Senior Survey - District 11 High Schools
VTAE, District 12, Neenah	Educational Specifications for Facilities Requirements (1980) - Bordini
	Student Needs in New Facilities - Stevens
VTAE, District 13, Green Bay	Follow Through Study of 1968 Graduates - Student Services
	Factors in College Success - Howlett
	Pilot Project in Basic Concepts of Exam Writing for Clerical Occupations (In cooperation with Bureau of Indian Affairs & U. S. Post Office) - Ellingson
	Adult Evening Enrollment Analysis - Zinda and VanRite
	Relationships Between Programmers Aptitude Tests and Student Grades in Data Processing Courses - Study of the Relationship Between Student Grades in all Courses and American College Test Results - Butts
	Computer Curriculum Scheduling - Staff

Agency/Institution Involved

VTAE, District 14, Wisconsin
Rapids

Title of Activity, Study or Project -
Investigator(s)

Faculty Survey to Determine Need for
Certification Course Offerings in
Wisconsin Rapids - Schneeberg

The Role of the Teacher of the Disadvant-
ages Adult - Mahnke

Room Utilization Study for Wisconsin
Rapids Center - Van Ornum

Identification of Aptitudes in Fourteen
Marketing Occupations - Twombly

Projected Instructor Need and Anticipated
Enrollment Statistics for 1969-70 - Van
Ornum

Course-Instructor Appraisal Evaluation -
Van Ornum

Development of Instructional Materials
Evaluation Form (Marketing) - Whitehead

Student Evaluation of Outreach Program -
Sickinger

Vocational Agriculture Needs in District
14 - Olson

A follow-up Analysis of Wisconsin Rapids
VTA Shorthand Student-Job success using
GATB Test Scores as success predictors -
Kioski

Survey to determine need of additional
Training for Law Enforcement Officials -
Anhalt

Long Range Plans (District 14) - Jaeger

Survey of Students in High School
Equivalency Preparation Course to Determine
How Many Passed the GED Test or the DPI

Agency/Institution Involved

Title of Activity, Study or Project -
Investigator(s)

VTAE, District 15, Wausau

High School Equivalency Test - Sickinger

Survey of the Educational Needs of Adults
in the Tri-County School District -
Sickinger

Development of a Scheduled Building
Maintenance Program - Schneeberg

Follow-up Study of 1967-68 Graduates -
Facklam

Selection and Review of New Tests for
Course Offerings for Fall Term, 1969-70 -
Van Ornum

Survey of 1969 High School Graduates in
five VTAE Districts - Sickinger

Survey of High School Juniors in five
VTAE Districts - Sickinger

Survey of Students by Grades in District
14 - Sickinger

Manpower Training Needs in Health
Occupations - Olson

Mission and Objectives of District 14 -
Sickinger

The Manpower and Educational Needs of the
Printing Industry in Wisconsin - Graese

Use of Business Education in Correctional
Institutions Schools, M.S. Paper - Hoover

Follow-up Study of Secretarial Science
Graduates, 1962-68, M.S. Paper - Battist

Article in December AVA Journal
'Articulation at the Outset' - Sorensen

Agency/Institution Involved

VTAE, District 15, Wausau

Title of Activity, Study or Project -
Investigator(s)

A Study to Determine Why New Students Who
Pre-Enrolled Did Not Attend School in
September, 1968 - Zahn

Analysis of the Changes, Developments and
Trends in the Residential Building
Industry - Schubert

Readability Level of Texts Used at NCTI -
Klug, Kaiser

Survey -- Reasons for Students Coming to
NCTI - Henning

Follow-up of Graduates - 1963, 1965, 1967
- Battist

A Comparative Analysis of the Automotive
Mechanic Curriculum and a Proposed
Automotive Technology Curriculum for the
North Central Technical Institute, M. S.
Paper - Berry

A Study of the Physically Handicapped
Students Enrolled in Beginning Type-
writing Classes in Wisconsin H. S. for
the 1966-67 School Year, M. S. Paper -
Frederickson

Analysis of Instructor Grading Patterns
for 1967-68 School Year - Paulsen

A.C.T. Research - Prediction of Success
in our Majors Based on A.C.T. and NCTI
Aptitude Tests - Teschke

Follow-up of the Marketing Graduates of
NCTI for 1964-67 - Dickerson

USOE-Higher Education General Information
Survey - Paulsen

Summer School Student and Faculty Survey
to Determine Interest in Summer Evening

Agency/Institution Involved

Title of Activity, Study of Project -
Investigator(s)

VTAE, District 15, Wausau

School Classes - Paulsen

A History of Technical Education in
Wisconsin - M.A. - Wheeler

Long Range Plan for District 15 - Paulsen

Attrition Study of NCTI Student Body -
Zahn & Paulsen

Housing Study Report - Gebert & Paulsen

Follow-up Study of 1968 Graduates of NCTI -
Paulsen

Review Advanced Placement Study - Paulsen

Accounting by Television Proposal -
Paulsen, et al

Do Personnel Problems Follow You Home -
Gebert

Development & Evaluation of a Unit in
Personality & Human Relations as Related
to the Agricultural Occupations - Doenier

Study of the Usage of G.E.D. Test for
High School Equivalency - Merkel

Faculty Rights in Televised Instruction -
Meyer

VTAE, District 16, Rhinelander

A Study of VTAE District 16 - Krueger

Evening School Enrollment Survey VTA
District 16 - Krueger

Foreign Language Survey VTAE District 16 -
Krueger

A Liberal Arts Proposal - Brown

Room Use Survey - Present Building -
Krueger

Agency/Institution Involved

Title of Activity, Study or Project -
Investigator(s)

VIAE, District 17, Superior

Survey of Starting Salaries of Students
Employed Through Superior Technical
Institute - McCorkell

Northwestern Wisconsin Regional Planning
Programs Project No. Wisconsin P-87 for
Burnett, Rusk, Sawyer, Taylor and Washburn
Counties - Staff

Survey on Data Processing Facilities in
Duluth-Superior area - K. Johnson

Survey of Student Housing Needs at
Superior Technical Institute - R. A.
MacDonald

VIAE, District 18, New Richmond

Survey of Current & Potential Apprentice-
ships in District 18 - Roder

Occupational Needs Survey for Burnett,
Polk, St. Croix Pierce Counties

Survey of Health Occupations Needs with
Potential Student Implications - McCarty,
Soderberg

Curriculum Development for Basic Education
(Contract with Voc. Rehab.) - Lindell,
Henderson

Job Cluster Concept for Resort Workers -
Krogh, Leonard

Training Facilities Need Survey for Dis-
trict 18

Clerical Operations Study: Part 1 Office
Volume Study; Part 2 Accounting System
Study - Lindas

BR 5-1216
PA-08

FINAL REPORT

Project No. BR 5-1216

Contract No. OE-6-85-083
OEG-0-8-051216-4628(085)

DEPARTMENTAL RESEARCH CENTER FOR
THE STATE BOARD OF VOCATIONAL, TECHNICAL
AND ADULT EDUCATION

October, 1968

U. S. DEPARTMENT OF
HEALTH, EDUCATION AND WELFARE

Office of Education
Bureau of Research

FINAL REPORT

**Project No. BR 5-1216
Contract No. OE-6-85-083
OEG-0-8-051216-4628(085)**

**DEPARTMENTAL RESEARCH CENTER FOR
THE STATE BOARD OF VOCATIONAL, TECHNICAL AND ADULT EDUCATION
(Wisconsin RCU)**

**Roland J. Krogstad
Donald M. Brill**

The research reported herein was performed pursuant to a contract with the Office of Education, U. S. Department of Health, Education, and Welfare. Contractors undertaking such projects under Government sponsorship are encouraged to express freely their professional judgment in the conduct of the project. Points of view or opinions stated do not, therefore, necessarily represent official Office of Education position or policy.

**U.S. DEPARTMENT OF
HEALTH, EDUCATION AND WELFARE
Office of Education
Bureau of Research**

TABLE OF CONTENTS

	<u>Page No.</u>
I. Summary	1
II. Introduction	3
III. Methods	4
IV. Results and Findings	6
V. Conclusions	11
VI. ERIC Resume'	12
VII. Appendixes	13

SUMMARY

The Departmental Research Center (RCU) of the Wisconsin Board of Vocational, Technical and Adult Education was approved to begin January 3, 1966 and continue operation under a contract plus a contract extension to September 30, 1968. It is located in the state office of the Wisconsin Board of Vocational, Technical and Adult Education.

The general objectives of the unit were stimulation, coordination, and dissemination of research in vocational and technical education in the state.

Major issues and problems were identified and given priorities for further detailed study. These include teacher education and leadership development, follow-up procedures, organization and administration of newly formed area vocational, technical and adult education districts, present and emerging occupations, information for program planning and development, and long-range planning.

Major activities were concerned with stimulating occupational education research projects within local schools and districts, State universities and the Center for Studies in Vocational and Technical Education at the University of Wisconsin.

The coordination of occupational research was affected through participation in pertinent conferences, meetings and seminars involving vocational educators and personal contacts with the existent research leadership, employment service personnel and other individuals and groups.

Dissemination of research and research related information was developed through use of newsletters and quarterly reports. The purposes of dissemination and the development of a research consciousness among associates in vocational education were furthered by means of seminars and correspondence. A library of research findings in vocational education has been established, which includes both original hard copy materials and microfiche. The microfiche are obtained from the Educational Research Information Center (ERIC).

The staff of the RCU participated in a number of State and national conferences in both vocational education and educational research. The benefits gained were disseminated through in-service educational conferences.

The in-service training phases of the program included workshops and seminars conducted by the Unit to upgrade vocational education personnel in educational research. A large amount of in-service education was provided different individuals, as staff members aided them in designing research projects.

Over three hundred surveys and projects were completed or commenced operation during the report period.

During the final six months of operation field support had been accomplished in fifteen of the eighteen area vocational, technical and adult education districts. This organizational structure completes the line of communication and research information dissemination from the federal level through the state down to the district and local school level.

INTRODUCTION

This is a final report for the project, A proposal for the establishment of a "Departmental Research Center for the State Board of Vocational and Adult Education." Contract No. OE-6-85-083. The original project was funded under Section 4 (c) of the Vocational Education Act of 1963, to be in operation from January 3, 1966, until June 30, 1967. Due to problems encountered in securing staff, the program did not begin operation until July 1, 1966, and the original grant period was extended until June 30, 1968. An additional extension was granted to September 30, 1968 under Contract No. OEG-0-8-051216-4628(085).

The major functions of the Research Coordinating Unit are those of coordination, stimulation, and dissemination of research related to vocational education.

The specific objectives listed in the original proposal are indicated in the part of this report entitled "Results and Findings."

After the Unit was in operation, the objectives were analyzed to determine which should be given top priority during the initial year of operation. As a result of the analysis, major emphasis was placed on the following activities to accomplish the objectives:

1. Identify issues and priorities of problems in vocational education needing research.
2. Establish liaison with State agencies, Wisconsin State Employment Service and others interested in research in vocational education.
3. Sponsor, coordinate and encourage in-service training in research methods and design for those interested in research related to vocational education.
4. Work with institutions of higher education in initiating and conducting research related to vocational education.
5. Encourage vocational, technical and adult education districts to design and conduct research projects.
6. Improve research capabilities of RCU staff to provide better consultative services to vocational, technical and adult schools or other groups conducting research in vocational education.
7. Locate completed research related to vocational education and initiate a library of research, labor market, and curriculum materials.
8. Disseminate findings of research in vocational education.
9. Aid vocational, technical and adult school districts and other institutions in securing funds to conduct research in vocational education.

This final report describes the activities performed, the methods used, results and findings obtained and the conclusions developed from the project operations.

METHODS

The Departmental Research Center (RCU) is located in the state office of the Wisconsin Board of Vocational, Technical and Adult Education and is directly responsible to the Program Administrator of the Educational Development and Special Services Division. Refer to Appendix "A" for the organizational structure. The Departmental Research Center (RCU) functions in the same Division as the supervisors of curriculum, student services, facilities, field services and teacher education.

At full strength, the Departmental Research Center (RCU) includes three full-time supervisors of research, including the director, a stenographer, and a clerk typist. The director works with other agencies and institutions in coordinating educational and occupational research. One supervisor's prime responsibilities are consultative services in developing proposals. The third supervisor's prime responsibilities are writing and summarizing research studies and disseminating information. During the operating period of the Unit, one of the professional positions was vacant much of the time which hampered operations. One clerical position was also vacant some of the time.

The professional staff worked together in effecting the major objectives of the Unit. They worked directly with the State Universities, University of Wisconsin, Marquette University, local vocational, technical and adult districts and schools, Wisconsin State Employment Service, the Center for Studies in Vocational and Technical Education, Department of Public Instruction, State Bureau of Planning, State Department of Administration, and the Coordinating Council for Higher Education in Wisconsin. These working relationships resulted in development of several research proposals, position papers, planning, guidelines, curriculum guides, and reports in vocational and technical education.

Professional staff serve on several inter-agency liaison planning and research committees.

Working committees and task force groups were developed to focus efforts on problems and priorities needing study. The majority of projects were financed from local or state funds. Several were funded by various divisions of the U.S. Office of Education.

Professional staff attended several national research seminars, conferences, and pre-session research training sessions at AVA and AERA. They are members of state and national research associations including AVERA, AERA, and WERA.

The Departmental Research Center conducted several in-service workshops, conferences, seminars and meetings.

Through encouragement of the Unit by the State Director of Vocational, Technical and Adult Education, field support for research has been accomplished in seventeen of the eighteen area vocational, technical and adult education districts through appointment of a district research and planning coordinator or supervisor either on a part-time or full-time basis. Communication lines with these staff persons completes the communication linkage from the federal level through state level down to the local action level.

The Departmental Research Center (RCU) performs the following functions for state level vocational, technical and adult education staff:

1. Presenting ideas for study pertinent to improvement of curriculum in all subject fields, student services, teacher education, extended services, planning, and administrative services.
2. Maintaining a reference library of abstracts, bibliographies, microfiche and hard copy of studies and reports pertinent to vocational education.
3. Routing, summarizing and disseminating appropriate research studies, reports and information for review and implementation.
4. Obtaining appropriate materials upon request.
5. Lending technical and consultative assistance in designing, writing and conducting research studies.
6. Coordinating needed labor market studies with Wisconsin State Employment Service and other institutions.
7. Coordinating needed pilot and experimental staffing and instructional studies and programs.
8. Coordinating needed placement and follow-up procedures.

The Departmental Research Center (RCU) performs the following functions for Area Vocational, Technical and Adult Education Districts:

1. Presenting ideas for research and study.
2. Lending technical and consultative assistance in developing research proposals.
3. Improving district research and planning capabilities through coordination and development of various in-service educational activities.
4. Developing a state-wide plan of research priorities.

5. Developing procedures and guidelines for research operations.
6. Maintaining a library of abstracts, bibliographies, microfiche, proposals, studies, reports and limited data bank.
7. Supplying a certain amount of informational services upon request.
8. Keeping them informed of plans, procedures and progress in research activities.
9. Bringing critical issues to the Research Committee of the Wisconsin Association of Vocational, Technical and Adult Education Administrators.
10. Coordinating cooperatively conducted studies with other districts and agencies.
11. Providing supervisory assistance to districts in the development and effective pursuit of a district research program.

Consultative services were rendered to several graduate students who conducted studies in vocational and technical education.

The above methods and functions were helpful in progressing toward accomplishment of the objectives.

RESULTS AND FINDINGS

This portion of the report is devoted to highlighting the accomplishments related to the major objectives of the Departmental Research Center. Much of the contributions and impact resulting from the Unit cannot be readily assessed. These include an increased awareness of, and capabilities for, research by vocational educators. Hopefully these concerns will be reflected in improved vocational education programs to meet the needs of people. Following are the original objectives with major results and findings for each objective:

1. Stimulate and encourage occupational education research and development activities in state departments, local school districts, colleges and universities, and nonprofit organizations.

Research Coordinating Unit staff met several times with researchers, teacher educators, and others at Stout State University, University of Wisconsin, Marquette University, The Center for Studies in Vocational and Technical Education at the University of Wisconsin, The University of Wisconsin Extension, The Coordinating Council for Higher Education, The Wisconsin State Employment Service, The State Bureau of Planning, The State Department of Administration, The State Department of Health and Social Services, The Department of Public Instruction and Local and Area Districts of Vocational, Technical and Adult Education.

Staff were involved in various state liaison, planning and research committees including information systems development and the Governor's Committee on Services to Minority Groups.

Consultative services were given to persons including several graduate students, state staff and local school officials interested in planning, developing and conducting research projects in vocational and technical education.

A draft copy of a "Handbook for Research and Planning" and tentative "Guidelines for Long Range Planning" have been developed.

Position papers and guidelines for evaluation of district vocational programs have been developed.

Refer to Appendix "B" of this report which lists research projects and activities conducted in Wisconsin.

2. Coordinate occupational research activities conducted within the state, and, further, coordinate such research activities with those being conducted outside the state.

The staff worked through the research committee of the local vocational school and district Director's Association, the Coordinating Council for Higher Education and other organizations listed under objective #1 to coordinate research activities. A list of priorities and a matrix of projected activities was developed.

The RCU operating in the Educational Development and Special Services Division coordinates research in the various subject and ancillary services areas. Refer to the section on "Methods" for the role of the RCU. Regional meetings were held with the district offices of the Wisconsin State Employment Service to strengthen communication lines and to coordinate labor market studies for planning vocational education programs. The Unit is linked with the Upper Great Lakes Regional Planning Commission in suggesting and reviewing project proposals.

The RCU Director is a liaison representative on the Council for Administration of Title I projects under the Higher Education Act of 1965.

Regional meetings have been held with RCU staff of neighboring states to explore cooperative projects. During part of the reporting period the RCU director was on the board of trustees of the Upper Midwest Regional Educational Laboratory.

3. Disseminate information on the progress and applications of the results of occupational education research.

A newsletter "Bits About Research" has periodically been published and disseminated to vocational educators, RCU's, and other agencies and organizations.

Quarterly reports of research projects and activities were published.

Summaries and reports of conferences, surveys and studies were prepared and disseminated. An "occupational reference guide" was prepared by WSES in cooperation with RCU staff as a result of project VISION.

Approximately thirty five requests for over fifty documents per quarter were fulfilled or referred to other sources.

A library of bibliographies, abstracts, reports, microfiche, and hard copy have been developed. Microfiche, reading and development equipment were purchased.

4. Stimulate activities which will result in increased interest and improved competence in research such as encouraging pre-service and in-service training of occupational researchers.

Research Coordinating Unit staff participated in several national research seminars and pre-session research meetings at national conferences. Staff conducted two regional and two state research seminars. Staff have appeared as resource persons at vocational school and district directors conferences and in-service teacher education programs.

A two-week research seminar was conducted by Stout State University for vocational, technical and adult education district coordinators of research and planning. Section meetings for these research staff were held at the annual Professional Growth Week Conference. Publications on sources of funds, research associations and sources of research information were disseminated.

5. Participate in the review, monitoring or conduct, as appropriate, of occupational research and development projects supported by federal state, local or private organization funds.

Staff have encouraged and assisted graduate students, state staff, teacher educators, and others in developing and conducting studies in vocational and technical education. Refer to Appendix "B" of this report listing research projects and activities conducted. Many of these were encouraged, reviewed and supported by the Research Coordinating Unit and the Wisconsin Board of Vocational, Technical and Adult Education. Cover letters of support were prepared and accompanied studies. Some of these studies pertained to safety education, student housing, library services, teacher profiles, participation of adults in part-time programs, services to American

Indians, home economics coordinators, competencies, full-time program openings, curriculum for ammonia refrigeration, district occupational education needs studies, influence of vocational education in industry location and expansion, technical teacher education curriculum, numerical control seminar, residential school evaluation and others.

Some of the above projects were funded partially through the Research Coordinating Unit.

6. Identify and maintain an inventory of available occupational research and development resources in light of anticipated needs and programs within the state.

The unit library was initiated and expanded during the period. Lists of bibliographies, abstracts and other sources of information were prepared. Reference books on research methodologies, reports of studies, examples of proposals, surveys, U. S. Department of Labor and Health Education and Welfare and state reports have been added to the library. A library of microfiche of approximately 5,000 documents cited in Research in Education is established.

7. Survey available data on employment opportunities, emerging occupational trends and future job projections as a base for planning vocational programs, curricula, and facilities within the state, and teacher training, recruitment and placement.

Staff worked closely with the Wisconsin State Employment Service in obtaining and developing formats and types of information needed for planning vocational education programs. Examples of labor market projection methodologies were acquired. Staff cooperated in Project VISION which was a pilot study of new techniques in determining occupational information for vocational education programs. A report "Occupational Opportunities Information" was prepared by the Wisconsin State Employment Service. U.S. Department of Labor reports, state agency reports on population, and other economic data were identified and disseminated.

Surveys were requested, coordinated and conducted cooperatively and reports of the studies were published and disseminated.

Staff are represented on the liaison committee with the State Employment Service, and the Cooperative Area Manpower Policy System (CAMPS) Committee.

8. Identify issues and problems relating to the nature and place of vocational education in the state school system, and determining the contributions which occupational research and development could make in resolving them.

A study of "Research Needs in Vocational-Technical Education" was conducted in 1966 through the Graduate School of Stout State University. The purpose of the study was to identify components under each of fourteen categories which was considered to be in the most critical need for research. The top ranking topic in each category was considered in the development of research projects in the state. Some of the areas identified were:

1. Present and emerging occupations for which vocational and technical education programs should be available.
2. Competencies needed for successful job entry, persistence and advancement.
3. Improvement of community attitudes toward vocational education as preparation for employment.
4. Factors affecting decisions by individuals to move and seek employment in new situations.
5. Basic skills which are transferrable from one occupation to another or which function in clusters.
6. Several others.

Major problem areas included teacher shortages, administrative design of area districts, leadership development, information needed in program planning and standardization of follow-up procedures, and long range planning.

The above topics were discussed at regional research seminars and a revised list of research topics and a matrix of projected activities were developed.

Working committees and task force groups were developed and a State Bureau of Management team were involved in studies of these problems and areas of high priority.

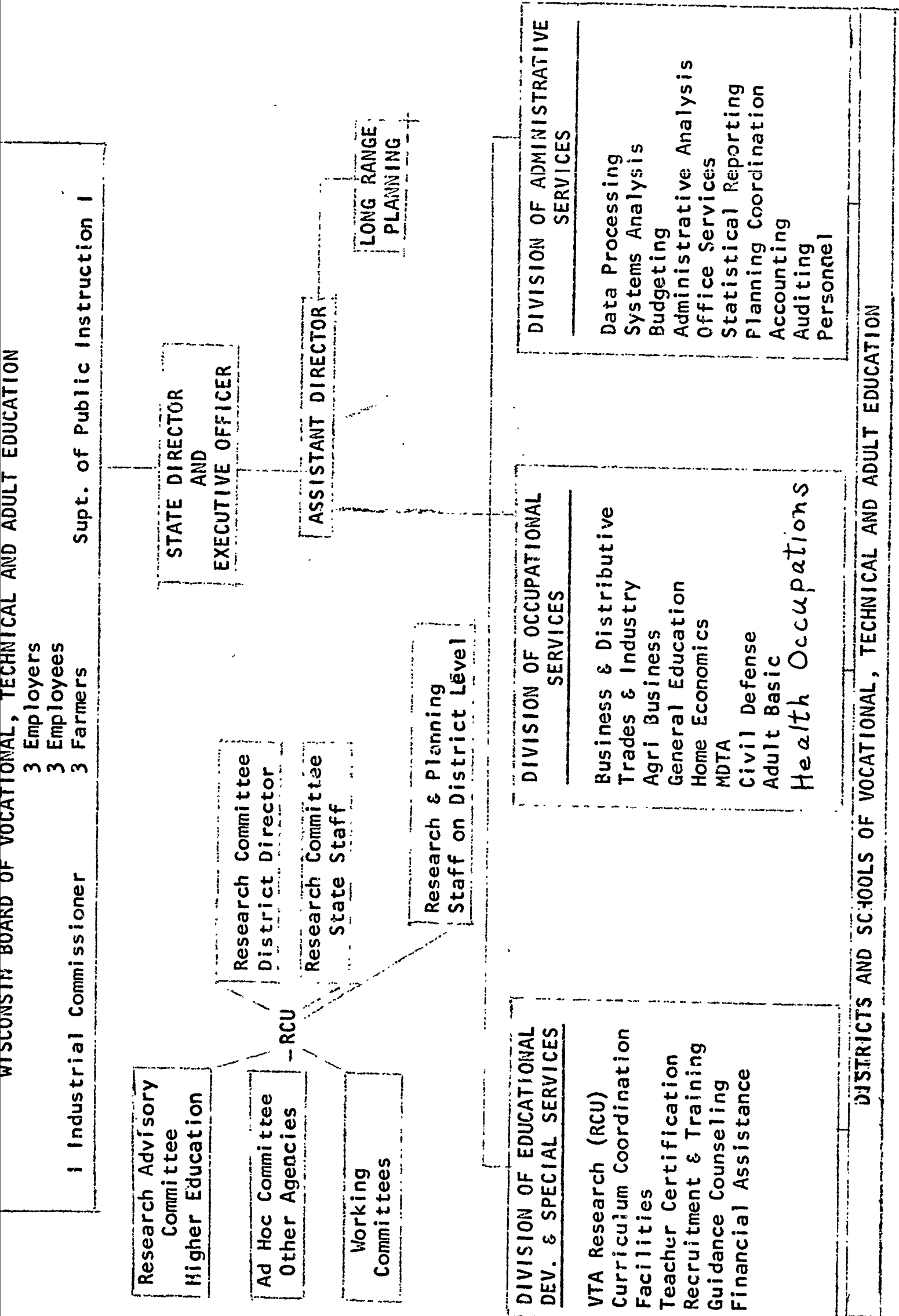
CONCLUSIONS

As a result of the Departmental Research Center (RCU) staff involvement in research in vocational and technical education the following conclusions are presented:

1. The Departmental Research Center (RCU) has made a contribution to research in vocational and technical education in Wisconsin.
2. The magnitude and degree of contributions is commensurate with the availability of staff and funds.

Location of the RCU in the state division or department of vocational education facilitates identification of problems and increased awareness and interest in research needs by the practitioner.

3. Continuation of the Research Coordinating Unit concept would assist in developing research studies in problem areas in vocational and technical education.
4. Further study is needed to identify types and format of labor market information for vocational education program planning.



DISTRICTS AND SCHOOLS OF VOCATIONAL, TECHNICAL AND ADULT EDUCATION

APPENDIX B

RESEARCH ACTIVITIES

The information included in this section indicates research activities which have been reported as completed or in progress during the report period. The mere listing of activities in the report is in no way meant to indicate that the RCU was involved in the planning or conducting of the activity.

Undoubtedly, there are other activities being conducted which for various reasons are not included in this report.

CCHE-WBVTAE	Physical Facilities Inventory Study of 17 Wisconsin Schools of Vocational, Technical and Adult Education-Higher Education Facilities Act-Schwehr, Schantz
TI-Wausau	Follow-up Study of Machine Shop Graduates January, 1968 - May, 1968-Battist
TI-Wausau	Student Survey to Determine Possible General Education Electives-May, 1968 - Sorenson
TI-Wausau	Analysis of the Formal Organization of North Central Technical Institute May, 1968 - Sorenson
TI-Wausau	Curriculum Change Pattern - April, 1968 - Christianson
TI-Wausau	The Effect of a Week Training Session for Retail Salesperson on Consumer Attitudes and Satisfactions - June 30, 1967 - August 15, 1967 - Frater, etc.
TI-Wausau	Course Outlines - Newspaper Advertising, Advertising Classes - May 20, 1968 - May 31, 1968 - Frater

*Note: WBVTAE = Wisconsin Board of Vocational, Technical and Adult Education
SVTAE = Local School of Vocational, Technical and Adult Education - City
UW = University of Wisconsin, Madison, Wisconsin
WSES = Wisconsin State Employment Service, Hill Farms, Madison, Wis.
CSVTE = Center for Studies in Vocational and Technical Education, University of Wisconsin
DPI = Department of Public Instruction, 126 Langdon, Madison, Wis.
WSU = Wisconsin State University
DRD = Division of Resource Development, Department of Natural Resources
TC = Technical College - City
TI = Technical Institute - City

<u>Agency/Institution Investigator</u>	<u>Title of Activity, Study or Project, Beginning/Ending Dates</u>
TI-Wausau	Selection of Texts for Introduction to Data Processing Courses - November 15, 1967 - April 15, 1968 - Cameron
TI-Wausau	Survey of Student Personnel Services of Wisconsin Vocational, Technical and Adult Schools for the Wisconsin Student Personnel Association - January - May, 1968 - Merkel
TI-Wausau	VTAE Evening School Report (1967-68 School Year) - May 24, 1968 - Paulsen
TI-Wausau	Student Housing Survey - May 1 - May 31, 1968 - Paulsen - Teschke
SVTAE-Appleton	Fashion Merchandising Proposal - October, 1967 - March, 1968
SVTAE-Appleton	Electronics Curriculum Revision - September, 1967 - April, 1968
SVTAE-Appleton	Independent Study Problems-Mch. Design September, 1967 - March, 1968
SVTAE-Appleton	Nursing Assistants Program VTAE 12 - September, 1967 - March, 1968
WBVTAE-VTAE-District 3	Industrial Safety Survey - March 1, 1968 - April 10, 1968 - Duffy
WBVTAE-VTAE-District 3	Library Survey - March 4, 1968 - March 18, 1968
TI-La Crosse	Guidelines for Liaison Between T&I Coordinators and Local Industry Through the Interview Technique - August, 1967 - Dittmer
TI-La Crosse	Wonderful World of Textiles - August, 1967 - Walter
TI-La Crosse	Institutional Foods (Proposal) - June, 1966 - Walter
TI-La Crosse	Apparel Arts (Proposal) - June, 1966 - Walter
TI-Eau Claire	Study to Determine the Correlation of American College Testing Program (ACT scores with grade point averages of student enrolled in the business department).

<u>Agency/Institution Investigator</u>	<u>Title of Activity, Study or Project, Beginning/Ending Dates</u>
TI-Eau Claire	A Follow-up Study on the Merits of the Training Program and Placement. This is for Training groups in 1966 & 1967. September, 1967 - October, 1967 - Larson
TI- Eau Claire	A basic Research Study Comparing Nine-Week Grade Point Averages for Students Enrolled in September, 1967 with ACT Scores and Other Entrance Tests. September, 1967 - October, 1967
TI-Eau Claire	A Follow-up Study of Trade and Industrial Students Graduating in 1967 Employment Related to Training, Number Not Employed, Number in Armed Services, Salary, Number of Weeks After Graduating Before Being Employed and Suggestions for Courses to Be Emphasized - October, 1967 - Hogstad
TI-Eau Claire	A Preparatory Study for Planning a Developmental Reading Program for First Year Students. Data Supporting Need and Suggestive Testing Program Developed - May, 1968 - Lewis
TI-Waukesha	Status Study - February 1, 1968 - April 29, 1968
TI-Waukesha	Long-Range Proposal - December 1, 1967 - February 1, 1968
VTAE-District 12	Long-Range Plans - May 20, 1968 - Bordini
WSU-Stout	A Study of the Need for Training Light Aircraft Mechanics in the State of Wisconsin and Vocational Area District 10 June, 1967 - August, 1967 - Wagner
VTAE-District 14	Adult Education Interests - John Edwards School District - February, 1968 - Everetts
TC-Milwaukee	Group Counseling with the Disadvantaged Adolescent - June, 1967 - Altmayer
VTAE-District 14	Adult Education Interests - Nekoosa School District - February, 1968 - District 14
TC-Milwaukee	Attitudes toward Guidance - Stockey
TC-Milwaukee	Entry Jobs and Average Starting Salaries November, 1967 - Redovich
TC-Milwaukee	Placement Report (1967) (MTC) Grads. November, 1967 - Redovich

<u>Agency/Institution Investigator</u>	<u>Title of Activity, Study or Project Beginning/Ending Dates</u>
TC-Milwaukee	Summary of Employer Part-Time Job Orders December, 1967 - Braun
TC-Milwaukee	1966-67 Adult School Dropout Follow-up December, 1967 - Braun
TC-Milwaukee	The Transfer of (MTC) Students to Four- Year Schools - December, 1967 - Redovich
TC-Milwaukee	1966-67 (MTC) Day School Dropout Follow- up - January, 1968 - Braun
TC-Milwaukee	Placement Report of 1967 Adult School Grads. - February, 1968 - Braun
TC-Milwaukee & USOE	You and Your Job - June, 1966 - June, 1967
TC-Milwaukee	Placement Report of 1965 (MTC) Grads. Two Years After Graduation - February, 1968 - Redovich
TC-Milwaukee & USOE	Where the Action Is (Film) - June, 1966 - June, 1967 - Berry
TC-Milwaukee & USOE	An Eight Week Seminar on an Introduction to Numerical Control - June, 1966 - August, 1967 - Carlson
TC-Milwaukee & Carnegie	A Practical Demonstration Project in Teaching Technical Mathematics - December, 1964 - September, 1967 - June, 1965 - McHale
SVTAE-Milwaukee	Graduate Profiles - Adult School - MIT
SVTAE-Milwaukee	Articulation - MIT and 4-Year Schools of Higher Education
SVTAE-Milwaukee	Dropout Follow-up Adult School - MIT
SVTAE-Milwaukee	Attitudes Toward Guidance at SVTAE- Milwaukee
WBVTAE	Five-Year Proposal for Continuation of the Wisconsin RCU-RCU
UIV-CSVTE	A National School Counselor Evaluation of Occupational Information - Perrone & Gross
TI-Kenosha	Descriptive Summary of Academic Potential of the 1966-67 Freshman Class - Graff
CSVTE-UIV	National Directory of Vocational Education

<u>Agency/Institution Investigator</u>	<u>Title of Activity, Study or Project, Beginning/Ending Dates</u>
TI-Kenosha	Teachers Service Schedule-First Semester 1967-68 - Graff
TI-Wausau	Computer Grading Analysis Program - July, 1967 - December, 1967 - Farrey
TI-Wausau	Course Outline for Drill Bit Sharpening - January 15, 1968 - February 1, 1968 - Saindon
TI-Wausau	Automotive Technology Monograph - March, 1968 - Sorensen
TI-Wausau	Electronic Technology Monograph - October, 1967 - Sorensen
TI-Wausau	Survey for Need for Trained Partsmen in the Farm Implement Business Also Skills and Knowledge Required - January 1, - April 1, 1968 - Roehl, Zepplin
WBVTAE	Follow-up of 1967 Graduates
WBVTAE	County of Residence of Students Enrolled in Wisconsin Schools of Vocational, Technical and Adult Education
CSVTE	A Study of the Effectiveness of Procedures for Establishing Vocational and Technical Programs in Wisconsin - Whinfield
CSVTE	Labor Market Information and Employment Plans of Students in Milwaukee Boys Technical High School -Dufty.
TI-Wausau	Machine Calculations Survey -Paulsen
TI-Wausau	Role of Research in Vocational-Technical Education - Paulsen
TI-Wausau	Summer School Interest Survey - Paulsen
TI-Wausau	Study of Driver Education in District 15 - Paulsen
TI-Kenosha	Student Utilization of Facilities - First Semester 1967-68 - November 9, 1967 - Graff
TI-Kenosha	1967 Graduate Report - Graff
TI-Kenosha	Faculty Profile - First Semester 1967-68 - Graff

<u>Agency/Institution Investigator</u>	<u>Title of Activity, Study or Project, Beginning/Ending Dates</u>
TI-Kenosha	Guidelines for Administering State and Federal Student Financial Aid Programs - Graff
CSVTE	The Flow of High School Graduates to Vocational-Technical and Adult Schools in Wisconsin - Fenske, Dufty
CSVTE	The Structure of Related Instruction in Wisconsin Apprenticeship Programs - Filley, Crabtree
CSVTE	Initiation of Technical Programs - Dufty
CSVTE	A Study of Registered Joint Apprenticeship Committees in Wisconsin Building Trades - Magnusen
TI-Wausau	Use of Text-- <u>How To Improve Your Reading</u> - Kaiser
TI-Wausau	Minnesota Mining Materials--Basic Reading Part I and Part II - Kaiser
TI-Wausau	Electronics Curriculum - Sorensen
TI-Wausau	Masters Paper--Development of an Inexpensive Contact Screen for Educational Use - Grasse
TI-Wausau	Course Outline for "Farm Electricity and Automation" for Evening School - Zepp/in
TI-Wausau	Graduate Paper--"Transfer of Learning" - Sorenson
TI-Wausau	M.S. Thesis--"Survey and Analysis of Tasks of Credit Personnel of North Central Wisconsin" - Larsen
TI-Wausau	Revision of Tech. Science Course Outlines - Babler
TI-Wausau	Academic Probation Analysis by Major - Zahn
TI-Wausau	Business Administration--Insurance Proposal - Paulsen
WBVTAE TC-Milwaukee	Numerical Control Seminar
TC-Milwaukee	Student Reasons for Attending Milwaukee Junior College

<u>Agency/Institution Investigator</u>	<u>Title of Activity, Study or Project, Beginning/Ending Dates</u>
SVTAE-Wisconsin Rapids	Part-time Day and Evening Student Survey
WSES-WBVTAE	Occupational Cluster Reference Guide
SVTAE-Wisconsin Rapids	Graduate Follow-up Study, 1966
SVTAE-Wisconsin Rapids	Admission Policies and Procedures and Pre-entrance Test Validity
UW-TI-Fond du Lac - Lindgren	A Survey to Determine Types of Students and Their Reasons for Selecting Programs of Business Training in Wisconsin Schools of Vocational, Technical and Adult Education M.S. Paper
SVTAE-Two Rivers	Follow-up of Nursing Assistants
WBVTAE	Report on the Use of Wisconsin VTAE Schools by the Department of Health and Social Services in Economic Opportunity Act Programs
TI-Kenosha	Status of Adult Education, Area Vocational, Technical and Adult Education - District 6 Leschinsky
TI-Kenosha	Proposed Advisory System - Sather & Banerdt
TI-Kenosha	Study of Facility's Needs at Kenosha Technical Institute - Hogan
TI-Kenosha	Proposal for Auto-Body Service - Hogan
TI-Kenosha	Faculty Perceptions - Banerdt, Graff, Hogan
TI-Kenosha	Program Evaluation Procedures - Hogan, Mills
TI-Kenosha	A Position Paper on Teacher Assistants - Banerdt
SVTAE-Two Rivers	Placement Report
SVTAE-Two Rivers	Electronics Technology Class Survey
WBVTAE-DRD	Vocational, Technical and Adult Education Facilities in Wisconsin
TC-Milwaukee	Two-Year and Five-Year Graduate Follow-up Adult School and MIT
TC-Milwaukee	Methods of Teaching the Disadvantaged

<u>Agency/Institution Investigator</u>	<u>Title of Activity, Study or Project, Beginning/Ending Dates</u>
WSU-Stout, Menomonie	A Study of the Inter-Intra School Supervisory and Faculty Communications in the Wisconsin Vocational, Technical and Adult System
TI-Kenosha	Dental Accreditation Survey - Hogan
TI-Kenosha	Walworth County Vocational, Technical and Adult Education Study
TI-Kenosha	Vocational-Technical Interest Survey, High School Seniors, Walworth County
TI-Kenosha	2500 MHz ITV Broadcast Preliminary Report - Bruce
TI-Kenosha	A Study of Administrative Responsibilities Nevala
WBVTAE	Guidelines for Realistic Facility Planning for Schools of Vocational, Technical and Adult Education
WBVTAE	Projected Program Activities for 1967-68
TI-Wausau	Some Aspects of Counseling the Mature Women (Selected Study of MCTI Women Furthering Their Education)
SVTAE-Wausau	Curriculum--Residential Design Survey
SVTAE-Wausau	Retail Management Survey
TC-Milwaukee	Professional Profile of Business Teachers in Vocational, Technical and Adult School in Wisconsin
SVTAE-Rice Lake	Communication Problems in the Wisconsin Vocational, Technical and Adult Education System
UW-Ball	Characteristics of Post Secondary D. E. Students in Wisconsin-Master's Paper
TI-Green Bay	Survey of Student Activities
TI-Green Bay	Agri-Business Proposal
TI-Green Bay	Transportation and Distribution Proposal
TI-Sheboygan	Employment Surveys in Marketing Employment Agri-Business, Dental Assistant, Optometrist Assistant, and Office Occupations
TI-Sheboygan	Follow-up Study of Medical Assistants

Agency/Institution Investigator

Title of Activity, Study or Project,
Beginning/Ending Dates

TI-Sheboygan	Survey of Maintenance Requirements for Electronics Equipment
TI-Eau Claire	Extensive Housing Survey
TI-Eau Claire	Survey on Dormitory Living
TI-Eau Claire	Follow-up Study on all 1966 Graduates and Those That Did Not Return
SVTAE-Racine	History and Development of Associate Degree Programs in Engineering Technology and Business Administration
SVTAE-Racine	Catalog of Personal Resumes of 1967 Associate Degree Graduates
SVTAE-Racine	Course Descriptions in Engineering Technology, Business Administration, and Marketing.
TI-Eau Claire	Survey of 1966 Graduates
SVTAE-Rice Lake	Determination of Need for an Agri-Business Program
TC-Madison	"A Modern Automotive and Diesel Center" Published in the <u>AVA Journal</u> , Vol. 42, No. 1, January, 1967 - Mitby
TC-Madison	"A Case Study" - A discussion of the role of science in technical education. Published in the <u>Science Education News</u> , March, 1967
TC-Madison	Report on Transfer of Students from other Institutions of Higher Learning, 1966-67 School Year
TC-Madison	Secretarial Science Vocabulary Project
TC-Madison	Development and Refinement of Instructional Materials Useful in Machine Bookkeeping, with Supporting Practice Guides in the Area of Budgetary Control, which will be Useful in Extending the Student's Understanding in Financial Management
TC-Madison	A Survey of the Use of Selected Office Machines
TC-Madison	"A Hydro-Pneumatic Paradox" will be published in <u>School Science and Mathematics</u> Fall, 1967

<u>Agency/institution Investigator</u>	<u>Title of Activity, Study or Project, Beginning/Ending Dates</u>
TI-La Crosse	Occupational Needs Studies in Various Program Areas
TI-La Crosse	Study of Curriculum Changes in English Courses for Technical Students
TI-La Crosse	Status Study for North Central Accreditation
TI-Oshkosh	Follow-up Study of Graduates, 1960-65
TI-Oshkosh	Student Profile
TI-Oshkosh	Occupational Education Needs for Automotive Technicians, Agri-Business, Banking and Finance Employers, General Clerical Employees
TI-Oshkosh Stout State University Grad. Student	Study of Graduates and Dropouts of Automotive Technology Program
TI-Oshkosh Stout State University Grad. Student	Mechanical Design Programs in Wisconsin Technical Institutes
TC-Madison	Small Engines Survey-Master's Thesis
TC-Madison	Pilot Electronics Study
TC-Madison Kansas State College	Automotive Research
TC-Madison	Electronics Test for Selection of Candidates
UW-CSVTE	A Study of the Relationship of Part-Time Education to Occupational Mobility
UW-CSVTE	Labor Market Information and Employment Plans of Students in the North Central Technical Institute
Ohio State University	Post-Secondary Distributive Education Programs
UCLA (Selected Faculty)	Higher Education in Wisconsin
UW - CSVTE	Union Interests in Apprenticeship and Training
SVTAE-Beloit	Status of Testing Norming Studies in two-year Programs - 1963-66

<u>Agency/Institution Investigator</u>	<u>Title of Activity, Study or Project, Beginning/Ending Dates</u>
UW-CSVTE	A Study of Registered Joint Apprenticeship Committees in Wisconsin Building Trades
UW-CSVTE	South Milwaukee County Study
UW-CSVTE	The Role of Education in Furthering the Movement from Blue to White Collar Employment
UW-CSVTE	The Relationship of Vocational Education to Post High School Occupations of High School Graduates
SVTAE-Two Rivers	A Follow-up Study of Electronics Technology Students - 1/65 - 7/66
VSES	Survey of Business and Industry Unemployed and Under Employed to Determine Need of MDTA Course in Stenographer Training in Prairie du Chien Area - 9/66- 10/66
SVTAE-Marinette	Program Planning for Three Post High School Courses - 5/66 - 9/66
SVTAE-Manitowoc	The Employment Possibilities for Machine Operators of Selected Punched Card Equipment in the Immediate Area of Manitowoc - September - December, 1966
SVTAE-Manitowoc	The Establishment of Guidelines for Liaison Between T & I Coordinators and Local Industries - 6/66 - 8/67
TI-Superior	Survey of Area Business Establishments to Determine the Fields of Work in Which They are Engaged - June, 1968
VTAE-District 16	Survey of VTA District 16 - February 1, 1968 - September 1, 1968 - Krueger
SVTAE-West Bend	A Survey to Determine Occupational Interests of High School Students, High Schools in the West Bend Area
SVTAE-West Bend	The Relationship Between the Field of Vision and Reaction Time to a Red Light Stimulus
Stout State University	Research Needs in Vocational-Technical Education - Courtney
TC-Madison	Follow-up Study of Students Graduated from Madison Vocational, Technical and Adult Schools 6/66 - 11/66

<u>Agency/Institution Investigator</u>	<u>Title of Activity, Study or Project, Beginning/Ending Dates</u>
SVTAE-Beloit	Effects of Sales Instruction as Measured by Sales Aptitude Test - 11/66 - 12/66
SVTAE-Beloit	Follow-up of 1966 Graduates - 6/66 - 11/66
TI-Eau Claire	A Survey of Needs for Technically Trained Personnel - 1966
SVTAE-Tomahawk	Course Content for Architectural Design - 9/66 - 11/66
WBVTAE	Occupational Education Needs Study for the West Bend Wisconsin Area
WBVTAE	A Comprehensive Study of September, 1966, Enrollments including Numbers, Programs, Residence and Educational Background
WBVTAE	A Compilation of Certain Population, Enrollment and Valuation Data by County for all Counties in Wisconsin
UW	An Experimental Educational Institute for Teacher-Coordinators for Newly Emerging High School Programs - Samson
UW	Post Secondary Guide for Distributive Education - Samson
UW	Regional Institute for Development of Leadership Abilities in Distributive Education - Samson
UW	Evaluation of Two-Year Marketing Program at the Wausau Technical Institute
UW	Guide for High School Coordinating Teachers in Developing a Cooperative Office Education Program - Samson
SVTAE-West Allis	Survey of Post High School Educational Activities of 1966 Graduates from Six High Schools in West Allis Area
TI-Eau Claire	Educational Interests of 1966 High School Juniors in 34 High Schools
TC-Madison	A Long-Range Plan for the Expansion to an Area School of the Madison Vocational, Technical and Adult Schools - May, 1966 - August, 1966

<u>Agency/Institution Investigator</u>	<u>Title of Activity, Study or Project</u> <u>Beginning/Ending Dates</u>
University of Wisconsin, Bureau of Business Research and Service and Madison-SVTAE	General Economic, Population and Public Finance Statistics Available from Public Agencies of the State of Wisconsin, Vol. 11, No. 5, Wisconsin Project Reports - A Reference Guide - 6/64 - 12/65 (Distribution since 1/66)
TC-Madison	Self-Study Format for North Central Association Accreditation - November, 1966
TC-Madison	Comparative Study of Dental Assisting Teaching Programs - April 21, 1966 \$4,133.80
TC-Madison	Study of Full-Time Student Mid-Term Grades, First Semester 1966-67 - 11/66 - 12/66
TI-Wausau	Follow-up of Electronics Graduates - 9/65 - 8/66
TI-Wausau	1965-66 Graduate Follow-up Survey - 10/66 - 12/66
TI-Wausau	Quantity Food Survey Program - 5/66 - 9/66
UM - R & D Center	A Study of Dropouts from Adult Literacy Programs - September 22 - December 1, 1966
TI-Wausau	Development of Communication Curriculums for Vocational Curriculums - 3/66 - 12/66
TI-Wausau	Future Curriculum Projection Plans - 8/66 - 12/66
TI-Wausau	Adoption of Procedure for Assigning Credits for Classes and Review and Revision of Existing Curriculum Credit Assignments 8/66 - 9/66
TI-Wausau	An Extensive Public Information Program on Adult Education Opportunities in North Central Wisconsin - Adult Education Inter-Agency Committee - 8/66
WSES-Fond du Lac SVTAE	Occupational Needs Survey for Fond du Lac County - March, 1966
UW-CSVTE-SBVTAE	Pilot Study of Curriculum Needs in Welding Technology
SVTAE-Rhineland	Occupational Training Needs Survey for Waitress Training in the Rhineland Area

<u>Agency/Institution Investigator</u>	<u>Title of Activity, Study or Project</u> <u>Beginning/Ending Dates</u>
SVTAE-Rhineland	Follow-up of Waitress Training Program
USOE-Milwaukee TC	In-Service Training Program for Teachers of Disadvantaged Adolescents
WBVTAE	A Survey of Local Vocational School Practices in Extending Services to Minority Groups
WBVTAE	Proceedings of the three workshops in Communication Skills, Economics and American Institutions have been produced and distributed to local schools. These reports will be used as interim guides until curriculum guides are developed.
SVTAE-Rice Lake	Skills of the Industries Exhibition
TI-Eau Claire-Stout	Occupational Needs Study for Civil Technology in District 1
TI-Oshkosh	Development of Success Predictors for Vocational and Technical Education
WSU-Stout	Two-week Research Seminar - June, 1968 - Courtney
CSVTE-WBVTAE	Institutional Variances of High School Dropouts Enrolled in Vocational Education Roomkin
TI-Wausau	Residential Design Curriculum - Sorensen
TI-Wausau	Appliance Repair Curriculum Development and Survey - Sorensen
TI-Wausau	Computerized Type Setting, Hot and Cold - Favell
TI-Wausau	Course Outline--Agricultural Hydraulics for Evening School - Zeplin
TI-Wausau	Use of Computer Assisted Instruction - Paulsen
TI-Wausau	Study of Remedial Reading and Adult Basic Education - Paulsen, Klug
CSVTE	Vocational Aspirations: Their Meaning for Counselors - Perrone
CSVTE	Area Development and Employment in Northern Wisconsin, Michigan and Minnesota - McKechnie

Agency/Institution Investigator

Title of Activity, Study or Project
Beginning/Ending Dates

CSVTE	Forces Influencing Decision Making in Vocational-Technical Education in Wisconsin, Before and After the Vocational Education Act of 1963 - Bowles, McIsaac
CSVTE	Long-Range Occupational Projections - Hansen
CSVTE	Variables Affecting Students Decisions on Post High School Education - Weisbrod
CSVTE	Forecasting Labor Demands - Perlman
CSVTE	The Vocational School Consumer - Perrow
CSVTE	Determination of Costs in Vocational-Technical Programs - L. Peterson
CSVTE	Barriers to Employability of Non-White Workers - Petshek
WSES	Study of Exit Evaluation Reports of MDTA Welders in Comparison with GATB Test Scores - Walters
WBVTAE	A Study of Why Adults Enroll, Dropout, and Complete Adult Education Programs in Wisconsin Schools of Vocational, Technical and Adult Education
UW Extension	A Study of Why Adult Enroll, Dropout and Complete Adult Education Programs in University of Wisconsin Extension Centers
CSVTE-WBVTAE	Occupational Careers of 1965 Graduates of Wisconsin Vocational Schools - Little
CSVTE	Development of Base Line Data for Appraisal of the Effectiveness of Vocational, Technical Education in the United States - Little, Somers
CSVTE	Survey of the Use of Occupational Data in Counselling High School Students - Perrone, Somers
CSVTE	Retraining the Disadvantaged
CSVTE	A Comparative Study of Students in Public Non-Baccalaureate Post-High School Programs in Institutions with a Single Educational Track or in Institutions with Dual Track - Whinfield

<u>Agency/Institution Investigator</u>	<u>Title of Activity, Study or Project Beginning/Ending Dates</u>
CSVTE	Trends in Wisconsin Teachers Training, Recruitment and Employment - Whinfield, Gibbs
CSVTE	Labor Market Information and Employment Plans of Students in Four Technical Institutes in Wisconsin - Dufty
CSVTE	Validity of Teacher Ratings of Employability - Perrone
UW	An Analysis of Post-High School Marketing Students in Wisconsin Schools of Vocational Technical and Adult Education - Samson
UW	Developmental and Pilot Program for Leadership in Distributive Education - Samson
UW	Distributive Education Handbook - Beecher, Samson
CSVTE-UW	Role of the Wisconsin Directors Association in Decision Making - Craven
CSVTE-UW	On the Job Training in Milwaukee - Nature, Extent & Relation to Vocational Education - Perlman
CSVTE-UW	Employment Experience of Non-College Bound Youth; Relation to H.S. Vocational Education Programs - Matteson
CSVTE-UW-USOE	Project: Vo-Ed
CSVTE-UW	Assessing the Extent of Manpower Forecasting Among Milwaukee Firms - Perlman
CSVTE-UW	Factors Influencing the Initiation of New Vocational Programs - Somers, Whinfield, Gunderson
VTAE-District 3-WSES	Occupational Needs Survey Crawford, Grant, Lafayette, Iowa and Richland Counties - June 3, 1968 - September 15, 1968 - Duffy
UW	Nature and Scope of Mid-Management in Retail and Department Stores - Samson
CSVTE	Variables Affecting Decisions on Post High School Education Plans - Melder

Agency/Institution Investigator

Title of Activity, Study or Project
Beginning/Ending Dates

WBVTAE

5-Year Proposal for Wisconsin Research
Coordinating Unit in Vocational Education

TI-Eau Claire

Study of Business Department Accounting
Graduates to Determine the Difference
Between What was Taught in Accounting
and What They are Using on Their Jobs -
Devine

TI-Eau Claire

Survey of Data Processing Departments
to Determine Data Processing Job Descrip-
tions, Job Titles, and Job Requirements
April, 1968 - November, 1968 - Shea

TI-Eau Claire

Follow-up Study of Business Education
Graduates from 1964-1968 - February, 1966 -
June, 1969 - Druschel