

DOCUMENT RESUME

ED 033 678

HE 001 223

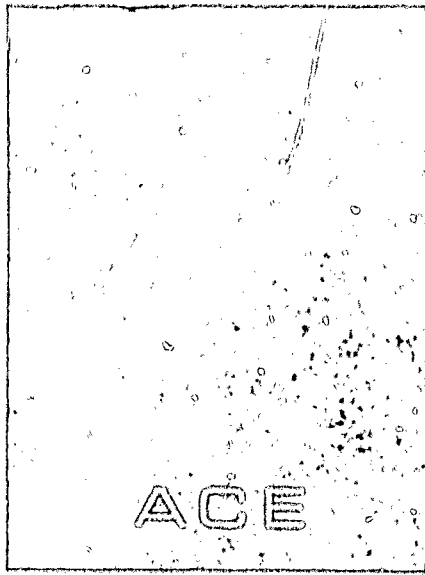
AUTHOR Creager, John A.; Sell, Charles L.
TITLE The Institutional Domain of Higher
Education: A Characteristics File for
Research.
INSTITUTION American Council on Education, Washington,
D.C. Office of Research.
Report No ACE-RR-Vol-4-No-6
Pub Date 69
Note 73p.
EDRS Price MF-\$0.50 HC-\$3.75
Descriptors Colleges, *Data, *Educational Research,
*Higher Education, *Institutional
Research, *Research, Universities
Identifiers *ACE Institutional Research File

Abstract

The Office of Research of the American Council on Education has established a file--the "ACE Institutional Research File"-- to (1) provide reasonable coverage of the national population of institutions of higher education; (2) contain information on a wide variety of topics likely to be pertinent to higher education research; (3) include complete information on those topics for each institution; and (4) be accessible to qualified persons. This report describes the development, characteristics, limitations and potential uses of the file. Data on 2319 institutions were collated from files of the Office of Education, the National Science Foundation, and the ACE. Information is included on an institution's type, sex, race, control, enrollment, selectivity measures, calendar plans, staff, amount of tuition charged, student aid granted, number of foreign students, residential facilities and use, library resources, federal aid received, and degrees conferred. The report contains 35 systematically arranged tables developed from the file which describe the domain of higher education. The tables are intended to help researchers to: plan research studies; develop sampling and weighting procedures within various subdomains of the universe; recode institutional variables for further analysis within special groups and merged files; and compare the profile of a given institution with that of relevant groups. Copies of the report may be obtained from the Office of Research, American Council on Education, 1 Dupont Circle, Washington, DC 20036. (JS)

HE 001 223

ED033678



RESEARCH
REPORTS

VOL. 4, • NO. 6, 1969

THE INSTITUTIONAL DOMAIN OF HIGHER EDUCATION: A CHARACTERISTICS FILE FOR RESEARCH

JOHN A. CREAGER

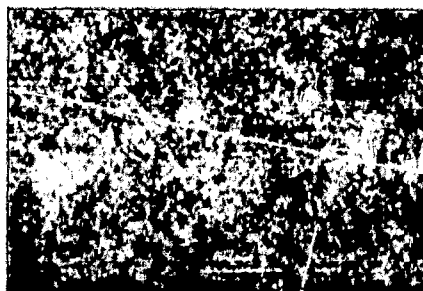
CHARLES L. BELL

U.S. DEPARTMENT OF HEALTH, EDUCATION & WELFARE
OFFICE OF EDUCATION

THIS DOCUMENT HAS BEEN REPRODUCED EXACTLY AS RECEIVED FROM THE
PERSON OR ORGANIZATION ORIGINATING IT. POINTS OF VIEW OR OPINIONS
STATED DO NOT NECESSARILY REPRESENT OFFICIAL OFFICE OF EDUCATION
POSITION OR POLICY.

OFFICE OF RESEARCH

AMERICAN COUNCIL
ON EDUCATION



HE 001 223

American Council on Education

Logan Wilson, President

The American Council on Education, founded in 1918, is a *council* of educational organizations and institutions. Its purpose is to advance education and educational methods through comprehensive voluntary and cooperative action on the part of American educational associations, organizations, and institutions.

The Council's Office of Research was established in 1965 to assume responsibility for conducting research on questions of general concern to higher education. *ACE Research Reports* are designed to expedite communication of the Office's research findings to a limited number of educational researchers and other interested persons.

ACE RESEARCH ADVISORY COMMITTEE

Nicholas Hobbs, *Chairman*
Provost of Vanderbilt University
and Director of the Kennedy
Center, Peabody College

Allan M. Cartter
Chancellor
New York University

Richard C. Gilman
President
Occidental College

John G. Darley
Chairman
Department of Psychology
University of Minnesota

Ralph W. Tyler
Director Emeritus
Center for Advanced Study
in the Behavioral Sciences

N. L. Gage
Professor of Education and
Psychology
Stanford Center for Research
and Development in Teaching
Stanford University

Dael Wolfle
Executive Officer
American Association for the
Advancement of Science

Additional copies of this *Research Report* (Vol. 4, No. 6, 1969) may be obtained from the Office of Research, American Council on Education, One DuPont Circle, Washington, D. C. 20036.

Acknowledgements

The production of a merged file of information collated from several sources involves the efforts of personnel in a large number of institutions, in several government agencies, and those in the American Council on Education. It would be quite impossible to cite many of these helpful and cooperative persons because neither they nor their precise roles are directly known to the authors. Nevertheless, we are able to express our appreciation to those government agencies and to Council personnel who supplied input data for the ACE Institutional Research File described in this report. Both the agencies and the key persons involved are gratefully acknowledged in footnotes at appropriate places in the text.

The authors note that none of these sources of information could have been so helpful if it had not been for the cooperation they received from the institutions of higher education and the various government agencies that supplied the basic data. To the many, and often anonymous persons who carried this load at the institutions, we offer our sincere thanks.

The professional staff of the Office of Research made many helpful suggestions and comments both on the preparation of the file and on this report. Members of the programming staff were most helpful in supplying technical aid in computer software and operations. Extensive work on preparing the manuscript with its many tables was accomplished by Mrs. Jeannie Royer and Miss Margo King. Miss Barbara Blandford performed her usual valuable liason with the printer. We appreciate this help from our colleagues, but absolve them from any and all errors that may have gotten through.

TABLE OF CONTENTS

	<u>Page</u>
ACKNOWLEDGEMENTS	
I. Introduction.....	1
II. Source Files and Their Contents.....	3
III. Characteristics of the ACE Institutional File.....	6
A. Identification Fields.....	6
B. Typological Categories.....	6
C. Enrollment Data.....	7
D. Selectivity Measures.....	7
E. Data from the ACE Reference Publications.....	7
F. Federal Support Data from the NSF CASE Studies.....	8
G. Earned Degrees.....	9
IV. Availability and Accessing of the Files.....	9
V. Summary Data on Institutional Characteristics.....	10
VI. References.....	13
VII. Appendix A. Layout of Institutional File Tape, A189.....	15
VIII. Appendix B. Codes for Variables Not Otherwise Designated on the Layout in Appendix A.....	23
IX. Appendix C. Characteristics of Institutions Within Fourteen Defined Groups.....	29
X. Appendix D. Enrollment Tables.....	35
XI. Appendix E. Ability Tables.....	47
XII. Appendix F. Faculty Tables.....	53
XIII. Appendix G. Student Aid Tables.....	61
XIV. Appendix H. Residence Hall and Library Facility Tables.....	67
XV. Appendix I. Revenues, Endowments, Affluence and Tuition Tables.....	73

The Institutional Domain of Higher Education:
A Characteristics File for Research¹

John A. Creager
Charles L. Sell

Most survey research in higher education requires access to information about colleges and universities. In order to obtain the particular information required in a given study, it is often necessary to tap a variety of sources and then to collate the desired information. Since the data may originally have been collected for some special purpose, they are often in a form that is inconvenient for immediate use in other research. Collecting new data is a formidable and expensive task which distracts from the main purposes of a study. Moreover, it is inefficient and unnecessarily burdensome to the institutions when many investigators request the same information.

What is needed is a central file of recent and relevant data that has already been collated and that can therefore be selectively read by many users in accordance with their respective needs. So far as possible, such a file should (1) provide reasonably complete coverage of the national population of the institutions of higher education, (2) contain information on a wide variety of topics likely to be pertinent to research in higher education, (3) include complete information on those topics for each institution, and (4) be accessible to qualified persons.

This report describes the development, characteristics, limitations, and potential uses of one such file developed in the Office of

¹This research was supported in part by Grant GR-57 from the National Science Foundation.

Research of the American Council on Education; the file is referred to as the ACE Institutional Research file. In order to fulfill the first requirement, that of reasonably complete coverage of the national population of institutions, the file was started with the Reference File developed from the second Higher Education General Information Survey (HEGIS-II) of the U. S. Office of Education.² After the "total" records for multicampus systems were eliminated, there remained 2,671 institutions used to match with files developed from other sources. Although not exhaustive, this list was the most complete available.³ Subsequent failures to obtain complete matches with institutions having data available from other sources resulted in the loss of many very new or satellite campuses, and those for which no student ability data were available. The final file contains records for 2,319 institutions.

The ACE Institutional Research File was built by collating information from the Office of Education, The National Science Foundation, and from the American Council on Education. Each of these agencies is dependent upon the colleges and universities or upon various government agencies for supplying the basic information, and each tries, insofar as is feasible, to collect complete and accurate information. Typically, this information is obtained through extensive questionnaires completed

²We are indebted to Mr. Theodore Drows of the National Center for Educational Statistics, USOE, for supplying this and other files developed from HEGIS-II.

³The population of institutions is discussed further in a previous report on the sampling of institutions of higher education (Creager, 1968) and in several USOE publications.

by responsible officials at the responding institution or agency queried. Such being the case, only limited effort was made to edit or recode the source data. However, certain source files having multiple records per institution were collapsed into a single summary record for each institution. Moreover, data collected by the Council required some special coding and the development of some interim subfiles. Finally, considerable special processing was needed in order to supply estimates for missing data and to organize the file for research use.

Source Files and Their Contents

The layout of the ACE Institutional Research File is presented in Appendix A. In addition to the HEGIS-II Reference File, the USOE provided their files on Opening Fall Enrollment, 1967, and on Earned Degrees Conferred, 1966-67. Basic identifying information, such as name and USOE institution codes for the descriptive categories, were included in the ACE file. The ACE institutional identification numbers were added to the record so that the ACE file could be matched with the extensive files of data on both institutions and students that were developed in the Cooperative Institutional Research Program (Astin, Panos, and Creager, 1966). Data from these merged files are available through the Office of Research data-accessing system (Bayer, et. al., 1969).

The data from Opening Fall Enrollment, 1967, were used in essentially complete form except for removal of identifying information which was redundant with that in the HEGIS-II Reference File. In addition to detailed 1967 enrollment data, the Opening Fall Enrollment File also contained total enrollment figures in coded form for both 1966 and 1967.

The USOE file on Earned Degrees Conferred, 1966-67, contains multiple records per institution, arranged by institutions within field and type of degree. In order ~~to~~^{to} keep the ACE file from becoming too long, these multiple records were sorted and collapsed into a single record for each institution, thus reducing the many degree fields to 26; grand totals for levels of degree by sex were retained. Although more extensive collapsing of fields was considered, it is desirable to maintain enough flexibility to satisfy the different requirements of various users. Some users will, however, want to collapse these field groups still further into fewer and more heterogeneous categories.

The CASE file supplied by the National Science Foundation, a file which shows amounts of governmental support to institutions for fiscal years 1963-66,⁴ also required that a compromise be made between keeping the ACE file down to a reasonable length and maintaining its maximal utility. Consequently, sorting and collapsing operations were carried out to remove redundant categories of support. Although the data in the other source files were originally supplied by the institutions, the CASE data were supplied by agencies of the Federal government.

For many research purposes it is important to have some measure of the ability level of the students entering an institution, since differential selectivity on admissions is related to both the college environment and to certain outcomes of the college experience. The variation

⁴We are indebted to Mr. Justin Lewis of the Office of Economic and Manpower Studies, National Science Foundation, for making these data available. This file was originally supplied in January of 1968; some of the data may not fully agree with those in more recently updated CASE files, especially for fiscal 1967.

among institutions in testing programs makes it quite difficult to obtain such information on a comparable basis. Astin (1970) developed the necessary conversion tables and created a "selectivity" data file which was an important source used in developing the ACE Institutional Research File. Selectivity measures for individual institutions and extensive reference data may be found in the cited publication.

The two remaining sources of data for input to the ACE file were the institutional questionnaires completed for the production of the Council's two quadrennial reference publications, (Gleazer, 1967; Singletary, 1968). These questionnaires were designed to elicit information in a form suitable for reference publications rather than for research. Therefore, this information has to be hand coded and read to tape.⁵ Moreover, only those kinds of data comparable in content and form for both two-year and four-year institutions were retained for inclusion in the ACE Institutional Research File. The surveys on which these two reference publications are based deal only with accredited or state-licensed institutions. Information on four-year colleges and universities covers the 1966-67 academic year, except in the case of tuition and fees, where the figures are for 1967-68. Information on junior colleges covers the 1965-66 academic year. The cited publications should be consulted for further details regarding their coverage of information.

⁵ Access to the source documents was made possible through the cooperation of Mr. Robert Quick, Director, Publications Division of the American Council on Education.

Characteristics of the ACE Institutional Research File

The ACE research file consists of 2,319 unblocked institutional records (each 564 BCD characters in length) on one 556 bpi reel of magnetic tape. Much of the basic information was either recoded or rescaled to facilitate direct research use, and values were estimated for missing data.

Identification Fields

The ACE identification numbers in the first three data fields are intended for use in matching and merging this file with other ACE research files and therefore will not generally be available for use by outside researchers. The main identification number for external use is the USOE 6-digit number (tape positions 15-20) obtained by combining the USOE state code (given in Appendix B) and the within-state institution number, which comes from the 1967 USOE Reference File. In a few instances, these numbers may fail to match external records identified with more recent USOE institutional identification numbers. The 35 stratification cells (tape positions 21-22) are those used in the Cooperative Institutional Research Program (Creager, 1968). Sixteen institutions which were not formerly included in this stratification were assigned to cells in accordance with their defining characteristics.

Typological Categories

The USOE codes for an institution's type, sex, race, control, and region were converted into a series of dichotomous variables (tape positions 48-72) to facilitate research use, for the purpose of either selecting records for analysis or of performing regression analyses. In addition, the full two-digit control code was retained in tape positions 46-47. This code is presented in Appendix B.

Enrollment Data

The total, full-time, and resident enrollment fields were retained from the USOE Opening Fall Enrollment data for 1967. Other enrollment breakouts were converted to percentages within the total, full-time, and resident categories in such a way as to retain basic information without lengthening the file with redundant or complementary information (e.g., figures for enrollment of men and for men and women combined are included, but not those for women only; the same is true for resident vs. nonresident and full-time vs. part-time enrollment.) Appendix B shows the USOE one-digit codes for the total enrollment in 1966 (tape position 73) and in 1967 (tape position 80).

Selectivity Measures

The median scores of entering freshmen on the ACT, the NMSQT, and the SAT composites obtained from Astin's study (1970) are included in the record for each institution. These median scores were adjusted on the basis of National Merit Scholarship candidates represented at the institution. Values assigned for missing data are shown on the layout in Appendix A (tape positions 119-128).

Data from the ACE Reference Publications

As was mentioned previously, the data from the questionnaires used in the production of the two ACE reference publications presented special problems. First, these surveys included only accredited or state-licensed institutions, and even within this group, information on many of the items was incomplete. Moreover, the questionnaires were designed to elicit reference, rather than research information. Finally,

institutions differ in their methods of keeping and reporting on records. To circumvent these difficulties, only those items which had the greatest potential value for research, and which provided some reasonable basis for supplying values for missing items, were retained.

The calendar plans of different institutions were converted to a set of dichotomous variables, as were certain admissions and other requirements. Degrees held by the staff members were converted to percentages of the total number of staff members for whom degree counts were reported. The out-of-state tuition was converted to an annual basis. If the out-of-state tuition was not reported, the in-state tuition was taken if available. In these and subsequent data fields from the ACE reference questionnaires, the mean values within each stratification cell were computed from available data, and these means were supplied for the missing data in accordance with the cell membership of the institution involved.

The number of students receiving various kinds of aid, the number of foreign students, and the number of students living in campus residence facilities were converted to percentages of full-time enrollment. Library capacity and financial data were retained intact, except for divisions by scaling constants in some fields to reduce field length. In addition, the financial fields were converted to a per-student basis for more meaningful use in regression analysis. The total revenues per student were also expressed in the form of a 1-digit "affluence" code, as indicated in Appendix B.

Federal Support Data from the NSF CASE Studies

Both the 1963 and the 1966 data on Federal support were

divided by the 1967 total enrollment so that they would have a common, available per-student basis for regression analysis. When data were missing, it was assumed that there had been no Federal support in the area covered; therefore, zeroes were supplied for institutions not matching the NSF CASE files.

Earned Degrees

Because it was anticipated that most studies using data from the ACE research programs would focus on undergraduates, baccalaureate degree counts were retained and combined for 21 groups of major fields. Counts of higher degrees in these fields were omitted, since the file length would otherwise become unreasonably great, even when major fields are drastically collapsed. However, the research file contains dichotomous variables indicating whether professional, master's, or doctoral degrees are granted within the major field at the given institution. For the professional fields, however, only a single total count across levels was retained for the research file. Degrees in these professional fields are usually, though not always, "professional" degrees. Level totals by sex were computed across fields and are included in the file. These totals are also supplied for prebaccalaureate certificates (e.g., associate degrees, and certificates of completion of an organized occupational curriculum).

Availability and Accessing of the Files

Since nearly all of the data in the ACE Institutional Research File are in the public domain, the data in this file are generally available to the community of educators and research scholars. Although copies

of the file, either in whole or in part, will not normally be available, summary information such as statistics, frequency distributions for defined groups, and cross-tabulations may be obtained through the ACE data-accessing system, using procedures specified in the ACE Users' Manual (Bayer, et. al., 1969).

Except for the NSF CASE data and that from Earned Degrees Conferred, the data on the institutional file have been linked to the Office of Research institutional summary files, which contain extensive information on the characteristics of students enrolled in each of the institutions participating in the Cooperative Institutional Research Program. The latter information was obtained under conditions which guarantee strict anonymity to individual responding students (Boruch, 1969). Consequently these tape files are not available for use outside the ACE data-accessing system. Analyses which require the use of these merged data files may be made only through that accessing system. All published analyses which employ data derived from the ACE Institutional Research file should acknowledge the American Council on Education as the source and should cite, in standard bibliographic style, this ACE Research Report (Vol 4, No. 6).

Summary Data on Institutional Characteristics

Sets of tables developed from the ACE Institutional Research File are presented in Appendices C through I. These 35 tables, which constitute a useful description of the domain of higher education are systematically arranged to show frequencies and percentages of those institutions in 14 groups defining rows of each table, which fall into the distributional categories defining columns. The reported percentages

have been rounded to the nearest integral value and total 100 percent (plus or minus 1 percent) of the number of institutions in the row-defining group. In cells where there is a nonzero frequency that amounts to less than half of 1 percent, an asterisk has been posted to indicate a trace and to distinguish it from an empty cell, designated by zero.

It is expected that these tables will provide information useful for the following purposes: (a) planning research studies; (b) developing sampling and weighting procedures within various subdomains of the universe; (c) recoding institutional variables for further analysis within special groups and with merged files; and (d) comparing the profile of a given institution with that of relevant groups.

The tables are grouped according to content and format into separate appendices. Within each appendix, the tables are arranged as they appear on the file layout. Otherwise, the tables are essentially self-explanatory.

REFERENCES

- Astin, Alexander W. Predicting Success in College. New York: The Free Press, 1970.
- Astin, Alexander W., Panos, Robert J., and Creager, John A. "A Program of Longitudinal Research on the Higher Educational System." ACE Research Reports, Vol. 1, No. 1, 1966.
- Bayer, Alan E., Astin, Alexander W., Boruch, Robert F., and Creager, John A. "Users' Manual -- ACE Higher Education Data Bank." ACE Research Reports, Vol. 4, No. 1, 1969.
- Boruch, Robert F. "Educational Research and the Confidentiality of Data." ACE Research Reports, Vol. 4, No. 4, 1969.
- Creager, John A. "General Purpose Sampling in the Domain of Higher Education." ACE Research Reports, Vol. 3, No. 2, 1968.
- Gleazer, Edmund J., Jr. (Ed.) American Junior Colleges. (7th ed.) Washington, D. C.: American Council on Education, 1967.
- Singletary, Otis A. (Ed.) American Universities and Colleges. (10th ed.) Washington, D. C.: American Council on Education, 1968.

APPENDIX A

Layout of Institutional File Tape, A189

Note: All dichotomous variables, indicated by 2/1 on the layout, are coded "2" if the characteristic applies, and "1" if it does not.

American Council on Education
 One Dupont Circle
 Washington, D.C. 20036

101 -17-

Office of Research
 TAPE LAYOUT SHEET

NAME OF STUDY Research Institutional File DATE November 1, 1969
 REEL NO. A189* LABEL None NO. OF CASES 2,319
 TAPE CHARACTERISTICS Unblocked, 556 bpi. BCD Tape (564 Characters)
 DATA Selected Institutional Data in Form for Research Use

1		51	4-year college	2/1
2	1968 ACE#	52	2-year college	2/1
3		53	Male	2/1
4		54	Female	2/1
5		55	Coed.	2/1
6	1967 ACE#	56	Northeast	
7		57	Midwest	2/1
8		58	Southeast	
9		59	West & Southwest	
10		60	Liberal Arts	
11		61	Teachers	
12	1966 ACE#	62	Independent Technical	
13		63	Religious	
14		64	Independent Professional	2/1
15	USOE State Code	65	Jr. College	
16		66	2-year Technical	
17		67	2-year Semiprofessional	
18	USOE Institution # Within State	68	Arts & Music School	
19		69	Public Control	
20		70	Private-Nonsectarian	2/1
21	Stratification Cell	71	Roman Catholic	
22		72	Other Sectarian	
23		73	1966 Enrollment Code	
24		74		
25		75		
26		76	Generated Total Enrollment	1967
27		77		
28		78		
29		79		
30		80	1967 Enrollment Code	
31	Name of Institution	81		
32		82		
33		83	Total Full-Time Enrollment,	1967
34		84		
35		85		
36		86		
37		87		
38		88		
39		89	Total Resident Enrollment	
40		90		
41		91		
42		92		
43		93	% Full-Time of Total	99 = 99-100
44		94	Enrollment	
45		95	% Male of Total	99 = 99-100
46	USOE Control Code	96	Enrollment	
47		97	% Resident of Total	99 = 99-100
48	Race (Negro = 2, White = 1)	98	Enrollment	
49	Control (private = 2, public = 1)	99	% First-Time, Full-Time	99 = 99-100
50	University = 2, 1 = otherwise	100	of Total Enrollment	

* Stratification cell means supplied in tape A189 for missing data in fields indicated.
 Tape A151 is the same except blanks for missing data.

American Council on Education
 One Dupont Circle
 Washington, D.C. 20036

-18-

REEL NO. A189

LABEL _____

Office of Research

Page 2 of 6

TAPE LAYOUT SHEET

101	% Freshmen of Total Enrollment	151	Percent Associates on Staff
102		152	
103	% Full-Time Male of Total Enrollment	153	
104		154	Annual Tuition (Out-of-State)
105	% Male of Full-Time Enrollment	155	
106		156	
107	% Resident of Full-Time Enrollment	157	% of Full-Time Enrollment Awarded Scholarships
108		158	
109	% Freshmen of Full-Time Enrollment	159	% of Full-Time Enrollment Given Loans
110		160	
111	% Full-Time of Resident Enrollment	161	% of Full-Time Enrollment Given Jobs
112		162	
113	% Male of Resident Enrollment	163	% of Full-Time Enrollment Given Aid
114		164	
115	% Undergraduate of Resident Enrollment	165	% Foreign Students of Full-Time Enrollment
116		166	
117	% Post-baccalaureates of Resident Enrollment	167	% of Full-Time Enrollment - Residence Hall Capacity
118		168	
119	Selectivity Level U = 0	169	Autos Allowed 2/1
120		170	
121	ACT Score (1-35) U = 19	171	
122		172	No. Volumes in Library $\div 100$
123	NMSQT Composite (1-165) U = 88	173	
124		174	
125		175	
126		176	
127	SAT V + M (400-1600) U = 850	177	No. of Periodicals in Library
128		178	
129	Semester	179	
130	Trimester	180	
131	Quarter	181	
132	Other or unknown	182	Student Fees $\div 100$
133	SAT known to be required	183	
134	CEEB known to be required	184	
135	ACT known to be required	185	
136	B average or better in high school	186	
137	Chapel attendance known to be required	187	
138		188	Government Appropriations $\div 100$
139	Generated Staff Total	189	
140	(sum of 5 staff degree fields)	190	
141		191	
142		192	
143	Percent Ph.D. on Staff	193	
144		194	Sponsored Research $\div 1000$
145	Percent Master's Degree on Staff	195	
146		196	
147	Percent Baccalaureates on Staff	197	
148		198	
149	Percent Professional Degree on Staff	199	Student Aid $\div 1000$
150		200	

** Stratification cell means supplied for missing data.

American Council on Education
 One Dupont Circle
 Washington, D.C. 20036

-19-

REEL NO. A189

LABEL _____

Office of Research

Page 3 of 6

TAPE LAYOUT SHEET

201	Student aid (continued)	251		
202		252	Endowment (Market) per Student	**
203		253		
204	Total Revenues \div 1000	254		
205		255		
206		256	Book Value of Physical Plant	**
207		257	per Student	
208		258		
209		259	Affluence Code	**
210	Book Value of Endowment \div 1000	260		
211		261	Total Federal Support per	
212		262	Student 1966	
213		263		
214		264		
215	Market Value of Endowment \div 1000	265		
216		266	Academic Science Support per	
217		267	Student 1966	
218		268		
219		269		
220		270		
221	Book Value of Buildings and	271		
222	Equipment \div 1000	272	R&D per Student 1966	
223		273		
224		274		
225		275		
226		276		
227	Fees per Student	277	R&D Plant per Student 1966	
228		278		
229		279		
230		280		
231	Appropriations per Student	281		
232		282	Total Federal Support per Student	
233		283		
234		284		
235	Research Funds per Student	285		
236		286		
237		287	Academic Science per Student 1963	
238		288		
239		289		
240	Aid per Student	290		
241		291		
242		292	R&D per Student 1963	
243		293		
244	(Total Revenues per Student) \div 10	294		
245	(affluence)	295		
246		296		
247	Endowment (Book) per Student	297	R&D Plant per Student 1963	
248		298		
249		299		
250		300	Beginning of Degree Fields; Group 01	

American Council on Education
 One Dupont Circle
 Washington, D.C. 20036

-20-

REEL NO. A189
 LABEL _____

Office of Research

Page 4 of 6

TAPE LAYOUT SHEET

301	Group 01 Agri. & Forestry	351	Baccalaureate
302		352	
303	Baccalaureate	353	Professional 2/1
304		354	Master's 2/1
305	Professional 2/1	355	Ph.D. 2/1
306	Master's 2/1	356	
307	Ph.D. 2/1	357	Group 08 Education
308		358	
309	Group 02 Biology, General	359	Baccalaureate
310		360	
311	Baccalaureate	361	Professional 2/1
312		362	Master's 2/1
313	Professional 2/1	363	Ph.D. 2/1
314	Master's 2/1	364	
315	Ph.D. 2/1	365	Group 09 Engineering
316		366	
317	Group 03 Structural,	367	Baccalaureate
318	Functional,	368	
319	Baccalaureate Genetic Biology	369	Professional 2/1
320		370	Master's 2/1
321	Professional 2/1	371	Ph.D. 2/1
322	Master's 2/1	372	
323	Ph.D. 2/1	373	Group 10 English
324		374	
325	Group 04 Biochemistry,	375	Baccalaureate
326	Biophysics	376	
327	Baccalaureate	377	Professional 2/1
328		378	Master's 2/1
329	Professional 2/1	379	Ph.D. 2/1
330	Master's 2/1	380	
331	Ph.D. 2/1	381	Group 11 Fine Arts
332		382	
333	Group 05 Business	383	Baccalaureate
334		384	
335	Baccalaureate	385	Professional 2/1
336		386	Master's 2/1
337	Professional 2/1	387	Ph.D. 2/1
338	Master's 2/1	388	
339	Ph.D. 2/1	389	Group 12 Home Ec.
340		390	
341	Group 06 Secretarial Sci.	391	Baccalaureate
342		392	
343	Baccalaureate	393	Professional 2/1
344		394	Master's 2/1
345	Professional 2/1	395	Ph.D. 2/1
346	Master's 2/1	396	Group 13 Math & Statis.
347	Ph.D. 2/1	397	
348		398	
349	Group 07 Computer Tech.	399	Baccalaureate
350		400	

American Council on Education
 One Dupont Circle
 Washington, D.C. 20036
 Office of Research
 TAPE LAYOUT SHEET

-21-

REEL NO. A189
 LABEL _____

Page 5 of 6

401	Professional 2/1	451	Ph.D. 2/1
402	Master's 2/1	452	
403	Ph.D. 2/1	453	Group 20 Political Sci.
404		454	
405	Group 14 Philosophy,	455	Baccalaureate
406	Religion	456	
407	Baccalaureate	457	Professional 2/1
408		458	Master's 2/1
409	Professional 2/1	459	Ph.D. 2/1
410	Master's 2/1	460	
411	Ph.D. 2/1	461	Group 21 General, Not else- where classified
412		462	
413	Group 15 Physical Sci.	463	Baccalaureate
414		464	
415	Baccalaureate	465	Professional 2/1
416		466	Master's 2/1
417	Professional 2/1	467	Ph.D. 2/1
418	Master's 2/1	468	
419	Ph.D. 2/1	469	Group 22 Total
420		470	Medical & Dental
421	Group 16 Psychology	471	
422		472	
423	Baccalaureate	473	
424		474	Group 23 Total
425	Professional 2/1	475	Nursing, Therapy & Med. Tech.
426	Master's 2/1	476	
427	Ph.D. 2/1	477	
428		478	
429	Group 17 Social Science	479	Group 24 Total
430		480	Pharmacy
431	Baccalaureate	481	
432		482	
433	Professional 2/1	483	
434	Master's 2/1	484	Group 25 Total
435	Ph.D. 2/1	485	Veterinary, Public Health,
436		486	Other Medical
437	Group 18 Economics	487	
438		488	
439	Baccalaureate	489	Group 26 Total
440		490	Law
441	Professional 2/1	491	
442	Master's 2/1	492	
443	Ph.D. 2/1	493	
444	Group 19 Geography & History	494	Group 27 Degree Totals
445		495	
446		496	Total Baccalaureate, Male
447	Baccalaureate	497	
448		498	Total Baccalaureate, Female
449	Professional 2/1	499	
450	Master's 2/1	500	

American Council on Education

-22-

REEL NO. A189

One Dupont Circle
Washington, D.C. 20036

LABEL _____

Office of Research

Page 6 of 6

TAPE LAYOUT SHEET

501		551	Occupational Curricula, Nontechnical
502	Total Professional, Male	552	Areas, Male
503		553	
504		554	Completion of Two-to Four-Year
505		555	Occupational Curricula, Nontechnical
506	Total Professional, Female	556	Areas, Female
507		557	
508		558	Completion of One-to Two-Year
509		559	Occupational Curricula, Nontechnical
510	Total Master's, Male	560	Areas, Male
511		561	
512		562	Completion of One-to Two-Year
513		563	Occupational Curricula, Nontechnical
514	Total Master's, Female	564	Areas, Female
515		565	
516		566	
517		567	
518	Total Doctorate, Male	568	
519		569	
520		570	
521		571	
522	Total Doctorate, Female	572	
523		573	
524		574	
525		575	
526	Group 28	576	
527	Associate, Male	577	
528		578	
529		579	
530		580	
531	Associate, Female	581	
532		582	
533	Group 29	583	
534	Completion of Two-to Four-Year	584	
535	Occupational Curricula, Technical	585	
536	Areas, Male	586	
537		587	
538	Completion of Two-to Four-Year	588	
539	Occupational Curricula, Technical	589	
540	Areas, Female	590	
541		591	
542	Completion of One-to Two-Year	592	
543	Occupational Curricula, Technical	593	
544	Areas, Male	594	
545		595	
546	Completion of One-to Two-Year	596	
547	Occupational Curricula, Technical	597	
548	Areas, Female	598	
549	Group 30	599	
550	Completion of Two-to Four-Year	600	

APPENDIX B

**Codes for Variables Not Otherwise Designated on
the Layout in Appendix A**

Appendix B

State Codes (Tape positions 15-16)

<u>State</u>	<u>Code</u>
Alabama	10
Alaska	11
Arizona	12
Arkansas	13
California	14
Colorado	15
Connecticut	16
Delaware	17
District of Columbia	18
Florida	19
Georgia	20
Hawaii	21
Idaho	22
Illinois	23
Indiana	24
Iowa	25
Kansas	26
Kentucky	27
Louisiana	28
Maine	29
Maryland	30
Massachusetts	31
Michigan	32
Minnesota	33
Mississippi	34
Missouri	35
Montana	36
Nebraska	37
Nevada	38
New Hampshire	39

<u>State</u>	<u>Code</u>
New Jersey	40
New Mexico	41
New York	42
North Carolina	43
North Dakota	44
Ohio	45
Oklahoma	46
Oregon	47
Pennsylvania	48
Rhode Island	49
South Carolina	50
South Dakota	51
Tennessee	52
Texas	53
Utah	54
Vermont	55
Virginia	56
Washington	57
West Virginia	58
Wisconsin	59
Wyoming	60
Service Schools	61
Canal Zone	62
Guam	63
Puerto Rico	64
	65 NOT ASSIGNED
Virgin Islands	66

1966 & 1967 Enrollment Codes

(tape position 73 and 80)

1: Below 200	5: 2,500 - 4,999
2: 200 - 499	6: 5,000 - 9,000
3: 500 - 999	7: 10,000 - 19,999
4: 1,000 - 2,499	8: 20,000 or more

USOE Control Code (Tape positions 46-47)

<u>Code</u>	<u>Control of Institution</u>	<u>Code</u>	<u>Control of Institution</u>
11	Federal	65	Friends
12	State	67	Lutheran Church Amer.
13	Local or State/Local	68	Lutheran Church - Mo. Synod
21	Non-Religious/Non-Profit	69	Mennonites
25	Non-Religious/Non-Propriet.	71	Methodists
30	Roman Catholic	72	Presbyterian, U.S.
51	African Meth. Episcopal	73	Protestant Episcopal
52	Amer. Bapt. Convention	75	Southern Baptist
53	Amer. Lutheran	76	United Church of Christ
54	Bapt. Excluding Southern	77	United Presbyterian, U.S.A.
55	Christian Meth. Episcopal	78	Multiple Protest. Denom.
56	Church of Christ	79	Other Protestant
57	Church of God	80	Jewish
58	Church of the Brethren	91	Greek Orthodox
59	Church of the Nazarene	92	Russian Orthodox
61	Disciples of Christ	93	Unitarian-Universalist
62	Evange. United Brethren	94	Latter Day Saints
63	Five Yr. Meeting Friends	95	Seventh Day Adventists
64	Free Methodists	99	Other

Appendix B

Selectivity Level Code (tape position 119)

0 = unknown; this also tags those scores on ACT, NMSQT, & SAT for which indicated values were posted.

1 = Under 89 on NMSQT

2 = 89-96 on NMSQT

3 = 97-104 on NMSQT

4 = 105-112 on NMSQT

5 = 113-120 on NMSQT

6 = 121-128 on NMSQT

7 = Over 128 on NMSQT

Affluence Code (tape position 259)^a

750 or less = 1

751-1000 = 2

1001-1250 = 3

1251-1500 = 4

1501-1750 = 5

1751-2000 = 6

2001-2250 = 7

2251-2500 = 8

Greater than 2500 = 9

^a Total revenues in dollars per student.

Appendix C

Table 1 - Characteristics of Institutions Within Fourteen Defined Groups

- * a. Major Types and Mode of Control
- * b. Student Body by Race
- * c. Student Body by Sex
- * d. Region
- * e. Detailed Type
- ** f. Calendar Plans
- ** g. Ability Requirements for Admission
- ** h. Chapel Attendance Required

* From USOE defined categories. The military service institutions have been assigned the code corresponding to their respective geographic locations.

** From ACE sources.

Table 1

Characteristics of Institutions Within Fourteen Defined Groups

Group	Characteristic															
	Major Types and Mode of Control															
	Univ.		4-Yr.		2-Yr.		Public		Private		Private Nonsect.		Roman Catholic		Other Sect.	
f	%	f	%	f	%	f	%	f	%	f	%	f	%	f	%	
All inst.	296	12	1241	54	782	34	1082	47	1237	53	524	23	300	13	413	18
Universities	296	100	0	0	0	0	224	76	72	24	44	15	17	6	10	3
4-yr. colleges	0	0	1241	100	0	0	323	26	918	74	359	29	237	19	322	26
2-yr. colleges	0	0	0	0	782	100	535	68	247	32	121	15	46	6	81	10
Public inst.	224	21	323	30	535	49	1082	100	0	0	0	0	0	0	0	0
Private inst.	72	6	918	74	247	20	0	0	1237	100	524	42	300	24	413	33
Private univ.	72	100	0	0	0	0	0	0	72	100	45	61	17	24	10	14
Public univ.	224	100	0	0	0	0	224	100	0	0	0	0	0	0	0	0
Private 4-yr.	0	0	18	100	0	0	0	0	918	100	359	39	237	26	322	35
Public 4-yr.	0	0	323	100	0	0	323	100	0	0	0	0	0	0	0	0
Private 2-yr.	0	0	0	0	247	100	0	0	247	100	120	49	46	19	81	33
Public 2-yr.	0	0	0	0	535	100	535	100	0	0	0	0	0	0	0	0
Predominately White	294	13	1163	52	769	35	1044	47	1182	53	508	23	299	13	375	17
Predominately Negro	2	2	78	84	13	14	38	41	55	59	16	17	1	1	38	41

Continued on next page...

30-31-

Table 1 (continued)

Characteristics of Institutions Within Fourteen Defined Groups

Group	Characteristic Detailed Type																	
	Liberal Arts		Teachers		Indep. Tech.		Religious		Indep. Profess.		Junior College		2-yr. semi-tech.		Arts & Music			
	f	%	f	%	f	%	f	%	f	%	f	%	f	%	f	%		
All inst.	855	37	180	8	49	2	74	3	44	2	729	31	27	1	26	3	37	2
Universities	0	0	0	0	0	0	0	0	0	0	0	0	0	0	0	0	0	0
4-yr. colleges	855	69	180	15	49	4	74	6	44	4	0	0	0	0	0	0	37	3
2-yr. colleges	0	0	0	0	0	0	0	0	0	0	729	93	27	3	26	3	0	0
Public inst.	132	12	159	15	24	2	0	0	6	1	509	47	21	2	5	0	2	0
Private inst.	723	58	21	2	25	2	74	6	38	3	220	18	6	0	21	2	35	3
Private univ.	0	0	0	0	0	0	0	0	0	0	0	0	0	0	0	0	0	0
Public univ.	0	0	0	0	0	0	0	0	0	0	0	0	0	0	0	0	0	0
Private 4-yr.	723	79	21	2	25	3	74	8	38	4	0	0	0	0	0	0	35	4
Public 4-yr.	132	41	159	49	24	7	0	0	6	2	0	0	0	0	0	0	2	1
Private 2-yr.	0	0	0	0	0	0	0	0	0	0	220	89	6	2	21	9	0	0
Public 2-yr.	0	0	0	0	0	0	0	0	0	0	509	95	21	4	5	1	0	0
Predominately White	790	35	168	8	49	2	73	3	44	2	716	32	27	1	26	1	39	2
Predominately Negro	65	70	12	13	0	0	1	1	0	0	13	14	0	0	0	0	0	0

Continued on next page...

Table 1 (continued)

Characteristics of Institutions Within Fourteen Defined Groups

Characteristic

Group	Student Body by Race				Student Body by Sex				Region									
	Predominately White		Predominately Negro		All Male		All Female		North-east		Mid-west		South-east		West & Southwest			
	f	%	f	%	f	%	f	%	f	%	f	%	f	%	f	%		
All inst.	2226	96	93	4	163	7	259	11	1897	82	659	28	648	28	520	22	492	21
Universities	294	99	2	1	5	2	1	0	290	98	92	31	91	31	53	18	60	20
4-yr. colleges	1163	94	78	6	128	10	193	16	920	74	383	31	356	29	288	23	214	17
2-yr. colleges	769	98	13	2	30	4	65	8	687	88	184	24	201	26	179	23	218	28
Public inst.	1044	96	38	4	18	2	6	1	1058	98	234	22	284	26	251	23	313	29
Private inst.	1182	96	55	4	145	12	253	20	839	68	425	34	364	29	269	22	179	14
Private univ.	71	99	1	1	4	6	0	0	68	94	39	54	15	21	7	10	11	15
Public univ.	223	100	0	0	1	0	1	0	222	99	53	24	76	34	46	21	49	22
Private 4-yr.	871	95	46	5	116	13	188	20	614	67	298	32	293	32	187	20	140	15
Public 4-yr.	291	90	32	10	12	4	5	2	306	95	85	26	63	20	101	31	74	23
Private 2-yr.	239	97	8	3	25	10	65	26	157	64	88	36	56	23	75	30	28	11
Public 2-yr.	530	99	5	1	5	1	0	0	530	99	96	18	145	27	104	19	190	36
Predominately White	2226	100	0	0	162	7	257	12	1807	81	651	29	646	29	447	20	482	22
Predominately Negro	0	0	93	100	1	1	2	2	90	97	8	9	2	2	73	78	10	11

Continued on next page...

Table 1 (continued)

Characteristics of Institutions Within Fourteen Defined Groups

Group	Calendar Plans												Ability Requirements for Admissions						Chapel Attendance Required	
	Semester			Trimester			Quarter			Other/Unknown			SAT	CEEB	ACT	B-Average in High School		f	%	
	f	%	f	%	f	%	f	%	f	%	f	%				f	%			
All inst.	1404	61	66	3	301	13	548	24	1036	45	439	19	650	28	1781	77	298	13		
Universities	135	46	4	1	68	23	89	30	155	52	71	24	63	21	208	70	3	1		
4-yr. colleges	805	65	33	3	137	11	266	21	742	60	337	27	342	28	1037	84	162	13		
2-yr. colleges	464	59	29	4	96	12	193	25	139	18	31	4	245	31	536	69	133	17		
Public inst.	599	55	27	2	208	19	248	23	284	26	91	8	387	36	807	75	27	2		
Private inst.	805	65	39	3	93	8	300	24	752	61	348	28	263	21	974	79	271	22		
Private univ.	57	79	1	1	6	8	8	11	61	85	42	58	7	10	65	90	3	4		
Public univ.	78	35	3	1	62	28	81	36	94	42	29	13	56	25	143	64	0	0		
Private 4-yr.	596	65	25	3	68	7	229	25	601	65	282	31	202	22	751	82	155	17		
Public 4-yr.	209	65	8	2	69	21	37	11	141	44	55	17	140	43	286	89	7	2		
Private 2-yr.	152	62	13	5	19	8	63	26	90	36	24	10	54	22	158	64	113	46		
Public 2-yr.	312	58	16	3	77	14	130	24	49	9	7	1	191	36	378	71	20	4		
Pred. White	1339	60	65	3	291	13	531	24	988	44	424	19	629	28	1704	77	127	12		
Pred. Negro	65	70	1	1	10	11	17	18	48	52	15	16	21	23	77	83	21	23		



Appendix D
Enrollment Tables^a

- Table 2 - Distributions of the 1967 Total Enrollment
- Table 3 - Distributions of the Percentage of Full-Time Enrollment, 1967
by Type and Control
- Table 4 - Distributions of the Percentage of Male Students, by Type and
Control
- Table 5 - Distributions of the Percentage of Resident Students, by Type
and Control
- Table 6 - Distributions of the Percentage of First-Time Students, by Type
and Control
- Table 7 - Distributions of the Percentage of Freshman Students, by Type
and Control
- Table 8 - Distributions of the Percentage of Undergraduate Students, by
Type and Control
- Table 9 - Distributions of the Percentage of Post-Baccalaureate Students,
by Type and Control
- Table 10- Distributions of the Percentage of Foreign Students, by Type and
Control

^aBased on information in tape positions 80-118, and 165-166.

Table 2

Distributions of the 1967 Total Enrollment

Group	Enrollment Category																Total
	1		2		3		4		5		6		7		8		
	f	%	f	%	f	%	f	%	f	%	f	%	f	%	f	%	
All inst.	142	6	345	15	557	24	623	27	292	13	204	9	111	5	45	2	2319
Universities	12	4	32	11	34	11	27	9	33	11	57	19	68	23	33	11	296
4-yr. colleges	49	4	145	12	342	28	416	34	154	12	107	9	18	1	10	1	1241
2-yr. colleges	81	10	168	21	181	23	180	23	105	13	40	5	25	3	2	0	782
Public inst.	32	3	120	11	181	17	259	24	210	19	154	14	89	8	37	3	1082
Private inst.	110	9	225	18	376	30	364	29	82	7	50	4	22	2	8	1	1237
Private univ.	0	0	1	1	3	4	3	4	11	15	29	40	18	25	7	10	72
Public univ.	12	5	31	14	31	14	24	11	22	10	28	13	50	22	26	12	224
Private 4-yr.	47	5	130	14	315	34	336	37	64	7	21	2	4	0	1	0	918
Public 4-yr.	2	1	15	5	27	8	80	25	90	28	86	27	14	4	9	3	323
Private 2-yr.	63	26	94	38	58	23	25	10	7	3	0	0	0	0	0	0	247
Public 2-yr.	18	3	74	14	123	23	155	29	98	18	40	7	25	5	2	0	535
Predominately White	138	6	332	15	527	24	595	27	276	12	202	9	111	5	45	2	2226
Predominately Negro	4	4	13	14	30	32	28	30	16	17	2	2	0	0	0	0	93

Table 3

Distributions of the Percentage of Full Time Enrollment, 1967, by Type and Control^a

Percent

Group	0		1-9		10-19		20-29		30-39		40-49		50-59		60-69		70-79		80-89		90-100	
	f	%	f	%	f	%	f	%	f	%	f	%	f	%	f	%	f	%	f	%	f	%
All inst.	1	*	2	*	11	*	24	1	80	3	146	6	195	8	224	10	297	13	407	18	932	40
Universities	0	0	0	0	5	2	3	1	17	6	14	5	39	13	32	11	55	19	62	21	69	23
4-yr. colleges	0	0	1	*	1	*	3	*	17	1	46	4	73	6	98	8	154	12	253	20	595	48
2-yr. colleges	1	*	1	*	5	1	18	2	46	6	86	11	83	11	94	12	88	11	92	12	268	34
Public inst.	1	*	2	*	8	1	19	2	60	6	114	11	121	11	123	11	160	15	206	19	268	25
Private inst.	0	0	0	0	3	*	5	*	20	2	32	3	74	6	101	8	137	11	201	16	664	54
Private univ.	0	0	0	0	0	0	0	0	4	6	1	1	15	21	11	15	17	24	8	11	16	22
Public univ.	0	0	0	0	5	2	3	1	13	6	13	6	24	11	21	9	38	17	54	24	53	24
Private 4-yr.	0	0	0	0	1	*	3	*	15	2	26	3	49	5	74	8	101	11	162	18	487	53
Public 4-yr.	0	0	1	*	0	0	0	0	2	1	20	6	24	7	24	7	53	16	91	28	108	33
Private 2-yr.	0	0	0	0	2	1	2	1	1	*	5	2	10	4	16	6	19	8	31	13	161	65
Public 2-yr.	1	*	1	*	3	1	16	3	45	8	81	15	73	14	78	15	69	13	61	11	107	20
Pred. White	1	*	1	*	11	*	24	1	79	4	146	7	195	9	222	10	290	13	393	18	863	39
Pred. Negro	0	0	0	0	0	0	0	0	1	1	0	0	0	0	2	2	7	8	14	15	69	74

^aPercentage based on total enrollment.

Table 4

Distributions of the Percentage of Male Students, by Type and Control^a

Group	Percent																					
	0	1-9	10-19	20-29	30-39	40-49	50-59	60-69	70-79	80-89	90-100											
	f	%	f	%	f	%	f	%	f	%	f	%										
All inst.	171	7	78	3	19	1	24	1	81	3	244	11	675	29	564	24	189	8	74	3	200	9
Universities	3	1	*	0	0	2	1	3	1	14	5	67	23	131	44	45	15	17	6	13	4	
4-yr. colleges	112	9	68	5	16	1	16	1	58	5	187	15	384	31	157	13	60	5	39	3	144	12
2-yr. colleges	56	7	9	1	3	*	6	1	20	3	43	5	224	29	276	35	84	11	18	2	43	5
Public inst.	6	1	2	*	3	*	13	1	44	4	102	9	347	32	398	37	102	9	24	2	41	4
Private inst.	165	13	76	6	16	1	11	1	37	3	142	11	328	27	166	13	87	7	50	4	159	13
Private univ.	1	1	1	1	0	0	0	0	0	0	1	1	10	14	29	40	18	25	7	10	5	7
Public univ.	2	1	0	0	0	2	1	3	3	1	13	6	57	25	102	46	27	12	10	4	8	4
Private 4-yr.	109	12	66	7	13	1	9	1	28	3	118	13	262	29	103	11	50	5	35	4	125	14
Public 4-yr.	3	1	2	1	3	1	7	2	30	9	69	21	122	38	54	17	10	3	4	1	19	6
Private 2-yr.	55	22	9	4	3	1	2	1	9	4	23	9	56	23	34	14	19	8	8	3	29	12
Public 2-yr.	1	*	0	0	0	0	4	1	11	2	20	4	168	31	242	45	65	12	10	2	14	3
Pred. White	169	8	78	4	18	1	22	1	55	2	204	9	659	30	561	25	187	8	74	3	199	9
Pred. Negro	2	2	0	0	1	1	2	2	26	28	40	43	16	17	3	3	2	2	0	0	1	1

^aPercentage based on 1967 full time enrollment.

Table 5
Distributions of the Percentage of Resident Students, by Type and Control^a

Group	Percent																					
	0	1-9	10-19	20-29	30-39	40-49	50-59	60-69	70-79	80-89	> 89	f	%	f	%							
All inst.	1	*	0	0	0	1	*	3	*	7	*	11	*	20	1	31	1	60	3	2185	94	
Universities	0	0	0	0	0	0	0	0	0	1	*	1	*	4	1	6	2	4	1	280	95	
4-yr. colleges	0	0	0	0	0	0	0	2	*	3	*	7	1	10	1	18	1	41	3	1160	93	
2-yr. colleges	1	*	0	0	0	0	1	*	1	*	3	*	3	*	6	1	7	1	15	2	745	95
Public inst.	1	*	0	0	0	0	0	2	*	4	*	8	1	14	1	14	1	42	4	997	92	
Private inst.	0	0	0	0	0	0	1	*	1	*	3	*	3	*	6	*	17	1	18	1	1188	96
Private univ.	0	0	0	0	0	0	0	0	0	0	0	0	0	1	1	3	4	0	0	68	94	
Public univ.	0	0	0	0	0	0	0	0	0	1	*	1	*	3	1	3	1	4	2	212	95	
Private 4-yr.	0	0	0	0	0	0	0	1	*	3	*	3	*	5	1	11	1	16	2	879	96	
Public 4-yr.	0	0	0	0	0	0	0	1	*	0	0	4	1	5	2	7	2	25	8	281	87	
Private 2-yr.	0	0	0	0	0	0	1	*	0	0	0	0	0	0	0	3	1	2	1	241	98	
Public 2-yr.	1	*	0	0	0	0	0	1	*	3	1	3	1	6	1	4	1	13	2	504	94	
Pred. White	1	*	0	0	0	0	1	*	3	*	7	*	11	*	19	1	31	1	58	3	2095	94
Pred. Negro	0	0	0	0	0	0	0	0	0	0	0	0	0	1	1	0	0	2	2	90	97	

^aPercentage based on 1967 full time enrollment. Note that "resident student" is defined as meeting the residency requirements in contrast with extension students. It has nothing to do with location of housing.

Table 6

Distributions of the Percentage of First Time Students, by Type and Control^a

Percent

Group	0		1-9		10-19		20-29		30-39		40-49		50-59		60-69		70-79		80-89		90-100		
	f	%	f	%	f	%	f	%	f	%	f	%	f	%	f	%	f	%	f	%	f	%	
All inst.	7	* 101	4	500	22	806	35	415	18	223	10	173	7	63	3	17	1	5	*	9	*		
Universities	1	* 29	10	136	46	67	23	25	8	20	7	5	2	5	2	4	1	2	1	2	1	2	1
4-yr. colleges	4	* 57	5	288	23	605	49	231	19	38	3	12	1	3	*	0	0	2	*	2	*	1	*
2-yr. colleges	2	* 15	2	76	10	134	17	159	20	165	21	56	20	55	7	13	2	1	*	1	*	6	1
Public inst.	2	* 44	4	237	22	338	31	193	18	126	12	84	8	35	3	14	1	4	*	4	*	5	*
Private inst.	5	* 57	5	263	21	468	38	222	18	97	8	89	7	28	2	3	*	1	*	1	*	4	*
Private univ.	0	0	14	19	52	6	8	0	0	0	0	0	0	0	0	0	0	0	0	0	0	0	0
Public univ.	1	* 15	7	84	38	61	27	25	11	20	9	5	2	5	2	4	2	2	1	2	1	2	1
Private 4-yr.	4	* 39	4	205	22	440	48	186	20	34	4	7	1	1	*	0	0	1	*	1	*	0	0
Public 4-yr.	0	0	18	6	83	165	51	45	14	4	1	5	2	1	*	0	0	1	*	1	*	1	*
Private 2-yr.	1	* 4	2	6	2	22	9	36	15	63	26	82	33	26	11	3	1	0	0	0	4	2	2
Public 2-yr.	1	* 11	2	70.	13	112	21	123	23	102	19	74	14	29	5	10	2	1	*	1	*	2	*
Pred. White	7	* 100	4	494	22	772	35	382	17	214	10	166	7	61	3	17	1	5	*	8	*		
Pred. Negro	0	0	1	6	6	34	37	33	35	9	10	7	8	2	2	0	0	0	0	0	1	1	1

^aPercentage based on 1967 full time enrollment.

Table 7

Distributions of the Percentage of Freshman Students, by Type and Control^a

Percent

Group	0		1-9		10-19		20-29		30-39		40-49		50-59		60-69		70-79		80-89		90-100	
	f	%	f	%	f	%	f	%	f	%	f	%	f	%	f	%	f	%	f	%	f	%
All inst.	6	*	27	1	263	11	651	28	454	20	199	9	315	14	242	10	85	4	41	2	36	2
Universities	1	*	11	4	91	31	83	28	34	11	23	8	28	9	11	4	4	1	4	1	6	2
4-yr. colleges	4	*	14	1	164	13	552	44	390	31	78	6	24	2	9	1	3	*	1	*	2	*
2-yr. colleges	1	*	2	*	8	1	16	2	30	4	98	13	263	34	222	28	78	10	36	5	28	4
Public inst.	2	*	6	1	95	9	207	19	168	16	86	8	198	18	180	17	72	7	37	4	31	3
Private inst.	4	*	21	2	168	14	444	36	286	23	113	9	117	9	62	5	13	1	4	*	5	*
Private univ.	0	0	9	13	47	65	15	21	1	1	0	0	0	0	0	0	0	0	0	0	0	0
Public univ.	1	*	2	1	44	20	68	30	33	15	23	10	28	13	11	5	4	2	4	2	6	3
Private 4-yr.	4	*	10	1	118	13	423	46	277	30	64	7	17	2	2	*	2	*	1	*	0	0
Public 4-yr.	0	0	4	1	46	14	129	40	113	35	14	4	7	2	7	2	1	*	0	0	2	1
Private 2-yr.	0	0	2	1	3	1	6	2	8	3	49	19	100	40	60	24	11	4	3	1	5	2
Public 2-yr.	1	*	0	0	5	1	10	2	22	4	49	9	163	30	162	30	67	13	33	6	23	4
Pred. White	6	*	27	1	262	12	629	28	416	19	183	8	306	14	237	11	84	4	41	2	35	2
Pred. Negro	0	0	0	0	1	1	22	24	38	41	16	17	9	10	5	5	1	1	0	0	1	1

^aPercentage based on 1967 full time enrollment.

Table 8

Distributions of the Percentage of Undergraduate Students, by Type and Control^a

Percent

Group	0		1-9		10-19		20-29		30-39		40-49		50-59		60-69		70-79		80-89		90-100	
	f	%	f	%	f	%	f	%	f	%	f	%	f	%	f	%	f	%	f	%	f	%
All inst.	2	*	0	0	1	*	3	*	5	*	15	1	14	1	53	2	114	5	119	9	1913	82
Universities	0	0	0	0	0	0	2	1	4	1	5	2	10	3	26	9	50	17	78	26	121	41
4-yr. colleges	1	*	0	0	1	*	1	*	1	*	10	1	4	*	27	2	64	5	121	10	1011	81
2-yr. colleges	1	*	0	0	0	0	0	0	0	0	0	0	0	0	0	0	0	0	0	0	781	100
Public inst.	1	*	0	0	0	0	1	*	2	*	3	*	3	*	14	1	51	5	121	11	886	82
Private inst.	1	*	0	0	1	*	2	*	3	*	12	1	11	1	39	3	63	5	78	6	1027	83
Private univ.	0	0	0	0	0	0	1	1	2	3	5	7	8	11	16	22	20	28	13	18	7	10
Public univ.	0	0	0	0	0	0	1	*	2	1	0	0	2	1	10	4	30	13	65	29	114	51
Private 4-yr.	1	*	0	0	1	*	1	*	1	*	7	1	3	*	23	3	43	5	65	7	773	84
Public 4-yr.	0	0	0	0	0	0	0	0	0	0	3	1	1	*	4	1	21	7	56	17	238	74
Private 2-yr.	0	0	0	0	0	0	0	0	0	0	0	0	0	0	0	0	0	0	0	0	247	100
Public 2-yr.	1	*	0	0	0	0	0	0	0	0	0	0	0	0	0	0	0	0	0	0	534	100
Pred. White	2	*	0	0	1	*	3	*	5	*	15	1	14	1	53	2	112	5	197	9	1824	82
Pred. Negro	0	0	0	0	0	0	0	0	0	0	0	0	0	0	0	0	2	2	2	2	89	96

^aPercentage based on resident enrollment.

Table 9

Distributions of the Percentage of Post Baccalaureate Students, by Type and Control^a

Group	Percent																					
	0	1-9	10-19	20-29	30-39	40-49	50-59	60-69	70-79	80-89	90-100											
	f	%	f	%	f	%	f	%	f	%	f	%										
All inst.	1529	66	352	16	212	9	128	6	51	2	21	1	15	1	6	*	3	*	1	*	1	*
Universities	68	23	46	16	74	25	60	20	53	8	13	4	6	2	4	1	2	1	0	0	0	0
4-yr. colleges	679	55	306	25	138	11	68	5	28	2	8	1	9	1	2	*	1	*	1	*	1	*
2-yr. colleges	782	100	0	0	0	0	0	0	0	0	0	0	0	0	0	0	0	0	0	0	0	0
Public inst.	702	65	166	15	129	12	59	5	14	1	6	1	3	*	2	*	1	*	0	0	0	0
Private inst.	827	67	186	15	83	7	69	6	37	3	15	1	12	1	4	*	2	*	1	*	1	*
Private univ.	3	4	3	4	9	13	25	35	13	18	10	14	6	8	2	3	1	1	0	0	0	0
Public univ.	65	29	43	19	65	29	35	16	10	4	3	1	0	0	2	1	1	*	0	0	0	0
Private 4-yr.	577	63	183	20	74	8	44	5	24	3	5	1	6	1	2	*	1	*	1	*	1	*
Public 4-yr.	102	32	123	38	64	20	24	7	4	1	3	1	3	1	0	0	0	0	0	0	0	0
Private 2-yr.	247	100	0	0	0	0	0	0	0	0	0	0	0	0	0	0	0	0	0	0	0	0
Public 2-yr.	535	100	0	0	0	0	0	0	0	0	0	0	0	0	0	0	0	0	0	0	0	0
Pred. White	1459	66	333	15	208	9	126	6	51	2	21	1	15	1	6	*	3	*	1	*	1	*
Pred. Negro	70	75	17	18	4	4	2	2	0	0	0	0	0	0	0	0	0	0	0	0	0	0

^aPercentage based on resident enrollment.

Table 10
Distributions of the Percentage of Foreign Students, by Type and Control^a

Group	Percent													
	0		1-9		10-19		20-29		30-39		40-49		50-100	
	f	%	f	%	f	%	f	%	f	%	f	%	f	%
All inst.	1244	54	1030	44	34	1	8	*	1	*	2	*	0	0
Universities	157	53	133	45	6	2	0	0	0	0	0	0	0	0
4-yr. colleges	538	43	668	54	25	2	8	1	1	*	1	*	0	0
2-yr. colleges	549	70	229	29	3	*	0	0	0	0	1	*	0	0
Public inst.	746	69	331	31	3	*	1	*	0	0	1	*	0	0
Private inst.	498	40	699	57	31	3	7	1	1	*	1	*	0	0
Private univ.	25	35	42	58	5	7	0	0	0	0	0	0	0	0
Public univ.	132	59	91	41	1	*	0	0	0	0	0	0	0	0
Private 4-yr.	326	36	560	61	24	3	7	1	1	*	0	0	0	0
Public 4-yr.	212	66	108	33	1	*	1	*	0	0	1	*	0	0
Private 2-yr.	147	60	97	39	2	1	0	0	0	0	0	0	0	0
Public 2-yr.	402	75	132	25	1	*	0	0	0	0	0	0	0	0
Pred. White	1182	53	1001	45	33	1	8	*	1	*	1	*	0	0
Pred. Negro	62	67	29	31	1	1	0	0	0	0	1	*	0	0

^aPercentage based on 1967 full time enrollment.

Appendix E
Ability Tables ^a

Table 11 - Distributions of Selectivity Scores

Table 12 - Distributions of Institutional Median Scores on ACT

Table 13 - Distributions of Institutional Median Scores on SAT

^a Based on information in tape positions 119-128. See text and layout for treatment of missing data.

Table 11
Distributions of Selectivity Scores^a

NMSQT Equivalent Group	Selectivity Code						
	1 Unknown <89	2 89-96	3 97-104	4 105-112	5 113-120	6 121-128	7 >128
All inst.	f 796 % 34	f 273 % 12	f 331 % 14	f 342 % 15	f 142 % 6	f 85 % 4	f 69 % 3
Universities	120 41	6 2	31 10	59 20	36 12	18 6	22 7
4-yr. colleges	217 17	159 13	243 20	258 21	101 8	66 5	46 4
2-yr. colleges	459 59	126 16	108 14	57 7	25 3	5 1	1 *
Public inst.	484 45	149 13	145 13	139 10	109 10	36 3	15 5
Private inst.	312 25	132 11	128 10	192 16	233 19	106 9	70 6
Private univ.	65 50	1 0	0 0	4 3	18 14	9 7	13 10
Public univ.	113 50	3 3	27 12	41 18	27 12	5 2	2 1
Private 4-yr.	181 20	86 9	87 9	170 20	201 22	92 10	57 6
Public 4-yr.	36 11	65 20	72 22	73 57	18 18	9 3	2 1
Private 2-yr.	124 50	45 18	41 17	18 7	14 6	5 2	0 0
Public 2-yr.	335 63	81 15	67 13	39 7	11 2	0 0	1 *
Pred. White	773 35	213 10	271 12	331 15	342 15	142 6	85 4
Pred. Negro	23 25	68 73	2 2	0 0	0 0	0 0	0 0

^aSelectivity scores are coded values for institutional medians on NMSQT.

Table 12

Distributions of Institutional Median Scores on ACT

Score

Group	<u>≤16</u>		<u>16-17</u>		<u>18</u>		<u>19</u>		<u>20</u>		<u>21</u>		<u>22</u>		<u>23</u>		<u>24</u>		<u>25-26</u>		<u>>26</u>	
	f	%	f	%	f	%	f	%	f	%	f	%	f	%	f	%	f	%	f	%	f	%
All inst.	73	3	68	3	122	5	932	40	139	6	151	7	206	9	197	8	138	6	161	7	132	6
Universities	0	0	2	1	2	1	122	41	4	1	11	4	22	7	44	15	14	5	39	13	36	12
4-yr. colleges	54	4	25	2	61	5	293	24	84	7	105	8	154	12	142	11	112	9	119	10	92	7
2-yr. colleges	19	2	41	5	59	8	517	66	51	7	35	4	30	4	11	1	12	2	3	*	4	1
Public inst.	38	4	36	3	73	7	557	51	71	7	68	6	80	7	75	7	27	2	41	4	16	1
Private inst.	35	3	32	3	49	4	375	30	68	5	83	7	126	10	122	10	111	9	120	10	116	9
Private univ.	0	0	1	1	0	0	7	10	0	0	0	0	4	5	11	15	8	11	11	15	30	41
Public univ.	0	0	1	*	2	1	115	51	4	2	11	5	18	8	33	15	6	3	28	13	6	3
Private 4-yr.	29	3	15	2	32	3	222	24	47	5	71	8	112	12	107	12	93	10	106	12	84	9
Public 4-yr.	25	8	10	3	29	9	71	22	37	11	34	11	42	13	35	11	19	6	13	4	8	2
Private 2-yr.	6	2	16	6	17	7	146	59	21	9	12	5	10	4	4	2	10	4	3	1	2	1
Public 2-yr.	13	2	25	5	42	8	371	69	30	6	23	4	20	4	7	1	2	*	0	0	2	*
Pred. White	21	9	57	3	117	5	908	41	138	6	151	7	206	9	197	9	138	6	161	7	132	6
Pred. Negro	52	56	11	12	5	5	25	26	1	1	0	0	0	0	0	0	0	0	0	0	0	0

Table 13

Distributions of Institutional Median Scores on SAT^a

Group	Score															
	<800	800-832	833-865	866-897	898-930	931-962	963-995	996-1027	1028-1060	1061-1190	>1190	f	%	f	%	
All inst.	129	6 40	2 925	40 120	5 211	9 91	4 165	7 155	7 151	7 217	9 115	5 115	5			
Universities	1	* 1	* 123	42 1	* 11	4 3	1 21	7 32	11 22	7 47	16 34	11 34	11			
4-yr colleges	73	6 18	1 287	23 70	6 131	11 69	6 122	10 112	9 115	9 165	13 79	6 79	6			
2-yr colleges	55	7 21	3 515	66 49	6 69	9 19	2 22	3 11	1 14	2 5	1 2	* 2	*			
Public inst.	71	7 16	1 553	51 69	6 108	10 35	3 65	6 63	6 37	-3 52	5 13	1 13	1			
Private inst.	58	5 24	2 372	30 51	4 103	8 56	5 100	8 92	7 114	9 165	13 102	8 102	8			
Private univ.	0	0 1	1 7	10 0	0 0	0 0	0 4	6 9	13 6	8 16	22 29	40 40	40			
Public univ.	1	* 0	0 116	52 1	* 11	5 3	1 17	8 23	10 16	7 31	14 5	2 5	2			
Private 4-yr.	40	4 12	1 222	24 37	4 76	8 50	5 87	9 80	9 97	11 145	17 72	8 72	8			
Public 4-yr.	33	10 6	2 65	20 33	10 55	17 19	6 35	11 32	10 18	6 20	6 7	2 7	2			
Private 2-yr.	18	7 11	4 143	58 14	6 27	11 6	2 9	3 3	1 11	4 4	2 1	* 1	*			
Public 2-yr.	37	7 10	2 372	70 35	7 42	8 13	2 13	2 8	1 3	1 1	* 1	* 1	* 1			
Pred. White	71	3 34	2 898	40 118	5 211	9 91	4 165	7 155	7 151	7 217	10 115	5 115	5			
Pred. Negro	58	61 6	27 29	2 2	0 0	0 0	0 0	0 0	0 0	0 0	0 0	0 0	0 0			

^aSAT-Verbal plus quantitative standard scores.

Appendix F
Faculty Tables ^a

Table 14 - Distributions of Faculty Size in Fourteen Groups of Institutions

Table 15 - Distributions of the Percentage of Faculty Holding the Doctoral
Degree

Table 16 - Distributions of the Percentage of Faculty with Highest Degree
at Master's Level

Table 17 - Distributions of the Percentage of Faculty with Highest Degree
at Baccalaureate Level

Table 18 - Distributions of the Percentage of Faculty Holding a Professional
Degree

Table 19 - Distributions of the Percentage of Faculty with Highest Degree
at Associate Level

^a Based on information in tape positions 138-152.

Table 14

Distributions of Faculty Size in Fourteen Groups of Institutions

Group	Estimated Size of Faculty														
	<25	26-50	51-75	76-100	101-200	201-300	301-400	401-500	501-1000	1001-1500	>1500	f	%	f	%
All inst.	70	3 367	16 690	30 329	14 408	18 213	9 50	2 49	2 87	4 42	2 14	14	1		
Universities	5	2 5	2 1	* 1	8 3	123 42	14 5	19 6	70 24	36 12	14 5				
4-yr. colleges	24	2 212	17 347	28 202	16 294	24 83	7 31	2 27	15 1	6 *	0 0				
2-yr. colleges	41	5 150	19 342	44 126	16 106	14 7	1 5	1 3	2 *	0 0	0 0				
Public inst.	18	2 61	6 331	31 116	11 207	19 179	17 35	3 39	4 60	6 27	2 9	1			
Private inst.	52	4 306	25 359	29 213	17 201	16 34	3 15	1 10	1 27	2 15	1 5	*			
Private univ.	0	0 0	0 0	0 0	3 4	11 15	9 13	5 7	25 35	14 19	5 7				
Public univ.	5	2 5	2 1	* 1	5 2	112 50	5 2	14 6	45 20	22 10	9 4				
Private 4-yr.	22	2 200	22 316	34 169	18 174	19 23	3 6	1 5	1 2	* 1	0 0				
Public 4-yr.	2	1 12	4 31	10 33	10 120	37 60	19 25	8 22	7 13	4 5	2 0				
Private 2-yr.	30	12 106	43 43	17 44	18 24	10 0	0 0	0 0	0 0	0 0	0 0				
Public 2-yr.	11	2 44	8 299	56 82	15 82	15 7	1 3	* 2	0 0	0 0	0 0				
Pred. White	69	3 355	16 671	30 296	13 390	18 206	9 48	2 49	2 86	4 42	2 14	1			
Pred. Negro	1	1 12	13 19	20 33	35 18	19 7	8 2	2 0	1 1	0 0	0 0				

a "Faculty size" was generated as the total of the counts of staff degrees after estimates were supplied for missing information.

155

Table 15

Distributions of the Percentage of Faculty Holding the Doctoral Degree ^a

Percent

Group	0		1-9		10-19		20-29		30-39		40-49		50-59		60-69		70-79		80-89		90-100	
	f	%	f	%	f	%	f	%	f	%	f	%	f	%	f	%	f	%	f	%	f	%
All inst.	535	23	559	24	184	8	373	16	297	13	174	8	115	5	54	2	19	1	7	*	2	*
Universities	114	39	30	10	8	3	12	4	23	8	42	14	40	14	19	6	5	2	2	1	1	*
4-yr. colleges	206	17	35	3	124	10	344	28	270	22	132	11	75	6	35	3	14	1	5	*	1	*
2-yr. colleges	215	27	494	63	52	7	17	2	4	1	0	0	0	0	0	0	0	0	0	0	0	0
Public inst.	275	25	392	36	63	6	124	11	91	8	59	5	47	4	23	2	5	*	2	*	1	*
Private inst.	260	21	167	14	121	10	249	20	206	17	115	9	68	5	31	2	14	1	5	*	1	*
Private univ.	15	21	1	1	3	4	4	6	13	18	17	24	9	13	5	7	3	4	2	3	0	0
Public univ.	99	44	29	13	5	2	8	4	10	4	25	11	31	14	14	6	2	1	0	0	1	*
Private 4-yr.	170	19	28	3	94	10	235	26	193	21	98	11	59	6	26	3	11	1	3	*	1	*
Public 4-yr.	36	11	7	2	30	9	109	34	77	24	34	11	16	5	9	3	3	1	2	1	0	0
Private 2-yr.	75	30	138	56	24	10	10	4	0	0	0	0	0	0	0	0	0	0	0	0	0	0
Public 2-yr.	140	26	356	67	28	5	7	1	4	1	0	0	0	0	0	0	0	0	0	0	0	0
Pred. White	519	23	558	25	170	8	328	15	283	13	172	8	114	5	54	2	19	1	7	*	2	*
Pred. Negro	16	17	1	1	14	15	45	48	14	15	2	2	1	1	0	0	0	0	0	0	0	0

^aPercentages based on generated faculty size shown in Table 14.

Table 16

Distributions of the Percentage of Faculty With Highest Degree at Master's Level

Percent

Group	0		1-9		10-19		20-29		30-39		40-49		50-59		60-69		70-79		80-89		90-100	
	f	%	f	%	f	%	f	%	f	%	f	%	f	%	f	%	f	%	f	%	f	%
All inst.	494	21	95	4	53	2	75	3	150	6	204	9	334	14	557	24	288	12	52	2	17	1
Universities	114	39	29	10	15	5	31	10	43	15	43	15	14	5	4	1	1	*	2	1	0	0
4-yr. colleges	204	16	5	*	19	2	41	3	96	8	138	11	281	23	311	25	129	10	17	1	0	0
2-yr. college	176	23	61	8	19	2	3	*	11	1	23	3	39	5	242	31	158	20	33	4	17	2
Public inst.	251	23	87	8	4	*	30	3	58	5	66	6	88	8	280	26	172	16	33	3	13	1
Private inst.	243	20	8	1	49	4	45	4	92	7	138	11	246	20	277	22	116	9	19	2	4	*
Private univ.	15	21	3	4	13	18	12	17	12	17	11	15	5	7	0	0	0	0	1	1	0	0
Public univ.	99	44	26	12	2	1	19	8	31	14	32	14	9	4	4	2	1	*	1	*	0	0
Private 4-yr.	168	18	5	1	17	2	31	3	76	8	112	12	223	24	201	22	77	8	8	1	0	0
Public 4-yr.	36	11	0	0	2	1	10	3	20	6	26	8	58	18	110	34	52	16	9	3	0	0
Private 2-yr.	60	24	0	0	19	8	2	1	4	2	15	6	18	7	76	31	39	16	10	4	4	2
Public 2-yr.	116	22	61	11	0	0	1	*	7	1	8	1	21	4	166	31	119	22	23	4	13	2
Pred. White	479	22	95	4	53	2	73	3	150	7	195	9	319	14	526	24	272	12	47	2	17	1
Pred. Negro	15	16	0	0	0	0	2	2	6	0	9	10	15	16	31	33	16	17	5	5	0	0

^aPercentage based on generated faculty size shown in Table 14.

Table 17

Distributions of the Percentage of Faculty with Highest Degree at Baccalaureate Level ^a

Percent

Group	0		1-9		10-19		20-29		30-39		40-49		50-59		60-69		70-79		80-89		90-100	
	f	%	f	%	f	%	f	%	f	%	f	%	f	%	f	%	f	%	f	%	f	%
All inst.	621	27	747	32	641	28	222	10	49	2	19	1	14	1	5	*	0	0	1	*	0	0
Universities	122	41	121	41	35	12	13	4	1	*	3	1	1	*	0	0	0	0	0	0	0	0
4-yr. colleges	318	26	493	40	326	26	70	6	23	2	4	*	6	*	0	0	0	0	1	*	0	0
2-yr. colleges	181	23	133	17	280	36	139	18	25	3	12	2	7	1	5	1	0	0	0	0	0	0
Public inst.	311	29	327	30	298	28	112	10	18	2	8	1	6	1	2	*	0	0	0	0	0	0
Private inst.	310	25	420	34	343	28	110	9	31	3	11	1	8	1	3	*	0	0	1	*	0	0
Private univ.	17	24	36	50	14	19	4	6	0	0	1	1	0	0	0	0	0	0	0	0	0	0
Public univ.	105	47	85	38	21	9	9	4	1	*	2	1	1	*	0	0	0	0	0	0	0	0
Private 4-yr.	231	25	345	38	260	28	54	6	19	2	3	2	5	1	0	0	0	0	1	*	0	0
Public 4-yr.	87	27	148	46	66	20	16	5	4	1	1	*	1	*	0	0	0	0	0	0	0	0
Private 2-yr.	62	25	36	16	69	28	52	21	12	5	7	3	3	1	3	1	0	0	0	0	0	0
Public 2-yr.	119	22	94	18	211	39	87	16	13	2	5	1	4	1	2	*	0	0	0	0	0	0
Pred. White	597	27	706	32	615	28	221	10	49	2	19	1	14	1	4	*	0	0	1	*	0	0
Pred. Negro	24	26	41	44	26	28	1	1	0	0	0	0	0	0	1	1	0	0	0	0	0	0

^aPercentage based on generated faculty size shown in Table 14.

Table 18

Distributions of the Percentage of Faculty Holding a Professional Degree^a

Percent

Group	0		1-9		10-19		20-29		30-39		40-49		50-59		60-69		70-79		80-89		90-100	
	f	%	f	%	f	%	f	%	f	%	f	%	f	%	f	%	f	%	f	%	f	%
All inst.	1422	61	798	34	55	2	19	1	11	*	5	*	5	*	2	*	0	0	1	*	1	*
Universities	169	57	85	29	15	5	8	3	9	3	3	1	4	1	2	1	0	0	0	0	1	*
4-yr. colleges	857	69	340	27	29	2	9	1	2	*	2	*	1	*	0	0	0	0	1	*	0	0
2-yr. colleges	396	51	373	48	11	1	2	*	0	0	0	0	0	0	0	0	0	0	0	0	0	0
Public inst.	693	64	360	33	17	2	7	1	3	*	0	0	0	0	1	*	0	0	0	0	1	*
Private inst.	729	59	438	35	38	3	12	1	8	1	5	*	5	*	1	*	0	0	1	*	0	0
Private univ.	28	35	20	28	7	10	3	4	6	8	3	4	4	6	1	1	0	0	0	0	0	0
Public univ.	141	63	65	29	8	4	5	2	3	1	0	0	0	0	1	*	0	0	0	0	1	*
Private 4-yr.	583	64	294	32	27	3	8	1	2	*	2	*	1	*	0	0	0	0	1	*	0	0
Public 4-yr.	274	85	46	14	2	1	1	*	0	0	0	0	0	0	0	0	0	0	0	0	0	0
Private 2-yr.	118	48	124	50	4	2	1	*	0	0	0	0	0	0	0	0	0	0	0	0	0	0
Public 2-yr.	278	52	249	47	7	1	1	*	0	0	0	0	0	0	0	0	0	0	0	0	0	0
Pred. White	1360	61	769	35	54	2	19	1	10	*	5	*	5	*	2	*	0	0	1	*	1	*
Pred. Negro	62	67	29	31	1	1	0	0	1	1	0	0	0	0	0	0	0	0	0	0	0	0

^aPercentages based on generated faculty size shown in Table 14.

Table 19

Distributions of the Percentage of Faculty with Highest Degree at Associate Level^a

Percent

Group	0		1-9		10-19		20-29		30-39		40-49		50-59		60-69		70-79		80-89		90-100		
	f	%	f	%	f	%	f	%	f	%	f	%	f	%	f	%	f	%	f	%	f	%	
All inst.	1831	79	465	20	12	1	6	*	2	*	2	*	2	*	1	*	0	0	0	0	0	0	0
Universities	292	99	4	1	0	0	0	0	0	0	0	0	0	0	0	0	0	0	0	0	0	0	0
4-yr. colleges	1235	100	5	*	1	*	0	0	0	0	0	0	0	0	0	0	0	0	0	0	0	0	0
2-yr. colleges	304	39	456	58	11	1	6	1	2	*	2	*	1	*	0	0	0	0	0	0	0	0	0
Public inst.	741	68	328	30	7	1	3	*	2	*	1	*	0	0	0	0	0	0	0	0	0	0	0
Private inst.	1090	88	137	11	5	*	3	*	0	0	1	*	1	*	0	0	0	0	0	0	0	0	0
Private univ.	7210	0	0	0	0	0	0	0	0	0	0	0	0	0	0	0	0	0	0	0	0	0	0
Public univ.	220	98	4	2	0	0	0	0	0	0	0	0	0	0	0	0	0	0	0	0	0	0	0
Private 4-yr.	914	100	3	*	1	*	0	0	0	0	0	0	0	0	0	0	0	0	0	0	0	0	0
Public 4-yr.	321	99	2	1	0	0	0	0	0	0	0	0	0	0	0	0	0	0	0	0	0	0	0
Private 2-yr.	104	42	134	54	4	2	3	1	0	0	1	*	1	*	0	0	0	0	0	0	0	0	0
Public 2-yr.	200	37	322	60	7	1	3	1	2	*	1	*	0	0	0	0	0	0	0	0	0	0	0
Pred. White	1739	78	464	21	12	1	6	*	2	*	2	*	1	*	0	0	0	0	0	0	0	0	0
Pred. Negro	92	99	1	1	0	0	0	0	0	0	0	0	0	0	0	0	0	0	0	0	0	0	0

^aPercentages based on generated faculty size shown in Table 14.

Appendix G
Student Aid Tables ^a

Table 20 - Distributions of the Percentage of Full-Time Students Awarded
Scholarships

Table 21 - Distributions of the Percentage of Full-Time Students Given Loans

Table 22 - Distributions of the Percentage of Full-Time Students Given Aid
Through Jobs

Table 23 - Distributions of the Percentage of Full-Time Students Given
Financial Aid

^a Based on information in tape positions 157-164.

Table 20

Distributions of the Percentage of Full-Time Students Awarded Scholarships

Percent

Group	0		1-9		10-19		20-29		30-39		40-49		50-59		60-69		70-79		80-89		90-100	
	f	%	f	%	f	%	f	%	f	%	f	%	f	%	f	%	f	%	f	%	f	%
All inst.	660	28	693	30	459	20	262	11	126	5	57	2	24	1	17	1	8	*	4	*	9	*
Universities	112	38	83	28	70	24	23	8	4	1	1	*	2	1	1	*	0	0	0	0	0	0
4-yr. colleges	258	21	264	21	287	23	221	18	113	9	49	4	21	2	13	1	7	1	2	*	6	*
2-yr. colleges	290	37	346	44	102	13	18	2	9	1	7	1	1	*	3	*	1	*	2	*	3	*
Public inst.	369	34	477	44	171	16	45	4	6	1	3	*	4	*	3	*	2	*	0	0	2	*
Private inst.	291	24	216	17	288	23	217	17	120	10	54	4	20	2	14	1	6	*	4	*	7	1
Private univ.	9	13	14	19	33	46	13	18	2	3	1	1	0	0	0	0	0	0	0	0	0	0
Public univ.	103	46	69	31	37	17	10	4	2	1	0	0	2	1	1	*	0	0	0	0	0	0
Private 4-yr.	193	21	116	13	214	23	195	21	111	12	47	5	20	2	11	1	5	1	2	*	4	*
Public 4-yr.	65	20	148	46	73	23	26	8	2	1	2	1	1	*	2	1	2	1	0	0	2	1
Private 2-yr.	89	36	86	35	41	17	9	4	7	3	6	2	0	0	3	1	1	*	2	1	3	1
Public 2-yr.	201	38	260	49	61	11	9	2	2	*	1	*	1	*	0	0	0	0	0	0	0	0
Pred. White	641	29	667	30	442	20	244	11	122	5	55	2	23	1	14	1	6	*	4	*	8	*
Pred. Negro	19	20	26	28	17	18	18	19	4	4	2	2	1	1	3	3	2	2	0	0	1	1



Table 21

Distributions of the Percent of Full-Time Students Given Loans

Percent

Group	<u>0</u>		<u>1-9</u>		<u>10-19</u>		<u>20-29</u>		<u>30-39</u>		<u>40-49</u>		<u>50-59</u>		<u>60-69</u>		<u>70-79</u>		<u>80-89</u>		<u>90-100</u>	
	f	%	f	%	f	%	f	%	f	%	f	%	f	%	f	%	f	%	f	%	f	%
All inst.	819	35	572	25	512	22	240	10	103	4	30	1	19	1	10	*	5	*	3	*	6	*
Universities	120	41	82	28	65	22	20	7	5	2	1	*	2	1	0	0	0	0	0	0	1	*
4-yr. colleges	271	22	245	20	382	31	194	16	91	7	25	2	15	1	9	1	4	*	1	*	4	*
2-yr. colleges	428	55	245	32	65	8	26	3	7	1	4	1	2	*	1	*	1	*	2	*	1	*
Public inst.	440	41	328	30	198	18	64	6	28	3	9	1	8	1	1	*	3	*	1	*	2	*
Private inst.	379	31	244	20	314	25	176	14	75	6	21	2	11	1	9	1	2	*	2	*	4	*
Private univ.	9	13	29	40	24	33	8	11	1	1	0	0	0	0	0	0	0	0	0	0	0	0
Public univ.	111	50	53	24	41	18	12	5	4	2	1	1	2	1	0	0	0	0	0	0	0	0
Private 4-yr.	222	24	166	18	263	29	154	17	71	8	19	2	11	1	8	1	2	*	0	0	2	*
Public 4-yr.	49	15	79	24	119	37	40	12	20	6	6	2	4	1	1	*	2	1	1	*	2	1
Private 2-yr.	148	60	49	20	27	11	14	6	3	1	2	1	0	0	1	*	0	0	2	1	1	*
Public 2-yr.	280	52	196	37	38	7	12	2	4	1	2	*	2	*	0	0	1	*	0	0	0	0
Pred. White	802	36	568	26	499	22	222	10	81	4	23	1	17	1	5	*	2	*	3	*	4	*
Pred. Negro	17	18	4	4	13	14	18	19	22	24	7	8	2	2	5	5	3	3	0	0	2	2

Table 22

Distributions of the Percentage of Full-Time Students Given Aid Through Jobs

Percent

Group	0		1-9		10-19		20-29		30-39		40-49		50-59		60-69		70-79		80-89		90-100		
	f	%	f	%	f	%	f	%	f	%	f	%	f	%	f	%	f	%	f	%	f	%	
All inst.	850	37	464	20	483	21	258	11	150	6	58	3	29	1	8	*	7	*	5	*	7	*	
Universities	131	44	79	27	56	19	19	6	10	3	1	*	0	0	0	0	0	0	0	0	0	0	
4-yr. colleges	287	23	188	15	330	27	216	17	124	10	49	4	26	2	7	1	5	*	4	*	5	*	
2-yr. colleges	432	55	197	25	97	12	23	3	16	2	8	2	8	1	3	*	2	*	1	*	2	*	
Public inst.	442	41	284	26	215	20	88	8	34	3	15	1	1	*	0	0	1	*	1	*	1	*	
Private inst.	408	33	180	15	268	22	170	14	116	9	43	3	28	2	8	1	6	*	4	*	6	*	
Private univ.	16	22	30	42	19	26	7	10	0	0	0	0	0	0	0	0	0	0	0	0	0	0	
Public univ.	115	51	49	22	37	17	12	5	10	4	1	*	0	0	0	0	0	0	0	0	0	0	
Private 4-yr.	234	25	117	13	222	24	153	17	108	12	39	4	25	3	7	1	5	1	3	*	5	1	
Public 4-yr.	53	16	71	22	108	33	63	20	16	5	10	3	1	*	0	0	0	0	1	*	0	0	
Private 2-yr.	158	64	33	13	27	11	10	4	8	3	4	2	3	1	1	*	1	*	*	*	1	*	
Public 2-yr.	274	51	164	31	70	13	13	2	8	1	4	1	0	0	0	0	1	*	0	0	1	*	
Pred. White	824	37	460	21	468	21	243	11	136	6	48	2	24	1	6	*	6	*	4	*	7	*	
Pred. Negro	26	28	4	4	15	16	15	16	14	15	10	11	5	5	2	2	1	1	1	1	1	0	0

Table 23

Distributions of the Percentage of Full-Time Students Given Financial Aid

Group	Percent																								
	0	1-9	10-19	20-29	30-39	40-49	50-59	60-69	70-79	80-89	90-100														
	f	%	f	%	f	%	f	%	f	%	f	%	f	%	f	%									
All inst.	750	32	172	7	314	14	330	14	309	13	195	8	106	5	59	3	47	2	18	1	19	1			
Universities	132	45	9	3	50	17	51	17	31	10	17	6	3	1	1	*	1	*	0	0	0	1	*		
4-yr. colleges	277	22	39	3	129	10	190	15	242	20	156	13	95	8	51	4	41	3	12	1	9	1	9	1	
2-yr. colleges	341	44	124	16	135	17	89	11	36	5	22	3	8	1	7	1	5	1	6	1	9	1	9	1	
Public inst.	402	37	129	12	196	18	142	13	105	10	59	5	18	2	11	1	10	1	6	1	4	*	4	*	
Private inst.	348	28	43	3	118	10	188	15	204	16	136	11	88	7	48	4	37	3	12	1	15	1	15	1	
Private univ.	17	24	0	0	14	19	21	29	14	19	3	4	2	3	0	0	0	0	0	0	0	1	1	1	1
Public univ.	115	51	9	4	36	16	30	13	17	8	14	6	1	*	1	*	1	*	0	0	0	0	0	0	0
Private 4-yr.	221	24	14	2	74	8	134	15	177	19	121	13	82	9	45	5	34	4	8	1	8	1	8	1	1
Public 4-yr.	56	17	25	8	55	17	56	17	65	20	35	11	13	4	6	2	7	2	4	1	1	1	1	*	*
Private 2-yr.	110	45	29	12	30	12	33	13	13	5	12	5	4	2	3	1	3	1	4	2	6	2	6	2	2
Public 2-yr.	231	43	95	18	105	20	56	10	23	4	10	2	4	1	4	1	2	*	2	*	3	1	3	1	1
Pred. White	732	33	168	8	314	14	324	15	295	13	182	8	98	4	50	2	35	2	12	1	16	1	16	1	1
Pred. Negro	18	19	4	4	0	0	6	6	14	15	13	14	8	9	9	10	12	13	6	6	3	3	3	3	3

Appendix H

Residence Hall and Library Facility Tables ^a

Table 24 - Distributions of Residence Hall Capacity as Percentages of
Full-Time Enrollment

Table 25 - Distributions of the Number of Volumes in the Library

Table 26 - Distributions of the Number of Periodicals in the Library

^a Based on information in tape positions 167-168, and 170-179.

Table 24

Distributions of Residence Hall Capacity as Percentages of Full Time Enrollment

Percent

Group	0		1-9		10-19		20-29		30-39		40-49		50-59		60-69		70-79		80-89		90-100	
	f	%	f	%	f	%	f	%	f	%	f	%	f	%	f	%	f	%	f	%	f	%
All inst.	918	40	48	2	78	3	108	5	119	5	148	6	178	8	199	9	151	7	139	6	233	10
Universities	121	41	9	3	19	6	35	12	36	12	34	11	23	8	10	3	4	1	2	1	3	1
4-yr. colleges	270	22	18	1	36	3	54	4	63	5	93	7	137	11	162	13	123	10	120	10	165	13
2-yr. colleges	527	67	21	3	23	3	19	2	20	3	21	3	18	2	27	3	24	3	17	2	65	8
Public inst.	610	56	45	4	48	4	56	5	61	6	65	6	78	7	48	4	33	3	15	1	23	2
Private inst.	308	25	3	*	30	2	52	4	58	5	83	7	100	8	151	12	118	10	124	10	210	17
Private univ.	9	13	1	1	6	8	15	21	15	21	14	19	5	7	5	7	1	1	1	1	0	0
Public univ.	112	50	8	4	13	6	20	9	21	9	20	9	18	8	5	2	3	1	1	*	3	1
Private 4-yr.	205	22	1	*	20	2	32	3	33	4	58	6	87	9	126	14	97	11	109	12	150	16
Public 4-yr.	65	20	17	5	16	5	22	7	30	9	35	11	50	15	36	11	26	8	11	3	15	5
Private 2-yr.	94	38	1	*	4	2	5	2	10	4	11	4	8	3	20	8	20	8	14	6	60	24
Public 2-yr.	433	81	20	4	19	4	14	3	10	2	10	2	10	2	7	1	4	1	3	1	5	1
Pred. White	897	40	48	2	77	3	106	5	110	5	142	6	167	8	184	8	141	6	130	6	224	10
Pred. Negro	21	23	0	0	1	1	1	1	9	10	6	6	11	12	15	16	10	11	9	10	9	10

68/-69-

Table 25

Distributions of the Number of Volumes in the Library

Hundreds of Volumes

Group	<u><100</u>		<u>101-150</u>		<u>151-250</u>		<u>251-400</u>		<u>401-500</u>		<u>501-600</u>		<u>601-700</u>		<u>701-1000</u>		<u>1001-2000</u>		<u>2001-5000</u>		<u>>5000</u>	
	f	%	f	%	f	%	f	%	f	%	f	%	f	%	f	%	f	%	f	%	f	%
All inst.	216	9	349	15	207	9	253	11	247	11	173	8	182	8	197	9	247	11	140	6	106	5
Universities	23	8	3	1	6	2	3	1	1	1	3	1	85	29	1	*	15	5	58	20	97	33
4-yr. colleges	17	1	11	1	34	3	184	15	232	19	159	13	95	7	189	15	230	19	81	7	9	1
2-yr. colleges	162	21	335	44	167	22	66	9	14	2	11	1	2	*	7	1	4	*	1	*	0	0
Public inst.	162	15	225	21	114	11	62	6	41	4	61	6	94	9	64	6	121	12	75	7	63	6
Private inst.	54	4	124	10	93	8	191	16	206	16	112	9	88	7	133	11	128	10	65	5	43	3
Private univ.	0	0	0	0	0	0	0	0	0	0	1	1	6	8	0	0	8	11	21	30	36	50
Public univ.	24	10	3	1	6	2	3	2	1	*	2	1	79	35	1	1	7	3	37	17	61	27
Private 4-yr.	14	2	8	1	26	3	170	18	204	22	110	12	82	9	133	14	120	13	44	5	7	1
Public 4-yr.	3	1	3	1	8	2	14	4	28	9	49	15	13	4	56	17	110	34	37	12	2	1
Private 2-yr.	40	16	116	47	67	27	21	9	2	1	1	*	0	0	0	0	0	0	0	0	0	0
Public 2-yr.	135	24	219	42	100	19	45	9	12	2	10	2	2	*	7	2	4	1	1	*	0	0
Pred. White	208	9	346	16	203	9	235	11	238	11	154	7	178	8	184	8	235	11	140	6	105	5
Pred. Negro	8	9	3	3	4	4	18	19	9	10	19	20	4	4	13	14	14	15	0	0	1	1

Table 26

Distributions of the Number of Periodicals in the Library

Group	Number																					
	<100	101-150	151-200	201-300	301-400	401-500	501-700	701-1000	1001-2000	2001-5000	>5000	f	%	f	%							
All inst.	209	9	231	10	246	11	201	9	257	11	259	11	247	11	190	8	247	12	118	5	87	4
Universities	11	4	9	3	6	2	2	1	2	1	0	0	4	1	5	2	101	34	75	25	81	27
4-yr. colleges	18	1	23	2	26	2	98	8	218	18	239	19	227	18	170	14	173	14	43	3	6	*
2-yr. colleges	180	22	199	26	214	28	101	13	37	5	20	3	16	2	15	2	0	0	0	0	0	0
Public inst.	120	11	95	9	192	18	99	9	51	5	38	4	70	7	97	9	187	16	75	7	58	5
Private inst.	89	7	136	11	54	4	102	8	206	17	221	18	177	14	93	8	87	7	43	3	29	2
Private univ.	0	0	0	0	0	0	0	0	1	1	0	0	0	0	2	3	15	21	28	39	26	36
Public univ.	11	5	9	4	6	3	2	1	1	*	0	0	4	2	3	2	86	38	30	21	55	25
Private 4-yr.	18	2	18	2	20	2	85	9	203	22	227	24	117	19	90	10	72	8	15	2	3	*
Public 4-yr.	0	0	5	2	6	2	13	4	15	5	22	7	50	15	80	24	101	31	28	8	3	1
Private 2-yr.	71	28	118	48	34	14	17	7	2	1	4	2	0	0	1	*	0	0	0	0	0	0
Public 2-yr.	109	19	81	15	180	34	84	16	35	7	16	3	16	3	14	3	0	0	0	0	0	0
Pred. White	203	9	226	10	326	14	344	16	241	11	138	6	98	4	179	8	268	12	117	5	86	4
Pred. Negro	6	6	5	5	14	15	20	21	18	19	8	9	3	3	11	12	6	6	1	1	1	1



Appendix I

Revenues, Endowments, Affluence and Tuition Tables ^a

- Table 27 - Distributions of Revenues from Student Fees
- Table 28 - Distributions of Revenues from Appropriations
- Table 29 - Distributions of Revenues from Research Funds
- Table 30 - Distributions of Revenues from Student Aid Funds
- Table 31 - Distributions of the Book Value of Endowments
- Table 32 - Distributions of the Market Value of Endowments
- Table 33 - Distributions of the Book Value of the Physical Plant
- Table 34 - Distributions of the Coded Affluence
- Table 35 - Distributions of the Annual Tuition

^a Based on information in tape positions 180-226 and 259.
Revenue data are on an annual basis.

Table 27

Distributions of Revenues From Student Fees

Dollars Per Student

Group	<u>0-100</u>		<u>101-350</u>		<u>351-475</u>		<u>476-600</u>		<u>601-725</u>		<u>726-850</u>		<u>851-975</u>		<u>976-1100</u>		<u>1101-1755</u>		<u>>1755</u>	
	f	%	f	%	f	%	f	%	f	%	f	%	f	%	f	%	f	%	f	%
All inst.	113	5	702	30	126	5	231	10	190	8	148	6	116	5	237	10	351	15	105	5
Universities	2	1	48	16	25	8	130	44	10	3	6	2	8	3	1	*	43	15	23	8
4-yr. colleges	15	1	252	20	52	4	42	3	81	7	127	10	94	8	224	18	287	23	67	5
2-yr. colleges	96	12	402	50	49	6	59	8	99	13	15	2	14	2	12	2	21	3	15	2
Public inst.	108	10	663	61	96	9	161	15	19	2	14	1	9	1	0	0	8	1	2	*
Private inst.	3	*	39	3	30	2	70	6	171	14	134	11	107	9	237	19	343	28	103	8
Private univ.	0	0	2	3	0	0	7	10	0	0	1	1	4	6	1	1	35	39	22	31
Public univ.	2	1	46	20	25	11	123	55	10	4	5	2	4	2	0	0	8	3	1	*
Private 4-yr.	1	*	14	2	8	1	29	3	72	8	123	13	93	10	224	24	287	31	67	7
Public 4-yr.	14	4	238	74	44	14	13	4	9	3	4	1	1	*	0	0	0	0	0	0
Private 2-yr.	2	1	23	9	22	9	34	14	99	40	10	4	10	4	12	5	21	8	14	6
Public 2-yr.	94	18	379	71	27	5	25	5	0	0	5	1	4	1	0	0	0	0	1	*
Pred. White	111	5	666	30	119	5	217	10	164	7	141	6	116	5	237	11	351	16	104	5
Pred. Negro	2	2	36	39	7	8	14	15	26	28	7	8	0	0	0	0	0	0	1	1

Table 28

Distributions of Revenues From Appropriations

Dollars Per Student

Group	<u>0</u>		<u>1-50</u>		<u>51-100</u>		<u>101-450</u>		<u>451-675</u>		<u>676-925</u>		<u>926-1300</u>		<u>1301-1800</u>		<u>>1800</u>	
	f	%	f	%	f	%	f	%	f	%	f	%	f	%	f	%	f	%
All inst.	92	4	369	16	358	15	342	15	420	18	233	10	223	10	189	8	93	4
Universities	0	0	2	1	2	1	7	3	11	4	18	6	54	18	134	45	68	23
4-yr. colleges	0	0	359	29	355	29	186	15	108	9	89	7	91	7	35	3	18	1
2-yr. colleges	92	12	8	1	1	*	149	19	301	38	118	16	78	10	20	3	7	1
Public inst.	1	*	6	1	4	*	142	13	330	30	185	17	176	16	180	17	58	5
Private inst.	91	7	363	29	354	29	200	16	90	7	48	4	47	4	9	1	35	3
Private univ.	0	0	1	1	0	0	3	4	0	0	1	1	24	33	9	13	34	47
Public univ.	0	0	1	*	2	1	4	2	11	5	17	8	30	13	125	56	34	15
Private 4-yr.	0	0	354	39	353	38	166	18	42	5	0	0	2	*	0	0	1	*
Public 4-yr.	0	0	5	2	2	1	20	7	66	20	89	28	89	28	35	11	17	6
Private 2-yr.	9	1	37	83	1	*	31	13	48	19	47	19	21	9	0	0	0	0
Public 2-yr.	1	*	0	0	0	0	118	24	253	47	79	15	57	11	20	4	7	1
Pred. White	92	4	368	17	356	16	339	15	366	16	222	10	208	9	185	8	90	4
Pred. Negro	0	0	1	1	2	2	3	3	54	58	11	12	15	16	4	4	3	3

Table 29

Distributions of Revenues from Research Funds

Dollars Per Student

Group	0		1-50		51-100		101-205		206-310		311-400		401-500		501-600		601-700		>700			
	f	%	f	%	f	%	f	%	f	%	f	%	f	%	f	%	f	%	f	%		
All inst.	92	4	1132	49	355	15	307	13	87	4	107	5	13	1	78	3	74	3	74	3	74	3
Universities	0	0	22	7	11	4	133	45	11	4	20	7	9	3	14	5	18	6	58	20		
4-yr. colleges	0	0	572	46	341	27	118	10	76	6	34	3	4	*	63	5	20	2	13	4		
2-yr. colleges	92	12	538	69	3	*	56	7	0	0	53	7	0	0	1	*	36	5	3	*		
Public inst.	1	*	6	1	4	*	13	1	53	5	76	7	330	30	106	10	79	7	414	38		
Private inst.	91	7	464	38	287	23	108	9	76	6	53	4	6	*	67	5	42	3	43	4		
Private univ.	0	0	5	7	4	6	12	17	5	7	5	7	2	3	3	4	5	7	31	43		
Public univ.	0	0	17	8	7	3	121	54	6	3	15	7	7	3	11	5	13	6	27	12		
Private 4-yr.	0	0	366	40	283	31	68	7	71	8	32	3	4	*	63	7	20	2	11	1		
Public 4-yr.	0	0	206	64	58	18	50	15	5	2	2	1	0	0	0	0	0	0	2	1		
Private 2-yr.	91	37	93	38	0	0	28	11	0	0	16	6	0	0	1	*	17	7	1	*		
Public 2-yr.	1	*	445	83	3	1	28	5	0	0	37	7	0	0	0	0	19	4	2	*		
Pred. White	92	4	1093	49	353	16	256	12	87	4	107	5	13	1	78	4	74	3	68	3		
Pred. Negro	0	0	39	42	2	2	51	55	0	0	0	0	0	0	0	0	0	0	1	1		

Table 30
Distributions of Revenues From Student Aid Funds

Dollars Per Student

Group	0		1-25		26-50		51-75		76-100		101-200		201-300		301-400		401-500		>500	
	f	%	f	%	f	%	f	%	f	%	f	%	f	%	f	%	f	%	f	%
All inst.	5	*	577	25	272	12	390	17	338	15	460	20	206	9	35	2	14	1	22	1
Universities	0	0	22	7	25	8	20	7	29	10	158	53	28	9	5	2	2	1	7	2
4-yr. colleges	0	0	195	16	152	13	162	13	298	24	281	23	93	7	30	2	10	1	13	1
2-yr. colleges	5	1	360	46	88	11	208	27	11	1	21	3	85	11	0	0	2	*	2	*
Public inst.	4	*	345	32	128	12	262	24	79	7	219	20	32	3	7	1	4	*	2	*
Private inst.	1	*	232	19	144	12	128	10	259	21	241	19	174	14	28	1	10	1	20	2
Private univ.	0	0	4	6	10	14	7	10	6	8	19	26	14	19	4	6	1	1	7	10
Public univ.	0	0	18	8	15	7	13	6	23	10	139	62	14	6	1	*	1	*	0	0
Private 4-yr.	0	0	133	14	104	11	107	12	246	27	209	23	75	8	24	3	8	1	12	1
Public 4-yr.	0	0	62	19	55	17	55	17	52	16	72	22	18	6	6	2	2	1	1	*
Private 2-yr.	1	*	95	38	30	12	14	6	7	3	13	5	85	34	0	0	1	*	1	*
Public 2-yr.	4	1	265	50	58	11	194	36	4	1	8	1	0	0	0	0	1	*	1	*
Pred. White	5	*	569	26	265	12	384	17	330	15	421	19	193	9	28	1	11	*	20	1
Pred. Negro	0	0	8	9	7	8	6	6	8	9	39	42	13	14	7	8	3	3	2	2

Table 31

Distributions of the Book Value of Endowments

Dollars Per Student

Group	<u><500</u>		<u>501-1000</u>		<u>1001-1400</u>		<u>1401-1600</u>		<u>1601-1800</u>		<u>1801-2000</u>		<u>2001-2200</u>		<u>2201-2600</u>		<u>2601-3000</u>		<u>3001-4500</u>		<u>>4500</u>	
	f	%	f	%	f	%	f	%	f	%	f	%	f	%	f	%	f	%	f	%	f	%
All inst.	785	34	651	28	132	6	46	2	29	1	209	9	127	5	45	2	69	3	81	3	145	6
Universities	68	23	24	8	5	2	18	6	5	2	127	43	1	*	7	2	2	1	18	6	21	7
4-yr. colleges	461	37	325	26	70	6	20	2	24	2	32	3	30	2	36	3	64	5	60	5	119	10
2-yr. colleges	256	33	302	39	57	7	8	1	0	0	50	6	96	12	2	*	3	*	3	*	5	1
Public inst.	537	50	306	28	45	4	12	1	3	*	153	14	1	*	5	*	3	*	10	1	7	1
Private inst.	248	20	345	28	87	7	34	3	26	2	56	5	26	10	40	3	66	5	71	6	138	11
Private univ.	8	11	11	15	2	3	7	10	2	3	10	14	0	0	3	4	0	0	11	15	18	25
Public univ.	60	27	13	6	3	1	11	5	3	1	117	52	1	*	4	2	2	1	7	3	3	1
Private 4-yr.	193	21	278	30	68	7	20	2	24	3	31	3	30	3	35	4	64	7	58	6	117	13
Public 4-yr.	268	83	47	15	2	1	0	0	0	0	1	*	0	0	1	*	0	0	2	1	2	1
Private 2-yr.	47	19	56	23	17	7	7	3	0	0	15	6	96	39	2	1	2	1	2	1	3	1
Public 2-yr.	209	39	246	46	40	7	1	*	0	0	35	7	0	0	0	0	1	*	1	*	2	*
Pred. White	740	33	641	29	126	6	45	2	27	1	209	9	110	5	45	2	66	3	78	4	139	6
Pred. Negro	45	48	10	11	6	6	1	1	2	2	0	0	17	18	0	0	3	3	3	3	6	6

Table 32

Distributions of the Market Value of Endowments

Dollars Per Student

Group	<u>≤500</u>		<u>501-1000</u>		<u>1001-1400</u>		<u>1401-1600</u>		<u>1601-1800</u>		<u>1801-2000</u>		<u>2001-2200</u>		<u>2201-2600</u>		<u>2601-3000</u>		<u>3001-4500</u>		<u>>4500</u>	
	f	%	f	%	f	%	f	%	f	%	f	%	f	%	f	%	f	%	f	%	f	%
All inst.	536	23	799	34	188	8	56	2	82	4	86	4	30	1	76	3	126	5	211	9	129	6
Universities	54	18	21	7	8	3	13	4	19	6	2	1	3	1	6	2	4	1	144	49	22	7
4-yr. colleges	436	35	337	27	50	4	40	3	16	1	84	7	22	2	59	5	32	3	64	5	103	8
2-yr. colleges	46	6	441	56	130	17	3	*	47	6	0	0	5	1	11	1	90	12	5	1	4	1
Public inst.	341	32	432	40	107	10	11	1	49	5	1	*	2	*	3	*	3	*	130	12	3	*
Private inst.	195	16	367	30	81	7	45	4	33	3	85	7	28	2	73	6	123	10	81	7	126	10
Private univ.	3	4	9	13	6	8	4	6	6	8	1	1	2	3	3	4	2	3	15	21	21	29
Public univ.	51	23	12	5	2	1	9	4	13	6	1	*	1	*	3	1	2	1	129	58	1	*
Private 4-yr.	165	18	289	31	50	5	39	4	16	2	84	9	21	2	59	6	31	3	62	7	102	11
Public 4-yr.	271	84	48	15	0	0	1	*	0	0	0	0	1	*	0	0	1	*	0	0	1	*
Private 2-yr.	27	11	69	28	25	10	2	1	11	4	0	0	5	2	11	4	90	36	4	2	3	1
Public 2-yr.	19	4	372	70	105	20	1	*	36	7	0	0	0	0	0	0	0	0	1	*	1	*
Pred. White	494	22	794	36	185	8	54	2	81	4	82	4	29	1	49	2	123	6	209	9	126	6
Pred. Negro	42	45	5	5	3	3	2	2	1	1	4	4	1	1	27	29	3	3	2	2	3	3



Table 33

Distributions of the Book Value of the Physical Plant

Dollars Per Student

Group	0		1-1150		1151-2260		2261-3370		3371-4480		4481-5600		5601-6700		6701-7810		7811-10,000		>10,000		
	f	%	f	%	f	%	f	%	f	%	f	%	f	%	f	%	f	%	f	%	
All inst.	2	*	156	7	198	9	430	19	579	25	329	14	226	10	172	7	227	10	0	0	0
Universities	0	0	16	5	10	3	17	6	117	40	26	9	44	15	26	9	40	14	0	0	0
4-yr. colleges	1	*	54	4	63	5	127	10	297	24	251	20	158	13	124	10	166	13	0	0	0
2-yr. colleges	1	*	86	11	125	16	286	37	165	21	52	7	24	3	22	3	21	3	0	0	0
Public inst.	0	0	89	8	121	11	311	29	268	25	107	10	70	6	43	4	73	7	0	0	0
Private inst.	2	*	67	5	77	6	119	10	311	25	222	18	156	13	129	10	154	12	0	0	0
Private univ.	0	0	3	4	0	0	9	13	17	26	9	13	11	15	13	18	10	14	0	0	0
Public univ.	0	0	13	6	10	4	8	4	100	45	17	8	33	15	13	6	30	13	0	0	0
Private 4-yr.	1	*	44	5	46	5	77	8	189	21	195	21	130	14	102	11	134	15	0	0	0
Public 4-yr.	0	0	10	3	17	5	50	15	108	33	56	17	28	9	22	7	32	10	0	0	0
Private 2-yr.	1	*	20	8	31	13	33	13	105	43	18	7	15	6	14	6	10	4	0	0	0
Public 2-yr.	0	0	62	12	94	18	253	47	6	11	34	6	9	1	8	1	11	2	0	0	0
Pred. White	2	*	155	7	191	9	409	18	554	25	307	14	217	10	169	8	222	10	0	0	0
Pred. Negro	0	0	1	1	7	8	21	23	25	27	22	24	9	10	3	3	5	5	0	0	0

Table 34

Distributions of the Coded Affluence^a

Equivalent Dollars per student	Affluence Category																	
	1	2	3	4	5	6	7	8	9	<751	751-1000	1001-1250	1251-1500	1501-1750	1751-2000	2001-2250	2251-2500	> 2500
Group	f	%	f	%	f	%	f	%	f	%	f	%	f	%	f	%	f	%
All inst.	184	8	291	13	235	10	185	8	171	7	355	15	239	10	117	5	542	23
Universities	8	3	2	1	5	2	6	2	3	1	118	40	15	5	18	6	121	41
4-yr. colleges	17	1	21	2	66	5	111	9	138	11	200	16	215	17	89	7	384	31
2-yr. colleges	159	20	268	34	164	21	68	9	30	4	37	5	9	1	10	1	37	5
Public inst.	156	14	256	24	102	9	117	11	74	7	192	18	38	4	28	3	119	11
Private inst.	28	2	35	3	113	11	68	5	97	8	163	13	201	16	89	7	423	34
Private univ.	0	0	0	0	0	0	0	0	1	1	14	19	6	8	5	7	46	64
Public univ.	8	4	2	1	5	2	6	3	2	1	104	46	9	4	13	6	75	33
Private 4-yr.	5	1	12	1	30	3	45	5	78	8	130	14	189	21	79	9	350	38
Public 4-yr.	12	4	9	3	36	11	66	20	60	19	70	22	26	8	10	3	34	11
Private 2-yr.	23	9	23	9	103	42	23	9	18	7	19	8	6	2	5	2	27	11
Public 2-yr.	136	25	245	46	61	11	45	8	12	2	18	3	3	1	5	1	10	2
Pred. White	181	8	284	13	233	10	177	8	155	7	327	15	228	10	114	5	527	24
Pred. Negro	3	3	7	8	2	2	8	9	16	17	23	30	11	12	3	3	15	16

^aTotal revenues in dollars per student.

Table 35

Distributions of the Annual Tuition

Dollars

Group	0-100		101-200		201-300		301-400		401-500		501-750		751-1000		1001-1500		1501-2000		>2000	
	f	%	f	%	f	%	f	%	f	%	f	%	f	%	f	%	f	%	f	%
All inst.	18	1	39	2	74	3	228	10	137	6	598	26	513	22	478	21	195	8	39	2
Universities	4	1	9	3	3	1	17	6	10	3	43	15	69	23	78	26	53	18	10	3
4-yr. colleges	10	1	8	1	21	2	48	4	55	4	273	22	301	24	374	30	133	11	18	2
2-yr. colleges	4	1	22	3	50	6	163	21	72	9	282	36	143	18	26	3	9	1	11	1
Public inst.	17	2	31	3	63	6	207	19	98	9	425	39	141	13	65	6	24	2	11	1
Private inst.	1	*	8	1	11	1	21	2	39	3	173	14	372	30	413	33	171	14	28	2
Private univ.	0	0	1	1	0	0	1	1	1	1	4	6	4	6	26	36	32	44	3	4
Public univ.	4	2	8	4	3	1	16	7	9	4	39	17	65	29	52	23	21	9	7	3
Private 4-yr.	1	*	3	*	4	*	7	1	13	1	108	12	267	29	366	40	132	14	17	2
Public 4-yr.	9	3	5	2	17	5	41	13	42	13	165	51	34	11	8	2	1	*	1	*
Private 2-yr.	0	0	4	2	7	3	13	5	25	10	61	25	101	41	21	9	7	3	8	3
Public 2-yr.	4	1	18	3	43	8	150	28	47	9	221	41	42	8	5	10	2	*	3	1
Pred. White	17	1	37	2	67	3	216	10	120	5	559	25	503	23	475	21	193	9	39	2
Pred. Negro	1	1	2	2	7	8	12	13	17	18	39	42	10	11	3	3	2	2	0	0

Other recent publications by the staff of the Office of Research not cited in text:

Alternative Methods of Describing Characteristics of Colleges and Universities

John A. Creager and Alexander W. Astin

Educational and Psychological Measurement, 28, 1968, 719--734

A Program of Research on Student Development

Alexander W. Astin

The Journal of College Student Personnel, 1968, 299-307

National Norms for Entering College Freshmen--Fall 1968

John A. Creager, Alexander W. Astin, Robert F. Boruch, Alan E. Bayer

ACE Research Reports, 3(1), 1968

The College Drop-out: Factors Affecting Senior College Completion

Alan E. Bayer

Sociology of Education, 41, 1968, 305--316

The College Environment

Alexander W. Astin

American Council on Education, 1968

Undergraduate Achievement and Institutional "Excellence"

Alexander W. Astin

Science, 161, 1968, 661--668

Use of Research Results in Matching Students and Colleges

John A. Creager

The Journal of College Student Personnel, 1968, 312--319

The Black Student in American Colleges

Alan E. Bayer and Robert F. Boruch

ACE Research Reports, 4(2), 1969

Campus Disruption During 1968-1969

Alan E. Bayer, Alexander W. Astin

ACE Research Reports, 4(3), 1969

Fortran Programs Providing Weights in Survey Designs Using Stratified Samples

John A. Creager

Educational and Psychological Measurement, 29, 1969, 709--712

Life Plans and Marriage Age: An Application of Path Analysis

Alan E. Bayer

Journal of Marriage and the Family, 31, 1969, 551--558

Marriage Plans and Educational Aspirations

Alan E. Bayer

American Journal of Sociology, 75, 1969, 239--244

The Educational and Vocational Development of College Students

Alexander W. Astin and Robert J. Panos

American Council on Education, 1969

The Faculty Role in Campus Unrest

Robert F. Boruch

ACE Research Reports, 4(5), 1969