

ED 021 532

JC 680 271

By Bradley, Harry M; And Others

A PROGRAM FOR THE EDUCATIONAL ENRICHMENT OF THE SENIOR CITIZENS OF POLK COUNTY. FINAL REPORT.

Polk Junior Coll., Bartow, Fla.

Pub Date Dec 67

Note- 57p.

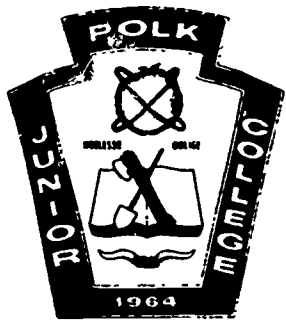
EDRS Price MF-\$0.25 HC-\$2.36

Descriptors-\*ADULT EDUCATION PROGRAMS, \*EDUCATIONAL LEGISLATION, FEDERAL PROGRAMS, \*JUNIOR COLLEGES, OLDER ADULTS, \*RETIREMENT, \*SENIOR CITIZENS

Identifiers-Florida, \*Higher Education Act of 1965, Polk County

Upon finding that more than 10% of the county's population of 215,000 (1966) were retirees and other senior citizens who had educational needs which were not being met by any single educational agency, members of the Polk Junior College staff developed and implemented a project under the Higher Education Act of 1965 for the purpose of fulfilling such needs. Advisory committee members were selected who, in turn, recommended contact persons in each community to assist in locating teacher-trainees, places to conduct sessions, and program consultants. Communities chosen to participate in the project were narrowed to Lakeland, Winter Haven, Bartow, Fedhaven, and Nalcrest. Teacher-trainees (varying from housewives to college professors), who subsequently were appointed to the college's part-time staff, selected topics of interest to the senior citizens. Two-hour seminars were held twice weekly for a 6-week period. Trainees served as forum coordinators and discussion leaders. Consultants (college faculty and specialists from the local area as well as from state and county agencies) gave lectures and/or demonstrations. Attendance reached approximately 100 per session, with 500 to 600 attending the meetings on a regular basis. Topics generally focused on health (social security, medicare, and medical problems) and on social studies (Florida history, international relations, and current events). (DG)

A PROGRAM  
FOR THE  
EDUCATIONAL  
ENRICHMENT  
of the  
SENIOR  
CITIZENS  
OF  
POLK COUNTY



POLK JUNIOR COLLEGE

FINAL REPORT

JC 680 271  
ED021532

POLK JUNIOR COLLEGE  
WINTER HAVEN, FLORIDA

PROJECT STAFF

DR. LELAND R. COOPER - - - - - PROJECT DIRECTOR  
PROFESSOR HARRY M. BRADLEY - - - - - PROJECT DIRECTOR  
DR. HAROLD H. KASTNER, JR. - - - - - ASSOCIATE PROJECT DIRECTOR  
MR. JAMES E. HARRIS - - - - - ASSOCIATE PROJECT DIRECTOR  
PROFESSOR LARRY L. ROUSH - - - - - SURVEY WORKER  
PROFESSOR T. DAVID SEIBER - - - - - SURVEY WORKER  
PROFESSOR BANKS B. VEST - - - - - SURVEY WORKER

U.S. DEPARTMENT OF HEALTH, EDUCATION & WELFARE  
OFFICE OF EDUCATION

THIS DOCUMENT HAS BEEN REPRODUCED EXACTLY AS RECEIVED FROM THE  
PERSON OR ORGANIZATION ORIGINATING IT. POINTS OF VIEW OR OPINIONS  
STATED DO NOT NECESSARILY REPRESENT OFFICIAL OFFICE OF EDUCATION  
POSITION OR POLICY.

A PROGRAM FOR THE  
EDUCATIONAL ENRICHMENT OF THE  
SENIOR CITIZENS OF  
POLK COUNTY

UNIVERSITY OF CALIF.  
LOS ANGELES

JUN 12 1968

CLEARINGHOUSE FOR  
JUNIOR COLLEGE  
INFORMATION

FINAL REPORT  
POLK JUNIOR COLLEGE  
WINTER HAVEN, FLORIDA 33880  
DECEMBER, 1967

## PREFACE

DURING THE SUMMER OF 1966, MEMBERS OF THE POLK JUNIOR COLLEGE STAFF MET TO DISCUSS WHAT CONTRIBUTION COULD BE MADE BY THE DIVISION OF CONTINUING EDUCATION TO THE POLK COUNTY COMMUNITY. DISCUSSIONS FOCUSED ON THE SOCIO-ECONOMIC NEEDS OF THE COMMUNITY AS WELL AS THE TYPES OF POPULATION CONCENTRATION. WHILE SEEKING TO DETERMINE A SINGLE AREA OF NEED, IT SOON BECAME EVIDENT THAT RETIREES AND OTHER SENIOR CITIZENS NOT ONLY COMPRISED A SIGNIFICANTLY LARGE PROPORTION OF THE TOTAL COUNTY POPULATION, BUT ALSO HAD EDUCATIONAL NEEDS WHICH WERE IMPORTANT TO THEM AND TO THE COMMUNITY THAT WERE NOT BEING MET BY ANY SINGLE EDUCATIONAL AGENCY. THERE WERE SEVERAL PROGRAMS WITHIN THE COUNTY THAT PROVIDED SOME EDUCATIONAL AND RECREATIONAL OPPORTUNITIES FOR SENIOR CITIZENS. THESE PROGRAMS WERE SPORADIC IN NATURE, GEARED PRIMARILY TO RECREATIONAL OPPORTUNITIES, AND LEFT A WIDE GAP IN THE AREA OF SPECIFIC, GENERAL EDUCATION PROGRAMS FOR SENIOR CITIZENS. USING THE REPORT OF THE WHITE HOUSE CONFERENCE ON AGING AND OTHER AVAILABLE LITERATURE AS A GUIDELINE, THE COLLEGE STAFF FELT THAT SOME OF THE GENERAL TOPICS OUTLINED IN THE LITERATURE WOULD BE OF INTEREST TO THE SENIOR CITIZENS OF THE COUNTY.

THE MAGNITUDE OF THE PROBLEM OF CREATING AN EDUCATIONAL PROGRAM FOR SENIOR CITIZENS WAS BEYOND THE FINANCIAL RESOURCES OF THE COLLEGE. IT WAS DECIDED THAT FURTHER DATA SHOULD BE GATHERED, AND A PROPOSAL BE SUBMITTED FOR THE FUNDING OF A PROGRAM UNDER TITLE I OF THE HIGHER EDUCATION ACT OF

1965. THIS WAS DONE, AND THE PROJECT WAS APPROVED LATE IN DECEMBER 1966 AND FUNDED TO BEGIN FEBRUARY 6, 1967. THIS REPORT IS A SUMMARY OF THE PROJECT FROM ITS INCEPTION TO ITS COMPLETION WITH ACCOMPANYING RECOMMENDATIONS.

NOVEMBER 1967

LELAND R. COOPER

HARRY M. BRADLEY

PROJECT DIRECTORS

NOTE:

ON JUNE 2, 1967, DR. COOPER LEFT THE COLLEGE TO ASSUME A NEW POSITION AND PROFESSOR BRADLEY WAS REQUESTED TO ASSUME THE POSITION OF DIRECTOR FOR THE REMAINDER OF THE PROJECT.

## CONTENTS

|                                         | PAGE |
|-----------------------------------------|------|
| PREFACE . . . . .                       | i    |
| ACKNOWLEDGMENTS . . . . .               | iv   |
| INTRODUCTION . . . . .                  | 1    |
| PRELIMINARY PLANNING PHASE . . . . .    | 4    |
| SURVEY PHASE . . . . .                  | 10   |
| TEACHER-TRAINEE SEMINAR PHASE . . . . . | 16   |
| COMMUNITY FORUM PHASE . . . . .         | 23   |
| RECOMMENDATIONS . . . . .               | 27   |
| APPENDICIES . . . . .                   | 30   |

## ACKNOWLEDGMENTS

IT WOULD BE IMPOSSIBLE TO GIVE APPROPRIATE RECOGNITION TO THE MANY PEOPLE WHO SHOWED INTEREST IN AND CONTRIBUTED TIME AND EFFORT TO THE FULFILLMENT OF PROJECT GOALS. APPRECIATIVE RECOGNITION IS DUE TO LITERALLY HUNDREDS OF PERSONS IN POLK COUNTY WHOSE ENTHUSIASM MADE THE COMPLETION OF THE PROJECT POSSIBLE.

SPECIAL THANKS GO TO THE FOLLOWING MEMBERS OF THE STAFF OF POLK JUNIOR COLLEGE -- DR. FRED T. LENFESTY, PRESIDENT, DR. HAROLD H. KASTNER, JR., VICE-PRESIDENT, AND MR. JAMES E. HARRIS, DIRECTOR OF DEVELOPMENT, FOR THEIR CONTRIBUTIONS IN PLANNING AND IMPLEMENTING THE PROJECT; ALSO PROFESSORS LARRY L. ROUSH, T. DAVID SEIBER, AND BANKS B. VEST FOR THE DEVELOPMENT OF SURVEY TECHNIQUES APPROPRIATE FOR THE COUNTY AND ASSISTANCE RENDERED THROUGHOUT ALL PHASES OF THE PROJECT.

WE ALSO RECOGNIZE THE ASSISTANCE RENDERED BY THE POLK JUNIOR COLLEGE ADVISORY BOARD, POLK COUNTY BOARD OF TRUSTEES, POLK COUNTY BOARD OF PUBLIC INSTRUCTION, AND THE POLK COUNTY SUPERINTENDENT OF PUBLIC INSTRUCTION AND HIS STAFF.

GRATEFUL ACKNOWLEDGMENT IS DUE THE FOLLOWING CONSULTANTS FOR THEIR VALUED ASSISTANCE IN VARIOUS PHASES OF PROGRAM DEVELOPMENT: MRS. VIRGINIA SMYTHE, REGIONAL REPRESENTATIVE, ADMINISTRATION ON AGING, DEPARTMENT OF



HEALTH, EDUCATION & WELFARE, ATLANTA, GEORGIA; DR. LOUIS H. MEETH, CONSULTANT ON AGING, PINELLAS COUNTY, FLORIDA, BOARD OF PUBLIC INSTRUCTION; FORMER STATE SENATOR CLYDE GALLOWAY, DIRECTOR, FLORIDA COMMISSION ON AGING; MRS. EDNA M. SMILEY, ADULT EDUCATION DIVISION, DAYTONA BEACH (FLORIDA) JUNIOR COLLEGE; MRS. MILDRED C. HARVEY, LAKELAND, FLORIDA, LOCAL DIRECTOR, INFORMATION AND REFERRAL SERVICE FOR OLDER PERSONS, FLORIDA COMMISSION ON AGING; DR. EARLE E. EMMEE, EMERITUS PROFESSOR OF PSYCHOLOGY, BRADLEY UNIVERSITY; MR. D. E. HOWARD, FIELD SERVICE DIRECTOR, FLORIDA COMMISSION ON AGING; REV. ROBERT H. HANNUM, RETIRED PROFESSOR OF HUMANITIES, CENTRAL FLORIDA JUNIOR COLLEGE, OCALA, FLORIDA; REV. JAMES H. BISHOP, (RET.), PRESIDENT, LAKELAND CHAPTER, AARP; AND DR. E. A. GIORDANO, STATE DIRECTOR, HIGHER EDUCATION ACT OF 1965, BOARD OF REGENTS, TALLAHASSEE, FLORIDA.

TO THE MEMBERS OF THE PROJECT ADVISORY COMMITTEE WE EXTEND OUR HEART-FELT THANKS FOR ALL THE ENCOURAGEMENT, COUNSEL, AND ASSISTANCE WHICH THEY PROVIDED DURING THE ENTIRE PROGRAM. INDIVIDUALLY AND COLLECTIVELY THEY WERE THERE WHEN NEEDED. MR. WILLIAM E. ARNOLD, DISTRICT MANAGER, SOCIAL SECURITY OFFICE, LAKELAND, FLORIDA; MR. ALBERT GRIFFIN, PRESIDENT, EXCHANGE NATIONAL BANK, WINTER HAVEN, FLORIDA; MR. CARL HEIDEL, BOARD OF PUBLIC INSTRUCTION, BARTOW, FLORIDA; MR. CARLOS MULLEN, BOARD OF PUBLIC INSTRUCTION, BARTOW, FLORIDA; MR. THOMAS MURRAY, ADMINISTRATIVE ASSISTANT, COMMUNITY MENTAL HEALTH CENTER, WINTER HAVEN, FLORIDA; MR. DONALD C. ROGERS, PRESIDENT, FIRST STATE BANK, FORT MEADE, FLORIDA; MR. BRUCE TYNDALL, LOCAL DIRECTOR, VOCATIONAL AND TECHNICAL EDUCATION, POLK COUNTY SCHOOLS,

BARTOW, FLORIDA; AND MISS OLLIE M. WHITE, STATE DEPARTMENT OF PUBLIC WELFARE, BARTOW, FLORIDA.

LRC  
HMB

NOTE:

FOR UNTIRING ASSISTANCE DURING THE COMPILATION AND WRITING OF THIS REPORT, THE PROJECT DIRECTOR WISHES TO ACKNOWLEDGE WITH GRATEFUL APPRECIATION THE SERVICES OF DR. COOPER, DR. KASTNER AND PROFESSOR SEIBER.

HMB

## INTRODUCTION

THE PROJECT ENTITLED A PROGRAM FOR THE EDUCATIONAL ENRICHMENT OF THE SENIOR CITIZENS OF POLK COUNTY WAS DEVELOPED AND IMPLEMENTED IN AN ATTEMPT TO PLACE CONCRETELY IN ACTION THE FOLLOWING QUOTATIONS FROM THE OFFICIALLY ADOPTED AND PUBLISHED PHILOSOPHY AND OBJECTIVES OF POLK JUNIOR COLLEGE: "...POLK JUNIOR COLLEGE HAS BEEN ESTABLISHED TO PROVIDE THE CITIZENS OF POLK COUNTY ... WITH AN OUTSTANDING INSTITUTION OF HIGHER EDUCATION ... AND THE COLLEGE IS COMMITTED TO: ... CULTURAL DEVELOPMENT. IN KEEPING WITH THE LEGISLATIVE ENACTMENT OF 1963 WHICH AUTHORIZED POLK JUNIOR COLLEGE, ONE OBJECTIVE OF THE COLLEGE IS (AMONG OTHERS) TO PROVIDE ... EDUCATIONAL PROGRAMS OF A COMMUNITY SERVICE NATURE AND CREDIT AND NON-CREDIT COURSES OF A CONTINUING EDUCATIONAL NATURE."

FROM THE BEGINNING, THE OFFICIAL EDUCATIONAL BODIES OF THE COUNTY VIEWED THE CAMPUS OF THE JUNIOR COLLEGE AS EMBRACING THE ENTIRE COUNTY AND ALL OF ITS CITIZENS. THUS, IT WAS, WHEN THE COLLEGE WAS AFFORDED THE OPPORTUNITY TO PARTICIPATE IN INNOVATIVE COMMUNITY PROGRAMS UNDER THE HIGHER EDUCATION ACT OF 1965, AN INFORMAL COMMITTEE OF COLLEGE PERSONNEL EXPLORED VARIOUS POSSIBILITIES OF RENDERING SERVICE TO THE CITIZENS OF POLK COUNTY IN KEEPING WITH THE STATED PHILOSOPHY AND OBJECTIVES OF THE COLLEGE.

AFTER EXTENSIVE DISCUSSION AND INVESTIGATION, CERTAIN FACTS RELATIVE TO THE POPULATION OF POLK COUNTY BEGAN TO EMERGE. REVIEW OF CENSUS BUREAU TABLES AND COUNTY PROGRAMS INVOLVING RETIRED PEOPLE REVEALED THAT POLK COUNTY HAD A LARGE NUMBER OF RETIREES AND OLDER CITIZENS - A NUMBER WHICH WAS LARGER THAN MANY OTHER COUNTIES IN PROPORTION TO TOTAL POPULATION. WITH THE IDENTIFICATION OF THIS FACT, IT WAS FELT THAT HERE WAS AN AREA OF EDUCATIONAL CONCERN WHICH THE COLLEGE MIGHT EXPLORE WITH PROFIT TO ALL CONCERNED.

UNITED STATES CENSUS FIGURES FOR 1960 PLACED THE POPULATION OF POLK COUNTY AT 195,139. THE ESTIMATED FIGURE FOR 1966 WAS 215,000. TEN PERCENT OF THE COUNTY'S POPULATION IN 1960 WAS 65 YEARS OF AGE OR OLDER. BY APPLYING THIS PERCENTAGE TO THE ESTIMATED POPULATION OF POLK COUNTY FOR 1966, IT APPEARED THAT APPROXIMATELY 21,500 PERSONS IN POLK COUNTY WERE IN THIS CATEGORY.

IN ADDITION, STATISTICS FURNISHED BY THE LOCAL SOCIAL SECURITY ADMINISTRATION INDICATED ABOUT 15,000 RETIRED WORKERS RESIDED IN THE COUNTY AS WELL AS 4,500 WHO HAD NOT APPLIED FOR BENEFITS OR WHO DID NOT QUALIFY FOR THEM. THUS, IT APPEARED THERE WERE OVER 19,000 RETIRED WORKERS IN THE COUNTY, WITHOUT COUNTING SURVIVING SPOUSES.

THEREFORE IT WAS ESTIMATED THAT THE PROPORTION OF POLK COUNTY'S POPULATION IN THE RETIRED-WORKER, INCLUDING THE OVER-65 AGE GROUP, WOULD CONSTITUTE ABOUT 30,000 PEOPLE. (APPENDIX A)

THESE 30,000 PEOPLE COULD BENEFIT FROM AN EDUCATIONAL PROGRAM THAT PROVIDED INFORMATION IN AREAS THAT CONCERNED THEIR EVERYDAY LIVES. UNFORTUNATELY, GUIDELINES FOR PROGRAMS TO SERVICE THESE PEOPLE WERE NOT AVAILABLE. THERE WAS NO OTHER JUNIOR COLLEGE PROGRAM IN EXISTENCE WHICH ATTEMPTED TO SERVE THE CONTINUING EDUCATIONAL NEEDS AND DESIRES OF ITS SENIOR CITIZENS IN SUCH A MANNER. THE PROJECT GOAL WAS THEN INTERPRETED TO BE THE CREATION AND EXECUTION OF A PROGRAM WHICH WOULD SERVE THE NEEDS AND INTERESTS AS INDICATED BY SENIOR CITIZENS THEMSELVES.

## PRELIMINARY PLANNING PHASE

EARLY IN THE PLANNING PHASE, INQUIRY AMONG COUNTY RESIDENTS RESULTED IN A LIST OF PROSPECTIVE MEMBERS OF A COMMITTEE TO ADVISE THE COLLEGE PROJECT DIRECTOR. THESE PEOPLE WERE ACTIVE AND RESPECTED AMONG THE SENIOR CITIZENS IN THE COUNTY. ALL MEMBERS ON THE LIST ACCEPTED THE RESPONSIBILITY OF SERVING AS AN ADVISORY COMMITTEE AND THEIR SUBSEQUENT LEADERSHIP IN ALL PHASES OF THE PROJECT WAS INVALUABLE. THEIR HELP DURING THE EARLY PHASES OF THE PROJECT GAVE THE PROJECT A WELL-GUIDED START THAT ENABLED THE PROJECT TO ACHIEVE ITS GOALS.

THE WHITE HOUSE REPORT ON AGING AND OTHER RELATED LITERATURE WAS RE-EXAMINED, AND THE FOLLOWING LIST OF TENTATIVE TOPICS FOR THE TEACHER-TRAINEE PHASE WAS DEVELOPED BY THE COLLEGE PROJECT REPRESENTATIVES.

- |             |                                                                                                                                                                    |
|-------------|--------------------------------------------------------------------------------------------------------------------------------------------------------------------|
| SESSION I   | INTRODUCTION, INSPIRATION, EXPLANATION, ORIENTATION.                                                                                                               |
| SESSION II  | THE PSYCHOLOGY OF AGING.                                                                                                                                           |
| SESSION III | COUNSELING, ADVISORY, AND THERAPEUTIC SERVICES AVAILABLE TO RETIREES - SOCIAL SECURITY AND MEDICARE.                                                               |
| SESSION IV  | HOME SAFETY AND ACCIDENT PREVENTION. AUTOMOBILE SAFETY AND INSURANCE. KEEPING PHYSICALLY FIT. PROPER NUTRITION FOR RETIREES. RECREATIONAL FACILITIES FOR RETIREES. |
| SESSION V   | SATISFYING MEDICAL NEEDS. EYES AND THEIR CARE.                                                                                                                     |
| SESSION VI  | ADEQUATE HOUSING IN RETIREMENT. FINANCING HEALTH COSTS. SUPPLEMENTAL INCOME FOR RETIREES.                                                                          |
| SESSION VII | WHEN AND HOW TO SEE A LAWYER - WILLS, LEGACIES, AND TRUSTS.                                                                                                        |

SESSION VIII IT WAS PLANNED THAT THE PARTICIPANTS IN THE SEMINARS  
SESSION IX WOULD MAKE SIGNIFICANT CONTRIBUTIONS IN PLANNING THE  
SESSION X CONTENT FOR THE THREE FINAL SESSIONS.

THESE TOPICS WERE DISTRIBUTED TO THE PROJECT ADVISORY COMMITTEE FOR REVIEW. COMMITTEE AND INDIVIDUAL DISCUSSIONS RESULTED IN REVISION OF THE ABOVE TOPIC OUTLINE. THIS REVISION WILL BE LISTED AND DISCUSSED IN THE TEACHER-TRAINEE SEMINAR SECTION OF THIS REPORT. MANY OF THE ORIGINAL TOPICS WERE BROKEN INTO SEPARATE CATEGORIES FOR BETTER GROUPING AND PRESENTATION.

AS HAS BEEN STATED, TENTATIVE SUBJECT IDEAS FOR THE PROGRAM WERE GLEANED FROM A NUMBER OF SOURCES: PUBLISHED REPORTS, COMMITTEE, CONSULTANT AND INDIVIDUAL SUGGESTIONS. SINCE IT IS DIFFICULT TO CREDIT ANY PARTICULAR SOURCE FOR THE FOLLOWING OBSERVATIONS, STATEMENTS OF A GENERAL NATURE WILL BE USED.

VARIOUS PUBLISHED SOURCES AND INDIVIDUALS INDICATED THAT ACTIVITIES OF A RECREATIONAL NATURE WOULD BE AN IMPORTANT AREA OF INTEREST FOR THE SENIOR CITIZENS. HOWEVER, LOCAL COMMUNITY PARTICIPANTS RATED THIS TYPE OF INFORMATION OR ACTIVITY VERY LOW (ACTUALLY ALMOST NONDESIRED) IN THEIR CHOICE OF DISCUSSION TOPICS.

ONE OF THE MOST ELUSIVE FACTORS IN PREPARING THE SEMINARS FOR THE TRAINEES WAS HOW SHOULD SUCH A PROGRAM BE STRUCTURED OR ORGANIZED. IT WAS

FELT THAT THERE MUST BE SOME STRUCTURING FOR THE PURPOSE OF STARTING THE PROGRAM. SINCE THIS WAS A PILOT PROJECT IN RENDERING EDUCATIONAL SERVICES TO SENIOR CITIZENS, THERE WAS NO MODEL WHICH COULD BE FOLLOWED. IT WAS DECIDED TO BUILD A STRUCTURE USING THE CHOSEN TOPICS AS A BASE FOR THE CONDUCT OF THE TEACHER-TRAINEE SEMINAR SESSIONS. THE STRUCTURING OF THE LOCAL FORUM PROGRAMS WILL BE DISCUSSED IN THAT SECTION OF THIS REPORT.

THE PROJECT ADVISORY COMMITTEE AND THE COLLEGE STAFF THEN UNDERTOOK THE TASK OF FINDING THE BEST QUALIFIED PERSONS TO ACT AS CONSULTANTS FOR THE SELECTED TEACHER-TRAINEE SEMINAR TOPICS. AFTER THOROUGH INQUIRY AND THOUGHTFUL CONSIDERATION, CONSULTANTS WERE IDENTIFIED AND CONTACTED TO SOLICIT THEIR PARTICIPATION IN THE PROGRAM. THIS WAS A TIME-CONSUMING PROCESS SINCE EACH CONSULTANT HAD TO BE THOROUGHLY BRIEFED ON THE WHOLE PROGRAM AND HIS INDIVIDUAL ROLE THEREIN. ONCE THE CONSULTANT UNDERSTOOD WHAT WAS REQUIRED, ACCEPTANCE WAS UNANIMOUS AND ENTHUSIASTIC. USING THEIR OWN EXPERIENCE AND BACKGROUND, THE CONSULTANTS BEGAN TO CONTRIBUTE SUGGESTIONS CONCERNING PROGRAM CONTENT AND PRESENTATION TECHNIQUES. THE TEACHER-TRAINEE PHASE OF THE PROGRAM BEGAN TO TAKE FORM AND SUBSTANCE AS THESE ACTIVITIES TOOK PLACE.

THE ADVISORY COMMITTEE WAS ASKED TO SUBMIT NAMES OF INDIVIDUALS IN THE COUNTY WHO COULD SERVE AS COMMUNITY CONTACT PERSONS FOR THE PROJECT. PEOPLE RECOMMENDED FOR CONTACT PERSONS WERE INDIVIDUALS WHO WERE ACTIVE IN THEIR LOCAL COMMUNITY, WHO KNEW WHAT WAS GOING ON WITHIN THE SENIOR



CITIZEN GROUP, AND WHO COULD AID THE PROJECT IN GETTING STARTED IN THAT COMMUNITY. THE PROJECT DIRECTOR MADE AN APPOINTMENT WITH EACH OF THE INDIVIDUALS RECOMMENDED BY THE ADVISORY COMMITTEE. AT THE FIRST APPOINTMENT AN EXPLORATORY DISCUSSION WAS HELD CONCERNING SENIOR CITIZEN ACTIVITIES AND NEEDS IN THE VARIOUS COMMUNITIES.

AFTER THE RECOMMENDED PERSONS HAD BEEN CONTACTED AND INTERVIEWED, A GENERAL REVIEW OF THE PLANNING WAS MADE BY THE STAFF. ON THE BASIS OF THE INTERVIEWS, IT BECAME APPARENT THAT THE PROJECT MUST WORK WITH SEVERAL TYPES AND GROUPS OF SENIOR CITIZENS. ONE GROUP OF SENIOR CITIZENS HAD RETIRED TO POLK COUNTY AND WERE PERMANENT RESIDENTS OF THEIR COMMUNITIES. THIS GROUP USUALLY TOOK A ONE OR TWO MONTHS SUMMER VACATION AND WAS THE MOST DIFFICULT TO SCHEDULE AND WORK WITH BECAUSE OF THESE VACATION PERIODS. A SECOND GROUP WAS MADE UP OF SENIOR CITIZENS WHO RETAINED HOMES AND BUSINESSES IN THEIR HOME STATE AND RETURNED A PORTION OF EACH YEAR TO OPERATE THESE BUSINESSES. THIS GROUP USUALLY WENT HOME IN THE SPRING AND RETURNED TO FLORIDA IN THE FALL. THE THIRD GROUP OF SENIOR CITIZENS WERE TOURISTS WHO CAME TO FLORIDA IN OCTOBER OR NOVEMBER AND LEFT EARLY IN THE SPRING.

THE ORIGINAL PROJECT APPLICATION HAD ASKED FOR A SEPTEMBER APPROVAL DATE. UNDER THIS PLAN THE FORUMS WOULD HAVE BEEN HELD BEFORE THE MAJORITY OF THE PEOPLE LEFT IN THE SPRING AND SUMMER. HOWEVER, APPROVAL WAS GRANTED DECEMBER 25, 1966, AND THE PROJECT DIRECTOR HAD TO REQUEST A REVISION OF THE TIME TABLE. UNDER THE REVISED TIME TABLE, APPROVED BY THE FLORIDA

BOARD OF REGENTS, SEMINARS FOR THE TEACHER-TRAINEES STARTED IN MAY 1967, AND FORUMS FOR THE SENIOR CITIZENS STARTED IN EARLY JULY AND LASTED INTO EARLY NOVEMBER. THIS REVISED SCHEDULE MEANT THAT THE PROJECT WOULD BE WORKING WITH THE GROUP OF PERMANENT RESIDENTS THAT USUALLY TOOK THEIR SUMMER VACATIONS DURING THE MAY THROUGH AUGUST PERIOD. FORTUNATELY, THIS PROBLEM WAS IDENTIFIED EARLY IN THE PROJECT, SO THAT TEACHER-TRAINEES WERE CHOSEN AND FORUMS HELD AT TIMES THAT HAD MINIMUM CONFLICT WITH VACATION SCHEDULES. THERE WERE SEVERAL INSTANCES OF CONTACT WITH EXCELLENT PROSPECTIVE TRAINEES WHO WOULD BE ON VACATION DURING THE SUMMER, AND THEY HAD TO BE WITHDRAWN FROM CONSIDERATION.

SEVERAL OF THE CONTACT PERSONS WERE INTERVIEWED A SECOND TIME. COMMUNITIES THAT WOULD PARTICIPATE IN THE PROJECT WERE NARROWED TO FIVE. LAKELAND, WINTER HAVEN, BARTOW, FEDHAVEN AND WALCREST WERE CHOSEN AS THE COMMUNITIES TO PARTICIPATE IN THIS PROJECT. CONTACT PERSONS WERE READY TO HELP, AND EACH COMMUNITY HAD AVAILABLE SENIOR CITIZENS WHO WOULD BE WILLING TO PARTICIPATE IN THE FORUMS. SEVERAL OF THE SMALLER COMMUNITIES WERE NOT CHOSEN BECAUSE ALMOST ALL OF THE SENIOR CITIZENS HAD LEFT THE STATE AND WOULD NOT BE BACK UNTIL FALL.

IN ADDITION TO SUPPLYING GENERAL INFORMATION ABOUT THE SENIOR CITIZENS IN THEIR COMMUNITY, THE CONTACT PERSONS WERE HELPFUL IN OTHER WAYS. THEY BECAME THE MAIN SOURCE OF NAMES OF INDIVIDUALS THAT COULD BECOME TEACHER-TRAINEES, AND IN MANY CASES ARRANGED TIME AND PLACES FOR INTERVIEWS. THE

CONTACT PERSONS WERE ALSO HELPFUL IN AIDING THE SURVEY WORKERS IN LOCATING BUILDINGS AND ROOMS WHERE THE FORUMS COULD BE HELD. DUE TO THEIR KEY POSITION IN THE COMMUNITIES, THEY WERE ABLE TO GET THINGS DONE WITH A MINIMUM OF WASTED EFFORT AND TIME.

IN RETROSPECT, IT APPEARS THAT THE ADVISORY COMMITTEE APPOINTMENTS WERE CRUCIAL TO THE SUCCESS OF THE PROGRAM. BY CAREFULLY SELECTING THOSE INDIVIDUALS FOR THE ADVISORY COMMITTEE WHO WERE LEADERS IN THEIR COMMUNITIES, THE WHOLE PROJECT WAS DEVELOPED AND CARRIED OUT IN AN ATMOSPHERE OF COOPERATION AND HELPFULNESS. BECAUSE OF THE RECOMMENDATIONS OF CONTACT PERSONS IN EACH COMMUNITY BY THE ADVISORY COMMITTEE, HELP WAS OBTAINED QUICKLY AND EASILY FOR THE SURVEY WORKERS TO LOCATE TEACHER-TRAINEES AND A PLACE TO CONDUCT FORUMS. WITHOUT THESE KEY APPOINTMENTS THE PROJECT WOULD HAVE FACED PROBLEMS AND DELAYS.

## SURVEY PHASE

ONCE THE CONTACT PERSONS AND THE COMMUNITIES WERE CHOSEN, THE NEXT STEP OF THE PROJECT WAS THE SURVEY PHASE. FURTHER INFORMATION WAS NEEDED CONCERNING THE EXACT RESIDENTIAL LOCATION OF SENIOR CITIZENS IN THE COUNTY; TEACHER-TRAINEES HAD TO BE LOCATED, INTERVIEWED AND SELECTED; BUILDINGS HAD TO BE LOCATED AND APPROVAL RECEIVED TO USE THEM FOR THE FORUMS; ADDITIONAL SUBJECTS OF INTEREST TO SENIOR CITIZENS NEEDED TO BE DEFINED; AND OTHER EDUCATIONAL AND RECREATIONAL PROGRAMS AVAILABLE TO SENIOR CITIZENS ANALYZED.

FOUR FACULTY MEMBERS OF THE COLLEGE WERE SELECTED AS SURVEY WORKERS. ALL FOUR WERE EXPERIENCED IN SURVEY TECHNIQUES. THEIR EXPERIENCE HAD BEEN IN BUREAU OF THE CENSUS SURVEY WORK, URBAN AND RURAL POPULATION ANALYSIS AND STRUCTURE, AND THE SOCIOLOGY OF RURAL AND URBAN COMMUNITIES.

THE SURVEY WORKERS WERE GIVEN THE RESPONSIBILITY OF LOCATING AREAS IN THE COMMUNITIES WHERE SENIOR CITIZENS LIVED AND CONGREGATED; LOCATING AND MAKING RECOMMENDATIONS FOR TEACHER-TRAINEES; AND LOCATING AND SECURING APPROVAL FOR PLACES TO HOLD FORUMS. THE SURVEY WORKERS WERE ASSIGNED THE FOLLOWING COMMUNITIES:

BANKS B. VEST

LAKELAND AND BARTOW

LARRY L. ROUSH

LAKE WALES, FROSTPROOF, NALCREST, FEDHAVEN,  
SUNRAY

T. DAVID SEIBER

WINTER HAVEN AND HAINES CITY

DR. COOPER AND PROFESSOR BRADLEY WORKED COUNTY-WIDE AND COORDINATED THE SURVEY ACTIVITIES.

A FIRST STEP BY THE SURVEY WORKERS WAS TO LOCATE PROSPECTIVE TEACHER-TRAINEES WITH THE ASSISTANCE OF THE COMMUNITY CONTACT PERSONS. PEOPLE THAT WERE INTERVIEWED CAME FROM MANY DIFFERENT OCCUPATIONAL AREAS. RETIRED SCHOOL TEACHERS, COLLEGE PROFESSORS, RETIRED INSURANCE EXECUTIVES, RETIRED POSTAL WORKERS, RETIRED INDUSTRIAL WORKERS AND HOUSEWIVES ARE EXAMPLES OF THE BACKGROUNDS. EDUCATIONAL BACKGROUNDS EXTENDED FROM HIGH SCHOOL GRADUATES TO PHD'S.

DURING THE FIRST INTERVIEW, THE SURVEY WORKER BECAME ACQUAINTED WITH THE TEACHER-TRAINEE PROSPECTS TO DETERMINE SUCH THINGS AS MENTAL ALERTNESS, ABILITY TO EXPRESS THEMSELVES ORALLY, TRANSPORTATION FACILITIES AT THEIR DISPOSAL, POSSIBLE CONFLICTS IN THEIR SCHEDULES AND THEIR INTEREST IN ASSISTING WITH THE PROJECT. THE PROJECT WAS ALSO EXPLAINED IN DETAIL TO THE PROSPECTS, AND EXACT REQUIREMENTS FOR LEADERSHIP WERE DISCUSSED. THE INDIVIDUALS WERE ASKED TO CONSIDER THE IDEAS PRESENTED AND WERE TOLD THAT THEY WOULD BE CONTACTED BY THE SURVEY WORKER IN A FEW DAYS. THE INDIVIDUALS WERE ALSO INVITED TO CALL THE CONTACT PERSON IN THE COMMUNITY OR THE SURVEY WORKER IF THEY HAD ANY FURTHER QUESTIONS ABOUT THE PROJECT. SEVERAL DAYS LATER EACH PERSON WHO EXPRESSED AN INTEREST WAS INTERVIEWED A SECOND TIME, AND THE PROJECT WAS DISCUSSED FURTHER. THE SURVEY WORKERS FOUND DURING THESE INTERVIEWS THAT, WHEN WORKING WITH OLDER PEOPLE WHO ARE TOTALLY UNFAMILIAR WITH PROJECTS OF THIS TYPE, EXPLANATIONS HAD TO BE VERY

CLEAR AND REPEATED SEVERAL TIMES IN ORDER TO BE SURE THAT THEY UNDERSTOOD EXACTLY WHAT WAS EXPECTED OF THEM FOR THE PROJECT. IF THE PERSON WAS INTERESTED IN TEACHING AND THE SURVEY WORKER THOUGHT HE SHOULD BE CONSIDERED AS A PROSPECT, AN APPLICATION FOR EMPLOYMENT AT THE COLLEGE AS A PART-TIME INSTRUCTOR WAS GIVEN TO THE PERSON TO FILL OUT AND RETURN. IN SOME CASES THE PERSON MAILED THE APPLICATION TO THE COLLEGE WHILE IN OTHER CASES THE PERSON WANTED ANOTHER INTERVIEW TO DISCUSS THE PROGRAM WITH THE SURVEY WORKER BEFORE AN APPLICATION FOR APPOINTMENT. SOME PEOPLE WERE ELIMINATED FOR VARIOUS REASONS. SOME HAD CONFLICTS IN THEIR VACATION SCHEDULES; SOME HAD TRANSPORTATION PROBLEMS AND COULD NOT FIND RIDES TO THE COLLEGE FOR THE TRAINING SESSIONS.

THE SURVEY WORKERS ALSO HELPED DETERMINE THE TOPICS THAT WOULD BE COVERED DURING THE TEACHER TRAINING SEMINARS; THE TIME OF DAY THE SEMINARS SHOULD BE HELD; HOW LONG THE SEMINARS SHOULD RUN EACH DAY; AND HOW MANY MEETINGS PER WEEK SHOULD BE HELD. THE TOPICS FIRST CHOSEN BY THE PROJECT DIRECTOR WERE TAKEN LARGELY FROM THE WHITE HOUSE REPORT. THIS REPORT GAVE THE SURVEY WORKERS A STARTING POINT FOR DISCUSSION, AND THE TEACHER-TRAINEES WERE QUITE FRANK IN THEIR DISCUSSIONS ABOUT THESE TOPICS. MEDICARE WAS IN ALMOST EVERY INSTANCE ONE OF THE TOPICS THEY CONSIDERED TO BE A NECESSITY. THEY DID NOT WANT TO DISCUSS HANDICRAFTS AND HOBBIES. THE TEACHER-TRAINEES FELT THAT TWICE-A-WEEK SEMINARS WHICH MET IN THE AFTERNOON WOULD BE THE BEST MEETING SCHEDULE. THE SEMINARS, IN THEIR OPINION,

SHOULD NOT LAST ANY LONGER THAN TWO HOURS. THEY DID NOT WANT TO MEET AT NIGHT DUE TO THE PROBLEMS INVOLVED IN DRIVING RELATIVELY LONG DISTANCES. ON THE BASIS OF THE INFORMATION GIVEN TO THE SURVEY WORKERS BY THE TEACHER-TRAINEES, THE PROJECT DIRECTOR WAS ABLE TO SCHEDULE THE SERIES OF TRAINING SEMINARS THAT MET WITH THE APPROVAL OF THE ENTIRE GROUP. PART OF THE SUCCESS OF THE PROJECT WAS DUE TO THE WILLINGNESS OF THE PROJECT DIRECTOR TO ARRANGE THE SEMINAR SCHEDULE TO THE TIMES THE TRAINEES WANTED.

BY THE TIME THE TEACHER-TRAINING SEMINARS STARTED ON MAY 16TH, 24 TEACHER-TRAINEES HAD BEEN SELECTED. THE DAY THE SESSIONS BEGAN A LADY FROM HAINES CITY FELL AND BROKE HER HIP. SINCE THE OTHER TRAINEE SELECTED FROM HAINES CITY DEPENDED UPON THIS LADY FOR TRANSPORTATION, HE COULD NOT ATTEND THE TRAINING SESSIONS. THREE OTHERS DROPPED OUT AFTER THE FIRST SESSION DUE TO FAMILY ILLNESSES. CONSEQUENTLY, 19 OUT OF 24 COMPLETED THE TRAINING SESSIONS. (APPENDIX B)

CONCURRENTLY WITH THE INTERVIEWING AND SELECTION OF TEACHER-TRAINEES, THE SURVEY WORKERS LOCATED AND OBTAINED PLACES FOR THE FORUMS TO BE HELD. THE CONTACT PERSON AGAIN WAS HELPFUL IN NARROWING DOWN THE LIST OF POSSIBLE SITES. IN EVERY COMMUNITY THERE WAS A DISTINCT WILLINGNESS TO OFFER FACILITIES AVAILABLE FOR MEETING PLACES. PEOPLE CONTACTED BY THE SURVEY WORKERS HELPED IN EVERY WAY TO SCHEDULE AND ARRANGE THE ROOM TO FIT THE NEEDS OF THE PROJECT. PLACES OFFERED FOR USE WERE CHURCHES, ELEMENTARY SCHOOLS, TRAILER COURT AUDITORIUMS AND RECREATION CENTERS. DUE TO THE

ATTITUDE OF THE PEOPLE IN THESE COMMUNITIES, THE LOCATION OF A PLACE TO HOLD THE FORUMS WAS THE MOST EASILY ACHIEVED OBJECTIVE OF THE SURVEY WORKERS. (APPENDIX C)

AS THE SURVEY WORKERS WORKED IN THEIR COMMUNITIES, IT WAS SOON APPARENT THAT THEY WERE DEALING WITH AN EXTREMELY VARIED AND COMPLICATED POPULATION. SOME COMMUNITIES HAD A WELL DEVELOPED AND OPERATED TOURIST CLUB THAT PROVIDED RECREATION FOR SENIOR CITIZENS. CARD PLAYING, CHECKERS AND SHUFFLEBOARD SEEMED TO BE THE MOST POPULAR RECREATION ACTIVITIES. IN ONE CASE, IT WAS EVIDENT THAT ANY PROGRAM THE PROJECT WOULD ATTEMPT WOULD BE A DUPLICATION OF THE CLUB'S PRESENT EFFORTS. THIS CLUB WAS HIGHLY ORGANIZED WITH BOTH RECREATIONAL AND EDUCATIONAL PROGRAMS. IN OTHER AREAS THE TOURIST CLUBS OPERATED PRIMARILY DURING THE WINTER MONTHS AND WERE CONCERNED MAINLY WITH RECREATIONAL PROGRAMS. THE RETIREMENT VILLAGES HAD FORMAL RECREATIONAL AND EDUCATIONAL PROGRAMS WHICH DID NOT COVER THE TOPICS PROPOSED BY THE PROJECT. SOME PERSONS DID NOT WISH TO PARTICIPATE IN A SCHEDULED PROGRAM OF FORUMS. SOME COMMUNITIES HAD AN EDUCATED AND ARTICULATE POPULATION WHILE OTHER COMMUNITIES HAD A POPULATION OF THE LOWER EDUCATIONAL AND SOCIO-ECONOMIC LEVEL. BY THE TIME THE SURVEY PHASE WAS COMPLETED, IT WAS EVIDENT THAT NO ONE PLAN OF TOPICS, MEETING TIMES, PLACES OF MEETING OR DURATION OF FORUMS COULD BE APPLIED COUNTY WIDE. EACH TEACHER-TRAINEE OR TRAINEE-TEAM NEEDED TO TAILOR THE FORUMS TO FIT THE COMMUNITY, AND THE INFORMATION PROVIDED BY THE SURVEY WORKERS AND CONTACT PERSONS AIDED THE TRAINEES IN DEVELOPING HIGHLY INDIVIDUAL PROGRAMS TO SERVE THE VARYING NEEDS OF EACH COMMUNITY.



WHEN THE PROSPECTIVE TEACHER-TRAINEE WAS INVITED TO PARTICIPATE IN THE PROJECT, HE COMPLETED A POLK JUNIOR COLLEGE APPLICATION FOR EMPLOYMENT. TRAINEES ACCEPTED WERE THEN APPOINTED TO THE PART-TIME STAFF OF THE COLLEGE BY THE POLK COUNTY BOARD OF PUBLIC INSTRUCTION AND WERE ISSUED COLLEGE FACULTY CAR IDENTIFICATION DECALS. THESE PROCEDURES HAD THE EFFECT OF MAKING THEM FEEL THEY WERE A DISTINCT PART OF THE TOTAL COLLEGE PROGRAM AND ENHANCED THE PRESTIGE OF THE TRAINEE, THE PROJECT, AND THE COLLEGE IN THEIR RESPECTIVE COMMUNITIES.

## TEACHER-TRAINEE SEMINAR PHASE

THE FIRST TEACHER-TRAINING SEMINAR WAS HELD ON THE AFTERNOON OF MAY 16TH. THIS PHASE OF THE PROGRAM WAS A NEW EXPERIENCE FOR ALL THE PEOPLE INVOLVED IN THE PROJECT, AND CONSIDERABLE THOUGHT, PREPARATION AND REVISION HAD GONE INTO THE PLANNING OF THESE SEMINARS. PROBLEMS CENTERED AROUND TIME AND DURATION OF SEMINARS WERE SOLVED ON THE BASIS OF INFORMATION OBTAINED BY THE SURVEY TEAM AND THE CONTACT PERSONS.

THE SELECTION AND SEQUENCE OF TOPICS TO PRESENT TO THE TRAINEES UNDERWENT CONSIDERABLE REVISION FROM THE PRELIMINARY TOPICS SELECTED. IN ADDITION TO THE WHITE HOUSE REPORT, REPORTS FROM UNIVERSITIES WERE USED FOR BACKGROUND INFORMATION. THE U. S. DEPARTMENT OF HEALTH, EDUCATION AND WELFARE, WELFARE ADMINISTRATION, OFFICE OF AGING IN ATLANTA SUPPLIED THE STAFF WITH MATERIALS TO HELP THEM SELECT TOPICS FOR DISCUSSION. SEMINAR PLANS WERE TENTATIVE BECAUSE NO ONE KNEW WHAT THE NEEDS OR DESIRES OF POLK COUNTY SENIOR CITIZENS WOULD BE, BUT THE STAFF FELT THAT SOME TOPICAL STRUCTURE WAS REQUIRED. FOLLOWING IS A LIST OF THE TOPICS THAT WERE FINALLY SELECTED:

|                        |                                                                                                                                             |                                                                                 |
|------------------------|---------------------------------------------------------------------------------------------------------------------------------------------|---------------------------------------------------------------------------------|
| SESSION I<br>MAY 16    | INTRODUCTION, INSPIRATION,<br>EXPLANATION, ORIENTATION.                                                                                     | DR. LOUIS H. MEETH                                                              |
| SESSION II<br>MAY 18   | THE PSYCHOLOGY OF AGING                                                                                                                     | DR. EARLE EMME                                                                  |
| SESSION III<br>MAY 23  | COUNSELING, ADVISORY AND<br>THERAPEUTIC SERVICE AVAILABLE<br>TO RETIREES.                                                                   | DR. JANE CARVER                                                                 |
| SESSION IV<br>MAY 25   | HOME SAFETY AND ACCIDENT PRE-<br>VENTION. AUTOMOBILE SAFETY<br>AND INSURANCE.                                                               | MR. THOMAS MURRAY<br>MR. MERRILL GRAFTON<br>MRS. RUTH EAGLE<br>MR. MARVIN BRICE |
| SESSION V<br>MAY 30    | EYES AND THEIR CARE                                                                                                                         | DR. RICHARD M. COPENHAVER                                                       |
| SESSION VI<br>JUNE 1   | SOCIAL SECURITY                                                                                                                             | MR. WILLIAM E. ARNOLD                                                           |
| SESSION VII<br>JUNE 6  | WHEN AND HOW TO SEE A LAWYER.<br>WILLS, LEGACIES, AND TRUSTS                                                                                | MR. JERRY DEVANE<br>MR. BILL FREEMAN                                            |
| SESSION VIII<br>JUNE 8 | MEDICAL NEEDS.                                                                                                                              | DR. ARTHUR J. MOSELEY                                                           |
| SESSION IX<br>JUNE 13  | ADEQUATE HOUSING IN RETIRE-<br>MENT. SUPPLEMENTAL INCOME<br>FOR RETIREES. LIVING ON A<br>SET INCOME. GENERAL CHANGING<br>FAMILY SITUATIONS. | MRS. ATHLYN HODGES                                                              |
| SESSION X<br>JUNE 15   | TO BE DEVELOPED BY PARTICI-<br>PANTS.                                                                                                       |                                                                                 |

IN THE EARLY DISCUSSIONS CONCERNING CONSULTANTS THE STAFF FELT THAT THE CONSULTANT SHOULD BE ABOUT THE SAME AGE AS THE TEACHER-TRAINEES. HOWEVER, REFERENCES TO THIS PROBLEM IN OTHER STUDIES RELATIVE TO SENIOR CITIZENS REVEALED THAT THE TRAINEES DID NOT NECESSARILY PREFER TO HAVE INSTRUCTORS WHO WERE THE SAME AGE OR OLDER. THE RESULTS OF THIS PROJECT SUBSTANTIATE THESE FINDINGS. SOME OF THE MOST VIGOROUS DISCUSSIONS ENSUED BECAUSE OF THE TOPIC RATHER THAN THE SPEAKER'S AGE. IT WAS FOUND THAT THE TRAINEES RELATED WELL TO CONSULTANTS WHO WERE YOUNGER THAN THEMSELVES. THE TRAINEES REACTED POSITIVELY TO SUCH YOUNGER SPEAKERS AS DR. JANE CARVER, DR. RICHARD COPENHAVER AND MR. THOMAS MURRAY. CONSULTANTS WERE RESPECTED SINCE THEY HAD ATTAINED EMINENCE IN THEIR OWN FIELD AND WERE RECOGNIZED IMMEDIATELY BY THE TRAINEES AS BEING COMPETENT. CONSULTANTS DR. LOUIS MEETH AND DR. EARLE EMME WERE ABOUT THE SAME AGE AS THE TRAINEES, AND THE GROUP ALSO REACTED FAVORABLY TO THEIR PRESENTATIONS. IT BECAME EVIDENT THAT THE TEACHER-TRAINEES SOUGHT KNOWLEDGE WHICH THEY COULD USE IN THE FORUMS, AND THE AGE OF THE CONSULTANT HAD NOTHING TO DO WITH THE TRAINEE'S RESPONSE TO THE CONSULTANT'S PRESENTATION.

THE FIRST MEETING ON MAY 16TH WAS DESIGNED TO INTRODUCE THE PROGRAM TO THE GROUP, AND PROVIDE INSPIRATION AND ORIENTATION SO THE SEMINAR SESSIONS COULD BEGIN ON A HIGH NOTE OF ENTHUSIASM. A TIME WAS SET ASIDE FOR PUNCH AND COOKIES, COMPLIMENTS OF THE COLLEGE, TO CREATE AN ATMOSPHERE OF INFORMALITY SO THAT THE TRAINEES COULD BECOME ACQUAINTED WITH THEIR FELLOW TRAINEES. HOWEVER, ENOUGH TIME WAS NOT ALLOTTED FOR THIS PURPOSE AND FOR

THE FIRST SEVERAL SESSIONS THE TRAINEES WERE STILL NOT WELL ENOUGH ACQUAINTED TO PARTICIPATE FREELY IN DISCUSSIONS. THE STAFF NOW FEELS THAT MORE UNSCHEDULED TIME SHOULD HAVE BEEN PROVIDED DURING THE FIRST SESSIONS TO QUICKLY ESTABLISH PERSONAL INTERACTION AMONG THE TRAINEES. SOME PROBLEMS INVOLVING PERSONAL RELATIONSHIPS CONCERNS THE GENERAL LACK OF KNOWLEDGE PEOPLE HAVE ABOUT THEIR HOME COUNTRY. FOR EXAMPLE, SEVERAL OF THE TEACHER-TRAINEES WERE FROM FEDHAVEN AND NALCREST WHICH ARE RETIREMENT COMMUNITIES IN SOUTHEAST POLK COUNTY. THE RESIDENTS ARE EXTREMELY PROUD OF WHAT HAS BEEN ACCOMPLISHED IN THE DECADE SINCE THESE COMMUNITIES HAVE BEEN ESTABLISHED. THEY WERE QUITE EAGER TO INFORM THE OTHER TRAINEES ABOUT THEIR COMMUNITIES. OTHER TRAINEES IN THE GROUP WHO HAD LIVED IN THE COUNTY FOR YEARS WERE NOT AWARE THAT THESE RETIREMENT COMMUNITIES EXISTED.

WITH EACH SUCCEEDING SEMINAR THERE WAS A DISTINCT INCREASE IN THE AMOUNT OF PERSONAL COMMUNICATION AMONG THE TRAINEES AND CONSULTANTS. TRAINEES WERE A LITTLE RELUCTANT TO TALK AT FIRST, A LITTLE SHY PERHAPS, BUT THEY SOON GOT OVER THIS AND BEGAN TO TALK, NOT ONLY WITH THE DIRECTORS AND THE CONSULTANTS, BUT WITH THEIR FELLOW TRAINEES. FOR THE MOST PART, THESE TRAINEES DID NOT PRESENT THE STEROTYPE OF THE CLOSED-MIND SO OFTEN ATTRIBUTED TO SENIOR CITIZENS. THEY WERE PERFECTLY WILLING TO HEAR WHAT SOMEONE HAD TO SAY. THEY WERE WILLING TO LISTEN TO OTHER IDEAS, AND THEIR OWN IDEAS WERE FRESH AND USEFUL. THEY WERE ACTIVE, ALERT AND THEIR ENTHUSIASM CARRIED OVER TO THEIR LOCAL FORUMS.

SOON AFTER THE SEMINARS STARTED THE PROJECT STAFF DETERMINED THAT 10 SEMINARS WOULD NOT BE ENOUGH. PERMISSION WAS ASKED AND THE BOARD OF REGENTS APPROVED THE ADDITION OF TWO SEMINARS TO BE USED TO HELP THE TRAINEES PLAN THE FIRST SEVERAL FORUMS THEY WOULD CONDUCT.

THE LAST THREE SEMINARS WERE THEN USED TO PREPARE THE TRAINEES IN THE MECHANICS OF PLANNING AND ORGANIZING FORUMS THEY WOULD CONDUCT IN THEIR COMMUNITIES. THERE WAS SOME FEELING OF INSECURITY AMONG THE GROUP AS THE TIME APPROACHED FOR THEM TO CONDUCT FORUMS OF THEIR OWN. THE PROJECT STAFF CAREFULLY HELPED THE TRAINEES PLAN THE FIRST TWO OR THREE FORUMS. NEWS RELEASES WERE WRITTEN; DISCUSSION QUESTIONS FORMULATED; AND TIMES TO HOLD THE FORUMS WERE CHOSEN. (APPENDIX D) A STEP BY STEP SEQUENCE OF PRESENTING MATERIAL WAS OUTLINED, WITH POSSIBLE DIFFICULTIES THAT MIGHT ARISE WITH PARTICIPANTS (SUCH AS THE PERSON THAT WANTS TO TALK AND MONOPOLIZE THE FORUM). THE TRAINEES ALSO PRACTICED ON EACH OTHER IN CONDUCTING A FORUM. THESE LAST THREE SEMINARS WERE VITALLY IMPORTANT IN PROVIDING THE TRAINEES WITH THE SELF-CONFIDENCE NEEDED WHEN THEY WENT OUT ON THEIR OWN.

DURING THE LAST TWO WEEKS OF THE SEMINARS, THE PROJECT DIRECTOR, SURVEY WORKERS AND STAFF DEVELOPED A BROCHURE DESCRIBING THE ENRICHMENT PROGRAM FOR RETIREES THAT INCLUDED A PORTION THAT THE READER COULD TEAR OFF AND MAIL TO THE COLLEGE. THE BROCHURE LISTED NAMES OF FORUM LEADERS TO CONTACT, AND A CHECK LIST OF TOPICS THEY WERE INTERESTED IN FOR THE FORUMS.

THESE BROCHURES WERE PLACED IN STRATEGIC LOCATIONS THROUGHOUT THE COUNTY BY TRAINEES AND SURVEY WORKERS. A COPY OF THE BROCHURE IS ATTACHED AS APPENDIX E.

EARLY IN THE DISCUSSION PHASE OF THE TEACHER-TRAINEE SEMINARS, THE STAFF FELT THAT THE TRAINEES WOULD BE TEACHING THE ACTUAL CONTENT OF THE TOPICS CHOSEN. HOWEVER, IT SOON BECAME APPARENT THAT THE TECHNICAL NATURE OF MANY OF THE TOPICS WAS BEYOND THE CAPABILITY OF PRESENTATION BY THE TRAINEES. THE ROLE OF THE TRAINEE WAS THEN SWITCHED FROM ONE OF A TEACHER OF CONTENT TO THAT OF FORUM COORDINATOR AND DISCUSSION LEADER. THE LECTURES AND DEMONSTRATIONS WOULD BE HANDLED BY CONSULTANTS. IT WAS IN THE SCHEDULING OF THE CONSULTANTS THAT ONE OF THE BIGGEST OBS OF THE PROJECTS EVOLVED.

ONCE THE DECISION WAS MADE TO HAVE THE CONTENT HANDLED BY CONSULTANTS, A POLICY DECISION ON HOW TO ADMINISTER THE SCHEDULING OF CONSULTANTS HAD TO BE MADE. TWO ALTERNATIVES WERE DISCUSSED AT LENGTH. ONE OF THE POLICIES DISCUSSED WAS FOR EACH OF THE LEADERS TO HANDLE THE SCHEDULING OF CONSULTANTS FOR HIS FORUMS. THIS ALTERNATIVE WAS REJECTED WHEN CONSULTANTS REQUESTED THAT ONE PERSON SCHEDULE FORUM REQUESTS TO AVOID CONFUSION. ALL REQUESTS FOR CONSULTANTS WERE SCHEDULED THROUGH THE PROJECT DIRECTOR'S OFFICE. A CHART WAS KEPT OF ALL FORUMS AND TOPICS, AND THE PROJECT DIRECTOR MADE THE NECESSARY CALLS TO ARRANGE FOR CONSULTANTS TO BE AT THE COMMUNITY CENTER WHEN NEEDED BY THE TRAINEE (NOW TERMED "FORUM LEADER").

THIS PLACED A HEAVY BURDEN ON THE PROJECT DIRECTOR, BUT THE SYSTEM DID PROVIDE EFFICIENT SCHEDULING AND CONFIRMATION OF CONSULTANTS THROUGHOUT THE TIME THE LOCAL FORUMS WERE IN OPERATION. THE SAME PROCEDURE WOULD BE FOLLOWED AGAIN UNDER SIMILAR CIRCUMSTANCES.

THE FINAL SEMINAR SESSION WAS USED TO DISCUSS ANY REMAINING PROBLEMS, AND A GRADUATION CEREMONY WAS HELD FOR THOSE COMPLETING THE SEMINARS. THE PRESIDENT OF THE COLLEGE MADE THE PRESENTATION OF A CERTIFICATE OF COMPLETION TO EACH GRADUATE (APPENDIX F); THE TRAINEES TOOK PHOTOGRAPHS OF EACH OTHER; AND PHOTOGRAPHS WERE TAKEN FOR LOCAL NEWSPAPERS. THE SEMINAR SESSIONS CLOSED ON A HIGH NOTE OF ENTHUSIASM AND SELF-CONFIDENCE ON THE PART OF THE LEADERS. (APPENDIX G)

IN SUMMARY, SOME OF THE MOST VITAL FACETS OF THIS PHASE WERE THE APPOINTMENT OF FORUM LEADERS TO THE COLLEGE PART-TIME FACULTY; THE PUBLICITY GIVEN BY LOCAL NEWSPAPERS, AND THE GRADUATION CEREMONY. (SEVERAL OF THESE LEADERS HAD NEVER ATTEMPTED ANYTHING OF THIS MAGNITUDE. THIS HAD MANIFESTED ITSELF IN THE INSECURITY THEY FELT IN THE EARLY SEMINARS.) THE STAFF THEN FELT THE LEADERS COULD CONDUCT FORUMS IN THEIR COMMUNITIES WITH CONFIDENCE.



## COMMUNITY FORUM PHASE

THE FIRST FORUM WAS HELD IN LAKELAND ON JULY 7, 1967, AND THE LAST FORUM WAS HELD IN LAKELAND ON NOVEMBER 6, 1967. THE CHIEF CHARACTERISTIC OF THE FORUMS WAS THAT EACH FORUM LEADER DEVELOPED A SERIES OF PROGRAMS THAT MET THE NEEDS OF HIS COMMUNITY GROUP. THE SIZE OF THE GROUPS RANGED FROM 10 TO 100 PARTICIPANTS AT THE SESSIONS. SOME FORUMS WERE HELD IN THE MORNING, SOME IN THE AFTERNOON AND OTHERS AT NIGHT. DUE TO THE TIME OF THE YEAR, SOME FORUM LEADERS COULD ARRANGE ONLY SIX SESSIONS, WHILE IN OTHER AREAS 15 OR 16 FORUMS WERE SCHEDULED. ONCE THE FORUM LEADERS STARTED THEIR OWN GROUPS, THE LAST THREE TEACHER-TRAINING SEMINARS PROVED THEIR VALUE TO THE LEADER. EACH GROUP, EACH LEADER, EACH COMMUNITY HAD ITS OWN UNIQUE CHARACTERISTICS, AND THE SUCCESS OF THE PROGRAM WAS DUE IN LARGE PART TO THE ABILITY OF THE FORUM LEADERS TO ADJUST TO THEIR OWN PARTICULAR SITUATION.

THE FORUM LEADERS MET A VARIETY OF PROBLEMS, AND IN EACH CASE WERE ABLE TO MAKE THE NECESSARY ADJUSTMENTS. ONE FORUM LEADER KNEW OF SEVERAL SHUT-INS AND MADE INDIVIDUAL PRESENTATIONS OF SOME OF THE TOPICS SO THAT PEOPLE WHO COULD NOT GET OUT OF THE HOUSE COULD BENEFIT IN PART FROM THIS PROGRAM. ANOTHER FORUM LEADER AND HIS WIFE PROVIDED TRANSPORTATION TO FORUMS FOR SEVERAL PEOPLE WHO WISHED TO PARTICIPATE BUT DID NOT HAVE TRANSPORTATION. FORUM LEADERS WERE PREPARED TO CARRY ON IN CASE A CONSULTANT WAS NOT ABLE TO ARRIVE AT THE MEETING ON TIME. THE ABILITY OF THESE

LEADERS TO MAKE THESE ADJUSTMENTS RELATED DIRECTLY TO TRAINING RECEIVED AT THE SEMINARS, AND THE SELF-CONFIDENCE THE LEADERS FELT AS THEY COMPLETED THE TRAINING PHASE.

ALL OF THE GROUPS SELECTED MOST OF THE TOPICS THEY WANTED FOR THEIR FORUMS. THE FIRST TWO OR THREE FORUM TOPICS WERE CHOSEN BY THE FORUM LEADER AND WERE TOPICS THE LEADER FELT THE GROUP WOULD BE INTERESTED IN LEARNING ABOUT. ONCE THE PARTICIPANTS WERE ASKED FOR THEIR CHOICES OF TOPICS, TWO MAIN AREAS OF INTEREST WERE DETECTED. ONE GROUP OF TOPICS WAS RELATED TO HEALTH PROBLEMS. ALL PARTICIPANTS WANTED TO KNOW HOW SOCIAL SECURITY AND MEDICARE OPERATED, ESPECIALLY ELIGIBILITY REQUIREMENTS AND HOW TO FILE FOR BENEFITS. THEY ALSO EXHIBITED GREAT CONCERN FOR SPECIFIC MEDICAL PROBLEMS. EYES AND THEIR CARE WAS AN EXTREMELY IMPORTANT TOPIC FOR SENIOR CITIZENS. A DISCUSSION OF CATARACTS, THE MEDICAL PROCEDURE FOR THEIR REMOVAL, AND THE CARE OF THE EYES WAS ONE OF THE MOST INTERESTING TOPICS. A SECOND GROUP OF TOPICS CENTERED AROUND SUCH CULTURALLY BROADENING THEMES AS FLORIDA HISTORY, BIRDS OF FLORIDA, INTERNATIONAL RELATIONS, CURRENT EVENTS, DEFENSIVE DRIVING AND AN ANALYSIS OF THE 1967 FLORIDA LAWS ON DRIVING.

GENERALLY, THE PARTICIPANTS RESPONDED MOST FAVORABLY TO THE SPEAKER WHO WAS INFORMAL AND ESTABLISHED A RAPPORT WITH THE GROUP. THE MORE OPEN THE SPEAKER WAS TO QUESTIONING, THE MORE LIKELY THE GROUP WAS TO SHOW INTEREST. IN SOME CASES THE GROUP STAYED AS LONG AS THREE HOURS TO QUESTION A

PARTICULAR SPEAKER THEY LIKED. ON THE OTHER HAND, THE MORE FORMAL AND HIGHLY STRUCTURED THE PRESENTATION, THE LESS RESPONSE FROM THE PARTICIPANTS.

AS FAR AS THE PHYSICAL FACILITIES OF THE MEETING PLACES ARE CONCERNED, TWO SIGNIFICANT POINTS FOR FUTURE PROGRAMS CAN BE NOTED. FIRST, THE SPEAKER SHOULD USE A MICROPHONE AND LOUDSPEAKER SYSTEM. MANY OF THE SENIOR CITIZENS HAVE HEARING PROBLEMS, AND IF THEY CANNOT HEAR THE SPEAKER, THEY GET UP AND LEAVE THE ROOM. THE SECOND POINT THAT SHOULD BE NOTED IS THAT ANY VISUAL AIDS USED SHOULD BE PREPARED WITH THE SIGHT PROBLEMS OF SENIOR CITIZENS IN MIND.

THE PROFESSIONAL GROUPS OF THE COUNTY WENT OUT OF THEIR WAY TO CO-OPERATE WITH THE PROJECT DIRECTOR IN LOCATING AND SCHEDULING CONSULTANTS. (APPENDIX H) MANY TIMES, PHYSICIANS, ATTORNEYS, BANKERS, AND OTHER PROFESSIONAL PEOPLE LEFT THEIR OFFICES DURING WORKING HOURS AND DROVE ACROSS THE COUNTY TO MAKE A PRESENTATION TO A FORUM. IN NO CASE DID THE PROJECT DIRECTOR HAVE A CONSULTANT TURN DOWN A REQUEST TO SPEAK. THE SOCIAL SECURITY OFFICE IN LAKELAND WAS ALWAYS WILLING TO PROVIDE CONSULTANTS, AND EVERY FORUM LEADER SCHEDULED PEOPLE FROM THIS OFFICE. CONSULTANTS WERE UNANIMOUS IN THEIR PRAISE OF THE PROJECT AND OF THE CONTACTS THEY HAD WITH THESE GROUPS OF SENIOR CITIZENS. IF THE CONSULTANT HAD ANY DOUBTS ABOUT THE ALERTNESS AND ABILITY OF SENIOR CITIZENS TO UNDERSTAND THE TOPICS PRESENTED, THESE DOUBTS WERE IMMEDIATELY DISPELLED BY THE PARTICIPANTS. WHEN THEY ARE INTERESTED, SENIOR CITIZENS MAKE EXCELLENT LISTENERS AND PARTICIPATE BY ASKING INTELLIGENT QUESTIONS OF THE CONSULTANTS.

THE FORUM PHASE OF THE PROJECT EXCEEDED ALL EXPECTATIONS OF THE PROJECT STAFF. DUE TO THE TIME OF THE YEAR, THE STAFF HAD FELT THAT ONLY A LIMITED NUMBER OF PEOPLE WOULD BE AVAILABLE TO ATTEND THE FORUMS. SINCE THIS WAS A PILOT PROJECT, NO ATTEMPT WAS MADE TO HAVE LARGE NUMBERS. IT SEEMED DESIRABLE TO HAVE AN ATTENDANCE OF 15 TO 20 PARTICIPANTS. HOWEVER, ONCE THE PROGRAMS STARTED, AND THE ATTENDANCE AT SOME MEETINGS JUMPED TO 100, THE IDEA OF LIMITED PARTICIPATION WAS QUICKLY DISPELLED. FORUM REPORTS INDICATE ABOUT 500 SENIOR CITIZENS ATTENDED THE SESSIONS ON A REGULAR BASIS. AN ESTIMATE OF DROP-IN ATTENDANCE FOR ONE OR TWO MEETINGS WOULD RAISE THE TOTAL TO ABOUT 600. THE FORUMS PROVED TO BE AN UNQUALIFIED SUCCESS AND TO POINT OUT THE NEED FOR COMMUNITY JUNIOR COLLEGES TO INITIATE AND CONTINUE PROGRAMS OF THIS TYPE FOR THEIR SENIOR CITIZENS WHO HAVE LITTLE IN THE WAY OF RECOGNITION AND INVOLVEMENT IN THEIR COMMUNITY.

## RECOMMENDATIONS

COMMENTS AND SUGGESTIONS RECEIVED FROM ALL WHO PARTICIPATED IN ANY MANNER IN THE TOTAL PROGRAM ARE USED AS THE BASIS OF THE FOLLOWING RECOMMENDATIONS.

1. THERE IS AN EXPRESSED NEED FOR THE CONTINUATION ON A PERMANENT BASIS OF THIS TYPE OF PROGRAM.

"THE PROGRAM WAS CARRIED OUT WITH SUCCESS. THE SPEAKERS WERE RICH IN INFORMATION AND THE MEMBERS OF THE GROUP WERE GREATLY HELPED. MANY EXPRESSED THE DESIRE THAT A PERMANENT ORGANIZATION WOULD BE SET UP IN THE COMMUNITIES SO THAT OLDER CITIZENS WOULD HAVE AN OPPORTUNITY TO LEAD A BETTER AND A PROFITABLE ENRICHED LIVLIHOOD THAN HERETOFORE."

"WE NEED SOMETHING LIKE THIS."

"THE IMPACT UPON THE LIVES OF THOSE WHO ATTENDED CANNOT BE MEASURED."

"I HAVE FELT THAT THE FORUMS DID A GREAT DEAL OF GOOD FOR THIS LONELY GROUP OF SHUT-INS. THEY ARE A PATHETIC GROUP BECAUSE OF THEIR AGES AND FRAILTY. THE SPEAKERS BROUGHT NOT ONLY GOOD ADVICE, BUT A CONTACT WITH THE OUTSIDE WORLD WHICH THEY NEEDED."

"IT WAS DIFFICULT TO GET AWAY FROM THE GROUPS TO WHOM I SPOKE. IT IS MY OPINION THAT A PROGRAM OF THIS SORT SHOULD BE MADE A PERMANENT PART OF THE SERVICES RENDERED BY POLK JUNIOR COLLEGE."

"WE ARE NOW READY FOR A MORE ENRICHED TYPE OF PROGRAM INCLUDING SUCH TOPICS AS LITERATURE, PHILOSOPHY, ART AND SO FORTH."

2. USE RETIREES AS SCHOOL AND COMMUNITY RESOURCE PERSONS.

MANY RETIREES HAVE VOLUNTEERED THEIR SERVICES TO THE EDUCATIONAL SYSTEM AND COMMUNITY GROUPS AS RESOURCE PERSONS COMMENSURATE WITH THEIR EXPERIENCE AND BACKGROUND. MANY ARE WELL EDUCATED, HAVE TRAVELED EXTENSIVELY, AND HAVE PARTICULAR INTERESTS WHICH COULD BE A MEANS TO ENHANCE THE WORK OF EDUCATIONAL AND COMMUNITY GROUPS.

3. THE COLLEGE SHOULD CONDUCT IN-DEPTH STUDIES IN THE COUNTY TO DETERMINE EDUCATIONAL NEEDS OF MANY GROUPS NOT NOW BEING SERVED IN ANY MANNER.

INHERENT HERE IS THE FURTHERING OF THE PHILOSOPHY OF THE COLLEGE AS AN INSTITUTION OF THE TOTAL COMMUNITY SERVING IT'S MEMBERS BY BOTH ON AND OFF-CAMPUS COURSES, FORUMS, LECTURES AND OTHER SERVICES.

4. PROGRAMS FOR CIVIC PARTICIPATION AND POLITICAL AWARENESS HAVE BEEN IDENTIFIED AS NEEDS BY THE NEGRO COMMUNITY.
5. THE COLLEGE SHOULD INVESTIGATE AND ACT AS A CLEARING HOUSE FOR ALL TYPES OF NEEDED COUNTY-WIDE SERVICES FOR ITS CITIZENS.
6. THE COLLEGE CAN USE THE SERVICES OF THE TRAINEES AND PARTICIPANTS TO IDENTIFY EDUCATIONAL NEEDS AND SERVICES IN THE VARIOUS COMMUNITIES WHICH MAY BE SERVED BY COLLEGE FACILITIES.
7. IN ANY PROGRAM WHERE LEADERS ARE TO BE TRAINED, IT IS IMPERATIVE THAT SUFFICIENT TIME AND A PLANNED PROGRAM BE DEVELOPED TO HAVE THESE PEOPLE BECOME WELL ACQUAINTED TO THE END THAT GREATER RAPPORT AND INTERACTION BE ESTABLISHED EARLY IN THE PROGRAM.
8. IT WOULD SEEM THAT THE COLLEGE MIGHT PLAN SOME PROCEDURE TO CONDUCT AND KEEP UP-DATED A COUNTY POPULATION ANALYSIS IN ORDER TO PROJECT VARIOUS GROUPS WHICH COULD BENEFIT FROM SERVICES RENDERED BY THE COLLEGE.
9. ARRANGE ANY FURTHER SENIOR CITIZEN PROGRAMS TO COINCIDE WITH THE TIME THE MAJORITY OF THESE PEOPLE ARE IN RESIDENCE.
10. IT IS RECOMMENDED THAT THE PERSONAL INTERVIEW TECHNIQUE BE USED FOR THE DEVELOPMENT OF ANY PROGRAM OF THIS TYPE AS MORE IS GAINED BY DISCUSSION THAN THROUGH THE USE OF CHECK LISTS OR QUESTIONNAIRES.
11. FLEXIBILITY TO STRUCTURE AND MAINTAIN LOCAL FORUM PROGRAMS IS ESSENTIAL TO ENABLE LEADERS TO PROCEED IN ACCORDANCE WITH COMMUNITY AND PARTICIPANT NEEDS.
12. THE STRUCTURING OF LOCAL FORUM OR OTHER PROGRAMS SHOULD BE DONE WITH THE ASSISTANCE OF THE PARTICIPANTS RATHER THAN BEING DONE BY ONE OR TWO PERSONS.
13. IT HAD BEEN THE FEELING OF THE PROJECT STAFF THAT PERHAPS A TWO-HOUR PROGRAM WOULD BE AMPLE. HOWEVER, IN MOST CASES, SESSIONS TENDED TO CONTINUE MUCH LONGER DUE TO THE HIGH INTEREST OF THOSE ATTENDING. MEETINGS SHOULD BE KEPT OPEN-ENDED FOR GROUP PARTICIPATION.

14. IN CERTAIN SOCIO-ECONOMIC AREAS IT BECAME EVIDENT A NEED EXISTED FOR PROVISION TO BE MADE FOR THE TEACHING OF FUNDAMENTAL READING AND WRITING SKILLS.
15. IT IS RECOMMENDED THAT TAPE RECORDINGS ON VARIOUS SUBJECTS BE MADE BY THE COLLEGE STAFF MEMBERS AND FORUM CONSULTANTS AND MAKE THESE TAPES AND TAPE RECORDERS AVAILABLE TO PARTICIPANTS OR INTERESTED SENIOR CITIZENS ON A LOAN BASIS.

APPENDIX A

SELECTED POPULATION STATISTICS, POLK COUNTY, 1960

AGE CHARACTERISTICS OF POLK COUNTY, BY DIVISION, 1960

|                                            | <u>TOTAL<br/>POPULATION</u> | <u>OVER 65</u> | <u>NON-WHITE<br/>POPULATION</u> | <u>NON-WHITE<br/>OVER 65</u> |
|--------------------------------------------|-----------------------------|----------------|---------------------------------|------------------------------|
| POLK COUNTY                                | 195,139                     | 19,807         | 36,132                          | 1,942                        |
| BARTOW                                     | 12,849                      | 1,009          | 4,170                           | 264                          |
| LAKELAND                                   | 41,350                      | 5,877          | 8,566                           | 582                          |
| WINTER HAVEN                               | 16,277                      | 2,021          | 3,810                           | 170                          |
| AUBURNDALE                                 | 5,595                       | 549            | 347                             | 20                           |
| FORT MEADE                                 | 4,041                       | 432            | 1,142                           | 70                           |
| MULBERRY                                   | 2,922                       | 179            | 803                             | 64                           |
| ELOISE                                     | 3,256                       | 197            | 92                              | 33                           |
| FROSTPROOF                                 | 2,664                       | 272            | 29                              | 1                            |
| HAINES CITY                                | 9,135                       | 580            | 4,096                           | 114                          |
| LAKE WALES                                 | 8,346                       | 960            | 2,921                           | 171                          |
| W. WINTER HAVEN                            | 5,045                       | 426            | 122                             | 8                            |
| OUTSIDE OF PLACES OVER<br>1,000 POPULATION | 63,160                      | 5,154          | 8,106                           | 369                          |

SOURCE: U.S. CENSUS OF POPULATION



CENSUS COUNTY DIVISIONS

|                               | <u>POPULATION OVER 65</u> |
|-------------------------------|---------------------------|
| AUBURNCALC DIVISION           | 992                       |
| BARTOW                        | 1,009                     |
| BARTOW, EAST                  | 138                       |
| DAVENPORT                     | 333                       |
| DUNDEE-LAKE HAMILTON          | 577                       |
| EAGLE LAKE-W. WINTER HAVEN    | 991                       |
| FORT MEADE                    | 648                       |
| FROSTPROOF                    | 523                       |
| HAINES CITY                   | 580                       |
| LAKE ALFRED                   | 442                       |
| LAKELAND                      | 5,877                     |
| LAKELAND, EAST-HIGHLANDS W.   | 1,121                     |
| LAKELAND, NORTH               | 770                       |
| LAKE WALES                    | 960                       |
| LAKE WALES, NORTH             | 273                       |
| LAKE WALES, SOUTH BABSON PARK | 504                       |
| WINSTON                       | 1,323                     |
| WINTER HAVEN                  | 2,021                     |

SOURCE: U.S. CENSUS OF POPULATION, 1960

COMMUNITIES 1,000-2,500 POPULATION

POPULATION 65 AND ABOVE

|               |     |
|---------------|-----|
| DUNDEE        | 192 |
| EAGLE LAKE    | 100 |
| HIGHLAND CITY | 64  |
| LAKE ALFRED   | 258 |
| WAHNETA       | 58  |
| WAVERLY       | 49  |

SOURCE: U.S. CENSUS, 1960

APPENDIX B

TEACHER TRAINEE/FORUM LEADERS

MRS. JAMES H. BISHOP  
804 LAKESIDE COURT  
LAKELAND, FLORIDA  
PHONE: 688-1843

MR. JAMES D. MATHER  
1060 WABASH STREET  
BARTOW, FLORIDA  
PHONE: 533-7717

MRS. MOLLIE BROWER  
CITY RECREATION CENTER  
BOX 366  
BARTOW, FLORIDA  
PHONE: 533-6015

MR. & MRS. MICHAEL J. MILLER  
P. O. BOX 186  
FEDHAVEN, FLORIDA  
PHONE: 676-4242

MR. JOHN C. CARTER  
145 LONGFELLOW ROAD  
WINTER HAVEN, FLORIDA  
PHONE: 293-0215

MR. CHARLES H. SMITH  
P. O. BOX 53  
FEDHAVEN, FLORIDA  
PHONE: 676-1366

MR. & MRS. JOHN W. CUNNINGHAM  
1915-4TH STREET, N.E.  
WINTER HAVEN, FLORIDA  
PHONE: 294-1337

MRS. E. GRETCHEN TAYLOR  
519 CHARLES STREET-APT. 2  
LAKELAND, FLORIDA  
PHONE: 686-3684

MRS. GLADYS L. EAGLE  
P. O. BOX 73  
FEDHAVEN, FLORIDA  
PHONE: 676-4716

MRS. HENRIETTA E. TOLEN  
207 WEST PEAR  
LAKELAND, FLORIDA

MR. & MRS. JOSEPH E. GREENMAN  
P. O. BOX 236  
FEDHAVEN, FLORIDA  
PHONE: 676-4242

MRS. IRENE TUFVANDER  
833 LAKESIDE COURT  
LAKELAND, FLORIDA  
PHONE: 686-6268

MR. & MRS. ROBERT H. HANNUN  
803 LAKESIDE COURT  
LAKELAND, FLORIDA  
PHONE: 686-3904

MALACHI Q. WILLIAMS, SR.  
305 WEST 9TH STREET  
LAKELAND, FLORIDA  
PHONE: 688-4670

MRS. KATE HODGES  
624 W. EMMA STREET  
LAKELAND, FLORIDA  
PHONE: 683-3361

APPENDIX C  
MEETING PLACES OF FORUMS

LAKELAND

WOODALL TRAILER COURT  
LAKE MORTON RETIREMENT HOME  
WESTMINSTER PRESBYTERIAN CHURCH  
NEW FLORIDA HOTEL  
HOWLAND - DELAY RETIREMENT HOME  
VIRGINIA AVENUE CITY RECREATION CENTER  
LAKELAND FEDERAL SAVINGS AND LOAN ASSOCIATION

WINTER HAVEN

CIVIC AUDITORIUM  
JEWETT PRIMARY SCHOOL

BARTOW

CARVER RECREATION CENTER

FEDHAVEN CIVIC AUDITORIUM (2 FORUMS)

NALCREST CIVIC AUDITORIUM

APPENDIX D

SELECTED NEWS RELEASES

**FOR 'ENRICHMENT'**

*6-27-67 - The Ledger*

# **Senior Citizen Forums To Be Conducted Here**

A series of government-sponsored forums on topics of interest to the elderly will begin in Polk County next month.

According to Mrs. E. Gretchen Taylor one of 18 coordinators in the pilot program, the first forum will be held July 5 at the New Florida Hotel.

Other forums are set to begin later at the Presbyterian Home and Woodall's Trailer Park.

The three sites have been designated centers for the experimental "Life Enrichment" program — funded by the U.S. Office of Education and approved by the Florida State Board of Regents.

The paid coordinators have

recently completed their training at Polk Junior College — the program training center selected by the government education office.

According to Mrs. Taylor, the "Life Enrichment" program is the first to be tried in Polk County.

The coordinators will explain topics of interest to retirement age persons and arrange for experts to lecture.

The forums are set to run through October.

Some of the subjects will include explanation of Medicare and Social Security benefits; suggestions for hobbies; general and specific health topics; money and investing.

## NEW CONCEPT

# Junior College to Launch Seniors' Education Program

By **FRANK RORDERUS**  
Ledger Staff Writer

A new concept of education for elderly citizens in Polk County, to be carried out by Polk Junior College, was outlined Wednesday by Dr. Leland R. Cooper, dean of the school's evening college.

Cooper was addressing the Lakeland chapter of the American Association of Retired Persons and their sister organization, the National Retired Teacher's Association.

The educational program will be financed by a federal grant from the U.S. Office of Education coming to Polk J. C. via the Florida Board of Regents.

An initial period of research, begun early in February, will culminate in a series of classes which will be offered to senior citizens at any place in the county where a sufficiently large number of them gather.

Teachers for the special course will be trained at the Polk Junior College campus,

then will go out into the county to instruct in the subject matter.

The course is scheduled to begin teaching operation some time in mid-July and is to terminate by the first of November.

Cooper said that so far the actual course material has not been decided upon, but it probably will include a number of subjects of special interest to senior citizens.

Mentioned as possible subject matter were health, housing, nutrition, maintenance of income, exercise and employ-

ment opportunities for the elderly.

Cooper asked the AARP and NRTA for their support and cooperation in the new program, the first of its kind here.

Teachers are needed immediately, Cooper said, since training of the teaching personnel should begin by May. The teachers, he added, will be paid enough to defer any expenses they might incur, and all materials will be furnished by the college.

There will be no charge for the students.

The course will run for 12 sessions, probably of two hours each. Times and places will be arranged to meet the needs of the students and the capacities of the teachers.

Cooper said that the entire program is to remain completely flexible so that it may suit the schedules of everyone concerned.

If the pilot program proves successful, Cooper said, other courses may be offered in the future. These could include any subject matter which will be of interest and of aid to the senior citizen. Here, again, Polk Junior College will keep its program flexible enough to meet specific desires.

The courses will all be non-credit.

7-2-67 NEWS-  
CHIEF  
Forums For

## Older Persons Slated Here

A series of forums on topics of interest to "Senior Citizens" will begin on July 19 at the Jewett Primary School on First Street.

There will be a series of from six to 12 meetings. Some of the subjects will include explanation of Medicare and Social Security benefits; general and specific health topics, eye care and information on wills and other legal matters.

The coordinators for this experimental life enrichment program will be Mr. and Mrs. John W. Cunningham who have recently completed their training center selected by the government education office.

The coordinators will explain the topic chosen for discussion and experts from each field will serve as consultants. Supervisors from Polk Junior College will observe the effectiveness of the forums from time to time.

The information to be gained at these forums will be of great help to all "Senior Citizens" and additional information may be gotten from Mr. and Mrs. John W. Cunningham, 1915 Sears Avenue.

7-16-67

## Forums For Older Persons Begin Here On July 19

A series of forums on topics of interest to "Senior Citizens" will begin on July 19 at the Jewett Primary School on First Street.

There will be a series of from six to 12 meetings. Some of the subjects will include explanation of Medicare and Social Security benefits; general and specific health topics, eye care and information on wills and other legal matters.

The coordinators for this experimental life enrichment program will be Mr. and Mrs. John W. Cunningham who have recently completed their training center selected by the government education office.

The coordinators will explain the topic chosen for discussion and experts from each field will serve as consultants. Supervisors from Polk Junior College will observe the effectiveness of the forums from time to time.

The first session on July 19 will be an orientation session with the Cunninghams acting as consultants.

Session two on July 26 will be on Social Security with a representative of the Social Security office acting as consultant.

Session three on August 2 will be on Medicare coordinated by the Social Security office.

Session four on August 9 will be on Care of the Eyes conducted by Dr. Richard Copenhagen.

Session five on August 16 will be Nutrition for the Elderly by Mrs. Dorothy Griswold of the Winter Haven Hospital Dietetic Department.

The topic for the sixth session on August 23 is as yet undetermined.

Sessions will be from 4 to 6 p. m. each night.

In Lakeland This Week—

## *Forums on Problems Of Elderly Set in Polk*

LAKELAND (By Staff Writer) — Three forums for retired citizens in the Lakeland area will be held here beginning this week.

They will be sponsored by the Polk Junior College department of continuing education in cooperation with the Florida Board of Regents.

The first forum will begin at 2 p.m. tomorrow at the Florida Hotel in downtown Lakeland. Mrs. E. Gretchen Taylor will coordinate the programs.

The second forum will begin Thursday. It will be held at 9 a.m. in the Lake Morton Retirement Home, 610 East Lime St. Mrs. Amy T. Hannum will coordinate the program.

The third forum will also begin Thursday, and will start at 10 a.m. in the Westminster Presbyterian Church, 730 S. Florida Ave. Dr. Robert H. Hannum will coordinate the program.

The first meeting of each will be a review of the series with members having an op-

portunity to suggest topics of interest for future meetings.

Various professional organizations throughout the county will contribute consultants and speakers from the areas of Medicare, care of the eyes, home safety and accident prevention, the importance of wills and other topics of interest to retirees.

The three coordinators have recently completed a special training course at Polk Junior College to aid them in conducting the forums.

The Lake Morton project is one of a series sponsored by Polk Junior College throughout the county under a grant from the United States Office of Education for the study of the problems of retired citizens.

The junior college has been designated as the sponsor for a pilot study in this area. Professor Harry M. Bradley is the project director for the study.

## LAKE WALES NEWS 6-29-67



**FEDHAVEN GRADUATES** with program director, Harry M. Bradley. Thelma Greenman, Mr. Bradley, Joe Greenman, Ruth Miller, Charlie Smith and Mike Miller. Gladys Eagle was not present for picture. (Story on page 4.)

For the past six weeks, Mr. and Mrs. Joseph Greenman, Mr. and Mrs. Michael J. Miller, Mr. Charles Smith and Mrs. Gladys Eagle have attended bi-weekly seminar sessions for leadership training in the Educational Enrichment program for Senior Citizens at Polk Junior College of Bartow.

Accepting the challenge we were rewarded by a most interesting experience, being privileged to hear lectures and join discussions associated with the needs of our age group.

This is a pilot program in the United States conducted by the professors of the college with Harry M. Bradley, Director, assisted by Mr. Roush, Mr. Seiber and Mr. Vest.

Graduation was held Thurs-

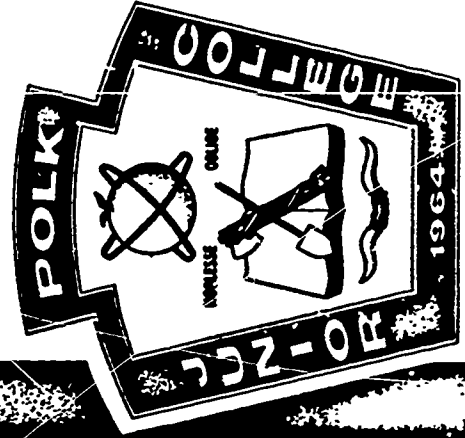
day, June 22, with Dr. F. T. Lenfesty, president of the college, giving the address and presenting the diplomas.

The first week in July Forums will be inaugurated in various areas in Polk County with the graduates as leaders. All retirees and senior citizens are invited to participate with the group in their area. The Greenmans will be conducting a forum in Haines City and Mr. Smith and Mrs. Eagle will be at Nalcrest.

The Fedhaven Forum for Educational Enrichment for Retirees will be organized in the Haven, Friday, July 7th at 2:30 p.m. with the Millers as leaders. The first session will be for registration and discussion of topics for the series of Forums.



# ENRICHMENT PROGRAM FOR RETIREES



POLK JUNIOR COLLEGE

POLK JUNIOR COLLEGE  
P.O. Box 836  
Bartow, Florida

U.S. POSTAGE  
PERMIT NO. 76  
PAID  
Bartow, Florida

## PROGRAM CONTENT

Please check the topics you are most interested in. Forums will not necessarily cover all of the following topics.

- \_\_\_\_\_ Adequate Housing in retirement
- \_\_\_\_\_ Economic Security in retirement
- \_\_\_\_\_ Supplemental income
- \_\_\_\_\_ Home Safety and accident prevention
- \_\_\_\_\_ Eyes and their care
- \_\_\_\_\_ Proper Nutrition
- \_\_\_\_\_ Physical fitness
- \_\_\_\_\_ Medical problems including Medicare
- \_\_\_\_\_ Legal problems including wills and trusts
- \_\_\_\_\_ Counseling, advisory, and other services available to retirees
- \_\_\_\_\_ Social Security
- \_\_\_\_\_ Transportation problems
- \_\_\_\_\_ Recreation for retirees
- \_\_\_\_\_ Problems of family life in retirement
- \_\_\_\_\_ Insurance problems of all types
- \_\_\_\_\_ Other topics of interest not listed

-----

## FOR FURTHER INFORMATION:

Call or write any of the Forum Leaders listed above, or  
Mr. Harry M. Bradley  
Project Director  
Polk Junior College  
Bartow, Florida  
Phone: 533-8147



## ABOUT THE PROGRAM

Senior Citizen Forums are presently being set up at various community centers throughout Polk County. The Forums are sponsored locally by Polk Junior College with the cooperation of the Florida Board of Regents. The purpose of the Forums is to make information available to retirees and Senior Citizens over a broad range of interests. Twenty Forum leaders, themselves Senior Citizens and retirees, have been trained to organize these community programs. Specialists in the fields of medicine, law, banking, social security, Medicare, nutrition, recreation and others will assist the Forum leaders in presenting programs requested by those who attend the meetings.

## COSTS

This program is offered without cost to the participant.

## LOCATION OF FORUMS

Forums will be offered in neighborhood or community centers in Lakeland, Winter Haven, Bartow, Haines City and Lake Wales and nearby communities. Watch for announcements concerning time and place for these forums.

## FORUM LEADERS

Mrs. James H. Bishop  
804 Lakeside Court  
Lakeland, Florida  
Phone: 688-1843

Mrs. Mollie Brown  
City Recreation Center  
Box 366  
Bartow, Florida  
Phone: 533-6015

John C. Carter  
145 Longfellow Road  
Winter Haven, Florida  
Phone: 293-0215

Mr. & Mrs. John W. Cunningham  
1915-4th St. NE.  
Winter Haven, Florida  
Phone: 294-1337

Mrs. Gladys L. Engle  
P.O. Box 73  
Fedahaven, Florida  
Phone: 676-4716

Mr. & Mrs. Joseph E. Greenman  
P.O. Box 236  
Fedahaven, Florida  
Phone: 676-4242

Mr. & Mrs. Robert H. Hannun  
803 Lakeside Court  
Lakeland, Florida  
Phone: 686-3974

Mrs. Kate Hodges  
624 W. Erma St.  
Lakeland, Florida  
Phone: 683-3361

James D. Mather  
1060 Wabash St.  
Bartow, Florida  
Phone: 533-7717

Mr. & Mrs. Michael J. Miller  
P.O. Box 186  
Fedahaven, Florida  
Phone: 676-4242

Mr. Charles H. Smith  
P.O. Box 53  
Fedahaven, Florida  
Phone: 676-1366

Mrs. E. Gretchen Taylor  
519 Charles St.-Apt. 2  
Lakeland, Florida  
Phone: 686-3684

Mrs. Henrietta E. Tolen  
207 West Pear  
Lakeland, Florida

Mrs. Irene Tufvander  
833 Lakeside Court  
Lakeland, Florida  
Phone: 686-6268

Malachi O. Williams, Sr.  
305 West 9th St.  
Lakeland, Florida  
Phone: 688-4670

4 Cent  
Stamp  
Here

MR. HARRY M. BRADLEY  
PROJECT DIRECTOR  
POLK JUNIOR COLLEGE  
P.O. BOX 836  
BARTOW, FLORIDA 33830

(TEAR OFF AND MAIL)

Yes, I would be interested in attending  
the retiree Enrichment Program in my  
neighborhood center.

Name: \_\_\_\_\_  
Address: \_\_\_\_\_  
Phone: \_\_\_\_\_

This Certificate is Awarded to

\_\_\_\_\_

in recognition of the completion of  
the Teacher-trainee Course of Study for

"The Program for the Educational  
Enrichment of Senior Citizens"

Issued at Polk Junior College

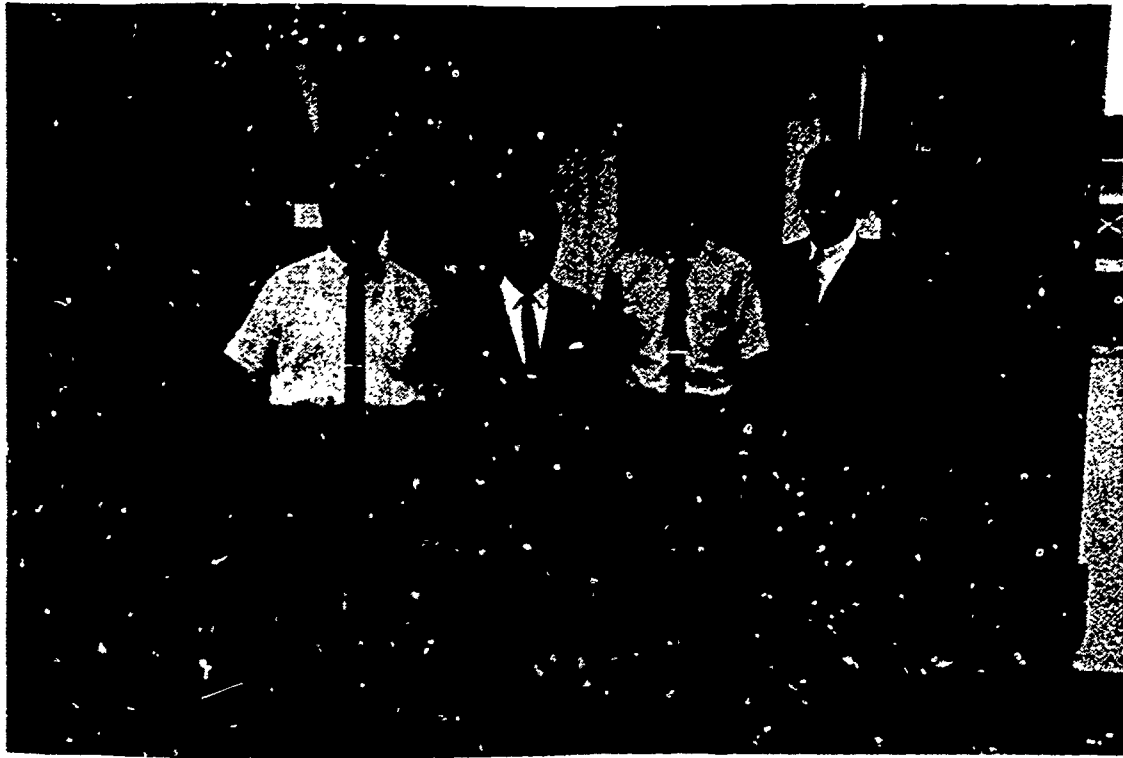
this \_\_\_\_\_ day of \_\_\_\_\_ 196\_\_

\_\_\_\_\_  
Project Director

\_\_\_\_\_  
President

APPENDIX G

PHOTOGRAPHS



FROM LEFT TO RIGHT:

PROFESSOR L. ROUSH, SURVEY WORKER,  
PROJECT DIRECTOR H. BRADLEY,  
PROFESSOR T. SEIBER, SURVEY WORKER,  
PROFESSOR B. VEST, SURVEY WORKER.

APPENDIX H (CONTINUED)

| <u>CONSULTANT</u>       | <u>ORGANIZATION OR PROFESSION</u>                                       |
|-------------------------|-------------------------------------------------------------------------|
| MR. K. D. FARRIS        | STATE TEACHER'S RETIREMENT SYSTEM<br>(TALLAHASSEE)                      |
| PROF. WARRENE FUGITT    | POLK JUNIOR COLLEGE                                                     |
| DR. JOHN W. GLOTFELTY   | OPHTHAMOLOGIST (LAKELAND)                                               |
| DR. CARL C. GORDON      | POLK JUNIOR COLLEGE                                                     |
| MR. MERRILL GRAFTON     | REGIONAL VICE PRESIDENT, STATE FARM<br>INSURANCE COMPANY (WINTER HAVEN) |
| PROF. HERBERT W. GRAVES | POLK JUNIOR COLLEGE                                                     |
| MRS. DOROTHY GRISWOLD   | DIETITIAN, WINTER HAVEN HOSPITAL                                        |
| DR. EDGAR B. HODGE      | PSYCHIATRY (LAKELAND)                                                   |
| MR. JONNIE HUTCHINSON   | FIELD REPRESENTATIVE, FLORIDA STATE<br>INSURANCE COMMISSION             |
| MR. CARLTON JACKSON     | FLORIDA GAME & FRESH WATER FISH COMMISSION<br>(LAKELAND)                |
| MR. LARRY JACKSON       | POLK COUNTY AGRICULTURAL AGENT'S OFFICE<br>(BARTOW)                     |
| SGT. D. R. JANSEN       | FLORIDA HIGHWAY PATROL (LAKELAND)                                       |
| MR. JOHN KIMAK          | SOCIAL SECURITY OFFICE (LAKELAND)                                       |
| MR. JOHN LLOYD          | STATE FARM INSURANCE CO. (WINTER HAVEN)                                 |
| MR. ROBERT MACDONALD    | FLORIDA SOUTHERN COLLEGE                                                |
| DR. JAMES D. MORGAN     | INTERNAL MEDICINE, BOND CLINIC<br>(WINTER HAVEN)                        |
| MISS ALMA MURDOCK       | AUDUBON SOCIETY (LAKELAND)                                              |
| DR. JAMES O. NISWONGER  | POLK JUNIOR COLLEGE                                                     |
| MR. HUBBARD PATE        | SOCIAL SECURITY OFFICE (LAKELAND)                                       |



FORUM

APPENDIX H

CONSULTANTS AND PARTICIPATING ORGANIZATIONS

| <u>CONSULTANT</u>         | <u>ORGANIZATION OR PROFESSION</u>                                           |
|---------------------------|-----------------------------------------------------------------------------|
| DR. ROBERT H. ACKERMAN    | FLORIDA SOUTHERN COLLEGE                                                    |
| MR. RALPH ALLEN           | ALLEN & COMPANY, INVESTMENTS (LAKELAND)                                     |
| MRS. HELEN ANTHONY        | AMERICAN RED CROSS                                                          |
| MR. WILLIAM E. ARNOLD     | SOCIAL SECURITY OFFICE (LAKELAND)                                           |
| MR. LAWRENCE A. BARTLETT  | BLUE CROSS-BLUE SHIELD (TAMPA)                                              |
| MRS. BETTY BROWN          | FLORIDA POWER CORP. (LAKE WALES)                                            |
| MR. CHARLEY BROWN         | VILLA'S VILLAGE (WINTER HAVEN)                                              |
| MR. CHARLES BUCKINGHAM    | SOCIAL SECURITY OFFICE (LAKELAND)                                           |
| MR. JACK CARTER           | SOCIAL SECURITY OFFICE (LAKELAND)                                           |
| DR. JANE CARVER           | BARTOW GENERAL HOSPITAL                                                     |
| MR. W. E. CASSITY         | STATE FARM INSURANCE CO. (WINTER HAVEN)                                     |
| PROF. JAMES W. CONNER     | POLK JUNIOR COLLEGE                                                         |
| DR. RICHARD M. COPENHAVER | OPHTHAMOLOGIST (WINTER HAVEN)                                               |
| MR. JERRY A. DEVANE       | DAYTON, LANGSTON, MASSEY, TROHN & WILLIAMS,<br>ATTORNEYS-AT-LAW, (LAKELAND) |
| DR. HOWARD M. DUBOSE      | INTERNAL MEDICINE (LAKELAND)                                                |
| MR. FRANKLIN G. DUERR     | SOCIAL SECURITY OFFICE (LAKELAND)                                           |
| MRS. ANNE DUNSON          | ASSISTANT COUNTY HOME ECONOMICS AGENT<br>(BARTOW)                           |
| MR. DICK EHLIS            | FLORIDA NATIONAL BANK (LAKELAND)                                            |
| DR. EARLE E. EMMEE        | EMERITUS PROFESSOR, BRADLEY UNIVERSITY<br>(LAKELAND)                        |

APPENDIX H (CONTINUED)

| <u>CONSULTANT</u>       | <u>ORGANIZATION OR PROFESSION</u>                                       |
|-------------------------|-------------------------------------------------------------------------|
| MR. K. D. FARRIS        | STATE TEACHER'S RETIREMENT SYSTEM<br>(TALLAHASSEE)                      |
| PROF. WARRENE FUGITT    | POLK JUNIOR COLLEGE                                                     |
| DR. JOHN W. GLOTFELTY   | OPHTHAMOLOGIST (LAKELAND)                                               |
| DR. CARL C. GORDON      | POLK JUNIOR COLLEGE                                                     |
| MR. MERRILL GRAFTON     | REGIONAL VICE PRESIDENT, STATE FARM<br>INSURANCE COMPANY (WINTER HAVEN) |
| PROF. HERBERT W. GRAVES | POLK JUNIOR COLLEGE                                                     |
| MRS. DOROTHY GRISWOLD   | DIETITIAN, WINTER HAVEN HOSPITAL                                        |
| DR. EDGAR B. HODGE      | PSYCHIATRY (LAKELAND)                                                   |
| MR. JONNIE HUTCHINSON   | FIELD REPRESENTATIVE, FLORIDA STATE<br>INSURANCE COMMISSION             |
| MR. CARLTON JACKSON     | FLORIDA GAME & FRESH WATER FISH COMMISSION<br>(LAKELAND)                |
| MR. LARRY JACKSON       | POLK COUNTY AGRICULTURAL AGENT'S OFFICE<br>(BARTOW)                     |
| SGT. D. R. JANSEN       | FLORIDA HIGHWAY PATROL (LAKELAND)                                       |
| MR. JOHN KIMAK          | SOCIAL SECURITY OFFICE (LAKELAND)                                       |
| MR. JOHN LLOYD          | STATE FARM INSURANCE CO. (WINTER HAVEN)                                 |
| MR. ROBERT MACDONALD    | FLORIDA SOUTHERN COLLEGE                                                |
| DR. JAMES D. MORGAN     | INTERNAL MEDICINE, BOND CLINIC<br>(WINTER HAVEN)                        |
| MISS ALMA MURDOCK       | AUDUBON SOCIETY (LAKELAND)                                              |
| DR. JAMES O. NISWONGER  | POLK JUNIOR COLLEGE                                                     |
| MR. HUBBARD PATE        | SOCIAL SECURITY OFFICE (LAKELAND)                                       |



APPENDIX H (CONTINUED)

| <u>CONSULTANT</u>        | <u>ORGANIZATION OR PROFESSION</u>                       |
|--------------------------|---------------------------------------------------------|
| MR. JOHN R. PURCELL, JR. | ATTORNEY-AT-LAW (BARTOW)                                |
| MRS. MIRIAM SEAY         | SUPERVISOR, STATE DEPARTMENT OF WELFARE<br>(LAKELAND)   |
| MR. THOMAS M. SHERIDAN   | ALLEN & COMPANY, INVESTMENTS (LAKELAND)                 |
| MR. SHERWOOD SMITH       | ADMINISTRATOR, LAKELAND GENERAL HOSPITAL                |
| MR. D. F. TRANHAM        | TRUST OFFICER, EXCHANGE NATIONAL BANK<br>(WINTER HAVEN) |
| PROF. BANKS B. VEST      | POLK JUNIOR COLLEGE                                     |
| MR. BOBBY WEBB           | ATTORNEY-AT-LAW (WINTER HAVEN)                          |
| PROF. PAUL WHITE         | POLK JUNIOR COLLEGE                                     |
| MR. CLAYTON W. ZESIGER   | WINTER HAVEN HIGH SCHOOL                                |

POLK JUNIOR COLLEGE  
WINTER HAVEN, FLORIDA

ADMINISTRATION

BOARD OF PUBLIC INSTRUCTION

SHELLEY S. BOONE, SUPERINTENDENT OF PUBLIC INSTRUCTION

WENDELL H. WATSON, CHAIRMAN

W. RALPH DURRANCE, VICE CHAIRMAN

SETH G. MCKEEL

WALTER O. GIBSON, JR.

AUSTIN T. RACE, JR.

ADVISORY COMMITTEE

MERRILL E. GRAFTON, CHAIRMAN 1968

LORIN T. BICE 1969

ALLEN T. COLE, PH.D. 1968

E. RANDOLPH BENTLEY 1969

STEPHEN GRIMES 1970

ADMINISTRATIVE OFFICERS

FREDERICK T. LENFESTEY, ED.D. - - - - - PRESIDENT

HAROLD H. KASTNER, JR., ED.D. - - - - - VICE-PRESIDENT

PERRY R. ADAMS, ED.D. - - - - - DEAN OF COLLEGE TRANSFER PROGRAMS

WILLIAM F. TAYLOR, ED.D. - - - - - DEAN OF STUDENTS

JAMES L. YOUNT, PH.D. - - - - - DEAN OF CONTINUING EDUCATION

JAMES E. HARRIS, M.S. - - - - - DIRECTOR OF DEVELOPMENT

ROBERT LEE COLLINS, JR., B.B.A. - - - - - DIRECTOR OF SERVICES

END

1-17-69